

Weseth **Cattle Co.**

15th Annual Sale

MONDAY, March 8, 2021

Lunch at 11:30 • Sale at 1:00

Glasgow Stockyards • Glasgow, MT



Selling

47 Red Angus Yearling Bulls

75 Red Bred Heifers

90 Red Heifer Calves

60 Short Term Red Cows

20 June Bred Red Cows

DALE & JANET VESETH

22787 Midale Road • Malta, MT 59538

(406) 658-2504 • djvsth@itstriangle.com

AMIDON FEED CONSULTING SERVICE



HELP YOUR HERD REACH ITS MAXIMUM POTENTIAL

Research shows these results in cattle fed diets including

MINTREX[®]
TRACE MINERALS

- Improved colostrum yield and quantity¹
- Improved reproduction²
- Improved herd health³
- Improved hoof health⁴

¹Rathert et al., 2018, ²Whitehurst et al., 2014, ³Nemec et al., 2012, ⁴Bach et al., 2015

Amidon Feed Consulting Service
Veseths Cattle Company

GUARANTEED ANALYSIS

CALCIUM (CA), MIN.....	18.00%
CALCIUM (CA), MAX.....	21.00%
PHOSPHORUS (P), MIN.....	5.80%
MAGNESIUM (MG), MIN.....	2.40%
POTASSIUM (K), MIN.....	0.30%
ZINC (ZN), MIN.....	6,715 PPM
ORGANIC ZINC (ZN), MIN.....	3,360 PPM
MANGANESE (MN), MIN.....	4,350 PPM
ORGANIC MANGANESE (MN), MIN.....	2,175 PPM
COPPER (CU), MIN.....	2,750 PPM
ORGANIC COPPER (CU), MIN.....	825 PPM
SELENIUM (SE), MIN.....	26 PPM
ORGANIC SELENIUM (SE), MIN.....	7.8 PPM
IODINE (I), MIN.....	100 PPM
COBALT (CO), MIN.....	50 PPM
THIAMINE, MIN.....	800 MG/LB.
VITAMIN A, MIN.....	300,000 I UNITS PER LB.
VITAMIN D3, MIN.....	30,000 I UNITS PER LB.
VITAMIN E, MIN.....	300 I UNITS PER LB.

CUSTOM BULL RATION

R6400 with **50 % Chelates & Thiamine 4000**

1533

MEDICATED

Feed to cattle on pasture or in confinement
For the prevention and control of coccidiosis caused by
Eimeria bovis and Eimeria zuernii.

ACTIVE DRUG INGREDIENT

MONENSIN.....6,400 g/ton

GUARANTEED ANALYSIS

CALCIUM (CA), MIN.....	27.00%
CALCIUM (CA), MAX.....	32.00%
PHOSPHORUS (P), MIN.....	0.05%
MAGNESIUM (MG), MIN.....	0.08%
POTASSIUM (K), MIN.....	0.04%
ZINC (ZN), MIN.....	13,300 PPM
ORGANIC ZINC (ZN), MIN.....	6,650 PPM
MANGANESE (MN), MIN.....	10,000 PPM
ORGANIC MANGANESE (MN), MIN.....	5,000 PPM
COPPER (CU), MIN.....	3,300 PPM
ORGANIC COPPER (CU), MIN.....	1,650 PPM
SELENIUM (SE), MIN.....	106 PPM
ORGANIC SELENIUM (SE), MIN.....	53 PPM
THIAMINE, MIN.....	4,000 MG/LB.
VITAMIN A, MIN.....	800,000 I UNITS PER LB.
VITAMIN D3, MIN.....	80,000 I UNITS PER LB.
VITAMIN E, MIN.....	1,600 I UNITS PER LB.

“Ron’s custom bull ration is designed to help my bulls reach their full genetic potential. Major emphasis is placed on protein, energy and fiber for muscle and frame development. The PX 1533 we use in the ration positively impacts scrotal circumference, semen quality and activity and herd fertility.

The ration is specifically designed to maximize bull longevity for you, the producer. The PX used also increases health performance. Note the percent of chelates in the zinc, copper and manganese from MINTREX[®] which helps support good feet and legs on our bulls.”

Dale Veseth, Veseth Cattle Co.

Contact Ron Amidon at 406-388-1065 for more information!
Products available at R&G Quality Feeds in Malta, MT

Veseth Cattle Co.

22787 Midale Road • Malta, MT 59538
(406) 658-2504 • djvsth@itstriangle.com

15th Annual Sale

March 8, 2021

Selling

47 Red Angus Yearling Bulls

75 Red Bred Heifers • 90 Red Heifer Calves

60 Short Term Red Cows • 20 June Bred Red Cows

SALE LOCATION

Glasgow Stockyards Inc • Fort Peck Hwy E • Glasgow, MT
Office 406-228-9306
Iva Murch 406-263-7529
Jake Newton 406-390-5109

SALE DAY PHONES

Collin Gibbs, Auctioneer 406-939-0645
Bill Pelton, Pelton Livestock 406-671-5100
Iva Murch, Manager Glasgow Stockyards 406-263-7529
Jake Newton, Glasgow Stockyards 406-390-5109
John Koss 406-301-2887
Jim Steele 406-654-7090
Dale Veseth, Cell (before sale day) 406-654-7086

AUCTIONEER

Colin Gibbs 406-939-0645
gibbs.livestock@gmail.com

SALE CONSULTANTS

Bill Pelton 406-671-5100
Glasgow Stockyards 406-228-9306

TERMS & CONDITIONS

Cattle will sell under the suggested Terms and Conditions of the Red Angus Association of America.

ACCOMMODATIONS

Cottonwood Inn 406-228-8213

ULTRASOUND

We will ultrasound on February 18th, 2021. Weights and scrotal circumference will also be updated at this time. This information will be available on www.glasgowstockyards.com and on www.billpelton.com (Go to Sales Calendar, then to March 8th to find Veseth Cattle Co information.)

RETAINED INTEREST BULLS

We are retaining 1/2 interest in every bull selling. Buyer gets 1/2 interest, full possession and full salvage value. This allows us to reserve the right to collect semen on any bull in the offering at the buyer's convenience.

SUPPLEMENT SHEETS

Supplement sheets with weights, scrotal circumference and ultrasound data will be available at Glasgow Stockyards or www.glasgowstockyards.com, www.billpelton.com or email Dale and Janet djvsth@itstriangle.com

VIDEOS

We will video the cattle on February 20th (may depend on weather). Videos will be available on www.glasgowstockyards.com and the Veseth Cattle page on www.billpelton.com (Go to Sales Calendar, then to March 8th to find Veseth Cattle Co sale page.)

SALE ORDER

Bulls and females will be sold in catalog order.

SALE DAY CONFERENCE CALL

No internet bidding this year. Sale Day Conference Call Line available through Pelton Livestock Marketing and Consulting. Contact Bill Pelton ahead of time at 406-671-5100 or bill@billpelton.com.

See page 5 for more info.



LIABILITY

All persons who attend the sale do so at their own risk. Veseth Cattle Co assumes no liability, legal or otherwise, for any accident which may occur.

BULLS WINTERING

The yearling bulls will be fed free of charge until they are ready for delivery between May 1, and June 1st, 2021.

BREEDING SOUNDNESS EXAM

The bulls will pass a breeding soundness exam by a certified veterinarian before delivery.

BIDDING

The Auctioneer will make the final decision on any bidding disputes.



Dear Customers, Neighbors and Friends

When and where can I buy Veseth breeding stock?

Veseth Cattle Co will be selling on March 8th, 2021 at the Glasgow Stockyards, Inc. (GSI) at 1 PM MST. There will be a complimentary lunch available starting at 11:30 catered by Doris Ozark. The cattle will be sold live through GSI by auctioneer Collin Gibbs. The sale order will be in catalog order.

The cattle will be videoed on February 24th and will be posted for viewing a few days later at www.billpelton.com or www.glasgowstockyards.com. Bill will hold a conference call during the sale for bidding. Please call Bill ahead of time to register. Bill's phone is (406) 671-5100.

Dale will be available prior to sale day at home (406) 658-2504 for absentee bids and questions. Collin Gibbs, our auctioneer, can be reached prior to the sale at (406) 939-0645 with any bids or questions. Jim Steele will be available during the sale at (406) 654-7090 for absentee bidding; (please contact Jim before the sale). All absentee bidders need to register with the Glasgow Stockyards at (406) 228-9306.

What is for sale and what is the base price?

Veseth Cattle Co will have 47 bulls for sale. The 2020 bull base price is \$2250, including wintering and breeding soundness evaluation at no additional cost. Bulls will be ready for delivery between May 5th and June 1st. Please go through the catalog to see our 2021 offering including female groups.

How does the sale work?

There will be buyer numbers available for prospective buyers at the office at GSI. Absentee bidders, please register prior to the sale at (406) 228-9306. All cattle will be started at base price; anything unsold will be available at private treaty. The bulls will be sold individually and the females by gate cut based on the buyer's head count needs. All females will sell FOB (freight on buyer) for delivery as soon as possible after the sale. The bulls will be wintered and evaluated for breeding soundness and ready for delivery on May 1st – June 1st. Veseth Cattle Co provides free delivery of bulls to central points up to 300 miles. This way bulls can be delivered in truckload lots. Bulls sold over 300 miles will be at cost. We have a long-distance hauler we contract with for cattle sold out of Montana.

Ultrasound: We will ultrasound the bulls on February 18th, 2021. Weights and scrotal circumference will be updated at this time. This information will be available at the Glasgow Stockyards; www.billpelton.com; www.glasgowstockyards.com or email your request to djvsth@itstriangle.com.

Thank you!

***Dale & Janet – Fred & Jackie
and the whole crew!***

Are there discounts on cattle?

There are discounts. Veseth Cattle will rebate the Volume and Partner discount after the sale. The Young Rancher Discount is taken care of by the Glasgow Stockyards. Bring your drivers license for verification of age.

Volume Discount Every bull bought after the first bull will receive a 1% discount on each additional bull, with a maximum of 10%.

Young Rancher Discount I sympathize with young people trying to get a start in agriculture today. It was tough when I started and it is only tougher now. Anybody 25 years and younger gets a 10% discount on all breeding cattle purchases. Anybody 26 to 35 years old gets a 5% discount on all breeding cattle purchases. This is for young people buying in their own name and brand and not for old established ranches. Veseth Cattle Co puts a maximum discount of \$2000 per buyer per year on young rancher discounts.

What traits do we select for in the cowherd?

First, we select for functional traits including disposition, udder quality, feet and legs, fleshing ability and moderate mature size. Secondly, we select for calving ease, you will find most of the AI and natural service sires we use are in the top percentages within their breed for calving ease. On the ranch, the cow is on her own. In the spring I go through and tag once per day on everything but 2-year-old heifer's calves. Next, we select for a moderate, maternal cow with longevity (stayability) that lives on minimal inputs. Our cows usually graze year-round with only mineral, and protein supplement during the winter in semi-arid conditions in the Missouri River breaks. Fourth, we put as much growth into the cattle as we can without wrecking functional traits, calving ease and moderate sized cows with excellent maternal abilities. Lastly, we try to improve carcass traits when we don't wreck the rest of the selection criteria.

Bull birth weights: We only weigh the 2-year old's calves at birth. The 2-year old cow's calves are weighed on a Tru-Test scale. The cow bulls are hoof taped due to time factors and land topography; Jim and I tag all the calves. The hoof tape is an estimate of birth weight; I think it is usually within 5 lbs. of the actual birth weight.

Our bulls are smaller than bulls at most other sales. There are good reasons why they are smaller at this time in their lives. Our bulls are born in April, not in January. These cattle are moderate framed cattle. Elephant cattle are bigger and have higher maintenance requirements. Our cattle live in the Missouri River breaks, without mountain meadow or irrigated pasture. We usually graze our cow herd year-round without harvested feedstuffs i.e. hay, haylage or silage, except in the worst conditions.

A word on age advantaged bulls

This year the calves were light at weaning from drought and grasshopper infestations. Bulls will get bigger if they are not used until they are 3 years old, but using younger bulls gives you potentially more breeding seasons and less bull depreciation /calf. Younger bulls may need additional care while they are growing, but it is still cheaper than buying expensive older bulls. These are working cattle for working ranchers. It has been a mild winter and this will reflect on cattle condition and size.

Reference Sires



PJ Veseth PJ

The Veseth herd abbreviation is PJ.

This is a bull we raised and sold through our production sale to our cattle partner, Keith VandeSandt. We followed this bull as he was out of a great cow family. PJ grew into a long body bull with a great disposition. Keith used him on heifers for 3 years and never pulled a calf. PJ has 2 generations of calving ease in his pedigree. His sire is KCC Pinnacle 949-109 (RAAA# 1486656) out of a Buf Crk Lancer FL297 daughter. He should be an exceptional calver. We collected him and these are his first calves. We used him again for 2021 calving season.

Sons sell as Lots 1, 8 and 9.

ProS	HB	GM	CED	BW	WW	YW	ADG	DMI	Milk	ME	HPG	CEM	STAY	Marb	YG	CW	REA	Fat
88	67	21	15	-4.1	67	104	0.23	1.21	31	0	10	11	11	0.35	0.19	14	-0.05	0.06

EPDs are of PJ's sire, KCC Pinnacle 949-109



18A WFL Merlin 018A

RAAA# 1628086. The Veseth herd abbreviation is 18A.

This is a Genex bull. He is the real deal. He was the #2 bull for Red Angus registrations this past year. Looking at his calves you can see why. They are smooth, thick, deep bodied and really gain on test. His bull calves include #2, 20, 21, and 25. His EPD profile puts him in the top 1% for MM, top 4% for WW, top 6% for YW, top 8% YG, top 9% for BW, top 13% for ADG and REA, top 18% for CED and top 24% for Marb.

Sons sell as Lots 2, 20, 21 and 25.

ProS	HB	GM	CED	BW	WW	YW	ADG	DMI	Milk	ME	HPG	CEM	STAY	Marb	YG	CW	REA	Fat
121	68	53	15	-4.7	81	128	0.30	1.38	36	-1	10	6	13	0.53	-0.05	21	0.34	0.00



297 Veseth 297 Bull

The Veseth herd abbreviation is 297.

297 is out of the old Buf Crk Lancer FL297 bull bred to my best cow. She was moderate framed, thick and easy fleshing. 297 was used as a herdsire for his maternal value, but also proved himself for calving easy. We assist 15% of his calves out of 2 year old heifers. Looking at the performance of Red Angus calving ease pen of bulls. 297 is also a standout as a performance sire as well. We will put him in the heifer and the cow AI program next year. These are the best disposition cattle on the ranch. Veseth 297 is a very complete herdsire. Buy his progeny with confidence.

Pictured at 8 years old, 2000 lbs, 44.5 SC. Recorded highest BCS of Veseth herdsires to date.

Sons sell as Lots 6, 7, 11 and 12.

ProS	HB	GM	CED	BW	WW	YW	ADG	DMI	Milk	ME	HPG	CEM	STAY	Marb	YG	CW	REA	Fat
107	87	20	19	-6.4	50	72	0.14	0.77	27	-5	8	11	16	0.33	0.01	6	0.06	0.01

EPDs are of 297's sire, Buf Crk Lancer FL297



FP Collier Finished Product

RAAA# 3861137. The Veseth abbreviation is FP.

FP is an ABS bull and is a complete outcross to the other Red Angus genetics. The Angus sires in his background are Final Product, Hoover Dam and In Focus. This is the first set of calves by FP and we are impressed! These cattle are easy calving, dark red colored, have excellent dispositions, smooth, long bodied phenotype and the daughters are very feminine. We look forward to calving another set of his calves next spring. The FP bulls in the sale are Lots 10, 27, 28, 29 and 30.

FP's EPD profile puts him in the top 2% for the HB index and CED, top 3% for BW, the top 4% for the new ProS index and Stay, the top 5% for HPG, and the top 6% for CEM. By the numbers, FP should produce the top cows in the Red Angus breed.

Sons sell as Lots 10, 27, 28, 29 and 30.

ProS	HB	GM	CED	BW	WW	YW	ADG	DMI	Milk	ME	HPG	CEM	STAY	Marb	YG	CW	REA	Fat
166	120	46	20	-6.0	53	91	0.24	2.29	25	1	16	11	20	0.50	0.14	29	0.11	0.04

Reference Sires



TP Veseth Top Performer

Veseth abbreviation is TP.

TP was a calf bred and born on the ranch. He sold to Owen DeBrucker in 2017. He was a standout calf that posted the following ratios: BW 92, WW 109, YW 118, WDA 113, REA 111, IMF 114, Semen Quality 114, SC 107. His calves are generally small at birth. We put a couple of bulls in the Simmental x CE. They are clean, smooth shoulder cattle with a good phenotype with moderate frames. Several are performing very well on test and tend to have a large scrotal measurement. SC 38.5 at 12 months.

His sons include Lots 3, 17, 18, 34 and 42.

RE WBF Rest Easy U085

American Simmental Association # 2472430 Veseth herd abbreviation is RE.

If all Simmentals were as good as this little bull, I would be a purebred Simmental breeder! We have calved him for 4 years and like the small vigorous calves. I have had all good reports on the calving ease of RE sons from my customers as well. However, I maintain RE's real merit are in the females he produces. Our high performing bull is out of a RE 2 year-old daughter. They are early maturity, moderate, milky and rebreed. RE cattle are true curve benders; You get good quick growth to about 15 months, but then they stop and are our smallest cows.

WBF Rest Easy U085 EPD - profile puts him in the top 1% of the ASA database for CE, BW, MCE, MM, Marb and API index, the top 3% for Stay and 25% for TI.

RE is represented by the following sons in Lots 13,14 and 15.

CE	BW	WW	YW	ADG	MCE	MM	MWW	STAY	Doc	CW	YG	Marb	BF	REA	Shr	API
25.2	-8.6	41.2	58.9	0.11	12.9	40.5	61.1	21.5	-8.5	3.5	-0.12	0.67	-0.038	0.03	-0.33	190.5



Veseth 297 Bull - BN maternal brother

BN Burlington Northern

Veseth herd abbreviation is BN.

This is BN's last calf crop. He has been a benchmark sire to compare other sires to in our program. These cattle are the most complete cattle on the ranch. They might not be the prettiest or the most famous, but they are among the best.

His calves include Lots 35, 41,43 and 44.

DOM 3SCC Domain A163

RAAA# 1619642. The Veseth herd abbreviation is Dom.

Dom is a Genex bull and he was #1 in Red Angus registrations last year. These cattle have moderate birth weights, are very maternal, heavily muscled and reduce frame size.

His sons are in the sale as Lots 4, 22, 23, 24, 26 and 31.



ProS	HB	GM	CED	BW	WW	YW	ADG	DMI	Milk	ME	HPG	CEM	STAY	Marb	YG	CW	REA	Fat
153	92	62	15	-1.5	63	105	0.26	1.27	21	2	11	3	22	0.70	0.21	23	0.05	0.07

Reference Sires

CE Lorenzen Next Episode D100

ASA# 3287884. The Veseth herd abbreviation is CE.

These are 50% SM and 50% RA bulls. Lorenzen Red Angus bought embryos from C Diamond Simmental flushing their famous Simmental cow "Hooks Mika 141M x the \$100,000 LSF TBJ Takeback 4856B (RA) bull. They offered nine flush brothers at auction. Leachman Cattle of Colorado and partners paid \$50,000 for Next Episode. Veseth Cattle Co bought 4 of the 8 remaining flush brothers to use as natural service to clean up our yearling heifers. The last two years we have assisted 3 calves in 104 2 year-old natural service births. These same calves had an above average nursing ratio compared to our AI sires on 2 year-old heifers. We saw the light and collected my favorite of the 4 bulls. We will have some the flush brothers on display at the sale. The bred heifers will carry their calves again this year. The CE sires EPD profile puts these bulls in the top 2% of the ASA database for MCE and MM, the top 3% for BW and API, the top 4% for MARB, and top 5% for CE, the 10% for TI, Top 15% for MWW and Doc, and 20% for Stay.

The CE sons in the sale are Lots 16 and Lot 19.



Picture of Veseth's Sire's Sire
LSF TBJ Takeback 4856B ASA # 3098335

CE	BW	WW	YW	ADG	MCE	MM	MWW	STAY	Doc	CW	YG	Marb	BF	REA	Shr	API
25.2	-8.6	41.2	58.9	0.11	12.9	40.5	61.1	21.5	-8.5	3.5	-0.12	0.67	-0.038	0.03	-0.33	190.5

LSF Takeback 4856B EPDs

DB DLCC Derby 64D

South Devon registration # 210507. Veseth herd abbreviation is DB. The reason we sampled these cattle was for their easy fleshing and their ability to convert feed efficiently into beef. They also have exceptional carcass characteristics for grading, yield and tenderness. DB has an awesome phenotype. His show career included winning the National Western Stock Show in Denver. DB calved well for us and his calves were especially impressive at weaning.

His bulls include Lots 32, 37 and 39.



BW	WW	YW	Milk	Mat W Wt	Fat	REA	Marb	CW	Doc	Stay	CED	CEM
+2.4	+65	+84	+16	+49	-0.11	+0.37	+0.2	-41.3	+12	+14	+9.0	+1.2

South Devon EPDs

MMS Veseth Multi Sire

Veseth abbreviation for mature cows multi-sire breeding group (MMS).

These are the mature cows we run in the Missouri River breaks.

We only keep bulls out of our very best cows and cull this group hard.

If they are not exceptional they are steers.



Sale Day Conference Call

It's as easy as

1. Pre-Register for your buyer number
2. Receive toll free call in # and pin
3. Get last minute instructions for call

Give Bill Pelton a call in advance

"Our goal is to get you in the seats but if you can't make it on sale day, we're fixin' to get you On The Line"

Pelton
Livestock
Marketing & Consulting

406.671.5100 bill@billpelton.com www.BILLPELTON.com

Veseth Cattle Facts

Ronald Reagan's motto was trust, but verify when dealing with the Soviets on nuclear disarmament. At Veseth Cattle our motto is test and verify. We have learned that everything you hear at the coffee shop or read on the internet or see in these glossy publications might not be true. We try to test everything and make no assumptions about our production inputs. Especially in the Missouri River Breaks environment.

The ranch keeps NOAA weather records; this calendar year total precipitation did not break the 9" mark. Aphis counts on grasshoppers put 80+ per square yard on our ranch. This is 10 times the economic threshold. Yes, the calves were lighter at weaning, but they weaned really easy!

We made a couple of changes to our program. Ron Amidon formulated a custom mineral for the ranch, which is high in chelated copper, zinc and manganese. It is also formulated for high thiamine to reduce the incidence of brain polio. The intakes have been so good I asked Ron to put a page in this catalog about the product to inform my customers. I am not a paid salesperson for this product, but believe it improves the health and performance of my cattle and will do the same for my customers' herds.

We also took our bulls to the Bruce Hould Feedlot in Malta and they have done an excellent job developing the bulls. The bulls are gaining 3.35 lbs/day on average. They will be more grown out with larger scrotal circumferences than we have offered in the past. The bulls should be able to service more cows their first year out.

Our average cow on the ranch is 1180 lbs. Yes, we produce the proverbial 1150 lb cow. The ideal of the industry. She averages 5.2 years of age and an average body condition score of 4.93. Our average cow weans 50% of her body weight every fall and rebreeds at 93.7% on an average.

We are still feeding cattle at Hy-Plains Feedyard in Montezuma, KS. To date we have fed 276 head with weighted average over 2 years of 3.9 ADG and a dry matter conversion of 6.02 lbs. The accumulative death loss in the feedlot is 1.5%. the cattle grade an average of 86.5% Choice. The bulls continue to marble in Middle Choice with average REA/cwt of 1.14 with .12 of back fat.

These cattle cover all areas of production at minimal production cost. It is time to go RED! Our Herd Sire battery have an average frame score of 5.0 and 1655 lbs at an average age of 3.2 years.



I have served as veterinarian for the Veseth cattle herd since the late 1970s, Over the years, Dale and company have selected and culled for many factors to create a uniform herd that is easy-calving and easy-handling.

Herd health includes annually: preg-testing, branding, preconditioning, pre-breeding and bull-testing programs.

Breeding females are vaccinated with PregGuard and a clostridial/hemophilus vaccine at preg-test. Branding vaccines(Pyramid5/Presponse and Vision7) are administered by the Veseth crew, along with a chelated trace mineral drench.

At preconditioning, Pyramid5/Presponse, Vision7/Somnus, Mycoplasma,and Endovac are given by myself and my staff, as well as chelated mineral drench and a pour-on. Bull prospects are given Fusogard as well.

Heifers calves for replacements are selected and Brucellosis-vaccinated after weaning. All calves are boosted with Hemophilus vaccine after weaning, by Dale's crew. Bull prospects are given a Fusogard booster.

Bulls are tested prior to sale(or turn-out) and given PregGard. Pour-on products are used according to the need: flies,lice and internal parasites.

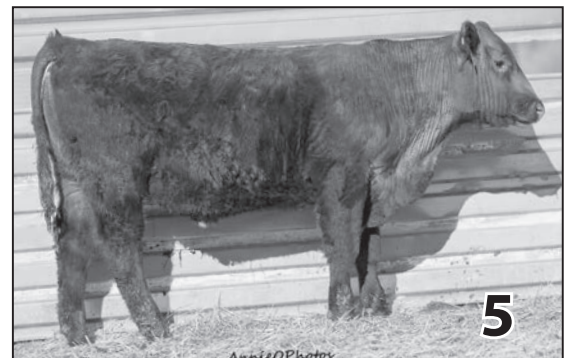
I have had opportunity to see Veseth bulls in other herds that I work. They tend to be quite durable, working well for 8-9 years for some. The calves they sire also seem to be more laid-back and easier to process. I believe this is because of the effort Dale puts in to low-stress handling techniques and a rigorous selection for good attitudes.

Anne H. Johnson DVM

High Performing Bulls *Group 1*

Group 1 will include the high performing bulls from all groups. These bulls will sell first in the sale.
Look for individual lot numbers in Performance Pen (Pen 1).

Calf Info												Dam Info				Preg-Test				
Sale Lot	Calf ID	Calf Sire ID	Birth Date	Birth weight	Calving Ease	Adj 205 Day Weight	Nursing Ratio	ADG on test 11/12/21	Hip Ht (in) 10/30	Frame Score 10/30	Poll Status	Cow ID	Dam Sire ID	Cow Disposition	Cow Udder	Fall Cow Weight	Weaning % (205/cow wt)	Cow Hip Ht (in)	BCS	Fall Preg Test
1	KV855	PJ	3/28/20	68	1	661	106.0	4.73	44	4.9	P	KV855	RE/ BN/ HMH	10	10	962	69%	49	5	B
2	55	18A	4/9/20	83	1	673	108.0	4.31	47.5	6.9	P	KHR769	52C/ COL	10	10	1235	55%	56	5	B
3	41	TP	4/3/20	93	1	647	104.0	4.26	47.5	6.7	P	D73	LET/ BM	10	10	1340	48%	57	5	B
4	206	DOM	4/21/20	92	1	731	117.0	3.31	46.5	6.6	P	C142		10	10	1145	64%	53	4	B
5	29	MMS	4/6/20	90	1	723	116.0	3.18	46	6.1	P	A260	OO	10	10	1130	64%	53	4	B



Red Angus Calving Ease Group 2

Calf Info												Dam Info				Preg-Test				
Sale Lot	Calf ID	Calf Sire ID	Birth Date	Birth weight	Calving Ease	Adj 205 Day Weight	Nursing Ratio	ADG on test 11/12/21	Hip Ht (in) 10/30	Frame Score 10/30	Poll Status	Cow ID	Dam Sire ID	Cow Disposition	Cow Udder	Fall Cow Weight	Weaning % (205/cow wt)	Cow Hip Ht (in)	BCS	Fall Preg Test
6	15	297	3/30/20	66	1	657	105.5	3.39	45	5.4	P	F130		10	10	960	68%	53	5	B
7	4	297	3/24/20	79	1	668	107.0	3.84	46	5.8	P	F49	TP/ OO	10	10	946	71%	52	5	B
8	6	PJ	3/27/20	78	1	640	103.0	4.01	45.5	5.6	P	F178		10	10	830	77%	51	5	B
9	16	PJ	3/30/20	79	1	635	102.0	4.08	45	5.4	P	F205		10	10	998	64%	53	5	B
10	46	FP	4/6/20	71	1	575	92.0	2.82	44.5	5.3	SC	E39	IO	10	10	1115	52%	54	5	B
11	3	297	3/24/20	75	5	585	94.0	3.18	44.5	5.1	P	F59	PB	10	10	964	61%	50	6	B
12	11	297	3/29/20	81	1	604	97.0	3.60	45	5.4	P	F111		10	10	956	63%	52	5	B



Simmental X Calving Ease Group 3

Calf Info												Dam Info				Preg-Test				
Sale Lot	Calf ID	Calf Sire ID	Birth Date	Birth weight	Calving Ease	Adj 205 Day Weight	Nursing Ratio	ADG on test 11/12/21	Hip Ht (in) 10/30	Frame Score 10/30	Poll Status	Cow ID	Dam Sire ID	Cow Disposition	Cow Udder	Fall Cow Weight	Weaning % (205/cow wt)	Cow Hip Ht (in)	BCS	Fall Preg Test
13	37	RE	4/3/20	76	2	613	98.0	3.74	44	5.0	P	F265	BA	9	10	846	73%	50	5	B
14	34	RE	4/3/20	69	1	666	107.0	2.91	45	5.5	P	F33	VIC/ RE/ GWS	10	10					B
15	33	RE	4/2/20	70	1	589	94.0	3.01	44	5.0	P	F132	HBMS	10	10	900	65%	50	6	B
16	50	CE	4/6/20	72	1	594	95.0	3.57	44	5.1	P	F11	RD/ PAC	10	10	842	71%	48	5	B
17	158	TP	4/16/20	75	1	696	112.0	3.30	45	5.8	P	C20	NC	10	9	1185	59%	56	4	O
18	65	TP	4/9/20	75	1	622	100.0	2.91	44	5.1	P	B48	GWS	10	10					
19	54	CE	4/8/20	72	1	587	94.0	2.77	43.5	4.9	P	F31	VIC	10	10	876	67%	51	4	B



Red Angus Maternal Group 4

We believe this is the best set of maternal Red Angus sired bulls we have sold.
There are several half brothers for a rancher to put together an exceptional herdbull battery.

Calf Info												Dam Info				Preg-Test				
Sale Lot	Calf ID	Calf Sire ID	Birth Date	Birth weight	Calving Ease	Adj 205 Day Weight	Nursing Ratio	ADG on test 11/12/21	Hip Ht (in) 10/30	Frame Score 10/30	Poll Status	Cow ID	Dam Sire ID	Cow Disposition	Cow Udder	Fall Cow Weight	Weaning % (205/cow wt)	Cow Hip Ht (in)	BCS	Fall Preg Test
20	39	18A	4/4/20	83	1	670	107.0	4.01	45	5.5	P	E189	COMP	10	10	994	67%	53	5	B
21	KV06C	18A	4/16/20	85	1	652	105.0	4.04	45	5.8	P	KV06C		10	10	1315	50%	55	5	B
22	136	DOM	4/13/20	88	1	658	105.0	3.91	46	6.2	P	D229		10	10					
23	61	DOM	4/9/20	83	1	677	108.0	3.65	46	6.1	P	C41	BP/ ACV	9	9	1175	58%	52	4	B
24	76	DOM	4/9/20	88	1	627	101.0	3.76	46	6.1	P	E116		9	10	1160	54%	56	4	B
25	69	18A	4/10/20	90	1	639	102.0	3.70	45	5.6	P	D79		9	10	1380	46%	56	4	B
26	139	DOM	4/14/20	85	1	644	103.0	3.31	44	5.2	P	E79	BP/ R034	10	10	1075	60%	56	4	B
27	80	FP	4/10/20	81	1	610	98.0	3.58	44	5.1	P	E54	BP/ ACV	9	10	1045	58%	52	5	B
28	133	FP	4/13/20	85	1	599	96.0	3.23	44	5.2	P	E58	BN	10	10	1195	50%	55	5	B
29	148	FP	4/16/20	86	1	617	99.0	3.11	45	5.8	P	D146		10	10	1270	49%	53	5	B
30	100	FP	4/10/20	83	1	616	99.0	2.91	44.5	5.4	P	E233		10	10	1060	58%	57	4	B
31	103	DOM	4/10/20	82	1	583	93.0	2.82	44	5.1	P	DW622	RK	10	9	1245	47%	52	5	B





Composite Maternal Group 5

Calf Info												Dam Info				Preg-Test				
Sale Lot	Calf ID	Calf Sire ID	Birth Date	Birth weight	Calving Ease	Adj 205 Day Weight	Nursing Ratio	ADG on test 11/12/21	Hip Ht (in) 10/30	Frame Score 10/30	Poll Status	Cow ID	Dam Sire ID	Cow Disposition	Cow Udder	Fall Cow Weight	Weaning % (205/cow wt)	Cow Hip Ht (in)	BCS	Fall Preg Test
32	KV655	DB	4/8/20	95	1	705	113.0	4.19	47.5	6.8	SC	KV655	BN/HMH	9	10	1360	52%	56	5	B
33	118	MMS	4/15/20	95	1	732	117.0	3.30	47.5	7.0	P	C90	PTB	10	10	1405	52%	57	6	B
34	82	TP	4/10/20	79	1	657	105.0	3.88	45	5.6	P	D28	RE/CHY	10	9	1215	54%	54	5	B
35	91	BN	4/12/20	85	1	665	107.0	3.70	48.5	7.4	P	C24	HMH	10	10	1310	51%	57	6	B
36	170	MMS	4/18/20	80	1	692	111.0	3.11	46	6.3	P	A294		10	9	1450	48%	58	5	B
37	129	DB	4/16/20	83	1	665	107.0	3.31	46	6.3	P	C150		10	10	1205	55%	54	5	B
38	171	MMS	4/18/20	80	1	661	106.0	3.28	45.5	6.0	P	DW407	29Z	10	10	1320	50%	55	6	B
39	47	DB	4/6/20	79	1	633	101.0	3.66	46	6.1	P	E11	VIC	10	10	1185	53%	53	4	B
40	57	MMS	4/9/20	82	1	658	105.0	3.41	45	5.6	P	142Y		10	9	1245	53%	54	4	B
41	79	BN	4/10/20	76	1	647	104.0	3.32	45	5.6	P	E14	BA/LET	10	10	1040	62%	52	4	B
42	111	TP	4/11/20	80	1	594	95.0	3.57	46	6.2	P	D167		10	10	1305	46%	55	5	B
43	112	BN	4/12/20	88	1	603	97.0	3.31	46	6.2	P	JS906	COMP	10	10	1075	56%	55	4	B
44	38	BN	4/3/20	89	1	643	103.0	3.19	47.5	6.7	P	E221		10	10	1145	56%	55	5	B
45	KV027	MMS	4/7/20	80	1	669	107.0	3.10	46.5	6.3	P	KV027	MS	10	8	1265	53%	55	5	B
46	67	MMS	4/10/20	90	1	655	105.0	3.19	45.5	5.9	P	33Y	CE	10	9	1220	54%	55	6	B





2021 Females

Groups 6-10

If you need less than 5 head of any of the Veseth female groups call Dale and we can get you taken care of at the ranch. 406-658-2504.



50 Veseth Red Bred Heifers *Group 6*

These heifers should calve April 25th thru May 10th. They are out of our CE Simmental Red Angus flush brothers that we have had such good calving success with. These heifers traditionally weigh 1000 to 1100 lbs on sale day. These heifers will be tested at the Glasgow Stockyards prior to the sale. \$1350 Base Price.

35 Sather Ranch Bred Heifers *Group 7*

This group of heifers was purchased in our 2020 sale as calves. Jeff bred them June 26th through August 13th with Calvo Red Angus bulls. These are a good gentle bunch that are straight from Veseth Cattle Co breeding. These heifers will be tested at the Glasgow Stockyards prior to the sale. Jeff can be reached at (406) 724-7820. Base Price \$1350.

50 Red Angus X Heifer Calves *Group 8*

This group of heifer calves is currently off the ranch They have been banged and given estrimate (guaranteed open). Our target weight is 700 lbs on sale day. Jake Newton will sort groups for uniformity at Glasgow Livestock. Base price is \$900.



40 Olsen JV Ranch Red Angus X Heifer Calves *Group 9*

Robert and Travis have been good customers for 15 years. They always end up with some of the best bulls from our sale and have used our breeding exclusively for years. These heifers will be banged and preg tested (guaranteed open) and sorted at Glasgow Stockyards. Robert's phone number is (406) 263-1574. Base Price is \$900.

40 Head of Short Term Cows *Group 10*

These are aged cows that start calving April 5th thru May 31st. The ranch has a mandatory culling age of 11 years old. There will be an age breakdown of the cows at the sale yard. These cows have been in our feedlot and traditionally weigh 1400+ lbs. These cows will be tested at the Glasgow Stockyards prior to the sale. Jake Newton for Glasgow Stockyards will sort the cows prior to the sale. Base price is \$875.

25 Head of Short Term Cows from Peigneux Bros *Group 11*

These cows will be 9 years old and older. Peigneux Bros are long time customers of Veseth Cattle Co. Some of these cows were bought from us as bred heifers and bred to sires purchased thru this sale. These cows will start calving March 20th through May 15th. Randy's phone number is (406) 344-2564. Brett's phone number is 658-2518. Base Price is \$875.

15 June Calving Veseth Cows *Group 12*

We have a June 1st cut off date for calving on the ranch. These cows can calve from June 1st until June 20th. Glasgow Stockyards will sort and cut this group of cows into Young: (3 to 6 yr olds) and Aged: (7 years and up). These cows will be tested at the Glasgow Stockyards prior to the sale. Base Price \$875.



AnnieOPhotos

Veseth Future Sires



RD Brown JYJ Redemption Y1334

RAAA #1441805. *The Veseth Abbreviation is RD.*

We have used RD in our program now for 5 years. We can calve him on heifers and he reduces frame score and adds muscle. His sire groups are traditionally the higher seller in our sale.

ProS	HB	GM	CED	BW	WW	YW	ADG	DMI	Milk	ME	HPG	CEM	STAY	Marb	YG	CW	REA	Fat
145	81	65	15	-4.9	64	114	0.31	1.97	25	0	12	7	15	0.63	0.09	26	-0.05	0.00



MB Milwillah Marble Bar J53

RAAA # 3567871. *The Veseth herd abbreviation is MB*

We used MB three years ago but lost a leg back calf the next spring. If we have any calving problems with a sire they are dropped from our breeding program. But MB got a reprieve when we weaned his calves and you could pick them out of the other calves and not look at the ear tags. When we BSE tested his sire group that next spring they were the largest scrotal group we have produced to date.

ProS	HB	GM	CED	BW	WW	YW	ADG	DMI	Milk	ME	HPG	CEM	STAY	Marb	YG	CW	REA	Fat
123	70	53	15	1.2	73	118	0.28	2.20	38	-5	11	9	10	0.49	0.24	44	0.16	0.06

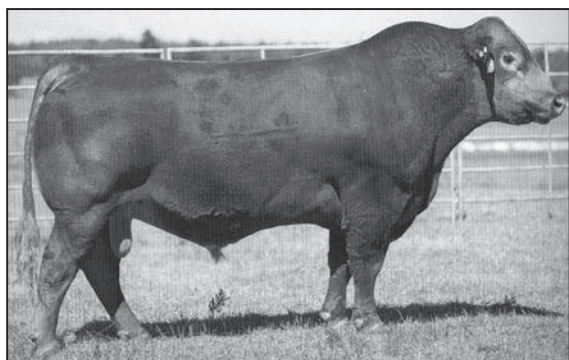


PM WFL Profitmaker E7030

RAAA # 3775477. *The Veseth abbreviation is PM.*

We used PM on heifers for calving ease, but think he will bring other quality factors to our program.

ProS	HB	GM	CED	BW	WW	YW	ADG	DMI	Milk	ME	HPG	CEM	STAY	Marb	YG	CW	REA	Fat
105	81	24	20	-7.6	65	97	0.20	1.29	38	1	7	10	16	0.38	0.02	12	0.18	0.03



GR LBRS Garmin G702

ASA # 3605659. *The Veseth herd abbreviation is GR.*

This was a bull we bought at Bulls of the Big Sky test. He was top gainer in the test of over 200 bulls. He had a 72 lb BW out of a 13 year old donor cow. He had 12 out of 15 traits that measured in the top 35% of the American Simmental Association data base. Including in the top 1% for MCE and to 5% for CE. He had a 39.3 Scrotal and is dog gentle so we bought him.

WS Outcross C164, sire of LBRS Garmin G702

CE	BW	WW	YW	ADG	MCE	MM	MWW	STAY	Doc	CW	YG	Marb	BF	REA	Shr	API
14.7	0.1	72.8	117.1	0.28	10.3	24.7	61.0	19.5	49.9	-0.33	0.04	0.04	-0.095	.78	-0.42	141.3

Veseth Future Sires



VC Ash Valley Count 8754

ASA # AR4279125. The Veseth herd abbreviation is VC.

We bought a composite bull for our program this year. The reason we purchased this bull was that I don't know of any other individual bulls that could put these numbers together under one hide anywhere, anytime and in any other breed or combination of breeds. He started life with a 75 lb BW and is in the top 5% of the Shorthorn data base for CED and CEM. The top 10% for BW and \$CEZ. VC has a moderate frame score of 4.5 and then you have his performance. He was the high gainer at 5.49 on test for a gain ratio of 135. He converted at 5.14 lbs of feed to 1 lb of gain, while the average of his contemporary group was 6.66 lbs. VC was 23% more efficient gaining than his contemporaries. He was fed on a grow safe feeding system so a residual feed intake (RFI)

was calculated. The larger the negative number the more efficient as compared to his contemporaries; VC's number is -4.91. Then you have his carcass traits. He has a marbling ratio of 141 as compared to his contemporaries: the highest in that group. His REA ratio was 104 and we had less back fat (trim) than average at 99. Together his carcass quality was 46% above the average of his contemporary group. Marty Loving, the VC bulls breeder, asked how we were going to use the bull (referring to his light birthweight). My comment was we will test him like we do every sire and if he breeds true for the outlined traits he will be used on everything!

CE	Brth	Wean	Year	ADG	MCE	Milk	MWW	Stay	Doc	CW	YG	Marb	BF	REA	API	TI
14.8	-3.2	44.2	58.5	0.09	10.4	19.7	41.8	20.4	11.5	-2.7	-0.33	0.07	-0.078	0.28	139.4	68.5

Ranching, Conservation, Communities — A Winning Team!

REGISTRATION IS OPEN! | LOG IN AT 7 P.M., 3RD THURSDAY OF EACH MONTH

2021 Rural Resilience Webinar Series



Feb. 16: Resilient ranch finances, Tris Munsick, Plank Stewardship Initiative

March 16: Build resilient underground livestock, Nicole Masters, Integrity Soils

April 20: Grow a resilient forage base, Dallas Mount, Ranch Management Consultants

May 18: Ranching in a resilient tech future, Todd Parker, Vence Corp. and Leo Barthelmess, Barthelmess Ranch, on virtual livestock fencing

Pre-registration is required, but FREE and open to all:

www.ranchstewards.org



www.ranchstewards.org | (406) 654-1405 | PO Box 716, Malta, MT 59538

Veseth Cattle Co.

DALE & JANET VESETH

22787 Midale Road • Malta, MT 59538
(406) 658-2504 • djvsth@itstriangle.com

FIRST CLASS

US Postage
Paid
Ballyhoo Printing
59457

**Pelton
Livestock**
Marketing & Consulting



Hould Feedlot
5867 MT HWY 363
Malta, MT 59538

**Hould
Feedlot**

Malta

to Grass Range,
Billings

15th Annual Sale

March 8, 2021

Lunch at 11:30 • Sale at 1:00

Glasgow Stockyards • Glasgow, MT

Glasgow

Glasgow Stockyards

Fort Peck HWY E
Glasgow, MT 59230