

Keeping Your Program on Target...

# CENTRAL MONTANA GELBVIEH & ANGUS GENETICS

*26th Annual Bull Sale*

*Sons of these great sires sell...*



*Chico Loco*



*Raindance*



*Resource*

## MARCH 20, 2021

LEWISTOWN LIVESTOCK AUCTION • LEWISTOWN, MT

ANGUS • GELBVIEH • BALANCER®



# *From the Heart of Big Sky Country* **CENTRAL MONTANA GELBVIEH & ANGUS GENETICS** *26th Annual Production Sale*

## **Welcome to the 26th Annual Central Montana Gelbvieh & Angus Genetics Bull Sale!**

We may be the little guys when it comes to the cattle world, but we are fully dedicated to the cattle business and strive to put the very best we can in front of you each year. We believe this impressive set of yearling bulls includes the best Gelbvieh, Balancer®, and Angus genetics available!

We, as seed stock producers, and you, as bull buyers, are being hit with a lot of new, and often technical, (and sometimes confusing) information. It seems that buying bulls has become as difficult as buying any other product in the modern world. To get the best bull for your money – you have to do your homework! Please do not feel overwhelmed by this information – if you have questions, just ask and we will do our best to find your answers.

The Linhart bulls have been fed out with Jeremy Grove near Moccasin. The Danell bulls were fed again at the Danell Diamond Six Ranch outside of Lewistown. The bulls will be at these locations anytime prior to March 18th at which time they will be moved to the Lewistown Livestock Auction.

If you cannot attend or get a chance to view the bulls prior to the sale, but have an interest in any of them, please talk with us. Be assured that your interest will be handled with the confidentiality you desire and that you are protected by our "sight unseen" guarantee of satisfaction. Be assured there IS a bull here for you, whether you are looking for A.I./herdsire prospects, cow bulls and/or heifer bulls! Come early and meet with our families and visit about our programs and guarantees, and to study this power packed set of bulls. Check out the pedigrees and find the bull that will work best in your herd. Contemplate the impact the bulls that you buy today will have on your herd for years to come! Look to the Central Montana Gelbvieh & Angus Genetics Bull Sale for your seedstock needs.

**Please join us for a PRE-SALE GATHERING at  
Lewistown Livestock on Friday, March 19th starting at 4 p.m.**  
This is a great time to analyze the bulls and chat with us (and maybe even your neighbors!) See you sale day!!

**DNA TESTING:** All homozygous black and homozygous polled bulls are guaranteed by birth right or by DNA testing.

**SEMEN TEST INFO:** Scrotal measurements are listed on the inside back cover, if they are done by print date. These bulls were tested by Dr. Gaugler of Hobson and Dr. Carlson of Lewistown.

**HEALTH:** The bulls have been fertility tested and scrotal measured. Bulls have also been BVD tested and vaccinated with Preg Guard 9 prior to the sale. Calfhood vaccinations have been taken care of by local vets. Yearling work has been done by Dr. Gaugler of Hobson and Dr. Carlson of Lewistown.

## **CMGAG RANCHES**

### **Linhart Angus**

Doug & Penny Linhart  
Mike & Mardi Vanek

Hobson, MT • Lewistown, MT

(406) 366-4668 - Mike • (406) 423-5445 - Doug

**Lots 1-15**

### **Danell Diamond Six Ranch**

Don & Omie Danell  
1012 Maiden Road

Lewistown, MT 59457

(406) 538-5622

**Lots 16 -33**

Look for videos  
on our Facebook  
page...

**Saturday • March 20, 2021 • 1:00 pm (MST)**  
**Lewistown Livestock Auction • Lewistown, Montana**



## AUCTIONEER:

Kyle Shobe..... Cell .....(406) 366-0472

## SALE DAY PHONES:

(406) 535-3535..... Lewistown Livestock Auction

(406) 366-6953..... Don Danell Cell

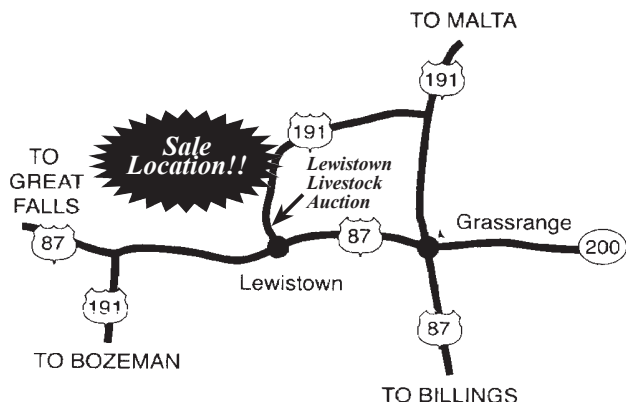
(406) 366-1192..... Doug Linhart Cell

(406) 366-4668..... Mike Vanek Cell

(406) 366-4667..... Mardi Linhart Cell

## SALE LOCATION:

Sale will be held in Lewistown, Montana at the Lewistown Livestock Auction Yards, 83 Stockyard Lane off of Highway 191.



## DELIVERY:

• **WE DELIVER!** – Not only the finest genetics in the Northwest, but we will deliver your purchases **FREE** in Montana and anywhere in the continental USA for no more than \$300/head.

## VOLUME DISCOUNTS:

- Volume Discount Purchases:
  - 5% on 5-9 bulls
  - 10% on 10 or more bulls

## CASH BACK:

- \$50 Cash Back per Bull if you haul away on sale day!

## EXTENDED FEEDING:

- Extended feeding arrangements available after Apr. 1.

## INSURANCE:

- Insurance will be available sale day.

## TERMS OF SALE:

- Bulls will sell under the suggested Terms & Conditions of the American Gelbvieh and American Angus Associations.

## LIABILITY

- All persons attending the sale do so at their own risk. The seller and/or sale management assume no liability, legal or otherwise, for any accidents occurring on or about the premises.

# Linhart Angus

## Linhart Angus

Doug & Penny Linhart  
6270 Ackley Lake Rd • Hobson, MT 59457  
406.423.5445 • 406.366.1192 Doug cell

Mike, Mardi, Tanner, Kade & Alyssa Vanek  
318 Juniper Lane • Lewistown, MT 59457  
406.366.4668 Mike cell



THANK YOU! We are humbled by those who believe in our program and deeply thank each and every one of you as producers for taking the time each year to look at our offering. We would not be here if it were not for you!

We have had the opportunity to be able to sell in this sale for just over a decade but we have been in the cow business for nearly 30 years. Being a small breeder can be a challenge and therefore our cows MUST earn the right to stay around. Lack of performance and rude behavior are both terms for dismissal. We AI heavily to leading tried and true sires in the nation as well as stepping out and try some of the new up and coming bulls. We strive to raise the "cowman's" bull.....**Growth, Capacity and Muscle** while maintaining calving ease and carcass.

All of the bulls we are offering are here because they have earned the right to be here. Below are some of the reasons we chose a few of the AI sires that we did.

Resource - Well known across the U.S. ,we used him to add more muscle dimension and moderate frame just a touch. Man has he worked for us. His calves are stout and packed with performance.

Raindance - An exciting package of calving ease, muscle and growth, we have used Raindance for two years now on our heifers and a few elite cows. His calves are born easy, grow fast and tip the scales in the fall. His tremendous added length make his calves mis-conceived when you compare phenotype to weights. He simply adds pounds.

TEF Outside - An exciting young sire we added to the lineup for his style and muscle mass. After watching him sell, we couldn't wait to try him on our cow herd. His calves have tremendous growth and muscle.

Our bulls were fed out again by Jeremy Grove near Moccasin. Having the bulls closer to home is great and Jeremy and his crew have been great to work with.

Our bulls are available to look at anytime prior to the sale. Call us and we can take a drive out to view them at anytime. And, of course, they will come to town early on Friday, March 19th. We welcome any questions you may have. Again thanks for taking a look at our offering and we hope to see you sale day!

**Kade with D L Cozimo**  
(full brother to Lot 10)

**3X Champion Angus Steer &  
2020 Mt Jr Angus Steer Series Champion!**





# Linhart Angus



## Linhart Raindance 0599 ML

DOB 1/28/20 • Tattoo 0599 • Reg. No. 19940282

Coleman Charlo 0256 (O C C Paxton 730P)

### S A V Raindance 6848

S A V Blackcap May 4136 (S A V 8180 Traveler 004)

Connealy Black Granite (Connealy Consensus 7229)

### M L Zara 5997

M L Zara 9973 (S A V Net Worth 4200)

Act. BW	83
Act. WW	850
Ratio	106
Adj. YW	1288
Ratio	106
ADG	3.62
Ratio	106

### Purebred Angus

CED	BW	WW	YW	SC	Milk	CW	Marb	RE	\$W	\$B
+8	+1.9	+63	+111		+23				+57	

A stand out since birth, this bull is simply a brute. If you are wanting to add depth and length of body as well as muscle, don't look past this guy. He will definitely add pounds to your bottom line at weaning time. His young dam by Granite is a head turner out in the pasture. Her maternal pedigree will make you want to keep every single replacement heifer you get. We lost the grandmother of this bull this last spring at age 11 due to a fall on the ice but his dam is making her mark on our herd just like her momma did.



Lot 1



## Linhart Raindance 0873 ML

DOB 1/28/20 • Tattoo 0873 • Reg. No. 19944881

Coleman Charlo 0256 (O C C Paxton 730P)

### S A V Raindance 6848

S A V Blackcap May 4136 (S A V 8180 Traveler 004)

Hilltop Wide Open 4215 (Hilltop Open Range 2279)

### M L Pearl Enechor 8793

M L Pearl Enechor 7193 (TC Freedom 104)

Act. BW	74
Act. WW	625
Ratio	100
Adj. YW	1052
Ratio	87
ADG	3.26
Ratio	95

### Purebred Angus

CED	BW	WW	YW	SC	Milk	CW	Marb	RE	\$W	\$B
+7	+1.6	+56	+113		+20				+44	

An excellent heifer bull prospect here! This bull is simply built right... clean fronted, tight shouldered, smooth made with the birth weight and birth EPD to match. Out of a really nice Wide Open two year old, his WW is lighter than we would like but he has the pedigree and the look to let us know that he belongs in a bull battery. He has the muscle and the style to catch about anyone's eye.



Lot 2



## Linhart Outside 0309 ML

DOB 1/30/20 • Tattoo 0309 • Reg. No. 19940279

HA Outside 3008 (KG Solution 0018)

### TEF Outside 514

T E F Jet Princess 714 (Hilltop Alliance T246)

S A V Net Worth 4200 (S A V 8180 Traveler 004)

### M L Zara 3097

M L Zara 0973 (Riverbend Beyond)

Act. BW	83
Act. WW	905
Ratio	113
Adj. YW	1355
Ratio	111
ADG	3.66
Ratio	107

### Purebred Angus

CED	BW	WW	YW	SC	Milk	CW	Marb	RE	\$W	\$B
+2	+3.4	+72	+130		+27				+63	

If you want big and stout, then look no further. This bull is packed with growth, power, structural correctness and look. A big boned, big bodied calf since birth, he has not strayed from that look at all. He will simply add pounds to your calf crop. His dam is a power house of a cow that has everyone looking when they see her in the pasture. This was the first bull calf she has had and man did she hit it out of the park. Power, growth, production and a very easy going nature, this bull is one to take a long look at.



Lot 3

Spring 2021 American Angus Association Non-Parent Bull Average EPD's

CED	BW	WW	YW	SC	Doc	Milk	CW	Marb	RE	Fat	\$W	\$F	\$G	\$B
+6	+1.2	+57	+100	+78	+17	+25	+42	+56	+57	+0.11	+56	+81	+46	+130



# Linhart Angus



## Linhart Raindance 0658 ML

DOB 2/01/20 • Tattoo 0658 • Reg. No. 19940280

Coleman Charlo 0256 (O C C Paxton 730P)

### S A V Raindance 6848

S A V Blackcap May 4136 (S A V 8180 Traveler 004)

Soo Line Motive 9016 (HF Kodiak 5R)

### M L Blackbird 6538

M L Blackbird 03 05 (M L Traveler 234D 1719)

Act. BW	80
Act. WW	660
Ratio	96
Adj. YW	1082
Ratio	89
ADG	3.35
Ratio	98

### Purebred Angus

CED	BW	WW	YW	SC	Milk	CW	Marb	RE	\$W	\$B
+6	+1.2	+44	+88		+20				+34	

A super long bodied Randance son that simply checks all the necessary boxes. He is smooth made, thick topped and has a lot of muscle and mass. His young Motive dam is one that is a looker out in the pasture and is consistently giving us calves that you really cannot fault. She comes from a strong maternal cow family. This is her first bull calf and we are excited for him as well as the new one she has on the ground. A great bull that could be easily used on heifers, he will add pounds to your herd.



## Linhart Resource 0127 DL

DOB 2/02/20 • Tattoo 0127 • Reg. No. pending

Rito 707 of Ideal 3407 7075 (R R Rito 707)

### S A V Resource 1441

S A V Blackcap May 4136 (S A V 8180 Traveler 004)

A A R Ten X 7008 S A (Connealy Onward)

### D L Sky Princess 1827

D L Sky Princess 8427 (Bon View Bando 598)

Act. BW	71
Act. WW	720
Ratio	97
Adj. YW	1100
Ratio	91
ADG	3.00
Ratio	90

### Purebred Angus

CED	BW	WW	YW	SC	Milk	CW	Marb	RE	\$W	\$B
+2	+3.0	+59	+112	+0.76	+19	+40	+0.3	+0.62	+47	+121

This is one of the most stylish, eye appealing bulls we are offering and he has the muscle and guts to show that he should produce like his sire. He is moderate framed, big topped and big middled. Those keys will add to the scale in the fall. His Ten X dam is a classy cow that produces one of the top calves every year. This bull is no exception.



## Linhart Resource 0161 DL

DOB 2/02/20 • Tattoo 0161 • Reg. No.

Rito 707 of Ideal 3407 7075 (R R Rito 707)

### S A V Resource 1441

S A V Blackcap May 4136 (S A V 8180 Traveler 004)

D L Bando 0699 7959 (S A V 5175 Bando 0699)

### D L Lass 1619

D L Lass 6119 (ICC Precision E161-4377)

Act. BW	83
Act. WW	790
Ratio	100
Adj. YW	1250
Ratio	103
ADG	3.66
Ratio	107

### Purebred Angus

CED	BW	WW	YW	SC	Milk	CW	Marb	RE	\$W	\$B
+2	+2.6	+63	+116		+17		+41	+0.06	+45	+118

We used Resource to moderate this cow and wow did it work! This bull is a meat wagon. He is good fronted, thick topped, and massive through his hip and down into his quarter. He is a bull that puts it all together with mass, muscle and dimension. His dam is a massive, big bodied cow with extremely strong maternal lineage. We have several daughters, grand daughters and even great grand daughters of the matriarch of this cow family. His brother sold in 2019 and is a resident herd sire at Hilltop Angus in Denton with calves on the ground.



Spring 2021 American Angus Association Non-Parent Bull Average EPD's

CED	BW	WW	YW	SC	Doc	Milk	CW	Marb	RE	Fat	\$W	\$F	\$G	\$B
+6	+1.2	+57	+100	+78	+17	+25	+42	+56	+57	+0.11	+56	+81	+46	+130



# Linhart Angus



## Linhart Raindance 0719 DL

DOB 2/06/20 • Tattoo 0719 • Reg. No. 19941957

Coleman Charlo 0256 (O C C Paxton 730P)

### S A V Raindance 6848

S A V Blackcap May 4136 (S A V 8180 Traveler 004)

ICC Precision E161-4377 (Twin Valley Precision E161)

### D L Lass 7119

D L Lass 1919 (K L M Newton)

Act. BW	80
Act. WW	785
Ratio	103
Adj. YW	1202
Ratio	99
ADG	3.26
Ratio	95

### Purebred Angus

CED	BW	WW	YW	SC	Milk	CW	Marb	RE	\$W	\$B
+5	+1.3	+50	+97	+1.01	+19	+26	+0.10	+0.63	+39	+107

This is a bull who stood out all summer with his tremendous length of body and muscle mass. He is moderate framed, thick topped and big hiped. With his natural thickness, he should sire some scale tipping calves. His dam is a modal framed, soft made cow who is extremely easy keeping. She comes from a strong maternal line of cows that produce well into their early teens. A strong maternally based bull here.



## Linhart Outside 0787 DL

DOB 2/12/20 • Tattoo 0787 • Reg. No. 19941956

HA Outside 3008 (KG Solution 0018)

### TEF Outside 514

T E F Jet Princess 714 (Hilltop Alliance T246)

ICC Precision E161-4377 (Twin Valley Precision E161)

### D L Sky Princess 0787

D L Sky Princess 0827 (Summitcrest Hi Flyer 3818)

Act. BW	80
Act. WW	745
Ratio	100
Adj. YW	1170
Ratio	96
ADG	3.08
Ratio	90

### Purebred Angus

CED	BW	WW	YW	SC	Milk	CW	Marb	RE	\$W	\$B
+4	+2.0	+52	+103	+1.05	+23	+35	+0.21	+0.53	+42	+123

This bull is out of one our favorite cows. She is big bodied, massive in her build and is so easy to handle and be around. She produces one of the top calves every year. This bull is no slouch. He is high growth, thick made bull who excels in his maternal traits and lineage. This bull should add dimension to your calf crop and make sure to take a long look at heifers out of his for your replacement pen.



## Linhart Raindance 0636 ML

DOB 2/20/20 • Tattoo 0636 • Reg. No. 19940277

Coleman Charlo 0256 (O C C Paxton 730P)

### S A V Raindance 6848

S A V Blackcap May 4136 (S A V 8180 Traveler 004)

Connealy Black Granite (Connealy Consensus 7229)

### M L Zara 6536

M L Zara 3536 (S A V Net Worth 4200)

Act. BW	74
Act. WW	720
Ratio	99
Adj. YW	1206
Ratio	99
ADG	3.39
Ratio	99

### Purebred Angus

CED	BW	WW	YW	SC	Milk	CW	Marb	RE	\$W	\$B
+9	+1.2	+57	+105		+23				+52	

A definite standout, this bull was an eye catcher all summer long. His mass, rib and thickness will impress anyone and he is super quiet to be around. This is simply a bull that will add pounds to any cow herd. He is huge topped, big ribbed and massive through his hip. This bull will sire some scale tipping calves and his heifers should be diverted into the replacement pen. His young dam is an upcoming standout for us as her first calf is in the herd and this bull is one of our favorites. A strong cow family to purchase from.



Lot 9

Spring 2021 American Angus Association Non-Parent Bull Average EPD's

CED	BW	WW	YW	SC	Doc	Milk	CW	Marb	RE	Fat	\$W	\$F	\$G	\$B
+6	+1.2	+57	+100	+78	+17	+25	+42	+56	+57	+0.11	+56	+81	+46	+130

# Linhart Angus

**LINHART**  
**10**

## Linhart Rainmaker 0545 DL

DOB 2/18/19 • Tattoo 9719 • Reg. No. Applied for  
Diamond Rainmaker 129A (Hilltop Rainmaker 1333)

### Hilltop Rainmaker 6357

Hilltop Elsiemere GP 3120 (Bobcat Trax)

Musgrave Big Sky (Connealy Earnan 076E)

### D L Tiger Lady 5459

D L Tiger Lady 4959 (TC Stockman 365)

### Purebred Angus

Act. BW	78
Act. WW	690
Ratio	97
Adj. YW	1159
Ratio	95
ADG	3.00
Ratio	90

CED	BW	WW	YW	SC	Milk	CW	Marb	RE	\$W	\$B
+5	+1.8	+58	+99		+13				+41	

We don't often have natural sired calves in February but after we had seen her calf from this cross in 2018, there was no worries! Simply born too late to make the 2019 sale, that calf went on to be the 2019 MJAA Champion Angus Steer for Kade. This bull is a spitting image of him! Big bodied, easy keeping, big hiped, good structured....all the things you look for. And we know that carcass end will be exceptional as well! A bull that will add to your herd for sure.



**LINHART**  
**11**

## Linhart Raindance 0627 DL

DOB 3/03/20 • Tattoo 0627 • Reg. No. pending

Coleman Charlo 0256 (O C C Paxton 730P)

### S A V Raindance 6848

S A V Blackcap May 4136 (S A V 8180 Traveler 004)

Hilltop Wide Open 4215 (Hilltop Open Range 2279)

### D L Sky Princess 6127

D L Sky Princess 1827 (A A R Ten X 7008 S A)

### Purebred Angus

Act. BW	80
Act. WW	660
Ratio	94
Adj. YW	1191
Ratio	98
ADG	3.66
Ratio	107

CED	BW	WW	YW	SC	Milk	CW	Marb	RE	\$W	\$B
+5	+1.6	+62	+122	+0.71	18	+40	+0.27	+0.64	+48	+126

A bull bred for calving ease, he should sire some well put together calves that will carry some of that added depth and dimension that he exhibits. The Raindance calves are high growth, high performance calves. This bull's dam is a looker out in the pasture. Near perfect in her phenotype, she is matching it in her production by already having a producing daughter in the herd. A bull that combines it all.

**LINHART**  
**13**

## Linhart Rainmaker 0571 DL

DOB 3/12/20 • Tattoo 0571 • Reg. No. 19941959

Diamond Rainmaker 129A (Hilltop Rainmaker 1333)

### Hilltop Rainmaker 6357

Hilltop Elsiemere GP 3120 (Bobcat Trax)

A A R Ten X 7008 S A (Mytty In Focus)

### D L Lass 5719

D L Lass 7119 (ICC Precision E161-4377)

### Purebred Angus

Act. BW	83
Act. WW	655
Ratio	96
Adj. YW	1210
Ratio	100
ADG	3.44
Ratio	101

CED	BW	WW	YW	SC	Milk	CW	Marb	RE	\$W	\$B
+3	+2.0	+58	+104		+15	+35	+0.50	+0.62	+37	+134

This is one of our younger bulls by our herd sire. Even with his younger age, his growth and performance over the summer didn't make us think twice about sending him to test. He is long bodied, clean fronted and smooth made. He should sire some calves that have a look but still have the added dimension to benefit your bottom line. His young Ten X dam is a very solid producer who has the added carcass performance in her strong maternal pedigree.

**LINHART**  
**12**

## Linhart Rainmaker 0505 DL

DOB 3/09/20 • Tattoo 0505 • Reg. No. 19941958

Diamond Rainmaker 129A (Hilltop Rainmaker 1333)

### Hilltop Rainmaker 6357

Hilltop Elsiemere GP 3120 (Bobcat Trax)

A A R Ten X 7008 S A (Mytty In Focus)

### D L Tiger Lady 5059

D L Tiger Lady 0959 (S A V Heritage 6295)

### Purebred Angus

Act. BW	83
Act. WW	720
Ratio	102
Adj. YW	1356
Ratio	112
ADG	4.11
Ratio	120

CED	BW	WW	YW	SC	Milk	CW	Marb	RE	\$W	\$B
+2	+2.5	+68	+120		+14	+40	+0.47	+0.66	+48	+136

If your are looking to moderate your calves but keep the pounds, then look no further. This bull is massive when you stop and look at him. Massive down his top and into his hip, he might have the most muscle shape of all the bulls we are offering. To top it off, he comes from the strongest cow family in our herd with almost half of the cows tracing back to one old cow. That shows the maternal side of this bull! Dont miss him!



Spring 2021 American Angus Association Non-Parent Bull Average EPD's

CED	BW	WW	YW	SC	Doc	Milk	CW	Marb	RE	Fat	\$W	\$F	\$G	\$B
+6	+1.2	+57	+100	+78	+17	+25	+42	+56	+57	+0.11	+56	+81	+46	+130



# Linhart Angus

**LINHART**  
**14**

## Linhart Rainmaker 0728 ML

DOB 3/13/20 • Tattoo 0728 • Reg. No. 19941960

Diamond Rainmaker 129A (Hilltop Rainmaker 1333)

### Hilltop Rainmaker 6357

Hilltop Elsiemere GP 3120 (Bobcat Trax)

Young Dale Yohan 133A (Young Dale Yohann 39Y)

### M L Blackbird 7258

M L Blackbird 2538 (D L Bando 0699 7959)

### Purebred Angus

CED	BW	WW	YW	SC	Milk	CW	Marb	RE	\$W	\$B
+2	+1.9	+70	+118		+13				+52	

Another younger bull out of our herd sire who proved he was worthy of test with his growth and performance over the summer. Born a twin to a young 3 year old, he was raised with his sibling for several weeks. This didn't hinder him much though. He still weighed off well at weaning and has shown great performance in the lot. He is big bodied, correct made and should add to the bottom line.

Act. BW	71
Act. WW	650
Ratio	103
Adj. YW	1176
Ratio	97
ADG	3.17
Ratio	93



**LINHART**  
**15**

## Linhart Rainmaker 0416 DL

DOB 3/24/20 • Tattoo 0416 • Reg. No. 19941954

Diamond Rainmaker 129A (Hilltop Rainmaker 1333)

### Hilltop Rainmaker 6357

Hilltop Elsiemere GP 3120 (Bobcat Trax)

A A R Ten X 7008 S A (Mytty In Focus)

### D L Lass 4161

D L Lass 6119 (ICC Precision E161-4377)

### Purebred Angus

CED	BW	WW	YW	SC	Milk	CW	Marb	RE	\$W	\$B
+4	+1.7	+77	+135		+15	+42	+0.50	+0.72	+60	+146

He is very young, but he is here for good reason as you will see when you see him in person. This bull is a beast. He is big topped, deep bodied and about as thick as one can be. His Ten X dam is a big, high growth cow that sends a scale tipping calf to the scales every year. She stems from a strong maternal line with a lot of longevity. A full brother was sold in 2019 and is working at the Sramek Ranch near Brooks.

Act. BW	80
Act. WW	755
Ratio	113
Adj. YW	1423
Ratio	117
ADG	3.79
Ratio	111



## AI Sires used by Linhart Angus...



*S A V Raindance 6848*



*T E F Outside 314*



*S A V Resource 1441*

CED	BW	WW	YW	SC	Doc	Milk	CW	Marb	RE	Fat	\$W	\$F	\$G	\$B
+6	+1.2	+57	+100	+78	+17	+25	+42	+56	+57	+0.11	+56	+81	+46	+130

## DANELL DIAMOND SIX RANCH

*EXPECT A LOT OF BULL!*

*Still Withstanding the Test of Time*

26 years and still going! The Energizer bunny's batteries are running down and we thought we had plenty of time to get pictures of all the bulls, but then Montana weather happened. Unfortunately, many of the bulls we did not get pictured are some of our Top bulls! We do intend to get out there again and get more photos taken, but it will be too late for catalog. They will be available to view, however, on the American Gelbvieh Association website. If you need any help to find them, give us a call and we will get you there.

We added another bit of info on our bulls this year – foot scores. Greg Carlson, DVM did the scoring for us and we hope to continue with this information in the future.

I think you will be pleased with the bulls this year. We strive to improve the offering from one year to the next and I think the big hips and volume will catch your eye. Again, we are here to help you succeed in today's market and these bulls will do just that – adding pounds and a high percentage of your calves grading choice!

We retain ½ semen interest on all our bulls.

### EPD's - Expected Progeny Differences • EPD abbreviations used in this information

CED – Calving Ease Direct	DMI – Dry Matter Intake
BW – Birth Weight	YG – Yield Grade
WW – Weaning Weight	CW – Carcass Weight
YW – Yearling Weight	REA – Ribeye Area
Milk – Milk	MB – Marbling
TM – Total Maternal	RFI – Residual Feed Intake
CEM – Calving Ease Maternal	\$Cow – genetic value in dollars of profit of an animal when retained as a replacement female
HP – Heifer pregnancy	FPI – Feeder profit index
PG30 – 30-month pregnancy	EPI – Efficiency profit index
ST – Stayability (cow's ability to produce a calf after age 6)	





# Danell Diamond Six Gelbvieh

DANELL  
16

## JOB Danell Swinger 05H

DOB 1/29/20 • Tattoo 05H • Reg. No. 1474629

JOB Danell Rocko 51D (JOB Danell TD Chico Loco 28Y)

### JOB Danell Pardner 07F

JOB Danell Dosey Doe 05D (A A R Ten X 7008 S A)

JOB Danell Spitz 26D (Sitz Upward 307R)

### JOB Danell Swizzle 02F

JOB Danell Sizzle 17Z ET (JOB Danell Resolution 26U ET)

**Homozygous Black**  
**Homozygous Polled**  
**Balancer®50 (TWIN)**



**Tenderness**  
**7**

Act. BW
63
Adj. 205
698
Ratio
NA
Adj. YW
1197
Ratio
NA
ADG
3.84
Ratio



Lot 16

CED	BW	WW	YW	Milk	TM	CEM	HP	PG30	ST	YG	CW	REA	MB	\$Cow	FPI	EPI
13	0.0	81	130	21	62	7	4.91	3.00	16	0.04	50	0.43	0.52		90.45	

HOMOZYGOUS Polled, HOMOZYGOUS Black (and solid black) 50% Gelbvieh Balancer twin. Swinger was born 63 pounds, along with his 57-pound twin sister, to a beautifully uddered heifer that raised him to a 698 pound 205 weight! He is easy to be around, but does not like to be alone – so I would not recommend him for a small herd with only one bull. Otherwise, Swinger is a great bull – smooth shouldered, big hipped, and long! His feet score 5 for heel and 6 for claw.

DANELL  
17

## JOB Danell Pay Pal 12H

DOB 2/07/20 • Tattoo 12H • Reg. No. 1474661

BBDM Bolton Pay Day 45C (JOB Danell Joey 7A)

### JOB Danell Paygrade 68E

JOB Danell Sal 9C (A A R Ten X 7008 S A)

DLW New Frontier 33A ET (KCF Bennett U271)

### JOB Danell Josephine 33C

JOB Danell JoJo 13Y ET (MLLC M/L Encore)

**Homozygous Black**  
**Homozygous Polled**  
**Purebred84.4**



**Tenderness**  
**7**

Act. BW
90
Adj. 205
798
Ratio
109
Adj. YW
1259
Ratio
102
ADG
3.47
Ratio



Lot 17

CED	BW	WW	YW	Milk	TM	CEM	HP	PG30	ST	YG	CW	REA	MB	\$Cow	FPI	EPI
12	-0.1	77	115	24	63	7	5.28	1.59	10	-0.25	37	0.82	0.34		84.57	

HOMOZYGOUS Polled, HOMOZYGOUS Black (and solid black) 84.4% Purebred Gelbvieh bull, and what a bull he is! Pay Pal is one of the Top bulls we have raised in 26 years! He is easy on the eye with a big hip that carries down and he is long made with a straight back. Pay Pal walks with a long, fluid stride and stands on sound feet, scoring 5/6 (heel/claw)! Good performance with a 798 pound 205 weight (ratio 109), a 1259 pound 365 weight (102 ratio), and a 14-inch ribeye (100 ratio). Pay Pal's donor dam has 14 embryos in the tank and has a reputation for producing the good ones - JOB DANELL Napoleon 01E being one of them! She is good uddered and has a calm disposition. Her performance on 3 calves is BW ratio 93, WW ratio 114, and YW ratio 101! Pay Pal's sire, Paygrade 68E, is an exciting young sire that has put some beautiful moderate framed, good uddered, easy going first calf heifers that we are calving out right now. As you can tell, we really like this bull! He will be collected for in herd use before he leaves the ranch and we are retaining 1/2 semen interest. He is an outcross to most Gelbvieh programs and has a Tenderness score of 7! Buy with confidence, buy into the future!

DANELL  
18

## JOB Danell Alert 18H

DOB 2/12/20 • Tattoo 18H • Reg. No. 1474667

JOB Danell TD Chico Loco 28Y (ELK CK Crazy Horse 138P)

### JOB Danell Toro 31A

Monarch Sandy Pride P064 (J D Daigger 901)

JOB Danell Spitz 26D (Sitz Upward 307R)

### JOB Danell Ambie 51F

JOB Danell Amber 48C (CCRO Carolina Exclusive 1230Y)

**Homozygous Black**  
**Homozygous Polled**  
**Balancer®38**



**Tenderness**  
**6**

Act. BW
86
Adj. 205
767
Ratio
106
Adj. YW
1452
Ratio
107
107
5.05
Ratio



Lot 18

CED	BW	WW	YW	Milk	TM	CEM	HP	PG30	ST	YG	CW	REA	MB	\$Cow	FPI	EPI
13	0.8	78	131	17	57	6	7.09	3.47	14	0.03	71	0.62	0.59		89.55	

HOMOZYGOUS Polled, HOMOZYGOUS Black (and solid black) 38% Gelbvieh Balancer, born 86 pounds from a first calf heifer. Alert has a very calm disposition and is long sided with a big wide hip and a very clean front! His foot score is 5/6 (heel/claw). He has quite the performance data – 767 pound 205 weight (106 ratio), 1452 pound 365 weight (107 ratio), 13.8-inch ribeye and a 3.755 IMF (124 ratio)! Alert is one of our Top performers, but carries an Angus genetic anomaly called DD (developmental duplication). Carriers are not affected and only matings with females that are also carriers would ever produce any affected calves (and then only a 25% chance that they would produce an affected calf). If you have used Angus bulls in your herd that were carriers of DD, you should probably stay away from this exceptional bull. Some of the most used Angus AI sires that are DD carriers include GAR Predestined, Three Rivers Mile High and others.

Winter 2021 American Gelbvieh Association Non-Parent Gelbvieh Average EPD's

CED	BW	WW	YW	Milk	TM	CEM	HP	PG30	ST	DOC	SC	DMI	YG	CW	RE	MB	FAT	ADG	RFI	\$Cow	FPI	EPI
12	0.1	67	96	21	54	6	6	1	15	12	0.60	0.016	-0.24	29	0.72	0.20	-0.04	-0.038	-0.006	108.68	73.72	72.84

# Danell Diamond Six Gelbvieh

Gelbvieh

Balancer®

Angus



## JOB Danell Ranch Hand 25H

DOB 2/15/20 • Tattoo 25H • Reg. No. 1474702

ELK CK Crazy Horse 138P (GRU ELK Dee Jake 744J)

### JOB Danell TD Chico Loco 28Y

MCFG TD Mya 210T (JOB Danell Montana Infusion)

MCFG The Man 113U (MCFG MCF Bruce Almighty 35PET)

### JOB Danell Pammy 15Z

JOB Danell P.J. 15S (JOB Danell Picasso 18P)

**Homozygous Black**  
**Homozygous Polled**  
**Purebred88**



Act. BW	86
Adj. 205	716
Ratio	98
Adj. YW	1114
Ratio	90
ADG	2.95
Ratio	



Lot 19

CED	BW	WW	YW	Milk	TM	CEM	HP	PG30	ST	YG	CW	REA	MB	\$Cow	FPI	EPI
13	-0.8	60	92	13	43	8	2.63	3.22	10	-0.18	27	0.61	0.30	78.09	72.79	64.48

HOMOZYGOUS Polled, HOMOZYGOUS Black (and solid black) 88% Purebred Gelbvieh with an 86-pound birthweight. Ranch Hand is long made and tight sheathed with a nice hip, and a foot score of 5/6 (heel/claw)! His mama, Pammy 15Z, has been a cow that keeps on producing bulls that make the sale. She has a good udder, calm disposition, and sound feet. His Daddy, Chico Loco 28Y, truly has been one of my most reliable AI Sires for producing mama cows to great bulls! This bull does not like to be alone, so I don't recommend him for small herds with only one bull.



## BBDM Bolton Zander 41H

DOB 2/15/20 • Tattoo 41H • Reg. No. 1496792

G A R Prophet (C R A Bextor 872 5205 608)

### BBDM Bolton Top Gun 40F

JOB Danell Daylily 28Z (SDCG X-Factor 202X)

MCFG The Man 113U (MCFG MCF Bruce Almighty 35PET)

### JOB Danell Zappa 41A

JOB Danell Moonshadow 30T (JOB Danell Picasso 18P)

**Homozygous Black**  
**Homozygous Polled**  
**Balancer®50**



Act. BW	89
Adj. 205	696
Ratio	98
Adj. YW	1229
Ratio	96
ADG	3.37
Ratio	



BBDM Bolton Top Gun - Sire of Lot 20

CED	BW	WW	YW	Milk	TM	CEM	HP	PG30	ST	YG	CW	REA	MB	\$Cow	FPI	EPI
11	0.0	65	98	20	53	6	1.93	4.82	14	-0.04	42	0.49	0.64	96.28	82.93	113.38

HOMOZYGOUS Polled, HOMOZYGOUS Black 50% Gelbvieh Balancer with an 89# birthweight. Zander is a larger framed bull with a lot of length and a 698# 205 weight and a foot score of 5/6! His mama is a daughter of one of our donor cows that is also a Dam of Distinction and, at 14 years old, has never failed to give us a healthy calf and still has a perfect udder! Breed back is one of the most important traits ranchers can invest in!



## JOB Danell CD Blackjack 26H

DOB 2/16/20 • Tattoo 26H • Reg. No. 1474703

JOB Danell Resolution 26U ET (JOB Danell Montana Infusion)

### JOB Danell Solvent 34Z

JLM Blackclass 6514 (Connealy Lead On)

JOB Danell A.J. 12A ET (A A R Ten X 7008 S A)

### JOB Danell CD Blackbird 70D

JOB Danell Raven 22T (JOB Danell Picasso 18P)

**Black**  
**Homozygous Polled**  
**Balancer®50**



Act. BW	68
Adj. 205	657
Ratio	89
Adj. YW	1135
Ratio	92
ADG	3.58
Ratio	



CED	BW	WW	YW	Milk	TM	CEM	HP	PG30	ST	YG	CW	REA	MB	\$Cow	FPI	EPI
18	-3.8	51	86	20	45	10	3.43	2.44	13	-0.07	31	0.40	0.46		77.03	

HOMOZYGOUS Polled, Black (red carrier) 50% Gelbvieh Balancer with a 68-pound birthweight! Blackjack is a very stylish bull with a nice hip, straight back, moderate frame, and a good disposition with a perfect foot score of 5/5 (heel/claw). His mama has a beautiful udder, sound feet, and a BW ratio of 83 on 3 calves – and just gave us another 74-pound bull calf. Blackjack should work well on heifers as well as cows, and give you nice replacement heifers and put pounds on steers.

Winter 2021 American Gelbvieh Association Balancers® Non-Parent Average EPD's

CED	BW	WW	YW	Milk	TM	CEM	HP	PG30	ST	DOC	SC	DMI	YG	CW	RE	MB	FAT	ADG	RFI	\$Cow	FPI	EPI
13	-0.5	69	106	20	54	7	5	1	14	12	0.50	0.028	-0.07	34	0.51	0.35	0.00	0.009	-0.013	100.19	79.50	112.68



# Danell Diamond Six Gelbvieh

DANELL  
22

## JOB Danell Anthurium 29H

DOB 2/17/20 • Tattoo 29H • Reg. No. 1474706

BBDM Bolton Pay Day 45C (JOB Danell Joey 7A)

### JOB Danell Paygrade 68E

JOB Danell Sal 9C (A A R Ten X 7008 S A)

JOB Danell A.J. 12A ET (A A R Ten X 7008 S A)

### JOB Danell Amaryllis 49C

JOB Danell Azalea 61Z (JOB Danell Professor 11X)

**Black**  
**Homozygous Polled**  
**Balancer®63**



**Tenderness**  
**4**

Act. BW	88
Adj. 205	718
Ratio	98
Adj. YW	1296
Ratio	105
ADG	4.05
Ratio	



Lot 22

CED	BW	WW	YW	Milk	TM	CEM	HP	PG30	ST	YG	CW	REA	MB	\$Cow	FPI	EPI
14	1.4	72	115	17	53	9	4.96	1.77	11	-0.08	38	0.53	0.35		82.35	

HOMOZYGOUS Polled, Black (and solid black) 68% Gelbvieh Balancer with an 88# birthweight. Anthurium is long made and straight backed with an easy-going disposition and his foot score is 5/7 (heel/claw). He has great calving ease and exceptional growth EPDs and his mama just gave us another 87-pound bull calf for next year's sale. She just keeps on giving! Anthurium's daddy, Paygrade 68E, has proven himself as a calving ease bull producing moderate framed heifers with good udders and plenty of milk. Anthurium should add some length, weight, and a bit of frame to your calves.

DANELL  
23

## JOB Danell Shake A Day 30H

DOB 2/17/20 • Tattoo 30H • Reg. No. 1474707

KHR 03Z (A A R Ten X 7008 S A)

### JOB Danell Shaker 05F

JOB Danell Shadow 59D (JOB Danell Toro 31A)

SDCG X-Factor 202X (TAU Mr Krugerrand 70M 130P)

### JOB Danell Mandy B. 48Z

Monarch Sandy Pride S132 (BR Midland)

**Homozygous Black**  
**Homozygous Polled**  
**Balancer®38**



**Tenderness**  
**10**

Act. BW	89
Adj. 205	653
Ratio	90
Adj. YW	1165
Ratio	86
ADG	3.84
Ratio	



JOB Danell Shaker 05F - Sire of Lot 23

CED	BW	WW	YW	Milk	TM	CEM	HP	PG30	ST	YG	CW	REA	MB	\$Cow	FPI	EPI
11	0.6	69	110	17	52	3	4.39	3.09	13	0.00	45	0.53	0.55		82.20	

HOMOZYGOUS Polled, HOMOZYGOUS Black (and solid black) 38% Gelbvieh Balancer with an 89# birthweight and a Tenderness score of 10! His foot score is a good 5/6 (heel/claw). Shake A Day is a moderate framed bull with a good hip and smooth shoulder from 2 of our Top Donor families – both producing beautifully uddered females! We keep almost every one of the females we get from those two cow families. Although not our Top bull for growth this year, I would bet this bull will produce some awfully good replacement heifers. Also worth repeating – Tenderness score of 10!

DANELL  
24

## JOB Danell Granger 32H

DOB 2/18/20 • Tattoo 32H • Reg. No. 1474709

BBDM Bolton Pay Day 45C (JOB Danell Joey 7A)

### JOB Danell Paygrade 68E

JOB Danell Sal 9C (A A R Ten X 7008 S A)

JOB Danell TD Chico Loco 28Y (ELK CK Crazy Horse 138P)

### JOB Danell Orange Blossom 35B

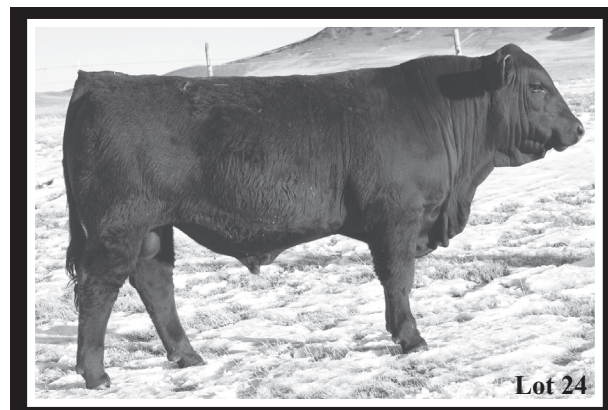
JOB Danell Sunny D. 24W (JBOB Carolina Fortune 2564JET)

**Homozygous Black**  
**Homozygous Polled**  
**Balancer®75**



**Tenderness**  
**7**

Act. BW	93
Adj. 205	772
Ratio	105
Adj. YW	1310
Ratio	106
ADG	3.74
Ratio	



Lot 24

CED	BW	WW	YW	Milk	TM	CEM	HP	PG30	ST	YG	CW	REA	MB	\$Cow	FPI	EPI
11	0.5	79	121	19	58	6	5.39	2.15	12	-0.20	36	0.74	0.23		81.20	

HOMOZYGOUS Polled, HOMOZYGOUS Black (and solid black) 75% Gelbvieh Balancer with a 93# birthweight. His performance shows exceptional weaning and yearling weights with a 15-inch ribeye. Granger is big hiped, wide topped, and easy going with a 5/6 (heel/claw) foot score. His mama, Orange Blossom, is another cow coming from two of our Top foundation cow families. Granger should give you some good replacement females and add weight to your steers.

Winter 2021 American Gelbvieh Association Non-Parent Gelbvieh Average EPD's

CED	BW	WW	YW	Milk	TM	CEM	HP	PG30	ST	DOC	SC	DMI	YG	CW	RE	MB	FAT	ADG	RFI	\$Cow	FPI	EPI
12	0.1	67	96	21	54	6	6	1	15	12	0.60	0.016	-0.24	29	0.72	0.20	-0.04	-0.038	-0.006	108.68	73.72	72.84

# Danell Diamond Six Gelbvieh

Gelbvieh

Balancer®

Angus

**DANELL**  
**25**

## BBDM Bolton Zion 63H

DOB 2/18/20 • Tattoo 63H • Reg. No. 1496793

BNG Overtime 23Y (S A V Final Answer 0035)

### BBDM Bolton All Over 25F

JOB Danell Arctic Girl 9Z (OZZ Ext Governor 3N)

V A R Discovery 2240 (A A R Ten X 7008 S A)

### BBDM Bolton Emma 63D

JOB Danell Ecstasy 44A (BDCG PMFG Chief Executive 10U1)

**Homozygous Black**  
**Homozygous Polled**  
**Balancer®63**



Act. BW
88
Adj. 205
723
Ratio
102
Adj. YW
1341
Ratio
104
ADG
3.89
Ratio



Lot 25

CED	BW	WW	YW	Milk	TM	CEM	HP	PG30	ST	YG	CW	REA	MB	\$Cow	FPI	EPI
8	2.1	78	121	15	55	4	5.96	4.32	15	-0.19	36	0.73	0.38	109.33	81.35	141.20

HOMOZYGOUS Polled, HOMOZYGOUS Black 63% Gelbvieh Balancer with an 88# birthweight. Zion has really performed well – 723# 205 weight and 1341# 365 weight with a 15-inch ribeye! He is long made and deep bodied on a larger frame with a foot score of 5/6 and has an easy-going disposition! Zion will catch your eye on sale day! The 2 Bolton bulls were born and raised until weaning at their ranch. When our bulls went to the bull pen, they were joined by Zander and Zion and started on feed together. So, the ADG on all the bulls is comparable.

**DANELL**  
**26**

## JOB Danell Louie Louie 41H

DOB 2/22/20 • Tattoo 41H • Reg. No. 1474720

JOB Danell Rocko 51D (JOB Danell TD Chico Loco 28Y)

### JOB Danell Pardner 07F

JOB Danell Dosey Doe 05D (A A R Ten X 7008 S A)

KHR 03Z (A A R Ten X 7008 S A)

### JOB Danell Jazzy 15C

JOB Danell Jasmine 57A (JOB Danell Fortunate 47Y)

**Black**  
**Homozygous Polled**  
**Balancer®63**



Act. BW
95
Adj. 205
710
Ratio
98
Adj. YW
1407
Ratio
104
ADG
5.16
Ratio



Lot 26

CED	BW	WW	YW	Milk	TM	CEM	HP	PG30	ST	YG	CW	REA	MB	\$Cow	FPI	EPI
14	0.3	72	124	18	54	7	5.88	2.07	13	-0.11	57	0.79	0.38		82.43	

HOMOZYGOUS Polled, Black (and solid black) 63% Gelbvieh Balancer with a 95# birthweight. This cow bull is long, thick, and easy going on a little bit taller frame, attributing to his 1407# 365-weight. Louie Louie has the calving ease with growth and carcass traits that we should all be striving to produce and has a calm disposition! He has a 16-inch ribeye and a 9 for a Tenderness score. His feet score a perfect 5/5 (heel/claw). His mama, Jazzy, is an easy fleshing, beautifully uddered type of female we like to see in our herd. Louie Louie is another bull that should give you some really nice replacement females and put pounds on all your calves. We will likely collect this bull before he leaves the ranch.

**DANELL**  
**27**

## JOB Danell Blue Moon 44H

DOB 2/24/20 • Tattoo 44H • Reg. No. 1474723

JOB Danell Rocko 51D (JOB Danell TD Chico Loco 28Y)

### JOB Danell Pardner 07F

JOB Danell Dosey Doe 05D (A A R Ten X 7008 S A)

JRI Probity 254D28 (Basin Payweight 1682)

### JOB Danell Moonrise 69F

JOB Danell Full Moon 63D (JOB Danell TD My Fortune 3B)

**Homozygous Black**  
**Homozygous Polled**  
**Balancer®75**



Act. BW
86
Adj. 205
780
Ratio
108
Adj. YW
1367
Ratio
101
ADG
4.21
Ratio



Lot 27

CED	BW	WW	YW	Milk	TM	CEM	HP	PG30	ST	YG	CW	REA	MB	\$Cow	FPI	EPI
14	1.4	89	143	20	65	8	7.70	2.59	16	-0.05	52	0.56	0.32	117.97	88.96	139.73

HOMOZYGOUS Polled, HOMOZYGOUS Black (and solid black) 75% Gelbvieh Balancer with an 86# birthweight. Blue Moon is a very calm bull with length, depth, big hips, a clean front, a 5/6 Foot Score and an exceptional WW and YW! His mama and his paternal granddam both have beautiful udders. Really like this bull and expect him to produce beautiful replacement heifers and add weight to your calves!

Winter 2021 American Gelbvieh Association Balancers® Non-Parent Average EPD's

CED	BW	WW	YW	Milk	TM	CEM	HP	PG30	ST	DOC	SC	DMI	YG	CW	RE	MB	FAT	ADG	RFI	\$Cow	FPI	EPI
13	-0.5	69	106	20	54	7	5	1	14	12	0.50	0.028	-0.07	34	0.51	0.35	0.00	0.009	-0.013	100.19	79.50	112.68



# Danell Diamond Six Gelbvieh

DANELL  
28

## JOB Danell Mascot 46H

DOB 2/27/20 • Tattoo 46H • Reg. No. 1474725

JOB Danell Rocko 51D (JOB Danell TD Chico Loco 28Y)

### JOB Danell Pardner 07F

JOB Danell Dosey Doe 05D (A A R Ten X 7008 S A)

JOB Danell Spitz 26D (Sitz Upward 307R)

### JOB Danell Moonie Bear 60F

JOB Danell Moonshadow 30T (JOB Danell Picasso 18P)

**Homozygous Black**  
**Homozygous Polled**  
**Balancer®50**



**Tenderness**  
**8**

Act. BW	80
Adj. 205	762
Ratio	104
Adj. YW	1227
Ratio	99
ADG	3.32
Ratio	

CED	BW	WW	YW	Milk	TM	CEM	HP	PG30	ST	YG	CW	REA	MB	\$Cow	FPI	EPI
16	-1.5	68	109	19	53	9	4.59	3.98	16	0.02	49	0.48	0.55		85.70	



HOMOZYGOUS Polled, HOMOZYGOUS BLACK (and solid black) 50% Gelbvieh Balancer with an 80# birthweight. Mascot is another bull coming from two beautifully uddered foundation donor dam families! He is a little smaller framed with a good disposition and has a straight back, clean sheath, clean front, big hip, and his feet score a 6/6. This is another bull to put weight on your steers and replacements in your heifer pen!

DANELL  
29

## JOB Danell Fuego 48H

DOB 2/28/20 • Tattoo 48H • Reg. No. 1474727

ELK CK Crazy Horse 138P (GRU ELK Dee Jake 744J)

### JOB Danell TD Chico Loco 28Y

MCFG TD Mya 210T (JOB Danell Montana Infusion)

JOB Danell Montana Infusion (MLLC M/L Advantage)

### JOB Danell Hot Chick 10Y

JOB Danell Chickie 31W (JBOB Carolina Fortune 2564JET)

**Homozygous Black**  
**Homozygous Polled**  
**Purebred99**



**Tenderness**  
**6**

Act. BW	85
Adj. 205	727
Ratio	101
Adj. YW	1305
Ratio	96
ADG	4.21
Ratio	

CED	BW	WW	YW	Milk	TM	CEM	HP	PG30	ST	YG	CW	REA	MB	\$Cow	FPI	EPI
15	-1.2	64	96	18	50	8	3.13	3.79	15	-0.23	29	0.72	0.33	107.61	77.76	65.94



HOMOZYGOUS Polled, HOMOZYGOUS Black 99% Purebred Gelbvieh with an 85# birthweight. Fuego is easy going with good growth, a straight back, tight sheath, good hip, smooth shoulder, big scrotal, a perfect 5/5 foot score, and great CE and low BW traits! Fuego's dam is 10 years old and has put 6 bulls in our sales! Fertility in your heifers is an added bonus when buying genetics from Dams of Distinction!

DANELL  
30

## JOB Danell Boy Howdy 58H

DOB 3/09/20 • Tattoo 58H • Reg. No. 1474738

JOB Danell Rocko 51D (JOB Danell TD Chico Loco 28Y)

### JOB Danell Pardner 07F

JOB Danell Dosey Doe 05D (A A R Ten X 7008 S A)

JOB Danell TD Chico Loco 28Y (ELK CK Crazy Horse 138P)

### JOB Danell Barb 30B

JOB Danell P.J. 15S (JOB Danell Picasso 18P)

**Red**  
**Homozygous Polled**  
**Balancer®75**



**Tenderness**  
**NA**

Act. BW	75
Adj. 205	682
Ratio	93
Adj. YW	1150
Ratio	93
ADG	3.68
Ratio	

CED	BW	WW	YW	Milk	TM	CEM	HP	PG30	ST	YG	CW	REA	MB	\$Cow	FPI	EPI
18	-3.0	63	95	15	47	11	4.45	3.45	14	-0.14	36	0.65	0.40	103.10	81.39	71.45



HOMOZYGOUS Polled, Red 75% Gelbvieh Balancer with a 75# birthweight. Yes, I did say RED! When I came back into the house after this one was born, Omie asked me if it was red – I replied, "Boy howdy!" – and thus he was named. He is a deep red from two black parents, which guarantees that he is diluter free (so will not sire any gray offspring). Boy Howdy is smaller framed with a lot of muscle expression and has a good hip and a calm disposition and scores a perfect 5/5 for foot quality! I feel he will make a good herdsire for heifers and for cows! His mama is one of our favorites and his daddy has been quite a performer!

Winter 2021 American Gelbvieh Association Non-Parent Gelbvieh Average EPD's

CED	BW	WW	YW	Milk	TM	CEM	HP	PG30	ST	DOC	SC	DMI	YG	CW	RE	MB	FAT	ADG	RFI	\$Cow	FPI	EPI
12	0.1	67	96	21	54	6	6	1	15	12	0.60	0.016	-0.24	29	0.72	0.20	-0.04	-0.038	-0.006	108.68	73.72	72.84

# Danell Diamond Six Gelbvieh

Gelbvieh

Balancer®

Angus

**DANELL**  
**31**

## JOB Danell Reese 64H

DOB 3/16/20 • Tattoo 64H • Reg. No. 1476614

JOB Danell Rocko 51D (JOB Danell TD Chico Loco 28Y)

### JOB Danell Pardner 07F

JOB Danell Dosey Doe 05D (A A R Ten X 7008 S A)

JOB Danell Resolution 26U ET (JOB Danell Montana Infusion)

### JOB Danell Reesa 11B ET

Monarch Sandy Pride S132 (BR Midland)

**Black**  
**Homozygous Polled**  
**Balancer®63**



**Tenderness**  
**6**

Act. BW
92
Adj. 205
730
Ratio
99
Adj. YW
1331
Ratio
108
ADG
4.26
Ratio



Lot 31

CED	BW	WW	YW	Milk	TM	CEM	HP	PG30	ST	YG	CW	REA	MB	\$Cow	FPI	EPI
14	-0.4	70	110	18	53	7	4.53	3.30	16	-0.05	42	0.51	0.53		84.56	

HOMOZYGOUS Polled, Black (and solid black) 63% Gelbvieh Balancer with a 92# birthweight. Reese is a calving ease cow bull that is moderate framed and wide topped good looking bull with a big scrotal, a clean front, a 15-inch ribeye and a 6/6 foot score! Reese's mama is a beautifully uddered mama with good feet and a great disposition! Reese should put some beautiful replacement heifers in your program. This bull could work in a seedstock or commercial herd!

**DANELL**  
**32**

## JOB Danell Bogart 67H

DOB 3/19/20 • Tattoo 67H • Reg. No. 1476617

BBDM Bolton Pay Day 45C (JOB Danell Joey 7A)

### JOB Danell Phoenix 15F

JOB Danell Pearl 45D (JOB Danell TD Chico Loco 28Y)

A A R Ten X 7008 S A (Mytty In Focus)

### JOB Danell Bo Derek 36B

JOB Danell Hot Chick 10Y (JOB Danell Montana Infusion)

**Homozygous Black**  
**Homozygous Polled**  
**Balancer®68**



**Tenderness**  
**9**

Act. BW
94
Adj. 205
746
Ratio
103
Adj. YW
1424
Ratio
105
ADG
5.26
Ratio



Lot 32

CED	BW	WW	YW	Milk	TM	CEM	HP	PG30	ST	YG	CW	REA	MB	\$Cow	FPI	EPI
12	0.1	73	116	16	8	4.23	2.57	14	14	-0.10	37	0.70	0.49	96.64	83.10	106.18

HOMOZYGOUS Polled, HOMOZYGOUS Black 68.6% Gelbvieh Balancer with a 94# birthweight. Bogart checks all the boxes – 746# 205 weight (103 ratio), 1424# 365 weight (105 ratio), 16.94 ribeye (118 ratio), 3.819 IMF (126 ratio), a Tenderness score of 9, a perfect 5/5 foot score, and a 38.9 adjusted scrotal! Bogart is square hipped and deep bodied with a good disposition! His mama is a daughter of one of our Dams of Distinction and I cannot fully express how excited I am about this bull! We would like to run this bull in our pasture until July 15 and would be interested in sharing possession this year with a fall breeder. If interested, please call me to talk out the details – otherwise, he sells on sale day. We also retain 1/2 semen interest on this bull and he will be collected for in herd use before he leaves the ranch.

**DANELL**  
**33**

## JOB Danell Eliot 71H

DOB 4/02/20 • Tattoo 71H • Reg. No. 1477314

KHR 03Z (A A R Ten X 7008 S A)

### JOB Danell Shaker 05F

JOB Danell Shadow 59D (JOB Danell Toro 31A)

BBDM Bolton Pay Day 45C (JOB Danell Joey 7A)

### JOB Danell Nessie 78E

JOB Danell Governess 48B (OZZ Ext Governor 3N)

**Homozygous Black**  
**Homozygous Polled**  
**Balancer®63**



**Tenderness**  
**7**

Act. BW
70
Adj. 205
773
Ratio
105
Adj. YW
1309
Ratio
106
ADG
4.26
Ratio



Lot 33

CED	BW	WW	YW	Milk	TM	CEM	HP	PG30	ST	YG	CW	REA	MB	\$Cow	FPI	EPI
16	-20	67	113	16	50	9	3.82	2.55	12	-0.13	47	0.82	0.52		83.04	

HOMOZYGOUS Polled, HOMOZYGOUS Black (and solid black) 63% Gelbvieh Balancer with a 70# birthweight and an April, 2020 birthdate! Compare the size of this young bull to the other guys that are 2 months older! Eliot is another bull that checks all the boxes – 70# birthweight, 773# 205 weight (105 ratio), 1309# 365 weight (106 ratio), 16.24 ribeye (115 ratio), 4.58 IMF (147 ratio), and a perfect 5/5 foot score! This bull should really be in a seedstock herd, so commercial buyers – pay attention! His mama is beautifully uddered, good footed, and may be joining our donor program!

Winter 2021 American Gelbvieh Association Balancers® Non-Parent Average EPD's

CED	BW	WW	YW	Milk	TM	CEM	HP	PG30	ST	DOC	SC	DMI	YG	CW	RE	MB	FAT	ADG	RFI	\$Cow	FPI	EPI
13	-0.5	69	106	20	54	7	5	1	14	12	0.50	0.028	-0.07	34	0.51	0.35	0.00	0.009	-0.013	100.19	79.50	112.68



# EPD Information

## AMERICAN GELBVIEH ASSOCIATION EPDS

### MATERNAL TRAITS

**Calving ease direct (CED):** Percent of unassisted births of a bull's calves when he is used on heifers. A higher number is favorable, meaning better calving ease. This EPD can be vital to a rancher looking to decrease the amount of calves pulled.

**Milk (Milk):** The genetic ability of a sire's daughters to produce milk expressed in pounds of weaning weight.

**Calving ease maternal (CEM):** Represented as percent of unassisted births in a sire's first-calving daughters. A higher number represents more favorable calving ease. This EPD is important to a rancher's bottom line because it predicts which animals produce daughters with a genetic pre-disposition to calve unassisted as heifers.

**Heifer pregnancy (HP):** Predicts the probability that a bull's daughters will become pregnant as first-calf heifers in a regular breeding season, expressed as a percent. A higher value of this EPD is favorable, meaning that a higher percentage of a sire's daughters get pregnant as first calf heifers compared to other sires in his contemporary group.

**30-month pregnancy (Pg30):** Predicts the probability that a bull's daughters will become pregnant and calve at three years of age, given that they calved as first-calf heifers. This EPD is expressed as a percent, again, with a higher number being more favorable meaning a higher percentage of a sire's daughters will calve at three years of age, given they calved as first-calf heifers.

**Stayability (STAY):** Predicts the genetic difference, in terms of percent probability, that a bull's daughters will stay productive within a herd to at least six year of age. The stayability EPD is one of the best measures currently available to compare a bull's ability to produce females with reproductive longevity.

**Dockity (DOC):** Is reported as a percentage, with higher numbers indicating a higher percent of offspring receiving a disposition score of 1 (docile).

**Scrotal circumference (SC):** Predicts the difference, in centimeters, of scrotal circumference of an animal's male offspring at yearling compared to the SC of other animals' male offspring.

### GROWTH TRAITS

**Birth weight (BW):** Predicts the difference, in pounds, for birth weight of the calf.

**Weaning weight (WW):** Predicts the difference, in pounds, for weaning weight (adjusted to age of dam and 205 days). An indicator of growth from birth to weaning.

**Yearling weight (YW):** Predicts the expected difference, in pounds, for yearling weight (adjusted to 365 days). This is an indicator of growth from birth to yearling.

### CARCASS TRAITS

**Yield grade (YG):** Differences in yield grade score, which is a predictor of percent retail product. Smaller values suggest that progeny will have a better lean to fat ratio.

**Carcass weight (CW):** Differences in pounds of hot carcass weight, adjusted to an industry standard age endpoint.

**Ribeye area (CREA):** Differences in ribeye area in inches between the 12th and 13th rib. Greater ribeye areas are preferable.

**Marbling (MARB):** Predicts the differences in the degree of marbling within the ribeye as expressed in marbling score units. Greater marbling numbers are preferable and are an indicator of higher carcass quality grades.

**Fat (CFAT):** Differences for fat thickness, in inches, for a carcass over the 12th rib, smaller numbers of fat thickness are preferable as excess fat can be detrimental to yield grade.

### EFFICIENCY TRAITS

**Dry matter intake (DMI):** Represents the average daily dry matter intake per day consumed in pounds. A negative, or lesser value, is more favorable.

### INDEXES

**Total maternal (TM):** An index that combines growth and milk information as a prediction of the weaning weight performance of calves from a sire's daughters. A greater TM value means a mother that returns comparatively higher weaning weights on her calves.  $TM\ Index = MK\ EPD + \frac{1}{2} WW\ EPD$ .

**\$Cow:** Represents the genetic value in dollars of profit of an animal when retained as a replacement female relative to other animals in the herd. A higher number represents more profitable genetics for maternal productivity. \$Cow will serve producers in selecting bulls that will sire daughters with stayability and reproductive efficiency as well as other traits that lead to profitability in a production system, such as milk, calving ease, moderate mature weight and the ability of calves to gain. A female's genetics also influence the performance of her calves in the feedlot and at slaughter, so traits such as feed efficiency and carcass value are also included in \$Cow.

**Efficiency profit index (EPI):** An economic selection index developed to aid producers in selecting for more feed efficient cattle that still have acceptable amounts of gain. The EPI provides slight negative pressure on intake, while keeping gain at a constant value. By selecting on this index, producers will be able to find those animals that gain the same amount as their contemporaries while eating less.

**FPI™** which stands for feeder profit index: An economic selection index designed to aid producers in selecting sires whose progeny will perform in the feedlot and are sold on a grade and yield standpoint. Well ranking sires for FPI have higher marbling and carcass weight than their contemporaries. As a terminal index, little emphasis is put on maternal traits such as stayability and calving ease.

## AMERICAN ANGUS ASSOCIATION EPDS

### GROWTH TRAITS

**Calving Ease Direct (CED),** is expressed as a difference in percentage of unassisted births, with a higher value indicating greater calving ease in first-calf heifers. It predicts the average difference in ease with which a sire's calves will be born when he is bred to first-calf heifers.

**Birth Weight (BW),** expressed in pounds, is a predictor of a sire's ability to transmit birth weight to his progeny compared to that of other sires.

**Weaning Weight (WW),** expressed in pounds, is a predictor of a sire's ability to transmit weaning growth to his progeny compared to that of other sires.

**Yearling Weight (YW),** expressed in pounds, is a predictor of a sire's ability to transmit yearling growth to his progeny compared to that of other sires.

**Yearling Height (YH),** is a predictor of a sire's ability to transmit yearling height, expressed in inches, compared to the that of other sires.

**Scrotal Circumference (SC),** expressed in centimeters, is a predictor of the difference in transmitting ability for scrotal size compared to that of other sires.

**Dockity (DOC),** is expressed as a difference in yearling cattle temperament, with a higher value indicating more favorable dockity in a sire's offspring compared to another sire.

### MATERNAL TRAITS

**Heifer Pregnancy (HP),** is a selection tool to increase the probability or chance of a sire's daughters becoming pregnant as first-calf heifers during a normal breeding season. A higher EPD is the more favorable direction, and the EPD is reported in percentage units.

**Calving Ease Maternal (CEM),** is expressed as a difference in percentage of unassisted births, with a higher value indicating greater calving ease in first-calf daughters. It predicts the average ease with which a sire's daughters will calve as first-calf heifers when compared to daughters of other sires.

**Maternal Milk (Milk),** is a predictor of a sire's genetic merit for milk and mothering ability in his daughters compared to daughters of other sires. In other words, it is that part of a calf's weaning weight attributed to milk and mothering ability.

**Mature Weight (MW),** expressed in pounds, is a predictor of the difference in mature weight of daughters of a sire compared to the daughters of other sires.

**Mature Height (MH),** expressed in inches, is a predictor of the difference in mature height of a sire's daughters compared to daughters of other sires.

### CARCASS TRAITS

**Carcass Weight (CW),** expressed in pounds, is a predictor of the differences in hot carcass weight of a sire's progeny compared to progeny of other sires.

**Marbling (Marb),** is expressed as a fraction of the difference in USDA marbling score of a sire's progeny compared to progeny of other sires.

**Ribeye Area (RE),** expressed in square inches, is a predictor of the difference in ribeye area of a sire's progeny compared to progeny of other sires.

**Fat Thickness (Fat),** expressed in inches, is a predictor of the differences in external fat thickness at the 12th rib (as measured between the 12th and 13th ribs) of a sire's progeny compared to progeny of other sires.

### FOOT SCORE

**Claw Set (Claw),** is expressed in units of claw-set score. A lower EPD is more favorable, indicating a sire will produce progeny with more ideal claw set, which is toes that are symmetrical, even and appropriately spaced.

**Foot Angle (Angle),** is expressed in units of foot-angle score. A lower EPD is more favorable, indicating a sire will produce progeny with more ideal foot angle, which is a 45-degree angle at the pastern joint with appropriate toe length and heel depth.

### \$VALUE INDEXES

**Maternal Weaned Calf Value (\$M),** expressed in dollars per head, predicts profitability differences in progeny due to genetics from conception to weaning. Increased selection pressure on \$M aims to decrease overall mature cow size and improve foot structure and fertility while maintaining weaning weights consistent with today's production.

**Weaned Calf Value (\$W),** expressed in dollars per head, provides the expected difference in future progeny preweaning performance from birth to weaning. Increased selection pressure on \$W increases weaning and maternal milk traits while increasing mature cow size.

**Feedlot Value (\$F),** expressed in dollars per head, is the expected average difference in future progeny performance for postweaning merit compared to progeny of other sires. The underlying objective assumes commercial producers will retain ownership of cattle through the feedlot phase and sell fed cattle on a carcass weight basis with no considerations of premiums or discounts for quality and yield grade.

**Grid Value (\$G),** expressed in dollars per carcass, is the expected average difference in future progeny performance for carcass grid merit, including quality and yield grade attributes, compared to progeny of other sires.

**Beef Value (\$B),** expressed in dollars per carcass, represents the expected average differences in the progeny postweaning performance and carcass value compared to progeny of other sires. This index assumes commercial producers wean all male and female progeny, retain ownership of these animals through the feedlot phase, and market these animals on a quality-based carcass grid.

# **- NOTES -**



# ULTRASOUND DATA

Lot # Scan Wt. Adj. REA Adj. IMF Act. SC

*The Linhart bulls were not ultrasounded. Actual scrotals will be available on our Facebook page as well as sale day!*

Lot #	Scan Wt.	Adj. REA	Adj. IMF	Act. SC
16	1135	11.83	2.858	38.1
17	1235	14.08	2.915	39.6
18	1285	13.81	3.755	41.5
19	1075	13.38	2.726	35.8
20	1165	11.93	2.882	39.6
21	1065	12.26	3.779	36.3
22	1195	14.07	2.894	39.9
23	1085	12.60	2.925	36.9
24	1235	15.25	2.171	36.9
25	1190	15.25	2.412	
26	1280	16.13	2.113	39.6
27	1205	13.22	2.591	38.4
28	1060	13.52	2.957	43.5
29	1155	13.33	2.990	41.3
30	1020	12.97	3.381	38.1
31	1140	15.00	2.637	40.8
32	1245	16.94	3.819	38.9
33	1055	16.24	4.585	35.1

# FIRST BREEDING SEASON GUARANTEE

If any bull, valued at \$2000 or more, is disabled (confirmed by a veterinarian) during the first breeding season, it will be guaranteed according to the following schedule:

**Purchase price - \$2000 to \$2950**

– covered at 50% less 1/2 salvage value

**Purchase price - \$3000 to \$3950**

– covered at 60% less 1/2 salvage value

**Purchase price - \$4000 or more**

– covered at 70% less 1/2 salvage value

Ex. – loss of \$2000 bull would give you \$1000 credit, less 1/2 salvage  
loss of \$5000 bull would give you \$3500 credit, less 1/2 salvage

Bulls kept isolated and used in single sire breeding pasture will be guaranteed at 80% of purchase price less salvage value.

Ex. – loss of \$2000 bull, single sire pasture – \$1600 credit, less salvage  
loss of \$5000 bull, single sire pasture – \$4000 credit, less salvage

Breeding season is defined as a 60 day period following the first turnout of bulls. The guarantee will be offered as a credit by the breeder on one bull in a future Central Montana Genetics Bull Sale or toward a replacement bull if that breeder has one available. (This will apply only to bulls offered by the same breeder that you purchased the original bull from.) Should the bull you purchase cost more than your credit, you pay the difference. If the cost is less, no further credit is due.

# MORTALITY INSURANCE

(DEATH LOSS IS THE BUYER'S RISK)

Insurance can be purchased, please speak with a producer.

# FOOT SCORE GUIDELINES

**FOOT SCORE GUIDELINES**  
**Claw Set (5 is ideal)**

1 Extremely weak, open, divergent claw set. Unsound.

2 Open, divergent claw set. Marginally unsound.

3 Moderately open/divergent claw set.

4 Slightly open/divergent claw set.

5 Ideal. Symmetrical claws, with appropriate space between claws.

6 Slight tendency for claws to curl. One claw may be slightly larger than the other.

7 Tendency for claws to curl, with one claw larger than the other.

8 Moderate scissor claw and/or screw claw. Curling of one or both claws. Near crossing of claws. Marginally unsound.

9 Extreme scissor claw and/or screw claw. Pronounced curling of one or both claws. Crossing of claws. Unsound.

Access AAA Login at [angus.org](http://angus.org) to submit scores.

**ANGUS**  
THE BUSINESS BREED

**FOOT SCORE GUIDELINES**  
**Foot Angle (5 is ideal)**

1 2 3 4 5

6 7 8 9

**Claw Set (5 is ideal)**

1 2 3 4 5

6 7 8 9

**FOOT SCORE GUIDELINES**  
**Foot Angle (5 is ideal)**

1 Extremely straight pasterns. Very short toe. Unsound.

2 Straight front and rear pasterns. Marginally unsound.

3 Moderately straight front and rear pasterns.

4 Slightly straight front and rear pasterns.

5 Ideal. Approximately 45-degree angle at pastern joint. Appropriate length of toe and depth of heel.

6 Slightly shallow heel and long toe.

7 Moderately shallow heel and long toe. Somewhat weak pasterns.

8 Shallow heel and long toe. Marginally unsound.

9 Extremely shallow heel and long toe. Extremely weak pasterns. Unsound.

Access AAA Login at [angus.org](http://angus.org) to submit scores.

**ANGUS**  
THE BUSINESS BREED

Central Montana Gelbvieh & Angus Genetics  
1012 Maiden Road  
Lewistown, MT 59457

Join us for a preview of  
the bulls on Friday,  
March 19th starting at 4 P.M.

## OFFERING 35 YEARLING BULLS



**MARCH 20, 2021 • LEWISTOWN, MT**