



Annual Production Sale **Monday, March 28, 2022**

1:00 p.m. (MST)

Sterling Livestock Commission
Sterling, Colorado

Offering

64 Yearling Red Angus Bulls

5 Yearling Charolais Bulls

15 Registered Red Angus Heifers

Commercial Red Angus Heifers



This sale will be broadcast live on the internet.

DVAuction

Broadcasting Real-Time Auctions

Real time bidding & proxy bidding available.

WELCOME!

We would like to welcome you to the annual Axtell Cattle Company production sale.

This set of bulls is one that we are very proud of! They are a very uniform group and the best group we've had in the past few years. They weaned incredibly well with basically no sickness and took off growing. There is not a lot of variation in this group, we feel we have a strong offering from the first to last bull.

We feel the quality of the registered heifers is excellent. We tried to keep most of our replacements from sires and dams we no longer have and by doing that, we will be offering a bunch of heifers from good young cows in our herd, and ones we really had no intention of selling. We've got daughters of some of our top cows in the group this year. The disposition of these heifers is phenomenal.

The commercial heifers will be from two customers. One group will be January calves with extra growth. These are the heifers that have topped our sale every year, the other group will be early April born heifers that will be more moderate in frame with excellent quality. Both groups of heifers will be great assets to commercial herds in the area.

Be sure to check out videos of all the bulls and heifers online at DVauction.com. Keep in mind that they will have matured another month from the date of the videos.

We invite you to stop by anytime to see the bulls and heifers, our herd sires or cowherd. Just call ahead to set up a time and get directions. The sale offering will be available for viewing at the sale location on the afternoon of March 27th.

We look forward to seeing you sale day, but if you are unable to attend and wish to bid just contact us, the sale representatives or pre-register on dvauction.com a couple days prior to the sale. You are able to bid live on [DVauction](http://DVauction.com) or leave proxy bids on lots you may be interested in.

Please let us know if we can be of any assistance to you in the buying process. We love to talk about cattle and would be glad to visit with you anytime. I will shoot it to you straight on any lots you may have interest in. Our goal is to have the right animals with the right buyers. We have years of experience with these cattle and if we know what you are looking for, we can assist you in getting the correct animals for your environment and management. Also be sure to follow our facebook page and website for more details. Hope to see you March 28th.

The Axtell Family
Brian, Jamie Jo and Clay





Axtell Cattle Company PRODUCTION SALE

Monday, March 28
1:00 p.m. (MST)

Sterling Livestock Commission
20197 Riverside Drive
Sterling, Colorado 80751

Sale Day Phone Numbers:

Sterling Livestock Commission 970.522.1950
Brian Axtell - 970.554.1132
Jamie Jo Axtell - 970.554.1680

Sale Representatives:

Mark Valko 970.630.3560
Jason Santomaso, Sterling Livestock 970.520.3049
Ty Groshans, DV Auction 970.818.6016
Matt Wznick, The Fence Post/TSLN 406.489.2414
Nolan Woodruff, Red Angus 805.861.0996

Brian and Jamie Jo Axtell
PO Box 21 - Anton, CO 80801
Home Phone: 970.383.2332
Cell Phone: 970.554.1132

Website: www.axtellcattlecompany.com
Email: axtellcattleco@hotmail.com
Facebook: Axtell Cattle Company

Inspection of Cattle: All bulls and registered heifers can be viewed at the ranch near Anton. Please call to set up an appointment and obtain directions. All sale animals will be available for preview at the sale location on the afternoon of March 27th.

Health: Health papers can be furnished for cattle to be shipped out of state. All bulls are tested negative for BVD and have passed a fertility test.

Delivery: Free delivery up to 250 miles is available on bulls and registered heifers. Other arrangements can be made on an individual basis, please call prior to sale.

NO DELIVERY IS AVAILABLE ON COMMERCIAL HEIFERS.

Possession: Bulls can be taken after purchase or we will care for the bulls until April 15th, free of charge.

Guarantee: All bulls have passed fertility tests. All bulls will be guaranteed sound for the first breeding season (until Sept 1, 2022); however, the seller will not be held responsible for mistreatment or mismanagement. If a suitable replacement is available he will be furnished—OR— a credit toward a purchase in next years sale if a suitable replacement is not available.

Sale Order: Commercial heifers will start the sale, followed by bulls and registered heifers in catalog order.

Semen Interest: Axtell Cattle is retaining a 1/3 revenue sharing semen interest in all bulls selling. Buyer will retain all salvage value of bull.

EPD Updates: Please note that EPD's are now recalculated weekly. Data in the catalog is from the last week of February.

Liability Statement: All persons attend this sale at their own risk. Neither Axtell Cattle Company or any other person connected with the management of the sale assumes any liability, legal or otherwise.

Lunch: Please join us before the sale for a complimentary lunch served in the salebarn café upstairs from the salering and office.

Absentee Bidding: Anyone wishing to bid who cannot attend the sale may place bids by contacting us or the sale representatives listed. Internet bidding is also available through DVAuction.com and CATTLEUSA.com. Online bidding requires pre-registration prior to the sale.

This sale will be broadcast live on the internet.

DVAuction
Broadcasting Real-Time Auctions
Real time bidding & proxy bidding available.

CATTLE USA.com



From E. Chestnut Street, turn north onto Cucarola Road (watch for Fleming Auto Sales on the corner). Cucarola will dead end at the salebarn facility, turn back west to find parking in front of the salebarn or across the road.

ACT RED SSS ACTION 907G

B 3/22/19 100% AR
 DBB907G 4339869

PIE GAME ON 9109
 RED SSS BIG GAME 814A
 RED SSS DUCHESS 896L
RED SSS GRAVITY 296E 4033432
 RED SSS SOLDIER 365W
 RED SSS LASS 704A
 RED BLAIRS LASS 231Y

RED FLYING K MAX 159Y
 RED SSS MAXIMUM 754A
 RED SSS JESSIE 654X
RED SSS PRINCESS 550C 4339867
 RED CROWFOOT MOONSHINE 8081U
 RED SSS PRINCESS 349Z
 RED SSS PRINCESS 628X

MPPA: Dam Age: 3/6/15

Ratio		Data
Act. BW		82
Adj. WW		806
Adj. YW		1279
SC		
Frame		
EPD Top%		Data
MARB	0.18	90
YG	0.07	47
CW	23	49
REA	0.06	58
FAT	0.01	33
ADG	0.27	24
DMI	1.82	80

	ProS	HB	GM	CED	BW	WW	YW	MILK	ME	HPG	CEM	STAY
EPD	79	62	16	10	0.7	66	110	19	5	10	7	17
Top%	60	30	81	78	86	34	28	88	56	67	42	24

The third high selling bull in the 2020 SSS sale in Canada. He is an extremely dark red bull combining the performance of Gravity and Moonshine with the maternal goodness of Max. He will add frame and performance in our herd. SEMEN AVAILABLE



RED SSS ACTION 907G

ARO RED ARO 818F

B 2/18/18 100% AR
 ARO818F 4339865

RED CROWFOOT 6253S
 RED ML MAX 862U
 RED BAR-X MISS LINETT 151K
RED FLYING K MAX 159Y 1629869
 RED FLYING K ACE 9R
 RED FLYING K ANITA 764T
 RED FLYING K ANEXA 4M

FORSTER NORTHERN 7057
 FORSTER NORTH 9017
 FORSTER DIXIE 6058
ARO NORTHERN LADY 330 1653716
 ARO RAM ROD 123
 ARO RAMROD 307
 ARO LASS 5127H

MPPA: 107 Dam Age: 3/6/13

Ratio		Data
Act. BW		84
Adj. WW		593
Adj. YW		1110
SC		
Frame		
EPD Top%		Data
MARB	0.49	33
YG	0.01	21
CW	7	91
REA	0.2	33
FAT	0.03	72
ADG	0.17	85
DMI	1.27	34

	ProS	HB	GM	CED	BW	WW	YW	MILK	ME	HPG	CEM	STAY
EPD	92	65	27	16	-3.4	49	75	20	-6	13	10	14
Top%	42	26	64	13	23	87	88	87	12	24	8	63

Aromax was our pick of the 2019 Arrowsmith Sale. We liked him for his calving ease, correctness, and the quality dam behind him. He has proven to be an aggressive breeder in multi sire pastures and is very easy calving. We think his daughters will be special!



RED TOWAW ORAZI CALIDAD 130Y
 Sire of RED SSS CALIDAD 870G

E5 AXTELL EPIC 511

B 3/5/15 A100% AR
 AX511 3477986

BECKTON EPIC R350 K
 BECKTON EPIC W690 C4
 BECKTON SERENA S819 CT
AXTELL EPIC 1011 1444323
 BECKTON EPIC K3 M606
 BECKTON ROSE P011 EP
 BECKTON ROSE M090 EP

GLACIER CHATEAU 744
 GLACIER HI COUNTRY 926
 GLACIER VERDALE 361
OCHO VACA HI-AMBER T11 1153151
 BUF CRK COUNTRCHF 6037
 OCHO VACA AMBER 23
 BUF CRK AMBER 3364

MPPA: 101 Dam Age: 2/8/07

Ratio		Data
Act. BW	96	77
Adj. WW	97	604
Adj. YW	101	1016
SC		
Frame		
EPD Top%		Data
MARB	0.61	17
YG	0.22	95
CW	4	94
REA	-0.37	99
FAT	0.05	90
ADG	0.12	96
DMI	1.06	20

	ProS	HB	GM	CED	BW	WW	YW	MILK	ME	HPG	CEM	STAY
EPD	88	72	16	10	-3	49	68	30	-7	1	5	23
Top%	47	17	81	75	28	87	93	16	10	99	85	1

511 was retained for his excellent feet and those of his dam and her great udder quality. He was used three years on heifers with good results. He has a heck of a set of bulls this year, but his legacy will be in his fantastic daughters!

CAL RED SSS CALIDAD 870G

B 3/11/19 100% AR
 DBB870G 4339835

RED DOBLEHACHE 33 ORIENTAL
 RED PASTORIZA 565 BRIGADIER
 RED PASTORIZA 312 NARANJA
RED TOWAW ORAZI CALIDAD 130Y 2424998
 RED PIRAAY 207RED QUEBRACHOD
 RED PIRAY 479 RED DION GALGA
 RED PIRAY237 REDGCANYON ELLE

RED SVR KNIGHT 236T
 RED SSS SOLDIER 365W
 RED SSS BELLE 342S
SSS GOLD EDGE 330Z 2475093
 CROWFOOT EQUATION 5793R
 SSS GOLDEDGE 226U
 RED SSS GOLD EDGE 768L

MPPA: Dam Age: 2/16/12

Ratio		Data
Act. BW	ET	76
Adj. WW		788
Adj. YW		1266
SC		
Frame		
EPD Top%		Data
MARB	0.33	65
YG	0.06	44
CW	21	55
REA	0.1	50
FAT	0.02	45
ADG	0.27	24
DMI	1.71	72

	ProS	HB	GM	CED	BW	WW	YW	MILK	ME	HPG	CEM	STAY
EPD	53	14	39	10	1.7	55	99	26	6	9	5	12
Top%	87	94	42	80	94	71	49	42	65	81	85	80

Calidad was an ET product of the Argentine bull, Calidad, and the performance 330Z cow from SSS. He sires calves with a little extra frame and excellent growth. There are no throw away calves from this bull, they are nearly all keepers!



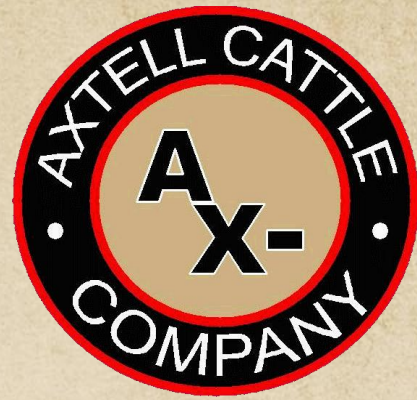
FORSTER WIDESCREEN F129
Watch for calves out of him in next year's sale!



DUFF INK 1710 20102
We are excited to add this bull to our lineup of herd sires.
Watch for his sons and daughters in a couple of years!



BECKTON DOMINOR T754 ZC
Sire of Axtell Dominor 4124



**Questions about the sale?
Need more information?**

**Call us at 970-383-2332
or 970-554-1132 (Brian Cell)**

**Email us at
axtellcattleco@hotmail.com**

**Visit our webpage at
www.axtellcattlecompany.com**

Find us on Facebook

**Check out our online catalog,
lot videos and sale broadcast at
DVAuction.com**



**Do you sell calves on Superior??
Be sure to let them know that you use
Axtell bulls and you can qualify for the
Superior Progressive Genetics value
added program.**

COMMERCIAL HEIFERS

This year we are offering a few groups of commercial replacement heifers. These heifers are owned and raised by Steve and Matt Kalous from Brush, Colorado and Lucas and Maureen Beek of Cheyenne Wells, Colorado. The heifers will come into the ring in small groups, sorted by weight and type. The buyer will buy the group in the ring or has the option of taking the entire lot as well. We would allow a young person to pull one heifer out if they are wanting to find a show heifer. We believe this is a great group of red females that will make their new owners proud. The commercial heifers will **START the sale at 1:00 P.M.** so be ready for these outstanding females!

Lot A: 15 Head - Steve and Matt Kalous – Brush, CO Steve (970) 768-2451

Steve and Matt Kalous are offering 15 head of replacement heifers. These heifers are born in January and February and are out of a high performance / maternal cattle herd. They will have extra size and weight and will make top cows. They are sired by Axtell Emperor 4229 our second high selling bull of all time, Axtell Dominator 5830 the third high selling bull in 2016, Axtell Redwing 7106, our second high seller in 2018, Axtell Red Knight 8370, our second high seller in 2019, and Axtell Dominor 9456, our second high seller in 2020. They buy the good ones and it is evident in the quality of their cattle. If you want to tie into top genetics, look at these girls. I would call this group, one of the best sets of cattle to sell in the state this spring. These heifers are weighing in the 850 lb. range, but are moderate framed and backed by generations of similar type. Please call Steve to discuss these heifers. He has documented carcass data on their steer mates that will make you salivate. Just an outstanding group of heifers!

Lot B: 16 Head - Beek Family – Cheyenne Wells, CO Lucas (719) 342-1005 or Maureen (719) 342-2969

The Beek family – Lucas and Maureen Beek are offering 16 head of replacement heifers.

From the Beek family: After consecutive drought years, our cattle have proven to grow another heifer crop that will follow in their footsteps. Our heifers are capable of providing for themselves in any environment because we choose not to pamper them. We believe they will make a nice addition to any red commercial herd. Sired by Axtell 34C Julian 8525 and other registered red angus bulls. Heifers were born in April and May.

This will be a nice set of cattle from a really good family with a passion for good cattle. The Beek's also have a beef business, so contact them for that as well. These heifers are weighing in the 650-700 lb. range, are moderate framed and backed by a hard working cow herd. Please call Lucas or Maureen to discuss these heifers.

Please note that **NO DELIVERY** will be available on commercial heifers.



Pictured are the 2018 consignment by Steve and Matt Kalous. For this year's consignments, check out videos on DVAuction.com

1 AXTELL DOMINOR 1651

B AX1651	2/27/21	A100% AR 4510099		Ratio	Data										
BECKTON DOMINOR ZC M919 BECKTON DOMINOR T754 ZC BECKTON LANA M809 EP AXTELL DOMINOR 4124 1703474 BECKTON CLIFFTOP T3 N800 BECKTON BARMAID R124 CT BECKTON BARMAID N371 LN BECKTON EPIC W690 C4 AXTELL EPIC 1011 BECKTON ROSE P011 EP AXTELL VERNICE 12-651 3574340 BUF CRK ROMEO L081 OCHO VACA MISS ROMEO 12 OCHO VACA MISS CNTRCHF 12524 MPPA: 104 Dam Age: 3/13/16 UDDER Excellent			Act. BW	95	75										
			Adj. WW	101	616										
			Adj. YW	112	1187										
			SC												
			Frame		4.9										
			EPD	Top%	Data-Ratio										
			MARB	0.38	56 3.14-96										
			YG	0.15	90										
			CW	11	88										
			REA	-0.16	96 12.91-108										
			FAT	0.03	82 0.41-131										
			ADG	0.18	80 3.56										
			DMI	0.95	16										
			★ HEIFER BULL												
			ProS	HB	GM	CED	BW	WW	YW	MILK	ME	HPG	CEM	STAY	
			EPD	77	45	32	18	-4.8	52	86	28	-1	2	9	17
			Top%	70	65	60	4	7	77	71	20	28	99	14	22



Lot 1

We lead off with the best bull we've raised in a number of years, maybe since his sire, 4124. This bull is stacked for calving ease, is backed by excellent cows, has good scrotal development and is deep, wide and long. If he has a hole, I haven't found it yet. I believe this bull has great potential as a top heifer bull and should have semen sales potential.



Lot 2

2 AXTELL DOMINOR 1377

B AX1377	3/8/21	A100% AR 4510155		Ratio	Data										
BECKTON DOMINOR ZC M919 BECKTON DOMINOR T754 ZC BECKTON LANA M809 EP AXTELL DOMINOR 4124 1703474 BECKTON CLIFFTOP T3 N800 BECKTON BARMAID R124 CT BECKTON BARMAID N371 LN BECKTON CODY K2 R168 BECKTON CODY T008 K2 BECKTON TAMARA R200 HU AXTELL AMBER 23-377 3773049 BUF CRK COUNTRCHF 6037 OCHO VACA AMBER 23 BUF CRK AMBER 3364 MPPA: 102 Dam Age: 3/19/13 UDDER Good			Act. BW	86	69										
			Adj. WW	111	676										
			Adj. YW	105	1106										
			SC												
			Frame		5.4										
			EPD	Top%	Data-Ratio										
			MARB	0.6	13 2.58-79										
			YG	0.17	95										
			CW	19	65										
			REA	-0.11	93 13.56-113										
			FAT	0.04	88 0.26-84										
			ADG	0.17	85 2.69										
			DMI	1.13	26										
			★ HEIFER BULL												
			ProS	HB	GM	CED	BW	WW	YW	MILK	ME	HPG	CEM	STAY	
			EPD	100	62	38	18	-4.8	49	75	28	0	5	10	19
			Top%	31	31	45	3	7	84	86	24	31	99	7	9

Lot 2 is another Dominor 4124 son out of our top cow family. Very similar to Lot 1, he will be a calving ease, cow maker that is thick, deep and long. He was one of the top bulls for REA as well. He's a mix of older Buf Crk and Beckton genetics, he's an outcross to nearly everything in the breed.

3 AXTELL ACTION 1855

B AX1855	2/27/21	A100% AR 4510323		Ratio	Data										
RED SSS BIG GAME 814A RED SSS GRAVITY 296E RED SSS LASS 704A RED SSS ACTION 907G 4339869 RED SSS MAXIMUM 754A RED SSS PRINCESS 550C RED SSS PRINCESS 349Z AXTELL EPIC 1011 AXTELL EPIC 511 OCHO VACA HI-AMBER T11 AXTELL FAITH 647-855 3982486 CALVO RED KNIGHT 86A AXTELL FAITH 5100-647 MLK CRK FAITH 5100 MPPA: 105 Dam Age: 2/13/18 UDDER Excellent			Act. BW	107	82										
			Adj. WW	112	684										
			Adj. YW	116	1227										
			SC												
			Frame		5.4										
			EPD	Top%	Data-Ratio										
			MARB	0.33	70 2.30-77										
			YG	0.11	75										
			CW	18	67										
			REA	-0.04	85 12.31-103										
			FAT	0.02	61 0.29-93										
			ADG	0.26	28 3.38										
			DMI	1.69	77										
			ProS	HB	GM	CED	BW	WW	YW	MILK	ME	HPG	CEM	STAY	
			EPD	98	75	23	11	-0.9	67	108	26	4	10	7	19
			Top%	34	11	79	70	67	23	24	45	55	74	54	7

1855 is the first son to sell out of the Action 907G bull we got at SSS. Action will add performance and frame. This bull is a standout bull that is very balanced in type. He's moderate, with great depth and muscle. One of the better bulls we've raised, he has been a standout from day one.



Lot 3

7 AXTELL ENDORSE 1716

B AX1716	2/20/21	A100% AR 4510175	Ratio	Data								
RED SSS ENDORSE 254B			Act. BW	83 63								
ARO ENDORSEMEN 665			Adj. WW	112 669								
ARO MS UNO 2101			Adj. YW	102 1107								
AXTELL ENDORSE 8935 3982630			SC									
BECKTON CODY T008 K2			Frame	6.2								
AXTELL WSTRN PRD 310-935			EPD Top% Data-Ratio									
AXTELL WSTRN PRIDE 310			MARB	0.35 64 2.20-77								
BJR C-CHIEF 811			YG	0.01 22								
AXTELL BOOTJACK 5826			CW	20 62								
AXTELL BONNEBELL 24G-826			REA	0.11 52 12.3-103								
AXTELL WSTRN PRD 112-716 3817953			FAT	0 15 0.23-84								
AXTELL CODY 9205			ADG	0.16 85 2.73								
AXTELL WSTRN PRD 712-112			DMI	1.43 52								
AXTELL WESTERN PRD 712			★ HEIFER BULL									
MPPA: 102 Dam Age: 3/20/17 UDDER Excellent												
	ProS	HB	GM	CED	BW	WW	YW	MILK	ME	HPG	CEM	STAY
EPD	124	99	25	17	-4.1	52	78	32	7	11	10	23
Top%	7	1	75	7	13	78	83	5	73	49	9	1

This bull was near the top at weaning with a 112 ratio, while starting out at only 63 lbs. A bigger framed heifer bull with true, low BW and good growth. He will add pounds at weaning and his daughters should stay in the herd.



Lot 10

8 AXTELL EPIC 1423

B AX1423	3/13/21	A100% AR 4510025	Ratio	Data								
BECKTON EPIC W690 C4			Act. BW	97 76								
AXTELL EPIC 1011			Adj. WW	105 625								
BECKTON ROSE P011 EP			Adj. YW	103 1121								
AXTELL EPIC 511 3477986			SC									
GLACIER HI COUNTRY 926			Frame	5.3								
OCHO VACA HI-AMBER T11			EPD Top% Data-Ratio									
OCHO VACA AMBER 23			MARB	0.5 28 3.72-130								
BECKTON DOMINOR T754 ZC			YG	0.17 95								
AXTELL DOMINATOR 1925			CW	13 84								
AXTELL LANA 944-925			REA	-0.22 98 10.64-89								
AXTELL BLOCKANNA 949-423 1703429			FAT	0.03 82 0.30-109								
BECKTON CODY T008 K2			ADG	0.19 76 3.1								
AXTELL BLOCKANNA 72-949			DMI	1.32 41								
SHOCO BLOCKANA			★ HEIFER BULL									
MPPA: 103 Dam Age: 3/16/14 UDDER Good												
	ProS	HB	GM	CED	BW	WW	YW	MILK	ME	HPG	CEM	STAY
EPD	114	90	24	12	-2.1	56	86	30	-1	7	6	23
Top%	14	3	77	63	43	63	71	9	30	97	70	1

A good heifer bull with enough power for the cows as well. He's out of our cow maker sire, Epic 511, and his dam is a proven, top producer with one son going to Arrowsmith Red Angus in Nebraska. She packs a punch. He will make excellent females!

10 AXTELL AROMAX 1611

B AX1611	3/2/21	A100% AR 4510113	Ratio	Data								
RED ML MAX 862U			Act. BW	90 69								
RED FLYING K MAX 159Y			Adj. WW	103 613								
RED FLYING K ANITA 764T			Adj. YW	100 1088								
RED ARO 818F 4339865			SC									
FORSTER NORTH 9017			Frame	4.6								
ARO NORTHERN LADY 330			EPD Top% Data-Ratio									
ARO RAMROD 307			MARB	0.36 61 2.80-98								
BECKTON DOMINOR T754 ZC			YG	0.15 90								
AXTELL DOMINATOR 1925			CW	8 92								
AXTELL LANA 944-925			REA	0.05 66 13.46-113								
AXTELL ASTER 943-611 3574384			FAT	0.06 99 0.36-133								
BECKTON CODY T008 K2			ADG	0.13 94 2.96								
AXTELL ASTER 943			DMI	1.2 31								
MLK CRK ASTER 446			★ HEIFER BULL									
MPPA: 104 Dam Age: 3/19/16 UDDER Excellent												
	ProS	HB	GM	CED	BW	WW	YW	MILK	ME	HPG	CEM	STAY
EPD	73	64	9	19	-5	46	67	26	-4	10	11	16
Top%	76	26	96	2	6	90	92	42	19	75	2	47

A bull similar to Lot 9, very deep bodied, loaded with muscle and calving ease throughout his pedigree. His dam is a good producer that is quickly rising to the top of the herd. If you like OCC or Duff type cattle, you will like this bull and he had a big ribeye.

9 AXTELL AROMAX 1225

B AX1225	2/28/21	A100% AR 4509953	Ratio	Data								
RED ML MAX 862U			Act. BW	91 70								
RED FLYING K MAX 159Y			Adj. WW	103 617								
RED FLYING K ANITA 764T			Adj. YW	99 1078								
RED ARO 818F 4339865			SC									
FORSTER NORTH 9017			Frame	4.5								
ARO NORTHERN LADY 330			EPD Top% Data-Ratio									
ARO RAMROD 307			MARB	0.47 34 2.91-102								
BECKTON CODY K2 R168			YG	0.12 80								
BECKTON CODY T008 K2			CW	-3 99								
BECKTON TAMARA R200 HU			REA	-0.17 97 10.93-91								
AXTELL DUCHESS 931-225 1517372			FAT	0.05 94 0.34-126								
FORSTER GOLD 3109			ADG	0.16 88 2.87								
AXTELL DUCHESS 931			DMI	1.24 34								
AXTELL DUCHESS 204			★ HEIFER BULL									
MPPA: 106 Dam Age: 3/23/12 UDDER Average +												
	ProS	HB	GM	CED	BW	WW	YW	MILK	ME	HPG	CEM	STAY
EPD	110	102	7	18	-3.4	49	74	27	1	11	11	22
Top%	19	1	97	4	21	84	87	31	40	41	2	1

A real fancy heifer bull that is one of my favorites. He's been a good one since birth. He's dark red, easy fleshing, moderate and has good muscle. His dam is a top producer, year after year.



RED FLYING K MAX 159Y
GRAND SIRE TO LOTS 9-10

11 AXTELL ENDORSE 1717

B AX1717	3/2/21	A100% AR 4510177	Ratio	Data								
RED SSS ENDORSE 254B			Act. BW	87 66								
ARO ENDORSEMEN 665			Adj. WW	102 607								
ARO MS UNO 2101			Adj. YW	103 1119								
AXTELL ENDORSE 8935 3982630			SC									
BECKTON CODY T008 K2			Frame	4.5								
AXTELL WSTRN PRD 310-935			EPD Top% Data-Ratio									
AXTELL WSTRN PRIDE 310			MARB	0.24 90 3.17-111								
REDHILL R017 LANCER 117Y			YG	0.01 23								
CALVO RED KNIGHT 86A			CW	17 71								
CALVO STELLA 8Y			REA	0.11 52 11.86-99								
AXTELL MOLLY 124-717 3817961			FAT	0 21 0.3-111								
AXTELL GUNSLINGER 801			ADG	0.18 80 3.19								
AXTELL MOLLY 670124			DMI	1.29 38								
SRAF SAMMIE 67M			★ HEIFER BULL									
MPPA: 101 Dam Age: 3/19/17 UDDER Excellent GGPLD												
ProS	HB	GM	CED	BW	WW	YW	MILK	ME	HPG	CEM	STAY	
EPD	95	77	18	19	-4	53	84	29	4	11	10	19
Top%	39	10	86	2	14	76	75	18	59	52	8	6



Lot 11

I stacked six similar bulls in a row, lots 9-15. They are moderate, deep, thick and full of muscle. This one's dam is moderate, built like a tank and kicks out small calves at birth that grow well. He will sire great, easy keeping females.

12 AXTELL CALIDAD 1706

B AX1706	3/31/21	A100% AR 4510161	Ratio	Data								
RED PASTORIZA 565 BRIGADIER			Act. BW	105 80								
RED TOWAW ORAZI CALIDAD 130Y			Adj. WW	108 645								
RED PIRAY 479 RED DION GALGA			Adj. YW	108 1172								
RED SSS CALIDAD 870G 4339835			SC									
RED SSS SOLDIER 365W			Frame	5.1								
SSS GOLD EDGE 330Z			EPD Top% Data-Ratio									
SSS GOLDEDGE 226U			MARB	0.33 70 2.62-92								
REDHILL R017 LANCER 117Y			YG	0.04 36								
CALVO RED KNIGHT 86A			CW	17 72								
CALVO STELLA 8Y			REA	0.09 58 12.53-105								
AXTELL WSTRN PRD 712-706 3817803			FAT	0.01 39 0.34-125								
FORSTER GOLD 3109			ADG	0.2 66 3.29								
AXTELL WESTERN PRD 712			DMI	1.51 60								
BJR WESTERN PRIDE 812												
MPPA: 108 Dam Age: 4/2/17 UDDER Excellent												
ProS	HB	GM	CED	BW	WW	YW	MILK	ME	HPG	CEM	STAY	
EPD	73	44	29	11	0.4	57	94	28	7	11	5	16
Top%	77	68	67	73	87	60	54	24	76	53	83	42



Lot 12

The first of many good Calidad sons selling. This is a moderate framed bull with excellent depth of rib and muscle. He will be ideal for making moderate framed cows that are fancy and productive. This bull is unrelated to nearly everything in the US.

13 AXTELL CALIDAD 1512

B AX1512	3/6/21	A100% AR 4510329	Ratio	Data								
RED PASTORIZA 565 BRIGADIER			Act. BW	106 83								
RED TOWAW ORAZI CALIDAD 130Y			Adj. WW	102 607								
RED PIRAY 479 RED DION GALGA			Adj. YW	107 1170								
RED SSS CALIDAD 870G 4339835			SC									
RED SSS SOLDIER 365W			Frame	5.2								
SSS GOLD EDGE 330Z			EPD Top% Data-Ratio									
SSS GOLDEDGE 226U			MARB	0.34 67 2.27-79								
BECKTON EPIC W690 C4			YG	0.08 60								
AXTELL EPIC 1011			CW	14 81								
BECKTON ROSE P011 EP			REA	-0.01 79 11.23-94								
AXTELL BLOCKANNA 109-512 3478084			FAT	0.02 61 0.25-93								
AXTELL GUNSLINGER 801			ADG	0.18 78 3.52								
AXTELL BLOCKANNA 72-109			DMI	1.34 42								
SHOCO BLOCKANNA												
MPPA: 101 Dam Age: 4/6/15 UDDER Excellent												
ProS	HB	GM	CED	BW	WW	YW	MILK	ME	HPG	CEM	STAY	
EPD	87	53	34	11	-0.5	52	89	26	2	8	5	18
Top%	53	49	55	70	75	77	65	44	43	94	83	18

1512 is a good Calidad son that is moderate, gained very well, is deep and full of muscle and is backed by an excellent cow and a great cow family. Use him to add thickness and produce top females.

14 AXTELL CALIDAD 1649

B AX1649	3/19/21	A100% AR 4510145	Ratio	Data								
RED PASTORIZA 565 BRIGADIER			Act. BW	106 83								
RED TOWAW ORAZI CALIDAD 130Y			Adj. WW	106 632								
RED PIRAY 479 RED DION GALGA			Adj. YW	106 1158								
RED SSS CALIDAD 870G 4339835			SC									
RED SSS SOLDIER 365W			Frame	5.2								
SSS GOLD EDGE 330Z			EPD Top% Data-Ratio									
SSS GOLDEDGE 226U			MARB	0.35 64 2.43-85								
BECKTON JULIAN GG B571			YG	0.06 50								
RED HILL B571 JULIAN 84S			CW	18 70								
BECKTON BARMALD M554 CH			REA	0.08 59 11.53-96								
OCC JESSI 649C 3613635			FAT	0.02 57 0.21-76								
OCC EASY RED			ADG	0.21 62 3.29								
SR JESSI 705A			DMI	1.3 39								
SR MISS PRACTICAL 556												
MPPA: 103 Dam Age: 3/13/15 UDDER Excellent												
ProS	HB	GM	CED	BW	WW	YW	MILK	ME	HPG	CEM	STAY	
EPD	84	48	36	13	-0.2	54	92	27	1	10	6	16
Top%	58	60	51	49	80	70	59	32	39	61	75	48

Here is a true cow maker. He's backed by a dam that is very easy fleshing, productive and sound. He's got a neat pedigree, with OCC genetics, Julian 84S and then a sire going back to grass finishing genetics from Argentina. A unique pedigree and a unique bull.

19 AXTELL CALIDAD 1705

B AX1705	2/23/21	A100% AR 4510163		Ratio	Data							
RED PASTORIZA 565 BRIGADIER			Act. BW	86	65							
RED TOWAW ORAZI CALIDAD 130Y			Adj. WW	100	596							
RED PIRAY 479 RED DION GALGA			Adj. YW	106	1153							
RED SSS CALIDAD 870G 4339835			SC									
RED SSS SOLDIER 365W			Frame		5.3							
SSS GOLD EDGE 330Z			EPD Top% Data-Ratio									
SSS GOLDEDGE 226U			MARB	0.31	75	2.69-94						
BECKTON CLIFFTOP W692 E3			YG	0.08	60							
BECKTON CLIFFTOP A073 C4			CW	15	78							
BECKTON EOLA T005 CT			REA	-0.03	82	12.65-106						
AXTELL LANA 705-705 3817805			FAT	0.02	48	0.17-63						
FORSTER GOLD 3109			ADG	0.18	80	3.47						
AXTELL LANA 944-705			DMI	1.22	32							
PVRA LANA 944			★ HEIFER BULL									
MPPA: 100 Dam Age: 3/4/17 UDDER Excellent												
ProS	HB	GM	CED	BW	WW	YW	MILK	ME	HPG	CEM	STAY	
EPD	83	47	36	15	-2.9	48	85	28	0	10	7	15
Top%	60	61	52	18	27	86	72	26	35	69	48	52

A growthy heifer bull. He's got some frame, length and growth. His dam is an up and coming young cow. She's done a good job and is sired by the Clifftop, the high selling bull at Beckton in 2016. This bull was one of the bigger REA bull, while still being very lean.



Lot 19

20 AXTELL REDWING 1835

B AX1835	3/16/21	A100% AR 4510267		Ratio	Data							
BB L902 BBRED 5236			Act. BW	90	66							
BB 5236 BBRED 6015			Adj. WW	106	634							
MM 1369 SALEE 1907			Adj. YW	101	1102							
AXTELL REDWING 7215 3818005			SC									
BECKTON CODY T008 K2			Frame		5.3							
AXTELL ANNE 701-215			EPD Top% Data-Ratio									
AXTELL ANNE 01-701			MARB	0.39	53	2.78-97						
CALVO JULIAN 64Z			YG	0.04	34							
CALVO 64Z JULIAN 34C			CW	12	87							
JEB 777 RED 927			REA	0.1	54	13.39-112						
AXTELL ANNE 501-835 3982876			FAT	0.02	61	0.30-109						
AXTELL YELLOWSTONE 3704			ADG	0.14	93	2.92						
AXTELL ANNE 01-501			DMI	1.05	21							
AXTELL ANNE 01-01			★ HEIFER BULL									
MPPA: 102 Dam Age: 2/26/18 UDDER Excellent												
ProS	HB	GM	CED	BW	WW	YW	MILK	ME	HPG	CEM	STAY	
EPD	94	72	22	17	-5.1	48	70	26	-2	11	9	18
Top%	41	14	81	4	6	86	91	39	26	45	13	20

Here's a thick, moderate and deep bodied heifer bull going back to our highly maternal Anne cow family on both sides of the pedigree. He will add thickness and calving ease and leave you with some outstanding daughters. It's rare to see bulls with a 66 lb BW have as big of a ribeye as he does.

22 AXTELL CALIDAD 1505

B AX1505	3/24/21	A100% AR 4510051		Ratio	Data							
RED PASTORIZA 565 BRIGADIER			Act. BW	108	84							
RED TOWAW ORAZI CALIDAD 130Y			Adj. WW	106	634							
RED PIRAY 479 RED DION GALGA			Adj. YW	109	1190							
RED SSS CALIDAD 870G 4339835			SC									
RED SSS SOLDIER 365W			Frame		6.2							
SSS GOLD EDGE 330Z			EPD Top% Data-Ratio									
SSS GOLDEDGE 226U			MARB	0.3	79	2.80-98						
BECKTON SCAMP X494 E3			YG	0.05	39							
BECKTON SCAMP A696 H4			CW	17	73							
BECKTON BELGA U424 HT			REA	0.05	66	12.52-105						
AXTELL EOLA 321-505 3478039			FAT	0.01	36	0.30-110						
AXTELL PAY DAY 8205			ADG	0.2	66	3.47						
AXTELL EOLA 5036-321			DMI	1.41	50							
DRGA STOBECY 5036			★ HEIFER BULL									
MPPA: 101 Dam Age: 3/9/15 UDDER Good												
ProS	HB	GM	CED	BW	WW	YW	MILK	ME	HPG	CEM	STAY	
EPD	84	52	32	12	-0.2	57	96	28	1	10	7	15
Top%	59	52	60	54	80	62	51	25	40	63	58	49

1505 is a long bodied, smooth haired bull with a cherry red color. He's a top gainer and is backed by a beautiful, feminine cow. He will add growth and still make nice cows.

21 AXTELL AROMAX 1821

B AX1821	3/8/21	A100% AR 4510245		Ratio	Data							
RED ML MAX 862U			Act. BW	95	70							
RED FLYING K MAX 159Y			Adj. WW	104	619							
RED FLYING K ANITA 764T			Adj. YW	109	1184							
RED ARO 818F 4339865			SC									
FORSTER NORTH 9017			Frame		5.6							
ARO NORTHERN LADY 330			EPD Top% Data									
ARO RAMROD 307			MARB	0.39	53	2.39-84						
RED SSS ENDORSE 254B			YG	0.02	27							
ARO ENDORSEMEN 665			CW	10	90							
ARO MS UNO 2101			REA	0.09	58	13.56-113						
AXTELL SUN GAL 212-821 3982742			FAT	0.02	52	0.17-63						
AXTELL CODY 9205			ADG	0.18	79	3.52						
AXTELL SUN GAL 675-212			DMI	1.33	42							
MLK CRK SUN GAL 675			★ HEIFER BULL									
MPPA: 101 Dam Age: 3/18/18 UDDER Excellent												
ProS	HB	GM	CED	BW	WW	YW	MILK	ME	HPG	CEM	STAY	
EPD	95	67	29	15	-2.7	53	87	23	-1	9	8	18
Top%	38	22	68	15	32	74	69	71	30	80	22	21

Lot 21 is a good heifer bull that is very long and smooth. He will add a little frame and performance as well. Definitely in the top end of heifer bulls with extra growth. His dam is good young cow for us.

23 AXTELL ENDORSE 1460

B AX1460	3/10/21	A100% AR 4510027		Ratio	Data							
RED SSS ENDORSE 254B			Act. BW	110	88							
ARO ENDORSEMEN 665			Adj. WW	101	615							
ARO MS UNO 2101			Adj. YW	109	1156							
AXTELL ENDORSE 8935 3982630			SC									
BECKTON CODY T008 K2			Frame		5.4							
AXTELL WSTRN PRD 310-935			EPD Top% Data-Ratio									
AXTELL WSTRN PRIDE 310			MARB	0.39	53	3.53-107						
BECKTON EPIC W690 C4			YG	0.07	55							
AXTELL EPIC 1011			CW	12	86							
BECKTON ROSE P011 EP			REA	-0.1	92	11.59-97						
AXTELL FAITH 957-460 1703431			FAT	0.01	35	0.26-81						
FORSTER GOLD 3109			ADG	0.17	84	3.38						
AXTELL FAITH 957			DMI	0.92	14							
MLK CRK FAITH 5100			★ HEIFER BULL									
MPPA: 101 Dam Age: 3/6/14 Udder Excellent												
ProS	HB	GM	CED	BW	WW	YW	MILK	ME	HPG	CEM	STAY	
EPD	126	88	38	12	-0.9	52	86	29	-1	8	5	24
Top%	6	2	47	60	67	78	70	17	30	93	81	1

A performance based Endorse son. He is very long and smooth with excellent performance from weaning to yearling.



Lot 24

26 AXTELL DOMINOR 1677

B	4/1/21	A100% AR	Ratio	Data								
AX1677		4510139										
BECKTON DOMINOR ZC M919 BECKTON DOMINOR T754 ZC BECKTON LANA M809 EP AXTELL DOMINOR 4124 1703474 BECKTON CLIFFTOP T3 N800 BECKTON BARMAID R124 CT BECKTON BARMAID N371 LN BECKTON EMPEROR T641 E2 BECKTON EMPEROR X342 J3 BECKTON LANA P685 JO AXTELL LANA 205-677 3574558 BJR GAMBLER 027 AX LANA 205 BECKTON LANA C691 CB MPPA: 103 Dam Age: 3/19/16 UDDER Excellent												
Act. BW	97		78									
Adj. WW	104		635									
Adj. YW	111		1169									
SC												
Frame			5.6									
EPD Top% Data-Ratio												
MARB	0.54	21	2.62-80									
YG	0.14	88										
CW	12	86										
REA	-0.15	95	13.74-115									
FAT	0.03	78	0.33-106									
ADG	0.17	84	3.33									
DMI	1.01	19										
★ HEIFER BULL												
ProS	HB	GM	CED	BW	WW	YW	MILK	ME	HPG	CEM	STAY	
EPD	136	87	49	19	-5.6	47	80	28	-3	10	11	20
Top%	3	4	23	2	3	88	81	27	22	69	3	4

Lot 26 is the rare April calf that kept up with the older guys. He had a huge ribeye for his size. His grand dam is our 205 cow that is probably the best cow to walk here. This bull is our classic pedigree, I see great calving ease and cows behind this bull.

24 AXTELL CALIDAD 1508

B	3/17/21	A100% AR	Ratio	Data								
AX1508		4510075										
RED PASTORIZA 565 BRIGADIER RED TOWAW ORAZI CALIDAD 130Y RED PIRAY 479 RED DION GALGA RED SSS CALIDAD 870G 4339835 RED SSS SOLDIER 365W SSS GOLD EDGE 330Z SSS GOLDEDGE 226U BECKTON EPIC W690 C4 AXTELL EPIC 1011 BECKTON ROSE P011 EP AXTELL LARKEISA 176-508 3478133 BECKTON NOMAD 7496 BKT LARKEISA U176 NM BECKTON LARKEISA M138 JC MPPA: 98 Dam Age: 3/21/15												
Act. BW	105		82									
Adj. WW	109		651									
Adj. YW	101		1096									
SC												
Frame			5.2									
EPD Top% Data-Ratio												
MARB	0.3	79	2.62-92									
YG	0.09	67										
CW	15	79										
REA	-0.01	79	11.40-95									
FAT	0.03	68	0.24-87									
ADG	0.19	74	2.78									
DMI	1.34	43										
ProS	HB	GM	CED	BW	WW	YW	MILK	ME	HPG	CEM	STAY	
EPD	67	49	18	14	-2	53	83	25	-2	8	6	16
Top%	85	58	87	33	46	75	76	50	24	91	76	39

1508 is a good, thick bull. He's deep bodied and will sire good steer calves, but his heifers should be top notch. The cow side stacks longevity in the pedigree.

27 AXTELL REDWING 1806

B	3/4/21	A100% AR	Ratio	Data								
AX1806		4510001										
BB L902 BBRED 5236 BB 5236 BBRED 6015 MM 1369 SALEE 1907 AXTELL REDWING 7215 3818005 BECKTON CODY T008 K2 AXTELL ANNE 701-215 AXTELL ANNE 01-701 KRP HI PRICE KRP HI PRICE 9500 KRP INTY 5100 KRP PRICELESS STAR 4806 1697843 KRP CHEROKEE EXCEL KRP CHEROKEE MAID 8506 KRP KANY 58206 MPPA: 97 Dam Age: 3/31/14 UDDER Good												
Act. BW	92		72									
Adj. WW	96		573									
Adj. YW	95		1032									
SC												
Frame			5.5									
EPD Top% Data-Ratio												
MARB	0.27	85	2.88-101									
YG	0.04	37										
CW	7	94										
REA	0.03	71	10.99-92									
FAT	0.02	64	0.25-93									
ADG	0.12	96	2.87									
DMI	1.02	19										
★ HEIFER BULL												
ProS	HB	GM	CED	BW	WW	YW	MILK	ME	HPG	CEM	STAY	
EPD	93	85	7	15	-3.3	45	65	26	-2	12	9	19
Top%	43	4	97	16	23	91	94	44	24	37	15	6

A good Redwing heifer bull. His dam has been a good producer over the years. This bull will add length and is smooth shouldered for calving ease. His dam now resides in Pratt, KS in the Turner Red Angus herd, who is a repeat customer and is using a good number of our cows to build their herd.

25 AXTELL CALIDAD 1124

B	3/22/21	A100% AR	Ratio	Data								
AX1124		4509931										
RED PASTORIZA 565 BRIGADIER RED TOWAW ORAZI CALIDAD 130Y RED PIRAY 479 RED DION GALGA RED SSS CALIDAD 870G 4339835 RED SSS SOLDIER 365W SSS GOLD EDGE 330Z SSS GOLDEDGE 226U BJR GAMBLER 027 AXTELL GUNSLINGER 801 AXTELL ANNIE 210-01 AXTELL MOLLY 670124 1444422 PIE MR BC SAM 9005 SRAF SAMMIE 67M SRAF MISS RAM 17E MPPA: 106 Dam Age: 4/1/11 UDDER Excellent												
Act. BW	88		68									
Adj. WW	109		648									
Adj. YW	109		1192									
SC												
Frame			5.6									
EPD Top% Data-Ratio												
MARB	0.32	72	2.66-93									
YG	0.02	25										
CW	13	84										
REA	0.07	62	12.58-105									
FAT	0.01	31	0.29-106									
ADG	0.17	83	3.38									
DMI	1.54	63										
★ HEIFER BULL												
ProS	HB	GM	CED	BW	WW	YW	MILK	ME	HPG	CEM	STAY	
EPD	77	51	27	15	-3.4	51	85	27	5	9	8	17
Top%	54	72	18	17	21	80	72	31	62	87	37	31

1124 is another outcross Calidad son. He is easy calving, has more length of body and will add growth as well. His dam is an old cow that has been one of our top producers over the years and is still in the herd.

28 AXTELL ACTION 1632

B	3/14/21	A100% AR	Ratio	Data								
AX1632		4510127										
RED SSS BIG GAME 814A RED SSS GRAVITY 296E RED SSS LASS 704A RED SSS ACTION 907G 4339869 RED SSS MAXIMUM 754A RED SSS PRINCESS 550C RED SSS PRINCESS 349Z KRP KANYON 0021 KRP KANYON LASER 3020 KRP KANY HO 0200 AXTELL ROXIE 4102-632 3574516 KRP BRILLIANT LITE 9707 KRP ROXIE-D 4102 KRP ROXIE KANYON 1021 MPPA: 107 Dam Age: 3/16/16 UDDER Excellent												
Act. BW	106		82									
Adj. WW	112		669									
Adj. YW	109		1188									
SC												
Frame			5.6									
EPD Top% Data-Ratio												
MARB	0.24	90	3.45-121									
YG	0.08	60										
CW	18	69										
REA	-0.05	86	10.05-84									
FAT	0.01	33	0.29-105									
ADG	0.19	74	3.24									
DMI	1.58	67										
ProS	HB	GM	CED	BW	WW	YW	MILK	ME	HPG	CEM	STAY	
EPD	98	87	11	11	-0.8	56	86	28	4	12	8	21
Top%	34	4	94	70	70	65	71	26	54	30	37	2

This bull is sired by Action 907G out of a top producing cow that is an outcross pedigree to everything. This calf has some stretch and is similar to his sire. He will add growth and frame. If his daughters are like his dam, he will also produce nice cows. Her bull last year was one of the best bulls in the sale and sold to Wetovick Red Angus in Fullerton, Nebraska.

29 AXTELL KNOCK OUT 1943

B AX1943	3/31/21	A100% AR 4510327	Ratio	Data								
RED SSS SOLUTION 329Z			Act. BW	106 83								
RED SSS CONTENDER 121B			Adj. WW	112 665								
RED SSS DYNA 688X			Adj. YW	111 1206								
RED SSS KNOCK OUT 661D 3721531			SC									
RED EKW GOLDEN DEED 10U			Frame	5.8								
RED EKW DYNOFIRE 37X												
RED BAR-E-L DYNOFIRE 127R												
OCC LINEBRED 801R			EPD	Top% Data-Ratio								
OCC EASY RED			MARB	0.43 43 2.62-92								
OCC VANESSA 829S			YG	0.08 62								
OCC MISS 943Z 3513147			CW	26 37								
FEDDES CUB 311			REA	-0.05 86 12.93-108								
HLH MS CUB 1157 5176			FAT	0 13 0.23-85								
HLH MS TECH 218 1157			ADG	0.19 74 3.38								
MPPA: 107 Dam Age: 10/31/12 UDDER Excellent			DMI	1.6 69								
ProS	HB	GM	CED	BW	WW	YW	MILK	ME	HPG	CEM	STAY	
EPD	105	67	37	11	0.1	59	93	22	-3	13	8	15
Top%	25	22	73	73	84	54	57	76	22	15	29	58

A performance bull that won't be a year old until after sale day. He has extra frame, length and performance. His dam is an excellent producer with a 107 MMPA. She is a bigger framed Ohlde cow that has a lot of performance in her. This bull will make top gaining steers.

30 AXTELL RED KNIGHT 1360

B AX1360	3/12/21	A100% AR 4509967	Ratio	Data								
BECKTON DOMINOR ZC M919			Act. BW	112 90								
BECKTON DOMINOR T754 ZC			Adj. WW	100 612								
BECKTON LANA M809 EP			Adj. YW	104 1094								
AXTELL DOMINOR 4124 1703474			SC									
BECKTON CLIFFTOP T3 N800			Frame	4.8								
BECKTON BARMAID R124 CT												
BECKTON BARMAID N371 LN			EPD	Top% Data-Ratio								
BECKTON EPIC R350 K			MARB	0.54 21 3.05-93								
BECKTON EPIC W690 C4			YG	0.11 75								
BECKTON SERENA S819 CT			CW	11 89								
AXTELL BONNEBELL 626-360 1622729			REA	-0.04 85 11.92-100								
MLK CRK TITLEIST 4158			FAT	0.03 83 0.28-88								
MLK CRK BONIBEL 626			ADG	0.17 83 3.01								
MLK CRK BONIBEL 219			DMI	0.88 13								
MPPA: 97 Dam Age: 3/11/13 UDDER Good												
ProS	HB	GM	CED	BW	WW	YW	MILK	ME	HPG	CEM	STAY	
EPD	129	92	37	15	-2.2	49	77	22	-6	8	8	22
Top%	5	2	50	23	42	84	84	81	15	92	33	1

If you want extra thickness and muscle in a moderate framed package, this is your bull. He packs the muscle and will make nice, moderate framed females and steers.

31 AXTELL ENDORSE 1411

B AX1411	3/6/21	A100% AR 4510019	Ratio	Data								
RED SSS ENDORSE 254B			Act. BW	111 87								
ARO ENDORSEMEN 665			Adj. WW	104 620								
ARO MS UNO 2101			Adj. YW	105 1139								
AXTELL ENDORSE 8935 3982630			SC									
BECKTON CODY T008 K2			Frame	6.1								
AXTELL WSTRN PRD 310-935												
AXTELL WSTRN PRIDE 310			EPD	Top% Data-Ratio								
BECKTON DOMINOR ZC M919			MARB	0.48 32 3.40-119								
BECKTON DOMINOR T754 ZC			YG	0.04 36								
BECKTON LANA M809 EP			CW	16 76								
AXTELL DUCHESS 402-411 1703378			REA	-0.03 82 12.23-102								
BJR GAMBLER 027			FAT	0 15 0.24-90								
AXTELL DUCHESS 402			ADG	0.18 78 3.24								
SOR DUCHESS NE 7123G			DMI	0.9 13								
MPPA: 98 Dam Age: 3/5/14 UDDER Excellent												
ProS	HB	GM	CED	BW	WW	YW	MILK	ME	HPG	CEM	STAY	
EPD	133	91	43	12	-0.6	50	79	29	-3	8	6	23
Top%	3	3	35	57	73	83	82	19	22	95	72	1

Here is a bull to add growth, frame and still has good depth of body. His dam is one of our most attractive females. He gained well, was a top bull for Marbling and was better than average for ribeye.

32 AXTELL CALIDAD 1510

B AX1510	3/11/21	A100% AR 4510083	Ratio	Data								
RED PASTORIZA 565 BRIGADIER			Act. BW	113 88								
RED TOWAW ORAZI CALIDAD 130Y			Adj. WW	111 660								
RED PIRAY 479 RED DION GALGA			Adj. YW	106 1149								
RED SSS CALIDAD 870G 4339835			SC									
RED SSS SOLDIER 365W			Frame	6.4								
SSS GOLD EDGE 330Z												
SSS GOLDEDGE 226U			EPD	Top% Data-Ratio								
BECKTON DOMINOR T754 ZC			MARB	0.41 48 2.86-100								
AXTELL DOMINATOR 1925			YG	0.07 53								
AXTELL LANA 944-925			CW	22 53								
AXTELL SYRINGA 704-510 3478159			REA	0.09 58 12.21-102								
FORSTER GOLD 3109			FAT	0.02 52 0.28-101								
AXTELL SYRINGA 404-704			ADG	0.21 61 3.06								
AXTELL SYRINGA 404			DMI	1.6 69								
MPPA: 102 Dam Age: 3/2/15 UDDER Excellent												
ProS	HB	GM	CED	BW	WW	YW	MILK	ME	HPG	CEM	STAY	
EPD	78	49	29	10	1.4	60	94	28	6	9	5	17
Top%	68	58	66	85	95	51	54	26	70	79	89	25

This bull is a bigger framed, high growth bull. He will give you those big steers at weaning. He had a 111 Weaning Ratio and will pass it on to his calves. Really good cow bull that will still make nice daughters!

33 AXTELL CALIDAD 1330

B AX1330	3/28/21	A100% AR 4509969	Ratio	Data								
RED PASTORIZA 565 BRIGADIER			Act. BW	96 75								
RED TOWAW ORAZI CALIDAD 130Y			Adj. WW	105 625								
RED PIRAY 479 RED DION GALGA			Adj. YW	105 1144								
RED SSS CALIDAD 870G 4339835			SC									
RED SSS SOLDIER 365W			Frame	5.9								
SSS GOLD EDGE 330Z												
SSS GOLDEDGE 226U			EPD	Top% Data-Ratio								
AXTELL GUNSLINGER 801			MARB	0.37 60 3.05-107								
AXTELL PISTOLERO 024			YG	0.08 61								
BJR BONNEBELL 24G			CW	12 87								
AXTELL CHERABELLE 672-330 1622749			REA	-0.09 91 13.98-117								
DFRA MELMON 534L			FAT	0.02 48 0.32-118								
DFRA CHERABELLE S672			ADG	0.17 85 3.24								
DFRA CHERABELLE N310			DMI	1.33 42								
MPPA: 102 Dam Age: 3/18/13 UDDER Excellent												
★ HEIFER BULL												
ProS	HB	GM	CED	BW	WW	YW	MILK	ME	HPG	CEM	STAY	
EPD	78	51	27	14	-2.1	48	80	25	6	9	7	17
Top%	68	53	72	36	43	87	81	50	67	81	39	27

Lot 33 is a good heifer/cow bull that is narrow shouldered and smooth made. He has good growth and his dam produced our high selling bull two years ago, Axtell Redwing 9330, selling to Sheaman Red Angus. He had nearly a 14 REA, one of the very best and very high in comparison to his weight.

34 AXTELL ENDORSE 1842

B AX1842	2/27/21	A100% AR 4510283	Ratio	Data								
RED SSS ENDORSE 254B			Act. BW	92 68								
ARO ENDORSEMEN 665			Adj. WW	103 616								
ARO MS UNO 2101			Adj. YW	98 1070								
AXTELL ENDORSE 8935 3982630			SC									
BECKTON CODY T008 K2			Frame	4.5								
AXTELL WSTRN PRD 310-935												
AXTELL WSTRN PRIDE 310			EPD	Top% Data-Ratio								
RED SSS CONTENDER 121B			MARB	0.4 51 2.49-87								
RED SSS KNOCK OUT 661D			YG	-0.01 15								
RED EKW DYNOFIRE 37X			CW	18 70								
AXTELL MATTIE 870-842 3982942			REA	0.11 52 10.61-89								
HAMMEL EKALAKA 85P			FAT	0 10 0.21-78								
AXTELL MATTIE 481-870			ADG	0.17 82 2.82								
LONK MATTE P481			DMI	1.39 48								
MPPA: 103 Dam Age: 4/5/18 UDDER Excellent												
★ HEIFER BULL												
ProS	HB	GM	CED	BW	WW	YW	MILK	ME	HPG	CEM	STAY	
EPD	96	66	31	13	-2.4	50	78	30	6	10	8	18
Top%	37	24	64	39	38	82	83	12	68	70	24	13

1842 is smooth and correct. He will be an excellent bull for calving ease but will still have good growth and excellent cows behind him.

35 AXTELL REDWING 1851

B	3/4/21	A100% AR	Ratio	Data								
AX1851		4510293										
BB L902 BBRED 5236 BB 5236 BBRED 6015 MM 1369 SALEE 1907 AXTELL REDWING 7765 3818291 OCC RED GRAZER 610Z OCC VANESSA 765B OCC VANESSA 839U RED HILL B571 JULIAN 84S CALVO JULIAN 56A CALVO SECRET 6X AXTELL ERICA LASSIE 711-851 3983010 OCC RED GRAZER 610Z OCC ERICA LASSIE 711C OCC ERICA LASSIE 704U MPPA: 100 Dam Age: 2/22/18 UDDER Excellent												
			Act. BW	91 67								
			Adj. WW	101 603								
			Adj. YW	98 1071								
			SC									
			Frame	4.6								
			EPD	Top% Data-Ratio								
			MARB	0.32 72 2.70-94								
			YG	0.08 58								
			CW	7 94								
			REA	0.06 64 12.49-104								
			FAT	0.04 91 0.23-86								
			ADG	0.14 92 2.92								
			DMI	0.97 17								
			★ HEIFER BULL									
ProS	HB	GM	CED	BW	WW	YW	MILK	ME	HPG	CEM	STAY	
EPD	87	74	13	16	-3.8	47	69	26	-6	12	8	17
Top%	53	13	93	14	16	88	91	42	16	26	32	26

Lot 35 is a moderate framed, easy fleshing heifer bull backed by a similar type cow with a great attitude. He has good depth of body and muscle. He will make excellent daughters as well!



Lot 38

36 AXTELL EPIC 1552

B	3/6/21	A100% AR	Ratio	Data								
AX1552		4510057										
BECKTON EPIC W690 C4 AXTELL EPIC 1011 BECKTON ROSE P011 EP AXTELL EPIC 511 3477986 GLACIER HI COUNTRY 926 OCHO VACA HI-AMBER T11 OCHO VACA AMBER 23 BECKTON EPIC W690 C4 AXTELL EPIC 1011 BECKTON ROSE P011 EP AXTELL AMBER 259-552 3478044 BECKTON EMPEROR X342 J3 AXTELL AMBER 040-259 AXTELL AMBER 23-040 MPPA: 102 Dam Age: 3/7/15 UDDER Excellent												
			Act. BW	100 80								
			Adj. WW	98 598								
			Adj. YW	102 1072								
			SC									
			Frame	4.2								
			EPD	Top% Data-Ratio								
			MARB	0.53 23 3.75-114								
			YG	0.2 98								
			CW	5 96								
			REA	-0.28 99 11.29-94								
			FAT	0.05 97 0.27-87								
			ADG	0.14 93 2.96								
			DMI	0.95 16								
			★ HEIFER BULL									
ProS	HB	GM	CED	BW	WW	YW	MILK	ME	HPG	CEM	STAY	
EPD	109	85	24	13	-3.4	48	73	29	-5	5	6	23
Top%	19	4	77	48	21	86	88	16	17	99	78	1

This interesting bull is one for heifers or cows, where you want to moderate mature frame size. He will make great daughters, he is linebred to both our Epic sire line and our Amber cow line. He combines a crazy amount of fleshing quality and udder quality. He's not the biggest bull here, but he should be a dandy if you want moderate framed, maternal cattle.

37 AXTELL EPIC 1040

B	3/16/21	A100% AR	Ratio	Data								
AX1040		4509923										
BECKTON EPIC W690 C4 AXTELL EPIC 1011 BECKTON ROSE P011 EP AXTELL EPIC 511 3477986 GLACIER HI COUNTRY 926 OCHO VACA HI-AMBER T11 OCHO VACA AMBER 23 BECKTON CODY K2 R168 BECKTON CODY T008 K2 BECKTON TAMARA R200 HU AXTELL AMBER 23-040 1398161 BUF CRK COUNTRCHF 6037 OCHO VACA AMBER 23 BUF CRK AMBER 3364 MPPA: 101 Dam Age: 3/3/10 UDDER Excellent												
			Act. BW	98 78								
			Adj. WW	109 662								
			Adj. YW	102 1080								
			SC									
			Frame	5.6								
			EPD	Top% Data-Ratio								
			MARB	0.49 30 3.49-106								
			YG	0.19 97								
			CW	12 85								
			REA	-0.22 98 11.29-94								
			FAT	0.04 91 0.40-126								
			ADG	0.16 87 2.59								
			DMI	1.18 29								
			★ HEIFER BULL									
ProS	HB	GM	CED	BW	WW	YW	MILK	ME	HPG	CEM	STAY	
EPD	116	94	22	14	-3.5	52	78	27	-5	7	7	23
Top%	12	2	80	30	20	77	83	29	17	97	48	1

Lot 37 is another linebred Amber bull. He is out of a 12 year old cow that still holds her condition as if she was seven. The only problem with our Amber cows is that we don't have enough of them. This bull will produce great daughters!

38 AXTELL ENDORSE 1850

B	3/15/21	A100% AR	Ratio	Data								
AX1850		4510297										
RED SSS ENDORSE 254B ARO ENDORSEMEN 665 ARO MS UNO 2101 AXTELL ENDORSE 8935 3982630 BECKTON CODY T008 K2 AXTELL WSTRN PRD 310-935 AXTELL WSTRN PRIDE 310 CALVO JULIAN 64Z CALVO 64Z JULIAN 34C JEB 777 RED 927 AXTELL MISS 943-850 3983014 OCC EASY RED OCC MISS 943Z HLH MS CUB 1157 5176 MPPA: 103 Dam Age: 2/21/18 UDDER Excellent												
			Act. BW	108 80								
			Adj. WW	106 632								
			Adj. YW	102 1108								
			SC									
			Frame	4.6								
			EPD	Top% Data-Ratio								
			MARB	0.34 67 2.55-89								
			YG	0.04 34								
			CW	18 70								
			REA	0 77 11.47-96								
			FAT	0 15 0.30-109								
			ADG	0.18 80 2.96								
			DMI	1.14 26								
ProS	HB	GM	CED	BW	WW	YW	MILK	ME	HPG	CEM	STAY	
EPD	108	81	28	12	-0.5	53	81	29	-3	10	6	20
Top%	20	7	70	61	75	75	78	14	23	71	75	3

Another moderate framed, easy keeping type bull. He will make those nice, 1,200 lb cows that are always fat. He ranks highly in all maternal traits!

39 AXTELL DOMINOR 1544

B	3/3/21	A100% AR	Ratio	Data								
AX1544		4510065										
BECKTON DOMINOR ZC M919 BECKTON DOMINOR T754 ZC BECKTON LANA M809 EP AXTELL DOMINOR 4124 1703474 BECKTON CLIFFTOP T3 N800 BECKTON BARMAID R124 CT BECKTON BARMAID N371 LN BECKTON EMPEROR T641 E2 BECKTON EMPEROR X342 J3 BECKTON LANA P685 JO AXTELL ENCINO 041-544 3478100 BECKTON CODY T008 K2 AXTELL ENCINO 91-041 SRAF SARA'S VACATION 91S MPPA: 101 Dam Age: 2/14/15 UDDER Excellent												
			Act. BW	103 83								
			Adj. WW	100 609								
			Adj. YW	104 1098								
			SC									
			Frame	5.4								
			EPD	Top% Data-Ratio								
			MARB	0.5 28 3.16-96								
			YG	0.14 89								
			CW	18 70								
			REA	-0.05 86 12.98-108								
			FAT	0.04 88 0.34-109								
			ADG	0.22 56 3.06								
			DMI	1.09 23								
ProS	HB	GM	CED	BW	WW	YW	MILK	ME	HPG	CEM	STAY	
EPD	123	82	41	16	-3.3	55	90	27	2	9	9	20
Top%	8	6	39	11	23	69	64	33	45	89	11	3

A bigger framed Dominor 4124 sired bull. He adds performance from the cow side. He will throw moderate BW, but should produce big steers and make good uddered daughters!



AXTELL ENCINO 041-455
Dam of Lot 40

42 AX COMMERCIAL1359

B	2/27/21	99.9%	Ratio	Data																																				
			Act. BW	84																																				
			Adj. WW	617																																				
			Adj. YW	1081																																				
			SC																																					
			Frame	5.0																																				
			EPD Top%	Data																																				
			MARB																																					
			YG																																					
			CW																																					
			REA																																					
			FAT																																					
			ADG																																					
			DMI																																					
MPPA: Dam Age: 2/22/13																																								
<table border="1"> <tr> <td>ProS</td> <td>HB</td> <td>GM</td> <td>CED</td> <td>BW</td> <td>WW</td> <td>YW</td> <td>MILK</td> <td>ME</td> <td>HPG</td> <td>CEM</td> <td>STAY</td> </tr> <tr> <td>EPD</td> <td></td> <td></td> <td></td> <td></td> <td></td> <td></td> <td></td> <td></td> <td></td> <td></td> <td></td> </tr> <tr> <td>Top%</td> <td></td> <td></td> <td></td> <td></td> <td></td> <td></td> <td></td> <td></td> <td></td> <td></td> <td></td> </tr> </table>					ProS	HB	GM	CED	BW	WW	YW	MILK	ME	HPG	CEM	STAY	EPD												Top%											
ProS	HB	GM	CED	BW	WW	YW	MILK	ME	HPG	CEM	STAY																													
EPD																																								
Top%																																								

This bull's dam is a 99.9% 1B cow that we kept as a commercial cow as we quit registering our 1B cows. She was a productive cow and we couldn't resist keeping this one. He is thick made, deep bodied and full of meat. If you want a good bull but don't need papers, he's a dandy.

40 AXTELL RED KNIGHT 1455

B	3/6/21	A100% AR	Ratio	Data																																				
AX1455		4510007	Act. BW	96																																				
			Adj. WW	596																																				
			Adj. YW	1048																																				
			SC																																					
			Frame	4.7																																				
			EPD Top%	Data-Ratio																																				
			MARB	0.5 28 3.12-95																																				
			YG	0.12 82																																				
			CW	17 74																																				
			REA	-0.07 88 11.63-97																																				
			FAT	0.03 72 0.38-122																																				
			ADG	0.2 69 2.82																																				
			DMI	1.06 21																																				
			★ HEIFER BULL																																					
MPPA: 101 Dam Age: 2/22/14 UDDER Excellent																																								
<table border="1"> <tr> <td>ProS</td> <td>HB</td> <td>GM</td> <td>CED</td> <td>BW</td> <td>WW</td> <td>YW</td> <td>MILK</td> <td>ME</td> <td>HPG</td> <td>CEM</td> <td>STAY</td> </tr> <tr> <td>EPD</td> <td>144</td> <td>102</td> <td>42</td> <td>16</td> <td>-3.7</td> <td>49</td> <td>81</td> <td>27</td> <td>-2</td> <td>10</td> <td>23</td> </tr> <tr> <td>Top%</td> <td>1</td> <td>1</td> <td>37</td> <td>8</td> <td>17</td> <td>84</td> <td>79</td> <td>29</td> <td>26</td> <td>61</td> <td>9</td> </tr> </table>					ProS	HB	GM	CED	BW	WW	YW	MILK	ME	HPG	CEM	STAY	EPD	144	102	42	16	-3.7	49	81	27	-2	10	23	Top%	1	1	37	8	17	84	79	29	26	61	9
ProS	HB	GM	CED	BW	WW	YW	MILK	ME	HPG	CEM	STAY																													
EPD	144	102	42	16	-3.7	49	81	27	-2	10	23																													
Top%	1	1	37	8	17	84	79	29	26	61	9																													

He's a 3/4 brother to the Lot 39 Bull! He will be more moderate in size and will produce those long lasting, moderate framed daughters. He ranks in the top 1% of PROS, HB and STAY.

43 AXTELL EPIC 1533

B	3/12/21	A100% AR	Ratio	Data																																				
AX1533		4510085	Act. BW	100																																				
			Adj. WW	592																																				
			Adj. YW	1081																																				
			SC																																					
			Frame	4.9																																				
			EPD Top%	Data-Ratio																																				
			MARB	0.45 39 2.79-85																																				
			YG	0.13 83																																				
			CW	2 98																																				
			REA	-0.26 99 13.52-113																																				
			FAT	0.03 72 0.32-100																																				
			ADG	0.11 97 3.06																																				
			DMI	0.86 12																																				
			★ HEIFER BULL																																					
MPPA: 98 Dam Age: 3/2/15 UDDER Good																																								
<table border="1"> <tr> <td>ProS</td> <td>HB</td> <td>GM</td> <td>CED</td> <td>BW</td> <td>WW</td> <td>YW</td> <td>MILK</td> <td>ME</td> <td>HPG</td> <td>CEM</td> <td>STAY</td> </tr> <tr> <td>EPD</td> <td>91</td> <td>77</td> <td>14</td> <td>11</td> <td>-2</td> <td>43</td> <td>62</td> <td>27</td> <td>-8</td> <td>6</td> <td>21</td> </tr> <tr> <td>Top%</td> <td>46</td> <td>10</td> <td>92</td> <td>75</td> <td>46</td> <td>93</td> <td>95</td> <td>36</td> <td>13</td> <td>98</td> <td>79</td> </tr> </table>					ProS	HB	GM	CED	BW	WW	YW	MILK	ME	HPG	CEM	STAY	EPD	91	77	14	11	-2	43	62	27	-8	6	21	Top%	46	10	92	75	46	93	95	36	13	98	79
ProS	HB	GM	CED	BW	WW	YW	MILK	ME	HPG	CEM	STAY																													
EPD	91	77	14	11	-2	43	62	27	-8	6	21																													
Top%	46	10	92	75	46	93	95	36	13	98	79																													

A good bull that is balanced in his type and performance traits. He will make good, sound daughters that stand the test of time! His REA was one of the best in the herd.

41 AXTELL EPIC 1215

B	3/10/21	A100% AR	Ratio	Data																																				
AX1215		4509945	Act. BW	97																																				
			Adj. WW	593																																				
			Adj. YW	1106																																				
			SC																																					
			Frame	5.3																																				
			EPD Top%	Data-Ratio																																				
			MARB	0.47 34 2.80-98																																				
			YG	0.16 93																																				
			CW	9 92																																				
			REA	-0.22 98 10.89-91																																				
			FAT	0.04 85 0.29-105																																				
			ADG	0.15 90 3.19																																				
			DMI	1.13 26																																				
			★ HEIFER BULL																																					
MPPA: 102 Dam Age: 3/8/12 UDDER Excellent																																								
<table border="1"> <tr> <td>ProS</td> <td>HB</td> <td>GM</td> <td>CED</td> <td>BW</td> <td>WW</td> <td>YW</td> <td>MILK</td> <td>ME</td> <td>HPG</td> <td>CEM</td> <td>STAY</td> </tr> <tr> <td>EPD</td> <td>110</td> <td>90</td> <td>20</td> <td>14</td> <td>-3.9</td> <td>48</td> <td>72</td> <td>30</td> <td>0</td> <td>8</td> <td>24</td> </tr> <tr> <td>Top%</td> <td>18</td> <td>3</td> <td>84</td> <td>36</td> <td>15</td> <td>86</td> <td>89</td> <td>13</td> <td>35</td> <td>94</td> <td>75</td> </tr> </table>					ProS	HB	GM	CED	BW	WW	YW	MILK	ME	HPG	CEM	STAY	EPD	110	90	20	14	-3.9	48	72	30	0	8	24	Top%	18	3	84	36	15	86	89	13	35	94	75
ProS	HB	GM	CED	BW	WW	YW	MILK	ME	HPG	CEM	STAY																													
EPD	110	90	20	14	-3.9	48	72	30	0	8	24																													
Top%	18	3	84	36	15	86	89	13	35	94	75																													

This bull will be good for calving ease but has the length to be a cow bull as well. He is backed by a top producing cow that has a son working in the Shuman Red Angus herd in Oregon and another son was kept by us (Axtell Redwing 7215), to incorporate his dam into our herd.

44 AXTELL ACTION 1222

B	3/14/21	A100% AR	Ratio	Data																																				
AX1222		4509949	Act. BW	81																																				
			Adj. WW	624																																				
			Adj. YW	1055																																				
			SC																																					
			Frame	4.7																																				
			EPD Top%	Data-Ratio																																				
			MARB	0.36 61 2.23-78																																				
			YG	0.08 58																																				
			CW	13 84																																				
			REA	0.03 71 14.85-124																																				
			FAT	0.03 73 0.19-68																																				
			ADG	0.17 82 2.69																																				
			DMI	1.41 50																																				
			★ HEIFER BULL																																					
MPPA: 98 Dam Age: 3/16/12 UDDER Excellent																																								
<table border="1"> <tr> <td>ProS</td> <td>HB</td> <td>GM</td> <td>CED</td> <td>BW</td> <td>WW</td> <td>YW</td> <td>MILK</td> <td>ME</td> <td>HPG</td> <td>CEM</td> <td>STAY</td> </tr> <tr> <td>EPD</td> <td>93</td> <td>73</td> <td>20</td> <td>21</td> <td>-7.2</td> <td>48</td> <td>75</td> <td>23</td> <td>-1</td> <td>11</td> <td>17</td> </tr> <tr> <td>Top%</td> <td>43</td> <td>14</td> <td>83</td> <td>1</td> <td>1</td> <td>87</td> <td>86</td> <td>72</td> <td>27</td> <td>57</td> <td>1</td> </tr> </table>					ProS	HB	GM	CED	BW	WW	YW	MILK	ME	HPG	CEM	STAY	EPD	93	73	20	21	-7.2	48	75	23	-1	11	17	Top%	43	14	83	1	1	87	86	72	27	57	1
ProS	HB	GM	CED	BW	WW	YW	MILK	ME	HPG	CEM	STAY																													
EPD	93	73	20	21	-7.2	48	75	23	-1	11	17																													
Top%	43	14	83	1	1	87	86	72	27	57	1																													

Here's a nice, moderate, low BW heifer bull that ranks highly in calving ease. He's put together well and is backed by a 10 year old dam that maintains her flesh well and is an excellent cow. His grand dam lasted into her teens. He was our number one bull for REA this year and had a huge one compared to his size!

45 AXTELL BOB 1961

B	3/1/21	A100% AR	Ratio	Data
AX1961		4510301		
BECKTON ACCENT W180 C2				
BECKTON ACCENT A243 N3				
BECKTON MINOLA T233 NB				
KDCS ARIES 808 3951397				
LCC ABOVE & BEYOND 1300J				
KDCS JUST ABOVE 503				
LJC JUSTINA 316				
CALVO RED KNIGHT 86A				
AXTELL RED KNIGHT 6249				
AXTELL LANA 616-249				
AXTELL AMBER 040-961 4209044				
BECKTON CODY T008 K2				
AXTELL AMBER 23-040				
OCHO VACA AMBER 23				
MPPA: 100 Dam Age: 3/9/19 UDDER Excellent				
			★ HEIFER BULL	

	ProS	HB	GM	CED	BW	WW	YW	MILK	ME	HPG	CEM	STAY
EPD	98	79	19	17	-4.9	47	73	24	-4	10	8	19
Top%	34	8	85	7	7	88	88	64	18	65	32	6

Bob 1961 is sired by Aries 808 from Sheaman Red Angus in Ft. Collins. His dam (503) is one of my favorite Red Angus cows. This son is loaded with great cows throughout his pedigree. He show's great breed character and will sire easy calving, highly maternal cattle that stand the test of time!



Lot 45



Lot 46

47 AX BLK 1560

2/26/21

RED ML MAX 862U	
RED FLYING K MAX 159Y	
RED FLYING K ANITA 764T	
RED ARO 818F 4339865	
FORSTER NORTH 9017	
ARO NORTHERN LADY 330	
ARO RAMROD 307	
COLE CREEK BLACK CEDAR 46P	
COLE CREEK BLK CEDAR 480	
COLE CREEK JUANADALEEN 0111	
AXTELL JUANADAMERE 160-560	
COLE CREEK BLACK CEDAR 46P	
COLE CREEK JUANADAMERE 560	
COLE CREEK JUANADAMERE 138R	
MPPA: Dam Age:	

	Ratio	Data
Act. BW		83
Adj. WW		640
Adj. YW		1077
SC		
Frame		
	EPD Top%	Data
MARB		
YG		
CW		
REA		
FAT		
ADG		
DMI		

	ProS	HB	GM	CED	BW	WW	YW	MILK	ME	HPG	CEM	STAY
EPD												
Top%												

This black bull is sired by 818F and out of a registered Black Angus cow. His dam is a great cow and is linebred Cole Creek Black Cedar 46P, one of the most maternal lines of Angus cattle around. The grand dam is still in the herd at eleven years of age. If you want to make black cows with a great maternal instinct, look no further. BLACK RED CARRIER

46 AXTELL KNOCK OUT 1388

B	3/4/21	A100% AR	Ratio	Data
AX1388		4509973		
RED SSS SOLUTION 329Z				
RED SSS CONTENDER 121B				
RED SSS DYNA 688X				
RED SSS KNOCK OUT 661D 3721531				
RED EKW GOLDEN DEED 10U				
RED EKW DYNOFIRE 37X				
RED BAR-E-L DYNOFIRE 127R				
BECKTON EPIC R350 K				
BECKTON EPIC W690 C4				
BECKTON SERENA S819 CT				
AXTELL LANA 852-388 1622787				
FORSTER GOLD 3109				
AXTELL LANA 517-852				
AX LANA 308-517				
MPPA: 94 Dam Age: 2/24/13 UDDER Excellent				
			★ HEIFER BULL	

	ProS	HB	GM	CED	BW	WW	YW	MILK	ME	HPG	CEM	STAY
EPD	114	81	33	13	-2.1	50	76	21	-8	11	8	17
Top%	14	7	57	45	43	83	85	88	13	43	24	26

Lot 46 is a really stout made Knock Out son out of a very moderate framed cow that does a good job! This is a very correct bull, with added muscle, depth and a fancy type. He will make those elusive 1,200 lb cows that produce forever!

48 AXTELL EPIC 1837

B	3/15/21	A100% AR	Ratio	Data
AX1837		4510271		
BECKTON EPIC W690 C4				
AXTELL EPIC 1011				
BECKTON ROSE P011 EP				
AXTELL EPIC 511 3477986				
GLACIER HI COUNTRY 926				
OCHO VACA HI-AMBER T11				
OCHO VACA AMBER 23				
CALVO JULIAN 64Z				
CALVO 64Z JULIAN 34C				
JEB 777 RED 927				
AXTELL AMBER 444-837 3982904				
BECKTON CODY T008 K2				
AXTELL AMBER 032-444				
AXTELL AMBER 11-032				
MPPA: 100 Dam Age: 3/17/18 UDDER Excellent				

	Ratio	Data
Act. BW	109	81
Adj. WW	104	620
Adj. YW	104	1133
SC		
Frame		5.5
	EPD Top%	Data-Ratio
MARB	0.44	41
YG	0.14	88
CW	12	87
REA	-0.16	96
FAT	0.03	78
ADG	0.15	90
DMI	1.18	29

	ProS	HB	GM	CED	BW	WW	YW	MILK	ME	HPG	CEM	STAY
EPD	93	76	17	11	-1.8	54	78	29	-5	7	5	21
Top%	42	10	88	72	49	71	83	16	18	97	89	2

Another 511 son, this will be the last year for them. This bull is linebred to our Amber cow family. He will make excellent cows. He's long bodied with a little more frame.

49 AXTELL KNOCK OUT 1721

B AX1721	3/7/21	A100% AR 4510185	Ratio	Data								
RED SSS SOLUTION 329Z			Act. BW	114 87								
RED SSS CONTENDER 121B			Adj. WW	103 614								
RED SSS DYNA 688X			Adj. YW	98 1067								
RED SSS KNOCK OUT 661D 3721531			SC									
RED EKW GOLDEN DEED 10U			Frame	4.8								
RED EKW DYNOFIRE 37X			EPD Top% Data-Ratio									
RED BAR-E-L DYNOFIRE 127R			MARB	0.45 39 3.24-113								
BECKTON EMPEROR T641 E2			YG	0.05 41								
BECKTON EMPEROR X342 J3			CW	16 76								
BECKTON LANA P685 JO			REA	-0.01 79 11.84-99								
AXTELL SUN GAL 212-721 3818001			FAT	0.01 26 0.29-108								
AXTELL CODY 9205			ADG	0.18 78 2.82								
AXTELL SUN GAL 675-212			DMI	1.33 42								
MLK CRK SUN GAL 675												
MPPA: 100 Dam Age: 3/18/17 UDDER Excellent			★ HEIFER BULL									
ProS	HB	GM	CED	BW	WW	YW	MILK	ME	HPG	CEM	STAY	
EPD	87	59	28	11	0	57	86	21	-1	11	7	16
Top%	53	36	69	70	82	61	71	83	29	49	44	48

Lot 49 is a long bodied Knock Out son out of a good, young Emperor daughter. He is solid, with no holes.

52 AXTELL EPIC 1673Y

B AX1673Y	3/3/21	A100% AR 4510039	Ratio	Data								
BECKTON EPIC W690 C4			Act. BW	95 73								
AXTELL EPIC 1011			Adj. WW	100 595								
BECKTON ROSE P011 EP			Adj. YW	94 1020								
AXTELL EPIC 511 3477986			SC									
GLACIER HI COUNTRY 926			Frame	4.3								
OCHO VACA HI-AMBER T11			EPD Top% Data-Ratio									
OCHO VACA AMBER 23			MARB	0.49 30 2.68-94								
BB KN CHF D1453			YG	0.17 95								
BBB KANSAS 990			CW	-1 99								
RC SALLIE 326			REA	-0.36 99 9.98-83								
OCC DIXIE ERICA 673Y 1729757			FAT	0.04 88 0.30-111								
O C C PRIORITY 882P			ADG	0.13 94 2.64								
O C C DIXIE ERICA 758U			DMI	0.85 11								
O C C DIXIE ERICA 803F												
MPPA: 98 Dam Age: 3/22/11 UDDER Average			★ HEIFER BULL									
ProS	HB	GM	CED	BW	WW	YW	MILK	ME	HPG	CEM	STAY	
EPD	93	78	15	14	-4.1	42	63	23	-10	8	6	20
Top%	42	9	90	24	13	94	95	69	11	95	68	3

This bull is a good calving ease bull that is out of our top bull for foot and udder quality, Epic 511. His dam is a black/red carrier cow with a unique pedigree. Her sire was a Beeby bred bull from 1972 and the dam side goes back to the famous OCC Dixie Erica cow!

50 AXTELL EPIC 1775

B AX1775	3/7/21	A100% AR 4510189	Ratio	Data								
BECKTON EPIC W690 C4			Act. BW	97 76								
AXTELL EPIC 1011			Adj. WW	103 627								
BECKTON ROSE P011 EP			Adj. YW	100 1058								
AXTELL EPIC 511 3477986			SC									
GLACIER HI COUNTRY 926			Frame	4.5								
OCHO VACA HI-AMBER T11			EPD Top% Data-Ratio									
OCHO VACA AMBER 23			MARB	0.58 16 5.21-159								
BECKTON EMPEROR T641 E2			YG	0.18 96								
BECKTON EMPEROR X342 J3			CW	5 96								
BECKTON LANA P685 JO			REA	-0.23 99 11.77-98								
AXTELL LANA 388-775 3818075			FAT	0.05 96 0.38-122								
BECKTON EPIC W690 C4			ADG	0.13 94 2.69								
AXTELL LANA 852-388			DMI	1 18								
AXTELL LANA 517-852												
MPPA: 100 Dam Age: 3/17/17 UDDER Excellent			★ HEIFER BULL									
ProS	HB	GM	CED	BW	WW	YW	MILK	ME	HPG	CEM	STAY	
EPD	106	86	21	13	-3.8	49	70	27	-4	7	7	22
Top%	23	4	83	39	16	85	91	35	20	98	48	1

This bull is a moderate framed bull that will work on heifers or cows. He will make some nice, easy fleshing, moderate framed females. His dam is a maternal sister to the good Lot 46 bull! He was our #1 bull for marbling this year and still maintained a good ribeye for his size. He would be ideal for a grass fattened beef program.

53 AXTELL RW 1641

B AX1641	3/6/21	A100% AR 4510151	Ratio	Data								
BB L902 BBRED 5236			Act. BW	97 75								
BB 5236 BBRED 6015			Adj. WW	100 595								
MM 1369 SALEE 1907			Adj. YW	93 1018								
AXTELL REDWING 7215 3818005			SC									
BECKTON CODY T008 K2			Frame	4.6								
AXTELL ANNE 701-215			EPD Top% Data-Ratio									
AXTELL ANNE 01-701			MARB	0.37 60 2.64-92								
OCC LINEBRED 801R			YG	0.18 96								
OCC EASY RED			CW	12 86								
OCC VANESSA 829S			REA	-0.15 95 10.03-84								
AXTELL JESSI 696-641 3758333			FAT	0.05 94 0.36-134								
O C C UPFRONT 873U			ADG	0.14 92 2.64								
OCC JESSI 696Z			DMI	1.11 24								
SR MISS PRACTICAL 557												
MPPA: 101 Dam Age: 3/20/16 UDDER Excellent			★ HEIFER BULL									
ProS	HB	GM	CED	BW	WW	YW	MILK	ME	HPG	CEM	STAY	
EPD	85	70	16	15	-3	46	68	25	-2	12	7	17
Top%	55	18	90	17	27	90	92	55	24	25	43	22

This bull is another moderate framed heifer bull going back to Beeby and OCC genetics. He will be an outcross to just about anything that you breed him to. He is a smooth shouldered bull out of a sire we used on heifers.

51 AXTELL AROMAX 1511

B AX1511	3/15/21	A100% AR 4510061	Ratio	Data								
RED ML MAX 862U			Act. BW	95 74								
RED FLYING K MAX 159Y			Adj. WW	102 608								
RED FLYING K ANITA 764T			Adj. YW	95 1038								
RED ARO 818F 4339865			SC									
FORSTER NORTH 9017			Frame	5.6								
ARO NORTHERN LADY 330			EPD Top% Data-Ratio									
ARO RAMROD 307			MARB	0.43 43 2.83-99								
BECKTON DOMINOR T754 ZC			YG	0.04 38								
AXTELL DOMINATOR 1925			CW	11 88								
AXTELL LANA 944-925			REA	0.1 54 11.77-98								
AXTELL SYRINGA 103-511 3478087			FAT	0.03 69 0.31-113								
BECKTON CODY T008 K2			ADG	0.17 83 2.69								
AXTELL SYRINGA 503-103			DMI	1.21 31								
AXTELL SYRINGA 03-503												
MPPA: 101 Dam Age: 3/13/15			★ HEIFER BULL									
ProS	HB	GM	CED	BW	WW	YW	MILK	ME	HPG	CEM	STAY	
EPD	117	90	27	16	-4	49	76	24	-6	11	10	19
Top%	11	3	72	8	14	84	85	63	16	47	7	6

1511 is a calving ease bull by 818F. He is smooth made for calving ease and is very long bodied. He is backed by our original cow family and has maternal built in!



Lot 53

54 AXTELL KNOCK OUT 1171

B	3/7/21	A100% AR	Ratio	Data		
AX1171		4509997				
	RED SSS SOLUTION 329Z		Act. BW	104	81	
	RED SSS CONTENDER 121B		Adj. WW	98	585	
	RED SSS DYNA 688X		Adj. YW	97	1059	
	RED SSS KNOCK OUT 661D 3721531		SC			
	RED EKW GOLDEN DEED 10U		Frame		4.9	
	RED EKW DYNOFIRE 37X					
	RED BAR-E-L DYNOFIRE 127R					
	KRP HI PRICE		EPD	Top%	Data-Ratio	
	KRP HI PRICE 9500		MARB	0.35	64	3.87-136
	KRP INTY 5100		YG	-0.03	11	
	KRP PRICELESS STAR 4171 1697679		CW	13	83	
	VGW REMARK 803		REA	0.03	71	10.84-91
	DGO DAKEL STAR 171		FAT	-0.01	3	0.25-93
	DGO DAKEL STAR 9649		ADG	0.15	91	2.96
	MPPA: 101 Dam Age: 4/29/14 UDDER Excellent		DMI	1.23	33	

	ProS	HB	GM	CED	BW	WW	YW	MILK	ME	HPG	CEM	STAY
EPD	83	61	22	12	-0.7	48	72	24	-5	12	8	15
Top%	60	32	81	60	71	86	89	58	18	30	29	58

This Knock Out son is from a good cow we bought at Koenig Red Angus in Montana. Those have been hard working cows. He was a standout for Marbling with a 136 ratio.

56 AXTELL ACTION 1032

B	3/4/21	A100% AR	Ratio	Data		
AX1032		4509957				
	RED SSS BIG GAME 814A		Act. BW	102	79	
	RED SSS GRAVITY 296E		Adj. WW	100	599	
	RED SSS LASS 704A		Adj. YW	95	1030	
	RED SSS ACTION 907G 4339869		SC			
	RED SSS MAXIMUM 754A		Frame		4.4	
	RED SSS PRINCESS 550C					
	RED SSS PRINCESS 349Z					
	BECKTON EMPEROR T641 E2		EPD	Top%	Data-Ratio	
	BECKTON EMPEROR X342 J3		MARB	0.36	61	2.49-87
	BECKTON LANA P685 JO		YG	0.11	78	
	AXTELL AMBER 2032 1517467		CW	19	66	
	AXTELL PAY DAY 8205		REA	-0.05	86	8.49-71
	AXTELL AMBER 11-032		FAT	0.02	61	0.23-86
	OCHO VACA HI-AMBER T11		ADG	0.22	53	2.69
	MPPA: 100 Dam Age: 3/4/12 UDDER Excellent		DMI	1.39	47	

	ProS	HB	GM	CED	BW	WW	YW	MILK	ME	HPG	CEM	STAY
EPD	100	70	29	13	-2.1	55	90	23	3	9	9	18
Top%	31	17	66	42	43	70	63	72	49	82	15	13

Lot 56 is a very dark red bull, much like his sire. He is deep bodied and moderate framed. His dam is one of, if not my favorite, cow on the place. She's produced some good ones in her day and is the right size with a great udder.

57 AXTELL ACTION 1843

B	3/19/21	A100% AR	Ratio	Data		
AX1843		4510287				
	RED SSS BIG GAME 814A		Act. BW	99	73	
	RED SSS GRAVITY 296E		Adj. WW	104	622	
	RED SSS LASS 704A		Adj. YW	101	1105	
	RED SSS ACTION 907G 4339869		SC			
	RED SSS MAXIMUM 754A		Frame		5.9	
	RED SSS PRINCESS 550C					
	RED SSS PRINCESS 349Z					
	RED SSS ENDORSE 254B		EPD	Top%	Data-Ratio	
	ARO ENDORSEMEN 665		MARB	0.28	83	4.24-148
	ARO MS UNO 2101		YG	0.05	43	
	AXTELL LAKOTA 515-843 3982962		CW	18	70	
	AXTELL DOMINATOR 1925		REA	0	77	12.43-104
	AXTELL LAKOTA 05-515		FAT	0.01	25	0.39-142
	AXTELL LAKOTA 650-05		ADG	0.23	44	3.01
	MPPA: 103 Dam Age: 2/28/18 UDDER Excellent		DMI	1.57	66	

	ProS	HB	GM	CED	BW	WW	YW	MILK	ME	HPG	CEM	STAY
EPD	89	67	22	12	-1	57	95	24	3	9	7	18
Top%	49	22	80	54	66	60	53	57	52	77	43	13

1843 is a smooth made, long bodied Action son. He may work on bigger heifers, but watch them the first year, as he does have some performance behind him.



AX LANA 205
Grand dam of Lot 55

55 AXTELL DOMINOR 1375

B	3/16/21	A100% AR	Ratio	Data		
AX1375		4509989				
	BECKTON DOMINOR ZC M919		Act. BW	100	80	
	BECKTON DOMINOR T754 ZC		Adj. WW	106	649	
	BECKTON LANA M809 EP		Adj. YW	99	1049	
	AXTELL DOMINOR 4124 1703474		SC			
	BECKTON CLIFFTOP T3 N800		Frame		5.3	
	BECKTON BARMAID R124 CT					
	BECKTON BARMAID N371 LN					
	BECKTON CODY K2 R168		EPD	Top%	Data-Ratio	
	BECKTON CODY T008 K2		MARB	0.4	51	3.03-92
	BECKTON TAMARA R200 HU		YG	0.12	83	
	AXTELL LANA 205-375 1622878		CW	17	71	
	BJR GAMBLER 027		REA	-0.09	91	12.79-107
	AX LANA 205		FAT	0.02	64	0.28-88
	BECKTON LANA C691 CB		ADG	0.19	73	2.5
	MPPA: 103 Dam Age: 3/8/13 UDDER Excellent		DMI	1.07	22	

	ProS	HB	GM	CED	BW	WW	YW	MILK	ME	HPG	CEM	STAY
EPD	129	96	33	18	-4.6	50	80	28	-3	8	9	22
Top%	5	1	57	4	9	83	80	21	22	90	10	1

This bull will be easy calving. Both his sire and dam side are loaded with calving ease genetics. He was 80 lbs. at birth, out of a mature cow. He should throw less birthweight on the heifers. I would use him on my heifers. His grand dam is 205, possibly the best cow we've owned.

58 AXTELL ACTION 1859

B	3/16/21	A100% AR	Ratio	Data		
AX1859		4510227				
	RED SSS BIG GAME 814A		Act. BW	97	74	
	RED SSS GRAVITY 296E		Adj. WW	103	625	
	RED SSS LASS 704A		Adj. YW	103	1086	
	RED SSS ACTION 907G 4339869		SC			
	RED SSS MAXIMUM 754A		Frame		5.2	
	RED SSS PRINCESS 550C					
	RED SSS PRINCESS 349Z					
	BECKTON EMPEROR T641 E2		EPD	Top%	Data-Ratio	
	BECKTON EMPEROR X342 J3		MARB	0.37	60	2.68-82
	BECKTON LANA P685 JO		YG	0.11	75	
	AXTELL BONNEBELL 151-859 3982594		CW	17	73	
	AXTELL PAY DAY 8205		REA	-0.06	87	10.79-90
	AXTELL BONNEBELLE 958-151		FAT	0.02	61	0.28-88
	AXTELL BONNEBELLE 510-958		ADG	0.21	60	2.87
	MPPA: 100 Dam Age: 2/28/18		DMI	1.38	46	

	ProS	HB	GM	CED	BW	WW	YW	MILK	ME	HPG	CEM	STAY
EPD	101	74	27	14	-2.5	54	88	23	3	10	9	19
Top%	30	13	72	28	36	70	66	72	50	75	10	12

1859 is another very deep red Action son. He had a low birthweight and gained well at both weaning and yearling. He has extra length of body and is backed by some very good cows.

59 AXTELL KO 1331

B AX1331	3/14/21	A100% AR 4509991	Ratio	Data							
RED SSS SOLUTION 329Z			Act. BW	110 86							
RED SSS CONTENDER 121B			Adj. WW	94 559							
RED SSS DYNA 688X			Adj. YW	95 1034							
RED SSS KNOCK OUT 661D 3721531			SC								
RED EKW GOLDEN DEED 10U			Frame	5.3							
RED EKW DYNOFIRE 37X			EPD Top% Data-Ratio								
RED BAR-E-L DYNOFIRE 127R			MARB	0.39 53 2.70-94							
BJR PAY DAY 1528			YG	0 17							
AXTELL PAY DAY 8205			CW	10 89							
AX LANA 205			REA	-0.08 89 12.45-104							
AXTELL DUCHESS 402-331 1622885			FAT	-0.01 3 0.24-87							
BJR GAMBLER 027			ADG	0.14 92 2.96							
AXTELL DUCHESS 402			DMI	0.98 17							
SOR DUCHESS NE 7123G											
MPPA: 98 Dam Age: 3/19/13 UDDER Excellent											
ProS	HB	GM	CED	BW	WW	YW	MILK	ME	HPG	CEM	STAY
EPD	89	63	26	10	-0.3	45	68	21	-7	10	7 16
Top%	49	29	73	79	78	91	92	86	14	72	46 41

1331 is a smooth made bull by a cow with the best udder quality in the herd.

62 AXTELL DOMINOR 1655

B AX1655	3/6/21	A100% AR 4510107	Ratio	Data							
BECKTON DOMINOR ZC M919			Act. BW	88 70							
BECKTON DOMINOR T754 ZC			Adj. WW	96 585							
BECKTON LANA M809 EP			Adj. YW	92 971							
AXTELL DOMINOR 4124 1703474			SC								
BECKTON CLIFFTOP T3 N800			Frame	4.2							
BECKTON BARMAID R124 CT			EPD Top% Data-Ratio								
BECKTON BARMAID N371 LN			MARB	0.57 17 4.78-146							
BECKTON DOMINOR T754 ZC			YG	0.13 85							
AXTELL DOMINATOR 1925			CW	15 80							
AXTELL LANA 944-925			REA	-0.09 91 11.03-92							
AXTELL MAGIC 835-655 3574353			FAT	0.03 79 0.23-74							
KDCS EPIC JULES 618			ADG	0.18 78 2.41							
KDCS JOLIE 835			DMI	0.84 11							
LJC JUSTIFY 303											
MPPA: 103 Dam Age: 3/20/16 UDDER Excellent											
ProS	HB	GM	CED	BW	WW	YW	MILK	ME	HPG	CEM	STAY
EPD	125	78	47	18	-5	46	76	28	0	9	9 21
Top%	7	9	27	4	6	89	86	26	32	88	19 3

1655 is a low birthweight Dominor son and is linebred to the old Dominor T754 ZC bull, who was a great heifer bull and maternal brother to Beckton Nebula P707. This bull should be a great heifer bull but don't discount his carcass quality, he had a 146 ratio for Marbling!

60 AXTELL EPIC 1652

B AX1652	3/7/21	A100% AR 4510101	Ratio	Data							
BECKTON EPIC W690 C4			Act. BW	108 86							
AXTELL EPIC 1011			Adj. WW	104 634							
BECKTON ROSE P011 EP			Adj. YW	97 1020							
AXTELL EPIC 511 3477986			SC								
GLACIER HI COUNTRY 926			Frame	5.2							
OCHO VACA HI-AMBER T11			EPD Top% Data-Ratio								
OCHO VACA AMBER 23			MARB	0.52 25 3.81-116							
REDHILL R017 LANCER 117Y			YG	0.15 91							
CALVO RED KNIGHT 86A			CW	10 90							
CALVO STELLA 8Y			REA	-0.18 97 11.44-96							
AXTELL AMBER 11-652 3574341			FAT	0.04 86 0.34-110							
GLACIER HI COUNTRY 926			ADG	0.15 90 2.41							
OCHO VACA HI-AMBER T11			DMI	1.19 30							
OCHO VACA AMBER 23											
MPPA: 100 Dam Age: 3/12/16 UDDER Excellent											
ProS	HB	GM	CED	BW	WW	YW	MILK	ME	HPG	CEM	STAY
EPD	96	76	20	12	-2.9	53	77	26	-5	7	6 20
Top%	37	10	84	57	29	73	84	38	17	98	72 3

This bull's dam is very easy fleshing and goes back to the great Amber family as does the sire Epic 511. This bull is a linebred Amber and should make outstanding daughters.

63 AXTELL AJAX 1673

B AX1673	3/16/21	A100% AR 4510131	Ratio	Data							
RED FLYING K NEBULA 179X			Act. BW	95 76							
RED ROD NEBULA 806B			Adj. WW	102 621							
RED ROD TRENDY LADY 935P			Adj. YW	88 933							
RED FLYING K AJAX 164F 4339863			SC								
RED ML MAX 862U			Frame	4.4							
RED FLYING K LINETT 59Z			EPD Top% Data-Ratio								
RED FLYING K DYNASTY 194W			MARB	0.33 70 3.67-112							
BECKTON SCAMP X494 E3			YG	0.1 73							
BECKTON SCAMP A696 H4			CW	10 90							
BECKTON BELGA U424 HT			REA	-0.07 88 11.39-95							
AXTELL ENCINO 455-673 3574526			FAT	0.03 76 0.26-82							
AXTELL DOMINATOR 1925			ADG	0.15 91 1.94							
AXTELL ENCINO 041-455			DMI	1.06 22							
AXTELL ENCINO 91-041											
MPPA: 100 Dam Age: 3/6/16 UDDER Excellent											
ProS	HB	GM	CED	BW	WW	YW	MILK	ME	HPG	CEM	STAY
EPD	95	78	17	16	-4.1	44	68	28	1	11	10 19
Top%	39	9	88	9	13	92	92	23	40	56	4 10

A son of Flying K Ajax, the high seller at the 2019 Flying K sale in Canada. This bull will be an easy calving heifer bull out of a good cow family.

61 AXTELL REDWING 1501

B AX1501	3/18/21	A100% AR 4510069	Ratio	Data							
BB L902 BBRED 5236			Act. BW	82 64							
BB 5236 BBRED 6015			Adj. WW	104 619							
MM 1369 SALEE 1907			Adj. YW	90 982							
AXTELL REDWING 7215 3818005			SC								
BECKTON CODY T008 K2			Frame	4.8							
AXTELL ANNE 701-215			EPD Top% Data-Ratio								
AXTELL ANNE 01-701			MARB	0.22 92 1.90-67							
AXTELL CODY 9205			YG	0.19 97							
AXTELL YELLOWSTONE 3704			CW	15 79							
AXTELL SYRINGA 404-704			REA	-0.09 91 12.82-107							
AXTELL ANNE 01-501 3478107			FAT	0.05 98 0.19-67							
BECKTON CODY T008 K2			ADG	0.12 96 2.27							
AXTELL ANNE 01-01			DMI	1.14 26							
AXTELL ANNIE 210-01											
MPPA: 99 Dam Age: 2/24/15 UDDER Excellent											
ProS	HB	GM	CED	BW	WW	YW	MILK	ME	HPG	CEM	STAY
EPD	104	101	3	19	-6.9	43	62	26	0	10	10 23
Top%	26	1	98	1	1	94	95	43	31	68	4 1

Here is a sleep all night heifer bull. He ranks in the top 1% for BW, CED, STAY and HB. Keep his daughters! A 12.8 ribeye is impressive out of a bull only weighing 1,000 lbs.

65 AXTELL AROMAX 1733

B AX1733	3/13/21	A100% AR 4510191	Ratio	Data							
RED ML MAX 862U			Act. BW	79 60							
RED FLYING K MAX 159Y			Adj. WW	103 616							
RED FLYING K ANITA 764T			Adj. YW	95 1039							
RED ARO 818F 4339865			SC								
FORSTER NORTH 9017			Frame	5.1							
ARO NORTHERN LADY 330			EPD Top% Data-Ratio								
ARO RAMROD 307			MARB	0.37 60 4.08-143							
REDHILL R017 LANCER 117Y			YG	0.03 31							
CALVO LANCER 26B			CW	10 90							
BBBB 7150 BBRED 7240 CALVO			REA	0.11 52 11.54-96							
AXTELL ANNE 335-733 3818085			FAT	0.02 66 0.28-101							
AXTELL CODY 9205			ADG	0.15 89 2.64							
AXTELL ANNE 01-335			DMI	1.13 26							
AXTELL ANNE 01-01											
MPPA: 101 Dam Age: 3/13/17 UDDER Excellent											
ProS	HB	GM	CED	BW	WW	YW	MILK	ME	HPG	CEM	STAY
EPD	108	87	21	19	-6	48	72	24	-5	12	10 19
Top%	21	4	83	2	2	87	89	57	17	28	6 10

This 818F son started at only 60 lbs. and combines good cows and calving ease throughout his pedigree. He ranks very highly for calving ease and marbling. He's a sleep all night heifer bull.

CHAROLAIS BULLS

We made the decision to add a small Charolais herd to our operation in order to give our customers the choice to add a little hybrid vigor to their calf crop with a breed that is in the ultimate cross on Red Angus in our opinion. The Charolais herd runs right with our Reds and are expected to live in the same rough conditions with no extra pampering. For that reason, we have selected cattle from the Bill King Ranch in New Mexico as the major contributor to our herd. We felt if these cattle can make it there, they should thrive here. We've also added some cattle from Wright Charolais of Missouri for their more moderate frames. These cattle are ideal for crossing on Red Angus or Black Angus based cows. They will give you a big performance kick from hybrid vigor and add ribeye. We will have a selection of Charolais x Red Angus bulls next year!



67 AXTELL HORIZON 1133

B 1/16/21
 AX1133 POLLED CHAR M957904

LT SILVER YIELD 3196 P
 LT SILVER DISTANCE 5342P
 LT MATTIE 9026 POLLED

LT HORIZON 6303 PLD
 LT LEDGER 0332 P
 LT BRENDA 3307 PLD
 LT BRENDA'S BREEZE 0174 P

THOMAS OAH E WIND 0772ET P
 TR MR FIRE WATER 5792R ET
 THOMASWISSERSWEET1764ET

KR MISS FIRE WATER 7133
 LT EASY PRO 3151 PLD
 KR MISS 3151 LT EASY PRO 1104
 KR MS EASY RIDE 3104
 Dam Age: 4 UDDER Excellent

	Ratio	Data
Act. BW	87	75
Adj. WW	102	693
Adj. YW	109	1296
SC		
Frame		6.0
EPD Top% Data-Ratio		
MARB	0.17	25 3.07-134
REA	0.73	45 14.31-103
FAT	0.04	95 0.27-129
ADG		3.89

	TSI	CE	BW	WW	YW	MILK	MCE	MTL
EPD	247	10.3	-3.7	57	101	21	6.6	50
Top%	55	15	6	55	60	85	40	65

We are proud to lead off our Charolais division with this stud. He is a heck of a bull, no matter the color. He is sired by LT Horizon, one of the easiest calving bulls in the breed. 1133 started small, grew well at weaning and really turned the crank on test. He is my type, thick, deep ribbed and full of muscle. He's sensible framed but has a ton of performance and ultrasound indicated a large ribeye and outstanding marbling, that can compete in the Reds.



Lot 67

68 AXTELL MILE HIGH 1236

B 1/16/21
 AX1236 POLLED/SCUR CHAR M957905

DA PASSPORT 502 P ET
 WC BENELLI 2134 P ET
 JWK CLARICE J139 ET

WC MILESTONE 5223 P
 LT BLUE VALUE 7903 ET
 WC LADY BLUE 0508 P
 DS MISS FAB MACK P ET

LT RIO BRAVO 3181 P
 LT RUSHMORE 8060 PLD
 LT BRENDA'S EASE 3055PLD

WC DUCHESS 5236 P
 WC-WCCC ROCKETFUEL 7109
 WC DUCHESS 0017 P
 LT-WC DUCHESS OF EASE 8008PET
 Dam Age: 6 UDDER Good

	Ratio	Data
Act. BW	89	78
Adj. WW	97	661
Adj. YW	96	1143
SC		
Frame		5.4
EPD Top% Data-Ratio		
MARB	0.03	85 1.19-52
REA	0.84	20 14.92-107
FAT	0.03	50 0.14-67
ADG		3.06

	TSI	CE	BW	WW	YW	MILK	MCE	MTL
EPD	239	11.9	-2.9	51	95	30	8.9	55
Top%	75	8	15	80	80	15	15	35

A Great combination of the performance of Milestone and the calving ease of Rushmore. This bull is another one that I like regardless of color. He is moderate framed, should make great females and is loaded with muscle and depth of rib. His ribeye was nearly 15 and he will make a great cross on Red Angus females. A bull good enough to make great feeder calves and females.



Lot 68

69 AXTELL CHOTEAU 1139

B	3/6/21	CHAR	Ratio	Data	
AX1139		M9570903	Act. BW	106 92	
	JDJ JUSTICE U319		Adj. WW	100 684	
	LHD CHOTEAU B1669 P		Adj. YW	106 1262	
	LHD MS CIGARSON T983		SC		
LT CHOTEAU 7192 PLD			Frame	6.6	
	LT RUSHMORE 8060 PLD		EPD Top%	Data-Ratio	
	LT BELLE 4054 PLD		MARB	0.20 15 2.91-127	
	LT BELLE 1227 PLD		REA	0.77 35 14.60-105	
	KEYS SPECIALIST 18U		FAT	0.02 80 0.25-119	
	KEYS ALL STATE 149X		ADG		3.61
	MISS KEY MEG 2T				
KR MISS ALLSTATE 7139 ET					
	TR MR FIRE WATER 5792RET				
	KR MISS FIREWATER 3085				
	KR MISS DOC SILVER 9031				
	Dam Age: 4 UDDER Average				

	TSI	CE	BW	WW	YW	MILK	MCE	MTL
EPD	252	0.2	0.7	61	109	18	3	48
Top%	40	90	70	35	40	85	80	70

1139 is a bigger framed, growth bull that gained very well on the cow and on test. He has a lot of bone and performance and is a massive bull. Look for his calves to be the big end of your calf crop and he showed good results in both Marbling and Ribeye. Definitely a bull to retain ownership of his calves.



Lot 69

70 AXTELL PATRIOT 1029

B	3/15/21	CHAR	Ratio	Data	
AX1029		M957911	Act. BW	102 86	
	LT LEDGER 0332 P		Adj. WW	100 679	
	LT PATRIOT 4004 PLD		Adj. YW	100 1188	
	LK MISS RIO 2119		SC		
LT PATRIOT 9168 PLD			Frame	6.3	
	LT SUNDANCE 2251 PLD		EPD Top%	Data-Ratio	
	LT MAXINE 6304 PLD		MARB	0.16 30 1.89-83	
	LT MAXINE 3073 PLD		REA	0.60 80 13.62-98	
	LT BLUEGRASS 4017 P		FAT	0.04 100 0.19-95	
	LT LEDGER 0332 P		ADG		3.19
	LT BRENDA 6120 PLD				
KR MS LEDGER 8029					
	EATONS ROYAL DYNASTY 6164				
	KR MISS ROYAL DYNASTY 3105				
	KR MISS EASY PRO 9037				
	Dam Age: 3 UDDER Excellent				

	TSI	CE	BW	WW	YW	MILK	MCE	MTL
EPD	250	3.0	0.5	60	110	23	3.2	53
Top%	45	80	65	45	40	50	75	45

1029 is a long bodied bull with a good hindquarters. He will add growth and has an extremely small head for calving ease. He combines Patriot and Ledger, two of the most popular bulls in the breed.

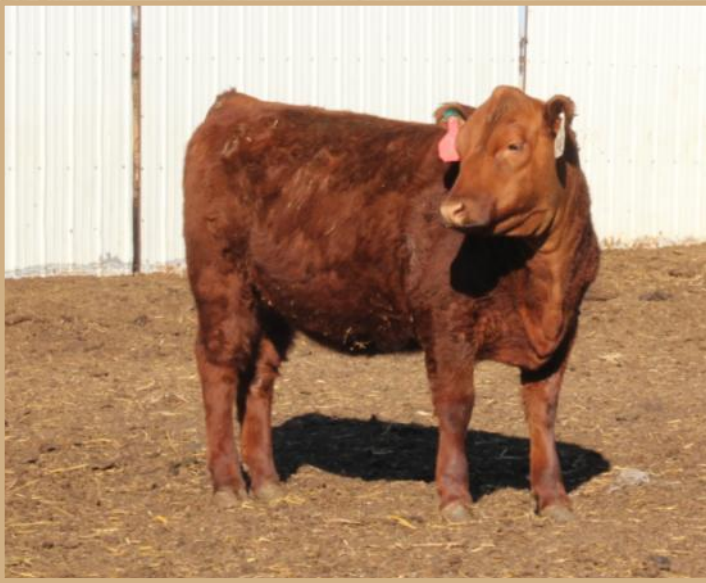
71 AXTELL BLUEGRASS 1060

B	3/29/21	CHAR	Ratio	Data	
AX1060		M957907	Act. BW	100 86	
	LT BLUEGRASS 4017 P		Adj. WW	95 648	
	KR BLUEGRASS 2035		Adj. YW	96 1138	
	KR MS EASY RIDE 3104		SC		
KR 2035 BLUEGRASS 8127			Frame	6.3	
	LT EASY RIO 8071 PLD		EPD Top%	Data-Ratio	
	KR MISS EASY RIO 3115		MARB	0.233 8 2.71-118	
	KR MS 9108 UNLIMITED 406		REA	0.51 95 13.22-95	
	LT SILVER DISTANCE 5342P		FAT	0.03 90 0.20-100	
	LT LONG DISTANCE 9001 PLD		ADG		3.01
	LT BELLE 7026 P				
KR MS LONG DISTANCE 7060					
	LT LEDGER 0332 P				
	KR MS LEDGER 5079				
	KR MISS EASY BLEND 3068				
	Dam Age: 4 UDDER Good				

	TSI	CE	BW	WW	YW	MILK	MCE	MTL
EPD	239	11.9	-2.9	51	95	30	8.9	55
Top%	75	8	15	80	80	15	15	35

1060 is the youngest Charolais in the sale, he won't be a year old until the day after the sale. He is long bodied and smooth made. He will add some stretch to your calves.





Lot 75

76 AXTELL ROSE 534-153

C 4/4/21 A100% AR
 AX153 4510081
 RED SSS SOLUTION 329Z
 RED SSS CONTENDER 121B
 RED SSS DYNA 688X
RED SSS KNOCK OUT 661D 3721531
 RED EKW GOLDEN DEED 10U
 RED EKW DYNOFIRE 37X
 RED BAR-E-L DYNOFIRE 127R
 5L LEGEND 1553-425V
 CHOAT LEGEND Y200
 CHOAT LUCY T716
AXTELL ROSE 747-534 3478153
 BECKTON JULIAN G4 P627
 BECKTON ROSE T747 JL
 BECKTON ROSE D741 LN
 MPPA: 101 Dam Age: 3/5/15 UDDER Good

	Ratio	Data
Act. BW	107	80
Adj. WW	107	570
Adj. YW		
EPD Top%		Data
MARB	0.46	36
YG	0	17
CW	13	85
REA	0.05	66
FAT	0	13
ADG	0.17	83
DMI	1.26	36

	ProS	HB	GM	CED	BW	WW	YW	MILK	ME	HPG	CEM	STAY
EPD	85	54	30	14	-2.2	51	79	22	-3	13	8	14
Top%	57	46	65	28	42	79	82	81	22	20	32	70

If you like dark red, extremely easy fleshing heifers, then this one is for you. Both the dam and grand dam are extremely easy fleshing. The grand dam was sold this year as a 14 year old bred cow. There is longevity in this line of cows.

75 AXTELL MOLLY 554-146

C 3/10/21 A100% AR
 AX146 4510067
 BECKTON DOMINOR ZC M919
 BECKTON DOMINOR T754 ZC
 BECKTON LANA M809 EP
AXTELL DOMINOR 4124 1703474
 BECKTON CLIFFTOP T3 N800
 BECKTON BARMAID R124 CT
 BECKTON BARMAID N371 LN
 BECKTON EMPEROR T641 E2
 BECKTON EMPEROR X342 J3
 BECKTON LANA P685 JO
AXTELL MOLLY 044-554 3478103
 FORSTER GOLD 3109
 AXTELL MOLLY 34-044
 SRAF JULIET 34R
 MPPA: 102 Dam Age: 3/17/15 UDDER Excellent

	Ratio	Data
Act. BW	92	69
Adj. WW	104	555
Adj. YW		
EPD Top%		Data
MARB	0.59	14
YG	0.14	88
CW	12	87
REA	-0.12	93
FAT	0.04	86
ADG	0.16	85
DMI	0.94	15

	ProS	HB	GM	CED	BW	WW	YW	MILK	ME	HPG	CEM	STAY
EPD	113	75	37	17	-4.7	49	75	27	0	8	10	19
Top%	16	11	48	4	8	84	86	32	31	94	5	8

Lot 75 is a real nice heifer backed by a real good dam. The Dominor 4124 daughters are outstanding, and I fully expect this one to be as well. Dominor x Emperor is a great combination in our herd.



Lot 76

77 AXTELL ANNA 766-138

C 3/2/21 A100% AR
 AX138 4510173
 BECKTON DOMINOR ZC M919
 BECKTON DOMINOR T754 ZC
 BECKTON LANA M809 EP
AXTELL DOMINOR 4124 1703474
 BECKTON CLIFFTOP T3 N800
 BECKTON BARMAID R124 CT
 BECKTON BARMAID N371 LN
 BECKTON SCAMP X494 E3
 BECKTON SCAMP A696 H4
 BECKTON BELGA U424 HT
AXTELL ANNA 039-766 3817933
 BECKTON CODY T008 K2
 AXTELL ANNA 10P-039
 SRAF MISS ALGEBRA 10P
 MPPA: 101 Dam Age: 3/6/17 UDDER Good

	Ratio	Data
Act. BW	98	71
Adj. WW	94	503
Adj. YW		
EPD Top%		Data
MARB	0.48	32
YG	0.09	65
CW	5	96
REA	-0.12	93
FAT	0.03	69
ADG	0.16	87
DMI	0.75	8

	ProS	HB	GM	CED	BW	WW	YW	MILK	ME	HPG	CEM	STAY
EPD	125	95	31	17	-3.9	44	70	29	-5	9	10	21
Top%	6	2	63	4	15	92	91	19	17	82	4	2

Lot 77 is an attractive Dominor daughter out of a good young cow. A maternal brother to the dam was our high seller to Arrowsmith Red Angus a few years back and has done a good job there.





Lot 78

80 AXTELL ROXIE 738-123

C	3/4/21	A100% AR	Ratio	Data	
AX123		4510199	Act. BW	109	74
	RED ML MAX 862U		Adj. WW	107	566
	RED FLYING K MAX 159Y		Adj. YW		
	RED FLYING K ANITA 764T				
RED ARO 818F	4339865				
	FORSTER NORTH 9017				
	ARO NORTHERN LADY 330				
	ARO RAMROD 307				
	RED HILL B571 JULIAN 84S				
	CALVO JULIAN 56A				
	CALVO SECRET 6X				
AXTELL ROXIE	4102-738 3818121				
	KRP BRILLIANT LITE 9707				
	KRP ROXIE-D 4102				
	KRP ROXIE KANYON 1021				
MPPA: 102	Dam Age: 4/12/17	UDDER Excellent			

	ProS	HB	GM	CED	BW	WW	YW	MILK	ME	HPG	CEM	STAY
EPD	93	72	21	15	-2.4	50	77	24	-3	12	9	17
Top%	43	15	83	17	38	82	84	60	23	30	15	32

A nice, moderate heifer from a good young cow that is moderate and easy fleshing. I think she will make an excellent cow! Her dam is one of our better, young cows!

78 AXTELL OPHELIA 2501-124

C	3/4/21	A100% AR	Ratio	Data	
AX124		4509935	Act. BW	104	73
	BB L902 BBRED 5236		Adj. WW	100	528
	BB 5236 BBRED 6015		Adj. YW		
	MM 1369 SALEE 1907				
AXTELL REDWING	7765 3818291				
	OCC RED GRAZER 610Z				
	OCC VANESSA 765B				
	OCC VANESSA 839U				
	BECKTON CODY K2 R168				
	BECKTON CODY T008 K2				
	BECKTON TAMARA R200 HU				
2501 AX	1517310				
	BFCK CHEROKEE CNYN 4912				
	LJC CRESCENT 501				
	LJC LA 5329 029				
MPPA: 101	Dam Age: 3/28/12	UDDER Excellent			

	ProS	HB	GM	CED	BW	WW	YW	MILK	ME	HPG	CEM	STAY
EPD	92	82	10	13	-1.4	52	77	27	-1	12	6	20
Top%	44	6	95	43	58	77	84	35	30	28	70	4

This is a really nice, long and feminine heifer. Her dam is a nice cow that is easy fleshing and always produces a good one. She produced our top selling heifer to Colby Sires two years ago! I think this heifer has a good future ahead of her.

81 AXTELL ANNE 744-122

C	3/4/21	A100% AR	Ratio	Data	
AX122		4510209	Act. BW	102	70
	RED SSS SOLUTION 329Z		Adj. WW	104	550
	RED SSS CONTENDER 121B		Adj. YW		
	RED SSS DYNA 688X				
RED SSS KNOCK OUT	661D 3721531				
	RED EKW GOLDEN DEED 10U				
	RED EKW DYNOFIRE 37X				
	RED BAR-E-L DYNOFIRE 127R				
	BECKTON DOMINOR T754 ZC				
	AXTELL DOMINOR 4124				
	BECKTON BARMALD R124 CT				
AXTELL ANNE	517-744 3818215				
	BECKTON SCAMP A696 H4				
	AXTELL ANNE 317-517				
	AXTELL ANNE 502-317				
MPPA: 101	Dam Age: 2/12/17	UDDER Excellent			

	ProS	HB	GM	CED	BW	WW	YW	MILK	ME	HPG	CEM	STAY
EPD	97	68	29	14	-2.2	51	78	25	-5	11	9	16
Top%	36	20	68	29	42	79	83	50	18	39	19	45

I think this could be a top cow and I think I will regret selling her. Her dam is a model cow for us and is the type to keep a herd bull for our own use. The dam, grand dam and great grand dam are all still top cows in our herd. I could see this heifer being that kind of cow as well.

79 AXTELL SPERRA 6303-127

C	3/9/21	A100% AR	Ratio	Data	
AX127		4510091	Act. BW	84	58
	RED SSS SOLUTION 329Z		Adj. WW	99	521
	RED SSS CONTENDER 121B		Adj. YW		
	RED SSS DYNA 688X				
RED SSS KNOCK OUT	661D 3721531				
	RED EKW GOLDEN DEED 10U				
	RED EKW DYNOFIRE 37X				
	RED BAR-E-L DYNOFIRE 127R				
	RED HILL B571 JULIAN 84S				
	BUF CRK JUBILEE X049				
	BUF CRK LASS T267				
POKE MS JUBILEE	1201 6303 3561904				
	BUF CRK MEDALLION U198				
	HLH MS MEDALLION 8195 1201				
	HLH MAJORETTE 1157 8195				
MPPA: 101	Dam Age: 3/9/16	UDDER Excellent			

	ProS	HB	GM	CED	BW	WW	YW	MILK	ME	HPG	CEM	STAY
EPD	75	52	22	14	-2.3	58	85	21	-2	13	9	13
Top%	74	51	80	30	40	57	74	86	27	21	15	79

This Knock Out heifer is by a good producing, bigger cow that we bought at the Hall-Pokorny dispersal. This heifer started with a low BW but should bring some good performance to her calves.



Lot 81

82 AXTELL BARMAID 749-112

C	3/1/21	A100% AR	Ratio	Data
AX112		4510219	Act. BW	92 62
	BECKTON EPIC W690 C4		Adj. WW	100 525
	AXTELL EPIC 1011		Adj. YW	
	BECKTON ROSE P011 EP			
	AXTELL EPIC 511 3477986			
	GLACIER HI COUNTRY 926			
	OCHO VACA HI-AMBER T11			
	OCHO VACA AMBER 23			
	BB L902 BBRED 5236			
	BB 5236 BBRED 6015			
	MM 1369 SALEE 1907			
	AXTELL BARMAID 124-749 ET 3845343			
	BECKTON CLIFFTOP T3 N800			
	BECKTON BARMAID R124 CT			
	BECKTON BARMAID N371 LN			
	MPPA: 99 Dam Age: 3/28/17			

	ProS	HB	GM	CED	BW	WW	YW	MILK	ME	HPG	CEM	STAY
EPD	86	74	12	12	-2.7	50	72	26	-5	7	6	20
Top%	55	13	94	60	32	83	89	43	17	98	76	3

This calving ease heifer should be a good producer. Her dam is a product of our ET program. The grand dam is the dam of Dominor 4124. We flush very few and they must be an old, proven cow to get that honor and she is one of only a couple cows we've ever flushed.

83 AXTELL DUTCHESS 635-135

C	4/5/21	A100% AR	Ratio	Data
AX135		4510125	Act. BW	96 67
	RED ML MAX 862U		Adj. WW	108 568
	RED FLYING K MAX 159Y		Adj. YW	
	RED FLYING K ANITA 764T			
	RED ARO 818F 4339865			
	FORSTER NORTH 9017			
	ARO NORTHERN LADY 330			
	ARO RAMROD 307			
	AXTELL CODY 9205			
	AXTELL YELLOWSTONE 3704			
	AXTELL SYRINGA 404-704			
	AXTELL DUTCHESS 207-635 3574449			
	AXTELL GUNSLINGER 801			
	AXTELL DUTCHESS 603-207			
	DFRA DUTCHESS R603			
	MPPA: 101 Dam Age: 3/18/16 Udder Excellent			

	ProS	HB	GM	CED	BW	WW	YW	MILK	ME	HPG	CEM	STAY
EPD	110	82	28	14	-2.3	54	82	23	1	10	8	20
Top%	18	6	70	26	40	72	78	73	41	61	22	4

Lot 83 is a high growth heifer going back to a good cow family we got at Damar, years ago. This heifer was light at birth and heavy at weaning. The dam is a good producer with a little more size than our average cow.

84 AXTELL LANA 569-152

C	3/24/21	A100% AR	Ratio	Data
AX152		4510153	Act. BW	94 70
	RED SSS ENDORSE 254B		Adj. WW	106 565
	ARO ENDORSEMEN 665		Adj. YW	
	ARO MS UNO 2101			
	AXTELL ENDORSE 8935 3982630			
	BECKTON CODY T008 K2			
	AXTELL WSTRN PRD 310-935			
	AXTELL WSTRN PRIDE 310			
	BECKTON DOMINOR T754 ZC			
	AXTELL DOMINATOR 1925			
	AXTELL LANA 944-925			
	AXTELL LANA 517-569 3773043			
	AXTELL BANDO CHF 26L			
	AX LANA 308-517			
	AX LANA 02-308			
	MPPA: 102 Dam Age: 3/19/15 Udder Excellent			

	ProS	HB	GM	CED	BW	WW	YW	MILK	ME	HPG	CEM	STAY
EPD	123	92	31	15	-3.7	45	72	30	1	9	8	23
Top%	8	2	63	15	17	91	89	13	37	85	29	1

This highly maternal heifer has longevity bred in and ranks very high for Stayability and Herd Builder. There are lots of great cows in her pedigree.

85 AXTELL PRINCESS 316-131

C	3/24/21	A100% AR	Ratio	Data
AX131		4509971	Act. BW	100 70
	RED FLYING K NEBULA 179X		Adj. WW	105 555
	RED ROD NEBULA 806B		Adj. YW	
	RED ROD TRENDY LADY 935P			
	RED FLYING K AJAX 164F 4339863			
	RED ML MAX 862U			
	RED FLYING K LINETT 59Z			
	RED FLYING K DYNASTY 194W			
	BECKTON CODY T008 K2			
	AXTELL CODY 9205			
	AX LANA 205			
	AXTELL PRINCESS 836-316 1622776			
	LCC NEW CHAPTER A705L			
	AXTELL PRINCESS 466-836			
	PAULS PRINCESS 466			
	MPPA: 104 Dam Age: 3/5/13 Udder Excellent			

	ProS	HB	GM	CED	BW	WW	YW	MILK	ME	HPG	CEM	STAY
EPD	113	89	24	14	-2.1	54	83	27	1	10	8	21
Top%	15	3	76	36	43	72	77	32	41	60	35	1

This moderate framed heifer is out of one of highest producing cows that is extremely easy fleshing. This heifer won't be tall but should fill out into an easy fleshing cow.

86 AXTELL LANA 217-126

C	3/6/21	A100% AR	Ratio	Data
AX126		4509947	Act. BW	99 69
	BB L902 BBRED 5236		Adj. WW	102 540
	BB 5236 BBRED 6015		Adj. YW	
	MM 1369 SALEE 1907			
	AXTELL REDWING 7215 3818005			
	BECKTON CODY T008 K2			
	AXTELL ANNE 701-215			
	AXTELL ANNE 01-701			
	BECKTON CODY K2 R168			
	BECKTON CODY T008 K2			
	BECKTON TAMARA R200 HU			
	AXTELL LANA 705-217 1517347			
	FORSTER GOLD 3109			
	AXTELL LANA 944-705			
	PVRA LANA 944			
	MPPA: 103 Dam Age: 3/15/12			

	ProS	HB	GM	CED	BW	WW	YW	MILK	ME	HPG	CEM	STAY
EPD	111	100	11	15	-3	52	77	28	2	12	8	23
Top%	18	1	94	18	27	78	84	23	42	35	36	1

This dark red, easy going heifer is backed by a bigger cow that had a great attitude. This heifer ranks in the top 1% for STAY and HB. She should make a good cow!

DVAuction

Broadcasting Real-Time Auctions

Never Miss An Auction Again!
Watch & Bid online for FREE!

Visit www.DVAuction.com
and Register Today!

For General Questions Please Contact Our Office:
(402) 316-5460 or support@dvauction.com

Red Angus Guide to EPDS and Indexes

ProS... Profitability and Sustainability is an all-purpose index that predicts average economic differences in all segments in the beef supply chain. This index is a combination of the breeding objectives modeled in the HerdBuilder and GridMaster selection indexes. In this index, replacement heifers are retained from within the herd and all remaining progeny are fed out to slaughter and sold on a quality-based grid. Traits included in this index include calving ease, growth, HPG, STAY, Mature Weight, Dry Matter Intake and carcass traits. The resulting index is expressed in dollars per head born (Index/High Value).

HB..... HerdBuilder is a maternal selection index that predicts the economic differences of animals for traits that are important from conception through weaning. Expressed as dollars per head born, HB is calculated based on the scenario that bulls are mated to heifers and cows, replacement heifers are retained and all remaining progeny are marketed at weaning. Traits included in the HB index include Calving Ease Direct, Calving Ease Maternal, Weaning Weight, Milk, Mature Weight, Heifer Pregnancy and Stayability (Index/High Value).

GM..... GridMaster is a selection index that predicts the average economic difference of non-replacement calves through the post-weaning phase of production. GM places selection pressure on growth, feedyard performance and carcass traits. Expressed as dollars per head born, GM is calculated based on the scenario that progeny are fed out to slaughter and marketed on a quality-based carcass grid. Traits included in GM include Average Daily Gain, Carcass Weight, Dry Matter Intake, Marbling, Back Fat and Rib Eye Area (Index/High Value).

CED..... Calving Ease Direct predicts differences in the percent of calves born unassisted out of 2-year-old dams. (Percent/High Value)

BW..... Birth Weight predicts differences in actual birth weight of progeny. (Pounds/Low Value)

WW..... Weaning Weight predicts differences in 205-day weaning weight. (Pounds/High Value)

YW..... Yearling Weight predicts differences in 365-day yearling weight. (Pounds/High Value)

ADG..... Average Daily Gain predicts differences in weight gain between 205 and 365 days of age. (Pounds/High Value)

DMI..... Dry Matter Intake predicts differences in daily feed intake as measured in a feedlot during the post-weaning period. (Pounds/Low Value)

MILK..... Milk predicts differences in weaning weight attributed to the milking ability of the animal's daughters. (Pounds/High Value)

ME..... Maintenance Energy predicts the difference in maintenance energy requirements. (Mcal per Month/Low Value)

HPG..... Heifer Pregnancy predicts differences in the percent of daughters who are able to conceive and calve at 2 years of age following exposure to breeding. (Percent/High Value)

CEM..... Calving Ease Maternal predicts differences in the percent of daughters who are able to calve unassisted as 2-year-old heifers. (Percent/High Value)

STAY..... Stayability predicts differences in the ability of an animals' retained daughters to remain productive in the herd – calve every year – through 6 years of age. (Percent/High Value)

MARB..... Marbling predicts differences in marbling score – amount of intramuscular fat measured at the 13th rib. (Marbling Score Units/High Value)

YG..... Yield Grade predicts differences in USDA Yield Grade, which is calculated using CW, REA and Fat. (Yield Grade Units/Low Value)

CW..... Carcass Weight predicts differences in actual hot carcass weight. (Pounds/High Value)

REA..... Ribeye Area predicts differences in square inches of ribeye area measured at the 13th rib. (Square Inches/High Value)

FAT..... Fat predicts differences in the depth of backfat measured between the 12th and 13th ribs. (Inches/Low Value)

RE ANGUS
RANCH TESTED. RANCHER TRUSTED.
RedAngus.org





Meeker, CO.

CLINT SHULTS

CUP & CPEC Certified Ultrasound Technician Services
Seedstock Consultation & Referrals
Sale and Show Day Fitting Services

📞 970-201-4104

✉ toomanyirons@msn.com

📌 2manyirons



A huge THANK YOU to Brian's parents, Vaughn and Joyce Axtell for everything you do for Axtell Cattle Company!



SPECIAL THANKS to the crew at Sterling Livestock Commission. It is a pleasure working with you!



Clay playing 6-man junior high football for his school, Arickaree.

Clay was busy all spring and summer playing travel baseball. Pictured is his winning Babe Ruth team from Akron. When he wasn't playing ball, he was working with his 4-H goats.





PHOTO GALLERY



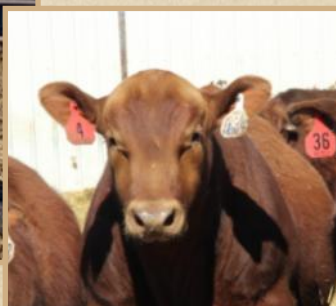
Axtell Bonnebelle 151-771



Lot 69 on summer grass



Lot 4 Then and Now





A
X-





AXTELL CATTLE COMPANY

Brian and Jamie Jo Axtell
PO Box 21
Anton, CO 80801

Address Service Requested



Hope To See You March 28th!