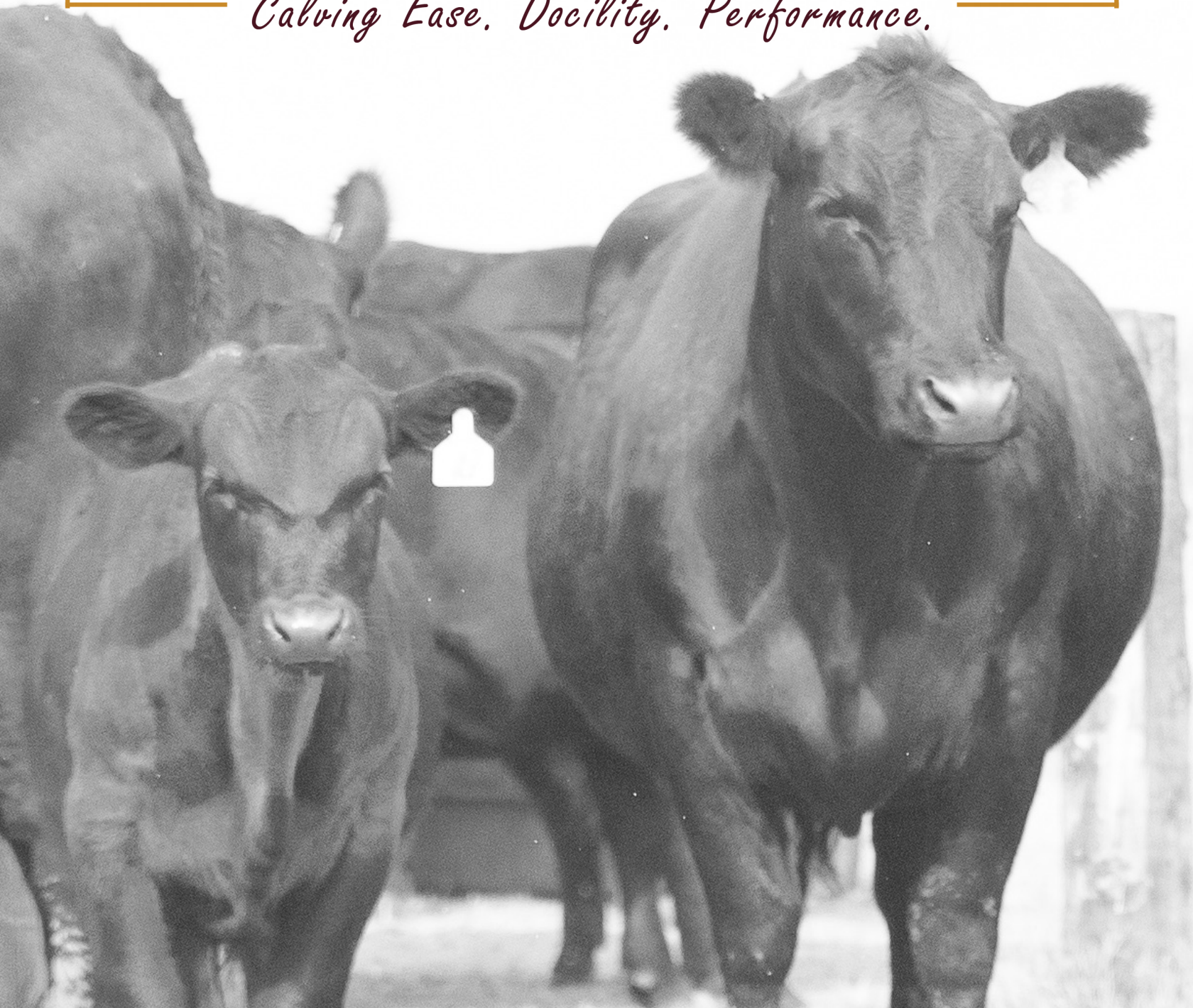


GLASOE ANGUS

Calving Ease. Docility. Performance.



Annual Bull Sale

MARCH 24, 1 PM

SITTING BULL AUCTION IN WILLISTON, ND



Dear Breeder,

As I write this letter and ponder the past year, gratitude resonates. Gratitude for our buyers – commercial and registered producers – who continue to feed the world and provide one of the most beneficial protein sources on the planet. You accomplish it under the narrowest of margins, policy pressures and weather conditions that would break the backbone of most. Thank you for the sleep you cut short for that laboring heifer at 3 a.m., the exhausted arms with which you carry newborn calves born in the blizzard to lifesaving heat, the miles you walk and ride checking and sorting and doctoring cow/calf pairs, the sweat you break fencing, the water you haul, the straw you bed and the feed you supply all winter long. You are doing hard and noble work.

Every breeding season I think of you all as we determine the next genetic combinations and our responsibility to furnish you with livestock that will be profitable and move our herds forward in production, longevity and efficiency. From hoof to udder, length of spine to depth of rib, nurturing ability to calf vigor, fertility to temperament, and from fleshing ability to pounds on the scale, we are striving to breed cattle that are the complete package in phenotype and proven production performance.

Our maternal focus continues with demands on structural integrity, nurturing ability and superior productivity. While the current Angus breed average for bulls is 657 pounds at 205 days, our bulls averaged 79 pounds at birth but exceeded the 205-day average by more than 100 pounds. Our bulls averaged 761 pounds without any exposure to creep feed. Our selection criteria for bulls utilizes sires raised by maternally powered dams that have earned breed-leading reputations and profit. Our donor dams in our embryo program are all long-proven Pathfinder Glasoe Angus dams: two fifteen-year-olds, a twelve-year-old, an eleven-year-old, and a nine-year-old dam.

Certainty and Assurance, Lots One and Two, hail from two donor Pathfinders and showcase the traits for which we strive. This yearling set is sound-structured, performance driven and backed with esteemed lineage and genetic potential to thrive in our herd and the next. We have high expectations for these featured prospects and hope they will benefit your herd for years to come.



COMMENTS FROM THE SALE MANAGER:

Tom Burke	Kurt Schaff	Carter Ward
(816) 853-2697	(816) 520-6447	(816) 261-0891

CALVING-EASE * DOCILITY * PERFORMANCE

Plan now to be on hand Thursday, March 24, 2022 for the Glasoe Angus Annual Bull Sale, at Sitting Bull Auction in Williston, North Dakota. Selling will be a powerful presentation of bulls backed by decades of Angus breeding at Glasoe Angus. Featured sires include Baldrige Colonel C251, Baldrige Pappy, Coleman Charlo 0256, GA Raindance 922, Hoover No Doubt, Jindra Blackout, SAV Exceptional 7279, SAV Rainfall 6846, SAV Raindance 6848, SAV Resource 1441 and more.

Established in 1973, the Glasoe Angus program is now nearly five full decades strong. Ever since, it has been breeding for the needs of the commercial cowman. Kevin and Sydney and their family carry forward the Angus tradition established by Art and Lance. Each year the results have shown continuous strides forward, and 2022 is sure to impress! Once again, a substantial proportion of the sale offering will stem from the great Glasoe foundation female SAR Colossal Anne 3095 7, who was selected from the Paul Schaff estate dispersal in 1980 and remained a pillar of production in the Glasoe breeding program through 19 years of age.

It is a sincere pleasure and privilege to work with everyone at Glasoe Angus on this sale, featuring the genetics of herd building prospects with the potential to positively impact the herds that they go into. Please don't hesitate to call on us at American Angus Hall of Fame if we can be of assistance in any way.

Sincerely,

Tom Burke

Kurt Schaff

Carter Ward

DIRECTORY:

HOOVER NO DOUBT 17882682	LOTS 1-4
BALDRIDGE PAPPY 19235838	LOTS 5-7
S A V RESOURCE 1441 17016597	LOTS 8-11
S A V RAINDANCE 6848 18578965	LOTS 12-13
S A V EMBLEM 8074 19250937	LOTS 14-16
S A V RAINFALL 6846 18578963	LOT 17
COLEMAN CHARLO 16879074	LOTS 18-19
JINDRA BLACKOUT 19889094	LOT 20
S A V AMERICA 8018 19249580	LOT 21
S A V EXCEPTIONAL 7279 18911196	LOT 22
BALDRIDGE COLONEL C251 18493773	LOTS 23-27
G A RAINDANCE 922 19629257	LOTS 28-35
RESSLER ROOSEVELT 901 19583237	LOTS 36-40
G A DIVERSE 927 19629105	LOTS 41-42

SALE DAY PHONE NUMBERS:

**SYDNEY GLASOE CARABALLO: 678-989-7189,
GLASOEANGUSND@GMAIL.COM**

**KURT SCHAFF, AMERICAN ANGUS HALL OF FAME:
816-520-6447**

LYNN WEISHAAR, AUCTIONEER: 605-866-4670

**ROD GEPPERT, AMERICAN ANGUS ASSOCIATION:
605-295-3673**

WILL BOLLUM, WESTERN AG REPORTER: 507-244-0833

CATALOG . PHOTOS . VIDEOS

BRANDED IMAGE AND PROMOTIONS

MCKAYLA HAGEN

701.307.0134 | BRANDED2012@MAIL.COM

Sale Info

Location:

Sitting Bull Livestock Auction, Williston, ND, 701.572.6701

Lunch:

Served before the sale and begins at 11:30 a.m.

Health:

Bulls have been vaccinated with Bovi-Shield Gold 5 and Oneshot Ultra 7, poured with Dectomax and have been given their first round of foot rot vaccination. It is the responsibility of the buyer to provide the second round. Health papers will be furnished to cattle going out of state.

Feeding:

We want our bulls to express fertility, structural integrity, and growth with muscle expression while protecting overall gut health and hoof longevity. We began utilizing Brandon Weidert, a nutrition consultant with CHS, three years ago with those goals in mind. The bulls are fed a high roughage diet with minimal amounts of starch; our chopped corn silage and hay are tested and fed in a mixed ration with bull challenger pellets. This year we reduced down to a 46 to 48 NEg and 14 protein for optimal bone development and growth. We also feed flax-lick tubs for our mineral program for a minimum of 45 days to promote sperm motility.

Papers:

Papers will be furnished upon request. We reserve 1/3 semen interest in all bulls that are sold.

Terms:

All animals will sell fully guaranteed according to the terms and conditions of the American Angus Association.

Purchaser's Risk:

Each animal becomes the risk of the purchaser as soon as sold, but shall be the obligation of the seller to see that animals are fed and cared for free of charge to purchaser until loaded for shipment or until the expiration of forty-eight (48) hours after the sale.

Attendance:

All persons who attend the sale do so at their own risk. We assume no liability, legal or otherwise for any accidents.

Insurance:

Haugland Insurance Agency of Crosby, ND, will be available sale day to provide insurance policies on the sires. For more information, please contact Amber Haugland at 701-641-8792.

SALE DAY PHONE NUMBERS

SYDNEY: 678.989.7189

KEVIN 678.989.7192

KURT 816.520.6447

SIRE NO DOUBT SONS



PRODUCTION/MATERNAL						
CED	BW	WW		YW	YH	
-2	+4.7	77		145	.6	
SC	DOC	HP		CEM	MILK	
1.69	32	9.2		12	16	
CARCASS/\$VALUES						
CW	MARB	RE	FAT	\$W	\$F	\$B
74	.88	.82	.042	60	135	195

No Doubt is a proven and esteemed sire of tremendous phenotype and EPD multi-trait excellence. No Doubt showcases superior hoof quality, carcass domination, excellent production performance and gentle temperament while earning the breed's Certified Angus Beef logo. His sons and daughters have been consistent sale toppers across the nation. No Doubt daughters in production are known for their capacity, well-made udders in teat size and attachment, and docility. We headlined our 2021 Glasoe Angus female sale with a No Doubt bred heifer that sold for \$5,000 to Brandon Erickson of Powers Lake.

No Doubt's donor dam, Miss Blackcap Ellston J2, was the lead-off, top-selling open heifer from Hoover's 2011 sale. She was sired by SydGen C C & 7, the son of S A F Connection — the landmark sire for docility and one of Art Glasoe's favorite sires back in the day. Hoover reserved one flush from J2. That flush produced several beautiful daughters and one bull: No Doubt. At eight years of age, J2 earned nearly a quarter million dollars in annual revenue. Multiple Pathfinder sires back No Doubt's pedigree. Our 2022 No Doubt progeny sires offer special pedigree opportunities with some of our best dams.

We selected No Doubt to pair with our top wean ratio Pathfinder dam, G A Colossal Anne 013, for her last natural calf before entering full-time embryo donor service this year. This 2010 dam boasts an average 364-day calving interval and an impressive 115 wean ratio on nine calves. Her Lot One son, G A Certainty, is an absolute favorite and earned a record 914 pounds for his adjusted 205-day weight at Glasoe Angus.

Herd matriarch and Pathfinder G A Minabelle 709 entered full-time donor service at thirteen years old in 2020 and recorded twelve consecutive calves with an average wean ratio of 110. We selected No Doubt to sire her first historic embryo flush. Lots Two and Three are flush brothers from that pairing, and we have retained all of her ET No Doubt daughters — broody, feminine and well-designed. Minabelle also sired the 2012 G A Montana 216, whose progeny were a huge favorite with our commercial buyers.

Lot Four hails from our G A Pride 507 dam, a consistent performer with Net Worth and Alberda Traveler maternal lineage and G A Score 304 as her sire.

These No Doubt sons frontline phenotypical superiority, powerful pedigrees and maternal excellence.

1 G A CERTAINTY 155

20205218 3/15/2021

BIRTH WEIGHT	205 ADJ. WEIGHT	WR	DAM'S PROGENY AVG.	WDA
85	914	119	9/115	4.5

EPDS

CED	BW	WW	YW	MILK
-5	+5.2	+81	+141	+28

DAM OF LOT 1

Mogck Bullseye
Hoover No Doubt +*17882682
Miss Blackcap Ellston J2
G A Certainty 155
Glasoes Gumbo 840
G A Colossal Anne 013 #16777033
Glasoes Colossal Anne 287

Certainty presents a special opportunity in the 49-year history of Glasoe Angus. Exuding sheer force and presence, Certainty is the careful culmination of generations of breeding and pedigree. His revered maternal grandsire, Glasoes Gumbo 840, was the first Glasoe sire to break the 800-pound adjusted 205-day landmark in 2008. Certainty carries Gumbo's esteemed lineage of performance forward and rightfully earns his place with a record-breaking 914 pounds at 205 days. His length is exceptional and an immense factor in his record; Certainty's expansive muscular bearing extends across superior length of spine and width of top and base. He's a masculine beauty.

We request the opportunity to collect semen from this prospect before breeding season begins.

Certainty's dam, G A Colossal Anne 013, is a capacious, broody Pathfinder powerhouse. This 2010 Colossal Anne boasts nine calves with a 115 wean ratio and a 364-day calving interval. She currently owns the highest wean ratio in our herd. We have retained five of her daughters — her last two daughters broke 800-pound 205-day records at 841 and 849 pounds. None of her calves were exposed to creep feed — including Certainty — while earning those tallies. She and her eldest daughter have served as flush donors in our herd; both have since raised calves at side — a testament to their enduring fertility. G A Colossal Anne 013 entered full-time donor service this year. Certainty is her powerful finale of natural production.

2 G A ASSURANCE 110

20283545

2/26/2021



BIRTH WEIGHT	205 ADJ. WEIGHT	WR	DAM'S PROGENY AVG.	WDA
87	774	103	12/110	3.84
EPDS				
CED	BW	WW	YW	MILK
1+2	1+40	1+64	1+120	1+21

Mogck Bullseye
Hoover No Doubt +*17882682
Miss Blackcap Ellston J2
G A Assurance 110
Mytty In Focus
G A Minabelle 709 #15992085
Glasoes Minabelle 550
PATERNAL SISTER LOTS 1-4
G A COLOSSAL ANNE 012

Assurance is the assured aesthetic charmer of our No Doubt sons. Head to hoof to hind quarter, he notches every expectation of what a herd sire in the front pasture should visually showcase.

Assurance is backed by tremendous fertility, mothering ability and production performance. We consider his donor dam, G A Minabelle 709, to be one of the top two foundation matriarchs of the herd we purchased from Art and Lance Glasoe in 2014. Minabelle 709 recorded twelve consecutive calves with an average wean ratio of 110 before entering full-time donor service. She produced 24 embryos from her first historic flush at thirteen years old with Hoover No Doubt. Her 2013 powerful Pathfinder daughter, G A Minabelle 334, is AI bred to G A Regard 633, a bull we bought back from Erickson Ranch that exhibits exceptional phenotype, and will be flushed with her calf at side this spring.

We request the opportunity to collect semen from Assurance before breeding season begins. Assurance also has three flush sisters we will retain; they are deep-made, feminine, sure-footed and gentle.

3 G A SURE THING 103

20283546

2/21/2021



BIRTH WEIGHT	205 ADJ. WEIGHT	WR	DAM'S PROGENY AVG.	WDA
68	734	97	12/110	3.54
EPDS				
CED	BW	WW	YW	MILK
1+2	1+1.2	1+62	1+120	1+21

Mogck Bullseye
Hoover No Doubt +*17882682
Miss Blackcap Ellston J2
G A Sure Thing 103
Mytty In Focus
G A Minabelle 709 #15992085
Glasoes Minabelle 550

DAM OF LOT 2 & 3



Sure Thing is a flush brother to Assurance. Once his genomic results are determined, it is likely that he and Assurance will both earn the Certified Angus Beef Targeting the Brand logo because Hoover No Doubt qualifies, and G A Minabelle scores in the top 20 percent for her Marbling (Marb) and the top 35 percent for her Grid Value (\$G) EPDs.

4 G A NO DOUBT 150

20205214

3/13/2021



BIRTH WEIGHT	205 ADJ. WEIGHT	WR	DAM'S PROGENY AVG.	WDA
74	692	90	5/101	3.49
EPDS				
CED	BW	WW	YW	MILK
+7	+.7	+55	+105	+25

Mogck Bullseye
Hoover No Doubt +*17882682
Miss Blackcap Ellston J2
G A No Doubt 150
GA Score 304
G A Pride 507 18314458
GA Titan 335

No Doubt 150 is another thick-made prospect who has blossomed post-wean. He also offers the most calving ease of the No Doubt sons. His Genomic Percent Rank is an impressive 13 for Birth Weight, 23 for Calving Ease Direct and a 27 for Calving Ease Maternal on a scale of 1 to 100. 1 is considered the best of the breed.

6 GLASOE ANGUS 2022

The farm is more

THAN LAND AND CROPS.
IT IS A FAMILY'S
HERITAGE AND FUTURE.

RILEY JO,
AT THE DIVIDE COUNTY FAIR



WYATT,
WITH DAM G A COLOSSAL ANNE 485



LANE,
ON RYE STRAW BALE
HE MADE



SIRE PAPPY SONS



Pappy is a calving ease, performance-packed son of Hoover No Doubt and grandson of the esteemed matriarch Baldridge Isabel Y69 (she is the dam of Baldridge Colonel C251, Beast Mode, Bronc and 38 Special). Y69 is internationally respected as one of the best in the Angus breed and one of the top income-producing dams in history. Like No Doubt, Pappy earns the coveted Certified Angus Beef Targeting the Brand logo while showcasing tremendous feet and base on a smooth body and muscular flank.

This gentle and handsome sire boasts one of the best birth to wean spreads in the industry with a birth weight of 70 pounds and adjusted 205-day weight of 896 pounds. He weighed 1,418 pounds as a yearling with a moderate frame score of 5.5 and a yearling scrotal measurement of 38.03 cm, according to Universal Semen Sales. He stands out in eye appeal and by the numbers. Pappy, who sold for \$110,000 at the 2018 Baldridge Bull Sale, earns index value EPDs among the top in the breed, as well as EPDs in his production performance, claw and angle score, carcass and docility.

We used Pappy on our heifers, and we didn't pull a single calf. Visitors to our ranch have been impressed by his sons and even more so his daughters. We will be using him in our AI lineup again this spring and are excited to breed our first crop of Pappy daughters.

PRODUCTION/MATERNAL						
CED	BW	WW	YW	YH		
+8	1.7	79	141	.4		
SC	DOC	HP	CEM	MILK		
1.72	27	14.4	14	23		
CARCASS/\$VALUES						
CW	MARB	RE	FAT	\$W	\$F	\$B
64	1.12	.88	.36	+79	109	182

MOGCK Sure Shot
 Mogck Bullseye
 Mogck Mary 1255
 Hoover No Doubt
 SydGen C C & 7
 Miss Blackcap Ellston J2
 Miss Blackcap Ellston D154
 Baldridge Pappy
 C R A Bextor 872 5205 608
 G A R Prophet
 G A R Objective 1885
 Baldridge Isabel B061
 Styles Upgrade J59
 Baldridge Isabel Y69
 Baldridge Isabel T935

5 G A PACESETTER 136

20205255 3/08/2021



BIRTH WEIGHT	205 ADJ. WEIGHT	WR	DAM'S PROGENY AVG.	WDA
74	869	113	1/113	4.01
EPDS				
CED	BW	WW	YW	MILK
+5	+1.9	+79	+133	+19

Hoover No Doubt
 Baldridge Pappy +*19235838
 Baldridge Isabel B060
 G A Pacesetter 136
 Baldridge Colonel C251
 G A Minnabelle 945 19627274
 G A Minnabelle 512

Pacesetter earned our second-highest 205-day weight of 869 pounds – a credit to his genetics and his dam's mothering ability. His first calf dam earned the highest wean ratio of her 2019 contemporaries and is a Baldridge Colonel C251 daughter. She hails from G A Minnabelle 709's (dam of lot two and three) pedigree in her maternal lineage and is the result of three consecutive generations of Pathfinders. She is off to a great start to be the fourth generation to earn that revered status. She is AI bred this spring to Connealy Shamrock – a testament to the excellent fertility in this maternal pedigree.

Pacesetter is a capacious and complete prospect who is a hoof improver. He scores in the top one percent of the breed for his Angle EPD and the top two percent for the Claw EPD, making him one of the best-footed bulls in the business by the numbers. He also scores in the top fifteen percent or higher in WW, YW, Calving Ease Maternal, \$M, \$W and \$C EPDs.



Performance

WE STRIVE TO BREED CATTLE THAT ADD POUNDS
IN ALL THE RIGHT PLACES WHILE SHOWCASING
EASY FLESHING ABILITY AND A PHENOTYPE BUILT
TO LAST.

6 G A PAYBACK 118

20205261 3/02/2021



BIRTH WEIGHT	205 ADJ. WEIGHT	WR	DAM'S PROGENY AVG.	WDA
78	830	108	1/108	3.8
EPDS				
CED	BW	WW	YW	MILK
-2	+3.6	+81	+141	+34

Hoover No Doubt
Baldridge Pappy +*19235838
Baldridge Isabel B061
G A Payback 118
G A Reign 610
G A Colossal Anne 977 19626696
G A Colossal Anne 603



Payback should provide his money's worth back in the calves he sires. Besides being a visual favorite of Art Glasoe's in the pen, he has genetic testing to back up that phenotype. We genetically tested all of our bulls, and Payback's Genomic Percent Rank earns him an 6 in yearling weight and scrotal circumference, a 7 in carcass weight, and an 8 in wean weight and mature weight on a scale of 1 to 100. 1 is the best in the breed.

Payback earns the Certified Angus Beef logo while scoring in the top ten percent for Milk, the top fifteen percent for Heifer Pregnancy, and the top 30 percent or higher in every economic selection index/\$Value EPD.

7 G A PAPPY 132

20205245 3/06/2021



BIRTH WEIGHT	205 ADJ. WEIGHT	WR	DAM'S PROGENY AVG.	WDA
74	750	98	2/96	3.57
EPDS				
CED	BW	WW	YW	MILK
+9	+3	+70	+119	+30

Hoover No Doubt
Baldridge Pappy +*19235838
Baldridge Isabel B062
G A Pappy 132
V A R Heritage 5038
G A Eriskay 848 19227335
G A Eriskay 439



Pappy 132 is the pick of the Pappies to breed heifers while also providing production performance excellence and exceptional carcass value.

He earns the Certified Angus Beef logo. His Genomic Percent Rank in regard to carcass value is a 5 for Marbling, 14 for Tenderness and a 35 for Ribeye. Retain his daughters because he also earns a 4 for Heifer Pregnancy, an 18 for both Calving Ease Direct and Birth Weight, a 25 for Scrotal Circumference, a 32 for Calving Ease Maternal and a 36 for Milk. By the EPDs he scores in the top ten percent for Weaning Weight (WW), Yearling Weight (YW), and Carcass Weight (CW), as well as in hoof Angle and index Feedlot Value (\$F) and (\$C) value, which is the Combined Value of both Maternal Weaned Calf Value (\$M) and Beef Value (\$B). He earns the highest Milk EPD of all the lots and ranks in the top 5 percent in that category, as well as Weaned Calf Value (\$W).

SIRE RESOURCE SONS



Our Resource sons offer the rare opportunity to add direct descendants of this legendary sire to your herd. Resource was transcendent. Deceased since 2019, Resource was an international presence in multiple cattle breeds for his sheer ability to improve seedstock performance in Black, Red Angus, Simmental, and Balancer programs. Countless producers chose Resource to stamp progeny with superior muscle, fleshing ability and pure mass into a moderate and sound design. He was the number one bull for semen sales at Genex AI Stud for multiple years. Nearly 18,000 registered progeny carry Resource's name; he remains a landmark Pathfinder sire whose EPDs and reputation only got better after thousands of progeny performances were recorded and became standouts in herd after registered herd.

His dam, S A V Blackcap May 4136, was the iconic, record-earning revenue cow in the Schaff program. Admired worldwide, she earned \$10.2 million in direct progeny sales of 221 direct sons and daughters.

Glasoe Angus is incredibly grateful for Resource and his influence in our program. We have entrusted Resource more than any other sire to move Glasoe Angus forward in pedigree, performance and the type and kind of cattle for which we strive. His daughters are beautifully structured brood cows; nearly one third of our dams producing calves this spring carry Resource lineage. His sons have been sale favorites for multiple years, and we continue to rely on him in our AI lineup until Resource's last straw is gone from our semen tanks.

PRODUCTION/MATERNAL						
CED	BW	WW	YW	YH		
+2	4.1	69	132	-.1		
SC	DOC	HP	CEM	MILK		
1.11	21	13.1	0	17		
CARCASS/\$VALUES						
CW	MARB	RE	FAT	\$W	\$F	\$B
51	-.9	1.09	-.002	55	91	116

Rito N Bar
 R R Rito 707
 Eriskay of Rollin Rock 3
 Rito 707 of Ideal 3407 7075
 Ideal 1418 of 8103 4286
 Ideal 3407 of 1418 076
 Ideal 076 of 692 8375
 S A V Resource 1441
 Sitz Traveler 8180
 S A V 8180 Traveler 004
 Boyd Forever Lady 8003
 S A V Blackcap May 4136
 S A F 598 Bando 5175
 S A V May 2397
 S A V May 7238

8 G A REVENUE 124

20205217 3/04/2021



BIRTH WEIGHT	205 ADJ. WEIGHT	WR	DAM'S PROGENY AVG.	WDA
83	770	101	5/104	3.85
EPDS				
CED	BW	WW	YW	MILK
+6	+2.1	+81	+151	+26



Rito 707 of Ideal 3407 7075
 S A V Resource 1441 #+*17016597
 Rito 707 of Ideal 3407 7075
 G A Revenue 124
 G A Complete 152
 G A Mag 547 18314475
 G A Mag 228
 DAM OF LOT 8

Revenue, like all the Resource sons, showcases rib, capacity and masculine presence. Revenue also adds frame and net pounds that push the scale in the right direction. His pedigree promotes feet improvement in both claw and angle.

His Genomic Percent Rank is a 2 for Yearling Weight, a 3 for Mature Weight, an 8 for Weaning Weight, a 9 for Heifer Pregnancy, a 16 for Carcass Weight, a 24 for Tenderness and a 25 for Ribeye. He ties with Lot One and Six for the top WW EPD, and he wins the top YW EPD of his 2021 contemporaries.

Revenue hails from SydGen C C & 7 and our Mag cow family in his maternal lineage and offers moderate calving ease with his production performance. His dam is once again AI bred to Resource and due this spring.

9

G A REGIME 148

20205211 3/12/2021



BIRTH WEIGHT	205 ADJ. WEIGHT	WR	DAM'S PROGENY AVG.	WDA
88	798	104	7/103	4.02
EPDS				
CED	BW	WW	YW	MILK
+0	+3.7	+62	+114	+24

Rito 707 of Ideal 3407 7075
 S A V Resource 1441 #+*17016597
 Rito 707 of Ideal 3407 7075
 G A Regime 148
 Brooks Connection 0327
 GA Anne 350 17569828
 G A Anne 151

Regime hails from a dam with great length of spine, mothering ability and a voluminous frame. A full brother of Regime's sold for \$9,000 in 2019 to Johnny Moe of White Earth, ND. He is a hoof improver by the EPDs.

10

G A REALIST 137

20205237 3/08/2021



BIRTH WEIGHT	205 ADJ. WEIGHT	WR	DAM'S PROGENY AVG.	WDA
78	717	94	2/97	3.41
EPDS				
CED	BW	WW	YW	MILK
1+3	1+2.6	1+60	1+111	1+23

Rito 707 of Ideal 3407 7075
 S A V Resource 1441 #+*17016597
 Rito 707 of Ideal 3407 7075
 G A Realist 137
 V A R Heritage 5038
 G A Colossal Anne 806 19227380
 G A Colossal Anne 662

Realist is a classic Resource son that exhibits muscle, top and rib on a moderate downsizer frame on solid hooves. His dam hails from several generations of another foundational matriarch, G A Colossal Anne 7120, who averages a 109 wean ratio on 11 consecutive calves and entered full time donor service in summer of 2020.

11

G A RECAP 140

20205232 3/09/2021



BIRTH WEIGHT	205 ADJ. WEIGHT	WR	DAM'S PROGENY AVG.	WDA
78	705	92	3/91	3.47
EPDS				
CED	BW	WW	YW	MILK
+6	+2.6	+63	+111	+23

Rito 707 of Ideal 3407 7075
 S A V Resource 1441 #+*17016597
 Rito 707 of Ideal 3407 7075
 G A Recap 140
 V A R Generation 2100
 G A Colossal Anee 733 18918654
 GA Anne 370

Recap is another traditionally styled Resource son showcasing masculinity and balance front to end on a moderate frame. His dam has built-in calving ease with Connealy Consensus 7229 and S A V Bismarck 5682 in her pedigree. Like Lot Ten Realist, Recap's dam hails from the maternal pedigree of G A Colossal Anne 7120.

SIRE RAINDANCE SONS



Raindance belongs to the world-record-selling flush from the 2017 S A V sale — the breeding result of S A V Blackcap May 4136, arguably the most influential cow of the modern-day breed, and Coleman Charlo. Charlo boasts the unique combo of great calving ease, fleshing ability and thickness. Charlo is also a Pathfinder-qualified sire and has produced multiple Pathfinder daughters.

Raindance, a maternal brother to Resource, was the \$450,000 second lead-off bull of the 2017 S A V sale. Raindance offers moderate birth weights, big rib and massive performance with length. He records an impressive 205-day weight of 1,053 pounds and a yearling weight of 1,640 pounds. His ribeye scanned 17.6 inches as a yearling, and his EPD for ribeye is in the top five percent for the breed. He combines calving ease with production performance and front-pasture, herd sire presence.

Our first Raindance son, a 2019 calf and full brother to Lot Twelve this year, is G A Raindance 922. That bull sold to Allen Erickson of Powers Lake in 2020. We have also utilized 922 in our breeding program, and his sons are lots 28-35. Those lots are April and May-born bulls at least one month behind in maturity compared to our AI-sired bulls, but they are demonstrating power, large scrotums and style. Lot Twelve, like 922, is a powerfully designed herd sire prospect with front pasture presence.

PRODUCTION/MATERNAL						
CED	BW	WW	YW	YH		
+9	1.8	67	128	.1		
SC	DOC	HP	CEM	MILK		
.99	15	10.5	7	25		
CARCASS/\$VALUES						
CW	MARB	RE	FAT	\$W	\$F	\$B
46	-.03	.93	-.01	+65	+93	+119

O C C Focus 813F
 O C C Paxton 730P
 O C C Blackbird 736K
 Coleman Charlo 0256
 Sitz Traveler 8180
 Bohi Abigale 6014
 S A V Abigale 6062
 S A V Raindance 6848
 Sitz Traveler 8180
 S A V 8180 Traveler 0047
 Boyd Forever Lady 8003
 S A V Blackcap May 4136
 S A F 598 Bando 5175
 S A V May 2397
 S A V May 7238

12 G A BIG RAIN 125



20207514 3/05/2021				
BIRTH WEIGHT	205 ADJ. WEIGHT	WR	DAM'S PROGENY AVG.	WDA
82	842	110	8/107	4.21
EPDS				
CED	BW	WW	YW	MILK
+5	+2.3	+75	+133	+26

Coleman Charlo 0256
 S A V Raindance 6848 +*18578965
 S A V Blackcap May 4136
 G A Big Rain 125
 Glasoes Forward 931
 G A Eriskay 276 #17429046
 Glasoes Eriskay 211

Butts, Guts and Nuts. Big Rain earns that title from a former livestock judge. He exudes front pasture herd sire energy.

Big Rain's moderate and well-made Pathfinder dam averages a birth ratio of 99 on eight calves and a wean ratio of 107 for a great birth to wean spread. This ten-year-old dam earns a 363-day calving interval and is bred and retained in our herd. Her 2017 daughter also just earned Pathfinder status her first year of eligibility after three calves. Big Rain's full brother, 2019 G A Raindance 922, sired Lots 28-35.

Big Rain earns a 5 for Weaning Weight, 6 for Yearling Weight and Ribeye, a 10 for Tenderness, an 11 for Carcass Weight, a 12 for Mature Weight, a 19 for Calving Ease Maternal

13 G A RAINDANCE 149

Coleman Charlo 0256
 S A V Raindance 6848 +*18578965
 S A V Blackcap May 4136
 G A Raindance 149
 G A Reign 610
 G A Coquette 836 19227357
 G A Coquette 564

20207619 3/12/2021				
BIRTH WEIGHT	205 ADJ. WEIGHT	WR	DAM'S PROGENY AVG.	WDA
82	734	96	2/97	3.59
EPDS				
CED	BW	WW	YW	MILK
1+4	1+2.8	1+65	1+123	1+25

SIRE EMBLEM SONS



Emblem provides style in a long and muscular package with the pedigree of Raindance in addition to the powerful Emblynnette cow family. He is a Raindance son, and his dam is a breed-leading Pathfinder for Schaff Angus Valley. She hails from Rito 707 of Ideal (Resource's sire) and S A V Net Worth 4200 lineage. Her progeny score an IMF (intramuscular fat translates to carcass marbling) ratio of 135 on 35 scanned progeny.

Emblems scores in the top three percent of the breed for the Ribeye Area (RE) EPD and in the top 1 percent for the Fat Thickness (Fat) EPD. He scores in the top 10 percent for the Docility (Doc) EPD and the Feedlot Value (\$F) index EPD. He scores in the top 15 percent for the Weaning Weight (WW) EPD and Yearling Weight (YW) EPD.

PRODUCTION/MATERNAL						
CED	BW	WW	YW	YH		
-3	+3.8	74	134	.7		
SC	DOC	HP	CEM	MILK		
.8	27	11	-1	26		
CARCASS/\$VALUES						
CW	MARB	RE	FAT	\$W	\$F	\$B
62	.24	1.08	-.071	65	115	160

O C C Paxton 730P
 Coleman Charlo 0256
 Bohi Abigale 6014
 S A V Raindance 6848
 S A V 8180 Traveler 004
 S A V Blackcap May 4136
 S A V May 2397
 S A V Emblem 8074
 Rito 707 of Ideal 3407 7075
 S A V 707 Rito 9969
 BR Polly 8077-472
 S A V Emblynnette 2369
 S A V Net Worth 4200
 S A V Emblynnette 7566
 S A V Emblynnette 7261

14 G A EMBLEM 151

20205242 3/13/2021

S A V Raindance 6848
 S A V Emblem 8074 +*19250937
 S A V Emblynnette 2369
 G A Emblem 151
 S A V Resource 1441
 G A Colossal Anne 834 *19227309
 G A Anne 113

BIRTH WEIGHT	205 ADJ. WEIGHT	WR	DAM'S PROGENY AVG.	WDA
78	742	97	2/99	3.56
EPDS				
CED	BW	WW	YW	MILK
-2	+4.2	+71	+134	+28

Lot 14 is a well-balanced bull in phenotype and EPDs. He is the combo of Raindance and Resource pedigrees; his dam is backed by two generations of Pathfinders. Maternal power and phenotypical integrity are built into this bull.

15 G A EMBLEM 109

20205247 2/26/2021

S A V Raindance 6848
 S A V Emblem 8074 +*19250937
 S A V Emblynnette 2369
 G A Emblem 109
 G A Reign 610
 G A Colossal Anne 862 19227387
 G A Colossal Anne 485

BIRTH WEIGHT	205 ADJ. WEIGHT	WR	DAM'S PROGENY AVG.	WDA
73	704	92	2/92	3.31
EPDS				
CED	BW	WW	YW	MILK
+7	+1.9	+61	+114	+31

16 G A EMBLEM 139

20205239 3/09//2021

S A V Raindance 6848
 S A V Emblem 8074 +*19250937
 S A V Emblynnette 2369
 G A Emblem 139
 S A V Resource 1441
 G A Colossal Anne 821 19227339
 G A Colossal Anne 484

BIRTH WEIGHT	205 ADJ. WEIGHT	WR	DAM'S PROGENY AVG.	WDA
79	713	93	2/96	3.4
EPDS				
CED	BW	WW	YW	MILK
+2	+2.3	+57	+106	+22

SIRE RAINFALL SON



Rainfall, a flush brother to Raindance, is the calving ease extraordinaire of the world-record-selling flush from the 2017 S A V sale. Rainfall's sire boasts the unique combo of great calving ease, fleshing ability and thickness. Charlo is also a Pathfinder-qualified sire and has produced many Pathfinder daughters.

Rainfall has topped semen sales at Select Sires AI Stud and offers the compelling combination of low birthweight and proven calving ease on heifers while also showcasing capacity, muscle and marbling. He scores top marks for foot improvement, as well as docility, milk and heifer pregnancy. His son, Lot Seventeen, offers phenotypical style and substance; we would be comfortable using him on our heifers.

PRODUCTION/MATERNAL						
CED	BW	WW	YW	YH		
+8	+3	57	108	-.3		
SC	DOC	HP	CEM	MILK		
.97	16	14.7	6	26		
CARCASS/\$VALUES						
CW	MARB	RE	FAT	\$W	\$F	\$B
19	.61	.59	.013	64	64	112

O C C Focus 813F
 O C C Paxton 730P
 O C C Blackbird 736K
 Coleman Charlo 0256
 Sitz Traveler 8180
 Bohi Abigale 6014
 S A V Abigale 6062
 S A V Rainfall 6846
 Sitz Traveler 8180
 S A V 8180 Traveler 004
 Boyd Forever Lady 8003
 S A V Blackcap May 4136
 S A F 598 Bando 5175
 S A V May 2397
 S A V May 7238

17 G A RAINFALL 122

20205259 3/03/2021



BIRTH WEIGHT	205 ADJ. WEIGHT	WR	DAM'S PROGENY AVG.	WDA
74	697	91	1/91	3.14
EPDS				
CED	BW	WW	YW	MILK
+7	+1.3	+60	+111	+28

G A PRIDE 018: PATERNAL
 SISTER TO LOT 17

Coleman Charlo 0256
 S A V Rainfall 6846 +*18578963
 S A V Blackcap May 4136
 G A Rainfall 122
 G A Reign 610
 G A Colossal Anne 960 19626677
 G A Colossal Anne 485



OUR RANCH HAND EXTRAORDINAIRE,
 RHYS JOHNSON



SIRE COLEMAN CHARLO SONS



Charlo is an exceptional maternal sire showcasing solid hooves, structural correctness and phenomenal thickness on a moderate and efficient frame. He produces daughters that exhibit superior udder quality and fleshing ability. His pedigree hails back to maternally powered and proven Pathfinder sires OCC Paxton 730P, Sitz Traveler 8180 and Bon View Emulation Ext 473. His Cow Energy Value (\$EN) EPD is in the top five percent of the breed. He is a frame down-sizer and heifer-qualified for calving ease while stamping his progeny with muscle, width and a deep rib.

Charlo is the sire of the record-selling 2017 S A V flush that produced the iconic Raindance, Rainfall and President. He is also the sire of the \$450,000 Coleman Bravo 6313. Charlo is not known for docility so we carefully selected dominant docile pedigrees to pair with his genetics. Lots Eighteen and Nineteen are Charlo sons whose dams both exhibit Colossal Anne family traits of calving ease, mothering ability and performance.

PRODUCTION/MATERNAL						
CED	BW	WW	YW	YH		
+9	0	50	91	-1		
SC	DOC	HP	CEM	MILK		
1.42	+4	7.8	-3	26		
CARCASS/\$VALUES						
CW	MARB	RE	FAT	\$W	\$F	\$B
19	.42	.48	.065	78	60	95

Basin Rainmaker 654X
O C C Focus 813F
Dixie Erica of C H 1019
O C C Paxton 730P
O C C Great Plains 943G
O C C Blackbird 736K
O C C Blackbird 824G
Coleman Charlo 0256
G D A R Traveler 71
Sitz Traveler 8180
Sitz Everelda Entense 1137
Bohi Abigale 6014
Bon View Emulation Ext 473
S A V Abigale 6062
Circle A Abigale 3008

18 G A CHARLEMAGNE 102

20205258 2/20/2021



BIRTH WEIGHT	205 ADJ. WEIGHT	WR	DAM'S PROGENY AVG.	WDA
71	806	105	1/105	3.63
EPDS				
CED	BW	WW	YW	MILK
+7	+1.3	+60	+98	+21

O C C Paxton 730P
Coleman Charlo 0256 #+*16879074
Bohi Abigale 6014
G A Charlemagne 102
G A Genesis 721
G A Colossal Anne 953 19626708
G A Colossal Anne 713

Charlemagne is a true downsizer for frame while still providing the muscle and meat the commercial producer desires. For those desiring smaller framed cattle and females that drive profit, Charlemagne scores in the top 2 percent of the breed for his Cow Energy Value (\$EN) EPD. He is sure-footed for longevity and scores in the top 10 percent for his Angle and top 15 percent for his Claw EPD.

Charlemagne weighed 71 pounds at birth and achieved 806 pounds for his adjusted 205-day weight. His docile dam is a daughter of our heifer-qualified G A Genesis 721 but the grandam is an S A V International 2020 daughter, and International 2020 did not exhibit calving ease. We would be comfortable using Charlemagne on our heifers.



GLASOE ANGUS DAMS

19

G A CHARLO 120

20205256

3/02/2021



BIRTH WEIGHT	205 ADJ. WEIGHT	WR	DAM'S PROGENY AVG.	WDA
74	750	98	1/98	3.4
EPDS				
CED	BW	WW	YW	MILK
+8	+.5	+53	+94	+27



O C C Paxton 730P
 Coleman Charlo 0256 #+*16879074
 Bohi Abigale 6014
 G A Charlo 120
 GFAR Reserve E214
 G A Colossal Anne 948 19626726
 G A Colossal Anne 787

G A ERISKAY 008
 PATERNAL SISTER TO
 LOTS 18 & 19

Charlo 120 is heifer-qualified to breed with calving ease built into every pedigree top and bottom. Like Charlemagne, he will be a frame down-sizer without sacrificing volume and has a great \$EN score – the top 10 percent. He also scores the higher Milk EPD.

WYATT, KEVIN & LANE



LANE & WYATT



SYDNEY WITH LOT 10



SIRE BLACKOUT SON



Blackout, the high-selling bull of the 2018 Jindra sale, weighed 74 pounds at birth, 965 pounds at weaning and 1,549 pounds as a yearling. He was our choice for utilizing the esteemed Jindra Acclaim pedigree. Blackout, an Acclaim son, offers a more moderate frame, more ribeye and docility, as well as a better scrotal circumference EPD than Acclaim. The Jindra program is also known for honoring and preserving the great Scotch Cap pedigrees of the Hoff program. Blackout presents Scotch Cap lineage on top and bottom, as well as Connealy Impression, who provided deep and wide daughters with exceptional udders and mothering ability in our herd.

Blackout scores in the top 2 percent for the Feedlot Value (\$F) index EPD; the top 10 percent for Carcass Weight (CW) EPD; top 15 percent for Claw Set (Claw) EPD, Maternal Milk (Milk) EPD and Docility (Doc) EPD; and the top 20 percent for the Mature Weight (MW) EPD and the Combined Value (\$C) index EPD, which includes traits from both the maternal Weaned Calf Value (\$M) and Beef Value (\$B) index.

PRODUCTION/MATERNAL						
CED	BW	WW	YW	YH		
+2	2.9	63	124	.5		
SC	DOC	HP	CEM	MILK		
.24	+25	9.7	7	32		
CARCASS/\$VALUES						
CW	MARB	RE	FAT	\$W	\$F	\$B
65	.29	.71	.71	63	131	168

Jindra Double Vision
 Jindra 3rd Dimension
 Jindras Sapphire J 417
 Jindra Acclaim
 Connealy Impression
 Jindra Blackbird Lassie 1111
 Jindras Enchantress J 102
 Jindra Blackout
 N Bar Prime Time D806
 G T Shear Force
 G T Siskin 106
 Jindra Judy J 1314 3150
 S V F Bandler
 Hoff Judy S C 669 1314
 Hoff Miss Max S C 132

20 G A MIDNIGHT RIDER 127

20205233 3/05/2021



BIRTH WEIGHT	205 ADJ. WEIGHT	WR	DAM'S PROGENY AVG.	WDA
76	781	102	3/100	3.83
EPDS				
CED	BW	WW	YW	MILK
+7	+2.0	+66	+131	+29

DAM OF LOT 20



Jindra Acclaim
 Jindra Blackout *18996457
 Jindra Judy J 1314 3150
 G A Midnight Rider 127
 S A V Resource 1441
 G A Anita 740 18920673
 G A Anita 415

Midnight Rider is a soggy-made herd sire prospect with a long rib and hip and superior shape in his hind quarter. He offers balanced EPDs and performance while also offering calving ease direct and calving ease maternal. We would be comfortable using him on our larger Glasoe Angus heifers.

His dam, a stout-made Resource daughter, was our lead-off bred dam of our 2021 sale and sold with our right to a flush to registered breeder Wendel Livestock of Lamoure, ND.

Sydney 678-989-7189

SIRE AMERICA SON



One year after Exceptional tipped the scales, America broke the record again, and his achievement still stands as the heaviest 205-day weight at 1,107 pounds in S A V history. He boasts great docility, length, rib, a square hip and correct style. He is also the world-record-selling bull: he sold in 2019 for \$1.51 million to Herbster Angus Farms.

America's pedigree represents Angus royalty with the combination of S A V President (Coleman Charlo and S A V Blackcap May 4136's historic flush) and S A V Madame Pride 0075. America's 0075 dam served the S A V program for 18 years and earned \$5.3 million on direct progeny. Forty-one of her daughters have been retained in the S A V herd.

We selected America to utilize on our first flush of G A Colossal Anne 4100 in 2020. She is a stylish and moderate Pathfinder with an excellent udder and milk who records six consecutive calves with a 97 birth ratio and a 110 wean ratio. Her 2010 dam is the mother of Lot One and is going into full-time donor service this year. We want to get several more calves at side from 4100 before entering her into full-time donor service. She has exceptional fertility and still bred back and raised a calf after her first flush and is bred again this year. That flush has produced two daughters and our Lot Twenty-Two son, G A American 107.

America's genomic testing and data is still pending with the American Angus Association, but it will be available before sale day. Phenotypically, he was a favorite at birth and has grown into a moderate and capacious sire with a wide top and deep rib. He is gentle, correct and easy on the eye.

PRODUCTION/MATERNAL						
CED	BW	WW	YW	YH		
0	4.5	81	135	.5		
SC	DOC	HP	CEM	MILK		
1.33	30	10.4	-2	19		
CARCASS/\$VALUES						
CW	MARB	RE	FAT	\$W	\$F	\$B
59	.45	.81	.018	66	94	137

O C C Paxton 730P
 Coleman Charlo 0256
 Bohi Abigale 6014
 S A V President 6847
 S A V 8180 Traveler 0041
 S A V Blackcap May 4136
 S A V May 2397
 S A V America 8018
 Bon View Bando 598
 S A F 598 Bando 5175
 S A F Royal Lass 1002
 S A V Madame Pride 0075
 Leachman Right Time
 S A V Madame Pride 8264
 S A R Cruzs Pride 8597

21 G A AMERICAN 107



#REGISTRATION PENDING 2/25/2021				
BIRTH WEIGHT	205 ADJ. WEIGHT	WR	DAM'S PROGENY AVG.	WDA
85	-	-	6/110	-
EPDS				
CED	BW	WW	YW	MILK
-	-	-	-	-

S A V President 6847
 S A V America 8018 +*19249580
 S A V Madame Pride 0075
 G A American 107
 Brooks Connection 0327
 G A Colossal Anne 4100 +*17916994
 G A Colossal Anne 013





www.glasoeangus.com

LOT 21 G A AMERICAN 107

SIRE EXCEPTIONAL SON



PRODUCTION/MATERNAL						
CED	BW	WW	YW	YH		
-5	3.3	.72	138	.7		
SC	DOC	HP	CEM	MILK		
1.4	27	13.9	2	24		
CARCASS/\$VALUES						
CW	MARB	RE	FAT	\$W	\$F	\$B
54	.47	.24	.037	59	102	138

Exceptional earned the highest 205-weight in SAV history at 1,097 pounds when he was sold to ZWT and Buford Ranches in 2018. He was the third lead-off bull of that sale and the careful breeding result of Kelly Schaff reintroducing the Emulation line of cattle in his herd lineup. Exceptional's dam — a Resource daughter — goes back to the Pathfinder Duke Girl family owned by Scott Davis of White Earth, ND. With Exceptional, she recorded a wean ratio of 111 on four calves.

Exceptional's son, Lot 21 G A Exceed 134, weighed a moderate 83 pounds at birth and earned an impressive 823 pounds for his adjusted 205-day weight to gain an average 4.12 pounds per day on his dam's milk. Exceed's 2012 dam has been a consistent, dependable and highly fertile producer in our herd. She maintains a 365-day calving interval on eight consecutive calves. Her dam was a daughter of Glasoes Gumbo 840, our first bull to tip the scale past 800 pounds at 205 days back in 2008. G A Ebony 239 has great udder attachment and teat shape, good fleshing ability and has been the kind of zero-maintenance dam with great mothering ability that we desire.

Emulation N Bar 5522
 N Bar Emulation EXT
 N Bar Primrose 2424
 Sinclair Emulation XXP
 N Bar Emulation EXT
 N Bar Primrose Y3051
 N Bar Primrose 2429
 S A V Exceptional 7279
 Rito 707 of Ideal 3407 7075
 S A V Resource 1441
 S A V Blackcap May 4136
 S A V Duke Girl 4441
 CAR Tracker 305
 A C Duke Girl 57
 A C Duke Girl 330

22 G A EXCEED 134



20205205 3/07/2021				
BIRTH WEIGHT	205 ADJ. WEIGHT	WR	DAM'S PROGENY AVG.	WDA
83	823	107	8/102	4.12
EPDS				
CED	BW	WW	YW	MILK
-1	+3.2	+68	+125	+25

Sinclair Emulation XXP
 S A V Exceptional 7279 1891196
 S A V Duke Girl 4441
 G A Exceed 134
 G A Pendleton 926
 G A Ebony 239 17449016
 G A Ebony 074



G A ELINE 057: PATERNAL SISTER TO LOT 22

G A MINNABELLE 045: PATERNAL SISTER TO LOT 22

SIRE BALDRIDGE COLONEL SONS



We chose Colonel for his outstanding carcass quality, rib, docility and hoof quality, as well as his production performance. As with other reference sires we have selected, we also chose Colonel due to the pedigree and performance of his outstanding mother — Baldridge Isabel Y69. She is a beautiful, deep-bodied and wide-topped brood cow who has produced multiple standout AI sires — Colonel, 38-Special, Beast Mode, Bronc and more. Isabel, valued at one million dollars, is impacting the industry with her daughters as well and ranks in the top four percent or better for wean and yearling performance, docility, claw and angle and dollar wean value with more than 100 direct progeny. One of her daughters is the dam of Baldridge Pappy who sired Lots Five, Six and Seven.

Colonel also carries the illustrious Pathfinder sire Hoover Dam, Sitz Upward 307R and Baldridge Kaboom K243 KCF pedigrees.

Our calves sired by him exhibit capacity and frame, muscle with fleshing ability and superior docility. His daughters are blossoming with the look and presence of powerful brood cows. Our first Colonel daughter, G A Minnabelle 945, earned the highest wean ratio of 113 with her contemporaries as a first-time mother of Lot Five. We have high expectations for their future in our herd.

PRODUCTION/MATERNAL						
CED	BW	WW	YW	YH		
+2	1.5	65	129	.4		
SC	DOC	HP	CEM	MILK		
1	27	5.2	7	31		
CARCASS/\$VALUES						
CW	MARB	RE	FAT	\$W	\$F	\$B
49	.78	.92	-.036	76	95	64

Basin Rainmaker 654X
O C C Focus 813F
Dixie Erica of CH 1019
O C C Paxton 730P
O C C Great Plains 943G
O C C Blackbird 736K
O C C Blackbird 824G
Coleman Charlo 0256
G D A R Traveler 71
Sitz Traveler 8180
Sitz Everelda Entense 1137
Bohi Abigale 6014
Bon View Emulation Ext 473
S A V Abigale 6062
Circle A Abigale 3008

23 G A CORNERSTONE 147

20205223 3/12/2021



BIRTH WEIGHT	205 ADJ. WEIGHT	WR	DAM'S PROGENY AVG.	WDA
73	780	102	5/108	3.92
EPDS				
CED	BW	WW	YW	MILK
+6	+.5	+64	+110	+34

Baldridge Xpand x743
Baldridge Colonel C251 +*18493773
Baldridge Isabel Y69
G A Cornerstone 147
G A Montana 216
G A Coquette 564 #18314494
GA Coquette 307



Cornerstone is a performance-geared sire with balanced EPDs, moderate calving ease, superior docility, high scoring hooves for claw and angle and excellent milk production. He also hails from a 2015 Pathfinder dam who is a G A Montana 216 daughter. She boasts a 362-day calving interval on five calves and is AI bred yet again this spring.

Cornerstone also earns the Certified Angus Beef Targeting the Brand logo for his genomics in marbling and carcass quality.

24 G A COLONEL 142

20213755 3/10/2021



Baldridge Xpand x743
Baldridge Colonel C251 +*18493773
Baldridge Isabel Y69
G A Colonel 142
V A R Heritage 5038
G A Eline 832 19227320
G A Eline 263

BIRTH WEIGHT	205 ADJ. WEIGHT	WR	DAM'S PROGENY AVG.	WDA
83	720	94	2/95	3.44
EPDS				
CED	BW	WW	YW	MILK
+2	+2.5	+72	+130	+25

Colonel 142 is a Certified Angus Beef logo qualified sire with superior rib and elevated production performance from the lineage of our Eline cow family. He claims the top 1 percent of the breed for his Claw EPD, and the top 20 percent for his Angle EPD. His docility is also top notch.

25

G A COLONEL 141

20205241

3/09/2021

Baldrige Xpand x743
 Baldrige Colonel C251 +*18493773
 Baldrige Isabel Y69
 G A Colonel 141
 S A V Resource 1441
 G A Colossal Anne 827 19227349
 G A Colossal Anne 527

BIRTH WEIGHT	205 ADJ. WEIGHT	WR	DAM'S PROGENY AVG.	WDA
90	730	95	2/93	3.49
EPDS				
CED	BW	WW	YW	MILK
-5	+4.8	+68	+129	+24

26

G A COLONEL 143

20213753

3/11/2021

Baldrige Xpand x743
 Baldrige Colonel C251 +*18493773
 Baldrige Isabel Y69
 G A Colonel 143
 S A V Resource 1441
 G A Eriskay 852 19227336
 Glasoes Eriskay 443

BIRTH WEIGHT	205 ADJ. WEIGHT	WR	DAM'S PROGENY AVG.	WDA
81	717	94	2/102	3.43
EPDS				
CED	BW	WW	YW	MILK
+2	+2.1	+62	+114	+23

27

G A COLONEL 154

20205246

3/14/2021

Baldrige Xpand x743
 Baldrige Colonel C251 *18493773
 Baldrige Isabel Y 69
 G A Colonel 154
 S A V Resource 1441
 G A Ebony 855 *19227331
 G A Ebony 425

BIRTH WEIGHT	205 ADJ. WEIGHT	WR	DAM'S PROGENY AVG.	WDA
83	702	92	2/96	3.44
EPDS				
CED	BW	WW	YW	MILK
I+2	I+29	I+59	I+119	I+26

FOR US, CALVING EASE IS MORE THAN AN EPD. FROM BIRTH WEIGHT TO THE DAM'S LABORING EASE AND NURTURING ABILITY POST-LABOR TO CALF VIGOR, WE TRY TO OBSERVE AND RECORD EVERY BIRTH BEYOND WHAT EPDS CAN PROVIDE. NATURE AND NURTURE BOTH MATTER. WE RETAIN THE DAMS THAT DEMONSTRATE SUPERIOR MOTHERING ABILITY IN ADDITION TO ESTEEMED LINEAGE AND GENETIC POTENTIAL.



SIRE G A RAINDANCE 922 SONS



Raindance 922 is a soggy-made and long, show-stopping bull with built-in production excellence. He weighed 85 pounds at birth and 841 pounds for his adjusted 205-day weight. He was purchased by Allen Erickson for \$10,000 at our 2020 Bull Sale, and we selected him for use in our breeding program due to his superior phenotype, performance and esteemed maternal lineage.

Raindance 922 earns an impressive sire average progeny ratio from birth to wean spread on his first set of calves born in 2021. His seventeen calves averaged a 98 birth ratio and a 102 wean ratio. His Genomic Percent Rank on a scale from 1 to 100 (1 being the most desirable) is a 1 for Tenderness, 5 for Ribeye, 8 for Yearling Weight, 15 for Carcass Weight, 17 for Wean Weight, 21 for Milk, 26 for Scrotal Circumference and a 31 for Heifer Pregnancy. He breeds for attractive calving ease direct and calving ease maternal EPD scores with a big scrotum, rib and good milk backing him.

Raindance 922 was raised by our 2012 Pathfinder G A Eriskay 276, who is bred to G A Regard 633 and due with her ninth consecutive calf. Her dam, a Hoff Head of the Class SC534 daughter, was sold bred as a coming-fourteen year old. Eriskay 276 earns a 363-day calving interval on eight calves, an average 99 birth ratio and a 107 wean ratio. She is also the dam

PRODUCTION/MATERNAL						
CED	BW	WW	YW	YH		
+9	1	69	128	.8		
SC	DOC	HP	CEM	MILK		
1.54	12	10.4	9	28		
CARCASS/\$VALUES						
CW	MARB	RE	FAT	\$W	\$F	\$B
+58	.16	.91	.026	75	103	135

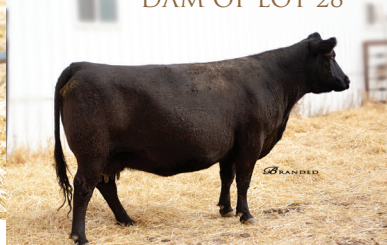
O C C Paxton 730P
 Coleman Charlo 0256
 Bohi Abigale 6014
 S A V Raindance 6848
 S A V 8180 Traveler 004
 S A V Blackcap May 4136
 S A V May 2397
 G A Raindance 922
 Connealy Forward
 Glasoes Forward 931
 G A Eline 622
 G A Eriskay 276
 Hoff Head of The Class SC534
 Glasoes Eriskay 211
 Glasoes Nor Eriskay 154

28 G A RAINDANCER 176



20205208 4/14/2021				
BIRTH WEIGHT	205 ADJ. WEIGHT	WR	DAM'S PROGENY AVG.	WDA
75	809	106	8/106	4.18
EPDS				
CED	BW	WW	YW	MILK
-1	+4.1	+75	+123	+33

DAM OF LOT 28



S A V Raindance 6848
 G A Raindance 922 *18578965
 G A Eriskay
 G A Raindancer 176
 Connealy Impression
 G A Anne 266 *15992084
 G A Colossal Anne 7120

While Raindancer was born a month after our AI-sired bull lineup, he has demonstrated the performance built into his Glasoe Angus maternal and paternal pedigree. He is made for longevity, fertility, great performance and maternal excellence.

His Genomic Percent Rank is a 3 for fat, 4 for Weaning Weight, 7 for Milk and Tenderness, an 8 for Carcass Weight, and a 17 for Calving Ease Maternal. (1 is the best score in the breed from 1 to 100).

He earns a great birth to wean spread, excellent production WW and YW EPDs and one of our top Milk scores. He is backed by Glasoe Pathfinder dams on the top and bottom of his pedigree: G A Eriskay 276, the ten-year-old productive dam of his sire and mother of Lot 12, and G A Anne 266, a ten-year-old standout daughter of G A Colossal Anne 7120, who is in full-time donor service as a fifteen year old. Anne 266, Raindancer's dam, was deemed a highlight of our 2020 ND Angus Association tour stop by multiple producers.

29 G A RAINDANCE 171

20205226 4/04/2021



BIRTH WEIGHT	205 ADJ. WEIGHT	WR	DAM'S PROGENY AVG.	WDA
83	771	101	5/100	3.97
EPDS				
CED	BW	WW	YW	MILK
+4	+2.2	+63	+115	+29

S A V Raindance 6848
G A Raindance 922 19629257
G A Eriskay 276
G A Raindance 171
G A Complete 152
G A Dakota Anne 588 18314519
G A Anne 285

Raindance 171 scores a Genomic Percent Rank of 2 in Yearling Height, a 3 for Ribeye, a 9 for Weaning Weight and Fat, a 10 for Yearling Weight, a 13 for Scrotal Circumference, and a 15 for Carcass Weight.

30 G A RAINDANCE 166

20207596 3/30/2021



BIRTH WEIGHT	205 ADJ. WEIGHT	WR	DAM'S PROGENY AVG.	WDA
83	752	98	2/102	3.67
EPDS				
CED	BW	WW	YW	MILK
+6	+2.4	+66	+122	+28

S A V Raindance 6848
G A Raindance 922 19629257
G A Eriskay 276
G A Raindance 166
HA Cowboy Up 5405
G A Ebony 803 19227375
G A Ebony 632

31 G A RAINDANCE 188

20205227 5/08/2021



BIRTH WEIGHT	205 ADJ. WEIGHT	WR	DAM'S PROGENY AVG.	WDA
74	857	114	4/105	4.4
EPDS				
CED	BW	WW	YW	MILK
+8	+1.0	+72	+124	+30

S A V Raindance 6848
G A Raindance 922 19629257
G A Eriskay 276
G A Raindance 188
GA Score 304
G A Colossal Anne 612 18600329
G A Colossal Anne 013

Raindance 188 earns the biggest birth to wean spread of the Raindance 922 sons. He is a maternal grandson of the dam of Lot 1 and a May-born calf who hit the ground running and continues to blossom. His long-made, broody dam averages a wean ratio of 105 on her first four calves. Genomics are pending on this bull but will be available before sale day. He also provides a Calving Ease Direct EPD that would make us comfortable using him on our heifers.

32 G A RAINDANCE 177

20205212 4/15/2021



BIRTH WEIGHT	205 ADJ. WEIGHT	WR	DAM'S PROGENY AVG.	WDA
81	756	99	7/102	3.93
EPDS				
CED	BW	WW	YW	MILK
+5	+6	+51	+96	+32

S A V Raindance 6848
 12 G A Raindance 922 19629257
 G A Eriskay 276
 G A Raindance 177
 Gfar Bismarck Y601
 GA Anne 370 17706371
 G A Anne 113

If you're looking to retain females and want a maternally powered sire, Raindance 177 scores a 9 for Milk, 14 for Calving Ease Maternal and a 35 for Heifer Pregnancy in his Genomic Percent Rank. He scores a 49 for Mature Height so he also offers moderate frame genetics. He is a grandson and great-grandson to two of our Pathfinders (2011 G A Anne 113 and 2007 G A Colossal Anne 7120) in full-time donor service.

33 G A RAINDANCE 175

20205238 4/13/2021

S A V Raindance 6848
 G A Raindance 922 19629257
 G A Eriskay 276
 G A Raindance 175
 S A V Resource 1441
 G A Colossal Anne 819 +*19313971
 G A Anne 113

BIRTH WEIGHT	205 ADJ. WEIGHT	WR	DAM'S PROGENY AVG.	WDA
78	743	97	2/102	3.67
EPDS				
CED	BW	WW	YW	MILK
+1	+2.8	+70	+127	+28

Raindance 175 offers similar pedigree to Lot 32; he is also a grandson and great-grandson of 2011 G A Anne 113 and 2007 G A Colossal Anne 7120. He offers production performance, carcass value and maternal excellence. His Genomic Percent Rank is a 2 for Heifer Pregnancy and Carcass Weight, a 6 for Tenderness, and a 7 for both Weaning Weight and Yearling Weight.

34 G A RAINDANCE 180

20205228 4/21/2021

S A V Raindance 6848
 G A Raindance 922 19629257
 G A Eriskay 276
 G A Raindance 180
 S A V Resource 1441
 G A Eline 614 18600352
 G A Eline 263

BIRTH WEIGHT	205 ADJ. WEIGHT	WR	DAM'S PROGENY AVG.	WDA
79	758	99	4/97	3.96
EPDS				
CED	BW	WW	YW	MILK
+11	+0	+62	+110	+20

Stylish and correct, Raindance 180 earns the best genomically verified Calving Ease Direct and Birth Weight EPDs of the Raindance 922 sons. He hails from a beautiful and well-uddered Resource daughter; we would be comfortable using him on our heifers.

35 G A RAINDANCE 186

20205206 5/06/2021

S A V Raindance 6848
 G A Raindance 922 19629257
 G A Eriskay 276
 G A Raindance 186
 G A Pendleton 926
 G A Colossal Anne 240 #17449177
 G A Anne 047

BIRTH WEIGHT	205 ADJ. WEIGHT	WR	DAM'S PROGENY AVG.	WDA
78	703	94	8/106	3.64
EPDS				
CED	BW	WW	YW	MILK
+6	+8	+59	+111	+31

Raindance 186 hails from a 2012 Pathfinder dam. This young bull's Genomic Percent Rank is a 2 for Tenderness, 4 for Yearling Weight, and 8 for Weaning Weight, an 11 for Mature Weight, a 15 for Heifer Pregnancy and a 19 for Carcass Weight.

SIRE RESSLER ROOSEVELT SONS



Roosevelt is a smooth-made, long-bodied sire whose calves came light, fast and easy and then hit the ground running. We purchased Roosevelt from Ressler Angus at their 2020 sale; he was an embryo transfer calf and the mating result of Ellingson Roughrider 4202 and maternal powerhouse and donor dam Mohnen Jilt 539, a TC Aberdeen daughter who showcases a big hip and excellent udder. She is also the dam of the \$120,000 Mohnen South Dakota 402. She hails from three consecutive generations of Pathfinders.

Roosevelt weighed 86 pounds at birth to his recipient/foster dam and 871 pounds for his adjusted 205-day weight. His ultrasound IMF earned a 127 ratio, and his ribeye of 14.6 earned a 112 ratio. His Genomic Percent Rank is a 16 for Docility, 17 for Mature Height, 19 for Birth Weight, 20 for Mature Weight, 24 for Tenderness, and 35 for Wean Weight. He ranks in the top 1 percent and top 10 percent for Claw and Angle EPDs, as well as the top 10 percent for the Docility EPD. He will add frame and volume and ranks in the top 25 percent for the Mature Weight and Mature Height EPDs. His fourteen calves, which include lots 36-40, averaged a 95 birth ratio and a 100 wean ratio.

PRODUCTION/MATERNAL						
CED	BW	WW	YW	YH		
+3	1.6	70	124	.7		
SC	DOC	HP	CEM	MILK		
.41	28	8.7	3	23		
CARCASS/\$VALUES						
CW	MARB	RE	FAT	\$W	\$F	\$B
48	.58	.39	.097	69	86	124

Connealy Consensus
 Connealy Earnan 076E
 Brazila of Conanga 3991 839A
 Ellingson Roughrider 4202
 LT Curve Bender 4810 of EA
 EA Blackclass 8914
 SAV Blackclass 374
 Ressler Roosevelt 901
 C R A Bextor 872 5205 608
 TC Aberdeen 759
 TC Blackbird 4034
 Mohnen Jilt 539
 Mohnen Brushpopper 353
 Mohnen Jilt 787
 Mohnen Jilt 1655

36 G A ROOSEVELT 160



			20207539	3/24/2021
BIRTH WEIGHT	205 ADJ. WEIGHT	WR	DAM'S PROGENY AVG.	WDA
78	840	110	3/108	4.19
EPDS				
CED	BW	WW	YW	MILK
+3	+1.5	+72	+126	+29

Ellingson Roughrider 4202
 Ressler Roosevelt 901 +*19583237
 Mohnen Jilt 539
 G A Roosevelt 160
 V A R Generation 2100
 G A Eriskay 703 #18918656
 G A Eriskay 276

Roosevelt 160 is the voluminous and great-tempered prospect of our Roosevelt sons. He earned an impressive 840 pounds for his adjusted 205-day weight and hails from a Pathfinder dam, G A Eriskay 703, who is a maternal sister to Lot 12.

He offers maternal longevity and performance and earns a quality Milk EPD score, as well as a Claw and Angle EPD that place him in the top 15 and 25 percent of the breed for sure-footedness.

GLASOE ANGUS CATTLE GRAZE IN NORTH PASTURE
UNDER A JUNE SUNSET



37

G A ROOSEVELT 164

20207652

3/27/2021

Ellingson Roughrider 4202
 Ressler Roosevelt 901 +*19583237
 Mohnen Jilt 539
 G A Roosevelt 164
 G A Reign 610
 G A Dakota Anne 872 19227361
 G A Dakota Anne 588

BIRTH WEIGHT	205 ADJ. WEIGHT	WR	DAM'S PROGENY AVG.	WDA
84	787	103	1/103	3.84
EPDS				
CED	BW	WW	YW	MILK
+0	+3.0	+68	+124	+24

If you are looking to add docility, Roosevelt 164 will do it. His genomics are pending, but he is one of the calmest and friendliest bulls of his contemporaries, and he has plenty of competition in that trait.

38

G A ROOSEVELT 163

20205220

3/27/2021

Ellingson Roughrider 4202
 Ressler Roosevelt 901 +*19583237
 Mohnen Jilt 539
 G A Roosevelt 163
 G A Montana 216
 G A Eriskay 550 18314516
 G A Eriskay 219

BIRTH WEIGHT	205 ADJ. WEIGHT	WR	DAM'S PROGENY AVG.	WDA
71	736	96	4/101	3.75
EPDS				
CED	BW	WW	YW	MILK
+7	+1	+57	+103	+19

Roosevelt 163 arrived at a light 71 pounds and his Genomic Percent Rank of 28 for Calving Ease Direct and 12 for Birth Weight lend credence to that weight. Smooth-shouldered and long-headed as a newborn, he's a grower and frame up-sizer. He scores in the top 5 and 7 for Mature Weight and Mature Height. His maternal pedigree goes back to heifer-qualified bulls.

39

G A ROOSEVELT 130

20285717

3/06/2021

Ellingson Roughrider 4202
 Ressler Roosevelt 901 +*19583237
 Mohnen Jilt 539
 G A Roosevelt 130
 GFAR Reserve E214
 G A Eriskay 867 19227379
 G A Eriskay 652

BIRTH WEIGHT	205 ADJ. WEIGHT	WR	DAM'S PROGENY AVG.	WDA
69	690	90	1/90	3.36
EPDS				
CED	BW	WW	YW	MILK
I+7	I+.8	I+58	I+104	I+26

Roosevelt 130 earned the lightest birthweight at 69 pounds of the Roosevelt sons. His genomics will be available before sale day. Like Lot 38, he goes back to heifer-qualified sires on the top and bottom of his maternal pedigree. His genomics will be available before sale day.

40

G A ROOSEVELT 159

20205240

3/24/2021

Ellingson Roughrider 4202
 Ressler Roosevelt 901 +*19583237
 Mohnen Jilt 539
 G A Roosevelt 159
 V A R Heritage 5038
 G A Anita 825 #18918656
 G A Anita 415

BIRTH WEIGHT	205 ADJ. WEIGHT	WR	DAM'S PROGENY AVG.	WDA
70	700	91	2/94	3.38
EPDS				
CED	BW	WW	YW	MILK
+7	-.2	+56	+98	+31

Roosevelt 159's Genomic Percent Rank places him in the top 11 for Docility, 12 for Milk, 16 for Birth Weight and 27 for Scrotal Circumference.

SIRE G A DIVERSE 927 SONS



Diverse offers a unique pedigree from the legendary Graham program. His K C F Bennett Diverse sire is thick-quartered, highly docile and earns double-digit calving ease, as well as genetic carcass merit. He scores in the top one percent for docility and the top three percent for calving ease direct on heifers.

Diverse was raised by an S A V International daughter; he was her first calf and earned an impressive adjusted 205-day weight of 804 pounds. He offers frame, hoof integrity, production performance and docility. His Glasoe grandam and great-grandam both earned Pathfinder status. His sons, Lots Forty-One and Forty-Two, were each raised by proven and productive dams. Lot Forty-Two carries the ten-year-old Pathfinder Glasoe Pride 244 on the top and bottom of his pedigree.

PRODUCTION/MATERNAL						
CED	BW	WW	YW	YH		
+3	4	73	115	.9		
SC	DOC	HP	CEM	MILK		
1.23	22	16.2	4	22		
CARCASS/\$VALUES						
CW	MARB	RE	FAT	\$W	\$F	\$B
44	.12	.3	.044	66	80	101

PHOTO OF
K C F BENNETTE DIVERSE

Fintry of Graham 47134
Fintry of Graham 48708
Graham Ali 6
K C F Bennett Diverse
Connealy Whitman
K C F Miss Whitman W631
K C F Miss 1407 P268
G A Diverse 924
S A V Harvester 0338
S A V International 2020
S A V Emblynnette 5483
G A Pride 727
Brooks Connection 0327
Glasoes Pride 244
Glasoes Pride 247

41 G A DIVERSE 189

K C F Bennett Diverse
G A Diverse 924 19629105
G A Pride 727
G A Diverse 189
GA Score 304
G A Colossal Anne 518 18314497
G A Colossal Anne 869

20207435 5/10/2021				
BIRTH WEIGHT	205 ADJ. WEIGHT	WR	DAM'S PROGENY AVG.	WDA
84	771	103	5/103	3.99
EPDS				
CED	BW	WW	YW	MILK
I+5	I+3.1	I+63	I+102	I+25

Diverse 189 scores in the top 35 percent or higher in his Genomic Percent Rank for Calving Ease Direct, Birth Weight, Yearling Height, Docility, Calving Ease Maternal and Mature Height. His hoof Angle EPD places him in the top 25 percent of the breed.

42 G A DIVERSE 179

K C F Bennett Diverse
G A Diverse 924 19629105
G A Pride 727
G A Diverse 179
Brooks Connection 0327
Glasoes Pride 244 #17449021
Glasoes Pride 247

20205207 4/18/2021				
BIRTH WEIGHT	205 ADJ. WEIGHT	WR	DAM'S PROGENY AVG.	WDA
77	735	96	8/106	3.83
EPDS				
CED	BW	WW	YW	MILK
I+4	I+2.8	I+59	I+100	I+26

Diverse 179 scores in the top 35 percent or higher in his Genomic Percent Rank for Calving Ease Direct, Birth Weight, Wean Weight, Yearling Height, Heifer Pregnancy, Calving Ease Maternal, Mature Weight, and Mature Height. His 2012 Pathfinder dam raised 8 consecutive calves with an average 106 wean ratio.

Docility.

GLASOE ANGUS BEGAN SELECTING DOCILE PEDIGREES NEARLY TWO DECADES AGO. OUR COWS HAVE GENERATIONS OF BUILT-IN HUMAN TOLERANCE, WORKING EASE AND GENTLE TEMPERAMENTS BACKING THEM.



THE AMERICAN ANGUS ASSOCIATION'S EXPLANATION OF EPDS

PRODUCTION EPDs

Calving Ease Direct (CED), is expressed as a difference in percentage of unassisted births, with a higher value indicating greater calving ease in first-calf heifers. It predicts the average difference in ease with which a sire's calves will be born when he is bred to first-calf heifers.

Birth Weight EPD (BW), expressed in pounds, is a predictor of a sire's ability to transmit birth weight to his progeny compared to that of other sires.

Weaning Weight EPD (WW), expressed in pounds, is a predictor of a sire's ability to transmit weaning growth to his progeny compared to that of other sires.

Yearling Weight EPD (YW), expressed in pounds, is a predictor of a sire's ability to transmit yearling growth to his progeny compared to that of other sires.

Residual Average Daily Gain (RADG), expressed in pounds per day, is a predictor of a sire's genetic ability for postweaning gain in future progeny compared to that of other sires, given a constant amount of feed consumed.

Dry Matter Intake (DMI), expressed in pounds per day, is a predictor of difference transmitting ability for feed intake during the postweaning phase, compared to that of other sires.

Yearling Height EPD (YH), is a predictor of a sire's ability to transmit yearling height, expressed in inches, compared to that of other sires.

Scrotal Circumference EPD (SC), expressed in centimeters, is a predictor of the difference in transmitting ability for scrotal size compared to that of other sires.

MATERNAL EPDs

Heifer Pregnancy (HP), is a selection tool to increase the probability or chance of a sire's daughters becoming pregnant as first-calf heifers during a normal breeding season. A higher EPD is the more favorable direction and the EPD is reported in percentage units.

Calving Ease Maternal (CEM), is expressed as a difference in percentage of unassisted births with a higher value indicating greater calving ease in first-calf daughters. It predicts the average ease with which a sire's daughters will calve as first-calf heifers when compared to daughters of other sires.

Maternal Milk EPD (Milk), is a predictor of a sire's genetic merit for milk and mothering ability as expressed in his daughters compared to daughters of other sires. In other words, it is that part of a calf's weaning weight attributed to milk and mothering ability.

Herds (MkH) indicate the number of herds from which daughters are reported.

Daughters (MkD) reflects the number of daughters that have progeny weaning weight records included in the analysis.

Mature Weight EPD (MW), expressed in pounds, is a predictor of the difference in mature weight of daughters of a sire compared to the daughters of other sires.

Mature Height EPD (MH), expressed in inches, is a predictor of the difference in mature height of a sire's daughters compared to daughters of other sires.

Cow Energy Value (\$EN), expressed in dollar savings per cow per year, assesses differences in cow energy requirements as an expected dollar savings difference in daughters of sires. A larger value is more favorable when comparing two animals (more dollars saved on feed energy expenses). Components for computing the cow \$EN savings difference include lactation energy requirements and energy costs associated with differences in mature cow size.

MANAGEMENT EPDS

Docility (Doc), is expressed as a difference in yearling cattle temperament, with a higher value indicating more favorable docility. It predicts the average difference of progeny from a sire in comparison with another sire's calves. In herds where temperament problems are not an issue, this expected difference would not be realized.

Claw Set EPD (Claw), is expressed in units of claw-set score, with a lower EPD being more favorable indicating a sire will produce progeny with more ideal claw set. The ideal claw set is toes that are symmetrical, even and appropriately spaced.

Foot Angle EPD (Angle), is expressed in units of foot-angle score, with a lower EPD being more favorable indicating a sire will produce progeny with more ideal foot angle. The ideal is a 45-degree angle at the pastern joint with appropriate toe length and heel depth.

Pulmonary arterial pressure EPD (PAP), is expressed in millimeters of Mercury (mmHg), with a lower EPD being more favorable indicating a sire should produce progeny with a lower PAP score. PAP score is an indicator of susceptibility to high altitude disease commonly experienced at elevations greater than 5,500 feet. Selection for this trait aims to improve the genetic potential for a sire's progeny to have lower PAP scores thus a lower chance of contracting high altitude disease increasing the environmental adaptability of cattle living in mountain areas.

CARCASS EPDs

Carcass Weight EPD (CW), expressed in pounds is a predictor of the differences in hot carcass weight of a sire's progeny compared to progeny of other sires.

Marbling EPD (Marb), expressed as a fraction of the difference in USDA marbling score of a sire's progeny compared to progeny of other sires.

Ribeye Area EPD (RE), expressed in square inches, is a predictor of the difference in ribeye area of a sire's progeny compared to progeny of other sires.

Fat Thickness EPD (Fat), expressed in inches, is a predictor of the differences in external fat thickness at the 12th rib (as measured between the 12th and 13th ribs) of a sire's progeny compared to progeny of other sires.

Group/progeny (C Grp/ Pg and U Grp/Pg) reflects the number of contemporary groups and the number of carcass and ultrasound progeny included in the analysis.

\$VALUE INDEXES

\$Value indexes, an economic selection index allows multiple change in several different traits at once pertaining to a specific breeding objective. The \$Value is an estimate of how future progeny of each sire are expected to perform, on average, compared to progeny of other sires if the sires were randomly mated to cows and if calves were exposed to the same environment. [More Info](#)

Maternal Weaned Calf Value (\$M), an index, expressed in dollars per head, predicts profitability differences from conception to weaning with the underlying breeding objective assuming that individuals retain their own replacement females within herd and sell the rest of the cull female and all male progeny as feeder calves. The model assumes commercial producers will replace 25% of their breeding females in the first generation and 20% of their breeding females in each subsequent generation. Traits included are as follows: calving ease direct, calving ease maternal, weaning weight, milk, heifer pregnancy, docility, mature cow weight, claw set and foot angle.

Weaned Calf Value (\$W), an index, expressed in dollars per head, to predict profitability differences in progeny due to genetics from birth to weaning. The underlying objective being producers will retain 20% of the female progeny as replacements and sell the rest of the cull females and their male counterparts as feeder calves. Traits included are as follows (in no particular order): birth weight, weaning weight, milk, and mature cow weight.

Feedlot Value (\$F), an index, expressed in dollars per head, to predict profitability differences in progeny due to genetics for postweaning feedlot merit compared to the progeny of other sires. The underlying objective assumes producers will retain ownership of cattle through the feedlot phase and sell fed cattle on a carcass weight basis, but with no consideration of premiums or discounts for quality and yield grade. Traits contributing directly to the index are as follows: yearling weight (gain), carcass weight and dry-matter intake.

Grid Value (\$G), an index, expressed in dollars per carcass, to predict profitability differences in progeny due to genetics for carcass grid merit compared to progeny of other sires. The underlying objective assumes producers will market cattle on an above-industry-average carcass grid. Traits included in the index are as follows (in no particular order): carcass weight, marbling, ribeye area, and fat.

Beef Value (\$B), a terminal index, expressed in dollars per carcass, to predict profitability differences in progeny due to genetics for postweaning and carcass traits. This terminal index assumes commercial producers wean all male and female progeny, retain ownership of these animals through the feedlot phase and market these animals on a carcass grid. Traits included in the index are as follows: yearling weight, dry-matter intake, marbling, carcass weight, ribeye area and fat.

Combined Value (\$C), an index, expressed in dollars per head, which includes all traits that make up both Maternal Weaned Calf Value (\$M) and Beef Value (\$B) with the objective that commercial producers will replace 20% of their breeding females per year with replacement heifers retained within their own herd. The remaining cull heifer and steer progeny are then assumed to be sent to the feedlot where the producers retain ownership of those cattle and sell them on a quality-based carcass merit grid. Expected progeny differences (EPDs) directly influencing a combined index: calving ease direct (CED) and maternal (CEM), weaning weight (WW), yearling weight (YW), maternal milk (Milk), heifer pregnancy (HP), docility (DOC), mature cow weight (MW), foot angle (Angle), claw set (Claw), dry matter intake (DMI), marbling (Marb), carcass weight (CW), ribeye area (RE) and fat thickness (Fat).

Notes:

GLASOE ANGUS

8533 114th Ave NW, Wildrose, ND 58795
www.glasoeangus.com | 701.539.2338

Thank You...



Annual
MARCH 24, 2022 - 1:00 P.M. | SITTING BULL LIVESTOCK AUCTION
2022 BULL SALE