

JOIN US FOR A
COMPLIMENTARY
LUNCH AT NOON.



ANNUAL

BULL SALE

Monday, April 11, 2022 - 2:00 MT

Faith Livestock - Faith, SD

Selling **44** Yearling Registered **ANGUS BULLS**
17 Yearling Registered 1-A **RED ANGUS BULLS**

WWW.GARRIGANCATTLE.COM

Welcome to our 2022 annual bull sale. It's hard to believe that we've been at this bull sale thing for 5 years, but here we are. It's true what they say, "Time flies when you're having fun!"

We really feel like we have our best set of bulls to offer to date. These bulls have been through a droughty summer with no creep feed and early weaning. With the lack of grass, the cows truly had to grow these bulls on their own. As in the past, they've been developed using a high-roughage ration to help them mature and be in appropriate condition to breed. And thanks to Jack Sieban of J&R Feeds, the ration also helps the bulls look pretty darn good. We appreciate the work Jack does to help our program!

Our goals for both our bulls and our cows haven't changed. We continually strive toward consistency in our herd. We want eye-appealing, structurally-sound cows that produce a quality calf every year. We pay attention to the numbers, but we are not looking to blow any of the numbers through the roof. While we realize that data is important, we also know that the numbers are only part of the equation, and they are one of the many decision-making tools available to ranchers.

One thing we've really focused on during the past few years is building our cows "from the ground up," meaning we have been extra vigilant about feet and leg structure in our herd, and we are focusing on using sires who have good feet and come from good-structured lineage. As much as numbers and data are pushed, the reality is that if a cow or bull doesn't have good feet, all they should be used for is hamburger.

We also continually monitor the docility of our herd. We love our cattle, and ranching is truly a family affair for us. We want our kids to have the opportunity to enjoy our cows as much as we do. We wish that same joy for your family.

Thank you again for your interest in our program. We invite you to stop at the ranch anytime to view the bulls, see our cows, and see our herd bulls. As always, we look forward to earning your business, and we hope to see you on sale day!

Justin, Somer, Quentin, & Karsin Garrigan



Justin - Home (605) 739-3109
Cell (605) 280-9220

Riley, Cally, Madelyn, & Gracie Garrigan



Riley - Home (605) 739-3901
Cell (605) 280-9722





ANNUAL BULL SALE

Monday, April 11, 2022 @ 2:00 MT

Faith Livestock Auction, Faith, SD



AUCTIONEER

Dace Harper.....(605) 515-1535

SALE REPRESENTATIVE

Dan Piroutek, Tri State Livestock News.....(605) 685-4556
Scott Dirk, Tri State Livestock News.....(605) 380-6024

INTERNET VIEWING

The sale will be broadcast via www.cattleusa.com. Click on "Live Auctions" on sale day to view the sale. If you plan to bid via the internet, register **one week** in advance to make sure you are approved to bid at the sale. If you have trouble bidding online, we encourage you to contact Faith Livestock to place your bid with them.

BULL VIDEOS

Bull videos are available at www.garrigancattle.com. Scrotal and pelvic measurements will be available on sale day.

TERMS & CONDITIONS

The terms of the sale are cash or check. Registration certificates will be transferred to the new owner(s) once payment is made. **BULLS WILL SELL IN CATALOG ORDER.**

The sale will follow the suggested sale terms and conditions of the American Angus Association.

SALE DAY ANNOUNCEMENTS

All announcements from the block on sale day will take precedence over the information obtained in this catalog.

BREEDING GUARANTEE

All bulls are guaranteed 100% for soundness and fertility at delivery. If a bull is injured or dies during the first breeding season, a replacement will be supplied, if available. If a replacement is not needed or available, we will offer a sale credit of up to \$3,500. We will do our best to accommodate your individual situation.

SALE LOCATION

Faith Livestock Commission Co.
127 N. 5th Ave. W.
Faith, SD 57626

SALE DAY TELEPHONE

Faith Livestock.....(605) 967-2200
Justin Garrigan.....(605) 280-9220
Riley Garrigan.....(605) 280-9722

HERD HEALTH

Bulls have been on a shot protocol recommended by Dr. Tammy Winger of Faith Veterinary Service.

Birth: Alpha CD, Inforce 3

Branding: Inforce 3, One Shot BVD

Preconditioning: Ultrabac 7 with Somnus, Bovishield Gold 1 Shot

Post-Weaning: Inforce 3, Autogenous, Pulmaguard PHM-1, Dectomax Injectable

Fertility Testing: Fusogard (with booster 3 weeks later), Clean-Up

FERTILITY TESTING

All bulls on today's sale have passed their fertility examination as performed by Dr. Rhett Scoggins; therefore, they will be ready to take home on sale day if you choose.

FEEDING & DELIVERY

A \$50 credit will be given for each bull taken home on sale day. GLC offers free delivery within 300 miles. GLC will do all they can to accommodate any further distances. GLC will start bull delivery immediately after the sale. Talk to Justin or Riley if alternate arrangements need to be made with any bulls you purchase.

SEMEN INTERESTS

GLC plans to keep 1/3 semen interest in all bulls sold at today's sale.

ANGUS. ONLY ANGUS.

There's only one DNA profile created specifically for Angus cattle.

Angus GS™ is the new standard in genetic testing for Angus cattle. Created by Angus Genetics, the profile is purely Angus DNA, so it will have better predictability and deliver more power and accuracy than any previous generation genomic enhanced EPD, and at a much greater value. Visit angus.org/agi for the test that only Angus Genetics could create.

FOR ANGUS. BY ANGUS.

ANGUSGS
Powered by Neogen GeneSeek



"All Angus bulls will have Gene Seek results and Top Dollar qualifications available on sale day."

Top Dollar Angus Feeder Calf Program



Promote Your Verified Genetic Investment

Top Dollar Angus is the industry leader in third-party genetic verification and marketing assistance for superior Angus and Red Angus-based feeder cattle. Our program stamps a unique identity on the 'best of the best' by verifying and then showcasing their genetic merit. The Top Dollar Angus team works directly with a large number of feedyards and buyers to provide them with documented superior feeder cattle, coupled with genetic risk

mitigation and the precision understanding they need to pursue your cattle with absolute confidence.

Top Dollar Angus enables cow-calf producers to benefit from the genetic value already built into their herds. Producers that invest in high-end genetics, as well as strong health and nutrition programs, need a means of positively differentiating their calves from average cattle. Top Dollar Angus does that. Industry demand is strong for genetically superior feeder calves with the right supporting documentation. Don't make buyers guess, let them know by putting the Top Dollar Angus badge of honor on your premium genetic investment.



Contact our team for more information and a free evaluation:

Nate Smith, General Manager • (620) 546-4839 • nate@topdollarangus.com

Kaytlin Hokanson • (307) 461-7687 • kaytlin@topdollarangus.com

Jake Feddes • (406) 581-8157 • jake@topdollarangus.com

Jim Akers • (859) 361-4221 • akersjim@bellsouth.net

Jason Gagnon • (559) 723-6362 • jason@topdollarangus.com

Andy Albrecht • (402) 922-1000 • andy@topdollarangus.com

   www.topdollarangus.com

Registered Angus Bull Offering

LOT 1 GLC Foundation 241

BD: 02/25/21 20133976 Brand: 241

Vision Unanimous 1418

S Foundation 514

S Lady Ann 8384

Millars Extra 972

Garrigan Eriskay 549

Eriskay Answer 2FA5

EPD's		
CED	2	85%
BW	2.5	80%
WW	61	45%
YW	114	35%
Milk	25	55%

Act. BW	205 Adj	Ratio	365 Adj	Ratio	ADG	Ratio
90	654	111	1275	113	3.88	121



Starting off the sale is a bull that makes us go WOW every time we see him. He's such an attractive bull. He checks all the boxes, and he performed well. In addition, he comes from one of our top cows in the herd. HERD BULL prospect!

LOT 2 GLC Double XL 391

BD: 02/25/21 20134000 Brand: 391

A A R Ten X 7008 S A

M A R Double XL 320

CAR Miss Amy 591

Pine Creek Chisum 7017

GLC Thunder Lady 949

GLC Thunder Lady 725

EPD's		
CED	1	90%
BW	3.6	95%
WW	70	20%
YW	124	20%
Milk	25	55%

Act. BW	205 Adj	Ratio	365 Adj	Ratio	ADG	Ratio
96	690	117	1284	114	3.71	115



If you want the biggest steers in the pen, look no further. This guy is big and long and displays power across the board. He and his half brothers in the sale all display a similar look. We sometimes have to look twice in the bull pen.

LOT 3 GLC Reputation 831

BD: 03/06/21 20238961 Brand: 831

S A V Renown 3439

Millars Renown 912

Millars Queen Lass 8276

Tombstone 050

Garrigan Windey 4T2

Windey Bismark 2BM3

EPD's		
CED	4	70%
BW	2.4	75%
WW	70	20%
YW	120	25%
Milk	28	30%

Act. BW	205 Adj	Ratio	365 Adj	Ratio	ADG	Ratio
88	710	120	1248	111	3.36	104



This bull comes from a cow that has a bull at the top of the sale order every year. Look at that weaning ratio. She is an 8 year old pathfinder cow and is as structurally sound as they come, complete with great feet and udders.

Videos of each lot are available at

WWW.GARRIGANCATTLE.COM.

Sign up to bid online at WWW.CATTLEUSA.COM.

LOT 4 GLC Foundation 211
 BD: 03/02/21 20134003 Brand: 211

Vision Unanimous 1418
S Foundation 514
 S Lady Ann 8384
 Sitz Upward 307R
Garrigan Erica 4U1
 Millars Erica 628

EPD's		
CED	0	95%
BW	3.6	95%
WW	59	55%
YW	111	40%
Milk	23	70%

Act. BW	205 Adj	Ratio	365 Adj	Ratio	ADG	Ratio
98	607	103	1201	107	3.71	115



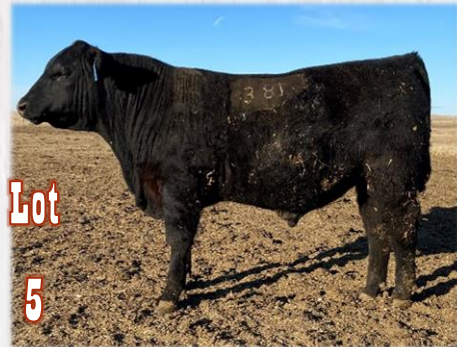
Here's a Foundation son that will not only add some depth-of-rib, he will also add some frame. He comes from an Upward daughter that performs well every year and has great docility.

LOT 5 GLC Double XL 381
 BD: 02/24/21 20134001 Brand: 381

A A R Ten X 7008 S A
M A R Double XL 320
 CAR Miss Amy 591
 Millars Windy 444
GLC Ann 945
 Garrigan Ann 4CF4

EPD's		
CED	7	45%
BW	2.2	75%
WW	66	30%
YW	116	35%
Milk	24	60%

Act. BW	205 Adj	Ratio	365 Adj	Ratio	ADG	Ratio
90	641	109	1239	110	3.74	116



This Double XL son is one that will add some pounds to steer calves. He has a larger frame and is a good, heavy-built bull.

LOT 6 GLC SpotLite 401
 BD: 02/20/21 20133999 Brand: 401

Tehama 944 R525
A & B SpotLite 3065
 A & B Queen 1021
 V D A R Cedar Wind 1044
GLC Dakota 924
 Garrigan Dakota 542

EPD's		
CED	14	4%
BW	-2.9	2%
WW	64	35%
YW	114	35%
Milk	27	40%

Act. BW	205 Adj	Ratio	365 Adj	Ratio	ADG	Ratio
62	680	115	1245	110	3.53	110



This SpotLite son combines both calving ease and growth. He is above-average everywhere you look. He's a bull that you could safely use on heifers without sacrificing finishing power at the feedlot.

LOT 7 GLC Sleep Easy 461
 BD: 02/23/21 20091634 Brand: 461

V D A R Cedar Wind 8111
V D A R Cedar Wind 1044
 V D A R Lass 2556
 V D A R Sonny Boy 1194
GLC All Lady 904
 GLC All Lady 652

EPD's		
CED	7	45%
BW	1.0	45%
WW	59	55%
YW	103	55%
Milk	28	30%

Act. BW	205 Adj	Ratio	365 Adj	Ratio	ADG	Ratio
84	660	112	1231	109	3.57	111



This bull is the only 1044 son in the sale. You'll see many 1044 mothers in the sale. The 1044 sons are always flashy with great disposition. This bull is no exception.

LOT 8 GLC Rainmaker 351
 BD: 02/24/21 20271310 Brand: 351

Basin Rainmaker 2704
Basin Rainmaker 4404
 Basin Joy 1036
 S Foundation 514
GLC All Lady 908
 Garrigan All Lady 4U4

EPD's		
CED	9	30%
BW	0.0	25%
WW	66	30%
YW	113	40%
Milk	34	10%

Act. BW	205 Adj	Ratio	365 Adj	Ratio	ADG	Ratio
72	689	117	1231	109	3.39	105

This 4404 son just keeps getting better and better. His grandmother has been a pathfinder dam for the better part of her life. He's above average in every category.

LOT 11 GLC Remedy 411
 BD: 02/22/21 20110635 Brand: 411

Connealy Thunder
CTS Remedy 1T01
 CTS 7V03 Bellemere Maid 9T02
 Millars Windy 444
GLC Queen 943
 Garrigan R Upward 944

EPD's		
CED	14	4%
BW	-4.2	1%
WW	54	70%
YW	106	50%
Milk	27	40%

Act. BW	205 Adj	Ratio	365 Adj	Ratio	ADG	Ratio
53	607	103	1194	106	3.67	114

This bull started out small, but he took off growing and hasn't looked back. He's got both calving ease and growth and would make an outstanding heifer bull. In addition, he's backed by a great cow family.

LOT 9 GLC Stout 691
 BD: 03/23/21 20091603 Brand: 691

V D A R Stout 1623
VDAR Stout 2837
 V D A R Lass 3180
 V D A R Cedar Wind 1044
GLC Blackcap 634
 Garrigan Blackcap 4RW1

EPD's		
CED	7	45%
BW	1.8	65%
WW	61	45%
YW	108	45%
Milk	26	45%

Act. BW	205 Adj	Ratio	365 Adj	Ratio	ADG	Ratio
89	649	110	1220	112	3.57	111

Here is a great, young bull that rose to the top of the sale order. His mother is now a pathfinder cow. Look at those ratios!

LOT 12 GLC Coalition 331
 BD: 03/01/21 20134967 Brand: 331

HF Syndicate 213Z
U-2 Coalition 206C
 U2 Erelite 109Z
 GLC Treasure 516
GLC Courtney 852
 GLC Courtney 610

EPD's		
CED	9	30%
BW	0.8	40%
WW	54	70%
YW	105	55%
Milk	25	55%

Act. BW	205 Adj	Ratio	365 Adj	Ratio	ADG	Ratio
81	590	100	1166	104	3.60	112

This Coalition son is like many we've had in the past. He grows well, is nice to look at, and has that classic Angus look.

LOT 10 GLC Windy 7 551
 BD: 03/06/21 20091627 Brand: 551

B Bar Windy 79
B Bar Windy 7 3575
 B Bar Eulima 357
 V D A R Cedar Wind 1064
GLC Forever Lady 840
 DRL Forever Lady 1L3 of 313

EPD's		
CED	14	4%
BW	-3.2	1%
WW	51	75%
YW	95	70%
Milk	24	60%

Act. BW	205 Adj	Ratio	365 Adj	Ratio	ADG	Ratio
68	602	102	1189	106	3.67	114

This bull has the potential to be a great heifer bull and he has some noticeability in the bull pen. He will be a 3575 son with a little more frame without sacrificing the depth of rib.





LOT 15 GLC Reputation 881
 BD: 04/06/21 20121593 Brand: 881

S A V Renown 3439
Millars Renown 912
 Millars Queen Lass 8276
 V D A R Cedar Wind 1044
GLC Thunder Lady 838
 Garrigan Thunder Lady 528

EPD's	
CED	7 45%
BW	0.5 35%
WW	54 70%
YW	99 65%
Milk	25 55%

Act. BW	205 Adj	Ratio	365 Adj	Ratio	ADG	Ratio
75	577	98	1209	104	3.95	123

Here is the bull with the biggest ADG in the sale. He's a heavy-set, well-built bull. Take a look!

LOT 13 GLC Valor 421
 BD: 03/06/21 20096306 Brand: 421

VDAR Stout 2837
GLC Stout 319
 Garrigan C C & 7 944
 Connealy Mentor 7374
Garrigan Mentor 901
 D R L Integrity Babe 901

EPD's	
CED	7 45%
BW	1.5 60%
WW	53 70%
YW	91 75%
Milk	27 40%

Act. BW	205 Adj	Ratio	365 Adj	Ratio	ADG	Ratio
91	645	109	1160	103	3.22	100

A 319 son that comes from a Mentor daughter who has been a pathfinder almost every year. We've kept a couple of her bulls, and she's got another good one this year!

LOT 16 GLC Tommy Boy 741
 BD: 03/18/21 20091636 Brand: 741

V D A R Sonny Boy 1194
VDAR Sonny Boy 5329
 V D A R Lass 4331
 S Foundation 514
GLC Zara 910
 GLC Zara 727

EPD's	
CED	5 65%
BW	0.8 40%
WW	68 25%
YW	117 30%
Milk	30 20%

Act. BW	205 Adj	Ratio	365 Adj	Ratio	ADG	Ratio
79	691	117	1233	113	3.39	105

This bull comes from a first calf heifer. We were impressed calving out our first Foundation mothers, and her bull never quit growing after weaning.

LOT 14 GLC Windy 7 471
 BD: 03/13/21 20091650 Brand: 471

B Bar Windy 79
B Bar Windy 7 3575
 B Bar Eulima 357
 Millars Reflection 170
Garrigan M Reflection 721
 DRL Trav 004-572 BAR F 3044

EPD's	
CED	7 45%
BW	-0.3 20%
WW	55 65%
YW	96 70%
Milk	23 70%

Act. BW	205 Adj	Ratio	365 Adj	Ratio	ADG	Ratio
85	592	100	1152	102	3.50	109

Here's a unique pedigree that really worked. He's got calving ease paired with above average growth among his contemporaries.



LOT 17 GLC Windy 7 491
 BD: 03/08/21 20091593 Brand: 491

B Bar Windy 79
B Bar Windy 7 3575
 B Bar Eulima 357
 Sitz Upward 307R
Garrigan Forever Lady 504
 DRL Forever Lady 1L3 of 313

EPD's	
CED	12 10%
BW	-1.7 5%
WW	48 85%
YW	91 75%
Milk	26 45%

Act. BW	205 Adj	Ratio	365 Adj	Ratio	ADG	Ratio
80	569	96	1129	100	3.50	109

Here's a great calving ease option backed by a phenomenal cow line. This Upward daughter gets it done every year. This one was no exception.



LOT 18 GLC Valor 441
 BD: 03/02/21 20096209 Brand: 441

VDAR Stout 2837
GLC Stout 319
 Garrigan C C & 7 944
 PA Full Power 1208
Garrigan Queen Lois 509
 Garrigan S Upward 6802

EPD's		
CED	2	85%
BW	2.8	85%
WW	51	75%
YW	98	65%
Milk	22	75%

Act. BW	205 Adj	Ratio	365 Adj	Ratio	ADG	Ratio
85	528	89	1104	98	3.60	112

This nice 319 son goes back to Full Power on the dam's side. He's been getting more noticeable during the development process.



Lot 18

LOT 19 GLC Foundation 231
 BD: 03/04/21 20133971 Brand: 231

Vision Unanimous 1418
S Foundation 514
 S Lady Ann 8384
 Mra Upward 1241
Garrigan Rosie 539
 D R L Direction BFS 806

EPD's		
CED	5	65%
BW	0.9	45%
WW	49	80%
YW	90	80%
Milk	22	75%

Act. BW	205 Adj	Ratio	365 Adj	Ratio	ADG	Ratio
86	559	95	1119	100	3.50	109

An attractive bull that's also backed by a phenomenal cow family. He's got a bit of frame potential with some deep ribs. His mother is from our overall most productive cow line.

LOT 22 GLC Sonny Boy 341
 BD: 03/02/21 20271276 Brand: 341

V D A R Hero 7072
V D A R Sonny Boy 1194
 V D A R Lass 2582
 V D A R Cedar Wind 1044
GLC Rosie 733
 Garrigan Rosie 539

EPD's		
CED	7	45%
BW	1.5	60%
WW	54	70%
YW	97	65%
Milk	27	40%

Act. BW	205 Adj	Ratio	365 Adj	Ratio	ADG	Ratio
90	628	106	1137	101	3.18	99

This is the only 1194 son we have in the sale. The Sonny Boys all have a similar, flashy look, with the potential to add some eye-appeal to your steer pen.

LOT 20 GLC Windy 7 541
 BD: 03/21/21 20091622 Brand: 541

B Bar Windy 79
B Bar Windy 7 3575
 B Bar Eulima 357
 V D A R Cedar Wind 1044
GLC Bella 832
 GLC Bella 604

EPD's		
CED	8	35%
BW	-0.3	20%
WW	64	35%
YW	115	35%
Milk	27	40%

Act. BW	205 Adj	Ratio	365 Adj	Ratio	ADG	Ratio
84	627	106	1192	109	3.53	110

A 3575 son that also has some growthy numbers. His dam a moderate-framed, productive cow. You're getting the best of both worlds here with growth and maternal merit.

LOT 23 GLC Foundation 221
 BD: 02/25/21 20134004 Brand: 221

Vision Unanimous 1418
S Foundation 514
 S Lady Ann 8384
 Sitz Upward 307R
Garrigan All Lady 4U4
 Miss JT All Lady 978

EPD's		
CED	6	55%
BW	1.2	50%
WW	47	85%
YW	85	85%
Milk	27	40%

Act. BW	205 Adj	Ratio	365 Adj	Ratio	ADG	Ratio
84	529	90	1083	96	3.46	108

Here's a bull with that classic Foundation look. He's deep-ribbed with a nice hind quarter. He stems from a pathfinder cow, and he's a good option to add some depth to your cows.

LOT 21 GLC Stout 661
 BD: 03/27/21 20091595 Brand: 661

V D A R Stout 1623
VDAR Stout 2837
 V D A R Lass 3180
 Brush Traveler 2B1
Garrigan Eline 523
 Garrigan Mentor 6205

EPD's		
CED	3	80%
BW	3.5	95%
WW	52	75%
YW	98	65%
Milk	29	25%

Act. BW	205 Adj	Ratio	365 Adj	Ratio	ADG	Ratio
100	659	112	1185	102	3.29	102

This younger bull comes from a highly productive cow in our herd. We kept a herd sire from her a couple years ago. At 7 years old, she's really proven herself in our herd, and we look to her to be a producer every year.



Lot 23

LOT 24 GLC Double XL 371
 BD: 02/22/21 20091641 Brand: 371

A A R Ten X 7008 S A
M A R Double XL 320
 CAR Miss Amy 591
 V D A R Cedar Wind 1044
GLC Queen Lois 920
 Garrigan R Upward 645

EPD's		
CED	13	10%
BW	-1.6	5%
WW	58	55%
YW	102	60%
Milk	24	60%

Act. BW	205 Adj	Ratio	365 Adj	Ratio	ADG	Ratio
69	581	98	1141	101	3.50	109

A heifer bull that grew up really well. His mother is a 1044 daughter, and they have great feet, udders, docility...the works.

LOT 26 GLC Triple Threat 611
 BD: 03/17/21 20091599 Brand: 611

V D A R Really Windy 4097
Millars Windy 444
 Millars Miss Bell 2044
 Gonnealy Guinness
GLC Rosie 602
 D R L Direction BFS 806

EPD's		
CED	6	55%
BW	1.0	45%
WW	55	65%
YW	94	70%
Milk	29	25%

Act. BW	205 Adj	Ratio	365 Adj	Ratio	ADG	Ratio
95	624	106	1139	105	3.22	100

A bull that goes back to both Really Windy 4097 and to our old Dorothy cow. He's a heavy-built bull with good shape. If you're looking for longevity, we had this bull maternal granddam until she was 17 years old. She produced a calf every single year!

LOT 25 GLC Windy 7 531
 BD: 03/02/21 20091620 Brand: 531

B Bar Windy 79
B Bar Windy 7 3575
 B Bar Eulima 357
 V D A R Cedar Wind 1044
GLC Annie 828
 Garrigan Annie 4U5

EPD's		
CED	9	30%
BW	-0.9	15%
WW	56	60%
YW	98	65%
Milk	25	55%

Act. BW	205 Adj	Ratio	365 Adj	Ratio	ADG	Ratio
81	619	105	1139	101	3.25	101

Here is a bull packed with both calving ease and docility on both sides of the pedigree. He's smooth-shouldered and clean fronted.

LOT 27 GLC Tommy Boy 751
 BD: 03/22/21 20091637 Brand: 751

V D A R Sonny Boy 1194
VDAR Sonny Boy 5329
 V D A R Lass 4331
 S Foundation 514
GLC Sara 911
 GLC Sara 734

EPD's		
CED	4	70%
BW	2.0	70%
WW	60	50%
YW	112	40%
Milk	27	40%

Act. BW	205 Adj	Ratio	365 Adj	Ratio	ADG	Ratio
83	591	100	1178	108	3.67	114

This younger bull comes from a first calf heifer. This bull really picked it up after weaning. He's got a solid set of numbers to back him up.



Summer days!



LOT 28 GLC Coalition 291

BD: 03/01/21 20135202 Brand: 291

HF Syndicate 213Z
U-2 Coalition 206C
 U2 Erelite 109Z
 V D A R Cedar Wind 1044
GLC Ann 623
 Garrigan Ann 4CF4

EPD's		
CED	11	15%
BW	-0.8	15%
WW	45	90%
YW	85	85%
Milk	24	60%

Act. BW	205 Adj	Ratio	365 Adj	Ratio	ADG	Ratio
78	553	94	1084	96	3.32	103

We don't have many Coalition sons in this year's sale, but here is definitely a good one. He's got 1044 on the dam side, so he's also a great cow-maker. You're getting a lot of bull in a more moderate frame.



LOT 29 GLC Tahoe 261

BD: 02/22/21 20110706 Brand: 261

Tehama Upward Y238
Tehama Tahoe B767
 Tehama Mary Blackbird Y684
 Garrigan Hoover Dam 2H2
GLC All Lady 652
 Garrigan S Upward 978

EPD's		
CED	12	10%
BW	-1.5	10%
WW	60	50%
YW	96	70%
Milk	29	25%

Act. BW	205 Adj	Ratio	365 Adj	Ratio	ADG	Ratio
74	601	102	1087	97	3.04	94

Here is a more moderate Tahoe son with some added calving ease and great foot structure. We love Tahoe especially after calving out his daughters for the first time this spring.

LOT 32 GLC Stout 961

BD: 03/24/21 20091658 Brand: 961

V D A R Stout 1623
VDAR Stout 2837
 V D A R Lass 3180
 B Bar Rainmaker 2487
GLC Asbury 749
 Garrigan Mentor 301

EPD's		
CED	-1	95%
BW	4.2	95%
WW	52	75%
YW	94	70%
Milk	26	45%

Act. BW	205 Adj	Ratio	365 Adj	Ratio	ADG	Ratio
100	575	97	999	86	2.62	81

This younger bull is a unique combination of genetics. He's got some power in his genetics and you can see that in his build.

LOT 30 GLC Windy 7 501

BD: 03/08/21 20091594 Brand: 501

B Bar Windy 79
B Bar Windy 7 3575
 B Bar Eulima 357
 TC Thunder 805
Garrigan Augie 520
 Garrigan S Upward 705

EPD's		
CED	13	10%
BW	-2.4	2%
WW	45	90%
YW	84	85%
Milk	24	60%

Act. BW	205 Adj	Ratio	365 Adj	Ratio	ADG	Ratio
75	542	92	1091	97	3.43	106

This bull is a great calving ease option. There's a moderate, easy-flushing pedigree on both sides.

LOT 33 GLC Stout 901

BD: 03/24/21 20091657 Brand: 901

V D A R Stout 1623
VDAR Stout 2837
 V D A R Lass 3180
 Garrigan Hoover Dam 2H2
GLC Forever Lady 646
 DRL Forever Lady 1L3 of 313

EPD's		
CED	9	30%
BW	0.5	35%
WW	51	75%
YW	87	80%
Milk	25	55%

Act. BW	205 Adj	Ratio	365 Adj	Ratio	ADG	Ratio
86	617	105	1132	98	3.43	106

A great Stout son out of one of our favorite cows. He's good the genetics to both great steer calves and replacement heifers.

LOT 31 GLC Coalition 321

BD: 03/07/21 20134972 Brand: 321

HF Syndicate 213Z
U-2 Coalition 206C
 U2 Erelite 109Z
 B Bar Windy 7 3575
GLC Queen 738
 Miss JT Queen 912

EPD's		
CED	7	45%
BW	1.1	50%
WW	52	75%
YW	98	65%
Milk	22	75%

Act. BW	205 Adj	Ratio	365 Adj	Ratio	ADG	Ratio
88	553	94	1102	98	3.43	106

Here's a really good bull out of a really nice cow. This cow goes back to our old 912 cow, which produced us a couple herd bulls.





LOT 36 GLC Tommy Boy 140
 BD: 03/04/21 20091643 Brand: 140

V D A R Sonny Boy 1194
VDAR Sonny Boy 5329
 V D A R Lass 4331
 V D A R Cedar Wind 1044
GLC Queen Lois 926
 GLC Queen Lois 616

EPD's	
CED	13 10%
BW	-2.8 2%
WW	56 60%
YW	101 60%
Milk	30 20%

Act. BW	205 Adj	Ratio	365 Adj	Ratio	ADG	Ratio
63	602	102	1115	96	3.29	102

Here is a Sonny Boy grandson that started out small and really took off. He's got calving ease and above average growth!

LOT 34 GLC Valor 431
 BD: 02/27/21 20096285 Brand: 431

VDAR Stout 2837
GLC Stout 319
 Garrigan C C & 7 944
 Millars Reflection 170
Garrigan Primrose 4MR5
 Millars Primrose Lady 636

EPD's	
CED	6 55%
BW	1.8 65%
WW	47 85%
YW	81 90%
Milk	21 80%

Act. BW	205 Adj	Ratio	365 Adj	Ratio	ADG	Ratio
89	559	95	1068	95	3.18	99

This bull is out of a cow that is 8 years old but looks half her age. He is stylish and comes from a bull we raised. He's built like a tank!

LOT 37 GLC Tommy Boy 761
 BD: 03/19/21 20091638 Brand: 761

V D A R Sonny Boy 1194
VDAR Sonny Boy 5329
 V D A R Lass 4331
 M A R Double XL 320
GLC Queen 912
 GLC Queen 633

EPD's	
CED	8 35%
BW	0.1 25%
WW	65 35%
YW	113 40%
Milk	28 30%

Act. BW	205 Adj	Ratio	365 Adj	Ratio	ADG	Ratio
80	648	110	1152	106	3.15	98

A Sonny Boy grandson out of a Double XL cow. This bull's mother just had a set of twins and is a wonderful mother to both calves.

LOT 35 GLC Windy 7 511
 BD: 03/15/21 20091604 Brand: 511

B Bar Windy 79
B Bar Windy 7 3575
 B Bar Eulima 357
 CTS Remedy 1T01
GLC Primrose Lady 701
 Millars Primrose Lady 636

EPD's	
CED	14 4%
BW	-4.0 1%
WW	51 75%
YW	95 70%
Milk	23 70%

Act. BW	205 Adj	Ratio	365 Adj	Ratio	ADG	Ratio
66	575	97	1106	98	3.32	103

A sure-shot heifer bull with some growth and frame on the dam's side. Look at those calving ease numbers!

LOT 38 GLC Windy 7 521
 BD: 03/16/21 20091608 Brand: 521

B Bar Windy 79
B Bar Windy 7 3575
 B Bar Eulima 357
 V D A R Churchill 1063
GLC Cattle Lady 721
 Garrigan Cattle Lady 517

EPD's	
CED	10 20%
BW	-1.2 10%
WW	49 80%
YW	95 70%
Milk	21 80%

Act. BW	205 Adj	Ratio	365 Adj	Ratio	ADG	Ratio
84	489	83	1043	96	3.46	108

A 3575 heifer bull that really took off after weaning out of a nice Churchill daughter. Look at the ADG!



LOT 39 GLC Triple Threat 581
 BD: 03/21/21 20091649 Brand: 581

V D A R Really Windy 4097
Millars Windy 444
 Millars Miss Bell 2044
 D R L Direction BFS 117
Dakota Direction 2FD7
 D OT26 Dakota 8237

EPD's	
CED	15 2%
BW	-3.1 1%
WW	49 80%
YW	79 90%
Milk	29 25%

Act. BW	205 Adj	Ratio	365 Adj	Ratio	ADG	Ratio
72	640	108	1093	100	2.83	88

A sleep all night heifer bull that has some really nice shape to him. He comes from a 10 year old cow who is still structurally sound and has good udders.

LOT 40 GLC Triple Threat 601
 BD: 04/22/21 20091653 Brand: 601

V D A R Really Windy 4097

Millars Windy 444
 Millars Miss Bell 2044
 Millars Reflection 170

Garrigan Windey 4MR6
 Millars Blackcap Windey 642

EPD's		
CED	7	45%
BW	0.8	40%
WW	57	60%
YW	91	75%
Milk	29	25%

Act. BW	205 Adj	Ratio	365 Adj	Ratio	ADG	Ratio
95	695	109	1125	97	3.01	93

Here is the youngest bull in the sale. Being almost a May calf, he still earned himself a spot. He's a bull that keeps getting better and better as we watch him mature.

LOT 43 GLC Rainmaker 361
 BD: 02/20/21 20271329 Brand: 361

Basin Rainmaker 2704

Basin Rainmaker 4404
 Basin Joy 1036
 V D A R Cedar Wind 1044

GLC Cattle Lady 921
 Garrigan Cattle Lady 4MR11

EPD's		
CED	4	70%
BW	2.3	75%
WW	57	60%
YW	102	60%
Milk	31	15%

Act. BW	205 Adj	Ratio	365 Adj	Ratio	ADG	Ratio
88						

This bull didn't come through at weaning, so we don't have his performance numbers. He's a lengthy bull that will put some frame on your steer calves.

LOT 41 GLC Stout 671
 BD: 03/14/21 20091597 Brand: 671

V D A R Stout 1623

VDAR Stout 2837
 V D A R Lass 3180
 Mra Upward 1241

Garrigan Edella 543
 Garrigan F Direction 418

EPD's		
CED	13	10%
BW	-1.4	10%
WW	39	95%
YW	71	95%
Milk	23	70%

Act. BW	205 Adj	Ratio	365 Adj	Ratio	ADG	Ratio
74	528	89	1009	87	3.01	93

This Stout son comes from a great cow line, complete with production, structural soundness, and docility.

LOT 44 GLC Windy 7 571
 BD: 02/22/21 20091639 Brand: 571

B Bar Windy 79

B Bar Windy 7 3575
 B Bar Eulima 357
 M A R Double XL 320

GLC Forever Lady 914
 GLC Forever Lady 726

EPD's		
CED	13	10%
BW	-2.3	3%
WW	55	65%
YW	100	60%
Milk	24	60%

Act. BW	205 Adj	Ratio	365 Adj	Ratio	ADG	Ratio
72	607	103				

The last lot of black bulls is a good one. He has great calving ease and growth to match. *We misplaced his yearling data, which is why it is blank.

LOT 42 GLC Triple Threat 971
 BD: 03/12/21 20121594 Brand: 971

V D A R Really Windy 4097

Millars Windy 444
 Millars Miss Bell 2044
 Mra Upward 1241

Garrigan R Upward 645
 Millars Queen Lois 645

EPD's		
CED	13	10%
BW	-2.9	2%
WW	45	90%
YW	69	95%
Milk	29	25%

Act. BW	205 Adj	Ratio	365 Adj	Ratio	ADG	Ratio
74	579	98	998	89	2.62	81

Here is probably our best sleep-all-night heifer bull in the sale. He comes from a great cow family, and he will no-doubt sire some nice little calves.

Videos of each lot are available at
WWW.GARRIGANCATTLE.COM.

Sign up to bid online at WWW.CATTLEUSA.COM.



Top Dollar Angus Feeder Calf Program

Promote Your Verified Genetic Investment

Top Dollar Angus is the industry leader in third-party genetic verification and marketing assistance for superior Angus and Red Angus-based feeder cattle. Our program stamps a unique identity on the 'best of the best' by verifying and then showcasing their genetic merit. The Top Dollar Angus team works directly with a large number of feedyards and buyers to provide them with documented superior feeder cattle, coupled with genetic risk mitigation and the precision understanding they need to pursue your cattle with absolute confidence.

Top Dollar Angus enables cow-calf producers to benefit from the genetic value already built into their herds. Producers that invest in high-end genetics, as well as strong health and nutrition programs, need a means of positively differentiating their calves from average cattle. Top Dollar Angus does that. Industry demand is strong for genetically superior feeder calves with the right supporting documentation. Don't make buyers guess, let them know by putting the Top Dollar Angus badge of honor on your premium genetic investment.



How it Works:

Our program begins with a FREE genetic evaluation based on the current/past herd sires used in your program. We evaluate the sires used in your herd based on their growth and carcass merit characteristics. A herd that qualifies for Top Dollar Angus has cattle that are at least 50% Angus or Red Angus and also ranks in the top 25% of its respective breed for growth and carcass merit.

Once qualified, our team provides boots on the ground to share this valuable information with buyers looking for high quality cattle that will go on feed and perform. Our team has experience coast to coast and works directly in all channels (video, local auction, direct and internet). Plus, we have the resources to provide a very fast turn-around.

What our Customers Say:

"Top Dollar Angus is a program that benefits all levels of the industry. The seedstock producer is rewarded for providing superior genetics to the commercial cattleman, who in turn supplies the feeder with efficient cattle that will produce top-end carcasses. As Top Dollar Angus continues to raise their qualifying standard, these cattlemen will have to up their game to purchase the genetics that will fit the program. These cattlemen will see a return on investment when offering reputation feeders at market time."

— Jon Pedotti — San Simeon Creek Ranch, California

Nate Smith, General Manager • (620) 546-4839 • nate@topdollarangus.com

Kaytlin Hokanson • (307) 461-7687 • kaytlin@topdollarangus.com

Jake Feddes • (406) 581-8157 • jake@topdollarangus.com

Jim Akers • (859) 361-4221 • akersjim@bellsouth.net

Jason Gagnon • (559) 723-6362 • jason@topdollarangus.com

Andy Albrecht • (402) 922-1000 • andy@topdollarangus.com

www.topdollarangus.com



Registered 1-A Red Angus Bull Offering

LOT 45 GLC Evolution 5541

BD: 02/27/21 4468751 Tag: 5541

TR Colt 45 UT806
C-Bar Evolution 107Y
 LGS Abby 6895
 Tradition 81 SCN
 S Bar U Sonja 554
 S Bar U Sonja 235

EPD's		
CED	13	51%
BW	-1.7	52%
WW	64	35%
YW	112	17%
Milk	23	69%
ME	7	73%

ProS	89	49%	HB	52	51%	GM	37	48%	
Act. BW	205	Adj	Ratio	365	Adj	Ratio	ADG	Ratio	
	89	610	105	1226	114	3.85	125		
Marb	YG	CW	REA	FAT					
0.15	51%	0.11	74%	33	16%	0.12	50%	0.02	54%



Starting off the reds is a bull that is a beast. We AI'd to Evolution because he sired some of our best cows, but to also have bulls like this one is just icing on the cake. He comes from a cow with an MPPA of 105 on 6 calves. HERD BULL PROSPECT!

LOT 46 GLC CCTS New Wind 9201

BD: 03/03/21 4468853 Tag: 9201

Andras New Direction R240
GLC New Wind 6028
 S Bar U Jessie 602
 GLC Prestigious 5047
S Bar U Darling 920
 S Bar U Darling 888

EPD's		
CED	10	79%
BW	0.7	90%
WW	62	41%
YW	104	33%
Milk	20	92%
ME	-2	24%

ProS	107	22%	HB	61	32%	GM	46	29%	
Act. BW	205	Adj	Ratio	365	Adj	Ratio	ADG	Ratio	
	80	623	105	1173	108	3.43	111		
Marb	YG	CW	REA	FAT					
0.38	56%	0.10	71%	30	23%	0.09	58%	0.02	48%



A bull that's always been really good, but he truly just keeps getting better and better. He is as docile as they come and he performed very well. He's above average in most categories. His sire is one we've used on heifers for two years without problems.

LOT 47 GLC X-Factor 8391

BD: 02/22/21 4468793 Tag: 8391

Redhill Ten X 104U 190A
LSF MEW X-Factor 6693D
 MEW Covergirl 402B
 Lone Tree Redemption C005
GLC Baroness 839
 S Bar U Baroness 571



EPD's		
CED	17	4%
BW	-5.0	6%
WW	62	40%
YW	102	36%
Milk	26	37%
ME	6	69%

ProS	119	10%	HB	65	25%	GM	54	16%	
Act. BW	205	Adj	Ratio	365	Adj	Ratio	ADG	Ratio	
	69	640	110	1129	105	3.04	99		
Marb	YG	CW	REA	FAT					
0.60	13%	0.14	87%	28	30%	0.15	42%	0.04	94%



CALVING EASE for days! This bull has it all. He has such a smooth, attractive look, and he is above average in all areas. He comes from a 3-year old cow that had a top bull in last year's sale also. We are excited for her continued progeny and look for her to be a top cow in our program.

Videos of each lot are available at

WWW.GARRIGANCATTLE.COM.

Sign up to bid online at WWW.CATTLEUSA.COM.



LOT 50 GLC X-Factor 7141
 BD: 02/26/21 4468773 Tag: 7141

Redhill Ten X 104U 190A
LSF MEW X-Factor 6693D
 MEW Covergirl 402B
 Lone Tree Redemption C005
GLC Baroness 714
 S Bar U Baroness 571

EPD's	
CED	16 9%
BW	-4.4 10%
WW	59 53%
YW	101 38%
Milk	23 69%
ME	5 62%

ProS	130	5%	HB	67	23%	GM	63	7%	
Act. BW	205	Adj	Ratio	365	Adj	Ratio	ADG	Ratio	
	79		528		91	1061	98	3.32	108
Marb	YG	CW	REA	FAT					
0.59	14%	0.14	87%	28	30%	0.17	38%	0.05	94%

Look at his ProS number. This bull's mother had a hurt leg last spring and into the summer, so the WW is a bit because of that, but he sure made up for lost time after weaning!

LOT 48 GLC Evolution 5481
 BD: 02/22/21 4468755 Tag: 5481

TR Colt 45 UT806
C-Bar Evolution 107Y
 LGS Abby 6895
 CTS S Bar U Nebula 320
S Bar U Baroness 548
 S Bar U Baroness 176

EPD's	
CED	17 6%
BW	-4.6 9%
WW	54 72%
YW	94 55%
Milk	22 79%
ME	7 76%

ProS	87	53%	HB	57	41%	GM	30	65%	
Act. BW	205	Adj	Ratio	365	Adj	Ratio	ADG	Ratio	
	72		568		97	1072	100	3.15	102
Marb	YG	CW	REA	FAT					
0.17	96%	0.11	75%	25	39%	0.02	73%	0.02	54%

Here's a good heifer bull out of Evolution and a cow that will produce a bit more frame without sacrificing style and structure.

LOT 51 GLC CCTS New Wind 9611
 BD: 03/09/21 4468859 Tag: 9611

Andras New Direction R240
GLC New Wind 6028
 S Bar U Jessie 602
 GLC Prestigious 5047
S Bar U Tara 961
 S Bar U Tara 322

EPD's	
CED	13 51%
BW	-2.0 46%
WW	55 70%
YW	91 62%
Milk	20 92%
ME	-2 24%

ProS	98	34%	HB	57	40%	GM	41	39%	
Act. BW	205	Adj	Ratio	365	Adj	Ratio	ADG	Ratio	
	68		622		105	1144	106	3.25	106
Marb	YG	CW	REA	FAT					
0.37	60%	0.09	67%	25	41%	0.05	66%	0.02	47%

Here's another sleep all night heifer bull that doesn't sacrifice on performance. This bull comes from a bull we raised and used on heifers for two years with extreme success.

LOT 49 GLC Blockade 7041
 BD: 03/13/21 4468769 Tag: 7041

5L Blockade 2218-30B
Forster Blockade E046
 Forster Sadie Z019
 Brown AA Prestigious B5153
GLC Tinkerbell 704
 S Bar U Tinkerbell 503

EPD's	
CED	15 21%
BW	-3.3 23%
WW	66 26%
YW	105 30%
Milk	20 92%
ME	7 74%

ProS	79	67%	HB	57	42%	GM	22	81%	
Act. BW	205	Adj	Ratio	365	Adj	Ratio	ADG	Ratio	
	70		613		105	1123	104	3.18	103
Marb	YG	CW	REA	FAT					
0.23	91%	-0.13	2%	19	65%	0.50	3%	-0.01	7%

This bull is FLASHY! He sticks out his neck and strides out when he walks. He's one that will always catch your eye. This bull looks to be an exact replica of his sire. I guarantee you won't miss him in the bull pen!

LOT 52 GLC X-Factor 1945
 BD: 02/18/21 4468839 Tag: 1945

Redhill Ten X 104U 190A
LSF MEW X-Factor 6693D
 MEW Covergirl 402B
 3SCC Domain A163
GLC Tinkerbell 945
 GLC Tinkerbell 704

EPD's	
CED	17 6%
BW	-4.8 7%
WW	62 43%
YW	99 44%
Milk	25 49%
ME	4 56%

ProS	119	10%	HB	62	30%	GM	57	12%	
Act. BW	205	Adj	Ratio	365	Adj	Ratio	ADG	Ratio	
	57		547		1062		3.22	104	
Marb	YG	CW	REA	FAT					
0.67	7%	0.13	86%	27	33%	0.23	26%	0.05	98%

This bull is a twin to lot 53. This twin was raised by a foster cow, and she definitely took good care of him. And check out Domain on the dam's side!



LOT 53 GLC X-Factor 9451
 BD: 02/18/21 4468827 Tag: 9451

Redhill Ten X 104U 190A
LSF MEW X-Factor 6693D
 MEW Covergirl 402B
 3SCC Domain A163
GLC Tinkerbell 945
 GLC Tinkerbell 704

EPD's	
CED	17 6%
BW	-4.8 7%
WW	62 43%
YW	99 44%
Milk	25 49%
ME	4 56%

ProS	119	10%	HB	62	30%	GM	57	12%	
Act. BW	205	Adj	Ratio	365	Adj	Ratio	ADG	Ratio	
	58		466		1003		3.36	109	
Marb	YG	CW	REA	FAT					
0.67	7%	0.13	86%	27	33%	0.23	26%	0.05	98%

This bull is a twin to lot 52. This twin was raised by his mother. He's a stylish looking bull, and both bulls would work great on heifers to help add consistency.

LOT 54 GLC Blockade 5711

BD: 04/10/21 4468745 Tag: 5711

5L Blockade 2218-30B
Forster Blockade E046
 Forster Sadie Z019
 C-Bar Evolution 107Y
S Bar U Baroness 571
 S Bar U Baroness 346

EPD's		
CED	15	15%
BW	-3.7	17%
WW	67	25%
YW	109	22%
Milk	20	92%
ME	10	88%

ProS 81 63% HB 66 23% GM 15 91%

Act. BW	205 Adj	Ratio	365 Adj	Ratio	ADG	Ratio			
68	625	107	1140	106	3.22	104			
Marb	YG	CW	REA	FAT					
0.12	98%	-0.10	3%	21	55%	0.43	6%	-0.00	9%

Here's a unique combination with a Blockade sire and Evolution on the dam's side. Seeing the production of these dams made us want to use Evolution in our own herd. This bull is an example of that great production. Note: He is one of the youngest bulls in the sale.



LOT 55 GLC Evolution 8361

BD: 02/22/21 4468797 Tag: 8361

TR Colt 45 UT806
C-Bar Evolution 107Y
 LGS Abby 6895
 Lone Tree Redemption C005
GLC Sonja 836
 S Bar U Sonja 554

EPD's		
CED	16	10%
BW	-4.7	8%
WW	50	82%
YW	88	67%
Milk	22	79%
ME	1	39%

ProS 86 54% HB 54 48% GM 33 59%

Act. BW	205 Adj	Ratio	365 Adj	Ratio	ADG	Ratio			
68	580	99	1074	100	3.08	100			
Marb	YG	CW	REA	FAT					
0.22	92%	0.12	82%	22	51%	-0.01	79%	0.03	69%

Here's a moderate framed Evolution son that is backed by Redemption on the dam's side.

LOT 58 GLC Evolution 9511

BD: 02/20/21 4468819 Tag: 9511

TR Colt 45 UT806
C-Bar Evolution 107Y
 LGS Abby 6895
 H2R Profitbuilder B403
GLC Baroness 951
 S Bar U Baroness 546

EPD's		
CED	15	17%
BW	-4.1	13%
WW	57	60%
YW	98	45%
Milk	20	90%
ME	4	58%

ProS 79 66% HB 42 71% GM 37 49%

Act. BW	205 Adj	Ratio	365 Adj	Ratio	ADG	Ratio			
65	569	98	1058	98	3.04	99			
Marb	YG	CW	REA	FAT					
0.28	83%	0.13	85%	24	42%	0.01	75%	0.03	72%

This Evolution son is backed by a Profitbuilder daughter that comes from our favorite "Tradition" cow line, which is full of both production and docility.

LOT 56 GLC Blockade 5291

BD: 03/20/21 4468757 Tag: 5291

5L Blockade 2218-30B
Forster Blockade E046
 Forster Sadie Z019
 CTS S Bar U Nebula 320
S Bar U Babe 529
 S Bar U Babe 994

EPD's		
CED	15	15%
BW	-3.3	23%
WW	63	38%
YW	97	47%
Milk	21	84%
ME	6	68%

ProS 89 50% HB 81 7% GM 8 96%

Act. BW	205 Adj	Ratio	365 Adj	Ratio	ADG	Ratio			
74	613	105	1094	102	3.01	98			
Marb	YG	CW	REA	FAT					
0.20	94%	-0.13	2%	12	87%	0.36	10%	-0.01	5%

This bull had a full brother in last year's sale. This bull looks almost identical and is growing into one of our favorites.

LOT 59 GLC X-Factor 9591

BD: 02/26/21 4468821 Tag: 9591

Redhill Ten X 104U 190A
LSF MEW X-Factor 6693D
 MEW Covergirl 402B
 Tmas Mr Smoky 731E
GLC Jenna 959
 S Bar U Jenna 545

EPD's		
CED	16	10%
BW	-3.6	18%
WW	61	45%
YW	96	51%
Milk	27	30%
ME	5	64%

ProS 120 10% HB 72 15% GM 48 25%

Act. BW	205 Adj	Ratio	365 Adj	Ratio	ADG	Ratio			
72	585	100	1074	100	3.04	99			
Marb	YG	CW	REA	FAT					
0.62	11%	0.11	75%	21	57%	0.13	47%	0.04	90%

Here is a stylish X-Factor son that checks all the boxes. Look at that calving ease!

LOT 57 GLC Blockade 5531

BD: 04/08/21 4468753 Tag: 5531

5L Blockade 2218-30B
Forster Blockade E046
 Forster Sadie Z019
 Tradition 81 SCN
S Bar U Sonja 553
 S Bar U Sonja 216

EPD's		
CED	14	34%
BW	-2.9	29%
WW	60	50%
YW	97	47%
Milk	21	83%
ME	5	62%

ProS 79 66% HB 67 22% GM 13 93%

Act. BW	205 Adj	Ratio	365 Adj	Ratio	ADG	Ratio			
72	617	106	1126	105	3.18	103			
Marb	YG	CW	REA	FAT					
0.16	97%	-0.13	2%	13	85%	0.38	8%	-0.01	5%

Here's a young Blockade son that is continuing to impress. He comes from one of our original red cows who gets it done every year.



LOT 60 GLC CCTS New Wind 9651
 BD: 02/27/21 4468861 Tag: 9651

Andras New Direction R240
GLC New Wind 6028
 S Bar U Jessie 602
 Ridge Advantage 7612
S Bar U Lizzie 965
 S Bar U Lizzie 336

EPD's		
CED	14	24%
BW	-3.8	16%
WW	48	87%
YW	76	85%
Milk	21	85%
ME	-6	16%

ProS	102	20%	HB	69	19%	GM	33	59%	
Act. BW	205	Adj	Ratio	365	Adj	Ratio	ADG	Ratio	
60	618	105	1084	100	2.90	94			
Marb	YG	CW	REA	FAT					
0.41	48%	0.13	83%	17	70%	-0.12	93%	0.02	57%

Here is a nice New Wind son out of a first calf heifer. The cowline is full of cows that produce well and last a long time. Plus, lots of calving ease here!!

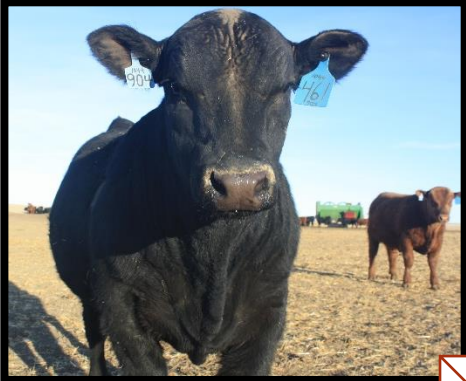
LOT 61 GLC Merlin 9581
 BD: 02/21/21 4468823 Tag: 9581

LJC Merlin T179
WFL Merlin 018A
 WFL Commitment 042Y
 Tmas Mr Smoky 731E
GLC Sonja 958
 S Bar U Sonja 540

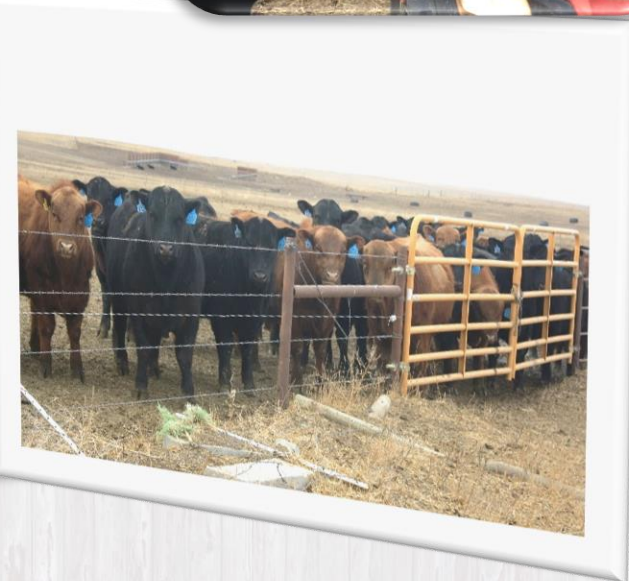
EPD's		
CED	15	21%
BW	-3.6	18%
WW	62	41%
YW	98	45%
Milk	29	14%
ME	0	31%

ProS	76	72%	HB	41	73%	GM	35	54%	
Act. BW	205	Adj	Ratio	365	Adj	Ratio	ADG	Ratio	
71	590	101	1056	98	2.90	94			
Marb	YG	CW	REA	FAT					
0.39	53%	-0.06	6%	13	83%	0.20	32%	-0.00	9%

You might say we saved the best for last. This Merlin son has the signature Merlin look. We are calving out our first Merlin daughters and are loving their temperament!



Picture days are always interesting. Here are a few of my favorite outtakes! 😊



Notes & Bulls to Remember:

In the market for bred heifers?

At Garrigan Land & Cattle, we sell a package of home-raised, home-developed, and home-bred commercial Angus heifers at Faith Livestock each winter. These heifers come straight from our own cow herd and are backed by our own genetics.

Stop by the ranch anytime if you are in the market for bred heifers, and we'd be glad to show you what we have to offer. We typically AI our heifers with a due date of February 15th for one day, and then they are cleaned-up with our bulls for 45 days, with a due date beginning March 5th. They are split into short calving intervals.

Visit with Justin or Riley to learn more.

(References are available)

Reference Sires

R E F A S Foundation 514
 BD: 02/19/15 18200213


Visiontopline Royal Stockman
Vision Unanimous 1418
 Vision Edella 665
 S Chisum 6175
S Lady Ann 8384
 S Lady Ann 6325

EPD's	
CED	5
BW	0.7
WW	53
YW	94
Milk	21

Act. BW	205 Adj	365 Adj
84	876	1423

R E F E A&B SpotLite 3065
 BD: 02/09/13 17689665

R P Bushwacker 3 944
Tehama 944 R525
 Tehama Erica N127
 EXAR 263C
A & B Queen 1021
 A & B Queen 9296




EPD's	
CED	12
BW	-1.7
WW	65
YW	123
Milk	26

Act. BW	205 Adj	365 Adj
75	635	1054

R E F B Tehama Tahoe B767
 BD: 09/06/13 17817177

Sitz Upward 307R
Tehama Upward Y238
 Tehama Elite Blackbird T735
 S A V Final Answer 0035
Tehama Mary Blackbird Y684
 Tehama Mary Blackbird T073



EPD's	
CED	10
BW	0.0
WW	78
YW	134
Milk	32

Act. BW	205 Adj.	Ratio:	365 Adj.	Ratio:
88	720	111	1334	109

R E F F V D A R Cedar Wind 1044
 BD: 01/02/14 17964753

Cole Creek Cedar Ridge 1V
V D A R Cedar Wind 8111
 V D A R Chloe 9727
 DFA Hero 6017
V D A R Lass 2556
 V D A R Lass 7815

EPD's	
CED	12
BW	-2.7
WW	48
YW	81
Milk	26

Act. BW	205 Adj.	Ratio:	365 Adj.	Ratio:
78	768	113	1227	107

R E F C M A R Double XL 320
 BD: 01/07/11 17612134


Mytty In Focus
A A R Ten X 7008 S A
 A A R Lady Kelton 5551
 Hyline Right Time 338
CAR Miss Amy 591
 CAR Miss Amy 121

EPD's	
CED	12
BW	-0.2
WW	63
YW	113
Milk	21

Act. BW	205 Adj	365 Adj
84	876	1423

R E F G Basin Rainmaker 4404
 BD: 03/19/14 17913751

Basin Rainmaker P175
Basin Rainmaker 2704
 Basin Erica 7520 BV
 Basin Payweight 107S
Basin Joy 1036
 Basin Joy 566T



EPD's	
CED	6
BW	1.2
WW	59
YW	108
Milk	38

Act. BW	205 Adj.	365 Adj.
74	702	1118

R E F D Millars Renown 912
 BD: 02/09/19 19617547

Rito 707 of Ideal 3407 707S
S A V Renown 3439
 S A V Blackcap May 4136
 Boyd Poundmaker 21
Millars Queen Lass 8276
 Millars Queen Lass 276

EPD's	
CED	-2
BW	4.1
WW	64
YW	117
Milk	23

Act. BW	205 Adj.	Ratio:	365 Adj.	Ratio:
92	809	121	1339	117





R E F **H** **VDAR Stout 2837**
 BD: 02/04/17 18820849

V D A R Black Cedar 8380
V D A R Stout 1623
 V D A R Lass 0464
 V D A R Royal Duke 4047
V D A R Lass 3180
 V D A R Lass 7508

EPD's	
CED	6
BW	3.0
WW	54
YW	98
Milk	25

Act. BW	205 Adj.	Ratio:	365 Adj.	Ratio:
88	770	103	1248	104

R E F **J** **CTS Remedy 1T01**
 BD: 08/23/11 17331233

Baldrige Kaboom K243 KCF
Connealy Thunder
 Parka of Conanga 241
 LT 598 Bando 9074
CTS 7V03 Belleme Maid 9T02
 SVA Rita 7V03 of 1407 502



EPD's	
CED	2
BW	-0.3
WW	54
YW	116
Milk	27

Act. BW	205 Adj.	Ratio:	365 Adj.	Ratio:
65	749	107	1443	110

R E F **K** **U-2 Coalition 206C**
 BD: 01/23/15 18626847

Connealy Consensus 7229
HF Syndicate 213Z
 HF Miss Blackcap 27R
 Young Dale Xclusive 25X
U2 Erelite 109Z
 U-2 Erelite 1X



EPD's	
CED	9
BW	0.8
WW	58
YW	116
Milk	23

Act. BW	205 Adj.	365 Adj.
83	814	1582

R E F **I** **B Bar Windy 7 3575**
 BD: 02/20/15 18137181

Crook Mt Really Windy 141
B Bar Windy 79
 B Bar Lady Jewel 116
 B Bar Rainmaker 9601
B Bar Eulima 357
 B Bar Eulima 970

EPD's	
CED	13
BW	-3.3
WW	58
YW	102
Milk	23

Act. BW	205 Adj.	Ratio:	365 Adj.	Ratio:	ADG:	Ratio:
82	779	104	1307	104	3.30	104

R E F **L** **GLC Stout 319**
 BD: 03/23/19 19431663

V D A R Black Cedar 8380
V D A R Stout 1623
 V D A R Lass 3180
 SydGen C C & 7
Garrigan C C & 7 944
 Miss JT Queen 944

EPD's	
CED	6
BW	2.2
WW	55
YW	98
Milk	23

Act. BW	205 Adj.	Ratio:	365 Adj.	Ratio:
91	624	98	1123	99



R E F **M** **VDAR Sonny Boy 5329**
 BD: 01/19/19 19447295

V D A R Hero 7072
V D A R Sonny Boy 1194
 V D A R Lass 2582
 Koupal Juneau 797
V D A R Lass 4331
 VDAR Lass 4617

EPD's	
CED	6
BW	0.7
WW	64
YW	113
Milk	33

Act. BW	205 Adj.	365 Adj.
75	780	1250

"All Angus bulls will have Gene Seek results and Top Dollar qualifications available on sale day."

R E F N C-Bar Evolution 107Y
BD: 02/08/11 1474506

Beckton Cody V E023
TR Colt 45 UT806
 Beckton Coca L388 CK
 Brown Vacation H7106
LGS Abby 6895
 Brown-CBAR Ms Abigrace CC P7

EPD's		
CED	15	26%
BW	-3.5	22%
WW	60	53%
YW	107	33%
Milk	19	89%
ME	8	73%

ProS	HB	GM	Act. BW	205 Adj.	365 Adj.
19	22	26	76	729	1335
90%	89%	64%			

R E F Q WFL Merlin 018A
BD: 01/19/13 1628086

LIC Mission Statement P27
LJC Merlin T179
 Buf Crk Redpride N179
 Brown Commitment S7205
WFL Commitment 042Y
 WFL Jewelmaker 9024



EPD's		
CED	16	18%
BW	-4.6	10%
WW	81	4%
YW	132	5%
Milk	37	1%
ME	-2	33%

ProS	HB	GM	Act. BW	205 Adj.	Ratio:	365 Adj.	Ratio:
119	65	53	63	676	116	1156	111
45%	73%	24%					

R E F O LSF MEW X-Factor 6693D
BD: 01/20/16 3539025

A A R Ten X 7008 S A
Redhill Ten X 104U 190A
 Red Hill B571 Barmaid 104U
 LSF Takeover 9943W
MEW Covergirl 402B
 MEW Covergirl 213Z



EPD's		
CED	18	5%
BW	-5.6	5%
WW	73	15%
YW	118	16%
Milk	29	20%
ME	12	90%

ProS	HB	GM	Act. BW	205 Adj.	Ratio:	365 Adj.	Ratio:
120	49	71	62	783	129	1272	118
12%	55%	6%					

R E F R Forster Blockade E046
BD: 04/28/17 3859535

5L Defender 560-30B
5L Blockade 2218-30B
 5L Opal 656-2218
 Red SSS Endorse 639X
Forster Sadie 2019
 Forster Sadie 5068

EPD's		
CED	11	73%
BW	0.4	83%
WW	84	3%
YW	133	4%
Milk	19	89%
ME	-1	41%

ProS	HB	GM	Act. BW	205 Adj.	Ratio:	365 Adj.	Ratio:
112	92	20	77	731	120	1242	114
55%	23%	80%					

R E F P GLC New Wind 6028
BD: 03/06/18 4009836


Andras In Focus B152
Andras New Direction R240
 Andras Kuruba B111
 V D A R Cedar Wind 1064
S Bar U Jessie 602
 S Bar U Jessie 992



EPD's		
CED	15	18%
BW	-3.2	26%
WW	52	78%
YW	90	64%
Milk	15	97%
ME	-5	20%

ProS	HB	GM	Act. BW	205 Adj.	Ratio:	365 Adj.	Ratio:
119	63	55	71	632	109	1144	107
45%	76%	22%					



A sunset over a rural landscape. The sun is low on the horizon, casting a warm orange and yellow glow across the sky. In the foreground, there is a dark silhouette of a tree on the left and a long, low barn or structure in the middle ground. The background shows rolling hills under the bright sky.

The world is full of
beauty, but my favorite
view is the one through
my window.

**THANK YOU FOR YOUR SUPPORT AND
INTEREST IN OUR PROGRAM!**



16699 216th Ave.
Dupree, SD 57623

Check out our website,
WWW.GARRIGANCATTLE.COM,
for sale videos and more
information!