



SINCLAIR CATTLE  
COMPANY, INC.

## ANNUAL PRODUCTION SALE

MARCH 25, 2023 • 1:00 PM  
BUFFALO, WYOMING



Original N-Bar Genetics Working For You

Staying true  
to the Legacy



Original N-Bar Genetics Working For You

Staying true  
to the Legacy

Dear Friends,

It is our pleasure to invite you to our 19th Annual Bull Sale at Buffalo Livestock Marketing in Buffalo, Wyoming on Saturday March 25, 2023. We very much appreciate your interest in our program and the effort you make to attend our sale. The bulls we are offering on sale day will be the top end of 250 bulls we weaned in September. These bulls have endured a strict culling process for fertility, structural soundness, and genetic merit, which continues right up to the time they walk into the sale ring. We follow this same process in evaluating our cow herd. *Staying True to The Legacy* is more than a slogan to the Sinclair team. It is our mission to keep building on Emulation genetics that were started back in the 1950's. It's an honor and our job as stewards of these genetics to ensure the quality lives on.

We continue to test our own *line bred sires* in our herd. We have also recently introduced some proven herd sires from outside our genetic line: KG Justified and Connealy Spur. We are confident these additions along with two Junior herd sires, Reisig Longmire, and Connealy Gary will add additional quality to our program. The fundamental objective at Sinclair Cattle Company remains the same: to produce line bred, functional and easy calving Angus seed stock that will enhance the pure bred and commercial livestock industries.

The Bulls were fed at Veltkamp feedlot on a high roughage diet. Phil always does a great job for us. They will be there until Thursday, March 23rd at which time we will move them to Buffalo, Wyoming. You are more than welcome to look at them at the feedlot or at the auction barn where the bulls will be penned and ready for viewing late Thursday afternoon.

The commercial heifers are the middle cut out of the registered cows. They will remain at the feedlot in Manhattan, MT and will be shipped from there after the sale. Arrangements can be made with Phil Veltkamp to have him AI the heifers at the buyers cost. Please make AI arrangements through Logan Baker. A video of the heifers will be available on the SCC web page. We are confident these heifers will make excellent cows.

Sinclair Cattle Company is working hard to earn your business by making the improvements our customers have discussed with us. We offer quality bulls that exhibit profit building traits and predictable performance to help enhance your genetic program.

We appreciate your business and look forward to seeing you on Sale Day. Stop by anytime; Visitors are always welcome.

Sincerely,

J Duncan Smith, Owner

11:30 am Lunch | 1:00 pm Sale Begins

## ANNUAL PRODUCTION SALE

MARCH 25, 2023 • 1:00 PM  
BUFFALO LIVESTOCK MARKETING  
BUFFALO, WYOMING

Selling **132 Yearling Angus BULLS**  
**60 Reputation Commercial Open**  
**Replacement Heifers**

FRED SAUNDERS  
406-788-9331

LOGAN BAKER  
307-254-1477

LANCE CLINE  
785-564-1744

STEVE BLANKLEY II  
240-625-5415

MIKE BAZZLE  
540-421-7411

STAYING TRUE TO THE LEGACY • MATERNAL | PERFORMANCE | LONGEVITY

# SALE INFORMATION

## AUCTIONEER

Roger Jacobs 406-698-7686

## SALE DAY DIRECT BID

### SINCLAIR REPRESENTATIVE PHONES

Fred Saunders 406-788-9331  
Logan Baker 307-254-1477  
Lance Cline 785-564-1744  
Steve Blankley II 240-625-5415  
Mike Bazzle 540-421-7411

## BUFFALO LIVESTOCK MARKETING

Sale Day Phone 307-684-0789

## LIVESTOCK PUBLICATION REPS

Kurt Kangas 406-254-7576 American Angus Association  
Curt Cox 307-630-4604 Wyoming Livestock Roundup  
Alan Sears 970-396-752 Western Ag Reporter  
Brady Williams 605-580-5315 TriState Livestock News  
Jeff Thomas 406-581-8859 Prairie Star  
Devin Murnin 406-696-1502 Western Livestock Journal

## BIDS

Buyer may call or send their bids to any of the sale professionals listed above or directly to Sinclair Cattle Company. Complete satisfaction is guaranteed for cattle purchased sight unseen as well as all bulls sold.

## SALE LOCATION

Buffalo Livestock Marketing, Buffalo Wyoming

## VIDEOS

Videos of the sale offering available at [www.sinclaircattle.com](http://www.sinclaircattle.com) and [dvauction.com](http://dvauction.com)

## TERMS & CONDITIONS

Cash. All cattle sell under the standard terms & conditions as adopted by the American Angus Association printed in the back of this book.

## INSURANCE

Mortality Insurance representatives will be available sale day.

## SALE BLOCK

All announcements from the sale block on sale day take precedence over material printed in this sale book.

## SALE ORDER

Cattle will sell in catalog order. Updates will be posted on website and social media. This catalog represents the results of careful selection of this sale offering. We invite you to bid with confidence.

## FOOD

Coffee and donuts in the morning. A beef lunch provided starting at 11:30 am. Snacks and refreshments available Friday while viewing.

## CONVENIENCE BUYING

### Online Bids

DV Auction & Cattle USA

See inside back cover for details

Donation Lot is 100% giving to 4H and FFA

scan this code



This is where you will be able to view videos when they are ready.

## HOTELS:

These are all within a block or within walking distance of one another.

**Hampton Inn and Suites** 307-684-8899  
Holiday Inn Express 307-684-9900  
SureStay Plus Hotel 307-684-9564  
The Super 8 307-684-2531  
Buffalo Inn 307-684-7000  
Rodeway Inn 307-684-5505

### Downtown

The Historic Occidental Hotel 307-684-0451  
The Big Horn Motel 307-684-7822  
The Mansion House Inn 307-684-2218

Visit [buffalowyo.com](http://buffalowyo.com) to view places to dine and tour in and around Buffalo, Wyoming.



Special room rates have been arranged. Call 307-684-8899 by 3/21/23 to reserve your room.

## AIRPORTS SERVING BUFFALO, WYOMING:

Johnson County Airport, Buffalo 307-684-9672  
Campbell County Airport, Gillette 307-686-1042  
Sheridan County Airport, Sheridan 307-674-4222  
Natrona County Airport, Casper 307-472-6688  
Billings Logan International, 169 miles 2hr 40 min. drive

## EPDS

EPDs current as of 2/25/23



## SINCLAIR JUSTIFIED K555

REG: 20553718 | DOB: 02/16/22 | TATTOO: K555

Connealy Judgment  
**KG Justified 3023** 17707279#  
 KG Miss Magic 1443

Connealy Consensus 7229#  
 Entrine of Conanga 9876#  
 Sitz Wisdom 481T#  
 KG Miss Magic 3528

N Bar Emulation EXT#  
**Sinclair Lady 0X13 3M18** 20037065  
 Sinclair Lady 3M18 4465#

Emulation N Bar 5522#  
 N Bar Primrose 2424  
 N Bar Moderation 9957  
 Ideal 4465 of 6807 4286

Individual Performance					EPD's				
BW	ADJ. WW	WR	ADJ. YW	YR	CED	BW	WW	MILK	YW
76	671	124	1161	114	7	-3	61	28	102
Individual Performance				Mat	\$ Values				
ADG	Act. IMF	REA/100 lbs	\$EN	\$M	\$W	\$F	\$G	\$B	
3.60	2.97	1.12	-11	72	61	70	41	111	
<b>Dam's Production</b> WR: 1 @ 124					YR: 1 @ 114				

K555 is a once-in-a-lifetime opportunity kind of bull with excellent herdsire credentials beginning with his rock-solid maternal heritage. A standout since day one and at weaning, K555 continued to jump through all the hoops recording a 124 WR and a 114 YR with a 113 RE ratio. His 76 lb. bw suggests he should be an ideal "go to" heifer sire. 555 is a high volumed, thick-ended bull who is smooth-shouldered and neat-fronted. His dam, 0X13, is a magnificent EXT daughter that will impress the most astute cattleman. The grandam, 3M18, was a featured donor for both Sinclair and ZWT in Tennessee for many years. The Ideal 4465 cow family needs no introduction as volumes can be written on their success in the Angus breed. This is one unique breeding tool whose dam offers an outcross to many of today's popular bloodlines. Sinclair Cattle Co is **retaining one-half interest** in K555, and will work with the buyer to have semen collected prior to delivery.

**BIG TIME ONE  
 OF A KIND  
 HERDSIRE!**



THE ICONIC IDEAL 4465, THE SINCLAIR FOUNDATION LADY AND THE THIRD DAM OF K555.



SINCLAIR LADY 3M18 4465, THE POWERFUL FOUNDATION GRANDAM OF K555.



**SINCLAIR JUSTIFIED K290**  
 REG: \*20400550 | DOB: 03/04/22 | TATTOO: K290

Connealy Judgment  
**KG Justified 3023** 17707279#  
 KG Miss Magic 1443

Connealy Consensus 7229#  
 Entrine of Conanga 9876#  
 Sitz Wisdom 481T#  
 KG Miss Magic 3528

Sinclair X-Plus 3XX20  
**Sinclair Primrose 5PX13 2XR4#** 18152673  
 Sinclair Primrose 2XR4 0A14

Sinclair Emulation XXP#  
 Sinclair Primrose 5R47 D011  
 Sinclair Emulation X 8X17  
 Sinclair Primrose 0A14 8R5

Individual Performance					EPD's				
BW	ADJ. WW	WR	ADJ. YW	YR	CED	BW	WW	MILK	YW
83	690	114	1154	112	9	-1.2	57	29	100
Individual Performance				Mat	\$ Values				
ADG	Act. IMF	REA/100 lbs	\$EN	\$M	\$W	\$F	\$G	\$B	\$C
3.04	3.35	1.02	-10	81	58	74	48	122	

**Dam's Production** WR: 6 @ 107 YR: 2 @ 109

An excellent calving ease herdsire prospect that offers outstanding performance is what K590 is all about. Check out his outstanding BW, WW, YW, IMF, and REA ratios. His dam is a model XXP daughter with an excellent disposition and is easy fleshing.

**TOP SHELF  
 CURVE BENDER!**

**REF  
 SIRE**

**KG JUSTIFIED 3023#**  
 REG: 17707279 | DOB: 1/21/2013 | TATTOO: 3023

KG Miss Magic 1443#  
**Connealy Judgment** 17031468  
 Entrine of Conanga 9876#

Connealy Consensus#  
 Blue Lilly of Conanga 16  
 Rito 6EMA of 4L3 Emblazon#  
 Entrance of Conanga 206#

Sitz Wisdom 481T#  
**KG Miss Magic 1443** 17127788  
 KG Miss Magic 3528

Connealy Onward#  
 Sitz Elluna Elite 94P  
 KG Traveler 8180 8171  
 KG Miss Magic 6560

CED	BW	WW	YW	SC	MILK	DOC	MARB	REA	\$M	\$W	\$F	\$B	\$C
12	-2.0	61	108	1.74	30	22	1.16	.31	93	80	71	140	275

After seeing Justified at stud, we felt he would really enhance our program from a phenotype and consistency standpoint. This is the second year of large sire group of Justified sons, and the extreme consistency is for real. They maintain light birth weight and well above average growth and carcass traits. He is a \$M leader and offers added milk as well. They are a good-footed, do-it-all kind of bulls. We collected a couple sale feature sons last year and used them back in the program. His first daughters in production at Sinclair are brood cows deluxe!



# A NO HOLES HERDSIRE BY 9P31!



**SINCLAIR JUSTIFIED K013**  
REG: 20553732 | DOB: 02/23/22 | TATTOO: K013

Individual Performance					EPD's				
BW	ADJ. WW	WR	ADJ. YW	YR	CED	BW	WW	MILK	YW
ET	661	115	1178	112	8	-1.2	56	32	100

Individual Performance				Mat	\$ Values				
ADG	Act. IMF	REA/100 lbs	SEN	\$M	\$W	\$F	\$G	\$B	
3.63	3.72	.97	-7	75	62	76	54	130	

Dam's Production WR: 11 @ 106 YR: 9 @ 107

Connealy Judgment  
**KG Justified 3023** 17707279#  
 KG Miss Magic 1443



N Bar Prime Time D806#  
**Sinclair K Bty 9P31 V149#** 16361083  
 N Bar Kinochtry Beauty 4317#

Connealy Consensus 7229#  
 Entrine of Conanga 9876#  
 Sitz Wisdom 481T#  
 KG Miss Magic 3528  
 Gardens Prime Time#  
 N Bar Miss Emulous A404  
 Leachman Bold Driver#  
 N Bar Kinochtry Beauty 2414

K012, K013, K011, and K015 are an exceptional flush of full brothers who offer unequalled cow-making potential right from the heart of the program. Their dam, 9P31, is a herd favorite and



**SINCLAIR JUSTIFIED K012**  
REG: 20553729 | DOB: 02/23/22 | TATTOO: K012

Individual Performance					EPD's				
BW	ADJ. WW	WR	ADJ. YW	YR	CED	BW	WW	MILK	YW
ET	567	100	1145	100	8	-1.2	48	32	88

Individual Performance				Mat	\$ Values				
ADG	Act. IMF	REA/100 lbs	SEN	\$M	\$W	\$F	\$G	\$B	
4.14	2.98	1.01	1	75	60	72	52	124	

Dam's Production WR: 11 @ 106 YR: 9 @ 107

the last daughter of the famed "V149" cow in the Sinclair herd. She is also the dam of Sinclair Exquisite 9X6, sold in 2020 to Don Abarr, MN, and dam of Sinclair Executive 7U43, a top seller in 2018 to Triangle S Ranch, SD. V149 was an iconic producer and nearly ideal in her type and kind with a perfect udder and was an outstanding producer. From the looks of Justified daughters we are calving, these brothers should be valuable breeding tools for replacement females in any herd or environment if you are serious about raising longevity-oriented, range-adapted females. Sinclair is **retaining one-half interest** in lot 3, (K013) and would like to work with the buyer on getting semen collected prior to delivery.

# 9P31'S CALVING EASE COWMAKER!





## THE SINCLAIR PROGRAM HERDSIRE!



**SINCLAIR JUSTIFIED K011**  
 REG: 20553726 | DOB: 02/22/22 | TATTOO: K011

Individual Performance						EPD's				
BW	ADJ. WW	WR	ADJ. YW	YR	CED	BW	WW	MILK	YW	
ET	640	100	1136	100	8	-1.2	48	32	88	
Individual Performance				Mat	\$ Values					
ADG	Act. IMF	REA/100 lbs	\$EN	\$M	\$W	\$F	\$G	\$B		
3.71	3.27	.96	1	75	60	72	53	125		
<b>Dam's Production WR: 11 @ 106 YR: 9 @ 107</b>										



**SINCLAIR JUSTIFIED K005**  
 REG: 20553722 | DOB: 02/15/22 | TATTOO: K005

Individual Performance						EPD's				
BW	ADJ. WW	WR	ADJ. YW	YR	CED	BW	WW	MILK	YW	
ET	579	101	1032	98	8	-2.1	45	32	81	
Individual Performance				Mat	\$ Values					
ADG	Act. IMF	REA/100 lbs	\$EN	\$M	\$W	\$F	\$G	\$B		
3.07	3.38	1.12	5	77	54	68	54	122		
<b>Dam's Production WR: 11 @ 106 YR: 9 @ 107</b>										



SINCLAIR K BTY 9P31 V149, THE 2ND GENERATION HERDSIRE PRODUCER AND DAM OF LOTS 3-6.



N BAR KINOCOTRY BEAUTY 4317, THE LEGENDARY MATERNAL GRANDAM OF LOTS 3-6.



7



### SINCLAIR JUSTIFIED K003

REG: 20553704 | DOB: 02/15/22 | TATTOO: K003

Connealy Judgment  
**KG Justified 3023** 17707279#  
 KG Miss Magic 1443

Connealy Consensus 7229#  
 Entrine of Conanga 9876#  
 Sitz Wisdom 481T#  
 KG Miss Magic 3528  
 Emulation N Bar 5522#  
 N Bar Primrose 2424  
 N Bar Moderation 9957  
 Ideal 4465 of 6807 4286

N Bar Emulation EXT#  
**Sinclair Lady 1X63 3M18** 16974000  
 Sinclair Lady 3M18 4465#

Individual Performance					EPD's				
BW	ADJ. WW	WR	ADJ. YW	YR	CED	BW	WW	MILK	YW
ET	671	100	1266	100	5	.1	62	27	104

Individual Performance				Mat	\$ Values				
ADG	Act. IMF	REA/100 lbs	\$EN	\$M	\$W	\$F	\$G	\$B	
4.10	3.93	1.04	-8	76	67	79	59	138	

**Dam's Production** WR: 5 @ 107 YR: 4 @ 103

Without question, K003 is the most powerful Justified son in this offering and possibly anywhere with an incredibly gentle disposition. He is at the upper echelon of his contemporaries on all phases of both performance and carcass traits. K003's dam, 1X63, is in the top 5 daughters of N Bar Emulation EXT for WW and YW and is an older full sister to 0X13, the dam of lot 1. 1X63 sold as an elite sale feature in the 2021 Sinclair Online Cow Sale to Brookhill Angus, KY. They are also full sisters to Sinclair Exquisite 0X2, an intriguing EXT son also owned by Brookhill. A unique opportunity to obtain a son of the powerful 1X63 donor. We are very excited about a full sister to K003 in the program. Sinclair Cattle Co is **retaining one-half interest** in K003 and will work with the buyer to have semen collected prior to delivery.

## JUSTIFIED'S FINEST!



SINCLAIR LADY 3M18 4465, THE POWERFUL FOUNDATION GRANDAM OF K555.



THE ICONIC IDEAL 4465, THE SINCLAIR FOUNDATION LADY AND THE THIRD DAM OF K555.



# JUSTIFIED POWER AND PERFORMANCE!



N BAR PRIMROSE Z1692, A CORNERSTONE FOUNDATION SINCLAIR PRIMROSE DONOR, AND THE GREAT GRANDAM OF LOT 8.



## SINCLAIR JUSTIFIED K590

REG: 20553678 | DOB: 02/22/22 | TATTOO: K590

Connealy Judgment  
KG Justified 3023 17707279#  
KG Miss Magic 1443

Sinclair X Changer 0FE35  
Sinclair Primrose 8EP21 2P12# 19166644  
Sinclair Primrose 2P12 B1#

Connealy Consensus 7229#  
Entrine of Conanga 9876#  
Sitz Wisdom 481T#  
KG Miss Magic 3528  
Sinclair Emulation 5522 XP#  
Sinclair K Bty 11P3 L234  
N Bar Prime Time D806#  
N Bar Primrose Z1692

Individual Performance					EPD's				
BW	ADJ. WW	WR	ADJ. YW	YR	CED	BW	WW	MILK	YW
90	668	123	1167	114	4	1.5	59	30	101
Individual Performance				Mat	\$ Values				
ADG	Act. IMF	REA/100 lbs	\$EN	\$M	\$W	\$F	\$G	\$B	
3.66	3.69	1.04	-7	69	57	70	44	113	
<b>Dam's Production</b> WR: 3 @ 113 YR: 2 @ 116									

A big-bodied, heavy-muscled Justified son from the illustrious Primrose cow family. K590 is a top performer and excels in carcass traits as proven by his ratios. His dam, 8EP21, is also at the top of her class with WR 3@113 and YR 2@116, and IMF and REA. Remember, success is bred in through generations of careful selection, not fed in.



## SINCLAIR JUSTIFIED K561

REG: 20553486 | DOB: 02/17/22 | TATTOO: K561

Connealy Judgment  
KG Justified 3023 17707279#  
KG Miss Magic 1443

N Bar Emulation EXT#  
Sinclair Miss Wix 0X10 2022 20045444  
Miss Wix 2022 HC Mc Cumber#

Connealy Consensus 7229#  
Entrine of Conanga 9876#  
Sitz Wisdom 481T#  
KG Miss Magic 3528  
Emulation N Bar 5522#  
N Bar Primrose 2424  
Leachman Right Time#  
Miss Wix 7111 of Mc Cumber

Individual Performance					EPD's				
BW	ADJ. WW	WR	ADJ. YW	YR	CED	BW	WW	MILK	YW
92	622	115	1144	112	3	2.2	60	28	106
Individual Performance				Mat	\$ Values				
ADG	Act. IMF	REA/100 lbs	\$EN	\$M	\$W	\$F	\$G	\$B	
3.81	3.58	1.04	-13	67	53	74	43	117	
<b>Dam's Production</b> WR: 1 @ 115 YR: 1 @ 112									

K561 carries an extremely proven Maternal pedigree that is backed by generations of performance. His young dam, 0X10, is a linebred Emulation daughter that's an exceptional producer weaning K561 with a 115 WR. This bull checks all the boxes!

# MATERNAL AND PERFORMANCE BY MISS WIX!



MISS WIX 2022 HC MC CUMBER, THE POWERFUL MATERNAL FOUNDATION GRANDAM OF LOT 9.





# SINCLAIR JUSTIFIED K330

REG: \*20400523 | DOB: 03/07/22 | TATTOO: K330

Connealy Judgment  
**KG Justified 3023** 17707279#  
KG Miss Magic 1443

Connealy Consensus 7229#  
Entrine of Conanga 9876#  
Sitz Wisdom 481T#  
KG Miss Magic 3528  
R R Rito 707#  
Ideal 4465 of 6807 4286  
N Bar Double Time D0116  
N Bar Enchantress 4908#

Sinclair Rito Legacy 3R9  
**Sinclair Enchantress 2RL7** 17255087  
N Bar Enchantress X4129

Individual Performance					EPD's				
BW	ADJ. WW	WR	ADJ. YW	YR	CED	BW	WW	MILK	YW
89	687	114	1116	109	5	.9	55	28	93
Individual Performance				Mat	\$ Values				
ADG	Act. IMF	REA/100 lbs		\$EN	\$M	\$W	\$F	\$G	\$B
2.76	3.82	1.15		-8	68	54	65	43	108

**Dam's Production** WR: 9 @ 105 YR: 5 @ 103

K330 is a massive Justified son out of 2RL7, an outstanding Rito Legacy daughter whose grandam is also the dam of N Bar Shadow. They've been top ratiing cows for generations. Buy with confidence; this bull will get the job done.



N BAR ENCHANTRESS X4129, THE FOUNDATION GRANDAM OF LOT 10 AND A MATERNAL SISTER TO N BAR SHADOW.

## Donation



With utmost gratitude, Sinclair Cattle Company supports our youth in agriculture. We are pleased to donate 100% of the proceeds of this semen offering equally to the Wyoming State 4H Foundation and Wyoming FFA Foundation.



**10 STRAWS**  
Sinclair In Time 6BT39



**10 STRAWS**  
Sinclair Boss



**10 STRAWS**  
N Bar Explosion



**5 STRAWS**  
Emulation N Bar 5522



11



**SINCLAIR GARY K293**

REG: \*20425658 | DOB: 03/04/22 | TATTOO: K293

Connealy Niobrara 5451  
 Connealy Gary 18869442  
 Hertha of Conanga 1639

Connealy Confidence Plus#  
 Britha of Conanga 167  
 Connealy Consensus#  
 Herra of Conanga 4462  
 Briar of Wye UMF 9024  
 Blackbird of Wye UMF 8623  
 N Bar Emulation Ext A1747  
 N Bar Lady Ida Z262

Bonheur of Wye UMF 9667  
**Sinclair Lady Ida 4WYE1 7V63** 17831622  
 Sinclair Laady Ida 7V63 B5

Individual Performance					EPD's				
BW	ADJ. WW	WR	ADJ. YW	YR	CED	BW	WW	MILK	YW
85	706	117	1212	118	2	1.1	66	23	115
Individual Performance				Mat	\$ Values				
ADG	Act. IMF	REA/100 lbs	SEN	\$M	\$W	\$F	\$G	\$B	SC
3.36	3.64	1.12	-18	48	56	83	40	122	
<b>Dam's Production WR: 6 @ 104 YR: 4 @ 103</b>									

K293 is a first-class herdsire prospect with a different pedigree twist of blending performance with maternal. A moderate bw bull that charts outstanding performance and carcass trait ratios backed by a proven producer. If you feed cattle for a living or sell your calves by the pound, these Gary sons fit the bill. Their daughters turn into fancy replacement females as well.

**A CHECKS ALL THE BOXES  
 HERDSIRE PROSPECT!**



**REF  
 SIRE**

**CONNEALY GARY**

REG: 18869442 | DOB: 01/21/17 | TATTOO: 7293

Connealy Confidence Plus  
**Connealy Niobrara 5451** 18227124  
 Britha of Conanga 167

Connealy Consensus  
**Hertha of Conanga 1639** 17063920  
 Herra of Conanga 4462

Connealy Confidence 0100  
 Elbanna of Conanga 1209  
 Connealy Answer 7304  
 Bristy of Conanga 9283  
 KMK Alliance 6595 187  
 Blinda of Conanga 004  
 Connealy Danny 5398  
 Harrah of Conanga 578

CED	BW	WW	YW	SC	MILK	DOC	MARB	REA	\$M	\$W	\$F	\$B	SC
5	1.9	84	159	1.24	21	28	.64	.68	63	76	120	169	282

Connealy Gary was selected to enhance performance, muscle, docility, scrotal circumference and ribeye in the Sinclair females. We feel he has complimented the Sinclair gene pool very well. The sons are big, stout, heavy muscled bulls that will make a lot of friends sale day. His daughters are among the top of the replacement pen. Use Gary sons to give your herd a "boost" without sacrificing any given traits.



**12 SINCLAIR GARY K007**  
 REG: 20559401 | DOB: 02/17/22 | TATTOO: K007  
 Connealy Niobrara 5451  
**Connealy Gary** 18869442  
 Hertha of Conanga 1639  
 Connealy Confidence Plus#  
 Britha of Conanga 167  
 Connealy Consensus#  
 Herra of Conanga 4462  
 N Bar Emulation EXT#  
 N Bar Blackbird 4307#  
 N Bar Nighthawk  
 N Bar Lady Ida 4360

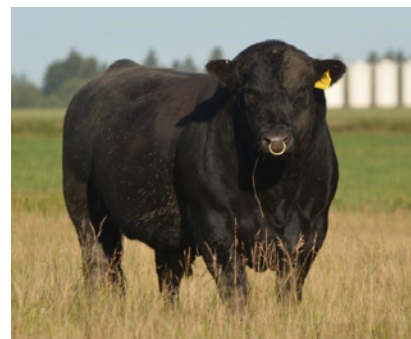
Individual Performance					EPD's				
BW	ADJ. WW	WR	ADJ. YW	YR	CED	BW	WW	MILK	YW
ET	617	100	1265	100	4	.3	60	26	107
Individual Performance				Mat	\$ Values				
ADG	Act. IMF	REA/100 lbs	SEN	\$M	\$W	\$F	\$G	\$B	
4.41	3.54	1.02	-14	49	60	87	43	130	

**Dam's Production WR: 11 @ 109 YR: 10 @ 107**

Sinclair is **retaining one-half interest** in lot 12, (K007) and would like to work with the buyer on getting semen collected prior to delivery.

Premier Herdsire Prospect! K Double 07 and his full brother K014 are the product of ET from a most treasured cow in the herd, the great Lady Ida 8XV12 who has earned a most impressive production record the old-fashioned way; out on the range and breeding back in a timely manner every year while raising herdsires. Notable sons of 8XV12 include Sinclair Broker 3RC33, a past high seller to Chapman Cattle Co, Canada and Sinclair Executive 9UF3, the second high seller of the 2020 sale to Don Abarr, MN. She is enrolled in the ET program again this spring to make some very coveted daughters. K007 is a bold-sprung, big-ribbed, high-volumed cowmaker who displays excellent carcass ratios as well as added docility and calving ease. Our first Gary daughters in production have well exceeded our expectations, and with the added maternal influence of EXT V722, this mating should be a home run!

***BIG TIME HERDSIRE  
 BY THE LEGENDARY  
 8XV12!***





13



**SINCLAIR GARY K014**  
 REG: 20559404 | DOB: 02/25/22 | TATTOO: K014

Connealy Niobrara 5451  
**Connealy Gary** 18869442  
 Hertha of Conanga 1639



N Bar Emulation Ext V722  
**Sinclair Lady Ida 8XV12 C52#** 16026999  
 N Bar Lady Ida Z1453

Connealy Confidence Plus#  
 Britha of Conanga 167  
 Connealy Consensus#  
 Herra of Conanga 4462  
 N Bar Emulation EXT#  
 N Bar Blackbird 4307#  
 N Bar Nighthawk  
 N Bar Lady Ida 4360

Individual Performance					EPD's				
BW	ADJ. WW	WR	ADJ. YW	YR	CED	BW	WW	MILK	YW
ET	674	100	1252	100	4	.3	60	26	107

Individual Performance				Mat	\$ Values				
ADG	Act. IMF	REA/100 lbs	SEN	SM	\$W	\$F	\$G	\$B	
4.35	3.74	1.03	-14	49	60	87	45	132	

**Dam's Production WR: 11 @ 109 YR: 10 @ 107**

K014 is the total performance herdsire prospect with a rich maternal N Bar heritage. He blew away his contemporaries on gain in the development phase. This is an outstanding individual to make tremendous females that raise heavy calves without sacrificing any maternal or carcass traits. His dam, 8XV12's production record is impeccable. Seize the opportunity to buy from the top of the program! Don't miss this rare chance to own a top-notch direct 8XV12 son!

**THE PERFORMANCE KING!**



SINCLAIR EXECUTIVE 9UF3, A MATERNAL BROTHER TO LOTS 12 AND 13.





14

**A TRUE MATERNAL BEEF MACHINE!**



**14 SINCLAIR GARY K592**

REG: \*20559306 | DOB: 02/22/22 | TATTOO: K592

Connealy Niobrara 5451  
**Connealy Gary** 18869442  
 Hertha of Conanga 1639

Sinclair Exactly 4U2  
**Sinclair Entense 8UR16 Y728** 19169666  
 Sinclair Entense Y728

Individual Performance					EPD's				
BW	ADJ. WW	WR	ADJ. YW	YR	CED	BW	WW	MILK	YW
90	672	111	1288	125	1	2.6	72	24	136
Individual Performance				Mat	\$ Values				
ADG	Act. IMF	REA/100 lbs	\$EN	\$M	\$W	\$F	\$G	\$B	
3.98	3.04	.93	-32	57	53	94	30	124	

**Dam's Production WR: 2 @ 114 YR: 2 @ 115**

A huge-bodied, female-making machine with worlds of performance backed by some of the finest maternal genetics in the business. K592's young dam, 8UR16, is one of our very top production daughters of 4U2, posting WR 2@114 and YR 2@115. He is backed by generations of elite cows including his grandam and great grandam, the immortal Shadybrook Ever Entense 491G, whose progeny are some of the most prized maternal possessions in the breed.



SINCLAIR INTENSE J659, AN OUTSTANDING MATERNAL BROTHER TO LOT 14 FEATURED IN THE 2022 SALE.



SHADY BROOK ENTENSE 491G, THE FORMER \$320,000 WORLD-RECORD SELLING COW AND MATERNAL GRANDAM OF LOT 14.



**15 SINCLAIR GARY K342**

REG: \*20425654 | DOB: 03/10/22 | TATTOO: K342

Connealy Niobrara 5451  
**Connealy Gary** 18869442  
 Hertha of Conanga 1639

Sinclair Preview 2TL6  
**Sinclair Ms Emulous 7TA9** 18826212  
 Sinclair Ms Emulous 2G18#

Connealy Confidence Plus#  
 Britha of Conanga 167  
 Connealy Consensus#  
 Herra of Conanga 4462  
 Sinclair Timeless 8BA4#  
 Sinclair K Bty 0A3 7XT55  
 Sinclair Grass Master#  
 Sinclair Ms Emulous 5PV72

Individual Performance					EPD's				
BW	ADJ. WW	WR	ADJ. YW	YR	CED	BW	WW	MILK	YW
98	744	123	1200	117	-2	3.0	73	23	126
Individual Performance				Mat	\$ Values				
ADG	Act. IMF	REA/100 lbs	\$EN	\$M	\$W	\$F	\$G	\$B	
3.10	2.88	1.07	-18	66	56	86	32	118	

**Dam's Production WR: 4 @ 104 YR: 1 @ 117**



16

## A MAGNIFICENT BLEND OF RAINMAKER AND EMULATION!



### SINCLAIR RAINMAKER K16

REG: \*20424349 | DOB: 02/09/22 | TATTOO: K16

Sitz Rainmaker 8075  
**Sitz Rainmaker 11127** 15734469#  
 Sitz Emma E 417L

Sinclair Emulation XXP#  
**Sinclair Blkbird 4XX11 0A15** 17802210  
 Sinclair Blkbird 0A15 8R41

Sitz Rainmaker 6169#  
 Sitz Erica Everelda 3172#  
 Sitz Traveler 5556#  
 Sitz Emma E 1336  
 N Bar Emulation EXT#  
 N Bar Primrose Y3051#  
 Emulation 31#  
 Sinclair Blkbird 8R41 5P101

Individual Performance					EPD's				
BW	ADJ. WW	WR	ADJ. YW	YR	CED	BW	WW	MILK	YW
79	646	107	1163	113	5	1.1	57	26	112

Individual Performance				Mat		\$ Values				
ADG	Act. IMF	REA/100 lbs		SEN	SM	\$W	\$F	\$G	\$B	
3.43	3.23	.91		-20	73	48	95	37	132	

**Dam's Production WR: 7 @ 102 YR: 6 @ 106**

Herd sire prospect. K16 is a calving ease, balanced trait prospect that excels from birth to yearling. He is backed by proven Emulation sires that have stood the test of time. His moderate framed, easy fleshing, beautiful uddered dam's combined birth ratio is 7@95. We've been very pleased in the 11127 progeny thus far and are excited to see his females in production come next spring.

SINCLAIR  
 EMULATION XXP,  
 THE INFLUENTIAL  
 SINCLAIR  
 PATHFINDER SIRE  
 AND MATERNAL  
 GRANDSIRE OF  
 LOT 16



**REF  
 SIRE**

### SITZ RAINMAKER 11127#

REG: 15734469 | DOB: 4/10/07 | TATTOO: 11127

Sitz Rainmaker 6169#  
**Sitz Rainmaker 8075** 14949299  
 Sitz Erica Everelda 3172

Sitz Traveler 5556  
**Sitz Emma E 417L** 13945988  
 Sitz Emma E 1336

Sitz Rainmaker 8987  
 Sitz Barbaramere Jet 3007  
 Sitz Focus 121K  
 Sitz Erica Everelda 2039  
 Traveler 124 G D A R  
 Sitz Everelda Entense 1137  
 Leachman Right Time  
 Sitz Emma E 611

CED	BW	WW	YW	SC	MILK	DOC	MARB	REA	\$M	\$W	\$F	\$B	\$C
1	3.4	67	130	1.85	32	42	63	.51	78	65	106	156	280

11127 is a highly proven performance sire that adds a stacked maternal pedigree, docility, fertility, and carcass traits. The results on crossing 11127 on the Sinclair herd have proven very successful thus far. The Emulation x Rainmaker Cross is extremely intriguing.

**MUSCLE AND  
MATERNAL  
BY 11127!**



**SINCLAIR RAINMAKER K144**

REG: \*20424364 | DOB: 03/04/22 | TATTOO: K144

Sitz Rainmaker 8075  
**Sitz Rainmaker 11127** 15734469#  
Sitz Emma E 417L

Dunlouse Jipsey Earl E161#  
**Sinclair Blacky OXT41 8SV32** 16660448  
Sinclair Blacky 8SV32 6P18

Sitz Rainmaker 6169#  
Sitz Erica Everelda 3172#  
Sitz Traveler 5556#  
Sitz Emma E 1336  
Betro of Classlochie  
Dunlouse Jipsey Clova C095  
Sinclair Telecast 0153  
Sinclair Blacky 6P18 J126

Individual Performance					EPD's				
BW	ADJ. WW	WR	ADJ. YW	YR	CED	BW	WW	MILK	YW
89	632	105	1136	111	4	1.9	48	31	89
Individual Performance				Mat	\$ Values				
ADG	Act. IMF	REA/100 lbs	SEN	\$M	\$W	\$F	\$G	\$B	
3.21	2.76	1.02	-8	82	46	81	28	108	

**Dam's Production WR: 11 @ 103 YR: 8 @ 100**

K144 is a really thick, big-hipped, high-volume kind of bull that is good footed and will last a long time. His dam is a problem-free longevity-oriented cow that has proven herself to have 11 calves ratio 103 at weaning. Really solid genetics here.



**SINCLAIR RAINMAKER K274**

REG: \*20424350 | DOB: 03/02/22 | TATTOO: K274

Sitz Rainmaker 8075  
**Sitz Rainmaker 11127** 15734469#  
Sitz Emma E 417L

Sinclair Pioneer 1RF1  
**Sinclair Lady Ida 3RM38** 17748709  
Sinclair Lady Ida 1JP16 9RD2#

Sitz Rainmaker 6169#  
Sitz Erica Everelda 3172#  
Sitz Traveler 5556#  
Sitz Emma E 1336  
PBC 707 1M F0203#  
N Bar Miss Emulous A404  
Dunlouse Jipsey Earl E161#  
Sinclair Lady Ida 9RD2 7RL2#

Individual Performance					EPD's				
BW	ADJ. WW	WR	ADJ. YW	YR	CED	BW	WW	MILK	YW
89	632	105	1093	107	5	1.6	47	31	84
Individual Performance				Mat	\$ Values				
ADG	Act. IMF	REA/100 lbs	SEN	\$M	\$W	\$F	\$G	\$B	
3.06	3.19	.94	-3	83	47	70	29	98	

**Dam's Production WR: 8 @ 102 YR: 7 @ 100**

This ruggedly designed, sound structured prospect checks the boxes for added docility, milking ability, fertility, and performance. His Lady Ida dam is a maternal specialist and a solid producer every year.

**THICKNESS  
AND FLESHING  
ABILITY  
RAINMAKER  
STYLE!**







**TIMELESS  
PERFORMANCE  
11127  
GENETICS!**

19

**19 SINCLAIR RAINMAKER K50**  
REG: \*20424346 | DOB: 02/14/22 | TATTOO: K50

Sitz Rainmaker 8075  
**Sitz Rainmaker 11127** 15734469#  
Sitz Emma E 417L

Sinclair Timeless 8BA4#  
**Sinclair Primrose 5TL32 3RC1#** 18154081  
Sinclair Primrose 3RC1 7FF4

Sitz Rainmaker 6169#  
Sitz Erica Everelda 3172#  
Sitz Traveler 5556#  
Sitz Emma E 1336  
Sinclair IN Time 6BT39  
Sinclair Blackbird 2P8 7079#  
Sinclair Entrepreneur 8R101  
Sinclair Primrose 7FF4 A14

Individual Performance					EPD's				
BW	ADJ. WW	WR	ADJ. YW	YR	CED	BW	WW	MILK	YW
86	650	108	1253	122	5	1.5	58	31	119
Individual Performance				Mat	\$ Values				
ADG	Act. IMF	REA/100 lbs	SEN	\$M	\$W	\$F	\$G	\$B	
3.83	3.59	.91	-28	51	52	98	40	138	

**Dam's Production** WR: 5 @ 107 YR: 2 @ 117

This performance powerhouse ratioed 122 for YW out of an extremely stout and productive Timeless daughter and still has a very balanced EPD profile. The Primrose cows always get the job done. Serious performance breeders take notice.

**20 SINCLAIR RAINMAKER K263**  
REG: \*20424359 | DOB: 03/01/22 | TATTOO: K263

Sitz Rainmaker 8075  
**Sitz Rainmaker 11127** 15734469#  
Sitz Emma E 417L

N Bar Prime Time D806#  
**Sinclair Ms Emulous 2P6 D47** 17218793  
N Bar Miss Emulous B514

Sitz Rainmaker 6169#  
Sitz Erica Everelda 3172#  
Sitz Traveler 5556#  
Sitz Emma E 1336  
Gardens Prime Time#  
N Bar Miss Emulous A404  
N Bar Emulation Extra V129  
N Bar Miss Emulous Y3502A

Individual Performance					EPD's				
BW	ADJ. WW	WR	ADJ. YW	YR	CED	BW	WW	MILK	YW
88	689	114	1183	115	3	1.8	57	30	112
Individual Performance				Mat	\$ Values				
ADG	Act. IMF	REA/100 lbs	SEN	\$M	\$W	\$F	\$G	\$B	
3.33	3.07	.91	-16	62	50	94	41	135	

**Dam's Production** WR: 9 @ 102 YR: 7 @ 108

A high octane 11127 son out of a proven N Bar bred cow that never misses.



SINCLAIR TIMELESS 8BA4, THE PATHFINDER MATERNAL GRANDSIRE OF LOT 19.



SINCLAIR EMULATION J87, A FEATURED SON OF SINCLAIR X-PLUS 8XX3 AND MATERNAL BROTHER TO LOT 19 FROM THE 2022 SALE TO MA AND PA ANGUS, SD.



SINCLAIR GARY J362, A PERFORMANCE POWERHOUSE AND A MATERNAL BROTHER TO LOT 20.



21



**SINCLAIR NIGHTHAWK K251**

REG: \*20400529 | DOB: 02/26/22 | TATTOO: K251

Ankonian Cornhusker#  
**N Bar Nighthawk** 11403481  
 N Bar Enchantress 4908#

Ankonian Cornerstone  
 Ankony 8F78 Erica 341B6  
 Basin Emulation 5953  
 Coffey Enchantress 424  
 PBC 707 1M F0203#  
 N Bar Miss Emulous A404  
 N Bar Emulation EXT#  
 Sinclair Lady 0653 4465

Sinclair Pioneer 1RF1  
**Sinclair Lady 3RM40 1X53** 17749572  
 Sinclair Lady 1X53 0653

Individual Performance					EPD's				
BW	ADJ. WW	WR	ADJ. YW	YR	CED	BW	WW	MILK	YW
79	660	109	1202	117	6	-7	41	26	77

Individual Performance				Mat	\$ Values				
ADG	Act. IMF	REA/100 lbs	\$EN	\$M	\$W	\$F	\$G	\$B	
3.01	3.70	1.00	-7	53	40	69	29	98	

Dam's Production **WR:** 8 @ 100 **YR:** 5 @ 95

Top Herdsire Prospect! K251 blends some of the finest maternal genetics in the breed into one intriguing package. He's a calving ease bull who is at the top of the pack for performance, and is a thick, stylish bull that really demands your attention in the sale pen. The dam, 3RM40, is a moderate framed, high volumed cow that is easy fleshing and has excellent mothering instincts. His sire, Nighthawk, a maternal brother to N Bar Shadow, made beautiful females that held up well for many years. Tom Elliott once described Nighthawk as "Walking Romance". K251 is a true multi-trait improver!

**OLD SCHOOL MATERNAL,  
 MODERN DAY PERFORMANCE!**



SINCLAIR LADY 0653 4465, THE POWERFUL GREAT GRANDAM OF K251



THE LEGENDARY IDEAL 4465, THE SINCLAIR FOUNDATION LADY AND THE THIRD DAM OF LOT 21.



**REF SIRE N BAR NIGHTHAWK**

REG: **11403481** | DOB: **03/02/90** | TATTOO: **Z276**

Ankonian Cornerstone  
**Ankonian Cornhusker** 9785532#  
 Ankony 8F78 Erica 341B6

Schearbrook Conductor N137  
 Ankony B999 Lass 160B4  
 Ankonian Dynamo 27542  
 Ankony B999 Lass 58352  
 N Bar Emulation 8520  
 Basin Pamela 2161  
 Jetliner 707 of Conanga#  
 Coffey Enchantress 1032

Basin Emulation 5953  
**N Bar Enchantress 4908#** 11074978  
 Coffey Enchantress 424

CED	BW	WW	YW	SC	MILK	DOC	MARB	REA	SM	SW	\$F	\$B	\$C
-4	1.7	30	64	1.16	34	-7	.23	-.23	22	32	70	91	140

Nighthawk is a time-tested maternal and performance sire of phenomenal females that are hard to fault. His sons should sire productive females that last in the herd. Nighthawk's avg progeny ratios are: CE 1.2 BW 101 WW 99 YW 101 IMF 106, and has 103 daughters with a whopping combined nursing ratio of 103.

**22 SINCLAIR NIGHTHAWK K331**  
 REG: \*20400543 | DOB: 03/08/22 | TATTOO: K331

Ankonian Cornhusker#  
**N Bar Nighthawk** 11403481  
 N Bar Enchantress 4908#

Ankonian Cornerstone  
 Ankony 8F78 Erica 341B6  
 Basin Emulation 5953  
 Coffey Enchantress 424

Sinclair Emulation 5522 XP#  
**Sinclair Lady Ida 5FE16** 18152701  
 Sinclair Lady Ida OJP29 855

Emulation N Bar 5522#  
 N Bar Primrose Y3051#  
 Dunlouse Jipsey Earl E161#  
 Sinclair Lady Ida 855 6PV1

Individual Performance					EPD's				
BW	ADJ. WW	WR	ADJ. YW	YR	CED	BW	WW	MILK	YW
93	678	112	1120	109	-2	2.0	43	29	74

Individual Performance				Mat				\$ Values			
ADG	Act. IMF	REA/100 lbs	SEN	SM	SW	\$F	\$G	\$B	\$C		
3.09	2.39	.94	-6	42	42	57	19	76			

**Dam's Production WR: 4 @ 103 YR: 2 @ 103**

**23 SINCLAIR NIGHTHAWK K273**  
 REG: \*20400538 | DOB: 03/02/22 | TATTOO: K273

Ankonian Cornhusker#  
**N Bar Nighthawk** 11403481  
 N Bar Enchantress 4908#

Ankonian Cornerstone  
 Ankony 8F78 Erica 341B6  
 Basin Emulation 5953  
 Coffey Enchantress 424

Sinclair Executive 9XV2  
**Sinclair Blkcap 4U5 602** 17830666  
 Sinclair Blkcap 602 A26

N Bar Emulation Ext V722  
 N Bar Primrose Y3051#  
 Sinclair Pioneer 1F3  
 Rito Majesty 4A26 of F0203

Individual Performance					EPD's				
BW	ADJ. WW	WR	ADJ. YW	YR	CED	BW	WW	MILK	YW
83	680	113	1107	108	5	-.1	38	28	71

Individual Performance				Mat				\$ Values			
ADG	Act. IMF	REA/100 lbs	SEN	SM	SW	\$F	\$G	\$B	\$C		
2.79	2.78	.90	-5	51	39	60	23	83			

**Dam's Production WR: 7 @ 98 YR: 6 @ 102**



SINCLAIR EMULATION 5522 XP, THE HIGHLY MATERNAL GRANDSIRE OF LOT 22.



  
**CattleUSA**  
 Online Casting Live Cattle Auctions  
  
**CONVENIENCE BUYING**  
 Online Bids  
 DV Auction & Cattle USA  
 See inside back cover for details  
  
  
 Broadcasting Real-Time Auctions



**REF SIRE REISIG LONGMIRE 8326**  
 REG: 19448009 | DOB: 08/30/18 | TATTOO: 8326

Rito 707 of Ideal 3407 7075  
**S AV Renown 3439** 17633839#  
 S AV Blackcap May 4136  
 N Bar Emulation EXT#  
**BUF Eriskay 7417** 16118882  
 J Bar 7 Eriskay Q13-71K1#

R R Rito 707#  
 Ideal 3407 of 1418 076  
 S AV 8180 Traveler 004#  
 S AV May 2397#  
 Emulation N Bar 5522#  
 N Bar Primrose 2424  
 Sitz Traveler 8180#  
 E F Eriskay Q13 7107

CED	BW	WW	YW	SC	MILK	DOC	MARB	REA	SM	SW	SF	SB	SC
8	-1.1	36	72	.72	22	18	-.06	.58	54	32	51	70	145

Longmire was purchased from Reisig Cattle to add the Rito influence while still enhancing EXT to another generation. His proven dam carried a stacked pedigree of proven maternal and performance giants for many generations. His first daughters are now in production and are the favorite sire group of 2 yr olds. Don't overlook the Longmire sons!

**PREEMINENT ERISKAY  
 HERDSIRE PROSPECT!**



**24 SINCLAIR LONGMIRE K504**  
 REG: 20546270 | DOB: 02/07/22 | TATTOO: K504

S AV Renown 3439#  
**Reisig Longmire 8326** 19448009  
 BUF Eriskay 7417  
 Basin Rainmaker 654X#  
**Sinclair Eriskay 502 2N1#** 18313177  
 Sinclair Eriskay 2N1 7883#

Rito 707 of Ideal 3407 7075  
 S AV Blackcap May 4136  
 N Bar Emulation EXT#  
 J Bar 7 Eriskay Q13-71K1#  
 Basin Rainmaker D S 380U#  
 Basin Bardolene 423U  
 D H D Traveler 6807#  
 Papa Eriskay 7883

Individual Performance					EPD's				
BW	ADJ. WW	WR	ADJ. YW	YR	CED	BW	WW	MILK	YW
90	609	113	1121	110	6	.4	42	29	83
Individual Performance					\$ Values				
ADG	Act. IMF	REA/100 lbs	SEN	Mat	\$M	\$W	\$F	\$G	\$B
3.64	2.51	1.11	-11		51	41	63	22	85

**Dam's Production WR: 6 @ 111 YR: 6 @ 110**

An intriguing herdsire prospect with a unique double-bred Eriskay pedigree. An own son of the herdsire producer, Eriskay 502, which is an exceptional daughter of the rare and valuable Basin Rainmaker 654X out of the performance queen, Eriskay 2N1. Sinclair Black Iron 9UR5, a 5O2 son, sold as a sale feature to Leadore Angus, ID in 2020. K504 is loaded with muscle mass and performance and is the most powerful Longmire son to date! Sinclair is **retaining one-half interest** in lot 24, (K504) and would like to work with the buyer on getting semen collected prior to delivery.



SINCLAIR ERISKAY 2N1, THE LEGENDARY PERFORMANCE QUEEN AND GRANDAM OF LOT 24.



MATERNAL BROTHER OF LOT 24, SINCLAIR BLACK IRON 9UR5, A TOP SELLER IN 2020 TO LEADORE ANGUS, ID.



Original N-Bar Genetics Working For You

# Staying true to the Legacy

## THE TOTAL PACKAGE BY LONGMIRE!



25



### SINCLAIR LONGMIRE K295

REG: \*20400566 | DOB: 03/04/22 | TATTOO: K295

S A V Renown 3439#  
Reisig Longmire 8326 19448009  
BUF Eriskay 7417

Rito 707 of Ideal 3407 7075  
S A V Blackcap May 4136  
N Bar Emulation EXT#  
J Bar 7 Eriskay Q13-71K1#

Sinclair Promise 4RP15  
Sinclair Blkbird 6RE29 OXM1# 18506492  
Sinclair Blkbird OXM1 8XV8

Sinclair Rito Promise OR12  
Sinclair Eriskay 5E3 2N11#  
N Bar Prime Time D806#  
Sinclair Blkbird 8XV8 5P21

Individual Performance					EPD's				
BW	ADJ. WW	WR	ADJ. YW	YR	CED	BW	WW	MILK	YW
89	658	109	1106	108	4	.4	46	24	85

Individual Performance				Mat		\$ Values			
ADG	Act. IMF	REA/100 lbs	\$EN	\$M	\$W	\$F	\$G	\$B	
2.91	2.79	1.13	1	62	41	63	25	88	

Dam's Production WR: 5 @ 105 YR: 4 @ 107

A really balanced, complete herdsire prospect, by a dam that knows how to raise the good ones every year. This is a thick-ended, deep-bodied bull that will be a cowman's dream. His dam, 6RE29, is a problem-free, consistently good producer each year. The first Longmire daughters in production are some of the very favorites of their calf crop.



SINCLAIR GARY J359, A MATERNAL BROTHER TO K295, AND WAS A FEATURED LOT IN THE 2022 SALE TO BROKEN B FARMS, MO.



### SINCLAIR LONGMIRE K580

REG: \*20549827 | DOB: 02/20/22 | TATTOO: K580

S A V Renown 3439#  
Reisig Longmire 8326 19448009  
BUF Eriskay 7417

Rito 707 of Ideal 3407 7075  
S A V Blackcap May 4136  
N Bar Emulation EXT#  
J Bar 7 Eriskay Q13-71K1#

N Bar Emulation Ext A1747  
Sinclair Lady Ida 9V10 3TL12 19602918  
Sinclair Lady Ida 3TL12 1XX9

N Bar Emulation EXT#  
N Bar Clova Pride U3031  
Sinclair Timeless 8BA4#  
Sinclair Lady Ida 1XX9 3541

Individual Performance					EPD's				
BW	ADJ. WW	WR	ADJ. YW	YR	CED	BW	WW	MILK	YW
90	638	106	1142	111	2	1.4	46	23	90

Individual Performance				Mat		\$ Values			
ADG	Act. IMF	REA/100 lbs	\$EN	\$M	\$W	\$F	\$G	\$B	
3.10	3.38	1.07	-12	60	37	73	19	92	

Dam's Production WR: 2 @ 101 YR: 1 @ 111

A top performer with outstanding ratios backed by EXT A1747 and the Lady Ida cow family for countless generations. A bull that enhances all traits in the right direction.



N BAR EMULATION EXT A1747, THE HIGH PERFORMANCE EXT SON AND MATERNAL GRANDSIRE OF LOT 26.

**27 SINCLAIR LONGMIRE K604**  
 REG: \*20548781 | DOB: 02/24/22 | TATTOO: K604

S A V Renown 3439#  
**Reisig Longmire 8326** 19448009  
 BUF Eriskay 7417

Rito 707 of Ideal 3407 7075  
 S A V Blackcap May 4136  
 N Bar Emulation EXT#  
 J Bar 7 Eriskay Q13-71K1#  
 Sinclair Deliverance 5U38  
 Sinclair Delia 1FE18 404  
 Sinclair Net Present Value#  
 Sinclair K Bty 6FA5 J495

Sinclair Delivery 7UD6  
**Sinclair K Bty 9UE4 8PV43** 19475364  
 Sinclair K Bty 8PV43 6FA5#

Individual Performance					EPD's				
BW	ADJ. WW	WR	ADJ. YW	YR	CED	BW	WW	MILK	YW
88	620	103	1132	110	4	1.3	48	21	88
Individual Performance				Mat	\$ Values				
ADG	Act. IMF	REA/100 lbs	SEN	\$M	\$W	\$F	\$G	\$B	
3.14	2.48	1.17	-7	65	39	68	16	84	

**Dam's Production WR: 2 @ 119 YR: 2 @ 111**

K604 is at the top of the Longmire pack. His dam is a stellar young cow with 2 WR @119. This is the kind of bull for producers who sell their calves at weaning and keep the finest replacements.

**29 SINCLAIR LONGMIRE K60**  
 REG: \*20419886 | DOB: 02/16/22 | TATTOO: K60

S A V Renown 3439#  
**Reisig Longmire 8326** 19448009  
 BUF Eriskay 7417

Rito 707 of Ideal 3407 7075  
 S A V Blackcap May 4136  
 N Bar Emulation EXT#  
 J Bar 7 Eriskay Q13-71K1#  
 Sinclair Emulation XXP#  
**Sinclair K Bty 4XX33 7BT20** 17821754  
 Sinclair K BTY 7BT20 11P3#

Individual Performance					EPD's				
BW	ADJ. WW	WR	ADJ. YW	YR	CED	BW	WW	MILK	YW
78	579	96	1065	104	7	-7	44	21	87
Individual Performance				Mat	\$ Values				
ADG	Act. IMF	REA/100 lbs	SEN	\$M	\$W	\$F	\$G	\$B	
3.39	3.70	.99	-7	64	36	72	27	99	

**Dam's Production WR: 7 @ 98 YR: 4 @ 104**

A big, high-performance bull that will produce an outstanding set of sons at weaning and beautiful replacement females.

**SINCLAIR CATTLE COMPANY, INC.**

SINCLAIR  
 BLACKBIRD 5E2  
 2C9, DAM OF  
 LOT 28



**28 SINCLAIR LONGMIRE K010**  
 REG: 20551861 | DOB: 02/21/22 | TATTOO: K010

S A V Renown 3439#  
**Reisig Longmire 8326** 19448009  
 BUF Eriskay 7417

Rito 707 of Ideal 3407 7075  
 S A V Blackcap May 4136  
 N Bar Emulation EXT#  
 J Bar 7 Eriskay Q13-71K1#  
 N Bar Emulation EXT#  
 N Bar Kinochtry Beauty 4288  
 D H D Traveler 6807#  
 Papa Blackbird 9864#

N Bar Explosion#  
**Sinclair Blackbird 5E2 2C9#** 14969676  
 Sinclair Blackbird 2C9 9864

Individual Performance					EPD's				
BW	ADJ. WW	WR	ADJ. YW	YR	CED	BW	WW	MILK	YW
ET	613	106	1063	101	3	-4	38	24	67
Individual Performance				Mat	\$ Values				
ADG	Act. IMF	REA/100 lbs	SEN	\$M	\$W	\$F	\$G	\$B	
3.24	2.99	1.22	-3	50	37	62	27	88	

**Dam's Production WR: 14 @ 110 YR: 13 @ 109**

If you want range cows that will live forever, this is the bull for you. The donor dam, 5E2, was one of the most proven cows at Sinclair with 14 natural calves and still having a 110 WR and a 109 YR. These genetics are bred to survive and thrive in any environment. A full brother sells as Lot 77.





**REF SIRE SINCLAIR EXQUISITE 0X3**  
 REG: 19941920 | DOB: 02/02/20 | TATTOO: 0X3

Emulation N Bar 5522#  
**N Bar Emulation EXT** 10776479#  
 N Bar Primrose 2424

Basin Rainmaker 654X#  
**Basin Pamella F271** 12932233  
 Basin Pamella 676X#

Emulation 31#  
 Ankony 8F78 Lass 8F275  
 Emulation 31#  
 Primrose N Bar 9962  
 Basin Rainmaker D S 380U#  
 Basin Bardolene 423U  
 Basin Rainmaker D S 450U  
 Basin Pamella 6806

CED	BW	WW	YW	SC	MILK	DOC	MARB	REA	\$M	\$W	\$F	\$B	\$C
-4	3.4	46	86	-.18	30	-3	.21	.21	47	40	78	103	181

0X3 was retained by Sinclair as a featured herdsire that adds tremendous length and performance and some extra size for those selling calves by the pound. His impeccable maternal pedigree is rock solid. His first progeny record ratios at CE 1.0 BW 105 WW 102 YW 105. His first calf crop have exceeded our expectations.



**30 SINCLAIR EXQUISITE K505**  
 REG: 20546271 | DOB: 02/07/22 | TATTOO: K505

N Bar Emulation EXT#  
**Sinclair Exquisite 0X3** 19941920  
 Basin Pamella F271

Sinclair Elation 6SX1  
**Sinclair Enchantress 9SG13** 19475320  
 Sinclair Enchantress 6HX26

Emulation N Bar 5522#  
 N Bar Primrose 2424  
 Basin Rainmaker 654X#  
 Basin Pamella 676X#  
 Sinclair Vision 3SX12  
 Sinclair C Pride 2G72 7X34  
 Sinclair Line-XX 2H1  
 Sinclair Enchantress WP 40E3

Individual Performance					EPD's				
BW	ADJ. WW	WR	ADJ. YW	YR	CED	BW	WW	MILK	YW
82	642	119	1152	113	4	.9	51	32	90

Individual Performance				Mat	\$ Values				
ADG	Act. IMF	REA/100 lbs	SEN	\$EN	\$M	\$W	\$F	\$G	\$B
3.49	3.69	.94	-.16	60	53	65	30	94	

**Dam's Production WR: 2 @ 115 YR: 2 @ 113**

A calving ease, high-performance 0X3 son, whose grandam is also the dam of the Sinclair herdsire, 8FT8, whose sons sell in this offering. His maternal brother, Sinclair Justified J575, sold as a calving ease sale feature in 2022.



scan this code  
 This is where you  
 will be able to view  
 videos when they  
 are ready.



## EXQUISITE MATERNAL HERDSIRE PROSPECT!

### **31** SINCLAIR EXQUISITE K616

REG: \*20548786 | DOB: 02/27/22 | TATTOO: K616

N Bar Emulation EXT#  
**Sinclair Exquisite OX3** 19941920  
 Basin Pamella F271

Emulation N Bar 5522#  
 N Bar Primrose 2424  
 Basin Rainmaker 654X#  
 Basin Pamella 676X#

Sinclair Delivery 7UD6  
**Sinclair Ms Emulous 9UE9** 19475360  
 Sinclair Ms Emulous 2RL5 D80

Sinclair Deliverance 5U38  
 Sinclair Delia 1FE18 404  
 Sinclair Rito Legacy 3R9  
 N Bar Miss Emulous A404

Individual Performance					EPD's				
BW	ADJ. WW	WR	ADJ. YW	YR	CED	BW	WW	MILK	YW
88	658	109	1173	114	-2	3.6	50	26	89
Individual Performance				Mat	\$ Values				
ADG	Act. IMF	REA/100 lbs	\$EN	\$M	\$W	\$F	\$G	\$B	
3.31	3.12	1.02	-6	62	39	64	24	87	

**Dam's Production** WR: 2 @ 102 YR: 2 @ 102

A maternal dream, K616, is a long-bodied, larger-framed bull that is smooth-shouldered and long-fronted and will make really feminine cows. He is out of the famous Ms Emulous "D80" cow family, the dam of the calving ease, maternal and carcass sire, N Bar Prime Time D806.

### **32** SINCLAIR EXQUISITE K613

REG: \*20548785 | DOB: 02/26/22 | TATTOO: K613

N Bar Emulation EXT#  
**Sinclair Exquisite OX3** 19941920  
 Basin Pamella F271

Emulation N Bar 5522#  
 N Bar Primrose 2424  
 Basin Rainmaker 654X#  
 Basin Pamella 676X#

N Bar Explosion#  
**Sinclair K Bty 9E2 1P16** 19602897  
 Sinclair K Bty 1P16 E118

N Bar Emulation EXT#  
 N Bar Kinochtry Beauty 4288  
 N Bar Prime Time D806#  
 N Bar Kinochtry Beauty Z1925

Individual Performance					EPD's				
BW	ADJ. WW	WR	ADJ. YW	YR	CED	BW	WW	MILK	YW
90	682	113	1189	116	-3	2.8	50	30	93
Individual Performance				Mat	\$ Values				
ADG	Act. IMF	REA/100 lbs	\$EN	\$M	\$W	\$F	\$G	\$B	
3.23	4.47	1.02	-12	57	44	74	27	102	

**Dam's Production** WR: 1 @ 113 YR: 2 @ 108

K613 is the product of many generations of linebreeding the very best Emulation genetics to excel in range environments. He charted a 113 WR and 116 YR. A really powerful, long-bodied bull that will add performance and enhance maternal and longevity traits.



N BAR MISS EMULOUS A404, "D80", THE FOUNDATION SINCLAIR MISS EMULOUS DONOR AND THE GREAT GRANDAM OF LOT 31.



N BAR EXPLOSION, THE MATERNAL GRANDSIRE OF LOT 32.





## *CURVE BENDER MATERNAL AND CARCASS GENETICS!*



**SINCLAIR EXQUISITE K501**  
 REG: 20559908 | DOB: 02/06/22 | TATTOO: K501

N Bar Emulation EXT#  
**Sinclair Exquisite OX3** 19941920  
 Basin Pamella F271

Sinclair Preview 2TL6  
**Sinclair Ms Emulous 7TA28** 18826193  
 Sinclair Ms Emulous 2P7 D47

Emulation N Bar 5522#  
 N Bar Primrose 2424  
 Basin Rainmaker 654X#  
 Basin Pamella 676X#  
 Sinclair Timeless 8BA4#  
 Sinclair K Bty OA3 7XT55  
 N Bar Prime Time D806#  
 N Bar Miss Emulous B514

Individual Performance					EPD's				
BW	ADJ. WW	WR	ADJ. YW	YR	CED	BW	WW	MILK	YW
74	568	105	1035	101	6	-8	42	27	76

Individual Performance				Mat				\$ Values			
ADG	Act. IMF	REA/100 lbs	SEN	\$M	\$W	\$F	\$G	\$B			
3.46	3.71	1.20	3	69	43	64	24	88			

**Dam's Production WR: 3 @ 99 YR: 3 @ 109**

A low-birth, high-growth kind of bull who will catch your eye on sale day. A standout kind of bull that will produce some of the finest females available in the land!



**SINCLAIR EXQUISITE K568**  
 REG: \*20548773 | DOB: 02/18/22 | TATTOO: K568

N Bar Emulation EXT#  
**Sinclair Exquisite OX3** 19941920  
 Basin Pamella F271

Sinclair Sun Dial 5TL43  
**Sinclair K Bty 9TG22 2G74** 19477811  
 Sinclair K Bty 2G74 7FE4

Emulation N Bar 5522#  
 N Bar Primrose 2424  
 Basin Rainmaker 654X#  
 Basin Pamella 676X#  
 Sinclair Timeless 8BA4#  
 Sinclair Primrose 1G13 6E11#  
 Sinclair Grass Master#  
 Sinclair K Bty 7FE4 E010#

Individual Performance					EPD's				
BW	ADJ. WW	WR	ADJ. YW	YR	CED	BW	WW	MILK	YW
82	619	103	1153	112	2	1.2	44	29	87

Individual Performance				Mat				\$ Values			
ADG	Act. IMF	REA/100 lbs	SEN	\$M	\$W	\$F	\$G	\$B			
3.35	2.95	1.07	-10	57	41	73	21	94			

**Dam's Production WR: 1 @ 103 YR: 1 @ 112**

Don't overlook this moderate birth, high-growth bull whose great grandam, 7FE4, is one of our most treasured aged donors.



N BAR MISS EMULOUS B514, THE SINCLAIR FOUNDATION MISS EMULOUS DONOR AND THE GRANDAM OF LOT 33.



SINCLAIR K BTY 7FE4 E010, THE FOUNDATION GREAT GRANDAM OF LOT 34.



## LEGENDARY PEDIGREE AND PERFORMANCE!



### SINCLAIR EXQUISITE K582

REG: \*20548774 | DOB: 02/20/22 | TATTOO: K582

N Bar Emulation EXT#  
**Sinclair Exquisite 0X3** 19941920  
 Basin Pamella F271

Q A S Traveler 23-4#  
**Sinclair lady 9Q1 0C4** 19607781  
 Sinclair Lady 0C4 4465

Emulation N Bar 5522#  
 N Bar Primrose 2424  
 Basin Rainmaker 654X#  
 Basin Pamella 676X#  
 Band 234 of Ideal 3163#  
 Q A S Blackbird Eve 601 1  
 Papa Rito T Intense DHD 6844#  
 Ideal 4465 of 6807 4286

Individual Performance					EPD's				
BW	ADJ. WW	WR	ADJ. YW	YR	CED	BW	WW	MILK	YW
92	623	103	1140	111	-1	2.6	40	30	80

Individual Performance				Mat	\$ Values				
ADG	Act. IMF	REA/100 lbs	\$EN	\$M	\$W	\$F	\$G	\$B	\$C
3.53	3.11	.94	-7	38	35	75	28	103	

**Dam's Production** WR: 2 @ 103 YR: 2 @ 108

A really eye-catching herdsire prospect with a rich maternal heritage with EXT, Rainmaker, Traveler and Ideal 4465 all in one outstanding quality package. He's a big, powerful bull that will catch the attention of the most discriminating breeder.



SINCLAIR LADY 0C4 4465, THE FAMOUS GRANDAM OF LOT 35.

### REF SIRE

### SINCLAIR EXACTLY 4U2

REG: 17798945 | DOB: 02/11/14 | TATTOO: 4U2

N Bar Emulation Ext V722  
**Sinclair Executive 9XV2** 16365949  
 N Bar Primrose Y3051#

R R Rito 707#  
**Sinclair Lady 0R109 03S3** 16715219  
 Sinclair Lady 03S3 4465

N Bar Emulation EXT#  
 N Bar Blackbird 4307#  
 N Bar Emulation EXT#  
 N Bar Primrose 2429#  
 Rito N Bar  
 Eriskay of Rollin Rock 3  
 N Bar Shadow X4124  
 Ideal 4465 of 6807 4286

CED	BW	WW	YW	SC	MILK	DOC	MARB	REA	\$M	\$W	\$F	\$B	\$C
1	1.1	47	72	.03	14	12	-.15	.34	56	40	51	62	136

4U2 is a unique sire that keeps cow size in check and adding muscle and thickness with added fleshing ability. His dam, 0R109, at age 13, is a donor at Sinclair.

Owned with Wade Risse, SD





SINCLAIR C PRIDE 1RL12 J204, THE POWERFUL DAM OF LOTS 36 AND 37.

## ROCK-SOLID COWMAKER FULL BROTHERS!

### **36** SINCLAIR BLACK IRON K006 REG: 20551817 | DOB: 02/16/22 | TATTOO: K006

Individual Performance					EPD's				
BW	ADJ. WW	WR	ADJ. YW	YR	CED	BW	WW	MILK	YW
96	542	100	1115	100	4	.2	40	21	64
Individual Performance				Mat	\$ Values				
ADG	Act. IMF	REA/100 lbs	SEN	\$M	\$W	\$F	\$G	\$B	
3.99	2.75	1.10	10	57	41	49	16	65	
<b>Dam's Production</b> WR: 7 @ 105 YR: 5 @ 104									

Sinclair Executive 9XV2  
Sinclair Exactly 4U2 17798945  
Sinclair Lady 0R109 03S3

 Sinclair Rito Legacy 3R9  
Sinclair C Pride 1RL12 J204 16934634  
N Bar Clova Pride WP C2009

N Bar Emulation Ext V722  
N Bar Primrose Y3051#  
R R Rito 707#  
Sinclair Lady 03S3 4465  
R R Rito 707#  
Ideal 4465 of 6807 4286  
N Bar Shadow X4124  
N Bar Clova Pride Z1553

### **37** SINCLAIR BLACK IRON K004 REG: 20551802 | DOB: 02/15/22 | TATTOO: K004

Individual Performance					EPD's				
BW	ADJ. WW	WR	ADJ. YW	YR	CED	BW	WW	MILK	YW
80	605	105	1079	103	4	.1	43	20	69
Individual Performance				Mat	\$ Values				
ADG	Act. IMF	REA/100 lbs	SEN	\$M	\$W	\$F	\$G	\$B	
3.46	2.54	1.08	6	55	41	51	15	67	
<b>Dam's Production</b> WR: 7 @ 105 YR: 5 @ 104									

A pair of ET flush brothers from one of the thickest donor cows you can find. They are thick topped and ended and clean-fronted. They are the type that makes really functional cows in tough country. The Clova Pride cows were at the N Bar ranch since the beginning and are still thriving.



N BAR CLOVA PRIDE WP C2009, A FOUNDATION SINCLAIR DONOR AND THE GRANDAM OF LOTS 36 AND 37.



**THE MEAT  
AND MUSCLE  
SPECIALIST  
BY 4U2!**

**38 SINCLAIR BLACK IRON K502**  
REG: 20559907 | DOB: 02/06/22 | TATTOO: K502

Sinclair Executive 9XV2  
**Sinclair Exactly 4U2** 17798945  
Sinclair Lady 0R109 0353

N Bar Emulation Ext V722  
N Bar Primrose Y3051#  
R R Rito 707#  
Sinclair Lady 0353 4465  
N Bar Emulation EXT#  
N Bar Clova Pride U3031  
Vance Top Dawg#  
N Bar Miss Emulous A404

N Bar Emulation Ext A1747  
**Sinclair Ms Emulous 0V5** 16649062  
Sinclair Ms Emulous 7td11

Individual Performance					EPD's				
BW	ADJ. WW	WR	ADJ. YW	YR	CED	BW	WW	MILK	YW
82	561	104	1079	106	4	.0	46	19	76

Individual Performance				Mat	\$ Values					
ADG	Act. IMF	REA/100 lbs		\$EN	\$M	\$W	\$F	\$G	\$B	
3.60	3.22	1.10	3	52	41	64	27	91		

**Dam's Production WR: 11 @ 103 YR: 9 @ 104**

A really thick and moderate bull that has an appealing birth to yearling spread and is the kind that will sire them big-bodied, easy-keeping kind of cows we all enjoy.

**39 SINCLAIR BLACK IRON K624**  
REG: \*20548788 | DOB: 03/01/22 | TATTOO: K624

Sinclair Executive 9XV2  
**Sinclair Exactly 4U2** 17798945  
Sinclair Lady 0R109 0353

N Bar Emulation Ext V722  
N Bar Primrose Y3051#  
R R Rito 707#  
Sinclair Lady 0353 4465  
Sinclair Patriarch 3B47  
Sinclair Lady Ida 7V19 04F3  
Sinclair In Time 9RT12  
Sinclair Blkcap 1N14 9XT0#

Sinclair Plains Boss 5B02  
**Sinclair Blkcap 8L1 6NR16** 19168746  
Sinclair Blkcap 6NR16 1N14

Individual Performance					EPD's				
BW	ADJ. WW	WR	ADJ. YW	YR	CED	BW	WW	MILK	YW
90	608	101	1096	107	-1	1.7	46	19	80

Individual Performance				Mat	\$ Values					
ADG	Act. IMF	REA/100 lbs		\$EN	\$M	\$W	\$F	\$G	\$B	
3.14	2.77	1.21	4	65	36	61	15	76		

**Dam's Production WR: 3 @ 109 YR: 2 @ 109**

K624 is the eye-catching kind that is really thick and rugged and full of performance in a big-bodied, bold sprung package. His daughters will be tremendous maternal replacement females. His young dam, 8L1, is a top ratioing, beautiful uddered Plains Boss daughter. Check out the ribeye ratio on K624! This is a bull to add some real muscle!

**THE VERY BEST OF  
4U2 GENETICS!**



SINCLAIR PLAINS BOSS 5B02, THE MATERNAL GRANDSIRE OF LOT 39.





40



**SINCLAIR EXQUISITE K581**  
 REG: 20546287 | DOB: 02/20/22 | TATTOO: K581

N Bar Emulation EXT#  
**Sinclair Exquisite 0X2** 19919831  
 Sinclair Lady 3M18 4465#

Sinclair Emperor OXT51  
**Sinclair Primrose 7X07 3RT8#** 18829797  
 Sinclair Primrose 3RT8 D011

Emulation N Bar 5522#  
 N Bar Primrose 2424  
 N Bar Moderation 9957  
 Ideal 4465 of 6807 4286  
 Sinclair Extra 4X13#  
 Sinclair Blkbird 7OC10 J472  
 Leachman Right Time#  
 N Bar Primrose 4324B

Individual Performance					EPD's				
BW	ADJ. WW	WR	ADJ. YW	YR	CED	BW	WW	MILK	YW
90	574	106	1104	108	3	1.7	41	24	75
Individual Performance				Mat	\$ Values				
ADG	Act. IMF	REA/100 lbs	SEN	SM	SW	SF	SG	SB	
3.86	3.16	.87	2	70	35	77	23	100	
<b>Dam's Production</b> WR: 4 @ 107					<b>YR: 4 @ 107</b>				

An elite Emulation herdsire prospect that will add incredible length, breed character, and performance with a balanced set of EPD traits. His phenomenal dam, 7X07, checks all the boxes in the black! 3RT8, the grandam, has long been a prestigious member of the program and derives from a long line of excellent Primrose cows. Serious Maternal breeders take notice here!

**PREMIER EMULATION  
 PRIMROSE HERDSIRE  
 PROSPECT!**



SINCLAIR PRIMROSE 3RT8 D011, A TRUE GENETIC GEM AND THE GRANDAM OF LOT 40.



SINCLAIR PRIMROSE 4234B "D011" FOUADATION THIRD DAM OF LOT 40

**THE MIRROR  
IMAGE OF  
EXQUISITE  
OX2!**



**41**



**41 SINCLAIR EXQUISITE K606**

REG: \*20548782 | DOB: 02/25/22 | TATTOO: K606

N Bar Emulation EXT#  
**Sinclair Exquisite OX2** 19919831  
Sinclair Lady 3M18 4465#

Emulation N Bar 5522#  
N Bar Primrose 2424  
N Bar Moderation 9957  
Ideal 4465 of 6807 4286

Sinclair Broker 6RC2  
**Sinclair K Bty 8RG3 OJP11** 19166664  
Sinclair K Bty OJP11 5PV6#

Sinclair Entrepreneur 8R101  
Sinclair Blkbird 9X59 2459#  
Dunlouse Jipse Earl E161#  
Sinclair K Bty 5PV6 H426

Individual Performance					EPD's				
BW	ADJ. WW	WR	ADJ. YW	YR	CED	BW	WW	MILK	YW
86	652	108	1074	104	2	1.1	39	25	61
Individual Performance				Mat	\$ Values				
ADG	Act. IMF	REA/100 lbs	\$EN	\$M	\$W	\$F	\$G	\$B	
2.62	2.64	.99	9	76	40	60	17	77	

**Dam's Production WR: 2 @ 111 YR: 2 @ 104**

An exceptional prospect that closely resembles his sire, Exquisite OX2, the top-selling bull of 2021 selling to Brookhill Angus, KY. He's backed by solid producers of the Kinochtry Beauty cow family for many, many generations. The Emulation genetics are the best in the business for range-adapted functional cows who know how to get the job done for the long term.



**42**



**42 SINCLAIR EXQUISITE K588**

REG: \*20570908 | DOB: 02/21/22 | TATTOO: K588

N Bar Emulation EXT#  
**Sinclair Exquisite OX2** 19919831  
Sinclair Lady 3M18 4465#

Emulation N Bar 5522#  
N Bar Primrose 2424  
N Bar Moderation 9957  
Ideal 4465 of 6807 4286

Sinclair Dynasty 3WCD7  
**Sinclair Blkbird 7WC8 3006** 18826243  
Sinclair Blkbird 3006 OXM1#

Wandering CRK Dynasty JRM 2F#  
Sinclair Eriskay 2N1 7883#  
Basin Rainmaker 914A  
Sinclair Blkbird OXM1 8XV8

Individual Performance					EPD's				
BW	ADJ. WW	WR	ADJ. YW	YR	CED	BW	WW	MILK	YW
80	613	100	1098	100	8	-5	36	22	58
Individual Performance				Mat	\$ Values				
ADG	Act. IMF	REA/100 lbs	\$EN	\$M	\$W	\$F	\$G	\$B	
3.09	2.75	1.14	13	79	36	56	20	76	

**Dam's Production WR: 3 @ 97 YR: 2 @ 96**

An intriguing herdsire prospect with a stellar, one-of-a-kind Maternal pedigree: EXT, Dynasty, and Rainmaker! Expect wonderful, longevity-oriented daughters that can work anywhere from this sire.

**THE COW-MAKER  
SPECIALIST WITH  
A RICH MATERNAL  
HERITAGE!**



SINCLAIR DYNASTY 3WCD7, THE LONG-TIME SINCLAIR HERDSIRE AND MATERNAL GRANDSIRE OF LOT 42.



**LENGTH,  
PERFORMANCE,  
AND MATERNAL  
BY 0X2!**

**43**



**SINCLAIR EXQUISITE K583**

REG: \*20548775 | DOB: 02/20/22 | TATTOO: K583

N Bar Emulation EXT#  
**Sinclair Exquisite 0X2** 19919831  
Sinclair Lady 3M18 4465#

Ideal 4458 of 6807 5103  
**Sinclair K Bty 8RJ9 1P16** 19166623  
Sinclair K Bty 1P16 E118

Emulation N Bar 5522#  
N Bar Primrose 2424  
N Bar Moderation 9957  
Ideal 4465 of 6807 4286  
D H D Traveler 6807#  
Eldorado 5103 Ideal 3167 156  
N Bar Prime Time D806#  
N Bar Kinochtry Beauty Z1925

Individual Performance					EPD's				
BW	ADJ. WW	WR	ADJ. YW	YR	CED	BW	WW	MILK	YW
78	636	105	1084	105	7	-4	37	23	68
Individual Performance				Mat	\$ Values				
ADG	Act. IMF	REA/100 lbs	SEN	\$M	\$W	\$F	\$G	\$B	
2.88	3.19	1.20	7	74	34	71	29	100	

**Dam's Production WR: 3 @ 104 YR: 3 @ 105**

A really long-bodied, stacked pedigreed, high-growth sire with a very conservative birthweight. His third dam, N Bar Kinochtry Beauty Z1925 (E118) was a major N Bar and Sinclair foundation donor whose progeny are still very relevant today.



**SINCLAIR EXQUISITE K608**

REG: \*20548783 | DOB: 02/25/22 | TATTOO: K608

N Bar Emulation EXT#  
**Sinclair Exquisite 0X2** 19919831  
Sinclair Lady 3M18 4465#

Sinclair Exquisite 6X2  
**Sinclair Blkbird 8XA9 OJP17** 19281330  
Sinclair Blkbird OJP17 6X3

Emulation N Bar 5522#  
N Bar Primrose 2424  
N Bar Moderation 9957  
Ideal 4465 of 6807 4286  
N Bar Emulation EXT#  
Sinclair Ms Emulous 7RT5  
Dunlouse Jipsey Earl E161#  
Sinclair Blkbird 6X3 2P8#

Individual Performance					EPD's				
BW	ADJ. WW	WR	ADJ. YW	YR	CED	BW	WW	MILK	YW
88	632	105	1032	101	3	1.0	33	22	52
Individual Performance				Mat	\$ Values				
ADG	Act. IMF	REA/100 lbs	SEN	\$M	\$W	\$F	\$G	\$B	
2.77	3.17	.94	14	75	31	49	17	66	

**Dam's Production WR: 3 @ 94 YR: 1 @ 101**



**REF SIRE SINCLAIR EXQUISITE 0X2**

REG: 19919831 | DOB: 02/13/20 | TATTOO: 0X2

Emulation N Bar 5522#  
**N Bar Emulation EXT** 10776479#  
N Bar Primrose 2424

N Bar Moderation 9957  
**Sinclair Lady 3M18 4465#** 14489949  
Ideal 4465 of 6807 4286

Emulation 31#  
Ankony 8F78 Lass 8F275  
Emulation 31#  
Primrose N Bar 9962  
N Bar Moderation 9955#  
N Bar Queen Mother 6079  
D H D Traveler 6807#  
E E 4286 of Ideal 2240 1254

CED	BW	WW	YW	SC	MILK	DOC	MARB	REA	\$M	\$W	\$F	\$B	\$C
5	0.0	33	52	-.84	18	18	.14	-.05	67	34	61	79	169

0X2 was the \$19,000 top-selling bull of the 2021 sale to Brookhill Angus, KY. He closely resembles and follows the genetic and phenotypic attributes of his famous sire, EXT. His first progeny ratios are CE 1.0 BW 97 WW 99 YW 104.



45



**SINCLAIR X-PLUS K611**

REG: \*20548784 | DOB: 02/26/22 | TATTOO: K611

N Bar Emulation EXT#  
**Sinclair Emulation XXP** 15355048#  
 N Bar Primrose Y3051#

Emulation N Bar 5522#  
 N Bar Primrose 2424  
 N Bar Emulation EXT#  
 N Bar Primrose 2429#  
 R R Rito 707#  
 N Bar Kinochtry Beauty Z1925  
 Sinclair Rito Legacy 3R9  
 Sinclair Lady 1C8 4465

Sinclair Entrepreneur 8R101  
**Sinclair Lady 8RC4 7RL30** 19364730  
 Sinclair Lady 7RL30 1C8

An outstanding herdsire prospect. The kind that made XXP famous! A chart-busting performance bull that's big-bodied, and easy fleshing. It comes naturally from his Entrepreneur/Rito Legacy dam that's a daughter of the famous Lady 1C8 donor.

**ELITE XXP HERDSIRE  
 PROSPECT!**

Individual Performance					EPD's				
BW	ADJ. WW	WR	ADJ. YW	YR	CED	BW	WW	MILK	YW
90	680	113	1157	113	-2	2.9	56	20	99
Individual Performance				Mat	\$ Values				
ADG	Act. IMF	REA/100 lbs	\$EN	\$M	\$W	\$F	\$G	\$B	
3.15	2.70	.94	-17	28	40	71	25	95	
<b>Dam's Production</b>					<b>WR: 3 @ 105</b>	<b>YR: 1 @ 113</b>			



SINCLAIR LADY 1C8 4465, THE FAMOUS GREAT GRANDAM OF LOT 45.



SINCLAIR LADY 7RL30 1C8, THE THIRD GENERATION SINCLAIR LADY DONOR AND THE GRANDAM OF LOT 45.





**46 SINCLAIR X-PLUS K015**  
REG: 20551890 | DOB: 02/27/22 | TATTOO: K015

N Bar Emulation EXT#  
**Sinclair Emulation XXP** 15355048#  
N Bar Primrose Y3051#

N Bar Explosion#  
**Sinclair Blackcap 5E5 2N10** 14969782  
Sinclair Blackcap 2N10 7856

Emulation N Bar 5522#  
N Bar Primrose 2424  
N Bar Emulation EXT#  
N Bar Primrose 2429#  
N Bar Emulation EXT#  
N Bar Kinochtry Beauty 4288  
D H D Traveler 6807#  
Papa Blackcap Mc Henry 7856#

Individual Performance					EPD's				
BW	ADJ. WW	WR	ADJ. YW	YR	CED	BW	WW	MILK	YW
ET	579	101	1006	96	3	.6	37	25	67
Individual Performance				Mat	\$ Values				
ADG	Act. IMF	REA/100 lbs	SEN	\$M	\$W	\$F	\$G	\$B	
3.13	3.81	1.01	-1	44	36	65	38	104	
<b>Dam's Production WR: 13 @ 105 YR: 10 @ 101</b>									



**47 SINCLAIR EXQUISITE K602**  
REG: \*20548780 | DOB: 02/24/22 | TATTOO: K602

N Bar Emulation EXT#  
**Sinclair Exquisite 9X93** 20254570  
N Bar Primrose Y3051#

Sinclair Executive 9XV2  
**Sinclair Pride 9U2 5DY1** 19475390  
Sinclair Pride 5DY1 2188

Emulation N Bar 5522#  
N Bar Primrose 2424  
N Bar Emulation EXT#  
N Bar Primrose 2429#  
N Bar Emulation Ext V722  
N Bar Primrose Y3051#  
Ankonian Dynamo#  
Sitz Pride 2188

Individual Performance					EPD's				
BW	ADJ. WW	WR	ADJ. YW	YR	CED	BW	WW	MILK	YW
96	652	108	1198	117	-3	3.6	52	19	101
Individual Performance				Mat	\$ Values				
ADG	Act. IMF	REA/100 lbs	SEN	\$M	\$W	\$F	\$G	\$B	
3.56	2.95	1.03	-13	45	30	78	20	98	
<b>Dam's Production WR: 2 @ 103 YR: 2 @ 108</b>									

A big-time performance sire that's double bred to XXP's dam top and bottom. A bull that will cover a lot of bases.



SINCLAIR EXECUTIVE 9XV2, THE MATERNAL GRANDSIRE OF LOT 47.



**48 SINCLAIR EXQUISITE K594**  
REG: \*20548777 | DOB: 02/22/22 | TATTOO: K594

N Bar Emulation EXT#  
**Sinclair Exquisite 9X93** 20254570  
N Bar Primrose Y3051#

Sinclair Elation 6SX1  
**Sinclair K Bty 9SG2 7U51** 19475305  
Sinclair K Bty 7U51 9P32

Emulation N Bar 5522#  
N Bar Primrose 2424  
N Bar Emulation EXT#  
N Bar Primrose 2429#  
Sinclair Vision 3SX12  
Sinclair C Pride 2G72 7X34  
Sinclair Executive 9XV2  
Sinclair K Bty 9P32 V149#

Individual Performance					EPD's				
BW	ADJ. WW	WR	ADJ. YW	YR	CED	BW	WW	MILK	YW
70	595	99	1150	112	8	-1.2	42	24	87
Individual Performance				Mat	\$ Values				
ADG	Act. IMF	REA/100 lbs	SEN	\$M	\$W	\$F	\$G	\$B	
3.47	3.97	1.15	-12	52	37	72	26	98	
<b>Dam's Production WR: 2 @ 104 YR: 2 @ 111</b>									

A heifer bull with excellent performance backed by the total program cow, V149!



**49 SINCLAIR EXQUISITE K596**  
REG: \*20548778 | DOB: 02/23/22 | TATTOO: K596

N Bar Emulation EXT#  
**Sinclair Exquisite 9X93** 20254570  
N Bar Primrose Y3051#

Sinclair Sun Dial 5TL43  
**Sinclair Ms Emulous 9TG7** 19472601  
Sinclair Ms Emulous 1P14 D47#

Emulation N Bar 5522#  
N Bar Primrose 2424  
N Bar Emulation EXT#  
N Bar Primrose 2429#  
Sinclair Timeless 8BA4#  
Sinclair Primrose 1G13 6E11#  
N Bar Prime Time D806#  
N Bar Miss Emulous B514

Individual Performance					EPD's				
BW	ADJ. WW	WR	ADJ. YW	YR	CED	BW	WW	MILK	YW
82	629	104	1146	111	6	.0	43	27	84
Individual Performance				Mat	\$ Values				
ADG	Act. IMF	REA/100 lbs	SEN	\$M	\$W	\$F	\$G	\$B	
2.60	3.12	1.27	-6	57	41	67	21	89	
<b>Dam's Production WR: 1 @ 104 YR: 1 @ 111</b>									

A curve bender-type bull with low birth to added performance. Check out this bull's ribeye area, and don't forget his maternal heritage.



**50 SINCLAIR EXQUISITE K627**  
REG: \*20548789 | DOB: 03/03/22 | TATTOO: K627

N Bar Emulation EXT#  
**Sinclair Exquisite 9X93** 20254570  
N Bar Primrose Y3051#

Sinclair Rollin Coal 5K2  
**Sinclair K Bty 9KF11 5OC8** 19475110  
Sinclair K Bty 5OC8 3TL51#

Emulation N Bar 5522#  
N Bar Primrose 2424  
N Bar Emulation EXT#  
N Bar Primrose 2429#  
Sinclair Broker 3RC33  
Sinclair Ms Emulous 1FE23  
O C C Great Plains 943G#  
Sinclair K Bty 3TL51 1A15

Individual Performance					EPD's				
BW	ADJ. WW	WR	ADJ. YW	YR	CED	BW	WW	MILK	YW
88	634	105	1146	111	4	.8	44	23	87
Individual Performance				Mat	\$ Values				
ADG	Act. IMF	REA/100 lbs	SEN	\$M	\$W	\$F	\$G	\$B	
3.32	3.12	.95	-7	52	36	67	25	92	
<b>Dam's Production WR: 2 @ 103 YR: 2 @ 108</b>									

9X93 is a lesser known, young full brother to XXP we retained to use as a natural herdsire, and he has worked quite well. These sons check the boxes for convenience traits.





# SINCLAIR EXQUISITE K541

REG: 20546281 | DOB: 02/14/22 | TATTOO: K541

N Bar Emulation EXT#  
**Sinclair Exquisite 9X93** 20254570  
N Bar Primrose Y3051#

Sinclair Black Iron 7UR26  
**Sinclair Primrose 9UF2 5R47** 19472547  
Sinclair Primrose 5R47 D011

Emulation N Bar 5522#  
N Bar Primrose 2424  
N Bar Emulation EXT#  
N Bar Primrose 2429#  
Sinclair Exactly 4U2  
Sinclair Erica 2FE2 8BT12  
N Bar Prime Time D806#  
N Bar Primrose 4324B

Individual Performance					EPD's				
BW	ADJ. WW	WR	ADJ. YW	YR	CED	BW	WW	MILK	YW
88	574	106	1092	107	0	3.0	48	23	87
Individual Performance				Mat	\$ Values				
ADG	Act. IMF	REA/100 lbs	\$EN	\$M	\$W	\$F	\$G	\$B	
3.76	3.26	1.02	-2	49	36	73	28	101	

**Dam's Production** WR: 2 @ 104 YR: 2 @ 106

Check out this stout 9X93 son backed by a top 7UR26 daughter out of a foundation Primrose cow. He hits the performance and IMF targets and will leave excellent replacements.



SINCLAIR BLACK IRON 7UR26, A FEATURED HERDSIRE IN THE SINCLAIR PROGRAM AND THE MATERNAL GRANDSIRE OF LOT 51.



N BAR PRIMROSE 4324B, A SINCLAIR FOUNDATION DONOR AND THE GREAT GRANDAM OF LOT 51.



# SINCLAIR EXQUISITE K629

REG: \*20548790 | DOB: 03/06/22 | TATTOO: K629

N Bar Emulation EXT#  
**Sinclair Exquisite 9X93** 20254570  
N Bar Primrose Y3051#

Sinclair Piney Creek 5FV5  
**Sinclair Ms Wix 9FF18 6FX15** 19475270  
Sinclair Ms Wix 6FX15 3S1

Emulation N Bar 5522#  
N Bar Primrose 2424  
N Bar Emulation EXT#  
N Bar Primrose 2429#  
Sinclair X-Changer 2FE9  
Sinclair Ms Emulous 8F12  
Sinclair Emulation 0F4  
Sinclair Ms Wix 3S1 2022

Individual Performance					EPD's				
BW	ADJ. WW	WR	ADJ. YW	YR	CED	BW	WW	MILK	YW
88	602	100	1140	111	1	2.3	46	21	92
Individual Performance				Mat	\$ Values				
ADG	Act. IMF	REA/100 lbs	\$EN	\$M	\$W	\$F	\$G	\$B	
3.48	4.10	1.13	-8	51	31	70	32	103	

**Dam's Production** WR: 2 @ 104 YR: 2 @ 111



# SINCLAIR EXQUISITE K540

REG: 20559909 | DOB: 02/14/22 | TATTOO: K540

N Bar Emulation EXT#  
**Sinclair Exquisite 9X93** 20254570  
N Bar Primrose Y3051#

Sinclair Sun Dial 5TL43  
**Sinclair Edella 9TG10 5XX17** 19472598  
Sinclair Edella 5XX17 10K1

Emulation N Bar 5522#  
N Bar Primrose 2424  
N Bar Emulation EXT#  
N Bar Primrose 2429#  
Sinclair Timeless 8BA4#  
Sinclair Primrose 1G13 6E11#  
Sinclair Emulation XXP#  
Sinclair Edella 10K1 7X53

Individual Performance					EPD's				
BW	ADJ. WW	WR	ADJ. YW	YR	CED	BW	WW	MILK	YW
76	640	100	1058	100	4	.5	44	25	78
Individual Performance				Mat	\$ Values				
ADG	Act. IMF	REA/100 lbs	\$EN	\$M	\$W	\$F	\$G	\$B	
2.81	3.17	1.15	-2	61	42	62			

**Dam's Production** WR: 1 @ 100 YR: 1 @ 100



## REF SIRE

## CONNELY SPUR#

REG: 17304082 | DOB: 1/31/2012 | TATTOO: 2363

H A Power Alliance 1025#  
**Connely Stimulus 8419** 16205004#  
Black Creesa of Conanga 5332

TC Grid Topper 355#  
**Jazza of Conanga 8594#** 16207100  
Jemma of Conanga 5614

Sitz Alliance 6595#  
Sitz Alliance 6595  
G A R Grid Maker#  
Black Crust of Conanga  
G A R Grid Maker  
TC Pride 8067  
B A R Ext Traveler 205  
B A R Ext Traveler 205

CED	BW	WW	YW	SC	MILK	DOC	MARB	REA	SM	\$W	\$F	\$B	SC
5	3.9	69	120	1.56	29	25	.70	.54	90	30	60	11	277

Spur was chosen to enhance performance, muscling, and docility to the Sinclair program. He adds frame, length, muscle, and overall pounds. He has worked very well in commercial programs in the West and offers an outcross for our customers. Our first Spur daughters in production are a sight to behold.





### SINCLAIR SPUR K305

REG: \*20400571 | DOB: 03/05/22 | TATTOO: K305

Connealy Stimulus 8419#  
Connealy Spur 17304082#  
Jazza of Conanga 8594#

H A Power Alliance 1025#  
Black Creeza of Conanga 5332  
TC Grid Topper 355#  
Jemma of Conanga 5614  
Sinclair Timeless 8BA4#  
Sinclair K Bty 2X7 6MB8#  
Sinclair Emulation XXP#  
Sinclair Enchantress 9A37

Sinclair Sun Dial 4TL2  
Sinclair Enchantress 6TT4 18506538  
Sinclair Enchantress 4XX8

Individual Performance					EPD's				
BW	ADJ. WW	WR	ADJ. YW	YR	CED	BW	WW	MILK	YW
90	709	118	1063	104	6	1.2	54	31	91
Individual Performance				Mat	\$ Values				
ADG	Act. IMF	REA/100 lbs	\$EN	\$M	\$W	\$F	\$G	\$B	
2.39	4.36	1.07	-7	82	56	73	46	119	

Dam's Production WR: 5 @ 109 YR: 4 @ 102



### SINCLAIR SPUR K335

REG: \*20400579 | DOB: 03/08/22 | TATTOO: K335

Connealy Stimulus 8419#  
Connealy Spur 17304082#  
Jazza of Conanga 8594#

H A Power Alliance 1025#  
Black Creeza of Conanga 5332  
TC Grid Topper 355#  
Jemma of Conanga 5614  
Sinclair Timeless 8BA4#  
Sinclair K Bty 0A3 7XT55  
Sinclair Fortunate Son#  
Sinclair Primrose 9XT5 7FF3

Sinclair Preview 2TL6  
Sinclair Primrose 7TA15 2D5 18826218  
Sinclair Primrose 2D5 9XT5#

Individual Performance					EPD's				
BW	ADJ. WW	WR	ADJ. YW	YR	CED	BW	WW	MILK	YW
85	657	109	1070	104	7	.7	53	26	87
Individual Performance				Mat	\$ Values				
ADG	Act. IMF	REA/100 lbs	\$EN	\$M	\$W	\$F	\$G	\$B	
2.77	2.89	1.00	3	91	52	61	31	92	

Dam's Production WR: 4 @ 97 YR: 2 @ 105



EMULATION N BAR 5522, THE HIGHLY REGARDED CALVING EASE AND FEMALE MAKER THAT IS THE SIRE OF LOTS 56 AND 57.

## EXCITING COWMAKER HEIFER BULLS BY 5522!



### SINCLAIR EMULATION K37

REG: \*20434673 | DOB: 02/13/22 | TATTOO: K37

Emulation 31#  
Emulation N Bar 5522 10095639#  
Ankony 8F78 Lass 8F275

F C R Elation Lad 652  
Miss Emulous 243  
Ankonian Dynamo 27542  
Ankony B999 Lass 26832  
Sinclair Emperor 0XT51  
Sinclair Ms Emulous 2V20 A40  
Cole Creek Cedar Ridge 1V#  
Sitz Pride 2188

Sinclair Emperor 6XO2  
Sinclair Pride 00V22 5CR14 19981727  
Sinclair Pride 5CR14 2188

Individual Performance					EPD's				
BW	ADJ. WW	WR	ADJ. YW	YR	CED	BW	WW	MILK	YW
83	587	97	1077	105	1	1.2	41	18	77
Individual Performance				Mat	\$ Values				
ADG	Act. IMF	REA/100 lbs	\$EN	\$M	\$W	\$F	\$G	\$B	
3.19	3.06	.85	8	65	30	62	17	79	

Dam's Production WR: 1 @ 97 YR: 1 @ 105

Only two 5522 sons in the sale this year, but we feel they deserve your attention if you desire range adaptable, intelligent cows that work for a living and last a long time. K37 excelled in the yearling phase.



### SINCLAIR EMULATION K27

REG: \*20434681 | DOB: 02/11/22 | TATTOO: K27

Emulation 31#  
Emulation N Bar 5522 10095639#  
Ankony 8F78 Lass 8F275

F C R Elation Lad 652  
Miss Emulous 243  
Ankonian Dynamo 27542  
Ankony B999 Lass 26832  
Sinclair Timeless 8BA4#  
Sinclair Primrose 1G13 6E11#  
Basin Rainmaker 914A  
Basin Pamella F271

Sinclair Sun Dial 5TL43  
Sinclair Pamela 0TG18 2001 19981200  
Sinclair Pamela 2001 F271

Individual Performance					EPD's				
BW	ADJ. WW	WR	ADJ. YW	YR	CED	BW	WW	MILK	YW
88	619	103	1094	107	-1	1.5	34	24	65
Individual Performance				Mat	\$ Values				
ADG	Act. IMF	REA/100 lbs	\$EN	\$M	\$W	\$F	\$G	\$B	
3.14	2.93	.91	9	62	29	58	17	75	

Dam's Production WR: 1 @ 103 YR: 1 @ 107

An own son of 5522 out of a young daughter of the Pamela cow, 2001, who is a true genetic gem. An outstanding calving ease, maternal heritage bull here.

SINCLAIR PAMELA  
2001 F271, A SINCLAIR  
HERD TREASURE  
AND THE MATERNAL  
GRANDAM OF LOT 57.





**REF SIRE SINCLAIR TIMELESS 8BA4#**  
 REG: 16027579 | DOB: 2/10/08 | TATTOO: 8BA4

BT Right Time 24J#  
**Sinclair IN Time 6BT39** 15366581  
 N Bar Miss Emulous A404

N Bar Prime Time D806#  
**Sinclair Blackbird 2P8 7079#** 14339897  
 Rito 707 of Ideal 089 7076

Leachman Right Time#  
 Sitz Everelda Entense 1905  
 N Bar Emulation Ext Z52  
 N Bar Miss Emulous X3091#

Gardens Prime Time#  
 N Bar Miss Emulous A404#  
 R R Rito 707#  
 Ideal 089 of 8103 7394

CED	BW	WW	YW	SC	MILK	DOC	MARB	REA	\$M	\$W	\$F	\$B	\$C
14	-4.7	21	53	.07	34	7	.39	-1.0	38	32	67	94	160

Timeless is a rock solid, "go to" highly proven heifer bull who is a universal breeding tool. He makes exceptional females that work for a living in range environments. This pathfinder sire's progeny ratios are BW-96 WW -98 YW -101 And has 134 daughters avg nursing ratio at a 102.

**58 SINCLAIR TIMELESS K347**  
 REG: \*20561686 | DOB: 03/11/22 | TATTOO: K347

Sinclair IN Time 6BT39  
**Sinclair Timeless 8BA4** 16027579#  
 Sinclair Blackbird 2P8 7079#

Sinclair Executive 9XV2  
**Sinclair Eileen 6U87 1 RC13** 18770787  
 Sinclair Eileen 1RC13 7X46

BT Right Time 24J#  
 N Bar Miss Emulous A404  
 N Bar Prime Time D806#  
 Rito 707 of Ideal 089 7076

N Bar Emulation Ext V722  
 N Bar Primrose Y3051#  
 Sinclair Entrepreneur 8R101  
 Sinclair Eilee 7X46 L228

Individual Performance					EPD's				
BW	ADJ. WW	WR	ADJ. YW	YR	CED	BW	WW	MILK	YW
98	641	106	1121	109	3	.5	42	25	84
Individual Performance					\$ Values				
ADG	Act. IMF	REA/100 lbs	Mat	SEN	\$M	\$W	\$F	\$G	\$B
3.17	2.74	.94	-2	51	37	76	27	103	
<b>Dam's Production WR: 5 @ 100</b>					<b>YR: 2 @ 109</b>				

Timeless is a universal breeding tool from calving ease to excellent cow production. K347 was at the top of the charts for growth with an excellent maternal background.

**59 SINCLAIR TIMELESS K572**  
 REG: 20546295 | DOB: 02/20/22 | TATTOO: K572

Sinclair IN Time 6BT39  
**Sinclair Timeless 8BA4** 16027579#  
 Sinclair Blackbird 2P8 7079#

N Bar Emulation EXT#  
**Sinclair Pamella 0X11 F271** 20559910  
 Basin Pamella F271

BT Right Time 24J#  
 N Bar Miss Emulous A404  
 N Bar Prime Time D806#  
 Rito 707 of Ideal 089 7076

Emulation N Bar 5522#  
 N Bar Primrose 2424  
 Basin Rainmaker 654X#  
 Basin Pamella 676X#

Individual Performance					EPD's				
BW	ADJ. WW	WR	ADJ. YW	YR	CED	BW	WW	MILK	YW
80	633	117	1139	112	7	-.6	38	34	74
Individual Performance					\$ Values				
ADG	Act. IMF	REA/100 lbs	Mat	SEN	\$M	\$W	\$F	\$G	\$B
3.81	2.56	1.08	-5	45	44	65	20	85	
<b>Dam's Production WR: 1 @ 117</b>					<b>YR: 1 @ 112</b>				

Exceptional calving ease herdsire prospect! K572 is a son of the only full sister to the genetic gem, Exquisite 0X3. Expect added performance from birth to weaning and daughters that will have a rock-solid maternal base.

**TIMELESS,  
 GENETIC GEM,  
 HEIFER BULL!**



SINCLAIR EXQUISITE 0X3, THE FULL BROTHER TO THE DAM OF LOT 59.



# THE COWMAN'S KIND OF HEIFER BULL!



61



## SINCLAIR JUSTIFIED K317

REG: \*20400577 | DOB: 03/05/22 | TATTOO: K317

Connealy Judgment  
**KG Justified 3023** 17707279#  
KG Miss Magic 1443

Sinclair Vision 35X12  
**Sinclair Ms Emulous 75X18** 18807048  
Sinclair Ms Emulous 50C14

Connealy Consensus 7229#  
Entrine of Conanga 9876#  
Sitz Wisdom 481T#  
KG Miss Magic 3528  
Sinclair Vision X 8S7  
Sinclair K Bty 0F1 2V3  
O C C Great Plains 943G#  
Sinclair Ms Emulous 3TL26

Individual Performance					EPD's				
BW	ADJ. WW	WR	ADJ. YW	YR	CED	BW	WW	MILK	YW
90	606	100	1105	107	8	-.4	51	28	97
Individual Performance				Mat	\$ Values				
ADG	Act. IMF	REA/100 lbs	\$EN	\$M	\$W	\$F	\$G	\$B	\$C
3.50	3.61	1.05	-7	81	49	70	52	122	
<b>Dam's Production</b> WR: 4 @ 103					<b>YR: 4 @ 104</b>				



## SINCLAIR JUSTIFIED K516

REG: 20553680 | DOB: 02/09/22 | TATTOO: K516

Connealy Judgment  
**KG Justified 3023** 17707279#  
KG Miss Magic 1443

Sinclair Rollin Coal 5K2  
**Sinclair C Pride 7KF4 4AR1** 18982427  
Sinclair C Pride 4AR1 2D1

Connealy Consensus 7229#  
Entrine of Conanga 9876#  
Sitz Wisdom 481T#  
KG Miss Magic 3528  
Sinclair Broker 3RC33  
Sinclair Ms Emulous 1FE23  
Sinclair Emulation 0A2  
Sinclair C Pride 2D1 7XT19#

Individual Performance					EPD's				
BW	ADJ. WW	WR	ADJ. YW	YR	CED	BW	WW	MILK	YW
80	511	94	1050	103	9	-1.5	46	23	83
Individual Performance				Mat	\$ Values				
ADG	Act. IMF	REA/100 lbs	\$EN	\$M	\$W	\$F	\$G	\$B	\$C
3.92	3.81	1.00	8	87	44	59	50	108	
<b>Dam's Production</b> WR: 2 @ 92					<b>YR: 2 @ 98</b>				

A true heifer bull prospect that is smooth-fronted and catches your eye while evaluating a big pen of bulls.

## REF SIRE

## KG JUSTIFIED 3023#

REG: 17707279 | DOB: 1/21/2013 | TATTOO: 3023

KG Miss Magic 1443#  
**Connealy Judgment** 17031468  
Entrine of Conanga 9876#

Sitz Wisdom 481T#  
**KG Miss Magic 1443** 17127788  
KG Miss Magic 3528

Connealy Consensus#  
Blue Lilly of Conanga 16  
Rito 6EMA of 4L3 Emblazon#  
Entrance of Conanga 206#  
Connealy Onward#  
Sitz Elluna Elite 94P  
KG Traveler 8180 8171  
KG Miss Magic 6560

CED	BW	WW	YW	SC	MILK	DOC	MARB	REA	\$M	\$W	\$F	\$B	\$C
12	-2.0	61	108	1.74	30	22	1.16	.31	93	80	71	140	275

After seeing Justified at stud, we felt he would really enhance our program from a phenotype and consistency standpoint. This is the second year of large sire group of Justified sons, and the extreme consistency is for real. They maintain light birth weight and well above average growth and carcass traits. He is a \$M leader and offers added milk as well. They are a good-footed, do-it-all kind of bulls. We collected a couple sale feature sons last year and used them back in the program. His first daughters in production at Sinclair are brood cows deluxe!



**62 SINCLAIR JUSTIFIED K278**  
REG: \*20400540 | DOB: 03/03/22 | TATTOO: K278

Connealy Judgment  
**KG Justified 3023** 17707279#  
KG Miss Magic 1443

Connealy Consensus 7229#  
Entrine of Conanga 9876#  
Sitz Wisdom 481T#  
KG Miss Magic 3528  
N Bar Emulation EXT#  
N Bar Primrose Y3051#  
Emulation 31#  
Sinclair Pride 7XT11 5H7

Sinclair Emulation XXP#  
**Sinclair Pride 4XX7 0A9** 17821728  
Sinclair Pride 0A9 7XT11

Individual Performance					EPD's				
BW	ADJ. WW	WR	ADJ. YW	YR	CED	BW	WW	MILK	YW
82	570	95	1101	108	9	-1.2	48	25	92
Individual Performance				Mat	\$ Values				
ADG	Act. IMF	REA/100 lbs	\$EN	\$M	\$W	\$F	\$G	\$B	
3.51	4.21	1.11	-3	81	45	78	57	135	

**Dam's Production** WR: 7 @ 99 YR: 6 @ 104

**65 SINCLAIR JUSTIFIED K297**  
REG: \*20400539 | DOB: 03/04/22 | TATTOO: K297

Connealy Judgment  
**KG Justified 3023** 17707279#  
KG Miss Magic 1443

Connealy Consensus 7229#  
Entrine of Conanga 9876#  
Sitz Wisdom 481T#  
KG Miss Magic 3528  
Emulation N Bar 5522#  
N Bar Primrose 2424  
Sinclair Rito Legacy 3R9  
Rito Majesty 718 of 6844

N Bar Emulation EXT#  
**Sinclair Blkbird 4X5 7RL33** 17830673  
Sinclair Blkbird 7RL33 718#

Individual Performance					EPD's				
BW	ADJ. WW	WR	ADJ. YW	YR	CED	BW	WW	MILK	YW
87	616	102	1040	101	6	1.5	48	28	87
Individual Performance				Mat	\$ Values				
ADG	Act. IMF	REA/100 lbs	\$EN	\$M	\$W	\$F	\$G	\$B	
3.02	2.50	1.05	1	72	47	67	44	111	

**Dam's Production** WR: 7 @ 104 YR: 6 @ 105

**63 SINCLAIR JUSTIFIED K78**  
REG: \*20423342 | DOB: 02/23/22 | TATTOO: K78

Connealy Judgment  
**KG Justified 3023** 17707279#  
KG Miss Magic 1443

Connealy Consensus 7229#  
Entrine of Conanga 9876#  
Sitz Wisdom 481T#  
KG Miss Magic 3528  
Cole Creek Black Cedar 46P#  
Cole Creek Clovanada 495#  
N Bar Emulation EXT#  
N Bar Enchantress X4129

Cole Creek Cedar Ridge 1V#  
**Sinclair Enchantress 5CR7** 18154694  
Sinclair Enchantress 3X10

Individual Performance					EPD's				
BW	ADJ. WW	WR	ADJ. YW	YR	CED	BW	WW	MILK	YW
89	648	107	1046	102	6	.7	50	31	85
Individual Performance				Mat	\$ Values				
ADG	Act. IMF	REA/100 lbs	\$EN	\$M	\$W	\$F	\$G	\$B	
2.69	2.95	.93	1	91	53	64	44	108	

**Dam's Production** WR: 4 @ 113 YR: 2 @ 104



N BAR EMULATION EXT, THE MOST INFLUENTIAL BULL IN THE BREED THE PAST CENTURY AND THE MATERNAL GRANDSIRE OF LOT 65.

**64 SINCLAIR JUSTIFIED K152**  
REG: \*20423353 | DOB: 03/07/22 | TATTOO: K152

Connealy Judgment  
**KG Justified 3023** 17707279#  
KG Miss Magic 1443

Connealy Consensus 7229#  
Entrine of Conanga 9876#  
Sitz Wisdom 481T#  
KG Miss Magic 3528  
Gardens Prime Time#  
N Bar Miss Emulous A404  
N Bar Shadow X4124  
N Bar Clova Pride 3626

N Bar Prime Time D806#  
**Sinclair C Pride 2P10 J355** 17218797  
N Bar Clova Pride F2839#

Individual Performance					EPD's				
BW	ADJ. WW	WR	ADJ. YW	YR	CED	BW	WW	MILK	YW
84	601	100	1108	108	5	.4	49	26	91
Individual Performance				Mat	\$ Values				
ADG	Act. IMF	REA/100 lbs	\$EN	\$M	\$W	\$F	\$G	\$B	
3.44	3.29	1.04	-1	66	48	81	53	134	

**Dam's Production** WR: 9 @ 102 YR: 7 @ 104



N BAR CLOVA PRIDE F2839, A FOUNDATION SINCLAIR DONOR AND THE MATERNAL GRANDAM OF LOT 64.

**66 SINCLAIR JUSTIFIED K255**  
REG: \*20400559 | DOB: 02/27/22 | TATTOO: K255

Connealy Judgment  
**KG Justified 3023** 17707279#  
KG Miss Magic 1443

Connealy Consensus 7229#  
Entrine of Conanga 9876#  
Sitz Wisdom 481T#  
KG Miss Magic 3528  
Sinclair Emulate 7XT28  
Sinclair Blackbird 2P8 7079#  
Sinclair Emulation XXP#  
Sinclair Lady Ida 7V19 04F3

Sinclair Fortunate Son#  
**Sinclair Lady Ida 6D2 1XX5** 18486025  
Sinclair Lady Ida 1XX5 7V19

Individual Performance					EPD's				
BW	ADJ. WW	WR	ADJ. YW	YR	CED	BW	WW	MILK	YW
84	594	99	1021	100	6	.3	49	26	89
Individual Performance				Mat	\$ Values				
ADG	Act. IMF	REA/100 lbs	\$EN	\$M	\$W	\$F	\$G	\$B	
2.96	4.74	1.14	3	88	46	71	59	130	

**Dam's Production** WR: 5 @ 102 YR: 4 @ 103



SINCLAIR LADY IDA 7V19 04F3, THE LEGENDARY THIRD DAM OF LOT 66.



**SINCLAIR JUSTIFIED K333**  
REG: \*20400537 | DOB: 03/08/22 | TATTOO: K333

Connealy Judgment  
**KG Justified 3023** 17707279#  
KG Miss Magic 1443

Sinclair Emulation OF4  
**Sinclair K Bty 4FX25 8R31** 17941940  
Sinclair K Bty 8R31 04M3

Connealy Consensus 7229#  
Etrine of Conanga 9876#  
Sitz Wisdom 481T#  
KG Miss Magic 3528  
Emulation N Bar 5522#  
N Bar Kinochtry Bty SCC 2V3#  
Rito Revolve OR5  
Sinclair K Beauty 04M3 E118

Individual Performance					EPD's				
BW	ADJ. WW	WR	ADJ. YW	YR	CED	BW	WW	MILK	YW
83	613	102	1040	101	7	-2	51	26	88
Individual Performance				Mat	\$ Values				
ADG	Act. IMF	REA/100 lbs		\$EN	\$M	\$W	\$F	\$G	\$B
2.78	3.47	1.22		-1	71	50	62	51	113
<b>Dam's Production</b>					WR: 6 @ 107	YR: 4 @ 108			



**SINCLAIR JUSTIFIED K107**  
REG: \*20423329 | DOB: 02/28/22 | TATTOO: K107

Connealy Judgment  
**KG Justified 3023** 17707279#  
KG Miss Magic 1443

N Bar Emulation EXT#  
**Sinclair Lady 7X14 3T9** 18835174  
Sinclair Lady 3T9 4465#

Connealy Consensus 7229#  
Etrine of Conanga 9876#  
Sitz Wisdom 481T#  
KG Miss Magic 3528  
Emulation N Bar 5522#  
N Bar Primrose 2424  
N Bar Explosion TNT#  
Ideal 4465 of 6807 4286

Individual Performance					EPD's				
BW	ADJ. WW	WR	ADJ. YW	YR	CED	BW	WW	MILK	YW
86	570	95	1004	98	6	-2	44	25	78
Individual Performance				Mat	\$ Values				
ADG	Act. IMF	REA/100 lbs		\$EN	\$M	\$W	\$F	\$G	\$B
2.94	2.45	1.04		7	70	43	63	38	101
<b>Dam's Production</b>					WR: 4 @ 100	YR: 2 @ 96			



**SINCLAIR JUSTIFIED K272**  
REG: \*20423332 | DOB: 03/02/22 | TATTOO: K272

Connealy Judgment  
**KG Justified 3023** 17707279#  
KG Miss Magic 1443

Sinclair Dynasty 3WCD7  
**Sinclair Enchantress 7WC37** 18826277  
Sinclair Enchantress 1JP11#

Connealy Consensus 7229#  
Etrine of Conanga 9876#  
Sitz Wisdom 481T#  
KG Miss Magic 3528  
Wandering CRK Dynasty JRM 2F#  
Sinclair Eriskay 2N1 7883#  
Dunlouse Jipsey Earl E161#  
Sinclair Enchantress 8V10

Individual Performance					EPD's				
BW	ADJ. WW	WR	ADJ. YW	YR	CED	BW	WW	MILK	YW
85	632	105	1014	99	9	-4	46	28	76
Individual Performance				Mat	\$ Values				
ADG	Act. IMF	REA/100 lbs		\$EN	\$M	\$W	\$F	\$G	\$B
2.41	2.64	1.07		6	93	49	59	39	99
<b>Dam's Production</b>					WR: 4 @ 98	YR: 2 @ 102			



SINCLAIR LADY 3T9 4465, A 2ND GENERATION SINCLAIR DONOR AND GRANDAM OF LOT 70.



ANKONIAN DYNAMO, THE FAMOUS MATERNAL GRANDSIRE OF LOT 69.



**SINCLAIR JUSTIFIED K77**  
REG: \*20423338 | DOB: 02/22/22 | TATTOO: K77

Connealy Judgment  
**KG Justified 3023** 17707279#  
KG Miss Magic 1443

Ankonian Dynamo#  
**Sinclair Pride 5DY1 2188** 18299732  
Sitz Pride 2188

Connealy Consensus 7229#  
Etrine of Conanga 9876#  
Sitz Wisdom 481T#  
KG Miss Magic 3528  
Emulous Pride 70  
Miss Emulous B  
N Bar Emulation EXT#  
Sitz Pride 838#

Individual Performance					EPD's				
BW	ADJ. WW	WR	ADJ. YW	YR	CED	BW	WW	MILK	YW
69	558	93	998	97	11	-2.9	38	24	69
Individual Performance				Mat	\$ Values				
ADG	Act. IMF	REA/100 lbs		\$EN	\$M	\$W	\$F	\$G	\$B
2.86	3.53	1.10		5	68	40	61	48	109
<b>Dam's Production</b>					WR: 5 @ 101	YR: 2 @ 106			





### SINCLAIR MT TIME K595

REG: 20565385 | DOB: 02/22/22 | TATTOO: K595

N Bar Prime Time D806#  
**Sinclair MT Time 2P77** 14311980  
N Bar Enchantress 4906

Gardens Prime Time#  
N Bar Miss Emulous A404  
Emulation N Bar 5522#  
Coffey Enchantress 424

Loyning Equinox 7  
**Sinclair K Bty 0EQ1 7FE4** 20563428  
Sinclair K Bty 7FE4 E010#

Horse Butte 6141 of 3141  
Jad Ester 3750  
Sinclair Emulation TNT 27F3  
N Bar Kinochtry Bty V1495H

Individual Performance					EPD's				
BW	ADJ. WW	WR	ADJ. YW	YR	CED	BW	WW	MILK	YW
74	643	119	1133	111	7	-1.3	48	26	78
Individual Performance					\$ Values				
ADG	Act. IMF	REA/100 lbs	Mat	SEN	\$M	\$W	\$F	\$G	\$B
3.49	3.22	1.15	-2	56	51	56	25	81	

**Dam's Production** WR: 1 @ 119 YR: 1 @ 111



SINCLAIR MT TIME 2P77, THE HIGHLY MATERNAL AND CALVING EASE SIRE OF LOT 71



### SINCLAIR EXECUTIVE K66

REG: \*20419909 | DOB: 02/18/22 | TATTOO: K66

Sinclair Black Iron 7UR26  
**Sinclair Executive 9UF3** 19472545  
Sinclair Lady Ida 8XV12 C52#

Sinclair Exactly 4U2  
Sinclair Erica 2FE2 8BT12  
N Bar Emulation Ext V722  
N Bar Lady Ida Z1453  
Sinclair Timeless 8BA4#  
Sinclair Primrose 1G13 6E11#  
R R Rito 707#  
Sinclair Lady 0353 4465

Sinclair Sun Dial 5TL43  
**Sinclair Lady 7TG11 0R109** 18982449  
Sinclair Lady 0R109 0353

Individual Performance					EPD's				
BW	ADJ. WW	WR	ADJ. YW	YR	CED	BW	WW	MILK	YW
78	567	94	1018	99	6	-1.9	36	19	60
Individual Performance					\$ Values				
ADG	Act. IMF	REA/100 lbs	Mat	SEN	\$M	\$W	\$F	\$G	\$B
3.00	3.05	1.15	16	53	36	49	22	71	

**Dam's Production** WR: 3 @ 95 YR: 1 @ 99



SINCLAIR EXECUTIVE 9UF3, THE FEMALE MAKER AND SIRE OF LOT 73.



SINCLAIR K BTY 7FE4 E010, THE GRANDAM OF LOT 71.



### SINCLAIR POWDER RIVER K34

REG: \*20555599 | DOB: 02/13/22 | TATTOO: K34

Sinclair Piney Creek 6FV16  
**Sinclair Powder River 0FL7** 19934800  
Sinclair Eriskay 5E3 2N11#

Sinclair X-Changer 2FE9  
Sinclair K Bty 2X7 6MB8#  
N Bar Explosion#  
Sinclair Eriskay 2N11 7883  
Sinclair Extra 4X13#  
Sinclair Blkbird 7OC10 J472  
Sinclair Grass Master#  
Sinclair Blkcap 8BT3 A29

Sinclair Emperor 0XT51  
**Sinclair Blkcap 6X014 2G54** 18486481  
Sinclair Blkcap 2G54 8BT3

Individual Performance					EPD's				
BW	ADJ. WW	WR	ADJ. YW	YR	CED	BW	WW	MILK	YW
77	618	102	1036	101	9	-1.0	36	30	64
Individual Performance					\$ Values				
ADG	Act. IMF	REA/100 lbs	Mat	SEN	\$M	\$W	\$F	\$G	\$B
2.69	3.20	.98	6	68	42	64	33	97	

**Dam's Production** WR: 4 @ 105 YR: 2 @ 104



SINCLAIR POWDER RIVER 0FL7, THE 2ND HIGH SELLING BULL OF 2021 SELLING TO SAM RISSE, SD AND THE SIRE OF LOT 74.



### SINCLAIR EXECUTIVE K571

REG: 20546286 | DOB: 02/19/22 | TATTOO: K571

Sinclair Black Iron 7UR26  
**Sinclair Executive 9UF3** 19472545  
Sinclair Lady Ida 8XV12 C52#

Sinclair Exactly 4U2  
Sinclair Erica 2FE2 8BT12  
N Bar Emulation Ext V722  
N Bar Lady Ida Z1453

Cole Creek Cedar Ridge 1V#  
**Sinclair Blkbird 6CR9 1SR13** 18497907  
Sinclair Blkbird 1SR13 9A9

Cole Creek Black Cedar 46P#  
Cole Creek Clovanada 49S#  
Sinclair Shadow Rider 9534  
Sinclair Blkbird 9A9 6P58

Individual Performance					EPD's				
BW	ADJ. WW	WR	ADJ. YW	YR	CED	BW	WW	MILK	YW
96	538	99	1048	102	1	1.4	41	23	72
Individual Performance					\$ Values				
ADG	Act. IMF	REA/100 lbs	Mat	SEN	\$M	\$W	\$F	\$G	\$B
3.38	3.34	1.22	12	64	36	55	33	88	

**Dam's Production** WR: 4 @ 102 YR: 3 @ 103



**75 SINCLAIR LONGMIRE K325**  
REG: \*20400544 | DOB: 03/06/22 | TATTOO: K325

S A V Renown 3439#  
**Reisig Longmire 8326** 19448009  
BUF Eriskay 7417

Sinclair Emulation 5522 XP#  
**Sinclair Blkcap 5FE28 602** 18370928  
Sinclair Blkcap 602 A26

Rito 707 of Ideal 3407 7075  
S A V Blackcap May 4136  
N Bar Emulation EXT#  
J Bar 7 Eriskay Q13-71K1#  
Emulation N Bar 5522#  
N Bar Primrose Y3051#  
Sinclair Pioneer 1F3  
Rito Majesty 4A26 of F0203

Individual Performance					EPD's				
BW	ADJ. WW	WR	ADJ. YW	YR	CED	BW	WW	MILK	YW
79	609	101	1078	105	10	-1.3	33	22	64
Individual Performance				Mat	\$ Values				
ADG	Act. IMF	REA/100 lbs	\$EN	\$M	\$W	\$F	\$G	\$B	
3.07	2.45	1.18	5	64	30	43	20	64	

**Dam's Production WR: 6 @ 99 YR: 3 @ 98**

**78 SINCLAIR LONGMIRE K619**  
REG: \*20548787 | DOB: 02/28/22 | TATTOO: K619

S A V Renown 3439#  
**Reisig Longmire 8326** 19448009  
BUF Eriskay 7417

Ideal 4458 of 6807 5103  
**Sinclair C Pride 8RJ6 1RL13** 19166620  
Sinclair C Pride 1RL13 J204

Rito 707 of Ideal 3407 7075  
S A V Blackcap May 4136  
N Bar Emulation EXT#  
J Bar 7 Eriskay Q13-71K1#  
D H D Traveler 6807#  
Eldorado 5103 Ideal 3167 156  
Sinclair Rito Legacy 3R9  
N Bar Clova Pride WP C2009

Individual Performance					EPD's				
BW	ADJ. WW	WR	ADJ. YW	YR	CED	BW	WW	MILK	YW
80	590	98	1054	103	6	.0	35	22	72
Individual Performance				Mat	\$ Values				
ADG	Act. IMF	REA/100 lbs	\$EN	\$M	\$W	\$F	\$G	\$B	
3.08	3.27	1.26	-1	62	29	66	21	87	

**Dam's Production WR: 3 @ 99 YR: 2 @ 106**

**76 SINCLAIR LONGMIRE K510**  
REG: 20546274 | DOB: 02/08/22 | TATTOO: K510

S A V Renown 3439#  
**Reisig Longmire 8326** 19448009  
BUF Eriskay 7417

Sinclair Pioneer 1RF1  
**Sinclair Ms Emulous 9RM1** 19475203  
Sinclair Ms Emulous 2P5 D47

Rito 707 of Ideal 3407 7075  
S A V Blackcap May 4136  
N Bar Emulation EXT#  
J Bar 7 Eriskay Q13-71K1#  
PBC 707 1M F0203#  
N Bar Miss Emulous A404  
N Bar Prime Time D806#  
N Bar Miss Emulous B514

Individual Performance					EPD's				
BW	ADJ. WW	WR	ADJ. YW	YR	CED	BW	WW	MILK	YW
92	509	94	1063	104	5	.7	35	22	73
Individual Performance				Mat	\$ Values				
ADG	Act. IMF	REA/100 lbs	\$EN	\$M	\$W	\$F	\$G	\$B	
4.05	3.11	1.08	6	67	27	66	19	84	

**Dam's Production WR: 1 @ 94 YR: 1 @ 104**

**79 SINCLAIR NIGHTHAWK K301**  
REG: \*20400556 | DOB: 03/05/22 | TATTOO: K301

Ankonian Cornhusker#  
**N Bar Nighthawk** 11403481  
N Bar Enchantress 4908#

Sinclair Executive 9XV2  
**Sinclair Blkbird 5U41 9BA9** 18154178  
Sinclair Blkbird 9BA9 7036#

Ankonian Cornerstone  
Ankony 8F78 Erica 341B6  
Basin Emulation 5953  
Coffey Enchantress 424  
N Bar Emulation Ext V722  
N Bar Primrose Y3051#  
Sinclair IN Time 6BT39  
Sinclair Blkbird 7036 5PV50

Individual Performance					EPD's				
BW	ADJ. WW	WR	ADJ. YW	YR	CED	BW	WW	MILK	YW
95	617	102	1030	100	-1	1.3	33	27	64
Individual Performance				Mat	\$ Values				
ADG	Act. IMF	REA/100 lbs	\$EN	\$M	\$W	\$F	\$G	\$B	
2.81	2.65	.91	2	36	31	61	26	87	

**Dam's Production WR: 6 @ 94 YR: 3 @ 99**

**77 SINCLAIR LONGMIRE K028**  
REG: 20551894 | DOB: 02/24/22 | TATTOO: K028

S A V Renown 3439#  
**Reisig Longmire 8326** 19448009  
BUF Eriskay 7417

**N Bar Explosion#**  
**Sinclair Blackbird 5E2 2C9#** 14969676  
Sinclair Blackbird 2C9 9864

Rito 707 of Ideal 3407 7075  
S A V Blackcap May 4136  
N Bar Emulation EXT#  
J Bar 7 Eriskay Q13-71K1#  
N Bar Emulation EXT#  
N Bar Kinochtry Beauty 4288  
D H D Traveler 6807#  
Papa Blackbird 9864#

Individual Performance					EPD's				
BW	ADJ. WW	WR	ADJ. YW	YR	CED	BW	WW	MILK	YW
ET	504	88	1040	99	3	.7	34	24	68
Individual Performance				Mat	\$ Values				
ADG	Act. IMF	REA/100 lbs	\$EN	\$M	\$W	\$F	\$G	\$B	
3.68	2.94	1.17	-1	48	30	67	26	92	

**Dam's Production WR: 14 @ 110 YR: 13 @ 109**

K028 carries a stacked maternal and range-adapted pedigree for generations. His dam definitely outperformed her contemporaries for the test of time.



N BAR NIGHTHAWK, A FEATURED LONG-TIME N BAR RANCH HERDSIRE AND THE SIRE OF LOT 79.

SINCLAIR  
BLACKBIRD 5E2  
2C9, DAM OF  
LOT 77



**80 SINCLAIR NIGHTHAWK K341**  
REG: \*20400532 | DOB: 03/10/22 | TATTOO: K341

Ankonian Cornhusker#  
**N Bar Nighthawk** 11403481  
N Bar Enchantress 4908#

N Bar Emulation EXT#  
**Sinclair K Bty 3X20 J115** 17578290  
N Bar Kinochtry Beauty G3259

Ankonian Cornerstone  
Ankony 8F78 Erica 341B6  
Basin Emulation 5953  
Coffey Enchantress 424  
Emulation N Bar 5522#  
N Bar Primrose 2424  
N Bar Prime Rate#  
N Bar Kinochtry Beauty Y3567

Individual Performance					EPD's				
BW	ADJ. WW	WR	ADJ. YW	YR	CED	BW	WW	MILK	YW
90	634	105	1036	101	-2	1.3	36	27	67
Individual Performance				Mat	\$ Values				
ADG	Act. IMF	REA/100 lbs	\$EN	\$M	\$W	\$F	\$G	\$B	
2.60	3.13	.95	2	38	35	69	23	92	

**Dam's Production WR: 7 @ 94 YR: 4 @ 101**



# SINCLAIR EMULATION K97

REG: \*20419898 | DOB: 02/26/22 | TATTOO: K97

N Bar Emulation EXT#  
**Sinclair Exquisite 0X3** 19941920  
Basin Pamella F271

Emulation N Bar 5522#  
N Bar Primrose 2424  
Basin Rainmaker 654X#  
Basin Pamella 676X#  
Sinclair Entrepreneur 8R101  
Sinclair Lady Ida 8XV12 C52#  
Basin Rainmaker 914A  
Sinclair Lady Ida OXM13

Sinclair Broker 3RC33  
**Sinclair Lady Ida 6K27 3007** 18487770  
Sinclair Lady Ida 3007 OXM13

Individual Performance					EPD's				
BW	ADJ. WW	WR	ADJ. YW	YR	CE	BW	WW	MILK	YW
90	634	105	1034	101	-1	1.9	41	29	72
Individual Performance				Mat	\$ Values				
ADG	Act. IMF	REA/100 lbs	SEN	\$M	\$W	\$F	\$G	\$B	
2.95	3.55	1.08	0	63	40	68	35	103	
<b>Dam's Production WR: 4 @ 104 YR: 4 @ 99</b>									



# SINCLAIR EMULATION K296

REG: \*20400584 | DOB: 03/04/22 | TATTOO: K296

N Bar Emulation EXT#  
**Sinclair Exquisite 0X3** 19941920  
Basin Pamella F271

Emulation N Bar 5522#  
N Bar Primrose 2424  
Basin Rainmaker 654X#  
Basin Pamella 676X#  
Wandering CRK Dynasty JRM 2F#  
Sinclair Eriskay 2N1 7883#  
Sinclair Original 8R104  
Sinclair Primrose 9X64 B1#

Sinclair Dynasty 3WCD7  
**Sinclair Primrose 7WC31 3RO6** 18826254  
Sinclair Primrose 3RO6 9X64

Individual Performance					EPD's				
BW	ADJ. WW	WR	ADJ. YW	YR	CE	BW	WW	MILK	YW
83	594	99	1015	99	1	2.0	38	26	68
Individual Performance				Mat	\$ Values				
ADG	Act. IMF	REA/100 lbs	SEN	\$M	\$W	\$F	\$G	\$B	
2.71	2.84	1.16	3	65	35	62	21	83	
<b>Dam's Production WR: 4 @ 99 YR: 2 @ 102</b>									

To better serve our customers, we are making every effort to provide our customer's cattle with better sale marketing exposure.

Let one of the Sinclair Team Representatives know when you are ready to market your cattle and we will try our best to assist you in achieving the top dollar possible to add value to your bottom line.

Fred Saunders is an experienced livestock marketing professional that strives to help earn top dollar for your cattle. He is a friend of the Sinclair program and has been through the offering. Please call him if he can help you successfully market your cattle.



Your personal representative for  
Northern Livestock Video Auction



**Heart S Livestock  
Marketing, LLC**

Contact Me for all your  
Marketing Needs!

**Fred Saunders**

4149 Elk Creek Rd - PO Box 117  
Grass Range, MT 59032

406-788-9331 | fredsaunders9@gmail.com

*Enhancing your marketing options  
the personal and professional way.*

Licensed and Bonded



**REF SIRE** **SINCLAIR EXQUISITE 0X3**  
 REG: 19941920 | DOB: 02/02/20 | TATTOO: 0X3

Emulation N Bar 5522#  
**N Bar Emulation EXT** 10776479#  
 N Bar Primrose 2424

Emulation 31#  
 Ankony 8F78 Lass 8F275  
 Emulation 31#  
 Primrose N Bar 9962  
 Basin Rainmaker D S 380U#  
 Basin Bardolene 423U  
 Basin Rainmaker D S 450U  
 Basin Pamella 6806

Basin Rainmaker 654X#  
**Basin Pamella F271** 12932233  
 Basin Pamella 676X#

CED	BW	WW	YW	SC	MILK	DOC	MARB	REA	\$M	\$W	\$F	\$B	\$C
-4	3.4	46	86		30				47	40	78	103	181

0X3 was retained by Sinclair as a featured herdsire that adds tremendous length and performance and some extra size for those selling calves by the pound. His impeccable maternal pedigree is rock solid. His first progeny record ratios at CE 1.0 BW 105 WW 102 YW 105. His first calf crop have exceeded our expectations.



**83 SINCLAIR EMULATION K157**  
 REG: \*20419913 | DOB: 03/07/22 | TATTOO: K157

N Bar Emulation EXT#  
**Sinclair Exquisite 0X3** 19941920  
 Basin Pamella F271

Emulation N Bar 5522#  
 N Bar Primrose 2424  
 Basin Rainmaker 654X#  
 Basin Pamella 676X#  
 Sinclair Emulation 5522 XP#  
 Sinclair M Emulous 4ET1 D47#  
 Sinclair Broker 3RC33  
 Sinclair Lady Ida 3001 0X4#

Sinclair X-Changer 5FE15  
**Sinclair Lady Ida 8EE8 6K15** 19275389  
 Sinclair Lady Ida 6K15 3001

Individual Performance					EPD's				
BW	ADJ. WW	WR	ADJ. YW	YR	CED	BW	WW	MILK	YW
88	610	101	1018	99	0	1.6	41	26	71
Individual Performance					\$ Values				
ADG	Act. IMF	REA/100 lbs	SEN	\$M	\$W	\$F	\$G	\$B	
2.68	3.40	1.16	5	67	39	59	23	83	

**Dam's Production** WR: 2 @ 97 YR: 1 @ 99

**85 SINCLAIR EXQUISITE K626**  
 REG: \*20561687 | DOB: 03/03/22 | TATTOO: K626

N Bar Emulation EXT#  
**Sinclair Exquisite 0X3** 19941920  
 Basin Pamella F271

Emulation N Bar 5522#  
 N Bar Primrose 2424  
 Basin Rainmaker 654X#  
 Basin Pamella 676X#  
 Sinclair X-Changer 2FE9  
 Sinclair Ms Emulous 8F12  
 O C C Emblazon 854E#  
 Sinclair Lady 0C4 4465

Sinclair Piney Creek 5FV5  
**Sinclair Lady 9FF41 7OE5** 19541313  
 Sinclair Lady 7OE5 0C4

Individual Performance					EPD's				
BW	ADJ. WW	WR	ADJ. YW	YR	CED	BW	WW	MILK	YW
80	624	103	1021	99	4	.2	40	26	65
Individual Performance					\$ Values				
ADG	Act. IMF	REA/100 lbs	SEN	\$M	\$W	\$F	\$G	\$B	
2.42	3.69	1.08	9	75	42	54	24	78	

**Dam's Production** WR: 1 @ 103 YR: 1 @ 99

**84 SINCLAIR EXQUISITE K508**  
 REG: 20546273 | DOB: 02/08/22 | TATTOO: K508

N Bar Emulation EXT#  
**Sinclair Exquisite 0X3** 19941920  
 Basin Pamella F271

Emulation N Bar 5522#  
 N Bar Primrose 2424  
 Basin Rainmaker 654X#  
 Basin Pamella 676X#  
 PBC 707 1M E0046  
 PBC 707 1F E0060  
 Papa Rito T Intense DHD 6844#  
 Papa Eriskay 7862#

Rito Excel 809#  
**Sinclair Eriskay 9Z1 011** 19622725  
 PLD Eriskay Papa 011

Individual Performance					EPD's				
BW	ADJ. WW	WR	ADJ. YW	YR	CED	BW	WW	MILK	YW
98	529	98	988	97	-4	4.1	40	22	70
Individual Performance					\$ Values				
ADG	Act. IMF	REA/100 lbs	SEN	\$M	\$W	\$F	\$G	\$B	
3.40	3.53	1.18	7	42	26	60	24	84	

**Dam's Production** WR: 2 @ 103 YR: 2 @ 101

An extremely intriguing pedigree in a bull out of the famous PAPA Eriskay cow family. Only at Sinclair are you going to find these stacked pedigrees of extremely proven legendary Angus sires.



RITO EXCEL 809, THE LEGENDARY MATERNAL GRANDSIRE OF LOT 84.

**86 SINCLAIR EXQUISITE K539**  
 REG: 20546280 | DOB: 02/14/22 | TATTOO: K539

N Bar Emulation EXT#  
**Sinclair Exquisite 9X93** 20254570  
 N Bar Primrose Y3051#

Emulation N Bar 5522#  
 N Bar Primrose 2424  
 N Bar Emulation EXT#  
 N Bar Primrose 2429#  
 N Bar Emulation EXT#  
 N Bar Kinochtry Beauty 4288  
 Sinclair Preview 2TL6  
 Sinclair Primrose 2D9 8PV95

N Bar Nitro  
**Sinclair Primrose 9NI11** 19602952  
 Sinclair Primrose 7TA3 2D9

Individual Performance					EPD's				
BW	ADJ. WW	WR	ADJ. YW	YR	CED	BW	WW	MILK	YW
78	584	108	1019	100	7	-1.1	42	23	70
Individual Performance					\$ Values				
ADG	Act. IMF	REA/100 lbs	SEN	\$M	\$W	\$F	\$G	\$B	
3.04	2.73	1.09	4	69	42	57	19	76	

**Dam's Production** WR: 1 @ 108 YR: 1 @ 100





**REF SIRE SINCLAIR TIMELESS 8BA4#**  
 REG: 16027579 | DOB: 8BA4 | TATTOO: 8BA4

BT Right Time 24J#  
**Sinclair IN Time 6BT39** 15366581  
 N Bar Miss Emulous A404

Leachman Right Time#  
 Sitz Everelda Entense 1905  
 N Bar Emulation Ext Z52  
 N Bar Miss Emulous X3091#

N Bar Prime Time D806#  
**Sinclair Blackbird 2P8 7079#** 14339897  
 Rito 707 of Ideal 089 7076

Gardens Prime Time#  
 N Bar Miss Emulous A404#  
 R R Rito 707#  
 Ideal 089 of 8103 7394

CED	BW	WW	YW	SC	MILK	DOC	MARB	REA	\$M	\$W	\$F	\$B	\$C
14	-4.7	21	53		34				38	32	67	94	160

Timeless is a rock solid, "go to" highly proven heifer bull who is a universal breeding tool. He makes exceptional females that work for a living in range environments. This pathfinder sire's progeny ratios are BW-96 WW -98 YW -101 And has 134 daughters avg nursing ratio at a 102.



87

**BIG TIME CALVING EASE HERDSIRE PROSPECT!**

**87 SINCLAIR TIMELESS K83**  
 REG: \*20419924 | DOB: 02/24/22 | TATTOO: K83

Sinclair IN Time 6BT39  
**Sinclair Timeless 8BA4** 16027579#  
 Sinclair Blackbird 2P8 7079#

Sinclair Plains Boss 5B02  
**Sinclair Blacky 8L23 4A3** 19169684  
 Sinclair Blacky 4A3 20C4

BT Right Time 24J#  
 N Bar Miss Emulous A404  
 N Bar Prime Time D806#  
 Rito 707 of Ideal 089 7076

Sinclair Patriarch 3B47  
 Sinclair Lady Ida 7V19 04F3  
 Sinclair Shadow Rider 9S34  
 Sinclair Blacky 20C4 0BA32

Individual Performance					EPD's				
BW	ADJ. WW	WR	ADJ. YW	YR	CED	BW	WW	MILK	YW
62	593	98	1014	99	15	-5.3	32	26	61

Individual Performance				Mat	\$ Values			
ADG	Act. IMF	REA/100 lbs	SEN	\$M	\$W	\$F	\$G	\$B
2.86	2.96	1.04	10	67	36	56	21	77

**Dam's Production WR: 3 @ 97 YR: 1 @ 99**

K83 is an extreme calving-ease specialist with an outstanding phenotype! If you desire "bet the ranch calving ease" with a proven female maker pedigree backed by an excellent dam that covers all the maternal bases, this is a very top choice!

**88 SINCLAIR TIMELESS K344**  
 REG: \*20400587 | DOB: 03/10/22 | TATTOO: K344

Sinclair IN Time 6BT39  
**Sinclair Timeless 8BA4** 16027579#  
 Sinclair Blackbird 2P8 7079#

Sinclair Exquisite 6X2  
**Sinclair C Pride 8XA16 5FE13** 19284027  
 Sinclair C Pride 5FE13 2P10

BT Right Time 24J#  
 N Bar Miss Emulous A404  
 N Bar Prime Time D806#  
 Rito 707 of Ideal 089 7076

N Bar Emulation EXT#  
 Sinclair Ms Emulous 7RT5  
 Sinclair Emulation 5522 XP#  
 Sinclair C Pride 2P10 J355

Individual Performance					EPD's				
BW	ADJ. WW	WR	ADJ. YW	YR	CED	BW	WW	MILK	YW
81	661	110	1055	103	10	-2.1	32	29	56

Individual Performance				Mat	\$ Values			
ADG	Act. IMF	REA/100 lbs	SEN	\$M	\$W	\$F	\$G	\$B
2.59	3.21	1.13	9	64	39	51	22	73

**Dam's Production WR: 2 @ 104 YR: 1 @ 103**



**SINCLAIR TIMELESS K44**

REG: \*20434690 | DOB: 02/14/22 | TATTOO: K44

Sinclair IN Time 6BT39  
**Sinclair Timeless 8BA4** 16027579#  
Sinclair Blackbird 2P8 7079#Sinclair X-Plus 8XX3  
**Sinclair Blacky OXC28 5TL18** 20006138  
Sinclair Blacky 5TL18 3G18#BT Right Time 24J#  
N Bar Miss Emulous A404  
N Bar Prime Time D806#  
Rito 707 of Ideal 089 7076  
Sinclair Emulation XXP#  
Sinclair Enchantress 5RT1#  
Sinclair Timeless 8BA4#  
Sinclair Blacky 3G18 6P18

Individual Performance					EPD's				
BW	ADJ. WW	WR	ADJ. YW	YR	CED	BW	WW	MILK	YW
79	593	98	1022	99	6	.0	35	28	72
Individual Performance					Mat	\$ Values			
ADG	Act. IMF	REA/100 lbs	\$EN	\$M	\$W	\$F	\$G	\$B	
2.91	2.46	1.06	0	42	34	64	19	83	
<b>Dam's Production</b>					WR: 1 @ 98	YR: 1 @ 99			

**SINCLAIR JUSTIFIED K550**

REG: 20553697 | DOB: 02/18/22 | TATTOO: K550

Connealy Judgment  
**KG Justified 3023** 17707279#  
KG Miss Magic 1443N Bar Emulation EXT#  
**Sinclair Eriskay 3X31 2C11** 17578697  
Sinclair Eriskay 2C11 7883Connealy Consensus 7229#  
Etrine of Conanga 9876#  
Sitz Wisdom 481T#  
KG Miss Magic 3528  
Emulation N Bar 5522#  
N Bar Primrose 2424  
D H D Traveler 6807#  
Papa Eriskay 7883

Individual Performance					EPD's				
BW	ADJ. WW	WR	ADJ. YW	YR	CED	BW	WW	MILK	YW
80	508	94	967	95	9	-8	44	24	77
Individual Performance					Mat	\$ Values			
ADG	Act. IMF	REA/100 lbs	\$EN	\$M	\$W	\$F	\$G	\$B	
3.26	3.15	1.05	4	70	43	64	40	104	
<b>Dam's Production</b>					WR: 2 @ 97	YR: 2 @ 98			

**SINCLAIR TIMELESS K591**

REG: 20546296 | DOB: 02/22/22 | TATTOO: K591

Sinclair IN Time 6BT39  
**Sinclair Timeless 8BA4** 16027579#  
Sinclair Blackbird 2P8 7079#Sinclair Emulous 8TD1  
**Sinclair Ms Wix OTD4 8RJ5** 20045453  
Sinclair Ms Wix 8RJ5 3S1BT Right Time 24J#  
N Bar Miss Emulous A404  
N Bar Prime Time D806#  
Rito 707 of Ideal 089 7076  
Vance Top Dawg#  
N Bar Miss Emulous A404  
Ideal 4458 of 6807 5103  
Sinclair Ms Wix 3S1 2022

Individual Performance					EPD's				
BW	ADJ. WW	WR	ADJ. YW	YR	CED	BW	WW	MILK	YW
70	519	96	964	94	11	-2.8	21	28	46
Individual Performance					Mat	\$ Values			
ADG	Act. IMF	REA/100 lbs	\$EN	\$M	\$W	\$F	\$G	\$B	
3.13	2.98	1.07	10	58	26	53	21	74	
<b>Dam's Production</b>					WR: 1 @ 96	YR: 1 @ 94			



SINCLAIR ERISKAY 3X31 2C11, THE MAJESTIC DAM OF LOT 93

**SINCLAIR TIMELESS K304**

REG: \*20400555 | DOB: 03/05/22 | TATTOO: K304

Sinclair IN Time 6BT39  
**Sinclair Timeless 8BA4** 16027579#  
Sinclair Blackbird 2P8 7079#Sinclair Executive 9XV2  
**Sinclair Primrose 5U4 3D10** 18154144  
Sinclair Primrose 3D10 655BT Right Time 24J#  
N Bar Miss Emulous A404  
N Bar Prime Time D806#  
Rito 707 of Ideal 089 7076  
N Bar Emulation Ext V722  
N Bar Primrose Y3051#  
Sinclair Fortunate Son#  
Sinclair Primrose 655 4P31

Individual Performance					EPD's				
BW	ADJ. WW	WR	ADJ. YW	YR	CED	BW	WW	MILK	YW
80	585	97	988	96	11	-2.7	29	28	57
Individual Performance					Mat	\$ Values			
ADG	Act. IMF	REA/100 lbs	\$EN	\$M	\$W	\$F	\$G	\$B	
2.65	3.03	1.06	9	62	34	59	22	81	
<b>Dam's Production</b>					WR: 6 @ 103	YR: 4 @ 102			

**SINCLAIR JUSTIFIED K30**

REG: \*20434672 | DOB: 02/12/22 | TATTOO: K30

Connealy Judgment  
**KG Justified 3023** 17707279#  
KG Miss Magic 1443Sinclair Emperor 6XO2  
**Sinclair Nalie 00V20 6SX28** 19981750  
Sinclair Nalie 6SX28 1FE19Connealy Consensus 7229#  
Etrine of Conanga 9876#  
Sitz Wisdom 481T#  
KG Miss Magic 3528  
Sinclair Emperor 0XT51  
Sinclair Ms Emulous 2V20 A40  
Sinclair Vision 3SX12  
Sinclair Nalie 1FE19 8P6

Individual Performance					EPD's				
BW	ADJ. WW	WR	ADJ. YW	YR	CED	BW	WW	MILK	YW
81	620	103	1023	100	8	-3	49	25	86
Individual Performance					Mat	\$ Values			
ADG	Act. IMF	REA/100 lbs	\$EN	\$M	\$W	\$F	\$G	\$B	
2.86	3.19	1.02	4	88	47	65	41	106	
<b>Dam's Production</b>					WR: 1 @ 103	YR: 1 @ 100			

**SINCLAIR JUSTIFIED K14**

REG: \*20434689 | DOB: 02/10/22 | TATTOO: K14

Connealy Judgment  
**KG Justified 3023** 17707279#  
KG Miss Magic 1443Sinclair Dynasty 7WC17  
**Sinclair K Bty OWG15 6RE10** 19981742  
Sinclair K Bty 6RE10 OXM2Connealy Consensus 7229#  
Etrine of Conanga 9876#  
Sitz Wisdom 481T#  
KG Miss Magic 3528  
Sinclair Dynasty 3WCD7  
Sinclair Primrose 1G13 6E11#  
Sinclair Promise 4RP15  
Sinclair K Bty OXM2 3J3

Individual Performance					EPD's				
BW	ADJ. WW	WR	ADJ. YW	YR	CED	BW	WW	MILK	YW
67	720	119	995	97	9	-3.1	49	31	72
Individual Performance					Mat	\$ Values			
ADG	Act. IMF	REA/100 lbs	\$EN	\$M	\$W	\$F	\$G	\$B	
1.85	3.33	1.04	7	97	61	52	41	94	
<b>Dam's Production</b>					WR: 1 @ 119	YR: 1 @ 97			

**SINCLAIR JUSTIFIED K40**

REG: \*20434677 | DOB: 02/13/22 | TATTOO: K40

Connealy Judgment  
**KG Justified 3023** 17707279#  
KG Miss Magic 1443Sinclair Shadow Rider 6S8  
**Sinclair Primrose 05H7 1G5** 19981336  
Sinclair Primrose 1G5 8P3Connealy Consensus 7229#  
Etrine of Conanga 9876#  
Sitz Wisdom 481T#  
KG Miss Magic 3528  
N Bar Shadow X4124  
N Bar Clova Pride E2188  
Sinclair Grass Master#  
Sinclair Primrose 8P3 E002

Individual Performance					EPD's				
BW	ADJ. WW	WR	ADJ. YW	YR	CED	BW	WW	MILK	YW
69	601	100	1028	100	9	-1.0	48	26	81
Individual Performance					Mat	\$ Values			
ADG	Act. IMF	REA/100 lbs	\$EN	\$M	\$W	\$F	\$G	\$B	
2.86	4.13	1.06	4	90	49	61	44	106	
<b>Dam's Production</b>					WR: 1 @ 100	YR: 1 @ 100			

**96 SINCLAIR JUSTIFIED K32**  
REG: \*20434674 | DOB: 02/12/22 | TATTOO: K32

Connealy Judgment  
KG Justified 3023 17707279#  
KG Miss Magic 1443

Connealy Consensus 7229#  
Entrine of Conanga 9876#  
Sitz Wisdom 481T#  
KG Miss Magic 3528  
PBC 707 1M F0203#  
N Bar Miss Emulous A404  
N Bar Emulation EXT#  
Sinclair K Bty 9P31 V149#

Sinclair Pioneer 1RF1  
Sinclair K Bty ORM7 8X2 19981784  
Sinclair K Bty 8X2 9P31

Individual Performance					EPD's				
BW	ADJ. WW	WR	ADJ. YW	YR	CED	BW	WW	MILK	YW
72	604	100	1014	99	8	-2.0	44	26	77
Individual Performance				Mat	\$ Values				
ADG	Act. IMF	REA/100 lbs	SEN	\$M	\$W	\$F	\$G	\$B	
2.86	4.07	1.03	9	92	46	61	44	106	
<b>Dam's Production</b> WR: 1 @ 100					<b>YR: 1 @ 99</b>				

**99 SINCLAIR EMULATION K324**  
REG: \*20400554 | DOB: 03/06/22 | TATTOO: K324

N Bar Emulation EXT#  
Sinclair Exquisite 9X6 19477703  
Sinclair K Bty 9P31 V149#

Emulation N Bar 5522#  
N Bar Primrose 2424  
N Bar Prime Time D806#  
N Bar Kinochtry Beauty 4317#  
Sinclair IN Time 6BT39  
Sinclair Blackbird 2P8 7079#  
N Bar Emulation EXT#  
N Bar Kinochtry Bty SCC 2V3#

Sinclair Timeless 8BA4#  
Sinclair K Bty 3TL9 2X39 18154060  
Sinclair K Bty 2X39 2V3

Individual Performance					EPD's				
BW	ADJ. WW	WR	ADJ. YW	YR	CED	BW	WW	MILK	YW
82	615	102	1017	99	8	-1.2	37	32	67
Individual Performance				Mat	\$ Values				
ADG	Act. IMF	REA/100 lbs	SEN	\$M	\$W	\$F	\$G	\$B	
3.03	3.36	1.00	5	71	44	67	26	92	
<b>Dam's Production</b> WR: 5 @ 105					<b>YR: 3 @ 103</b>				

**97 SINCLAIR JUSTIFIED K166**  
REG: \*20423323 | DOB: 03/08/22 | TATTOO: K166

Connealy Judgment  
KG Justified 3023 17707279#  
KG Miss Magic 1443

Connealy Consensus 7229#  
Entrine of Conanga 9876#  
Sitz Wisdom 481T#  
KG Miss Magic 3528  
Sinclair Broker 3RC33  
Sinclair Ms Emulous 1FE23  
Sinclair IN Time 6BT39  
Sinclair K Bty 5P65 2S24

Sinclair Rollin Coal 5K2  
Sinclair K Bty 8KF22 1BA24 19281339  
Sinclair K Bty 1BA24 5P65#

Individual Performance					EPD's				
BW	ADJ. WW	WR	ADJ. YW	YR	CED	BW	WW	MILK	YW
88	584	97	995	97	9	-1.5	41	26	72
Individual Performance				Mat	\$ Values				
ADG	Act. IMF	REA/100 lbs	SEN	\$M	\$W	\$F	\$G	\$B	
2.80	3.25	1.22	10	89	43	59	43	103	
<b>Dam's Production</b> WR: 3 @ 99					<b>YR: 1 @ 97</b>				



SINCLAIR EXQUISITE 9X6, A FEATURED SON OF THE K BTY 9P31 DONOR, WHOSE FIRST DAUGHTERS ARE MAKING WONDERFUL COWS IN THE SINCLAIR PROGRAM, AND THE SIRE OF LOT 99.

**98 SINCLAIR DYNASTY K197**  
REG: \*20548762 | DOB: 03/19/22 | TATTOO: K197

Sinclair Dynasty 3WCD7  
Sinclair Dynasty 7WC17 18826235  
Sinclair Primrose 1G13 6E11#

Wandering CRK Dynasty JRM 2F#  
Sinclair Eriskay 2N1 7883#  
Sinclair Grass Master#  
Sinclair Primrose 6E11 Z194  
Rito Revolve OR5  
Sinclair K BTY 6PV5 25F3  
Sinclair Emperor OXT1  
Sinclair Primrose ORS12 6X40

Sinclair Rito 9R7  
Sinclair Primrose 6RV5 3IJ3 18526809  
Sinclair Primrose 3IJ3 ORS12#

Individual Performance					EPD's				
BW	ADJ. WW	WR	ADJ. YW	YR	CED	BW	WW	MILK	YW
88	629	104	1098	113	7	.6	52	22	92
Individual Performance				Mat	\$ Values				
ADG	Act. IMF	REA/100 lbs	SEN	\$M	\$W	\$F	\$G	\$B	
3.14	2.64	.97	-10	56	45	69	21	89	
<b>Dam's Production</b> WR: 5 @ 100					<b>YR: 3 @ 105</b>				



SINCLAIR RITO 9R7, THE MATERNAL GRANDSIRE OF LOT 98.





**REF SIRE** **SINCLAIR EMULATION 8FT8**  
 REG: 19168723 | DOB: 02/02/18 | TATTOO: 8FT8

Sinclair Emulation OF4  
**Sinclair Emulation 4FX1** 17925421  
 Sinclair M Emulous 4ET1 D47#

Sinclair Line-XX 2H1  
**Sinclair Enchantress 6HX26** 18795483  
 Sinclair Enchantress WP 40E3

Emulation N Bar 5522#  
 N Bar Kinochtry Bty SCC 2V3#  
 N Bar Explosion TNT#  
 N Bar Miss Emulous B514  
 Sinclair Line X 8XV6  
 Sinclair Primrose 9IT13 5R47  
 O C C Emblazon 854E#  
 N Bar Enchantress WP F3619

CED	BW	WW	YW	SC	MILK	DOC	MARB	REA	\$M	\$W	\$F	\$B	\$C
8	0.1	39	66	-.28	29	-9	.22	.02	64	43	42	62	144

8FT8 is an impressive grass based, low-input type sire that is an extremely thick bodied bull that's calving ease and added milking ability while still being a positive \$EN. His dam and grandam are hard working, moderate framed cows that descend from the famous foundation Enchantress J380 cow. 8FT8 really stamps his calves with his type and kind.



**100** **SINCLAIR EMULATION K363**  
 REG: \*20559911 | DOB: 03/22/22 | TATTOO: K363

Sinclair Emulation 4FX1  
**Sinclair Emulation 8FT8** 19168723  
 Sinclair Enchantress 6HX26

Sinclair Emperor OXT1  
**Sinclair Primrose 3IJ1 8P3** 17483217  
 Sinclair Primrose 8P3 E002

Sinclair Emulation OF4  
 Sinclair M Emulous 4ET1 D47#  
 Sinclair Line-XX 2H1  
 Sinclair Enchantress WP 40E3

Sinclair Extra 4X13#  
 Sinclair Ruth 8A1 A78  
 N Bar Prime Time D806#  
 N Bar Primrose 1985B

Individual Performance					EPD's				
BW	ADJ. WW	WR	ADJ. YW	YR	CED	BW	WW	MILK	YW
81	632	105	1096	113	12	-1.6	36	26	65
Individual Performance				Mat	\$ Values				
ADG	Act. IMF	REA/100 lbs	\$EN	\$M	\$W	\$F	\$G	\$B	
3.11	3.05	1.14	8	69	39	53	29	82	
<b>Dam's Production</b> WR: 8 @ 99					<b>YR: 7 @ 99</b>				



SINCLAIR EMULATION 8FT8 SIRE TO LOT 100 AND 101.

**101** **SINCLAIR EMULATION K361**  
 REG: \*20548766 | DOB: 03/21/22 | TATTOO: K361

Sinclair Emulation 4FX1  
**Sinclair Emulation 8FT8** 19168723  
 Sinclair Enchantress 6HX26

Sinclair Shadow Rider 9S34  
**Sinclair Blacky 4A3 20C4** 17803223  
 Sinclair Blacky 20C4 0BA32

Sinclair Emulation OF4  
 Sinclair M Emulous 4ET1 D47#  
 Sinclair Line-XX 2H1  
 Sinclair Enchantress WP 40E3

N Bar Shadow X4124  
 N Bar Primrose Y3051#  
 O C C Great Plains 943G#  
 Sinclair Blacky 0BA32 6P18

Individual Performance					EPD's				
BW	ADJ. WW	WR	ADJ. YW	YR	CED	BW	WW	MILK	YW
75	636	105	1014	104	11	-1.9	42	24	67
Individual Performance				Mat	\$ Values				
ADG	Act. IMF	REA/100 lbs	\$EN	\$M	\$W	\$F	\$G	\$B	
2.53	3.48	1.09	10	86	45	48	25	73	
<b>Dam's Production</b> WR: 7 @ 97					<b>YR: 4 @ 97</b>				



**102 SINCLAIR PROMISE K362**  
 REG: \*20548767 | DOB: 03/22/22 | TATTOO: K362

Sinclair Promise 6RE2  
**Sinclair Promise 8PR8** 19284016  
 Sinclair K Bty 4FX25 8R31

Sinclair Promise 4RP15  
 Sinclair Primrose 1V2 145K  
 Sinclair Emulation 0F4  
 Sinclair K Bty 8R31 04M3  
 Sinclair Emulation 5522 XP#  
 Sinclair Blackie 7V3 2P18  
 N Bar Explosion#  
 Sinclair Blackcap 2N10 7856

Sinclair X-Changer 2FE9  
**Sinclair Blkcap 6FV12 5E5** 18486490  
 Sinclair Blackcap 5E5 2N10

Individual Performance					EPD's				
BW	ADJ. WW	WR	ADJ. YW	YR	CED	BW	WW	MILK	YW
89	666	110	1064	109	-1	2.9	53	26	89
Individual Performance				Mat	\$ Values				
ADG	Act. IMF	REA/100 lbs		\$EN	\$M	\$W	\$F	\$G	\$B
2.67	4.02	.98		-6	63	46	65	37	102

**Dam's Production WR: 4 @ 104 YR: 4 @ 104**

**103 SINCLAIR BLACK IRON K130**  
 REG: \*20548761 | DOB: 03/03/22 | TATTOO: K130

Sinclair Exactly 4U2  
**Sinclair Black Iron 7UR26** 19016137  
 Sinclair Erica 2FE2 8BT12

Sinclair Executive 9XV2  
 Sinclair Lady 0R109 03S3  
 Sinclair Emulation 5522 XP#  
 Sinclair Erica 8BT12 A18  
 Traveler 1148 G D A R#  
 N Bar Clova Pride 2264  
 Emulation 31#  
 Sinclair Enchantress 7P14

Gardens Transition 7205 S1  
**Sinclair Enchantress 7GT4** 18829781  
 Sinclair Enchantress 9A37

Individual Performance					EPD's				
BW	ADJ. WW	WR	ADJ. YW	YR	CED	BW	WW	MILK	YW
90	597	99	1109	108	-1	3.1	49	15	83
Individual Performance				Mat	\$ Values				
ADG	Act. IMF	REA/100 lbs		\$EN	\$M	\$W	\$F	\$G	\$B
3.18	3.11	1.00		5	47	32	62	30	92

**Dam's Production WR: 4 @ 97 YR: 2 @ 104**



SINCLAIR BLACK IRON 7UR26, THE POWER AND MATERNAL SIRE OF LOTS 103 AND 105.

**104 SINCLAIR BLACK IRON K122**  
 REG: \*20419904 | DOB: 03/02/22 | TATTOO: K122

Sinclair Executive 9XV2  
**Sinclair Exactly 4U2** 17798945  
 Sinclair Lady 0R109 03S3

N Bar Emulation Ext V722  
 N Bar Primrose Y3051#  
 R R Rito 707#  
 Sinclair Lady 03S3 4465  
 Sinclair Emulation 0F4  
 Sinclair M Emulous 4ET1 D47#  
 Sinclair Timeless 8BA4#  
 Sinclair Primrose 3I1 8P3

Individual Performance					EPD's				
BW	ADJ. WW	WR	ADJ. YW	YR	CED	BW	WW	MILK	YW
78	574	95	1001	97	8	-1.9	38	19	64
Individual Performance				Mat	\$ Values				
ADG	Act. IMF	REA/100 lbs		\$EN	\$M	\$W	\$F	\$G	\$B
2.97	2.88	1.10		14	69	35	52	14	66

**Dam's Production WR: 4 @ 103 YR: 3 @ 98**



SINCLAIR EXACTLY 4U2, THE SIRE OF LOTS 104 AND 107.

**105 SINCLAIR BLACK IRON K221**  
 REG: \*20548764 | DOB: 04/01/22 | TATTOO: K221

Sinclair Exactly 4U2  
**Sinclair Black Iron 7UR26** 19016137  
 Sinclair Erica 2FE2 8BT12

Sinclair Executive 9XV2  
 Sinclair Lady 0R109 03S3  
 Sinclair Emulation 5522 XP#  
 Sinclair Erica 8BT12 A18  
 Wagner Graham Corbinaire 624#  
 Spurs Emulous Raven 14  
 N Bar Emulation EXT#  
 N Bar Primrose 2429#

Vance Top Dawg#  
**Sinclair Primrose 2TD8 A14#** 17251784  
 N Bar Primrose Y3051#

Individual Performance					EPD's				
BW	ADJ. WW	WR	ADJ. YW	YR	CED	BW	WW	MILK	YW
86	658	109	1053	108	0	1.7	51	18	84
Individual Performance				Mat	\$ Values				
ADG	Act. IMF	REA/100 lbs		\$EN	\$M	\$W	\$F	\$G	\$B
2.65	3.38	1.14		-2	51	42	55	26	81

**Dam's Production WR: 9 @ 103 YR: 7 @ 105**



N BAR PRIMROSE Y3051, THE DAM OF SINCLAIR EMULATION XXP, AND THE GRANDAM OF LOT 105.







**THE DO IT ALL KIND!**



**SINCLAIR EXACTLY K177**  
 REG: \*20419908 | DOB: 03/11/22 | TATTOO: K177

Sinclair Exactly 4U2  
**Sinclair Black Iron 8UR17** 19169667  
 Sinclair K BTY 6E4 A3

Sinclair Cloud Peak 504  
**Sinclair Primrose 7ON3 3FX71** 18826313  
 Sinclair Primrose 3FX71

Sinclair Executive 9XV2  
 Sinclair Lady OR109 03S3  
 N Bar Explosion#  
 N Bar Kinochtry Beauty Y3881  
 Basin Rainmaker 654X#  
 Sinclair Eriskay 2N1 7883#  
 Sinclair Emulation 0F4  
 Sinclair Primrose 1UX15#

Individual Performance					EPD's				
BW	ADJ. WW	WR	ADJ. YW	YR	CED	BW	WW	MILK	YW
83	626	104	1058	103	6	-6	44	23	73
Individual Performance				Mat	\$ Values				
ADG	Act. IMF	REA/100 lbs	SEN	\$M	\$W	\$F	\$G	\$B	
2.81	3.24	1.10	5	73	43	60	24	84	
<b>Dam's Production</b> WR: 4 @ 103					<b>YR: 1 @ 103</b>				

The only 8UR17 son in the sale but a really powerful individual that is conservative birth and has plenty of performance with a stacked cowmaker pedigree.



SINCLAIR CLOUD PEAK 504, THE MATERNAL GRANDSIRE OF LOT 106.



**SINCLAIR BLACK IRON K612**  
 REG: 20546291 | DOB: 02/26/22 | TATTOO: K612

Sinclair Executive 9XV2  
**Sinclair Exactly 4U2** 17798945  
 Sinclair Lady OR109 03S3

N Bar Prime Time D806#  
**Sinclair Primrose 2P12 B1#** 17218799  
 N Bar Primrose Z1692

N Bar Emulation Ext V722  
 N Bar Primrose Y3051#  
 R R Rito 707#  
 Sinclair Lady 03S3 4465  
 Gardens Prime Time#  
 N Bar Miss Emulous A404  
 N Bar Moderation 9957  
 N Bar Primrose 4320

Individual Performance					EPD's				
BW	ADJ. WW	WR	ADJ. YW	YR	CED	BW	WW	MILK	YW
80	549	101	1015	99	4	.2	40	20	65
Individual Performance				Mat	\$ Values				
ADG	Act. IMF	REA/100 lbs	SEN	\$M	\$W	\$F	\$G	\$B	
3.23	2.72	1.23	12	49	38	64	24	88	
<b>Dam's Production</b> WR: 7 @ 105					<b>YR: 5 @ 106</b>				





**POWERHOUSE HERD BULL PROSPECT BY GARY!**



**108 SINCLAIR GARY K258**

REG: \*20425659 | DOB: 02/28/22 | TATTOO: K258

Connealy Niobrara 5451  
**Connealy Gary** 18869442  
 Hertha of Conanga 1639

Sinclair X-Changer 2FE9  
**Sinclair K Bty 4FV2 1TX4** 17830565  
 Sinclair K Bty 1TX4 8PV43

Connealy Confidence Plus#  
 Briha of Conanga 167  
 Connealy Consensus#  
 Herra of Conanga 4462  
 Sinclair Emulation 5522 XP#  
 Sinclair Blackie 7V3 2P18  
 Sinclair XX 8X28  
 Sinclair K Bty 8PV43 6FA5#

Individual Performance					EPD's				
BW	ADJ. WW	WR	ADJ. YW	YR	CED	BW	WW	MILK	YW
112	670	111	1225	119	-5	5.2	74	19	139
Individual Performance				Mat	\$ Values				
ADG	Act. IMF	REA/100 lbs		SEN	\$M	\$W	\$F	\$G	\$B
3.51	3.35	1.04		-26	38	41	99	35	134

**Dam's Production WR: 5 @ 100 YR: 4 @ 106**

K258 is an outstanding, total-performance, and muscle Gary son whose progeny will really explode in the feedlot. A big, powerful bull that is very docile and will make some friends on sale day. Gary sons make great cows too. His dam is a powerhouse cow that is very feminine and is good-footed and uddered.



SINCLAIR X-CHANGER 2FE9, THE POPULAR LONG-TIME SINCLAIR HERDSIRE AND MATERNAL GRANDSIRE OF LOT 108.



**109 SINCLAIR GARY K104**

REG: \*20425648 | DOB: 02/27/22 | TATTOO: K104

Connealy Niobrara 5451  
**Connealy Gary** 18869442  
 Hertha of Conanga 1639

Sinclair Emulation 6FX2  
**Sinclair K Bty 8FA6 8R46**# 19169695  
 Sinclair K Bty 8R46 39P3#

Connealy Confidence Plus#  
 Briha of Conanga 167  
 Connealy Consensus#  
 Herra of Conanga 4462  
 Sinclair Emulation 0F4  
 Sinclair K Bty 7FA18 4P85  
 Rito Revolve OR5  
 Sinclair K Bty 39P3 L309

Individual Performance					EPD's				
BW	ADJ. WW	WR	ADJ. YW	YR	CED	BW	WW	MILK	YW
93	678	112	936	91	-1	2.6	60	22	96
Individual Performance				Mat	\$ Values				
ADG	Act. IMF	REA/100 lbs		SEN	\$M	\$W	\$F	\$G	\$B
1.78	3.88	.98		1	74	50	71	39	110

**Dam's Production WR: 3 @ 106 YR: 2 @ 97**

Original N-Bar Genetics Working For You

**Staying true  
to the Legacy**

**110 SINCLAIR BLACK IRON K383**  
 REG: \*20548768 | DOB: 03/27/22 | TATTOO: K383

Sinclair Exactly 4U2  
**Sinclair Black Iron 7UR26** 19016137  
 Sinclair Erica 2FE2 8BT12

Sinclair Executive 9XV2  
 Sinclair Lady 0R109 03S3  
 Sinclair Emulation 5522 XP#  
 Sinclair Erica 8BT12 A18  
 N Bar Emulation EXT#  
 N Bar Primrose Y3051#  
 Pinebank Waigroup 41/97#  
 Sinclair Blackbird 4NI42 1C4

Sinclair Emulation XXP#  
**Sinclair C Pride 3XX14 9NZ12** 17463874  
 Sinclair C Pride 9NZ12 4NI42#

Individual Performance					EPD's				
BW	ADJ. WW	WR	ADJ. YW	YR	CE	BW	WW	MILK	YW
115	642	106	1036	106	2	6.3	55	20	94
Individual Performance					\$ Values				
ADG	Act. IMF	REA/100 lbs	SEN	\$M	\$W	\$F	\$G	\$B	
2.64	2.68	1.12	-2	73	29	69	29	97	

**Dam's Production** WR: 6 @ 102 YR: 5 @ 105



SINCLAIR EMULATION XXP, THE MATERNAL GRANDSIRE OF LOT 110.

**112 SINCLAIR EMULATION K119**  
 REG: \*20419936 | DOB: 03/02/22 | TATTOO: K119

N Bar Emulation EXT#  
**Sinclair Exquisite 0X3** 19941920  
 Basin Pamella F271

Emulation N Bar 5522#  
 N Bar Primrose 2424  
 Basin Rainmaker 654X#  
 Basin Pamella 676X#  
 Rito 2100 G D A R#  
 Miss Wix 903 of Mc Cumber  
 Sinclair Net Present Value#  
 N Bar Miss Emulous A404

V D A R Rito 953#  
**Sinclair Ms Emulous 8VR5#** 19250092  
 Sinclair Ms Emulous 5PV72

Individual Performance					EPD's				
BW	ADJ. WW	WR	ADJ. YW	YR	CE	BW	WW	MILK	YW
96	610	101	1000	97	-3	3.4	37	30	69
Individual Performance					\$ Values				
ADG	Act. IMF	REA/100 lbs	SEN	\$M	\$W	\$F	\$G	\$B	
2.68	2.66	1.28	1	60	32	62	21	83	

**Dam's Production** WR: 3 @ 107 YR: 1 @ 97



V D A R RITO 953, A HIGHLY REGARDED PROVEN FEMALE SIRE AND THE MATERNAL GRANDSIRE OF LOT 112.

**111 SINCLAIR EMULATION K316**  
 REG: \*20400563 | DOB: 03/06/22 | TATTOO: K316

N Bar Emulation EXT#  
**Sinclair Exquisite 9X6** 19477703  
 Sinclair K Bty 9P31 V149#

Emulation N Bar 5522#  
 N Bar Primrose 2424  
 N Bar Prime Time D806#  
 N Bar Kinochtry Beauty 4317#  
 Sinclair Entrepreneur 8R101  
 Sinclair Lady Ida 8XV12 C52#  
 Sinclair Emulation 0F4  
 Sinclair Lady Ida 0X16 04F3

Sinclair Broker 3RC33  
**Sinclair Lady Ida 6K6 4FX7** 18488257  
 Sinclair Lady Ida 4FX7 0X16

Individual Performance					EPD's				
BW	ADJ. WW	WR	ADJ. YW	YR	CE	BW	WW	MILK	YW
74	572	95	1012	99	11	-2.4	34	29	65
Individual Performance					\$ Values				
ADG	Act. IMF	REA/100 lbs	SEN	\$M	\$W	\$F	\$G	\$B	
2.97	2.68	1.04	6	51	39	64	29	93	

**Dam's Production** WR: 5 @ 102 YR: 3 @ 107



**113 SINCLAIR EMULATION K142**  
 REG: \*20561685 | DOB: 03/03/22 | TATTOO: K142

Sinclair Piney Creek 5FV5  
**Sinclair Emulation OFF5** 19934796  
 Sinclair Queen 6TT14 4XX17#

Sinclair X-Changer 2FE9  
 Sinclair Ms Emulous 8F12  
 Sinclair Sun Dial 4TL2  
 Sinclair Queen 4XX17 9V4  
 Sinclair Timeless 8BA4#  
 Sinclair Primrose 1G13 6E11#  
 Emulation 31#  
 Sinclair Pride 7XT11 5H7

Sinclair Sun Dial 5TL43  
**Sinclair Pride 0TG15 0A9** 19981193  
 Sinclair Pride 0A9 7XT11

Individual Performance					EPD's				
BW	ADJ. WW	WR	ADJ. YW	YR	CE	BW	WW	MILK	YW
76	627	104	1062	103	10	-1.9	33	27	60
Individual Performance					\$ Values				
ADG	Act. IMF	REA/100 lbs	SEN	\$M	\$W	\$F	\$G	\$B	
2.83	2.97	.99	9	81	37	55	15	70	

**Dam's Production** WR: 1 @ 104 YR: 1 @ 103

**114 SINCLAIR SPUR K323**  
 REG: \*20400525 | DOB: 03/06/22 | TATTOO: K323

Connealy Stimulus 8419#  
**Connealy Spur** 17304082#  
 Jazza of Conanga 8594#

H A Power Alliance 1025#  
 Black Creesa of Conanga 5332  
 TC Grid Topper 355#  
 Jemma of Conanga 5614  
 Sinclair IN Time 6BT39  
 Sinclair Blackbird 2P8 7079#  
 N Bar Emulation EXT#  
 Sinclair Primrose 6X40 A14

Sinclair Timeless 8BA4#  
**Sinclair Primrose 2TL29 9X99** 17212171  
 Sinclair Primrose XXX 9X99

Individual Performance					EPD's				
BW	ADJ. WW	WR	ADJ. YW	YR	CE	BW	WW	MILK	YW
81	637	106	1019	99	10	-5	44	28	77
Individual Performance					\$ Values				
ADG	Act. IMF	REA/100 lbs	SEN	\$M	\$W	\$F	\$G	\$B	
2.67	3.99	.99	4	86	46	67	39	106	

**Dam's Production** WR: 8 @ 104 YR: 6 @ 101

**115 SINCLAIR POWDER RIVER K329**  
 REG: \*2055596 | DOB: 03/07/22 | TATTOO: K329

Sinclair Piney Creek 6FV16  
**Sinclair Powder River 0FL7** 19934800  
 Sinclair Eriskay 5E3 2N11#

Sinclair X-Changer 2FE9  
 Sinclair K Bty 2X7 6MB8#  
 N Bar Explosion#  
 Sinclair Eriskay 2N11 7883  
 Sinclair Entrepreneur 8R101  
 Sinclair Lady Ida 8XV12 C52#  
 N Bar Prime Time D806#  
 N Bar Miss Emulous B514

Sinclair Broker 3RC33  
**Sinclair Ms Emulous 6K1 2P7** 18487748  
 Sinclair Ms Emulous 2P7 D47

Individual Performance					EPD's				
BW	ADJ. WW	WR	ADJ. YW	YR	CED	BW	WW	MILK	YW
84	627	104	1005	98	7	-1.5	34	29	61
Individual Performance				Mat	\$ Values				
ADG	Act. IMF	REA/100 lbs		\$EN	\$M	\$W	\$F	\$G	\$B
2.53	4.16	.98		9	68	40	59	39	98
<b>Dam's Production</b> WR: 5 @ 102					<b>YR: 3 @ 102</b>				

**117 SINCLAIR LONGMIRE K137**  
 REG: \*20419911 | DOB: 03/03/22 | TATTOO: K137

S A V Renown 3439#  
**Reisig Longmire 8326** 19448009  
 BUF Eriskay 7417

Rito 707 of Ideal 3407 7075  
 S A V Blackcap May 4136  
 N Bar Emulation EXT#  
 J Bar 7 Eriskay Q13-71K1#  
 Leachman Right Time#  
 Sitz Everelda Entense 1905  
 Sinclair Pioneer 1RF1  
 Sinclair Lady 1A4 9JP22

BT Right Time 24J#  
**Sinclair Lady 8BT7 3RM21** 19169633  
 Sinclair Lady 3RM21 1A4

Individual Performance					EPD's				
BW	ADJ. WW	WR	ADJ. YW	YR	CED	BW	WW	MILK	YW
93	633	105	1011	98	1	2.2	40	24	68
Individual Performance				Mat	\$ Values				
ADG	Act. IMF	REA/100 lbs		\$EN	\$M	\$W	\$F	\$G	\$B
2.63	2.88	1.12		5	58	35	51	17	68
<b>Dam's Production</b> WR: 2 @ 106					<b>YR: 2 @ 101</b>				



BT RIGHT TIME 24J, THE BULL DEEMED THE COWMAKER, AND THE MATERNAL GRANDSIRE OF LOT 117.

**REF SIRE REISIG LONGMIRE 8326**  
 REG: 19448009 | DOB: 08/30/18 | TATTOO: 8326

Rito 707 of Ideal 3407 7075  
**S A V Renown 3439** 17633839#  
 S A V Blackcap May 4136

R R Rito 707#  
 Ideal 3407 of 1418 076  
 S A V 8180 Traveler 004#  
 S A V May 2397#  
 Emulation N Bar 5522#  
 N Bar Primrose 2424  
 Sitz Traveler 8180#  
 E F Eriskay Q13 7107

N Bar Emulation EXT#  
**BUF Eriskay 7417** 16118882  
 J Bar 7 Eriskay Q13-71K1#

CED	BW	WW	YW	SC	MILK	DOC	MARB	REA	\$M	\$W	\$F	\$B	\$C
8	-1.1	36	72	.72	22	18	-.06	.58	54	32	51	70	145

Longmire was purchased from Reisig Cattle to add the Rito influence while still enhancing EXT to another generation. His proven dam carried a stacked pedigree of proven maternal and performance giants for many generations. His first daughters are now in production and are the favorite sire group of 2 yr olds. Don't overlook the Longmire sons!

**118 SINCLAIR LONGMIRE K281**  
 REG: \*20400568 | DOB: 03/03/22 | TATTOO: K281

S A V Renown 3439#  
**Reisig Longmire 8326** 19448009  
 BUF Eriskay 7417

Rito 707 of Ideal 3407 7075  
 S A V Blackcap May 4136  
 N Bar Emulation EXT#  
 J Bar 7 Eriskay Q13-71K1#  
 Sinclair Vision X 857  
 Sinclair K Bty OF1 2V3  
 Sinclair Emulation 5522 XP#  
 Sinclair Nalie 8P6 D17

Sinclair Vision 3SX12  
**Sinclair Nalie 6SX28 1FE19** 18770797  
 Sinclair Nalie 1FE19 8P6

Individual Performance					EPD's				
BW	ADJ. WW	WR	ADJ. YW	YR	CED	BW	WW	MILK	YW
65	576	96	1010	99	14	-4.5	28	25	56
Individual Performance				Mat	\$ Values				
ADG	Act. IMF	REA/100 lbs		\$EN	\$M	\$W	\$F	\$G	\$B
2.94	3.26	1.14		6	54	31	42	31	73
<b>Dam's Production</b> WR: 4 @ 102					<b>YR: 2 @ 104</b>				

**116 SINCLAIR LONGMIRE K537**  
 REG: 20546279 | DOB: 02/14/22 | TATTOO: K537

S A V Renown 3439#  
**Reisig Longmire 8326** 19448009  
 BUF Eriskay 7417

Rito 707 of Ideal 3407 7075  
 S A V Blackcap May 4136  
 N Bar Emulation EXT#  
 J Bar 7 Eriskay Q13-71K1#  
 Rito Revolve OR5  
 Sinclair K BTY 6PV5 25F3  
 N Bar Shadow X4124  
 Sinclair C Pride 5P97 3G32

Sinclair Rito 9R7  
**Sinclair C Pride 7RV1 8S20** 18829730  
 Sinclair C Pride 8S20 5P97

Individual Performance					EPD's				
BW	ADJ. WW	WR	ADJ. YW	YR	CED	BW	WW	MILK	YW
78	519	96	980	96	9	-1.8	41	17	70
Individual Performance				Mat	\$ Values				
ADG	Act. IMF	REA/100 lbs		\$EN	\$M	\$W	\$F	\$G	\$B
3.31	2.34	1.08		4	68	35	57	14	71
<b>Dam's Production</b> WR: 3 @ 102					<b>YR: 2 @ 100</b>				

**119 SINCLAIR LONGMIRE K514**  
 REG: 20546275 | DOB: 02/09/22 | TATTOO: K514

S A V Renown 3439#  
**Reisig Longmire 8326** 19448009  
 BUF Eriskay 7417

Rito 707 of Ideal 3407 7075  
 S A V Blackcap May 4136  
 N Bar Emulation EXT#  
 J Bar 7 Eriskay Q13-71K1#  
 Sinclair X-Changer 2FE9  
 Sinclair Ms Emulous 8F12  
 Sinclair Preview 2TL6  
 Sinclair Bella Donna 1UX4#

Sinclair Piney Creek 5FV5  
**Sinclair Bella Donna 9FF4** 19475288  
 Sinclair Bella Donna 7TA12#

Individual Performance					EPD's				
BW	ADJ. WW	WR	ADJ. YW	YR	CED	BW	WW	MILK	YW
70	502	93	992	97	11	-2.3	28	23	53
Individual Performance				Mat	\$ Values				
ADG	Act. IMF	REA/100 lbs		\$EN	\$M	\$W	\$F	\$G	\$B
3.60	2.59	1.04		12	69	29	53	15	68
<b>Dam's Production</b> WR: 1 @ 93					<b>YR: 1 @ 97</b>				

**120 SINCLAIR LONGMIRE K584**  
 REG: \*20548776 | DOB: 02/21/22 | TATTOO: K584

S A V Renown 3439#  
**Reisig Longmire 8326** 19448009  
 BUF Eriskay 7417

Sinclair Sun Dial 5TL43  
**Sinclair Blkbird 9TG19 5U34** 19472588  
 Sinclair Blkbird 5U34 0P29

Rito 707 of Ideal 3407 7075  
 S A V Blackcap May 4136  
 N Bar Emulation EXT#  
 J Bar 7 Eriskay Q13-71K1#  
 Sinclair Timeless 8BA4#  
 Sinclair Primrose 1G13 6E11#  
 Sinclair Executive 9XV2  
 Sinclair Blkbird 0P29 F188

Individual Performance					EPD's				
BW	ADJ. WW	WR	ADJ. YW	YR	CE	BW	WW	MILK	YW
74	563	93	1016	99	10	-2.1	32	23	67
Individual Performance				Mat	\$ Values				
ADG	Act. IMF	REA/100 lbs		\$EN	\$M	\$W	\$F	\$G	\$B
2.98	3.56	1.15		5	67	30	63	20	82
<b>Dam's Production</b> WR: 2 @ 94					YR: 1 @ 99				

**123 SINCLAIR X-PLUS K285**  
 REG: \*20400576 | DOB: 03/03/22 | TATTOO: K285

N Bar Emulation EXT#  
**Sinclair Emulation XXP** 15355048#  
 N Bar Primrose Y3051#

Sinclair Pioneer 1RF1  
**Sinclair Lady Ida 7RM8 3FE19** 18845216  
 Sinclair Lady Ida 3FE19 7V63

Emulation N Bar 5522#  
 N Bar Primrose 2424  
 N Bar Emulation EXT#  
 N Bar Primrose 2429#  
 PBC 707 1M F0203#  
 N Bar Miss Emulous A404  
 Sinclair Emulation 5522 XP#  
 Sinclair Laady Ida 7V63 B5

Individual Performance					EPD's				
BW	ADJ. WW	WR	ADJ. YW	YR	CE	BW	WW	MILK	YW
95	559	93	1007	98	0	2.1	41	20	79
Individual Performance				Mat	\$ Values				
ADG	Act. IMF	REA/100 lbs		\$EN	\$M	\$W	\$F	\$G	\$B
2.69	3.38	.98		0	54	29	71	32	103
<b>Dam's Production</b> WR: 4 @ 103					YR: 3 @ 106				

**121 SINCLAIR LONGMIRE K349**  
 REG: \*20400536 | DOB: 03/12/22 | TATTOO: K349

S A V Renown 3439#  
**Reisig Longmire 8326** 19448009  
 BUF Eriskay 7417

Sinclair Emulation 1A2  
**Sinclair K Bty 4AA2 1P16** 17821819  
 Sinclair K Bty 1P16 E118

Rito 707 of Ideal 3407 7075  
 S A V Blackcap May 4136  
 N Bar Emulation EXT#  
 J Bar 7 Eriskay Q13-71K1#  
 Emulation 31#  
 Sinclair K Bty 9R107 E118  
 N Bar Prime Time D806#  
 N Bar Kinochtry Beauty Z1925

Individual Performance					EPD's				
BW	ADJ. WW	WR	ADJ. YW	YR	CE	BW	WW	MILK	YW
77	573	95	984	96	10	-1.9	33	22	55
Individual Performance				Mat	\$ Values				
ADG	Act. IMF	REA/100 lbs		\$EN	\$M	\$W	\$F	\$G	\$B
2.76	3.06	1.22		13	71	34	48	26	74
<b>Dam's Production</b> WR: 7 @ 97					YR: 4 @ 94				



SINCLAIR EMULATION XXP, THE  
 SIRE OF LOTS 123-125.

**122 SINCLAIR LONGMIRE K549**  
 REG: 20546285 | DOB: | TATTOO:

S A V Renown 3439#  
**Reisig Longmire 8326** 19448009  
 BUF Eriskay 7417

Sinclair Traveler 6Q1  
**Sinclair Blkcap Mc 9QR14** 19602947  
 Sinclair Blkcap Mc 7ON8

Rito 707 of Ideal 3407 7075  
 S A V Blackcap May 4136  
 N Bar Emulation EXT#  
 J Bar 7 Eriskay Q13-71K1#  
 Q A S Traveler 23-4  
 Rito Majesty 5A61 of F0203  
 Sinclair Cloud Peak 5O4  
 Sinclair Blkcap Mc 0XT28

Individual Performance					EPD's				
BW	ADJ. WW	WR	ADJ. YW	YR	CE	BW	WW	MILK	YW
					-8	33	63	23	
Individual Performance				Mat	\$ Values				
ADG	Act. IMF	REA/100 lbs		\$EN	\$M	\$W	\$F	\$G	\$B
3.09		1.27		7	71	31	60	18	78
<b>Dam's Production</b> WR: @					YR: @				

**124 SINCLAIR X-PLUS K009**  
 REG: 20551847 | DOB: 02/21/22 | TATTOO: K009

N Bar Emulation EXT#  
**Sinclair Emulation XXP** 15355048#  
 N Bar Primrose Y3051#

 N Bar Explosion#  
**Sinclair Blackcap 5E5 2N10** 14969782  
 Sinclair Blackcap 2N10 7856

Emulation N Bar 5522#  
 N Bar Primrose 2424  
 N Bar Emulation EXT#  
 N Bar Primrose 2429#  
 N Bar Emulation EXT#  
 N Bar Kinochtry Beauty 4288  
 D H D Traveler 6807#  
 Papa Blackcap Mc Henry 7856#

Individual Performance					EPD's				
BW	ADJ. WW	WR	ADJ. YW	YR	CE	BW	WW	MILK	YW
ET	490	85	959	91	3	.5	33	25	64
Individual Performance				Mat	\$ Values				
ADG	Act. IMF	REA/100 lbs		\$EN	\$M	\$W	\$F	\$G	\$B
3.29	3.01	1.09		2	44	31	66	34	100
<b>Dam's Production</b> WR: 13 @ 105					YR: 10 @ 101				



**125 SINCLAIR X-PLUS K105**  
 REG: \*20419881 | DOB: 02/27/22 | TATTOO: K105

N Bar Emulation EXT#  
**Sinclair Emulation XXP** 15355048  
 N Bar Primrose Y3051#

N Bar Shadow X4124  
**Sinclair Delia 2S18 404** 17251756  
 Octoraro Delia 404

Emulation N Bar 5522#  
 N Bar Primrose 2424  
 N Bar Emulation EXT#  
 N Bar Primrose 2429#  
 N Bar Emulation EXT#  
 N Bar Enchantress 4908#  
 Emulation N Bar 5522#  
 Octoraro Delia 503

Individual Performance					EPD's				
BW	ADJ. WW	WR	ADJ. YW	YR	CED	BW	WW	MILK	YW
80	595	99	963	94	6	-.8	36	20	58
Individual Performance				Mat	\$ Values				
ADG	Act. IMF	REA/100 lbs		\$EN	\$M	\$W	\$F	\$G	\$B
2.47	3.20	1.03		7	49	34	52	28	79

**Dam's Production** WR: 9 @ 99 YR: 8 @ 96

The dam of Lot 125, 2S18 a beautiful N Bar Shadow daughter, is shown in the background of this page.



N BAR SHADOW X4124, THE RARE AND VALUABLE LEGENDARY MATERNAL SIRE AND MATERNAL GRANDSIRE OF LOT 125.

**127 SINCLAIR BLACK IRON K001**  
 REG: 20551771 | DOB: 02/10/22 | TATTOO: K001

Sinclair Executive 9XV2  
**Sinclair Exactly 4U2** 17798945  
 Sinclair Lady 0R109 0353

 Sinclair Rito Legacy 3R9  
**Sinclair C Pride 1RL12 J204** 16934634  
 N Bar Clova Pride WP C2009

N Bar Emulation Ext V722  
 N Bar Primrose Y3051#  
 R R Rito 707#  
 Sinclair Lady 03S3 4465  
 R R Rito 707#  
 Ideal 4465 of 6807 4286  
 N Bar Shadow X4124  
 N Bar Clova Pride Z1553

Individual Performance					EPD's				
BW	ADJ. WW	WR	ADJ. YW	YR	CED	BW	WW	MILK	YW
ET	579	100	870	100	4	.2	40	21	64
Individual Performance				Mat	\$ Values				
ADG	Act. IMF	REA/100 lbs		\$EN	\$M	\$W	\$F	\$G	\$B
2.35	2.11	1.05		10	57	41	49	14	63

**Dam's Production** WR: 7 @ 105 YR: 5 @ 104

**128 SINCLAIR BLACK IRON K328**  
 REG: \*20400524 | DOB: 03/06/22 | TATTOO: K328

Sinclair Executive 9XV2  
**Sinclair Exactly 4U2** 17798945  
 Sinclair Lady 0R109 0353

Sinclair Timeless 8BA4#  
**Sinclair Lady 2TL13 0X35** 17199694  
 Sinclair Lady 0X35 3M17

N Bar Emulation Ext V722  
 N Bar Primrose Y3051#  
 R R Rito 707#  
 Sinclair Lady 03S3 4465  
 Sinclair IN Time 6BT39  
 Sinclair Blackbird 2P8 7079#  
 N Bar Emulation EXT#  
 Sinclair Lady 3M17 4465#

Individual Performance					EPD's				
BW	ADJ. WW	WR	ADJ. YW	YR	CED	BW	WW	MILK	YW
91	695	115	954	93	2	.4	42	23	60
Individual Performance				Mat	\$ Values				
ADG	Act. IMF	REA/100 lbs		\$EN	\$M	\$W	\$F	\$G	\$B
1.72	2.93	.99		12	55	45	48	23	71

**Dam's Production** WR: 8 @ 110 YR: 6 @ 102



SINCLAIR LADY 3M17 4465, THE FOUNDATION GREAT GRANDAM OF LOT 128.

**126 SINCLAIR EMPEROR K355**  
 REG: \*20548765 | DOB: 03/16/22 | TATTOO: K355

Sinclair Emperor 0XT51  
**Sinclair Emperor 6X02** 18486466  
 Sinclair Ms Emulous 2V20 A40

Sinclair Line-XX 2H1  
**Sinclair Blkcap 6HX1 4U5** 18486521  
 Sinclair Blkcap 4U5 602

Sinclair Extra 4X13#  
 Sinclair Blkbird 7OC10 J472  
 N Bar Emulation Ext A1747  
 N Bar Miss Emulous X3091#  
 Sinclair Line X 8XV6  
 Sinclair Primrose 9IT13 5R47  
 Sinclair Executive 9XV2  
 Sinclair Blkcap 602 A26

Individual Performance					EPD's				
BW	ADJ. WW	WR	ADJ. YW	YR	CED	BW	WW	MILK	YW
83	695	115	978	95	9	-.9	36	23	55
Individual Performance				Mat	\$ Values				
ADG	Act. IMF	REA/100 lbs		\$EN	\$M	\$W	\$F	\$G	\$B
2.04	3.27	1.01		12	67	38	54	32	86

**Dam's Production** WR: 5 @ 107 YR: 3 @ 104



**129 SINCLAIR MT TIME K566**  
 REG: 20588230 | DOB: 02/18/22 | TATTOO: K566

N Bar Prime Time D806#  
**Sinclair MT Time 2P77** 14311980  
 N Bar Enchantress 4906

Gardens Prime Time#  
 N Bar Miss Emulous A404  
 Emulation N Bar 5522#  
 Coffey Enchantress 424  
 Band 234 of Ideal 3163#  
 Q A S Blackbird Eve 601 1  
 Papa Rito T Intense DHD 6844#  
 Ideal 4465 of 6807 4286

Q A S Traveler 23-4#  
**Sinclair Lady 0Q21 0C4** 20578517  
 Sinclair Lady 0C4 4465

Individual Performance					EPD's				
BW	ADJ. WW	WR	ADJ. YW	YR	CED	BW	WW	MILK	YW
78	503	93	975	100	6	-1.2	2.6	2.6	49
Individual Performance				Mat	\$ Values				
ADG	Act. IMF	REA/100 lbs	\$EN	\$M	\$W	\$F	\$G	\$B	
3.45	2.54	1.22	11	42	29	49	22	71	
<b>Dam's Production WR: 1 @ 93 YR: 1 @ 100</b>									



SINCLAIR LADY 0C4 4465, THE FAMOUS GRANDAM OF LOT 129.

**131 SINCLAIR K365 COMMERCIAL**  
 REG: \*626801713 | DOB: 03/24/22 | TATTOO: K365

Sinclair Emulation 2A10  
**Sinclair Edella 7AS1 5XX17**# 18805003  
 Sinclair Edella 5XX17 10K1

Emulation 31#  
 N Bar Enchantress WP F3619  
 Sinclair Emulation XXP#  
 Sinclair Edella 10K1 7X53

Individual Performance					EPD's				
BW	ADJ. WW	WR	ADJ. YW	YR	CED	BW	WW	MILK	YW
82	649	108	1038	107					
Individual Performance				Mat	\$ Values				
ADG	Act. IMF	REA/100 lbs	\$EN	\$M	\$W	\$F	\$G	\$B	
2.60	3.26	1.19							
<b>Dam's Production WR: 4 @ 108 YR: 1 @ 107</b>									

**132 SINCLAIR K376 COMMERCIAL**  
 REG: \*626801612 | DOB: 03/26/22 | TATTOO: K376

Basin Rainmaker 914A  
**Sinclair Lady Ida 3001 0XH4**# 17463029  
 Sinclair Lady Ida 0XH4 3541

Basin Rainmaker 654X#  
 Basin Blackbird 584Y#  
 Sinclair Extravagant 6X7#  
 Sinclair Lady Ida 3541 J424

Individual Performance					EPD's				
BW	ADJ. WW	WR	ADJ. YW	YR	CED	BW	WW	MILK	YW
90	690	114	1050	108					
Individual Performance				Mat	\$ Values				
ADG	Act. IMF	REA/100 lbs	\$EN	\$M	\$W	\$F	\$G	\$B	
2.41	2.77	1.05							
<b>Dam's Production WR: 8 @ 110 YR: 6 @ 105</b>									

**130 SINCLAIR TIMELESS K134**  
 REG: \*20419873 | DOB: 03/03/22 | TATTOO: K134

Sinclair IN Time 6BT39  
**Sinclair Timeless 8BA4** 16027579#  
 Sinclair Blackbird 2P8 7079#

BT Right Time 24J#  
 N Bar Miss Emulous A404  
 N Bar Prime Time D806#  
 Rito 707 of Ideal 089 7076  
 N Bar Shadow X4124  
 N Bar Miss Emulous A404  
 O C C Great Plains 943G#  
 Sinclair Primrose 4F3 G260

Sinclair Vision X 8S7  
**Sinclair Primrose 1SX15** 16909567  
 Sinclair Primrose 8OC35 4F3

Individual Performance					EPD's				
BW	ADJ. WW	WR	ADJ. YW	YR	CED	BW	WW	MILK	YW
80	571	95	989	96	14	-3.8	19	29	42
Individual Performance				Mat	\$ Values				
ADG	Act. IMF	REA/100 lbs	\$EN	\$M	\$W	\$F	\$G	\$B	
2.87	3.2	1.05	10	52	26	48	29	77	
<b>Dam's Production WR: 9 @ 99 YR: 8 @ 96</b>									



CONVENIENCE BUYING  
 Online Bids

DV Auction & Cattle USA  
 See inside back cover for details

**DVAuction**  
 Broadcasting Real-Time Auctions





**THANK YOU TO  
OUR CUSTOMERS  
FOR YOUR  
CONTINUED  
SUPPORT IN  
PERSON AND  
ONLINE**





## 60 COMMERCIAL REPLACEMENT HEIFERS

**Notice: The Commercial heifers will NOT be at the sale site. They will sell via video.**

The commercial heifers are home-raised and are selected right out of the middle of the registered replacement heifer pen. All heifers will be vaccinated with Virashield 6 VL5 Somnus and administered pour-on. Videos will be available on Sinclaircattle.com, dvauction.com or by request. The heifers are located at Veltkamp Livestock Manhattan, MT and sell with the option to continue being developed and AI'd there, at cost. The buyer has the option to purchase 5 or more heifers on a gate cut basis. Semen available for commercial heifers at a reduced rate. Contact the Sinclair Cattle Company team for details. Commercial heifer trucking can be arranged.





## SINCLAIR CATTLE COMPANY, INC.

**WE'RE EXCITED ABOUT THE  
FUTURE. HERE'S A SNEAK PEEK  
AT SIRE GROUPS FOR NEXT YEAR!**

KG Justified 3023

Connealy Gary

Sinclair Timeless 8BA4

Sinclair Executive 9UF3

Coleman Keen

Leachman Bold Driver

Sinclair Exquisite 9X6

Sinclair Extreme 3VA10

Sinclair Justified J574

Reisig Longmire

# CONVENIENCE OPTIONS

## BROADCASTING ON

This sale will be broadcast live on the internet.

**DVAuction**  
Broadcasting Real-Time Auctions  
Real time bidding & proxy bidding available.

Never Miss An Auction Again!  
Watch & Bid online for FREE!

Visit [www.DVAuction.com](http://www.DVAuction.com) and Register  
Today

For General Questions Please Contact our  
Office:  
402-316-5460 or [support@dvauction.com](mailto:support@dvauction.com)



LIVE CATTLE  
AUCTIONS

1. Go to [www.CattleUSA.com](http://www.CattleUSA.com)
2. First time users must register as a viewer.
3. In the 'Live Auctions' tab select the sale that you wish to register as a buyer (only if you wish to buy) and click the 'Submit' button.
4. Fill out the required contact and banking information then click the 'Proceed' button.
5. After you have been approved as a buyer you will receive a confirmation email. On sale day, log in and click the green 'View' button for our sale. You will have the bid console available to place your online bids. Click on 'Bid Now' to place a bid.
6. The bid received by the auctioneer will be the amount showing in the 'Price' box in the bid console.

High speed internet required for viewing & bidding.  
Questions call 307-684-0789

# INSURANCE

For Insurance Needs Contact: **John Goggins**  
**James Allen/Harding and Harding Insurance**  
(Mortality Insurance Only)

6 month = 4% of Purchase Price

1 year = 6% of Purchase Price

[john@westernagreporter.com](mailto:john@westernagreporter.com)  
406-698-4149



**SINCLAIR**  
CATTLE COMPANY

*Thank You*

Gary Bischel  
Blacktooth Large Animal Veterinary Services  
Buffalo Livestock Marketing  
Caryl Cammack, Caryl and Company  
Sandi Hoffman  
Johnson County Cattlewomen  
Matt Lane  
Dan Reinke and Family  
Gordon Taylor  
Warren Reinke  
Roduner Family  
Jared Schafer  
Thad and Heidi Stoltz and Crew  
Phil Veltkamp and Crew





PO Box 1158  
Buffalo, WY 82834

FIRST CLASS MAIL • DATED MATERIAL

# ANNUAL PRODUCTION SALE

MARCH 25, 2023 • 1:00 PM  
BUFFALO, WYOMING

Original N-Bar Genetics Working For You

*Staying true  
to the* Legacy

