

31ST ANNIVERSARY



Online **TWO  
YEAR OLD**

**ABERDEEN  
ANGUS**

**BULL  
SALE**



**MARCH 14 & 15 2024 - WAWOTA, SASK**

**FERTILE, FUNCTIONAL, PRACTICAL, PREDICTABLE ANGUS GENETICS**

**The Bull Business - Done Different.**

# WELCOME

to our 12th Annual Online Offering!



Welcome and thank you for taking time to evaluate our 2024 offering. We realize the impact a new herd sire has for our customers and value your interest and consideration of our genetics. We are forever grateful for our past relationships with customers new and old. The interest in and followers of our program is one of the biggest motivators for us to keep working on our genetic base. The good words about our cattle and how they work for you and referrals we receive, is our biggest driver-Thanks so much!

We have been very diligent over the years, to refrain from the most popular, most used, highest numbered, fad driven cattle of the day. Our goal is a complete 180 of that. We value and seek out THE MOST BALANCED. Because of this goal, you will notice that our pedigrees are very unique to anything else available. They have multiple generations of our own prefix top and bottom. This is our method of discovering cattle that are most adapted to our management, environment and expectations. Testing these genetics then seed saving the ones that flourish, has created cattle that are more adapted and predictable. Our cattle are ranch run, similar to our good commercial producers that we sell to. The mother cows are expected to manage and rustle for themselves as much as practically possible, in our wide swinging environment. This ensures the genetics that we propagate and offer will not just survive, but thrive and have a very positive contribution in their new home. We do our best to represent the bulls in a manner that isn't over fancy or misleading. Our customers sell their calves without the visual advantages of cosmetics, hair and foot trimming, so we feel it's only fair we play on the same level. We do our own pictures and videos of each bull. We score feet, disposition, measure hip height and reference the dams of these bulls, their udder quality and lifetime production ability. We strive to make our cattle as even and similar to each other in their phenotype and genotype but we are realistic that there is always slight variations. Between Cheryl and I, we over-see and do 100% of the day to day tasks, so we are most familiar with all aspects and would be more than happy to give our most honest, unbiased opinion.

Thanks again for your consideration!

Respectfully,  
*Trevor, Cheryl, Brett, Carter Branvold*





2024  
MARCH 14 & 15  
*2 Year Old*  
**BULL SALE**  
ONLINE

**BIDDING CLOSSES 6PM CST FRIDAY MARCH 15TH**

Videos and Pictures are available online at  
[www.gbtangus.com](http://www.gbtangus.com) or [www.edjeauctions.com](http://www.edjeauctions.com)



**Sign up to bid!**



Trevor 306-577-9141  
Cheryl 306-435-7785  
Box 205  
Wawota, SK. S0G 5A0  
Email: [gbtangus@sasktel.net](mailto:gbtangus@sasktel.net)  
Website: [gbtangus.com](http://gbtangus.com)

**Sign up to bid** - [www.edjeauctions.com](http://www.edjeauctions.com) :

**#1 - Go to [www.edjeauctions.com](http://www.edjeauctions.com)**

**#2 - Register for edjeauctions by clicking on the purple "register for edje auctions" below "Login" button. If you've signed up for previous years sales, you can just use your previous username and password. Write your username and password down for future use. They are case sensitive so be aware of what upper and lower case characters you use.**

**#3 - Once you've completed the form, see our sale listing on the edje home page. Look below our 2024 GBT Angus 2 Year Old Bull Sale listing and click on the "Register to Bid". You will apply for a bidding number then wait for an email notification showing your approved. -YOU'RE ALL SET! Once the sale opens up, you can begin bidding anytime.**

### **PROXY/MAX BID FEATURE:**

If you have suspect internet service or cannot be around a computer or hand held device, be sure to utilize the proxy or max bid feature. It is a safe, secure and private feature where no one but you and the computer system knows your proxy or max bid. The computer will bid on your behalf and only bids if there is another active bidder on the same bull. Example: You place max bid of \$10,000 and a competing bidder stops at \$6,000, you own the bull for the winning bid of \$6,100. This is not a commission based sale. We pay a flat fee of \$900 to list all our bulls. We are simply paying Edge Auctions for the rights to list and utilize their bidding system. At the conclusion of the sale, all invoicing and money transactions are between us and the buyer. Refresh your page often, to ensure your computer stays current with bidding "and "countdown clock on each bull will indicate if your computer is staying current.

### **ABBREVIATIONS AND OUR RATING SYSTEM EXPLAINED:**

#### ***BW= Birth Weight.***

1-5 score with 5 being most ideal for lowering birth size. Like our customers we sell to, we do not fuss with birth weights. Cows and heifers calve on grass without issue or they are culled. Trouble free calving is genetically bred in over generations. Because we don't chase extremes, we have not sacrificed calving ease-it's all about balance, Our calving ease scoring system is based on multiple factors. At the time of calving we assign each calf an estimated weight range (we have a pretty good gauge of this from years of weighing calves); then we take into consideration the calf's structure and we look at the momma to see if she has swelling or tears from birthing. We take this calving info and cross reference it with the pedigree and the dams calving history to put together a score that potential customers can use to aid their decision. We feel this system has more merit than simply a birth weight or birth weight EPD, as there is a broader collection of information.

#### ***Hip Ht.= Hip Height***

Hip height is measured over the hook bones at about 18 months of age, expressed in inches. This measure is done to give those unable to view bulls in person, a good comparison of frame between bulls.

#### ***SC = Scrotal***

Measured in centimetres, at about 18 months of age.

#### ***AOD= Age of Dam***

The dam's age when the bull was born.

#### ***Udder***

1-5 score with 5 being the highest quality teat and udder design. Calving on grass, we need to be extra diligent about teat and udders. Scoring them right at calving, before they are milked down is imperative as the first suckling is the most important. Slightly inflated or miss-shaped teats or bigger, low slung bags all impair the calf's ability for the vital first colostrum.

#### ***I.C.%= Inbreeding Coefficient %***

An indicator of percent relation to a common ancestor. In an effort to discover clean lines of cattle and create consistency and predictability, most of our cattle carry some degree of line breeding. This percentage simply shows how much of that influence occurs in a particular animal.

#### ***Disp.= Disposition***

Scored from 1-5 with 5 being the most docile. We are very careful and open with any issues we see. Every time we handle the cattle, they are being scrutinized for proper disposition and work-ability. We find the day we single them out for picturing, is the ultimate test for disposition. Any bad actors will surface with this testing.

## **BULL DEVELOPMENT/TIMELINE:**

*The following is an outline of how we develop these bulls from birth to two years of age.*

Since moving to a two year old system and focusing on using time rather than inputs, to slowly and properly develop bulls, the feed back from our customers has been very positive. Our method of slow growing and never pushing our bulls creates a very different end product. If you are new to our program, don't expect to see 1800lb "thick" bulls. We want them presented in a practical fashion, without clippers and hair cuts. No feet trimming or special photography or photo shop tricks. Our goal and approach is one that aligns with the real world needs of commercial cattle producers. Come sale time in March, our bulls will be burly, hard muscled breeding bulls weighing roughly 1300 lbs. This happens by design, through the way we develop them. Pushing breeding animals for excessive gains via a high starch diet is counter intuitive to good rumen health and overall bull longevity. Developing bulls should never be about a race or coffee shop bragging rights. As seed stock producers, we believe it's our responsibility to develop herd sires for our customers that are genetically selected and developed with the ultimate goal of delivering a product that has been ruthlessly sorted with common sense cattle production values. "Bull tests" commonly conducted throughout the industry, have little to do with "testing" cattle. In our opinion, a test isn't giving them everything they could ever want. To us, testing involves the entire production cycle-not just feedlot gain. The true test is first and foremost, determining fertility. This involves: #1-Short calving season (preferably 45 days). #2-Low input. Mother cows that calve, nurse and wean a healthy calf all while getting re bred without intervention or extraordinary inputs. #3-Cow herd longevity. A long process to discover but is essential in keeping turn over low and profits high. Highly fertile, low maintenance, long lived cows is the definition of sustainable and profitable ranching.

## **TIMELINE:**

- May/June: Calved out on grass with only mommas milk, green grass and a loose mineral specifically formulated for our herds requirements. Cows and first calf heifers are calved together, away from any corrals or facilities so it's imperative they calve and nurse without assistance. 2009 was our first year of calving on grass and we have exercised a strict, no touch policy ever since. Following this model has ensured real calving ease, quality udders and maternal intelligence is built in and high fuss management and genetics are bred out!
- December/January: Calves were weaned onto free choice grass/alfalfa hay, green-feed and baleage. They also receive a natural mineral lick tub with yeast cultures and pre and probiotic enzymes to help further support good gut health and boost immunity properties. No supplemental grain or starch was fed during this phase. Once stress of the weaning process was complete, they were allowed access to a large paddock to promote exercise.
- April through October: Weather dependant, winter feeding is typically complete by mid April and cattle are moved to stockpiled perennial pastures with a good quality free choice loose mineral. Cattle then seamlessly transition to summer grazing as the green spring flush begins to dominate the forage sward. From here to fall dormancy, all cattle are dependant solely on the forage growth nature provides along with the free choice mineral-we do not dry lot our bulls for the summer! Maximum gain is never our goal.
- November through March: The bulls were moved back home Nov.1 and placed on free choice grass/alfalfa hay November 28th we introduced them to 4 lbs ground oats and 2 lbs of a specific protein/mineral supplement. We kept them on this ration for the rest of winter. Maintaining a winter diet very high in dry forage helps develop the rumen properly by mimicking the high volume that is required for efficient summer grazing. Never confined to a corral, we are able to force plenty of daily exercise in their large paddock. Feed, bedding and their water source are all strategically placed a good distance apart. These measures insure a fit and ready bull for the breeding and grazing season.
- April: After the bull sale, bulls left here are sent to stockpile forage until delivery.



## GBT WEATHERPROOF 2002

2002 05/05/2020 AAA reg#: 20185032 BULL

MH Winner 932  
**GBT Winner 1724**  
 GBT Cassie 1331  
  
 GBT Locomotive 1239  
**GBT Mayflower 1651**  
 GBT Mayflower 1456

MH Titan 752  
 MH Mina 53  
 Sinclair X-Plus 1XX30  
 GBT Cassie 010  
 B B A R Legacy 624  
 GBT Blossom 743  
 GBT Locomotive 1239  
 GBT Mayflower 012

REF SIRE  
**2002**



Pretty neat stats here...every year we sample a group of our yearling bulls. 2002 was part of a multi sire group and through DNA, we determined he not only covered but actually sired 30 live calves in a competing group of four other bulls-and in under a 2 week breeding period to boot! A feat not many bulls could replicate, let alone a green 800 lb yearling. Maybe this should come as no surprise, considering his dam (1651) and paternal grand dam (1331) are very productive, fertile matrons. Icing on the cake is the probability of these genes being passed along to his progeny. We anticipate these 2002 sons to transmit excellent calving ease, high quality udders and feet and females you can bank on for the long run. -owned by Steven and Katie Cowan.

left: Sire - 1724

middle: Paternal Grandsire - 932

right: Dam - 1651



## GBT ELEVATE 1850

1850 05/31/2018 AAA reg#: 19646213 BULL

Sinclair X-Plus 1XX30  
**GBT X-Plus 1549**  
 GBT Ruby Belle 1279  
  
 Willabar Windy 107N  
**Willabar Countess 138W**  
 Willabar Countess 154H

Sinclair Emulation XXP  
 Sinclair K Bty 5S1 E013  
 GBT Rolex 002  
 GBT Ruby Belle 088  
 A A R Really Windy 1205  
 Willabar Pride 2L  
 Willabar Right Time 34E  
 Willabar Countess 91E

REF SIRE  
**1850**



The first 1850 sons to sell in the 2023 sale were met with very high acceptance. Very few sires offer this kind of ability to consistently stamp their offspring. He truly adds capacity, growth-without added frame, ease of flesh, breed character and will fix disposition in one cross. We calved his first daughters in 2023 and they check the box for super ideal udders with that calm maternal intelligence. His next hurdle is the test of longevity. With a stacked pedigree of persistently productive and industry wide proven cows and bulls like X-Plus 1549, Emulation EXT, Emulation XXP, 2 shots of Right Time, Really Windy, Ruby Belle 1279, Countess 138W, two shots of our efficiency matron, Ruby Belle 134L and Willabar Right Time 34E, he is about as royally bred as one can make them. All signs are indicating that Elevate 1850 may very well be the next chapter to our program! -owned with Running Rabbit Ranching, Alberta.

## \* Bull sale is always the third Friday of March \*

- Bulls are efficiency tested not by giving them all they can eat of a high energy feedlot type diet but rather, how well they can do on a minimal energy, high roughage diet. This best mimics the ability to convert lower quality feeds. It is the most similar comparison to the cow/calf stock-mans needs.
- Allowing our cows to be cows; our cattle have evolved over time to be self reliant. They calve easily and calves nurse without assistance. No need for watchful cameras or confinement to corrals and barns. We calve on grass with less than 1% requiring assistance -this includes our first calf heifers. Anything requiring intervention is culled. Perpetuating problems isn't our practice.



# Sinclair PLAINS BOSS 5B02

REF SIRE  
**5B02**

5B02 02/15/2015 AAA reg#: 18152044 BULL

Sinclair Boss  
**Sinclair Patriarch 3B47**  
Sinclair Lady Ida 70C7 2V11

N Bar Emulation Ext A1747  
**Sinclair Lady Ida 7V19 04F3**  
Sinclair Lady Ida 04F3 B154

Sinclair Grass Master  
Sinclair Lady 6P69 3M18  
O C C Great Plains 943G  
N Bar Lady Ida S C C 2V11  
N Bar Emulation EXT  
N Bar Clova Pride U3031  
Emulation N Bar 5522  
N Bar Lady Ida X2912



A herd building producer of outstanding females. Not a surprise, considering his nicely populated lineage of intense Emulation genetics that trace an incredible 45 times to the maternal phenom, Emulation 31. The first 5B02 daughters are coming seven years old in 2024. He does an excellent job of passing on the sought after Emulation attributes of teat and udder quality, fertility and that pleasing feminine, true maternal look. 5B02 was a very athletic, dirt pawing, bellowing breeding machine that successfully served us for 8 breeding seasons-longevity! In that time, he quickly built us a base of highly productive females we are excited to carry forward with. -semen rights with Sinclair Cattle Co, Wyoming.

# Chez of WYE UMF 10824

REF SIRE  
**CHEZ**

10824 02/01/2016 AAA reg#: 18627221 BULL

Cyrus of Wye  
**Quintes of Wye UMF 10502**  
Queen Mother of Wye UMF 9141

Carter of Wye UMF 8138  
**Clova of Wye UMF 8996**  
Clova of Wye UMF 8176

Prince of Malpas  
Caltha of Wye  
Bonanza of Wye  
Queen Mother of Wye 7829  
Framework of Wye  
Clova of Wye Umf 7931  
Landowner of Wye  
Clova of Wye Umf 6767



Chez was our pick from the storied WYE herd. He is from the beautiful and productive Clova of WYE 8996 cow who is also the dam of our Calum of WYE bull. Chez progeny are the epitome of classic Aberdeen Angus. He is a sire of zero extremes and is moderate and balanced in every trait- just good functional cattle. Chez is indirectly represented in this sale through sons, GBT Champion 2057, GBT Champion 2061, GBT Champion 2016 and is the sire to several dams.

# GBT X-PLUS 1549

REF SIRE  
**1549**

1549 05/26/2015 AAA reg#: 18986503 BULL

Sinclair Emulation XXP  
**Sinclair X-Plus 1XX30**  
Sinclair K Bty 5S1 E013

GBT Rolex 002  
**GBT Ruby Belle 1279**  
GBT Ruby Belle 088

N Bar Emulation EXT  
N Bar Primrose Y3051  
Sinclair Idealistic 1R4  
N Bar Kinochtry Bty V14951  
Leachman Right Time  
B B A R Ruby Belle 1134  
B B A R Legacy 624  
GBT Ruby Belle 782



One of the most predictable breeding bulls we have ever raised and was our pick to replace his impressive sire, Sinclair X-Plus 1XX30. 1549's stable siring ability to consistently add fleshing ease, moderate frame, place brilliant udders in his daughters, improve disposition, rib capacity and fix poor headed cattle is hard to top. At 11 years of age, his fleshing ease and efficiency dam is still in production. 1549 is the sire to our new rising star, GBT Elevate 1850 and has genetic influence in several bulls selling.

left: Sire - 1XX30

middle: Dam - 1279

right: Son - 1850





**GBT WEATHERCHECK 2210**

**2210**

2210 05/11/2022 AAA reg#: 20777047 BULL

GBT Winner 1724  
**GBT Weatherproof 2002**  
 GBT Mayflower 1651

Chez of Wye UMF 10824  
**GBT Lady Ann 1867**  
 GBT Lady Ann 043

MH Winner 932  
 GBT Cassie 1331  
 GBT Locomotive 1239  
 GBT Mayflower 1456  
 Quintes of Wye UMF 10502  
 Clova of Wye UMF 8996  
 B B A R Legacy 624  
 GBT Lady Ann 715



AOD: 4 CE: ★★★★★ DISP: ★★★★★ UDDER: ★★★★★☆  
 SCROTAL: 36 HIP HT.: 46 I.C.%: 2.39

2210 and this group of paternal siblings represent the first proof of GBT Weatherproof 2002's breeding ability. The sire, 2002 was used as a yearling in a multi sire breeding group with four other bulls. In only a two week breeding allowance, 2002 didn't just walk and cover or "clean up" on a group of cows but actually sired 30 live calves. 2210 is the definition of round, sound and low to the ground. Expressive muscled, growling boss type of bull. His mom is a super fertile Chez sired cow, calving every year, in the first 11 days of the season and has two daughters retained in herd.



**GBT CHAPTER TWO XPL 2213**

**2213**

2213 05/12/2022 AAA reg#: 20615719 BULL

GBT Champion 1824  
**GBT Champion 2057**  
 GBT Tilda 1870

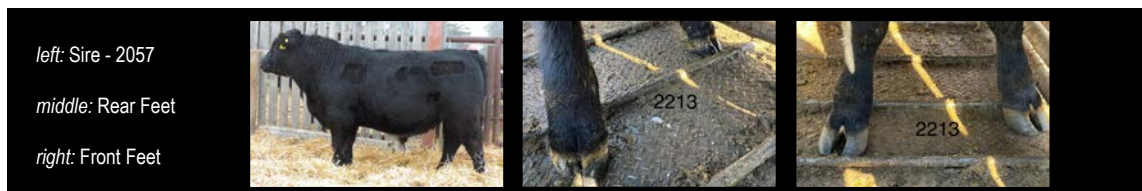
GBT X-Plus 1549  
**GBT Daisey 1969**  
 GBT Daisey 1232

Chez of Wye UMF 10824  
 GBT Jestress 1639  
 GBT X-Plus 1549  
 GBT Tilda 1351  
 Sinclair X-Plus 1XX30  
 GBT Ruby Belle 1279  
 B B A R Legacy 624  
 GBT Daisey 30R



AOD: 3 CE: ★★★★★☆ DISP: ★★★★★☆ UDDER: ★★★★★★  
 SCROTAL: 37.5 HIP HT.: 48 I.C.%: 10.33

The sire, Champion 2057 is another yearling bull we sampled before he sold to the Cowans in 2022. We also have some nice 2057 sisters to this bull that have the similar massive capacity. Whenever Legacy and X-Plus 1549 show up in a pedigree, you know they'll be deep, heavy muscled bulls. This guy has several shots of Legacy and traces twice to 1549, so those traits really show up here.





# GBT WEATHERBOSS 2226

## 2226

2226 05/17/2022 AAA reg#: 20615668 BULL

GBT Winner 1724  
**GBT Weatherproof 2002**  
 GBT Mayflower 1651

Sinclair Plains Boss 5802  
**GBT Cleo 1835**  
 GBT Cleo 1515

MH Winner 932  
 GBT Cassie 1331  
 GBT Locomotive 1239  
 GBT Mayflower 1456  
 Sinclair Patriarch 3B47  
 Sinclair Lady Ida 7V19 04F3  
 Locke of Wye UMF 10398  
 GBT Cleo 1323



AOD: 4 CE: ★★★★★☆ DISP: ★★☆☆☆☆ UDDER: ★★★★★★  
 SCROTAL: 36.5 HIP HT.: 48.75 I.C.%: 2.34

If you follow our program, you know we are all about the cows and typically save praise to those who prove themselves the old fashioned way. 2226's dam is proving fertile and quite predictable and consistent in her production record. She has calved first cycle every year but one where she calved inside the first 30 days. One daughter retained and a son to Terry Martin. The grand dam, Cleo 1515 is still in production and has put every one of her daughters in our herd and every bull has made our sale. Rich blood in a balanced package here. *Please note in regards to this bulls disposition score; This bull behaved well when worked in the chute and doesn't bother when in a group, but we found when he is singled out he can be a bit unpredictable.*

left: Dam - 1835  
 next: Mat Sib - 1888  
 middle: Gr.Dam - 1515  
 next: Back Feet  
 right: Front Feet



# GBT WEATHERCHECK 2228

## 2228

2228 05/17/2022 AAA reg#: 20777048 BULL

GBT Winner 1724  
**GBT Weatherproof 2002**  
 GBT Mayflower 1651

Chez of Wye UMF 10824  
**GBT Cassie 1847**  
 GBT Cassie 1645

MH Winner 932  
 GBT Cassie 1331  
 GBT Locomotive 1239  
 GBT Mayflower 1456  
 Quintes of Wye UMF 10502  
 Clova of Wye UMF 8996  
 GBT X-Plus 1460  
 GBT Cassie 1296



AOD: 5 CE: ★★★★★★ DISP: ★★★★★☆ UDDER: ★★★★★★  
 SCROTAL: 36 HIP HT.: 48.5 I.C.%: 1.66

Dam is another first cycle calver with all of her progeny thus far. Since fertility is economically twice as important as growth traits, grab a hold of these kind of genetics. High fertility will never get you into trouble but chasing growth surely can and will. 2228 traces multiple times to Legacy and twice to our foundation Cassie cow family. Grand dam is the dam of the good 2245 bull! This bull was "hiding in the weeds", as we never fully appreciated him until singled out for pictures. Solid bull, solid genetic backing.

left: Dam - 1847  
 next: Gr.Dam - 1645  
 next: Rear Feet  
 right: Front Feet





**GBT WEATHERBOSS XXL 2233**

**2233**

2223 05/17/2022 AAA reg#: 20615669 BULL

GBT Winner 1724  
**GBT Weatherproof 2002**  
 GBT Mayflower 1651

Sinclair Plains Boss 5802  
**GBT Miss Morrison 1869**  
 GBT Miss Morrison 1436

MH Winner 932  
 GBT Cassie 1331  
 GBT Locomotive 1239  
 GBT Mayflower 1456  
 Sinclair Patriarch 3847  
 Sinclair Lady Ida 7V19 04F3  
 Sinclair X-Plus 1XX30  
 GBT Miss Morrison 753



AOD: 4 CE: ★★★★★☆ DISP: ★★★★★☆ UDDER: ★★★★★★  
 SCROTAL: 37 HIP HT.: 49 I.C.%: 4.13

Dam is another first cycle calver and is a producer of herd bulls that find their way to the top of our sale offering every year. Added interest is that every calf has been sired by different bulls. We like to see this as it represents genetic strength and consistency. The ability to have good ones no matter how they're mated is an excellent attribute. Sons have sold to Lee Suteau, Darcy Easton and her 2023 son looks on track to make the 2025 sale. Utilizing cattle genetics that are as efficient, fertile and consistent in production as cows like 1869, is vital to ranch sustainability.



left: Dam - 1869 udder  
 next: Mat Sib - 2015  
 next: Rear Feet  
 right: Front Feet

**GBT 2235**

**2235**

2235 05/17/2022 BIR reg#: 627006049 BULL

GBT Champion 1824  
**GBT Champion 2061**  
 GBT Ruby Belle 1822

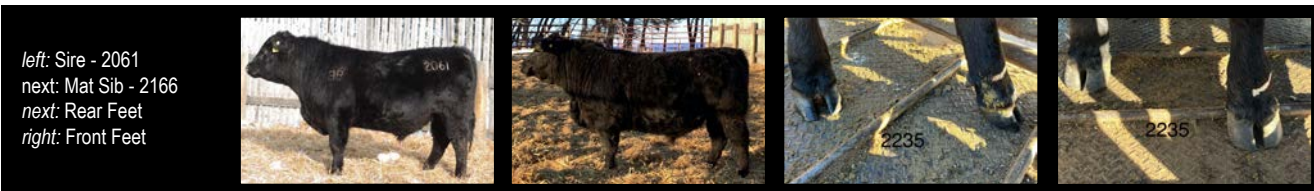
Chez of WYE UMF 10824  
**GBT 1939**

Chez of Wye UMF 10824  
 GBT Jestress 1639  
 Sinclair Plains Boss 5802  
 GBT Ruby Belle 1376  
 Quintes of Wye UMF 10502  
 GBT Ruby Belle 1279



AOD: 3 CE: ★★★★★★ DISP: ★★★★★☆ UDDER: ★★★★★★  
 SCROTAL: 34 HIP HT.: 45.5 I.C.%: COMM

**Purebred unregistered bull. Sells without registration papers.** This guys sire, 2061 is a blend of Plains Boss and Chez of WYE. He was utilized as a yearling then sold through our sale to Jeff O'Neill. 2235's mom is also by Chez. The females we have by Chez are very ideal and true to the good Aberdeen Angus type, so doubling that blood should only prove to be a positive. She is also a certified first cycle calver with her first three progeny. Her son sold in last years sale to Sawmill Creek Livestock. Paternal brothers are 2238 and 2253.



left: Sire - 2061  
 next: Mat Sib - 2166  
 next: Rear Feet  
 right: Front Feet



**GBT WEATHERWINN 2236**

**2236**

2236 05/18/2022 AAA reg#: 20615667 BULL

GBT Winner 1724  
**GBT Weatherproof 2002**  
 GBT Mayflower 1651

MH Winner 932  
**GBT Lady Fanny 1734**  
 GBT Lady Fanny 1464

MH Winner 932  
 GBT Cassie 1331  
 GBT Locomotive 1239  
 GBT Mayflower 1456  
 MH Titan 752  
 MH Mina 53  
 Sinclair Time Out 8P1  
 GBT Lady Fanny 1108



AOD: 5 CE: ★★★★★☆ DISP: ★★★★★☆ UDDER: ★★★★★★  
 SCROTAL: 34 HIP HT.: 49 I.C.%: 8.15

The Winner and Weatherproof sire line come about through the acquisition of a seven year old herd bull by the name of MH Winner 932. Perfect footed, sound and athletic best describes him. High fertility here as well. Dam has calved within the first 15 days of the calving season, every year. A maternal sister to 2236 is retained in herd and a brother sold in last years sale to Glen and Dawn Ekert of Moosomin.



left: Dam - 1734  
 next: Mat Sib - 2118  
 middle: x2 Sire - 932  
 next: Back Feet  
 right: Front Feet

**GBT CHELATION 2238**

**2238**

2238 05/19/2022 AAA reg#: 20615671 BULL

GBT Champion 1824  
**GBT Champion 2061**  
 GBT Ruby Belle 1822

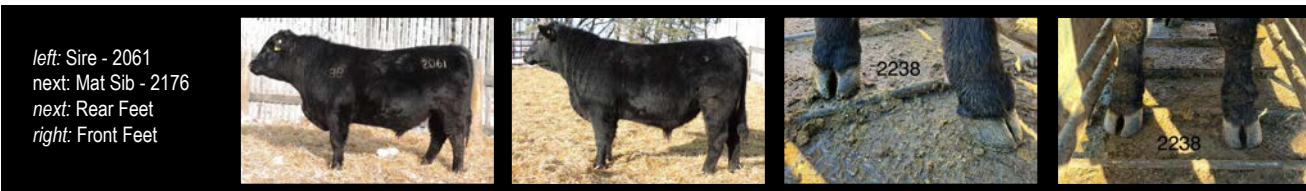
GBT Rolex 1276  
**GBT Luetta 1829**  
 GBT Luetta 032

Chez of Wye UMF 10824  
 GBT Jestress 1639  
 Sinclair Plains Boss 5B02  
 GBT Ruby Belle 1376  
 GBT Rolex 002  
 GBT Blackwood 063  
 B B A R Legacy 624  
 GBT Luetta 3P



AOD: 4 CE: ★★★★★☆ DISP: ★★★★★☆ UDDER: ★★★★★★  
 SCROTAL: 37 HIP HT.: 49 I.C.%: 3.05

Paternal brother to lots 2235 and 2253. Dam is one who goes about her work quietly. She weans off good calves and scores high on udder quality. Just what we need-no fuss production oriented cows. Her son sold in last years sale to Terry Martin.



left: Sire - 2061  
 next: Mat Sib - 2176  
 next: Rear Feet  
 right: Front Feet



**GBT CHEMIST 2244**

**2244**

2244 05/19/2022 AAA reg#: 20615672 BULL

GBT Champion 1827  
**GBT Champion 2016**  
 GBT Cleo 1370

Chez of Wye UMF 10824  
**GBT Countess 1830**  
 GBT Countess 1518

Chez of Wye UMF 10824  
 GBT Mayflower 1651  
 B B A R Legacy 624  
 GBT Cleo 0101  
 Quintes of Wye UMF 10502  
 Clova of Wye UMF 8996  
 Sinclair X-Plus 1XX30  
 GBT Countess 827



AOD: 4 CE: ★★★★★ DISP: ★★★★★ UDDER: ★★★★★  
 SCROTAL: 35.5 HIP HT.: 47.5 I.C.%: 8.45

The sire, 2016 was a yearling bull we thought enough of to sample as a yearling before selling to Lewis' at McAuley, MB. He is a blend of two really good, highly productive, balanced cows here in Mayflower 1651 and Cleo 1370. 2244's dam is a first cycle calving daughter of Chez. Her son sold in last years sale to Ekerts and one daughter is in the replacement pen.



left: Sire - 2016  
 next: Dam - 1830  
 next: Rear Feet  
 right: Front Feet

**GBT WEATHERPROOF 2245**

**2245**

2245 05/19/2022 AAA reg#: 20615676 BULL

GBT Winner 1724  
**GBT Weatherproof 2002**  
 GBT Mayflower 1651

GBT X-Plus 1460  
**GBT Cassie 1645**  
 GBT Cassie 1296

MH Winner 932  
 GBT Cassie 1331  
 GBT Locomotive 1239  
 GBT Mayflower 1456  
 Sinclair X-Plus 1XX30  
 GBT Lady Lynn 739  
 O C C Legacy 839L  
 Bievers Cassie 51F



AOD: 6 CE: ★★★★★ DISP: ★★★★★ UDDER: ★★★★★  
 SCROTAL: 34 HIP HT.: 50 I.C.%: 3.61

2245 is a bull we sampled last summer. Our decision to use him was based on who his mom was and her excellent production record. She's calved first cycle five out of six years. She's put 3 of her 4 daughters in our herd (one is the dam of lot 2228). And all three daughters are showing the same fertility, consistency of production and strong udder design. We don't like fluffy footnotes. Real cow production history and stats is what has meaning and value. This bull is backed by such a cow(s).



left: Dam - 1645  
 next: Mat Sib & Dam of 2228 - 1847  
 next: Rear Feet  
 right: Front Feet



**GBT WEATHERBOSS LON 2247** **2247**

2247 05/19/2022 AAA reg#: 20615677 BULL

GBT Winner 1724  
**GBT Weatherproof 2002**  
 GBT Mayflower 1651

Sinclair Plains Boss 5802  
**GBT Cassie 1832**  
 GBT Cassie 1426

MH Winner 932  
 GBT Cassie 1331  
 GBT Locomotive 1239  
 GBT Mayflower 1456  
 Sinclair Patriarch 3847  
 Sinclair Lady Ida 7V19 04F3  
 GBT Locomotive 1239  
 GBT Cassie 723

AOD: 4 CE: ★★★★★ DISP: ★★★★★ UDDER: ★★★★★

SCROTAL: 34.5 HIP HT.: 47 I.C.%: 6.54

Dam must be a cover girl bull magnet. She's been bred to a different sire every year and has calved the first 2 weeks of the season every year. Two daughters retained in herd. 2247 is a very easy nature bull by the good Cassie cow family.



left: Sire of Dam - 5802

middle: Rear Feet

right: Front Feet



**GBT PLAINS BOSS CHF 2248** **2248**

2248 05/20/2022 AAA reg#: 20777045 BULL

Sinclair Plains Boss 5802  
**GBT Plains Boss 2025**  
 GBT Gerlie 1863

Chez of Wye UMF 10824  
**GBT Mayflower 1821**  
 GBT Mayflower 1350

Sinclair Patriarch 3847  
 Sinclair Lady Ida 7V19 04F3  
 GBT Rolex 1276  
 GBT Gerlie 1536  
 Quintes of Wye UMF 10502  
 Clova of Wye UMF 8996  
 Bad Lands Forte 5S  
 GBT Mayflower 855

AOD: 4 CE: ★★★★★ DISP: ★★★★★ UDDER: ★★★★★

SCROTAL: 38 HIP HT.: 49 I.C.%: 1.61

This bulls grand dam produced 7 progeny for us and all but one time has calved first cycle.



left: Dam - 1821  
 next: Gr.Dam - 1350  
 next: Rear Feet  
 right: Front Feet





**GBT WEATHERPROOF 2XL 2250** **2250**

2250 05/20/2022 AAA reg#: 20777046 BULL

GBT Winner 1724  
**GBT Weatherproof 2002**  
 GBT Mayflower 1651

GBT X-Plus 1549  
**GBT Jestress 1932**  
 GBT Jestress 1406

MH Winner 932  
 GBT Cassie 1331  
 GBT Locomotive 1239  
 GBT Mayflower 1456  
 Sinclair X-Plus 1XX30  
 GBT Ruby Belle 1279  
 Sinclair X-Plus 1XX30  
 GBT Jestress 067

AOD: 3 CE: ★★★★★☆ DISP: ★★★★★☆ UDDER: ★★★★★★

SCROTAL: 36 HIP HT.: 47 I.C.%: 6.49

As his name implies, 2250 2XL traces twice to Sinclair X-Plus and twice to Legacy. From a young Jestress cow that is showing stay-ability so far. When single out, we marked this guy down as a bit nervous for disposition.



**GBT CHELATION XPL 2253** **2253**

2253 05/21/2022 AAA reg#: 20615673 BULL

GBT Champion 1824  
**GBT Champion 2061**  
 GBT Ruby Belle 1822

GBT X-Plus 1549  
**GBT Tilda 1963**  
 GBT Tilda 1351

Chez of Wye UMF 10824  
 GBT Jestress 1639  
 Sinclair Plains Boss 5802  
 GBT Ruby Belle 1376  
 Sinclair X-Plus 1XX30  
 GBT Ruby Belle 1279  
 B B A R Legacy 624  
 Willabar Tilda 106S

AOD: 3 CE: ★★★★★☆ DISP: ★★★★★★ UDDER: ★★★★★★

SCROTAL: 35.5 HIP HT.: 47 I.C.%: 2.95

Paternal brother to lots 2235 and 2238. To no surprise, dam scores high for udder quality as all X-Plus 1549 daughters do. Grand dam, 1351 is still producing for us at 10 years of age.





**GBT WEATHERBOSS IDEAL 2255** **2255**

2255 05/21/2022 AAA reg#: 20615674 BULL

- |                              |                             |
|------------------------------|-----------------------------|
| GBT Winner 1724              | MH Winner 932               |
| <b>GBT Weatherproof 2002</b> | GBT Cassie 1331             |
| GBT Mayflower 1651           | GBT Locomotive 1239         |
|                              | GBT Mayflower 1456          |
| Sinclair Plains Boss 5802    | Sinclair Patriarch 3847     |
| <b>GBT Princess 1741</b>     | Sinclair Lady Ida 7V19 04F3 |
| Prairielane 2029 Band 6115   | Prairielane Ideal 0051-2029 |
|                              | Prairielane 9012 Band 3127  |



AOD: 5 CE: ★★★★★☆ DISP: ★★★★★☆ UDDER: ★★★★★☆  
 SCROTAL: 33.5 HIP HT.: 48 I.C.%: 0.98

Nice genetic package here. The grand dam was a 2006 model import as a heifer calf, from Prairielane Farms of Manitoba. Prairielane utilized straight Jorgenson breeding and this was a cow that did an excellent job here and produced 10 calves for us. 2255's dam is the best female we retained from that good matron and she is proving her worth as well. She's another member of the first cycle calving club with a son selling to Doe River Colony in northern Alberta, her only daughter produced so far, is retained in herd and her 2023 son is on our short list to use in 2024. We sampled 2255 as a yearling so we will be expecting some progeny off him this summer! Superb nature on this bull here.



**GBT OVER PLAINS 2258** **2258**

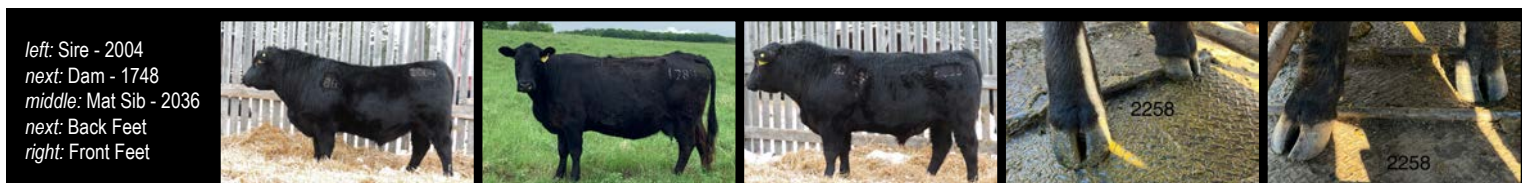
2258 05/22/2022 AAA reg#: 20615678 BULL

- |                             |                           |
|-----------------------------|---------------------------|
| GBT Open Plains 1809        | Sinclair Plains Boss 5802 |
| <b>GBT Open Plains 2004</b> | GBT Miss Morrison 1224    |
| GBT Tilda 1351              | B B A R Legacy 624        |
|                             | Willabar Tilda 106S       |
| MH Winner 932               | MH Titan 752              |
| <b>GBT Cassie 1784</b>      | MH Mina 53                |
| GBT Cassie 1325             | B B A R Legacy 624        |
|                             | GBT Cassie 723            |



AOD: 5 CE: ★★★★★☆ DISP: ★★★★★☆ UDDER: ★★★★★☆  
 SCROTAL: 36 HIP HT.: 48 I.C.%: 5.10

2258 represents the Open Plains 2004 sire we sampled as a yearling before he went to the Sawmill Creek herd in Manitoba. 2004 is out of another long lived cow (Tilda 1351) and who's dam (106S) produced until 15 years. Dam of 2258 is a good Winner sired Cassie cow that sports a solid udder but was marked in the calving book that it's tipped some.





**GBT  
2260**

**2260**

2260 05/22/2022 BIR reg#: 627006074 BULL

GBT X-Plus 1549  
**GBT ELEVATE 1850**  
Willabar Countess 138W

GBT Champion 1824  
**GBT 2035**  
7

Sinclair X-Plus 1XX30  
GBT Ruby Belle 1279  
Willabar Windy 107N  
Willabar Countess 154H  
Chez of Wye UMF 10824  
Clova of Wye UMF 8996  
Badlands Rogue 16Y



AOD: 2 CE: ★★★★★ DISP: ★★★★★ UDDER: ★★★★★  
SCROTAL: 38 HIP HT.: 49 I.C.%: COMM

**Purebred unregistered bull. Sells without registration papers.**

If there was ever a time we could get parentage figured out, this would be it. Despite an exhaustive search, we were never able to figure out the maternal parentage on this guys grand dam. If you're not worried about registration papers, this guy will more than satisfy the most discriminant of cattlemen. Very nice profiling individual with the typical puppy dog disposition that Elevate 1850 puts on ALL his progeny. Good bull.

left: Gr.Dam - 7

middle: Rear Feet

right: Front Feet



**GBT  
REVOLVE 2269**

**2269**

2269 05/25/2022 AAA reg#: 20615679 BULL

Bad Lands Rogue 16Y  
**GBT Revere 2054**  
GBT Cassie 1747

GBT Rolex 1276  
**GBT Gertie 1863**  
GBT Gertie 1536

KBJ Rogue II 203H  
Bad Lands Erica 10K  
Sinclair Plains Boss 5802  
GBT Cassie 1426  
GBT Rolex 002  
GBT Blackwood 063  
GBT Locomotive 1354  
GBT Gertie 1149



AOD: 4 CE: ★★★★★ DISP: ★★★★★ UDDER: ★★★★★  
SCROTAL: 37 HIP HT.: 50 I.C.%: 1.07

This guys sire is one we maybe should have kept. We sampled him before selling to very good customers and local producers, Glen and Dawn Ekert. From the daughters we have, I believe 2269 represents that bull very well. Heavy made bull here without the unneeded frame.

left: Sire - 2054

middle: Rear Feet

right: Front Feet





**GBT WEATHERFORT 2270**

**2270**

2270 05/26/2022 AAA reg#: 20615680 BULL

GBT Winner 1724  
**GBT Weatherproof 2002**  
 GBT Mayflower 1651

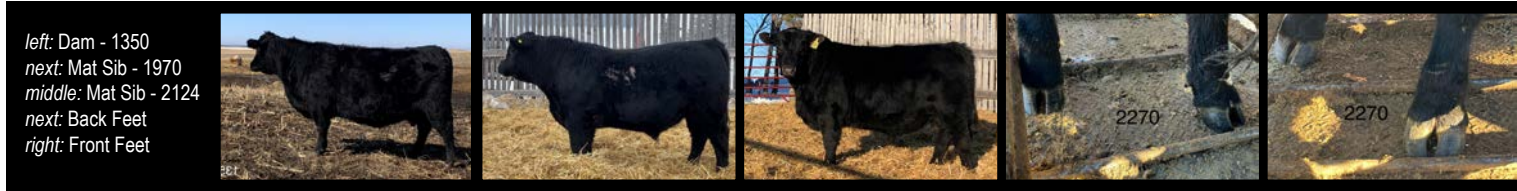
Bad Lands Forte 5S  
**GBT Mayflower 1350**  
 GBT Mayflower 855

MH Winner 932  
 GBT Cassie 1331  
 GBT Locomotive 1239  
 GBT Mayflower 1456  
 Papa Forte 1921  
 Bad Lands Princess 63K  
 B B A R Legacy 6128  
 GBT Mayflower 29N



AOD: 9 CE: ★★★★★☆ DISP: ★★★★★☆ UDDER: ★★★★★☆  
 SCROTAL: 33 HIP HT.: 47.5 I.C.%: 0.10

If one of your requests in a herd bull is longevity, this bull may meet your needs. Dam was a deep ribbed Forte 5S daughter who served us for 9 years. We have retained a daughter and sold a good son to Dave Weightman in 2021. This guy's mom was a bit more of a suspicious demeanour cow but so far, this guy seems to handle pressure quite well.



left: Dam - 1350  
 next: Mat Sib - 1970  
 middle: Mat Sib - 2124  
 next: Back Feet  
 right: Front Feet

**GBT WEATHERBOSS LL 2274**

**2274**

2274 05/28/2022 AAA reg#: 20615681 BULL

GBT Winner 1724  
**GBT Weatherproof 2002**  
 GBT Mayflower 1651

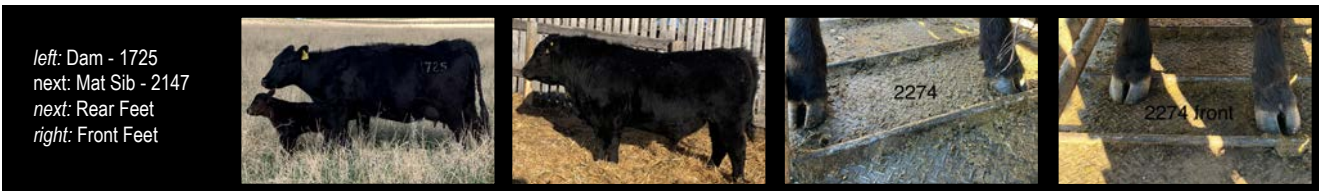
Sinclair Plains Boss 5802  
**GBT Lady Fanny 1725**  
 GBT Lady Fanny 1309

MH Winner 932  
 GBT Cassie 1331  
 GBT Locomotive 1239  
 GBT Mayflower 1456  
 Sinclair Patriarch 3B47  
 Sinclair Lady Ida 7V19 04F3  
 B B A R Legacy 624  
 B B A R Lady Fanny 6822



AOD: 5 CE: ★★★★★★ DISP: ★★★★★☆ UDDER: ★★★★★☆  
 SCROTAL: 33 HIP HT.: 46.5 I.C.%: 4.14

The dam of 2274 produces like a well oiled machine. To date, she's calved all five of her progeny in the first two weeks of the season. This well bred bull is from the prolific Lady Fanny cow family. We have two sisters to 2274 retained in herd and sold an exceptional brother in last years sale to very good customers, Steven and Katie Cowan. This bull isn't the biggest or heaviest in the pen but if your game is building functional, productive females, this one needs to be marked with double stars. This guys great grand dam was a bit anti social. 2274 seems to follow the same characteristic. Mark this guy a bit nervous when singled out.



left: Dam - 1725  
 next: Mat Sib - 2147  
 next: Rear Feet  
 right: Front Feet



**GBT WEATHERCHECK 2277**

**2277**

2277 05/29/2022 AAA reg#: 20615682 BULL

GBT Winner 1724  
**GBT Weatherproof 2002**  
 GBT Mayflower 1651

Chez of Wye UMF 10824  
**GBT Lady Fanny 1846**  
 GBT Lady Fanny 1464

MH Winner 932  
 GBT Cassie 1331  
 GBT Locomotive 1239  
 GBT Mayflower 1456  
 Quintes of Wye UMF 10502  
 Clova of Wye UMF 8996  
 Sinclair Time Out 8P1  
 GBT Lady Fanny 1108



AOD: 4 CE: ★★★★★☆ DISP: ★★★★★☆ UDDER: ★★★★★☆

SCROTAL: 37 HIP HT.: 46.5 I.C.%: 1.66

Maternal brother sold in last years sale to very good customers, Glen and Dawn Ekert. We've also retained a maternal sister in our herd. It's maybe a bit of a broken record but we feel it's highly important to mention, that this guys mom is another member of first cycle calving club.

left: Mat Sib - 2134

middle: Rear Feet

right: Front Feet



**GBT ELEVATE 2286**

**2286**

2286 06/04/2022 AAA reg#: 20615683 BULL

GBT X-Plus 1549  
**GBT Elevate 1850**  
 Willabar Countess 138W

GBT Locomotive 1478  
**GBT Lady Fanny 1631**  
 GBT Lady Fanny 1464

Sinclair X-Plus 1XX30  
 GBT Ruby Belle 1279  
 Willabar Windy 107N  
 Willabar Countess 154H  
 GBT Locomotive 1239  
 GBT Cassie 036  
 Sinclair Time Out 8P1  
 GBT Lady Fanny 1108



AOD: 6 CE: ★★★★★☆ DISP: ★★★★★☆ UDDER: ★★★★★☆

SCROTAL: 38 HIP HT.: 48 I.C.%: 1.37

Only three Elevate 1850 sons in this years sale, which is unfortunate as they were a highly sought after group last year. Don't worry though, we will have a good group of them again for next years sale! Dam has only ever given us one daughter, which we retained and has put two sons into past sales selling to Cowans and one to Luke treasure cows that are guys mom is one of them.

top left: Dam - 1631

top middle: Mat Sib - 1941

top right: Mat Sib - 2066

bottom left: Mat Sib - 2198

bottom middle: Rear Feet

bottom right: Front Feet





**GBT  
ELEVATE XPL 2291**

**2291**

2291 06/08/2022 AAA reg#: 20615684 BULL

GBT X-Plus 1549  
**GBT Elevate 1850**  
Willabar Countess 138W

Sinclair X-Plus 1XX30  
**GBT Blossom 1368**  
GBT Blossom 1127

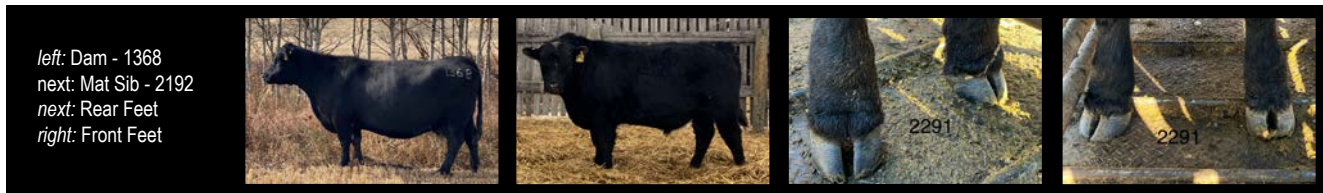
Sinclair X-Plus 1XX30  
GBT Ruby Belle 1279  
Willabar Windy 107N  
Willabar Countess 154H  
Sinclair Emulation XXP  
Sinclair K Bty 551 E013  
B B A R Legacy 624  
GBT Blossom 14L



AOD: 9 CE: ★★★★★☆ DISP: ★★★★★☆ UDDER: ★★★★★☆

SCROTAL: 38 HIP HT.: 48 I.C.%: 7.47

This bull represents a double influence of our Sinclair X-Plus 1XX30 bull. Dam is coming 11 years old and is still in production. Two daughters in our herd, one bull to Running Rabbit Ranch and another to Randy Smith. Some of our most easy fleshing genetics genetics all wrapped up in this bull.



left: Dam - 1368  
next: Mat Sib - 2192  
next: Rear Feet  
right: Front Feet

**GBT  
PLAINS BOSS XPRO 22103**

**22103**

22103 06/16/2022 AAA reg#: 20615685 BULL

Sinclair Patriarch 3B47  
**Sinclair Plains Boss 5B02**  
Sinclair Lady Ida 7V19 04F3

GBT X-Plus 1460  
**GBT Cassie 1659**  
GBT Cassie 1228

Sinclair Boss  
Sinclair Lady Ida 70C7 2V11  
N Bar Emulation Ext A1747  
Sinclair Lady Ida 04F3 B154  
Sinclair X-Plus 1XX30  
GBT Lady Lynn 739  
GBT Rolex 002  
GBT Cassie 010



AOD: 6 CE: ★★★★★☆ DISP: ★★★★★☆ UDDER: ★★★★★☆

SCROTAL: 36.5 HIP HT.: 47.5 I.C.%: 5.91

A maternal brother sold to Jim and Brenda Milligan after sampling in our herd as a yearling. One daughter retained in our herd and now this bull, 22103. Pedigree loaded with maternal heavy hitters such as Right Time and EXT and sired by our female maker, Plains Boss 5B02. 22103's similarity to his sire is almost eerie, right down to his identical head shape and mannerism.



left: Dam - 1659  
middle: Rear Feet  
right: Front Feet



**GBT  
PLAINS BOSS CHL 22104**

**22104**

22104 06/16/2022 AAA reg#: 20615686 BULL

Sinclair Patriarch 3B47  
**Sinclair Plains Boss 5B02**  
Sinclair Lady Ida 7V19 04F3

Chez of Wye UMF 10824  
**GBT Cassie 1849**  
GBT Cassie 1288

Sinclair Boss  
Sinclair Lady Ida 70C7 2V11  
N Bar Emulation Ext A1747  
Sinclair Lady Ida 04F3 B154  
Quintes of Wye UMF 10502  
Clova of Wye UMF 8996  
O C C Legacy 839L  
Bievers Cassie 51F



AOD: 4 CE: ★★★★★☆ DISP: ★★★★★☆ UDDER: ★★★★★☆  
SCROTAL: 35.5 HIP HT.: 47.5 I.C.%: 1.51

The good Cassie cow family represented here. The dam has put two daughters in our herd and a bull sold in last years sale to Clinton Erickson of Alberta. Note the udder score on 22104's dam. Being a son of Plains Boss will just solidify that high udder quality.

left: Dam - 1849  
next: Mat Sib - 2182  
middle: Gr. Dam - 1288  
next: Back Feet  
right: Front Feet



**GBT  
PLAINS BOSS LN 22113**

**22113**

22113 07/03/2022 AAA reg#: 20773566 BULL

Sinclair Patriarch 3B47  
**Sinclair Plains Boss 5B02**  
Sinclair Lady Ida 7V19 04F3

B B A R Legacy 624  
**GBT Jestress 1307**  
GBT Jestress 841

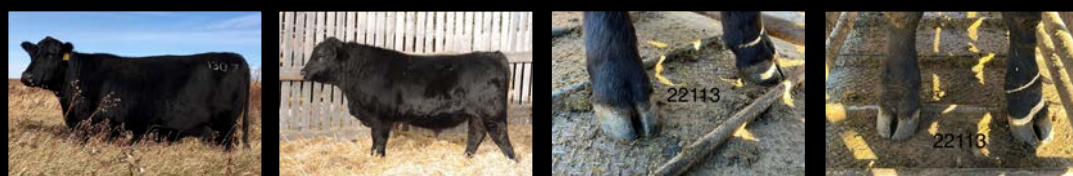
Sinclair Boss  
Sinclair Lady Ida 70C7 2V11  
N Bar Emulation Ext A1747  
Sinclair Lady Ida 04F3 B154  
O C C Legacy 839L  
B B A R Ruby Majorette124'96  
GBT 322 Nugget 624S  
Aitken Acres Jestress 11P



AOD: 9 CE: ★★★★★☆ DISP: ★★★★★☆ UDDER: ★★★★★☆  
SCROTAL: 36 HIP HT.: 50 I.C.%: 0.20

Dam has been a solid producer for us with one daughter retained and sons selling to Blustone Stock Farms and a full brother to 22113 working for Craig Smith. By all reports, he is breeding and calving heifers successfully with him. Since the introduction of the Jestress family with the 11P cow, 18 years ago, they've proven their strong staying power in our system. Mark this guy as a bit nervous. He is workable and non threatening but when singled out, is a bit insecure.

left: Dam - 1307  
next: Full Sib - 2047  
next: Rear Feet  
right: Front Feet





2015 - 2023

# A Tribute TO SINCLAIR PLAINS BOSS 5B02



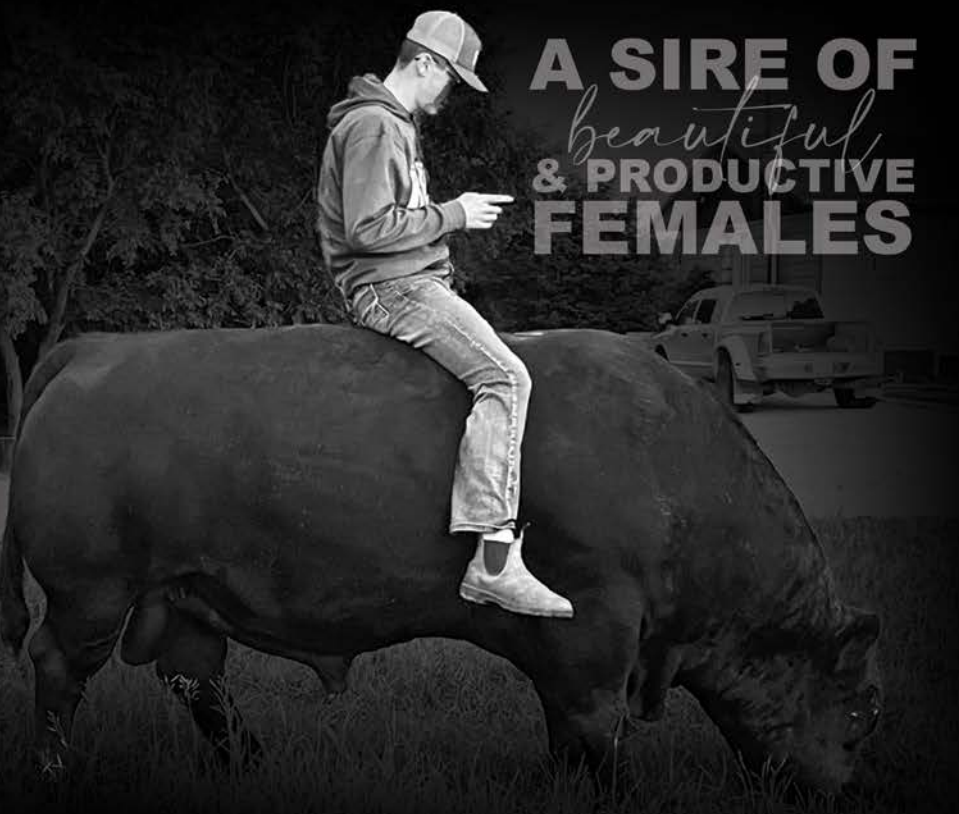
5B02 - YEARLING SALE PICTURE



5B02 - YEARLING SALE PICTURE



5B02 - 3 YEARS OLD



A SIRE OF beautiful & PRODUCTIVE FEMALES



5B02 - SUMMER 2022



5B02 - SUMMER 2023



DAM - SINCLAIR LADY IDA 7V19 04F3



GR. DAM - SINCLAIR LADY IDA 70C7 2V11



5B02 - BREEDING AT 7 YEARS OLD











# A Balanced Approach - Our Philosophy:

*Why do we base price all our bulls the same?*

Quite simply, it's the by-product of creating consistency. Years ago, we set out with the goal of making every female and bull as similar as possible. This way, our customers could choose from a whole pen of bulls versus just one or two "good ones". Our genetic process is not about maximizing traits. Profitable, sustainable cattle production does not tolerate extremes so we do our best to avoid them. The instant that we push and dictate what our cattle should be, is precisely the time balance is compromised. A system balanced by the environment is always more sustainable and profitable. Our breeding objective over the past 30 some years has never been about trying to create the "one home run" but rather to develop the most uniform set of cows in type and production ability, in a least cost environment. By default, the pen of bulls will certainly carry this same genetic suite of traits.



Trevor & Cheryl Branvold  
Box 205  
Wawota, SK, S0G 5A0  
306-577-9141