

28th Production Sale

**APRIL 14-16, 2022**

Internet Auction  
Pelton Livestock  
BillPelton.com



**SELLING:**

**30**

Yearling Angus  
and Red Angus  
Bulls

**8**

Angus Two-  
Year-Old Bulls

**135**

Commercial  
Fancy  
replacement  
heifers  
BWF, Black and  
Red Angus

**REALISTIC**

Webster Dictionary Definition: tending to face facts, practical rather than visionary

**Real World:** Functional Not Pampered

**Economical:** Priced and Bred

**Angus:** Thick, Deep Ribbed, Easy Fleshing, Calving Ease

**Longevity:** Providing Trouble Free Genetics

**Integrity:** Honest, Practical Data and Results

**Satisfied Customers:** Over 80% Repeat Buyers

**Two Colors:** Black & Red Angus

**Inheritability:** Function = Efficiency = PROFIT

**Convenience:** Free Delivery, or \$50 off if picked up week following the Sale

All Bulls are Fertility Tested  
Performance Tested



Doug & Ceylon Feiring  
6698 94th Ave. NW. Powers Lake, ND 558773  
(701)755-3449 • Cell (701) 629-1912  
Fax: (701) 628-1258 • dfeiring6@gmail.com

# *Welcome Friends,*

I would like to invite you to our 28th Annual Sale. This year's sale will be an online sale at [billpelton.com](http://billpelton.com). As many of you know I was hit hard with COVID the end of September. I spent 6 weeks in the Grand Forks hospital and 2 weeks in Stanley in swing bed/ therapy getting strong enough to go home. I'm getting stronger and have been doing chores since Christmas. I decided to have this online sale to help cut down on some of the work of having a sale. Most of the farm machinery sales have gone to this format. You are welcome to come view the cattle anytime. We only ask that you call before coming so that we are around to show them to you. The Ramberg's 70 heifers will be at their ranch south of White Earth. We hope that you can come and look over the offering before the sale. If you cannot make it, we understand and will guarantee the cattle will meet your expectations, or you do not own them no questions asked! That's our sight unseen guarantee. We know how busy this time of year can be and if you are not confident to bid online yourself, or too busy we are more than willing to take orders, or have you on the phone and bid on lots as we have done in the past for many of our customers. We will try and have all the cattle penned in pens to make viewing of the sale cattle quick and easy a week before the sale. We would love to show you our cow herd also. We have not yet shown them to anyone that was not impressed! They may not be the who's who or the breeds so called leading genetics. They are Practical and Predictable Angus.

Practical cattle, are cattle that will make the customers the most net profit. It means live, vigorous calves born with little or no assistance and raised on their mama's milk, without creep feed and a lot of fuss. It means heifers that calve as 2-year olds, are good mothers, raise a heavy calf at weaning, and breed back on schedule under ordinary range condition. It means cows with good disposition that are structurally sound throughout their life time, with good udders, and teats that stay sound.

Predictable means cattle that will breed like they look and individual performance records say they should. Accomplished by using a consistent criteria of selecting for economically important traits on an accurate within-herd comparison basis, year after year and generation after generation. To add predictability we line breed to common ancestors that are proven to be consistent producers of all the economically important traits in the proper balance---not spectacular in some traits and the lacking in others.

Our cattle weaned a little lighter last year because of the drought. We weaned the first part of November and have fed the bull's wheat midds until January and then switched them to Harvey's (Feed Mix) calf grower pellet. They are hand fed once a day and have free-choice grass hay. Growing slower for longevity and overall health of the bulls. You cannot fatten bulls for impressive gain and then expected them not to fall apart servicing cows!

We look forward to seeing and visiting with you.  
Thank-you for your present and past purchase's.

God Bless and pray for rain!  
Doug & Ceylon Feiring Family



## HOW THIS SALE CLOSE WORKS

The Feiring Angus online auction will close with horse race style bidding or extended bidding. This means that when the online auction event comes to its scheduled end time there will be 5 more minutes of extended bidding. If bidding continues the sale will stay open until there is a 5-minute stretch with no bidding on any lot. Once there is a full 5 minutes with no bidding on any lot, the whole event will close.

This auction is scheduled to close at 1pm CST on April 16th.

- Example 1: The auction closes at 1pm and goes into extended bidding. If there are no bids on any lot between 1pm and 1:05pm. The whole sale is declared closed at 1:05pm.
- Example 2: The Auction is scheduled to close at 1pm and goes into extended bidding. There is a bid on a lot at 1:02pm. Every lot remains open to bids. If there are no bids on any lot by 1:07, the whole sale is declared closed at 1:07pm.
- Example 3: The Auction is scheduled to close at 1pm and goes into extended bidding. There is a bid on a lot at 1:02pm. Every lot remains open to bids. Another bid is placed at 1:06. Every lot remains open. Another bid is placed at 1:10. Every lot remains open. If there are no bids on any lot by 1:15, the whole auction is declared closed at 1:15pm.

You may use the maximum bidding feature throughout the extended bidding. A maximum bid will automatically increase your bid when someone else bids on this lot up to your set maximum.

If you are the highest bidder, or want to be, and the auction is coming to a close keep an eye on your Watchlist. During the bidding process you will not need to refresh your page to ensure you are viewing the most current bidding activity. The auction platform auto-refreshes the page, and the bidding is in real time.

## Creating an Account with Pelton Livestock Online Auctions

Only registered bidders over the age of 18 can participate in Pelton Livestock online auctions. To register, select the Login/Register link on the right top side of the screen in the navigation bar. Register for a new account by entering your contact information, email address, desired password, etc. Once you submit the auction registration form, an email will be sent to the email account provided. Please click the link in that email to activate your account. Prior to Prebidding opening day, view auction and click “request to bid” on any lot to be approved for bidding. Request will be sent to Seller and once approved, you will be notified that you can now bid live for that auction. Please keep your user information (email address and password) in a secure place as you can use the same account login for all online auctions hosted by Pelton Livestock. If you have any questions or need assistance with creating an account or bidding, please call PELTON LIVESTOCK Darci Sachdeva at 406-794-3174 or Abbi Boggess at 406-560-2029.



01

**Register**  
If you are not already a user on our site, create an account.

02

**Verify Email**  
An email will be sent to email account provided. Please click link in email to activate your account.

03

**View Upcoming Auctions**  
Once you see auction you are interested in click "Get Approved to Bid"

04

**Sale Day**  
Login with credentials provided at registration.

05

**For Help call**  
Darci Pelton Sachdeva  
(406) 794-3174

## AUCTION DEMO AVAILABLE

Login with credentials provided at registration and enter “Demo Auction” to practice bidding. For Help call Darci Pelton Sachdeva (406) 794-3174.

## BUYER FAQ

Please read Buyer FAQ on the upper right-hand side of the screen in the navigation/menu bar to learn how to bid, use watchlists, maximum bids and more.

## IS THE AUCTION PLATFORM MOBILE FRIENDLY?

Yes, the auction platform and entire site is mobile friendly. So, no matter the device (computer, cell phone, tablet, etc.) you are utilizing to view and/or bid on an auction, the site is responsive to your screen, so you have the most optimum viewing and bidding experience.

# Sale Info

## *Sale Contacts*

Feiring Angus Ranch.....	701-755-3449
Doug Feiring.....	701-629-1912
Ceylon Feiring.....	701-629-1746
Chuck Ramberg.....	701-629-1501
Roberta Ramberg.....	701-629-9917

## *Accommodations*

Microtel Inn & Suites.....	701-628-4090
901 Juard St. Stanley, ND	
Black Gold Suites.....	701-664-4464
201 Elm St. Tioga, ND	
Tioga Motel.....	701-664-3395
210 2nd St. E. Tioga, ND	
other accommodations in Williston, New Town, and Minot, ND. Please call if you need assistance.	

## *Inspection of Cattle*

Sale cattle are available for inspection at Feiring Angus or Ramberg's Ranch. Please call ahead of time to set up a viewing.

## *Terms & Conditions*

All cattle must be paid for in full before taking possession by buyer, or if other arranged payments have been agreed on by both parties.

## *Health*

Health and brand papers will be furnished. All cattle have been vaccinated for IBR, Pi3, BVD, Pasturella Haemophilus Somnus, and poured with Vetrimec. All females have been bangs vaccinated for Brucellosis and will be vaccinated with PregGaurd FP 10 before the sale. All bulls have been vaccinated with Fusogard (footrot vaccine) so their ready to work for you.

## *Insurance*

Insurance will be available through Bill Pelton.

## *Announcements*

Announcements before the sale will take precedence over information in this catalog.

## *Delivery*

\$50.00 off per bull picked up the following week of the sale. Or free delivery on bull(s) within a 200 mile radius. Heifers will be at the expense of the buyer. Prompt pickup is appreciated. Feiring heifers will be at their ranch & Ramberg heifers will be at their ranch. We will help find transportation if requested.

## *Feeding Arrangements*

We can board your bull(s) until you need them. There will be a \$2.50 per head/per day charge with this service. You will be responsible for picking up the bull(s) at Feiring's ranch, unless prior arrangements have been made.

## *Our Guarantee*

To our knowledge, these bulls are fertile and have passed a breeding soundness exam and are guaranteed for the first breeding season (60 days). Which begins when you turn our the bull(s). The semen test conducted by a licensed veterinarian consisted of both an internal and external exam. Scores were derived from scrotal measurement and microscope examination to determine the motility and morphology of the sperm.

If a bull fails to settle cows or heifers, assuming he is in good condition and not injured, we will provide you with a satisfactory replacement if available. If a replacement is not available, we will issue you credit equal to your purchase price minus the salvage value that may be used towards the purchase of an animal for sale through our annual production sale or private treaty. We must be notified immediately and before selling the infertile bull in question. We also reserve the right to a second opinion from a veterinarian of our choice, and 60 days to determine if the bull is infertile. This guarantee is to ensure the bull's fertility only.

## *Liability*

Everyone coming to Feiring's or Ramberg's ranches does so at his or her own risk. Neither party assumes any liability, legal responsibility for any accidents, or for the behavior of the animals.

## *Retaining Interest*

Feiring Angus Ranch is retaining one-third revenue sharing semen interest in every bull selling in this sale. Full possession and full salvage value sells on all bulls. Unless stated otherwise. We also reserve the right to collect semen on any bull selling in this sale, at your convenience and our expense, to be used in our herd only.

## *Sale Videos*

Videos will be available for viewing at [www.billpelton.com](http://www.billpelton.com) under Feiring Angus Sale Info.

## *Sale Order*

Heifers start the sale, 2-year-old bulls, and followed by yearling bulls oldest to youngest. Each heifer has a herd number and a freeze brand number that match. Winning bidder has choice of 5 head or more, If they take 10 head they get the heaviest 10 head, and then the bidding starts over again on the remaining heifers in the pen, or they can take the whole pen at their bid price.



# A *Red Gemstone 91C Lad ET 1*

Tattoo: 178F      DOB: 5/28/18

RED OCC EASY RED  
**RED CALVO 91C**  
 RED CALVO BAILEY 9X  
 FEDDES BIG SKY R9  
**RED TOP GRADE FANCY 169A**  
 RED TG PEARL 170Y

RED OCC LINEBRED 801R  
 RED OCC VANESSA 829S  
 RED BB ROY 45S  
 RED BBBB 6540 BBRED 6840  
 BIEBER MAKE MIMI 7249  
 FEDDES LAKINA 310  
 RED TER-RON WINDERMERE 14  
 RED L4 PEARL 980M

178 is an Embryo born bull in Canada, added to bring OCC Type cattle into Reds.



RED GEMSTONE 91C LAD ET 1

# B *Red Edie Creek Easy 93D*

Tattoo: 93D-RR      DOB: 3/05/14

RED OCC EASY RED  
**RED OCC EASY RED 868A**  
 RED OCC VANESSA 797Y  
 RED CROWFOOT MOONSHINE 8081U  
**RED XO CROWFOOT BRNDINA 322A**  
 RED CROWFOOT BRNDINA 6234S

RED OCC LINEBRED 801R  
 RED OCC VANESSA 829S  
 RED OCC RED ROCK 864U  
 RED OCC VANESSA 929T  
 CROWFOOT 6004S  
 RED CROWFOOT BRNDINA 6359S  
 RED CROWFOOT OLE'S OSCAR  
 RED CROWFOOT BRNDINA 2071M

A bull imported from Canada to inject OCC genetics in our Red Angus herd.



RED OCC EASY RED 868A | SIRE

# C *Red SVR Hitch 42C*

Tattoo: 42C      DOB: 3/15/15

RED ANCHOR 1 HITCH 38T  
**RED CLAY BANDIT 18X**  
 RED GET-A-LONG EILEEN 749  
 RED SVR GANGSTER 14S  
**RED SVR MISS LARK 100X**  
 RED SVR MISS LARK 68U

RED YY HITCH 514R  
 RED CROWFOOT STRETCH 4320P  
 RED BRYLOR PASQUALE 213P  
 RED FINELL EILEEN 17R  
 RED GEIS HI HO 180'04  
 RED DWAJO DUCHESS 75M  
 RED SVR KNIGHT 73P  
 SVR MISS LARK 57N

42C was imported from Canada. He's a long spined, deep, wide based & muscular with a great hind quarter. Great foot, calving east, dark red, and disposition.



RED SVR HITCH 42C

# D *OCC Diplomat 868D*

Reg. # 18827254      Tattoo: 869D      DOB: 10/18/16

OCC PAXTON 730P  
**OCC YOU'RE EXACT 763Y**  
 OCC POLLYANNA 944H  
 OCC EMBLAZON 854E  
**OCC REVOLUTION ROSE 807Z**  
 OCC REVOLUTION ROSE 743K

OCC FOCUS 813F  
 OCC BLACKBIRD 736K  
 OCC ANCHOR 771A  
 OCC POLLYANNA 979F  
 D H D TRAVELER 6807  
 DIXIE ERICA OF CH 1019  
 OCC ANCHOR 771A  
 OCC REVOLUTION ROSE 751E

869D is a Royal bred OCC bull, covering all th bases: longeigity, soundness, calving ease, and trouble free genetics that just get-r-done!



OCC DIPLOMAT 869D

## *E Sinclair Rollin Coal 6K21*

Reg. # 18487763 Tattoo: 6K21 DOB: 2/27/16

SINCLAIR ENTREPRENEUR 8R101  
**SINCLAIR BROKER 3RC33**  
 SINCLAIR LADY IDA 8XV12 C52  
 SINCLAIR NET PRESENT VALUE  
**SINCLAIR LADY IDA 5PBV38 B154**  
 N BAR LADY IDA X2912

R R RITO 707  
 N BAR KINOC TRY BEAUTY Z1925  
 N BAR EMULATION EXT V722  
 N BAR LADY IDA Z1453  
 N BAR PRIME TIME D806  
 IDEAL 4465 OF 6807 4286  
 N BAR EMULATION EXT  
 N BAR LADY IDA 9778

6K21 is a natural son of the famous Lady Ida 70C7 and granddam 7V19, both donor cows for Sinclair. 6K21 was her 12th natural calf, at that time her average BW was 74 lbs. 205 WW ratio was 105, and had a 369 days calving interval.



## *F O C C Dodge 678D*

Reg. # 19067880 Tattoo: 678D DOB: 3/20/16

O C C PRACTICAL 841P  
**O C C UNBELIEVABLE 851U**  
 O C C POLLYANNA 944H  
 O C C MISSING LINK 830M  
**O C C POLLYANNA 613B**  
 O C C POLLYANNA 944H

O C C FOCUS 813F  
 O C C JUANADA 968G  
 O C C ANCHOR 771A  
 O C C POLLYANNA 979F  
 O C C HEADLINER 661H  
 O C C DIXIE ERICA 946K  
 O C C ANCHOR 771A  
 O C C POLLYANNA 979F

678D is a linbred son of the OCC Pollyanna 944H. One of OCC's flush cows that produced for 18 years. Lots of longevity bred in.



## *G Edie Creek Titan 75D*

Reg. # - Tattoo: 75D-B16 DOB: 05/8/16

O C C GREAT PLAINS 943G  
**MH TITAN 752**  
 MH MELISA 357  
 O C C LEGACY 839L  
**EDIE CREEK 839L CAROLINE 48W**  
 EDIE CREEK CAROLINE 10M

N BAR EMULATION EXT  
 DIXIE ERICA OF C H 1019  
 O C C HOMER 650H  
 MH MELISA 1147  
 O C C ECHELON 857E  
 O C C DIXIE ERICA 960E  
 OKMA FOURTRAX 5134  
 2J CAROLINE 10K

75D sons will produce low input cattle, that can thrive on forage. They have good feed, udders, and continue to produce 10-12 years.



## *H Citadel of Saddle Butte 47/15*

Reg. # 18335228 Tattoo: 547 DOB: 02/15/15

BETRO OF CLASSLOCHIE  
**DUNLOUISE JIPSE EARL E161**  
 DUNLOUISE JIPSEY CLOVA C095  
 JASNIC ERICA OF KEMPSONS  
**DUNLOUISE CBLOSSOM ERIN E171**  
 CHERRY BEE W9 OF CHAMPAGNE

ROCKIE OF WOODVIEW  
 BETHROTHED 19 OF CLASSLOCHIE  
 BERBARDO OF CLASSLOCHIE  
 CANNAHARS JIPSEY YOKO Y485  
 PHINEUS OF CAIRNFIELD  
 JASMINE ERICA OF KEMPSONS  
 EVAN OF CHAMPAGNE  
 CHERRY BEE OF CHAMPAGNE

547 was an embryo imported from Scotland by Sinclair Cattle Co. 547 was part of the plan to develop the old Aberdeen Angus cow back into the US. 547 is closely related to the proven genetics that started the Angus breed 150 years ago.





# *FairView Bardolene 4235*

Reg. # 18164860    Tattoo: 4235    DOB: 07/25/14

BATTLE RIVER BARDOLENE	GRASSY LANES BARDOLENE 35M
<b>GRASSY LANES BARDOLENE 26Z</b>	BATTLE RIVER SUELLEN 11S
ROSEBUD OF GRASSY LANES 26M	IOSEGUN BAR LAD 37J
BAR LAD OF GRASSY LANES 70M	ROSEBUD OF GRASSY LANES 26Z
<b>LINDA LOU OF GRASSY LANES</b>	IOSEGUN BAR 37J
LINDA LOU OF GRASSY LANES29H	BETSY OF GRASSY LANES 70C
	LSF LANCELOT 16F
	LINDA LOU OF GRASSY LANES35F

4235 is old Bardolene breeding dating back to 1960, straight from Canada. The foot structure, muscle, maternal, masculinity, carcass and hair coat put this outcross sire at the top of the list.



**FAIRVIEW BARDOLENE 4235**

# *O C C Conquest 660C*

Reg. # 18736710    Tattoo: 660C    DOB: 03/16/15

O C C FOCUS 813F	BASIN RAINMAKER 654X
<b>O C C SENTINEL 714S</b>	DIXIE ERICA OF C H 1019
O C C BLACKCAP 804M	O C C ECHELON 857E
O C C ANCHOR 771A	O C C BLACKCAP 872K
<b>O C C POLLYANNA 944H</b>	D H D TRAVELER 6807
O C C POLLYANNA 979F	O C C JUANADA 709V
	O C C BONANZA 880B
	POLLYANNA OF R R 520S

660C is also a son of the great 944H cow, top donor cow for OCC. She produced till 18 years of age, longevity at its best. If you study OCC sale catalog you will see that his cow shows up in many of the offering.



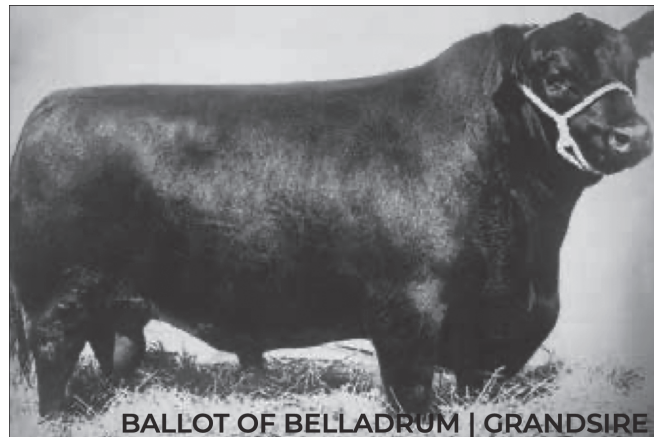
**O C C CONQUEST 660C**

# *SVR Ballot Black 7117*

Reg. # 19263575    Tattoo: 7117    DOB: 12/8/54

BALLOT OF BELLADRUM	PARAGON OF HAYMOUNT
<b>OCTORARO BALLOT STO 6</b>	BEDELIA MAID OF BELLADRUM
OCTORARO GAMMER 203	RITO 054 G D A R
EMULATION N BAR 5522	OCTORARO GAMMER 305
<b>K C F MISS 5522 D3</b>	EMULATION 31
C S U MISS TRAVELER 0138	ANKONY 8F78 LASS 8F275
	Q A S TRAVELER 23-4
	C S U MS LANDMARK 4117

Sire J's Grandsire was imported to the USA in the 50's, Belladrum was one of the all-time great bulls in the Angus breed, born 12/8/1954.



**BALLOT OF BELLADRUM | GRANDSIRE**

# *Pinebank Southeast 117d*

Reg. # 19339138    Tattoo: P17D    DOB: 11/21/16

PINEBANK WAIGROUP 45/02	PINEBANK WAIGROUP 3/00
<b>PINEBANK WAIGROUP 152/04</b>	PINEBANK WAIGROUP 75/99
PINEBANK WAIGROUP 86/96	SHALOM 486/93
PINEBANK 1/06	PINEBANK WAIG 61/93
<b>PINEBANK 25/08</b>	HINGAIA 469
PINEBANK WAIGROUP 125/03	PINEBANK WAIGROUP 62/99
	PINEBANK WAIGROUP 2/01
	PINEBANK WAIGROUP 5/98

P17D is an imported embryo from New Zealand born in the USA. Pinebank Waigroup was formed in 1967, a group of 4 breeders closed their herds with a breeding objective to select Angus cattle for fertility, calving ease, low BW, WW, YW, scanned ribeyes & IMF. In a total grass environment where the cattle follow the sheep!



# Feiring Angus AgBoost DNA Scores

DNA was processed at Neogen Geneseek Operations/IGENITY

**What are AgBoost DNA Scores?** AgBoost identifies 16 traits and applies a score from 1-10, with 1 being the lowest and 10 being the highest score, against all breeds today. A higher score is generally better, unless you want less BW, FAT and FRI, then you would want a lower score. The DNA test is done at IGENITY (Neogen Geenseek Operations) Lab, and AgBoost is the 3 party source.

## 2-Year-Old Bulls

Herd #	Birth Date	Sire	Dam	MGS	Dam Age	BW	205 WT	365 WT	Gain	Scrotal CM	Frame	Weight
11	4/23/20	869D	E01	47/15	3	84	515	1051	3.35	38.5	4	1340
57	5/02/20	678D	D3	616Z	4	74	667	1081	2.59	37	4	1425
68	05/05/20	178F	E19	3068	3	84	632	1078	2.79	38.5	6	1365
10	04/21/20	178F	AX70	Beckton	3	70	694	1272	3.61	37	5.5	1595
46	04/30/20	42C	Y41	6188	9	84	712	1114	2.51	38.5	6	1565
70	05/05/20	178F	F69	42C	5	84	667	1147	3	41.5	6	1565
77	05/08/20	178F	D25	A107 BA	4	84	659	1169	3.19	43	6	1565
80	05/08/20	178F	F97	4124	2	86	720	1253	3.33	39	5.5	1405
96	05/12/20	178F	F29	4124	2	80	744	1051	1.92	40	5	1365

## Black Yearling Bulls

Herd #	Birth Date	Sire	Dam	MGS	Dam Age	BW	205 WT	365 WT	Gain	Scrotal CM	Frame	
1007	04/21/21	117d	G123	47/15	2	76	636	1021	2.44	32.6	4	
1008	04/22/21	869D	E01	47/15	4	76	640	1044	2.56	35.4	4	
1080	04/25/21	869D	F117	660C	3	74	563	963	2.54	33.7	4	
1023	04/27/21	117d	G22	506	2	80	597	1015	2.65	31.8	4	
1024	04/27/21	869D	W10	6118	12	78	632	973	2.16	33.8	4	
1040	05/01/21	7117	D86	858X	4	72	560	949	2.47	33.2	4	
1042	05/01/21	75D	Z47	867W	9	84	650	1125	3.01	34.5	5	
1044	05/02/21	117d	G23	660Z	2	88	657	1114	3.09	31	5	
1050	05/02/21	7117	E60	2288	4	64	617	967	2.22	34.5	4	
1052	05/02/21	75D	B101	6118	7	76	617	965	2.28	33.8	4	
1059	05/03/21	869D	B14	469X	7	86	608	1009	2.54	33.1	5	
1060	05/04/21	117d	G69	47/15	2	72	583	989	2.57	34.9	4	
1061	05/04/21	7117	A70	9974	8	82	633	1043	2.6	33.6	5	
1067	05/05/21	660C	X06	636U	11	84	667	1080	2.62	34.2	5	
1069	05/06/21	869D	F84	660C	3	84	687	994	2	31.2	4	
1073	05/06/21	117d	G81	75D	2	76	632	1036	2.56	32.9	4	



Herd #	Birth Date	Sire	Dam	MGS	Dam Age	BW	205 WT	365 WT	Gain	Scrotal CM	Frame	
1074	05/07/21	7117	A01	F Wider 137	8	82	632	982	2.22	31.2	5	
1077	05/07/21	75D	D36	2103	5	72	621	1008	2.46	34.7	4	
1079	05/07/21	7117	C50	920Z	6	76	541	910	2.34	32.2	4	
1088	05/10/21	117d	G67	41/15	2	72	655	1059	2.55	33.8	4	
1100	05/20/21	660C	D143	313	5	76	612	985	2.37	32.9	5	
1139	05/23/21	7117	Y72	636U	10	72	696	1046	2.22	33.8	5	

## *Red Yearling Bulls*

Herd #	Birth Date	Sire	Dam	MGS	Dam Age	BW	205 WT	365 WT	Gain	Scrotal CM	Frame	
1033	04/29/21	178F	E58	4928	4	90	647	1055	2.59	34.1	5	
1046	05/02/21	178F	A80	Beck X188	8	84	606	1044	2.78	34.5	5	
1053	05/03/21	42C	E113	4124	4	68	608	944	2.13	35.8	5	
1072	05/06/21	178F	D132	4928	5	86	639	1012	2.12	35.2	5	
1082	05/08/21	42C	AX73	Gambler	5	72	683	1105	2.68	36	5	
1089	05/10/21	42C	B115	X36	7	76	652	1055	2.56	36.9	5	
1117	05/17/21	42C	B67	Beck X188	7	72	639	1055	2.69	35.7	5	
1128	05/19/21	178F	C82	A107 BA	6	88	630	1045	2.63	38.7	5	
1136	05/21/21	42C	C26	A107 BA	6	82	650	1072	2.68	37.5	5	



We have chosen an independent company AgBoost, to establish the integrity of our data, rather than the antiquated EPD system. There are 16 main traits that most producers look for in their sire selection. These traits are verified through Igenity DNA Profile against all breeds. The scale is very simple. Lower score is better in BW, RFI, & Fat.

The chart on the following page will show each bulls AgBoost DNA score.

# AgBoost DNA Scores

Herd #	BW	CED	CEM	DOC	HRP	MILK	STAY	ADG	RFI	TEND	MARB	REA	FAT	HCW	WW	YW
11	4	8	5	6	5	4	7	5	8	7	5	4	8	5	6	6
57	5	7	6	6	7	6	3	6	9	6	4	4	6	6	6	6
68	6	8	2	6	4	2	6	6	5	6	5	8	8	6	6	6
10	7	7	2	6	4	5	4	7	5	6	5	8	8	6	6	6
46	3	7	3	6	4	3	7	5	6	9	8	4	8	5	5	5
70	4	7	3	6	2	3	6	8	5	7	5	5	6	6	7	7
77	4	7	3	6	4	4	7	6	7	9	5	6	6	5	5	5
80	8	4	2	7	2	3	5	8	4	6	8	7	6	9	8	8
96	4	7	4	7	5	4	5	8	5	7	6	5	8	6	9	8
1007	3	5	5	8	5	5	7	6	5	9	6	4	8	4	6	6
1008	6	7	2	7	6	6	6	5	6	6	4	5	7	5	5	5
1018	7	5	1	4	4	4	5	6	8	9	4	5	6	4	5	6
1023	5	5	1	7	8	3	5	6	6	4	5	5	8	4	6	6
1024	7	5	1	6	3	4	5	7	7	6	4	5	5	4	7	7
1029	4	6	2	5	8	4	7	5	7	7	56	6	4	4	4	4
1033	7	5	2	6	2	2	6	8	6	7	4	7	5	7	7	7
1040	4	6	6	5	5	5	5	5	7	5	6	3	7	2	4	4
1042	6	7	5	5	5	3	6	6	7	9	5	7	5	6	5	5
1044	6	5	3	6	6	3	6	5	7	9	3	5	6	5	4	4
1046	4	8	3	6	4	3	6	6	6	7	7	4	8	6	6	6
1050	6	8	6	8	6	7	4	5	7	5	6	4	4	6	6	6
1052	3	7	5	6	7	6	7	5	6	9	6	4	6	4	5	5
1053	3	8	5	7	1	4	7	5	8	8	6	5	7	5	5	5
1059	5	6	4	5	6	3	7	7	8	9	6	6	6	5	7	7
1060	2	6	5	5	7	4	6	6	6	6	4	2	7	1	5	5
1061	6	6	4	8	5	4	3	6	9	9	5	5	6	7	6	6
1067	5	6	6	5	5	5	4	5	8	10	6	6	6	5	5	5
1069	5	7	3	5	6	5	5	6	7	7	6	5	6	4	5	5
1072	7	5	3	8	5	4	6	6	5	7	6	7	7	8	7	7
1073	4	6	4	8	7	2	8	6	7	7	5	4	8	3	6	6
1074	5	5	3	6	6	3	4	4	8	7	4	3	5	2	4	4
1077	4	7	3	6	4	4	7	5	7	9	5	6	6	5	5	5
1079	4	5	6	8	4	5	4	5	6	5	6	3	7	6	6	5
1082	3	7	5	6	3	3	7	6	6	9	6	4	8	3	6	6
1088	3	5	4	5	6	4	7	5	6	4	6	3	7	2	4	5
1089	3	8	5	8	8	7	5	8	6	4	6	3	8	4	7	8
1100	-	-	-	-	-	-	-	-	-	-	-	-	-	-	-	-
1117	4	9	5	7	2	4	7	5	6	9	8	3	10	4	5	5
1128	6	5	2	7	2	3	4	6	5	7	6	6	6	7	6	6
1136	4	7	4	6	4	4	8	6	7	7	8	4	5	4	6	6
1139	4	9	4	6	6	6	5	6	7	8	5	5	6	5	5	5

DOC: DOCILITY

MARB: MARBLING

TEND: TENDERNESS

RIB: RIBEYE AREA

STAY: STAYABILITY

BW: BIRTHWEIGHT

WW: WEANING WEIGHT

YW: YEARLING WEIGHT

ADG: AVERAGE DAILY GAIN

HCW: HOT CARCASS WEIGHT

CED: CALVING EASE DIRECT

RFI: RESIDUAL FOOD INTAKE

CEM: CALVING EASE MATERNAL

HRP: HEIFER PREGNANCY RATE

FAT: FAT THICKNESS

# Commercial Heifer Offering

## General information on the commercial heifer offering:

- Heifers are weighed and are selling heaviest to lightest in each group.
  - Each heifer has a herd # and a freeze brand # that match.
- Winning bidder has choice of 5 head or more. If they take 10 head they get the heaviest 10 head, and then the bidding starts over again on the remaining heifers in the pen, or they can take the whole pen at their bid price.
- Pen is defined as Black, Red or BWF heifers by each consignor, either Feiring Angus Ranch or Ramberg Family.
  - If you have any questions contact Doug Feiring at 701-629-1912 or Chuck Ramberg at 701-629-1501

## 65 Commercial Heifers

50 Black Angus Heifers & 15 Red Angus Heifers

Feiring Angus Ranch

- Born April and May 2021

- Sired by Feiring reference sires and Feiring raised bulls
  - Bangs vaccinated and freeze branded
- Outstanding brood cow prospects. Optimum size and very uniform in length, volume and structural correctness
- Weaned on grass hay until mid-January, then started on feed, 4lbs. pellet per/day and free choice grass hay

*# of Head*

*Buyer*

*Price*

---

---

---

---

---

---

---

---

---

---

---

---

---

---

---

## 70 Commercial Heifers

40 Black Angus Heifers & 30 Black White Face Heifers

Chuck & Roberta Ramberg and Family

701-755-3419 or 701-629-1501

- Born March - May 2021

- Sires from Feiring Angus Ranch, Spickler Ranch and Holden Hereford Ranch
  - Bangs vaccinated, PregGuard, and freeze branded
- Outstanding brood cow prospects. Optimum size and very uniform in length, volume and structural correctness
  - Weaned on alfalfa/grass hay

*# of Head*

*Buyer*

*Price*

---

---

---

---

---

---

---

---

---

---

---

---

---

---

---



## *2-Year-Old Bulls*

*Lot 010*



*Lot 011*



*Lot 068*



*Lot 077*



*Lot 070*



*Lot 096*



*Lot 057*





# Yearling Bulls

*Lot 1024*



*Lot 1046*



*Lot 1100*



*Lot 1136*



*Lot 1044*



*Lot 1073*





# *Yearling Bulls*

*Lot 1023*



*Lot 1082*



*Lot 1067*



*Lot 1072*



*Lot 1060*



*Lot 1008*





# Yearling Bulls

*Lot 1069*



*Lot 1139*



*Lot 1007*



*Lot 1018*



*Lot 1128*





# *Practical Genetics: Knocking out the Props*

By Allen Williams, Ph.D.

[www.understandingag.com](http://www.understandingag.com)

<https://understandingag.com/practical-genetics-knocking-out-the-props/>

Genetic selection is something that is often complicated and confusing for many livestock producers. There are numerous trait measurements that we try to decipher, including breeding values and EPD's that we pour through and try to interpret. We like to use weighted or adjusted values for various traits. In the past couple of decades, we have added DNA Marker technology to the mix. We read breed-promotion literature, look at the glossy pictures in breed association catalogs, ask neighbors and friends what they are using. Some of us may pay attention to the sale barn owners and operators, to the feedlot managers, to the packer or processor, to whomever is selling us something, or to our lender.

## **Context**

The one glaring item that is missing from any of these sources is context. Your context. Any genetics you select must work at your farm, under your management, and must generate reasonable net profits. No one else can provide your context. You know your goals and objectives, you know what your challenges are on your farm, you know what your economics are.

What are the most important traits relative to net profitability and productivity? They are longevity, adaptability, fertility, and soundness. These are traits that are very hard to properly measure and ascertain using breeding values, EPD's or DNA Markers. Why? Because none of those address your specific farm context.

## **Most Profitable**

For more than 15 years, I worked with the IRM SPA program and collected data from many beef farms across multiple regions. What I found was that the most profitable operations were not those that had the highest weaning weight calves, the highest annual pregnancy rates, the greatest ribeye area or the highest marbling. The average beef cow in the dataset was culled after 4.3 calves. This included culling for not breeding as a virgin heifer, failing to rebreed after her first calf, poor udder, or other reasons. However, based on investment in each cow, it took an average of 5 calves before that cow breaks even. That means the average cow never made any net profit for her owner. The beef farms with the highest net profits year after year were not those with the greatest performance in any of the traits that we typically use for our selection protocols. They were the ones whose cows had superior longevity. To possess superior longevity, cows have to be highly adapted to your farm and management, able to breed back and produce a live calf every 365 days and have a higher degree of soundness.

## **Knocking out the Props**

Livestock that perform on your farm without having to rely on a high degree of inputs are the ones you want to select for. Can they survive and thrive without all the props? Are they mostly trouble free? How do you determine whether they are trouble free livestock? You have to knock out all the props and stop treating individual animals differently. You also have to stop mass treating all animals in your herd for parasites, respiratory issues, or other issues. This is the only way to expose those who are more susceptible to these issues. Once exposed, cull them at the earliest convenience and at best market opportunity. Stop making any excuses for animals that do not perform as well and are not well-adapted to your environment.

By formal training, I am a geneticist and physiologist. I spent way too many years thinking I knew how to select superior breeding stock. I poured through EPD's, through individual trait data, linear measurements, and other data points. I kept different age groups separate. I managed for the weak in the group and not the strong, meaning I catered to those who were not nearly as well adapted. I would put first calf heifers in a calving pasture and check on them every 4 hours around the clock. I thought I was being an excellent husbandman, but I was really facilitating calving issues and selection of less than desirable genetics.



So, what do I do now? I no longer spend inordinate amounts of time measuring specific traits, studying EPD's or other genetic indicators. I no longer have a "heifer calving pasture." I no longer spend every four hours checking calving heifers. All heifers, regardless of measurements or other genetic indicators, get a chance to breed to calve as a two-year old. Bulls are turned in for 60 days. Approximately 30 days after bulls are removed, I ultrasound pregnancy test the heifers. Those that are confirmed pregnant are put back in with the cow herd and will spend the rest of their productive lives there. Those that are open are moved to the grass finishing herd and become sellable end product. I do not strive for 85% or 90% pregnant heifers. I simply let nature and the heifer's adaptability to my environment determine their breed-up percentage. If they are bred, great. I have replacements and maybe additional bred heifers to market as breeding stock to someone else. If they are open, I turn them into high-quality grass-fed beef.

What has happened? Calving issues, especially abnormal presentations have practically disappeared. I do not have to keep a separate pasture for heifer calving and interrupt my grazing management. I do not have to spend every four hours checking calving heifers. The heifers that best fit my environment, including my management, are the ones that breed and become the new cows. The rest become meat and no longer propagate inferior genetics. First calf heifers get checked once daily when the cow herd is moved to their new paddock. This has eliminated the vast majority of our problems and has created a herd that is mostly trouble free. They require far fewer inputs and perform far better.

### **What About Dairy?**

For decades now, selection in many dairy herds has been centered around fluid milk production with some selection pressure on components. This has caused the gene pool to excessively narrow and led to cows that are highly productive as individuals, when fed high amounts of feedstuffs and catered to. Unintended consequences resulting from this selection philosophy has led to cows that are large framed, high maintenance, and possess low longevity.

The pictures below show a contrast between two cows in the same dairy herd located near Cold Springs, MN. One is a Jersey-cross cow and the other is a Holstein. Both were born in the same month in the same year and are in their second lactation. The day that I took these pictures they just happened to stand side-by-side in the barn while being milked. I immediately noticed the contrast and had to ask the owner several questions. He explained that his records indicated the Jersey cow ate about 70% of what the Holstein consumed daily. It is clear that there is a distinct body condition difference between the two. The Jersey has maintained a far better BCS than the Holstein, in spite of the Holstein eating 30% more feedstuffs daily. The Jersey is certainly more moderate in frame score. A look at the udders reveals that the Jersey has excellent attachment and conformation, while the udder of the Holstein is already starting to show signs of weakening and breaking down. That Jersey was actually producing slightly more total milk with higher components compared to the Holstein.



In talking with the producer, he noted that that Jersey would likely last eight-plus lactations in his herd while the Holstein would be culled after the current lactation. Which cow will make him more money over their lifetime? The answer is obvious. He could cater to the Holstein and provide her with all she needs, but she will still be inferior, and any heifers produced from her would be inferior. By culling her and not using her heifer calf as a replacement, he is selecting for cows that fit his environment and will be far more profitable.

### Summary

We are often our own worst enemy in terms of genetic selection. Letting nature help us with our selection often is far more advantageous and profitable. I believe that Robert Bakewell (1700's England) had it right with his three principles of genetic selection: 1) Have an "Ideal Type," 2) Breed the best to the best regardless of relationship, and 3) Progeny test. Bakewell never knew what genes, DNA, chromosomes were. He never knew what EPD's, Breeding Values, or DNA markers were. However, he would beat the socks off of almost every modern-day animal breeder following his three principles only. We can do the same.

### *Notes*

**THANK YOU FOR YOUR CONTINUED SUPPORT  
WE HOPE TO SEE YOU DOWN THE TRAIL!**

## *Notes*

**Feiring Angus Ranch  
6698 94th Ave. NW  
Powers Lake, ND 558773**

FIRST CLASS  
US POSTAGE  
PAID  
UNITED PRINTING

*REAL BULLS  
FOR THE  
REAL RANCHER*

April 14-16, 2022  
Online Internet Auction  
Pelton Livestock  
[www.billpelton.com](http://www.billpelton.com)

*PASTURE TO PLATE FOCUSED  
CONVENIENCE & ECONOMIC TRAIT DRIVEN*