

Armstrong

Forage Developed  
Ready to go to work

Angus Ranch

**Timed online with ConneXion Livestock  
December 14 1pm bids start to close.  
Viewing at the Ranch near Cardwell**





**Wednesday, December 14, 2022**

**Lunch 12pm Final Bidding starts at 1pm  
Bid at ConneXion Livestock**

### **Auction/Online**

We will have another online auction. We will still have the bulls available for you to view and a lunch like always. You can start bidding Monday Dec 12th. The final bidding will start at 1pm Dec 14th. We will still have the bulls up on the big screen for you to watch the auction and see the bidding. Robbie's will be available to help you sign up if you are having trouble with the internet.

### **Bidding:**

**ConneXionLivestock.com**

You may bid anytime anywhere starting Monday morning Dec 12 until final bids begin closing at 1pm on Wednesday Dec 14. You may bring a phone or tablet to the ranch on Wednesday where internet service will be provided or you may also stay and bid from home. **You must register to bid at:**

**ConneXionLivestock.com**

### **Sale Order**

The bulls will sell in catalog order with the 10 bulls that we used being sold first and the rest following in birth order. Yearlings after 2yr olds . You may bid on any animal at any time while the sale is open.

### **Bull Videos**

Individual videos may be viewed at  
**ConneXionLivestock.com**

### **Sale Location**

Exit off of interstate 90 at the Cardwell, MT exit. Take highway 359 toward Harrison, MT 4-4 1/2 miles to Cemetery Hill Rd ( There is an Armstrong Angus sign along the road) turn right and travel up the gravel road 1/2 mile and turn left, just before the first house on the left. Go 1/4 mile to Chad and Trista's house and the sale is there. Look for signs.

### **Herd Health:**

The bulls are fertility tested by Dr. Cory Tebay (406-287-3333) Western Veterinary, Whitehall, MT and we guarantee them as sound breeders. The bulls are poured with Vetrimec when we semen test. Armstrong Angus will retain 1/3 semen interest in all bulls sold. If bulls go out of state the health and test are responsibility of the buyers.

### **Delivery**

Bull delivery is free up to 100 miles then it is at buyers expense.

### **Paying for Purchases**

Purchases not paid for the day of sale will be invoiced by ConneXionLivestock.com

We'd like to thank you for taking the time to study our catalog, program, and for reading about our breeding philosophies and development ideas.

For those of you who are not familiar with us, we develop our bulls and run our cows in a "commercial type" manor. The 2 yr. old bulls are developed on hay and grass (no grain). This lets you see what they will look like in their working clothes although sometimes individuals may look rougher, as they deal with injuries or they may look better if they are not as aggressive of a fighter. Do the fleshy ones breed more cows or do the ones who are more aggressive? Is cow fertility connected to the amount of calves a bull throws? We are studying these thoughts.

We have been told by "experts" to select for the highly heritable traits (birth weight, growth, carcass, and not to pay attention to the low heritable maternal traits ( fertility) as you can make rapid consistence improvements on the highly heritable traits. As I ponder on this concept it seems backwards. Shouldn't we select harder on the low heritable traits as it is slower to improve. Our experience with angus cattle is we've lost ground with the maternal traits ( fertility, mothering, foot structure) because we've been focusing on more growth and carcass (highly heritable traits).

We see many breeders breed for higher EPD's and feed their bulls excessively. Why? Its simple, the bulls bring more money. But the extra feed doesn't make a better bull. In fact aren't they less healthy. Doctors say fat people aren't healthy so why would fat bulls be healthy? They are certainly in poorer shape and therefore it's harder for them to breed cows.

As to breeding to improve EPD's, EPD's were created to be a tool in selecting cattle, not be the sole selection. A high EPD in a certain trait is no guarantee that an animal will be high there, it just means that it is likely based on it's genetics. Look at humans! All families run strong on some traits but not all family members have those strong traits.

By breeding many of our cows naturally to several bulls and identifying the calves through DNA we are hopefully identifying the more fertile cattle. We have developed a score sheet to give you our personal opinion of each bulls performance and maternal traits based on EPD's as well as personal and family traits they have expressed here at the ranch. We feel this is the most accurate evaluation we can provide as to how these bulls can influence your own herd to change or maintain the development of your herd on individual traits.

We thank our Lord and Savior Jesus Christ for the wonderful life and many friends we have created through our life in ranching.

**Call us if you have questions or if you can come by. Hope to see you sale day or before.**

**The Armstrong's**

**Chad & Trista Armstrong**

**406-224-0586**

**Klancy & Emmie Armstrong**

**406-565-0654**

**Kyra Armstrong**

**406-565-2750**

# Armstrong Score Sheet Explanation!

## Feet - foot soundness and body structure.

1. Very Poor
2. Poor
3. Average/ OK
4. Good
5. Excellent  
- tends toward post leg

## Muscling

1. Little muscling
2. Some muscling
3. Average muscling
4. Clear muscle definition
5. Heavily muscling

## Disposition

1. Wild—aggressive
2. Nervous ( excitable when alone)
3. Average ( normally handles fine)
4. Laid back but responds to pressure
5. Extremely tame may be hard to move

## Fertility - bulls ability to breed and cows ability to conceive

1. Many cows open / poor libido
2. Some cows open / some libido evident
3. Average conception
4. Higher conception / good libido
5. Most cows pregnant

## Mothering - daughters projected desire to mother

1. Doesn't mother
2. Mothers calf but is pretty laid back
3. Good Mother
4. Good mother but may be more aggressive
5. Aggressive

## W. Weight - projected weaning advantage

1. Lightest weight
2. Below average weight
3. Average weight
4. Above average weight
5. Highest performance

## Frame - estimated frame size

1. Small ( Frame size of about 4)
2. Frame size of about 5
3. Average ( Frame size of about 5.5 )
4. Frame size of about 6
5. Large ( Frame size of about 7 )

## Fleshing - animals ability to maintain flesh

1. Very hard keeping
2. Animal is thin but still functional
3. Average animal
4. Good flesh (very healthy looking)
5. Very good shape (tending toward obesity)

## Calu E - Calving Ease

1. Very large, use on cows only
2. Somewhat large, recommended for cows
3. Average, throws some larger calves
4. Somewhat small, recommended for heifers
5. Very easy calving ( Possible dinks )

## D. Milk - estimated milk production of daughters

1. Poor milk production, calf shows signs  
Of starvation
2. Low milk - calf may have poor health/  
Performance
3. Average milk - calf is healthy and  
Performs fine
4. Above average milk - calf should be  
Bloomy and fat
5. High milk – cow may have fertility or  
Udder problems

## Udder - daughters projected udder structure

1. Pendulous udder or big teats
2. Somewhat pendulous udder or larger teats
3. Average teat or udder structure
4. Tight udder or smaller than average teats
5. Small udder or small teats

## Calf Vigor

1. Calf won't suck (needs tubed)
2. Calf slow or had to help suck
3. Average calf got going without problems
4. Calf aggressive or energetic
5. Calf very energetic and quick to nurse





## Auction & Sale Information

- Auction format will be **Online Only**, Click-to-Bid; with NO live Auctioneer.
- Buyer **MUST** be Registered at ConnexionLivestock.com
- Bid Anytime, Anywhere online via Phone, Tablet, or computer. *Detailed Instructions Below.*
- View Bulls any time at the ranch by appointment - Contact Chad or Trista - 406.224.0586
- View Lot info, pictures and video on the online catalog.
  - Contact Chad or Trista - 406.224.0586

### How to Register

1. Visit **ConnexionLivestock.com**
2. Sign in to your existing account OR Register a New Account
3. Enter email, password, address etc. and Agree to Terms & Conditions
4. You'll receive an email when your account is approved to bid
  - a. Approval usually takes an Hour or Less
5. Sign in to your account; Bid on the Armstrong Angus Sale!

### Bidding Guide/Options

- Bid anytime, anywhere while the auction is open.
- Click "Quick Bid" to manually bid the smallest increment; like raising your hand at an auction.
- Type in a Proxy Bid (Max Bid); The system will bid for you if someone bids against you, but only up to your max. You may increase your max bid at any time.
- Check back prior to the sale close to make sure you're not outbid.
- Time extends if a bid is placed in the last minute.
- Lots sell in lot order.

### Payment & Delivery

- All sales are final by decision of the sales manager. Buyers responsible for their own due diligence.
- Purchases not paid the day of the Sale will be billed by Connexion Livestock & Cash Cow Escrow
- Bulls will not ship / deliver before payment is made.
- Bull delivery available within 100 miles if 3 or more head are going in that direction.

### Need Help Getting Registered or Bidding?

- Registration Support - Mitzi Robbie - 406.855.1335
- Bidding / Sale Info Support - Scott Robbie - 406.855.0534

R  
E  
F  
E  
R  
E  
N  
C  
E  
  
S  
I  
R  
E

**KG Justified 3023**

Bull 1/21/2013 reg 17707279

Conneal Consensus 7229  
 Connealy Judgment  
 Entrine of conanga 9876  
 Sitz Wisdom 481T  
 KG Miss Magic 1443  
 KG Miss Magic 3528

| BW | WW  | YW   | MILK | Marb  | RE   |
|----|-----|------|------|-------|------|
| -2 | +61 | +109 | +30  | +1.12 | +.30 |



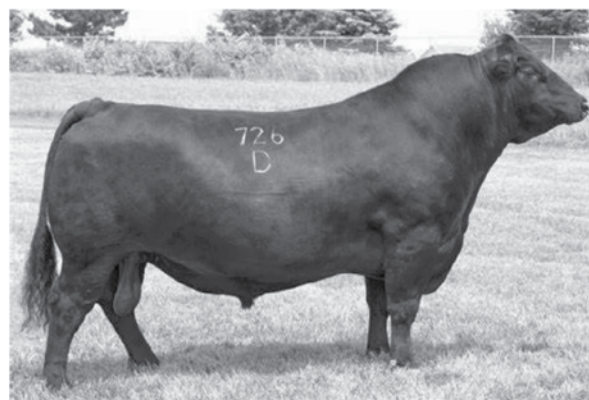
R  
E  
F  
E  
R  
E  
N  
C  
E  
  
S  
I  
R  
E

**Sitz Stellar 726D**

Bull 01/23/2016 reg 18397542

Benfield Substance 8506  
 Mohnen Substantial 272  
 Mohnen Glyn Mawr Elba 1758  
 Connealy Final Product  
 Sitz Pride 200B  
 Sitz Pride 308Y

| BW  | WW  | YW   | MILK | Marb | RE   |
|-----|-----|------|------|------|------|
| -.2 | +71 | +130 | +21  | +.62 | +.59 |



R  
E  
F  
E  
R  
E  
N  
C  
E  
  
S  
I  
R  
E

**SAV Cattlemaster 4873**

Bull 02/02/2014 reg 17923431

Connealy Consensus  
 Connealy Consensus 7229  
 Blue Lily of Conanga 16  
 SAV Net Worth 4200  
 SAV Emblynette 7545  
 SAV Emblynette 7260

| BW   | WW  | YW   | MILK | Marb | RE    |
|------|-----|------|------|------|-------|
| +2.9 | +68 | +119 | +25  | +.81 | +1.17 |



R  
E  
F  
E  
R  
E  
N  
C  
E  
  
S  
I  
R  
E

**AAR Renegade 802**

Bull 1/18/2018 reg 19232024

Rito 707 of Ideal 3407 7075  
 FairView Renegade 4166  
 FairView Lady Traveler X85  
 Sitz Thunderbolt 0189  
 Barbaramere 666 AAR  
 Barbaramere 467 AAR

| BW   | WW  | YW  | MILK | Marb | RE   |
|------|-----|-----|------|------|------|
| -3.8 | +52 | +90 | +31  | +.44 | +.23 |





R  
E  
F  
E  
R  
E  
N  
C  
E  
  
S  
I  
R  
E

**FairView Elevation 3115**

Bull 7/17/2013 reg 17810419

OCC Backstop 888B  
OCC Eureka 865E  
Blackbird of RR 1204  
Leachman Right Time  
Leachman Blackcap 0017  
Leachman Blackcap 8081

|      |     |     |      |      |      |
|------|-----|-----|------|------|------|
| BW   | WW  | YW  | MILK | Marb | RE   |
| +1.6 | +52 | +85 | +31  | +.21 | +.26 |



R  
E  
F  
E  
R  
E  
N  
C  
E  
  
S  
I  
R  
E

**Connealy Dry Valley**

Bull 2/08/16 reg 18533906

Mogck Bullseye  
Hoover No Doubt  
Miss Blackcap Ellston J2  
Summitcrest Complete 1P55  
Becca of Conanga 1617  
Brisha of Conanga 746 1237

|      |     |      |      |       |      |
|------|-----|------|------|-------|------|
| BW   | WW  | YW   | MILK | Marb  | RE   |
| +3.5 | +55 | +105 | +23  | +..99 | +.57 |



| Name                 | Birth date | Reg #    | BW   | WW  | YW  | Milk | Marb | RE   |
|----------------------|------------|----------|------|-----|-----|------|------|------|
| AAR Aviator 941      | 1/29/2019  | 19533611 | -.6  | +54 | +87 | +30  | +.43 | +.68 |
| AAR Black Cedar 9013 | 02/09/2019 | 19533567 | -.4  | +40 | +68 | +32  | +.38 | +.14 |
| AAR Black Cedar 9002 | 02/04/2019 | 19533556 | +1.4 | +48 | +98 | +31  | +.42 | +.49 |
| AAR Black Cedar 921  | 01/26/2019 | 19533596 | +2.4 | +53 | +88 | +28  | +.39 | +.24 |



## Two Year Old Angus Bulls

The first ten lots in our two year old offering were used this year as natural service sires in our registered cow herd

# 106

### AAR Stellar 106

Bull 01/18/21 reg 20170542 tattoo 106

#### AAR Scores

Feet **4**  
Muscle **3**  
Disp **4**  
Fert **3**  
Mother **3**  
W Wt **4**  
Frame **3.5**  
Flesh **3**  
CE **3**  
D Milk **3**  
Udder **3.5**  
Vigor **4**

MOHNEN SUBSTANTIAL 272#  
**SITZ STELLAR 726D**  
SITZ PRIDE 200B

BENFIELD SUBSTANCE 8506#  
MOHNEN GLYN MAWR ELBA 1758  
CONNELY FINAL PRODUCT#  
SITZ PRIDE 308Y#  
O C C EUREKA 865E#  
LEACHMAN BLACKCAP 0017#  
HA PROGRAM 5652#  
TRAVELIN TERESSA 8053 A A R

FAIRVIEW ELEVATION 3115  
**ELEVATION TERESSA 9093 AAR**  
PROGRAM TERESSA 3053 AAR

| BW          | WW         | YW          | Milk       | Marb         | RE           |
|-------------|------------|-------------|------------|--------------|--------------|
| <b>+0.9</b> | <b>+67</b> | <b>+111</b> | <b>+25</b> | <b>+0.51</b> | <b>+0.50</b> |
| Birth Wt    | 205 Wt     | NR          | Marb Ratio | RE Ratio     | Scrotal      |
| <b>76</b>   | <b>685</b> | <b>118</b>  | <b>105</b> | <b>103</b>   | <b>35.0</b>  |



# 143

### AAR Justified 143

Bull 02/04/21 reg 20170537 tattoo 143

#### AAR Scores

Feet **4**  
Muscle **3.5**  
Disp **3.5**  
Fert **4**  
Mother **3**  
W Wt **3.4**  
Frame **3.5**  
Flesh **4**  
CE **3**  
D Milk **3**  
Udder **3**  
Vigor **4**

CONNELY JUDGMENT  
**KG JUSTIFIED 3023#**  
KG MISS MAGIC 1443

CONNELY CONSENSUS 7229#  
ENTRINE OF CONANGA 9876#  
SITZ WISDOM 481T#  
KG MISS MAGIC 3528  
C H QUANTUM 6247#  
COLE CREEK CLOVA JUANADA 67  
G A R RETAIL PRODUCT#  
DIV TERESSA 877 A A R#

COLE CREEK BLACK CEDAR 46P#  
**BLACK TERESSA 272 AAR**  
TERESSA 573 A A R

| BW          | WW         | YW         | Milk       | Marb         | RE           |
|-------------|------------|------------|------------|--------------|--------------|
| <b>+1.2</b> | <b>+50</b> | <b>+90</b> | <b>+25</b> | <b>+0.60</b> | <b>+0.31</b> |
| Birth Wt    | 205 Wt     | NR         | Marb Ratio | RE Ratio     | Scrotal      |
| <b>80</b>   | <b>545</b> | <b>93</b>  | <b>75</b>  | <b>97</b>    | <b>37.5</b>  |

# 1008 AAR 4507 Capitolist 1008

Bull 02/07/21 reg 20170551 tattoo 1008

#### AAR Scores

Feet **4**  
Muscle **4**  
Disp **4**  
Fert **4**  
Mother **3**  
W Wt **3.5**  
Frame **3**  
Flesh **4**  
CE **3**  
D Milk **3**  
Udder **3**  
Vigor **4**

CONNELY CAPITALIST 028#  
**AB-LVS CAPITALIST 4507**  
AB-LVS EMMA 096#

S A V FINAL ANSWER 0035#  
PRIDES PITA OF CONANGA 8821  
WMR TIMELESS 458#  
OX BOW EMMA E396  
C H QUANTUM 6247#  
COLE CREEK CLOVA JUANADA 67  
J L B EXACTO 416#  
BARBAR PERFECTING 553 A A R

COLE CREEK BLACK CEDAR 46P#  
**BARBARA PERFECTION 2058 AAR**  
BARBARA PERFECTION 158 A A R

| BW          | WW         | YW         | Milk       | Marb         | RE           |
|-------------|------------|------------|------------|--------------|--------------|
| <b>-0.1</b> | <b>+49</b> | <b>+92</b> | <b>+21</b> | <b>+0.39</b> | <b>+0.44</b> |
| Birth Wt    | 205 Wt     | NR         | Marb Ratio | RE Ratio     | Scrotal      |
| <b>74</b>   | <b>555</b> | <b>95</b>  | <b>101</b> | <b>98</b>    | <b>34.5</b>  |

# 148

### AAR DRY Valley 148

Bull 02/05/21 reg 20170540 tattoo 148

#### AAR Scores

Feet **4**  
Muscle **3**  
Disp **3.5**  
Fert **3.5**  
Mother **3**  
W Wt **4**  
Frame **3.5**  
Flesh **3.5**  
CE **3.5**  
D Milk **3**  
Udder **3**  
Vigor **4**

HOOVER NO DOUBT  
**CONNELY DRY VALLEY**  
BECCA OF CONANGA 1617

MOGCK BULLSEYE#  
MISS BLACKCAP ELLSTON J2  
SUMMITCREST COMPLETE 1P55#  
BRISHA OF CONANGA 746 1237  
WILLEKES CONVERTER 4402-9#  
BARBARA PERFECTION 2058 AAR  
H A IMAGE MAKER 0415#  
PINE COULEE EISA ERICA U12

AAR CONVERTABULL 401  
**EISA ERICA 7075 AAR#**  
PINE COULEE EISA ERICA X46

| BW          | WW         | YW         | Milk       | Marb         | RE           |
|-------------|------------|------------|------------|--------------|--------------|
| <b>-0.8</b> | <b>+50</b> | <b>+95</b> | <b>+27</b> | <b>+0.61</b> | <b>+0.49</b> |
| Birth Wt    | 205 Wt     | NR         | Marb Ratio | RE Ratio     | Scrotal      |
| <b>68</b>   | <b>578</b> | <b>99</b>  | <b>112</b> | <b>101</b>   | <b>35.0</b>  |



# 1009 AAR Justified 1009

Bull 02/07/21 reg 20170552 tattoo 1009

#### AAR Scores

Feet **4**  
Muscle **3.5**  
Disp **3.5**  
Fert **4**  
Mother **3**  
W Wt **4**  
Frame **4**  
Flesh **4**  
CE **4**  
D Milk **3.5**  
Udder **2.5**  
Vigor **4**

CONNELY JUDGMENT  
**KG JUSTIFIED 3023#**  
KG MISS MAGIC 1443

CONNELY CONSENSUS 7229#  
ENTRINE OF CONANGA 9876#  
SITZ WISDOM 481T#  
KG MISS MAGIC 3528  
COLE CREEK BLACK CEDAR 46P#  
COLE CREEK CLOVANADA 49S#  
CONNELY FREIGHTLINER#  
A A R CAP LASS 163

COLE CREEK CEDAR RIDGE 1V#  
**CEDAR LASS367AAR#**  
FREIGHTER LASS 184 A A R

| BW          | WW         | YW         | Milk       | Marb         | RE           |
|-------------|------------|------------|------------|--------------|--------------|
| <b>-1.5</b> | <b>+52</b> | <b>+99</b> | <b>+30</b> | <b>+0.68</b> | <b>+0.37</b> |
| Birth Wt    | 205 Wt     | NR         | Marb Ratio | RE Ratio     | Scrotal      |
| <b>74</b>   | <b>574</b> | <b>98</b>  | <b>103</b> | <b>101</b>   | <b>37.5</b>  |



## Two Year Old Angus Bulls

The first ten lots in our two year old offering were used this year as natural service sires in our registered cow herd



### 1023 AAR 802 Renegade 1023

**AAR Scores**

- Feet **4**
- Muscle **3.5**
- Disp **4**
- Fert **4**
- Mother **3**
- W Wt **3.5**
- Frame **3.5**
- Flesh **3.5**
- CE **3**
- D Milk **3.5**
- Udder **3**
- Vigor **4**

Bull 02/10/21 reg 20170513 tattoo 1023  
 FAIRVIEW RENEGADE 4166 RITO 707 OF IDEAL 3407 7075  
**AAR RENEGADE 802** FAIRVIEW LADY TRAVELER X85  
 BARBARAMERE 666 AAR SITZ THUNDERBOLT 0189  
 BARBARAMERE 467 AAR  
 C C A UNO 049# SITZ UPWARD 307R#  
**TERESSA UNO 468 AAR** MYTTY COUNTESS 906  
 TERESSA 958 A A R S A V FINAL ANSWER 0035#  
 EXT TERESSA 167 A A R

| BW       | WW     | YW  | Milk       | Marb     | RE      |
|----------|--------|-----|------------|----------|---------|
| -1.0     | +56    | +96 | +34        | +0.45    | +0.46   |
| Birth Wt | 205 Wt | NR  | Marb Ratio | RE Ratio | Scrotal |
| 80       | 632    | 108 | 114        | 107      | 35.0    |

### 1042 AAR DRY Valley 1042

**AAR Scores**

- Feet **4**
- Muscle **4**
- Disp **3**
- Fert **3.5**
- Mother **3.5**
- W Wt **4**
- Frame **3**
- Flesh **3.5**
- CE **2**
- D Milk **3**
- Udder **3**
- Vigor **4**

Bull 02/14/21 reg 20170572 tattoo 1042  
 HOOVER NO DOUBT MOGCK BULLSEYE#  
**CONNELLY DRY VALLEY** MISS BLACKCAP ELLSTON J2  
 BECCA OF CONANGA 1617 BRISHA OF CONANGA 746 1237  
 B C MID EMBLAZON 854E 702# O C C EMBLAZON 854E#  
**BARBARAMERE 056 A A R#** GIBBET HILL MIGNONNE E37  
 BARBARAMERE 856 A A R H A IMAGE MAKER 0415#  
 BARBARAMERE 084 A A R

| BW       | WW     | YW  | Milk       | Marb     | RE      |
|----------|--------|-----|------------|----------|---------|
| +2.2     | +56    | +97 | +26        | +0.56    | +0.47   |
| Birth Wt | 205 Wt | NR  | Marb Ratio | RE Ratio | Scrotal |
| 83       | 642    | 110 | 97         | 106      | 36.0    |



### 1024 AAR CattleMaster 1024

**AAR Scores**

- Feet **4**
- Muscle **3.5**
- Disp **4**
- Fert **3.5**
- Mother **3**
- W Wt **3.5**
- Frame **3.5**
- Flesh **3.5**
- CE **2**
- D Milk **3.5**
- Udder **3**
- Vigor **4**

Bull 02/11/21 reg 20170514 tattoo 1024  
 CONNEALY CONSENSUS 7229# CONNEALY CONSENSUS#  
**S A V CATTLEMASTER 4873** BLUE LILLY OF CONANGA 16  
 S A V EMBLYNETTE 7545 S A V NET WORTH 4200#  
 S A V EMBLYNETTE 7260#  
 RITO 616 OF 4B20 6807# D H D TRAVELER 6807#  
**RITO 616 ROSE 954 A A R#** RITA 4B20 OF OFB1 BANDO  
 ROSE DESIGN 755 A A R SITZ NEW DESIGN 349M#  
 ROSE 457 A A R#

| BW       | WW     | YW   | Milk       | Marb     | RE      |
|----------|--------|------|------------|----------|---------|
| +2.6     | +57    | +105 | +29        | +0.56    | +0.95   |
| Birth Wt | 205 Wt | NR   | Marb Ratio | RE Ratio | Scrotal |
| 85       | 604    | 103  | 106        | 131      | 38.0    |

### 1040 AAR Black Cedar 1040

**AAR Scores**

- Feet **3.5**
- Muscle **4**
- Disp **3.5**
- Fert **3**
- Mother **3**
- W Wt **3**
- Frame **2.5**
- Flesh **3.5**
- CE **2**
- D Milk **2.5**
- Udder **4**
- Vigor **4**

Bull 02/14/21 reg 20177006 tattoo 1040  
 COLE CREEK BLACK CEDAR 1100# COLE CREEK BLACK CEDAR 46P#  
**AAR BLACK CEDAR 9013** COLE CREEK JUANADA BIRD 38N  
 BARBARAMERE 467 AAR MCD AAR JUNEAU 944#  
 BARBARAMERE 2081 AAR  
 AAR CAPITALIST 642 AB-LVS CAPITALIST 4507  
**BARBARAMERE 8087 AAR** IMAGE PRIDELLA 8065 A A R  
 BARBARAMERE 554 AAR V D A R TRAVELER 455  
 BARBARAMERE 3050 AAR

| BW       | WW     | YW  | Milk       | Marb     | RE      |
|----------|--------|-----|------------|----------|---------|
| +1.8     | +52    | +89 | +30        | +0.35    | +0.32   |
| Birth Wt | 205 Wt | NR  | Marb Ratio | RE Ratio | Scrotal |
| 85       | 624    | 106 | 88         | 102      | 36.5    |

### 1025 AAR 941 Aviator 1025

**AAR Scores**

- Feet **3**
- Muscle **3.5**
- Disp **3.5**
- Fert **3.5**
- Mother **3**
- W Wt **3**
- Frame **3**
- Flesh **4**
- CE **3.5**
- D Milk **2.5**
- Udder **4**
- Vigor **3.5**

Bull 02/11/21 reg 20170515 tattoo 1025  
 MUSGRAVE AVIATOR# KROUPALS B&B IDENTITY#  
**AAR AVIATOR 941** MCATL FOREVER LADY 1429-138  
 JUANEAU NACOMA 7074 AAR# MCD AAR JUNEAU 944#  
 GLAUS NACOMA 629  
 AAR CAPITALIST 623 AB-LVS CAPITALIST 4507  
**TERESSA 8079 AAR** DESIGNER ROSE 790 A A R#  
 TERESSA 573 A A R G A R RETAIL PRODUCT#  
 DIV TERESSA 877 A A R#

| BW       | WW     | YW  | Milk       | Marb     | RE      |
|----------|--------|-----|------------|----------|---------|
| -0.5     | +54    | +91 | +28        | +0.50    | +0.53   |
| Birth Wt | 205 Wt | NR  | Marb Ratio | RE Ratio | Scrotal |
| 75       | 611    | 104 | 118        | 106      | 36.5    |





# 101 AAR 802 Renegade 101

**AAR Scores**

- Feet **4**
- Muscle **3.5**
- Disp **3.5**
- Fert **4.5**
- Mother **4**
- W Wt **3.5**
- Frame **3.5**
- Flesh **4**
- CE **4**
- D Milk **2.5**
- Udder **5**
- Vigor **4.5**

Bull 01/09/21 reg 20170553 tattoo 101  
 FAIRVIEW RENEGADE 4166 RITO 707 OF IDEAL 3407 7075  
**AAR RENEGADE 802** FAIRVIEW LADY TRAVELER X85  
 BARBARAMERE 666 AAR SITZ THUNDERBOLT 0189  
 BARBARAMERE 467 AAR  
 O C C JET STREAM 825J# O C C EMBLAZON 854E#  
**HOULD JUANADA 6025** O C C JUANADA 968G  
 JJJ JUANADA 9150 N BAR EMULATION EXT#  
 COLE CREEK 104 JUANADA 8M

| BW       | WW     | YW  | Milk       | Marb     | RE      |
|----------|--------|-----|------------|----------|---------|
| -1.4     | +51    | +87 | +27        | +0.23    | +0.21   |
| Birth Wt | 205 Wt | NR  | Marb Ratio | RE Ratio | Scrotal |
| 75       | 604    | 103 | 96         | 94       | 38.0    |

# 103 AAR Stellar 103

**AAR Scores**

- Feet **4**
- Muscle **3.5**
- Disp **3.5**
- Fert **3.5**
- Mother **3**
- W Wt **3.5**
- Frame **3**
- Flesh **3.5**
- CE **4**
- D Milk **3**
- Udder **3**
- Vigor **4**

Bull 01/14/21 reg 20170516 tattoo 103  
 MOHNEB SUBSTANTIAL 272# BENFIELD SUBSTANCE 8506#  
**SITZ STELLAR 726D** MOHNEB GLYN MAWR ELBA 1758  
 SITZ PRIDE 200B CONNEALY FINAL PRODUCT#  
 SITZ PRIDE 308Y#  
 SPUR FRANCHISE OF GARTON SPUR FRANCHISE 7070  
**SPUR TAURUS 974 AAR** H&H IRENE LASS 0135#  
 UNO TAURUS 482 AAR C C A UNO 049#  
 NEW TERESSA 764 A A R

| BW       | WW     | YW   | Milk       | Marb     | RE      |
|----------|--------|------|------------|----------|---------|
| +0.4     | +54    | +104 | +25        | +0.73    | +0.63   |
| Birth Wt | 205 Wt | NR   | Marb Ratio | RE Ratio | Scrotal |
| 73       | 546    | 93   | 113        | 96       | 36.0    |

# 104 AAR Justified 104

**AAR Scores**

- Feet **3**
- Muscle **2.5**
- Disp **3.5**
- Fert **2.5**
- Mother **3.5**
- W Wt **4**
- Frame **4.5**
- Flesh **3**
- CE **3**
- D Milk **3**
- Udder **4**
- Vigor **4.5**

Bull 01/15/21 reg 20170522 tattoo 104  
 CONNEALY JUDGMENT CONNEALY CONSENSUS 7229#  
**KG JUSTIFIED 3023#** ENTRINE OF CONANGA 9876#  
 KG MISS MAGIC 1443 SITZ WISDOM 481T#  
 KG MISS MAGIC 3528  
 DDA B&T 18K D D A BANJO 1101  
**BLACKBIRD 9070 AAR** DDA GALATEA 031  
 BLACKBIRD OF PAR 411 PURE GOLD OF PAR  
 BLACKBIRD OF P A R 418

| BW       | WW     | YW   | Milk       | Marb     | RE      |
|----------|--------|------|------------|----------|---------|
| +1.2     | +66    | +111 | +29        | +0.67    | +0.40   |
| Birth Wt | 205 Wt | NR   | Marb Ratio | RE Ratio | Scrotal |
| 77       | 714    | 123  | 84         | 103      | 40.0    |

# 107 AAR Justified 107

**AAR Scores**

- Feet **3.5**
- Muscle **3**
- Disp **5**
- Fert **3**
- Mother **3**
- W Wt **4**
- Frame **4**
- Flesh **2.5**
- CE **4.5**
- D Milk **3.5**
- Udder **3**
- Vigor **5**

Bull 01/19/21 reg 20170543 tattoo 107  
 CONNEALY JUDGMENT CONNEALY CONSENSUS 7229#  
**KG JUSTIFIED 3023#** ENTRINE OF CONANGA 9876#  
 KG MISS MAGIC 1443 SITZ WISDOM 481T#  
 KG MISS MAGIC 3528  
 SPUR FRANCHISE OF GARTON SPUR FRANCHISE 7070  
**SPUR IMAGING 995 AAR** H&H IRENE LASS 0135#  
 ROSE IMAGING 666 A A R ISU IMAGING Q 9111#  
 EXACTO ROSE 056 A A R

| BW       | WW     | YW   | Milk       | Marb     | RE      |
|----------|--------|------|------------|----------|---------|
| -1.4     | +62    | +108 | +32        | +0.88    | +0.79   |
| Birth Wt | 205 Wt | NR   | Marb Ratio | RE Ratio | Scrotal |
| 67       | 707    | 121  | 93         | 122      | 39.5    |

# 108 AAR Justified 108

**AAR Scores**

- Feet **3**
- Muscle **3.5**
- Disp **4**
- Fert **3.5**
- Mother **3**
- W Wt **3.5**
- Frame **3.5**
- Flesh **3**
- CE **4**
- D Milk **4**
- Udder **3**
- Vigor **4**

Bull 01/19/21 reg 20175490 tattoo 108  
 CONNEALY JUDGMENT CONNEALY CONSENSUS 7229#  
**KG JUSTIFIED 3023#** ENTRINE OF CONANGA 9876#  
 KG MISS MAGIC 1443 SITZ WISDOM 481T#  
 KG MISS MAGIC 3528  
 SPUR FRANCHISE OF GARTON SPUR FRANCHISE 7070  
**SPUR NACOMA 960 AAR** H&H IRENE LASS 0135#  
 GLAUS NACOMA 811 O C C HOMER 650H#  
 GLAUS NACOMA 629

| BW       | WW     | YW  | Milk       | Marb     | RE      |
|----------|--------|-----|------------|----------|---------|
| -0.4     | +55    | +96 | +29        | +0.87    | +0.47   |
| Birth Wt | 205 Wt | NR  | Marb Ratio | RE Ratio | Scrotal |
| 70       | 601    | 103 | 117        | 101      | 35.5    |

# 110 AAR Stellar 110

**AAR Scores**

- Feet **3**
- Muscle **4**
- Disp **3.5**
- Fert **3**
- Mother **3**
- W Wt **4**
- Frame **3.5**
- Flesh **4**
- CE **4**
- D Milk **3**
- Udder **3**
- Vigor **3**

Bull 01/22/21 reg 20170524 tattoo 110  
 MOHNEB SUBSTANTIAL 272# BENFIELD SUBSTANCE 8506#  
**SITZ STELLAR 726D** MOHNEB GLYN MAWR ELBA 1758  
 SITZ PRIDE 200B CONNEALY FINAL PRODUCT#  
 SITZ PRIDE 308Y#  
 AAR CONVERTABULL 401 WILLEKES CONVERTER 4402-9#  
**BLACKBIRD 9064 AAR** BARBARA PERFECTION 2058 AAR  
 UNO BLACKBIRD 6151 AAR# AAR UNO 427  
 CHISUM BLACKBIRD 374 AAR

| BW       | WW     | YW   | Milk       | Marb     | RE      |
|----------|--------|------|------------|----------|---------|
| -0.4     | +69    | +118 | +25        | +0.67    | +0.55   |
| Birth Wt | 205 Wt | NR   | Marb Ratio | RE Ratio | Scrotal |
| 67       | 680    | 117  | 128        | 102      | 36.0    |







**111** **AAR Justified 111**

Bull 01/22/21 reg 20170556 tattoo 111

CONNEALY JUDGMENT  
**KG JUSTIFIED 3023#**  
 KG MISS MAGIC 1443

AAR CONVERTABULL 401  
**NACOMA 9098 AAR**  
 JUNEAU NACOMA 477 AAR

CONNEALY CONSENSUS 7229#  
 ENTRINE OF CONANGA 9876#  
 SITZ WISDOM 481T#  
 KG MISS MAGIC 3528

WILLEKES CONVERTER 4402-9#  
 BARBARA PERFECTION 2058 AAR  
 MCD AAR JUNEAU 944#  
 GLAUS NACOMA 629

| BW       | WW     | YW  | Milk       | Marb     | RE      |
|----------|--------|-----|------------|----------|---------|
| +1.3     | +60    | +99 | +29        | +0.65    | +0.29   |
| Birth Wt | 205 Wt | NR  | Marb Ratio | RE Ratio | Scrotal |
| 84       | 630    | 108 | 89         | 91       | 36.0    |

**AAR Scores**

Feet 3  
 Muscle 3  
 Disp 3.5  
 Fert 3  
 Mother 3  
 W Wt 3  
 Frame 3  
 Flesh 3  
 CE 3  
 D Milk 3.5  
 Udder 3  
 Vigor 4

**113** **AAR Stellar 113**

Bull 01/23/21 reg 20175491 tattoo 113

MOHNE SUBSTANTIAL 272#  
**AVIATOR STELLAR 726D**  
 SITZ PRIDE 200B

MUSGRAVE AVIATOR#  
**AVIATOR LASS 959 AAR**  
 RENEGADE LASS 7151 AAR

BENFIELD SUBSTANCE 8506#  
 MOHNEN GLYN MAWR ELBA 1758  
 CONNEALY FINAL PRODUCT#  
 SITZ PRIDE 308Y#

KOUPALS B&B IDENTITY#  
 MCATL FOREVER LADY 1429-138  
 FAIRVIEW RENEGADE 4166  
 JUNEAU LASS 4091 AAR

| BW       | WW     | YW   | Milk       | Marb     | RE      |
|----------|--------|------|------------|----------|---------|
| +0.6     | +60    | +110 | +23        | +0.46    | +0.66   |
| Birth Wt | 205 Wt | NR   | Marb Ratio | RE Ratio | Scrotal |
| 77       | 592    | 101  | 74         | 111      | 36.0    |

**AAR Scores**

Feet 3.5  
 Muscle 4  
 Disp 3  
 Fert 3  
 Mother 3  
 W Wt 4  
 Frame 3.5  
 Flesh 4  
 CE 3  
 D Milk 3  
 Udder 3  
 Vigor 4.5



**112** **AAR Justified 112**

Bull 01/23/21 reg 20175492 tattoo 112

MOHNE SUBSTANTIAL 272#  
**SITZ STELLAR 726D**  
 SITZ PRIDE 200B

MUSGRAVE AVIATOR#  
**AVIATOR LASS 991 AAR**  
 RENEGADE LASS 7095 AAR

BENFIELD SUBSTANCE 8506#  
 MOHNEN GLYN MAWR ELBA 1758  
 CONNEALY FINAL PRODUCT#  
 SITZ PRIDE 308Y#

KOUPALS B&B IDENTITY#  
 MCATL FOREVER LADY 1429-138  
 FAIRVIEW RENEGADE 4166  
 JUNEAU LASS 461 AAR

| BW       | WW     | YW   | Milk       | Marb     | RE      |
|----------|--------|------|------------|----------|---------|
| -0.4     | +55    | +100 | +23        | +0.52    | +0.49   |
| Birth Wt | 205 Wt | NR   | Marb Ratio | RE Ratio | Scrotal |
| 72       | 579    | 99   | 103        | 92       | 36.0    |

**AAR Scores**

Feet 4  
 Muscle 3.5  
 Disp 3  
 Fert 3  
 Mother 3.5  
 W Wt 4  
 Frame 3.5  
 Flesh 3.5  
 CE 4  
 D Milk 4  
 Udder 2.5  
 Vigor 4.5

**114** **AAR Justified 114**

Bull 01/23/21 reg 20170545 tattoo 114

CONNEALY JUDGMENT  
**KG JUSTIFIED 3023#**  
 KG MISS MAGIC 1443

FAIRVIEW ELEVATION 3115  
**ELEVATION PRIDE 9150 AAR**  
 JUNEAU PRIDE 499 AAR

CONNEALY CONSENSUS 7229#  
 ENTRINE OF CONANGA 9876#  
 SITZ WISDOM 481T#  
 KG MISS MAGIC 3528

O C C EUREKA 865E#  
 LEACHMAN BLACKCAP 0017#  
 MCD AAR JUNEAU 944#  
 PRIDE MAKER 0150 A A R

| BW       | WW     | YW   | Milk       | Marb     | RE      |
|----------|--------|------|------------|----------|---------|
| +0.9     | +58    | +105 | +28        | +0.72    | +0.42   |
| Birth Wt | 205 Wt | NR   | Marb Ratio | RE Ratio | Scrotal |
| 87       | 588    | 100  | 122        | 96       | 35.0    |

**AAR Scores**

Feet 3.5  
 Muscle 3  
 Disp 4  
 Fert 3.5  
 Mother 3  
 W Wt 3  
 Frame 3  
 Flesh 3  
 CE 2  
 D Milk 3  
 Udder 3  
 Vigor 4



# 115 AAR 802 Renegade 115

Bull 01/23/21 reg 20209293 tattoo 115

FAIRVIEW RENEGADE 4166  
**AAR RENEGADE 802**  
 BARBARAMERE 666 AAR

RITO 707 OF IDEAL 3407 7075  
 FAIRVIEW LADY TRAVELER X85  
 SITZ THUNDERBOLT 0189  
 BARBARAMERE 467 AAR  
 AB-LVS CAPITALIST 4507  
 IMAGE PRIDELLA 8065 A A R  
 YA BLACK CEDAR 162  
 YA EILEENMERE 194#

AAR CAPITALIST 642  
**EILEENMERE 9162 AAR**  
 YA EILEENMERE 449

| AAR Scores |     |
|------------|-----|
| Feet       | 4   |
| Muscle     | 4   |
| Disp       | 4   |
| Fert       | 4   |
| Mother     | 3   |
| W Wt       | 3.5 |
| Frame      | 2.5 |
| Flesh      | 4.5 |
| CE         | 4   |
| D Milk     | 3   |
| Udder      | 3   |
| Vigor      | 4   |

| BW       | WW     | YW  | Milk       | Marb     | RE      |
|----------|--------|-----|------------|----------|---------|
| -0.1     | +54    | +95 | +27        | +0.32    | +0.30   |
| Birth Wt | 205 Wt | NR  | Marb Ratio | RE Ratio | Scrotal |
| 71       | 559    | 96  | 90         | 96       | 35.5    |



# 119 AAR 802 Renegade 119

Bull 01/24/21 reg 20209192 tattoo 119

FAIRVIEW RENEGADE 4166  
**AAR RENEGADE 802**  
 BARBARAMERE 666 AAR

RITO 707 OF IDEAL 3407 7075  
 FAIRVIEW LADY TRAVELER X85  
 SITZ THUNDERBOLT 0189  
 BARBARAMERE 467 AAR  
 BASIN PAYWEIGHT 1682#  
 MCD -1 BLACKBIRD 544  
 KOUPAL ADVANCE 28#  
 OX BOW PRIDE 0129

MCD PAYWEIGHT 7128  
**PAYWEIGHT PRIDE 9090 AAR**  
 ADVANCE PRIDE 5067 AAR#

| AAR Scores |     |
|------------|-----|
| Feet       | 3.5 |
| Muscle     | 3   |
| Disp       | 4.5 |
| Fert       | 3.5 |
| Mother     | 3   |
| W Wt       | 3.5 |
| Frame      | 3.5 |
| Flesh      | 3   |
| CE         | 3.5 |
| D Milk     | 3.5 |
| Udder      | 3   |
| Vigor      | 4   |

| BW       | WW     | YW  | Milk       | Marb     | RE      |
|----------|--------|-----|------------|----------|---------|
| -0.2     | +58    | +97 | +32        | +0.21    | +0.31   |
| Birth Wt | 205 Wt | NR  | Marb Ratio | RE Ratio | Scrotal |
| 76       | 647    | 111 | 72         | 96       | 36.0    |



# 117 AAR Renegade 117

Bull 01/24/21 reg 20170528 tattoo 117

RITO 707 OF IDEAL 3407 7075  
**FAIRVIEW RENEGADE 4166**  
 FAIRVIEW LADY TRAVELER X85

R R RITO 707#  
 IDEAL 3407 OF 1418 076  
 LEACHMAN RIGHT TIME#  
 B C C LADY TRAVELER 13B 93  
 YA ENDURANCE 526  
 YA PRIDE 373  
 AAR HERO 011  
 BARBARA PERFECTION 953 A A R

YA ENDURANCE 721  
**BARBARA PERFECTION 994 AAR**  
 BARBARA PERFECTION 2162 AAR

| AAR Scores |     |
|------------|-----|
| Feet       | 3.5 |
| Muscle     | 4   |
| Disp       | 3.5 |
| Fert       | 3   |
| Mother     | 3   |
| W Wt       | 3   |
| Frame      | 3   |
| Flesh      | 4   |
| CE         | 3   |
| D Milk     | 3   |
| Udder      | 3   |
| Vigor      | 4   |

| BW       | WW     | YW  | Milk       | Marb     | RE      |
|----------|--------|-----|------------|----------|---------|
| +1.6     | +41    | +76 | +26        | +0.14    | +0.26   |
| Birth Wt | 205 Wt | NR  | Marb Ratio | RE Ratio | Scrotal |
| 78       | 541    | 92  | 98         | 96       | 31.5    |

# 122 AAR Stellar 122

Bull 01/27/21 reg 20170565 tattoo 122

MOHNEN SUBSTANTIAL 272#  
**SITZ STELLAR 726D**  
 SITZ PRIDE 200B

BENFIELD SUBSTANCE 8506#  
 MOHNEN GLYN MAWR ELBA 1758  
 CONNEALY FINAL PRODUCT#  
 SITZ PRIDE 308Y#  
 O C C EUREKA 865E#  
 LEACHMAN BLACKCAP 0017#  
 A A R FINAL RITO 926  
 POUNDER EVERGREEN 182 A A R#

FAIRVIEW ELEVATION 3115  
**EVERGREEN 9096 AAR**  
 RITO 926 EVERGREEN 4075 AAR

| AAR Scores |     |
|------------|-----|
| Feet       | 3.5 |
| Muscle     | 4   |
| Disp       | 3   |
| Fert       | 3.5 |
| Mother     | 3   |
| W Wt       | 4.5 |
| Frame      | 4.5 |
| Flesh      | 3   |
| CE         | 4   |
| D Milk     | 3   |
| Udder      | 3   |
| Vigor      | 3   |

| BW       | WW     | YW   | Milk       | Marb     | RE      |
|----------|--------|------|------------|----------|---------|
| -0.7     | +62    | +113 | +23        | +0.44    | +0.41   |
| Birth Wt | 205 Wt | NR   | Marb Ratio | RE Ratio | Scrotal |
| 65       | 624    | 106  | 88         | 99       | 34.5    |

# 118 AAR Justified 118

Bull 01/24/21 reg 20170529 tattoo 118

CONNEALY JUDGMENT  
**KG JUSTIFIED 3023#**  
 KG MISS MAGIC 1443

CONNEALY CONSENSUS 7229#  
 ENTRINE OF CONANGA 9876#  
 SITZ WISDOM 481T#  
 KG MISS MAGIC 3528  
 BASIN PAYWEIGHT 1682#  
 MCD -1 BLACKBIRD 544  
 C A FUTURE DIRECTION 5321#  
 A A R TRAVELER ROSE 362

MCD PAYWEIGHT 7128  
**PAYWEIGHT ROSE 9086 AAR**  
 FUTURE ROSE 356 A A R

| AAR Scores |     |
|------------|-----|
| Feet       | 3.5 |
| Muscle     | 3.5 |
| Disp       | 4   |
| Fert       | 4   |
| Mother     | 3   |
| W Wt       | 3.5 |
| Frame      | 3   |
| Flesh      | 4   |
| CE         | 3   |
| D Milk     | 3.5 |
| Udder      | 3   |
| Vigor      | 4   |

| BW       | WW     | YW  | Milk       | Marb     | RE      |
|----------|--------|-----|------------|----------|---------|
| +0.0     | +55    | +92 | +29        | +0.70    | +0.32   |
| Birth Wt | 205 Wt | NR  | Marb Ratio | RE Ratio | Scrotal |
| 82       | 589    | 101 | 104        | 98       | 36.0    |





# 123 AAR ELEVATION123

Bull 01/28/21 reg 20170566 tattoo 123

O C C EUREKA 865E#  
**FAIRVIEW ELEVATION 3115**  
 LEACHMAN BLACKCAP 0017#

O C C BACKSTOP 888B#  
 BLACKBIRD OF R R 1204#  
 LEACHMAN RIGHT TIME#  
 LEACHMAN BLACKCAP 8081

ISU IMAGING Q 9111#  
**ROSE IMAGING 666 A A R**  
 EXACTO ROSE 056 A A R

G T EXPO#  
 SUMMITCREST PRIDE 351F  
 J L B EXACTO 416#  
 A A R TRAVELER ROSE 362

| BW          | WW         | YW         | Milk       | Marb         | RE           |
|-------------|------------|------------|------------|--------------|--------------|
| <b>+1.7</b> | <b>+38</b> | <b>+69</b> | <b>+29</b> | <b>+0.44</b> | <b>+0.17</b> |
| Birth Wt    | 205 Wt     | NR         | Marb Ratio | RE Ratio     | Scrotal      |
| <b>84</b>   | <b>542</b> | <b>93</b>  | <b>105</b> | <b>74</b>    | <b>34.0</b>  |

**AAR Scores**

|        |            |
|--------|------------|
| Feet   | <b>3.5</b> |
| Muscle | <b>3</b>   |
| Disp   | <b>3</b>   |
| Fert   | <b>4</b>   |
| Mother | <b>3.5</b> |
| W Wt   | <b>3</b>   |
| Frame  | <b>3</b>   |
| Flesh  | <b>3</b>   |
| CE     | <b>3</b>   |
| D Milk | <b>3</b>   |
| Udder  | <b>3</b>   |
| Vigor  | <b>4</b>   |



# 127 AAR Image Maker 127

Bull 01/29/21 reg 20170570 tattoo 127

H A IMAGE MAKER 0415#  
**AAR IMAGE MAKER 9003**  
 BLACK TERESSA 272 AAR

HERO 6267 OF R R 2418#  
 H A RITO BLACKCAP 9038  
 COLE CREEK BLACK CEDAR 46P#  
 TERESSA 573 A A R

B C MID EMBLAZON 854E 702#  
**BARBARAMERE 062 A A R**  
 BARBARAMERE 852 A A R

O C C EMBLAZON 854E#  
 GIBBET HILL MIGNONNE E37  
 OAK HOLLOW 7709 OF 1318 1118  
 BARBARAMERE 6050 A A R

| BW          | WW         | YW         | Milk       | Marb         | RE           |
|-------------|------------|------------|------------|--------------|--------------|
| <b>+0.1</b> | <b>+51</b> | <b>+87</b> | <b>+26</b> | <b>+0.27</b> | <b>+0.37</b> |
| Birth Wt    | 205 Wt     | NR         | Marb Ratio | RE Ratio     | Scrotal      |
| <b>75</b>   | <b>553</b> | <b>95</b>  | <b>109</b> | <b>108</b>   | <b>33.5</b>  |

**AAR Scores**

|        |            |
|--------|------------|
| Feet   | <b>3.5</b> |
| Muscle | <b>3.5</b> |
| Disp   | <b>3</b>   |
| Fert   | <b>3.5</b> |
| Mother | <b>3.5</b> |
| W Wt   | <b>3.5</b> |
| Frame  | <b>3.5</b> |
| Flesh  | <b>4</b>   |
| CE     | <b>3</b>   |
| D Milk | <b>3</b>   |
| Udder  | <b>3</b>   |
| Vigor  | <b>5</b>   |



# 124 AAR Stellar 124

Bull 01/28/21 reg 20170567 tattoo 124

MOHNEN SUBSTANTIAL 272#  
**SITZ STELLAR 726D**  
 SITZ PRIDE 200B

BENFIELD SUBSTANCE 8506#  
 MOHNEN GLYN MAWR ELBA 1758  
 CONNEALY FINAL PRODUCT#  
 SITZ PRIDE 308Y#

FAIRVIEW ELEVATION 3115  
**TERESSA 9081 AAR**  
 TERESSA 0166 A A R#

O C C EUREKA 865E#  
 LEACHMAN BLACKCAP 0017#  
 B C MID EMBLAZON 854E 702#  
 NEW TERESSA 766 A A R

| BW          | WW         | YW          | Milk       | Marb         | RE           |
|-------------|------------|-------------|------------|--------------|--------------|
| <b>+0.7</b> | <b>+67</b> | <b>+113</b> | <b>+25</b> | <b>+0.44</b> | <b>+0.66</b> |
| Birth Wt    | 205 Wt     | NR          | Marb Ratio | RE Ratio     | Scrotal      |
| <b>76</b>   | <b>686</b> | <b>117</b>  | <b>94</b>  | <b>113</b>   | <b>36.5</b>  |

**AAR Scores**

|        |            |
|--------|------------|
| Feet   | <b>3.5</b> |
| Muscle | <b>4</b>   |
| Disp   | <b>3.5</b> |
| Fert   | <b>3.5</b> |
| Mother | <b>3</b>   |
| W Wt   | <b>4.5</b> |
| Frame  | <b>4</b>   |
| Flesh  | <b>4</b>   |
| CE     | <b>3</b>   |
| D Milk | <b>3</b>   |
| Udder  | <b>3.5</b> |
| Vigor  | <b>5</b>   |



# 125 AAR Stellar 125

Bull 01/29/21 reg 20170568 tattoo 125

MOHNEN SUBSTANTIAL 272#  
**SITZ STELLAR 726D**  
 SITZ PRIDE 200B

BENFIELD SUBSTANCE 8506#  
 MOHNEN GLYN MAWR ELBA 1758  
 CONNEALY FINAL PRODUCT#  
 SITZ PRIDE 308Y#

B3R BACK TO BASICS U077#  
**BASIC EVERGREEN 952 AAR**  
 UNO EVERGREEN 795 AAR

B3R TENDER TEN R065#  
 B3R S024 ELISE P061 N191  
 C C A UNO 049#  
 EVERGREEN 990 A A R

| BW          | WW         | YW          | Milk       | Marb         | RE           |
|-------------|------------|-------------|------------|--------------|--------------|
| <b>+2.0</b> | <b>+76</b> | <b>+128</b> | <b>+28</b> | <b>+0.52</b> | <b>+0.49</b> |
| Birth Wt    | 205 Wt     | NR          | Marb Ratio | RE Ratio     | Scrotal      |
| <b>88</b>   | <b>768</b> | <b>132</b>  | <b>100</b> | <b>88</b>    | <b>38.0</b>  |

**AAR Scores**

|        |            |
|--------|------------|
| Feet   | <b>3.5</b> |
| Muscle | <b>3</b>   |
| Disp   | <b>3.5</b> |
| Fert   | <b>3</b>   |
| Mother | <b>3</b>   |
| W Wt   | <b>5</b>   |
| Frame  | <b>4</b>   |
| Flesh  | <b>3</b>   |
| CE     | <b>2</b>   |
| D Milk | <b>3.5</b> |
| Udder  | <b>3</b>   |
| Vigor  | <b>3.5</b> |

# 128 AAR Stellar 128

Bull 01/30/21 reg 20170571 tattoo 128

MOHNEN SUBSTANTIAL 272#  
**SITZ STELLAR 726D**  
 SITZ PRIDE 200B

BENFIELD SUBSTANCE 8506#  
 MOHNEN GLYN MAWR ELBA 1758  
 CONNEALY FINAL PRODUCT#  
 SITZ PRIDE 308Y#

COLE CREEK BLACK BORE 572  
**BARBARAMERE 990 AAR**  
 BARBARAMERE 981 A A R#

COLE CREEK FULL BORE 730  
 COLE CREEK JUANADA 92T#  
 O C C HOMER 650H#  
 BARBARAMERE 658 A A R#

| BW          | WW         | YW          | Milk       | Marb         | RE           |
|-------------|------------|-------------|------------|--------------|--------------|
| <b>+3.8</b> | <b>+74</b> | <b>+136</b> | <b>+26</b> | <b>+0.47</b> | <b>+0.60</b> |
| Birth Wt    | 205 Wt     | NR          | Marb Ratio | RE Ratio     | Scrotal      |
| <b>93</b>   | <b>703</b> | <b>121</b>  | <b>103</b> | <b>106</b>   | <b>36.0</b>  |

**AAR Scores**

|        |            |
|--------|------------|
| Feet   | <b>3</b>   |
| Muscle | <b>4</b>   |
| Disp   | <b>3</b>   |
| Fert   | <b>3</b>   |
| Mother | <b>3</b>   |
| W Wt   | <b>5</b>   |
| Frame  | <b>3.5</b> |
| Flesh  | <b>3</b>   |
| CE     | <b>1</b>   |
| D Milk | <b>3.5</b> |
| Udder  | <b>3</b>   |
| Vigor  | <b>3.5</b> |



# 136 AAR Cattlemaster 136

Bull 02/01/21 reg 20170532 tattoo 136  
 CONNEALY CONSENSUS 7229#  
**S A V CATTLEMASTER 4873**  
 S A V EMBLYNETTE 7545

AAR UNO 522  
**UNO IDA 7165 AAR**  
 EMBLAZON IDA 057 A A R

CONNEALY CONSENSUS#  
 BLUE LILLY OF CONANGA 16  
 S A V NET WORTH 4200#  
 S A V EMBLYNETTE 7260#  
 C C A UNO 049#  
 EVERGREEN 990 A A R  
 B C MID EMBLAZON 854E 702#  
 IMAGE IDA 870 A A R#

| BW       | WW     | YW   | Milk       | Marb     | RE      |
|----------|--------|------|------------|----------|---------|
| +3.5     | +64    | +105 | +28        | +0.55    | +0.84   |
| Birth Wt | 205 Wt | NR   | Marb Ratio | RE Ratio | Scrotal |
| 90       | 637    | 109  | 107        | 113      | 38.5    |

**AAR Scores**

|        |     |
|--------|-----|
| Feet   | 3.5 |
| Muscle | 3.5 |
| Disp   | 4   |
| Fert   | 3   |
| Mother | 3   |
| W Wt   | 4   |
| Frame  | 3   |
| Flesh  | 4   |
| CE     | 2   |
| D Milk | 3   |
| Udder  | 3   |
| Vigor  | 4   |

# 129 AAR 941 Aviator 129

Bull 01/30/21 reg 20177003 tattoo 129  
 MUSGRAVE AVIATOR#  
**AAR AVIATOR 941**  
 JUANEAU NACOMA 7074 AAR#

YA BLACK CEDAR 162  
**YA EILEENMERE 449**  
 YA EILEENMERE 194#

KOUPALS B&B IDENTITY#  
 MCATL FOREVER LADY 1429-138  
 MCD AAR JUNEAU 944#  
 GLAUS NACOMA 629  
 COLE CREEK BLACK CEDAR 46P#  
 YA PRIDE 375  
 YA EQUATOR 825  
 YA EILEENMERE 853

| BW       | WW     | YW   | Milk       | Marb     | RE      |
|----------|--------|------|------------|----------|---------|
| I+2.4    | I+58   | I+96 | I+27       | +0.26    | +0.50   |
| Birth Wt | 205 Wt | NR   | Marb Ratio | RE Ratio | Scrotal |
| 70       | 594    | 101  | 88         | 111      | 35.5    |

**AAR Scores**

|        |     |
|--------|-----|
| Feet   | 3   |
| Muscle | 2.5 |
| Disp   | 3.5 |
| Fert   | 3.5 |
| Mother | 3   |
| W Wt   | 3.5 |
| Frame  | 3.5 |
| Flesh  | 3   |
| CE     | 3   |
| D Milk | 2.5 |
| Udder  | 4   |
| Vigor  | 3.5 |

# 137 AAR 18K 137

Bull 02/01/21 reg 20187192 tattoo 137  
 DDA B&T 18K  
**AAR 18K 9008**  
 BARBARAMERE EXTRA 3056 AAR

MCD PERFORMER 472  
**FOREVER 7164 AAR**  
 POUNDER FOREVER 4084 AAR

D D A BANJO 1101  
 DDA GALATEA 031  
 A A R EXTRA 814  
 BARBARAMERE 856 A A R  
 SCHAFER 21C OF 514 1005  
 MID ELDORENE 6511  
 A A A POUNDER 141  
 BRUSETT FOREVER Y202#

| BW       | WW     | YW  | Milk       | Marb     | RE      |
|----------|--------|-----|------------|----------|---------|
| +1.8     | +39    | +72 | +25        | I+0.28   | I+0.12  |
| Birth Wt | 205 Wt | NR  | Marb Ratio | RE Ratio | Scrotal |
| 85       | 528    | 100 | 100        | 100      | 34.5    |

**AAR Scores**

|        |     |
|--------|-----|
| Feet   | 3.5 |
| Muscle | 4   |
| Disp   | 4   |
| Fert   | 3.5 |
| Mother | 3   |
| W Wt   | 3   |
| Frame  | 3   |
| Flesh  | 4   |
| CE     | 2   |
| D Milk | 3   |
| Udder  | 3   |
| Vigor  | 4   |

# 132 AAR 9013 Black Cedar 132

Bull 01/31/21 reg 20177004 tattoo 132  
 COLE CREEK BLACK CEDAR 1100#  
**AAR BLACK CEDAR 9013**  
 BARBARAMERE 467 AAR

YA BLACK CEDAR 135  
**YA EILEENMERE 520**  
 YA EILEENMERE 194#

COLE CREEK BLACK CEDAR 46P#  
 COLE CREEK JUANADA BIRD 38N  
 MCD AAR JUNEAU 944#  
 BARBARAMERE 2081 AAR  
 COLE CREEK BLACK CEDAR 46P#  
 YA BLACK BELLE 842#  
 YA EQUATOR 825  
 YA EILEENMERE 853

| BW       | WW     | YW  | Milk       | Marb     | RE      |
|----------|--------|-----|------------|----------|---------|
| +1.6     | +51    | +82 | +27        | +0.33    | +0.19   |
| Birth Wt | 205 Wt | NR  | Marb Ratio | RE Ratio | Scrotal |
| 91       | 609    | 104 | 109        | 90       | 36.5    |

**AAR Scores**

|        |     |
|--------|-----|
| Feet   | 3   |
| Muscle | 3.5 |
| Disp   | 3   |
| Fert   | 3   |
| Mother | 3   |
| W Wt   | 3.5 |
| Frame  | 3   |
| Flesh  | 4   |
| CE     | 2   |
| D Milk | 3   |
| Udder  | 3   |
| Vigor  | 4   |

# 138 AAR Black Cedar 138

Bull 02/01/21 reg 20170533 tattoo 138  
 COLE CREEK BLACK BORE 572  
**AAR BLACK CEDAR 9002**  
 POUNDER EVERGREEN 182 A A R#

MID PERFORMER 608  
**608 LASS 166 A A R#**  
 616 567 A A R

COLE CREEK FULL BORE 730  
 COLE CREEK JUANADA 92T#  
 OFF POUNDER U831  
 EVERGREEN 990 A A R  
 SCHURRTOP AMERICAN 5846#  
 BELLES SHOSHONNESS 155  
 RITO 616 OF 4B20 6807#  
 EXT LASS 672 A A R

| BW       | WW     | YW   | Milk       | Marb     | RE      |
|----------|--------|------|------------|----------|---------|
| +4.3     | +54    | +100 | +32        | +0.47    | +0.30   |
| Birth Wt | 205 Wt | NR   | Marb Ratio | RE Ratio | Scrotal |
| 92       | 606    | 103  | 119        | 89       | 37.0    |

**AAR Scores**

|        |     |
|--------|-----|
| Feet   | 3.5 |
| Muscle | 3   |
| Disp   | 2.5 |
| Fert   | 3.5 |
| Mother | 3.5 |
| W Wt   | 3.5 |
| Frame  | 3.5 |
| Flesh  | 3   |
| CE     | 1   |
| D Milk | 3   |
| Udder  | 3   |
| Vigor  | 5   |

# 134 AAR Stellar 134

Bull 01/31/21 reg 20170530 tattoo 134  
 MOHNEN SUBSTANTIAL 272#  
**SITZ STELLAR 726D**  
 SITZ PRIDE 200B

DDA B&T 18K  
**PRIDE 9058 AAR**  
 JUNEAU PRIDE 459 AAR

BENFIELD SUBSTANCE 8506#  
 MOHNEN GLYN MAWR ELBA 1758  
 CONNEALY FINAL PRODUCT#  
 SITZ PRIDE 308Y#  
 D D A BANJO 1101  
 DDA GALATEA 031  
 MCD AAR JUNEAU 944#  
 FINAL PRIDE 2069 AAR

| BW       | WW     | YW   | Milk       | Marb     | RE      |
|----------|--------|------|------------|----------|---------|
| +0.1     | +63    | +102 | +22        | +0.45    | +0.37   |
| Birth Wt | 205 Wt | NR   | Marb Ratio | RE Ratio | Scrotal |
| 71       | 647    | 110  | 92         | 94       | 36.0    |

**AAR Scores**

|        |     |
|--------|-----|
| Feet   | 4   |
| Muscle | 4   |
| Disp   | 2.5 |
| Fert   | 3.5 |
| Mother | 3.5 |
| W Wt   | 4   |
| Frame  | 3   |
| Flesh  | 4   |
| CE     | 4   |
| D Milk | 3   |
| Udder  | 3   |
| Vigor  | 4   |







## 145 AAR Black Cedar 145

Bull 03/04/21 reg 20170538 tattoo 145

COLE CREEK BLACK CEDAR 1100#  
**AAR BLACK CEDAR 921**  
 FINAL ANSWER LASS 8058 A A R

MCD AAR JUNEAU 944#  
**JUNEAU LASS 472 AAR**  
 POUNDER LASS 2084 AAR

COLE CREEK BLACK CEDAR 46P#  
 COLE CREEK JUANADA BIRD 38N  
 S A V FINAL ANSWER 0035#  
 RIGHT TIME LASS 256 A A R

O C C JUNEAU 807J#  
 MID AMBUSHESS 354#  
 OFF POUNDER U831  
 RITO LASS 9052 A A R

| BW       | WW     | YW  | Milk       | Marb     | RE      |
|----------|--------|-----|------------|----------|---------|
| +0.3     | +49    | +80 | +31        | +0.44    | +0.21   |
| Birth Wt | 205 Wt | NR  | Marb Ratio | RE Ratio | Scrotal |
| 80       | 618    | 106 | 88         | 80       | 32.0    |

**AAR Scores**

Feet **3**  
 Muscle **3.5**  
 Disp **3.5**  
 Fert **3**  
 Mother **3**  
 W Wt **3.5**  
 Frame **3.5**  
 Flesh **3.5**  
 CE **3**  
 D Milk **2.5**  
 Udder **3**  
 Vigor **4**



## 146 AAR Black Cedar 146

Bull 02/05/21 reg 20170539 tattoo 146

COLE CREEK BLACK CEDAR 1100#  
**AAR BLACK CEDAR 921**  
 FINAL ANSWER LASS 8058 A A R

MID PERFORMER 608  
**BARBARAMERE 288 AAR#**  
 BARBARAMERE 362 A A R

COLE CREEK BLACK CEDAR 46P#  
 COLE CREEK JUANADA BIRD 38N  
 S A V FINAL ANSWER 0035#  
 RIGHT TIME LASS 256 A A R

SCHURRTOP AMERICAN 5846#  
 BELLES SHOSHONESS 155  
 RITO 616 OF 4B20 6807#  
 AMBUSH BARBARAMERE 657 A A R

| BW       | WW     | YW  | Milk       | Marb     | RE      |
|----------|--------|-----|------------|----------|---------|
| +2.1     | +49    | +83 | +31        | +0.46    | +0.24   |
| Birth Wt | 205 Wt | NR  | Marb Ratio | RE Ratio | Scrotal |
| 81       | 569    | 97  | 115        | 103      | 36.0    |

**AAR Scores**

Feet **4**  
 Muscle **3**  
 Disp **3**  
 Fert **3.5**  
 Mother **3**  
 W Wt **3.5**  
 Frame **4**  
 Flesh **3**  
 CE **3**  
 D Milk **2.5**  
 Udder **3**  
 Vigor **4**

## 141 AAR DRY Valley 141

Bull 02/02/21 reg 20170535 tattoo 141

HOOPER NO DOUBT  
**CONNELY DRY VALLEY**  
 BECCA OF CONANGA 1617

EMULATION N BAR 5522#  
**INDRELAND JUANADA 9401**  
 I A POWER KEYBAN 016

MOGCK BULLSEYE#  
 MISS BLACKCAP ELLSTON J2  
 SUMMITCREST COMPLETE 1P55#  
 BRISHA OF CONANGA 746 1237

EMULATION 31#  
 ANKONY 8F78 LASS 8F275  
 PJM POWERPOINT#  
 JUANADA KEYBAN OF L C 88

| BW       | WW     | YW  | Milk       | Marb     | RE      |
|----------|--------|-----|------------|----------|---------|
| +3.9     | +33    | +66 | +24        | +0.46    | +0.15   |
| Birth Wt | 205 Wt | NR  | Marb Ratio | RE Ratio | Scrotal |
| 94       | 527    | 90  | 72         | 84       | 37.5    |

**AAR Scores**

Feet **3.5**  
 Muscle **3.5**  
 Disp **3.5**  
 Fert **4**  
 Mother **3**  
 W Wt **3**  
 Frame **3.5**  
 Flesh **4**  
 CE **1**  
 D Milk **3**  
 Udder **3.5**  
 Vigor **4**



## 149 AAR DRY Valley 149

Bull 02/05/21 reg 20170541 tattoo 149

HOOPER NO DOUBT  
**CONNELY DRY VALLEY**  
 BECCA OF CONANGA 1617

OFF POUNDER U831  
**POUNDER EVERGREEN 182 A A R#**  
 EVERGREEN 990 A A R

MOGCK BULLSEYE#  
 MISS BLACKCAP ELLSTON J2  
 SUMMITCREST COMPLETE 1P55#  
 BRISHA OF CONANGA 746 1237

SCHURRTOP E267 X687  
 BASIN ZARA 831D  
 GDAR GAME DAY 449#  
 LADY EXTRA 670 A A R

| BW       | WW     | YW  | Milk       | Marb     | RE      |
|----------|--------|-----|------------|----------|---------|
| +3.7     | +52    | +99 | +28        | +0.62    | +0.43   |
| Birth Wt | 205 Wt | NR  | Marb Ratio | RE Ratio | Scrotal |
| 87       | 597    | 102 | 79         | 106      | 35.0    |

**AAR Scores**

Feet **3.5**  
 Muscle **3.5**  
 Disp **3.5**  
 Fert **3.5**  
 Mother **3**  
 W Wt **4**  
 Frame **3**  
 Flesh **3**  
 CE **2**  
 D Milk **3.5**  
 Udder **3**  
 Vigor **4**

## 142 AAR DRY Valley 142

Bull 02/03/21 reg 20170536 tattoo 142

HOOPER NO DOUBT  
**CONNELY DRY VALLEY**  
 BECCA OF CONANGA 1617

A A R EXTRA 814  
**BARBARAMERE EXTRA 3056 AAR**  
 BARBARAMERE 856 A A R

MOGCK BULLSEYE#  
 MISS BLACKCAP ELLSTON J2  
 SUMMITCREST COMPLETE 1P55#  
 BRISHA OF CONANGA 746 1237

N BAR EMULATION EXT#  
 A A R TRAVELER ROSE 362  
 H A IMAGE MAKER 0415#  
 BARBARAMERE 084 A A R

| BW       | WW     | YW  | Milk       | Marb     | RE      |
|----------|--------|-----|------------|----------|---------|
| +0.2     | +44    | +80 | +26        | +0.61    | +0.26   |
| Birth Wt | 205 Wt | NR  | Marb Ratio | RE Ratio | Scrotal |
| 70       | 568    | 98  | 99         | 98       | 34.5    |

**AAR Scores**

Feet **4**  
 Muscle **3**  
 Disp **3**  
 Fert **3.5**  
 Mother **3**  
 W Wt **3.5**  
 Frame **3**  
 Flesh **3.5**  
 CE **3**  
 D Milk **3**  
 Udder **3**  
 Vigor **4**

# 1001 AAR Black Cedar 1001

Bull 02/05/21 reg 20170546 tattoo 1001

| AAR Scores |     |
|------------|-----|
| Feet       | 3.5 |
| Muscle     | 3   |
| Disp       | 3   |
| Fert       | 3   |
| Mother     | 3   |
| W Wt       | 3   |
| Frame      | 3.5 |
| Flesh      | 3   |
| CE         | 2   |
| D Milk     | 3   |
| Udder      | 3   |
| Vigor      | 4   |

COLE CREEK BLACK CEDAR 1100#  
**AAR BLACK CEDAR 921**  
 FINAL ANSWER LASS 8058 A A R

AAR UNO 522  
**BARBARAMERE 7089 AAR**  
 BARBARAMERE 951 A A R

COLE CREEK BLACK CEDAR 46P#  
 COLE CREEK JUANADA BIRD 38N  
 S A V FINAL ANSWER 0035#  
 RIGHT TIME LASS 256 A A R

C C A UNO 049#  
 EVERGREEN 990 A A R  
 A A R NEW TRAVELER 742  
 616 BARBARAMERE 566 A A R

| BW       | WW     | YW  | Milk       | Marb     | RE      |
|----------|--------|-----|------------|----------|---------|
| +1.5     | +46    | +78 | +29        | +0.47    | +0.35   |
| Birth Wt | 205 Wt | NR  | Marb Ratio | RE Ratio | Scrotal |
| 80       | 579    | 99  | 112        | 103      | 35.0    |



# 1005 AAR DRY Valley 1005

Bull 02/06/21 reg 20170549 tattoo 1005

| AAR Scores |     |
|------------|-----|
| Feet       | 3.5 |
| Muscle     | 3.5 |
| Disp       | 3.5 |
| Fert       | 3.5 |
| Mother     | 3   |
| W Wt       | 4   |
| Frame      | 3   |
| Flesh      | 3.5 |
| CE         | 1   |
| D Milk     | 3   |
| Udder      | 3   |
| Vigor      | 4   |

HOOVER NO DOUBT  
**CONNEALY DRY VALLEY**  
 BECCA OF CONANGA 1617

MOGCK BULLSEYE#  
 MISS BLACKCAP ELLSTON J2  
 SUMMITCREST COMPLETE 1P55#  
 BRISHA OF CONANGA 746 1237

KOUPAL ADVANCE 28#  
**ADVANCE TAURUS 563 AAR**  
 INTEGRITY TAURUS 879 A A R

KOUPAL JUNEAU 797#  
 KOUPAL EBONETTE 734  
 A A R INTEGRITY 631  
 CASH FLOW TAURUS 691 A A R

| BW       | WW     | YW  | Milk       | Marb     | RE      |
|----------|--------|-----|------------|----------|---------|
| +3.7     | +53    | +92 | +23        | +1.04    | +0.27   |
| Birth Wt | 205 Wt | NR  | Marb Ratio | RE Ratio | Scrotal |
| 93       | 598    | 103 | 151        | 88       | 37.5    |



# 1002 AAR CattleMaster 1002

Bull 02/05/21 reg 20170547 tattoo 1002

| AAR Scores |     |
|------------|-----|
| Feet       | 3   |
| Muscle     | 3.5 |
| Disp       | 3.5 |
| Fert       | 3   |
| Mother     | 3.5 |
| W Wt       | 4   |
| Frame      | 3.5 |
| Flesh      | 3   |
| CE         | 3   |
| D Milk     | 3.5 |
| Udder      | 3   |
| Vigor      | 4   |

CONNEALY CONSENSUS 7229#  
**S A V CATTLEMASTER 4873**  
 S A V EMBLYNETTE 7545

C C A UNO 049#  
**UNO ROSE 491 AAR**  
 DESIGNER ROSE 790 A A R#

CONNEALY CONSENSUS#  
 BLUE LILLY OF CONANGA 16  
 S A V NET WORTH 4200#  
 S A V EMBLYNETTE 7260#

SITZ UPWARD 307R#  
 MYTTY COUNTESS 906  
 SITZ NEW DESIGN 349M#  
 A A R TRAVELER ROSE 362

| BW       | WW     | YW  | Milk       | Marb     | RE      |
|----------|--------|-----|------------|----------|---------|
| -0.8     | +53    | +86 | +32        | +0.68    | +0.63   |
| Birth Wt | 205 Wt | NR  | Marb Ratio | RE Ratio | Scrotal |
| 70       | 610    | 104 | 123        | 91       | 35.0    |

# 1011 AAR Black Cedar 1011

Bull 02/07/21 reg 20170507 tattoo 1011

| AAR Scores |     |
|------------|-----|
| Feet       | 3.5 |
| Muscle     | 3   |
| Disp       | 3.5 |
| Fert       | 3   |
| Mother     | 3   |
| W Wt       | 3   |
| Frame      | 2.5 |
| Flesh      | 3   |
| CE         | 3   |
| D Milk     | 3   |
| Udder      | 3   |
| Vigor      | 4   |

COLE CREEK BLACK BORE 572  
**AAR BLACK CEDAR 9002**  
 POUNDER EVERGREEN 182 A A R#

COLE CREEK FULL BORE 730  
 COLE CREEK JUANADA 92T#  
 OFF POUNDER U831  
 EVERGREEN 990 A A R

S A V RESOURCE 1441#  
**RESOURCE LASS 866 AAR**  
 JUNEAU LASS 472 AAR

RITO 707 OF IDEAL 3407 7075  
 S A V BLACKCAP MAY 4136  
 MCD AAR JUNEAU 944#  
 POUNDER LASS 2084 AAR

| BW       | WW     | YW  | Milk       | Marb     | RE      |
|----------|--------|-----|------------|----------|---------|
| +0.4     | +49    | +99 | +28        | +0.27    | +0.67   |
| Birth Wt | 205 Wt | NR  | Marb Ratio | RE Ratio | Scrotal |
| 76       | 564    | 97  | 82         | 105      | 35.5    |

# 1003 AAR 941 Aviator 1003

Bull 02/06/21 reg 20170548 tattoo 1003

| AAR Scores |     |
|------------|-----|
| Feet       | 2.5 |
| Muscle     | 3.5 |
| Disp       | 3   |
| Fert       | 3   |
| Mother     | 3.5 |
| W Wt       | 3.5 |
| Frame      | 4   |
| Flesh      | 3.5 |
| CE         | 2   |
| D Milk     | 2.5 |
| Udder      | 3.5 |
| Vigor      | 4   |

MUSGRAVE AVIATOR#  
**AAR AVIATOR 941**  
 JUANEAU NACOMA 7074 AAR#

QUAKER HILL RAMPAGE 0A36#  
**FLORABELLE 6054 AAR**  
 FLORABELLE EXTRA 7057 A A R

KOUPALS B&B IDENTITY#  
 MCATL FOREVER LADY 1429:138  
 MCD AAR JUNEAU 944#  
 GLAUS NACOMA 629

MCC DAYBREAK#  
 QHF BLACKCAP 6E2 OF4V16 4355  
 A A R EXTRA 814  
 FLORABELLE 588 A A R

| BW       | WW     | YW   | Milk       | Marb     | RE      |
|----------|--------|------|------------|----------|---------|
| +3.0     | +56    | +103 | +26        | +0.32    | +0.85   |
| Birth Wt | 205 Wt | NR   | Marb Ratio | RE Ratio | Scrotal |
| 87       | 549    | 94   | 79         | 124      | 36.0    |

# 1012 AAR Capitolist 1012

Bull 03/07/21 reg 20170508 tattoo 1012

| AAR Scores |     |
|------------|-----|
| Feet       | 4   |
| Muscle     | 4   |
| Disp       | 4   |
| Fert       | 4   |
| Mother     | 3   |
| W Wt       | 4   |
| Frame      | 3.5 |
| Flesh      | 3.5 |
| CE         | 1   |
| D Milk     | 3   |
| Udder      | 3   |
| Vigor      | 5   |

CONNEALY CAPITALIST 028#  
**AB-LVS CAPITALIST 4507**  
 AB-LVS EMMA 096#

S A V FINAL ANSWER 0035#  
 PRIDES PITA OF CONANGA 8821  
 WMR TIMELESS 458#  
 OX BOW EMMA E396

O C C HOMER 650H#  
**HOMER LASS 969 A A R#**  
 FINAL LASS 751 A A R

O C C FOCUS 813F  
 O C C DIXIE ERICA 816B  
 S A V FINAL ANSWER 0035#  
 112 LASS 563 A A R

| BW       | WW     | YW   | Milk       | Marb     | RE      |
|----------|--------|------|------------|----------|---------|
| +2.0     | +65    | +109 | +24        | +0.42    | +0.44   |
| Birth Wt | 205 Wt | NR   | Marb Ratio | RE Ratio | Scrotal |
| 91       | 735    | 126  | 114        | 104      | 33.5    |



# 1016 AAR DRY Valley 1016

### AAR Scores

- Feet **3**
- Muscle **3**
- Disp **3**
- Fert **4**
- Mother **3.5**
- W Wt **4**
- Frame **3**
- Flesh **3**
- CE **3**
- D Milk **3.5**
- Udder **2.5**
- Vigor **4**

Bull 02/09/21 reg 20170509 tattoo 1016  
 HOOVER NO DOUBT  
**CONNEALY DRY VALLEY**  
 BECCA OF CONANGA 1617  
 RITO 2X15 OF RITA 8Z22 EXP#  
**2X15 ROSE 1053 A A R**  
 RITO 616 ROSE 954 A A R#

MOGCK BULLSEYE#  
 MISS BLACKCAP ELLSTON J2  
 SUMMITCREST COMPLETE 1P55#  
 BRISHA OF CONANGA 746 1237  
 G A R EXPECTATION 4915#  
 RITA 8Z22 OF 6K24 CAL T  
 RITO 616 OF 4B20 6807#  
 ROSE DESIGN 755 A A R

| BW          | WW         | YW         | Milk       | Marb         | RE           |
|-------------|------------|------------|------------|--------------|--------------|
| <b>+1.2</b> | <b>+48</b> | <b>+91</b> | <b>+29</b> | <b>+0.55</b> | <b>+0.42</b> |
| Birth Wt    | 205 Wt     | NR         | Marb Ratio | RE Ratio     | Scrotal      |
| <b>80</b>   | <b>628</b> | <b>108</b> | <b>95</b>  | <b>106</b>   | <b>39.0</b>  |

# 1032 AAR 941 Aviator 1032

### AAR Scores

- Feet **2.5**
- Muscle **3**
- Disp **3**
- Fert **3.5**
- Mother **3.5**
- W Wt **3.5**
- Frame **3**
- Flesh **4**
- CE **3**
- D Milk **2.5**
- Udder **2.5**
- Vigor **4**

Bull 02/12/21 reg 20170518 tattoo 1032  
 MUSGRAVE AVIATOR#  
**AAR AVIATOR 941**  
 JUANEAU NACOMA 7074 AAR#  
 AAR ABSOLUTE 603  
**ABSOLUTE LASS 852 AAR**  
 UNO LASS 6081 AAR

KOUPALS B&B IDENTITY#  
 MCATL FOREVER LADY 1429-138  
 MCD AAR JUNEAU 944#  
 GLAUS NACOMA 629  
 K C F BENNETT ABSOLUTE#  
 WINDY ROSE 476 AAR  
 AAR UNO 427  
 112 LASS 563 A A R

| BW          | WW         | YW         | Milk       | Marb         | RE           |
|-------------|------------|------------|------------|--------------|--------------|
| <b>+0.0</b> | <b>+58</b> | <b>+95</b> | <b>+30</b> | <b>+0.48</b> | <b>+0.46</b> |
| Birth Wt    | 205 Wt     | NR         | Marb Ratio | RE Ratio     | Scrotal      |
| <b>80</b>   | <b>628</b> | <b>107</b> | <b>91</b>  | <b>101</b>   | <b>38.0</b>  |

# 1020 AAR Black Cedar 1020

### AAR Scores

- Feet **4**
- Muscle **3**
- Disp **4**
- Fert **3**
- Mother **3**
- W Wt **3.5**
- Frame **3.5**
- Flesh **3**
- CE **2**
- D Milk **3**
- Udder **3**
- Vigor **4**

Bull 02/10/21 reg 20176924 tattoo 1020  
 COLE CREEK BLACK CEDAR 1100#  
**AAR BLACK CEDAR 9013**  
 BARBARAMERE 467 AAR  
 MID PERFORMER 608  
**BARBARAMERE 294 AAR#**  
 616 BARBARAMERE 652 A A R

COLE CREEK BLACK CEDAR 46P#  
 COLE CREEK JUANADA BIRD 38N  
 MCD AAR JUNEAU 944#  
 BARBARAMERE 2081 AAR  
 SCHURRTOP AMERICAN 5846#  
 BELLES SHOSHONESS 155  
 RITO 616 OF 4B20 6807#  
 BARBARAMERE 881 A A R

| BW          | WW         | YW         | Milk       | Marb         | RE           |
|-------------|------------|------------|------------|--------------|--------------|
| <b>+2.3</b> | <b>+46</b> | <b>+71</b> | <b>+32</b> | <b>+0.24</b> | <b>+0.26</b> |
| Birth Wt    | 205 Wt     | NR         | Marb Ratio | RE Ratio     | Scrotal      |
| <b>85</b>   | <b>590</b> | <b>101</b> | <b>64</b>  | <b>99</b>    | <b>35.0</b>  |

# 1033 AAR DRY Valley 1033

### AAR Scores

- Feet **3.5**
- Muscle **3**
- Disp **3**
- Fert **4**
- Mother **3.5**
- W Wt **3.5**
- Frame **4**
- Flesh **3**
- CE **4**
- D Milk **3**
- Udder **3**
- Vigor **4**

Bull 02/12/21 reg 20170519 tattoo 1033  
 HOOVER NO DOUBT  
**CONNEALY DRY VALLEY**  
 BECCA OF CONANGA 1617  
 O C C HOMER 650H#  
**BARBARAMERE 981 A A R#**  
 BARBARAMERE 658 A A R#

MOGCK BULLSEYE#  
 MISS BLACKCAP ELLSTON J2  
 SUMMITCREST COMPLETE 1P55#  
 BRISHA OF CONANGA 746 1237  
 O C C FOCUS 813F  
 O C C DIXIE ERICA 816B  
 ISU IMAGING Q 9111#  
 BARBARAMERE 761 A A R#

| BW          | WW         | YW         | Milk       | Marb         | RE           |
|-------------|------------|------------|------------|--------------|--------------|
| <b>-1.1</b> | <b>+48</b> | <b>+88</b> | <b>+25</b> | <b>+0.57</b> | <b>+0.36</b> |
| Birth Wt    | 205 Wt     | NR         | Marb Ratio | RE Ratio     | Scrotal      |
| <b>68</b>   | <b>616</b> | <b>105</b> | <b>93</b>  | <b>101</b>   | <b>34.5</b>  |

# 1030 AAR Elevation 1030

### AAR Scores

- Feet **3.5**
- Muscle **3**
- Disp **5**
- Fert **4**
- Mother **3**
- W Wt **4**
- Frame **4**
- Flesh **3**
- CE **3**
- D Milk **3**
- Udder **3**
- Vigor **4**

Bull 02/12/21 reg 20170517 tattoo 1030  
 O C C EUREKA 865E#  
**FAIRVIEW ELEVATION 3115**  
 LEACHMAN BLACKCAP 0017#  
 SPUR FRANCHISE OF GARTON  
**SPUR EVERGREEN 681 AAR**  
 RITO 926 EVERGREEN 4075 AAR

O C C BACKSTOP 888B#  
 BLACKBIRD OF R R 1204#  
 LEACHMAN RIGHT TIME#  
 LEACHMAN BLACKCAP 8081  
 SPUR FRANCHISE 7070  
 H&H IRENE LASS 0135#  
 A A R FINAL RITO 926  
 POUNDER EVERGREEN 182 A A R#

| BW          | WW         | YW         | Milk       | Marb         | RE           |
|-------------|------------|------------|------------|--------------|--------------|
| <b>+0.8</b> | <b>+52</b> | <b>+89</b> | <b>+29</b> | <b>+0.43</b> | <b>+0.35</b> |
| Birth Wt    | 205 Wt     | NR         | Marb Ratio | RE Ratio     | Scrotal      |
| <b>78</b>   | <b>591</b> | <b>101</b> | <b>94</b>  | <b>92</b>    | <b>32.0</b>  |



# 1043 AAR Stellar 1043

### AAR Scores

- Feet **3.5**
- Muscle **3.5**
- Disp **2.5**
- Fert **3.5**
- Mother **3.5**
- W Wt **4**
- Frame **3.5**
- Flesh **3**
- CE **4**
- D Milk **3**
- Udder **3**
- Vigor **3**

Bull 02/15/21 reg 20170573 tattoo 1043  
 MOHNEN SUBSTANTIAL 272#  
**SITZ STELLAR 726D**  
 SITZ PRIDE 200B  
 A A A POUNDER 141  
**POUNDER TAURUS 4066 AAR**  
 21X TAURUS 1062 A A R

BENFIELD SUBSTANCE 8506#  
 MOHNEN GLYN MAWR ELBA 1758  
 CONNEALY FINAL PRODUCT#  
 SITZ PRIDE 308Y#  
 OFF POUNDER U831  
 FLORABELLE 9055 A A R  
 D D A FAHREN 21X  
 DUCHES TAURUS 281 A A R#

| BW          | WW         | YW          | Milk       | Marb         | RE           |
|-------------|------------|-------------|------------|--------------|--------------|
| <b>-1.3</b> | <b>+55</b> | <b>+100</b> | <b>+22</b> | <b>+0.51</b> | <b>+0.49</b> |
| Birth Wt    | 205 Wt     | NR          | Marb Ratio | RE Ratio     | Scrotal      |
| <b>74</b>   | <b>603</b> | <b>103</b>  | <b>110</b> | <b>107</b>   | <b>35.0</b>  |



# 1045 AAR 913 Aviator 1045

AAR Scores

- Feet 3
- Muscle 3
- Disp 3.5
- Fert 3
- Mother 3
- W Wt 3
- Frame 3
- Flesh 3
- CE 5
- D Milk 3
- Udder 3
- Vigor 4

Bull 02/15/21 reg 20170574 tattoo 1045

MUSGRAVE AVIATOR#  
AAR AVIATOR 913  
BARBARAMERE 7084 AAR

KOUPALS B&B IDENTITY#  
MCATL FOREVER LADY 1429-138  
MCD PERFORMER 472  
BARBARAMERE 4154 AAR

AAR CAPITALIST 623  
BARBARA PERFECTION 9165 AAR  
BARBARA PERFECTION 478 AAR

AB-LVS CAPITALIST 4507  
DESIGNER ROSE 790 A A R#  
A A R FREIGHTLINER 917  
BARBARA PERFECTION 991 A A R

| BW       | WW     | YW  | Milk       | Marb     | RE      |
|----------|--------|-----|------------|----------|---------|
| -0.7     | +52    | +89 | +26        | +0.40    | +0.31   |
| Birth Wt | 205 Wt | NR  | Marb Ratio | RE Ratio | Scrotal |
| 67       | 617    | 105 | 77         | 90       | 33.0    |

# 1047 AAR DRY VALLEY 1047

AAR Scores

- Feet 4
- Muscle 3
- Disp 4
- Fert 3
- Mother 3
- W Wt 3.5
- Frame 3.5
- Flesh 3
- CE 2
- D Milk 3
- Udder 3
- Vigor 4

Bull 02/16/21 reg 20170576 tattoo 1047

HOOVER NO DOUBT  
CONNEALY DRY VALLEY  
BECCA OF CONANGA 1617

MOGCK BULLSEYE#  
MISS BLACKCAP ELLSTON J2  
SUMMITCREST COMPLETE 1P55#  
BRISHA OF CONANGA 746 1237

K C F BENNETT ABSOLUTE#  
ABSOLUTE PRIDE 663 AAR  
JUNEAU PRIDE 4083 AAR

S A V FINAL ANSWER 0035#  
THOMAS MISS LUCY 5152  
MCD AAR JUNEAU 944#  
OX BOW PRIDE 065

| BW       | WW     | YW  | Milk       | Marb     | RE      |
|----------|--------|-----|------------|----------|---------|
| +2.9     | +54    | +98 | +24        | +0.58    | +0.51   |
| Birth Wt | 205 Wt | NR  | Marb Ratio | RE Ratio | Scrotal |
| 89       | 622    | 106 | 72         | 103      | 32.0    |



# 1102 AAR Spur 1102

AAR Scores

- Feet 4
- Muscle 4
- Disp 3
- Fert 3.5
- Mother 3
- W Wt 3.5
- Frame 3
- Flesh 3.5
- CE 2
- D Milk 3
- Udder 3
- Vigor 4

Bull 02/17/21 reg 20170526 tattoo 1102

SPUR FRANCHISE OF GARTON  
AAR SPUR 9009  
BARBARAMERE 460 AAR#

SPUR FRANCHISE 7070  
H&H IRENE LASS 0135#  
MCD AAR JUNEAU 944#  
BARBARAMERE 2079 AAR

AAR SURE SHOT 3012  
BARBARAMERE 6068 AAR#  
BARBARAMERE 362 A A R

MOGCK SURE SHOT#  
BARBARAMERE 080 A A R  
RITO 616 OF 4B20 6807#  
AMBUSH BARBARAMERE 657 A A R

| BW       | WW     | YW  | Milk       | Marb     | RE      |
|----------|--------|-----|------------|----------|---------|
| +1.0     | +48    | +85 | +30        | +0.65    | +0.56   |
| Birth Wt | 205 Wt | NR  | Marb Ratio | RE Ratio | Scrotal |
| 83       | 569    | 97  | 123        | 114      | 32.5    |

# 1046 AAR Elevation 1046

AAR Scores

- Feet 3
- Muscle 3
- Disp 3
- Fert 4
- Mother 3.5
- W Wt 4
- Frame 3.5
- Flesh 3
- CE 3.5
- D Milk 3
- Udder 3
- Vigor 4

Bull 02/16/21 reg 20170575 tattoo 1046

O C C EUREKA 865E#  
FAIRVIEW ELEVATION 3115  
LEACHMAN BLACKCAP 0017#

O C C BACKSTOP 888B#  
BLACKBIRD OF R R 1204#  
LEACHMAN RIGHT TIME#  
LEACHMAN BLACKCAP 8081

SYDGEN MANDATE 6079#  
BARBARA PERFECTION 2078 AAR  
BARBARA PERFECTION 672 A A R

S S OBJECTIVE T510 OT26#  
SYDGEN GINA 4235  
G 13 STRUCTURE#  
BARBAR PERFECTION 553 A A R

| BW       | WW     | YW  | Milk       | Marb     | RE      |
|----------|--------|-----|------------|----------|---------|
| +0.1     | +48    | +81 | +26        | +0.56    | +0.23   |
| Birth Wt | 205 Wt | NR  | Marb Ratio | RE Ratio | Scrotal |
| 68       | 583    | 99  | 127        | 95       | 32.0    |



# 1104 AAR Elevation 1104

AAR Scores

- Feet 4
- Muscle 4
- Disp 3.5
- Fert 4
- Mother 3
- W Wt 4
- Frame 3.5
- Flesh 4
- CE 1
- D Milk 2.5
- Udder 3.5
- Vigor 4

Bull 02/17/21 reg 20170554 tattoo 1104

O C C EUREKA 865E#  
FAIRVIEW ELEVATION 3115  
LEACHMAN BLACKCAP 0017#

O C C BACKSTOP 888B#  
BLACKBIRD OF R R 1204#  
LEACHMAN RIGHT TIME#  
LEACHMAN BLACKCAP 8081

AAR HERO 011  
BARBARA PERFECTION 2162 AAR  
BARBARA PERFECTION 953 A A R

HERO 6267 OF R R 2418#  
A A R TRAVELER ROSE 362  
BLEVINS MISSION 5709  
BARBARA PERFECTION 654 AAR

| BW       | WW     | YW  | Milk       | Marb     | RE      |
|----------|--------|-----|------------|----------|---------|
| +3.2     | +50    | +83 | +27        | +0.20    | +0.40   |
| Birth Wt | 205 Wt | NR  | Marb Ratio | RE Ratio | Scrotal |
| 97       | 644    | 110 | 84         | 113      | 36.0    |





# 1105 AAR 941 Aviator 1105

Bull 02/17/21 reg 20170555 tattoo 1105

| AAR Scores |     |
|------------|-----|
| Feet       | 2.5 |
| Muscle     | 4   |
| Disp       | 2   |
| Fert       | 4   |
| Mother     | 4.5 |
| W Wt       | 4   |
| Frame      | 3   |
| Flesh      | 4   |
| CE         | 4   |
| D Milk     | 3   |
| Udder      | 4   |
| Vigor      | 4   |

MUSGRAVE AVIATOR#  
**AAR AVIATOR 941**  
 JUANEAU NACOMA 7074 AAR#

KOUPALS B&B IDENTITY#  
 MCATL FOREVER LADY 1429-138  
 MCD AAR JUNEAU 944#  
 GLAUS NACOMA 629

YA UNIVERSE 013  
**YA BLACK BELLE COUNTESS 547**  
 YA BLACK BELLE COUNTESS 701#

PAPA UNIVERSE 515#  
 YA BLACK BELL HIGHROLLER 304#  
 RAR REALLY WINDY 34  
 YA BLACK BELLE COUNTESS 922

| BW       | WW     | YW  | Milk       | Marb     | RE      |
|----------|--------|-----|------------|----------|---------|
| +0.1     | +50    | +79 | +28        | +0.31    | +0.46   |
| Birth Wt | 205 Wt | NR  | Marb Ratio | RE Ratio | Scrotal |
| 76       | 628    | 107 | 83         | 99       | 35.0    |



# 1110 AAR Black Cedar 1110

Bull 02/20/21 reg 20177002 tattoo 1110

COLE CREEK BLACK CEDAR 1100#  
**AAR BLACK CEDAR 9013**  
 BARBARAMERE 467 AAR

COLE CREEK BLACK CEDAR 46P#  
 COLE CREEK JUANADA BIRD 38N  
 MCD AAR JUNEAU 944#  
 BARBARAMERE 2081 AAR

SITZ THUNDERBOLT 0189  
**BLACKCAP 686 AAR**  
 BLACKCAP EXTRA 9056

CONNEALY THUNDER#  
 SITZ ELSIEMERE 1779  
 NICHOLS EXTRA K205#  
 RITO BLACKCAP 651 A A R

| BW       | WW     | YW  | Milk       | Marb     | RE      |
|----------|--------|-----|------------|----------|---------|
| -1.4     | +39    | +69 | +28        | +0.46    | +0.21   |
| Birth Wt | 205 Wt | NR  | Marb Ratio | RE Ratio | Scrotal |
| 69       | 551    | 94  | 110        | 97       | 37.0    |

| AAR Scores |     |
|------------|-----|
| Feet       | 3.5 |
| Muscle     | 3.5 |
| Disp       | 3.5 |
| Fert       | 3.5 |
| Mother     | 3   |
| W Wt       | 3   |
| Frame      | 3   |
| Flesh      | 3.5 |
| CE         | 4   |
| D Milk     | 3   |
| Udder      | 3   |
| Vigor      | 4   |

# 1106 AAR Black Cedar 1106

Bull 02/17/21 reg 20176998 tattoo 1106

| AAR Scores |     |
|------------|-----|
| Feet       | 3   |
| Muscle     | 3.5 |
| Disp       | 3.5 |
| Fert       | 3.5 |
| Mother     | 3   |
| W Wt       | 3   |
| Frame      | 3   |
| Flesh      | 4   |
| CE         | 4   |
| D Milk     | 3   |
| Udder      | 3   |
| Vigor      | 4.5 |

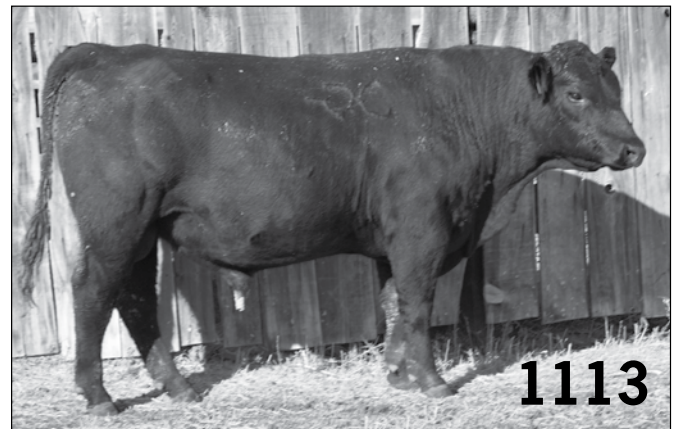
COLE CREEK BLACK CEDAR 1100#  
**AAR BLACK CEDAR 9013**  
 BARBARAMERE 467 AAR

COLE CREEK BLACK CEDAR 46P#  
 COLE CREEK JUANADA BIRD 38N  
 MCD AAR JUNEAU 944#  
 BARBARAMERE 2081 AAR

AAR UNO 427  
**UNO ROSE 8082 AAR**  
 DESIGNER ROSE 790 A A R#

C C A UNO 049#  
 BARBARAMERE 361 A A R#  
 SITZ NEW DESIGN 349M#  
 A A R TRAVELER ROSE 362

| BW       | WW     | YW  | Milk       | Marb     | RE      |
|----------|--------|-----|------------|----------|---------|
| -0.3     | +39    | +70 | +32        | +0.41    | +0.12   |
| Birth Wt | 205 Wt | NR  | Marb Ratio | RE Ratio | Scrotal |
| 74       | 561    | 96  | 98         | 90       | 36.5    |



# 1109 AAR Black Cedar 1109

Bull 02/19/21 reg 20177000 tattoo 1109

| AAR Scores |     |
|------------|-----|
| Feet       | 4   |
| Muscle     | 3.5 |
| Disp       | 3   |
| Fert       | 3.5 |
| Mother     | 3   |
| W Wt       | 3   |
| Frame      | 3   |
| Flesh      | 3.5 |
| CE         | 1   |
| D Milk     | 3   |
| Udder      | 3   |
| Vigor      | 4   |

COLE CREEK BLACK CEDAR 1100#  
**AAR BLACK CEDAR 9013**  
 BARBARAMERE 467 AAR

COLE CREEK BLACK CEDAR 46P#  
 COLE CREEK JUANADA BIRD 38N  
 MCD AAR JUNEAU 944#  
 BARBARAMERE 2081 AAR

MID PERFORMER 608  
**AMERICAN ELITE 1090 AAR**  
 FORESIGHT ELITE 673 A A R

SCHURRTOP AMERICAN 5846#  
 BELLES SHOSHONNESS 155  
 LRA FORESIGHT 26C  
 TRAVELER ELITE 870 A A R

| BW       | WW     | YW  | Milk       | Marb     | RE      |
|----------|--------|-----|------------|----------|---------|
| +4.2     | +45    | +77 | +30        | +0.45    | +0.25   |
| Birth Wt | 205 Wt | NR  | Marb Ratio | RE Ratio | Scrotal |
| 99       | 607    | 104 | 90         | 94       | 33.5    |

# 1113 AAR 941 Aviator 1113

Bull 02/20/21 reg 20170558 tattoo 1113

MUSGRAVE AVIATOR#  
**AAR AVIATOR 941**  
 JUANEAU NACOMA 7074 AAR#

AB-LVS CAPITALIST 4507  
**4507 TERESSA 8164 AAR**  
 PROGRAM TERESSA 3053 AAR

KOUPALS B&B IDENTITY#  
 MCATL FOREVER LADY 1429-138  
 MCD AAR JUNEAU 944#  
 GLAUS NACOMA 629

CONNEALY CAPITALIST 028#  
 AB-LVS EMMA 096#  
 HA PROGRAM 5652#  
 TRAVELIN TERESSA 8053 A A R

| BW       | WW     | YW  | Milk       | Marb     | RE      |
|----------|--------|-----|------------|----------|---------|
| -0.2     | +62    | +96 | +30        | +0.54    | +0.49   |
| Birth Wt | 205 Wt | NR  | Marb Ratio | RE Ratio | Scrotal |
| 78       | 668    | 114 | 102        | 99       | 38.5    |

| AAR Scores |     |
|------------|-----|
| Feet       | 3   |
| Muscle     | 3.5 |
| Disp       | 3.5 |
| Fert       | 4   |
| Mother     | 3   |
| W Wt       | 4   |
| Frame      | 3.5 |
| Flesh      | 4   |
| CE         | 3   |
| D Milk     | 2.5 |
| Udder      | 4   |
| Vigor      | 4   |

# 1114 AAR 941 Aviator 1114

Bull 02/22/21 reg 20170559 tattoo 1114  
 MUSGRAVE AVIATOR#  
**AAR AVIATOR 941**  
 JUANEAU NACOMA 7074 AAR#  
 PATHFINDER GENESIS G357  
**ERISKAY 8054 AAR**  
 DR ERISKAY 1116

| BW       | WW     | YW  | Milk       | Marb     | RE      |
|----------|--------|-----|------------|----------|---------|
| +2.2     | +53    | +93 | +26        | +0.54    | +0.54   |
| Birth Wt | 205 Wt | NR  | Marb Ratio | RE Ratio | Scrotal |
| 81       | 579    | 99  | 117        | 100      | 38.5    |

**AAR Scores**

Feet **3**  
 Muscle **3.5**  
 Disp **3**  
 Fert **4**  
 Mother **3**  
 W Wt **3.5**  
 Frame **2.5**  
 Flesh **3.5**  
 CE **3**  
 D Milk **2.5**  
 Udder **4**  
 Vigor **4**



# 1118 AAR 802 Renegade 1118

Bull 02/25/21 reg 20170561 tattoo 1118  
 FAIRVIEW RENEGADE 4166  
**AAR RENEGADE 802**  
 BARBARAMERE 666 AAR  
 FAIRVIEW RENEGADE 4166  
**RENEGADE TAURUS 7150 AAR**  
 UNO TAURUS 482 AAR

| BW       | WW     | YW  | Milk       | Marb     | RE      |
|----------|--------|-----|------------|----------|---------|
| -2.0     | +48    | +80 | +31        | +0.35    | +0.21   |
| Birth Wt | 205 Wt | NR  | Marb Ratio | RE Ratio | Scrotal |
| 79       | 596    | 102 | 102        | 89       | 32.5    |

**AAR Scores**

Feet **4**  
 Muscle **4**  
 Disp **4**  
 Fert **4**  
 Mother **3**  
 W Wt **3**  
 Frame **3**  
 Flesh **4**  
 CE **4**  
 D Milk **3**  
 Udder **3**  
 Vigor **4**

# 1124 AAR 603 Absolute 1124

Bull 03/09/21 reg 20170564 tattoo 1124  
 K C F BENNETT ABSOLUTE#  
**AAR ABSOLUTE 603**  
 WINDY ROSE 476 AAR  
 FAIRVIEW RENEGADE 4166  
**TERESSA 8069 AAR**  
 TERESSA UNO 468 AAR

| BW       | WW     | YW  | Milk       | Marb     | RE      |
|----------|--------|-----|------------|----------|---------|
| +0.2     | +48    | +84 | +30        | +0.46    | +0.47   |
| Birth Wt | 205 Wt | NR  | Marb Ratio | RE Ratio | Scrotal |
| 79       | 592    | 102 | 99         | 109      | 35.0    |

**AAR Scores**

Feet **3.5**  
 Muscle **3.5**  
 Disp **3.5**  
 Fert **3**  
 Mother **3.5**  
 W Wt **3**  
 Frame **3**  
 Flesh **4**  
 CE **3**  
 D Milk **2.5**  
 Udder **3**  
 Vigor **4**



# 1120 AAR 941 Aviator 1120

Bull 02/27/21 reg 20170562 tattoo 1120  
 MUSGRAVE AVIATOR#  
**AAR AVIATOR 941**  
 JUANEAU NACOMA 7074 AAR#  
 MCD AAR JUNEAU 944#  
**BARBARAMERE 857 AAR**  
 BARBARAMERE 6090 AAR

| BW       | WW     | YW  | Milk       | Marb     | RE      |
|----------|--------|-----|------------|----------|---------|
| -0.8     | +49    | +83 | +32        | +0.48    | +0.42   |
| Birth Wt | 205 Wt | NR  | Marb Ratio | RE Ratio | Scrotal |
| 70       | 585    | 100 | 104        | 92       | 36.5    |

**AAR Scores**

Feet **3.5**  
 Muscle **3.5**  
 Disp **3**  
 Fert **4**  
 Mother **3**  
 W Wt **3**  
 Frame **3**  
 Flesh **4**  
 CE **4**  
 D Milk **3**  
 Udder **2.5**  
 Vigor **3**



# 1125 AAR 603 Absolute 1125

Bull 03/16/21 reg 20170544 tattoo 1125  
 K C F BENNETT ABSOLUTE#  
**AAR ABSOLUTE 603**  
 WINDY ROSE 476 AAR  
 B C MID EMBLAZON 854E 702#  
**EMBLAZON ROSE 0152 A A R#**  
 ROSE DESIGN 755 A A R

| BW       | WW     | YW  | Milk       | Marb     | RE      |
|----------|--------|-----|------------|----------|---------|
| -2.7     | +47    | +83 | +30        | +0.51    | +0.37   |
| Birth Wt | 205 Wt | NR  | Marb Ratio | RE Ratio | Scrotal |
| 65       | 605    | 103 | 109        | 101      | 34.5    |

**AAR Scores**

Feet **2.5**  
 Muscle **3.5**  
 Disp **3**  
 Fert **4**  
 Mother **4**  
 W Wt **3.5**  
 Frame **3**  
 Flesh **4**  
 CE **5**  
 D Milk **3**  
 Udder **3**  
 Vigor **5**



Yearling Angus Bulls

**1127 AAR Black Cedar 1126**

Bull 03/21/21 reg 20181571 tattoo 1127  
 COLE CREEK BLACK BORE 572 COLE CREEK FULL BORE 730  
**AAR BLACK CEDAR 9002** COLE CREEK JUANADA 92T#  
 POUNDER EVERGREEN 182 A A R# OFF POUNDER U831  
 EVERGREEN 990 A A R  
 O C C HOMER 650H# O C C FOCUS 813F  
**GLAUS NACOMA 811** O C C DIXIE ERICA 816B  
 GLAUS NACOMA 629 B C C BUSHWACKER 41-93#  
 GLAUS NACOMA 010

| BW       | WW     | YW  | Milk       | Marb     | RE      |
|----------|--------|-----|------------|----------|---------|
| +2.3     | +45    | +80 | +27        | +0.32    | +0.22   |
| Birth Wt | 205 Wt | NR  | Marb Ratio | RE Ratio | Scrotal |
| 87       | 605    | 103 | 96         | 95       | 36.0    |

**AAR Scores**

Feet **4**  
 Muscle **3**  
 Disp **3.5**  
 Fert **3.5**  
 Mother **3**  
 W Wt **3**  
 Frame **3**  
 Flesh **4**  
 CE **2**  
 D Milk **3**  
 Udder **3**  
 Vigor **3.5**

**221 AAR 018 Renegade 221**

Bull 01/29/22 reg 20465778 tattoo 221  
 AAR RENEGADE 802 FAIRVIEW RENEGADE 4166  
**AAR 802 RENEGADE 018** BARBARAMERE 666 AAR  
 TERESSA 784 AAR AB-LVS CAPITALIST 4507  
 BLACK TERESSA 272 AAR  
 MUSGRAVE AVIATOR# KROUPALS B&B IDENTITY#  
**AVIATOR LASS 991 AAR** MCATL FOREVER LADY 1429-138  
 RENEGADE LASS 7095 AAR FAIRVIEW RENEGADE 4166  
 JUNEAU LASS 461 AAR

| BW       | WW     | YW  | Milk       | Marb     | RE      |
|----------|--------|-----|------------|----------|---------|
| -3.0     | +46    | +80 | +26        | I+0.39   | I+0.59  |
| Birth Wt | 205 Wt | NR  | Marb Ratio | RE Ratio | Scrotal |
| 59       | 568    | 93  |            |          |         |

**AAR Scores**

Feet **3.5**  
 Muscle **3.5**  
 Disp **3.5**  
 Fert **4**  
 Mother **3**  
 W Wt **3**  
 Frame **3**  
 Flesh **3.5**  
 CE **5**  
 D Milk **3**  
 Udder **3**  
 Vigor **4**

**204 AAR Emulation 204**

Bull 01/19/22 reg 20472309 tattoo 204  
 INDRELAND EXT 8904 INDRELAND EXT 5520  
**INDRELAND EXT 4666** I A POWER KEYBAN 016  
 INDRELAND EILEEN 0106 INDRELAND TRAVELER 2508  
 INDRELAND EILEEN 4029  
 AAR UNO 5001 C C A UNO 049#  
**UNO TERESSA 0193 AAR** BARBARAMERE 7062 A A R  
 PROGRAM TERESSA 3053 AAR HA PROGRAM 5652#  
 TRAVELIN TERESSA 8053 A A R

| BW       | WW     | YW  | Milk       | Marb     | RE      |
|----------|--------|-----|------------|----------|---------|
| -1.6     | +31    | +52 | +26        | na       | na      |
| Birth Wt | 205 Wt | NR  | Marb Ratio | RE Ratio | Scrotal |
| 66       | 613    | 100 |            |          |         |

**AAR Scores**

Feet **3**  
 Muscle **3**  
 Disp **3**  
 Fert **3**  
 Mother **3**  
 W Wt **2.5**  
 Frame **3**  
 Flesh **3**  
 CE **5**  
 D Milk **3**  
 Udder **3**  
 Vigor **4**

**2033 AAR 802 Renegade 2033**

Bull 02/24/22 reg 20465763 tattoo 2033  
 FAIRVIEW RENEGADE 4166 RITO 707 OF IDEAL 3407 7075  
**AAR RENEGADE 802** FAIRVIEW LADY TRAVELER X85  
 BARBARAMERE 666 AAR SITZ THUNDERBOLT 0189  
 BARBARAMERE 467 AAR  
 KROUPAL ADVANCE 28# KROUPAL JUNEAU 797#  
**BARBARAMERE 5070 AAR#** KROUPAL EBONETTE 734  
 BARBARAMERE 056 A A R# B C MID EMBLAZON 854E 702#  
 BARBARAMERE 856 A A R

| BW       | WW     | YW  | Milk       | Marb     | RE      |
|----------|--------|-----|------------|----------|---------|
| -2.5     | +52    | +90 | +32        | I+0.43   | I+0.34  |
| Birth Wt | 205 Wt | NR  | Marb Ratio | RE Ratio | Scrotal |
| 68       | 633    | 104 |            |          |         |

**AAR Scores**

Feet **3.5**  
 Muscle **3.5**  
 Disp **3.5**  
 Fert **4**  
 Mother **3.5**  
 W Wt **4**  
 Frame **4**  
 Flesh **3.5**  
 CE **5**  
 D Milk **4.5**  
 Udder **3**  
 Vigor **4**

**220 AAR Tiger 220**

Bull 01/29/22 reg 20465777 tattoo 220  
 T/D TIGER 8106 SPRING COVE TL CAT D13  
**JVC TIGER 239** JVC LADY 648#  
 JVC DONNA E55 COLEMAN CHARLO 0256#  
 COLEMAN DONNA 1264  
 AAR JUNEAU 823 MCD AAR JUNEAU 944#  
**PRIDELLA 075 AAR** BARBARAMERE 6091 AAR  
 UNO PRIDELLA 7083 AAR# AAR UNO 522  
 IMAGE PRIDELLA 8065 A A R

| BW       | WW     | YW  | Milk       | Marb     | RE      |
|----------|--------|-----|------------|----------|---------|
| -1.2     | +56    | +98 | +30        | I+0.38   | I+0.48  |
| Birth Wt | 205 Wt | NR  | Marb Ratio | RE Ratio | Scrotal |
| 62       | 629    | 103 |            |          |         |

**AAR Scores**

Feet **3**  
 Muscle **3**  
 Disp **5**  
 Fert **4.5**  
 Mother **3**  
 W Wt **3.5**  
 Frame **3**  
 Flesh **3**  
 CE **5**  
 D Milk **3**  
 Udder **3**  
 Vigor **5**

**2036 AAR 802 Renegade 2036**

Bull 02/27/22 reg 20465765 tattoo 2036  
 FAIRVIEW RENEGADE 4166 RITO 707 OF IDEAL 3407 7075  
**AAR RENEGADE 802** FAIRVIEW LADY TRAVELER X85  
 BARBARAMERE 666 AAR SITZ THUNDERBOLT 0189  
 BARBARAMERE 467 AAR  
 POSS ELEMENT 215# POSS EASY IMPACT 0119  
**BARBARA PERFECTION 751 AAR** POSS ERICA 004#  
 BARBARA PERFECTION 555 AAR JOLLY R CASH FLOW 9060  
 BARBARA PERFECTION 385 AAR

| BW       | WW     | YW  | Milk       | Marb     | RE      |
|----------|--------|-----|------------|----------|---------|
| -2.6     | +53    | +88 | +29        | I+0.35   | I+0.34  |
| Birth Wt | 205 Wt | NR  | Marb Ratio | RE Ratio | Scrotal |
| 67       | 583    | 96  |            |          |         |

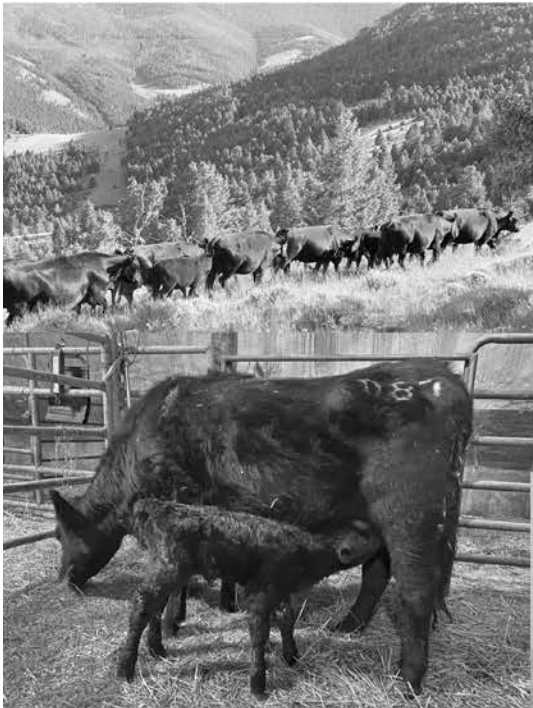
**AAR Scores**

Feet **3**  
 Muscle **3**  
 Disp **3**  
 Fert **3**  
 Mother **3**  
 W Wt **3**  
 Frame **3.5**  
 Flesh **3**  
 CE **5**  
 D Milk **3.5**  
 Udder **3**  
 Vigor **5**

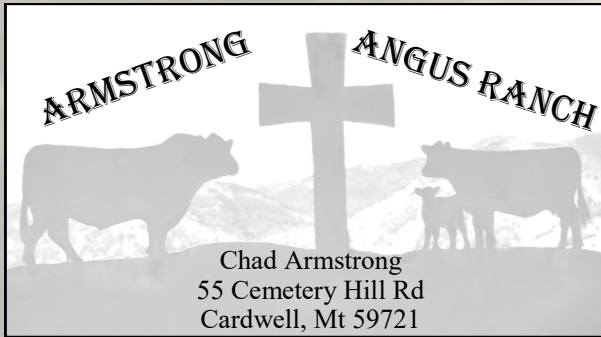






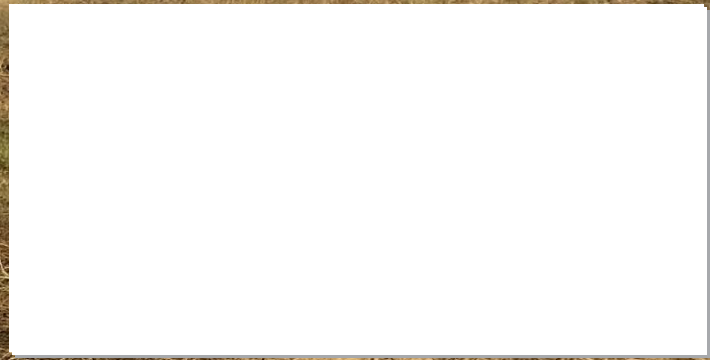






**FIRST CLASS**

US Postage  
Paid  
Ballyhoo Printing  
59457



Annual Bull Sale  
**DECEMBER 14, 2022 ~ 1:00**

Online at [ConneXion Livestock.com](http://ConneXionLivestock.com)

At our ranch South of Cardwell, MT

Phone: 406-224-0586

Email: [armstrongangus@live.com](mailto:armstrongangus@live.com)

Like us on Facebook

**The Lord is my light and my salvation: whom shall, I fear? The lord is the stronghold of my life; of whom shall I be afraid?" Psalm 27:17.**