



Armstrong Angus Ranch

Online at Montana Cattle ConneXion

December 7 start bidding

December 9th 12pm Lunch and social

at Ranch bids start closeing at 1pm



Wednesday, December 9, 2020

**Lunch 12pm final bidding at 1pm. Find the bulls and Heifers at
www.MontanaCattleConnexion.com**

Auction/Online

Because of Covid we have decided to do an online auction. We will still have the bulls available for you to view and a lunch like always. You can start bidding Monday Dec 7th. The final bidding will start at 1pm Dec 9th. We will still have the bulls up on the big screen for you to watch the auction and see the bidding. Robbie's and us are here to help you sign up if you are having trouble with the internet.

Absentee Bidding:

www.MontanaCattleConnexion.com

You may bid anytime anywhere starting Monday morning Dec 7 until final bids begin closing at 1pm on Wednesday Dec 9. You may bring a phone or tablet to the ranch on Wednesday where internet service will be provided or you may also stay and bid from home. You must register to bid at:

www.MontanaCattleConnexion.com

Sale Order

The bulls will sell in catalog order with the 10 bulls that we used being sold first and the rest following in birth order. Yearlings after 2yr olds and heifers last. You may bid on any animal at any time while the sale is open.

Bull Videos

Individual videos may be viewed at
Montana Cattle Connexion .

Sale Location

Exit off of interstate 90 at the Cardwell, MT exit. Take highway 359 toward Harrison, MT 4-4 1/2 miles to Cemetery Hill Rd (There is an Armstrong Angus sign along the road) turn right and travel up the gravel road 1/2 mile and turn left, just before the first house on the left. Go 1/4 mile to Chad and Trista's house and the sale is there. Look for signs.

Herd Health:

The bulls are fertility tested by Dr. Cory Tebay (406-287-3333) Western Veterinary, Whitehall, MT and we guarantee them as sound breeders. The bulls are poured with Vetrimec when we semen test. All females selling have been ultrasounded in late July by Dr. Liem Robbins, Falon County Vet, Baker, MT and pregnancy tested by Dr. Cory Tebay three days before the sale. They have been poured with Vetrimec and given the first shot of Scour-Guard 4KC.

Delivery

Bull delivery is free up to 300 miles if there are 3 or more bulls going that direction. Heifer delivery is at your cost.

Kaden
Klancy Armstrong
406-565-0654
Kyra Armstrong
406-565-2750
Emmie (soon to be)
Emmie Armstrong



Trista and Chad
Armstrong
406-224-0586 cell
406-287-3212 home

Hello Everyone

We trust that you are all getting along OK in spite of the turmoil our country is going through this year. We just never can guess what is going to happen. We can only trust that our Lord Jesus has a plan for everything even if we can't understand what that plan is.

This year due to covid 19 and the possibility of bad roads the day of the sale, we have chosen to do the sale through the internet with our host being Montana Cattle ConneXion. The bidding starts Monday December 7th and lots will start closing Wednesday, December 9th at 1pm. If you have trouble working with the internet please let us know and we would be more than happy to help you. **Your trust in our program and past support means a lot to us.** We welcome you to be with us at the ranch for lunch the day of sale closing, but respect and support your concern of sickness if you choose not to come and bid over the internet instead. You are more than welcome to come look at the cattle anytime, just give Chad a call 406-244-0586.

Our cattle program is based on maximum profit, lowering input costs, optimum performance and most importantly fertility. We appreciate pounds (weaning/yearling weights, carcass premiums and milk production) but want cows to rebreed with less bull power to maximize profits.

Our cattle must have strong maternal traits. We want cows to calve on their own and yet be a pleasure to work around. They need to be good mothers with good udders to get their calves going. The calves need to have vigor when born to get going. Life is more pleasurable when the cows take care of themselves.

Once again we thank you for your interest and would be glad to assist you if we can. We pray for your safety and good health.

The Armstrong's

This year's Production Sale will be hosted Online Only at www.MontanaCattleConnexion.com! You will be able to bid online on the Bulls when the Sale opens on Monday, December 7th until Bids begin Closing on Wednesday, December 9th at 1:00pm. Auction will be held online-only in a "Click-to-Bid" format. Bulls will be available to view on Sale Day or by appointment prior to the sale. There will still be a lunch and social at the Ranch at 12:00pm on Wednesday, December 9th. Contact Montana Cattle ConneXion before the sale with any questions. ConneXion Reps will be present at the sale to lend any support! Mitzi Robbie: 406-855-1335, Boe Robbie: 406-855-0051, Scott Robbie: 406-855-0534.

Armstrong Score Sheet Explanation!

Feet - foot soundness and body structure.

1. Very Poor
 2. Poor
 3. Average/ OK
 4. Good
 5. Excellent
- tends toward post leg

Muscling

1. Little muscling
2. Some muscling
3. Average muscling
4. Clear muscle definition
5. Heavily muscling

Disposition

1. Wild—aggressive
2. Nervous (excitable when alone)
3. Average (normally handles fine)
4. Laid back but responds to pressure
5. Extremely tame may be hard to move

Fertility - bulls ability to breed and cows ability to conceive

1. Many cows open / poor libido
2. Some cows open / some libido evident
3. Average conception
4. Higher conception / good libido
5. Most cows pregnant

Mothering - daughters projected desire to mother

1. Doesn't mother
2. Mothers calf but is pretty laid back
3. Good Mother
4. Good mother but may be more aggressive
5. Aggressive

W. Weight - projected weaning advantage

1. Lightest weight
2. Below average weight
3. Average weight
4. Above average weight
5. Highest performance

Frame - estimated frame size

1. Small (Frame size of about 4)
2. Frame size of about 5
3. Average (Frame size of about 5.5)
4. Frame size of about 6
5. Large (Frame size of about 7)

Fleshing - animals ability to maintain flesh

1. Very hard keeping
2. Animal is thin but still functional
3. Average animal
4. Good flesh (very healthy looking)
5. Very good shape (tending toward obesity)

Calv E - Calving Ease

1. Very large, use on cows only
2. Somewhat large, recommended for cows
3. Average, throws some larger calves
4. Somewhat small, recommended for heifers
5. Very easy calving (Possible dinks)

D. Milk - estimated milk production of daughters

1. Poor milk production, calf shows signs
Of starvation
2. Low milk - calf may have poor health/
Performance
3. Average milk - calf is healthy and
Performs fine
4. Above average milk - calf should be
Bloomy and fat
5. High milk – cow may have fertility or
Udder problems

Udder - daughters projected udder structure

1. Pendulous udder or big teats
2. Somewhat pendulous udder or larger teats
3. Average teat or udder structure
4. Tight udder or smaller than average teats
5. Small udder or small teats

Calf Vigor

1. Calf won't suck (needs tubed)
2. Calf slow or had to help suck
3. Average calf got going without problems
4. Calf aggressive or energetic
5. Calf very energetic and quick to nurse

www.MontanaCattleConnexion.com



This year's Production Sale will be hosted ***Online Only*** at www.MontanaCattleConnexion.com!

You will be able to bid online on the Bulls when the Sale opens on Monday, December 7th until Bids begin closing on Wednesday, December 9th at 1:00pm.

Auction will be held online-only in a "Click-to-Bid" format. Bulls will be available to view on Sale Day or by appointment prior to the sale. There will still be a lunch and social at the Ranch at 12:00pm on Wednesday, December 9th.

Contact Montana Cattle ConneXion before the sale with any questions. ConneXion Reps will be present at the sale to lend any support!

Absentee Bidding

With the Sale being conducted online, you may bid from home, out in the pasture, or anywhere you have internet service. You may also bid anytime starting Monday morning until the final bids begin closing at 1:00 pm on Wednesday. You may bring your phone or tablet to the ranch on Wednesday where internet service will be provided, or you may also stay and bid from home. You can bid on any device with internet access like a phone, tablet or computer. You must register to bid at www.MontanaCattleConnexion.com.

For Questions about Viewing the Bulls

Chad Armstrong 406.224.0586

For Questions regarding Registering or Bidding Online

Mitzi Robbie: 406.855.1335

Boe Robbie 406.855.0051

Scott Robbie 406.855.0534

Sale Order

You may bid on any bull at any time while the sale is open. Bulls will sell in catalog order starting at 1:00 pm - two year old bulls, yearling bulls, and heifers.

Bull Videos

View Videos and Digital Catalog Online at www.MontanaCattleConneXion.com
Bulls will be available to view by appointment or on Sale Day.

Reference Sires

Reference Sire **B3R Back to Basics U077**

Bull 09/25/08 reg 16317735 # tattoo U077

B3R 0004 ELECTRA 8082-8017
B3R TENDER TEN R065#
 B3R N127 5522 BLACKBIRD 203

B3R P061 M048 CAFD M098
B3R S024 ELISE P061 N191
 B3R N191 0128 ELISE 9032#

B3R 8082 3173 ELECTOR 4013
 B3R 8017 466 LADY 7164#
 FINKS 5522-6148#
 B3R BLACKBIRD 2075 P
 B3R M048 CAFD 0125#
 B3R M098 3525 ERICA 9164#
 B3R 0128 RITO 3091 4004
 B3R 9032 7095 ELISE 7637#

BW	WW	YW	Milk	Marb	RE
-4.0	+35	+60	+26	+0.71	-1.10

AAR Scores	
Feet	4.5
Muscle	2.5
Disp	4
Fert	
Mother	
W Wt	4
Frame	4.5
Flesh	3
CE	4
D Milk	
Udder	
Vigor	5



B3R Back to Basics U077

Reference Sire **Musgrave Aviator**

Bull 01/30/12 reg 17264774 tattoo MA

SITZ UPWARD 307R#
KOUPALS B&B IDENTITY#
 B&B ERICA 605#

S A V FINAL ANSWER 0035#
MCATL FOREVER LADY 1429-138
 ALC FOREVER LADY R02S

CONNELLY ONWARD#
 SITZ HENRIETTA PRIDE 81M
 G A R EXALTATION 3144#
 B&B ERICA 4064
 SITZ TRAVELER 8180#
 S A V EMULOUS 8145
 LEACHMAN RIGHT TIME#
 ALC FOREVER LADY K14P

BW	WW	YW	Milk	Marb	RE
-1.8	+50	+91	+25	+0.55	+0.68

AAR Scores	
Feet	2
Muscle	3
Disp	3
Fert	
Mother	
W Wt	3
Frame	3
Flesh	2.5
CE	3.5
D Milk	
Udder	
Vigor	3.5



Musgrave Aviator

Reference Sire **Spur Franchise of Garton**

Bull 08/28/12 reg 17420917 tattoo SPR

BASIN FRANCHISE P142#
SPUR FRANCHISE 7070
 H&H L&C LADY BEHAVE 5040#

SYDGEN C C & 7#
H&H IRENE LASS 0135#
 H&H L&C IRENE LASS 7116

C A FUTURE DIRECTION 5321#
 BASIN CHLOE 812L
 SPUR SUCCESS 2801
 SPUR LADY BEHAVE 3061
 S A F CONNECTION#
 SYDGEN FOREVER LADY 4087
 SPUR SUCCESS 2801
 H&H L&C IRENE LASS 5099

BW	WW	YW	Milk	Marb	RE
-0.3	+48	+94	+26	+1.09	+1.10

AAR Scores	
Feet	2.5
Muscle	2.5
Disp	4
Fert	3
Mother	3
W Wt	4
Frame	4
Flesh	2.5
CE	2
D Milk	4
Udder	2.5
Vigor	3



Spur Franchise of Garton

Reference Sire **Cole Creek Black Bore 572**

Bull 02/19/12 reg 17329105 tattoo B572

COLE CREEK BLACK CEDAR 46P#
COLE CREEK FULL BORE 730
 COLE CREEK S G JUMBOLEEN 76P#

COLE CREEK GOLDMERE 31N#
COLE CREEK JUANADA 92T#
 COLE CREEK JUANADA 32P

C H QUANTUM 6247#
 COLE CREEK CLOVA JUANADA 67
 HBR ENCORE 0544
 COLE CREEK JUMBOLEEN 876
 JUANADA GOLDMERE OF P J M
 COLE CREEK CLOVADA 397
 C H QUANTUM 6247#
 COLE CREEK JUANADA 429

BW	WW	YW	Milk	Marb	RE
+1.6	+47	+97	+28	+0.17	+0.50

AAR Scores	
Feet	3.5
Muscle	3.5
Disp	2.5
Fert	3.5
Mother	
W Wt	3.5
Frame	3
Flesh	3.5
CE	2
D Milk	3
Udder	
Vigor	3.5

Reference Sire **Cole Creek Black Cedar 1100**

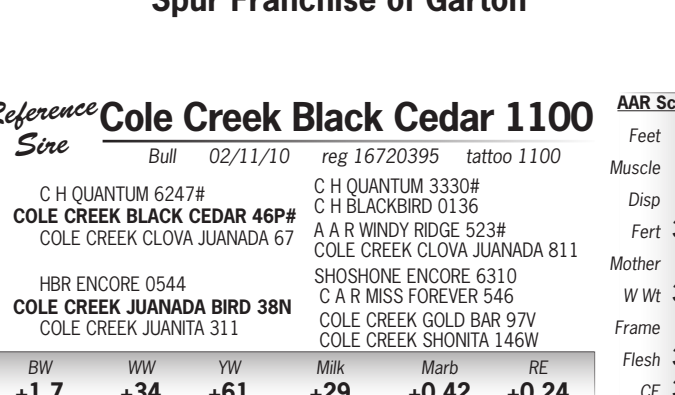
Bull 02/11/10 reg 16720395 tattoo 1100

C H QUANTUM 6247#
COLE CREEK BLACK CEDAR 46P#
 COLE CREEK CLOVA JUANADA 67

HBR ENCORE 0544
COLE CREEK JUANADA BIRD 38N
 COLE CREEK JUANITA 311

BW	WW	YW	Milk	Marb	RE
+1.7	+34	+61	+29	+0.42	+0.24

AAR Scores	
Feet	4
Muscle	3
Disp	4
Fert	3.5
Mother	
W Wt	3.5
Frame	4
Flesh	3.5
CE	3.5
D Milk	3
Udder	
Vigor	3.5



Reference Sires

Reference Sire

H A Image Maker 0415

Bull 01/23/00 reg +13739532 # tattoo 0415

R R HERO 6267#
HERO 6267 OF R R 2418#
 R R EVERELDA ENTENSE 0413

H 96 RITO 2100 7371
H A RITO BLACKCAP 9038
 H 96 BLACKCAP 3835

HIGHWOOD HERO L C H#
 BLACKBIRD OF R R 1204#
 Q A S TRAVELER 234#
 RR EVERELDA ENTENSE 8320 TPB
 RITO 2100 G D A R#
 RITO EILEENMERE 378 OF 96
 BAND 105 OF HYLINE 2380
 H96 BLACKCAP EILEEN 380#

BW	WW	YW	Milk	Marb	RE
+0.2	+60	+98	+36	+0.05	+0.26

AAR Scores

Feet	4
Muscle	2.5
Disp	2.5
Fert	3.5
Mother	3.5
W Wt	4
Frame	3
Flesh	2.5
CE	3
D Milk	4
Udder	2.5
Vigor	3.5



H-A-Image-Maker-0415

Reference Sire

FairView Renegade 4166

Bull 07/05/14 reg +18164849 tattoo 4166

R R RITO 707#
RITO 707 OF IDEAL 3407 7075
 IDEAL 3407 OF 1418 076

LEACHMAN RIGHT TIME#
FAIRVIEW LADY TRAVELER X85
 B C C LADY TRAVELER 13B 93

RITO N BAR
 ERISKAY OF ROLLIN ROCK 3
 IDEAL 1418 OF 8103 4286
 IDEAL 076 OF 692 8375
 N BAR EMULATION EXT#
 LEACHMAN ERICA 0025
 D H D TRAVELER 6807#
 CONCAR SARAH 8078

BW	WW	YW	Milk	Marb	RE
-1.6	+38	+63	+24	-0.11	+0.25

AAR Scores

Feet	4
Muscle	4
Disp	3
Fert	3.5
Mother	3
W Wt	3
Frame	3
Flesh	4.5
CE	3
D Milk	3
Udder	4
Vigor	3.5



FairView-Renegade-4166

Reference Sire

DDA B&T 18K

Bull 05/01/10 reg 16878656 tattoo 18K

BANJO OF WYE UMF 6413
D D A BANJO 1101
 MISS DIAMOND JUMBO 587

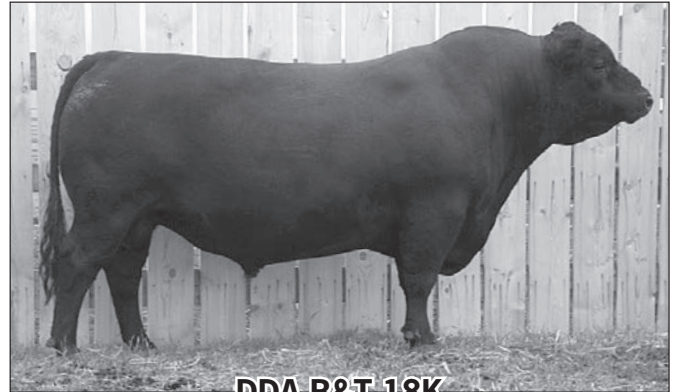
HIGH VALLEY 4C6 AMBUSH#
DDA GALATEA 031
 D D A GALATEA 423

LONESTAR OF WYE
 BLACKBIRD OF WYE UMF 5362#
 BLACK BROWE JUMBO 37P
 MISS DIAMOND CHANCE 334
 PARAMONT AMBUSH 2172#
 HIGH VALLEY GLORIA 1Q2
 BANJO OF WYE UMF 6413
 GALATEA DIAMOND 006

BW	WW	YW	Milk	Marb	RE
+1.3	+43	+70	+22	+0.34	+0.20

AAR Scores

Feet	4
Muscle	4
Disp	4
Fert	3.5
Mother	
W Wt	2.5
Frame	2.5
Flesh	4.5
CE	3
D Milk	3
Udder	2.5
Vigor	3.5



DDA-B&T-18K



Two Year Old Angus Bulls

The first ten lots in our two year old offering were used this year as natural service sires in our registered cow herd

902 AAR Renegade 902

Bull 01/14/19 reg 19533570 tattoo 902

RITO 707 OF IDEAL 3407 7075
FAIRVIEW RENEGADE 4166
FAIRVIEW LADY TRAVELER X85

R R RITO 707#
IDEAL 3407 OF 1418 076
LEACHMAN RIGHT TIME#
B C C LADY TRAVELER 13B 93
MOGCK SURE SHOT#
BARBARAMERE 080 A A R
APEX WINDY 078#
616 567 A A R

AAR SURE SHOT 3012
SURE SHOT LASS 7071 AAR
WINDY LASS 387 AAR

BW	WW	YW	Milk	Marb	RE
-1.8	+53	+81	+29	+20	+38
Birth Wt	205 Wt	NR	Marb Ratio	RE Ratio	Scrotal
66	719	117	108	106	40.75

Used on the registered cows

AAR Scores

Feet	3.5
Muscle	3.5
Disp	4
Fert	4
Mother	3.5
W Wt	3.5
Frame	2.5
Flesh	5
CE	4.5
D Milk	4
Udder	3.5
Vigor	4



913 AAR Aviator 913

Bull 01/24/19 reg 19533590 tattoo 913

KOUPALS B&B IDENTITY#
MUSGRAVE AVIATOR
MCATL FOREVER LADY 1429-138

SITZ UPWARD 307R#
B&B ERICA 605#
S A V FINAL ANSWER 0035#
ALC FOREVER LADY R02S
SCHAFER 21C OF 514 1005
MID ELDORENE 6511
A A R FINAL RITO 926
BARBARAMERE 172 A A R#

MCD PERFORMER 472
BARBARAMERE 7084 AAR
BARBARAMERE 4154 AAR

BW	WW	YW	Milk	Marb	RE
-0.3	+51	+92	+27	+56	+46
Birth Wt	205 Wt	NR	Marb Ratio	RE Ratio	Scrotal
75	671	109	126	100	38.75

While semen testing the vet noticed that this bull injured his penis while breeding but noted that it has healed fine and is a sound breeder. This is one of the bulls we used on our heifers.

AAR Scores

Feet	2.5
Muscle	3
Disp	4
Fert	3
Mother	3
W Wt	3.5
Frame	4
Flesh	3
CE	3.5
D Milk	3.5
Udder	3.5
Vigor	3.5

941 AAR Aviator 941

Bull 01/29/19 reg 19533611 tattoo 941

KOUPALS B&B IDENTITY#
MUSGRAVE AVIATOR
MCATL FOREVER LADY 1429-138

SITZ UPWARD 307R#
B&B ERICA 605#
S A V FINAL ANSWER 0035#
ALC FOREVER LADY R02S
O C C JUNEAU 807J#
MID AMBUSHESS 354#
B C C BUSHWACKER 41-93#
GLAUS NACOMA 010

MCD AAR JUNEAU 944#
JUANEAU NACOMA 7074 AAR
GLAUS NACOMA 629

BW	WW	YW	Milk	Marb	RE
+0.0	+57	+92	+30	+39	+70
Birth Wt	205 Wt	NR	Marb Ratio	RE Ratio	Scrotal
74	728	118	72	112	38.25

Used on registered cows.

AAR Scores

Feet	2.5
Muscle	3.5
Disp	3
Fert	3
Mother	4
W Wt	4
Frame	3
Flesh	3.5
CE	3.5
D Milk	3.5
Udder	3.5
Vigor	5

920 AAR Basics 920

Bull 01/26/19 reg 19550484 tattoo 920

B3R TENDER TEN R065#
B3R BACK TO BASICS U077#
B3R S024 ELISE P061 N191

B3R 0004 ELECTRA 8082-8017
B3R N127 5522 BLACKBIRD 203
B3R P061 M048 CAFD M098
B3R N191 0128 ELISE 9032#

MCD AAR JUNEAU 944#
944 BLACKCAP 755 AAR
BUSINESS BLACKCAP 5080 AAR

O C C JUNEAU 807J#
MID AMBUSHESS 354#
MC SF BUSINESS 2254
GLAUS BLACKCAP 838

BW	WW	YW	Milk	Marb	RE
-0.2	+42	+71	+30	+54	+27
Birth Wt	205 Wt	NR	Marb Ratio	RE Ratio	Scrotal
76	614	100	118	92	39.5

This bull we used on our heifers.

AAR Scores

Feet	4
Muscle	3
Disp	4.5
Fert	3
Mother	3.5
W Wt	3.5
Frame	4
Flesh	3
CE	3.5
D Milk	3.5
Udder	3
Vigor	3.5

944 AAR Renegade 944

Bull 01/31/19 reg 19533614 tattoo 944

RITO 707 OF IDEAL 3407 7075
FAIRVIEW RENEGADE 4166
FAIRVIEW LADY TRAVELER X85

R R RITO 707#
IDEAL 3407 OF 1418 076
LEACHMAN RIGHT TIME#
B C C LADY TRAVELER 13B 93
O C C JUNEAU 807J#
MID AMBUSHESS 354#
S CHISUM 6175#
BARBARA PERFECTION 273 A A R#

MCD AAR JUNEAU 944#
JUNEAU PERFECTION 551 AAR
CHISUM PERFECTION 3080 AAR

BW	WW	YW	Milk	Marb	RE
-0.9	+41	+65	+26	+19	+33
Birth Wt	205 Wt	NR	Marb Ratio	RE Ratio	Scrotal
78	583	100	92	96	40

This bull somehow got a broken pelvis but vet tested him clear to be a sound breeder.

AAR Scores

Feet	4
Muscle	4
Disp	4
Fert	4
Mother	4
W Wt	3
Frame	2.5
Flesh	5
CE	3.5
D Milk	3.5
Udder	3
Vigor	4

921 AAR Black Cedar 921

Bull 01/26/19 reg 19533596 tattoo 921

COLE CREEK BLACK CEDAR 46P#
COLE CREEK BLACK CEDAR 1100
COLE CREEK JUANADA BIRD 38N

C H QUANTUM 6247#
COLE CREEK CLOVA JUANADA 67
HBR ENCORE 0544
COLE CREEK JUANITA 311

S A V FINAL ANSWER 0035#
FINAL ANSWER LASS 8058 A A R
RIGHT TIME LASS 256 A A R

SITZ TRAVELER 8180#
S A V EMULOUS 8145
LEACHMAN RIGHT TIME#
CASH FLOW LASS 061 A A R#

BW	WW	YW	Milk	Marb	RE
+2.2	+53	+87	+28	+35	+29
Birth Wt	205 Wt	NR	Marb Ratio	RE Ratio	Scrotal
92	696	113	110	100	39.5

Used on registered cows.

AAR Scores

Feet	3.5
Muscle	2.5
Disp	4
Fert	4
Mother	3.5
W Wt	4
Frame	5
Flesh	3
CE	2
D Milk	3.5
Udder	3
Vigor	4

9002 AAR Black Cedar 9002

Bull 02/04/19 reg 19533556 tattoo 9002

COLE CREEK FULL BORE 730
COLE CREEK BLACK BORE 572
COLE CREEK JUANADA 92T#

COLE CREEK BLACK CEDAR 46P#
COLE CREEK S G JUMBOLEEN 76P#
COLE CREEK GOLDMERE 31N#
COLE CREEK JUANADA 32P
SCHURRTOP E267 X687
BASIN ZARA 831D
GDAR GAME DAY 449#
LADY EXTRA 670 A A R

OFF POUNDER U831
POUNDER EVERGREEN 182 A A R#
EVERGREEN 990 A A R

BW	WW	YW	Milk	Marb	RE
+1.5	+48	+93	+29	+39	+55
Birth Wt	205 Wt	NR	Marb Ratio	RE Ratio	Scrotal
80	603	104	107	111	38.5

Used on registered cows.

AAR Scores

Feet	3
Muscle	3.5
Disp	3
Fert	3.5
Mother	3.5
W Wt	3.5
Frame	3.5
Flesh	3.5
CE	2.5
D Milk	3.5
Udder	3.5
Vigor	4

Two Year Old Angus Bulls

9003 AAR Image Maker 9003

Bull 02/04/19 reg 19533557 tattoo 9003
 HERO 6267 OF R R 2418#
H A IMAGE MAKER 0415#
 H A RITO BLACKCAP 9038
 COLE CREEK BLACK CEDAR 46P#
BLACK TERESSA 272 AAR
 TERESSA 573 A A R

BW	WW	YW	Milk	Marb	RE
+1.2	+50	+82	+28	+19	+27
Birth Wt	205 Wt	NR	Marb Ratio	RE Ratio	Scrotal
79	572	98	101	98	38

Used on registered cows.

AAR Scores

Feet	3.5
Muscle	3
Disp	3
Fert	3.5
Mother	3
W Wt	4
Frame	3.5
Flesh	3.5
CE	3
D Milk	4
Udder	3
Vigor	4



9013 AAR Black Cedar 9013

Bull 02/09/19 reg 19533567 tattoo 9013
 COLE CREEK BLACK CEDAR 46P#
COLE CREEK BLACK CEDAR 1100
 COLE CREEK JUANADA BIRD 38N
 MCD AAR JUNEAU 944#
BARBARAMERE 467 AAR
 BARBARAMERE 2081 AAR

BW	WW	YW	Milk	Marb	RE
-0.1	+44	+73	+33	+35	+26
Birth Wt	205 Wt	NR	Marb Ratio	RE Ratio	Scrotal
78	604	104	82	96	40

Used on registered cows.

AAR Scores

Feet	4
Muscle	3
Disp	4
Fert	4
Mother	3
W Wt	3.5
Frame	3.5
Flesh	3.5
CE	3
D Milk	4
Udder	3.5
Vigor	3.5



9008 AAR 18k 9008

Bull 02/06/19 reg 19533561 tattoo 9008
 D D A BANJO 1101
DDA B&T 18K
 DDA GALATEA 031
 A A R EXTRA 814
BARBARAMERE EXTRA 3056 AAR
 BARBARAMERE 856 A A R

BW	WW	YW	Milk	Marb	RE
-0.1	+43	+69	+24	+37	+09
Birth Wt	205 Wt	NR	Marb Ratio	RE Ratio	Scrotal
75	580	100	116	88	39

Used on registered cows. This bull is extremely gentle and has been since a calf.

AAR Scores

Feet	4
Muscle	4
Disp	5
Fert	4
Mother	3
W Wt	3
Frame	3
Flesh	4
CE	3.5
D Milk	4
Udder	3
Vigor	4

915 AAR Convertabull 915

Bull 01/24/19 reg 19533592 tattoo 915
 WILLEKES CONVERTER 4402-9#
AAR CONVERTABULL 401
 BARBARA PERFECTION 2058 AAR
 LEACHMAN RIGHT ANSWER 4516
BARBARA PERFECTION 6058 AAR
 BARBARA PERFECTION 496 AAR

BW	WW	YW	Milk	Marb	RE
-2.3	+45	+74	+25	+29	+25
Birth Wt	205 Wt	NR	Marb Ratio	RE Ratio	Scrotal
62	550	95	91	98	38.5

Used on registered cows.

AAR Scores

Feet	3.5
Muscle	2.5
Disp	2.5
Fert	3.5
Mother	3.5
W Wt	3
Frame	3
Flesh	3
CE	4.5
D Milk	3
Udder	4
Vigor	3



916 AAR Capitolist 916

Bull 01/24/19 reg 19533593 tattoo 916
 CONNEALY CAPITALIST 028#
AB-LVS CAPITALIST 4507
 AB-LVS EMMA 096#
 SITZ NEW DESIGN 349M#
DESIGNER ROSE 7052 A A R
 A A R TRAVELER ROSE 362

BW	WW	YW	Milk	Marb	RE
-0.4	+43	+80	+25	+52	+36
Birth Wt	205 Wt	NR	Marb Ratio	RE Ratio	Scrotal
78	549	95	100	99	35.25

Used on registered cows.

AAR Scores

Feet	3.5
Muscle	3
Disp	4
Fert	3.5
Mother	3
W Wt	3.5
Frame	2.5
Flesh	3.5
CE	3
D Milk	3
Udder	2.5
Vigor	3.5

Two Year Old Angus Bulls

918 AAR Renegade 918

Bull 01/25/19 reg 19533594 tattoo 918

RITO 707 OF IDEAL 3407 7075
FAIRVIEW RENEGADE 4166
 FAIRVIEW LADY TRAVELER X85

R R RITO 707#
 IDEAL 3407 OF 1418 076
 LEACHMAN RIGHT TIME#
 B C C LADY TRAVELER 13B 93
 WILLEKES CONVERTER 4402-9#
 BARBARA PERFECTION 2058 AAR
 GDAR GAME DAY 449#
 IMAGE PRIDELLA 8065 A A R

AAR CONVERTABULL 401
CONVERTA PRIDELLA 7154 AAR
 GAME DAY PRIDELLA 395 AAR

BW	WW	YW	Milk	Marb	RE
+0.8	+49	+80	+25	+18	+28
Birth Wt	205 Wt	NR	Marb Ratio	RE Ratio	Scrotal
73	613	100	105	93	37.25

AAR Scores

Feet **4**
 Muscle **4**
 Disp **4**
 Fert **3**
 Mother **3.5**
 W Wt **3.5**
 Frame **3**
 Flesh **4**
 CE **3**
 D Milk **3**
 Udder **4**
 Vigor **3.5**



924 AAR Basics 924

Bull 01/26/19 reg 19533598 tattoo 924

B3R TENDER TEN R065#
B3R BACK TO BASICS U077#
 B3R S024 ELISE P061 N191

B3R 0004 ELECTRA 8082-8017
 B3R N127 5522 BLACKBIRD 203
 B3R P061 M048 CAFD M098
 B3R N191 0128 ELISE 9032#

AB-LVS CAPITALIST 4507
CAPITOLIST ROSE 785 AAR
 DESIGNER ROSE 790 A A R#

CONNELLY CAPITALIST 028#
 AB-LVS EMMA 096#
 SITZ NEW DESIGN 349M#
 A A R TRAVELER ROSE 362

BW	WW	YW	Milk	Marb	RE
-1.1	+54	+94	+28	+52	+21
Birth Wt	205 Wt	NR	Marb Ratio	RE Ratio	Scrotal
74	694	113	101	91	37.5

AAR Scores

Feet **4**
 Muscle **4**
 Disp **4**
 Fert **3**
 Mother **3**
 W Wt **3.5**
 Frame **3.5**
 Flesh **4**
 CE **3.5**
 D Milk **3.5**
 Udder **3**
 Vigor **4**



919 AAR Renegade 919

Bull 01/26/19 reg 19533595 tattoo 919

RITO 707 OF IDEAL 3407 7075
FAIRVIEW RENEGADE 4166
 FAIRVIEW LADY TRAVELER X85

R R RITO 707#
 IDEAL 3407 OF 1418 076
 LEACHMAN RIGHT TIME#
 B C C LADY TRAVELER 13B 93
 CONNEALY THUNDER#
 CTS 7V03 BELLEMERE MAID 9T02
 SILVER STATE PIONEER 338
 ROSE IMAGING 666 A A R

CTS REMEDY 1T01#
REMEDY ROSE 769 AAR
 SILVER ROSE 591 AAR

BW	WW	YW	Milk	Marb	RE
+0.2	+52	+92	+27	+23	+33
Birth Wt	205 Wt	NR	Marb Ratio	RE Ratio	Scrotal
77	689	112	95	91	36.25

AAR Scores

Feet **3.5**
 Muscle **3.5**
 Disp **3**
 Fert **3**
 Mother **3.5**
 W Wt **3.5**
 Frame **3**
 Flesh **3.5**
 CE **3**
 D Milk **3**
 Udder **4**
 Vigor **3.5**



925 AAR Black Cidar 925

Bull 01/26/19 reg 19533599 tattoo 925

COLE CREEK FULL BORE 730
COLE CREEK BLACK BORE 572
 COLE CREEK JUANADA 92T#

COLE CREEK BLACK CEDAR 46P#
 COLE CREEK S G JUMBOLEEN 76P#
 COLE CREEK GOLDMERE 31N#
 COLE CREEK JUANADA 32P

MC SF BUSINESS 2254
BARBARAMERE 580 AAR
 BARBARAMERE 869 A A R

SCHURRTOP RTA BUSINESS
 SF ISABEL 8212
 S A V FINAL ANSWER 0035#
 BARBARA 174 A A R#

BW	WW	YW	Milk	Marb	RE
-0.9	+49	+90	+25	+26	+48
Birth Wt	205 Wt	NR	Marb Ratio	RE Ratio	Scrotal
77	617	106	101	100	42.5

AAR Scores

Feet **4**
 Muscle **3**
 Disp **2.5**
 Fert **4**
 Mother **4**
 W Wt **3.5**
 Frame **3**
 Flesh **4**
 CE **3.5**
 D Milk **3.5**
 Udder **3**
 Vigor **4**

This bull doesn't have the best disposition.

923 AAR Cash Flow 923

Bull 01/26/19 reg 19533597 tattoo 923

G D A R CASH FLOW 6203#
JOLLY R CASH FLOW 9060
 JOLLY R FOREVER X003#

TRAVELER 1148 G D A R#
 L T BLACKBIRD G D A R
 CANDOLIER FOREVER 376#
 MG S BLACK DIAMOND
 Y A RITO 71 ENDURO 709
 YA BLUEBIRD LASS 020#
 YA IMAGE MAKER 623
 YA BLACK BELLE 210

YA RITO 71 ENDURO 911
YA BLACK BELLE 201
 YA BLACK BELLE 004#

BW	WW	YW	Milk	Marb	RE
-0.6	+27	+38	+29	+30	+13
Birth Wt	205 Wt	NR	Marb Ratio	RE Ratio	Scrotal
80	527	91	107	97	36.5

AAR Scores

Feet **3.5**
 Muscle **3**
 Disp **2.5**
 Fert **4**
 Mother **4**
 W Wt **2**
 Frame **3**
 Flesh **3**
 CE **3**
 D Milk **3.5**
 Udder **4**
 Vigor **3.5**

Two Year Old Angus Bulls



931 AAR Renegade 931

Bull 01/27/19 reg 19533604 tattoo 931
 RITO 707 OF IDEAL 3407 7075
FAIRVIEW RENEGADE 4166
 FAIRVIEW LADY TRAVELER X85
 MID PERFORMER 608
PERFORMER ROSE 2099 AAR#
 DESIGNER ROSE 785 A A R

BW	WW	YW	Milk	Marb	RE
+4.4	+51	+84	+30	+19	+18
Birth Wt	205 Wt	NR	Marb Ratio	RE Ratio	Scrotal
98	656	113	96	88	38.25

AAR Scores

Feet	4
Muscle	4
Disp	3.5
Fert	3.5
Mother	3
W Wt	4
Frame	3.5
Flesh	3.5
CE	1
D Milk	3.5
Udder	3
Vigor	4

927 AAR Basics 927

Bull 01/26/19 reg 19533601 tattoo 927
 B3R TENDER TEN R065#
B3R BACK TO BASICS U077#
 B3R S024 ELISE P061 N191
 C C A UNO 049#
BARBARAMERE 7166 AAR
 BARBARAMERE 981 A A R#

BW	WW	YW	Milk	Marb	RE
-0.5	+44	+74	+29	+48	+21
Birth Wt	205 Wt	NR	Marb Ratio	RE Ratio	Scrotal
77	594	103	100	101	36

AAR Scores

Feet	4
Muscle	3
Disp	3
Fert	3
Mother	3
W Wt	3
Frame	4
Flesh	3
CE	3
D Milk	3
Udder	3
Vigor	3

933 AAR Black Cedar 933

Bull 01/27/19 reg 19533606 tattoo 933
 COLE CREEK BLACK CEDAR 46P#
COLE CREEK BLACK CEDAR 1100
 COLE CREEK JUANADA BIRD 38N
 MID PERFORMER 608
BARBARAMERE 288 AAR#
 BARBARAMERE 362 A A R

BW	WW	YW	Milk	Marb	RE
+3.7	+45	+77	+32	+41	+21
Birth Wt	205 Wt	NR	Marb Ratio	RE Ratio	Scrotal
94	607	104	104	98	39.5

AAR Scores

Feet	3
Muscle	3
Disp	2.5
Fert	4
Mother	3.5
W Wt	4
Frame	4
Flesh	3
CE	1
D Milk	3
Udder	4
Vigor	4

928 AAR Renegade 928

Bull 01/26/19 reg 19550485 tattoo 928
 RITO 707 OF IDEAL 3407 7075
FAIRVIEW RENEGADE 4166
 FAIRVIEW LADY TRAVELER X85
 AAR SURE SHOT 3012
BARBARAMERE 7068 AAR
 BARBARAMERE 658 A A R#

BW	WW	YW	Milk	Marb	RE
+1.1	+44	+75	+27	+23	+40
Birth Wt	205 Wt	NR	Marb Ratio	RE Ratio	Scrotal
78	600	98	110	108	37

AAR Scores

Feet	3.5
Muscle	4
Disp	3.5
Fert	3
Mother	3
W Wt	3
Frame	3
Flesh	3.5
CE	3
D Milk	2.5
Udder	4
Vigor	3.5



937 AAR Image Maker 937

Bull 01/29/19 reg 19533608 tattoo 937
 HERO 6267 OF R R 2418#
H A IMAGE MAKER 0415#
 H A RITO BLACKCAP 9038
 R R HERO 6267#
 R R EVERELDA ENTENSE 0413
 H 96 RITO 2100 7371
 H 96 BLACKCAP 3835
 YA BLACK CEDAR 135
YA BLUEBIRD 559
 YA BLUEBIRD 131

BW	WW	YW	Milk	Marb	RE
-1.3	+43	+72	+26	+12	+21
Birth Wt	205 Wt	NR	Marb Ratio	RE Ratio	Scrotal
70	502	86	95	93	36

AAR Scores

Feet	4
Muscle	3
Disp	3
Fert	3
Mother	3.5
W Wt	3
Frame	3.5
Flesh	3
CE	4
D Milk	3
Udder	3
Vigor	4.5

929 AAR Image Maker 929

Bull 01/27/19 reg 19533602 tattoo 929
 HERO 6267 OF R R 2418#
H A IMAGE MAKER 0415#
 H A RITO BLACKCAP 9038
 YA EQUATOR 825
YA EILEENMERE 194#
 YA EILEENMERE 853

BW	WW	YW	Milk	Marb	RE
+3.4	+61	+103	+31	+08	+24
Birth Wt	205 Wt	NR	Marb Ratio	RE Ratio	Scrotal
99	607	104	98	93	36

AAR Scores

Feet	3.5
Muscle	2.5
Disp	3
Fert	3
Mother	3.5
W Wt	4.5
Frame	5
Flesh	2.5
CE	1
D Milk	3
Udder	3
Vigor	3

Two Year Old Angus Bulls

939 AAR Image Maker 939

Bull 01/29/19 reg 19533610 tattoo 939

HERO 6267 OF R R 2418#
H A IMAGE MAKER 0415#
 H A RITO BLACKCAP 9038

R R HERO 6267#
 R R EVERELDA ENTENSE 0413
 H 96 RITO 2100 7371
 H 96 BLACKCAP 3835

SINCLAIR SUPER HERO 8RD2
DR MABEL 187 OF 602
 DR MABEL 602#

HERO 6267 OF R R 2418#
 SINCLAIR LADY 0C4 4465
 N BAR PRIME TIME D806#
 DR MABEL 433#

BW	WW	YW	Milk	Marb	RE
+0.5	+50	+82	+31	+20	+32
Birth Wt	205 Wt	NR	Marb Ratio	RE Ratio	Scrotal
85	625	108	106	104	37

AAR Scores

Feet **3**
 Muscle **2.5**
 Disp **3**
 Fert **3.5**
 Mother **4**
 W Wt **3.5**
 Frame **4**
 Flesh **2.5**
 CE **2.5**
 D Milk **3.5**
 Udder **3**
 Vigor **3.5**

9001 AAR 18K 9001

Bull 02/04/19 reg 19533555 tattoo 9001

D D A BANJO 1101
DDA B&T 18K
 DDA GALATEA 031

BANJO OF WYE UMF 6413
 MISS DIAMOND JUMBO 587
 HIGH VALLEY 4C6 AMBUSH#
 D D A GALATEA 423

MCD AAR JUNEAU 944#
JUNEAU IDA 4150 AAR
 EMBLAZON IDA 057 A A R

O C C JUNEAU 807J#
 MID AMBUSHESS 354#
 B C MID EMBLAZON 854E 702#
 IMAGE IDA 870 A A R#

BW	WW	YW	Milk	Marb	RE
+1.7	+43	+72	+27	+22	+47
Birth Wt	205 Wt	NR	Marb Ratio	RE Ratio	Scrotal
86	563	97	76	106	36.75

AAR Scores

Feet **4**
 Muscle **4**
 Disp **3.5**
 Fert **3.5**
 Mother **3.5**
 W Wt **2.5**
 Frame **2.5**
 Flesh **4**
 CE **2.5**
 D Milk **3**
 Udder **2**
 Vigor **3.5**

This bull has a white spec in both eyes from pink eye last winter he sees fine.

942 AAR Aviator 942

Bull 01/29/19 reg 19533612 tattoo 942

KOUPALS B&B IDENTITY#
MUSGRAVE AVIATOR
 MCATL FOREVER LADY 1429-138

SITZ UPWARD 307R#
 B&B ERICA 605#
 S A V FINAL ANSWER 0035#
 ALC FOREVER LADY R02S

CTS REMEDY 1T01#
ERISKAY 7062 AAR
 DR ERISKAY 1116

CONNELLY THUNDER#
 CTS 7V03 BELLEMERE MAID 9T02
 SINCLAIR MEMENTO 8RL4
 DR ERISKAY 8116

BW	WW	YW	Milk	Marb	RE
-2.1	+49	+88	+25	+53	+39
Birth Wt	205 Wt	NR	Marb Ratio	RE Ratio	Scrotal
67	665	108	99	87	34

AAR Scores

Feet **5**
 Muscle **3**
 Disp **3**
 Fert **3.5**
 Mother **3**
 W Wt **3**
 Frame **3**
 Flesh **3.5**
 CE **4.5**
 D Milk **3**
 Udder **3.5**
 Vigor **4.5**

9004 AAR Image Maker 9004

Bull 02/04/19 reg 19533558 tattoo 9004

HERO 6267 OF R R 2418#
H A IMAGE MAKER 0415#
 H A RITO BLACKCAP 9038

R R HERO 6267#
 R R EVERELDA ENTENSE 0413
 H 96 RITO 2100 7371
 H 96 BLACKCAP 3835

CONNELLY FREIGHTLINER#
FREIGHTLINER IDA 8064
 TRAVELER IDA 666 A A R#

BON VIEW BANDO 598#
 JOANA ERICA OF CONANGA
 V D A R TRAVELER 455
 A A R LADY RITO 962

BW	WW	YW	Milk	Marb	RE
+2.3	+51	+82	+30	+24	+17
Birth Wt	205 Wt	NR	Marb Ratio	RE Ratio	Scrotal
92	654	106	113	98	40

AAR Scores

Feet **3.5**
 Muscle **3.5**
 Disp **2.5**
 Fert **3**
 Mother **4**
 W Wt **3.5**
 Frame **3**
 Flesh **3.5**
 CE **2**
 D Milk **4**
 Udder **2.5**
 Vigor **4**



943 AAR Renegade 943

Bull 01/30/19 reg 19533613 tattoo 943

RITO 707 OF IDEAL 3407 7075
FAIRVIEW RENEGADE 4166
 FAIRVIEW LADY TRAVELER X85

R R RITO 707#
 IDEAL 3407 OF 1418 076
 LEACHMAN RIGHT TIME#
 B C C LADY TRAVELER 13B 93

COLE CREEK BLACK CEDAR 46P#
YA EILEEN 263
 YA EILEEN 625#

C H QUANTUM 6247#
 COLE CREEK CLOVA JUANADA 67
 H A IMAGE MAKER 0415#
 YA EILEEN 097

BW	WW	YW	Milk	Marb	RE
-0.8	+36	+63	+25	+05	+26
Birth Wt	205 Wt	NR	Marb Ratio	RE Ratio	Scrotal
78	517	89	89	100	40

AAR Scores

Feet **4**
 Muscle **3.5**
 Disp **3**
 Fert **3.5**
 Mother **4**
 W Wt **3**
 Frame **3**
 Flesh **3.5**
 CE **3**
 D Milk **3**
 Udder **4**
 Vigor **4**

9006 AAR Spur 9006

Bull 02/05/19 reg 19533560 tattoo 9006

SPUR FRANCHISE 7070
SPUR FRANCHISE OF GARTON
 H&H IRENE LASS 0135#

BASIN FRANCHISE P142#
 H&H L&C LADY BEHAVE 5040#
 SYDGEN C C & 7#
 H&H L&C IRENE LASS 7116

APEX WINDY 078#
WINDY LASS 387 AAR
 616 567 A A R

H A R B WINDY 702 JH#
 APEXETTE LUCY 6037
 RITO 616 OF 4B20 6807#
 EXT LASS 672 A A R

BW	WW	YW	Milk	Marb	RE
+1.0	+52	+90	+29	+71	+68
Birth Wt	205 Wt	NR	Marb Ratio	RE Ratio	Scrotal
87	617	106	110	112	34.5

AAR Scores

Feet **2.5**
 Muscle **3**
 Disp **3**
 Fert **3.5**
 Mother **3.5**
 W Wt **4**
 Frame **3.5**
 Flesh **3**
 CE **2**
 D Milk **3.5**
 Udder **3**
 Vigor **4**



Two Year Old Angus Bulls



9010

9010 AAR Convertabull 9010

Bull 02/08/19 reg 19533564 tattoo 9010
 WILLEKES CONVERTER 4402-9# RITO 112 OF 2536 RITO 616#
AAR CONVERTABULL 401 WILLEKES LADY OF 410
 BARBARA PERFECTION 2058 AAR COLE CREEK BLACK CEDAR 46P#
 BARBARA PERFECTION 158 A A R
 JVC EMULATION EXT V910 N BAR EMULATION EXT#
EXT NACOMA 6056 AAR IDEAL 2434 OF 7407 7412
 GLAUS NACOMA 811 O C C HOMER 650H#
 GLAUS NACOMA 629

BW	WW	YW	Milk	Marb	RE
+2.9	+49	+79	+23	+33	+40
Birth Wt	205 Wt	NR	Marb Ratio	RE Ratio	Scrotal
88	562	97	103	110	38.75

AAR Scores

Feet **4**
 Muscle **4**
 Disp **2.5**
 Fert **3.5**
 Mother **3.5**
 W Wt **3.5**
 Frame **2.5**
 Flesh **4**
 CE **2**
 D Milk **3**
 Udder **4**
 Vigor **4**



9011

9011 AAR Black Cedar 9011

Bull 02/09/19 reg 19533565 tattoo 9011
 COLE CREEK BLACK CEDAR 46P# C H QUANTUM 6247#
COLE CREEK BLACK CEDAR 1100 COLE CREEK CLOVA JUANADA 67
 COLE CREEK JUANADA BIRD 38N HBR ENCORE 0544
 COLE CREEK JUANITA 311
 SYDGEN MANDATE 6079# S S OBJECTIVE T510 OT26#
BARBARA PERFECTION 2078 AAR SYDGEN GINA 4235
 BARBARA PERFECTION 672 A A R G 13 STRUCTURE#
 BARBARA PERFECTION 553 A A R

BW	WW	YW	Milk	Marb	RE
+0.0	+38	+66	+27	+67	+26
Birth Wt	205 Wt	NR	Marb Ratio	RE Ratio	Scrotal
69	554	95	131	107	38.5

AAR Scores

Feet **4**
 Muscle **3.5**
 Disp **4**
 Fert **4**
 Mother **4**
 W Wt **3**
 Frame **3**
 Flesh **3.5**
 CE **3.5**
 D Milk **3**
 Udder **3.5**
 Vigor **4**

9012 AAR 18k 9012

Bull 02/09/19 reg 19533566 tattoo 9012
 D D A BANJO 1101 BANJO OF WYE UMF 6413
DDA B&T 18K MISS DIAMOND JUMBO 587
 DDA GALATEA 031 HIGH VALLEY 4C6 AMBUSH#
 D D A GALATEA 423
 BRUSETT FRANKLIN U28 TC FRANKLIN 619#
BRUSETT FOREVER Y202# BRUSETT 520 JO06
 BRUSETT FOREVER Q742 BRUSETT TIMESAVER 91
 BRUSETT 8180 325

BW	WW	YW	Milk	Marb	RE
+2.1	+43	+78	+20	+29	+19
Birth Wt	205 Wt	NR	Marb Ratio	RE Ratio	Scrotal
82	521	90	79	90	38

AAR Scores

Feet **3.5**
 Muscle **4**
 Disp **4**
 Fert **3**
 Mother **3**
 W Wt **3**
 Frame **3**
 Flesh **3**
 CE **2.5**
 D Milk **4**
 Udder **4**
 Vigor **3**

9014 AAR Black Cedar 9014

Bull 02/10/19 reg 19533568 tattoo 9014
 COLE CREEK BLACK CEDAR 46P# C H QUANTUM 6247#
COLE CREEK BLACK CEDAR 1100 COLE CREEK CLOVA JUANADA 67
 COLE CREEK JUANADA BIRD 38N HBR ENCORE 0544
 COLE CREEK JUANITA 311
 APEX WINDY 078# H A R B WINDY 702 JH#
BARBARAMERE 383 AAR# APEXETTE LUCY 6037
 BARBARAMERE 556 A A R H A R B HIGH PLAINS 975 JH#
 BARBARAMERE 363 A A R

BW	WW	YW	Milk	Marb	RE
+1.3	+44	+75	+30	+37	+36
Birth Wt	205 Wt	NR	Marb Ratio	RE Ratio	Scrotal
80	608	100	100	100	39

AAR Scores

Feet **3.5**
 Muscle **3**
 Disp **3.5**
 Fert **3.5**
 Mother **3**
 W Wt **3.5**
 Frame **4.5**
 Flesh **3**
 CE **3**
 D Milk **3**
 Udder **3.5**
 Vigor **4**

9018 AAR ENDURANCE 9018

Bull 02/11/19 reg 19583803 tattoo 9018
 YA ENDURANCE 526 YA UNIVERSE 013
YA ENDURANCE 721 YA QUEEN 808
 YA PRIDE 373 YA BLACK CEDAR 162
 YA PRIDE 833#
 HRA RITO 8296 330 COLEMAN RITO 149-8296
YA BLACK BELLE 635 HRA LASSIE 767
 YA BLACK BELLE 966 Y A INTRIGUE 716
 YA BLACK BELLE 645#

BW	WW	YW	Milk	Marb	RE
+3.5	+41	+67	+29	na	na
Birth Wt	205 Wt	NR	Marb Ratio	RE Ratio	Scrotal
88					39.5

AAR Scores

Feet **3.5**
 Muscle **3**
 Disp **3**
 Fert **3**
 Mother **3**
 W Wt **3**
 Frame **4**
 Flesh **3**
 CE **2**
 D Milk **3**
 Udder **3**
 Vigor **4**

9024 AAR Convertabull 9024

Bull 02/14/19 reg 19533571 tattoo 9024
 WILLEKES CONVERTER 4402-9# RITO 112 OF 2536 RITO 616#
AAR CONVERTABULL 401 WILLEKES LADY OF 410
 BARBARA PERFECTION 2058 AAR COLE CREEK BLACK CEDAR 46P#
 BARBARA PERFECTION 158 A A R
 AAR SURE SHOT 3012 MOGCK SURE SHOT#
BARBARAMERE 6067 AAR BARBARAMERE 080 A A R
 BARBARAMERE 3050 AAR SITZ DASH 10277#
 BARBARAMERE 362 A A R

BW	WW	YW	Milk	Marb	RE
-0.1	+52	+85	+26	+38	+35
Birth Wt	205 Wt	NR	Marb Ratio	RE Ratio	Scrotal
70	605	104	104	97	37.75

AAR Scores

Feet **3**
 Muscle **3.5**
 Disp **3**
 Fert **3**
 Mother **3.5**
 W Wt **3.5**
 Frame **3**
 Flesh **2.5**
 CE **3.5**
 D Milk **3**
 Udder **3.5**
 Vigor **4**

Two Year Old Angus Bulls

9026 AAR Black Cedar 9026

Bull 02/16/19 reg 19533573 tattoo 9026
 COLE CREEK FULL BORE 730
COLE CREEK BLACK BORE 572
 COLE CREEK JUANADA 92T#
 A A A POUNDER 141
POUNDER TAURUS 4066 AAR
 21X TAURUS 1062 A A R

BW	WW	YW	Milk	Marb	RE
+0.2	+40	+83	+24	+30	+53
Birth Wt	205 Wt	NR	Marb Ratio	RE Ratio	Scrotal
80	539	93	104	113	37.25

AAR Scores

Feet 4
 Muscle 3
 Disp 3
 Fert 3.5
 Mother 3
 W Wt 3
 Frame 3
 Flesh 3.5
 CE 3
 D Milk 3
 Udder 3
 Vigor 4.5

9033 AAR Payweight 9033

Bull 02/20/19 reg 19533576 tattoo 9033
 BASIN PAYWEIGHT 1682#
MCD PAYWEIGHT 7128
 MCD -1 BLACKBIRD 544
 MCD AAR JUNEAU 944#
NACOMA 2155 AAR
 GLAUS NACOMA 308

BW	WW	YW	Milk	Marb	RE
-0.2	+53	+90	+32	+42	+36
Birth Wt	205 Wt	NR	Marb Ratio	RE Ratio	Scrotal
75	583	100	110	103	38

AAR Scores

Feet 3
 Muscle 4
 Disp 3.5
 Fert 3.5
 Mother 3
 W Wt 4
 Frame 3
 Flesh 3.5
 CE 2.5
 D Milk 3.5
 Udder 3
 Vigor 4

9029 AAR 18K 9029

Bull 02/19/19 reg 19533575 tattoo 9029
 D D A BANJO 1101
DDA B&T 18K
 DDA GALATEA 031
 B C MID EMBLAZON 854E 702#
BARBARAMERE 062 A A R
 BARBARAMERE 852 A A R

BW	WW	YW	Milk	Marb	RE
+3.3	+53	+88	+22	+31	+20
Birth Wt	205 Wt	NR	Marb Ratio	RE Ratio	Scrotal
98	605	104	105	93	36

AAR Scores

Feet 4
 Muscle 4
 Disp 2.5
 Fert 4
 Mother 3.5
 W Wt 4
 Frame 2.5
 Flesh 4
 CE 1
 D Milk 3
 Udder 3
 Vigor 4

9034 AAR Black Cedar 9034

Bull 02/21/19 reg 19533577 tattoo 9034
 COLE CREEK FULL BORE 730
COLE CREEK BLACK BORE 572
 COLE CREEK JUANADA 92T#
 H A IMAGE MAKER 0415#
PINE COULEE EISA ERICA X46
 PINE COULEE EISA ERICA U12

BW	WW	YW	Milk	Marb	RE
-0.2	+45	+88	+28	+24	+46
Birth Wt	205 Wt	NR	Marb Ratio	RE Ratio	Scrotal
78	568	100	100	100	33.75

AAR Scores

Feet 3.5
 Muscle 3
 Disp 3
 Fert 3.5
 Mother 4
 W Wt 3
 Frame 2.5
 Flesh 3
 CE 3
 D Milk 4
 Udder 2.5
 Vigor 4



9032 AAR

Bull 02/20/19 reg 19571992 tattoo 9032
 YA ENDURANCE 526
YA ENDURANCE 721
 YA PRIDE 373
 QUAKER HILL RAMPAGE 0A36
FLORABELLE 6054 AAR
 FLORABELLE EXTRA 7057 A A R

BW	WW	YW	Milk	Marb	RE
+3.4	+54	+92	+28	+30	+56
Birth Wt	205 Wt	NR	Marb Ratio	RE Ratio	Scrotal
82	603	104	101	107	40.5

AAR Scores

Feet 3.5
 Muscle 3
 Disp 2.5
 Fert 2.5
 Mother 4
 W Wt 3.5
 Frame 3
 Flesh 3
 CE 2
 D Milk 2.5
 Udder 3
 Vigor 5

9035 AAR Convertabull 9035

Bull 02/22/19 reg 19533578 tattoo 9035
 WILLEKES CONVERTER 4402-9#
AAR CONVERTABULL 401
 BARBARA PERFECTION 2058 AAR
 AB-LVS CAPITALIST 4507
BARBARAMERE 671 AAR
 BARBARAMERE 951 A A R

BW	WW	YW	Milk	Marb	RE
+1.3	+52	+90	+24	+39	+40
Birth Wt	205 Wt	NR	Marb Ratio	RE Ratio	Scrotal
85	593	102	101	107	38.25

AAR Scores

Feet 4
 Muscle 3
 Disp 3
 Fert 3
 Mother 3
 W Wt 3
 Frame 2.5
 Flesh 3.5
 CE 2
 D Milk 2.5
 Udder 4
 Vigor 3.5

Two Year Old Angus Bulls

9039 AAR Elevation 9039

Bull 03/09/19 reg 19533579 tattoo 9039
 O C C EUREKA 865E#
FAIRVIEW ELEVATION 3115
 LEACHMAN BLACKCAP 0017#
 O C C MISSING LINK 830M#
BARBARA PERFECTION 099 A A R
 BARBARA PERFECTION 158 A A R

BW	WW	YW	Milk	Marb	RE
-0.8	+40	+64	+26	+11	+29
Birth Wt	205 Wt	NR	Marb Ratio	RE Ratio	Scrotal
71	582	100	100	100	40

AAR Scores

Feet 3.5
 Muscle 3
 Disp 3
 Fert 4
 Mother 3.5
 W Wt 2.5
 Frame 2.5
 Flesh 4
 CE 3
 D Milk 3
 Udder 3.5
 Vigor 3.5



9041 AAR Elevation 9041

Bull 03/09/19 reg 19533581 tattoo 9041
 O C C EUREKA 865E#
FAIRVIEW ELEVATION 3115
 LEACHMAN BLACKCAP 0017#
 V D A R TRAVELER 455
BARBARAMERE 554 AAR
 BARBARAMERE 3050 AAR

BW	WW	YW	Milk	Marb	RE
+2.6	+45	+75	+30	+27	+21
Birth Wt	205 Wt	NR	Marb Ratio	RE Ratio	Scrotal
92	592	102	87	91	37

AAR Scores

Feet 3.5
 Muscle 3.5
 Disp 3
 Fert 3.5
 Mother 3
 W Wt 3
 Frame 3.5
 Flesh 3
 CE 2
 D Milk 3
 Udder 3
 Vigor 4

9046 AAR RENEGADE 9046

Bull 04/12/19 reg 19533584 tattoo 9046
 RITO 707 OF IDEAL 3407 7075
FAIRVIEW RENEGADE 4166
 FAIRVIEW LADY TRAVELER X85
 CCC MERRITT 030
CROUTHAMEL ERMINE 4037
 CCC ERMINE 1099

BW	WW	YW	Milk	Marb	RE
+2.1	+52	+91	+24	+27	+28
Birth Wt	205 Wt	NR	Marb Ratio	RE Ratio	Scrotal
93	604	104	116	96	38.75

AAR Scores

Feet 4
 Muscle 4
 Disp 3
 Fert 3.5
 Mother 3.5
 W Wt 3
 Frame 2.5
 Flesh 4
 CE 2
 D Milk 3
 Udder 3.5
 Vigor 4

9045 AAR ELAVATION 4045

Bull 04/04/19 reg 19533583 tattoo 9045
 O C C EUREKA 865E#
FAIRVIEW ELEVATION 3115
 LEACHMAN BLACKCAP 0017#
 MID PERFORMER 608
608 ROSE 171 A A R
 TRAVELER ROSE 064 A A R

BW	WW	YW	Milk	Marb	RE
+2.7	+52	+85	+31	+28	+16
Birth Wt	205 Wt	NR	Marb Ratio	RE Ratio	Scrotal
87	658	113	94	98	36

AAR Scores

Feet 4
 Muscle 3
 Disp 3
 Fert 3.5
 Mother 3
 W Wt 3.5
 Frame 3
 Flesh 3.5
 CE 2
 D Milk 3
 Udder 3
 Vigor 4

9047 AAR CAPITOIST 9047

Bull 04/15/19 reg 19533585 tattoo 9047
 AB-LVS CAPITALIST 4507
AAR CAPITALIST 623
 DESIGNER ROSE 790 A A R#
 MCD AAR JUNEAU 944#
JUNEAU LASS 461 AAR
 CEDAR LASS 2080 AAR

BW	WW	YW	Milk	Marb	RE
+0.7	+52	+93	+30	+38	+44
Birth Wt	205 Wt	NR	Marb Ratio	RE Ratio	Scrotal
100	644	100			38

AAR Scores

Feet 3.5
 Muscle 3
 Disp 2.5
 Fert 3
 Mother 3.5
 W Wt 3.5
 Frame 3
 Flesh 3
 CE 1
 D Milk 3.5
 Udder 3
 Vigor 4



9048 AAR Renegade 9048

Bull 03/16/19 reg 19533586 tattoo 9048
 RITO 707 OF IDEAL 3407 7075
FAIRVIEW RENEGADE 4166
 FAIRVIEW LADY TRAVELER X85
 MID PERFORMER 608
608 BARBARAMERE 186 A A R
 BARBARAMERE 469 A A R

BW	WW	YW	Milk	Marb	RE
+4.9	+53	+89	+26	+31	+32
Birth Wt	205 Wt	NR	Marb Ratio	RE Ratio	Scrotal
99	673	116	109	102	40.5

AAR Scores

Feet 3.5
 Muscle 3
 Disp 2.5
 Fert 3
 Mother 3.5
 W Wt 4.5
 Frame 4
 Flesh 3
 CE 1
 D Milk 3
 Udder 3
 Vigor 4

Yearling Angus Bulls

015 AAR Real Mccoy 015

Bull 01/26/20 reg 19840889 tattoo 015

PCC RUGER 1042T
PCC FSR REAL MCCOY 1918X
FSR MISS REBEL 826

AB-LVS CAPITALIST 4507
CAPITALIST IDA 8063 AAR
FREIGHTLINER IDA 8064

O C C EMANCIPATE 889E
P C C QUEEN 409
PCC MH REBEL 2009#
FSR MISS HUSKER LEGEND 660
CONNEALY CAPITALIST 028#
AB-LVS EMMA 096#
CONNEALY FREIGHTLINER#
TRAVELER IDA 666 A A R#

BW	WW	YW	Milk	Marb	RE
-3.1	+45	+72	+22	+38	+25
Birth Wt	205 Wt	NR	Marb Ratio	RE Ratio	Scrotal
67	595	101			

AAR Scores	
Feet	3
Muscle	4
Disp	3
Fert	3.5
Mother	3
W Wt	3
Frame	2.5
Flesh	4
CE	4
D Milk	3
Udder	3
Vigor	4

046 AAR Riptide 046

Bull 02/03/20 reg 19840907 tattoo 046

PCC FSR SKYWALKER 1997A
PCC FSR RIPTIDE 3598D
MH CLOVA PRIDE 20

YOUNKIN BELLE BOY 5182
EILEENMERE 8078 AAR
YA RITO EILEENMERE 583

PCC FSR REAL MCCOY 1918X
FSR MISS REBEL 754
P C C COLORADO HUNTER 1062P
MH CLOVA PRIDE 105
YA EQUATOR 361
YA QUEEN 182
YA BLACK CEDAR 135
YA RITO EILEENMERE 805#

BW	WW	YW	Milk	Marb	RE
-1.6	+32	+66	+24	na	na
Birth Wt	205 Wt	NR	Marb Ratio	RE Ratio	Scrotal
68	563	95			

AAR Scores	
Feet	3
Muscle	3
Disp	3
Fert	3
Mother	3
W Wt	3
Frame	3
Flesh	3
CE	4
D Milk	3
Udder	3
Vigor	4

028 AAR Juneau 028

Bull 01/29/20 reg 19840898 tattoo 028

MCD AAR JUNEAU 944#
AAR JUNEAU 823
BARBARAMERE 6091 AAR

POSS ELEMENT 215
BARBARA PERFECTION 751 AAR
BARBARA PERFECTION 555 AAR

O C C JUNEAU 807J#
MID AMBUSHNESS 354#
AAR CONVERTABULL 401
BARBARAMERE 263 A A R#
POSS EASY IMPACT 0119
POSS ERICA 004#
JOLLY R CASH FLOW 9060
BARBARA PERFECTION 385 AAR

BW	WW	YW	Milk	Marb	RE
-2.9	+47	+76	+30	+37	+34
Birth Wt	205 Wt	NR	Marb Ratio	RE Ratio	Scrotal
60	580	98			

AAR Scores	
Feet	3
Muscle	2.5
Disp	3
Fert	3.5
Mother	3
W Wt	3
Frame	3.5
Flesh	2.5
CE	4.5
D Milk	3
Udder	3
Vigor	4

047 AAR 802 Renegade 047

Bull 02/03/20 reg 19840908 tattoo 047

FAIRVIEW RENEGADE 4166
AAR RENEGADE 802
BARBARAMERE 666 AAR

MCD AAR JUNEAU 944#
JUNEAU PERFECTION 551 AAR
CHISUM PERFECTION 3080 AAR

RITO 707 OF IDEAL 3407 7075
FAIRVIEW LADY TRAVELER X85
SITZ THUNDERBOLT 0189
BARBARAMERE 467 AAR
O C C JUNEAU 807J#
MID AMBUSHNESS 354#
S CHISUM 6175#
BARBARA PERFECTION 273 A A R#

BW	WW	YW	Milk	Marb	RE
-2.7	+34	+56	+28	+39	+40
Birth Wt	205 Wt	NR	Marb Ratio	RE Ratio	Scrotal
70	520	88			

AAR Scores	
Feet	3.5
Muscle	3
Disp	3
Fert	4
Mother	3
W Wt	2.5
Frame	3
Flesh	3
CE	4
D Milk	4
Udder	3
Vigor	4

029 AAR Capitolist 029

Bull 01/29/20 reg 19840899 tattoo 029

CONNEALY CAPITALIST 028#
LD CAPITALIST 316
LD DIXIE ERICA 2053

PATHFINDER GENESIS G357
BARBARA PERFECTION 873 AAR
BARBARA PERFECTION 099 A A R

S A V FINAL ANSWER 0035#
PRIDES PITA OF CONANGA 8821
C A FUTURE DIRECTION 5321#
LD DIXIE ERICA OAR 0853
TE MANIA BERKLEY B1
PATHFINDER DIRECTION D245
O C C MISSING LINK 830M#
BARBARA PERFECTION 158 A A R

BW	WW	YW	Milk	Marb	RE
-1.0	+56	+98	+25	+49	+56
Birth Wt	205 Wt	NR	Marb Ratio	RE Ratio	Scrotal
69	603	102			

AAR Scores	
Feet	3.5
Muscle	3.5
Disp	3
Fert	3
Mother	3
W Wt	3
Frame	3
Flesh	3
CE	4
D Milk	3
Udder	3
Vigor	4

049 AAR Capitolist 049

Bull 02/03/20 reg 19840910 tattoo 049

CONNEALY CAPITALIST 028#
LD CAPITALIST 316
LD DIXIE ERICA 2053

O C C PROTOTYPE 847P
JUANADAMERE 178 A A R
GLAUS JUANADAMERE 218#

S A V FINAL ANSWER 0035#
PRIDES PITA OF CONANGA 8821
C A FUTURE DIRECTION 5321#
LD DIXIE ERICA OAR 0853
O C C KANGA 886K
O C C DIXIE ERICA 867K
SITZ VALUE 7097#
MISS POWER TREND 203

BW	WW	YW	Milk	Marb	RE
-1.6	+45	+76	+23	+40	+44
Birth Wt	205 Wt	NR	Marb Ratio	RE Ratio	Scrotal
67	546	92			

AAR Scores	
Feet	3
Muscle	3.5
Disp	3
Fert	3.5
Mother	3.5
W Wt	3
Frame	3
Flesh	3
CE	4
D Milk	3
Udder	3
Vigor	4

040 AAR Juneau 040

Bull 01/31/20 reg 19840905 tattoo 040

MCD AAR JUNEAU 944#
AAR JUNEAU 823
BARBARAMERE 6091 AAR

MCD AAR JUNEAU 944#
BARBARAMERE 7063 AAR
BARBARAMERE 062 A A R

O C C JUNEAU 807J#
MID AMBUSHNESS 354#
AAR CONVERTABULL 401
BARBARAMERE 263 A A R#
O C C JUNEAU 807J#
MID AMBUSHNESS 354#
B C MID EMBLAZON 854E 702#
BARBARAMERE 852 A A R

BW	WW	YW	Milk	Marb	RE
-1.9	+44	+74	+32	+46	+38
Birth Wt	205 Wt	NR	Marb Ratio	RE Ratio	Scrotal
69	597	101			

AAR Scores	
Feet	3.5
Muscle	3
Disp	3
Fert	3.5
Mother	3
W Wt	3
Frame	3
Flesh	3
CE	4
D Milk	3
Udder	3
Vigor	4

0048 AAR Riptide 0048

Bull 01/29/20 reg 19841995 tattoo 0048

PCC FSR SKYWALKER 1997A
PCC FSR RIPTIDE 3598D
MH CLOVA PRIDE 20

B C MID EMBLAZON 854E 702#
EMBLAZON ROSE 0152 A A R#
ROSE DESIGN 755 A A R

PCC FSR REAL MCCOY 1918X
FSR MISS REBEL 754
P C C COLORADO HUNTER 1062P
MH CLOVA PRIDE 105
O C C EMBLAZON 854E#
GIBBET HILL MIGNONNE E37
SITZ NEW DESIGN 349M#
ROSE 457 A A R#

BW	WW	YW	Milk	Marb	RE
-3.9	+28	+60	+26	na	na
Birth Wt	205 Wt	NR	Marb Ratio	RE Ratio	Scrotal
65	560	95			

AAR Scores	
Feet	4
Muscle	4
Disp	2.5
Fert	4.5
Mother	4
W Wt	2.5
Frame	2.5
Flesh	4
CE	4.5
D Milk	3.5
Udder	3
Vigor	4



Commercial Bred Heifers



Group 1: 10 Heifers. Ultrasounded to have heifers 1/26 - 2/14

Group 2: 16 Heifers. Ultrasounded to have bulls 1/29 - 2/13

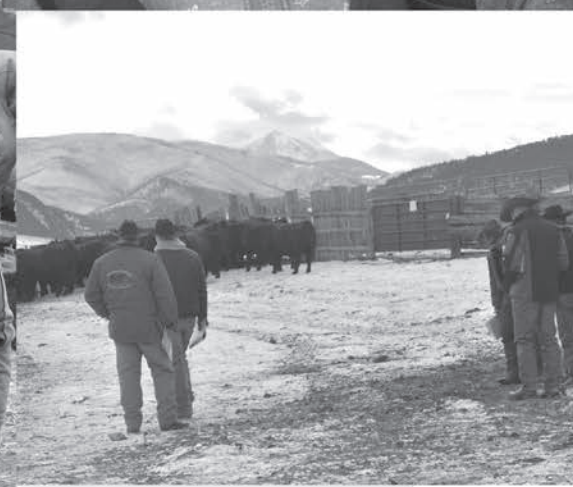
Group 3: 8 Heifers. Ultrasounded to have heifers 2/16 - 3/16

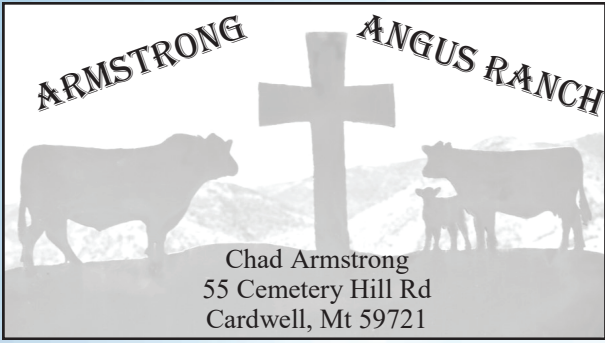
Group 4: 11 Heifers. Ultrasounded to have bulls 2/17 - 3/12

Group 5: 15 Heifers. No sex on the calves 3/18 - 4/9

Heifers will sell after the bulls. The Heifers will also be online like the bulls with Montana Cattle Connexion. Please see the videos at www.MontanaCattleConnexion.com







FIRST CLASS

US Postage
Paid
Ballyhoo Printing
59457



Annual Bull Sale

DECEMBER 9, 2020 ~ 1:00

Online at Montana Cattle ConneXion and at our
ranch south of Cardwell, MT

He makes grass grow for the cattle, and plants for man to cultivate,
bringing forth food from the earth.

Psalm 104:14