

Simmental

Angus

BEGGER'S

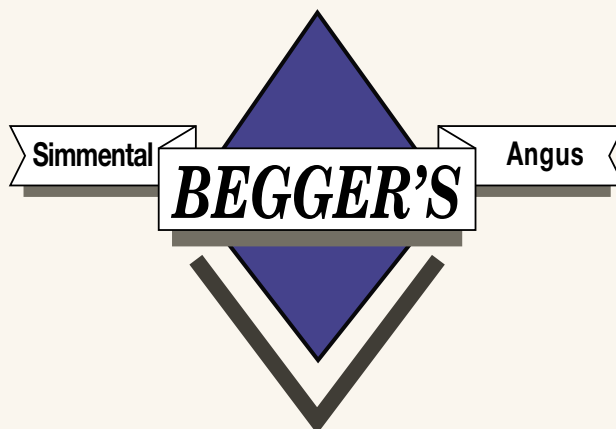
Begger's **DIAMOND V RANCH**

WEDNESDAY, FEBRUARY 3, 2021 // 12:30 PM
AT THE RANCH // WIBAUX, MT

*Selling 153 Simmental, SimAngus & Angus Bulls,
and the Pick of our Open Heifers!*

BIG SKY GENETIC SOURCE

Bull Sale



Welcome, Welcome, Welcome,

Like so many opening statements start out, Oh, what a year 2020 has turned out to be, lots of hype, drama, and likewise hardship and postponements. On the bright side not all was that ugly. We had a decent summer, a little short of moisture but tolerable with mild pleasant weather. This winter makes you wonder what next year will hold in store. But no doubt what a nice environment for the livestock, they don't mind the weather one bit, when it is easy on cattle, it is easier on us.

We weaned the bulls on October 8th, they went right to feed and did not look back. We were real hard on them and put a lot of selection pressure on them. There are no nervous ones, no low performers or hard doers. They will sire moderate, deep bodied, easy fleshing calves with plenty of rear quarter and thickness. They will add value to every segment of the beef industry. This set of bulls are as uniform as we have ever offered. I guess you will either like them or hate them because they are alike.

Our motto is "THE COWMAN COMES FIRST". We strongly believe in this statement, because if your cowherd don't work well for you, or is not profitable, why go through the hassle. One thing is for sure, if you don't like the looks of your cowherd, it is not as exciting to go do chores.

When we say "The cowman comes first", we mean cows have to be the kind that can withstand our environment well, even when it is -40 degrees below zero, or 100 degrees above. We believe cows need to be efficient, strong cows that calve unassisted, wean heavy calves, and breed back year after year. At Begger's Diamond V Ranch we demand calving ease, superb udder qualities, and top disposition with a foot structure that

lasts. It seems there's a lot of cattle being promoted for the past few years that have lost focus on those traits. EPDs have taken over the cattle breeding business. We feel that there are way too many cattle out there that are bred on paper, and some producers breed for the biggest numbers without considering the effect it may put on their cowherd. Most times bigger is not always better, we have been down that road before. Many have lost sight of the rancher's needs, they seem to over emphasize terminal values and are not focusing enough on production and traits that keep the rancher profitable. We understand that the end product is to eat them, but likewise we need to feed them and breed them, balanced selection is the way to profitability. We stress cow quality, because when your cows fail, it's expensive and unprofitable to cull young cows that fall out from structure issues soon, or cows that fail to breed back year after year. We realize that not all cattle work every time, and we understand there will be issues. We want you to be confident when one fails to be satisfactory. We will stand behind them for the first breeding season at 100% of their value, not at a ½ purchase price like many do.

If your operation is looking to enhance cow qualities along with traits that are profit driven and consumer friendly. We invite you to come, analyze our program, and encourage you to compare. We feel confident you will like what you see and when you sell those calves and retain the heifers, you will be glad you did. Just remember the breeding decision you make today will influence the next 20 years, make it a good one. Use Begger's Diamond V Ranch breeding stock, where the cattle and the program put you the cowman first.

Bill, Darlene, John, Alicia, Harry, Elaine, and Virginia



Bill & Darlene



John, Alicia, Gabriel, Harrison,
Charlotte & Magdalene



Virginia



Harry & Elaine
*Married 70 Years! Take the
time to congratulate them!*

BEGGER'S DIAMOND V RANCH

February 3, 2021 // 12:30 PM MST // At the Ranch, Wibaux, MT

MOTELS

Beaver Creek Inn, Wibaux, MT 406-796-2666
Buckboard Inn, Beach, ND 701-872-4794

SALE DAY PHONES

406-796-2326 // 406-796-2380 // 406-796-2327
Bill Begger, darbegger@gmail.com 406-796-2326
482 Custer Trail Rd, Wibaux, MT 59353
John Begger, cell 406-956-0151

AUCTIONEER

Roger Jacobs 406-698-7686

REPRESENTATIVES AND RINGMEN

Jeff Thomas, Prairie Star 406-581-8859
Kirby Goettsch, Farm and Ranch Guide 605-380-3939
John Goggins, Western Livestock Reporter 406-698-4159
John Paterson, ASA 406-581-3492
Rocky Forseth, Allied Genetic Resources 406-590-7984
Bill Pelton, Pelton Livestock Representative 406-671-5100

RANCH LOCATION

The sale will be held at the ranch located south of Wibaux, Montana.

Go 4 1/2 miles south of the Wibaux County Fair Grounds on Highway #7, then turn left on Black Diamond Road (east) go 1 1/2 miles, then turn right (south) on Custer Trail Road, go 2 3/4 miles, sale location is on the left hand side of the road.

From Beach, North Dakota, take Exit One, turn left, go past both Truck Stops, approximately 1 mile to the first stop sign (please note the 4 way stop), turn right at 4 way stop, go 7 miles west, then turn left on Custer Trail Road and go 2 3/4 miles, sale location is on the left hand side of the road.

From Baker, Montana, take Highway #7 north, approximately 35 miles, turn right on Red Top Road at mile marker 71, go 1 1/2 miles east (Custer Trail), turn left, go 1 1/4 miles, sale location is on the right hand side of the road.



CATTLE VIEWING

We welcome your visit anytime that you are in the area. Please call before you come, so that we are here to show you around.

TERMS AND CONDITIONS

As recommended by the American Angus and American Simmental Associations. Cattle will only be released from the sale after they have been settled for. In no instance, will any cattle be allowed to be loaded for shipping without full settlement. Simmental EPDs listed in the catalog were populated on December 29, 2020. Angus EPDs listed in the catalog were populated on January 8, 2021. Please note that EPDs may change from time sale catalog is printed, until registration papers are transferred.

FEEDING ARRANGEMENTS AND DELIVERY

For bulls selling for \$3,000 or more, we will offer free keep of your bull until the first of April. At that time we will semen test and give your bulls a breeding exam and deliver them free of charge up to 500 miles. For bulls that sell for less than \$3,000 we will feed them and have them semen tested for \$150 due on sale day. We will help in delivery arrangements. The bulls will be delivered to your ranch or in some cases when there are multiple owners of cattle on the truck and there is a need to unload and sort cattle, we may ask that you meet us at a central location that is convenient to both parties. For cattle selling over 500 miles away, we may have to hire a trucking firm to help with delivery, if so, we will guarantee delivery cost not to exceed \$300 per bull. In most cases, we will deliver them ourselves, but occasionally we will put the bull on a commercial truck that is reputable and conscientious. For purchases of cattle a long distance away, we ask that you be flexible on delivery dates in case we have the opportunity to send your bull your direction earlier than April 1st. When purchasing a bull from Begger's Diamond V Ranch, we take responsibility in delivering a healthy, breeding bull. We will take responsibility of injury or death loss while the bull is on our ranch. Responsibility of your bull purchase begins when he reaches your ranch or delivery point. We guarantee buyer satisfaction. If you have any problems with your bulls ability to breed and settle cows, let us know so we can make it right. We suggest that you insure your bull against death or injury. We cannot guarantee them against an act of God or sickness that develops while he is in your control. We do guarantee our cattle to be healthy sale day.

ANNOUNCEMENTS

Announcements made sale day and from the auction block during the sale take precedence over printed material associated with this sale. Anyone attending this sale attends at their own risk. Begger's Diamond V Ranch or any of the sale force will not be responsible for any personal injury or loss while attending this sale.

HEALTH AND VACCINATIONS

The Bulls were vaccinated at branding with Pyramid 4, with Presponse and Vision 7 with Somnus, and again at weaning, they were poured with Ivermectin on September 3 and again in December.

SALE ORDER

We will sell lots 1 through 20, then fall bulls, then go back to lot 21 following catalog order, selling Angus bulls last.

SIGHT UNSEEN PURCHASES

We guarantee all sight unseen purchases. Call ahead and we will go over the bulls and try and match you up with a bull that meets your needs. You can leave a bid with us or any Sales Rep, or by phone, whichever is convenient for you. We know our cattle and strongly recommend that you call and visit with us on all sight unseen purchases. Sight unseen purchase policy does not apply if you are selecting your own bulls without our consultation or the help of our sales reps.

INTERNET

Our sale will be broadcast over the Internet on DVAuctions. If you cannot attend the sale in person we have set up this method so you can view the sale and make a purchase. Make sure you pre-register with DVAuctions before sale day. We likewise will offer phone service sale day for those who prefer making their purchase that way.

Catalog designed by

 **Generation 6**
marketing
www.generation6.co



QQ CONOCO F6

QQ CONOCO F6

PB SM | ASA # 3509732

Homo Black, Homo Polled

QB BLUEPRINT D47 x TNT TANKER U263

Semen \$35.00 or \$30 or more

NINE SONS SELL!

When you are looking for genetics that will put enough gas in your calves, you will want to look at Conoco.

Conoco has sired some of the top performance bulls. This year he excels in all the performance traits. He will sire calves that perform in the pasture on feed and on the rail.

We spent a lot of time searching for a purebred herd sire that offers the genetics to sire calves that weight heavy at weaning and look the part. We wanted a bull that was loaded with eye appeal and the look, Conoco was our choice. He sires cattle that tip the scale, have eye appeal, and performance. Cattlemen and cattlemen that sell pounds will love his kind.

Take a look at his EPDs in the top percentiles for weaning and yearling wts, he is a big ribeye bull with excellent yield.

His sire Blue Print is deceased and we decided to own a son that will carry on his genetic value. We feel Conoco is his top son to date.

Conoco is the bull that will add volume, a clean profile, and extra pay weight. Use Conoco to satisfy the cowman that want calves that weigh up at sale time.

We expect Conoco to carry on Blue Print's ability to sire jet black calves with presence. The Blue Prints separate themselves easily when it comes to cattle with eye appeal, thickness, and acceptability, among breeders and cattlemen that have used him. Conoco's calves are extremely docile.

DVAuction
www.dvauction.com

Watch & Bid online for FREE!

Can't make the sale?

Let DVAuction bring the sale to you!

Busy during the sale?

Let DVAuction represent your bid!

Visit www.dvauction.com and Register!

It's as easy as 1, 2, 3...

1. Create an account at www.dvauction.com under the "create new account" tab
2. Apply for bidding by clicking "apply for bidding" in the upper left corner of your screen, at least 24 hours prior to the auction
3. Tune into the sale and make your purchases!

For General Questions Please Contact Our Office:
(402) 316-5460 or dva@dvauction.com

*High Speed Internet Access Required

Sale Day Conference Call

It's as easy as

1. Pre-Register for your buyer number
2. Receive toll free call in # and pin
3. Get last minute instructions for call

Give Bill Pelton a call in advance

"Our goal is to get you in the seats but if you can't make it on sale day, we're fixin' to get you On The Line"

Pelton
Livestock
Marketing & Consulting

406.671.5100 bill@billpelton.com www.BILLPELTON.com





SELLING THE PICK OF OUR *Heifer Calves*

OUR GOAL IS TO MAKE OUR WORST COW TO BE AS GOOD AS OUR BEST.

This year we are offering the pick of our heifer calves both spring and fall born, there were over 250 head born. We have culled the spring heifers down to the top 100 and all the fall born will be available. These heifers are awesome, no doubt the best we have ever produced. Very even, deep sided, wide bodied, and moderate in their frame. We expect these heifers to heavily influence our future production sales. There are purebred, 3/4 blood, a large group of 1/2 blood SimAngus, and a nice selection of Angus heifers. Nothing held back, the whole shooting match is there for your appraisal. We don't do this often, so the gates are open, take your pick.

WHAT WE EXPECT FROM OUR COW HERD

Our cow herd is run like any good ranch would run theirs. Run on grass from mid-May through December and at times until February. They raise their calves on grass and mother's milk, NO CREEP. They are expected to wean a heavy calf, bred back on time, maintain their body condition.

Fertility is the basis of our program. These cows need to get bred early while doing their job. We run a synchronized AI program, breeding all the heifers first. This year 103, only 5 opens, with a 92% AI conception. We start breeding the mature cows 2 days after about 70 head every other day for 4 groups. They are then cleaned up with excellent quality herd sires.

This year when preg checked, there were only 10 dries in the whole spring calving herd for a 97% conception rate. If a cow goes open, she goes to town, no second chance, no switching cows from spring to fall, just doing what is right, culling them and replacing them with females that are fertile. We breed the cows to start calving March 1st, but we usually have our first calf mid-February. The heifers seem to be about 80% calved out by their due date, along with around 30 cows. We use bulls that calve easy, but we also expect them to be performance cattle, we won't use bulls that are small birth wt, that sire low performance. The cows are our main focus, we expect them to be trouble free and low maintenance, udder quality is a must if they have a poor udder or ever have a problem getting their calves to nurse, we will get them in to start them once, and only once. If they go through the chute to get a calf started, she is culled, no exceptions and no excuses.

The fall calvers start around August 20th, they calve on the range, even the 2 year olds. We check them once a day to tag and weigh the newborns. As with most years we hardly see a calf born. This past year we had a 100% fall calf crop, we did lose 2 calves, but had 2 sets of twins to back them up. We do not creep feed the fall calves either, we probably should because late fall and through the winter the pickings are slim. They eat what their mother's eat, so they have to compete to get enough to eat. This does affect their weaning wt, but the genetics are there, and they have the summer to express their genetics, which they do on grass and a mineral lick barrel very well.

SPRING SIMMENTAL BULLS

THE SPRING BULLS

This group of bulls have jumped through all the tests very well. They are the cream of the crop. They are the top end out of over 200 born. They were never creep fed and were raised on mother's milk and grass. On September 3rd, we preconditioned them, and took weaning wts. We turned them back out and weaned them October 7th. These calves sailed through the weaning process without any sick ones. They were super easy to be around with very few nervous ones (if they were, they are now steers). We never pushed these bulls hard, they are fed a cool ration of oat and pea silage, along with a blended hay mix of grass and alfalfa, with some corn for energy. We feed a pound a day of a pellet ration balancer. We don't want the bulls to gain much over 3.25 to 3.5 lbs a day, we are not in an ADG contest and will not over feed to make them look good. This is a very uniform group with excellent quality from front to back. They are selected for the right reasons. They will make you money and be profitable.



LOT 1

1

80H

Homo Black • Homo Polled • 1/2 SM 1/2 AN
ASA# 3811623 • Tattoo: 80H • BD: 3/10/20
Act. BW: 89 lbs. • Adj. WW: 810 lbs. • Ratio: 113
Adj YW: 1421 lbs. • ADG: 3.82 lbs. • SC: 37.0
QB BLUEPRINT D47
GQ CONOCO F6
KRJ B478

X

TC TOTAL 410
BDV X004 OF TOTAL
B D V T707 OF 4-SEASONS

CE	BW	WW	YW	MCE	Milk	MW	CW	YG	MB	BF	REA	API	TI
11.2	1.4	86.6	132.9	8.6	18.0	61.2	33.0	-0.20	0.36	-0.028	0.70	133.0	83.9

Here is one stout powerhouse, it won't take long to find him. He is in pen one and earned the lead off position for several reasons. He is thick, attractive and easy fleshing with a powerful rib shape. Then analyze his outstanding performance figures. He puts it all together in a package that every cowman desires. There is a lot to offer here.

2

33H

Homo Black • Homo Polled • 1/2 SM 1/2 AN
ASA# 3811531 • Tattoo: 33H • BD: 2/29/20
Act. BW: 100 lbs. • Adj. WW: 783 lbs. • Ratio: 109
Adj YW: 1397 lbs. • ADG: 3.84 lbs. • SC: 38.0
KOCH LC MONTE 803U
LRS RANGE BOSS 901Z
LRS MS FINAL ANSWER 901W

X

TRAXS DOC Z52
BDV MS DOC D142
MBP LADY 152S

CE	BW	WW	YW	MCE	Milk	MW	CW	YG	MB	BF	REA	API	TI
8.3	3.5	88.7	132.6	3.6	17.3	61.6	32.8	-0.19	0.28	-0.032	0.66	121.4	79.8

This Range Boss son will get it done and get it done well. Thick, deep and loaded with performance. Any rancher that sells his calves by the pound should sit up and take notice! This calf is a prime example of total performance and yet will sire cattle that are sensible sized with outstanding fleshing ability. They are the kind the industry needs more of. He is very gentle.

3

54H

Homo Black • Polled • 3/4 SM 1/4 AN
ASA# 3811584 • Tattoo: 54H • BD: 3/6/20
Act. BW: 83 lbs. • Adj. WW: 856 lbs. • Ratio: 119
Adj YW: 1478 lbs. • ADG: 3.89 lbs. • SC: 35.0
HOOK'S BLACK HAWK 50B
HOOK'S EAGLE 6E
HOOK'S CRYSTAL 1C

X

BDV CAPITALIST 43B
BDV D67 CAPITALIST 43B
BDV MS SWEET MEAT Y39

CE	BW	WW	YW	MCE	Milk	MW	CW	YG	MB	BF	REA	API	TI
10.8	0.9	101.4	157.2	6.1	28.5	79.1	46.9	-0.28	0.28	-0.050	0.98	150.9	93.0

Here is a bull that ranks 2nd for 205-day weight out of 130 contemporaries. This guy is long, strong and performance designed. The cow family behind him backs him up. There is several generations of cows and sires that are lined up to be pound makers and it doesn't end there. Likewise, the maternal power in his pedigree very good. Cows with excellent udders and top-notch dispositions are blended together to make this bull and future generations excel both on the range and in the feedlot. He is the kind that will produce value no matter how you take your program. The added bonus is his quiet disposition.



LOT 2



LOT 3

SPRING SIMMENTAL BULLS

4

134H

Homo Black • Homo Polled • PB SM
 ASA# 3811712 • Tattoo: 134H • BD: 3/30/20
 Act. BW: 97 lbs. • Adj. WW: 859 lbs. • Ratio: 120
 Adj YW: 1413 lbs. • ADG: 3.46 lbs. • SC: 36.0
 QB BLUEPRINT D47
GQ CONOCO F6 X BDV MASTERPIECE 36X
 KRJ B478 THSR X066

CE	BW	WW	YW	MCE	Milk	MW	CW	YG	MB	BF	REA	API	TI
9.5	3.1	91.1	141.0	5.3	22.7	68.2	43.4	-0.42	0.11	-0.100	0.97	132.1	83.8

This is the top indexing bull out of the whole calf crop, and he is a purebred by Conoco. I truly appreciate his outcross pedigree and well put together design. He has the genetics to produce calves that are ideal in type and kind. If you like sensible sized cattle that are long, deep, and wide, and look good from any angle, here he is. A true performance bull with ratios that blow the competition away, if pay weight and style are what you are looking for, you will want to own him. He is very gentle.



LOT 4

5

36H

Hetero Black • Polled • PB SM
 ASA# 3811537 • Tattoo: 36H • BD: 3/1/20
 Act. BW: 94 lbs. • Adj. WW: 834 lbs. • Ratio: 116
 Adj YW: 1335 lbs. • ADG: 3.13 lbs. • SC: 37.0
 HOOK'S BLACK HAWK 50B
HOOK'S EAGLE 6E X OLF GRANDMASTER Y33
 HOOK'S CRYSTAL 1C RFS MISS BELGIUM B152
 RFS MISS T83

CE	BW	WW	YW	MCE	Milk	MW	CW	YG	MB	BF	REA	API	TI
10.1	1.3	87.6	140.1	6.3	30.2	74.0	41.6	-0.39	0.36	-0.075	1.05	155.0	91.1

If you are looking for a purebred that is pure performance, here you go. He ranked #3 out of 143 contemporaries at weaning and is coming right along on test. This bull will be one of Eagle's larger framed sons. His dam is a perfect uddered baldy cow that John purchased out of Paul Rydeen's sale. He is a free moving bull with the potential to sire calves that smash the scale down. Note, this bull is a little flighty.



Videos
Online!

DVAuction
Broadcasting Real-Time Auctions

Remember to check out our sale videos online!
 Available on DVAuction by mid-January.

6

70H

Homo Black • Homo Polled • 3/4 SM 1/4 AN
 ASA# 3811604 • Tattoo: 70H • BD: 3/8/20
 Act. BW: 89 lbs. • Adj. WW: 777 lbs. • Ratio: 108
 Adj YW: 1396 lbs. • ADG: 3.87 lbs. • SC: 36.0
 FBF1 COMBUSTIBLE
QB IGNITE D83 X BDV TORQUE 912W
 KNH PLAY ON 458Z BDV MS TORQUE B90
 BDV MS COAL MINER X62

CE	BW	WW	YW	MCE	Milk	MW	CW	YG	MB	BF	REA	API	TI
11.7	1.6	79.6	122.5	6.9	22.5	62.2	31.5	-0.13	0.17	-0.032	0.44	125.5	75.0

Every time I look in the bull pen there stands this eye-catching bull, I look and sure enough, it is 70H. There is a reason it's called B90, his dam, she has consistently produced calves that wean heavy and have eye appeal. This bull is not her first son that made the front pen. This guy will add some frame, a lot of power and eye appeal. He is nice and gentle.



LOT 6

7

57H

Homo Black • Homo Polled • 1/2 SM 1/2 AN
 ASA# 3811587 • Tattoo: 57H • BD: 3/6/20
 Act. BW: 82 lbs. • Adj. WW: 729 lbs. • Ratio: 102
 Adj YW: 1331 lbs. • ADG: 3.76 lbs. • SC: 38.0
 CCR FLINT HILLS 2092B
CCR FLINT ROCK 0101E X WCS MR TRADITION 732T
 CCR MS GINGER 3114A BDV MS TRADITION Y25
 ANCHOR FAME 105

CE	BW	WW	YW	MCE	Milk	MW	CW	YG	MB	BF	REA	API	TI
12.2	0.5	75.4	109.2	8.6	23.2	60.9	30.5	-0.06	0.63	0.001	0.47	143.2	84.4

Truly a beef bull with a ton of opportunity. He is what beef cattle are supposed to be; long, quiet natured, and powerfully constructed. Soft in his design and backed by a cow that has truly been one of our favorites. If you are wanting to produce cattle that do so much right, but still keep everything sensible and useful. Here is a bull that will sire females you will want to keep and steer calves that weigh heavy at sale time. Udder quality is second to none in this bull's lineage. He is solid enough to be an outcross breeder bull.



LOT 7

SPRING SIMMENTAL BULLS

8

128H

Hetero Black Baldy • Polled • 3/4 SM 1/4 AN
ASA# 3811703 • Tattoo: 128H • BD: 3/28/20
Act. BW: 93 lbs. • Adj. WW: 829 lbs. • Ratio: 116
Adj YW: 1427 lbs. • ADG: 3.74 lbs. • SC: 34.5

FBF1 COMBUSTIBLE
QB IGNITE D83
KNH PLAY ON 458Z

X

GW PREM BEEF 612Z
BDV MS PREM BEEF B68
BDV MS SPECIAL FOCUS Z46

CE	BW	WW	YW	MCE	Milk	MW	CW	YG	MB	BF	REA	API	TI
10.9	0.8	81.3	130.1	5.6	22.0	62.6	36.7	-0.15	0.28	-0.024	0.63	134.2	79.8

This is the baldy bull that catches everyone's eye. Very complete, long, deep sided, and wide behind. His dam is a no miss cow, the right size and kind with a perfect udder. There is no doubt, he will catch attention sale day with his completeness. Not only did he excel on and off the cow, he puts together a unique package.

LOT 8

9

56H

Homo Black • Homo Polled • 5/8 SM 3/8 AN
ASA# 3811586 • Tattoo: 56H • BD: 3/6/20
Act. BW: 82 lbs. • Adj. WW: 786 lbs. • Ratio: 110
Adj YW: 1370 lbs. • ADG: 3.65 lbs. • SC: 36.0

HOOK'S BLACK HAWK 50B
HOOK'S EAGLE 6E
HOOK'S CRYSTAL 1C

X

RFS W109
BDV MS SUMMIT Z77
BDV W925 OF BOX CAR

CE	BW	WW	YW	MCE	Milk	MW	CW	YG	MB	BF	REA	API	TI
11.7	0.3	100.0	153.6	6.1	20.2	70.1	48.1	-0.26	0.33	-0.045	0.97	142.7	93.2

Long, strong topped, and constructed like a performance beef bull. The opportunity this bull offers is great. Use him to add body length, soundness and maternal excellence. There is no doubt he will sire pay weight, and cattle that excel both in performance and eye appeal.

HOOK'S EAGLE 6E - SIX SONS SELL, INCLUDING LOT 9

10

51H

Homo Black • Homo Polled • 1/2 SM 1/2 AN
ASA# 3811577 • Tattoo: 51H • BD: 3/5/20
Act. BW: 97 lbs. • Adj. WW: 751 lbs. • Ratio: 105
Adj YW: 1426 lbs. • ADG: 4.22 lbs. • SC: 38.0

CCR COWBOY CUT 5048Z
TJ FRANCHISE 451D
TJ MISS NET WORTH U11

X

CONNEALY CAPITALIST 028
BDV MS CAPITALIST B34
HILLS L31 DAKOTA 245Z

CE	BW	WW	YW	MCE	Milk	MW	CW	YG	MB	BF	REA	API	TI
9.8	2.7	84.9	130.7	5.7	26.3	68.7	38.9	-0.11	0.25	-0.018	0.58	128.5	78.8

Long, strong, deep sided and strong topped. This bull certainly carries the genetics it takes to produce cattle that top sales. We enjoy the eye appeal he possesses, always eye catching and posing. If you have a set of cows that need a little more body length and depth here is an excellent choice, very easy to be around.

LOT 10

11

50H

Homo Black • Polled • 1/2 SM 1/2 AN
ASA# 3811575 • Tattoo: 50H • BD: 3/5/20
Act. BW: 95 lbs. • Adj. WW: 772 lbs. • Ratio: 108
Adj YW: 1330 lbs. • ADG: 3.49 lbs. • SC: 38.0

MAR INNOVATION 251
LRS TOPSHELF 902F
LRS MS TOPGRADE 303A

X

CONNEALY CAPITALIST 028
BDV MS CAPITALIST B20
BDV MS SUMMIT Z69

CE	BW	WW	YW	MCE	Milk	MW	CW	YG	MB	BF	REA	API	TI
13.5	0.9	90.2	139.8	7.9	20.8	65.9	48.0	-0.09	0.28	-0.014	0.67	138.7	85.0

Here is a man among the boys! Even in a very strong class of contemporaries, this bull will get your attention. We debated on whether to retain this guy for a herd bull. We really appreciate the volume, rib shape, and deep sidedness he possesses. When you look at him you will be totally impressed with his width and depth. If you are looking to add fleshing ability and rear ends into those cows that have that noassatall genetics, he should help you improve their dilemma. Excellent cow power, sensible sized, and impressive both on paper and in person. The industry is crying for more of his kind.

LRS TOPSHELF 902F - SIRE OF SEVERAL LOTS

SPRING SIMMENTAL BULLS

12

52H

Homo Black • Homo Polled • 1/2 SM 1/2 AN
ASA# 3811578 • Tattoo: 52H • BD: 3/5/20
Act. BW: 87 lbs. • Adj. WW: 754 lbs. • Ratio: 105
Adj YW: 1340 lbs. • ADG: 3.66 lbs. • SC: 36.0

BASIN PAYWEIGHT 1682
CCR PAY DIRT 2340C
CCR MS SINGLETARY 2340Z

X

BDV FESTUS 149S
BDV MS FESTUS A38
BDV MS DUAL FOCUS X35

CE	BW	WW	YW	MCE	Milk	MW	CW	YG	MB	BF	REA	API	TI
10.8	0.7	81.8	132.7	6.1	25.3	66.2	35.4	-0.06	0.35	-0.008	0.47	130.9	82.2

Old A38 hit it out of the park again! Last year a full brother was a sale highlight and sold to the Millers at Raleigh, ND. This bull is out of a cow we would like to model our cowherd around. So well balanced, easy fleshing, and sensible sized with an udder we would like to hang under every cow we ever have to work with. No matter what, breed or style, you like. This bull will only help make better cows.



CCR PAY DIRT 2340C - SIRE OF LOTS 12, 70, 82, 122

13

12H

Homo Black • Homo Polled • PB SM
ASA# 3811491 • Tattoo: 12H • BD: 2/24/20
Act. BW: 80 lbs. • Adj. WW: 777 lbs. • Ratio: 108
Adj YW: 1391 lbs. • ADG: 3.84 lbs. • SC: 35.5

HOOK'S BLACK HAWK 50B
HOOK'S EAGLE 6E
HOOK'S CRYSTAL 1C

X

TNT PRIDE C232
BDV MS PRIDE E69
LRS MS MISSING LINK 943W

CE	BW	WW	YW	MCE	Milk	MW	CW	YG	MB	BF	REA	API	TI
12.6	-1.5	96.6	153.0	8.4	19.6	67.9	44.3	-0.41	0.34	-0.085	1.05	163.7	98.8

This bull gets a big nod of approval from me, he is truly a cowman's bull. Out of a 3 year old dam that appears to be on her way to becoming a top producer. This Eagle son is moderate like his sire. He possesses excellent eye appeal with top fleshing ability and volume. He performed well on the cow and continued to perform on test. If you are looking for a bull that will sire fleshing ability with eye appeal, he could be a great choice. With his light birth weight, he could possibly work on heifers with supervision and will certainly work on young cows. He is in the top 3% for API & Top 1% for TI.



LOT 13

14

136H

Homo Black • Polled • 1/2 SM 1/2 AN
ASA# 3811718 • Tattoo: 136H • BD: 4/4/20
Act. BW: 80 lbs. • Adj. WW: 792 lbs. • Ratio: 110
Adj YW: 1434 lbs. • ADG: 4.01 lbs. • SC: 35.0

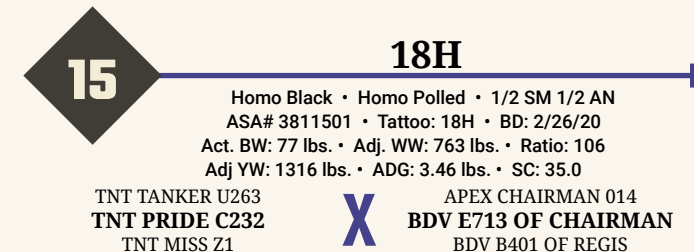
LRS RANGE BOSS 901Z
NLC HALF NELSON 98E
NLC BIRONA B40

X

PARKERS BLUEBOY B440
BDV MS BLUEBOY E80
BDV MS SOLO A67

CE	BW	WW	YW	MCE	Milk	MW	CW	YG	MB	BF	REA	API	TI
10.3	1.8	87.6	128.1	6.1	20.9	64.7	41.5	-0.15	0.24	-0.019	0.76	126.4	80.6

A bull that started off at 80 pounds and then blew past most of his contemporaries to wean just under 800 pounds. He still kept pouring it on to become one of the elite yearling weight bulls, with a top ADG on test. He is made the way we like them, sensible frame sized, and thick, and deep sided. There is some of the top cow families we own running through his veins. He offers outcross genetics that blend together, excellent performance with outstanding potential.



15

18H

Homo Black • Homo Polled • 1/2 SM 1/2 AN
ASA# 3811501 • Tattoo: 18H • BD: 2/26/20
Act. BW: 77 lbs. • Adj. WW: 763 lbs. • Ratio: 106
Adj YW: 1316 lbs. • ADG: 3.46 lbs. • SC: 35.0

TNT TANKER U263
TNT PRIDE C232
TNT MISS Z1

X

APEX CHAIRMAN 014
BDV E713 OF CHAIRMAN
BDV B401 OF REGIS

CE	BW	WW	YW	MCE	Milk	MW	CW	YG	MB	BF	REA	API	TI
14.1	-0.8	92.1	140.5	10.0	18.1	64.1	51.4	-0.20	0.18	-0.043	0.84	139.1	85.7

This is a long bodied, soggy bull. He is soft in his make-up with a lot to offer. Only 77 pounds at birth and 763 at weaning. He performed very well post weaning and seems to keep getting better every day. His young 3 year old dam comes by her calf raising ability honestly, her Angus dam is a true calf raiser that she brings in a big efficient calf every year. Not big cows but very efficient.

16

106H

Homo Black • Homo Polled • 1/2 SM 1/2 AN
ASA# 3811668 • Tattoo: 106H • BD: 3/18/20
Act. BW: 87 lbs. • Adj. WW: 790 lbs. • Ratio: 110
Adj YW: 1409 lbs. • ADG: 3.87 lbs. • SC: 36.0

LRS RANGE BOSS 901Z
NLC HALF NELSON 98E
NLC BIRONA B40

X

TNT DUAL FOCUS T249
BDV MS DUAL FOCUS A48
BDV ROBIN S39

CE	BW	WW	YW	MCE	Milk	MW	CW	YG	MB	BF	REA	API	TI
11.1	0.8	82.0	120.1	5.0	21.1	62.0	29.5	-0.13	0.33	-0.005	0.62	131.2	80.6

This is a very stout, well-constructed bull with excellent performance. He is built like a freight train, deep, thick and long. A super powerful cow family backs him up. He is one of those bulls that just keeps excelling and he just doesn't falter. He will sire calves that have the go power to weigh heavy on sale day and his daughters will be excellent uddered cows that stay in shape.



LOT 16

SPRING SIMMENTAL BULLS

17

63H

Homo Black • Polled • 1/2 SM 1/2 AN
ASA# 3811597 • Tattoo: 63H • BD: 3/7/20
Act. BW: 82 lbs. • Adj. WW: 788 lbs. • Ratio: 110
Adj YW: 1478 lbs. • ADG: 4.31 lbs. • SC: 37.0

S A V PRIVILEGE 3030
VERMILION PRIVILEGE E856
VERMILION BLACKCAP 4889

LRS UNLIMITED 752A
BDV MS UNLIMITED D124
U40

CE	BW	WW	YW	MCE	Milk	MW	CW	YG	MB	BF	REA	API	TI
10.8	1.1	83.3	126.5	5.3	22.5	64.1	48.5	-0.14	0.24	-0.025	0.73	124.2	77.2

This bull has performed very well. He is out of a cow family that are heavy milkers. With their ability to milk and Privilege's powerful make up the obvious occurs, big heavy weaning cattle that smash the scales down.

19

32H

Homo Black • Homo Polled • PB SM
ASA# 3811530 • Tattoo: 32H • BD: 2/29/20
Act. BW: 94 lbs. • Adj. WW: 750 lbs. • Ratio: 105
Adj YW: 1294 lbs. • ADG: 3.40 lbs. • SC: 36.0

QB BLUEPRINT D47
GQ CONOCO F6
KRJ B478

LRS UNLIMITED 752A
BDV MS UNLIMITED C26
MISS PRICKLY PEAR 081X

CE	BW	WW	YW	MCE	Milk	MW	CW	YG	MB	BF	REA	API	TI
10.5	1.9	83.2	126.5	7.7	22.9	64.4	43.0	-0.41	0.27	-0.080	1.08	142.3	84.3

This is one well put together bull; very thick and wide, with a ton of fleshing ability. His dam is a 6 frame easy going Unlimited daughter out of a superb Oxbow Traveler cow that always raised one of the best. We feel this bull is so right for the times. We think he is good enough for any program purebred or commercial that wants to keep their cowherd thick deep and productive. He should sire plenty of performance and yet sire moderate sensible sized cattle that have pay weight and volume. Note this bull did have an abscess that we lanced so he may have a little scar tissue. He is very quite natured.

21

133H

Homo Black • Homo Polled • 1/2 SM 1/2 AN
ASA# 3811711 • Tattoo: 133H • BD: 3/29/20
Act. BW: 95 lbs. • Adj. WW: 813 lbs. • Ratio: 113
Adj YW: 1334 lbs. • ADG: 3.38 lbs. • SC: 35.0

MAR INNOVATION 251
LRS TOPSHELF 902F
LRS MS TOPGRADE 303A

BDV FESTUS 149S
BDV MS FESTUS A15
GSR MS HYBRED 63N

CE	BW	WW	YW	MCE	Milk	MW	CW	YG	MB	BF	REA	API	TI
10.8	3.1	88.1	139.0	6.9	22.8	66.8	41.3	-0.09	0.23	-0.022	0.51	129.5	79.8

This bull is absolutely a power packed performance bull and he has one of the bigger beat. From day one he let us know he was special. His dam is one of our missed cows, but absolutely a top calf producer. If you are looking to add performance and eye appeal, here is a top choice. Another bonus is the elite disposition and top udder quality in his pedigree.

23

120H

Homo Black • Homo Polled • 3/4 SM 1/4 AN
ASA# 3811692 • Tattoo: 120H • BD: 3/24/20
Act. BW: 89 lbs. • Adj. WW: 721 lbs. • Ratio: 101
Adj YW: 1359 lbs. • ADG: 3.99 lbs. • SC: 37.0

TJ MAIN EVENT 503B
CDI PREACHER 274E
CDI MS RIGHT ON 8Y

TRAXS SOLO Y39
BDV MS SOLO B109
BDV MS PREMIUM BEEF Y1

CE	BW	WW	YW	MCE	Milk	MW	CW	YG	MB	BF	REA	API	TI
11.3	0.8	73.5	113.2	5.1	29.8	66.5	29.2	-0.36	0.10	-0.078	0.79	125.1	72.3

This bull excelled all the way from birth to weaning and on test. He may be close to the top performer on test. He is one of the larger framed bulls in the offering, use him on those thick deep cows that need a bit more length and I don't think he will disappoint. He comes from a cow family of very heavy milkers at times, I wonder if they don't over milk. So, when you mate him don't put him on cows that need udder improvement, it is not that they are bad, they just have plenty of milk. He is very quiet and easy to be around.

8

18

121H

Homo Black • Homo Polled • 5/8 SM 3/8 AN
ASA# 3811693 • Tattoo: 121H • BD: 3/24/20
Act. BW: 78 lbs. • Adj. WW: 755 lbs. • Ratio: 105
Adj YW: 1336 lbs. • ADG: 3.65 lbs. • SC: 35.0

TJ MAIN EVENT 503B
CDI PREACHER 274E
CDI MS RIGHT ON 8Y

LRS PREFERRED STOCK 370C
BDV MS PREF STOCK Z41
ANCHOR FAME 105

CE	BW	WW	YW	MCE	Milk	MW	CW	YG	MB	BF	REA	API	TI
13.2	0.2	79.8	127.7	8.0	24.9	64.8	41.6	-0.25	0.17	-0.056	0.77	130.1	78.0

This bull puts together a very nice well-balanced package, light at birth, heavy at weaning, and excellent post weaning performance. He is out of a high producing Preferred Stock half blood dam. If you like them with a touch more frame and length, he may be the perfect fit. The udder quality is very good, he has a great disposition to boot.

20

25H

Homo Black • Polled • 1/2 SM 1/2 AN
ASA# 3811516 • Tattoo: 25H • BD: 2/28/20
Act. BW: 82 lbs. • Adj. WW: 716 lbs. • Ratio: 100
Adj YW: 1335 lbs. • ADG: 3.87 lbs. • SC: 35.0

KOCH LC MONTE 803U
LRS RANGE BOSS 901Z
LRS MS FINAL ANSWER 901W

GW PREM BEEF 612Z
BDV MS PREM BEEF D88
BDV MS FOCUS W21

CE	BW	WW	YW	MCE	Milk	MW	CW	YG	MB	BF	REA	API	TI
14.3	0.1	78.8	115.6	6.3	15.4	54.7	29.1	-0.17	0.26	-0.024	0.60	135.5	77.9

This Range Boss son will grab your attention. He has that clean stylish look at me look. He will offer excellent eye appeal with top performance. This bull is long and moderate framed and has the genetics to sire calves that will make your calf buyer sit-up and take notice. He will sire value.

22

122H

Homo Black • Polled • 1/2 SM 1/2 AN
ASA# 3811694 • Tattoo: 122H • BD: 3/24/20
Act. BW: 97 lbs. • Adj. WW: 830 lbs. • Ratio: 116
Adj YW: 1449 lbs. • ADG: 3.87 lbs. • SC: 35.0

CCR FRONTIER 0053Z
SYS BANJO F39
SYS JULIET A61

LRS RANGE BOSS 901Z
BDV MS RANGE BOSS D42
BDV MS LEGEND U17

CE	BW	WW	YW	MCE	Milk	MW	CW	YG	MB	BF	REA	API	TI
9.4	3.1	89.6	135.3	1.9	23.3	68.1	34.4	-0.19	0.25	-0.036	0.64	121.9	81.1

By golly this bull gets it done, both on paper and in person. He is in the bigger framed pen with some of the top performers. There is no doubt he is bred to produce pay weight and eye appeal. His daughters should have excellent udders and be very maternal.

24

8H

Homo Black • Homo Polled • 1/2 SM 1/2 AN
ASA# 3811481 • Tattoo: 8H • BD: 2/24/20
Act. BW: 106 lbs. • Adj. WW: 825 lbs. • Ratio: 115
Adj YW: 1396 lbs. • ADG: 3.57 lbs. • SC: 38.0

CCR COWBOY CUT 5048Z
TJ FRANCHISE 451D
TJ MISS NET WORTH U11

S A V FINAL ANSWER 0035
BDV MS FINAL ANSWER Y11
BDV MS FORTUNATE W38

CE	BW	WW	YW	MCE	Milk	MW	CW	YG	MB	BF	REA	API	TI
9.1	3.5	88.9	131.0	5.7	27.4	71.8	38.7	-0.06	0.32	-0.002	0.56	129.3	81.3

This is probably the longest bull in the offering. He is a high-performance bull that should be used on mature cows. If power and pay weight is your program, here is a candidate. His dam is a very strong producer that always brings in a top calf, this bull is very gentle.

SPRING SIMMENTAL BULLS

25

91H

Homo Black • Polled • 1/2 SM 1/2 AN
ASA# 3811645 • Tattoo: 91H • BD: 3/16/20
Act. BW: 89 lbs. • Adj. WW: 802 lbs. • Ratio: 112
Adj YW: 1344 lbs. • ADG: 3.39 lbs. • SC: 35.0

MAR INNOVATION 251
LRS TOPSHELF 902F
LRS MS TOPGRADE 303A



BDV TORQUE 912W
BDV MS TORQUE Z82
BDV MS STETSON X12

CE	BW	WW	YW	MCE	Milk	MW	CW	YG	MB	BF	REA	API	TI
14.1	1.0	88.4	133.2	8.2	23.0	67.1	42.8	-0.10	0.31	-0.030	0.50	139.4	84.5

Here is a very long sided bull with a little more frame than most in the offering. There is excellent performance both on and off the cow, if you are serious about weaning performance, here is a good choice. The maternal side of the picture is good likewise his dam is a heavy milker with a perfect udder. This bull will add some frame to his calves.

26

47H

Homo Black • Polled • 3/4 SM 1/4 AN
ASA# 3811570 • Tattoo: 47H • BD: 3/5/20
Act. BW: 90 lbs. • Adj. WW: 764 lbs. • Ratio: 107
Adj YW: 1390 lbs. • ADG: 3.91 lbs. • SC: 39.0

TNT TANKER U263
TNT PRIDE C232
TNT MISS Z1



S D S GRADUATE 006X
BDV MS GRADUATE A19
BDV MS DUAL FOCUS Y4

CE	BW	WW	YW	MCE	Milk	MW	CW	YG	MB	BF	REA	API	TI
12.9	1.4	86.8	132.6	7.9	20.6	63.9	42.3	-0.46	0.04	-0.098	1.09	139.3	81.9

This is a very long bull with some extra frame, use him to add some power and pay weight to a set of moderate cows. His dam is a moderate framed powerhouse and always weans a big calf. The udder quality on her is very nice, she is a heavy milker.

27

41H

Homo Black • Polled • 1/2 SM 1/2 AN
ASA# 3811552 • Tattoo: 41H • BD: 3/4/20
Act. BW: 104 lbs. • Adj. WW: 773 lbs. • Ratio: 108
Adj YW: 1287 lbs. • ADG: 3.21 lbs. • SC: 35.0

CCR COWBOY CUT 5048Z
TJ FRANCHISE 451D
TJ MISS NET WORTH U11



HSR IDENTITY A142
BDV MS IDENTITY C93
BDV MS TORQUE Z55

CE	BW	WW	YW	MCE	Milk	MW	CW	YG	MB	BF	REA	API	TI
8.2	2.4	82.0	126.9	4.6	31.3	72.2	38.7	-0.09	0.39	-0.008	0.59	134.6	81.1

This is a performance packed bull that carries a little extra frame. He comes from a cow family that always weans calves that weigh heavy at weaning. Udder quality is very good in his cow family. Use this bull on cows that need more maternal or more frame. He is very easy to be around and quiet mannered.

28

59H

Homo Black • Homo Polled • 3/4 SM 1/4 AN
ASA# 3811591 • Tattoo: 59H • BD: 3/6/20
Act. BW: 83 lbs. • Adj. WW: 752 lbs. • Ratio: 105
Adj YW: 1243 lbs. • ADG: 3.07 lbs. • SC: 38.0

GW-WBF SUBSTANCE 820Y
HOOK'S BALTIC 17B
HOOK'S SARITA 92Y



BDV CLICKER 27T
BDV MS CLICKER Z80
BDV W915 OF PREDESTINED

CE	BW	WW	YW	MCE	Milk	MW	CW	YG	MB	BF	REA	API	TI
13.4	1.1	79.4	130.3	8.1	11.3	51.0	39.9	-0.26	0.32	-0.055	0.76	132.4	79.6

As always, the Z80 cow produced another top performing calf. She consistently puts together a calf that not only performs above average but is very easy on the eyes. There is ton of value in this bull's genetics. His cow family is very useful, and they are production driven with excellent udders. There is no doubt the females will be the keeping kind. His sons will make excellent feeding cattle that hang useful profit-making carcasses.

29

117H

Homo Black • Polled • 3/4 SM 1/4 AN
ASA# 3811685 • Tattoo: 117H • BD: 3/22/20
Act. BW: 90 lbs. • Adj. WW: 776 lbs. • Ratio: 108
Adj YW: 1334 lbs. • ADG: 3.49 lbs. • SC: 35.0

MAR INNOVATION 251
LRS TOPSHELF 902F
LRS MS TOPGRADE 303A



TRAXS SOLO Y39
BDV MS SOLO A51
BDV MS CLUB KING X27

CE	BW	WW	YW	MCE	Milk	MW	CW	YG	MB	BF	REA	API	TI
11.9	1.2	78.4	114.1	7.6	23.5	62.6	35.5	-0.30	0.25	-0.072	0.72	129.2	77.1

This is a 3/4 blood out of Top Shelf and a good one. He is long, deep sided, and high performing. This bull is an outcross to many Simmental lines. He will produce cattle that weigh up and stay sensible sized. He is very good dispositioned and maternally bred.

30

38H

Hetero Black • Polled • 1/2 SM 1/2 AN
ASA# 3811545 • Tattoo: 38H • BD: 3/2/20
Act. BW: 104 lbs. • Adj. WW: 726 lbs. • Ratio: 101
Adj YW: 1230 lbs. • ADG: 3.15 lbs. • SC: 36.0

CCR COWBOY CUT 5048Z
TJ FRANCHISE 451D
TJ MISS NET WORTH U11



078 WINDY 377 J V
BDV MS WINDY C70
THSR XO89

CE	BW	WW	YW	MCE	Milk	MW	CW	YG	MB	BF	REA	API	TI
7.5	3.5	82.7	130.9	5.9	28.1	69.4	45.4	-0.05	0.34	-0.009	0.56	128.1	78.6

This Franchise son certainly carries a little more frame than most Franchise progeny. His dam is proving to be a performance cow as she weans heavy calves with enough stoutness to weigh up on sale day. This bull should sire calves with the potential to top feeder calf markets. His daughters will be good uddered and power packed.

31

112H

Homo Black • Homo Polled • 1/2 SM 1/2 AN
ASA# 3811679 • Tattoo: 112H • BD: 3/21/20
Act. BW: 92 lbs. • Adj. WW: 807 lbs. • Ratio: 113
Adj YW: 1372 lbs. • ADG: 3.53 lbs. • SC: 38.0

S A V PRIVILEGE 3030
VERMILION PRIVILEGE E856
VERMILION BLACKCAP 4889



BDV CLICKER 27T
BDV MS CLICKER X54
BDV MISS TIFFANY N21

CE	BW	WW	YW	MCE	Milk	MW	CW	YG	MB	BF	REA	API	TI
8.0	2.2	89.1	137.5	3.7	22.5	67.0	56.6	-0.09	0.09	-0.029	0.66	112.4	77.2

This bull is out of a 10 year old dam that never misses. She consistently produces a calf that is one of the heaviest. She is a larger framed cow that is a heavy milker. We mated her to the Privilege bull expecting to get a high-performance beef bull with power. Here he is, great ratios and genetics that will produce weight. Great disposition, nice and gentle.

32

82H

Homo Black • Homo Polled • 1/2 SM 1/2 AN
ASA# 3811626 • Tattoo: 82H • BD: 3/12/20
Act. BW: 83 lbs. • Adj. WW: 771 lbs. • Ratio: 108
Adj YW: 1372 lbs. • ADG: 3.76 lbs. • SC: 35.0

MAR INNOVATION 251
LRS TOPSHELF 902F
LRS MS TOPGRADE 303A



BDV TORQUE 912W
BDV MS TORQUE B103
LRS MS DAKOTA 641S

CE	BW	WW	YW	MCE	Milk	MW	CW	YG	MB	BF	REA	API	TI
13.5	0.8	83.1	124.6	7.9	21.9	63.4	43.5	-0.21	0.31	-0.044	0.76	138.9	82.0

This bull has jumped through all the hoops and has risen to the top of the performance offering. Offering excellent calving ease, very balanced weaning, and yearling performance with top indexes. He offers cow power with weaning and feed lot performance in a well-balanced package. His maternal strength should be excellent and udder quality will be the best.

SPRING SIMMENTAL BULLS



LOT 33

33

16H

Homo Black • Polled • 5/8 SM 3/8 AN
ASA# 3811497 • Tattoo: 16H • BD: 2/26/20
Act. BW: 82 lbs. • Adj. WW: 735 lbs. • Ratio: 103
Adj YW: 1273 lbs. • ADG: 3.36 lbs. • SC: 37.0

CCR FLINT HILLS 2092B
CCR FLINT ROCK 0101E
CCR MS GINGER 3114A

X

S D S GRADUATE 006X
BDV MS GRADUATE A12
BDV MS CLICKER Y40

CE	BW	WW	YW	MCE	Milk	MW	CW	YG	MB	BF	REA	API	TI
13.8	-1.3	71.1	105.7	8.1	23.5	59.0	30.0	-0.14	0.55	-0.010	0.63	148.5	82.9

This is a bull that continually catches my attention. He is a bull that you could use on any set of cows. Light at birth and grew like a weed on his dam, by weaning time he was a sight to see nursing his 5 frame dam. This bull is long and eye appealing. Clean in design and powerful in his makeup. If you are looking for a bull that is bred to sire marbling and still sire calves that are easy born and grow well. Along with daughters that will be very maternal and sensible sized, here you go.

34

130H

Homo Black • Homo Polled • 1/2 SM 1/2 AN
ASA# 3811706 • Tattoo: 130H • BD: 3/28/20
Act. BW: 100 lbs. • Adj. WW: 727 lbs. • Ratio: 101
Adj YW: 1362 lbs. • ADG: 3.97 lbs. • SC: 37.0

LRS RANGE BOSS 901Z
NLC HALF NELSON 98E
NLC BIRONA B40

X

RFS W109
BDV MS SUMMIT Z65
BDV R515 OF VRD

CE	BW	WW	YW	MCE	Milk	MW	CW	YG	MB	BF	REA	API	TI
6.9	3.7	90.0	138.1	3.7	21.0	66.0	35.9	-0.04	0.32	0.002	0.49	121.1	80.9

Here is a younger bull in the offering that don't take a back seat to many. By the time he is turned out to breed cows, I expect him to be as stout and solid as any. He is out of a very powerful cow that is stacked generation after generation with top producing cows. His great granddam was a top producing Angus cow sired by VRD. This bull is for the cowman that likes power. His dam is a very heavy milker, so mate him accordingly.

35

125H

Homo Black • Homo Polled • 5/8 SM 3/8 AN
ASA# 3811697 • Tattoo: 125H • BD: 3/25/20
Act. BW: 83 lbs. • Adj. WW: 755 lbs. • Ratio: 105
Adj YW: 1381 lbs. • ADG: 3.91 lbs. • SC: 35.5

CCR FRONTIER 0053Z
SYS BANJO F39
SYS JULIET A61

X

J BAR J NIGHTRIDE 225Z
BDV MS NIGHTRIDE D37
BDV MS YELLOWSTONE B65

CE	BW	WW	YW	MCE	Milk	MW	CW	YG	MB	BF	REA	API	TI
14.4	-0.2	82.4	132.8	5.9	24.0	65.2	40.4	-0.24	0.43	-0.050	0.76	142.4	86.7

This bull amazes me how he just keeps hanging in there, out of a moderate, deep sided cow that is positioning herself to be as good as any. She produces light birth weight calves that excel to weaning and keep going on test. Yet they are not overly tall, just thick, long, and good. The udder quality is very strong with excellent type. If you look at the EPD profile, the ones that make you money, are the ones excelling in birth weight, weaning, yearling, ADG, docility, marbling, and ribeye, with a very good API & TI.

36

116H

Homo Black • Homo Polled • PB SM
ASA# 3811684 • Tattoo: 116H • BD: 3/22/20
Act. BW: 84 lbs. • Adj. WW: 784 lbs. • Ratio: 109
Adj YW: 1250 lbs. • ADG: 2.91 lbs. • SC: 34.0

TJ MAIN EVENT 503B
CDI PREACHER 274E
CDI MS RIGHT ON 8Y

X

TNT AXIS X307
BDV MS AXIS B47
BDV MS GRANDMASTER Y17

CE	BW	WW	YW	MCE	Milk	MW	CW	YG	MB	BF	REA	API	TI
9.6	1.9	81.3	124.2	4.8	30.4	71.0	32.8	-0.40	0.11	-0.072	0.99	132.4	79.7

This bull is a very classy bull with outstanding performance to back him up. This year ago, we offered the pick of our herd in the North Dakota State Sale to benefit Doug Bichler and his family. She brought \$9750 and was purchased by a large group of supporters, they then donated her to Doug's daughter, when Doug made his choice, it was this bull's sister. We believe he couldn't have made a better choice. The cow behind this bull is very good, a real eye pleaser, and always a top calf producer.

37

30H

Homo Black • Polled • 1/2 SM 1/2 AN
ASA# 3811524 • Tattoo: 30H • BD: 2/29/20
Act. BW: 66 lbs. • Adj. WW: 689 lbs. • Ratio: 96
Adj YW: 1150 lbs. • ADG: 2.88 lbs. • SC: 35.0

MAR INNOVATION 251
LRS TOPSHELF 902F
LRS MS TOPGRADE 303A

X

TNT DUAL FOCUS T249
BDV MS DUAL FOCUS Y4
BDV MS SOLUTION U6

CE	BW	WW	YW	MCE	Milk	MW	CW	YG	MB	BF	REA	API	TI
18.6	-2.3	73.2	115.8	12.1	21.1	57.6	35.0	-0.06	0.40	-0.017	0.38	151.6	81.9

When you walk out into the bull pen this bull seems to always grab your attention. He is very complete in his makeup and has that look at me profile. If you like cattle that are deep and soggy with style this guy deserves a look. His dam is big volumed and easy fleshing. These Top Shelf calves are peas in a pod and are flat good. This bull is very easy to be around.

TESTICLE MEASUREMENTS

The scrotal circumference of each bull was tape-measured on December 20, 2020. The scrotal measurements were adjusted to yearling, and sometimes will vary one way or another as actual yearlings. We guarantee our bulls 100% for fertility, unless damage is induced at your ranch, and then it's out of our control.

Recommendations for Scrotal Circumference:

Months of Age	12-14	15-20	21-30	30 +	
Scrotal cm	35	37	39	49	Excellent
	30-35	31-37	32-39	33-40	Good
	30	31	32	33	Poor



LOT 37

SPRING SIMMENTAL BULLS

38

71H

Homo Black • Homo Polled • 1/2 SM 1/2 AN
ASA# 3811605 • Tattoo: 71H • BD: 3/8/20
Act. BW: 84 lbs. • Adj. WW: 714 lbs. • Ratio: 100
Adj YW: 1282 lbs. • ADG: 3.55 lbs. • SC: 36.0

QB BLUEPRINT D47
GQ CONOCO F6
KRJ B478

X

G A R PREDESTINED
BDV W923 OF PREDESTINED
BDV 615 OF EXCITEMENT

CE	BW	WW	YW	MCE	Milk	MW	CW	YG	MB	BF	REA	API	TI
10.8	0.9	74.2	117.0	7.8	21.8	58.8	35.7	-0.14	0.39	-0.028	0.56	122.8	77.9

This Conoco son has stood out as a top bull prospect all summer long. He is long, thick, and powerful yet moderate sized and very complete. He is wide topped and stylish, his dam is 11 years old, still producing well. Every cowman that appreciates easy doing cattle both physically and mentally should take the time to look this bull up. If you owned a pot load of calves built like him, you would enjoy sale day.



TJ FRANCHISE 451D - SIRE OF SIX LOTS, INCLUDING LOT 39

39

73H

Homo Black • Polled • 1/2 SM 1/2 AN
ASA# 3811608 • Tattoo: 73H • BD: 3/8/20
Act. BW: 105 lbs. • Adj. WW: 691 lbs. • Ratio: 96
Adj YW: 1283 lbs. • ADG: 3.70 lbs. • SC: 36.0

CCR COWBOY CUT 5048Z
TJ FRANCHISE 451D
TJ MISS NET WORTH U11

X

BDV TORQUE 912W
BDV MS TORQUE A87
BDV MS COAL MINER X62

CE	BW	WW	YW	MCE	Milk	MW	CW	YG	MB	BF	REA	API	TI
9.2	3.2	78.3	118.1	5.8	25.7	64.8	37.0	-0.11	0.35	-0.022	0.52	130.0	76.4

A thick deep bull that is all performance. He was born a little bigger than average, but he is out of a bigger stouter cow. I really like the stoutness she possesses, perfect uddered and easy keeping. He is very eye catching and powerfully shaped, he will put value into his calf crop.



LOT 39

40

40H

Homo Black • Homo Polled • 1/2 SM 1/2 AN
ASA# 3811547 • Tattoo: 40H • BD: 3/2/20
Act. BW: 96 lbs. • Adj. WW: 703 lbs. • Ratio: 98
Adj YW: 1228 lbs. • ADG: 3.28 lbs. • SC: 37.0

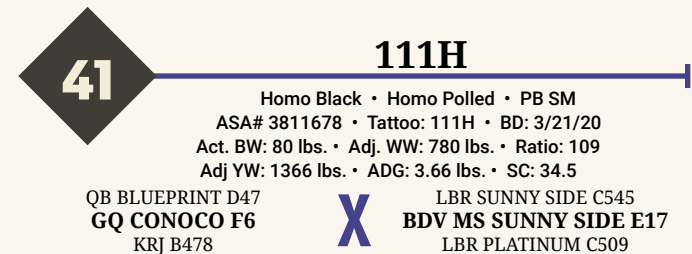
KOCH LC MONTE 803U
LRS RANGE BOSS 901Z
LRS MS FINAL ANSWER 901W

X

CCR COWBOY CUT 5048Z
BDV MS COWBOY CUT D41
BDV A306 OF 9969

CE	BW	WW	YW	MCE	Milk	MW	CW	YG	MB	BF	REA	API	TI
8.3	2.6	85.4	122.9	2.9	13.3	56.0	28.1	-0.14	0.28	-0.025	0.50	123.9	77.9

If you like them thick, moderate, and deep, here is your bull. This guy is an absolute meat wagon, you won't find one any deeper. Use him on a set of bigger framed cows that need more body, and you will hit a home run. He has a real nice dam with a high quality udder.



41

111H

Homo Black • Homo Polled • PB SM
ASA# 3811678 • Tattoo: 111H • BD: 3/21/20
Act. BW: 80 lbs. • Adj. WW: 780 lbs. • Ratio: 109
Adj YW: 1366 lbs. • ADG: 3.66 lbs. • SC: 34.5

QB BLUEPRINT D47
GQ CONOCO F6
KRJ B478

X

LBR SUNNY SIDE C545
BDV MS SUNNY SIDE E17
LBR PLATINUM C509

CE	BW	WW	YW	MCE	Milk	MW	CW	YG	MB	BF	REA	API	TI
15.6	-0.5	83.1	124.4	9.9	24.0	65.5	33.3	-0.45	0.09	-0.090	1.01	144.2	83.6

This bull amazes me, he is quite moderate in his body type, but still excelled as one of the heavy weights at weaning and yearling. I recommend using him on bigger framed cows that need some extra fleshing ability. Although if your program is moderate framed cattle that can turn it on, here you go. The cow family that backs him up is excellent uddered. He is out of a 3 year old dam.

42

78H

Homo Black • Polled • 1/2 SM 1/2 AN
ASA# 3811774 • Tattoo: 78H • BD: 3/10/20
Act. BW: 85 lbs. • Adj. WW: 756 lbs. • Ratio: 105
Adj YW: 1338 lbs. • ADG: 3.64 lbs. • SC: 35.0

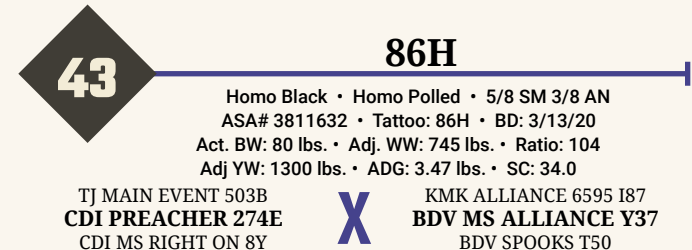
RITO 707 OF IDEAL 3407 7075
S A V RESOURCE 1441
S A V BLACKCAP MAY 4136

X

RFS W109
BDV MS SUMMIT Z69
U40

CE	BW	WW	YW	MCE	Milk	MW	CW	YG	MB	BF	REA	API	TI
10.5	0.3	81.3	131.6	2.9	21.8	62.4	51.0	-0.11	0.10	-0.006	0.83	119.8	75.8

The one and only Resource son in the sale, and a good one. He is moderate, thick, and easy on the eyes. He is out of a really productive cow family that milks heavy. He is a pound maker in a moderate package.



43

86H

Homo Black • Homo Polled • 5/8 SM 3/8 AN
ASA# 3811632 • Tattoo: 86H • BD: 3/13/20
Act. BW: 80 lbs. • Adj. WW: 745 lbs. • Ratio: 104
Adj YW: 1300 lbs. • ADG: 3.47 lbs. • SC: 34.0

TJ MAIN EVENT 503B
CDI PREACHER 274E
CDI MS RIGHT ON 8Y

X

KMK ALLIANCE 6595 I87
BDV MS ALLIANCE Y37
BDV SPOOKS T50

CE	BW	WW	YW	MCE	Milk	MW	CW	YG	MB	BF	REA	API	TI
12.4	0.2	77.0	119.1	6.0	26.3	64.7	36.2	-0.24	0.16	-0.059	0.62	126.2	75.7

There is predictability in this bull, his dam is very consistent, and she always brings a heavy calf to the weaning pen. She always puts length and a little more frame in her calves than average. She has a very nice udder and is an eye pleasing cow. No matter if you sell all your calves or keep the replacement females, this bull offers eye appeal and profit in a package that we all appreciate.

SPRING SIMMENTAL BULLS



LOT 44

44

129H

Homo Black • Homo Polled • 1/4 SM 3/4 AN
ASA# 3811705 • Tattoo: 129H • BD: 3/28/20
Act. BW: 83 lbs. • Adj. WW: 759 lbs. • Ratio: 106
Adj YW: 1260 lbs. • ADG: 3.13 lbs. • SC: 36.0

LRS RANGE BOSS 901Z
NLC HALF NELSON 98E
NLC BIRONA B40

X

MR NLC SUPERIOR S6018
BDV MS GAME ON 1Y28
BDV U805 OF FOUR SEASONS

CE	BW	WW	YW	MCE	Milk	MW	CW	YG	MB	BF	REA	API	TI
10.8	1.1	76.0	111.6	5.4	19.5	57.5	30.0	-0.13	0.25	-0.007	0.61	122.8	74.5

This guy amazes me, and he just keeps coming on. I truly appreciate his 10 year old dam, always in excellent shape. She is not a very tall cow, but is very long, thick and deep with a very nice udder. This bull will sire calves that are eye catching and perform well.

45

77H

Homo Black • Polled • 1/2 SM 1/2 AN
ASA# 3811617 • Tattoo: 77H • BD: 3/10/20
Act. BW: 81 lbs. • Adj. WW: 727 lbs. • Ratio: 101
Adj YW: 1258 lbs. • ADG: 3.32 lbs. • SC: 35.0

LRS RANGE BOSS 901Z
NLC HALF NELSON 98E
NLC BIRONA B40

X

VERMILION DATELINE 7078
BDV MS DATELINE W40
CVF MISS SPIDER

CE	BW	WW	YW	MCE	Milk	MW	CW	YG	MB	BF	REA	API	TI
10.4	1.7	77.4	112.5	6.5	23.1	61.8	28.6	-0.15	0.33	-0.026	0.53	128.0	77.0

This is quite a little stud, so thick and deep. He stood out like a sore thumb all summer long. He is out of one of our older cows at 12 years of age. Today he looks like he will be very sensible sized and has that much needed growth factor and still be able to mature into a sensible sized mature weight. His VRD sired dam has been one of our elite year after year. She has produced a couple sons that ranked right at the top at weaning and one that was a sale feature. If you are looking to add power with maternal and longevity, here you go.

47

113H

Homo Black • Polled • 1/2 SM 1/2 AN
ASA# 3811681 • Tattoo: 113H • BD: 3/21/20
Act. BW: 87 lbs. • Adj. WW: 733 lbs. • Ratio: 102
Adj YW: 1319 lbs. • ADG: 3.66 lbs. • SC: 34.0

LRS RANGE BOSS 901Z
NLC HALF NELSON 98E
NLC BIRONA B40

X

B C MATRIX 4132
BDV MS MATRIX X14
BDV ALISSA S60

CE	BW	WW	YW	MCE	Milk	MW	CW	YG	MB	BF	REA	API	TI
11.4	0.9	78.6	121.7	6.3	21.9	61.2	32.6	-0.13	0.17	-0.017	0.59	128.8	75.2

This bull is out of a 10 year old dam that has always been a favorite of ours. She is very eye catching with a very good udder, a superb udder and has been a good producer year after year. His granddam likewise was a top cow until she was struck by lightning. Use him on those deep thick cows and enjoy a great set of offspring. If his daughters are like his dam and granddam, you won't hang a better udder under them.

49

84H

Homo Black • Polled • 3/4 SM 1/4 AN
ASA# 3811629 • Tattoo: 84H • BD: 3/12/20
Act. BW: 89 lbs. • Adj. WW: 689 lbs. • Ratio: 96
Adj YW: 1254 lbs. • ADG: 3.53 lbs. • SC: 34.5

TJ MAIN EVENT 503B
CDI PREACHER 274E
CDI MS RIGHT ON 8Y

X

SRS RIGHT-ON 22R
BTS HONEY 069X
THSR SHIRLEY S646

CE	BW	WW	YW	MCE	Milk	MW	CW	YG	MB	BF	REA	API	TI
12.3	2.1	73.2	115.7	5.2	27.8	64.3	27.5	-0.34	0.17	-0.078	0.68	124.0	72.4

Here is a bull that offers balance with very good performance in a moderate complete package. I would bet there is not a cowman out there that wouldn't like to model their entire cowherd after his dam. She has an eye-catching look about her that is very desirable. Moderate framed, deep sided, big sweeping rib shape and a perfect udder.

46

31H

Homo Black • Homo Polled • 1/2 SM 1/2 AN
ASA# 3811527 • Tattoo: 31H • BD: 2/29/20
Act. BW: 78 lbs. • Adj. WW: 723 lbs. • Ratio: 101
Adj YW: 1304 lbs. • ADG: 3.63 lbs. • SC: 35.0

S A V BISMARCK 5682
QB DATA D15
ASR MS DESI Z2110

X

BDV CAPITALIST 43B
BDV E37 CAPITALIST 43B
BDV MS DUAL FOCUS Z13

CE	BW	WW	YW	MCE	Milk	MW	CW	YG	MB	BF	REA	API	TI
12.3	0.0	72.5	108.1	6.2	21.8	58.0	28.5	-0.18	0.10	-0.022	0.64	120.4	70.7

Here is a moderate framed bull that is thick and deep. He comes by it honestly because there is not a cow or bull in his pedigree that is not loaded with fleshing ability. There won't be very many more Data calves as we let him go after a very rewarding breeding career here. If you like cattle that are easy fleshing and easy on the eye here you go.

48

11H

Homo Black • Homo Polled • 1/2 SM 1/2 AN
ASA# 3811488 • Tattoo: 11H • BD: 2/24/20
Act. BW: 87 lbs. • Adj. WW: 658 lbs. • Ratio: 92
Adj YW: 1272 lbs. • ADG: 3.84 lbs. • SC: 35.0

MAR INNOVATION 251
LRS TOPSHELF 902F
LRS MS TOPGRADE 303A

X

TNT TUITION U238
BDV MS TUITION C11
BDV MS FINAL ANSWER Y11

CE	BW	WW	YW	MCE	Milk	MW	CW	YG	MB	BF	REA	API	TI
13.2	1.2	83.0	127.4	8.0	16.7	58.2	40.7	-0.06	0.42	-0.017	0.46	138.1	82.9

We like these Top Shelf cattle a lot, always deep sided and soggy. They are good footed and look like they are a powerful addition to our lineup. This bull's dam is a very good structured cow with a ton of length. You will enjoy some extra power and performance here. Udder quality will be very strong.

50

145H

Homo Black • Homo Polled • 1/2 SM 1/2 AN
ASA# 3811730 • Tattoo: 145H • BD: 4/9/20
Act. BW: 92 lbs. • Adj. WW: 735 lbs. • Ratio: 103
Adj YW: 1399 lbs. • ADG: 4.15 lbs. • SC: 35.0

LRS RANGE BOSS 901Z
NLC HALF NELSON 98E
NLC BIRONA B40

X

LRS PREFERRED STOCK 370C
BDV MS PREF STCOK Z35
B D V P414 OF EMULATION EXT

CE	BW	WW	YW	MCE	Milk	MW	CW	YG	MB	BF	REA	API	TI
10.1	1.7	77.8	124.9	5.8	19.3	58.2	38.1	-0.15	0.32	-0.030	0.60	127.6	77.2

The youngest bull in the offering but puts together an excellent performance stat. This bull sits in the middle of the sale in a very impressive set of bulls. That doesn't surprise me, his dam is a high producing Preferred Stock cow that just doesn't miss. There is cow power here with the genetics to outperform most. You won't be disappointed in his daughters as they will have great udders under them. Three generations back you will find EXT, the true udder improver.

SPRING SIMMENTAL BULLS

51

35H

Homo Black • Polled • PB SM
ASA# 3811536 • Tattoo: 35H • BD: 3/1/20
Act. BW: 80 lbs. • Adj. WW: 694 lbs. • Ratio: 97
Adj YW: 1289 lbs. • ADG: 3.72 lbs. • SC: 37.0

HOOK'S BLACK HAWK 50B
HOOK'S EAGLE 6E
HOOK'S CRYSTAL 1C

X

LRS BANKSHOT 906Y
BDV MS BANK SHOT A35
BDV MISS ABBY S61

CE	BW	WW	YW	MCE	Milk	MW	CW	YG	MB	BF	REA	API	TI
12.5	0.1	87.4	134.0	8.2	19.8	63.4	38.1	-0.43	0.35	-0.083	1.08	157.9	91.3

This Eagle son is out of a cow that consistently produces eye appeal. Look at his outstanding post weaning performance. This bull has a great EPD profile with top 5% API and 4% TI. We really enjoy the Eagle calves because they come easy, wean heavy and are quiet in nature. It doesn't hurt that his carcass values are high as well.

53

85H

Homo Black • Homo Polled • 1/2 SM 1/2 AN
ASA# 3811630 • Tattoo: 85H • BD: 3/12/20
Act. BW: 92 lbs. • Adj. WW: 721 lbs. • Ratio: 101
Adj YW: 1299 lbs. • ADG: 3.61 lbs. • SC: 35.0

QB BLUEPRINT D47
GQ CONOCO F6
KRJ B478

X

BDV TORQUE 912W
BDV A315 OF TORQUE
BDV W904 OF PREDESTINED

CE	BW	WW	YW	MCE	Milk	MW	CW	YG	MB	BF	REA	API	TI
10.7	1.9	83.7	126.5	7.1	20.5	62.3	44.5	-0.16	0.32	-0.036	0.67	125.3	80.3

I like this bull, he is very complete, up headed and clean made with striking profile. His dam certainly comes from top cow families on both sides of her pedigree. This bull should produce offspring that press the scale down at sale time. The eye appeal he will sire will excite you and your calf buyer. But maybe it will be his daughters that catch your attention because they will be fancy and maternal with superb udders. His 12 year old granddam has an outstanding Southern Charm son in the Angus line up and will calve again this spring. There is longevity in the pedigree here.

55

58H

Homo Black • Homo Polled • 1/2 SM 1/2 AN
ASA# 3811588 • Tattoo: 58H • BD: 3/6/20
Act. BW: 78 lbs. • Adj. WW: 692 lbs. • Ratio: 97
Adj YW: 1278 lbs. • ADG: 3.66 lbs. • SC: 35.0

MAR INNOVATION 251
LRS TOPSHELF 902F
LRS MS TOPGRADE 303A

X

CONNELLY CAPITALIST 028
BDV MS CAPITALIST C6
BDV MS HIGH TECH A63

CE	BW	WW	YW	MCE	Milk	MW	CW	YG	MB	BF	REA	API	TI
15.0	-0.8	80.2	124.1	9.3	19.4	59.4	41.7	-0.18	0.25	-0.037	0.68	143.9	80.5

This bull just about did not make the sale, the reason is we just about kept him for a heifer bull. Yes, we believe he could make an outstanding heifer bull for the cowman that wants more than just a live calf. There is a lot of cow power running through his veins. His dam is simply right on target, deep sided, easy fleshing, and super uddered in a moderate sensible sized package. Not only is this bull bred to calve easy but to sire daughters that you will want a whole herd of and his feeder cattle will be excellent performers and sought after by calf buyers.

56

49H

Homo Black • Homo Polled • 1/2 SM 1/2 AN
ASA# 3811574 • Tattoo: 49H • BD: 3/5/20
Act. BW: 80 lbs. • Adj. WW: 664 lbs. • Ratio: 93
Adj YW: 1202 lbs. • ADG: 3.36 lbs. • SC: 38.0

CCR FLINT HILLS 2092B
CCR FLINT ROCK 0101E
CCR MS GINGER 3114A

X

HPF DOMINANCE Y927
CS/BFW EILEEN 510C
BFW EILEEN 605

CE	BW	WW	YW	MCE	Milk	MW	CW	YG	MB	BF	REA	API	TI
15.1	-0.2	68.7	107.3	9.5	22.1	56.4	27.7	-0.01	0.63	0.011	0.36	142.7	82.0

This is a real quiet fancy bull that seems to always be posing to get your attention. The Flint Rocks definitely have the looks and style we all appreciate. They also weigh heavy at weaning. Expect this bull to add value to every segment of the industry. He has a marbling EPD in the top 10% of the breed and is very quiet mannered.

52

48H

Homo Black • Polled • PB SM
ASA# 3811572 • Tattoo: 48H • BD: 3/5/20
Act. BW: 83 lbs. • Adj. WW: 722 lbs. • Ratio: 101
Adj YW: 1300 lbs. • ADG: 3.61 lbs. • SC: 35.0

HOOK'S BLACK HAWK 50B
HOOK'S EAGLE 6E
HOOK'S CRYSTAL 1C

X

SAS T101 SWEET MEAT
BDV MS SWEET MEAT X39
CVF MISS BLACK GENIE

CE	BW	WW	YW	MCE	Milk	MW	CW	YG	MB	BF	REA	API	TI
13.0	-0.4	83.2	123.5	7.7	22.2	63.7	38.1	-0.32	0.37	-0.074	0.80	160.3	89.4

The Eagle bulls are stout, they have the look we all appreciate. Easy fleshing and pound makers. This guy should work well on a set of British cows that just need some crossing up with Simmental to produce pounds and be more profitable. The udder quality of this guy's dam is outstanding, so his daughters should be good calf producers. He is very quiet.

54

67H

Homo Black • Homo Polled • 1/2 SM 1/2 AN
ASA# 3811602 • Tattoo: 67H • BD: 3/8/20
Act. BW: 83 lbs. • Adj. WW: 678 lbs. • Ratio: 95
Adj YW: 1241 lbs. • ADG: 3.46 lbs. • SC: 37.0

QB BLUEPRINT D47
GQ CONOCO F6
KRJ B478

X

VERMILION X FACTOR
BDV Z207 OF X FACTOR
B D V S620 OF HART TRAVELER

CE	BW	WW	YW	MCE	Milk	MW	CW	YG	MB	BF	REA	API	TI
11.5	0.6	74.3	115.1	10.3	17.8	54.9	37.1	-0.20	0.19	-0.034	0.70	117.8	73.3

Like all the Conoco's, this bull is moderate, thick and wide based. He is out of a cow family we really appreciate, S620 was one of our favorite Angus cows, always productive and good uddered. This bull is very easy to be around.

Sale Format & Bidding Options

With the Covid going around, some may choose to come early and go through the bull pens, feel free to stop in. Our sale format will stay the same by running the bulls through the ring. Some of you that prefer it, the sale will be cast live on DVAuctions. You can also bid on the phone with Pelton Livestock, more information available on page two. We are here to accommodate you and your bull buying purchases. Call anytime, let's talk bulls.

57

124H

Homo Black • Polled • 1/2 SM 1/2 AN
ASA# 3811696 • Tattoo: 124H • BD: 3/25/20
Act. BW: 83 lbs. • Adj. WW: 730 lbs. • Ratio: 102
Adj YW: 1328 lbs. • ADG: 3.74 lbs. • SC: 37.0

LRS RANGE BOSS 901Z
NLC HALF NELSON 98E
NLC BIRONA B40

X

LRS TOP TEN 104A
BDV MS TOP TEN D139
BDV MS SUMMIT Z65

CE	BW	WW	YW	MCE	Milk	MW	CW	YG	MB	BF	REA	API	TI
11.0	0.5	86.3	131.5	5.9	17.6	60.8	34.6	-0.06	0.32	-0.007	0.47	128.9	82.9

Here is a thick rascal, long sided, and moderate framed. His granddam is a very heavy milker and has a great track record of producing heavy calves. There is a powerful set of genetics here with Range Boss, Top 10 and Z65 all in his pedigree, expect cattle that perform very well. Please take note this bull is a little more flighty than average.

SPRING SIMMENTAL BULLS

59

61H

Homo Black • Polled • PB SM
ASA# 3811593 • Tattoo: 61H • BD: 3/7/20
Act. BW: 93 lbs. • Adj. WW: 703 lbs. • Ratio: 98
Adj YW: 1271 lbs. • ADG: 3.55 lbs. • SC: 34.0

TRIPLE C SINGLETARY S3H
CCR COWBOY CUT 5048Z
CCR MS 4045 TIME 7322T

X BDV DUAL FOCUS 11Y
BDV A4 OF 11Y
CVF MISS SPIDER

CE	BW	WW	YW	MCE	Milk	MW	CW	YG	MB	BF	REA	API	TI
9.0	3.3	83.3	118.3	5.5	24.8	66.4	32.0	-0.29	0.33	-0.062	0.71	145.8	83.0

Thick, thick, thick and deep, deep, deep! This bull will sire fleshing ability in an easy keeping and good doing package. Cattle like his cow family are the kind that don't melt away when times get tough. If you are looking to put some fleshing ability in your cowherd, here is one to help out. Jeramy Fowler owns a full brother.

60

44H

Homo Black • Polled • 5/8 SM 3/8 AN
ASA# 3811559 • Tattoo: 44H • BD: 3/4/20
Act. BW: 84 lbs. • Adj. WW: 698 lbs. • Ratio: 97
Adj YW: 1215 lbs. • ADG: 3.23 lbs. • SC: 34.0

CCR FLINT HILLS 2092B
CCR FLINT ROCK 0101E
CCR MS GINGER 3114A

X KS BLACK DIAMOND W992
BDV MS BLACK DIAMOND B46
BDV MS TORQUE Y38

CE	BW	WW	YW	MCE	Milk	MW	CW	YG	MB	BF	REA	API	TI
10.6	0.9	76.6	114.3	5.2	24.3	62.6	34.7	-0.11	0.53	-0.013	0.57	140.5	82.5

Here is a very classy eye catcher. This bull should sire calves that have a real stylish look that will create sale ability. He has a very easy to appreciate dam that has a perfect udder. He weaned right at 700 pounds to boot. He is just a good all-around bull that will sire both steer calves and daughters that will be sought after and be valuable.

61

90H

Homo Black • Homo Polled • 1/2 SM 1/2 AN
ASA# 3811644 • Tattoo: 90H • BD: 3/15/20
Act. BW: 87 lbs. • Adj. WW: 695 lbs. • Ratio: 97
Adj YW: 1300 lbs. • ADG: 3.78 lbs. • SC: 37.0

FBF1 COMBUSTIBLE
QB IGNITE D83
KNH PLAY ON 458Z

X CONNEALY CAPITALIST 028
BDV B407 OF CAPITALIST
DR ERISKAY 113

CE	BW	WW	YW	MCE	Milk	MW	CW	YG	MB	BF	REA	API	TI
11.7	0.8	78.2	126.4	4.2	14.6	53.6	39.6	0.06	0.24	0.017	0.34	126.6	75.3

I like this bull, he is really complete in his design, long bodied, strong topped with a deep rear quarter. He is real easy to get along with quiet and mild mannered. His dam is a very nice uddered Angus cow.

62

138H

Homo Black • Polled • 5/8 SM 3/8 AN
ASA# 3811725 • Tattoo: 138H • BD: 4/8/20
Act. BW: 80 lbs. • Adj. WW: 780 lbs. • Ratio: 109
Adj YW: 1318 lbs. • ADG: 3.36 lbs. • SC: 34.0

TJ MAIN EVENT 503B
CDI PREACHER 274E
CDI MS RIGHT ON 8Y

X CONNEALY CAPITALIST 028
BDV MS CAPITALIST E11
BDV MS DOC B28

CE	BW	WW	YW	MCE	Milk	MW	CW	YG	MB	BF	REA	API	TI
11.3	-0.2	75.1	121.7	4.9	26.0	63.5	36.5	-0.28	0.17	-0.048	0.85	127.9	75.8

You will find this bull in a strong pen of bulls that are moderate in frame and long as you want them. He will lead that pen off in sale order with style. He posts a very big 205-day weight, with strong performance on test. This bull is one of the younger bulls in the sale, so he does not quite match the front pen in size, but he would be there if he was a little older. He is out of a 3 year old Capitalist daughter that will soon become one of the valuable contributors to our cow herd.

63

20H

Homo Black • Polled • 1/2 SM 1/2 AN
ASA# 3811507 • Tattoo: 20H • BD: 2/28/20
Act. BW: 82 lbs. • Adj. WW: 726 lbs. • Ratio: 101
Adj YW: 1236 lbs. • ADG: 3.19 lbs. • SC: 36.5

KOUPALS B&B IDENTITY
MUSGRAVE AVIATOR
MCATL FOREVER LADY 1429-138

X CCR COWBOY CUT 5048Z
BDV MS COWBOY CUT F81
BDV A4 OF 11Y

CE	BW	WW	YW	MCE	Milk	MW	CW	YG	MB	BF	REA	API	TI
10.9	0.5	81.0	124.9	9.6	21.9	62.3	43.9	-0.15	0.44	-0.026	0.73	140.2	83.8

Out of a 2 year old heifer that did a very nice job on her first time. This bull is load-
ed with cows that are stout, deep ribbed, and easy fleshing. If you are looking to
put some fleshing ability back in your cow herd, here is a bull to take a look at. We
have been using Aviator as a heifer bull that will sire the easy keeping kind.

64

45H

Homo Black • Polled • PB SM
ASA# 3811560 • Tattoo: 45H • BD: 3/4/20
Act. BW: 79 lbs. • Adj. WW: 702 lbs. • Ratio: 98
Adj YW: 1288 lbs. • ADG: 3.66 lbs. • SC: 35.0

TNT TANKER U263
TNT PRIDE C232
TNT MISS Z1

X BDV CLICKER 27T
BDV MS CLICKER Z70
BDV SPOOKS T50

CE	BW	WW	YW	MCE	Milk	MW	CW	YG	MB	BF	REA	API	TI
14.5	-0.8	76.4	114.1	8.8	15.5	53.7	32.7	-0.47	0.05	-0.118	0.85	140.6	78.0

A Pride son with some eye appeal. Use him on a set of cows that need volume and
under quality. He is bred to be maternal. These Pride cattle really click when used
on Angus and baldy cows.

RETAINED SEMEN INTEREST IN BULLS

Every bull sells in his entirety, except Lots 89 and 134, we know that when you pay a big premium to own a herd sire, that when a breeder keeps a share, it's hard to recoup your investment. We do retain the right to collect 200 units of semen at our expense and your convenience for within herd use only. In case an AI stud buys the bull, we reserve the right to buy semen at cost as if we were a shareholder, but will not share in any revenue received.

65

98H

Homo Black • Polled • 3/4 SM 1/4 AN
ASA# 3811652 • Tattoo: 98H • BD: 3/17/20
Act. BW: 90 lbs. • Adj. WW: 701 lbs. • Ratio: 98
Adj YW: 1290 lbs. • ADG: 3.68 lbs. • SC: 34.5

MAR INNOVATION 251
LRS TOPSHELF 902F
LRS MS TOPGRADE 303A

X BDV FESTUS 35G
BDV MS SPECIAL FOCUS Z9
BDV MS STETSON X57

CE	BW	WW	YW	MCE	Milk	MW	CW	YG	MB	BF	REA	API	TI
11.0	2.1	77.0	113.9	6.9	24.9	63.4	28.4	-0.28	0.25	-0.058	0.65	128.1	75.3

This is a long bodied Top Shelf son that has dam that never misses. She is very
consistent in the type and kind she produces. The maternal side of the equation is
lots of milk and calves that perform well.

SPRING SIMMENTAL BULLS

66

114H

Homo Black • Polled • 3/4 SM 1/4 AN
ASA# 3811682 • Tattoo: 114H • BD: 3/21/20
Act. BW: 83 lbs. • Adj. WW: 748 lbs. • Ratio: 104
Adj YW: 1316 lbs. • ADG: 3.55 lbs. • SC: 37.0

MR ISHEE CATALYST
RBS BOISE B63
RBS MISS S63

X

LRS TOP TEN 104A
BDV MS TOP TEN D79
BDV MS 4 SEASONS W55

CE	BW	WW	YW	MCE	Milk	MW	CW	YG	MB	BF	REA	API	TI
13.1	-0.1	78.2	112.4	7.4	24.1	63.1	29.9	-0.30	0.08	-0.069	0.68	123.9	74.5

This bull goes back to the great W55 cow, she was absolutely one of the best to ever eat grass on this ranch. Very easy on the eye, always in condition, and she had an udder that was the best. His dam is a young Top 10 cow that is a little taller like the 10X cattle were. So, we mated her to Boise to bring her back a little, this bull is the result, a high performing meat machine.



LOT 66

67

21H

Homo Black Baldy • Homo Polled • PB SM
ASA# 3811508 • Tattoo: 21H • BD: 2/28/20
Act. BW: 80 lbs. • Adj. WW: 675 lbs. • Ratio: 94
Adj YW: 1303 lbs. • ADG: 3.93 lbs. • SC: 34.5

HOOK'S BOZEMAN 8B
BRIDLE BIT VIP F875
BRIDLE BIT MISS B452

X

QB BLUEPRINT D47
BDV MS BLUEPRINT F72
CS/BFW EILEEN 510C

CE	BW	WW	YW	MCE	Milk	MW	CW	YG	MB	BF	REA	API	TI
15.1	0.5	74.8	121.3	9.5	19.4	56.8	26.7	-0.35	0.34	-0.068	0.78	136.7	79.4

Here is a baldy bull out of a 2 year old heifer and the calving ease VIP. If you like baldies and light birth weight moderate cattle that have fleshing ability and mature into cattle that are efficient and stay sensible sized, this bull could be a good choice. An added bonus is his calving ease and marbling EPDs are in the top 10% & 15% of the breed respectively. Very classy and eye appealing calf that won't disappoint.

69

4H

Homo Black Baldy • Polled • 1/2 SM 1/2 AN
ASA# 3811472 • Tattoo: 4H • BD: 2/21/20
Act. BW: 88 lbs. • Adj. WW: 644 lbs. • Ratio: 90
Adj YW: 1266 lbs. • ADG: 3.89 lbs. • SC: 34.0

KOCH LC MONTE 803U
LRS RANGE BOSS 901Z
LRS MS FINAL ANSWER 901W

X

LRS TOP TEN 104A
BDV MS TOP TEN E20
BDV MS IDENTITY C73

CE	BW	WW	YW	MCE	Milk	MW	CW	YG	MB	BF	REA	API	TI
11.0	2.1	82.0	124.2	4.7	10.0	50.9	28.6	-0.15	0.23	-0.028	0.50	122.8	75.8

This is a real fancy bull with a star on his forehead. If you like cattle that are thick, deep and wide with a classy look then this bull needs a look. These Range Boss cattle will certainly add volume and easy fleshing traits.

71

137H

Homo Black • Homo Polled • 3/4 SM 1/4 AN
ASA# 3811719 • Tattoo: 137H • BD: 4/4/20
Act. BW: 94 lbs. • Adj. WW: 743 lbs. • Ratio: 104
Adj YW: 1321 lbs. • ADG: 3.61 lbs. • SC: 35.0

CCR FRONTIER 0053Z
SYS BANJO F39
SYS JULIET A61

X

LRS ARSENAL 121B
BDV MS ARSENAL D76
BDV MS AXIS Z21

CE	BW	WW	YW	MCE	Milk	MW	CW	YG	MB	BF	REA	API	TI
9.6	2.6	82.0	127.1	2.6	22.3	63.3	30.4	-0.23	0.14	-0.042	0.68	117.6	74.6

Here is a Banjo son out of an Arsenal dam. He is a sensible sized bull that has been performing very well all the way from birth. I would use him on larger framed power cows to slow down some frame, and not slow down pay weight. He is very classy with eye appeal.

68

72H

Homo Black • Homo Polled • 1/2 SM 1/2 AN
ASA# 3811606 • Tattoo: 72H • BD: 3/8/20
Act. BW: 71 lbs. • Adj. WW: 710 lbs. • Ratio:
Adj YW: 1208 lbs. • ADG: 3.11 lbs. • SC: 37.0

MR ISHEE CATALYST
RBS BOISE B63
RBS MISS S63

X

S A V 5175 BANDO 502
BDV X018 OF BOX CAR
BLACK BUTTE TOBYS BLKCAP 842

CE	BW	WW	YW	MCE	Milk	MW	CW	YG	MB	BF	REA	API	TI
13.2	0.1	64.4	89.5	7.4	22.8	54.9	19.7	-0.23	0.21	-0.044	0.51	119.4	68.5

A well-made clean eye appealing Sim-Angus son of Boise. There is excellent calving ease and performance wrapped around this bull's genetic package, he is a twin, but he still performed well.

70

79H

Homo Black • Polled • 3/4 SM 1/4 AN
ASA# 3811622 • Tattoo: 79H • BD: 3/10/20
Act. BW: 88 lbs. • Adj. WW: 709 lbs. • Ratio: 99
Adj YW: 1240 lbs. • ADG: 3.32 lbs. • SC: 36.0

BASIN PAYWEIGHT 1682
CCR PAY DIRT 2340C
CCR MS SINGLETARY 2340Z

X

TNT PRIDE C232
BDV MS PRIDE E127
BDV MS MONTE A32

CE	BW	WW	YW	MCE	Milk	MW	CW	YG	MB	BF	REA	API	TI
9.9	2.6	93.6	146.6	6.4	20.7	67.5	43.3	-0.19	0.33	-0.055	0.60	132.2	86.3

This is a real outcross bull to most Simmental genetics. He is in a real well-balanced pen of bulls that offer a clean classy look with balance and a touch more frame. There is cow power and excellent performance here.

72

94H

Homo Black • Polled • 1/2 SM 1/2 AN
ASA# 3811648 • Tattoo: 94H • BD: 3/16/20
Act. BW: 87 lbs. • Adj. WW: 727 lbs. • Ratio: 101
Adj YW: 1308 lbs. • ADG: 3.63 lbs. • SC: 36.0

S A V PRIVILEGE 3030
VERMILION PRIVILEGE E856
VERMILION BLACKCAP 4889

X

RBS BOISE B63
BDV MS BOISE E118
BDV MS COAL MINER X73

CE	BW	WW	YW	MCE	Milk	MW	CW	YG	MB	BF	REA	API	TI
10.6	2.1	80.2	120.2	5.3	21.1	61.1	38.8	-0.17	0.09	-0.038	0.60	113.3	72.3

Every time you lay eyes on these Privilege cattle, you get that excellent thickness and eye appeal with very good performance. If you are looking for a bull that will give you a little extra, here is a good candidate, an all-around good blend of genetics that work.

SPRING SIMMENTAL BULLS

73

123H

Homo Black • Polled • 1/2 SM 1/2 AN
ASA# 3811695 • Tattoo: 123H • BD: 3/25/20
Act. BW: 90 lbs. • Adj. WW: 715 lbs. • Ratio: 100
Adj YW: 1313 lbs. • ADG: 3.74 lbs. • SC: 35.0

CCR FRONTIER 0053Z
SYS BANJO F39
SYS JULIET A61



APEX CHAIRMAN 014
BDV MS CHAIRMAN D147
BDV MS COAL MINER X71

CE	BW	WW	YW	MCE	Milk	MW	CW	YG	MB	BF	REA	API	TI
9.2	2.1	80.9	129.5	5.7	24.5	64.9	35.4	-0.19	0.34	-0.044	0.58	121.6	79.8

I have always liked the way this bull is built, very well balanced with excellent eye appeal. He is out of moderate framed dam that is easy keeping and clean in her design. She has a very well put together udder. You will like his calves; they will be neat and complete.

74

2H

Homo Black • Homo Polled • 1/2 SM 1/2 AN
ASA# 3811466 • Tattoo: 2H • BD: 2/17/20
Act. BW: 71 lbs. • Adj. WW: 706 lbs. • Ratio: 98
Adj YW: 1274 lbs. • ADG: 3.55 lbs. • SC: 35.0

CCR COWBOY CUT 5048Z
TJ FRANCHISE 451D
TJ MISS NET WORTH U11



TJ MAIN EVENT 503B
BDV MS MAIN EVENT F7
BDV MS PLATINUM C23

CE	BW	WW	YW	MCE	Milk	MW	CW	YG	MB	BF	REA	API	TI
11.6	1.0	84.9	135.1	6.7	28.3	70.7	49.4	-0.09	0.32	-0.015	0.69	138.2	83.3

Here is a well-made bull out of a 2 year old heifer. If you are looking for a light birth weight bull that you could use on heifers then he will be a good choice. This bull should likewise sire calves that are fancy with eye appeal. His EPDs put him in the top 25% at weaning and top 10% at yearling. I don't know if it is quite that high, but he should sire excellent quality with excellent eye appeal and calves that perform well.

75

108H

Homo Black • Homo Polled • 1/2 SM 1/2 AN
ASA# 3811671 • Tattoo: 108H • BD: 3/18/20
Act. BW: 78 lbs. • Adj. WW: 701 lbs. • Ratio: 98
Adj YW: 1189 lbs. • ADG: 3.05 lbs. • SC: 34.0

HOOK'S BOZEMAN 8B
BRIDLE BIT VIP F875
BRIDLE BIT MISS B452



078 WINDY 377 J V
BDV F810 OF WINDY
BDV W903 OF IN FOCUS

CE	BW	WW	YW	MCE	Milk	MW	CW	YG	MB	BF	REA	API	TI
16.2	-1.3	71.1	113.1	9.9	22.0	57.5	31.9	-0.08	0.44	-0.019	0.40	142.8	78.4

Here is a calving ease bull that I wouldn't be afraid to use on heifers, out of a 2 year old dam, and the extreme calving ease VIP. His cow family is no slouch either, as his granddam has been a consistently above average producer. His dam weaned this bull, her first calf, at a 205 adj wt of 701, not bad.

76

141H

Homo Black • Polled • 1/2 SM 1/2 AN
ASA# 3811741 • Tattoo: 141H • BD: 4/21/20
Act. BW: 80 lbs. • Adj. WW: 777 lbs. • Ratio: 108
Adj YW: 1412 lbs. • ADG: 3.97 lbs. • SC: 36.0

CCR FRONTIER 0053Z
SYS BANJO F39
SYS JULIET A61



LRS FLEX 802Z
BDV MS FLEX C85
BDV MS X FACTOR Z61

CE	BW	WW	YW	MCE	Milk	MW	CW	YG	MB	BF	REA	API	TI
13.0	0.9	79.0	128.3	6.8	26.5	66.0	38.4	-0.24	0.23	-0.052	0.71	126.0	78.4

This bull may be one of the best investments in the sale and he is one of the youngest in offering. Light at birth weight, with a very nice 205 weight. He has been pouring it on during test, with a top ADG. His cow family is a real stout one with top genetics on both his sire and dam's side, they are pound makers. His EPD profile suggests that he will sire pay weight and maternal power.

77

6H

Homo Black • Homo Polled • 1/2 SM 1/2 AN
ASA# 3811475 • Tattoo: 6H • BD: 2/22/20
Act. BW: 76 lbs. • Adj. WW: 675 lbs. • Ratio: 94
Adj YW: 1283 lbs. • ADG: 3.80 lbs. • SC: 34.5

CONNEALY CONSENSUS 7229
CONNEALY BLACK GRANITE
EURA ELGA OF CONANGA 9109



RBS BOISE B63
BDV MS BOISIE F34
BDV MS COWBOY CUT D35

CE	BW	WW	YW	MCE	Milk	MW	CW	YG	MB	BF	REA	API	TI
16.6	-0.4	75.9	111.0	10.5	20.6	58.5	35.1	-0.09	0.31	-0.011	0.54	131.2	78.4

Here is a bull that I recommend to the cowman that is looking for a sim-angus bull to use on heifers. Born at 76 pounds out of a 2 year old dam. He has the genetics to calve easy and then sire calves that perform above average for a calving ease bull. His daughters should be maternal with nice udders in a moderate package.

78

17H

Homo Black • Homo Polled • 1/2 SM 1/2 AN
ASA# 3811500 • Tattoo: 17H • BD: 2/26/20
Act. BW: 80 lbs. • Adj. WW: 653 lbs. • Ratio: 91
Adj YW: 1187 lbs. • ADG: 3.34 lbs. • SC: 36.0

MR NLC UPGRADE U8676
TJ MAIN EVENT 503B
TJ MISS NEW DAY U14



TNT PRIDE C232
BDV MS PRIDE F30
BDV A311 OF COAL BANK

CE	BW	WW	YW	MCE	Milk	MW	CW	YG	MB	BF	REA	API	TI
14.5	-0.5	81.8	123.5	7.6	24.1	65.0	37.0	-0.25	0.22	-0.061	0.65	131.8	81.1

This bull is another one of my top picks as a heifer bull prospect. Out of a 2 year old that we had high hopes for, but she was not meant to be. In June we lost her to what we think was lighting, so he was on his own for a while until we found a cow to put him on. He did do a good job robbing so he did ok. This did affect his weaning weight some. However, it is easy to see his genetic value. He is very quiet mannered and definitely easy to be around.

79

15H

Homo Black • Polled • PB SM
ASA# 3811495 • Tattoo: 15H • BD: 2/25/20
Act. BW: 80 lbs. • Adj. WW: 697 lbs. • Ratio: 97
Adj YW: 1181 lbs. • ADG: 3.02 lbs. • SC: 36.0

MR ISHEE CATALYST
RBS BOISE B63
RBS MISS S63



HOOK'S BROADWAY 11B
BDV MS BROADWAY F62
RYMO MISS THUNDER A58B

CE	BW	WW	YW	MCE	Milk	MW	CW	YG	MB	BF	REA	API	TI
11.0	1.5	77.0	114.5	7.0	27.2	65.7	30.3	-0.49	0.08	-0.108	0.96	133.3	77.1

This is a tremendously thick Boise son. He is quite moderate, but very deep sided and easy fleshing. If you are looking for a bull that offers calving ease and will put fleshing ability and volume in his offspring, here is a good choice. He is out of a 2 year old dam.

80

9H

Homo Black • Polled • 5/8 SM 3/8 AN
ASA# 3811486 • Tattoo: 9H • BD: 2/24/20
Act. BW: 64 lbs. • Adj. WW: 671 lbs. • Ratio: 94
Adj YW: 1202 lbs. • ADG: 3.32 lbs. • SC: 37.5

MCDF NEW RIVER 499B
JC JOURNEY 610E
JC MISS USPB 610S



RBS BOISE B63
BDV MS BOISE F90
BDV MS TORQUE Z63

Projected EPDS

CE	BW	WW	YW	MCE	Milk	MW	CW	YG	MB	BF	REA	API	TI
16.2	-2.5	58.5	90.0	10.1	26.8	56.0	26.1	-0.28	0.28	-0.070	0.55	136.5	70.9

The Journey cattle are moderate and thick. We have been using him on heifers for his exceptional calving ease, no doubt this bull should be a slam dunk heifer bull for the cowman that wants to use a Sim influenced bull. His calves should be moderate framed thick wide bodied easy keepers.

SPRING SIMMENTAL BULLS

81

126H

Homo Black Baldy • Polled • PB SM
ASA# 3811698 • Tattoo: 126H • BD: 3/25/20
Act. BW: 82 lbs. • Adj. WW: 743 lbs. • Ratio: 104
Adj YW: 1201 lbs. • ADG: 2.86 lbs. • SC: 34.0

QB BLUEPRINT D47
GQ CONOCO F6
KRJ B478



REMINGTON LOCK N LOAD54U
BRKC CADENCE C804
HSF/HS SCARLETT Y165

CE	BW	WW	YW	MCE	Milk	MW	CW	YG	MB	BF	REA	API	TI
12.9	0.9	79.8	123.3	8.2	18.0	57.8	33.5	-0.52	-0.14	-0.115	1.02	115.5	73.7

Here is a flashy baldy bull out of a young cow I purchased out of the North Dakota State Sale. She is out of the famed Lock N Load bull. This bull is sired by Conoco, a bull we feel will highlight our program for years to come. He is very well designed and posted a real impressive 205 weight. It looks like he may be a frame reducer and a bull that will add thickness with eye appeal.

82

27H

Homo Black • Homo Polled • 1/2 SM 1/2 AN
ASA# 3811520 • Tattoo: 27H • BD: 2/28/20
Act. BW: 82 lbs. • Adj. WW: 715 lbs. • Ratio: 100
Adj YW: 1337 lbs. • ADG: 3.89 lbs. • SC: 37.5

BASIN PAYWEIGHT 1682
CCR PAY DIRT 2340C
CCR MS SINGLETARY 2340Z



CCR COWBOY CUT 5048Z
BDV MS COWBOY CUT E61
B D V 5620 OF HART TRAVELER

CE	BW	WW	YW	MCE	Milk	MW	CW	YG	MB	BF	REA	API	TI
11.2	1.3	79.1	124.0	7.5	24.1	63.6	34.8	-0.07	0.45	-0.016	0.44	133.5	82.0

The Pay Dirt calves are flat good. We like the way they perform and it doesn't seem like we ever get a bad one out of him. But as ABS says in their AI book Pay Dirt is Payweights best son. This bull is fancy and complete out of a 3 year old Cowboy Cut dam. That will only add to the eye appeal and udder quality of his sons and daughters. The cow family behind this bull is one that we have always felt to be one of the elites.

83

144H

Homo Black • Polled • 5/8 SM 3/8 AN
ASA# 3811729 • Tattoo: 144H • BD: 4/9/20
Act. BW: 90 lbs. • Adj. WW: 742 lbs. • Ratio: 104
Adj YW: 1297 lbs. • ADG: 3.47 lbs. • SC: 36.0

CCR FRONTIER 0053Z
SYS BANJO F39
SYS JULIET A61



GW PREM BEEF 612Z
BDV MS PREM BEEF C62
BDV MS GRADUATE A12

CE	BW	WW	YW	MCE	Milk	MW	CW	YG	MB	BF	REA	API	TI
11.9	0.7	78.9	131.7	4.6	24.9	64.3	40.1	-0.23	0.22	-0.042	0.78	130.0	78.2

The second youngest bull in the sale, he posts a very impressive 205 weight, with a very respectable yearling weight. He offers a unique pedigree with top performance and calving ease blended in. His granddam A12 is a smaller cow in our herd, but is a very strong producer, her son is Lot 33. I expect this bull to mature into an excellent herd sire.

84

88H

Homo Black • Homo Polled • PB SM
ASA# 3811641 • Tattoo: 88H • BD: 3/15/20
Act. BW: 82 lbs. • Adj. WW: 697 lbs. • Ratio: 97
Adj YW: 1241 lbs. • ADG: 3.40 lbs. • SC: 36.0

GW PROSPECTOR 389C
SOUTHERN PROSPECTOR 856E
GW MISS SUBSTANCE 576B



HOOK'S BEACON 56B
DMS MS MAS FORCE J34F
RHRS MISS UNO MASS 334C

Projected EPDS

CE	BW	WW	YW	MCE	Milk	MW	CW	YG	MB	BF	REA	API	TI
13.3	-0.3	78.2	124.7	8.1	20.9	59.9	36.7	-0.29	0.43	-0.050	0.89	149.3	83.4

This is a unique bull in pedigree and also type and kind. If you like cattle that are thick, deep sided, and have that extra fleshing ability we desire, then here is a good choice. His 2 year old dam is a very thick easy keeping cow with a perfect udder. Whether it's the calving ease, fleshing ability, excellent performance or maternal qualities and EPDs you desire, here is a bull that offers a well-balanced opportunity.

85

75H

Homo Black • Homo Polled • 3/4 SM 1/4 AN
ASA# 3811613 • Tattoo: 75H • BD: 3/10/20
Act. BW: 87 lbs. • Adj. WW: 672 lbs. • Ratio: 94
Adj YW: 1210 lbs. • ADG: 3.36 lbs. • SC: 35.0

QB BLUEPRINT D47
GQ CONOCO F6
KRJ B478



CONNEALY CAPITALIST 028
BDV MS CAPITALIST C28
BDV MS NEW TRADITION A54

CE	BW	WW	YW	MCE	Milk	MW	CW	YG	MB	BF	REA	API	TI
13.2	0.6	74.7	113.8	8.1	20.8	58.1	27.5	-0.33	0.08	-0.067	0.75	124.4	71.8

This bull is moderate, thick and flashy made. He is out of a very nice made cow that's moderate sized and easy keeping. Always one that catches your attention, super uddered, and a great disposition. If you run cattle in a tough environment or just like cattle that are more moderate and still punch the scale down, here is one you should like.



LOT 85

86

102H

Homo Black • Polled • 1/2 SM 1/2 AN
ASA# 3811658 • Tattoo: 102H • BD: 3/17/20
Act. BW: 94 lbs. • Adj. WW: 702 lbs. • Ratio: 98
Adj YW: 1291 lbs. • ADG: 3.68 lbs. • SC: 35.0

S A V PRIVILEGE 3030
VERMILION PRIVILEGE E856
VERMILION BLACKCAP 4889



LRS ARSENAL 121B
BDV MS ARSENAL D58
BDV MS CLICKER Y48

CE	BW	WW	YW	MCE	Milk	MW	CW	YG	MB	BF	REA	API	TI
8.1	1.9	77.4	123.1	2.8	15.0	53.7	48.0	-0.11	0.17	-0.030	0.61	111.8	72.0

This is a very good performing bull that is thick and deep sided. He demonstrates the power this offering of bulls has to offer. Later in the sale and still over 700 lbs at 205 days. Don't hesitate to own him, he will do a good job.

87

93H

Homo Black • Polled • 1/2 SM 1/2 AN
ASA# 3811647 • Tattoo: 93H • BD: 3/16/20
Act. BW: 65 lbs. • Adj. WW: 694 lbs. • Ratio: 97
Adj YW: 1216 lbs. • ADG: 3.26 lbs. • SC: 37.0

CCR FRONTIER 0053Z
SYS BANJO F39
SYS JULIET A61



BDV CORNER STONE 194B
BDV MS CORNER STONE E62
BDV MS CAPITALIST B20

CE	BW	WW	YW	MCE	Milk	MW	CW	YG	MB	BF	REA	API	TI
15.0	-1.4	74.7	121.4	6.4	24.4	61.7	37.8	-0.22	0.15	-0.036	0.78	127.5	76.5

Here is a new bloodline on the sire's side. The Banjo bull is an embryo out of a Resource dam. This bull goes back to the B20 cow that is the dam to Lot 11, the lead off bull in pen 2. Great genetics out, and very respectful EPD package, over 100 pounds a month on every weigh date. A nice made bull with excellent post weaning performance.

SPRING SIMMENTAL BULLS

Bull Photos

We don't puff and fluff or hire photographers that photo enhance, we take them ourselves in their natural environment. We feel this is the best way to honestly represent our cattle and the way we run them, unpampered and in their work clothes.

88

131H

Homo Black • Polled • 5/8 SM 3/8 AN
ASA# 3811708 • Tattoo: 131H • BD: 3/29/20
Act. BW: 86 lbs. • Adj. WW: 706 lbs. • Ratio: 98
Adj YW: 1247 lbs. • ADG: 3.38 lbs. • SC: 35.0

TJ MAIN EVENT 503B
CDI PREACHER 274E
CDI MS RIGHT ON 8Y

X

BDV IMPACT 410B
BDV MS IMPACT D70
BDV MS LUCKY MAN W17

CE	BW	WW	YW	MCE	Milk	MW	CW	YG	MB	BF	REA	API	TI
12.1	0.9	75.8	121.7	6.1	27.1	64.9	32.9	-0.23	0.24	-0.056	0.60	134.3	76.6

This is an eye pleaser, every time you see him, he is standing there with a look at me profile, nice and calm in his manners. To wean at 706 pounds at 205 days, he is the kind that should make cows that don't get oversized. His grandsire 410B, is out of one of the finest Angus cows you could ever find, and the great Capitalist bull.

SUGGESTED GUIDELINES FOR USING YEARLING BULLS

We are firm believers in the use of yearling bulls and feel it is one of the best years of their lives. It is a time when they are easy to manage and their only concern is breeding cows. We have found that yearling bulls that are managed carefully during the second year of their lives, not only do well, but they will perform better, over time. Below are some suggested guidelines for the care of yearling bulls.

Upon delivery to your ranch, keep yearling bulls separate from older bulls and feed them a maintenance ration of 5-8 pounds per head of grain and free choice hay. Reduce the amount of grain fed gradually, so that bulls are on straight hay or grass 2-4 weeks prior to the breeding season.

Where possible, try to limit the bulls to 45-60 days of pasture service the first year. At this time or as soon as possible, remove the bulls and put them in separate pastures with plenty of good quality grass.

It is best to feed yearling bulls separate from older bulls until after their second breeding season. This allows them to achieve the growth and strength to compete with older bulls for feed and space.

You will see the benefit of a little added cost and care of feeding a yearling bull by probably two or three more years of service from a well managed and healthy bull.

QUICK GUIDE TO ASA EPDS AND \$ INDEXES

Expected Progeny Differences (EPDs): EPDs are the most accurate and effective tool available for comparing genetic levels. In using EPDs, the difference between two sires' EPDs represents the unit difference expected in the performance of their progeny. For example, if sires A and B have EPDs of +10 and -5, a 15-unit difference would be expected in their progeny (moving from -5 to +10 yields 15 units). Key to using EPDs is knowing what units they are expressed in. For example, if the above case referred to weaning weight EPDs, A would be expected to sire 15-pounds more weaning weight than B. If calving ease were the trait, A would be expected to sire 15-percent more unassisted births in first-calf heifers; in other words, if B sired 30 assists in a group of 100 heifers, we'd expect A to require 15 assists. A percentile-ranking chart is required to determine where a bull's EPDs rank him relative to other bulls in the breed. For percentile rankings or more detailed information about EPDs and \$ indexes visit www.simmental.org.

Listed below are the units ASA EPDs are expressed in:

All-Purpose Index (API): Dollars per cow exposed under an all-purpose-sire scenario. (See below for more details.)

Back Fat (BF): Inches of backfat.

Birth Weight (BW): Pounds of birth weight.

Calving Ease (CE): Percent of unassisted births when used on heifers.

Carcass Weight (CW): Pounds of carcass weight.

Maternal Calving Ease (MCE): Percent of unassisted births in first-calving daughters.

Milk (MLK): Pounds of weaning weight due to milk.

Marbling (MRB): Marbling score.

Maternal Weaning Weight (MWW): Pounds of weaning weight due to milk and growth.

Ribeye Area (REA): Square inches of ribeye.

Warner-Bratzler Shear Force (WBSF): Pounds of force required to shear a steak.

Stayability (STAY): Percent of daughters remaining in the cowherd at 6 years of age.

Terminal Index (TI): Dollars per cow exposed under a terminal-sire scenario. (See below for more details.)

Weaning Weight (WW): Pounds of weaning weight.

Yearling Weight (YW): Pounds of yearling weight.

Yield Grade (YG): Yield grade score.

\$ Indexes: Though EPDs allow for the comparison of genetic levels for many economically important traits, they only provide a piece of the economic puzzle. That's where \$ indexes come in. Through well-conceived, rigorous mathematical computation, \$ indexes blend EPDs and economics to estimate an animal's overall impact on your bottom line. The same technology that led to the dramatic progress in swine, poultry and dairy genetics over the last several decades was used to develop the following \$ indexes:

All-Purpose Index (API): Evaluates sires for use on the entire cow herd (bred to both Angus first-calf heifers and mature cows) with the portion of their daughters required to maintain herd size retained and the remaining heifers and steers put on feed and sold grade and yield.

Terminal Index (TI): Evaluates sire for use on mature Angus cows with all offspring put on feed and sold grade and yield.

Using API and TI: First, determine which index to use; if you're keeping replacements use API, if not, TI. Then, just as with EPDs, zero in on the unit difference between bulls. (As described above, index units are in dollars per cow exposed.) The difference can be used to determine how much a bull is worth compared to another. Or, put another way, how much you can pay for one bull compared to another. For example, when buying an all-purpose-type sire, you can quickly figure a bull scoring +100 for API is worth an extra \$6,000 over a +50 bull if both are exposed to 30 cows over 4 years (\$50 diff. x 30 hd. x 4 yr. = \$6,000). A percentile-ranking chart is required to determine where a bull's index value ranks him relative to other bulls in the breed. For percentile rankings or more detailed information about EPDs and \$ indexes.

FALL SIMMENTAL BULLS

THE FALL BULLS

Oh what a powerful group. Raised on mother's milk and grass and NO CREEP. They were weaned late March and were put on a growing ration, but not very hot until grass turn out. They were then turned out on grass with only a mineral barrel. This is how they were developed until late October when they were brought back to the lots for sale development. These bulls absolutely have come to the for-front with ease. We never ran an ADG test on them, because at weaning we did not want to feed them for more than a 1.5 to 2 lb gain. In the fall they were past yearling age so we are showing you a projected sale day weight that we feel shows you their potential. We believe that they are ready to go to work and breed like a 2 year old bull would. They will lack a little 205 wt compared to the spring calves, but remember they didn't have the green grass environment like the spring borns do. They still have very impressive stats but just a little lower. There is some real powerful herd bulls in the offering. The fall bulls are all semen tested and are ready for heavy service.

89

179G

Homo Black • Homo Polled • PB SM
ASA# 3732554 • Tattoo: 179G • BD: 8/23/19
Act. BW: 84 lbs. • Adj. WW: 751 lbs. • Ratio: 108
Projected Sale Weight: 1606 lbs. • SC: 45.0

FBF1 COMBUSTIBLE
QB IGNITE D83
KNH PLAY ON 458Z

X

LRS UNLIMITED 752A
BDV MS UNLIMITED 5C33
BDV MS SPECIALFOCUS 2Z46

CE	BW	WW	YW	MCE	Milk	MW	CW	YG	MB	BF	REA	API	TI
10.8	2.3	84.2	132.3	6.1	19.8	61.8	36.4	-0.26	0.17	-0.048	0.79	137.3	81.3

This is a purebred bull that will put the wow factor on you. He is thick, powerful, and complete, he is a stud. If you are searching for a homozygous black and polled purebred, take the time, check him out, he is no fluke. His cow family is absolutely the cream of the crop all the way back to his base cow. His granddam is absolutely a perfect shaped female. His whole cow family is loaded with top quality udders. There just are not many purebred bulls with this amount of volume and muscle. He is soft made, very complete and a well above average outcross. **We will retain 1/3 semen interest.**



LOT 89

90

188G

Homo Black • Homo Polled • 5/8 SM 3/8 AN
ASA# 3732570 • Tattoo: 188G • BD: 8/30/19
Act. BW: 93 lbs. • Adj. WW: 787 lbs. • Ratio: 113
Projected Sale Weight: 1600 lbs. • SC: 44.0

FBF1 COMBUSTIBLE
QB IGNITE D83
KNH PLAY ON 458Z

X

GW PREM BEEF 612Z
BDV MS PREM BEEF 4B5
BDV MS DENALI 2Z52

CE	BW	WW	YW	MCE	Milk	MW	CW	YG	MB	BF	REA	API	TI
9.2	1.9	88.5	141.9	5.1	20.5	64.7	45.6	-0.11	0.27	-0.027	0.61	130.9	82.2

Here is one of the most powerful baldy bulls that will sell nationwide. There is no doubt he is a true beef bull, long, straight topped, wide behind, and very attractive. If you are looking for a power packed herd bull, don't hesitate to haul him home. You, your cows, and the calf buyer will all be satisfied. An added bonus, he is one of the quietest bulls in the offering.



LOT 90

91

173G

Homo Black • Homo Polled • 3/4 SM 1/4 AN
ASA# 3732544 • Tattoo: 173G • BD: 8/19/19
Act. BW: 84 lbs. • Adj. WW: 643 lbs. • Ratio: 93
Projected Sale Weight: 1464 lbs. • SC: 41.0

LRS GRADE BREAK 114B
QB BLUEPRINT D47
RUST MISS 452B

X

BDV NEW TRADITION 131X
BDV MS TRADITION 2Z78
BDV M216 OF BANDO 1575

CE	BW	WW	YW	MCE	Milk	MW	CW	YG	MB	BF	REA	API	TI
10.3	2.8	74.5	119.0	6.5	21.5	58.7	35.8	-0.28	0.24	-0.058	0.75	121.8	72.9

This bull is one of my personal favorites, he is deep sided, thick made, and stout from end to end. He is out of a cow that seems to always raise a top calf. From day one, this bull was a standout that shined. He is one of the last Blue Print sons we will offer, because he is deceased. Big and stout, he is a proud bull that carries himself with a look at me style. I question his 205 adj weight, he weaned at 724 actual. He was always the stoutest in the pen and still is today, pure power, no doubt.



LOT 91

FALL SIMMENTAL BULLS



92

208G

Homo Black • Homo Polled • PB SM
ASA# 3732602 • Tattoo: 208G • BD: 9/11/19
Act. BW: 90 lbs. • Adj. WW: 742 lbs. • Ratio: 107
Projected Sale Weight: 1432 lbs. • SC: 43.0

FBF1 COMBUSTIBLE
QB IGNITE D83
KNH PLAY ON 458Z

X

LRS UNLIMITED 752A
BDV MS UNLIMITED 5C15
BDV MS 9W16 OF 149S

CE	BW	WW	YW	MCE	Milk	MW	CW	YG	MB	BF	REA	API	TI
8.5	3.5	85.6	135.8	5.3	21.7	64.5	36.7	-0.23	0.11	-0.040	0.77	128.8	79.1

Boy do I appreciate this bull, he is so well designed and balanced. He will put that fleshing ability and wow factor in a set of calves. You bet he will sire pay weight and power in his calves. If you sell them by the pound, here is one to own. He is so thick and deep; you will look far and wide to find another like him. He is a true asset to the Simmental breed. You won't find one that is thicker and deeper.



93

191G

Hetero Black • Homo Polled • PB SM
ASA# 3732575 • Tattoo: 191G • BD: 9/1/19
Act. BW: 88 lbs. • Adj. WW: 777 lbs. • Ratio: 112
Projected Sale Weight: 1484 lbs. • SC: 38.0

LRS GRADE BREAK 114B
QB BLUEPRINT D47
RUST MISS 452B

X

3C WALLY C240 BLK
BDV MS WALLY 9W8
BDV MS FULL FORCE 7T28

CE	BW	WW	YW	MCE	Milk	MW	CW	YG	MB	BF	REA	API	TI
8.5	5.2	83.4	124.8	6.7	25.5	67.2	30.8	-0.56	0.27	-0.112	1.14	133.1	81.2

Man, oh man, what a stud, very eye-catching high performance and flashy. This bull should sire showstoppers, every cowman, woman, and child that know cattle will appreciate his style. He comes from a real outcross pedigree that has been around awhile. His sire is the power packed Blue Print that has sired many sale toppers throughout the Midwest. We certainly think he is one of the best. He is a little more flighty than average.



94

183G

Homo Black • Polled • PB SM
ASA# 3732560 • Tattoo: 183G • BD: 8/26/19
Act. BW: 91 lbs. • Adj. WW: 801 lbs. • Ratio: 115
Projected Sale Weight: 1478 lbs. • SC: 42.0

MR ISHEE CATALYST
RBS BOISE B63
RBS MISS S63

X

BDV MASTERPIECE 36X
BDV MS MASTER PIECE 2Z4
BDV MS CLICKER 9W5

CE	BW	WW	YW	MCE	Milk	MW	CW	YG	MB	BF	REA	API	TI
11.4	2.0	82.6	120.6	6.1	26.2	67.5	35.9	-0.52	0.01	-0.124	0.99	127.6	78.1

Big stout and rugged, this Boise son is powerful from end to end, absolutely a tank of a bull. Out of a cow that never misses a beat. Looking for a bull that will increase thickness body mass and all-around volume, here he is. The cow family behind him is very good. His dam is a true asset to our program, we feel he offers the best when it comes to total beef production.

95

193G

Homo Black • Polled • 1/2 SM 1/2 AN
ASA# 3732579 • Tattoo: 193G • BD: 9/2/19
Act. BW: 82 lbs. • Adj. WW: 814 lbs. • Ratio:
Projected Sale Weight: 1606 lbs. • SC: 38.5

S A V BISMARCK 5682
QB DATA D15
ASR MS DESI Z2110

X

BDV TUITION 130A
BDV TUITION FOCUS 5C76
BDV MS ASSET 3A5

CE	BW	WW	YW	MCE	Milk	MW	CW	YG	MB	BF	REA	API	TI
10.1	1.8	79.5	120.1	6.5	21.0	60.7	33.8	-0.16	0.24	-0.028	0.60	124.8	76.0

Here is a bull that is one of the big guns, he is very stout and should be on most cowmen's short list. He is very high performance out of a very powerful dam. Note, he is a twin and as good as any in the sale. If you enjoy cattle that are long and strong, here's a great choice. These Data cattle are designed to catch your attention, so attractive and built to last.

96

186G

Homo Black • Homo Polled • 3/4 SM 1/4 AN
ASA# 3732566 • Tattoo: 186G • BD: 8/28/19
Act. BW: 81 lbs. • Adj. WW: 729 lbs. • Ratio: 105
Projected Sale Weight: 1596 lbs. • SC: 43.0

FBF1 COMBUSTIBLE
QB IGNITE D83
KNH PLAY ON 458Z

X

B D V SOLUTION 603S
BDV MS SOLUTION 1Y45
BDV MISS ANITA P28

CE	BW	WW	YW	MCE	Milk	MW	CW	YG	MB	BF	REA	API	TI
11.1	1.6	75.7	119.4	6.7	19.2	57.0	39.4	-0.07	0.22	-0.007	0.54	129.9	73.2

Looking for a larger framed bull that will sire calves with a little extra bang, this bull might be a solid choice for the cowman, that desires a little extra frame. He should sire pay weight, and profit come sale day. He is very quiet and easy to be around.

FALL SIMMENTAL BULLS

97

202G

Homo Black • Polled • 3/4 SM 1/4 AN
ASA# 3732595 • Tattoo: 202G • BD: 9/8/19
Act. BW: 87 lbs. • Adj. WW: 728 lbs. • Ratio: 105
Projected Sale Weight: 1482 lbs. • SC: 39.0

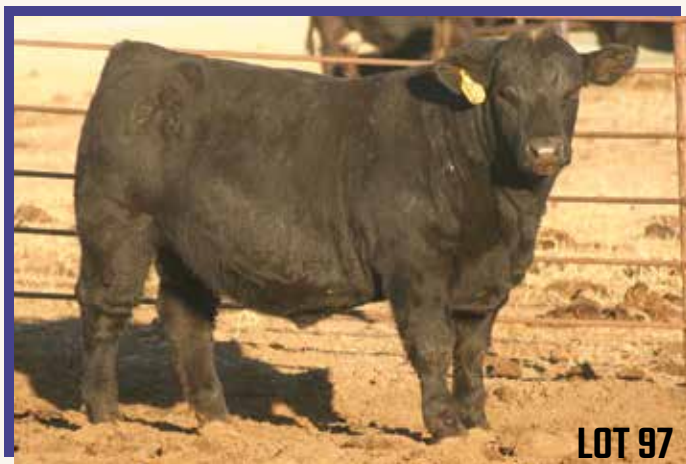
S A V BISMARCK 5682
QB DATA D15
ASR MS DESI Z2110

X

LRS UNLIMITED 752A
BDV MS UNLIMITED 5C63
BDV MS SUPERIOR X51

CE	BW	WW	YW	MCE	Milk	MW	CW	YG	MB	BF	REA	API	TI
8.0	2.4	78.5	120.2	4.8	21.7	60.9	36.4	-0.43	-0.01	-0.072	1.12	110.9	69.4

This bull is the real McCoy, very long, very deep, and very complete. He is out of a cow family that will put performance in your herd. When you sell your steers expect them to weight up and dollar out. When you select your replacement heifers you will want to keep his. There is so much good no matter how you look at him. He should add value and profit to your bottom line.



LOT 97

98

172G

Homo Black • Polled • 1/2 SM 1/2 AN
ASA# 3732541 • Tattoo: 172G • BD: 8/18/19
Act. BW: 85 lbs. • Adj. WW: 708 lbs. • Ratio: 102
Projected Sale Weight: 1526 lbs. • SC: 35.0

G A R RETAIL PRODUCT
G A R GAME ON
G A R 1407 NEW DESIGN 1683

X

RBS BOISE B63
BDV MS BOISE 7E36
BDV MS INVASION 9W30

CE	BW	WW	YW	MCE	Milk	MW	CW	YG	MB	BF	REA	API	TI
12.4	1.0	76.3	116.8	7.6	24.4	62.5	41.5	-0.20	0.36	-0.045	0.71	136.2	78.9

We used Game On on some of our purebred and Angus heifers. We had excellent success calving and the calves perform very well. This bull is thick deep sided and long. I truly appreciate how he developed into a big stout bull with the performance to sire power. His cow family is one of our favorite and is very predictable.



QB IGNITE D83 - SIRE OF LOTS 92 & 96

99

60G

Homo Black • Polled • PB SM
ASA# 3576108 • Tattoo: 60G • BD: 3/4/19
Act. BW: 88 lbs. • Adj. WW: 701 lbs. • Ratio: 104
Adj YW: 1245 lbs. • SC: 39

LRS GRADE BREAK 114B
QB BLUEPRINT D47
RUST MISS 452B

X

HOOK'S YELLOWSTONE 97Y
BDV MS YELLOWSTONE D39
BDV MS NEW TRADITION B88

CE	BW	WW	YW	MCE	Milk	MW	CW	YG	MB	BF	REA	API	TI
9.8	2.6	84.8	131.9	5.7	22.6	65.0	31.6	-0.48	0.21	-0.091	1.06	131.5	83.3

Here is a coming 2 year old bull that is a very good bull. He is a performance bull that will sire calves with outstanding pay weight. He had a big 15.03 ribeye. We did sell this bull in last year's sale for \$5,250, but he had a slight limp at delivery time, so he was replaced. The limp is gone, he is solid as a rock. He is very calm and easy on the eye and to be around. His dam is a moderate framed cow with an excellent udder. As you can see by his picture beside his dam at weaning with no creep, both mother and son are ideal and efficient performers.



LOT 99 WITH DAM, SUMMER 2019

100

195G

Homo Black • Polled • 1/2 SM 1/2 AN
ASA# 3732586 • Tattoo: 195G • BD: 9/5/19
Act. BW: 87 lbs. • Adj. WW: 735 lbs. • Ratio:
Projected Sale Weight: 1480 lbs. • SC: 41.0

PA FULL POWER 1208
WEEKS FULL POWER 1715
T W MISS CANDY 1527

X

TRIPLE C INVASION R47K
BDV MS INVASION 9W34
BDV MS FULL FORCE 7T38

CE	BW	WW	YW	MCE	Milk	MW	CW	YG	MB	BF	REA	API	TI
9.2	1.9	79.5	131.3	4.8	26.4	66.1	35.3	-0.16	0.39	-0.028	0.61	131.1	80.7

Here is a very long bull with a little extra frame. He is the bull for the cowman that wants to sell pounds, no doubt he will put calves on the ground that grow. His dam is a clean made long bodied cow that milks very well. This bull is made to put performance in his calves. He should work like a dream on black and baldy cows.

101

216G

Homo Black • Polled • 1/2 SM 1/2 AN
ASA# 3732620 • Tattoo: 216G • BD: 9/18/19
Act. BW: 86 lbs. • Adj. WW: 755 lbs. • Ratio: 109
Projected Sale Weight: 1492 lbs. • SC: 41.0

PA FULL POWER 1208
WEEKS FULL POWER 1715
T W MISS CANDY 1527

X

MR NLC SUPERIOR S6018
BDV MS SUPERIOR 0X23
BDV PARKER R90

CE	BW	WW	YW	MCE	Milk	MW	CW	YG	MB	BF	REA	API	TI
10.4	2.4	83.6	132.5	4.5	23.6	65.4	41.7	-0.21	0.33	-0.045	0.73	127.5	80.9

A Full Power half blood with extra bang, he is a true performance bull that is loaded with volume, thickness, and fleshing ability. His dam is a very high-performance cow, she has a great udder and always puts a desirable calf on the ground. If you like them with extra power, he could be made for you. He is very complete and will catch every good cowman's attention.

FALL SIMMENTAL BULLS



LOT 102

102

217G

Homo Black • Polled • PB SM
 ASA# 3732621 • Tattoo: 217G • BD: 9/20/19
 Act. BW: 105 lbs. • Adj. WW: 797 lbs. • Ratio: 115
 Projected Sale Weight: 1502 lbs. • SC: 42
 FBF1 COMBUSTIBLE
QB IGNITE D83
 KNH PLAY ON 458Z

X

MR NLC SUPERIOR S6018
BDV MS SUPERIOR X51
 BDV MISS KELLY R17

CE	BW	WW	YW	MCE	Milk	MW	CW	YG	MB	BF	REA	API	TI
4.1	4.5	83.8	128.5	2.0	21.8	63.7	40.7	-0.33	-0.03	-0.074	0.86	111.1	72.5

Bigger stouter, and high performing is his game. His dam is thick, deep, and wide. She is a high producer, and this bull shows you why. You cowboys that want to sell payweight, he is made for you.



LOT 103

103

212G

Homo Black • Polled • 1/2 SM 1/2 AN
 ASA# 3732613 • Tattoo: 212G • BD: 9/15/19
 Act. BW: 81 lbs. • Adj. WW: 717 lbs. • Ratio: 103
 Projected Sale Weight: 1406 lbs. • SC: 40
 S A V BISMARCK 5682
QB DATA D15
 ASR MS DESI Z2110

X

GW PREM BEEF 612Z
BDV MS PREM BEEF 4B33
 BDV MS SHARPERIMAGE 2Z17

CE	BW	WW	YW	MCE	Milk	MW	CW	YG	MB	BF	REA	API	TI
11.9	1.2	79.8	127.4	7.2	20.1	60.0	47.2	-0.17	0.20	-0.029	0.81	129.0	76.5

A very sharp attractive bull that is long, fancy and complete. He has a little more frmae than the average of the pen. There is plenty of maternal and cow power, you will appreciate the eye appeal here.



LOT 105

105

185G

Homo Black • Homo Polled • 3/4 SM 1/4 AN
 ASA# 3732565 • Tattoo: 185G • BD: 8/26/19
 Act. BW: 88 lbs. • Adj. WW: 717 lbs. • Ratio: 103
 Projected Sale Weight: 1392 lbs. • SC: 39.0
 LRS GRADE BREAK 114B
QB BLUEPRINT D47
 RUST MISS 452B

X

B P F SPECIAL FOCUS 504
BDV MS SPECIALFOCUS 2Z46
 BDV MS CLICKER 0X49

CE	BW	WW	YW	MCE	Milk	MW	CW	YG	MB	BF	REA	API	TI
10.5	2.9	87.0	137.7	6.6	21.9	65.4	35.6	-0.30	0.28	-0.060	0.82	127.0	81.4

Here is a looker, very eye catching with an eye pleasing profile. If you like cattle that are thick, deep, long, and wide bodied that are attractive, here is a bull to consider. You will like his daughters if they are anything like his dam. So eye appealing, well balanced, and perfect uddered. His dam is the granddam of the big stout Ignite son Lot 89.

The decision you make today will influence the next 20 years.
 Make it a good one. Use Begger's Diamond V Ranch seedstock.

FALL SIMMENTAL BULLS

106

223G

Homo Black • Polled • 1/2 SM 1/2 AN
ASA# 3732631 • Tattoo: 223G • BD: 9/27/19
Act. BW: 88 lbs. • Adj. WW: 766 lbs. • Ratio: 110
Projected Sale Weight: 1350 lbs. • SC: 39.5

PARKERS BLUEBOY B440
BDV BLUEBOY 166D
BDV MS FORESIGHT 0X13

X

MR NLC SUPERIOR S6018
BDV MS SUPERIOR 1Y31
BDV U834 OF BOX CAR

CE	BW	WW	YW	MCE	Milk	MW	CW	YG	MB	BF	REA	API	TI
9.3	1.5	77.2	111.7	5.5	24.3	62.9	41.2	-0.12	0.09	-0.026	0.60	114.3	70.7

This bull has some very eye-catching genetics. If you like them well balanced and flashy, here is your man. We just love his dam's power, she is very deep, long, and attractive, she is one of the elite uddered cows among a herd of cows that have top notch udders. You don't have to wonder, he is going to sire power and pay weight.

108

232G

Hetero Black • Polled • 1/2 SM 1/2 AN
ASA# 3732648 • Tattoo: 232G • BD: 10/7/19
Act. BW: 95 lbs. • Adj. WW: 787 lbs. • Ratio: 113
Projected Sale Weight: 1418 lbs. • SC: 40.0

S A V PRIVILEGE 3030
VERMILION PRIVILEGE E856
VERMILION BLACKCAP 4889

X

TRAXS DOC Z52
BDV MS DOC 5C52
BDV MS WALLY 9W8

CE	BW	WW	YW	MCE	Milk	MW	CW	YG	MB	BF	REA	API	TI
6.7	3.8	84.4	127.9	3.2	22.3	64.5	45.8	-0.18	0.30	-0.039	0.72	116.6	77.6

Long and clean, put him on a set of big, thick, deep sided cows, you want to put some body length in and enjoy the results. He will add pay weight and a clean neat look. If pounds are the name of your game, this bull will get you there.

109

214G

Homo Black • Polled • 1/2 SM 1/2 AN
ASA# 3732617 • Tattoo: 214G • BD: 9/16/19
Act. BW: 82 lbs. • Adj. WW: 755 lbs. • Ratio: 109
Projected Sale Weight: 1420 lbs. • SC: 39.5

PA FULL POWER 1208
WEEKS FULL POWER 1715
T W MISS CANDY 1527

X

TRAXS DOC Z52
BDV MS DOC B101
BDV MISS EIGHTY P80

CE	BW	WW	YW	MCE	Milk	MW	CW	YG	MB	BF	REA	API	TI
10.4	0.5	79.3	127.7	6.0	26.6	66.3	30.4	-0.16	0.42	-0.017	0.63	134.3	83.0

Here is a long bodied bull that has performed very well right from the start. His dam is a moderate cow with a very high quality udder. His Full Power Angus sire has consistently sired calves that are very eye catching and in demand. This bull is strong topped with a very eye appealing profile.

107

230G

Homo Black • Polled • 5/8 SM 3/8 AN
ASA# 3732644 • Tattoo: 230G • BD: 10/4/19
Act. BW: 82 lbs. • Adj. WW: 826 lbs. • Ratio: 119
Projected Sale Weight: 1330 lbs. • SC: 42.0

TJ MAIN EVENT 503B
CDI PREACHER 274E
CDI MS RIGHT ON 8Y

X

BDV CAPITALIST 43B
BDV MS CAPITALIST 7E44
BDV MS PREM BEEF 4B66

CE	BW	WW	YW	MCE	Milk	MW	CW	YG	MB	BF	REA	API	TI
10.5	0.7	85.3	132.0	4.3	28.9	71.6	42.2	-0.22	0.09	-0.046	0.76	123.8	78.5

Just a real complete bull with a great profile. He is very attractive from front to back. He has a sharp clean head with a clean fronted look. When you see him, you will have to appreciate his deep side, strong top, and big hip.



110

194G

Homo Black • Polled • 1/2 SM 1/2 AN
ASA# 3732583 • Tattoo: 194G • BD: 9/4/19
Act. BW: 83 lbs. • Adj. WW: 663 lbs. • Ratio: 96
Projected Sale Weight: 1360 lbs. • SC: 40.0

S A V BISMARCK 5682
QB DATA D15
ASR MS DESI Z2110

X

LRS FLEX 802Z
BDV MS FLEX 5C31
BDV MS SOLUTION 0X35

CE	BW	WW	YW	MCE	Milk	MW	CW	YG	MB	BF	REA	API	TI
11.4	0.9	72.8	113.7	7.1	21.4	57.7	41.5	-0.22	0.21	-0.038	0.82	126.3	73.2

A very well-balanced beef bull with a super stout, deep made profile with length and style to burn. His dam is absolutely one of our finest, she is powerfully constructed, deep sided, long bodied, and wide. She possesses one of the best udders you can hang under a cow. If you like power in your cattle, try to own him.

WHAT CAN YOU EXPECT FROM BEGGER'S DIAMOND V RANCH GENETICS

Our goal is to offer the best when it comes to total profitability. When we select our genetics, we consider all the avenues in the beef business. First of all we look at what will keep you the cow-calf man profitable. Things such as calving ease, fleshing ability, udder quality, disposition, and phenotype, along with mature cow size, and their ability to raise a calf that is worth more at sale time, and is efficient. Producing cattle that the feeders and packers desire. How do we select our genetics? We use EPDs, dollar based Indexes such as API and TI and eye appeal, along with the ability for an animal to be productive, wean a satisfactory calf, breed back on time, and have the ability to use the feed source that our environment provides. We try to run our cows in the same way that most commercial outfits run their cattle and the cows are still in excellent condition. We believe that the API is a valuable tool to

consider, but feel that it is simply a guideline, and like all EPDs and dollar indexes, should be used as a way to split the difference between a choice of 2 animals that appear to be alike. It is just one equation that needs to be considered along with an animal's performance, eye appeal, and ability to survive in its environment. When you purchase your seedstock, take the time to look at your suppliers' cow herd, what do they look like, are they functional, what is their udder quality like, what is their frame size, and do they calve easy, stay in shape, and do they produce a high percentage of their body wt. We consider it all and believe we offer a good solution and end point.

Come take a look, we will have the majority of our cows available to observe, so you can see for yourself what you can expect your cowherd to look like if you use Begger's Diamond V Ranch genetics.

FALL SIMMENTAL BULLS



LOT 112

112

209G

Homo Black Baldy • Polled • 1/2 SM 1/2 AN
ASA# 3732606 • Tattoo: 209G • BD: 9/12/19
Act. BW: 82 lbs. • Adj. WW: 688 lbs. • Ratio: 99
Projected Sale Weight: 1438 lbs. • SC: 38.0

PARKERS BLUEBOY B440
BDV BLUEBOY 166D
BDV MS FORESIGHT 0X13

X

BDV TORQUE 912W
BDV MS TORQUE 2Z58
BDV MS CLUB KING 0X18

CE	BW	WW	YW	MCE	Milk	MW	CW	YG	MB	BF	REA	API	TI
12.4	0.9	77.4	113.3	7.0	20.3	58.9	31.5	-0.08	0.21	-0.022	0.36	128.9	74.7

A very flashy baldy bull that is built like a tank, more on the moderate side, but very easy on the eye. He has a great disposition and a great genetic base. He will sire calves that are stout made, moderate sized, and attractive. His cow family is moderate with superb udder quality.

113

181G

Homo Black • Homo Polled • 3/4 SM 1/4 AN
ASA# 3732558 • Tattoo: 181G • BD: 8/25/19
Act. BW: 88 lbs. • Adj. WW: 691 lbs. • Ratio: 100
Projected Sale Weight: 1362 lbs. • SC: 42.0

MR ISHEE CATALYST
RBS BOISE B63
RBS MISS S63

X

BDV FESTUS 149S
BDV MS FESTUS 1Y5
BDV MISS JOLA P69

CE	BW	WW	YW	MCE	Milk	MW	CW	YG	MB	BF	REA	API	TI
11.8	1.2	74.5	107.5	6.9	22.1	59.3	28.0	-0.36	0.08	-0.079	0.74	120.4	70.7

This Boise son has the right genetics to sire thick deep bodied cattle that excel on grass with little inputs. His genetic base is loaded up with very good producing cows with excellent udder quality. There is no doubt he will work in a commercial environment that demands the best.



LOT 115

115

234G

Homo Black • Polled • 1/2 SM 1/2 AN
ASA# 3732651 • Tattoo: 234G • BD: 10/9/19
Act. BW: 87 lbs. • Adj. WW: 725 lbs. • Ratio: 104
Projected Sale Weight: 1282 lbs. • SC: 39.0

PARKERS BLUEBOY B440
BDV BLUEBOY 166D
BDV MS FORESIGHT 0X13

X

CONNEALY CAPITALIST 028
BDV MS CAPITALIST D44
BDV MS SOLO B110

CE	BW	WW	YW	MCE	Milk	MW	CW	YG	MB	BF	REA	API	TI
10.6	1.3	76.8	112.9	6.0	20.0	58.3	32.7	-0.07	0.25	-0.016	0.40	125.1	74.4

Here is one of the younger fall bulls, he is long bodied, and has a lot of eye appeal. He comes from a very fertile cow line, his dam calved as a yearling heifer in the spring bunch. We did make a concession for her as she calved mid-May as a yearling. She was not exposed to a bull until we put her in the fall herd.

116

227G

Homo Black • Polled • 1/2 SM 1/2 AN
ASA# 3732639 • Tattoo: 227G • BD: 10/3/19
Act. BW: 88 lbs. • Adj. WW: 729 lbs. • Ratio: 105
Projected Sale Weight: 1340 lbs. • SC: 38.0

S A V PRIVILEGE 3030
VERMILION PRIVILEGE E856
VERMILION BLACKCAP 4889

X

ES DAKOTA NK68
BDV MS DAKOTA 8U13
NLC NANETTE N251

CE	BW	WW	YW	MCE	Milk	MW	CW	YG	MB	BF	REA	API	TI
8.5	2.0	83.4	126.8	3.5	20.4	62.1	46.8	-0.17	0.06	-0.057	0.57	105.5	73.3

This is a little taller bull that will add a little more size. His dam is a 12 year old cow that always gets the job done well. We think this bull will really work well on a group of thick, deep sided cows that need a little more bang. The udder structure on his cow family is excellent.

You can count on Begger's Diamond V
Ranch genetics to maximize the trait
that counts the most "PROFIT."

FALL SIMMENTAL BULLS

117

180G

Homo Black • Polled • 5/8 SM 3/8 AN
ASA# 3732556 • Tattoo: 180G • BD: 8/25/19
Act. BW: 83 lbs. • Adj. WW: 695 lbs. • Ratio: 100
Projected Sale Weight: 1440 lbs. • SC: 42.0

PARKERS BLUEBOY B440
BDV BLUEBOY 166D
BDV MS FORESIGHT 0X13

X

S D S GRADUATE 006X
BDV MS GRADUATE 5C9
BDV MS TUITION 3A12

CE	BW	WW	YW	MCE	Milk	MW	CW	YG	MB	BF	REA	API	TI
10.0	0.5	79.7	119.7	6.0	20.0	59.8	36.3	-0.18	0.22	-0.037	0.61	125.1	77.0

Here is a well constructed Blue Boy son with a ton of capacity and body depth. If you like to keep them moderate and easy fleshing with a ton of maternal strength, here you are. Cattlemen that desire true cow strength and fleshing ability, here is one to own.



LOT 117

118

231G

Homo Black • Homo Polled • PB SM
ASA# 3732647 • Tattoo: 231G • BD: 10/7/19
Act. BW: 94 lbs. • Adj. WW: 726 lbs. • Ratio: 105
Projected Sale Weight: 1350 lbs. • SC: 39.0

MR ISHEE CATALYST
RBS BOISE B63
RBS MISS S63

X

LRS RANGE BOSS 901Z
BDV MS RANGE BOSS 4B15
BDV MS SWEET MEAT 0X40

CE	BW	WW	YW	MCE	Milk	MW	CW	YG	MB	BF	REA	API	TI
11.2	2.3	81.3	114.3	6.0	22.1	62.7	26.6	-0.45	-0.01	-0.095	0.89	127.0	75.2

This is a moderate framed bull with a lot of depth and volume. He will put capacity and the easy fleshing ability in his progeny. He will sire pay weight and add value to his calves. If you need to put extra volume in a set of cows, here is the one to do it.



RBS BOISE B63 - SIRE OF LOT 118

119

201G

Homo Black • Homo Polled • 3/8 SM 5/8 AN
ASA# 3732593 • Tattoo: 201G • BD: 9/8/19
Act. BW: 70 lbs. • Adj. WW: 678 lbs. • Ratio: 98
Projected Sale Weight: 1344 lbs. • SC: 36.5

TJ MAIN EVENT 503B
CDI PREACHER 274E
CDI MS RIGHT ON 8Y

X

BDV IMPACT 410B
BDV E752 OF IMPACT
BDV Z220 OF HOVER DAM

CE	BW	WW	YW	MCE	Milk	MW	CW	YG	MB	BF	REA	API	TI
13.8	-0.9	71.6	116.3	6.4	25.4	61.1	39.5	-0.14	0.30	-0.040	0.53	133.2	75.3

Are you looking for a Sim-Angus that is low percentage, here is a real classy bull that is strong throughout his body make up. He is easy on the eye and has a great personality, quiet natured and strong in his body type, moderate thick, and long sided. Look at his light 70 pound birth weight and weaning off his 2 year old Angus dam at right under 700 pounds. The cow family that backs him up is very good, they are the right size with excellent udder quality. I believe he could work on heifers.



LOT 119

120

210G

Homo Black • Polled • 1/2 SM 1/2 AN
ASA# 3732611 • Tattoo: 210G • BD: 9/14/19
Act. BW: 83 lbs. • Adj. WW: 644 lbs. • Ratio: 93
Projected Sale Weight: 1330 lbs. • SC: 39.0

S A V BISMARCK 5682
QB DATA D15
ASR MS DESI Z2110

X

BDV FESTUS 149S
BDV MS 9W16 OF 149S
BDV MS 4-SEASONS 7T31

CE	BW	WW	YW	MCE	Milk	MW	CW	YG	MB	BF	REA	API	TI
10.0	1.4	72.8	110.8	6.2	23.1	59.5	30.5	-0.13	0.16	-0.024	0.50	120.6	70.6

This is a meat wagon, as always, this bull's dam raised another bull with extra body capacity. If you like them deep, powerful, and good in a moderate easy keeping package, this bull maybe just the ticket. The maternal side will be very good, take a look at Lot 90, the stout purebred with all the thickness and volume. This bull's dam is his granddam.

121

20G

Homo Black • Homo Polled • 1/2 SM 1/2 AN
ASA# 3576032 • Tattoo: 20G • BD: 2/26/19
Act. BW: 62 lbs. • Adj. WW: 507 lbs. • Ratio:
Projected Sale Weight: 1160 lbs. • SC: 40.0

CCR FLINT HILLS 2092B
CCR FLINT ROCK 0101E
CCR MS GINGER 3114A

X

CCR COWBOY CUT 5048Z
BDV MS COWBOY CUT D92
B D V S620 OF HART TRAVELER

CE	BW	WW	YW	MCE	Milk	MW	CW	YG	MB	BF	REA	API	TI
11.9	1.8	83.6	123.6	8.0	24.2	65.9	33.4	-0.11	0.59	-0.007	0.60	141.1	87.2

Super, super easy to be around, this bull was never offered for sale. He was a twin, so his birth weight was only 62 lbs. When they are born so light and born a twin, they don't get adjusted like singles do, so his 205 weight maybe a little shy. Don't be afraid to own him, he is out of a great cow family. There are excellent genetic here, he will do his new owner a lot of good.

FALL SIMMENTAL BULLS

122

64G

Homo Black • Polled • 1/2 SM 1/2 AN
ASA# 3576116 • Tattoo: 64G • BD: 3/5/19
Act. BW: 80 lbs. • Adj. WW: 614 lbs. • Ratio: 91
Projected Sale Weight: 1145 lbs. • SC: 40.0

BASIN PAYWEIGHT 1682
CCR PAY DIRT 2340C
CCR MS SINGLETARY 2340Z



GW PREM BEEF 612Z
BDV MS PREM BEEF D88
BDV MS FOCUS W21

CE	BW	WW	YW	MCE	Milk	MW	CW	YG	MB	BF	REA	API	TI
13.5	-0.5	74.2	118.0	7.5	23.6	60.7	35.1	-0.12	0.48	-0.023	0.54	145.0	82.4

Here is a classy fronted, clean made virgin 2 year old that was never offered for sale before. We kept him back to sell, as a 2 year old. If you are looking for an older bull that offers eye appeal, and style, he needs a look. His dam is a useful cow that is a little larger framed and fancy, the maternal side is excellent.

124

222G

Homo Black • Polled • 1/2 SM 1/2 AN
ASA# 3732629 • Tattoo: 222G • BD: 9/26/19
Act. BW: 82 lbs. • Adj. WW: 676 lbs. • Ratio: 97
Adj YW: 1296 lbs. • SC: 40.0

S A V BISMARCK 5682
QB DATA D15
ASR MS DESI Z2110



LRS FLEX 802Z
BDV MS FLEX 4B9
BDV MS 4-SEASONS 7T31

CE	BW	WW	YW	MCE	Milk	MW	CW	YG	MB	BF	REA	API	TI
12.3	-0.3	65.3	102.8	7.6	23.0	55.6	26.2	-0.15	0.23	-0.024	0.51	122.8	70.3

Very long and smooth framed from end to end. He will add that long bodied style to his calves. He is moderate in his frame, use him on cows that need protected at calving. He should sire calves that are born easily, his cow family milks very well.

126

199G

Homo Black • Homo Polled • PB SM
ASA# 3732591 • Tattoo: 199G • BD: 9/7/19
Act. BW: 80 lbs. • Adj. WW: 664 lbs. • Ratio: 96
Projected Sale Weight: 1246 lbs. • SC: 41.0

TJ MAIN EVENT 503B
CDI PREACHER 274E
CDI MS RIGHT ON 8Y



RBS BOISE B63
BDV MS BOISE 7E59
BDV MS FESTUS 1Y13

CE	BW	WW	YW	MCE	Milk	MW	CW	YG	MB	BF	REA	API	TI
11.3	0.0	68.6	100.6	5.9	27.1	61.4	27.3	-0.41	0.02	-0.085	0.86	129.5	71.9

A real attractive bull that is moderate sized. He is very keen headed and sharp looking, average for depth, but clean in his design. He should complement a set of Angus or baldy cows well. He will work well on a set of cows that need a little more calving ease with less birth weight.

128

213G

Homo Black • Polled • 5/8 SM 3/8 AN
ASA# 3732615 • Tattoo: 213G • BD: 9/16/19
Act. BW: 79 lbs. • Adj. WW: 674 lbs. • Ratio: 97
Projected Sale Weight: 1232 lbs. • SC: 37.0

TJ MAIN EVENT 503B
CDI PREACHER 274E
CDI MS RIGHT ON 8Y



BDV CORNER STONE 194B
BDV MS CORNER STONE 7E26
BDV MS SOLUTION 1Y45

CE	BW	WW	YW	MCE	Milk	MW	CW	YG	MB	BF	REA	API	TI
11.8	0.3	69.1	111.7	5.6	25.6	60.1	28.8	-0.27	0.17	-0.045	0.76	129.0	71.5

Here is a calving ease bull out of a 2 year old heifer. He is a little more moderate in size, but very complete, he is quiet and easy to be around. He would work well on a longer framed set of cows.

123

221G

Homo Black • Polled • 1/2 SM 1/2 AN
ASA# 3732628 • Tattoo: 221G • BD: 9/26/19
Act. BW: 91 lbs. • Adj. WW: 689 lbs. • Ratio: 99
Adj YW: 1328 lbs. • SC: 39.0

PARKERS BLUEBOY B440
BDV BLUEBOY 166D
BDV MS FORESIGHT 0X13



BDV TORQUE 912W
BDV MS TORQUE 3A62
BDV MS SWEET MEAT 0X29

CE	BW	WW	YW	MCE	Milk	MW	CW	YG	MB	BF	REA	API	TI
10.1	1.7	70.8	102.0	5.9	19.1	54.5	25.0	-0.06	0.21	-0.019	0.26	121.6	69.0

If you like them long bodied, strong topped, and fancy, here you go. Very easy to like and constructed to be fancy. His dam is a high production female with a faultless udder.

125

170G

Homo Black • Homo Polled • 5/8 SM 3/8 AN
ASA# 3732537 • Tattoo: 170G • BD: 8/16/19
Act. BW: 78 lbs. • Adj. WW: 668 lbs. • Ratio: 96
Projected Sale Weight: 1340 lbs. • SC: 38.0

W/C UNITED 956Y
TNT BCR UNIFIED B203
MS NLC TANKER Z2058



BDV CAPITALIST 43B
BDV MS CAPITALIST 7E19
BDV MS PREM BEEF 4B31

CE	BW	WW	YW	MCE	Milk	MW	CW	YG	MB	BF	REA	API	TI
15.0	-1.4	72.9	109.4	6.7	22.6	59.0	19.7	-0.12	0.17	-0.024	0.32	126.9	74.6

This bull is a true heifer bull prospect out of a 2 year old heifer himself. We contemplated retaining him for our own heifer bull. He has a small calving ease head with a very complete easy to appreciate body shape that looks to be of easy calving makeup. He goes back several generations with excellent low birth weight, calving ease lines, yet don't be mislead, he has some performance that makes him complete, his dam has a tidy udder that is made right.

127

192G

Homo Black • Polled • 1/2 SM 1/2 AN
ASA# 3732577 • Tattoo: 192G • BD: 9/1/19
Act. BW: 85 lbs. • Adj. WW: 685 lbs. • Ratio: 99
Projected Sale Weight: 1368 lbs. • SC: 38.0

S A V BISMARCK 5682
QB DATA D15
ASR MS DESI Z2110



BDV TORQUE 912W
BDV MS TORQUE 4B12
BDV VALENTINE 6S20

CE	BW	WW	YW	MCE	Milk	MW	CW	YG	MB	BF	REA	API	TI
12.2	1.0	72.8	109.8	6.8	19.6	56.0	29.3	-0.15	0.14	-0.030	0.50	126.2	70.6

A deep, deep sided bull that will make a set of feeder calves that feed well. He is long sided, and nicely constructed. If you like cattle that do well without extra help, here is a good one.

129

219G

Homo Black • Polled • 1/2 SM 1/2 AN
ASA# 3732625 • Tattoo: 219G • BD: 9/24/19
Act. BW: 92 lbs. • Adj. WW: 646 lbs. • Ratio: 93
Projected Sale Weight: 1380 lbs. • SC: 43.0

S A V BISMARCK 5682
QB DATA D15
ASR MS DESI Z2110



LRS FLEX 802Z
BDV MS FLEX 4B55
BDV MS SOLUTION 0X35

CE	BW	WW	YW	MCE	Milk	MW	CW	YG	MB	BF	REA	API	TI
10.9	1.6	72.9	118.8	6.9	20.3	56.7	41.8	-0.24	0.12	-0.042	0.86	118.9	70.2

Looking to add pay weight, here is a bull that might excel. I would recommend him as more of a terminal sire. His dam is a powerful cow but may have a little too much tit length, so that is why I say a better terminal bull. Put him on a set of British cows and I think you will be very pleased. He will add some frame and body length.

FALL SIMMENTAL BULLS

130

203G

Homo Black • Homo Polled • 5/8 SM 3/8 AN
ASA# 3732597 • Tattoo: 203G • BD: 9/8/19
Act. BW: 82 lbs. • Adj. WW: 590 lbs. • Ratio: 85
Projected Sale Weight: 1266 lbs. • SC: 40.0

S A V BISMARCK 5682
QB DATA D15
ASR MS DESI Z2110

X

GW PREM BEEF 612Z
BDV MS PREM BEEF 4B31
BDV MS FESTUS 2Z54

CE	BW	WW	YW	MCE	Milk	MW	CW	YG	MB	BF	REA	API	TI
13.5	-1.8	56.7	92.3	7.6	21.4	49.7	16.2	-0.25	0.14	-0.042	0.56	130.0	65.5

Looking for that real clean 5 frame bull that is heavy muscled and powerfully constructed, here is one to check out. He is for the outfit that needs cattle that doesn't get oversized. He will definitely put muscle and stoutness in his calves. He may be a real ticket if you need a bull that will calve easy.

132

228G

Homo Black • Homo Polled • 1/2 SM 1/2 AN
ASA# 3732642 • Tattoo: 228G • BD: 10/3/19
Act. BW: 81 lbs. • Adj. WW: 637 lbs. • Ratio: 92
Projected Sale Weight: 1234 lbs. • SC: 39.0

MR ISHEE CATALYST
RBS BOISE B63
RBS MISS S63

X

S A V 5175 BANDO 502
BDV U831 OF BOX CAR
BLACK BUTTE RITO QUANTUM 917

CE	BW	WW	YW	MCE	Milk	MW	CW	YG	MB	BF	REA	API	TI
16.4	-1.6	55.1	77.2	9.7	26.4	53.8	21.0	-0.17	0.07	-0.038	0.39	116.1	62.1

A moderate sized bull with excellent balance about him. He is out of a 12 year old Angus cow that is starting to show her age. He lacks a little 205 weight compared to some, but the genetics are there. Expect this bull to sire a little more moderation and long frame size than some. If you are looking to produce replacement females that stay sensible sized, this bull will produce them. The udder quality will be top of the line.

131

226G

Homo Black • Homo Polled • 1/2 SM 1/2 AN
ASA# 3732638 • Tattoo: 226G • BD: 9/1/19
Act. BW: 70 lbs. • Adj. WW: 547 lbs. • Ratio:
Projected Sale Weight: 1300 lbs. • SC: 38.0

S A V BISMARCK 5682
QB DATA D15
ASR MS DESI Z2110

X

TRAXS DOC Z52
BDV MS DOC 5C35
BDV Y118 OF SOLUTION

CE	BW	WW	YW	MCE	Milk	MW	CW	YG	MB	BF	REA	API	TI
9.2	0.2	67.2	107.0	6.6	20.7	54.2	30.7	-0.17	0.14	-0.023	0.63	115.6	68.2

A calving ease thick made bull in a moderate package. Use him to add some easy keeping genetics. He is a very complete bull in a 5 frame package. Like all data progeny, very eye appealing. He has a puppy dog disposition, very quite.

133

220G

Homo Black • Polled • PB SM
ASA# 3732627 • Tattoo: 220G • BD: 9/26/19
Act. BW: 73 lbs. • Adj. WW: 683 lbs. • Ratio: 98
Projected Sale Weight: 1210 lbs. • SC: 37.5

MR ISHEE CATALYST
RBS BOISE B63
RBS MISS S63

X

TRAXS DOC Z52
BDV MS DOC 5C14
BDV MS CLUB KING 0X18

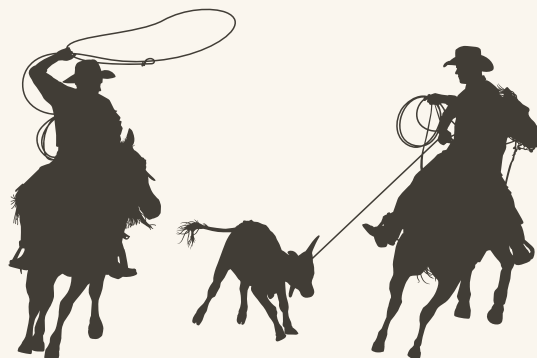
CE	BW	WW	YW	MCE	Milk	MW	CW	YG	MB	BF	REA	API	TI
13.2	-1.3	66.6	98.1	7.9	28.9	62.2	17.4	-0.50	-0.04	-0.101	0.89	128.1	71.6

This Boise son is very complete in his design. He is a little more moderate than some, but is certainly the right kind, very eye pleasing. He is made for the cowman that wants a more moderate cow with a perfect conformation. The udder quality he sires should be top of the line.

GENOMICS WITH COW SENSE

There is a lot of hype out there about EPDs, Genomic Testing, and Carcass Traits. We strongly believe in the use of all of these genetic enhancement tools. We also know that you can ruin a good cowherd in a blink of an eye if you chase paper traits with no directive or focus put on the mother cow and what it takes to keep her in production with as few inputs as possible. There are breeding programs that only provide EPDs with no actual data. Be careful, many times these programs have cattle that do not have the ability to produce pay weight, and fleshing ability. They don't like to show actual data because it isn't all that good. Raw data such as actual birth weights, 205 wts, 365 wts and performance data and indexes allows you to observe how an animal has performed within his contemporary group. It shows you his potential to sire calves that may increase or decrease performance. There are way too many cattle out there with excellent EPDs and dollar indexes that are not worthy of anything but a castrating knife. You can breed for all the highest EPDs and indexes in the world, but if you sacrifice FLESHING ABILITY, MENTAL, MATERNAL, and PHYSICAL TRAITS, along with an animal's ability to produce PAY WEIGHT and EYE APPEAL, all you will gain is a cull cow with good EPDs.

We employ cow sense, common sense and science to create dollars and cents.



SIX SECONDS FLAT!

Two brothers were born into the farming business, they always had horses, liked cows and ranching, but farmers were what they were known as. As the years progressed they never gave up the idea that they were cowboys. It was after they married they built their own arena, bought some steers, trained their own horses to head and heal, held ropings every Sunday, they became quite handy and could twirl the twine. One day the farm boys decided to enter up in the rodeo at the County Fair. There were a lot of top ropers entered from near and far, likely the under dogs, but they felt they could hold their own. When they backed into box, they knew the draw was right. Bill was the header and Bob on the heels. When they turned him out, they came to win, 2 swings a throw, 2 horns were caught, with 2 more swings Bob let his end go, 2 feet, and a quick face time 6 seconds flat. Yup, the brothers won. The event put a few bucks in their pocket and a buckle on their belt. Later that night the dad's of the second place team were a little disgruntled, kept grumbling, "beat by a couple of farmers." That's when Ray piped up and said, "now you guys know, those farmers can rope."

ANGUS BULLS

THE ANGUS BULLS

These Angus bulls are the best we have ever offered. There are some very elite bulls that we feel are as good as you will find Nationwide. Likewise, you will find Angus bulls that will excel when bred to cows as well as some top notice heifer bulls. They are the kind to add value and get-r-done.



LOT 134

134

942G

Black • Homo Polled • Purebred Angus
ASA# 19622648 • Tattoo: 942G • BD: 9/12/19
Act. BW: 85 lbs. • Adj. WW: 797 lbs. • Ratio: 109
Adj YW: 1550 lbs. • SC: 38.5

PA FULL POWER 1208
WEEKS FULL POWER 1715
T W MISS CANDY 1527



BDV TORQUE 912W
BDV B424 OF TORQUE
BDV X030 OF DENALI

CED	BW	WW	YW	CEM	Milk	CW	Marb	RE	Fat	\$W	\$F	\$G	\$B
3	2.1	59	102	5	25					56	77		

There may not be very many bulls throughout the Angus breed that is anymore complete than this bull. He certainly is a power packed herd bull. We truly believe if he was in just about any highly recognized Angus sale he would be a headliner. There are not very many that can compete with this bull's balance, muscle, and completeness. He is a true asset to the Angus breed, and the beef industry. We should probably be retaining him for our own program. Fleshing ability and udder quality is top notch in his cow family. The other unique thing about him is, he is an outcross to just about any program, he is a real herd bull. **We will retain 1/3 semen interest in this bull.**



LOT 135

135

940G

Black • Homo Polled • Purebred Angus
ASA# 19622646 • Tattoo: 940G • BD: 8/19/19
Act. BW: 79 lbs. • Adj. WW: 682 lbs. • Ratio: 93
Adj YW: 1408 lbs. • SC: 39.0

LCC NEW STANDARD
R B ACTIVE DUTY 010
B A LADY 6807 305



S A V 8180 TRAVELER 004
BDV T743 OF TRAVELER 004
ANCHOR EVERGREEN B M B 624

CED	BW	WW	YW	CEM	Milk	CW	Marb	RE	Fat	\$W	\$F	\$G	\$B
4	1.8	48	86	9	21					41	71		

This is one powerful Angus bull, we really like him. His dam is a 13 year old 004 daughter that has produced some very outstanding calves throughout her lifetime. She has a perfect udder, is raising one more calf this year, but it will be her last. Herd bull written all over this bull, his sire is the immortal Active Duty and his dam has proved herself to be long lasting and a great calf raiser. You will want to own this bull if you keep your own replacements. We plan on collecting this bull and using him back in our own herd.



LOT 136

136

003H

Black • Homo Polled • Purebred Angus
ASA# 19900425 • Tattoo: 003H • BD: 2/20/20
Act. BW: 65 lbs. • Adj. WW: 785 lbs. • Ratio: 110
Adj YW: 1323 lbs. • ADG: 3.36 lbs. • SC: 37.0

CONNEALY CONSENSUS 7229
CONNEALY BLACK GRANITE
EURA ELGA OF CONANGA 9109



CONNEALY CAPITALIST 028
BDV F806 OF CAPITALIST
BDV X003 OF THUNDER

CED	BW	WW	YW	CEM	Milk	CW	Marb	RE	Fat	\$W	\$F	\$G	\$B
13	-0.2	64	107	12	25					67	78		

This is quite a bull out of a 2 year old dam and a good one. He just blew the thing wide open at only 65 lbs at birth and then weaned at 790 pounds with no creep, he then just kept pouring it on post weaning. This bull is a true curve bender, absolutely what the industry needs more of. This is no accident his cow family is powerfully bred with Capitalist and Thunder backing him up. Use him on the heifers and then put him on the cows. Keep the daughters and enjoy the rewards. You will drive far and wide to find many like him.

ANGUS BULLS

137

019H

Black • Homo Polled • Purebred Angus
ASA# 19896525 • Tattoo: 019H • BD: 3/22/20
Act. BW: 89 lbs. • Adj. WW: 810 lbs. • Ratio: 114
Adj YW: 1324 lbs. • ADG: 3.21 lbs. • SC: 37.0

PEAK DOT UNANIMOUS 420A
DCC PD UNANIMOUS 519
DCC PRIMROSE BOLD 314

X

B C C BUSHWACKER 41-93
ISAAK ZARA 909
ISAAK ZARA 521

CED	BW	WW	YW	CEM	Milk	CW	Marb	RE	Fat	\$W	\$F	\$G	\$B
-5	4.6	66	111	1	23					52	79		

This is a very good performance bull, he is out of a top producing Bushwacker daughter that has been raising some of the high indexing calves year after year. She raised this bull at 11 years of age. He indexed 114, not too bad for an old grandma. Looking for a little more gas with outcross genetics, here you go.

138

007H

Black • Homo Polled • Purebred Angus
ASA# 19896515 • Tattoo: 007H • BD: 3/1/20
Act. BW: 90 lbs. • Adj. WW: 760 lbs. • Ratio: 107
Adj YW: 1401 lbs. • ADG: 4.01 lbs. • SC: 36.0

BASIN PAYWEIGHT 1682
DEER VALLEY GROWTH FUND
DEER VALLEY RITA 36113

X

KOUPALS B&B IDENTITY
ISAAK BLACKBIRD 630
ISAAK BLACKBIRD 132

CED	BW	WW	YW	CEM	Milk	CW	Marb	RE	Fat	\$W	\$F	\$G	\$B
1	3.4	72	132	9	27					62	94		

This bull stood out all summer long. We purchased his dam out of a dispersion. John was looking for a couple Angus cows to add to his herd, so he bought a few cows that will be excellent producers. As for the 630 cow, she came with high recommendation and we couldn't be more pleased with this Growth Fund son. He was the bull calf that showed up early on as one to watch and he still has the power we thought he would. We think he will sire payweight and performance to his calves, his daughters should make powerful cows that are useful.

139

017H

Black • Homo Polled • Purebred Angus
ASA# 19896523 • Tattoo: 017H • BD: 3/18/20
Act. BW: 87 lbs. • Adj. WW: 732 lbs. • Ratio: 103
Adj YW: 1343 lbs. • ADG: 3.82 lbs. • SC: 35.0

S A V PRIVILEGE 3030
VERMILION PRIVILEGE E856
VERMILION BLACKCAP 4889

X

H A R B DENALI 788 J H
BDV A304 OF DENALI
DR ERISKAY 113

CED	BW	WW	YW	CEM	Milk	CW	Marb	RE	Fat	\$W	\$F	\$G	\$B
4	2.6	66	111	5	19					54	80		

This is a bull that I think a lot of, he is very well put together, long, wide topped, and deep rear ended. This dam has worked herself in to one of our promising producers. She has an excellent udder and comes from a very strong hard working cow family. These Privilege cattle are very stout and real eye pleasing. If you are looking for a sensible sized bull that will sire the keeping kind, you may want to take a serious look here.

141

013H

Black • Homo Polled • Purebred Angus
ASA# 19896520 • Tattoo: 013H • BD: 3/6/20
Act. BW: 81 lbs. • Adj. WW: 753 lbs. • Ratio: 106
Adj YW: 1273 lbs. • ADG: 3.25 lbs. • SC: 38.0

SILVEIRAS CONVERSION 8064
BUBS SOUTHERN CHARM AA31
HICKORY HILL ERICA 009

X

G A R PREDESTINED
BDV W904 OF PREDESTINED
B D V N302 OF V R D

CED	BW	WW	YW	CEM	Milk	CW	Marb	RE	Fat	\$W	\$F	\$G	\$B
4	3.2	61	103	9	28	40	0.84	0.69	0.014	58	81	62	142

Out of one of our favorite Angus cows, 11 years old, and still going strong. This bull is royally bred and is backed generation after generation of excellent Angus blood, out of Southern Charm, one of the breeds most sought after sire groups. Then a very nice Predestined daughter and going back to one powerful VRD daughter that is certainly one of my picks to be in the top 10 Angus matrons to ever eat grass on this ranch. No matter how you analyze this bull with his cow family and sire, expect great results that offer the finest genetic merit. His daughters will be the keeping kind.

Forage Seed Available

We have 3000 bushels of cleaned haybet barley seed for sale.

We also have 500 bushel of cleaned 4010 forage peas available, along with 250 bushels of spring triticale. Don't want to wait to long it'll go fast. Speak for it now and pick it up when you're ready.



140

010H

Black • Homo Polled • Purebred Angus
ASA# 19896518 • Tattoo: 010H • BD: 3/4/20
Act. BW: 86 lbs. • Adj. WW: 756 lbs. • Ratio: 106
Adj YW: 1287 lbs. • ADG: 3.34 lbs. • SC: 36.0

SILVEIRAS CONVERSION 8064
BUBS SOUTHERN CHARM AA31
HICKORY HILL ERICA 009

X

SITZ BULLSEYE 8144
VERMILION MARTHA 7601
VERMILION S MARTHA 4096

CED	BW	WW	YW	CEM	Milk	CW	Marb	RE	Fat	\$W	\$F	\$G	\$B
3	3.1	69	117	9	28					66	82		

Here is a bull that is bred to contribute to your bottom line. He should sire carcass cattle and females that are very solid producers. His young dam looks to be a cow that will produce well, her udder is real good.



ANGUS BULLS



LOT 142

142

008H

Black • Homo Polled • Purebred Angus
ASA# 19896516 • Tattoo: 008H • BD: 3/1/20
Act. BW: 87 lbs. • Adj. WW: 723 lbs. • Ratio: 101
Adj YW: 1334 lbs. • ADG: 3.82 lbs. • SC: 35.0

S A V PRIVILEGE 3030
VERMILION PRIVILEGE E856
VERMILION BLACKCAP 4889

S A V PIONEER 7301
BDV Z203 OF PIONEER
B D V R513 OF HART TRAVELER

CED	BW	WW	YW	CEM	Milk	CW	Marb	RE	Fat	\$W	\$F	\$G	\$B
2	2.7	63	111	5	17	45	0.38	0.68	-0.004	47	90	42	132

This is one of the good ones. The Z203 cow never misses, always does a top notch job year after year. She has put a couple bulls in the top Angus herds. You don't have to wonder his daughters will be the using kind. His steers will make excellent feeding cattle. They all will be thick, easy fleshing, and ones you won't be sorry are carrying your brand. Added bonus, this calf is very gentle.

143

009H

Black • Homo Polled • Purebred Angus
ASA# 19896517 • Tattoo: 009H • BD: 3/2/20
Act. BW: 82 lbs. • Adj. WW: 731 lbs. • Ratio: 103
Adj YW: 1342 lbs. • ADG: 3.82 lbs. • SC: 36.0

SYDGEN EXCEED 3223
SYDGEN ENHANCE
SYDGEN RITA 2618

BASIN PAYWEIGHT 1682
ISAAK PAYWEIGHT 827
ISAAK ANNE 108

CED	BW	WW	YW	CEM	Milk	CW	Marb	RE	Fat	\$W	\$F	\$G	\$B
5	2.0	66	125	11	28					62	96		

Here is a bull out of a 2 year old heifer that offers a new but excellent twist to our program. He is out of a Payweight 1682 daughter and Sydgen Enhance, 2 bulls that have taken the Angus breed by storm. This combination does not disappoint. I feel you are looking at a bull you could use on larger heifers or cows with excellent results. The Payweight cattle offer excellent fleshing ability and enhance offers calving ease and carcass. Top genetics are combined in this one.

145

006H

Black • Homo Polled • Purebred Angus
ASA# 19896514 • Tattoo: 006H • BD: 2/29/20
Act. BW: 75 lbs. • Adj. WW: 680 lbs. • Ratio: 95
Adj YW: 1272 lbs. • ADG: 3.70 lbs. • SC: 37.0

S A V FINAL ANSWER 0035
CONNEALY CAPITALIST 028
PRIDES PITA OF CONANGA 8821

SITZ JLS GAME DAY 9630
VERMILION JL LASS 6108
VERMILION JL LASS 3095

CED	BW	WW	YW	CEM	Milk	CW	Marb	RE	Fat	\$W	\$F	\$G	\$B
10	0.0	52	92	10	24	33	0.47	0.39	0.049	54	76	38	114

Here is a bull that could really sire some powerful daughters with Final Answer, Capitalist, and Game Day all represented, his young dam came out of the Vermilion herd and has not disappointed. This one qualifies for a heifer bull.

147

005H

Black • Homo Polled • Purebred Angus
ASA# 19896513 • Tattoo: 005H • BD: 2/27/20
Act. BW: 70 lbs. • Adj. WW: 743 lbs. • Ratio: 104
Adj YW: 1101 lbs. • ADG: 2.24 lbs. • SC: 35.0

SYDGEN EXCEED 3223
SYDGEN ENHANCE
SYDGEN RITA 2618

BASIN PAYWEIGHT 1682
ISAAK PAYWEIGHT 818
ISAAK BLACKBIRD 110

CED	BW	WW	YW	CEM	Milk	CW	Marb	RE	Fat	\$W	\$F	\$G	\$B
7	1.1	68	128	11	28					66	97		

Here is a calving ease deluxe, out of Enhance and Payweight 1682. This bull has the genetic potential to sire high carcass value and cattle that the feeding industry desires. But it doesn't stop there, the cow family behind his was one of Isaak Angus's top producing. I purchased this bull's dam as Lot 1 out of the Isaak's dispersion, she topped the bred heifer division and looks like she will become an asset here. Use him on heifers and then turn him into a cow bull.

30

144

018H

Black • Homo Polled • Purebred Angus
ASA# 19896524 • Tattoo: 018H • BD: 3/19/20
Act. BW: 85 lbs. • Adj. WW: 665 lbs. • Ratio: 93
Adj YW: 1331 lbs. • ADG: 4.16 lbs. • SC: 34.5

PEAK DOT UNANIMOUS 420A
DCC PD UNANIMOUS 519
DCC PRIMROSE BOLD 314

TC TOTAL 410
ISAAK ANNE 108
ISAAK ANNIE 4115

CED	BW	WW	YW	CEM	Milk	CW	Marb	RE	Fat	\$W	\$F	\$G	\$B
0	2.8	54	95	6	24					47	77		

If you want to build a cow herd that is big and stout, here is an opportunity to head you in the right direction. Unanimous on TC Total will put lbs on a calf crop, and females in the herd. This bull's dam is 10 years old and is still looking good. We feel this guy will add value to any herd.

146

011H

Black • Homo Polled • Purebred Angus
ASA# 19896519 • Tattoo: 011H • BD: 3/5/20
Act. BW: 78 lbs. • Adj. WW: 726 lbs. • Ratio: 102
Adj YW: 1267 lbs. • ADG: 3.63 lbs. • SC: 37.0

KOUPALS B&B IDENTITY
MUSGRAVE AVIATOR
MCATL FOREVER LADY 1429-138

MED ROCK EMBLAZON 702 707
NLC MED ROCK T56 X77
NLC LADY JEWEL P49-T56

CED	BW	WW	YW	CEM	Milk	CW	Marb	RE	Fat	\$W	\$F	\$G	\$B
7	-0.2	49	85	13	27					53	72		

If you are looking for a heifer bull that will calve easy and still sire calves that grow into performance cattle, this bull comes highly recommended. His dam raised him at 10 years of age and did an excellent job. The Pearle Lee outfit brought a full brother a few years ago, and said he was an outstanding calving ease sire. The nice thing about him is he should work well on your cows as well. Use him a year or 2 on your heifers, and then when he gets a little too big use him on your cows. So many times, heifer bulls are thrown away after they get bigger. The females out of this guy will be sensible sized, easy fleshing cattle with good udders.

148

002H

Black • Homo Polled • Purebred Angus
ASA# 19896511 • Tattoo: 002H • BD: 2/20/20
Act. BW: 62 lbs. • Adj. WW: 687 lbs. • Ratio: 96
Adj YW: 1133 lbs. • ADG: 2.79 lbs. • SC: 35.0

KOUPALS B&B IDENTITY
MUSGRAVE AVIATOR
MCATL FOREVER LADY 1429-138

CONNEALY BLACK GRANITE
BDV F802 OF GRANITE
BDV D607 OF IMPACT

CED	BW	WW	YW	CEM	Milk	CW	Marb	RE	Fat	\$W	\$F	\$G	\$B
12	-1.7	51	89	15	25					55	74		

Here is an excellent choice as a heifer bull, 62 pounds at birth, and ran right up to a few lbs short of 700 pounds at 205 days. He comes out of a very nice 2 year old dam that looks like she will become a very nice producer for us.

ANGUS BULLS

149

015H

Black • Homo Polled • Purebred Angus
ASA# 19896521 • Tattoo: 015H • BD: 3/11/20
Act. BW: 78 lbs. • Adj. WW: 670 lbs. • Ratio: 94
Adj YW: 1241 lbs. • ADG: 3.57 lbs. • SC: 34.0

ELLINGSON CHAPS 4095
ISAAK CHAPS 893
ISAAK BLACKBIRD 830



ELLINGSON CHAPS 4095
ISAAK CHAPS 802
ISAAK ZARA 909

CED	BW	WW	YW	CEM	Milk	CW	Marb	RE	Fat	\$W	\$F	\$G	\$B
1	2.9	58	102	7	22					48	76		

This bull is out of a 2 year old Chap's daughter and his granddam is the mother of 019H, the big stout bull that will follow the lead off bull in the yearling Angus division. There is an excellent cow family represented here. This bull was born at 78 pounds and may make a good heifer bull. I feel he will work on bigger heifers for the cowman that watches his heifers. With Chaps and Bushwacker backing him up, the heifers should be the best.

151

014H

Black • Homo Polled • Purebred Angus
ASA# 19916751 • Tattoo: 014H • BD: 3/8/20
Act. BW: 78 lbs. • Adj. WW: 661 lbs. • Ratio: 93
Adj YW: 1208 lbs. • ADG: 3.42 lbs. • SC: 34.0

N BAR EMULATION EXT
B A R EXT TRAVELER 205
B A R QUEEN TRAVELER 3015



VERMILION X FACTOR
VERMILION LJ LASS 2278
VERMILION LJ LASS 7421

CED	BW	WW	YW	CEM	Milk	CW	Marb	RE	Fat	\$W	\$F	\$G	\$B
8	0.1	44	75	11	26					48	65		

These Bar EXT cattle are the calving ease heifer bull kind, the calves come very easy. This bull comes out of a real nice cow out of Vermilion's. With this combination, expect excellent calving with females that are hard working with excellent udders.

153

001H

Black • Homo Polled • Purebred Angus
ASA# 19916750 • Tattoo: 001H • BD: 2/19/20
Act. BW: 60 lbs. • Adj. WW: 635 lbs. • Ratio: 89
Adj YW: 1057 lbs. • ADG: 2.64 lbs. • SC: 34.0

N BAR EMULATION EXT
B A R EXT TRAVELER 205
B A R QUEEN TRAVELER 3015



CONNEALY BLACK GRANITE
BDV F803 OF GRANITE
BDV D602 OF CAPITALIST

CED	BW	WW	YW	CEM	Milk	CW	Marb	RE	Fat	\$W	\$F	\$G	\$B
14	-1.7	40	69	12	30					50	63		

Heifer bull, heifer bull, heifer bull, certainly that should be your focus when you consider this bull. Over 3 generations calving ease stacked one after the other. Only 60 pounds at birth, breed him to the heifers, and sleep at night.

150

004H

Black • Homo Polled • Purebred Angus
ASA# 19896512 • Tattoo: 004H • BD: 2/24/20
Act. BW: 80 lbs. • Adj. WW: 663 lbs. • Ratio: 93
Adj YW: 1221 lbs. • ADG: 3.49 lbs. • SC: 35.0

SILVEIRAS CONVERSION 8064
BUBS SOUTHERN CHARM AA31
HICKORY HILL ERICA 009



APEX CHAIRMAN 014
BDV E707 OF CHAIRMAN
NLC MISS MYTTY W05

CED	BW	WW	YW	CEM	Milk	CW	Marb	RE	Fat	\$W	\$F	\$G	\$B
3	2.4	60	103	9	24					55	78		

This bull offers some very well respected genetics with his cow family. You can rest assured the replacement heifers will be good. You can expect him to be moderate sized when mature. His daughters will be sensible sized and easy fleshing. The carcass values are elite.

152

016H

Black • Homo Polled • Purebred Angus
ASA# 19896522 • Tattoo: 016H • BD: 3/14/20
Act. BW: 80 lbs. • Adj. WW: 664 lbs. • Ratio: 93
Adj YW: 1269 lbs. • ADG: 3.78 lbs. • SC: 34.0

S A V PRIVILEGE 3030
VERMILION PRIVILEGE E856
VERMILION BLACKCAP 4889



HOOVER DAM
BDV D603 OF HOOVER DAM
BDV B402 OF CAPITALIST

CED	BW	WW	YW	CEM	Milk	CW	Marb	RE	Fat	\$W	\$F	\$G	\$B
5	1.4	59	105	7	16					46	82		

This bull is thick, thick, thick. He comes from a very moderate, very thick, deep bodied cow family that will improve fleshing ability. His dam and granddam are bred for calving ease and maternal quality. The udders on them are very good with lots of milk. If you have a set of cows that lack capacity and need more here is an opportunity to add some.

154

020H

Black • Homo Polled • Purebred Angus
ASA# 19896526 • Tattoo: 020H • BD: 4/3/20
Act. BW: 83 lbs. • Adj. WW: 732 lbs. • Ratio: 103
Adj YW: 1290 lbs. • ADG: 3.51 lbs. • Act. SC: 34

S A V PRIVILEGE 3030
VERMILION PRIVILEGE E856
VERMILION BLACKCAP 4889



CONNEALY CAPITALIST 028
BDV B402 OF CAPITALIST
B D V S620 OF HART TRAVELER

CED	BW	WW	YW	CEM	Milk	CW	Marb	RE	Fat	\$W	\$F	\$G	\$B
3	2.7	64	109	7	16					48	80		

This is one thick, heavy muscled bull. Out of a heavy milking cow that has a real nice udder. If you like cattle that are moderate framed, easy keeping and very maternal then here is a solid choice. We would take a whole herd of cows like his dam.



Bob Begger

BOB BEGGER On March 6, 2020, we lost my bother Bob. He was the best partner, mentor, friend, and brother I could have ever had. He was the toughest man I ever knew. He certainly had his share of trials thrown his way, but Bob would never surrender or give up, always up beat and forward thinking. Always there doing his share the best that he could. He never knew a stranger, never had a bad word to

say about anyone and I never heard anyone have a bad word to say about him. He had a deep strong faith that showed everyday by his actions and his honesty. He lived his final days like he did every day, always putting others first. He loved his family more than anything, loved the Lord, and was prepared for eternity. Bob died the way he hoped, at home on the ranch. May you rest in peace Bob, you had plenty of hell on earth.



Mike Fischer

In Memory

MIKE FISCHER A lifelong friend, and a man that was always at our sale for the past 20 years. Mike Fischer served as our Brand Inspector throughout the years. Mike was a cowboy whether it was team roping, helping work cattle or roping calves at brandings. Being

on horseback was his passion. No branding, fall gathering, or day spent horseback will be the same without you. Your fall work is done, your brand inspections complete. You will be missed by many. Rest in Peace.

MY BROTHER WIFE

They say when you pick your partner, pick them like you pick your wife. I don't know who picked who, I guess we both just showed up, he was older and lead the way. I was his little brother that at times got in the way. As we grew older we both picked our own friends, and many were the same. Funny when we picked our wives, we married girls with the same last name. They didn't grow up together, but soon became best of friends that would confide in each other. They laughed, worked and cried side by side. We raised our kids to fine young adults, 7 boys, 3 girls. They grew up together, they played, worked, and a few times even fought. At times you had mine and at times I had yours. We taught them to work, love, play, and sometimes pray. As for you and I, we worked, we played, we shared family friends, we stood beside each other through thick and through thin, for better for worse, for richer for poorer, in sickness and health. You became my Brother Wife.

THE CHRISTMAS TREE HUNT

One Sunday afternoon, Bob and I went out to feed cows on the Wheeler place up the Pine Unit Road. After the cows were fed, we got to the gate, Bob says, "Hey the J.C.'s are out Christmas Tree hunting in the Pines, let's go check it out." So off we went, caught up to 20 or so, that's when the party began. Yep, Peppermint Schnapps, and did it taste good. When it was time to head home, we loaded up 6 or 7 pickups full of trees, got in our pickup and headed for home. When the heat kicked in Bob got a little ornery, finally I had enough, so I slammed the pickup in park, and out in the ditch we rolled. The rest of the guys were right behind, they made Bob ride with his father in law Ray, and Ray Schneider drove mine. Well when we got to our turn off, Bob had settled down, when we drove in the yard I woke Bob up, said we were home. He opened the door, fell out right on his face, yup a bloody eye. Gina met us at the door fire in her eyes. The gals didn't know where we were, should have been home hours ago. We had a birthday party to go to, Bob didn't make it. The next day Clint said, "I'm not going to drink Schnapps, it gives you a bloody eye!"

BAR BREAKING THE HORSES

When we were young, my brother and I we had a love for horses, you might say as young boys, we rode them all over the neighborhood. As we got older we began to rope and spent hours on end building an arena. Soon many a cowboy, their wives and kids showed up to rope.

That was our playtime and how we spent every Sunday that we could. One day we brothers took our young boys along to a roping in town. After the roping the beer started to flow. As we left the arena, if we headed south we would go home, go north we would end up at the bar. Well day turned into night, and night into closing time. The next day our dad asked about our late night. Out of nowhere, Clint piped up, "Grandpa we had to bar break the horses."

I OWE YOU ONE!

When my brother and I were young, we were inseparable, at times I think we were attached. There were times that we did things to each other for a laugh. The time that we got this new BB gun, my brother asked, "let me shoot you in the belly, it won't hurt you've got this big parka on, it won't go through." So there I stood at point blank, he pulled the trigger, and oh what a fright, I squealed and balled and took off for the house, he held me in the barn and told me not to tell because if I did the gun would go away. Maybe it was the time we were feeding calves and he tossed me a pitch fork and it bounced off the ground, it stuck me in the leg. I cried and groaned, again I was held hostage in the barn until I got over and promised not to tell. Well a few hours later, I couldn't walk so off to the doctor I went, and mom and dad we had to tell. Maybe it was the cake fight, I mean cow pellets, one hit me in the mouth and split lip and bloody mouth again held hostage in the barn. It could be the loader rides that he gave us way up in the air, shake and tilt, scared us to death, and one time I fell out, again to the barn we went and again held hostage until I said I won't tell. Maybe it was the times he would threaten to feed me smart pills that was either sheep or rabbit turds. Never ate one but had plenty of opportunity as he tried to put them in my mouth. Thanks Uncle Chuck for teaching him that. As we got older there were plenty more. Or about my wedding day when he wrote the word "help" on the bottom of my shoes, so when I knelt down at the altar, everyone got a good laugh, neither me or my bride knew. About the time I was big enough



Bob Begger

to return some favors Bob got sick and those days became things of the past. But now he pulls this on me and I can't shake off. So big bro, I owe you one. Rest in Peace.

THE TOUGHEST MAN I EVER KNEW

Bob was always the tough one. When he was young there was no doubt who was the strongest of us all. When it was time to get things done, he was the muscle and brawn that carried much of the load. Whether it was building fence, tamping ties, or working on machinery and making things fit, it was Bob that moved things around like they were feathers. Work or play Bob was one to get things done. Always one of the first to be there volunteering, and giving to his community. In early 1978, Bob was diagnosed with diabetes for over 15 years most people didn't even know he had it. Eventually Bob's life and health began to change his quality of life was starting to change, his health began to deteriorate. His eyes began to give him problems, then his kidneys began to fail, eventually he had to go on dialysis. He needed a compatible kidney, twice his health went all the way to ground zero, and we thought it was the end of the line. We all wondered if we were headed for boot hill. But our prayers were answered and he got those 2 kidney transplants, and his life got better. Bob was a man of great faith, his family and God were his greatest focus. With much determination he fought battle after battle, and came through each and every time, when most would have given up. Bob was on a mission, he had a young family that needed a dad and a good one he was. Although his health was failing Bob was the man of the house and a great husband and father. He was a great role model through the years, the doctors and hospitals became a part of his life. He told me after awhile you lose your dignity, it don't matter who sees what, that good looking nurse doesn't see you like you see her! It was his eyes, then his kidney, then his feet, no matter what life threw his way, Bob always prevailed. His outlook on life was always the brightest, no one and I mean no one had a better attitude. He met every challenge with great determination and strength. God was his master and faith. God always answer back with a new light on life and gave Bob those years he needed to see is children grow up and become fine young adults. Still life threw new challenges and Bob would always come through. His mission now became his grandchildren. He set out to be the grandpa every child would want. His grandchildren along with his family were his pride and joy. Always there at their ballgames, swim meets, programs, and birthdays. Bob loved life, loved his family and friends, always a positive man. He always put everyone he knew ahead of himself. I don't think he ever had an enemy. With each challenge Bob said it was just a bump or a curve in the road. He never gave up or called it quits, up until recently you could find Bob at work on the ranch he loved, when most people would have thrown in the towel and called it quits. Bob would shift gears and climb that next hill, never a time that he gave up and never a doubt he would conquer the next challenge. With his strong faith in God and his family and friends around him, he became the grandpa that every child could hope for and his grandchildren will always remember Bob, you put up one hell of a fight. You are the toughest man I ever knew. We love you and will miss you. Thanks for the great memories and leading the way. May God Bless, Bill.

SIMMENTAL REFERENCE SIRES

TJ FRANCHISE 451D [PICTURED ON PAGE 11]

Franchise is a bull that is in the ABS lineup. He is thick, moderate framed, and very eye appealing. We used him on a wide variety of cows with mixed results. We did use him on quite a few heifers and had good results. Never helped any but do not feel that he is a slam dunk heifer bull because we did get some larger BW out of mature cows. Franchise sires' calves that are attractive and most are thick deep sided and wide across the top and down through the rear quarter. The dispositions are excellent. We recommend his sons for the rancher that likes cattle that are moderate framed and eye appealing.

HOOK'S EAGLE 6E [PICTURED ON PAGE 6]

This bull seems to do a lot of things right. He has a very easy to appreciate, EPD profile ranking at the top of the charts in most categories. We really appreciate the dispositions he sires, very quiet and easy to get along with. His actual performance and in his progeny is at curve bending levels. He calves easy and the calves weigh like lead at weaning and yearling. One of the unique things is they do it in a more moderate easy fleshing manner with sensible mature size. He is a bull we will be using more in the future.

LRS TOP SHELF 902F [PICTURED ON PAGE 6]

What a great acquisition this outstanding individual has not done much wrong. His sons and daughters are absolutely some of the best. He calves easily. After calving this spring, we have bred him to several heifers, we will find out if he makes the cut as a calving ease heifer bull soon. No matter on cows, he is a slam dunk. And it don't stop there, both his sons and daughters are absolutely on track to be some of the elite. If your program is looking to add calving ease, fleshing ability, weaning performance and maternal characteristics, here is one of the breeds best and most consistent sires. He has been heavy use in both our spring and fall programs and will be one of the heaviest used bulls in the future. Easy calving, excellent performance, top of the line eye appeal and not a bad one in the bunch.

GQ CONOCO FG [PICTURED ON PAGE 2]

This purebred bull is absolutely a breeding piece. He is moderate framed, thick made and loaded with muscle and eye appeal. One of his greatest attributes is his quiet disposition. It looks like his calving ease is excellent, most are born in the 80-90 LB range and they are moderate and thick. One of his sons is the top 205 wt bull in the entire offering. We feel confident that his sons will be the ticket for both purebred and commercial outfits that are looking to add muscle and performance in a very complete moderate package. Both his purebred and Sim Angus sons are very complete and eye catching.

TNT PRIDE C232

Pride was the sale feature and topped the prestigious TNT sale. We owned the bull and are not disappointed in his calves, they are performance cattle that add power. His daughters are very eye catching with great maternal traits. His sons rise to the top when it comes to body type. They pass that "who is that one" look. We lost Pride at a young age so we only have a limited amount of semen. He will continue to see use in our herd. A son tops the TNT Sale at \$38,500 a few years ago.

CDI PREACHER 274E

This Main Event son was my pick of all the bulls at the C Diamond sale. He had a disposition that was second to none and way out front of any other bull in that sale. Preacher sires cattle with eye appeal, they are stylish and born easily. You can use his sons on a wide variety of type and kind with very good results.

NLC HALF NELSON 98E

This 1/2 blood Range Boss son was a sale feature at Nelson's a few years back. He has a little more frame than his sire, but sires calves that are flashy and are performing quite well, most of his sons and daughters made the cut and look to be cattle that will add value. We lost him in early summer due to a leg injury so there won't be many more.

QB IGNITE D83 [PICTURED ON PAGE 21]

This bull absolutely rocks. We were looking for a baldy bull with no white under his belly, when we saw this bull, we knew he was the one. He sires them thick, deep and good. His calves perform at the top of the pack. You get about ½ baldy and ½ solid black when used on solid black cows. His disposition is outstanding and the fleshing ability and performance is what the industry needs more of.

QB DATA D15

Here is a 1/2 blood SAV Bismarck son that is as complete as any bull walking, very eye catching. We chose Data as our pick of 5 ET brothers, he had the balance eye appeal and stats of a herd bull. His sons have that same look. Cattle like them are hard to fault and have the genetic package that it takes to excel.

CCR FLINT ROCK 0101E

We used Flint Rock AI, there is not a lot of his sons in the sale but everyone born made the sale. These cattle have a lot of eye appeal. They are long sided, clean made and perform very well. Last year in the sale, his sons were very popular and I expect it will be no different this year. Cattle like this spell profit.

CCR PAY DIRT 2340C [PICTURED ON PAGE 7]

An ABS Sim-Angus bull that ABS claims to be 1682's best son. We think that could be true. This is Pay Dirt's second set of sons in the sale and another group is on the way. In our last sale, a Pay Dirt son topped it and all were sought after. We think there is a couple of his sons that are pretty special again this year.

SYS BANJO F39

Want to add some length and eye appeal, Banjo sons just might be a great choice. These cattle are long, clean made, and eye pleasing. We recommend using them on deep bodied cows that could use more length and style.

VERMILLION PRIVILEGE E856

This bull was a stud. When I went into the over 300 bull in that offering, there stood VP, what a thick, deep, powerful Angus. He just reeked with thickness and he possessed a butt end that very few Angus cattle have. His calves are a real pleasure to observe, like their sire full of meat and muscle. Get a hold of the rope, these cattle are exciting.

BUBS SOUTHERN CHARM AA31 [PICTURED ON PAGE 28]

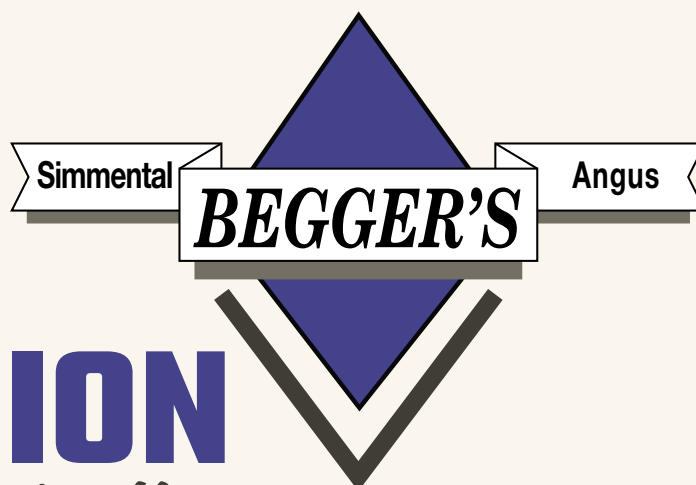
I was up at Origin going through the bull stud when I first laid eyes on this great Angus bull. Oh what an Angus bull, thick, deep and complete physically and on paper. I made the right choice and used him. Today in many of the nation's most recognized bull sales, Southern Charm sons top the sale. We liked him so much, we purchased a top son of him as the high selling bull in the North Dakota State Angus Sale and are very excited about his future.

RBS BOISE B63 [PICTURED ON PAGE 25]

We purchased Boise out of a great herd of cattle in Minnesota, he topped the Vision Sale at \$40,000. A bull that was used hard here and nationally, his sons and daughters were sought after many times over. Boise is a frame modernizer, he calves easy even on heifers he sires them thick and deep. There is a lot of good in this bull. This offering will be some of the last to sell here, but his legacy will continue in his daughters, there is a fall bull in the sale that is herd sire quality.

Begger's Diamond V Ranch
482 Custer Trail Road
Wibaux, MT 59353

TIME DATED MATERIAL, PLEASE DELIVER PROMPTLY



OUR VISION
is simply this...

to wrap ourselves around the
BEST GENETICS the industry offers and to provide
the **BEST SEEDSTOCK** we can to the nation's
MOST PROGRESSIVE AND AGGRESSIVE
CATTLEMEN AND WOMEN.

Please bring this catalog with you to the sale!