

BEST *value in the* BADLANDS

Profitable *by* DESIGN ~ Efficient *by* NATURE

First Tributes Sell!



LOTS 14 AND 18

Annual Production Sale
March 2, 2020
Watford City, ND

75 Angus
Bulls
65 Yearlings
10 Two-Year Olds

25 Elite Registered
Open Heifers

PROFITABLE *by design* EFFICIENT *by nature*

Assessing your operation

Every ranch has its own unique resources. Our job as managers is to analyze the strengths and weaknesses of our environment and resources.

OUR PROFITABLE DESIGN, AFTER ANALYZING OUR RESOURCES:

- Grazing until February, weather permitting to reduce harvested forage costs.
- We calve the end of March to reduce labor, maximize forage quality at a time of peak nutritional needs and to create a better balance between AI season and calving season.
- We wean the first week in October, so the cows can flesh up and prepare for winter grazing.
- Moderate framed, deep ribbed, Angus cattle with a strong grazing instinct that maintain flesh in the Badlands.
- Extreme fertility allowing breed back, even on poor years.
- Sound structure, excellent feet and legs to cover country.
- Intelligent cattle with strong survival instincts.

We believe it is imperative that a profitable cowherd is efficient with nature. It is your best way to combat rising input costs and labor shortages. It will give you flexibility to adjust to future changes in the beef industry. Not everyone should be buying bulls from us. We know our goals and priorities for our cow herd are not going to be exactly what you see for your future cattle operation. We are confident the selection pressure we are providing to our herd will help create cattle that can help you meet your goals.

- We are concerned about rising feed and equipment costs, so we want our cowherd to be able to winter graze and maintain their condition. We not only save some feed cost today; it also gives us options as to what and how they will be fed in the future. If you breed for a biological type that requires greater and greater inputs you will be more susceptible to higher fuel and equipment prices.
- We are not optimistic about finding lower cost, high quality labor in the future. "Convenience" traits become economic traits really quick in tight labor markets. This is why we put so much pressure on disposition, intelligence, udder quality, calf vigor, and survival instincts. Low management cows are a necessity for a large commercial herd or a small herd that doesn't get in the way of a full-time job or other enterprises.
- Nearly all of our customers calves will be marketed into the main stream commodity beef industry. It is imperative that our cattle continue to have above average feedlot and carcass performance or the buyers may reduce their offers or even stop coming back.
- We want our customers to have a flexible cow herds. Carcass and performance traits are very heritable, so they can be quickly changed if the market requires it. Most of the traits that make up a great cow herd are low in heritability, so they take a long time to change them, or correct a mistake.

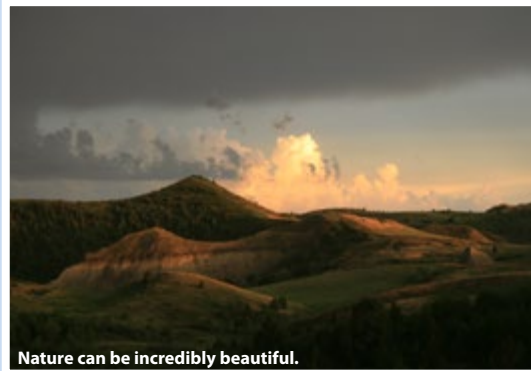
"We cannot *command* nature without *obeying* her."

- Sir Francis Bacon

"In nature there are neither rewards nor punishments; *there are consequences.*" - Robert G. Ingersoll



Nature can be bountiful.



Nature can be incredibly beautiful.



Nature can be harsh.



Nature is resilient.

Thanks to our emergency responders for your service to our community.





"God made the country. Man made the town."

- William Cowper

"I CHOOSE THE COUNTRY."

- Kyle Best

Welcome cattlemen!

Welcome Cattlemen and thank you for your interest in our program. We are excited to present this year's bulls to you. We think you will find more top end bulls in this offering than ever before. The bulls will be penned for your inspection at the Watford City Livestock Scale Association. The scale is located across from Comfort Inn and the Elevator. The video auction sale will take place at Outlaws' Bar and Grill's convention center, Main Street in Watford City.

We are excited about the heifers that will be in the sale. These girls have been selected out of this year's replacement pen. They are high ratioing heifers out of top cows from our herd.

For those of you that are unable to attend in person, our sale will be broadcast live on DV Auction (www.dvauction.com). You will need to go to www.dvauction.com at least 24 hours prior to the sale and register to be able to bid online. The videos will be available for viewing prior to the sale.

Best Angus and Quarter Horses is a family operation. We have been breeding and marketing bulls since 1988. We are headquartered on the same ranch that Vawnita's father, Kurt Hovet, purchased in 1968 and actively operated until his passing March of 2013. We are blessed to have the opportunity to carry on his legacy and to have the support system that we do. It takes a team of family, friends, and neighbors. We are blessed beyond words for our Best Angus family. We would also like to extend our sincere appreciation to Pesek Farms. Monte and David care for the bulls like they were their own. Tracy and Jon Davis have been great additions to the ranch team. Thank you to Outlaws' for allowing us to use their beautiful convention center and to their attentive staff for their always exceptional food and service. Thank you to the Watford City Livestock Association for allowing us to use their facility to display the cattle.

We don't take your business for granted. Without your support, we couldn't do what we do. If you have any questions, suggestions or concerns please call. We hope to see you all on a beautiful day March 2nd!



Clockwise from top left: Vawnita & Pete Best, Lee & Kim (holding Morgan) Murphy, Rita Hovet, Jaden Murphy, Kyle Best, Sue & Lyle Best.



Jon & Tracy Davis

BEST *value in the* BADLANDS

Production Sale - March 2, 2020



Directions:

Outlaws Bar & Grill, 120 S Main St.
Watford City, ND 58854

Watford City Livestock Association

Southwest of Horizon Grain on 3rd Ave SW.
in Watford City

Sale Day Phones:

Pete Best's cell..... 701-570-6959
Vawnita Best's cell 701-580-1862

Auctioneer:

Kyle Shobe..... 406-366-0472

Special Representatives:

Rowdy Benson..... 605-569-1493
Special Assignment

Wendell Vigen..... 701-290-1113
Big Blue Sale Barn

Casey Jenz..... 608-234-1998
American Angus Association

Scott Ressler..... 701-391-7310
North Dakota Stockmen's Association

Sale Terms & Conditions:

Terms of the sale are cash. Each animal will be sold to the highest bidder. Any bidding disputes will be settled by the auctioneer. Any person attending the sale will do so at their own risk. Neither the owner, nor any person connected with this sale assumes any liability, legal or otherwise.

Sale Format:

The bulls will be on display at the Watford City Scale Association in Watford City prior to the sale. The auction sale will be conducted at Outlaw's Bar and Grill's convention center located downtown Watford City. DV Auction will produce a video prior to sale day that we will be using to conduct the sale instead of running the bulls through an auction ring.

Volume Discount:

We will discount 3% on purchases of 3 or more bulls, 5% on 5 or more bulls, and 10% on purchases of 10 or more bulls by one buyer or buying group.

Semen Interest:

We are keeping a semen interest in many of the bulls. These are bulls that we may want to collect semen on in the future. If any semen is sold, we would share in the revenue generated from the sale of semen. Buyer has full possession and full salvage value of the bull.

Genetic Conditions:

All bulls are guaranteed free from all known genetic conditions recognized by the American Angus Association (as of March 2, 2020).

Sight Unseen Purchase Program:

If you are unable to attend our sale, but you would like to purchase a bull, please give us a call and we'll be glad to help you with your selection. Describe what you are looking for in a bull, and what your price range is. We can assure you that your bid will be handled with integrity and your money will be handled like it is our own. If you do not like what we selected for you, we will keep the bull and you can keep your money.

Delivery:

We offer free delivery within a 300 mile radius of Watford City. The heifers will be ready to go following the sale.

Lunch:

A complimentary beef lunch will be served at Outlaw's Bar and Grill's convention center starting at 12 noon CST.

Watford City Lodging:

Comfort Inn & Suites..... 701-842-6565
Roosevelt Inn & Suites..... 701-842-3686
The Watford 701-842-6800
Teddy's Residential Suites..... 701-842-6480
Little Missouri Inn & Suites..... 701-842-6262

DVAuction
Broadcasting Real-Time Auctions

Can't make the sale?
Let DVAuction bring the sale
to you!
Busy during the sale?
Let DVAuction represent
your bid!

**Visit www.DVAuction.com
and Register Today**

**For General Questions
Please Contact Our Office:
(402) 316-5460 or
support@dvauction.com**



Reference Sire: **S A V RESOURCE 1441**

We are excited to be offering Resource genetics again in this year's sale. We have watched this bull for many years. They have been my favorite sire group nearly everywhere that I have seen them. We would have used him earlier, but we feel strongly that it is our responsibility to our customers to make sure the females are going to fit with our breeding philosophy and the unique environment that we call home.

SAV RESOURCE 1441

Reg #: 17016597

Tattoo: 1441

DOB: 01/07/2011

#R R Rito 707
Rito 707 of Ideal 3407 7075
Ideal 3407 of 1418 076

#S A V 8180 Traveler 004
S A V Blackcap May 4136
#S A V May 2397

Rito N Bar
Eriskay of Rollin Rock 3
#Ideal 1418 of 8103 4286
Ideal 076 of 692 8375
#Sitz Traveler 8180
Boyd Forever Lady 8003
#S A F 598 Bando 5175
S A V May 7238

| EPDs | |
|------|------|
| CED | 1 |
| BW | 4.0 |
| WW | 70 |
| YW | 133 |
| MILK | 18 |
| SC | 1.18 |
| MARB | -0.5 |
| REA | 1.11 |

Resource is a very complementary mating for most of our cows. We have a high maternal calving ease cow herd. Resource will add muscle, rib, fleshing ability, and performance to our cattle. It is rare when a bull comes along that breeds as true as what Resource has. He has been bred to almost every kind of cow in the Angus breed and the progeny are powerful and extremely consistent regardless of the cow's pedigree. Resource progeny are not only stout, but they have great breed character, and excellent feet. Resource will moderate frame size and milk. We are very confident these are "Badlands" bulls that will sire some of the best calves you have ever sold. These bulls will also leave you daughters that are easy fleshing and will add longevity to your cowherd. Resource passed away in November. We feel strongly these genetics will be timeless and in strong demand for many years.



LOT 1

THE COW FAMILY BACKING 986.



Rosetta 261 of Best Angus



Rosetta 429 of Best Angus



Rosetta 149 of Best Angus



Rosetta 501 of Best Angus



Best Resource 986 pictured on summer pasture
Here is a real herd sire prospect out of a young cow that is off to a tremendous start. He was one of the high ratioing calves at weaning, and he looks like he will be one of the heaviest at yearling as well. His weight comes from his exceptional length of body and thickness. Dam is moderate framed, easy fleshing, and attractive. She bred back AI again this year. I would expect to see her in the donor pen very soon. This bull is out of a very deep line of cows from the Rosetta family filled with past donors for us. Udder quality and longevity are hallmarks of this line of cows. **Retaining 1/3 semen interest.**

BEST RESOURCE 986

Reg #: 19636432

Tattoo: 986

DOB: 3/23/2019

Rito 707 of Ideal 3407 7075
#S A V Resource 1441
S A V Blackcap May 4136

#Sinclair Fortunate Son
Rosetta 613 of Best Angus
#Rosetta 261 of Best Angus

#R R Rito 707
Ideal 3407 of 1418 076
#S A V 8180 Traveler 004
#S A V May 2397
Sinclair Emulate 7XT28
#Sinclair Blackbird 2P8 7079
#LAR Alliance 64L
Rosetta 811 of Best Angus

| EPDs | |
|------|-------|
| CED | 0 |
| BW | 3.6 |
| WW | 66 |
| YW | 122 |
| MILK | 25 |
| SC | |
| MARB | 0.16 |
| REA | 0.68 |
| Fat | 0.021 |

| Dam Production | | Cow Weight: 1300 • Cow Height: 52 | | | | |
|----------------|-----|-----------------------------------|-------|-------|-------|------|
| BW | WWR | BW | WW | YR | %IMF | REA |
| 88 | 114 | 2/107 | 2/112 | 1/109 | 1/111 | 1/93 |



Best Resource 988



Best Resource 929

2 BEST RESOURCE 988

Reg #: 19636448
Tattoo: 988
DOB: 3/23/2019

Rito 707 of Ideal 3407 7075
#S A V Resource 1441
S A V Blackcap May 4136

#LAR Alliance 64L
Miss Wix 5030 of Best Angus
#Miss Wix 817 of Best Angus

#R R Rito 707
Ideal 3407 of 1418 076
#S A V 8180 Traveler 004
#S A V May 2397
#Sitz Alliance 7617
Eileenmere Diamond 161 L A R
#S A V 8180 Traveler 004
Miss Wix 0100 of Best Angus

| EPDs | |
|------|-------|
| CED | 1 |
| BW | 3.2 |
| WW | 60 |
| YW | 110 |
| MILK | 23 |
| SC | |
| MARB | 0.06 |
| REA | 0.58 |
| Fat | 0.009 |

Excellent Resource bull out of a really solid Miss Wix cow with a perfect udder.

| BW | | WW | | Dam Production | | Cow Weight: 1200 • Cow Height: 52 | |
|----|-----|-------|-------|----------------|-------|-----------------------------------|--|
| | | | | | | | |
| 88 | 107 | BW | WW | YR | %IMF | REA | |
| | | 3/104 | 3/101 | 1/97 | 1/100 | 1/100 | |



Best Resource 975

4 BEST RESOURCE 975

Reg #: 19636444
Tattoo: 975
DOB: 3/22/2019

Rito 707 of Ideal 3407 7075
#S A V Resource 1441
S A V Blackcap May 4136

#LAR Alliance 64L
Rosetta 5016 of Best Angus
Rosetta 8014 of Best Angus

#R R Rito 707
Ideal 3407 of 1418 076
#S A V 8180 Traveler 004
#S A V May 2397
#Sitz Alliance 7617
Eileenmere Diamond 161 L A R
#Leachman Right Time
#Rosetta 149 of Best Angus

| EPDs | |
|------|-------|
| CED | 8 |
| BW | 0.3 |
| WW | 54 |
| YW | 100 |
| MILK | 25 |
| SC | 1.05 |
| MARB | 0.14 |
| REA | 0.59 |
| Fat | 0.015 |

Moderate framed, super thick, high volume bull.

| BW | | WW | | Dam Production | | Cow Weight: 1200 • Cow Height: 51 | |
|----|-----|------|-------|----------------|------|-----------------------------------|--|
| | | | | | | | |
| 78 | 104 | BW | WW | YR | %IMF | REA | |
| | | 2/92 | 2/102 | 1/99 | 1/91 | 1/109 | |

3 BEST RESOURCE 929

Reg #: 19636455
Tattoo: 929
DOB: 3/17/2019

Rito 707 of Ideal 3407 7075
#S A V Resource 1441
S A V Blackcap May 4136

Best KTH 269
#Rosetta 468 of Best Angus
Rosetta 2002 of Best Angus

#R R Rito 707
Ideal 3407 of 1418 076
#S A V 8180 Traveler 004
#S A V May 2397
#CAR Duke 104
Gale 7024 of Best Angus
#Leachman Right Time
Rosetta 1100 of Best Angus

| EPDs | |
|------|-------|
| CED | 7 |
| BW | 1.6 |
| WW | 60 |
| YW | 111 |
| MILK | 24 |
| SC | |
| MARB | 0.28 |
| REA | 0.67 |
| Fat | 0.013 |

Here is another ripping good Resource out of a pathfinder dam.

| BW | | WW | | Dam Production | | Cow Weight: 1100 • Cow Height: 54 | |
|----|-----|-------|-------|----------------|-------|-----------------------------------|--|
| | | | | | | | |
| 76 | 110 | BW | WW | YR | %IMF | REA | |
| | | 4/102 | 4/109 | 2/110 | 3/110 | 3/103 | |



Rosetta 8014 of Best Angus, Maternal granddam of Lot 4.

BY FAR THE BEST PROOF IS *experience.*

- Sir Francis Bacon

We try to provide as much information about our bulls and program as useful in an understandable and efficient way. We have been using data for selection of our cattle since the beginning. Data is important, but we believe it is only one part of the selection process. I have seen far too many times, where people have been too hung up on a single trait or specific EPD. EPD's should reaffirm what you see visually. Trust your eyes. **I am a big believer in EPD's, but just chasing numbers will not get you where you want to go.**



Rosetta 2101 of Best Angus, Maternal granddam of Lot 5 with a 3/4 sister to Lot 5



LOT 6

Best Resource 974

5 BEST RESOURCE 980

Reg #: 19636428
Tattoo: 980
DOB: 3/23/2019

Rito 707 of Ideal 3407 7075
#S A V Resource 1441
S A V Blackcap May 4136

#Sinclair Fortunate Son
Rosetta 661 of Best Angus
Rosetta 2101 of Best Angus

#R R Rito 707
Ideal 3407 of 1418 076
#S A V 8180 Traveler 004
#S A V May 2397
Sinclair Emulate 7XT28
#Sinclair Blackbird 2P8 7079
#Pine Creek Right Time 1147
#Rosetta 818 of Best Angus

| EPDs | |
|------|------|
| CED | 2 |
| BW | 2.6 |
| WW | 56 |
| YW | 103 |
| MILK | 21 |
| SC | 0.7 |
| MARB | 0.16 |
| REA | 0.66 |
| Fat | 0.03 |

Dam is one of my favorite young cows. She is absolutely gorgeous and has settled AI every year so far, just like her mother pictured with Kyle's 2020 4-H heifer, Juliet.

| BW | | WWR | | Dam Production | | | | |
|-------|-------|-------|-------|-----------------------------------|----|----|----|------|
| 82 | | 101 | | Cow Weight: 1070 • Cow Height: 51 | | | | |
| BW | WW | YR | %IMF | REA | BW | WW | YR | %IMF |
| 2/100 | 2/101 | 1/101 | 1/119 | 1/101 | | | | |



Rosetta 024 of Best Angus, Maternal granddam of Lot 8



Tracey Davis, left, and Esther Harms, our 2019 summer intern from Kansas State University. Go Wildcats!

6 BEST RESOURCE 974

Reg #: 19636460
Tattoo: 974
DOB: 3/23/2019

Rito 707 of Ideal 3407 7075
#S A V Resource 1441
S A V Blackcap May 4136

#Sinclair Extra 4X13
#Rosetta 244 of Best Angus
Rosetta 068 of Best Angus

#R R Rito 707
Ideal 3407 of 1418 076
#S A V 8180 Traveler 004
#S A V May 2397
#N Bar Emulation EXT
N Bar Lady Ida S C C 2P37
Best Right Time 8024
#Rosetta 443 of Best Angus

| EPDs | |
|------|-------|
| CED | 2 |
| BW | 2.7 |
| WW | 56 |
| YW | 104 |
| MILK | 24 |
| SC | |
| MARB | 0.21 |
| REA | 0.64 |
| Fat | 0.025 |

This Resource is as stout as any bull we have ever raised. His dam has an excellent udder and still qualifies for pathfinder status.

| BW | | WWR | | Dam Production | | | | |
|-------|-------|-------|------|-----------------------------------|----|----|----|------|
| 92 | | 105 | | Cow Weight: 1120 • Cow Height: 53 | | | | |
| BW | WW | YR | %IMF | REA | BW | WW | YR | %IMF |
| 6/114 | 6/105 | 2/106 | 4/92 | 4/97 | | | | |

7 BEST RESOURCE 959

Reg #: 19636459
Tattoo: 959
DOB: 3/21/2019

Rito 707 of Ideal 3407 7075
#S A V Resource 1441
S A V Blackcap May 4136

#LAR Alliance 64L
#Miss Wix 310 of Best Angus
Miss Wix 1007 of Best Angus

#R R Rito 707
Ideal 3407 of 1418 076
#S A V 8180 Traveler 004
#S A V May 2397
#Sitz Alliance 7617
Eileenmere Diamond 16I L A R
#O C C Missing Link 830M
#Miss Wix 2043 of Mc Cumber

| EPDs | |
|------|-------|
| CED | 6 |
| BW | 0.8 |
| WW | 63 |
| YW | 114 |
| MILK | 24 |
| SC | 1.02 |
| MARB | 0.08 |
| REA | 0.67 |
| Fat | 0.005 |

Resource and 64L make an excellent combination. Here is another good one out of a pathfinder Miss Wix dam.

| BW | | WWR | | Dam Production | | | | |
|-------|-------|-------|------|-----------------------------------|----|----|----|------|
| 80 | | 107 | | Cow Weight: 1250 • Cow Height: 54 | | | | |
| BW | WW | YR | %IMF | REA | BW | WW | YR | %IMF |
| 5/107 | 5/104 | 2/104 | 2/89 | 2/94 | | | | |

8 BEST RESOURCE 951

Reg #: 19636451
Tattoo: 951
DOB: 3/20/2019

Rito 707 of Ideal 3407 7075
#S A V Resource 1441
S A V Blackcap May 4136

#LAR Alliance 64L
Rosetta 558 of Best Angus
Rosetta 024 of Best Angus

#R R Rito 707
Ideal 3407 of 1418 076
#S A V 8180 Traveler 004
#S A V May 2397
#Sitz Alliance 7617
Eileenmere Diamond 16I L A R
#Sinclair Extra 4X13
Rosetta 8014 of Best Angus

| EPDs | |
|------|-------|
| CED | 6 |
| BW | 1.4 |
| WW | 62 |
| YW | 115 |
| MILK | 22 |
| SC | |
| MARB | 0.2 |
| REA | 0.55 |
| Fat | 0.018 |

Excellent Resource out a terrific line of cows.

| BW | | WWR | | Dam Production | | | | |
|------|------|-------|-------|-----------------------------------|----|----|----|------|
| 80 | | 106 | | Cow Weight: 1260 • Cow Height: 53 | | | | |
| BW | WW | YR | %IMF | REA | BW | WW | YR | %IMF |
| 3/90 | 3/99 | 1/101 | 1/116 | 1/82 | | | | |



Rosetta 420 of Best Angus, pictured at age 14, Maternal granddam of Lot 9



Rosetta 808 of Best Angus, Maternal granddam of Lot 10



Rosetta 8016 of Best Angus, full sister to the dam of Lot 11

We would love to show you around the ranch!

We wish you could come out during different times of the year. We know that is not practical, so please check out our website www.bestangusandquarterhorses.com, which includes videos of the ranch and cattle. We provide history and philosophy on our program. We want to provide you with as much information as we can about the cattle and the place they are raised. Please like us on Facebook, **FB/BestAngusandQuarterHorses**.

9

BEST RESOURCE 965

Reg #: 19636426

Tattoo: 965

DOB: 3/22/2019

Rito 707 of Ideal 3407 7075
#S A V Resource 1441
S A V Blackcap May 4136

#Sinclair Fortunate Son
#Rosetta 604 of Best Angus
#Rosetta 420 of Best Angus

#R R Rito 707
Ideal 3407 of 1418 076
#S A V 8180 Traveler 004
#S A V May 2397
Sinclair Emulate 7XT28
#Sinclair Blackbird 2P8 7079
#Boyd New Day 8005
#Rosetta 107 of Best Angus

| EPDs | |
|------|-------|
| CED | -1 |
| BW | 4.7 |
| WW | 61 |
| YW | 114 |
| MILK | 21 |
| SC | 0.9 |
| MARB | 0.06 |
| REA | 0.84 |
| Fat | 0.008 |

This is a really exciting bull. His 1,100 pound mother brought in one of the biggest calves last fall and stuck AI again. Grand dam is still going strong at age 15 and still has a perfect udder.

| | | Dam Production | | | | |
|----|-----|-----------------------------------|-------|------|-------|------|
| | | Cow Weight: 1130 • Cow Height: 52 | | | | |
| BW | WW | BW | WW | YR | %IMF | REA |
| 91 | 110 | 2/101 | 2/102 | 1/95 | 1/114 | 1/98 |

10

BEST RESOURCE 973

Reg #: 19636457

Tattoo: 973

DOB: 3/22/2019

Rito 707 of Ideal 3407 7075
#S A V Resource 1441
S A V Blackcap May 4136

#LAR Alliance 64L
#Rosetta 3022 of Best Angus
Rosetta 808 of Best Angus

#R R Rito 707
Ideal 3407 of 1418 076
#S A V 8180 Traveler 004
#S A V May 2397
#Sitz Alliance 7617
Eileenmere Diamond 161 L A R
#S A V 8180 Traveler 004
#Rosetta 107 of Best Angus

| EPDs | |
|------|-------|
| CED | 8 |
| BW | 0.6 |
| WW | 54 |
| YW | 104 |
| MILK | 23 |
| SC | 1.28 |
| MARB | 0.13 |
| REA | 0.58 |
| Fat | 0.014 |

Here is another 64L X Resource combo that is easy to appreciate.

| | | Dam Production | | | | |
|----|-----|-----------------------------------|-------|-------|------|------|
| | | Cow Weight: 1130 • Cow Height: 53 | | | | |
| BW | WW | BW | WW | YR | %IMF | REA |
| 76 | 100 | 5/99 | 5/100 | 3/103 | 3/98 | 3/94 |

11

BEST RESOURCE 982

Reg #: 19636463

Tattoo: 982

DOB: 3/23/2019

Rito 707 of Ideal 3407 7075
#S A V Resource 1441
S A V Blackcap May 4136

#Leachman Right Time
#Rosetta 2010 of Best Angus
#Rosetta 149 of Best Angus

#R R Rito 707
Ideal 3407 of 1418 076
#S A V 8180 Traveler 004
#S A V May 2397
#N Bar Emulation EXT
Leachman Erica 0025
#G D A R Executive 727
Rosetta 501 of Best Angus

| EPDs | |
|------|-------|
| CED | 2 |
| BW | 2.7 |
| WW | 51 |
| YW | 95 |
| MILK | 21 |
| SC | 0.84 |
| MARB | 0.11 |
| REA | 0.6 |
| Fat | 0.023 |

Good stout Resource. His dam is a full sister to 8014 and 8016, two of our cornerstone cows.

| | | Dam Production | | | | |
|----|-----|-----------------------------------|------|------|-------|------|
| | | Cow Weight: 1100 • Cow Height: 53 | | | | |
| BW | WW | BW | WW | YR | %IMF | REA |
| 90 | 102 | 6/100 | 6/95 | 4/97 | 5/103 | 5/96 |



Rosetta 8014 of Best Angus and her 2019 calf. 8014 is a full sister to the dam of Lot 11

12 BEST RESOURCE 944

Reg #: 19636452
Tattoo: 944
DOB: 3/19/2019

Rito 707 of Ideal 3407 7075
#S A V Resource 1441
S A V Blackcap May 4136

Best KTH 269
Rosetta 574 of Best Angus
Rosetta 364 of Best Angus

#R R Rito 707
Ideal 3407 of 1418 076
#S A V 8180 Traveler 004
#S A V May 2397
#CAR Duke 104
Gale 7024 of Best Angus
#LAR Alliance 64L
Rosetta 0010 of Best Angus

| EPDs | |
|------|-------|
| CED | 2 |
| BW | 3.8 |
| WW | 56 |
| YW | 110 |
| MILK | 23 |
| SC | |
| MARB | 0.18 |
| REA | 0.79 |
| Fat | 0.003 |

This is a really nice bull. He got separated from his mother toward the end of the summer and he still weaned off just below the herd average. He might be a sale sleeper.

| BW | | WWR | | Dam Production | | | | | |
|----|----|-------|-------|-----------------------------------|------|-----|--|--|--|
| | | | | Cow Weight: 1175 • Cow Height: 54 | | | | | |
| | | BW | WW | YR | %IMF | REA | | | |
| 91 | 98 | | | | | | | | |
| | | 2/101 | 2/103 | / | / | / | | | |

13 BEST RESOURCE 960

Reg #: 19636418
Tattoo: 960
DOB: 3/21/2019

Rito 707 of Ideal 3407 7075
#S A V Resource 1441
S A V Blackcap May 4136

#LAR Alliance 64L
Rosetta 6021 of Best Angus
Rosetta 720 of Best Angus

#R R Rito 707
Ideal 3407 of 1418 076
#S A V 8180 Traveler 004
#S A V May 2397
#Sitz Alliance 7617
Eileenmere Diamond 161 L A R
#Boyd New Day 8005
Rosetta 702 of Best Angus

| EPDs | |
|------|-------|
| CED | 4 |
| BW | 2 |
| WW | 53 |
| YW | 103 |
| MILK | 23 |
| SC | 1.13 |
| MARB | 0.18 |
| REA | 0.6 |
| Fat | 0.011 |

I wish we had more Resources to offer. Thankful we were able to purchase more semen after he passed away in November.

| BW | | WWR | | Dam Production | | | | | |
|----|-----|------|------|-----------------------------------|-------|-------|--|--|--|
| | | | | Cow Weight: 1115 • Cow Height: 55 | | | | | |
| | | BW | WW | YR | %IMF | REA | | | |
| 84 | 101 | | | | | | | | |
| | | 2/97 | 2/99 | 1/97 | 1/119 | 1/104 | | | |



LOTS 14 AND 18

[we will not over-feed them]

BULL DEVELOPMENT

Once the calves are weaned we take the bull calves over to Peseck Farms to be fed a ration of corn silage, corn, chopped hay, beet pulp and distiller's grain. We slowly increase the neg in the ration to a maximum of .44 neg, which is still a low energy ration with a CP of 13%. We want to grow our bulls so they are big and strong enough to cover a large number of cows as yearlings, but we will not over feed them. We want to make sure they don't melt and fall apart during the breeding season. Our bulls are normally very lean. Most of our bulls will have less than .20" of backfat. We use our own bulls, so we know that how they are developed works even in our challenging badlands environment.

By feeding low energy dense, high moisture, high forage rations we are putting selection pressure on appetite and feed efficiency. We realize that if we fed our bulls more, they would be more impressive to look at on sale day, but we don't think that is the best thing for the longevity of the bulls, or our customers. We try to develop a ration that closely mimics green grass. Early season pasture would typically run about 16% protein and neg of about .46 and a little more moisture than our ration. **The ration that we feed really separates the high-input cattle from the forage-efficient bulls.**



Reference Sire: **MC CUMBER TRIBUTE 702**



Lassie 113 of Mc Cumber, Dam of Mc Cumber Tribute 702



Lassie 935 of Mc Cumber, Granddam of Mc Cumber Tribute 702



MC CUMBER TRIBUTE 702

Reg #: Missing

Tattoo:

DOB:

#O C C Tremendous 619T
Mc Cumber Tremendous 2008
 #Miss Wix 2022 HC Mc Cumber

#O C C Missing Link 830M
#Lassie 113 of Mc Cumber
 #Lassie 935 of Mc Cumber

#O C C Emblazon 854E
 O C C Dixie Erica 960H
 #Leachman Right Time
 Miss Wix of 7111 of Mc Cumber
 O C C Headliner 661H
 O C C Dixie Erica 946K
 Sinclair Extra 4X13
 Lassie 4117 of Mc Cumber

| EPDs | |
|-------------|------|
| CED | 16 |
| BW | -2.5 |
| WW | 47 |
| YW | 91 |
| MILK | 33 |
| SC | 1.05 |
| MARB | .14 |
| REA | .62 |
| Fat | .011 |

It is very rare for us to use an unproven outside bull. It is also not very often a bull like this comes around. We tried to purchase Tribute, but came up short. Tribute was an extremely impressive individual. He crushed his contemporaries at nearly every important measurement. He has an easy going, gentle demeanor. He comes from my favorite cow family currently at McCumber Angus Ranch. We are very happy with the Tribute calves so far. He is a surefire calving ease bull. What has been impressive to me is the power that he puts into his calves in such a clean attractive pattern. The top Tributes are some of the highest performance calves in the 2019 crop.

The daughters are what I was hoping they would be. They have deep sweeping rib, a wide hip, and clean necks. They are very attractive and they can hold their cute little Angus heads high. I still think Tribute will be a frame moderator in most programs. They definitely have the look of badlands cattle.



LOT 14

FIRST TRIBUTES TO SELL



A C Blackbird Blossom, Dam of Lot 14



LOT 15

Best Tribute 9042



LOT 17

Best Tribute 9036

14 BEST TRIBUTE 9015

Mc Cumber Tremendous 2008
Mc Cumber Tribute 702
#Lassie 113 of Mc Cumber

GDAR Dateline 354
A C Blackbird Blossom
A C Blackbird Blossom 265

#O C C Tremendous 619T
#Miss Wix 2022 HC Mc Cumber
#O C C Missing Link 830M
#Lassie 935 OF Mc Cumber
#Vermilion Dateline 7078
Gdar SVF Forever Lady 226D
C T Miner 308
A C Blackbird Blossom 81

Reg #: 19638821
Tattoo: 9015
DOB: 3/19/2019

| EPDs | |
|------|-------|
| CED | 10 |
| BW | -0.1 |
| WW | 60 |
| YW | 108 |
| MILK | 32 |
| SC | 1.43 |
| MARB | 0.33 |
| REA | 0.54 |
| Fat | 0.014 |

This is a real treat. Scott Davis, owner of Ash Coulee Angus, was extremely generous to allow us to flush this great cow. I have always been a big fan of 918. She is a very gentle and extremely productive cow. She is fertile with a nearly perfect udder. She puts a great front end and style into her calves and a huge scrotal on her bull calves. Her natural calf is crushing his contemporaries at Ash Coulee this winter. All four of these bulls were at the top for weaning weights, and they have done very well in the feedlot. I expect these four bulls to add performance and a little extra stretch and frame compared to their sire. **Retaining 1/3 semen interest on 14, 15 and 17.**

| BW | | WWR | | Dam Production Cow Weight: 1375 • Cow Height: | | | | |
|----|-----|-------|-------|--|--------|--------|--|--|
| BW | WWR | BW | WWR | YR | %IMF | REA | | |
| 82 | 113 | 9/101 | 9/107 | 4/105 | 15/103 | 15/102 | | |

Flush brothers:

These ET brothers sell together. The highest bidder will get his/her pick, or can take them all.

15 BEST TRIBUTE 9042

Reg #: 19645083
Tattoo: 9042
DOB: 3/27/2019

| BW | | WWR | | CED | | BW | | WW | | YW | | Milk | | SC | | Marb | | REA | | Fat | | Dam Production Cow Weight: 1375 • Cow Height: | | | | |
|----|-----|-----|-----|-----|-----|------|------|------|------|-------|-------|-------|-------|--------|--------|------|--|-----|--|-----|--|--|-----|----|------|-----|
| BW | WWR | CED | BW | WW | YW | Milk | SC | Marb | REA | Fat | BW | WWR | YR | %IMF | REA | | | | | | | BW | WWR | YR | %IMF | REA |
| 90 | ET | 10 | 0.3 | 53 | 100 | 32 | 1.43 | 0.33 | 0.54 | 0.014 | 9/101 | 9/107 | 4/105 | 15/103 | 15/102 | | | | | | | | | | | |

16 BEST TRIBUTE 9038

Reg #: 19638818
Tattoo: 9038
DOB: 3/24/2019

| BW | | WWR | | CED | | BW | | WW | | YW | | Milk | | SC | | Marb | | REA | | Fat | | Dam Production Cow Weight: 1375 • Cow Height: | | | | |
|----|-----|-----|-----|-----|-----|------|------|------|------|-------|-------|-------|-------|--------|--------|------|--|-----|--|-----|--|--|-----|----|------|-----|
| BW | WWR | CED | BW | WW | YW | Milk | SC | Marb | REA | Fat | BW | WWR | YR | %IMF | REA | | | | | | | BW | WWR | YR | %IMF | REA |
| 90 | 111 | 10 | 0.3 | 53 | 100 | 32 | 1.43 | 0.33 | 0.54 | 0.014 | 9/101 | 9/107 | 4/105 | 15/103 | 15/102 | | | | | | | | | | | |

17 BEST TRIBUTE 9036

Reg #: 19638820
Tattoo: 9036
DOB: 3/24/2019

| BW | | WWR | | CED | | BW | | WW | | YW | | Milk | | SC | | Marb | | REA | | Fat | | Dam Production Cow Weight: 1375 • Cow Height: | | | | |
|----|-----|-----|-----|-----|-----|------|------|------|------|-------|-------|-------|-------|--------|--------|------|--|-----|--|-----|--|--|-----|----|------|-----|
| BW | WWR | CED | BW | WW | YW | Milk | SC | Marb | REA | Fat | BW | WWR | YR | %IMF | REA | | | | | | | BW | WWR | YR | %IMF | REA |
| 88 | 109 | 10 | 0.3 | 53 | 100 | 32 | 1.43 | 0.33 | 0.54 | 0.014 | 9/101 | 9/107 | 4/105 | 15/103 | 15/102 | | | | | | | | | | | |



Best Tribute 956

18 BEST TRIBUTE 956

Reg #: 19638793

Tattoo: 956

DOB: 3/21/2019

Mc Cumber Tremendous 2008
Mc Cumber Tribute 702
#Lassie 113 of Mc Cumber

#S A V 8180 Traveler 004
Rosetta 289 of Best Angus
Rosetta 804 of Best Angus

#O C C Tremendous 619T
#Miss Wix 2022 HC Mc Cumber
#O C C Missing Link 830M
#Lassie 935 OF Mc Cumber
#Sitz Traveler 8180
Boyd Forever Lady 8003
#Sinclair Extra 4X13
Rosetta 992 of Best Angus

| EPDs | |
|------|-------|
| CED | 12 |
| BW | -0.7 |
| WW | 55 |
| YW | 97 |
| MILK | 28 |
| SC | 0.78 |
| MARB | 0.23 |
| REA | 0.32 |
| Fat | 0.036 |

If you are looking for a sure fire heifer bull and a fresh, but foundational pedigree, check out this attractive bull. **Retaining 1/3 semen interest.**

| BW | WW | Dam Production | | | |
|----|-----|-----------------------------------|-------|------|-------|
| | | Cow Weight: 1280 • Cow Height: 52 | | | |
| BW | WW | YR | %IMF | REA | |
| 76 | 110 | 4/97 | 4/104 | 2/99 | 3/109 |



Best Tribute 955

19 BEST TRIBUTE 955

Reg #: 19638780

Tattoo: 955

DOB: 3/20/2019

Mc Cumber Tremendous 2008
Mc Cumber Tribute 702
#Lassie 113 of Mc Cumber

#LAR Alliance 64L
Marie 6037 of Best Angus
#Marie 8005 of Best Angus

#O C C Tremendous 619T
#Miss Wix 2022 HC Mc Cumber
#O C C Missing Link 830M
#Lassie 935 OF Mc Cumber
#Sitz Alliance 7617
Eileenmere Diamond 16I L A R
#CAR Duke 104
C A R Miss Viking 604

| EPDs | |
|------|-------|
| CED | 9 |
| BW | 1.5 |
| WW | 55 |
| YW | 102 |
| MILK | 33 |
| SC | |
| MARB | 0.29 |
| REA | 0.32 |
| Fat | 0.017 |

Pedigree says heifer bull, but he had a 90 pound birth weight. He could go either way, but I would be careful if breeding heifers. This is a really nice bull with excellent performance out of one of Box Cross's full sisters. **Retaining 1/3 semen interest.**

| BW | WW | Dam Production | | | |
|----|-----|-----------------------------------|-------|------|------|
| | | Cow Weight: 1175 • Cow Height: 54 | | | |
| BW | WW | YR | %IMF | REA | |
| 90 | 111 | 2/102 | 2/105 | 1/96 | 1/78 |



Best Tribute 941

20 BEST TRIBUTE 941

Reg #: 19638782

Tattoo: 941

DOB: 3/19/2019

Mc Cumber Tremendous 2008
Mc Cumber Tribute 702
#Lassie 113 of Mc Cumber

#Sinclair Fortunate Son
Rosetta 607 of Best Angus
#Rosetta 144 of Best Angus

#O C C Tremendous 619T
#Miss Wix 2022 HC Mc Cumber
#O C C Missing Link 830M
#Lassie 935 OF Mc Cumber
Sinclair Emulate 7XT28
#Sinclair Blackbird 2P8 7079
#S A V 8180 Traveler 004
#Rosetta 8004 of Best Angus

| EPDs | |
|------|-------|
| CED | 8 |
| BW | 1.3 |
| WW | 52 |
| YW | 94 |
| MILK | 29 |
| SC | |
| MARB | 0.22 |
| REA | 0.57 |
| Fat | 0.028 |

Here is a thick made, attractive Tribute out of a gorgeous young Fortunate cow, the newest member in a great line of cows.

| BW | WW | Dam Production | | | |
|----|-----|-----------------------------------|-------|-----|---|
| | | Cow Weight: 1300 • Cow Height: 53 | | | |
| BW | WW | YR | %IMF | REA | |
| 86 | 103 | 1/106 | 1/103 | / | / |



Rosetta 607 of Best Angus



Rosetta 144 of Best Angus



Rosetta 8004 of Best Angus



Rosetta 1100 of Best Angus



Rosetta 401 of Best Angus



LOT 21

Best Tribute 902



Rosetta 7036 and Lot 21, July, 2019

21 BEST TRIBUTE 902

Reg #: 19638777
Tattoo: 902
DOB: 3/10/2019

Mc Cumber Tremendous 2008
Mc Cumber Tribute 702
#Lassie 113 of Mc Cumber

#Sinclair Fortunate Son
Rosetta 7036 of Best Angus
Rosetta 8014 of Best Angus

#O C C Tremendous 619T
#Miss Wix 2022 HC Mc Cumber
#O C C Missing Link 830M
#Lassie 935 OF Mc Cumber
Sinclair Emulate 7XT28
#Sinclair Blackbird 2P8 7079
#Leachman Right Time
#Rosetta 149 of Best Angus

| EPDs | |
|------|-----|
| CED | 8 |
| BW | 0.8 |
| WW | 49 |
| YW | 89 |
| MILK | 29 |
| SC | |
| MARB | |
| REA | |
| Fat | |

This might be the best bull in the sale. Dam is a gorgeous 1st calf heifer that brought in a big calf at weaning and settled AI. She did all this while maintaining her flesh. She is what I want all of our cows to be like. **Retaining 1/3 semen interest.**

| BW | WW | Dam Production | | | | |
|----|-----|----------------------------------|-------|----|------|-----|
| | | Cow Weight: 950 • Cow Height: 51 | | | | |
| 80 | 104 | BW | WW | YR | %IMF | REA |
| | | 1/105 | 1/104 | / | / | / |



LOT 22

Best Tribute 972

22 BEST TRIBUTE 972

Reg #: 19638787
Tattoo: 972
DOB: 3/22/2019

Mc Cumber Tremendous 2008
Mc Cumber Tribute 702
#Lassie 113 of Mc Cumber

#LAR Alliance 64L
Marie 367 of Best Angus
Marie 7010 of Best Angus

#O C C Tremendous 619T
#Miss Wix 2022 HC Mc Cumber
#O C C Missing Link 830M
#Lassie 935 OF Mc Cumber
#Sitz Alliance 7617
Eileenmere Diamond 16I L A R
#S A V 8180 Traveler 004
C A R Miss Viking 604

| EPDs | |
|------|-------|
| CED | 11 |
| BW | -0.3 |
| WW | 48 |
| YW | 96 |
| MILK | 31 |
| SC | 1.14 |
| MARB | 0.18 |
| REA | 0.47 |
| Fat | 0.016 |

This is a very impressive Tribute bull calf out of my favorite 64L cow. She is a 4th generation donor from the great Marie line of cows at the Coneally Angus Ranch in Valier MT.

| BW | WW | Dam Production | | | | |
|----|----|-----------------------------------|-------|-------|------|-------|
| | | Cow Weight: 1260 • Cow Height: 53 | | | | |
| 80 | 97 | BW | WW | YR | %IMF | REA |
| | | 5/97 | 5/101 | 3/102 | 4/95 | 4/105 |



Marie 367 of Best Angus, Dam of Lot 22



LOT 25

Best Tribute 9019

Flush brothers:

These ET brothers sell together. The highest bidder will get his/her pick, or can take them all.

23 BEST TRIBUTE 9028

Reg #: 625367823
Tattoo: 9028
DOB: 3/21/2019

Mc Cumber Tremendous 2008
Mc Cumber Tribute 702
#Lassie 113 of Mc Cumber

#Sinclair Extra 4X13
#Miss Wix 266 of Best Angus
Miss Wix 0012 of Best Angus

#O C C Tremendous 619T
#Miss Wix 2022 HC Mc Cumber
#O C C Missing Link 830M
#Lassie 935 OF Mc Cumber
#N Bar Emulation EXT
N Bar Lady Ida S C C 2P37
#Car Tracker 904
#Miss Wix 307 of Best Angus

| EPDs | |
|------|------|
| CED | 13 |
| BW | -1.7 |
| WW | 42 |
| YW | 74 |
| MILK | 31 |
| SC | .37 |
| MARB | .36 |
| REA | .27 |
| Fat | .046 |

Donor dam has been one of our most productive cows. She has a perfect udder, perfect feet and a great disposition. I was expecting a more powerful set of ET bulls, from this mating, but they should be solid heifer bulls. Dam has had 5 calves with an average birth weight of 74 pounds.

| BW | WWR | Dam Production | | | | |
|----|-----|-----------------------------------|-------|-------|-------|-------|
| | | Cow Weight: 1350 • Cow Height: 53 | | | | |
| 80 | 103 | BW | WW | YR | %IMF | REA |
| | | 5/95 | 5/106 | 4/103 | 4/116 | 4/100 |

24 BEST TRIBUTE 9018

Reg #: 625367802
Tattoo: 9018
DOB: 3/20/2019

| BW | | WWR | | CED | | BW | | WW | | YW | | Milk | | SC | | Marb | | REA | | Fat | | Dam Production | | | | |
|----|--|-----|--|-----|--|------|--|-----|--|------|--|-------|--|-------|--|-------|--|-------|--|------|--|-----------------------------------|--|--|--|--|
| 80 | | 95 | | 13 | | -2 | | 36 | | 74 | | 31 | | .37 | | .36 | | .27 | | .046 | | Cow Weight: 1350 • Cow Height: 53 | | | | |
| BW | | WW | | YR | | %IMF | | REA | | 5/95 | | 5/106 | | 4/103 | | 4/116 | | 4/100 | | | | | | | | |
| | | | | | | | | | | | | | | | | | | | | | | | | | | |

25 BEST TRIBUTE 9019

Reg #: 625367801
Tattoo: 9019
DOB: 3/20/2019

| BW | | WWR | | CED | | BW | | WW | | YW | | Milk | | SC | | Marb | | REA | | Fat | | Dam Production | | | | | | | | | |
|----|--|-----|--|-----|--|------|--|----|--|----|--|------|--|-----|--|------|--|-----|--|------|--|-----------------------------------|--|-------|--|-------|--|-------|--|-------|--|
| | | | | | | | | | | | | | | | | | | | | | | Cow Weight: 1350 • Cow Height: 53 | | | | | | | | | |
| 63 | | 86 | | 13 | | -4.5 | | 32 | | 74 | | 31 | | .37 | | .36 | | .27 | | .046 | | BW | | WW | | YR | | %IMF | | REA | |
| | | | | | | | | | | | | | | | | | | | | | | 5/95 | | 5/106 | | 4/103 | | 4/116 | | 4/100 | |

26 BEST TRIBUTE 963

Reg #: 19638786
Tattoo: 963
DOB: 3/21/2019

Mc Cumber Tremendous 2008
Mc Cumber Tribute 702
#Lassie 113 of Mc Cumber

#LAR Alliance 64L
Rosetta 3010 of Best Angus
Rosetta 808 of Best Angus

#O C C Tremendous 619T
#Miss Wix 2022 HC Mc Cumber
#O C C Missing Link 830M
#Lassie 935 OF Mc Cumber
#Sitz Alliance 7617
Eileenmere Diamond 16I L A R
#S A V 8180 Traveler 004
#Rosetta 107 of Best Angus

| EPDs | |
|------|-------|
| CED | 11 |
| BW | -0.1 |
| WW | 44 |
| YW | 88 |
| MILK | 28 |
| SC | 1.24 |
| MARB | 0.26 |
| REA | 0.3 |
| Fat | 0.019 |

I would recommend this bull for use on heifers.

| | | Dam Production | | | | |
|----|-----|-----------------------------------|------|-------|------|------|
| BW | WWR | Cow Weight: 1080 • Cow Height: 53 | | | | |
| 85 | 95 | BW | WW | YR | %IMF | REA |
| | | 5/103 | 5/96 | 3/100 | 2/95 | 2/95 |



Rosetta 808 of Best Angus, Maternal granddam of Lot 26



Best Tribute 9024

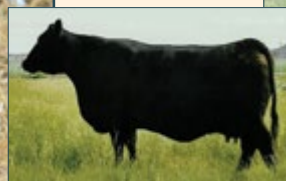
Rosetta 144 of
Best Angus,
Dam of Lot 27



Rosetta 8004 of Best Angus,
Maternal granddam of Lot 27



Rosetta 1100 of
Best Angus, Maternal
great granddam of
Lot 27



Rosetta 401 of Best Angus,
Maternal great great
granddam of Lot 27

LOT 27

**The maternal strength
behind Lots 27-29**

Flush brothers:

These ET brothers sell together. The highest bidder will get his/her pick, or can take them all.

27 BEST TRIBUTE 9024

Reg #: 19638803

Tattoo: 9024

DOB: 3/21/2019

Mc Cumber Tremendous 2008
Mc Cumber Tribute 702
#Lassie 113 of Mc Cumber

#S A V 8180 Traveler 004
#Rosetta 144 of Best Angus
#Rosetta 8004 of Best Angus

#O C C Tremendous 619T
#Miss Wix 2022 HC Mc Cumber
#O C C Missing Link 830M
#Lassie 935 OF Mc Cumber
#Sitz Traveler 8180
Boyd Forever Lady 8003
#Sinclair Extra 4X13
Rosetta 1100 of Best Angus

| EPDs | |
|------|-------|
| CED | 14 |
| BW | 0.2 |
| WW | 45 |
| YW | 82 |
| MILK | 30 |
| SC | 0.9 |
| MARB | 0.23 |
| REA | 0.53 |
| Fat | 0.028 |

Donor dam is a smaller framed easy fleshing kind of cow. She has had 6 calves with an average birth weight of 76 pounds, so am confident in your ability to use these three bulls on heifers.

| BW | | WWR | | Dam Production | | Cow Weight: 1375 • Cow Height: 53 | |
|----|-----|------|-------|----------------|--------|-----------------------------------|--|
| BW | WWR | BW | WWR | YR | %IMF | REA | |
| 88 | 96 | 6/96 | 6/104 | 5/102 | 10/104 | 10/102 | |

28 BEST TRIBUTE 9009

Reg #: 19638813

Tattoo: 9009

DOB: 3/16/2019

| BW | WWR | CED | BW | WW | YW | Milk | SC | Marb | REA | Fat | Dam Production | |
|----|-----|-----|------|----|----|------|-----|------|------|-------|-----------------------------------|--------|
| | | | | | | | | | | | Cow Weight: 1375 • Cow Height: 53 | |
| 74 | 86 | 14 | -1.6 | 38 | 72 | 30 | 0.9 | 0.23 | 0.53 | 0.028 | BW | WWR |
| | | | | | | | | | | | YR | %IMF |
| | | | | | | | | | | | REA | |
| | | | | | | | | | | | 6/96 | 6/104 |
| | | | | | | | | | | | 5/102 | 10/104 |
| | | | | | | | | | | | 10/102 | |

29 BEST TRIBUTE 9010

Reg #: 19638811

Tattoo: 9009

DOB: 3/16/2019

| BW | WWR | CED | BW | WW | YW | Milk | SC | Marb | REA | Fat | Dam Production | |
|----|-----|-----|------|----|----|------|-----|------|------|-------|-----------------------------------|--------|
| | | | | | | | | | | | Cow Weight: 1375 • Cow Height: 53 | |
| 68 | 100 | 14 | -1.6 | 38 | 72 | 30 | 0.9 | 0.23 | 0.53 | 0.028 | BW | WWR |
| | | | | | | | | | | | YR | %IMF |
| | | | | | | | | | | | REA | |
| | | | | | | | | | | | 6/96 | 6/104 |
| | | | | | | | | | | | 5/102 | 10/104 |
| | | | | | | | | | | | 10/102 | |



Best Tribute 9009

30 BEST TRIBUTE 954

Reg #: 19638826

Tattoo: 954

DOB: 3/20/2019

Mc Cumber Tremendous 2008
Mc Cumber Tribute 702
#Lassie 113 of Mc Cumber

#CAR Duke 104
#Marie 8003 of Best Angus
C A R Miss Viking 604

#O C C Tremendous 619T
#Miss Wix 2022 HC Mc Cumber
#O C C Missing Link 830M
#Lassie 935 OF Mc Cumber
#Car Tracker 904
#C A R Miss Raindancer 421
#Leachman Right Time
#Lady Viking 131 C A R

| EPDs | |
|------|-------|
| CED | 15 |
| BW | -3 |
| WW | 26 |
| YW | 57 |
| MILK | 29 |
| SC | 1.14 |
| MARB | 0.29 |
| REA | 0.32 |
| Fat | 0.024 |

This bull is a little behind his herd mates. His mother was an excellent cow. This is her last calf and she ran out of juice this summer. He should work well on heifers.

| BW | | WWR | | Dam Production | | Cow Weight: 1000 • Cow Height: 52 | |
|----|-----|-------|--------|----------------|--------|-----------------------------------|--|
| BW | WWR | BW | WWR | YR | %IMF | REA | |
| 67 | 91 | 10/91 | 10/105 | 9/101 | 10/101 | 10/96 | |



LOT 31

Best KTH 8314



BEST KTH 8314

Reg #: 19304410

Tattoo: 8314

DOB: 4/21/2018

#CAR Duke 104
Best KTH 269
 Gale 7024 of Best Angus

 #Sinclair Extra 4X13
#Rosetta 8004 of Best Angus
 Rosetta 1100 of Best Angus

#Car Tracker 904
 #C A R Miss Raindancer 421
 #S A V 8180 Traveler 004
 #Gale 120 of Mc Cumber
 #N Bar Emulation EXT
 N Bar Lady Ida S C C 2P37
 #Papa Equator 2928
 Bando 401 of Best Angus

| EPDs | |
|------|-------|
| CED | 13 |
| BW | -1.2 |
| WW | 46 |
| YW | 83 |
| MILK | 30 |
| SC | 0.35 |
| MARB | 0.56 |
| REA | 0.16 |
| Fat | 0.039 |



Rosetta 8004 of Best Angus, Dam of Lot 31



Rosetta 1100 of Best Angus,
 Maternal granddam of Lot 31



Bando 401 of Best Angus,
 Maternal great granddam of Lot 31

| BW | | WWR | | Dam Production | | | |
|-------------|-----|-------------|--------|----------------|-------|-------|--|
| Cow Weight: | | Cow Height: | | | | | |
| BW | WWR | BW | WW | YR | %IMF | REA | |
| 74 | 114 | | | | | | |
| | | 10/98 | 10/106 | 6/106 | 5/104 | 5/100 | |

We used this bull last year on all of our Winchester heifers. KTH was a really good bull that did all the little things right. This bull is probably the best KTH we have raised. He is a little thicker and more rugged than KTH. **Retaining 1/3 semen interest.**



Reference Sire: ANGUS ALLIANCE WINCHESTER 975



Coleman Donna 386, Dam of
Angus Alliance Winchester 975



LOT 33

Best Winchester 991

ANGUS ALLIANCE WINCHESTER 975

Reg #: 16533253

Tattoo: 975

DOB: 02/22/2009

#Emulation N Bar 5522
#N Bar Emulation EXT
N Bar Primrose 2424

#Basin Rainmaker 654X
Coleman Donna 386
KMK Donna J311

#Emulation 31
Ankory 8F78 Lass 8F275
#Emulation 31
Primrose N Bar 9962
#Basin Rainmaker D S 380U
Basin Bardolene 423U
#D H D Traveler 6807
Brooks Donna 319

| EPDs | |
|------|-----|
| CED | 10 |
| BW | .4 |
| WW | 51 |
| YW | 93 |
| MILK | 20 |
| SC | .40 |
| MARB | .28 |
| REA | .44 |

I have to thank Scott Davis for pointing out this bull to me. He has a gold star, proven pedigree. Winchester is a direct son of N Bar Emulation EXT, one of the heaviest used sires of all time with over 38,000 progeny reported. His dam is the great Coleman Donna 386, the matron of the Donna family for Coleman Angus in Montana. This may be an "old pedigree", but the bull has a strong EPD profile. I have been pleasantly surprised by the bull calves. They are thicker and much more masculine than EXT sons typically are. They have good muscle with a wide hip and excellent rump shape.

The Winchester bulls were our high selling sire group in our 2017 sale. They were the second highest marbling and the highest ribeye sire group. We were so impressed, we decided to purchase Angus Alliance International's semen interest in him. He is a true heifer bull that will give you plenty of performance when used on mature cows. This spring we will be finally getting a true test on what the daughters are like. They are absolutely gorgeous. This is not very surprising considering the sisters to Winchester that I saw in Missouri last year were three of the nicest cows I have ever laid eyes on.

33

BEST WINCHESTER 991

Reg #: 19489722

Tattoo: 991

DOB: 3/24/2019

#N Bar Emulation EXT
Angus Alliance Winchester 975
Coleman Donna 386

#LAR Alliance 64L
Miss Marie 279 of Best Angus
Marie 032 of Best Angus

#Emulation N Bar 5522
N Bar Primrose 2424
#Basin Rainmaker 654X
KMK Donna J311
#Sitz Alliance 7617
Eileenmere Diamond 16L L A R
#Boyd New Day 8005
Marie 601 of Best Angus

| EPDs | |
|------|-------|
| CED | 9 |
| BW | 0.5 |
| WW | 56 |
| YW | 105 |
| MILK | 25 |
| SC | 0.51 |
| MARB | 0.27 |
| REA | 0.25 |
| Fat | 0.018 |

Excellent bull that should work on heifers. He is out of one of my favorite 64L cows. She has a picture perfect udder and is one of the kindest, most attentive mothers to be around when calving. I would love a whole herd of cows like her.

| BW | | WWR | | Dam Production | |
|-------|-------|-------|-------|-----------------------------------|--|
| 84 | | 114 | | Cow Weight: 1325 • Cow Height: 52 | |
| BW | WW | YR | %IMF | REA | |
| 5/105 | 5/106 | 3/107 | 3/112 | 3/97 | |

Cow & Environment Connection

If bull selection wasn't hard enough already, the study of epigenomics or fetal programming is proving that even if cattle have specific genes, they may not express them if the environment does not promote those genes. **You have to make sure the cattle you are buying are being managed in a way that is in sync with how you manage your operation, or you may get some unexpected results.**





LOT 35

Best Winchester 976

35 BEST WINCHESTER 976

Reg #: 19489721
Tattoo: 976
DOB: 3/22/2019

#N Bar Emulation EXT
Angus Alliance Winchester975
Coleman Donna 386

#LAR Alliance 64L
Miss Wix 5018 of Best Angus
#Miss Wix 817 of Best Angus

#Emulation N Bar 5522
N Bar Primrose 2424
#Basin Rainmaker 654X
KMK Donna J311
#Sitz Alliance 7617
Eileenmere Diamond 161 L A R
#S A V 8180 Traveler 004
Miss Wix 0100 of Best Angus

| EPDs | | | | | | |
|------|-------|--|--|--|--|--|
| CED | 10 | | | | | |
| BW | -0.7 | | | | | |
| WW | 52 | | | | | |
| YW | 91 | | | | | |
| MILK | 25 | | | | | |
| SC | | | | | | |
| MARB | 0.27 | | | | | |
| REA | 0.22 | | | | | |
| Fat | 0.015 | | | | | |

Here is a real heifer bull prospect out of a pretty good Miss Wix cow.

| Dam Production | | | | | | |
|----------------|-----|-----------------------------------|-------|----|------|-----|
| BW | WWR | Cow Weight: 1180 • Cow Height: 52 | | | | |
| | | BW | WW | YR | %IMF | REA |
| 72 | 110 | 1/87 | 1/110 | / | / | / |



LOT 38

Best Winchester 921

38 BEST WINCHESTER 921

Reg #: 19489706
Tattoo: 921
DOB: 3/17/2019

#N Bar Emulation EXT
Angus Alliance Winchester975
Coleman Donna 386

Best Roughneck 40 of A C
Lass 6113 of Best Angus
Lass 4024 of Best Angus

#Emulation N Bar 5522
N Bar Primrose 2424
#Basin Rainmaker 654X
KMK Donna J311
Best Roughneck Creek 125
#A C Princess 976
Best Tjelde 2016
A C Cash Lass 886

| EPDs | | | | | | |
|------|------|--|--|--|--|--|
| CED | 6 | | | | | |
| BW | 1.7 | | | | | |
| WW | 48 | | | | | |
| YW | 87 | | | | | |
| MILK | 23 | | | | | |
| SC | | | | | | |
| MARB | 0.28 | | | | | |
| REA | 0.33 | | | | | |
| Fat | 0.02 | | | | | |

Here is another bull that should work on heifers, but there is a little birth weight back in the pedigree, so you will need to keep an eye on them.

| Dam Production | | | | | | |
|----------------|-----|-----------------------------------|-------|----|------|-----|
| BW | WWR | Cow Weight: 1130 • Cow Height: 50 | | | | |
| | | BW | WW | YR | %IMF | REA |
| 84 | 103 | 1/104 | 1/103 | / | / | / |

34 BEST WINCHESTER 851

Reg #: 19179008
Tattoo: 851
DOB: 3/23/2018

#N Bar Emulation EXT
Angus Alliance Winchester975
Coleman Donna 386

#LAR Alliance 64L
Miss Marie 279 of Best Angus
Marie 032 of Best Angus

#Emulation N Bar 5522
N Bar Primrose 2424
#Basin Rainmaker 654X
KMK Donna J311
#Sitz Alliance 7617
Eileenmere Diamond 161 L A R
#Boyd New Day 8005
Marie 601 of Best Angus

| EPDs | | | | | | |
|------|-------|--|--|--|--|--|
| CED | 16 | | | | | |
| BW | -2.4 | | | | | |
| WW | 36 | | | | | |
| YW | 63 | | | | | |
| MILK | 22 | | | | | |
| SC | -0.04 | | | | | |
| MARB | 0.12 | | | | | |
| REA | 0.08 | | | | | |
| Fat | 0.044 | | | | | |

We used this bull last year on registered cows. He got a little behind this fall, so he is a little behind the rest of the two-year-old bulls. He is a full brother to Lot 33. He should work well on heifers.

| Dam Production | | | | | | |
|----------------|-----|-----------------------------------|-------|-------|-------|------|
| BW | WWR | Cow Weight: 1280 • Cow Height: 53 | | | | |
| | | BW | WW | YR | %IMF | REA |
| 82 | 106 | 5/105 | 5/106 | 3/107 | 3/112 | 3/97 |

36 BEST WINCHESTER 9014

Reg #: 625367793
Tattoo: 9014
DOB: 3/19/2019

#N Bar Emulation EXT
Angus Alliance Winchester975
Coleman Donna 386

#LAR Alliance 64L
Miss Marie 338 of Best Angus
Miss Marie 0013 Best Angus

#Emulation N Bar 5522
N Bar Primrose 2424
#Basin Rainmaker 654X
KMK Donna J311
#Sitz Alliance 7617
Eileenmere Diamond 161 L A R
#Car Tracker 904
C A R Miss Marie 701

| EPDs | | | | | | |
|------|------|--|--|--|--|--|
| CED | 8 | | | | | |
| BW | 1.1 | | | | | |
| WW | 48 | | | | | |
| YW | 90 | | | | | |
| MILK | 25 | | | | | |
| SC | 67 | | | | | |
| MARB | 37 | | | | | |
| REA | .15 | | | | | |
| Fat | .015 | | | | | |

I am confident this bull will work well on heifers. Dam is a really good cow that has had some bad luck with death loss on a couple of calves outside her control.

| Dam Production | | | | | | |
|----------------|-----|---------------------------|-------|-------|-------|------|
| BW | WWR | Cow Weight: • Cow Height: | | | | |
| | | BW | WW | YR | %IMF | REA |
| 80 | 100 | 2/93 | 2/101 | 1/119 | 2/123 | 2/94 |

37 BEST WINCHESTER 964

Reg #: 19489719
Tattoo: 964
DOB: 3/21/2019

#N Bar Emulation EXT
Angus Alliance Winchester975
Coleman Donna 386

Best Ft Peck 336
Miss Marie 5167 Best Angus
#Miss Marie 250 of Best Angus

#Emulation N Bar 5522
N Bar Primrose 2424
#Basin Rainmaker 654X
KMK Donna J311
#O C C Missing Link 830M
Gale 7024 of Best Angus
#LAR Alliance 64L
Miss Marie 0013 Best Angus

| EPDs | | | | | | |
|------|------|--|--|--|--|--|
| CED | 9 | | | | | |
| BW | 0.7 | | | | | |
| WW | 47 | | | | | |
| YW | 90 | | | | | |
| MILK | 20 | | | | | |
| SC | 0.81 | | | | | |
| MARB | 0.34 | | | | | |
| REA | 0.19 | | | | | |
| Fat | 0.04 | | | | | |

Heifer bull. Dam is a powerful cow that is starting to come into her own.

| Dam Production | | | | | | |
|----------------|-----|-----------------------------------|------|------|-------|------|
| BW | WWR | Cow Weight: 1400 • Cow Height: 55 | | | | |
| | | BW | WW | YR | %IMF | REA |
| 80 | 100 | 3/95 | 3/89 | 2/91 | 2/111 | 2/93 |

39 BEST WINCHESTER 962

Reg #: 19489718
Tattoo: 962
DOB: 3/21/2019

#N Bar Emulation EXT
Angus Alliance Winchester975
Coleman Donna 386

#O C C Missing Link 830M
Rosetta 463 of Best Angus
Rosetta 913 of Best Angus

#Emulation N Bar 5522
N Bar Primrose 2424
#Basin Rainmaker 654X
KMK Donna J311
O C C Headliner 661H
O C C Dixie Erica 946K
#Boyd New Day 8005
#Rosetta 327 of Best Angus

| EPDs | | | | | | |
|------|------|--|--|--|--|--|
| CED | 6 | | | | | |
| BW | 1.7 | | | | | |
| WW | 49 | | | | | |
| YW | 88 | | | | | |
| MILK | 23 | | | | | |
| SC | | | | | | |
| MARB | 0.11 | | | | | |
| REA | 0.48 | | | | | |
| Fat | 0.01 | | | | | |

I think this bull will work fine on heifers. Grand dam has some birth weight which is influencing the EPD. Dam has had 4 calves with an average BW of 80 pounds. The biggest BW she had is only 84 pounds. EPD's can be very strange sometimes.

| Dam Production | | | | | | |
|----------------|-----|-----------------------------------|-------|-------|------|-------|
| BW | WWR | Cow Weight: 1200 • Cow Height: 54 | | | | |
| | | BW | WW | YR | %IMF | REA |
| 80 | 101 | 3/99 | 3/100 | 2/101 | 2/98 | 2/109 |



Marie 8005 of Best Angus, Dam of Lot 40 and reference sire, Best Box Cross 291

40 BEST WINCHESTER 9033

#N Bar Emulation EXT
Angus Alliance Winchester975
Coleman Donna 386

#CAR Duke 104
#Marie 8005 of Best Angus
C A R Miss Viking 604

#Emulation N Bar 5522
N Bar Primrose 2424
#Basin Rainmaker 654X
KMK Donna J311
#Car Tracker 904
#C A R Miss Raindancer 421
#Leachman Right Time
#Lady Viking 131 C A R

Reg #: 19627888
Tattoo: 9033
DOB: 3/23/2019

| EPDs | |
|------|-------|
| CED | 11 |
| BW | -1.4 |
| WW | 36 |
| YW | 64 |
| MILK | 26 |
| SC | 0.36 |
| MARB | 0.41 |
| REA | 0.07 |
| Fat | 0.035 |

Sleep all night heifer bull. 8005 is still my favorite calving ease cow in the herd at age 12 and going strong. We have an ET sister in the replacement pen that is really nice.

| BW | | WWR | | Dam Production | | | |
|----|-----|------|-------|-----------------------------------|--------|-------|--|
| | | | | Cow Weight: 1020 • Cow Height: 49 | | | |
| BW | WWR | BW | WW | YR | %IMF | REA | |
| 77 | 93 | 8/94 | 8/106 | 6/101 | 13/109 | 13/92 | |



Rosetta 0004 of Best Angus, Granddam of Lot 43

43 BEST WINCHESTER 915

#N Bar Emulation EXT
Angus Alliance Winchester975
Coleman Donna 386

#Sitz Rainmaker 11127
Rosetta 744 of Best Angus
Rosetta 0004 of Best Angus

#Emulation N Bar 5522
N Bar Primrose 2424
#Basin Rainmaker 654X
KMK Donna J311
Sitz Rainmaker 8075
Sitz Emma E 417L
#S A V 8180 Traveler 004
Rosetta 5001 of Best Angus

Reg #: 19489703
Tattoo: 915
DOB: 3/16/2019

| EPDs | |
|------|-------|
| CED | 8 |
| BW | 1 |
| WW | 48 |
| YW | 91 |
| MILK | 21 |
| SC | |
| MARB | 0.24 |
| REA | 0.4 |
| Fat | 0.014 |

A nice heifer bull out of a Rainmaker mother. I am tickled with how the Rainmaker daughters did last year. They stayed in good shape, brought in good calves, and most importantly, rebred timely. They have really fleshed up grazing this winter after weaning.

| BW | | WWR | | Dam Production | | | |
|----|-----|------|------|-----------------------------------|------|-----|--|
| | | | | Cow Weight: 1130 • Cow Height: 52 | | | |
| BW | WWR | BW | WW | YR | %IMF | REA | |
| 73 | 92 | 1/96 | 1/92 | / | / | / | |



Marie 367 of Best Angus, Maternal granddam of Lot 41

41 BEST WINCHESTER 945

#N Bar Emulation EXT
Angus Alliance Winchester975
Coleman Donna 386

#Sinclair Fortunate Son
Marie 759 of Best Angus
Marie 367 of Best Angus

#Emulation N Bar 5522
N Bar Primrose 2424
#Basin Rainmaker 654X
KMK Donna J311
Sinclair Emulate 7XT28
#Sinclair Blackbird 2P8 7079
#LAR Alliance 64L
Marie 7010 of Best Angus

Reg #: 19489715
Tattoo: 945
DOB: 3/20/2019

| EPDs | |
|------|-------|
| CED | 3 |
| BW | 2.9 |
| WW | 53 |
| YW | 100 |
| MILK | 23 |
| SC | |
| MARB | 0.26 |
| REA | 0.5 |
| Fat | 0.015 |

Nice bull who's grand dam is one of my favorites. I would use this bull on cows only.

| BW | | WWR | | Dam Production | | | |
|----|-----|-------|-------|-----------------------------------|------|-----|--|
| | | | | Cow Weight: 1020 • Cow Height: 49 | | | |
| BW | WWR | BW | WW | YR | %IMF | REA | |
| 84 | 100 | 1/110 | 1/100 | / | / | / | |

42 BEST WINCHESTER 914

#N Bar Emulation EXT
Angus Alliance Winchester975
Coleman Donna 386

#Boyd New Day 8005
Best Everelda Entense 7007
Sitz Everelda Entense 3738

#Emulation N Bar 5522
N Bar Primrose 2424
#Basin Rainmaker 654X
KMK Donna J311
#A A R New Trend
S V F Forever Lady 57D
Leachman Prime Time
Sitz Everelda Entense 3133

Reg #: 19623963
Tattoo: 914
DOB: 3/16/2019

| EPDs | |
|------|-------|
| CED | 6 |
| BW | 1.8 |
| WW | 46 |
| YW | 82 |
| MILK | 20 |
| SC | |
| MARB | 0.28 |
| REA | 0.45 |
| Fat | 0.008 |

This nice heifer bull combines two of the legendary cows in the Angus breed. Everelda Entense 1137 and Coleman Donna 386.

| BW | | WWR | | Dam Production | | | |
|----|-----|-------|------|-----------------------------------|------|-----|--|
| | | | | Cow Weight: 1065 • Cow Height: 53 | | | |
| BW | WWR | BW | WW | YR | %IMF | REA | |
| 78 | 91 | 1/102 | 1/91 | / | / | / | |

44 BEST WINCHESTER 9102

#N Bar Emulation EXT
Angus Alliance Winchester975
Coleman Donna 386

Best Bakken 4013
Miss Wix 762 of Best Angus
Miss Wix 2008 of Best Angus

#Emulation N Bar 5522
N Bar Primrose 2424
#Basin Rainmaker 654X
KMK Donna J311
#LAR Alliance 64L
#Rosetta 8016 of Best Angus
#O C C Missing Link 830M
#Miss Wix 307 of Best Angus

Reg #: 19489728
Tattoo: 9102
DOB: 3/25/2019

| EPDs | |
|------|-------|
| CED | 10 |
| BW | -0.5 |
| WW | 42 |
| YW | 75 |
| MILK | 24 |
| SC | |
| MARB | 0.28 |
| REA | 0.35 |
| Fat | 0.025 |

Heifer bull.

| BW | | WWR | | Dam Production | | | |
|----|-----|------|------|-----------------------------------|------|-----|--|
| | | | | Cow Weight: 1030 • Cow Height: 53 | | | |
| BW | WWR | BW | WW | YR | %IMF | REA | |
| 70 | 90 | 1/93 | 1/90 | / | / | / | |



Best Box Cross

We really believe that LAR Alliance 64L was a tremendous bull. We have been trying for quite some time to determine which bull we will use to carry on these valuable genes in our program. We want a sire that will produce power calving ease bulls and that is exactly what Box Cross does. Ash Coullee purchased this bull in 2013. He was a standout individual out of our top calving ease cow. He had a 66 pound actual birth weight, 106 weaning ratio and 107 yearling ratio. He was also the top marbling bull that year with a 148 IMF ratio.

Reference Sire: **BEST BOX CROSS 291**

BEST BOX CROSS 291

Reg #: 17438354

Tattoo: 01B2

DOB: 03/17/2012

#Sitz Alliance 7617
#LAR Alliance 64L
Eileenmere Diamond 161 L A R

#N Bar Emulation EXT
N Bar Lady Ida S C C 2P37
#Emulation N Bar 5522
Ideal 6417 of 1418 2459
#CAR Tracker 904
#C A R Miss Raindancer 421
#Leachman Right Time
#Lady Viking 131 C A R

#CAR Duke 104
#Marie 8005 of Best Angus
C A R Miss Viking 604

| EPDs | |
|------|------|
| CED | 17 |
| BW | -3.3 |
| WW | 45 |
| YW | 84 |
| MILK | 36 |
| SC | .90 |
| MARB | .72 |
| REA | -.21 |

While we continued to use 64L, Box Cross was doing an excellent job at Ash Coullee. His progeny were very popular with many top selling bulls coming out of this high selling sire group at Ash Coullee. The daughters are doing an excellent job. They have snug udders and small teats. The milk EPD says +36 which is not very representative of his daughters. They have an average nursing ratio of 100 with 55 daughters reporting.

He is an absolute sure-fire calving ease bull. We used him on some of our higher birth weight cows last year and he dramatically reduced their birth weight as well. His progeny are extremely deep ribbed and moderate framed. They don't have the frame of the 64L's, but they perform extremely well on our low energy ration. They should be excellent low input cattle. Box Cross will continue to see heavy use in our program. Best Box Cross 291 semen is available. Contact us.



Best Box Cross 9305

LOT 45

45 BEST BOX CROSS 9305

Reg #: 19623975

Tattoo: 9305

DOB: 3/22/2019

#LAR Alliance 64L
Best Box Cross 291
#Marie 8005 of Best Angus

#Sitz Alliance 7617
Eileenmere Diamond 161 L A R
#CAR Duke 104
C A R Miss Viking 604
#C H Quantum 6247
Cole Creek Jumbolen 233
#G D A R Executive 727
Rosetta 8148 of Mc Cumber

| EPDs | |
|------|-------|
| CED | 10 |
| BW | 0.1 |
| WW | 46 |
| YW | 74 |
| MILK | 33 |
| SC | 0.69 |
| MARB | 0.46 |
| REA | -0.07 |
| Fat | 0.031 |

Cole Creek Cedar Jumbo 68R
Rosetta 724 of Best Angus
Rosetta 402 of Best Angus

We have possession on Box Cross again so we decided to use him on a small group of older cows to get some daughters. We knew we would get some bulls too, and I am tickled with the bulls. Recommended for use on heifers.

| Dam Production | | Cow Weight: 1340 • Cow Height: 55 | | | |
|----------------|-----|-----------------------------------|--------|------|------|
| BW | WWR | BW | WW | YR | %IMF |
| 82 | 112 | 11/101 | 11/105 | 7/96 | 8/91 |
| | | | | | 8/93 |

46 BEST BOX CROSS 9310

Reg #: 19654112
Tattoo: 9310
DOB: 4/15/2019

#LAR Alliance 64L
Best Box Cross 291
#Marie 8005 of Best Angus

#S A V 8180 Traveler 004
Rosetta 909 of Best Angus
Rosetta 402 of Best Angus

#Sitz Alliance 7617
Eileenmere Diamond 161 L A R
#CAR Duke 104
C A R Miss Viking 604
#Sitz Traveler 8180
Boyd Forever Lady 8003
#G D A R Executive 727
Rosetta 8148 of Mc Cumber

| EPDs | |
|------|-------|
| CED | 12 |
| BW | -2 |
| WW | 49 |
| YW | 79 |
| MILK | 32 |
| SC | .90 |
| MARB | 0.60 |
| REA | -0.06 |
| Fat | .055 |

Excellent bull that should work well on heifers.

| BW | WWR | Dam Production | | | | |
|----|-----|-----------------------------------|-------|-------|-------|-------|
| | | Cow Weight: 1317 • Cow Height: 55 | | | | |
| 81 | 109 | BW | WW | YR | %IMF | REA |
| | | 7/96 | 8/101 | 5/102 | 3/113 | 3/108 |

48 BEST BOX CROSS 9306

Reg #: 19623957
Tattoo: 9306
DOB: 3/24/2019

#LAR Alliance 64L
Best Box Cross 291
#Marie 8005 of Best Angus

#Boyd New Day 8005
#Rosetta 623 of Best Angus
#Rosetta 443 of Best Angus

#Sitz Alliance 7617
Eileenmere Diamond 161 L A R
#CAR Duke 104
C A R Miss Viking 604
#A A R New Trend
S V F Forever Lady 57D
#G D A R Executive 727
Rosetta 118 of Best Angus

| EPDs | |
|------|-------|
| CED | 9 |
| BW | 0.7 |
| WW | 48 |
| YW | 84 |
| MILK | 34 |
| SC | 1.08 |
| MARB | 0.48 |
| REA | 0.07 |
| Fat | 0.026 |

The birth weights on the Box Cross bulls were very consistent, but the dam carries some birth weight in her pedigree. I would recommend cows for this bull, unless you keep an eye on your heifers.

| | | Dam Production | | | | |
|----|-----|-----------------------------------|--------|-------|------|------|
| BW | WWR | Cow Weight: 1205 • Cow Height: 54 | | | | |
| 83 | 110 | BW | WW | YR | %IMF | REA |
| | | 11/105 | 11/106 | 6/101 | 6/95 | 6/99 |

47 BEST BOX CROSS 9303

Reg #: 19623959
Tattoo: 9303
DOB: 3/20/2019

#LAR Alliance 64L
Best Box Cross 291
#Marie 8005 of Best Angus

#Boyd New Day 8005
Rosetta 913 of Best Angus
#Rosetta 327 of Best Angus

#Sitz Alliance 7617
Eileenmere Diamond 161 L A R
#CAR Duke 104
C A R Miss Viking 604
#A A R New Trend
S V F Forever Lady 57D
Mc Cumber Mr Wix 7104
Rosetta 127 of Best Angus

| EPDs | |
|------|------|
| CED | 7 |
| BW | 0.6 |
| WW | 52 |
| YW | 94 |
| MILK | 33 |
| SC | 0.83 |
| MARB | 0.45 |
| REA | 0.09 |
| Fat | 0.03 |

This is probably my favorite Box Cross son in the sale. I would not recommend using him on heifers since there is some birth weight on the bottom side of this pedigree.

| BW | WWR | Dam Production | | | | |
|----|-----|-----------------------------------|-------|-------|------|-------|
| | | Cow Weight: 1360 • Cow Height: 53 | | | | |
| 80 | 109 | BW | WW | YR | %IMF | REA |
| | | 8/109 | 8/109 | 3/109 | 4/89 | 4/108 |

49 BEST BOX CROSS 906

Reg #: 19489698
Tattoo: 906
DOB: 3/13/2019

#LAR Alliance 64L
Best Box Cross 291
#Marie 8005 of Best Angus

#Basin Excitement
Marie 717 of Best Angus
Miss Marie 263 of Best Angus

#Sitz Alliance 7617
Eileenmere Diamond 161 L A R
#CAR Duke 104
C A R Miss Viking 604
Basin Expedition R156
Basin Lady S532 AK
#LAR Alliance 64L
Marie 7010 of Best Angus

| EPDs | |
|------|-------|
| CED | 9 |
| BW | 0.4 |
| WW | 48 |
| YW | 89 |
| MILK | 31 |
| SC | |
| MARB | 0.39 |
| REA | 0.11 |
| Fat | 0.031 |

Good solid heifer bull out of a low birth line of cows.

| BW | WWR | Dam Production | | | | |
|----|-----|-----------------------------------|------|----|------|-----|
| | | Cow Weight: 1010 • Cow Height: 52 | | | | |
| 80 | 92 | BW | WW | YR | %IMF | REA |
| | | 1/105 | 1/92 | / | / | / |

50 BEST BOX CROSS 919

Reg #: 19640561
Tattoo: 919
DOB: 3/16/2019

#LAR Alliance 64L
Best Box Cross 291
#Marie 8005 of Best Angus

#Sinclair Fortunate Son
Princess 7017 of Best Angus
#A C Princess 976

#Sitz Alliance 7617
Eileenmere Diamond 161 L A R
#CAR Duke 104
C A R Miss Viking 604
Sinclair Emulate 7XT28
#Sinclair Blackbird 2P8 7079
GDAR Dateline 354
A C Princess 500

| EPDs | |
|------|-------|
| CED | |
| BW | 0.5 |
| WW | 47 |
| YW | 87 |
| MILK | 32 |
| SC | |
| MARB | 0.59 |
| REA | 0.15 |
| Fat | 0.036 |

Heifer bull out of a really nice first calf heifer.

| BW | WWR | Dam Production | | | | |
|----|-----|-----------------------------------|-------|----|------|-----|
| | | Cow Weight: 1055 • Cow Height: 53 | | | | |
| 68 | 100 | BW | WW | YR | %IMF | REA |
| | | 1/100 | 1/100 | / | / | / |

How we do business:



We want to earn a reputation of having excellent quality cattle, but even more importantly we want our customers to feel they have been treated fairly and received excellent value in their purchases. Not every animal we sell is going to turn out as anticipated We want to know about it, so we can make it right.

"If I take care of my **character**,
my **reputation** will *take care of me.*"
- Dwight L. Moody



Sinclair Fortunate Son

Reference Sire: **SINCLAIR FORTUNATE SON**

SINCLAIR FORTUNATE SON

Reg #: 16648841

Tattoo: 01B2

DOB: 02/11/2010

#Sinclair Extra 4X13
Sinclair Emulate 7XT28
Sinclair Blackbird 20F3 6417

#N Bar Emulation EXT
N Bar Lady Ida S C C 2P37
#Emulation N Bar 5522
Ideal 6417 of 1418 2459
#Gardens Prime Time
N Bar Miss Emulous A404
#R R Rito 707
Ideal 089 of 8103 7394

| EPDs | |
|------|-----|
| CED | -5 |
| BW | 4.4 |
| WW | 55 |
| YW | 104 |
| MILK | 22 |
| SC | .43 |
| MARB | .35 |
| REA | .47 |

We have been watching Fortunate for quite a few years while trying to determine if he would fit our program. I have always been impressed, but wanted to make sure the daughters were as good as they need to be. After seeing quite a few daughters in production we decided to use him heavily.

This bull sires excellent performance, but the mature size is still moderate, exactly what we are looking for. McCumber used him on heifers for the first two years and they got along fine. The birth weight EPD has climbed since his yearling year, but in our herd we saw the birth weights follow the cow and they were reasonable. We have calved two groups of daughters now and they did an excellent job. They raised nice calves, stayed in very nice shape and they bred back early. There will be some Fortunate daughters that will leave a big mark on our herd.



Rosetta 8014 of Best Angus, Dam of Lot 51



Rosetta 420 of Best Angus, Dam of Lot 52

51 BEST FORTUNATE 8132

Reg #: 19178964

Tattoo: 8132

DOB: 4/25/2018

#Sinclair Fortunate Son
Best Fortunate 6050
Miss Marie 0013 Best Angus

#Leachman Right Time
Rosetta 8014 of Best Angus
#Rosetta 149 of Best Angus

Sinclair Emulate 7XT28
#Sinclair Blackbird 2P8 7079
#Car Tracker 904
C A R Miss Marie 701
#N Bar Emulation EXT
Leachman Erica 0025
#G D A R Executive 727
Rosetta 501 of Best Angus

| EPDs | |
|------|-------|
| CED | 2 |
| BW | 2.8 |
| WW | 39 |
| YW | 71 |
| MILK | 27 |
| SC | 0.67 |
| MARB | 0.31 |
| REA | 0.14 |
| Fat | 0.035 |

Here is an excellent bull out of 8014. She has done everything we could ask a cow to do. She has been fertile, excellent disposition, great feet and legs. We have numerous progeny from 8014 leaving their mark on our herd.

| BW | | WWR | | Dam Production | | | |
|----|-----|-------|-------|-----------------------------------|--------|-------|--|
| | | | | Cow Weight: 1220 • Cow Height: 52 | | | |
| BW | WWR | BW | WWR | YR | %IMF | REA | |
| 92 | 107 | | | | | | |
| | | 9/103 | 9/109 | 6/101 | 32/103 | 32/98 | |

52 BEST FORTUNATE 8138

Reg #: 19304395

Tattoo: 8138

DOB: 4/28/2018

#Sinclair Fortunate Son
Best Fortunate 6060
Rosetta 024 of Best Angus

#Boyd New Day 8005
#Rosetta 420 of Best Angus
#Rosetta 107 of Best Angus

Sinclair Emulate 7XT28
#Sinclair Blackbird 2P8 7079
#Sinclair Extra 4X13
Rosetta 8014 of Best Angus
#A A R New Trend
S V F Forever Lady 57D
#G D A R Executive 727
Rosetta 201 of Best Angus

| EPDs | |
|------|------|
| CED | 2 |
| BW | 3.1 |
| WW | 39 |
| YW | 73 |
| MILK | 22 |
| SC | 0.8 |
| MARB | 0.22 |
| REA | 0.22 |
| Fat | 0.04 |

This soon to be 16 year old pathfinder is still going strong. Ultra-sound data shows she will be having another AI calf this spring. This bull is one of the best bulls she has had during her long, productive career.

| BW | | WWR | | Dam Production | | | |
|----|-----|-------|--------|-----------------------------------|-------|--------|--|
| | | | | Cow Weight: 1270 • Cow Height: 54 | | | |
| BW | WWR | BW | WWR | YR | %IMF | REA | |
| 86 | 108 | | | | | | |
| | | 14/94 | 14/104 | 10/100 | 34/93 | 34/101 | |

53 BEST FORTUNATE 8147

Reg #: 19178949
Tattoo: 8147
DOB: 5/8/2018

#Sinclair Fortunate Son
Best Fortunate 6056
#Rosetta 8016 of Best Angus

#O C C Missing Link 830M
Miss Wix 2008 of Best Angus
#Miss Wix 307 of Best Angus

Sinclair Emulate 7XT28
#Sinclair Blackbird 2P8 7079
#Leachman Right Time
#Rosetta 149 of Best Angus
O C C Headliner 661H
O C C Dixie Erica 946K
#G D A R Executive 727
Miss Wix 0100 of Best Angus

| EPDs | |
|------|------|
| CED | 3 |
| BW | 1.6 |
| WW | 41 |
| YW | 73 |
| MILK | 26 |
| SC | 0.58 |
| MARB | 0.18 |
| REA | 0.38 |
| Fat | 0.02 |

Good performance bull out of one of our highest weaning ratio cows.

| BW | WWR | Dam Production Cow Weight: 1140 • Cow Height: 52 | | | | |
|----|-----|---|-------|-------|-------|-------|
| 90 | 100 | BW | WW | YR | %IMF | REA |
| | | 5/113 | 5/106 | 4/103 | 4/104 | 4/105 |

55 BEST FORTUNATE 9119

Reg #: 19489741
Tattoo: 9119
DOB: 4/8/2019

#Sinclair Fortunate Son
Best Fortunate 7003
#A C Princess 976

Best Alliance 4003
Rosetta 672 of Best Angus
Rosetta 499 of Best Angus

Sinclair Emulate 7XT28
#Sinclair Blackbird 2P8 7079
GDAR Dateline 354
A C Princess 500
#LAR Alliance 64L
#Rosetta 9003 of Best Angus
Best KTH 269
Rosetta 2003 of Best Angus

| EPDs | |
|------|-------|
| CED | 9 |
| BW | 0.1 |
| WW | 49 |
| YW | 95 |
| MILK | 31 |
| SC | |
| MARB | 0.55 |
| REA | 0.21 |
| Fat | 0.029 |

I would feel comfortable using this bull on heifers.

| BW | WWR | Dam Production Cow Weight: 1140 • Cow Height: 52 | | | | |
|----|-----|---|-------|----|------|-----|
| 72 | 103 | BW | WW | YR | %IMF | REA |
| | | 1/89 | 1/103 | / | / | / |

54 BEST FORTUNATE 8121

Reg #: 19178972
Tattoo: 8121
DOB: 4/18/2018

#Sinclair Fortunate Son
Best Fortunate 697
Rosetta 335 of Best Angus

Bo Duke 8006 of Best Angus
Best Bo Duke 060
Miss Wix 835 of Best Angus

Sinclair Emulate 7XT28
#Sinclair Blackbird 2P8 7079
#LAR Alliance 64L
#Rosetta 8016 of Best Angus
#CAR Duke 104
C A R Miss Viking 604
K N M Right Time 659
Miss Wix 664 of Best Angus

| EPDs | |
|------|-------|
| CED | 2 |
| BW | 1.4 |
| WW | 43 |
| YW | 78 |
| MILK | 32 |
| SC | 0.65 |
| MARB | 0.34 |
| REA | 0.26 |
| Fat | 0.036 |

Good calf that weaned well. Dam is a moderate framed and easy fleshing cow with lots of natural thickness. Her calves gain and have strong carcass traits.

| BW | WWR | Dam Production Cow Weight: 1350 • Cow Height: 54 | | | | |
|----|-----|---|------|-------|-------|-------|
| 90 | 106 | BW | WW | YR | %IMF | REA |
| | | 6/98 | 6/99 | 4/102 | 4/104 | 4/103 |

56 BEST FORTUNATE 993

Reg #: 19653516
Tattoo: 993
DOB: 3/26/2019

Sinclair Emulate 7XT28
#Sinclair Fortunate Son
#Sinclair Blackbird 2P8 7079

#O C C Missing Link 830M
Miss Wix 2012 of Best Angus
#Miss Wix 307 of Best Angus

#Sinclair Extra 4X13
Sinclair Blackbird 20F3 6417
#N Bar Prime Time D806
Rito 707 of Ideal 089 7076
O C C Headliner 661H
O C C Dixie Erica 946K
#G D A R Executive 727
Miss Wix 0100 of Best Angus

| EPDs | |
|------|------|
| CED | 0 |
| BW | 2.5 |
| WW | 43 |
| YW | 79 |
| MILK | 22 |
| SC | .72 |
| MARB | .14 |
| REA | .48 |
| Fat | .027 |

We used Fortunate Son fairly hard for two years. I am very happy with how the daughters are doing. It looks to me like the bulls are turning out as well. Fortunate Son is adding some fleshing ability and performance while moderating frame.

| BW | WWR | Dam Production Cow Weight: 1230 • Cow Height: 53 | | | | |
|----|-----|---|------|------|-------|-------|
| 90 | 94 | BW | WW | YR | %IMF | REA |
| | | 6/102 | 6/94 | 3/95 | 5/100 | 5/100 |

Thoughts about FERTILITY

I attended a meeting in Kansas City last year where we were discussing fertility in the Angus cow herd. Using the heifer pregnancy EPD as our measure, the Angus cowherd has reduced its fertility over the last 50 years. I find this fact very concerning. I started thinking back to all the recent conversations with producers that are concerned by their larger open rates.

I am sure this same observation would be seen in all of the major breeds in the United States as well. The first thing I thought of is if fertility/ longevity is the most important trait for the profitability of commercial ranches, how can nearly every other EPD be increasing and the fertility EPD be declining. How could we as breeders let our priorities so far out of line. We are enrolled in Maternal Plus to aid in improving fertility trait collection and improving accuracy and reliability of the fertility EPDs for the Angus Association.

I think there are a few reasons that this has happened.

1. Obviously, other traits are taking priority when breeding and selection decisions. The industry has seen increases in growth, mature size, and milk, and improvements in carcass traits. I am not saying those traits don't matter because they do. However, fertility can't be an after-thought when making breeding decisions. At Best Angus, we have always taken a balanced approach to trait selection trying to improve our cattle, but we will not sacrifice fertility. It is the first trait that we think about. We have sent a lot of beautiful cows to the sale barn because they were open or late.

2. The second issue is our national cow herd may still be just as "fertile", but we have bred for an animal that no longer functions in the natural environment and needs additional inputs to breed in a timely fashion, neither of which help your bottom line. The result is the same; open cows for you, or a much larger feed bill. Our ranch and management style really challenges fertility. This challenge is good for our customers (but an expensive challenge for us). The breed up on the females we have sold to other producers has been excellent. We are proud of those reports.

3. Not intentionally, but it is likely that breeders are selecting genetics from lines of cattle that have fertility issues. Fertility has always been a front of the brain trait when making breeding decisions because it is the #1 economic trait. At Best Angus, we keep daughters and bulls from cows that breed up early to use for our next generation of genetics. When we bring in outside sires, we investigate the programs and the genetics these bulls come from to make sure fertility is one of their top priorities as well. We feel there is a body type that works in our environment as well. We want our cows to be wide bodied, but wedge shaped with refined shoulders and neck. Last, but not least they need to have a feminine triangular shaped head, a critical phenotypic indicator of fertility.



57 BEST FORTUNATE 9113

Reg #: 19489735
Tattoo: 9113
DOB: 4/7/2019

#Sinclair Fortunate Son
Best Fortunate 7030
A C Blackbird Blossom 533

Best Alliance 3007
Gale 5142 of Best Angus
Gale 701 of Best Angus

Sinclair Emulate 7XT28
#Sinclair Blackbird 2P8 7079
CAR Tracker 305
A C Blackbird Blossom 316
#LAR Alliance 64L
Rosetta 808 of Best Angus
#S A V 8180 Traveler 004
#Gale 120 of Mc Cumber

| EPDs | |
|------|-------|
| CED | 10 |
| BW | -1.5 |
| WW | 39 |
| YW | 71 |
| MILK | 28 |
| SC | |
| MARB | 0.46 |
| REA | 0.27 |
| Fat | 0.035 |

This bull should work on heifers.
Dam is a moderate framed, easy
fleshing cow with a perfect udder.

| BW | | WWR | | Dam Production Cow Weight: 1105 • Cow Height: 50 | | | | | |
|----|----|------|------|---|-------|-------|--|--|--|
| BW | 93 | BW | WW | YR | %IMF | REA | | | |
| 62 | 93 | 3/92 | 3/94 | 1/100 | 1/100 | 1/100 | | | |

58 BEST FORTUNATE 8103

Reg #: 19489729
Tattoo: 9103
DOB: 3/28/2019

#Sinclair Fortunate Son
Best Fortunate 7030
A C Blackbird Blossom 533

Best Tracker 0039
Rosetta 2127 of Best Angus
Rosetta 727 of Best Angus

Sinclair Emulate 7XT28
#Sinclair Blackbird 2P8 7079
CAR Tracker 305
A C Blackbird Blossom 316
#Car Tracker 904
#Miss Wix 307 of Best Angus
MC Cumber Next Step 224
Rosetta 542 of Best Angus

| EPDs | |
|------|-------|
| CED | -4 |
| BW | 4 |
| WW | 47 |
| YW | 85 |
| MILK | 24 |
| SC | |
| MARB | 0.23 |
| REA | 0.38 |
| Fat | 0.019 |

Cow bull.

| BW | | WWR | | Dam Production Cow Weight: 1250 • Cow Height: 53 | | | | | |
|----|----|-------|------|---|------|-------|--|--|--|
| BW | 94 | BW | WW | YR | %IMF | REA | | | |
| 96 | 94 | 3/105 | 3/89 | 1/95 | 1/64 | 1/107 | | | |

59 BEST FORTUNATE 8117

Reg #: 19178975
Tattoo: 8117
DOB: 4/17/2018

#Sinclair Fortunate Son
Best Fortunate 655
Rosetta 3026 of Best Angus

#S A V 8180 Traveler 004
Rosetta 0031 of Best Angus
Rosetta 429 of Best Angus

Sinclair Emulate 7XT28
#Sinclair Blackbird 2P8 7079
#LAR Alliance 64L
#Rosetta 8016 of Best Angus
#Sitz Traveler 8180
Boyd Forever Lady 8003
#Boyd New Day 8005
#Rosetta 149 of Best Angus

| EPDs | |
|------|-------|
| CED | 6 |
| BW | 0.3 |
| WW | 36 |
| YW | 67 |
| MILK | 31 |
| SC | 0.81 |
| MARB | 0.28 |
| REA | 0.21 |
| Fat | 0.029 |

Dam is a moderate framed, picture
perfect cow. This bull has a little
extra frame.

| BW | | WWR | | Dam Production Cow Weight: 1320 • Cow Height: 51 | | | | | |
|----|----|------|-------|---|------|------|--|--|--|
| BW | 97 | BW | WW | YR | %IMF | REA | | | |
| 80 | 97 | 7/96 | 7/100 | 3/91 | 3/95 | 3/99 | | | |

60 BEST FORTUNATE 9127

Reg #: Missing
Tattoo: 9127
DOB: 4/11/2019

#Sinclair Fortunate Son
Best Fortunate 7003
#A C Princess 976

Best Alliance 3007
Rosetta 596 of Best Angus
Rosetta 2158 of Best Angus

Sinclair Emulate 7XT28
#Sinclair Blackbird 2P8 7079
GDAR Dateline 354
A C Princess 500
#LAR Alliance 64L
Rosetta 808 of Best Angus
Best Tracker 0022
Gale 7014 of Best Angus

| EPDs | |
|------|-------|
| CED | 6 |
| BW | 1.4 |
| WW | 45 |
| YW | 87 |
| MILK | 27 |
| SC | |
| MARB | 0.38 |
| REA | 0.18 |
| Fat | 0.021 |

He could work on heifers.

| BW | | WWR | | Dam Production Cow Weight: 1370 • Cow Height: 52 | | | | | |
|----|-----|------|------|---|------|-------|--|--|--|
| BW | 103 | BW | WW | YR | %IMF | REA | | | |
| 85 | 103 | 2/97 | 2/98 | 1/97 | 1/80 | 1/111 | | | |



Investing in your FUTURE

Daily management determines whether or not you can pay your bills today. Sobering fact is you will not receive return on your investment for at least 18 months when you sell your first calves out of your new bull.

Investopedia defines a long-term investment as any asset that a company plans to hold for more than a year. Purchasing a bull is long term investment

in all of our futures. If you are keeping your own replacements or selling females, your bull purchases will affect your future and your children's future indefinitely.

The market determines a base price for all bulls, but the extra investment that will impact your family's future for potentially multiple generations is often times the cheapest part of the purchase. Most calculations that I have seen are based on selling more weight. This value can not be over looked, but there are a whole lot of other issues to consider.

- Do you think fuel costs and other inputs are likely to decrease in the future?
- Is it going to be easier to hire people if you want to expand your cow herd in the future?
- Do you think the price of cattle will go up or will you need to spread your costs over more cows to improve profits in the future?
- What kind of cattle will be in demand in the future?

CATTLE THAT ARE EFFICIENT WITH NATURE ARE TIMELESS GENETICS AND AN INVESTMENT IN THE FUTURE.



Best Rainmaker 7008

Reference Sire: **BEST RAINMAKER 7008**

BEST RAINMAKER 7008

Reg #: 18970274
Tattoo: 7008
DOB: 3/16/2017

Sitz Rainmaker 80757
#Sitz Rainmaker 11127
Sitz Emma E 417L

#S A V 8180 Traveler 004
Marie 7010 of Best Angus
C A R Miss Viking 604

Sitz Rainmaker 6169
Sitz Erica Everelda 3172
#Sitz Traveler 5556
Sitz Emma E 1336
#Sitz Traveler 8180
Boyd Forever Lady 8003
#Leachman Right Time
#Lady Viking 131 C A R

| EPDs | |
|------|------|
| CED | 4 |
| BW | 2.1 |
| WW | 58 |
| YW | 105 |
| MILK | 30 |
| SC | 1.55 |
| MARB | .18 |
| REA | .27 |
| Fat | .035 |

We are very excited about how the Rainmaker genetics are performing in our herd. The Rainmakers have shown above average performance. Sitz Rainmaker 11127 has had a tremendously positive effect on dispositions. The daughters are gentle kind mothers at calving time. The breed back was strong and most of them stayed in good condition. I think they are going to make excellent cows.



Best Rainmaker 9118

61 BEST RAINMAKER 9118

Reg #: 19489745
Tattoo: 9118
DOB: 4/8/2019

#Sitz Rainmaker 11127
Best Rainmaker 7002
Marie 7010 of Best Angus

#Sinclair Fortunate Son
Gale 654 of Best Angus
Gale 8011 of Best Angus

Sitz Rainmaker 8075
Sitz Emma E 417L
#S A V 8180 Traveler 004
C A R Miss Viking 604
Sinclair Emulate 7XT28
#Sinclair Blackbird 2P8 7079
#Leachman Right Time
#Gale 120 of Mc Cumber

| EPDs | |
|------|-------|
| CED | 4 |
| BW | 2.1 |
| WW | 54 |
| YW | 100 |
| MILK | 28 |
| SC | |
| MARB | 0.23 |
| REA | 0.44 |
| Fat | 0.035 |

I really like this bull. Recommend using on cows.

| BW | WWR | Dam Production Cow Weight: 1150 • Cow Height: 52 | | | | |
|----|-----|---|-------|------|------|-------|
| 80 | 107 | BW | WW | YR | %IMF | REA |
| | | 2/101 | 2/103 | 1/96 | 1/90 | 1/106 |

62 BEST RAINMAKER 910

Reg #: 19489740
Tattoo: 910
DOB: 3/15/2019

#Sitz Rainmaker 11127
Best Rainmaker 7008
Marie 7010 of Best Angus

#LAR Alliance 64L
Queen 6008 of Best Angus
V D A R Queen 6365

Sitz Rainmaker 8075
Sitz Emma E 417L
#S A V 8180 Traveler 004
C A R Miss Viking 604
#Sitz Alliance 7617
Eileenmere Diamond 161 L A R
#Sinclair Net Present Value
VDAR Queen 1345

| EPDs | |
|------|------|
| CED | 3 |
| BW | 3.6 |
| WW | 55 |
| YW | 112 |
| MILK | 29 |
| SC | |
| MARB | .31 |
| REA | .24 |
| Fat | .303 |

Nice thick bull. Use on cows.

| BW | WWR | Dam Production Cow Weight: 1320 • Cow Height: 55 | | | | |
|----|-----|---|------|-------|-------|------|
| 86 | 97 | BW | WW | YR | %IMF | REA |
| | | 2/108 | 2/99 | 1/108 | 1/115 | 1/97 |

63 BEST RAINMAKER 979

Reg #: 19623971
Tattoo: 979
DOB: 3/23/2019

#Sitz Rainmaker 11127
Best Rainmaker 7008
Marie 7010 of Best Angus

#O C C Missing Link 830M
Miss Wix 2021 of Best Angus
#Miss Wix 307 of Best Angus

Sitz Rainmaker 8075
Sitz Emma E 417L
#S A V 8180 Traveler 004
C A R Miss Viking 604
O C C Headliner 661H
O C C Dixie Erica 946K
#G D A R Executive 727
Miss Wix 0100 of Best Angus

| EPDs | |
|------|-------|
| CED | 0 |
| BW | 3.1 |
| WW | 50 |
| YW | 89 |
| MILK | 25 |
| SC | 1.24 |
| MARB | 0.06 |
| REA | 0.27 |
| Fat | 0.024 |

Cow bull.

| BW | WWR | Dam Production Cow Weight: • Cow Height: | | | | |
|----|-----|---|------|------|------|------|
| 98 | 100 | BW | WW | YR | %IMF | REA |
| | | 6/108 | 6/92 | 3/92 | 2/74 | 2/89 |

64 BEST RAINMAKER 983

Reg #: 19623961
Tattoo: 983
DOB: 3/23/2019

#Sitz Rainmaker 11127
Best Rainmaker 7042
#Rosetta 144 of Best Angus

#Boyd New Day 8005
Rosetta 711 of Best Angus
#Rosetta 429 of Best Angus

Sitz Rainmaker 8075
Sitz Emma E 417L
#S A V 8180 Traveler 004
#Rosetta 8004 of Best Angus
#A A R New Trend
S V F Forever Lady 57D
Best Right Time 268
Rosetta 2116 of Best Angus

| EPDs | |
|------|-------|
| CED | 9 |
| BW | 0.9 |
| WW | 46 |
| YW | 85 |
| MILK | 33 |
| SC | |
| MARB | 0.32 |
| REA | 0.63 |
| Fat | 0.022 |

Heifer bull.

| BW | WWR | Dam Production Cow Weight: 1100 • Cow Height: 52 | | | | |
|----|-----|---|------|----|------|-----|
| 74 | 97 | BW | WW | YR | %IMF | REA |
| | | 1/98 | 1/97 | / | / | / |





Best Excitement 752



Rosetta 9003 of Best Angus, Maternal granddam of Lot 65.

Reference Sire: **BEST EXCITEMENT 752**

BEST EXCITEMENT 752

Reg #: 18938965
Tattoo: 752
DOB: 3/20/2017

#Basin Expedition R156
#Basin Excitement
Basin Lady S532 AK

#LAR Alliance 64L
Rosetta 5016 of Best Angus
Rosetta 8014 of Best Angus

#Gardens Expedition
Basin Primrose Lady 5287
#Vermilion Payweight J847
Basin Lady 306E
#Sitz Alliance 7617
Eileenmere Diamond 161 L A R
#Leachman Right Time
#Rosetta 149 of Best Angus

| EPDs | |
|------|-------|
| CED | 12 |
| BW | -2.6 |
| WW | 48 |
| YW | 75 |
| MILK | 29 |
| SC | 0.49 |
| MARB | 0.19 |
| REA | 0.14 |
| Fat | 0.042 |

Best Excitement 752 sure did a nice job. His calves are very attractive and have performed well. Granddam is still one of my favorite cows. At age 11 she brought home a Tribute heifer calf that ratioed 116 at weaning this past fall. 5016 is doing a nice job. These sons should calve very easy.

65

BEST EXCITEMENT 9109

Reg #: 19504156
Tattoo: 9109
DOB: 4/5/2019

#Basin Excitement
Best Excitement 752
Rosetta 5016 of Best Angus

#Sinclair Fortunate Son
Rosetta 744 of Best Angus
#Rosetta 9003 of Best Angus

Basin Expedition R156
Basin Lady S532 AK
#LAR Alliance 64L
Rosetta 8014 of Best Angus
Sinclair Emulate 7XT28
#Sinclair Blackbird 2P8 7079
#Boyd New Day 8005
Rosetta 903 of Best Angus

| EPDs | |
|------|-------|
| CED | 9 |
| BW | -0.6 |
| WW | 52 |
| YW | 89 |
| MILK | 29 |
| SC | |
| MARB | 0.22 |
| REA | 0.31 |
| Fat | 0.044 |

Nice Heifer bull.

| BW | WWR | Dam Production | | | | |
|----|-----|----------------------------------|-------|----|------|-----|
| | | Cow Weight: 960 • Cow Height: 52 | | | | |
| 68 | 106 | BW | WW | YR | %IMF | REA |
| | | 1/90 | 1/106 | / | / | / |

67

BEST ROUGH CREEK 8135

Reg #: 19304407
Tattoo: 8135
DOB: 4/27/2018

Rough Creek 45 of Ash Coulee
A C Rough Creek 638
#A C Princess 976

#LAR Alliance 64L
Rosetta 6007 of Best Angus
#Rosetta 9003 of Best Angus

Best Rough Creek 125
A C Gypsofolia 548
GDAR Dateline 354
A C Princess 500
#Sitz Alliance 7617
Eileenmere Diamond 161 L A R
#Boyd New Day 8005
Rosetta 903 of Best Angus

| EPDs | |
|------|-------|
| CED | 6 |
| BW | 1.8 |
| WW | 48 |
| YW | 86 |
| MILK | 37 |
| SC | 1.42 |
| MARB | 0.81 |
| REA | 0.17 |
| Fat | 0.032 |

Nice bull that should work well on heifers.

| BW | WWR | Dam Production | | | | |
|----|-----|----------------------------------|-------|-------|-------|------|
| | | Cow Weight: 960 • Cow Height: 52 | | | | |
| 78 | 99 | BW | WW | YR | %IMF | REA |
| | | 2/106 | 2/101 | 1/102 | 1/140 | 1/98 |

68

BEST ROUGH CREEK 8127

Reg #: 19178967
Tattoo: 8127
DOB: 4/21/2018

Rough Creek 45 of Ash Coulee
A C Rough Creek 638
#A C Princess 976

#Sinclair Fortunate Son
Rosetta 604 of Best Angus
#Rosetta 420 of Best Angus

Best Rough Creek 125
A C Gypsofolia 548
GDAR Dateline 354
A C Princess 500
Sinclair Emulate 7XT28
#Sinclair Blackbird 2P8 7079
#Boyd New Day 8005
#Rosetta 107 of Best Angus

| EPDs | |
|------|-------|
| CED | 6 |
| BW | 1.2 |
| WW | 38 |
| YW | 69 |
| MILK | 27 |
| SC | 0.89 |
| MARB | 0.57 |
| REA | 0.23 |
| Fat | 0.034 |

Nice bull that should work on heifers. Dam is a moderate framed 1100 pound cow with a perfect udder.

| BW | WWR | Dam Production | | | | |
|----|-----|-----------------------------------|-------|------|-------|------|
| | | Cow Weight: 1100 • Cow Height: 52 | | | | |
| 72 | 93 | BW | WW | YR | %IMF | REA |
| | | 2/101 | 2/102 | 1/95 | 1/114 | 1/98 |

Grand dam is still a pathfinder at age 15 possessing a weaning ratio of 105 on 13 calves. Granddam is pictured on page 23.

66

BEST EXCITEMENT 9106

Reg #: 19489731
Tattoo: 9106
DOB: 3/30/2019

#Basin Excitement
Best Excitement 752
Rosetta 5016 of Best Angus

#Basin Excitement
Rosetta 706 of Best Angus
Rosetta 558 of Best Angus

Basin Expedition R156
Basin Lady S532 AK
#LAR Alliance 64L
Rosetta 8014 of Best Angus
Basin Expedition R156
Basin Lady S532 AK
#LAR Alliance 64L
Rosetta 024 of Best Angus

| EPDs | |
|------|-------|
| CED | 12 |
| BW | -1.9 |
| WW | 54 |
| YW | 91 |
| MILK | 28 |
| SC | |
| MARB | 0.25 |
| REA | 0.07 |
| Fat | 0.047 |

This double bred Excitement should be a sleep all night heifer bull.

| BW | WWR | Dam Production | | | | |
|----|-----|----------------------------------|-------|----|------|-----|
| | | Cow Weight: 900 • Cow Height: 51 | | | | |
| 69 | 104 | BW | WW | YR | %IMF | REA |
| | | 1/92 | 1/104 | / | / | / |



LOT 68

Best Rough Creek 8127



Gale 247 of Best Angus, Dam of Lot 71

71 BEST SHOSHONE 8143

Shoshone

#Sinclair Extra 4X13
Gale 247 of Best Angus
Gale 8011 of Best Angus

#N Bar Emulation EXT
N Bar Lady Ida S C C 2P37
#Leachman Right Time
#Gale 120 of Mc Cumber

Reg #: Commercial
Tattoo: 8143
DOB: 5/2/2018

| EPDs | |
|------|--|
| CED | |
| BW | |
| WW | |
| YW | |
| MILK | |
| SC | |
| MARB | |
| REA | |
| Fat | |

Commercial bull. Use on cows.

| BW | WWR | Dam Production | | | | |
|----|-----|-----------------------------------|-------|------|------|------|
| | | Cow Weight: 1280 • Cow Height: 55 | | | | |
| | | BW | WW | YR | %IMF | REA |
| 86 | 91 | 5/101 | 5/101 | 4/97 | 4/99 | 4/99 |

72 BEST SHOSHONE 8148

Shoshone

#O C C Missing Link 830M
Rosetta 463 of Best Angus
Rosetta 913 of Best Angus

O C C Headliner 661H
O C C Dixie Erica 946K
#Boyd New Day 8005
#Rosetta 327 of Best Angus

Reg #: Commercial
Tattoo: 8148
DOB: 5/8/2018

| EPDs | |
|------|--|
| CED | |
| BW | |
| WW | |
| YW | |
| MILK | |
| SC | |
| MARB | |
| REA | |
| Fat | |

Commercial bull. Could be used on heifers.

| BW | WWR | Dam Production | | | | |
|----|-----|-----------------------------------|-------|-------|------|-------|
| | | Cow Weight: 1220 • Cow Height: 55 | | | | |
| | | BW | WW | YR | %IMF | REA |
| 74 | 100 | 3/99 | 3/100 | 2/101 | 2/98 | 2/109 |

70 BEST SHOSHONE 8146

Shoshone

Best Diego 1017
Marie 395 of Best Angus
#Marie 8005 of Best Angus

#O C C Missing Link 830M
#Miss Wix 2043 of Mc Cumber
#CAR Duke 104
C A R Miss Viking 604

Reg #: Commercial
Tattoo: 8146
DOB: 5/4/2018

| EPDs | |
|------|--|
| CED | |
| BW | |
| WW | |
| YW | |
| MILK | |
| SC | |
| MARB | |
| REA | |
| Fat | |

The Shoshone-sired bulls sell without papers. His sire is a Shoshone bull. 8146's dam is one of our top cows.

| BW | WWR | Dam Production | | | | |
|----|-----|-----------------------------------|-------|-------|-------|------|
| | | Cow Weight: 1310 • Cow Height: 52 | | | | |
| | | BW | WW | YR | %IMF | REA |
| 90 | 85 | 5/110 | 5/103 | 2/109 | 4/109 | 4/93 |



Gale 540 of Best Angus, Dam of Lot 73

73 BEST SHOSHONE 8145

Shoshone

#O C C Missing Link 830M
Gale 540 of Best Angus
Gale 7014 of Best Angus

O C C Headliner 661H
O C C Dixie Erica 946K
#S A V 8180 Traveler 004
#Gale 120 of Mc Cumber

Reg #: Commercial
Tattoo: 8145
DOB: 5/3/2018

| EPDs | |
|------|--|
| CED | |
| BW | |
| WW | |
| YW | |
| MILK | |
| SC | |
| MARB | |
| REA | |
| Fat | |

Commercial bull. Could be used on heifers.

| BW | WWR | Dam Production | | | | |
|----|-----|-----------------------------------|------|------|------|-------|
| | | Cow Weight: 1160 • Cow Height: 50 | | | | |
| | | BW | WW | YR | %IMF | REA |
| 80 | 84 | 3/101 | 3/92 | 2/92 | 2/89 | 2/108 |



We love you Grandma, and Great-grandma Olga!

Grandma Olga Hovet, turned 100 years young this past October, celebrated with 200 of her closest friends and family on Bison Game Day. Horns Up, Herd! And happiest 100, Grandma!



Best Angus HEIFERS

Many of these heifers are A.I. sired and out of the top cows in our herd. We have been focusing on fertility, sound structure, and udder quality for over 30 years. These heifers are a product of that dedication. They are designed to be profitable and efficient with nature.

We are proud of these heifers and we expect that they will work in your program. We will guarantee them to breed during your first breeding season or we will replace your heifer or give you credit for a future purchase.



LOT 75

Rosetta 9022 of Best Angus

75

ROSETTA 9022 OF BEST ANGUS

Reg #: 19638806

Tattoo: 9022

DOB: 3/20/2019

Mc Cumber Tremendous 2008
#Mc Cumber Tribute 702
#Lassie 113 of Mc Cumber

#S A V 8180 Traveler 004
#Rosetta 144 of Best Angus
#Rosetta 8004 of Best Angus

#O C C Tremendous 619T
#Miss Wix 2022 HC Mc Cumber
#O C C Missing Link 830M
#Lassie 935 OF Mc Cumber
#Sitz Traveler 8180
Boyd Forever Lady 8003
#Sinclair Extra 4X13
Rosetta 1100 of Best Angus

| EPDs | |
|------|-------|
| CED | 14 |
| BW | -1.4 |
| WW | 41 |
| YW | 75 |
| MILK | 30 |
| SC | 0.9 |
| MARB | 0.23 |
| REA | 0.53 |
| Fat | 0.028 |

It is not easy to line up that many good cows in a row. This is a real opportunity to buy a really nice Tribute heifer out of a terrific cow family. We are keeping 7 flush mates to this heifer. You could flip a coin on the top 3 heifers in this flush. Here is your opportunity to own one of the three.

| BW | WWR | Dam Production | | | | |
|----|-----|---------------------------|-------|-------|--------|--------|
| | | Cow Weight: • Cow Height: | | | | |
| 76 | 96 | BW | WW | YR | %IMF | REA |
| | | 6/96 | 6/104 | 5/102 | 10/104 | 10/102 |



Rosetta 144 of Best Angus,
Dam of Lot 75



Rosetta 8004 of Best Angus,
Maternal granddam of Lot 75



Rosetta 1100 of Best Angus,
Maternal great granddam of Lot 75



Rosetta 401 of Best Angus,
Maternal great great granddam of Lot 75



LOT 76

Marie 985 of Best Angus

76 MARIE 985 OF BEST ANGUS

Reg #: 19636420
Tattoo: 985
DOB: 3/23/2019

Rito 707 of Ideal 3407 7075
#S A V Resource 1441
S A V Blackcap May 4136

#LAR Alliance 64L
Marie 6009 of Best Angus
#Marie 8005 of Best Angus

#R R Rito 707
Ideal 3407 of 1418 076
#S A V 8180 Traveler 004
#S A V May 2397
#Sitz Alliance 7617
Eileenmere Diamond 161 L A R
#CAR Duke 104
C A R Miss Viking 604

| EPDs | |
|------|-------|
| CED | 9 |
| BW | 0.3 |
| WW | 51 |
| YW | 97 |
| MILK | 25 |
| SC | 1.02 |
| MARB | 0.29 |
| REA | 0.47 |
| Fat | 0.024 |

This heifer is out of a full sister to Box Cross. Grand dam is one of one of our very top donor cows. Resource X 64L cross is a great one. The Marie cow family has been an absolutely fantastic addition to our breeding program. This is a real opportunity.

| BW | WW | Dam Production | | | |
|----|----|-----------------------------------|-------|------|----------|
| | | Cow Weight: 1050 • Cow Height: 53 | | | |
| 70 | 97 | BW | WW | YR | %IMF REA |
| | | 2/94 | 2/101 | 1/95 | / / |



LOT 79

Rosetta 989 of Best Angus

79 ROSETTA 989 OF BEST ANGUS

Reg #: 19636423
Tattoo: 989
DOB: 3/24/2019

Rito 707 of Ideal 3407 7075
#S A V Resource 1441
S A V Blackcap May 4136

#LAR Alliance 64L
Rosetta 6041 of Best Angus
#Rosetta 8016 of Best Angus

#R R Rito 707
Ideal 3407 of 1418 076
#S A V 8180 Traveler 004
#S A V May 2397
#Sitz Alliance 7617
Eileenmere Diamond 161 L A R
#Leachman Right Time
#Rosetta 149 of Best Angus

| EPDs | |
|------|------|
| CED | 4 |
| BW | 1.2 |
| WW | 56 |
| YW | 110 |
| MILK | 26 |
| SC | 1.08 |
| MARB | 0.27 |
| REA | 0.62 |
| Fat | 0.01 |

Resource x 64L combination and one of our strongest cow families. A rip of a good heifer right here.

| BW | WW | Dam Production | | | |
|----|-----|----------------------------------|-------|-------|-------------|
| | | Cow Weight: 910 • Cow Height: 53 | | | |
| 78 | 106 | BW | WW | YR | %IMF REA |
| | | 2/111 | 2/105 | 1/104 | 1/130 1/101 |



LOT 77

Miss Wix 923 of Best Angus

77 MISS WIX 923 OF BEST ANGUS

Reg #: 19636466
Tattoo: 923
DOB: 3/17/2019

Rito 707 of Ideal 3407 7075
#S A V Resource 1441
S A V Blackcap May 4136

#O C C Missing Link 830M
Miss Wix 1007 of Best Angus
#Miss Wix 2043 of Mc Cumber

#R R Rito 707
Ideal 3407 of 1418 076
#S A V 8180 Traveler 004
#S A V May 2397
O C C Headliner 661H
O C C Dixie Erica 946K
Garrison 8128 Dynamite
#Miss Wix 352 of Mc Cumber

| EPDs | |
|------|-------|
| CED | 4 |
| BW | 1.7 |
| WW | 54 |
| YW | 98 |
| MILK | 21 |
| SC | 0.82 |
| MARB | -0.02 |
| REA | 0.76 |
| Fat | 0.003 |

Miss Wix is a cow family that doesn't need introductions. This nice Resource would be a nice addition to any herd.

| BW | WW | Dam Production | | | |
|----|-----|-----------------------------------|-------|-------|------------|
| | | Cow Weight: 1490 • Cow Height: 54 | | | |
| 80 | 100 | BW | WW | YR | %IMF REA |
| | | 7/101 | 7/101 | 3/101 | 3/90 3/101 |

78 ROSETTA 970 OF BEST ANGUS

Reg #: 19636450
Tattoo: 970
DOB: 3/22/2019

Rito 707 of Ideal 3407 7075
#S A V Resource 1441
S A V Blackcap May 4136

#LAR Alliance 64L
Rosetta 554 of Best Angus
#Rosetta 9003 of Best Angus

#R R Rito 707
Ideal 3407 of 1418 076
#S A V 8180 Traveler 004
#S A V May 2397
#Sitz Alliance 7617
Eileenmere Diamond 161 L A R
#Boyd New Day 8005
Rosetta 903 of Best Angus

| EPDs | |
|------|-------|
| CED | 6 |
| BW | 1.7 |
| WW | 57 |
| YW | 111 |
| MILK | 25 |
| SC | |
| MARB | 0.08 |
| REA | 0.79 |
| Fat | 0.001 |

Here is another 64L X Resource cross out of an excellent cow family. Grand dam and great grand dam were both in our donor program.

| BW | WW | Dam Production | | | |
|----|-----|-----------------------------------|-------|-------|-------------|
| | | Cow Weight: 1250 • Cow Height: 54 | | | |
| 77 | 104 | BW | WW | YR | %IMF REA |
| | | 3/91 | 3/100 | 1/104 | 2/112 2/101 |



Breeding project crew



LOT 80

Marie 926 of Best Angus

80 MARIE 926 OF BEST ANGUS

Reg #: 19636458
Tattoo: 926
DOB: 3/19/2019

Rito 707 of Ideal 3407 7075
#S A V Resource 1441
S A V Blackcap May 4136

#LAR Alliance 64L
Marie 363 of Best Angus
#Marie 8003 of Best Angus

#R R Rito 707
Ideal 3407 of 1418 076
#S A V 8180 Traveler 004
#S A V May 2397
#Sitz Alliance 7617
Eileenmere Diamond 161 L A R
#CAR Duke 104
C A R Miss Viking 604

| EPDs | |
|------|-------|
| CED | 2 |
| BW | 2.8 |
| WW | 54 |
| YW | 105 |
| MILK | 22 |
| SC | 1.22 |
| MARB | 0.16 |
| REA | 0.58 |
| Fat | 0.021 |

Resource X 64L combo out of the Maire cow family. Full sister in blood to lot 76.

| BW | WW | Dam Production | | | | |
|----|----|-----------------------------------|------|-------|-------|-------|
| 85 | 97 | Cow Weight: 1340 • Cow Height: 54 | | | | |
| | | BW | WW | YR | %IMF | REA |
| | | 4/106 | 4/96 | 2/101 | 3/111 | 3/101 |

82 GALE 981 OF BEST ANGUS

Reg #: 19641625
Tattoo: 981
DOB: 3/23/2019

Sinclair Emulate 7XT28
#Sinclair Fortunate Son
#Sinclair Blackbird 2P8 7079

#Leachman Right Time
Gale 6023 of Best Angus
#Gale 120 of Mc Cumber

#Sinclair Extra 4X13
Sinclair Blackbird 20F3 6417
#N Bar Prime Time D806
Rito 707 of Ideal 089 7076
#N Bar Emulation EXT
Leachman Erica 0025
#Mc Cumber Foundation 701
Gale 839 of Mc Cumber

| EPDs | |
|------|-------|
| CED | -1 |
| BW | 3.2 |
| WW | 44 |
| YW | 82 |
| MILK | 25 |
| SC | |
| MARB | 0.3 |
| REA | 0.22 |
| Fat | 0.048 |

I have been very impressed with the Fortunate daughters. Fortunate and Right Time has been a good cross for us.

| BW | WW | Dam Production | | | | |
|----|----|-----------------------------------|-------|-------|-------|------|
| 84 | 97 | Cow Weight: 1225 • Cow Height: 53 | | | | |
| | | BW | WW | YR | %IMF | REA |
| | | 2/107 | 2/101 | 1/103 | 1/104 | 1/77 |



LOT 81

Queen 946 of Best Angus

81 QUEEN 946 OF BEST ANGUS

Reg #: 19636411
Tattoo: 946
DOB: 3/20/2019

Rito 707 of Ideal 3407 7075
#S A V Resource 1441
S A V Blackcap May 4136

#LAR Alliance 64L
Queen 6029 of Best Angus
V D A R Queen 6365

#R R Rito 707
Ideal 3407 of 1418 076
#S A V 8180 Traveler 004
#S A V May 2397
#Sitz Alliance 7617
Eileenmere Diamond 161 L A R
#Sinclair Net Present Value
VDAR Queen 1345

| EPDs | |
|------|-------|
| CED | 0 |
| BW | 4 |
| WW | 56 |
| YW | 110 |
| MILK | 23 |
| SC | 1.22 |
| MARB | 0.24 |
| REA | 0.67 |
| Fat | 0.013 |

Grand dam was a donor for us that we purchased from VDAR. This high ratioing heifer is about as fancy a Resource as you will ever find.

| BW | WW | Dam Production | | | | |
|----|----|---------------------------|-------|-------|-------|-------|
| 84 | 97 | Cow Weight: • Cow Height: | | | | |
| | | BW | WW | YR | %IMF | REA |
| | | 2/102 | 2/103 | 1/102 | 1/198 | 1/100 |

83 GALE 961 OF BEST ANGUS

Reg #: 19636438
Tattoo: 961
DOB: 3/21/2019

Rito 707 of Ideal 3407 7075
#S A V Resource 1441
S A V Blackcap May 4136

Best KTH 269
Gale 6138 of Best Angus
Gale 247 of Best Angus

#R R Rito 707
Ideal 3407 of 1418 076
#S A V 8180 Traveler 004
#S A V May 2397
#CAR Duke 104
Gale 7024 of Best Angus
#Sinclair Extra 4X13
Gale 8011 of Best Angus

| EPDs | |
|------|-------|
| CED | 6 |
| BW | 1.8 |
| WW | 51 |
| YW | 95 |
| MILK | 22 |
| SC | |
| MARB | 0.21 |
| REA | 0.69 |
| Fat | 0.015 |

Dam is a nice young cow that is off to a good start.

| BW | WW | Dam Production | | | | |
|----|----|----------------------------------|------|------|-------|------|
| 80 | 97 | Cow Weight: 910 • Cow Height: 51 | | | | |
| | | BW | WW | YR | %IMF | REA |
| | | 2/102 | 2/97 | 1/99 | 1/102 | 1/97 |





HOW CAN WE HELP YOU be more profitable?

We are always looking for ways we can support the profitability of your operation. Of course our major focus is on the genetic side. We want to know your ideas. We plan to have a female sale again, the Badlands Angus Alliance 2 year old bulls and bred female sale is scheduled for Dec. 1, 2020. If you have interest in consigning heifers, please call us.

84 MARIE 990 OF BEST ANGUS

Reg #: 19636434
Tattoo: 990
DOB: 3/24/2019

Rito 707 of Ideal 3407 7075
#S A V Resource 1441
S A V Blackcap May 4136

Best Tjelde 4008
Miss Marie 6209 Best Angus
#Miss Marie 250 of Best Angus

#R R Rito 707
Ideal 3407 of 1418 076
#S A V 8180 Traveler 004
#S A V May 2397
Best Tjelde 2016
Gale 7024 of Best Angus
#LAR Alliance 64L
Miss Marie 0013 Best Angus

| EPDs | |
|------|-------|
| CED | 11 |
| BW | -0.5 |
| WW | 49 |
| YW | 100 |
| MILK | 21 |
| SC | |
| MARB | 0.21 |
| REA | 0.46 |
| Fat | 0.038 |

Dam is very moderate. Grand dam is one of our most powerful 64L daughters out of a really powerful donor we sold to Ash Coulee.

| BW | | WWR | | Dam Production | | | | |
|----|-----|------|------|-----------------------------------|-------|------|--|--|
| | | | | Cow Weight: 1070 • Cow Height: 53 | | | | |
| BW | WWR | BW | WW | YR | %IMF | REA | | |
| 64 | 89 | 2/92 | 2/92 | 1/104 | 1/132 | 1/72 | | |



LOT 86

Best Rainmaker 9105

85 ROSETTA 939 OF BEST ANGUS

Reg #: 19638778
Tattoo: 939
DOB: 3/19/2019

Mc Cumber Tremendous 2008
Mc Cumber Tribute 702
#Lassie 113 of Mc Cumber

#Sinclair Fortunate Son
Rosetta 685 of Best Angus
Rosetta 8017 of Best Angus

#O C C Tremendous 619T
#Miss Wix 2022 HC Mc Cumber
#O C C Missing Link 830M
#Lassie 935 OF Mc Cumber
Sinclair Emulate 7XT28
#Sinclair Blackbird 2P8 7079
#Leachman Right Time
#Rosetta 149 of Best Angus

| EPDs | |
|------|-------|
| CED | 8 |
| BW | 0.9 |
| WW | 42 |
| YW | 82 |
| MILK | 28 |
| SC | 0.89 |
| MARB | 0.28 |
| REA | 0.52 |
| Fat | 0.026 |

Tribute out of a 3-year-old Fortunate daughter.

| BW | | WWR | | Dam Production | | | | |
|----|-----|-------|------|----------------------------------|------|------|--|--|
| | | | | Cow Weight: 985 • Cow Height: 53 | | | | |
| BW | WWR | BW | WW | YR | %IMF | REA | | |
| 80 | 91 | 2/105 | 2/97 | 1/103 | 1/81 | 1/96 | | |

86 MARIE 9105 OF BEST ANGUS

Reg #: 19489730
Tattoo: 9105
DOB: 3/30/2019

#Sitz Rainmaker 11127
Best Rainmaker 7008
Marie 7010 of Best Angus

#V D A R Really Windy 4097
Marie 308 of Best Angus
Marie 147 of Best Angus

Sitz Rainmaker 8075
Sitz Emma E 417L
#S A V 8180 Traveler 004
C A R Miss Viking 604
#A A R Really Windy 1205
VDAR Blackbird 2031
#LAR Alliance 64L
Marie 601 of Best Angus

| EPDs | |
|------|------|
| CED | 5 |
| BW | 2 |
| WW | 56 |
| YW | 100 |
| MILK | 24 |
| SC | 0.89 |
| MARB | 0.21 |
| REA | 0.31 |
| Fat | 0.01 |

Dam is a really nice VDAR 4097 Windy. She is very attractive and has a picture perfect udder.

| BW | | WWR | | Dam Production | | | | |
|----|-----|-------|------|-----------------------------------|-------|-------|--|--|
| | | | | Cow Weight: 1330 • Cow Height: 54 | | | | |
| BW | WWR | BW | WW | YR | %IMF | REA | | |
| 87 | 102 | 5/102 | 5/98 | 4/95 | 3/104 | 3/105 | | |

Thank you to the
Best customers
in the Badlands!



87 ROSETTA 901 OF BEST ANGUS

Reg #: 19489695
Tattoo: 901
DOB: 3/10/2019

#LAR Alliance 64L
Best Box Cross 291
#Marie 8005 of Best Angus

#Sinclair Fortunate Son
Rosetta 7309 of Best Angus
#Rosetta 8004 of Best Angus

#Sitz Alliance 7617
Eileenmere Diamond 16I L A R
#CAR Duke 104
C A R Miss Viking 604
Sinclair Emulate 7XT28
#Sinclair Blackbird 2P8 7079
#Sinclair Extra 4X13
Rosetta 1100 of Best Angus

| EPDs | |
|------|-------|
| CED | 7 |
| BW | 0.9 |
| WW | 45 |
| YW | 85 |
| MILK | 30 |
| SC | |
| MARB | 0.64 |
| REA | 0.02 |
| Fat | 0.047 |

Box Cross daughters are really nice cows.

| BW | WW | Dam Production | | | | |
|----|----|-----------------------------------|------|----|------|-----|
| | | Cow Weight: 1150 • Cow Height: 54 | | | | |
| | | BW | WW | YR | %IMF | REA |
| 78 | 91 | | | | | |
| | | 1/109 | 1/91 | / | / | / |

88 BLOSSOM 9128 OF BEST ANGUS

Reg #: 19489746
Tattoo: 9128
DOB: 4/11/2019

#Sitz Rainmaker 11127
Best Rainmaker 7008
Marie 7010 of Best Angus

Sitz Rainmaker 8075
Sitz Emma E 417L
#S A V 8180 Traveler 004
C A R Miss Viking 604
#Car Tracker 904
C A R Miss Julie 643
GDAR Dateline 354
A C Blackbird Blossom 265

| EPDs | |
|------|-------|
| CED | 0 |
| BW | 3.9 |
| WW | 50 |
| YW | 94 |
| MILK | 29 |
| SC | |
| MARB | 0.22 |
| REA | 0.45 |
| Fat | 0.009 |

Granddam is as pretty a cow as you will ever find.

| BW | WW | Dam Production | | | | |
|----|----|-----------------------------------|-------|----|------|-----|
| | | Cow Weight: 1190 • Cow Height: 56 | | | | |
| | | BW | WW | YR | %IMF | REA |
| 84 | 94 | | | | | |
| | | 2/108 | 2/101 | / | / | / |

89 ROSETTA 9122 OF BEST ANGUS

Reg #: 19623972
Tattoo: 9122
DOB: 4/9/2019

#Sitz Rainmaker 11127
Best Rainmaker 7042
#Rosetta 144 of Best Angus

Sitz Rainmaker 8075
Sitz Emma E 417L
#S A V 8180 Traveler 004
#Rosetta 8004 of Best Angus
Sinclair Emulate 7XT28
#Sinclair Blackbird 2P8 7079
#LAR Alliance 64L
Rosetta 068 of Best Angus

| EPDs | |
|------|-----|
| CED | 0 |
| BW | 4.2 |
| WW | 55 |
| YW | 101 |
| MILK | 33 |
| SC | |
| MARB | |
| REA | |
| Fat | |

High ratioing heifer out of a nice young cow.

| BW | WW | Dam Production | | | | |
|----|-----|---------------------------|------|----|------|-----|
| | | Cow Weight: • Cow Height: | | | | |
| | | BW | WW | YR | %IMF | REA |
| 92 | 100 | | | | | |
| | | 2/107 | 2/98 | / | / | / |

90 ROSETTA 9108 OF BEST ANGUS

Reg #: 19489733
Tattoo: 9108
DOB: 4/4/2019

#Sitz Rainmaker 11127
Best Rainmaker 7042
#Rosetta 144 of Best Angus

Sitz Rainmaker 8075
Sitz Emma E 417L
#S A V 8180 Traveler 004
#Rosetta 8004 of Best Angus
#LAR Alliance 64L
Rosetta 5001 of Best Angus
#Boyd New Day 8005
Rosetta 903 of Best Angus

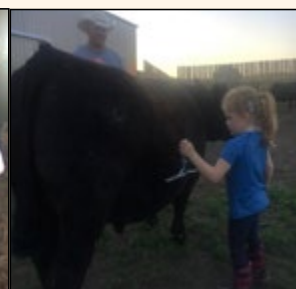
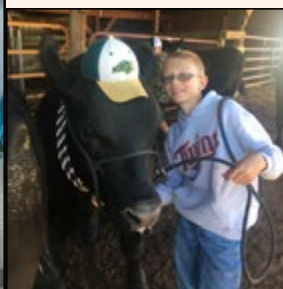
| EPDs | |
|------|-------|
| CED | 12 |
| BW | -0.5 |
| WW | 46 |
| YW | 86 |
| MILK | 33 |
| SC | 1.05 |
| MARB | 0.29 |
| REA | 0.49 |
| Fat | 0.023 |

Grand dam is a past donor.

| BW | WW | Dam Production | | | | |
|----|----|-----------------------------------|-------|-------|------|-------|
| | | Cow Weight: 1325 • Cow Height: 56 | | | | |
| | | BW | WW | YR | %IMF | REA |
| 72 | 97 | | | | | |
| | | 3/94 | 3/101 | 1/107 | 1/92 | 1/104 |



DISPOSITION MATTERS!



91 ROSETTA 9132 OF BEST ANGUS

Reg #: 19489750
Tattoo: 9132
DOB: 4/12/2019

#Sitz Rainmaker 11127
Best Rainmaker 7002
Marie 7010 of Best Angus

#LAR Alliance 64L
#Rosetta 3002 of Best Angus
Rosetta 808 of Best Angus

Sitz Rainmaker 8075
Sitz Emma E 417L
#S A V 8180 Traveler 004
C A R Miss Viking 604
#Sitz Alliance 7617
Eileenmere Diamond 16I L A R
#S A V 8180 Traveler 004
#Rosetta 107 of Best Angus

| EPDs | |
|------|-------|
| CED | 6 |
| BW | 1.4 |
| WW | 47 |
| YW | 88 |
| MILK | 29 |
| SC | 1.45 |
| MARB | 0.33 |
| REA | 0.16 |
| Fat | 0.041 |

Dam has been a rock solid cow for us.

| BW | WWR | Dam Production | | | | |
|----|-----|-----------------------------------|-------|-------|------|------|
| | | Cow Weight: 1260 • Cow Height: 53 | | | | |
| 80 | 98 | BW | WW | YR | %IMF | REA |
| | | 5/102 | 5/102 | 3/100 | 2/94 | 2/97 |

93 ROSETTA 9125 OF BEST ANGUS

Reg #: 19489744
Tattoo: 9125
DOB: 4/10/2019

#Sitz Rainmaker 11127
Best Rainmaker 7002
Marie 7010 of Best Angus

#LAR Alliance 64L
Rosetta 537 of Best Angus
Rosetta 808 of Best Angus

Sitz Rainmaker 8075
Sitz Emma E 417L
#S A V 8180 Traveler 004
C A R Miss Viking 604
#Sitz Alliance 7617
Eileenmere Diamond 16I L A R
#S A V 8180 Traveler 004
#Rosetta 107 of Best Angus

| EPDs | |
|------|------|
| CED | 9 |
| BW | 0 |
| WW | 47 |
| YW | 88 |
| MILK | 29 |
| SC | |
| MARB | 0.3 |
| REA | 0.11 |
| Fat | 0.04 |

Grand dam was a past donor for us.

| BW | WWR | Dam Production | | | | |
|----|-----|-----------------------------------|------|----|------|-----|
| | | Cow Weight: 1210 • Cow Height: 54 | | | | |
| 70 | 96 | BW | WW | YR | %IMF | REA |
| | | 2/97 | 2/98 | / | / | / |

92 ROSETTA 9110 OF BEST ANGUS

Reg #: 19489734
Tattoo: 9110
DOB: 4/5/2019

#Basin Excitement
Best Excitement 752
Rosetta 5016 of Best Angus

Best Bakken 4013
Rosetta 733 of Best Angus
Rosetta 255 of Best Angus

Basin Expedition R156
Basin Lady S532 AK
#LAR Alliance 64L
Rosetta 8014 of Best Angus
#LAR Alliance 64L
#Rosetta 8016 of Best Angus
#Sinclair Extra 4X13
Rosetta 015 of Best Angus

| EPDs | |
|------|------|
| CED | 13 |
| BW | -2.6 |
| WW | 45 |
| YW | 77 |
| MILK | 30 |
| SC | |
| MARB | 0.37 |
| REA | 0.08 |
| Fat | 0.05 |

| BW | WWR | Dam Production | | | | |
|----|-----|----------------------------------|------|----|------|-----|
| | | Cow Weight: 970 • Cow Height: 52 | | | | |
| 58 | 97 | BW | WW | YR | %IMF | REA |
| | | 1/84 | 1/97 | / | / | / |

94 BLACKBIRD 9158 OF BEST ANGUS

Reg #: 19489772
Tattoo: 9158
DOB: 4/21/2019

#Sinclair Fortunate Son
Best Fortunate 7027
Rosetta 8014 of Best Angus

Sinclair IN Time 6BT39
Blackbird 2107 of Best Angus
DR Blackbird 217

Sinclair Emulate 7XT28
#Sinclair Blackbird 2P8 7079
#Leachman Right Time
#Rosetta 149 of Best Angus
#BT Right Time 24J
N Bar Miss Emulous A404
Papa Romeo 8050
DR Blackbird 315

| EPDs | |
|------|-------|
| CED | 7 |
| BW | -0.7 |
| WW | 38 |
| YW | 61 |
| MILK | 25 |
| SC | 0.3 |
| MARB | 0.25 |
| REA | 0.25 |
| Fat | 0.032 |

Dam is picture perfect.

| BW | WWR | Dam Production | | | | |
|----|-----|-----------------------------------|------|------|------|-------|
| | | Cow Weight: 1230 • Cow Height: 52 | | | | |
| 78 | 94 | BW | WW | YR | %IMF | REA |
| | | 3/104 | 3/98 | 1/98 | 1/82 | 1/103 |

Modern Cow: There have been a number of articles written in popular press about the modern cow that is making up most of today's national cow herd. The point of these articles is that we have increased the size and management levels required to raise a calf, but we have made virtually no progress with weaning weights.

That may very well be true from a national view and perspective, but that does not mean that everyone has followed this path. I think that all of us have noticed there are a lot of popular genetics (at your neighbors place of course) that are falling short of meeting the needs of the commercial cow/calf herd. Breeding cattle is not easy, but I think sometimes we make it more difficult than it needs to be.

I know we can continue to make genetic progress, without sacrificing the traits that are so very important for the profitability of a cowherd. The safest and simplest way to do this is to continue to use bulls out of cows that you know work in your environment. You need to use sires that complement your cows, but do not stray too far from a body type that will still work for your environment. It does not have to be hard, but it takes discipline.... and discipline can be hard.



95 GALE 9169 OF BEST ANGUS

#Sitz Rainmaker 11127
Best Rainmaker 7042
#Rosetta 144 of Best Angus

Best KTH 269
Gale 523 of Best Angus
Gale 3004 of Best Angus

Sitz Rainmaker 8075
Sitz Emma E 417L
#S A V 8180 Traveler 004
#Rosetta 8004 of Best Angus
#CAR Duke 104
Gale 7024 of Best Angus
#Leachman Right Time
#Gale 120 of Mc Cumber

Reg #: 19489775
Tattoo: 9169
DOB: 5/3/2019

| EPDs | |
|------|-------|
| CED | 11 |
| BW | 0.3 |
| WW | 49 |
| YW | 87 |
| MILK | 35 |
| SC | 1.18 |
| MARB | 0.39 |
| REA | 0.37 |
| Fat | 0.035 |

| BW | | WWR | | Dam Production | | | | | |
|----|-----|-----|----|-----------------------------------|------|-----|------|-------|-------|
| | | | | Cow Weight: 1100 • Cow Height: 53 | | | | | |
| BW | WW | WW | WW | YR | %IMF | REA | | | |
| 74 | 101 | | | | | | 3/92 | 3/101 | 1/105 |
| | | | | | | | 1/92 | | 1/95 |

96 ROSETTA 9174 OF BEST ANGUS

#Sitz Rainmaker 11127
Best Rainmaker 7042
#Rosetta 144 of Best Angus

#LAR Alliance 64L
Rosetta 335 of Best Angus
#Rosetta 8016 of Best Angus

Sitz Rainmaker 8075
Sitz Emma E 417L
#S A V 8180 Traveler 004
#Rosetta 8004 of Best Angus
#Sitz Alliance 7617
Eileenmere Diamond 16I L A R
#Leachman Right Time
#Rosetta 149 of Best Angus

Reg #: 19489779
Tattoo: 9174
DOB: 5/5/2019

| EPDs | |
|------|------|
| CED | 7 |
| BW | 1.4 |
| WW | 49 |
| YW | 91 |
| MILK | 38 |
| SC | 1.24 |
| MARB | 0.43 |
| REA | 0.39 |
| Fat | 0.03 |

Grand dam is donor.

| BW | | WWR | | Dam Production | | | | | |
|----|-----|-----|----|-----------------------------------|------|-----|-------|-------|-------|
| | | | | Cow Weight: 1270 • Cow Height: 53 | | | | | |
| BW | WW | WW | WW | YR | %IMF | REA | | | |
| 84 | 103 | | | | | | 4/103 | 4/104 | 2/103 |
| | | | | | | | 2/109 | | 2/102 |

97 ROSETTA 9150 OF BEST ANGUS

#Sinclair Fortunate Son
Best Fortunate 7030
A C Blackbird Blossom 533

#LAR Alliance 64L
Rosetta 435 of Best Angus
Rosetta 720 of Best Angus

Sinclair Emulate 7XT28
#Sinclair Blackbird 2P8 7079
CAR Tracker 305
A C Blackbird Blossom 316
#Sitz Alliance 7617
Eileenmere Diamond 16I L A R
#Boyd New Day 8005
Rosetta 702 of Best Angus

Reg #: 19489764
Tattoo: 9150
DOB: 4/17/2019

| EPDs | |
|------|-------|
| CED | 3 |
| BW | 1.8 |
| WW | 45 |
| YW | 87 |
| MILK | 30 |
| SC | |
| MARB | 0.33 |
| REA | 0.26 |
| Fat | 0.024 |

Grand dam is a past donor.

| BW | | WWR | | Dam Production | | | | | |
|----|----|-----|----|-----------------------------------|------|-----|-------|-------|-------|
| | | | | Cow Weight: 1425 • Cow Height: 55 | | | | | |
| BW | WW | WW | WW | YR | %IMF | REA | | | |
| 82 | 95 | | | | | | 4/99 | 4/101 | 2/107 |
| | | | | | | | 2/108 | | 2/97 |

98 ROSETTA 9140 OF BEST ANGUS

#Sitz Rainmaker 11127
Best Rainmaker 7008
Marie 7010 of Best Angus

Best Roughneck 40 of A C
Rosetta 682 of Best Angus
Rosetta 4021 of Best Angus

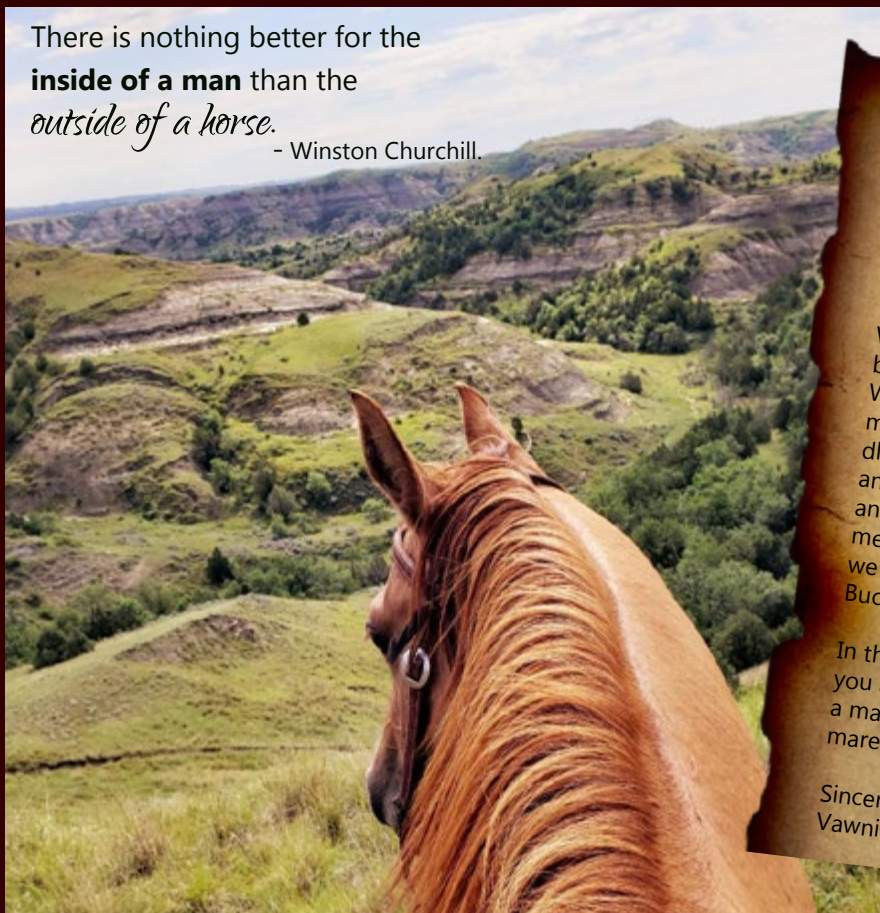
Sitz Rainmaker 8075
Sitz Emma E 417L
#S A V 8180 Traveler 004
C A R Miss Viking 604
Best Rough Creek 125
#A C Princess 976
#LAR Alliance 64L
#Rosetta 8016 of Best Angus

Reg #: 19640562
Tattoo: 9140
DOB: 4/13/2019

| EPDs | |
|------|-------|
| CED | 3 |
| BW | 2.5 |
| WW | 56 |
| YW | 99 |
| MILK | 32 |
| SC | |
| MARB | 0.37 |
| REA | 0.15 |
| Fat | 0.044 |

| BW | | WWR | | Dam Production | | | | | |
|----|-----|-----|----|-----------------------------------|------|-----|-------|-------|-------|
| | | | | Cow Weight: 1100 • Cow Height: 51 | | | | | |
| BW | WW | WW | WW | YR | %IMF | REA | | | |
| 82 | 108 | | | | | | 2/97 | 2/100 | 1/95 |
| | | | | | | | 1/163 | | 1/104 |

There is nothing better for the
inside of a man than the
outside of a horse.
- Winston Churchill.



Dear Stockman,

A most heartfelt and gracious "thank-you" from our outfit to yours. We absolutely could not do what we do, if you did not do what you do. So again, Thank You! We are humbled by your interest and support.

We really wanted to offer you two geldings this year both coming four-year olds and really, really nice colts. We decided to give them both one more year to get more miles, experience, and maturity under their saddle pads and between their ears. Tracy continues to do an exceptional job preparing the babies for their future and growing them into productive and respectful members of the equine society. Know that next year we will have a good coming five-year old Genuine Two Bucks (aka Chance) and a really cool Sparkin Hot son.

In the meantime, we are getting long on fillies, so if you are like me and you appreciate the heart and try of a mare, we have some super nice private treaty ranch

Sincere Gratitude,
Vawnita





Pete and Vawnita Best

1930 118th Ave NW
Watford City ND 58854

PROFITABLE *by design*
EFFICIENT *by nature*

Annual Production Sale
March 2, 2020
Watford City, ND

75 Angus
Bulls
25 Elite Registered
Open Heifers

