



Monday, January 22

GENERATIONS OF PREDICTABILITY

Bull Sale

At the Ranch • 1:30pm CST

Wood Lake, NE • www.bulliscreek.com • 402-376-4465

HONEST CATTLE. HONEST PEOPLE. HONEST DEALINGS.

Welcome to our 24th Annual “Generations of Predictability” Production Sale held on the 4th Monday in January each year. In 2020 we held the sale at the ranch south of Wood Lake, NE. It went well and was certainly a whole lot less stress on us and the cattle. The sale was well attended by friends, neighbors and buyers. The cattle, our commitment to quality, reliability and value will never change regardless of where the sale is held or how the cattle are sold. I look forward to seeing all of you at the ranch south of Wood Lake on January 22, 2024. As always buyers are welcome to come anytime to look at the cattle or call us with any questions. We are here to serve and truly want our buyers to be satisfied and successful with the cattle purchased from us.

Our goal has always been to breed for balanced traits and our emphasis has been performance orientated. We have always utilized the latest improvements in beef production. Performance testing, data collection, EPD's, AI, embryo transfer, whole herd reporting, and genomic testing are all utilized on the ranch. We have always tried to be involved in all facets of our industry from breeding, feeding and marketing of our product. We have fed to finish our entire calf crop not sold as breeding stock. We have nearly 15 years of feeding and carcass data. The last 7 years we have been selling beef direct to the consumer and tracking consumer satisfaction. Rest assured that we have focused on these 5 areas in our cowherd. We have selected for highly docile easy handling cattle that are efficient, structurally sound with increased longevity and performance while not increasing maintenance. We try and run our cowherd mostly on forage and in a normal year the cows are fed hay less than 90 days per year.

Bulls going out of state will need a trich test to go to most states so we will do the health work after the sale and coordinate with the buyers on delivery. If you buy a bull that day for instate delivery and want to transport him home, then we will do our best to make sure that the brand work is in order for travel. We have offered to feed the bulls till the first of April in the past and will do so again. Please see information on this in the performance section following this letter. We ask that you bring your trailer on sale day or as soon as possible after the sale or arrange for us to deliver your purchases. We encourage you to purchase livestock insurance on your purchases if we keep them for you and would be glad to assist with insurance if needed.



Rob and Family

Analyzing Performance Information

BW Birth weight- We take birth weights on our cattle in order to give you some method of determining calving ease. Larger calves will sometimes come very easy. We believe that calf structure determines calving ease along with size.

WW Weaning Weight- This is the weight of the cattle taken at weaning time adjusted to constant age of 205 days, and is a good indication of growth and maternal performance of the dam or indication of the environment that the animals were raised in. Our environment contains very little supplemental feed or pampering. Our cattle are expected to exist on mostly a forage diet with minimal extra inputs.

Ratios Ratios are indicated for WW, ribeye, marbling and back fat and show how each animal compares to its herd mates within a group. Ratios are only within herds, so a 100 (or average) ratio within Bullis Creek herd is different than 100 in another herd.

Dam Production The first four numbers at the start of each footnote are the combined production averages of all the dam's progeny. The first number is the birth ratio, second number is an average weaning ratio, the third is an average yearling ratio and the fourth number is the MPPA (Most probable producing ability of the dam).

CE Calving ease score is noted in the footnote with *, **, ***. This is based on several things 1. The individual birth weight of the bull. 2. His birth weight EPD and CED 3. His dam's birth weight ratio. * For use on Cows. ** For use on Cows, 3-year-olds and big well grown out yearling heifers.

*** For use on yearling heifers without much difficulty or calving trouble.

Carcass Data We have ultra-sounded all sale lots and the data has been turned into the breed association if eligible. We have indicated carcass EPD's and ratios on rib eye, marbling and back fat or yield grade. We include a Rib eye measurement based on square inch of REA per CWT of body weight. Since we don't push our bulls, this measurement will allow you to compare our bulls to those that have been fed harder. All bulls have been genomically DNA tested including sire verification and have genomically enhanced EPD's for greater accuracy and reliability of data. All Red Angus bulls are OSF and MA tested free of these defects.

Auctioneer

Tracy Harl.....402-469-3852

Sale Day Phone

Sale Barn.....402-967-3060
Rob's Cell.....402-376-4465
Brenda's Cell.....402-376-4002
Neil.....402-322-3939
Audrey.....402-760-1037

Sale Representatives

Todd Eberle, Burwell Livestock.....308-870-1783
Jake Gideon, Burwell Livestock.....402-380-8244
Dean Summerbell, Heartland Limousin Assoc.....612-963-3799
Cody Nye, Fence Post & TSLN.....308-760-8588
Harry Walahoski, Sale Representative.....308-730-0667
Andy Rest, Cattle Business Weekly.....406-670-5678

Mail and phone bids

Mailed or phoned bids will be handled in a confidential manner. If you are unable to attend the sale, simply contact Rob Brawner or any of the sale representatives far enough in advance so we can help youringside on sale day. All cattle purchased through our "sight unseen program" are unconditionally guaranteed, if the cattle purchased for you on order are not what you expected, we don't expect you to pay for them.

Terms

Terms of the sale are cash unless prior credit arrangements are established between buyer and seller. Settlements are to be made with the clerk immediately after the conclusion of the auction.

Health

Health certificates (for out of state or country buyers) and semen test certificates will be provided with each lot sold. Cattle going to out of state buyers may need to be trich tested following the sale. The tests will be performed as quickly after the sale.

Nutrition of the sale cattle

The bulls were wintered as calves on a ration of long-stemmed hay and Bull Challenger pellets fed at less than 1% of their body weight. They were ran in large pastures on grass the following summer. In October the bulls were started on Bull Challenger pelleted ration at less than 1% of their bodyweight along with pasture and long stem meadow hay. They were run in a large hill pasture promoting exercise and fitness. The bulls were fed with soundness in mind and to develop them for trouble free use.

Sale Day Information

We will provide actual scrotal measurements and any other pertinent information. Every bull will have passed a BSE (breeding soundness Exam) unless stated at sale time.

Announcements

Announcements made sale day will take precedent over printed material in the catalog. Please take note of any changes.

GE-EPDs All Bulls have been Genomically Tested

Liability

Each animal will be the buyers risk as soon as it is sold, but will be cared for by the seller for a reasonable period of time. Every precaution will be taken for the welfare of the cattle sold. Neither the owner nor the salesmanagement can be held responsible for accidents, but every effort will be made to provide for safety and comfort of those attending the sale.

Genetic Defects

Every animal in the **Bullis Creek** herd that has a known carrier in the first three generations has been tested for Osteopetrosis (OS). No known carriers will be offered for sale. All the sires at **Bullis Creek** have been tested OS free.

Health - All cattle have been vaccinated for 7 way clostridial, pasturella, IBR, BVD, PI3 and BRSV and poured for internal and external parasites.

Lodging in Valentine, Nebraska

Rodeway Inn Ainsworth.....402-387-1050
Super 8 Valentine.....402-376-1250
Niobrara Lodge Valentine.....402-376-3000
Raine Motel Valentine.....402-376-2030

Guarantee

All bulls selling for \$3000 or more will be covered 100% for fertility, soundness, and customer satisfaction for a complete breeding season defined as 60 days following 1st turnout. Any problems with the bulls must be reported by September 1st of 2014 to arrange a bull replacement or if necessary, a credit for next year's sale. Injured bulls must be diagnosed by an accredited veterinarian. Credits will be awarded 100% of value of the injured bull, less \$1700. Salvage of the injured bull goes to the buyer. The guarantee is under the discretion of Bullis Creek Ranch and bulls may not be covered if inhuman practices or negligence are present whether directly or indirectly related to the injury.

Example 1: A \$5,000 bull is injured and examined to be a non-breeder; \$3,300 credit will be awarded to the buyer.

Example 2: A \$3,000 bull is injured and examined to be a non-breeder a \$1,300 credit will be given to the buyer.

Example 3: A bull sells for less than \$3,000 and is injured and examined to be a non-breeder; no credit will be given.

The bulls will be delivered by the seller at his convenience if the buyer opts for delivery. Bring your trailer sale day and deduct \$100/ hd. Bulls bringing \$3000 or more will be delivered free of charge within a 300-mile radius of Wood Lake, NE.

We have offered to keep and feed the bulls in the past till April 1st, and we will do this again for buyers of our bulls. The cost will be \$3 per day for 70 days (\$210) till April 1 and if you elect to have us keep and feed your bulls then the cost will be added to your invoice on sale day and must be paid for at settlement. The bulls will be fed 30 lbs of hay and 4 lbs of distiller's range cake per day and will be bedded with straw in the event of inclement weather as needed. Delivery will be after April 1, 2024.

The bulls will be fertility tested and papers for semen test and health will be provided by Dr. Bill Hines, Martin, SD

Carcass ultrasound by Old West Ultrasound, Martin, SD
Ranch Veterinary, Dr. Joe Butler, Valentine, NE.....402-376-1500
Dr. Steve Schumacher, Valentine, NE.....402-376-6144

2200 **BRAW** *Mr. Enhance* **2200K**

2/21/22 • LIM-FLEX(36/33) • BRAW 2200K • HOMO BLACK (T) • HOMO POLLED (T) • LFM2524875 • BULL

SYDGEN EXCEED 3223
SYDGEN ENHANCE
 SYDGEN RITA 2618

Dam

AOD BR WR YR MPPA
 2

WULFS EAGLESTONE Y711E
BRAW MS EAGLE 0273H
 BRAW MS LSS 1131Y

Carcass

REA (Sq. cwt) RE Ratio IMF Ratio BF Ratio

CED	BW	WW	YW	MK	TM	CEM	SC	DOC	YG	CW	REA	MB	\$MTI
11	0.4	81	135	28	68	5	1.26	16	-0.15	50	0.64	0.59	77
	35%	20%	10%	5%	10%		20%	10%		10%		3%	2%

CE ** • Act. BW 72 • Adj. WW 650 • WW Ratio • YW Ratio

LIM-FLEX
 Limousin x Angus Hybrid



Don't miss this bull! Light birth with the highest YW EPD in the sale offering. He got missed at the day we took yearling weights and ultrasound scanned hence there is no data on him. Great cow family behind him. 77 MTI!

Limousin
Feature Lot



LIMOUSIN & LIM-FLEX FEATURE BULLS

2209

BRAW *Windfall* **2209K**

3/16/22 • PUREBRED(89/80.3) • BRAW 2209K • BLACK • HET POLLED (T) • NPM2524915 • BULL

LVLS SECRET WEAPON 4408K
CJSL WINDFALL 9072W
 CJ'S MS ARROWHEAD 456P

Dam

AOD	BR	WR	YR	MPPA
7	96	104	108	

BRAW XTRACTOR 380A
BRAW JEWEL 576C
 BRAW MISS STAR 516R

Carcass

REA (Sq. cwt)	RE Ratio	IMF Ratio	BF Ratio
1.06	97	17	

CED	BW	WW	YW	MK	TM	CEM	SC	DOC	YG	CW	REA	MB	\$MTI
8	1.8	69	109	27	61	5	0.75	14	-0.38	59	1.28	0.05	55.96
		40%	25%	15%	20%		25%	40%		1%	20%	10%	15%

CE ** • Act. BW 83 • Adj. WW 673 • WW Ratio 106 • YW Ratio 109

Feature Lot
Limousin

Heterosis central here! Just the ticket for producing top quality feeder calves that will hit the target no matter where your aim is. 106 wean ratio- 109 yearling ratio- 127 REA ratio- He will add muscle.



2224

ARRC *Stockman* 2224K

3/25/22 • LIM-FLEX(42/38.3) • ARRC 2224K • RED • HOMO POLLED (T) • LFM2524969 • BULL

PIE STOCKMAN 4051
BIEBER CL STOCKMAN E116
 BIEBER CL DATELINE 115C

Dam

AOD BR WR YR MPPA
 4 93 101 99

WULFS DEFEND K909D ET
ARRC CARAMEL 8247F
 BRAW MS XTRACTOR 574C

Carcass

REA (Sq. cwt) RE Ratio IMF Ratio BF Ratio
 1.2 105 204

CED	BW	WW	YW	MK	TM	CEM	SC	DOC	YG	CW	REA	MB	\$MTI
19	-4.6	68	103	28	62	11		15	-0.12	21	0.59	0.36	64.63
1%	1%			5%	25%	2%		20%				25%	30%

CE *** • Act. BW 70 • Adj. WW 643 • WW Ratio 101 • YW Ratio 99

LIM-FLEX
 Limousin x Angus Hybrid



Yep, I think I can justify the claim that this bull can do it all! Light birth – Growth- Carcass- Maternal
 Eye catching and correct.



Limousin
Feature Lot

LIMOUSIN & LIM-FLEX FEATURE BULLS

2226

BRAW *Yellowstone* **2226K**

3/26/22 • LIM-FLEX(66/58.4) • BRAW 2226K • HET BLACK (T) • HOMO POLLED (T) • LFM2524927 • BULL

AHCC EARNING POWER 900E ET

JBV YELLOWSTONE 901G

JBV GIRL CRUSH 422B

CONNEALY DANNY 5398

BRAW CHEAP TRICK 7202E

BRAW MS CHEAP TRICK 5175C

Dam

AOD	BR	WR	YR	MPPA
5	101	103	110	

Carcass

REA (Sq. cwt)	RE Ratio	IMF Ratio	BF Ratio
0.95	92	143	

CED	BW	WW	YW	MK	TM	CEM	SC	DOC	YG	CW	REA	MB	\$MTI
8	0.6	69	117	22	57	4	1.7	12	-0.23	36	0.82	0.25	62.23
	40%		35%	45%	50%		2%		35%		30%	40%	

CE * • Act. BW 93 • Adj. WW 702 • WW Ratio 110 • YW Ratio 110



Feature Lot
Limousin

110 ratio for weaning and yearling weight- 143 IMF ratio- Don't miss this eye catching long spined Yellowstone son.



2246

BRAW *Emprize* **2246K**

4/8/22 • LIM-FLEX(68/61.7) • BRAW 2246K • RED • HOMO POLLED (P-1) • LFM2524941 • BULL

BIEBER DEEP END B597
WULFS EMPRIZE 2424E
 WULFS ZUNI 2424Z
 WULFS DEFEND K909D ET
BRAW MS CHRISTY 8220F
 BRAW MS CHRISTIE 661D

Dam

AOD	BR	WR	YR	MPPA
4	109	116	110	

Carcass

REA (Sq. cwt)	RE Ratio	IMF Ratio	BF Ratio
1.23	119	165	

CED	BW	WW	YW	MK	TM	CEM	SC	DOC	YG	CW	REA	MB	\$MTI
11	2.3	87	131	24	68	7	0.9	14	-0.44	35	1.15	0.22	68.01
30%		10%	15%	25%	10%	35%		35%	5%		4%		20%

CE * • Act. BW 90 • Adj. WW 717 • WW Ratio 113 • YW Ratio 110



717 Adj WW with a 113 ratio and 110 for Yearling weight- IMF ratio of 165! - Whether you sell calves by the pound or retain them and sell on a quality grid here's your bull!

Limousin
Feature Lot



LIMOUSIN & LIM-FLEX BULLS

2207 *ARRC Stockman* 2207K

3/12/22 - PERCENTAGE(12/11.1) • ARRC 2207K • RED • HOMO POLLED (P-2) • NXM2524963 • BULL

PIE STOCKMAN 4051
BIEBER CL STOCKMAN E116
 BIEBER CL DATELINE 115C

Dam					Carcass			
AOD	BR	WR	YR	MPPA	REA (Sq. cwt)	RE Ratio	IMF Ratio	BF Ratio
2	100	105	100		1.06	94	69	

NEBR DEFENSE 809F
BRAW MS PRIDE 0215H
 BRAW MS PRIDE 8219F ET

CED	BW	WW	YW	MK	TM	CEM	SC	DOC	YG	CW	REA	MB	\$MTI
15	-2.2	79	130	29	69	11		19	-0.07	41	0.71	0.31	65.91
15%	15%	10%	5%	3%	2%	1%		1%		25%		30%	15%

CE *** • Act. BW 77 • Adj. WW 667 • WW Ratio 105 • YW Ratio 100



2212 *BRAW Emprize* 2212K

3/18/22 - LIM-FLEX(62/56.7) • BRAW 2212K • RED • HOMO POLLED (T) • LFM2524957 • BULL

BIEBER DEEP END B597
WULFS EMPRIZE 2424E
 WULFS ZUNI 2424Z

Dam					Carcass			
AOD	BR	WR	YR	MPPA	REA (Sq. cwt)	RE Ratio	IMF Ratio	BF Ratio
3	122	113	111		1.21	118	73	

WULFS DEFEND K909D ET
BRAW MS DEFEND 9256F
 BRAW MS ATLAS 3125A

CED	BW	WW	YW	MK	TM	CEM	SC	DOC	YG	CW	REA	MB	\$MTI
10	3.2	86	121	25	68	5		12	-0.48	29	1.17	0.07	62.34
		10%	30%	20%	10%				3%		4%		45%

CE * • Act. BW 86 • Adj. WW 716 • WW Ratio 113 • YW Ratio 111



2218 *BRAW Yellowstone* 2218K

3/23/22 - LIM-FLEX(70/62.7) • BRAW 2218K • HOMO BLACK (T) • HOMO POLLED (T) • LFM2524935 • BULL

AHCC EARNING POWER 900E ET
JBV YELLOWSTONE 901G
 JBV GIRL CRUSH 422B

Dam					Carcass			
AOD	BR	WR	YR	MPPA	REA (Sq. cwt)	RE Ratio	IMF Ratio	BF Ratio
5	110	105	106		1.21	111	20	

O C C EMBLAZON 854E
BRAW MS TIZZY 7252E
 VL TIZZIE

CED	BW	WW	YW	MK	TM	CEM	SC	DOC	YG	CW	REA	MB	\$MTI	
8	3	70	110	22	57	5		1.65	11	-0.28	32	0.92	-0.06	51.35
									45%		3%		25%	20%

CE * • Act. BW 90 • Adj. WW 615 • WW Ratio 97 • YW Ratio 104



2223 *BRAW Yellowstone* 2223K

3/25/22 - PERCENTAGE(82/72.9) • BRAW 2223K • HET BLACK (T) • HOMO POLLED (T) • NXM2524955 • BULL

AHCC EARNING POWER 900E ET
JBV YELLOWSTONE 901G
 JBV GIRL CRUSH 422B

Dam					Carcass			
AOD	BR	WR	YR	MPPA	REA (Sq. cwt)	RE Ratio	IMF Ratio	BF Ratio
3	102	109	102		1.05	99	36	

DANH DURHAM 54D
BRAW DEWDROP 9234G
 BRAW MS YANKEE 3259A

CED	BW	WW	YW	MK	TM	CEM	SC	DOC	YG	CW	REA	MB	\$MTI	
8	2.4	74	112	24	60	7		1.73	12	-0.49	31	1.16	-0.04	54.92
		20%	20%	20%	20%	40%	2%		15%		15%			

CE * • Act. BW 83 • Adj. WW 695 • WW Ratio 109 • YW Ratio 106



2225 *BRAW Emprize* 2225K

3/25/22 - LIM-FLEX(60/55.9) • BRAW 2225K • RED • HOMO POLLED (T) • LFM2525939 • BULL

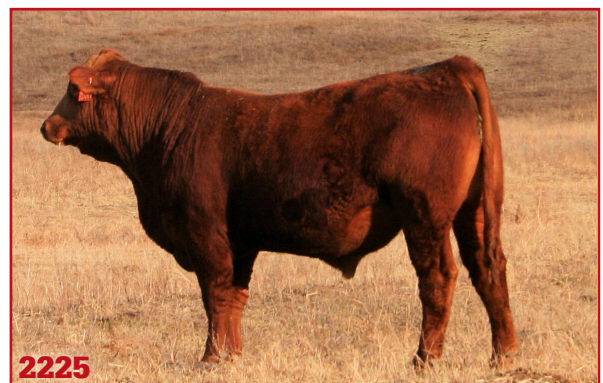
BIEBER DEEP END B597
WULFS EMPRIZE 2424E
 WULFS ZUNI 2424Z

Dam					Carcass			
AOD	BR	WR	YR	MPPA	REA (Sq. cwt)	RE Ratio	IMF Ratio	BF Ratio
8	111	995	93		1.17	105	149	

LFCL ZZ TOP 70Z
BRAW MS TOPPER 4163B
 BRAW MS NEBRASKA 616S

CED	BW	WW	YW	MK	TM	CEM	SC	DOC	YG	CW	REA	MB	\$MTI	
8	1.7	90	145	17	62	6		1.02	12	-0.32	41	0.95	0.29	70.66
		4%	3%		25%		35%		20%	30%	15%	35%	10%	

CE * • Act. BW 96 • Adj. WW 618 • WW Ratio 97 • YW Ratio 102



LIMOUSIN & LIM-FLEX BULLS

2227 BRAW *Yellowstone* 2227K

3/27/22 • LIM-FLEX(70/61.6) • BRAW 2227K • HOMO BLACK (P-1) • HOMO POLLED (T) • LFM2524880 • BULL

AHCC EARNING POWER 900E ET
JBV YELLOWSTONE 901G
JBV GIRL CRUSH 422B

Dam					Carcass			
AOD	BR	WR	YR	MPPA	REA (Sq. cwt)	RE Ratio	IMF Ratio	BF Ratio
10	103	108	101		1.04	91	145	

SPADES NEW DESIGN 643X
SPADES MS NEW DESIGN 046Z
SPADES MISS EXTRA 046X

CED	BW	WW	YW	MK	TM	CEM	SC	DOC	YG	CW	REA	MB	\$MTI
6	2.7	72	112	27	62	4	1.7	11	-0.31	42	0.96	0.09	57.52
				10%	25%	2%		20%	30%	15%			

CE * • Act. BW 95 • Adj. WW 680 • WW Ratio 107 • YW Ratio 100



2229 ARRC *Snickers* 2229K

3/27/22 • LIM-FLEX(67/60.1) • ARRC 2229K • RED • HET POLLED (T) • LFM2524967 • BULL

LVLS SECRET WEAPON 4408K
CJSL WINDFALL 9072W
CJ'S MS ARROWHEAD 456P

Dam					Carcass			
AOD	BR	WR	YR	MPPA	REA (Sq. cwt)	RE Ratio	IMF Ratio	BF Ratio
5	97	104	107		1.32	125	130	

C-BAR ELDORADO 114Z
ARRC MS ELDORADO 7200E
BRAW MS XTRACTOR 574C

CED	BW	WW	YW	MK	TM	CEM	SC	DOC	YG	CW	REA	MB	\$MTI
11	1.8	69	98	26	61	5		14	-0.45	33	1.34	0.03	55.46
				15%	30%	35%		4%	60%	1%			

CE ** • Act. BW 85 • Adj. WW 714 • WW Ratio 112 • YW Ratio 107



2232 BRAW *Entice* 2232K

3/29/22 • LIM-FLEX(70/62.4) • BRAW 2232K • HOMO BLACK (T) • HOMO POLLED (T) • LFM2524890 • BULL

AHCC EARNING POWER 900E ET
JBV YELLOWSTONE 901G
JBV GIRL CRUSH 422B

Dam					Carcass			
AOD	BR	WR	YR	MPPA	REA (Sq. cwt)	RE Ratio	IMF Ratio	BF Ratio
10	106	98	100		1.34	117	226	

CONNEALY DANNY 5398
BRAW MS DANNY 212Z
BRAW MS FINAL TIME 9174W

CED	BW	WW	YW	MK	TM	CEM	SC	DOC	YG	CW	REA	MB	\$MTI
3	1.3	70	109	18	53	0	1.76	13	-0.39	33	1.18	0.2	61.69
				2%	10%	3%							

CE * • Act. BW 89 • Adj. WW 640 • WW Ratio 101 • YW Ratio 99



2236 BRAW *Mr* 2236K

4/3/22 • LIM-FLEX(68/59.9) • BRAW 2236K • HOMO BLACK (T) • HOMO POLLED (T) • LFM2524953 • BULL

WULFS COMPLIANT K687C ET
WULFS EAGLESTONE Y711E
MINE PLD KISSNTELL 0072X

Dam					Carcass			
AOD	BR	WR	YR	MPPA	REA (Sq. cwt)	RE Ratio	IMF Ratio	BF Ratio
3	98	109	100		1.27	103	166	

DANH DURHAM 54D
BRAW MS DURHAM 9225G
BRAW MS HEARTLAND 117

CED	BW	WW	YW	MK	TM	CEM	SC	DOC	YG	CW	REA	MB	\$MTI
13	0.5	69	107	25	59	10	0.65	14	-0.35	23	0.9	0.14	58.92
				15%	20%	40%	4%	35%	15%	20%			

CE ** • Act. BW 80 • Adj. WW 605 • WW Ratio 95 • YW Ratio 92



2240 BRAW *Windfall* 2240K

4/4/22 • LIM-FLEX(75/66.4) • BRAW 2240K • BLACK • HOMO POLLED (T) • LFM2524894 • BULL

LVLS SECRET WEAPON 4408K
CJSL WINDFALL 9072W
CJ'S MS ARROWHEAD 456P

Dam					Carcass			
AOD	BR	WR	YR	MPPA	REA (Sq. cwt)	RE Ratio	IMF Ratio	BF Ratio
9	102	104	100		1.11	97	138	

SITZ IDENTITY 2575
SPADES MISS IDENTITY 34A
SPADES MISS LODESTAR 884U

CED	BW	WW	YW	MK	TM	CEM	SC	DOC	YG	CW	REA	MB	\$MTI
7	2.3	69	112	23	58	6	0.65	11	-0.25	35	0.72	0.18	59.74
				35%	30%								

CE * • Act. BW 78 • Adj. WW 650 • WW Ratio 102 • YW Ratio 99



LIMOUSIN & LIM-FLEX BULLS

2241 BRAW *Wind River* 2241K

4/4/22 • LIM-FLEX(75/66.2) • BRAW 2241K • RED • HOMO POLLED (T) • LFM2524929 • BULL

LVLS SECRET WEAPON 4408K
CJSL WINDFALL 9072W
CJ'S MS ARROWHEAD 456P

Dam					Carcass			
AOD	BR	WR	YR	MPPA	REA (Sq. cwt)	RE Ratio	IMF Ratio	BF Ratio
5	103	111	104		1.08	98	26	

WULFS XTRACTOR X233X
BRAW MS PRIDE 7212E ET
RED LAZY MC PRIDE 43X

CED	BW	WW	YW	MK	TM	CEM	SC	DOC	YG	CW	REA	MB	\$MTI
5	1.9	61	88	29	59	5	13	-0.44	20	0.98	-0.05	50.15	
		3%	40%					5%		15%			

CE * • Act. BW 98 • Adj. WW 731 • WW Ratio 115 • YW Ratio 102



2241

2242 BRAW *Yellowstone* 2242K

4/4/22 • PERCENTAGE(81/72.2) • BRAW 2242K • HET BLACK (T) • HOMO POLLED (T) • NXM2524910 • BULL

AHCC EARNING POWER 900E ET
JBV YELLOWSTONE 901G
JBV GIRL CRUSH 422B

Dam					Carcass			
AOD	BR	WR	YR	MPPA	REA (Sq. cwt)	RE Ratio	IMF Ratio	BF Ratio
7	102	93	98					

LFLC ZZ TOP 70Z
BRAW MS TOPPER 5130C
BRAW MS FOCUS 947W

CED	BW	WW	YW	MK	TM	CEM	SC	DOC	YG	CW	REA	MB	\$MTI
5	0.4	62	104	15	46	0	1.99	10	-0.32	26	0.74	0.18	58.29
		35%				1%		35%				40%	

CE * • Act. BW 86 • Adj. WW 482 • WW Ratio 76 • YW Ratio

2243 BRAW *Ms Yellowstone* 2243K

4/5/22 • LIM-FLEX(57/50.7) • BRAW 2243K • HOMO BLACK (P-1) • HOMO POLLED (T) • LFM2524906 • BULL

AHCC EARNING POWER 900E ET
JBV YELLOWSTONE 901G
JBV GIRL CRUSH 422B

Dam					Carcass			
AOD	BR	WR	YR	MPPA	REA (Sq. cwt)	RE Ratio	IMF Ratio	BF Ratio
8	100	99	115		0.94	95	43	

PA SAFEGUARD 021
SPADES MS SAFEGUARD 45B
SPADES MISS IDENTITY 45Y

CED	BW	WW	YW	MK	TM	CEM	SC	DOC	YG	CW	REA	MB	\$MTI
5	1.6	75	124	21	58	2	1.89	11	-0.15	48	0.58	0.38	67.85
		35%	25%		45%		1%		15%		20%	20%	

CE ** • Act. BW 94 • Adj. WW 681 • WW Ratio 107 • YW Ratio 115



2245 BRAW *Yellowstone* 2245K

4/7/22 • PERCENTAGE(76/67) • BRAW 2245K • HOMO BLACK (P-1) • HOMO POLLED (P-2) • NXM2524937 • BULL

AHCC EARNING POWER 900E ET
JBV YELLOWSTONE 901G
JBV GIRL CRUSH 422B

Dam					Carcass			
AOD	BR	WR	YR	MPPA	REA (Sq. cwt)	RE Ratio	IMF Ratio	BF Ratio
6	97	90	94		1.04	89	101	

SPADES MS STETSON 414B
SPADES MISS STETSON 79D
SPADES MS SAFEGUARD 184B

CED	BW	WW	YW	MK	TM	CEM	SC	DOC	YG	CW	REA	MB	\$MTI
10	2.4	77	125	16	55	6	1.77	13	-0.35	62	1.18	0.04	57.92
		15%	10%		35%		2%	35%	30%	1%	15%	40%	

CE * • Act. BW 76 • Adj. WW 625 • WW Ratio 98 • YW Ratio 98



2245

2248 BRAW *Yellowstone* 2248K

4/10/22 • PERCENTAGE(82/73.4) • BRAW 2248K • HET BLACK (T) • HOMO POLLED (T) • NXM2524943 • BULL

AHCC EARNING POWER 900E ET
JBV YELLOWSTONE 901G
JBV GIRL CRUSH 422B

Dam					Carcass			
AOD	BR	WR	YR	MPPA	REA (Sq. cwt)	RE Ratio	IMF Ratio	BF Ratio
4	98	98	100		1.11	98	71	

SYES BEST BUY 316B
BRAW MS BELT 8224F
BRAW MS DANNY 212Z

CED	BW	WW	YW	MK	TM	CEM	SC	DOC	YG	CW	REA	MB	\$MTI
6	3.4	73	116	17	53	2	1.43	12	-0.4	28	0.89	0.01	55.86
		25%	15%				5%		25%		35%		

CE * • Act. BW 90 • Adj. WW 612 • WW Ratio 96 • YW Ratio 100

2258 BRAW *Emprize* 2258K

4/13/22 • LIM-FLEX(70/65.4) • BRAW 2258K • RED • HET POLLED (T) • LFM2524960 • BULL

BIEBER DEEP END B597
WULFS EMPRIZE 2424E
WULFS ZUNI 2424Z

Dam					Carcass			
AOD	BR	WR	YR	MPPA	REA (Sq. cwt)	RE Ratio	IMF Ratio	BF Ratio
3	122	104	98		1.18	102	129	

LFLC BIG COUNTRY 759B
BRAW MS BC 9299G
BRAW MS LSS 1131Y

CED	BW	WW	YW	MK	TM	CEM	SC	DOC	YG	CW	REA	MB	\$MTI
12	1.3	80	115	25	65	4	0.89	16	-0.39	34	1.05	0.21	64.91
		30%	20%	40%	20%	15%		10%	10%		10%	30%	

CE * • Act. BW 80 • Adj. WW 662 • WW Ratio 104 • YW Ratio 98



LIMOUSIN & LIM-FLEX BULLS

2261 BRAW Emprize 2261K

4/14/22 • LIM-FLEX(50/46) • BRAW 2261K • RED • HOMO POLLED (P-1) • LFM2524950 • BULL

BIEBER DEEP END B597
WULFS EMPRIZE 2424E
 WULFS ZUNI 2424Z
 WULFS DEFEND K909D ET
BRAW PRIDE 9217G ET
 RED LAZY MC PRIDE 43X

Dam					Carcass			
AOD	BR	WR	YR	MPPA	REA (Sq. cwt)	RE Ratio	IMF Ratio	BF Ratio
3	91	104	96		1.08	90	116	

CED	BW	WW	YW	MK	TM	CEM	SC	DOC	YG	CW	REA	MB	\$MTI
14	-0.5	80	122	23	63	10		12	-0.24	46	0.84	0.25	65.35
15%	20%	20%	25%	35%	20%	4%		35%	20%	25%	40%	30%	

CE *** • Act. BW 74 • Adj. WW 666 • WW Ratio 105 • YW Ratio 94



2263 BRAW ELD 2263K

4/14/22 • LIM-FLEX(43/39.1) • BRAW 2263K • RED • HOMO POLLED (P-2) • LFM2524872 • BULL

C-BAR ELDORADO 114Z
NEBR DEFENSE 809F
 NEBR FOXY TRILOGY 6153D
 LFLC BIG COUNTRY 759B
BRAW MS BC 0249H
 SPADES MS STETSON 485B

Dam					Carcass			
AOD	BR	WR	YR	MPPA	REA (Sq. cwt)	RE Ratio	IMF Ratio	BF Ratio
2	92	96	96		1.16	98	237	

CED	BW	WW	YW	MK	TM	CEM	SC	DOC	YG	CW	REA	MB	\$MTI
14	-2.8	59	92	19	48	7		14	-0.25	24	0.81	0.32	61.47
15%	2%					35%		35%	30%		30%	30%	

CE *** • Act. BW 70 • Adj. WW 609 • WW Ratio 96 • YW Ratio 96



2267 BRAW Emprize 2267K

4/18/22 • LIM-FLEX(62/56.8) • BRAW 2267K • RED • HOMO POLLED (T) • LFM2524954 • BULL

BIEBER DEEP END B597
WULFS EMPRIZE 2424E
 WULFS ZUNI 2424Z
 WULFS EDGE 5045E
BRAW CHEAP TRICK 9228G
 BRAW MS CHEAP TRICK 6170D

Dam					Carcass			
AOD	BR	WR	YR	MPPA	REA (Sq. cwt)	RE Ratio	IMF Ratio	BF Ratio
3	102	102	98		1.13	100	116	

CED	BW	WW	YW	MK	TM	CEM	SC	DOC	YG	CW	REA	MB	\$MTI
13	-1	79	126	22	61	9	0.95	13	-0.3	41	0.97	0.46	73.24
20%	15%	25%	20%		30%	10%			20%	30%	15%	10%	10%

CE ** • Act. BW 82 • Adj. WW 619 • WW Ratio 97 • YW Ratio 100



2268 BRAW Mr 2268K

4/19/22 • PERCENTAGE(68/60.1) • BRAW 2268K • RED • HOMO POLLED (P-1) • NXM2524939 • BULL

WULFS COMPLIANT K687C ET
WULFS EAGLESTONE Y711E
 MINE PLD KISSNTELL 0072X
 LFLC ZZ TOP 70Z
BRAW MS BELT 8207F
 BRAW MS RIDGE 7154T

Dam					Carcass			
AOD	BR	WR	YR	MPPA	REA (Sq. cwt)	RE Ratio	IMF Ratio	BF Ratio
4	96	109	105		1.17	107	60	

CED	BW	WW	YW	MK	TM	CEM	SC	DOC	YG	CW	REA	MB	\$MTI
14	-1.3	69	103	28	63	7	0.78	12	-0.19	27	0.56	0.01	52.88
20%	25%	30%	35%	5%	10%	40%							

CE ** • Act. BW 70 • Adj. WW 702 • WW Ratio 110 • YW Ratio 105

2270 BRAW KP 2270K

4/20/22 • LIM-FLEX(67/59.9) • BRAW 2270K • HOMO BLACK (T) • HOMO POLLED (T) • LFM2524909 • BULL

WULFS COMPLIANT K687C ET
WULFS EAGLESTONE Y711E
 MINE PLD KISSNTELL 0072X
 LFLC ZZ TOP 70Z
BRAW MS TOPPER 5121C
 BRAW MS DANNY 8131U

Dam					Carcass			
AOD	BR	WR	YR	MPPA	REA (Sq. cwt)	RE Ratio	IMF Ratio	BF Ratio
7	100	98	99		1.29	111	33	

CED	BW	WW	YW	MK	TM	CEM	SC	DOC	YG	CW	REA	MB	\$MTI
13	-1.4	64	96	22	54	5	0.75	11	-0.36	14	0.72	0.11	56.38
15%	10%			45%					15%				

CE ** • Act. BW 76 • Adj. WW 621 • WW Ratio 98 • YW Ratio 97



2274 BRAW Mr 2274K

4/22/22 • LIM-FLEX(58/52.1) • BRAW 2274K • DOUBLE BLACK • HOMO POLLED (T) • LFM2524956 • BULL

WULFS COMPLIANT K687C ET
WULFS EAGLESTONE Y711E
 MINE PLD KISSNTELL 0072X
 WULFS CONVERSION 3970C
BRAW MS CONVERSION 9249G
 BRAW MS PREDESTINED 153Y

Dam					Carcass			
AOD	BR	WR	YR	MPPA	REA (Sq. cwt)	RE Ratio	IMF Ratio	BF Ratio
3	96	101	106		1.04	92	34	

CED	BW	WW	YW	MK	TM	CEM	SC	DOC	YG	CW	REA	MB	\$MTI
14	1	69	106	28	62	10	0.53	14	-0.22	46	0.82	0.2	59.88
15%				5%	25%	4%		35%	35%	20%	30%		

CE ** • Act. BW 74 • Adj. WW 631 • WW Ratio 99 • YW Ratio 101



LIMOUSIN & LIM-FLEX BULLS

2286 BRAW *Emprize* 2286K

4/26/22 • LIM-FLEX(46/43.4) • BRAW 2286K • RED • DOUBLE POLLED • LFM2524898 • BULL

BIEBER DEEP END B597
WULFS EMPRIZE 2424E
 WULFS ZUNI 2424Z

Dam
 AOD BR WR YR MPPA
 9 99 97 94

G A R PREDESTINED
BRAW CHEAP TRICK 379A
 BRAW PLD THUNDER 796J

Carcass
 REA (Sq. cwt) RE Ratio IMF Ratio BF Ratio
 1.25 107 98

CED	BW	WW	YW	MK	TM	CEM	SC	DOC	YG	CW	REA	MB	\$MTI		
14	1.1	67	102	23	56	10	1.23	13	-0.3	36	0.77	0.42	67.96		
15%		35%		4%		20%		20%		35%		15%		20%	

CE ** • Act. BW 78 • Adj. WW 640 • WW Ratio 101 • YW Ratio 97



2287 BRAW *Mr* 2287K

4/26/22 • LIM-FLEX(68/60.4) • BRAW 2287K • RED • DOUBLE POLLED • LFM2524948 • BULL

WULFS DEFEND K909D ET
BRAW DEFEND 8242F
 BRAW MS PREDESTINED 170

Dam
 AOD BR WR YR MPPA
 3 105 108 102

WULFS EDGE 5045E
BRAW MISS NORTHERN 9204G
 BRAW MS NORTHERN 7234E

Carcass
 REA (Sq. cwt) RE Ratio IMF Ratio BF Ratio
 1.19 100 146

CED	BW	WW	YW	MK	TM	CEM	SC	DOC	YG	CW	REA	MB	\$MTI
11	1.4	70	111	22	57	3	0.71	14	-0.26	34	0.72	0.26	62.9
35%		30%		40%		40%							

CE * • Act. BW 80 • Adj. WW 616 • WW Ratio 97 • YW Ratio 96



2291 BRAW *Mr* 2291K

4/29/22 • LIM-FLEX(50/43.8) • BRAW 2291K • DOUBLE BLACK • HOMO POLLED (P-1) • LFM2525938 • BULL

WULFS DEFEND K909D ET
BRAW DEFEND 8242F
 BRAW MS PREDESTINED 170

Dam
 AOD BR WR YR MPPA
 7 100 104 97

BALDRIDGE WAYLON W34
SPAD MS WAYLON 246Z
 SPADES MISS EXTRA 246Z

Carcass
 REA (Sq. cwt) RE Ratio IMF Ratio BF Ratio
 0.97 88 150

CED	BW	WW	YW	MK	TM	CEM	SC	DOC	YG	CW	REA	MB	\$MTI				
15	-0.7	80	130	19	59	10	0.81	12	0.01	52	0.35	0.39	68.52				
10%		15%		20%		15%		40%		4%		10%		20%		20%	

CE ** • Act. BW 78 • Adj. WW 662 • WW Ratio 104 • YW Ratio 103



2295 BRAW *Emprize* 2295K

5/1/22 • LIM-FLEX(50/46.1) • BRAW 2295K • RED • HOMO POLLED (P-1) • LFM2524945 • BULL

BIEBER DEEP END B597
WULFS EMPRIZE 2424E
 WULFS ZUNI 2424Z

Dam
 AOD BR WR YR MPPA
 4 106 99 94

WULFS XTRACTOR X233X
BRAW MS PRIDE 8236F ET
 RED LAZY MC PRIDE 43X

Carcass
 REA (Sq. cwt) RE Ratio IMF Ratio BF Ratio
 1.18 95 72

CED	BW	WW	YW	MK	TM	CEM	SC	DOC	YG	CW	REA	MB	\$MTI
13	-0.2	73	107	22	58	10	15	-0.26	27	0.68	0.26	63.52	
20%		25%		4%		20%		30%		40%		40%	

CE * • Act. BW 80 • Adj. WW 643 • WW Ratio 96 • YW Ratio 97



2297 BRAW *Eagle* 2297K

5/5/22 • LIM-FLEX(68/60.8) • BRAW 2297K • RED • DOUBLE POLLED • LFM2524895 • BULL

WULFS COMPLIANT K687C ET
WULFS EAGLESTONE Y711E
 MINE PLD KISSNTELL 0072X

Dam
 AOD BR WR YR MPPA
 9 103 108 102

SYES USER FRIENDLY 524U
BRAW MS BLACKBELT 354A
 BRAW MS PREDESTINED 170

Carcass
 REA (Sq. cwt) RE Ratio IMF Ratio BF Ratio
 1.19 94 128

CED	BW	WW	YW	MK	TM	CEM	SC	DOC	YG	CW	REA	MB	\$MTI
10	0.2	68	100	29	63	2	0.76	9	-0.21	17	0.58	0.15	57.55
30%		3%		20%		40%							

CE ** • Act. BW 88 • Adj. WW 681 • WW Ratio 102 • YW Ratio 95



2300 ARRC *Mr* 2300K

5/8/22 • PERCENTAGE(73/64.9) • ARRC 2300K • RED • HOMO POLLED (P-1) • NXM2524970 • BULL

WULFS DEFEND K909D ET
BRAW DEFEND 8242F
 BRAW MS PREDESTINED 170

Dam
 AOD BR WR YR MPPA
 4 95 103 106

LFLC BIG COUNTRY 759B
BRAW MS CHRISTIE 8272F
 BRAW MISS CHRISTIE 3211A

Carcass
 REA (Sq. cwt) RE Ratio IMF Ratio BF Ratio
 1.1 97 46

CED	BW	WW	YW	MK	TM	CEM	SC	DOC	YG	CW	REA	MB	\$MTI		
16	1.2	79	122	20	59	7	0.66	13	-0.22	37	0.69	0.07	58.21		
10%		10%		10%		20%		40%		35%		35%		40%	

CE ** • Act. BW 80 • Adj. WW 681 • WW Ratio 102 • YW Ratio 106



2355
 BW 77 • Adj WW 574
 Sire Larson Cody • Dam 8184
 IMF Ratio 113 • RE Ratio 95 • RE Sq Inch/CWT 1.12 • CE **

8K
 BW 80 • Adj WW 738
 Sire Wulf's Eaglestone Y711E • Dam #4
 IMF Ratio 151 • RE Ratio • RE Sq Inch/CWT 0.86 • CE **

2357
 BW 90 • Adj WW 606
 Sire Gilman's Envied (SH) • Dam 555
 IMF Ratio 216 • RE Ratio 150 • RE Sq Inch/CWT 1.42 • CE *

274

BCRR 274

4/10/22 • RED ANGUS • BCRR 274 • RED • POLLED • 4630761 • BULL

PIE STOCKMAN 4051
BIEBER CL STOCKMAN E116
 BIEBER CL DATELINE 115C

Dam

AOD	BR	WR	YR	MPPA
5	103	99	103	99

BHR KING 167
767E
 BCRR NORSEMAN GEM 0190

Carcass

REA (Sq. cwt)	RE Ratio	IMF Ratio	BF Ratio
1.21	111	209	101

CED	BW	WW	YW	MK	ME	HPG	CEM	ST	MB	YG	CW	REA	FAT	ProS	HERD	GRID
-----	----	----	----	----	----	-----	-----	----	----	----	----	-----	-----	------	------	------

15 -0.4 83 138 27 6 11 10 17 0.61 0 53 0.61 0.01 163 79 84

21% 2% 1% 34% 7% 24% 14% 20% 1% 2% 26% 1% 10% 1%

CE * • Act. BW 88 • WW 649 • WW Ratio 103 • YW Ratio 103



Red Angus
Feature Lot

Top shelf Herdsire prospect here! A super cow family behind this bull. She is an own daughter of BHR King 167 a sire that made a huge mark on our herd. 274 has 14 EPD's in the top 26% or higher. Don't miss this genetic giant.



RED ANGUS FEATURE BULLS

206

BCRR *Top End* 206

3/2/22 • RED ANGUS • BCRR 206 • RED • POLLED • 4630837 • BULL

LASO FOUNDATION D168F
VGW TOP END 021
 VGW MM-CHRSS 1897

ARRC LOOKOUT 706E
BCRR VICELIA 0119H
 BCRR VICELIA 2114Z

Dam

AOD	BR	WR	YR	MPPA
2	114	124	117	110

Carcass

REA (Sq. cwt)	RE Ratio	IMF Ratio	BF Ratio
1.11	115	136	107

CED	BW	WW	YW	MK	ME	HPG	CEM	ST	MB	YG	CW	REA	FAT	ProS	HERD	GRID
-----	----	----	----	----	----	-----	-----	----	----	----	----	-----	-----	------	------	------

8	-0.7	72	116	33	19	11	3	20	0.6	0.06	32	0.32	0.03	96	51	45
		14%	13%	5%				6%	16		17%	15				33%

CE * • Act. BW 84 • WW 777 • WW Ratio 124 • YW Ratio 117



Red Angus
Feature Lot

Performance that will blow you away! 777 Adj ww to ratio 124- 117 - His dam's first effort earning her a 110 MPPA- His carcass scan data is over the top with a 136 IMF ratio and a 115 Rib eye ratio- 1.11 sq.inch of RE/ CWT- Balance across the board.



209

BCRR *Well Stocked* 209

3/7/22 • RED ANGUS • BCRR 209 • RED • POLLED • 4630827 • BULL

Red Angus
Feature Lot

PIE STOCKMAN 4051
BIEBER CL STOCKMAN E116
BIEBER CL DATELINE 115C

Dam

AOD	BR	WR	YR	MPPA
3	92	123	124	113

RAVN DEFENSE C550
BCRR PRIDE 953G
BCRR PRIDE 674D

Carcass

REA (Sq. cwt)	RE Ratio	IMF Ratio	BF Ratio
1.14			

CED	BW	WW	YW	MK	ME	HPG	CEM	ST	MB	YG	CW	REA	FAT	ProS	HERD	GRID
-----	----	----	----	----	----	-----	-----	----	----	----	----	-----	-----	------	------	------

19 -2.9 76 132 37 10 7 13 15 0.6 0.13 55 0.32 0.02 123 53 70

1% 30 6% 3% 1% 1% 16% 1% 15% 10% 5%

CE *** • Act. BW 67 • WW 804 • WW Ratio 128 • YW Ratio 142



Is your genetic pantry low? Get well Stocked up now and here's how. Strong balanced genetics with a top 10% Pro S. His dam is from our "Pride" cow family= Awesome females.



RED ANGUS FEATURE BULLS

228

BCRR NEBR *Top End* 228

3/21/22 • RED ANGUS • BCRR 228 • RED • POLLED • 4630859 • BULL

LASO FOUNDATION D168F
VGW TOP END 021
 VGW MM-CHRSS 1897
 ARRC LOOKOUT 706E
NEBR FOXY 0130H
 NEBR 472

Dam

AOD	BR	WR	YR	MPPA
2	96	99	105	100

Carcass

REA (Sq. cwt)	RE Ratio	IMF Ratio	BF Ratio
1.18	107	149	110

CED	BW	WW	YW	MK	ME	HPG	CEM	ST	MB	YG	CW	REA	FAT	ProS	HERD	GRID
-----	----	----	----	----	----	-----	-----	----	----	----	----	-----	-----	------	------	------

11	-1.7	64	110	30	13	12	7	20	0.68	0.07	31	0.31	0.03	135	74	62
		36%	23%	12%		31%		4%	9%		22%	16%		4%	16%	10%

CE ** • Act. BW 70 • WW 665 • WW Ratio 99 • YW Ratio 105



Red Angus
Feature Lot

This is the first crop of VGW Top End's to sell and man are they outstanding! We couldn't be more pleased as they hit all the targets!



229

BCRR Monument 229

3/22/22 • RED ANGUS • BCRR 229 • RED • POLLED • 4630729 • BULL

Red Angus
Feature Lot

FRITZ GOLDEN OSCAR 8006
FRITZ MONUMENT 618G
FRITZ JOANIE 257E

Dam

AOD	BR	WR	YR	MPPA
6	96	108	104	106

GMRA TRILOGY 0226
BCRR GEM 680D
BCRR ATLAS'S GEM 281Z

Carcass

REA (Sq. cwt)	RE Ratio	IMF Ratio	BF Ratio
1.04	95	140	89

CED	BW	WW	YW	MK	ME	HPG	CEM	ST	MB	YG	CW	REA	FAT	ProS	HERD	GRID
-----	----	----	----	----	----	-----	-----	----	----	----	----	-----	-----	------	------	------

16 -3 72 122 32 19 12 12 18 0.8 0.2 34 0.1 0.05 131 67 64

11% 28% 12% 8% 6% 1% 20% 3% 13% 6% 27% 8%

CE *** • Act. BW 75 • WW 674 • WW Ratio 107 • YW Ratio 103



You can say "spread bull" 3 star calving ease with -3 birth and all the way to a 122 yearling weight
Across the board trait leader with top 6% Pro S Top 27% Herdbuilder Top 8% Gridmaster
Monument x Trilogy- His 6-year-old dam sports a 106 MPPA.



RED ANGUS FEATURE BULLS

272

BCRR *Top End* 272

4/10/22 • RED ANGUS • BCRR 272 • RED • POLLED • 4630719 • BULL

LASO FOUNDATION D168F
VGW TOP END 021
 VGW MM-CHRSS 1897

Dam

AOD	BR	WR	YR	MPPA
7	102	101	106	101

LARSON CODY 208
BCRR GEM 513C
 BCRR MS PACKER GEM 1102Y

Carcass

REA (Sq. cwt)	RE Ratio	IMF Ratio	BF Ratio
1.1	102	181	89

CED	BW	WW	YW	MK	ME	HPG	CEM	ST	MB	YG	CW	REA	FAT	ProS	HERD	GRID
-----	----	----	----	----	----	-----	-----	----	----	----	----	-----	-----	------	------	------

8 -1 68 110 29 10 13 5 19 0.53 0.02 51 0.67 0.03 141 71 70

22% 23% 18% 27% 7% 25% 28 1% 1% 3% 20% 5%

CE * • Act. BW 88 • WW 624 • WW Ratio 99 • YW Ratio 105



Red Angus
Feature Lot

What a truck! He's a real GBN candidate- Guts, butts and nuts- His paperwork is just as heavy as he is!



205 BCRR Stockman 205

3/1/22 • RED ANGUS • BCRR 205 • RED • POLLED • 4630841 • BULL

PIE STOCKMAN 4051
BIEBER CL STOCKMAN E116
BIEBER CL DATELINE 115C

Dam

AOD	BR	WR	YR	MPPA
2	116	103	107	101

3SCC DOMAIN A163
BCRR SEREOLA 064H
BCRR SEREOLA 451B

Carcass

REA (Sq. cwt)	RE Ratio	IMF Ratio	BF Ratio
0.85	81	28	63

CED	BW	WW	YW	MK	ME	HPG	CEM	ST	MB	YG	CW	REA	FAT	ProS	HERD	GRID
12	0.8	84	137	30	9	9	8	17	0.38	0.21	47	0.13	0.04	111	65	46
		1%	1%	15%			39%	23%			2%			23%	30%	32%

CE * • Act. BW 86 • WW 648 • WW Ratio 103 • YW Ratio 107



207 BCRR Entice 207

3/6/22 • RED ANGUS • BCRR 207 • BLACK • POLLED • 4630805 • BULL

SYDGEN ENHANCE
MOGCK ENTICE
MOGCK ERICA 2255

Dam

AOD	BR	WR	YR	MPPA
3	98	106	112	103

5L INDEPENDENCE 560-298Y
BCRR AUBURN 902G
DKK AUBURN P35

Carcass

REA (Sq. cwt)	RE Ratio	IMF Ratio	BF Ratio
1.11	107	130	89

CED	BW	WW	YW	MK	ME	HPG	CEM	ST	MB	YG	CW	REA	FAT	ProS	HERD	GRID
12	-1.2	74	131	28	6	11	0	10	0.53	0.01	49	0.42	-0.01	69	-10	79
		10%	3%	30%					25%	23%	1%	7%	7%			2%

CE *** • Act. BW 78 • WW 639 • WW Ratio 102 • YW Ratio 109



213 BCRR Entice 213

3/15/22 • RED ANGUS • BCRR 213 • BLACK • POLLED • 4630825 • BULL

SYDGEN ENHANCE
MOGCK ENTICE
MOGCK ERICA 2255

Dam

AOD	BR	WR	YR	MPPA
3	103	111	106	106

BIEBER CL STOCKMAN E116
BCRR MISS WIX 939G
BCRR MISS WIX 6140D

Carcass

REA (Sq. cwt)	RE Ratio	IMF Ratio	BF Ratio
1.27	120	179	89

CED	BW	WW	YW	MK	ME	HPG	CEM	ST	MB	YG	CW	REA	FAT	ProS	HERD	GRID
16	-1.9	82	136	25	8	10	10	15	0.74					119	55	64
		10%	2%	2%			12%		5%					13%	49%	9%

CE * • Act. BW 85 • WW 695 • WW Ratio 111 • YW Ratio 107



215 BCRR Monument 215

3/15/22 • RED ANGUS • BCRR 215 • RED • POLLED • 4630685 • BULL

FRITZ GOLDEN OSCAR 8006
FRITZ MONUMENT 618G
FRITZ JOANIE 257E

Dam

AOD	BR	WR	YR	MPPA
8	96	100	97	100

ANDRAS NEW LOOK 2012
BCRR QUEEN 445B
PAULS QUEEN 7105

Carcass

REA (Sq. cwt)	RE Ratio	IMF Ratio	BF Ratio
0.91	79	55	51

CED	BW	WW	YW	MK	ME	HPG	CEM	ST	MB	YG	CW	REA	FAT	ProS	HERD	GRID	
14	-3.3	63	101	27	14	12	9	22	0.69	0.21	28	-0.2	0.03	134	89	45	
		31%	23%	40%			34%		31%	14%	1%	8%	31%		5%	4%	34%

CE *** • Act. BW 83 • WW 639 • WW Ratio 102 • YW Ratio 98

226 BCRR Top End 226

3/20/22 • RED ANGUS • BCRR 226 • RED • POLLED • 4630769 • BULL

FRITZ GOLDEN OSCAR 8006
FRITZ MONUMENT 618G
FRITZ JOANIE 257E

Dam

AOD	BR	WR	YR	MPPA
5	92	95	87	96

GMRA TRILOGY 0226
726E
BCRR ANGEL 2196Z

Carcass

REA (Sq. cwt)	RE Ratio	IMF Ratio	BF Ratio
1.18	94	200	101

CED	BW	WW	YW	MK	ME	HPG	CEM	ST	MB	YG	CW	REA	FAT	ProS	HERD	GRID
15	-3.5	63	92	25	12	11	11	17	0.69	0.1	14	0.09	0.04	95	64	31
		23%	21%						2%	32%	8%				32%	

CE *** • Act. BW 76 • WW 617 • WW Ratio 98 • YW Ratio 90

232 BCRR Monument 232

3/22/22 • RED ANGUS • BCRR 232 • RED • POLLED • 4630865 • BULL

FRITZ GOLDEN OSCAR 8006
FRITZ MONUMENT 618G
FRITZ JOANIE 257E

Dam

AOD	BR	WR	YR	MPPA
10	103	105	102	104

5L Norseman King
BCRR Norseman Gem 0190
Sodak Gem H8058

Carcass

REA (Sq. cwt)	RE Ratio	IMF Ratio	BF Ratio

CED	BW	WW	YW	MK	ME	HPG	CEM	ST	MB	YG	CW	REA	FAT	ProS	HERD	GRID
11	0.6	72	120	27	16	11	8	19	0.58	0.06	28	0.14	0.01	117	69	49
				13%	10%	36%			31%	7%	18%	31%	31%	15%	23%	27%

CE * • Act. BW 98 • WW 638 • WW Ratio 101 • YW Ratio 102

RED ANGUS BULLS

236 BCRR Enterprise 236

3/24/22 • RED ANGUS • BCRR 236 • RED • POLLED • 4630721 • BULL

9 MILE FRANCHISE 6305
9 MILE ENTERPRISE 8180
DYK RED BIRD 1944-5105

<i>Dam</i>					<i>Carcass</i>			
AOD	BR	WR	YR	MPPA	REA (Sq. cwt)	RE Ratio	IMF Ratio	BF Ratio
6	108	102	101	101	1.13	103	30	89

GMRA TRILOGY 0226
BCRR GEM 613D
BCRR GEM 013X

CED	BW	WW	YW	MK	ME	HPG	CEM	ST	MB	YG	CW	REA	FAT	ProS	HERD	GRID
11	-2.7	56	99	31	5	13	7	17	0.37	0.02	16	0.32	0.04	101	64	37
		33%	12%		20%		29%		24%		15%		36%		32%	

CE * • Act. BW 90 • WW 636 • WW Ratio 101 • YW Ratio 103

239 BCRR Well Built 239

3/25/22 • RED ANGUS • BCRR 239 • BLACK • POLLED • 4630733 • BULL

BIEBER CL STOCKMAN E116
BCRR STOCKMAN 952G
BCRR LAKINA 607D

<i>Dam</i>					<i>Carcass</i>			
AOD	BR	WR	YR	MPPA	REA (Sq. cwt)	RE Ratio	IMF Ratio	BF Ratio
6	97	97	92	98	1.28	107	89	89

BHR KING 167
BCRR MISS WIX 6182D
PAULS MISS WIX 827

CED	BW	WW	YW	MK	ME	HPG	CEM	ST	MB	YG	CW	REA	FAT	ProS	HERD	GRID
14	-5	65	100	22	9	12	9	19	0.46	-0.05	24	0.44	0.01	110	75	35
		26%	6%	32%			17%		10%	38%	8%	6%	37%	23%	14%	

CE *** • Act. BW 76 • WW 642 • WW Ratio 102 • YW Ratio 94

243 ARRC Stockman 243

4/1/22 • RED ANGUS • ARRC 243 • RED • POLLED • 4630879 • BULL

PIE STOCKMAN 4051
BIEBER CL STOCKMAN E116
BIEBER CL DATELINE 115C

<i>Dam</i>					<i>Carcass</i>			
AOD	BR	WR	YR	MPPA	REA (Sq. cwt)	RE Ratio	IMF Ratio	BF Ratio
5	111	92		94	1.22			

JCBB TRAILHEAD 347A
STAR G CEDAR E714
URIELL CEDAR 522-512

CED	BW	WW	YW	MK	ME	HPG	CEM	ST	MB	YG	CW	REA	FAT	ProS	HERD	GRID
16	-3.8	68	109	25	2	10	9	21	0.77	0.19	17	-0.06	0.05	142	93	49
		12%	17%	24%	25%			19%		4%				3%	3%	27%

CE ** • Act. BW 77 • WW 813 • WW Ratio • YW Ratio



245 BCRR SM 245

3/28/22 • RED ANGUS • BCRR 245 • RED • POLLED • 4630787 • BULL

BIEBER CL STOCKMAN E116
BCRR STOCKMAN 952G
BCRR LAKINA 607D

<i>Dam</i>					<i>Carcass</i>			
AOD	BR	WR	YR	MPPA	REA (Sq. cwt)	RE Ratio	IMF Ratio	BF Ratio
4	89	103	105	101	1.15	104	44	89

RAVN DEFENSE C550
BCRR LAKOTA 884F
BCRR LAKOTA KING 3123A

CED	BW	WW	YW	MK	ME	HPG	CEM	ST	MB	YG	CW	REA	FAT	ProS	HERD	GRID
12	-4.6	71	111	29	12	9	6	16	0.4	-0.01	40	0.42	0	88	41	47
		9%	16%	21%	21%			16%		5%	7%	15%			30%	

CE *** • Act. BW 81 • WW 633 • WW Ratio 101 • YW Ratio 102



248 ARRC Stockman 248

3/29/22 • RED ANGUS • ARRC 248 • RED • POLLED • 4630875 • BULL

PIE STOCKMAN 4051
BIEBER CL STOCKMAN E116
BIEBER CL DATELINE 115C

<i>Dam</i>					<i>Carcass</i>			
AOD	BR	WR	YR	MPPA	REA (Sq. cwt)	RE Ratio	IMF Ratio	BF Ratio
3	95	100	107	100	1.1	100	78	108

RRREDS SENECA 731C
CLARK MARY 1123-1910
CLARK MARY 9126-1123

CED	BW	WW	YW	MK	ME	HPG	CEM	ST	MB	YG	CW	REA	FAT	ProS	HERD	GRID
20	-6.3	71	116	31	9	10	12	16	0.44	0.21	44	0.37	0.07	111	61	50
		1%	2%	15%	14%	11%	1%		3%		10%	22%		37%	25%	

CE *** • Act. BW 64 • WW 568 • WW Ratio 100 • YW Ratio 107



257 BCRR Marksman 257

4/2/22 • RED ANGUS • BCRR 257 • RED • POLLED • 4630649 • BULL

WFL MERLIN 018A
LELAND MARKSMAN 6629
LELAND CHATEAU 747

Dam					Carcass			
AOD	BR	WR	YR	MPPA	REA (Sq. cwt)	RE Ratio	IMF Ratio	BF Ratio
10	97	105	103	105	0.99	81	32	76

BCRR SUMMIT 925W
BCRR NEXA 274Z
GMRA NEXA 812

CED	BW	WW	YW	MK	ME	HPG	CEM	ST	MB	YG	CW	REA	FAT	ProS	HERD	GRID
15	-3.7	63	102	36	9	11	9	15	0.14	-0.04	32	0.23	-0.02	79	50	29
22%	18%	39%	1%			11%			10%	18%	28%	2%				

CE *** • Act. BW 76 • WW 624 • WW Ratio 99 • YW Ratio 92



262 BCRR Top End 262

4/6/22 • RED ANGUS • BCRR 262 • RED • POLLED • 4630661 • BULL

LASO FOUNDATION D168F
VGW TOP END 021
VGW MM-CHRSS 1897

Dam					Carcass			
AOD	BR	WR	YR	MPPA	REA (Sq. cwt)	RE Ratio	IMF Ratio	BF Ratio
9	100	107	107	105	1.1	105	85	76

BHR KING 167
BCRR KING'S GEM 3149A
BCRR NORSEMAN GEM 934W

CED	BW	WW	YW	MK	ME	HPG	CEM	ST	MB	YG	CW	REA	FAT	ProS	HERD	GRID
9	0.9	70	118	29	16	14	4	22	0.54	-0.14	42	0.79	-0.01	144	78	67
		16%	12%	23%		11%		1%	23%	2%	4%	1%	6%	2%	11%	7%

CE * • Act. BW 83 • WW 699 • WW Ratio 111 • YW Ratio 108



263 BCRR Marksman 263

4/6/22 • RED ANGUS • BCRR 263 • RED • POLLED • 4630783 • BULL

WFL MERLIN 018A
LELAND MARKSMAN 6629
LELAND CHATEAU 747

Dam					Carcass			
AOD	BR	WR	YR	MPPA	REA (Sq. cwt)	RE Ratio	IMF Ratio	BF Ratio
4	93	102	104	101	1.14	105	67	89

CSPF CASH MONEY 11C
BCRR ANGIE ROSE 825F
BCRR ANGIE ROSE 376A

CED	BW	WW	YW	MK	ME	HPG	CEM	ST	MB	YG	CW	REA	FAT	ProS	HERD	GRID
16	-2.5	68	108	34	-1	11	9	14	0.23	0.02	32	0.53	0.04	89	56	32
12%	37%	23%	26%	2%	30%		18%			25%	18%	3%				

CE ** • Act. BW 72 • WW 624 • WW Ratio 99 • YW Ratio 104

264 BCRR Monument 264

4/7/22 • RED ANGUS • BCRR 264 • RED • POLLED • 4630639 • BULL

PIE STOCKMAN 4051
BIEBER CL STOCKMAN E116
BIEBER CL DATELINE 115C

Dam					Carcass			
AOD	BR	WR	YR	MPPA	REA (Sq. cwt)	RE Ratio	IMF Ratio	BF Ratio
10	102	105	104	104	1.03	95	35	89

FEDDES ATLAS 867
BCRR ATLAS'S GEM 281Z
BCRR EXECUTIVE GEM 533R

CED	BW	WW	YW	MK	ME	HPG	CEM	ST	MB	YG	CW	REA	FAT	ProS	HERD	GRID
15	-1.6	73	120	34	8	11	11	16	0.37	0.13	29	0.21	0.05	100	65	35
19%	10%	9%	2%				3%				28%	32%		37%	30%	

CE ** • Act. BW 83 • WW 687 • WW Ratio 109 • YW Ratio 104

271 BCRR Monument 271

4/10/22 • RED ANGUS • BCRR 271 • RED • POLLED • 4630709 • BULL

LASO FOUNDATION D168F
VGW TOP END 021
VGW MM-CHRSS 1897

Dam					Carcass			
AOD	BR	WR	YR	MPPA	REA (Sq. cwt)	RE Ratio	IMF Ratio	BF Ratio
7	108	108	105	106	1.1	96	41	134

ANDRAS NEW LOOK 2012
BCRR HOLLEY 5109C
BCRR QUEEN 228Z

CED	BW	WW	YW	MK	ME	HPG	CEM	ST	MB	YG	CW	REA	FAT	ProS	HERD	GRID
11	-0.6	58	90	30	10	13	7	24	0.63	0.11	15	0.05	0.04	136	103	33
						13%			1%	13%				4%	1%	

CE * • Act. BW 80 • WW 652 • WW Ratio 104 • YW Ratio 98

273 BCRR 273

4/10/22 • RED ANGUS • BCRR 273 • RED • POLLED • 4630789 • BULL

PIE STOCKMAN 4051
BIEBER CL STOCKMAN E116
BIEBER CL DATELINE 115C

Dam					Carcass			
AOD	BR	WR	YR	MPPA	REA (Sq. cwt)	RE Ratio	IMF Ratio	BF Ratio
4	101	104	102	102	1.02	96	87	121

BIEBER DEEP END B597
BCRR RED ROSE 847F
377A

CED	BW	WW	YW	MK	ME	HPG	CEM	ST	MB	YG	CW	REA	FAT	ProS	HERD	GRID
16	-4.3	73	116	29	10	12	11	18	0.55	0.13	44	0.43	0.05	131	78	53
10%	11%	11%	14%	24%			36%	2%	22%	22%	3%	6%		6%	11%	21%

CE ** • Act. BW 80 • WW 642 • WW Ratio 102 • YW Ratio 106



RED ANGUS BULLS

279 **BCRR Monument 279**

4/12/22 • RED ANGUS • BCRR 279 • RED • POLLED • 4630667 • BULL

PIE STOCKMAN 4051
BIEBER CL STOCKMAN E116
 BIEBER CL DATELINE 115C

<i>Dam</i>					<i>Carcass</i>			
AOD	BR	WR	YR	MPPA	REA (sq. cwt)	RE Ratio	IMF Ratio	BF Ratio
9	105	106	105	105	0.94	89	34	135

FEDES ATLAS 867
BCRR ANNE 3148A
 GMRA ANNE 804

CED	BW	WW	YW	MK	ME	HPG	CEM	ST	MB	YG	CW	REA	FAT	ProS	HERD	GRID
16	-1.2	70	112	33	13	10	10	17	0.49	0.15	27	0.08	0.04	96	59	37
9%		17%	20%	4%			6%	28%	33%		34%					

CE * • Act. BW 80 • WW 688 • WW Ratio 109 • YW Ratio 107



288 **BCRR Lakota 288**

4/15/22 • RED ANGUS • BCRR 288 • RED • POLLED • 4630771 • BULL

PIE STOCKMAN 4051
BIEBER CL STOCKMAN E116
 BIEBER CL DATELINE 115C

<i>Dam</i>					<i>Carcass</i>			
AOD	BR	WR	YR	MPPA	REA (sq. cwt)	RE Ratio	IMF Ratio	BF Ratio
5	96	103		102	1.14	110	166	89

BIEBER SPARTACUS A193
708E
BCRR LAKOTA 4220B

CED	BW	WW	YW	MK	ME	HPG	CEM	ST	MB	YG	CW	REA	FAT	ProS	HERD	GRID
18	-4.4	77	123	32	14	7	12	15	0.6	0.14	50	0.43	0.04	106	49	57
3%	11%	5%	7%	5%			1%		16%		1%	6%		28%		15%

CE *** • Act. BW 74 • WW 735 • WW Ratio 117 • YW Ratio



289 **BCRR Monument 289**

4/15/22 • RED ANGUS • BCRR 289 • RED • POLLED • 4630731 • BULL

FRITZ GOLDEN OSCAR 8006
FRITZ MONUMENT 618G
 FRITZ JOANIE 257E

<i>Dam</i>					<i>Carcass</i>			
AOD	BR	WR	YR	MPPA	REA (sq. cwt)	RE Ratio	IMF Ratio	BF Ratio
6	99	107	103	105	1.13	103	146	89

GMRA TRILOGY 0226
BCRR JOLENE 6144D
 A-1 BLAZIN JOLENE 594Y

CED	BW	WW	YW	MK	ME	HPG	CEM	ST	MB	YG	CW	REA	FAT	ProS	HERD	GRID
11	-2.5	72	114	29	16	11	8	20	0.67	0.12	28	0.13	0.03	118	73	45
		37%	13%	16%	24%			39%	4%	9%	29%			14%	17%	33%

CE * • Act. BW 90 • WW 700 • WW Ratio 111 • YW Ratio 102



TOP 10 REASONS YOU SHOULD INVEST IN THE BULLIS CREEK ADVANTGE

- Sandhills Ranch Raised Long age Bulls Never pampered.
- Low inputs with minimal supplement feeding cows fed hay less than 90 days per year.
- Customers are treated the way we would like to be treated.
- Sound structured cattle with emphasis on feet, legs and udders.
- Optimal performance that is data driven. Genomically tested.

- Limousin for 50 years – Red Angus for 30 years.
- Strict culling for disposition and ease of handling.
- Relying heavily on AI and cows are run in large groups in large pastures.
- We retain ownership and sell more finished cattle than we do breeding stock.
- No smoke and mirrors guarantee just honest dealings and standing behind the cattle we produce.

RED ANGUS BULLS

293

BCRR Monument 293

4/16/22 • RED ANGUS • BCRR 293 • RED • POLLED • 4630773 • BULL

FRITZ GOLDEN OSCAR 8006
FRITZ MONUMENT 618G
 FRITZ JOANIE 257E

Dam

AOD	BR	WR	YR	MPPA
5	104	95	97	97

Carcass

REA (Sq. cwt)	RE Ratio	IMF Ratio	BF Ratio
1.25	105	192	111

ANDRAS NEW LOOK 2012
785E
 BCRR FOXY RIDGE 7149T

CED	BW	WW	YW	MK	ME	HPG	CEM	ST	MB	YG	CW	REA	FAT	ProS	HERD	GRID	
10	0	70	111	26	16	10	6	17	0.41	0.08	17	0.1	0.03	61	46	14	
		17%	21%					29%									

CE * • Act. BW 84 • WW 614 • WW Ratio 98 • YW Ratio 94

298

BCRR 298

4/17/22 • RED ANGUS • BCRR 298 • RED • POLLED • 4630785 • BULL

BIEBER DEEP END B597
BCRR DROVER 982G
 RED LAZY MC PRIDE 43X

Dam

AOD	BR	WR	YR	MPPA
4	95	106	93	104

Carcass

REA (Sq. cwt)	RE Ratio	IMF Ratio	BF Ratio
1.3	108	35	76

RAVN DEFENSE C550
BCRR LASS 8141F
 BCRR LASS 317A

CED	BW	WW	YW	MK	ME	HPG	CEM	ST	MB	YG	CW	REA	FAT	ProS	HERD	GRID
14	-3.5	55	82	31	12	13	10	17	0.44	-0.09	14	0.42	0.01	84	64	20
		27%	21%			12%	18%	7%	30%	4%	7%	33%	31%			

CE *** • Act. BW 78 • WW 612 • WW Ratio 97 • YW Ratio 93

2103

BCRR 2103

4/19/22 • RED ANGUS • BCRR 2103 • RED • POLLED • 4630627 • BULL

BIEBER DEEP END B597
BCRR DROVER 982G
 RED LAZY MC PRIDE 43X

Dam

AOD	BR	WR	YR	MPPA
11	94	105	101	105

Carcass

REA (Sq. cwt)	RE Ratio	IMF Ratio	BF Ratio
1.29	117	84	85

5L NORSEMAN KING 2291
HLD MS NORSEMAN 125Y
 HLD 12

CED	BW	WW	YW	MK	ME	HPG	CEM	ST	MB	YG	CW	REA	FAT	ProS	HERD	GRID
14	-0.7	62	102	28	4	13	11	12	0.46	-0.13	29	0.69	0	104	49	55
		29%	38%		28%	23%		3%	38%	2%	29%	1%	22%	31%	17%	

CE * • Act. BW 80 • WW 707 • WW Ratio 105 • YW Ratio 105



2105

BCRR Monument 2105

4/20/22 • RED ANGUS • BCRR 2105 • RED • POLLED • 4630635 • BULL

FRITZ GOLDEN OSCAR 8006
FRITZ MONUMENT 618G
 FRITZ JOANIE 257E

Dam

AOD	BR	WR	YR	MPPA
12	96	105	104	105

Carcass

REA (Sq. cwt)	RE Ratio	IMF Ratio	BF Ratio
1.01	78	45	108

RED RMJ REDMAN 1T
RED LAZY MC PRIDE 43X
 LAZY MC PRIDE 97S

CED	BW	WW	YW	MK	ME	HPG	CEM	ST	MB	YG	CW	REA	FAT	ProS	HERD	GRID
19	-3.9	57	91	28	13	9	15	19	0.37	0.17	7	-0.22	0.04	84	80	4
		2%	16%	30%		1%		6%					9%			

CE *** • Act. BW 70 • WW 647 • WW Ratio 96 • YW Ratio 90

2114

BCRR 2114

4/26/22 • RED ANGUS • BCRR 2114 • RED • POLLED • 4630793 • BULL

PIE STOCKMAN 4051
BIEBER CL STOCKMAN E116
 BIEBER CL DATELINE 115C

Dam

AOD	BR	WR	YR	MPPA
4	106	109	94	106

Carcass

REA (Sq. cwt)	RE Ratio	IMF Ratio	BF Ratio
1.11	93	37	115

BIEBER SPARTACUS A193
BCRR GEM 812F
 BCRR GEM 680D

CED	BW	WW	YW	MK	ME	HPG	CEM	ST	MB	YG	CW	REA	FAT	ProS	HERD	GRID
15	-4.2	66	103	34	8	8	11	13	0.55	0.15	30	0.13	0.04	83	41	42
		20%	12%	30%	36%	3%	3%		22%	25%		40%				

CE ** • Act. BW 80 • WW 613 • WW Ratio 97 • YW Ratio 94

2116

BCRR 2116

4/26/22 • RED ANGUS • BCRR 2116 • RED • POLLED • 4630677 • BULL

PIE STOCKMAN 4051
BIEBER CL STOCKMAN E116
 BIEBER CL DATELINE 115C

Dam

AOD	BR	WR	YR	MPPA
8	103	105	104	104

Carcass

REA (Sq. cwt)	RE Ratio	IMF Ratio	BF Ratio
1.07	100	37	115

RED NCJ LAZY MC VENOM 34Z
BCRR SEREOLA 451B
 SLGN SPT SEREOLA 5390R

CED	BW	WW	YW	MK	ME	HPG	CEM	ST	MB	YG	CW	REA	FAT	ProS	HERD	GRID
15	-3.1	65	104	31	10	8	11	13	0.54	0.21	36	0.15	0.06	81	36	45
		24%	26%	34%	34%	10%	2%		23%	11%		33%				

CE ** • Act. BW 76 • WW 655 • WW Ratio 104 • YW Ratio 106



REFERENCE SIRES

Reference Sire **CJSL Windfall 9072W**

03/15/2009 • PUREBRED(100/88.1) • CJSL 9072W • RED • HET POLLED (T) • NPM1936111 • BULL

LVLS FARMER 4G
LVLS SECRET WEAPON 4408K
LVLS 408H

Dam
AOD BR WR YR MPPA

DVFC ARROWHEAD 1004J
CJ'S MS ARROWHEAD 456P
CJ'S MAGDELINE 252M

Carcass
REA (Sq.cwt) RE Ratio IMF Ratio BF Ratio

CED	BW	WW	YW	MK	TM	CEM	SC	DOC	YG	CW	REA	MB	\$MTI
6	2.7	62	89	30	61	4	0.7	14	-0.53	40	1.33	-0.19	46.04
				10%	15%			25%	30%	10%	20%		

Act. BW 95 • Adj. WW 755 • WW Ratio 122 • YW Ratio



Limousin

Windfall

Reference Sire **WULFS Emprize 2424E**

04/07/2017 • LIM-FLEX(50/47.7) • FI 2424E • RED • HOMO POLLED (T) • LFM2119950 • BULL

BIEBER ROLLIN DEEP Y118
BIEBER DEEP END B597
BIEBER LAURA 158W

Dam
AOD BR WR YR MPPA

WZRK GENESIS 532E
WULFS ZUNI 2424Z
WULFS PLEASURE 4251P

Carcass
REA (Sq.cwt) RE Ratio IMF Ratio BF Ratio

CED	BW	WW	YW	MK	TM	CEM	SC	DOC	YG	CW	REA	MB	\$MTI
12	-0.7	88	137	24	68	10	1.4	13	-0.32	52	1.09	0.43	75.04
		30%	15%	10%	10%	25%	10%	10%	20%	15%	10%	15%	10%

Act. BW 83 • Adj. WW 680 • WW Ratio 108 • YW Ratio 110



Limousin

Emprize

Reference Sire **JBV Yellowstone 901G**

01/01/2019 • PUREBRED(90/78.9) • JBVF 901G • HOMO BLACK (T) • HOMO POLLED (P-1) • NPM2166804 • BULL

MAGS ANCHOR
AHCC EARNING POWER 900E ET
LVLS 9066U

Dam
AOD BR WR YR MPPA

JBV EXPEDITION 205Z
JBV GIRL CRUSH 422B
JBV BRITTANY 029X

Carcass
REA (Sq.cwt) RE Ratio IMF Ratio BF Ratio

CED	BW	WW	YW	MK	TM	CEM	SC	DOC	YG	CW	REA	MB	\$MTI
5	2.4	72	122	24	60	4	2.8	12	-0.36	52	1.1	0.18	61.56
			20%	10%	35%	20%	1%			2%		2%	3%

Act. BW 85 • Adj. WW 722 • WW Ratio 101 • YW Ratio 106



Limousin

Yellowstone

Reference Sire **WULFS Eaglestone Y711E**

09/22/2017 • LIM-FLEX(62/56.1) • FI Y711E • HET BLACK (T) • HOMO POLLED (T) • LFM2145302 • BULL

WULFS WILLARD 5115W
WULFS COMPLIANT K687C ET
WULFS SOLOIST 6284S

Dam
AOD BR WR YR MPPA

DEER VALLEY DESIGN 208 61
MINE PLD KISSNTELL 0072X
MINE PLD FOCUS 8011U

Carcass
REA (Sq.cwt) RE Ratio IMF Ratio BF Ratio

CED	BW	WW	YW	MK	TM	CEM	SC	DOC	YG	CW	REA	MB	\$MTI
15	-1.1	70	103	29	64	10	0.8	11	-0.24	30	0.75	0.21	60.75
		10%	15%		10%	20%	10%		30%		35%		

Act. BW 95 • Adj. WW 713 • WW Ratio 103 • YW Ratio 108



Limousin

Eaglestone

REFERENCE SIRES

Limousin



WULFS Defend K909D

Reference Sire

BRAW Defend 8242F

03/08/2018 • LIM-FLEX(75/64.9) • BRAW 8242F • BLACK • HOMO POLLED (T) • LFM2153026 • BULL

WULFS XTRACTOR X233X
WULFS DEFEND K909D ET
WULFS WORTH IT ALL 9108W

Dam

AOD BR WR YR MPPA

G A R PREDESTINED
BRAW MS PREDESTINED 170
BRAW MS POWER 7145T

Carcass
REA (Sq. cwt) RE Ratio IMF Ratio BF Ratio
97 111

CED	BW	WW	YW	MK	TM	CEM	SC	DOC	YG	CW	REA	MB	\$MT1
18	-0.4	62	101	24	54	9	0.82	14	-0.2	34	0.49	0.04	51.9
2%	20%			25%		15%		35%	40%			0%	

Act. BW 68 • Adj. WW 718 • WW Ratio 114 • YW Ratio 112



Red Angus



Stockman

Reference Sire

BIEBER CL Stockman E116

1/13/2017 • RED ANGUS • RED • POLLED • 3751653 • BULL

LSF SAGA 1040Y
PIE STOCKMAN 4051
PIE LAKOTA 046

Dam

AOD BR WR YR MPPA
103

PARINGA IRON ORE E27
BIEBER CL DATELINE 115C
BIEBER CL DATELINE 109A

Carcass
REA (Sq. cwt) RE Ratio IMF Ratio BF Ratio
116 163

CED	BW	WW	YW	MK	ME	HPG	CEM	ST	MB	YG	CW	REA	FAT	ProS	HERD	GRID
21	-5.7	72	121	33	7	8	14	16	0.57	0.22	47	0.35	0.07	130	66	64
1%	4%	19%	14%	6%			1%	35%	23%		5%	18%		10%	31%	12%

Act. BW 67 • WW 633 • WW Ratio 107 • YW Ratio 115

Angus



Entice

Reference Sire

MOGCK Entice

1/31/2017 • ANGUS • RED • POLLED • 4629773 • BULL

SYDGEN EXCEED 3223
SYDGEN ENHANCE
SYDGEN RITA 2618

Dam

AOD BR WR YR MPPA

MOGCK SURE SHOT 253
MOGCK ERICA 2255
MOGCK ERICA 2162

Carcass
REA (Sq. cwt) RE Ratio IMF Ratio BF Ratio

CED	BW	WW	YW	MK	ME	HPG	CEM	ST	MB	YG	CW	REA	FAT	ProS	HERD	GRID
10	-0.1	93	160	22	2	12	-6	9	0.81	0.11	72	0.56	0.01	52	-58	109
		1%	1%		39%				5%		1%	6%	38%			1%

Act. BW • WW • WW Ratio • YW Ratio

Red Angus



Monument

Reference Sire

FRITZ Monument 618G

1/30/2019 • RED ANGUS • RED • POLLED • 4169568 • BULL

RED CROWFOOT OLE'S OSCAR
FRITZ GOLDEN OSCAR 8006
FRITZ REBALS 6039

Dam

AOD BR WR YR MPPA
106

FRITZ ANVIL 747C
FRITZ JOANIE 257E
FRITZ JOANIE 043

Carcass
REA (Sq. cwt) RE Ratio IMF Ratio BF Ratio
104 139

CED	BW	WW	YW	MK	ME	HPG	CEM	ST	MB	YG	CW	REA	FAT	ProS	HERD	GRID
17	-3.5	79	134	28	28	11	12	19	0.68	0.22	30	-0.12	0.04	103	62	40
13%	23%	8%	6%	32%			3%	12%	12%		31%			33%	35%	

Act. BW 75 • WW 797 • WW Ratio 118 • YW Ratio 115

REFERENCE SIRES

Reference Sire **VGW *Top End* 021**

2/4/2020 • RED ANGUS • RED • POLLED • 4272811 • BULL

C-BAR CORNERSTONE 105D
LASO FOUNDATION D168F
 LASO DORY JIBA B29D

Dam
 AOD BR WR YR MPPA
 100

VGW MERCY- MERCY 412
VGW MM-CHRSS 1897
 VGW JOUR-CHRSS 13123

Carcass
 REA (Sq.cwt) RE Ratio IMF Ratio BF Ratio

CED	BW	WW	YW	MK	ME	HPG	CEM	ST	MB	YG	CW	REA	FAT	ProS	HERD	GRID
9	-1	68	116	31	14	12	6	22	0.66	-0.02	34	0.49	0.01	147	81	66
		30%	20%	11%				2%	14%	16%	22%	9%		4%	11%	11%

Act. BW 75 • WW 765 • WW Ratio 114 • YW Ratio 114



Red Angus

Top End

Reference Sire **SYDGEN *Enhance***

1/27/2015 • ANGUS • BLACK • POLLED • 4058664 • BULL

SYDGEN GOOGOL
SYDGEN EXCEED 3223
 SYDGEN FOREVER LADY 1255

Dam
 AOD BR WR YR MPPA

SYDGEN LIBERTY GA 8627
SYDGEN RITA 2618
 FOX RUN RITA 9308

Carcass
 REA (Sq.cwt) RE Ratio IMF Ratio BF Ratio

CED	BW	WW	YW	MK	ME	HPG	CEM	ST	MB	YG	CW	REA	FAT	ProS	HERD	GRID
15	-1.8	87	156	21	17	11	8	11	0.98	0.15	63	0.44	0.03	118	19	99
		26%	3%	1%			37%	1%	81%	1%	11%			18%		1%

Act. BW • WW • WW Ratio • YW Ratio



Angus

Enhance

Reference Sire **LELAND *Marksman* 6629**

4/10/2016 • RED ANGUS • RED • POLLED • 3543019 • BULL

LJC MERLIN T179
WFL MERLIN 018A
 WFL COMMITMENT 042Y

Dam
 AOD BR WR YR MPPA
 105

GLACIER CHATEAU 744
LELAND CHATEAU 747
 MESSMER PANDORA W044

Carcass
 REA (Sq.cwt) RE Ratio IMF Ratio BF Ratio
 107 86

CED	BW	WW	YW	MK	ME	HPG	CEM	ST	MB	YG	CW	REA	FAT	ProS	HERD	GRID
16	-4.8	64	111	41	4	10	9	12	0.25	-0.11	30	0.64	0	83	33	49
		16%	9%	28%	1%	51%	21%		6%	31%	4%	23%				28%

Act. BW 65 • WW 769 • WW Ratio 104 • YW Ratio 107



Red Angus

Marksman

Reference Sire **BCRR *Drover* 982G**

3/23/2019 • RED ANGUS • RED • POLLED • 4126682 • BULL

BIEBER ROLLIN DEEP Y118
BIEBER DEEP END B597
 BIEBER LAURA 158W

Dam
 AOD BR WR YR MPPA
 105

RED RMJ REDMAN 1T
RED LAZY MC PRIDE 43X
 LAZY MC PRIDE 97S

Carcass
 REA (Sq.cwt) RE Ratio IMF Ratio BF Ratio
 130 100

CED	BW	WW	YW	MK	ME	HPG	CEM	ST	MB	YG	CW	REA	FAT	ProS	HERD	GRID
15	-3	60	97	27	9	15	13	15	0.54	0.01	33	0.51	0.03	122	71	52
		28%	29%			10%	1%		27%	24%	22%	8%		14%	23%	24%

Act. BW 88 • WW 630 • WW Ratio 106 • YW Ratio 106



Red Angus

Dam - Red Lazy Mc Pride 43X

What is Top Dollar Angus?

Top Dollar Angus is the beef industry's leading genetic verification and marketing assistance company for commercial feeder cattle. We focus exclusively on Angus- and Red Angus-influence cattle ranking in the Top 25% for growth and carcass traits.

Our focus on these traits is driven by the needs of our feeding partners. In today's marketplace, cattle feeders must know the cattle they buy will stay healthy, grow quickly and efficiently, while also delivering high-value carcass traits. Top Dollar Angus verifies cattle with Top 25% genetics, presenting feedlots with a product they can trust.

Our Top Dollar Angus seedstock partners provide bull buyers with the genetics to be successful in today's marketplace. Top Dollar Angus magnifies that success by connecting Top Dollar Angus feeder calves with our ever-growing network of feeding partners.

How Do I Enroll?

Learning more about Top Dollar Angus Feeder Partnership enrollment is simple.

1. Contact a representative listed below via phone or email. Please share your phone number and email address.
2. Answer a few questions about your operation's background including bull suppliers and, if available, registration numbers on bulls used in your herd.
3. Submit any of the following for a free genetic evaluation.
 - **Registration Numbers** – A five- to seven-year history with more years preferred. Many seedstock breeders can help supply this information.
 - **Commercial DNA test** such as:
Igenity Beef by Neogen
GeneMax or Inherit by Zoetis
 - **Recent carcass data on your cattle**
4. Submit your information for review. After your evaluation, we will notify you about your cattle's qualifications and ranking or be able to advise you on adjustments and improvements you can make to qualify.

What is the Cost?

Once a group of cattle qualifies and the producer chooses to use the Top Dollar Angus promotional program, the verification fee is calculated at the cost of \$4 per head marketed.

*Contact us for a free,
no-obligation
consultation!*



Nate Smith, General Manager
(620) 546-4839 • nate@topdollarangus.com

Andrea Rutledge • (406) 399-3993
andrea@topdollarangus.com

Andy Albrecht • (402) 922-1000
andy@topdollarangus.com

www.topdollarangus.com



To learn more and
get in contact with us:
www.topdollarangus.com/earnmore
or scan the QR code:





Sale Averages

Number of Lots

Sale Gross

Sale Average

_____	Limousin Bulls	_____	_____
_____	Red Angus Bulls	_____	_____
_____	Commercial Bulls	_____	_____

Notes

We appreciate your support and interest in our breeding program. Your attendance and participation in our sale event has humbled us, and we wish you many successes with your purchases.

Thank you for taking time to view the catalog and allowing us the opportunity to earn your business.



Docility & Calving Ease

"Docility and calving ease are the two number-one things for a commercial rancher. And the docility of the Lim-Flex is really great. But calving ease is top of the line. She has to be able to produce a calf without a lot of problems!" - *Shane Whiting, Commercial Cow/Calf Producer*

Feed Efficiency & Carcass Merit

"Using a Continental breed such as Limousin or Lim-Flex on a British-based cow herd gives you the best of both worlds – the maximum combination of a balance between gain, feed efficiency and carcass quality." - *Dr. Kee Jim, CEO of Feedlot Health Management Services*

Improved Marbling

"Genomic testing, breeder focus and the heritability of carcass traits have enabled all of us as seedstock producers to make rapid genetic gain in carcass quality. In fact, the marbling EPD value in our breed reflects an improvement of 0.25 to 0.35 for both Limousin and Lim-Flex, making them very comparable to other Continental breeds!" - *Dan Hunt, Commercial Cow/Calf Producer*



LIMOUSIN
Think

Limousin@NALF.org • 303-220-1693 • NALF.org

6205 S Main Street, Suite D-280, Aurora, CO 80016

Find us on Facebook and Instagram @Limousin_NALF

Research Validates Red Angus as Most-Favored Female

Ranchers across the country have long recognized the value of Red Angus females as the foundation of a profitable cowherd. Now, independent research validates those years of cattle production experience with tangible data proving the Red Angus heifer's worth.

Research Confirmation

Esther McCabe, et al., of Kansas State University, led a study that confirmed Red Angus are the most-favored female in the industry. McCabe and her team compiled five years' worth of pricing data from Superior Livestock Auction, comparing 13,804 lots of heifer calves totaling over 1.2 million head that sold in 116 video auctions.

The research team evaluated the effects of independent variables on the sale price of heifer calves that fell into six different breed composition groups: English, English crosses, English-Continental crosses, Black Angus-sired out of dams with no Brahman influence, Red Angus-sired out of dams with no Brahman influence, and Brahman-influenced.

They deduced that Red Angus-sired heifer calves bring \$5 to \$9 more per hundredweight than all other breed types.

Rancher Trusted

While market research validates the price advantage of Red Angus heifers, ranchers have tested and trusted her worth on the range for years. Red Angus females are desirable as replacement heifers because they mature into productive mother cows that reward producers with extra dollars in their pockets on sale day.

Red Angus cows have gained ranchers' trust as a complete package through fertility, fleshing ability, good disposition, longevity and excellent overall production. They produce feeder calves that earn premiums in the yard and on the rail through docility, feed efficiency, conversion and carcass merit.

Over the years, stockmen have voted with their checkbooks, purchasing heifers they know will bring profitability to their ranching businesses – and Red Angus females are their most-favored choice. ■



Independent research studying five years of Superior Livestock Auction data confirms the value of Red Angus replacement females.

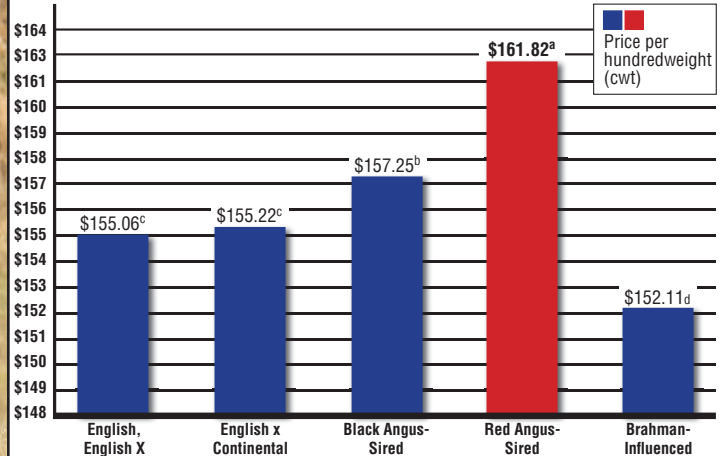
Red Angus Stockyard

List or locate quality Red Angus replacement females at stockyard.redangus.org. Over 20,000 head of cattle are sold each year through the Red Angus Stockyard.

FeMail

An electronic tool to help locate or market ranch-tested replacements. Market your open heifers, bred heifers or cows, or cow-calf pairs. FeMails are designed for offerings of 25 head of more to complement listings on the Red Angus Stockyard.

Breed and Gender Interact to Affect the Sale Price of Beef Heifer Calves*



* McCabe, et al., 2016. Breed and gender interact to affect the sale price of beef calves sold through video auctions from 2010 through 2014. J. Animal Science, Volume 94, Supplement 2, pp 28.
^{abcd} Means with unlike superscripts differ (P<0.05).



Bullis Creek Ranch
Rob & Brenda Brawner
88102 S Wood Lake Rd
Wood Lake, NE 69221

Catalog Design By Mallory Blunier, Limousin Media



Monday, January 22

GENERATIONS OF PREDICTABILITY

At the Ranch • 1:30pm CST

Bull Sale

Wood Lake, NE • www.bulliscreek.com • 402-376-4465

HONEST CATTLE. HONEST PEOPLE. HONEST DEALINGS.