



Your path TO **PROFIT**

ANNUAL PRODUCTION SALE
MARCH 6, 2020

Kist Livestock Auction, Mandan, N.D.
SELLING 62 GELBVIEH & BALANCER® BULLS

Chimney
 *Butte*
RANCH

DOUG HILLE FAMILY
RANCH: (701) 445-7383 ~ DOUG: (701) 220-2083
3320 51st Street, Mandan, ND 58554
www.ChimneyButteRanch.com

Welcome to our 2020 Sale

Thank you to all our past customers. And a warm welcome to all new guests at our sale this year.

Looking at the past, and trying to gaze into the future, one thing is for certain, CHANGE. Change and evolution, driven by consumer demand and fueled by technology, keeps producers and our industry looking for better and more inclusive methods of improving traits that result in a better experience for our end customers.

These changes demand an ever updated tool chest for our customers to help select new genetics. Genomic enhanced EPD's, the Bolt Evaluation system, Multi breed evaluations and better data collection are resulting in more consistent, and accurate numbers to base our decisions on. Not long ago EPD's adjusted once a year. Today they adjust weekly. The new EPD system, videos, catalogues, viewing the bulls, and visits with our customers are part of the tool box we offer. No one tool can make the decision for us, but utilizing several tools will help us make the best choice in bull selection.

The process of harvesting sunshine and rain to make beef appears to be a simple process, but to accomplish this task with environmental, economic, and weather influencing our everyday decisions is ever changing. Our mission to

our customers still remains simple and unchanged, "TO PROVIDE GENETICS THAT HELP INCREASE OUR CUSTOMERS' PROFITS".

Most of us have had a challenging year when it comes to weather and putting up good feed. Our calves did not wean until November 4, about 6 weeks later than usual. I made the decision to feed for health and longevity, not to play catch up with massive gains in the feedlot. We feel, in spite of conditions, this may be the best crop of bulls we have prepared for sale. We selected 63 bulls out of over 150 bull calves born this spring, we believe intense deep culling is necessary in our business.

After reviewing the data, looking at the catalogue and video, and researching the data, please contact us to discuss specific animals.

If you physically come to the sale, watch or bid on DV Auction, phone bid, or have someone bid for you, be assured we will work to make your purchase a very satisfying experience. YOUR COMPLETE SATISFACTION IS IMPORTANT TO US.

GOD BLESS,

Doug, Carol, and family



Chimney Butte Ranch

GELBIEH * BALANCERS

FRIDAY MARCH 6 2020

1 p.m. CST • Kist Livestock Auction • Mandan, ND.
701-663-9573 • 1-800-732-1163

Chimney Butte Ranch Sale Contacts

Doug Hille Cell.....(701) 220-2083
Chimney Butte Ranch Phone.....(701) 445-7383
E-mailchimneybutteranch@westriv.com

Jay Elfeldt, Auctioneer.....(308) 293-3049
E-mailjay@sutherlandindustries.com

Kirby Goettsch, Farm & Ranch Guide.....(605) 380-3939
Scott Ressler, North Dakota Stockmen's Assoc.....(701) 391-7310
Tony Heins, Cattle Business Weekly.....(701) 400-4435

www.ChimneyButteRanch.com

MULTIPLE SIRE GROUP * Genetic data not returned by press time. A supplement sheet with Sires and updated EPD's will be provided closer to the sale.

All bulls in
this catalog
have had
samples submitted
for DNA analysis.
Genomic-enhanced
EPDs and other results will be
posted when available.



DVAuction
Broadcasting Real-Time Auctions

Never Miss An Auction Again!
Watch & Bid online for FREE!

**Visit www.DVAuction.com
and Register Today!**

For General Questions Please Contact Our Office:
(402) 316-5460 or support@dvauction.com

CHIMNEY BUTTE RANCH SIGHT UNSEEN WARRANTY * If you cannot make it to the sale and wish to purchase a bull, please contact us. We will help select bulls for you to review. You may review the catalog and video to assist in your selection. On sale day, we will assign a third-party to call you and review the bull before the sale. We will have someone on the phone to bid for you, bid online using DV auction, or you may ask one of the Livestock Representatives to bid for you. Your bid will remain confidential and will be handled professionally. When we deliver the bull to you, if he is not what you think we described, we will refund 100% of your purchase price.

BULL PERFORMANCE INFORMATION * EPDs, birth weights and adjusted weaning weights are published in the sale book. Adjusted yearling weights and scrotal measurements will be available sale day in the form of a supplement sheet and will also be posted prior to the sale on www.chimneybutteranch.com as soon as the results are available.

Reference sire information, the sale book and videos are all on our website, www.chimneybutteranch.com. Videos are also posted online at www.cattleseller.com and www.dvauction.com.

VIDEOS * If you would like a video for your television or computer please contact us and we will ship one to you. Contact us by e-mail: chimneybutteranch@westriv.com or by telephone (701) 445-7383 Home • Doug's Cell: (701) 220-2083.

DELIVERY * Option 1: Take your bulls home the day of the sale and receive \$100 off your purchase price.

Option 2: We feed the bulls until April 1, provide a breeding soundness exam, and deliver the bulls up to 350 miles at no charge. If the delivery is over 350 miles, we will work with you to insure safe, prompt and economical delivery. No delivery will cost the buyer in excess of \$250. We will feed the bulls for you after April 1, for \$3.00 per day per bull. Buyer assumes all risk if bulls are left for us to feed. Insurance is recommended.

STORM DATE * We will make every effort to hold the sale regardless of the weather. The technology we have in place will allow us to hold the sale in case of a storm. All animals are presented on the video and the sale will be broadcast over the internet on www.dvauction.com.

We will have phones available for bidders to call in and place their bids. In other words, you can buy your bull from the comfort of your home or office regardless of the weather or road conditions. Please call us if you cannot make the sale. We will postpone the sale, if Kist Livestock cannot have staff available, or if we feel road and weather conditions will place our help, customers, staff or animals at excessive risk.

INSURANCE * Ownership transfers at time of sale. It is recommended that bulls be insured. Kist Livestock and other insurance company representatives can help provide insurance for you. Please inform the staff when paying for the bull if you wish to have the bull insured. Several plans are available. Insurance premium must be paid at Kist on sale day. Bulls left for us to feed are at the buyers risk. Insurance is recommended for all bulls returned for us to care for.

RETAINED INTEREST * Unless otherwise specified, Chimney Butte Ranch reserves 1/3 semen interest on any bull offered for sale. Any collection for our use, or sale, will be done at our expense, and the customers convenience.

Herd Health - a Priority

JANUARY 1 * Vaccinate heifers with Scourguard-4KC.

FEBRUARY 15 * Booster heifers and vaccinate cows with Scourguard-4KC.

FEBRUARY 25 * Begin calving synchronized heifers.

MARCH 10 * Begin calving A-I bred cows. At birth, all calves are weighed, tattooed, and vaccinated with Ultrabac CD and Inforce 3. Move pairs to spring pasture as soon as conditions allow.

MID MARCH * Vaccinate heifers with Preg-guard 9 and Anthrax vaccine.

MID APRIL * Vaccinate cows with Preg-guard 9 and Anthrax vaccine.

LATE APRIL * Test all bulls for breeding soundness.

MID MAY * Brand calves. Vaccinate with 7-way, Anthrax vaccine, and Bovashield Gold, and administer Dectomax injectable. Booster cows with Anthrax vaccine and administer Dectomax injectable.

MAY 25 * A-I breed synchronized heifers, move heifers to pastures. Begin putting bulls out to pasture with cows not synchronized.

JUNE 1 * A-I breed synchronized cows.

FIRST WEEK OF AUGUST * Fetal ultrasound heifers, identify sex and establish fetal age.

LATE AUGUST * Take herd bulls away from cows.

EARLY SEPTEMBER * Fetal ultrasound cows. Identify sex and establish fetal age. Administer preweaning vaccines including: Inforce 3, 7-way with haemophilus, Bovi-shield BVD, and One Shot.

LATE SEPTEMBER * Wean and weigh calves. Pour calves with Dectomax. Administer Bovi-shield Gold and Somubac for booster vaccinations.

LATE NOVEMBER * Bangs vaccinate and pregnancy check heifer calves kept for replacements. Pour cows, replacement heifers and herd bulls with Dectomax, return to pasture until conditions dictate feeding.

EARLY DECEMBER * Select breeding stock females for sales to purebred and commercial producers.

* Note: All dates are approximate.



- Free choice salt and mineral is available to all animals year round.

- We begin feeding cows and herd bulls hay when pasture or weather conditions dictate. At the latest, we will begin feeding about December 25.

- Zoetis is our primary source for vaccines & animal health products.

- Mandan Vet Clinic is our primary herd health advisor.

- Culling is an ongoing process, we note poor doing, bad udders, poor

performance, calving problems, bad attitudes, poor feet, late breeders, etc, and sell cull animals at the optimum time of year.

- If you would like to discuss our program in more detail, please contact us.

- All handling and vaccinations are given according to Beef Quality Assurance guidelines.

This info. is also on our website: www.ChimneyButteRanch.com

REFERENCE SIREs

Notes: _____



A- DCH HILLE STOCK OPTIONS D410

BD: 2/20/16 Reg#: AMGV1364748 %GB: PB94 HPS: homo polled Color: homo black

EPDs													
CED	BW	WW	YW	MK	TM	CEM	ST	YG	CW	REA	MB	FPI	\$Cow
16	-2	77	107	24	62	8	18	-0.31	32	0.81	0.24	84.7	129.79

B- LRSF LRL ARTEMIS D112

BD: 3/7/16 Reg#: AMGV1350052 %GB: BA75 HPS: homo polled Color: red

EPDs													
CED	BW	WW	YW	MK	TM	CEM	ST	YG	CW	REA	MB	FPI	\$Cow
15	-0.6	64	99	21	53	10	9	-0.18	42	0.79	-0.03	76.62	

C- DANELL CHOCO 53B

BD: 2/28/14 Reg#: AMGV1278414 %GB: PB94 HPS: homo polled Color: homo black

EPDs													
CED	BW	WW	YW	MK	TM	CEM	ST	YG	CW	REA	MB	FPI	\$Cow
16	-1.7	69	99	12	46	10	15	-0.26	28	0.71	0.31	80.23	

D- DCH HILLE C169

BD: 3/14/15 Reg#: AMGV1330361 %GB: PB94 HPS: homo polled Color: red

EPDs													
CED	BW	WW	YW	MK	TM	CEM	ST	YG	CW	REA	MB	FPI	\$Cow
13	0.7	80	127	19	59	10	15	-0.21	50	0.78	0.25	83.15	106.45

E- MCCA 524C CORNHUSKER RED

BD: 1/26/15 Reg#: AMGV1310913 %GB: PB94 HPS: homo polled Color: red

EPDs													
CED	BW	WW	YW	MK	TM	CEM	ST	YG	CW	REA	MB	FPI	\$Cow
19	-1.5	68	96	18	52	10	14	-0.11	26	0.35	0.25	78.64	96.19

F- PHG E02 EMINENCE

BD: 2/16/17 Reg#: AMGV1389102 %GB: PB88 HPS: homo polled Color: hetero black

EPDs													
CED	BW	WW	YW	MK	TM	CEM	ST	YG	CW	REA	MB	FPI	\$Cow
10	0.7	71	99	6	42	6	18	-0.24	25	0.66	0.36	77.31	

G- DCH HILLE Y109

BD: 3/1/11 Reg#: AMGV1199670 %GB: PB94 HPS: homo polled Color: hetero black

EPDs													
CED	BW	WW	YW	MK	TM	CEM	ST	YG	CW	REA	MB	FPI	\$Cow
18	0.2	80	123	22	62	11	16	-0.31	38	0.9	0.15	83.07	111.57

H- DCH HILLE COLLEGIAN C134

BD: 2/28/15 Reg#: AMGV1330307 %GB: PB94 HPS: homo polled Color: hetero black

EPDs													
CED	BW	WW	YW	MK	TM	CEM	ST	YG	CW	REA	MB	FPI	\$Cow
15	-1.1	69	109	26	60	5	16	-0.27	32	0.67	0.3	80.99	113.86

I- DCH HILLE DOLLAR D610

BD: 4/9/16 Reg#: AMGV1365428 %GB: PB94 HPS: homo polled Color: hetero black

EPDs													
CED	BW	WW	YW	MK	TM	CEM	ST	YG	CW	REA	MB	FPI	\$Cow
12	1.2	69	104	21	55	4	17	-0.15	48	0.65	0.02	69.07	115.05

J- GOLDEN BUCKLE GELV 195D

BD: 4/10/16 Reg#: AMGV1369535 %GB: PB64 HPS: homo polled Color: hetero black

EPDs													
CED	BW	WW	YW	MK	TM	CEM	ST	YG	CW	REA	MB	FPI	\$Cow
12	0.1	66	88	11	44	6	17	-0.34	22	0.61	0.25	73.29	

2020 Bulls Offering:

G401

HILLE G401

BD 2/13/19 **Act. BW** 84 **205** 677 **Color** Red

TRACTION 7412

CORNHUSKER RED 524C

ZIVA Z24

HILLE G401 REG#: AMGV1467548

HILLE RED DIRT ROAD B166

HILLE E779

HILLE B142

EPDs	
CED	15
BW	0.1
WW	66
YW	95
MK	22
TM	55
CEM	10
YG	-0.21
CW	26
REA	0.57
MB	0.2
FPI	74.11

HPS: Homo Polled • **%GB:** 94 • The first bull in the catalogue, and will be in the first pen at the sale. Red buyer alert!! Balanced numbers, excellent performance, big butt end clean fronted and long sided. Backed by a maternal pedigree that includes, a dam of merit and dam of distinction. His sire is deceased and no semen is available. A herd sire prospect for a progressive red program. Retaining 50% semen interest.

G402

HILLE G402

BD 2/14/19 **Act. BW** 85 **205** 664 **Color** Red

YIKES 1512

CAESAR C25

HILLE Y105

HILLE G402 REG#: AMGV1467549

MUSGRAVE AVIATOR

HILLE E710

HILLE C163

EPDs	
CED	16
BW	-1.5
WW	59
YW	86
MK	20
TM	50
CEM	10
YG	-0.17
CW	19
REA	0.54
MB	0.35
FPI	75.58

HPS: Hetero Polled • **%GB:** 75 • We don't raise many red balancers, but when we bring one to town he will be a good one. This exceptional animal is flat out good. Big quarter and long sided. Calving ease and loaded with performance. Lots of profit potential here.



CHIMNEY BUTTE RANCH SIGHT UNSEEN WARRANTY • If you cannot make it to the sale and wish to purchase a bull, please contact us. We will help select bulls for you to review. You may review the catalog and video to assist in your selection. On sale day, we will assign a third-party to call you and review the bull before the sale. We will have someone on the phone to bid for you, bid online using DV auction, or you may ask one of the Livestock Representatives to bid for you. Your bid will remain confidential and will be handled professionally. When we deliver the bull to you, if he is not what you think we described, we will refund 100% of your purchase price.



HILLE G413

BD 2/17/19 Act. BW 77 205 668 Color Black

TRACTION 7412

CORNHUSKER RED 524C

ZIVA Z24

HILLE G413 REG#: AMGV1467566

CAROLINA LEVERAGE 3214A

HILLE E720

HILLE C230

EPDs	
CED	16
BW	-1.5
WW	67
YW	96
MK	21
TM	55
CEM	10
YG	-0.2
CW	29
REA	0.6
MB	0.25
FPI	77.97

HPS: Polled • **%GB:** 94 • A hard to find black hided son of Cornhusker Red. Calving ease, great performance, and a moderate framed, wide topped phenotype to complete this package. An opportunity to put new genetics into a black program. Remember, no semen available from his deceased sire.



HILLE G421

BD 2/22/19 Act. BW 81 205 780 Color Homo Black

DANELL TD CHICO LOCO 28Y

DANELL CHOCO 53B

DANELL TWINKLES 21X

HILLE G421 REG#: AMGV1467610

HILLE COLLEGIAN C134

HILLE E711

HILLE C213

EPDs	
CED	17
BW	-0.6
WW	71
YW	107
MK	24
TM	59
CEM	10
YG	-0.24
CW	31
REA	0.65
MB	0.23
FPI	79.71

HPS: Polled (Homo - D) • **%GB:** 94 • His mother a C134 daughter, brought in a barn burner for her first calf. 780 lbs adjusted weaning weight from a first calf heifer is impressive. But not as impressive as he is. Wide topped, loose and soggy, big volume, and clean up front. Herdsire prospect here. All this is backed by a strong maternal pedigree that includes two dams of distinction. Retaining 50% semen interest.



HILLE G417

BD 2/19/19 Act. BW 91 205 774 Color Hetero Black

DANELL TD CHICO LOCO 28Y

DANELL CHOCO 53B

DANELL TWINKLES 21X

HILLE G417 REG#: AMGV1467606

HILLE RED DIRT ROAD B166

HILLE E726

HILLE C246

EPDs	
CED	9
BW	1.7
WW	79
YW	114
MK	7
TM	47
CEM	4
YG	-0.23
CW	42
REA	0.73
MB	0.13
FPI	75.27

HPS: Polled (Homo - D) • **%GB:** 94 • A powerhouse from a first calf heifer, 774 pound weaning weight!! Top 1% for WW, top 2% for YW, and top 5% for CW EPD's. One of the highest gaining bulls for the first 80 days. Real performance, numbers and the opportunity to put extra pounds on the ground. Pounds are dollars in the cow calf business.



HILLE G423

BD 2/23/19 Act. BW 75 205 732 Color Red

TRACTION 7412

CORNHUSKER RED 524C

ZIVA Z24

HILLE G423 REG#: AMGV1467612

HILLE B197 ET

HILLE E771

HILLE B206

EPDs	
CED	18
BW	-2.9
WW	66
YW	93
MK	22
TM	55
CEM	9
YG	-0.19
CW	30
REA	0.56
MB	0.19
FPI	78.17

HPS: Polled (Homo - D) • **%GB:** 94 • We plan to collect this bull and use in our heifer breeding program. Top 3% CE, 4% BW, 25% YW and WW, top 10% CW, impressive EPD package. His dam a B197 (Tye x U510), daughter did it all right. Light birth weight, good performance, wide topped, long and clean. This is an exceptional package loaded with potential. Retaining 50% semen interest.



HILLE G419

BD 2/21/19 Act. BW 86 205 696 Color Red

TRACTION 7412

CORNHUSKER RED 524C

ZIVA Z24

HILLE G419 REG#: AMGV1467608

HILLE Y109

HILLE E713

HILLE C257

EPDs	
CED	17
BW	-0.4
WW	67
YW	94
MK	19
TM	52
CEM	10
YG	-0.18
CW	28
REA	0.54
MB	0.21
FPI	75.11

HPS: Polled • **%GB:** 94 • A good long bull, deep ribbed and clean fronted. These Cornhusker calves are very impressive. The high selling female in our December 2019 sale was Cornhusker Red sired. EPD's top 4% CE, and still top 25% for WW and YW. Backed up with a maternal pedigree that includes a dam of distinction.



HILLE G425

BD 2/23/19 Act. BW 88 205 684 Color Hetero Black

ALUMNI 7513A ET

HILLE COLLEGIAN C134

HILLE A166

HILLE G425 REG#: AMGV1467614

HILLE C169

HILLE E923

HILLE Z126

EPDs	
CED	13
BW	0.3
WW	69
YW	108
MK	21
TM	55
CEM	7
YG	-0.27
CW	35
REA	0.68
MB	0.25
FPI	77.13

HPS: Polled • **%GB:** 94 • His sire C134, owned with Thorstenson Gelbvieh, has proven to be an exceptional bull to use on heifers. His dam, a C169 daughter brings performance and structure to this mating. Great rib shape, long sided, deep body and smooth front. Flat out good from any perspective. Unlimited potential and opportunity.



HILLE G434

BD 2/26/19 Act. BW 83 205 714 Color Hetero Black

HILLE M118 MAJESTY

DCH HILLE X102

HILLE U279 UNDERCURRENT

HILLE G434 REG#: AMGV1467919

CAESAR C25

HILLE E924

HILLE B128

EPDs	
CED	16
BW	0
WW	71
YW	104
MK	24
TM	59
CEM	11
YG	-0.3
CW	29
REA	0.69
MB	0.05
FPI	74.19

HPS: Polled • %GB: 94 • Just wish we had room for more X102 genetics in our program, he does not disappoint. Look over the pedigree, loaded with building blocks for our program. Curve bending EPD's, top 10% for CE, WW, YW, and CW, a spread not seen very often. Use for calving ease, and don't give up any pounds, a great way to lessen calving labor and increase weaning pounds. Look close at this opportunity.



HILLE G438

BD 2/27/19 Act. BW 92 205 707 Color Hetero Black

HILLE M118 MAJESTY

DCH HILLE X102

HILLE U279 UNDERCURRENT

HILLE G438 REG#: AMGV1467923

BENTLEY ET

HILLE E826

HILLE B192

EPDs	
CED	14
BW	1.1
WW	74
YW	115
MK	24
TM	61
CEM	10
YG	-0.28
CW	37
REA	0.7
MB	-0.02
FPI	73.07

HPS: Polled • %GB: 94 • His sire, X102 brings in another great prospect. Extra deep, soggy with a great quarter. Rock solid maternal genetics back up this package. EPD's in the top 4% of the breed for WW, YW, and CW.



HILLE G437

BD 2/26/19 Act. BW 88 205 683 Color Black

BLUE'S IMPACT 001X

TRUMP TRAIN C521

2Z1 ET

HILLE G437 REG#: AMGV1467922

HILLE COLLEGIAN C134

HILLE E750

HILLE C351

EPDs	
CED	9
BW	0.3
WW	60
YW	83
MK	23
TM	53
CEM	2
YG	-0.25
CW	15
REA	0.52
MB	0.2
FPI	68.38

HPS: Polled • %GB: 94 • Sired by the Breeders Choice Futurity winner Trump train. Maternal influence by C134 and 3 cows that are in flush programs. Take a good close look at this outstanding young prospect.



HILLE G440

BD 2/27/19 Act. BW 86 205 757 Color Red

TRACTION 7412

CORNHUSKER RED 524C

ZIVA Z24

HILLE G440 REG#: AMGV1467925

HILLE B197 ET

DCH HILLE E815 ET

HILLE Z159

EPDs	
CED	15
BW	-0.1
WW	72
YW	102
MK	20
TM	56
CEM	8
YG	-0.23
CW	31
REA	0.63
MB	0.19
FPI	77.34

HPS: Polled • %GB: 94 • Deep dark red and a big wide top makes this guy stand out from the crowd. His mama, another B197 daughter, brought in a really good one. Wish there was more Cornhusker Red semen available. This will be one of the last opportunities to put Cornhusker sons into your programs.





HILLE G441

BD 3/1/19 Act. BW 99 205 812 Color Black

HILLE T266 TYE

HILLE Y109

HILLE W175 WAKE UP

HILLE G441 REG#: AMGV1467927

DANELL CHOCO 53B

HILLE E839

HILLE B149

EPDs	
CED	11
BW	1.3
WW	83
YW	124
MK	15
TM	56
CEM	4
YG	-0.25
CW	31
REA	0.84
MB	0.38
FPI	85.68

HPS: Polled (Homo - D) • %GB: 88 • High weaning weight bull of the year. Over 800 pounds from a first calf heifer. Sired by the great Y109 bull we raised. His dam is a Choco daughter, performance and calving ease top and bottom. Not hard to describe this meat machine, performance plus.



HILLE G468

BD 3/8/19 Act. BW 97 205 722 Color Black

ARIAT 127A

HILLE C169

HILLE A105

HILLE G468 REG#: AMGV1467961

CAROLINA LEVERAGE 3214A

HILLE D401

HILLE B199

EPDs	
CED	12
BW	1
WW	75
YW	114
MK	23
TM	61
CEM	8
YG	-0.26
CW	38
REA	0.78
MB	0.23
FPI	79.28

HPS: Polled (Homo - D) • %GB: 94 • If its time to power up your calf crop and still maintain decent calving ease, this may be your choice. His sire C169 gives us consistent performance oriented calves with plenty of calving ease and style. We use C169 and a C169 son in our herd. A dam of distinction and a dam of merit in the maternal pedigree add to the genetic value of this package.



HILLE G443

BD 3/2/19 Act. BW 77 205 746 Color Hetero Black

DOMINANCE 4280B

EMINENCE E02

BELLY RIVER AMBER 56A

HILLE G443 REG#: AMGV1467929

MR REV

HILLE D561

HILLE B170 ET

EPDs	
CED	14
BW	-0.4
WW	72
YW	104
MK	15
TM	51
CEM	6
YG	-0.32
CW	39
REA	0.85
MB	0.23
FPI	78.41

HPS: Polled (Homo - D) • %GB: 94 • We will collect this bull before we deliver. Our first Eminence (2018 Breeders Choice Futurity winner) calf we are offering for sale and what a way to start. It is hard to fault this great young bull. Light birth weight, great performance, good feedlot gain, and a great profile. You can run the wheels off your truck looking for another bull this good. An outcross pedigree for most in the states make this a unique package and a great Herd sire prospect. Retaining 50% semen interest.



HILLE G474

BD 3/9/19 Act. BW 89 205 726 Color Black

ASTRO 407S

HIGH IMPACT 40X

COOKIE 62R

HILLE G474 REG#: AMGV1467967

LAZY TV SAM U451

HILLE C127

HILLE A198

EPDs	
CED	12
BW	0.3
WW	68
YW	94
MK	19
TM	53
CEM	4
YG	-0.29
CW	23
REA	0.61
MB	0.19
FPI	73.96

HPS: Polled • %GB: 94 • A very strongly maternal influenced bull. His sire has put many good females into our herd, the maternal pedigree includes N197 a multi-year dam of distinction, and L112 one of the most prolific cows we have flushed. This guy is a mama maker, his heifers should be great replacements, and his steers should pack on the pounds.



HILLE G446

BD 3/3/19 Act. BW 89 205 712 Color Red (D)

ALUMNI 7513A ET

HILLE COLLEGIAN C134

HILLE A166

HILLE G446 REG#: AMGV1467932

CARLOS 103C

HILLE E844

HILLE B287

EPDs	
CED	8
BW	1.2
WW	67
YW	101
MK	21
TM	55
CEM	2
YG	-0.24
CW	31
REA	0.66
MB	0.28
FPI	73.86

HPS: Polled • %GB: 94 • A powerful diluter free (double black, red) deep dark red bull. Big wide top and still smooth and clean up front. Two dams of distinction in the maternal pedigree indicate longevity, fertility and performance, all traits needed for a profitable herd.



HILLE G475

BD 3/9/19 Act. BW 93 205 687 Color Homo Black

CONNEALY CAPITALIST 028

FAST CAPITALIST 414

FAST ERICA ALT 24

HILLE G475 REG#: AMGV1467968

PURE POWER

HILLE Y139

HILLE W174 WHOA

EPDs	
CED	7
BW	2.1
WW	77
YW	122
MK	22
TM	61
CEM	9
YG	-0.03
CW	43
REA	0.53
MB	0.53
FPI	84.3

HPS: Polled • %GB: 50 • This big wide Balancer is deep, soggy and long. His mama has achieved dam of merit status for several years, and his maternal grand dam has achieved dam of distinction status. A great looking animal backed with a rock solid maternal pedigree.



HILLE G480

BD 3/10/19 Act. BW 96 205 714 Color Red

ALUMNI 7513A ET
HILLE COLLEGIAN C134
HILLE A166
HILLE G480 REG#: AMGV1467973
TAXI 44T
DCH HILLE X204
HILLE L185 LACEY

EPDs	
CED	11
BW	1.6
WW	67
YW	98
MK	24
TM	57
CEM	5
YG	-0.33
CW	26
REA	0.76
MB	0.24
FPI	73.61

HPS: Polled • %GB: 94 • Mr. BEEF, best describes this guy. Big deep quarter, good solid bone, and big, big volume. A dam of merit, and a dam of distinction, in the maternal pedigree only add to his potential.



HILLE G484

BD 3/11/19 Act. BW 86 205 681 Color Black

DOMINANCE 4280B
EMINENCE E02
BELLY RIVER AMBER 56A
HILLE G484 REG#: AMGV1467998
HILLE Y165
HILLE D476
HILLE Z233

EPDs	
CED	11
BW	0.3
WW	66
YW	97
MK	19
TM	52
CEM	5
YG	-0.28
CW	28
REA	0.72
MB	0.24
FPI	73.99

HPS: Polled • %GB: 94 • We didn't use Eminence hard enough his first year, but his calves are good. We have several Eminence females in the replacement pen. He will be used extensively in the future. Take a good look at a very well made bull from a good young cow.



HILLE G483

BD 3/11/19 Act. BW 86 205 677 Color Red

HILLE Y165
HILLE RED DIRT ROAD B166
HILLE Y262
HILLE G483 REG#: AMGV1467997
FLYINGH TRACTION 270B ET
HILLE D553
HILLE T175 TUESDAY

EPDs	
CED	13
BW	0.2
WW	65
YW	96
MK	20
TM	53
CEM	8
YG	-0.29
CW	23
REA	0.67
MB	0.13
FPI	71.35

HPS: Polled • %GB: 94 • Extra long with a big wide rear end, typical of all Red Dirt Road calves. A very well balanced bull that has the potential to put great females in the replacement pen. His pedigree includes several dams of merit and dams of distinction, as well as Majesty, Tye, Pure Power, Louie and Traction. Proven genetics behind this guy.



HILLE G488

BD 3/11/19 Act. BW 89 205 674 Color Homo Black

CAROLINA LEVERAGE 3214A
HILLE STOCK OPTIONS D410
HILLE B189 ET
HILLE G488 REG#: AMGV1468002
SECRET BRAND 2100Z ET
HILLE B141
DCH HILLE X110

EPDs	
CED	14
BW	-0.9
WW	69
YW	97
MK	20
TM	54
CEM	9
YG	-0.23
CW	29
REA	0.64
MB	0.29
FPI	78.47

HPS: Polled • %GB: 88 • We are still impressed with the Stock Option calves. This one has a Big volume middle, Wide top, Big butt and is still good and clean. We use Stock Option in our A-I program, and have a Stock option son working our pasture.

MARKETING YOUR GELBVIEH INFLUENCED CALVES . . .



Many options exist to market your Gelbvieh & Gelbvieh-influenced feeder calves! We will help connect you with options:

- Kist Livestock has a Gelbvieh influenced feeder calf sale the third Wednesday in October. If you have interest in consigning to that sale, contact us or Kist Livestock.
- Several order buyers look to buy direct from the producer. Let us know if you wish to pursue this avenue, we will provide buyers contact information to you.



HILLE G490

BD 3/12/19 Act. BW 71 205 710 Color Hetero Black

CAROLINA LEVERAGE 3214A

HILLE STOCK OPTIONS D410

HILLE B189 ET

HILLE G490 REG#: AMGV1468004

DANELL CHOCO 53B

HILLE D552

HILLE W133 WHIZ

EPDs	
CED	17
BW	-2.8
WW	68
YW	98
MK	25
TM	59
CEM	10
YG	-0.32
CW	30
REA	0.79
MB	0.19
FPI	80.1

HPS: Polled • **%GB:** 94 • This light birthweight Stock Option bull should work very well on heifers. If you want to add calving ease and add performance, this bull may be your choice. EPD's in the top 4% for CE and BW and top 15% for WW and YW. A really hard spread to find.



HILLE G492

BD 3/12/19 Act. BW 84 205 662 Color Homo Black

ALUMNI 7513A ET

HILLE COLLEGIAN C134

HILLE A166

HILLE G492 REG#: AMGV1468018

GOLDEN BUCKLE GELV BABE MAGNET 200B ET

HILLE D547

HILLE W269 WALRUS

EPDs	
CED	14
BW	-1.3
WW	61
YW	92
MK	25
TM	55
CEM	5
YG	-0.26
CW	30
REA	0.63
MB	0.27
FPI	74.62

HPS: Polled • **%GB:** 94 • Epd's and pedigree say this one should work on heifers and still keep performance if used on cows. Clean fronted, smooth and long best describe the phenotype. Should have held him back for our heifers. One of the really good ones.



HILLE G495

BD 3/12/19 Act. BW 93 205 731 Color Homo Black

CAROLINA LEVERAGE 3214A

HILLE STOCK OPTIONS D410

HILLE B189 ET

HILLE G495 REG#: AMGV1468020

DANELL CHOCO 53B

HILLE D643

HILLE N197 NURTURE

EPDs	
CED	13
BW	0.1
WW	70
YW	102
MK	24
TM	60
CEM	7
YG	-0.3
CW	33
REA	0.81
MB	0.23
FPI	77.53

HPS: Polled • **%GB:** 94 • Stock option out of a Choco mama, a super combination of complimentary genetics. Performance, calving ease, and style in one package. We like this bull and think he has great potential, wish we had room for him in our program. Take a close look at this long, big volume smooth made bull with a great quarter. Don't overlook this guy.



HILLE G496

BD 3/13/19 Act. BW 93 205 709 Color Homo Black

DOMINANCE 4280B

EMINENCE E02

BELLY RIVER AMBER 56A

HILLE G496 REG#: AMGV1468021

UPGRADE 425X

HILLE D575

HILLE A231

EPDs	
CED	10
BW	1
WW	68
YW	96
MK	18
TM	52
CEM	6
YG	-0.27
CW	23
REA	0.69
MB	0.27
FPI	74.28

HPS: Polled • **%GB:** 94 • It's hard not to like these Eminence calves. This one has a strong maternal pedigree that has dams of merit, Tye and Upgrade as anchors. This will be one of those eye catchers on sale day.





HILLE G497

BD 3/13/19 Act. BW 73 205 709 Color Black

HILLE T266 TYE

HILLE Y109

HILLE W175 WAKE UP

HILLE G497 REG#: AMGV1468022

FLADELAND DJW ROCKM SOCKM

HILLE D505

HILLE S115 SUZY

EPDs	
CED	18
BW	-2.4
WW	62
YW	89
MK	26
TM	57
CEM	8
YG	-0.34
CW	28
REA	0.86
MB	0.21
FPI	76.41

HPS: Polled • %GB: 94 • We are always asked to recommend really good calving ease bulls. This is one of the best. Calving ease and BW EPD's in the top 5% of the breed. A nice profile, long and clean. All backed by a rock solid pedigree that has more than 4 dams of merit and distinction in it. Look at the numbers, look at the calf, no guesswork here.



HILLE G513

BD 3/17/19 Act. BW 70 205 669 Color Red

MULTIPLE SIRE GROUP

HILLE G513 REG#: AMGV1468038

HILLE Z327

HILLE D519

HILLE P196 PETTICOAT

EPDs	
CED	16
BW	-2.6
WW	49
YW	65
MK	20
TM	44
CEM	9
YG	-0.16
CW	32
REA	0.42
MB	0.23
FPI	66.83

HPS: Polled • %GB: • His maternal grand dam, P196, was the oldest cow to raise a calf on our place this year. P196 was a dam of merit for 3 consecutive years, and dam of distinction for 6 consecutive years. If you believe in maternal influence this wide topped big rear ended bull is a must to look at.



HILLE G517

BD 3/18/19 Act. BW 79 205 684 Color Hetero Black

MULTIPLE SIRE GROUP

HILLE G517 REG#: AMGV1468042

HILLE Z198

HILLE B288

DCH HILLE X153

EPDs	
CED	15
BW	-2.2
WW	49
YW	72
MK	22
TM	46
CEM	8
YG	-0.15
CW	29
REA	0.4
MB	0.27
FPI	68.05

HPS: Polled • %GB: • Whenever the dam is dam of merit, and maternal grand dam is dam of distinction, we need to look close. This well made, deep, big volume bull with light birth weight is a must to look at on sale day.



HILLE G515

BD 3/17/19 Act. BW 87 205 714 Color Hetero Black

CAROLINA EXCLUSIVE 1230Y

GOLDEN BUCKLE GELV BABE MAGNET 200B ET

GOLDEN BUCKLE GELV 031T

HILLE G515 REG#: AMGV1468040

DCH HILLE X107

HILLE Z156

HILLE U269 UPPERCRUST

EPDs	
CED	14
BW	-0.1
WW	64
YW	97
MK	23
TM	55
CEM	4
YG	-0.26
CW	26
REA	0.61
MB	0.26
FPI	75.08

HPS: Polled (Homo - D) • %GB: 94 • Performance with style is what we get when we use Babe Magnet. On sale day this long bull with a really strong quarter will have many lookers. Need to look close at this kind, especially when the maternal pedigree boasts dams of merit and distinction.



HILLE G523 ET

BD 3/19/19 Act. BW 94 205 669 Color Red

AT EASE A357

2020 MR AT EASE 510C

105X MS VELVET

HILLE G523 ET REG#: AMGV1471334

PURE POWER

HILLE T801 THREE SPEEDET

HILLE L232 LANA

EPDs	
CED	13
BW	-0.4
WW	57
YW	87
MK	26
TM	55
CEM	8
YG	-0.19
CW	29
REA	0.59
MB	0.23
FPI	69.92

HPS: Polled • %GB: 88 • Being an ET calf does not guarantee a good calf. This is a great calf. Proven dam, proven sire in many programs and can stand on his own merits. One walk around this cherry red, big volume, strong topped calf will not be enough on sale day. Truly a Red herd sire prospect. Don't miss this one.

A photograph of a herd of cattle grazing in a field. In the foreground, the back of a black and white cow is visible. In the background, a herd of brown and black cattle is grazing on green grass under a clear blue sky.

Dams of Merit ~ Dams of Distinction

Dams of Merit and Dams of Distinction indicate superior fertility and calf weaning performance. We reference these females in foot notes to emphasize proven performance, longevity, and fertility in their genetic makeup.

To achieve Dam of Merit status, the cow must produce three consecutive calves that have a weaning weight ratio of over 100 and the calving interval must be less than 365 days. Only 6.3% of all females in the breed achieved this status in 2018.

To achieve Dam of Distinction status, the cow must produce eight consecutive calves with the same requirements. Approximately 1% of all registered cows have reached this status.

**"Look at the bull.
Buy the cows behind him."**

One of the best things about using Gelbvieh bulls is the females they will provide!

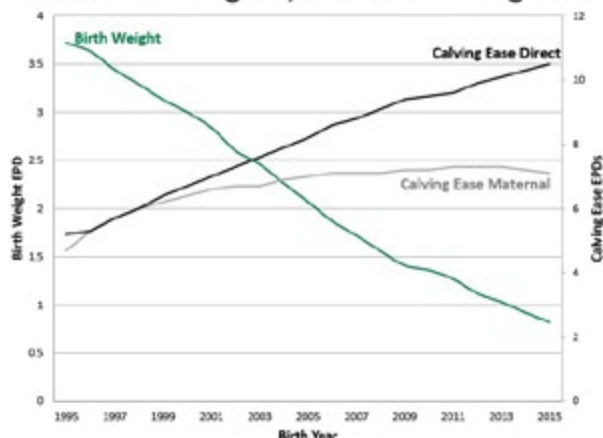
Gelbvieh Females Stay in Herd Longer

Age of Dam	% Stayability Population	Breed Association ¹		
		AGA	ASA	RAAA
3 year	% Success	82%	71%	77%
	Total	74,885	365,907	180,584
4 year	% Success	74%	62%	67%
	Total	74,536	367,886	180,125
5 year	% Success	68%	52%	58%
	Total	65,182	365,047	168,177
6 year	% Success	62%	43%	50%
	Total	54,459	262,663	153,203

¹AGA = American Gelbvieh Association; ASA = American Simmental Association; RAAA = Red Angus Association of America

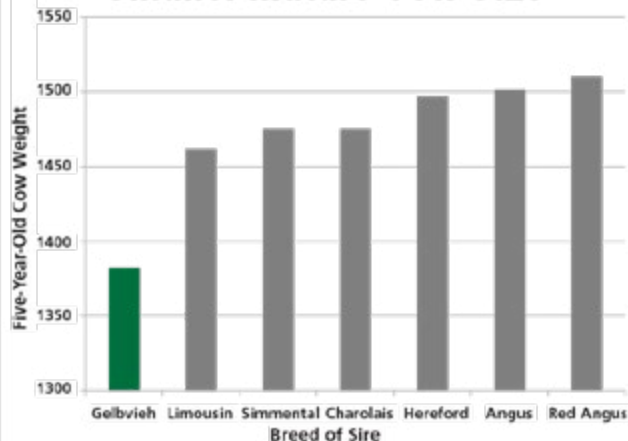
Source: Brigham, B.W., Spoelhof, S.E., Enns, R.M., Garrick, D.J. Stayability to Alternate Ages.

Lower Birth Weights, Greater Calving Ease



Source: American Gelbvieh Association genetic trends for birth weight and calving ease

Smaller Mature Cow Size



Source: Meat Animal Research Center Progress Report #22

G524 HILLE G524

BD 3/19/19 Act. BW 79 205 655 Color Red

MULTIPLE SIRE GROUP

HILLE G524 REG#: AMGV1468050

HILLE U145 UPPERCUT

HILLE C218 ET

HILLE R220 RIGHTOUS

HPS: Polled • **%GB:** • Dam of merit mother, dam of merit maternal grand dam, R220 (dam of Tye), light birth weight, moderate framed with and exceptional quarter, are all attributes that call attention to this great prospect. Look him over, tear the data apart, you won't be disappointed.

EPDs	
CED	14
BW	-1.4
WW	50
YW	72
MK	24
TM	49
CEM	7
YG	-0.17
CW	29
REA	0.43
MB	0.19
FPI	65.51

G527 HILLE G527

BD 3/20/19 Act. BW 63 205 612 Color Red

MULTIPLE SIRE GROUP

HILLE G527 REG#: AMGV1468053

DCH HILLE X115

HILLE B234

HILLE Z204

HPS: Polled • **%GB:** • Extra light birth weight, moderate frame, good quarter and plenty of volume. When a calf starts this light and catches up with the contemporaries by weaning, we really need to take a second look. Look close, a lot of good bull to offer here.

EPDs	
CED	18
BW	-5.2
WW	37
YW	50
MK	21
TM	40
CEM	8
YG	-0.16
CW	23
REA	0.33
MB	0.25
FPI	64.6

G536 HILLE G536

BD 3/23/19 Act. BW 75 205 698 Color Black

ARIAT 127A

HILLE C169

HILLE A105

HILLE G536 REG#: AMGV1468458

HIGH IMPACT 40X

HILLE B206

GOLDEN GIRL

HPS: Polled • **%GB:** 94 • A big stout powerhouse, with exceptional volume, and a big wide top. This C169 calf is a real eye catcher. C169 genetics add volume, pounds and structure. An outcross to most black genetics, this bull offers unlimited potential. Herd sire material for the seedstock or commercial operator. If you haven't tried C169 genetics don't pass this one by.

EPDs	
CED	14
BW	-1.1
WW	68
YW	101
MK	21
TM	55
CEM	8
YG	-0.25
CW	34
REA	0.69
MB	0.18
FPI	76.24

G540**HILLE G540 ET**

BD	Act. BW	205	Color
3/23/19	81	632	Hetero Black

SAM SPADE 02S

LAZY TV SAM U451

LAZY TV MS FULLBACK L643

HILLE G540 ET REG#: AMGV1470265

38N

POST ROCK ARATA 80R2

POST ROCK ARATA 76L2 ET

EPDs	
CED	15
BW	-0.5
WW	66
YW	92
MK	24
TM	57
CEM	9
YG	-0.32
CW	16
REA	0.62
MB	0.27
FPI	76.91

HPS: Homo Polled • **%GB:** 94 • An ET calf out of the proven Sam bull. Very predictable, profitable genetics in a good solidly made calf. We don't gamble much when we select genetics for the ET program.

G557**HILLE G557**

BD	Act. BW	205	Color
3/26/19	78	646	Red

MULTIPLE SIRE GROUP**HILLE G557** REG#: AMGV1468536

HILLE Y109

HILLE A101

HILLE Y101

EPDs	
CED	16
BW	-2.1
WW	50
YW	71
MK	22
TM	46
CEM	9
YG	-0.18
CW	30
REA	0.46
MB	0.25
FPI	68.29

HPS: Polled • **%GB:** • His dam, A101, is a standout in the pasture. A picture perfect cow. This calf has a big wide stance and big, big volume. Light birth weight, Y109 maternal genetics, and great phenotype. Quite a package.

G545**HILLE G545**

BD	Act. BW	205	Color
3/24/19	95	661	Red

ARIAT 127A

HILLE C169

HILLE A105

HILLE G545 REG#: AMGV1468496

HILLE T266 TYE

HILLE B506 ET

HILLE T185 TAFIA

EPDs	
CED	11
BW	1.1
WW	64
YW	99
MK	25
TM	57
CEM	7
YG	-0.27
CW	30
REA	0.67
MB	0.18
FPI	71.33

HPS: Polled • **%GB:** 94 • Red or black, these C169 sons have a lot to offer. This stout bull is really put together right, smooth shoulders, clean lines and big volume. Take a close look at the pedigree, you will find dams of merit and several females we have flushed in his pedigree. An exceptional package.

G559**HILLE G559**

BD	Act. BW	205	Color
3/27/19	69	656	Hetero Black

LAZY TV SAM U451

RAFTER M 3434A

RAFTER M 0602X

HILLE G559 REG#: AMGV1468538

UPGRADE 425X

HILLE B204

HILLE W175 WAKE UP

EPDs	
CED	20
BW	-3
WW	57
YW	81
MK	28
TM	56
CEM	13
YG	-0.32
CW	16
REA	0.64
MB	0.17
FPI	73.96

HPS: Polled • **%GB:** 94 • An elite calving ease bull. This is one of the last Rafter calves we will be offering. His dam, and maternal grand dam have both achieved dam of merit status. He may be a calving ease bull but looks like a performance bull. This is a special package. CE epd, top 1% of breed, BW epd, top 3% of breed.





HILLE G574

BD 3/30/19 Act. BW 81 205 683 Color Hetero Black

HILLE G574 REG#: AMGV1468552
LAZY TV SAM U451
HILLE B128
HILLE Z228

HPS: Polled • **%GB:** • The big butt end on this calf stands out. Maternal genetics are Sam and Majesty, both strong maternal bulls loaded with performance and calving ease. Light birth weight, good numbers, great maternal pedigree and good looks in one package.

EPDs	
CED	15
BW	0
WW	61
YW	85
MK	19
TM	50
CEM	10
YG	-0.22
CW	31
REA	0.56
MB	0.28
FPI	72.61



HILLE G579

BD 3/31/19 Act. BW 89 205 616 Color Red

ARIAT 127A
HILLE C169
HILLE A105
HILLE G579 REG#: AMGV1468557
HILLE T266 TYE
HILLE Y202
HILLE T172 TRACEY

HPS: Polled • **%GB:** 94 • These powerful C169 sons just make it happen. Big volume, powerful looking and long, very predictable genetics. His dam, sired by Tye, is one of those picture perfect mama cows.

EPDs	
CED	14
BW	0.3
WW	68
YW	103
MK	22
TM	56
CEM	8
YG	-0.27
CW	36
REA	0.75
MB	0.24
FPI	76.25



HILLE G576

BD 3/30/19 Act. BW 77 205 707 Color Homo Black

INTENSE 2501
GOLDEN BUCKLE GELV 195D
GOLDEN BUCKLE GELV 195B
HILLE G576 REG#: AMGV1468554
HILLE Z327
HILLE D587
HILLE Y276

HPS: Polled • **%GB:** 94 • A light birth weight twin bull that just went out and made it happen. Not hard to like this bull.

EPDs	
CED	10
BW	0.2
WW	60
YW	89
MK	22
TM	52
CEM	7
YG	-0.04
CW	24
REA	0.33
MB	0.24
FPI	69.08



HILLE G580

BD 3/31/19 Act. BW 88 205 669 Color Red

ARIAT 127A
HILLE C169
HILLE A105
HILLE G580 REG#: AMGV1468558
43T
HILLE Y273
HILLE K81 KRAMER

HPS: Polled • **%GB:** 94 • If red is your choice and you haven't tried C169 genetics, look close. Powerful looking with plenty of volume and style. A darn good red bull.

EPDs	
CED	12
BW	0.5
WW	69
YW	101
MK	22
TM	56
CEM	6
YG	-0.28
CW	33
REA	0.8
MB	0.12
FPI	72.65

VIDEOS

of every lot will be available at
www.chimneybutterranch.com
AND www.dvauction.com



HILLE G585

BD 3/31/19 Act. BW 89 205 628 Color Hetero Black

MULTIPLE SIRE GROUP

HILLE G585 REG#: AMGV1468563

CK CRAZY HORSE 138P

GOLDEN GIRL

HILLE R211 ROMANCE

HPS: Polled • **%GB:** • A good black bull from one of the few cows in our herd we have purchased (a Crazy Horse daughter). Extra-long, good volume, nice quarter and clean fronted.

EPDs	
CED	12
BW	-0.7
WW	52
YW	73
MK	19
TM	45
CEM	7
YG	-0.19
CW	29
REA	0.51
MB	0.2
FPI	65.19



HILLE G587

BD 4/1/19 Act. BW 95 205 683 Color Black

ARIAT 127A

HILLE C169

HILLE A105

HILLE G587 REG#: AMGV1468565

UPGRADE 425X

HILLE A361

HILLE T213 TINKERBELLE

HPS: Polled • **%GB:** 94 • A powerful looking C169 son complimented with Upgrade maternal genetics. Smooth made, long with a big quarter. Not hard to like this one.

EPDs	
CED	11
BW	0.6
WW	69
YW	103
MK	22
TM	57
CEM	9
YG	-0.23
CW	34
REA	0.69
MB	0.21
FPI	74.59



HILLE G593

BD 4/2/19 Act. BW 81 205 678 Color Hetero Black

MULTIPLE SIRE GROUP

HILLE G593 REG#: AMGV1468571

A12

HILLE D494

HILLE W103 WARM UP

HPS: Polled • **%GB:** • A twin bull that came home looking like a true power bull. Big powerful looks, good structure and bone, and a big wide top.

EPDs	
CED	11
BW	0.7
WW	61
YW	87
MK	14
TM	45
CEM	1
YG	-0.23
CW	18
REA	0.49
MB	0.28
FPI	70.51



HILLE G592

BD 4/1/19 Act. BW 81 205 655 Color Hetero Black

MULTIPLE SIRE GROUP

HILLE G592 REG#: AMGV1468570

GOLDEN BUCKLE GELV 145Z

HILLE C301

HILLE A286

HPS: Polled • **%GB:** • Good! A very big volume bull, light birth weight and backed by a great young mama cow. Look closely don't miss this opportunity.

EPDs	
CED	14
BW	-1.6
WW	52
YW	72
MK	20
TM	46
CEM	8
YG	-0.18
CW	29
REA	0.47
MB	0.2
FPI	66.91



HILLE G595

BD 4/2/19 Act. BW 83 205 752 Color Red

ARIAT 127A

HILLE C169

HILLE A105

HILLE G595 REG#: AMGV1468573

HILLE U145 UPPERCUT

HILLE Y197

HILLE P257 PONDEROSA

HPS: Polled (Homo - D) • **%GB:** 94 • A C169 bull that comes to the top of the group. Powerful looking big volume, and plenty of length and thickness. Top 10% WW, top 3%YW and top 2%, and still in the top 20% for CE EPD's. Will add pounds and not sacrifice calving ease. Maternal grand dam achieved Dam of Distinction Status. This is one very nice package.

EPDs	
CED	14
BW	-0.6
WW	72
YW	109
MK	23
TM	59
CEM	9
YG	-0.21
CW	39
REA	0.63
MB	0.19
FPI	78.44

G597**HILLE G597**

BD 4/2/19 Act. BW 92 205 643 Color Hetero Black

MULTIPLE SIRE GROUP**HILLE G597** REG#: AMGV1468575

HILLE U145 UPPERCUT

HILLE A142

HILLE Y322

HPS: Polled • **%GB:** • A dam of merit mother brought in this good calf. Exceptionally smooth and trim he will catch lookers on sale day. One of the higher gaining bulls on feed.

EPDs	
CED	10
BW	1.1
WW	56
YW	83
MK	19
TM	47
CEM	5
YG	-0.15
CW	30
REA	0.35
MB	0.24
FPI	65.95

G602**HILLE G602**

BD 4/3/19 Act. BW 92 205 671 Color Hetero Black

MULTIPLE SIRE GROUP**HILLE G602** REG#: AMGV1468580

HILLE Z198

HILLE C351

HILLE T801 THREE SPEEDET

HPS: Polled • **%GB:** • A great looking bull that stands on his own merit. He is backed with a maternal pedigree that included a dam of distinction, 2 dams of merit, and 2 cows that have been in our ET flush program.

EPDs	
CED	11
BW	0.8
WW	51
YW	75
MK	22
TM	47
CEM	6
YG	-0.15
CW	27
REA	0.39
MB	0.26
FPI	64.62

Watch & bid online for **FREE** at

DVAuction
Broadcasting Real-Time Auctions

View the Auction Live!
Bid Online... you're ringside
right at your desk!

Buying online is as easy as 1,2,3...

1. Create an account at www.dvauction.com under the "register" tab
2. Apply for bidding approval by clicking on the "details" tab at least 24 hours prior to the auction-a DV representative will notify you once you have been approved
3. Tune in for the sale and make you purchases!

High speed internet is required for successful bidding-be sure to check the lag-time monitor in the top left corner to ensure real-time broadcasts.

Proxy Bidding-if you can't make time to watch the sale, register a proxy bid and let our system represent your bid while you're away. Look for the "proxy bid" tab on the auction listing, and fill in your maximum bids. We'll handle the rest!

Having troubles? During the auction, you can type a message to the operator at any time for assistance. Our full-time support team can also always be reached at (402) 474-5557.

DVAuction
Broadcasting Real-Time Auctions

DVA Rep. Justin Dikoff (605) 290-0635 - email: jdikoff@dvauction.com
Please feel free to contact me with questions about the sale or to view the cattle for you.



HILLE G606

BD 4/4/19 Act. BW 87 205 691 Color Red

ARIAT 127A

HILLE C169

HILLE A105

HILLE G606 REG#: AMGV1468584

RAFTER M 3434A

HILLE D611

HILLE A316

EPDs	
CED	14
BW	0
WW	66
YW	99
MK	24
TM	57
CEM	8
YG	-0.27
CW	31
REA	0.69
MB	0.24
FPI	75.95

HPS: Polled • %GB: 94 • One of the bigger framed bulls in the offering. The extra frame allows for him to be one of the highest gaining bulls on feed. A good long bull with great rib shape. His dam is a Rafter daughter that is working hard in our herd.



HILLE G626

BD 4/6/19 Act. BW 86 205 644 Color Homo Black

MULTIPLE SIRE GROUP

HILLE G626 REG#: AMGV1468680

SS OBJECTIVE T510 OT26

DCH HILLE X114

HILLE N109 NINE

EPDs	
CED	14
BW	-1.3
WW	56
YW	83
MK	18
TM	46
CEM	7
YG	-0.07
CW	26
REA	0.3
MB	0.42
FPI	74.05

HPS: Homo Polled • %GB: • A 75% Balancer bull that stands with the bulls 6 weeks older. Soggy, loose, and deep give the first impression. Looking closer he is long and flat good.



HILLE G607

BD 4/4/19 Act. BW 83 205 668 Color Hetero Black

MULTIPLE SIRE GROUP

HILLE G607 REG#: AMGV1468585

PURE POWER

HILLE Y253

HILLE R198 RAIN

EPDs	
CED	13
BW	-0.3
WW	55
YW	78
MK	18
TM	46
CEM	10
YG	-0.17
CW	29
REA	0.46
MB	0.3
FPI	69.26

HPS: Polled • %GB: • His dam, Y253, is a Pure Power Daughter. His maternal grand dam R198 achieved Dam of Distinction status. He will have many friends on sale day.



HILLE G633

BD 4/8/19 Act. BW 73 205 697 Color Red

MULTIPLE SIRE GROUP

HILLE G633 REG#: AMGV1468752

HILLE U145 UPPERCUT

HILLE A250 ET

HILLE U510 VIVIAN ET

EPDs	
CED	16
BW	-3
WW	56
YW	80
MK	23
TM	50
CEM	9
YG	-0.12
CW	31
REA	0.34
MB	0.19
FPI	70.99

HPS: Polled • %GB: • Backed by one of the strongest maternal pedigrees in the herd, 3 females have been flushed, and an impressive mama cow, this outstanding young calf has really turned it on. Light birth weight, good weaning weight, great feed lot gain and deep dark red. Top end bull will be in the front pens.



HILLE G619

BD 4/5/19 Act. BW 94 205 655 Color Hetero Black

MULTIPLE SIRE GROUP

HILLE G619 REG#: AMGV1468627

FIR RIVER XAMPLE 29X

HILLE A344

HILLE P103 POP

EPDs	
CED	10
BW	1.2
WW	55
YW	74
MK	16
TM	43
CEM	4
YG	-0.16
CW	26
REA	0.45
MB	0.19
FPI	62.9

HPS: Polled • %GB: • A bull with a big wide stance. Exceptional rib shape and plenty of length make this an attractive bull.



HILLE G635

BD 4/8/19 Act. BW 89 205 705 Color Red

MR REV

HILLE E970

HILLE A142

HILLE G635 REG#: AMGV1468754

GOLDEN BUCKLE GELV 030X

HILLE Z220

HILLE T267 TART

EPDs	
CED	12
BW	0.1
WW	64
YW	96
MK	22
TM	54
CEM	6
YG	-0.21
CW	26
REA	0.41
MB	0.18
FPI	71.71

HPS: Polled • %GB: 94 • Outcross genetic for many of our past customers. A deep red bull that is long and carries a strong quarter. His dam has achieved dam of merit status.



HILLE G641

BD 4/10/19 Act. BW 88 205 748 Color Red

MULTIPLE SIRE GROUP

HILLE G641 REG#: AMGV1468868

DCH HILLE X102

HILLE B104

HILLE Z132

HPS: Homo Polled • **%GB:** • A big performance bull that has really added pounds in the feedlot. A nice powerful quarter, plenty of length, and a touch of extra frame allow for the great performance.

EPDs	
CED	14
BW	-0.8
WW	66
YW	98
MK	21
TM	54
CEM	9
YG	-0.16
CW	44
REA	0.57
MB	0.15
FPI	73.59



HILLE G648

BD 4/12/19 Act. BW 91 205 701 Color Red

157C

ELI 117E

123B

HILLE G648 REG#: AMGV1471042

WAYLON 936W

HILLE Y307

HILLE P103 POP

HPS: Polled • **%GB:** 94 • His sire, Eli, was brought in for a calving ease bull for use following the heifer A-I program. Only had a few calves from Eli, they came easy. This young bull could certainly be put in with heifers.

EPDs	
CED	17
BW	-1.1
WW	62
YW	84
MK	20
TM	51
CEM	8
YG	-0.37
CW	19
REA	0.75
MB	0.23
FPI	74.75



HILLE G642

BD 4/10/19 Act. BW 76 205 635 Color Red

MULTIPLE SIRE GROUP

HILLE G642 REG#: AMGV1468869

UPGRADE 425X

HILLE A194

HILLE P203 PURRFECT

HPS: Polled • **%GB:** • A light birth weight bull loaded with potential. His Upgrade mama has a picture perfect udder and great disposition. This impressive bull has big volume, great rib shape, and a nice quarter.

EPDs	
CED	15
BW	-2.4
WW	45
YW	63
MK	22
TM	45
CEM	9
YG	-0.15
CW	27
REA	0.38
MB	0.2
FPI	64.07



HILLE G651

BD 4/12/19 Act. BW 89 205 708 Color Red

MULTIPLE SIRE GROUP

HILLE G651 REG#: AMGV1468888

HILLE T266 TYE

HILLE Y115

HILLE W187 WHEN

HPS: Polled • **%GB:** • A very deep, soggy bull from a never miss mama. His mama is a Tye daughter that we really like.

EPDs	
CED	14
BW	-1.1
WW	57
YW	79
MK	20
TM	48
CEM	7
YG	-0.19
CW	30
REA	0.53
MB	0.26
FPI	70.57





HILLE G672

BD 4/18/19 Act. BW 92 205 637 Color Hetero Black

MULTIPLE SIRE GROUP

HILLE G672 REG#: AMGV1468936

GOLDEN BUCKLE GELV 030X

HILLE Z233

HILLE W331 WANNABE

HPS: Polled • **%GB:** • A dam of merit mama is a great foundation to build a strong bull calf from. She is a good one.

EPDs	
CED	12
BW	-0.7
WW	47
YW	64
MK	21
TM	44
CEM	4
YG	-0.18
CW	24
REA	0.37
MB	0.22
FPI	62.45



HILLE G694

BD 5/1/19 Act. BW 95 205 661 Color Homo Black

MULTIPLE SIRE GROUP

HILLE G694 REG#: AMGV1468965

PURE POWER

HILLE Y281

HILLE T106 TOOTSIE

HPS: Polled • **%GB:** • The youngest bull in the sale gives nothing up to the older bulls. Good looks, good gain, good performance, good maternal pedigree. A good bull to look over and take home.

EPDs	
CED	12
BW	0.6
WW	50
YW	73
MK	18
TM	43
CEM	8
YG	-0.17
CW	23
REA	0.37
MB	0.25
FPI	63.61



HILLE G675

BD 4/20/19 Act. BW 89 205 724 Color Red

MULTIPLE SIRE GROUP

HILLE G675 REG#: AMGV1468939

ARIAT 127A

HILLE C308

HILLE Z271

HPS: Homo Polled • **%GB:** • Just plain good. This young bull has put it all together. Big volume, good rib shape, nice stride, and looks the part of a great bull. He has the nuts, guts, and butt to get the job done.

EPDs	
CED	12
BW	1
WW	63
YW	91
MK	20
TM	52
CEM	7
YG	-0.17
CW	35
REA	0.5
MB	0.21
FPI	70.23

*Thank you
for coming to the
sale!*

Source & Age Verification Program for Feeder Cattle Sired by Gelbvieh & Balancer® Bulls

BALANCER® EDGE

\$3.00/hd

STEP 1:

Gather calving records documenting the first and last calf born for the season. Have a head count of your cows. Have copies available to show IMI Global representative.

STEP 2:

Fill out the form on www.gelbvieh.org to apply for Balancer® Edge and order tags.

STEP 3:

Send form via mail or email:
IMI Global
202 6th Street, Ste. 400
Castle Rock, CO 80104
info@imiglobal.com

STEP 4:

Participate in a phone audit and off-site records review.

STEP 5:

Market calves with the Balancer® Edge program.

**Value added
options available:**

NHTC
Verified Natural
GAP Certification
*Additional auditing and
cost may be involved



www.gelbvieh.org | 303.465.2333

GELBVIEH & BALANCER®

Smart. Reliable. Profitable.

*Gelbvieh and Balancer® genetics offer
more pounds of calf weaned, added fertility,
and greater cow herd longevity.*



gelbvieh.org

CHIMNEY BUTTE RANCH

3320 51st Street
Mandan, ND 58554

RETURN SERVICE REQUESTED.

Postmaster: Time Dated material.
Please deliver immediately.

