

Connelly Angus Ranch

Genetics for the Long Run
Production Sale

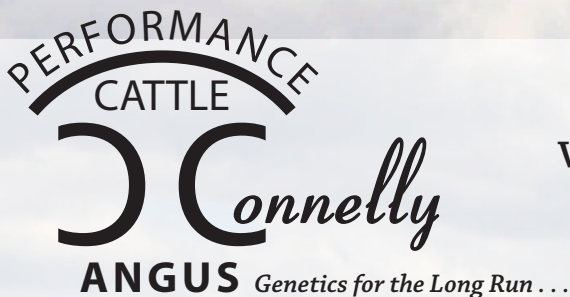
Tuesday, February 28, 2023

**At the Ranch in Valier, MT
Sale Starts at 1 pm**



**— Selling —
127 Yearling Bulls
21 Yearling Registered Heifers**

connelly@3rivers.net
www.connellyangus.com



1950 Dean Road
Valier, MT 59486

Don Connelly
406/ 279-3569
406/ 899-3826

Welcome to Connelly Angus!

Welcome to our 32nd Annual "Genetics for the Long Run" Production Sale. Next year will be our 50th year in the seedstock business. This year's sale offering promises to be one of the most exciting ever. The bulls selling represent the top 48% of the calf crop. The replacement heifers we are offering are a top end selection from the heart of our herd.

As I look back on the year 2022, It was a very challenging year. It was the driest year we had experienced since the 80s. We half stocked pastures for a while and water supply was definitely an issue. Our hay crops were again considerably shorter than normal. It definitely tested the cattle genetics as well as the human sector on the ranch. Our cattle must get by on what mother nature dishes out without any supplements. This tests the fertility and longevity of your cowherd and the genetics you sell. We are very proud of the proof of this by the 23 Pathfinder cows in our program, a huge indicator of the quality of the cowherd.

When you look at all the different agriculture commodities out there, the cattle business has the most positive outlook for the future. When you study the dynamics of the industry, there are quite a few really good years ahead for the rancher to enjoy.

A high percentage of the bulls selling are calving ease bulls that will work great on heifers or cows without giving up weaning weights or performance.

The heifers selling represent top prospects in each sire group from cow families that have stood the test of time. These heifers are developed the same way we do on our own replacements to insure their future soundness and production.

Our breeding philosophy has always been centered around producing problem free females with excellent longevity that can survive and excel in a commercial rancher's environment. This can only be accomplished with females that have excellent structure, feet, superior udder and teat qualities. We believe in a moderate framed cow that milks well while holding her condition and can consistently wean off a heavy calf. In our program, we place high emphasis on fertility, carcass quality, natural thickness, maternal traits, fast growth, quiet dispositions and moderate birth weights. At Connelly Angus we have been stacking cow families with these characteristics to produce an elite cowherd that can produce a consistent and quality product. We are focusing on bloodlines that leave you with females that can bring in a good calf year after year for the long run. You cannot build a cowherd and get ahead with a high percentage of open young cows.

We did not receive carcass data back on our steers this past year. The year before, our steers carcass data came back with the group grading 100% choice and 26% prime. This shows our cattle have the carcass genetics to improve any program.

The bulls have been developed on a high roughage ration to grow out, NOT FATTEN. Their ration was designed for a 2.75-pound ADG. They are very athletic and should be able to cover a lot of country. All bulls will be veterinary inspected, and semen tested before sale day by Dr Wade Spears, DVM.

We have decided to utilize genetic enhanced EPDs through HD50K DNA technology on the entire sale offering again this year. You can read more about this on page 4 of this catalog.

Our sale will be broadcast on DV Auction this year for those who cannot attend the sale. We also have a limited number of phone lines to utilize if you would like.

All cattle sell with the Connelly Angus guarantee. If you are unable to attend the sale, we offer a sight unseen satisfaction guarantee on the sale offering. We invite you to come join us on Tuesday, February 28 and have lunch, visit and enjoy the day. All cattle are available for your inspection at the ranch before the sale and on video at our website. If we can offer any additional information or assistance, feel free to contact us.

Sincerely,
The Connelly's

***Everyone is invited to a
Pre-Sale CAB Prime Rib Dinner
Monday, February 27, 6:00 pm
at the Ranch, North of Valier.
Cattle are available for preview all day before dinner.***



Skyler, Chantz, Wendy, Don, Matt and Mikayla

Connelly Angus Ranch

Genetics for the Long Run
Production Sale

Tuesday, February 28, 2023

**At the Ranch in Valier, MT
Sale Starts at 1 pm**

— 148 Angus Sell —

127 Long, Thick, Stout Yearling Bulls
(the top 48% of the calf crop)

21 Select Yearling Registered Heifers

Sale Day Phones

406-279-3569
406-899-3826

Videos of the sale cattle available at
www.connellyangus.com
www.DVAuctions.com

Schedule of Events

Monday, February 27, 2023

- All sale cattle & cowherd available to look over
- Be our guest for pre-sale CAB Prime Rib dinner, 6:00 pm at the Ranch

Tuesday, February 28, 2023

- Complimentary lunch will be served at 11:30 am
- Sale Time 1:00 pm

Volume Discounts

2 Bulls - 2% Discount, 3 Bulls - 3% Discount
4 Bulls - 4% Discount
and continuing up to 10 or more bulls - 10% Discount

Sale Order Selling by catalog order.

Free delivery on bulls in Montana and adjoining states. Beyond at actual cost. \$50 discount per bull if you pick up within a week of sale day. Heifers delivered at cost.

All bulls are fertility tested, veterinary inspected. Entire offering tested free of known defects identified by the American Angus Association, or has no pedigree risk.

Semen Interest Connelly Angus is retaining one-third revenue sharing semen interest on every bull selling in this sale. Full possession and full salvage value sells on all bulls.

Terms and Conditions

This sale is being conducted under the suggested sale terms and conditions adopted by the American Angus Association.

Inspection The cattle are ready for inspection at your convenience. Visitors are welcome at anytime.

Travel and Accommodations Air Travel: Great Falls is served by Delta, Horizon and Northwest Airlines. It is about a 90 minute drive to Connelly Angus. We have a local airfield for small planes in Valier and would be happy to have someone meet you if arrangements are made in advance.

- Stone School Inn, Valier406/ 279-3796
- Super 8 Motel, Conrad406/ 278-7676
- Crossroads Inn, Shelby406/ 434-5134
- Fairfield Inn, Great Falls.....406/ 454-3000
- Comfort Inn, Great Falls406/ 454-2727
- Lake Frances Inn, Valier.....406/ 279-3476

**- Buyers unable to attend the sale -
We offer a sight unseen satisfaction
guarantee on sale offerings**

DV Auctions will be assisting those unable to attend the sale this year. Please see page 2 for details.

Bids can be phoned into auctioneer or the owners.

Announcements from the auction block take precedence over information in this catalog.

Representatives

- Roger Jacobs.....Auctioneer
406/ 698-7686 or 406/ 373-6124
- Kurt Kangas.....American Angus Association
661/ 706-2041
- John Goggins Western Ag Reporter
406/ 698-4159 or 406/ 373-5000
- Devin Murnin Western Livestock Journal
406/ 696-1502
- Bill Pelton.....Bill Pelton Livestock
406/ 671-5100

Liability: Everyone attending this sale does so at his own risk and without liability on the part of the owners or their employees.

EPDs are current as of 2/6/23
Updated EPDs can be viewed at www.angus.org

Please bring this catalog to the sale!



Common Sense Ranching

At Connolly Angus we have always bred cattle realizing that the Angus female is the key to making the most out of your ranch's operation. We have focused on bloodlines and cow families that have proven bred in longevity.

We strive to breed cattle that will excel and survive in a low input environment not cattle in a artificial environment with extra supplements, creep feed and extra management. When mother nature gives you a good year, the calves will really weigh up for you. More importantly in those dry tough years if your cow herd has the right genetics, your cows can still bring in a good calf and breed back on time without those costly extra inputs. The wrong bloodlines and/or high powered, high input genetics can really cost you in those tough years if you want them to stay in your herd and avoid a high percentage of open cows. There are plenty of high input genetics out there that will cost you lots of extra dollars in the good years!

We take pride in proving to our customers the history behind the bulls they buy. You will find ratios on all the measurements we take in developing the bulls. You will find generations of cow production records behind the bulls to help aid in your selection. We believe the best genetics are found over time through a cow producing a good calf year after year through ten plus years while maintaining soundness & udder quality and proving there is actual bred in longevity. There are great financial rewards in using the right genetics.

When you buy a bull for your program without any performance ratios or cow family history, you really have no idea what you are in for. You don't know if you are improving what you already have or in for a big costly disappointment down the road.

Survival in today's ranching atmosphere allows for few mistakes. Look to add the genetics to your program that will give you the biggest returns and keep you going for the Long Run!

First Year Breeding Guarantee

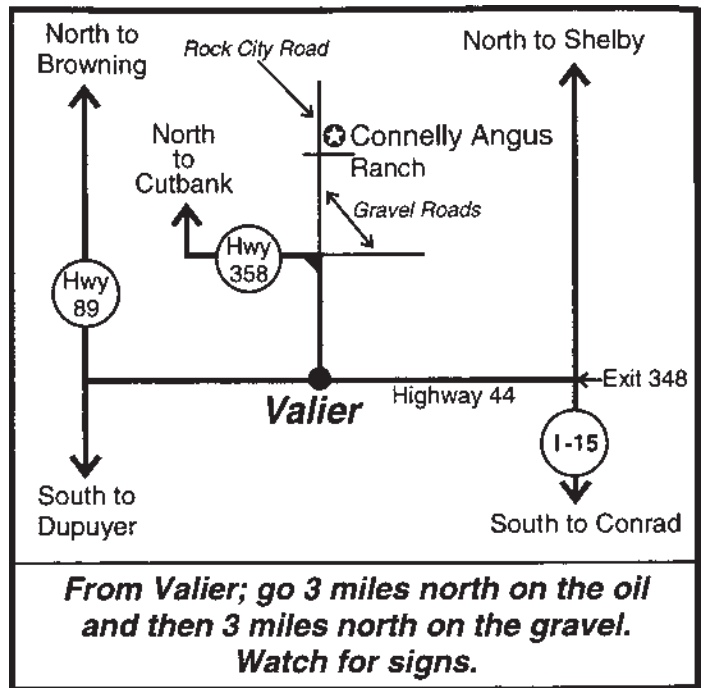
All bulls selling for \$3000 or more will be covered 50% by Connolly Angus, if they are injured during their first breeding season and not able to return to service during that first breeding season. Breeding season is defined as the 90 day period following the first turnout of the bulls.

50% of the value of the injured bull, minus one-half salvage value, will be given as credit in a future sale or toward a replacement bull if one is available. Salvage value, if any, will be split equally between Connolly Angus and the buyer. All injured bulls must be diagnosed by a veterinarian. Please notify us as soon as possible should injury occur and prior to the injured bull being sold for salvage. All claims must be made by September 1, 2023.

Example 1: A \$6000 bull is injured, a credit of \$3000 minus one-half any salvage value will be given to the buyer.

Example 2: A \$4000 bull is injured, a credit of \$2000 minus one-half any salvage value will be given to the buyer.

Example 3: A \$2500 bull is injured, no credit is given. Buyer retains all salvage value.



DVAuction

Watch & Bid Online for FREE!

Can't make the sale? Let DVAuction bring the sale to you!
Busy during the sale? Let DVAuction represent your bid!

Visit www.dvauction.com and Register!
It's as easy as 1, 2, 3...

1. Create an account at www.dvauction.com under the "create new account" tab
 2. Apply for bidding by clicking "apply for bidding" in the upper left corner of your screen, at least 24 hours prior to the auction
 3. Tune into the sale and make your purchases!
- *High Speed Internet Access Required

For General Questions Please Contact Our Office:
(402) 316-5460 or support@dvauction.com

Visitors are always welcome to stop by and see the cattle at any time.

Give us a call and we'll turn on the coffee pot!





Driving the science of better breeding

There's little room for error in the cattle business. Producers need the most advanced information to make smart selection decisions, and Angus Genetics Inc. (AGI) provides it through genomic-enhanced expected progeny differences (GE-EPDs).

GE-EPDs have become the industry standard for herd improvement, building on decades of science-backed genetic evaluation tools originated and maintained through the American Angus Association®, home to the largest and ever-growing single-breed beef cattle database.

EPDs that traditionally contained all pedigree, performance and progeny information now also include results from available genomic, or DNA, tests. Breeders who use genomic technology give buyers access to AGI-generated GE-EPDs that provide:

Increased predictability and decreased risk for young and unproven animals due to enhanced accuracy of EPDs

Better characterization of genetics for difficult-to-measure performance traits (such as carcass traits, maternal traits and feed efficiency)

The ability to make more rapid progress for traits that are important to you, due to:

- more accurate selection
- easier identification of genetic outliers
- the ability to propagate young animals with confidence earlier in their lives

In fact, GE-EPDs on unproven animals have the same amount of accuracy as if they had recorded 10-36 calves, depending on the trait. That's valuable insight, offered regularly through the breed's weekly national cattle evaluation.

Trait	Progeny Equivalent	Trait	Progeny Equivalent
Calving Ease Direct	26	Heifer Pregnancy	17
Birth Weight	23	Calving Ease Maternal	20
Weaning Weight	27	Milk	36
Yearling Weight	23	Mature Weight	15
Dry Matter Intake	12	Mature Height	9
Scrotal Circumference	15	Carcass Weight	15
Docility	12	Yearling Height	17
Claw Set	10	Carcass Marbling	11
Foot Angle	10	Carcass Ribeye	17
		Carcass Fat	14

How do you know if EPDs are genomic-enhanced?

Ask your breeder, refer to the registration paper, or look for the AGI GE-EPD logo, Angus GS™ powered by partner Neogen GeneSeek or the HD50k by partner Zoetis. These images indicate animals for which low-density or high-density genomic testing has been conducted and incorporated by AGI into GE-EPDs



www.angus.org

Reference Sire

CAR REMARKABLE 821

19292977

calved - 01/17/18

S A V RESOURCE 1441#
CAR REMARKABLE 640
 CAR MISS MARIE 769#

RITO 707 OF IDEAL 3407 7075
 S A V BLACKCAP MAY 4136
 CAR EFFICIENT 534#
 CAR MISS MARIE 5164

CAR CEDAR RIDGE 156
CAR MISS HEATHER 5167#
 CAR MISS HEATHER 2197

COLE CREEK CEDAR RIDGE 1V#
 CAR MISS LUCY 720
 CAR JUSTICE 8112
 CAR MISS HEATHER 999

Birth Wt	74
205 Wt	205
	753
	NR
	117
	YR
	117

CED EPD	BW EPD	WW EPD	Milk EPD	YW EPD	SC EPD		
+10	+1.2	+69	+21	+122	+2.70		
Acc .49	.77	.71	.33	.61	.68		
Marb	RE	Fat	\$M	\$W	\$F	\$G	\$B
+1.19	+5.4	+0.42	+65	+60	+91	+28	+119
Acc .38	.39	.36					



Calving ease, performance, beef phenotype, fertility and structural correctness with an outcross pedigree for most producers. Pathfinder dam from a herd bull producing cow family that is strong in the basic fundamentals including great feet, clean sheath, robust body dimension and exceptional thickness plus ideal Angus breed character. Outstanding docile sire group that will impress. First daughters in production are doing a fantastic job. Proudly co-owned with Adams Angus & Christensen Cattle Co. Semen available through Universal Semen Sales.

Reference Sire

CAR LEGENDARY 026

19940742

calved - 01/24/20

QUAKER HILL RAMPAGE 0A36#
CONNEALY LEGENDARY 644L
 JAZZED OF CONANGA 4660

MCC DAYBREAK#
 QHF BLACKCAP 6E2 OF4V16 4355#
 MORGANS DIRECTION 111 9901#
 JAZE OF CONANGA 234

S A V RESOURCE 1441#
CAR MISS LUCY 717#
 CAR MISS LUCY 301

RITO 707 OF IDEAL 3407 7075
 S A V BLACKCAP MAY 4136
 S A V FINAL ANSWER 0035#
 CAR MISS LUCY 720

Birth Wt	65
205 Wt	746
	NR
	107
	YR
	117

CED EPD	BW EPD	WW EPD	Milk EPD	YW EPD	SC EPD		
+13	-2.1	+78	+21	+144	+1.58		
Acc .48	.73	.67	.35	.56	.58		
Marb	RE	Fat	\$M	\$W	\$F	\$G	\$B
+6.1	+1.11	-.003	+51	+67	+109	+59	+168
Acc .38	.38	.34					



Legendary 026 was our high selling bull of our 2021 production sale to Wheeler Mountain Angus & M R Angus. He is sure shot calving ease bull whose progeny have performed well and are attractive in their makeup with nice quiet dispositions. Outstanding sire group. Semen Available.

Reference Sire

CAR HICKORY 547

18297718

calved - 01/19/15

COLE CREEK CEDAR RIDGE 1V#
CAR CEDAR RIDGE 156
 CAR MISS LUCY 720

COLE CREEK BLACK CEDAR 46P#
 COLE CREEK CLOVANADA 49S#
 H A IMAGE MAKER 0415#
 CAR MISS LUCY 515#

CAR CHINNOOK 786#
CAR MISS MARIE 3157
 CAR MISS MARIE 943

A A R REALLY WINDY 1205#
 CAR MISS MARIE 5109
 CAR EFFICIENT 648
 CAR MISS MARIE 699

Birth Wt	65
205 Wt	745
	NR
	119
	YR
	110

CED EPD	BW EPD	WW EPD	Milk EPD	YW EPD	SC EPD		
+9	+1.1	+69	+14	+107	+1.62		
Acc .51	.76	.71	.37	.61	.68		
Marb	RE	Fat	\$M	\$W	\$F	\$G	\$B
+2.23	+2.29	+0.003	+58	+56	+74	+29	+103
Acc .35	.36	.34					



Hickory was chosen out of our 2015 calf crop to replace his sire. His dam is an intensely linebred female that traces to foundation 449 cow 9 times. Excellent calving ease and performance in a moderate framed package. Excellent feet on this herdbull. Progeny are early maturing line and extremely easy fleshing. First daughters in production are indexing 105 on their progeny. Semen available.

Reference Sire

CAR DURABULL LINE 575

18354613 calved - 01/22/15

CAR DUKE 865
CAR 865 DUKE 3200
 CAR LADY DIANA 503

CAR DUKE 504
 CAR MISS MARIE 300
 CAR TRACKER 904#
 CAR LADY DIANA 968
 CAR CHINNOOK 786#
 CAR MARIE 9139
 CAR DUKE 865
 CAR MISS MARIE 645

Birth Wt	67
205 Wt	205
	749
	NR
	119
	YR
	107

CED EPD	BW EPD	WW EPD	Milk EPD	YW EPD	SC EPD		
+14	-0.7	+40	+30	+72	+1.78		
Acc .44	.76	.72	.34	.59	.67		
Marb	RE	Fat	\$M	\$W	\$F	\$G	\$B
+41	+16	+068	+49	+45	+70	+31	+101
Acc .23	.27	.21					



We retained this outstanding bull from our 2015 calf crop. He ties up all of our best cow families and traces to our foundation 449 cow 16 times. Outcross calving ease genetics with excellent weaning weights and unbeatable maternal attributes. Daughters in production are living up to our expectations. Sons are phenotypical standouts. Semen Available

Reference Sire

CAR CHA CHING 528

18330751 calved - 01/17/15

SITZ DASH 10277#
BARSTOW CASH#
 BARSTOW QUEEN W16

SITZ UPWARD 307R#
 SITZ EVERELDA ENTENSE 2665
 S A V FINAL ANSWER 0035#
 RCA QUEEN R42
 CAR TRACKER 904#
 CAR MISS LINDA 033
 MC BEE WMR SUPER X 745#
 C A R LADY 011 RITO 280

Birth Wt	77
205 Wt	205
	749
	NR
	119
	YR
	108

CED EPD	BW EPD	WW EPD	Milk EPD	YW EPD	SC EPD		
+10	+0.0	+63	+19	+105	+1.18		
Acc .49	.76	.72	.47	.64	.70		
Marb	RE	Fat	\$M	\$W	\$F	\$G	\$B
+00	+56	+034	+61	+56	+87	+20	+107
Acc .37	.38	.34					



Calving ease with extra length, added rib and heavy muscling from one of the best cows on the ranch! She is a 17 year old pathfinder due to calve again on time. She was exhibited and greatly admired on the 2021 Montana Angus Tour here on the ranch. First daughters in production are impressive and are indexing 108 on their calves.

Reference Sire

CAR DURABULL 056

19946036 calved - 01/27/20

CAR 865 DUKE 3200
CAR DURABULL LINE 575
 CAR MISS MARIE 3184#

CAR DUKE 865
 CAR LADY DIANA 503
 CAR CHINNOOK 1119
 CAR MISS MARIE 110
 KOU PAL JUNE AU 797#
 QUEEN ELBA 763U LAR
 CAR TRACKER 219
 CAR MISS VIKING 5145

Birth Wt	73
205 Wt	205
	773
	NR
	111
	YR
	111

CED EPD	BW EPD	WW EPD	Milk EPD	YW EPD	SC EPD		
+11	-0.8	+58	+31	+100	+1.99		
Acc .39	.59	.52	.29	.43	.49		
Marb	RE	Fat	\$M	\$W	\$F	\$G	\$B
+44	+29	+041	+82	+64	+85	+36	+122
Acc .30	.31	.27					



Sold in our 2021 sale to Dirk Ewing. Cow family has the best udder quality on the ranch. Traces back to our foundation 131 Viking cow. This top Durabull son has had a herdbull look to him from an early age. Very well put together & attractive. Calving ease with excellent performance and maternal values.

Reference Sire **STERLING PACIFIC 904**

+19444025 calved - 02/13/19

MOGCK BULLSEYE#
HOOVER NO DOUBT
 MISS BLACKCAP ELLSTON J2

G A R PROPHET#
BALDRIDGE ISABEL B082
 BALDRIDGE ISABEL Y69

MOGCK SURE SHOT#
 MOGCK MARY 1255
 SYDGEN C C & 7#
 MISS BLACKCAP ELLSTON D154#

C R A BEXTOR 872 5205 608#
 G A R OBJECTIVE 1885
 STYLES UPGRADE J59#
 BALDRIDGE ISABEL T935

Birth Wt
205 Wt
NR
ET
YR
ET

CED EPD	BW EPD	WW EPD	Milk EPD	YW EPD	SC EPD		
+10	+1.5	+76	+17	+136	+1.22		
Acc .67	.91	.88	.33	.78	.75		
Marb	RE	Fat	\$M	\$W	\$F	\$G	\$B
+1.31	+.53	+.040	+80	+60	+102	+80	+182
Acc .44	.46	.44					



A bull we sampled and were extremely impressed with how they performed for us. They offer calving ease, explosive growth and carcass genetics along with a strong maternal background. We used Pacific again because we really liked what we were seeing early on.

Reference Sire **SITZ RESILIENT 10208**

19057457 calved - 02/15/18

MOHNEN SUBSTANTIAL 272#
SITZ STELLAR 726D
 SITZ PRIDE 200B

SITZ TOP GAME 561X#
SITZ MISS BURGESS 1856
 SITZ MISS BURGESS 4381

BENFIELD SUBSTANCE 8506
 MOHNEN GLYN MAWR ELBA 1758
 CONNEALY FINAL PRODUCT#
 SITZ PRIDE 308Y#

GDAR GAME DAY 449#
 SITZ PRIDE 88T#
 SITZ RAINMAKER 10899
 SITZ MISS BURGESS 1609

Birth Wt
205 Wt
NR
YR

CED EPD	BW EPD	WW EPD	Milk EPD	YW EPD	SC EPD		
+9	+0.2	+76	+22	+136	+98		
Acc .87	.96	.95	.36	.91	.89		
Marb	RE	Fat	\$M	\$W	\$F	\$G	\$B
+91	+.76	+.002	+88	+68	+84	+68	+151
Acc .67	.63	.66					



Resilient has done a nice job in our program. His progeny have been in high demand across the country. We are just calving his first daughters & they look very promising.

Reference Sire **CAR BISMARCK 8190**

19330111 calved - 02/13/18

S A V BISMARCK 5682#
CAR BISMARCK 371
 CAR MISS VIKING 9191

R B ACTIVE DUTY 010#
CAR MISS MIKAYLA 530#
 CAR MISS MIKAYLA 179#

G A R GRID MAKER#
 S A V ABIGALE 0451
 CAR TRACKER 219
 CAR MISS VIKING 5145

LCC NEW STANDARD#
 B A LADY 6807 305
 CAR 504 DUKE 898
 CAR MISS MIKAYLA 346

Birth Wt
74
205 Wt
732
NR
113
YR
109

CED EPD	BW EPD	WW EPD	Milk EPD	YW EPD	SC EPD		
+11	-0.5	+55	+28	+90	+2.17		
Acc .37	.62	.55	.31	.48	.57		
Marb	RE	Fat	\$M	\$W	\$F	\$G	\$B
+19	+.39	+.038	+70	+61	+47	+26	+73
Acc .32	.33	.28					



We retained 8190 out of our 2018 calf crop because of his outstanding dam and his overall completeness as a herd bull. Dam is outstanding 2nd generation pathfinder with 5 @ 114 weaning. Used as cleanup on heifers for 2 years. Excellent feet & disposition on this impressive herd bull. Impressive sire group.

Reference Sire **BALDRIDGE SR GOALKEEPER**

19356243 calved - 01/07/19
 SYDGEN EXCEED 3223#
SYDGEN ENHANCE
 SYDGEN RITA 2618
 CONNEALY CONFIDENCE PLUS#
BALDRIDGE ISABEL E030
 BALDRIDGE ISABEL Y69
 SYDGEN GOOGOL
 SYDGEN FOREVER LADY 1255
 SYDGEN LIBERTY GA 8627#
 FOX RUN RITA 9308#
 CONNEALY CONFIDENCE 0100#
 ELBANNA OF CONANGA 1209
 STYLES UPGRADE J59#
 BALDRIDGE ISABEL T935

Birth Wt
205 Wt
NR
YR

CED EPD	BW EPD	WW EPD	Milk EPD	YW EPD	SC EPD		
+5	+1.5	+67	+25	+137	+1.69		
Acc .74	.91	.88	.34	.81	.78		
Marb	RE	Fat	\$M	\$W	\$F	\$G	\$B
+1.19	+.98	+.003	+63	+55	+102	+84	+185
Acc .48	.48	.48					



This is the second year we used the Goalkeeper bull. He descends from a great cow family that offers us some very intriguing outcross genetics. We were very happy with the results. These cattle are a really good fit for our program. We are just calving his first daughters and are impressed.

Reference Sire **PINE COULEE CAPITALIST F339**

19307349 calved - 02/08/18
 CONNEALY CAPITALIST 028#
LD CAPITALIST 316#
 LD DIXIE ERICA 2053
 PINE COULEE POWERHOUSE W112
PINE COULEE BLACKCAP Y1#
 PINE COULEE BLACKCAP G 3Z71#
 S A V FINAL ANSWER 0035#
 PRIDES PITA OF CONANGA 8821
 C A FUTURE DIRECTION 5321#
 LD DIXIE ERICA OAR 0853
 S A V NET WORTH 4200#
 VF 2031 BLKCP 0046 OF 878
 LEACHMAN RIGHT TIME#
 V T 6807 TRAVELER R43

Birth Wt
80
205 Wt
750
NR
100
YR
100

CED EPD	BW EPD	WW EPD	Milk EPD	YW EPD	SC EPD		
+9	+1.2	+53	+29	+91	+64		
Acc .45	.65	.58	.35	.47	.49		
Marb	RE	Fat	\$M	\$W	\$F	\$G	\$B
+4.46	+.32	+.042	+60	+58	+80	+37	+118
Acc .37	.37	.33					

F339 was our pick of the 2019 Pine Coulee production sale. Used as clean up bull on heifers. Dam is 2nd generation pathfinder. We are impressed with the extra body dimension and mass of these Capitalist sons. Daughters are proving their worth to our program.

Reference Sire **WINDY RIDGE SWAGGER 714**

18960623 calved - 02/01/17
 CONNEALY CONFIDENCE 0100#
MARDA SWAGGER 463
 MF BLACKBIRD 51
 WINDY RIDGE DAYLIGHT 104
WINDY RIDGE ROSE 312
 WINDY RIDGE ROSE 117
 CONNEALY TOBIN
 BECKA GALA OF CONANGA 8281
 CONNEALY RIGHT ANSWER 746#
 MF BLACKBIRD 82
 MCC DAYBREAK#
 WINDY RIDGE BRAZEN LADY 916
 SYDGEN MANDATE 6079
 WINDY RIDGE EVERELLA 319

Birth Wt
205 Wt
NR
YR

CED EPD	BW EPD	WW EPD	Milk EPD	YW EPD	SC EPD		
+9	+0.7	+86	+25	+137	+1.40		
Acc .40	.78	.73	.37	.63	.68		
Marb	RE	Fat	\$M	\$W	\$F	\$G	\$B
+.40	+.59	-.002	+73	+82	+95	+42	+137
Acc .34	.35	.31					

We bought Swagger from Karen Davis in their 2020 sale as a 3 year old. Excellent feet and a super disposition. This bull has done a nice job here. You will like this outcross sire group. Excellent performing sire group. First calf daughters look very promising. Semen available.

Reference Sire **B BAR HOMESTRETCH 3047**

18823242 calved - 02/28/17
 CROOK MT REALLY WINDY 141#
B BAR WINDY 79
 B BAR LADY JEWEL 116#
 SITZ RLS ALLIANCE 7164
B BAR QUEEN 304#
 B BAR QUEEN 557#
 A A R REALLY WINDY 1205#
 REVOLUTION 155 OF CROOK MT
 RA JOE HERO
 B BAR LADY JEWEL 884
 SITZ ALLIANCE 6595#
 SITZ RLS EISA EVERGREEN 4451#
 S A V BUSHWACKER 3119#
 B BAR QUEEN TIME ET 4014

Birth Wt
92
205 Wt
848
NR
114
YR
113

CED EPD	BW EPD	WW EPD	Milk EPD	YW EPD	SC EPD		
+8	+0.3	+56	+35	+95	+1.45		
Acc .37	.69	.64	.27	.55	.60		
Marb	RE	Fat	\$M	\$W	\$F	\$G	\$B
-.01	+.46	+.023	+58	+62	+81	+19	+100
Acc .20	.26	.22					

Homestretch was our pick and the high selling bull of the 2018 Lunds B Bar production sale. His dam is an outstanding 2nd generation pathfinder cow in their program. This bull will add length to his progeny. New outcross genetics for our customers. First daughters calved have excellent udder quality and are good mothers.

Reference Sire **CAR JUNEAU 7213**

19001536 calved - 02/16/17
 KROUPAL JUNEAU 797#
LAR JUNEANU 796Y
 QUEEN ELBA 763U LAR
 CAR RIDGERUNNER 001
CAR MISS JULIE 667
 CAR MISS JULIE 429#
 O C C JUNEAU 807J#
 KROUPALS ELBA 187
 LAR ALLIANCE 64L#
 QUEEN ELBA 525R LAR
 WINDY RIDGE COMMODORE#
 LADY TRAVELER 449 C A R#
 CAR TRACKER 904#
 C A R LADY 446 TREND 668

Birth Wt
78
205 Wt
664
NR
106
YR
102

CED EPD	BW EPD	WW EPD	Milk EPD	YW EPD	SC EPD		
+2	+3.0	+63	+17	+104	+1.99		
Acc .34	.63	.57	.33	.45	.51		
Marb	RE	Fat	\$M	\$W	\$F	\$G	\$B
+.13	+.47	-.030	+46	+44	+71	+30	+101
Acc .32	.33	.28					

Interesting herd bull here. Dam produced 14 calves. The 6 consecutive generations of dams behind this bull averaged 12 calves in their lifetime production. Old line proven cow families behind this Juneau son who is doing a tremendous job for us. His daughters in production are great mothers and just what we were hoping for. Most of his sons are the younger bulls in the sale.

Reference Sire

BYERGO COLONEL G14

+19434474

calved - 01/05/19

BALDRIDGE XPAND X743
BALDRIDGE COLONEL C251#
BALDRIDGE ISABEL Y69

HOOVER DAM#
BALDRIDGE QUEEN S87
STYLES UPGRADE J59#
BALDRIDGE ISABEL T935

LCC NEW STANDARD#
BYERGO CLOVER 850
BYERGO CLOVER 513

BON VIEW NEW DESIGN 1407#
LCC SUNSET K3118
RITO PLUS#
BYERGO CLOVER 9983

Birth Wt
205 Wt
NR
ET
YR
ET

CED EPD	BW EPD	WW EPD	Milk EPD	YW EPD	SC EPD		
+3	+0.1	+62	+29	+119	+0.2		
Acc .42	.68	.62	.35	.47	.54		
Marb	RE	Fat	\$M	\$W	\$F	\$G	\$B
+0.70	+0.67	-0.024	+48	+58	+105	+59	+164
Acc .38	.39	.36					



Colonel was our pick and the high selling bull of 2020 Midland Bull Test. He brings in some new bloodlines to our program. He had the best feet we have ever seen on a yearling bull and a super disposition. We are just calving his first daughters and they look quite promising. Semen available.

Reference Sire

JBOB MISSING LINK 935

19628869

calved - 03/12/19

O C C HEADLINER 661H
O C C MISSING LINK 830M#
O C C DIXIE ERICA 946K

O C C EMBLAZON 854E#
O C C JUANADA 858F#
O C C GLORY 950G#
O C C DIXIE ERICA 816B

CAR CHINNOOK 786#
CAR MISS MARIE 048
CAR MISS MARIE 7170

A A R REALLY WINDY 1205#
CAR MISS MARIE 5109
BOYD NEW DAY 8005#
C A R MISS MARIE 701

Birth Wt
80
205 Wt
685
NR
112
YR

CED EPD	BW EPD	WW EPD	Milk EPD	YW EPD	SC EPD		
+5	+2.4	+55	+26	+94	+1.04		
Acc .39	.62	.56	.33	.47	.54		
Marb	RE	Fat	\$M	\$W	\$F	\$G	\$B
-0.17	+0.72	-0.003	+58	+53	+84	+17	+101
Acc .32	.33	.28					

Excellent Missing Link son that is doing a tremendous job for us. Looking forward to getting daughters into production. Should be as range hardy and efficient as there is when you consider the cow family behind them.

Reference Sire

FOOS REVOLUTION 243

18961495

calved - 01/30/17

CANDOLIER FOREVER 376#
SVR REVOLUTION 4129
S C C ENCHANTRESS 3F1 X412

FOREVER OF WYE#
BARB 157 FOREVER E C
EMULATION N BAR 5522#
N BAR ENCHANTRESS 4908#

CROOK MT REALLY WINDY 8834
FOOS HAZEL 243
N F HAZEL 7461-8#

CROOK MT REALLY WINDY 141#
BLACKBIRD 604 OF CROOK MT
CROOK MT REALLY WINDY 104
N F HAZEL 74601

Birth Wt
85
205 Wt
651
NR
101
YR
103

CED EPD	BW EPD	WW EPD	Milk EPD	YW EPD	SC EPD		
+12	-1.1	+30	+24	+50	+0.98		
Acc .42	.76	.71	.31	.58	.64		
Marb	RE	Fat	\$M	\$W	\$F	\$G	\$B
+0.08	+0.14	+0.037	+69	+37	+49	+18	+67
Acc .28	.30	.25					

This Revolution son was our pick of the 2017 Foos production sale. He was used as a clean up bull on heifers the first year. Old line foundation proven genetics. Candolier 376, Emulation 5522 and a double shot of Windy 141. He adds tremendous length and style to his progeny. His progeny have a lot more performance than his EPDs indicate. You will like this powerful sire group when you see them.

Reference Sire

CAR YETI 973

19643038

calved - 01/28/19

BASIN PAYWEIGHT 1682#
PAHR YETI B5
PAHR RITA Q28 OF 0151 9Q20

BASIN PAYWEIGHT 006S#
21AR O LASS 7017
RITO 9Q20 OF RITA 5F56 GHM
P A R LADY COMMITMENT 0151

CAR DURABULL LINE 575
CAR MISS MIKAYLA 760
CAR MISS MIKAYLA 179#

CAR 865 DUKE 3200
CAR MISS MARIE 3184#
CAR 504 DUKE 898
CAR MISS MIKAYLA 346

Birth Wt
70
205 Wt
796
NR
121
YR
109

CED EPD	BW EPD	WW EPD	Milk EPD	YW EPD	SC EPD		
+9	+1.1	+67	+22	+106	+0.80		
Acc .39	.61	.54	.32	.43	.50		
Marb	RE	Fat	\$M	\$W	\$F	\$G	\$B
+0.30	+0.42	+0.034	+56	+63	+60	+32	+92
Acc .33	.33	.29					

Used as cleanup bull on heifers for 2 years. Yeti's progeny have that extra punch in weaning & yearling performance. Proven calving ease and maternal ability.

Reference Sire

BIG DRY RAINFALL H35

19982102

calved - 03/25/20

COLEMAN CHARLO 0256#
S A V RAINFALL 6846
S A V BLACKCAP MAY 4136

O C C PAXTON 730P#
BOHI ABIGALE 6014
S A V 8180 TRAVELER 004#
S A V MAY 2397#

SITZ ROYAL 9784
BDAR RUBY 747E
BDAR RUBY 406C

SITZ TOP GAME 561X#
SITZ BARBARAMERE JET 57
CONNEALY COOL 39L#
BDAR RUBY 246Z

Birth Wt
205 Wt
NR
YR

CED EPD	BW EPD	WW EPD	Milk EPD	YW EPD	SC EPD		
+7	+1.5	+66	+34	+128	+2.05		
Acc .38	.60	.53	.35	.45	.51		
Marb	RE	Fat	\$M	\$W	\$F	\$G	\$B
+0.79	+0.71	-0.008	+93	+72	+71	+62	+133
Acc .38	.38	.34					

Our pick of the 2021 Big Dry Angus Sale. As quiet of a disposition you can find. Easy keeping attractive bull we are looking forward to more of his influence in our program.

Reference Sire

CAR LEGENDARY 034

19940750 calved - 01/25/20

QUAKER HILL RAMPAGE 0A36#	MCC DAYBREAK#	Birth Wt	75
CONNEALY LEGENDARY 644L	QHF BLACKCAP 6E2 OF4V16 4355	205 Wt	205
JAZZED OF CONANGA 4660	MORGANS DIRECTION 111 9901#		723
	JAZE OF CONANGA 234		NR
	HF KODIAK 5R		103
SOO LINE MOTIVE 9016#	TLA BEAUTY 5R		YR
CAR MISS MIKAYLA 511	C A R EXT 510		107
CAR MISS MIKAYLA 9132	C A R LADY 011 RITO 280		

CED EPD	BW EPD	WW EPD	Milk EPD	YW EPD	SC EPD		
+10	-2.7	+66	+29	+116	+33		
Acc .40	.59	.51	.34	.45	.51		
Marb	RE	Fat	\$M	\$W	\$F	\$G	\$B
+52	+1.05	-.036	+55	+69	+98	+57	+154
Acc .36	.36	.32					

Used for cleanup on heifers. Excellent calving ease, performance and maternal coupled with good carcass traits.

Reference Sire

CAR MOTIVE 004

19916581 calved - 01/18/20

SOO LINE MOTIVE 9016#	HF KODIAK 5R	Birth Wt	75
CAR MOTIVE 423	TLA BEAUTY 5R	205 Wt	205
CAR MISS HEATHER 446#	CAR DUKE 104#		734
	CAR HEATHER 020#		NR
	CAR PRIMETRACKER 308#		105
CAR PRIMETRACKER 512	CAR PRIMROSE LADY 9118		YR
CAR MISS DIANA 9159	CAR PRIMETRACKER 308#		111
CAR MISS DIANA 629	C A R REAL LADY 657#		

CED EPD	BW EPD	WW EPD	Milk EPD	YW EPD	SC EPD		
+6	-0.7	+48	+18	+80	+25		
Acc .37	.58	.51	.31	.43	.49		
Marb	RE	Fat	\$M	\$W	\$F	\$G	\$B
+25	+.26	+.029	+35	+42	+69	+28	+97
Acc .31	.31	.27					

Dam is a 14 year old Primetracker daughter. She is moderate framed with tons of rib and fleshing ability along with flawless udder quality. Lot of longevity for generations in this young herd bull we retained for a clean up bull on heifers.

Reference Sire

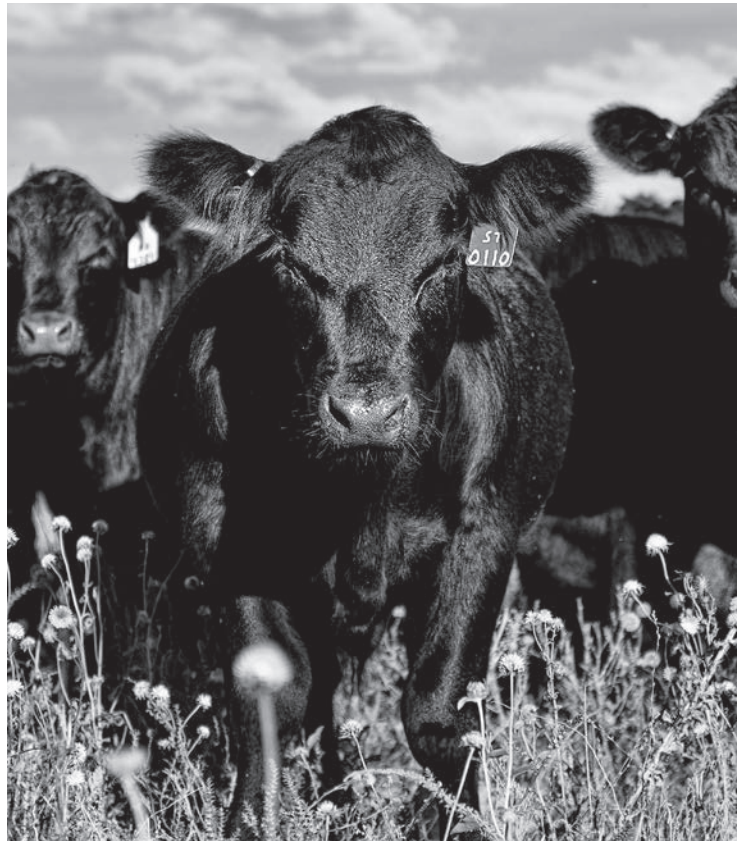
CAR REMARKABLE 039

19916730 calved - 01/25/20

S A V RESOURCE 1441#	RITO 707 OF IDEAL 3407 7075	Birth Wt	82
CAR REMARKABLE 640	S A V BLACKCAP MAY 4136	205 Wt	205
CAR MISS MARIE 769#	CAR EFFICIENT 534#		668
	CAR MISS MARIE 5164		NR
	CAR TRACKER 904#		96
CAR PRIMETRACKER 308#	CAR MISS LINDA 033		YR
CAR MISS MIKAYLA 510#	MC BEE WMR SUPER X 745#		95
CAR MISS MIKAYLA 209	C A R LADY 011 RITO 280		

CED EPD	BW EPD	WW EPD	Milk EPD	YW EPD	SC EPD		
+6	+1.1	+57	+29	+93	+1.06		
Acc .33	.55	.49	.31	.44	.51		
Marb	RE	Fat	\$M	\$W	\$F	\$G	\$B
+42	+1.18	+.067	+75	+61	+66	+32	+98
Acc .32	.33	.28					

Dam is a 18 year old Pathfinder PrimeTracker daughter and dam of the herd sire CAR Cha Ching 528. Top end maternal package with proven bred in longevity. His sons have performed with the best.



Add A Tag That Adds Value.

The American Angus Association's comprehensive AngusSource® Process Verified Program and services are aimed at improving profitability in the commercial sector of the cattle industry. The AngusSource portfolio of five value-added programs is your source to stay competitive in the marketplace.

Visit AngusSource.com or call 816.383.5100 to get the value you deserve.

ANGUS SOURCE

VALUE ADDED PROGRAMS



Age and Source • Non-Hormone Treated Cattle • AS NeverEver3
• AS Cattle Care & Handling • AS Calf Management

Lot Information Explanation

BW - Actual Birthweight

WW - Actual Weight on day weaned 10/13/23)

205 wt - Weaning weight adjusted to 205 day weight to allow comparison among individuals

NR - Nursing Ratio used for within herd comparisons



Bull
 HOOVER NO DOUBT
STERLING PACIFIC 904
 BALDRIDGE ISABEL B082

CAR GAME DAY 406
CAR MISS AMY 686
 CAR MISS AMY 8113

CAR PACIFIC 258

20561134

calved - 01/24/22

MOGCK BULLSEYE#
 MISS BLACKCAP ELLSTON J2
 G A R PROPHET#
 BALDRIDGE ISABEL Y69
 JENNAWAY GAME DAY 024
 CAR MISS MARIE 8212#
 CAR MEDICINE MAN 640
 CAR MISS AMY 600



BW	WW 10/13	205 wt	NR	365 wt	YR	ADG	Scrotal
75	841	725	115	1370	120	4.03	38.4
CED	BW	WW	Milk	YW	SC		
+7	+1.5	+60	+20	+110	+43		
Marb	RE	Fat	\$M	\$W	\$F	\$G	\$B
+0.72	+0.53	+0.019	+49	+48	+82	+54	+136

365 wt - Weaning weight adjusted to 365 day weight to allow comparison among individuals

ADG - Average Daily Gain

YR - Yearling Ratio used for within herd comparison

Scrotal - Adjusted scrotal measurement

Calving Ease Direct EPD (CED) - Expressed as a difference on percentage of unassisted births, with a higher value indicating greater calving ease in first-calf heifers. Predicts the average difference in ease with which a sire's calves will be born when he is bred to first-calf heifers.

Birth Weight EPD (BW) - Expressed in pounds, is a predictor of an individual's ability to transmit birth weight to his progeny compared to that of other individuals.

Weaning Weight EPD (WW) - Expressed in pounds, is a predictor of an individual's ability to transmit weaning growth to his progeny compared to that of other individuals.

Maternal Milk EPD (Milk) - A predictor of individual's genetic merit for milk and mothering ability compared to other individuals. It is that part of a calf's weaning weight attributed to milk and mothering ability.

Yearling Weight EPD (YW) - Expressed in pounds, is a predictor of an individual's ability to transmit yearling growth to his progeny compared to that of other individuals.

Scrotal Circumference (SC) - expressed in centimeters, is a predictor of the difference in transmitting ability for scrotal size compared to that of other sires.

Marbling EPD (Marb) - Expressed as a fraction of the difference in USDA marbling score of a sire's progeny compared to progeny of other sires.

Ribeye Area EPD (RE) - Expressed in square inches, is a predictor of the difference in ribeye area of a sire's progeny compared to progeny of other sires.

Fat Thickness EPD (Fat) - Expressed in inches, is a predictor of the differences in external fat thickness at the 12th rib (as measured between the 12th and 13th ribs) of a sire's progeny compared to progeny of other sires.

Maternal Weaned Calf Value (\$M) - An index expressed in dollars per head, predicts profitability differences in progeny due to genetics from conception to weaning. \$M is built off of a self-replacing herd model where commercial cattlemen replace 25% of their breeding females in the first generation and 20% in subsequent generations. Remaining cull females and all male progeny are sold as feeder calves. Increased selection pressure on \$M aims to decrease overall mature cow size and improve foot structure and fertility while maintaining weaning weights consistent with today's production.

Weaned Calf Value (\$W) - An index value expressed in dollars per head, is the expected average difference in future progeny performance for preweaning merit. \$W includes both revenue and cost adjustments associated with differences in birth weight, weaning direct growth, maternal milk, and mature cow size.

Feedlot Value (\$F) - An index value expressed in dollars per head, is the expected average difference in future progeny performance for postweaning merit compared to progeny of other sires.

Grid Value (\$G) - an index value expressed in dollars per head, is the expected average difference in future progeny performance for carcass grid merit compared to progeny of other sires.

Beef Value (\$B) - an index value expressed in dollars per head, is the expected average difference in future progeny performance for postweaning and carcass value compared to progeny of other sires.

Key to performance information used in this catalog

- Pathfinder

BW - Actual Birth Weight

WW - Actual Weaning Weight

Weaning Date - 10/13/23

205 wt - 205 Day Adjusted Weight

NR - Nursing Ratio

365 wt - 365 Day Adjusted Weight

YR - Yearling Ratio

ADG - Average Daily Gain

Scrotal - Adjusted Scrotal Measurement

ET - Embryo Transplant

Marb EPD - Marbling Carcass EPD

RE EPD - Ribeye Carcass EPD

FAT EPD - Fat Carcass EPD





YEARLING BULLS



CAR PACIFIC 258

20561134 calved - 01/24/22

HOOVER NO DOUBT
STERLING PACIFIC 904
BALDRIDGE ISABEL B082

MOGCK BULLSEYE#
MISS BLACKCAP ELLSTON J2
G A R PROPHET#
BALDRIDGE ISABEL Y69
JENNAWAY GAME DAY 024
CAR MISS MARIE 8212#
CAR MEDICINE MAN 640
CAR MISS AMY 600

CAR GAME DAY 406
CAR MISS AMY 686
CAR MISS AMY 8113



BW	WW 10/13	205 wt	NR	365 wt	YR	ADG	Scrotal
75	841	725	115	1370	120	4.03	38.4
CED	BW	WW	Milk	YW	SC		
+7	+1.5	+60	+20	+110	+43		
Marb	RE	Fat	\$M	\$W	\$F	\$G	\$B
+72	+53	+019	+49	+48	+82	+54	+136

Dam has an average Birth Weight ratio of 99, Weaning 108 and Yearling of 108. This cow family produced CAR Duke 104. Top of the line calving ease herdbull prospect, that excelled in every way we could measure. Heavy weaning weight and high gaining bull.



CAR SWAGGER 242

20554563 calved - 01/26/22

MARDA SWAGGER 463
WINDY RIDGE SWAGGER 714
WINDY RIDGE ROSE 312

CONNELLY CONFIDENCE 0100#
MF BLACKBIRD 51
WINDY RIDGE DAYLIGHT 104
WINDY RIDGE ROSE 117
LAR JUNEANU 796Y
CAR MISS DIANA 0101#
CAR DUKE 104#
CAR SUSIE 101

CAR JUNEANU 3236
CAR MISS SUSIE 737
CAR MISS SUSIE 618



BW	WW 10/13	205 wt	NR	365 wt	YR	ADG	Scrotal
84	938	811	115	1237	107	2.66	39.5
CED	BW	WW	Milk	YW	SC		
+5	+1.5	+82	+28	+139	+1.42		
Marb	RE	Fat	\$M	\$W	\$F	\$G	\$B
+41	+51	+004	+73	+79	+99	+41	+139

Granddam produced 14 calves. Cow family produced CAR Efficient 534. Look at the heavy weaning weight on this big stout herdbull prospect. Impressive figures.



CAR REMARKABLE 202

20554470 calved - 01/14/22

CAR REMARKABLE 640
CAR REMARKABLE 821
CAR MISS HEATHER 5167#

S A V RESOURCE 1441#
CAR MISS MARIE 769#
CAR CEDAR RIDGE 156
CAR MISS HEATHER 2197
A A R TEN X 7008 S A#
CAR MISS AMY 121#
CAR TRAVELER 465
CAR DIANA 026#

CAR TEN X 107
CAR MISS DIANA 6113#
CAR MISS DIANA 7189



BW	WW 10/13	205 wt	NR	365 wt	YR	ADG	Scrotal
78	898	761	108	1222	105	2.88	38.1
CED	BW	WW	Milk	YW	SC		
+16	-1.9	+68	+23	+116	+1.34		
Marb	RE	Fat	\$M	\$W	\$F	\$G	\$B
+51	+60	+047	+58	+68	+77	+43	+120

Dam will make pathfinder this spring. She has 5@ 97BW and 5@ 105 Weaning. Excellent top end calving ease herdbull prospect that weaned heavy and has a great set of figures.



CAR SWAGGER 241

20554546 calved - 01/22/22

MARDA SWAGGER 463
WINDY RIDGE SWAGGER 714
WINDY RIDGE ROSE 312

CONNELLY CONFIDENCE 0100#
MF BLACKBIRD 51
WINDY RIDGE DAYLIGHT 104
WINDY RIDGE ROSE 117
LCC NEW STANDARD#
B A LADY 6807 305
CAR INCREDIBULL 080
CAR MISS MARIE 7163#

R B ACTIVE DUTY 010#
CAR MISS MARIE 5105#
CAR MISS MARIE 319



BW	WW 10/13	205 wt	NR	365 wt	YR	ADG	Scrotal
84	872	750	106	1217	105	2.92	37.3
CED	BW	WW	Milk	YW	SC		
+10	+1.8	+71	+32	+126	+1.50		
Marb	RE	Fat	\$M	\$W	\$F	\$G	\$B
+56	+82	-004	+58	+72	+89	+53	+141

Dam is a pathfinder with 6@ 103BW, 6@ 109 Weaning and 6@ 112YW. Lots of pathfinders tracing directly to our 449 cow. Excellent set of figures on this big, stout herdbull prospect by Swagger and backed up by a tremendous producing cow family.





YEARLING BULLS



5 Bull

CAR SWAGGER 275

20554564

calved - 01/26/22

MARDA SWAGGER 463
CAR WINDY RIDGE SWAGGER 714
WINDY RIDGE ROSE 312

CONNEALY CONFIDENCE 0100#
MF BLACKBIRD 51
WINDY RIDGE DAYLIGHT 104
WINDY RIDGE ROSE 117

CONNEALY MENTOR 7374#
CAR MISS CAROLINE 459#
CAR MISS CAROLINE 511#

G A R RETAIL PRODUCT#
EXECUTA OF CONANGA 939#
CAR DUKE 316
CAR MISS CAROLINE 254



BW	WW 10/13	205 wt	NR	365 wt	YR	ADG	Scrotal
80	860	744	105	1293	111	3.43	39.5
CED	BW	WW	Milk	YW	SC		
+11	+0.3	+76	+35	+136	+1.46		
Marb	RE	Fat	\$M	\$W	\$F	\$G	\$B
+59	+86	+0.01	+68	+83	+92	+54	+146

Second generation pathfinder dam has been an outstanding producer for us. Heavy weaning weight on this outstanding calving ease herdbull prospect by Swagger with impressive figures.



6 Bull

CAR BISMARCK 228

20554539

calved - 01/20/22

CAR BISMARCK 371
CAR BISMARCK 8190
CAR MISS MIKAYLA 530#

S A V BISMARCK 5682#
CAR MISS VIKING 9191
R B ACTIVE DUTY 010#
CAR MISS MIKAYLA 179#

CAR INCREDIBULL 080
CAR MISS FOREVER 510#
CAR MISS FOREVER 017#

LAR WINDY 64 4235#
CAR MISS TARESA 663#
CAR TRACKER 904#
CAR MISS FOREVER 5175



BW	WW 10/13	205 wt	NR	365 wt	YR	ADG	Scrotal
84	805	691	110	1323	116	3.95	40.3
CED	BW	WW	Milk	YW	SC		
+10	+1.0	+52	+30	+101	+1.93		
Marb	RE	Fat	\$M	\$W	\$F	\$G	\$B
+31	+58	+0.25	+39	+50	+81	+35	+116

Dam is a 2nd generation pathfinder with 6@ 103 & 6@ 111 weaning. This cow never misses. A strong herdbull prospect with impressive weaning weight and indexes plus a big scrotal on this eye appealing Bismark son.



7 Bull

CAR LEGENDARY 227

20554538

calved - 01/20/22

CONNEALY LEGENDARY 644L
CAR LEGENDARY 026
CAR MISS LUCY 717#

QUAKER HILL RAMPAGE 0A36#
JAZZED OF CONANGA 4660
S A V RESOURCE 1441#
CAR MISS LUCY 301

WMR TIMELESS 458#
CAR MISS DIANA 274#
CAR MISS DIANA 861

LEACHMAN RIGHT TIME 338-5605#
WMR BLACKCAP 521
CAR TRACKER 904#
C A R DIANA 842#



BW	WW 10/13	205 wt	NR	365 wt	YR	ADG	Scrotal
75	844	744	105	1222	105	2.99	39.4
CED	BW	WW	Milk	YW	SC		
+11	+0.5	+63	+18	+107	+1.73		
Marb	RE	Fat	\$M	\$W	\$F	\$G	\$B
+43	+63	+0.009	+63	+53	+80	+43	+123

Dam is an 11 year old pathfinder cow with superb udder that always brings in a top calf. Heavy weaning weight on this top calving ease herdbull prospect by Legendry 026.





YEARLING BULLS



8 Bull

CAR GOALKEEPER 2103

20554700

calved - 01/31/22

SYDGEN ENHANCE
BALDRIDGE SR GOALKEEPER
BALDRIDGE ISABEL E030

SYDGEN EXCEED 3223#
SYDGEN RITA 2618
CONNEALY CONFIDENCE PLUS#
BALDRIDGE ISABEL Y69
CONNEALY LEAD ON#
CAR MISS DIANA 8110#
CAR TIMELINE 072
CAR MISSY 454#

CAR LEAD ON 2106
CAR MISSY 4200
CAR MISSY 232



BW	WW 10/13	205 wt	NR	365 wt	YR	ADG	Scrotal
83	820	717	102	1255	108	3.36	38.1
CED	BW	WW	Milk	YW	SC		
+5	+2.1	+68	+32	+130	+1.52		
Marb	RE	Fat	\$M	\$W	\$F	\$G	\$B
+59	+88	-016	+57	+67	+98	+56	+154

Dam has 7@ 104 Weaning. Big stout Goalkeeper son that weighed heavy off the cow. Excellent maternal and carcass genetics.



9 Bull

CAR SWAGGER 226

20554537

calved - 01/19/22

MARDA SWAGGER 463
WINDY RIDGE SWAGGER 714
WINDY RIDGE ROSE 312

CONNEALY CONFIDENCE 0100#
MF BLACKBIRD 51
WINDY RIDGE DAYLIGHT 104
WINDY RIDGE ROSE 117
CAR DUKE 316
C A R MARIE 818
CAR RIDGERUNNER 660
C A R DIANA 842#

CAR DUKE 504
CAR MISS DIANA 635
CAR MISS DIANA 941#



BW	WW 10/13	205 wt	NR	365 wt	YR	ADG	Scrotal
80	834	713	101	1236	107	3.27	41.2
CED	BW	WW	Milk	YW	SC		
+8	+1.5	+58	+34	+100	+2.00		
Marb	RE	Fat	\$M	\$W	\$F	\$G	\$B
+55	+73	-010	+65	+65	+74	+52	+125

Three consecutive generations of pathfinder dams with four generations averaging 13 calves in lifetime production. This big, stout Swagger son did very well in every way we could measure. Lots of proven long term longevity in this herdbull prospect.



10 Bull

CAR PACIFIC 281

20561147

calved - 01/28/22

HOOVER NO DOUBT
STERLING PACIFIC 904
BALDRIDGE ISABEL B082

MOGCK BULLSEYE#
MISS BLACKCAP ELLSTON J2
G A R PROPHET#
BALDRIDGE ISABEL Y69
H A R B WINDY 702 JH#
EILEENMERE DIAMOND 161 L A R
K C F BENNETT EFFICIENT
CAR HILDA 954

LAR WINDY 64 423S#
CAR MISS HILDA 1121
CAR MISS HILDA 516



BW	WW 10/13	205 wt	NR	365 wt	YR	ADG	Scrotal
76	828	741	105	1229	106	3.05	34.7
CED	BW	WW	Milk	YW	SC		
+9	+1.3	+64	+19	+116	+2.3		
Marb	RE	Fat	\$M	\$W	\$F	\$G	\$B
+71	+48	+047	+48	+53	+79	+51	+130

Dam is a very productive 12 year old Windy daughter with 9@ 99BW and 9@ 105 Weaning. Impressive indexes and numbers on this eye catching, calving ease herdbull prospect by Pacific.





YEARLING BULLS



11

Bull

CAR LEGENDARY 260

20554554 calved - 01/25/22

CONNEALY LEGENDARY 644L
CAR LEGENDARY 026
CAR MISS LUCY 717#

QUAKER HILL RAMPAGE 0A36#
JAZZED OF CONANGA 4660
S A V RESOURCE 1441#
CAR MISS LUCY 301

DIAMOND CAPITALIST B011
CAR MISS SUSIE 0222
CAR MISS SUSIE 6207

CONNEALY CAPITALIST 028#
DIAMOND BLACK LADY 7206#
CAR GAME DAY 406
CAR MISS SUSIE 060#



BW	WW 10/13	205 wt	NR	365 wt	YR	ADG	Scrotal
70	775	737	117	1294	113	3.48	38.9
CED	BW	WW	Milk	YW	SC		
+12	-0.2	+71	+29	+132	+1.93		
Marb	RE	Fat	\$M	\$W	\$F	\$G	\$B
+11	+1.03	+0.11	+57	+68	+119	+33	+153

Out of a 1st calf heifer. Tremendous long term proven bred in longevity in this cow family. Cow family produced CAR Efficient 534. Hard to fault this top end calving ease herdbull prospect when you study him and his performance data and cow family behind him.



12

Bull

CAR SWAGGER 221

20554522 calved - 01/19/22

MARDA SWAGGER 463
WINDY RIDGE SWAGGER 714
WINDY RIDGE ROSE 312

CONNEALY CONFIDENCE 0100#
MF BLACKBIRD 51
WINDY RIDGE DAYLIGHT 104
WINDY RIDGE ROSE 117

LAR JUNEANU 796Y
CAR MISS CAROLINE 7141
CAR MISS CAROLINE 738#

KOUPAL JUNEANU 797#
QUEEN ELBA 763U LAR
CAR ICEBERG 5153
CAR MISS CAROLINE 459



BW	WW 10/13	205 wt	NR	365 wt	YR	ADG	Scrotal
76	777	733	117	1280	112	3.42	37.8
CED	BW	WW	Milk	YW	SC		
+4	+2.2	+72	+35	+123	+1.77		
Marb	RE	Fat	\$M	\$W	\$F	\$G	\$B
+35	+4.48	+0.02	+54	+72	+91	+38	+129

Dam has a cumulative 93 & 110 on her birth and weaning ratios. Granddam is a pathfinder. A powerful cow family behind this big stout Swagger son. Twin to Lot# 47.

Connelly Angus Ranch



Everyone is invited to a
Pre-Sale CAB Prime Rib Dinner
Monday, February 27, 6:00 pm
at the Ranch, North of Valier.



13

Bull

CAR BISMARCK 256

20554553 calved - 01/24/22

CAR BISMARCK 371
CAR BISMARCK 8190
CAR MISS MIKAYLA 530#

S A V BISMARCK 5682#
CAR MISS VIKING 9191
R B ACTIVE DUTY 010#
CAR MISS MIKAYLA 179#

S A V RESOURCE 1441#
CAR MISS DIANA 776
CAR MISS DIANA 956

RITO 707 OF IDEAL 3407 7075
S A V BLACKCAP MAY 4136
REDLAND RAINMAKER 3856
CAR MISS DIANA 579



BW	WW 10/13	205 wt	NR	365 wt	YR	ADG	Scrotal
80	809	698	111	1210	106	3.20	41.4
CED	BW	WW	Milk	YW	SC		
+4	+2.6	+57	+25	+97	+1.70		
Marb	RE	Fat	\$M	\$W	\$F	\$G	\$B
-0.1	+0.69	+0.02	+70	+53	+68	+24	+91

Dam will make pathfinder this spring. She has 4@ 102BW and 4@ 111 Weaning. Awesome herdbull prospect and out of a great cow family. You will appreciate him when you look at him. Great genetic package.





YEARLING BULLS



14

Bull

CAR REMARKABLE 200

20554469

calved - 01/12/22

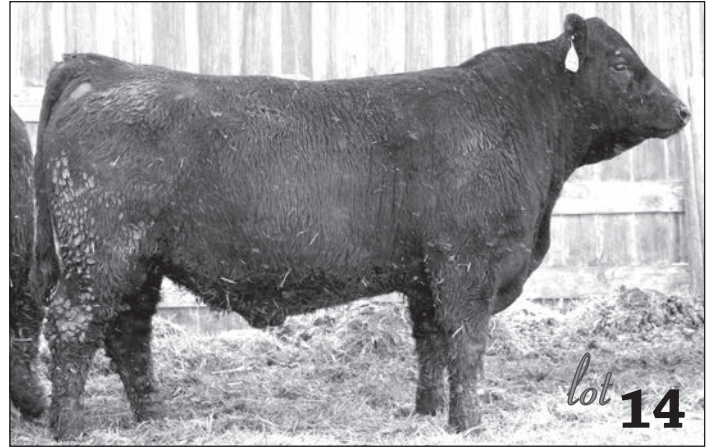
CAR REMARKABLE 640
CAR REMARKABLE 821
CAR MISS HEATHER 5167#

S A V RESOURCE 1441#
CAR MISS MARIE 769#
CAR CEDAR RIDGE 156
CAR MISS HEATHER 2197
CAR 865 DUKE 3200
CAR MISS MARIE 3184#
CAR PRIMERACKER 511
CAR MISS ROBERTA 403



BW	WW 10/13	205 wt	NR	365 wt	YR	ADG	Scrotal
70	818	706	100	1188	102	3.01	38.2
CED	BW	WW	Milk	YW	SC		
+9	+0.7	+59	+21	+96	+92		
Marb	RE	Fat	\$M	\$W	\$F	\$G	\$B
-.05	+38	+0.35	+63	+58	+66	+15	+81

Dam will make pathfinder this spring. She has 3@ 99BW and 3@ 106 weaning. Granddam produced her last calf at 14. Cow family produced 904 Tracker. Excellent calving ease herdbull prospect.



15

Bull

CAR RESILIENT 2116

20554701

calved - 02/01/22

SITZ STELLAR 726D
SITZ RESILIENT 10208
SITZ MISS BURGESS 1856

MOHNEN SUBSTANTIAL 272#
SITZ PRIDE 200B
SITZ TOP GAME 561X#
SITZ MISS BURGESS 4381
HILLTOP TRUE GRIT 9202#
HARRISON MISS HILDA 9097
LAR JUNEANU 796Y
CAR MISS MARIE 993#



BW	WW 10/13	205 wt	NR	365 wt	YR	ADG	Scrotal
68	786	755	107	1289	111	3.34	38.7
CED	BW	WW	Milk	YW	SC		
+4	+1.3	+78	+22	+139	+1.28		
Marb	RE	Fat	\$M	\$W	\$F	\$G	\$B
+36	+64	+0.16	+74	+68	+78	+39	+117

Out of a 1st calf heifer. Herdbull producing cow family tracing directly to foundation 449 cow. Impressive calving ease herdbull prospect that is well put together and has a great set of figures.



16

Bull

CAR SWAGGER 217

20554503

calved - 01/18/22

MARDA SWAGGER 463
WINDY RIDGE SWAGGER 714
WINDY RIDGE ROSE 312

CONNEALY CONFIDENCE 0100#
MF BLACKBIRD 51
WINDY RIDGE DAYLIGHT 104
WINDY RIDGE ROSE 117
LAR WINDY 64 423S#
CAR MISS TARESA 663#
CAR DUKE 104#
CAR HEATHER 020#



BW	WW 10/13	205 wt	NR	365 wt	YR	ADG	Scrotal
73	804	708	100	1196	103	3.05	38.3
CED	BW	WW	Milk	YW	SC		
+7	+0.7	+63	+25	+100	+1.27		
Marb	RE	Fat	\$M	\$W	\$F	\$G	\$B
+51	+44	+0.18	+65	+64	+78	+43	+122

Dam is 13 and looks fantastic. Two generations of pathfinder dams that produced for the long run. Dam always brings in a top calf. Good weaning weight on this top eye appealing, calving ease herdbull prospect by Swagger.





YEARLING BULLS



17

Bull

CAR LEGENDARY 229

20554540

calved - 01/20/22

CONNEALY LEGENDARY 644L
CAR LEGENDARY 026
CAR MISS LUCY 717#

QUAKER HILL RAMPAGE 0A36#
JAZZED OF CONANGA 4660
S A V RESOURCE 1441#
CAR MISS LUCY 301

HBR ENCORE 0544
CAR MISS MIKAYLA 294
CAR MISS MIKAYLA 510#

SHOSHONE ENCORE 6310
C A R MISS FOREVER 546
CAR PRIMETRACKER 308#
CAR MISS MIKAYLA 209



BW	WW 10/13	205 wt	NR	365 wt	YR	ADG	Scrotal
83	818	724	116	1206	108	3.01	36.4
CED	BW	WW	Milk	YW	SC		
+6	+1.3	+50	+31	+80	+31		
Marb	RE	Fat	\$M	\$W	\$F	\$G	\$B
+44	+34	+053	+63	+58	+62	+36	+98

Pathfinder Granddam produced her last calf at 17. She produced our herdbulls CAR Cha Ching 528 and CAR Remarkable 039, both of which have progeny in the sale. Excellent maternal lineage behind this big, stout eye appealing Legendary son with a heavy weaning weight.

20

Bull

CAR GOALKEEPER 2151

20557633

calved - 02/08/22

SYDGEN ENHANCE
BALDRIDGE SR GOALKEEPER
BALDRIDGE ISABEL E030

SYDGEN EXCEED 3223#
SYDGEN RITA 2618
CONNEALY CONFIDENCE PLUS#
BALDRIDGE ISABEL Y69

CAR MOTIVE 416
CAR MISS TARESA 0101
CAR MISS TARESA 899

SOO LINE MOTIVE 9016#
CAR PRIMROSE LADY 691
CAR CHA CHING 528
CAR MISS TARESA 6225



BW	WW 10/13	205 wt	NR	365 wt	YR	ADG	Scrotal
75	768	751	119	1314	115	3.52	38.9
CED	BW	WW	Milk	YW	SC		
+5	+1.6	+66	+31	+121	+2.01		
Marb	RE	Fat	\$M	\$W	\$F	\$G	\$B
+75	+65	+040	+57	+63	+83	+56	+139

Out of a 1st calf heifer. Multiple generations of long term producing pathfinder cows behind this high indexing calving ease herdbull prospect with a very appealing set of numbers by Goalkeeper.

18

Bull

CAR PACIFIC 286

20561144

calved - 01/28/22

HOOVER NO DOUBT
STERLING PACIFIC 904
BALDRIDGE ISABEL B082

MOGCK BULLSEYE#
MISS BLACKCAP ELLSTON J2
G A R PROPHET#
BALDRIDGE ISABEL Y69

COLE CREEK CEDAR RIDGE 1V#
CAR PRIMROSE LADY 2103#
CAR PRIMROSE LADY 091#

COLE CREEK BLACK CEDAR 46P#
COLE CREEK CLOVANADA 49S#
LAR WINDY 64 423S#
CAR PRIMROSE LADY 691



BW	WW 10/13	205 wt	NR	365 wt	YR	ADG	Scrotal
86	839	752	120	1296	114	3.40	39.6
CED	BW	WW	Milk	YW	SC		
+3	+3.9	+66	+25	+112	+1.67		
Marb	RE	Fat	\$M	\$W	\$F	\$G	\$B
+66	+34	-008	+74	+56	+87	+51	+138

Dam is a 2nd generation pathfinder with 9@ 108 Weaning. Herdbull producing cow family behind this big, stout herdbull prospect by Pacific with impressive indexes.



19

Bull

CAR SWAGGER 204

20554471

calved - 01/15/22

MARDA SWAGGER 463
WINDY RIDGE SWAGGER 714
WINDY RIDGE ROSE 312

CONNEALY CONFIDENCE 0100#
MF BLACKBIRD 51
WINDY RIDGE DAYLIGHT 104
WINDY RIDGE ROSE 117

CAR BISMARCK 371
CAR MISS TARESA 8185
CAR MISS TARESA 963#

S A V BISMARCK 5682#
CAR MISS VIKING 9191
CAR NEW DAY 7162
CAR TARESA 655#



BW	WW 10/13	205 wt	NR	365 wt	YR	ADG	Scrotal
70	805	698	111	1160	102	2.89	35.3
CED	BW	WW	Milk	YW	SC		
+15	-1.7	+53	+33	+85	+75		
Marb	RE	Fat	\$M	\$W	\$F	\$G	\$B
+66	+59	+021	+85	+69	+54	+52	+106

Dam has 3@ 97BW and 3@ 101 Weaning. 3 consecutive generations of pathfinder cows behind this top Swagger calving ease herdbull prospect with an impressive set of figures.

21

Bull

CAR RESILIENT 278

20557900

calved - 01/27/22

SITZ STELLAR 726D
SITZ RESILIENT 10208
SITZ MISS BURGESS 1856

MOHLEN SUBSTANTIAL 272#
SITZ PRIDE 200B
SITZ TOP GAME 561X#
SITZ MISS BURGESS 4381

CAR GAME DAY 406
CAR MISS MARIE 689
CAR MISS MARIE 4104#

JENNAWAY GAME DAY 024
CAR MISS MARIE 8212#
PREMIER CHAIRMAN 6011A#
C A R MISS MARIE 701



BW	WW 10/13	205 wt	NR	365 wt	YR	ADG	Scrotal
77	796	691	110	1190	104	3.12	37.5
CED	BW	WW	Milk	YW	SC		
+4	+0.6	+62	+33	+104	+1.07		
Marb	RE	Fat	\$M	\$W	\$F	\$G	\$B
+52	+96	-009	+93	+71	+84	+53	+137

Pathfinder granddam produced 15 calves. Four dams back, is foundation 449 cow. Excellent data on this top calving ease prospect by Resilient.



YEARLING BULLS



22

Bull

CAR LEGENDARY 2152

20577726

calved - 02/08/22

CONNEALY LEGENDARY 644L
CAR LEGENDARY 026
CAR MISS LUCY 717#

QUAKER HILL RAMPAGE 0A36#
JAZZED OF CONANGA 4660
S A V RESOURCE 1441#
CAR MISS LUCY 301

LAR JUNEANU 796Y
CAR MISS HEATHER 3147
CAR MISS HEATHER 016

KOUPAL JUNEANU 797#
QUEEN ELBA 763U LAR
CAR RIDGERUNNER 867
CAR MISS HEATHER 420#



BW	WW 10/13	205 wt	NR	365 wt	YR	ADG	Scrotal
80	783	733	111	1242	109	3.18	39.9
CED	BW	WW	Milk	YW	SC		
I+8	I+0.4	I+67	I+25	I+123	I+1.54		
Marb	RE	Fat	\$M	\$W	\$F	\$G	\$B
I+.43	I+.76	I+.011	+51	+60	+99	+45	+144

Dam has 6@ 95BW and 6@ 103 Weaning. Outstanding long, thick made Legendary son that will catch your eye, and he is from a very productive established cow family.



23

Bull

CAR REMARKABLE 2117

20554481

calved - 02/01/22

CAR REMARKABLE 640
CAR REMARKABLE 039
CAR MISS MIKAYLA 510#

S A V RESOURCE 1441#
CAR MISS MARIE 769#
CAR PRIMETRACKER 308#
CAR MISS MIKAYLA 209

CAR INCREDIBULL 080
CAR MISS CATHERINE 4140
CAR MISS CATHERINE 228

LAR WINDY 64 423S#
CAR MISS TARESA 663#
CAR TRACKER 904#
C A R LADY HOSTAGE 662



BW	WW 10/13	205 wt	NR	365 wt	YR	ADG	Scrotal
82	808	708	100	1180	102	2.95	37.6
CED	BW	WW	Milk	YW	SC		
+8	+2.2	+51	+30	+82	+1.55		
Marb	RE	Fat	\$M	\$W	\$F	\$G	\$B
+41	+21	+051	+74	+55	+57	+33	+90

Pathfinder dam of sire raised her last calf when she was 17. Big, stout herdbull look to this tremendous Remarkable 039 son you will like.



24

Bull

CAR RESILIENT 213

20554702

calved - 01/17/22

SITZ STELLAR 726D
SITZ RESILIENT 10208
SITZ MISS BURGESS 1856

MOHNEN SUBSTANTIAL 272#
SITZ PRIDE 200B
SITZ TOP GAME 561X#
SITZ MISS BURGESS 4381

CAR CEDAR RIDGE 156
CAR MISS JULIE 503
CAR MISS JULIE 0125#

COLE CREEK CEDAR RIDGE 1V#
CAR MISS LUCY 720
CAR INCREDIBULL 8136
CAR MISS JULIE 8108



BW	WW 10/13	205 wt	NR	365 wt	YR	ADG	Scrotal
80	753	643	102	1240	108	3.73	39.7
CED	BW	WW	Milk	YW	SC		
+3	+2.1	+69	+28	+122	+1.81		
Marb	RE	Fat	\$M	\$W	\$F	\$G	\$B
+38	+59	+010	+62	+66	+96	+40	+136

Granddam is a pathfinder, Cow family produced the high gaining bulls in past Midland and Treasure Test sales. Excellent eye appealing Resilient son from a proven top cow family.





YEARLING BULLS



25 Bull

CAR SWAGGER 2194

20554513

calved - 02/20/22

MARDA SWAGGER 463
WINDY RIDGE SWAGGER 714
WINDY RIDGE ROSE 312

CONNEALY CONFIDENCE 0100#
MF BLACKBIRD 51
WINDY RIDGE DAYLIGHT 104
WINDY RIDGE ROSE 117

CAR TRACKER 904#
CAR MISS PRIMROSE 865
CAR MISS PRIMROSE 023#

C A R TRACKER 614
LADY NEW TREND 027 C A R
C H QUANTUM 3330#
C A R MISS HOSTAGE 663#



BW	WW 10/13	205 wt	NR	365 wt	YR	ADG	Scrotal
88	782	738	118	1261	113	3.27	34.7
CED	BW	WW	Milk	YW	SC		
+1	+4.9	+73	+32	+116	+98		
Marb	RE	Fat	\$M	\$W	\$F	\$G	\$B
+4.9	+3.6	+0.30	+74	+65	+83	+40	+124

Dam is a 15 year old 904 Tracker daughter that is still producing. She is backed by 2 generations of pathfinder cows that produced 12 calves each. Use this big, stout, high indexing Swagger son to get a great set of steers and replacement heifers.

28 Bull

CAR COLONEL 284

20554566

calved - 01/28/22

BALDRIDGE COLONEL C251#
BYERGO COLONEL G14
BYERGO CLOVER 850

BALDRIDGE XPAND X743
BALDRIDGE ISABEL Y69
LCC NEW STANDARD#
BYERGO CLOVER 513

NA PIONEER 0180
CAR MISS MARIE 556#
CAR MISS MARIE 7180

S A V PIONEER 7301#
SITZ TW MISS VIKING 487
BOYD NEW DAY 8005#
C A R MISS MARIE 701



BW	WW 10/13	205 wt	NR	365 wt	YR	ADG	Scrotal
80	745	649	103	1263	110	3.84	35.5
CED	BW	WW	Milk	YW	SC		
+8	+0.4	+57	+19	+114	+18		
Marb	RE	Fat	\$M	\$W	\$F	\$G	\$B
+5.5	+5.3	-0.19	+38	+44	+82	+50	+131

Dam is a pathfinder backed by 3 generations of donor dams. High gaining, calving ease prospect by Colonel offering outcross genetics.

26 Bull

CAR BUSHWACKER 287

20554567

calved - 01/28/22

CAR BUSHWACKER 601
CAR BUSHWACKER 618
CAR MISS BRENDA 422

B C C BUSHWACKER 41-93#
C A R MISS RAINDANCER 421#
CAR TANK 226
CAR MISS BRENDA 062

JENNAWAY GAME DAY 024
CAR MISS CAROLINE 4144
CAR MISS CAROLINE 7217

GDAR GAME DAY 449#
JENNAWAY VICKY J27
CAR TRACKER 219
CAR MISS CAROLINE 304



BW	WW 10/13	205 wt	NR	365 wt	YR	ADG	Scrotal
84	814	708	100	1190	102	3.01	37.5
CED	BW	WW	Milk	YW	SC		
+5	+1.3	+52	+31	+98	+80		
Marb	RE	Fat	\$M	\$W	\$F	\$G	\$B
+5.6	+1.2	+0.46	+52	+53	+84	+39	+123

Dam of sire produced 14 calves. Tremendous amount of maternal power behind this eye appealing, big, stout herdbull prospect by Bushwacker.



27 Bull

CAR LEGENDARY 233

20554542

calved - 01/21/22

CONNEALY LEGENDARY 644L
CAR LEGENDARY 026
CAR MISS LUCY 717#

QUAKER HILL RAMPAGE 0A36#
JAZZED OF CONANGA 4660
S A V RESOURCE 1441#
CAR MISS LUCY 301

CAR TEN X 107
CAR MISS MIKAYLA 6123
CAR MISS MIKAYLA 863

A A R TEN X 7008 S A#
CAR MISS AMY 121#
CAR TRACKER 904#
CAR MISS MIKAYLA 9132



BW	WW 10/13	205 wt	NR	365 wt	YR	ADG	Scrotal
70	792	679	108	1146	100	2.92	36.8
CED	BW	WW	Milk	YW	SC		
+9	-0.1	+63	+19	+107	+1.69		
Marb	RE	Fat	\$M	\$W	\$F	\$G	\$B
+5.4	+5.4	+0.33	+63	+58	+77	+45	+122

Dam has 5@ 98BW and 5@ 101 weaning. Previous 2 generations of cows averaged 14 calves. Excellent set of figures on this top calving ease herdbull prospect with a heavy weaning weight.

29 Bull

CAR COLONEL 2147

20554492

calved - 02/06/22

BALDRIDGE COLONEL C251#
BYERGO COLONEL G14
BYERGO CLOVER 850

BALDRIDGE XPAND X743
BALDRIDGE ISABEL Y69
LCC NEW STANDARD#
BYERGO CLOVER 513

CAR INCREDIBULL 390
CAR MISS DIANA 6230
CAR MISS DIANA 675

CAR INCREDIBULL 080
CAR MISS MARIE 845#
CONNEALY FREIGHTLINER#
CAR MISS DIANA 258



BW	WW 10/13	205 wt	NR	365 wt	YR	ADG	Scrotal
80	838	741	105	1117	96	2.35	34.8
CED	BW	WW	Milk	YW	SC		
+8	+0.2	+62	+24	+106	+17		
Marb	RE	Fat	\$M	\$W	\$F	\$G	\$B
+7.9	+7.1	+0.04	+83	+64	+85	+61	+146

Good heavy weaning weight and carcass EPDs on this top calving ease prospect by Colonel.



YEARLING BULLS



30

Bull

CAR SWAGGER 225

20557751

calved - 01/19/22

MARDA SWAGGER 463
WINDY RIDGE SWAGGER 714
WINDY RIDGE ROSE 312

CONNEALY CONFIDENCE 0100#
MF BLACKBIRD 51
WINDY RIDGE DAYLIGHT 104
WINDY RIDGE ROSE 117

CAR JUNEANU 6144
CAR MISS DIANA 8174
CAR MISS DIANA 334

LAR JUNEANU 796Y
CAR IDEAL PRIME LADY 2141
CAR IDEAL 061
C A R DIANA 872



BW	WW 10/13	205 wt	NR	365 wt	YR	ADG	Scrotal
83	804	704	100	1115	96	2.57	39.4
CED	BW	WW	Milk	YW	SC		
+6	+0.6	+71	+21	+110	+1.48		
Marb	RE	Fat	\$M	\$W	\$F	\$G	\$B
+0.66	+0.14	+0.043	+53	+67	+69	+44	+114

Granddam produced her last calf at 15. This herdbull producing cow family has flawless udder quality. Excellent weaning weight and numbers on this top end Swagger son.

Our breeding philosophy has always been centered around producing problem free females with excellent longevity that can survive and excel in a commercial cowmen's environment.



31

Bull

CAR DUARABULL LINE 2170

20554504

calved - 02/12/22

CAR 865 DUKE 3200
CAR DURABULL LINE 575
CAR MISS MARIE 3184#

CAR DUKE 865
CAR LADY DIANA 503
CAR CHINNOOK1119
CAR MISS MARIE 110

CAR JUNEANU 3236
CAR MISS HEATHER 630
CAR MISS HEATHER 1143#

LAR JUNEANU 796Y
CAR MISS DIANA 0101#
CAR CHINNOOK 786#
CAR MISS HEATHER 999



BW	WW 10/13	205 wt	NR	365 wt	YR	ADG	Scrotal
78	721	647	103	1279	112	3.95	39.0
CED	BW	WW	Milk	YW	SC		
+12	+0.0	+62	+35	+116	+2.07		
Marb	RE	Fat	\$M	\$W	\$F	\$G	\$B
+0.22	+0.65	+0.024	+55	+67	+94	+32	+126

Dam is an outstanding prolific young cow in our program with 5@ 108 Weaning. This top end calving ease herdbull prospect will catch your eye. A very complete individual and one of the high gaining bulls on test. We like this Durabull son.



32

Bull

CAR LEGENDARY 261

20554555

calved - 01/25/22

CONNEALY LEGENDARY 644L
CAR LEGENDARY 034
CAR MISS MIKAYLA 511

QUAKER HILL RAMPAGE 0A36#
JAZZED OF CONANGA 4660
SOO LINE MOTIVE 9016#
CAR MISS MIKAYLA 9132

CAR REMARKABLE 821
CAR MISS WILMA 038
CAR MISS WILMA 1154

CAR REMARKABLE 640
CAR MISS HEATHER 5167#
LAR WINDY 64 423S#
CAR MISS WILMA 248



BW	WW 10/13	205 wt	NR	365 wt	YR	ADG	Scrotal
60	776	737	104	1209	104	2.95	37.4
CED	BW	WW	Milk	YW	SC		
+15	-3.8	+51	+32	+94	+4.8		
Marb	RE	Fat	\$M	\$W	\$F	\$G	\$B
+0.59	+0.88	-0.009	+60	+58	+77	+55	+132

Out of a 1st calf heifer. Breed leading, calving ease on this top sleep all night Legendary 034 son with impressive indexes, carcass values and a heavy weaning weight.





YEARLING BULLS



33

Bull

CAR GOALKEEPER 2133

20554703 calved - 02/04/22

SYDGEN ENHANCE
BALDRIDGE SR GOALKEEPER
BALDRIDGE ISABEL E030

SYDGEN EXCEED 3223#
SYDGEN RITA 2618
CONNEALY CONFIDENCE PLUS#
BALDRIDGE ISABEL Y69
QUAKER HILL RAMPAGE 0A36#
JAZZED OF CONANGA 4660
CAR TRACKER 904#
CAR JODY 953#



CONNEALY LEGENDARY 644L
CAR MISS JODY 955
CAR MISS JODY 940

BW	WW 10/13	205 wt	NR	365 wt	YR	ADG	Scrotal
78	743	693	110	1282	112	3.68	37.3
CED	BW	WW	Milk	YW	SC		
+3	+2.7	+66	+29	+127	+1.30		
Marb	RE	Fat	\$M	\$W	\$F	\$G	\$B
+0.73	+0.80	+0.021	+42	+55	+107	+58	+165

Dam has 2@ 111 Weaning. Granddam is still producing at 14. Excellent ratios on this top end eye appealing Goalkeeper son with great maternal and carcass values.



34

Bull

CAR REMARKABLE 206

20554472 calved - 01/16/22

CAR REMARKABLE 640
CAR REMARKABLE 821
CAR MISS HEATHER 5167#

S A V RESOURCE 1441#
CAR MISS MARIE 769#
CAR CEDAR RIDGE 156
CAR MISS HEATHER 2197
C A R TRACKER 614
LADY NEW TREND 027 C A R
C A R SUPREME 749#
C A R IDEAL LADY 628



CAR TRACKER 904#
CAR MISS JODY 940
CAR JODY 953#

BW	WW 10/13	205 wt	NR	365 wt	YR	ADG	Scrotal
75	782	688	110	1166	104	2.99	38.6
CED	BW	WW	Milk	YW	SC		
+15	-0.3	+46	+21	+74	+1.28		
Marb	RE	Fat	\$M	\$W	\$F	\$G	\$B
+0.14	+0.17	+0.071	+67	+46	+54	+18	+72

Dam is a 14 year old 904 Tracker daughter who hasn't missed a lick and will calve again this year. Lots of bred in longevity behind this top end eye appealing Remarkable son with bred in calving ease.

36

Bull

CAR RESILIENT 257

20554704 calved - 01/24/22

SITZ STELLAR 726D
SITZ RESILIENT 10208
SITZ MISS BURGESS 1856

MOHNEN SUBSTANTIAL 272#
SITZ PRIDE 200B
SITZ TOP GAME 561X#
SITZ MISS BURGESS 4381
A A R REALLY WINDY 1205#
CAR MISS MARIE 5109
CAR TRACKER 201
CAR MISS MARIE 271#



CAR CHINNOOK 786#
CAR MISS MARIE 5109
CAR MISS MARIE 508

BW	WW 10/13	205 wt	NR	365 wt	YR	ADG	Scrotal
80	747	646	103	1246	109	3.75	40.4
CED	BW	WW	Milk	YW	SC		
I+4	I+1.9	I+64	I+25	I+115	I+1.40		
Marb	RE	Fat	\$M	\$W	\$F	\$G	\$B
I+0.75	I+0.49	I+0.021	+69	+55	+80	+55	+136

Lots of long term proven bred in longevity behind this attractive high gaining Resilient son.

35

Bull

CAR LEGENDARY 2102

20569913 calved - 01/31/22

CONNEALY LEGENDARY 644L
CAR LEGENDARY 026
CAR MISS LUCY 717#

QUAKER HILL RAMPAGE 0A36#
JAZZED OF CONANGA 4660
S A V RESOURCE 1441#
CAR MISS LUCY 301
A A R REALLY WINDY 1205#
CAR MISS MARIE 5109
CAR JUNEAU 6144
CAR MISS DIANA 334



CAR CHINNOOK 786#
CAR MISS DIANA 084
CAR MISS DIANA 8174

BW	WW 10/13	205 wt	NR	365 wt	YR	ADG	Scrotal
76	718	697	99	1323	114	3.91	38.6
CED	BW	WW	Milk	YW	SC		
+10	+1.1	+64	+26	+130	+2.07		
Marb	RE	Fat	\$M	\$W	\$F	\$G	\$B
+0.62	+0.70	-0.010	+43	+53	+86	+54	+140

Out of a 1st calf heifer. Great Granddam produced 13 calves. You will want to take a close look at this high gaining smooth made calving ease herdbull prospect by Legendary and his impressive numbers. Lots of bred in proven longevity from a great cow family.





YEARLING BULLS



37 Bull

CAR REMARKABLE 2142

20554490

calved - 02/05/22

CAR REMARKABLE 640
CAR REMARKABLE 821
CAR MISS HEATHER 5167#

S A V RESOURCE 1441#
CAR MISS MARIE 769#
CAR CEDAR RIDGE 156
CAR MISS HEATHER 2197

HARRISON TRUE GRIT 4253
CAR MISS MARIE 0182
CAR MISS MARIE 994

HILLTOP TRUE GRIT 9202#
HARRISON MISS HILDA 9097
CAR CHINNOOK 786#
C A R MISS MARIE 701



BW	WW 10/13	205 wt	NR	365 wt	YR	ADG	Scrotal
75	740	722	102	1263	109	3.38	40.8
CED	BW	WW	Milk	YW	SC		
+6	+1.2	+67	+26	+115	+2.39		
Marb	RE	Fat	\$M	\$W	\$F	\$G	\$B
+0.28	+0.24	+0.019	+44	+64	+71	+30	+101

Out of a 1st calf heifer. Three generations of donor cows behind this top end calving ease herdbull prospect by Remarkable 821.

40 Bull

CAR GOALKEEPER 274

20557823

calved - 01/26/22

SYDGEN ENHANCE
BALDRIDGE SR GOALKEEPER
BALDRIDGE ISABEL E030

SYDGEN EXCEED 3223#
SYDGEN RITA 2618
CONNEALY CONFIDENCE PLUS#
BALDRIDGE ISABEL Y69

S A V FINAL ANSWER 0035#
CAR LADY DIANA 3120
CAR LADY DIANA 475

SITZ TRAVELER 8180#
S A V EMULOUS 8145
CAR FERNANDO 113
CAR LADY DIANA 968



BW	WW 10/13	205 wt	NR	365 wt	YR	ADG	Scrotal
75	822	711	113	1148	100	2.73	36.5
CED	BW	WW	Milk	YW	SC		
+12	-0.4	+59	+34	+107	+1.35		
Marb	RE	Fat	\$M	\$W	\$F	\$G	\$B
+0.72	+0.38	+0.095	+62	+65	+81	+46	+127

Tremendous fertility in this cow family. Three generations of dams behind this cow averaged 14 calves. Very complete calving ease herdbull prospect by Goalkeeper with a heavy weaning weight.

38 Bull

CAR REMARKABLE 220

20554516

calved - 01/19/22

CAR REMARKABLE 640
CAR REMARKABLE 821
CAR MISS HEATHER 5167#

S A V RESOURCE 1441#
CAR MISS MARIE 769#
CAR CEDAR RIDGE 156
CAR MISS HEATHER 2197

CAR GAME DAY 406
CAR MISS DIANNA 786
CAR MISS DIANA 5117

JENNAWAY GAME DAY 024
CAR MISS MARIE 8212#
CONNEALY BLACK GRANITE#
CAR MISS DIANA 675



BW	WW 10/13	205 wt	NR	365 wt	YR	ADG	Scrotal
76	755	646	103	1155	101	3.18	37.3
CED	BW	WW	Milk	YW	SC		
+15	-0.1	+69	+25	+125	+1.75		
Marb	RE	Fat	\$M	\$W	\$F	\$G	\$B
+0.20	+0.73	+0.055	+76	+67	+100	+30	+129

Dam will make pathfinder this spring and one of the best looking cows on the ranch. Top end numbers on this top end calving ease prospect by Remarkable 821.

41 Bull

CAR SWAGGER 2110

20554478

calved - 02/01/22

MARDA SWAGGER 463
WINDY RIDGE SWAGGER 714
WINDY RIDGE ROSE 312

CONNEALY CONFIDENCE 0100#
MF BLACKBIRD 51
WINDY RIDGE DAYLIGHT 104
WINDY RIDGE ROSE 117

CAR JUNEAU 3236
CAR MISS CATHERINE 769
CAR MISS CATHERINE 203#

LAR JUNEANU 796Y
CAR MISS DIANA 0101#
CAR CHINNOOK 786#
CAR MISS CATHERINE 504



BW	WW 10/13	205 wt	NR	365 wt	YR	ADG	Scrotal
80	730	641	102	1249	109	3.80	37.7
CED	BW	WW	Milk	YW	SC		
+5	+1.7	+73	+26	+124	+2.02		
Marb	RE	Fat	\$M	\$W	\$F	\$G	\$B
+0.21	+0.46	+0.010	+69	+72	+77	+30	+107

Dam has 4@ 105 Weaning and is ultra easy keeping, picture perfect cow. A big, stout, growthy, high gaining Swagger son that will catch your eye.

39 Bull

CAR COLONEL 2122

20554483

calved - 02/02/22

BALDRIDGE COLONEL C251#
BYERGO COLONEL G14
BYERGO CLOVER 850

BALDRIDGE XPAND X743
BALDRIDGE ISABEL Y69
LCC NEW STANDARD#
BYERGO CLOVER 513

CAR JUNEAU 3236
CAR MISS CAROLINE 7132
CAR MISS CAROLINE 953

LAR JUNEANU 796Y
CAR MISS DIANA 0101#
CAR TRACKER 904#
CAR MISS CAROLINE 436



BW	WW 10/13	205 wt	NR	365 wt	YR	ADG	Scrotal
75	804	705	100	1142	98	2.73	35.7
CED	BW	WW	Milk	YW	SC		
-2	+1.9	+69	+32	+121	+5.1		
Marb	RE	Fat	\$M	\$W	\$F	\$G	\$B
+0.49	+0.79	+0.007	+64	+69	+101	+48	+149

Granddam is 14 and still producing. Rock solid cow family with lots of bred in longevity behind this good outcross calving ease prospect by Colonel.

42 Bull

CAR COLONEL 235

20554543

calved - 01/21/22

BALDRIDGE COLONEL C251#
BYERGO COLONEL G14
BYERGO CLOVER 850

BALDRIDGE XPAND X743
BALDRIDGE ISABEL Y69
LCC NEW STANDARD#
BYERGO CLOVER 513

CAR MOTIVE 777
CAR MISS ZARA 9228
CAR MISS ZARA 543#

CAR MOTIVE 423
CAR MISS BAILEY 694
CAR PRIMETRACKER 308#
WRAF LADY ZARA#



BW	WW 10/13	205 wt	NR	365 wt	YR	ADG	Scrotal
68	756	685	109	1208	106	3.27	35.3
CED	BW	WW	Milk	YW	SC		
+12	-1.8	+56	+28	+105	+3.35		
Marb	RE	Fat	\$M	\$W	\$F	\$G	\$B
+0.32	+0.60	-0.010	+48	+55	+82	+39	+121

Dam has 2@ 94BW & 2@ 103 weaning. Three consecutive generations of pathfinder cows behind this young dam with closest 2 generations raising 15 & 14 calves in their lifetime. Outcross calving ease genetics with exceptional bred in longevity and cow family behind this top Colonel son.



YEARLING BULLS



43

Bull

CAR LEGENDARY 209

20554473

calved - 01/17/22

CONNEALY LEGENDARY 644L
CAR LEGENDARY 026
CAR MISS LUCY 717#

QUAKER HILL RAMPAGE 0A36#
JAZZED OF CONANGA 4660
S A V RESOURCE 1441#
CAR MISS LUCY 301

HA COWBOY UP 5405#
CAR MISS MARIE 813#
CAR MISS MARIE 809

HA OUTSIDE 3008
HA BLACKCAP LADY 1602#
CAR 461 TRACKER 653
CAR MISS MARIE 514#



BW	WW 10/13	205 wt	NR	365 wt	YR	ADG	Scrotal
76	862	749	119	1090	95	2.13	33.4
CED	BW	WW	Milk	YW	SC		
+7	+0.1	+66	+13	+107	+41		
Marb	RE	Fat	\$M	\$W	\$F	\$G	\$B
+30	+69	-007	+42	+53	+60	+39	+99

Dam will make pathfinder this spring. She has 3@ 115 Weaning. Granddam is 15 and still producing. Excellent weaning weight on this top calving herd bull prospect by 026 Legendary.



lot 43

44

Bull

CAR PACIFIC 2124

20561042

calved - 02/02/22

HOOVER NO DOUBT
STERLING PACIFIC 904
BALDRIDGE ISABEL B082

MOGCK BULLSEYE#
MISS BLACKCAP ELLSTON J2
G A R PROPHET#
BALDRIDGE ISABEL Y69

CAR MOTIVE 423
CAR MISS MARIE 047
CAR MISS MARIE 4180

SOO LINE MOTIVE 9016#
CAR MISS HEATHER 446#
LAR JUNEANU 796Y
CAR MISS MARIE 6134



BW	WW 10/13	205 wt	NR	365 wt	YR	ADG	Scrotal
72	784	756	107	1214	105	2.86	39.7
CED	BW	WW	Milk	YW	SC		
+5	+1.8	+67	+17	+123	+1.07		
Marb	RE	Fat	\$M	\$W	\$F	\$G	\$B
+1.06	+22	+0.21	+73	+52	+90	+66	+156

Out of a 1st calf heifer. Excellent genetic package on this front end calving ease herd bull prospect by Pacific that did well in every category. Our best cow family and high marbling bull in sale.



lot 44

45

Bull

CAR REMARKABLE 2105

20569922

calved - 01/31/22

CAR REMARKABLE 640
CAR REMARKABLE 821
CAR MISS HEATHER 5167#

S A V RESOURCE 1441#
CAR MISS MARIE 769#
CAR CEDAR RIDGE 156
CAR MISS HEATHER 2197

CAR DURABULL LINE 575
CAR MISS VIKING 004
CAR MISS VIKING 2212

CAR 865 DUKE 3200
CAR MISS MARIE 3184#
CAR INCREDIBULL 080
CAR MISS VIKING 5145



BW	WW 10/13	205 wt	NR	365 wt	YR	ADG	Scrotal
70	736	711	101	1175	101	2.90	40.6
CED	BW	WW	Milk	YW	SC		
+8	+0.7	+56	+23	+100	+2.70		
Marb	RE	Fat	\$M	\$W	\$F	\$G	\$B
+0.09	+58	+0.046	+58	+54	+93	+23	+117

Out of 1st calf heifer. Long made eye appealing calving ease prospect by Remarkable.



lot 45



YEARLING BULLS



46

Bull

CAR YETI 2204

20554519

calved - 02/24/22

PAHR YETI B5
CAR YETI 973
CAR MISS MIKAYLA 760

BASIN PAYWEIGHT 1682#
PAHR RITA Q28 OF 0151 9Q20
CAR DURABULL LINE 575
CAR MISS MIKAYLA 179#
CONNEALY IMPRESSION#
K C F MISS CONSENSUS Y300
CAR PRIMETRACKER 308#
CAR PRIMROSE LADY 549

BARTELS IMPRESSION C116
CAR MISS PRIMROSE LADY 904
CAR MISS PRIMROSE LADY 255



BW	WW 10/13	205 wt	NR	365 wt	YR	ADG	Scrotal
78	732	714	114	1252	110	3.36	35.9
CED	BW	WW	Milk	YW	SC		
+5	+1.8	+72	+20	+122	+57		
Marb	RE	Fat	\$M	\$W	\$F	\$G	\$B
+47	+66	-002	+33	+56	+90	+46	+136

Dam has 2@ 107 Weaning. Tremendous Yeti bull that did everything very well that we could measure. Impressive set of numbers.

49

Bull

CAR REMARKABLE 240

20557796

calved - 01/22/22

CAR REMARKABLE 640
CAR REMARKABLE 821
CAR MISS HEATHER 5167#

S A V RESOURCE 1441#
CAR MISS MARIE 769#
CAR CEDAR RIDGE 156
CAR MISS HEATHER 2197
SANDPOINT BUTKUS X797#
GDAR PAMELA EVER 2115#
CAR BUSHWACKER 601
CAR PATTY 537#

GDAR BUTKUS 5217
CAR MISS PATTY 897#
CAR MISS PATTY 988



BW	WW 10/13	205 wt	NR	365 wt	YR	ADG	Scrotal
77	732	645	103	1194	105	3.43	39.5
CED	BW	WW	Milk	YW	SC		
+6	+2.1	+61	+19	+103	+197		
Marb	RE	Fat	\$M	\$W	\$F	\$G	\$B
+39	-06	+073	+60	+51	+64	+27	+91

Dam will make pathfinder this spring. Lots of pathfinders in this cow family and long term proven bred in longevity. Another top end Remarkable 821 son that could be used for heifer matings.

47

Bull

CAR SWAGGER 223

20554533

calved - 01/19/22

MARDA SWAGGER 463
WINDY RIDGE SWAGGER 714
WINDY RIDGE ROSE 312

CONNEALY CONFIDENCE 0100#
MF BLACKBIRD 51
WINDY RIDGE DAYLIGHT 104
WINDY RIDGE ROSE 117
KOU PAL JUNEAU 797#
QUEEN ELBA 763U LAR
CAR ICEBERG 5153
CAR MISS CAROLINE 459

LAR JUNEANU 796Y
CAR MISS CAROLINE 7141
CAR MISS CAROLINE 738#



BW	WW 10/13	205 wt	NR	365 wt	YR	ADG	Scrotal
75	818	767	109	1133	98	2.29	37.3
CED	BW	WW	Milk	YW	SC		
+5	+2.7	+74	+31	+117	+1.74		
Marb	RE	Fat	\$M	\$W	\$F	\$G	\$B
+57	+46	-006	+63	+73	+81	+48	+129

Dam has a cumulative 93 & 110 on her birth & weaning ratio on progeny. Granddam is a pathfinder. A powerful cow family behind this big, stout Swagger son. Twin to Lot# 12.



48

Bull

CAR REMARKABLE 2156

20554494

calved - 02/08/22

CAR REMARKABLE 640
CAR REMARKABLE 039
CAR MISS MIKAYLA 510#

S A V RESOURCE 1441#
CAR MISS MARIE 769#
CAR PRIMETRACKER 308#
CAR MISS MIKAYLA 209
A A R REALLY WINDY 1205#
CAR MISS MARIE 5109
CAR PRIMETRACKER 576
CAR PRIMROSE LADY 229#

CAR CHINNOOK 786#
CAR PRIMROSE LADY 416
CAR PRIMROSE LADY 8157



BW	WW 10/13	205 wt	NR	365 wt	YR	ADG	Scrotal
82	760	677	108	1144	100	2.92	35.9
CED	BW	WW	Milk	YW	SC		
+2	+1.6	+50	+29	+89	+31		
Marb	RE	Fat	\$M	\$W	\$F	\$G	\$B
+42	+41	+043	+45	+48	+63	+37	+99

Dam has 7@ 100BW and 7@ 103 Weaning. Dam of sire produced her last calf at 17 and produced 2 herdbulls for our program. We are really impressed with the power and consistency of this sire group by Remarkable 039.





YEARLING BULLS



50

Bull

CAR PACIFIC 2114

20561023 calved - 02/01/22

HOOVER NO DOUBT
STERLING PACIFIC 904
BALDRIDGE ISABEL B082

MOGCK BULLSEYE#
MISS BLACKCAP ELLSTON J2
G A R PROPHET#
BALDRIDGE ISABEL Y69
SVR REVOLUTION 4129
FOOS HAZEL 243
R B ACTIVE DUTY 010#
CAR MISS MIKAYLA 179#



BW	WW 10/13	205 wt	NR	365 wt	YR	ADG	Scrotal
72	717	696	111	1278	112	3.64	37.7
CED	BW	WW	Milk	YW	SC		
+8	+0.5	+69	+23	+116	+1.43		
Marb	RE	Fat	\$M	\$W	\$F	\$G	\$B
+1.12	+0.41	+0.038	+68	+66	+91	+70	+161

Out of a 1st calf heifer. Granddam is a pathfinder with 114 Weaning ratio on her progeny. Granddam also produced Reference Sire-CAR Bismark 8190. This Pacific son has a great look to him, top set of numbers, indexes and excellent carcass values with the highest marbling EPD in the sale offering. Strong calving ease herdbull prospect.



51

Bull

CAR SWAGGER 207

20557436 calved - 01/17/22

MARDA SWAGGER 463
WINDY RIDGE SWAGGER 714
WINDY RIDGE ROSE 312

CONNELY CONFIDENCE 0100#
MF BLACKBIRD 51
WINDY RIDGE DAYLIGHT 104
WINDY RIDGE ROSE 117
O C C UNMISTAKABLE 946U#
CAR LADY DIANA 9145#
CAR TRACKER 8109
CAR MISS TARESA 253



BW	WW 10/13	205 wt	NR	365 wt	YR	ADG	Scrotal
78	758	662	105	1164	102	3.14	38.4
CED	BW	WW	Milk	YW	SC		
+3	+2.8	+73	+17	+117	+0.91		
Marb	RE	Fat	\$M	\$W	\$F	\$G	\$B
+0.24	+0.45	+0.009	+72	+59	+88	+32	+120

Terific udder quality in this productive cow family. This Swagger son has an attractive set of figures.

53

Bull

CAR BISMARCK 232

20554541 calved - 01/21/22

CAR BISMARCK 371
CAR BISMARCK 8190
CAR MISS MIKAYLA 530#

S A V BISMARCK 5682#
CAR MISS VIKING 9191
R B ACTIVE DUTY 010#
CAR MISS MIKAYLA 179#
LAR WINDY 64 423S#
CAR MARIE 239
CAR TRACKER 904#
CAR MISS MARIE 289



BW	WW 10/13	205 wt	NR	365 wt	YR	ADG	Scrotal
76	734	653	104	1163	102	3.19	37.7
CED	BW	WW	Milk	YW	SC		
+5	+1.1	+47	+29	+84	+1.07		
Marb	RE	Fat	\$M	\$W	\$F	\$G	\$B
+0.26	+0.88	-0.007	+53	+50	+73	+40	+113

Dam is a 13 year old pathfinder cow that is still producing with a picture perfect udder. We don't sell daughters out of this cow. The maternal Longevity is really stacked up on this top end herdbull prospect by Bismark 8190.

52

Bull

CAR REMARKABLE 2134

20554489 calved - 02/04/22

CAR REMARKABLE 640
CAR REMARKABLE 039
CAR MISS MIKAYLA 510#

S A V RESOURCE 1441#
CAR MISS MARIE 769#
CAR PRIMETRACKER 308#
CAR MISS MIKAYLA 209
CAR DUKE 504
CAR MISS DIANA 6165#
CAR JUSTICE 754
CAR MISS MARIE 8127



BW	WW 10/13	205 wt	NR	365 wt	YR	ADG	Scrotal
84	758	684	109	1207	106	3.27	36.9
CED	BW	WW	Milk	YW	SC		
+5	+1.2	+60	+32	+103	+1.22		
Marb	RE	Fat	\$M	\$W	\$F	\$G	\$B
+0.32	+0.26	+0.076	+60	+64	+77	+27	+104

Dam will make pathfinder status this spring and boasts 3@ 111 Weaning. Pathfinder granddam is 13 years old and one of our favorites. Another big, stout Remarkable 039 son that did really well.

54

Bull

CAR MENTOR 2212

20554524 calved - 02/25/22

CONNELY MENTOR 7374#
CAR MENTOR 0115
CAR MISS TARESA 815

G A R RETAIL PRODUCT#
EXECUTA OF CONANGA 939#
CAR REMARKABLE 640
CAR MISS TARESA 2224
BASIN PAYWEIGHT 1682#
CRAZY K BLACKCAP 4297
LAR JUNEANU 796Y
CAR MISS CAROLINE 233



BW	WW 10/13	205 wt	NR	365 wt	YR	ADG	Scrotal
72	753	765	119	1227	119	2.89	42.9
CED	BW	WW	Milk	YW	SC		
+9	+1.9	+72	+30	+134	+2.35		
Marb	RE	Fat	\$M	\$W	\$F	\$G	\$B
+0.38	+0.68	+0.008	+52	+66	+79	+41	+121

Out of a 1st calf heifer. Tremendous cow family that we think very highly of. Look at the indexes and EPDs on this top outcross calving ease herdbull prospect.



YEARLING BULLS



55

Bull

CAR BISMARK 212

20554482 calved - 01/17/22

CAR BISMARK 371
CAR BISMARK 8190
CAR MISS MIKAYLA 530#

S A V BISMARCK 5682#
CAR MISS VIKING 9191
R B ACTIVE DUTY 010#
CAR MISS MIKAYLA 179#
A A R TEN X 7008 S A#
CAR MISS AMY 121#
K C F BENNETT ENERGIZER W474
CAR MISS ROBERTA 895



BW	WW 10/13	205 wt	NR	365 wt	YR	ADG	Scrotal
80	808	689	98	1065	92	2.35	38.2
CED	BW	WW	Milk	YW	SC		
+11	+0.0	+47	+24	+76	+1.54		
Marb	RE	Fat	\$M	\$W	\$F	\$G	\$B
+26	-.05	+0.055	+83	+51	+50	+22	+72

Dam has 100 & 103 on birth and weaning ratio on her progeny. Top end eye appealing calving ease prospect by 8190 Bismark with a heavy weaning weight.



56

Bull

CAR RESILIENT 277

20570963 calved - 01/27/22

SITZ STELLAR 726D
SITZ RESILIENT 10208
SITZ MISS BURGESS 1856

MOHNEN SUBSTANTIAL 272#
SITZ PRIDE 200B
SITZ TOP GAME 561X#
SITZ MISS BURGESS 4381
SVR REVOLUTION 4129
FOOS HAZEL 243
CAR 504 DUKE 898
CAR MISS MIKAYLA 346



BW	WW 10/13	205 wt	NR	365 wt	YR	ADG	Scrotal
74	776	741	105	1103	95	2.26	40.5
CED	BW	WW	Milk	YW	SC		
+5	+1.7	+65	+14	+93	+1.67		
Marb	RE	Fat	\$M	\$W	\$F	\$G	\$B
+20	+4.8	+0.22	+68	+57	+59	+29	+88

Out of 1st calf heifer. Pathfinder Granddam has 10@ 105 Weaning. Top calving ease herdbull prospect by Resilient.



57

Bull

CAR DURABULL LINE 2115

20554480 calved - 02/01/22

CAR 865 DUKE 3200
CAR DURABULL LINE 575
CAR MISS MARIE 3184#

CAR DUKE 865
CAR LADY DIANA 503
CAR CHINNOOK1119
CAR MISS MARIE 110
LAR WINDY 64 423S#
CAR MISS MARIE 417
CAR DUKE 504
CAR MISS JULIE 660



BW	WW 10/13	205 wt	NR	365 wt	YR	ADG	Scrotal
76	786	710	101	1112	96	2.51	37.1
CED	BW	WW	Milk	YW	SC		
+12	+0.2	+47	+25	+91	+1.83		
Marb	RE	Fat	\$M	\$W	\$F	\$G	\$B
+19	+0.08	+0.044	+39	+42	+85	+21	+106

Pathfinder dam is 13 years old and always brings in a good calf. A top calving ease herdbull prospect by Durabull from a great cow family.

58

Bull

CAR REMARKABLE 224

20570791 calved - 01/19/22

CAR REMARKABLE 640
CAR REMARKABLE 821
CAR MISS HEATHER 5167#

S A V RESOURCE 1441#
CAR MISS MARIE 769#
CAR CEDAR RIDGE 156
CAR MISS HEATHER 2197
CAR 461 TRACKER 653
CAR MISS VIKING 4110#
CAR PRIMETRACKER 308#
C A R MARIE 841



BW	WW 10/13	205 wt	NR	365 wt	YR	ADG	Scrotal
75	690	660	105	1262	110	3.76	40.2
CED	BW	WW	Milk	YW	SC		
+8	+1.5	+56	+23	+95	+1.96		
Marb	RE	Fat	\$M	\$W	\$F	\$G	\$B
+1.20	+0.36	+0.043	+59	+52	+82	+26	+107

Dam has 5@ 98BW and 5@ 104W. Granddam is still producing at 15. Excellent longevity behind this high gaining, top calving ease prospect by Remarkable 821.



YEARLING BULLS



59

Bull

CAR MENTOR 2109

20554476

calved - 02/01/22

CONNEALY MENTOR 7374#
CAR MENTOR 0100
CAR MISS MARIE 870

G A R RETAIL PRODUCT#
EXECUTA OF CONANGA 939#
CAR BISMARCK 371
CAR MISS MARIE 340#
CAR REMARKABLE 640
CAR MISS HEATHER 5167#
CAR PRIMETRACKER 802
CAR MISS MARIE 358#



CAR REMARKABLE 821
CAR MISS MARIE 025
CAR MISS MARIE 012

BW	WW 10/13	205 wt	NR	365 wt	YR	ADG	Scrotal
70	762	735	104	1178	101	2.77	41.2
CED	BW	WW	Milk	YW	SC		
+11	-1.2	+46	+11	+72	+2.08		
Marb	RE	Fat	\$M	\$W	\$F	\$G	\$B
+43	+29	+037	+43	+36	+37	+36	+73

Out of a 1st calf heifer. Granddam is 12 and just calved on time again. Great Granddam produced 16 calves. Incredible bred in longevity on this outcross calving ease herdbull prospect that is pleasing to the eye.



60

Bull

CAR HICKORY 222

20554527

calved - 01/19/22

CAR CEDAR RIDGE 156
CAR HICKORY 547
CAR MISS MARIE 3157

COLE CREEK CEDAR RIDGE 1V#
CAR MISS LUCY 720
CAR CHINNOOK 786#
CAR MISS MARIE 943



COLE CREEK CEDAR RIDGE 1V#
CAR MISS AMY 196
CAR MISS AMY 802

COLE CREEK BLACK CEDAR 46P#
COLE CREEK CLOVANADA 49S#
CAR PRIMETRACKER 308#
C A R MISS RAINDANCER 421#

BW	WW 10/13	205 wt	NR	365 wt	YR	ADG	Scrotal
75	749	663	105	1217	106	3.46	36.4
CED	BW	WW	Milk	YW	SC		
+8	+1.0	+62	+27	+99	+1.38		
Marb	RE	Fat	\$M	\$W	\$F	\$G	\$B
+11	-.01	+044	+66	+63	+80	+16	+96

Dam is 12 years old and has a 95 & 101 on her birth and weaning ratios on her progeny. Cow family produced CAR Duke 104. Excellent figures across the board on this top calving ease prospect by Hickory.

62

Bull

CAR BISMARCK 265

20554557

calved - 01/25/22

CAR BISMARCK 371
CAR BISMARCK 8190
CAR MISS MIKAYLA 530#

S A V BISMARCK 5682#
CAR MISS VIKING 9191
R B ACTIVE DUTY 010#
CAR MISS MIKAYLA 179#



LAR JUNEANU 796Y
CAR MISS CAROLINE 699
CAR MISS CAROLINE 233

KOUPAL JUNEANU 797#
QUEEN ELBA 763U LAR
REDLAND RAINMAKER 3856
CAR MISS CAROLINE 7217



BW	WW 10/13	205 wt	NR	365 wt	YR	ADG	Scrotal
78	773	669	106	1167	102	3.11	35.4
CED	BW	WW	Milk	YW	SC		
+7	+0.0	+54	+23	+88	+67		
Marb	RE	Fat	\$M	\$W	\$F	\$G	\$B
+23	+28	+053	+58	+54	+49	+25	+74

Dam is a prolific producing Juneau daughter with an average ratio of 110BW, 107 Weaning and 103 Yearling. This calving ease prospect by Bismarck 8190 is loaded top and bottom with a lot of long term bred in longevity.

61

Bull

CAR LEGENDARY 293

20554572

calved - 01/29/22

CONNEALY LEGENDARY 644L
CAR LEGENDARY 026
CAR MISS LUCY 717#

QUAKER HILL RAMPAGE 0A36#
JAZZED OF CONANGA 4660
S A V RESOURCE 1441#
CAR MISS LUCY 301
SOO LINE MOTIVE 9016#
CAR MISS HEATHER 446#
LAR WINDY 64 423S#
CAR MISS DIANA 4165



CAR MOTIVE 423
CAR MISS DIANA 036
CAR MISS DIANA 971#

BW	WW 10/13	205 wt	NR	365 wt	YR	ADG	Scrotal
72	710	687	109	1210	106	3.27	40.1
CED	BW	WW	Milk	YW	SC		
+1	+1.2	+58	+19	+108	+1.57		
Marb	RE	Fat	\$M	\$W	\$F	\$G	\$B
+69	+80	-.002	+25	+45	+100	+58	+158

Out of a 1st calf heifer. Pathfinder granddam is 16 and still rolling. Ultra complete calving ease herdbull prospect by Legendary with great figures and one of our best cow families behind him.





YEARLING BULLS



63 Bull

CAR CAPITALIST 2185

20554511

calved - 02/16/22

LD CAPITALIST 316#
PINE COULEE CAPITALIST F339
PINE COULEE BLACKCAP Y1#

CONNEALY CAPITALIST 028#
LD DIXIE ERICA 2053
PINE COULEE POWERHOUSE W112
PINE COULEE BLACKCAP G 3271#

HARRISON TRUE GRIT 4253
CAR MISS BRENDA 8180
CAR MISS BRENDA 585#

HILLTOP TRUE GRIT 9202#
HARRISON MISS HILDA 9097
BARSTOW CASH#
CAR MISS BRENDA 3132



BW	WW 10/13	205 wt	NR	365 wt	YR	ADG	Scrotal
77	747	692	110	1210	106	3.24	36.8
CED	BW	WW	Milk	YW	SC		
+5	+1.0	+54	+23	+94	+65		
Marb	RE	Fat	\$M	\$W	\$F	\$G	\$B
+0.30	+0.23	+0.043	+54	+53	+65	+29	+93

Dam has 2@ 98BW, 2@ 113 Weaning and 2@ 113Yearling. Granddam is a pathfinder. Calving ease prospect by Capitalist with a top set of figures.

HOW MUCH MORE CAN A RANCHER AFFORD TO PAY FOR A TOP BULL?

Increase in weaning weight from top performing bull per calf.

- X Number of cows covered per year
 - X Number of years used
 - X Selling price of calves
- = **Extra you can afford to pay for a better bull**

Example: A bull who can add 30 lbs to your weaning weights X 25 cows per year X 4 years of use X \$1.50 per lb = \$4,500

This example shows that this bull is worth \$4500 more than the average bull that keeps your weaning weights the same.

This formula does not take into account the extra value realized through genetics that have been developed to survive and excel in a low input environment. The replacement heifers that have that extra fertility and bred in longevity to give you those extra years of production. The feedlot gain and improved carcass quality that helps you to market your calves. All of these items add to your bottom line and help your outfit to survive and prosper. Put your own figures into this formula and see what you come up with.



64 Bull

CAR GOALKEEPER 210

20554699

calved - 01/17/22

SYDGEN ENHANCE
BALDRIDGE SR GOALKEEPER
BALDRIDGE ISABEL E030

SYDGEN EXCEED 3223#
SYDGEN RITA 2618
CONNEALY CONFIDENCE PLUS#
BALDRIDGE ISABEL Y69

CAR MOTIVE 423
CAR MISS MARIE 609#
CAR MISS MARIE 1167

SOO LINE MOTIVE 9016#
CAR MISS HEATHER 446#
CAR PRIMETRACKER 780
CAR MISS MARIE 358#



BW	WW 10/13	205 wt	NR	365 wt	YR	ADG	Scrotal
70	725	618	98	1183	103	3.53	36.7
CED	BW	WW	Milk	YW	SC		
+6	-0.1	+60	+22	+118	+79		
Marb	RE	Fat	\$M	\$W	\$F	\$G	\$B
+0.95	+0.69	+0.022	+61	+51	+87	+67	+154

Dam is a pathfinder and an ideal angus cow in our program. Strong maternal and carcass values on this top calving ease prospect by Goal Keeper.

65 Bull

CAR RAINFALL 271

20554562

calved - 01/26/22

S A V RAINFALL 6846
BIG DRY RAINFALL H35
BDAR RUBY 747E

COLEMAN CHARLO 0256#
S A V BLACKCAP MAY 4136
SITZ ROYAL 9784
BDAR RUBY 406C

CAR DUKE 504
CAR MISS MARIE 723
CAR MISS MARIE 401

CAR DUKE 316
C A R MARIE 818
N BAR EMULATION EXT#
LADY TRAVELER 449 C A R#



BW	WW 10/13	205 wt	NR	365 wt	YR	ADG	Scrotal
84	754	677	96	1215	105	3.36	40.4
CED	BW	WW	Milk	YW	SC		
-1	+4.1	+63	+32	+116	+1.68		
Marb	RE	Fat	\$M	\$W	\$F	\$G	\$B
+0.78	+0.65	-0.008	+55	+56	+86	+61	+147

Dam is an awesome looking 16 year old cow still producing. Backed by 3 consecutive generations of donor dams tracing to foundation 449 cow. Excellent maternal genetic package on this good looking complete Rainfall son.





YEARLING BULLS



66

Bull

CAR BISMARK 216

20554497 calved - 01/18/22

CAR BISMARK 371
CAR BISMARK 8190
CAR MISS MIKAYLA 530#

S A V BISMARCK 5682#
CAR MISS VIKING 9191
R B ACTIVE DUTY 010#
CAR MISS MIKAYLA 179#
CAR TRACKER 904#
CAR MARIE 0108
C A FUTURE DIRECTION 5321#
CAR MISS TARESA 253



CAR MEDICINE MAN 640
CAR MISS TARESA 006
CAR MISS TARESA 524#

BW	WW 10/13	205 wt	NR	365 wt	YR	ADG	Scrotal
77	730	647	103	1185	104	3.36	40.6
CED	BW	WW	Milk	YW	SC		
+10	-0.3	+34	+29	+62	+1.81		
Marb	RE	Fat	\$M	\$W	\$F	\$G	\$B
+0.59	+0.28	+0.031	+49	+39	+50	+44	+94

Dam is a 13 year old ideal angus cow still producing. Pathfinder granddam produced 14 calves. Don't let the lover EPD package on his dam's old blood lines deter you. Plenty of performance and the bred in longevity in your program will net you big returns. Bred in calving ease.



67

Bull

CAR REVOLUTION 2129

20554487 calved - 02/03/22

SVR REVOLUTION 4129
FOOS REVOLUTION 243
FOOS HAZEL 243

CANDOLIER FOREVER 376#
S C C ENCHANTRESS 3F1 X412
CROOK MT REALLY WINDY 8834
N F HAZEL 7461-8#



HARRISON TRUE GRIT 4253
CAR MISS MARIE 9184
CAR MISS MARIE 555#

HILLTOP TRUE GRIT 9202#
HARRISON MISS HILDA 9097
CAR JUNEAU 3236
CAR MARIE 302#

BW	WW 10/13	205 wt	NR	365 wt	YR	ADG	Scrotal
74	792	733	104	1106	95	2.33	38.2
CED	BW	WW	Milk	YW	SC		
+11	-0.3	+53	+19	+89	+1.36		
Marb	RE	Fat	\$M	\$W	\$F	\$G	\$B
+0.16	+0.19	+0.044	+65	+51	+72	+21	+94

Dam has 2@ 96BW and 2@ 106 Weaning. Dam is backed by 3 consecutive generations of long term producing pathfinder cows tracing to foundation 131 cow. Excellent outcross calving ease prospect from older proven bloodlines.

69

Bull

CAR LEGENDARY 237

20570137 calved - 01/21/22

CONNEALY LEGENDARY 644L
CAR LEGENDARY 026
CAR MISS LUCY 717#

QUAKER HILL RAMPAGE 0A36#
JAZZED OF CONANGA 4660
S A V RESOURCE 1441#
CAR MISS LUCY 301



CAR REGULATOR 769
CAR MISS MIKAYLA 0161
CAR MISS MIKAYLA 8122

GDAR REGULATOR 364#
CAR MISS DIANNA 5107
CAR BISMARK 371
CAR MISS MIKAYLA 5189



BW	WW 10/13	205 wt	NR	365 wt	YR	ADG	Scrotal
70	736	700	99	1146	99	2.79	33.3
CED	BW	WW	Milk	YW	SC		
+8	-1.0	+52	+13	+103	+1.06		
Marb	RE	Fat	\$M	\$W	\$F	\$G	\$B
+0.52	+0.67	+0.014	+55	+39	+66	+47	+114

Out of a 1st calf heifer. Excellent udder quality and maternal strength on this top calving ease prospect by Legendary.

68

Bull

CAR COLONEL 296

20554574 calved - 01/30/22

BALDRIDGE COLONEL C251#
BYERGO COLONEL G14
BYERGO CLOVER 850

BALDRIDGE XPAND X743
BALDRIDGE ISABEL Y69
LCC NEW STANDARD#
BYERGO CLOVER 513



NA PIONEER 0180
CAR MISS MARIE 5159#
CAR MISS MARIE 1103#

S A V PIONEER 7301#
SITZ TW MISS VIKING 487
A A R TEN X 7008 S A#
CAR MISS MARIE 827

BW	WW 10/13	205 wt	NR	365 wt	YR	ADG	Scrotal
75	781	681	108	1126	98	2.78	36.6
CED	BW	WW	Milk	YW	SC		
+10	-0.5	+51	+39	+87	+0.81		
Marb	RE	Fat	\$M	\$W	\$F	\$G	\$B
+0.63	+0.52	+0.001	+57	+64	+80	+52	+131

Second generation pathfinder dam with 6@ 109 Weaning. Outcross calving ease genetics on this good Colonel son.

70

Bull

CAR CHA CHING 2213

20554525 calved - 02/26/22

BARSTOW CASH#
CAR CHA CHING 528
CAR MISS MIKAYLA 510#

SITZ DASH 10277#
BARSTOW QUEEN W16
CAR PRIMETRACKER 308#
CAR MISS MIKAYLA 209



CAR HERO 9143
CAR MISS MARIE 229
CAR MISS MARIE 0158

CAR HERO 631
CAR MISS CAROLINE 7217
CAR BUSHWACKER 884
CAR MISS MARIE 827



BW	WW 10/13	205 wt	NR	365 wt	YR	ADG	Scrotal
75	676	651	104	1232	110	3.63	39.0
CED	BW	WW	Milk	YW	SC		
+11	-0.6	+47	+12	+90	+0.96		
Marb	RE	Fat	\$M	\$W	\$F	\$G	\$B
+0.22	+0.46	+0.048	+53	+33	+72	+28	+99

Dam is 11 years old and one of the easiest keeping cows on the ranch. Eye catching calving ease prospect from Cha Ching.



YEARLING BULLS



71

Bull

CAR REMARKABLE 253

20554551 calved - 01/24/22

CAR REMARKABLE 640
CAR REMARKABLE 821
CAR MISS HEATHER 5167#

S A V RESOURCE 1441#
CAR MISS MARIE 769#
CAR CEDAR RIDGE 156
CAR MISS HEATHER 2197
BARSTOW CASH#
CAR MISS MIKAYLA 510#
CAR CEDAR RIDGE 156
CAR MISS VIKING 829



BW	WW 10/13	205 wt	NR	365 wt	YR	ADG	Scrotal
76	750	685	97	1143	99	2.86	38.9
CED	BW	WW	Milk	YW	SC		
+11	+1.3	+59	+23	+101	+93		
Marb	RE	Fat	\$M	\$W	\$F	\$G	\$B
-.18	+.45	+.026	+75	+56	+69	+10	+80

Another top calving ease prospect by Remarkable from a very consistent producing cow family.



72

Bull

CAR SWAGGER 2159

20554496 calved - 02/08/22

MARDA SWAGGER 463
WINDY RIDGE SWAGGER 714
WINDY RIDGE ROSE 312

CONNEALY CONFIDENCE 0100#
MF BLACKBIRD 51
WINDY RIDGE DAYLIGHT 104
WINDY RIDGE ROSE 117
SOO LINE MOTIVE 9016#
CAR MISS HEATHER 446#
REDLAND RAINMAKER 3856
CAR MISS MARIE 318



BW	WW 10/13	205 wt	NR	365 wt	YR	ADG	Scrotal
84	689	614	98	1256	110	4.01	34.9
CED	BW	WW	Milk	YW	SC		
+5	+2.4	+68	+25	+125	-.12		
Marb	RE	Fat	\$M	\$W	\$F	\$G	\$B
+.46	+.41	-.017	+73	+61	+87	+44	+131

This big, stout Swagger son was one of the high gaining bulls on test.



73

Bull

CAR COLONEL 238

20554544 calved - 01/21/22

BALDRIDGE COLONEL C251#
BYERGO COLONEL G14
BYERGO CLOVER 850

BALDRIDGE XPAND X743
BALDRIDGE ISABEL Y69
LCC NEW STANDARD#
BYERGO CLOVER 513
CONNEALY IMPRESSION#
K C F MISS CONSENSUS Y300
CAR INCREDIBULL 820
CAR MISS JULIE 7151



BW	WW 10/13	205 wt	NR	365 wt	YR	ADG	Scrotal
75	726	639	102	1124	100	3.03	36.5
CED	BW	WW	Milk	YW	SC		
+7	+0.9	+49	+30	+92	+91		
Marb	RE	Fat	\$M	\$W	\$F	\$G	\$B
+.54	+.34	-.007	+41	+49	+75	+46	+121

Dam has 3@ 102BW & 3@ 103 weaning. Top calving ease prospect by Colonel.





YEARLING BULLS



74

Bull

CAR DURABULL 2197

20554515 calved - 02/21/22

CAR DURABULL LINE 575
CAR DURABULL 056
CAR MISS VIKING 624#

CAR 865 DUKE 3200
CAR MISS MARIE 3184#
LAR JUNEANU 796Y
CAR MISS VIKING 9191
CAR CEDAR RIDGE 156
CAR MISS MARIE 3157
CAR PRIMTRACKER 576
CAR PRIMROSE LADY 229#



BW	WW 10/13	205 wt	NR	365 wt	YR	ADG	Scrotal
70	768	771	120	1133	110	2.26	39.3
CED	BW	WW	Milk	YW	SC		
+11	+0.4	+64	+31	+106	+1.61		
Marb	RE	Fat	\$M	\$W	\$F	\$G	\$B
+0.45	+0.13	+0.051	+73	+69	+86	+34	+120

Out of a 1st calf heifer. The sir Durabull 056 hit a home run on this top calving ease herdbull prospect. 120 Weaning ratio and an appealing set of EPDs.



75

Bull

CAR SWAGGER 2137

20570960 calved - 02/05/22

MARDA SWAGGER 463
WINDY RIDGE SWAGGER 714
WINDY RIDGE ROSE 312

CONNEALY CONFIDENCE 0100#
MF BLACKBIRD 51
WINDY RIDGE DAYLIGHT 104
WINDY RIDGE ROSE 117
S A V BISMARCK 5682#
CAR MISS VIKING 9191
CAR RIDGERUNNER 660
C A R DIANA 842#



BW	WW 10/13	205 wt	NR	365 wt	YR	ADG	Scrotal
77	713	631	100	1149	100	3.24	35.8
CED	BW	WW	Milk	YW	SC		
+8	+0.9	+50	+20	+91	+5.1		
Marb	RE	Fat	\$M	\$W	\$F	\$G	\$B
+0.08	+0.43	-0.009	+36	+41	+76	+25	+101

Dam has 3@ 108 Weaning. Dam is backed by 3 consecutive generations of pathfinder dams that averaged 12 calves. Outcross calving ease genetics on this top Swagger son with bred in proven long term longevity.

77

Bull

CAR REMARKABLE 294

20554573 calved - 01/29/22

CAR REMARKABLE 640
CAR REMARKABLE 821
CAR MISS HEATHER 5167#

S A V RESOURCE 1441#
CAR MISS MARIE 769#
CAR CEDAR RIDGE 156
CAR MISS HEATHER 2197
CONNEALY CONSENSUS 7229#
EURA ELGA OF CONANGA 9109#
CAR TRACKER 904#
CAR PRIMROSE LADY 229#



BW	WW 10/13	205 wt	NR	365 wt	YR	ADG	Scrotal
80	770	671	95	1156	100	3.03	38.5
CED	BW	WW	Milk	YW	SC		
+12	-0.1	+47	+24	+79	+1.59		
Marb	RE	Fat	\$M	\$W	\$F	\$G	\$B
+0.29	+0.56	+0.048	+67	+52	+62	+32	+94

Dam has 6@ 102 Weaning. Heavy muscled calving ease prospect by Remarkable 821.

76

Bull

CAR LEGENDARY 246

20554547 calved - 01/23/22

CONNEALY LEGENDARY 644L
CAR LEGENDARY 026
CAR MISS LUCY 717#

QUAKER HILL RAMPAGE 0A36#
JAZZED OF CONANGA 4660
S A V RESOURCE 1441#
CAR MISS LUCY 301
LAR WINDY 64 423S#
CAR MISS TARESA 663#
CAR CHINNOOK 786#
CAR MISS MARIE 948



BW	WW 10/13	205 wt	NR	365 wt	YR	ADG	Scrotal
78	784	676	96	1078	93	2.51	37.4
CED	BW	WW	Milk	YW	SC		
+8	+0.3	+54	+22	+100	+1.20		
Marb	RE	Fat	\$M	\$W	\$F	\$G	\$B
+0.37	+0.59	-0.018	+39	+46	+81	+42	+123

Dam is a prolific producing cow from our most productive cow family. Granddam is an 11 year old pathfinder. Heavy weaning weight on this eye appealing, clean made calving ease prospect by Legendary 026.





YEARLING BULLS



78

Bull

CAR GOALKEEPER 2138

20557628

calved - 02/05/22

SYDGEN ENHANCE
BALDRIDGE SR GOALKEEPER
BALDRIDGE ISABEL E030

SYDGEN EXCEED 3223#
SYDGEN RITA 2618
CONNEALY CONFIDENCE PLUS#
BALDRIDGE ISABEL Y69

CONNEALY LEGENDARY 644L
CAR MISS DIANNA 082
CAR MISS DIANNA 786

QUAKER HILL RAMPAGE 0A36#
JAZZED OF CONANGA 4660
CAR GAME DAY 406
CAR MISS DIANA 5117



BW	WW 10/13	205 wt	NR	365 wt	YR	ADG	Scrotal
70	691	679	108	1241	109	3.51	38.8
CED	BW	WW	Milk	YW	SC		
+7	+0.3	+65	+33	+123	+1.69		
Marb	RE	Fat	\$M	\$W	\$F	\$G	\$B
+0.74	+0.95	+0.023	+66	+67	+91	+61	+151

Out of a 1st calf heifer. Granddam will make pathfinder status this spring. This top calving ease herd bull prospect by Goalkeeper checks all the boxes for a good investment in your cowherd.

81

Bull

CAR REMARKABLE 297

20554575

calved - 01/30/22

CAR REMARKABLE 640
CAR REMARKABLE 821
CAR MISS HEATHER 5167#

S A V RESOURCE 1441#
CAR MISS MARIE 769#
CAR CEDAR RIDGE 156
CAR MISS HEATHER 2197

CAR TRACKER 904#
CAR MISS BAILEY 694
CAR MISS BAILEY 016#

C A R TRACKER 614
LADY NEW TREND 027 C A R
C A R AMBITION 737
LADY 598 TRAVELER 857 C A R#



BW	WW 10/13	205 wt	NR	365 wt	YR	ADG	Scrotal
80	712	645	103	1117	100	2.95	37.0
CED	BW	WW	Milk	YW	SC		
+4	+2.3	+47	+19	+81	+1.20		
Marb	RE	Fat	\$M	\$W	\$F	\$G	\$B
+0.18	+0.20	+0.020	+23	+37	+57	+25	+82

Dam is a 17 year old cow that just calved again. Backed by 2 generations of pathfinders that each raised 12 calves. Excellent bred in longevity on this top Remarkable 821 son.

79

Bull

CAR HICKORY 249

20554549

calved - 01/23/22

CAR CEDAR RIDGE 156
CAR HICKORY 547
CAR MISS MARIE 3157

COLE CREEK CEDAR RIDGE 1V#
CAR MISS LUCY 720
CAR CHINNOOK 786#
CAR MISS MARIE 943

HARRISON TRUE GRIT 4253
CAR MISS MIKAYLA 8232
CAR MISS MIKAYLA 5207

HILLTOP TRUE GRIT 9202#
HARRISON MISS HILDA 9097
CAR CEDAR RIDGE 156
CAR MISS MIKAYLA 294



BW	WW 10/13	205 wt	NR	365 wt	YR	ADG	Scrotal
77	713	630	100	1145	100	3.22	35.0
CED	BW	WW	Milk	YW	SC		
+11	+1.0	+73	+20	+118	+1.62		
Marb	RE	Fat	\$M	\$W	\$F	\$G	\$B
+0.47	+0.50	+0.016	+69	+67	+77	+43	+120

Young prolific dam has 3@ 100BW, 3@ 102 Weaning and 3@ 107Y. Very appealing set of numbers on this top calving ease herd bull prospect by Hickory.

82

Bull

CAR YETI 2219

20557035

calved - 03/01/22

PAHR YETI B5
CAR YETI 973
CAR MISS MIKAYLA 760

BASIN PAYWEIGHT 1682#
PAHR RITA Q28 OF 0151 9Q20
CAR DURABULL LINE 575
CAR MISS MIKAYLA 179#

BARTELS CONSENSUS 3809 649
CAR MISS JULIE 9141
CAR MISS JULIE 713

CONNEALY CONSENSUS#
ELISHA OF CONANGA 868 988
GDAR REGULATOR 364#
CAR MISS JULIE 2111



BW	WW 10/13	205 wt	NR	365 wt	YR	ADG	Scrotal
75	749	739	115	1131	110	2.45	34
CED	BW	WW	Milk	YW	SC		
+9	-0.1	+67	+22	+110	+0.29		
Marb	RE	Fat	\$M	\$W	\$F	\$G	\$B
+0.36	+0.78	+0.009	+58	+64	+71	+42	+113

This calving ease prospect by Yeti had a big weaning ratio off his dam. Excellent EPD profile.

80

Bull

CAR CAPITALIST 2171

20570961

calved - 02/12/22

LD CAPITALIST 316#
PINE COULEE CAPITALIST F339
PINE COULEE BLACKCAP Y1#

CONNEALY CAPITALIST 028#
LD DIXIE ERICA 2053
PINE COULEE POWERHOUSE W112
PINE COULEE BLACKCAP G 3271#

LAR JUNEANU 796Y
CAR MISS HEATHER 7173
CAR MISS HEATHER 307

KOUPAL JUNEANU 797#
QUEEN ELBA 763U LAR
CAR TRACKER 904#
C A R HEATHER 8102



BW	WW 10/13	205 wt	NR	365 wt	YR	ADG	Scrotal
77	755	677	108	1143	100	2.91	36.0
CED	BW	WW	Milk	YW	SC		
+1	+2.4	+59	+16	+91	+1.14		
Marb	RE	Fat	\$M	\$W	\$F	\$G	\$B
+0.26	+0.03	+0.072	+56	+49	+73	+22	+95

Juneau bred dam has 4@ 108 Weaning. Soggy made Capitalist son that offers calving ease, performance, strong maternal and has the genetics to excel in a low input environment.



lot 80



YEARLING BULLS



83

Bull

CAR BISMARK 269

20554561

calved - 01/26/22

CAR BISMARK 371
CAR BISMARK 8190
CAR MISS MIKAYLA 530#

S A V BISMARCK 5682#
CAR MISS VIKING 9191
R B ACTIVE DUTY 010#
CAR MISS MIKAYLA 179#
CONNEALY LEADTIME#
ELIGENCE PLUS OF CONANGA
CAR TRACKER 321
CAR MISS DIANA 980#



CONNEALY LEAD ON#
CAR MISS DIANA 170#
CAR MISS DIANA 6180

BW	WW 10/13	205 wt	NR	365 wt	YR	ADG	Scrotal
75	706	634	101	1172	103	3.36	37.7
CED	BW	WW	Milk	YW	SC		
+8	+0.3	+54	+27	+98	+1.25		
Marb	RE	Fat	\$M	\$W	\$F	\$G	\$B
+0.31	+0.40	-0.01	+49	+54	+66	+35	+101

Dam is a 12 year old pathfinder backed by 3 generations of pathfinder donor cows. Eye appealing calving ease prospect by Bismark 8190 backed by a great cow family.



84

Bull

CAR COLONEL 2100

20554474

calved - 01/31/22

BALDRIDGE COLONEL C251#
BYERGO COLONEL G14
BYERGO CLOVER 850

BALDRIDGE XPAND X743
BALDRIDGE ISABEL Y69
LCC NEW STANDARD#
BYERGO CLOVER 513
CAR INCREDIBULL 080
CAR MISS MARIE 7170
CAR NEW DAY 7162
CAR MISS MARIE 130#



CAR INCREDIBULL 496
CAR MISS MARIE 7207#
CAR MISS MARIE 178

BW	WW 10/13	205 wt	NR	365 wt	YR	ADG	Scrotal
80	755	661	105	1135	99	2.96	35.1
CED	BW	WW	Milk	YW	SC		
+8	+1.0	+50	+22	+84	+1.18		
Marb	RE	Fat	\$M	\$W	\$F	\$G	\$B
+0.95	+0.33	+0.044	+39	+43	+77	+60	+137

Dam has 4@ 106 Weaning. Excellent marbling and a top producing cow family behind this calving ease prospect by Colonel.

86

Bull

CAR LEGENDARY 248

20554548

calved - 01/23/22

CONNEALY LEGENDARY 644L
CAR LEGENDARY 026
CAR MISS LUCY 717#

QUAKER HILL RAMPAGE 0A36#
JAZZED OF CONANGA 4660
S A V RESOURCE 1441#
CAR MISS LUCY 301
CONNEALY CONSENSUS#
ELISHA OF CONANGA 868 988
HARRISON TRUE GRIT 4253
CAR MISS CATHERINE 550



BARTELS CONSENSUS 3809 649
CAR MISS CATHERINE 919
CAR MISS CATHERINE 714

BW	WW 10/13	205 wt	NR	365 wt	YR	ADG	Scrotal
70	696	637	101	1151	101	3.21	34.9
CED	BW	WW	Milk	YW	SC		
+7	-0.8	+69	+26	+120	+0.63		
Marb	RE	Fat	\$M	\$W	\$F	\$G	\$B
+0.80	+1.05	+0.017	+53	+68	+93	+65	+158

Dam has 2@ 97BW, 2@ 103 Weaning & 2@ 103Y. Excellent carcass values on this top calving ease prospect by Legendary 026.

85

Bull

CAR JUNEAU 2195

20554514

calved - 02/20/22

LAR JUNEANU 796Y
CAR JUNEAU 7213
CAR MISS JULIE 667

KOUPAL JUNEAU 797#
QUEEN ELBA 763U LAR
CAR RIDGERUNNER 001
CAR MISS JULIE 429#
CONNEALY CAPITALIST 028#
DIAMOND BLACK LADY 7206#
A A R TEN X 7008 S A#
CAR MISS CATHERINE 193



DIAMOND CAPITALIST B011
CAR MISS CATHERINE 8230
CAR MISS CATHERINE 3127

BW	WW 10/13	205 wt	NR	365 wt	YR	ADG	Scrotal
76	693	649	103	1179	103	3.31	40.4
CED	BW	WW	Milk	YW	SC		
+5	+2.1	+53	+20	+93	+2.03		
Marb	RE	Fat	\$M	\$W	\$F	\$G	\$B
+0.43	+0.30	+0.006	+57	+44	+72	+39	+111

This good young Juneau son has a very appealing set of figures.

87

Bull

CAR JUNEAU 2190

20554512

calved - 02/18/22

LAR JUNEANU 796Y
CAR JUNEAU 7213
CAR MISS JULIE 667

KOUPAL JUNEAU 797#
QUEEN ELBA 763U LAR
CAR RIDGERUNNER 001
CAR MISS JULIE 429#
LAR JUNEANU 796Y
CAR MISS DIANA 0101#
E 7 GURU 1375
CAR MISS WENDY 1110#



CAR JUNEAU 3236
CAR MISS WENDY 7114#
CAR MISS WENDY 4121

BW	WW 10/13	205 wt	NR	365 wt	YR	ADG	Scrotal
88	764	696	111	1110	97	2.59	39.7
CED	BW	WW	Milk	YW	SC		
-4	+5.0	+68	+27	+108	+2.48		
Marb	RE	Fat	\$M	\$W	\$F	\$G	\$B
-0.01	+0.36	-0.032	+52	+56	+75	+22	+97

Dam has 4@ 106 Weaning. Incredible fleshing ability in this cow family. Big weaning index on this top double bred Juneau son that will sire a heavy set of steers.



YEARLING BULLS



88

Bull

CAR DURABULL LINE 291

20554570

calved - 01/29/22

CAR 865 DUKE 3200
CAR DURABULL LINE 575
CAR MISS MARIE 3184#

CAR DUKE 865
CAR LADY DIANA 503
CAR CHINNOOK1119
CAR MISS MARIE 110

CAR REMARKABLE 640
CAR MISS HILDA 964
CAR MISS HILDA 4216

S A V RESOURCE 1441#
CAR MISS MARIE 769#
NA PIONEER 0180
CAR MISS HILDA 649



BW	WW 10/13	205 wt	NR	365 wt	YR	ADG	Scrotal
80	687	637	101	1205	105	3.55	39.6
CED	BW	WW	Milk	YW	SC		
+10	+1.4	+52	+30	+93	+1.90		
Marb	RE	Fat	\$M	\$W	\$F	\$G	\$B
+0.33	+0.11	+0.079	+44	+53	+59	+26	+84

Dam has 2@ 105 Weaning. Top calving ease prospect on this soggy made, eye appealing, high gaining Durabull son.

91

Bull

CAR LEGENDARY 254

20554552

calved - 01/24/22

CONNEALY LEGENDARY 644L
CAR LEGENDARY 026
CAR MISS LUCY 717#

QUAKER HILL RAMPAGE 0A36#
JAZZED OF CONANGA 4660
S A V RESOURCE 1441#
CAR MISS LUCY 301

CAR INCREDIBULL 080
CAR MISS MIKAYLA 5189
CAR MISS MIKAYLA 158#

LAR WINDY 64 423S#
CAR MISS TARESA 663#
CAR EFFICIENT 904
CAR MISS MIKAYLA 8140



BW	WW 10/13	205 wt	NR	365 wt	YR	ADG	Scrotal
74	715	618	98	1116	98	3.11	34.4
CED	BW	WW	Milk	YW	SC		
+12	-1.9	+51	+21	+96	+0.88		
Marb	RE	Fat	\$M	\$W	\$F	\$G	\$B
+0.30	+0.64	+0.007	+20	+43	+78	+37	+115

Dam has 5@ 96BW, 6@ 101 Weaning. Granddam is a top producing 12 year old pathfinder. Balanced set of figures and a top producing cow family behind this good calving ease prospect by Legendary 026.

89

Bull

CAR DURABULL LINE 252

20554550

calved - 01/24/22

CAR 865 DUKE 3200
CAR DURABULL LINE 575
CAR MISS MARIE 3184#

CAR DUKE 865
CAR LADY DIANA 503
CAR CHINNOOK1119
CAR MISS MARIE 110

CAR STEWARD 076
CAR MISS TARESA 5166#
CAR MISS TARESA 7113

K C F BENNETT STEWARD
CAR MISS MARIE 862#
H A IMAGE MAKER 0415#
CAR TARESA 655#



BW	WW 10/13	205 wt	NR	365 wt	YR	ADG	Scrotal
80	743	642	102	1080	95	2.74	38.4
CED	BW	WW	Milk	YW	SC		
+11	+1.1	+40	+28	+66	+7.9		
Marb	RE	Fat	\$M	\$W	\$F	\$G	\$B
+0.11	+0.46	+0.023	+61	+46	+69	+24	+93

Three generations of pathfinder dams including dam behind this top Durabull son with bred in calving ease and longevity.

92

Bull

CAR JUNEAU 2225

20554531

calved - 03/03/22

LAR JUNEANU 796Y
CAR JUNEAU 7179
CAR MISS MARIE 340#

KOUPAL JUNEAU 797#
QUEEN ELBA 763U LAR
CAR CHINNOOK 786#
CAR MISS MARIE 7183#

CAR CEDAR RIDGE 156
CAR MISS JOSEPHINE 5219#
CAR MISS JOSEPHINE 2170

COLE CREEK CEDAR RIDGE 1V#
CAR MISS LUCY 720
K C F BENNETT ENERGIZER W474
CAR MISS JOSEPHINE 9134



BW	WW 10/13	205 wt	NR	365 wt	YR	ADG	Scrotal
76	702	662	105	1157	101	3.09	37.5
CED	BW	WW	Milk	YW	SC		
+7	+0.7	+59	+30	+105	+2.10		
Marb	RE	Fat	\$M	\$W	\$F	\$G	\$B
+0.24	+0.58	-0.014	+73	+64	+60	+35	+96

Dam is a pathfinder cow with 5@ 107 Weaning. Calving ease prospect by Juneau from a prominent cow family.

90

Bull

CAR YETI 2224

20554530

calved - 03/02/22

PAHR YETI B5
CAR YETI 973
CAR MISS MIKAYLA 760

BASIN PAYWEIGHT 1682#
PAHR RITA Q28 OF 0151 9Q20
CAR DURABULL LINE 575
CAR MISS MIKAYLA 179#

CAR INCREDIBULL 820
CAR MISS DIANA 844
CAR MISS DIANA 2120#

LAR WINDY 64 423S#
CAR MARIE 239
CAR RIDGERUNNER 867
CAR MISS DIANA 0101#



BW	WW 10/13	205 wt	NR	365 wt	YR	ADG	Scrotal
85	672	647	103	1213	106	3.54	36
CED	BW	WW	Milk	YW	SC		
+6	+2.2	+55	+20	+94	+1.17		
Marb	RE	Fat	\$M	\$W	\$F	\$G	\$B
+0.43	+0.49	+0.042	+47	+45	+68	+38	+107

Five generations of pathfinder dams behind this top end Yeti son.

93

Bull

CAR HOMESTRETCH 2164

20554499

calved - 02/10/22

B BAR WINDY 79
B BAR HOMESTRETCH 3047
B BAR QUEEN 304#

CROOK MT REALLY WINDY 141#
B BAR LADY JEWEL 116#
SITZ RLS ALLIANCE 7164
B BAR QUEEN 557#

CAR CEDAR RIDGE 156
CAR MISS MARIE 6138
CAR MISS MARIE 723

COLE CREEK CEDAR RIDGE 1V#
CAR MISS LUCY 720
CAR DUKE 504
CAR MISS MARIE 401



BW	WW 10/13	205 wt	NR	365 wt	YR	ADG	Scrotal
77	696	622	99	1136	100	3.21	40.4
CED	BW	WW	Milk	YW	SC		
+9	-0.3	+57	+27	+93	+1.97		
Marb	RE	Fat	\$M	\$W	\$F	\$G	\$B
+0.30	+0.39	+0.042	+72	+65	+75	+31	+106

Long made calving ease prospect by Homestretch and from our top cow family. Granddam is 16 and still going strong.



YEARLING BULLS



94

Bull

CAR JUNEAU 2238

20554535 calved - 03/18/22

LAR JUNEANU 796Y
CAR JUNEANU 7179
CAR MISS MARIE 340#

KOUPAL JUNEANU 797#
QUEEN ELBA 763U LAR
CAR CHINNOOK 786#
CAR MISS MARIE 7183#
SRA 2418 OF RR 303
WMR BLACKCAP 323#
CAR PRIMETRACKER 308#
CAR MISS ROBERTA 0138#

WMR HERO 036
CAR MISS ROBERTA 9172
CAR MISS ROBERTA 6108#



BW	WW 10/13	205 wt	NR	365 wt	YR	ADG	Scrotal
78	710	723	116	1134	102	2.57	34
CED	BW	WW	Milk	YW	SC		
+6	+2.7	+63	+35	+116	+1.42		
Marb	RE	Fat	\$M	\$W	\$F	\$G	\$B
+0.30	+0.50	+0.020	+51	+63	+88	+34	+122

Dam is 14 years old and still producing. Two pathfinder dams behind her tracing directly to dam of CAR Tracker 904. Big weaning ratio on this top Juneau 7179 son with worlds of bred in longevity.

97

Bull

CAR LEGENDARY 2209

20570098 calved - 02/24/22

CONNEALY LEGENDARY 644L
CAR LEGENDARY 034
CAR MISS MIKAYLA 511

QUAKER HILL RAMPAGE 0A36#
JAZZED OF CONANGA 4660
SOO LINE MOTIVE 9016#
CAR MISS MIKAYLA 9132
CONNEALY CONSENSUS#
ELISHA OF CONANGA 868 988
SOO LINE MOTIVE 9016#
CAR MISS ROBERTA 068

BARTELS CONSENSUS 3809 649
CAR MISS ROBERTA 0203
CAR MISS ROBERTA 493



BW	WW 10/13	205 wt	NR	365 wt	YR	ADG	Scrotal
68	657	675	107	1161	101	3.04	36.4
CED	BW	WW	Milk	YW	SC		
+5	-0.9	+55	+32	+90	+0.98		
Marb	RE	Fat	\$M	\$W	\$F	\$G	\$B
+0.53	+0.66	+0.012	+72	+67	+53	+48	+101

Out of a 1st calf heifer. Really nice calving ease prospect by Legendary with appealing figures.

95

Bull

CAR REMARKABLE 266

20554558 calved - 01/25/22

CAR REMARKABLE 640
CAR REMARKABLE 821
CAR MISS HEATHER 5167#

S A V RESOURCE 1441#
CAR MISS MARIE 769#
CAR CEDAR RIDGE 156
CAR MISS HEATHER 2197
CAR BUSHWACKER 601
CAR LADY MARIE 648
WMR HERO 036
CAR MISS MARIE 614#

CAR BUSHWACKER 971 MJC
CAR MISS MARIE 1186
CAR MISS MARIE 9157



BW	WW 10/13	205 wt	NR	365 wt	YR	ADG	Scrotal
80	687	618	98	1162	102	3.40	38.6
CED	BW	WW	Milk	YW	SC		
+9	+1.9	+53	+25	+94	+2.26		
Marb	RE	Fat	\$M	\$W	\$F	\$G	\$B
+0.57	+0.26	+0.065	+79	+53	+66	+40	+106

Dam is a 12 year old cow with 9@ 102BW and 9@ 105 Weaning. Calving ease prospect by Remarkable 821 that gained well on test.

98

Bull

CAR REVOLUTION 290

20554569 calved - 01/29/22

SVR REVOLUTION 4129
FOOS REVOLUTION 243
FOOS HAZEL 243

CANDOLIER FOREVER 376#
S C C ENCHANTRESS 3F1 X412
CROOK MT REALLY WINDY 8834
N F HAZEL 7461-8#
S A V RESOURCE 1441#
CAR MISS ROBERTA 7117
CAR EFFICIENT 534#
CAR MISS DIANA 019

CAR RESOURCE 610
CAR MISS DIANA 9175
CAR MISS DIANA 390



BW	WW 10/13	205 wt	NR	365 wt	YR	ADG	Scrotal
74	734	677	108	1117	98	2.75	38.1
CED	BW	WW	Milk	YW	SC		
+10	+0.9	+40	+24	+68	+1.81		
Marb	RE	Fat	\$M	\$W	\$F	\$G	\$B
-0.05	+0.18	+0.020	+57	+42	+56	+13	+70

Dam has 2@ 104 Weaning. Excellent eye appealing, calving ease prospect by Revolution.

96

Bull

CAR DURABULL LINE 2158

20554495 calved - 02/08/22

CAR 865 DUKE 3200
CAR DURABULL LINE 575
CAR MISS MARIE 3184#

CAR DUKE 865
CAR LADY DIANA 503
CAR CHINNOOK1119
CAR MISS MARIE 110
HILLTOP TRUE GRIT 9202#
HARRISON MISS HILDA 9097
CAR MOTIVE 423
CAR PATTY 537#

HARRISON TRUE GRIT 4253
CAR MISS PATTY 9195
CAR MISS PATTY 629



BW	WW 10/13	205 wt	NR	365 wt	YR	ADG	Scrotal
76	732	688	107	1061	103	2.33	35.4
CED	BW	WW	Milk	YW	SC		
+3	+1.8	+57	+26	+95	+1.29		
Marb	RE	Fat	\$M	\$W	\$F	\$G	\$B
+0.34	+0.63	+0.024	+38	+53	+63	+38	+100

Top calving ease prospect by Durabull that has a lot to offer when you study his figures.

99

Bull

CAR DURABULL 2200

20570962 calved - 02/21/22

CAR 865 DUKE 3200
CAR DURABULL LINE 575
CAR MISS MARIE 3184#

CAR DUKE 865
CAR LADY DIANA 503
CAR CHINNOOK1119
CAR MISS MARIE 110
HILLTOP TRUE GRIT 9202#
HARRISON MISS HILDA 9097
CAR CEDAR RIDGE 156
CAR MISS MARIE 6134

HARRISON TRUE GRIT 4253
CAR MISS MARIE 9179
CAR MISS MARIE 541



BW	WW 10/13	205 wt	NR	365 wt	YR	ADG	Scrotal
77	666	649	103	1190	104	3.38	39.3
CED	BW	WW	Milk	YW	SC		
+13	-0.5	+51	+23	+92	+1.44		
Marb	RE	Fat	\$M	\$W	\$F	\$G	\$B
+0.26	+0.01	+0.061	+58	+49	+55	+22	+77

Excellent potential calving ease prospect out of a very productive young True Grit cow.



YEARLING BULLS



100

Bull

CAR LEGENDARY 282

20554565

calved - 01/28/22

CONNEALY LEGENDARY 644L
CAR LEGENDARY 026
CAR MISS LUCY 717#

QUAKER HILL RAMPAGE 0A36#
JAZZED OF CONANGA 4660
S A V RESOURCE 1441#
CAR MISS LUCY 301

HARRISON TRUE GRIT 4253
CAR MISS TARESA 0126
CAR MISS TARESA 2224

HILLTOP TRUE GRIT 9202#
HARRISON MISS HILDA 9097
CAR JUSTICE 8112
CAR MISS TARESA 728



BW	WW 10/13	205 wt	NR	365 wt	YR	ADG	Scrotal
70	702	678	96	1118	96	2.75	37.5
CED	BW	WW	Milk	YW	SC		
+16	-1.6	+61	+30	+112	+1.89		
Marb	RE	Fat	\$M	\$W	\$F	\$G	\$B
+0.34	+0.52	+0.008	+0.70	+0.66	+0.68	+0.37	+106

Out of a 1st calf heifer. Sleep all night calving ease prospect by Legendary 026, with a top set of numbers.

103

Bull

CAR MISSING LINK 2172

20554505

calved - 02/12/22

O C C MISSING LINK 830M#
JBOB MISSING LINK 935
CAR MISS MARIE 048

O C C HEADLINER 661H
O C C DIXIE ERICA 946K
CAR CHINNOOK 786#
CAR MISS MARIE 7170

CAR GAME DAY 406
CAR MISS FORTUNATE 8162
CAR MISS FORTUNATE 131

JENNAWAY GAME DAY 024
CAR MISS MARIE 8212#
CAR RIDGERUNNER 660
CAR MISS FORTUNATE 461#



BW	WW 10/13	205 wt	NR	365 wt	YR	ADG	Scrotal
76	685	630	100	1104	97	2.96	35.2
CED	BW	WW	Milk	YW	SC		
+3	+1.8	+55	+24	+85	-0.03		
Marb	RE	Fat	\$M	\$W	\$F	\$G	\$B
-0.11	+0.59	+0.032	+0.65	+0.58	+0.61	+0.15	+76

Old line outcross genetics on this good calving ease prospect by Missing Link that will excel in a low input environment.

101

Bull

CAR RAINFALL 2169

20554502

calved - 02/12/22

S A V RAINFALL 6846
BIG DRY RAINFALL H35
BDAR RUBY 747E

COLEMAN CHARLO 0256#
S A V BLACKCAP MAY 4136
SITZ ROYAL 9784
BDAR RUBY 406C

FOOS REVOLUTION 243
CAR MISS TARESA 9176
CAR MISS TARESA 790#

SVR REVOLUTION 4129
FOOS HAZEL 243
GDAR REGULATOR 364#
CAR MISS TARESA 3123#



BW	WW 10/13	205 wt	NR	365 wt	YR	ADG	Scrotal
77	674	643	102	1142	100	3.12	35.5
CED	BW	WW	Milk	YW	SC		
+5	+3.7	+71	+24	+130	+1.28		
Marb	RE	Fat	\$M	\$W	\$F	\$G	\$B
+0.41	+0.60	+0.001	+0.71	+0.57	+0.94	+0.42	+137

There are 5 consecutive generations of pathfinder dams behind this big stout Rainfall son. Should leave you with an outstanding set of replacement heifers.

104

Bull

CAR MISSING LINK 2127

20554485

calved - 02/03/22

O C C MISSING LINK 830M#
JBOB MISSING LINK 935
CAR MISS MARIE 048

O C C HEADLINER 661H
O C C DIXIE ERICA 946K
CAR CHINNOOK 786#
CAR MISS MARIE 7170

REDLAND RAINMAKER 3856
CAR LADY DIANA 9145#
CAR DIANA 997

SITZ RAINMAKER 6169#
REDLAND ELBA 1849
H A R B NITRO 679 J H
C A R MISS REAL RITO 541#



BW	WW 10/13	205 wt	NR	365 wt	YR	ADG	Scrotal
82	682	624	100	1064	95	2.75	36.1
CED	BW	WW	Milk	YW	SC		
0	+2.6	+43	+27	+74	+0.80		
Marb	RE	Fat	\$M	\$W	\$F	\$G	\$B
+0.05	+0.68	-0.013	+0.61	+0.43	+0.74	+0.28	+102

Dam is a 14 year old pathfinder cow still in production. This top Missing Link son represents some old bloodlines and stacked up cow families that have proven themselves to excel in low input environments.

102

Bull

CAR MOTIVE 2177

20554508

calved - 02/14/22

CAR MOTIVE 423
CAR MOTIVE 004
CAR MISS DIANA 9159

SOO LINE MOTIVE 9016#
CAR MISS HEATHER 446#
CAR PRIMETRACKER 312
CAR MISS DIANA 629

CAR HICKORY 547
CAR MISS AMY 083
CAR MISS AMY 874

CAR CEDAR RIDGE 156
CAR MISS MARIE 3157
GDAR BUTKUS 5217
CAR MISS AMY 196



BW	WW 10/13	205 wt	NR	365 wt	YR	ADG	Scrotal
72	681	682	106	1071	104	2.43	34.1
CED	BW	WW	Milk	YW	SC		
+5	+1.5	+67	+29	+112	+0.27		
Marb	RE	Fat	\$M	\$W	\$F	\$G	\$B
+0.47	+0.34	+0.012	+0.55	+0.67	+0.67	+0.41	+108

Out of a 1st calf heifer. Multiple generations of bred in calving ease, performance and maternal strength in this top Motive 004 son.

105

Bull

CAR LEGENDARY 2188

20557674

calved - 02/17/22

CONNEALY LEGENDARY 644L
CAR LEGENDARY 034
CAR MISS MIKAYLA 511

QUAKER HILL RAMPAGE 0A36#
JAZZED OF CONANGA 4660
SOO LINE MOTIVE 9016#
CAR MISS MIKAYLA 9132

CAR CHA CHING 528
CAR MISS MARIE 088
CAR MISS MARIE 609#

BARSTOW CASH#
CAR MISS MIKAYLA 510#
CAR MOTIVE 423
CAR MISS MARIE 1167



BW	WW 10/13	205 wt	NR	365 wt	YR	ADG	Scrotal
68	683	688	109	1104	96	2.60	34.2
CED	BW	WW	Milk	YW	SC		
+7	-0.5	+67	+21	+127	-0.05		
Marb	RE	Fat	\$M	\$W	\$F	\$G	\$B
+0.76	+0.48	-0.007	+0.50	+0.54	+0.110	+0.58	+167

Out of a 1st calf heifer. Granddam is a pathfinder. Super indexes and numbers on this calving ease prospect by Legendary 034.



YEARLING BULLS



106 Bull

CAR GOALKEEPER 2130

20557630

calved - 02/03/22

SYDGEN ENHANCE
BALDRIDGE SR GOALKEEPER
BALDRIDGE ISABEL E030

SYDGEN EXCEED 3223#
SYDGEN RITA 2618
CONNEALY CONFIDENCE PLUS#
BALDRIDGE ISABEL Y69

CAR CHA CHING 528
CAR PRIMROSE LADY 081
CAR PRIMROSE LADY 6180

BARSTOW CASH#
CAR MISS MIKAYLA 510#
CAR BISMARK 371
CAR PRIMROSE LADY 416



BW	WW 10/13	205 wt	NR	365 wt	YR	ADG	Scrotal
72	661	650	103	1172	102	3.26	36.7
CED	BW	WW	Milk	YW	SC		
+5	+1.7	+59	+25	+103	+1.17		
Marb	RE	Fat	\$M	\$W	\$F	\$G	\$B
+0.40	+0.57	+0.039	+55	+51	+74	+38	+113

Out of a 1st calf heifer. Outcross calving ease genetics on this top Goalkeeper son.

109 Bull

CAR CAPITALIST 2163

20554498

calved - 02/10/22

LD CAPITALIST 316#
PINE COULEE CAPITALIST F339
PINE COULEE BLACKCAP Y1#

CONNEALY CAPITALIST 028#
LD DIXIE ERICA 2053
PINE COULEE POWERHOUSE W112
PINE COULEE BLACKCAP G 3Z71#

CAR CHINNOOK 786#
CAR MISS JULIE 849
CAR MISS JULIE 664

A A R REALLY WINDY 1205#
CAR MISS MARIE 5109
PRAIRIE PRIDE NEXT STEP 2036#
CAR MISS JULIE 4130



BW	WW 10/13	205 wt	NR	365 wt	YR	ADG	Scrotal
80	698	640	102	1112	97	2.95	36.1
CED	BW	WW	Milk	YW	SC		
+2	+3.0	+48	+35	+82	+90		
Marb	RE	Fat	\$M	\$W	\$F	\$G	\$B
+0.62	+0.46	-0.010	+47	+51	+66	+51	+117

Excellent Chinook dam behind this good numbered Capitalist son.

107 Bull

CAR CAPITALIST 2210

20554523

calved - 02/25/22

LD CAPITALIST 316#
PINE COULEE CAPITALIST F339
PINE COULEE BLACKCAP Y1#

CONNEALY CAPITALIST 028#
LD DIXIE ERICA 2053
PINE COULEE POWERHOUSE W112
PINE COULEE BLACKCAP G 3Z71#

A A R TEN X 7008 S A#
CAR MISS HEATHER 1113#
CAR MISS HEATHER 420#

MYTTY IN FOCUS#
A A R LADY KELTON 5551#
CAR TRACKER 904#
CAR MISS HEATHER 175#



BW	WW 10/13	205 wt	NR	365 wt	YR	ADG	Scrotal
82	685	658	105	1088	95	2.69	33.6
CED	BW	WW	Milk	YW	SC		
+2	+2.4	+50	+29	+85	-0.05		
Marb	RE	Fat	\$M	\$W	\$F	\$G	\$B
+0.74	+0.29	+0.064	+65	+51	+69	+48	+117

Dam is a 12 years old third generation pathfinder dam. Tremendous maternal lineage behind this really good Capitalist bull.

110 Bull

CAR DURABULL LINE 2202

20554518

calved - 02/22/22

CAR 865 DUKE 3200
CAR DURABULL LINE 575
CAR MISS MARIE 3184#

CAR DUKE 865
CAR LADY DIANA 503
CAR CHINNOOK 1119
CAR MISS MARIE 110

HARRISON TRUE GRIT 4253
CAR MISS AMY 9180
CAR MISS AMY 5152

HILLTOP TRUE GRIT 9202#
HARRISON MISS HILDA 9097
CAR INCREDIBULL 080
CAR MISS AMY 7169



BW	WW 10/13	205 wt	NR	365 wt	YR	ADG	Scrotal
74	648	633	101	1147	101	3.21	36.8
CED	BW	WW	Milk	YW	SC		
+15	-1.2	+46	+31	+80	+1.56		
Marb	RE	Fat	\$M	\$W	\$F	\$G	\$B
+0.76	+0.21	+0.079	+71	+55	+54	+47	+101

EPDs indicate sleep all night calving ease prospect with top carcass values. Another really nice Durabull son.

108 Bull

CAR LEGENDARY 2113

20554479

calved - 02/01/22

CONNEALY LEGENDARY 644L
CAR LEGENDARY 026
CAR MISS LUCY 717#

QUAKER HILL RAMPAGE 0A36#
JAZZED OF CONANGA 4660
S A V RESOURCE 1441#
CAR MISS LUCY 301

FOOS REVOLUTION 243
CAR MISS JULIE 077
CAR MISS JULIE 606

SVR REVOLUTION 4129
FOOS HAZEL 243
CAR MOTIVE 416
CAR MISS JULIE 8200#



BW	WW 10/13	205 wt	NR	365 wt	YR	ADG	Scrotal
65	704	684	97	1103	95	2.62	37.7
CED	BW	WW	Milk	YW	SC		
+14	-2.7	+37	+26	+70	+1.10		
Marb	RE	Fat	\$M	\$W	\$F	\$G	\$B
+0.57	+0.75	+0.016	+55	+45	+69	+51	+120

Out of a 1st calf heifer. A top end sleep all night calving ease prospect by Legendary 026.

111 Bull

CAR LEGENDARY 2126

20554484

calved - 02/02/22

CONNEALY LEGENDARY 644L
CAR LEGENDARY 026
CAR MISS LUCY 717#

QUAKER HILL RAMPAGE 0A36#
JAZZED OF CONANGA 4660
S A V RESOURCE 1441#
CAR MISS LUCY 301

GDAR BUTKUS 5217
CAR MISS TARESA 0205
CAR MISS TARESA 310#

SANDPOINT BUTKUS X797#
GDAR PAMELA EVER 2115#
S A V FINAL ANSWER 0035#
CAR MISS TARESA 7113



BW	WW 10/13	205 wt	NR	365 wt	YR	ADG	Scrotal
65	625	617	98	1209	106	3.70	34.7
CED	BW	WW	Milk	YW	SC		
+17	-2.1	+62	+31	+119	+0.76		
Marb	RE	Fat	\$M	\$W	\$F	\$G	\$B
+0.57	+0.71	+0.015	+71	+68	+77	+50	+127

Out of a 1st calf heifer. Sleep all night calving ease prospect by Legendary 026 with a top set of EPDs



YEARLING BULLS



112

Bull

CAR DURABULL 2218

20554526

calved - 03/01/22

CAR DURABULL LINE 575
CAR DURABULL 056
CAR MISS VIKING 624#

CAR 865 DUKE 3200
CAR MISS MARIE 3184#
LAR JUNEANU 796Y
CAR MISS VIKING 9191
O C C UNMISTAKABLE 946U#
CAR LADY DIANA 9145#
CAR JUNEANU 3236
CAR MISS CATHERINE 203#

CAR UNMISTAKABLE 556
CAR MISS CATHERINE 0176
CAR MISS CATHERINE 769



BW	WW 10/13	205 wt	NR	365 wt	YR	ADG	Scrotal
76	638	666	106	1201	108	3.34	36
CED	BW	WW	Milk	YW	SC		
+5	+1.7	+70	+28	+125	+1.90		
Marb	RE	Fat	\$M	\$W	\$F	\$G	\$B
+0.39	+0.69	-0.19	+64	+66	+105	+44	+149

Out of a 1st calf heifer. Genomics shows top 2% on weaning and top 3% on yearling weight. Top performance potential on this calving ease prospect by Durabull 056.

115

Bull

CAR MOTIVE 2101

20554475

calved - 01/31/22

CAR MOTIVE 423
CAR MOTIVE 004
CAR MISS DIANA 9159

SOO LINE MOTIVE 9016#
CAR MISS HEATHER 446#
CAR PRIMETRACKER 512
CAR MISS DIANA 629
CAR CEDAR RIDGE 156
CAR MISS MARIE 3157
CAR MOTIVE 416
CAR MISS DIANA 257#

CAR HICKORY 547
CAR MISS DIANA 066
CAR MISS DIANA 704



BW	WW 10/13	205 wt	NR	365 wt	YR	ADG	Scrotal
68	708	687	109	1092	95	2.53	36.6
CED	BW	WW	Milk	YW	SC		
+3	+0.3	+47	+17	+76	+0.65		
Marb	RE	Fat	\$M	\$W	\$F	\$G	\$B
+0.33	+0.33	+0.20	+26	+39	+66	+33	+100

Out of a 1st calf heifer. Easy keeping genetics on this good calving ease prospect by Motive.

113

Bull

CAR MENTOR 2167

20554500

calved - 02/12/22

CONNELLY MENTOR 7374#
CAR MENTOR 0115
CAR MISS TARESA 815

G A R RETAIL PRODUCT#
EXECUTA OF CONANGA 939#
CAR REMARKABLE 640
CAR MISS TARESA 2224
HILLTOP TRUE GRIT 9202#
HARRISON MISS HILDA 9097
GDAR REGULATOR 364#
CAR MISS DIANA 475

HARRISON TRUE GRIT 4253
CAR MISS DIANA 0147
CAR MISS DIANA 789



BW	WW 10/13	205 wt	NR	365 wt	YR	ADG	Scrotal
68	632	636	102	1124	101	3.05	35.5
CED	BW	WW	Milk	YW	SC		
+5	+2.0	+55	+23	+102	+1.65		
Marb	RE	Fat	\$M	\$W	\$F	\$G	\$B
+0.29	+0.60	+0.005	+67	+48	+80	+36	+116

Out of a 1st calf heifer. This top calving ease prospect by Mentor has a great set of figures and offers outcross genetics.

116

Bull

CAR LEGENDARY 2149

20557034

calved - 02/07/22

CONNELLY LEGENDARY 644L
CAR LEGENDARY 026
CAR MISS LUCY 717#

QUAKER HILL RAMPAGE 0A36#
JAZZED OF CONANGA 4660
S A V RESOURCE 1441#
CAR MISS LUCY 301
LD CAPITALIST 316#
PINE COULEE BLACKCAP Y1#
CAR BUSHWACKER 618
CAR MISS AMY 6240

PINE COULEE CAPITALIST F339
CAR MISS AMY 0170
CAR MISS AMY 8118



BW	WW 10/13	205 wt	NR	365 wt	YR	ADG	Scrotal
66	670	662	100	1052	100	2.44	37.9
CED	BW	WW	Milk	YW	SC		
+13	-1.0	+48	+21	+94	+1.23		
Marb	RE	Fat	\$M	\$W	\$F	\$G	\$B
+0.79	+0.72	-0.020	+45	+43	+83	+63	+147

Out of a 1st calf heifer. Sleep all night calving ease prospect with strong carcass and maternal values.

114

Bull

CAR DURABULL LINE 2201

20554517

calved - 02/22/22

CAR 865 DUKE 3200
CAR DURABULL LINE 575
CAR MISS MARIE 3184#

CAR DUKE 865
CAR LADY DIANA 503
CAR CHINNOOK1119
CAR MISS MARIE 110
K C F BENNETT EFFICIENT
CAR MISS SUSIE 308#
CAR CEDAR RIDGE 156
CAR MISS BOBETT 2101

CAR EFFICIENT 534#
CAR MISS BOBETT 665
CAR MISS BOBETT 457



BW	WW 10/13	205 wt	NR	365 wt	YR	ADG	Scrotal
72	657	604	96	1116	98	3.20	38.3
CED	BW	WW	Milk	YW	SC		
+15	-2.2	+28	+27	+45	+1.91		
Marb	RE	Fat	\$M	\$W	\$F	\$G	\$B
+0.43	+0.16	+0.051	+51	+38	+47	+33	+81

These Durabull sons are an eye catching sire group. Sleep all night calving ease prospect.





YEARLING BULLS



117

Bull

CAR DURABULL LINE 2174

20554506

calved - 02/14/22

CAR 865 DUKE 3200
CAR DURABULL LINE 575
CAR MISS MARIE 3184#

CAR DUKE 865
CAR LADY DIANA 503
CAR CHINNOOK1119
CAR MISS MARIE 110

CAR EFFICIENT 904
CAR MISS JULIE 910
CAR MISS JULIE 0125#

CAR EFFICIENT 7132
CAR MISS JODY 119
CAR INCREDIBULL 8136
CAR MISS JULIE 8108



BW	WW 10/13	205 wt	NR	365 wt	YR	ADG	Scrotal
86	687	658	105	1085	95	2.67	38.6
CED	BW	WW	Milk	YW	SC		
+4	+1.3	+46	+29	+83	+1.43		
Marb	RE	Fat	\$M	\$W	\$F	\$G	\$B
-.02	+.33	+.053	+53	+48	+71	+14	+85

Pathfinder granddam is 13 and still producing. The Durabull line of cattle have done an excellent job here on the ranch.

120

Bull

CAR DUARABULL LINE 2168

20554501

calved - 02/12/22

CAR 865 DUKE 3200
CAR DURABULL LINE 575
CAR MISS MARIE 3184#

CAR DUKE 865
CAR LADY DIANA 503
CAR CHINNOOK1119
CAR MISS MARIE 110

CAR UNMISTAKABLE 556
CAR MISS DIANA 9126
CAR MISS DIANA 6252

O C C UNMISTAKABLE 946U#
CAR LADY DIANA 9145#
CAR GAME DAY 406
CAR MISS DIANA 484



BW	WW 10/13	205 wt	NR	365 wt	YR	ADG	Scrotal
77	687	654	104	1075	94	2.63	36.5
CED	BW	WW	Milk	YW	SC		
+4	+2.1	+53	+18	+84	+1.25		
Marb	RE	Fat	\$M	\$W	\$F	\$G	\$B
+.32	+.26	+.037	+38	+43	+55	+31	+86

Lots of maternal genetics tied up in this eye catching Durabull son that could be used for heifer matings.

118

Bull

CAR GOALKEEPER 2141

20572830

calved - 02/05/22

SYDGEN ENHANCE
BALDRIDGE SR GOALKEEPER
BALDRIDGE ISABEL E030

SYDGEN EXCEED 3223#
SYDGEN RITA 2618
CONNEALY CONFIDENCE PLUS#
BALDRIDGE ISABEL Y69

CAR UNMISTAKABLE 556
CAR MISS CATHERINE 003
CAR MISS MARIE 769#

O C C UNMISTAKABLE 946U#
CAR LADY DIANA 9145#
CAR EFFICIENT 534#
CAR MISS MARIE 5164



BW	WW 10/13	205 wt	NR	365 wt	YR	ADG	Scrotal
72	687	674	95	1055	100	2.38	34.8
CED	BW	WW	Milk	YW	SC		
+6	+0.9	+49	+30	+92	+1.30		
Marb	RE	Fat	\$M	\$W	\$F	\$G	\$B
+.73	+.55	+.056	+78	+55	+64	+52	+116

Out of a 1st calf heifer. Granddam is a pathfinder and produced 12 calves. She also produced our high seller in 2017 sale CAR Remarkable 640. Very impressive calving ease prospect by Goalkeeper.

121

Bull

CAR YETI 2221

20554528

calved - 03/01/22

PAHR YETI B5
CAR YETI 973
CAR MISS MIKAYLA 760

BASIN PAYWEIGHT 1682#
PAHR RITA Q28 OF 0151 9Q20
CAR DURABULL LINE 575
CAR MISS MIKAYLA 179#

CAR HICKORY 547
CAR MISS CATHERINE 925
CAR MISS CATHERINE 532

CAR CEDAR RIDGE 156
CAR MISS MARIE 3157
R B ACTIVE DUTY 010#
CAR MISS CATHERINE 504



BW	WW 10/13	205 wt	NR	365 wt	YR	ADG	Scrotal
75	646	643	102	1114	98	2.95	36
CED	BW	WW	Milk	YW	SC		
+9	+1.8	+59	+20	+98	+1.20		
Marb	RE	Fat	\$M	\$W	\$F	\$G	\$B
+.63	-.04	+.060	+68	+52	+50	+39	+89

Good EPD profile on this young calving ease prospect by Yeti.

119

Bull

CAR JUNEAU 2229

20554532

calved - 03/06/22

LAR JUNEANU 796Y
CAR JUNEAU 7213
CAR MISS JULIE 667

KOUPAL JUNEAU 797#
QUEEN ELBA 763U LAR
CAR RIDGERUNNER 001
CAR MISS JULIE 429#

CAR CHINNOOK 786#
CAR MISS MARIE 340#
CAR MISS MARIE 7183#

A A R REALLY WINDY 1205#
CAR MISS MARIE 5109
BOYD NEW DAY 8005#
C A R MISS MARIE 701



BW	WW 10/13	205 wt	NR	365 wt	YR	ADG	Scrotal
77	659	627	100	1089	95	2.89	36.5
CED	BW	WW	Milk	YW	SC		
+6	+1.5	+50	+17	+86	+2.05		
Marb	RE	Fat	\$M	\$W	\$F	\$G	\$B
+.66	+.37	+.058	+39	+39	+61	+46	+107

Dam is a second generation pathfinder cow that produced a past sale toppler. We really like the Juneau 7213 daughters. This bull is a 3/4 brother to our herd sire CAR Juneau 7179.

122

Bull

CAR JUNEAU 2150

20554493

calved - 02/07/22

LAR JUNEANU 796Y
CAR JUNEAU 7179
CAR MISS MARIE 340#

KOUPAL JUNEAU 797#
QUEEN ELBA 763U LAR
CAR CHINNOOK 786#
CAR MISS MARIE 7183#

CAR UNMISTAKABLE 556
CAR MISS MIKAYLA 999
CAR MISS MIKAYLA 510#

O C C UNMISTAKABLE 946U#
CAR LADY DIANA 9145#
CAR PRIMETRACKER 308#
CAR MISS MIKAYLA 209



BW	WW 10/13	205 wt	NR	365 wt	YR	ADG	Scrotal
83	676	639	102	1050	92	2.57	35.4
CED	BW	WW	Milk	YW	SC		
+3	+1.4	+57	+30	+100	+1.02		
Marb	RE	Fat	\$M	\$W	\$F	\$G	\$B
-.01	+.31	+.003	+56	+58	+83	+18	+101

Pathfinder granddam produced last calf at 17. Also produced 2 herd bulls for our program. Lots of powerful cow families behind this impressive Juneau bred son.



YEARLING BULLS



123

Bull

CAR JUNEAU 2175

20554507 calved - 02/14/22

LAR JUNEANU 796Y
CAR JUNEAU 7213
CAR MISS JULIE 667

KOUPAL JUNEAU 797#
QUEEN ELBA 763U LAR
CAR RIDGERUNNER 001
CAR MISS JULIE 429#

SOO LINE MOTIVE 9016#
CAR MISS ROBERTA 493
CAR MISS ROBERTA 068

HF KODIAK 5R
TLA BEAUTY 5R
C A R FERDINAND 832
C A R MISS ROBERTA 791



BW	WW 10/13	205 wt	NR	365 wt	YR	ADG	Scrotal
74	683	616	98	1061	93	2.78	36.1
CED	BW	WW	Milk	YW	SC		
+7	+0.1	+47	+30	+86	+1.38		
Marb	RE	Fat	\$M	\$W	\$F	\$G	\$B
+0.35	+0.49	+0.002	+74	+52	+60	+38	+98

Excellent calving ease prospect by Juneau 7213. We are just calving the first daughters by this sire and they look tremendous.

126

Bull

CAR DURABULL LINE 2207

20554521 calved - 02/24/22

CAR 865 DUKE 3200
CAR DURABULL LINE 575
CAR MISS MARIE 3184#

CAR DUKE 865
CAR LADY DIANA 503
CAR CHINNOOK 1119
CAR MISS MARIE 110

CAR MOTIVE 423
CAR MISS TARESA 702
CAR MISS TARESA 524#

SOO LINE MOTIVE 9016#
CAR MISS HEATHER 446#
C A FUTURE DIRECTION 5321#
CAR MISS TARESA 253



BW	WW 10/13	205 wt	NR	365 wt	YR	ADG	Scrotal
80	678	627	100	1059	93	2.70	35.4
CED	BW	WW	Milk	YW	SC		
+6	+1.8	+31	+37	+58	+0.87		
Marb	RE	Fat	\$M	\$W	\$F	\$G	\$B
+0.26	+0.29	-0.002	+31	+37	+59	+31	+90

Pathfinder Granddam produced 14 calves. Lots of long term bred in longevity in the cow line behind this good Durabull son that could be used for heifer matings.

124

Bull

CAR MOTIVE 2178

20554509 calved - 02/15/22

CAR MOTIVE 423
CAR MOTIVE 004
CAR MISS DIANA 9159

SOO LINE MOTIVE 9016#
CAR MISS HEATHER 446#
CAR PRIMETRACKER 512
CAR MISS DIANA 629

CAR REMARKABLE 821
CAR MISS MARIE 053
CAR MISS MARIE 318

CAR REMARKABLE 640
CAR MISS HEATHER 5167#
CAR EFFICIENT 534#
CAR MISS MARIE 7121



BW	WW 10/13	205 wt	NR	365 wt	YR	ADG	Scrotal
70	642	649	101	1019	99	2.31	38.1
CED	BW	WW	Milk	YW	SC		
+10	-0.3	+42	+16	+75	+0.97		
Marb	RE	Fat	\$M	\$W	\$F	\$G	\$B
+0.06	+0.33	+0.048	+36	+38	+52	+18	+70

Out of a 1st calf heifer. Top end calving ease genetics in this good Motive son.

127

Bull

CAR JUNEAU 2231

20554534 calved - 03/08/22

LAR JUNEANU 796Y
CAR JUNEAU 7213
CAR MISS JULIE 667

KOUPAL JUNEAU 797#
QUEEN ELBA 763U LAR
CAR RIDGERUNNER 001
CAR MISS JULIE 429#

CAR CHA CHING 528
CAR MISS JULIE 8136#
CAR MISS JULIE 633

BARSTOW CASH#
CAR MISS MIKAYLA 510#
CAR MOTIVE 423
CAR MISS JULIE 0125#



BW	WW 10/13	205 wt	NR	365 wt	YR	ADG	Scrotal
90	696	681	108	1121	98	2.75	36
CED	BW	WW	Milk	YW	SC		
-6	+5.8	+71	+19	+118	+1.52		
Marb	RE	Fat	\$M	\$W	\$F	\$G	\$B
+0.35	+0.43	-0.019	+30	+43	+87	+39	+125

Dam has 3@ 110 Weaning. Lots of long term proven bred in longevity in this cow family. A big stout high performing young bull in the sale offering by Juneau 7213.

125

Bull

CAR LEGENDARY 2206

20554520 calved - 02/24/22

CONNEALY LEGENDARY 644L
CAR LEGENDARY 034
CAR MISS MIKAYLA 511

QUAKER HILL RAMPAGE 0A36#
JAZZED OF CONANGA 4660
SOO LINE MOTIVE 9016#
CAR MISS MIKAYLA 9132

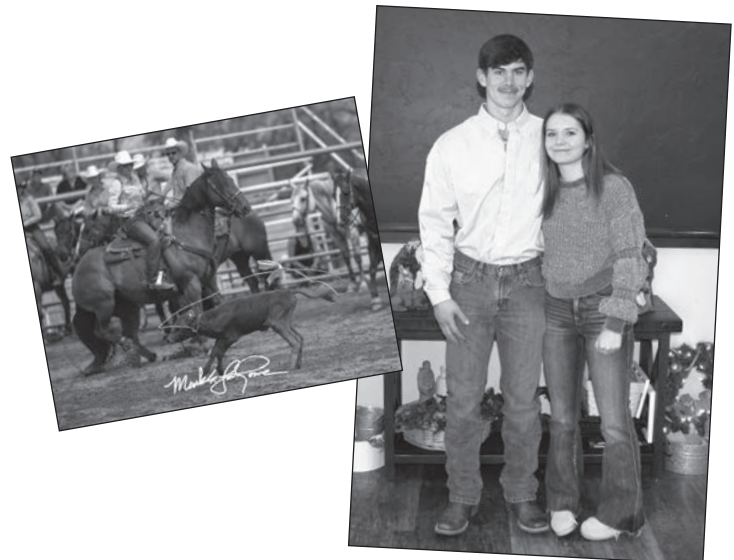
CAR BUSHWACKER 618
CAR MISS MARIE 0152
CAR MISS MARIE 6146

CAR BUSHWACKER 601
CAR MISS BRENDA 422
LAR JUNEANU 796Y
CAR MISS MARIE 7180



BW	WW 10/13	205 wt	NR	365 wt	YR	ADG	Scrotal
70	642	662	105	1120	98	2.86	36.4
CED	BW	WW	Milk	YW	SC		
+4	+1.5	+58	+32	+107	+0.90		
Marb	RE	Fat	\$M	\$W	\$F	\$G	\$B
+0.57	+0.52	+0.018	+38	+55	+100	+47	+147

Out of a 1st calf heifer. Nice figures on this calving ease prospect by Legendary 034.





All These Young Ladies Are Selling!



130
Cow

CAR MISS PATTY 214

20568673

calved - 01/19/22

HOOVER NO DOUBT
STERLING PACIFIC 904
BALDRIDGE ISABEL B082

MOGCK BULLSEYE#
MISS BLACKCAP ELLSTON J2
G A R PROPHET#
BALDRIDGE ISABEL Y69
SOO LINE MOTIVE 9016#
CAR MISS HEATHER 446#
CAR PRIMETRACKER 308#
C A R MISS EXT 434

CAR MOTIVE 423
CAR MISS PATTY 629
CAR PATTY 537#



BW	NR	YR	Sale Wt				
76	105						
BW EPD	WW EPD	Milk EPD	YW EPD				
+2.6	+58	+24	+96				
Marb	RE	Fat	\$M	\$W	\$F	\$G	\$B
+0.92	+0.51	+0.020	+51	+51	+77	+63	+140

Dam has 5@ 99BW and 5@ 103 Weaning. Granddam is a pathfinder. A really sweet looking Pacific daughter that we hate to let go of.

132
Cow

CAR MISS DIANA 224

20568231

calved - 01/20/22

CONNEALY LEGENDARY 644L
CAR LEGENDARY 026
CAR MISS LUCY 717#

QUAKER HILL RAMPAGE 0A36#
JAZZED OF CONANGA 4660
S A V RESOURCE 1441#
CAR MISS LUCY 301
CAR DUKE 504
CAR PRIMROSE LADY 4115#
CAR JUSTICE 217
C A R DIANA 836#

CAR DUKE 735
CAR MISS DIANA 6127
CAR MISS DIANA 4213



BW	NR	YR	Sale Wt				
73	115						
BW EPD	WW EPD	Milk EPD	YW EPD				
-0.1	+58	+22	+106				
Marb	RE	Fat	\$M	\$W	\$F	\$G	\$B
+0.60	+0.78	+0.002	+45	+50	+92	+54	+146

Dam has 5@ 105 Weaning. Backed by three consecutive generations of pathfinder cows tracing directly to foundation 937 cow. This fancy Legendary daughter has a tremendous set of figures and a great cow family backing her.

131
Cow

CAR MISS DIANA 221

20568670

calved - 01/19/22

SITZ STELLAR 726D
SITZ RESILIENT 10208
SITZ MISS BURGESS 1856

MOHNEN SUBSTANTIAL 272#
SITZ PRIDE 200B
SITZ TOP GAME 561X#
SITZ MISS BURGESS 4381
JENNAWAY GAME DAY 024
CAR MISS MARIE 8212#
REDLAND RAINMAKER 3856
CAR MISS DIANA 4139

CAR GAME DAY 406
CAR MISS DIANA 656
CAR MISS DIANA 2209



BW	NR	YR	Sale Wt				
75	103						
BW EPD	WW EPD	Milk EPD	YW EPD				
+0.3	+59	+26	+104				
Marb	RE	Fat	\$M	\$W	\$F	\$G	\$B
+0.75	+0.60	+0.021	+81	+63	+78	+57	+135

Productive cow family with great granddam raising 14 calves. Lots of bred in longevity in this intriguing Resilient daughter.

133
Cow

CAR MISS MARIE 213

20568169

calved - 01/19/22

CAR BISMARCK 371
CAR BISMARCK 8190
CAR MISS MIKAYLA 530#

S A V BISMARCK 5682#
CAR MISS VIKING 9191
R B ACTIVE DUTY 010#
CAR MISS MIKAYLA 179#
JENNAWAY GAME DAY 024
CAR MISS MARIE 8212#
CAR TRACKER 904#
C A R MISS MARIE 701

CAR GAME DAY 406
CAR MISS MARIE 6105
CAR MISS MARIE 900



BW	NR	YR	Sale Wt				
72	104						
BW EPD	WW EPD	Milk EPD	YW EPD				
-0.4	+47	+27	+87				
Marb	RE	Fat	\$M	\$W	\$F	\$G	\$B
+0.34	+0.39	+0.043	+61	+53	+61	+33	+93

A real eye catching Bismark 8190 female from our most productive cow family.



REGISTERED HEIFERS



134

Cow

CAR MISS MARIE 211

20568200

calved - 01/19/22

MARDA SWAGGER 463
WINDY RIDGE SWAGGER 714
WINDY RIDGE ROSE 312

CONNEALY CONFIDENCE 0100#
MF BLACKBIRD 51
WINDY RIDGE DAYLIGHT 104
WINDY RIDGE ROSE 117
JENNAWAY GAME DAY 024
CAR MISS MARIE 8212#
R B TOUR OF DUTY 177#
CAR MISS MARIE 352#

CAR GAME DAY 406
CAR MISS MARIE 7183
CAR MISS MARIE 576



BW	NR	YR	Sale Wt				
78	112						
BW EPD	WW EPD	Milk EPD	YW EPD				
+2.4	+71	+30	+125				
Marb	RE	Fat	\$M	\$W	\$F	\$G	\$B
+0.5	+0.62	+0.12	+55	+67	+94	+25	+119

Dam has 4@ 104 Weaning. Tremendous cow family behind this really nice Swagger daughter.

137

Cow

CAR MISS SUSIE 226

20568146

calved - 01/20/22

CONNEALY LEGENDARY 644L
CAR LEGENDARY 026
CAR MISS LUCY 717#

QUAKER HILL RAMPAGE 0A36#
JAZZED OF CONANGA 4660
S A V RESOURCE 1441#
CAR MISS LUCY 301
CAR DUKE 865
CAR MISS CAROLINE 7217
CAR TRACKER 305
CAR SUSIE 101

CAR 865 DUKE 3126
CAR MISS SUSIE 518
CAR MISS SUSIE 973



BW	NR	YR	Sale Wt				
74	108						
BW EPD	WW EPD	Milk EPD	YW EPD				
+1.8	+55	+17	+99				
Marb	RE	Fat	\$M	\$W	\$F	\$G	\$B
+0.29	+0.45	+0.17	+29	+39	+75	+33	+108

A real interesting Legendary 026 daughter from the cow family that produced CAR Efficient 534 who was leased to ABS.

135

Cow

CAR MISS DIANA 222

20568175

calved - 01/19/22

BALDRIDGE COLONEL C251#
BYERGO COLONEL G14
BYERGO CLOVER 850

BALDRIDGE XPAND X743
BALDRIDGE ISABEL Y69
LCC NEW STANDARD#
BYERGO CLOVER 513
HILLTOP TRUE GRIT 9202#
HARRISON MISS HILDA 9097
CAR TEN X 107
CAR MISS DIANA 257#

HARRISON TRUE GRIT 4253
CAR MISS DIANA 7168
CAR MISS DIANA 5195



BW	NR	YR	Sale Wt				
73	105						
BW EPD	WW EPD	Milk EPD	YW EPD				
+0.2	+68	+25	+119				
Marb	RE	Fat	\$M	\$W	\$F	\$G	\$B
+0.37	+0.66	-0.15	+47	+64	+84	+43	+126

This fancy Colonel daughter descends from a herd bull producing cow family with longevity galore.

138

Cow

CAR MISS DIANA 295

20568675

calved - 01/31/22

SYDGEN ENHANCE
BALDRIDGE SR GOALKEEPER
BALDRIDGE ISABEL E030

SYDGEN EXCEED 3223#
SYDGEN RITA 2618
CONNEALY CONFIDENCE PLUS#
BALDRIDGE ISABEL Y69
HILLTOP TRUE GRIT 9202#
HARRISON MISS HILDA 9097
CAR EXT 909
CAR MISS DIANA 8110#

HARRISON TRUE GRIT 4253
CAR MISS DIANA 0123
CAR MISS DIANA 4221



BW	NR	YR	Sale Wt				
70	106						
BW EPD	WW EPD	Milk EPD	YW EPD				
+1.6	+67	+24	+107				
Marb	RE	Fat	\$M	\$W	\$F	\$G	\$B
+0.84	+0.43	+0.28	+52	+64	+66	+58	+124

Out of a 1st calf heifer. Good numbers and carcass EPDs on this Goalkeeper daughter backed by a royal cow family.

136

Cow

CAR MISS BRENDA 242

20568115

calved - 01/17/22

CAR REMARKABLE 640
CAR REMARKABLE 821
CAR MISS HEATHER 5167#

S A V RESOURCE 1441#
CAR MISS MARIE 769#
CAR CEDAR RIDGE 156
CAR MISS HEATHER 2197
SITZ DASH 10277#
BARSTOW QUEEN W16
S A V BISMARCK 5682#
CAR MISS BRENDA 826

BARSTOW CASH#
CAR MISS BRENDA 585#
CAR MISS BRENDA 3132



BW	NR	YR	Sale Wt				
70	103						
BW EPD	WW EPD	Milk EPD	YW EPD				
+1.2	+67	+21	+120				
Marb	RE	Fat	\$M	\$W	\$F	\$G	\$B
+0.41	+0.49	+0.034	+51	+57	+95	+38	+133

Dam is a pathfinder with 6@ 104 Weaning. The Remarkable 821 daughters are making great cows here on the ranch. Lots of potential in this top prospect.

139

Cow

CAR MISS DIANA 232

20568151

calved - 01/21/22

MARDA SWAGGER 463
WINDY RIDGE SWAGGER 714
WINDY RIDGE ROSE 312

CONNEALY CONFIDENCE 0100#
MF BLACKBIRD 51
WINDY RIDGE DAYLIGHT 104
WINDY RIDGE ROSE 117
BARSTOW CASH#
CAR MISS MIKAYLA 510#
CAR RIDGERUNNER 867
CAR MISS DIANA 0101#

CAR CHA CHING 528
CAR MISS DIANA 7120
CAR MISS DIANA 2120#



BW	NR	YR	Sale Wt				
77	106						
BW EPD	WW EPD	Milk EPD	YW EPD				
+1.5	+69	+23	+112				
Marb	RE	Fat	\$M	\$W	\$F	\$G	\$B
+0.36	+0.64	-0.019	+64	+68	+57	+42	+99

Dam has 3@ 105 Weaning. Five generations of pathfinder dams with three of them being donor dams. Lots of maternal power behind this sweet Swagger daughter with worlds of potential.



REGISTERED HEIFERS



140

Cow

CAR MISS VIKING 284

20568172 calved - 01/29/22

CAR MOTIVE 423
CAR MOTIVE 004
CAR MISS DIANA 9159

SOO LINE MOTIVE 9016#
CAR MISS HEATHER 446#
CAR PRIMETRACKER 512
CAR MISS DIANA 629

GDAR REGULATOR 364#
CAR MISS DIANNA 5107
CAR FINAL ANSWER 5213
CAR MISS VIKING 624#

CAR REGULATOR 769
CAR MISS VIKING 0208
CAR MISS VIKING 8157



BW	NR	YR	Sale Wt				
74	101						
BW EPD	WW EPD	Milk EPD	YW EPD				
+1.3	+50	+17	+93				
Marb	RE	Fat	\$M	\$W	\$F	\$G	\$B
+0.24	+0.51	+0.007	+62	+40	+87	+33	+120

Out of a 1st calf heifer. I am looking so forward to getting these Motive 004 daughters in production. Lots of great cows in this heifers pedigree.

143

Cow

CAR MISS CAROLINE 2166

20568136 calved - 02/17/22

O C C MISSING LINK 830M#
JBOB MISSING LINK 935
CAR MISS MARIE 048

O C C HEADLINER 661H
O C C DIXIE ERICA 946K
CAR CHINNOOK 786#
CAR MISS MARIE 7170

NF EVEREADY B150
CAR MISS CAROLINE 9199
CAR MISS CAROLINE 717

IDEAL 4636 OF 452 6187
E7 EOLA W186
CAR DUKE 104#
CAR MISS CAROLINE 4100#



BW	NR	YR	Sale Wt				
70	105						
BW EPD	WW EPD	Milk EPD	YW EPD				
+2.8	+50	+26	+88				
Marb	RE	Fat	\$M	\$W	\$F	\$G	\$B
+0.11	+0.79	-0.020	+51	+46	+67	+32	+99

Dam has 2@ 103 Weaning. Granddam has 10@103 Weaning. We really like our Missing Link daughters. This one should excel in a low input environment.

141

Cow

CAR MISS AMY 2142

20568152 calved - 02/11/22

B BAR WINDY 79
B BAR HOMESTRETCH 3047
B BAR QUEEN 304#

CROOK MT REALLY WINDY 141#
B BAR LADY JEWEL 116#
SITZ RLS ALLIANCE 7164
B BAR QUEEN 557#

S A V RESOURCE 1441#
CAR MISS MARIE 769#
CAR JUSTICE 8112
CAR MISS AMY 7169

CAR REMARKABLE 640
CAR MISS AMY 935
CAR MISS AMY 1178#



BW	NR	YR	Sale Wt				
77	112						
BW EPD	WW EPD	Milk EPD	YW EPD				
+2.6	+54	+38	+92				
Marb	RE	Fat	\$M	\$W	\$F	\$G	\$B
+0.15	+0.21	+0.029	+59	+60	+60	+23	+83

Dam has 2@ 110 Weaning. Granddam is a 12 year old pathfinder with 10@ 105 Weaning. Lots of maternal power behind this high indexing fancy Homestretch daughter.

144

Cow

CAR MISS CAROLINE 227

20568119 calved - 01/20/22

BALDRIDGE COLONEL C251#
BYERGO COLONEL G14
BYERGO CLOVER 850

BALDRIDGE XPAND X743
BALDRIDGE ISABEL Y69
LCC NEW STANDARD#
BYERGO CLOVER 513

CAR UNMISTAKABLE 556
CAR MISS CAROLINE 8106
CAR MISS CAROLINE 233

O C C UNMISTAKABLE 946U#
CAR LADY DIANA 9145#
REDLAND RAINMAKER 3856
CAR MISS CAROLINE 7217



BW	NR	YR	Sale Wt				
77	104						
BW EPD	WW EPD	Milk EPD	YW EPD				
+2.2	+58	+29	+107				
Marb	RE	Fat	\$M	\$W	\$F	\$G	\$B
+0.67	+0.67	-0.008	+53	+54	+98	+56	+154

Outcross genetics from this Colonel daughter. Very consistent producing cow family with excellent udder quality and easy keeping.

142

Cow

CAR MISS WENDY 212

20568202 calved - 01/19/22

CAR CEDAR RIDGE 156
CAR HICKORY 547
CAR MISS MARIE 3157

COLE CREEK CEDAR RIDGE 1V#
CAR MISS LUCY 720
CAR CHINNOOK 786#
CAR MISS MARIE 943

BARSTOW CASH#
CAR MISS MIKAYLA 510#
CAR INCREDIBULL 496
CAR MISS WENDY 4121

CAR CHA CHING 528
CAR MISS WENDY 942
CAR MISS WENDY 668



BW	NR	YR	Sale Wt				
70	106						
BW EPD	WW EPD	Milk EPD	YW EPD				
+2.1	+69	+7	+107				
Marb	RE	Fat	\$M	\$W	\$F	\$G	\$B
+0.01	+0.23	-0.019	+36	+44	+66	+20	+87

Dam has 2@ 105 Weaning. This cow family has produced the past high gaining bulls at both Midland and Treasure Test. This Hickory daughter has a lot of potential.

145

Cow

CAR MISS HILDA 2174

20568208 calved - 02/18/22

CAR DURABULL LINE 575
CAR DURABULL 056
CAR MISS VIKING 624#

CAR 865 DUKE 3200
CAR MISS MARIE 3184#
LAR JUNEANU 796Y
CAR MISS VIKING 9191

CAR CHA CHING 528
CAR MISS HILDA 050
CAR MISS HILDA 741

BARSTOW CASH#
CAR MISS MIKAYLA 510#
A A R REALLY WINDY 1205#
CAR MISS HILDA 529



BW	NR	YR	Sale Wt				
60	98						
BW EPD	WW EPD	Milk EPD	YW EPD				
+0.0	+58	+23	+93				
Marb	RE	Fat	\$M	\$W	\$F	\$G	\$B
+0.62	+0.45	+0.036	+69	+60	+74	+47	+121

Out of a 1st calf heifer. Next two dams raised 12 and 13 calves. These Durabull 056 daughters are an exciting group.



REGISTERED HEIFERS



146

Cow

CAR MISS ROBERTA 259

20568182

calved - 01/26/22

SVR REVOLUTION 4129
FOOS REVOLUTION 243
FOOS HAZEL 243

CANDOLIER FOREVER 376#
S C C ENCHANTRESS 3F1 X412
CROOK MT REALLY WINDY 8834
N F HAZEL 7461-8#

LAR WINDY 64 4235#
CAR MISS ROBERTA 115#
CAR ROBERTA 014

H A R B WINDY 702 JH#
EILEENMERE DIAMOND 161 L A R
C A R SUPREME 749#
C A R ROBERTA 837



BW		NR		YR		Sale Wt	
77		100					
BW EPD		WW EPD		Milk EPD		YW EPD	
-0.2		+33		+29		+58	
Marb	RE	Fat	\$M	\$W	\$F	\$G	\$B
+0.36	+0.08	+0.080	+64	+41	+54	+26	+81

Dam is a 12 year old pathfinder with 10@ 105 Weaning. Old line proven genetics tied up in this nice Revolution daughter.

149

Cow

CAR MISS CAROLINE 2133

20568217

calved - 02/07/22

S A V RAINFALL 6846
BIG DRY RAINFALL H35
BDAR RUBY 747E

COLEMAN CHARLO 0256#
S A V BLACKCAP MAY 4136
SITZ ROYAL 9784
BDAR RUBY 406C

HARRISON TRUE GRIT 4253
CAR MISS CAROLINE 9104
CAR MISS CAROLINE 4144

HILLTOP TRUE GRIT 9202#
HARRISON MISS HILDA 9097
JENNAWAY GAME DAY 024
CAR MISS CAROLINE 7217



BW		NR		YR		Sale Wt	
74		101					
BW EPD		WW EPD		Milk EPD		YW EPD	
+1.1		+60		+31		+119	
Marb	RE	Fat	\$M	\$W	\$F	\$G	\$B
+0.65	+0.56	+0.017	+72	+61	+79	+52	+131

We are really impressed with the Rainfall progeny so far. The females have a real nice maternal look to them.

147

Cow

CAR MISS MARIE 2188

20568142

calved - 02/22/22

PAHR YETI B5
CAR YETI 973
CAR MISS MIKAYLA 760

BASIN PAYWEIGHT 1682#
PAHR RITA Q28 OF 0151 9Q20
CAR DURABULL LINE 575
CAR MISS MIKAYLA 179#

CAR RESOURCE 610
CAR MISS MARIE 993
CAR MISS MARIE 413#

S A V RESOURCE 1441#
CAR MISS ROBERTA 7117
CAR EFFICIENT 534#
CAR MISS MARIE 374



BW		NR		YR		Sale Wt	
75		98					
BW EPD		WW EPD		Milk EPD		YW EPD	
+0.8		+57		+17		+99	
Marb	RE	Fat	\$M	\$W	\$F	\$G	\$B
+0.31	+0.35	+0.058	+56	+48	+57	+30	+87

Dam is a productive young cow with 2@ 104 Weaning. Granddam is a pathfinder. Another great producing cow family behind this attractive Yeti daughter.

150

Cow

CAR MISS DIANA 2120

20568203

calved - 02/04/22

CAR 865 DUKE 3200
CAR DURABULL LINE 575
CAR MISS MARIE 3184#

CAR DUKE 865
CAR LADY DIANA 503
CAR CHINNOOK 1119
CAR MISS MARIE 110

CAR MOTIVE 423
CAR MISS DIANA 711
CAR MISS DIANA 134

SOO LINE MOTIVE 9016#
CAR MISS HEATHER 446#
CAR DUKE 865
CAR MISS DIANA 427



BW		NR		YR		Sale Wt	
75		95					
BW EPD		WW EPD		Milk EPD		YW EPD	
+1.5		+49		+27		+89	
Marb	RE	Fat	\$M	\$W	\$F	\$G	\$B
+0.32	+0.41	+0.077	+51	+47	+75	+29	+104

Dam has 4@ 100 Weaning. The Motive 423 daughters are making some of our best young cows. Very balanced numbers on this real nice Durabull daughter, who is bred for the long run.

148

Cow

CAR MISS MARIE 207

20568174

calved - 01/18/22

B BAR WINDY 79
B BAR HOMESTRETCH 3047
B BAR QUEEN 304#

CROOK MT REALLY WINDY 141#
B BAR LADY JEWEL 116#
SITZ RLS ALLIANCE 7164
B BAR QUEEN 557#

CAR CHA CHING 528
CAR MISS MARIE 868
CAR MISS MARIE 632

BARSTOW CASH#
CAR MISS MIKAYLA 510#
CAR CEDAR RIDGE 156
CAR MISS MARIE 935



BW		NR		YR		Sale Wt	
75		95					
BW EPD		WW EPD		Milk EPD		YW EPD	
+1.6		+50		+26		+80	
Marb	RE	Fat	\$M	\$W	\$F	\$G	\$B
+0.04	+0.36	+0.013	+64	+52	+65	+21	+85

Excellent udder quality and flesching ability along with 5 consecutive generations of pathfinder dams behind this nice Homestretch daughter.





SALE NOTES



Connolly Angus Ranch

**Genetics for the Long Run
Production Sale**



Thanks for coming to the sale!





Connelly Angus
1950 Dean Road
Valier, MT 59486

Presorted
FIRST CLASS
US Postage
Paid
Ballyhoo Printing
59457

FIRST CLASS

Connelly Angus Ranch

Tuesday, February 28, 2023



Don Connelly
406/ 279-3569 | 406/899/3826

www.connellyangus.com