

Keeping Your Program on Target...

CENTRAL MONTANA GELBVIEH & ANGUS GENETICS

28th Annual Bull Sale

Sons of these great sires sell...



Rebel Yell



Chico Loco



Pay Pal

TIMED ONLINE ONLY AUCTION

BIDDING OPENS ON MARCH 16 • BIDDING CLOSES @ 1 P.M. ON MARCH 18
BIDDING AVAILABLE AT WWW.BILLPELTON.COM

– From the Heart of Big Sky Country –
CENTRAL MONTANA GELBVIEH & ANGUS GENETICS
28th Annual Production Sale

“Times, They Are a-Changing!”

28 years later - it's just us now! We are the only ones left in the Central Montana Gelbvieh and Angus Genetics Bull Sale! My goal never was to have a hundred bulls for sale every year – I enjoy raising a handful of what I consider to be exceptional bulls. Without the extra number of bulls provided by our Angus-producer friends, it no longer makes sense to have a live auction. This year, we will be selling our bulls online through Bill Pelton Livestock (billpelton.com) and we will do all we can to help you with details on how to go about bidding for your favorites. Bill's daughter, Darci, will also be available to help with the technical information and we have found her to be easy to talk to and easy to reach on the phone. This path was not the direction I wanted to go, as I have always enjoyed the live auction setting and personal interaction, but a live auction with only 17 bulls does not seem feasible. We will try this method and see how it goes!

We are keeping the same sale date for the final bids (the third Saturday in March – which is March 18th this year). We will still have a viewing of the bulls Friday night and sale day, but it will be at the ranch. The bulls are fed at the ranch so you are welcome to give us a call and stop by to check them out anytime! Even if you are unable to come by, rest assured that you are protected by our “sight unseen” guarantee of satisfaction should you have an interest in any of the bulls.

I do feel we are offering another excellent set of bulls, as I hope you have come to expect from us! Again, we are here to help you succeed in today's market and these bulls will do that – adding pounds and a high percentage of your calves grading choice!

We guarantee our bulls through the 1st breeding season. We retain ½ semen interest on all the bulls.

Please join us for a PRE-SALE GATHERING at the Danell Diamond Six Ranch on Friday, March 17th starting at 4 P.M.

This is a great time to analyze the bulls and chat with us (and maybe even your neighbors!)

DNA TESTING: All homozygous black and homozygous polled bulls are guaranteed by birthright or by DNA testing.

SEMEN TEST and HEALTH INFO: Full Breeding Soundness Exams have been performed. Scrotal measurements and foot scores are listed with the performance data on each bull. Bulls were tested and examined by Dr. Greg Carlson, Horizon Veterinary Clinic of Lewistown. Bulls have also been BVD tested and vaccinated with Preg Guard 9.

TIMED ONLINE ONLY AUCTION
BIDDING OPENS ON MARCH 16 • BIDDING CLOSSES @ 1 P.M. ON MARCH 18
VIDEOS & BIDDING AVAILABLE AT WWW.BILLPELTON.COM

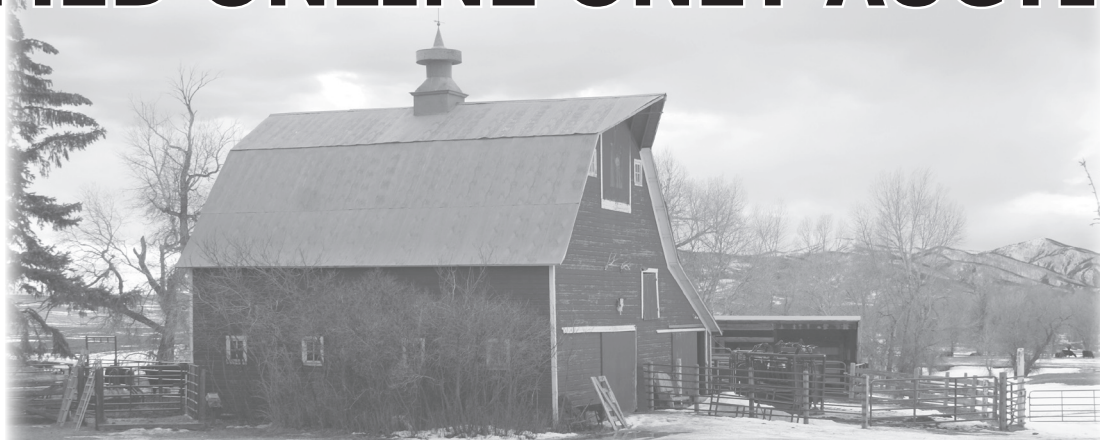
ALL BULLS ULTRASOUNDED
For more information, please contact
DON DANELL @ 406-366-6953



Danell Diamond Six Ranch
Don, Omie, Chase & Teale Rose Danell
Lewistown, MT • danelldiamondsix@gmail.com



TIMED ONLINE ONLY AUCTION



BIDDING OPENS ON MARCH 16 • BIDDING CLOSSES @ 1 P.M. ON MARCH 18
VIDEOS & BIDDING AVAILABLE AT WWW.BILLPELTON.COM

ONLINE AUCTION:

Bid at www.billpelton.com.
Darci Pelton ..(406) 794-3174

INTERNET DIRECTIONS:

Go to www.BillPelton.com

Click on Sales.

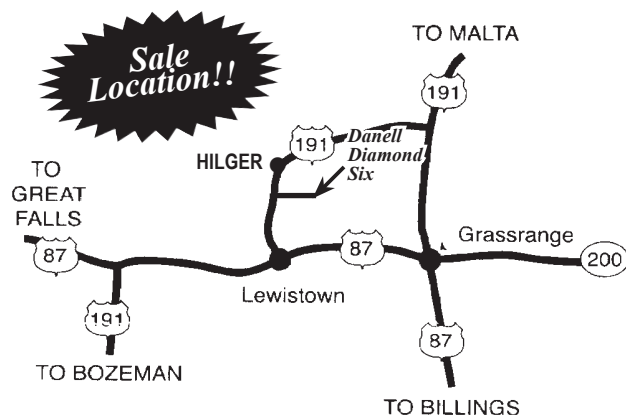
Locate Danell Diamond Six Ranch and click to see pedigrees & videos.

SALE LOCATION:

Sale will be held at Danell Diamond Six Ranch.
1012 Maiden Road, Lewistown, Montana

FROM LEWISTOWN: 10 miles north of Lewistown on Highway 191, turn right on Maiden Road, 1st place on the right.

FROM HILGER: 6 miles south of Hilger on Highway 191, turn left onto Maiden Road, 1st place on the right.



SALE DAY PHONES:

(406) 366-6953..... Don Danell Cell
(406) 366-5803..... Teale Danell Cell
(406) 366-6833..... Omie Danell Cell
(406) 671-5100..... Bill Pelton Cell

DELIVERY:

• **FREE DELIVERY** in Montana for bull selling for \$3000 or more.

VOLUME DISCOUNTS:

• Volume Discount Purchases:
5% on 5-9 bulls 10% on 10 or more bulls

CASH BACK:

• \$75 Cash Back on bulls picked up on or before March 26th

INSURANCE:

• Insurance available through BillPelton.com

TERMS OF SALE:

• Bulls will sell under the suggested Terms & Conditions of the American Gelbvieh Association.

LIABILITY

• All persons visiting the ranch do so at their own risk. The seller and/or sale management assume no liability, legal or otherwise, for any accidents occurring on or about the premises.

Danell Diamond Six Gelbvieh

Lot 1



JOB Danell Eli 12K

DOB 02/12/22 • Tattoo 12K • Reg. 1534771

JOB Danell Shaker 05F (KHR 03Z)

JOB Danell Eliot 71H

JOB Danell Nessie (BBDM Bolton Pay Day 45C)

SDCG X-CFactor 202X (TAU Mr Kruegerrand 70M 130P)

JOB Danell Mandy B. 48Z

Monarch Sandy Pride S132 (BR Midland)

Homo Black
(Solid Black)

Homo Polled

**44.5% GV 55.5% AN
Balancer®**

Act. BW

92

Adj. 205

747

Ratio

99

Adj. YW

1310

Ratio

99

ADG

5.35

Adj SC

41.9

HOMOZYGOUS Polled, HOMOZYGOUS Black (and solid black) 44.5% Gelbvieh Balancer cow bull with a 92# birthweight and a Tenderness score of 7! DAM: JOB DANELL Mandy B. 48Z has a good udder and sound feet at 11 years old. She has produced replacement females and 3 other sons that have made it to our bull sale. SIRE: JOB DANELL Eliot 71H is a sire we raised and chose not to put him in the sale so we could use him as our Herdsire on heifers and cows. We chose him because of his low birthweight and exceptional calving ease, growth, and carcass traits, 16.24" Ribeye (115 ratio), 4.58 IMF (147 ratio), with a 70# BW and a 1309# YW – along with exceptional eye appeal, a perfect 5/5 (claw/heel) foot score and from a top producing mama.

ELI (contemporary group 1) Performance: 747# WW, 1310# YW, 5.4 ADG on test (126 ratio), 4.42 IMF (ratio 122), foot 7/4 (claw/heel), and a 41.9 scrotal! He has a PG30 EPD in the TOP 2% and Marbling TOP 15%! Eli is long made, with a wide square hip, clean sheath, clean front, soggy made cow bull that will move anyone's program forward and should give you great replacement females, bulls, and steers that will grow! This one will catch your eye!

| Scan Wt | Adj REA | Adj FT | Adj IMF |
|---------|---------|--------|---------|
| 1210 | 12.81 | 0.25 | 4.421 |

| CED | BW | WW | YW | Milk | TM | CEM | HP | PG30 | ST | YG | CW | REA | MB | \$Cow | FPI | EPI |
|-----|-----|----|-----|------|----|-----|------|------|----|-------|----|------|------|-------|-------|-----|
| 9 | 0.9 | 72 | 115 | 20 | 56 | 3 | 4.73 | 3.86 | 11 | -0.10 | 26 | 0.31 | 0.54 | | 83.48 | |



Lot 2



JOB Danell Romeo 14K

DOB 2/14/22 • Tattoo 14K • Reg. 1534773

BBDM Bolton Pay Day 45C (JOB Danell Joey 7A)

JOB Danell Paygrade 68E

JOB Danell Sal 9C (A A R Ten X 7008 S A)

Connealy Black Granit (Connealy Consensus 7229)

JOB Danell Juliet 06E

JOB Danell Capture 32C (JOB Danell TD Chico Loco 28Y)

Homo Black
(Solid Black)

Homo Polled

**46.9% GV 53.1% AN
Balancer®**

Act. BW

83

Adj. 205

704

Ratio

93

Adj. YW

1318

Ratio

100

ADG

4.72

Adj SC

36.9

HOMOZYGOUS Polled, HOMOZYGOUS Black (and solid black) 46.9% Gelbvieh Balancer cow bull with an 83# birthweight and a 7 for Tenderness! DAM: JOB DANELL Juliet 06E is a Connealy Black Granite daughter that is good uddered and sound footed. SIRE: JOB DANELL Paygrade 68E is a well-rounded sire that has worked in our AI program as well as roaming our pastures. He is also the sire of our top selling bull, JOB DANELL Pay Pal 12H, which sold in our 2021 sale for \$33,000! We are offering 5 sons of Pay Pal this year in our sale and you will see that he did a great job for us. Paygrade was used in this mating for his good calving ease & birthweight EPDs, TOP growth EPDs, excellent HP and PG30, 16.9-inch ribeye, and great eye appeal.

ROMEO (contemporary group 1) stands out on his own - long body, big spring of rib, tight sheath, and one of the widest and squarest hips you will ever see on a yearling bull. He is one of my favorites! EPDs – TOP 10% WW, YW, PG30, & YG, and TOP 20% HP & FPI! 704# WW, 1318# YW, 4.7 ADG on test (112 ratio), foot 7/4 (claw/heel), 36.9 scrotal, and a 15" Ribeye (103 ratio). He will work anywhere you put him – commercial or registered program!

| Scan Wt | Adj REA | Adj FT | Adj IMF |
|---------|---------|--------|---------|
| 1270 | 15.00 | 0.29 | 2.165 |

| CED | BW | WW | YW | Milk | TM | CEM | HP | PG30 | ST | YG | CW | REA | MB | \$Cow | FPI | EPI |
|-----|-----|----|-----|------|----|-----|------|------|----|-------|----|------|------|-------|-------|-----|
| 13 | 0.0 | 84 | 127 | 14 | 55 | 7 | 8.49 | 2.93 | 11 | -0.19 | 20 | 0.45 | 0.31 | | 85.54 | |



Winter 2023 American Gelbvieh Association Balancers® Non-Parent Average EPD's

| CED | BW | WW | YW | Milk | TM | CEM | HP | PG30 | ST | DOC | DMI | YG | CW | RE | MB | FAT | ADG | RFI | \$Cow | FPI | EPI |
|-----|------|----|-----|------|----|-----|----|------|----|-----|-------|-------|----|------|------|------|-------|--------|--------|-------|--------|
| 13 | -0.6 | 71 | 109 | 20 | 56 | 7 | 6 | 1 | 15 | 12 | 0.026 | -0.06 | 35 | 0.48 | 0.37 | 0.00 | 0.009 | -0.014 | 102.99 | 81.12 | 115.59 |

Danell Diamond Six Gelbvieh

HOMOZYGOUS Polled, HOMOZYGOUS Black (and solid black) 50% Gelbvieh Balancer cow bull with an 84# birthweight, Tenderness 3. DAM: JOB DANELL Sassafras 07G is a 3-year-old with a bright future – her 1st calf made the replacement heifer pen and will be calving soon and Rockstar has made the bull pen! SIRE: TJB Rebel Yell 804F ET was the 2021 Gelbvieh Balancer Bull Futurity winner at National. We sold several impressive sons of his last year, one of which was a top seller. We are still impressed the two sons we have for sale this year.

ROCKSTAR (contemporary group 2) has the second highest weaning weight ratio in his contemporary group at 656# (ratio 104), 1231# YW, 3.74 IMF (ratio 109), foot 6/4 (claw/heel), and a 39.8 scrotal! EPDS – TOP 4% HP, Top 10% Milk, TOP 20% PG30, TOP 25% TM, and TOP 30% MB.

Act. BW

84

Adj. 205

656

Ratio

104

Adj. YW

1231

Ratio

98

ADG

3.94

Adj SC

39.8

Lot 3



JOB Danell Rockstar 16K

DOB 2/16/22 • Tattoo 16K • Reg. 1534775

JRI Probit 254D28 (Basin Payweight 1682)

TJB Rebel Yell 804F ET

TJB Anissa 921U ET (BC Lookout 7024)

JOB Danell Napoleon 01E (BBDM Bolton Pay Day 45C)

JOB Danell Sassafras 07G

JOB Danell Sass 05E (Connealy Black Granite)

| Scan Wt | Adj REA | Adj FT | Adj IMF |
|---------|---------|--------|---------|
| 1090 | 12.07 | 0.22 | 3.736 |



| CED | BW | WW | YW | Milk | TM | CEM | HP | PG30 | ST | YG | CW | REA | MB | \$Cow | FPI | EPI |
|-----|------|----|-----|------|----|-----|-------|------|----|------|----|------|------|-------|-------|-----|
| 14 | -0.9 | 68 | 113 | 26 | 60 | 7 | 10.59 | 1.92 | 14 | 0.06 | 36 | 0.23 | 0.44 | | 82.43 | |

HOMOZYGOUS Polled, HOMOZYGOUS Black 79% Gelbvieh Balancer with an 84# birthweight, Tenderness 4. DAM: JOB DANELL Moonrise 69F has an incredible performance record of 91 BW ratio (3 calves), 103 WW ratio (3 calves), and 100 YW ratio (2 calves). She is beautifully uddered and good footed and has a 4.83 IMF (152 ratio)! SIRE: JOB DANELL Pay Pal 12H is a young sire making a name for himself producing calves like Chisel. He was our all-time high selling bull at our 2021 sale for \$33,000! I can't say enough about how well his sons are performing in the breed! As you will see, Chisel is not the only Pay Pal son in this year's bull sale that will catch your eye.

CHISEL (contemporary group 1) is quite a work of art – EPDs: Calving Ease TOP 15%, BW TOP 35%, WW & YW TOP 30%, Milk TOP 20%, TM, CEM, & HP TOP 15%, PG30 TOP 10%, Marbling TOP 20%, and FPI TOP 15%! His own performance – 99 BW ratio (84#), 109 WW ratio (820#), 100 YW ratio (1314#), 100 REA ratio (14.46"), and 100 IMF ratio (3.63). Chisel is long made, straight backed and an almost perfect 6/5 (claw/heel) foot score with a big 40.9 scrotal measurement! This bull will work for anyone anywhere! He can make Purebreds and Balancers that can improve herds – commercial and registered. This is your chance to take home JOB DANELL Pay Pal 12H genetics!

Act. BW

84

Adj. 205

820

Ratio

109

Adj. YW

1314

Ratio

100

ADG

3.38

Adj SC

40.9

Lot 4



JOB Danell Chisel 18K

DOB 2/17/22 • Tattoo 18K • Reg. 1534777

JOB Danell Paygrade 68E (BBDM Bolton Pay Day 45C)

JOB Danell Pay Pal 12H

JOB Danell Josephine 33C (DLW New Frontier 33A ET)

JRI Probit 254D28 (Basin Payweight 1682)

JOB Danell Moonrise 69F

JOB Danell Full Moon 63D (JOB Danell TD My Fortune 3B)

| Scan Wt | Adj REA | Adj FT | Adj IMF |
|---------|---------|--------|---------|
| 1250 | 14.46 | 0.29 | 3.632 |



| CED | BW | WW | YW | Milk | TM | CEM | HP | PG30 | ST | YG | CW | REA | MB | \$Cow | FPI | EPI |
|-----|------|----|-----|------|----|-----|------|------|----|-------|----|------|------|-------|-------|-----|
| 16 | -1.0 | 76 | 115 | 24 | 62 | 9 | 9.05 | 2.64 | 10 | -0.09 | 33 | 0.50 | 0.45 | | 87.92 | |

Winter 2023 American Gelbvieh Association Non-Parent Gelbvieh Average EPD's

| CED | BW | WW | YW | Milk | TM | CEM | HP | PG30 | ST | DOC | DMI | YG | CW | RE | MB | FAT | ADG | RFI | \$Cow | FPI | EPI |
|-----|-----|----|-----|------|----|-----|----|------|----|-----|-------|-------|----|------|------|-------|--------|--------|--------|-------|-------|
| 12 | 0.0 | 68 | 100 | 22 | 56 | 7 | 7 | 1 | 16 | 12 | 0.019 | -0.21 | 30 | 0.66 | 0.22 | -0.03 | -0.032 | -0.010 | 111.77 | 75.35 | 80.79 |

Danell Diamond Six Gelbvieh

Lot 5



JOB Danell Booyah 24K ET

DOB 02/21/22 • Tattoo 24K • Reg. 1558810

S S Niagara Z29 (Hoover Dam)

Tehama Patriarch F028

Tehama Elite Blackbird (Connealy Thunder)

JOB Danell Absolute 21U ET (MLH Goldrush Visa J40)

JOB Danell Sally 23Y

JOB Danell Adieu 3S (MLLC M/L Advantage)

Homo Black
(Solid Black)

Homo Polled

50% GV 50% AN
Balancer®

Act. BW

72

Adj. 205

622

Ratio

ET

Adj. YW

1160

Ratio

ET

ADG

3.52

Adj SC

37.6

HOMOZYGOUS Polled, HOMOZYGOUS Black (and solid black) 50% Gelbvieh Balancer heifer/cow bull with a 72# birthweight, Tenderness 5. DONOR DAM: JOB DANELL Sally 23Y has quite a track record – 92 BW ratio (10 calves), 104 WW ratio (10 calves), 103 YW ratio (7 calves), and 110 Ribeye ratio (7 calves)! SIRE: Tehama Patriarch F028 is the lead off bull in the ABS Sire Summary. He excels in CE, BW, Milk, & Carcass Traits. We had 5 calves sired by him in last year's sale and were so impressed with those animals that we flushed Sally to him.

BOO YAH (contemporary group 2) is a calm bull with EPDs - CE TOP 10%, BW TOP 15%, WW TOP 35%, YW TOP 20%, TM TOP 30%, CEM TOP 2%, HP TOP 30%, PG30 TOP 10%, CW TOP 15%, REA TOP 20%, MB TOP 25%, and FPI TOP 10%. He scored a 4.06 IMF with minimal backfat thickness (.13). He is on a moderate frame and is long made with a 37.6 scrotal and a 6/4 (claw/heel) foot score.

| Scan Wt | Adj REA | Adj FT | Adj IMF |
|---------|---------|--------|---------|
| 1025 | 11.76 | 0.15 | 4.057 |

| CED | BW | WW | YW | Milk | TM | CEM | HP | PG30 | ST | YG | CW | REA | MB | \$Cow | FPI | EPI |
|-----|------|----|-----|------|----|-----|------|------|----|-------|----|------|------|-------|-------|-----|
| 17 | -2.4 | 75 | 121 | 22 | 59 | 12 | 6.78 | 2.92 | 15 | -0.06 | 46 | 0.65 | 0.47 | | 89.77 | |



Lot 6



JOB Danell Bowie 27K

DOB 2/22/22 • Tattoo 27K • Reg. 1535003

JRO Probit 254D28 (Basin Payweight 1682)

TJB Rebel Yell 804F ET

TJB Anissa 921U ET (B C Lookout 7024)

JOB Danell Napoleon 01E (BBDM Bolton Pay Day 45C)

JOB Danell Cutie 20G

JOB Danell Orange Blossom 35B (JOB Danell TD Chico Loco 28Y)

Homo Black
(Solid Black)

Homo Polled

75% GV 25% AN
Balancer®

Act. BW

86

Adj. 205

655

Ratio

104

Adj. YW

1173

Ratio

94

ADG

3.66

Adj SC

37.5

HOMOZYGOUS Polled, HOMOZYGOUS Black (and solid black) 75% Gelbvieh Balancer cow bull with an 86# birthweight, Tenderness 5. DAM: JOB DANELL Cutie 20G is an exciting young 3-year-old sired by JOB DANELL Napoleon 01E (another incredible son of our notable Josephine 33C cow). Cutie is good footed with a calm disposition. SIRE: TJB Rebel Yell 804F ET, as I said in the write-up on Lot 3, has worked very well in our program and we continue to use him for outcross genetics.

BOWIE (contemporary group 2) is one of the most eye appealing 75% Gelbvieh Balancers we have ever produced. His proven pedigree, and above average weaning weight in his contemporary group (655# - 104 ratio) predict a successful future for Bowie. We may collect this bull before he leaves the ranch in an effort to produce his results in a Purebred package. TOP 2% for YG, TOP 10% for HP & REA, TOP 15% for Milk, TOP 20% for PG30, TOP 25% TM, and TOP 35% RFI. 3.24 IMF (106 ratio), 37.5 scrotal, & a perfect 5/5 (claw/heel) foot score!

| Scan Wt | Adj REA | Adj FT | Adj IMF |
|---------|---------|--------|---------|
| 1030 | 12.33 | 0.22 | 3.626 |

| CED | BW | WW | YW | Milk | TM | CEM | HP | PG30 | ST | YG | CW | REA | MB | \$Cow | FPI | EPI |
|-----|-----|----|-----|------|----|-----|------|------|----|-------|----|------|------|--------|-------|-------|
| 10 | 0.4 | 74 | 110 | 24 | 61 | 3 | 9.82 | 2.40 | 16 | -0.25 | 37 | 0.77 | 0.39 | 115.46 | 82.44 | 97.56 |



Winter 2023 American Gelbvieh Association Balancers® Non-Parent Average EPD's

| CED | BW | WW | YW | Milk | TM | CEM | HP | PG30 | ST | DOC | DMI | YG | CW | RE | MB | FAT | ADG | RFI | \$Cow | FPI | EPI |
|-----|------|----|-----|------|----|-----|----|------|----|-----|-------|-------|----|------|------|------|-------|--------|--------|-------|--------|
| 13 | -0.6 | 71 | 109 | 20 | 56 | 7 | 6 | 1 | 15 | 12 | 0.026 | -0.06 | 35 | 0.48 | 0.37 | 0.00 | 0.009 | -0.014 | 102.99 | 81.12 | 115.59 |

Danell Diamond Six Gelbvieh

HOMOZYGOUS Polled, HOMOZYGOUS Black 64% Gelbvieh Balancer cow bull with a 91# birthweight, Tenderness 4. DAM: JOB DANELL Glitter 17G is an incredible cow sired by Plattmeyer Weigh Up K360 and out of JOB DANELL Twinkles 21X, who was also the dam of JOB DANELL Choco 53B! At just 3 years old, Glitter has had 2 calves – both bulls and both made the bull sale! She has a beautiful udder and good feet, and boasts a 111 WW ratio and a 105 YW ratio on her 2 calves! SIRE: JOB DANELL Pay Pal 12H is one of the most exciting sires we have used in our AI program – his calves just flat perform!

HUMDINGER (contemporary group 2) was in the contemporary group that averaged 100# less than the bulls in the other group, but still had a 732# WW (116 ratio). He is one heck of a bull and touts a set of EPDs that read like a book – WW TOP 1%, YW TOP 2%, Milk TOP 25%, TM TOP 2%, CEM TOP 30%, HP TOP 20%, PG30 TOP 10%, SC TOP 20% and his carcass traits are nothing short of amazing – YG TOP 5%, CW TOP 10%, REA TOP 2%, MB TOP 15%, and FPI TOP 2%! And his performance matches his EPDs – WW 732# (116 ratio), YW 1364# (109 ratio), Ribeye 13.12" (105 ratio), IMF 3.25 (95 ratio), 4.6 ADG on test (108 ratio), 6/4 (claw/heel) foot score, and a 41.5 scrotal! This bull will work well in a commercial or registered herd! Take this soggy made bull home!

| |
|----------|
| Act. BW |
| 91 |
| Adj. 205 |
| 732 |
| Ratio |
| 116 |
| Adj. YW |
| 1364 |
| Ratio |
| 109 |
| ADG |
| 4.58 |
| Adj SC |
| 41.5 |



JOB Danell Humdinger 32K

DOB 2/23/22 • Tattoo 32K • Reg. 1535038
 JOB Danell Paygrade 68E (BBDM Bolton Pay Day 45C)
JOB Danell Pay Pal 12H
 JOB Danell Josephine 33C (DLW New Frontier 33A ET)
 Plattmeyer Weigh Up K360 (Sitz Upward 307R)
JOB Danell Glitter 17G
 JOB Danell Twinkles 21X (JOB Danell Starward 19U)

Homo Black
Homo Polled
64.1% GV 35.9% AN
Balancer®

| | | | |
|---------|---------|--------|---------|
| Scan Wt | Adj REA | Adj FT | Adj IMF |
| 1210 | 13.12 | 0.29 | 3.247 |



| | | | | | | | | | | | | | | | | |
|-----|-----|----|-----|------|----|-----|------|------|----|-------|----|------|------|-------|-------|-----|
| CED | BW | WW | YW | Milk | TM | CEM | HP | PG30 | ST | YG | CW | REA | MB | \$Cow | FPI | EPI |
| 13 | 2.0 | 93 | 142 | 23 | 69 | 8 | 7.77 | 2.65 | 11 | -0.21 | 49 | 0.90 | 0.51 | | 95.68 | |

HOMOZYGOUS Polled, solid Black 99.9% Purebred Gelbvieh heifer/cow bull with an 82# birthweight, Tenderness 4. DONOR DAM: JOB DANELL Josephine 33C was also the dam of JOB DANELL Napoleon 01E and JOB DANELL Pay Pal 12H! Her performance record shines – 95 BW ratio (7 calves), 112 WW ratio (7 calves), 101 YW ratio (4 calves), 95 Ribeye ratio (3 calves), and 100 IMF ratio (3 calves) and she has a good udder and good feet. SIRE: JOB DANELL TD Chico Loco 28Y is one of my favorite sires in the breed, we have NEVER cut a daughter of his from the herd because of lack of milk, poor temperament, or poor feet! His females have beautiful udders and his dam was a phenomenal female – MCFG TD Mya 210T was our daughter's (Teale's) cow and selling her bull calves paid her way through college! You can go to the AGA website to see pictures of Mya and many of her offspring, including Chico Loco.

TOP SHELF (weighed separately) has been a favorite of mine since his birth. He is clean fronted, clean sheathed, has a big 39.7 scrotal and a big wide hip on a moderate frame and has an easy-going attitude! His performance – 82# BW, 831# WW, 1253# YW, 13.92" Ribeye, an incredible 4.29 IMF, and a perfect 5/5 (claw/heel) foot score! We have been ultrasound testing our yearlings for 25+ years and never have had a Purebred Gelbvieh bull score a 4.29 IMF and I don't think there are many out there that have! EPDs – TOP 3% MB, TOP 10% BW & PG30, TOP 15% FPI, TOP 25% CE, and TOP 30% REA. We will be collecting Top Shelf for in herd use before he leaves the ranch. Is he the Purebred Gelbvieh heifer bull we have been looking for? He can sire red and black purebreds – a good red bull calf would be an exciting outcross! Grab your chance to take home a son of JOB DANELL Josephine 33C!

| |
|----------|
| Act. BW |
| 82 |
| Adj. 205 |
| 831 |
| Ratio |
| ET |
| Adj. YW |
| 1253 |
| Ratio |
| ET |
| ADG |
| 3.52 |
| Adj SC |
| 39.7 |



JOB Danell Top Shelf 38K ET

DOB 2/24/22 • Tattoo 38K • Reg. 1535044
 ELK CK Crazy Horse 138P (GRU ELK Dee Jake 744J)
JOB Danell Chico Loco 28Y
 MCFG TD Mya 210T (JOB Danell Motana Infusion)
 DLW New Frontier 33A ET (KCF Bennett U271)
JOB Danell Josephine 33C
 JOB Danell Jojo 13Y ET (MLLC M/L Encore)

Black
Homo Polled
Purebred
Gelbvieh

| | | | |
|---------|---------|--------|---------|
| Scan Wt | Adj REA | Adj FT | Adj IMF |
| 1160 | 13.92 | 0.36 | 4.290 |



| | | | | | | | | | | | | | | | | |
|-----|------|----|----|------|----|-----|------|------|----|-------|----|------|------|-------|-------|-------|
| CED | BW | WW | YW | Milk | TM | CEM | HP | PG30 | ST | YG | CW | REA | MB | \$Cow | FPI | EPI |
| 14 | -2.3 | 66 | 91 | 20 | 53 | 7 | 4.24 | 2.78 | 12 | -0.22 | 33 | 0.75 | 0.44 | 92.62 | 82.52 | 42.92 |

Winter 2023 American Gelbvieh Association Non-Parent Gelbvieh Average EPD's

| | | | | | | | | | | | | | | | | | | | | | |
|-----|-----|----|-----|------|----|-----|----|------|----|-----|-------|-------|----|------|------|-------|--------|--------|--------|-------|-------|
| CED | BW | WW | YW | Milk | TM | CEM | HP | PG30 | ST | DOC | DMI | YG | CW | RE | MB | FAT | ADG | RFI | \$Cow | FPI | EPI |
| 12 | 0.0 | 68 | 100 | 22 | 56 | 7 | 7 | 1 | 16 | 12 | 0.019 | -0.21 | 30 | 0.66 | 0.22 | -0.03 | -0.032 | -0.010 | 111.77 | 75.35 | 80.79 |

Danell Diamond Six Gelbvieh

Lot 9



JOB Danell Done Deal 42K

DOB 02/25/22 • Tattoo 42K • Reg. 1535048

JOB Danell Paygrade 68E (BBDM Bolton Pay Day 45C)

JOB Danell Pay Pal 12H

JOB Danell Josephine 33C (DLW New Frontier 33A ET)

JOB Danell Toro 31A (JOB Danell TD Chico Loco 28Y)

JOB Danell Shadow 59D

JOB Danell Moonshadow 30T (JOB Danell Picasso 18P)

Homo Black
(Solid Black)

Homo Polled
67.2% GV 32.8% AN
Balancer®

Act. BW

79

Adj. 205

604

Ratio

96

Adj. YW

1171

Ratio

94

ADG

3.87

Adj SC

37.8

HOMOZYGOUS Polled, HOMOZYGOUS Black (and solid black) 67% Gelbvieh Balancer heifer/cow bull with a 79# birthweight, Tenderness 9. DAM: JOB DANELL Shadow 59D is a favorite from a favorite cow family – moderate frame, beautiful udder, low birthweight calves, phenotypically flawless with a wonderful disposition. SIRE: JOB DANELL Pay Pal 12H, again - a producer of calves like this that make you want to take them home with you, an incredible EPD profile and an out-cross to many herds.

DONE DEAL (contemporary group 2) is a moderate framed bull with calving ease & birthweight EPDs in the TOP 15% & 20%, Ribeye TOP 25%, CEM & HP TOP 30%, PG30 TOP 1%, YG TOP 20%, REA & FPI TOP 25%, and Marbling TOP 4%, and a Tenderness score of 9! 37.8 scrotal, 5.5/4 (claw/heel) foot score, and 3.45 IMF (101 ratio). I will be collecting Done Deal before he leaves the ranch for in herd use on my heifers and some of my larger, higher birthweight cows.

| Scan Wt | Adj REA | Adj FT | Adj IMF |
|---------|---------|--------|---------|
| 1045 | 12.52 | 0.21 | 3.448 |

| CED | BW | WW | YW | Milk | TM | CEM | HP | PG30 | ST | YG | CW | REA | MB | \$Cow | FPI | EPI |
|-----|------|----|----|------|----|-----|------|------|----|-------|----|------|------|-------|-------|-----|
| 16 | -2.2 | 62 | 94 | 20 | 52 | 8 | 6.56 | 4.81 | 12 | -0.13 | 34 | 0.63 | 0.64 | | 85.39 | |



Lot 10



JOB Danell Bruiser 43K

DOB 2/25/22 • Tattoo 43K • Reg. 1535049

JOB Danell Paygrade 68E (BBDM Bolton Pay Day 45C)

JOB Danell Pay Pal 12H

JOB Danell Josephine 33C (DLW New Frontier 33A ET)

BBDM Bolton Pay Day 45C (JOB Danell Joey 7A)

JOB Danell Susie 35F

JOB Danell Sally 23Y (JOB Danell Absolute 21U ET)

Homo Black
(Solid Black)

Homo Polled
92.2% Purebred
Gelbvieh

Act. BW

84

Adj. 205

751

Ratio

99

Adj. YW

1349

Ratio

102

ADG

5.21

Adj SC

41.2

HOMOZYGOUS Polled, HOMOZYGOUS Black (and solid black) 92% Purebred Gelbvieh cow bull with an 84# birthweight, Tenderness 6. DAM: JOB DANELL Susie 35F is a 5-year-old out of Donor Dam Sally 23Y. Susie has a WW ratio 102 (3 calves), YW ratio 103 (3 calves), and Ribeye ratio 103 (2 calves). SIRE: JOB DANELL Pay Pal 12H again producing the great ones!

BRUISER (contemporary group 1) Performance: 84# birthweight, 751# WW, 1349# YW, 14.9" Ribeye, 3.31 IMF, 41.2 scrotal, almost perfect 6/5 (claw/heel) foot score, and a 5.2 ADG on test (123 ratio)! EPDs: TOP 4% WW, TOP 3% YW, TOP 10% for PG30, YG, & FPI, TOP 15% for TM, CW, & REA, TOP 20% for HP, TOP 30% for MB, and TOP 35% for CEM! Bruiser is long made with a big hip and a straight back, and he has a big scrotal measurement and a clean sheath. He is good to go for a registered or commercial herd and I would be collecting him if I did not have Pay Pal semen – take him home!

| Scan Wt | Adj REA | Adj FT | Adj IMF |
|---------|---------|--------|---------|
| 1205 | 14.94 | 0.29 | 3.306 |

| CED | BW | WW | YW | Milk | TM | CEM | HP | PG30 | ST | YG | CW | REA | MB | \$Cow | FPI | EPI |
|-----|-----|----|-----|------|----|-----|------|------|----|-------|----|------|------|-------|-------|-----|
| 11 | 2.0 | 82 | 124 | 21 | 62 | 6 | 9.39 | 3.26 | 13 | -0.31 | 38 | 0.83 | 0.25 | | 82.43 | |



Winter 2023 American Gelbvieh Association Balancers® Non-Parent Average EPD's

| CED | BW | WW | YW | Milk | TM | CEM | HP | PG30 | ST | DOC | DMI | YG | CW | RE | MB | FAT | ADG | RFI | \$Cow | FPI | EPI |
|-----|------|----|-----|------|----|-----|----|------|----|-----|-------|-------|----|------|------|------|-------|--------|--------|-------|--------|
| 13 | -0.6 | 71 | 109 | 20 | 56 | 7 | 6 | 1 | 15 | 12 | 0.026 | -0.06 | 35 | 0.48 | 0.37 | 0.00 | 0.009 | -0.014 | 102.99 | 81.12 | 115.59 |

Danell Diamond Six Gelbvieh

HOMOZYGOUS Polled, HOMOZYGOUS Black (and solid black) 86% Purebred Gelbvieh cow bull with an 87# birthweight, Tenderness 7. DAM: JOB DANELL Orange Blossom 35B is a beautiful Chico Loco daughter with a 104 WW ratio (7 calves), 99 YW ratio (5 calves), 99 Ribeye ratio (4 calves), and 3.64 average IMF on 4 calves. She is good uddered and good footed (see her photo on the AGA website). SIRE: JOB DANELL Pay Pal 12H keeps giving us bulls that are fun to sell!

CHA CHING (contemporary group 1) has a very impressive set of EPDs: TOP 25% CE, TOP 30% WW & YW, TOP 35% TM & CEM, TOP 10% PG30, TOP 15% YG, TOP 35% Ribeye, and TOP 35% FPI. Performance: 87# BW, 813# WW (108 ratio), 1288# YW (98 ratio), 4.5 ADG on test (107 ratio), 5.5/4 (claw/heel) foot score, 41.4 scrotal, and 3.69 IMF (102 ratio). He is long made with a big hip and very easy on the eye – another bull that I would be collecting for in herd use if I did not have semen from his sire.

| |
|----------|
| Act. BW |
| 87 |
| Adj. 205 |
| 813 |
| Ratio |
| 108 |
| Adj. YW |
| 1288 |
| Ratio |
| 98 |
| ADG |
| 4.51 |
| Adj SC |
| 41.4 |



JOB Danell Cha Ching 49K

DOB 2/28/22 • Tattoo 49K • Reg. 1535055
 JOB Danell Paygrade 68E (BBDM Bolton Pay Day 45C)
JOB Danell Pay Pal 12H
 JOB Danell Josephine 33C (DLW New Frontier 33A ET)
 JOB Danell TD Chico Loco 28Y (ELK CK Crazy Horse 138P)
JOB Danell Orange Blossom 35B
 JOB Danell Sunny D. 24W (JBOB Carolina Fortune 2564JET)

| Scan Wt | Adj REA | Adj FT | Adj IMF |
|---------|---------|--------|---------|
| 1190 | 13.72 | 0.31 | 3.689 |



| CED | BW | WW | YW | Milk | TM | CEM | HP | PG30 | ST | YG | CW | REA | MB | \$Cow | FPI | EPI |
|-----|-----|----|-----|------|----|-----|------|------|----|-------|----|------|------|-------|-------|-----|
| 14 | 0.1 | 75 | 110 | 22 | 59 | 7 | 6.03 | 2.87 | 12 | -0.30 | 27 | 0.73 | 0.16 | | 78.68 | |

HOMOZYGOUS Polled, HOMOZYGOUS Black (and solid black) 54% Gelbvieh Balancer heifer/cow bull with an 82# birthweight, Tenderness test pending. DAM: JOB DANELL Pageant 69C is from one of our past Donor Dams, JOB DANELL P.J. 15S – both with beautiful udders and great dispositions! SIRE: JOB DANELL Eliot 71H is a young sire we decided not to put in our bull sale because, to be honest, we needed a calving ease and performance bull like him for our own breeding program! BW 70# (81 ratio), WW 773# (105 ratio), YW 1309# (106 ratio), 16.24 REA (115 ratio), and 4.59 IMF (147 ratio) – along with good feet and a calm attitude!

HARVEY (contemporary group 2) EPD for CE is TOP 10%, BW TOP 15%, TOP 3% TM, TOP 20% for PG30, and TOP 30% for MB. 626# WW (99 ratio), 1234# YW (99 ratio), and 3.38 IMF (99 ratio). Harvey was raised with the contemporary group that averaged 100# lighter than the other because of drought conditions - Harvey's group had only 2 water sources on 700 acres. He has a moderate frame, big hip, clean front, near perfect foot score 5.5/5 (claw/heel), easy going temperament, 36.4 scrotal, and a 4.5 ADG on test (107 ratio)!

| |
|----------|
| Act. BW |
| 82 |
| Adj. 205 |
| 626 |
| Ratio |
| 99 |
| Adj. YW |
| 1234 |
| Ratio |
| 99 |
| ADG |
| 4.51 |
| Adj SC |
| 36.4 |



JOB Danell Harvey 50K

DOB 2/28/22 • Tattoo 50K • Reg. 1535056
 JOB Danell Shaker 05F (KHR 032)
JOB Danell Eliot 71H
 JOB Danell Nessie 78E (BBDM Bolton Pay Day 45C)
 JOB Danell A.J. 12A ET (A A R Ten X 70008 S A)
JOB Danell Pageant 69C
 JOB Danell P.J. 15S (JOB Danell Picasso 18P)

| Scan Wt | Adj REA | Adj FT | Adj IMF |
|---------|---------|--------|---------|
| 1070 | 11.83 | 0.21 | 3.379 |



| CED | BW | WW | YW | Milk | TM | CEM | HP | PG30 | ST | YG | CW | REA | MB | \$Cow | FPI | EPI |
|-----|------|----|-----|------|----|-----|------|------|----|-------|----|------|------|-------|-------|-----|
| 17 | -2.7 | 63 | 103 | 18 | 49 | 11 | 4.44 | 2.02 | 12 | -0.04 | 25 | 0.29 | 0.44 | | 81.75 | |

Winter 2023 American Gelbvieh Association Non-Parent Gelbvieh Average EPD's

| CED | BW | WW | YW | Milk | TM | CEM | HP | PG30 | ST | DOC | DMI | YG | CW | RE | MB | FAT | ADG | RFI | \$Cow | FPI | EPI |
|-----|-----|----|-----|------|----|-----|----|------|----|-----|-------|-------|----|------|------|-------|--------|--------|--------|-------|-------|
| 12 | 0.0 | 68 | 100 | 22 | 56 | 7 | 7 | 1 | 16 | 12 | 0.019 | -0.21 | 30 | 0.66 | 0.22 | -0.03 | -0.032 | -0.010 | 111.77 | 75.35 | 80.79 |

Danell Diamond Six Gelbvieh

Lot 13



JOB Danell Marvel 58K

DOB 03/05/22 • Tattoo 58K • Reg. 1535065

JOB Danell Phoenix 15F (BBDM Bolton Pay Day 45C)

JOB Danell Bogart 67H

JOB Danell Bo Derek 36B (A A R Ten X 7008 S A)

OZZ EXT Governor 3N JPHG Flying H Exclusive)

JOB Danell Panda 42B

Monarch Sandy Pride S132 (BR Midland)

Homo Black
(Solid Black)

Homo Polled

**59.3% GV 40.6% AN
Balancer®**

Act. BW

92

Adj. 205

728

Ratio

96

Adj. YW

1317

Ratio

100

ADG

4.79

Adj SC

38.5

HOMOZYGOUS Polled, HOMOZYGOUS Black (and solid black) 59% Gelbvieh Balancer cow bull with a 92# birthweight. DAM: JOB DANELL Panda 42B just gave us another 85# heifer calf born 2/16. Panda is an incredible female – ultrasound 10.5 Ribeye (108 ratio) and 5.96 IMF (132 ratio)! At 9 years old, she still has a good udder and sound feet. SIRE: JOB DANELL Bogart 67H is a young sire we will use more in our AI program in the future. His most impressive traits are his 16.8" ribeye (118 ratio) and 3.8 IMF (126 ratio).

MARVEL (contemporary group 1) is a stout, soggy bull with a big hip, long made, easy on the eye, and a good disposition. He should sire some great replacements and some stout steers and bull calves. TOP 1% PG30, TOP 30% Stayability & YG, TOP 4% MB, and TOP 30% FPI. Performance – 728# WW, 1317# YW, 38.5 scrotal, almost perfect 6/5 (claw/heel) foot score, and an outstanding 4.8 ADG on test (113 ratio)!

| Scan Wt | Adj REA | Adj FT | Adj IMF |
|---------|---------|--------|---------|
| 1175 | 13.76 | 0.31 | 3.402 |

| CED | BW | WW | YW | Milk | TM | CEM | HP | PG30 | ST | YG | CW | REA | MB | \$Cow | FPI | EPI |
|-----|------|----|-----|------|----|-----|------|------|----|-------|----|------|------|-------|-------|-----|
| 11 | -0.3 | 65 | 107 | 16 | 48 | 6 | 5.48 | 4.81 | 16 | -0.12 | 21 | 0.47 | 0.65 | | 83.75 | |



Lot 14



JOB Danell Secret Agent 59K

DOB 3/06/22 • Tattoo 59K • Reg. 1535066

JOB Danell Shaker 05F (KHR 03Z)

JOB Danell Eliot 71H

JOB Danell Nessie 78E (BBDM Bolton Pay Day 45C)

JOB Danell Innovator 04D (MAR Innoovation 251)

JOB Danell Tyra 82F

JOB Danell Pageant 69C (JOB Danell A. J. 12A ET)

Homo Black
(Solid Black)

Homo Polled

**42% GV 57.8% AN
Balancer®**

Act. BW

87

Adj. 205

642

Ratio

102

Adj. YW

1453

Ratio

116

ADG

6.13

Adj SC

41.5

HOMOZYGOUS Polled, HOMOZYGOUS Black (and solid black) 42% Gelbvieh Balancer cow bull with an 87# birthweight, Tenderness 7. DAM: JOB DANELL Tyra 82F is a beautifully uddered 5 y/o with a promising future, especially if she keeps giving us bulls that perform like this one! 102 WW ratio (3 calves), 110 YW ratio (2 calves), 101 Ribeye ratio (2 calves), and 108 IMF ratio (2 calves). SIRE: JOB DANELL Eliot 71H is a sire we used because of his great CE & BW EPDs, his high ultrasound data – 16.24" Ribeye (115 ratio) and 4.6 IMF (147 ratio), and his unique appearance with a 70# birthweight!

SECRET AGENT (contemporary group 2) has an incredible set of EPDs – CE TOP 25%, BW TOP 20%, YW & CEM both TOP 10%, HP & PG30 both TOP 20%, and MB & FPI both TOP 15%. Unbelievable performance – 642# WW (102 ratio), 1453# YW (116 ratio), 6.1 ADG on test (145 ratio), 14" Ribeye (112 ratio), 6/4 (claw/heel) foot score, and 41.5 scrotal! He is another soggy made bull with length and hip and should give you great replacement heifers, bulls, and steers – he can definitely go to work in a purebred herd.

| Scan Wt | Adj REA | Adj FT | Adj IMF |
|---------|---------|--------|---------|
| 1190 | 14.02 | 0.26 | 2.727 |

| CED | BW | WW | YW | Milk | TM | CEM | HP | PG30 | ST | YG | CW | REA | MB | \$Cow | FPI | EPI |
|-----|------|----|-----|------|----|-----|------|------|----|-------|----|------|------|-------|-------|-----|
| 15 | -2.4 | 70 | 135 | 16 | 49 | 10 | 7.85 | 1.90 | 11 | -0.04 | 36 | 0.47 | 0.55 | | 82.87 | |



Winter 2023 American Gelbvieh Association Balancers® Non-Parent Average EPD's

| CED | BW | WW | YW | Milk | TM | CEM | HP | PG30 | ST | DOC | DMI | YG | CW | RE | MB | FAT | ADG | RFI | \$Cow | FPI | EPI |
|-----|------|----|-----|------|----|-----|----|------|----|-----|-------|-------|----|------|------|------|-------|--------|--------|-------|--------|
| 13 | -0.6 | 71 | 109 | 20 | 56 | 7 | 6 | 1 | 15 | 12 | 0.026 | -0.06 | 35 | 0.48 | 0.37 | 0.00 | 0.009 | -0.014 | 102.99 | 81.12 | 115.59 |

Danell Diamond Six Gelbvieh

HOMOZYGOUS Polled, HOMOZYGOUS Black (and solid black) 80% Gelbvieh Balancer heifer/cow bull with a 72# birthweight. Natural calf of DONOR DAM: JOB DANELL Jojo 13Y ET is also the dam of Donor Dam JOB DANELL Josephine 33C (the dam of game changer JOB DANELL Pay Pal 12H)! Jojo is a 12 y/o donor dam that has an average IMF of 3.75 (106 ratio) on her 7 calves that were ultrasounded – not bad for a purebred! We are calving five Jojo 13Y ETs this year flushed to JOB DANELL Paygrade 68E (the sire of Pay Pal 12H). Jojo still has a beautiful udder and sound feet! SIRE: JOB DANELL Eliot 71H is also a calving ease and birthweight specialist!

STABILIZER (weighed separately) has a very clean front, clean sheath, smooth made body type with a good disposition and a perfect 5/5 (claw/heel) foot score. 72# BW (86 ratio), 37.7 scrotal, and EPDs - TOP 2% CE, TOP 4% BW, TOP 5% CEM, TOP 10% PG30, TOP 35% YG, and TOP 30% MB! Coming from a 12 y/o dam that was flushed the same year she was bred to Eliot 71H is pretty impressive – fertility plus! I feel like Stabilizer could be used heavily on your heifers and would also work on the cow side.

Act. BW
72
Adj. 205
674
Ratio
N/A
Adj. YW
1120
Ratio
N/A
ADG
3.45
Adj SC
37.7



JOB Danell Stabilizer 61K

DOB 3/11/22 • Tattoo 61K • Reg. 1535068
JOB Danell Saker 05F (KHR 032)
JOB Danell Eliot 71H
JOB Danell Nessie 78E (BBDM Bolton Pay Day 45C)
MLLC M/L Encore (MLLC M/L Advantage)
JOB Danell Jojo 13Y ET
JCGR Bar GT Sammy Jo 258H ET (FHG Flying H Extra 150D)

Homo Black
(Solid Black!)

Homo Polled

79.7% GV 20.3% AN
Balancer®

| Scan Wt | Adj REA | Adj FT | Adj IMF |
|------------|--------------|-------------|--------------|
| 980 | 11.43 | 0.15 | 3.774 |



| CED | BW | WW | YW | Milk | TM | CEM | HP | PG30 | ST | YG | CW | REA | MB | \$Cow | FPI | EPI |
|-----------|-------------|-----------|-----------|-----------|-----------|-----------|-------------|-------------|-----------|--------------|-----------|-------------|-------------|-------|--------------|-----|
| 19 | -3.9 | 52 | 75 | 20 | 46 | 10 | 0.39 | 3.21 | 13 | -0.17 | 18 | 0.47 | 0.40 | | 75.98 | |

HOMOZYGOUS Polled, HOMOZYGOUS Black (and solid black) 34% Gelbvieh Balancer cow bull with an 86# birthweight, Tenderness test pending. DAM: JOB DANELL Butterfly 53G is a 4 y/o purebred Angus with a beautiful udder, sound feet, a good attitude and a 10 for Tenderness – absolutely one of our favorites! She ultrasounded a 6.6 IMF (ratio 132) and her EPD for IMF is in the TOP 1%! SIRE: JOB DANELL Bogart 67H is another young sire we used for his exceptional ultrasound data, a Tenderness of 9, and strong growth. We will continue using him in the future because of these traits and resulting offspring like Kickstart!

KICKSTART (contemporary group 1) is an exceptional Balancer bull with a performance record second to none! 769# WW (102 ratio), 1324# YW (ratio 101), 16.8" Ribeye (116 ratio), 4.74 IMF (131 ratio), 39.7 scrotal, 6/4 (claw/heel) foot score, and 4.4 ADG (103 ratio). EPDs – TOP 4% MB, TOP 20% PG30, and TOP 25% YW & FPI. I want more calves that perform like this one and that is why we will continue to AI to his daddy and will collect Kickstart before he leaves the ranch. A definite Herdsire/AI Sire prospect – buy with confidence!

Act. BW
86
Adj. 205
769
Ratio
102
Adj. YW
1324
Ratio
101
ADG
4.37
Adj SC
39.7



JOB Danell Kickstart 65K

DOB 3/16/22 • Tattoo 65K • Reg. 1536127
JOB Danell Phoenix 15F (BBDM Bolton Pay Day 45C)
JOB Danell Bogart 67H
JOB Danell Bo Derek 36B (A A R Ten X 7008 S A)
JOB Danell Innovator 04D (MAR Innovation 251)
JOB Danell Butterfly 53G
JLM Blackclass 6514 (Connealy Lead On)

Homo Black
(Solid Black!)

Homo Polled

34.3% GV 65.6% AN
Balancer®

| Scan Wt | Adj REA | Adj FT | Adj IMF |
|-------------|--------------|-------------|--------------|
| 1110 | 16.81 | 0.26 | 4.737 |



| CED | BW | WW | YW | Milk | TM | CEM | HP | PG30 | ST | YG | CW | REA | MB | \$Cow | FPI | EPI |
|-----------|------------|-----------|------------|-----------|-----------|----------|-------------|-------------|-----------|--------------|-----------|-------------|-------------|-------|--------------|-----|
| 11 | 0.4 | 69 | 121 | 15 | 49 | 7 | 4.73 | 1.86 | 12 | -0.03 | 38 | 0.46 | 0.65 | | 85.68 | |

Winter 2023 American Gelbvieh Association Non-Parent Gelbvieh Average EPD's

| CED | BW | WW | YW | Milk | TM | CEM | HP | PG30 | ST | DOC | DMI | YG | CW | RE | MB | FAT | ADG | RFI | \$Cow | FPI | EPI |
|-----------|------------|-----------|------------|-----------|-----------|----------|----------|----------|-----------|-----------|--------------|--------------|-----------|-------------|-------------|--------------|---------------|---------------|---------------|--------------|--------------|
| 12 | 0.0 | 68 | 100 | 22 | 56 | 7 | 7 | 1 | 16 | 12 | 0.019 | -0.21 | 30 | 0.66 | 0.22 | -0.03 | -0.032 | -0.010 | 111.77 | 75.35 | 80.79 |

Danell Diamond Six Gelbvieh

Lot 17



JOB Danell Willy 69K

DOB 03/18/22 • Tattoo 69K • Reg. 1536131

JOB Danell Shaker 05F (KHR 03Z)

JOB Danell Eliot 71H

JOB Danell Nessie 78E (BBDM Bolton Pay Day 45C)

DLW New Frontier 33A ET (KCF Bennett U271)

JOB Danell Winks 31C

JOB Danell Twinkles 21X (FHG Flying H Exclusive)

Homo Black
(Solid Black)

Homo Polled
72.7% GV 24.7% AN
Balancer®

Act. BW

80

Adj. 205

639

Ratio

101

Adj. YW

1133

Ratio

91

ADG

3.6

Adj SC

36.4

HOMOZYGOUS Polled, HOMOZYGOUS Black (and solid black) 73% Gelbvieh Balancer heifer bull with an 80# birthweight. DAM: JOB DANELL Winks 31C is an 8 y/o purebred Gelbvieh with a perfect 9/9 udder, sound feet, and from our foundation cow, JOB DANELL Twinkles 21X, that produced the topnotch Herdsire/AI Sire JOB DANELL Choco 53B. SIRE: JOB DANELL Eliot 71H, again, was used for his calving ease, moderate growth, carcass traits, phenotype, and his mama, JOB DANELL Nessie 78E, is on her way to making it into the donor group.

WILLY (contemporary group 2), the youngest bull in the pen, should work well as a heifer bull and give you 'sleep easy' calving. His performance - 80# birthweight (94 ratio) and 639# WW (101 ratio), near perfect 5.5/5 (claw/heel) foot score, 36.4 scrotal, 4.26 IMF (125 ratio) with a low .21 Backfat Thickness (94 ratio). EPDs - CE & BW TOP 25%, CEM & PG30 TOP 10%, YG TOP 20%, and MB TOP 15%! If you're looking for a good heifer bull or just a good calving ease bull - take Willy home!

| Scan Wt | Adj REA | Adj FT | Adj IMF |
|---------|---------|--------|---------|
| 985 | 12.08 | 0.21 | 4.258 |

| CED | BW | WW | YW | Milk | TM | CEM | HP | PG30 | ST | YG | CW | REA | MB | \$Cow | FPI | EPI |
|-----|------|----|----|------|----|-----|------|------|----|-------|----|------|------|-------|-------|-----|
| 15 | -1.8 | 63 | 95 | 19 | 50 | 10 | 5.16 | 3.02 | 14 | -0.15 | 17 | 0.46 | 0.56 | | 83.08 | |



- NOTES -



Expect A Lot of Bull!

Winter 2023 American Gelbvieh Association Balancers® Non-Parent Average EPD's

| CED | BW | WW | YW | Milk | TM | CEM | HP | PG30 | ST | DOC | DMI | YG | CW | RE | MB | FAT | ADG | RFI | \$Cow | FPI | EPI |
|-----|------|----|-----|------|----|-----|----|------|----|-----|-------|-------|----|------|------|------|-------|--------|--------|-------|--------|
| 13 | -0.6 | 71 | 109 | 20 | 56 | 7 | 6 | 1 | 15 | 12 | 0.026 | -0.06 | 35 | 0.48 | 0.37 | 0.00 | 0.009 | -0.014 | 102.99 | 81.12 | 115.59 |

- HERD SIRES -



JOB DANELL ELIOT 71H

APRIL 02, 2020 • AMGV 1477314

BALANCER® 59.4% GV | 40.6% AN

JOB Danell Shaker 05F (KHR 03Z) x JOB Danell Nessie 78E (BBDM Bolton Pay Day 45C)

| CED | BW | WW | YW | Milk | TM | CEM | HP | PG30 | ST | YG | CW | REA | MB | \$Cow | FPI | EPI |
|-----|------|----|-----|------|----|-----|------|------|----|-------|----|------|------|-------|-------|-----|
| 17 | -2.3 | 64 | 105 | 20 | 51 | 10 | 4.72 | 2.90 | 11 | -0.10 | 22 | 0.35 | 0.48 | | 83.07 | |



JOB DANELL PAYGRADE 68E

MARCH 04, 2017 • AMGV 1381968

BALANCER® 68.8% GV | 31.3% AN

BBDM Bolton Paygrade 68E (JOB Danell Joey 7A) x JOB Danell Sal 9C (AAR Ten X 7008 S A)

| CED | BW | WW | YW | Milk | TM | CEM | HP | PG30 | ST | YG | CW | REA | MB | \$Cow | FPI | EPI |
|-----|------|----|-----|------|----|-----|-------|------|----|-------|----|------|------|-------|-------|-----|
| 12 | -0.7 | 82 | 131 | 18 | 59 | 7 | 10.96 | 3.59 | 8 | -0.17 | 35 | 0.57 | 0.19 | | 83.72 | |



TJB REBEL YELL 804F ET

SEPTEMBER 01, 2018 • AMGV 1448912

BALANCER® 50% GV | 50% AN

JRI Probit 254D28 (Basin Payweight 1682) x TJB Anissa 921U ET (B C Lookout 7024)

| CED | BW | WW | YW | Milk | TM | CEM | HP | PG30 | ST | YG | CW | REA | MB | \$Cow | FPI | EPI |
|-----|-----|----|-----|------|----|-----|-------|------|----|-------|----|------|------|--------|-------|--------|
| 12 | 1.3 | 73 | 120 | 28 | 64 | 4 | 11.29 | 1.19 | 15 | -0.02 | 47 | 0.55 | 0.47 | 109.00 | 83.20 | 140.06 |



JOB DANELL PAY-PAL 12H

FEBRUARY 07, 2020 • AMGV 1474661

PUREBRED 84.4% GV | 15.6% AN

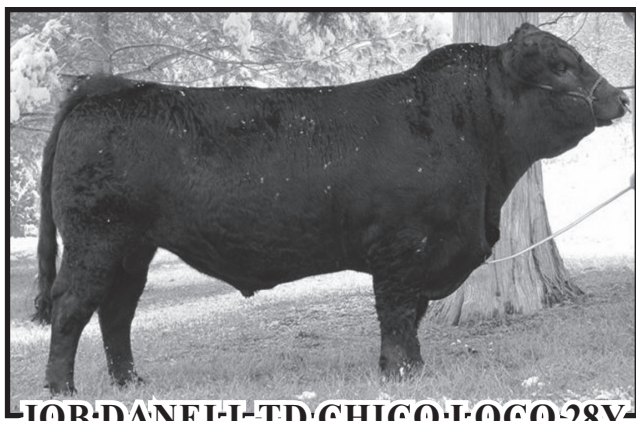
JOB Danell Paygrade 68E (BBDM Bolton Pay Day 45C) x JOB Danell Josephine 33C (DLW New Frontier 33A ET)

| CED | BW | WW | YW | Milk | TM | CEM | HP | PG30 | ST | YG | CW | REA | MB | \$Cow | FPI | EPI |
|-----|-----|----|-----|------|----|-----|------|------|----|-------|----|------|------|-------|-------|-----|
| 12 | 1.3 | 80 | 123 | 25 | 65 | 6 | 7.12 | 3.28 | 9 | -0.27 | 35 | 0.74 | 0.37 | | 85.65 | |



- HERD SIRES -

- NOTES -



JOB DANELL TD CHICO LOCO 28Y

FEBRUARY 20, 2011 • AMGV 1184875

PUREBRED 99.9% GV

ELK CK Crazy Horse 138P (GRU ELK Dee Jake 744J) x MCFG TD Mya 210T (JOB Danell Montana Infusion)

| CED | BW | WW | YW | Milk | TM | CEM | HP | PG30 | ST | YG | CW | REA | MB | \$Cow | FPI | EPI |
|-----|-----|----|-----|------|----|-----|------|------|----|-------|----|------|------|-------|-------|-------|
| 12 | 0.4 | 71 | 102 | 8 | 43 | 4 | 5.19 | 2.59 | 11 | -0.39 | 32 | 0.88 | 0.27 | 84.95 | 76.94 | 63.86 |



JOB DANELL BOGART 67H

MARCH 19, 2020 • AMGV 1476617

BALANCER® 68.55% GV | 31.25% AN

JOB Danell Phoenix 15F (BDDM Bolton Pay Day 45C) x JOB Danell Bo Derek 36B (AAR Ten X 7008 S A)

| CED | BW | WW | YW | Milk | TM | CEM | HP | PG30 | ST | YG | CW | REA | MB | \$Cow | FPI | EPI |
|-----|-----|----|-----|------|----|-----|------|------|----|-------|----|------|------|-------|-------|-------|
| 11 | 0.3 | 65 | 115 | 15 | 47 | 6 | 4.71 | 2.72 | 13 | -0.16 | 28 | 0.57 | 0.52 | 95.14 | 80.56 | 89.23 |



TEHAMA PATRIARCH F028

FEBRUARY 03, 2017 • AAA 18981191

PUREBRED ANGUS

SS Niagra Z29 (Hoover Dam) x Tehama Elite Blackbird (Connealy Thunder)

| CED | BW | WW | YW | Milk | TM | CEM | HP | PG30 | ST | YG | CW | REA | MB | \$Cow | FPI | EPI |
|-----|------|----|-----|------|----|-----|------|------|----|----|----|------|------|-------|-----|-----|
| 14 | -1.9 | 65 | 128 | 31 | | 16 | 17.8 | | | | 52 | 0.83 | 0.80 | | | |

EPD INFORMATION

MATERNAL TRAITS

Calving ease direct (CED): Percent of unassisted births of a bull's calves when he is used on heifers. A higher number is favorable, meaning better calving ease. This EPD can be vital to a rancher looking to decrease the amount of calves pulled.

Milk (Milk): The genetic ability of a sire's daughters to produce milk expressed in pounds of weaning weight.

Calving ease maternal (CEM): Represented as percent of unassisted births in a sire's first-calving daughters. A higher number represents more favorable calving ease. This EPD is important to a rancher's bottom line because it predicts which animals produce daughters with a genetic pre-disposition to calve unassisted as heifers.

Heifer pregnancy (HP): Predicts the probability that a bull's daughters will become pregnant as first-calf heifers in a regular breeding season, expressed as a percent. A higher value of this EPD is favorable, meaning that a higher percentage of a sire's daughters get pregnant as first calf heifers compared to other sires in his contemporary group.

30-month pregnancy (Pg30): Predicts the probability that a bull's daughters will become pregnant and calve at three years of age, given that they calved as first-calf heifers. This EPD is expressed as a percent, again, with a higher number being more favorable meaning a higher percentage of a sire's daughters will calve at three years of age, given they calved as first-calf heifers.

Stayability (STAY): Predicts the genetic difference, in terms of percent probability, that a bull's daughters will stay productive within a herd to at least six year of age. The stayability EPD is one of the best measures currently available to compare a bull's ability to produce females with reproductive longevity.

Docility (DOC): Is reported as a percentage, with higher numbers indicating a higher percent of offspring receiving a disposition score of 1 (docile).

Scrotal circumference (SC): Predicts the difference, in centimeters, of scrotal circumference of an animal's male offspring at yearling compared to the SC of other animals' male offspring.

GROWTH TRAITS

Birth weight (BW): Predicts the difference, in pounds, for birth weight of the calf.

Weaning weight (WW): Predicts the difference, in pounds, for weaning weight (adjusted to age of dam and 205 days). An indicator of growth from birth to weaning.

Yearling weight (YW): Predicts the expected difference, in pounds, for yearling weight (adjusted to 365 days). This is an indicator of growth from birth to yearling.

CARCASS TRAITS

Yield grade (YG): Differences in yield grade score, which is a predictor of percent retail product. Smaller values suggest that progeny will have a better lean to fat ratio.

Carcass weight (CW): Differences in pounds of hot carcass weight, adjusted to an industry standard age endpoint.

Ribeye area (CREA): Differences in ribeye area in inches between the 12th and 13th rib. Greater ribeye areas are preferable.

Marbling (MARB): Predicts the differences in the degree of marbling within the ribeye as expressed in marbling score units. Greater marbling numbers are preferable and are an indicator of higher carcass quality grades.

Fat (CFAT): Differences for fat thickness, in inches, for a carcass over the 12th rib, smaller numbers of fat thickness are preferable as excess fat can be detrimental to yield grade.

EFFICIENCY TRAITS

Dry matter intake (DMI): Represents the average daily dry matter intake per day consumed in pounds. A negative, or lesser value, is more favorable.

INDEXES

Total maternal (TM): An index that combines growth and milk information as a prediction of the weaning weight performance of calves from a sire's daughters. A greater TM value means a mother that returns comparatively higher weaning weights on her calves. TM Index = MK EPD + ½ WW EPD.

\$Cow: Represents the genetic value in dollars of profit of an animal when retained as a replacement female relative to other animals in the herd. A higher number represents more profitable genetics for maternal productivity. \$Cow will serve producers in selecting bulls that will sire daughters with stayability and reproductive efficiency as well as other traits that lead to profitability in a production system, such as milk, calving ease, moderate mature weight and the ability of calves to gain. A female's genetics also influence the performance of her calves in the feedlot and at slaughter, so traits such as feed efficiency and carcass value are also included in \$Cow.

Efficiency profit index (EPI): An economic selection index developed to aid producers in selecting for more feed efficient cattle that still have acceptable amounts of gain. The EPI provides slight negative pressure on intake, while keeping gain at a constant value. By selecting on this index, producers will be able to find those animals that gain the same amount as their contemporaries while eating less.

FPI™ which stands for feeder profit index: An economic selection index designed to aid producers in selecting sires whose progeny will perform in the feedlot and are sold on a grade and yield standpoint. Well ranking sires for FPI have higher marbling and carcass weight than their contemporaries. As a terminal index, little emphasis is put on maternal traits such as stayability and calving ease.

FOOT SCORE GUIDELINES

FOOT SCORE GUIDELINES
Claw Set (5 is ideal)

1 Extremely weak, open, divergent claw set. Unsound.

2 Open, divergent claw set. Marginally unsound.

3 Moderately open/divergent claw set.

4 Slightly open/divergent claw set.

5 Ideal. Symmetrical claws, with appropriate space between claws.

6 Slight tendency for claws to curl. One claw may be slightly larger than the other.

7 Tendency for claws to curl, with one claw larger than the other.

8 Moderate scissor claw and/or screw claw. Curling of one or both claws. Near crossing of claws. Marginally unsound.

9 Extreme scissor claw and/or screw claw. Pronounced curling of one or both claws. Crossing of claws. Unsound.

Access AAA Login at angus.org to submit scores.

ANGUS
THE BUSINESS BREED

FOOT SCORE GUIDELINES
Foot Angle (5 is ideal)

1 2 3 4 5

6 7 8 9

Claw Set (5 is ideal)

1 2 3 4 5

6 7 8 9

FOOT SCORE GUIDELINES
Foot Angle (5 is ideal)

1 Extremely straight pasterns. Very short toe. Unsound.

2 Straight front and rear pasterns. Marginally unsound.

3 Moderately straight front and rear pasterns.

4 Slightly straight front and rear pasterns.

5 Ideal. Approximately 45-degree angle at pastern joint. Appropriate length of toe and depth of heel.

6 Slightly shallow heel and long toe.

7 Moderately shallow heel and long toe. Somewhat weak pasterns.

8 Shallow heel and long toe. Marginally unsound.

9 Extremely shallow heel and long toe. Extremely weak pasterns. Unsound.

Access AAA Login at angus.org to submit scores.

ANGUS
THE BUSINESS BREED

Central Montana Gelbvieh & Angus Genetics
1012 Maiden Road
Lewistown, MT 59457

Join us for a preview of
the bulls at the ranch!
Friday, March 17th - 4 P.M.

VIDEOS & BIDDING AT WWW.BILLPELTON.COM



BIDDING CLOSES MARCH 18, 2023