

Same Operation. New Location.

FELTON

ANGUS RANCH

- Established 1952 -

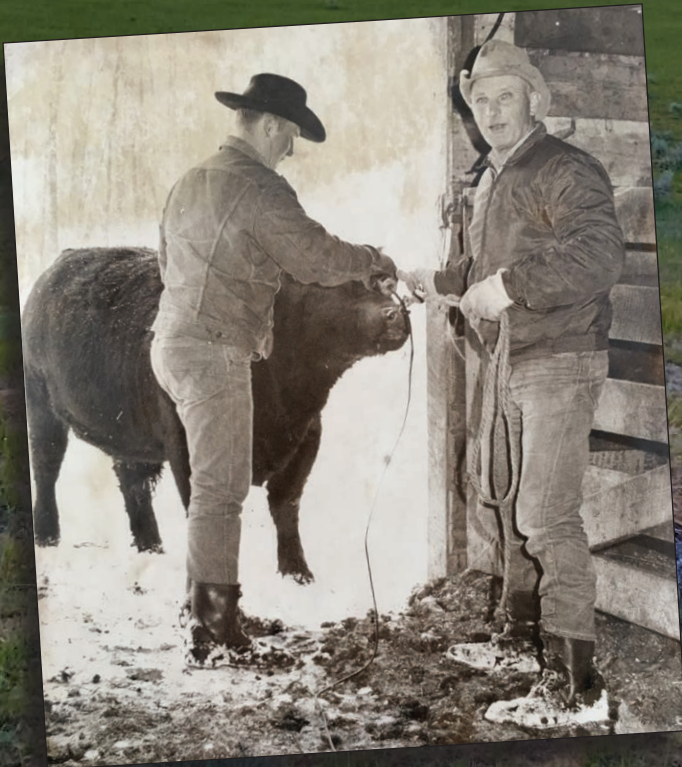
245 Head of Angus Sell!

120 Two-Year-Old Bulls
- Fertility Tested -

75 16 Month Old Fall Bulls
- Fertility Tested -

50 Replacement Heifers

50TH ANNUAL
SALE



Tuesday
February 14
2023

Lunch at 12:00 pm
Sale at 1:00 pm MST

At the Ranch
Deer Lodge, MT

Ray Felton keeps good grip on rope while son Rich uses clippers to shave head of an Angus bull they'll be taking to the Show Case show and Sale in Missoula Saturday. Felton and two sons are enthusiastic Angus men — They'll talk about cattle without much prodding.

...AND THE TRADITION CONTINUES.



Working Class Bulls for the
Working Class Rancher . . .



Sale Day Phones:
cell 406-220-1177
or 406-220-1176

Richard Felton
Cell 406/ 220-1176
rkfelton@rangeweb.net

Jim Felton
Cell 406/ 220-1177
jim@feltonangus.com

www.FeltonAngus.com

50TH
ANNUAL
SALE

At the Ranch
1380 Bowman Rd • Deer Lodge, MT 59722
See Map page 3

FEBRUARY 14, 2023

Felton Angus Ranch Sale Barn • Deer Lodge, MT
Lunch at 12:00 pm • Sale at 1:00 pm MST

245 Head of Angus Sell

120 Two-Year-Old Bulls
- Fertility Tested -

75 16 Month Old Fall Bulls
- Fertility Tested -

50 Replacement Heifers

- All bulls tested negative for BVD/PI
- Felton Angus Ranch retains the rights on 1/3 revenue sharing of semen sales on all bulls
- Bulls with registration "pending" are awaiting genetic test results. Their EPDs will be available sale day
 - Free delivery nationwide if we deliver bulls. We will pay 1/2 if custom hauled.
- Cattle sell under the American Angus Association Terms and Conditions dated February 21, 2014

Updated EPDs can be viewed at www.Angus.org

The sale will be broadcast live
via Superior Productions on
Dish Network channel 997
Please see page 4 for details

Auctioneer

Roger Jacobs, 406-698-7686

Representatives

Kurt Kangus, *American Angus Assoc* 406-366-4190
 John Goggins, *Western Ag Reporter* 406-698-4159
 Bill Pelton, *Pelton Insurance* 406-671-5100
 Devin Murnin, *Western Livestock Journal* 406-696-1502
 John Beardsley, *Superior Livestock* 406-853-4938
 Andy Rest, *Cattle Business Weekly* 406-670-5678

Bids may be sent to any of the representatives or the auctioneer.



DVAuction
www.dvauction.com

Watch & Bid online for FREE!

Can't make the sale?
Let DVAuction bring the sale to you!
Busy during the sale?
Let DVAuction represent your bid!

Visit www.dvauction.com and Register!

It's as easy as 1, 2, 3...

1. Create an account at www.dvauction.com under the "create new account" tab
2. Apply for bidding by clicking "apply for bidding" in the upper left corner of your screen, at least 24 hours prior to the auction
3. Tune into the sale and make your purchases!

For General Questions Please Contact Our Office:
(402) 316-5460 or support@dvauction.com

*High Speed Internet Access Required





Cell 406/ 220-1177
1380 Bowman Rd
Deer Lodge, MT 59722

www.FeltonAngus.com

Dear Producers,

WELCOME to our 50th ANNUAL Production sale at our new location in the beautiful Deer Lodge Valley. I would like to personally invite you to join us for sale day on FEB 14th, 2023. This year we will be offering 200 head of STOUT RANGE READY bulls. 120 coming 2 Yr. old bulls, 75 Fall bulls, and 50 replacement heifers. They are in their working clothes and ready to work for you. We intentionally raise them this way so they stand up to years of use and breed lots of cows during the bulls life. We feel it is very important for our bull buyers to get the most bang for your buck. One thing we experience year after year is our bulls get out and move with your cow herd. You won't find a Felton bull laying down low in the shade or by the water tank while the cows are up high in the hills grazing.

I am sure most of you have heard about the latest change up in our operation. We took the plunge and sold both ranches last spring and bought replacement ranches that are much closer together. One in the Deer Lodge valley, and one in the Big Hole valley. Without boring you with the nitty gritty details of how and why this came about, it was time to consolidate our operation. Mom and Dad are getting along in age, and it was time to bring them closer to their kids. I am located on the same property as my parents and can look after the day-to-day operations alongside my dad. We have our differences, but at the end of day, it's a privilege to continue learning and working with him. My sister Kelly and her family are 25 minutes down the road and help out whenever extra help is needed. Dad still goes out every day; rain or shine, hot or cold, and does his daily chores. At almost 80 years old, he still enjoys being on his horse, riding through his cow herd. On those colder days, the Can Am works well for him. Mom feeds the help on a daily basis, and we are all a few pounds heavier because of it. Homemade bread, desserts, and fresh lunches will do that to a person. We are also happy to have our right-hand guy, Matt, back with our Felton family.

We feel like this has been a really positive move for our operation. It will allow us to in-crease the size and scope of our cattle program and farming operations.

We may have changed locations, but we haven't changed how we breed and raise our cattle. We will be LIVE on Superior Livestock and DV Auction on Feb 14th. We would love for you to join us in person, but as we all know with ranching, sometimes that can be tough to leave the operation. If you don't feel comfortable placing your bids with Superior Livestock, or DV Auction, we will gladly assist you in getting your bulls of choice bought. If anyone has questions, please feel free to call, text, or stop by the ranch and see us. It is with gratitude and a heart felt THANK YOU to all you for keeping us in the bull business for 50 straight years. We are very proud of this accomplishment, and we owe it all to our buyers, old and new.

Sincerely,
Jim Felton and family



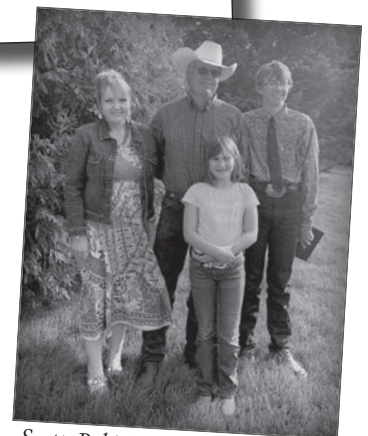
Karol & Rich Felton



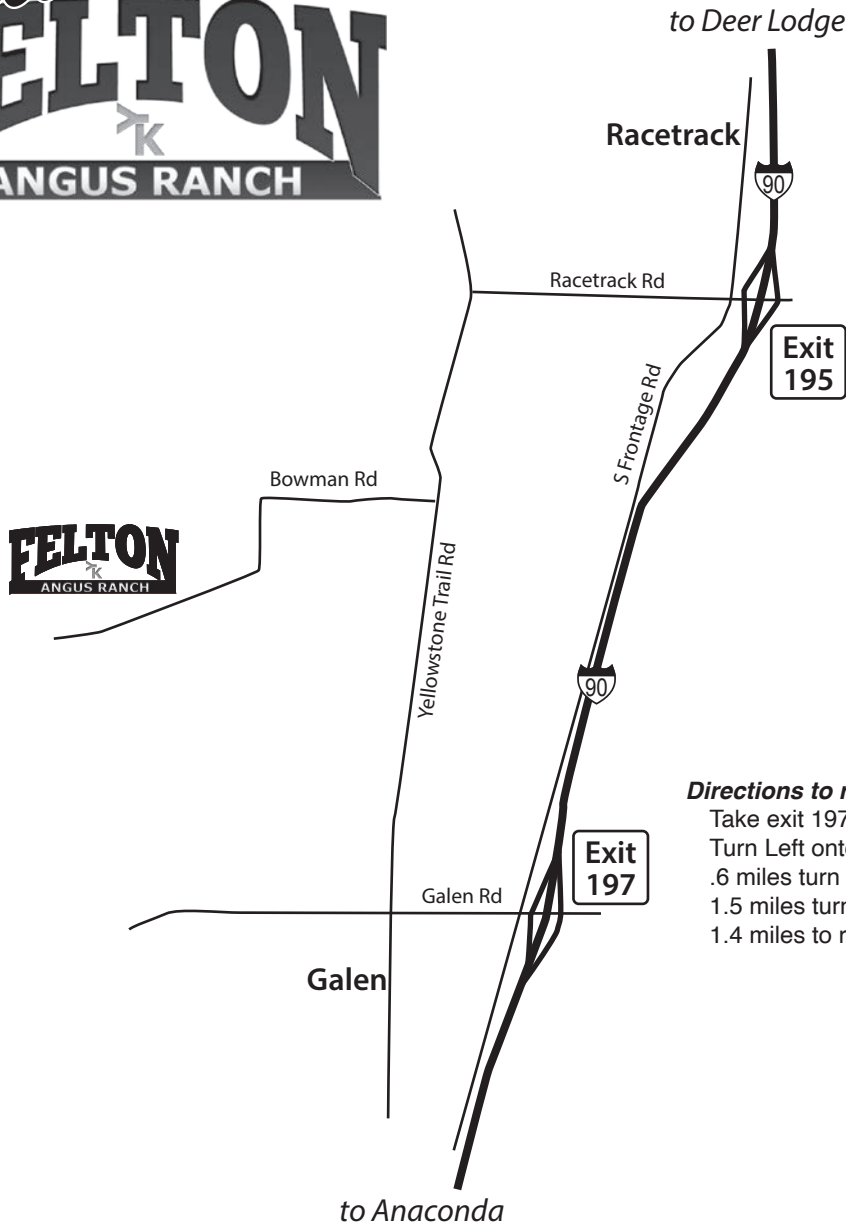
Jim, Sydni & Quincy
Felton



Ben, Kelly, Grant & Greta Hursh



Scott, Bobi, Layne & Tayler Boeh



Directions to ranch headed East:
 Take exit 195 towards Racetrack
 Turn right on Race Track Rd
 1 mile turn left onto Yellowstone Trail
 .8 mile turn right onto Bowman Rd
 1.4 mile to ranch

Directions to ranch headed West:
 Take exit 197 towards Galen Rd E.
 Turn Left onto Galen Rd. E
 .6 miles turn right onto Yellowstone Trail
 1.5 miles turn left onto Bowman Rd
 1.4 miles to ranch

Accommodations

- The Forge Hotel, BW signature collection* (406) 797-4100
 100 Union Avenue • Anaconda, MT 59711
 Offering a group discount for Felton Angus Ranch Buyers
- Fairmont Hot Springs Resort*(406)221-5408
 1500 Fairmont Rd • Anaconda, MT 59711
- Holiday Inn Express and Suites* (406)782-2000
 2609 Harrison Ave • Butte, MT 59701
- Fairfield Inn and Suites* (406)494-3000
 2340 Cornell Ave. • Butte, MT 59701

Airports near the ranch

- Bozeman Yellowstone International Airport (BZN)*
 Delta, United, American, Southwest, Alaska, Allegiant
 850 Gallatin Field Rd. • Belgrade, MT 59714
- Missoula Airport*
 Delta, United, American Airlines, Allegiant, Alaska
 5225 W. Broadway St. • Missoula, MT 59808
- Bert Mooney Airport*
 Delta Airlines
 101 Airport Rd • Butte, MT 59701

If we can be of any assistance please feel free to call us.

VIEWING THE AUCTION

The auction will be broadcast online at Bid.SuperiorLivestock.com and the pre-recorded videos will also be hosted there. You do not need an account just to watch the auction or view videos of the sale offering.

ONLINE BIDDING

Go to Bid.SuperiorLivestock.com for Superior's new online bidding platform. If you have not registered there before you will need to create an account. The first time you register an account you will receive a confirmation e-mail that you must click on. Once you have completed this, select the auction you would like to bid on and click the "Request a Buyer Number" button. The first time you request a buyer number you will be sent a confirmation code via text. Enter that code in the login portal and you will receive a buyer number. This 2-step verification process will only have to be done once and in the future you will be able to simply login and request a buyer number and receive it instantly for any auction. Once you have successfully registered and received a buyer number it will show your name and buyer number on both the video preview page and the online bidding page when you are logged in. If you have an account at LiveAuctions.tv you may skip the registration process and use those login credentials to request a buyer number as LiveAuctions is a division of Superior Livestock. For more details on registering an account and also how to bid, you may watch a tutorial at Bid.SuperiorLivestock.com/how-it-works.



TURN IN BIDS OVER THE PHONE

This is Superior's traditional method of buying cattle and is the suggested process for anybody who does not have consistent, high-speed internet. You still must register an account at Bid.SuperiorLivestock.com and request a buyer number. Once you receive a buyer number you will see the bid line phone number. Just watch the auction online and call in at least 2 lots ahead of the lot you are looking to bid on. A Superior Livestock representative will be with you on the phone and will assist you in placing bids.

FOR HELP WITH REGISTRATION OR ANY PART OF THE BIDDING PROCESS
PLEASE CALL SUPERIOR AT (800) 422-2117.



Follow us . . .



And be sure you
visit our website!

www.FeltonAngus.com



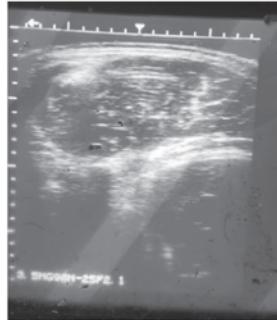
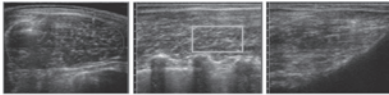
ULTRASOUND

WHAT IS CARCASS ULTRASOUND AND HOW IS IT COLLECTED?

Carcass ultrasound is collecting the carcass data from a live animal using an ultrasound machine. The tech gets images of the ribeye, cross sections of the loin, and a rump. Once the images are saved, they are sent to a lab in order to be processed. The ribeyes are measured around to see the size in inches. The intramuscular fat percentage or (%imf) is measured by the black to white contrast in the cross section of the loin. The back or rump fat is also determined by the space between the fat line and hide line. The rump fat is measured with the thickness of fat in the rump image.



Locations Scanned



Ribeye scan

HOW DOES A RANCHER USE IT?

Each data is presented in a different way.

Ribeye size is presented in inches. So you may see a 10-inch ribeye. The bigger the inches the better the ribeye, but you also need to look at the weight. The lower the weight and bigger the ribeye the better. This shows the efficiency to convert feed to meat. The imf image will be shown in a percentage. You may see a 3.5% imf. You also want this number to be higher. This is where you will see the meat quality (select, choice, or prime). The back fat and rump fat you will see in smaller numbers. You will see a .1 or .3 inch. Both of these measurements you want to be smaller. These help you know how fat the cattle are. The higher the number the fatter the cattle.



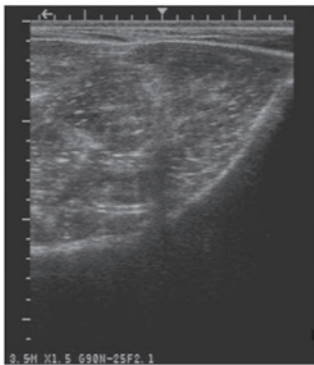
Wade Elliott

UGC Certified field technician
(903) 388-6223

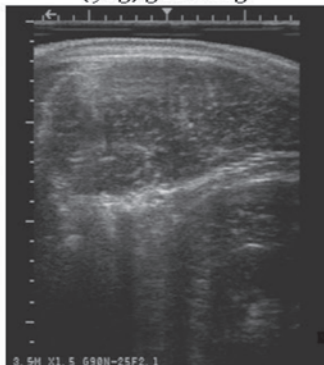
Ranchers who care about their data use UltraInsights to “take a peek under the hood.”

Improve your herd and create more value for your customers.

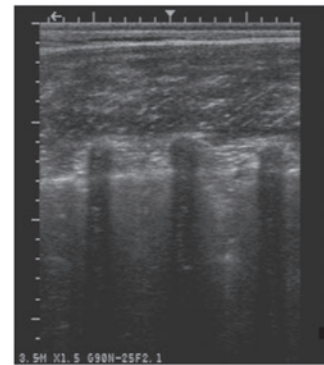
Schedule your ultrasound today!



Rump Fat



Ribeye Area & Fat Thickness



% IMF



Visit us at www.ultrainsights.com
(660) 562-2074 (phone, fax or text)
ui@ultrainsights.com



FELTON

ANGUS RANCH

Reference Sires

Reference Sire

WRIGHT WAY SUPER DUTY 385

Bull — Calved 01/09/2015 — 18091923

MYTTY FOREFRONT 77P
MYTTY FOREFRONT 1094
MYTTY BLACKCAP U370#

CONNEALY FOREFRONT#
SIX BELLES FOREVER LADY 015
CONNEALY FREIGHTLINER#
SITZ BLACKCAP 1478

HARB PENDLETON 765 J H#
TWELA PRIDE 508Y
LCB BV PRIDE R3111

S A V FINAL ANSWER 0035#
H A R B BLACK LADY 375 J H#
LCC NEW STANDARD#
LCC PRIDE K3914

CED	BW	WW	YW	Doc	Milk	
+2	+2.5	+62	+107	+22	+20	
Marb	RE	\$M	\$W	\$F	\$G	\$B
+0.40	+0.41	+38	+54	+91	+35	+126

We purchased this bull through Midland Bull Test in 2016.

Reference Sire

HYLINE REVOLUTION 486

Bull — Calved 02/17/16 — 18575369

CANDOLIER FOREVER 376#
SVR REVOLUTION 3173
S C C ENCHANTRESS 3F1 X412

FOREVER OF WYE#
BARB 157 FOREVER E C

EMULATION N BAR 5522
N BAR ENCHANTRESS 4908#

V D A R SENTINEL 3016
DEHAANS ELLUNA 116
VDAR ELLUNA 3771#

W C C SPECIAL DESIGN L309#
VDAR LASS 8516

LEACHMAN RIGHT TIME#
V D A R ELLUNA 4167#

CED	BW	WW	YW	Doc	Milk	
+3	+1.8	+53	+85	+1	+29	
Marb	RE	\$M	\$W	\$F	\$G	\$B
+0.39	+0.11	+74	+63	+55	+30	+85

Talk about a pleasant surprise! Old school genetics on the top! Nice set of bulls out of him and talk about a cow maker!



Wright Way Super Duty 385

Reference Sire

JINDRA CRUISER

Bull — Calved 02/08/19 — 19628271

HOFF BLOCKBUSTER SC 929 1612
JINDRA MEGA HIT
HOFF SWEETHEART S C 216

HOFF INVESTOR S C 929
HOFF CHRISTINE S C 7195 929
HOFF HEARTLAND S C 456#
HOFF LADY ACE S C 884

SEARS GILBERT SA70 STARPOWER
JINDRA STOCKQUEEN J 837 011
JINDRA STOCKQUEEN J 543 837

SUMMITCREST SEARS STAR POWER
SUMMITCREST BURGESS N289
TC FREEDOM 104#
JINDRA STOCKQUEEN J 7311

CED	BW	WW	YW	Doc	Milk	
+4	+4.4	+85	+154	+20	+22	
Marb	RE	\$M	\$W	\$F	\$G	\$B
+0.60	+0.76	+53	+60	+115	+55	+170

Reference Sire

CLEAR CREEK ARTILLERY 893

Bull — Calved 03/01/18 — 19178832

CONNEALY ARSENAL 2174#
CONNEALY ARTILLERY 4236
DELLA OF CONANGA 130

CONNEALY PACKER 547#
BLACK RICE OF CONANGA 9529#

GDAR GAME DAY 449#
DENTA OF CONANGA 9637

SITZ UPWARD 307R#
CCA ERICA LASSIE 260
CCA ERICA LASSIE 607T

CONNEALY ONWARD#
SITZ HENRIETTA PRIDE 81M

BALDRIDGE NEBRASKA 901#
WARDS ERICA LASSIE 201

CED	BW	WW	YW	Doc	Milk	
+8	+2.7	+82	+152	+26	+34	
Marb	RE	\$M	\$W	\$F	\$G	\$B
+0.42	+0.33	+72	+88	+117	+38	+155

Reference Sire

HYLINE DOUBLE VISION 325

Bull — Calved 02/04/15 — 18304681

CONNEALY REFLECTION#
JINDRA DOUBLE VISION#
HOFF RACHEL 8312 405

BON VIEW NEW DESIGN 878#
HAPPY GRILL OF CONANGA 6260
HOFF LIMITED EDITION S C 594#
HOFF MISS EXPO S C 4223

HYLINE RIGHT TIME 338#
HYLINE LUCY 456
HYLINE LUCY 763

LEACHMAN RIGHT TIME#
HYLINE PRIDE 265

HYLINE S V F RITO 1116#
HYLINE LUCY 442

CED	BW	WW	YW	Doc	Milk	
+3	+2.8	+57	+105	+16	+21	
Marb	RE	\$M	\$W	\$F	\$G	\$B
+0.28	+0.58	+50	+45	+104	+35	+140

Reference Sire

FELTON'S ACES 7

Bull — Calved 10/28/2015 — 18495579

APEX WIDE TRACK 545
APEX WIDE TRACK 4401
APEXETTE BLACKCAP 5008

APEX 450 WIDE TRACK 052
APEXETTE BLACKCAP 1080#

APEX FOCUS 053
APEXETTE BLACKCAP 7069

FELTON BUSH HOG C597
FELTON 5368 BURGESS T497#
FELTON 8973 NICOLE 5368

B C C BUSHWACKER 41-93#
FELTON 8728 ERICA A390

FAR EL TIGRE 233
1839 FAR V SARA 8973

CED	BW	WW	YW	Doc	Milk	
+2	+1.9	+45	+81	+8	+30	
Marb	RE	\$M	\$W	\$F	\$G	\$B
+0.29	+0.39	+48	+49	+87	+32	+119

Full brother to Bruzer, weaned off at 1050# off dry land pastures

Reference Sire		HYLINE FIRST CLASS 268					
		Bull — Calved 02/14/12 — +17443877					
S A V NET WORTH 4200#		S A V 8180 TRAVELER 004#					
S A V FIRST CLASS 0207		S A V MAY 2410					
S A V DUKE GIRL 7348#		S A V PEACEMAKER 3179#					
		A C DUKE GIRL 57#					
HYLINE NEW TREND 6602		E E 394 HY TREND 819					
HYLINE EILEENMERE 642		HYLINE PRIDE 856					
HYLINE EILEENMERE 312#		HYLINE RIGHT TIME 338#					
		HYLINE EILEENMERE 184#					
CED	BW	WW	YW	Doc	Milk		
+5	+2.7	+50	+79	+8	+21		
Marb	RE	\$M	\$W	\$F	\$G	\$B	
+55	+26	+74	+47	+60	+43	+103	

Reference Sire		DUTCH FLAT FRONTMAN 4512					
		Bull — Calved 12/15/11 — 17300417					
CONNEALY FRONT PAGE 0228#		CONNEALY FOREFRONT#					
KESSLERS FRONTMAN R001#		EBONY LIT OF CONANGA 840#					
KESSLERS BELL 0024		TC RANCHER 056#					
		KESSLERS BELL 8055					
B/R NEW FRONTIER 095#		B/R NEW DESIGN 036#					
DUTCH FLAT STAR AMBUSH 0510#		WHITE FENCE PRIDE H1					
DUTCH FLAT STAR AMBUSH 7107		CONNEALY LEAD ON#					
		K A STAR AMBUSH 32K#					
CED	BW	WW	YW	Doc	Milk		
+10	-0.1	+39	+72	+23	+31		
Marb	RE	\$M	\$W	\$F	\$G	\$B	
+27	+83	+75	+50	+95	+42	+137	

This bull was purchased at the Midland Test, he will work well on heifers.

Reference Sire		CLEAR CREEK SURENUFF 402					
		Bull — Calved 01/23/2014 — 17938846					
KESSLERS FRONTMAN R001#		CONNEALY FRONT PAGE 0228#					
STEVENS ON SURENUFF 2017		KESSLERS BELL 0024					
STEVENS ON ROSE 962		STEVENS ON ONLINE 1150					
		RIMROCK ROSE J3158					
A A R TEN X 9903		A A R TEN X 7008 S A#					
CCA BLACKBIRD 208		A A R ELITE 3011#					
CCA BLACKBIRD 604T		CONNEALY DANNY BOY#					
		LEACHMAN BLACKBIRD 5068					
CED	BW	WW	YW	Doc	Milk		
+8	-1.0	+44	+95	+23	+30		
Marb	RE	\$M	\$W	\$F	\$G	\$B	
+34	+42	+50	+48	+104	+32	+135	

Purchased from Clear Creek Angus, the top selling bull in their sale. We picked him for his low birth weights, They should be easy calving bulls.



Stevenson Surenuuff 2017

Reference Sire		OCC MANIFEST 712					
		Bull — Calved 02/13/17 — 19043896					
CONNEALY GUINNESS#		CONNEALY DUBLIN 8223#					
JINDRA MANIFEST		PANDA OF CONANGA 3609					
JINDRA ENCHANTRESS J 301 025#		JINDRA PREMIUM CUT#					
		JINDRAS ENCHANTRESS J 102					
SITZ UPWARD 307R#		CONNEALY ONWARD#					
OCC MONTANA DREAM 216		SITZ HENRIETTA PRIDE 81M					
OCC MONTANA DREAM 601		MYTTY IN FOCUS#					
		OCC MONTANA DREAM 404					
CED	BW	WW	YW	Doc	Milk		
+5	+2.2	+58	+105	+18	+34		
Marb	RE	\$M	\$W	\$F	\$G	\$B	
+57	+30	+73	+69	+83	+44	+127	

Purchased him in 2018 Treasure Test Sale from Wendy Olson. He was the best bull in the sale.

Reference Sire		MLG BOND 8005					
		Bull — Calved 04/25/18 — 19914913					
BAR S RANGE BOSS 4002		BAR S RANGE BOSS 1118					
MERIT BOND 6007D		BAR S PRIDE 0073					
MERIT JILT 4040		HF PROWLER 43U#					
		MERIT JILT 2023					
JL AUTHORITY 2098		S A V ELIMINATOR 9105					
MLG PAULINE 31B		JL LADY 8026					
MLG PAULINE 1Z		JL PIONEER 0062					
		EASTONDALE PAULINE 08'03					
CED	BW	WW	YW	Doc	Milk		
+2	+2.8	+43	+78	na	+25		
Marb	RE	\$M	\$W	\$F	\$G	\$B	
na	na	na	+38	+69	na	na	

Reference Sire		FELTON BUSH HOG C597					
		Bull — Calved 09/11/02 — 14539514					
PARAMONT AMBUSH 2172#		BANDOLIER ESTON DURNES 42B#					
B C C BUSHWACKER 41-93#		E W S MISS BURGESS 1720					
R C ANITA T BANDO 918903		TEHAMA BANDO 155#					
		R C TRAVELING ANN 8903					
FAR CLYDE 1695		CORNHUSKER CLYDE 99					
FELTON 8728 ERICA A390		3273 F A R 555 QUEEN 6241#					
1644 F A R SARA 8728#		SKARSHIP SARATOGA#					
		4102 F A R LOVANA 1644#					
CED	BW	WW	YW	Doc	Milk		
+3	+2.4	+50	+88	+13	+25		
Marb	RE	\$M	\$W	\$F	\$G	\$B	
+39	+35	+52	+48	+89	+36	+125	

Reference Sire		FELTON WIDE TRACK 162F5					
		Bull — Calved 10/15/15 — 18495568					
APEX WIDE TRACK 545		APEX 450 WIDE TRACK 052					
APEX WIDE TRACK 4401		APEXETTE BLACKCAP 1080#					
APEXETTE BLACKCAP 5008		APEX FOCUS 053					
		APEXETTE BLACKCAP 7069					
FELTON ANTARCTICA F135		LOST LAKE ANTARCTICA 683					
FELTON T958 F135 ANNE T1701		FELTON 1587 EILEEN 9959#					
FELTON A406 ULTRESS T958		FELTON HALLMARK 2044					
		FELTON 5738 VIXEN A406					
CED	BW	WW	YW	Doc	Milk		
-3	+3.1	+55	+90	na	+26		
Marb	RE	\$M	\$W	\$F	\$G	\$B	
na	na	+56	+52	+70	na	na	

Another outstanding son of 4401.



Live Cattle Settlement Packet by Payee
AB Foods LLC

2/4/2022
7:26:27AM

Kill Date 2/1/2022 Check No. 68412 - RICHARD JAMES FELTON
Feeder Lot Payee
Head Count 39 PO/Commit 24507 / 23483
Live Weight 45,908 Lot No 32205

Quick Glance			
Live Avg	\$134.54	AVG LIVE WT	1,177
Hot Avg	\$212.54	AVG HOT WT	745
		HOT YIELD	63.30%
		% YG 1:2	69.23%
		% YG 4:5	2.56%
USDA SPRD	(\$7.13)		

We will order
Genomic testing on
any of the bulls at
the buyer's request!



	PERFORMANCE GRID													
	Y1		Y2		Y3		Y4		Y5		NY	Totals	Percent	
	HD	Hot Wgt	HD	Hot Wgt	HD	Hot Wgt	HD	Hot Wgt	HD	Hot Wgt	HD	Hot Wgt	HD	Hot Wgt
Prime			19	13,819	10	7,936								
Choice			7	5,135	1	645	1	816						
Select	1	709										29	21,785	74.35%
No Roll												10	7,305	25.64%
Commercial														
Misc Grades														
Standard														
Certified														
Dark C/utter														
Condemned														
TOTAL	1	709	26	18,954	11	8,581	1	816				39	29,080	100.00%
YIELD %	2.56%	2.43%	66.66%	65.22%	28.20%	29.52%	2.56%	2.80%				100.00%	100.00%	100.00%

OUT CATTLE			
	HD	HOT WT	CREDIT
BRUISED			
AGHEMM			
YELLOW			
STAG			
HARDBONE			

NON-OUT CATTLE W/ FINANCIAL IMPACT			
	HD	HOT WT	CREDIT
UNDERWT			
OVERWT			
HOLSTEIN			
30PLUS			

FINANCIAL SUMMARY							
FORMULA:	RR90						
	%	THRESHOLD	ACTUAL	PAYABLE WT	HOT \$\$/CWT	\$\$ AMOUNT	\$\$ HEAD
BASE PRICE	100.00%		29,060	29,060			
Quality Base Price Adj	74.86%		29,060	29,060	\$217.93	\$63,330.45	\$1,623.86
Double R Premium	10.87%		3,161	3,161	(\$7.11)	(\$2,066.17)	(\$52.98)
Choice Plus	74.86%	21,795	21,755	40	\$3.50	\$110.63	\$2.84
Yield Grade 1	2.43%		709	709	(\$7.13)	(\$5.05)	(\$0.07)
Yield Grade 2	65.22%		18,954	18,954	\$2.00	\$379.08	\$9.72
TOTAL PROCEEDS			18,954	18,954	\$212.54	\$61,765.33	\$1,583.73

Settlement Fees/Adjustments		\$ / Head
Beef Comm Fee	(\$19.50)	(\$0.50)
Animal Disease Trace	(\$1.95)	(\$0.05)
Net Check Amount	\$61,743.88	\$1,583.18



Live Cattle Settlement Packet by Payee

Kill Date 1/11/2022 Check No. 68412 - RICHARD JAMES FELTON
Feeder Lot Payee
Head Count 85 PO/Commit 24436 / 22422
Live Weight 102,477 Lot No 11207

	Y1		Y2		Y3		Y4		HD	Hot Wgt	HD	Hot Wgt	HD	Hot Wgt
	HD	Hot Wgt	HD	Hot Wgt	HD	Hot Wgt	HD	Hot Wgt						
Prime			56	42,851	16	12,636	1	825						
Choice	3	2,241	5	3,599	2	1,268								
Select	2	1,450												
No Roll														
Commercial														
Misc Grades														
Standard														
Certified														
Dark C/utter														
Condemned														
TOTAL	5	3,691	61	46,450	18	13,902	1	825						
YIELD %	5.88%	5.69%	71.76%	71.60%	21.17%	21.43%	1.17%	1.27%						

OUT CATTLE			
	HD	HOT WT	CREDIT
BRUISED			
AGHEMM			
YELLOW			
STAG			
HARDBONE			

NON-OUT CATTLE W/ FINANCIAL IMPACT			
	HD	HOT WT	CREDIT
UNDERWT			
OVERWT			
HOLSTEIN			
30PLUS			

FINANCIAL SUMMARY							
FORMULA:	RR90						
	%	THRESHOLD	ACTUAL	PAYABLE WT	HOT \$\$/CWT	\$\$ AMOUNT	\$\$ HEAD
BASE PRICE	100.00%		64,868	64,868	\$220.24	\$142,865.28	\$1,680.77
Quality Base Price Adj	90.26%		64,868	64,868	\$3.16	\$2,049.83	\$24.12
Double R Premium	4.52%		2,938	2,938	\$3.50	\$102.83	\$1.21
Choice Plus	90.26%	48,651	58,553	9,902	\$9.54	\$944.65	\$11.11
Yield Grade 1	5.69%		3,691	3,691	\$2.00	\$73.82	\$0.87
Yield Grade 2	71.60%		46,450	46,450	\$226.56	\$146,965.41	\$1,729.00
TOTAL PROCEEDS			64,868	64,868	\$226.56	\$146,965.41	\$1,729.00

Settlement Fees/Adjustments		\$ / Head
Beef Comm Fee	(\$42.50)	(\$0.50)
Animal Disease Trace	(\$4.25)	(\$0.05)
Net Check Amount	\$146,918.66	\$1,728.45



2-year-old Bulls

1 **FELTON MANIFEST 712 T1181**
Bull — calved 05/05/21 — tattoo T1181 — 20561654

JINDRA MANIFEST
 OCC MANIFEST 712
 OCC MONTANA DREAM 216

CONNEALY GUINNESS#
 JINDRA ENCHANTRESS J 301 025#

SITZ UPWARD 307R#
 OCC MONTANA DREAM 601

SPRINGVALE IN FOCUS 743
 FELTON C584 COUNTESS T0205
 FELTON A412 PEARL C584

MYTTY IN FOCUS#
 SPRINGVALE RITA 407

ADAMS ACRES IDITAROD 427
 FELTON 5201 BEAUTY A412

Birth Wt	Act Wn Wt	NR	YR	— Dam's Production —	
79	667	98	103	5 WR 94	2 YR 98
Final Weight		Scrotal	REA	IMF	
1500		34	11.5	4.10	
BW	WW	YW	Milk	\$F	
+1.7	+50	+91	+26	+71	

2 **FELTON WIDE TRACK T1291**
Bull — calved 05/30/21 — tattoo T1291 — 20568024

APEX WIDE TRACK 4401
 FELTON WIDE TRACK 162F5
 FELTON T958 F135 ANNE T1701

APEX WIDE TRACK 545
 APEXETTE BLACKCAP 5008

FELTON ANTARCTICA F135
 FELTON A406 ULTRESS T958

FELTON BACKSTRAP T723
 FELTON 4704 JET T1490
 FELTON A369 PAULA 4704

BECKER FARMS BACKSTAP 3023
 FELTON 8885 FERN 2113#

FELTON CHATTER C227
 FELTON 337 ERICA A369

Birth Wt	Act Wn Wt	NR	YR	— Dam's Production —	
90	700	112	116	5 WR 105	4 YR 108
Final Weight		Scrotal	REA	IMF	
1480		38	11.9	4.20	
BW	WW	YW	Milk	\$F	
I+3.5	I+59	I+100	I+26	+74	

3 **FELTON SURENUFF T1151**
Bull — calved 06/04/21 — tattoo T1151 — 20561651

STEVENSON SURENUFF 2017
 CLEAR CREEK SURENUFF 402
 CCA BLACKBIRD 208

KESSLERS FRONTMAN R001#
 STEVENSON ROSE 962

A A R TEN X 9903#
 CCA BLACKBIRD 604T

FELTON ANTARCTICA F135
 FELTON 6036 ANNE T0117
 FELTON 8885 EILA 6036

LOST LAKE ANTARCTICA 683
 FELTON 1587 EILEEN 9959#

FELTON BOTTOMLINE C212
 4140 FAR NICOLE 8885

Birth Wt	Act Wn Wt	NR	YR	— Dam's Production —	
76	681	111	104	7 WR 105	4 YR 97
Final Weight		Scrotal	REA	IMF	
1410		38	11.7	4.36	
BW	WW	YW	Milk	\$F	
-0.9	+46	+85	+31	+85	

4 **FELTON MANIFEST 712 T1141**
Bull — calved 04/23/21 — tattoo T1141 — 20561650

JINDRA MANIFEST
 OCC MANIFEST 712
 OCC MONTANA DREAM 216

CONNEALY GUINNESS#
 JINDRA ENCHANTRESS J 301 025#

SITZ UPWARD 307R#
 OCC MONTANA DREAM 601

RALLY DUTCHMAN 4022
 FELTON C652 KR DUTCHESST0103
 FELTON KR 9069 QUEEN C652

RALLY DUTCHMAN 219
 RALLY BLACK EMPRESS 58

FAR DIVIDENDS PAYCHECK 2536
 FELTON K1536 ROYEL LASS 9069

Birth Wt	Act Wn Wt	NR	YR	— Dam's Production —	
75	675	96	100	5 WR 102	3 YR 104
Final Weight		Scrotal	REA	IMF	
1405		34	10.3	3.58	
BW	WW	YW	Milk	\$F	
+0.8	+51	+88	+29	+67	

5 **FELTON WIDE TRACK T1390**
Bull — calved 05/18/21 — tattoo T1390 — 20568029

APEX WIDE TRACK 4401
 FELTON WIDE TRACK 162F5
 FELTON T958 F135 ANNE T1701

APEX WIDE TRACK 545
 APEXETTE BLACKCAP 5008

FELTON ANTARCTICA F135
 FELTON A406 ULTRESS T958

COLEMAN MIDLAND 404
 FELTON 61 BLACKCAP T854
 FELTON 4073 BURGESS 61

BR MIDLAND#
 COLEMAN MISS WIX 911

FELTON BUSH HOG C597
 FELTON A399 EMPRESS 4073

Birth Wt	Act Wn Wt	NR	YR	— Dam's Production —	
90	715	109	114	2 WR 100	1 YR 114
Final Weight		Scrotal	REA	IMF	
1500		40	10.1	6.34	
BW	WW	YW	Milk	\$F	
I+3.6	I+56	I+95	I+22	+73	

6 **FELTON FIRST CLASS T1191**
Bull — calved 05/22/21 — tattoo T1191 — 20568020

S A V FIRST CLASS 0207
 HYLINE FIRST CLASS 268
 HYLINE EILEENMERE 642

S A V NET WORTH 4200#
 S A V DUKE GIRL 7348#

HYLINE NEW TREND 6602
 HYLINE EILEENMERE 312#

FELTON BACKSTRAP T723
 FELTON 5124 JET T1260
 FELTON 9529 PAULA 5124#

BECKER FARMS BACKSTAP 3023
 FELTON 8885 FERN 2113#

FELTON CHATTER C233
 FELTON 906 LADY 9529

Birth Wt	Act Wn Wt	NR	YR	— Dam's Production —	
84	700	109	103	4 WR 105	3 YR 103
Final Weight		Scrotal	REA	IMF	
1365		36	12.5	3.55	
BW	WW	YW	Milk	\$F	
I+2.9	I+51	I+77	I+25	+63	

7 **FELTON FIRST CLASS T1271**
Bull — calved 05/25/21 — tattoo T1271 — 20568023

S A V FIRST CLASS 0207
 HYLINE FIRST CLASS 268
 HYLINE EILEENMERE 642

S A V NET WORTH 4200#
 S A V DUKE GIRL 7348#

HYLINE NEW TREND 6602
 HYLINE EILEENMERE 312#

RALLY DUTCHMAN 4022
 FELTON RJ DUCHESS T1449
 FELTON 2549 RJ ROSEMARY 6668

RALLY DUTCHMAN 219
 RALLY BLACK EMPRESS 58

TOMWALL D V COMMODORE 2143
 7047 FAR ERICA 2549

Birth Wt	Act Wn Wt	NR	YR	— Dam's Production —	
87	670	105	97	8 WR 99	6 YR 99
Final Weight		Scrotal	REA	IMF	
1360		36	12.5	3.32	
BW	WW	YW	Milk	\$F	
I+3.2	I+46	I+69	I+23	+50	

8**FELTON REVOLUTION T291**

Bull — calved 04/15/21 — tattoo T291 — 20561674

SVR REVOLUTION 3173
HYLINE REVOLUTION 486
DEHAANS ELLUNA 116CANDOLIER FOREVER 376#
S C C ENCHANTRESS 3F1 X412
V D A R SENTINEL 3016
VDAR ELLUNA 3771#BOVAGENE APOLLO 011
FELTON T9105 PRIME T4111
FELTON 5143 DUCHESS T9105HIGH PRIME 4037#
LONE CONE BLACKCAP 729
RALLY DUTCHMAN 4022
FELTON 8929 BURNADETT 5143

Birth Wt	Act Wn Wt	NR	YR	— Dam's Production —	
86	700	95	90	3 WR 97	2 YR 95
Final Weight		Scrotal	REA	IMF	
1350		35	10.0	5.74	
BW	WW	YW	Milk	\$F	
+3.3	+47	+78	+26	+61	

12**FELTON ARTILLARY T1351**

Bull — calved 05/15/21 — tattoo T1351 — 20561661

CONNEALY ARTILLERY 4236
CLEAR CREEK ARTILLERY 893
CCA ERICA LASSIE 260CONNEALY ARSENAL 2174#
DELLA OF CONANGA 130
SITZ UPWARD 307R#
CCA ERICA LASSIE 607TAPEX WIDE TRACK 4401
FELTON T1838 BLACKCAP 2347
FELTON C561 EILEENMERE T1838APEX WIDE TRACK 545
APEXETTE BLACKCAP 5008
GRANGER SASQUATCH 680
FELTON A302 BLACKCAP C561

Birth Wt	Act Wn Wt	NR	YR	— Dam's Production —	
85	680	104	100	2 WR 101	2 YR 104
Final Weight		Scrotal	REA	IMF	
1300		40	10.2	4.20	
BW	WW	YW	Milk	\$F	
+3.5	+70	+129	+29	+90	

9**FELTON MANIFEST 712 T1221**

Bull — calved 05/12/21 — tattoo T1221 — 20561656

JINDRA MANIFEST
OCC MANIFEST 712
OCC MONTANA DREAM 216CONNEALY GUINNESS#
JINDRA ENCHANTRESS J 301 025#
SITZ UPWARD 307R#
OCC MONTANA DREAM 601HYLINE O'REILLY FACTOR 270
FELTON 3094 GRETA T656
FELTON 5188 PAULA 3094VIN-MAR O'REILLY FACTOR#
HYLINE LUCY 456
FELTON CHATTER C237
FELTON 1566 427 PEARL 5188

Birth Wt	Act Wn Wt	NR	YR	— Dam's Production —	
80	670	97	93	2 WR 103	2 YR 95
Final Weight		Scrotal	REA	IMF	
1350		38	13.3	4.36	
BW	WW	YW	Milk	\$F	
+1.1	+49	+84	+32	+65	

13**FELTON BUSH HOG S1621**

Bull — calved 04/23/21 — tattoo S1621 — 20568009

B C C BUSHWACKER 41-93#
FELTON BUSH HOG C597
FELTON 8728 ERICA A390PARAMONT AMBUSH 2172#
R CANITA T BANDO 918903
EAR CLYDE 1695
1644 F A R SARA 8728#LOST LAKE HEAD START U188
FELTON T1188 BELLE T60
FELTON A390 ULTRESS T1188APEX VANGUARD 136
CONTRACT ANNE 2816 LLR
FELTON HALLMARK 2044
FELTON 8728 ERICA A390

Birth Wt	Act Wn Wt	NR	YR	— Dam's Production —	
78	656	94	98	4 WR 97	2 YR 96
Final Weight		Scrotal	REA	IMF	
1285		38	10.2	3.70	
BW	WW	YW	Milk	\$F	
I+1.4	I+41	I+73	I+26	+78	

10**FELTON BLACKSMITH S3421**

Bull — calved 05/25/21 — tattoo S3421 — 626981274

MARDA BLACKSMITH 683
MARDA BLACKSMITH 978
MF ASTI 016CONNEALY BLACK GRANITE#
S A V BLACKCAP MAY 3092
TC TOTAL 410#
MF ASTI 596FELTON'S ACES 7
FELTON BLACKCAP T508
FELTON 8479 ULTRESS T2226APEX WIDE TRACK 4401
FELTON 5368 BURGESS T497#
WILLWOOD HALLMARK 2556
FELTON 8893 BLACKBIRD 8479

Birth Wt	Act Wn Wt	NR	YR	— Dam's Production —	
86	680	109	101	1 WR 109	na
Final Weight		Scrotal	REA	IMF	
1300		33	12.3	5.74	
BW	WW	YW	Milk	\$F	
na	na	na	na	na	

14**FELTON FRONTMAN T1331**

Bull — calved 06/01/21 — tattoo T1331 — 20561660

KESSLERS FRONTMAN R001#
DUTCH FLAT FRONTMAN 4512
DUTCH FLAT STAR AMBUSH 0510#CONNEALY FRONT PAGE 0228#
KESSLERS BELL 0024
B/R NEW FRONTIER 095#
DUTCH FLAT STAR AMBUSH 7107FELTON BACKSTRAP T723
FELTON T497 JET T149
FELTON 5368 BURGESS T497#BECKER FARMS BACKSTAP 3023
FELTON 8885 FERN 2113#
FELTON BUSH HOG C597
FELTON 8973 NICOLE 5368

Birth Wt	Act Wn Wt	NR	YR	— Dam's Production —	
85	687	110	102	7 WR 98	5 YR 99
Final Weight		Scrotal	REA	IMF	
1280		38	10.2	5.54	
BW	WW	YW	Milk	\$F	
+2.3	+49	+86	+29	+91	

11**FELTON WEIGH UP T1211**

Bull — calved 05/12/21 — tattoo T1211 — 20561655

PLATTEMERE WEIGH UP K360#
RVF WEIGH UP E2429
G A R TEN X A3018SITZ UPWARD 307R#
BARBARA OF PLATTEMERE 337#
A A R TEN X 7008 S A#
G A R 5050 NEW DESIGN A91FELTON BUSH HOG C597
FELTON C515 BURGESS T1277
FELTON 567 PAULA C515#B C C BUSHWACKER 41-93#
FELTON 8728 ERICA A390
SODAK CHATTER K339#
FAR 4250 H BEAUTY 567

Birth Wt	Act Wn Wt	NR	YR	— Dam's Production —	
82	690	104	102	6 WR 100	2 YR 97
Final Weight		Scrotal	REA	IMF	
1310		40	10.7	3.59	
BW	WW	YW	Milk	\$F	
+1.5	+59	+103	+32	+77	

15**FELTON WIDE TRACK T1251**

Bull — calved 05/09/21 — tattoo T1251 —

APEX WIDE TRACK 4401
FELTON WIDE TRACK 162F5
FELTON T958 F135 ANNE T1701APEX WIDE TRACK 545
APEXETTE BLACKCAP 5008
FELTON ANTARCTICA F135
FELTON A406 ULTRESS T958FELTON 1093 ULTRESS T1429
FELTON 2556 VIXON 1093RIMROCK ULTRASOUND 108
6026 FAR EILEEN 2556

Birth Wt	Act Wn Wt	NR	YR	— Dam's Production —	
82	665	99	99	5 WR 97	2 YR 94
Final Weight		Scrotal	REA	IMF	
1305		38	11.5	6.20	
BW	WW	YW	Milk	\$F	
na	na	na	na	na	

17		FELTON FIRST CLASS T861				
Bull — calved 05/25/21 — tattoo T861 — 20568060						
S A V FIRST CLASS 0207			S A V NET WORTH 4200#			
HYLINE FIRST CLASS 268			S A V DUKE GIRL 7348#			
HYLINE EILEENMERE 642			HYLINE NEW TREND 6602			
FELTON ANTARCTICA F135			HYLINE EILEENMERE 312#			
FELTON B324 ANNE T1073			LOST LAKE ANTARCTICA 683			
FELTON 8393 MISS SARA B324			FELTON 1587 EILEEN 9959#			
FAR 2100 L 45			5566 FAR BARBIE 8393			
— Dam's Production —						
Birth Wt	Act Wn Wt	NR	YR	5 WR 104	3 YR 104	
89	683	107	105			
Final Weight		Scrotal	REA	IMF		
1300		37	10.1	3.56		
BW	WW	YW	Milk	\$F		
I+2.9	I+54	I+89	I+23	+73		

21		FELTON MANIFEST 712 T1231				
Bull — calved 05/27/21 — tattoo T1231 — 20561657						
JINDRA MANIFEST			CONNELLY GUINNESS#			
OCC MANIFEST 712			JINDRA ENCHANTRESS J 301 025#			
OCC MONTANA DREAM 216			SITZ UPWARD 307R#			
BECKER FARMS BACKSTAP 3023			OCC MONTANA DREAM 601			
FELTON B528 JET T1217			SITZ ALLIANCE 6595#			
FELTON 8019 FERN B528#			BECKER FARMS ERICA 9982#			
A A R REALLY WINDY 1205#			FELTON 1547 ROYAL LASS 8019			
— Dam's Production —						
Birth Wt	Act Wn Wt	NR	YR	8 WR 98	4 YR 94	
83	650	103	103			
Final Weight		Scrotal	REA	IMF		
1270		37	10.3	4.86		
BW	WW	YW	Milk	\$F		
+1.6	+52	+89	+28	+75		

18		FELTON WIDE TRACK T1381				
Bull — calved 05/14/21 — tattoo T1381 — 20568027						
APEX WIDE TRACK 4401			APEX WIDE TRACK 545			
FELTON WIDE TRACK 162F5			APEXETTE BLACKCAP 5008			
FELTON T958 F135 ANNE T1701			FELTON ANTARCTICA F135			
C A UNIVERSE 650			FELTON A406 ULTRESS T958			
FELTON 8415 VAL T9017			BENSONS UNIVERSE 308			
FELTON C556 PAULA 8415			C A MISS FAME 172			
FELTON CHATTER C233			FELTON A338 ANITA C556			
— Dam's Production —						
Birth Wt	Act Wn Wt	NR	YR	4 WR 97	3 YR 99	
90	690	104	99			
Final Weight		Scrotal	REA	IMF		
1280		37	10.1	4.29		
BW	WW	YW	Milk	\$F		
I+3.8	I+53	I+83	I+25	+62		

22		FELTON SUPER DUTY T1391				
Bull — calved 05/18/21 — tattoo T1391 — 20561663						
MYTTY FOREFRONT 1094			MYTTY FOREFRONT 77P			
WRIGHT WAY SUPER DUTY 385			MYTTY BLACKCAP U370#			
TW ELA PRIDE 508Y			HARB PENDLETON 765 J H#			
HYLINE IMAGE MAKER 163			LCB BV PRIDE R3111			
FELTON PRIDE T703			HYLINE IMAGE MAKER 1048			
FELTON BJ 5768 ANN T1736			HYLINE EILEENMERE 928			
GODLEY OUTBACK 290			FELTON 8002 BJ ROSEMARY 5768			
— Dam's Production —						
Birth Wt	Act Wn Wt	NR	YR	2 WR 98	2 YR 100	
83	660	100	98			
Final Weight		Scrotal	REA	IMF		
1270		36	10.3	3.81		
BW	WW	YW	Milk	\$F		
+2.4	+54	+92	+21	+70		

19		FELTON FRONTMAN T1201				
Bull — calved 05/13/21 — tattoo T1201 — 20568021						
KESSLERS FRONTMAN R001#			CONNELLY FRONT PAGE 0228#			
DUTCH FLAT FRONTMAN 4512			KESSLERS BELL 0024			
DUTCH FLAT STAR AMBUSH 0510#			B/R NEW FRONTIER 095#			
FELTON ANTARCTICA F135 T983			DUTCH FLAT STAR AMBUSH 7107			
FELTON 4774 ANNE T1191#			FELTON ANTARCTICA F135			
FELTON A352 PAULA 4774#			FELTON C343 LADY 3244			
FELTON CHATTER C233			FELTON 5941 ERICA A352			
— Dam's Production —						
Birth Wt	Act Wn Wt	NR	YR	6 WR 103	3 YR 95	
82	687	100	93			
Final Weight		Scrotal	REA	IMF		
1275		38	10.1	4.24		
BW	WW	YW	Milk	\$F		
I+1.2	I+40	I+64	I+31	+58		

23		FELTON WIDE TRACK T1311				
Bull — calved 04/27/21 — tattoo T1311 — 20568025						
APEX WIDE TRACK 4401			APEX WIDE TRACK 545			
FELTON WIDE TRACK 162F5			APEXETTE BLACKCAP 5008			
FELTON T958 F135 ANNE T1701			FELTON ANTARCTICA F135			
FELTON ANTARCTICA F135 T983			FELTON A406 ULTRESS T958			
FELTON C598 ANNE T1611			FELTON ANTARCTICA F135			
FELTON A324 ANITA C598			FELTON C343 LADY 3244			
B C C BUSHWACKER 41-93#			FELTON 7344 JESTRESS A324			
— Dam's Production —						
Birth Wt	Act Wn Wt	NR	YR	1 WR 95	1 YR 94	
88	680	95	94			
Final Weight		Scrotal	REA	IMF		
1255		39	10.4	2.47		
BW	WW	YW	Milk	\$F		
I+3.0	I+50	I+79	I+25	+62		

20		FELTON REVOLUTION T1171				
Bull — calved 04/12/21 — tattoo T1171 — 20561653						
SVR REVOLUTION 3173			CANDOLIER FOREVER 376#			
HYLINE REVOLUTION 486			S C C ENCHANTRESS 3F1 X412			
DEHAANS ELLUNA 116			V D A R SENTINEL 3016			
SPRINGVALE IN FOCUS 743			VDAR ELLUNA 3771#			
FELTON T8023 COUNTESS T020			MYTTY IN FOCUS#			
FELTON C719 DUTCHESS T8023			SPRINGVALE RITA 407			
RALLY DUTCHESS 4022			FELTON 6448 NELLIE C719			
— Dam's Production —						
Birth Wt	Act Wn Wt	NR	YR	8 WR 97	3 YR 102	
73	698	97	97			
Final Weight		Scrotal	REA	IMF		
1270		36	10.2	3.98		
BW	WW	YW	Milk	\$F		
+0.6	+48	+77	+24	+56		

24		FELTON ARTILLARY T1361				
Bull — calved 05/24/21 — tattoo T1361 — 20561662						
CONNELLY ARTILLERY 4236			CONNELLY ARSENAL 2174#			
CLEAR CREEK ARTILLERY 893			DELLA OF CONANGA 130			
CCA ERICA LASSIE 260			SITZ UPWARD 307R#			
DUTCH FLAT FRONTMAN 4512			CCA ERICA LASSIE 607T			
FELTON 274F4 BELL 2397			KESSLERS FRONTMAN R001#			
FELTON T619 CRUZ 274F4			DUTCH FLAT STAR AMBUSH 0510#			
BOVAGENE APOLLO 011			FELTON 2024 ULTRESS T619			
— Dam's Production —						
Birth Wt	Act Wn Wt	NR	YR	1 WR 106	1 YR 102	
88	670	106	102			
Final Weight		Scrotal	REA	IMF		
1250		37	10.6	4.14		
BW	WW	YW	Milk	\$F		
+2.8	+63	+115	+31	+84		

25	FELTON REVOLUTION T131				
	Bull — calved 04/27/21 — tattoo T131 — 20561659				
SVR REVOLUTION 3173		CANDOLIER FOREVER 376#			
HYLINE REVOLUTION 486		S C C ENCHANTRESS 3F1 X412			
DEHAANS ELLUNA 116		V D A R SENTINEL 3016			
		VDAR ELLUNA 3771#			
DUTCH FLAT FRONTMAN 4512		KESSLERS FRONTMAN R001#			
FELTON BELL T1268		DUTCH FLAT STAR AMBUSH 0510#			
FELTON S1318 CHEY T4270		WRIGHTS GRIZ 49			
		FELTON 705 BLACKBIRD S1318			
Birth Wt	Act Wn Wt	NR	YR	— Dam's Production —	
79	674	99	93	1 WR 99	1 YR 93
Final Weight		Scrotal	REA	IMF	
1250		36	10.1	7.46	
BW	WW	YW	Milk	\$F	
+1.3	+47	+81	+28	+65	

32	FELTON FIRST CLASS T1131				
	Bull — calved 04/30/21 — tattoo T1131 — 20568019				
S A V FIRST CLASS 0207		S A V NET WORTH 4200#			
HYLINE FIRST CLASS 268		S A V DUKE GIRL 7348#			
HYLINE EILEENMERE 642		HYLINE NEW TREND 6602			
		HYLINE EILEENMERE 312#			
FELTON DUTCHMAN T964		RALLY DUTCHMAN 4022			
FELTON C683 DUTCHESS T1125		FELTON 8393 MISS SARA B324			
FELTON RJ 5838 NELLIE C683		GODLEY REALLY WINDY 705			
		FELTON 8605 RJ ERICA 5838			
Birth Wt	Act Wn Wt	NR	YR	— Dam's Production —	
91	689	100	118	5 WR 108	4 YR 109
Final Weight		Scrotal	REA	IMF	
1560		41	10.0	4.00	
BW	WW	YW	Milk	\$F	
I+4.7	I+55	I+100	I+23	+79	

26	FELTON WIDE TRACK T1341				
	Bull — calved 05/20/21 — tattoo T1341 — 20542724				
APEX WIDE TRACK 4401		APEX WIDE TRACK 545			
FELTON WIDE TRACK 162F5		APEXETTE BLACKCAP 5008			
FELTON T958 F135 ANNE T1701		FELTON ANTARCTICA F135			
		FELTON A406 ULTRESS T958			
BOVAGENE APOLLO 011		HIGH PRIME 4037#			
FELTON T1531 CRUZ 236F4		LONE CONE BLACKCAP 729			
FELTON 2394 COUNTESS T1531		SPRINGVALE IN FOCUS 743			
		FELTON C502 LADY KELTON 2394#			
Birth Wt	Act Wn Wt	NR	YR	— Dam's Production —	
82	720			3 WR 101	2 YR 96
Final Weight		Scrotal	REA	IMF	
1250		34	10.2	2.50	
BW	WW	YW	Milk	\$F	
I+2.1	I+52	I+84	I+26	+64	

33	FELTON ACE T1321				
	Bull — calved 06/29/21 — tattoo T1321 — commercial				
APEX WIDE TRACK 4401		APEX WIDE TRACK 545			
FELTON'S ACES 7		APEXETTE BLACKCAP 5008			
FELTON 5368 BURGESS T497#		FELTON BUSH HOG C597			
		FELTON 8973 NICOLE 5368			
FELTON BUSH HOG C597		B C C BUSHWACKER 41-93#			
FELTON 4453 BURGESS T1307		FELTON 8728 ERICA A390			
FELTON A318 PAULA 4453#		SODAK CHATTER K339#			
		FELTON 5878 LADY KELTON A318			
Birth Wt	Act Wn Wt	NR	YR	— Dam's Production —	
90	638	101	106	5 WR 97	3 YR 99
Final Weight		Scrotal	REA	IMF	
1505		40	11.8	4.08	
BW	WW	YW	Milk	\$F	
na	na	na	na	na	

Commercial Bull

27	FELTON FIRST CLASS T1261				
	Bull — calved 05/06/21 — tattoo T1261 — 20543759				
S A V FIRST CLASS 0207		S A V NET WORTH 4200#			
HYLINE FIRST CLASS 268		S A V DUKE GIRL 7348#			
HYLINE EILEENMERE 642		HYLINE NEW TREND 6602			
		HYLINE EILEENMERE 312#			
JINDRA PREDECESSOR		JINDRA 3RD DIMENSION			
FELTON FLOWER T1448		HOFF FLOWER SC 8303 748#			
FELTON 454 EBONY S348		APEX WIDE TRACK 545			
		FELTON B65 PRIDE 454#			
Birth Wt	Act Wn Wt	NR	YR	— Dam's Production —	
89	685	103	103	1 WR 103	na
Final Weight		Scrotal	REA	IMF	
na		37	10.3	5.67	
BW	WW	YW	Milk	\$F	
I+3.8	I+58	I+102	I+21	+77	

34	FELTON ACE T1071				
	Bull — calved 05/01/21 — tattoo T1071 — 20568016				
APEX WIDE TRACK 4401		APEX WIDE TRACK 545			
FELTON'S ACES 7		APEXETTE BLACKCAP 5008			
FELTON 5368 BURGESS T497#		FELTON BUSH HOG C597			
		FELTON 8973 NICOLE 5368			
HYLINE O'REILLY FACTOR 270		VIN-MAR O'REILLY FACTOR#			
FELTON T8111 GRETA T602		HYLINE LUCY 456			
FELTON C694 JUMBOLEEN T8111		GRANGER CINCHA 568			
		FELTON 6468 NELLIE C694			
Birth Wt	Act Wn Wt	NR	YR	— Dam's Production —	
82	674	95	109	1 WR 95	1 YR 109
Final Weight		Scrotal	REA	IMF	
1470		40	10.6	4.83	
BW	WW	YW	Milk	\$F	
I+1.9	I+45	I+89	I+29	+77	

28	FELTON ACE T191				
	Bull — calved 05/02/21 — tattoo T191 — 20568041				
APEX WIDE TRACK 4401		APEX WIDE TRACK 545			
FELTON'S ACES 7		APEXETTE BLACKCAP 5008			
FELTON 5368 BURGESS T497#		FELTON BUSH HOG C597			
		FELTON 8973 NICOLE 5368			
JINDRA MANIFEST		CONNELLY GUINNESS#			
FELTON 2424 MANDI T603		JINDRA ENCHANTRESS J 301 025#			
FELTON 286 ROSIE 2424		FELTON BOTTOMLINE C212			
		2569 FAR LADY LASS 286			
Birth Wt	Act Wn Wt	NR	YR	— Dam's Production —	
81	678	96	98	1 WR 96	1 YR 98
Final Weight		Scrotal	REA	IMF	
1275		37	9.6	3.64	
BW	WW	YW	Milk	\$F	
I+0.9	I+44	I+81	I+31	+69	

35	FELTON SUPER DUTY T551				
	Bull — calved 05/02/21 — tattoo T551 — 20561677				
MYTTY FOREFRONT 1094		MYTTY FOREFRONT 77P			
WRIGHT WAY SUPER DUTY 385		MYTTY BLACKCAP U370#			
TW ELA PRIDE 508Y		HARB PENDLETON 765 J H#			
		LCB BV PRIDE R3111			
HYLINE IMAGE MAKER 163		HYLINE IMAGE MAKER 1048			
FELTON T430 EILEENMERE T607		HYLINE EILEENMERE 928			
FELTON T547 COUNTESS T430		SPRINGVALE IN FOCUS 743			
		FELTON 5153 PAULA C233 T547			
Birth Wt	Act Wn Wt	NR	YR	— Dam's Production —	
79	673	95	111	1 WR 95	2 YR 107
Final Weight		Scrotal	REA	IMF	
1510		41	10.5	3.84	
BW	WW	YW	Milk	\$F	
+1.5	+53	+91	+20	+69	

36**FELTON WIDE TRACK T561**

Bull — calved 04/30/21 — tattoo T561 — pending

APEX WIDE TRACK 4401
 FELTON WIDE TRACK 162F5
 FELTON T958 F135 ANNE T1701

APEX WIDE TRACK 545
 APEXETTE BLACKCAP 5008
 FELTON ANTARCTICA F135
 FELTON A406 ULTRESS T958

FELTON WATER MARK S520
 FELTON BJ T1527 FERN 69F3
 FELTON BJ C662 PAULA T1527

WATER MARK 895 DRF
 FELTON 207 BLACKCAP 496#
 FELTON CHATTER C233
 FELTON BJ 5768 NELLIE C662

Birth Wt	Act Wn	Wt	NR	YR	— Dam's Production —					
		645	91	100	6 WR 97	5 YR 101				
		<i>Final Weight</i>	<i>Scrotal</i>		<i>REA</i>	<i>IMF</i>				
		1415	37		10.1	2.92				
	<i>BW</i>	<i>WW</i>	<i>YW</i>		<i>Milk</i>	<i>\$F</i>				
	na	na	na		na	na				

Waiting on genetic test results

40**FELTON ACE 691**

Bull — calved 04/10/21 — tattoo 691 — 20568006

APEX WIDE TRACK 4401
 FELTON'S ACES 7
 FELTON 5368 BURGESS T497#

APEX WIDE TRACK 545
 APEXETTE BLACKCAP 5008
 FELTON BUSH HOG C597
 FELTON 8973 NICOLE 5368

JINDRA MANIFEST
 FELTON MANDY 137F6
 FELTON T638 EILA F1332

CONNEALY GUINNESS#
 JINDRA ENCHANTRESS J 301 025#
 FELTON BOTTOMLINE T881
 FELTON VAL T638

Birth Wt	Act Wn	Wt	NR	YR	— Dam's Production —					
		82	689		1 WR 120	1 YR 106				
		<i>Final Weight</i>	<i>Scrotal</i>		<i>REA</i>	<i>IMF</i>				
		1390	40		10.0	5.31				
	<i>BW</i>	<i>WW</i>	<i>YW</i>		<i>Milk</i>	<i>\$F</i>				
	I+0.8	I+50	I+87		I+34	+70				

37**FELTON ACE T631**

Bull — calved 05/02/21 — tattoo T631 — 20568054

APEX WIDE TRACK 4401
 FELTON'S ACES 7
 FELTON 5368 BURGESS T497#

APEX WIDE TRACK 545
 APEXETTE BLACKCAP 5008
 FELTON BUSH HOG C597
 FELTON 8973 NICOLE 5368

CCA PENDLETON 013
 FELTON WP T600 BLACKLADYF272
 FELTON WP A339 QUEEN T600#

HARB PENDLETON 765 JH#
 VERMILION JK LASS 0312#
 FELTON BOTTOMLINE T797
 FELTON WP 9385 PRIDE191 A339

Birth Wt	Act Wn	Wt	NR	YR	— Dam's Production —					
		660	93	100	2 WR 97	2 YR 98				
		<i>Final Weight</i>	<i>Scrotal</i>		<i>REA</i>	<i>IMF</i>				
		1420	42		10.1	3.38				
	<i>BW</i>	<i>WW</i>	<i>YW</i>		<i>Milk</i>	<i>\$F</i>				
	I+1.1	I+46	I+85		I+28	+72				

41**FELTON ACE T1961**

Bull — calved 04/30/21 — tattoo T1961 — 20568043

APEX WIDE TRACK 4401
 FELTON'S ACES 7
 FELTON 5368 BURGESS T497#

APEX WIDE TRACK 545
 APEXETTE BLACKCAP 5008
 FELTON BUSH HOG C597
 FELTON 8973 NICOLE 5368

CCA PENDLETON 013
 FELTON T0117 BLACK LADY T21
 FELTON 6036 ANNE T0117

HARB PENDLETON 765 JH#
 VERMILION JK LASS 0312#
 FELTON ANTARCTICA F135
 FELTON 8885 EILA 6036

Birth Wt	Act Wn	Wt	NR	YR	— Dam's Production —					
		80	659	93	1 WR 93	1 YR 95				
		<i>Final Weight</i>	<i>Scrotal</i>		<i>REA</i>	<i>IMF</i>				
		1415	39		10.0	2.92				
	<i>BW</i>	<i>WW</i>	<i>YW</i>		<i>Milk</i>	<i>\$F</i>				
	I+0.7	I+39	I+73		I+30	+66				

38**FELTON MANIFEST 712 T1061**

Bull — calved 04/23/21 — tattoo T1061 — 20561647

JINDRA MANIFEST
 OCC MANIFEST 712
 OCC MONTANA DREAM 216

CONNEALY GUINNESS#
 JINDRA ENCHANTRESS J 301 025#
 SITZ UPWARD 307R#
 OCC MONTANA DREAM 601

FELTON BOTTOMLINE T881
 FELTON 1093 QUEEN T1301
 FELTON 2556 VIXON 1093

FELTON BOTTOMLINE C212
 FELTON 216 2028 PRIDE B300
 RIMROCK ULTRASOUND 108
 6026 FAR EILEEN 2556

Birth Wt	Act Wn	Wt	NR	YR	— Dam's Production —					
		86	702	97	5 WR 98	4 YR 98				
		<i>Final Weight</i>	<i>Scrotal</i>		<i>REA</i>	<i>IMF</i>				
		1390	38		10.4	3.15				
	<i>BW</i>	<i>WW</i>	<i>YW</i>		<i>Milk</i>	<i>\$F</i>				
	+1.4	+44	+78		+32	+73				

42**FELTON MANIFEST 712 T531**

Bull — calved 04/29/21 — tattoo T531 — 20561676

JINDRA MANIFEST
 OCC MANIFEST 712
 OCC MONTANA DREAM 216

CONNEALY GUINNESS#
 JINDRA ENCHANTRESS J 301 025#
 SITZ UPWARD 307R#
 OCC MONTANA DREAM 601

COLEMAN MIDLAND 404
 FELTON 690 BLACKCAP T852
 FELTON B324 EILA 690

BR MIDLAND#
 COLEMAN MISS WIX 911
 FELTON BOTTOMLINE C212
 FELTON 8393 MISS SARA B324

Birth Wt	Act Wn	Wt	NR	YR	— Dam's Production —					
		78	640	93	5 WR 97	3 YR 104				
		<i>Final Weight</i>	<i>Scrotal</i>		<i>REA</i>	<i>IMF</i>				
		1435	41		11.3	4.82				
	<i>BW</i>	<i>WW</i>	<i>YW</i>		<i>Milk</i>	<i>\$F</i>				
	+1.4	+47	+87		+28	+86				

39**FELTON WEIGH UP T801**

Bull — calved 05/02/21 — tattoo T901 — 20561683

PLATTEMERE WEIGH UP K360#
 RVF WEIGH UP E2429
 G A R TEN X A3018

SITZ UPWARD 307R#
 BARBARA OF PLATTEMERE 337#
 A A R TEN X 7008 S A#
 G A R 5050 NEW DESIGN A91

SPRINGVALE IN FOCUS 743
 FELTON T1217 COUNTESS T400
 FELTON B528 JET T1217

MYTTY IN FOCUS#
 SPRINGVALE RITA 407
 BECKER FARMS BACKSTAP 3023
 FELTON 8019 FERN B528#

Birth Wt	Act Wn	Wt	NR	YR	— Dam's Production —					
		80	668	98	5 WR 98	3 YR 103				
		<i>Final Weight</i>	<i>Scrotal</i>		<i>REA</i>	<i>IMF</i>				
		1405	42		10.1	3.02				
	<i>BW</i>	<i>WW</i>	<i>YW</i>		<i>Milk</i>	<i>\$F</i>				
	+2.1	+65	+117		+28	+101				

43**FELTON WIDE TRACK T1101**

Bull — calved 05/14/21 — tattoo T1101 — 20568017

APEX WIDE TRACK 4401
 FELTON WIDE TRACK 162F5
 FELTON T958 F135 ANNE T1701

APEX WIDE TRACK 545
 APEXETTE BLACKCAP 5008
 FELTON ANTARCTICA F135
 FELTON A406 ULTRESS T958

FELTON ANTARCTICA F135
 FELTON 8415 ANNE T179
 FELTON C556 PAULA 8415

LOST LAKE ANTARCTICA 683
 FELTON 1587 EILEEN 9959#
 FELTON CHATTER C233
 FELTON A338 ANITA C556

Birth Wt	Act Wn	Wt	NR	YR	— Dam's Production —					
		81	678	103	5 WR 101	3 YR 107				
		<i>Final Weight</i>	<i>Scrotal</i>		<i>REA</i>	<i>IMF</i>				
		1455	40		10.0	4.34				
	<i>BW</i>	<i>WW</i>	<i>YW</i>		<i>Milk</i>	<i>\$F</i>				
	I+1.4	I+51	I+90		I+26	+71				

44**FELTON ACE T521**

Bull — calved 04/30/21 — tattoo T521 — 20568048

APEX WIDE TRACK 4401
 FELTON'S ACES 7
 FELTON 5368 BURGESS T497#

APEX WIDE TRACK 545
 APEXETTE BLACKCAP 5008
 FELTON BUSH HOG C597
 FELTON 8973 NICOLE 5368

JINDRA MANIFEST
 FELTON S197 MANDI T65
 FELTON A16 ULTRESS S197

CONNELLY GUINNESS#
 JINDRA ENCHANTRESS J 301 025#
 WILLWOOD HALLMARK 2556
 FELTON 1296 MISS WIX A16#

Birth Wt	Act Wn Wt	NR	YR	— Dam's Production —	
83	674	95	100	1 WR 95	1 YR 100
Final Weight		Scrotal	REA	IMF	
1450		40	10.7	5.19	
BW	WW	YW	Milk	\$F	
I+1.2	I+46	I+86	I+34	+72	

48**FELTON REVOLUTION T1081**

Bull — calved 05/04/21 — tattoo T1081 — 20561648

SVR REVOLUTION 3173
 HYLINE REVOLUTION 486
 DEHAANS ELLUNA 116

CANDOLIER FOREVER 376#
 S C C ENCHANTRESS 3F1 X412
 V D A R SENTINEL 3016
 VDAR ELLUNA 3771#

FELTON ANTARCTICA F135 T983
 FELTON 5124 ANNE T1081
 FELTON 9529 PAULA 5124#

FELTON ANTARCTICA F135
 FELTON C343 LADY 3244
 FELTON CHATTER C233
 FELTON 906 LADY 9529

Birth Wt	Act Wn Wt	NR	YR	— Dam's Production —	
83	688	98	99	3 WR 95	3 YR 100
Final Weight		Scrotal	REA	IMF	
1300		37	11.0	6.58	
BW	WW	YW	Milk	\$F	
+1.7	+49	+78	+28	+61	

45**FELTON DOUBLE VISION T1011**

Bull — calved 05/04/21 — tattoo T1011 — 20561644

JINDRA DOUBLE VISION#
 HYLINE DOUBLE VISION 325
 HYLINE LUCY 456

CONNELLY REFLECTION#
 HOFF RACHEL 8312 405
 HYLINE RIGHT TIME 338#
 HYLINE LUCY 763

FELTON BACKSTRAP T723
 FELTON A338 JET T240
 FELTON 196 LADY KELTON A338

BECKER FARMS BACKSTAP 3023
 FELTON 8885 FERN 2113#
 A A R REALLY WINDY 1205#
 2659 FAR LADY LASS 196

Birth Wt	Act Wn Wt	NR	YR	— Dam's Production —	
79	689	101	97	5 WR 100	3 YR 97
Final Weight		Scrotal	REA	IMF	
1390		38	10.3	4.47	
BW	WW	YW	Milk	\$F	
+2.0	+54	+95	+21	+74	

49**FELTON FIRST CLASS T641**

Bull — calved 05/02/21 — tattoo T641 — 20568055

S A V FIRST CLASS 0207
 HYLINE FIRST CLASS 268
 HYLINE EILEENMERE 642

S A V NET WORTH 4200#
 S A V DUKE GIRL 7348#
 HYLINE NEW TREND 6602
 HYLINE EILEENMERE 312#

JINDRA MANIFEST
 FELTON T50 MANDI T698
 FELTON T1608 EVERELDA T50

CONNELLY GUINNESS#
 JINDRA ENCHANTRESS J 301 025#
 HARB PENDELTON 765 J H#
 FELTON B504 ULTRESS T1608

Birth Wt	Act Wn Wt	NR	YR	— Dam's Production —	
80	649	92	97	1 WR 92	1 YR 97
Final Weight		Scrotal	REA	IMF	
1300		39	11.8	3.96	
BW	WW	YW	Milk	\$F	
I+1.9	I+51	I+90	I+28	+73	

46**FELTON BUSH HOG T511**

Bull — calved 04/23/21 — tattoo T511 — 20568047

S A V FIRST CLASS 0207
 HYLINE FIRST CLASS 268
 HYLINE EILEENMERE 642

S A V NET WORTH 4200#
 S A V DUKE GIRL 7348#
 HYLINE NEW TREND 6602
 HYLINE EILEENMERE 312#

HYLINE O'REILLY FACTOR 270
 FELTON T980 GRETA T5119
 FELTON 5174 DUCHESS T980

VIN-MAR O'REILLY FACTOR#
 HYLINE LUCY 456
 RALLY DUTCHMAN 4022
 FELTON A503 PAULA 5174

Birth Wt	Act Wn Wt	NR	YR	— Dam's Production —	
84	689	95	95	2 WR 99	1 YR 95
Final Weight		Scrotal	REA	IMF	
1340		43	10.2	5.67	
BW	WW	YW	Milk	\$F	
I+2.8	I+50	I+83	I+23	+67	

50**FELTON SURENUFF T1301**

Bull — calved 06/03/21 — tattoo T1301 — 20561658

STEVENSON SURENUFF 2017
 CLEAR CREEK SURENUFF 402
 CCA BLACKBIRD 208

KESSLERS FRONTMAN R001#
 STEVENSON ROSE 962
 A A R TEN X 9903#
 CCA BLACKBIRD 604T

FELTON ANTARCTICA F135
 FELTON RJ 639 ANNE T150
 FELTON RJ B169 ANN 639

LOST LAKE ANTARCTICA 683
 FELTON 1587 EILEEN 9959#
 GODLEY OUTBACK 290
 FELTON RJ 7004 ENTENSE B169

Birth Wt	Act Wn Wt	NR	YR	— Dam's Production —	
81	630	102	106	6 WR 102	3 YR 98
Final Weight		Scrotal	REA	IMF	
1300		41	10.3	4.95	
BW	WW	YW	Milk	\$F	
+1.2	+48	+91	+28	+89	

47**FELTON SURENUFF 402 T91**

Bull — calved 04/21/21 — tattoo T91 — 20561684

STEVENSON SURENUFF 2017
 CLEAR CREEK SURENUFF 402
 CCA BLACKBIRD 208

KESSLERS FRONTMAN R001#
 STEVENSON ROSE 962
 A A R TEN X 9903#
 CCA BLACKBIRD 604T

FELTON HALLMARK 8335
 FELTON RJ 6668 ULTRESS T490
 FELTON 2549 RJ ROSEMARY 6668

WILLWOOD HALLMARK 2556
 FELTON 636 EILEEN A379
 TOMWALL D V COMMODORE 2143
 7047 FAR ERICA 2549

Birth Wt	Act Wn Wt	NR	YR	— Dam's Production —	
83	673	96	100	5 WR 101	3 YR 98
Final Weight		Scrotal	REA	IMF	
1340		38	10.7	3.01	
BW	WW	YW	Milk	\$F	
+1.2	+39	+78	+28	+81	

51**FELTON SURENUFF T1951**

Bull — calved 05/29/21 — tattoo T1951 — 20568042

KESSLERS FRONTMAN R001#
 DUTCH FLAT FRONTMAN 4512
 DUTCH FLAT STAR AMBUSH 0510#

CONNELLY FRONT PAGE 0228#
 KESSLERS BELL 0024
 B/R NEW FRONTIER 095#
 DUTCH FLAT STAR AMBUSH 7107

BOVAGENE APOLLO 011
 FELTON T925 KR CRUZ T2102
 FELTON T71 KR QUEEN T925

HIGH PRIME 4037#
 LONE CONE BLACKCAP 729
 ADAMS ACRES IDITAROD 427
 FELTON KR ANN T71

Birth Wt	Act Wn Wt	NR	YR	— Dam's Production —	
88	685	106	98	5 WR 103	3 YR 99
Final Weight		Scrotal	REA	IMF	
1315		38	10.0	3.96	
BW	WW	YW	Milk	\$F	
+1.7	+49	+80	+28	+81	

52	FELTON WIDE TRACK T501				
Bull — calved 05/03/21 — tattoo T501 — commercial					
APEX WIDE TRACK 4401			APEX WIDE TRACK 545		
FELTON WIDE TRACK 162F5			APEXETTE BLACKCAP 5008		
FELTON T958 F135 ANNE T1701			FELTON ANTARCTICA F135		
			FELTON A406 ULTRESS T958		
FELTON WATER MARK S800			WATER MARK 895 DRF		
FELTON B430 FERN T5100			FELTON C14 FERN 23 674#		
FELTON 6928 QUEEN B430			FAR DIVIDENDS PAYCHECK 2536		
			FELTON 7244 PEARL 6928		
Birth Wt	Act Wn Wt	NR	YR	— Dam's Production —	
84	659	98	101	na	na
Final Weight		Scrotal	REA	IMF	
1295		38	10.0	4.32	
BW	WW	YW	Milk	\$F	
na	na	na	na	na	

Commercial Bull

53	FELTON FIRST CLASS T571				
Bull — calved 05/02/21 — tattoo T571 — 20568050					
S A V FIRST CLASS 0207			S A V NET WORTH 4200#		
HYLINE FIRST CLASS 268			S A V DUKE GIRL 7348#		
HYLINE EILEENMERE 642			HYLINE NEW TREND 6602		
			HYLINE EILEENMERE 312#		
GRANGER SASQUATCH 680			HYLINE SASQUATCH 513		
FELTON 5838 EILEENMERE T598			GRANGER PRIDE 275		
FELTON 8605 RJ ERICA 5838			FAR CLYDE 1695		
			2549 FAR RUBY J F 8605#		
Birth Wt	Act Wn Wt	NR	YR	— Dam's Production —	
82	661	97	101	8 WR 101	5 YR 99
Final Weight		Scrotal	REA	IMF	
1295		36	10.0	4.71	
BW	WW	YW	Milk	\$F	
I+3.6	I+44	I+78	I+24	+69	

54	FELTON FIRST CLASS T761				
Bull — calved 05/21/21 — tattoo T761 — 20568059					
S A V FIRST CLASS 0207			S A V NET WORTH 4200#		
HYLINE FIRST CLASS 268			S A V DUKE GIRL 7348#		
HYLINE EILEENMERE 642			HYLINE NEW TREND 6602		
			HYLINE EILEENMERE 312#		
COLEMAN MIDLAND 404			BR MIDLAND#		
FELTON 4724 BLACKCAP T26			COLEMAN MISS WIX 911		
FELTON A386 PAULA 4724			FELTON CHATTER C227		
			FELTON 7284 STORMY A386		
Birth Wt	Act Wn Wt	NR	YR	— Dam's Production —	
79	659	102	103	2 WR 97	2 YR 101
Final Weight		Scrotal	REA	IMF	
1295		40	11.0	6.58	
BW	WW	YW	Milk	\$F	
I+1.7	I+49	I+84	I+19	+69	

55	FELTON FRONTMAN T681				
Bull — calved 04/30/21 — tattoo T681 — 20561681					
KESSLERS FRONTMAN R001#			CONNELLY FRONT PAGE 0228#		
DUTCH FLAT FRONTMAN 4512			KESSLERS BELL 0024		
DUTCH FLAT STAR AMBUSH 0510#			B/R NEW FRONTIER 095#		
			DUTCH FLAT STAR AMBUSH 7107		
HYLINE O'REILLY FACTOR 270			VIN-MAR O'REILLY FACTOR#		
FELTON T228 GRETA T672			HYLINE LUCY 456		
FELTON ULTRESS T228			FELTON HALLMARK 8335		
			FELTON 8669 QUEEN C650		
Birth Wt	Act Wn Wt	NR	YR	— Dam's Production —	
79	656	92	98	2 WR 96	1 YR 98
Final Weight		Scrotal	REA	IMF	
1285		37	10.1	4.26	
BW	WW	YW	Milk	\$F	
+1.1	+40	+73	+27	+87	

56	FELTON REVOLUTION T1051				
Bull — calved 05/04/21 — tattoo T1051 — 20561646					
SVR REVOLUTION 3173			CANDOLIER FOREVER 376#		
HYLINE REVOLUTION 486			S C C ENCHANTRESS 3F1 X412		
DEHAANS ELLUNA 116			V D A R SENTINEL 3016		
			VDAR ELLUNA 3771#		
FELTON HALLMARK 8335			WILLWOOD HALLMARK 2556		
FELTON 5243 PRIDE T1329			FELTON 636 EILEEN A379		
FELTON 9089 BURNADETT 5243			R P BWK 866-131		
			FELTON 296 ROYAL LASS 9089		
Birth Wt	Act Wn Wt	NR	YR	— Dam's Production —	
83	654	96	102	5 WR 99	3 YR 101
Final Weight		Scrotal	REA	IMF	
1285		36	10.2	3.03	
BW	WW	YW	Milk	\$F	
+1.9	+45	+78	+27	+63	

57	FELTON SUPER DUTY T621				
Bull — calved 05/06/21 — tattoo T621 — 20561679					
MYTTY FOREFRONT 1094			MYTTY FOREFRONT 77P		
WRIGHT WAY SUPER DUTY 385			MYTTY BLACKCAP U370#		
TW ELA PRIDE 508Y			HARB PENDLETON 765 J H#		
			LCB BV PRIDE R3111		
DUTCH FLAT FRONTMAN 4512			KESSLERS FRONTMAN R001#		
FELTON B517 BELL T6227			DUTCH FLAT STAR AMBUSH 0510#		
FELTON 9149 FERN B517			A A R REALLY WINDY 1205#		
			FELTON 6161 NICOLE 9149		
Birth Wt	Act Wn Wt	NR	YR	— Dam's Production —	
85	691	99	91	2 WR 98	2 YR 93
Final Weight		Scrotal	REA	IMF	
1275		38	10.1	4.54	
BW	WW	YW	Milk	\$F	
+2.2	+48	+85	+24	+68	

59	FELTON WIDE TRACK T541				
Bull — calved 05/01/21 — tattoo T541 — 20568049					
APEX WIDE TRACK 4401			APEX WIDE TRACK 545		
FELTON WIDE TRACK 162F5			APEXETTE BLACKCAP 5008		
FELTON T958 F135 ANNE T1701			FELTON ANTARCTICA F135		
			FELTON A406 ULTRESS T958		
APEX WIDE TRACK 4401			APEX WIDE TRACK 545		
FELTON T1217 ETTE T595			APEXETTE BLACKCAP 5008		
FELTON B528 JET T1217			BECKER FARMS BACKSTAP 3023		
			FELTON 8019 FERN B528#		
Birth Wt	Act Wn Wt	NR	YR	— Dam's Production —	
87	678	96	97	1 WR 96	1 YR 97
Final Weight		Scrotal	REA	IMF	
1285		39	11.0	2.82	
BW	WW	YW	Milk	\$F	
I+2.5	I+51	I+87	I+25	+68	

60	FELTON WIDE TRACK T691				
Bull — calved 04/12/21 — tattoo T691 — pending					
APEX WIDE TRACK 4401			APEX WIDE TRACK 545		
FELTON WIDE TRACK 162F5			APEXETTE BLACKCAP 5008		
FELTON T958 F135 ANNE T1701			FELTON ANTARCTICA F135		
			FELTON A406 ULTRESS T958		
JINDRA MANIFEST			CONNELLY GUINNESS#		
FELTON EILEENMERE 136F6			JINDRA ENCHANTRESS J 301 025#		
FELTON T457 COUNTESS T300			SPRINGVALE IN FOCUS 743		
			FELTON 5178 BURGESS T457		
Birth Wt	Act Wn Wt	NR	YR	— Dam's Production —	
83	704	97	na	1 WR 97	na
Final Weight		Scrotal	REA	IMF	
1250		32	10.0	3.34	
BW	WW	YW	Milk	\$F	
na	na	na	na	na	

61	FELTON REVOLUTION T1641				
	Bull — calved 05/27/21 — tattoo T1641 — 20561672				
SVR REVOLUTION 3173		CANDOLIER FOREVER 376#			
HYLINE REVOLUTION 486		S C C ENCHANTRESS 3F1 X412			
DEHAANS ELLUNA 116		V D A R SENTINEL 3016			
		VDAR ELLUNA 3771#			
APEX WIDE TRACK 4401		APEX WIDE TRACK 545			
FELTON T981 ETTE T5110		APEXETTE BLACKCAP 5008			
FELTON C719 PRIDE T981		LOST LAKE ANTARCTICA 683			
		FELTON 6448 NELLIE C719			
Birth Wt	Act Wn Wt	NR	YR	— Dam's Production —	
82	628	96	98	2 WR 99	2 YR 98
Final Weight		Scrotal	REA	IMF	
na		36	10.4	2.27	
BW	WW	YW	Milk	\$F	
+1.3	+53	+86	+27	+63	

65	FELTON WIDE TRACK 651				
	Bull — calved 04/30/21 — tattoo 651 — 20568005				
APEX WIDE TRACK 4401		APEX WIDE TRACK 545			
FELTON WIDE TRACK 162F5		APEXETTE BLACKCAP 5008			
FELTON T958 F135 ANNE T1701		FELTON ANTARCTICA F135			
		FELTON A406 ULTRESS T958			
APEX WIDE TRACK 4401		APEX WIDE TRACK 545			
FELTON B319 ETTE T4242		APEXETTE BLACKCAP 5008			
FELTON 1386 MISS SARA B319		FAR 2100 L 45			
		8043 FAR MARRIOTTA 1386#			
Birth Wt	Act Wn Wt	NR	YR	— Dam's Production —	
80	667	94	98	3 WR 101	3 YR 103
Final Weight		Scrotal	REA	IMF	
1395		39	10.3	3.86	
BW	WW	YW	Milk	\$F	
I+1.7	I+48	I+84	I+27	+68	

62	FELTON ACE T1971				
	Bull — calved 04/24/21 — tattoo T1971 — 20568044				
APEX WIDE TRACK 4401		APEX WIDE TRACK 545			
FELTON'S ACES 7		APEXETTE BLACKCAP 5008			
FELTON 5368 BURGESS T497#		FELTON BUSH HOG C597			
		FELTON 8973 NICOLE 5368			
ROCK'N D DATELINE 2821		ROCK'N D DATELINE 2414			
FELTON T2029 BLACK CAP T220		DESIGN BLACKCAP OF RDR 2551			
FELTON 4453 BURGESS T1307		FELTON BUSH HOG C597			
		FELTON A318 PAULA 4453#			
Birth Wt	Act Wn Wt	NR	YR	— Dam's Production —	
81	699	97	91	2 WR 99	2 YR 94
Final Weight		Scrotal	REA	IMF	
na		na	11.2	2.53	
BW	WW	YW	Milk	\$F	
I+0.7	I+42	I+72	I+30	+64	

66	FELTON BUSH HOG S121				
	Bull — calved 05/26/21 — tattoo S121 — 20568007				
B C C BUSHWACKER 41-93#		PARAMONT AMBUSH 2172#			
FELTON BUSH HOG C597		R CANITA T BANDO 918903			
FELTON 8728 ERICA A390		FAR CLYDE 1695			
		1644 F A R SARA 8728#			
FELTON DUTCHMAN T964		RALLY DUTCHMAN 4022			
FELTON 2434 DUTCHESS T1002		FELTON 8393 MISS SARA B324			
FELTON 125 ROSIE 2434		FELTON BOTTOMLINE C212			
		6121 FAR 201 TRAVELER 125			
Birth Wt	Act Wn Wt	NR	YR	— Dam's Production —	
90	664	104	106	5 WR 105	3 YR 103
Final Weight		Scrotal	REA	IMF	
1395		34	10.7	3.19	
BW	WW	YW	Milk	\$F	
I+2.8	I+48	I+85	I+28	+82	

63	FELTON FIRST CLASS T1421				
	Bull — calved 05/15/21 — tattoo T1421 — 20568030				
S A V FIRST CLASS 0207		S A V NET WORTH 4200#			
HYLINE FIRST CLASS 268		S A V DUKE GIRL 7348#			
HYLINE EILEENMERE 642		HYLINE NEW TREND 6602			
		HYLINE EILEENMERE 312#			
HARB PENDLETON 765 J H#		S A V FINAL ANSWER 0035#			
FELTON T1608 EVERELDA T50		H A R B BLACK LADY 375 J H#			
FELTON B504 ULTRESS T1608		FELTON HALLMARK 2044			
		FELTON 9129 FERN B504			
Birth Wt	Act Wn Wt	NR	YR	— Dam's Production —	
82	702	106	95	6 WR 109	2 YR 93
Final Weight		Scrotal	REA	IMF	
1575		42	11.2	2.53	
BW	WW	YW	Milk	\$F	
I+2.5	I+51	I+79	I+26	+75	

67	FELTON CRUISER S921				
	Bull — calved 05/12/21 — tattoo S921 — 20561642				
JINDRA MEGA HIT		HOFF BLOCKBUSTER SC 929 1612			
JINDRA CRUISER		HOFF SWEETHEART S C 216			
JINDRA STOCKQUEEN J 837 011		SEARS GILBERT SA70 STARPOWER			
		JINDRA STOCKQUEEN J 543 837			
SPRINGVALE IN FOCUS 743		MYTTY IN FOCUS#			
FELTON T457 COUNTESS T300		SPRINGVALE RITA 407			
FELTON 5178 BURGESS T457		FELTON BUSH HOG C597			
		FELTON 346 95 LASS 5178			
Birth Wt	Act Wn Wt	NR	YR	— Dam's Production —	
92	660	99	103	5 WR 98	4 YR 100
Final Weight		Scrotal	REA	IMF	
1390		38	11.6	3.62	
BW	WW	YW	Milk	\$F	
+5.3	+67	+119	+23	+100	

64	FELTON MANIFEST 712 11				
	Bull — calved 05/29/21 — tattoo 11 — 20561634				
JINDRA MANIFEST		CONNELLY GUINNESS#			
OCC MANIFEST 712		JINDRA ENCHANTRESS J 301 025#			
OCC MONTANA DREAM 216		SITZ UPWARD 307R#			
		OCC MONTANA DREAM 601			
APEX WIDE TRACK 4401		APEX WIDE TRACK 545			
FELTON T925 KR ETTE T4205		APEXETTE BLACKCAP 5008			
FELTON T71 KR QUEEN T925		ADAMS ACRES IDITAROD 427			
		FELTON KR ANN T71			
Birth Wt	Act Wn Wt	NR	YR	— Dam's Production —	
81	677	104	116	5 WR 99	3 YR 106
Final Weight		Scrotal	REA	IMF	
1560		40	10.4	2.27	
BW	WW	YW	Milk	\$F	
+0.8	+58	+100	+29	+78	

68	FELTON MANIFEST 712 T1581				
	Bull — calved 05/12/21 — tattoo T1581 — 20561669				
JINDRA MANIFEST		CONNELLY GUINNESS#			
OCC MANIFEST 712		JINDRA ENCHANTRESS J 301 025#			
OCC MONTANA DREAM 216		SITZ UPWARD 307R#			
		OCC MONTANA DREAM 601			
FELTON ANTARCTICA F135		LOST LAKE ANTARCTICA 683			
FELTON B8 ANNE T3413		FELTON 1587 EILEEN 9959#			
FELTONS 5859 LADY KELTON B8		A A R REALLY WINDY 1205#			
		FELTON 1487 NELLIE 5859			
Birth Wt	Act Wn Wt	NR	YR	— Dam's Production —	
85	656	96	102	4 WR 97	3 YR 99
Final Weight		Scrotal	REA	IMF	
na		37	na	na	
BW	WW	YW	Milk	\$F	
+1.2	+49	+90	+27	+75	

69**FELTON MANIFEST 712 311**

Bull — calved 05/13/21 — tattoo 311 — 20561635

JINDRA MANIFEST
OCC MANIFEST 712
OCC MONTANA DREAM 216

CONNEALY GUINNESS#
JINDRA ENCHANTRESS J 301 025#
SITZ UPWARD 307R#
OCC MONTANA DREAM 601

HYLINE O'REILLY FACTOR 270
FELTON EDELLA 478

VIN-MAR O'REILLY FACTOR#
HYLINE LUCY 456

FELTON A318 LADY T3433

CCA PENDLETON 013
FELTON 5878 LADY KELTON A318

Birth Wt	Act Wn Wt	NR	YR	— Dam's Production —	
83	639	99	106	1 WR 99	1 YR 106
Final Weight		Scrotal	REA	IMF	
1415		38	11.1	4.71	
BW	WW	YW	Milk	\$F	
+2.2	+54	+97	+31	+73	

73**FELTON WIDE TRACK T1531**

Bull — calved 05/19/21 — tattoo T1531 — pending

APEX WIDE TRACK 4401
FELTON WIDE TRACK 162F5
FELTON T958 F135 ANNE T1701

APEX WIDE TRACK 545
APEXETTE BLACKCAP 5008
FELTON ANTARCTICA F135
FELTON A406 ULTRESS T958

CCA PENDLETON 013
FELTONRJ T150 BLACKLADY T031
FELTON RJ 639 ANNE T150

HARB PENDLETON 765 JH#
VERMILION JK LASS 0312#
FELTON ANTARCTICA F135
FELTON RJ B169 ANN 639

Birth Wt	Act Wn Wt	NR	YR	— Dam's Production —	
81	675	100	99	3 WR 95	3 YR 97
Final Weight		Scrotal	REA	IMF	
1350		40	12.0	3.64	
BW	WW	YW	Milk	\$F	
na	na	na	na	na	

70**FELTON SUPER DUTY 81**

Bull — calved 05/28/21 — tattoo 81 — 20561639

MYTTY FOREFRONT 1094
WRIGHT WAY SUPER DUTY 385
TW ELA PRIDE 508Y

MYTTY FOREFRONT 77P
MYTTY BLACKCAP U370#
HARB PENDLETON 765 JH#
LCB BV PRIDE R3111

HYLINE O'REILLY FACTOR 270
FELTON 674 GRETA T418 1
FELTON C14 FERN 23 674#

VIN-MAR O'REILLY FACTOR#
HYLINE LUCY 456
BAIRDS REALLY WINDY 23
FELTON A16 MISS FERN C14#

Birth Wt	Act Wn Wt	NR	YR	— Dam's Production —	
80	660	101	105	3 WR 103	3 YR 103
Final Weight		Scrotal	REA	IMF	
1430		37	10.8	3.26	
BW	WW	YW	Milk	\$F	
+2.5	+57	+100	+26	+74	

74**FELTON BUSH HOG S1921**

Bull — calved 05/30/21 — tattoo S1921 — 20568010

B C C BUSHWACKER 41-93#
FELTON BUSH HOG C597
FELTON 8728 ERICA A390

PARAMONT AMBUSH 2172#
R C ANITA T BANDO 918903
FAR CLYDE 1695
1644 F A R SARA 8728#

JINDRA DESCRIPTION J 507
FELTON 853 REFLECTION T0598
FELTON 137 PAULA 853

JINDRA DOUBLE VISION#
JINDRAS PRETTY PICTURE J 304
SODAK CHATTER K339#
FAR 2039 MARSHA 137

Birth Wt	Act Wn Wt	NR	YR	— Dam's Production —	
89	698	108	104	2 WR 101	1 YR 104
Final Weight		Scrotal	REA	IMF	
1330		35	na	na	
BW	WW	YW	Milk	\$F	
I+3.2	I+54	I+90	I+23	+70	

71**FELTON FIRST CLASS T1551**

Bull — calved 05/20/21 — tattoo T1551 — 20568037

S A V FIRST CLASS 0207
HYLINE FIRST CLASS 268
HYLINE EILEENMERE 642

S A V NET WORTH 4200#
S A V DUKE GIRL 7348#
HYLINE NEW TREND 6602
HYLINE EILEENMERE 312#

FELTON WATER MARK S800
FELTON T966 FERN T5127
FELTON C343 PRIDE T966

WATER MARK 895 DRF
FELTON C14 FERN 23 674#
LOST LAKE ANTARCTICA 683
FELTON 5448 A146 PRIDE C343

Birth Wt	Act Wn Wt	NR	YR	— Dam's Production —	
85	660	99	101	2 WR 104	2 YR 102
Final Weight		Scrotal	REA	IMF	
1360		40	10.3	4.16	
BW	WW	YW	Milk	\$F	
I+2.7	I+44	I+77	I+26	+67	

75**FELTON ARTILLERY T701**

Bull — calved 05/03/21 — tattoo T701 — 20561682

CONNEALY ARTILLERY 4236
CLEAR CREEK ARTILLERY 893
CCA ERICA LASSIE 260

CONNEALY ARSENAL 2174#
DELLA OF CONANGA 130
SITZ UPWARD 307R#
CCA ERICA LASSIE 607T

JINDRA MANIFEST
FELTON MANDY T7067
FELTON T1490 FERN T5131

CONNEALY GUINNESS#
JINDRA ENCHANTRESS J 301 025#
FELTON WATER MARK S800
FELTON 4704 JET T1490

Birth Wt	Act Wn Wt	NR	YR	— Dam's Production —	
81	698	101	94	1 WR 101	1 YR 94
Final Weight		Scrotal	REA	IMF	
1295		36	na	na	
BW	WW	YW	Milk	\$F	
+1.7	+63	+117	+33	+86	

72**FELTON WIDE TRACK T1511**

Bull — calved 05/27/21 — tattoo T1511 — 20568036

APEX WIDE TRACK 4401
FELTON WIDE TRACK 162F5
FELTON T958 F135 ANNE T1701

APEX WIDE TRACK 545
APEXETTE BLACKCAP 5008
FELTON ANTARCTICA F135
FELTON A406 ULTRESS T958

FELTON BACKSTRAP T723
FELTON 1513 JET T184
FELTON 2536 VIXON 1513

BECKER FARMS BACKSTAP 3023
FELTON 8885 FERN 2113#
RIMROCK ULTRASOUND 108
7124 FAR EILEEN 2536

Birth Wt	Act Wn Wt	NR	YR	— Dam's Production —	
85	670	106	102	2 WR 105	2 YR 101
Final Weight		Scrotal	REA	IMF	
1360		40	10.1	2.98	
BW	WW	YW	Milk	\$F	
I+2.4	I+51	I+84	I+25	+65	

76**FELTON BUSH HOG T1451**

Bull — calved 05/30/21 — tattoo T1451 — 20568033

B C C BUSHWACKER 41-93#
FELTON BUSH HOG C597
FELTON 8728 ERICA A390

PARAMONT AMBUSH 2172#
R C ANITA T BANDO 918903
FAR CLYDE 1695
1644 F A R SARA 8728#

APEX WIDE TRACK 4401
FELTON T2426 ETT T4245
FELTON 8129 FERN T2426

APEX WIDE TRACK 545
APEXETTE BLACKCAP 5008
FELTON REALLY WINDY A138
FELTON 4860 H BEAUTY 8129

Birth Wt	Act Wn Wt	NR	YR	— Dam's Production —	
84	685	106	104	2 WR 101	2 YR 103
Final Weight		Scrotal	REA	IMF	
1370		37	10.5	3.22	
BW	WW	YW	Milk	\$F	
I+1.5	I+53	I+90	I+26	+81	

78		FELTON ACE 581				
Bull — calved 05/23/21 — tattoo 581 — 20568004						
APEX WIDE TRACK 4401		APEX WIDE TRACK 545			APEXETTE BLACKCAP 5008	
FELTON'S ACES 7		FELTON BUSH HOG C597			FELTON 8973 NICOLE 5368	
FELTON 5368 BURGESS T497#		HIGH PRIME 4037#			LONE CONE BLACKCAP 729	
BOVAGENE APOLLO 011		ADAMS ACRES IDITAROD 427			FELTON RJ 6668 ULTRESS 8765	
FELTON RJ T814 PRIME T2169		FELTON RJ 8765 QUEEN T814				
Birth Wt		Act Wn	Wt	NR	YR	
91	639	96	99	3 WR 100	3 YR 101	
Final Weight		Scrotal		REA	IMF	
1335		40		10.5	2.43	
BW	WW	YW		Milk	\$F	
I+3.2	I+45	I+81		I+30	+82	

82		FELTON ARTILLARY 361				
Bull — calved 05/05/21 — tattoo 361 — 20561636						
CONNEALY ARTILLERY 4236		CONNEALY ARSENAL 2174#			DELLA OF CONANGA 130	
CLEAR CREEK ARTILLERY 893		SITZ UPWARD 307R#			CCA ERICA LASSIE 607T	
CCA ERICA LASSIE 260		HIGH PRIME 4037#			LONE CONE BLACKCAP 729	
BOVAGENE APOLLO 011		CA UNIVERSE 650			FELTON 4020 ANNE 8659	
FELTON T1128 PRIME T3478		FELTON 8659 VAL T1128				
Birth Wt		Act Wn	Wt	NR	YR	
86	701	100	97	2 WR 109	2 YR 101	
Final Weight		Scrotal		REA	IMF	
1350		40		11.2	4.64	
BW	WW	YW		Milk	\$F	
+3.6	+63	+110		+32	+78	

79		FELTON BUSH HOG S221				
Bull — calved 05/05/21 — tattoo S221 — 20568011						
B C C BUSHWACKER 41-93#		PARAMONT AMBUSH 2172#			RC ANITA T BANDO 918903	
FELTON BUSH HOG C597		FAR CLYDE 1695			1644 F A R SARA 8728#	
FELTON 8728 ERICA A390		RALLY DUTCHMAN 4022			FELTON 8393 MISS SARA B324	
FELTON DUTCHMAN T964		FELTON HALLMARK 8335			FELTON 5368 NELLIE C737	
FELTON T085 EMPRESS T4119		FELTON C737 ULTRESS T085				
Birth Wt		Act Wn	Wt	NR	YR	
90	684	97	98	3 WR 94	4 YR 102	
Final Weight		Scrotal		REA	IMF	
1335		40		11.3	2.92	
BW	WW	YW		Milk	\$F	
I+3.3	I+49	I+89		I+22	+74	

83		FELTON ACES 341				
Bull — calved 05/03/21 — tattoo 341 — 20568003						
APEX WIDE TRACK 4401		APEX WIDE TRACK 545			APEXETTE BLACKCAP 5008	
FELTON'S ACES 7		FELTON BUSH HOG C597			FELTON 8973 NICOLE 5368	
FELTON 5368 BURGESS T497#		APEX WIDE TRACK 4401			APEXETTE BLACKCAP 5008	
APEX WIDE TRACK 4401		FELTON 2264 ETTE T3389			WILLWOOD HALLMARK 2556	
FELTON 2264 ETTE T3389		FELTON C520 ULTRESS 2264			FELTON 9739 PAULA C520#	
Birth Wt		Act Wn	Wt	NR	YR	
87	644	91	96	4 WR 97	3 YR 102	
Final Weight		Scrotal		REA	IMF	
1295		35		10.1	3.25	
BW	WW	YW		Milk	\$F	
I+2.6	I+43	I+80		I+30	+87	

80		FELTON WIDE TRACK T1411				
Bull — calved 04/30/21 — tattoo T1411 — commercial						
APEX WIDE TRACK 4401		APEX WIDE TRACK 545			APEXETTE BLACKCAP 5008	
FELTON WIDE TRACK 162F5		FELTON ANTARCTICA F135			FELTON A406 ULTRESS T958	
FELTON T958 F135 ANNE T1701		FELTON DUTCHMAN T7019			BC BLACKCAP EFFIE 2104	
CCA DUTCHMAN 071		RALLY DUTCHMAN 4022			FELTON A2 VIXON 413	
FELTON T1559 EMPRESS T3111		FELTON 413 DUCHESS T1559				
Birth Wt		Act Wn	Wt	NR	YR	
89	681	96	97	3 WR 97	3 YR 100	
Final Weight		Scrotal		REA	IMF	
1315		36		10.0	3.63	
BW	WW	YW		Milk	\$F	
na	na	na		na	na	

84		FELTON WEIGH UP 661				
Bull — calved 05/24/21 — tattoo 661 — 20561638						
SVR REVOLUTION 3173		CANDOLIER FOREVER 376#			S C C ENCHANTRESS 3F1 X412	
HYLINE REVOLUTION 486		V D A R SENTINEL 3016			VDAR ELLUNA 3771#	
DEHAANS ELLUNA 116		BECKER FARMS BACKSTAP 3023			FELTON 8885 FERN 2113#	
FELTON BACKSTRAP T723		FELTON HALLMARK 8335			FELTON 1957 PAULA C521	
FELTON T1280 FERN T1327		FELTON C521 ULTRESS T1280				
Birth Wt		Act Wn	Wt	NR	YR	
87	648	98	102	3 WR 98	4 YR 103	
Final Weight		Scrotal		REA	IMF	
1285		37		10.0	5.03	
BW	WW	YW		Milk	\$F	
+2.9	+50	+88		+25	+69	

81		FELTON ARTILLERY 1461				
Bull — calved 06/02/21 — tattoo T1461 — 20554376						
CONNEALY ARTILLERY 4236		CONNEALY ARSENAL 2174#			DELLA OF CONANGA 130	
CLEAR CREEK ARTILLERY 893		SITZ UPWARD 307R#			CCA ERICA LASSIE 607T	
CCA ERICA LASSIE 260		WATER MARK 895 DRF			FELTON C14 FERN 23 674#	
FELTON WATER MARK S800		FELTON ANTARCTICA F135			FELTON 8149 BLACKBIRD C711	
FELTON T1129 FERN T5118		FELTON C711 ANNE T1129				
Birth Wt		Act Wn	Wt	NR	YR	
80	655	103	105	2 WR 101	1 YR 105	
Final Weight		Scrotal		REA	IMF	
1280		38		11.3	2.96	
BW	WW	YW		Milk	\$F	
+2.2	+60	+110		+31	+85	

85		FELTON SUPER DUTY T1611				
Bull — calved 05/09/21 — tattoo T1611 — 20561670						
MYTTY FOREFRONT 1094		MYTTY FOREFRONT 77P			MYTTY BLACKCAP U370#	
WRIGHT WAY SUPER DUTY 385		HARB PENDELTON 765 J H#			LCB BV PRIDE R3111	
TW ELA PRIDE 508Y		JINDRA MANIFEST			OCC MONTANA DREAM 216	
OCC MANIFEST 712		FELTON DREAM 3319			RALLY DUTCHMAN 4022	
FELTON DREAM 3319		FELTON B550 DUTCHESS T1529			FELTON 5578 PRIDE 2028 B550	
Birth Wt		Act Wn	Wt	NR	YR	
79	660	105	105	1 WR 105	1 YR 105	
Final Weight		Scrotal		REA	IMF	
1320		39		11.2	4.21	
BW	WW	YW		Milk	\$F	
+2.9	+60	+101		+26	+70	

86**FELTON MANIFEST 712 T1541**

Bull — calved 05/12/21 — tattoo T1541 — 20561667

JINDRA MANIFEST
OCC MANIFEST 712
OCC MONTANA DREAM 216

MARDA WILLIE NELSON 564
FELTON DUTCHESS 4759
FELTON T958 CHEY T5211

CONNELLY GUINNESS#
JINDRA ENCHANTRESS J 301 025#

SITZ UPWARD 307R#
OCC MONTANA DREAM 601

BALDRIDGE WILLIE Y34
MF ASTI 016

WRIGHTS GRIZ 49
FELTON A406 ULTRESS T958

Birth Wt	Act Wn Wt	NR	YR	— Dam's Production —		
79	640	103	106	1 WR 103	1 YR 106	
Final Weight		Scrotal	REA	IMF		
1275		36	12.8	2.48		
BW	WW	YW	Milk	\$F		
+2.7	+58	+104	+31	+78		

91**FELTON SUPER DUTY T1571**

Bull — calved 05/29/21 — tattoo T1571 — 20561668

MYTTY FOREFRONT 1094
WRIGHT WAY SUPER DUTY 385
TW ELA PRIDE 508Y

GRANGER SASQUATCH 680
FELTON T1277 EILEENMERE T250
FELTON C515 BURGESS T1277

MYTTY FOREFRONT 77P
MYTTY BLACKCAP U370#

HARB PENDLETON 765 J H#
LCB BV PRIDE R3111

HYLINE SASQUATCH 513
GRANGER PRIDE 275

FELTON BUSH HOG C597
FELTON 567 PAULA C515#

Birth Wt	Act Wn Wt	NR	YR	— Dam's Production —		
88	660	105	105	2 WR 102	1 YR 105	
Final Weight		Scrotal	REA	IMF		
1260		37	10.4	7.06		
BW	WW	YW	Milk	\$F		
+3.6	+57	+97	+24	+70		

87**FELTON WEIGH UP 1281**

Bull — calved 11/01/21 — tattoo 1281 — 20564059

PLATTEMERE WEIGH UP K360#
RVF WEIGH UP E2429
G A R TEN X A3018

CCA DUTCHMAN 071
FELTON T1809 DUTCHESS 160F4
FELTON 9959 DUCHESS T1809

SITZ UPWARD 307R#
BARBARA OF PLATTEMERE 337#

A A R TEN X 7008 S A#
G A R 5050 NEW DESIGN A91

FELTON DUTCHMAN T7019
BC BLACKCAP EFFIE 2104

RALLY DUTCHMAN 4022
FELTON 1587 EILEEN 9959#

Birth Wt	Act Wn Wt	NR	YR	— Dam's Production —		
80	698	102	97	3 WR 104	3 YR 96	
Final Weight		Scrotal	REA	IMF		
1280		39	11.4	3.29		
BW	WW	YW	Milk	\$F		
+1.5	+58	+100	+33	+85		

95**FELTON SUPER DUTY T321**

Bull — calved 04/21/21 — tattoo T321 — 20561675

MYTTY FOREFRONT 1094
WRIGHT WAY SUPER DUTY 385
TW ELA PRIDE 508Y

FELTON DUTCHMAN T964
FELTON T1829 DUTCHESS T3119
FELTON A305 DUCHESS T1829

MYTTY FOREFRONT 77P
MYTTY BLACKCAP U370#

HARB PENDLETON 765 J H#
LCB BV PRIDE R3111

RALLY DUTCHMAN 4022
FELTON 8393 MISS SARA B324

RALLY DUTCHMAN 4022
FELTON 8723 PRINCESS A305

Birth Wt	Act Wn Wt	NR	YR	— Dam's Production —		
89	674	93	90	2 WR 93	4 YR 98	
Final Weight		Scrotal	REA	IMF		
1235		34	10.0	5.56		
BW	WW	YW	Milk	\$F		
+3.6	+53	+92	+20	+76		

89**FELTON MANIFEST 712 T1481**

Bull — calved 05/29/21 — tattoo T1481 — 20561664

JINDRA MANIFEST
OCC MANIFEST 712
OCC MONTANA DREAM 216

HYLINE O'REILLY FACTOR 270
FELTON T9006 GRETA T467
FELTON 5678 ANNE T9006

CONNELLY GUINNESS#
JINDRA ENCHANTRESS J 301 025#

SITZ UPWARD 307R#
OCC MONTANA DREAM 601

VIN-MAR O'REILLY FACTOR#
HYLINE LUCY 456

FELTON ANTARCTICA F135
FELTON 8533 ROSEMARY 5678

Birth Wt	Act Wn Wt	NR	YR	— Dam's Production —		
80	645	100	102	2 WR 98	1 YR 102	
Final Weight		Scrotal	REA	IMF		
1260		39	11.0	3.04		
BW	WW	YW	Milk	\$F		
+1.8	+53	+94	+32	+71		

96**FELTON SUPER DUTY T1041**

Bull — calved 05/05/21 — tattoo T1041 — 20561645

MYTTY FOREFRONT 1094
WRIGHT WAY SUPER DUTY 385
TW ELA PRIDE 508Y

FELTON ANTARCTICA F135 T983
FELTON B535 ANNE T1371
FELTON 8479 FERN B535

MYTTY FOREFRONT 77P
MYTTY BLACKCAP U370#

HARB PENDLETON 765 J H#
LCB BV PRIDE R3111

FELTON ANTARCTICA F135
FELTON C343 LADY 3244

A A R REALLY WINDY 1205#
FELTON 8893 BLACKBIRD 8479

Birth Wt	Act Wn Wt	NR	YR	— Dam's Production —		
92	649	93	94	3 WR 99	3 YR 95	
Final Weight		Scrotal	REA	IMF		
1230		39	10.4	2.84		
BW	WW	YW	Milk	\$F		
+2.9	+39	+70	+24	+78		

90**FELTON BUSH HOG S2521**

Bull — calved 05/28/21 — tattoo S2521 — 20568012

B C C BUSHWACKER 41-93#
FELTON BUSH HOG C597
FELTON 8728 ERICA A390

FELTON DUTCHMAN T964
FELTON 3244 EMPRESS T464
FELTON C343 LADY 3244

PARAMONT AMBUSH 2172#
R C ANITA T BANDO 918903

FAR CLYDE 1695
1644 F A R SARA 8728#

RALLY DUTCHMAN 4022
FELTON 8393 MISS SARA B324

BAR S NIGHT MOVES 1129
FELTON 5448 A146 PRIDE C343

Birth Wt	Act Wn Wt	NR	YR	— Dam's Production —		
80	668	103	102	4 WR 97	4 YR 101	
Final Weight		Scrotal	REA	IMF		
1265		36	10.4	4.84		
BW	WW	YW	Milk	\$F		
I+2.1	I+54	I+92	I+23	+79		

97**FELTON BOND T1521**

Bull — calved 05/07/21 — tattoo T1521 — 20561666

MERIT BOND 6007D
MLG BOND 8005
MLG PAULINE 31B

JINDRA MAVERICK
FELTON ROSELLA 3339
FELTON C515 BURGESS T1277

BAR S RANGE BOSS 4002
MERIT JILT 4040

JL AUTHORITY 2098
MLG PAULINE 1Z

JINDRA 3RD DIMENSION
JINDRA ROSELLA J 825 323#

FELTON BUSH HOG C597
FELTON 567 PAULA C515#

Birth Wt	Act Wn Wt	NR	YR	— Dam's Production —		
86	668	106	107	1 WR 106	1 YR 107	
Final Weight		Scrotal	REA	IMF		
1225		36	10.0	3.37		
BW	WW	YW	Milk	\$F		
+3.7	+56	+98	+26	+73		

99		FELTON BUSH HOG S2321				
Bull — calved 04/21/21 — tattoo S2321 — commercial						
B C C BUSHWACKER 41-93# FELTON BUSH HOG C597 FELTON 8728 ERICA A390			PARAMONT AMBUSH 2172# R C ANITA T BANDO 918903 FAR CLYDE 1695 1644 F A R SARA 8728# APEX VANGUARD 136 CONTRACT ANNE 2816 LLR WATER MARK 895 DRF FELTONS 127 MISS WIX B46			
LOST LAKE HEAD START U188 FELTON S628 BELL S1030 FELTON B46 ULTRESS 895 S628			— Dam's Production —			
Birth Wt	Act Wn Wt	NR	YR			
82	698			4 WR 100	4 YR 101	
Final Weight		Scrotal	REA	IMF		
1225		34	10.7	2.73		
BW	WW	YW	Milk	\$F		
na	na	na	na	na		

Commercial Bull

100		FELTON WEIGH UP T1001				
Bull — calved 05/13/21 — tattoo T1001 — 20561643						
PLATTEMERE WEIGH UP K360# RVF WEIGH UP E2429 G A R TEN X A3018			SITZ UPWARD 307R# BARBARA OF PLATTEMERE 337# A A R TEN X 7008 S A# G A R 5050 NEW DESIGN A91 LOST LAKE ANTARCTICA 683 FELTON 1587 EILEEN 9959# FELTON REALLY WINDY A138 4140 FAR NICOLE 8885			
FELTON ANTARCTICA F135 FELTON 2114 ANNE T092 FELTON 8885 FERN 2113#			— Dam's Production —			
Birth Wt	Act Wn Wt	NR	YR			
89	691	104	99	6 WR 104	6 YR 95	
Final Weight		Scrotal	REA	IMF		
1235		37	11.0	5.49		
BW	WW	YW	Milk	\$F		
+2.2	+54	+100	+35	+79		

101		FELTON REVOLUTION T1121				
Bull — calved 05/12/21 — tattoo T1121 — 20561649						
SVR REVOLUTION 3173 HYLINE REVOLUTION 486 DEHAANS ELLUNA 116			CANDOLIER FOREVER 376# S C C ENCHANTRESS 3F1 X412 V D A R SENTINEL 3016 VDAR ELLUNA 3771# LOST LAKE ANTARCTICA 683 FELTON 1587 EILEEN 9959# BUSHS GRAND DESIGN# FELTON 1497 PAULA C32			
FELTON ANTARCTICA F135 FELTON 64 ANNE T187 FELTON C32 DESIGN 64			— Dam's Production —			
Birth Wt	Act Wn Wt	NR	YR			
90	668	100	95	5 WR 102	3 YR 100	
Final Weight		Scrotal	REA	IMF		
1220		38	10.3	4.95		
BW	WW	YW	Milk	\$F		
+3.7	+49	+83	+28	+63		

102		FELTON REVOLUTION T1401				
Bull — calved 05/28/21 — tattoo T1401 — pending						
SVR REVOLUTION 3173 HYLINE REVOLUTION 486 DEHAANS ELLUNA 116			CANDOLIER FOREVER 376# S C C ENCHANTRESS 3F1 X412 V D A R SENTINEL 3016 VDAR ELLUNA 3771# WATER MARK 895 DRF FELTON 207 BLACKCAP 496# C A UNIVERSE 650 FELTON 9089 BURNADETT 5243			
FELTON WATER MARK S520 FELTON T58 FERN S520 185F3 FELTON 5243 VAL T58			— Dam's Production —			
Birth Wt	Act Wn Wt	NR	YR			
75	691	106	101	3 WR 104	2 YR 97	
Final Weight		Scrotal	REA	IMF		
1220		38	10.0	3.96		
BW	WW	YW	Milk	\$F		
na	na	na	na	na		

2-year-old Bulls

103		FELTON WEIGH UP T1631				
Bull — calved 05/01/21 — tattoo T1631 — 20561671						
PLATTEMERE WEIGH UP K360# RVF WEIGH UP E2429 G A R TEN X A3018			SITZ UPWARD 307R# BARBARA OF PLATTEMERE 337# A A R TEN X 7008 S A# G A R 5050 NEW DESIGN A91 HARB PENDLETON 765 J H# VERMILION JK LASS 0312# FELTON HALLMARK 8335 FELTON 337 ERICA A369			
CCA PENDLETON 013 FELTON T1210 BLACK LADY T306 FELTON A369 ULTRESS T1210			— Dam's Production —			
Birth Wt	Act Wn Wt	NR	YR			
90	675	95	103	4 WR 95	1 YR 103	
Final Weight		Scrotal	REA	IMF		
1320		39	10.0	3.01		
BW	WW	YW	Milk	\$F		
+1.7	+54	+101	+30	+92		

104		FELTON WIDE TRACK T1621				
Bull — calved 05/13/21 — tattoo T1621 — 20568040						
APEX WIDE TRACK 4401 FELTON WIDE TRACK 162F5 FELTON T958 F135 ANNE T1701			APEX WIDE TRACK 545 APEXETTE BLACKCAP 5008 FELTON ANTARCTICA F135 FELTON A406 ULTRESS T958 CONNEALY GUINNESS# JINDRA ENCHANTRESS J 301 025# BOVAGENE APOLLO 011 FELTON 4774 ANNE T1191#			
JINDRA MANIFEST FELTON MANDY 228F6 FELTON T1191 CRUZ 235F4			— Dam's Production —			
Birth Wt	Act Wn Wt	NR	YR			
80	681	102	98	1 WR 102	1 YR 98	
Final Weight		Scrotal	REA	IMF		
1210		36	10.0	4.71		
BW	WW	YW	Milk	\$F		
I+1.7	I+57	I+93	I+29	na		

105		FELTON ACE T611				
Bull — calved 05/04/21 — tattoo T611 — 20568053						
APEX WIDE TRACK 4401 FELTON'S ACES 7 FELTON 5368 BURGESS T497#			APEX WIDE TRACK 545 APEXETTE BLACKCAP 5008 FELTON BUSH HOG C597 FELTON 8973 NICOLE 5368 WATER MARK 895 DRF FELTON C14 FERN 23 674# CCA PENDLETON 013 FELTON T1236 JET T071			
FELTON WATER MARK S800 FELTON T210 FERN T6220 FELTON T071 BLACKLADY T210			— Dam's Production —			
Birth Wt	Act Wn Wt	NR	YR			
87	689	98	93	3 WR 101	1 YR 93	
Final Weight		Scrotal	REA	IMF		
1215		38	11.0	6.58		
BW	WW	YW	Milk	\$F		
I+2.5	I+45	I+78	I+30	+81		

107		FELTON SURENUFF T1281				
Bull — calved 05/23/21 — tattoo T1281 — pending						
STEVENSON SURENUFF 2017 CLEAR CREEK SURENUFF 402 CCA BLACKBIRD 208			KESSLERS FRONTMAN R001# STEVENSON ROSE 962 A A R TEN X 9903# CCA BLACKBIRD 604T MYTTY FOREFRONT 1094 TW ELA PRIDE 508Y CCA PENDLETON 013 FELTON A369 ULTRESS T1210			
WRIGHT WAY SUPER DUTY 385 FELTON PRIDE T148 FELTON T1210 BLACK LADY T306			— Dam's Production —			
Birth Wt	Act Wn Wt	NR	YR			
83	650	104	104	1 WR 104	na	
Final Weight		Scrotal	REA	IMF		
1205		34	10.0	4.32		
BW	WW	YW	Milk	\$F		
na	na	na	na	na		

108 FELTON MANIFEST 712 T1491

Bull — calved 04/30/21 — tattoo T1491 — 20561665

JINDRA MANIFEST
OCC MANIFEST 712
OCC MONTANA DREAM 216

CONNELLY GUINNESS#
JINDRA ENCHANTRESS J 301 025#

SITZ UPWARD 307R#
OCC MONTANA DREAM 601

CCA PENDLETON 004
FELTON 2424 LASS T3417
FELTON 2536 PAULA 2424T

HARB PENDLETON 765 JH#
VERMILION JK LASS 0312#

SODAK CHATTER K339#
7124 FAR EILEEN 2536

Birth Wt	Act Wn Wt	NR	YR	— Dam's Production —		
84	645	91	94	4 WR 99	3 YR 97	
Final Weight		Scrotal	REA	IMF		
1200		36	10.1	4.26		
BW	WW	YW	Milk	\$F		
+1.9	+47	+84	+27	+80		



All bulls will be freeze branded before delivery

110 FELTON ACE T139

Bull — calved 05/06/21 — tattoo T139 — 20568028

APEX WIDE TRACK 4401
FELTON'S ACES 7
FELTON 5368 BURGESS T497#

APEX WIDE TRACK 545
APEXETTE BLACKCAP 5008

FELTON BUSH HOG C597
FELTON 8973 NICOLE 5368

RALLY DUTCHMAN 4022
FELTON B550 DUTCHESS T1529
FELTON 5578 PRIDE 2028 B550

RALLY DUTCHMAN 219
RALLY BLACK EMPRESS 58

FELTON STOCKMAN 2028
FELTON 5341 NICOLE 5578

Birth Wt	Act Wn Wt	NR	YR	— Dam's Production —		
82	673	99	96	6 WR 99	5 YR 98	
Final Weight		Scrotal	REA	IMF		
1190		36	10.2	3.42		
BW	WW	YW	Milk	\$F		
I+2.9	I+52	I+84	I+27	+65		

114 FELTON WIDE TRACK S2621

Bull — calved 06/03/21 — tattoo S2621 — 20568013

APEX WIDE TRACK 4401
FELTON WIDE TRACK 162F5
FELTON T958 F135 ANNE T1701

APEX WIDE TRACK 545
APEXETTE BLACKCAP 5008

FELTON ANTARCTICA F135
FELTON A406 ULTRESS T958

CCA DUTCHMAN 071
FELTON 5174 BLACKCAP T2114
FELTON A503 PAULA 5174

FELTON DUTCHMAN T7019
BC BLACKCAP EFFIE 2104

FELTON CHATTER C233
FELTON 1967 PRIDE A503#

Birth Wt	Act Wn Wt	NR	YR	— Dam's Production —		
85	653	102	97	5 WR 104	4 YR 97	
Final Weight		Scrotal	REA	IMF		
1190		35	10.1	5.03		
BW	WW	YW	Milk	\$F		
I+2.7	I+55	I+87	I+25	+63		

111 FELTON WIDE TRACK T1371

Bull — calved 05/30/21 — tattoo T1371 — 20568026

APEX WIDE TRACK 4401
FELTON WIDE TRACK 162F5
FELTON T958 F135 ANNE T1701

APEX WIDE TRACK 545
APEXETTE BLACKCAP 5008

FELTON ANTARCTICA F135
FELTON A406 ULTRESS T958

ROCK'N D DATELINE 2821
FELTON T689 AMY T201
FELTON A300 VAL T689

ROCK'N D DATELINE 2414
DESIGN BLACKCAP OF RDR 2551

C A UNIVERSE 650
FELTON 7764 ERICA A300

Birth Wt	Act Wn Wt	NR	YR	— Dam's Production —		
84	671	107	96	2 WR 99	2 YR 93	
Final Weight		Scrotal	REA	IMF		
1200		34	11.0	2.71		
BW	WW	YW	Milk	\$F		
I+1.4	I+49	I+76	I+26	+61		

115 FELTON CRUISER S3121

Bull — calved 05/23/21 — tattoo S3121 — 20561641

JINDRA MEGA HIT
JINDRA CRUISER
JINDRA STOCKQUEEN J 837 011

HOFF BLOCKBUSTER SC 929 1612
HOFF SWEETHEART S C 216

SEARS GILBERT SA70 STARPOWER
JINDRA STOCKQUEEN J 543 837

FELTON HALLMARK 8335
FELTON T1209 EILEEN T056
FELTON 4784 ULTRESS T1209

WILLWOOD HALLMARK 2556
FELTON 636 EILEEN A379

FELTON HALLMARK 8335
FELTON A417 PAULA 4784

Birth Wt	Act Wn Wt	NR	YR	— Dam's Production —		
88	664	100	104	2 WR 99	2 YR 104	
Final Weight		Scrotal	REA	IMF		
1200		36	10.0	5.31		
BW	WW	YW	Milk	\$F		
+3.1	+59	+110	+24	+90		

112 FELTON WIDE TRACK T1111

Bull — calved 05/26/21 — tattoo T1111 — 20568018

APEX WIDE TRACK 4401
FELTON WIDE TRACK 162F5
FELTON T958 F135 ANNE T1701

APEX WIDE TRACK 545
APEXETTE BLACKCAP 5008

FELTON ANTARCTICA F135
FELTON A406 ULTRESS T958

FELTON ANTARCTICA F135
FELTON 4574 ANNE T172
FELTON 8819 LADY KELTON 4574

LOST LAKE ANTARCTICA 683
FELTON 1587 EILEEN 9959#

FELTON REALLY WINDY A138
FELTON 5381 MARSHA 8819

Birth Wt	Act Wn Wt	NR	YR	— Dam's Production —		
90	683	107	103	5 WR 98	3 YR 95	
Final Weight		Scrotal	REA	IMF		
1190		35	10.0	3.34		
BW	WW	YW	Milk	\$F		
I+2.8	I+50	I+76	I+25	+60		

117 FELTON REVOLUTION T591

Bull — calved 04/30/21 — tattoo T591 — 20561678

SVR REVOLUTION 3173
HYLINE REVOLUTION 486
DEHAANS ELLUNA 116

CANDOLIER FOREVER 376#
S C C ENCHANTRESS 3F1 X412

V D A R SENTINEL 3016
VDAR ELLUNA 3771#

FELTON DATELINE T385
FELTON S307 AMY T594
FELTON 5629 ULTRESS S307

ROCK'N D DATELINE 2821
FELTON C569 ANNE T1238

WATER MARK 895 DRF
FELTON 847 EDELLA 5629

Birth Wt	Act Wn Wt	NR	YR	— Dam's Production —		
80	695	98	97	3 WR 99	3 YR 94	
Final Weight		Scrotal	REA	IMF		
1200		34	10.6	2.41		
BW	WW	YW	Milk	\$F		
+0.1	+46	+72	+27	+56		

118	FELTON ACE T351				
Bull — calved 04/23/21 — tattoo T351 — 20568045					
APEX WIDE TRACK 4401			APEX WIDE TRACK 545		
FELTON'S ACES 7			APEXETTE BLACKCAP 5008		
FELTON 5368 BURGESS T497#			FELTON BUSH HOG C597		
			FELTON 8973 NICOLE 5368		
FELTON CHATTER C233			SODAK CHATTER K339#		
FELTON A338 PAULA T477			2769 FAR E SARA 7624		
FELTON 196 LADY KELTON A338			A A R REALLY WINDY 1205#		
			2659 FAR LADY LASS 196		
— Dam's Production —					
Birth Wt	Act Wn Wt	NR	YR		
86	703	100	98	8 WR 99	4 YR 101
Final Weight		Scrotal	REA	IMF	
1165		35	10.1	5.19	
BW	WW	YW	Milk	\$F	
I+3.0	I+50	I+87	I+25	+83	

122	FELTON REVOLUTION T1161				
Bull — calved 04/26/21 — tattoo T1161 — 20561652					
SVR REVOLUTION 3173			CANDOLIER FOREVER 376#		
HYLINE REVOLUTION 486			S C C ENCHANTRESS 3F1 X412		
DEHAANS ELLUNA 116			V D A R SENTINEL 3016		
			VDAR ELLUNA 3771#		
FELTON BACKSTRAP T723			BECKER FARMS BACKSTAP 3023		
FELTON T2086 JET T0159			FELTON 8885 FERN 2113#		
FELTON 8569 ULTRESS T2086			WILLWOOD HALLMARK 2556		
			FELTON 6122 H BEAUTY 8569		
— Dam's Production —					
Birth Wt	Act Wn Wt	NR	YR		
76	701	101	97	5 WR 101	3 YR 99
Final Weight		Scrotal	REA	IMF	
1160		38	11.8	3.96	
BW	WW	YW	Milk	\$F	
+1.0	+50	+81	+26	+65	

119	FELTON BUSH HOG T1471				
Bull — calved 05/10/21 — tattoo T1471 — 20568034					
B C C BUSHWACKER 41-93#			PARAMONT AMBUSH 2172#		
FELTON BUSH HOG C597			R C ANITA T BANDO 918903		
FELTON 8728 ERICA A390			FAR CLYDE 1695		
			1644 F A R SARA 8728#		
HYLINE O'REILLY FACTOR 270			VIN-MAR O'REILLY FACTOR#		
FELTON T50 GRETA T4124			HYLINE LUCY 456		
FELTON T1608 EVERELDA T50			HARB PENDLETON 765 J H#		
			FELTON B504 ULTRESS T1608		
— Dam's Production —					
Birth Wt	Act Wn Wt	NR	YR		
85	679	98	98	3 WR 98	3 YR 100
Final Weight		Scrotal	REA	IMF	
1170		34	10.5	3.84	
BW	WW	YW	Milk	\$F	
I+3.2	I+52	I+92	I+27	+74	

124	FELTON BUSH HOG T1431				
Bull — calved 06/01/21 — tattoo T1431 — 20568031					
B C C BUSHWACKER 41-93#			PARAMONT AMBUSH 2172#		
FELTON BUSH HOG C597			R C ANITA T BANDO 918903		
FELTON 8728 ERICA A390			FAR CLYDE 1695		
			1644 F A R SARA 8728#		
CCA DUTCHMAN 071			FELTON DUTCHMAN T7019		
FELTON T437 KR EFFIE T5113			BC BLACKCAP EFFIE 2104		
FELTON KR 9069 BURGESS T437			FELTON BUSH HOG C597		
			FELTON K1536 ROYEL LASS 9069		
— Dam's Production —					
Birth Wt	Act Wn Wt	NR	YR		
90	641	100	104	3 WR 99	2 YR 108
Final Weight		Scrotal	REA	IMF	
1160		38	10.2	2.50	
BW	WW	YW	Milk	\$F	
I+3.3	I+55	I+96	I+23	+85	

120	FELTON SURENUFF 402 T1651				
Bull — calved 05/20/21 — tattoo T1651 — 20561673					
STEVENS SURENUFF 2017			KESSLERS FRONTMAN R001#		
CLEAR CREEK SURENUFF 402			STEVENS ROSE 962		
CCA BLACKBIRD 208			A A R TEN X 9903#		
			CCA BLACKBIRD 604T		
FELTON HALLMARK 8335			WILLWOOD HALLMARK 2556		
FELTON C737 ULTRESS T085			FELTON 636 EILEEN A379		
FELTON 5368 NELLIE C737			GODLEY REALLY WINDY 705		
			FELTON 8973 NICOLE 5368		
— Dam's Production —					
Birth Wt	Act Wn Wt	NR	YR		
90	694	107	99	7 WR 100	4 YR 98
Final Weight		Scrotal	REA	IMF	
1185		37	10.2	2.99	
BW	WW	YW	Milk	\$F	
+2.4	+52	+101	+26	+81	

125	FELTON ACE T1241				
Bull — calved 05/19/21 — tattoo T1241 — 20568022					
APEX WIDE TRACK 4401			APEX WIDE TRACK 545		
FELTON'S ACES 7			APEXETTE BLACKCAP 5008		
FELTON 5368 BURGESS T497#			FELTON BUSH HOG C597		
			FELTON 8973 NICOLE 5368		
GRANGER SASQUATCH 680			HYLINE SASQUATCH 513		
FELTON T497 EILEENMERE T130			GRANGER PRIDE 275		
FELTON 5368 BURGESS T497#			FELTON BUSH HOG C597		
			FELTON 8973 NICOLE 5368		
— Dam's Production —					
Birth Wt	Act Wn Wt	NR	YR		
82	655	101	97	6 WR 105	2 YR 99
Final Weight		Scrotal	REA	IMF	
1135		35	11.7	1.89	
BW	WW	YW	Milk	\$F	
I+2.8	I+47	I+84	I+32	+90	

121	FELTON FIRST CLASS T581				
Bull — calved 04/28/21 — tattoo T581 — 20568051					
S A V FIRST CLASS 0207			S A V NET WORTH 4200#		
HYLINE FIRST CLASS 268			S A V DUKE GIRL 7348#		
HYLINE EILEENMERE 642			HYLINE NEW TREND 6602		
			HYLINE EILEENMERE 312#		
FELTON HALLMARK 8335			WILLWOOD HALLMARK 2556		
FELTON 2024 ULTRESS T619			FELTON 636 EILEEN A379		
FELTON C523 ULTRESS 2024			WILLWOOD HALLMARK 2556		
			FELTON 2556 PAULA C523		
— Dam's Production —					
Birth Wt	Act Wn Wt	NR	YR		
90	688	99	93	6 WR 97	5 YR 97
Final Weight		Scrotal	REA	IMF	
1165		38	10.1	3.38	
BW	WW	YW	Milk	\$F	
I+2.1	I+41	I+68	I+21	+55	

126	FELTON WIDE TRACK T1601				
Bull — calved 05/01/21 — tattoo T1601 — 20568039					
APEX WIDE TRACK 4401			APEX WIDE TRACK 545		
FELTON WIDE TRACK 162F5			APEXETTE BLACKCAP 5008		
FELTON T958 F135 ANNE T1701			FELTON ANTARCTICA F135		
			FELTON A406 ULTRESS T958		
FELTON BACKSTRAP T723			BECKER FARMS BACKSTAP 3023		
FELTON 8859 JET T1330			FELTON 8885 FERN 2113#		
FELTON 7102 NICOLE 8859			FAR EL TIGRE 233		
			7033 FAR V SARA 7102		
— Dam's Production —					
Birth Wt	Act Wn Wt	NR	YR		
84	654	96	95	6 WR 96	3 YR 101
Final Weight		Scrotal	REA	IMF	
1145		39	10.3	3.58	
BW	WW	YW	Milk	\$F	
I+3.1	I+47	I+81	I+22	+67	

127 Bull — calved 05/15/21 — tattoo T71 — 20568058

FELTON SURENUFF T71

STEVENSON SURENUFF 2017
CLEAR CREEK SURENUFF 402
CCA BLACKBIRD 208

DUTCH FLAT FRONTMAN 4512
FELTON BELL 4409
FELTON T719 CHEY T4212

KESSLERS FRONTMAN R001#
STEVENSON ROSE 962

A A R TEN X 9903#
CCA BLACKBIRD 604T

KESSLERS FRONTMAN R001#
DUTCH FLAT STAR AMBUSH 0510#

WRIGHTS GRIZ 49
FELTON B223 EILA T719

Birth Wt	Act Wn Wt	NR	YR	— Dam's Production —	
84	700	113	102	1 WR 113	1 YR 102
Final Weight		Scrotal	REA	IMF	
1135		37	10.4	3.15	
BW	WW	YW	Milk	\$F	
I+2.1	I+55	I+98	I+28	na	

133 Bull — calved 05/03/21 — tattoo T1021 — 20568014

FELTON WIDE TRACK T1021

APEX WIDE TRACK 4401
FELTON WIDE TRACK 162F5
FELTON T958 F135 ANNE T1701

SPRINGVALE IN FOCUS 743
FELTON T547 COUNTESS T119
FELTON 5153 PAULA C233 T547

APEX WIDE TRACK 545
APEXETTE BLACKCAP 5008

FELTON ANTARCTICA F135
FELTON A406 ULTRESS T958

MYTTY IN FOCUS#
SPRINGVALE RITA 407

FELTON CHATTER C233
FELTON A326 EMPRESS 5153

Birth Wt	Act Wn Wt	NR	YR	— Dam's Production —	
90	670	98	94	7 WR 99	5 YR 100
Final Weight		Scrotal	REA	IMF	
1080		36	10.2	2.75	
BW	WW	YW	Milk	\$F	
I+3.5	I+51	I+84	I+26	+65	

130 Bull — calved 06/02/21 — tattoo T1591 — pending

FELTON WIDE TRACK T1591

B C C BUSHWACKER 41-93#
FELTON BUSH HOG C597
FELTON 8728 ERICA A390

GODLEY OUTBACK 290
FELTON BJ 5768 ANN T1736
FELTON 8002 BJ ROSEMARY 5768

PARAMONT AMBUSH 2172#
R C ANITA T BANDO 918903

FAR CLYDE 1695
1644 F A R SARA 8728#

H A R B OUTCROSS 1000
GODLEY ANGEL 442-906

TOMWALL D V COMMODORE 2143
BJ BEAUTY QUEEN FAR

Birth Wt	Act Wn Wt	NR	YR	— Dam's Production —	
87	643	104	101	2 WR 98	1 YR 101
Final Weight		Scrotal	REA	IMF	
1110		36	10.1	3.02	
BW	WW	YW	Milk	\$F	
na	na	na	na	na	

134 Bull — calved 05/12/21 — tattoo T1561 — 20568038

FELTON BUSH HOG T1561

B C C BUSHWACKER 41-93#
FELTON BUSH HOG C597
FELTON 8728 ERICA A390

BOVAGENE APOLLO 011
FELTON T9075 CRUZ T2149
FELTON C583 DUCHESS T9075

PARAMONT AMBUSH 2172#
R C ANITA T BANDO 918903

FAR CLYDE 1695
1644 F A R SARA 8728#

HIGH PRIME 4037#
LONE CONE BLACKCAP 729

RALLY DUTCHMAN 4022
FELTON A392 BURGESS C583

Birth Wt	Act Wn Wt	NR	YR	— Dam's Production —	
82	672	97	101	3 WR 101	3 YR 104
Final Weight		Scrotal	REA	IMF	
1080		34	11.2	2.57	
BW	WW	YW	Milk	\$F	
I+2.5	I+50	I+84	I+27	+77	

135 Bull — calved 05/25/21 — tattoo S2021 — 20561640

FELTON WEIGH UP S2021

PLATTEMERE WEIGH UP K360#
RVF WEIGH UP E2429
G A R TEN X A3018

CCA PENDLETON 013
FELTON S432 LASS S184
FELTON S1217 CHEY S432

SITZ UPWARD 307R#
BARBARA OF PLATTEMERE 337#

A A R TEN X 7008 S A#
G A R 5050 NEW DESIGN A91

HARB PENDLETON 765 JH#
VERMILION JK LASS 0312#

WRIGHTS GRIZ 49
FELTON C29 LADY KELTON S1217

Birth Wt	Act Wn Wt	NR	YR	— Dam's Production —	
92	680	103	93	1 WR 103	1 YR 93
Final Weight		Scrotal	REA	IMF	
1065		34	10.1	2.67	
BW	WW	YW	Milk	\$F	
+2.7	+63	+116	+31	+86	

136 Bull — calved 04/30/21 — tattoo T661 — 20561680

FELTON WEIGH UP T661

PLATTEMERE WEIGH UP K360#
RVF WEIGH UP E2429
G A R TEN X A3018

CCA DUTCHMAN 071
FELTON T951 BLACKCAP T670
FELTON 2114 ANNE T951

SITZ UPWARD 307R#
BARBARA OF PLATTEMERE 337#

A A R TEN X 7008 S A#
G A R 5050 NEW DESIGN A91

FELTON DUTCHMAN T7019
BC BLACKCAP EFFIE 2104

FELTON ANTARCTICA F135
FELTON 5538 PAULA 2114

Birth Wt	Act Wn Wt	NR	YR	— Dam's Production —	
78	665	93	94	2 WR 101	2 YR 103
Final Weight		Scrotal	REA	IMF	
1065		34	10.6	2.97	
BW	WW	YW	Milk	\$F	
+0.8	+54	+99	+30	+93	

Stockmans Insurance Agency LLC

Livestock Insurer

Equine & Bovine

Licensed Since 1989

Coverage

Mortality, Loss of Use, Major Medical

For more information and rates, contact Bill Pelton

"We partner with you to provide you the protection want and need."

Pelton Livestock Marketing & Consulting

406.671.5100 bill@billpelton.com www.BILLPELTON.com



Baldy Bulls

B1

COMMERCIAL HEREFORD

Bull — calved 03/25/21 — Commercial

L3 MR. RANGO 363
AFH 363 RIMROCK 1514
L3 LADY STOCKINGS 391

L3 DESERT RANGO 138
L3 LADY DIAMOND 8000
L3 D BLOCKER 861
L3 LADY PREMIER 468

FELTON COMMERCIAL COW

<i>Birth Wt</i>	<i>Act Wn Wt</i>	<i>Act Yr Wt</i>
86	705	1110
<i>Final Weight</i>	<i>Scrotal</i>	
1400	40	

B4

COMMERCIAL HEREFORD

Bull — calved 04/10/21 — Commercial

L3 MR. RANGO 363
AFH 363 RIMROCK 1514
L3 LADY STOCKINGS 391

L3 DESERT RANGO 138
L3 LADY DIAMOND 8000
L3 D BLOCKER 861
L3 LADY PREMIER 468

FELTON COMMERCIAL COW

<i>Birth Wt</i>	<i>Act Wn Wt</i>	<i>Act Yr Wt</i>
83	665	1115
<i>Final Weight</i>	<i>Scrotal</i>	
1400	40	

B2

COMMERCIAL HEREFORD

Bull — calved 03/30/21 — Commercial

L3 MR. RANGO 363
AFH 363 RIMROCK 1514
L3 LADY STOCKINGS 391

L3 DESERT RANGO 138
L3 LADY DIAMOND 8000
L3 D BLOCKER 861
L3 LADY PREMIER 468

FELTON COMMERCIAL COW

<i>Birth Wt</i>	<i>Act Wn Wt</i>	<i>Act Yr Wt</i>
84	678	1075
<i>Final Weight</i>	<i>Scrotal</i>	
1375	38	

B5

COMMERCIAL HEREFORD

Bull — calved 04/12/21 — Commercial

L3 MR. RANGO 363
AFH 363 RIMROCK 1514
L3 LADY STOCKINGS 391

L3 DESERT RANGO 138
L3 LADY DIAMOND 8000
L3 D BLOCKER 861
L3 LADY PREMIER 468

FELTON COMMERCIAL COW

<i>Birth Wt</i>	<i>Act Wn Wt</i>	<i>Act Yr Wt</i>
86	690	1045
<i>Final Weight</i>	<i>Scrotal</i>	
1395	38	

B3

COMMERCIAL HEREFORD

Bull — calved 04/02/21 — Commercial

L3 MR. RANGO 363
AFH 363 RIMROCK 1514
L3 LADY STOCKINGS 391

L3 DESERT RANGO 138
L3 LADY DIAMOND 8000
L3 D BLOCKER 861
L3 LADY PREMIER 468

FELTON COMMERCIAL COW

<i>Birth Wt</i>	<i>Act Wn Wt</i>	<i>Act Yr Wt</i>
90	700	1095
<i>Final Weight</i>	<i>Scrotal</i>	
1390	42	

B6

COMMERCIAL HEREFORD

Bull — calved 04/02/21 — Commercial

L3 MR. RANGO 363
AFH 363 RIMROCK 1514
L3 LADY STOCKINGS 391

L3 DESERT RANGO 138
L3 LADY DIAMOND 8000
L3 D BLOCKER 861
L3 LADY PREMIER 468

FELTON COMMERCIAL COW

<i>Birth Wt</i>	<i>Act Wn Wt</i>	<i>Act Yr Wt</i>
91	705	1120
<i>Final Weight</i>	<i>Scrotal</i>	
1405	41	



Fall Bulls

143 Bull — calved 10/12/21 — tattoo 156 — 20542716

PLATTEMERE WEIGH UP K360# SITZ UPWARD 307R#
 RVF WEIGH UP E2429 BARBARA OF PLATTEMERE 337#
 G A R TEN X A3018 A A R TEN X 7008 S A#
 G A R 5050 NEW DESIGN A91

BOVAGENE APOLLO 011 HIGH PRIME 4037#
 FELTON T1989 CRUISE 137F2 LONE CONE BLACKCAP 729
 FELTON 2324 DUCHESS T1989 RALLY DUTCHMAN 4022
 FELTON 8045 ROSIE 2324

Birth Wt	Act Wn Wt	NR	YR	— Dam's Production —	
83	699	96	106	2 WR 102	1 YR 106
Final Weight		Scrotal	REA	IMF	
1225		35	12.6	3.29	
BW	WW	YW	Milk	\$F	
+2.8	+63	+114	+30	+102	

140 Bull — calved 11/30/21 — tattoo 1261 — 20568102

APEX WIDE TRACK 4401 APEX WIDE TRACK 545
 FELTON WIDE TRACK 162F5 APEXETTE BLACKCAP 5008
 FELTON T958 F135 ANNE T1701 FELTON ANTARCTICA F135
 FELTON A406 ULTRESS T958

HYLINE IMAGE MAKER 163 HYLINE IMAGE MAKER 1048
 FELTON EILEENMERE 87F6 HYLINE EILEENMERE 928
 FELTON T1127 QUEEN T1481 FELTON BOT TOMLINE T881
 FELTON A341 BURGESS T1127#

Birth Wt	Act Wn Wt	NR	YR	— Dam's Production —	
82	615	100	121	1 WR 100	1 YR 121
Final Weight		Scrotal	REA	IMF	
1270		40	12.5	3.63	
BW	WW	YW	Milk	\$F	
I+2.3	I+58	I+104	I+24	na	

144 Bull — calved 10/22/21 — tattoo 186 — 20542720

PLATTEMERE WEIGH UP K360# SITZ UPWARD 307R#
 RVF WEIGH UP E2429 BARBARA OF PLATTEMERE 337#
 G A R TEN X A3018 A A R TEN X 7008 S A#
 G A R 5050 NEW DESIGN A91

FELTON ANTARCTICA F135 T983 FELTON ANTARCTICA F135
 FELTON 9019 ANNE T1011 FELTON C343 LADY 3244
 FELTON 8645 NICOLE 9019 FAR EL TIGRE 233
 8728 FAR NICOLE 8645#

Birth Wt	Act Wn Wt	NR	YR	— Dam's Production —	
79	683	100	108	3 WR 108	2 YR 112
Final Weight		Scrotal	REA	IMF	
1205		35	11.2	3.3	
BW	WW	YW	Milk	\$F	
+2.2	+57	+100	+34	+76	

141 Bull — calved 11/04/21 — tattoo 1131 — pending

PLATTEMERE WEIGH UP K360# SITZ UPWARD 307R#
 RVF WEIGH UP E2429 BARBARA OF PLATTEMERE 337#
 G A R TEN X A3018 A A R TEN X 7008 S A#
 G A R 5050 NEW DESIGN A91

Birth Wt	Act Wn Wt	NR	YR	— Dam's Production —	
79	678	100	100	1 WR 100	1 YR 100
Final Weight		Scrotal	REA	IMF	
1260		36	10.6	3.69	
BW	WW	YW	Milk	\$F	
na	na	na	na	na	

145 Bull — calved 10/23/21 — tattoo 1331 — 20542711

CONNELLY ARTILLERY 4236 CONNELLY ARSENAL 2174#
 CLEAR CREEK ARTILLERY 893 DELLA OF CONANGA 130
 CCA ERICA LASSIE 260 SITZ UPWARD 307R#
 CCA ERICA LASSIE 607T

FELTON BOT TOMLINE T881 FELTON BOT TOMLINE C212
 FELTON 2324 EILA F1682 FELTON 216 2028 PRIDE B300
 FELTON 8045 ROSIE 2324 FELTON BOT TOMLINE C212
 1809 FAR NICOLE 8045

Birth Wt	Act Wn Wt	NR	YR	— Dam's Production —	
80	673	96	107	4 WR 96	3 YR 99
Final Weight		Scrotal	REA	IMF	
1210		37	09.5	4.01	
BW	WW	YW	Milk	\$F	
+2.1	+55	+104	+26	+91	

142 Bull — calved 11/08/21 — tattoo 501 — 20564069

MYTTY FOREFRONT 1094 MYTTY FOREFRONT 77P
 WRIGHT WAY SUPER DUTY 385 MYTTY BLACKCAP U370#
 TW ELA PRIDE 508Y HARB PENDLETON 765 J H#
 LCB BV PRIDE R3111

CCA PENDLETON 013 HARB PENDLETON 765 J H#
 FELTON T1276 FERN T621 VERMILION JK LASS 0312#
 FELTON 4583 DUCHESS T1276 RALLY DUTCHMAN 4022
 FELTON 8859 FERN 4583

Birth Wt	Act Wn Wt	NR	YR	— Dam's Production —	
83	691	103	114	1 WR 103	1 YR 114
Final Weight		Scrotal	REA	IMF	
1235		39	12.4	3.51	
BW	WW	YW	Milk	\$F	
+1.9	+59	+100	+22	+71	

146 Bull — calved 11/30/21 — tattoo 1511 — 20568111

S A V FIRST CLASS 0207 S A V NET WORTH 4200#
 HYLINE FIRST CLASS 268 S A V DUKE GIRL 7348#
 HYLINE EILEENMERE 642 HYLINE NEW TREND 6602
 HYLINE EILEENMERE 312#

FELTON DATELINE T385 ROCK'N D DATELINE 2821
 FELTON T840 AMY T5287 FELTON C569 ANNE T1238
 FELTON T1607 COUNTESS T840 SPRINGVALE IN FOCUS 743
 FELTON 4213 PAULA T1607

Birth Wt	Act Wn Wt	NR	YR	— Dam's Production —	
82	653	107	116	2 WR 104	2 YR 114
Final Weight		Scrotal	REA	IMF	
1175		35	10.7	3.26	
BW	WW	YW	Milk	\$F	
I+2.9	I+61	I+104	I+21	+77	

148 FELTON WEIGH UP 133

Bull — calved 10/13/21 — tattoo 133 — 20542710

PLATTEMERE WEIGH UP K360# SITZ UPWARD 307R#
 RVF WEIGH UP E2429 BARBARA OF PLATTEMERE 337#
 G A R TEN X A3018 A A R TEN X 7008 S A#
 G A R 5050 NEW DESIGN A91

DUTCH FLAT FRONTMAN 4512 KESSLERS FRONTMAN R001#
 FELTON 183F2 BELL 31F4 DUTCH FLAT STAR AMBUSH 0510#
 FELTON A526 DUTCHESS F1832 CCA DUTCHMAN 942T
 FELTON 6026 JESTRESS 2556

Birth Wt	Act Wn Wt	NR	YR	— Dam's Production —	
79	700	97	97	2 WR 107	2 YR 103
Final Weight		Scrotal	REA	IMF	
1130		32	10.9	3.55	
BW	WW	YW	Milk	\$F	
+1.7	+55	+100	+34	+78	

154 FELTON WIDE TRACK 203

Bull — calved 11/04/21 — tattoo 203 — 20568114

APEX WIDE TRACK 4401 APEX WIDE TRACK 545
 FELTON WIDE TRACK 162F5 APEXETTE BLACKCAP 5008
 FELTON T958 F135 ANNE T1701 FELTON ANTARCTICA F135
 FELTON A406 ULTRESS T958

CCA DUTCHMAN 071 FELTON DUTCHMAN T7019
 BC BLACKCAP EFFIE 2104
 FELTON T8108 KR EMPRESST432 GRANGER CINCHA 568
 FELTON KR 2443 JIMBOLEENT8108 FELTON KR B259 LADY 2443

Birth Wt	Act Wn Wt	NR	YR	— Dam's Production —	
82	669	99	105	4 WR 103	2 YR 108
Final Weight		Scrotal	REA	IMF	
1160		35	10.6	3.56	
BW	WW	YW	Milk	\$F	
I+3.1	I+54	I+95	I+24	+73	

151 FELTON BUSH HOG 1510

Bull — calved 11/25/21 — tattoo 1510 — 20568110

B C C BUSHWACKER 41-93# PARAMONT AMBUSH 2172#
 FELTON BUSH HOG C597 R C ANITA T BANDO 918903
 FELTON 8728 ERICA A390 FAR CLYDE 1695
 1644 F A R SARA 8728#

JINDRA DESCRIPTION J 507 JINDRA DOUBLE VISION#
 FELTON T188 REFLECTION 166F5 JINDRAS PRETTY PICTURE J 304
 FELTON 4364 ANNE T188 FELTON ANTARCTICA F135
 FELTON BJ LADY KELTON 4364

Birth Wt	Act Wn Wt	NR	YR	— Dam's Production —	
82	649	104	114	1 WR 104	1 YR 114
Final Weight		Scrotal	REA	IMF	
1175		38	12.6	3.13	
BW	WW	YW	Milk	\$F	
I+1.7	I+52	I+95	I+24	+76	

155 FELTON WIDE TRACK 1505

Bull — calved 11/14/21 — tattoo 1505 — 20568108

APEX WIDE TRACK 4401 APEX WIDE TRACK 545
 FELTON WIDE TRACK 162F5 APEXETTE BLACKCAP 5008
 FELTON T958 F135 ANNE T1701 FELTON ANTARCTICA F135
 FELTON A406 ULTRESS T958

C A UNIVERSE 650 BENSONS UNIVERSE 308
 FELTON VAL T638 C A MISS FAME 172
 FELTON C13 ULTRESS 124 WILLWOOD HALLMARK 2556
 FELTON 87 PAULA C13

Birth Wt	Act Wn Wt	NR	YR	— Dam's Production —	
81	678	107	106	6 WR 104	2 YR 105
Final Weight		Scrotal	REA	IMF	
1125		37	9.9	4.58	
BW	WW	YW	Milk	\$F	
I+2.5	I+56	I+91	I+28	+68	

152 FELTON WIDE TRACK 135

Bull — calved 11/01/21 — tattoo 135 — 20568103

APEX WIDE TRACK 4401 APEX WIDE TRACK 545
 FELTON WIDE TRACK 162F5 APEXETTE BLACKCAP 5008
 FELTON T958 F135 ANNE T1701 FELTON ANTARCTICA F135
 FELTON A406 ULTRESS T958

HYLINE IMAGE MAKER 163 HYLINE IMAGE MAKER 1048
 FELTON EILEENMERE T721 HYLINE EILEENMERE 928
 FELTON 4124 DUCHESS T1959 RALLY DUTCHMAN 4022
 FELTON RJ C575 BURGESS 4124

Birth Wt	Act Wn Wt	NR	YR	— Dam's Production —	
80	693	103	111	1 WR 103	1 YR 111
Final Weight		Scrotal	REA	IMF	
1190		37	10.5	3.32	
BW	WW	YW	Milk	\$F	
I+2.0	I+56	I+92	I+25	na	

156 FELTON WIDE TRACK 1504

Bull — calved 11/10/21 — tattoo 1504 — 20568107

APEX WIDE TRACK 4401 APEX WIDE TRACK 545
 FELTON WIDE TRACK 162F5 APEXETTE BLACKCAP 5008
 FELTON T958 F135 ANNE T1701 FELTON ANTARCTICA F135
 FELTON A406 ULTRESS T958

CCA PENDLETON 013 HARB PENDLETON 765 J H#
 FELTON T1032 BLACK LADY T302 VERMILION JK LASS 0312#
 FELTON 5143 DUTCHESS T1032 FELTON DUTCHMAN T964
 FELTON 8929 BURNADETT 5143

Birth Wt	Act Wn Wt	NR	YR	— Dam's Production —	
79	687	104	103	2 WR 113	2 YR 100
Final Weight		Scrotal	REA	IMF	
1120		35	11.9	2.89	
BW	WW	YW	Milk	\$F	
I+1.6	I+55	I+90	I+27	+67	

153 FELTON WATER MARK 1241

Bull — calved 11/15/21 — tattoo 1241 — pending

WATER MARK 895 DRF WILLWOOD HALLMARK 2556
 FELTON WATER MARK S800 JUANADAS ALLIANCE 909 DRF#
 FELTON C14 FERN 23 674# BAIRDS REALLY WINDY 23
 FELTON A16 MISS FERN C14#

JINDRA DESCRIPTION J 507 JINDRA DOUBLE VISION#
 FELTON T927 REFLECTION 165F5 JINDRAS PRETTY PICTURE J 304
 FELTON T795 QUEEN T927 ADAMS ACRES IDITAROD 427
 FELTON 2424 DUTCHESS T795

Birth Wt	Act Wn Wt	NR	YR	— Dam's Production —	
79	674	103	109	2 WR 100	1 YR 109
Final Weight		Scrotal	REA	IMF	
1180		36	10.3	3.08	
BW	WW	YW	Milk	\$F	
na	na	na	na	na	

Waiting for genetic test results.

Fall Bulls

157 FELTON SUPER DUTY 1121

Bull — calved 11/30/21 — tattoo 1121 — 20542707

MYTTY FOREFRONT 1094 MYTTY FOREFRONT 77P
 WRIGHT WAY SUPER DUTY 385 MYTTY BLACKCAP U370#
 TW ELA PRIDE 508Y HARB PENDLETON 765 J H#
 LCB BV PRIDE R3111

WRIGHTS GRIZ 49 DAVEYS 008-004-642
 FELTON S890 CHEY T5271 WRIGHTS HALEY 1515
 FELTON S1207 BLACKBIRD S890 ROCK'N D DATELINE 2821
 FELTON 973 EBONY S1207

Birth Wt	Act Wn Wt	NR	YR	— Dam's Production —	
80	700	114	107	4 WR 108	3 YR 105
Final Weight		Scrotal	REA	IMF	
1100		33	10.4	3.04	
BW	WW	YW	Milk	\$F	
+2.0	+64	+109	+26	+96	

158 FELTON ARTILLARY 531

Bull — calved 04/30/21 — tattoo 531 — 20561637

CONNELLY ARTILLERY 4236
CLEAR CREEK ARTILLERY 893
CCA ERICA LASSIE 260

CONNELLY ARSENAL 2174#
DELLA OF CONANGA 130
SITZ UPWARD 307R#
CCA ERICA LASSIE 607T

GRANGER SASQUATCH 680
FELTON T1267 EILEENMERE T110
FELTON 4504 EILA T1267

HYLINE SASQUATCH 513
GRANGER PRIDE 275
FELTON BOTTOMLINE C212
FELTON A390 PAULA 4504

Birth Wt	Act Wn Wt	NR	YR	— Dam's Production —		
89	684	99	96	6 WR 96	5 YR 99	
Final Weight		Scrotal	REA	IMF		
1110		35	10.3	3.02		
BW	WW	YW	Milk	\$F		
+3.6	+63	+116	+28	+101		

163 FELTON WEIGH UP 1102

Bull — calved 10/24/21 — tattoo 1102 — 20564056

PLATTEMERE WEIGH UP K360#
RVF WEIGH UP E2429
G A R TEN X A3018

SITZ UPWARD 307R#
BARBARA OF PLATTEMERE 337#
A A R TEN X 7008 S A#
G A R 5050 NEW DESIGN A91

HYLINE IMAGE MAKER 163
FELTON EILEENMERE T715
FELTON 4614 VAL T1979

HYLINE IMAGE MAKER 1048
HYLINE EILEENMERE 928
C A UNIVERSE 650
FELTON A384 PRIDE 4614

Birth Wt	Act Wn Wt	NR	YR	— Dam's Production —		
81	635	93	105	1 WR 93	1 YR 105	
Final Weight		Scrotal	REA	IMF		
1160		36	10.2	2.72		
BW	WW	YW	Milk	\$F		
+2.1	+58	+106	+28	+82		

159 FELTON WEIGH UP 1506

Bull — calved 11/17/21 — tattoo 1506 — 20564060

PLATTEMERE WEIGH UP K360#
RVF WEIGH UP E2429
G A R TEN X A3018

SITZ UPWARD 307R#
BARBARA OF PLATTEMERE 337#
A A R TEN X 7008 S A#
G A R 5050 NEW DESIGN A91

CCA DUTCHMAN 071
FELTON S1068 BLACKCAP T664
FELTON 803 ULTRESS 895 S1068

FELTON DUTCHMAN T7019
BC BLACKCAP EFFIE 2104
WATER MARK 895 DRF
FELTON 1497 PAULA 803

Birth Wt	Act Wn Wt	NR	YR	— Dam's Production —		
78	701	108	106	1 WR 108	1 YR 106	
Final Weight		Scrotal	REA	IMF		
1135		38	10.2	3.32		
BW	WW	YW	Milk	\$F		
+1.3	+67	+120	+32	+85		

164 FELTON WEIGH UP 159

Bull — calved 10/26/21 — tattoo 159 — 20542717

PLATTEMERE WEIGH UP K360#
RVF WEIGH UP E2429
G A R TEN X A3018

SITZ UPWARD 307R#
BARBARA OF PLATTEMERE 337#
A A R TEN X 7008 S A#
G A R 5050 NEW DESIGN A91

FELTON BACKSTRAP T723
FELTON WP8589 ERICA T1020
FELTON WP ERICA 8589

BECKER FARMS BACKSTAP 3023
FELTON 8885 FERN 2113#
FAR CLYDE 1695
6982 FAR PEARL WP 9385

Birth Wt	Act Wn Wt	NR	YR	— Dam's Production —		
83	683	101	106	3 WR 97	2 YR 105	
Final Weight		Scrotal	REA	IMF		
1150		34	10.3	2.89		
BW	WW	YW	Milk	\$F		
+2.5	+63	+116	+30	+86		

160 FELTON ACE 1120

Bull — calved 11/12/21 — tattoo 1120 — 20568098

APEX WIDE TRACK 4401
FELTON'S ACES 7
FELTON 5368 BURGESS T497#

APEX WIDE TRACK 545
APEXETTE BLACKCAP 5008
FELTON BUSH HOG C597
FELTON 8973 NICOLE 5368

FELTON WATER MARK S800
FELTON T1857 FERN 116F3
FELTON C598 PAULA T1857

WATER MARK 895 DRF
FELTON C14 FERN 23 674#
FELTON CHATTER C233
FELTON A324 ANITA C598

Birth Wt	Act Wn Wt	NR	YR	— Dam's Production —		
81	689	105	105	3 WR 97	1 YR 105	
Final Weight		Scrotal	REA	IMF		
1140		32	11.7	4.07		
BW	WW	YW	Milk	\$F		
I+2.6	I+51	I+85	I+26	+66		

This bull has an extra rib.

165 FELTON DOUBLE VISION 164

Bull — calved 10/17/21 — tattoo 164 — 20543760

JINDRA DOUBLE VISION#
HYLINE DOUBLE VISION 325
HYLINE LUCY 456

CONNELLY REFLECTION#
HOFF RACHEL 8312 405
HYLINE RIGHT TIME 338#
HYLINE LUCY 763

APEX WIDE TRACK 545
FELTON B25 ETE S380
FELTONS 987 MISS WIX B25

APEX 450 WIDE TRACK 052
APEXETTE BLACKCAP 1080#
FSHK SCOTCH CAP 852
FAR 3139 ROSEMARY 987

Birth Wt	Act Wn Wt	NR	YR	— Dam's Production —		
82	653	94	100	4 WR 96	2 YR 105	
Final Weight		Scrotal	REA	IMF		
1140		36	10.7	3.72		
BW	WW	YW	Milk	\$F		
+2.7	+48	+93	+22	+98		

162 FELTON BOND 1512

Bull — calved 11/28/21 — tattoo 1512 — 20564062

MERIT BOND 6007D
MLG BOND 8005
MLG PAULINE 31B

BAR S RANGE BOSS 4002
MERIT JILT 4040
JL AUTHORITY 2098
MLG PAULINE 1Z

FELTON BOTTOMLINE T797
FELTON C692 QUEEN T570
FELTON 8169 BLACKBIRD C692

FELTON BOTTOMLINE C212
FELTON 8305 ERICA 8929
GODLEY MERGER 937
FELTON 9403 PEARL 8169

Birth Wt	Act Wn Wt	NR	YR	— Dam's Production —		
78	645	108	118	6 WR 99	4 YR 104	
Final Weight		Scrotal	REA	IMF		
1195		36	11.9	3.62		
BW	WW	YW	Milk	\$F		
+1.8	+57	+100	+23	+74		

166 FELTON SUPER DUTY 1513

Bull — calved 11/28/21 — tattoo 1513 — 20564063

MYTTY FOREFRONT 1094
WRIGHT WAY SUPER DUTY 385
TW ELA PRIDE 508Y

MYTTY FOREFRONT 77P
MYTTY BLACKCAP U370#
HARB PENDLETON 765 J H#
LCB BV PRIDE R3111

JINDRA DESCRIPTION J 507
FELTON T156 REFLECTION 167F5
FELTON C665 JET T156

JINDRA DOUBLE VISION#
JINDRAS PRETTY PICTURE J 304
FELTON BACKSTRAP T723
FELTON 8839 QUEEN C665

Birth Wt	Act Wn Wt	NR	YR	— Dam's Production —		
80	651	105	111	1 WR 105	2 YR 102	
Final Weight		Scrotal	REA	IMF		
1160		38	10.7	3.66		
BW	WW	YW	Milk	\$F		
+2.4	+58	+101	+24	+73		

167 FELTON MANIFEST 1508

Bull — calved 12/02/21 — tattoo 1508 — 20564061

JINDRA MANIFEST
OCC MANIFEST 712
OCC MONTANA DREAM 216

CONNEALY GUINNESS#
JINDRA ENCHANTRESS J 301 025#
SITZ UPWARD 307R#
OCC MONTANA DREAM 601

JINDRA MANIFEST
FELTON MANDI T647
FELTON WP B529 PRIDE F255

CONNEALY GUINNESS#
JINDRA ENCHANTRESS J 301 025#
LOST LAKE ANTARCTICA 683
FELTON 8589 WP FERN B529

Birth Wt	Act Wn Wt	NR	YR	— Dam's Production —	
78	640	105	112	1 WR 105	1 YR 112
Final Weight		Scrotal	REA	IMF	
1115		35	9.4	4.08	
BW	WW	YW	Milk	\$F	
+1.1	+57	+102	+34	+76	

172 FELTON ACE 210

Bull — calved 10/23/21 — tattoo 210 — 20543758

APEX WIDE TRACK 4401
FELTON'S ACES 7
FELTON 5368 BURGESS T497#

APEX WIDE TRACK 545
APEXETTE BLACKCAP 5008
FELTON BUSH HOG C597
FELTON 8973 NICOLE 5368

BOVAGENE APOLLO 011
FELTON KR T359 CRUISE F1452
FELTON KR T437 JET T359

HIGH PRIME 4037#
LONE CONE BLACKCAP 729
FELTON BACKSTRAP T723
FELTON KR 9069 BURGESS T437

Birth Wt	Act Wn Wt	NR	YR	— Dam's Production —	
82	697	99	93	3 WR 98	3 YR 96
Final Weight		Scrotal	REA	IMF	
1075		36	10.6	3.08	
BW	WW	YW	Milk	\$F	
+3.0	+51	+87	+27	+69	

169 FELTON WEIGH UP 138

Bull — calved 10/06/21 — tattoo 138 — 20542712

PLATTEMERE WEIGH UP K360#
RVF WEIGH UP E2429
G A R TEN X A3018

SITZ UPWARD 307R#
BARBARA OF PLATTEMERE 337#
A A R TEN X 7008 S A#
G A R 5050 NEW DESIGN A91

FELTON HALLMARK 2044
FELTON C520 ULTRESS T698
FELTON 9739 PAULA C520#

WILLWOOD HALLMARK 2556
FELTON 376 PAULA C526
SODAK CHATTER K339#
FELTON 2536 QUEEN 9739

Birth Wt	Act Wn Wt	NR	YR	— Dam's Production —	
80	701	98	93	7 WR 99	4 YR 100
Final Weight		Scrotal	REA	IMF	
1085		37	11.0	3.26	
BW	WW	YW	Milk	\$F	
+2.1	+58	+103	+30	+77	

173 FELTON DOUBLE VISION 143

Bull — calved 10/11/21 — tattoo 143 — 20542713

JINDRA DOUBLE VISION#
HYLINE DOUBLE VISION 325
HYLINE LUCY 456

CONNEALY REFLECTION#
HOFF RACHEL 8312 405
HYLINE RIGHT TIME 338#
HYLINE LUCY 763

CONNEALY CAPITALIST 028#
FELTON 78F3 SKY 11F5
FELTON T1277 DUTCHESS 78F3

S A V FINAL ANSWER 0035#
PRIDES PITA OF CONANGA 8821
CCA DUTCHMAN 071
FELTON C515 BURGESS T1277

Birth Wt	Act Wn Wt	NR	YR	— Dam's Production —	
82	692	95	92	2 WR 98	2 YR 92
Final Weight		Scrotal	REA	IMF	
1030		35	9.1	4.27	
BW	WW	YW	Milk	\$F	
+2.2	+50	+88	+21	+70	

170 FELTON WEIGH UP 0127

Bull — calved 11/01/21 — tattoo 0127 — 20564055

PLATTEMERE WEIGH UP K360#
RVF WEIGH UP E2429
G A R TEN X A3018

SITZ UPWARD 307R#
BARBARA OF PLATTEMERE 337#
A A R TEN X 7008 S A#
G A R 5050 NEW DESIGN A91

FELTON WIDE TRACK 162F5
FELTON BLACKCAP T918
FELTON RJ C575 BURGESS 4124

APEX WIDE TRACK 4401
FELTON T958 F135 ANNE T1701
FELTON BUSH HOG C597
FELTON RJ A304 PEARL C575

Birth Wt	Act Wn Wt	NR	YR	— Dam's Production —	
81	675	103	109	2 WR 108	1 YR 109
Final Weight		Scrotal	REA	IMF	
1090		38	10.6	3.69	
BW	WW	YW	Milk	\$F	
+2.1	+62	+109	+34	+80	

174 FELTON WIDE TRACK 178

Bull — calved 10/23/21 — tattoo 178 — 20568113

APEX WIDE TRACK 4401
FELTON WIDE TRACK 162F5
FELTON T958 F135 ANNE T1701

APEX WIDE TRACK 545
APEXETTE BLACKCAP 5008
FELTON ANTARCTICA F135
FELTON A406 ULTRESS T958

CLEAR CREEK SURENUFF 402
FELTON BRANDY 170F6
FELTON 4774 ANNE T1191#

STEVENSON SURENUFF 2017
CCA BLACKBIRD 208
FELTON ANTARCTICA F135 T983
FELTON A352 PAULA 4774#

Birth Wt	Act Wn Wt	NR	YR	— Dam's Production —	
82	668	95	92	2 WR 97	1 YR 92
Final Weight		Scrotal	REA	IMF	
1060		30	9.6	3.84	
BW	WW	YW	Milk	\$F	
I+2.0	I+46	I+80	I+28	+66	

171 FELTON WEIGH UP 118

Bull — calved 10/16/21 — tattoo 118 — 20542709

PLATTEMERE WEIGH UP K360#
RVF WEIGH UP E2429
G A R TEN X A3018

SITZ UPWARD 307R#
BARBARA OF PLATTEMERE 337#
A A R TEN X 7008 S A#
G A R 5050 NEW DESIGN A91

BOVAGENE APOLLO 011
FELTON T1191 CRUZ 235F4
FELTON 4774 ANNE T1191#

HIGH PRIME 4037#
LONE CONE BLACKCAP 729
FELTON ANTARCTICA F135 T983
FELTON A352 PAULA 4774#

Birth Wt	Act Wn Wt	NR	YR	— Dam's Production —	
81	673	94	93	1 WR 94	1 YR 93
Final Weight		Scrotal	REA	IMF	
1070		38	9.4	2.88	
BW	WW	YW	Milk	\$F	
+2.3	+61	+107	+32	+79	

175 FELTON BUSH HOG 112

Bull — calved 10/12/21 — tattoo 112 — 20568097

B C C BUSHWACKER 41-93#
FELTON BUSH HOG C597
FELTON 8728 ERICA A390

PARAMONT AMBUSH 2172#
R C ANITA T BANDO 918903
FAR CLYDE 1695
1644 F A R SARA 8728#

FELTON T881 BOTTOMLINE T1062
FELTON T697 PRIDE 119F5
FELTON C569 BURGESS T697

FELTON BOTTOMLINE T881
FELTON 4803 DUTCHESS T2546
FELTON BUSH HOG C597
FELTON A363 ANITA C569#

Birth Wt	Act Wn Wt	NR	YR	— Dam's Production —	
79	671	92	92	5 WR 98	5 YR 97
Final Weight		Scrotal	REA	IMF	
1080		32	10.5	3.01	
BW	WW	YW	Milk	\$F	
I+2.1	I+47	I+80	I+24	+77	

176 FELTON IMAGE MAKER 209

Bull — calved 10/24/21 — tattoo 209 — 20564068

HYLINE IMAGE MAKER 1048
HYLINE IMAGE MAKER 163
HYLINE EILEENMERE 928

H A IMAGE MAKER 0415#
HYLINE PRIDE T L 319
TC FRANKLIN 619#
HYLINE EILEENMERE 184#

HYLINE IMAGE MAKER 163
FELTON EILEENMERE 162F6
FELTON 5578 ULTRESS T839

HYLINE IMAGE MAKER 1048
HYLINE EILEENMERE 928
FELTON HALLMARK 8335
FELTON 5341 NICOLE 5578

Birth Wt	Act Wn Wt	NR	YR	— Dam's Production —	
80	698	99	93	1 WR 99	1 YR 93
Final Weight		Scrotal	REA	IMF	
1050		36	8.9	3.51	
BW	WW	YW	Milk	\$F	
+1.5	+56	+92	+20	+72	

180 FELTON SUPER DUTY 184

Bull — calved 10/28/21 — tattoo 184 — 20564066

MYTTY FOREFRONT 1094
WRIGHT WAY SUPER DUTY 385
TW ELA PRIDE 508Y

MYTTY FOREFRONT 77P
MYTTY BLACKCAP U370#
HARB PENDLETON 765 JH#
LCB BV PRIDE R3111

FELTON T881 BOTTOMLINE T1062
FELTON T1241 PRIDE 153F5
FELTON T1277 ANNE T1241

FELTON BOTTOMLINE T881
FELTON 4803 DUTCHESS T2546
FELTON ANTARCTICA F135
FELTON C515 BURGESS T1277

Birth Wt	Act Wn Wt	NR	YR	— Dam's Production —	
81	688	99	94	1 WR 99	1 YR 94
Final Weight		Scrotal	REA	IMF	
1075		34	10.0	2.92	
BW	WW	YW	Milk	\$F	
+2.2	+53	+90	+24	+67	

This bull carries an extra rib

177 FELTON SUPER DUTY 1141

Bull — calved 11/12/21 — tattoo 1141 — 20568099

MYTTY FOREFRONT 1094
WRIGHT WAY SUPER DUTY 385
TW ELA PRIDE 508Y

MYTTY FOREFRONT 77P
MYTTY BLACKCAP U370#
HARB PENDLETON 765 JH#
LCB BV PRIDE R3111

FELTON T881 BOTTOMLINE T1062
FELTON T224 PRIDE 115F5
FELTON T0968 BLACK LADY T224

FELTON BOTTOMLINE T881
FELTON 4803 DUTCHESS T2546
CCA PENDLETON 013
FELTON B100 ANNE T0968

Birth Wt	Act Wn Wt	NR	YR	— Dam's Production —	
83	690	105	99	2 WR 101	3 YR 103
Final Weight		Scrotal	REA	IMF	
1020		36	9.6	3.13	
BW	WW	YW	Milk	\$F	
+2.5	+58	+99	+22	+71	

181 FELTON WIDE TRACK 1502

Bull — calved 10/24/21 — tattoo 1502 — 20568105

APEX WIDE TRACK 4401
FELTON WIDE TRACK 162F5
FELTON T958 F135 ANNE T1701

APEX WIDE TRACK 545
APEXETTE BLACKCAP 5008
FELTON ANTARCTICA F135
FELTON A406 ULTRESS T958

DUTCH FLAT FRONTMAN 4512
FELTON 6F2 BELL 14F4
FELTON T1200 BLACKLADY F62

KESSLERS FRONTMAN R001#
DUTCH FLAT STAR AMBUSH 0510#
CCA PENDLETON 013
FELTON B517 JET T1200

Birth Wt	Act Wn Wt	NR	YR	— Dam's Production —	
81	667	95	92	5 WR 98	4 YR 94
Final Weight		Scrotal	REA	IMF	
1050		33	9.1	3.23	
BW	WW	YW	Milk	\$F	
I+2.0	I+48	I+83	I+26	+68	

178 FELTON WIDE TRACK 198

Bull — calved 10/13/21 — tattoo 198 — 20543754

APEX WIDE TRACK 4401
FELTON WIDE TRACK 162F5
FELTON T958 F135 ANNE T1701

APEX WIDE TRACK 545
APEXETTE BLACKCAP 5008
FELTON ANTARCTICA F135
FELTON A406 ULTRESS T958

DUTCH FLAT FRONTMAN 4512
FELTON 37F2 BELL 33F4
FELTON T660 BLACKLADY 37F2

KESSLERS FRONTMAN R001#
DUTCH FLAT STAR AMBUSH 0510#
CCA PENDLETON 013
FELTON T597 COUNTESS T660

Birth Wt	Act Wn Wt	NR	YR	— Dam's Production —	
80	686	95	91	5 WR 98	5 YR 104
Final Weight		Scrotal	REA	IMF	
1050		34	9.1	3.14	
BW	WW	YW	Milk	\$F	
+2.0	+53	+93	+24	+72	

182 FELTON SUPER DUTY 1101

Bull — calved 10/31/21 — tattoo 1101 — 20542706

MYTTY FOREFRONT 1094
WRIGHT WAY SUPER DUTY 385
TW ELA PRIDE 508Y

MYTTY FOREFRONT 77P
MYTTY BLACKCAP U370#
HARB PENDLETON 765 JH#
LCB BV PRIDE R3111

FELTON BOTTOMLINE T881
FELTON B596 QUEEN T1621
FELTON 6178 PRIDE 2028 B596

FELTON BOTTOMLINE C212
FELTON 216 2028 PRIDE B300
FELTON STOCKMAN 2028
FELTON 8875 ERICA 6178

Birth Wt	Act Wn Wt	NR	YR	— Dam's Production —	
84	675	101	96	5 WR 98	3 YR 94
Final Weight		Scrotal	REA	IMF	
1045		34	10.2	3.55	
BW	WW	YW	Milk	\$F	
+3.6	+54	+94	+23	+83	

179 FELTON WEIGH UP 180

Bull — calved 10/12/21 — tattoo 180 — 20542718

PLATTEMERE WEIGH UP K360#
RVF WEIGH UP E2429
G A R TEN X A3018

SITZ UPWARD 307R#
BARBARA OF PLATTEMERE 337#
A A R TEN X 7008 S A#
G A R 5050 NEW DESIGN A91

CLEAR CREEK SURENUFF 4104
FELTON ERICA T7174
FELTON 286 ROSIE 2424

STEVENSON SURENUFF 2017
CCA BRANDY 229
FELTON BOTTOMLINE C212
2569 FAR LADY LASS 286

Birth Wt	Act Wn Wt	NR	YR	— Dam's Production —	
74	665	94	90	1 WR 94	1 YR 90
Final Weight		Scrotal	REA	IMF	
1030		34	10.0	2.96	
BW	WW	YW	Milk	\$F	
+0.1	+53	+96	+32	+76	

183 FELTON WIDE TRACK 193

Bull — calved 10/18/21 — tattoo 193 — 20543753

APEX WIDE TRACK 4401
FELTON WIDE TRACK 162F5
FELTON T958 F135 ANNE T1701

APEX WIDE TRACK 545
APEXETTE BLACKCAP 5008
FELTON ANTARCTICA F135
FELTON A406 ULTRESS T958

CCA DUTCHMAN 071
FELTON 4393 DUTCHESS 167F4
FELTON 6128 BURNADETT 4393

FELTON DUTCHMAN T7019
BC BLACKCAP EFFIE 2104
R P BWK 866-131
FELTON 886 95 LASS 6128

Birth Wt	Act Wn Wt	NR	YR	— Dam's Production —	
81	700	98	92	3 WR 97	3 YR 95
Final Weight		Scrotal	REA	IMF	
1050		34	9.7	3.14	
BW	WW	YW	Milk	\$F	
+2.8	+51	+86	+24	+67	

184 FELTON WEIGH UP 169

Bull — calved 10/27/21 — tattoo 169 — 20564064

PLATTEMERE WEIGH UP K360# SITZ UPWARD 307R#
 RVF WEIGH UP E2429 BARBARA OF PLATTEMERE 337#
 G A R TEN X A3018 A A R TEN X 7008 S A#
 G A R 5050 NEW DESIGN A91

CCA PENDLETON 013 HARB PENDLETON 765 J H#
 FELTON T767 BLACKLADY 200F5 VERMILION JK LASS 0312#
 FELTON C686 PAULA C233 T767 FELTON CHATTER C233
 FELTON 6288 NELLIE C686

Birth Wt	Act Wn Wt	NR	YR	— Dam's Production —	
79	684	98	94	1 WR 98	1 YR 94
Final Weight		Scrotal	REA	IMF	
1070		38	9.2	3.02	
BW	WW	YW	Milk	\$F	
+1.1	+61	+111	+29	+83	

189 FELTON WIDE TRACK 1500

Bull — calved 10/13/21 — tattoo 1500 — 20543655

APEX WIDE TRACK 4401 APEX WIDE TRACK 545
 FELTON WIDE TRACK 162F5 APEXETTE BLACKCAP 5008
 FELTON T958 F135 ANNE T1701 FELTON ANTARCTICA F135
 FELTON A406 ULTRESS T958

FELTON ANTARCTICA F135 LOST LAKE ANTARCTICA 683
 FELTON 5784 ANNE T1012 FELTON 1587 EILEEN 9959#
 FELTON 5178 PAULA 5784 FELTON CHATTER C227
 FELTON 346 95 LASS 5178

Birth Wt	Act Wn Wt	NR	YR	— Dam's Production —	
80	681	97	91	3 WR 100	2 YR 96
Final Weight		Scrotal	REA	IMF	
1000		32	10.0	3.03	
BW	WW	YW	Milk	\$F	
+2.5	+49	+81	+27	+63	

186 FELTON BUSH HOG 1291

Bull — calved 10/12/21 — tattoo 1291 — 20571028

B C C BUSHWACKER 41-93# PARAMONT AMBUSH 2172#
 FELTON BUSH HOG C597 R C ANITA T BANDO 918903
 FELTON 8728 ERICA A390 FAR CLYDE 1695
 1644 F A R SARA 8728#

FELTON HALLMARK 8335 WILLWOOD HALLMARK 2556
 FELTON 4634 ULTRESS T1030 FELTON 636 EILEEN A379
 FELTON 8859 PAULA 4634 FELTON CHATTER C227
 FELTON 7102 NICOLE 8859

Birth Wt	Act Wn Wt	NR	YR	— Dam's Production —	
80	699	91	96	6 WR 99	1 YR 104
Final Weight		Scrotal	REA	IMF	
1005		36	10.0	4.47	
BW	WW	YW	Milk	\$F	
+3.0	+47	+86	+24	+72	

190 FELTON SUPER DUTY 188

Bull — calved 10/29/21 — tattoo 188 — 20542721

MYTTY FOREFRONT 1094 MYTTY FOREFRONT 77P
 WRIGHT WAY SUPER DUTY 385 MYTTY BLACKCAP U370#
 TW ELA PRIDE 508Y HARB PENDLETON 765 J H#
 LCB BV PRIDE R3111

BOVAGENE APOLLO 011 HIGH PRIME 4037#
 FELTON T1621 CRUZ 26F3 LONE CONE BLACKCAP 729
 FELTON B596 QUEEN T1621 FELTON BOTTOMLINE T881
 FELTON 6178 PRIDE 2028 B596

Birth Wt	Act Wn Wt	NR	YR	— Dam's Production —	
79	680	98	94	4 WR 102	1 YR 94
Final Weight		Scrotal	REA	IMF	
980		32	9.9	3.42	
BW	WW	YW	Milk	\$F	
+2.7	+52	+88	+23	+80	

187 FELTON SUPER DUTY 182

Bull — calved 10/11/21 — tattoo 182 — 20542719

MYTTY FOREFRONT 1094 MYTTY FOREFRONT 77P
 WRIGHT WAY SUPER DUTY 385 MYTTY BLACKCAP U370#
 TW ELA PRIDE 508Y HARB PENDLETON 765 J H#
 LCB BV PRIDE R3111

CONNEALY CAPITALIST 028# S A V FINAL ANSWER 0035#
 FELTON 159F3 SKY 16F5 PRIDES PITA OF CONANGA 8821
 FELTON 5784 DUTCHESS 159F3 CCA DUTCHMAN 071
 FELTON 5178 PAULA 5784

Birth Wt	Act Wn Wt	NR	YR	— Dam's Production —	
81	687	94	93	4 WR 95	3 YR 96
Final Weight		Scrotal	REA	IMF	
1000		34	9.8	3.12	
BW	WW	YW	Milk	\$F	
+2.2	+56	+97	+18	+70	

191 FELTON ACE 207

Bull — calved 10/27/21 — tattoo 207 — 20543757

APEX WIDE TRACK 4401 APEX WIDE TRACK 545
 FELTON'S ACES 7 APEXETTE BLACKCAP 5008
 FELTON 5368 BURGESS T497# FELTON BUSH HOG C597
 FELTON 8973 NICOLE 5368

JINDRA MANIFEST CONNEALY GUINNESS#
 FELTON S987 MANDI T612 JINDRA ENCHANTRESS J 301 025#
 FELTON 257 LADY KELTON S987 BAIRDS REALLY WINDY 23
 FAR 4140 H BEAUTY 257#

Birth Wt	Act Wn Wt	NR	YR	— Dam's Production —	
80	678	97	101	2 WR 95	3 YR 108
Final Weight		Scrotal	REA	IMF	
980		35	9.1	3.14	
BW	WW	YW	Milk	\$F	
+1.4	+49	+91	+30	+75	

188 FELTON SUPER DUTY 190

Bull — calved 10/17/21 — tattoo 190 — 20542722

MYTTY FOREFRONT 1094 MYTTY FOREFRONT 77P
 WRIGHT WAY SUPER DUTY 385 MYTTY BLACKCAP U370#
 TW ELA PRIDE 508Y HARB PENDLETON 765 J H#
 LCB BV PRIDE R3111

GRANGER SASQUATCH 680 HYLIN SASQUATCH 513
 FELTON C561 EILEENMERE T1838 GRANGER PRIDE 275
 FELTON A302 BLACKCAP C561 ADAMS ACRES IDITAROD 427
 FELTON 3310 PRIDE A302

Birth Wt	Act Wn Wt	NR	YR	— Dam's Production —	
76	680	98	92	3 WR 99	2 YR 96
Final Weight		Scrotal	REA	IMF	
1000		36	8.5	3.12	
BW	WW	YW	Milk	\$F	
+2.2	+55	+98	+22	+84	

192 FELTON WEIGH UP 1211

Bull — calved 11/14/21 — tattoo 1211 — 20564057

PLATTEMERE WEIGH UP K360# SITZ UPWARD 307R#
 RVF WEIGH UP E2429 BARBARA OF PLATTEMERE 337#
 G A R TEN X A3018 A A R TEN X 7008 S A#
 G A R 5050 NEW DESIGN A91

JINDRA MANIFEST CONNEALY GUINNESS#
 FELTON MANDY 83F6 JINDRA ENCHANTRESS J 301 025#
 FELTON T1277 DUTCHESS 78F3 CCA DUTCHMAN 071
 FELTON C515 BURGESS T1277

Birth Wt	Act Wn Wt	NR	YR	— Dam's Production —	
83	687	105	102	1 WR 105	1 YR 102
Final Weight		Scrotal	REA	IMF	
905		35	8.9	4.16	
BW	WW	YW	Milk	\$F	
+1.9	+66	+119	+35	+86	

194 FELTON ACE 201

Bull — calved 10/20/21 — tattoo 201 — 20543756

APEX WIDE TRACK 4401
 FELTON'S ACES 7
 FELTON 5368 BURGESS T497#
 DUTCH FLAT FRONTMAN 4512
 FELTON 92F2 BELL 51F4
 FELTON T893 ANNE F922

APEX WIDE TRACK 545
 APEXETTE BLACKCAP 5008
 FELTON BUSH HOG C597
 FELTON 8973 NICOLE 5368
 KESSLERS FRONTMAN R001#
 DUTCH FLAT STAR AMBUSH 0510#
 FELTON ANTARCTICA F135 T983
 FELTON 5118 ULTRESS T893

Birth Wt	Act Wn Wt	NR	YR	— Dam's Production —	
80	681	96	93	2 WR 104	2 YR 101
Final Weight		Scrotal	REA	IMF	
930		35	8.5	3.41	
BW	WW	YW	Milk	\$F	
+1.4	+46	+81	+31	+68	

198 FELTON SUPER DUTY 1509

Bull — calved 11/23/21 — tattoo 1509 — 20568109

MYTTY FOREFRONT 1094
 WRIGHT WAY SUPER DUTY 385
 TW ELA PRIDE 508Y
 HYLINE O'REILLY FACTOR 270
 FELTON EDELLA 5F2 1037
 FELTON T1070 BLACKLADY F52

MYTTY FOREFRONT 77P
 MYTTY BLACKCAP U370#
 HARB PENDLETON 765 JH#
 LCB BV PRIDE R3111
 VIN-MAR O'REILLY FACTOR#
 HYLINE LUCY 456
 CCA PENDLETON 013
 FELTON A352 QUEEN T1070

Birth Wt	Act Wn Wt	NR	YR	— Dam's Production —	
84	664	107	104	1 WR 107	1 YR 104
Final Weight		Scrotal	REA	IMF	
1074		34	10.2	3.25	
BW	WW	YW	Milk	\$F	
I+3.0	I+60	I+101	I+24	na	

195 FELTON WIDE TRACK 148

Bull — calved 10/25/21 — tattoo 148 — 20568104

APEX WIDE TRACK 4401
 FELTON WIDE TRACK 162F5
 FELTON T958 F135 ANNE T1701
 FELTON T881 BOTTOMLINE T1062
 FELTON T86 PRIDE 133F5
 FELTON 8165 QUEEN T86

APEX WIDE TRACK 545
 APEXETTE BLACKCAP 5008
 FELTON ANTARCTICA F135
 FELTON A406 ULTRESS T958
 FELTON BOTTOMLINE T881
 FELTON 4803 DUTCHESS T2546
 ADAMS ACRES IDITAROD 427
 FELTON 4583 BURGESS 8165

Birth Wt	Act Wn Wt	NR	YR	— Dam's Production —	
80	673	96	91	3 WR 96	3 YR 95
Final Weight		Scrotal	REA	IMF	
1000		31	9.1	3.13	
BW	WW	YW	Milk	\$F	
I+1.9	I+47	I+79	I+26	+64	

200 FELTON WIDE TRACK 1503

Bull — calved 11/02/21 — tattoo 1503 — 20568106

APEX WIDE TRACK 4401
 FELTON WIDE TRACK 162F5
 FELTON T958 F135 ANNE T1701
 CCA DUTCHMAN 071
 FELTON T780 DUTCHESS 163F3
 FELTON 2394 QUEEN T780

APEX WIDE TRACK 545
 APEXETTE BLACKCAP 5008
 FELTON ANTARCTICA F135
 FELTON A406 ULTRESS T958
 FELTON DUTCHMAN T7019
 BC BLACKCAP EFFIE 2104
 FELTON BOTTOMLINE T797
 FELTON C502 LADY KELTON 2394#

Birth Wt	Act Wn Wt	NR	YR	— Dam's Production —	
82	693	101	94	4 WR 99	4 YR 100
Final Weight		Scrotal	REA	IMF	
1000		35	10.5	3.13	
BW	WW	YW	Milk	\$F	
I+2.7	I+59	I+96	I+24	+70	

196 FELTON WIDE TRACK 128

Bull — calved 10/28/21 — tattoo 128 — 20564058

APEX WIDE TRACK 4401
 FELTON BRUZER 128F3
 FELTON 5368 BURGESS T497#
 FELTON HALLMARK 8335
 FELTON 4583 ULTRESS T9390
 FELTON 8859 FERN 4583

APEX WIDE TRACK 545
 APEXETTE BLACKCAP 5008
 FELTON BUSH HOG C597
 FELTON 8973 NICOLE 5368
 WILLWOOD HALLMARK 2556
 FELTON 636 EILEEN A379
 FELTON REALLY WINDY A138
 FELTON 7102 NICOLE 8859

Birth Wt	Act Wn Wt	NR	YR	— Dam's Production —	
83	670	100	98	4 WR 98	3 YR 100
Final Weight		Scrotal	REA	IMF	
880		30	9.0	3.29	
BW	WW	YW	Milk	\$F	
+3.4	+55	+101	+25	+79	

201 FELTON SUPER DUTY 212

Bull — calved 10/29/21 — tattoo 212 — 20542723

MYTTY FOREFRONT 1094
 WRIGHT WAY SUPER DUTY 385
 TW ELA PRIDE 508Y
 RALLY DUTCHMAN 4022
 FELTON A305 DUCHESS T1829
 FELTON 8723 PRINCESS A305

MYTTY FOREFRONT 77P
 MYTTY BLACKCAP U370#
 HARB PENDLETON 765 JH#
 LCB BV PRIDE R3111
 RALLY DUTCHMAN 219
 RALLY BLACK EMPRESS 58
 FAR 2100 L 45
 3420 FAR OPEL 8723#

Birth Wt	Act Wn Wt	NR	YR	— Dam's Production —	
82	659	99	100	4 WR 103	2 YR 100
Final Weight		Scrotal	REA	IMF	
905		34	9.2	5.77	
BW	WW	YW	Milk	\$F	
+2.9	+55	+90	+23	+73	

197 FELTON ARTILLERY 171

Bull — calved 10/25/21 — tattoo 171 — 20564065

CONNELLY ARTILLERY 4236
 CLEAR CREEK ARTILLERY 893
 CCA ERICA LASSIE 260
 JINDRA MANIFEST
 KF 490 MISS INFINITY T628
 JINDRA BLACKCAP J 924 490

CONNELLY ARSENAL 2174#
 DELLA OF CONANGA 130
 SITZ UPWARD 307R#
 CCA ERICA LASSIE 607T
 CONNEALY GUINNESS#
 JINDRA ENCHANTRESS J 301 025#
 JINDRA DOUBLE VISION#
 JINDRA ELEGANCE J 201 924

Birth Wt	Act Wn Wt	NR	YR	— Dam's Production —	
82	690	99	92	2 WR 98	2 YR 98
Final Weight		Scrotal	REA	IMF	
900		30	9.0	2.96	
BW	WW	YW	Milk	\$F	
+2.8	+68	+126	+31	+90	



Heifers 50 Head of Black Open Commercial Heifer Replacements

- come right out of our herd
- bangs vaccinated, poured and first round of pre breeding shots.
- born in April-May 2022



WE *KNOW* MONTANA.

What is the value of my land in today's market?
What are your 1031 exchange options?



Call Logan to discuss how we can help agricultural producing families navigate complex and complicated real estate transactions.

Logan Todd 406.930.3673
logan@sonnytoddrealestate.com

© Sonny Todd Real Estate | www.sonnytoddrealestate.com | info@sonnytoddrealestate.com
301 W. 1st Ave., Suite C, PO Box 828, Big Timber, MT 59011 | 406.932.1031

CattlActive
100% Natural
Made in the USA
The health of your cattle
all starts in the rumen.

Did you know that 80% of a cow's immune system lies in and around the rumen? The ravages of acidosis, poor nutrient absorption and consequent illness can damage not only your cattle but your bottom line.

CattlActive® is 100% natural. It works to neutralize acid, encourage feed and water consumption, support beneficial gut flora and increase nutrient absorption for healthier, stronger, heavier cattle come sale time.

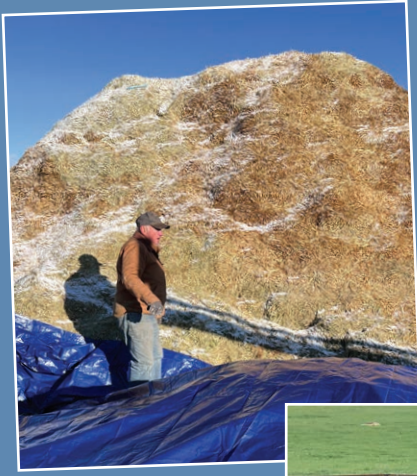
Lane TeKrony
(605)880-5408



800-254-0179
www.proearthanimalhealth.com



PRO EARTH
ANIMAL HEALTH
Ringing Around Healthy



Thanks for Joining Us!

FELTON ANGUS RANCH

Visit Felton Angus Ranch!

FELTON

ANGUS RANCH

406-220-1177
1380 Bowman Rd
Deer Lodge, MT 59722

FIRST CLASS

US Postage
Paid
Ballyhoo Printing
59457



**Tuesday
February 14
2023**

**Lunch at 12:00 pm
Sale at 1:00 pm MST
At the Ranch
Deer Lodge, MT**

WWW.FELTONANGUS.COM

Jim Felton (406) 220-1177 jim@feltonangus.com
Rich Felton (406) 220-1176



This sale will be broadcast live on the internet.

DVAuction
Broadcasting Real-Time Auctions
Real time bidding & proxy bidding available.



SUPERIOR
LIVESTOCK AUCTION

ALL NEW PUREBRED PLATFORM

bid.superiorlivestock.com | 800.422.2817