

GILL RED ANGUS



Lot 59

Fall Bull & Female Sale

DECEMBER 8, 2021

1:00 PM MT | At the Ranch Near Timber Lake, South Dakota

Selling

- 137 Coming 2-Year-Old Bulls
- 60 Commercial Bred Heifers



Fall Bull & Female Sale

DECEMBER 8, 2021

1:00 PM MT
At the Ranch
Timber Lake, SD

www.GillRedAngus.com

RANCH HEADQUARTERS

Gill Red Angus
13138 256th Ave.
Timber Lake, SD 57656
www.gillredangus.com

MARKETING, BUSINESS & COW HERD MANAGER

Bryan & Kristen Gill
Cell • 701-730-0134
E-Mail: bigredgenetics@hotmail.com

RANCH MANAGER

Brent & Emily Gill
Cell • 605-848-3722
Larry & Janet Gill
Home • 605-865-3288
Cell • 605-848-1996

SALE DATE & TIME

Wednesday, December 8, 2021 • 1:00 p.m. MT

SALE LOCATION

Gill Red Angus sale facility • On the ranch
Timber Lake, South Dakota

DIRECTIONS TO SALE

Gill Red Angus Ranch is located 120 miles south of Bismarck, ND, 34 miles west of Mobridge, SD and 6 miles east of Timber Lake, SD.

If traveling east from Timber Lake: Go 6 miles on Highway 20 to ranch turnoff. Turn left, go north 1.5 miles. Turn left, go west ½ mile.

If traveling west from Mobridge or Bismarck: From Highway 63 and Highway 20 Junction, go 8.5 miles west to ranch turnoff. Turn right, go north 1.5 miles. Turn left, go west ½ mile.

ACCOMODATIONS

Timber Lake, South Dakota
The Limit Lodge – 1-605-865-3526
Mobridge, South Dakota
Wrangler Motor Inn • 605-845-3641
Grand River Casino • 800-475-3321

LUNCH

Complimentary lunch available on sale day served by Amy Sandquist

VIDEO

A video of each lot will be on both www.dvauction.com and www.gillredangus.com. The sale will be a video sale. The bulls & heifers will not be run through a sale ring, but instead of a sale ring, several big screen TV's will be displayed throughout the sale barn and a video of each bull will be displayed when each lot is being sold.

AUCTIONEER

Roger Jacobs • 406-698-7686

RINGMEN

Tony Heins • Cattle Business Weekly
701-943-2367
Donnie Leddy • Cattle Business Weekly
605-695-0113
Scott Dirk • Tri-State Livestock News
605-380-6024
Kirby Goettsch • Farm & Ranch Guide
605-380-3939

BUYER REPRESENTATIVES

Dan Hooper • Nebraska Rep 308-360-3293
or 308-282-2309
Gary Fike • Kansas Rep 785-410-2608
Kevin Fettig • North Dakota Rep 701-391-9127
Nick Caspers • South Dakota Rep 605-350-9102

Buyers unable to attend sale may have their bid represented by contacting the auctioneer, one of the buyer representatives, the marketing manager or Gill Red Angus.

RED ANGUS ASSOCIATION

Harold Bertz
Commercial Marketing Specialist
816-661-2289

SALE CATALOG

The Cattle Business Weekly, Philip, SD
605-859-2022 • cattle@gwtc.net
www.cattlebusinessweekly.com

SALE VETERINARIAN

Oahe Vet Clinic
Mobridge, South Dakota • 605-845-3634

SALE ORDER

Cattle will sell in catalog order, but are subject to change on sale day.

INSPECTION OF BULLS

The bulls are available to be viewed at ranch headquarters anytime between now and sale.

LOT TAGS

Ear tag numbers on the sale cattle will correspond to the sale catalog.

HEALTH, VACCINATIONS, & REQUIRED TRICH TESTING

At Gill Red Angus we maintain a consistent mineral and vaccination program. From birth to weaning, our calves receive their necessary vaccinations and remain on vitamins and minerals to aid in maintaining health as they grow. These bulls have also been poured prior to pasture and receive an oral dewormer when coming home as well as being poured again for lice.

NO LOAD OUT AFTER DARK ON SALE DAY

SALE TERMS & CONDITIONS

Any terms and conditions not covered by the catalog will refer to the Standard Terms & Conditions set forth by the Red Angus Association of America.

GILL RED ANGUS GUARANTEE

All bulls that are in good breeding condition at the beginning of the first breeding season are guaranteed breeders. This does not include any injury. Any bull that settles one third or more of the healthy cows he services or passes a fertility test made by a competent veterinarian during the first six months after the sale date is considered a good breeder. All claims for adjustment or refund must be made within six months of sale date. All bulls returned must be in good and healthy condition. Any bulls given a fertility test within the first six months after the sale date will be at the buyer's expense. All bulls are guaranteed to be breeders, however, no guarantee is given that the semen collected from a bull will freeze.

INSURANCE

An injury and mortality insurance is available on all bulls. Insurance is available through Ray Trudeau of Martin-Trudeau Insurance - 605-770-5170

This sale will be broadcast live online at

DVAuction
Broadcasting Real-Time Auctions
Real time bidding & proxy bidding available.

For more info about bidding online with
DVAuction.com, check out Pages 15 & 54



The Gill Red Angus Customer Marketing Program

"You Buy Our Bulls, We Will Bid on Your Calves"

Something that sets us apart from most of our competition is our Customer Service Program. Our slogan is "You buy our bulls and we will bid on your calves." This has really helped our customers on selling day. We have run replacement heifers up as much as \$15 per hundred weight! Add that up on a load of 525 lbs replacement heifers and that is an extra \$7500 in your pocket. Compare that to what is offered by other seed stock producers, how can you go wrong?

Here is how it works:

- ✓ First you must be a Gill Red Angus customer. At marketing time, contact Gill Red Angus with the marketing option you wish to pursue:
 - Complete Retained Ownership
 - Partial/Partnership Retained Ownership
 - Livestock Auction or Off-the-Farm Marketing - Sell 100% of your calves off-the-farm or at the stockyards and a Gill staff member will be there to place a bid on them for you.
 - Discounted semen available to all customers who want to AI.
 - Discounted vet supplies through DeTye Vet Supply, River Ag & Stockmans Supply.
- ✓ When possible, we will work with our customers to help form co-mingled loads of calves. Upon harvest, if possible, Gill Red Angus will prepare a report, complete with feed yard and harvest data, for your use.
- ✓ We are also available for consultations regarding breeding, replacement heifer procurement, and all marketing options. We will help you in any way we can to make your bottom dollar grow.

"You Buy Our Bulls, We Will Bid on Your Calves"



Hello Ranchers,

We would like to invite you to our Fall Bull and Commercial Bred Heifer Sale. This is our 42nd year raising Registered Red Angus. Our goals have grown over the years but our core has not changed. We raise the type of cows that perform on grass without inputs; cows that are long made, big bodied, and easy fleshing. At the same time, we work to raise bulls that are wide based, heavy muscled, long bodied, and will sire commercial females that will make great cows and steers that will feed and grade



Brent and Bryan

better than the competition. We have proven this to be true over and over again on grass and in the feedlots.

I'm writing this on October 22nd. We have been going to sale barns every day for the last two weeks and we still have a couple heavy weeks to go. A large portion of the Dakotas and Nebraska received some much needed rain the last few weeks. Because of the mud, there were some cancellations and now all the cattle are heading to the sale barns over a shorter timeframe. Dad and I have each been going to different barns and we have asked a couple order buyers to handle some as well since these calf sales are often on the same days at the various locations. Brent is following us around trucking them home, while Wes is handing everything at home. This year more than ever before it has paid big returns to be our customer. We do all we can to make sure you get paid what you are deserved! If you aren't part of the Gill Red Angus program, now is the time!

The bulls and heifers are as good as ever! We have done everything we can to make a product that gives you what you need. We have culled any bull that seems to be a little nervous, making this a very gentle group. We are proud to offer them to you! The heifers are all confirmed AI bred to calve March 1 in a 10 day period. They are easy keeping, gentle, and good!

The sale will be broadcast live on dvaultion.com. We can handle phone bids or bid on cattle for you if you can't make it. We want it to be as easy as possible for you to buy your bulls.

Come check us out before the sale or on sale day.

The Gill's

Visit Our Website www.gillredangus.com

A video of each bull is available on the website



Larry and Janet

SALE DAY REPRESENTATIVES

Dan Hooper

Nebraska Sale Representative

308-360-3293
308-282-2309

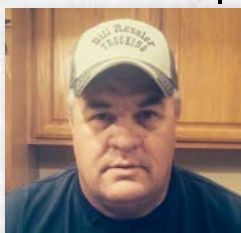


Dan and Tara Hooper are from Merriman, NE, which is in the NW corner of the Nebraska Sandhills. They have been buying bulls from us for 15 years. They had an excellent set of Red Angus cows who always raised a set of calves that obtained premium prices. These two know cattle! Give Dan a call and talk about Red Angus and our cattle. He will give you an honest opinion on us and our bulls. He does business the old fashion way, with a hand shake and by his word.

Kevin Fettig

North Dakota Sale Representative

701-391-9127



Kevin lives about 15 minutes northeast of Bismarck, ND where he buys and sells replacement heifers, feeder steers, and bred females. He is also a licensed and bonded cattle buyer. The past couple years he has done a great job in purchasing several thousand feeder calves on order. He has earned the trust and respect from ND ranchers and what Kevin says is the way it will be, as he never goes back on his word. His son Cody works beside Kevin in the ranching and order buying business as well. I have complete trust in both Kevin and Cody and if you have any questions about the bulls, they will help you, anyway they can.

Cody Fettig: 701-391-9132

Gary Fike

Kansas Sale Representative

785-410-2608



Gary Fike lives near Westmoreland, KS. He has been involved in the beef industry nearly all of his working career (37 years) as an extension specialist in beef cattle, as a county extension agent, serving as a beef cattle specialist for Certified Angus Beef, and was the Director of Commercial Marketing for the RAAA most recently. He has experience in carcass data collection and interpretation, marketing of feeder cattle, and evaluating and purchasing sires for ranchers and farmers. He has many connections in the industry, particularly with feedlots in western Kansas, Nebraska, Oklahoma, and Texas. He holds a BS in Ag Education from Oklahoma Panhandle State University and an MS degree in Ruminant Nutrition from Kansas State University. Gary loves the cattle industry and the people in it and has a special affection for Red Angus genetics!

Nick Caspers

South Dakota Sale Representative

605-350-9102



Nick lives in Huron, SD where he is an Auctioneer and field rep for Huron Continental Marketing. Nick started out on his family's 350 head cow calf operation in Hecla, SD, before deciding to move to the marketing side of our industry. He has been a great promoter and trusted marketer of the beef producers of the Dakota's. If you have any questions, etc. 605-350-9102



GILL RED ANGUS DELIVERY

We will start delivering bulls directly after the sale. All of the heifers and cows will be shipped right after the sale. The trucking for the females will be at the buyer's expense.

We will continue to deliver bulls for free if you are from ND, SD, NE, and parts of MN, WY, and MT. (See map for details) We will deliver with both a semi and a stock trailer. If possible, we will deliver to your ranch, but it's not always possible, especially if we use our semi. So in those times, we ask that we meet you at "central points", like a sale barn.

For all other states, here are our delivery charges. We will charge \$150 per head for the first 450 miles, and for every hundred miles after that, it's an additional \$100 per head. Depending on the situation, we may ask you to meet us along the way. Also, if we have a trailer load of bulls going to the same area, the delivery charges will be adjusted less.



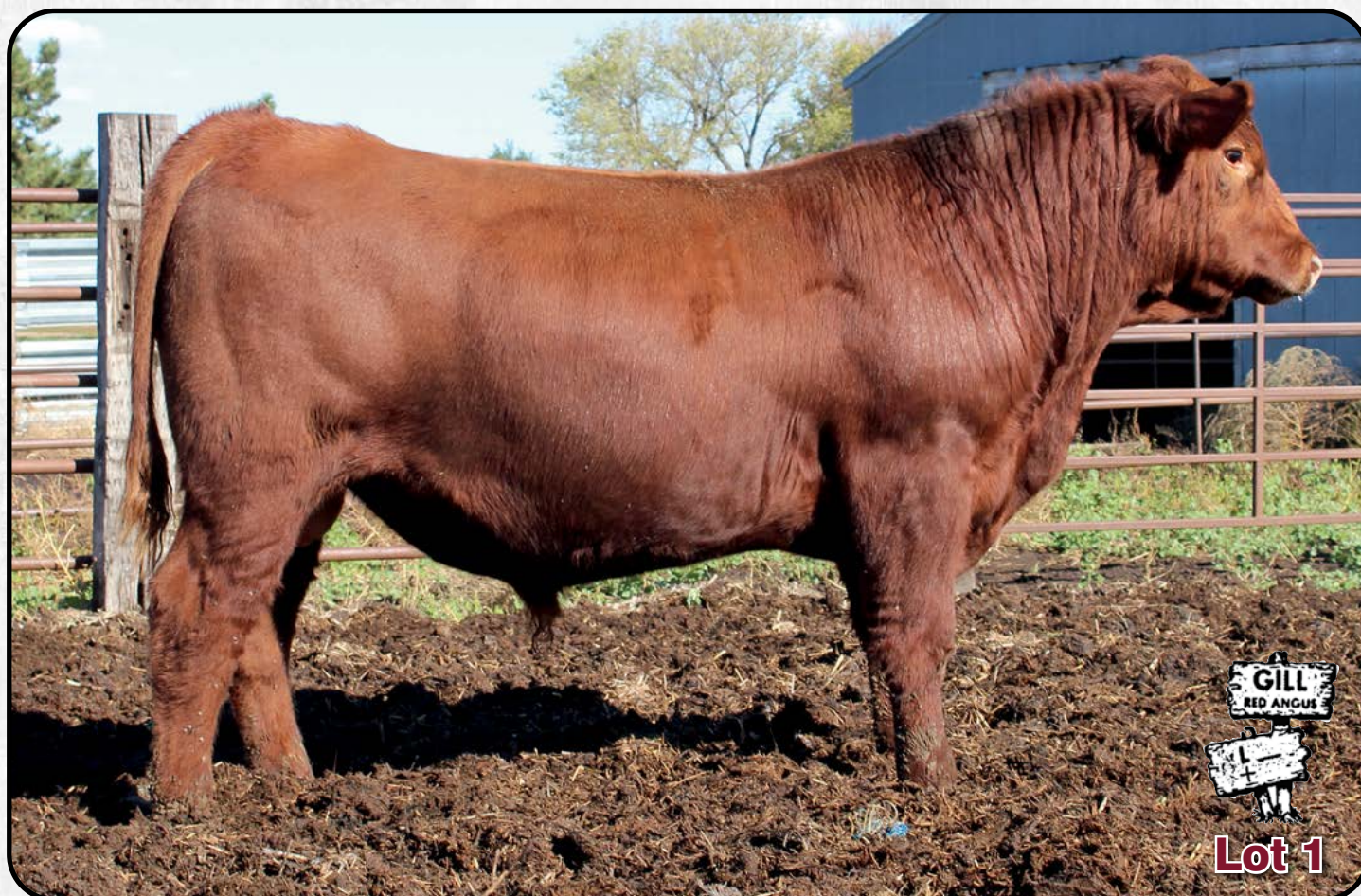
Commercial Bred Heifers



We are offering you this outstanding set of commercial Red Angus bred heifers. They were ultrasound tested in August to confirm AI or bull bred. We then sold all of the bull bred heifers to a ranch in New Mexico and they left in September. We have all of the AI bred heifers in this sale and they are due March 1 for 10 days. The heifers were primarily raised by a couple of our customers, Johnson/Strand and Troy Ramsey. These girls are big bodied, deep made, have extra length in them and will be the calf-raising kind! Their dams have excellent udders, good feet, and are easy keeping. They are AI bred to Willow Franchise, a great calving ease bull we have used with success on our own heifers and the AI bred heifers we sold last year. The cattle market is on the rise and these might be the best investment you can make. Come check them out!

We will sell a minimum of 10 heifers with the option to take the entire load.





Lot 1



LMG Gills Ringside 0254

5/10/20

4371061

WILLOW RINGSIDE 1313-1753
3806584

HXC DECLARATION 5504C
WILLOW JACKIE 1313

LMG MISS LASS 5536
3523458

LSF HERDBUILDER 1058Y
LMG MISS GRAND LASS 2548

	ProS	HB	GM	CED	BW	WW	YW	Milk	Stay	MB	REA
EPD	116	69	47	12	-1.2	63	106	23	17	0.46	0.07
PCTL (%)	22	41	22	58	62	36	27	67	37	37	56

BW: 84 lbs.

WW: 740 lbs.



Cayn and Jude hitching a ride in the semi.



Hudson & Murphy

Lot
2



LMG Gills Redemption 0240

4/30/20

4371143

CER MR. REDEMPTION 41D
3566170

BROWN JYJ REDEMPTION Y1334
JRC MS 611 6227 0117X

LMG MISS BLOCKANNA 6463
3711867

4MC PROSPECT 469
LMG MISS BLOCKANNA 4008

	ProS	HB	GM	CED	BW	WW	YW	Milk	Stay	MB	REA
EPD	118	71	47	8	0.3	69	117	25	19	0.44	0.15
PCTL (%)	20	36	23	94	86	18	11	48	7	41	37

BW: 85 lbs.

WW: 667 lbs.



Lot 3  **LMG Gills Redemption 0168**
4/30/20 4370867

CER MR. REDEMPTION 41D 3566170 BROWN JYJ REDEMPTION Y1334
JRC MS 611 6227 0117X

LMG MISS ROXIE 2566 1594829 C-T GRAND STATEMENT 1025
LMG MISS ROXIE 9142

	ProS	HB	GM	CED	BW	WW	YW	Milk	Stay	MB	REA
EPD	110	60	50	9	0.3	67	116	24	17	0.49	0.13
PCTL (%)	30	59	18	91	86	23	12	58	31	32	42

BW: 80 lbs.
WW: 649 lbs.

Lot 4  **LMG Gills Redemption 0293**
5/15/20 4371195

CER MR. REDEMPTION 41D 3566170 BROWN JYJ REDEMPTION Y1334
JRC MS 611 6227 0117X

LMG MISS SUSETTE 6588 3556378 LMG GILLS STATEMENT 2066
LMG MISS SUSETTE

	ProS	HB	GM	CED	BW	WW	YW	Milk	Stay	MB	REA
EPD	96	55	41	8	0.8	74	124	25	17	0.43	0.13
PCTL (%)	53	69	33	95	91	7	5	49	35	43	42

BW: 86 lbs.
WW: 729 lbs.



GILL RED ANGUS

You buy our bulls, we bid on your calves!



Larry and Janet enjoying a Sunday evening!

Lot 5



LMG Gills Trending 0112

4/1/20

4370525

STRA TRENDING 618
3556536

BIEBER ROLLIN DEEP Y118
HRR COLLEEN 429

LMG MISS DYNETTE 6606
3556395

FLYING W GAME PLAN 189Y
LMG MISS ROCKER

	ProS	HB	GM	CED	BW	WW	YW	Milk	Stay	MB	REA
EPD	95	71	24	9	-0.8	59	94	21	18	0.39	0.19
PCTL (%)	56	37	72	90	69	54	54	85	22	53	29

BW: 72 lbs.

WW: 608 lbs.



Lot 6  **LMG Gills Prospect 0257**
5/23/20 4371043

LMG GILL 6331
3556272

4MC PROSPECT 469
LUCHT BLOCKANA 77

LMG MISS SCARLETTE 5520
3523442

LSF HERDBUILDER 1058Y
LMG MISS SCARLETT 1321

	ProS	HB	GM	CED	BW	WW	YW	Milk	Stay	MB	REA
EPD	93	71	21	13	-2.8	54	86	31	17	0.28	0.05
PCTL (%)	59	35	77	43	31	73	71	8	27	80	61

BW: 78 lbs.
WW: 704 lbs.

Lot 7  **LMG Gills Foremost 0261**
6/22/20 4370843

LSF SRR FOREMOST 5314C
1744805

BROWN PREMIER X7876
SRR VICTORIA JOAN 277-675

LMG MIS DIANN 1282
1494523

LMG GILLS NO DOUBT 9018
LMG MISS BRANDY 8043

	ProS	HB	GM	CED	BW	WW	YW	Milk	Stay	MB	REA
EPD	95	51	44	8	0.7	63	108	26	16	0.43	0.07
PCTL (%)	56	76	28	95	90	38	24	44	39	43	56

BW: 80 lbs.
WW: 689 lbs.

Lot 8  **LMG Gills Spartacus 0165**
5/15/20 4371305

BIEBER SPARTACUS F129
3958047

BIEBER SPARTACUS A193
BIEBER ENCHANTRESS 399D

LMG MISS 7293
3899183

4MC OPTIMISM 482
LMG MISS MTX 4134

	ProS	HB	GM	CED	BW	WW	YW	Milk	Stay	MB	REA
EPD	110	68	42	15	-2	72	116	29	14	0.35	0.19
PCTL (%)	30	42	32	22	46	11	12	16	67	63	29

BW: 72 lbs.
WW: 756 lbs.



Bryan and Kenny, first time they seen each other in 6 years.



Lot 9 **LMG Gills Trending 0113**
 3/15/20 **4370527**

STRA TRENDING 618
 3556536

BIEBER ROLLIN DEEP Y118
 HRR COLLEEN 429

LMG MISS 7268
 3899233

4MC OPTIMISM 482
 LMG MISS DYNETTE 77010

	ProS	HB	GM	CED	BW	WW	YW	Milk	Stay	MB	REA
EPD	110	86	23	10	0.2	67	103	28	19	0.37	0.18
PCTL (%)	31	13	74	84	85	23	33	26	7	58	32

BW: 84 lbs.
WW: 690 lbs.

Lot 10 **LMG Gills Prospect 0209** (2540/6603)
 6/15/20 **4370861**

LMG GILL 6331
 3556272

4MC PROSPECT 469
 LUCHT BLOCKANA 77

LMG MISS NEW TREND 2540
 1563371

SJRA 508 LANTRY 734
 MFIN MISS NEW TREND M53

	ProS	HB	GM	CED	BW	WW	YW	Milk	Stay	MB	REA
EPD	94	76	18	10	-0.4	56	90	27	18	0.28	0.02
PCTL (%)	57	27	83	80	76	64	63	28	14	80	68

BW: 82 lbs.
WW: 660 lbs.



Quayde's 5th Birthday!

Lot 11 **LMG Gills Redemption 0216**
 5/15/20 **4371313**

CER MR. REDEMPTION 41D
 3566170

BROWN JYJ REDEMPTION Y1334
 JRC MS 611 6227 0117X

LMG MISS ROCKER
 1667992

LMG GILLS VIN DIESEL 7611
 LMG MISS ROCKER 0005

	ProS	HB	GM	CED	BW	WW	YW	Milk	Stay	MB	REA
EPD	93	51	42	9	1.1	68	117	28	17	0.4	0.21
PCTL (%)	58	75	31	92	93	21	10	23	24	50	26

BW: 82 lbs.
WW: 635 lbs.



Lot 13



Lot 12



LMG Gills Redemption 0156

4/27/20

4371141

CER MR. REDEMPTION 41D
3566170

BROWN JYJ REDEMPTION Y1334
JRC MS 611 6227 0117X

LMG MISS DIANNE 6454
3711883

1DRA VICTORY 0034
LMG MISS DIANNE 2634

	ProS	HB	GM	CED	BW	WW	YW	Milk	Stay	MB	REA
EPD	92	52	41	10	-0.1	66	112	29	16	0.46	0.02
PCTL (%)	60	74	34	79	81	27	17	19	39	37	68

BW: 80 lbs.
WW: 663 lbs.

Lot 13



Gills 0126

3/1/20

4355289

DKK ONE OF A KIND 7044
3726621

PIE ONE OF A KIND 510
DKK STARLETTE 5122

LUCHT TINA 442
4020308

LUCHT BIG BOSS 181
C-T TINA 402

	ProS	HB	GM	CED	BW	WW	YW	Milk	Stay	MB	REA
EPD	73	49	24	12	-2.2	58	95	30	15	0.2	0.29
PCTL (%)	88	79	72	63	41	57	52	11	64	94	15

BW: 80 lbs.
WW: 594 lbs.



Bryan, Kristen & Krisin's parents.

Lot 14  **LMG Gills Spartacus 0286**
5/29/20 **4371063**

BIEBER SPARTACUS F129 3958047 BIEBER SPARTACUS A193
BIEBER ENCHANTRESS 399D

LMG MISS PERFECT 5549 3523316 1DRA VICTORY 0034
MISS PERFECT 945-875

	ProS	HB	GM	CED	BW	WW	YW	Milk	Stay	MB	REA
EPD	67	31	36	12	-1.1	80	129	30	11	0.38	0.12
PCTL (%)	93	96	46	57	64	2	3	11	92	55	44

BW: 84 lbs.
WW: 813 lbs.

Lot 15  **LMG Gills Redemption 0194**
5/23/20 **4370821**

CER MR. REDEMPTION 41D 3566170 BROWN JYJ REDEMPTION Y1334
JRC MS 611 6227 0117X

LUCHT BLOCKANA 254 1600740 LUCHT 304
LUCHT BLOCKANA 919

	ProS	HB	GM	CED	BW	WW	YW	Milk	Stay	MB	REA
EPD	78	47	31	11	-1.1	61	102	31	16	0.46	0.01
PCTL (%)	82	82	57	69	64	45	36	7	50	37	70

BW: 78 lbs.
WW: 638 lbs.

Lot 16  **LMG Gills Prospect 0152**
5/20/20 **4371035**

LMG GILL 6331 3556272 4MC PROSPECT 469
LUCHT BLOCKANA 77

LMG MISS ROXIE 4103 1743484 C-T GRAND STATEMENT 1025
LMG MISS ROXIE 6005

	ProS	HB	GM	CED	BW	WW	YW	Milk	Stay	MB	REA
EPD	84	61	23	10	1.2	66	107	28	16	0.27	0.12
PCTL (%)	73	56	74	87	94	25	25	24	42	83	44

BW: 80 lbs.
WW: 766 lbs.

Lot 17  **LMG Gills Foremost 0117**
3/11/20 **4355269**

LSF SRR FOREMOST 5314C 1744805 BROWN PREMIER X7876
SRR VICTORIA JOAN 277-675

2CR MISSION`S FLAME 7525 4182502 VF SHAZAM'S DESTINY
GRA MISSION'S FLAME

	ProS	HB	GM	CED	BW	WW	YW	Milk	Stay	MB	REA
EPD	113	56	57	11	-2	61	102	32	17	0.57	0.16
PCTL (%)	25	66	10	70	47	47	35	4	34	17	35

BW: 80 lbs.
WW: 694 lbs.

Lot 18  **LMG Redemption 0139**
4/4/20 **4370553**

LMG GILLS REDEMPTION 8320 4098040 CER MR. REDEMPTION 41D
LMG MISS CINNAMON 4201

LMG MISS LYDIA 4014 1743406 LJC LEGACY 467W
LMG MISS LYDIA 2549

	ProS	HB	GM	CED	BW	WW	YW	Milk	Stay	MB	REA
EPD	87	54	33	10	-1	59	99	24	17	0.39	-0.01
PCTL (%)	70	70	54	86	66	53	43	63	34	53	75

BW: 84 lbs.
WW: 586 lbs.

Lot 19  **LMG Gills Redemption 0218**
4/30/20 **4371093**

CER MR. REDEMPTION 41D 3566170 BROWN JYJ REDEMPTION Y1334
JRC MS 611 6227 0117X

LMG MISS POTEET 5619 3523462 LMG GILLS INDEED 1603
LMG MISS POTEET 2569

	ProS	HB	GM	CED	BW	WW	YW	Milk	Stay	MB	REA
EPD	102	60	43	9	0	66	110	24	18	0.43	0.09
PCTL (%)	42	59	30	91	82	25	20	61	22	43	52

BW: 84 lbs.
WW: 682 lbs.

Lot 20  **LMG Gills Ribeye 0071**
3/4/20 **4370563**

GMRA MIDNIGHT EXPRESS 6216 BROWN JYJ REDEMPTION Y1334
3538395 GMRA PEACHA 454

LUCHT GRAND BLOCKANA 777 LUCHT ROYAL STATEMENT 1405
4365703 LUCHT GRAND BLOCKANA R030

	ProS	HB	GM	CED	BW	WW	YW	Milk	Stay	MB	REA
EPD	93	58	35	11	-2.4	62	100	28	17	0.56	-0.02
PCTL (%)	58	62	47	71	38	42	41	26	37	19	77

BW: 78 lbs.
WW: 609 lbs.

Lot 21  **LMG Gills Stock Market 0300**
6/20/20 **4371547**

BIEBER CL STOCKMARKET E119 PIE STOCKMAN 4051
3751659 BIEBER CL ADELLE 475C

LMG MISS ARROW 5653 LMG GILLS VIN DIESEL 7611
3523258 SST KP ARROW M417

	ProS	HB	GM	CED	BW	WW	YW	Milk	Stay	MB	REA
EPD	116	76	39	15	-4.2	60	98	26	18	0.63	0.16
PCTL (%)	22	26	37	17	12	49	46	38	23	10	35

BW: NA lbs.
WW: 790 lbs.

Lot 22  **LMG Gills Foremost**
6/1/20 **Commercial**

LSF SRR FOREMOST 5314C BROWN PREMIER X7876
1744805 SRR VICTORIA JOAN 277-675

REGISTERED RED ANGUS COW RED ANGUS BULL
RED ANGUS COW

	ProS	HB	GM	CED	BW	WW	YW	Milk	Stay	MB	REA
EPD											
PCTL (%)											

BW: 80 lbs.
WW: 700 lbs.

DNA shows the cow that raised him is not his true dam, so we have to sell as commercial, but his dam is one of our registered cows.

Lot 23  **LMG Gills Optimism 0104**
3/22/20 **4370517**

4MC OPTIMISM 482 LSF OPTIMISM 1107Y
1725031 PIE MS D C CRICKET 0284

LMG MISS 7289 4MC OPTIMISM 482
3899191 LMG MISS DYNETTE 3249

	ProS	HB	GM	CED	BW	WW	YW	Milk	Stay	MB	REA
EPD	153	116	37	14	-2.5	60	93	27	21	0.34	0.11
PCTL (%)	2	1	42	35	36	51	57	30	1	65	46

BW: 71 lbs.
WW: 603 lbs.



Evyy (front row, far left) and her basketball team



Gracem and some kitties.



Lot 25  **LMG Spartacus 0102**
3/19/20 4370515

BIEBER SPARTACUS F129
3958047

BIEBER SPARTACUS A193
BIEBER ENCHANTRESS 399D

LMG MISS DYNETTE 6522
3711935

LMG GILLS VIN DIESEL 7611
LMG MISS DYNETTE 0405

	ProS	HB	GM	CED	BW	WW	YW	Milk	Stay	MB	REA
EPD	62	33	29	14	-2.9	74	122	28	11	0.27	0.27
PCTL (%)	96	95	63	33	29	8	7	23	93	83	17

BW: 65 lbs.
WW: 631 lbs.

Lot 26  **LMG Gills Ribeye 0206**
4/24/20 4370951

BARHI RIBEYE 663
4073132

SUNR ULTIMATE RIBEYE 672Z
5L FIREFLY 190-2573

LMG MISS NEW DAY 2638
1594878

LMG GILLS VIN DIESEL 7611
JRA NEW DAY 4323

	ProS	HB	GM	CED	BW	WW	YW	Milk	Stay	MB	REA
EPD	65	62	4	9	0	65	99	25	17	0.28	0.02
PCTL (%)	94	56	97	89	82	31	43	52	30	80	68

BW: 82 lbs.
WW: 701 lbs.

View the Auction Live! Bid Online... you're ringside right at your desk!

Buying online is as easy as 1, 2, 3...

1. Create an account at www.DVAuction.com under the "Register" tab
2. Apply for bidding approval by clicking on the "details" tab at least 24 hours prior to the auction – a DV representative will notify you once you have been approved.
3. Tune in for the sale to make your purchases!

High Speed internet is required for successful bidding-be sure to check the lag-time monitor in the top left corner to ensure real-time broadcasts.
Proxy-bidding – if you can't make time to watch the sale, register a proxy bid and let our system represent your bid while you're away. Look for the "proxy bid" tab on the auction listing, and fill in your maximum bids. We'll handle the rest!

For General Questions Please contact Our Office:
402-316-5460 or support@dvauction.com



DVAuction
Broadcasting Real-Time Auctions



Lot 27  **LMG Gills Foremost 0724**
5/4/20 **Commercial**

LSF SRR FOREMOST 5314C
1744805

BROWN PREMIER X7876
SRR VICTORIA JOAN 277-675

REGISTERED RED ANGUS COW RED ANGUS BULL
RED ANGUS COW

	ProS	HB	GM	CED	BW	WW	YW	Milk	Stay	MB	REA
EPD											
PCTL (%)											

BW: 84 lbs.
WW: 724 lbs.

DNA shows the cow that raised him is not his true dam, so we have to sell as commercial, but his dam is one of our registered cows.

Lot 28  **LMG Gills Franchise 0134**
3/5/20 **4370547**

WILLOW FRANCHISE 1638-1853
4020990

9 MILE FRANCHISE 6305
WILLOW FIREFLY 1638

LMG MISS LYDIA 6545
3711887

LMG GILLS STATEMENT 4591
LMG MISS LYDIA 1208

	ProS	HB	GM	CED	BW	WW	YW	Milk	Stay	MB	REA
EPD	48	25	22	12	-1.5	44	66	12	11	0.28	0.07
PCTL (%)	99	98	76	63	56	92	93	99	93	80	56

BW: 86 lbs.
WW: 527 lbs.

Twin to heifer.

Lot 29  **LMG Gills Vortex 0230**
5/20/20 **4370877**

LMG GILLS VIN DIESEL 4533
1743620

LMG GILLS VIN DIESEL 7611
LMG MISS DYNETTE 77012

LMG MISS CHENEY 2593
1594842

SANDERSON KING ROLLO 22V
MESSMER CHENEY 277P

	ProS	HB	GM	CED	BW	WW	YW	Milk	Stay	MB	REA
EPD	68	53	15	10	0.2	67	107	22	16	0.22	0.21
PCTL (%)	92	71	88	85	85	22	27	80	42	92	26

BW: 84 lbs.
WW: 679 lbs.

Lot 30  **LMG Gills Spartacus 0262**
5/20/20 **4371021**

BIEBER SPARTACUS F129
3958047

BIEBER SPARTACUS A193
BIEBER ENCHANTRESS 399D

LMG MISS SUSETTE
1743562

FLYING W GAME PLAN 189Y
LMG MISS SUSETTE 1274

	ProS	HB	GM	CED	BW	WW	YW	Milk	Stay	MB	REA
EPD	80	50	30	11	-0.8	78	124	26	13	0.29	0.16
PCTL (%)	79	77	60	71	69	4	5	39	83	78	35

BW: 85 lbs.
WW: 752 lbs.



Gills One Of A Kind 0126

3/1/20

4355289

DKK ONE OF A KIND 7044
3726621

PIE ONE OF A KIND 510
DKK STARLETTE 5122

LUCHT TINA 442
4020308

LUCHT BIG BOSS 181
C-T TINA 402

	ProS	HB	GM	CED	BW	WW	YW	Milk	Stay	MB	REA
EPD	73	49	24	12	-2.2	58	95	30	15	0.20	0.29
PCTL (%)	88	79	72	63	41	57	52	11	64	94	15

BW: 80 lbs.

WW: 594 lbs.



LMG Gills Spartacus

5/25/20

Commercial

BIEBER SPARTACUS F129
3958047

BIEBER SPARTACUS A193
BIEBER ENCHANTRESS 399D

REGISTERED RED ANGUS COW

RED ANGUS BULL
RED ANGUS COW

	ProS	HB	GM	CED	BW	WW	YW	Milk	Stay	MB	REA
EPD											
PCTL (%)											

BW: 84 lbs.

WW: 675 lbs.

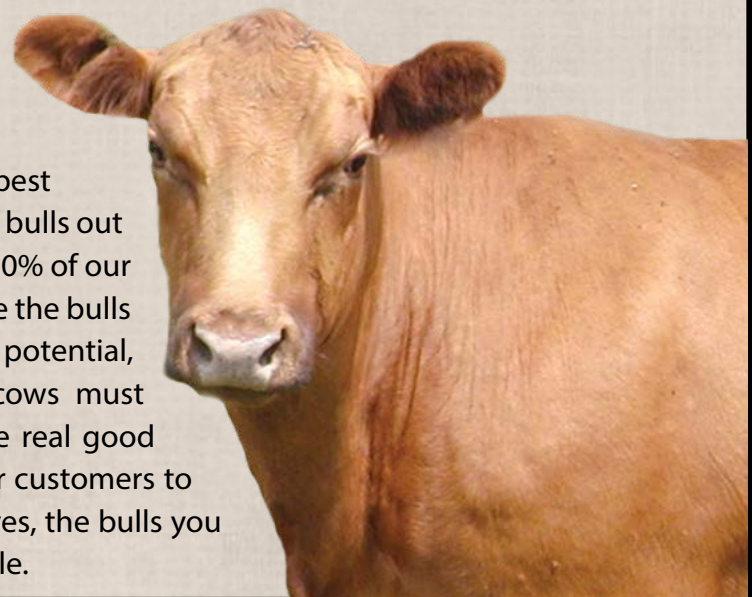
DNA shows the cow that raised him is not his true dam, so we have to sell as commercial, but his dam is one of our registered cows.

Our Commitment

We know in order for us to be successful, our customers need to be successful as well. That's why we have committed ourselves to add value to your calf crop with feeder calf and heifer marketing. Ask about how we can help promote your Gill Red Angus sired calves to potential customers.

Our Dedication

We are dedicated to raising the highest quality bulls possible for both our customers and the feeders who purchase our customer's calves every year. In order for us to supply you with the best bulls possible, we will only use the absolute best bulls out of the very best cows. We also take the bottom 20% of our cowherd and sell them every December. We raise the bulls with the goal of developing them to their max potential, while keeping them sound and fertile. Our cows must be easy fleshing, sound made, fertile, and have real good udders on them. No exceptions! In order for our customers to continue getting a premium for their heifer calves, the bulls you use need to come from the best genetics possible.



Lot 33  **LMG Gills Spartacus 0223**
4/28/20 4370961

BIEBER SPARTACUS F129
3958047

BIEBER SPARTACUS A193
BIEBER ENCHANTRESS 399D

LMG MISS MTX 4023
1743414

SANDERSON KING ROLLO 22V
LMG MISS MTX 1364

	ProS	HB	GM	CED	BW	WW	YW	Milk	Stay	MB	REA
EPD	87	53	34	13	-1.9	65	107	25	13	0.33	0.16
PCTL (%)	69	72	50	51	48	29	25	47	77	68	35

BW: 82 lbs.
WW: 650 lbs.

Lot 34  **LMG Gills Redemption 0196**
5/15/20 4371527

CER MR. REDEMPTION 41D
3566170

BROWN JYJ REDEMPTION Y1334
JRC MS 611 6227 0117X

LMG MISS MARIE 4211
1743584

C-T GRAND STATEMENT 1025
LMG MISS MARIE 8025

	ProS	HB	GM	CED	BW	WW	YW	Milk	Stay	MB	REA
EPD	114	64	50	10	-0.4	65	112	25	18	0.49	0.15
PCTL (%)	24	50	18	85	76	29	17	48	21	32	37

BW: 84 lbs.
WW: 684 lbs.



Lot 35  **LMG Gills Spartacus 0184**
5/15/20 4370787

BIEBER SPARTACUS F129
3958047

BIEBER SPARTACUS A193
BIEBER ENCHANTRESS 399D

LMG MISS GEORGIA 1320
1494592

DKK ADDICTION N10
LMG MISS GEORGIA 4106

	ProS	HB	GM	CED	BW	WW	YW	Milk	Stay	MB	REA
EPD	78	52	26	13	-2.8	58	91	28	13	0.31	0.08
PCTL (%)	82	73	68	37	31	56	62	24	77	73	54

BW: 76 lbs.
WW: 662 lbs.

Lot 36  **LMG Gills Ribeye 0115**
2/16/20 4355251

BARHI RIBEYE 663
4073132

SUNR ULTIMATE RIBEYE 672Z
5L FIREFLY 190-2573

C-T HONEST GIRL 6093
3535258

C-T REQUEST 3013
C-T HONEST GIRL 2067

	ProS	HB	GM	CED	BW	WW	YW	Milk	Stay	MB	REA
EPD	90	70	21	11	-1.2	59	90	26	17	0.47	-0.03
PCTL (%)	63	38	79	67	62	54	64	45	31	35	79

BW: 78 lbs.
WW: 624 lbs.

Lot 37  **LMG Gills Vortex 0217**
5/23/20 4370889

LMG GILLS VIN DIESEL 4533 1743620 LMG GILLS VIN DIESEL 7611 LMG MISS DYNETTE 77012

LMG MISS BRANDY 3211 1667964 C-T GRAND STATEMENT 1025 LMG MISS BRANDY 9186

	ProS	HB	GM	CED	BW	WW	YW	Milk	Stay	MB	REA
EPD	80	61	18	10	0.2	72	112	21	16	0.3	0.16
PCTL (%)	80	56	82	84	85	11	16	86	42	77	35

BW: 78 lbs.
WW: 699 lbs.

Lot 38  **LMG Gills Spartacus**
6/1/20 **Commercial**

BIEBER SPARTACUS F129 3958047 BIEBER SPARTACUS A193 BIEBER ENCHANTRESS 399D

REGISTERED RED ANGUS COW RED ANGUS BULL
RED ANGUS COW

	ProS	HB	GM	CED	BW	WW	YW	Milk	Stay	MB	REA
EPD											
PCTL (%)											

BW: 84 lbs.
WW: 705 lbs.

DNA shows the cow that raised him is not his true dam, so we have to sell as commercial, but his dam is one of our registered cows.

Lot 39  **LMG Gills Trending 0122**
4/1/20 4370533

STRA TRENDING 618 3556536 BIEBER ROLLIN DEEP Y118 HRR COLLEEN 429

LUCHT'S HOBO GAL 804 1272650 RED BRYLOR PASQUALE 213P LUCHT'S HOBO GAL S42

	ProS	HB	GM	CED	BW	WW	YW	Milk	Stay	MB	REA
EPD	94	68	26	11	-1.9	50	81	24	16	0.44	0.05
PCTL (%)	57	41	69	71	48	83	80	59	38	41	61

BW: 77 lbs.
WW: 575 lbs.



Hudson and his spelling bee trophies.



Waiting for the SDSU game to start.



Lot 40



Gills Silver 0097

2/28/20

4355217

FEDES SILVER B90-D308
3539819

FEDES SILVER BOW B226
FEDES SLEEK X166 B90

CRA GLACIER LACE
1275612

GLACIER CHATEAU 744
CRA CHANTILLY FORTUNE

	ProS	HB	GM	CED	BW	WW	YW	Milk	Stay	MB	REA
EPD	106	67	39	8	-0.2	74	119	21	17	0.33	0.42
PCTL (%)	37	44	39	96	79	8	8	83	27	68	5

BW: 89 lbs.
WW: 699 lbs.

Lot 41



LMG Gills Ribeye 0098

1/29/20

4355291

BARHI RIBEYE 663
4073132

SUNR ULTIMATE RIBEYE 672Z
5L FIREFLY 190-2573

LUCHT BLOCKANA 106
1495746

FEDES BIG SKY R9
FEDES BLOCKANA 173

	ProS	HB	GM	CED	BW	WW	YW	Milk	Stay	MB	REA
EPD	81	67	15	10	-1.5	50	75	27	16	0.35	0.04
PCTL (%)	78	45	88	85	56	83	86	34	45	63	63

BW: 85 lbs.
WW: 535 lbs.

Lot 42



LMG Gills Lucht Defender 0146

5/25/20

4370967

LUCHT DEFENDER 8703
4043558

5L DEFENDER 560-30Z
2CR RUBY BARMAID 6103

LMG MISS LASS 4034
1743425

C-T GRAND STATEMENT 1025
LMG MISS LASS 0126

	ProS	HB	GM	CED	BW	WW	YW	Milk	Stay	MB	REA
EPD	93	54	39	11	-0.4	62	104	23	16	0.46	0.07
PCTL (%)	58	70	39	75	76	42	32	73	48	37	56

BW: 84 lbs.
WW: 627 lbs.

Lot 43



LMG Gills Foremost 0283

5/13/20

4371017

LSF SRR FOREMOST 5314C
1744805

BROWN PREMIER X7876
SRR VCTORIA JOAN 277-675

LMG MISS JACKIE 4178
1743555

SANDERSON KING ROLLO 22V
LMG MISS JACKIE 5032

	ProS	HB	GM	CED	BW	WW	YW	Milk	Stay	MB	REA
EPD	94	44	50	10	-0.3	54	93	24	14	0.49	0.1
PCTL (%)	57	86	18	87	78	71	57	56	66	32	49

BW: 82 lbs.
WW: 685 lbs.

Lot 44  **LMG Gills Foremost 0061**
3/1/20 4355285

LSF SRR FOREMOST 5314C BROWN PREMIER X7876
1744805 SRR VCTORIA JOAN 277-675

LUCHT FORTUNE 7535 BUF CRK ROMEO L081
1106723 CRA STILLWATER FORTUNE

	ProS	HB	GM	CED	BW	WW	YW	Milk	Stay	MB	REA
EPD	31	28	3	14	-1.5	62	98	28	11	0.15	0.27
PCTL (%)	99	96	93	30	50	32	34	24	95	95	12

BW: 77 lbs.
WW: 635 lbs.

Lot 45  **LMG Gills 0265**
4/29/20 4371511

LMG GILL 6331 4MC PROSPECT 469
3556272 LUCHT BLOCKANA 77

LMG MISS STEPHANIE 9110 MLK CRK COMBINATION 4149
1356640 LMG MISS STEPHANIE 7020

	ProS	HB	GM	CED	BW	WW	YW	Milk	Stay	MB	REA
EPD	80	56	24	9	0.3	61	100	25	17	0.27	0.1
PCTL (%)	79	67	72	91	86	45	41	49	35	83	49

BW: 84 lbs.
WW: 677 lbs.

Lot 46  **LMG Gills Redemption 0295**
5/6/20 4370937

CER MR. REDEMPTION 41D BROWN JYJ REDEMPTION Y1334
3566170 JRC MS 611 6227 0117X

LMG MISS TINA 3326 LMG GILLS WIDES PREAD 0606
1668000 LUCHT TINA 24

	ProS	HB	GM	CED	BW	WW	YW	Milk	Stay	MB	REA
EPD	97	62	35	10	0.5	65	106	31	19	0.43	0.1
PCTL (%)	52	55	48	82	88	28	27	9	9	43	49

BW: 82 lbs.
WW: 712 lbs.

Lot 47  **LMG Gills Sparticus 0052**
3/30/20 4370471

BIEBER SPARTACUS F129 BIEBER SPARTACUS A193
3958047 BIEBER ENCHANTRESS 399D

LMG MISS 7274 LSF SRR FOREMOST 5314C
3899221 LMG MISS REBELLAS 1291

	ProS	HB	GM	CED	BW	WW	YW	Milk	Stay	MB	REA
EPD	89	44	45	14	-3.6	70	115	31	12	0.4	0.14
PCTL (%)	65	85	25	27	18	16	13	7	88	50	40

BW: 71 lbs.
WW: 681 lbs.

Lot 48  **LMG Gills Stock Market**
4/30/20 4370993

BIEBER CL STOCKMARKET E119 PIE STOCKMAN 4051
3751659 BIEBER CL ADELLE 475C

LMG MISS CORA 0401 PIE MAXIMIZER 5052
1417123 LMG CORA 3069

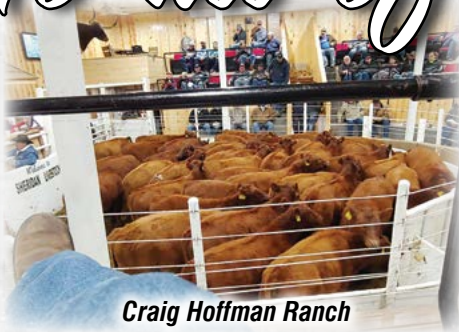
	ProS	HB	GM	CED	BW	WW	YW	Milk	Stay	MB	REA
EPD	111	80	31	13	-3.2	59	88	31	18	0.66	0.03
PCTL (%)	29	21	58	46	23	53	68	8	19	8	65

BW: 84 lbs.
WW: 686 lbs.



Hudson and Kendyl

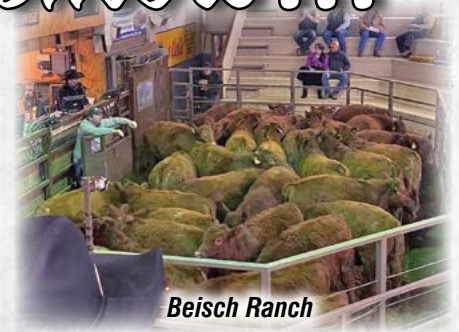
To all of our Customers...



Craig Hoffman Ranch



Frank's 4U Ranch



Beisch Ranch



Collette Johnson Ranch



Leibel Ranch



Johnson/Strand Ranch



Garrett Ranch



Evenson Ranch



Droog Ranch



Jones Ranch



Amiotte Ranch



Ryckman Ranch



Suchy Ranch



Eddinger Ranch



Aberle Ranch



Locken Ranch



Dahners Ranch



Enright Ranch



Gaikowski Ranch



Lyndale Johnson Ranch



Genzler Ranch



Ellefson Ranch



Frank Ranch



Landis Ranch



Claymore Ranch

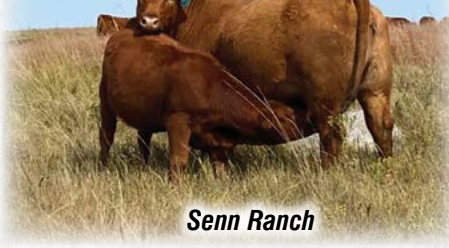
Thank You!

"You Buy Our Bulls, We Will Bid on Your Calves"

Pasture Photos from our Customers



Marks Ranch



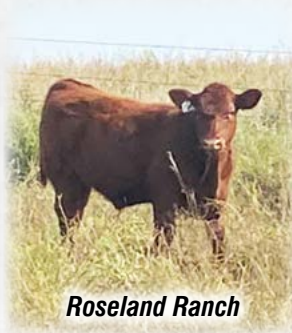
Senn Ranch



Evenson Ranch



Garrett Ranch



Roseland Ranch



Genzler Ranch



Anderson Ranch



Collette Johnson Ranch



Marshall Ranch



Gropper Ranch



Johnson & Strand Ranch



Metzinger Ranch



Nagel Ranch



Todd Elwein Ranch



Prince Ranch



Ramsey Ranch

Lot 49  **LMG Gills Prospect 0152**
5/20/20 4371035

LMG GILL 6331
3556272

4MC PROSPECT 469
LUCHT BLOCKANA 77

LMG MISS ROXIE 4103
1743484

C-T GRAND STATEMENT 1025
LMG MISS ROXIE 6005

	ProS	HB	GM	CED	BW	WW	YW	Milk	Stay	MB	REA
EPD	84	61	23	10	1.2	66	107	28	16	0.27	0.12
PCTL (%)	73	56	74	87	94	25	25	24	42	83	44

BW: 80 lbs.
WW: 766 lbs.

Lot 50  **LMG Gills Ribeye 0067**
2/20/20 4370559

BARHI RIBEYE 663
4043240

SUNR ULTIMATE RIBEYE 672Z
5L FIREFLY 190-2573

LUCHT MISS EOLA 606
4043240

GMRA TRIGGER 4248
LUCHT MISS EOLA 106X

	ProS	HB	GM	CED	BW	WW	YW	Milk	Stay	MB	REA
EPD	70	60	10	10	-0.4	60	90	27	17	0.39	-0.01
PCTL (%)	91	59	93	87	76	50	64	35	32	53	75

BW: 80 lbs.
WW: 605 lbs.



Lot 51  **LMG Gills Redemption 0285**
5/20/20 4371255

CER MR. REDEMPTION 41D
3566170

BROWN JYJ REDEMPTION Y1334
JRC MS 611 6227 0117X

LMG MISS 7223
3899317

LMG GILLS STATEMENT 2066
LMG MISS DIANNE 7303

	ProS	HB	GM	CED	BW	WW	YW	Milk	Stay	MB	REA
EPD	77	40	37	8	1.6	71	121	23	16	0.39	0.16
PCTL (%)	83	90	43	95	96	12	7	69	50	53	35

BW: 78 lbs.
WW: 678 lbs.

Lot 52  **LMG Gills Spartacus 0150**
5/20/20 4370809

BIEBER SPARTACUS F129
3958047

BIEBER SPARTACUS A193
BIEBER ENCHANTRESS 399D

LUCHT RAINBOW 168
1495773

LUCHT ROMEO R052
WFR RAINBOW 2236S

	ProS	HB	GM	CED	BW	WW	YW	Milk	Stay	MB	REA
EPD	86	48	38	12	-1.1	71	119	31	13	0.31	0.16
PCTL (%)	70	81	39	66	64	12	9	8	82	73	35

BW: 82 lbs.
WW: 760 lbs.





Lot 53



LMG Gills Stock Market 0151
4/24/20 4370921

BIEBER CL STOCKMARKET E119
3751659

PIE STOCKMAN 4051
BIEBER CL ADELLE 475C

LMG MISS ROXIE 3296
1667926

LMG GILLS VIN DIESEL 7611
LMG MISS ROXIE 7316

	ProS	HB	GM	CED	BW	WW	YW	Milk	Stay	MB	REA
EPD	117	76	41	14	-2.9	66	109	24	18	0.58	0.27
PCTL (%)	21	27	34	35	29	25	22	63	23	15	18

BW: 80 lbs.
WW: 672 lbs.

Lot 53

Lot 54



LMG Gills Spartacus 0189
5/3/20 4371137

BIEBER SPARTACUS F129
3958047

BIEBER SPARTACUS A193
BIEBER ENCHANTRESS 399D

LMG MISS BRANDY 6444
3711857

LMG GILLS STATEMENT 4591
LMG MISS BRANDY 3211

	ProS	HB	GM	CED	BW	WW	YW	Milk	Stay	MB	REA
EPD	98	59	39	12	-1.9	72	117	21	13	0.4	0.14
PCTL (%)	49	61	37	61	48	11	10	85	81	50	40

BW: 82 lbs.
WW: 680 lbs.



Lot 54



White water rafting in Colorado.



Larry and Holden



Lot 55



LMG Gills Redemption 0142

6/22/20

4371259

CER MR. REDEMPTION 41D
3566170

BROWN JYJ REDEMPTION Y1334
JRC MS 611 6227 0117X

LMG MISS 7230
3899305

LSF SRR FOREMOST 5314C
LMG MISS POTEET 5619

	ProS	HB	GM	CED	BW	WW	YW	Milk	Stay	MB	REA
EPD	114	61	53	10	-0.7	62	108	32	18	0.53	0.08
PCTL (%)	24	56	14	85	71	39	23	5	17	23	54

BW: 75 lbs.
WW: 781 lbs.

Lot 56



LMG Gills 0188

5/31/20

4370971

4MC PROSPECT 469
1725003

LSF PROSPECT 2035Z
CCR CHEROKEE 340-510

LMG MISS MAXINE 4048
1743432

LMG GILLS VIN DIESEL 7611
LMG MISS MAXINE 2028

	ProS	HB	GM	CED	BW	WW	YW	Milk	Stay	MB	REA
EPD	96	73	24	8	0.9	74	118	18	19	0.25	0.16
PCTL (%)	53	33	73	96	92	8	10	97	8	87	35

BW: 85 lbs.
WW: 722 lbs.

Seller:	Power Genetics	Plant:	SCH
Feedyard:	37 Cattle Co Inc	Purchase Type:	AL
Harvest Date:	10/08/20	FY Lot #:	25
Harvest Lot:	847	Agreement:	PG Power Genetics
Pen:	24		
Hot Yield:	63.35 %	Avg Live Wt:	1519 N
Choice+:	95.04 %	Avg Dressed Wt:	962 N

The Harvest Data from 200 steers we purchased from customers and fed out.



Lot 57



LMG Gills Spartacus 0213

5/6/20

4371235

BIEBER SPARTACUS F129
3958047

BIEBER SPARTACUS A193
BIEBER ENCHANTRESS 399D

LMG MISS 7202
3899357

LSF SRR FOREMOST 5314C
LMG MISS SARA 5542

	ProS	HB	GM	CED	BW	WW	YW	Milk	Stay	MB	REA
EPD	86	38	48	13	-2.9	66	111	29	11	0.45	0.09
PCTL (%)	70	91	21	51	29	27	19	18	90	39	52

BW: 76 lbs.

WW: 670 lbs.

Lot 58



LMG Gills Redemption 0310

6/15/20

4370851

CER MR. REDEMPTION 41D
3566170

BROWN JYJ REDEMPTION Y1334
JRC MS 611 6227 0117X

LMG MISS SARA 1345
1494597

DKK ADDICTION N10
LMG MISS SARA 9140

	ProS	HB	GM	CED	BW	WW	YW	Milk	Stay	MB	REA
EPD	94	59	35	9	0	57	95	33	17	0.38	0.06
PCTL (%)	57	61	48	88	82	63	52	3	24	55	59

BW: 82 lbs.

WW: 724 lbs.



Gracen & Evy dying Easter Eggs.



Lot 59



LMG Gills Trending 0143

5/1/20

4370841

STRA TRENDING 618
3556536

BIEBER ROLLIN DEEP Y118
HRR COLLEEN 429

LMG MISS LYDIA 1208
1494574

LMG GILLS PASQUOLE 9042W
LMG MISS LYDIA 8042

	ProS	HB	GM	CED	BW	WW	YW	Milk	Stay	MB	REA
EPD	85	71	14	10	-1	56	90	22	18	0.34	0.03
PCTL (%)	73	36	89	82	66	64	64	78	19	65	66

BW: 82 lbs.

WW: 673 lbs.

Lot 60



LMG Gills Vortex 0186

5/20/20

4371151

LMG GILLS VIN DIESEL 4533
1743620

LMG GILLS VIN DIESEL 7611
LMG MISS DYNETTE 77012

LMG MISS LARKABELLE 6479
3711951

LMG MISS LARKABELLE 9031

	ProS	HB	GM	CED	BW	WW	YW	Milk	Stay	MB	REA
EPD	56	40	17	11	-0.3	65	103	18	13	0.24	0.15
PCTL (%)	97	90	85	78	78	29	35	96	80	89	37

BW: 84 lbs.

WW: 648 lbs.



Christian and Ty and his fish



Lot 61  **LMG Gills Prospect 0147**
4/28/20 4371287

LMG GILL 6331
3556272

4MC PROSPECT 469
LUCHT BLOCKANA 77

LMG MISS 7270
3899229

LSF SRR FOREMOST 5314C
LUCHT PALASS 744

	ProS	HB	GM	CED	BW	WW	YW	Milk	Stay	MB	REA
EPD	91	64	27	11	0	60	102	25	17	0.27	0.16
PCTL (%)	62	50	66	71	82	48	37	52	26	83	35

BW: 75 lbs.
WW: 681 lbs.

Lot 62  **LMG Gills Prospect 0305**
6/5/20 4371541

LMG GILL 6331
3556272

4MC PROSPECT 469
LUCHT BLOCKANA 77

LMG MISS FREYJA 7010
1212324

DKK ADDICTION N10
LMG MISS FREYJA 5019

	ProS	HB	GM	CED	BW	WW	YW	Milk	Stay	MB	REA
EPD	66	58	9	10	-0.2	53	81	30	17	0.19	0.11
PCTL (%)	93	64	94	79	79	76	79	13	35	95	46

BW: N/A
WW: 712 lbs.

Lot 63  **LMG Gills Redemption 0224**
5/15/20 4371201

CER MR. REDEMPTION 41D
3566170

BROWN JYJ REDEMPTION Y1334
JRC MS 611 6227 0117X

LMG MISS PERFECT 6593
3556383

LMG GILLS STATEMENT 2066
MISS PERFECT 945-875

	ProS	HB	GM	CED	BW	WW	YW	Milk	Stay	MB	REA
EPD	91	49	42	9	0.6	71	119	24	16	0.44	0.11
PCTL (%)	62	79	31	88	89	13	9	61	38	41	46

BW: 80 lbs.
WW: 707 lbs.

Lot 64  **LMG Gills 0301**
5/27/20 4370849

HBR LINEDRIVE 663
3557097

LSF SRR HEADLINER 3105A
HBR MOOSE 829-0144

LMG MISS DYNETTE 1327
1494698

LUCHT ROMEO R052
LMG DYNETTE 3041

	ProS	HB	GM	CED	BW	WW	YW	Milk	Stay	MB	REA
EPD	86	70	16	11	-2.1	48	76	31	17	0.3	0.04
PCTL (%)	71	39	86	72	42	87	85	7	30	77	63

BW: 84 lbs.
WW: 550 lbs.

Weaned light as he had a bad foot at weaning time.

Lot 65



LMG Gills Trending 0074

4/9/20

4370483

STRA TRENDING 618
3556536

BIEBER ROLLIN DEEP Y118
HRR COLLEEN 429

LUCHT SARA 1103
1495795

LUCHT MARIO 907
LUCHT SARA 817- 999

	ProS	HB	GM	CED	BW	WW	YW	Milk	Stay	MB	REA
EPD	83	66	18	10	-1	50	85	25	18	0.36	-0.02
PCTL (%)	74	47	83	84	66	82	72	46	16	60	77

BW: 85 lbs.

WW: 697 lbs.



Wes sorting heifers.

Lot 66



LMG Gills Foremost 0162

5/27/20

4371051

LSF SRR FOREMOST 5314C
1744805

BROWN PREMIER X7876
SRR VICTORIA JOAN 277-675

LMG MISS STORMY 5530
3523535

1DRA VICTORY 0034
LMG MISS STORMY

	ProS	HB	GM	CED	BW	WW	YW	Milk	Stay	MB	REA
EPD	95	37	58	10	-1.2	63	109	30	14	0.56	0.09
PCTL (%)	55	92	9	86	62	37	23	12	68	19	52

BW: 82 lbs.

WW: 716 lbs.



Lot 66



Lot 67

Lot 67



LMG Gills Line Drive 0299

6/5/20

4371535

HBR LINEDRIVE 663
3557097

LSF SRR HEADLINER 3105A
HBR MOOSE 829-0144

LMG MISS LYDIA 4192
1743569

FLYING W GAME PLAN 189Y
LMG MISS LYDIA 5073

	ProS	HB	GM	CED	BW	WW	YW	Milk	Stay	MB	REA
EPD	100	74	26	10	-0.8	58	86	34	17	0.41	0.1
PCTL (%)	47	31	68	80	69	58	71	2	34	48	49

BW: 82 lbs.

WW: 716 lbs.



GILL RED ANGUS

You buy our bulls, we bid on your calves!

Lot
68



LMG Gills Foremost 0109

3/14/20

4370521

LSF SRR FOREMOST 5314C
1744805

BROWN PREMIER X7876
SRR VICTORIA JOAN 277-675

LUCHT BLOCKANA 836
1272628

5L NORSEMAN KING 2291
LUCHT BLOCKANA R026

	ProS	HB	GM	CED	BW	WW	YW	Milk	Stay	MB	REA
EPD	96	47	49	9	-1	47	81	26	15	0.59	0.17
PCTL (%)	54	82	19	89	66	88	80	37	64	15	33

BW: 85 lbs.

WW: 553 lbs.

Got orphaned before weaning. He should have weighed 100 lbs. more than he did.



Gracen and Evy on the tramp with a sprinkler.



Lot 69

Lot
69



LMG Gills 0275

5/15/20

4371265

CER MR. REDEMPTION 41D
3566170

BROWN JYJ REDEMPTION Y1334
JRC MS 611 6227 0117X

LMG MISS 7233
3899299

LMG GILLS STATEMENT 2066
LMG MISS SARA 1345

	ProS	HB	GM	CED	BW	WW	YW	Milk	Stay	MB	REA
EPD	86	46	40	8	0.9	67	113	27	16	0.43	0.1
PCTL (%)	70	82	36	96	92	22	15	29	48	43	49

BW: 82 lbs.

WW: 678 lbs.

Lot
70



LMG Gills Trending 0260

4/14/20

4371253

STRA TRENDING 618
3556536

BIEBER ROLLIN DEEP Y118
HRR COLLEEN 429

LMG MISS 7222
3899319

LSF SRR FOREMOST 5314C
LMG MISS QUEEN 5681

	ProS	HB	GM	CED	BW	WW	YW	Milk	Stay	MB	REA
EPD	117	76	40	9	0.3	62	104	27	19	0.5	0.2
PCTL (%)	21	26	35	93	86	39	33	28	11	29	28

BW: 78 lbs.

WW: 680 lbs.

Lots 71-72-73

We are selling the next 3 lots as commercial as DNA shows the dams that raised them are not their actual dams. We do not know what happened or who the mothers are, except that they are one of our registered cows.

Lot 71  **LMG Gills Foremost 0129**
4/9/20 Commercial

LSF SRR FOREMOST 5314C
1744805

BROWN PREMIER X7876
SRR VICTORIA JOAN 277-675

REGISTERED RED ANGUS COW

RED ANGUS BULL
RED ANGUS COW

	ProS	HB	GM	CED	BW	WW	YW	Milk	Stay	MB	REA
EPD											
PCTL (%)											

BW: 78 lbs.
WW: 678 lbs.

Lot 72  **LMG Gills Spartacus 0201**
4/26/20 Commercial

BIEBER SPARTACUS F129
3958047

BIEBER SPARTACUS A193
BIEBER ENCHANTRESS 399D

REGISTERED RED ANGUS COW

RED ANGUS BULL
RED ANGUS COW

	ProS	HB	GM	CED	BW	WW	YW	Milk	Stay	MB	REA
EPD											
PCTL (%)											

BW: 82 lbs.
WW: 661 lbs.

Lot 73  **LMG Gills Spartacus 0199**
4/17/20 Commercial

BIEBER SPARTACUS F129
3958047

BIEBER SPARTACUS A193
BIEBER ENCHANTRESS 399D

REGISTERED RED ANGUS COW

RED ANGUS BULL
RED ANGUS COW

	ProS	HB	GM	CED	BW	WW	YW	Milk	Stay	MB	REA
EPD											
PCTL (%)											

BW: 84 lbs.
WW: 638 lbs.

Lot 74  **LMG Gills Ringside 0174**
4/30/20 4370947

WILLOW RINGSIDE 1313-1753
3806584

HXC DECLARATION 5504C
WILLOW JACKIE 1313

LMG MISS LASS 3243
1668198

FEDDES COMANDER Y104
LMG MISS LASS 1227

	ProS	HB	GM	CED	BW	WW	YW	Milk	Stay	MB	REA
EPD	102	57	45	11	-0.9	60	103	25	16	0.43	0.04
PCTL (%)	42	64	26	72	67	51	33	52	38	43	63

BW: 84 lbs.
WW: 647 lbs.



Holden playing guitar



Brent and Shad Bollinger ran into Governor Noem at Dairy Queen after fighting a prairie fire

Lot 75  **LMG Gills Spartacus 0238**
5/15/20 4370905

BIEBER SPARTACUS F129 3958047 BIEBER SPARTACUS A193
BIEBER ENCHANTRESS 399D

LMG MISS BLOCKANA 3256 1668012 LMG GILLS VIN DIESEL 7611
LUCHT BLOCKANA 170

	ProS	HB	GM	CED	BW	WW	YW	Milk	Stay	MB	REA
EPD	68	39	29	12	-1	76	123	25	12	0.3	0.23
PCTL (%)	92	91	62	61	66	5	6	46	88	77	23

BW: 78 lbs.
WW: 684 lbs.

Lot 76  **LMG Gills Oly 0169**
5/25/20 4370873

LMG GILLS OLY 4726 1713957 RED SSS OLY 554T
VANWYE OLIVE 68W

LMG MISS MTX 1364 1494515 LMG GILLS BULL DAWG 8507-743
LMG MTX 062

	ProS	HB	GM	CED	BW	WW	YW	Milk	Stay	MB	REA
EPD	89	77	12	10	-1.4	59	91	26	18	0.26	0.09
PCTL (%)	66	25	91	79	58	52	62	38	15	85	52

BW: 86 lbs.
WW: 659 lbs.

Lot 77  **LMG Gills Vortex 0154**
5/27/20 4370865

LMG GILLS VIN DIESEL 4533 1743620 LMG GILLS VIN DIESEL 7611
LMG MISS DYNETTE 77012

LMG MISS ROXIE 2547 1563364 LMG GILLS PASQUOLE 9042W
LMG MISS ROXIE 9222

	ProS	HB	GM	CED	BW	WW	YW	Milk	Stay	MB	REA
EPD	69	61	9	10	0.4	67	104	20	18	0.25	0.08
PCTL (%)	91	57	94	87	87	24	31	92	15	87	54

BW: 82 lbs.
WW: 648 lbs.

Lot 78  **LMG Gills Prospect 0166**
5/28/20 4370833

LMG GILL 6331 3556272 4MC PROSPECT 469
LUCHT BLOCKANA 77

LUCHT VERDALE 909 1350993 C-T BUFFALO HORN 0712
LUCHT VERDALE 729

	ProS	HB	GM	CED	BW	WW	YW	Milk	Stay	MB	REA
EPD	86	68	18	12	-1.3	60	98	26	18	0.3	0.16
PCTL (%)	71	43	83	66	59	48	46	43	21	77	35

BW: 82 lbs.
WW: 715 lbs.

Lot 79  **LMG Gills Foremost 0229**
5/15/20 4371107

LSF SRR FOREMOST 5314C 1744805 BROWN PREMIER X7876
SRR VICTORIA JOAN 277-675

LMG MISS JESSA 3347 1667920 LMG GILLS WIDE SPREAD 0904
LMG MISS JESSA 7069

	ProS	HB	GM	CED	BW	WW	YW	Milk	Stay	MB	REA
EPD	96	48	47	9	0.5	59	101	21	16	0.46	0.1
PCTL (%)	54	80	22	92	88	53	38	85	47	37	49

BW: 82 lbs.
WW: 641 lbs.

Lot 80  **LMG Gills Stock Market 0212**
5/1/20 4370795

BIEBER CL STOCKMARKET E119 3751659 PIE STOCKMAN 4051
BIEBER CL ADELLE 475C

LUCHT POLLY 45 1495740 LUCHT ROMEO R052
LUCHT POLLY S01

	ProS	HB	GM	CED	BW	WW	YW	Milk	Stay	MB	REA
EPD	100	57	43	16	-3.7	63	102	26	13	0.72	0.01
PCTL (%)	46	65	29	10	17	38	35	39	83	4	71

BW: 75 lbs.
WW: 733 lbs.

Lot 81  **LMG Gills Line Drive 0160**
5/25/20 4371119

HBR LINEDRIVE 663 3557097 LSF SRR HEADLINER 3105A
HBR MOOSE 829-0144

LMG MISS STAR 4138 1743518 FLYING W GAME PLAN 189Y
LMG MISS STAR 8079

	ProS	HB	GM	CED	BW	WW	YW	Milk	Stay	MB	REA
EPD	118	93	25	11	-0.8	59	85	25	18	0.39	0.09
PCTL (%)	20	7	71	71	69	54	74	52	15	53	52

BW: 80 lbs.
WW: 718 lbs.

Lot 82  **LMG Gills Foremost 0250**
5/25/20 4370953

LSF SRR FOREMOST 5314C 1744805 BROWN PREMIER X7876
SRR VICTORIA JOAN 277-675

LMG MISS JESSA 4009 1743402 LJC LEGACY 467W
LMG MISS JESSA 2523

	ProS	HB	GM	CED	BW	WW	YW	Milk	Stay	MB	REA
EPD	78	31	48	10	-1.6	54	94	28	14	0.51	0.09
PCTL (%)	82	96	22	87	54	71	56	20	66	27	52

BW: 82 lbs.
WW: 640 lbs.

Lot 83  **LMG Gills Redemption 0167**
5/12/20 4371077

CER MR. REDEMPTION 41D 3566170 BROWN JYJ REDEMPTION Y1334
JRC MS 611 6227 0117X

LMG MISS VERDALE 5587 3523367 1DRA VICTORY 0034
LUCHT VRDALE 35

	ProS	HB	GM	CED	BW	WW	YW	Milk	Stay	MB	REA
EPD	92	51	42	10	-0.7	69	116	23	16	0.47	0.04
PCTL (%)	60	76	32	79	71	17	12	74	41	35	63

BW: 82 lbs.
WW: 651 lbs.

Lot 84  **LMG Gills Trending 0263**
4/27/20 4371103

STRA TRENDING 618 3556536 BIEBER ROLLIN DEEP Y118
HRR COLLEEN 429

LMG MISS DIANNE 5648 3523350 FLYING W GAME PLAN 189Y
LMG MISS DIANNE 9169

	ProS	HB	GM	CED	BW	WW	YW	Milk	Stay	MB	REA
EPD	98	79	19	8	0.2	56	87	23	19	0.38	0.06
PCTL (%)	51	22	82	96	85	63	69	66	9	55	59

BW: 84 lbs.
WW: 676 lbs.



Bryan's boys and Kenny's son, Jamie, having some cousin time.

Lot 85



LMG Gills Foremost 81

5/25/20

Commercial

LSF SRR FOREMOST 5314C
1744805

BROWN PREMIER X7876
SRR VICTORIA JOAN 277-675

RED ANGUS COW

RED ANGUS BULL
RED ANGUS COW

	ProS	HB	GM	CED	BW	WW	YW	Milk	Stay	MB	REA
EPD											
PCTL (%)											

BW: 86 lbs.

WW: 725 lbs.

Dam is 90% Red Angus & 10% Charolais. Every year we sell a brother to this guy. They are always moderate framed, deep bodied, Charolais colored and good.

Lot 86



LMG Gills Foremost 0245

5/15/20

4370911

LSF SRR FOREMOST 5314C
1744805

BROWN PREMIER X7876
SRR VICTORIA JOAN 277-675

LMG MISS FREYJA 3275
1668273

SANDERSON KING ROLLO 22V
7009 LMG

	ProS	HB	GM	CED	BW	WW	YW	Milk	Stay	MB	REA
EPD	101	50	51	10	-0.2	57	98	26	16	0.47	0.17
PCTL (%)	44	78	16	86	79	63	46	42	50	35	33

BW: 80 lbs.

WW: 653 lbs.



Lot 87



LMG Gills Spartacus 0208

5/22/20

4371349

BIEBER SPARTACUS F129
3958047

BIEBER SPARTACUS A193
BIEBER ENCHANTRESS 399D

LMG MISS ROCKER 2535
1563361

LUCHT DIAMOND BACK 894
KKC MS. ROCKER 143U

	ProS	HB	GM	CED	BW	WW	YW	Milk	Stay	MB	REA
EPD	71	41	30	12	-0.3	70	116	27	13	0.33	0.09
PCTL (%)	90	89	59	63	78	16	12	33	81	68	52

BW: 80 lbs.

WW: 674 lbs.

Lot 88



LMG Gills Trending 0259

5/28/20

4371031

STRA TRENDING 618
3556536

BIEBER ROLLIN DEEP Y118
HRR COLLEEN 429

LMG MISS CINNAMON 4201
1743575

LMG GILLS INDEED 8845
LMG MISS CINNAMON 9166

	ProS	HB	GM	CED	BW	WW	YW	Milk	Stay	MB	REA
EPD	97	74	22	9	0.3	64	102	17	17	0.35	0.09
PCTL (%)	52	30	75	91	86	33	37	98	26	63	52

BW: 82 lbs.

WW: 727 lbs.

Lot 89  **LMG Gills Prospect 0228**
5/25/20 4371079

LMG GILL 6331
3556272

4MC PROSPECT 469
LUCHT BLOCKANA 77

LMG MISS CHEROKETTE 6519
3711853

4MC PROSPECT 469
LMG MISS CHEROKETTE 4174

	ProS	HB	GM	CED	BW	WW	YW	Milk	Stay	MB	REA
EPD	83	58	25	10	0	65	109	23	17	0.28	0.11
PCTL (%)	76	64	70	84	82	29	21	66	37	80	46

BW: 80 lbs.
WW: 648 lbs.



Lot 90  **LMG Gills Prospect 0159**
6/22/20 4371005

LMG GILL 6331
3556272

4MC PROSPECT 469
LUCHT BLOCKANA 77

LMG MISS BRANDY 4122
1743503

LJC LANCER 313Y
LMG MISS BRANDY 2629

	ProS	HB	GM	CED	BW	WW	YW	Milk	Stay	MB	REA
EPD	85	54	31	10	0.1	61	104	26	16	0.33	0.11
PCTL (%)	73	71	57	84	84	44	32	44	50	68	46

BW: 82 lbs.
WW: 728 lbs.

Lot 91  **LMG Gills Hard Drive 0242**
5/15/20 4371359

LMG GILLS HARD DRIVE 7005
3802962

BIEBER HARD DRIVE Y120
WOF SARA 043

LMG MISS 7357
3899061

LSF SRR FOREMOST 5314C
LMG MISS ROXIE 3335

	ProS	HB	GM	CED	BW	WW	YW	Milk	Stay	MB	REA
EPD	108	53	55	9	-0.6	74	121	29	16	0.52	0.31
PCTL (%)	33	72	12	91	73	7	7	15	48	25	13

BW: 85 lbs.
WW: 726 lbs.

Lot 92  **LMG Gills Trending 0270**
5/9/20 4371297

STRA TRENDING 618
3556536

BIEBER ROLLIN DEEP Y118
HRR COLLEEN 429

LMG MISS 7284
3899201

LSF SRR FOREMOST 5314C
LMG MISS JESSA 8303

	ProS	HB	GM	CED	BW	WW	YW	Milk	Stay	MB	REA
EPD	102	65	37	9	-0.1	58	94	25	17	0.48	0.16
PCTL (%)	43	48	43	93	81	58	54	49	24	33	35

BW: 76 lbs.
WW: 665 lbs.

Lot 93  **LMG Gills Trending 0163**
5/20/20 4371087

STRA TRENDING 618
3556536

BIEBER ROLLIN DEEP Y118
HRR COLLEEN 429

LMG MISS BOYD 5598
3523364

LMG GILLS INDEED 1603
LUCHT MISS BOYD 19

	ProS	HB	GM	CED	BW	WW	YW	Milk	Stay	MB	REA
EPD	104	78	26	10	-0.9	61	93	23	18	0.44	0.1
PCTL (%)	39	24	68	84	67	47	56	72	17	41	49

BW: 84 lbs.
WW: 732 lbs.



Lot 94  **LMG Gills Redemption 0222**
5/12/20 4370817

CER MR. REDEMPTION 41D BROWN JYJ REDEMPTION Y1334
3566170 JRC MS 611 6227 0117X

LUCHT PALASS 196 LUCHT PASQUALE 839
1495787 LUCHT PALASS 744

	ProS	HB	GM	CED	BW	WW	YW	Milk	Stay	MB	REA
EPD	94	61	33	9	0.6	67	112	25	18	0.35	0.17
PCTL (%)	57	57	52	88	89	24	17	49	20	63	33

BW: 84 lbs.
WW: 700 lbs.

Lot 95  **LMG Gills Foremost 0192**
5/23/20 4371059

LSF SRR FOREMOST 5314C BROWN PREMIER X7876
1744805 SRR VICTORIA JOAN 277-675

LMG MISS SARA 5535 HOOK'S YUKON 80Y
3523336 LMG MISS SARA 9014

	ProS	HB	GM	CED	BW	WW	YW	Milk	Stay	MB	REA
EPD	121	68	53	11	-0.3	61	100	28	17	0.47	0.45
PCTL (%)	17	43	14	77	78	44	40	26	31	35	4

BW: 80 lbs.
WW: 610 lbs.

Lot 96  **LMG Gills Line Drive 0297**
5/15/20 4370887

HBR LINEDRIVE 663 LSF SRR HEADLINER 3105A
3557097 HBR MOOSE 829-0144

LMG MISS ROXIE 3208 RED FINE LINE MULBERRY 26P
1668063 LMG ROXIE 1080

	ProS	HB	GM	CED	BW	WW	YW	Milk	Stay	MB	REA
EPD	110	86	24	12	-0.7	61	95	30	19	0.37	0.08
PCTL (%)	30	13	72	63	71	44	53	12	13	58	54

BW: 82 lbs.
WW: 677 lbs.



Nick looking a bit dirty.

Lot 97  **LMG Gills Redemption 0195**
5/8/20 4371167

CER MR. REDEMPTION 41D BROWN JYJ REDEMPTION Y1334
3566170 JRC MS 611 6227 0117X

LMG MISS WELMA 6535 4MC PROSPECT 469
3711827 LMG MISS WELMA 4096

	ProS	HB	GM	CED	BW	WW	YW	Milk	Stay	MB	REA
EPD	102	57	45	9	0.1	73	125	24	18	0.44	0.14
PCTL (%)	43	65	26	92	84	9	5	57	23	41	40

BW: 82 lbs.
WW: 657 lbs.



Lot 98  **LMG Gills 0272**
5/10/20 4370815

LMG GILLS HARD DRIVE 7005 BIEBER HARD DRIVE Y120
3802962 WOF SARA 043

LUCHT BLOCKANA 182 LUCHT ROMEO 931
1495782 LUCHT BLOCKANA 905

	ProS	HB	GM	CED	BW	WW	YW	Milk	Stay	MB	REA
EPD	104	59	45	12	-2.2	69	112	29	15	0.42	0.23
PCTL (%)	39	61	25	57	41	18	17	15	52	45	23

BW: 82 lbs.
WW: 743 lbs.

Lot 99  **LMG Gills Hard Drive 0235**
5/2/20 4371339

LMG GILLS HARD DRIVE 7005 BIEBER HARD DRIVE Y120
3802962 WOF SARA 043

LMG MISS 7335 LSF SRR FOREMOST 5314C
3899103 LMG MISS ROXIE 7022

	ProS	HB	GM	CED	BW	WW	YW	Milk	Stay	MB	REA
EPD	101	51	50	10	-1	69	114	31	15	0.44	0.31
PCTL (%)	44	75	18	79	66	18	15	6	55	41	13

BW: 82 lbs.
WW: 700 lbs.

Lot 100  **LMG Gills Hard Drive 0210**
5/9/20 4371247

LMG GILLS HARD DRIVE 7005 BIEBER HARD DRIVE Y120
3802962 WOF SARA 043

LMG MISS 7214 LSF SRR FOREMOST 5314C
3899335 LMG MISS RAINBOW 4017

	ProS	HB	GM	CED	BW	WW	YW	Milk	Stay	MB	REA
EPD	102	46	55	10	-0.6	70	117	32	15	0.51	0.28
PCTL (%)	43	83	12	83	73	14	11	5	61	27	16

BW: 78 lbs.
WW: 705 lbs.



Cayn taking it easy.

Lot 101



LMG Gills Prospect 0280

5/3/20

4371267

LMG GILL 6331
3556272

4MC PROSPECT 469
LUCHT BLOCKANA 77

LMG MISS 7236
3899293

LSF SRR FOREMOST 5314C
LMG MISS MAIDEN

	ProS	HB	GM	CED	BW	WW	YW	Milk	Stay	MB	REA
EPD	105	67	38	11	-0.8	59	101	25	17	0.32	0.11
PCTL (%)	38	44	41	71	69	54	39	50	31	70	46

BW: 76 lbs.
WW: 687 lbs.

Lot 102



LMG Gills 451

5/25/20

Commercial

STRA TRENDING 618
3556536

BIEBER ROLLIN DEEP Y118
HRR COLLEEN 429

1/2 BLOOD SIM/ANGUS

	ProS	HB	GM	CED	BW	WW	YW	Milk	Stay	MB	REA
EPD											
PCTL (%)											

BW: 86 lbs.
WW: 710 lbs.

This guy is the grand kids bull. We purchased his dam at a Simmental dispersion. We sold a maternal brother to Tanner Kraft - he loves his calves! Come support the kids!

Lot 103



LMG Gills Redemption 0246

4/29/20

4371159

CER MR. REDEMPTION 41D
3566170

BROWN JYJ REDEMPTION Y1334
JRC MS 611 6227 0117X

LMG MISS BLOCKANA 6513
3711791

LMG GILLS VIN DIESEL 7611
LUCHT BLOCKANA R026

	ProS	HB	GM	CED	BW	WW	YW	Milk	Stay	MB	REA
EPD	97	57	40	11	-0.8	67	112	29	17	0.45	0.18
PCTL (%)	52	66	35	78	69	23	17	19	32	39	32

BW: 78 lbs.
WW: 692 lbs.

Lot 104



LMG Gills Spartacus 0221

5/26/20

4371055

BIEBER SPARTACUS F129
3958047

BIEBER SPARTACUS A193
BIEBER ENCHANTRESS 399D

LMG MISS POTEET 5533
3523538

1DRA VICTORY 0034
LMG MISS POTEET

	ProS	HB	GM	CED	BW	WW	YW	Milk	Stay	MB	REA
EPD	72	36	36	13	-1.8	77	125	27	11	0.36	0.15
PCTL (%)	89	93	44	49	49	4	5	35	93	60	37

BW: 82 lbs.
WW: 763 lbs.

Lot 105



LMG Gills Redemption 0248

5/6/20

4371317

CER MR. REDEMPTION 41D
3566170

BROWN JYJ REDEMPTION Y1334
JRC MS 611 6227 0117X

LMG MISS 7308
3899155

LMG GILLS STATEMENT 2066
LMG MISS LYDIA 4014

	ProS	HB	GM	CED	BW	WW	YW	Milk	Stay	MB	REA
EPD	93	49	44	10	-0.2	72	121	25	16	0.48	0.11
PCTL (%)	58	79	27	87	79	11	7	51	44	33	46

BW: 76 lbs.
WW: 676 lbs.



Lot 106  **LMG Gills Vortex 0226**
5/20/20 4371361

LMG GILLS VIN DIESEL 4533 1743620 LMG GILLS VIN DIESEL 7611
LMG MISS DYNETTE 77012

LMG MISS SUSETTE 8075 1284341 MLK CRK COMBINATION 4149
LMG MISS SUSETTE 6060

	ProS	HB	GM	CED	BW	WW	YW	Milk	Stay	MB	REA
EPD	66	49	17	11	-0.8	69	108	22	16	0.24	0.18
PCTL (%)	94	79	85	69	69	19	23	79	38	89	32

BW: 75 lbs.
WW: 769 lbs.

Lot 107  **LMG Gills Vortex 0203**
5/28/20 4371275

LMG GILLS VIN DIESEL 4533 1743620 LMG GILLS VIN DIESEL 7611
LMG MISS DYNETTE 77012

LMG MISS 7249 3899269 LMG GILLS STATEMENT 2066
LUCHT RAINBOW 168

	ProS	HB	GM	CED	BW	WW	YW	Milk	Stay	MB	REA
EPD	58	39	19	9	0.6	72	116	22	14	0.27	0.11
PCTL (%)	97	91	81	93	89	11	12	81	66	83	46

BW: 78 lbs.
WW: 685 lbs.

Lot 108  **LMG Gills Investment 0175**
5/6/20 4371517

LMG GILLS INVESTMENT 8009 4032980 H2R PROFITBUILDER B403
WRIGHTS ROSELLA 45C

LMG MISS MARIE 4142 1743522 LMG GILLS INDEED 8845
LMG MISS MARIE 7023

	ProS	HB	GM	CED	BW	WW	YW	Milk	Stay	MB	REA
EPD	100	61	39	10	-0.5	71	113	24	15	0.45	0.01
PCTL (%)	45	57	37	83	75	13	16	62	58	39	70

BW: 84 lbs.
WW: 771 lbs.



Quayde had a big day in the truck



Lot 109  **LMG Gills Franchise 0249**
6/22/20 4371029

WILLOW FRANCHISE 1638-1853 4020990 9 MILE FRANCHISE 6305
WILLOW FIREFLY 1638

LMG MISS ROXIE 4198 1743572 LMG GILLS RED DAWG 9906
LMG MISS ROXIE 0100

	ProS	HB	GM	CED	BW	WW	YW	Milk	Stay	MB	REA
EPD	85	70	16	10	-0.3	58	97	31	17	0.32	0.1
PCTL (%)	72	39	86	85	78	56	47	9	28	70	49

BW: 78 lbs.
WW: 668 lbs.

Lot 110



LMG Gills Redemption 0243

5/12/20

4371139

CER MR. REDEMPTION 41D
3566170

BROWN JYJ REDEMPTION Y1334
JRC MS 611 6227 0117X

LMG MISS MTX 6450
3712013

4MC PROSPECT 469
LMG MISS MYX 4127

	ProS	HB	GM	CED	BW	WW	YW	Milk	Stay	MB	REA
EPD	120	74	46	8	1.2	76	126	26	20	0.46	0.13
PCTL (%)	18	30	24	95	94	5	4	36	4	37	42

BW: 84 lbs.

WW: 726 lbs.



Kristen flying.

Lots 111-112-113

The Next 3 lots are getting sold as Commercial. The DNA shows none of the bulls we have on file is their sire. So the sire has to be LMG Gills Boss 6202. A bull we had around here and got in with the cows. He was never DNA checked and is no longer here.

Lot 111



LMG Gills 0273

4/16/20

Commercial

LMG GILL BOSS 6202
3556246

LUCHT BIG BOSS 181
LUCHT MISS WIX 740

LMG MISS 7298
3899173

FLYING W GAME PLAN 189Y
LMG MISS VELMA 1315

	ProS	HB	GM	CED	BW	WW	YW	Milk	Stay	MB	REA
EPD	100	66	34	10	-0.3	62	99	25	17	0.34	0.20
PCTL (%)											

BW: 76 lbs.

WW: 677 lbs.

Lot 112



LMG Gills 0123

2/26/20

Commercial

LMG GILL BOSS 6202
3556246

LUCHT BIG BOSS 181
LUCHT MISS WIX 740

LMG MISS ROXIE 8812
4097506

LSF SRR FOREMOST 5314C
LMG MISS ROXIE 3340

	ProS	HB	GM	CED	BW	WW	YW	Milk	Stay	MB	REA
EPD	130	73	57	11	-0.3	59	102	25	17	0.45	0.23
PCTL (%)											

BW: 70 lbs.

WW: 617 lbs.

Lot 113



LMG Gills 0276

4/27/20

Commercial

LMG GILL BOSS 6202
3556246

LUCHT BIG BOSS 181
LUCHT MISS WIX 740

LMG MISS BRANDY 8795
4097552

NON-REGISTERED SIRE
LMG MISS BRANDY 5521

	ProS	HB	GM	CED	BW	WW	YW	Milk	Stay	MB	REA
EPD	96	52	44	11	0.1	60	94	23	13	0.34	0.23
PCTL (%)											

BW: 78 lbs.

WW: 682 lbs.



Lot 113

Lot 114  **LMG Gills Ringside 0155**
5/12/20 4371013

WILLOW RINGSIDE 1313-1753 HXC DECLARATION 5504C
3806584 WILLOW JACKIE 1313

LMG MISS VELMA 4137 LMG GILLS WIDE SPREAD 0904
1743517 LMG MISS VELMA 1295

	ProS	HB	GM	CED	BW	WW	YW	Milk	Stay	MB	REA
EPD	87	58	30	11	-1.1	57	99	20	17	0.31	0
PCTL (%)	68	64	60	69	64	60	43	88	34	73	72

BW: 82 lbs.
WW: 647 lbs.

Lot 115  **LMG Gills Redemption 0288**
5/6/20 4371323

CER MR. REDEMPTION 41D BROWN JYJ REDEMPTION Y1334
3566170 JRC MS 611 6227 0117X

LMG MISS 7314 4MC OPTIMISM 482
3899143 LMG MISS SUSETTE

	ProS	HB	GM	CED	BW	WW	YW	Milk	Stay	MB	REA
EPD	127	83	45	10	0.6	71	117	26	20	0.42	0.16
PCTL (%)	11	17	26	82	89	12	11	43	4	45	35

BW: 78 lbs.
WW: 669 lbs.

Lot 116  **LMG Gills Prospect 0183**
4/29/20 4371273

LMG GILL 6331 4MC PROSPECT 469
3556272 LUCHT BLOCKANA 77

LMG MISS 7241 LSF SRR FOREMOST 5314C
3899283 LMG MISS MAIDEN 4056

	ProS	HB	GM	CED	BW	WW	YW	Milk	Stay	MB	REA
EPD	99	68	32	10	-0.2	62	102	25	17	0.32	0.13
PCTL (%)	47	43	56	82	79	40	35	50	24	70	42

BW: 78 lbs.
WW: 682 lbs.

Lot 117  **LMG Gills Franchise 0264**
4/16/20 4371407

WILLOW FRANCHISE 1638-1853 9 MILE FRANCHISE 6305
4020990 WILLOW FIREFLY 1638

LMG MISS LASS 8765 LMG MISS LASS 6625
4097610

	ProS	HB	GM	CED	BW	WW	YW	Milk	Stay	MB	REA
EPD	88	53	35	11	-0.6	64	103	29	13	0.36	0.21
PCTL (%)	68	73	48	75	73	32	33	14	80	60	26

BW: 76 lbs.
WW: 690 lbs.



Joe Senn found a friend last year looking at bulls



Brent's gang

Lot 118



LMG Gills Redemption 0287

4/29/20

4370799

CER MR. REDEMPTION 41D
3566170

BROWN JYJ REDEMPTION Y1334
JRC MS 611 6227 0117X

LUCHT FOXXY ROXY 108
1495747

LUCHT DIAMOND BACK 894
OHRR FOXXY ROXY 21L

	ProS	HB	GM	CED	BW	WW	YW	Milk	Stay	MB	REA
EPD	97	59	38	10	-0.4	58	97	26	18	0.43	0
PCTL (%)	52	62	40	81	76	59	46	41	14	43	72

BW: 84 lbs.

WW: 648 lbs.



Lot 118

Lot 119



LMG Gills Foremost 0148

5/25/20

4370801

LSF SRR FOREMOST 5314C
1744805

BROWN PREMIER X7876
SRR VICTORIA JOAN 277-675

LUCHT MISS BOYD 113
1495750

LUCHT DIAMOND BACK 894
LUCHT MISS BOYD 741

	ProS	HB	GM	CED	BW	WW	YW	Milk	Stay	MB	REA
EPD	98	42	55	10	-1.6	54	93	25	14	0.51	0.07
PCTL (%)	50	87	12	84	54	72	57	47	71	27	56

BW: 86 lbs.

WW: 654 lbs.

Lot 120



LMG Gills Franchise 0171

6/15/20

4370797

WILLOW FRANCHISE 1638-1853
4020990

9 MILE FRANCHISE 6305
WILLOW FIREFLY 1638

LMG MISS SUSETT 0074
1414726

MLK CRK COMBINATION 4149
LMG MISS SUSETT 5135

	ProS	HB	GM	CED	BW	WW	YW	Milk	Stay	MB	REA
EPD	87	60	28	10	-1.3	59	100	31	17	0.36	0.07
PCTL (%)	68	60	65	82	59	53	41	9	34	60	56

BW: 82 lbs.

WW: 745 lbs.



Lot 121

Lot 121



Gills Silver 0141

3/5/20

4355293

FEDDES SILVER B90-D308
3539819

FEDDES SILVER BOW B226
FEDDES SLEEK X166 B90

BARHI BRANDY 385
1646288

RCRA HICKOK 12X
CRA BRANDY RED

	ProS	HB	GM	CED	BW	WW	YW	Milk	Stay	MB	REA
EPD	91	59	32	9	0.1	64	106	23	16	0.36	0.18
PCTL (%)	62	60	55	91	84	34	28	73	45	60	32

BW: 79 lbs.

WW: 602 lbs.

Lot
122



LMG Gills 0193

5/15/20

4371529

LMG GILL 6331
3556272

4MC PROSPECT 469
LUCHT BLOCKANA 77

LMG MISS GRAND LASS 2548
1563381

LUCHT DIAMOND BACK 894
DJW GRAND LASS 33L

	ProS	HB	GM	CED	BW	WW	YW	Milk	Stay	MB	REA
EPD	79	68	10	13	-1	58	90	25	17	0.23	-0.03
PCTL (%)	81	41	93	51	66	59	64	47	27	90	79

BW: 82 lbs.
WW: 686 lbs.

Lot
123



LMG Gills Hard Drive 0309

5/27/20

4371251

LMG GILLS HARD DRIVE 7005
3802962

BIEBER HARD DRIVE Y120
WOF SARA 043

LMG MISS 7219
3899325

LMG GILLS STATEMENT 2066
LMG MISS STEPHANIE 5642

	ProS	HB	GM	CED	BW	WW	YW	Milk	Stay	MB	REA
EPD	79	38	41	8	-0.1	74	118	24	13	0.46	0.25
PCTL (%)	81	92	34	94	81	7	9	61	80	37	20

BW: 84 lbs.
WW: 633 lbs.

Lot
124



LMG Gills 0231

5/15/20

Commercial

LSF SRR FOREMOST 5314C
1744805

BROWN PREMIER X7876
SRR VICTORIA JOAN 277-675

LMG MISS MAXINE 6561
3556357

LMG GILLS SUN KING 3503
LMG MISS MAXINE 4048

	ProS	HB	GM	CED	BW	WW	YW	Milk	Stay	MB	REA
EPD	105	50	55	9	-0.9	57	97	27	15	0.55	0.17
PCTL (%)	38	78	12	88	67	61	47	29	54	20	33

BW: 78 lbs.
WW: 659 lbs.

Lot
125



LMG Gills Prospect 0304

4/27/20

4371513

LMG GILL 6331
3556272

4MC PROSPECT 469
LUCHT BLOCKANA 77

LMG MISS DIANNE 9169
1356519

PIE MAXIMIZER 5052
LMG DIANNE

	ProS	HB	GM	CED	BW	WW	YW	Milk	Stay	MB	REA
EPD	73	69	4	9	0	55	86	27	18	0.18	-0.06
PCTL (%)	88	40	97	89	82	68	71	30	16	95	84

BW: 82 lbs.
WW: 628 lbs.



Evy and the deer



Kendyl riding around.

Lot 126  **LMG Gills Hard Drive 0170**
5/6/20 4370811

LMG GILLS HARD DRIVE 7005
3802962

BIEBER HARD DRIVE Y120
WOF SARA 043

LUCHT SLEEK 174
1495777

LUCHT PASQUALE 839
LUCHT SLEEK 734

	ProS	HB	GM	CED	BW	WW	YW	Milk	Stay	MB	REA
EPD	79	46	33	11	-1.3	64	101	26	14	0.36	0.2
PCTL (%)	80	82	53	77	59	33	38	39	66	60	28

BW: 84 lbs.
WW: 686 lbs.



Lot 126

Lot 127  **LMG Gills Optimism 0055**
3/16/20 4370473

4MC OPTIMISM 482
1725031

LSF OPTIMISM 1107Y
PIE MS D C CRICKET 0284

LMG MISS RITA 5593
3523397

LMG GILLS INDEED 1603
LMG MISS RITA 0416

	ProS	HB	GM	CED	BW	WW	YW	Milk	Stay	MB	REA
EPD	125	98	27	13	-2.3	60	89	22	19	0.35	0.02
PCTL (%)	13	5	66	48	40	48	66	81	12	63	68

BW: 67 lbs.
WW: 583 lbs.

Lot 128  **LMG Gills Trending 0131**
4/10/20 4370543

STRA TRENDING 618
3556536

BIEBER ROLLIN DEEP Y118
HRR COLLEEN 429

LMG MISS 7211
3899341

BIEBER HARD DRIVE Y120
LUCHT MISS BOYD 19

	ProS	HB	GM	CED	BW	WW	YW	Milk	Stay	MB	REA
EPD	103	61	42	9	0.2	62	100	22	16	0.51	0.31
PCTL (%)	41	56	32	88	85	40	42	75	44	27	13

BW: 84 lbs.
WW: 604 lbs.

Lot 129  **LMG Gills Foremost 0164**
6/22/20 4371205

LSF SRR FOREMOST 5314C
1744805

BROWN PREMIER X7876
SRR VICTORIA JOAN 277-675

LMG MISS POTEET 6600
3556390

4MC OPTIMISM 482
LMG MISS POTEET 3309

	ProS	HB	GM	CED	BW	WW	YW	Milk	Stay	MB	REA
EPD	134	74	60	9	0.1	68	112	28	18	0.51	0.2
PCTL (%)	8	30	8	90	84	20	17	26	16	27	28

BW: 84 lbs.
WW: 821 lbs.

Lot 130  **LMG Gills Prospect 0147**
4/28/20 4371287

LMG GILL 6331
3556272

4MC PROSPECT 469
LUCHT BLOCKANA 77

LMG MISS 7270
3899229

LSF SRR FOREMOST 5314C
LUCHT PALASS 744

	ProS	HB	GM	CED	BW	WW	YW	Milk	Stay	MB	REA
EPD	91	64	27	11	0.0	60	102	25	17	0.27	0.16
PCTL (%)	62	50	66	71	82	48	37	52	26	46	35

BW: 75 lbs.
WW: 681 lbs.

Lot 131  **LMG Gills Prospect 0278**
5/25/20 **4370903**

4MC PROSPECT 469
1725003

LSF PROSPECT 2035Z
CCR CHEROKEE 340-510

LMG MISS ROXIE 3247
1667931

C-T GRAND STATEMENT 1025
LMG MISS ROXIE 8038

	ProS	HB	GM	CED	BW	WW	YW	Milk	Stay	MB	REA
EPD	97	67	30	8	0.9	67	110	19	17	0.33	0.05
PCTL (%)	52	44	60	96	92	23	20	92	30	68	61

BW: 84 lbs.
WW: 652 lbs.

Lot 132  **LMG Gills Prospect 0274**
5/15/20 **4371531**

LMG GILL 6331
3556272

4MC PROSPECT 469
LUCHT BLOCKANA 77

LMG MISS STORMY 4141
1743521

FLYING W GAME PLAN 189Y
LMG MISS STORMY 7074

	ProS	HB	GM	CED	BW	WW	YW	Milk	Stay	MB	REA
EPD	78	66	13	10	-0.5	62	99	24	17	0.21	0.05
PCTL (%)	82	47	90	83	75	41	42	59	26	93	61

BW: 84 lbs.
WW: 684 lbs.

Lot 133  **LMG Gills Prospect 0294**
5/15/20 **4371105**

LMG GILL 6331
3556272

4MC PROSPECT 469
LUCHT BLOCKANA 77

LMG MISS LARK 5655
3523268

LMG GILLS VIN DIESEL 7611
LMG LARK 4042

	ProS	HB	GM	CED	BW	WW	YW	Milk	Stay	MB	REA
EPD	73	59	13	10	0.2	62	102	23	17	0.15	0.18
PCTL (%)	88	60	89	81	85	42	36	73	35	97	32

BW: 85 lbs.
WW: 660 lbs.

Lot 134  **LMG Gills Spartacus 0255**
4/26/20 **4370933**

BIEBER SPARTACUS F129
3958047

BIEBER SPARTACUS A193
BIEBER ENCHANTRESS 399D

LMG MISS STORMY
1668027

LJC LANCER 313Y
LMG MISS STORMY 0414

	ProS	HB	GM	CED	BW	WW	YW	Milk	Stay	MB	REA
EPD	83	38	45	12	-2.2	69	117	29	12	0.37	0.16
PCTL (%)	75	92	25	52	41	18	11	16	85	58	35

BW: 82 lbs.
WW: 688 lbs.



Holden and Hudson at the SDSU game.

Lots 135-136-137

The last 3 lots are sold as commercial. DNA Shows that their sire does not match any bulls we have on record. So the sire has to be LMG Gills Boss 6202. A bull we had around here and got in with the cows. He was never DNA checked and is no longer here.

Lot 135



LMG Gills 0157

4/15/20

Commercial

LMG GILL BOSS 6202
3556246

LUCHT BIG BOSS 181
LUCHT MISS WIX 740

LMG MISS IDA 8805
4097524

CER MR. REDEMPTION 41D
MESSMER IDA S116

	ProS	HB	GM	CED	BW	WW	YW	Milk	Stay	MB	REA
EPD	103	56	48	10	0.2	62	104	28	16	0.44	0.20
PCTL (%)											

BW: 89 lbs.
WW: 732 lbs.



Lot 136



LMG Gills 0269

6/22/20

Commercial

LMG GILL BOSS 6202
3556246

LUCHT BIG BOSS 181
LUCHT MISS WIX 740

LMG MISS PAN 6571
3556363

LMG GILLS STATEMENT 2066
C-T MISS PAN 2093

	ProS	HB	GM	CED	BW	WW	YW	Milk	Stay	MB	REA
EPD	104	68	36	9	0.8	67	107	20	16	0.41	0.19
PCTL (%)											

BW: 76 lbs.
WW: 701 lbs.

Lot 137



LMG Gills 0284

4/27/20

Commercial

LMG GILL BOSS 6202
3556246

LUCHT BIG BOSS 181
LUCHT MISS WIX 740

LMG MISS BLOCKANA 8847
4097444

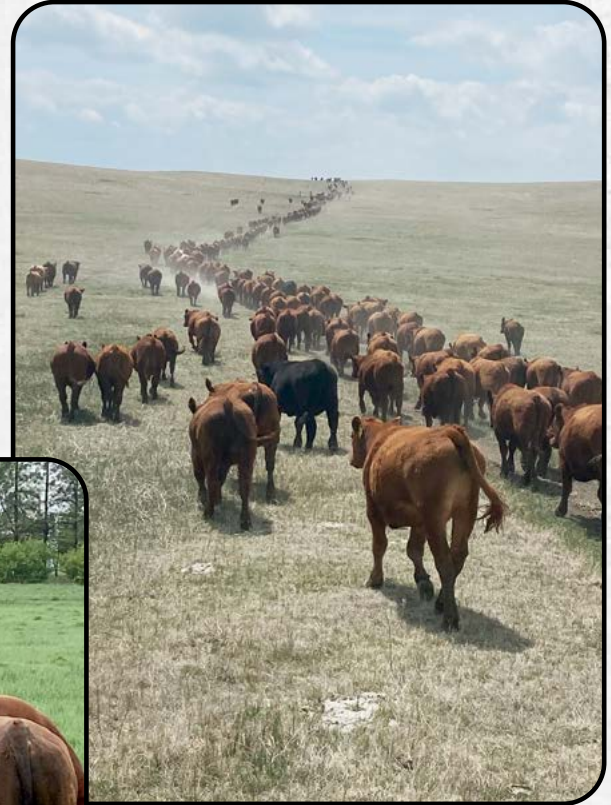
LMG GILLS VIN DIESEL 4533
LUCHT BLOCKANA 254

	ProS	HB	GM	CED	BW	WW	YW	Milk	Stay	MB	REA
EPD	87	57	29	11	0.2	68	108	25	16	0.33	0.22
PCTL (%)											

BW: 76 lbs.
WW: 720 lbs.



Making Hay



Moving our yearling steers.



Holden on Red bringing some bulls home.

Sod. Soil. *SOLD!*SM



Whether farmland, pastureland or hunting land, we will visit about the various options for marketing your property to come up with the best approach to achieve your specific goals.

Contact **Kristen Gill** at **605-848-4502**
TODAY for your free land value estimate.
kristen@glcland.com • www.glcland.com





4MC OPTIMISM 482

2-10-14

1725031

LSF OPTIMISM 1107Y
1547645

LSF NIGHT CALVER 9921W
LSF BLACKBIRD N3080 X0406

PIE MS D C CRICKET 0284
1409967

PIE GET R DONE 684
PIE MS D C CRICKET 7184

	ProS	HB	GM	CED	BW	WW	YW	Milk	Stay	MB	REA
EPD	171	132	38	13	-1.6	63	95	28	22	0.35	0.10
PCTL (%)	1	1	39	40	52	44	56	22	1	60	47



4MC OPTIMISM 482



BIEBER CL STOCKMARKET E119

1/15/17

3751659

PIE STOCKMAN 4051
1724236

LSF SAGA 1040Y
PIE LAKOTA 046

BIEBER CL ADELLE 475C
3474411

ANDRAS FUSION R236
BIEBER ADELLE 297Y

	ProS	HB	GM	CED	BW	WW	YW	Milk	Stay	MB	REA
EPD	144	87	58	17	-5.5	71	115	27	17	1.06	0.23
PCTL (%)	6	13	14	8	5	19	20	32	30	1	26



BIEBER CL STOCKMARKET E119



LSF SRR FOREMOST 5314C

1-20-15

1744805

BROWN PREMIER X7876
1379610

BECKTON NEBULA P P707
BROWN MS DESTINATION T7664

SRR VICTORIA JOAN 277-675
1516205

SRR SUPER CONQUEST 03
SRR VICTORA JOAN 675-711

	ProS	HB	GM	CED	BW	WW	YW	Milk	Stay	MB	REA
EPD	111	36	75	9	-0.9	61	109	31	14	0.67	0.19
PCTL (%)	28	88	4	90	64	50	28	9	62	11	32



LSF SRR FOREMOST 5314C



LMG GILL 6331

2-17-16

3556272

4MC PROSPECT 469
1725003

LSF PROSPECT 2035Z
CCR CHEROKEE 340-510

LUCHT BLOCKANA 77
1410952

LUCHT ROMEO 864
LUCHT BLOCKANA 893

	ProS	HB	GM	CED	BW	WW	YW	Milk	Stay	MB	REA
EPD	74	62	12	10	0.0	63	103	25	17	0.17	0.08
PCTL (%)	78	51	84	75	78	43	40	52	35	91	51



LMG GILLS REDEMPTION 8320

4/12/18

4098040

CER MR. REDEMPTION 41D
3566170

BROWN JYJ REDEMPTION Y1334
JRC MS 611 6227 0117X

LMG MISS CINNAMON 4201
1743575

LMG GILLS INDEED 8845
LMG MISS CINNAMON 9166

	ProS	HB	GM	CED	BW	WW	YW	Milk	Stay	MB	REA
EPD	100	58	42	9	-0.2	66	113	55	17	0.39	0.03
PCTL (%)	43	58	35	87	75	35	23	74	32	52	61



STRA TRENDING 618



STRA TRENDING 618

2/10/16

3556536

BIEBER ROLLIN DEEP Y118
1436844

BIEBER ROOSEVELT W384
BIEBER TILLY 399W

HRR COLLEEN 429
958998

GLACIER LOGAN 210
HOLDEN COLLEEN 6024

	ProS	HB	GM	CED	BW	WW	YW	Milk	Stay	MB	REA
EPD	104	79	25	8	0.6	58	95	23	19	0.47	0.24
PCTL (%)	37	22	63	92	86	60	57	70	12	36	25



BIEBER SPARTACUS F129



BIEBER SPARTACUS F129

4/4/18

3958047

BIEBER SPARTACUS A193
1617230

BIEBER ROUSE SAMURAI X22
BIEBER TILLY 233U

BIEBER ENCHANTRESS 399D
3536793

LOOSLI RIGHT ON 423
BIEBER ENCHANTRESS 225A

	ProS	HB	GM	CED	BW	WW	YW	Milk	Stay	MB	REA
EPD	72	26	46	15	-3.3	81	135	30	7	0.38	0.22
PCTL (%)	80	94	28	21	24	5	4	93	98	54	27



SIRE OF CER MR REDEMPTION 41D



CER MR. REDEMPTION 41D

3-1-16

3566170

BROWN JYJ REDEMPTION Y1334
1441805

BECKTON NEBULA P P707
JYJ MS JOLENE W16

JRC MS 611 6227 0117X
1393338

2 RJL ROCKER S611
PIE VERNICE 6227

	ProS	HB	GM	CED	BW	WW	YW	Milk	Stay	MB	REA
EPD	116	55	62	9	0.3	74	131	32	18	0.56	0.21
PCTL (%)	23	64	11	84	82	13	6	7	18	32	29



WILLOW RINGSIDE 1313-1753

4-18-17

3806584

HXC DECLARATION 5504C
3494198

LEACHMAN PLEDGE A282Z
HXC190Y

WILLOW JACKIE 1313
1643715

PIE OSCAR 118
WILLOW JACKIE 033

	ProS	HB	GM	CED	BW	WW	YW	Milk	Stay	MB	REA
EPD	98	38	59	12	-1.4	63	117	20	14	0.48	0.06
PCTL (%)	46	85	12	58	55	42	16	86	70	35	55



LMG GILLS INVESTMENT 8008

1/10/18

4032978

H2R PROFITBUILDER B403
1683223

LSF TAKEOVER 9943W
BROWN MS P707 Y6674

VANWYE SPLIT ROCK 437
1747821

BIEBER HARD DRIVE Y120
VANWYE SPLIT ROCK 312

	ProS	HB	GM	CED	BW	WW	YW	Milk	Stay	MB	REA
EPD	112	42	70	10	-1.3	67	113	24	13	0.77	0.22
PCTL (%)	28	82	6	77	57	31	22	61	79	6	27



GMRA MIDNIGHT EXPRESS 6216

1/14/16

3538395

BROWN JYJ REDEMPTION Y1334
1441805

BECKTON NEBULA P P707
JYJ MS JOLENE W16

GMRA PEACHA 454
1681538

GMRA PEACEMAKER 1216
GMRA PEACHA 135

	ProS	HB	GM	CED	BW	WW	YW	Milk	Stay	MB	REA
EPD	111	64	47	12	-3.6	71	114	30	18	0.72	0.07
PCTL (%)	28	46	27	61	20	21	21	13	19	8	53



GMRA MIDNIGHT EXPRESS 6216



FEDDES SILVER B90-D308

3/7/16

3539819

FEDDES SILVER BOW B226
1687147

BROWN JYJ REDEMPTION Y1334
FEDDES LAKINA Y17

FEDDES SLEEK X166 B90
1687120

C-T GRAND DATA 2085
FEDDES SLEEK X166

	ProS	HB	GM	CED	BW	WW	YW	Milk	Stay	MB	REA
EPD	126	80	47	10	-1.7	74	122	23	17	0.43	0.44
PCTL (%)	14	21	27	79	50	13	12	64	30	44	9



FEDDES SILVER B90-D308



BARHI RIBEYE 663

2-9-16

4073132

SUNR ULTIMATE RIBEYE 672Z
1511181

DKK ULTIMATE 9032
SUNR LARSON 672

5L FIREFLY 190-2573
920789

5L COPPER ROLLER 1040
5L FIREFLY 317-190

	ProS	HB	GM	CED	BW	WW	YW	Milk	Stay	MB	REA
EPD	59	61	-1	8	1.0	66	100	26	17	0.31	-0.02
PCTL (%)	90	54	95	91	89	33	47	40	29	69	71



LMG GILLS HARD DRIVE 7005

12/13/16

3802962

BIEBER HARD DRIVE Y120
1436718

LACY GOLD BAR 8123
BIEBER LAURA 158W

WOF SARA 043
1401136

WHITE OAKS COPPER 873
WOF SARA 875

	ProS	HB	GM	CED	BW	WW	YW	Milk	Stay	MB	REA
EPD	94	34	60	11	-1.3	76	123	32	12	0.54	0.46
PCTL (%)	51	89	12	64	57	10	11	6	84	26	8



HBR LINEDRIVE 663

2-25-16

3557097

LSF SRR HEADLINER 3105A
1623897

LSF SAGA 1040Y
LSF CRYSTAL R5145 Y1011

HBR MOOSE 829-0144
1405096

MFIN FINCHBULL R115
LDCC MOOSE 829

	ProS	HB	GM	CED	BW	WW	YW	Milk	Stay	MB	REA
EPD	139	109	30	12	-0.2	64	94	35	20	0.46	0.16
PCTL (%)	7	2	55	63	75	39	59	2	7	38	37



LMG GILLS OLY 4726

12-12-13

1713957

RED SSS OLY 554T
1411448

RED CROWFOOT OLE'S OSCAR
RED SSS GOLD EDGE 77R

VANWYE OLIVE 68W
1319563

ANDRAS TRAVELER 6042
LSF HUS OLIVE S715

	ProS	HB	GM	CED	BW	WW	YW	Milk	Stay	MB	REA
EPD	84	55	29	10	-0.7	72	111	24	15	0.37	0.25
PCTL (%)	66	63	57	77	67	16	25	56	56	56	24



LMG GILLS BOSS 6202

3/12/16

3556246

LUCHT BIG BOSS 181
1495780

LUCHT DIAMOND BACK 894
LUCHT BLOCKANA 886

LUCHT MISS WIX 740
1164398

SINCLAIR TELECAST 01S3
LUCHT RED MISS WIX 4092

	ProS	HB	GM	CED	BW	WW	YW	Milk	Stay	MB	REA
EPD	132	81	51	12	0.2	61	101	24	18	0.38	0.32
PCTL (%)	11	20	22	59	81	50	43	59	24	54	16



WILLOW FRANCHISE 1638-1853

4/4/18

4020990

9 MILE FRANCHISE 6305
3555188

SPUR FRANCHISE OF GARTON
C-BAR ABIGRACE Y11

WILLOW FIREFLY 1638
3579039

PIE LEGEND 468
WILLOW FIREFLY 975

	ProS	HB	GM	CED	BW	WW	YW	Milk	Stay	MB	REA
EPD	86	64	23	11	-1.2	71	122	34	16	0.41	0.16
PCTL (%)	62	48	67	66	59	20	12	4	44	48	37



LMG GILLS VIN DIESEL 4533 (Vortex)

5/24/14

1743620

LMG GILLS VIN DIESEL 7611
1312237

WR MR. RED DAWG 5335
LMG ROXIE 1080

LMG MISS DYNETTE 77012
1176743

LCC VAQUERO 1412J
LMG DYNETTE 902

	ProS	HB	GM	CED	BW	WW	YW	Milk	Stay	MB	REA
EPD	45	34	11	10	0.6	84	131	20	15	0.20	0.25
PCTL (%)	96	89	85	82	86	4	6	87	60	88	24



LUCHT DEFENDER 8703

2/9/16

4043558

5L DEFENDER 560-30Z
1549933

5L ADVOCATE 817-14W
5L BLACK ADINA 525-560

2CR RUBY BARMAID 6103
4043526

BUF CRK SPITN IMAGE X014
CRA PACKER'S MAIDEN

	ProS	HB	GM	CED	BW	WW	YW	Milk	Stay	MB	REA
EPD	73	22	51	13	-0.6	78	132	29	13	0.48	0.24
PCTL (%)	79	96	21	40	69	8	5	21	80	35	25



After one of Hudson and Holden's football games!



Hudson and Holden tubing!



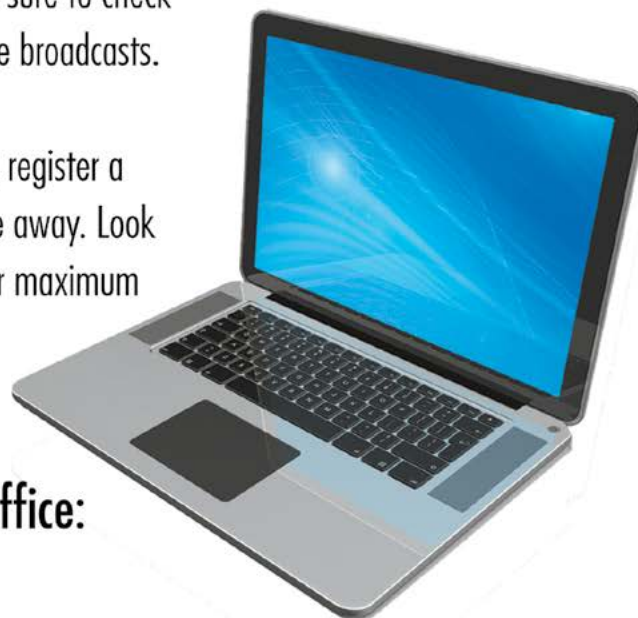
View the Auction Live! Bid Online... you're ringside right at your desk!

Buying online is as easy as 1, 2, 3...

1. Create an account at www.DVAuction.com under the "Register" tab
2. Apply for bidding approval by clicking on the "details" tab at least 24 hours prior to the auction – a DV representative will notify you once you have been approved.
3. Tune in for the sale to make your purchases!

High Speed internet is required for successful bidding-be sure to check the lag-time monitor in the top left corner to ensure real-time broadcasts.

Proxy-bidding – if you can't make time to watch the sale, register a proxy bid and let our system represent your bid while you're away. Look for the "proxy bid" tab on the auction listing, and fill in your maximum bids. We'll handle the rest!

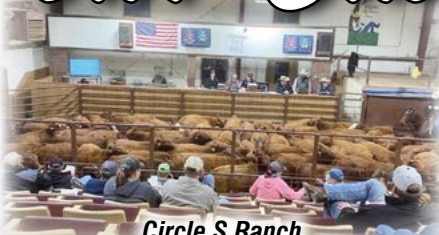


For General Questions Please contact Our Office:
402-316-5460 or support@dvauction.com

To all of our Customers...



Marshall Ranch



Circle S Ranch



Kahl Ranch



Sandquist Ranch



Stradinger Ranch



Newling Ranch



Metzinger Ranch



Prince Ranch



Collins Ranch



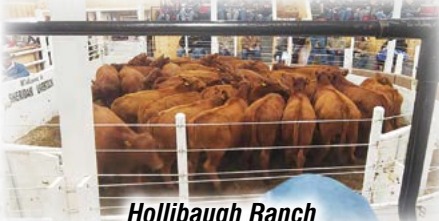
Nemeck Ranch



Schlect Ranch



Preszler Ranch



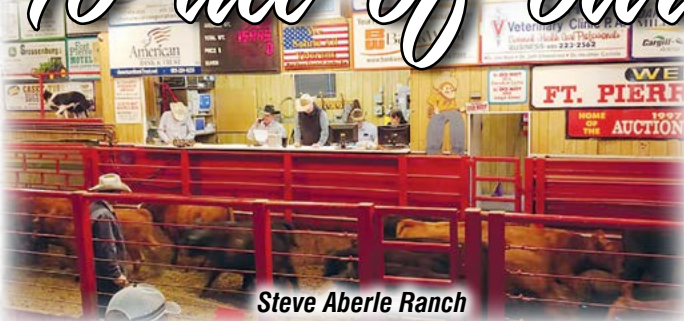
Hollibaugh Ranch



Wanner Ranch

Thank You!

To all of our Customers...



Steve Aberle Ranch



Robert & Eric Jones Ranch



Andrews Ranch



Archie Hulm



Cody Hooper Ranch



Bruce Ranch



Shawn Claymore Ranch



Terry Henderson Ranch



Senn Ranch



Tucker Amiotte Ranch



Gran Ranch



Jerry Nelson Ranch



Burruss Ranch



Hollenbeck Ranch



Jose Campos Ranch



Dusty Jackson



Duane Frank Ranch



Webb Ranch



Gropper Ranch



Lawrence Ranch



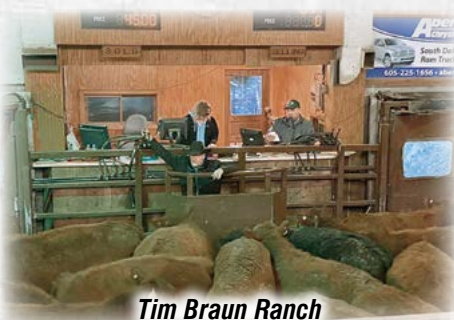
Nagel Ranch



Brian Andres Ranch



Marks Ranch



Tim Braun Ranch



Weigel Ranch

Thank You!



Gill Red Angus
13138 256th Ave.
Timber Lake, SD 57656
www.gillredangus.com



Also Selling Commercial Bred Females



Fall Bull & Female Sale

DECEMBER 8, 2021

1:00 PM MT
At the Ranch
Timber Lake, SD

www.GillRedAngus.com