



Quality Genetics Built on a Heritage of Commitment
HEART RIVER RANCH & OPEN A ANGUS

Annual Production Sale

**Wednesday,
March 11, 2020**

**The Feedlot • Belfield, ND
1 p.m. MDT**



Dear Friends,

Welcome to the 15th annual joint sale of Heart River Ranch and Open A Angus. 2019 was a pretty crazy year at least when it came to weather and politics. Starting with an extremely cold and long winter, short if any spring, wet summer and fall, and a recently more like normal winter. We have our fingers crossed it will continue. On the political side, all I will say is make your vote count in 2020!

Our programs have retained their focus on the maternal end of the business, while managing resources with integrity to optimize versus maximize production. There are certainly pressures to push the envelope on EPDs in growth and carcass traits and there has been progress made in those areas, however, are we really addressing the cost at which some of these gains are made? Cows that leave the herd early because of fertility, structural soundness or other issues even with maximum genomics have proven to be one of the most expensive costs you can incur in ranching. We continue selection for the goal of longevity and least cost maintenance while optimizing production that will meet the needs of the end product consumer.

We thank you for your continued interest and patronage of the genetics that we present for your consideration. It is gratifying to be associated with the great customer base we enjoy and we welcome your inspection of the bulls and any questions you may have about our programs.

Additional information will be provided and posted online as sale day approaches and as data is collected at www.openaangus.com and www.heartrivergenetics.com. Carcass ultrasound data, videos and updated EPDs will be provided as they become available. Feel free to view bulls ahead of the sale at your leisure at the development lot 4 miles south of Belfield on highway 85, then ½ mile west on 40th Street SW.

We will entertain a question and answer session on after a prime rib dinner the evening of March 10th at the Feedlot and we will also hear from residents of the Home on the Range. Come early to inspect the bulls and we will look forward to an enjoyable evening ahead of the sale.



Open A Angus

Jim & Lynn Arthaud Family
PO Box 556, Medora, ND 58645
701-623-4461 • jima@midstate.net • lynna@midstate.com
Website: www.openaangus.com
Wes Obrigewitch, Ranch Manager 701-290-6424 Cell
weso@openaangus.com

Justin Tyler, State Line Ranch, 701-872-6179
Dey Obrigewitch, Montana Ranch
Tom Scheef, Frank's Creek Ranch, 218-689-5625
Jim Cant, Feedlot
Seth Mitchell, Dahl Ranch



Heart River Ranch

Chuck & Annette Steffan Family
4291 Hwy 85 South
Belfield, ND 58622
701-575-8145 • heartrivergenetics@yahoo.com
Website: heartrivergenetics.com

Tim & Karen Stevenson, 605-375-3124
Short Pines Ranch Manager

Tellan and Kayla Steffan,
Commercial Herd, 701-260-0412

Directions to Heart River Ranch

Cows are located 13 miles west of Buffalo, SD, and 7 miles south of Harding, SD. Stop by our home anytime 7 miles south of Belfield right off US Highway 85 or 52 miles north of Bowman, ND, on US Highway 85 and look for the Heart River Genetics sign or 43rd St SW.

Directions to Open A Angus

Cows are located 16 miles north of Belfield, ND on US Hwy 85 and west on Frank's Creek. Cows are located 15 miles north of Beach, ND on US Hwy 16 at the State Line Ranch and north of Wibaux, MT.

Directions to The Feedlot

Bulls are located 3 miles S. of Belfield on US Hwy 85. Go to 40th St SW, turn west 1 mile. You will see the feedlot at the top of the hill.

Offering

41 Yearling Red Angus Bulls
1 2-Year-Old Red Angus Bulls
65 Yearling Black Angus Bulls
10 2-Year-Old Black Angus Bulls

Cattle Viewing

A cattle viewing is available at any time. Please call any of the contact numbers to make arrangements if you need to see cows or bulls before March 1 so that we are available and you have ample time to see the cows or bulls.

Schedule of Events

Tuesday, March 10, 2020

Open A Angus/Heart River Ranch Feedlot Belfield, ND
 Cattle available for viewing through late evening
 Complimentary Coffee and Rolls, Bars, Cookies..... All Day
 "How to Foot Score Cattle" 5 p.m.
 Guest Speaker: Kurt Froelich, Stark-Billings County Extension Agent
 No-Host Social 6:00 p.m. (MT)
 Complimentary Beef Dinner 6:30 p.m. (MT)
 Guest Speaker: Home On The Range Residents

Wednesday, March 11, 2020

Open A Angus/Heart River Ranch Feedlot Belfield, ND
 Complimentary Coffee and Rolls, Bars, Cookies..... All Day
 Complimentary Lunch..... 11:00 a.m. (MT)
 Sale..... 1:00 p.m. (MT)

Sale Location

Open A Angus/Heart River Ranch Feedlot, Belfield, ND

The bulls will be on display in pens outside of the barn. The sale itself will be a video auction in the warmth and comfort of the barn.

A DVD will be available upon request and bulls can be viewed online at heartrivergenetics.com and openaangus.com after Feb. 25, 2020.

Sale Order The sale order will be catalog order. Supplement sheets with updated pedigrees, HD50k information, carcass ultrasound, etc. will be available sale day and online at heartrivergenetics.com or openaangus.com.

DV Auction The sale will be available online on DV Auction.

Phone Numbers

If you would like to bid on the telephone please call 701-290-6424 or 701-290-9745 to make arrangements to be on the telephone for bidding or to have someone look at the cattle for you. The main office phone number to call us on sale day is 701-290-9745. Please call in advance to make arrangements to call in during the sale.

701-260-4630 **Chuck's Cell**
701-260-0412 **Tellan's Cell**
701-290-6424 **Wes's Cell**
701-290-9015 **Jim's Cell**
701-290-9745 **Office Cell**

Internet and Absentee Bids

We would prefer to visit with our customers in person but realize that not everyone can be at the sale; therefore we have made arrangements to bid through telephone or internet. Bids will be handled in strict confidence by any of the publication representatives or the respective ranches. If you would like to discuss the sale offering call us preferably several days before the sale, and we can help select your genetics. Keep in mind that we are sure that we have a bull that will fit your needs. After the sale you will need to contact Annette at 701-575-8145 or 701-290-9745 to make arrangements for payment of telephone purchases.

Storm Date

In case of postponement please listen to the Northern Ag Network, KLTC 1460 AM or go to northernag.net, ndstockmen.org, heartrivergenetics.com or openaangus.com for any postponement announcement. Postponement sale date is set for pre-sale activities: March 13, 2020, 6:00 p.m. and sale March 14, 2020, 1:00 p.m.

Transportation

Dickinson, ND, is also served by United, Delta and Frontier Airlines. Please call 701-290-9745 if you need transportation from the bus or airport.

Lodging

Lodging is available in Belfield, ND.

Trapper's Inn Motel

801 Hwy 85 N, Belfield, ND 701-575-4261

Cowboy Inn

406 Hwy 10 E, Belfield, ND 701-575-4245

Sales Team

Auctioneer:

Scott Weishaar 701-426-6826 (c), 701-872-5299 (h)

Ring Service:

Scott Dirk, Tri-State Livestock News 605-456-1499
 Kirby Goetsch, Farm & Ranch Guide 605-380-3939
 Tony Heins, Cattle Business Weekly 701-400-4435
 Will Bollum, Western Ag Reporter 507-244-0833
 Katie Ochsner, Red Angus Association of America 307-575-6802
 Rod Geppert, American Angus Association 605-295-3673

Bull Commentary

Red Angus:

Chuck Steffan, Heart River Ranch 701-260-4630 (c)

Angus:

Vern Frey, Frey Livestock Sales 701-721-0344 (c) 701-537-5383 (h)
 Wes Obrigewitch, Jim Arthaud, Open A Angus

Sale Block Clerk

Tena Ketchum/Annette Steffan/Laura Steffan

Sale Video

Theresa Howie and Ken Howie

Announcements

Errors discovered in the catalog will be corrected by announcements from the auction block at sale time and such corrections will take precedence over the printed matter in the catalog.

Liability

All persons who attend the sale do so at their own risk. Neither the owners, management, sales staff, facility or any person connected with this sale assume liability, legal nor otherwise, for property loss or for any accidents that may occur.

Delivery

Free Delivery to central points up to 500 miles. Balance will be at cost. We will make every effort to assist in deliveries of greater distance or by private arrangements and volume purchases. Delivery will be made at our convenience and efforts will be made to have bulls delivered by April 1.

Feeding and Development of Bulls

All bulls of Heart River Ranch were weaned in September and the Open A bulls were weaned in late October. The bulls did not receive creep feed except for a few Open A bulls that were ET calves produced at a recipient herd. Calves received their pre-weaning and weaning vaccinations and were handled in every respect as all natural. Bulls were fed to gain 2.5 lb. per head per day on a 1% grain and by product rotation. Bulls were fed free choice mineral, salt, and hay. We took yearling weights at approximately 105 days post weaning with no post weaning adjustment period or warm up period. Our intent is to grow out the bulls for maximum longevity and integrity of the bull.

Historic Photos

Most of the historic photos in this catalog were taken by Inez Kessler, Annette's great grandmother between 1905 and 1908 in the Gaylord, ND area. Inez was the only person to have a camera in the area and as a result she took pictures of many people and events. The town of Gaylord was located about 13 miles south of Belfield, ND along US Highway 85. The Gaylord Post Office and store was a stop for travelers going south. This building still stands at the Curt Molm place.

Red Angus EPD Averages (non-parent)

HB	GM	CED	BW	WW	YW	MK	ME	HPG	CEM	ST	MB	YG	CW	REA	Fat
169	48	12	-1.4	58	91	23	-1	11	7	16	0.40	0.10	20	0.03	0.02

Angus EPD Averages (non-parent)

CED	BW	WW	YW	CEM	MILK	MW	MARB	REA	FAT	\$W	\$F	\$B
+6	+1.3	+54	+96	+9	+25	+51	+54	+55	+0.11	+54	+83	+129

Sale Terms & Conditions

The terms of the sale are cash. No release will be given until satisfactory settlement has been made. All settlements will be made with the clerks of the sale immediately after the sale. We reserve the right to withhold animals from shipment for whom payments have not been received prior to departure date. Every animal sells to the highest bidder and in cases of disputes, the auctioneer's decision will be final. All sales are subject to an acceptable semen examination. Semen evaluation certificates will be furnished to the buyer at delivery.

Bulls were carcass ultrasounded on approximately February 25.

Updated EPD information, carcass ultrasound, and 50K data will be provided at the sale and available at www.heartrivergenetics.com or www.openaangus.com. This information will be available as soon as it is received from the Red Angus Association of America or the American Angus Association.



All bulls have been tested using the Zoetis HD50k genomic test or Igenity HD genomic test and parent verified. All bulls sold will be DNA tested free of any known genetic defects.

Health certificates and brand releases will be furnished for shipment anywhere in the United States.

Each animal carries a readable tattoo or freeze brand.

Insurance

Ownership risk to purchaser commences when the auctioneer's hammer falls. Insurance will be available sale day. It is recommended that buyers insure their purchases for safe delivery. Purchaser assumes the risk of death or injury to their livestock immediately after the sale.

Heart River Ranch and Open A Angus

Loss of Use Policy

2020 optional loss of use policy: Heart River Ranch and Open A Angus are striving to offer the best options not only in beef animal genetics but also loss of use protection for bulls and/or females we offer to our customers. We would like to introduce our customers to the Stockman's Insurance Policy which to the best of our knowledge and research offers the best protection to you, our customers.

Heart River Ranch/Open A Angus will pay 4% of sale price toward the Stockman's Insurance policy. The balance of the policy will be paid by the customer. If the customer chooses to decline the policy, Heart River Ranch or Open A Angus has no obligation to cover any losses due to injury, sickness or death. Heart River Ranch/Open A Angus does guarantee all cattle to be sound the day of the sale. All bulls will be semen tested by the Wibaux Vet Clinic in March/April 2020.

Breeder's Guarantee: All bulls are guaranteed to be breeders. All claims for adjustment or refund must be made in writing within six months of the sale date. In the event a bull is claimed to be a non-breeder, the purchaser may return the animal to the ranch of the seller if in good condition and complying with the health requirements of the Seller's state. The Seller will be entitled to six months trial following the return of the animal in which to prove that the animal is a breeder. If at the end of six months, the Seller shall be obligated to replace the animal with another of equal value or to refund the purchase price. The return of the full purchase price shall in any case be deemed full satisfaction and settlement. If the Seller proved the animal to be a breeder, it shall be the obligation of the purchaser to take delivery of the animal at the purchaser's expense.

Implied warranty: Except for those stated in the terms and conditions, there are no warranties or implies, as to merchantability or fitness for a particular purpose with respect to the cattle being sold in this auction. The warranties set forth in the terms and condition are in lieu of all other warranties, either expressed or implied and the remedies provided therein shall be the sole and exclusive remedy of the buyer, or any party claiming through the buyer, for any breach of warranty or guarantee therein provided and all other obligations or liabilities.

Health

Bulls and heifers were treated with Enforce at birth and branding and were calf hood vaccinated with 4-way and 7-way. At weaning, calves were given a 5-way, 7-way and One Shot, boosters were also given. Calves and cows were poured with Dectomax in the spring, fall and late winter. All bulls will be vaccinated with Preg Guard, Endovac and wormed prior to delivery. All females are bangs vaccinated and on a fall vaccination program.

Semen Tests: Bulls will be semen tested after the sale.

Semen Interests:

Heart River Ranch and Open A Angus are each respectively retaining 50% revenue-sharing semen interest in every bull selling in this sale. Full possession and full salvage value sells on all bulls. If a buyer chooses to collect and market semen, the seller will share proportionately in the collection costs and revenues earned. In the event that the seller chooses to collect semen for "in herd" use, it will be done at the seller's expense and at buyer convenience. Semen will be made available to buyer at cost.

Volume Discounts

We are pleased to give a volume buyer discount. You will receive 5% off of purchases of 5 to 9 bulls, and 10% off of 10 or more bulls. Please notify the clerk when you check out to receive your discount. This is another way to say "Thank You" for your trust in our program.



Grandchildren (L to R):

Cooper Madzo (15 hours old), Annette, Klain Steffan, (1 month), Chuck, Sienna Schaffer (2 months), Will Steffan (4 years), Luke Schaffer (2 years)



(L to R): Bud Obrigewitch, Lynn, Grace, Hudson and Jim Arthaud



Wes Obrigewitch,
Open A Ranch Manager



Jim Cant,
Feedlot/Open A



Tom and Becky
Scheef,
Frank's Creek /
Open A



Tim and Karen
Stevenson ,
Short Pines
Ranch/HRR



Justin and Michelle Tyler,
State Line Ranch/
Open A Ranch



Dey and Jen Obrigewitch,
Kramer Ranch/Open A

Justin and Michelle Tyler,
State Line Ranch/
Open A Ranch

Seth Mitchell
(not pictured),
Dahl Ranch/Open A

A special thank you to all of our friends and neighbors for all of your help and support.

Auctioneer

Scott Weishaar

Catalog and Ad Design

Tracey Koester, 701-391-5440
Cow Camp Promotions

Printing

United Printing, Bismarck, ND

Videography

Ken and Theresa Howie, 701-495-1706
Ken Howie Studios

Photography

Annette Steffan

Veterinarians

Terry Hall, DVM, 406-796-2624
Wibaux Veterinary Clinic, Wibaux, MT

Brand Inspection

Donovan O'Brien

Carcass Ultrasound

Jason McLennan, 605-645-1630
McLennan Enterprises

Sound

Qwain Malkowski

Meals

Presale Meal: Donald & Sarah Nordby,
Badlands Genetics, 701-879-6376
Sale Day: Ray & Cathy Kessler
Cookies/Snacks: Michelle Tyler
Salads and Desserts: Laura Filkowski
Kitchen: Julie Syness, Nikki Edwards,
Gage Edwards, Scott Edwards, Kaylene
Klein, Chandler Syness

Clipping

Jay Temchack,
Laughing Stock Cattle Services

Embroidery

Scarves: Becky Scheef, Belfield, ND
Vests: Buffalo Gap Gift Shop,
Medora, ND
Caps: Krazy Kreft Embroidery,
Streeter, ND

Website

Therese Howie,
Tess Howie Media and Marketing

Office Crew

Heather Weishaar, head clerk
Annette Steffan, Diana Obrigewitch,
Laura Steffan

Barn Crew

Chance Andrews
Clay Baurer
Wade Berg
Rhonda Buckman
Brendan Butterfield
Zeb Doe
Brayden Jorgensen
Kaylene Klein
Kyle Kostelecky
Ty Nordby
Rourke McPeters
Charity Parsons
Tim Ponak
Shane Siverson
Colbey Steeke
Derek Tabor
Zach Tessier
Shayna Uffleman

Buy a Bull – We'll Buy Your Tags!



If you purchase a bull from us, we will purchase one bag of FCCP or Allied Access tags per bull for you. All you need to do is call the Red Angus Marketing Department, answer a few management questions, and enroll your calf crop for free. Then start reaping the premiums through Red Angus' marketing programs!

Feeder Calf Certification Program (FCCP) "yellow tags" are for bull customers using ONLY Red Angus bulls. FCCP cattle are accepted into the Choice+ Grid and Pro-Cow Program. Cattle enrolled in FCCP are USDA genetic, source and age verified.



Allied Access "green tags" verify source and age for bull customers utilizing halfblood bulls in their planned crossbreeding program.

RedAngus.org
(940) 387-3502

Bull Selection – Simplified.

Red Angus stakeholders have enjoyed the capability of selecting bulls based on economically relevant traits (ERTs), such as Heifer Pregnancy or Stayability, that truly impact their operations profitability. While these ERTs allow for efficient selection decisions, the growing number of ERTs and EPDs has resulted in confusion as producers attempt to estimate a sire's overall impact. In response, RAAA has developed the HerdBuilder and GridMaster indices, which answer the question:

"What impact will each potential sire have on my operation's profitability?"

HERDBUILDER

Producers selecting bulls to develop profitable replacement females and maximize the value of non-replacement marketed progeny should incorporate the HerdBuilder Index into their selection decisions.

The HerdBuilder Index is built using the following scenario:

- Red Angus bulls mated to cows and heifers
- Replacement heifers retained from within the herd
- All remaining progeny sold on a quality-based carcass grid

Given that replacement heifers are retained, significant influence is placed on the obvious maternal ERTs of Stayability, Heifer Pregnancy and Calving Ease. Additionally, with all remaining progeny sold on a quality-based carcass grid, Marbling, Yield Grade and growth EPDs also impact the HerdBuilder Index.

GRIDMASTER

Use the GridMaster Index if your operation's primary goal is maximizing profitability of feeders in the feedyard and on the rail.

The GridMaster Index is built using the following scenario:

- Red Angus bulls mated to cows
- All progeny sold on a quality-based carcass grid

Marbling, Yield Grade and growth EPDs are the traits of primary importance in the GridMaster Index.

Ranch Tested. Rancher Trusted.

Red Angus

(940) 387-3502 | RedAngus.org



Watch & bid online for FREE at

DVAuction

Broadcasting Real-Time Auctions

View the Auction Live!
Bid Online... you're ringside right at your desk!

Buying online is as easy as 1, 2, 3...

1. Create an account at www.dvauction.com under the "register" tab
2. Apply for bidding approval by clicking on the "details" tab at least 24 hours prior to the auction—a DV representative will notify you once you have been approved
3. Tune in for the sale and make your purchases!

High speed internet is required for successful bidding—be sure to check the lag-time monitor in the top left corner to ensure real-time broadcasts.

Proxy Bidding—if you can't make time to watch the sale, register a proxy bid and let our system represent your bid while you're away. Look for the "proxy bid" tab on the auction listing, and fill in your maximum bids. We'll handle the rest!

Having troubles? During the auction, you can type a message to the operator at any time for assistance. Our full-time support team can also always be reached at (402) 474-5557.



DVAuction
Broadcasting Real-Time Auctions

DVA Rep. Justin Dikoff (605) 290-0635 - email: jdikoff@dvauction.com
Please feel free to contact me with questions about the sale or to view the cattle for you.



RIDGE TRAVELER 5412



SIRE **A**

RIDGE TRAVELER 5412

BIRTH DATE: **2/3/15** REG. #: **3469342** CAT: **1A 100%**

HB	GM	CED	BW	WW	YW	MK	ME	HPG	CEM	ST	MB	YG	CW	REA	Fat
138	46	11	-0.1	53	83	21	-2	9	2	14	0.44	0.06	11	-0.04	0.01

5L LEGEND 1553-425V
RIDGE LEGEND 2069
RIDGE AQUILA 552-8066

5L CRITICAL MASS 189Y
RIDGE CASEY 8034-3032
RIDGE CASEY 978-8034

5L LAKOTA LEGEND 7074
5L HAZEL 45L-1553
5L NORMANDY CANYON 6024
RIDGE AQUILA 213-552
5L TOP LANCE 233-8566
5L TESS 1134-416
5L GRAND EXPRESS 453-5655
OTT-CASEY-F412-978

BW	84
ADJ WW	652
WR	112
ADJ YW	1162
YR	110

Ridge Traveler 5412 is a breeding bull that moves out with determination and athletic ability. His greatest assets are his feet and legs and depth of rib. His daughters mature into cows with rib and capacity and have balanced udders.



RED FLYING K MAX 159Y



SIRE **B**

RED FLYING K MAX 159Y

BIRTH DATE: **3/18/11** REG. #: **1629869** CAT: **1A 100%**

HB	GM	CED	BW	WW	YW	MK	ME	HPG	CEM	ST	MB	YG	CW	REA	Fat
200	45	14	-2.5	41	61	20	-11	13	9	20	0.40	0.08	9	-0.11	0.02

RED CROWFOOT 6253S
RED ML MAX 862U
RED BAR-X MISS LINETT 151K

RED FLYING K ACE 9R
RED FLYING K ANITA 764T
RED FLYING K ANEXA 4M

CROWFOOT MAX 1743L
CROWFOOT PIED PIPER 3859N
BECKTON CLIPPER D225 JM
RED BAR-X MISS LINETT 284D
RED FLYING K PATRICK 29N
RED FLYING K MS DYNAMO 91H
RED U-2 WANTED: 917J
RED FLYING K MS 7C B.J. 27F

BW	0
ADJ WW	691
WR	
ADJ YW	1108
YR	

Red Flying K Max 159Y is a Canadian bred maternal bull that adds volume and mass to his offspring. He moderate framed with extra thickness, correct leg structure and is well known for his outstanding daughters. Semen Available. The Max daughters are finding

their way to becoming moderate framed attractive, deep ribbed daughters. Max is in the top 11% for HB, top 14% or better for efficiency traits like DMI, ME, and STAY even at 9 years of age, Max is moving his EPDS in these areas positively.



5L TOPGUN 560-65B



SIRE **C**

5L TOPGUN 560-65B

BIRTH DATE: **2/9/14** REG. #: **1701524** CAT: **1A 100%**

HB	GM	CED	BW	WW	YW	MK	ME	HPG	CEM	ST	MB	YG	CW	REA	Fat
156	50	20	-5.4	58	93	14	-7	18	11	9	0.57	0.02	21	0.16	0.01

BUF CRK THE RIGHT KIND U199
5L ADVANTAGE 3267-221Y
5L ADINA 195-3267

TC STOCKMAN 365
5L BLACK ADINA 525-560
5L ADINA 293-525

BUF CRK LANCER R017
BUF CRK SHOSHONE R353
5L TRADITION 203-6145
5L ADINA 2113-195
TC STOCKMAN
TC PRIDE 0014
GLACIER LOGAN 210
5L ADINA 109-293

BW	70
ADJ WW	607
WR	ET
ADJ YW	1161
YR	ET

Top Gun provides calving ease in the top 2% of the breed, above average performance, excellent carcass EPDs and moderate dark red broody daughters that have top of the breed maternal calving ease. Used AI, owned by 5L Ranch and Croissant Red Angus.



RIDGE PRAGMATIC 6098



SIRE **D**

RIDGE PRAGMATIC 6098

BIRTH DATE: **2/16/16** REG. #: **3552183** CAT: **1A 100%**

HB	GM	CED	BW	WW	YW	MK	ME	HPG	CEM	ST	MB	YG	CW	REA	Fat
151	48	13	-0.7	65	100	18	-6	16	5	12	0.29	-0.03	20	0.29	0.01
													BW	75	
													ADJ WW	725	
													WR	118	
													ADJ YW	1252	
													YR	108	

5L ADVANTAGE 3267-221Y
5L TOPGUN 560-65B
 5L BLACK ADINA 525-560

 5L LEGEND 1553-425V
RIDGE SHEILA 009-2088
 RIDGE SHEILA 009

BUF CRK THE RIGHT KIND U199
 5L ADINA 195-3267
 TC STOCKMAN 365
 5L ADINA 293-525
 5L LAKOTA LEGEND 7074
 5L HAZEL 45L-1553
 BUF CRK BARNEY 3474
 B&C 018-560 OF B3R 602

Ridge Pragmatic 6098 is a dark red performance sire out of 5L Top Gun. We used Ridge Pragmatic 6098 AI to capture the maternal strength of his young dam and grand dam and to put his good growth and carcass genetics to work. His first daughter's will calve in 2020 and reports are good to date.



RIDGE PROVISION 6013



SIRE **E**

RIDGE PROVISION 6013

BIRTH DATE: **1/29/16** REG. #: **3552198** CAT: **1A 100%**

HB	GM	CED	BW	WW	YW	MK	ME	HPG	CEM	ST	MB	YG	CW	REA	Fat
186	47	11	-1.4	58	87	24	-7	15	6	18	0.33	0.05	3	-0.14	0.01
													BW	70	
													ADJ WW	711	
													WR	116	
													ADJ YW	1200	
													YR	104	

BUF CRK THE RIGHT KIND U199
5L ADVANTAGE 3267-221Y
 5L ADINA 195-3267

 5L ZENITH 1425-5767
RIDGE MONA 8162-2057
 RIDGE MONA 620-8162

BUF CRK LANCER R017
 BUF CRK SHOSHONE R353
 5L TRADITION 203-6145
 5L ADINA 2113-195
 5L MTN NORSE 71-7994
 5L OSCE 233-1425
 MUSHRUSH LTJULIAN LG S005
 RIDGE MONA 303-620

Ridge Provision 6013 was a bull we found to be attractive in phenotype, performance and his strong maternal lineage. His calves are uniform in type and have a lot of balance and performance. We are looking forward to seeing his daughters in production.



SIRE **E**

BIRNIE EXPRESS 353A

BIRTH DATE: **3/16/13** REG. #: **1613128** CAT: **1A 100%**

HB	GM	CED	BW	WW	YW	MK	ME	HPG	CEM	ST	MB	YG	CW	REA	Fat
205	43	14	-1.1	52	75	19	-3	11	9	22	0.16	0.25	28	-0.23	0.04
													BW	ET	
													ADJ WW	669	
													WR	ET	
													ADJ YW	1135	
													YR	ET	

5L GRAND EXPRESS 453-5655
MLK CRK EXPRESS 9127
 MLK CRK SHEBA 043

 SELL COPPERTOP 608
OTT-MONA-758-970
 OTT-MONA-303-758

5L NORSEMAN EXPRESS
 5L RUBY 01-453
 BJR PROOF 224-159
 MLK CRK SHEBA 869
 BUF CRK COPPERTOP 75A
 BUF CRK SUNFLOWER 247
 MSJ-HVN BUST-980-508
 TONI 1

AKA "Rockstar" Birnie Express 353A is a true maternal genetic combination, his dam "970" was a foundation donor dam that we had the fortune to flush - she had rib shape, good feet and a perfect udder before those traits became primary targets for most outfits. She produced her last calf at 17 years of age. The sire of Rockstar is Milk Crk Express 9127 - a sire known for the cows he produced. We were so pleased with 9127, daughters, we used him AI in 2019 at 10 years of age. Expect easy fleshing females and calving ease bulls with longevity out of this bull. Despite lower growth EPDs, he ratios at 100 even with higher growth sires. He ranks in the top 5% for HB, top 37% CED, top 26% CEM and top 1% for stay.

MLK CRK GRASS ROOTS 7208 3756023

HB	GM	CED	BW	WW	YW	MK	ME	HPG	CEM	ST	MB	YG	CW	REA	Fat
212	47	14	-1.0	66	102	23	-4	13	7	21	0.26	0.20	7	-0.28	0.05

MLK CRK STEWARD 7217 3755907

HB	GM	CED	BW	WW	YW	MK	ME	HPG	CEM	ST	MB	YG	CW	REA	Fat
175	48	8	0.5	64	98	15	1	15	2	18	0.60	0.10	13	0.10	0.05

MLK CRK STEWARD 7334 3756215

HB	GM	CED	BW	WW	YW	MK	ME	HPG	CEM	ST	MB	YG	CW	REA	Fat
188	49	5	1.5	70	105	16	2	19	2	19	0.72	0.08	25	0.29	0.04

HRR EXPRESS 5142 3491493

HB	GM	CED	BW	WW	YW	MK	ME	HPG	CEM	ST	MB	YG	CW	REA	Fat
228	45	19	-4.0	54	79	30	3	11	13	22	0.37	0.20	33	-0.14	0.02

LOOSLI RIGHT KIND 205 1523153

HB	GM	CED	BW	WW	YW	MK	ME	HPG	CEM	ST	MB	YG	CW	REA	Fat
191	48	18	-4.7	45	75	31	-8	10	10	16	0.36	0.03	3	0.15	0.04

4L SUPER VISION R2292 836810

HB	GM	CED	BW	WW	YW	MK	ME	HPG	CEM	ST	MB	YG	CW	REA	Fat
140	44	9	-1.1	48	74	25	1	2	11	16	0.20	0.14	17	-0.07	0.03

RED ANGUS GUIDE TO EPDS

For more information, visit RedAngus.org.

HB – HerdBuilder is a maternally focused selection index that predicts the probability of developing profitable cowherd traits while maximizing the value of marketed progeny. Expressed as dollars per cow exposure, HB is calculated based on the scenario that bulls are mated to heifers and cows, replacement heifers are retained, and all remaining progeny are marketed on a quality-based carcass grid. (Index/High Value)

GM – GridMaster is a terminally focused selection index that predicts the probability to increase the value of marketed calves. GM places selection pressure on growth, feedyard performance and carcass quality, predicting differences in profit as expressed per cow exposure. GM is calculated based on the scenario that bulls are mated to cows only, and all progeny are marketed on a quality-based carcass grid. (Index/High Value)

CED – Calving Ease Direct predicts differences in the percent of calves born unassisted out of 2-year-old dams. (Percent/High Value)

BW – Birth Weight predicts differences in actual birth weight of progeny. (Pounds/Low Value)

WW – Weaning Weight predicts differences in 205-day weaning weight. (Pounds/High Value)

YW – Yearling Weight predicts differences in 365-day yearling weight. (Pounds/High Value)

ADG – Average Daily Gain predicts differences in weight gain between 205 and 365 days of age. (Pounds/High Value)

DMI – Dry Matter Intake predicts differences in daily feed intake as measured in a feedlot during the post-weaning period. (Pounds/Low Value)

MILK – Milk predicts differences in weaning weight attributed to the milking ability of the animal's daughters. (Pounds/High Value)

HPG – Heifer Pregnancy predicts differences in the percent of daughters who are able to conceive and calve at 2 years of age following exposure to breeding. (Percent/High Value)

CEM – Calving Ease Maternal predicts differences in the percent of daughters who are able to calve unassisted as 2-year-old heifers. (Percent/High Value)

STAY – Stayability predicts differences in the ability of an animals' retained daughters to remain productive in the herd – calve every year – through 6 years of age. (Percent/High Value)

MARB – Marbling predicts differences in marbling score – amount of intramuscular fat measured at the 13th rib. (Marbling Score Units/High Value)

YG – Yield Grade predicts differences in USDA Yield Grade, which is calculated using CW, REA and Fat. (Yield Grade Units/Low Value)

CW – Carcass Weight predicts differences in actual hot carcass weight. (Pounds/High Value)

REA – Ribeye Area predicts differences in square inches of ribeye area measured at the 13th rib. (Square Inches/High Value)

FAT – Fat predicts differences in the depth of backfat measured between the 12th and 13th ribs. (Inches/Low Value)



American Angus Association® Selection Tools

Expected Progeny Difference (EPD), is the prediction of how future progeny of each animal are expected to perform relative to the progeny of other animals listed in the database. EPDs are expressed in units of measure for the trait, plus or minus. Interim EPDs may appear on young animals when their performance has yet to be incorporated into the American Angus Association National Cattle Evaluation (NCE) procedures. This EPD will be preceded by an “I”, and may or may not include the animal’s own performance record for a particular trait, depending on its availability, appropriate contemporary grouping, or data edits needed for NCE.

Accuracy (ACC), is the reliability that can be placed on the EPD. An accuracy of close to 1.0 indicates higher reliability. Accuracy is impacted by the number of progeny and ancestral records included in the analysis.

GROWTH

Calving Ease Direct (CED), is expressed as a difference in percentage of unassisted births, with a higher value indicating greater calving ease in first-calf heifers. It predicts the average difference in ease with which a sire’s calves will be born when he is bred to first-calf heifers.

Birth Weight EPD (BW), expressed in pounds, is a predictor of a sire’s ability to transmit birth weight to his progeny compared to that of other sires.

Weaning Weight EPD (WW), expressed in pounds, is a predictor of a sire’s ability to transmit weaning growth to his progeny compared to that of other sires.

Residual Average Daily Gain (RADG), feed efficiency expressed in pounds per day, is a predictor of a sire’s genetic ability for postweaning gain in future progeny compared to that of other sires, given a constant amount of feed consumed.

Yearling Weight EPD (YW), expressed in pounds, is a predictor of a sire’s ability to transmit yearling growth to his progeny compared to that of other sires.

Yearling Height EPD (YH), is a predictor of a sire’s ability to transmit yearling height, expressed in inches, compared to the that of other sires.

Scrotal Circumference EPD (SC), expressed in centimeters, is a predictor of the difference in transmitting ability for scrotal size compared to that of other sires.

Docility (DOC), is expressed as a difference in yearling cattle temperament, with a higher value indicating more favorable docility. It predicts the average difference of progeny from a sire in comparison with another sire’s calves.

MATERNAL

Heifer Pregnancy (HP), is a selection tool to increase the probability or chance of a sire’s daughters becoming pregnant as first-calf heifers during a normal breeding season. A higher EPD is the more favorable direction, and the EPD is reported in percentage units.

Calving Ease Maternal (CEM), is expressed as a difference in percentage of unassisted births with a higher value indicating greater calving ease in first-calf daughters. It predicts the average ease with which a sire’s daughters will calve as first-calf heifers when compared to daughters of other sires.

Maternal Milk EPD (Milk), is a predictor of a sire’s genetic merit for milk and mothering ability as expressed in his daughters compared to daughters of other sires. In other words, it is that part of a calf’s weaning weight attributed to milk and mothering ability.

Mature Weight EPD (MW), expressed in pounds, is a predictor of the difference in mature weight of daughters of a sire compared to the daughters of other sires.

Mature Height EPD (MH), expressed in inches, is a predictor of the difference in mature height of a sire’s daughters compared to daughters of other sires.

Cow Energy Value (\$EN), expressed in dollars savings per cow per year, assesses differences in cow energy requirements as an expected dollar savings difference in daughters of sires. A larger value is more favorable when comparing two animals (more dollars saved on feed energy expenses). Components for computing the cow \$EN savings difference include lactation energy requirements and energy costs associated with differences in mature cow size.

CARCASS

The genetic evaluation produces a single set of EPDs for carcass weight, marbling score, Ribeye area and fat thickness. The units of measure are in carcass trait format and analyzed on an age-constant basis.

Carcass Weight EPD (CW), expressed in pounds is a predictor of the differences in hot carcass weight of a sire’s progeny compared to progeny of other sires.

Marbling EPD (Marb), expressed as a fraction of the difference in USDA marbling score of a sire’s progeny compared to progeny of other sires.

Ribeye Area EPD (RE), expressed in square inches, is a predictor of the difference in ribeye area of a sire’s progeny compared to progeny of other sires.

Fat Thickness EPD (Fat), expressed in inches, is a predictor of the differences in external fat thickness at the 12th rib (as measured between the 12th and 13th ribs) of a sire’s progeny compared to progeny of other sires.

\$VALUE INDEXES

\$Value indexes, are multi-trait selection indexes to assist beef producers by adding simplicity to genetic selection decisions. \$Values are reported in dollars per head, where a higher value is more favorable. The \$Value is an estimate of how future progeny of each sire are expected to perform, on average, compared to progeny of other sires in the database if the sires were randomly mated to cows and if calves were exposed to the same environment.

Weaned Calf Value (\$W), an index value expressed in dollars per head, is the expected average difference in future progeny performance for pre-weaning merit. \$W includes both revenue and cost adjustments associated with differences in birth weight, weaning direct growth, maternal milk, and mature cow size.

Feedlot Value (\$F), an index value expressed in dollars per head, is the expected average difference in future progeny performance for postweaning merit compared to progeny of other sires.

Grid Value (\$G), an index value expressed in dollars per head, is the expected average difference in future progeny performance for carcass grid merit compared to progeny of other sires.

Quality Grade (\$QG) represents the quality grade segment of the economic advantage found in \$G. \$QG is intended for the specialized user wanting to place more emphasis on improving quality grade. The carcass marbling (Marb) EPD, which is influenced by carcass marbling scores and ultrasound percent intramuscular fat (% IMF) measurements, contribute to \$QG.

Yield Grade (\$YG) \$YG represents the yield grade segment of the economic advantage found in \$G. \$YG is intended for the specialized user wanting to place more emphasis on red meat yield. It provides a multi-trait approach to encompass ribeye, fat thickness and weight into an economic value for red meat yield.

\$G combines both \$QG and \$YG, and may be the best carcass decision tool for focusing on quality and red meat yield simultaneously.

Beef Value (\$B), an index value expressed in dollars per head, is the expected average difference in future progeny performance for postweaning and carcass value compared to progeny of other sires.



O C C REAR END 751R



SIRE **G**

O C C REAR END 751R

BIRTH DATE: **9/1/05** REG. #: **15649977**

CED	BW	WW	YW	CEM	MILK	MW	MARB	REA	FAT	\$W	\$F	\$B
3	2.2	44	71	4	18	-37	0.10	0.42	-0.006	45	45	71

O C C FOCUS 813F
O C C HOMER 650H
 O C C DIXIE ERICA 816B

O C C JOKER 620J
FCC REVOLUTION ROSE 995N
 O C C REVOLUTION ROSE 887H

BASIN RAINMAKER 654X
 DIXIE ERICA OF C H 1019
 D H D TRAVELER 6807
 DIXIE ERICA OF C H 1019
 O C C EMBLAZON 854E
 O C C JUANADA 709V
 RITO 904 OF 1H1 SASQUATCH
 O C C REVOLUTION ROSE 919E

BW	
ADJ WW	
WR	
ADJ YW	
YR	

OCC Rear End 751R is a massive easy fleshing son of OCC Homer 650H. His EPDs and phenotype are similar to OCC Legend. The progeny of OCC Rear End 751R have strong wide top lines with heavy hindquarters. Daughters will stay fat easily and have beautiful udders. Used extensively in the AI program.



O C C THUMPER 819T



SIRE **H**

O C C THUMPER 819T

BIRTH DATE: **9/1/07** REG. #: ***16293203**

CED	BW	WW	YW	CEM	MILK	MW	MARB	REA	FAT	\$W	\$F	\$B
0	3.9	45	77	-2	17	31	0.17	0.34	0.009	30	54	81

O C C BACKSTOP 888B
O C C EUREKA 865E
 BLACKBIRD OF R R 1204

O C C ANCHOR 771A
O C C DIXIE ERICA 954K
 O C C DIXIE ERICA 907C

D H D TRAVELER 6807
 REVOLUTION ROSE OF R R 9239
 PBC 707 1M F0203
 BLACKBIRD OF R R 7023
 D H D TRAVELER 6807
 O C C JUANADA 709V
 N BAR EMULATION EXT
 DIXIE ERICA OF C H 1019

BW	
ADJ WW	
WR	
ADJ YW	
YR	

OCC Thumper 819T is a heavy muscled easy fleshing bull. His daughters have great udders and are easy fleshing. Used in AI program.



O C C BIG TIME 746Z



SIRE **I**

O C C BIG TIME 746Z

BIRTH DATE: **4/16/12** REG. #: **17696450**

CED	BW	WW	YW	CEM	MILK	MW	MARB	REA	FAT	\$W	\$F	\$B
-1	4.0	63	109	-3	14	68	0.25	0.74	-0.003	42	86	123

O C C HOMER 650H
O C C REAR END 751R
 FCC REVOLUTION ROSE 995N

O C C MISSING LINK 830M
O C C DIXIE ERICA 771R
 O C C DIXIE ERICA 776M

O C C FOCUS 813F
 O C C DIXIE ERICA 816B
 O C C JOKER 620J
 O C C REVOLUTION ROSE 887H
 O C C HEADLINER 661H
 O C C DIXIE ERICA 946K
 O C C EUREKA 865E
 O C C DIXIE ERICA 606G

BW	80
ADJ WW	700
WR	118
ADJ YW	1020
YR	112

Big Time is an OCC Rear End 751R son that should replace his sire. His overall thickness, mass, performance and eye appeal is impressive. His dam & granddam have been exceptional producing cows. Open A had the opportunity to purchase a full flush brother, OCC Beast 709B who will have progeny coming up.



O C C X-TRA EASY 708X



O C C X-TRA EASY 708X

SIRE **J**

BIRTH DATE: **9/11/10** REG. #: **17190960**

CED	BW	WW	YW	CEM	MILK	MW	MARB	REA	FAT	\$W	\$F	\$B
11	-1.2	38	74	14	20	0	0.15	-0.07	0.030	39	47	65

O C C FOCUS 813F
O C C NO PROBLEMS 52N
 O C C DIXIE ERICA 816B

O C C TRAVELER 723Z
O C C DIXIE ERICA 678T
 O C C DIXIE ERICA 613L

BASIN RAINMAKER 654X
 DIXIE ERICA OF C H 1019
 D H D TRAVELER 6807
 DIXIE ERICA OF C H 1019
 Q A S TRAVELER 23-4
 JUANADA OF ROLLIN ROCK 0355
 O C C HOMER 650H
 O C C DIXIE ERICA 642J

BW
ADJ WW
WR
ADJ YW
YR

OCC X-tra Easy 708X is a long, thick, smooth-made bull bred several generations for low birth and great efficiency. He has extra scrotal and exceptional fleshing ability.



O C C JET STREAM 825J



O C C JET STREAM 825J

SIRE **K**

BIRTH DATE: **9/24/99** REG. #: **#13635095**

CED	BW	WW	YW	CEM	MILK	MW	MARB	REA	FAT	\$W	\$F	\$B
10	0.2	38	61	0	21	-20	-0.03	0.35	0.29	48	62	77

D H D TRAVELER 6807
O C C EMBLAZON 854E
 DIXIE ERICA OF C H 1019

O C C EUREKA 865E
O C C JUANADA 968G
 O C C JUANADA 774A

Q A S TRAVELER 23-4
 BEMINDFUL MAID D H D 0807
 PBC 707 1M F0203
 DIXIE ERICA OF C H 615
 O C C BACKSTOP 888B
 BLACKBIRD OF R R 1204
 D H D TRAVELER 6807
 O C C HEROS JUANADA 700Y

BW
ADJ WW
WR
ADJ YW
YR

The OCC Jet Stream 825J daughters are very good, with unbelievable under quality. His dam is a beautiful Eureka daughter that stems from the OCC Juanada 709V (Anchor's dam) cow family.



O C C DEADLINE 775D



O C C DEADLINE 775D

SIRE **L**

BIRTH DATE: **4/17/16** REG. #: **19067902**

CED	BW	WW	YW	CEM	MILK	MW	MARB	REA	FAT	\$W	\$F	\$B
9	0.4	46	77	-1	11	17	-0.17	0.39	-0.003	36	61	74

O C C MISSING LINK 830M
O C C ANVIL 809A
 FCC BLACKCAP LADY 3810

O C C LINEBRED 661L
O C C REVOLUTION ROSE 603Y
 O C C REVOLUTION ROSE 743K

O C C HEADLINER 661H
 O C C DIXIE ERICA 946K
 O C C ANCHOR 771A
 H A BLACKCAP LADY 0464
 O C C HOMER 650H
 O C C DIXIE ERICA 686J
 O C C ANCHOR 771A
 O C C REVOLUTION ROSE 751E

BW
ADJ WW
WR
ADJ YW
YR

OCC Deadline 775D is a really thick, easy fleshing bull that Open A purchased from Ohlde Cattle Company. He has been used extensively AI and as a cleanup bull.

Reference Sires

Quality Genetics Built on a Heritage of Commitment – 11

O C C ARCHIMEDES 895A *18078397

CED	BW	WW	YW	CEM	MILK	MW	MARB	REA	FAT	\$W	\$F	\$B
3	1.1	41	70	3	22	24	0.14	0.17	0.023	41	38	60

APEX WINDY 078 #*16237970

CED	BW	WW	YW	CEM	MILK	MW	MARB	REA	FAT	\$W	\$F	\$B
-3	3.9	64	103	-1	24	53	0.40	0.22	-0.005	64	53	91

O C C MISSING LINK 830M #*14456399

CED	BW	WW	YW	CEM	MILK	MW	MARB	REA	FAT	\$W	\$F	\$B
8	-0.3	44	72	-1	22	-2	-0.20	0.41	0.033	58	51	59

S A V INTERNATIONAL 2020 #*17318795

CED	BW	WW	YW	CEM	MILK	MW	MARB	REA	FAT	\$W	\$F	\$B
-7	5.6	70	116	-6	21	73	0.020	0.55	0.037	58	87	116

OPEN A 8180 179T ET +*15946829

CED	BW	WW	YW	CEM	MILK	MW	MARB	REA	FAT	\$W	\$F	\$B
6	-0.1	36	71	13	24	18	0.19	0.13	0.035	37	78	100

OPEN A 8163U DONOVAN G9816 *19650558

CED	BW	WW	YW	CEM	MILK	MW	MARB	REA	FAT	\$W	\$F	\$B
10	0.5	54	96	3	21	33	0.34	0.27	-0.022	55	75	113

O C C BEAST 709B +*18413414

CED	BW	WW	YW	CEM	MILK	MW	MARB	REA	FAT	\$W	\$F	\$B
4	1.1	38	70	0	13	14	0.07	0.56	0.006	26	52	77

OPEN A Y229 ACTIVE DUTY C293 18297622

CED	BW	WW	YW	CEM	MILK	MW	MARB	REA	FAT	\$W	\$F	\$B
2	2.6	55	96	6	29	60	0.21	0.27	0.052	57	102	125

O C C DEVOTED 794D *19067906

CED	BW	WW	YW	CEM	MILK	MW	MARB	REA	FAT	\$W	\$F	\$B
15	-3.3	27	47	12	20	-35	-0.21	0.29	0.032	33	37	42

O C C ALABAMA 807A +*18078519

CED	BW	WW	YW	CEM	MILK	MW	MARB	REA	FAT	\$W	\$F	\$B
10	-1.1	19	32	6	25	-18	0.20	0.42	0.054	24	23	48

OPEN A 101X MOD D430 *18680949

CED	BW	WW	YW	CEM	MILK	MW	MARB	REA	FAT	\$W	\$F	\$B
5	1.1	46	66	6	22	-26	0.13	0.32	0.024	56	60	83

O C C BENSON 684B +*18413411

CED	BW	WW	YW	CEM	MILK	MW	MARB	REA	FAT	\$W	\$F	\$B
12	0	21	36	8	24	-53	0.10	0.42	0.016	29	24	48

OPEN A Z2236 WART D330 *18681041

CED	BW	WW	YW	CEM	MILK	MW	MARB	REA	FAT	\$W	\$F	\$B
6	2.5	56	100	10	20	62	-0.01	0.30	-0.002	47	83	101

O C C CHAMP 777C 18736730

CED	BW	WW	YW	CEM	MILK	MW	MARB	REA	FAT	\$W	\$F	\$B
9	1.6	44	73	1	13	-4	-0.13	0.95	-0.014	36	58	81

NICHOLS GOOD AS GOLD Z103 *17397661

CED	BW	WW	YW	CEM	MILK	MW	MARB	REA	FAT	\$W	\$F	\$B
2	4.3	66	127	7	9	96	-0.11	0.90	-0.018	31	109	132

LEACHMAN RIGHT TIME 11750711

CED	BW	WW	YW	CEM	MILK	MW	MARB	REA	FAT	\$W	\$F	\$B
3	1.6	38	68	10	22	27	0.09	0.08	0.034	36	63	80





LOT 1

LOT 1



HRR TRAVELER 9244

BIRTH DATE: 3/3/19 REG. #: 4144816 CAT: 1A 100%

HB	GM	CED	BW	WW	YW	MK	ME	HPG	CEM	ST	MB	YG	CW	REA	Fat
175	47	14	-1.2	62	97	24	-2	7	2	18	0.38	0.09	16	0.13	0.04

RIDGE LEGEND 2069
RIDGE TRAVELER 5412
 RIDGE CASEY 8034-3032

RIDGE JULIAN S005-0099
HRR JULIA 446
 LELAND JULIA 8302U

5L LEGEND 1553-425V
 RIDGE AQUILA 552-8066
 5L CRITICAL MASS 189Y
 RIDGE CASEY 978-8034
 MUSHRUSH LTJULIAN LG S005
 RIDGE SARA F7-8025
 MESSMER JUDGE 36N
 LELAND HOLLY 5050R

BW	85
ADJ WW	749
WR	115
ADJ YW	1291
YR	117
FRAME	5.3
SCROTAL	36.5
DAM'S MPPA	100.0

HRR Traveler 9244 is a Ridge Traveler 5412 son that is a tank of mass and volume. He is out of a young dam, HRR Julia 446, that has a 88 birth weight ratio and a 101 weaning weight ratio. This calf has set the standard at every step thus far posting a moderate birth weight, and a 112 WW ratio and 117 YW ratio. This bull keeps getting better and better. He is a moderate, dark red herd bull and is one of the top scrotal and top gaining bulls in the pen. Herd sire potential with a quiet disposition.



RIDGE TRAVELER 5412



HIGH-SELLING OPEN FEMALE, 2019 NILE RED ANGUS SALE
 HRR BLOCKANA 966



LOT 2

LOT 2

HRR GUNSMOKE 9309

BIRTH DATE: 3/21/19 REG. #: 4144790 CAT: 1A 100%

HB	GM	CED	BW	WW	YW	MK	ME	HPG	CEM	ST	MB	YG	CW	REA	Fat
189	46	11	-1.5	64	99	18	3	12	4	20	0.26	0.22	33	-0.11	0.03

MLK CRK GRASS ROOTS
MLK CRK GRASS ROOTS 7208
 MLK CRK LAKOTA 324

STEADFAST BOAZ T71
HRR STARLIGHT 312
 HRR STARLIGHT 128

MUSHRUSH IMPRESSIVE CA U236
 MLK CRK LAKOTA 173
 MLK CRK REDSTONE
 MLK CRK LAKOTA 848
 MUSHRUSH ROCKET P016
 MUSHRUSH LANA LT R040
 VGW LIBERTY 523
 HRR STARLIGHT 958

BW	90
ADJ WW	721
WR	110
ADJ YW	1214
YR	110
FRAME	5.8
SCROTAL	35.3
DAM'S MPPA	100.0

HRR Gunsmoke 9309 is a solid working-class performance bull that made his mark with consistently being above average at the scale. He is out of Milk Creek Grass Roots 7208, who brings a little different pedigree on the sire side. The gold standard is set on the dam, HRR Starlight 312. Going back four generations, the dams hit 100 or better MPPAs. His performance EPDs and ratios will be among the top in this sale.



HRR STARLIGHT 312, DAM



Heart River Ranch steers being finished at a feedlot in northwest Iowa. These cattle were harvested in May of 2019.



LOT 3



HRR PRO 9246

LOT 3

BIRTH DATE: **3/3/19** REG. #: **4144758** CAT: **1A 100%**

HB	GM	CED	BW	WW	YW	MK	ME	HPG	CEM	ST	MB	YG	CW	REA	Fat
188	47	8	0.8	67	99	19	-3	11	5	20	0.24	0.10	10	-0.12	0.02
													BW	100	
													ADJ WW	702	
													WR	108	
													ADJ YW	1185	
													YR	107	
													FRAME	5.2	
													SCROTAL	36.2	
													DAM'S MPPA	105.0	

5L ADVANTAGE 3267-221Y
RIDGE PROVISION 6013
 RIDGE MONA 8162-2057

HRR KNIGHT 956
HRR THELMA 1101
 HRR THELMA 818

BUF CRK THE RIGHT KIND U199
 5L ADINA 195-3267
 5L ZENITH 1425-5767
 RIDGE MONA 620-8162
 MLK CRK KNIGHT 7153
 HRR SALLEE 337
 SHOCO DATA
 HRR THELMA 331

This Ridge Provision 6013 son is a thick, high-growth bull that was above average at every stop. His dam, HRR Thelma 1101, is a good-uddered, proven performer with an MPPA of 105. This bull came a little bigger but was born on the worst day of calving season at 2 a.m. in a blizzard. The extra pounds at birth made him a survivor. If you sell by the pound, he should be a bull to consider.



LOT 4



HRR MATER 9215

LOT 4

BIRTH DATE: **2/21/19** REG. #: **4144904** CAT: **1A 100%**

HB	GM	CED	BW	WW	YW	MK	ME	HPG	CEM	ST	MB	YG	CW	REA	Fat
181	47	11	-1.1	62	98	17	-5	16	6	17	0.27	0.01	23	0.26	0.01
													BW	82	
													ADJ WW	691	
													WR	105	
													ADJ YW	1186	
													YR	108	
													FRAME	5.1	
													SCROTAL	35.4	
													DAM'S MPPA	102.0	

5L TOPGUN 560-65B
RIDGE PRAGMATIC 6098
 RIDGE SHEILA 009-2088

5L FREEDOM 1480-234A
RIDGE MONA 1076-7101
 RIDGE MONA 631-1076

5L ADVANTAGE 3267-221Y
 5L BLACK ADINA 525-560
 5L LEGEND 1553-425V
 RIDGE SHEILA 009
 5L FREEDOM 09-02Y
 5L HAZEL 245-1480
 MLK CRK EXPRESS 9127
 RIDGE MONA 758-631

HRR Mater 9215 is the first of the Ridge Pragmatic 6098 sons with an outcross pedigree on the dam side. His dam, Ridge Mona 1076-7101, did a nice job with her first calf. Here is a really long-sided, deep, straight-topped, dark-red bull. His genomically balanced EPDs rank in the upper quartile for a number of traits.



LOT 5



HRR ROCK STAR 9340

LOT 5

BIRTH DATE: **3/29/19** REG. #: **4144868** CAT: **1A 100%**

HB	GM	CED	BW	WW	YW	MK	ME	HPG	CEM	ST	MB	YG	CW	REA	Fat
192	46	11	-0.6	58	87	17	-3	15	4	20	0.44	0.18	22	-0.21	0.03
													BW	78	
													ADJ WW	694	
													WR	107	
													ADJ YW	1197	
													YR	107	
													FRAME	4.9	
													SCROTAL	32.6	
													DAM'S MPPA	100.0	

MLK CRK EXPRESS 9127
BIRNIE EXPRESS 353A
 OTT-MONA-758-970

JACOBSON BLAZIN ON 0057
MLK CRK FIREFLY 6219
 MLK CRK FIREFLY 974

5L GRAND EXPRESS 453-5655
 MLK CRK SHEBA 043
 SELL COPPERTOP 608
 OTT-MONA-303-758
 5L DOUBLE BLAZE 1134-8576
 5L FUSCHIA 643-3668
 BUF CRK GIULIANI L851
 MLK CRK LANA 760

Here is a Bernie Express 353A (aka Rock Star) son out of outcross young cow, MLK CRK Firefly 6219, that we purchased as a heifer from Milk Creek Reds in their female sale. She is doing a good job raising now her second calf. Moderate birth, balanced profile and above-average performance. His dam has a nice udder and, combined with the maternal genetics of the Rock Star bull, the cow genomics should be rock solid.



LOT 6



LOT 6 HRR RIGHT KIND 9201

BIRTH DATE: **2/11/19** REG. #: **4144912** CAT: **1A 100%**

HB	GM	CED	BW	WW	YW	MK	ME	HPG	CEM	ST	MB	YG	CW	REA	Fat
207	50	18	-3.3	58	93	20	-8	14	11	17	0.42	0.03	12	0.20	0.03
													BW	65	
													ADJ WW	648	
													WR	99	
													ADJ YW	1162	
													YR	106	
													FRAME	4.0	
													SCROTAL	34.6	
													DAM'S MPPA	100.0	

BUF CRK THE RIGHT KIND U199
LOOSLI RIGHT KIND 205
MISS LL PACKER 005

5L ADVANTAGE 3267-221Y
HRR BONNEBELL 731
HRR BONNEBELL 253

BUF CRK LANCER R017
BUF CRK SHOSHONE R353
MESSMER PACKER S008
LOOSLI SIGNATURE 824
BUF CRK THE RIGHT KIND U199
5L ADINA 195-3267
C-T GRAND STATEMENT 1025
HRR BONNEBELL 701

HRR Right Kind 9201 is a top heifer bull prospect starting life at 65 pounds. He went on to post a much-above-average 114 gain ratio. His sire is Loosli Right Kind 205, which is a bull we used several years ago that gave us moderate-framed, easy-keeping daughters with neat udders. His 5L Advantage 3267-221Y dam, HRR Bonnebell 731, did a nice job here and her maternal line has produced sale bulls over the years at Heart River.



LOT 7



LOT 7 HRR MAX 9269

BIRTH DATE: **3/7/19** REG. #: **4144774** CAT: **1A 100%**

HB	GM	CED	BW	WW	YW	MK	ME	HPG	CEM	ST	MB	YG	CW	REA	Fat
199	47	17	-3.3	48	76	24	-3	10	10	19	0.53	0.02	20	0.15	0.01
													BW	76	
													ADJ WW	657	
													WR	101	
													ADJ YW	1154	
													YR	105	
													FRAME	5.5	
													SCROTAL	36.9	
													DAM'S MPPA	102.0	

RED ML MAX 862U
RED FLYING K MAX 159Y
RED FLYING K ANITA 764T

VGW LIBERTY 523
HRR BANA 2101
HRR BANA 002

RED CROWFOOT 6253S
RED BAR-X MISS LINETT 151K
RED FLYING K ACE 9R
RED FLYING K ANEXA 4M
VGW UNLIMITED 819
VGW KW- DORA 0334
BUF CRK LANCER-F L297
HRR BANA 833

Here is a low birth weight son of Flying K Max 159Y that should go on to do a good job on cows. His full brother was a top seller last year going to Ron Steffan in SD. His dam, HRR Bana 2101, is getting the job done with these ratios: 91BW, 102 WW, 104 YW, 119 IMF, 102 REA and 102 MPPA. He is a good scrotal bull with a 110 gain ratio. A potential herd bull prospect.



LOT 8



LOT 8 HRR GUNSMOKE 9327

BIRTH DATE: **3/25/19** REG. #: **4144808** CAT: **1A 100%**

HB	GM	CED	BW	WW	YW	MK	ME	HPG	CEM	ST	MB	YG	CW	REA	Fat
206	49	6	0.4	61	93	25	0	17	3	22	0.73	0.06	23	0.12	0.01
													BW	98	
													ADJ WW	702	
													WR	108	
													ADJ YW	1153	
													YR	104	
													FRAME	4.7	
													SCROTAL	35.9	
													DAM'S MPPA	109.0	

MLK CRK ADVOCATE 4304
MLK CRK STEWARD 7334
MLK CRK THUNDER 499

5L ADVOCATE 817-14W
HRR LAKOTA 430A
HRR LAKOTA 115

5L SECRET AGENT 117-229Z
MLK CRK SHEBA 1014
ANDRAS FUSION R236
HRR THUNDER 751
5L SIGNATURE 5615
5L MARTA 345-817
SHOCO DATA
MLK CRK LAKOTA 850

HRR Gunsmoke 9327 is a young growth bull that puts EPDs out about as well as you could hope for; growth, carcass and maternal bases covered here. His young dam, HRR Lakota 430A posts a 109 MPPA and comes from the exceptional Lakota cow family. We have flushed her dam, HRR Lakota 115, and granddam, HRR Lakota 850, here at HRR. His sire, MLK CRK Steward 7334, is a grandson of HRR Thunder 751, a cow we sold to Milk Creek Reds and was subsequently flushed there to produce some high-performance offspring. This bull is built like a box and is stout, thick topped and should sire good feeding steers and productive dams.



LOT 9



HRR PRO 9243

LOT 9

BIRTH DATE: 3/2/19 REG. #: 4144962 CAT: 2 100%

HB	GM	CED	BW	WW	YW	MK	ME	HPG	CEM	ST	MB	YG	CW	REA	Fat
192	49	9	0.7	69	103	20	-6	12	5	19	0.37	0.04	11	0.02	0.01

5L ADVANTAGE 3267-221Y
RIDGE PROVISION 6013
 RIDGE MONA 8162-2057

LCC MAJOR LEAGUE A502M
HRR EILEEN 9159
 JAYNBEE WILEEN 468F

BUF CRK THE RIGHT KIND U199
 5L ADINA 195-3267
 5L ZENITH 1425-5767
 RIDGE MONA 620-8162
 BFCK CHEROKEE CNYN 4912
 KRN REBA'S ROBIN
 BON VIEW BANDO 598
 JAYNBEE EILEEN 675B

BW	102
ADJ WW	712
WR	109
ADJ YW	1190
YR	108
FRAME	5.5
SCROTAL	33.7
DAM'S MPPA	105.0

HRR Pro 9243 is one of the top black/red carrier bulls we have ever sold. He is super long, balanced and wide based. We have been waiting patiently for his 10-year-old dam, HRR Eileen 9159, to have a red calf but no dice. The 9159 dam posts ratios: 100 BW, 106 WW, 104 YW, 119 IMF, 110 REA and a 105 MPPA. Performance and growth EPDs in the top of the breed but still keeps strong maternal in the program including a 362-day calving interval.



LOT 10



HRR SUPERVISION 9403

LOT 10

BIRTH DATE: 2/25/19 REG. #: 4144976 CAT: 1A 100%

HB	GM	CED	BW	WW	YW	MK	ME	HPG	CEM	ST	MB	YG	CW	REA	Fat
191	43	9	-0.7	48	72	23	-2	11	8	21	0.12	0.10	16	-0.03	0.03

GLACIER CHATEAU 744
4L SUPER VISION R2292
 4L MR RAMBO R709

HOLDEN HI HO 574
HOLDEN HITHUNDER 724
 HOLDEN THUNDRESS 481

LMAN KING ROB 8621
 GLACIER REBALA
 VДАР RAMBO 323
 GMRA RACHILLE
 BJR HI HO 916
 BECKTON EOLA 2025 CB
 BIEBER THUNDER 3730
 BIEBER B333 1903

BW	ET
ADJ WW	659
WR	ET
ADJ YW	1168
YR	ET
FRAME	5.3
SCROTAL	33.0
DAM'S MPPA	102.0

Here is some older genetics that came out of the ET tank. The Holden HiThunder 724 cow did a great job for Heart River and the maternal dam to 4L Super Vision R2292 – 4L MR Rambo R709 is still one of our favorite Red Angus cows. This long, straight-topped bull competed well with his pen mates and the maternal EPDs hold their own in the breed. Dam's 100 BW, 102 WW, 102 YW and a 102 MPPA.



LOT 11



HRR TOP GUN 9206

LOT 11

BIRTH DATE: 2/17/19 REG. #: 4144942 CAT: 1A 100%

HB	GM	CED	BW	WW	YW	MK	ME	HPG	CEM	ST	MB	YG	CW	REA	Fat
147	47	13	-2.6	65	98	13	-3	17	7	12	0.29	0.05	20	0.05	0.01

5L ADVANTAGE 3267-221Y
5L TOPGUN 560-65B
 5L BLACK ADINA 525-560

MLK CRK EXPRESS 9127
HRR FREYJA 766
 HRR FREYJA 308

BUF CRK THE RIGHT KIND U199
 5L ADINA 195-3267
 TC STOCKMAN 365
 5L ADINA 293-525
 5L GRAND EXPRESS 453-5655
 MLK CRK SHEBA 043
 BJR MAKE MY DAY 981
 HRR FREYJA 116

BW	80
ADJ WW	748
WR	114
ADJ YW	1156
YR	105
FRAME	4.0
SCROTAL	36.3
DAM'S MPPA	106.0

HRR Top Gun 9206 is a super deep, heavy-quartered, calving-ease bull with exceptional weaning weight performance, posting a 114 WW ratio from a first-calf heifer, HRR Freyja 766. The maternal granddam, HRR Freyja 308, was a donor at HRR with a 104 MPPA. Two generations of calving ease – should be usable on heifers.



LOT 12



LOT 12

HRR TRAVELER 9280

BIRTH DATE: **3/10/19** REG. #: **4144768** CAT: **1A 100%**

HB	GM	CED	BW	WW	YW	MK	ME	HPG	CEM	ST	MB	YG	CW	REA	Fat
152	45	9	-0.7	52	80	21	1	8	2	18	0.34	0.06	21	0.09	0.02

RIDGE LEGEND 2069
RIDGE TRAVELER 5412
 RIDGE CASEY 8034-3032

VGW LIBERTY 523
HRR STARLIGHT 128
 HRR STARLIGHT 958

5L LEGEND 1553-425V
 RIDGE AQUILA 552-8066
 5L CRITICAL MASS 189Y
 RIDGE CASEY 978-8034
 VGW UNLIMITED 819
 VGW KW- DORA 0334
 SHOCO DATA
 VGW PT-STAR 0438

BW	98
ADJ WW	704
WR	108
ADJ YW	1164
YR	105
FRAME	5.4
SCROTAL	32.9
DAM'S MPPA	101.0

HRR Traveler 9280 is a straight-topped, good-ribbed performance bull that comes from a proven cow family. His dam, HRR Starlight 128, performance is BW 97, WW 101, YW 100, IMF 108 with an MPPA of 101 on a 367-day calving interval. HRR Starlight 128 is also the maternal granddam to Lot 2.



LOT 13



LOT 13

HRR PRO 9251

BIRTH DATE: **3/5/19** REG. #: **4144794** CAT: **1A 100%**

HB	GM	CED	BW	WW	YW	MK	ME	HPG	CEM	ST	MB	YG	CW	REA	Fat
166	48	10	0.6	67	100	18	-1	11	7	16	0.36	0.02	22	0.13	0.00

5L ADVANTAGE 3267-221Y
RIDGE PROVISION 6013
 RIDGE MONA 8162-2057

FEDDES MONTANA X44
HRR LAKOTA 318
 HRR LAKOTA 0176

BUF CRK THE RIGHT KIND U199
 5L ADINA 195-3267
 5L ZENITH 1425-5767
 RIDGE MONA 620-8162
 BIEBER MAKE MIMI 7249
 FEDDES BLOCKANA 8121
 BUF CRK HOBO 1961
 HRR LAKOTA 869

BW	102
ADJ WW	730
WR	112
ADJ YW	1147
YR	104
FRAME	5.5
SCROTAL	33.8
DAM'S MPPA	102.0

HRR Pro 9251 is smooth-made bull with a top weaning weight, 113 WWR and good yearling performance to sire heavy calves. Dam's MPPA 102. These calves did it without creep in big country where it is a long walk to water.



HRR EILEEN 9159, DAM OF LOT 9



HRR FREYJA 308, MATERNAL GRANDDAM OF LOT 11



LOT 14



LOT 14

HRR ROCK STAR 9250

BIRTH DATE: **3/5/19** REG. #: **4144886** CAT: **1A 100%**

HB	GM	CED	BW	WW	YW	MK	ME	HPG	CEM	ST	MB	YG	CW	REA	Fat
195	44	15	-2.0	55	80	18	-2	17	8	19	0.33	0.31	32	-0.26	0.05

MLK CRK EXPRESS 9127
BIRNIE EXPRESS 353A
 OTT-MONA-758-970

HRR RAYMOND 975
HRR COLLEEN 655
 HRR COLLEEN 155

5L GRAND EXPRESS 453-5655
 MLK CRK SHEBA 043
 SELL COPPERTOP 608
 OTT-MONA-303-758
 SHOCO DATA
 SODAK PAULA 6139-96
 MUSHRUSH LTJULIAN LG S005
 HRR COLLEEN 812

BW	80
ADJ WW	672
WR	104
ADJ YW	1169
YR	104
FRAME	5.0
SCROTAL	36.8
DAM'S MPPA	99.0

HRR Rockstar 9250 is an easy-going heifer bull with above-average weaning and yearling performance. Keep the daughters as his EPDs indicate ranking in the top of the breed for HB, HPG and Stay. Calving ease on both sides of the pedigree.



LOT 15



LOT 15

HRR MAX 9281

BIRTH DATE: **3/10/19** REG. #: **4144828** CAT: **1A 100%**

HB	GM	CED	BW	WW	YW	MK	ME	HPG	CEM	ST	MB	YG	CW	REA	Fat
208	47	12	-1.5	55	82	19	-8	16	7	20	0.35	0.01	1	-0.23	-0.01

RED ML MAX 862U
RED FLYING K MAX 159Y
 RED FLYING K ANITA 764T

MLK CRK EXPRESS 9127
HRR LAKOTA 521
 HRR BLOCKANA 2178A

RED CROWFOOT 6253S
 RED BAR-X MISS LINETT 151K
 RED FLYING K ACE 9R
 RED FLYING K ANEXA 4M
 5L GRAND EXPRESS 453-5655
 MLK CRK SHEBA 043
 TR JULIAN LT142
 FEDDES BLOCKANA 940

BW	88
ADJ WW	654
WR	100
ADJ YW	1170
YR	106
FRAME	4.9
SCROTAL	36.4
DAM'S MPPA	96.0

HRR Max 9281 is a dark red Flying Y Max 159Y son going back to the Blockana cow family with solid maternal genetics and good overall performance. Keep the females out of this guy.



LOT 16



LOT 16

HRR TRAVELER 9241

BIRTH DATE: **3/2/19** REG. #: **4144776** CAT: **1A 100%**

HB	GM	CED	BW	WW	YW	MK	ME	HPG	CEM	ST	MB	YG	CW	REA	Fat
142	49	11	-0.3	63	97	22	-3	4	3	15	0.47	0.00	26	0.26	0.00

RIDGE LEGEND 2069
RIDGE TRAVELER 5412
 RIDGE CASEY 8034-3032

RIDGE JULIAN S005-0099
HRR COLLEEN 2146
 HRR COLLEEN 015

5L LEGEND 1553-425V
 RIDGE AQUILA 552-8066
 5L CRITICAL MASS 189Y
 RIDGE CASEY 978-8034
 MUSHRUSH LTJULIAN LG S005
 RIDGE SARA F7-8025
 STEADFAST BOAZ T71
 HRR COLLEEN 812

BW	100
ADJ WW	664
WR	102
ADJ YW	1162
YR	105
FRAME	5.2
SCROTAL	33.7
DAM'S MPPA	103.0

HRR Traveler 9241 is an attractive, long-sided bull with positive growth and carcass EPDs. His dam, HRR Collen 2146, comes from the strong Colleen cow family that has earned high marks here at HRR. Dams Ratios are as follows: 103 BW, 104 WW, 103 YW, 103 REA, MPPA 103.



LOT 17



HRR MATER 9275

LOT 17

BIRTH DATE: 3/9/19 REG. #: 4144752 CAT: 1A 100%

HB	GM	CED	BW	WW	YW	MK	ME	HPG	CEM	ST	MB	YG	CW	REA	Fat
154	46	8	0.8	62	94	15	-4	14	3	16	0.23	0.07	16	0.06	0.02

5L TOPGUN 560-65B
RIDGE PRAGMATIC 6098
 RIDGE SHEILA 009-2088

5L BLAZIN RED 1354-6166
HRR PAULA 062
 SODAK PAULA 6139-96

5L ADVANTAGE 3267-221Y
 5L BLACK ADINA 525-560
 5L LEGEND 1553-425V
 RIDGE SHEILA 009
 5L BLAZIN HOBO 404-5654
 5L REBA 60-1354
 SODAK OSCAR 2437
 SODAK PAULA 1010

BW	108
ADJ WW	668
WR	102
ADJ YW	1159
YR	105
FRAME	5.6
SCROTAL	36.4
DAM'S MPPA	98.0

Here is a good Ridge Pragmatic 6098 son that is out of a really well-made outcross dam, HRR Paula 062. She has put a couple good daughters into our herd and this bull should do the same. Here is a super long, deep-bodied, performance bull.



LOT 18



HRR MATER 9207

LOT 18

BIRTH DATE: 2/17/19 REG. #: 4144950 CAT: 1A 100%

HB	GM	CED	BW	WW	YW	MK	ME	HPG	CEM	ST	MB	YG	CW	REA	Fat
166	48	10	-0.6	61	94	19	-4	15	5	15	0.39	-0.02	17	0.23	0.00

5L TOPGUN 560-65B
RIDGE PRAGMATIC 6098
 RIDGE SHEILA 009-2088

RIDGE TRAVELER 5412
HRR SHEBA 790
 HRR LAKOTA 127

5L ADVANTAGE 3267-221Y
 5L BLACK ADINA 525-560
 5L LEGEND 1553-425V
 RIDGE SHEILA 009
 RIDGE LEGEND 2069
 RIDGE CASEY 8034-3032
 BECKTON EPIC R397 K
 MLK CRK LAKOTA 850

BW	85
ADJ WW	686
WR	104
ADJ YW	1144
YR	104
FRAME	4.8
SCROTAL	33.3
DAM'S MPPA	102.0

Another really long, balanced, performance and carcass son of Ridge Pragmatic 6098 and out of a first-calf heifer, HRR Sheba 790. A dark red bull with a good disposition and strong EPDs for growth and retail traits.



HRR COLLEEN 2146, MATERNAL DAM OF LOT 16



HRR PAULA 062, DAM OF LOT 17



LOT 19



LOT 19 HRR EXPRESS 9209

BIRTH DATE: **2/20/19** REG. #: **4144934** CAT: **1A 100%**

HB	GM	CED	BW	WW	YW	MK	ME	HPG	CEM	ST	MB	YG	CW	REA	Fat
168	44	19	-4.8	58	82	20	-6	10	11	15	0.35	0.12	30	0.02	0.01
													BW	66	
													ADJ WW	706	
													WR	107	
													ADJ YW	1157	
													YR	105	
													FRAME	4.3	
													SCROTAL	34.9	
													DAM'S MPPA	103.0	

MLK CRK EXPRESS 9127
HRR EXPRESS 5142
HRR LAKOTA 115

MUSHRUSH IMPRESSIVE CA U236
HRR BLOCKANA 750
HRR BLOCKANA 544

5L GRAND EXPRESS 453-5655
MLK CRK SHEBA 043
SHOCO DATA
MLK CRK LAKOTA 850
BUF CRK LANCER R017
MUSHRUSH MADAM LT R265
MLK CRK EXPRESS 9127
HRR BLOCKANA 013

Here is a sleep-all-night heifer bull, HRR Express 9209, that taps into two of the strongest cow families at HRR. The sire, HRR Express 5142, is a heifer clean-up bull that we retained a few years ago that sires low birth and above-average growth. The heifers from this bull should have great udders with the cow families represented and also because he is double bred back to MLK CRK Express 9127. To top it off, he is a moderate, neatly made bull with uniform depth and a nice profile.



LOT 20



LOT 20 HRR GUNSMOKE 9357

BIRTH DATE: **4/6/19** REG. #: **4144824** CAT: **1A 100%**

HB	GM	CED	BW	WW	YW	MK	ME	HPG	CEM	ST	MB	YG	CW	REA	Fat
158	47	13	0.2	71	107	10	3	7	6	15	0.23	0.04	15	0.22	0.03
													BW	84	
													ADJ WW	670	
													WR	103	
													ADJ YW	1136	
													YR	103	
													FRAME	4.9	
													SCROTAL	32.8	
													DAM'S MPPA	103.0	

MLK CRK ADVOCATE 4304
MLK CRK STEWARD 7217
MLK CRK LAKOTA 003

RED CROWFOOT MOONSHINE 8081U
HRR LAKOTA 514
HRR LAKOTA 886

5L SECRET AGENT 117-229Z
MLK CRK SHEBA 1014
5L TRADEMARK 1715-6317
MLK CRK LAKOTA 451
CROWFOOT 6004S
RED CROWFOOT BRNDINA 6359S
SHOCO DATA
MLK CRK LAKOTA 152-HOBO

HRR Gunsmoke 9357 is out of a young cow, HRR Lakota 514, with a bright future whose maternal granddam was the mother to Milk Crk Cub 722. She posts positive ratios of 96 BW, 105 WW, 105 YW with a 103 MPPA. Her first calf was a top bull in our 2018 sale going to Pat McGee. One of the top WW and YW EPD bulls in the sale with a good hip and hind quarter.



LOT 21



LOT 21 HRR ROCK STAR 9285

BIRTH DATE: **3/11/19** REG. #: **4144870** CAT: **1A 100%**

HB	GM	CED	BW	WW	YW	MK	ME	HPG	CEM	ST	MB	YG	CW	REA	Fat
172	44	8	-0.4	53	75	20	-1	13	5	19	0.35	0.16	25	-0.07	0.03
													BW	92	
													ADJ WW	683	
													WR	106	
													ADJ YW	1138	
													YR	101	
													FRAME	5.6	
													SCROTAL	35.0	
													DAM'S MPPA	103.0	

MLK CRK EXPRESS 9127
BIRNIE EXPRESS 353A
OTT-MONA-758-970

RED HILL B571 JULIAN 84S
HRR ESTONIA 623
HRR ESTONIA 0106

5L GRAND EXPRESS 453-5655
MLK CRK SHEBA 043
SELL COPPERTOP 608
OTT-MONA-303-758
BECKTON JULIAN GG B571
BECKTON BARMAID M554 CH
MLK CRK KNIGHT 7153
HRR BANNA 758

Another maternally bred, strong-topped, structurally correct Rockstar son having good performance at weaning and yearling. Dam's MPPA 103.



LOT 22



LOT 22 HRR TRAVELER 9266

BIRTH DATE: **3/7/19** REG. #: **4144844** CAT: **1A 100%**

HB	GM	CED	BW	WW	YW	MK	ME	HPG	CEM	ST	MB	YG	CW	REA	Fat
94	45	11	-1.0	51	79	27	2	8	5	9	0.38	0.08	19	0.02	0.02
													BW	94	
													ADJ WW	700	
													WR	107	
													ADJ YW	1135	
													YR	103	
													FRAME	5.3	
													SCROTAL	32.9	
													DAM'S MPPA	103.0	

RIDGE LEGEND 2069
RIDGE TRAVELER 5412
RIDGE CASEY 8034-3032

IDEAL BERRY 912
HRR THELMA 553
HRR THELMA 2159

5L LEGEND 1553-425V
RIDGE AQUILA 552-8066
5L CRITICAL MASS 189Y
RIDGE CASEY 978-8034
RED COMPASS MULBERRY 449M
RED DUS FAYETTE 8G
MLK CRK KNIGHT 7153
MLK CRK THELMA 076

HRR Traveler 9266 is 700 pound WW bull with style and phenotype. His dam, HRR Thelma 553, is off to a good start with a MPPA of 103 on three head.



LOT 23



LOT 23 HRR ROCKSTAR 9410

BIRTH DATE: **3/12/19** REG. #: **4144648** CAT: **1A 100%**

HB	GM	CED	BW	WW	YW	MK	ME	HPG	CEM	ST	MB	YG	CW	REA	Fat
186	44	18	-1.4	55	81	20	-7	12	10	17	0.24	0.27	21	-0.12	0.07
													BW	80	
													ADJ WW	641	
													WR	99	
													ADJ YW	1188	
													YR	106	
													FRAME	4.6	
													SCROTAL	34.0	
													DAM'S MPPA	102.0	

MLK CRK EXPRESS 9127
BIRNIE EXPRESS 353A
OTT-MONA-758-970

XO CROWFOOT 0102X
HRR BLOCKANA 609
HRR BLOCKANA 013

5L GRAND EXPRESS 453-5655
MLK CRK SHEBA 043
SELL COPPERTOP 608
OTT-MONA-303-758
RED CROWFOOT MOONSHINE 8081U
XO CROWFOOT BLACKBIRD 8810U
STEADFAST BOAZ T71
HRR BLOCKANA 845

This Rockstar son is positive for CED and solid performance and goes back to one of the very good cows, HRR Blockana 013, who we are currently flushing. His young dam, HRR Blockana 609, is doing a nice job. There is maternal plus written all over the pedigree.



LOT 24



LOT 24 HRR GUNSMOKE 9314

BIRTH DATE: **3/22/19** REG. #: **4144778** CAT: **1A 100%**

HB	GM	CED	BW	WW	YW	MK	ME	HPG	CEM	ST	MB	YG	CW	REA	Fat
156	46	11	-1.0	61	91	21	-4	11	5	15	0.47	0.18	12	-0.18	0.04
													BW	90	
													ADJ WW	739	
													WR	113	
													ADJ YW	1131	
													YR	102	
													FRAME	5.3	
													SCROTAL	36.3	
													DAM'S MPPA	102.0	

MLK CRK ADVOCATE 4304
MLK CRK STEWARD 7217
MLK CRK LAKOTA 003

TR JULIAN LT142
HRR BLOCKANA 2178A
FEDDES BLOCKANA 940

5L SECRET AGENT 117-229Z
MLK CRK SHEBA 1014
5L TRADEMARK 1715-6317
MLK CRK LAKOTA 451
BECKTON JULIAN GG B571
TR LANA G760
LEACHMAN MONU 2X 8096
FED'S BLOCKANA 4225

Over half way through the sale and here is a power bull, HRR Gunsmoke 9314, with top-notch weaning performance out of his dam, HRR Blockana 2718, that has a super nice udder. You will find the 2178A dam in the pedigree of two other bulls in the sale. Sired by MLK CRK Steward from Milk Creek – here is a bull that ranks high for growth and carcass as well. Dam's ratios: 93 BW, 103 WW, 101 YW with a 102 MPPA.



LOT 25



HRR BOAZ 9408

LOT 25

BIRTH DATE: 3/2/19 REG. #: 4144986 CAT: 1A 100%

HB	GM	CED	BW	WW	YW	MK	ME	HPG	CEM	ST	MB	YG	CW	REA	Fat
198	46	15	-2.8	46	72	26	1	11	8	20	0.38	0.02	-7	-0.18	0.01

MUSHRUSH ROCKET P016
STEADFAST BOAZ T71
 MUSHRUSH LANA LT R040

GLACIER LOGAN 210
HRR COLLEEN 429
 HOLDEN COLLEEN 6024

TR JULIAN LT142
 MUSHRUSH LANA 9037
 TR JULIAN LT142
 MUSHRUSH LANA 1035
 BFLO CR VC CHIEF 105
 GLACIER REBALAS
 BUR HI HO 916
 COLLEEN

BW	ET
ADJ WW	627
WR	ET
ADJ YW	1125
YR	ET
FRAME	5.2
SCROTAL	36.2
DAM'S MPPA	104.0

An ET calving-ease son out of Steadfast Boaz t71 and the famous HRR Colleen 429 cow that was a donor for Jacobson and Twedt Red Angus. This will be the last of her progeny for us. HRR Colleen 429 had nine natural progeny and 75 ET offspring. 429's ratios: 97 BW, 104 WW, 106 YW 106 IMF, 119 REA and an MPPA of 104. This would be one to use on heifers.



LOT 26



HRR ADVANTAGE 9409

LOT 26

BIRTH DATE: 3/2/19 REG. #: 4144982 CAT: 1A 100%

HB	GM	CED	BW	WW	YW	MK	ME	HPG	CEM	ST	MB	YG	CW	REA	Fat
226	48	16	-1.8	63	96	15	-2	14	11	20	0.28	0.14	18	-0.14	0.02

BUF CRK THE RIGHT KIND U199
5L ADVANTAGE 3267-221Y
 5L ADINA 195-3267

MLK CRK EPIC 7160
DR 21R JULIAN W100
 HCK MISS JULIAN 21R

BUF CRK LANCER R017
 BUF CRK SHOSHONE R353
 5L TRADITION 203-6145
 5L ADINA 2113-195
 BECKTON EPIC R397 K
 MLK CRK LAKOTA 559
 BECKTON JULIAN M427 G
 HCK MISS EQUAL 01L

BW	ET
ADJ WW	665
WR	ET
ADJ YW	1121
YR	ET
FRAME	4.5
SCROTAL	40.7
DAM'S MPPA	103.0

A heifer bull out of a proven donor, DR 21R Julian W100, x 5L Advantage 3267-221Y. This bull has above-average performance and gain, and stacks a lot of maternal traits being in the top 1% of the breed for HB, top 12% for CED, top 6% for HPG and Stay, top 1% for CEM.



LOT 27



HRR MATER 9202

LOT 27

BIRTH DATE: 2/12/19 REG. #: 4144932 CAT: 1A 100%

HB	GM	CED	BW	WW	YW	MK	ME	HPG	CEM	ST	MB	YG	CW	REA	Fat
157	46	15	-3.8	50	78	29	-5	14	7	14	0.30	-0.04	22	0.37	0.01

5L TOPGUN 560-65B
RIDGE PRAGMATIC 6098
 RIDGE SHEILA 009-2088

MUSHRUSH IMPRESSIVE CA U236
HRR LAKOTA 749
 HRR LAKOTA 539

5L ADVANTAGE 3267-221Y
 5L BLACK ADINA 525-560
 5L LEGEND 1553-425V
 RIDGE SHEILA 009
 BUF CRK LANCER R017
 MUSHRUSH MADAM LT R265
 STEADFAST BOAZ T71
 HRR LAKOTA 820

BW	76
ADJ WW	657
WR	100
ADJ YW	1121
YR	102
FRAME	4.9
SCROTAL	33.6
DAM'S MPPA	100.0

HRR Mater 9202 is a long, deep, bonafide heifer bull coming from several calving ease lines with above-average performance. Nice job for this first-calf heifer, HRR Lakota 749.



LOT 28



LOT 28

HRR MAX 9265

BIRTH DATE: 3/7/19 REG. #: 4144812 CAT: 1A 100%

HB	GM	CED	BW	WW	YW	MK	ME	HPG	CEM	ST	MB	YG	CW	REA	Fat
186	45	18	-3.1	47	74	19	-4	11	9	18	0.28	0.04	16	0.20	0.03

RED ML MAX 862U
HRR FLYING K MAX 159Y
 RED FLYING K ANITA 764T

5L LEGEND 1553-425V
HRR STARLIGHT 434
 HRR STARLIGHT 128

RED CROWFOOT 6253S
 RED BAR-X MISS LINETT 151K
 RED FLYING K ACE 9R
 RED FLYING K ANEXA 4M
 5L LAKOTA LEGEND 7074
 5L HAZEL 45L-1553
 VGW LIBERTY 523
 HRR STARLIGHT 958

BW	74
ADJ WW	674
WR	103
ADJ YW	1116
YR	101
FRAME	5.6
SCROTAL	35.4
DAM'S MPPA	95.0

Another calving-ease bull with a small head and smooth shoulder, this time out of Red Flying K Max 159Y. The dam to this bull, HRR Starlight 434, is a Legend daughter that we really like with a great disposition. Note the Starlight cow family strikes again.



LOT 29



LOT 29

HRR RIGHT KIND 9239

BIRTH DATE: 3/2/19 REG. #: 4144814 CAT: 1A 100%

HB	GM	CED	BW	WW	YW	MK	ME	HPG	CEM	ST	MB	YG	CW	REA	Fat
157	48	15	-2.8	57	87	18	-3	10	7	14	0.32	0.05	14	0.07	0.02

BUF CRK THE RIGHT KIND U199
LOOSLI RIGHT KIND 205
 MISS LL PACKER 005

MUSHRUSH IMPRESSIVE CA U236
HRR RACHEL 436
 HRR RACHEL 794

BUF CRK LANCER R017
 BUF CRK SHOSHONE R353
 MESSMER PACKER S008
 LOOSLI SIGNATURE 824
 BUF CRK LANCER R017
 MUSHRUSH MADAM LT R265
 SHOCCO DATA
 HRR RACHEL 334

BW	84
ADJ WW	652
WR	100
ADJ YW	1109
YR	100
FRAME	5.0
SCROTAL	36.7
DAM'S MPPA	101.0

Another Loosli Right Kind 205 son coming from the Rachel cow family. This is a heifer bull out of a young cow with a good start on her career having already raised bulls that sold to Beery's Land and Cattle and Rodoeske Cattle Co.



LOT 30



LOT 30

HRR ROCK STAR 9320

BIRTH DATE: 3/24/19 REG. #: 4144898 CAT: 1A 100%

HB	GM	CED	BW	WW	YW	MK	ME	HPG	CEM	ST	MB	YG	CW	REA	Fat
203	44	16	-0.6	55	83	19	-1	12	10	20	0.16	0.12	24	0.09	0.03

MLK CRK EXPRESS 9127
BIRNIE EXPRESS 353A
 OTT-MONA-758-970

5L NORSEMAN KING 2291
HRR LAKOTA 692
 MLK CRK LAKOTA 850

5L GRAND EXPRESS 453-5655
 MLK CRK SHEBA 043
 SELL COPPERTOP 608
 OTT-MONA-303-758
 VGW KING OF THE WEST
 NORSEMAN 1312 PJM
 GLACIER CUB 446
 MLK CRK LAKOTA 651

BW	82
ADJ WW	696
WR	108
ADJ YW	1135
YR	101
FRAME	4.7
SCROTAL	38.4
DAM'S MPPA	103.0

HRR Rockstar 9320's dam, HRR Lakota 692, produced a calving-ease bull that sold to Curt Westland in 2018. This young cow is getting good grades on her first two tries. The maternal granddam, HRR Lakota 850, is a donor who produced 10 natural calves and 79 donor calves in her lifetime. Her influence in our herd is strong, having been a calving ease dam with a top quality udder and performance. This in combination with the Rockstar sire, he should produce some really good cows.



LOT 31



LOT 31
HRR TOP GUN 9204

BIRTH DATE: **2/15/19** REG. #: **4144910** CAT: **1A 100%**

HB	GM	CED	BW	WW	YW	MK	ME	HPG	CEM	ST	MB	YG	CW	REA	Fat
219	49	17	-2.3	63	101	17	-1	18	10	18	0.40	0.14	27	0.05	0.03

5L ADVANTAGE 3267-221Y
5L TOPGUN 560-65B
5L BLACK ADINA 525-560

BECKTON EPIC R397 K
HRR IDESSA 728
HRR IDESSA 305

BUF CRK THE RIGHT KIND U199
5L ADINA 195-3267
TC STOCKMAN 365
5L ADINA 293-525
BECKTON EPIC K F075
BECKTON KIT F468 JL
STEADFAST BOAZ T71
HRR IDESSA 1108

BW	80
ADJ WW	663
WR	101
ADJ YW	1098
YR	100
FRAME	4.2
SCROTAL	36.2
DAM'S MPPA	100.0

A 5L Top Gun 560-65B son with calving ease and performance ranking in the top half of the breed across the EPD profile. Would recommend for larger heifers given the performance numbers.



LOT 32



LOT 32
HRR TRAVELER 9237

BIRTH DATE: **3/2/19** REG. #: **4144792** CAT: **1A 100%**

HB	GM	CED	BW	WW	YW	MK	ME	HPG	CEM	ST	MB	YG	CW	REA	Fat
161	45	16	-2.1	49	73	22	-3	12	7	15	0.41	0.11	14	-0.16	0.01

RIDGE LEGEND 2069
RIDGE TRAVELER 5412
RIDGE CASEY 8034-3032

MLK CRK EXPRESS 9127
HRR FREYJA 315
HRR FREYJA 529

5L LEGEND 1553-425V
RIDGE AQUILA 552-8066
5L CRITICAL MASS 189Y
RIDGE CASEY 978-8034
5L GRAND EXPRESS 453-5655
MLK CRK SHEBA 043
VDAR RAMBO 323
HOLDEN FREYJA 601

BW	82
ADJ WW	660
WR	101
ADJ YW	1091
YR	99
FRAME	5.2
SCROTAL	34.7
DAM'S MPPA	98.0

A heifer bull prospect out of Ridge Traveler 5412, the maternal side of the pedigree is loaded with calving ease.



LOT 33



LOT 33
HRR ADVANTAGE 9406

BIRTH DATE: **3/7/19** REG. #: **4144980** CAT: **1A 100%**

HB	GM	CED	BW	WW	YW	MK	ME	HPG	CEM	ST	MB	YG	CW	REA	Fat
214	49	10	-0.7	70	106	11	-2	17	8	20	0.27	0.15	28	-0.07	0.02

BUF CRK THE RIGHT KIND U199
5L ADVANTAGE 3267-221Y
5L ADINA 195-3267

MLK CRK EPIC 7160
DR 21R JULIAN W100
HCK MISS JULIAN 21R

BUF CRK LANCER R017
BUF CRK SHOSHONE R353
5L TRADITION 203-6145
5L ADINA 2113-195
BECKTON EPIC R397 K
MLK CRK LAKOTA 559
BECKTON JULIAN M427 G
HCK MISS EQUAL 01L

BW	ET
ADJ WW	674
WR	ET
ADJ YW	1091
YR	ET
FRAME	4.8
SCROTAL	36.9
DAM'S MPPA	103.0

Here is 5L Advantage 3267-221Y son out of proven donor dam, DR 21R Julian W100, that has top EPDs for HB, WW, YW, HPG and Stay. The W100 cow did a nice job for us and this will be the last of her offering.



LOT 34



LOT 34

HRR TOP GUN 9203

BIRTH DATE: **2/14/19** REG. #: **4144900** CAT: **1A 100%**

HB	GM	CED	BW	WW	YW	MK	ME	HPG	CEM	ST	MB	YG	CW	REA	Fat
170	49	16	-3.4	61	93	17	-4	16	9	13	0.54	0.04	27	0.08	0.00
													BW	72	
													ADJ WW	667	
													WR	101	
													ADJ YW	1078	
													YR	98	
													FRAME	4.3	
													SCROTAL	34.7	
													DAM'S MPPA	100.0	

5L ADVANTAGE 3267-221Y
5L TOPGUN 560-65B
 5L BLACK ADINA 525-560
 BUF CRK THE RIGHT KIND U199
HRR COLLEEN 704
 HRR COL 534

BUF CRK THE RIGHT KIND U199
 5L ADINA 195-3267
 TC STOCKMAN 365
 5L ADINA 293-525
 BUF CRK LANCER R017
 BUF CRK SHOSHONE R353
 FEDDES MONTANA X44
 HRR COLLEEN 632

Here is a heifer bull through and through by numbers and pedigree. Solid performance at weaning for a light birth weight bull.



LOT 35



LOT 35

HRR MAX 9254

BIRTH DATE: **3/6/19** REG. #: **4144818** CAT: **1A 100%**

HB	GM	CED	BW	WW	YW	MK	ME	HPG	CEM	ST	MB	YG	CW	REA	Fat
183	44	13	-2.2	49	70	20	-7	13	8	18	0.23	0.10	3	-0.20	0.02
													BW	90	
													ADJ WW	670	
													WR	103	
													ADJ YW	1077	
													YR	98	
													FRAME	5.0	
													SCROTAL	34.8	
													DAM'S MPPA	102.0	

RED ML MAX 862U
RED FLYING K MAX 159Y
 RED FLYING K ANITA 764T
 TR JULIAN ZT262
HRR FREYJA 448
 HRR FREYJA 2114

RED CROWFOOT 6253S
 RED BAR-X MISS LINETT 151K
 RED FLYING K ACE 9R
 RED FLYING K ANEXA 4M
 BECKTON JULIAN GG B571
 TR LANA G760
 MLK CRK KNIGHT 7153
 HRR FREYJA 732

A really attractive, dark-red Flying K Max 159Y son whose dam, HRR Freyja 448, has done a nice job with a 95 BW ratio and a 103 WW ratio.



LOT 36



LOT 36

HRR TOP GUN 9205

BIRTH DATE: **2/17/19** REG. #: **4144914** CAT: **1A 100%**

HB	GM	CED	BW	WW	YW	MK	ME	HPG	CEM	ST	MB	YG	CW	REA	Fat
151	47	17	-3.0	56	82	14	-2	14	11	11	0.38	0.01	14	0.16	0.02
													BW	75	
													ADJ WW	668	
													WR	102	
													ADJ YW	1076	
													YR	98	
													FRAME	5.0	
													SCROTAL	33.3	
													DAM'S MPPA	101.0	

5L ADVANTAGE 3267-221Y
5L TOPGUN 560-65B
 5L BLACK ADINA 525-560
 SHOCO DATA
HRR FIREFLY 734
 SHOCO FIREFLY 9505

BUF CRK THE RIGHT KIND U199
 5L ADINA 195-3267
 TC STOCKMAN 365
 5L ADINA 293-525
 SHOCO SIR ROBIN
 VDAR BLACKANA 303
 BJR RAMBLER 5162
 RCN FIREFLY-CT 505

HRR Top Gun 9205 is a heifer bull out of a some good cow families all through the maternal side. Daughters should make good cows and still have some performance at weaning.



LOT 37



LOT **37**

HRR TOP GUN 9222

BIRTH DATE: **2/24/19** REG. #: **4144902** CAT: **1A 100%**

HB	GM	CED	BW	WW	YW	MK	ME	HPG	CEM	ST	MB	YG	CW	REA	Fat
160	47	18	-3.3	59	85	13	-7	18	10	11	0.55	0.10	22	0.20	0.04

5L ADVANTAGE 3267-221Y
5L TOPGUN 560-65B
 5L BLACK ADINA 525-560

MLK CRK EXPRESS 9127
HRR LAKOTA 707
 HRR LAKOTA 528

BUF CRK THE RIGHT KIND U199
 5L ADINA 195-3267
 TC STOCKMAN 365
 5L ADINA 293-525
 5L GRAND EXPRESS 453-5655
 MLK CRK SHEBA 043
 XO CROWFOOT 0102X
 HRR LAKOTA 090

BW	76
ADJ WW	649
WR	99
ADJ YW	1055
YR	96
FRAME	4.1
SCROTAL	32.5
DAM'S MPPA	100.0

HRR Top Gun 9222 is double shot of calving ease and pretty fair performance from a first calf heifer. The cows on the maternal end of this pedigree were cows that had above-average production.



LOT 38



LOT **38**

HRR TOP GUN 9210

BIRTH DATE: **2/20/19** REG. #: **4144946** CAT: **1A 100%**

HB	GM	CED	BW	WW	YW	MK	ME	HPG	CEM	ST	MB	YG	CW	REA	Fat
165	48	19	-3.8	53	81	17	-5	17	9	12	0.67	0.09	17	0.25	0.05

5L ADVANTAGE 3267-221Y
5L TOPGUN 560-65B
 5L BLACK ADINA 525-560

RIDGE TRAVELER 5412
HRR TREASURE 768
 HRR TREASURE 401

BUF CRK THE RIGHT KIND U199
 5L ADINA 195-3267
 TC STOCKMAN 365
 5L ADINA 293-525
 RIDGE LEGEND 2069
 RIDGE CASEY 8034-3032
 RED CROWFOOT MOONSHINE 8081U
 MARCYS TREASURE 497

BW	66
ADJ WW	606
WR	92
ADJ YW	975
YR	89
FRAME	3.8
SCROTAL	32.4
DAM'S MPPA	97.0

HRR Top Gun 9210 is a 5L Top Gun 560-65B son started at 66# and should be a calving-ease deluxe.



LOT 39



LOT **39**

HRR ADVANTAGE 9407

BIRTH DATE: **3/5/19** REG. #: **4144984** CAT: **1A 100%**

HB	GM	CED	BW	WW	YW	MK	ME	HPG	CEM	ST	MB	YG	CW	REA	Fat
237	49	13	-0.3	71	107	9	-2	16	9	22	0.22	0.11	7	-0.24	0.02

BUF CRK THE RIGHT KIND U199
5L ADVANTAGE 3267-221Y
 5L ADINA 195-3267

MLK CRK EPIC 7160
DR 21R JULIAN W100
 HCK MISS JULIAN 21R

BUF CRK LANCER R017
 BUF CRK SHOSHONE R353
 5L TRADITION 203-6145
 5L ADINA 2113-195
 BECKTON EPIC R397 K
 MLK CRK LAKOTA 559
 BECKTON JULIAN M427 G
 HCK MISS EQUAL 01L

BW	ET
ADJ WW	649
WR	ET
ADJ YW	975
YR	ET
FRAME	4.5
SCROTAL	36.8
DAM'S MPPA	103.0

HRR Advantage 9407 is a full flush brother to Lot 33. He is out of the proven donor dam, DR 21R Julian W100. Here is a phenotypically attractive bull that has mass, volume and length of body.



LOT 40



LOT 40

HRR PRO 9247

BIRTH DATE: **3/3/19** REG. #: **4144760** CAT: **1A 100%**

HB	GM	CED	BW	WW	YW	MK	ME	HPG	CEM	ST	MB	YG	CW	REA	Fat
189	46	10	0.8	62	91	23	1	11	6	20	0.30	0.15	17	-0.16	0.03

5L ADVANTAGE 3267-221Y
RIDGE PROVISION 6013
 RIDGE MONA 8162-2057

HRR KNIGHT 956
HRR BLOCKANA 1102
 FEDDES BLOCKANA 166

BUF CRK THE RIGHT KIND U199
 5L ADINA 195-3267
 5L ZENITH 1425-5767
 RIDGE MONA 620-8162
 MLK CRK KNIGHT 7153
 HRR SALLEE 337
 HOLDEN HI HO 574
 FEDDES BLOCKANA 899

BW	100
ADJ WW	662
WR	101
ADJ YW	1016
YR	92
FRAME	4.8
SCROTAL	33.7
DAM'S MPPA	102.0

HRR Pro 9247 is a smooth-made, clean-fronted, Ridge Provision 6013 son out of a good dam, HRR Blockana 1102, that has an MPPA of 102. His granddam, Feddes Blockana 166, started the Blockana line of cows for us and was a top producer at HRR with an MPPA of 104.



LOT 41



LOT 41

HRR ROCK STAR 9297

BIRTH DATE: **3/17/19** REG. #: **4144882** CAT: **1A 100%**

HB	GM	CED	BW	WW	YW	MK	ME	HPG	CEM	ST	MB	YG	CW	REA	Fat
203	42	17	-1.3	53	74	19	-7	10	9	21	0.12	0.26	14	-0.36	0.05

MLK CRK EXPRESS 9127
BIRNIE EXPRESS 353A
 OTT-MONA-758-970

XO CROWFOOT 0102X
HRR CASEY 642
 RIDGE CASEY 871-028

5L GRAND EXPRESS 453-5655
 MLK CRK SHEBA 043
 SELL COPPERTOP 608
 OTT-MONA-303-758
 RED CROWFOOT MOONSHINE 8081U
 XO CROWFOOT BLACKBIRD 8810U
 BUFCRK SIOUX CANYON 4759
 OTT-CASEY-F20-871

BW	70
ADJ WW	630
WR	97
ADJ YW	1039
YR	93
FRAME	5.1
SCROTAL	33.2
DAM'S MPPA	100.0

A Rockstar son with a low birth weight from a good young cow, HRR Casey 642. This bull is smooth made with the make-up of a heifer bull.



LOT 42



LOT 42

HRR FULL DRAW 8271

BIRTH DATE: **3/28/18** REG. #: **3954931** CAT: **1A 100%**

HB	GM	CED	BW	WW	YW	MK	ME	HPG	CEM	ST	MB	YG	CW	REA	Fat
223	48	8	1.9	67	102	26	-7	15	5	23	0.40	0.16	26	0.11	0.05

BECKTON EPIC R397 K
MLK CRK EPIC 5341
 MLK CRK LAKINA 523

UBAR HIGH CAPACITY 224
HRR LADY 585
 RED YY LADY 901W

BECKTON EPIC K F075
 BECKTON KIT F468 JL
 SHOCO DATA
 MLK CRK LAKINA 228
 BJR HIGH CAPACITY 008
 BJR BONNEBELL 7G
 RED YY DSGN KING 522R
 RED BAR-X LADY CLIPPER 93J

BW	95
ADJ WW	792
WR	117
ADJ YW	1145
YR	103
FRAME	5.1
SCROTAL	37.5
DAM'S MPPA	107.0

Our 2-year-old offering is a high-performance grandson of Beckton Epic R397 K that almost adjusted 800 pounds at weaning. This is a long-bodied, thick-topped bull that will work well on cows.



Ranch Dogs

FOR SALE at various times a year



Border Collie X Australian Shepard

Out of Working Parents

For more information call
(605) 375 - 3124

13698 Harding Rd, Buffalo, SD 57720
Tim: (605) 210 - 2666 | Karen: (605) 641 - 1224



LOT 43



LOT 43

OPEN A A3142 JETSTREAM G9119

BIRTH DATE: **3/29/19** REG. #: **19648456**

CED	BW	WW	YW	CEM	MILK	MW	MARB	REA	FAT	\$W	\$F	\$B
5	1.9	49	75	4	28	38	-0.01	0.15	0.046	56	46	58

BW	71
ADJ WW	711
WR	110
ADJ YW	1107
YR	105
FRAME	5.0
SCROTAL	34.0

O C C EMBLAZON 854E
O C C JET STREAM 825J
 O C C JUANADA 968G

R B ACTIVE DUTY 010
OPEN A AD DORA A3142
 OPEN A 24J DORA 58X

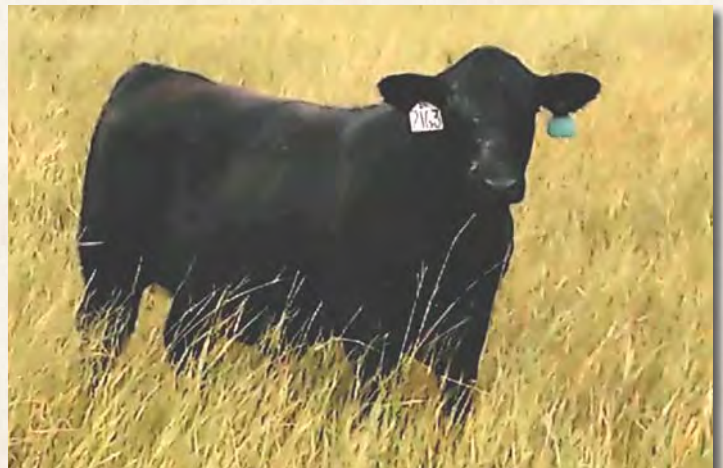
D H D TRAVELER 6807
 DIXIE ERICA OF C H 1019
 O C C EUREKA 865E
 O C C JUANADA 774A
 LCC NEW STANDARD
 B A LADY 6807 305
 BT RIGHT TIME 24J
 OPEN A 878 4T

Open A A3142 Jetstream G9119 kicks off the 2020 Open A sale. This extremely good OCC Jetstream 825J son is a growth bull that posted a 711 pound wean weight and 109 wean weight ratio running in the Badlands of Western North Dakota. He is a deep-bodied, massive bull with a large outline. His dam, Open A Ad Dora A3142 has been a solid cow at Open A that has retained all of her daughters in the Open A herd. This bull is the first bull she has had out of six calves.

HERD BULL POTENTIAL.



O C C JET STREAM 825J





LOT 44



LOT 44

OPEN A 265X THUMPER G986

BIRTH DATE: **3/25/19** REG. #: **19648533**

CED	BW	WW	YW	CEM	MILK	MW	MARB	REA	FAT	\$W	\$F	\$B
1	3.8	51	85	3	10	34	0.41	-0.06	0.065	28	64	92

BW	97
ADJ WW	732
WR	105
ADJ YW	1074
YR	98
FRAME	5.0
SCROTAL	37.0

O C C EUREKA 865E
O C C THUMPER 819T
 O C C DIXIE ERICA 954K

 O C C EMBLAZON 854E
OPEN A 854E PRIDE RUBY 265X
 OPEN A 8180 218S

O C C BACKSTOP 888B
 BLACKBIRD OF R R 1204
 O C C ANCHOR 771A
 O C C DIXIE ERICA 907C
 D H D TRAVELER 6807
 DIXIE ERICA OF C H 1019
 SITZ TRAVELER 8180
 JAYNBEЕ PRIDE RUBY 430F

Open A 265X Thumper G986 is out of Open A 854E Pride Ruby 265X, who is part of the Pride Ruby cow family which is a foundation cow family in the Open A herd. The dam to this bull is outstanding and was a donor dam for Open A and has produced many good females that are still retained in the Open A herd. This cow bull posted an impressive weaning weight with aa WR of 105 and a respectable yearling weight.



OPEN A 8180 218S, MATERNAL GRANDDAM



OCC THUMPER 819T



LOT 45



LOT 45

OPEN A B224 BIG TIME G9221

BIRTH DATE: **4/1/19** REG. #: **19648477**

CED	BW	WW	YW	CEM	MILK	MW	MARB	REA	FAT	\$W	\$F	\$B
1	3.0	58	103	1	19	50	0.16	0.56	0.001	46	86	116

O C C REAR END 751R
O C C BIG TIME 746Z
 O C C DIXIE ERICA 771R

 O C C UNMISTAKABLE 946U
OPEN A 946U DORA B224
 OPEN A 7097 DORA 1W

O C C HOMER 650H
 FCC REVOLUTION ROSE 995N
 O C C MISSING LINK 830M
 O C C DIXIE ERICA 776M
 O C C PAXTON 730P
 FCC REVOLUTION ROSE 2476
 SITZ VALUE 7097
 OPEN A 878 4T

BW	75
ADJ WW	686
WR	N/A
ADJ YW	1045
YR	99
FRAME	4.0
SCROTAL	36.0

Open A B224 Big Time G9221 is a deep-bodied, big-hipped cow bull that has the thickness and volume of his sire OCC Big Time 746Z. PARENTAGE AND HD50K PENDING



LOT 46



LOT 46

OPEN A B248 BIG TIME G9227

BIRTH DATE: **3/27/19** REG. #: **19648479**

CED	BW	WW	YW	CEM	MILK	MW	MARB	REA	FAT	\$W	\$F	\$B
-2	4.3	55	97	0	21	23	0.65	0.34	0.031	46	67	115

O C C REAR END 751R
O C C BIG TIME 746Z
 O C C DIXIE ERICA 771R

 OPEN A 2308 GRIDIRON Y391
OPEN A Y391 LINDSEY B248
 OPEN A MIF LINDSEY 159W

O C C HOMER 650H
 FCC REVOLUTION ROSE 995N
 O C C MISSING LINK 830M
 O C C DIXIE ERICA 776M
 TC GRIDIRON 258
 S A V CHERYL 2308
 MYTTY IN FOCUS
 OPEN A DIRECT 780M

BW	98
ADJ WW	675
WR	104
ADJ YW	1083
YR	103
FRAME	5.0
SCROTAL	36.5

Open A B248 Big Time G9227 is an OCC Big Time 746Z cow bull that offers performance. He had a 700# weaning weight and 104 WW ratio running in the ND Badlands.



LOT 47



LOT 47

OPEN A B285 THUMPER G9235

BIRTH DATE: **3/21/19** REG. #: **19658059**

CED	BW	WW	YW	CEM	MILK	MW	MARB	REA	FAT	\$W	\$F	\$B
4	2.5	51	88	3	14	22	0.21	0.31	0.007	37	68	97

O C C EUREKA 865E
O C C THUMPER 819T
 O C C DIXIE ERICA 954K

 O C C PAXTON 730P
OPEN A PAX KRISTLE B285
 OPEN A MIF KRISTLE 803U

O C C BACKSTOP 888B
 BLACKBIRD OF R R 1204
 O C C ANCHOR 771A
 O C C DIXIE ERICA 907C
 O C C FOCUS 813F
 O C C BLACKBIRD 736K
 MYTTY IN FOCUS
 OPEN A L309 184S

BW	85
ADJ WW	648
WR	100
ADJ YW	1080
YR	103
FRAME	4.0
SCROTAL	34.0

This OCC Thumper 819T son did really well after weaning in the development lot. He has a combination of Thumper and OCC Paxton 730P who is known for making efficient calving-ease daughters. HD50K AND PARENTAGE PENDING.



LOT 48



LOT 48

OPEN A G937

BIRTH DATE: **3/26/19** REG. #: **625571585**

CED	BW	WW	YW	CEM MILK	MW	MARB	REA	FAT	\$W	\$F	\$B

O C C HOMER 650H
O C C REAR END 751R
 FCC REVOLUTION ROSE 995N
 H A R B CINCHA 829
OPEN A 829 KRYSTLE 39W
 OPEN A 6595 159S

O C C FOCUS 813F
 O C C DIXIE ERICA 816B
 O C C JOKER 620J
 O C C REVOLUTION ROSE 887H
 C H QUANTUM 3330
 H A R B JUMBOLEEN D03
 SITZ ALLIANCE 6595
 OPEN A NEW DESIGN 69N

BW	81
ADJ WW	736
WR	106
ADJ YW	1142
YR	104
FRAME	5.0
SCROTAL	37.5

Open A 38W Rear End G937 is an outstanding son of OCC Rear End 751R. Here is a good, massive, complete bull with a moderate birth weight and good growth performance. He is easily one of the top bulls in this offering. At the time of catalog print we are parent verifying him. HD50K AND PARENTAGE PENDING.



LOT 49



LOT 49

OPEN A C474 ARCHIMEDES G9906

BIRTH DATE: **4/1/19** REG. #: **19648534**

CED	BW	WW	YW	CEM MILK	MW	MARB	REA	FAT	\$W	\$F	\$B	
6	1.7	65	103	7	19	50	0.60	0.48	0.012	65	80	129

O C C X-FACTOR 677X
O C C ARCHIMEDES 895A
 O C C DIXIE ERICA 863X
 COLE CREEK CEDAR RIDGE 1V
OPEN A 1V KRYSTLE C474
 OPEN A HD KRYSTLE A3215

O C C FOCUS 813F
 O C C DIXIE ERICA 603N
 O C C PAXTON 730P
 O C C DIXIE ERICA 903E
 COLE CREEK BLACK CEDAR 46P
 COLE CREEK CLOVANADA 49S
 HOOVER DAM
 OPEN A MIF KRYSTLE 803U

BW	70
ADJ WW	704
WR	108
ADJ YW	1169
YR	110
FRAME	5.0
SCROTAL	38.0

Open A C474 Archimedes G9906 carries the CAB logo. This logo can be used by any breeder whose bulls are breed average or better for two key metrics: Marbling EPD (expected progeny difference) and Angus Grid Value Index (\$G). To find the cream of the crop for grade potential, qualifying bulls as of Fall 2019 need a Marbling EPD of at least +0.54, along with \$G + 46. This bull posts a marbling EPD of .60 and Grid value index of 50. He also ranks in the top 20% for WW.



LOT 50



LOT 50

OPEN A A3288 DEADLINE G9155

BIRTH DATE: **3/19/19** REG. #: **19648463**

CED	BW	WW	YW	CEM MILK	MW	MARB	REA	FAT	\$W	\$F	\$B	
10	-0.2	51	86	12	23	4	0.24	0.23	0.042	60	82	107

O C C ANVIL 809A
O C C DEADLINE 775D
 O C C REVOLUTION ROSE 603Y
 S A V FINAL ANSWER 0035
OPEN A FA KRYSTLE A3288
 OPEN A 6595 159S

O C C MISSING LINK 830M
 FCC BLACKCAP LADY 3810
 O C C LINEBRED 661L
 O C C REVOLUTION ROSE 743K
 SITZ TRAVELER 8180
 S A V EMULOUS 8145
 SITZ ALLIANCE 6595
 OPEN A NEW DESIGN 69N

BW	68
ADJ WW	727
WR	112
ADJ YW	1159
YR	110
FRAME	4.0
SCROTAL	39.0

Open A A3288 Deadline G9155 is a calving-ease bull that ranks in the top 20% for BW and %15 for CED. His dam, Open A Fa Krystle A3288, is part of the foundation Krystle cow family at Open A Angus.



LOT 51



LOT 51

OPEN A A3241 REAR END G9142

BIRTH DATE: **3/24/19** REG. #: **19652241**

CED	BW	WW	YW	CEM MILK	MW	MARB	REA	FAT	\$W	\$F	\$B	
3	0.9	47	80	1	16	0	0.53	0.44	0.023	45	71	115
											BW	83
											ADJ WW	687
											WR	106
											ADJ YW	1047
											YR	100
											FRAME	4.0
											SCROTAL	36.0

O C C HOMER 650H
O C C REAR END 751R
 FCC REVOLUTION ROSE 995N
 HOOVER DAM
OPEN A HD MISS GOLD A3241
 OPEN A 004 GOLD 8236U

O C C FOCUS 813F
 O C C DIXIE ERICA 816B
 O C C JOKER 620J
 O C C REVOLUTION ROSE 887H
 SYDGEN C C & 7
 ERICA OF ELLSTON C124
 S A V 8180 TRAVELER 004
 OPEN A EXT 2P

A smooth-made OCC Rear End 751R son that genomically ranks in the top 40% for BW.



LOT 52



LOT 52

OPEN A 204W BIG TIME G969

BIRTH DATE: **3/31/19** REG. #: **19648527**

CED	BW	WW	YW	CEM MILK	MW	MARB	REA	FAT	\$W	\$F	\$B	
6	1.1	40	60	2	21	-15	0.25	0.49	0.026	45	38	70
											BW	88
											ADJ WW	664
											WR	95
											ADJ YW	1122
											YR	106
											FRAME	5.0
											SCROTAL	38.0

O C C REAR END 751R
O C C BIG TIME 746Z
 O C C DIXIE ERICA 771R
 S A V 8180 TRAVELER 004
OPEN A 004 EILEEN 204W
 JAYNBE EILEEN 468F

O C C HOMER 650H
 FCC REVOLUTION ROSE 995N
 O C C MISSING LINK 830M
 O C C DIXIE ERICA 776M
 SITZ TRAVELER 8180
 BOYD FOREVER LADY 8003
 BON VIEW BANDO 598
 JAYNBE EILEEN 675B

Open A 204W Big Time G969 is an OCC Big Time 746Z son that is really attractive from a side profile and also offers width and thickness. His granddam, Jaynbee Eileen 468F, was the first cow that Open A flushed 20 years ago. She was an elite, outstanding cow that has daughters in the Open A herd.



LOT 53



LOT 53

OPEN A 156W DEADLINE G962

BIRTH DATE: **3/21/19** REG. #: **19648526**

CED	BW	WW	YW	CEM MILK	MW	MARB	REA	FAT	\$W	\$F	\$B	
6	0.8	53	99	-2	20	53	0.17	0.32	-0.014	49	96	125
											BW	78
											ADJ WW	682
											WR	98
											ADJ YW	1056
											YR	96
											FRAME	4.0
											SCROTAL	36.0

O C C ANVIL 809A
O C C DEADLINE 775D
 O C C REVOLUTION ROSE 603Y
 O C C GREAT PLAINS 943G
OPEN A 943G CHASITY 156W
 OPEN A DIRECT 119M

O C C MISSING LINK 830M
 FCC BLACKCAP LADY 3810
 O C C LINEBRED 661L
 O C C REVOLUTION ROSE 743K
 N BAR EMULATION EXT
 DIXIE ERICA OF C H 1019
 EVENSON DIRECT DEPOSIT 054
 OPEN A CHASITY 119A

Open A 156W Deadline G962 is out of a 10-year-old, OCC Great Plains 943G daughter that has consistently bred AI and has several daughters in the Open A herd. This is a long-ribbed and long-hipped bull out of a new sire to Open A, OCC Deadline 775D.



LOT 54



LOT 54

OPEN A B328 DEADLINE G9241

BIRTH DATE: **3/25/19** REG. #: **19648482**

CED	BW	WW	YW	CEM MILK	MW	MARB	REA	FAT	\$W	\$F	\$B	
3	2.4	46	71	-4	15	-2	0.07	0.45	-0.002	40	46	71
											BW	75
											ADJ WW	598
											WR	92
											ADJ YW	1060
											YR	101
											FRAME	3.0
											SCROTAL	34.5

O C C ANVIL 809A
O C C DEADLINE 775D
 O C C REVOLUTION ROSE 603Y

 O C C THUMPER 819T
OPEN A 819T KARAMA B328
 OPEN A 24J 28T

O C C MISSING LINK 830M
 FCC BLACKCAP LADY 3810
 O C C LINEBRED 661L
 O C C REVOLUTION ROSE 743K
 O C C EUREKA 865E
 O C C DIXIE ERICA 954K
 BT RIGHT TIME 24J
 OPEN A 878 67P

Open A B328 Deadline G9241 is an attractive cow bull that has almost a straight-bred OCC pedigree with OCC Deadline and OCC Thumper 819T on the bottom side.



LOT 55



LOT 55

OPEN A A3261 REAR END G9149

BIRTH DATE: **3/20/19** REG. #: **19652242**

CED	BW	WW	YW	CEM MILK	MW	MARB	REA	FAT	\$W	\$F	\$B	
8	-0.8	43	65	7	23	-37	0.14	0.52	-0.009	58	46	76
											BW	77
											ADJ WW	655
											WR	101
											ADJ YW	1095
											YR	104
											FRAME	4.0
											SCROTAL	33.0

O C C HOMER 650H
O C C REAR END 751R
 FCC REVOLUTION ROSE 995N

 KESSLERS FRONTMAN R001
OPEN A FM KARAMA A3261
 OPEN A 24J 28T

O C C FOCUS 813F
 O C C DIXIE ERICA 816B
 O C C JOKER 620J
 O C C REVOLUTION ROSE 887H
 CONNEALY FRONT PAGE 0228
 KESSLERS BELL 0024
 BT RIGHT TIME 24J
 OPEN A 878 67P

Open A A3261 Rear End G9149 is a moderate-framed, big-hipped, deep-ribbed, nice profiled Rear End son that has calving ease EPDs to boot.



LOT 56



LOT 56

OPEN A Z2406 XTRA EASY G9083

BIRTH DATE: **3/27/19** REG. #: **19648450**

CED	BW	WW	YW	CEM MILK	MW	MARB	REA	FAT	\$W	\$F	\$B	
8	1.2	47	78	7	19	-1	0.28	0.14	0.017	49	56	85
											BW	82
											ADJ WW	670
											WR	96
											ADJ YW	1033
											YR	94
											FRAME	5.0
											SCROTAL	34.0

O C C NO PROBLEMS 52N
O C C X-TRA EASY 708X
 O C C DIXIE ERICA 678T

 KESSLERS FRONTMAN R001
OPEN A FM PRIDE RUBY Z2406
 OPEN A 854E PRIDE RUBY 265X

O C C FOCUS 813F
 O C C DIXIE ERICA 816B
 O C C TRAVELER 723Z
 O C C DIXIE ERICA 613L
 CONNEALY FRONT PAGE 0228
 KESSLERS BELL 0024
 O C C EMBLAZON 854E
 OPEN A 8180 218S

Open A Z2406 Xtra Easy G9083 is a phenotypically attractive bull that has length of rib and loin and is smooth shouldered. He has a moderate birth weight EPD.



LOT 57



LOT 57

OPEN A A3408 DEADLINE G9166

BIRTH DATE: **3/26/19** REG. #: **19648468**

CED	BW	WW	YW	CEM MILK	MW	MARB	REA	FAT	\$W	\$F	\$B
10	0.8	52	86	5	9	38	-0.15	0.49	0.012	37	76

O C C ANVIL 809A
O C C DEADLINE 775D
 O C C REVOLUTION ROSE 603Y

 S A V 004 DENSITY 4336
OPEN A 4336 MISS GOLD A3408
 OPEN A EXT 2P

O C C MISSING LINK 830M
 FCC BLACKCAP LADY 3810
 O C C LINEBRED 661L
 O C C REVOLUTION ROSE 743K
 S A V 8180 TRAVELER 004
 S A V MAY 7238
 B A R EXT TRAVELER 205
 OPEN A MISS GOLD 239A

BW	82
ADJ WW	591
WR	91
ADJ YW	1140
YR	109
FRAME	4.0
SCROTAL	34.0

The dam to Open A A3408 Deadline G9166 is out of a mating of SAV 004 Density 4336 and Open A Ext 2P which really clicked. Put that combination with OCC Deadline 775D and we get a really attractive phenotype. This bull has a strong top, depth of rib and width of hip.



LOT 58



LOT 58

OPEN A A3123 DEADLINE G9117

BIRTH DATE: **3/29/19** REG. #: **19648455**

CED	BW	WW	YW	CEM MILK	MW	MARB	REA	FAT	\$W	\$F	\$B
15	-2.0	40	75	8	19	20	-0.06	0.32	0.039	40	69

O C C ANVIL 809A
O C C DEADLINE 775D
 O C C REVOLUTION ROSE 603Y

 COLE CREEK CEDAR RIDGE 1V
OPEN A PRIDE RUBY A3123
 OPEN A 854E PRIDE RUBY 264X

O C C MISSING LINK 830M
 FCC BLACKCAP LADY 3810
 O C C LINEBRED 661L
 O C C REVOLUTION ROSE 743K
 COLE CREEK BLACK CEDAR 46P
 COLE CREEK CLOVANADA 49S
 O C C EMBLAZON 854E
 OPEN A 8180 218S

BW	73
ADJ WW	601
WR	93
ADJ YW	110
YR	95
FRAME	5.0
SCROTAL	36.0

Here is another calving-ease bull that has an impressive CED genomic EPD ranking in the top 2% and BW ranking in the top 4%. Heifer bull.



LOT 59



LOT 59

OPEN A B127 REAR END G9198

BIRTH DATE: **4/8/19** REG. #: **19658710**

CED	BW	WW	YW	CEM MILK	MW	MARB	REA	FAT	\$W	\$F	\$B
2	3.9	55	81	6	26	-10	0.42	0.38	0.007	62	97

O C C HOMER 650H
O C C REAR END 751R
 FCC REVOLUTION ROSE 995N

 TOMBSTONE 050
OPEN A TOMB CASARANDA B127
 OPEN A CASSANDRA Y236

O C C FOCUS 813F
 O C C DIXIE ERICA 816B
 O C C JOKER 620J
 O C C REVOLUTION ROSE 887H
 SITZ UPWARD 307R
 MYTTY COUNTESS 906
 OPEN A 41-B BUSHWACHER 213W
 OPEN A 24J CASSANDRA 75T

BW	95
ADJ WW	741
WR	114
ADJ YW	1086
YR	103
FRAME	5.0
SCROTAL	37.0

This bull posts an impressive 114 WR and 103 YR so there should be performance here with OCC Rear End 751R on the top side and Tombstone 050 on the bottom side of the pedigree.



LOT 60



LOT 60

OPEN A 9W DEADLINE G935

BIRTH DATE: **3/21/19** REG. #: **19648494**

CED	BW	WW	YW	CEM MILK	MW	MARB	REA	FAT	\$W	\$F	\$B
11	-0.5	42	74	5	16	12	0.03	0.24	0.027	38	68

O C C ANVIL 809A
O C C DEADLINE 775D
 O C C REVOLUTION ROSE 603Y

MYTTY IN FOCUS
OPEN A MIF PRIDE RUBY 9W
 OPEN A 2700 92T ET

O C C MISSING LINK 830M
 FCC BLACKCAP LADY 3810
 O C C LINEBRED 661L
 O C C REVOLUTION ROSE 743K
 S A F FOCUS OF ER
 MYTTY COUNTESS 906
 LEACHMAN RIGHT TIME
 JAYNBEE PRIDE RUBY 430F

BW	76
ADJ WW	764
WR	110
ADJ YW	1057
YR	96
FRAME	5.0
SCROTAL	37.0

Open A 9W Deadline G935 ranks in the top 15% for BW and 20% for CED, yet he posts a respectable 710# actual wean weight.



LOT 61



LOT 61

OPEN A B212 XTRA EASY G9219

BIRTH DATE: **4/1/19** REG. #: **19648476**

CED	BW	WW	YW	CEM MILK	MW	MARB	REA	FAT	\$W	\$F	\$B
3	1.8	49	88	8	26	25	-0.05	0.29	0.017	53	100

O C C NO PROBLEMS 52N
O C C X-TRA EASY 708X
 O C C DIXIE ERICA 678T

TOMBSTONE 050
OPEN A 050 ENCHANTRESS B212
 OPEN A NPV ENCHANTRESS 3X

O C C FOCUS 813F
 O C C DIXIE ERICA 816B
 O C C TRAVELER 723Z
 O C C DIXIE ERICA 613L
 SITZ UPWARD 307R
 MYTTY COUNTESS 906
 SINCLAIR NET PRESENT VALUE
 OPEN A 004 ENCHANTRESS 8117U

BW	82
ADJ WW	670
WR	103
ADJ YW	1010
YR	95
FRAME	5.0
SCROTAL	37.0

Open A B212 Xtra Easy G9219 is a complete bull with good muscle and volume.



LOT 62



LOT 62

OPEN A 49W BIG TIME G941

BIRTH DATE: **3/31/19** REG. #: **19648499**

CED	BW	WW	YW	CEM MILK	MW	MARB	REA	FAT	\$W	\$F	\$B
-3	3.9	53	84	4	19	36	0.60	0.15	0.016	43	107

O C C REAR END 751R
O C C BIG TIME 746Z
 O C C DIXIE ERICA 771R

H A R B CINCHA 829
OPEN A 829 KRISTLE 49W
 OPEN A 004 808S

O C C HOMER 650H
 FCC REVOLUTION ROSE 995N
 O C C MISSING LINK 830M
 O C C DIXIE ERICA 776M
 C H QUANTUM 3330
 H A R B JUMBOLEEN D03
 S A V 8180 TRAVELER 004
 OPEN A KRISTLE 69L

BW	94
ADJ WW	777
WR	111
ADJ YW	1129
YR	107
FRAME	5.0
SCROTAL	38.0

Here is a OCC Big Time 746Z son that had a 111 WW ratio and 777 Adj. 205-day weight. This cow bull offers fleshing ability.



LOT 63



LOT **63**

OPEN A A3315 XTRA EASY G9161

BIRTH DATE: **3/11/19** REG. #: **19648466**

CED	BW	WW	YW	CEM MILK	MW	MARB	REA	FAT	\$W	\$F	\$B	
6	0.2	48	86	12	17	28	0.29	0.09	0.018	44	88	
											BW	60
											ADJ WW	711
											WR	110
											ADJ YW	1151
											YR	110
											FRAME	4.0
											SCROTAL	33.0

O C C NO PROBLEMS 52N
O C C X-TRA EASY 708X
 O C C DIXIE ERICA 678T

S A V BISMARCK 5682
OPEN A BIS FAWN A3315
 OPEN A 7021 139R

O C C FOCUS 813F
 O C C DIXIE ERICA 816B
 O C C TRAVELER 723Z
 O C C DIXIE ERICA 613L
 G A R GRID MAKER
 S A V ABIGALE 0451
 VERMILION DATELINE 7021
 OPEN A FAWN 551

Open A A3315 Xtra Easy G9161 is a smooth-made calving-ease bull.



LOT 64



LOT **64**

OPEN A B183 THUMPER G9211

BIRTH DATE: **4/3/19** REG. #: **19648473**

CED	BW	WW	YW	CEM MILK	MW	MARB	REA	FAT	\$W	\$F	\$B	
2	4.2	55	96	4	22	42	0.29	0.29	0.045	46	93	
											BW	86
											ADJ WW	640
											WR	99
											ADJ YW	1073
											YR	101
											FRAME	4.5
											SCROTAL	36.0

O C C EUREKA 865E
O C C THUMPER 819T
 O C C DIXIE ERICA 954K

R B ACTIVE DUTY 010
OPEN A 010 PATRICIA B183
 OPEN A 702 PATRICIA 166X

O C C BACKSTOP 888B
 BLACKBIRD OF R R 1204
 O C C ANCHOR 771A
 O C C DIXIE ERICA 907C
 LCC NEW STANDARD
 B A LADY 6807 305
 B C MID EMBLAZON 854E 702
 OPEN A 878 13R

Open A B183 Thumper G9211 is a square-hipped, deep-bodied, soggy cow bull.



LOT 65



LOT **65**

OPEN A 141W BIG TIME G959

BIRTH DATE: **4/3/19** REG. #: **19648522**

CED	BW	WW	YW	CEM MILK	MW	MARB	REA	FAT	\$W	\$F	\$B	
4	1.7	53	92	5	5	39	0.34	0.40	0.020	29	129	
											BW	83
											ADJ WW	705
											WR	101
											ADJ YW	1079
											YR	102
											FRAME	4.0
											SCROTAL	37.0

O C C REAR END 751R
O C C BIG TIME 746Z
 O C C DIXIE ERICA 771R

SITZ VALUE 7097
OPEN A 7097 HEROINE 141W
 OPEN A DIRECT 629N

O C C HOMER 650H
 FCC REVOLUTION ROSE 995N
 O C C MISSING LINK 830M
 O C C DIXIE ERICA 776M
 SITZ TRAVELER 6802
 SITZ EISA EVERGREEN 791
 EVENSON DIRECT DEPOSIT 054
 OPEN A JAYNBEE F TRAVL 629A

Open A 141W Big Time G959 is a long-bodied bull that has spring of rib and a big hip.



LOT 66



LOT 66

OPEN A B340 XTRA EASY G9244

BIRTH DATE: **3/21/19** REG. #: **19648484**

CED	BW	WW	YW	CEM	MILK	MW	MARB	REA	FAT	\$W	\$F	\$B
1	1.0	40	68	7	15	17	0.15	-0.08	0.046	32	48	64
											BW	81
											ADJ WW	671
											WR	103
											ADJ YW	1025
											YR	97
											FRAME	5.0
											SCROTAL	38.0

O C C NO PROBLEMS 52N
O C C X-TRA EASY 708X
 O C C DIXIE ERICA 678T

OPEN A 2308 GRIDIRON Y391
OPEN A Y391 DORA B340
 OPEN A 6595 69T

O C C FOCUS 813F
 O C C DIXIE ERICA 816B
 O C C TRAVELER 723Z
 O C C DIXIE ERICA 613L
 TC GRIDIRON 258
 S A V CHERYL 2308
 SITZ ALLIANCE 6595
 OPEN A DORA 951

Open A B340 Xtra Easy G9244 has a good top and is deep sided. He carries his depth in his lower quarter.



LOT 67



LOT 67

OPEN A 118W DEADLINE G954

BIRTH DATE: **3/25/19** REG. #: **19648515**

CED	BW	WW	YW	CEM	MILK	MW	MARB	REA	FAT	\$W	\$F	\$B
6	1.0	50	91	5	23	34	0.15	0.53	-0.017	52	88	120
											BW	80
											ADJ WW	697
											WR	100
											ADJ YW	1129
											YR	103
											FRAME	5.0
											SCROTAL	37.5

O C C ANVIL 809A
O C C DEADLINE 775D
 O C C REVOLUTION ROSE 603Y
 S A V FINAL ANSWER 0035
OPEN A 0035 KARAMA 118W
 OPEN A 878 67P

O C C MISSING LINK 830M
 FCC BLACKCAP LADY 3810
 O C C LINEBRED 661L
 O C C REVOLUTION ROSE 743K
 SITZ TRAVELER 8180
 S A V EMULOUS 8145
 BON VIEW NEW DESIGN 878
 JAYNBEЕ KARAMA 587F

Open A 118W Deadline G954 is out of a nice SAV Final Answer 0035 daughter.



LOT 68



LOT 68

OPEN A Z2160 REAR END G9051

BIRTH DATE: **3/30/19** REG. #: **19652244**

CED	BW	WW	YW	CEM	MILK	MW	MARB	REA	FAT	\$W	\$F	\$B
11	-0.5	31	57	10	27	-55	0.08	0.23	0.024	46	42	61
											BW	82
											ADJ WW	614
											WR	88
											ADJ YW	991
											YR	94
											FRAME	4.0
											SCROTAL	35.0

O C C HOMER 650H
O C C REAR END 751R
 FCC REVOLUTION ROSE 995N
 S A V FINAL ANSWER 0035
OPEN A FA EILEEN Z2160
 OPEN A FOCUS 44P

O C C FOCUS 813F
 O C C DIXIE ERICA 816B
 O C C JOKER 620J
 O C C REVOLUTION ROSE 887H
 SITZ TRAVELER 8180
 S A V EMULOUS 8145
 S A F FOCUS OF E R
 JAYNBEЕ EILEEN 468F

An OCC Rear End 751R calving-ease son that is out of the foundation Eileen cow family at Open A.



LOT 69



LOT 69

OPEN A 218S TRAVELER G9812

BIRTH DATE: **2/28/19** REG. #: **19639557**

CED	BW	WW	YW	CEM MILK	MW	MARB	REA	FAT	\$W	\$F	\$B	
6	0.4	33	67	12	22	17	0.24	0.13	0.033	30	79	104
										BW	ET	
										ADJ WW	733	
										WR	ET	
										ADJ YW	1147	
										YR	ET	
										FRAME	5.0	
										SCROTAL	36.0	

SITZ TRAVELER 8180
OPEN A 8180 179T ET
OPEN A KRYSTLE 69L

SITZ TRAVELER 8180
OPEN A 8180 218S
JAYNBEE PRIDE RUBY 430F

G D A R TRAVELER 71
SITZ EVERELDA ENTENSE 1137
LEACHMAN RIGHT TIME
OPEN A KRYSTLE 67A
G D A R TRAVELER 71
SITZ EVERELDA ENTENSE 1137
THOMAS LATIGO
PRIDE RUBY OF JAYNBEE 210

Open A 218S Traveler G9812 has Sitz Traveler 8180 as his maternal and paternal grand-sire. His sire, Open A 8180 179T, was a top bull to ever come out of the Open A program. He was a calving ease bull that was still in service at 9 years of age at Silbernagel Angus.



LOT 70



LOT 70

OPEN A 218S WINDY G9805

BIRTH DATE: **2/22/19** REG. #: **19637553**

CED	BW	WW	YW	CEM MILK	MW	MARB	REA	FAT	\$W	\$F	\$B	
2	2.4	47	83	5	22	35	0.35	0.17	0.013	42	67	100
										BW	ET	
										ADJ WW	780	
										WR	ET	
										ADJ YW	1134	
										YR	ET	
										FRAME	5.0	
										SCROTAL	37.0	

H A R B WINDY 702 JH
APEX WINDY 078
APEXETTE LUCY 6037

SITZ TRAVELER 8180
OPEN A 8180 218S
JAYNBEE PRIDE RUBY 430F

A A R REALLY WINDY 1205
H A R B BLACK LADY 073 J H
APEX MTN FRONT 044
APEXETTE LUCY 1064
G D A R TRAVELER 71
SITZ EVERELDA ENTENSE 1137
THOMAS LATIGO
PRIDE RUBY OF JAYNBEE 210

Open A 218S Windy G9805 is a big volumed, deep-ribbed cow bull out of the really good donor, Open A 8180 218S and Apex Windy 178. HD50k pending.



LOT 71



LOT 71

OPEN A Z2416 XTRA EASY G9088

BIRTH DATE: **3/25/19** REG. #: **19658053**

CED	BW	WW	YW	CEM MILK	MW	MARB	REA	FAT	\$W	\$F	\$B	
7	0.2	49	81	11	24	17	0.15	0.05	0.037	57	64	83
										BW	80	
										ADJ WW	753	
										WR	108	
										ADJ YW	1134	
										YR	103	
										FRAME	5.0	
										SCROTAL	36.0	

O C C NO PROBLEMS 52N
O C C X-TRA EASY 708X
O C C DIXIE ERICA 678T

SITZ TRAVELER 8180
OPEN A 8180 CHERYL Z2416
S A V CHERYL 2308

O C C FOCUS 813F
O C C DIXIE ERICA 816B
O C C TRAVELER 723Z
O C C DIXIE ERICA 613L
G D A R TRAVELER 71
SITZ EVERELDA ENTENSE 1137
S A V 8180 TRAVELER 004
S A V CHERYL 9030

Open A Z2416 Xtra Easy G9088 is a grandson of the powerful SAV Cheryl 2308 donor dam. His genomic HD50k gives him calving ease EPDs.



LOT 72



LOT **72**

OPEN A B249 MISS LINK G9228

BIRTH DATE: **3/27/19** REG. #: **19648480**

CED	BW	WW	YW	CEM	MILK	MW	MARB	REA	FAT	\$W	\$F	\$B
12	-0.4	47	80	7	21	2	-0.10	0.34	0.057	53	45	54
											BW	75
											ADJ WW	607
											WR	94
											ADJ YW	1015
											YR	97
											FRAME	5.0
											SCROTAL	34.5

O C C HEADLINER 661H
O C C MISSING LINK 830M
 O C C DIXIE ERICA 946K

OPEN A 92T GREAT PLAINS62X
OPEN A DORA B249
 OPEN A 943G DORA 160W

O C C EMBLAZON 854E
 O C C JUANADA 858F
 O C C GLORY 950G
 O C C DIXIE ERICA 816B
 O C C GREAT PLAINS 943G
 OPEN A 2700 92T ET
 O C C GREAT PLAINS 943G
 OPEN A DIRECT 949M

You have to like the shape and smooth shoulder of the OCC Missing Link 830M son. Calving ease and maternal efficiency here.



LOT 73



LOT **73**

OPEN A B6 XTRA EASY G9177

BIRTH DATE: **3/21/19** REG. #: **19658054**

CED	BW	WW	YW	CEM	MILK	MW	MARB	REA	FAT	\$W	\$F	\$B
12	0.8	37	64	13	20	-6	0.18	0.08	0.025	38	54	76
											BW	88
											ADJ WW	667
											WR	103
											ADJ YW	1129
											YR	108
											FRAME	5.0
											SCROTAL	33.0

O C C NO PROBLEMS 52N
O C C X-TRA EASY 708X
 O C C DIXIE ERICA 678T

O C C HOMER 650H
OPEN A 650H PRIDE RUBY B6
 OPEN A FM PRIDE RUBY Z2026

O C C FOCUS 813F
 O C C DIXIE ERICA 816B
 O C C TRAVELER 723Z
 O C C DIXIE ERICA 613L
 O C C FOCUS 813F
 O C C DIXIE ERICA 816B
 KESSLERS FRONTMAN R001
 OPEN A 218S PRIDE RUBY 259X

Open A B6 Xtra Easy G9177 is a long-spined, straight-topped calving-ease bull. Top 10% CED and 3% \$EN.



OPEN A 8180 218S, DAM OF LOT 69, 70 AND 74



SAV CHERYL 208, MATERNAL GRANDDAM OF LOT 71



LOT 74



LOT 74

OPEN A 218S INATIONAL G9807

BIRTH DATE: **2/28/19** REG. #: **19637554**

CED	BW	WW	YW	CEM	MILK	MW	MARB	REA	FAT	\$W	\$F	\$B
0	3.2	50	90	2	21	44	0.25	0.34	0.034	41	83	111

S A V HARVESTOR 0338
S A V INTERNATIONAL 2020
 S A V EMBLYNETTE 5483

SITZ TRAVELER 8180
OPEN A 8180 218S
 JAYNBEE PRIDE RUBY 430F

S A V HERITAGE 6295
 S A V EMBLYNETTE 7749
 S A V 8180 TRAVELER 004
 S A V EMBLYNETTE 7260
 G D A R TRAVELER 71
 SITZ EVERELDA ENTENSE 1137
 THOMAS LATIGO
 PRIDE RUBY OF JAYNBEE 210

BW	ET
ADJ WW	722
WR	ET
ADJ YW	1106
YR	ET
FRAME	6.0
SCROTAL	36.0

Open A 218S International G9807 is a bigger framed, long-spined cow bull. HD50k pending.



LOT 75



LOT 75

OPEN A 218S INATIONAL G9810

BIRTH DATE: **2/28/19** REG. #: **19637555**

CED	BW	WW	YW	CEM	MILK	MW	MARB	REA	FAT	\$W	\$F	\$B
0	3.2	50	90	2	21	44	0.25	0.34	0.034	41	83	111

S A V HARVESTOR 0338
S A V INTERNATIONAL 2020
 S A V EMBLYNETTE 5483

SITZ TRAVELER 8180
OPEN A 8180 218S
 JAYNBEE PRIDE RUBY 430F

S A V HERITAGE 6295
 S A V EMBLYNETTE 7749
 S A V 8180 TRAVELER 004
 S A V EMBLYNETTE 7260
 G D A R TRAVELER 71
 SITZ EVERELDA ENTENSE 1137
 THOMAS LATIGO
 PRIDE RUBY OF JAYNBEE 210

BW	ET
ADJ WW	762
WR	ET
ADJ YW	1176
YR	ET
FRAME	6.0
SCROTAL	37.0

Open A 218S International G9810 is a big-outlined, big-bodied bull with lots of length and depth. HD50k pending.



LOT 76



LOT 76

OPEN A A3199 DEADLINE G9135

BIRTH DATE: **3/24/19** REG. #: **19648461**

CED	BW	WW	YW	CEM	MILK	MW	MARB	REA	FAT	\$W	\$F	\$B
14	-1.5	49	80	9	16	-2	-0.01	0.59	0.009	52	79	101

O C C ANVIL 809A
O C C DEADLINE 775D
 O C C REVOLUTION ROSE 603Y

S CHISUM 6175
OPEN A CHM WENDY A3199
 OPEN A 943G WENDY 69W

O C C MISSING LINK 830M
 FCC BLACKCAP LADY 3810
 O C C LINEBRED 661L
 O C C REVOLUTION ROSE 743K
 S ALLIANCE 3313
 S GLORIA 464
 O C C GREAT PLAINS 943G
 OPEN A 878 6R

BW	68
ADJ WW	719
WR	111
ADJ YW	1041
YR	99
FRAME	4.0
SCROTAL	37.0

A smooth-shouldered, deep-ribbed, calving-ease OCC Deadline 775D son that also had some actual performance growth.



LOT 77



LOT 77

OPEN A A3172 MISS LINK G9129

BIRTH DATE: **3/16/19** REG. #: **19648459**

CED	BW	WW	YW	CEM	MILK	MW	MARB	REA	FAT	\$W	\$F	\$B
10	-0.2	56	92	4	22	51	-0.23	0.51	0.002	59	84	94
											BW	71
											ADJ WW	657
											WR	101
											ADJ YW	1167
											YR	111
											FRAME	4.0
											SCROTAL	35.0

O C C HEADLINER 661H
O C C MISSING LINK 830M
 O C C DIXIE ERICA 946K
 S A V BISMARCK 5682
OPEN A BIS CHASTITY A3172
 OPEN A 943G CHASTITY 156W

O C C EMBLAZON 854E
 O C C JUANADA 858F
 O C C GLORY 950G
 O C C DIXIE ERICA 816B
 G A R GRID MAKER
 S A V ABIGALE 0451
 O C C GREAT PLAINS 943G
 OPEN A DIRECT 119M

Open A A3172 Miss Link G9129 is a calving-ease bull that has muscle shape and some weaning performance with a 101 WW ratio.



LOT 78



LOT 78

OPEN A 28T REAR END G904

BIRTH DATE: **4/5/19** REG. #: **19652246**

CED	BW	WW	YW	CEM	MILK	MW	MARB	REA	FAT	\$W	\$F	\$B
1	1.7	36	63	4	24	-32	0.45	0.46	0.013	42	48	89
											BW	76
											ADJ WW	662
											WR	95
											ADJ YW	1017
											YR	96
											FRAME	4.0
											SCROTAL	37.0

O C C HOMER 650H
O C C REAR END 751R
 FCC REVOLUTION ROSE 995N
 BT RIGHT TIME 24J
OPEN A 24J 28T
 OPEN A 878 67P

O C C FOCUS 813F
 O C C DIXIE ERICA 816B
 O C C JOKER 620J
 O C C REVOLUTION ROSE 887H
 LEACHMAN RIGHT TIME
 SITZ EVERELDA ENTENSE 1905
 BON VIEW NEW DESIGN 878
 JAYN BEE KARAMA 587F

Open A 28T REAR END G904 is out of a solid BT Right Time 24J daughter, Open A 24J 28T daughter who has consistently produced bulls that have made it into the bull pen every time. At 12 years of age, she has stuck AI with every calf. Here is a really fancy-made, clean-throated bull that offers style, mass and phenotype.



LOT 79



LOT 79

OPEN A 8163U DONOVAN G9816

BIRTH DATE: **4/2/19** REG. #: **19650558**

CED	BW	WW	YW	CEM	MILK	MW	MARB	REA	FAT	\$W	\$F	\$B
9	0.5	54	96	3	21	34	0.34	0.27	-0.021	55	75	112
											BW	70
											ADJ WW	752
											WR	108
											ADJ YW	1113
											YR	105
											FRAME	4.0
											SCROTAL	35.0

O C C GREAT PLAINS 943G
O C C DONOVAN 854D
 O C C JUANADA 652Z
 KMK ALLIANCE 6595 187
OPEN A 187 BEATRICE 8163U
 OPEN A DIRECT 909M

N BAR EMULATION EXT
 DIXIE ERICA OF C H 1019
 O C C PAXTON 730P
 O C C JUANADA 723S
 SITZ ALLIANCE 6595
 G A R EXT 916
 EVENSON DIRECT DEPOSIT 054
 OPEN A BEATRICE 909A

Here is a low birth weight bull with some depth and thickness out of a KMK Alliance 187 daughter.



LOT 80



LOT 80

OPEN A 42W DEADLINE G938

BIRTH DATE: **3/30/19** REG. #: **19648497**

CED	BW	WW	YW	CEM	MILK	MW	MARB	REA	FAT	\$W	\$F	\$B
10	-0.1	38	66	5	24	9	-0.04	0.01	0.018	42	59	71

O C C ANVIL 809A
O C C DEADLINE 775D
 O C C REVOLUTION ROSE 603Y

H A R B CINCHA 829
OPEN A 829 EILEEN 42W
 OPEN A 187 194S

O C C MISSING LINK 830M
 FCC BLACKCAP LADY 3810
 O C C LINEBRED 661L
 O C C REVOLUTION ROSE 743K
 C H QUANTUM 3330
 H A R B JUMBOLEEN D03
 KMK ALLIANCE 6595 187
 JAYNBEE EILEEN 468F

BW	76
ADJ WW	712
WR	110
ADJ YW	1041
YR	98
FRAME	5.5
SCROTAL	36.0

Open A 42W Deadline G938 is a smooth-made, calving-ease bull.



LOT 81



LOT 81

OPEN A Z2200 THUMPER G9063

BIRTH DATE: **3/27/19** REG. #: **19648447**

CED	BW	WW	YW	CEM	MILK	MW	MARB	REA	FAT	\$W	\$F	\$B
6	1.8	45	80	6	26	31	-0.18	0.57	-0.005	47	65	80

O C C EUREKA 865E
O C C THUMPER 819T
 O C C DIXIE ERICA 954K

L T BANDWAGON 3105
OPEN A GLORIA Z2200
 OPEN A 829 GLORIA 67W

O C C BACKSTOP 888B
 BLACKBIRD OF R R 1204
 O C C ANCHOR 771A
 O C C DIXIE ERICA 907C
 LEACHMAN RIGHT TIME
 L T MS VIKINGS VALUE 0256
 H A R B CINCHA 829
 OPEN A 878 1R

BW	84
ADJ WW	701
WR	101
ADJ YW	1077
YR	98
FRAME	5.0
SCROTAL	35.0

Open A Z2200 Thumper G9063 had a 101 WW ratio in a large contemporary group.



LOT 82



LOT 82

OPEN A B206 REAR END G9216

BIRTH DATE: **4/2/19** REG. #: **19652240**

CED	BW	WW	YW	CEM	MILK	MW	MARB	REA	FAT	\$W	\$F	\$B
8	1.6	59	103	12	27	20	-0.10	0.36	-0.002	69	74	89

O C C HOMER 650H
O C C REAR END 751R
 FCC REVOLUTION ROSE 995N

TOMBSTONE 050
OPEN A 050 PRIDE RUBY B206
 OPEN A NW PRIDE RUBY X283

O C C FOCUS 813F
 O C C DIXIE ERICA 816B
 O C C JOKER 620J
 O C C REVOLUTION ROSE 887H
 SITZ UPWARD 307R
 MYTTY COUNTESS 906
 S A V NET WORTH 4200
 OPEN A 8180 218S

BW	93
ADJ WW	658
WR	101
ADJ YW	1124
YR	106
FRAME	5.0
SCROTAL	36.0

Open A B206 Rear End G9216 has calving-ease-deluxe genomic HD50K EPDs. He ranks in the top 3% for CED, BW and \$EN. Maternal is written all over this bull.



LOT 83



LOT 83

OPEN A C237 BEAST G9298

BIRTH DATE: **4/22/19** REG. #: **19658056**

CED	BW	WW	YW	CEM MILK	MW	MARB	REA	FAT	\$W	\$F	\$B	
7	-0.5	39	75	4	15	6	0.43	0.24	0.048	32	53	88
											BW	69
											ADJ WW	654
											WR	101
											ADJ YW	977
											YR	92
											FRAME	4.5
											SCROTAL	36.0

O C C REAR END 751R
O C C BEAST 709B
 O C C DIXIE ERICA 771R

OPEN A 17R EFFICIENT Y279
OPEN A 23X C237
 OPEN A MIF DORA 23X

O C C HOMER 650H
 FCC REVOLUTION ROSE 995N
 O C C MISSING LINK 830M
 O C C DIXIE ERICA 776M
 CAR EFFICIENT 534
 OPEN A 878 560N
 MYTTY IN FOCUS
 OPEN A 878 DORA 8140U

Open A C237 Beast G9298 is sired by OCC Beast 709B, who is a half brother to OCC Big Time 746Z. Beast was purchased by Open A in the 2016 Ohlde Cattle Company sale and is doing a great job for Open A.



LOT 84



LOT 84

OPEN A 97T BIG TIME G911

BIRTH DATE: **3/28/19** REG. #: **19650544**

CED	BW	WW	YW	CEM MILK	MW	MARB	REA	FAT	\$W	\$F	\$B	
-1	3.8	56	91	4	20	56	0.27	0.22	0.034	46	72	100
											BW	81
											ADJ WW	725
											WR	N/A
											ADJ YW	1131
											YR	107
											FRAME	4.6
											SCROTAL	35.0

O C C REAR END 751R
O C C BIG TIME 746Z
 O C C DIXIE ERICA 771R

SITZ TRAVELER 8180
OPEN A 8180 97T
 OPEN A KRYSTLE 69L

O C C HOMER 650H
 FCC REVOLUTION ROSE 995N
 O C C MISSING LINK 830M
 O C C DIXIE ERICA 776M
 G D A R TRAVELER 71
 SITZ EVERELDA ENTENSE 1137
 LEACHMAN RIGHT TIME
 OPEN A KRYSTLE 67A

Open A 97T Big Time G911 is a cow bull that posted a respectable 675# actual weaning weight.



LOT 85



LOT 85

OPEN A A3319 XTRA EASY G9163

BIRTH DATE: **3/25/19** REG. #: **19648467**

CED	BW	WW	YW	CEM MILK	MW	MARB	REA	FAT	\$W	\$F	\$B	
12	-0.4	47	85	15	22	13	0.12	0.14	0.052	51	70	87
											BW	76
											ADJ WW	665
											WR	102
											ADJ YW	1065
											YR	101
											FRAME	5.0
											SCROTAL	33.0

O C C NO PROBLEMS 52N
O C C X-TRA EASY 708X
 O C C DIXIE ERICA 678T

TOMBSTONE 050
OPEN A 050 KARAMA A3319
 OPEN A 187 39R

O C C FOCUS 813F
 O C C DIXIE ERICA 816B
 O C C TRAVELER 723Z
 O C C DIXIE ERICA 613L
 SITZ UPWARD 307R
 MYTTY COUNTESS 906
 KMK ALLIANCE 6595 187
 OPEN A JAYN BEE KARAMA 660

Here is a smooth-shouldered, small-headed bull who genomically ranks in the top 10% CED, 20% BW and 15% for \$EN.



LOT 86



LOT 86

OPEN A 110W DEADLINE G950

BIRTH DATE: **3/19/19** REG. #: **19648513**

CED	BW	WW	YW	CEM	MILK	MW	MARB	REA	FAT	\$W	\$F	\$B
9	0.6	40	74	7	15	45	0.08	0.41	0.007	28	79	103
											BW	74
											ADJ WW	636
											WR	91
											ADJ YW	1042
											YR	95
											FRAME	4.0
											SCROTAL	36.0

O C C ANVIL 809A
O C C DEADLINE 775D
 O C C REVOLUTION ROSE 603Y

 SITZ VALUE 7097
OPEN A 7097 HEROINE 110W
 OPEN A 004 31P

O C C MISSING LINK 830M
 FCC BLACKCAP LADY 3810
 O C C LINEBRED 661L
 O C C REVOLUTION ROSE 743K
 SITZ TRAVELER 6802
 SITZ EISA EVERGREEN 791
 S A V 8180 TRAVELER 004
 OPEN A DATELINE 78M

Open A 110W Deadline G950 is a moderate, calving-ease bull.



LOT 87



LOT 87

OPEN A 8X XTRA EASY G970

BIRTH DATE: **4/10/19** REG. #: **19648528**

CED	BW	WW	YW	CEM	MILK	MW	MARB	REA	FAT	\$W	\$F	\$B
2	3.4	53	92	7	28	61	-0.07	0.43	0.004	51	84	101
											BW	95
											ADJ WW	737
											WR	106
											ADJ YW	1131
											YR	107
											FRAME	5.0
											SCROTAL	37.0

R B ACTIVE DUTY 010
OPEN A Y229 ACTIVE DUTY C293
 OPEN A R001 PATRICIA Y229

 SINCLAIR NET PRESENT VALUE
OPEN A NPV ENCHANTRESS 8X
 OPEN A 878 ENCHANTRES 8183U

LCC NEW STANDARD
 B A LADY 6807 305
 KESSLERS FRONTMAN R001
 OPEN A 878 149R
 N BAR PRIME TIME D806
 IDEAL 4465 OF 6807 4286
 BON VIEW NEW DESIGN 878
 OPEN A ENCHANTRESS 830

Here is a smooth-made growth bull that posted an adjusted 737 pound WW and 109 WW ratio in a large contemporary group.



LOT 88



LOT 88

OPEN A E99 DAYBREAK G9488

BIRTH DATE: **3/10/19** REG. #: **19648511**

CED	BW	WW	YW	CEM	MILK	MW	MARB	REA	FAT	\$W	\$F	\$B
8	-0.1	27	45	3	19	-50	0.00	0.22	-0.006	31	43	61
											BW	70
											ADJ WW	487
											WR	97
											ADJ YW	965
											YR	98
											FRAME	3.0
											SCROTAL	35.0

O C C HOMER 650H
O C C DAYBREAK 743D
 O C C JUANADA 710K

 O C C JET STREAM 825J
OPEN A JET STR PATRICA E99
 OPEN A 338 21T

O C C FOCUS 813F
 O C C DIXIE ERICA 816B
 O C C ANCHOR 771A
 O C C JUANADA 709Z
 O C C EMBLAZON 854E
 O C C JUANADA 968G
 HYLINE RIGHT TIME 338
 OPEN A VALUE 22P

This is a calving-ease bull out of a first-calf heifer, Open A Jet STR Patrica E99.



LOT 89



LOT 89

OPEN A D146 DEVOTED G9379

BIRTH DATE: **4/2/19** REG. #: **19648496**

CED	BW	WW	YW	CEM	MILK	MW	MARB	REA	FAT	\$W	\$F	\$B
12	-2.6	45	68	13	24	-12	0.04	-0.02	0.029	61	29	43

O C C ALPHA 700A
O C C DEVOTED 794D
 O C C DIXIE ERICA 713B

O C C X-TRA EASY 708X
OPEN A XTRA CASSANDRA D146
 OPEN A TOMB GASARANDA B127

O C C X-TRA EASY 708X
 O C C DIXIE ERICA 806Y
 O C C REAR END 751R
 O C C DIXIE ERICA 771R
 O C C NO PROBLEMS 52N
 O C C DIXIE ERICA 678T
 TOMBSTONE 050
 OPEN A CASSANDRA Y236

BW	62
ADJ WW	606
WR	111
ADJ YW	942
YR	89
FRAME	4.0
SCROTAL	33.0

Open A D146 Devoted G9379 is a bull that has calving ease on both sides of his pedigree. He posts a -2.6 BW EPD ranking him in the top 2% for BW and a .26 CED. Heifer bull.



LOT 90



LOT 90

OPEN A D601 DEVOTED G9468

BIRTH DATE: **4/4/19** REG. #: **19648506**

CED	BW	WW	YW	CEM	MILK	MW	MARB	REA	FAT	\$W	\$F	\$B
15	-3.3	27	49	8	25	-24	-0.18	-0.04	0.022	38	29	33

O C C ALPHA 700A
O C C DEVOTED 794D
 O C C DIXIE ERICA 713B

O C C TRANSFORMATION 680T
OPEN A TRANS PATRICIA D601
 OPEN A 878 13R

O C C X-TRA EASY 708X
 O C C DIXIE ERICA 806Y
 O C C REAR END 751R
 O C C DIXIE ERICA 771R
 O C C FOCUS 813F
 O C C DIXIE ERICA 603N
 BON VIEW NEW DESIGN 878
 OPEN A DATELINE 92N

BW	71
ADJ WW	674
WR	124
ADJ YW	906
YR	86
FRAME	3.0
SCROTAL	34.0

Open A D601 Devoted G9468 is out of a really nice, efficient young dam, Open A Trans Patricia D601 that is doing a great job. Here is a definite calving-ease bull that also has the ability to grow as indicated by an impressive 124 WW ratio.



LOT 91



LOT 91

OPEN A Y95 ALABAMA G997

BIRTH DATE: **4/8/19** REG. #: **19648537**

CED	BW	WW	YW	CEM	MILK	MW	MARB	REA	FAT	\$W	\$F	\$B
6	1.3	51	80	9	27	34	0.02	0.42	0.013	59	61	81

O C C MODERATOR 825M
O C C ALABAMA 807A
 BHA MISS EUREKA 519

L T BANDWAGON 3105
OPEN A BW GRACIE 95Y
 OPEN A 6169 GRACIE 8177U

O C C HEADLINER 661H
 O C C DIXIE ERICA 845K
 O C C EUREKA 865E
 BHA EVONNE 180
 LEACHMAN RIGHT TIME
 L T MS VIKINGS VALUE 0256
 SITZ RAINMAKER 6169
 OPEN A GRACIE 799A

BW	71
ADJ WW	794
WR	114
ADJ YW	1155
YR	109
FRAME	5.0
SCROTAL	37.0

Open A Y95 Alabama G997 is a moderate BW and high wean weight ratio son of OCC Alabama 807A.



LOT 92



LOT 92

OPEN A B194 DEADLINE G9214

BIRTH DATE: **3/27/19** REG. #: **19648474**

CED	BW	WW	YW	CEM	MILK	MW	MARB	REA	FAT	\$W	\$F	\$B
14	-1.9	34	68	5	13	7	0.28	0.31	0.046	25	66	95

O C C ANVIL 809A
O C C DEADLINE 775D
 O C C REVOLUTION ROSE 603Y

S A V FINAL ANSWER 0035
OPEN A FA PRIDE RUBY B194
 OPEN A 218S PRIDE RUBY 259X

O C C MISSING LINK 830M
 FCC BLACKCAP LADY 3810
 O C C LINEBRED 661L
 O C C REVOLUTION ROSE 743K
 SITZ TRAVELER 8180
 S A V EMULOUS 8145
 LEACHMAN RIGHT TIME
 OPEN A 8180 218S

BW	70
ADJ WW	582
WR	90
ADJ YW	1068
YR	102
FRAME	4.0
SCROTAL	37.0

Open A B194 Deadline G9214 has calving-ease-deluxe genomic HD50K EPDs. He ranks in the top 4% for CED, BW and \$EN. Maternal written all over this bull.



LOT 93



LOT 93

OPEN A B208 BIG TIME G9217

BIRTH DATE: **4/20/19** REG. #: **19648475**

CED	BW	WW	YW	CEM	MILK	MW	MARB	REA	FAT	\$W	\$F	\$B
2	2.3	57	82	4	19	14	0.22	0.14	0.072	59	41	62

O C C MODERATOR 825M
OPEN A 101X MOD D430
 OPEN A 702 KRSTLE 101X

O C C PAXTON 730P
OPEN A PAX GRACIE B208
 OPEN A NPU GRACIE 29X

O C C HEADLINER 661H
 O C C DIXIE ERICA 845K
 B C MID EMBLAZON 854E 702
 OPEN A 878 178S
 O C C FOCUS 813F
 O C C BLACKBIRD 736K
 SINCLAIR NET PRESENT VALUE
 OPEN A 004 GRACIE 8103U

BW	89
ADJ WW	759
WR	117
ADJ YW	992
YR	94
FRAME	4.0
SCROTAL	36.0

An Open A 101X Mod D430 son that is a performance bull with a \$EN ranking in the top 10%.



LOT 94



LOT 94

OPEN A D306 BENSON G9409

BIRTH DATE: **4/17/19** REG. #: **19648498**

CED	BW	WW	YW	CEM	MILK	MW	MARB	REA	FAT	\$W	\$F	\$B
10	0.4	45	69	8	25	-16	0.37	0.05	0.045	58	43	72

O C C MODERATOR 825M
O C C BENSON 684B
 O C C DIXIE ERICA 605K

APEX WINDY 078
OPEN A WNDY COQUETTE D306
 OPEN A 050 COQUETTE Z2166

O C C HEADLINER 661H
 O C C DIXIE ERICA 845K
 PAPA FORTE 1921
 O C C DIXIE ERICA 921D
 H A R B WINDY 702 JH
 APEXETTE LUCY 6037
 TOMBSTONE 050
 OPEN A 2061 84R

BW	68
ADJ WW	663
WR	122
ADJ YW	967
YR	91
FRAME	4.0
SCROTAL	36.0

Here is another calving-ease bull that has length of body and a nice profile.



LOT 95



LOT 95

OPEN A Z2234 REAR END G9071

BIRTH DATE: **4/10/19** REG. #: **19652243**

CED	BW	WW	YW	CEM	MILK	MW	MARB	REA	FAT	\$W	\$F	\$B
-1	2.9	56	88	3	17	-13	0.35	0.07	0.014	55	71	103

O C C HOMER 650H
O C C REAR END 751R
 FCC REVOLUTION ROSE 995N
 TOMBSTONE 050
OPEN A 050 HEROINE Z2234
 OPEN A 878 23T

O C C FOCUS 813F
 O C C DIXIE ERICA 816B
 O C C JOKER 620J
 O C C REVOLUTION ROSE 887H
 SITZ UPWARD 307R
 MYTTY COUNTESS 906
 BON VIEW NEW DESIGN 878
 OPEN A 004 26P

BW	94
ADJ WW	726
WR	104
ADJ YW	1100
YR	104
FRAME	5.0
SCROTAL	35.0

Open A Z2234 Rear End G9071 ranks in the top 2% for \$EN which is a maternal EPD that is expressed in dollar savings per cow per year and assesses differences in cow energy requirements as an expected dollar savings difference in daughters of sires. Components for computing the cow \$EN savings difference include lactation energy requirements and energy costs associated with differences in mature cow size.



LOT 96



LOT 96

OPEN A A3159 DEADLINE G9128

BIRTH DATE: **3/28/19** REG. #: **19648458**

CED	BW	WW	YW	CEM	MILK	MW	MARB	REA	FAT	\$W	\$F	\$B
4	1.1	52	82	3	18	17	0.24	0.52	-0.004	53	65	99

O C C ANVIL 809A
O C C DEADLINE 775D
 O C C REVOLUTION ROSE 603Y
 OPEN A RIGHT TIME 177A
OPEN A FAWN A3159
 OPEN A MIF FAWN 119W

O C C MISSING LINK 830M
 FCC BLACKCAP LADY 3810
 O C C LINEBRED 661L
 O C C REVOLUTION ROSE 743K
 LEACHMAN RIGHT TIME
 K&S BETH 121
 MYTTY IN FOCUS
 OPEN A 2061 68P

BW	81
ADJ WW	657
WR	101
ADJ YW	1082
YR	102
FRAME	5.0
SCROTAL	37.0

Open A A3159 is moderate framed with lots of volume and width.



LOT 97



LOT 97

OPEN A Z2211 BIG TIME G9067

BIRTH DATE: **4/7/19** REG. #: **19648448**

CED	BW	WW	YW	CEM	MILK	MW	MARB	REA	FAT	\$W	\$F	\$B
5	3.0	59	95	5	23	49	0.06	0.66	-0.038	57	63	94

O C C REAR END 751R
O C C BIG TIME 746Z
 O C C DIXIE ERICA 771R
 H A IMAGE MAKER 0415
OPEN A IM HEROINE Z2211
 OPEN A 24J HEROINE 869U

O C C HOMER 650H
 FCC REVOLUTION ROSE 995N
 O C C MISSING LINK 830M
 O C C DIXIE ERICA 776M
 HERO 6267 OF R R 2418
 H A RITO BLACKCAP 9038
 BT RIGHT TIME 24J
 OPEN A 878 16R

BW	82
ADJ WW	629
WR	90
ADJ YW	1035
YR	98
FRAME	5.0
SCROTAL	35.0

Open A Z2211 Big Time G9067 is a performance bull that has thickness and eye appeal.



LOT 98



LOT 98

OPEN A 139W DEADLINE G958

BIRTH DATE: **3/20/19** REG. #: **19648518**

CED	BW	WW	YW	CEM	MILK	MW	MARB	REA	FAT	\$W	\$F	\$B
6	0.9	49	79	-1	27	20	0.35	0.35	-0.013	59	56	94
											BW	79
											ADJ WW	674
											WR	97
											ADJ YW	1055
											YR	96
											FRAME	5.0
											SCROTAL	35.0

O C C ANVIL 809A
O C C DEADLINE 775D
 O C C REVOLUTION ROSE 603Y

 H A IMAGE MAKER 0415
OPEN A 0415 HEROINE 139W
 OPEN A DATE 511N

O C C MISSING LINK 830M
 FCC BLACKCAP LADY 3810
 O C C LINEBRED 661L
 O C C REVOLUTION ROSE 743K
 HERO 6267 OF R R 2418
 H A RITO BLACKCAP 9038
 CONNEALY DATELINE
 OPEN A FOCUS 511

Open A 139W Deadline G958 an eye-appealing, thick-made bull that follows the type and kind of his sire.



LOT 99



LOT 99

OPEN A A3202 BIG TIME G9136

BIRTH DATE: **4/5/19** REG. #: **19656696**

CED	BW	WW	YW	CEM	MILK	MW	MARB	REA	FAT	\$W	\$F	\$B
7	1.1	53	84	8	27	25	0.31	0.39	0.030	63	68	101
											BW	75
											ADJ WW	639
											WR	98
											ADJ YW	1065
											YR	101
											FRAME	5.0
											SCROTAL	37.0

O C C REAR END 751R
O C C BIG TIME 746Z
 O C C DIXIE ERICA 771R

 OPEN A 829 CINCHA 92W
OPEN A 92W PATRICIA A3202
 OPEN A 7097 PATRICIA 74W

O C C HOMER 650H
 FCC REVOLUTION ROSE 995N
 O C C MISSING LINK 830M
 O C C DIXIE ERICA 776M
 H A R B CINCHA 829
 OPEN A 878 21R
 SITZ VALUE 7097
 OPEN A 878 44R

Open A A202 Big Time G9136 is an easy-fleshing bull will lots of rib and a moderate frame.



LOT 100



LOT 100

OPEN A B171 THUMPER G9208

BIRTH DATE: **3/26/19** REG. #: **19648472**

CED	BW	WW	YW	CEM	MILK	MW	MARB	REA	FAT	\$W	\$F	\$B
4	1.0	35	63	3	29	15	-0.09	0.14	0.027	42	55	64
											BW	81
											ADJ WW	619
											WR	95
											ADJ YW	1073
											YR	102
											FRAME	4.0
											SCROTAL	35.0

O C C EUREKA 865E
O C C THUMPER 819T
 O C C DIXIE ERICA 954K

 TOMBSTONE 050
OPEN A 050 GLORIA B171
 OPEN A 6032 GLORIA 132X

O C C BACKSTOP 888B
 BLACKBIRD OF R R 1204
 O C C ANCHOR 771A
 O C C DIXIE ERICA 907C
 SITZ UPWARD 307R
 MYTTY COUNTESS 906
 21AR OUTFITTER 6032
 OPEN A 878 50R

A moderate birth weight OCC Thumper 819T son that has length of rib and loin.



LOT 101



LOT 101

OPEN A C520 WRK OF ART G9338

BIRTH DATE: **4/3/19** REG. #: **19648492**

CED	BW	WW	YW	CEM	MILK	MW	MARB	REA	FAT	\$W	\$F	\$B
0	2.6	66	118	5	27	89	0.20	0.59	0.002	64	83	115

O C C WORK OF ART 766W
OPEN A Z2236 WART D330
 OPEN A UP KRSTLE Z2236

HOOVER DAM
OPEN A HD KARAMA C520
 OPEN A 050 KARAMA A3319

O C C GREAT PLAINS 943G
 O C C DIXIE ERICA 662J
 SITZ UPWARD 307R
 OPEN A 022S
 SYDGEN C C & 7
 ERICA OF ELLSTON C124
 TOMBSTONE 050
 OPEN A 187 39R

BW	83
ADJ WW	635
WR	98
ADJ YW	1035
YR	98
FRAME	5.0
SCROTAL	35.0

Open A C520 WRK of Art G9338 is a cow bull that has nice growth numbers ranking in the top 20% for WW and top 15% for YW. This is a nice side profiling bull with volume and mass.



LOT 102



LOT 102

OPEN A A3220 XTRA EASY G9139

BIRTH DATE: **3/30/19** REG. #: **19648462**

CED	BW	WW	YW	CEM	MILK	MW	MARB	REA	FAT	\$W	\$F	\$B
5	2.2	43	71	7	32	-5	0.24	-0.24	0.037	56	33	52

O C C NO PROBLEMS 52N
O C C X-TRA EASY 708X
 O C C DIXIE ERICA 678T

APEX WINDY 078
OPEN A WNDY ENCHANTRESSA3220
 OPEN A 6595 ENCHANTRESS 8104

O C C FOCUS 813F
 O C C DIXIE ERICA 816B
 O C C TRAVELER 723Z
 O C C DIXIE ERICA 613L
 H A R B WINDY 702 JH
 APEXETTE LUCY 6037
 SITZ ALLIANCE 6595
 OPEN A 004 83P

BW	89
ADJ WW	588
WR	91
ADJ YW	982
YR	93
FRAME	4.8
SCROTAL	38.0

Open A A220 Xtra Easy G9139 is a level-topped, long-spined bull that has some depth of rib.



LOT 103



LOT 103

OPEN A 83W DEADLINE G947

BIRTH DATE: **3/18/19** REG. #: **19648508**

CED	BW	WW	YW	CEM	MILK	MW	MARB	REA	FAT	\$W	\$F	\$B
2	2.2	53	89	1	9	31	0.06	0.43	-0.003	36	67	91

O C C ANVIL 809A
O C C DEADLINE 775D
 O C C REVOLUTION ROSE 603Y

H A IMAGE MAKER 0415
OPEN A 0415 PATRICIA 83W
 OPEN A 878 140R

O C C MISSING LINK 830M
 FCC BLACKCAP LADY 3810
 O C C LINEBRED 661L
 O C C REVOLUTION ROSE 743K
 HERO 6267 OF R R 2418
 H A RITO BLACKCAP 9038
 BON VIEW NEW DESIGN 878
 OPEN A PATRICIA 631

BW	78
ADJ WW	675
WR	97
ADJ YW	974
YR	89
FRAME	3.0
SCROTAL	35.0

Open A 83W Deadline G947 is a cow bull that has volume and depth of rib.



LOT 104



LOT **104**

OPEN A 8183U REAR END G928

BIRTH DATE: **4/3/19** REG. #: **19659008**

CED	BW	WW	YW	CEM	MILK	MW	MARB	REA	FAT	\$W	\$F	\$B
6	2.9	41	68	7	19	-9	0.20	0.28	-0.002	37	61	90

O C C HOMER 650H
O C C REAR END 751R
 FCC REVOLUTION ROSE 995N

BON VIEW NEW DESIGN 878
OPEN A 878 ENCHANTRES 8183U
 OPEN A ENCHANTRESS 830

O C C FOCUS 813F
 O C C DIXIE ERICA 816B
 O C C JOKER 620J
 O C C REVOLUTION ROSE 887H
 B/R NEW DESIGN 036
 BON VIEW GAMMER 85
 OPEN A RIGHT TIME 177A
 JAYN BEE ENCHANTRESS 489F

BW	89
ADJ WW	667
WR	96
ADJ YW	1106
YR	105
FRAME	4.7
SCROTAL	37.0

Open A 8183U Rear End G928 is an attractive bull with shape, and ranks in the top 3% for \$EN.



LOT 105



LOT **105**

OPEN A B4419 REAR END G9264

BIRTH DATE: **3/27/19** REG. #: **19652239**

CED	BW	WW	YW	CEM	MILK	MW	MARB	REA	FAT	\$W	\$F	\$B
8	1.5	43	80	4	27	0	0.23	0.20	0.019	51	49	76

O C C HOMER 650H
O C C REAR END 751R
 FCC REVOLUTION ROSE 995N

APEX WINDY 078
OPEN A 078 PRIDE RUBY B4419
 OPEN A 8180 218S

O C C FOCUS 813F
 O C C DIXIE ERICA 816B
 O C C JOKER 620J
 O C C REVOLUTION ROSE 887H
 H A R B WINDY 702 JH
 APEXETTE LUCY 6037
 SITZ TRAVELER 8180
 JAYN BEE PRIDE RUBY 430F

BW	83
ADJ WW	636
WR	98
ADJ YW	1076
YR	102
FRAME	4.0
SCROTAL	35.0

Open A B4419 Rear End G9264 is a moderate birth weight bull that has a really nice outline.



LOT 106



LOT **106**

OPEN A 312X XTRA EASY G991

BIRTH DATE: **3/22/19** REG. #: **19648535**

CED	BW	WW	YW	CEM	MILK	MW	MARB	REA	FAT	\$W	\$F	\$B
11	-0.4	25	52	13	18	-4	0.43	-0.01	0.013	18	32	66

O C C NO PROBLEMS 52N
O C C X-TRA EASY 708X
 O C C DIXIE ERICA 678T

H A R B CINCHA 829
OPEN A 829 MISS WESTY 312X
 K R MISS WESTY 2717

O C C FOCUS 813F
 O C C DIXIE ERICA 816B
 O C C TRAVELER 723Z
 O C C DIXIE ERICA 613L
 C H QUANTUM 3330
 H A R B JUMBOLEEN D03
 HOFF WESTWIND S C 070
 K R ELINE 717

BW	80
ADJ WW	672
WR	96
ADJ YW	1002
YR	91
FRAME	5.0
SCROTAL	37.0

Open A 312X Xtra Easy G991 is a calving-ease Xtra Easy son that offers length of body.



LOT 107



LOT 107

OPEN A A3196 MODERATOR G9134

BIRTH DATE: **4/12/19** REG. #: **19648460**

CED	BW	WW	YW	CEM	MILK	MW	MARB	REA	FAT	\$W	\$F	\$B
7	1.0	46	75	10	33	-7	0.10	0.23	0.035	64	78	98

O C C MODERATOR 825M
OPEN A 101X MOD D430
 OPEN A 702 KRYSTLE 101X

SITZ UPWARD 307R
OPEN A UP KRYSTLE A3196
 OPEN A 829 KRYSTLE 50W

O C C HEADLINER 661H
 O C C DIXIE ERICA 845K
 B C MID EMBLAZON 854E 702
 OPEN A 878 178S
 CONNEALY ONWARD
 SITZ HENRIETTA PRIDE 81M
 H A R B CINCHA 829
 OPEN A 004 820S

BW	72
ADJ WW	635
WR	98
ADJ YW	995
YR	94
FRAME	4.0
SCROTAL	36.0

Open A A3196 Moderator G9134 is a bull that has an excellent dam, Open A Up Krystle A3196, who has had heifer calves retained and all of her bull calves have made the sale.



LOT 108



LOT 108

OPEN A Z2187 CHAMP G9061

BIRTH DATE: **4/23/19** REG. #: **19648446**

CED	BW	WW	YW	CEM	MILK	MW	MARB	REA	FAT	\$W	\$F	\$B
10	0.9	56	100	5	21	31	-0.01	0.53	-0.005	58	81	103

O C C ZUK 681Z
O C C CHAMP 777C
 O C C DIXIE ERICA 778T

TOMBSTONE 050
OPEN A 050 KRYSTLE Z2187
 OPEN A 878 178S

O C C EUREKA 865E
 O C C DIXIE ERICA 645U
 O C C EMBLAZON 854E
 O C C DIXIE ERICA 960H
 SITZ UPWARD 307R
 MYTTY COUNTESS 906
 BON VIEW NEW DESIGN 878
 OPEN A KRYSTLE 69L

BW	90
ADJ WW	809
WR	116
ADJ YW	1099
YR	104
FRAME	4.0
SCROTAL	38.0

Here is a son out of the cleanup sire OCC Champ 777C who is doing a really good job. Open A Z2187 Champ G9061 is a cow bull that had a 116 WW ratio.



O C C CHAMP 777C



OPEN A 8180 179T



LOT 109



LOT 109

OPEN A 99T BADGER F828

BIRTH DATE: **3/27/18** REG. #: **19328468**

CED	BW	WW	YW	CEM	MILK	MW	MARB	REA	FAT	\$W	\$F	\$B
3	1.8	46	86	5	25	37	0.09	0.43	0.010	44	80	104

COLEMAN CHARLO 0256
B/C BLAIR BADGER 5023
 DUFF AMIGO 927K JUANADA 071

S A V 8180 TRAVELER 004
OPEN A 004 99T
 OPEN A KRYSTLE 69L

O C C PAXTON 730P
 BOHI ABIGALE 6014
 DUFF AMIGO 815
 O C C JUANADA 927K
 SITZ TRAVELER 8180
 BOYD FOREVER LADY 8003
 LEACHMAN RIGHT TIME
 OPEN A KRYSTLE 67A

BW	85
ADJ WW	565
WR	88
ADJ YW	1087
YR	100
FRAME	4.0
SCROTAL	32.0

Open A 99T Badger F828 is an attractive, smooth designed bull out of a new sire for Open A, B/C Blair Badger.



LOT 110



LOT 110

OPEN A 145W BIG TIME F885

BIRTH DATE: **3/26/18** REG. #: **19320817**

CED	BW	WW	YW	CEM	MILK	MW	MARB	REA	FAT	\$W	\$F	\$B
5	2.8	39	73	7	12	37	0.32	0.18	0.002	16	49	82

O C C REAR END 751R
O C C BIG TIME 746Z
 O C C DIXIE ERICA 771R

 O C C GREAT PLAINS 943G
OPEN A 943G LADY FOREVER 145
 STOCKMAN 902N

O C C HOMER 650H
 FCC REVOLUTION ROSE 995N
 O C C MISSING LINK 830M
 O C C DIXIE ERICA 776M
 N BAR EMULATION EXT
 DIXIE ERICA OF C H 1019
 TC STOCKMAN 365
 L A LADY FOREVER 902

BW	85
ADJ WW	616
WR	98
ADJ YW	1000
YR	N/A
FRAME	4.0
SCROTAL	35.0

Open A 145W Big Time F885 is a moderate birth weight EPD bull. He offers style and length of body.



LOT 111



LOT 111

OPEN A Y187 FANE F8138

BIRTH DATE: **4/17/18** REG. #: **19662491**

CED	BW	WW	YW	CEM	MILK	MW	MARB	REA	FAT	\$W	\$F	\$B
12	-0.3	32	56	10	24	3	0.20	0.39	0.046	35	68	93

O C C MODERATOR 825M
O C C BENSON 684B
 O C C DIXIE ERICA 605K

 SITZ DASH 10277
OPEN A DASH KARAMA Y187
 OPEN A 187 39R

O C C HEADLINER 661H
 O C C DIXIE ERICA 845K
 PAPA FORTE 1921
 O C C DIXIE ERICA 921D
 SITZ UPWARD 307R
 SITZ EVERELDA ENTENSE 2665
 KMK ALLIANCE 6595 187
 OPEN A JAYN BEE KARAMA 660

BW	70
ADJ WW	581
WR	91
ADJ YW	852
YR	N/A
FRAME	4.0
SCROTAL	34.0

Open A Y187 FANE F8138 is a young heifer bull that has a 70# actual birth weight and 86 BW ratio. His maternal pedigree has performance traits with KMK Alliance 6595 187 and Sitz Upward 307R in the background.



LOT 112



LOT 112

OPEN A Z2166 LINK F8190

BIRTH DATE: **3/29/18** REG. #: **19320790**

CED	BW	WW	YW	CEM	MILK	MW	MARB	REA	FAT	\$W	\$F	\$B
7	0.8	45	71	6	28	-16	0.41	0.16	0.050	60	50	82

O C C HEADLINER 661H
O C C MISSING LINK 830M
 O C C DIXIE ERICA 946K

TOMBSTONE 050
OPEN A 050 COQUETTE Z2166
 OPEN A 2061 84R

O C C EMBLAZON 854E
 O C C JUANADA 858F
 O C C GLORY 950G
 O C C DIXIE ERICA 816B
 SITZ UPWARD 307R
 MYTTY COUNTESS 906
 S A V 5175 BANDO 2061
 JAYNBEE COQUETTE 24F

BW	90
ADJ WW	615
WR	96
ADJ YW	1007
YR	94
FRAME	4.0
SCROTAL	34.0

Open A Z2166 Link F8190 is a long-bodied, long-hipped bull that ranks in the top 40% BW and 30% \$W.



LOT 113



LOT 113

OPEN A Z2211 THUMPER F8203

BIRTH DATE: **4/3/18** REG. #: **19320792**

CED	BW	WW	YW	CEM	MILK	MW	MARB	REA	FAT	\$W	\$F	\$B
2	5.1	65	109	-2	24	52	0.33	0.66	-0.019	57	83	125

O C C EUREKA 865E
O C C THUMPER 819T
 O C C DIXIE ERICA 954K

H A IMAGE MAKER 0415
OPEN A IM HEROINE Z2211
 OPEN A 24J HEROINE 869U

O C C BACKSTOP 888B
 BLACKBIRD OF R R 1204
 O C C ANCHOR 771A
 O C C DIXIE ERICA 907C
 HERO 6267 OF R R 2418
 H A RITO BLACKCAP 9038
 BT RIGHT TIME 24J
 OPEN A 878 16R

BW	104
ADJ WW	634
WR	99
ADJ YW	1048
YR	N/A
FRAME	5.0
SCROTAL	35.0

Open A Z2211 Thumper F8203 is a performance bull that posts a respectable 63 WW and 105 YW EPD.



LOT 114



LOT 114

OPEN A Z2220 GOLD F8206

BIRTH DATE: **3/29/18** REG. #: **19320793**

CED	BW	WW	YW	CEM	MILK	MW	MARB	REA	FAT	\$W	\$F	\$B
9	0.6	61	110	13	23	83	0.04	0.37	0.016	59	81	102

NICHOLS GOOD AS GOLD W121
NICHOLS GOOD AS GOLD Z103
 NICHOLS PRIDE W219

MYTTY IN FOCUS
OPEN A MIF HEROINE Z2220
 OPEN A 004 26P

NICHOLS STEADFAST T139
 NICHOLS LULA S92
 NICHOLS QUIET LAD T9
 NICHOLS PRIDE S134
 S A F FOCUS OF R
 MYTTY COUNTESS 906
 S A V 8180 TRAVELER 004
 OPEN A HEROINE 52M

BW	81
ADJ WW	643
WR	101
ADJ YW	1123
YR	105
FRAME	5.0
SCROTAL	34.0

Open A Z2220 Gold F8206 is a complete, long-bodied bull that has a really nice birth-to-wean weight spread.



LOT 115



LOT 115

OPEN A A3424 G PLAINS F8312

BIRTH DATE: **3/27/18** REG. #: **19320811**

CED	BW	WW	YW	CEM	MILK	MW	MARB	REA	FAT	\$W	\$F	\$B
7	0.3	44	78	13	34	27	-0.19	0.53	-0.008	58	69	83
											BW	87
											ADJ WW	650
											WR	101
											ADJ YW	1095
											YR	102
											FRAME	4.0
											SCROTAL	34.0

N BAR EMULATION EXT
O C C GREAT PLAINS 943G
DIXIE ERICA OF C H 1019

SUMMITCREST COMPLETE 1P55
OPEN A 1P55 OAKLEAF A3424
OPEN A 004 187S

EMULATION N BAR 5522
N BAR PRIMROSE 2424
PBC 707 1M F0203
DIXIE ERICA OF C H 615
C F RIGHT DESIGN 1802
SUMMITCREST ELBA 1M17
S A V 8180 TRAVELER 004
S A V OAKLEAF 293

Open A A3424 Thumper F8312 is out of the donor dam, Open A 004 187S, who is a daughter of S A V Oakleaf 293 who was in the Schaff Angus Valley embryo program years ago.



LOT 116



LOT 116

OPEN A B385 THUMPER F8405

BIRTH DATE: **4/3/18** REG. #: **19330212**

CED	BW	WW	YW	CEM	MILK	MW	MARB	REA	FAT	\$W	\$F	\$B
2	3.1	37	59	-1	18	-18	0.05	0.21	0.034	31	34	51
											BW	93
											ADJ WW	586
											WR	92
											ADJ YW	1013
											YR	94
											FRAME	3.0
											SCROTAL	35.0

O C C EUREKA 865E
O C C THUMPER 819T
O C C DIXIE ERICA 954K

R B ACTIVE DUTY 010
OPEN A AD FAWN B385
OPEN A 878 55R

O C C BACKSTOP 888B
BLACKBIRD OF R R 1204
O C C ANCHOR 771A
O C C DIXIE ERICA 907C
LCC NEW STANDARD
B A LADY 6807 305
BON VIEW NEW DESIGN 878
JAYN BEE FAWN 413F

Open A B385 Thumper F8405 is a really nice phenotype package out of OCC Thumper and 819T. You have to like the clean front end and square hip on this young calf.



LOT 117



LOT 117

OPEN A C359 FRANKIE F8470

BIRTH DATE: **4/12/18** REG. #: **19371604**

CED	BW	WW	YW	CEM	MILK	MW	MARB	REA	FAT	\$W	\$F	\$B
8	0.8	33	59	4	26	6	0.16	0.16	0.022	36	50	73
											BW	80
											ADJ WW	673
											WR	94
											ADJ YW	1030
											YR	91
											FRAME	4.0
											SCROTAL	32.0

O C C WORK OF ART 766W
O C C CAJUN 616C
O C C DIXIE ERICA 605K

S A V REGISTRY 2831
OPEN A 2831 KRYSTLE C359
OPEN A UP KRYSTLE Z2161

O C C GREAT PLAINS 943G
O C C DIXIE ERICA 662J
PAPA FORTE 1921
O C C DIXIE ERICA 921D
RITO 707 OF IDEAL 3407 7075
S A V MADAME PRIDE 0075
SITZ UPWARD 307R
OPEN A BUSHWACKER 156R

This massive cow bull has lots of spring of rib and depth of body out of a young dam, Open A 2831 Krystle C359.



LOT 118



LOT 118

OPEN A 2P RIGHT TIME F8918

BIRTH DATE: **3/27/18** REG. #: **19320823**

CED	BW	WW	YW	CEM	MILK	MW	MARB	REA	FAT	\$W	\$F	\$B
10	-1.5	31	46	4	30	1	0.41	-0.13	0.055	45	35	63

N BAR EMULATION EXT
LEACHMAN RIGHT TIME
LEACHMAN ERICA 0025

B A R EXT TRAVELER 205
OPEN A EXT 2P
OPEN A MISS GOLD 239A

EMULATION N BAR 5522
N BAR PRIMROSE 2424
TEHAMA BANDO 155
LEACHMAN ERICA 8058
N BAR EMULATION EXT
B A R QUEEN TRAVELER 3015
JAYNBEE F TRAVELER 433F
MISS GOLD 106

BW	ET
ADJ WW	741
WR	ET
ADJ YW	1215
YR	ET
FRAME	5.0
SCROTAL	38.0

Open A 2P Right Time F8918 offers old but solid genetics in Leachman Right Time and BAR Ext 205. This calving-ease bull ranks in the top 5% for birth weight and 30% for CED. His dam, Open A Ext 2P, was a long-time donor and was finally retired last year. This bull can be used on heifers and yet has performance to use on cows.



LOT 119



LOT 119

OPEN A Y433 FREDDIE F8166

BIRTH DATE: **4/13/18** REG. #: **N/A**

CED	BW	WW	YW	CEM	MILK	MW	MARB	REA	FAT	\$W	\$F	\$B

UNKNOWN SIRE

TC GRIDIRON 258
OPEN A GI RACHEL Y433
SSAF HC RACHEL 265

G A R GRID MAKER
TC BLACKBIRD 7049
HOFF HEAD OF THE CLASS SC534
S S A F RACHEL D 302

BW	
ADJ WW	660
WR	N/A
ADJ YW	1035
YR	N/A
FRAME	
SCROTAL	36.0

Commercial Bull. OPEN A Y433 FREDDIE F8166 is a moderate birth weight bull whose dam, Open A GI Rachel Y433, is a daughter of the great maternal donor dam, SSAF HC Rachel 265.



LOT 120



LOT 120

OPEN A A375 THUMPER F8246

BIRTH DATE: **3/25/18** REG. #:

CED	BW	WW	YW	CEM	MILK	MW	MARB	REA	FAT	\$W	\$F	\$B

O C C EUREKA 865E
O C C THUMPER 819T
O C C DIXIE ERICA 954K

OPEN A LADY FOREVER A375

O C C BACKSTOP 888B
BLACKBIRD OF R R 1204
O C C ANCHOR 771A
O C C DIXIE ERICA 907C

BW	87
ADJ WW	554
WR	100
ADJ YW	900
YR	N/A
FRAME	
SCROTAL	35.0

Commercial Bull. Open A A375 Thumper F8246 sells as a commercial bull because of parentage problems with his dam that we are trying to fix.



Home On The Range Program



For the eleventh year in a row, Home On The Range is participating in the embryo transfer program. Home On The Range has entered into a contract with Open A Angus (Jim Arthaud) and Heart River Genetics (Annette Steffan). The staff and children bring in the cows, implant the CIDRs (a progesterone impregnated devise), inject GnRH (gonadotropin hormone), remove the CIDRs and, finally, the embryologist transfers the frozen embryo into the cow.

The children are a little apprehensive at first, never really being around cattle and such a procedure, but once they get comfortable and know what their job is, the take responsibility. They put in ear tags and even lean how to palpate the cow later to see if she is pregnant.

It is a great program for Home On The Range and teaching children about cattle and animal reproduction.

Livestock Judging Team Practice





A Gathering in the Badlands ...

Chuck and Annette Steffan
4291 Highway 85 South
Belfield, ND 58622
www.heartrivergenetics.com
www.openaangus.com

FIRST CLASS
US POSTAGE
PAID
BISMARCK, ND
PERMIT #256

CHANGE SERVICE REQUESTED

Quality Genetics Built on a Heritage of Commitment

HEART RIVER RANCH & OPEN A ANGUS

Wednesday, March 11, 2020

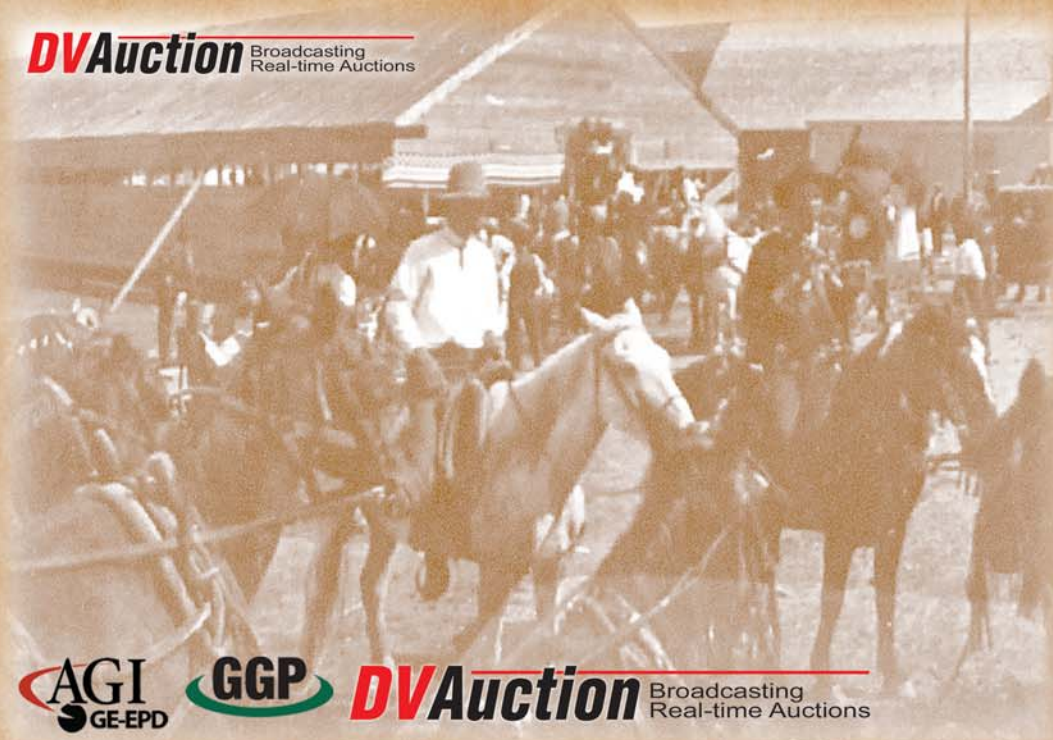
The Feedlot

Belfield, ND

Lunch 11:00 am MT

Sale 1:00 pm MT

DVAuction Broadcasting
Real-time Auctions



41
Yearling
Red Angus Bulls

1
2-Year-Old
Red Angus Bulls

65
Yearling Angus
Bulls

10
2-Year-Old
Angus Bulls



DVAuction Broadcasting
Real-time Auctions