



ANNUAL PRODUCTION SALE

**WED., JANUARY 29, 2020**

Stockmen's Livestock West • Dickinson, ND

*Sale Time: 1:00 P.M. MST*

*Selling 40 select yearlings and 2 year old bulls*



**PA PAYWEIGHT 668**



**PA FORTITUDE 5104**



**ICC PAY RAISE 4886**



**MUSGRAVE MEDIATOR 575**

JB ANGUS • Bobby and Erika Kubas

H: 701-677-4484 • C: 701-590-9814 • 12549 31st St SW • Belfield, ND 58622

**WWW.JBANGUS.COM**





# Driving the science of better breeding

There's little room for error in the cattle business. Producers need the most advanced information to make smart selection decisions, and Angus Genetics Inc. (AGI) provides it through genomic-enhanced expected progeny differences (GE-EPDs).

GE-EPDs have become the industry standard for herd improvement, building on decades of science-backed genetic evaluation tools originated and maintained through the American Angus Association®, home to the largest and ever-growing single-breed beef cattle database.

EPDs that traditionally contained all pedigree, performance and progeny information now also include results from available genomic, or DNA, tests. Breeders who use genomic technology give buyers access to AGI-generated GE-EPDs that provide:

Increased predictability and decreased risk for young and unproven animals due to enhanced accuracy of EPDs

Better characterization of genetics for difficult-to-measure performance traits (such as carcass traits, maternal traits and feed efficiency)

The ability to make more rapid progress for traits that are important to you, due to:

- more accurate selection
- easier identification of genetic outliers
- the ability to propagate young animals with confidence earlier in their lives

In fact, GE-EPDs on unproven animals have the same amount of accuracy as if they had recorded 8-33 calves, depending on the trait. That's valuable insight, offered regularly through the breed's weekly national cattle evaluation.

Trait	Progeny Equivalent	Trait	Progeny Equivalent
Calving Ease Direct	28	Milk	33
Birth Weight	21	Mature Weight	11
Weaning Weight	26	Mature Height	8
Yearling Weight	21	Carcass Weight	9
Dry Matter Intake	8	Yearling Height	11
Scrotal Circumference	13	Carcass Marbling	9
Docility	10	Carcass Ribeye	12
Heifer Pregnancy	14	Carcass Fat	10

## How do you know if EPDs are genomic-enhanced?

Ask your breeder, refer to the registration paper, or look for the AGI GE-EPD logo, Angus GS™ powered by partner Neogen GeneSeek or the HD50k or i50k by partner Zoetis. These images indicate animals for which low-density or high-density genomic testing has been conducted and incorporated by AGI into GE-EPDs



[www.angus.org](http://www.angus.org)





**WEDNESDAY,  
JANUARY 29, 2020**

**Stockmen's Livestock West  
Dickinson, ND**

***Sale Time: 1:00 P.M. MST***

Welcome to our 6th annual production Sale! It has been a pleasure serving our past customers with industry leading genetics and service for the last five years. We would like to thank all of our customers and friends that have entrusted us and our bulls to breed your females. We are very humbled for the opportunity.

What do we want to talk about first, the weather or the market uncertainty possibly to do with the trade war? How about neither. 2019 was a year for the memory bank. We had plenty of challenges ourselves but it is hard to complain about green grass and an abundant hay crop even if some producers, (myself included) were baling our last hay toward the end of October. Our bulls in the offering this year had some pretty hard conditions right from their first breath of air. It seemed like it was twenty below zero for most of the time we were calving and the calves did end up weaning a little lighter than our 2018 calves. We have a very consistent group of yearling bulls to sell this year and we couldn't be happier with how they look. As usual, they are not overfed, but fed enough to show genetic traits. Our females have a very tight calving window. The cows have 40 days to breed and heifers have 30 days. They each get 2 cycles to get bred and if they cannot, they are out the door. We have been doing this for a couple years now and it has made a difference. The calves are more consistent and fertility is on the rise in our females which will also be passed down through the bull calves as well.

Thank you for attending our sale and we look forward to meeting new customers and friends throughout our life. Please do not hesitate to call us with any questions and as always, you are always welcome to stop in, visit, and view the herd.

Sincerely,

JB Angus  
Bobby, Erika, Conner, Jaden,  
Matthew & Kasey Kubas



**JB ANGUS  
POWERFUL, CONSISTENT, HIGH MATERNAL GENETICS**



**Sale Day Phone:** 701-225-8145

**Toll Free:** 1-800-568-2490

**AUCTIONEER** Scott Weishaar  
Home: 701-872-5299  
Cell: 701-426-6826

**RINGMAN**

**Executive Director**  
**ND Cowboy Hall of Fame**  
Rick Thompson 701-290-6839

**Stockmen's Livestock**  
John Fisher 701-290-1606

**Stockmen's Livestock**  
Tyler Schoch 701-290-1017

**Pre-Sale Inspection:** Bulls can be viewed at the Kubas Ranch, located 4 miles west of South Heart to 125th Ave, 5 miles north to 31st St., and ½ mile west, prior to January 23rd and at Stockmen's West thereafter.

**Health:** All bulls have been vaccinated with Vision 7 with pink eye protection, triangle 4, and poured with Ivermectin. All bulls have received the wart and hoof rot vaccine and will receive pg10 prior to delivery. Health papers will be furnished to cattle going out of state.

**Genetic Defects:** All bulls in the sale are either tested free or from animals tested free or have no carrier ancestors in the pedigree for AM, NH, CA, M1, D2, and DD. Some animals are awaiting genetic testing results for OH. Potential carriers are marked in the footnotes with OHP. We do not anticipate any of them to be carriers due to the fact that only 2 animals have tested positive in the entire Angus breed.

**Delivery:** Delivery for yearling bulls will be free up to 300 miles from Dickinson North Dakota. We will try to accommodate for any delivery beyond 300 miles. Delivery for yearling bulls will take place in April. **All 2-year old bulls will have to be picked up on sale day unless prior arrangements were made with Bobby.**

**Mail Bids:** Anyone unable to attend the sale may give bids to any ringman or auctioneer.

**Insurance:** JB Angus recommends all buyers carry insurance on bulls. JB Angus will not be held liable for any injury or death of bulls after they are purchased. Insurance on bulls will be available through Todd Schweitzer Agency Inc. 701-483-6228. Todd Schweitzer will be available on sale day.

**Semen Interests:** JB Angus Ranch reserves the right to retain one third (1/3) revenue sharing interest on any of the bulls in the sale. Full possession and salvage value sells on all bulls.

**Terms:** All bulls sell fully guaranteed according to the terms and conditions according to the American Angus Association and are outlined on page 3. A registration certificate will be provided on all registered bulls.

**Phone Bidding:** Sale day phone numbers include, Tyler Schoch 701-290-1017, Rick Thomson 701-290-6839, or John Fisher 701-290-1606.

**Announcements:** Every effort has been made to provide the correct information in this catalog; however, announcements from the auction block will take precedence over information listed in this catalog.

**Lunch:** Join us for coffee and treats starting at 9 am, and a Free beef lunch starting at 11:30 am

**Feeding Arrangements:** JB Angus will winter bulls for free until delivery. If you would like to have bulls wintered beyond our delivery date, please contact us and we will try our best to accommodate.

**Supplement Sheet:** A Supplement Sheet will be provided with adjusted yearling weights and scrotal measurements on sale day.

**Sale Order:** There will be a sale order used on sale day. It will be available on our website prior to sale day.

***Pictures and videos can be  
viewed on our website at  
[www.jbangus.com](http://www.jbangus.com)***

## **JB ANGUS Owners and Operators**



**Bobby and Erika Kubas**

**12549 31st St SW • Belfield, ND 58622**

**H: 701-677-4484 • C: 701-590-9814**

**[www.JBAngus.com](http://www.JBAngus.com)**



## JB ANGUS SALE TERMS, CONDITIONS, AND WARRANTY

JB Angus prides itself on providing quality Angus genetics to the region.

1. JB Angus guarantees to the buyer that the pedigree, performance data and genetic information, as represented in any sales materials are accurate.
2. JB Angus guarantees that bulls sold will pass a breeding soundness exam. We make no guarantees with respect to the ability to freeze semen.
3. Buyer must have a breeding soundness exam completed within 60 days of the bull's purchase date if taken home on sale day.
4. JB Angus guarantees that all bulls are breeders for a period of 90 days following the initial turn out with buyer's herd or September 1st of this year, whichever is first.
5. JB Angus shall ensure transfer of the bull to seller within 45 days of purchase.
6. JB Angus will deliver bulls free within 300 miles of Dickinson, North Dakota.
7. Claims by the buyer:
  - a. All bulls selling for \$3,000.00 or more will be covered 100 percent by JB Angus if they are injured during their first breeding season except as follows:
    - Any injuries caused by animals once they have left JB Angus.
    - Any injuries caused by buyers care of the bull, including

transport of the animal.

- b. For all validated claims – 100% of the purchase price of the injured bull minus \$1200 salvage value, will be given as credit at the JB Angus 2018 Production Sale or towards a replacement bull, if one is available.
- c. All injured bulls must be diagnosed by a third-party veterinarian.
- d. Buyer must notify seller of any injuries immediately.
- e. All claims must be made by September 1st, 2020.

**Example 1:** A \$5,000 bull is injured and will not heal. A credit of \$5,000 minus \$1,200 salvage value for a total credit of \$3800 will be given to the buyer.

**Example 2:** A \$3,000 bull is injured and will not heal. A credit of \$3,000 minus \$1,200 salvage value for a total credit of \$1,800 will be given to the buyer.

**Example 3:** A \$2,000 bull is injured and will not heal. No credit is given. Buyer retains all salvage value.

### INJURY OR DEATH PRIOR TO DELIVERY:

Injury resulting in death or death of the bull prior to delivery will not be the responsibility of JB Angus Ranch. This is an insurable risk that the buyer can obtain coverage through Todd Schweitzer Agency Inc., at time of purchase, Todd Schweitzer, Agent.

## EXPLANATION OF EPD'S & MEASUREMENTS

### PERFORMANCE DATA

All of the EPDs, birth weights, 205-day weights, ratios and carcass information in this catalog is official data processed by the American Angus Association. The information was the most current information available prior to printing the catalog.

### EXPECTED PROGENY DIFFERENCE (EPD)

Is the prediction of how progeny of each animal is expected to perform relative to the progeny of other animals in the Angus breed. As data continues to accumulate, accuracy levels rise and EPDs can shift accordingly.

### CALVING EASE DIRECT (CED)

Is expressed as a difference in percentage of unassisted births, with a higher value indicating greater calving ease in first calf heifers. It predicts the average difference in ease with which a sire's calves will be born when he is bred to first-calf heifers.

### BIRTH WEIGHT EPD (BW)

Expressed in pounds, is a predictor of a sire's ability to transmit birth weight to his progeny compared to that of other sires.

### WEANING WEIGHT EPD (WW)

Expressed in pounds, is a predictor of the sire's ability to transmit weaning growth to his progeny compared to that of other sires.

### YEARLING WEIGHT EPD (YW)

Expressed in pounds, is a predictor of the sire's ability to transmit yearling growth to his progeny compared to that of other sires.

### MATERNAL MILK EPD (MILK)

Is a predictor of a sire's genetic merit for milk production and mothering ability as expressed in his daughters compared to daughters of other sires. In other words, it is that part of a calf's weaning weight attributed to milk and mothering ability.

### CARCASS WEIGHT (CW)

Expressed in pounds is a predictor of the differences in hot carcass weight of a sire's progeny compared to progeny of other sires.

### RIBEYE AREA (RE)

Expressed in square inches, is a predictor of the difference in ribeye area of a sire's progeny compared to progeny of other sires.

### MARBLING (Marb)

Expressed as a fraction of the difference in USDA marbling score of a sire's progeny compared to progeny of other sires.

### FAT THICKNESS (Fat)

Expressed in inches, is a predictor of the differences in external fat thickness at the 12th rib (as measured between the 12th and 13th ribs) of a sire's progeny compared to progeny of other sires.

### CARCASS WEIGHT (CW)

Expressed in pounds is a predictor of the differences in hot carcass weight of a sire's progeny compared to progeny of other sires.

### WEANED CALF VALUE (\$W)

An index value expressed in dollars per head, is the expected average difference in future progeny performance for preweaning merit. \$W includes both revenue and cost adjustments associated with differences in birth weight, weaning direct growth, maternal milk and mature cow size.

### FEEDLOT VALUE (\$F)

An index value expressed in dollars per head, is the expected average difference in future progeny performance for postweaning merit compared to progeny of other sires.

### BEEF VALUE (\$B)

An index value expressed in dollars per head, is the expected average difference in future progeny performance for postweaning merit compared to progeny of other sires.

### DAM NURSING RATIO (DAM NR)

This measurement gives the number of calves the dam has weaned and the average weaning ratio of all these calves.



# REFERENCE SIREs



## PA Fortitude 5104

Calved: 1/22/2015 Reg #: 18104451 Freeze Brand: 5104

GAR-EGL Protégé#  
**SIRE: PA FORTITUDE 2500**  
G G Clara 0171

G A R New Design 5050#  
**DAM: PA WCLC RITA 0250-209#**  
Goode 454 New Day 0250

Rito 112 of 2536 Rito 616#  
L B 6807 Isabel 339  
SydGen C C & 7#  
G G Clara 7192

B/R New Design 036#  
G A R Precision 706  
B/R New Day 454#  
G A R Objective G28

*This bull has been tremendous for us. This past year we calved the first heifers from 5104 and they are super docile and have been good mothers. We are very excited to watch them mature into great cows. Take a look at the numbers.*

- Extreme calving ease.
- Top 1% in the breed for CW, \$F, and \$B.
- Top 4% for WW, YW, and Marb.

CED	BW	WW	YW	Milk	CW	Marb	RE	FAT	\$M	\$W	\$F	\$B	SC
+13	+1	+78	+136	+22	+73	+1.13	+78	+0.01	+37	+75	+132	+213	+1.35



## ICC Pay Raise

Calved: 03/30/2014 Reg #: 17974692 Freeze Brand: 4886

Basin Payweight 1075#  
**SIRE: MILL COULEE PAY RAISE**  
Mill Coulee Barbara K 905#

Hoover Dam#  
**DAM: ICC BLACKBIRD 0739**  
M A R Blackbird 8067#

Vermilion Payweight J847#  
Basin Lucy 3829  
S A V Final Answer 0035#  
Mill Coulee Barbara K 414

SydGen C C & 7#  
Erica of Ellston C124#  
Sitz Traveler 8180#  
Jolly R Blackbird 184A

*This bull is amazingly thick from front to back. His offspring in our herd this year is the breadwinner. They grow and grow. They were the heaviest at weaning time. His docility ranks in the top 15% of the breed and is very structurally correct. If you are looking for a pay raise, check out his offspring.*

CED	BW	WW	YW	Milk	CW	Marb	RE	FAT	\$M	\$W	\$F	\$B	SC
+6	+1.5	+63	+123	+19	+42	+1.8	+39	+0.27	+37	+50	+92	+118	+1.69



## Musgrave Mediator

Calved: 01/22/2015 Reg #: 18129638 Freeze Brand: 575

Koupals B&B Identity  
**SIRE: MUSGRAVE AVIATOR**  
MCATL Forever Lady 1429-138

Musgrave Boulder  
**DAM: MUSGRAVE BARBARA LASS 273**  
MCATL Barbara Lass 931-719

Sitz Upward 307R  
B&B Erica 605  
S A V Final Answer 0035  
ALC Forever Lady R02S

Hoover Dam  
Mill Brae SA Jaunty 3079  
BT Final Product 1109  
MCATL Barbara Lass 719-947

- Mediator has just been an all-around good bull. Calves come light and have moderate growth. Excellent on heifers.
- Heavy muscled Aviator Son.
- Double Digit calving ease.
- Ranks among the top Aviator sons for combined \$W and \$B offering added growth, marbling and maternal value.

CED	BW	WW	YW	Milk	CW	Marb	RE	FAT	\$M	\$W	\$F	\$B	SC
+13	-1.6	+56	+101	+37	+37	+1.04	+45	+0.014	+61	+76	+82	+152	+67



## PA Payweight

Calved: 01/02/2016 Reg #: 18509336 Freeze Brand: 668

Basin Payweight 006S#  
**SIRE: BASIN PAYWEIGHT 1682**  
21AR O Lass 7017

B/R New Day 454#  
**DAM: PA LORA 2602-B1087#**  
PA Lora 707-2602#

Vermilion Payweight J847#  
Basin Lucy 3829  
HARB Pendleton 765 J H#  
21AR O Lass F24A

Boyd New Day 8005#  
B/R Ruby 1224  
PA Power Tool 9108#  
PA Lora 419-707

*We purchased this bull from Peterson Angus in 2017. He is a very broad and thick bull. This is our first year with his offspring in the sale and the calves are very nice. They come easy and wean off heavy. He has great disposition and he is in the top 3% for WW, YW and the top 10% for CW!*

CED	BW	WW	YW	Milk	CW	Marb	RE	FAT	\$M	\$W	\$F	\$B	SC
+8	+1.8	+83	+140	+33	+61	+7.6	+68	+0.060	+55	+97	+97	+152	+1.60





## REFERENCE SIRES

### PA Enterprise

Calved: 01/31/2016 Reg #: 18527038

Freeze Brand: 6169

Connealy Earnan 076E#  
**SIRE: ELLINGSON ENTERPRISE 3190**  
EA Emblynette 0025

B/R New Day 454#  
**DAM: PINE VIEW RITA Y056#**  
S V F Woodlawn Rita U016

Connealy Consensus#  
Brazila of Conanga 3991 839A  
LT Territory 5824 of EA#  
S A V Emblynette 7466

Boyd New Day 8005#  
B/R Ruby 1224  
G A R Predestined#  
S V F Rita R083

• We purchased this bull because of his structure and disposition. He ranks in the top 3% for Doc and foot score. Also ranks in the top 15% for WW, YW, and CW.

CED	BW	WW	YW	Milk	CW	Marb	RE	FAT	\$M	\$W	\$F	\$B	SC
+8	+1.8	+70	+125	+25	+55	+95	+53	+0.31	+81	+72	+80	+145	+29

*Notes*



**BE READY.**

**A MULTIPURPOSE WORKHORSE BUILT FOR PERFORMANCE.**

Case IH Maxxum® series tractors are designed to handle the multiple tasks of livestock operations, row-crop applications and roadside mowing. The proven Tier 4A compliant engine delivers more power with less fuel and a power boost of up to 25 HP moves you through tough conditions without losing speed or productivity. The high-visibility roof panel in the Surround Vision cab gives you 4.5 square feet of upward visibility for loader operation and the optional industry-leading cab suspension reduces the shock loads to the operator by 25%. Easy-access service and 600-hour maintenance intervals maximize your uptime. To learn more, see your Case IH dealer or visit us at [caseih.com](http://caseih.com).



**SEE US TODAY.**



**WEST PLAINS, INC**  
Beach, Bowman, Dickinson & Hettinger, ND  
[www.westplains.com](http://www.westplains.com)



Case IH is a registered trademark of CNH America LLC.

## the JB Angus Difference

- Backed by a long standing and well respected cowherd.
- What you see on paper is what you get, no number manipulating.
- Years of testing these same genetics in our commercial cowherd, we know they work.
- No creep and a high roughage ration, bulls are structurally correct, easy moving, and fertile.
- Free wintering and a breeding soundness exam prior to delivery at no cost to you
- Free delivery up to 300 miles and a personal visit about how you like your purchase
- First year breeding guarantee
- Family Ranch Raised



**1****PA Fortitude 5104**

Calved: 01/22/2015 Bull: 18104451 Freeze Brand: 5104

Birth Wt.  
**84**  
Adj.205/Ratio  
**837/113**  
Dam NR  
**103**  
Adj.365/Ratio  
**1469/111**  
Adj.Scrotal  
**39.54**

GAR-EGL Protégé#  
**SIRE: PA FORTITUDE 2500**  
G G Clara 0171

G A R New Design 5050#  
**DAM: PA WCLC RITA 0250-209#**  
Goode 454 New Day 0250

Rito 112 of 2536 Rito 616#  
L B 6807 Isabel 339  
SydGen C C & 7#  
G G Clara 7192

B/R New Design 036#  
G A R Precision 706  
B/R New Day 454#  
G A R Objective G28

EPDS

CED	BW	WW	YW	Milk	CW	Marb
+13	+1	+78	+136	+22	+73	+1.13
RE	FAT	\$M	\$W	\$F	\$B	
+78	+0.01	+37	+75	+132	+213	

- PA Fortitude just turned 5 and was too nice of a bull to send to the slaughter plant. We have enough of his genetics in our herd so now he is looking for a new home. He has tremendous growth potential from birth to yearling. He has a \$F a +132! That is the top 1%. His calves have had very good feed efficiency in the lot. Not to mention a YW and WW in the top 4% of the angus breed. We all sell pounds to make a profit and this bull will increase your bottom line. He has added tons of length to our females. We also have semen for sale at rock bottom prices for your heifers.

**1****YEARLING BULLS****2****JBA Pay Raise G04**

Calved: 01/25/2019 Bull: 19578993 Freeze Brand: G04

Birth Wt.  
**60**  
Adj.205/Ratio  
**812/111**  
Dam NR  
**2-108**

Mill Coulee Pay Raise  
**SIRE: ICC PAY RAISE 4886**  
ICC Blackbird 0739

PA Full Power 1208  
**DAM: JBA EWA D79**  
T A Ewa Z13

Basin Payweight 1075#  
Mill Coulee Barbara K 905#  
Hoover Dam#  
M A R Blackbird 8067#

PA Power Tool 9108#  
Pine View SQR Rita W091  
B Bar Bushwacker 450  
T A Ellery X41

EPDS

CED	BW	WW	YW	Milk	\$W	\$F
+13	-1.9	+68	+118	+25	+63	+71

- This calf has always been so fun to watch grow. He came 12 days early and just never stopped growing. His numbers are amazing. From a 60lb BW to a 812 WW out of a 2nd calf cow. He would work on heifers.

**2****3****JBA Pay Raise G13**

Calved: 01/27/2019 Bull: 19578977 Freeze Brand: G13

Birth Wt.  
**66**  
Adj.205/Ratio  
**765/105**  
Dam NR  
**3-98**

Mill Coulee Pay Raise  
**SIRE: ICC PAY RAISE 4886**  
ICC Blackbird 0739

DL Incentive 51  
**DAM: JBA KAREN 4105**  
T A Karen T21

Basin Payweight 1075#  
Mill Coulee Barbara K 905#  
Hoover Dam#  
M A R Blackbird 8067#

DL Incentive 228  
DL Barbara 258#  
S A V 8180 Traveler 004#  
T A Karmere E114

EPDS

CED	BW	WW	YW	Milk	\$W	\$F
+9	-.1	+67	+119	+12	+53	+61

- Some of our nicest cattle are the DL Incentive 51 cows. They are such an awesome group as a whole and 14105 is no exception. She is very deep and long. G13 has a huge spread and would work on heifers.

**3****4****JBA Pay Raise G20**

Calved: 01/29/2019 Bull: 19578991 Freeze Brand: G20

Birth Wt.  
**86**  
Adj.205/Ratio  
**688/91**  
Dam NR  
**5-97**

Mill Coulee Pay Raise  
**SIRE: ICC PAY RAISE 4886**  
ICC Blackbird 0739

Mytty In Focus#  
**DAM: T A GEMINI Y30**  
T A Genesis U66

Basin Payweight 1075#  
Mill Coulee Barbara K 905#  
Hoover Dam#  
M A R Blackbird 8067#

S A F Focus of E R#  
Mytty Countess 906  
TC Gridiron 258#  
T A Genece H90

EPDS

CED	BW	WW	YW	Milk	\$W	\$F
+5	+1.6	+52	+100	+18	+41	+39

**5****JBA Pay Raise G21**

Calved: 01/30/2019 Bull: 19578961 Freeze Brand: G21

Birth Wt.  
**96**  
Adj.205/Ratio  
**708/97**  
Dam NR  
**3-97**

Mill Coulee Pay Raise  
**SIRE: ICC PAY RAISE 4886**  
ICC Blackbird 0739

Basin Excitement#  
**DAM: JBA MAIRE C93**  
T A Maire R55

Basin Payweight 1075#  
Mill Coulee Barbara K 905#  
Hoover Dam#  
M A R Blackbird 8067#

Basin Expedition R156  
Basin Lady S532 AK  
V E A R Traveler 810  
T A Miss Mere E03#

EPDS

CED	BW	WW	YW	Milk	\$W	\$F
+3	+2.6	+62	+115	+21	+57	+51





**6****JBA Fortitude G22**

Calved: 01/30/2019 Bull: 19578971 Freeze Brand: G22

Birth Wt.  
**80**Adj.205/Ratio  
**734/100**Dam NR  
**1-100**PA Fortitude 2500  
**SIRE: PA FORTITUDE 5104**  
PA WCLC Rita 0250-209T A Chisum A25  
**DAM: JBA NELYA E57**  
T A Nelya U12GAR-EGL Protégé#  
G G Clara 0171  
G A R New Design 5050#  
Goode 454 New Day 0250  
S Chisum 6175  
T A Terri X66  
ER Justice N013#  
Traveler 004 H29 P26J**EPDs**

CED	BW	WW	YW	Milk	\$W	\$F
+7	+1.5	+64	+117	+23	+58	+58

**8****JBA Pay Raise G241**

Calved: 01/30/2019 Bull: 19592374 Freeze Brand: G241

Birth Wt.  
**78**Adj.205/Ratio  
**719/98**Dam NR  
**4-94**Mill Coulee Pay Raise  
**SIRE: ICC PAY RAISE 4886**  
ICC Blackbird 0739S Chisum 6175#  
**DAM: T A SAYLOR A39**  
T A Sayo X45Basin Payweight 1075#  
Mill Coulee Barbara K 905#  
Hoover Dam#  
M A R Blackbird 8067#  
S Alliance 3313  
S Gloria 464#  
Connealy Freight Train#  
T A Sophia M01**EPDs**

CED	BW	WW	YW	Milk	\$W	\$F
+7	+5	+52	+98	+18	+51	+47

• Twin with Lot 7.

**9****JBA Pay Raise G25**

Calved: 01/30/2019 Bull: 19578963 Freeze Brand: G25

Birth Wt.  
**70**Adj.205/Ratio  
**717/98**Dam NR  
**3-99**Mill Coulee Pay Raise  
**SIRE: ICC PAY RAISE 4886**  
ICC Blackbird 0739PA Full Power 1208  
**DAM: JBA WILLOW C14**  
T A Willow A57Basin Payweight 1075#  
Mill Coulee Barbara K 905#  
Hoover Dam#  
M A R Blackbird 8067#  
PA Power Tool 9108#  
Pine View SQR Rita W091  
Connealy Right Answer 746#  
T A Winny X42**EPDs**

CED	BW	WW	YW	Milk	\$W	\$F
+10	-.8	+60	+113	+21	+59	+54

• Heifer Bull

**11****JBA Pay Raise G34**

Calved: 01/31/2019 Bull: 19578970 Freeze Brand: G34

Birth Wt.  
**78**Adj.205/Ratio  
**712/100**Dam NR  
**3-98**Mill Coulee Pay Raise  
**SIRE: ICC PAY RAISE 4886**  
ICC Blackbird 0739DL Regis 133  
**DAM: T A PIMA TD17**  
JBA Pima 418Basin Payweight 1075#  
Mill Coulee Barbara K 905#  
Hoover Dam#  
M A R Blackbird 8067#  
Coleman Regis 904#  
Coleman Lady 901  
Connealy Final Product#  
T A Pima X30**EPDs**

CED	BW	WW	YW	Milk	\$W	\$F
+11	-.1	+51	+59	+19	+43	+61

• Heifer Bull

**7****JBA Pay Raise G24**

Calved: 01/30/2019 Bull: 19578962 Freeze Brand: G24

Birth Wt.  
**88**Adj.205/Ratio  
**772/106**Dam NR  
**4-94**Mill Coulee Pay Raise  
**SIRE: ICC PAY RAISE 4886**  
ICC Blackbird 0739S Chisum 6175#  
**DAM: T A SAYLOR A39**  
T A Sayo X45Basin Payweight 1075#  
Mill Coulee Barbara K 905#  
Hoover Dam#  
M A R Blackbird 8067#S Alliance 3313  
S Gloria 464#  
Connealy Freight Train#  
T A Sophia M01**EPDs**

CED	BW	WW	YW	Milk	\$W	\$F
+7	+5	+52	+98	+18	+51	+47

• Twin with Lot 8.

**10****JBA Pay Raise G32**

Calved: 01/31/2019 Bull: 19578990 Freeze Brand: G32

Birth Wt.  
**80**Adj.205/Ratio  
**763/100**Dam NR  
**6-94**Mill Coulee Pay Raise  
**SIRE: ICC PAY RAISE 4886**  
ICC Blackbird 0739Mytty In Focus#  
**DAM: T A PERRY Y50**  
T A Persia S37Basin Payweight 1075#  
Mill Coulee Barbara K 905#  
Hoover Dam#  
M A R Blackbird 8067#S A F Focus of E R#  
Mytty Countess 906  
S A V 8180 Traveler 004#  
T A Pearly N44**EPDs**

CED	BW	WW	YW	Milk	\$W	\$F
+8	+2	+51	+93	+19	+45	+43



YEARLING BULLS



12

## JBA Pay Raise G39

Calved: 02/01/2019 Bull: 19578964 Freeze Brand: G39

Birth Wt.  
96  
Adj.205/Ratio  
739/101  
Dam NR  
2-98

Mill Coulee Pay Raise  
**SIRE: ICC PAY RAISE 4886**  
ICC Blackbird 0739  
PA Full Power 1208  
**DAM: JBA WYOME C16**  
T A Wyome A66

Basin Payweight 1075#  
Mill Coulee Barbara K 905#  
Hoover Dam#  
M A R Blackbird 8067#  
PA Power Tool 9108#  
Pine View SQR Rita W091  
Basin Excitement#  
T A Wynne R77

### EPDs

CED	BW	WW	YW	Milk	\$W	\$F
+0	+3.6	+63	+120	+21	+61	+45

13

## JBA Fortitude G40

Calved: 02/01/2019 Bull: 19578992 Freeze Brand: G40

Birth Wt.  
72  
Adj.205/Ratio  
717/98  
Dam NR  
2-98

PA Fortitude 2500  
**SIRE: PA FORTITUDE 5104**  
PA WCLC Rita 0250-209  
Basin Advance 3134  
**DAM: JBA ELDA E45**  
T A Elda Z31

GAR-EGL Protégé#  
G G Clara 0171  
G A R New Design 5050#  
Goode 454 New Day 0250  
G A R Progress#  
Basin O Lass 1663  
Connealy Final Product#  
T A Elektra W46

### EPDs

CED	BW	WW	YW	Milk	\$W	\$F
+12	-.2	+66	+113	+25	+48	+68

• Heifer Bull

14

## JBA Fortitude G43

Calved: 02/01/2019 Bull: 19578989 Freeze Brand: G43

Birth Wt.  
86  
Adj.205/Ratio  
723/99  
Dam NR  
6-100

PA Fortitude 2500  
**SIRE: PA FORTITUDE 5104**  
PA WCLC Rita 0250-209  
GDAR Game Day 8138  
**DAM: T A DAGMAR X40**  
T A Dagney U37#

GAR-EGL Protégé#  
G G Clara 0171  
G A R New Design 5050#  
Goode 454 New Day 0250  
GDAR Game Day 449#  
GDAR Beauty 657  
T A Focus S58  
T A Dagmar S84

### EPDs

CED	BW	WW	YW	Milk	\$W	\$F
+8	+1.4	+64	+112	+22	+48	+60



15

## JBA Mediator G44

Calved: 02/01/2019 Bull: 19578965 Freeze Brand: G44

Birth Wt.  
96  
Adj.205/Ratio  
766/105  
Dam NR  
5-101

Musgrave Aviator  
**SIRE: MUSGRAVE MEDIATOR 575**  
Musgrave Barbara Lass 273  
T A Total W29  
**DAM: T A UNITI A107**  
T A UTA T34

Koupals B&B Identity  
MCATL Forever Lady 1429-138  
Musgrave Boulder  
MCATL Barbara Lass 931-719  
K C F Bennett Total#  
T A Farin S17  
S A V 8180 Traveler 004#  
Rito J05 New Design M31J

### EPDs

CED	BW	WW	YW	Milk	\$W	\$F
+5	+2.4	+58	+104	+31	+56	+59

16

## JBA Pay Raise G45

Calved: 02/01/2019 Bull: 19578978 Freeze Brand: G45

Birth Wt.  
72  
Adj.205/Ratio  
770/105  
Dam NR  
3-103

Mill Coulee Pay Raise  
**SIRE: ICC PAY RAISE 4886**  
ICC Blackbird 0739  
JBA Infusion 419  
**DAM: JBA LALLY D180**  
T A Lally Z01

Basin Payweight 1075#  
Mill Coulee Barbara K 905#  
Hoover Dam#  
M A R Blackbird 8067#  
Connealy Right Answer 746#  
T A Raja Y31  
Kesslers Frontman R001#  
T A Luz X54

### EPDs

CED	BW	WW	YW	Milk	\$W	\$F
+10	-.8	+65	+111	+23	+66	+65

• Heifer Bull

17

## JBA Mediator G49

Calved: 02/02/2019 Bull: 19578987 Freeze Brand: G49

Birth Wt.  
78  
Adj.205/Ratio  
662/91  
Dam NR  
4-103

Baldrige Kaboom K243 KCF#  
**SIRE: MUSGRAVE MEDIATOR 575**  
Parka of Conanga 241#  
DL Incentive 51  
**DAM: JBA UTA 451**  
T A UTA T34

Koupals B&B Identity  
MCATL Forever Lady 1429-138  
Musgrave Boulder  
MCATL Barbara Lass 931-719  
DL Incentive 228  
DL Barbara 258#  
S A V 8180 Traveler 004#  
Rito J05 New Design M31J

### EPDs

CED	BW	WW	YW	Milk	\$W	\$F
+10	+4	+50	+95	+32	+45	+56

• Heifer Bull





**18****JBA Pay Raise G51**

Calved: 02/02/2019 Bull: 19578966 Freeze Brand: G51

Birth Wt.  
**90**  
Adj.205/Ratio  
**726/99**  
Dam NR  
**2-94**

Mill Coulee Pay Raise  
**SIRE: ICC PAY RAISE 4886**  
ICC Blackbird 0739

JBA Infusion 419  
**DAM: JBA JEMMA D08**  
JBA Jemma 410

Basin Payweight 1075#  
Mill Coulee Barbara K 905#  
Hoover Dam#  
M A R Blackbird 8067#  
Connealy Right Answer 746#  
T A Raja Y31#  
PA Full Power 1208  
T A Jemma Z65

**EPDs**

CED	BW	WW	YW	Milk	\$W	\$F
+2	+2.8	+66	+117	+19	+65	+51

**19****JBA Fortitude G52**

Calved: 02/02/2019 Bull: 19578967 Freeze Brand: G52

Birth Wt.  
**88**  
Adj.205/Ratio  
**674/92**  
Dam NR  
**1-92**

PA Fortitude 2500  
**SIRE: PA FORTITUDE 5104**  
PA WCLC Rita 0250-209

Basin Advance 3134  
**DAM: JBA FARIN E29**  
T A Farin S17#

GAR-EGL Protégé#  
G G Clara 0171  
G A R New Design 5050#  
Goode 454 New Day 0250

G A R Progress#  
Basin O Lass 1663  
Sitz Rainmaker 6169#  
T A Miss Faith M42

**EPDs**

CED	BW	WW	YW	Milk	\$W	\$F
+7	+2.7	+60	+107	+23	+46	+51

**20****JBA Pay Raise G60**

Calved: 02/03/2019 Bull: 19578979 Freeze Brand: G60

Birth Wt.  
**94**  
Adj.205/Ratio  
**746/102**  
Dam NR  
**5-94**

Mill Coulee Pay Raise  
**SIRE: ICC PAY RAISE 4886**  
ICC Blackbird 0739

T A Total W29  
**DAM: T A TAJA A117**  
T A Taja T12

Basin Payweight 1075#  
Mill Coulee Barbara K 905#  
Hoover Dam#  
M A R Blackbird 8067#  
K C F Bennett Total#  
T A Farin S17#  
Mytty In Focus#  
T A Tania R43

**EPDs**

CED	BW	WW	YW	Milk	\$W	\$F
+1	+3.5	+61	+112	+19	+59	+43

**21****JBA Mediator G63**

Calved: 02/04/2019 Bull: 19578968 Freeze Brand: G63

Birth Wt.  
**78**  
Adj.205/Ratio  
**719/98**  
Dam NR  
**3-98**

Musgrave Aviator  
**SIRE: MUSGRAVE MEDIATOR 575**  
Musgrave Barbara Lass 273

S A V Brilliance 8077#  
**DAM: JBA TAYNER C29**  
T A Tayner X02

Koupals B&B Identity  
MCATL Forever Lady 1429-138  
Musgrave Boulder  
MCATL Barbara Lass 931-719

S A V Bismarck 5682#  
S A V Blackcap May 5270  
Mytty In Focus#  
T A Tajah U02

**EPDs**

CED	BW	WW	YW	Milk	\$W	\$F
+13	-1.5	+51	+89	+33	+63	+66

• Heifer Bull

**22****JBA Mediator G64**

Calved: 02/04/2019 Bull: 19578969 Freeze Brand: G64

Birth Wt.  
**78**  
Adj.205/Ratio  
**714/98**  
Dam NR  
**3-100**

Musgrave Aviator  
**SIRE: MUSGRAVE MEDIATOR 575**  
Musgrave Barbara Lass 273

PA Full Power 1208  
**DAM: JBA SADE D17**  
T A Sade A112

Koupals B&B Identity  
MCATL Forever Lady 1429-138  
Musgrave Boulder  
MCATL Barbara Lass 931-719

PA Power Tool 9108#  
Pine View SQR Rita W091  
B Bar Bushwacker 450  
T A Safia Y66

**EPDs**

CED	BW	WW	YW	Milk	\$W	\$F
+12	-1.3	+56	+100	+31	+58	+65

• Heifer Bull

**23****JBA Fortitude G66**

Calved: 02/04/2019 Bull: 19578972 Freeze Brand: G66

Birth Wt.  
**74**  
Adj.205/Ratio  
**747/102**  
Dam NR  
**1-102**

PA Fortitude 2500  
**SIRE: PA FORTITUDE 5104**  
PA WCLC Rita 0250-209

Connealy Thunder#  
**DAM: JBA OBA D12**  
T A Oba X47#

GAR-EGL Protégé#  
G G Clara 0171  
G A R New Design 5050#  
Goode 454 New Day 0250  
Baldridge Kaboom K243 KCF#  
Parka of Conanga 241  
GDAR Game Day 449#  
Bando Regal G05 N121J#

**EPDs**

CED	BW	WW	YW	Milk	\$W	\$F
+13	-1.6	+62	+109	+24	+62	+64

• Heifer Bull



## 24 JBA Fortitude G69

Calved: 02/04/2019 Bull: 19578973 Freeze Brand: G69

Birth Wt. <b>74</b>	PA Fortitude 2500	GAR-EGL Protégé#
Adj.205/Ratio <b>741/101</b>	<b>SIRE: PA FORTITUDE 5104</b>	G G Clara 0171
Dam NR <b>2-104</b>	PA WCLC Rita 0250-209	G A R New Design 5050#
	Connealy Thunder#	Goode 454 New Day 0250
	<b>DAM: JBA MALLORY D61</b>	Baldrige Kaboom K243 KCF#
	T A Mallory A110	Parka of Conanga 241#
		DL Incentive 51
		T A Mist W61

**EPDs**

CED	BW	WW	YW	Milk	\$W	\$F
+9	+1.2	+67	+123	+22	+56	+59

## 25 JBA Mediator G77

Calved: 02/06/2019 Bull: 19578975 Freeze Brand: G77

Birth Wt. <b>80</b>	Musgrave Aviator	Koupals B&B Identity
Adj.205/Ratio <b>720/98</b>	<b>SIRE: MUSGRAVE MEDIATOR 575</b>	MCATL Forever Lady 1429-138
Dam NR <b>1-117</b>	Musgrave Barbara Lass 273	Musgrave Boulder
	SydGen Mandate 6079#	MCATL Barbara Lass 931-719
	<b>DAM: JBA PARK C75</b>	S S Objective T510 0T26#
	T A Park R48	SydGen Gina 4235
		L T 598 Bando 9074#
		T A Paris J97

**EPDs**

CED	BW	WW	YW	Milk	\$W	\$F
+8	+.3	+58	+105	+31	+47	+65

• Heifer Bull

## 26 JBA Pay Raise G78

Calved: 02/06/2019 Bull: 19578988 Freeze Brand: G78

Birth Wt. <b>98</b>	Mill Coulee Pay Raise	Basin Payweight 1075#
Adj.205/Ratio <b>738/101</b>	<b>SIRE: ICC PAY RAISE 4886</b>	Mill Coulee Barbara K 905#
Dam NR <b>6-102</b>	ICC Blackbird 0739	Hoover Dam#
	Connealy Impression#	M A R Blackbird 8067#
	<b>DAM: T A JEMMA Z65</b>	Connealy Reflection#
	T A Jessy T31	Pearl Pammy of Conanga 194
		Connealy Freightliner#
		T A Jess H67

**EPDs**

CED	BW	WW	YW	Milk	\$W	\$F
+1	3.9	+60	+110	+20	+60	+42

## 27 JBA Mediator G80

Calved: 02/07/2019 Bull: 19578976 Freeze Brand: G80

Birth Wt. <b>90</b>	Musgrave Aviator	Koupals B&B Identity
Adj.205/Ratio <b>713/98</b>	<b>SIRE: MUSGRAVE MEDIATOR 575</b>	MCATL Forever Lady 1429-138
Dam NR <b>3-93</b>	Musgrave Barbara Lass 273	Musgrave Boulder
	Connealy Impression#	MCATL Barbara Lass 931-719
	<b>DAM: JBA BETTY C88</b>	Connealy Reflection#
	T A Betty Z54	Pearl Pammy of Conanga 194
		Sitz Upward 307R#
		Traveler MOJO L41 J

**EPDs**

CED	BW	WW	YW	Milk	\$W	\$F
+7	+1.3	+56	+100	+29	+74	+59



## 28 JBA Mediator G82

Calved: 02/08/2019 Bull: 19578986 Freeze Brand: G82

Birth Wt. <b>80</b>	Musgrave Aviator	Koupals B&B Identity
Adj.205/Ratio <b>731/100</b>	<b>SIRE: MUSGRAVE MEDIATOR 575</b>	MCATL Forever Lady 1429-138
Dam NR <b>11-100</b>	Musgrave Barbara Lass 273	Musgrave Boulder
	S A V 8180 Traveler 004#	MCATL Barbara Lass 931-719
	<b>DAM: T A UTA T34</b>	Sitz Traveler 8180#
	Rito J05 New Design M31J	Boyd Forever Lady 8003
		Bon View New Design 878#
		Rain Rito G115 J05 J

**EPDs**

CED	BW	WW	YW	Milk	\$W	\$F
+10	+.1	+54	+97	+32	+53	+63

• Heifer Bull

## 29 JBA Payweight G89

Calved: 02/13/2019 Bull: 19578985 Freeze Brand: G89

Birth Wt. <b>80</b>	Basin Payweight 1682	Basin Payweight 0065#
Adj.205/Ratio <b>742/102</b>	<b>SIRE: PA PAYWEIGHT 668</b>	21AR O Lass 7017
Dam NR <b>6-101</b>	PA Lora 2602-B1087	B/R New Day 454#
	Connealy Impression#	PA Lora 707-2602#
	<b>DAM: T A AKIRA Z35</b>	Connealy Reflection#
	Traveler 004 L58 P83J	Pearl Pammy of Conanga 194
		S A V 8180 Traveler 004#
		Traveler Advantage L58 J

**EPDs**

CED	BW	WW	YW	Milk	\$W	\$F
+10	+.4	+67	+110	+29	+60	+77

• Heifer Bull





**30****JBA Mediator G90**

Calved: 02/15/2019 Bull: 19578984 Freeze Brand: G90

Birth Wt.  
**80**  
Adj.205/Ratio  
**699/106**Musgrave Aviator  
**SIRE: MUSGRAVE MEDIATOR 575**  
Musgrave Barbara Lass 273Koupals B&B Identity  
MCATL Forever Lady 1429-138  
Musgrave Boulder  
MCATL Barbara Lass 931-719Dam NR  
**6-98**Connealy Final Product#  
**DAM: T A ISLA 276**  
T A Tamara P35Connealy Product 568#  
Ebonista of Conanga 471#  
Connealy Freight Train#  
T A Iva T111**EPDs**

CED	BW	WW	YW	Milk	\$W	\$F
+8	-.7	+53	+98	+28	+60	+59

• Heifer Bull

**31****JBA Payweight G104**

Calved: 02/22/2019 Bull: 19597005 Freeze Brand: G104

Birth Wt.  
**68**  
Adj.205/Ratio  
**731/100**Basin Payweight 1682  
**SIRE: PA PAYWEIGHT 668**  
PA Lora 2602-B1087Basin Payweight 006S#  
21AR O Lass 7017  
B/R New Day 454#  
PA Lora 707-2602#Dam NR  
**7-105**GDAR Game Day 449#  
**DAM: T A RAJA Y31#**  
T A Ragana U15#Boyd New Day 800S#  
G D A R Miss Wix 474#  
H A Image Maker 0415#  
Bando Rito J05 N85J#**EPDs**

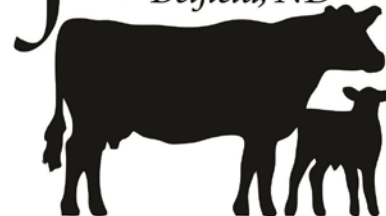
CED	BW	WW	YW	Milk	\$W	\$F
+7	+0	+69	+129	+33	+64	+87

**32****JBA Payweight G119**

Calved: 02/28/2019 Bull: 19597007 Freeze Brand: G119

Birth Wt.  
**86**  
Adj.205/Ratio  
**752/103**Basin Payweight 1682  
**SIRE: PA PAYWEIGHT 668**  
PA Lora 2602-B1087Basin Payweight 006S#  
21AR O Lass 7017  
B/R New Day 454#  
PA Lora 707-2602#Dam NR  
**5-98**B Bar Bushwacker 450  
**DAM: T A REASON A40**  
T A Rosheen Y60B Bar Bushwacker 987  
B Bar Barbara 2016  
Mytty Upward W321  
T A Rylee U05#**EPDs**

CED	BW	WW	YW	Milk	\$W	\$F
+11	+1.7	+69	+115	+30	+59	+80

**JB** ANGUS  
Belfield, ND

Pictures and videos can be viewed on our website at  
[www.jbangus.com](http://www.jbangus.com)



**Bull Development Program** The bulls have been raised on native range and only mothers milk. No creep feed of any sort. Our herd is also fed dry mineral. The bulls throughout their time in the feedlot are placed on a high roughage diet. This diet consists of chopped hay, silage, corn, modified live distillers, and bull challenger.

YEARLING BULLS



**33****JBA Enterprise F93**Calved: **03/02/18** Bull: **19291802** Freeze Brand: **F93**

Birth Wt.  
**71**  
Adj.205/Ratio  
**734/100**  
Dam NR  
**4-105**  
Adj.365/Ratio  
**1206/96**  
Adj.Scrotal  
**38.00**

Ellingson Enterprise 3190  
**SIRE: PA ENTERPRISE 6169**  
Pine View Rita Y056#

Mytty Upward W321  
**DAM: T A KARNA A119#**  
T A Karen T21

Connealy Earnan 076E#  
EA Emblynnette 0025  
B/R New Day 454#  
S V F Woodlawn Rita U016

Sitz Upward 307R#  
Bairds Black Lady P30  
S A V 8180 Traveler 004#  
T A Karmere E114

EPDS	CED	BW	WW	YW	Milk	CW	Marb
	+3	+3.3	+63	+113	+27	+43	+64
	RE	FAT	\$M	\$W	\$F	\$B	
	+51	+0.13	+77	+56	+83	+134	

**34****JBA Enterprise F97**Calved: **03/05/18** Bull: **19291803** Freeze Brand: **F97**

Birth Wt.  
**88**  
Adj.205/Ratio  
**716/92**  
Dam NR  
**7-98**  
Adj.365/Ratio  
**1188/96**  
Adj.Scrotal  
**38.25**

Ellingson Enterprise 3190  
**SIRE: PA ENTERPRISE 6169**  
Pine View Rita Y056#

Connealy Freight Train#  
**DAM: T A MAREN W04**  
T A Maret T15

Connealy Earnan 076E#  
EA Emblynnette 0025  
B/R New Day 454#  
S V F Woodlawn Rita U016

Connealy Freightliner #  
Bristow of Conanga 539  
Mytty In Focus#  
Power Travel F125J

EPDS	CED	BW	WW	YW	Milk	CW	Marb
	+7	+1.9	+56	+105	+21	+36	+68
	RE	FAT	\$M	\$W	\$F	\$B	
	+40	+0.22	+62	+49	+78	+129	

**35****JBA Enterprise F105**Calved: **03/09/18** Bull: **19291809** Freeze Brand: **F105**

Birth Wt.  
**88**  
Adj.205/Ratio  
**785/101**  
Dam NR  
**3-97**  
Adj.365/Ratio  
**1265/101**  
Adj.Scrotal  
**38.38**

Ellingson Enterprise 3190  
**SIRE: PA ENTERPRISE 6169**  
Pine View Rita Y056#

Basin Excitement#  
**DAM: JBA MAIRE C93**  
T A Maire R55

Connealy Earnan 076E#  
EA Emblynnette 0025  
B/R New Day 454#  
S V F Woodlawn Rita U016

Basin Expedition R156  
Basin Lady S532 AK  
V E A R Traveler 810  
T A Miss Mere E03#

EPDS	CED	BW	WW	YW	Milk	CW	Marb
	+6	+2.1	+65	+115	+24	+50	+70
	RE	FAT	\$M	\$W	\$F	\$B	
	+49	+0.27	+79	+63	+87	+140	

**36****JBA Enterprise F109**Calved: **03/16/18** Bull: **19304595** Freeze Brand: **F109**

Birth Wt.  
**70**  
Adj.205/Ratio  
**773/99**  
Dam NR  
**3-98**  
Adj.365/Ratio  
**1253/100**  
Adj.Scrotal  
**39.60**

Ellingson Enterprise 3190  
**SIRE: PA ENTERPRISE 6169**  
Pine View Rita Y056#

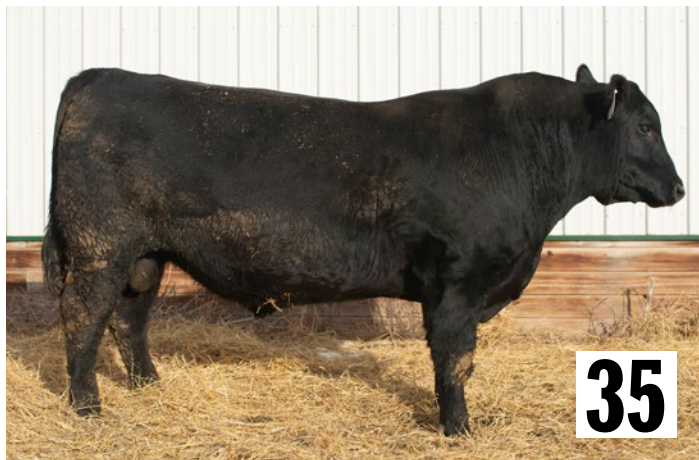
S A V Brilliance 8077#  
**DAM: JBA TAYNER C29**  
T A Tayner X02

Connealy Earnan 076E#  
EA Emblynnette 0025  
B/R New Day 454#  
S V F Woodlawn Rita U016

S A V Bismarck 5682#  
S A V Blackcap May 5270  
Mytty In Focus#  
T A Tajah U02

EPDS	CED	BW	WW	YW	Milk	CW	Marb
	+11	+2	+55	+97	+27	+44	+63
	RE	FAT	\$M	\$W	\$F	\$B	
	+42	+0.33	+71	+62	+80	+128	

• Heifer Bull

**37****JBA Fortitude F123**Calved: **04/09/18** Bull: **19291820** Freeze Brand: **F123**

Birth Wt.  
**70**  
Adj.205/Ratio  
**798/103**  
Dam NR  
**1-99**  
Adj.365/Ratio  
**1300/103**  
Adj.Scrotal  
**38.87**

Connealy Right Answer 746#  
**SIRE: PA FORTITUDE 5104**  
PA WCLC Rita 0250-209

GDAR Leupold 4273  
**DAM: JBA CLOVAE D130**  
T A Clovae Z55

GAR-EGL Protégé#  
G G Clara 0171  
G A R New Design 5050#  
Goode 454 New Day 0250

GDAR Leupold 298  
GDAR Miss Wix 780  
Mytty In Focus#  
T A Clovae N52

EPDS	CED	BW	WW	YW	Milk	CW	Marb
	+11	+2	+65	+115	+22	+53	+84
	RE	FAT	\$M	\$W	\$F	\$B	
	+47	+0.08	+45	+61	+104	+165	

• Heifer Bull

**38****JBA Payweight F129**Calved: **04/29/18** Bull: **19597009** Freeze Brand: **F129**

Birth Wt.  
**72**  
Adj.205/Ratio  
**810/100**  
Dam NR  
**3-98**  
Adj.365/Ratio  
**1341/100**  
Adj.Scrotal  
**37.99**

Basin Payweight 1682  
**SIRE: PA PAYWEIGHT 668**  
PA Lora 2602-B1087

Connealy Final Product#  
**DAM: T A DALE Z16**  
T A Dagney U37#

Basin Payweight 006S#  
21AR O Lass 7017  
B/R New Day 454#  
PA Lora 707-2602#

Connealy Product 568  
Ebonista of Conanga 471#  
T A Focus S58  
T A Dagmar S84

EPDS	CED	BW	WW	YW	Milk	CW	Marb
	+5	+2.2	+78	+135	+28	+50	+54
	RE	FAT	\$M	\$W	\$F	\$B	
	+57	+0.46	+51	+76	+65	+140	



Pictures and videos can be viewed on our website at  
**www.jbangus.com**





# 39 JBA Fortitude F131

Calved: 05/01/18 Bull: 19291826 Freeze Brand: F131

Birth Wt. 70  
Adj. 205/Ratio 878/108  
Dam NR 1-108  
Adj. 365/Ratio 1419/104  
Adj. Scrotal 39.09

Conneally Right Answer 746#  
**SIRE: PA FORTITUDE 5104**  
PA WCLC Rita 0250-209

JBA Infusion 419  
**DAM: JBA TANIN D144**  
T A Tanin Y07

GAR-EGL Protégé#  
G G Clara 0171  
G A R New Design 5050#  
Goode 454 New Day 0250

Conneally Right Answer 746#  
T A Raja Y31#  
H A Image Maker 0415#  
T A Tania R43

EPDS	CED	BW	WW	YW	Milk	CW	Marb
	+12	+.1	+74	+124	+25	+50	+.69
	RE	FAT	\$M	\$W	\$F	\$B	
	+.44	+.008	+.60	+.75	+.104	+.157	

• Heifer Bull



# 40 JBA Payweight F132

Calved: 05/01/18 Bull: 19291827 Freeze Brand: F132

Birth Wt. 74  
Adj. 205/Ratio 817/100  
Dam NR 6-95  
Adj. 365/Ratio 1340/98  
Adj. Scrotal 37.05

Basin Payweight 1682  
**SIRE: PA PAYWEIGHT 668**  
PA Lora 2602-B1087

T A Focus S58  
**DAM: T A PAMELA X16**  
T A Pamela M80#

Basin Payweight 006S#  
21AR O Lass 7017  
B/R New Day 454#  
PA Lora 707-2602#

Mytty In Focus #  
T A Windy H52#  
C A Future Direction 5321#  
T A Cherish H12#

EPDS	CED	BW	WW	YW	Milk	CW	Marb
	+6	+1.9	+69	+117	+28	+44	+.68
	RE	FAT	\$M	\$W	\$F	\$B	
	+.55	+.035	+.50	+.73	+.88	+.140	

# 41 JBA Payweight F135

Calved: 05/01/18 Bull: 19291829 Freeze Brand: F135

Birth Wt. 72  
Adj. 205/Ratio 804/99  
Dam NR 8-97  
Adj. 365/Ratio 1342/99  
Adj. Scrotal 37.57

Basin Payweight 1682  
**SIRE: PA PAYWEIGHT 668**  
PA Lora 2602-B1087

Mytty In Focus#  
**DAM: T A MARRETTE W40**  
T A Marra R02

Basin Payweight 006S#  
21AR O Lass 7017  
B/R New Day 454#  
PA Lora 707-2602#

S A F Focus of E R#  
Mytty Countess 906  
Gardens Prime Time#  
T A Miranda N40

EPDS	CED	BW	WW	YW	Milk	CW	Marb
	+9	+.5	+62	+107	+28	+36	+.77
	RE	FAT	\$M	\$W	\$F	\$B	
	+.32	+.057	+.67	+.66	+.84	+.135	

# 42 JBA Payweight F136

Calved: 05/01/18 Bull: 19291830 Freeze Brand: F136

Birth Wt. 72  
Adj. 205/Ratio 820/101  
Dam NR 11-98  
Adj. 365/Ratio 1370/101  
Adj. Scrotal 37.97

Basin Payweight 1682  
**SIRE: PA PAYWEIGHT 668**  
PA Lora 2602-B1087

Sitz Rainmaker 6169#  
**DAM: T A FARIN S17**  
T A Miss Faith M42

Basin Payweight 006S#  
21AR O Lass 7017  
B/R New Day 454#  
PA Lora 707-2602#

Sitz Rainmaker 8987  
Sitz Barbaramere Jet 3007  
Bon View New Design 878#  
T A Faith F37

EPDS	CED	BW	WW	YW	Milk	CW	Marb
	+8	+1.7	+61	+105	+28	+43	+.48
	RE	FAT	\$M	\$W	\$F	\$B	
	+.47	+.036	+.57	+.66	+.91	+.132	



# 43 JBA Infusion F134

Calved: 05/1/2018 Bull: 19292999 Freeze Brand: F134

Birth Wt. 70  
Adj. 205/Ratio 748/92  
Dam NR 3-98  
Adj. 365/Ratio 1322/97  
Adj. Scrotal 38.00

Conneally Right Answer 746  
**SIRE: JBA INFUSION 419**  
T A Raja Y31

Mytty In Focus  
**DAM: T A CLOVAE Z55**  
T A Clovae N52

S A V Final Answer 0035  
Happy Dell of Conanga 262  
GDAR Game Day 449  
T A Ragana U15

S A F Focus of E R  
Mytty Countess 906  
Bon View New Design 878  
T A Cloves H75

EPDS	CED	BW	WW	YW	Milk	CW	Marb
	+7	+.8	+53	+98	+23	+28	+.46
	RE	FAT	\$M	\$W	\$F	\$B	
	+.08	+.023	+.54	+.51	+.83	+.119	

*Thank you to all  
the advertisers  
that make our  
operations run!*



# WE PROTECT THIS.

This farm. This family. This dream.



This world is made of dreams like yours and at American Family Insurance, we believe everyone's dream deserves protection. That's why our local agents specialize in building customizable plans that protect the hard work of farmers and ranchers like you.

**Contact me today to learn more or get a quote.**



**Todd Schweitzer, Agent**

Todd Schweitzer Agency Inc

204 Sims St # 202

Dickinson, ND 58601

Bus: (701) 483-6228



American Family Mutual Insurance Company, S.I. and Its Operating Companies  
6000 American Parkway, Madison, WI 53783 015410 – 10/18 ©2018 – 9293348





## 2019 Headliners



MILL BAR **HICKOK** 7242  
AAA 17351674  
CONNELLY CONSENSUS 7229 x S A V FINAL ANSWER 0035

### Quality and Balance At Its Best

- ✓ Well rounded, maternally oriented bull with super phenotype and calving ease



YON **FUTURE FORCE** Z77  
AAA 17264322  
YON FUTURE FOCUS T219 x S A V FINAL ANSWER 0035

### The Future is Now

- ✓ Proven high-profit, total performance son of the Sire Alliance All-Star FUTURE FOCUS



BASIN **PAYWEIGHT** 1682  
AAA 17038724  
BASIN PAYWEIGHT 006S x HARB PENDLETON 765 J H

### Type, Performance and Demand Changer

- ✓ All around performance leader with a powerful phenotype and unlimited mating options

Donald and Sarah Nordby  
Amidon, ND  
701-879-6376

[ABSBEEF.COM](http://ABSBEEF.COM) | 1.800.ABS.STUD



**Dr. Chance Noyce**

11660 Hwy 10  
Dickinson, ND 58601  
701-690-0509

# We know insurance. We know North Dakota.



**Clare Messmer**, *Career Agent*

2717 3rd Ave. W. • Dickinson

**483.4282**

**We might even know you.**

Call me with your insurance questions.

Auto. Home. Farm and Ranch. Business.  
Life. Annuities. Crop Hail.

**Nodak**  
**Insurance Company**

Agents with answers.

Life insurance and annuity products offered through Farm Bureau Life Insurance Company, West Des Moines, IA.



Thank you to all  
our customers and  
communities—it is  
because of your trust  
in us that we have  
been able to achieve  
this recognition.

# #1 Ag Lender in ND

RECOGNIZED BY THE  
FDIC IN 2011 & 2014



**DICKINSON**  
323 18th Street W  
701.483.8282

**BELFIELD**  
201 North Main St  
701.575.8282

**SOUTH HEART**  
209 4th Street NW  
701.677.8282

[choicefinancialgroup.com](http://choicefinancialgroup.com)

Information on #1 Ag Lender: [fdic.gov](http://fdic.gov). Member FDIC.







**PAYBACK MONTHLY SPECIAL:**  
**Payback Minerals**  
 available with Zinpro® Performance  
 Minerals and Bio-Mos®



**\$40 OFF**  
**PER TON**

Ranchers, make  
**PAYBACK MINERAL**  
 part of your productive feeding program,  
 for a healthy, profitable herd.



## Payback Mineral

**PAYBACK**

### Heifers:

- ▶ Improved growth
- ▶ Improved ovulation
- ▶ Better conception rates

### Cows:

- ▶ Tighter calving intervals
- ▶ Improved conception rates

### Bulls:

- ▶ Earlier puberty
- ▶ Enhanced semen quality
- ▶ Improved foot health

### Healthy calves:

- ▶ Improved colostrum quality
- ▶ Better vaccination response
- ▶ Lower incidence of scours

### Heavier calves:

- ▶ Increased milk production
- ▶ Tighter calving intervals
- ▶ Greater weaning weights

Payback mineral forms the foundation  
 of a productive feeding program  
 resulting in the best return on  
 investment for your operation.

*Ask about a Payback professional consultation for  
 custom nutritional formulations for your operation*

LEAD TIME 10 DAYS TO 2 WEEKS

NUTRITIONAL SOLUTIONS FROM **CHS**



**Southwest  
 Grain**

*Available at Belfield SWG location*







JB ANGUS  
*Bobby and Erika Kubas*  
12549 31st St SW  
Belfield, ND 58622

PRSRT. STD.  
U.S. POSTAGE  
PAID  
PERMIT #20  
DICKINSON, ND  
58601

ADDRESS SERVICE REQUESTED  
REQUESTED DELIVERY DATE JANUARY 13, 2020

ANNUAL PRODUCTION SALE  
**WEDNESDAY,**  
**JANUARY 29, 2020**

Stockmen's Livestock West • Dickinson, ND

*Sale Time: 1:00 P.M. MST*

*Selling 40 select yearlings and 2 year old bulls*

**WWW.JBANGUS.COM**