

22nd

Winter bull & Female Sale

k2redangus.com

February 3, 2022

At the K2 Sale Facility,
Slater Road, Wheatland WY

100 Head

**Bulls: 18-month-old and yearlings
registered yearling heifers**

**K
2** *Red Angus*

DVAuction
Broadcasting Real Time Auctions

Jason & Kim Cullen Goertz
307-331-2917
kcullen@wyoming.com

Welcome to our 22nd year of selling Red Angus bulls. I cannot quite believe it has been that long! I look back at those first bulls and females and know that we have built this program on a strong foundation, based on a firm set of principles, about what a cow, and a bull, should be. We always work to improve our herd, and our sale offering, but we never lose sight of that foundation.

Sitting for hours on the computer working on this catalog and listening to the radio—I heard a line I just have to add to this. “Do what you love but call it work.” I think that sums up this life and lifestyle for our family! I have no doubt it is the same for many of you reading this.

We are in a business where we work hard, do an honest job, involve the whole family, and produce a healthy, wholesome and necessary product. It seems more than ever, now it a great time for all of us to be proud we are in Agriculture.

Sincerely,
Jason & Kim



000 Sir Loin



Fertility Test

Bulls have all passed a complete Breeding Soundness exam and Fertility Test, bulls under a year old are guaranteed to pass by 1 year of age.

Feeding

We will keep all bulls and feed them for free up to March 1st. At that time we will schedule deliveries.

If you would like to take your bull sale day, you will receive **\$100 credit per bull**

Delivery

We will be glad to work with you to make delivery easy and at the least expense possible !

Free delivery 150 miles per bull.

If you want to buy the bulls—we will get them to you!

If you have questions about where we will deliver for free just give us a call. Sometimes a central location works best for delivery. Additional miles will be charged at \$.50/mile. Neighbors delivered to one location can count as one total volume.

Heifers

Heifers are brucellosis vaccinated, and tested BVD negative.

Heifers can be picked up sale day, or any time up to February 15th.

We do not offer free delivery on the heifers, **but** if you purchase bulls also, the girls can hitch a free ride with them! With bull purchase and delivery we will also feed and care for your heifers until that delivery date.



3SCC Domain

Bulls are Guaranteed

All bulls will be fertility tested and guaranteed sound breeders. Young bulls are guaranteed to have passed a fertility test by 1 year old.

All bulls are guaranteed to your satisfaction—if you bid online or phone, sight-unseen, we will make sure the bulls you purchase are the bulls you want.

All bulls will be guaranteed tested;

- BVD negative
- All 18-month-old bulls Trich negative

Replacement Guarantee Details:

- For Replacement Guarantee bulls must be in adequate condition to breed cows.
- We do not provide delivery or pick up for replacements bulls.
- You can choose a replacement bull, **or** credit for the next year's sale based on your bull's purchase price.



Red U2 Foreigner — Sire of our herd bull "Stout"



RAVN Linebacker

2022 Breeding season— More than a Guarantee

**... because credit can't breed
cows right now!**

Bulls will be bulls, and unforeseen things will happen. They fight, break legs, break other things...including each other.

While we guarantee when you receive your bull he will have passed a complete fertility test, be sound and of the quality you purchased, all of that can't overcome everything a bull can do during the breeding season. We want to guarantee you will have a bull throughout your entire breeding season!

If a bull you purchased in our Winter 2022 sale, is unable to breed throughout your entire 2022 breeding season, we give you the option of getting another bull to finish out the season. (see details on page 3)

*We appreciate you being our
customer!*



Sale contact phones:

Kim Cullen Goertz 307-331-2917
Jason Goertz 307-331-2250

Paul Marchant 208-312-0517
Progressive Cattlemen

Curt Cox 307-630-4604
Wyoming Livestock Roundup

Matt Wznick 406-489-2414
TriState Livestock News

Torrington Livestock Auction
307-532-3333

Lex Madden 307-532-1580

Red Angus Association,
Commercial Marketing Representative
Nolan Woodruff 805-861-0996

Location:

K2 Red Angus
2 South Goertz Road
Wheatland, Wyoming 82201

Sale Schedule—

Thursday, February 3rd

*9 a.m. Cattle will be penned by the
sale facility and ready for viewing
Coffee, cocoa and donuts will be ready
also!*

Noon Lunch

1 p.m. Sale starts (MST)

18-Month-Old Bulls: Lots 1-35

Yearling Bulls: Lots 34-78

Registered Yearling Heifers: Lots 79-92

Videos are available for each lot at Dvauction.com or a link on our website, k2redangus.com.

DV Auction: Bidding is available through DV Auction. We recommend registering with DV at least 24 hours ahead of sale time.

Phone Bids: If you would like to place bids with a representative or bid over the phone feel free to contact us, or any of the other sale contact numbers. We can get you set up with someone to help you.

Sale Order: Sale cattle are listed in lot order, and will sell in lot order.

All the sale cattle will be located at our place off Slater Road; 2 S. Goertz Road, Wheatland, WY (see map in back of catalog) through sale time. Feel free to come by anytime and look at the cattle. If you want to go see the cow herd we can also do that.

PAP scores: All cattle in this sale will be PAP (pulmonary arterial pressure) tested. Since cattle are being tested in late January results will be available after the printing of the catalog. Contact us for these results. Results will also be posted on our website and on DV Auction during the sale.

Scrotal Circumference: Will be available on a supplement sheet at the sale, on our website and through email or mail. These will be taken Jan 19th.



Red U2 Dominion

ET Donors & Sires

Our summer program was initially built on using embryo transfer, and collecting the best females out of our spring herd. We put about 40-50 embryos every year into the commercial cows of our summer calving herd.

One benefit of this is to offer our customers several full brothers and 3/4 brothers out of the best genetics in our program. If you are looking for this consistency we can help you with a list of these closely related bulls.



K2 Paprika 305 605—Granddam to Lot 17 and a donor dam showing up in many of our pedigrees



POKE NebP707 9116 1064

K2 Sheridan 714 is one of our embryo donors, and shows up in many pedigrees in this catalog

714 with her first calf in 2009



K2 Sheridan 714

714 at 7 with son Resilience



Spring and Summer Calving programs

Our entire cattle operation is divided into a spring calving herd and a summer calving herd. There are several reasons why we operate this way;

- To spread out our labor—we can work twice as many cattle by splitting the timing of our labor.
- To match our pasture resources. Some pastures are better matched for cattle to be up in the mountains and inaccessible in the summer months. We like to have those calved out, branded, and rebred AI before the end of May.

The summer calving herd spends those winter and spring months fending for themselves with very little labor.

After the spring calving herd is turned up to summer pasture, we start calving the summer herd. This group is then branded, and rebred AI & ET and turned out to summer range about the time we start weaning and preg checking the spring group.

- To lower our bull needs. We use AI or Embryo Transfer on all of our females. We also expect our herd sires to breed in both seasons—requiring a true test of fertility, structure and fleshing ability.



Common Misconceptions

The two calving seasons are for keeping open cows in the herd. **NO** We absolutely do not use the two calving seasons to keep low fertility cattle. No open female is ever moved to the other calving season.

Bulls that are sold as 18-month-olds are bulls that failed to sell the past year. **NO** We only offer our bulls for sale once—"no sales" are never passed on to the next sale.

Lots 1-78

Bulls



Bulls will sell in lot order.

We reserve the right to keep 1/2 semen interest in any sale bulls. Semen will be collected at our expense and the buyers convenience. The buyer has full possession of the bull.

These bulls are all registered and can be part of the Red Angus Feeder Calf Certification Program (FCCP).

We will be glad to help buyers learn about this program or enroll their calves. Nolan Woodruff, Red Angus Association Commercial Marketing Specialist, will also be at the sale and available to help buyers with the programs Red Angus has to help commercial producers add value to their Red Angus Calves.

DVAuction

www.dvauction.com

Watch & Bid online for FREE!

Can't make the sale?

Let DVAuction bring the sale to you!

Busy during the sale?

Let DVAuction represent your bid!

Visit www.dvauction.com and Register!

It's as easy as 1, 2, 3...

1. Create an account at www.dvauction.com under the "create new account" tab
2. Apply for bidding by clicking "apply for bidding" in the upper left corner of your screen, at least 24 hours prior to the auction
3. Tune into the sale and make your purchases!

For General Questions Please Contact Our Office:
(402) 316-5460 or support@dvauction.com

*High Speed Internet Access Required

PAP Risk Category Flow Chart

Timothy N. Holt, DVM

2019

Location of PAP Test
Wheatland, Wyoming Ranch
K-2 Red Angus
Elevation 5523 feet

All bulls and females in this sale will be PAP tested, but it will be after the catalog is printed. Results will be on our website, handed out at the sale, or feel free to contact us to get your copy.

PAP Risk Factor

High Elevation Test Chart

PAP test conducted at elevation 5500-7000 ft.
 (75-95% Repeatable, Predictive Value)

PAP Score	Use at Low Elev. (<4000 feet)	Use at Moderate Elev. (4000-5500 FEET)	Use at High Elev. (5500-7500 feet)	Use at Extreme (>7500 feet)
34-41	Low Risk	Low Risk	Low Risk	Low Risk
42-44	Low Risk	Low Risk	Low Risk	Moderate Risk
45-49	Moderate Risk	Moderate Risk	Moderate Risk	High Risk
≥50	Moderate Risk	Moderate Risk	High Risk	High Risk

Calving Ease Scores

We have updated our Calving Ease Scores this year to a scale of 1-5 to better describe each bull. These scores are located in each bull's information at the bottom of the pedigree and just above the EPDs.

Our scores for each bull range from 1 – 5. 1 being recommended for only cows, to 5 being elite calving ease. We feel that sometimes the numbers can be hard to equate to what you can expect when the due date is here. To come up with our scores we do take into account the CED and BW EPD's, but we go a few steps farther. We look at our cows that we know well, and study her pedigree 3 generations back looking at calving and birth weight tendencies. We also look at how the sire has worked in our herd. We look at trends and variations on each side of the pedigree. It takes consistent calving ease on both sides of the pedigree to get our 4 or 5 status. We are very conservative on the calving ease since we calve all of our cows on the range without assistance. I believe our 3 scores are bulls that some people would use on heifers, and some people only on cows, depending on your calving situation and your cattle.

Please feel free to contact us if you have any questions or would like more information on this system of rating our bulls.



1 K2 REDMAN 832 0128B 3/21/20 A100% AR
K2RA128 4360103RED RMJ REDMAN 1T
K2 REDMAN 7115 530
OCHO VACA MISS WENDY T15
K2 REDMAN 631 80314012058
BASIN TREND SETTER 6074
BASIN LAKOTA 6318
BASIN LAKOTA 3956BECKTON EPIC R397 K
K2 EPIC PAYWT ET 651 6027
BASIN DUCHESS 6151
K2 ROSES LUCK 583 8324012274
LR HAMILTON 721
K2 HAMILTON'S ROSE 592 583
BASIN ROSE 5892

MPPA: 96 Dam Age: 3/7/18 Calving Ease 5

	Ratio	Data
Act. BW	89	65
Adj. WW	91	512
Adj. YW		
SC		
Frame		
	EPD Top%	Data
MARB	0.33	68
YG	0.05	47
CW	3	95
REA	-0.03	79
FAT	0.03	72
ADG	0.1	98
DMI	0.82	12

	ProS	HB	GM	CED	BW	WW	YW	MILK	ME	HPG	CEM	STAY
EPD	112	97	15	20	-6.9	33	49	25	-6	11	12	19
Top%	27	5	88	1	1	99	99	53	19	56	1	9

Outstanding calving ease, with great thickness and length. We think enough of this bull that we used him in our registered cows last spring. He is a great traveling bull, free and easy, and a nice disposition.

2 K2 LUKE ACE 939 13HB 5/25/20 A100% AR
K2RA13H 4376429BECKTON ACCENT W180 C2
BECKTON ACCENT A243 N3
BECKTON MINOLA T233 NB
KDCS ACCORD 8293951405
KDCS JAGO 822
KDCS EVE 017
KDCS JULENE 836BASIN TREND SETTER 6074
BASIN TREND SETTER 59T5
BASIN PRIDE 5235
K2 DIANA BXT 651 9391320290
BASIN PAYWEIGHT M205
BASIN DUCHESS 6151
BASIN DUCHESS 1787

MPPA: 106 Dam Age: 4/4/09 Calving Ease 4

	Ratio	Data
Act. BW		80
Adj. WW		594
Adj. YW		
SC		
Frame		
	EPD Top%	Data
MARB	0.41	48
YG	0.07	58
CW	5	94
REA	-0.02	77
FAT	0.03	82
ADG	0.16	86
DMI	1.04	21

	ProS	HB	GM	CED	BW	WW	YW	MILK	ME	HPG	CEM	STAY
EPD	106	85	21	18	-5.4	46	72	26	2	13	9	19
Top%	36	15	78	4	4	89	89	36	54	19	11	13

This bull has been a standout from the day he was born. An ET out of an outstanding 16 year old cow. He is stacked with maternal, longevity, dark color, calving ease, growth, and sound structure.

3 K2 LG WALTER 447 0143B 4/15/20 A100% AR
K2RA143 4359897BROWN P707 X7877
DUBAS EXCELLENT ANSWER
LCS 012
K2 EXCELLENT ANS 423 7893791941
K2 GRAND EC 840 255
K2 CARRIE KG 045 423
K2 ARGENTINE HOBO 803 045C-T GRAND STATEMENT 1025
K2 GRAND EC 840 255
K2 ERICA EXT 552 840
K2 CLG RED VELVET 807 4471695091
LPB TOPPER E02
SLCC 07H
DOUBLE FORK 002D

MPPA: 97 Dam Age: 5/21/14 Calving Ease 4

	Ratio	Data
Act. BW	96	78
Adj. WW	98	538
Adj. YW		
SC		
Frame		
	EPD Top%	Data
MARB	0.35	63
YG	0.12	84
CW	14	74
REA	-0.15	94
FAT	0.02	64
ADG	0.19	73
DMI	1.06	22

	ProS	HB	GM	CED	BW	WW	YW	MILK	ME	HPG	CEM	STAY
EPD	96	71	25	15	-4.5	51	82	23	1	13	11	15
Top%	53	37	70	15	9	80	78	74	49	20	3	59

Excellent longevity with a granddam that was a great cow in our herd up to 18! Disposition just doesn't get much better than this easy going guy; but he has a lot more to offer with easy calving, nice thickness... and more.

4 K2 LB 6D 54HB 5/14/20
K2RA54HA100% AR
43600015L ADVOCATE 817-14W
5L DEFENDER 560-30Z
5L BLACK ADINA 525-560
RAVN LINEBACKER C5373486945
BADLANDS STATEMENT 70Y
RAVN BONNEBELL A325
PAULS BONNEBELL 124BFCK CHEROKEE CNYN 4912
LCC MAJOR LEAGUE A502M
KRN REBA'S ROBINK2 MABEL ML ET 243 6D3623571
LR HAMILTON 721

K2 AMES HLT 714 243

K2 SHERIDAN 714

MPPA: 99 Dam Age: 5/14/16

Calving Ease 3

	Ratio	Data
Act. BW	96	77
Adj. WW	86	460
Adj. YW		
SC		
Frame		
	EPD Top%	Data
MARB	0.42	45
YG	0.01	25
CW	15	69
REA	0.12	44
FAT	0.01	35
ADG	0.19	75
DMI	1.89	90

	ProS	HB	GM	CED	BW	WW	YW	MILK	ME	HPG	CEM	STAY
EPD	67	48	19	15	-3.6	56	86	21	3	13	5	14
Top%	93	81	81	20	18	66	71	83	59	18	85	72

This bull covers a lot of bases – long, smooth bodied, sound and free moving. Built to get the job done.

**5 K2 RHETT J012 15H**B 5/13/20
K2RA15HA100% AR
4376445BUF CRK GOLD MEDAL L091
BUF CRK MEDALLION N328
BUF CRK BELGA 6114
BUF CRK NICE'N EASY T1891190716
BECKTON JULIAN GG B571
BUF CRK REDPRIDE P154
MRM 832 8664 9005BECKTON COPPER J E616
BECKTON COPPER JT G095
BECKTON RUTH E549 TPBECKTON BARMAID J012 CO677499
BECKTON LANCER T A664
BECKTON BARMAID G565 LN
BKT BARMAID 9517 RN

MPPA: 108 Dam Age: 2/20/99

Calving Ease 5

	Ratio	Data
Act. BW		77
Adj. WW		480
Adj. YW		
SC		
Frame		
	EPD Top%	Data
MARB	0.46	37
YG	0.24	99
CW	11	84
REA	-0.27	99
FAT	0.06	99
ADG	0.17	84
DMI	0.72	8

	ProS	HB	GM	CED	BW	WW	YW	MILK	ME	HPG	CEM	STAY
EPD	126	96	29	16	-5.3	46	73	28	-10	12	7	19
Top%	13	6	62	11	4	89	88	23	9	30	44	7

1st of 4 full flush brothers. Outstanding calving ease and fleshing ability. His dam is the great J012 cow with an impressive MPPA of 108.

6 K2 LINDER LB 653 51HB 5/14/20 A100% AR
K2RA51H 43599915L ADVOCATE 817-14W
5L DEFENDER 560-30Z
5L BLACK ADINA 525-560
RAVN LINEBACKER C5373486945
BADLANDS STATEMENT 70Y
RAVN BONNEBELL A325
PAULS BONNEBELL 124

BIEBER MAKIN HAY 9913
RED HOWEY 400
RED CONNIE 5347
K2 JULIANNE 400 616 6463542384
BUF CRK JULESBURG 5807
BP JULIANNE 413 616
BP ANNA 413
MPPA: 107 Dam Age: 3/26/16 Calving Ease 3

	Ratio	Data
Act. BW	101	82
Adj. WW	118	632
Adj. YW		
SC		
Frame		
	EPD Top%	Data
MARB	0.41	48
YG	0.04	41
CW	26	27
REA	0.21	26
FAT	0.01	47
ADG	0.26	22
DMI	2.15	97

	ProS	HB	GM	CED	BW	WW	YW	MILK	ME	HPG	CEM	STAY
EPD	63	37	26	14	-1.7	74	117	25	8	13	6	12
Top%	95	92	68	35	52	7	11	46	85	18	78	86

A nice powerful bull with a weaning ratio of 118, and coming from a great cow family going back to our 616 cow that did a lot of good in our herd. Growth and maternal value here.

**7 K2 PAXTON PK 66D 35H**B 5/9/20 A100% AR
K2RA35H 4359999BECKTON NEBULA P P707
POKE NEBP707 9116 1064
HLH MS QB 6021 9116
K2 PK 605 41E3898199
LCC MAJOR LEAGUE A502M
K2 PAPRIKA 305 605
K2 GINGER 0805 305

5L ADVOCATE 817-14W
5L ALL YOU NEED 118-554A
5L DYNABELLE 1966-118
K2 ROXIE 3068 66D3542397
5L GRAND EXPRESS 453-5655
5L ROXIE X 1824-3068
5L ROXIE 936-1824
MPPA: 100 Dam Age: 6/17/16 Calving Ease 3

	Ratio	Data
Act. BW	105	84
Adj. WW	108	577
Adj. YW		
SC		
Frame		
	EPD Top%	Data
MARB	0.51	27
YG	0.07	58
CW	12	81
REA	0	72
FAT	0.02	68
ADG	0.17	84
DMI	0.95	17

	ProS	HB	GM	CED	BW	WW	YW	MILK	ME	HPG	CEM	STAY
EPD	114	79	35	14	-2.3	51	78	23	-7	12	6	18
Top%	25	22	49	28	40	80	83	73	16	27	72	21

This bull has been a top pick for several of us that have worked with these bulls for almost 2 years. Power, length, thickness, dark red. His sire PK was a high seller to Rice Ranch & a bull we use AI.



8 K2 REILLY R 652 86H

B 5/19/20 A100% AR
K2RA86H 4359989

K2 AUSTIN ALLIANCE 812 1060
K2 RESILIANCE 714 473
K2 SHERIDAN 714
K2 RED REIGN 939 7793791833
BASIN TREND SETTER 59T5
K2 DIANA BXT 651 939
BASIN DUCHESS 6151

NBAR HAMLEY S913
LR HAMILTON 721
SMBA HIHO SHONI M15
K2 BONIBELL HLT 372 6523542445
BECKTON CODY T008 K2
AXTELL BONNEBELLE 053-372
AXTELL BONNEBELL 843-053
MPPA: 100 Dam Age: 3/26/16 Calving Ease 5

	Ratio	Data
Act. BW	96	78
Adj. WW	101	542
Adj. YW		
SC		
Frame		
	EPD Top%	Data
MARB	0.34	65
YG	0.1	73
CW	15	71
REA	-0.04	81
FAT	0.02	68
ADG	0.14	92
DMI	1.04	21

	ProS	HB	GM	CED	BW	WW	YW	MILK	ME	HPG	CEM	STAY
EPD	145	125	20	19	-5.2	46	69	25	-2	13	11	24
Top%	3	1	79	2	5	89	91	55	33	22	2	1

Complete package! Calving ease and growth – a combination made possible by his smooth and long bodied build. Two of our top donor cows and our top sire, Hamilton, all back this bull up in his pedigree.

9 K2 MELVIN MB 651 95H

B 5/11/20 A100% AR
K2RA95H 4376471

RED U-2 RECON 192Y
RED U-2 RECKONING 149A
RED U-2 ANEXA 271Y
RED U2 MALBEC 195D3721545
RED MINBURN COPENHAGEN 3Y
RED U-2 MABEL 60A
RED U-2 MABEL 7061T

VERMILION DATELINE 7078
BASIN PAYWEIGHT M205
BASIN ROSE 801E
BASIN DUCHESS 61511121590
BASIN DRIFTER 430H
BASIN DUCHESS 1787
BASIN DUCHESS G69
MPPA: 101 Dam Age: 2/15/06 Calving Ease 2

	Ratio	Data
Act. BW		85
Adj. WW		512
Adj. YW		
SC		
Frame		
	EPD Top%	Data
MARB	0.29	78
YG	0.03	31
CW	4	95
REA	0.03	66
FAT	0.02	61
ADG	0.12	96
DMI	0.91	15

	ProS	HB	GM	CED	BW	WW	YW	MILK	ME	HPG	CEM	STAY
EPD	89	82	7	14	-3.8	46	65	21	-15	10	10	15
Top%	65	18	95	33	16	90	94	83	4	65	6	59

Massive deep bodied bull with tons of rib shape and thickness. There are 2 bull ET borthers offered here (lots 9 & 14). Lots of power along with maternal strength and longevity.

10 K2 PARKER 501 0142B 4/14/20 A100% AR
K2RA142 4359905DKF ELIMINATOR 15A
RED DKF RAZOR 55C
DKF MISS NET WORTH 21A
K2 RZR PUCK 137B 80164012204
RED YY DESIGNER 15X
RED REDRICH HALLEY 137B
RED REDRICH HALLEY 138ZBECKTON NEBULA P P707
BROWN JYJ REDEMPTION Y1334
JYJ MS JOLENE W16K2 ALEX 372 5013480434
BECKTON CODY T008 K2
AXTELL BONNEBELLE 053-372
AXTELL BONNEBELL 843-053

MPPA: 95 Dam Age: 2/13/15 Calving Ease 4

	Ratio	Data
Act. BW	88	71
Adj. WW	91	503
Adj. YW		
SC		
Frame		
	EPD Top%	Data
MARB	0.38	55
YG	0.14	89
CW	28	23
REA	-0.04	81
FAT	0.02	56
ADG	0.22	56
DMI	1.45	53

	ProS	HB	GM	CED	BW	WW	YW	MILK	ME	HPG	CEM	STAY
EPD	140	100	40	16	-4.5	50	85	25	-7	12	8	20
Top%	5	4	36	9	9	82	73	46	17	30	24	4

Calving ease, growth and thickness out of a top Redemption daughter. We used this bull on our registered cows as a yearling. He did a great job and came out in excellent condition.

11 K2 BEAU ACE 939 12HB 5/16/20 A100% AR
K2RA12H 4376433BECKTON ACCENT W180 C2
BECKTON ACCENT A243 N3
BECKTON MINOLA T233 NB

KDCS ACCORD 8293951405

KDCS JAGO 822
KDCS EVE 017
KDCS JULENE 836BASIN TREND SETTER 6074
BASIN TREND SETTER 59T5
BASIN PRIDE 5235K2 DIANA BXT 651 9391320290
BASIN PAYWEIGHT M205
BASIN DUCHESS 6151
BASIN DUCHESS 1787

MPPA: 106 Dam Age: 4/4/09 Calving Ease 4

	Ratio	Data
Act. BW		74
Adj. WW		486
Adj. YW		
SC		
Frame		
	EPD Top%	Data
MARB	0.41	48
YG	0.07	58
CW	5	94
REA	-0.02	77
FAT	0.03	82
ADG	0.16	86
DMI	1.04	21

	ProS	HB	GM	CED	BW	WW	YW	MILK	ME	HPG	CEM	STAY
EPD	106	85	21	18	-5.4	46	72	26	2	13	9	19
Top%	36	15	78	4	4	89	89	36	54	19	11	13

Another great package! Full ET brother to lot 2. Calving ease, maternal ability and so much more. Don't be put off by the lower weaning weight – he was raised by a recipient dam that did not do great, but the genetics are there.

12 K2 MALCOLM MB 5E 44HB 5/21/20 A100% AR
K2RA44H 4359943RED U-2 RECON 192Y
RED U-2 RECKONING 149A
RED U-2 ANEXA 271Y
RED U2 MALBEC 195D3721545
RED MINBURN COPENHAGEN 3Y
RED U-2 MABEL 60A
RED U-2 MABEL 7061TBROWN P707 X7877
DUBAS EXCELLENT ANSWER
LCS 012K2 ARLENE EA 045 5E3898187
BUF CRK HOBO 1961
K2 ARGENTINE HOBO 803 045
K2 PATAGONIA RBLR 620 803

MPPA: 100 Dam Age: 5/1/17 Calving Ease 2

	Ratio	Data
Act. BW		
Adj. WW	105	563
Adj. YW		
SC		
Frame		
	EPD Top%	Data
MARB	0.29	78
YG	0.12	85
CW	12	80
REA	-0.14	93
FAT	0.03	74
ADG	0.19	74
DMI	1.12	26

	ProS	HB	GM	CED	BW	WW	YW	MILK	ME	HPG	CEM	STAY
EPD	102	90	12	15	-2.9	58	89	23	-12	9	12	16
Top%	42	10	91	21	29	56	66	73	7	79	1	47

Eye appealing with length and thickness. His sire Malbec packs pounds in every dimension on his progeny. We didn't catch him until he was too old to get a birth weight – excellent calf vigor!! He was not a large calf at birth.

13 K2 ACCORD Y312 29F 47H

B 5/13/20 A100% AR
K2RA47H 4359835

BECKTON CODY K1 P014
BECKTON ACCENT U777 C2
BECKTON SUSAN R022 CQ
BECKTON ACCENT Y312 N31451236
BECKTON NEBULA P P707
BKT LARKEISA S055 NB
BECKTON LARKEISA P688 C

BROWN P707 X7877
DUBAS EXCELLENT ANSWER
LCS 012
K2 SHERIDAN EA 714 29F4062102
RF ROSCO 0187
K2 SHERIDAN 714
K2 RED CHEYENNE 512
MPPA: 106 Dam Age: 5/20/18 Calving Ease 4

	Ratio	Data
Act. BW	97	73
Adj. WW	111	598
Adj. YW		
SC		
Frame		
	EPD Top%	Data
MARB	0.4	50
YG	0.21	99
CW	21	45
REA	-0.13	92
FAT	0.05	95
ADG	0.2	67
DMI	1.25	35

	ProS	HB	GM	CED	BW	WW	YW	MILK	ME	HPG	CEM	STAY
EPD	94	69	25	16	-4.3	60	92	29	0	17	8	14
Top%	56	40	69	11	11	50	59	16	42	2	32	70

This bull's young dam is 2 for 2 on raising outstanding bulls. Look here for consistency in calving ease, growth (excellent 111 weaning ratio) maternal traits and a great disposition.

14 K2 MADER MB 651 7H

B 5/10/20 A100% AR
K2RA7H 4376467

RED U-2 RECON 192Y
RED U-2 RECKONING 149A
RED U-2 ANEXA 271Y
RED U2 MALBEC 195D3721545
RED MINBURN COPENHAGEN 3Y
RED U-2 MABEL 60A
RED U-2 MABEL 7061T

VERMILION DATELINE 7078
BASIN PAYWEIGHT M205
BASIN ROSE 801E
BASIN DUCHESS 61511121590
BASIN DRIFTER 430H
BASIN DUCHESS 1787
BASIN DUCHESS G69
MPPA: 101 Dam Age: 2/15/06 Calving Ease 2

	Ratio	Data
Act. BW		85
Adj. WW		442
Adj. YW		
SC		
Frame		
	EPD Top%	Data
MARB	0.29	78
YG	0.03	31
CW	4	95
REA	0.03	66
FAT	0.02	61
ADG	0.12	96
DMI	0.91	15

	ProS	HB	GM	CED	BW	WW	YW	MILK	ME	HPG	CEM	STAY
EPD	89	82	7	14	-3.8	46	65	21	-15	10	10	15
Top%	65	18	95	33	16	90	94	83	4	65	6	59

This bull is going to pack power in every dimension – like his full ET brother lot 9. Tons of rib shape and depth. Dark red. Good disposition.

15 K2 HAMLEY 13D 69H

B 5/19/20 A100% AR
K2RA69H 4359761

PERKS ADVANCE 121R
PIE BILLINGS 487
PIE RAMBO'S PRIDE 0289
NBAR HAMLEY S9131102983
NBAR DANCE 531
NBAR KELLY 913
NBAR KELLY 700

CV FOUR TIMES
FCC RAMBO 502
COPPER LASS 2392
K2 CHIEFETTE 502 ET 413 13D3623575
RED CHIEF R143
RED CHIEFETTE 413
PANHANDLE LUCY 734
MPPA: 104 Dam Age: 5/23/16 Calving Ease 2

	Ratio	Data
Act. BW	99	79
Adj. WW	106	567
Adj. YW		
SC		
Frame		
	EPD Top%	Data
MARB	0.23	90
YG	0.05	42
CW	8	89
REA	-0.07	85
FAT	0.01	35
ADG	0.11	97
DMI	0.87	13

	ProS	HB	GM	CED	BW	WW	YW	MILK	ME	HPG	CEM	STAY
EPD	62	61	1	12	-0.8	51	68	23	-12	7	6	15
Top%	96	57	98	52	69	81	92	72	7	97	70	54

This bull combines some breed legends; Rambo 502 and Hamley. You get added power and a little more from his Rambo 502 dam. Thickness and some good feet from Hamley.

16 K2 MB 7D 48HB 5/13/20
K2RA48HA100% AR
4360065

RED U-2 RECON 192Y
 RED U-2 RECKONING 149A
 RED U-2 ANEXA 271Y
RED U2 MALBEC 195D3721545
 RED MINBURN COPENHAGEN 3Y
 RED U-2 MABEL 60A
 RED U-2 MABEL 7061T

BFCK CHEROKEE CNYN 4912
 LCC MAJOR LEAGUE A502M
 KRN REBA'S ROBIN
K2 AMES LEAGUE ET 243 7D3623603
 LR HAMILTON 721
 K2 AMES HLT 714 243
 K2 SHERIDAN 714
 MPPA: 95 Dam Age: 5/17/16

Calving Ease 2

	Ratio	Data
Act. BW	100	80
Adj. WW	84	453
Adj. YW		
SC		
Frame		
	EPD Top%	Data
MARB	0.29	78
YG	0.04	38
CW	8	90
REA	0.03	66
FAT	0.02	59
ADG	0.12	96
DMI	0.99	18

	ProS	HB	GM	CED	BW	WW	YW	MILK	ME	HPG	CEM	STAY
EPD	97	87	10	14	-4.1	45	64	20	-16	10	10	16
Top%	52	12	93	26	13	91	94	92	3	74	5	51

Good power bull out of Malbec. A bull to cover the country and the cows.
 Easy traveling, moderate birth and good growth.

17 K2 HARLEN HLT 4HB 5/16/20
K2RA4HA100% AR
4376457

PIE BILLINGS 487
 NBAR HAMLEY S913
 NBAR KELLY 913
LR HAMILTON 7211354863
 HOLDEN HI HO 7151
 SMBA HIHO SHONI M15
 SMBA ROBINS SHOSHONIJ24

RED BRYLOR NEW TREND 22
 BASIN TREND SETTER 6074
 BASIN ROSE F521
K2 PRIMROSE TS 605 2061553529
 LCC MAJOR LEAGUE A502M
 K2 PAPRIKA 305 605
 K2 GINGER 0805 305
 MPPA: 101 Dam Age: 2/2/12

Calving Ease 5

	Ratio	Data
Act. BW		82
Adj. WW		453
Adj. YW		
SC		
Frame		
	EPD Top%	Data
MARB	0.28	80
YG	0.08	64
CW	11	82
REA	-0.03	79
FAT	0.02	68
ADG	0.1	98
DMI	0.78	10

	ProS	HB	GM	CED	BW	WW	YW	MILK	ME	HPG	CEM	STAY
EPD	123	111	11	19	-5.4	43	58	24	-7	13	11	20
Top%	15	1	91	1	4	93	96	58	16	22	1	3

Don't miss this rare opportunity! Hamilton is gone and semen is down to less than 5 straws. This bull has so much of what we breed for; exceptional calving ease, top notch foot structure, a donor dam with great udder structure. Don't let his marginal recipient dam's production get in the way.

18 K2 MALBEC 658 26HB 5/4/20
K2RA26HA100% AR
4359993

RED U-2 RECON 192Y
 RED U-2 RECKONING 149A
 RED U-2 ANEXA 271Y
RED U2 MALBEC 195D3721545
 RED MINBURN COPENHAGEN 3Y
 RED U-2 MABEL 60A
 RED U-2 MABEL 7061T

NBAR HAMLEY S913
 LR HAMILTON 721
 SMBA HIHO SHONI M15
K2 RINGA HLT 145 6583542411
 BECKTON JULIAN W354 E5
 AXTELL SYRINGA 838-116
 AXTELL SYRINGA 604-838
 MPPA: 97 Dam Age: 4/2/16

Calving Ease 4

	Ratio	Data
Act. BW	95	77
Adj. WW	92	493
Adj. YW		
SC		
Frame		
	EPD Top%	Data
MARB	0.28	80
YG	0.07	55
CW	0	98
REA	-0.12	92
FAT	0.03	70
ADG	0.11	96
DMI	0.84	12

	ProS	HB	GM	CED	BW	WW	YW	MILK	ME	HPG	CEM	STAY
EPD	95	91	3	17	-5.4	41	60	22	-18	9	11	16
Top%	56	9	97	5	4	95	96	81	2	85	2	41

Calving ease from his Hamilton dam and power from Malbec – a good combination.

19 K2 ACCENT 2F 29FB
K2RA29H

5/6/20

A100% AR
4359841

BECKTON CODY K1 P014
 BECKTON ACCENT U777 C2
 BECKTON SUSAN R022 CQ
BECKTON ACCENT Y312 N31451236
 BECKTON NEBULA P P707
 BKT LARKEISA S055 NB
 BECKTON LARKEISA P688 C

BROWN P707 X7877
 DUBAS EXCELLENT ANSWER
 LCS 012

K2 SHERRI 016 2F4062096
 RF ROSCO 0187
 K2 SHERIDAN 714

K2 RED CHEYENNE 512

MPPA: 99 Dam Age: 5/15/18

Calving Ease 5

	Ratio	Data
Act. BW	82	60
Adj. WW	99	531
Adj. YW		
SC		
Frame		
	EPD Top%	Data
MARB	0.4	50
YG	0.21	99
CW	18	59
REA	-0.18	96
FAT	0.05	95
ADG	0.18	80
DMI	1.2	32

	ProS	HB	GM	CED	BW	WW	YW	MILK	ME	HPG	CEM	STAY
EPD	93	69	24	17	-5.9	52	81	28	0	17	8	14
Top%	59	40	73	6	2	77	80	23	38	2	25	70

Consistency in calving ease throughout his pedigree. Add in his nice length and thickness and you have a great package.

20 K2 ROX R 3068 67HB
K2RA67H

5/19/20

A100% AR
4359843

K2 AUSTIN ALLIANCE 812 1060
 K2 RESILIANCE 714 473
 K2 SHERIDAN 714
K2 RED REIGN 939 7793791833
 BASIN TREND SETTER 59T5
 K2 DIANA BXT 651 939
 BASIN DUCHESS 6151

5L NORSEMAN EXPRESS
 5L GRAND EXPRESS 453-5655
 5L RUBY 01-453

5L ROXIE X 1824-30681261800
 O C C EMBLAZON 854E
 5L ROXIE 936-1824

XXX ROXIE 936 MR

MPPA: 97 Dam Age: 2/25/08

Calving Ease 3

	Ratio	Data
Act. BW	100	81
Adj. WW	95	512
Adj. YW		
SC		
Frame		
	EPD Top%	Data
MARB	0.41	48
YG	0.03	35
CW	15	68
REA	0.15	37
FAT	0.02	61
ADG	0.13	94
DMI	1.19	31

	ProS	HB	GM	CED	BW	WW	YW	MILK	ME	HPG	CEM	STAY
EPD	134	111	23	15	-3	49	70	19	-7	14	9	20
Top%	8	1	74	17	27	84	91	95	17	9	18	3

This bull's dam is 14 and still going strong and bred up early. Deep, dark red long bodied bull.

21 K2 53C 81HB
K2RA81H

6/9/20

A100% AR
4359919

RED RMJ REDMAN 1T
 K2 REDMAN 7115 530
 OCHO VACA MISS WENDY T15
K2 REDMAN 631 80314012058
 BASIN TREND SETTER 6074
 BASIN LAKOTA 6318
 BASIN LAKOTA 3956

NBAR HAMLEY S913
 LR HAMILTON 721
 SMBA HIHO SHONI M15

K2 SENSATION ET 602 53C3513717
 BASIN SENSATIONAL
 7 Z SENSATION LASS 602

7 Z APPROVAL LADY 1014

MPPA: 108 Dam Age: 5/1/15

Calving Ease 5

	Ratio	Data
Act. BW	83	68
Adj. WW	103	555
Adj. YW		
SC		
Frame		
	EPD Top%	Data
MARB	0.35	63
YG	0.07	60
CW	11	82
REA	-0.01	75
FAT	0.02	68
ADG	0.09	99
DMI	0.95	17

	ProS	HB	GM	CED	BW	WW	YW	MILK	ME	HPG	CEM	STAY
EPD	138	120	18	22	-6.9	35	49	28	-7	12	13	21
Top%	6	1	83	1	1	98	99	26	16	35	1	2

If you have a lot of heifers and a lot of country this is the perfect bull. He moves like a cat and checks all the calving ease boxes. His dam has an impressive 108 MPPA! He does not quite have the great disposition that most of our cattle do.

22 HUSTON'S HAYMITCH 20-1

B 3/29/20 A100% AR
4COW20-1 4372765

5L ADVOCATE 817-14W
5L ALL YOU NEED 118-554A
5L DYNABELLE 1966-118
K2 NORMAN 1263 62D3542506
5L REGAL TRAVELER 2321
5L MARY 287-1263
5L MARY 233-287

DKF ELIMINATOR 15A
RED DKF RAZOR 55C
DKF MISS NET WORTH 21A
K2 LOLA 218 8174012130
FEDDES BIG SKY R9
K2 RAYLYN SKY ET 0602 218
ZCC SAGEBRUSH LADY 0602
MPPA: Dam Age: 2/28/18 Calving Ease 3

Ratio		Data
Act. BW		77
Adj. WW		659
Adj. YW		
SC		
Frame		
EPD Top%		Data
MARB	0.34	65
YG	0.1	75
CW	22	44
REA	-0.09	88
FAT	0.01	30
ADG	0.18	81
DMI	1.24	34

	ProS	HB	GM	CED	BW	WW	YW	MILK	ME	HPG	CEM	STAY
EPD	95	68	28	11	-1.1	50	78	22	-4	14	4	16
Top%	54	43	64	76	64	82	83	81	23	14	94	38

Born unassisted out of a first calf heifer this bull has 'heifer bull' potential and nice growth. His granddam produced into her mid teens. His dam combines Razor power and 218's excellent udder and longevity.

23 K2 CK MAVERICK MB 7135 90H

B 5/13/20 A100% AR
K2RA90H 4360025

RED U-2 RECON 192Y
RED U-2 RECKONING 149A
RED U-2 ANEXA 271Y
RED U2 MALBEC 195D3721545
RED MINBURN COPENHAGEN 3Y
RED U-2 MABEL 60A
RED U-2 MABEL 7061T

BECKTON DOMINOR Y052 N6
BECKTON DOMINOR A038 J7
BECKTON TARA Y111 J
MLK CRK THUNDER 71353756095
MLK CRK EXPRESS 9141
MLK CRK THUNDER 4116
MLK CRK THUNDER 063
MPPA: 99 Dam Age: 3/21/17 Calving Ease 1

Ratio		Data
Act. BW	113	90
Adj. WW	100	539
Adj. YW		
SC		
Frame		
EPD Top%		Data
MARB	0.3	77
YG	0.09	71
CW	18	59
REA	0.12	44
FAT	0.04	89
ADG	0.18	80
DMI	1.14	27

	ProS	HB	GM	CED	BW	WW	YW	MILK	ME	HPG	CEM	STAY
EPD	92	74	18	10	0	59	88	20	-14	12	7	14
Top%	61	31	83	87	82	52	68	91	4	35	39	75

This guy hit the ground packing power! I remember the length and thickness he had already – and he has not backed off a bit! This is a moderate framed power house. If you like your power in the package and not the blue sky between the belly and ground – this is the bull for you.

24 K2 1064 11D 59H

B 5/16/20 A100% AR
K2RA59H 4359749

BECKTON NEBULA M045
BECKTON NEBULA P P707
BECKTON LANA M809 EP
POKE NEBP707 9116 10641447375
5L QUARTERBACK 1205-5337
HLH MS QB 6021 9116
HLH ABBIE 4224 6021

CV FOUR TIMES
FCC RAMBO 502
COPPER LASS 2392
K2 CHIEFETTE 502 ET 413 11D3623565
RED CHIEF R143
RED CHIEFETTE 413
PANHANDLE LUCY 734
MPPA: 102 Dam Age: 5/14/16 Calving Ease 2

Ratio		Data
Act. BW	107	86
Adj. WW	105	565
Adj. YW		
SC		
Frame		
EPD Top%		Data
MARB	0.42	45
YG	0.13	87
CW	9	86
REA	-0.22	98
FAT	0.02	64
ADG	0.2	71
DMI	1.16	29

	ProS	HB	GM	CED	BW	WW	YW	MILK	ME	HPG	CEM	STAY
EPD	65	41	24	13	-1.5	52	83	25	0	7	5	15
Top%	94	89	73	49	56	78	76	50	40	98	81	58

Great foot structure! Rock solid Red Angus behind this bull. Rambo 502 is a breed legend for growth and great daughters- and 1064 is our top pick of recent bulls used for calving ease and wonderful daughters. That adds up to a lot of good traits!

25 K2 WAYLON J012 16HB 5/13/20 A100% AR
K2RA16H 4376447

BUF CRK GOLD MEDAL L091
 BUF CRK MEDALLION N328
 BUF CRK BELGA 6114
BUF CRK NICE'N EASY T1891190716
 BECKTON JULIAN GG B571
 BUF CRK REDPRIDE P154
 MRM 832 8664 9005

BECKTON COPPER J E616
 BECKTON COPPER JT G095
 BECKTON RUTH E549 TP
BECKTON BARMAID J012 C0677499
 BECKTON LANCER T A664
 BECKTON BARMAID G565 LN
 BKT BARMAID 9517 RN

MPPA: 108 Dam Age: 2/20/99 Calving Ease 5

Ratio		Data
Act. BW		71
Adj. WW		485
Adj. YW		
SC		
Frame		
EPD Top%		Data
MARB	0.46	37
YG	0.24	99
CW	11	84
REA	-0.27	99
FAT	0.06	99
ADG	0.17	84
DMI	0.72	8

	ProS	HB	GM	CED	BW	WW	YW	MILK	ME	HPG	CEM	STAY
EPD	126	96	29	16	-5.3	46	73	28	-10	12	7	19
Top%	13	6	62	11	4	89	88	23	9	30	44	7

1 of 4 flush brothers from embryos we purchased from Calvo Red Angus. Outstanding calving ease and fleshing ability in a smaller frame package.

26 K2 SUPREMACY 18F 61HB 5/16/20 A100% AR
K2RA61H 4359775

5L BOURNE 117-48A
 5L BOURNE 670-111C
 5L ADINA 2174-670
SCHULER SUPREMACY 7177E3778501
 SCHULER ENDURANCE 2101Z
 SOR KARVE ENDRANCE 4205B
 SOR KARVE PCKR 2625Z

BROWN JYJ REDEMPTION Y1334
 K2 MAX RD 206 456
 K2 PRIMROSE TS 605 206
K2 GALE MX 2D 18F4012396
 RL GALENA 60
 K2 MS GALENA ET 0602 2D
 ZCC SAGEBRUSH LADY 0602

MPPA: 100 Dam Age: 5/13/18 Calving Ease 3

Ratio		Data
Act. BW	112	85
Adj. WW	100	539
Adj. YW		
SC		
Frame		
EPD Top%		Data
MARB	0.45	39
YG	0.03	32
CW	17	64
REA	0.09	52
FAT	0.01	35
ADG	0.22	56
DMI	1.16	29

	ProS	HB	GM	CED	BW	WW	YW	MILK	ME	HPG	CEM	STAY
EPD	125	83	43	14	-2	52	87	21	2	15	9	16
Top%	13	17	30	25	46	78	70	87	52	6	11	38

Great feet on this bull! Moderate bull built to get the job done.

27 K2 GARTH J012 24HB 5/20/20 A100% AR
K2RA24H 4376439

BUF CRK GOLD MEDAL L091
 BUF CRK MEDALLION N328
 BUF CRK BELGA 6114
BUF CRK NICE'N EASY T1891190716
 BECKTON JULIAN GG B571
 BUF CRK REDPRIDE P154
 MRM 832 8664 9005

BECKTON COPPER J E616
 BECKTON COPPER JT G095
 BECKTON RUTH E549 TP
BECKTON BARMAID J012 C0677499
 BECKTON LANCER T A664
 BECKTON BARMAID G565 LN
 BKT BARMAID 9517 RN

MPPA: 108 Dam Age: 2/20/99 Calving Ease 5

Ratio		Data
Act. BW		81
Adj. WW		548
Adj. YW		
SC		
Frame		
EPD Top%		Data
MARB	0.46	37
YG	0.24	99
CW	11	84
REA	-0.27	99
FAT	0.06	99
ADG	0.17	84
DMI	0.72	8

	ProS	HB	GM	CED	BW	WW	YW	MILK	ME	HPG	CEM	STAY
EPD	126	96	29	16	-5.3	46	73	28	-10	12	7	19
Top%	13	6	62	11	4	89	88	23	9	30	44	7

Another of 4 flush brothers out of Calvo Red Angus embryos. Great calving ease and fleshing ability. Moderate size with good capacity.

28 K2 Y312 862 45HB 5/13/20
K2RA45HA100% AR
4360137BECKTON CODY K1 P014
BECKTON ACCENT U777 C2
BECKTON SUSAN R022 CQ
BECKTON ACCENT Y312 N31451236
BECKTON NEBULA P P707
BKT LARKEISA S055 NB
BECKTON LARKEISA P688 CBECKTON EPIC R397 K
K2 EPIC PAYWT ET 651 6027
BASIN DUCHESS 6151**K2 DEE 7 504 8624012256**
RED RMJ REDMAN 1T
K2 RED DUCHESS 939 504
K2 DIANA BXT 651 939

MPPA: 104 Dam Age: 4/21/18

Calving Ease 4

	Ratio	Data
Act. BW	100	75
Adj. WW	107	573
Adj. YW		
SC		
Frame		
	EPD Top%	Data
MARB	0.42	45
YG	0.17	95
CW	18	60
REA	0.01	70
FAT	0.05	98
ADG	0.19	75
DMI	1.13	26

	ProS	HB	GM	CED	BW	WW	YW	MILK	ME	HPG	CEM	STAY
EPD	96	68	28	15	-4.1	55	86	27	-4	16	7	14
Top%	54	42	65	16	13	67	72	32	24	3	55	70

Good all around bull. Dark Cherry red. Moderate birth but not giving up growth with a nice 107 weaning ratio.

29 K2 LEGEND 20E 52HB 5/14/20
K2RA52HA100% AR
4359789PIE BILLINGS 487
NBAR HAMLEY S913
NBAR KELLY 913
K2 H LEE 3068 66E3791823
5L GRAND EXPRESS 453-5655
5L ROXIE X 1824-3068
5L ROXIE 936-1824BECKTON EPIC R397 K
BROWN BLW LEGEND A1965
HXC PATRICIA ROSE 102Y**K2 RUBY LG 519 20E3791793**
ANDRAS ENERGIZER 2222
BASIN RUBY 5119 BR
BASIN RUBY 1658

MPPA: 93 Dam Age: 5/22/17

Calving Ease 2

	Ratio	Data
Act. BW	106	83
Adj. WW	94	503
Adj. YW		
SC		
Frame		
	EPD Top%	Data
MARB	0.43	43
YG	0.1	74
CW	13	76
REA	-0.06	84
FAT	0.02	68
ADG	0.14	91
DMI	0.99	19

	ProS	HB	GM	CED	BW	WW	YW	MILK	ME	HPG	CEM	STAY
EPD	112	84	28	11	-0.1	45	68	17	-11	13	5	17
Top%	27	16	64	71	81	91	92	98	8	16	86	26

A good low maintenance energy, cow bull. 2 grandams produced into their teens – nice longevity and production.

30 K2 PUCK 524 0141B 4/13/20
K2RA141A100% AR
4359913DKF ELIMINATOR 15A
RED DKF RAZOR 55C
DKF MISS NET WORTH 21A
K2 RZR PUCK 137B 80164012204
RED YY DESIGNER 15X
RED REDRICH HALLEY 137B
RED REDRICH HALLEY 138Z5L NORSEMAN KING 2291
RED RMJ REDMAN 1T
CROWFOOT KURUBA 4033P**K2 KURUBA 145 5243480449**
BECKTON JULIAN W354 E5
AXTELL SYRINGA 838-116
AXTELL SYRINGA 604-838

MPPA: 98 Dam Age: 2/20/15

Calving Ease 3

	Ratio	Data
Act. BW	99	80
Adj. WW	95	524
Adj. YW		
SC		
Frame		
	EPD Top%	Data
MARB	0.23	90
YG	0.09	69
CW	11	82
REA	-0.07	85
FAT	0.02	64
ADG	0.2	71
DMI	1.16	28

	ProS	HB	GM	CED	BW	WW	YW	MILK	ME	HPG	CEM	STAY
EPD	102	85	16	14	-3.4	47	79	25	-12	11	6	18
Top%	43	14	86	33	21	88	83	54	7	43	74	15

Low maintenance, easy doing bull. Good for whatever and where ever you need a bull!

31 K2 PUCK 310 0140B
K2RA140

4/9/20

2100% AR
4359847DKF ELIMINATOR 15A
RED DKF RAZOR 55C
DKF MISS NET WORTH 21A
K2 RZR PUCK 137B 80164012204
RED YY DESIGNER 15X
RED REDRICH HALLEY 137B
RED REDRICH HALLEY 138ZF C R ELATION LAD 652
EMULATION 31
MISS EMULOUS 243
K2 EMULOUS ET 605 3101628878
LCC MAJOR LEAGUE A502M
K2 PAPRIKA 305 605
K2 GINGER 0805 305
MPPA: 100 Dam Age: 2/23/13

Calving Ease 3

	Ratio	Data
Act. BW	96	78
Adj. WW	109	601
Adj. YW		
SC		
Frame		
	EPD Top%	Data
MARB	0.3	77
YG	0.13	86
CW	22	41
REA	0.03	66
FAT	0.03	82
ADG	0.15	89
DMI	1.21	32

	ProS	HB	GM	CED	BW	WW	YW	MILK	ME	HPG	CEM	STAY
EPD	103	84	20	14	-3.3	51	75	27	-11	13	8	16
Top%	40	16	80	25	23	79	86	35	8	20	33	39

Black bull. Total outcross pedigree with Angus legendary female maker Emulation 31 crossed with some top Canadian genetics on top.

32 K2 14D 82HB
K2RA82H

6/10/20

A100% AR
4359763BECKTON ACCENT W180 C2
BECKTON ACCENT A243 N3
BECKTON MINOLA T233 NB
KDCS ACCORD 8293951405
KDCS JAGO 822
KDCS EVE 017
KDCS JULENE 836CV FOUR TIMES
FCC RAMBO 502
COPPER LASS 2392
K2 CHIEFETTE 502 ET 413 14D3623577
RED CHIEF R143
RED CHIEFETTE 413
PANHANDLE LUCY 734
MPPA: 102 Dam Age: 5/23/16

Calving Ease 4

	Ratio	Data
Act. BW	84	68
Adj. WW	101	540
Adj. YW		
SC		
Frame		
	EPD Top%	Data
MARB	0.32	70
YG	0.07	58
CW	5	93
REA	-0.06	84
FAT	0.03	72
ADG	0.16	86
DMI	1.18	30

	ProS	HB	GM	CED	BW	WW	YW	MILK	ME	HPG	CEM	STAY
EPD	64	54	10	16	-4.1	49	75	25	2	8	8	16
Top%	94	70	93	11	13	85	86	54	51	93	24	51

Good calving ease and nice outcross pedigree. His sire is an excellent herd bull we bought from Sheamans – nice calving ease, eye appealing and good disposition.

33 K2 ROLLY 660 85HB
K2RA85H

7/21/20

A100% AR
4359997BECKTON ACCENT W180 C2
BECKTON ACCENT A243 N3
BECKTON MINOLA T233 NB
KDCS ACCORD 8293951405
KDCS JAGO 822
KDCS EVE 017
KDCS JULENE 836NBAR HAMLEY S913
LR HAMILTON 721
SMBA HIHO SHONI M15
K2 BANDA HLT 019 6603542410
K2 RED ALLIANCE 1602 73
BP MS ALLIANCE 616 019
BP JULIANNE 413 616
MPPA: 99 Dam Age: 4/11/16

Calving Ease 5

	Ratio	Data
Act. BW	90	73
Adj. WW	97	523
Adj. YW		
SC		
Frame		
	EPD Top%	Data
MARB	0.36	60
YG	0.1	75
CW	6	92
REA	-0.08	87
FAT	0.03	84
ADG	0.15	89
DMI	1.12	25

	ProS	HB	GM	CED	BW	WW	YW	MILK	ME	HPG	CEM	STAY
EPD	106	94	12	19	-6.2	49	74	25	1	14	10	19
Top%	36	7	91	1	2	84	87	53	45	12	7	7

Don't miss this guy because he is a little younger! Excellent calving ease and maternal traits. His dam bred back in less than 30 days after he was born.

Lot 39 & dam



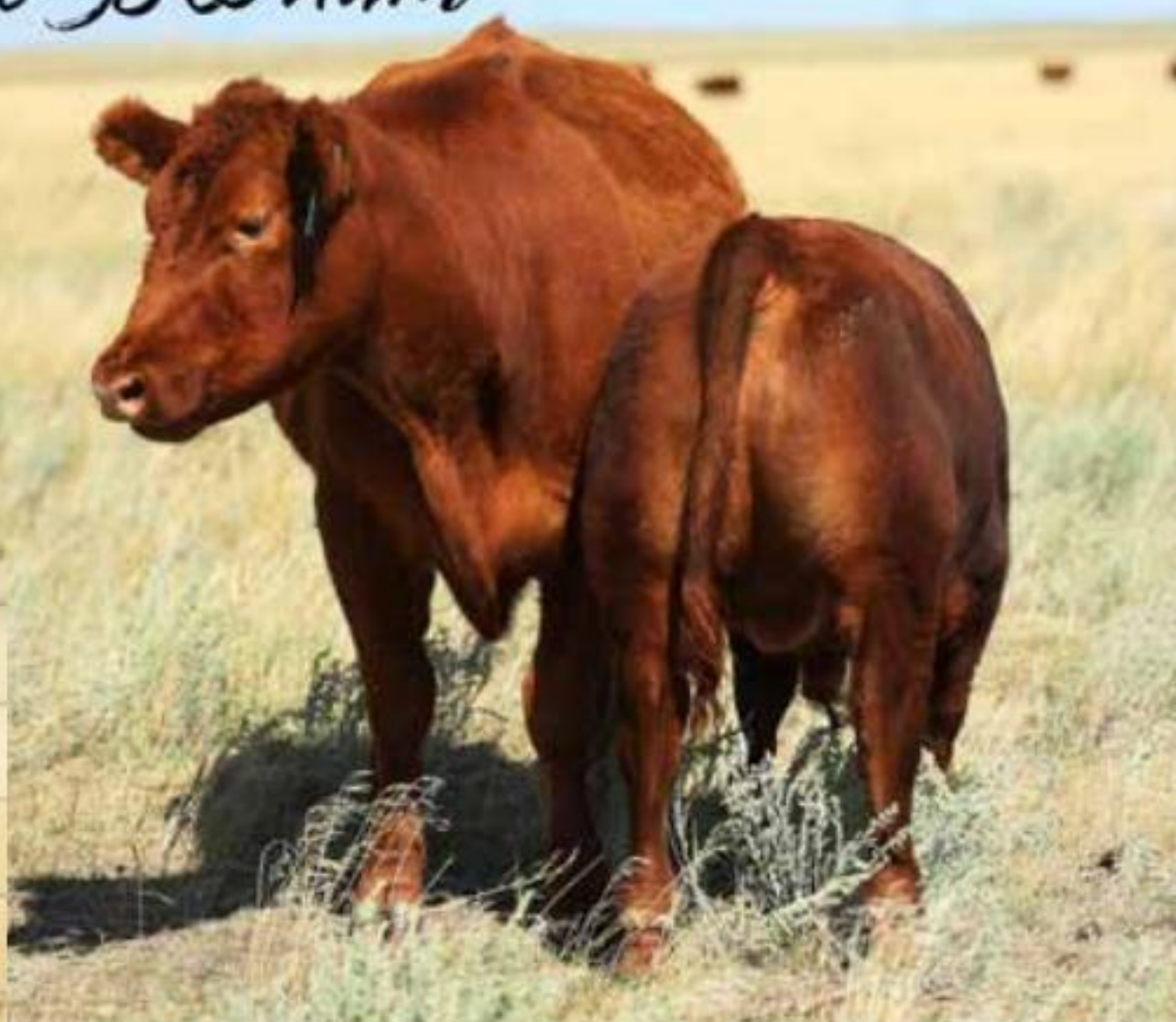
Lot 80



Lot 8



Lot 38 & dam



34 K2 WILLIE J012 19HB 5/16/20 A100% AR
K2RA19H 4376449

BUF CRK GOLD MEDAL L091
 BUF CRK MEDALLION N328
 BUF CRK BELGA 6114
BUF CRK NICE'N EASY T1891190716
 BECKTON JULIAN GG B571
 BUF CRK REDPRIDE P154
 MRM 832 8664 9005

BECKTON COPPER J E616
 BECKTON COPPER JT G095
 BECKTON RUTH E549 TP
BECKTON BARMAID J012 CO677499
 BECKTON LANCER T A664
 BECKTON BARMAID G565 LN
 BKT BARMAID 9517 RN

MPPA: 108 Dam Age: 2/20/99 Calving Ease 5

Ratio		Data
Act. BW		81
Adj. WW		523
Adj. YW		
SC		
Frame		
EPD Top%		Data
MARB	0.46	37
YG	0.24	99
CW	11	84
REA	-0.27	99
FAT	0.06	99
ADG	0.17	84
DMI	0.72	8
		0

	ProS	HB	GM	CED	BW	WW	YW	MILK	ME	HPG	CEM	STAY
EPD	126	96	29	16	-5.3	46	73	28	-10	12	7	19
Top%	13	6	62	11	4	89	88	23	9	30	44	7

Last chance at this group of 4 flush brothers! Calving ease, fleshing ability, nice disposition. Get all 4 for your heifers and get a great consistent calf crop! You would also have quite a lineup for a great country song 😊

35 K2 MARCO 11E 60HB 5/16/20 A100% AR
K2RA60H 4359751

RED U-2 RECON 192Y
 RED U-2 RECKONING 149A
 RED U-2 ANEXA 271Y
RED U2 MALBEC 195D3721545
 RED MINBURN COPENHAGEN 3Y
 RED U-2 MABEL 60A
 RED U-2 MABEL 7061T

K2 AUSTIN ALLIANCE 812 1060
 K2 RESILIANCE 714 473
 K2 SHERIDAN 714
K2 ELLE RS 602 11E3898171
 K2 HIDALGO 005 41
 BP ELLE 202 602
 BP KIM 202

MPPA: 111 Dam Age: 5/10/17 Calving Ease 4

Ratio		Data
Act. BW	91	71
Adj. WW	126	677
Adj. YW		
SC		
Frame		
EPD Top%		Data
MARB	0.28	80
YG	0.04	37
CW	18	59
REA	0.12	44
FAT	0.02	49
ADG	0.16	86
DMI	1.25	35
		0

	ProS	HB	GM	CED	BW	WW	YW	MILK	ME	HPG	CEM	STAY
EPD	107	96	11	15	-3.9	65	91	25	-12	10	11	17
Top%	35	6	92	17	15	31	62	50	7	65	1	30

Last chance at an 18 month old bull and a really good one! This bull has the best birth to weaning spread in the whole set – birth ration 71 and highest weaning ratio of 126. Herdbuilder in top 6% rounds out the total package.

36 K2 PRIOR SL 834 192B 2/24/21 A100% AR
K2RA192 4514689

HXC CONQUEST 4405P
 LSF TAKEOVER 9943W
 LSF WIDELoad R5014 U8061
OOO SIR LOIN 51223493807
 BROWN PARAMOUNT X7879
 BROWN MS PARAMOUNT A7033
 BROWN MS MISSION STMT W7525

BECKTON EPIC K F075
 BECKTON EPIC R397 K
 BECKTON KIT F468 JL
K2 CARI EP 423 8344012172
 K2 GRAND EC 840 255
 K2 CARRIE KG 045 423
 K2 ARGENTINE HOBO 803 045

MPPA: 97 Dam Age: 3/10/18 Calving Ease 4

Ratio		Data
Act. BW	94	73
Adj. WW	97	594
Adj. YW		
SC		
Frame		
EPD Top%		Data
MARB	0.51	27
YG	0.18	97
CW	18	59
REA	0.02	68
FAT	0.06	99
ADG	0.24	42
DMI	0.98	18
		0

	ProS	HB	GM	CED	BW	WW	YW	MILK	ME	HPG	CEM	STAY
EPD	115	71	45	13	-4	56	94	20	0	14	7	15
Top%	23	37	27	43	14	66	55	91	38	14	43	54

Nice dark red, super thick, easy going bull that is versatile for heifers or cows. He will catch your eye, and I like him more every time I am in the pen.

37 K2 CRUSADE 718 191

B
K2RA191

2/24/21

A100% AR
4514691

HXC CONQUEST 4405P
LSF TAKEOVER 9943W
LSF WIDELoad R5014 U8061
OOO SIR LOIN 51223493807
BROWN PARAMOUNT X7879
BROWN MS PARAMOUNT A7033
BROWN MS MISSION STMT W7525

BECKTON JULIAN GG B571
RED HILL B571 JULIAN 84S
BECKTON BARMAID M554 CH

K2 SALLIE 5008 7183792005
K2 BLK TRADER ET 602 389
K2 MISS 6T B805 151 5008
K2 LAINE SK 0805 151

MPPA: 103 Dam Age: 2/19/17

Calving Ease 3

	Ratio	Data
Act. BW	103	83
Adj. WW	110	671
Adj. YW		
SC		
Frame		

	EPD	Top%	Data
MARB	0.46	37	
YG	0.13	88	
CW	15	70	
REA	0.08	54	
FAT	0.05	98	
ADG	0.23	45	0
DMI	0.81	11	

	ProS	HB	GM	CED	BW	WW	YW	MILK	ME	HPG	CEM	STAY
EPD	116	76	39	13	-2.7	61	98	22	-3	13	7	16
Top%	23	27	37	39	32	45	45	81	28	23	46	42

It is hard to miss this guy going through the pen. Thick, stout, deep and all that with a great disposition.



38 K2 REX 81 180B
K2RA180

2/21/21

A100% AR
4514715

BUF CRK THE RIGHT KIND U199
 5L LEADING EDGE 1221-79A
 5L BLACKBIRD 5519-1221
5L LEADING EDGE 15383-117C3483291
 5L PURSUIT 3244-127X
 5L RED BIRD 411-15383
 5L RED BIRD 1312-411

NBAR HAMLEY S913
 LR HAMILTON 721
 SMBA HIHO SHONI M15
K2 FIREFLY HLT 787 814012064
 BUF CRK GIULIANI L851
 MLK CRK FIREFLY 787
 MLK CRK FIREFLY 461
 MPPA: 104 Dam Age: 9/22/18

Calving Ease 5

	Ratio	Data	
Act. BW	97	74	
Adj. WW	111	681	
Adj. YW			
SC			
Frame			
	EPD	Top%	Data
MARB	0.35	63	
YG	0.07	55	
CW	18	57	
REA	0.11	46	
FAT	0.02	68	
ADG	0.14	92	0
DMI	0.89	14	

	ProS	HB	GM	CED	BW	WW	YW	MILK	ME	HPG	CEM	STAY
EPD	118	94	24	19	-5	55	77	28	-9	13	10	17
Top%	20	7	73	2	6	70	84	20	12	17	6	30

A favorite of all of ours all summer. This is one thick calving ease bull!
 Length and moderate bone keeps the calving ease on this chunk. Out of a
 1st calf heifer, but great longevity in the 15 year old granddam.

**39 K2 UNION 704 1111**B
K2RA1111

3/5/21

A100% AR
4514931

RED U6 HESSTON 14Z
 RED HOWE HESSTON 212C
 RED HOWE MS ARAB 170X
RED U2 DOMINION4098772
 RED HOWE MAGNUM 169W
 RED U2 HIDEE HO 459D
 RED U-2 HIDEE HO 281Y

BECKTON NEBULA P P707
 POKE NEBP707 9116 1064
 HLH MS QB 6021 9116
K2 CALLIE PK 512 7043791995
 BECKTON EPIC R397 K
 K2 CALLIE 203 512
 K2 CONQUEST 045 203
 MPPA: 102 Dam Age: 2/11/17

Calving Ease 3

	Ratio	Data	
Act. BW	101	82	
Adj. WW	102	626	
Adj. YW			
SC			
Frame			
	EPD	Top%	Data
MARB	0.35	63	
YG	0.1	74	
CW	24	33	
REA	0.09	52	
FAT	0.03	72	
ADG	0.25	31	0
DMI	1.47	56	

	ProS	HB	GM	CED	BW	WW	YW	MILK	ME	HPG	CEM	STAY
EPD	105	67	39	12	-2.3	55	96	29	-2	9	6	17
Top%	37	45	39	55	40	67	51	16	30	83	66	31

Thick! Check out the picture of him on his dam. This guy has power, in a
 moderate, deep, thick... and good looking package. His dam is a great
 young cow backed by several generations of top cows.

40 K2 ASCENDENCE 607 198B 2/27/21 A100% AR
K2RA198 4514679

RED U6 HESSTON 14Z
 RED HOWE HESSTON 212C
 RED HOWE MS ARAB 170X
RED U2 DOMINION4098772
 RED HOWE MAGNUM 169W
 RED U2 HIDEE HO 459D
 RED U-2 HIDEE HO 281Y

BECKTON JULIAN GG B571
 RED HILL B571 JULIAN 84S
 BECKTON BARMAID M554 CH
K2 CN ROBIN 84S 228B 6073542505
 RED BAR-E-L PRESTIGE 73Y
 RED REDRICH ROBIN 228B
 RED REDRICH ROBIN 227U
 MPPA: 103 Dam Age: 2/17/16 Calving Ease 1

	Ratio	Data
Act. BW	108	89
Adj. WW	107	657
Adj. YW		
SC		
Frame		
	EPD Top%	Data
MARB	0.19	95
YG	0.01	22
CW	21	45
REA	0.25	20
FAT	0.01	42
ADG	0.23	45
DMI	1.26	36

	ProS	HB	GM	CED	BW	WW	YW	MILK	ME	HPG	CEM	STAY
EPD	108	84	24	9	0.5	59	96	30	-9	8	5	19
Top%	33	16	71	88	88	53	50	10	13	93	87	7

Another powerful bull out of a cow that always produces well. Check out the outcross pedigree.

41 K2 STOUT 552 1123B 3/18/21 A100% AR
K2RA1123 4514905

U2 T.K.O.254Z
 RED U-2 FOREIGNER 413B
 RED U-2 ANEXA 8026U
VGW STOUT 7403764739
 LONEROCK GOLDSTRIKE 262
 VGW GS-DORY 0647
 VGW PT- DORY 0361

BECKTON CODY T008 K2
 AXTELL CODY 3844
 AXTELL LAKOTA 645-844
K2 LAKOTA OPAL 702 5523466502
 BROWN VACATION H7106
 K2 RED OPAL 702
 K2 KEEPSAKE 502
 MPPA: 100 Dam Age: 3/17/15 Calving Ease 3

	Ratio	Data
Act. BW	95	78
Adj. WW	113	692
Adj. YW		
SC		
Frame		
	EPD Top%	Data
MARB	0.18	95
YG	0.02	30
CW	20	52
REA	0.19	29
FAT	0.02	49
ADG	0.21	64
DMI	1.54	62

	ProS	HB	GM	CED	BW	WW	YW	MILK	ME	HPG	CEM	STAY
EPD	98	85	13	15	-3.7	57	90	26	2	13	9	18
Top%	50	15	90	21	17	60	63	44	51	21	19	20

This super thick bull has a lot to offer with a moderate birth weight and nearly 700 weaning wt. Super feet. Granddam is still in the herd at 15 and a top donor cow. Disposition on this bull is excellent!

42 K2 BUTLER LB 199 751B 3/5/21 A100% AR
K2RA199 4514677

5L ADVOCATE 817-14W
 5L DEFENDER 560-30Z
 5L BLACK ADINA 525-560
RAVN LINEBACKER C5373486945
 BADLANDS STATEMENT 70Y
 RAVN BONNEBELL A325
 PAULS BONNEBELL 124

LOOSLI RIGHT KIND 201
 CRS DIAMND UPRIGHT 4204
 CRS DIAMND TRADITION 195
K2 ARIES CD 108 7513791861
 K2 RED ALLIANCE 1602 73
 K2 ARIES ALLIANCE ET 812 108
 K2 SAN FRAN RBLR 601 812
 MPPA: 106 Dam Age: 3/24/17 Calving Ease 4

	Ratio	Data
Act. BW	105	84
Adj. WW	123	753
Adj. YW		
SC		
Frame		
	EPD Top%	Data
MARB	0.5	29
YG	0.05	48
CW	27	24
REA	0.17	33
FAT	0.01	42
ADG	0.25	30
DMI	2.1	97

	ProS	HB	GM	CED	BW	WW	YW	MILK	ME	HPG	CEM	STAY
EPD	84	54	30	14	-2.3	76	116	26	5	14	6	14
Top%	73	70	59	32	40	5	12	36	68	15	74	73

Power! Top weaning ratio of 123. His dam has a MPPA of 106. This is a bull to pack on some pounds, and all with a moderate birth weight.

43 K2 DOMINANCE 452 179B 2/21/21 A100% AR
K2RA179 4514719

RED U6 HESSTON 14Z
 RED HOWE HESSTON 212C
 RED HOWE MS ARAB 170X
RED U2 DOMINION4098772
 RED HOWE MAGNUM 169W
 RED U2 HIDEE HO 459D
 RED U-2 HIDEE HO 281Y

NBAR HAMLEY S913
 LR HAMILTON 721
 SMBA HIHO SHONI M15
K2 COPPERQUEEN HLT 207 4521695080
 C-T GRAND STATEMENT 1025
 K2 COPPERQUEEN 912 207
 DZA COPPERQUEEN 1912
 MPPA: 95 Dam Age: 2/9/14 Calving Ease 2

	Ratio	Data
Act. BW	103	85
Adj. WW	101	616
Adj. YW		
SC		
Frame		
	EPD Top%	Data
MARB	0.25	87
YG	0.06	50
CW	25	30
REA	0.18	32
FAT	0.02	56
ADG	0.21	58
DMI	1.41	50
		0

	ProS	HB	GM	CED	BW	WW	YW	MILK	ME	HPG	CEM	STAY
EPD	111	85	26	12	-1.2	58	92	24	-7	10	7	18
Top%	28	14	68	58	62	58	59	60	17	74	51	15

This bull has a picture perfect dam, great foot and udder structure, smooth made – crossed with the power of Dominion. Moderate birth with power to offer.

44 K2 COCHISE 31 710 1124B 3/18/21 A100% AR
K2RA1124 4514903

RED RMJ REDMAN 1T
 K2 REDMAN 7115 530
 OCHO VACA MISS WENDY T15
K2 REDMAN 631 80314012058
 BASIN TREND SETTER 6074
 BASIN LAKOTA 6318
 BASIN LAKOTA 3956

BECKTON NEBULA P P707
 POKE NEBP707 9116 1064
 HLH MS QB 6021 9116
K2 AUBREY PK 502 7103791999
 RED RMJ REDMAN 1T
 K2 AUBREY 1T 201 502
 K2 AUBREY ALLI CQ 019 201
 MPPA: 101 Dam Age: 2/15/17 Calving Ease 5

	Ratio	Data
Act. BW	78	63
Adj. WW		648
Adj. YW		
SC		
Frame		
	EPD Top%	Data
MARB	0.4	50
YG	0.09	67
CW	1	97
REA	-0.16	95
FAT	0.03	75
ADG	0.14	93
DMI	0.95	17
		0

	ProS	HB	GM	CED	BW	WW	YW	MILK	ME	HPG	CEM	STAY
EPD	117	97	20	22	-8.1	33	55	27	-5	9	13	20
Top%	21	5	80	1	1	99	98	28	21	82	1	5

Elite calving ease out of one of our favorite cows. Sadly, she was struck by lightning mid-summer – imagine his weaning weight if he wasn't an orphan for several months before weaning!

45 K2 RED CLOUD 827 1129B 3/28/21 A100% AR
K2RA1129 4514893

RED RMJ REDMAN 1T
 K2 REDMAN 7115 530
 OCHO VACA MISS WENDY T15
K2 REDMAN 631 80314012058
 BASIN TREND SETTER 6074
 BASIN LAKOTA 6318
 BASIN LAKOTA 3956

DKF ELIMINATOR 15A
 RED DKF RAZOR 55C
 DKF MISS NET WORTH 21A
K2 COPPERQUEEN RZ 452 8274012188
 LR HAMILTON 721
 K2 COPPERQUEEN HLT 207 452
 K2 COPPERQUEEN 912 207
 MPPA: 95 Dam Age: 3/4/18 Calving Ease 4

	Ratio	Data
Act. BW	97	76
Adj. WW	94	577
Adj. YW		
SC		
Frame		
	EPD Top%	Data
MARB	0.32	70
YG	0.1	74
CW	11	83
REA	-0.09	88
FAT	0.02	68
ADG	0.14	92
DMI	1.1	24
		0

	ProS	HB	GM	CED	BW	YW	MILK	ME	HPG	CEM	STAY	
EPD	124	105	18	18	-4.6	40	62	23	-8	11	10	20
Top%	14	2	82	3	8	96	95	70	15	45	4	3

Moderate, versatile bull that goes back to the same 452 cow as Lot 43.

46 K2 BATES LB 828 1104B
K2RA1104

3/2/21

A100% AR
4514945

5L ADVOCATE 817-14W
 5L DEFENDER 560-30Z
 5L BLACK ADINA 525-560
RAVN LINEBACKER C5373486945
 BADLANDS STATEMENT 70Y
 RAVN BONNEBELL A325
 PAULS BONNEBELL 124

RED RMJ REDMAN 1T
 K2 KEYSTONE 203 6006
 K2 CONQUEST 045 203
K2 HONESTY KS 536 8284012254
 BECKTON EPIC R397 K
 K2 HONOR 045 536
 K2 ARGENTINE HOBO 803 045
 MPPA: 105 Dam Age: 3/4/18 Calving Ease 3

	Ratio	Data
Act. BW	99	77
Adj. WW	121	741
Adj. YW		
SC		
Frame		
	EPD Top%	Data
MARB	0.42	45
YG	0.05	43
CW	21	47
REA	0.16	35
FAT	0.02	56
ADG	0.26	23
DMI	1.87	89

	ProS	HB	GM	CED	BW	WW	YW	MILK	ME	HPG	CEM	STAY
EPD	90	61	29	16	-3.7	68	110	24	3	12	7	15
Top%	64	58	61	11	17	19	20	65	59	30	39	63

This bull puts the ratios just right with below 100 on birth and an outstanding 121 on weaning.

47 K2 DOMINION 629 1115B
K2RA1115

3/8/21

A100% AR
4514923

RED U6 HESSTON 14Z
 RED HOWE HESSTON 212C
 RED HOWE MS ARAB 170X
RED U2 DOMINION4098772
 RED HOWE MAGNUM 169W
 RED U2 HIDEE HO 459D
 RED U-2 HIDEE HO 281Y

K2 AUSTIN ALLIANCE 812 1060
 K2 RESILIANCE 714 473
 K2 SHERIDAN 714
K2 REIGN RS 201 6293542439
 HXC CONQUEST 4405P
 K2 AUBREY ALLI CQ 019 201
 BP MS ALLIANCE 616 019
 MPPA: 104 Dam Age: 2/29/16 Calving Ease 2

	Ratio	Data
Act. BW	100	82
Adj. WW	108	660
Adj. YW		
SC		
Frame		
	EPD Top%	Data
MARB	0.31	73
YG	0.08	63
CW	28	23
REA	0.17	33
FAT	0.02	64
ADG	0.23	47
DMI	1.74	80

	ProS	HB	GM	CED	BW	WW	YW	MILK	ME	HPG	CEM	STAY
EPD	108	82	26	11	-1.5	63	100	29	0	11	7	18
Top%	33	18	68	70	56	37	41	16	39	53	48	15

A great match of sire power and dam quality adding up to a nice complete cow bull. Dominion just has too much power and stoutness to make heifer bulls.

48 K2 DANE 551 189B
K2RA189

2/24/21

A100% AR
4514697

BECKTON DOMINOR Z1 R610
 BECKTON DOMINOR T122 Z1
 BKT LARKABEL R038 WA
3SCC DOMAIN A1631619642
 BASIN HOBO 0545
 3SCC EUCLA X723
 BSKF EUCLA U278

NBAR HAMLEY S913
 LR HAMILTON 721
 SMBA HIHO SHONI M15
K2 SHONI DUCHESS 651 5513466501
 BASIN PAYWEIGHT M205
 BASIN DUCHESS 6151
 BASIN DUCHESS 1787
 MPPA: 99 Dam Age: 3/10/15 Calving Ease 4

	Ratio	Data
Act. BW	96	79
Adj. WW	101	615
Adj. YW		
SC		
Frame		
	EPD Top%	Data
MARB	0.43	43
YG	0.11	80
CW	16	68
REA	0.02	68
FAT	0.04	89
ADG	0.17	83
DMI	1.13	27

	ProS	HB	GM	CED	BW	WW	YW	MILK	ME	HPG	CEM	STAY
EPD	125	96	29	16	-3.8	50	77	23	-3	13	6	21
Top%	14	6	62	9	16	82	84	72	27	19	74	1

Make money by saving money with this one – Use him on heifers then use him on cows. His dam Shoni 551 is one of the easiest keeping cows we have. Low inputs, longevity and nice growth should turn a profit :)

49 K2 TEMPLAR SL 51C 1109B
K2RA1109

3/3/21

A100% AR
4514937

HXC CONQUEST 4405P
LSF TAKEOVER 9943W
LSF WIDELOAD R5014 U8061
OOO SIR LOIN 51223493807
BROWN PARAMOUNT X7879
BROWN MS PARAMOUNT A7033
BROWN MS MISSION STMT W7525

BECKTON EPIC K F075
BECKTON EPIC R397 K
BECKTON KIT F468 JL
K2 DUSK ET 914 51C3480394
FEDDES BIG SKY R9
K2 SKY'S DUSK 7115 914
OCHO VACA MISS WENDY T15
MPPA: 103 Dam Age: 2/21/15 Calving Ease 3

	Ratio	Data
Act. BW	88	72
Adj. WW	103	644
Adj. YW		
SC		
Frame		
	EPD Top%	Data
MARB	0.53	23
YG	0.16	94
CW	24	34
REA	0.14	40
FAT	0.06	99
ADG	0.25	33
DMI	1.06	22

	ProS	HB	GM	CED	BW	WW	YW	MILK	ME	HPG	CEM	STAY
EPD	125	75	50	14	-4.2	62	102	22	2	14	7	16
Top%	13	29	18	35	12	41	36	80	52	14	43	39

Dam 51C is a very consistent power producer. I like her with Sir Loin for a little less birth weight and a nice mellow disposition.

50 K2 QB 321 181B
K2RA181

2/22/21

A100% AR
4514713

5L ADVOCATE 817-14W
5L DEFENDER 560-30Z
5L BLACK ADINA 525-560
RAVN LINEBACKER C5373486945
BADLANDS STATEMENT 70Y
RAVN BONNEBELL A325
PAULS BONNEBELL 124

NBAR HAMLEY S913
LR HAMILTON 721
SMBA HIHO SHONI M15
K2 HAZEL 903 3211628851
LJC MISSION STATEMENT P27
K2 JASMINE 538 903
BASIN LASS 5338
MPPA: 99 Dam Age: 3/16/13 Calving Ease 3

	Ratio	Data
Act. BW	92	76
Adj. WW	100	610
Adj. YW		
SC		
Frame		
	EPD Top%	Data
MARB	0.43	43
YG	0	20
CW	20	52
REA	0.2	28
FAT	0.01	27
ADG	0.21	61
DMI	1.96	93

	ProS	HB	GM	CED	BW	WW	YW	MILK	ME	HPG	CEM	STAY
EPD	77	53	24	17	-4.5	61	95	21	3	14	7	14
Top%	83	73	72	5	9	44	52	86	57	11	57	71

This bull's dam deserves some credit for being a 9 year old that puts a bull in the sale every time she has one. Lot 50 has a good foundation behind him and some power and carcass added by his sire.

51 K2 LANCE SL 719 175B
K2RA175

2/12/21

A100% AR
4514727

HXC CONQUEST 4405P
LSF TAKEOVER 9943W
LSF WIDELOAD R5014 U8061
OOO SIR LOIN 51223493807
BROWN PARAMOUNT X7879
BROWN MS PARAMOUNT A7033
BROWN MS MISSION STMT W7525

BROWN P707 X7877
DUBAS EXCELLENT ANSWER
LCS 012
K2 GALLI EX AN 315 7193791915
K2 GALENA ET 0602 1007
K2 G1007 ALLIANCE 019 315
BP MS ALLIANCE 616 019
MPPA: 103 Dam Age: 2/20/17 Calving Ease 3

	Ratio	Data
Act. BW	96	77
Adj. WW	108	658
Adj. YW		
SC		
Frame		
	EPD Top%	Data
MARB	0.5	29
YG	0.21	98
CW	21	45
REA	-0.06	84
FAT	0.05	98
ADG	0.25	29
DMI	1.21	32

	ProS	HB	GM	CED	BW	WW	YW	MILK	ME	HPG	CEM	STAY
EPD	116	78	38	14	-3.4	67	108	22	2	14	9	15
Top%	22	24	40	28	21	23	25	75	52	8	15	54

Nice versatile bull with ratios going the right way for use on cows or heifers at a 96 birth and 108 weaning. Nice power and a little more growth in this bull.

52 K2 1064 936 195B
K2RA195

2/25/21

A100% AR
4514685

BECKTON NEBULA M045
 BECKTON NEBULA P P707
 BECKTON LANA M809 EP
POKE NEBP707 9116 10641447375
 5L QUARTERBACK 1205-5337
 HLH MS QB 6021 9116
 HLH ABBIE 4224 6021

LSF PROSPECT 2035Z
 TAC PROSPECT C2
 VF PRINCESS ANN A236-054

K2 LIZZY C453 9364190224
 VGW COLUMBIA 221
 3SCC LIZZY C453
 BSKF LIZZY X817

MPPA: 100 Dam Age: 3/11/19

Calving Ease 3

	Ratio	Data
Act. BW	107	81
Adj. WW	100	609
Adj. YW		
SC		
Frame		
	EPD Top%	Data
MARB	0.53	23
YG	0.14	89
CW	15	70
REA	-0.09	88
FAT	0.03	84
ADG	0.24	42
DMI	1.4	49

	ProS	HB	GM	CED	BW	WW	YW	MILK	ME	HPG	CEM	STAY
EPD	95	56	39	13	-3.4	54	92	26	5	10	6	17
Top%	56	67	38	39	21	71	59	44	69	76	76	32

1064 sons and daughters do very well in our herd and sale. This bull is out of an outcross cow we picked out of Stonstegarrd's herd in Minnesota.

53 K2 LANCE 361B 194B
K2RA194

2/25/21

A100% AR
4514687

HXC CONQUEST 4405P
 LSF TAKEOVER 9943W
 LSF WIDELOAD R5014 U8061
OOO SIR LOIN 51223493807
 BROWN PARAMOUNT X7879
 BROWN MS PARAMOUNT A7033
 BROWN MS MISSION STMT W7525

RED REDRICH GLORY ROAD 248X
 RED REDRICH SIZZLER 609Z
 RED YY URISAL 609S

RED REDRICH KD ESSENCE 361B2544396
 RED YY DESIGNER 15X
 RED REDRICH ESSENCE 360Z
 RED REDRICH ESSENCE 359X

MPPA: 99 Dam Age: 2/16/14

Calving Ease 3

	Ratio	Data
Act. BW	96	79
Adj. WW	104	637
Adj. YW		
SC		
Frame		
	EPD Top%	Data
MARB	0.46	37
YG	0.12	82
CW	17	63
REA	0.03	66
FAT	0.04	89
ADG	0.22	53
DMI	0.93	16

	ProS	HB	GM	CED	BW	WW	YW	MILK	ME	HPG	CEM	STAY
EPD	127	88	39	12	-2.8	59	95	18	-13	12	8	16
Top%	11	11	38	60	31	52	53	96	6	35	35	44

A nice dark red Sir Loin son with a little extra stretch to him. His dam is a gorgeous cow we got out of Canada as a calf. She is a little bigger than most of ours, so look to this guy to add a little size.

54 K2 RITTER SL 729 1103B
K2RA1103

3/2/21

A100% AR
4514947

HXC CONQUEST 4405P
 LSF TAKEOVER 9943W
 LSF WIDELOAD R5014 U8061
OOO SIR LOIN 51223493807
 BROWN PARAMOUNT X7879
 BROWN MS PARAMOUNT A7033
 BROWN MS MISSION STMT W7525

BROWN P707 X7877
 DUBAS EXCELLENT ANSWER
 LCS 012

K2 COPPER EX ANS 314 7293791907
 K2 AUSTIN ALLIANCE 812 1060
 K2 COPPERQUEEN AUS 912 314
 DZA COPPERQUEEN 1912

MPPA: 101 Dam Age: 2/25/17

Calving Ease 3

	Ratio	Data
Act. BW	99	79
Adj. WW	103	633
Adj. YW		
SC		
Frame		
	EPD Top%	Data
MARB	0.51	27
YG	0.22	99
CW	19	55
REA	-0.09	88
FAT	0.06	99
ADG	0.25	30
DMI	1.2	31

	ProS	HB	GM	CED	BW	WW	YW	MILK	ME	HPG	CEM	STAY
EPD	114	78	36	14	-3.4	66	106	21	2	14	9	16
Top%	24	24	44	32	21	26	27	84	54	9	14	51

$\frac{3}{4}$ brother to Lot 51, and look how closely the birth and weaning weights are. That's consistency in genetics. Take them both for a nice even calf crop.



55 K2 STOUT 835 1135

B 4/1/21 A100% AR
K2RA1135 4514881

U2 T.K.O.254Z
RED U-2 FOREIGNER 413B
RED U-2 ANEXA 8026U
VGW STOUT 7403764739
LONEROCK GOLDSTRIKE 262
VGW GS-DORY 0647
VGW PT- DORY 0361

BUF CRK NICE'N EASY T189
SR HERE WE GO C325
RED HILL M045 LYDIA 65R

K2 JEANIE EZ 444 8354012160

K2 JJ 925 256

K2 JEAN 614 444

K2 ELLE CHEY 412 614

MPPA: 104 Dam Age: 3/10/18

Calving Ease 3

	Ratio	Data
Act. BW	100	78
Adj. WW	107	656
Adj. YW		
SC		
Frame		
	EPD Top%	Data
MARB	0.19 95	
YG	0.03 35	
CW	12 79	
REA	0.1 49	
FAT	0.02 61	
ADG	0.19 72	0
DMI	1.53 61	

	ProS	HB	GM	CED	BW	WW	YW	MILK	ME	HPG	CEM	STAY
EPD	80	77	3	14	-2.6	58	89	26	-3	13	7	16
Top%	80	26	97	28	33	59	66	43	26	18	44	42

The youngest bull in the sale. I usually keep April calves over a year, but this guy just fit in with the older bulls. Half brother to our high selling yearling last year. Stout kind of says it all with him.

56 K2 LG GUS 947 182

B 2/22/21 A100% AR
K2RA182 4514711

BUF CRK THE RIGHT KIND U199
5L LEADING EDGE 1221-79A
5L BLACKBIRD 5519-1221
5L LEADING EDGE 15383-117C3483291
5L PURSUIT 3244-127X
5L RED BIRD 411-15383
5L RED BIRD 1312-411

BUF CRK NICE'N EASY T189
SR HERE WE GO C325
RED HILL M045 LYDIA 65R

K2 CLG 447 9474190160

K2 GRAND EC 840 255

K2 CLG RED VELVET 807 447

SLCC 07H

MPPA: 101 Dam Age: 4/1/19

Calving Ease 5

	Ratio	Data
Act. BW	94	69
Adj. WW	103	627
Adj. YW		
SC		
Frame		
	EPD Top%	Data
MARB	0.42 45	
YG	0.06 52	
CW	16 65	
REA	0.09 52	
FAT	0.02 66	
ADG	0.16 86	0
DMI	1.15 27	

	ProS	HB	GM	CED	BW	WW	YW	MILK	ME	HPG	CEM	STAY
EPD	97	69	27	18	-5.7	54	80	26	-5	13	9	14
Top%	52	39	65	4	3	72	81	37	22	17	9	73

If you want great calf vigor this is the bull. He was literally bucking circles around mom at about 30 minutes old. Great calving ease, nice disposition.

57 K2 REDMAN 909 1121B 3/15/21 A100% AR
K2RA1121 4514909RED RMJ REDMAN 1T
K2 REDMAN 7115 530
OCHO VACA MISS WENDY T15**K2 REDMAN 631 80314012058**
BASIN TREND SETTER 6074
BASIN LAKOTA 6318
BASIN LAKOTA 3956K2 RESILIANCE 714 473
K2 RED REIGN 939 779
K2 DIANA BXT 651 939**K2 HANNA 736 9094190372**
NBAR HAMLEY S913
K2 HADLEY 419 736

K2 LENA BLZN 105 419

MPPA: 95 Dam Age: 2/23/19

Calving Ease 4

	Ratio	Data
Act. BW	109	83
Adj. WW	87	534
Adj. YW		
SC		
Frame		
	EPD Top%	Data
MARB	0.34	65
YG	0.05	43
CW	0	98
REA	-0.11	91
FAT	0.02	56
ADG	0.1	98
DMI	0.8	11

	ProS	HB	GM	CED	BW	WW	YW	MILK	ME	HPG	CEM	STAY
EPD	119	108	11	19	-3.8	35	51	22	-8	11	12	20
Top%	18	2	92	1	16	98	98	78	13	56	1	3

Nice dark red heifer bull with plenty of thickness. I would recommend keeping his daughters in the herd .

58 K2 WOVOKA 8004 1133B 3/31/21 A100% AR
K2RA1133 4514885RED RMJ REDMAN 1T
K2 REDMAN 7115 530
OCHO VACA MISS WENDY T15**K2 REDMAN 631 80314012058**
BASIN TREND SETTER 6074
BASIN LAKOTA 6318
BASIN LAKOTA 3956RED RMJ REDMAN 1T
K2 KEYSTONE 203 6006
K2 CONQUEST 045 203**K2 OSCE KS 580 50044012218**
AXTELL CODY 3844K2 OSCE CD 255 580
OCC OSCE Z15

MPPA: 98 Dam Age: 3/6/18

Calving Ease 5

	Ratio	Data
Act. BW	94	73
Adj. WW	103	632
Adj. YW		
SC		
Frame		
	EPD Top%	Data
MARB	0.31	73
YG	0.06	49
CW	3	96
REA	-0.07	85
FAT	0.02	68
ADG	0.14	92
DMI	0.78	10

	ProS	HB	GM	CED	BW	WW	YW	MILK	ME	HPG	CEM	STAY
EPD	123	107	17	20	-5.8	38	60	25	-8	9	12	21
Top%	14	2	85	1	3	97	96	55	14	88	1	2

Triple bred for calving ease, offering great consistency. Excels in maternal traits with top 1-2% in Herdbuilder, calving ease maternal and Stayability.

59 K2 1064 956 188B 2/23/21 A100% AR
K2RA188 4514699BECKTON NEBULA M045
BECKTON NEBULA P P707
BECKTON LANA M809 EP**POKE NEBP707 9116 10641447375**
5L QUARTERBACK 1205-5337
HLH MS QB 6021 9116

HLH ABBIE 4224 6021

RED U-2 FOREIGNER 413B

VGW STOUT 740

VGW GS-DORY 0647

K2 CPR QUEEN 609 9564190252
RED LAZY MC CC DETOUR 2W

K2 COPPER DT 207 609

K2 COPPERQUEEN 912 207

MPPA: 95 Dam Age: 4/9/19

Calving Ease 4

	Ratio	Data
Act. BW	97	72
Adj. WW	87	533
Adj. YW		
SC		
Frame		
	EPD Top%	Data
MARB	0.37	58
YG	0.12	82
CW	1	97
REA	-0.23	98
FAT	0.03	77
ADG	0.18	77
DMI	1.25	35

	ProS	HB	GM	CED	BW	WW	YW	MILK	ME	HPG	CEM	STAY
EPD	78	62	16	18	-4.9	40	70	24	-3	9	10	15
Top%	83	55	86	3	7	95	90	58	28	80	7	55

Lot 59's sire 1064 has been one of our favorite sires for calving ease and making nice females, so we keep using him. Another nice son here,

60 K2 ED 930 187B
K2RA187

2/23/21

2100% AR
4514701

BUF CRK THE RIGHT KIND U199
 5L LEADING EDGE 1221-79A
 5L BLACKBIRD 5519-1221
5L LEADING EDGE 15383-117C3483291
 5L PURSUIT 3244-127X
 5L RED BIRD 411-15383
 5L RED BIRD 1312-411

RED U-2 RECKONING 149A
 RED U2 MALBEC 195D
 RED U-2 MABEL 60A
K2 RAILYN MB 625 9304190258
 K2 RESILIANCE 714 473
 K2 RAYLYN RS 218 625
 K2 RAYLYN SKY ET 0602 218
 MPPA: 102 Dam Age: 3/6/19

Calving Ease 3

	Ratio	Data
Act. BW	108	82
Adj. WW	106	650
Adj. YW		
SC		
Frame		
	EPD Top%	Data
MARB	0.44	41
YG	0.04	41
CW	24	34
REA	0.21	26
FAT	0.02	54
ADG	0.17	82
DMI	1.25	35

	ProS	HB	GM	CED	BW	WW	YW	MILK	ME	HPG	CEM	STAY
EPD	100	68	32	12	-3	63	91	26	-11	11	7	14
Top%	47	42	55	61	27	35	61	42	9	55	48	73

Lot 60's first calf heifer mama did a nice job at putting a 106 weaning ratio on him. This bull is dark red with a black muzzle, and black skin on his nose and eyes which puts him as a Category 2, but still 100% Red Angus on his registration.

61 K2 RM E120 1125B
K2RA1125

3/19/21

A100% AR
4514901

RED RMJ REDMAN 1T
 K2 REDMAN 7115 530
 OCHO VACA MISS WENDY T15
K2 REDMAN 631 80314012058
 BASIN TREND SETTER 6074
 BASIN LAKOTA 6318
 BASIN LAKOTA 3956

3SCC DOMINOR W338
 3SCC DICTATE C74
 MESSMER GINNIE V536
3SCC TINA E1203765955
 JACOBSON WORTH 1066
 3SCC TINA B161
 3SCC TINA U345
 MPPA: 101 Dam Age: 3/3/17

Calving Ease 4

	Ratio	Data
Act. BW	101	82
Adj. WW	101	617
Adj. YW		
SC		
Frame		
	EPD Top%	Data
MARB	0.36	60
YG	0.1	74
CW	11	83
REA	-0.06	84
FAT	0.03	77
ADG	0.15	90
DMI	0.94	16

	ProS	HB	GM	CED	BW	WW	YW	MILK	ME	HPG	CEM	STAY
EPD	133	108	25	19	-4.8	40	64	30	-4	12	11	21
Top%	8	2	70	1	7	96	94	13	22	33	2	2

This bull packs a nice bit of power on to his calving ease, and excels in traits for maternal and longevity.

62 K2 DOM 822 185B
K2RA185

2/23/21

A100% AR
4514705

RED U6 HESSTON 14Z
 RED HOWE HESSTON 212C
 RED HOWE MS ARAB 170X
RED U2 DOMINION4098772
 RED HOWE MAGNUM 169W
 RED U2 HIDEE HO 459D
 RED U-2 HIDEE HO 281Y

RED RMJ REDMAN 1T
 K2 KEYSTONE 203 6006
 K2 CONQUEST 045 203
K2 SHOSHONN KS 551 8224012210
 LR HAMILTON 721
 K2 SHONI DUCHESS 651 551
 BASIN DUCHESS 6151
 MPPA: 99 Dam Age: 3/2/18

Calving Ease 3

	Ratio	Data
Act. BW	90	70
Adj. WW	99	604
Adj. YW		
SC		
Frame		
	EPD Top%	Data
MARB	0.22	92
YG	0.04	39
CW	20	51
REA	0.17	33
FAT	0.02	56
ADG	0.21	65
DMI	1.39	48

	ProS	HB	GM	CED	BW	WW	YW	MILK	ME	HPG	CEM	STAY
EPD	112	89	22	14	-3.3	51	84	27	-7	9	8	19
Top%	28	10	75	28	23	81	75	35	17	85	29	7

This bull's little Keystone mama weaned a big % of her body weight. I recommend using caution if using on heifers just because Dominion puts so much power in his calves.

63 K2 DOMAIN 643 1120

B 3/12/21 A100% AR
K2RA1120 4514911

BECKTON DOMINOR Z1 R610
BECKTON DOMINOR T122 Z1
BKT LARKABEL R038 WA

3SCC DOMAIN A1631619642
BASIN HOBO 0545
3SCC EUCLA X723
BSKF EUCLA U278

K2 AUSTIN ALLIANCE 812 1060
K2 RESILIANCE 714 473
K2 SHERIDAN 714

K2 EMULOUS RS 308 6433542465
EMULATION 31
K2 EMULOUS ET 605 308
K2 PAPRIKA 305 605

MPPA: 103 Dam Age: 3/1/16 Calving Ease 3

	Ratio	Data
Act. BW	107	88
Adj. WW	120	751
Adj. YW		
SC		
Frame		
	EPD Top%	Data
MARB	0.51	27
YG	0.14	89
CW	24	36
REA	0.09	52
FAT	0.04	94
ADG	0.21	65
DMI	1.33	42
		0

	ProS	HB	GM	CED	BW	WW	YW	MILK	ME	HPG	CEM	STAY
EPD	136	100	35	14	-2.2	65	98	23	-1	14	6	20
Top%	7	4	47	27	41	30	46	67	34	13	62	3

I nice power bull with a weaning ratio of 120 and well over 700 lb weaning wt!
Packed with maternal quality on the dam's side with our 714 & 605 donor cows and Angus legend Emulation 31.

64 K2 RIG 577G 1117

B 3/10/21 A100% AR
K2RA1117 4514919

RED RMJ REDMAN 1T
K2 REDMAN 7115 530
OCHO VACA MISS WENDY T15

K2 REDMAN 631 80314012058
BASIN TREND SETTER 6074
BASIN LAKOTA 6318
BASIN LAKOTA 3956

RED U-2 RECKONING 149A
RED U-2 RIFF 1213C
RED U2 OPHELIA 370W

RED U2 MS FIRE 577G4402665
RED MINBURN COPENHAGEN 3Y
RED PACIFIC MS FIRE 26C
RED U-2 MS FIRE 405X

MPPA: 96 Dam Age: 3/3/19 Calving Ease 3

	Ratio	Data
Act. BW	105	79
Adj. WW	89	547
Adj. YW		
SC		
Frame		
	EPD Top%	Data
MARB	0.24	89
YG	0.02	29
CW	6	93
REA	0.04	63
FAT	0.02	50
ADG	0.15	90
DMI	0.34	2
		0

	ProS	HB	GM	CED	BW	WW	YW	MILK	ME	HPG	CEM	STAY
EPD	100	75	25	13	-3.2	39	63	23	-5	4	7	18
Top%	46	28	70	39	24	96	94	72	21	99	53	21

Don't be put off by a lower weaning weight here – his dam got sick and he was orphaned this summer. He has more to offer than the numbers show.

65 K2 HITCH 957 197

B 2/26/21 A100% AR
K2RA197 4514681

BJR YOGO 002-104
BJR HOBO 800
DDF NOOK UMP 800

K2 HIDALGO 005 41971567
BUF CRK CHEROKEE1431
BUF CRK ELAINE 2142
BUF CRK ELAINE 1473

RED U-2 FOREIGNER 413B
VGW STOUT 740
VGW GS-DORY 0647

K2 DANI 632 9574190238
K2 RESILIANCE 714 473
K2 DANI RS 939 632
K2 DIANA BXT 651 939

MPPA: 97 Dam Age: 4/10/19 Calving Ease 3

	Ratio	Data
Act. BW	96	71
Adj. WW	92	563
Adj. YW		
SC		
Frame		
	EPD Top%	Data
MARB	0.17	96
YG	-0.05	8
CW	6	92
REA	0.12	44
FAT	0	15
ADG	0.14	93
DMI	1.25	35
		0

	ProS	HB	GM	CED	BW	WW	YW	MILK	ME	HPG	CEM	STAY
EPD	87	84	3	16	-3.7	43	64	26	1	10	10	19
Top%	68	15	97	9	17	94	94	44	46	71	6	10

If you feel like you need to get some fresh genetics from mainstream Red Angus this guy is quite an outcross. His sire was born in 2004, and granddam 1992.

66 K2 RED31 630 1119B
K2RA1119

3/12/21

A100% AR
4514915

RED RMJ REDMAN 1T
K2 REDMAN 7115 530
OCHO VACA MISS WENDY T15
K2 REDMAN 631 80314012058
BASIN TREND SETTER 6074
BASIN LAKOTA 6318
BASIN LAKOTA 3956

K2 AUSTIN ALLIANCE 812 1060
K2 RESILIANCE 714 473
K2 SHERIDAN 714
K2 KYAN 317 6303542452
BIEBER ROUSE SAMURAI X22
K2 KYOTO 812 317
K2 SAN FRAN RBLR 601 812

MPPA: 100 Dam Age: 2/29/16

Calving Ease 4

	Ratio	Data
Act. BW	95	78
Adj. WW	93	586
Adj. YW		
SC		
Frame		
	EPD Top%	Data
MARB	0.41	48
YG	0.09	70
CW	8	90
REA	-0.11	91
FAT	0.03	70
ADG	0.12	95
DMI	1.08	23

	ProS	HB	GM	CED	BW	WW	YW	MILK	ME	HPG	CEM	STAY
EPD	122	104	18	19	-5.5	42	62	25	-3	10	12	21
Top%	16	3	83	2	4	94	95	55	26	63	1	2

Great option for heifers or cows. Lots of length and thickness and eye appeal.

67 K2 EDGE 902 177B
K2RA177

2/16/21

A100% AR
4514723

BUF CRK THE RIGHT KIND U199
5L LEADING EDGE 1221-79A
5L BLACKBIRD 5519-1221
5L LEADING EDGE 15383-117C3483291
5L PURSUIT 3244-127X
5L RED BIRD 411-15383
5L RED BIRD 1312-411

K2 RESILIANCE 714 473
K2 RED REIGN 939 779
K2 DIANA BXT 651 939
K2 RAINEE 718 9024190392
RED HILL B571 JULIAN 84S
K2 SALLIE 5008 718
K2 MISS 6T B805 151 5008

MPPA: 94 Dam Age: 2/19/19

Calving Ease 5

	Ratio	Data
Act. BW	84	62
Adj. WW	86	528
Adj. YW		
SC		
Frame		
	EPD Top%	Data
MARB	0.42	45
YG	0.05	44
CW	15	71
REA	0.1	49
FAT	0.02	64
ADG	0.13	94
DMI	1.12	25

	ProS	HB	GM	CED	BW	WW	YW	MILK	ME	HPG	CEM	STAY
EPD	112	84	27	19	-6.6	44	65	26	-4	12	11	17
Top%	27	15	65	1	1	92	93	36	23	37	1	34

Excellent heifer bull. Top 1% calving ease, low birth weight and calving ease maternal.

68 K2 RAPE 41F 621 1110B
K2RA1110

3/5/21

A100% AR
4514933

DKF ELIMINATOR 15A
RED DKF RAZOR 55C
DKF MISS NET WORTH 21A
K2 RAPHAEL 016 41F4062070
K2 BARKLEY 8221
K2 VICTORIAN ROSE 592 016
BASIN ROSE 5892

BECKTON JULIAN GG B571
RED HILL B571 JULIAN 84S
BECKTON BARMAID M554 CH
K2 CENTURIA 84S 424 6213542469
K2 AUSTIN ALLIANCE 812 1060
K2 CENTURIA AUS 513 424
BASIN CENTURIA 5313

MPPA: 105 Dam Age: 2/25/16

Calving Ease 3

	Ratio	Data
Act. BW	96	79
Adj. WW	112	705
Adj. YW		
SC		
Frame		
	EPD Top%	Data
MARB	0.32	70
YG	0.06	54
CW	25	30
REA	0.18	32
FAT	0.02	64
ADG	0.21	58
DMI	1.24	34

	ProS	HB	GM	CED	BW	WW	YW	MILK	ME	HPG	CEM	STAY
EPD	121	91	30	13	-2	64	99	31	-1	11	6	20
Top%	17	9	60	39	46	32	43	6	36	44	64	4

Outcross pedigree, proven dam with a 105 MPPA and an awesome over 700lb weaning weight.

69 K2 RIVAL 903 1116B
K2RA1116

3/10/21

A100% AR
4514921

RED RMJ REDMAN 1T
 K2 REDMAN 7115 530
 OCHO VACA MISS WENDY T15
K2 REDMAN 631 80314012058
 BASIN TREND SETTER 6074
 BASIN LAKOTA 6318
 BASIN LAKOTA 3956

BECKTON NEBULA P P707
 POKE NEBP707 9116 1064
 HLH MS QB 6021 9116
K2 ARIEL 751 9034190354
 CRS DIAMND UPRIGHT 4204
 K2 ARIES CD 108 751
 K2 ARIES ALLIANCE ET 812 108

MPPA: 98 Dam Age: 2/19/19

Calving Ease 5

	Ratio	Data
Act. BW	81	60
Adj. WW	95	582
Adj. YW		
SC		
Frame		
	EPD Top%	Data
MARB	0.45	39
YG	0.1	74
CW	3	96
REA	-0.18	96
FAT	0.02	68
ADG	0.12	95
DMI	0.94	16

	ProS	HB	GM	CED	BW	WW	YW	MILK	ME	HPG	CEM	STAY
EPD	122	98	23	22	-8	34	53	28	-5	10	13	20
Top%	16	5	74	1	1	99	98	25	21	73	1	4

Heifer bull! His sire 8031 has been proven to be the most consistent calving ease sire we have used lately – and the calves carry plenty of muscle to go with it.

70 K2 RED DAWG 106 1128B
K2RA1128

3/23/21

A100% AR
4514895

RED RMJ REDMAN 1T
 K2 REDMAN 7115 530
 OCHO VACA MISS WENDY T15
K2 REDMAN 631 80314012058
 BASIN TREND SETTER 6074
 BASIN LAKOTA 6318
 BASIN LAKOTA 3956

5L BLAZIN HOBO 404-5654
 5L BLAZIN RED 1354-6166
 5L REBA 60-1354
K2 ARVADA 412 1061451002
 BECKTON CHAMP L290 R3
 K2 CHEY 412
 MISS CHEYENNE RIVR 7012

MPPA: 100 Dam Age: 2/22/11

Calving Ease 4

	Ratio	Data
Act. BW	96	78
Adj. WW	93	569
Adj. YW		
SC		
Frame		
	EPD Top%	Data
MARB	0.31	73
YG	0.09	69
CW	0	97
REA	-0.18	96
FAT	0.03	74
ADG	0.12	95
DMI	0.86	13

	ProS	HB	GM	CED	BW	WW	YW	MILK	ME	HPG	CEM	STAY
EPD	112	104	9	18	-4.6	38	58	22	-7	9	9	22
Top%	27	3	94	3	8	97	97	75	16	87	11	1

This bull's dam is a great 10 year old cow that always add a little pop of power to her calves. Dark red, big ribbed, good bull for heifers or cows. Super disposition.

71 K2 PEET 959 178B
K2RA178

2/20/21

A100% AR
4514721

BECKTON NEBULA M045
 BECKTON NEBULA P P707
 BECKTON LANA M809 EP
POKE NEBP707 9116 10641447375
 5L QUARTERBACK 1205-5337
 HLH MS QB 6021 9116
 HLH ABBIE 4224 6021

ANDRAS FUSION R236
 3SCC RED ENERGY D62
 3SCC BURG Y B87
K2 ANNA E137 9594190332
 JACOBSON MTN MAN 4144
 3SCC ANNA E137
 3SCC ANNA B70

MPPA: 98 Dam Age: 4/12/19

Calving Ease 4

	Ratio	Data
Act. BW	101	75
Adj. WW	95	580
Adj. YW		
SC		
Frame		
	EPD Top%	Data
MARB	0.6	14
YG	0.14	88
CW	9	87
REA	-0.29	99
FAT	0.02	49
ADG	0.22	52
DMI	1.21	32

	ProS	HB	GM	CED	BW	WW	YW	MILK	ME	HPG	CEM	STAY
EPD	115	72	43	18	-4.3	47	82	24	-1	11	10	16
Top%	24	34	30	3	11	88	77	60	34	53	6	42

Last chance today for a 1064 son. Some of the best calving ease and maternal bloodlines we have found.

72 K2 DOMINION 203 1105B 3/3/21 A100% AR
K2RA1105 4514943

RED U6 HESSTON 14Z
 RED HOWE HESSTON 212C
 RED HOWE MS ARAB 170X
RED U2 DOMINION4098772
 RED HOWE MAGNUM 169W
 RED U2 HIDEE HO 459D
 RED U-2 HIDEE HO 281Y

BECKTON JULIAN GG B571
 HXC CONQUEST 4405P
 HXC ELLIE MAY MA638
K2 CONQUEST 045 2031553558
 BUF CRK HOBO 1961
 K2 ARGENTINE HOBO 803 045
 K2 PATAGONIA RBLR 620 803
 MPPA: 107 Dam Age: 2/17/12 Calving Ease 2

	Ratio	Data
Act. BW	102	83
Adj. WW	106	664
Adj. YW		
SC		
Frame		
	EPD Top%	Data
MARB	0.29	78
YG	0.07	59
CW	22	44
REA	0.1	49
FAT	0.02	61
ADG	0.24	42
DMI	1.44	53

	ProS	HB	GM	CED	BW	WW	YW	MILK	ME	HPG	CEM	STAY
EPD	106	77	29	13	-2.2	57	94	30	-2	8	8	18
Top%	36	25	62	49	41	62	54	10	30	92	35	16

Check out his dam's 107 MPPA! She is one of our top cows even at 9 years old. Power and a little more birth weight coming from his Canadian bred sire.

73 K2 REED 919 1122B 3/15/21 A100% AR
K2RA1122 4514907

RED RMJ REDMAN 1T
 K2 REDMAN 7115 530
 OCHO VACA MISS WENDY T15
K2 REDMAN 631 80314012058
 BASIN TREND SETTER 6074
 BASIN LAKOTA 6318
 BASIN LAKOTA 3956

K2 RESILIANCE 714 473
 K2 RESILIAN ET 702 49D
 K2 RED OPAL 702
K2 AUBREY 201 9194190094
 HXC CONQUEST 4405P
 K2 AUBREY ALLI CQ 019 201
 BP MS ALLIANCE 616 019
 MPPA: 99 Dam Age: 2/28/19 Calving Ease 5

	Ratio	Data
Act. BW	92	69
Adj. WW	97	593
Adj. YW		
SC		
Frame		
	EPD Top%	Data
MARB	0.35	63
YG	0.09	68
CW	7	90
REA	-0.07	85
FAT	0.03	77
ADG	0.12	96
DMI	1.08	24

	ProS	HB	GM	CED	BW	WW	YW	MILK	ME	HPG	CEM	STAY
EPD	113	100	13	19	-6	40	59	26	-1	11	12	20
Top%	26	4	90	1	2	96	96	41	34	54	1	4

Calving ease 3 generations deep. Packed with maternal quality as well with several of our top cows behind him and top 1% maternal calving ease and 4% Stayability.

74 K2 DAGO 917 186B 2/23/21 A100% AR
K2RA186 4514703

BJR YOGO 002-104
 BJR HOBO 800
 DDF NOOK UMP 800
K2 HIDALGO 005 41971567
 BUF CRK CHEROKEE1431
 BUF CRK ELAINE 2142
 BUF CRK ELAINE 1473

LTD 1206B 1130 CHAP
 K2 BAND CHAP ET 6052 46D
 SODAK CHAPPIE 6052
K2 CHAPPIE 241 9174190084
 LR HAMILTON 721
 K2 SHONI 651 241
 BASIN DUCHESS 6151
 MPPA: 100 Dam Age: 2/27/19 Calving Ease 3

	Ratio	Data
Act. BW	111	84
Adj. WW	100	609
Adj. YW		
SC		
Frame		
	EPD Top%	Data
MARB	0.18	95
YG	-0.07	5
CW	9	87
REA	0.16	35
FAT	-0.01	6
ADG	0.12	95
DMI	0.86	13

	ProS	HB	GM	CED	BW	WW	YW	MILK	ME	HPG	CEM	STAY
EPD	102	91	11	15	-1.8	44	64	26	0	9	10	20
Top%	42	9	92	17	49	92	94	39	41	86	6	3

This bull has an outcross pedigree to most Red Angus today with some tried and true old bloodlines.

74 K2 DAGO 917 186B 2/23/21
K2RA186A100% AR
4514703BJR YOGO 002-104
BJR HOBO 800
DDF NOOK UMP 800
K2 HIDALGO 005 41971567
BUF CRK CHEROKEE1431
BUF CRK ELAINE 2142
BUF CRK ELAINE 1473

LTD 1206B 1130 CHAP
K2 BAND CHAP ET 6052 46D
SODAK CHAPPIE 6052
K2 CHAPPIE 241 9174190084
LR HAMILTON 721
K2 SHONI 651 241
BASIN DUCHESS 6151
MPPA: 100 Dam Age: 2/27/19

Calving Ease 3

	Ratio	Data
Act. BW	111	84
Adj. WW	100	609
Adj. YW		
SC		
Frame		
	EPD Top%	Data
MARB	0.18	95
YG	-0.07	5
CW	9	87
REA	0.16	35
FAT	-0.01	6
ADG	0.12	95
DMI	0.86	13

	ProS	HB	GM	CED	BW	WW	YW	MILK	ME	HPG	CEM	STAY
EPD	102	91	11	15	-1.8	44	64	26	0	9	10	20
Top%	42	9	92	17	49	92	94	39	41	86	6	3

This bull has an outcross pedigree to most Red Angus today with some tried and true old bloodlines.

76 K2 RAFE 935 1150B 3/1/21
K2RA1150A100% AR
4514851K2 AUSTIN ALLIANCE 812 1060
K2 RESILIANCE 714 473
K2 SHERIDAN 714
K2 RESILIAN ET 702 49D3623607
BROWN VACATION H7106
K2 RED OPAL 702
K2 KEEPSAKE 502

BASIN TREND SETTER 6074
BASIN TREND SETTER 59T5
BASIN PRIDE 5235
K2 RACHELL BXT 522 9351320271
BASIN LOGAN 0882
BASIN RACHEL 5022 BR
BASIN RACHEL 0550
MPPA: 100 Dam Age: 3/28/09

Calving Ease 4

	Ratio	Data
Act. BW	99	80
Adj. WW	98	601
Adj. YW		
SC		
Frame		
	EPD Top%	Data
MARB	0.37	58
YG	0.11	79
CW	13	77
REA	-0.09	88
FAT	0.03	72
ADG	0.1	98
DMI	1.12	26

	ProS	HB	GM	CED	BW	WW	YW	MILK	ME	HPG	CEM	STAY
EPD	110	95	15	15	-4.9	41	57	24	2	13	10	20
Top%	30	6	87	15	7	95	97	65	55	17	6	5

Raised by his 13 year old dam who still has a prefect udder and great feet, weaned a calf at 600lbs and bred back early again! Longevity here can't be beat with 2 of our donor cows on the top side both still in the herd at 14.

77 K2 CHIP 901 176B 2/16/21
K2RA176A100% AR
4514725BECKTON NEBULA M045
BECKTON NEBULA P P707
BECKTON LANA M809 EP
POKE NEBP707 9116 10641447375
5L QUARTERBACK 1205-5337
HLH MS QB 6021 9116
HLH ABBIE 4224 6021

K2 RESILIANCE 714 473
K2 RED REIGN 939 779
K2 DIANA BXT 651 939
K2 HEATHER 709 9014190396
RED HILL B571 JULIAN 84S
K2 HEATHER 509 709
K2 HEATHER 346 509
MPPA: 96 Dam Age: 2/19/19

Calving Ease 5

	Ratio	Data
Act. BW	90	67
Adj. WW	91	556
Adj. YW		
SC		
Frame		
	EPD Top%	Data
MARB	0.46	37
YG	0.12	81
CW	4	94
REA	-0.22	98
FAT	0.03	70
ADG	0.18	81
DMI	0.97	18

	ProS	HB	GM	CED	BW	WW	YW	MILK	ME	HPG	CEM	STAY
EPD	109	81	28	19	-5.6	42	70	25	0	11	10	19
Top%	31	19	64	1	3	94	90	48	41	56	6	11

3 generations of calving ease should make for great consistency. A nice bull out of a great little first calf heifer.



78 **K2 JOSEPH 311 12**

B
K2RA12

12/23/20

350% AR 50%
4514841

5L TRADITION 203-6145
5L TRADESMAN 1715-6237
5L LAKOTA 41C-1715
K2 DUCHESS TRMAN 651 3111628821
BASIN PAYWEIGHT M205
BASIN DUCHESS 6151
BASIN DUCHESS 1787
MPPA: 98 Dam Age: 2/23/13

Calving Ease 3

	Ratio	Data
Act. BW		82
Adj. WW		583
Adj. YW		
SC		
Frame		
	EPD Top%	Data
MARB	0.31	73
YG	0.06	53
CW	27	24
REA	0.05	61
FAT	0	18
ADG	0.12	96
DMI		0

	ProS	HB	GM	CED	BW	WW	YW	MILK	ME	HPG	CEM	STAY
EPD	87	36	51	14	-2.7	38	57	20			7	11
Top%	69	93	16	36	32	97	97	91			39	90

Note his nearly Christmas birthday. Joseph is out of one of our bulls, but a group got out with the cows during calving and we do not know which one. His dam bred up 25 days after calving. Amazing fertility! He was a surprise.





79 K2 ALLI LB 650 132

C 3/1/21 A100% AR
 K2RA132 4514813
 5L ADVOCATE 817-14W
 5L DEFENDER 560-30Z
 5L BLACK ADINA 525-560
RAVN LINEBACKER C5373486945
 BADLANDS STATEMENT 70Y
 RAVN BONNEBELL A325
 PAULS BONNEBELL 124
 NBAR HAMLEY S913
 LR HAMILTON 721
 SMBA HIHO SHONI M15
K2 HLT ALLI 231 6503542441
 K2 RED ALLIANCE 1602 73
 K2 ALLI 614 231
 K2 ELLE CHEY 412 614
 MPPA: 106 Dam Age: 3/24/16

	Ratio	Data
Act. BW	117	87
Adj. WW	122	699
Adj. YW		
SC		
Frame		
	EPD Top%	Data
MARB	0.43	43
YG	0.03	33
CW	22	41
REA	0.2	28
FAT	0.01	43
ADG	0.24	38
DMI	1.96	93

	ProS	HB	GM	CED	BW	WW	YW	MILK	ME	HPG	CEM	STAY
EPD	81	60	21	13	-0.3	77	115	21	2	13	4	15
Top%	78	59	78	49	78	4	13	83	53	15	91	59

This is without a doubt one of my favorite heifers we raised in 2021. Her dam, 650, combines 2 of our best outcross female making lines with Red Alliance and Hamilton.

80 K2 LYDIA LB 848 131

C 3/3/21 A100% AR
 K2RA131 4514817
 5L ADVOCATE 817-14W
 5L DEFENDER 560-30Z
 5L BLACK ADINA 525-560
RAVN LINEBACKER C5373486945
 BADLANDS STATEMENT 70Y
 RAVN BONNEBELL A325
 PAULS BONNEBELL 124
 BUF CRK NICE'N EASY T189
 SR HERE WE GO C325
 RED HILL M045 LYDIA 65R
K2 LYDIA 112 8484012100
 MUSHRUSH IMPRESSIVE CA U236
 K2 SARATOGA IMPRESS 963 112
 K2 SARATOGA SPRING 614 963
 MPPA: 101 Dam Age: 3/18/18

	Ratio	Data
Act. BW	121	87
Adj. WW	113	645
Adj. YW		
SC		
Frame		
	EPD Top%	Data
MARB	0.39	53
YG	0.04	37
CW	21	45
REA	0.2	28
FAT	0.02	56
ADG	0.28	15
DMI	2.07	96

	ProS	HB	GM	CED	BW	WW	YW	MILK	ME	HPG	CEM	STAY
EPD	48	28	20	10	0.1	80	124	23	6	14	1	13
Top%	99	97	80	79	84	2	5	73	73	9	99	83

A really powerful heifer. Check out the top 2-5% on weaning and yearling EPD's.

81 K2 LYNN DEE 625 152C 3/10/21 A100% AR
K2RA152 4514769

BECKTON DOMINOR Z1 R610
 BECKTON DOMINOR T122 Z1
 BKT LARKABEL R038 WA
3SCC DOMAIN A1631619642
 BASIN HOBO 0545
 3SCC EUCLA X723
 BSKF EUCLA U278

K2 AUSTIN ALLIANCE 812 1060
 K2 RESILIANCE 714 473
 K2 SHERIDAN 714
K2 RAYLYN RS 218 6253542444
 FEDDES BIG SKY R9
 K2 RAYLYN SKY ET 0602 218
 ZCC SAGEBRUSH LADY 0602
 MPPA: 101 Dam Age: 2/28/16

	Ratio	Data
Act. BW	109	82
Adj. WW	105	608
Adj. YW		
SC		
Frame		
	EPD Top%	Data
MARB	0.54	22
YG	0.13	87
CW	28	23
REA	0.08	54
FAT	0.03	82
ADG	0.21	58
DMI	1.49	58

	ProS	HB	GM	CED	BW	WW	YW	MILK	ME	HPG	CEM	STAY
EPD	138	96	43	13	-1.6	61	95	21	1	14	5	21
Top%	5	6	30	48	54	45	51	84	46	10	85	2

We try to offer some of each sire group in our sale, so we can't leave you without a Domain daughter, and this is a nice one! Domain is one of the breed's favorite female makers.

82 K2 MAVE 928 108C 2/19/21 A100% AR
K2RA108 4514961

BECKTON NEBULA M045
 BECKTON NEBULA P P707
 BECKTON LANA M809 EP
POKE NEBP707 9116 10641447375
 5L QUARTERBACK 1205-5337
 HLH MS QB 6021 9116
 HLH ABBIE 4224 6021

RED U-2 RECKONING 149A
 RED U2 MALBEC 195D
 RED U-2 MABEL 60A
K2 MABEL 621 9284190282
 RED HILL B571 JULIAN 84S
 K2 CENTURIA 84S 424 621
 K2 CENTURIA AUS 513 424
 MPPA: 98 Dam Age: 3/5/19

	Ratio	Data
Act. BW	108	74
Adj. WW	95	547
Adj. YW		
SC		
Frame		
	EPD Top%	Data
MARB	0.47	35
YG	0.11	79
CW	5	93
REA	-0.17	95
FAT	0.03	74
ADG	0.2	71
DMI	0.97	18

	ProS	HB	GM	CED	BW	WW	YW	MILK	ME	HPG	CEM	STAY
EPD	96	68	29	16	-3.4	50	81	26	-7	9	9	16
Top%	53	43	63	11	21	82	79	45	16	86	16	51

There is a whole lot of good maternal backing this heifer: 84S, Malbec and especially her sire 1064 – all make great cows.

83 K2 ESSENCE 864 119C 2/24/21 A100% AR
K2RA119 4514845

5L ADVOCATE 817-14W
 5L DEFENDER 560-30Z
 5L BLACK ADINA 525-560
RAVN LINEBACKER C5373486945
 BADLANDS STATEMENT 70Y
 RAVN BONNEBELL A325
 PAULS BONNEBELL 124

BECKTON EPIC R397 K
 K2 EPIC PAYWT ET 651 6027
 BASIN DUCHESS 6151
K2 ESSENCE 7 361B 8544012202
 RED REDRICH SIZZLER 609Z
 RED REDRICH KD ESSENCE 361B
 RED REDRICH ESSENCE 360Z
 MPPA: 107 Dam Age: 3/21/18

	Ratio	Data
Act. BW	121	87
Adj. WW	119	680
Adj. YW		
SC		
Frame		
	EPD Top%	Data
MARB	0.41	48
YG	0.02	30
CW	24	36
REA	0.22	24
FAT	0.01	39
ADG	0.26	22
DMI	1.89	90

	ProS	HB	GM	CED	BW	WW	YW	MILK	ME	HPG	CEM	STAY
EPD	77	50	28	10	0.2	76	118	23	-1	13	4	13
Top%	83	77	65	81	85	5	10	69	36	24	95	80

The dam of this heifer is a total outcross from Canada. She is powerful with a 119 weaning ratio!

84 K2 LAKOTA 844 144C 3/5/21 A100% AR
K2RA144 4514787

5L ADVOCATE 817-14W
 5L DEFENDER 560-30Z
 5L BLACK ADINA 525-560
RAVN LINEBACKER C5373486945
 BADLANDS STATEMENT 70Y
 RAVN BONNEBELL A325
 PAULS BONNEBELL 124

BECKTON EPIC R397 K
 K2 EPIC PAYWT ET 651 6027
 BASIN DUCHESS 6151
K2 7 LAKOTA 411 8444012176
 K2 AUSTIN ALLIANCE 812 1060
 K2 AUSTIN LAKOTA 144 411
 AXTELL LAKOTA 1844
 MPPA: 103 Dam Age: 3/14/18

	Ratio	Data
Act. BW	123	88
Adj. WW	106	609
Adj. YW		
SC		
Frame		
	EPD Top%	Data
MARB	0.47	35
YG	0.04	41
CW	22	42
REA	0.18	32
FAT	0.02	54
ADG	0.25	28
DMI	2.03	95

	ProS	HB	GM	CED	BW	WW	YW	MILK	ME	HPG	CEM	STAY
EPD	69	42	27	11	-0.7	73	114	23	6	14	3	14
Top%	91	88	66	75	71	8	14	74	77	15	97	74

Another powerful Linebacker daughter. Dark red and a great disposition too.

85 K2 FANNY RED 504 146C 3/7/21 350% AR 50%
K2RA146 4514783

EATONS ASSERT 9171
 LT ASSERTION 1277 P
 LT ALLI'S CLASS 9140 P
LT BLUEGRASS 4017P3346920
 LT WYOMING WIND 4020 PLD
 LT PEARL'S BREEZE 2236 P
 LT UNLIMITED PEARL 7053P

5L NORSEMAN KING 2291
 RED RMJ REDMAN 1T
 CROWFOOT KURUBA 4033P
K2 RED DUCHESS 939 5043480459
 BASIN TREND SETTER 59T5
 K2 DIANA BXT 651 939
 BASIN DUCHESS 6151
 MPPA: 97 Dam Age: 2/14/15

	Ratio	Data
Act. BW	109	84
Adj. WW	105	609
Adj. YW		
SC		
Frame		
	EPD Top%	Data
MARB	0.22	92
YG	0	19
CW	10	86
REA	0.16	35
FAT	0.02	54
ADG	0.21	59
DMI	1.13	27

	ProS	HB	GM	CED	BW	WW	YW	MILK	ME	HPG	CEM	STAY
EPD	110	93	17	13	-2.3	54	88	23	-9	10	8	19
Top%	30	8	84	46	40	72	67	73	13	61	37	11

Check out this beautiful strawberry blond! I have been wanting to use the Charolais bull Bluegrass ever since I saw him on a tour years ago. He is an outstanding bull. We chose the 504 cow because she consistently has so much eye appeal in her calves.

86 K2 SHILO 820 112C 2/21/21 A100% AR
K2RA112 4514913

5L ADVOCATE 817-14W
 5L DEFENDER 560-30Z
 5L BLACK ADINA 525-560
RAVN LINEBACKER C5373486945
 BADLANDS STATEMENT 70Y
 RAVN BONNEBELL A325
 PAULS BONNEBELL 124

RED RMJ REDMAN 1T
 K2 KEYSTONE 203 6006
 K2 CONQUEST 045 203
K2 SHILO KS 578 8204012232
 LR HAMILTON 721
 K2 SHILO 316 578
 K2 TRADIN CENTURIA 513 316
 MPPA: 104 Dam Age: 3/1/18

	Ratio	Data
Act. BW	85	60
Adj. WW	110	629
Adj. YW		
SC		
Frame		
	EPD Top%	Data
MARB	0.4	50
YG	0.04	38
CW	17	64
REA	0.12	44
FAT	0.02	54
ADG	0.23	44
DMI	1.96	93

	ProS	HB	GM	CED	BW	WW	YW	MILK	ME	HPG	CEM	STAY
EPD	77	57	20	17	-4.6	63	100	24	2	13	7	15
Top%	83	65	80	5	8	36	39	62	51	25	55	59

We had a lot of Linebacker daughters this year so we are able to offer several here. This is another one packing a lot of power, but also some calving ease thrown in.

87 K2 ILA 802 164C 4/6/21
K2RA164A100% AR
4514743

U2 T.K.O.254Z
 RED U-2 FOREIGNER 413B
 RED U-2 ANEXA 8026U
VGW STOUT 7403764739
 LONEROCK GOLDSTRIKE 262
 VGW GS-DORY 0647
 VGW PT- DORY 0361

BECKTON NEBULA P P707
 POKE NEBP707 9116 1064
 HLH MS QB 6021 9116
K2 ILA PK 610 8024012328
 RED LAZY MC CC DETOUR 2W
 K2 ILA DT 347 610
 K2 IMPRESSIVE EXT 840 347
 MPPA: 96 Dam Age: 2/20/18

	Ratio	Data
Act. BW	105	76
Adj. WW	91	519
Adj. YW		
SC		
Frame		
	EPD Top%	Data
MARB	0.21	93
YG	0.06	50
CW	5	93
REA	-0.02	77
FAT	0.03	72
ADG	0.19	75
DMI	1.39	48

	ProS	HB	GM	CED	BW	WW	YW	MILK	ME	HPG	CEM	STAY
EPD	68	64	4	15	-2.7	48	79	24	-4	11	8	15
Top%	92	50	97	21	32	86	83	61	24	59	27	59

She is pretty young, so keep that in mind when comparing her to the group. Wonderful disposition! Stout has really produced some nice calves for us including our high selling yearling bull in 2021 and Lot 41 & 55 in this sale.

88 K2 ZIN 939 110C 2/20/21
K2RA110A100% AR
4514953

BUF CRK THE RIGHT KIND U199
 5L LEADING EDGE 1221-79A
 5L BLACKBIRD 5519-1221
5L LEADING EDGE 15383-117C3483291
 5L PURSUIT 3244-127X
 5L RED BIRD 411-15383
 5L RED BIRD 1312-411

RED U-2 FOREIGNER 413B
 VGW STOUT 740
 VGW GS-DORY 0647
K2 CABERNET 650 9394190256
 LR HAMILTON 721
 K2 HLT ALLI 231 650
 K2 ALLI 614 231
 MPPA: 94 Dam Age: 3/16/19

	Ratio	Data
Act. BW	113	77
Adj. WW	84	482
Adj. YW		
SC		
Frame		
	EPD Top%	Data
MARB	0.36	60
YG	0.03	33
CW	15	70
REA	0.15	37
FAT	0.02	59
ADG	0.16	88
DMI	1.35	44

	ProS	HB	GM	CED	BW	WW	YW	MILK	ME	HPG	CEM	STAY
EPD	95	77	18	16	-2.9	54	79	25	-6	12	9	15
Top%	55	26	82	11	29	72	82	54	17	36	12	54

Pretty little dark red heifer out of a first calf heifer that did a nice job for us. This is our first crop of Edge daughters but I have sure heard nice things about these cows.

89 K2 CLAIRE 904 105C 2/18/21
K2RA105A100% AR
4514967

RED RMJ REDMAN 1T
 K2 REDMAN 7115 530
 OCHO VACA MISS WENDY T15
K2 REDMAN 631 80314012058
 BASIN TREND SETTER 6074
 BASIN LAKOTA 6318
 BASIN LAKOTA 3956

BECKTON DOMINOR T122 Z1
 3SCC DOMAIN A163
 3SCC EUCLA X723
K2 CLARISSA E544 9044190412
 3SCC HELIX B64
 3SCC CLARISSA E544
 BSKF CLARISSA X801
 MPPA: 99 Dam Age: 2/19/19

	Ratio	Data
Act. BW	85	57
Adj. WW	97	556
Adj. YW		
SC		
Frame		
	EPD Top%	Data
MARB	0.46	37
YG	0.07	58
CW	7	91
REA	0	72
FAT	0.03	81
ADG	0.13	94
DMI	0.96	17

	ProS	HB	GM	CED	BW	WW	YW	MILK	ME	HPG	CEM	STAY
EPD	131	103	28	20	-6	37	58	24	-6	11	11	20
Top%	9	3	63	1	2	97	97	59	18	45	2	3

This heifer will be great for raising nice calving ease bulls. She excels in maternal also with top 2-3% in Herdbuilder, calving ease maternal and Stayability.

90 K2 LIZZY C453 154C
K2RA154

3/12/21

A100% AR
4514765

BECKTON ACCENT W180 C2
 BECKTON ACCENT A243 N3
 BECKTON MINOLA T233 NB
KDCS ACCORD 8293951405
 KDCS JAGO 822
 KDCS EVE 017
 KDCS JULENE 836

MESSMER COLUMBIA W054
 VGW COLUMBIA 221
 VGW 7432-STAR 1051

3SCC LIZZY C4533502602
 STEVENSON SALUTE H505T
 BSKF LIZZY X817
 BSKF LIZZY N271

MPPA: 98 Dam Age: 3/26/15

	Ratio	Data
Act. BW	91	68
Adj. WW	97	562
Adj. YW		
SC		
Frame		
	EPD Top%	Data
MARB	0.48	33
YG	0.1	72
CW	7	91
REA	-0.08	87
FAT	0.03	81
ADG	0.17	85
DMI	1.19	31

	ProS	HB	GM	CED	BW	WW	YW	MILK	ME	HPG	CEM	STAY
EPD	95	73	22	19	-5.5	50	76	21	2	11	8	18
Top%	55	32	76	2	4	83	85	83	52	55	21	15

A nice calving ease and maternal heifer out of a new herdsire for us, Accord 829, from Kerry & Debbie Sheaman.

91 K2 LACE 416 171C
K2RA171

4/26/21

A100% AR
4514729

RED SSS CONTENDER 121B
 RED SSS KNOCK OUT 661D
 RED EKW DYNOFIRE 37X
AXTELL KNOCK OUT 82093982700
 BECKTON DOMINOR T754 ZC
 AXTELL EMU MAR 660-209
 MLK CRK EMUMAR 660

K2 RED ALLIANCE 1602 73
 K2 AUSTIN ALLIANCE 812 1060
 K2 SAN FRAN RBLR 601 812
K2 AUSTIN LACE 7115 4161695022
 OCHO VACA CHEROKEE WIND N06
 OCHO VACA MISS WENDY T15
 MRM CE 9219 H217

MPPA: 100 Dam Age: 2/27/14

	Ratio	Data
Act. BW	101	76
Adj. WW	98	567
Adj. YW		
SC		
Frame		
	EPD Top%	Data
MARB	0.43	43
YG	0.1	74
CW	18	58
REA	-0.02	77
FAT	0.02	61
ADG	0.17	82
DMI	1.2	31

	ProS	HB	GM	CED	BW	WW	YW	MILK	ME	HPG	CEM	STAY
EPD	113	81	31	12	-1	51	79	23	-3	11	6	19
Top%	26	19	57	63	66	80	82	70	28	50	66	12

When checking out this little gal keep in mind she is by far the youngest heifer in the pen. She is also the only chance to get our Knock Out bloodlines. Her maternal half sister is the cow in the picture on page 5!

92 K2 EMULOUS ST 728 158C
K2RA158

3/18/21

A100% AR
4514757

U2 T.K.O.254Z
 RED U-2 FOREIGNER 413B
 RED U-2 ANEXA 8026U
VGW STOUT 7403764739
 LONEROCK GOLDSTRIKE 262
 VGW GS-DORY 0647
 VGW PT- DORY 0361

K2 AUSTIN ALLIANCE 812 1060
 K2 RESILIANCE 714 473
 K2 SHERIDAN 714
K2 EMULOUS RS 308 7283791919
 EMULATION 31
 K2 EMULOUS ET 605 308
 K2 PAPRIKA 305 605

MPPA: 100 Dam Age: 2/25/17

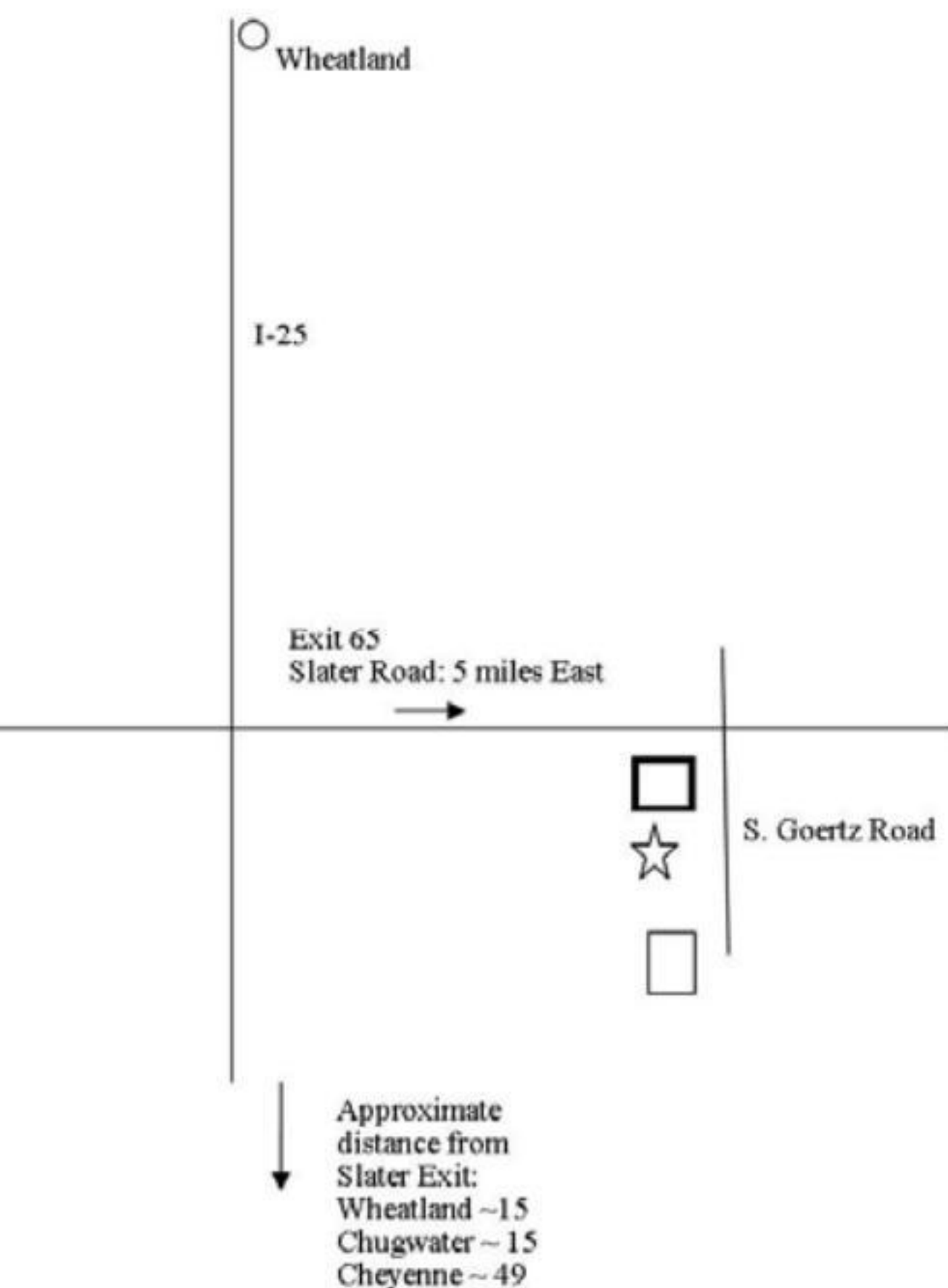
	Ratio	Data
Act. BW	87	64
Adj. WW		432
Adj. YW		
SC		
Frame		
	EPD Top%	Data
MARB	0.24	89
YG	0.04	40
CW	11	82
REA	0.1	49
FAT	0.03	70
ADG	0.13	93
DMI	1.48	57

	ProS	HB	GM	CED	BW	WW	YW	MILK	ME	HPG	CEM	STAY
EPD	90	89	2	16	-4.1	48	69	23	-4	13	10	17
Top%	63	11	98	9	13	87	91	70	24	17	4	34

Lot 92 could be the deal of the day – she lost her dam in late April and ran out with the herd as an orphan, so she is a little behind on weaning weight, but catching up. She combines our 2 donor cows 714 & 605 along with rare Emulation 31 genetics.



K2 Redman 631 8031



K2 Red Angus
Jason & Kim Cullen Goertz
2 South Goertz Road
Wheatland, WY 82201

