

# KICKING HORSE RANCH JR

*"Gelbvieh Since 1973"*

## *Annual Production Sale*

March 21, 2024 • 1:00 PM

ONLINE INTERNET AUCTION BY PELTON LIVESTOCK



Kathleen Rankin  
1285 Nine Mile Rd  
Olimont, MT 59466  
406-937-4815

# KICKING HORSE RANCH

R

"Gelbvieh Since 1973"

Jim Bjorkman  
406-460-0535  
krankin@northerntel.net  
www.kickinghorseranch.com

We would like to welcome everyone to our 2024 annual production sale. This year it will look a little different as we have chosen to do an online only sale using Bill Pelton as host. Our sale offering is a little smaller this year and we felt it made sense to try the online venue. We hope that you are able to join us for the closing on March 21, 2024.

We have endured three years of drought and in so doing, have reduced the size of our herd both through attrition and the sale of adult breeding stock. We feel that the cattle we have left are the ones that fit our operation as they are the ones that have continued to produce under this stress. Rain has been scarce, grass short, and hay none existent. We continue to marvel at the adaptability of the Gelbvieh cow and how she can raise an awesome calf and rebreed under these extreme conditions.

This year was the first year that we hand fed the bulls. We had difficulty getting delivery from the normal feed companies so settled for bagged feed from Hubbard. The bulls are much quieter and easier to work with this constant interaction. They reached the 3 pound gain target and look good.

We have only been involved with the cattle for 30 of the 50 years that Kicking Horse Ranch has been exclusively Gelbvieh. In that time, we have tried to stay current with the programs that the American Gelbvieh Association has implemented. We always welcome more data on our cattle but are mindful that the cattle have to work in our environment and be profitable to keep us in business. In turn we can supply genetics to you that will keep you in business.

This year we can see that a lot of the work we have done on the numbers side has paid off as we have kept our calving ease and performance and have added carcass traits. We also see that there is more uniformity and eye appeal.

The cattle are here at the house and we encourage you to visit if possible. There are pictures, videos and all the data on line at [www.kickinghorseranch.com](http://www.kickinghorseranch.com) and [www.BillPelton.com](http://www.BillPelton.com).

As always, we appreciate the continual support of our repeat buyers and encourage new buyers to contact us with any questions.

*Sincerely,*

*Jim & Kathy*



## KHR 2024 Sale Offering

18 Purebred Yearling Bulls  
10 Yearling Heifers  
7 Purebred • 3 Balancer

# KICKING HORSE RANCH JR

"Gelbvieh Since 1973"

## TIMED ONLINE AUCTION THIS YEAR!

Thursday, March 21<sup>st</sup>, 2024 • 1:00 pm (MDT)

Prebidding opens March 19<sup>th</sup>, Final Bidding starts @ 1:00 PM Mountain March 21<sup>st</sup>

### VIEWING OF THE SALE CATTLE

Bulls and heifers are available for viewing any time prior to the sale at the ranch. We are located 13 miles east of Sunburst, MT.

### ONLINE VIDEO VIEWING

Videos of each lot will be available for viewing on BILLPELTON.COM approximately 2 weeks before the sale

### GENOMIC ENHANCED EPDs

All cattle have genomic enhanced EPDs and have been tested for polled and coat color with results printed in the catalog. All cattle have been sire verified. EPDs are provided by the American Gelbvieh Association and are current as of February 27, 2024.

### HEALTH INFORMATION

All cattle sell with a valid health certificate that will allow shipment anywhere in the continental United States. All cattle are guaranteed to meet health requirements to enter Canada.

---

### INDIVIDUAL PERFORMANCE DATA

All weights presented by the American Gelbvieh Association

BW	actual weight at birth
WW	205 day adjusted weight
Ratio	nursing ratio within herd
YW	365 day adjusted weight
SC	actual scrotal circumference

---

### EPD DEFINITIONS

CE	calving ease direct	ST	stayability
BW	birth weight	SC	scrotal circumference
WW	weaning weight	YG	yield grade
YW	yearling weight	CW	carcass weight
MK	milk	REA	ribeye area
TM	total maternal	MB	marbling
CEM	calving ease maternal	\$Cow	replacement heifer profit
HP	heifer pregnancy	FPI	feeder profit index
PG30	30 month pregnancy	EPI	efficiency profile index

### BULLS SELLING

All bulls have completed a breeding soundness exam and sell as guaranteed breeders. They were hand fed a feed ration that is purposefully balanced to develop the bulls in a safe manner for an average gain of 3 pounds per day. They are current on vaccinations and were poured with CleanUp II prior to the sale.

### FEMALES SELLING

All females sell as guaranteed breeders and are ready to breed this spring. Heifers have been managed for optimal growth and development with a target of 1.5 pounds of gain. They were Brucellosis vaccinated last fall and were given Citadel VL5 vaccine and poured with CleanUP II at their yearling weight.

### REGISTRATION PAPERS

All registration papers on the animals selling are in order and will be transferred to the new owner. Papers will be mailed by the American Gelbvieh Association within 30 days of the sale.

### TERMS AND CONDITIONS

All cattle sell under the standard terms and conditions recommended by the American Gelbvieh Association. A copy of these terms and conditions may be obtained from the AGA. Terms are check or cash. Invoices will be sent out following the sale.

### FEEDING AND DELIVERY AFTER THE SALE

We are offering free feeding of the bulls until April 1st. Free delivery within 400 miles will begin on April 1st. Reliable truckers are available for long distance hauling.

### INSURANCE

All animals become the responsibility of the buyer after the purchase. Mortality and ASD Insurance is available through:

Choice Insurance:

Klint Sickler, AFIS

k.sickler@insurewithchoice.com

701.483.1864 (office) 701.260.1853 (cell)

# KICKING HORSE RANCH JR

"Gelbvieh Since 1973"

**TIMED ONLINE AUCTION THIS YEAR!**

Thursday, March 21<sup>st</sup>, 2024 • 1:00 pm (MDT)

Prebidding opens March 19<sup>th</sup>, Final Bidding starts @ 1:00 PM Mountain March 21<sup>st</sup>

**ONLINE INTERNET AUCTION BY PELTON LIVESTOCK**

**[HTTPS://BID.BILLPELTON.COM/](https://bid.billpelton.com/)**



## HOW THIS SALE CLOSE WORKS

The Kicking Horse Ranch online auction will close with horse race style bidding or extended bidding. This means that when the online auction event comes to its scheduled end time there will be 5 more minutes of extended bidding. If bidding continues the sale will stay open until there is a 5-minute stretch with no bidding on any lot. Once there is a full 5 minutes with no bidding on any lot, the whole event will close.

**This auction is scheduled to close at 1pm on March 21st.**

- Example 1: The auction closes at 1pm and goes into extended bidding. If there are no bids on any lot between 1pm and 1:05pm. The whole sale is declared closed at 1:05pm.
- Example 2: The Auction is scheduled to close at 1pm and goes into extended bidding. There is a bid on a lot at 1:02pm. Every lot remains open to bids. If there are no bids on any lot by 1:07, the whole sale is declared closed at 1:07pm.
- Example 3: The Auction is scheduled to close at 1pm and goes into extended bidding. There is a bid on a lot at 1:02pm. Every lot remains open to bids. Another bid is placed at 1:06. Every lot re-

mains open. Another bid is placed at 1:10. Every lot remains open. If there are no bids on any lot by 1:15, the whole auction is declared closed at 1:15pm.

You may use the maximum bidding feature throughout the extended bidding. A maximum bid will automatically increase your bid when someone else bids on this lot up to your set maximum.

If you are the highest bidder, or want to be, and the auction is coming to a close keep an eye on your Watchlist. During the bidding process you will not need to refresh your page to ensure you are viewing the most current bidding activity. The auction platform auto-refreshes the page, and the bidding is in real time.

Creating an Account with Pelton Livestock Online Auctions

Only registered bidders over the age of 18 can participate in Pelton Livestock online auctions. To register, select the Login/Register link on the right top side of the screen in the navigation bar. Register for a new account by entering your contact information, email address, desired password, etc. Once you submit the auction registration form, an email will be sent to the email account provided. Please click the link in that email to activate your account. Prior to Prebidding opening day, view auction and click "request to bid" on any lot to be approved for bidding. Request will be sent to Seller and once approved, you will be notified that you can now bid live for that auction. Please keep your user information (email address and password) in a secure place as you can use the same account login for all online auctions hosted by Pelton Livestock. If you have any questions or need assistance with creating an account or bidding, please call PELTON LIVESTOCK Darci Sachdeva at 406-794-3174.

## AUCTION DEMO AVAILABLE

Login with credentials provided at registration and enter "Demo Auction" to practice bidding. For Help call Darci Pelton Sachdeva (406) 794-3174.

## BUYER FAQ

Please read Buyer FAQ on the upper right-hand side of the screen in the navigation/menu bar to learn how to bid, use watchlists, maximum bids and more.

## IS THE AUCTION PLATFORM MOBILE FRIENDLY?

Yes, the auction platform and entire site is mobile friendly. So, no matter the device (computer, cell phone, tablet, etc.) you are utilizing to view and/or bid on an auction, the site is responsive to your screen, so you have the most optimum viewing and bidding experience.

# Gelbvieh Bulls

KHR

**KHR 02L**

**02L**

DOB: 2/25/2023 • Tattoo 02L • Reg. No. AMGV1567100

Gelbvieh

Red • Polled (Homo - D) • PB99.9

MCCA CORNHUSKER RED 524C	RWG TRACTION 7412	BW	72
KHR 03F	MCCA ZIVA Z24	Adj. WW	615
KHR 613D	KHR 25A	Ratio	93
KHR 14Y	KHR 435B	Adj. YW	1108
KHR 459B	KHR LOUIE KHR 09W	SC	32
KHR 973W	KHR 703T		
	KHR 85T		
	KHR REBECCA 536R		



03F Sire of Lots 02L, 16 L & 19L

EPDs  
% Rank

CE	BW	WW	YW	MILK	TM	CEM	HP	PG30
17.9	-2.1	70	99	18	53	10	14.65	-0.17
3	10	50	60	90	75	3	1	65
STAY	SC	YG	CW	CREA	MARB	SCOW	FPI	EPI
13.7	0.9	-0.22	30	0.43	0.16		78.42	
75	20	60	40	95	60		35	

Homo Polled Red Purebred KHR 03F son from a KHR 14Y Dam. 72 pound birth weight, 109 Weaning Ratio. He has 3 Dams of Distinction in his pedigree. Top 1% for HP, 3% for CE, CEM, 10% BW, 20 % SC. Here is a heifer bull with performance. He should be a cow maker. Long, dark red

KHR

**KHR 04L**

**04L**

DOB: 2/28/2023 • Tattoo 04L • Reg. No. AMGV1567104

Gelbvieh

Black (not Homo - D) • Polled (Homo - D) • PB99.9

RWG EXACT COMBINATION 7409	RWG RIGHT COMBINATION 5506	BW	84
RWG RWG SEMINOLE WIND 9430 ET	RWG HADIE 3505	Adj. WW	643
RWG KITTYS DREAM 6526	BEAS 2806Z	Ratio	97
KCF BENNETT PERFECTION K163	RWG ROXY KITTY X 0301	Adj. YW	1102
KHR 406B	KCF BENNETT IDEAL G182	SC	35
KHR 232Z	KCF MISS VALUE E119		
	KHR 06W		
	KHR 82TU		



Lot 04L

EPDs  
% Rank

CE	BW	WW	YW	MILK	TM	CEM	HP	PG30
12.8	0.1	68	102	28	62	9	4.69	1.03
40	50	60	55	10	25	10	75	40
STAY	SC	YG	CW	CREA	MARB	SCOW	FPI	EPI
14.2	0.9	-0.07	29	0.42	0.44		80.84	
75	20	>95	40	95	5		25	

Black Homozygous Polled Purebred Seminole Wind son from a beautiful Perfection Dam with 8 calves for 102 WW and 102 YW. 84 pound birth weight. Top 5% for MB, 10% Milk, CEM, 25% FPI. He has the highest MB EPD in the sale offering. He definitely inherited his eye appeal from his dam.



Seminole Wind Sire of Lots 04L & 21L



Revelation Sire of Lots 11L, 26L & 31L

Winter 2024 American Gelbvieh Association Gelbvieh and Balancer Non-Parent Average EPDs.

	CE	BW	WW	YW	MK	TM	CEM	HP	PG30	ST	YG	CW	REA	MB	SCOW	FPI	EPI
GV	13	0.1	70	103	23	58	6	7	1	16	-0.24	27	0.67	0.20	114.79	75.99	81.49
BA	13	-0.5	72	112	23	59	7	6	1	15	-0.07	36	0.52	0.36	107.28	81.90	113.63

# Gelbvieh® Bulls

KHR

## KHR 11L

11L

DOB: 3/6/2023 • Tattoo 11L • Reg. No. AMGV1567114

Gelbvieh

Red • Polled (Homo - D) • PB93.75

DLW ARAPAHOE 207A  
JEN REVELATION J120 ET  
JORD MISS LULU G25

DCH DCH HILLE X102  
DCSF POST ROCK RHONDA 207M2  
JRI IN PURSUIT 017850  
JORD MISS LULABELLE B25  
JCGR BAR GT LOUIE 2J  
KHR 760T  
JRI FULLY EXPOSED 270N83  
KHR 241M

BW	80
Adj. WW	713
Ratio	107
Adj. YW	1171
SC	48

EPDs  
% Rank

CED	BW	WW	YW	MILK	TM	CEM	HP	PG30
17.3	-0.6	72	103	30	66	9	7.32	0.06
5	35	40	50	3	10	10	50	65
STAY	SC	YG	CW	CREA	MARB	SCOW	FPI	EPI
16.9	2	-0.23	20	0.63	0.15		78.65	
30	1	55	80	60	60		35	

Homozygous Polled Red Purebred Revelation son from a KHR 25A Dam with 4 calves for 102 WW, 80 pound birth weight, 107 Weaning Ratio. Top 1% for SC, 3% Milk, 5% CE, and 10% TM, CEM. This smooth muscled long calf has calving east and fertility.



Lot 11L

KHR

## KHR 12L

12L

DOB: 3/6/2023 • Tattoo 12L • Reg. No. AMGV1567115

Gelbvieh

Red • Scurred • PB93.75

JRI SECRET INSTINCT 254U83  
JRI SUSTAINABULL 253F48  
JRI MS PATINA 253038

JRI TOP SECRET 253M75 ET  
JRI MS EXTRA SUGAR 254N72 ET  
JRI GENERAL PATTON 213B97 ET  
JRI MS SPECIAL BLEND 253W28  
KHR 39Y  
KHR 156Y  
OLYMPIC  
KHR 314N

BW	72
Adj. WW	648
Ratio	97
Adj. YW	1127
SC	37

EPDs  
% Rank

CED	BW	WW	YW	MILK	TM	CEM	HP	PG30
11.7	-3.2	56	77	23	51	6	11.08	-1.63
55	3	95	>95	50	85	50	15	95
STAY	SC	YG	CW	CREA	MARB	SCOW	FPI	EPI
16.1	0.8	-0.16	16	0.41	-0.01	111.27	65.51	45.27
45	30	90	90	95	95	60	>95	90

Scurred Polled Red Purebred Sustainabull son from an 11year old KHR 26X Dam of Distinction with 11 calves for 104 WW, 106 YW, 72 pound birth weight, 97 Weaning Ratio. Top 3% for BW, 15% HP! Stout made, powerful.



Lot 12L

KHR

## KHR 14L

14L

DOB: 3/7/2023 • Tattoo 14L • Reg. No. AMGV1567117

Gelbvieh

Red • Polled (Homo - D) • PB99.9

MCCA CORNHUSKER RED 524C  
ATM GVC TEJAS FLACO 44F  
CRS 244D

RWG TRACTION 7412  
MCCA ZIVA Z24  
DCSF POST ROCK POWER BUILT 378B  
CKS MS DAZZLE Z44  
KHR 52C  
KHR 477B  
KHR 25A  
KHR 314N

BW	83
Adj. WW	657
Ratio	99
Adj. YW	1075
SC	32

EPDs  
% Rank

CED	BW	WW	YW	MILK	TM	CEM	HP	PG30
18.6	-2.2	63	88	21	53	10	15.22	0.38
1	10	80	85	70	75	3	1	65
STAY	SC	YG	CW	CREA	MARB	SCOW	FPI	EPI
14.1	1.11	-0.26	17	0.46	0.07		72.83	
75	10	40	90	90	85		70	

Homozygous Polled Red Purebred Tejas Flaco son from a KHR 45G first calf heifer. There are three Dams of Distinction in his pedigree. 83 pound birth weight, 99 Weaning Ratio. Top 1% for CE, HP, 3% CEM, 10% BW, SC. Definitely a heifer bull. Moderate sized, well balanced.



Lot 14L

Winter 2024 American Gelbvieh Association Gelbvieh and Balancer Non-Parent Average EPDs.

	CED	BW	WW	YW	MK	TM	CEM	HP	PG30	ST	YG	CW	REA	MB	SCOW	FPI	EPI
GV	13	0.1	70	103	23	58	6	7	1	16	-0.24	27	0.67	0.20	114.79	75.99	81.49
BA	13	-0.5	72	112	23	59	7	6	1	15	-0.07	36	0.52	0.36	107.28	81.90	113.63

# Gelbvieh Bulls

KHR

## KHR 15L

15L

DOB: 3/7/2023 • Tattoo 15L • Reg. No. AMGV1567199

Gelbvieh

Red • Polled (Homo - P) • PB99.9

DCHD ARIAT 127A  
DCH HILLE C169  
DCH HILLE A105  
DCH HILLE B197 ET  
HOOT J101  
DCH HILLE F205

DCH HILLE Y342  
DCHD BAILEY'S GIRL 127W  
DCH HILLE W287 WOW  
DCH HILLE Y270  
DCH HILLE T266 TYE  
DCH HILLE U510 VIVIAN ET  
DCHD GOLDEN BUCKLE GELV BABE MAGNET 200B ET  
DCH HILLE Z156

BW	78
Adj. WW	683
Ratio	103
Adj. YW	1157
SC	30

EPDs	CED	BW	WW	YW	MILK	TM	CEM	HP	PG30
% Rank	14.7	-0.7	78	125	25	64	8	7.82	0.21
	20	30	20	10	30	15	15	35	65
STAY	SC	YG	CW	CREA	MARB	SCOW	FPI	EPI	
	15.1	0.97	-0.28	60	1.08	0.17		83.13	
	60	20	30	1	2	55		15	

Homozygous Polled Red Purebred son of HILLE C169 and a HILLE B197 first calf heifer. We purchase his dam as a bred heifer in the 2023 Golden Rule Sale. This calf was outstanding from birth on. 78 pound birth weight, 103 Weaning Ratio. Top 1% for CW, 2% REA, 10% YW, 15% TM, CEM, FPI, 20% CE, WW, Milk, SC. That gives him 10 EPDs in the top 20% or less.



Lot 15L

KHR

## KHR 16L

16L

DOB: 3/7/2023 • Tattoo 16L • Reg. No. AMGV1567120

Gelbvieh

Red • Polled (Homo - D) • PB99.9

MCCA CORNHUSKER RED 524C  
KHR 03F  
KHR 613D  
KHR 26X  
KHR 230Z  
KHR 463P

RWG TRACTION 7412  
MCCA ZIVA Z24  
KHR 25A  
KHR 435B  
JGGR BAR GT LOUIE 2J  
KHR 760T  
RHRT INDEPENDENCE L19  
KHR 510E

BW	83
Adj. WW	683
Ratio	103
Adj. YW	1126
SC	36

EPDs	CED	BW	WW	YW	MILK	TM	CEM	HP	PG30
% Rank	17.8	-2.1	60	94	21	50	11	11.52	1.9
	3	10	90	75	70	90	1	10	20
STAY	SC	YG	CW	CREA	MARB	SCOW	FPI	EPI	
	23.4	0.8	-0.31	17	0.47	-0.05	159.38	68.34	42.02
	1	30	15	90	90	>95	2	90	90

Homozygous Polled Red Purebred from our cow maker sire, KHR 03F and an 11 year old 26X Dam with 11 calves for 96 WW and 99 YW. He has 2 Dams of Distinction on his sire's side. 83 pound birth weight, 103 Weaning Ratio. Top 1% CEM, Stay, 2% \$Cow, 3% CE, 10% BW, HP, 20% PG30. This heifer bull is a cow maker!



Lot 16L

KHR

## KHR 19L

19L

DOB: 3/9/2023 • Tattoo 19L • Reg. No. AMGV1567127

Gelbvieh

Red • Polled (Homo - D) • PB99.9

MCCA CORNHUSKER RED 524C  
KHR 03F  
KHR 613D  
KHR 27Z  
KHR 568C  
KHR 972W

RWG TRACTION 7412  
MCCA ZIVA Z24  
KHR 25A  
KHR 435B  
KHR 05T  
KHR 621S  
KHR 85T  
KHR 606S

BW	85
Adj. WW	674
Ratio	101
Adj. YW	1106
SC	37

EPDs	CED	BW	WW	YW	MILK	TM	CEM	HP	PG30
% Rank	12.4	-1.3	68	93	25	59	6	9.99	1.3
	55	20	60	75	30	40	50	20	40
STAY	SC	YG	CW	CREA	MARB	SCOW	FPI	EPI	
	14.7	0.9	-0.22	34	0.55	0.14		74.83	
	60	20	60	25	75	65		60	

Homozygous Polled KHR 03F son from a KHR 27A Dam of Distinction with 8 calves for 102 WW and 102 YW. Maternal Grand Dam has 11 calves with 107 WW and 103 YW. There are 6 Dams of Distinction in his pedigree which reads as a who's who in the Gelbvieh Breed with Cornhusker Red, Top Brass and Collateral represented. 85 pound birth weight, 101 Weaning Ratio. Top 20% for BW, HP, SC.



568C Dam of Lot 19L

# Gelbvieh® Bulls

KHR

## KHR 20L

20L

DOB: 3/9/2023 • Tattoo 20L • Reg. No. AMGV1567090

Gelbvieh

Black (Homo - P) • Polled (Homo - D) • PB99.9

KHR 13B  
KHR 38F  
KHR 509C  
KHR 06W  
KHR 332A  
KHR 056X

DLGO MC RANSOME 103X  
KHR 164Y  
HAHR ARROW H RAMROD 13Z  
KHR 029X  
KHR 03N  
KHR 703T  
KHR 18U  
KHR 645S

BW	86
Adj. WW	747
Ratio	112
Adj. YW	1168
SC	35

EPDs  
% Rank

CED	BW	WW	YW	MILK	TM	CEM	HP	PG30
21.3	-1.5	68	94	25	59	12	7.82	1.07
1	15	60	75	30	40	1	35	40
STAY	SC	YG	CW	CREA	MARB	SCOW	FPI	EPI
17.6	0.35	-0.39	13	0.66	0.31	127.12	82.56	49.43
20	85	2	95	50	20	25	15	85

Homozygous Black Homozygous Polled KHT 38 Son from a 10 year old KHR 06W Dam of Distinction with 9 calves for 109 WW and 100 YW. There are 3 Dams of Distinction in his Pedigree. 86 pound birth weight, 112 Weaning Ratio. Top 1% for CE, CEM, 2 % YG, 15% FPI, 20% BW, Stay, DMI, MB 25% \$ Cow. Calving ease and carcass here.



Lot 20L

KHR

## KHR 21L

21L

DOB: 3/11/2023 • Tattoo 21L • Reg. No. AMGV1567135

Gelbvieh

Red • Polled (Homo - D) • PB99.9

RWG EXACT COMBINATION 7409  
RWG RWG SEMINOLE WIND 9430 ET  
RWG KITTY'S DREAM 6526  
KHR 03N  
KHR 637D  
KHR 413P

RWG RIGHT COMBINATION 5506  
RWG HADIE 3505  
BEAS 2806Z  
RWG ROXY KITTY X 0301  
RTC ATLAS 712G  
KHR 907J  
KHR DYNAMIC  
KHR 130L

BW	85
Adj. WW	727
Ratio	109
Adj. YW	1186
SC	36

EPDs  
% Rank

CED	BW	WW	YW	MILK	TM	CEM	HP	PG30
13.8	-1.2	78	112	24	62	9	5.35	1.28
30	20	20	30	40	25	10	75	40
STAY	SC	YG	CW	CREA	MARB	SCOW	FPI	EPI
17.2	1.2	-0.17	38	0.62	0.2	117.79	82.4	67.39
30	10	85	15	60	50	45	20	70

Homozygous Polled Red Purebred Seminole Wind son from a KHR 03N Dam who is a full sister to Sam Spade with 6 calves for 100 WW. Maternal Grand Dam has 12 calves for 101 WW. 85 pound birth weight, 109 Weaning Ratio. Top 10% for CEM and SC, 15% CW, 20% BW, WW, FPI, 25% TM. He's got that herd bull look. Tested diluter free.



Lot 21L

KHR

## KHR 26L

26L

DOB: 3/12/2023 • Tattoo 26L • Reg. No. AMGV1567140

Gelbvieh

Red • Polled (Homo - D) • PB93.8

DLW ARAPAHOE 207A  
JEN REVELATION J120 ET  
JORD MISS LULU G25  
JRI TRUMP 270W13B  
KHR 420B  
KHR 401P LADY LIBERTY

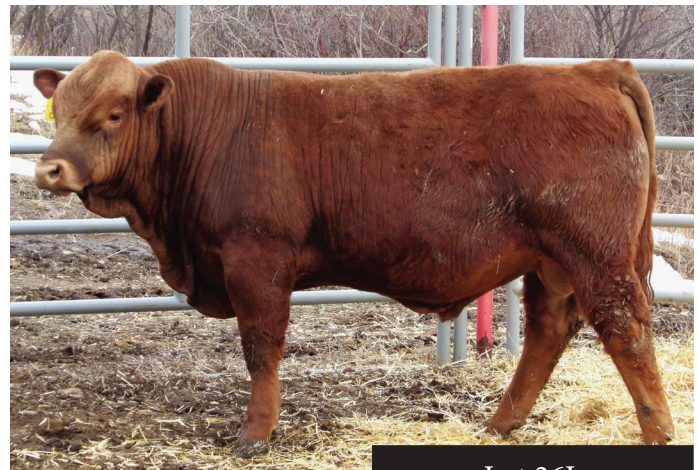
DCH DCH HILLE X102  
DCSF POST ROCK RHONDA 207M2  
JRI IN PURSUIT 017B50  
JORD MISS LULABELLE B25  
JRI EXTRA EXPOSURE 285L71 ET  
JRI MS CHANCE 270S93  
RHRT INDEPENDENCE L19  
KHR 126L

BW	82
Adj. WW	663
Ratio	100
Adj. YW	1185
SC	38

EPDs  
% Rank

CED	BW	WW	YW	MILK	TM	CEM	HP	PG30
17.1	-0.6	75	113	26	63	9	6.49	1.03
5	35	25	25	20	20	10	60	40
STAY	SC	YG	CW	CREA	MARB	SCOW	FPI	EPI
19.2	1.75	-0.11	32	0.55	-0.08		73.94	
10	1	>95	30	75	>95		65	

Homozygous Polled Red Purebred JEN Revelation son from a beautiful Trump Dam with 8 calves for 99 WW and 100 YW. Maternal Grand Dam is Lady Liberty who has 12 calves for 101 WW and 101 YW. 82 pound birth weight, 100 Weaning Ratio. Top 1% for SC, 5% CE, 10% CEM, Stay, 20% Milk, 25% WW, YW. Stout build, wide loin, width carries down behind.



Lot 26L



# Gelbvieh Bulls



420B Dam of Lot 26L

**KHR 31L**  
 Gelbvieh • DOB: 3/16/2023 • Tattoo 31L • Reg. No. AMGV1567154  
 Red • Polled (Homo - D) • PB93.8

DLW ARAPAHOE 207A	DCH DCH HILLE X102	<table border="1"> <tr><td>BW</td><td>88</td></tr> <tr><td>Adj. WW</td><td>736</td></tr> <tr><td>Ratio</td><td>111</td></tr> <tr><td>Adj. YW</td><td>1217</td></tr> <tr><td>SC</td><td>38</td></tr> </table>	BW	88	Adj. WW	736	Ratio	111	Adj. YW	1217	SC	38
BW	88											
Adj. WW	736											
Ratio	111											
Adj. YW	1217											
SC	38											
<b>JEN REVELATION J120 ET</b>	DCSF POST ROCK RHONDA 207M2											
JORD MISS LULU G25	JRI IN PURSUIT 017B50											
MCCA CORNHUSKER RED 524C	JORD MISS LULABELLE B25											
<b>KHR 846F</b>	RWG TRACTION 7412											
KHR 042X	MCCA ZIVA Z24											
	KHR 21T											
	KHR MILLIE KHR 249M											

EPDs	CED	BW	WW	YW	MILK	TM	CEM	HP	PG30
% Rank	14.7	-0.2	82	121	26	66	8	9.96	1.62
	20	45	10	15	20	10	15	20	20
	STAY	SC	YG	CW	CREA	MARB	\$COW	FPI	EPI
	18.6	1.6	-0.23	47	0.74	0.03		80.15	
	10	1	55	3	35	90		25	

Homozygous Polled Red Purebred JEN Revelation son from a Cornhusker Red Dam of Merit with 4 calves for 107 WW, 105 YW. Maternal Grand Dam of Distinction has 9 calves for 102 WW, 101 YW. 80 pound birth weight, 11 Weaning Ratio. Top 1% for SC, 10% WW, TM, Stay, 15% YW, CEM, 20% CE, Milk, HP, PG30 25% FPI. Nice top line, carries his thickness throughout.

**KHR 35L**  
 Gelbvieh • DOB: 3/18/2023 • Tattoo 35L • Reg. No. AMGV1567209  
 Red • Polled (Homo - D) • PB99.9

DVE DAVIDSON JACKSON 26A	DVE DAVIDSON TRUMP 63W	<table border="1"> <tr><td>BW</td><td>89</td></tr> <tr><td>Adj. WW</td><td>730</td></tr> <tr><td>Ratio</td><td>110</td></tr> <tr><td>Adj. YW</td><td>1187</td></tr> <tr><td>SC</td><td>34</td></tr> </table>	BW	89	Adj. WW	730	Ratio	110	Adj. YW	1187	SC	34
BW	89											
Adj. WW	730											
Ratio	110											
Adj. YW	1187											
SC	34											
<b>DDGR INTUITION 321J</b>	DVE DAVIDSON MS CADILLAC 160Y											
DDGR 427B	DVE DAVIDSON MR DAKOTA 151X											
KHR 52C	DDGR WANDA 177W											
<b>KHR 142J</b>	KHR 25A											
KHR 807F	KHR 923W											
	MCCA CORNHUSKER RED 524C											
	KHR 641D											

EPDs	CED	BW	WW	YW	MILK	TM	CEM	HP	PG30
% Rank	9.7	1	79	123	24	64	4	11.25	0.7
	85	75	15	10	40	15	85	15	40
	STAY	SC	YG	CW	CREA	MARB	\$COW	FPI	EPI
	17.9	0.38	-0.25	34	0.7	0.06		76.87	
	20	85	45	25	45	85		45	

Homo Polled Red Purebred DDGR Intuition son from a KHR 52C first calf beifer. There are 3 Dams of Distinction on his dam's side of the pedigree. 89 pound birth weight, 110 Weaning Ratio. Top 10% for YW, TM, 15% WW, HP, 20% Stay. Moderate sized, smooth muscled.



Lot 31L

**KHR 37L**  
 Gelbvieh • DOB: 3/19/2023 • Tattoo 37L • Reg. No. AMGV1567092  
 Black (Homo - D) • Polled (Homo - D) • PB99.9

KHR 13B	DLGO MC RANSOME 103X	<table border="1"> <tr><td>BW</td><td>86</td></tr> <tr><td>Adj. WW</td><td>682</td></tr> <tr><td>Ratio</td><td>103</td></tr> <tr><td>Adj. YW</td><td>1125</td></tr> <tr><td>SC</td><td>35</td></tr> </table>	BW	86	Adj. WW	682	Ratio	103	Adj. YW	1125	SC	35
BW	86											
Adj. WW	682											
Ratio	103											
Adj. YW	1125											
SC	35											
<b>KHR 38F</b>	KHR 164Y											
KHR 509C	HAHR ARROW H RAMROD 13Z											
HAHR ARROW H RAMROD 13Z	KHR 029X											
<b>KHR 511C</b>	OZZ EXT GOVENOR 3N											
KHR 329A	MCFG 107X											
	JNGF TRENDSETTER 55R ET											
	KHR 039X											

EPDs	CED	BW	WW	YW	MILK	TM	CEM	HP	PG30
% Rank	15.8	-1.7	72	104	20	56	9	7.74	2.55
	10	15	40	50	75	60	10	35	10
	STAY	SC	YG	CW	CREA	MARB	\$COW	FPI	EPI
	18.2	0.85	-0.3	16	0.65	0.27	129.47	81.99	58.65
	20	30	20	90	55	30	25	20	80

Homozygous Black Homozygous Polled Purebred KHR 38F son from a Ramrod Dam with 8 calves for 101 WW. There are two Dams of Distinction in his paternal pedigree. 86 pound birth weight 103 Weaning Ratio. Top 10% for CE, CEM, PG30, Stay, 15% BW, DMI, YG, 20% FPI, 25% \$Cow, 30% MB. Growth, long, cow maker.



Lot 37L

# Gelbvieh® Bulls

**KHR 42L**  
 DOB: 3/27/2023 • Tattoo 42L • Reg. No. AMGV1567170  
 Black (Homo - D) • Polled (Homo - D) • PB99.9

KHR 01E	DBRG TWISTER 451B	BW	89
KHR 77H	KHR 501C	Adj. WW	637
KHR 332A	KHR 06W	Ratio	96
KHR 08W	KHR 056X	Adj. YW	1090
KHR 266Z	KHR 31T	SC	31
KHR 632S	KHR 708T		
	KHR 38N		
	KHR SMURFETTE 101L		

EPDs  
% Rank

CED	BW	WW	YW	MILK	TM	CEM	HP	PG30
14.8	0.6	65	99	24	56	9	8.62	-2.11
20	65	70	60	40	60	10	25	95
STAY	SC	YG	CW	CREA	MARB	SCOW	FPI	EPI
17.5	0.7	-0.26	31	0.73	0.15	119.65	72.35	60.32
20	40	40	35	35	60	40	75	75

Homozygous Black Homozygous Polled Purebred son of KHR 77H from an 11 year old KHR 08W Dam with 10 calves for 96 WW, 103 YW. Three Dams of Distinction in the pedigree. 89 pound birth weight, 96 Weaning Ratio. Top 10% for CE, 15% RFI, 20% CE, Stay, DMI. Definitely a heifer bull. Moderate size, thick made.



Lot 42L

**KHR 49L**  
 DOB: 3/31/2023 • Tattoo 49L • Reg. No. AMGV1567180  
 Red • Polled (Homo - D) • PB99.9

DVE DAVIDSON JACKSON 26A	DVE DAVIDSON TRUMP 63W	BW	83
DDGR INTUITION 321J	DVE DAVIDSON MS CADILLAC 160Y	Adj. WW	643
DDGR 427B	DVE DAVIDSON MR DAKOTA 151X	Ratio	97
PTL ELI 117E	DDGR WANDA 177W	Adj. YW	1059
DCH HILLE H796	PTL 157C	SC	33
DCH HILLE A251	PTL 123B		
	DCH GOLDEN BUCKLE GELV 068X		
	DCH HILLE M129 MYTH		

EPDs  
% Rank

CED	BW	WW	YW	MILK	TM	CEM	HP	PG30
14.7	-0.7	64	96	22	54	8	2.44	-0.53
20	30	75	70	60	70	15	95	85
STAY	SC	YG	CW	CREA	MARB	SCOW	FPI	EPI
14.5	0.23	-0.32	23	0.64	0.26		76.31	
75	90	15	70	55	30		50	

Homozygous Polled Red Purebred son of DDGR Intuition and a PTL ELI second calf Dam. 83 pound birth weight, 97 Weaning Ratio. Top 15% CEM and YG, 20% CE, 30% BW, MB. We have been pleased with the heifer we purchased from Chimney Butte as they fit right into our program.

**KHR 53L**  
 DOB: 4/3/2023 • Tattoo 53L • Reg. No. AMGV1567186  
 Red • Polled (Homo - D) • PB99.9

DVE DAVIDSON JACKSON 26A	DVE DAVIDSON TRUMP 63W	BW	81
DDGR INTUITION 321J	DVE DAVIDSON MS CADILLAC 160Y	Adj. WW	711
DDGR 427B	DVE DAVIDSON MR DAKOTA 151X	Ratio	107
KHR KHR TAYLOR MADE 85D	DDGR WANDA 177W	Adj. YW	1143
KHR 010H	PHG BINFORD 881	SC	33
KHR 837F	KHR 453B		
	MCCA CORNHUSKER RED 524C		
	KHR 475B		

EPDs  
% Rank

CED	BW	WW	YW	MILK	TM	CEM	HP	PG30
14.3	-1.3	64	89	28	60	7	9.26	1.08
30	20	75	85	10	35	30	25	40
STAY	SC	YG	CW	CREA	MARB	SCOW	FPI	EPI
14.9	0.9	-0.37	14	0.58	0.13		73.89	
60	20	3	95	70	70		65	

Homozygous Polled Red Purebred DDGR Intuitions son from a Taylor Made second calf Dam with 2 calves for 104 WW, 101 YW. Three Dams of Distinction in his pedigree. 81 pound birth weight, 107 Weaning Ratio. Top 3% for YG, 10% Milk, 20% BW, SC, 25% HP. Deep and thick.

**KHR 55L**  
 DOB: 4/4/2023 • Tattoo 55L • Reg. No. AMGV1567188  
 Black (Homo - D) • Polled (Homo - D) • PB99.9

KHR 01E	DBRG TWISTER 451B	BW	84
KHR 77H	KHR 501C	Adj. WW	725
KHR 332A	KHR 06W	Ratio	109
KHR 67A	KHR 056X	Adj. YW	1103
KHR 914G	KHR 67Y	SC	38
KHR 268Z	KHR 016X		
	KHR 26X		
	KHR 813U		

EPDs  
% Rank

CED	BW	WW	YW	MILK	TM	CEM	HP	PG30
15.9	-2	59	80	30	60	8	9.42	-0.04
10	10	90	95	3	35	15	25	65
STAY	SC	YG	CW	CREA	MARB	SCOW	FPI	EPI
14.9	1	-0.32	17	0.63	0.21	109.03	73.86	35.42
60	15	15	90	60	45	65	65	95

Homozygous Black Homozygous Polled Purebred KHR 77H son from a KHR 67A Dam with 3 calves for 105 WW, 100 YW. 84 pound birth weight, 109 Weaning Ratio. 4 Dams of Distinction in his pedigree. Top 3% for Milk, 10% CE, BW, 15% CEM, SC, YG, RFI, 20% DMI, 45% MB. Moderate sized, good length.



Lot 55L

	CED	BW	WW	YW	MK	TM	CEM	HP	PG30	ST	YG	CW	REA	MB	SCOW	FPI	EPI
GV	13	0.1	70	103	23	58	6	7	1	16	-0.24	27	0.67	0.20	114.79	75.99	81.49
BA	13	-0.5	72	112	23	59	7	6	1	15	-0.07	36	0.52	0.36	107.28	81.90	113.63

# Purebred & Balancer® Yearling Heifers

**KHR 305L**  
**305L**  
 Gelbvieh

DOB: 2/26/2023 • Tattoo 305L • Reg. No. AMGV1567102  
 Black (Homo - D) • Polled (not Homo - D) • PB99.9

KHR 03N  
 KHR 413P  
 WAC FULLBACK 011G  
 VRT LAZY TV E271  
 JCB LAZY TV BEECH JET R052ET  
 JKGF 37U  
 KCF BENNETT PERFECTION K163  
 KHR 232Z

KHR SAM SPADE 02S  
 VRT LAZY TV SAM U451  
 VRT LAZY TV MS FULLBACK L643  
 DLGO MC RANSOME 103X  
**KHR 133J**  
 KHR 406B

BW	76
Adj. WW	609
Ratio	101
Adj. YW	818

EPDS % Rank	CED	BW	WW	YW	MILK	TM	CEM	HP	PG30
	12.4	0.1	70	100	27	62	7	12.22	2.79
	55	50	50	60	15	25	30	10	10
	STAY	SC	YG	CW	CREA	MARB	SCOW	FPI	EPI
	14.5	1.07	-0.22	8	0.42	0.44		82.35	
	75	15	60	>95	95	5		20	

*Homozygous Black Polled Purebred Lazy TV Sam daughter from a Ransom first calf heifer. 76 pound birth weight, 101 Weaning Ratio. Top 15% Milk and SC, 10% HP and PG30, 5% MB and 20% FPI. Moderate in frame, thick made, highly maternal.*



Lot 305L

**KHR 311L**  
**311L**  
 Gelbvieh

DOB: 3/4/2023 • Tattoo 311L • Reg. No. AMGV1567110  
 Black (not Homo - D) • Polled (Homo - D) • PB93.8

RWG RIGHT COMBINATION 5506  
 RWG HADIE 3505  
 BEAS 2806Z  
 RWG ROXY KITTY X 0301  
 WFA FLYING H GRANITE 7Z  
 DBRG MR BLK IMPACT 2100Z ET  
 KHR 47R  
 KHR 524R

RWG EXACT COMBINATION 7409  
 RWG RWG SEMINOLE WIND 9430 ET  
 RWG KITTY'S DREAM 6526  
 DBRG TWISTER 451B  
**KHR 712E**  
 KHR 024X

BW	85
Adj. WW	679
Ratio	112
Adj. YW	988

EPDS % Rank	CED	BW	WW	YW	MILK	TM	CEM	HP	PG30
	8.2	1.5	90	138	26	71	5	5.07	1
	95	85	1	1	20	2	70	75	40
	STAY	SC	YG	CW	CREA	MARB	SCOW	FPI	EPI
	17.8	1.5	-0.01	42	0.34	0.15	117.83	83.68	117.16
	20	1	>95	10	>95	60	45	15	15

*Black Homozygous Polled Purebred Seminole Wind daughter from a Twister Dam with 5 calves for 105 WW and 108 YW. 85 pound birthweight, 112 Weaning Ratio and 114 Yearling Ratio. Top 1% WW, YW and SC, 2% TM, 4% RFI, and 15% DMI, FPI, and EPI. Obviously a standout for her growth, she is deep bodied with a feminine front.*



Lot 311L



# Purebred & Balancer<sup>®</sup> Yearling Heifers

KHR

**KHR 318L**

**318L**  
Gelbvieh

DOB: 3/9/2023 • Tattoo 318L • Reg. No. AMGV1567124  
Black (Homo - D) • Polled (Homo - D) • PB99.9

KHR 03N  
**KHR 96D**  
KHR 104Y  
SBSF BEE LICK GRANITE YALE  
**KHR 919G**  
KHR 052X

RIC ATLAS 712G  
KHR 907J  
KHR 26P  
KHR 716T  
DCSF POST ROCK GRANITE 200P2  
CRFF BEE LICK MILLY ET  
DAR NATIONAL 302N  
KHR 318N

BW	84
Adj. WW	618
Ratio	102
Adj. YW	808

EPDS  
% Rank

CED	BW	WW	YW	MILK	TM	CEM	HP	PG30
13.8	-0.1	74	112	21	58	10	7.43	0.35
30	45	30	30	70	50	3	50	65
STAY	SC	YG	CW	CREA	MARB	SCOW	FPI	EPI
13.6	0.8	-0.44	12	0.9	-0.05		73.81	
75	30	1	95	10	>95		65	

Homozygous Black Homozygous Polled Purebred KHR 96D daughter from a Granite Yale Dam of Merit with 3 calves for 102 WW. Her maternal Grand Dam of Distinction has 8 calves for 101 WW and 105 YW. 84 pound birth weight, 102 Weaning Ratio. Top 3% CEM, 10% REA. There is maternal cow power in her pedigree.



Lot 318L

KHR

**KHR 324L**

**324L**  
Gelbvieh

DOB: 3/10/2023 • Tattoo 324L • Reg. No. AMGV1567131  
Black (Homo - D) • Polled (not Homo - D) • PB99.9

DBRG TWISTER 451B  
**KHR 01E**  
KHR 501C  
KHR 14B  
**KHR 952G**  
KHR 306A

WFA FLYING H GRANITE 7Z  
DBRG MR BLK IMPACT 2100Z ET  
KHR 47R  
KHR 319A  
KHR 47R  
KHR 948W  
JKGF TRENDSETER 55R ET  
KHR 115Y

BW	84
Adj. WW	584
Ratio	97
Adj. YW	834

EPDS  
% Rank

CED	BW	WW	YW	MILK	TM	CEM	HP	PG30
9.3	1	69	95	25	59	4	7.01	-0.1
90	75	55	70	30	40	85	50	65
STAY	SC	YG	CW	CREA	MARB	SCOW	FPI	EPI
13.2	1.1	-0.33	29	0.85	0.18	96.7	73.14	47.15
85	10	10	40	15	55	85	70	90

Homozygous Black Polled Purebred daughter from KHR 01E and a KHR 14B Dam. Two Dams of Distinction in her pedigree, one on each side. 84 pound birth weight. Top 4% RFI, 10% for SC, DMI, YG, 15% REA. Moderate made with extra volume.



Lot 324L

KHR

**KHR 342L**

**342L**  
Gelbvieh

DOB: 3/25/2023 • Tattoo 342L • Reg. No. AMGV1567166  
Red • Polled (Homo - D) • BA75

KHR 17W  
**KHR 15J**  
KHR 950G  
MCCA CORNHUSKER RED 524C  
**KHR 807F**  
KHR 641D

BUF BFCK CHEROKEE CNYN 4912  
KHR 430P  
3SCC DOMAIN A163  
KHR 054X  
RWG TRACTION 7412  
MCCA ZIVA Z24  
HFGC HART STAR 35Y43  
KHR 042X

BW	87
Adj. WW	651
Ratio	108
Adj. YW	877

EPDS  
% Rank

CED	BW	WW	YW	MILK	TM	CEM	HP	PG30
12.2	1.2	81	115	22	62	6	12.54	0.43
65	85	15	40	60	35	65	2	70
STAY	SC	YG	CW	CREA	MARB	SCOW	FPI	EPI
18.5	0.45	-0.13	30	0.49	0.09		77.67	
10	65	30	70	55	>95		75	

Homozygous Polled Red 75% Balancer daughter of KHR 15J and a Cornhusker Red Dam with 3 calves for 109Ww and 108YW. All three heifer calves have been kept in the replacement pen. She also has 2 Dams of Distinction in her pedigree. 87 pound birth weight, 108 Weaning Ratio, 101 Yearling Ratio. Top 2% HP, 10% Stay, 15% WW. Deep bodied, powerful looking.



Lot 342L

Winter 2024 American Gelbvieh Association Gelbvieh and Balancer Non-Parent Average EPDS.

	CED	BW	WW	YW	MK	TM	CEM	HP	PG30	ST	YG	CW	REA	MB	SCOW	FPI	EPI
GV	13	0.1	70	103	23	58	6	7	1	16	-0.24	27	0.67	0.20	114.79	75.99	81.49
BA	13	-0.5	72	112	23	59	7	6	1	15	-0.07	36	0.52	0.36	107.28	81.90	113.63

# Purebred & Balancer<sup>®</sup> Yearling Heifers

**KHR 345L**  
**345L** DOB: 3/27/2023 • Tattoo 345L • Reg. No. AMGV1567169  
 Gelbvieh Black (Homo - D) • Polled (Homo - D) • PB99.9

DDGR EMULATION 71E DDGR INNOVATION 120C  
 DDGR JUSTIFIED 147J DDGR 247A  
 DDGR 149D DCSF POST ROCK CAPTAIN 1532Z  
 KHR 15E DDGR 36Y  
**KHR 954G** DBRG TWISTER 451B  
 KHR 601D KHR 716T  
 KHR 67A  
 KHR 447B

BW	83
Adj. WW	582
Ratio	96
Adj. YW	816

EPDs	CED	BW	WW	YW	MILK	TM	CEM	HP	PG30
% Rank	12.3	1.1	69	105	22	56	5	6.69	0.58
	55	75	55	45	60	60	70	50	40
	STAY	SC	YG	CW	CREA	MARB	SCOW	FPI	EPI
	18.8	0.45	-0.34	28	0.77	0.07		71.43	
	10	75	10	45	30	85		80	

*Homozygous Black Homozygous Polled Purebred DDGR Justified daughter from a KHR 15E Dam with 3 calves for 98 WW, 98 YW. She had 2 Dams of Distinction in her pedigree. 83 pound birth weight. Top 10% for Stay. Moderate sized with an eye catching presence.*

**KHR 348L**  
**348L** DOB: 4/1/2023 • Tattoo 348L • Reg. No. AMGV1567181  
 Gelbvieh Red • Polled (Homo - D) • BA75

KHR 17W BUF BFCK CHEROKEE CNYN 4912  
**KHR 15J** KHR 430P  
 KHR 950G 3SCC DOMAIN A163  
 KHR KHR TAYLOR MADE 85D KHR 054X  
**KHR 931G** PHG BINFORD B81  
 KHR 242Z KHR 453B  
 KHR 26P  
 KHR 703T

BW	75
Adj. WW	598
Ratio	99
Adj. YW	833

EPDs	CED	BW	WW	YW	MILK	TM	CEM	HP	PG30
% Rank	13.8	-2.7	64	92	28	60	8	8.81	0.05
	35	15	85	90	10	45	30	20	70
	STAY	SC	YG	CW	CREA	MARB	SCOW	FPI	EPI
	15.4	0.7	-0.09	34	0.68	0.05		72.14	
	45	30	45	55	20	>95		95	

*Homozygous Polled Red Balancer from KHR 15J and a Taylor Made Dam with 3 calves for 100 WW, 99 YW. 75 pound Birth Weight. Top 10% Milk, 15% BW, 20% HP, 20% REA. Smaller framed, well balanced, red wrap.*

**KHR 346L**  
**346L** DOB: 3/28/2023 • Tattoo 346L • Reg. No. AMGV1567172  
 Gelbvieh Red • Polled (Homo - D) • PB93

DVE DAVIDSON TRUMP 63W  
 DVE DAVIDSON JACKSON 26A DVE DAVIDSON MS CADILLAC 160Y  
**DDGR INTUITION 321J** DVE DAVIDSON MR DAKOTA 151X  
 DDGR 427B DDGR WANDA 177W  
 COV DURANGO 366A JRI POP A TOP 197783  
**KHR 831F** COV 669S  
 KHR 444B RSSL RSSL YEAGER 13Y  
 MHD 3X1

BW	70
Adj. WW	638
Ratio	106
Adj. YW	865

EPDs	CED	BW	WW	YW	MILK	TM	CEM	HP	PG30
% Rank	15.8	-2.6	55	74	21	49	5	4.05	0.08
	10	5	>95	>95	70	90	70	85	65
	STAY	SC	YG	CW	CREA	MARB	SCOW	FPI	EPI
	14.9	0.5	-0.34	31	0.86	0.2		71.23	
	60	65	10	35	15	50		80	

*Homozygous Polled Red Purebred DDGR Intuition daughter from a Durango Dam with 4 calves for 103 WW, 98YW. She has two Dams of Distinction in her pedigree. 70 pound birth weight, 106 Weaning Ratio, 100 YW. Top 5% BW, 10% CE, YG 15% REA. Powerful, long bodied.*



Lot 346L



# Purebred & Balancer® Yearling Heifers

KHR

**KHR 354L**

354L

DOB: 4/17/2023 • Tattoo 354L • Reg. No. AMGV1568874

Gelbvieh

Red • Polled (Homo - D) • PC78.1

DVE DAVIDSON JACKSON 26A  
 DDGR INTUITION 321J  
 DDGR 427B  
 KHR 17W  
**KHR 108J**  
 KHR 928G

DVE DAVIDSON TRUMP 63W  
 DVE DAVIDSON MS CADILLAC 160Y  
 DVE DAVIDSON MR DAKOTA 151X  
 DDGR WANDA 177W  
 BUF BFCK CHEROKEE CNYN 4912  
 KHR 430P  
 KHR 17W  
 KHR 475B

BW	76
Adj. WW	610
Ratio	101
Adj. YW	850

EPDs  
% Rank

CE	BW	WW	YW	MILK	TM	CEM	HP	PG30
14.1	-1.5	69	101	24	59	5	7.42	0.18
35	25	60	70	40	45	75	35	65
STAY	SC	YG	CW	CREA	MARB	SCOW	FPI	EPI
16.5	0.57	-0.22	32	0.66	0.17		76.96	
35	55	25	50	30	80		65	

*Homozygous Polled Red 78% daughter from DDGR Intuition and a KHR 17W Balancer first calf heifer. 76 pound birth weight, 101 WW Ratio. Average grouping of EPDs. Moderate framed, has extra volume.*



Lot 354L

KHR

**KHR 355L**

355L

DOB: 4/18/2023 • Tattoo 355L • Reg. No. AMGV1568875

Gelbvieh

Red • Polled (Homo - D) • PB99.9

DVE DAVIDSON JACKSON 26A  
 DDGR INTUITION 321J  
 DDGR 427B  
 PTL ELI 117E  
**DCH HILLE H909**  
 DCH HILLE 2233

DVE DAVIDSON TRUMP 63W  
 DVE DAVIDSON MS CADILLAC 160Y  
 DVE DAVIDSON MR DAKOTA 151X  
 DDGR WANDA 177W  
 PTL 157C  
 PTL 123B  
 DCH GOLDEN BUCKLE GELV 030X  
 DCH HILLE W331 WANNABE

BW	42
Adj. WW	688
Ratio	114
Adj. YW	925

EPDs  
% Rank

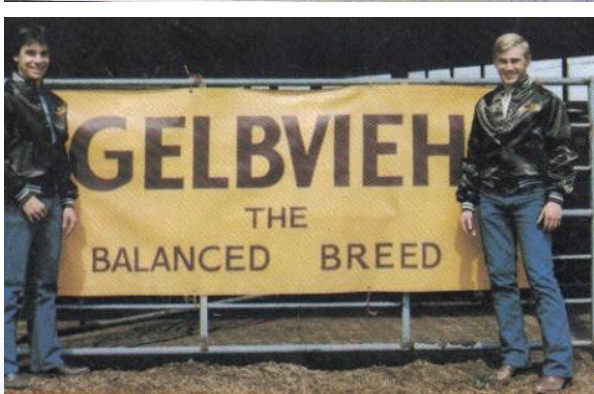
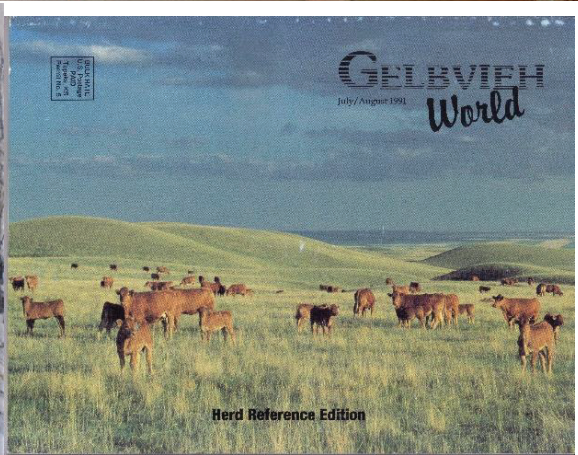
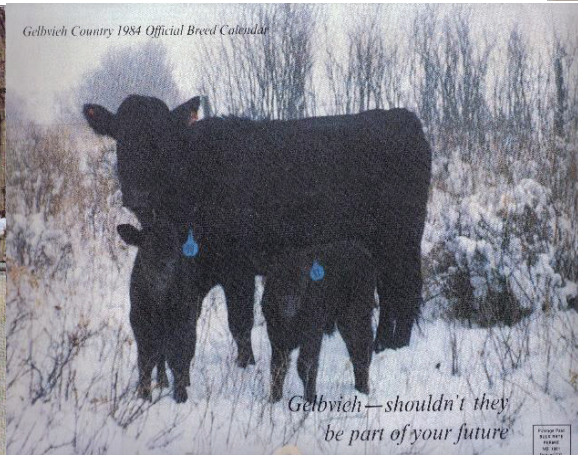
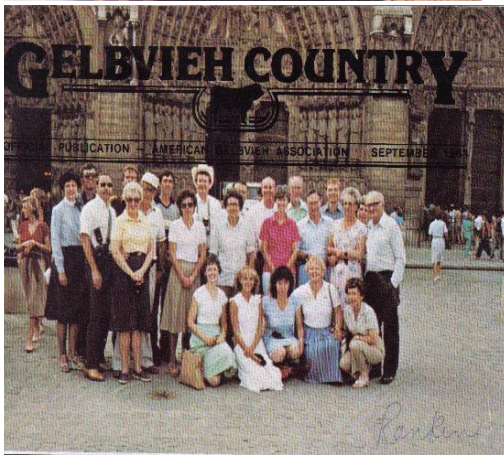
CE	BW	WW	YW	MILK	TM	CEM	HP	PG30
23.3	-3.9	68	103	27	61	11	3.29	-0.34
1	1	60	50	15	30	1	90	65
STAY	SC	YG	CW	CREA	MARB	SCOW	FPI	EPI
16.5	0.25	-0.36	30	0.8	0.14		82.63	
45	90	4	40	25	65		15	

*Homozygous Polled Red Purebred DDGR Intuition daughter from a Hillie ELI Dam with 2 calves for 107 WW and 102 YW. 42 pound birth weight, 114 WW, 106 YW. Top 1% CE, CEM, BW, 15% Milk, and FPI. Moderate framed, should make a brood cow.*



Lot 355L





KICKING HORSE RANCH  
JR

*"Gelbvieh Since 1973"*

Jim & Kathy Bjorkman  
1289 Nine Mile Rd.  
Oilmont, MT 59466

**First Class Mail**

