



LAUBACH RED ANGUS

BIG TIMBER, MONTANA

16th Annual Production Sale
—33 Registered Bulls & 35 Open Yearling Heifers—

Friday, March 17, 2023
Lunch @ 12 • Sale Begins at 1:00 p.m.

March 15-16: View Cattle In Person Online Bidding Starts Mar 15

March 17: View Cattle Sale Day Bid Online & In-Person starting @ 1:00 p.m.

Lunch served each day



Bid Online:
www.frontierlivesale.com





LAUBACH RED ANGUS

BIG TIMBER, MONTANA

Marvin & Ashley Laubach
 Cell - (406) 930-0911 • Home - (406) 932-4403
 307 Howie Rd. • Big Timber, Montana 59011
 laubachredangus@gmail.com

Welcome to our 16th annual Bull and Female Sale! This year, we are doing a few things different with our sale. Starting Wednesday, March 15th-16th, we would be pleased to have you come visit, have lunch, and walk through the bulls and females offered. At this time, people will be available to place bids online for you. On March 17th, we will be serving donuts and coffee in the morning and lunch at 12. We will start a Gentleman's Auction at 1:00 p.m., Marvin will be running this. The bulls will start at a base price or what the online bid is and will be bid in \$250 increments. The heifers will go at increments of \$100, starting at the last price offered online. You may also bid online at this time.

Online bidding will be available starting March 15th and lots will start closing at 1 p.m. on the 17th. To bid online go to: www.frontierlivesale.com

The bulls will be fertility tested and ready to go home Sale Day. We weaned and fed the bulls at the ranch this year. We are happy to have them back HOME, as we really did miss feeding them daily and watching them develop. As always, bull delivery is free in Montana and surrounding states. We are planning to start delivering the 1st week of April. Heifers must be taken as soon as possible, unless other arrangements have been made with Marvin.

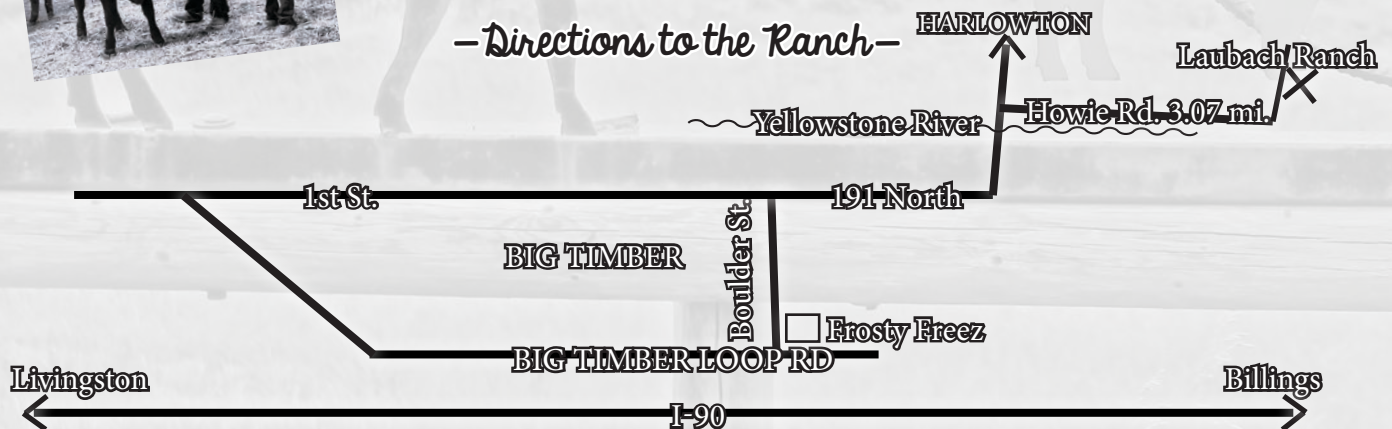
Like most of you, our kids are keeping us on our toes! Time sure does fly when you're raising kids. Aubree is 10 and in 4th Grade, 4-H, and Jr. Red Angus. At the NILE in October, she received the Wes Watson Junior Herdsman Award. She was also nominated to be a MTJRAA Ambassador, we hope to get her to a few other bull sales this year! She will be taking her first Red Angus Heifer to the county fair this year. Holden is 7 and in 1st Grade and is in 4-H as a Cloverbud. At the NILE, Holden got to compete in the Pee Wee Showmanship showing a heifer. This is just a fun thing for the little kids to do when they aren't quite old enough to show in the "big" show.

Thank you for your interest in our program, we are reminded everyday of how fortunate we are to be involved in agriculture and the cattle business, we wouldn't want to raise our kids any other way. As always, look for the big red barn on Sale Day!

Marvin, Ashley, Aubree & Holden Laubach



- Directions to the Ranch -



— GENERAL INFORMATION —

SELLING... 3 BULLS & 3 5 OPEN YEARLING HEIFERS

Friday, March 17, 2023 - 1:00 P.M. (Lunch @ 12)

If you can't make it in person, the sale will be broadcast live over the Internet, or call us on sale day phones!

Sale Day Phones:

- Marvin Laubach - 406.930.0911
- Donna Laubach - 406.930.2833
- Ashley Laubach - 406.930.1232

View, Watch & Bid on:

- www.frontierlivesale.com
(Instructions on page 3)



Frontier Live Sale Representative's:

- Scott Fraser - 406.860.6548
- Sam Fraser - 406.860.0590

Veterinarians:

- Crazy Mountain Vet Services - 406.547.6347
- All Creatures Vet Clinic - 406.932.4324

Special Guests:

- Tena Ketchum, President of MTRAA
- Luke Larson, Vice President of MTRAA
- Kara Herbst, Secretary/Treasurer
- Tim Geib, Director
- Jenny Moke, Director
- Madri Blom, Director
- Chuck Feddes, National Director
- Kay Klompjen, National Director

Accommodations:

- Super 8 Motel - 406.932.8888
- Lazy J Motel - 406.932.5533
- River Valley Inn - 406.932.4943
- The Grand - 406.932.4459



Terms:

- Terms of sale are cash unless satisfactory credit arrangements have been made with Sale Management prior to sale.

Liability:

- Everyone attending this sale, do so at their own risk. Owners, clerks or other helpers do not assume responsibility, legal or otherwise, for damages, accidents or property loss that may occur.

Sale Day Announcements:

- Announcements from the auction block shall take precedence over the sale catalog and/or any additional printed information regarding animal(s) sold.

Females:

- All females are guaranteed sound and fertile by a licensed vet. Buyers are responsible for picking up females unless other arrangements have been made. If no contact has been made with seller within 48 hours after the sale, feed cost will be charged.

Bull Guarantee:

- Before delivery, the bulls will be fertility and soundness tested by a licensed vet and will be guaranteed through the first breeding season. Breeding season is defined as the 90-day period following the first turnout of the bull. Please notify us as soon as possible if injury should occur. This is not an insurance policy nor does it cover neglect or mismanagement.

Delivery:

- Bulls will be delivered free of charge in Montana and surrounding states. All other deliveries at cost.

Registration Transfers:

- A certificate of registry and transfer will be furnished for each animal sold as a registered animal, after settlement has been made.
- We will be retaining a 1/3 semen interest on some bulls, buyer has full possession and salvage value.



—TERMS AND CONDITIONS—

1. TERMS

Terms of sale are cash unless satisfactory credit arrangements have been made with Sale Management prior to sale.

2. BIDDING

The Auctioneer in charge will settle any disputes as to bids, and his decision on such matters shall be final.

3. ANNOUNCEMENTS

Announcements from the auction block shall take precedence over the sale catalog and/or any additional printed information regarding animal(s) sold.

4. HEALTH

All animals are eligible for interstate shipment, except as otherwise announced. Interstate health papers will be furnished for each animal in accordance with prevailing State/Federal Regulations.

5. PURCHASER'S RISK

Each animal becomes the risk of the Buyer as soon as sold, but it shall be the obligation of the Seller to see that animals are fed and cared for free of charge to Buyer, until loaded for shipment or until the expiration of 48 hours after the sale, whichever occurs sooner.

6. CERTIFICATE OF REGISTRY

A transferred certificate of registry will be furnished to the Buyer for each animal, after settlement has been made.

7. BULL GUARANTEE

Bulls will be wintered free of charge until April 1, 2020. Before delivery, they will be fertility and soundness tested by a licensed vet and will be guaranteed through the first breeding season. Breeding season is defined as the 90-day period following the first turnout of the bull. Please notify us as soon as possible if injury should occur. This is not an insurance policy nor does it cover neglect or mismanagement. We will be retaining a 1/3 semen interest on some bulls, buyer has full possession and salvage value.

8. LIABILITY

Everyone attending this sale, do so at their own risk. owners, clerks or other helpers do not assume responsibility, legal or otherwise, for damages, accidents or property loss that may occur.

9. DELIVERY

All purchases are the buyer's responsibility as soon as they are sold. All reasonable care will be provided for the bull's care before delivery. There will be an insurance agent available if you wish to insure your purchase. Bulls will be delivered free of charge in Montana and surrounding states. All other deliveries at cost.

10. BREEDING GUARANTEE

All cattle are guaranteed to be breeders. We reserve the right to test any animal for 90 days after it is returned to us before making adjustments.

-The seller will settle any disputes on bids and his decision will be final.

-The above terms and conditions shall constitute a contract between the buyer and seller of each animal sold.

* 100% of females' bid price will be due on sale day and delivery arrangements may be made, 50% of the bulls' bid price will be due on sale day. The balance will be due when they are guaranteed fertile and sound, and delivered in March or April. If the bulls do not prove out, the down payment may be refunded, replace with a bull of equal value, or credit towards another bull. Feed costs will be sellers' responsibility until delivery.

These cattle do sell in accordance with the Sale Terms and Conditions set forth by the Red Angus Association of America.



David & Jennifer Breck
127 E Yellowstone Ave
Big Timber, MT 59011
(406) 932-5132
[facebook.com/yellowstonefeeds](https://www.facebook.com/yellowstonefeeds)



•Custom Rolling •Mixing
•Feed •Seed
•Supplies •Pet Food
•Fertilizer •Chemical
•Fence •Bogs Boots and more

THANK YOU, Yellowstone Feed, for
donating our sale day breakfast!

LUNCH @ 12:00 • SALE BEGINS AT 1:00

FRONTIER LIVE SALE

This Sale will be broadcast live on www.frontierlivesale.com. To view a sale,

1. Create an account, if you have already done so skip to next step. To create a new account, click on the word **Registration** in the upper right hand corner. You must fill out the information requested. Then click **Create Account**. An email will be sent to your email account you provided. Please click the link in the email to activate your new account.



2. Once you click the link, your account will now be activated
3. At this point, you may click **Continue To Browse Our Site**. This will allow you to view all upcoming auctions.
4. Once you see the auction you are interested in, click **Get Approved To Bid** for absentee and live bidding.
5. Please enter your information in the form. Depending on the auctioneer, different information may be requested. Click **I agree to sale terms and conditions**. Congratulations! You are now approved for the auction. Now that you're approved you can participate in the auction and bid on its items.
6. Login on sale day with the credentials provided at registration.

Call 866-313-0123 for tech help.

PREMIUM CALF VALUE

Easy as 1-2-3

Want MORE for your steers?

THAT'S EASY ...

1. Purchase Top Dollar Angus-qualified bulls.
2. Raise Top Dollar Angus-qualified feeder calves.
3. Pocket MORE per head!



THE RESULTS: Better performance and a documented \$84.26-per-head advantage as fed cattle!

Steers & Heifers	Top Dollar Angus		Difference
	Qualified	Non-Qualified	
Head Count	1,801	4,448	
Percentage of Head Count	29%	71%	
Average Daily Gain	4.28	3.99	0.29
Hot Carcass Weight	935	888	47
Marbling	504	471	33
Ribeye Area	15.4	15.2	0.2
Fat Thickness	0.66	0.61	0.05
Value Per Head	\$1,626.13	\$1,541.86	\$84.26

The PROOF

is in your bank account.

Scan this QR code for profit verification:



Contact us for a free, no-obligation consultation!



www.topdollarangus.com



Nate Smith, General Manager • (620) 546-4839 • nate@topdollarangus.com

Kaytlin Hokanson • (307) 461-7687 • kaytlin@topdollarangus.com

Andy Albrecht • (402) 922-1000 • andy@topdollarangus.com

Red Angus Guide to EPDS and Indexes

ProS... Profitability and Sustainability is an all-purpose index that predicts average economic differences in all segments in the beef supply chain. This index is a combination of the breeding objectives modeled in the HerdBuilder and GridMaster selection indexes. In this index, replacement heifers are retained from within the herd and all remaining progeny are fed out to slaughter and sold on a quality-based grid. Traits included in this index include calving ease, growth, HPG, STAY, Mature Weight, Dry Matter Intake and carcass traits. The resulting index is expressed in dollars per head born (Index/High Value).

HB..... HerdBuilder is a maternal selection index that predicts the economic differences of animals for traits that are important from conception through weaning. Expressed as dollars per head born, HB is calculated based on the scenario that bulls are mated to heifers and cows, replacement heifers are retained and all remaining progeny are marketed at weaning. Traits included in the HB index include Calving Ease Direct, Calving Ease Maternal, Weaning Weight, Milk, Mature Weight, Heifer Pregnancy and Stayability (Index/High Value).

GM..... GridMaster is a selection index that predicts the average economic difference of non-replacement calves through the post-weaning phase of production. GM places selection pressure on growth, feedyard performance and carcass traits. Expressed as dollars per head born, GM is calculated based on the scenario that progeny are fed out to slaughter and marketed on a quality-based carcass grid. Traits included in GM include Average Daily Gain, Carcass Weight, Dry Matter Intake, Marbling, Back Fat and Rib Eye Area (Index/High Value).

CED..... Calving Ease Direct predicts differences in the percent of calves born unassisted out of 2-year-old dams. (Percent/High Value)

BW..... Birth Weight predicts differences in actual birth weight of progeny. (Pounds/Low Value)

WW..... Weaning Weight predicts differences in 205-day weaning weight. (Pounds/High Value)

YW..... Yearling Weight predicts differences in 365-day yearling weight. (Pounds/High Value)

ADG..... Average Daily Gain predicts differences in weight gain between 205 and 365 days of age. (Pounds/High Value)

DMI..... Dry Matter Intake predicts differences in daily feed intake as measured in a feedlot during the post-weaning period. (Pounds/Low Value)

MILK..... Milk predicts differences in weaning weight attributed to the milking ability of the animal's daughters. (Pounds/High Value)

ME..... Maintenance Energy predicts the difference in maintenance energy requirements. (Mcal per Month/Low Value)

HPG..... Heifer Pregnancy predicts differences in the percent of daughters who are able to conceive and calve at 2 years of age following exposure to breeding. (Percent/High Value)

CEM..... Calving Ease Maternal predicts differences in the percent of daughters who are able to calve unassisted as 2-year-old heifers. (Percent/High Value)

STAY..... Stayability predicts differences in the ability of an animals' retained daughters to remain productive in the herd – calve every year – through 6 years of age. (Percent/High Value)

MARB..... Marbling predicts differences in marbling score – amount of intramuscular fat measured at the 13th rib. (Marbling Score Units/High Value)

YG..... Yield Grade predicts differences in USDA Yield Grade, which is calculated using CW, REA and Fat. (Yield Grade Units/Low Value)

CW..... Carcass Weight predicts differences in actual hot carcass weight. (Pounds/High Value)

REA..... Ribeye Area predicts differences in square inches of ribeye area measured at the 13th rib. (Square Inches/High Value)

FAT..... Fat predicts differences in the depth of backfat measured between the 12th and 13th ribs. (Inches/Low Value)

RED ANGUS

RANCH TESTED. RANCHER TRUSTED.

RedAngus.org



—REFERENCE SIRES—



LOT A



LOT C

A GMRA TESLA 6214

B	1/12/16	A — 100% AR%	Ratio	Data
GMRA / 6214	#	3538390	Act. BW	94 72
			Adj. WW	111 694
			Adj. YW	108 1204
			SC	Frame
			EPD	Top% Data
			MARB	0.6 19% 4.43
			YG	0.18 89%
			CW	35 19%
			REA	0.11 51% 11.66
			FAT	0.04 86 0.24
			ADG	0.28 23 3.17
			DMI	1.87 80

	ProS	HB	GM	CED	BW	WW	YW	MILK	ME	HPG	CEM	STAY
EPD	148	93	55	15	-3.6	68	113	37	14	12	14	20
Top	4	4	21	22%	21%	30%	25%	1%	92%	40%	1%	8%

MESSMER PACKER S008
GMRA TRILOGY 02261367533
GMRA LAKOTA 625

GMRA PEACEMAKER 1216
GMRA ANGIE ROSE 4481681676
GMRA ANGIE ROSE 967

MPP 104 Dam Age: 1/21/14

C BAR M JUMBO 5152

B	3/25/15	A — 100% AR%	Ratio	Data
BARM / 5152	#	3475698	Act. BW	109 92
			Adj. WW	118 815
			Adj. YW	
			SC	Frame
			EPD	Top% Data
			MARB	0.43 46% 2.66
			YG	0.11 68%
			CW	28 36%
			REA	0.1 52% 14.32
			FAT	0.03 63 0.15
			ADG	0.28 22 0
			DMI	1.73 70

	ProS	HB	GM	CED	BW	WW	YW	MILK	ME	HPG	CEM	STAY
EPD	88	53	35	6	1.9	76	121	23	13	13	4	17
Top	52	52	50	97%	94%	12%	14%	67%	90%	27%	87%	31%

BECKTON EPIC R397 K
LSF SRR JUMBO 3104A1623890
LSF KANSAS L033 Y007

OKCC DIRECT DESIGN 102W
BAR M MS DESIGN 9960-21331548054
LARSON TAMARA 960-432

MPPA109 Dam Age: 3/17/12



LOT B



LOT D

B 9 MILE FRANCHISE 6305

B	3/2/16	A — 100% AR%	Ratio	Data
DYK / 6305	#	3555188	Act. BW	72
			Adj. WW	760
			Adj. YW	1234
			SC	Frame
			EPD	Top% Data
			MARB	0.53 29% 5.32
			YG	0.03 30%
			CW	42 9%
			REA	0.65 4% 14.52
			FAT	0.04 84 0.32
			ADG	0.31 12 2.96
			DMI	2.13 92

	ProS	HB	GM	CED	BW	WW	YW	MILK	ME	HPG	CEM	STAY
EPD	145	74	71	16	-5.3	57	107	39	3	10	13	17
Top	5	18	8	17%	6%	67%	36%	1%	45%	79%	1%	34%

SPUR FRANCHISE 7070
SPUR FRANCHISE OF GARTON3469042
H & H IRENE LASS 0135

TR COLT 45 UT806
C-BAR ABIGRACE Y111430755
C-BAR & BROWN ABIGRACE T712

MPP 104 Dam Age: 2/11/11

D SILVEIRAS MISSION NEXUS 1378

B	1/24/11	A — 100% AR%	Ratio	Data
SIL / 1378	#	1410853	Act. BW	95 80
			Adj. WW	113 858
			Adj. YW	1353
			SC	Frame 5.76
			EPD	Top% Data
			MARB	0.36 60% 3.81
			YG	-0.06 9%
			CW	26 41%
			REA	0.38 15% 14.74
			FAT	-0.01 12 0.25
			ADG	0.32 9 3.08
			DMI	2.02 88

	ProS	HB	GM	CED	BW	WW	YW	MILK	ME	HPG	CEM	STAY
EPD	77	35	42	14	-3.1	71	122	22	5	11	9	11
Top	66	78	39	31%	28%	22%	14%	78%	60%	56%	20%	88%

LJC LANCER 806
LJC MISSION STATEMENT P27960383
LJC HANNAH 106

TROTTERS ROMEO 412
SILVEIRAS DAORV 83991238236
MOORE'S DAORV 5365

MPPA109 Dam Age: 4/2/08

—REFERENCE SIRES—



E 3SCC DOMAIN A163

B	3/26/13	A — 100% AR%	Ratio	Data
3SCC / A163	#	1619642	Act. BW	98 84
			Adj. WW	109 655
			Adj. YW	113 1233
			SC	Frame
			EPD	Top% Data
			MARB	0.6 19% 4.25
			YG	0.21 95%
			CW	35 19%
			REA	0.15 43% 14.89
			FAT	0.06 97 0.44
			ADG	0.26 32 3.61
			DMI	1.51 51

BECKTON DOMINOR Z1 R610
BECKTON DOMINOR T122 Z11178633
BKT LARKABEL R038 WA

BASIN HOBO 0545
3SCC EUCLA X7231406911
BSKF EUCLA U278

MPP 107 Dam Age: 2/21/10

	ProS	HB	GM	CED	BW	WW	YW	MILK	ME	HPG	CEM	STAY
EPD	104	45	59	15	-1.4	63	105	27	4	15	3	16
Top	31	63	17	26%	57%	46%	40%	38%	52%	15%	93%	41%



G RED SYNERGY 741

B	1/31/17	A — 100% AR%	Ratio	Data
RED / 741	#	3826723	Act. BW	84 72
			Adj. WW	96 653
			Adj. YW	98 1087
			SC	Frame
			EPD	Top% Data
			MARB	0.49 35% 3.7
			YG	0.16 85%
			CW	17 69%
			REA	-0.24 96% 11.89
			FAT	0.02 50 0.19
			ADG	0.25 41 2.71
			DMI	1.59 59

BECKTON NEBULA P P707
BROWN SYNERGY X78381384811
C-BAR & BROWN ABIGRACE T714

MLK CRK EPIC 0190
RED EVIE 20701576313
RED SHARLA 6530

MPPA100 Dam Age: 2/28/12

	ProS	HB	GM	CED	BW	WW	YW	MILK	ME	HPG	CEM	STAY
EPD	114	73	41	14	-4.7	48	88	29	5	13	9	18
Top	21	19	40	34%	10%	89%	72%	25%	56%	28%	24%	20%



F BIEBER CL STOCKMARKET E119

B	1/15/17	A — 100% AR%	Ratio	Data
1CLRA / E119	#	3751659	Act. BW	85 64
			Adj. WW	108 640
			Adj. YW	111 1203
			SC 38.4	Frame 5.46
			EPD	Top% Data
			MARB	1.27 1% 5.27
			YG	0.16 84%
			CW	24 47%
			REA	0.31 21% 15.94
			FAT	0.08 99 0.31
			ADG	0.34 6 3.5
			DMI	2.2 94

LSF SAGA 1040Y
PIE STOCKMAN 40511724236
PIE LAKOTA 046

ANDRAS FUSION R236
BIEBER CL ADELLE 475C3474411
BIEBER ADELLE 297Y

MPP 100 Dam Age: 3/16/15

	ProS	HB	GM	CED	BW	WW	YW	MILK	ME	HPG	CEM	STAY
EPD	139	57	82	16	-5.1	75	129	22	11	6	9	18
Top	6	44	4	13%	7%	14%	8%	77%	85%	98%	15%	20%



H CLZB PLEDGE C505

B	3/8/15	A — 100% AR%	Ratio	Data
CLZB / C505	#	3500285	Act. BW	94 76
			Adj. WW	94 545
			Adj. YW	111 771
			SC	Frame
			EPD	Top% Data
			MARB	0.64 15% 2.69
			YG	0.12 70%
			CW	53 3%
			REA	0.26 27% 7.02
			FAT	0.01 26 0.08
			ADG	0.32 10 1.4
			DMI	2.34 97

LSF NEXTPECTATION 0083X
LEACHMAN PLEDGE A282Z1652360
LCOC ZARA TG004

HXC BIG IRON 0024X
CLZB LANA 30461652732
C-BAR LANA W973

MPPA98 Dam Age: 3/2/13

	ProS	HB	GM	CED	BW	WW	YW	MILK	ME	HPG	CEM	STAY
EPD	71	3	68	5	1.6	81	132	19	21	15	3	10
Top	72	97	10	98%	93%	7%	7%	91%	99%	15%	93%	91%

—REFERENCE SIRES—



**CHECK OUT LAUBACH RED ANGUS
ON FACEBOOK,
INSTAGRAM, OR VISIT OUR
WEBSITE FOR MORE INFO &
PICTURES!**



I KCC PLATINUM F71

B	2/16/18	A — 100% AR%	Ratio	Data
KCC / F71	#	3965145		
			Act. BW	114
			Adj. WW	107
			Adj. YW	110
			SC	Frame
			EPD	Top%
			MARB	0.76
			YG	0.24
			CW	46
			REA	0.14
			FAT	0.05
			ADG	0.35
			DMI	1.72

BROWN INCREDABULL Z7277
 LSF MEW PLATINUM 5660C1751232
 BROWN MS NEW STANDARD A7053

 PARINGA IRON ORE E27
 BROWN MS IRON ORE A70071607005
 BROWN MS ABIGRACE L7730

 MPP 105 Dam Age: 2/23/13

	ProS	HB	GM	CED	BW	WW	YW	MILK	ME	HPG	CEM	STAY
EPD	54	-30	85	8	0.9	72	128	11	27	11	4	8
Top	87	99	3	94%	88%	19%	9%	99%	99%	54%	90%	97%

K LUCHT MERLIN 0113

B	1/30/20	A — 100% AR%	Ratio	Data
LUR / 113	#	4355199		
			Act. BW	89
			Adj. WW	102
			Adj. YW	95
			SC	Frame
			EPD	Top%
			MARB	0.75
			YG	-0.11
			CW	27
			REA	0.51
			FAT	-0.01
			ADG	0.22
			DMI	1.43

LJC MERLIN T179
 WFL MERLIN 018A1628086
 WFL COMMITMENT 042Y

 FEDDES BIG SKY R9
 FEDDES LARKABU X211368609
 FEDDES LARKABU 827

 MPPA100 Dam Age: 1/25/10

	ProS	HB	GM	CED	BW	WW	YW	MILK	ME	HPG	CEM	STAY
EPD	114	48	66	17	-5.8	67	102	32	2	12	8	13
Top	21	59	11	11%	4%	33%	46%	8%	42%	45%	28%	72%



L RED CONTOUR 025

B	1/28/20	A — 100% AR%	Ratio	Data
RED / 25	#	4367675		
			Act. BW	93
			Adj. WW	107
			Adj. YW	107
			SC	Frame
			EPD	Top%
			MARB	0.58
			YG	0.03
			CW	17
			REA	0.2
			FAT	0.02
			ADG	0.24
			DMI	1.82

C-BAR CONTOUR 107X
 C-BAR-RJ CONTOUR 106C3498990
 C-BAR STONY W909

 K2 RED ALLIANCE 1602 73
 RED ALLIE 10971452642
 RED SHARLA 7288

 MPPA107 Dam Age: 2/19/11

	ProS	HB	GM	CED	BW	WW	YW	MILK	ME	HPG	CEM	STAY
EPD	106	66	41	14	-3	60	98	22	9	11	9	18
Top	28	28	43	26%	28%	52%	48%	79%	82%	68%	19%	16%

J TBJR BEEF SENSATION 6808D

B	1/21/16	A — 100% AR%	Ratio	Data
TBJR / 6808D	#	3525604		
			Act. BW	92
			Adj. WW	714
			Adj. YW	1259
			SC	Frame
			EPD	Top%
			MARB	0.51
			YG	0.17
			CW	25
			REA	0.22
			FAT	0.07
			ADG	0.23
			DMI	1.87

MESSMER PACKER S008
 LSF BOXED BEEF 9063W1305669
 LSF LARKABA 59J R5195

 BASIN FUTURE DIRECTION 7303
 SRR MISS SENSATION 121433631
 SRR MISS SENSATION 9124-633

 MPP 106 Dam Age: 1/9/11

	ProS	HB	GM	CED	BW	WW	YW	MILK	ME	HPG	CEM	STAY
EPD	86	51	35	9	-1.6	60	96	26	4	17	8	12
Top	54	54	51	89%	53%	59%	57%	43%	49%	5%	34%	81%

M FISCHER CALVARY 937

B	1/23/19	A — 100% AR%	Ratio	Data
RJF / 937	#	4138758		
			Act. BW	103
			Adj. WW	115
			Adj. YW	111
			SC	Frame
			EPD	Top%
			MARB	0.49
			YG	0.11
			CW	34
			REA	0.19
			FAT	0.03
			ADG	0.29
			DMI	2.75

FRITZ JUSTICE 8013
 FRITZ JUSTICE 20D3544052
 FRITZ EMULOUS 602B

 FISCHER SOLDIER 735
 FISCHER HEIRESS 7373763973
 FISCHER HEIRESS 378

 MPPA101 Dam Age: 1/28/17

	ProS	HB	GM	CED	BW	WW	YW	MILK	ME	HPG	CEM	STAY
EPD	76	54	23	9	0.3	89	136	29	20	5	8	19
Top	67	50	72	87%	82%	2%	5%	20%	98%	99%	31%	12%

—YEARLING RED ANGUS BULLS—

We are eager to bring you a group of bulls that have been hand selected. Each one has been based on docility, structure, soundness, and growth. We develop and fertility test our bulls on site to ensure quality, so you know they will be ready to go to work. These guys are fed for moderate gains so they remain sound and fertile. All will be fertility, soundness tested, and ready to go home Sale Day. Visit our website for updated DNA.



1 LAUBACH STOCKMARKET 2014

B		A — 100% AR%		Ratio		Data	
1/13/22	#	4671003		Act. BW	110	84	
4LRA / 2014				Adj. WW	102	657	
				Adj. YW	110	1136	
				SC	Frame		
PIE STOCKMAN 4051 BIEBER CL STOCKMARKET E1193751659 BIEBER CL ADELLE 475C				EPD		Top%	Data
SJRA S222 HIGHLAND 620 LAUBACH DINA ROSE 00584317257 LAUBACH DINA ROSE 9004				MARB	0.88	2%	
MPP 101 Dam Age: 2/12/20				YG	0.12	80%	
				CW	22	55%	
				REA	0.19	36%	
				FAT	0.05	96	
				ADG	0.29	10	2.98
				DMI	2.06	94	

	ProS	HB	GM	CED	BW	WW	YW	MILK	ME	HPG	CEM	STAY
EPD	109	52	56	11	-0.3	75	122	22	10	7	6	18
Top	25	56	16	70%	78%	8%	8%	83%	87%	99%	64%	20%

This guy is thick, deep and has a big hind quarter.

2 LAUBACH STOCKMARKET 2016

B		A — 100% AR%		Ratio		Data	
1/13/22	#	4670975		Act. BW	104	79	
4LRA / 2016				Adj. WW	91	587	
				Adj. YW	86	893	
				SC	Frame		
PIE STOCKMAN 4051 BIEBER CL STOCKMARKET E1193751659 BIEBER CL ADELLE 475C				EPD		Top%	Data
COLLIER FINISHED PRODUCT LAUBACH LARKABA 00194317187 LAUBACH LARKABA 1090				MARB	0.83	3%	
MPP 96 Dam Age: 2/2/20				YG	0.13	83%	
				CW	18	72%	
				REA	0.12	51%	
				FAT	0.05	97	
				ADG	0.27	21	1.9
				DMI	1.81	81	

	ProS	HB	GM	CED	BW	WW	YW	MILK	ME	HPG	CEM	STAY
EPD	122	63	58	14	-3.3	60	103	18	7	9	9	18
Top	11	33	14	31%	23%	53%	37%	97%	71%	92%	14%	19%

He's a lighter birth weight bull with a nice butt and is long bodied.

3 LAUBACH STOCKMARKET 2027

B		3 — 75% AR 25%		Ratio		Data	
1/20/22	#	4670969		Act. BW	103	82	
4LRA / 2027				Adj. WW	93	599	
				Adj. YW	94	974	
				SC	Frame		
PIE STOCKMAN 4051 BIEBER CL STOCKMARKET E1193751659 BIEBER CL ADELLE 475C				EPD		Top%	Data
LAUBACH GINNIE 00094317169 LAUBACH GINNIE 8059				MARB	0.85	2%	
MPPA97 Dam Age: 1/18/20				YG	0.11	76%	
				CW	23	51%	
				REA	0.2	34%	
				FAT	0.05	95	
				ADG	0.23	50	2.34
				DMI	1.48	52	

	ProS	HB	GM	CED	BW	WW	YW	MILK	ME	HPG	CEM	STAY
EPD	110	44	65	14	-2.5	57	94	19	-1	8	8	14
Top	24	71	7	35%	37%	63%	58%	96%	29%	96%	24%	72%

He is smooth fronted on straight feet and legs.



—YEARLING RED ANGUS BULLS—



4 LAUBACH DOMAIN 2035

B	1/29/22	A — 100% AR%	Ratio	Data
4LRA / 2035	#	4670867		
BECKTON DOMINOR T122 Z1 3SCC DOMAIN A1631619642 3SCC EUCLA X723				
SRR EXT 393 LAUBACH BLACKCAP 51613466698 TLS BLACKCAP X0133				
MPP 96 Dam Age: 3/9/15				
	Act. BW	100	83	
	Adj. WW	93	602	
	Adj. YW	89	915	
	SC	Frame		
	EPD	Top%	Data	
	MARB	0.46	38%	
	YG	0.12	80%	
	CW	28	32%	
	REA	0.14	46%	
	FAT	0.04	85	
	ADG	0.25	31	1.96
	DMI	1.64	67	

	ProS	HB	GM	CED	BW	WW	YW	MILK	ME	HPG	CEM	STAY
EPD	103	59	44	13	-0.9	61	102	23	9	14	6	17
Top	33	42	36	45%	67%	49%	40%	75%	80%	10%	80%	26%

He has the length and is out of a great Dam.



5 LAUBACH 2041

B	2/1/22	3 — 50% AR	Ratio	Data
4MAL / 2041	#	4705271		
RED LAZY MC SERGEANT 97Z JFCF FLO MARIE 44-2621684281 CRSF FLO-MARIE 262				
MPP 103 Dam Age: 3/9/14				
	Act. BW	70		
	Adj. WW	582		
	Adj. YW	1027		
	SC	Frame		
	EPD	Top%	Data	
	MARB	0.29	80%	
	YG	-0.06	5%	
	CW	26	38%	
	REA	0.41	7%	
	FAT	0	13	
	ADG	0.12	96	2.78
	DMI	0	1	

	ProS	HB	GM	CED	BW	WW	YW	MILK	ME	HPG	CEM	STAY
EPD	78	29	49	12	-0.8	50	69	22	0	0	6	10
Top	73	91	27	57%	70%	84%	92%	81%	32%	99%	64%	95%

DNA Pending. This bull is deep and thick who carries his width from front to back.

6 LAUBACH DOMAIN 2048

B	2/2/22	A — 100% AR%	Ratio	Data
4LRA / 2048	#	4670863		
BECKTON DOMINOR T122 Z1 3SCC DOMAIN A1631619642 3SCC EUCLA X723				
FEDDES VACATE A207 LAUBACH NEXA 50923466678 LAUBACH NEXA 8100				
MPPA93 Dam Age: 2/5/15				
	Act. BW	110	92	
	Adj. WW	105	679	
	Adj. YW	105	1089	
	SC	Frame		
	EPD	Top%	Data	
	MARB	0.44	42%	
	YG	0.12	81%	
	CW	33	16%	
	REA	0.17	40%	
	FAT	0.03	79	
	ADG	0.26	30	2.56
	DMI	0.97	15	

	ProS	HB	GM	CED	BW	WW	YW	MILK	ME	HPG	CEM	STAY
EPD	116	60	56	10	1.1	67	108	23	-15	9	3	16
Top	16	39	16	83%	93%	27%	27%	76%	5%	85%	98%	46%

This guy has good shape and style to his ribs and is long.



7 LAUBACH FRANCHISE 2049

B	2/2/22	A — 100% AR%	Ratio	Data
4LRA / 2049	#	4670831		
SPUR FRANCHISE OF GARTON 9 MILE FRANCHISE 63053555188 C-BAR ABIGRACE Y11				
J 5 COPPER MINE 913 J5 913 DORY 34A1660257 J 5 5796 DORY 9105				
MPPA96 Dam Age: 3/15/13				
	Act. BW	94	77	
	Adj. WW	94	611	
	Adj. YW	94	975	
	SC	Frame		
	EPD	Top%	Data	
	MARB	0.35	65%	
	YG	0.04	33%	
	CW	28	30%	
	REA	0.32	15%	
	FAT	0.02	62	
	ADG	0.23	45	2.27
	DMI	0.67	5	

	ProS	HB	GM	CED	BW	WW	YW	MILK	ME	HPG	CEM	STAY
EPD	155	93	61	15	-4.5	49	87	33	-17	9	11	17
Top	1	3	11	21%	10%	85%	72%	4%	3%	84%	2%	29%

Dont let him fool you with his smaller frame, he's powerful with good quarters.



—YEARLING RED ANGUS BULLS—



LOT 8

8 LAUBACH TESLA 2051

B	2/3/22	A — 100% AR%	Ratio	Data
4LRA / 2051	#	4670887	Act. BW	90 75
			Adj. WW	100 649
			Adj. YW	92 956
			SC	Frame
			EPD	Top% Data
			MARB	0.51 28%
			YG	0.13 85%
			CW	37 9%
			REA	0.16 42%
			FAT	0.03 71
			ADG	0.31 7
			DMI	1.18 27
				1.92

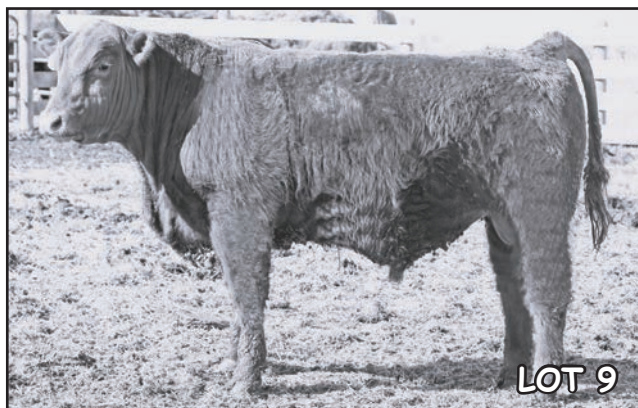
GMRA TRILOGY 0226
GMRA TESLA 62143538390
GMRA ANGIE ROSE 448

HXC BIG IRON 0024X
LAUBACH JODI 60553541104
LAUBACH JODI 9018

MPP 98 Dam Age: 1/22/16

	ProS	HB	GM	CED	BW	WW	YW	MILK	ME	HPG	CEM	STAY
EPD	152	85	67	13	-2.3	71	120	28	-6	8	10	18
Top	1	6	6	47%	41%	16%	10%	27%	16%	97%	5%	19%

This bull is dark red, big boned with nice quarters.



LOT 9

9 LAUBACH TESLA 2053

B	2/4/22	A — 100% AR%	Ratio	Data
4LRA / 2053	#	4670871	Act. BW	91 76
			Adj. WW	92 593
			Adj. YW	99 1020
			SC	Frame
			EPD	Top% Data
			MARB	0.41 50%
			YG	0.15 88%
			CW	22 53%
			REA	-0.02 81%
			FAT	0.03 81
			ADG	0.22 58
			DMI	0.6 3
				2.67

GMRA TRILOGY 0226
GMRA TESLA 62143538390
GMRA ANGIE ROSE 448

FLYING W SKYWAYS 124A
RED SKYLARK 61153535324
RED RACHAEL 1001

MPP 94 Dam Age: 3/1/16

	ProS	HB	GM	CED	BW	WW	YW	MILK	ME	HPG	CEM	STAY
EPD	151	101	50	14	-3.3	54	89	28	-16	9	11	19
Top	1	1	25	31%	23%	73%	67%	30%	4%	92%	3%	9%

Check out how smooth on top this guy is.



LOT 10

10 LAUBACH DOMAIN 2057

B	2/5/22	A — 100% AR%	Ratio	Data
4LRA / 2057	#	4670879	Act. BW	108 90
			Adj. WW	95 612
			Adj. YW	116 1196
			SC	Frame
			EPD	Top% Data
			MARB	0.4 52%
			YG	0.14 87%
			CW	29 29%
			REA	0.09 59%
			FAT	0.03 82
			ADG	0.25 37
			DMI	0.68 5
				3.65

BECKTON DOMINOR T122 Z1
3SCC DOMAIN A1631619642
3SCC EUCLA X723

LARSON FIRST BASE 105
LAUBACH PINE MARIE 60743541045
LAUBACH PNEMARIE 1146

MPPA: 99 Dam Age: 1/27/16

	ProS	HB	GM	CED	BW	WW	YW	MILK	ME	HPG	CEM	STAY
EPD	118	61	57	11	0.3	58	97	25	-12	10	3	16
Top%	14	37	15	79%	86%	61%	51%	57%	8%	71%	97%	36%

He's long, dark red, with good quarters and a straight back. This guy is evenly made.



LOT 11

11 LAUBACH 2059

B	2/5/22	3 — 50% AR 50%	Ratio	Data
4MAL / 2059	#	4671049	Act. BW	77
			Adj. WW	658
			Adj. YW	1080
			SC	Frame
			EPD	Top% Data
			MARB	0.36 63%
			YG	-0.01 15%
			CW	27 36%
			REA	0.29 19%
			FAT	0 22
			ADG	0.12 96
			DMI	1.06 20
				2.63

RED WHEATLAND 1235
CRSF LAKOTA 48-11731684312
CRSF LAKOTA 1173-454

MPPA:104 Dam Age: 2/13/14

	ProS	HB	GM	CED	BW	WW	YW	MILK	ME	HPG	CEM	STAY
EPD	70	34	36	10	-1.3	47	67	20	-14	11	4	11
Top%	84	87	53	84%	61%	88%	93%	93%	7%	51%	95%	90%

DNA Pending. He's a pet. This guy is long and big boned.

—YEARLING RED ANGUS BULLS—



LOT 12

12 LAUBACH PLATINUM 2065

B	2/8/22	A — 100% AR%	Ratio	Data
4LRA / 2065	#	4670923		
			Act. BW	94
			Adj. WW	112
			Adj. YW	108
			SC	Frame
			EPD	Top% Data
			MARB	0.32 72%
			YG	0.04 34%
			CW	39 7%
			REA	0.24 26%
			FAT	0 10
			ADG	0.15 91
			DMI	1.48 52
				2.47

LSF MEW PLATINUM 5660C
KCC PLATINUM F713965145
BROWN MS IRON ORE A7007

BAR M JUMBO 5152
LAUBACH GAL 80303944533
LAUBACH GAL 8118

MPPA: 99 Dam Age: 1/15/18

EPD	Pro	HB	GM	CED	BW	WW	YW	MILK	ME	HPG	CEM	STAY
	50	17	34	12	-1.7	56	79	22	15	11	7	12
Top%	96	98	57	56%	53%	68%	82%	83%	97%	53%	55%	86%

He will catch your eye for sure. He's got growth, muscling and length.



LOT 13

13 LAUBACH PLEDGE 2066

B	2/8/22	A — 100% AR%	Ratio	Data
4LRA / 2066	#	4670837		
			Act. BW	94
			Adj. WW	108
			Adj. YW	105
			SC	Frame
			EPD	Top% Data
			MARB	0.23 90%
			YG	0 19%
			CW	35 11%
			REA	0.21 32%
			FAT	-0.02 3
			ADG	0.16 88
			DMI	1.8 81
				2.4

LEACHMAN PLEDGE A282Z
CLZB C5053500285
CLZB LANA 3046

TJS COLOSSAL X042
LAUBACH CELESTE 41421686310
LAUBACH CELESTE 730

MPPA: 102 Dam Age: 2/20/14

EPD	Pro	HB	GM	CED	BW	WW	YW	MILK	ME	HPG	CEM	STAY
	54	30	24	14	-2.6	52	78	22	14	15	7	12
Top%	95	90	78	37%	34%	79%	84%	83%	96%	6%	41%	83%

This bull is heavy muscled, he is deep & thick with power.



LOT 14

14 LAUBACH MERLIN 2068

B	2/3/22	A — 100% AR%	Ratio	Data
4LRA / 2068	#	4671017		
			Act. BW	96
			Adj. WW	101
			Adj. YW	93
			SC	Frame
			EPD	Top% Data
			MARB	0.39 54%
			YG	0.06 49%
			CW	34 14%
			REA	0.21 32%
			FAT	0.01 31
			ADG	0.14 93
			DMI	1.58 61
				1.88

WFL MERLIN 018A
LUCHT MERLIN 01134355199
FEDDES LARKABU X21

TBJR BEEF SENSATION 6808D
LAUBACH RED 00844317305
LAUBACH RED 5050

MPPA: 100 Dam Age: 2/19/20

EPD	ProS	HB	GM	CED	BW	WW	YW	MILK	ME	HPG	CEM	STAY
	62	26	37	12	-1.9	47	69	23	3	13	8	10
Top%	91	94	51	63%	49%	89%	92%	74%	51%	17%	37%	95%

He is well balanced and is dark cherry red.

15 LAUBACH PLATINUM 2071

B	2/9/22	A — 100% AR%	Ratio	Data
4LRA / 2071	#	4670941		
			Act. BW	96
			Adj. WW	95
			Adj. YW	94
			SC	Frame
			EPD	Top% Data
			MARB	0.43 45%
			YG	0.04 38%
			CW	46 2%
			REA	0.3 17%
			FAT	0 9
			ADG	0.17 83
			DMI	1.98 91
				2.19

LSF MEW PLATINUM 5660C
KCC PLATINUM F713965145
BROWN MS IRON ORE A7007

BIEBER DEEP END B597
LAUBACH RED 90194156034
LAUBACH RED 9125

MPPA: 96 Dam Age: 1/26/19

EPD	ProS	HB	GM	CED	BW	WW	YW	MILK	ME	HPG	CEM	STAY
	64	14	50	13	-1.1	48	76	22	17	14	9	10
Top%	89	98	24	45%	64%	87%	86%	84%	99%	15%	18%	93%

16 LAUBACH PLATINUM 2073

B	2/10/22	A — 100% AR%	Ratio	Data
4LRA / 2073	#	4670873		
			Act. BW	104
			Adj. WW	100
			Adj. YW	109
			SC	Frame
			EPD	Top% Data
			MARB	0.33 70%
			YG	0.04 35%
			CW	34 13%
			REA	0.17 40%
			FAT	0 9
			ADG	0.14 92
			DMI	1.63 67
				2.98

LSF MEW PLATINUM 5660C
KCC PLATINUM F713965145
BROWN MS IRON ORE A7007

SRR EXT 393
LAUBACH ROSE 61673541006
LAUBACH ROSE 0063

MPPA: 99 Dam Age: 2/21/16

EPD	ProS	HB	GM	CED	BW	WW	YW	MILK	ME	HPG	CEM	STAY
	44	14	29	11	-0.3	52	75	19	15	11	6	12
Top%	98	98	67	77%	78%	79%	87%	95%	98%	51%	68%	85%

Hes powerful, thick, and stout - this guy is a pet who is always in your back pocket.

—YEARLING RED ANGUS BULLS—



20 LAUBACH PLEDGE 2088

B	2/19/22	A — 100% AR%	Ratio	Data							
4LRA / 2088	#	4670833									
LEACHMAN PLEDGE A282Z											
CLZB C5053500285											
CLZB LANA 3046											
MESSMER PACKER S008											
LAUBACH STAR GIRL 40281686273											
TPRA STAR GIRL 202											
MPPA: 98 Dam Age: 1/21/14											
			Act. BW	94 78							
			Adj. WW	106 685							
			Adj. YW	108 1117							
			SC	Frame							
			EPD	Top% Data							
			MARB	0.28 82%							
			YG	0.03 29%							
			CW	35 12%							
			REA	0.27 21%							
			FAT	0 19							
			ADG	0.12 97 2.7							
			DMI	1.49 53							
ProS	HB	GM	CED	BW	WW	YW	MILK	ME	HPG	CEM	STAY
EPD	66	39	27	13	-2.6	48	67	18	8	14	8 13
Top%	88	80	72	39%	34%	87%	93%	97%	80%	14%	22% 79%

17 LAUBACH 2074

B	2/11/22	3 — 50% AR	Ratio	Data
4LRA / 2074	#	4670785		
Act. BW 84				
Adj. WW 643				
Adj. YW 1083				
SC Frame				
			EPD	Top% Data
			MARB	0.27 84%
			YG	0.01 22%
			CW	32 18%
			REA	0.2 34%
			FAT	-0.01 5
			ADG	0.14 92 2.73
			DMI	0.74 7
GMRA SECRET MISSION 8258				
LAUBACH CELESTE 00301368281				
LAUBACH CELESTE 730				
MPPA: 107 Dam Age: 1/30/10				

Pro	HB	GM	CED	BW	WW	YW	MILK	ME	HPG	CEM	STAY
EPD	77	32	45	12	-1.5	43	66	26	-10	11	7 10
Top%	75	89	33	62%	57%	94%	94%	49%	11%	53%	59% 95%

DNA Pending. He is thick. This Dam has been a favorite who has been with us a long time.

18 LAUBACH PLEDGE 2077

B	2/14/22	A — 100% AR%	Ratio	Data
4LRA / 2077	#	4670905		
Act. BW 89 74				
Adj. WW 102 662				
Adj. YW 93 961				
SC Frame				
			EPD	Top% Data
			MARB	0.24 89%
			YG	0.01 20%
			CW	29 27%
			REA	0.13 49%
			FAT	-0.01 3
			ADG	0.13 95 1.87
			DMI	1.73 75
LEACHMAN PLEDGE A282Z				
CLZB C5053500285				
CLZB LANA 3046				
RED ENDURANCE 503				
LAUBACH MISS ROSE 70853746909				
LAUBACH MISS ROSE 3268				
MPPA96 Dam Age: 2/1/17				

ProS	HB	GM	CED	BW	WW	YW	MILK	ME	HPG	CEM	STAY
EPD	48	28	20	15	-4.1	43	64	19	13	13	9 13
Top%	97	92	83	18%	13%	94%	95%	94%	95%	21%	19% 81%

19 LAUBACH 2083

B	2/17/22	3 — 50% AR	Ratio	Data
4LRA / 2083	#	4670783		
Act. BW 85				
Adj. WW 637				
Adj. YW 1000				
SC Frame				
			EPD	Top% Data
			MARB	0.33 70%
			YG	0.02 26%
			CW	26 39%
			REA	0.17 40%
			FAT	0 17
			ADG	0.14 94 2.25
			DMI	0.81 9
LARSON NOTABLE 815				
LAUBACH JUNIE BEE 01221368279				
LAUBACH UNIQUA 724				
MPPA103 Dam Age: 2/25/10				

ProS	HB	GM	CED	BW	WW	YW	MILK	ME	HPG	CEM	STAY
EPD	77	36	41	12	-1.2	43	65	23	-16	10	7 10
Top%	74	84	41	59%	63%	94%	94%	75%	4%	82%	55% 94%

DNA Pending. He's a smooth made bull with great dimension.

21 LAUBACH SYNERGY 2097

B	2/20/22	A — 100% AR%	Ratio	Data
4LRA / 2097	#	4670899		
Act. BW 85 71				
Adj. WW 98 632				
Adj. YW 90 931				
SC Frame				
			EPD	Top% Data
			MARB	0.3 77%
			YG	0.02 26%
			CW	36 11%
			REA	0.23 28%
			FAT	-0.01 7
			ADG	0.16 89 1.87
			DMI	1.62 66
BROWN SYNERGY X7838				
RED SYNERGY 7413826723				
RED EVIE 2070				
BAR M JUMBO 5152				
LAUBACH ESTONIA 70463746849				
LAUBACH ESTONIA 1040				
MPPA: 98 Dam Age: 1/18/17				

ProS	HB	GM	CED	BW	WW	YW	MILK	ME	HPG	CEM	STAY
EPD	64	30	34	13	-2.3	49	74	21	6	13	8 11
Top%	90	91	58	51%	41%	86%	88%	87%	65%	20%	39% 89%

22 LAUBACH SYNERGY 2099

B	2/21/22	A — 100% AR%	Ratio	Data
4LRA / 2099	#	4670901		
Act. BW 85 70				
Adj. WW 101 655				
Adj. YW 101 1040				
SC Frame				
			EPD	Top% Data
			MARB	0.34 67%
			YG	0.05 41%
			CW	35 12%
			REA	0.17 40%
			FAT	0 13
			ADG	0.15 92 2.4
			DMI	1.57 60
BROWN SYNERGY X7838				
RED SYNERGY 7413826723				
RED EVIE 2070				
BAR M JUMBO 5152				
LAUBACH LIL MISS 71653746851				
MJA SEQOUIA'S LIL MISS				
MPPA:100 Dam Age: 3/3/17				

ProS	HB	GM	CED	BW	WW	YW	MILK	ME	HPG	CEM	STAY
EPD	56	22	34	14	-2.9	49	73	22	7	13	7 10
Top%	94	96	58	38%	30%	85%	89%	84%	70%	17%	46% 93%



—YEARLING RED ANGUS BULLS—



LOT 23

23 LAUBACH PLEDGE 2104

B	2/21/22	A — 100% AR%	Ratio	Data
4LRA / 2104	#	4670855		
			Act. BW	101
			Adj. WW	102
			Adj. YW	104
			SC	Frame
			EPD	Top%
			MARB	0.28
			YG	0
			CW	36
			REA	0.3
			FAT	-0.01
			ADG	0.17
			DMI	1.99
				84
				92
				2.6

LEACHMAN PLEDGE A282Z
CLZB C5053500285
CLZB LANA 3046

LARSON FIRST BASE 105
LAUBACH JOAN 50953466614
LAUBACH JOAN 0164

MPPA: 100 Dam Age: 2/6/15

EPD	Pro	HB	GM	CED	BW	WW	YW	MILK	ME	HPG	CEM	STAY
30	0	30	11	-1.2	48	76	22	17	13	5	10	
99	99	65	79%	63%	87%	87%	84%	99%	25%	83%	94%	

He is muscular, deep, and thick.

24 LAUBACH SYNERGY 2106

B	2/21/22	A — 100% AR%	Ratio	Data
4LRA / 2106	#	4670791		
			Act. BW	103
			Adj. WW	101
			Adj. YW	101
			SC	Frame
			EPD	Top%
			MARB	0.26
			YG	0.08
			CW	27
			REA	0
			FAT	0
			ADG	0.1
			DMI	1.41
				86%
				59%
				36%
				78%
				20
				99
				45
				2.4

BROWN SYNERGY X7838
RED SYNERGY 7413826723
RED EVIE 2070

RED SIX MILE SAKIC 832S
LAUBACH MISS FLINT 10391428098
LAUBACH MS FLINT 311

MPPA: 103 Dam Age: 2/1/11

EPD	Pro	HB	GM	CED	BW	WW	YW	MILK	ME	HPG	CEM	STAY
33	17	16	12	-1.5	41	57	26	4	11	6	11	
99	98	88	66%	57%	95%	98%	48%	52%	51%	74%	92%	



LOT 25

25 LAUBACH CALVARY 2109

B	2/23/22	A — 100% AR%	Ratio	Data
4LRA / 2109	#	4670893		
			Act. BW	101
			Adj. WW	110
			Adj. YW	109
			SC	Frame
			EPD	Top%
			MARB	0.25
			YG	0.02
			CW	34
			REA	0.15
			FAT	-0.01
			ADG	0.15
			DMI	2.35
				87%
				26%
				14%
				45%
				3
				90
				99
				2.59

FRITZ JUSTICE 20D
FISCHER CALVARY 9374138758
FISCHER HEIRESS 737

LAUBACH TREND SETTER 4121
LAUBACH HEIRESS 71563746751
LAUBACH HEIRESS 735

MPPA: 111 Dam Age: 3/1/17

EPD	ProS	HB	GM	CED	BW	WW	YW	MILK	ME	HPG	CEM	STAY
29	18	11	13	-1.1	53	78	27	15	10	8	12	
99	97	94	53%	64%	75%	84%	34%	97%	83%	31%	85%	

This cross between Trend Setter and Calvary has made a great bull. He's has excellent growth.

26 LAUBACH 2142

B	3/9/22	3 — 50% AR 50%	Ratio	Data
4LRA / 2142	#	4670829		
			Act. BW	92
			Adj. WW	677
			Adj. YW	1108
			SC	Frame
			EPD	Top%
			MARB	0.34
			YG	0.07
			CW	32
			REA	0.13
			FAT	0.01
			ADG	0.16
			DMI	1.15
				67%
				55%
				18%
				49%
				25
				87
				25
				2.69

5L TRADESMAN 1715-6237
J5 TRD ESTONIA 51A1660194
JTJB RED ESTONIA 589

MPPA95 Dam Age: 3/19/13

EPD	ProS	HB	GM	CED	BW	WW	YW	MILK	ME	HPG	CEM	STAY
79	37	41	11	0.7	49	75	19	-12	10	6	11	
72	82	41	79%	90%	86%	87%	94%	8%	71%	66%	92%	

DNA Pending. Thick, deep, and muscular - he has it.



—YEARLING RED ANGUS BULLS—



27 LAUBACH 2144

B	3/10/22	3 — 50% AR	Ratio	Data
4LRA / 2144	#	4728153	Act. BW	88
			Adj. WW	751
			Adj. YW	1167
			SC	Frame
			EPD	Top%
			MARB	0.25 87%
			YG	-0.05 7%
			CW	28 32%
			REA	0.31 16%
			FAT	-0.01 4
			ADG	0.18 79
			DMI	2.6

FISCHER INDEED 242
FISCHER MISS PAN 40831665894
FISCHER MISS PAN 083

MPPA107 Dam Age: 2/24/14

	ProS	HB	GM	CED	BW	WW	YW	MILK	ME	HPG	CEM	STAY
EPD	91	41	51	8	0	61	90	27			3	14
Top%	52	78	24	95%	83%	50%	66%	34%			99%	73%

DNA Pending. This guy is deep with great muscling, who is straight on his feet and legs.



28 LAUBACH CALVARY 2162

B	3/25/22	A — 100% AR%	Ratio	Data
4LRA / 2162	#	4724019	Act. BW	74
			Adj. WW	712
			Adj. YW	1126
			SC	Frame
			EPD	Top%
			MARB	0.45 40%
			YG	0 17%
			CW	37 9%
			REA	0.43 6%
			FAT	0.01 26
			ADG	0.21 66
			DMI	2.46 99

FRITZ JUSTICE 20D
FISCHER CALVARY 9374138758
FISCHER HEIRESS 737

BIEBER DEEP END B597
LAUBACH JODI 80293944555
LAUBACH JODI 9018

MPPA: 101 Dam Age: 1/15/18

	Pro	HB	GM	CED	BW	WW	YW	MILK	ME	HPG	CEM	STAY
EPD	41	4	37	12	-0.8	57	90	20	17	9	7	10
Top%	98	99	51	67%	70%	64%	66%	90%	99%	88%	41%	93%

A younger bull who has great length.

29 LAUBACH C1

# C1	Ratio	Data
ID: C1 SIRE: FISCHER CALVARY 937 WW: 640 YW: 860	Act. BW	
	Adj. WW	
	Adj. YW	
	SC	Frame
	EPD	Top%
	MARB	
	YG	
	CW	
	REA	
	FAT	
	ADG	
	DMI	

MPPA Dam Age:

	ProS	HB	GM	CED	BW	WW	YW	MILK	ME	HPG	CEM	STAY
EPD												
Top												

A dark cherry red bull with lots of length.

30 LAUBACH C2

# C2	Ratio	Data
ID: C2 SIRE: CLZB PLEDGE C505 WW: 651 YW: 953	Act. BW	
	Adj. WW	
	Adj. YW	
	SC	Frame
	EPD	Top%
	MARB	
	YG	
	CW	
	REA	
	FAT	
	ADG	
	DMI	

MPPA Dam Age:

	ProS	HB	GM	CED	BW	WW	YW	MILK	ME	HPG	CEM	STAY
EPD												
Top												

Thick, stout, deep.

31 LAUBACH C3

# C3	Ratio	Data
ID: C3 SIRE: KCC PLATINUM F71 WW: 707 YW: 962	Act. BW	
	Adj. WW	
	Adj. YW	
	SC	Frame
	EPD	Top%
	MARB	
	YG	
	CW	
	REA	
	FAT	
	ADG	
	DMI	

MPPA Dam Age:

	ProS	HB	GM	CED	BW	WW	YW	MILK	ME	HPG	CEM	STAY
EPD												
Top												



—YEARLING RED ANGUS BULLS—

32 LAUBACH C4

# C4		Ratio	Data
ID: C4 SIRE: RED SYNERGY 741 WW: 651 YW: 858		Act. BW	
		Adj. WW	
		Adj. YW	
		SC	Frame
		EPD	Top% Data
		MARB	
		YG	
		CW	
		REA	
		FAT	
		ADG	
		DMI	
ProS	HB	GM	CED BW WW YW MILK ME HPG CEM STAY
EPD			
Top			

MPP Dam Age:

33 LAUBACH C5

# C5		Ratio	Data
ID: C5 WW: 661 YW: 947		Act. BW	
		Adj. WW	
		Adj. YW	
		SC	Frame
		EPD	Top% Data
		MARB	
		YG	
		CW	
		REA	
		FAT	
		ADG	
		DMI	
ProS	HB	GM	CED BW WW YW MILK ME HPG CEM STAY
EPD			
Top			

MPPA Dam Age:

This guy is an even well-balanced bull.

VIEW VIDEOS AND BID ONLINE: www.FrontierLiveSale.com



PARAMOUNT

Authenticate your Red Angus genetics.

Now is a paramount time to verify your genetics in the Feeder Calf Certification Program. The Red Angus Live Animal Specification, recognized by the USDA, acknowledges **Red Angus are genetically Angus and meet requirements to be included in many Angus branded-beef programs.**

Capitalize on Red Angus-based opportunities.

RED ANGUS
RANCH TESTED. RANCHER TRUSTED.

Visit
RedAngus.org

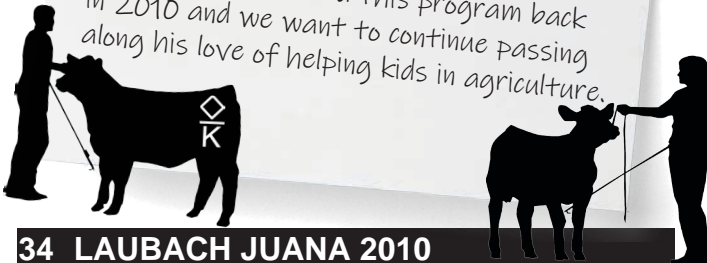


—OPEN YEARLING RED ANGUS HEIFERS—

We always have a difficult time choosing which heifers to keep home and which to put into our sale. These girls are just a gate cut and will be put right back into our herd if they don't sell. All heifers are Bangs vaccinated, up to date on shots, and are guaranteed open. 100% of the females' sale price will be due, and buyers are responsible for taking them home sale day, unless other arrangements have been made. A brand inspector will be available on Sale Day. Visit our website for updated DNA.

"YOUTH IN PROGRESS"

We are offering \$200 off any heifer calf to a STUDENT. On the day of the sale, please have the student get registered for a buyer number. This will help us at checkout and when transferring the animal. Ken Laubach started this program back in 2010 and we want to continue passing along his love of helping kids in agriculture.



LOT 35

34 LAUBACH JUANA 2010

C	1/12/22	A — 100% AR%	Ratio	Data
4LRA / 2010	#	4670983	Act. BW	101 70
			Adj. WW	97 561
			Adj. YW	
			SC	Frame
			EPD	Top% Data
			MARB	0.51 28%
			YG	0.07 52%
			CW	33 16%
			REA	0.3 17%
			FAT	0.03 69
			ADG	0.27 23
			DMI	2.04 94
				0

SPUR FRANCHISE OF GARTON
9 MILE FRANCHISE 63053555188
C-BAR ABIGRACE Y11

CLZB C505
LAUBACH JUANA 00284317205
LAUBACH JUANA 3092

MPPA99 Dam Age: 2/4/20

	ProS	HB	GM	CED	BW	WW	YW	MILK	ME	HPG	CEM	STAY
EPD	108	55	53	12	-2.6	57	99	30	9	11	9	16
Top%	25	49	20	60%	34%	64%	45%	15%	83%	52%	18%	45%

35 LAUBACH CELESTE 2012

C	1/13/22	A — 100% AR%	Ratio	Data
4LRA / 2012	#	4670991	Act. BW	98 68
			Adj. WW	91 527
			Adj. YW	
			SC	Frame
			EPD	Top% Data
			MARB	0.47 36%
			YG	0.06 49%
			CW	31 21%
			REA	0.28 20%
			FAT	0.02 64
			ADG	0.28 16
			DMI	1.8 81
				0

SPUR FRANCHISE OF GARTON
9 MILE FRANCHISE 63053555188
C-BAR ABIGRACE Y11

CLZB FUSION C534
LAUBACH CELESTE 00384317225
LAUBACH CELESTE 4142

MPPA: 96 Dam Age: 2/8/20

	ProS	HB	GM	CED	BW	WW	YW	MILK	ME	HPG	CEM	STAY
EPD	131	74	57	13	-2.6	54	98	27	6	12	9	18
Top%	6	16	15	48%	34%	74%	47%	35%	67%	42%	10%	17%

36 LAUBACH GINNIE 2022

C	1/17/22	A — 100% AR%	Ratio	Data
4LRA / 2022	#	4671015	Act. BW	103 72
			Adj. WW	620
			Adj. YW	
			SC	Frame
			EPD	Top% Data
			MARB	0.86 2%
			YG	0.11 73%
			CW	21 60%
			REA	0.29 19%
			FAT	0.06 99
			ADG	0.26 26
			DMI	1.82 82
				0

PIE STOCKMAN 4051
BIEBER CL STOCKMARKET E1193751659
BIEBER CL ADELLE 475C

TBJR BEEF SENSATION 6808D
LAUBACH GINNIE 30834317287
LAUBACH GINNIE 3083

MPPA: Dam Age: 2/17/20

	ProS	HB	GM	CED	BW	WW	YW	MILK	ME	HPG	CEM	STAY
EPD	114	56	59	14	-3.5	66	108	24	7	9	9	16
Top%	18	48	13	34%	21%	30%	27%	67%	71%	87%	15%	45%



— OPEN YEARLING RED ANGUS HEIFERS —

37 LAUBACH TESLA 2030

C	1/27/22	A — 100% AR%	Ratio	Data	
4LRA / 2030	#	4670817	Act. BW	86	67
			Adj. WW	101	581
			Adj. YW		
			SC	Frame	
			EPD	Top%	Data
			MARB	0.44	42%
			YG	0.11	74%
			CW	20	61%
			REA	0.01	76%
			FAT	0.03	67
			ADG	0.18	80
			DMI	1.23	30
					0

GMRA TRILOGY 0226
GMRA TESLA 62143538390
GMRA ANGIE ROSE 448

3C CHEROKEE SQUALL 04W
LAUBACH RED 31631611631
RED 0179

MPPA97 Dam Age: 2/9/13

	ProS	HB	GM	CED	BW	WW	YW	MILK	ME	HPG	CEM	STAY
EPD	126	88	38	17	-5.1	48	77	30	5	12	12	19
Top%	9	4	49	8%	6%	87%	85%	13%	61%	43%	1%	6%



LOT 39

39 LAUBACH RED 2038

C	1/30/22	3 — 50% AR 50%	Ratio	Data	
4LRA / 2038	#	4670897	Act. BW	56	
			Adj. WW	606	
			Adj. YW		
			SC	Frame	
			EPD	Top%	Data
			MARB	0.37	61%
			YG	0.05	42%
			CW	36	10%
			REA	0.18	39%
			FAT	0	14
			ADG	0.14	93
			DMI	0.96	15
					0

BAR M JUMBO 5152
LAUBACH RED 71513746801
LAUBACH RED 9114

MPPA:104 Dam Age: 2/24/17

	ProS	HB	GM	CED	BW	WW	YW	MILK	ME	HPG	CEM	STAY
EPD	97	49	48	15	-4.2	47	69	21	-12	11	10	11
Top%	42	62	28	16%	12%	89%	92%	85%	9%	54%	8%	90%



LOT 38

38 LAUBACH AQUILA 2031

C	1/27/22	A — 100% AR%	Ratio	Data	
4MAL / 2031	#	4671047	Act. BW	71	
			Adj. WW	640	
			Adj. YW		
			SC	Frame	
			EPD	Top%	Data
			MARB	0.38	57%
			YG	0.1	72%
			CW	31	22%
			REA	0.22	30%
			FAT	0.03	81
			ADG	0.24	44
			DMI	1.69	72
					0

BECKTON DOMINOR T122 Z1
3SCC DOMAIN A1631619642
3SCC EUCLA X723

RED LAZY MC SERGEANT 97Z
CRSF AQUILA 413-0171684245
CRSF AQUILA 017-N801

MPPA96 Dam Age: 2/1/14

	ProS	HB	GM	CED	BW	WW	YW	MILK	ME	HPG	CEM	STAY
EPD	98	63	34	14	-1.7	65	103	23	7	13	7	17
Top%	41	33	56	30%	53%	32%	37%	72%	71%	28%	46%	30%



LOT 40

40 LAUBACH STAR GIRL 2052

C	2/3/22	A — 100% AR%	Ratio	Data	
4LRA / 2052	#	4670819	Act. BW	86	67
			Adj. WW	103	593
			Adj. YW		
			SC	Frame	
			EPD	Top%	Data
			MARB	0.27	84%
			YG	0.05	39%
			CW	32	18%
			REA	0.12	51%
			FAT	-0.01	8
			ADG	0.09	99
			DMI	1.41	45
					0

GMRA TRILOGY 0226
GMRA TESLA 62143538390
GMRA ANGIE ROSE 448

RED BECKER 1124
LAUBACH STAR GIRL 31081611641
TPRA STAR GIRL 202

MPPA:95 Dam Age: 2/12/13

	ProS	HB	GM	CED	BW	WW	YW	MILK	ME	HPG	CEM	STAY
EPD	54	31	23	14	-2.9	43	58	16	2	12	8	12
Top%	95	89	79	29%	30%	94%	97%	99%	43%	42%	29%	87%



—OPEN YEARLING RED ANGUS HEIFERS—



41 LAUBACH AUBREE 2056

C	2/4/22	3 — 25% AR	Ratio	Data
4LRA / 2056	#	4670919	Act. BW	82
			Adj. WW	562
			Adj. YW	
			SC	Frame
			EPD	Top%
			MARB 0.38	57%
			YG 0.05	40%
			CW 32	17%
			REA 0.22	30%
			FAT 0.01	29
			ADG 0.1	99
			DMI 0.43	1
				0

MUSHRUSH IMPRESSIVE CA U236
LAUBACH AUBREE 30083753643

MPPA: 102 Dam Age: 1/22/13

	Pro	HB	GM	CED	BW	WW	YW	MILK	ME	HPG	CEM	STAY
EPD	68	16	52	10	-0.3	41	57	18	-25	11	5	6
Top%	86	98	21	82%	78%	96%	98%	97%	1%	67%	91%	99%

42 LAUBACH ROSE 2067

C	2/2/22	A — 100% AR%	Ratio	Data
4LRA / 2067	#	4671025	Act. BW	114
			Adj. WW	99
			Adj. YW	
			SC	Frame
			EPD	Top%
			MARB 0.4	52%
			YG 0.07	51%
			CW 37	9%
			REA 0.15	45%
			FAT 0	14
			ADG 0.17	84
			DMI 1.61	64
				0

WFL MERLIN 018A
LUCHT MERLIN 01134355199
FEDDES LARKABU X21

CLZB FUSION C534
LAUBACH ROSE 01094317345
LAUBACH ROSE 6167

MPPA100 Dam Age: 3/1/20

	ProS	HB	GM	CED	BW	WW	YW	MILK	ME	HPG	CEM	STAY
EPD	67	24	42	10	0.8	51	78	16	6	12	6	12
Top%	87	95	39	84%	91%	81%	84%	99%	67%	35%	70%	88%



43 LAUBACH PINEMARIE 2076

C	2/13/22	3 — 75% AR 25%	Ratio	Data
4LRA / 2076	#	4671031	Act. BW	102
			Adj. WW	103
			Adj. YW	592
			SC	Frame
			EPD	Top%
			MARB 0.25	87%
			YG 0.03	32%
			CW 38	8%
			REA 0.17	40%
			FAT -0.01	4
			ADG 0.1	99
			DMI 1.09	21
				0

WFL MERLIN 018A
LUCHT MERLIN 01134355199
FEDDES LARKABU X21

LAUBACH PINEMARIE 01434317407
LAUBACH PNEMARIE 1146

MPPA:101 Dam Age: 3/14/20

	ProS	HB	GM	CED	BW	WW	YW	MILK	ME	HPG	CEM	STAY
EPD	44	13	31	12	-0.6	45	61	19	-7	11	6	8
Top%	98	98	63	66%	74%	91%	96%	94%	15%	51%	70%	99%

44 LAUBACH ESTHER 2086

C	2/18/22	A — 100% AR%	Ratio	Data
4LRA / 2086	#	4671001	Act. BW	111
			Adj. WW	113
			Adj. YW	652
			SC	Frame
			EPD	Top%
			MARB 0.39	54%
			YG 0.06	46%
			CW 38	7%
			REA 0.19	36%
			FAT 0	14
			ADG 0.19	75
			DMI 1.67	70
				0

WFL MERLIN 018A
LUCHT MERLIN 01134355199
FEDDES LARKABU X21

SUTH MAXIMUM 106C
LAUBACH ESTHER 00534317249
LAUBACH ESTHER 8156

MPPA105 Dam Age: 2/12/20

	ProS	HB	GM	CED	BW	WW	YW	MILK	ME	HPG	CEM	STAY
EPD	57	14	43	11	0.1	56	86	19	9	12	6	10
Top%	94	98	38	71%	84%	67%	72%	94%	81%	32%	66%	95%

45 LAUBACH JOAN 2089

C	2/19/22	A — 100% AR%	Ratio	Data
4LRA / 2089	#	4670793	Act. BW	106
			Adj. WW	100
			Adj. YW	575
			SC	Frame
			EPD	Top%
			MARB 0.32	72%
			YG -0.02	12%
			CW 28	32%
			REA 0.25	25%
			FAT -0.01	5
			ADG 0.12	96
			DMI 1.54	58
				0

LEACHMAN PLEDGE A282Z
CLZB C5053500285
CLZB LANA 3046

3C CHEROKEE SQUALL 04W
LAUBACH JOAN 10481436335
SRR JOAN 847-458

MPPA:90 Dam Age: 2/4/11

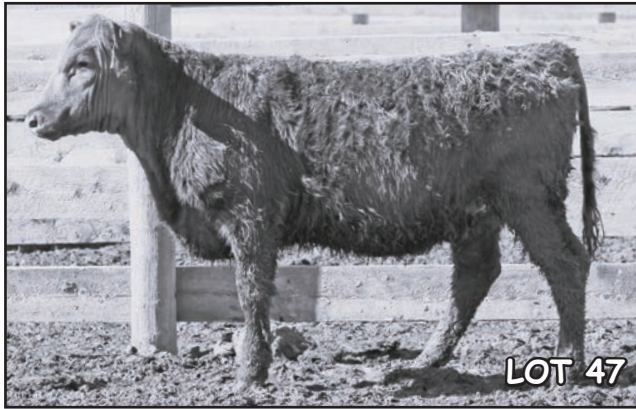
	ProS	HB	GM	CED	BW	WW	YW	MILK	ME	HPG	CEM	STAY
EPD	48	17	30	12	-1.6	39	59	17	8	14	6	11
Top%	97	97	65	63%	55%	97%	97%	99%	75%	9%	68%	93%

— OPEN YEARLING RED ANGUS HEIFERS —



46 LAUBACH KARUBA 2101														
C	2/22/22	A — 100% AR%		Ratio		Data								
4LRA / 2101	#	4670895		Act. BW	95	74	Adj. WW	102	589	Adj. YW	SC	Frame		
BROWN SYNERGY X7838 RED SYNERGY 7413826723 RED EVIE 2070														
LARSON FIRST BASE 105 LAUBACH KARUBA 71403746795 LAUBACH KARUBA 9038														
MPPA: 96 Dam Age: 2/17/17														
EPD	Top%	Pro	HB	GM	CED	BW	WW	YW	MILK	ME	HPG	CEM	STAY	Data
50	14	36	11	-0.7	50	77	20	9	12	6	11			
Top%	96	98	52	78%	72%	84%	85%	92%	83%	39%	74%	92%		

48 LAUBACH SIS 2114														
C	2/24/22	A — 100% AR%		Ratio		Data								
4LRA / 2114	#	4670773		Act. BW	88	68	Adj. WW	116	669	Adj. YW	SC	Frame		
LSF SRR JUMBO 3104A BAR M JUMBO 51523475698 BAR M MS DESIGN 9960-2133														
FEDDES VACATE A207 LAUBACH SIS 61313541032 LAUBACH SIS 610														
MPPA: 111 Dam Age: 2/10/16														
EPD	Top%	ProS	HB	GM	CED	BW	WW	YW	MILK	ME	HPG	CEM	STAY	Data
52	25	27	15	-3	55	79	23	9	12	8	11			
Top%	96	94	72	25%	28%	69%	83%	77%	80%	44%	24%	90%		



47 LAUBACH GLORYA 2112														
C	2/24/22	A — 100% AR%		Ratio		Data								
4LRA / 2112	#	4670957		Act. BW	83	60	Adj. WW	88	506	Adj. YW	SC	Frame		
LSF MEW PLATINUM 5660C KCC PLATINUM F713965145 BROWN MS IRON ORE A7007														
LOOSLI RIGHT ON 423 LAUBACH GLORYA 90234156152 J5 RMR GLORYA 107A														
MPPA: 93 Dam Age: 1/28/19														
EPD	Top%	ProS	HB	GM	CED	BW	WW	YW	MILK	ME	HPG	CEM	STAY	Data
18	-5	23	16	-4.7	33	51	23	15	10	9	9			
Top%	99	99	78	13%	8%	99%	99%	71%	98%	81%	12%	97%		

49 LAUBACH JUANA FIRE 2115														
C	2/24/22	A — 100% AR%		Ratio		Data								
4LRA / 2115	#	4670947		Act. BW		62	Adj. WW		516	Adj. YW	SC	Frame		
LSF MEW PLATINUM 5660C KCC PLATINUM F713965145 BROWN MS IRON ORE A7007														
BIEBER DEEP END B597 LAUBACH JUANA FIRE 90414156066 LAUBACH JUANA FIRE 0143														
MPPA: 99 Dam Age: 2/1/19														
EPD	Top%	ProS	HB	GM	CED	BW	WW	YW	MILK	ME	HPG	CEM	STAY	Data
78	35	43	12	0	64	100	22	17	12	7	15			
Top%	73	85	37	67%	83%	36%	44%	80%	99%	39%	50%	63%		

50 LAUBACH 2117																																											
# 2117 - COMMERCIAL																																											
<div style="border: 1px solid black; padding: 5px; text-align: center;"> ID: LAUBACH 2117 SIRE: RED SYNERGY 741 BD: 2/25/2022 BW: 67 WW: 569 </div>																																											
MPPA Dam Age:																																											
<table border="1" style="width: 100%; border-collapse: collapse;"> <thead> <tr> <th>EPD</th> <th>Top%</th> <th>ProS</th> <th>HB</th> <th>GM</th> <th>CED</th> <th>BW</th> <th>WW</th> <th>YW</th> <th>MILK</th> <th>ME</th> <th>HPG</th> <th>CEM</th> <th>STAY</th> <th>Data</th> </tr> </thead> <tbody> <tr> <td></td> <td></td> <td></td> <td></td> <td></td> <td></td> <td></td> <td></td> <td></td> <td></td> <td></td> <td></td> <td></td> <td></td> <td></td> </tr> </tbody> </table>														EPD	Top%	ProS	HB	GM	CED	BW	WW	YW	MILK	ME	HPG	CEM	STAY	Data															
EPD	Top%	ProS	HB	GM	CED	BW	WW	YW	MILK	ME	HPG	CEM	STAY	Data																													
<table border="1" style="width: 100%; border-collapse: collapse;"> <thead> <tr> <th>Act. BW</th> <th>Adj. WW</th> <th>Adj. YW</th> <th>SC</th> <th>Frame</th> <th>EPD</th> <th>Top%</th> <th>Data</th> </tr> </thead> <tbody> <tr> <td></td> <td></td> <td></td> <td></td> <td></td> <td></td> <td></td> <td></td> </tr> </tbody> </table>														Act. BW	Adj. WW	Adj. YW	SC	Frame	EPD	Top%	Data																						
Act. BW	Adj. WW	Adj. YW	SC	Frame	EPD	Top%	Data																																				

— OPEN YEARLING RED ANGUS HEIFERS —

51 LAUBACH MS RED 2120

C	2/24/22	A — 100% AR		Ratio	Data
4LRA / 2120	#	4670813		Act. BW	111
				Adj. WW	96
				Adj. YW	
				SC	Frame
LEACHMAN PLEDGE A282Z CLZB C5053500285 CLZB LANA 3046					
RED BECKER 1124 LAUBACH MS RED 31451611545 LAUBACH RED 230					
MPP 96 Dam Age: 2/17/13					
				EPD	Top%
				MARB	0.27
				YG	-0.05
				CW	23
				REA	0.26
				FAT	-0.01
				ADG	0.1
				DMI	1.92
					0
	ProS	HB	GM	CED	BW
EPD	32	18	14	15	-3.6
Top%	99	97	91	18%	19%
	WW	YW	MILK	ME	HPG
	37	53	16	12	12
	98%	98%	99%	93%	47%
	CEM	STAY			
	9	12			
	14%	87%			



52 LAUBACH TEAPOT 2121

C	2/26/22	B — 87.5% AR		Ratio	Data
4LRA / 2121	#	4720743		Act. BW	64
				Adj. WW	575
				Adj. YW	
				SC	Frame
LSF MEW PLATINUM 5660C KCC PLATINUM F713965145 BROWN MS IRON ORE A7007					
BAR M JUMBO 5152 LAUBACH TEAPOT 90304156344 LAUBACH TEAPOT 3062A					
MPPA95 Dam Age: 2/20/19					
				EPD	Top%
				MARB	0.39
				YG	0
				CW	28
				REA	0.29
				FAT	0
				ADG	0.13
				DMI	1.58
					0
	ProS	HB	GM	CED	BW
EPD	36	4	32	13	-2
Top%	99	99	62	50%	47%
	WW	YW	MILK	ME	HPG
	47	68	18	11	12
	88%	92%	97%	91%	33%
	CEM	STAY			
	8	9			
	37%	98%			

54 LAUBACH LAKOTA 2133

C	3/4/22	3 — 50% AR 50%		Ratio	Data
4LRA / 2133	#	4720739		Act. BW	73
				Adj. WW	630
				Adj. YW	
				SC	Frame
SUNR CHEROKEE LANCE M969W LAUBACH LAKOTA 31571611693 LAUBACH LAKOTA 511					
MPPA:99 Dam Age: 2/19/13					
				EPD	Top%
				MARB	0.31
				YG	-0.11
				CW	17
				REA	0.37
				FAT	-0.01
				ADG	0.1
				DMI	0.98
					0
	ProS	HB	GM	CED	BW
EPD	78	34	44	13	-2.4
Top%	73	87	35	41%	39%
	WW	YW	MILK	ME	HPG
	42	58	21		
	95%	97%	88%		
	CEM	STAY			
	8	11			
	37%	93%			

53 LAUBACH LOLA 2126

C	2/27/22	A — 100% AR		Ratio	Data
4LRA / 2126	#	4671045		Act. BW	110
				Adj. WW	108
				Adj. YW	625
				SC	Frame
LSF MEW PLATINUM 5660C KCC PLATINUM F713965145 BROWN MS IRON ORE A7007					
J5 8306 RAMMER 66Y J5 RMR LOLA 117A1660235 JTB PAT LOLA 807					
MPPA101 Dam Age: 3/30/13					
				EPD	Top%
				MARB	0.3
				YG	0.05
				CW	32
				REA	0.08
				FAT	-0.01
				ADG	0.14
				DMI	1.37
					0
	ProS	HB	GM	CED	BW
EPD	55	25	30	10	0.6
Top%	95	94	66	86%	89%
	WW	YW	MILK	ME	HPG
	48	70	20	10	12
	87%	91%	90%	87%	41%
	CEM	STAY			
	6	13			
	75%	79%			

55 LAUBACH PRISCILLA 2140

C	3/8/22	A — 100% AR		Ratio	Data
4LRA / 2140	#	4671033		Act. BW	116
				Adj. WW	107
				Adj. YW	617
				SC	Frame
WFL MERLIN 018A LUCHT MERLIN 01134355199 FEDDES LARKABU X21					
CLZB C505 LAUBACH PRISCILLA 01474317415 LAUBACH PRISCILLA 6126					
MPPA:103 Dam Age: 3/16/20					
				EPD	Top%
				MARB	0.38
				YG	0.06
				CW	43
				REA	0.22
				FAT	0
				ADG	0.2
				DMI	1.64
					0
	ProS	HB	GM	CED	BW
EPD	57	10	48	9	1.3
Top%	94	99	29	92%	94%
	WW	YW	MILK	ME	HPG
	57	88	19	9	13
	65%	69%	95%	81%	22%
	CEM	STAY			
	5	10			
	87%	96%			



56 LAUBACH LAKOTA 2141

C	3/9/22	3 — 75% AR 25%		Ratio	Data
4LRA / 2141	#	4671041		Act. BW	102
				Adj. WW	99
				Adj. YW	573
				SC	Frame
LEACHMAN PLEDGE A282Z CLZB C5053500285 CLZB LANA 3046					
LAUBACH LAKOTA 80793944601 LAUBACH LAKOTA 1096					
MPPA:98 Dam Age: 1/23/18					
				EPD	Top%
				MARB	0.36
				YG	0.05
				CW	34
				REA	0.14
				FAT	0
				ADG	0.1
				DMI	1.46
					0
	ProS	HB	GM	CED	BW
EPD	39	4	35	12	-1.6
Top%	99	99	55	56%	55%
	WW	YW	MILK	ME	HPG
	37	52	17	2	13
	98%	99%	98%	45%	22%
	CEM	STAY			
	7	8			
	57%	99%			

—OPEN YEARLING RED ANGUS HEIFERS—



57 LAUBACH JOAN 2146

C 3/18/22 3 — 50% AR Ratio Data
 4LRA / 2146 # 4670787

Act. BW	77
Adj. WW	607
Adj. YW	
SC	Frame

BROWN SYNERGY X7838
RED SYNERGY 7413826723
RED EVIE 2070

EPD	Top%	Data
MARB	0.25	87%
YG	-0.02	13%
CW	33	15%
REA	0.32	15%
FAT	-0.01	7
ADG	0.15	91
DMI	0.93	13

GMRA SECRET MISSION 8258
 LAUBACH JOAN 01641368400
 SRR JOAN 374-898

MPPA: 101 Dam Age: 3/9/10

60 LAUBACH COLLEEN 2165

C 3/20/22 A — 100% AR% Ratio Data
 4LRA / 2165 # 4670801

Act. BW	97	74
Adj. WW	97	557
Adj. YW		
SC	Frame	

BROWN SYNERGY X7838
RED SYNERGY 7413826723
RED EVIE 2070

EPD	Top%	Data
MARB	0.29	80%
YG	0.05	40%
CW	28	31%
REA	0.09	59%
FAT	0	14
ADG	0.11	98
DMI	1.53	57

CRSF FUTURE DIRECTION9142
 LAUBACH COLLEEN 21311519385
 LAUBACH COLLEEN 8031

MPPA: 102 Dam Age: 2/27/12

Pro	HB	GM	CED	BW	WW	YW	MILK	ME	HPG	CEM	STAY	
EPD	73	32	42	12	-2	47	71	24	-10	10	6	11
Top%	80	89	41	60%	47%	89%	91%	66%	11%	73%	79%	91%

ProS	HB	GM	CED	BW	WW	YW	MILK	ME	HPG	CEM	STAY	
EPD	44	20	24	12	-2	38	56	22	0	12	7	9
Top%	98	97	77	66%	47%	97%	98%	79%	35%	32%	41%	96%

58 LAUBACH FLO MARIE 2150

C 3/19/22 A — 100% AR% Ratio Data
 4LRA / 2150 # 4670825

Act. BW	68	52
Adj. WW	94	544
Adj. YW		
SC	Frame	

BROWN SYNERGY X7838
RED SYNERGY 7413826723
RED EVIE 2070

EPD	Top%	Data
MARB	0.33	70%
YG	0.08	60%
CW	24	45%
REA	-0.02	81%
FAT	0	22
ADG	0.07	99
DMI	1.57	60

SIX MILE TIMBERLAKE 180T
 LAUBACH FLO MARIE 30531611678
 SRR FLO-MARIE 150-185

MPPA101 Dam Age: 1/31/13

61 LAUBACH 211

211

ID: LAUBACH 211
SIRE: FISCHER CALVARY 937
WW: 564

Act. BW		
Adj. WW		
Adj. YW		
SC	Frame	

EPD	Top%	Data
MARB		
YG		
CW		
REA		
FAT		
ADG		
DMI		

MPPA Dam Age:

ProS	HB	GM	CED	BW	WW	YW	MILK	ME	HPG	CEM	STAY	
EPD	39	21	19	18	-6.5	32	44	23	2	13	11	8
Top%	99	96	86	3%	1%	99%	99%	71%	40%	17%	2%	98%

ProS	HB	GM	CED	BW	WW	YW	MILK	ME	HPG	CEM	STAY	
EPD												
Top												

59 LAUBACH JESS 2157

C 3/22/22 A — 100% AR% Ratio Data
 4LRA / 2157 # 4720741

Act. BW	76	
Adj. WW	663	
Adj. YW		
SC	Frame	

LEACHMAN PLEDGE A282Z
CLZB C5053500285
CLZB LANA 3046

EPD	Top%	Data
MARB	0.46	38%
YG	-0.05	7%
CW	25	40%
REA	0.34	13%
FAT	0	11
ADG	0.14	93
DMI	2.01	92

GMRA OUT WEST 4251
 LAUBACH JESS 70723746871
 CLARK JESS 1104-1309

MPPA91 Dam Age: 1/26/17

62 LAUBACH 213

213

ID: LAUBACH 213
SIRE: CLZB PLEDGE C505
WW: 517

Act. BW		
Adj. WW		
Adj. YW		
SC	Frame	

EPD	Top%	Data
MARB		
YG		
CW		
REA		
FAT		
ADG		
DMI		

MPPA Dam Age:

ProS	HB	GM	CED	BW	WW	YW	MILK	ME	HPG	CEM	STAY	
EPD	48	17	31	13	-2.3	46	69	19	14	12	8	12
Top%	97	98	63	53%	41%	90%	92%	94%	96%	39%	35%	88%

ProS	HB	GM	CED	BW	WW	YW	MILK	ME	HPG	CEM	STAY	
EPD												
Top												

—OPEN YEARLING RED ANGUS HEIFERS—

63 LAUBACH 215

# 215		Ratio	Data
ID: LAUBACH 215 SIRE: FISCHER CALVARY 937 WW: 524		Act. BW	
		Adj. WW	
		Adj. YW	
		SC	Frame
		EPD	Top%
		MARB	
		YG	
		CW	
		REA	
		FAT	
		ADG	
		DMI	
MPP	Dam Age:		
ProS	HB	GM	CED
BW	WW	YW	MILK
ME	HPG	CEM	STAY
EPD			
Top			



64 LAUBACH 216

# 216		Ratio	Data
ID: LAUBACH 216 SIRE: CLZB PLEDGE C505 WW: 633		Act. BW	
		Adj. WW	
		Adj. YW	
		SC	Frame
		EPD	Top%
		MARB	
		YG	
		CW	
		REA	
		FAT	
		ADG	
		DMI	
MPP	Dam Age:		
ProS	HB	GM	CED
BW	WW	YW	MILK
ME	HPG	CEM	STAY
EPD			
Top			

66 LAUBACH 212

# 212		Ratio	Data
ID: LAUBACH 212 SIRE: RED SYNERGY 741 WW: 578		Act. BW	
		Adj. WW	
		Adj. YW	
		SC	Frame
		EPD	Top%
		MARB	
		YG	
		CW	
		REA	
		FAT	
		ADG	
		DMI	
MPPA	Dam Age:		
ProS	HB	GM	CED
BW	WW	YW	MILK
ME	HPG	CEM	STAY
EPD			
Top			



67 LAUBACH 214

# 214		Ratio	Data
ID: LAUBACH 214 WW: 557		Act. BW	
		Adj. WW	
		Adj. YW	
		SC	Frame
		EPD	Top%
		MARB	
		YG	
		CW	
		REA	
		FAT	
		ADG	
		DMI	
MPPA	Dam Age:		
ProS	HB	GM	CED
BW	WW	YW	MILK
ME	HPG	CEM	STAY
EPD			
Top			

65 LAUBACH 210

# 210		Ratio	Data
ID: LAUBACH 210 SIRE: FISCHER CALVARY 937 WW: 556		Act. BW	
		Adj. WW	
		Adj. YW	
		SC	Frame
		EPD	Top%
		MARB	
		YG	
		CW	
		REA	
		FAT	
		ADG	
		DMI	
MPP	Dam Age:		
ProS	HB	GM	CED
BW	WW	YW	MILK
ME	HPG	CEM	STAY
EPD			
Top			

68 LAUBACH 2120

# 2120		Ratio	Data
ID: LAUBACH 2120 SIRE: CLZB PLEDGE C505 BD: 2/25/2022 BW: 85 WW: 570		Act. BW	
		Adj. WW	
		Adj. YW	
		SC	Frame
		EPD	Top%
		MARB	
		YG	
		CW	
		REA	
		FAT	
		ADG	
		DMI	
MPPA	Dam Age:		
ProS	HB	GM	CED
BW	WW	YW	MILK
ME	HPG	CEM	STAY
EPD			
Top			

PARAMOUNT

Elevate to a more valuable female.

For over a decade, Red Angus females have commanded more at auction than all other breeds, including Angus. According to Superior Livestock data, Red Angus heifers brought nearly \$17/cwt more – that equates to a \$92/head premium on a weaned replacement female.

To learn more about industry-leading stayability, visit RedAngus.org



RED ANGUS
RANCH TESTED. RANCHER TRUSTED.

—NOTES—

RED CHOICE

To learn more about Red Choice and how to enroll heifers, visit RedAngus.org.

RED ANGUS
RANCH TESTED. RANCHER TRUSTED.

Use Red Choice to improve heifer development, increase marketing opportunities for Red Angus females and create reliable sources of high-quality replacement heifers for cattle producers.

Red Choice Requirements

- Heifers Enrolled in a Red Angus Value-Added Program
- Vaccination Protocol
- Pelvic Measurement/Tract Score
- Phenotypic Assessment
- Planned Mating to Eligible Sires
- Pregnancy Exam

Producers can put premium Red Choice females to work in their herd with the confidence these females have been managed and raised to the highest quality standards possible.



—THANK YOU, CUSTOMERS & FRIENDS—



*Thank you
for coming to our sale!
Your support is greatly appreciated!*

♥

*A special thanks for all the help of
our friends and family, without you,
this would not be possible!*





LAUBACH RED ANGUS
P.O. BOX 530
BIG TIMBER, MT 59011



CHECK OUT LAUBACH RED ANGUS
ON FACEBOOK,
INSTAGRAM, OR VISIT OUR
WEBSITE FOR MORE INFO &
PICTURES!

PLEASE BRING THIS CATALOG TO THE SALE



LAUBACH STOCKMARKET 2014



LAUBACH DOMAIN 2035



LAUBACH PLEDGE 2066



LAUBACH 2074



LAUBACH CALVARY 2109



LAUBACH AQUILA 2031



LAUBACH RED 2038



LAUBACH AUBREE 2056



LAUBACH COLLEEN 2165

BID ONLINE: www.FrontierLiveSale.com