



11th Annual Bull & Female Sale

SELLING

65 Yearling Bulls

(59 Red Angus Bulls, 4 Black Angus Bulls, 2 Sim-Angus Bulls)

10 Two year old Red Angus Bulls

10 Bred Heifers

5 Bred Cows

RED ANGUS • BLACK ANGUS • SIM-ANGUS

MONDAY, FEBRUARY 27, 2023 • 2 PM MST

At our sale facility in Meadow, South Dakota

Welcome!



Fellow Cattle Producers,

Welcome to our 11th Annual Sale! We are entering exciting times in the cattle industry. We believe this offering of bulls and females will push any program in the right direction and help capitalize on the good times ahead!

Over the last couple of years we have been adding some black angus genetics in our embryo program and for the first time will be offering some bulls in our sale. While red angus will continue to be our main focus, we are excited to branch out and offer another breed!

As always we continue to use all of the tools at our disposal. This includes observations at calving including foot, udder, and disposition scores on the dams. Every bull will also sell DNA evaluated insuring accuracy of EPDS and parentage. All of the bulls have also been evaluated by Top Dollar Angus and many of them qualify for this value added program.

We will once again be hosting our sale at our sale facility in Meadow, S.D. All of the cattle will be available for viewing the day before the sale. Of course we welcome visitors to our ranch anytime to view the cattle prior to the sale.

Please don't hesitate to call and discuss any lots that may work best in your program!

Thank you for your interest,

Brad Schecher
Cell: (605) 430-2787



**Brooke & Brad
Kashton, & Hazyn**



Joan & Larry



Mike Mays





AUCTIONEER:

Seth Weishaar 605-210-1124

SALE DAY REPRESENTATIVES:



Cattle Business Weekly
Kadon Leddy 605-924-0757

Tri State Livestock News
Scott Dirk 605-380-6024



SALE DAY PHONE NUMBERS:

Brad Schecher 605-430-2787 | Larry Schecher 605-484-6446

Sale Barn Phone 605-788-2500



Sale Information

> TWO YEAR BREEDING GUARANTEE:

We guarantee all of our bulls to be fertile and sound for their first TWO breeding seasons. This guarantee does not cover death and is void if improper management is apparent.

- Year one through October 1st 2023: We will provide a back-up bull or credit the full cost of the bull minus salvage value to the next years sale.
 - o Example: You pay \$5,000 for a bull and an injury occurs. He pounds out for \$1200. You would receive a \$3800 credit.
- Year two, Oct 1st 2023 through Oct. 1st 2024: One-third of the full cost of the bull minus salvage value will be credited toward the next years sale.
 - o Example: You pay \$5,000 for a bull and an injury occurs. He pounds out for \$1,200. You would receive a \$1,266 credit.

> ABSENTEE BIDS:

Internet Bidding:

Phone Bidding:

If you wish to bid on the phone you may contact Brad or any of the sale staff to discuss different options.

We will contact any successful absentee bidders the day after the bull sale for purchase conformation and delivery arrangements.

This sale will be broadcast live on the internet.



www.dvauction.com

> ANNOUNCEMENTS:

Announcements from the auction block will take precedence over any information contained in this catalog

> VIDEO:

A video of each lot offered in the sale will be available at

www.dvauction.com

> SUPPLEMENT SHEET:

A supplement sheet will be available including actual scrotal measurements and updated information the week before the sale.

> BREEDING SOUNDNESS EXAM:

All bulls sell as guaranteed breeders. The bulls will be examined by West River Veterinary Clinic, prior to the sale, to determine they are developing correctly for their age. We highly recommend you have these bulls tested closer to your turnout time. We guarantee they pass a fertility test by turnout time.

> RETAINED INTEREST:

We are retaining 1/2 revenue sharing semen interest in all bulls in the sale.

> DELIVERY AND BOARDING:

BULLS:

OPTION 1 – We will provide free keep on the bulls until April 15th and deliver them free within a 300 mile radius. For distances further than 300 miles bulls will be delivered at a fair price to central locations.

OPTION 2 - We will provide free keep on the bulls until June 1st if picked up from the ranch.

OPTION 3 - Receive a \$200 discount on any bulls picked up on sale day

FEMALES: Transportation for the open heifers and bred cows can be arranged with buyer responsible for delivery cost.

Complimentary lunch will be served.





**OUR SALE FACILITY LOCATED
ALONG HIGHWAY 20 IN MEADOW, S.D.**

DVAuction

Broadcasting Real-Time Auctions

Never Miss An Auction Again!
Watch & Bid online for FREE!

**Visit www.DVAuction.com
and Register Today!**

For General Questions Please Contact Our Office:
(402) 316-5460 or support@dvauction.com



WE DEVELOP ATHLETES!

- **Our bulls are developed in a pasture setting which allows for plenty of exercise.**
- **They are developed at a modest rate of gain which produces a bull ready for a long life of productive service.**
- **Our development pasture is lined with high tensile electric, which creates respect for other fences later in life.**
- **Bulls are backed by a two year breeding guarantee.**



The Top Cut



Lot 1



Lot 2

LOT 1 LONE TREE POWER PLAY K024

REG#4668297 BD: 1/26/2022 Cat: A

BIEBER CL ATOMIC C218
BIEBER CL ENERGIZE F121
 BIEBER CL ADELLE 575D

3SCC DOMAIN A163
LONE TREE LONDA H113
 LONE TREE LONDA B074

BW/RATIO	78	101
WW/RATIO	683	113
YW/RATIO	1173	110
ADG/RATIO	3.1	105
MB/RATIO	3.2	114
REA/RATIO	10.4	88
AOD/MPPA	2	105

	ProS	HB	GM	CED	BW	WW	YW	MM	ME	HPG	CEM	STAY	Marb	REA
EPD	79	33	46	12	-1.7	69	116	31	4	11	6	13	0.3	0.3
PCTL	73	87	32	57	53	19	14	10	56	58	80	79	79	13

LOT 2 LONE TREE STAGECOACH K084

REG#4668249 BD: 2/12/2022 Cat: A

MR COACH 20003
MR COACH 1296
 M R ROYAL 4077S

CRUMP ONE OF A KIND 7789
LONE TREE BERTHA G159
 LONE TREE BERTHA D053

BW/RATIO	85	105
WW/RATIO	683	113
YW/RATIO	1204	112
ADG/RATIO	3.2	111
MB/RATIO	2.3	81
REA/RATIO	12.6	107
AOD/MPPA	3	107

	ProS	HB	GM	CED	BW	WW	YW	MM	ME	HPG	CEM	STAY	Marb	REA
EPD	113	86	26	12	-1	76	127	27	4	13	8	19	0.2	0.1
PCTL	20	5	74	58	67	6	5	40	55	19	35	8	94	61

Energize has been producing some of the top herd bull prospects in the breed and Lone Tree Power Play K024 is a prime example. He exhibits a wide base with extra volume. His Domain sired dam hit it out of the park, raising the 3rd heaviest weaning weight bull of this offering. If you're looking for an extra shot of performance here's a herd bull that should deliver.

Mr Coach was utilized by Crump Red Angus a few years ago as a complete out cross to the red angus breed. We also decided to use a few straws in our AI Program and had good results! Lone Tree Stage Coach K084 is picture perfect, structurally correct and exhibits the length we all like to see. He pulled off the #4 205 WW and the #6 365 YW of all the bulls. It's hard to let this herd sire prospect go!

RED ANGUS BULLS



The Top Cut



LOT 3 LONE TREE ORACLE K168

REG#4668019 BD: 3/5/2022 Cat: A

BROWN ORACLE B112
LONE TREE ORACLE G033
 LSF RAINDANCE U8038 Z2112

BASIN EXT 5233
LSF COUNTESS T7211 Z2128
 LSF COUNTESS K1490 T7211



BW/RATIO	83	99
WW/RATIO	696	115
YW/RATIO	1232	115
ADG/RATIO	3.3	114
MB/RATIO	3.6	128
REA/RATIO	12.2	103
AOD/MPPA	10	104

	ProS	HB	GM	CED	BW	WW	YW	MM	ME	HPG	CEM	STAY	Marb	REA
EPD	101	40	62	10	-0.9	77	126	30	12	11	6	14	0.7	0.2
PCTL	35	78	11	88	68	6	5	15	93	57	64	67	10	27

Lot 3 has also caught our attention, rising to the top spot in several categories. This heavy muscled bull pulled off the #1 205 WW, the #1 365 YW, the #9 ADG, and the #7 adjusted IMF of all the bulls offered! Look no further for some of the top performing red angus genetics in the country!

LOT 4 LONE TREE STOCKMARKET K020

REG#4668303 BD: 1/25/2022 Cat: A

PIE STOCKMAN 4051
BIEBER CL STOCKMARKET E119
 BIEBER CL ADELLE 475C

FEDDES BRUNSWICK D202
LONE TREE GARDNER H069
 LONE TREE GARDNER B019

BW/RATIO	84	108
WW/RATIO	675	112
YW/RATIO	1228	115
ADG/RATIO	3.4	118
MB/RATIO	3.4	119
REA/RATIO	12.6	107
AOD/MPPA	2	105

	ProS	HB	GM	CED	BW	WW	YW	MM	ME	HPG	CEM	STAY	Marb	REA
EPD	136	77	59	12	-0.6	90	149	25	10	9	8	19	0.9	0.3
PCTL	4	12	14	54	74	1	1	57	85	90	29	8	30	13

Lot 4 is the definition of a powerhouse. He has true masculinity, loaded with red meat and muscle. His is wide topped and as deep as they come. He was the #6 205 WW, #2 YW, and had the 7th highest ADG. His dam sells as lot 86.



The Top Cut



LOT 5 LONE TREE TRIFECTA K138

REG#4668061 BD: 2/22/2022 Cat: 2 Black Red Carrier

SPUR FRANCHISE 7070
SPUR FRANCHISE OF GARTON
 H & H IRENE LASS 0135

BSKF TRENDSETTER U222
LONE TREE ROSIE A012
 TJS RED HONESTY X048



BW/RATIO	89	106
WW/RATIO	679	112
YW/RATIO	1214	113
ADG/RATIO	3.3	114
MB/RATIO	3.0	106
REA/RATIO	13.7	116
AOD/MPPA	9	106

	ProS	HB	GM	CED	BW	WW	YW	MM	ME	HPG	CEM	STAY	Marb	REA
EPD	175	99	76	14	-1.5	70	121	33	7	12	9	22	0.7	0.7
PCTL	1	1	3	38	57	17	8	4	71	35	19	1	9	1

LOT 6 LONE TREE ONE OF A KIND K147

REG#4668261 BD: 2/27/2022 Cat: A

PIE ONE OF A KIND 352
CRUMP ONE OF A KIND 7789
 MLK CRK SHEBA 048

LONE TREE TRILOGY D057
LONE TREE CAROL G138
 LONE TREE CAROL E004

BW/RATIO	86	106
WW/RATIO	650	108
YW/RATIO	1179	110
ADG/RATIO	3.3	113
MB/RATIO	3.2	114
REA/RATIO	12.0	101
AOD/MPPA	3	106

	ProS	HB	GM	CED	BW	WW	YW	MM	ME	HPG	CEM	STAY	Marb	REA
EPD	111	87	24	14	-2.2	83	130	35	6	15	9	17	0.4	0.2
PCTL	22	5	78	28	43	2	3	1	70	5	10	25	50	46

I love it when a plan comes together. Lone Tree Trifecta K138 may be the breed impact sire we have been searching for. When you study the data you will find he had the #5 205 WW, the #4 365 YW, the #10 ADG, and the #2 REA of all of the 2022 bull calves. It doesn't stop there, he has the #1 ProS EPD, the #1 HB EPD, the #1 GM EPD, and the #1 Stay EPD of all the bulls offered. This correlated into rankings of a top 1% ProS, top 1% HB, top 3% GM, and top 1% Stay!

Lot 6 combines some of the best genetics of Pie One of a Kind 352 and GMRA Trilogy in a cherry red package. Just look at those ratios earning a 108 WR, a 110 YR and a 113 YR! If you're looking for some consistent performance here's your bull.

RED ANGUS BULLS



The Top Cut



LOT 7 LONE TREE GRINDSTONE K112

REG#4668147 BD: 2/17/2022 Cat: A

HXC ALLEGIANCE 5502C
HXC GRINDSTONE 9908G
 HXC 605D

LONE TREE THOR C014
LONE TREE VALENKA E070
 MCCR VALENKA 0038



BW/RATIO	86	101
WW/RATIO	604	102
YW/RATIO	1081	102
ADG/RATIO	3.0	103
MB/RATIO	3.4	113
REA/RATIO	12.7	108
AOD/MPPA	5	99

	ProS	HB	GM	CED	BW	WW	YW	MM	ME	HPG	CEM	STAY	Marb	REA
EPD	136	78	58	10	-2.5	65	104	26	4	13	5	20	0.6	0.6
PCTL	4	11	15	85	37	32	35	49	56	19	91	6	14	2

We kick off the grindstone bulls by bringing you lot 7. To make it in the top 8, these bulls have to stand out, and it was hard to miss this bull's awesome phenotype and dark cherry red color. When you look at the EPDS, you'll find an impressive set ranking in the top 4% for ProS, top 11% HB and top 6% for Stay!

LOT 8 LONE TREE GRINDSTONE K072

REG#4668091 BD: 2/10/2022 Cat: A

HXC ALLEGIANCE 5502C
HXC GRINDSTONE 9908G
 HXC 605D

TBLC 605 CHEYENNE 146
TBLC MISS 146 CHEYENNE 452
 TBLC MISS TANK 988

BW/RATIO	79	93
WW/RATIO	620	103
YW/RATIO	1112	104
ADG/RATIO	3.1	105
MB/RATIO	2.9	104
REA/RATIO	11.7	99
AOD/MPPA	8	105

	ProS	HB	GM	CED	BW	WW	YW	MM	ME	HPG	CEM	STAY	Marb	REA
EPD	111	66	45	14	-3.8	63	103	28	12	12	8	18	0.5	0.1
PCTL	22	28	34	36	17	42	38	26	93	30	39	14	29	60

Lot 8 comes from a great producing dam that has earned a 106 WR on 6 calves, a 107 YR on 4 calves, and a 103 REA ratio on 4 calves. This bull calf earned a top place in the sale and offers a good spread from a 79lb BW to a 620lb WW.

BIEBER CL STOCKMARKET E119

SIRE GROUP

LOTS 9-11



LOT 9 LONE TREE STOCKMARKET K014

REG#4668295 BD: 1/24/2022 Cat: A

PIE STOCKMAN 4051
BIEBER CL STOCKMARKET E119
 BIEBER CL ADELLE 475C

LSF SRR GRAND PRAIRIE 7039E
LONE TREE XANDU H093
 LONE TREE XANDU A024

BW/RATIO	65	86
WW/RATIO	630	104
YW/RATIO	1039	97
ADG/RATIO	2.6	87
MB/RATIO	3.0	107
REA/RATIO	12.1	103
AOD/MPPA	2	102

	ProS	HB	GM	CED	BW	WW	YW	MM	ME	HPG	CEM	STAY	Marb	REA
EPD	113	71	42	17	-5.2	63	102	30	8	10	9	19	0.7	0.1
PCTL	19	19	41	7	5	39	38	16	80	75	10	11	9	47

Calving ease deluxe without sacrificing performance. His actual BW of 65 lbs.



LOT 10 LONE TREE STOCKMARKET K013

REG#4668339 BD: 1/24/2022 Cat: A

PIE STOCKMAN 4051
BIEBER CL STOCKMARKET E119
 BIEBER CL ADELLE 475C

LSF SRR GRAND PRAIRIE 7039E
LONE TREE TILLY H006
 LONE TREE TILLY F098



BW/RATIO	60	79
WW/RATIO	619	102
YW/RATIO	1109	104
ADG/RATIO	3.1	105
MB/RATIO	4.3	152
REA/RATIO	12.0	102
AOD/MPPA	2	101

	ProS	HB	GM	CED	BW	WW	YW	MM	ME	HPG	CEM	STAY	Marb	REA
EPD	134	68	65	19	-6.3	71	115	28	8	10	10	18	0.8	0.4
PCTL	5	24	8	2	2	15	15	26	78	71	6	21	3	12

Appreciate the huge spread on this bull. He ranks #2 for CED and #1 for BW in this offering yet he posts above average growth ratios across the board. Also note his top 3% Marbling and top 12% REA and #2 IMF ranking in this sale for capitalizing on carcass premiums.

LOT 11 LONE TREE STOCKMARKET K037

REG#4668335 BD: 1/29/2022 Cat: A

PIE STOCKMAN 4051
BIEBER CL STOCKMARKET E119
 BIEBER CL ADELLE 475C

LSF SRR PEDIGREE 5053C
LONE TREE CHEYENNE H182
 LONE TREE CHEYENNE F071



BW/RATIO	86	111
WW/RATIO	580	98
YW/RATIO	1075	102
ADG/RATIO	3.1	106
MB/RATIO	3.0	101
REA/RATIO	10.2	86
AOD/MPPA	2	99

	ProS	HB	GM	CED	BW	WW	YW	MM	ME	HPG	CEM	STAY	Marb	REA
EPD	118	52	66	11	-1.6	82	135	23	12	10	8	15	0.9	0.2
PCTL	15	56	8	77	55	2	2	78	93	69	37	50	2	29

He's #1 in the sale for highest Marbling EPD and proved he can also compete on performance with a 106 ADG Ratio. He posts a top 2% WW EPD and top 2% YW EPD.

RED ANGUS BULLS



LONE TREE DAKOTA H037

SIRE GROUP

LOTS 12-25

LOT 12 LONE TREE DAKOTA K151

REG#4668081 BD: 2/27/2022 Cat: A

FEDDES BRUNSWICK D202
LONE TREE DAKOTA H037
 LSF DELLA X0090 Z2101

FEDDES BIG SKY R9
TBLC MISS BIG SKY 4021
 TBLC TANK 852

BW/RATIO	65	TWN
WW/RATIO	627	TWN
YW/RATIO	1069	TWN
ADG/RATIO	2.8	TWN
MB/RATIO	2.7	TWN
REA/RATIO	11.8	TWN
AOD/MPPA	8	99

	ProS	HB	GM	CED	BW	WW	YW	MM	ME	HPG	CEM	STAY	Marb	REA
EPD	116	74	42	11	-1.2	72	117	20	7	12	6	19	0.4	0.3
PCTL	17	16	41	68	63	12	13	93	71	38	68	10	53	24



Lot 12

We lead off the Dakota group with this thick made son. Check out that spread on this guy going from a 65lb BW to a 627 lb WW!

LOT 13 LONE TREE DAKOTA K199

REG#4668009 BD: 3/16/2022 Cat: A

FEDDES BRUNSWICK D202
LONE TREE DAKOTA H037
 LSF DELLA X0090 Z2101

PIE CONTENDER 960
LSF RR CRYSTAL T7128 Y1366
 LSF CRYSTAL LA394 T7128



BW/RATIO	87	104
WW/RATIO	628	106
YW/RATIO	1095	104
ADG/RATIO	2.9	100
MB/RATIO	2.4	80
REA/RATIO	12.9	110
AOD/MPPA	11	103

	ProS	HB	GM	CED	BW	WW	YW	MM	ME	HPG	CEM	STAY	Marb	REA
EPD	134	78	56	8	-1.5	64	102	26	4	11	3	22	0.7	0.6
PCTL	5	12	17	96	57	38	39	49	58	52	98	1	11	2



Lot 13

He had a WW ratio of 106 from an 11 year old dam who still gets it done with a 103 MPPA on 9 calves. He has the 6th highest REA in this offering.

LOTS 12-25 LONE TREE DAKOTA H037 SIRE GROUP

LOT 14 LONE TREE DAKOTA K143

REG#4668233 BD: 2/24/2022 Cat: A

FEDDES BRUNSWICK D202
LONE TREE DAKOTA H037
 LSF DELLA X0090 Z2101

CRUMP ONE OF A KIND 7789
LONE TREE LONDA G149
 LONE TREE LONDA B074

BW/RATIO	87	107
WW/RATIO	567	94
YW/RATIO	1151	107
ADG/RATIO	3.6	125
MB/RATIO	2.5	90
REA/RATIO	11.6	98
AOD/MPPA	3	99

	ProS	HB	GM	CED	BW	WW	YW	MM	ME	HPG	CEM	STAY	Marb	REA
EPD	110	83	27	9	1.1	74	122	27	8	11	5	21	0.3	0
PCTL	23	7	73	90	93	9	8	35	79	48	89	1	75	76

Top 9% WW and top 8% YW EPD and the #2 ADG in this sale to ratio 125.



LOT 15 LONE TREE DAKOTA K163

REG#4668039 BD: 3/3/2022 Cat: A

FEDDES BRUNSWICK D202
LONE TREE DAKOTA H037
 LSF DELLA X0090 Z2101

LSF JBOB EXPECTATION 6034S
LSF CRYSTAL LA394 Z2251
 LSF CRYSTAL G1382 LA394



BW/RATIO	74	88
WW/RATIO	589	97
YW/RATIO	1080	101
ADG/RATIO	3.1	105
MB/RATIO	2.2	80
REA/RATIO	12.6	107
AOD/MPPA	10	100

	ProS	HB	GM	CED	BW	WW	YW	MM	ME	HPG	CEM	STAY	Marb	REA
EPD	134	76	58	14	-4.4	59	102	25	7	14	8	18	0.7	0.3
PCTL	5	14	14	34	11	57	40	52	74	8	26	18	11	26

With a YW Ratio at 101 and ADG Ratio at 107 his 10 year old dam is still hitting her marks!



LOT 16 LONE TREE DAKOTA K133

REG#4668049 BD: 2/21/2022 Cat: A

FEDDES BRUNSWICK D202
LONE TREE DAKOTA H037
 LSF DELLA X0090 Z2101

BOWDEN LANCER B69
1228 SLTR
 BOWDEN SIERRA B503

BW/RATIO	84	100
WW/RATIO	593	98
YW/RATIO	1109	104
ADG/RATIO	3.2	110
MB/RATIO	2.3	82
REA/RATIO	13.1	111
AOD/MPPA	10	103

	ProS	HB	GM	CED	BW	WW	YW	MM	ME	HPG	CEM	STAY	Marb	REA
EPD	86	47	38	11	-1.6	64	100	27	6	9	4	17	0.6	0.3
PCTL	61	65	48	76	55	35	43	39	66	86	96	24	18	17

This guy ranks #4 out of the bulls for REA to ratio 111. His 10 year old dam sports a 103 MPPA on 8 calves. YW and ADG Ratios exhibit good performance.

LOT 17 LONE TREE DAKOTA K191

REG#4668005 BD: 3/12/2022 Cat: A

FEDDES BRUNSWICK D202
LONE TREE DAKOTA H037
 LSF DELLA X0090 Z2101

LSF JBOB EXPECTATION 6034S
LSF RR HAZEL 9010 Y1307
 LACY HAZEL 9010



BW/RATIO	77	92
WW/RATIO	592	98
YW/RATIO	1083	101
ADG/RATIO	3.1	105
MB/RATIO	2.8	100
REA/RATIO	12.5	106
AOD/MPPA	11	104

	ProS	HB	GM	CED	BW	WW	YW	MM	ME	HPG	CEM	STAY	Marb	REA
EPD	158	102	56	14	-1.7	63	110	28	8	14	7	23	0.5	0.4
PCTL	1	1	17	34	53	42	22	30	81	10	52	1	30	9

The dam to Lot 17 has been a superstar, earning a 104 WR on 9 calves, a 107 YR on 8 calves, and 111 REA ratio on 8 calves.

RED ANGUS BULLS

LOTS 12-25 LONE TREE DAKOTA H037 SIRE GROUP

LOT 18 LONE TREE DAKOTA K196

REG#4668117 BD: 3/15/2022 Cat: A

FEDDES BRUNSWICK D202
LONE TREE DAKOTA H037
LSF DELLA X0090 Z2101

LSF RR STACKED 2311Z
LONE TREE ROSE C094
TJS ROSE X034



BW/RATIO	97	114
WW/RATIO	645	107
YW/RATIO	1130	106
ADG/RATIO	3.0	104
MB/RATIO	2.2	77
REA/RATIO	13.0	110
AOD/MPPA	7	101

	ProS	HB	GM	CED	BW	WW	YW	MM	ME	HPG	CEM	STAY	Marb	REA
EPD	116	54	62	7	1.4	82	137	28	10	13	4	16	0.5	0.5
PCTL	16	51	11	97	95	2	1	27	87	24	94	36	25	5

If you need to add ribeye area, this bull may be the ticket, scanning the 5th largest ribeye area of the offering!

LOT 19 LONE TREE DAKOTA K153

REG#4668105 BD: 2/28/2022 Cat: A

FEDDES BRUNSWICK D202
LONE TREE DAKOTA H037
LSF DELLA X0090 Z2101

BIEBER H HUGHES W109
LONE TREE DELLA C050
1232 SLTR

BW/RATIO	79	93
WW/RATIO	608	103
YW/RATIO	1030	98
ADG/RATIO	2.64	91
MB/RATIO	1.74	58
REA/RATIO	12.48	106
AOD/MPPA	7	100

	ProS	HB	GM	CED	BW	WW	YW	MM	ME	HPG	CEM	STAY	Marb	REA
EPD	121	80	41	14	-2.2	75	127	27	8	12	10	18	0.38	0.19
PCTL	13	10	43	28	43	8	5	33	80	44	8	15	58	37

This guy could sire an awesome set of feeder cattle with his top 8% WW and top 5% YW and 106 REA ratio.

LOT 20 LONE TREE DAKOTA K181

REG#4668001 BD: 3/7/2022 Cat: A

FEDDES BRUNSWICK D202
LONE TREE DAKOTA H037
LSF DELLA X0090 Z2101

LSF JBOB EXPECTATION 6034S
LSF COVER GIRL LA414 Y1405
LSF LOGAN H1375 LA414

BW/RATIO	81	97
WW/RATIO	630	106
YW/RATIO	1039	98
ADG/RATIO	2.54	88
MB/RATIO	3.15	105
REA/RATIO	11.49	97
AOD/MPPA	11	104

	ProS	HB	GM	CED	BW	WW	YW	MM	ME	HPG	CEM	STAY	Marb	REA
EPD	147	114	32	12	-3.4	62	98	30	6	15	8	23	0.65	0.23
PCTL	2	1	62	60	22	45	49	12	69	4	29	1	11	29

Check out those maternal traits with his top 2% ProS, top 1% HB and top 1% Stay!



Lot 20

LOT 21 LONE TREE DAKOTA K194

REG#4668255 BD: 3/15/2022 Cat: A

FEDDES BRUNSWICK D202
LONE TREE DAKOTA H037
LSF DELLA X0090 Z2101

CRUMP ONE OF A KIND 7789
LONE TREE ROSIE G089
LONE TREE ROSIE D106



BW/RATIO	90	110
WW/RATIO	631	104
YW/RATIO	1079	101
ADG/RATIO	2.79	96
MB/RATIO	2.57	92
REA/RATIO	12.02	102
AOD/MPPA	3	100

	ProS	HB	GM	CED	BW	WW	YW	MM	ME	HPG	CEM	STAY	Marb	REA
EPD	139	87	52	11	0.3	82	134	27	8	13	6	20	0.47	0.42
PCTL	3	5	22	77	86	2	2	33	78	21	77	3	36	7

Big time performance with top 2% rankings for both WW and YW!

LOT 22 LONE TREE DAKOTA K120

REG#4668111 BD: 2/18/2022 Cat: A

FEDDES BRUNSWICK D202
LONE TREE DAKOTA H037
LSF DELLA X0090 Z2101

LSF SAGA 1040Y
LONE TREE DORA C033
1223 SLTR

BW/RATIO	79	93
WW/RATIO	564	93
YW/RATIO	1023	96
ADG/RATIO	2.87	98
MB/RATIO	2.03	72
REA/RATIO	11.72	99
AOD/MPPA	7	102

	ProS	HB	GM	CED	BW	WW	YW	MM	ME	HPG	CEM	STAY	Marb	REA
EPD	103	88	15	13	-1.8	62	97	22	3	11	6	22	0.27	0.3
PCTL	33	4	91	52	50	43	51	79	47	67	79	1	84	18

The dam to lot 22 had been a consistent producer earning a 102 MPPA on 5 calves.

RED ANGUS BULLS

LOT 23 LONE TREE DAKOTA K158

REG#4668247 BD: 3/3/2022 Cat: A

FEDDES BRUNSWICK D202
LONE TREE DAKOTA H037
 LSF DELLA X0090 Z2101

CRUMP ONE OF A KIND 7789
LONE TREE ANASCO G047
 LONE TREE ANASCO D037



BW/RATIO	76	94
WW/RATIO	581	96
YW/RATIO	1003	94
ADG/RATIO	2.63	90
MB/RATIO	2.29	82
REA/RATIO	10.72	91
AOD/MPPA	3	101

	ProS	HB	GM	CED	BW	WW	YW	MM	ME	HPG	CEM	STAY	Marb	REA
EPD	139	84	55	12	-2.1	72	114	28	12	13	7	21	0.69	0.24
PCTL	3	7	18	60	44	13	17	27	92	21	61	2	8	27

This bull is backed by the great Anasco cow family, producing an excellent set of bulls and females for our program.



Maternal sister to lot 23 that sold in the Red Select sale this past December.

LOT 24 LONE TREE DAKOTA K113

REG#4667999 BD: 2/17/2022 Cat: A

FEDDES BRUNSWICK D202
LONE TREE DAKOTA H037
 LSF DELLA X0090 Z2101

SUNR SLAM DUNK 436W
LSF JIBA W9212 Y1134
 LSF JIBA K1004 W9212



BW/RATIO	86	102
WW/RATIO	549	91
YW/RATIO	1030	96
ADG/RATIO	2.99	102
MB/RATIO	2.51	89
REA/RATIO	11.3	96
AOD/MPPA	11	99

	ProS	HB	GM	CED	BW	WW	YW	MM	ME	HPG	CEM	STAY	Marb	REA
EPD	158	93	66	13	-0.7	72	122	24	3	11	8	21	0.46	0.65
PCTL	1	3	8	49	72	12	8	68	48	54	35	3	39	1

Big time numbers here with this bulls top 1% ProS, top 3% HB, and top 8% GM!



LOT 25 LONE TREE DAKOTA K146

REG#4668037 BD: 2/26/2022 Cat: A

FEDDES BRUNSWICK D202
LONE TREE DAKOTA H037
 LSF DELLA X0090 Z2101

BASIN EXT 5233
LSF LARKABA R5195 Z2200
 LSF LARKABA 59J R5195

BW/RATIO	78	93
WW/RATIO	545	90
YW/RATIO	1023	96
ADG/RATIO	2.97	102
MB/RATIO	2.02	72
REA/RATIO	11.24	95
AOD/MPPA	10	100

	ProS	HB	GM	CED	BW	WW	YW	MM	ME	HPG	CEM	STAY	Marb	REA
EPD	117	78	38	15	-3	59	94	28	11	11	9	20	0.45	0.54
PCTL	16	11	49	18	28	57	59	26	91	51	12	4	41	3

9 traits in the top 1/3 of the breed or better!



LSF SRR SMOOTH FACTOR 9212G

SIRE GROUP

LOTS 26-27

LOT 26 LONE TREE SMOOTH FACTOR K141

REG#4668275 BD: 2/24/2022 Cat: A

LSF MEW X-FACTOR 6693D
LSF SRR SMOOTH FACTOR 9212G
 LSF SRR DOROTHY 489 D6559

WFL MERLIN 018A
LONE TREE WIDELOAD H088
 LSF RR WIDELOAD N3195 Z2332



BW/RATIO	80	102
WW/RATIO	647	109
YW/RATIO	1209	115
ADG/RATIO	3.5	121
MB/RATIO	3.5	115
REA/RATIO	12.8	109
AOD/MPPA	2	104

	ProS	HB	GM	CED	BW	WW	YW	MM	ME	HPG	CEM	STAY	Marb	REA
EPD	104	40	64	16	-4.8	72	118	34	7	10	10	12	0.6	0.5
PCTL	31	77	9	13	8	12	11	2	70	69	9	84	19	3

We kick off the smooth factor sire group with a solid individual earning the #5 YW and #5 ADG! Check out that awesome spread going from a top 8% BW to a top 12% WW.

LOT 27 LONE TREE SMOOTH FACTOR K082

REG#4668299 BD: 2/12/2022 Cat: A

LSF MEW X-FACTOR 6693D
LSF SRR SMOOTH FACTOR 9212G
 LSF SRR DOROTHY 489 D6559

THOMAS JEFFERSON 55602
LONE TREE JUSTICE H075
 LONE TREE JUSTICE B030



BW/RATIO	74	95
WW/RATIO	636	105
YW/RATIO	1129	105
ADG/RATIO	3.1	105
MB/RATIO	3.5	126
REA/RATIO	12.2	103
AOD/MPPA	2	102

	ProS	HB	GM	CED	BW	WW	YW	MM	ME	HPG	CEM	STAY	Marb	REA
EPD	125	60	65	17	-3.5	70	116	28	6	12	10	15	0.6	0.4
PCTL	9	40	8	8	21	17	14	25	68	40	9	55	12	12

Excellent performance consistency for this bull with a 105 WW Ratio, 105 YW Ratio and 105 ADG Ratio. This Thomas Jefferson grandson also earns the #8 IMF of the 2022 bulls.



RED ANGUS BULLS

BIEBER CL ENERGIZE F121

SIRE GROUP

LOTS 28-30



LOT 28 LONE TREE ENGERGIZE K025

REG#4668327 BD: 1/26/2022 Cat: A

BIEBER CL ATOMIC C218
BIEBER CL ENERGIZE F121
 BIEBER CL ADELLE 575D

CRUMP ONE OF A KIND 7789
LONE TREE ROSIE H159
 LONE TREE ROSIE E086



BW/RATIO	61	81
WW/RATIO	590	99
YW/RATIO	1066	101
ADG/RATIO	3.0	102
MB/RATIO	4.4	146
REA/RATIO	10.5	89
AOD/MPPA	2	100

	ProS	HB	GM	CED	BW	WW	YW	MM	ME	HPG	CEM	STAY	Marb	REA
EPD	108	59	49	19	-5.7	62	104	30	7	13	11	15	0.6	0.2
PCTL	26	41	28	1	3	44	34	15	76	27	2	53	17	34

Wow! He ranks #1 in this offering for the highest IMF measurement, earning him an IMF ratio of 146! He also has one of the largest spreads going from a -5.7 BW to a 104 YW.



LOT 29 LONE TREE ENGERGIZE K086

REG#4668125 BD: 2/12/2022 Cat: A

BIEBER CL ATOMIC C218
BIEBER CL ENERGIZE F121
 BIEBER CL ADELLE 575D

BROWN PREMIER X7876
LONE TREE ANASCO D037
 BUF CRK ANASCO X179



BW/RATIO	73	86
WW/RATIO	548	91
YW/RATIO	1014	95
ADG/RATIO	2.9	100
MB/RATIO	3.9	140
REA/RATIO	11.1	94
AOD/MPPA	6	103

	ProS	HB	GM	CED	BW	WW	YW	MM	ME	HPG	CEM	STAY	Marb	REA
EPD	135	70	65	15	-4.4	67	110	30	10	13	8	18	0.6	0.3
PCTL	5	22	8	18	11	27	23	12	88	16	27	17	12	18

This bull is a maternal brother to our herd sire Lone Tree Pathfinder J071. His dam has had a solid production record earning a 103 WR on 5 calves, a 105 YR on 3 calves, and a 133 IMF ratio on 3 calves!

LOT 30 LONE TREE ENGERGIZE K127

REG#4668013 BD: 2/19/2022 Cat: A

BIEBER CL ATOMIC C218
BIEBER CL ENERGIZE F121
 BIEBER CL ADELLE 575D

SUNR SLAM DUNK 436W
LSF RR LAKOTA 7190 Z2342
 LACY LAKOTA 7190

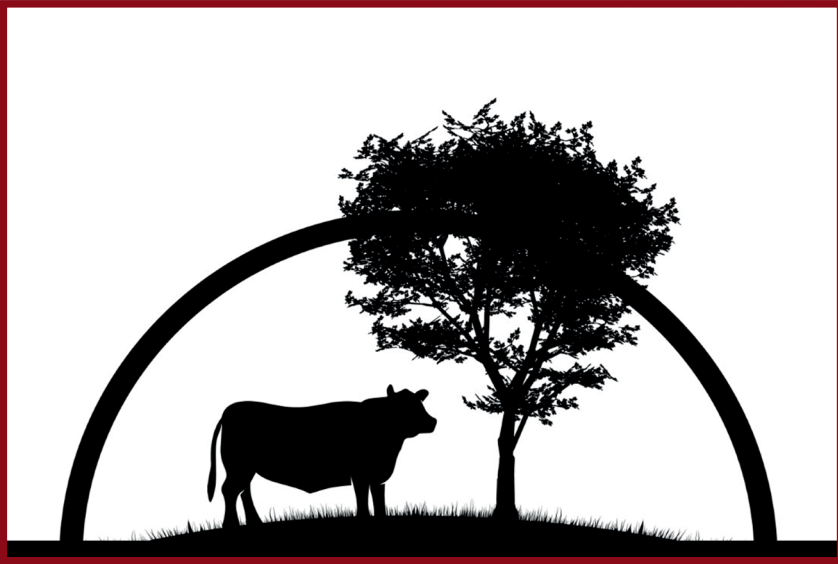


BW/RATIO	90	107
WW/RATIO	576	95
YW/RATIO	1021	95
ADG/RATIO	2.8	95
MB/RATIO	3.0	107
REA/RATIO	11.8	100
AOD/MPPA	10	103

	ProS	HB	GM	CED	BW	WW	YW	MM	ME	HPG	CEM	STAY	Marb	REA
EPD	95	48	48	12	-1.1	61	101	30	0	12	8	13	0.6	0.2
PCTL	45	64	30	55	65	49	41	15	30	42	39	76	19	32

Check out this guy's 107 IMF ratio to rank him in the top 19% of the breed for Marbling. His 10 year old dam has a 103 MPPA.

RED ANGUS BULLS



PIE CHAMPION 0126
SIRE GROUP
LOT 31

LOT 31 LONE TREE CHAMPION K202

REG#4668225 BD: 3/18/2022 Cat: A

PIE QUARTERBACK 789
PIE CHAMPION 0126
 PIE GUSTY 7007

BIEBER DEEP END B597
LONE TREE MISS ARROW G098
 1236 SLTR



BW/RATIO	76	93
VW/RATIO	686	116
YW/RATIO	1139	108
ADG/RATIO	2.8	97
MB/RATIO	2.4	80
REA/RATIO	12.4	105
AOD/MPPA	3	103

	ProS	HB	GM	CED	BW	WW	YW	MM	ME	HPG	CEM	STAY	Marb	REA
EPD	109	36	73	15	-2.2	78	125	35	11	12	8	13	0.7	0.3
PCTL	24	83	4	17	43	5	6	1	91	42	39	79	9	32



Lot 31 is a son from our new herd sire Pie Champion. Even though he was younger, he had no problem keeping up with his contemporaries to earn the 2nd highest WW of the bulls. His top 5% WW and top 6% YW EPD verify his exceptional performance genetics.



RED ANGUS BULLS

RED U2 TOWNSHIP 17G

SIRE GROUP

LOTS 32-34



LOT 32 LONE TREE TOWNSHIP K079

REG#4668195 BD: 2/11/2022 Cat: A

WS ALL-AROUND Z35
RED U2 TOWNSHIP 17G
 WS LITTLE SISTER W37

BROWN JYJ REDEMPTION Y1334
LONE TREE FIRE F035
 LONE TREE FIRE C026



BW/RATIO	83	98
WW/RATIO	552	93
YW/RATIO	1043	99
ADG/RATIO	3.1	108
MB/RATIO	3.5	117
REA/RATIO	10.6	90
AOD/MPPA	4	100

	ProS	HB	GM	CED	BW	WW	YW	MM	ME	HPG	CEM	STAY	Marb	REA
EPD	96	26	70	16	-3.1	76	123	25	6	12	9	9	0.5	0.8
PCTL	45	93	6	11	26	7	7	60	65	33	13	97	25	1



We kick off the Township sire group with a powerful individual, expressing a lot of depth, a wide top, and an awesome rear quarter. His top 11% CED and 26% BW EPDs spread to top 7% WW and 7% YW EPDs. He also lists his REA EPD in the top 1%.

LOT 33 LONE TREE TOWNSHIP K121

REG#4668069 BD: 2/18/2022 Cat: A

RED MRLA RESOURCE 137E
RED U2 TOWNSHIP 17G
 U2 BEAUTY 113Z

LSF RR STACKED 2311Z
LONE TREE BESSIE B056
 TLS BESSIE X0269

BW/RATIO	91	107
WW/RATIO	603	100
YW/RATIO	1085	101
ADG/RATIO	3.0	103
MB/RATIO	2.4	86
REA/RATIO	12.8	109
AOD/MPPA	8	106

	ProS	HB	GM	CED	BW	WW	YW	MM	ME	HPG	CEM	STAY	Marb	REA
EPD	90	51	39	9	0.1	63	100	31	4	13	5	15	0.4	0.3
PCTL	55	58	48	92	84	40	44	7	57	17	82	58	48	21

He's out of a high producing 8 year old dam with a 106 MPPA. His good growth ratios are complemented by his 109 REA Ratio,

LOT 34 LONE TREE TOWNSHIP K107

REG#4668191 BD: 2/17/2022 Cat: A

RED MRLA RESOURCE 137E
RED U2 TOWNSHIP 17G
 U2 BEAUTY 113Z

CRUMP MISSION STATEMENT 6187
LONE TREE LONDA F075
 LONE TREE LONDA C008

BW/RATIO	88	106
WW/RATIO	575	95
YW/RATIO	1048	98
ADG/RATIO	3.0	101
MB/RATIO	2.3	82
REA/RATIO	10.7	91
AOD/MPPA	4	101

	ProS	HB	GM	CED	BW	WW	YW	MM	ME	HPG	CEM	STAY	Marb	REA
EPD	69	34	35	8	1.5	73	133	29	3	15	7	11	0.1	0.2
PCTL	85	86	56	95	95	11	2	17	50	7	61	90	99	46

His ADG Ratio of 101 matches his dam's career performance of a 101 MPPA. Excellent WW, YW, Milk and HPG EPDs.

RED ANGUS BULLS



RREDS PATHFINDER F811

SIRE GROUP

LOTS 35-41

LOT 35 LONE TREE PATHFINDER K052

REG#4668259 BD: 2/4/2022 Cat: A

RREDS SENECA 731C
RREDS PATHFINDER F811
 RREDS KIMA D607

5L BOURNE 117-48A
LONE TREE BERTHA G017
 LONE TREE BERTHA E045

BW/RATIO	73	91
WW/RATIO	605	100
YW/RATIO	1143	107
ADG/RATIO	3.4	115
MB/RATIO	2.3	81
REA/RATIO	11.6	98
AOD/MPPA	3	106

	ProS	HB	GM	CED	BW	WW	YW	MM	ME	HPG	CEM	STAY	Marb	REA
EPD	94	61	33	16	-1.2	76	122	32	12	14	10	15	0.3	0.4
PCTL	47	37	61	12	63	6	7	5	93	12	7	55	73	11



He was born to lead this Pathfinder sire group with 107 YW Ratio, 115 ADG Ratio and his dam's production record of a 106 MPPA. Notice the CED, WW, YW, Milk, HPG and REA EPDs are all within the top 15% of the breed.

LOT 36 LONE TREE PATHFINDER K047

REG#4681221 BD: 2/4/2022 Cat: A

RREDS SENECA 731C
RREDS PATHFINDER F811
 RREDS KIMA D607

LSF SRR PEDIGREE 5053C
LONE TREE SIERRA G161
 LONE TREE SIERRA C092



BW/RATIO	64	
WW/RATIO	556	
YW/RATIO	1076	
ADG/RATIO	3.2	
MB/RATIO	3.2	
REA/RATIO	11.2	
AOD/MPPA	3	

	ProS	HB	GM	CED	BW	WW	YW	MM	ME	HPG	CEM	STAY	Marb	REA
EPD	97	45	52	10	-0.4	76	129	26	9	10	5	15	0.4	0.2
PCTL	42	70	22	83	77	6	4	50	84	75	84	49	61	34

His WW and YW EPDS rank in the top 6% and 4% respectively and his ADG was 11% above the herd average.

LOT 37 LONE TREE PATHFINDER K131

REG#4668201 BD: 2/20/2022 Cat: A

RREDS SENECA 731C
RREDS PATHFINDER F811
 RREDS KIMA D607

5L DEFENDER 560-30Z
LONE TREE DYNA F002
 LONE TREE DYNA D025

BW/RATIO	80	95
WW/RATIO	572	96
YW/RATIO	1066	101
ADG/RATIO	3.1	106
MB/RATIO	3.8	127
REA/RATIO	10.9	92
AOD/MPPA	4	96

	ProS	HB	GM	CED	BW	WW	YW	MM	ME	HPG	CEM	STAY	Marb	REA
EPD	72	51	22	15	-3.4	69	118	26	8	12	8	15	0.2	0.5
PCTL	81	59	81	23	22	20	11	50	78	38	34	60	97	5

There's a spread here with good calving ease EPDs combined with a 106 ADG ratio. He had the 6th highest IMF to ratio 127.

RED ANGUS BULLS

LOTS 35-41 RREDS PATHFINDER F811 SIRE GROUP

LOT 38 LONE TREE PATHFINDER K077

REG#4668167 BD: 2/10/2022 Cat: A

RREDS SENECA 731C
RREDS PATHFINDER F811
 RREDS KIMA D607

BROWN JYJ REDEMPTION Y1334
LONE TREE VALENKA E030
 LONE TREE VALENKA C043

BW/RATIO	80	94
WW/RATIO	589	97
YW/RATIO	1013	95
ADG/RATIO	2.7	91
MB/RATIO	2.5	90
REA/RATIO	11.2	95
AOD/MPPA	5	97

	ProS	HB	GM	CED	BW	WW	YW	MM	ME	HPG	CEM	STAY	Marb	REA
EPD	117	79	38	15	-1.6	68	112	26	11	10	9	20	0.4	0.1
PCTL	15	10	49	25	55	23	20	49	89	68	10	6	48	68

If you save your own replacements, he ranks #5 for the HB EPD and #6 for the HPG EPD in today's entire offering.

LOT 39 LONE TREE PATHFINDER K122

REG#4668023 BD: 2/18/2022 Cat: A

RREDS SENECA 731C
RREDS PATHFINDER F811
 RREDS KIMA D607

5L QUARTERBACK 1205-5337
LSF RAINDANCE U8038 Z2112
 LSF RAINDANCE P4002 U8038

BW/RATIO	79	94
WW/RATIO	551	91
YW/RATIO	993	93
ADG/RATIO	2.8	94
MB/RATIO	2.2	77
REA/RATIO	10.8	92
AOD/MPPA	10	99

	ProS	HB	GM	CED	BW	WW	YW	MM	ME	HPG	CEM	STAY	Marb	REA
EPD	63	57	6	13	-1.5	62	101	25	10	12	8	16	0.2	0
PCTL	91	46	97	52	57	43	42	57	86	46	22	42	92	78

He's above average for the breed in WW, YW, HPG and Stay EPD's and his 10 year old dam has stood the test of time.

LOT 40 LONE TREE PATHFINDER K094

REG#4668109 BD: 2/14/2022 Cat: A

RREDS SENECA 731C
RREDS PATHFINDER F811
 RREDS KIMA D607

BECKTON CLIFFTOP Y030 N4
LONE TREE PRINCESS C081
 1226 SLTR

BW/RATIO	103	121
WW/RATIO	610	101
YW/RATIO	1092	102
ADG/RATIO	3.0	103
MB/RATIO	3.0	107
REA/RATIO	11.4	96
AOD/MPPA	7	106

	ProS	HB	GM	CED	BW	WW	YW	MM	ME	HPG	CEM	STAY	Marb	REA
EPD	110	65	45	7	4.4	87	147	28	10	9	5	19	0.2	0.2
PCTL	23	29	35	98	99	1	1	25	86	85	91	8	97	37

This growth bull ranks in the top 1% of the breed for both WW and YW EPDS. Although he had a higher BW, his CED EPD is in the top 7%. His dam has a good track record as well with a 106 MPPA and with his top 9% HPG and top 8% Stay EPDs, he should sire some excellent replacement females.

LOT 41 LONE TREE PATHFINDER K136

REG#4668145 BD: 2/21/2022 Cat: A

RREDS SENECA 731C
RREDS PATHFINDER F811
 RREDS KIMA D607

BIEBER DEEP END B597
LONE TREE PRIMROSE E082
 TJS PRIMROSE X0273

BW/RATIO	96	113
WW/RATIO	623	103
YW/RATIO	998	93
ADG/RATIO	2.3	80
MB/RATIO	2.9	105
REA/RATIO	12.5	106
AOD/MPPA	5	106

	ProS	HB	GM	CED	BW	WW	YW	MM	ME	HPG	CEM	STAY	Marb	REA
EPD	104	74	30	9	0.3	75	120	32	11	12	7	20	0.5	0.2
PCTL	32	16	67	92	86	7	9	6	89	45	59	5	33	29

His WW, YW, Milk and Stay EPDs all rank within the top 10%. He scanned a 105 Ratio IMF and a 106 Ratio REA. Note the dam's 106 MPPA.



RED ANGUS BULLS



CRUMP ONE OF A KIND 7789

SIRE GROUP

LOTS 42-44

LOT 42 LONE TREE ONE OF A KIND K197

REG#4668073 BD: 3/16/2022 Cat: A

PIE ONE OF A KIND 352
CRUMP ONE OF A KIND 7789
 MLK CRK SHEBA 048

BECKTON EPIC R397 K
LONE TREE BERTHA B036
 TJS BERTHA X018

BW/RATIO	79	93
VW/RATIO	613	103
YW/RATIO	1042	99
ADG/RATIO	2.7	92
MB/RATIO	4.0	132
REA/RATIO	10.2	87
AOD/MPPA	8	98

	ProS	HB	GM	CED	BW	WW	YW	MM	ME	HPG	CEM	STAY	Marb	REA
EPD	80	57	23	15	-3.1	63	95	30	9	15	9	14	0.4	-0.1
PCTL	71	46	79	16	26	42	55	15	83	5	12	66	43	95



Lot 42

He ranks in the top 5% for HPG and happens to rank as the 5th highest in today's offering for that trait as well. He scored the third highest IMF to index 132.

LOT 43 LONE TREE ONE OF A KIND K177

REG#4668137 BD: 3/7/2022 Cat: A

PIE ONE OF A KIND 352
CRUMP ONE OF A KIND 7789
 MLK CRK SHEBA 048

5L ADVANTAGE 560-87B
LONE TREE ROSIE D106
 LONE TREE ROSIE A012

BW/RATIO	100	118
VW/RATIO	673	111
YW/RATIO	1080	101
ADG/RATIO	2.6	87
MB/RATIO	3.1	112
REA/RATIO	10.2	86
AOD/MPPA	6	105

	ProS	HB	GM	CED	BW	WW	YW	MM	ME	HPG	CEM	STAY	Marb	REA
EPD	88	65	23	11	0.4	84	121	32	6	16	6	15	0.3	0.3
PCTL	58	30	79	78	88	1	9	5	67	3	68	60	84	21



Paternal grandsire to lots 42-44

His top 1% WW EPD corresponds to his 111 WW Ratio. He ranks #1 among all yearling bulls offered today for HPG EPD and indexes 112 for IMF.

RED ANGUS BULLS

LOTS 42-44 CRUMP ONE OF A KIND 7789 SIRE GROUP

LOT 44 LONE TREE ONE OF A KIND K116

REG#Commercial BD: 2/18/2022 Cat:

PIE ONE OF A KIND 352
CRUMP ONE OF A KIND 7789
 MLK CRK SHEBA 048

C003

BW/RATIO	74	
WW/RATIO	576	
YW/RATIO	1026	
ADG/RATIO	3.6	
MB/RATIO	3.0	
REA/RATIO	11.6	
AOD/MPPA	7	

	ProS	HB	GM	CED	BW	WW	YW	MM	ME	HPG	CEM	STAY	Marb	REA
EPD														
PCTL														



His dam is an exceptional commercial cow that has earned the right to run with our registered herd. This will be the 2nd time we have felt compelled to put one of her sons in our sale. He posts the 4th highest ADG for the day.



RED ANGUS BULLS



HXC GRINDSTONE 9908G

SIRE GROUP

LOTS 45-48

LOT 45 LONE TREE GRINDSTONE K048

REG#4668033 BD: 2/4/2022 Cat: A

HXC ALLEGIANCE 5502C
HXC GRINDSTONE 9908G
 HXC 605D

LEACHMAN DENIRO A090X
LSF RR BELLE X0379 Z2356
 LSF RR BELLE 881R X0379



BW/RATIO	81	97
WW/RATIO	532	88
YW/RATIO	1116	104
ADG/RATIO	3.6	125
MB/RATIO	3.5	124
REA/RATIO	11.5	97
AOD/MPPA	10	96

	ProS	HB	GM	CED	BW	WW	YW	MM	ME	HPG	CEM	STAY	Marb	REA
EPD	110	36	74	13	-1	68	120	27	6	10	6	13	0.4	0.5
PCTL	23	83	4	46	67	22	9	38	66	79	68	72	43	3

His outstanding 124 IMF Ratio agrees with his top 4% GM EPD. He achieved the 3rd highest ADG to Ratio 125.



Lot 45

LOT 46 LONE TREE GRINDSTONE K070

REG#4668171 BD: 2/9/2022 Cat: A

HXC ALLEGIANCE 5502C
HXC GRINDSTONE 9908G
 HXC 605D

LONE TREE THOR C014
LONE TREE VALENKA E069
 MCCR VALENKA 0038



BW/RATIO	100	118
WW/RATIO	621	103
YW/RATIO	1110	104
ADG/RATIO	3.1	105
MB/RATIO	2.9	102
REA/RATIO	11.9	101
AOD/MPPA	5	104

	ProS	HB	GM	CED	BW	WW	YW	MM	ME	HPG	CEM	STAY	Marb	REA
EPD	103	39	64	7	-0.2	75	123	27	5	12	3	14	0.4	0.7
PCTL	33	80	9	97	80	8	7	35	60	45	97	63	58	1

Great performance and carcass traits with this one! He posts top 8% WW and 7% YW EPDS along with top 9% GM and 1% REA EPDs. He has very good growth ratios across the board and his dam's history includes a 104 MPPA.



Lot 46

RED ANGUS BULLS

LOTS 45-48 HXC GRINDSTONE 9908G SIRE GROUP

LOT 47 LONE TREE GRINDSTONE K054

REG#4668035 BD: 2/5/2022 Cat: A

HXC ALLEGIANCE 5502C
HXC GRINDSTONE 9908G
 HXC 605D

LEACHMAN DENIRO A090X
LSF CRYSTAL X0415 Z2134
 LSF CRYSTAL R5145 X0415

BW/RATIO	80	95
WW/RATIO	579	96
YW/RATIO	1012	94
ADG/RATIO	2.7	92
MB/RATIO	2.7	97
REA/RATIO	12.1	103
AOD/MPPA	10	106

	ProS	HB	GM	CED	BW	WW	YW	MM	ME	HPG	CEM	STAY	Marb	REA
EPD	135	78	57	12	-1.1	68	117	30	7	10	7	20	0.4	0.7
PCTL	5	12	16	61	65	22	13	14	72	73	61	4	58	1

LOT 48 LONE TREE GRINDSTONE K087

REG#4668071 BD: 2/12/2022 Cat: A

HXC ALLEGIANCE 5502C
HXC GRINDSTONE 9908G
 HXC 605D

LSF RR STACKED 2311Z
LONE TREE JESSA ILKA B052
 TJS JESSA ILKA X0157



BW/RATIO	100	118
WW/RATIO	606	100
YW/RATIO	1052	98
ADG/RATIO	2.8	96
MB/RATIO	2.4	84
REA/RATIO	11.0	93
AOD/MPPA	8	100

	ProS	HB	GM	CED	BW	WW	YW	MM	ME	HPG	CEM	STAY	Marb	REA
EPD	99	39	60	7	2	81	129	24	7	13	4	13	0.5	0.7
PCTL	39	79	13	98	97	2	4	66	71	27	95	73	33	1

This bull ranks in the top 5% ProS, top 4% Stay and top 1% REA EPDs. His dam's 106 MPPA suggests you will like the replacement females he sires.

Great growth EPDs with a top 2% WW and top 4% YW. Also notice his top 1% REA EPD.



RED ANGUS BULLS



THOMAS JEFFERSON 55602

SIRE GROUP

LOTS 49-50

LOT 49 LONE TREE JEFFERSON K067

REG#4668029 BD: 2/9/2022 Cat: A

SPUR FRANCHISE 7070
THOMAS JEFFERSON 55602
 THOMAS ERICA 3339

PIE CONTENDER 960
LSF MINOLA W9041 Z2044
 LSF MINOLA T7172 W9041



BW/RATIO	83	99
WW/RATIO	583	96
YW/RATIO	1012	94
ADG/RATIO	2.7	91
MB/RATIO	3.2	112
REA/RATIO	11.8	100
AOD/MPPA	10	103

	ProS	HB	GM	CED	BW	WW	YW	MM	ME	HPG	CEM	STAY	Marb	REA
EPD	126	52	74	12	-1.8	71	112	30	6	13	7	14	0.8	0.7
PCTL	9	56	3	61	50	14	19	16	64	22	41	70	4	1

His EPD profile includes 8 traits in the top quartile including top 3% GM, top 4% Marbling and top 1% REA which indicates his progeny should inherit good carcass genetics.



PAULS BONNELL 065

LOT 50 LONE TREE JEFFERSON K046

REG#4668021 BD: 2/4/2022 Cat: A

SPUR FRANCHISE 7070
THOMAS JEFFERSON 55602
 THOMAS ERICA 3339

LCC NEW CHAPTER A705L
PAULS BONNELL 065
 PAULS BONNELL 584



BW/RATIO	101	ET
WW/RATIO	599	ET
YW/RATIO	1092	ET
ADG/RATIO	3.1	ET
MB/RATIO	2.8	ET
REA/RATIO	12.1	ET
AOD/MPPA	12	107

	ProS	HB	GM	CED	BW	WW	YW	MM	ME	HPG	CEM	STAY	Marb	REA
EPD	140	72	68	11	2	78	128	29	7	16	6	17	0.5	0.6
PCTL	3	19	6	73	97	4	4	19	76	3	72	32	24	2

Impressive EPDs for this performance bull including top 3% ProS, 6% GM, 4% WW, 4% YW, 3% HPG and 2% REA. His dam claims the 2nd highest MPPA at 107.



Lot 50

RED ANGUS BULLS

MR COACH 1296

SIRE GROUP

LOTS 51-52



LOT 51 LONE TREE MR COACH K117

REG#4668051 BD: 2/18/2022 Cat: A

MR COACH 20003
MR COACH 1296
 M R ROYAL 4077S

BECKTON CLIFFTOP Y030 N4
LONE TREE SIERRA A072
 BOWDEN SIERRA B503

BW/RATIO	91	107
WW/RATIO	657	111
YW/RATIO	1068	101
ADG/RATIO	2.6	88
MB/RATIO	2.1	69
REA/RATIO	9.9	84
AOD/MPPA	9	104

	ProS	HB	GM	CED	BW	WW	YW	MM	ME	HPG	CEM	STAY	Marb	REA
EPD	70	34	36	10	0.3	63	105	23	-1	10	6	12	0.4	-0.2
PCTL	84	86	53	83	86	40	32	78	26	75	72	84	50	98

Very good weaning performance with a 111 WW Ratio from a dam with a 104 MPPA.



LOT 52 LONE TREE MR COACH K135

REG#4668099 BD: 2/21/2022 Cat: A

MR COACH 20003
MR COACH 1296
 M R ROYAL 4077S

TBLC SEQYOYA 002
TBLC MISS SEQUOYA 4069
 TBLC MISS TANK 947

BW/RATIO	92	108
WW/RATIO	577	97
YW/RATIO	1077	102
ADG/RATIO	3.1	108
MB/RATIO	3.2	107
REA/RATIO	11.5	97
AOD/MPPA	8	96

	ProS	HB	GM	CED	BW	WW	YW	MM	ME	HPG	CEM	STAY	Marb	REA
EPD	93	54	39	8	0.6	63	109	20	-1	11	6	15	0.3	0.2
PCTL	49	52	46	95	89	42	26	93	27	61	67	53	75	30

He records an ADG Ratio of 108 and an IMF Ratio of 107.



RED ANGUS BULLS



LONE TREE ORACLE G033

SIRE GROUP

LOTS 53-58

LOT 53 LONE TREE ORACLE K092

REG#4668043 BD: 02-14-2022 Cat: A

BROWN ORACLE B112
LONE TREE ORACLE G033
 LSF RAINDANCE U8038 Z2112

GMRA CODY 7228
1236 SLTR
 BOWDEN MISS ARROW B630

BW/RATIO	92	110
WW/RATIO	586	99
YW/RATIO	1215	115
ADG/RATIO	3.92	135
MB/RATIO	2.51	84
REA/RATIO	12.85	109
AOD/MPPA	10	102

	ProS	HB	GM	CED	BW	WW	YW	MM	ME	HPG	CEM	STAY	Marb	REA
EPD	88	20	68	10	0	67	119	29	6	9	5	11	0.62	0.26
PCTL	58	96	6	81	83	26	11	20	67	87	82	88	14	24

This bull had the #1 ADG which resulted in his 3rd highest YW ratio of 115. He also lists an excellent REA ratio of 109.



Lot 53

LOT 54 LONE TREE ORACLE K149

REG#4668207 BD: 02-27-2022 Cat: A

BROWN ORACLE B112
LONE TREE ORACLE G033
 LSF RAINDANCE U8038 Z2112

LSF MEW X-PORTER 6695D
LONE TREE GILDA G113
 LSF RR GILDA U8267 Y1360



BW/RATIO	94	115
WW/RATIO	644	109
YW/RATIO	1142	108
ADG/RATIO	3.1	107
MB/RATIO	2.56	85
REA/RATIO	13.46	114
AOD/MPPA	3	102

	ProS	HB	GM	CED	BW	WW	YW	MM	ME	HPG	CEM	STAY	Marb	REA
EPD	92	14	78	8	1	84	136	25	9	12	6	8	0.76	0.38
PCTL	51	98	2	96	92	1	2	53	81	29	77	98	5	10

A genuine performance bull here with his 109 WW ratio, 108 YW ratio, and 107 ADG ratio! He also achieved the 3rd biggest REA to ratio 114.

LOT 55 LONE TREE ORACLE K166

REG#4668345 BD: 03-03-2022 Cat: A

BROWN ORACLE B112
LONE TREE ORACLE G033
 LSF RAINDANCE U8038 Z2112

LSF MEATPACKER 9076W
LSF RR JAMES U8284 Z2358
 LSF JAMES 4108 U8284



BW/RATIO	78	TWN
WW/RATIO	568	TWN
YW/RATIO	1050	TWN
ADG/RATIO	3.01	TWN
MB/RATIO	2.38	TWN
REA/RATIO	12.72	TWN
AOD/MPPA	10	98

	ProS	HB	GM	CED	BW	WW	YW	MM	ME	HPG	CEM	STAY	Marb	REA
EPD	116	55	60	6	1.7	80	131	22	4	12	3	17	0.56	0.37
PCTL	17	49	12	99	96	3	3	84	56	35	98	34	21	11

Potential for big time performance here with this bulls top 3% rankings for both WW and YW.

RED ANGUS BULLS

LOT 56 LONE TREE ORACLE K173

REG#4668077 BD: 03-06-2022 Cat: A

BROWN ORACLE B112
LONE TREE ORACLE G033
 LSF RAINDANCE U8038 Z2112

BROWN JYJ REDEMPTION Y1334
LONE TREE DELLA B003
 1231 SLTR



BW/RATIO	93	110
WW/RATIO	663	110
YW/RATIO	1055	99
ADG/RATIO	2.44	84
MB/RATIO	2.68	96
REA/RATIO	11.37	96
AOD/MPPA	8	104

	ProS	HB	GM	CED	BW	WW	YW	MM	ME	HPG	CEM	STAY	Marb	REA
EPD	116	41	75	11	-1.1	72	117	29	7	12	7	13	0.82	0.24
PCTL	17	77	3	72	65	13	13	20	75	40	55	78	3	27

This bull recorded the 8th highest 205 WW, so his 8 year old dam performed in line with her 104 MPPA.

LOT 57 LONE TREE ORACLE K109

REG#4667989 BD: 02-17-2022 Cat: A

BROWN ORACLE B112
LONE TREE ORACLE G033
 LSF RAINDANCE U8038 Z2112

5L TRAVLIN EXPRESS 1892-6295
MCCR KIMA 0007
 MCCR KIMA U810

BW/RATIO	96	114
WW/RATIO	626	106
YW/RATIO	1067	101
ADG/RATIO	2.74	95
MB/RATIO	3.83	128
REA/RATIO	11.4	97
AOD/MPPA	12	98

	ProS	HB	GM	CED	BW	WW	YW	MM	ME	HPG	CEM	STAY	Marb	REA
EPD	79	31	48	9	-0.2	69	108	23	1	11	6	11	0.57	0.23
PCTL	73	89	29	89	80	21	27	75	38	63	76	89	19	29

He ranks #5 for his actual IMF measurement! In addition to his good weaning performance, he lists excellent WW and YW EPDS. His 12 year old dam speaks to longevity.

LOT 58 LONE TREE ORACLE K137

REG#4668041 BD: 02-22-2022 Cat: A

BROWN ORACLE B112
LONE TREE ORACLE G033
 LSF RAINDANCE U8038 Z2112

MESSMER PACKER S008
LSF LASS T7047 Z2207
 LSF LASS 29J T7047



BW/RATIO	88	105
WW/RATIO	568	96
YW/RATIO	996	94
ADG/RATIO	2.66	92
MB/RATIO		
REA/RATIO		
AOD/MPPA	10	101

	ProS	HB	GM	CED	BW	WW	YW	MM	ME	HPG	CEM	STAY	Marb	REA
EPD	107	49	58	8	-0.9	73	112	23	6	13	6	14	0.55	0.16
PCTL	27	61	15	94	68	12	19	77	70	21	77	64	22	43

Excellent growth EPDS with a top a top 12% WW and top 19% YW.

Every bull has undergone GGP-LD testing and have genomically enhanced EPDS and parent verification





WS ALL ABOARD B80

SIRE GROUP

LOTS 59-60

LOT 59 LONE TREE ALL ABOARD K089

REG#4668095 BD: 2/13/2022 Cat: 3 ½ Red Angus ½ Simmental

WS ALL-AROUND Z35
WS ALL ABOARD B80
 WS LITTLE SISTER W37

TBLC SEQYOYA 002
TBLC MISS SEQUOYA 485
 TBLC MISS RED DAWG 017

BW/RATIO	77	88
WW/RATIO	574	97
YW/RATIO	1119	106
ADG/RATIO	3.5	120
MB/RATIO	2.3	76
REA/RATIO	12.5	106
AOD/MPPA	8	98

	ProS	HB	GM	CED	BW	WW	YW	MM	ME	HPG	CEM	STAY	Marb	REA
EPD	92	47	45	16	-2.3	75	113	23	3	13	10	11	0.3	1
PCTL	51	65	35	12	41	7	18	75	50	29	7	88	75	1

He ranks #6 in this offering for best ADG and in addition to great growth EPDs he ranks #1 for his REA EPD.



Lot 59

LOT 60 LONE TREE ALL ABOARD K110

REG#4668113 BD: 2/17/2022 Cat: 3 ½ Red Angus ½ Simmental

WS ALL-AROUND Z35
WS ALL ABOARD B80
 WS LITTLE SISTER W37

GMRA TRILOGY 0226
LONE TREE FIRE C026
 HJG 117

BW/RATIO	76	87
WW/RATIO	549	93
YW/RATIO	1014	96
ADG/RATIO	3.0	102
MB/RATIO	2.2	73
REA/RATIO	14.3	121
AOD/MPPA	7	101

	ProS	HB	GM	CED	BW	WW	YW	MM	ME	HPG	CEM	STAY	Marb	REA
EPD	79	38	41	17	-3.7	67	98	25	6	13	10	11	0.4	0.9
PCTL	73	80	43	7	18	26	49	58	68	18	5	92	55	1

All Aboard sons get it done when it comes to REA. He is in the top 1% for his REA EPD and he ranked #1 for the best actual REA measurement of all our yearling bulls.



Maternal Grand sire to Lot 60

SIM-ANGUS BULLS

COLEMAN CHARLO 0256

SIRE GROUP

LOT 61



LOT 61 Lone Tree Charlo K016

REG#20340307 BD: 01/24/22

O C C Paxton 730P
Coleman Charlo 0256
 Bohi Abigale 6014

S A V 8180 Traveler 004
S A V Blackcap May 8962
 S A V May 2397

BW/RATIO	97	100
WW/RATIO	617	ET
YW/RATIO	1137	ET
IMF/RATIO	2	84
REA/RATIO	12.8	112

	CED	BW	WN	YW	DOC	CLAW	ANGLE	HP	Milk	CW	Marb	RE
EPD	6	1.7	51	91	24	0.5	0.4	11.8	35	29	-0.2	0.3
PCTL	70	79	55	60	14	63	16	41	10	64	99	80

He's the progeny of an outstanding dam with a great reputation, SAV Blackcap May 8962, tallying \$250,250 in previous SAV sales. He expresses his sire's muscle definition and performance.



Lot 61



SAV Blackcap May 8962



SAV BLACKCAP MAY 1430

BLACK ANGUS BULLS



SAV AMERICA 8018
SIRE GROUP
LOT 62-64

LOT 62 Lone Tree America K018

REG#20340308 BD: 01/25/22

S A V President 6847
S A V America 8018
 S A V Madame Pride 0075

Rito 707 of Ideal 3407 7075
S A V Blackcap May 1430
 S A V Blackcap May 4136

BW/RATIO	94	100
WW/RATIO	577	ET
YW/RATIO	1163	ET
IMF/RATIO	2.6	113
REA/RATIO	11.3	99

	CED	BW	WN	YW	DOC	CLAW	ANGLE	HP	Milk	CW	Marb	RE
EPD	2	3	71	117	21	0.3	0.5	8.3	25	41	0.1	0.9
PCTL	63	65	22	53	33	3	69	44	71	40	81	11

Lone Tree America K018 combines the reputation genetics of his famous sire with his dam who is a full sib to SAV Resource. He was one of the top performing Black bulls having achieved the heaviest adjusted yearling weight. His full brother sells as lot 64.



Lot 62

LOT 63 Lone Tree America K044

REG#20371994 BD: 02/03/22

S A V President 6847
S A V America 8018
 S A V Madame Pride 0075

Rito 707 of Ideal 3407 7075
S A V Blackcap May 1779
 S A V May 2397

BW/RATIO	102	100
WW/RATIO	679	ET
YW/RATIO	925	ET
IMF/RATIO	2.2	94
REA/RATIO	10.9	96

	CED	BW	WN	YW	DOC	CLAW	ANGLE	HP	Milk	CW	Marb	RE
EPD	0	4.2	66	110	35	0.4	0.4	7.3	28	51	0.1	1
PCTL	63	71	37	67	1	16	15	80	44	33	91	11

This guy recorded the heaviest adjusted weaning weight of the 2022 bull calf crop. He is the progeny of a great cow, SAV Black Cap May 1779, a proven donor with a great history of producing top end genetics.

LOT 64 Lone Tree America K009

REG#20340306 BD: 01/23/22

S A V President 6847
S A V America 8018
 S A V Madame Pride 0075

Rito 707 of Ideal 3407 7075
S A V Blackcap May 1430
 S A V Blackcap May 4136

BW/RATIO	91	100
WW/RATIO	498	ET
YW/RATIO	952	ET
IMF/RATIO	2.5	107
REA/RATIO	10.6	93

	CED	BW	WN	YW	DOC	CLAW	ANGLE	HP	Milk	CW	Marb	RE
EPD	6	0.5	70	123	21	0.4	0.5	12.3	25	42	0.4	0.9
PCTL	65	37	30	33	26	6	78	23	81	43	82	9

Lone Tree America K009 shares the same great qualities as lot 62, his full brother.

BLACK ANGUS BULLS

SPUR FRANCHISE OF GARTON

SIRE GROUP

LOT 65



LOT 65 LONE TREE FRANCHISE K106

REG#4668181 BD: 2/16/2022 Cat: 2 Black Red Carrier

SPUR FRANCHISE 7070
SPUR FRANCHISE OF GARTON
 H & H IRENE LASS 0135

LSF SRR PEDIGREE 5053C
LONE TREE HONESTY F094
 TJS RED HONESTY X048

BW/RATIO	84	101
WW/RATIO	562	93
YW/RATIO	1067	100
ADG/RATIO	3.2	108
MB/RATIO	2.8	101
REA/RATIO	12.2	103
AOD/MPPA	4	95

	ProS	HB	GM	CED	BW	WW	YW	MM	ME	HPG	CEM	STAY	Marb	REA
EPD	146	86	60	11	-2.5	63	104	27	4	13	7	20	0.7	0.5
PCTL	2	5	13	68	37	42	36	32	58	29	44	4	8	4

Impressive numbers for all 3 composite EPDs including top 2% ProS, top 5% HB and top 13% GM.



BLACK RED CARRIER BULLS

TWO YEAR OLD BULLS | LOTS 66-75

LOT 66 LONE TREE EYE APPEAL J203

REG#4487391 BD: 3/16/2021 Cat: A

LSF TAKEOVER 9943W
LSF SRR EYE APPEAL 5026C
 LSF SRR RITZY X0387 A3332

BECKTON EPIC R397 K
FLATIRON MISS MARY J173
 MARY

BW/RATIO	90	109
VW/RATIO	650	108
YW/RATIO	1056	102
ADG/RATIO	2.5	93
MB/RATIO		
REA/RATIO		
AOD/MPPA	10	101

	ProS	HB	GM	CED	BW	WW	YW	MM	ME	HPG	CEM	STAY	Marb	REA
EPD	128	89	39	12	-0.8	63	104	25	2	12	6	21	0.4	0.0
PCTL	8	4	48	58	70	41	36	57	42	30	68	2	48	76



Lot 66

He didn't make our age cut off for last year's sale but he is anxious to go to work this year. He posts good growth ratios and excellent Pros, HB and Stay EPDs.

LOT 67 LONE TREE MERLIN J126

REG#4487537 BD: 2/20/2021 Cat: A

LJC MERLIN T179
WFL MERLIN 018A
 WFL COMMITMENT 042Y

TBLC SEQYOYA 002
TBLC MISS SEQUOYA 4069
 TBLC MISS TANK 947

BW/RATIO	88	105
VW/RATIO	609	101
YW/RATIO	1044	101
ADG/RATIO	2.7	100
MB/RATIO	2.7	114
REA/RATIO	11.3	99
AOD/MPPA	7	96

	ProS	HB	GM	CED	BW	WW	YW	MM	ME	HPG	CEM	STAY	Marb	REA
EPD	99	52	47	12	-1	78	123	29	1	8	7	15	0.6	0.5
PCTL	39	55	32	54	67	4	7	17	35	96	50	58	18	5



Lot 67

Very good growth ratios with top 4% WW and top 7% YW EPDs to match.

LOT 68 LONE TREE EYE APPEAL J199

REG#4487519 BD: 3/14/2021 Cat: A

LSF TAKEOVER 9943W
LSF SRR EYE APPEAL 5026C
 LSF SRR RITZY X0387 A3332

FEDDES BIG SKY R9
TBLC MISS BIG SKY 4021
 TBLC TANK 852



BW/RATIO	94	112
VW/RATIO	604	100
YW/RATIO	1104	107
ADG/RATIO	3.1	115
MB/RATIO		
REA/RATIO		
AOD/MPPA	7	99

	ProS	HB	GM	CED	BW	WW	YW	MM	ME	HPG	CEM	STAY	Marb	REA
EPD	130	67	64	10	-0.1	62	99	22	10	14	5	19	0.5	0.5
PCTL	6	27	9	87	81	44	46	82	89	11	84	12	25	5



Lot 68

All of the two year old's sell as virgins except Lot 68. We had some injuries late in the season with our bull battery, so he helped finish the breeding season on a group of cows. He lists 9 EPDs in the top quartile of the breed! His top 6% ProS and excellent carcass EPDs across the board are highlights. He stepped on the gas after weaning to boost his YW Ratio to 107.

TWO YEAR OLD BULLS | LOTS 66-75

LOT 69 LONE TREE EYE APPEAL J190

REG#4487501 BD: 3/9/2021 Cat: A

LSF TAKEOVER 9943W
LSF SRR EYE APPEAL 5026C
 LSF SRR RITZY X0387 A3332

HXC CONQUEST 4405P
LONE TREE RED ROSE B009
 BCRR RED ROSE 0123X



BW/RATIO	85	101
WW/RATIO	590	98
YW/RATIO	1015	98
ADG/RATIO	2.7	98
MB/RATIO		
REA/RATIO		
AOD/MPPA	7	98

	ProS	HB	GM	CED	BW	WW	YW	MM	ME	HPG	CEM	STAY	Marb	REA
EPD	154	84	70	12	-0.2	69	116	27	4	12	6	20	0.5	0.6
PCTL	1	7	5	64	80	21	14	35	53	36	67	5	27	2

Perhaps the best EPD profile of the sale with top 1% ProS, 7% HB, 5% GM, 5% Stay, 3% YG and 2% REA!

LOT 70 LONE TREE EYE APPEAL J206

REG#4487469 BD: 3/19/2021 Cat: A

LSF TAKEOVER 9943W
LSF SRR EYE APPEAL 5026C
 LSF SRR RITZY X0387 A3332

MESSMER PACKER S008
LSF LASS T7047 Z2207
 LSF LASS 29J T7047

BW/RATIO	91	110
WW/RATIO	595	99
YW/RATIO	998	96
ADG/RATIO	2.5	92
MB/RATIO		
REA/RATIO		
AOD/MPPA	9	101

	ProS	HB	GM	CED	BW	WW	YW	MM	ME	HPG	CEM	STAY	Marb	REA
EPD	76	33	43	10	-0.2	68	104	25	7	17	6	10	0.4	0.2
PCTL	77	87	39	87	80	22	35	59	72	1	77	93	45	34

He claims the top 1% HPG EPD and has respectable growth EPDs.

LOT 71 LONE TREE ORACLE J211

REG#4487385 BD: 3/25/2021 Cat: A

BROWN ORACLE B112
LONE TREE ORACLE G033
 LSF RAINDANCE U8038 Z2112

5L TRAVLIN EXPRESS 1892-6295
MCCR KIMA 0007
 MCCR KIMA U810

BW/RATIO	78	94
WW/RATIO	572	95
YW/RATIO	1058	102
ADG/RATIO	3.0	111
MB/RATIO		
REA/RATIO		
AOD/MPPA	11	98

	ProS	HB	GM	CED	BW	WW	YW	MM	ME	HPG	CEM	STAY	Marb	REA
EPD	77	52	24	11	-2.4	61	87	23	1	12	7	14	0.5	0.1
PCTL	76	55	77	71	39	49	71	75	38	38	46	67	27	68

He may have been the youngest bull we raised last year but he's old enough to know better now. He indexed 102 for YW and his dam is now 13 years old and still in production.

LOT 72 LONE TREE EYE APPEAL J209

REG#4487367 BD: 3/23/2021 Cat: A

LSF TAKEOVER 9943W
LSF SRR EYE APPEAL 5026C
 LSF SRR RITZY X0387 A3332

BIEBER ROMEO 10107
BOWDEN ANGEL 901
 JLRA ANGEL II



BW/RATIO	105	126
WW/RATIO	628	104
YW/RATIO	1027	99
ADG/RATIO	2.5	91
MB/RATIO		
REA/RATIO		
AOD/MPPA	12	99

	ProS	HB	GM	CED	BW	WW	YW	MM	ME	HPG	CEM	STAY	Marb	REA
EPD	64	26	38	5	1.9	67	112	27	7	8	3	15	0.4	0.2
PCTL	90	93	49	99	97	27	19	36	71	97	98	54	45	29

Good weaning performance with a 104 WW Ratio out of a 12 year old dam.

LOT 73 LONE TREE ALL ABOARD J135

REG#4487631 BD: 2/22/2021 Cat: 3 ½ Red Angus ½ Simmental

WS ALL-AROUND Z35
WS ALL ABOARD B80
 WS LITTLE SISTER W37

LSF SRR EYE APPEAL 5026C
LONE TREE AMIGO F116
 HJG 117

BW/RATIO	78	95
WW/RATIO	558	93
YW/RATIO	990	96
ADG/RATIO	2.7	101
MB/RATIO		
REA/RATIO		
AOD/MPPA	3	98

	ProS	HB	GM	CED	BW	WW	YW	MM	ME	HPG	CEM	STAY	Marb	REA
EPD	114	40	74	15	-0.9	76	120	24	-1	14	8	10	0.6	0.9
PCTL	19	78	3	25	68	6	10	67	28	16	39	94	17	1

This Sim-Angus All Aboard son has phenomenal carcass EPDs across the board that place him in the top 3% for the GM EPD. His top 6% WW and top 10% YW EPDs indicate good growth genetics as well.

LOT 74 LONE TREE EYE APPEAL J161

REG#4487761 BD: 3/1/2021 Cat: A

LSF TAKEOVER 9943W
LSF SRR EYE APPEAL 5026C
 LSF SRR RITZY X0387 A3332

LSF JBOB EXPECTATION 6034S
LSF COVER GIRL LA414 Y1405
 LSF LOGAN H1375 LA414

BW/RATIO	65	
WW/RATIO	525	
YW/RATIO	950	
ADG/RATIO	2.7	
MB/RATIO		
REA/RATIO		
AOD/MPPA	10	104

	ProS	HB	GM	CED	BW	WW	YW	MM	ME	HPG	CEM	STAY	Marb	REA
EPD	101	76	25	9	-0.3	60	94	33	5	15	6	18	0.7	0.0
PCTL	35	13	76	93	79	52	58	4	63	4	77	15	11	86

He was born a twin from a dam who records a 104 MPPA. He records 3 EPDs in the top 1% of the breed including Milk, HPG and Marbling.

RED ANGUS BULLS

TWO YEAR OLD BULLS | LOTS 66-75

LOT 75 LONE TREE DOMAIN J063

REG#4487663 BD: 2/9/2021 Cat: A

BECKTON DOMINOR T122 Z1
3SCC DOMAIN A163
 3SCC EUCLA X723
 LSF SRR EYE APPEAL 5026C
LONE TREE TILLY F098
 BOWDEN TILLY B90

BW/RATIO	77	97
WW/RATIO	533	89
YW/RATIO	1012	98
ADG/RATIO	3.0	110
MB/RATIO		
REA/RATIO		
AOD/MPPA	3	95

	ProS	HB	GM	CED	BW	WW	YW	MM	ME	HPG	CEM	STAY	Marb	REA
EPD	85	55	31	15	-2.9	59	99	26	0	13	5	16	0.4	0.0
PCTL	62	50	65	18	30	57	46	45	34	17	82	47	61	72

The top 18% CED and top 30% BW indicate good calving ease.



RED ANGUS BULLS

BRED HEIFERS | LOTS 76-85

LOT 76 LONE TREE DINA J055

REG#4487413 BD: 2/7/2021 Cat: A

LJC MERLIN T179

WFL MERLIN 018A

WFL COMMITMENT 042Y

LSF RR CHARISMATIC 8810U

LSF RR DINA R5024 Y1321

LSF DINA N3043 R5024



BW/RATIO	68	90
WW/RATIO	573	105

	ProS	HB	GM	CED	BW	WW	YW	MM	ME	HPG	CEM	STAY	Marb	REA
EPD	96	37	58	16	-4.5	71	114	34	4	9	8	12	0.66	0.59
PCTL	45	81	14	10	10	15	17	1	52	87	26	81	10	2

Due 4/3/23 to PIE Champion (4389123). We kick off the bred heifer group with a very well put together Merlin daughter. Check out her spread going from a top 10% BW to a top 17% YW!



Lot 76

LOT 77 LONE TREE LARKABA J202

REG#4487509 BD: 3/15/2021 Cat: A

PIE ONE OF A KIND 352

CRUMP ONE OF A KIND 7789

MLK CRK SHEBA 048

BECKTON CLIFFTOP Y030 N4

LONE TREE LARKABA B079

TJS LARKABA X0190

BW/RATIO	70	91
WW/RATIO	517	95

	ProS	HB	GM	CED	BW	WW	YW	MM	ME	HPG	CEM	STAY	Marb	REA
EPD	87	61	26	16	-3.1	70	109	27	3	13	9	14	0.35	
PCTL	60	38	75	13	26	16	26	32	51	24	17	62	65	96

Due 4/3/23 to PIE Champion (4389123). Lot 77 stems from an awesome cow family that always produces for us.



Lot 77

LOT 78 LONE TREE PRINCESS J026

REG#4487739 BD: 1/28/2021 Cat: A

LJC MERLIN T179

WFL MERLIN 018A

WFL COMMITMENT 042Y

CRUMP ONE OF A KIND 7789

LONE TREE PRINCESS G116

LONE TREE PRINCESS D043



BW/RATIO	47	
WW/RATIO	491	

	ProS	HB	GM	CED	BW	WW	YW	MM	ME	HPG	CEM	STAY	Marb	REA
EPD	91	41	51	15	-2.8	81	126	36	6	11	9	12	0.54	0.58
PCTL	52	76	25	21	32	2	5	1	69	59	18	86	24	2

Due 4/4/23 to PIE Champion (4389123). Another merlin daughter with a big shot of performance posting a WR of 112!

LOT 79 LONE TREE ANASCO J134

REG#4487621 BD: 2/21/2021 Cat: A

LSF TAKEOVER 9943W

LSF SRR EYE APPEAL 5026C

LSF SRR RITZY X0387 A3332

BIEBER HARD DRIVE Y120

LONE TREE ANASCO F017

BUF CRK ANASCO X179

BW/RATIO	64	89
WW/RATIO	531	97

	ProS	HB	GM	CED	BW	WW	YW	MM	ME	HPG	CEM	STAY	Marb	REA
EPD	108	57	51	13	-2.8	62	102	29	10	14	6	17	0.57	0.31
PCTL	26	46	24	40	32	43	39	20	86	8	77	34	19	17

Due 4/4/23 to PIE Champion (4389123). A very well rounded heifer with 15 EPDS in the top half of the breed!

BRED HEIFERS | LOTS 76-85

LOT 80 LONE TREE LARKABA J129

REG#4487701 BD: 2/21/2021 Cat: A

LSF MEW X-FACTOR 6693D
LSF SRR SMOOTH FACTOR 9212G
 LSF SRR DOROTHY 489 D6559

WFL MERLIN 018A
LONE TREE LARKABA G063
 LONE TREE LARKABA A022



BW/RATIO	80	114
WW/RATIO	547	100

	ProS	HB	GM	CED	BW	WW	YW	MM	ME	HPG	CEM	STAY	Marb	REA
EPD	74	23	51	13	-1.4	79	124	31	8	10	8	10	0.47	0.4
PCTL	79	95	24	43	59	4	6	8	79	67	26	96	36	8

Due 4/6/23 to PIE Champion (4389123). If you're looking for a shot of performance check out this gals top 4% WW and 6% YW.

LOT 81 LONE TREE MISS SEQUOYA J036

REG#4487831 BD: 2/1/2021 Cat: A

BECKTON DOMINOR T122 Z1
3SCC DOMAIN A163
 3SCC EUCLA X723

TBLC SEQYOYA 002
TBLC MISS SEQUOYA 4024
 TBLC MISS 725 CHEYENNE 044

BW/RATIO	79	94
WW/RATIO	560	106

	ProS	HB	GM	CED	BW	WW	YW	MM	ME	HPG	CEM	STAY	Marb	REA
EPD	97	64	34	16	-2.9	58	89	26	-1	10	8	17	0.61	
PCTL	42	33	58	13	30	61	67	46	27	78	39	30	15	88

Due 4/10/23 to PIE Champion (4389123). This female should be an easy keeper with her top 27% ME.

LOT 82 LONE TREE ANASCO J032

REG#4487667 BD: 1/29/2021 Cat: A

BIEBER CL ATOMIC C218
BIEBER CL ENERGIZE F121
 BIEBER CL ADELLE 575D

WFL MERLIN 018A
LONE TREE ANASCO G055
 BUF CRK ANASCO X179

BW/RATIO	55	81
WW/RATIO	569	104

	ProS	HB	GM	CED	BW	WW	YW	MM	ME	HPG	CEM	STAY	Marb	REA
EPD	73	38	35	16	-6	60	97	33	7	11	8	13	0.52	0.19
PCTL	80	81	55	15	2	54	51	3	73	50	34	76	27	37

Due 5/1/23 to PIE Champion (4389123). With energize semen in very tight supply, this will be a good opportunity to take home a daughter!

LOT 83 LONE TREE SIERRA J029

REG#4487697 BD: 1/29/2021 Cat: A

LJC MERLIN T179
WFL MERLIN 018A
 WFL COMMITMENT 042Y

CRUMP ONE OF A KIND 7789
LONE TREE SIERRA G198
 LONE TREE SIERRA A072

BW/RATIO	72	104
WW/RATIO	567	104

	ProS	HB	GM	CED	BW	WW	YW	MM	ME	HPG	CEM	STAY	Marb	REA
EPD	76	52	24	13	-3.8	74	108	34	3	10	7	15	0.41	0.33
PCTL	76	55	78	42	17	9	27	2	47	71	55	60	50	14

Due 5/2/23 to PIE Champion (4389123). Imagine the calves this heifer could produce with her top 9% WW, top 27% YW, and top 2% Milk!

LOT 84 LONE TREE LARKABA J193

REG#4487465 BD: 3/11/2021 Cat: A

LSF TAKEOVER 9943W
LSF SRR EYE APPEAL 5026C
 LSF SRR RITZY X0387 A3332

BASIN EXT 5233
LSF LARKABA R5195 Z2200
 LSF LARKABA 59J R5195



BW/RATIO	83	108
WW/RATIO	536	98

	ProS	HB	GM	CED	BW	WW	YW	MM	ME	HPG	CEM	STAY	Marb	REA
EPD	97	49	48	12	0.2	66	116	30	10	13	8	14	0.35	0.36
PCTL	42	62	29	63	85	31	14	12	88	20	39	64	65	12

Due 5/2/23 to PIE Champion (4389123). Her dam is still in production at 10 years old. Maternal brother sells as Lot 25.

LOT 85

REG#COMMERCIAL BD: Cat:

BIEBER CL ATOMIC C218
Bieber CL Energize F121
 BIEBER CL ADELLE 575D

G018

BW/RATIO	58	
WW/RATIO		

	ProS	HB	GM	CED	BW	WW	YW	MM	ME	HPG	CEM	STAY	Marb	REA
EPD														
PCTL														

Due 5/5/23 to PIE Champion (4389123). This energize heifer comes from a handful of commercial cows and will sell without papers.

BRED COWS | LOTS 86-90

LOT 86 LONE TREE GARDNER H069

REG#4328643 BD: 2/12/2020 Cat: A

FEDDES SILVER BOW B226

FEDDES BRUNSWICK D202

FEDDES LARKABU X21

HXC CONQUEST 4405P

LONE TREE GARDNER B019

LAKEVIEW AVA GARDNER 114



MPPA 105

	ProS	HB	GM	CED	BW	WW	YW	MM	ME	HPG	CEM	STAY	Marb	REA
EPD	105	59	46	8	2	84	137	26	8	10	6	17	0.5	0.6
PCTL	28	51	21	94	96	1	1	47	80	71	75	43	26	1



Lot 86

Due 4/12/23 to GMRA Investment (4465011) or Lone Tree Pathfinder J071 (4487565). This girl hit it out of the park this last year raising Lot 4 in this year's sale. She expresses a lot of volume and depth and her first calf earned above average ratios across the board. The calf in her belly could be a special one!

LOT 87 LONE TREE CRYSTAL G008

REG#4178046 BD: 1/21/2019 Cat: A

LEACHMAN PLEDGE A282Z

HXC DECLARATION 5504C

HXC190Y

MESSMER PACKER S008

LSF CRYSTAL U8915 Y1020

LSF CRYSTAL T7129 U8915



MPPA 100

	ProS	HB	GM	CED	BW	WW	YW	MM	ME	HPG	CEM	STAY	Marb	REA
EPD	111	46	65	14	-1.9	74	125	22	11	15	9	12	0.6	0.2
PCTL	21	73	5	28	44	6	4	73	89	9	14	89	17	24



Lot 87

Due 4/27/23 to GMRA Investment (4465011) or Lone Tree Pathfinder J071 (4487565). The crystal cow family is rock solid, so look no further for great maternal traits. Check out her top 6% WW and top 4% YW!

LOT 88 LONE TREE WILLIE G197

REG#4178272 BD: 3/24/2019 Cat: A

BROWN JYJ REDEMPTION Y1334

LSF SRR PEDIGREE 5053C

LSF DINA U8003 Y1077

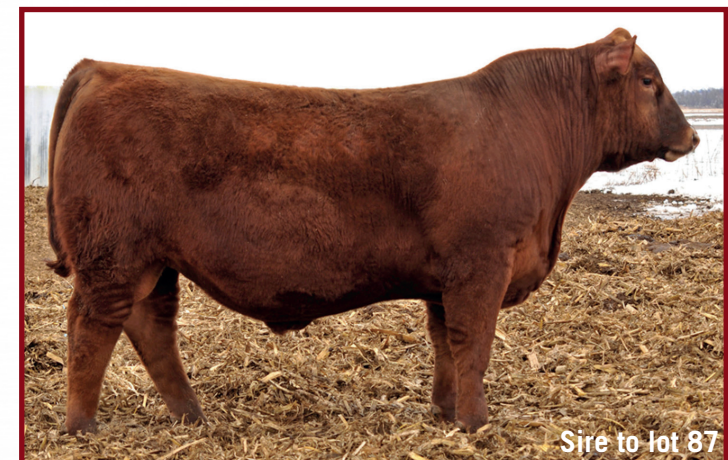
GMRA TRILOGY 0226

LONE TREE WILLIE C025

1215 SLTR

MPPA 99

	ProS	HB	GM	CED	BW	WW	YW	MM	ME	HPG	CEM	STAY	Marb	REA
EPD	89	57	32	7	0.8	69	105	24	8	12	5	17	0.5	0.1
PCTL	52	54	47	97	88	16	25	62	80	33	88	39	26	45



Sire to lot 87

Due 5/10/23 to GMRA Investment (4465011) or Lone Tree Pathfinder J071 (4487565). This cow produced one of the best IMF bulls in the 2021 bull sale to ratio 121.

BRED COWS | LOTS 86-90

LOT 89 LONE TREE LARKABA G183

REG#4178222 BD: 3/9/2019 Cat: A

PIE ONE OF A KIND 352
CRUMP ONE OF A KIND 7789
 MLK CRK SHEBA 048

BECKTON CLIFFTOP Y030 N4
LONE TREE LARKABA B079
 TJS LARKABA X0190

MPPA 99

	ProS	HB	GM	CED	BW	WW	YW	MM	ME	HPG	CEM	STAY	Marb	REA
EPD	76	49	28	16	-3.6	71	113	28	4	13	9	13	0.3	-0.1
PCTL	71	68	56	10	18	11	13	32	55	28	15	86	59	86

Due 4/5/23 to GMRA Investment (4465011) or Lone Tree Pathfinder J071 (4487565). Check out the spread on this cow with her top 18% BW and top 13% YW!

LOT 90 LONE TREE SIERRA F064

REG#3970408 BD: 2/7/2018 Cat: A

LJC MISSION STATEMENT P27
CRUMP MISSION STATEMENT 6187
 TR BRANDY XT074

BECKTON CLIFFTOP Y030 N4
LONE TREE SIERRA A072
 BOWDEN SIERRA B503



MPPA 96

	ProS	HB	GM	CED	BW	WW	YW	MM	ME	HPG	CEM	STAY	Marb	REA
EPD	54	-2	56	4	1.4	67	112	29	6	13	4	8	0.4	0.4
PCTL	92	99	11	99	93	20	13	26	69	29	92	99	49	8

Due 4/17/23 to Crump One of Kind (3715005) or Lone Tree Eye Appeal (4487519). The dam to lot 90 has been a favorite on the place, earning a 104 MPPA on 9 calves.



REFERENCE SIRES



Reference Sire Lots 9-11

ANDRAS FUSION R236
BIEBER CL ATOMIC C218
 BIEBER DATELINE 308Y

BIEBER CL STOCKMARKET E119

BIEBER HARD DRIVE Y120

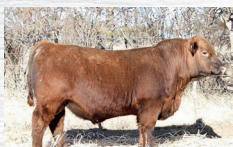
#3958815

Cat: 100% AR

BIEBER CL ADELLE 575D

BIEBER ADELLE 297Y

	ProS	HB	GM	CED	BW	WW	YW	ME	HPG	CEM	STAY	Marb	YG	CW	REA	FAT
EPD	162	83	79	19	-6.1	67	121	4	12	11	17	0.63	0.08	42	0.46	0.03
PCTL	2%	17%	3%	3%	3%	30%	13%	60%	37%	5%	25%	15%	54%	7%	8%	78%



Reference Sire Lots 12-25

FEDDES SILVER BOW B226
FEDDES BRUNSWICK D202
 FEDDES LARKABU X21

LONE TREE DAKOTA H037

BECKTON CODY T085 K2

#4328581

Cat: 100% AR

LSF DELLA X0090 Z2101

LSF DELLA T7094 X0090

	ProS	HB	GM	CED	BW	WW	YW	ME	HPG	CEM	STAY	Marb	YG	CW	REA	FAT
EPD	153	92	62	12	-1.7	72	120	9	11	5	23	0.61	0.09	38	0.59	0.06
PCTL	3%	5%	14%	65%	52%	20%	16%	79%	66%	76%	1%	18%	60%	14%	6%	98%



Reference Sire Lots 26-27

REDHILL TEN X 104U 190A
LSF MEW X-FACTOR 6693D
 MEW COVERGIRL 402B

LSF SRR SMOOTH FACTOR 9212G

LSF SRR VICTORY 3013A

#4110382

Cat: 100% AR

LSF SRR DOROTHY 489 D6559

SRR DOROTHY 489-140

	ProS	HB	GM	CED	BW	WW	YW	ME	HPG	CEM	STAY	Marb	YG	CW	REA	FAT
EPD	102	49	53	17	-5.7	68	112	15	11	11	13	0.69	0.02	19	0.38	0.04
PCTL	40%	73%	19%	8%	4%	28%	23%	96%	55%	3%	74%	10%	27%	54%	12%	84%



Reference Sire Lots 28-30

ANDRAS FUSION R236
BIEBER CL ATOMIC C218
 BIEBER DATELINE 308Y

BIEBER CL ENERGIZE F121

BIEBER HARD DRIVE Y120

#3958815

Cat: 100% AR

BIEBER CL ADELLE 575D

BIEBER ADELLE 297Y

	ProS	HB	GM	CED	BW	WW	YW	ME	HPG	CEM	STAY	Marb	YG	CW	REA	FAT
EPD	162	83	79	19	-6.1	67	121	4	12	11	17	0.63	0.08	42	0.46	0.03
PCTL	2%	17%	3%	3%	3%	30%	13%	60%	37%	5%	25%	15%	54%	7%	8%	78%



Reference Sire Lot 31

PIE STOCKMAN 4051
PIE QUARTERBACK 789
 PIE RUBY 520

PIE CHAMPION 0126

5L DEFENDER 560-30Z

#4389123

Cat: 100% AR

PIE GUSTY 7007

PIE GUSTY 5121

	ProS	HB	GM	CED	BW	WW	YW	ME	HPG	CEM	STAY	Marb	YG	CW	REA	FAT
EPD	113	47	66	18	-5.5	72	121	12	11	8	15	0.76	-0.06	27	0.38	0
PCTL	22%	62%	11%	6%	5%	20%	14%	88%	61%	30%	47%	7%	10%	38%	15%	13%



Reference Sire Lots 32-34

MRLA RELOAD 56C
RED MRLA RESOURCE 137E
 MRLA MISS 4422B

RED U2 TOWNSHIP 17G

RED U-2 MAMA'S BOY 167X

#4265551

Cat: 100% AR

U2 BEAUTY 113Z

RED U-2 BEAUTY 48X

	ProS	HB	GM	CED	BW	WW	YW	ME	HPG	CEM	STAY	Marb	YG	CW	REA	FAT
EPD	47	28	19	5	1.8	67	105	1	13	3	12	0.26	0.12	25	0.03	0.02
PCTL	92%	85%	78%	98%	94%	34%	40%	33%	31%	95%	81%	79%	71%	45%	66%	60%



Reference Sire Lots 35-41

BIEBER ROLLIN DEEP Y118
RREDS SENECA 731C
 RREDS ASTER 309A

RREDS PATHFINDER F811

PIE CINCH 4126

#3952885

Cat: 100% AR

RREDS KIMA D607

MCCR KIMA 1099

	ProS	HB	GM	CED	BW	WW	YW	ME	HPG	CEM	STAY	Marb	YG	CW	REA	FAT
EPD	108	88	20	11	-0.3	80	134	8	9	6	21	-0.03	0.12	44	0.43	0.04
PCTL	33%	13%	71%	67%	74%	6%	4%	80%	79%	62%	3%	99%	74%	6%	9%	89%



Reference Sire Lots 42-44

BUF CRK THE RIGHT KIND U199
PIE ONE OF A KIND 352
 PIE FAYETTE 1160

CRUMP ONE OF A KIND 7789

5L BLAZIN TRAIL 1336-237V

#3715005

Cat: 100% AR

MLK CRK SHEBA 048

MLK CRK SHEBA 748

	ProS	HB	GM	CED	BW	WW	YW	ME	HPG	CEM	STAY	Marb	YG	CW	REA	FAT
EPD	102	73	29	12	-1.2	91	138	13	16	9	15	0.49	0.14	42	0.23	0.03
PCTL	39%	31%	56%	55%	59%	1%	3%	94%	7%	25%	57%	33%	81%	7%	26%	75%

PREMIUM CALF VALUE

Easy as 1-2-3

Want MORE for your steers?

THAT'S EASY ...

1. Purchase Top Dollar Angus-qualified bulls.
2. Raise Top Dollar Angus-qualified feeder calves.
3. Pocket MORE per head!



THE RESULTS:

Better performance and a documented \$84.26-per-head advantage as fed cattle!
The PROOF is in your bank account.

Steers & Heifers	Top Dollar Angus Qualified	Non-Qualified	Difference
Head Count	1,801	4,448	
Percentage of Head Count	29%	71%	
Average Daily Gain	4.28	3.99	0.29
Hot Carcass Weight	935	888	47
Marbling	504	471	33
Ribeye Area	15.4	15.2	0.2
Fat Thickness	0.66	0.61	0.05
Value Per Head	\$1,626.13	\$1,541.86	\$84.26

Top Dollar Angus has the necessary resources to provide third-party genetic verification of high-quality Angus and Red Angus-influenced feeder calves and females. Combining genetic verification with our extensive network of seedstock partners and feedyards allows Top Dollar Angus to deliver the unique ability of marketing assistance to our customers and truly connect people to people and people to profit.

Source: Neogen field study representing five feed yards and 6,249 head.



Read about satisfied steer-sellers.
Click the QR code:



Contact us for a free, no-obligation consultation!



Nate Smith, General Manager
(620) 546-4839 • nate@topdollarangus.com
Kaytlin Hokanson • (307) 461-7687 • kaytlin@topdollarangus.com
Andy Albrecht • (402) 922-1000 • andy@topdollarangus.com

www.topdollarangus.com





**THANK YOU TO ALL OF OUR CUSTOMERS
FOR MAKING 2022 SUCH A SUCCESS.**



Lone Tree Red Angus
Brad Schecher
18164 135th Street
Bison, SD 57620

Bulls backed by a two year breeding guarantee!

WWW.LONETREEREDANGUS.COM

