



# 10<sup>th</sup> ANNUAL BULL SALE

**1:00 PM MDT - Thursday**

**MARCH 16, 2023**

**At the Ranch in Highwood, Montana**



Montana's High Performance Herd Sire Headquarters



Welcome to



**2023**

# Bull Sale

**Ty Malek**  
**(406) 899-4360**

**Thursday**  
**March 16, 2023**  
**1:00 PM**  
**at the Ranch**

22700 Highwood Rd - Highwood, MT  
*0.5 miles East of Highwood on Hwy 228*

*Join us -*

**Wednesday, March 15, 2023**

- *Bulls penned, available for viewing.*
- *5 PM - Social Hour and light meal*

**Thursday, March 16, 2023**

- *8 AM - Bulls available for inspection.*
- *NOON - Complimentary Lunch by Elmo's Highwood Bar*
- *1 PM - Malek Angus Ranch Bull Sale*



**Auctioneer:**

**Kyle Shobe**

**(406) 366-0472**

## PUBLICATION REPRESENTATIVES

- John Goggins** . . . *Western Ag Reporter* **(406) 259-4589**  
**Kurt Kangas** . . . . . *Angus Journal* **(406) 366-4190**  
**Jeff Thomas** . . . . . *Prairie Star* **(406) 581-8859**  
**Andy Rest** . . . *Cattle Business Weekly* **(406) 670-5678**

## MARKETING AGENTS

- Ty Malek** . . . . . **(406) 899-4360**  
**Glen Davis** . . . . . **(219) 776-7584**  
**Chase Mury** . . . . . **(406) 590-1069**  
**Joel Judge** . . . . . **(805) 234-7191**  
**Parker Friedrich** . . . . . **(254) 413-2420**

## HERD HEALTH

All bulls in this offering are virgin bulls and we will arrange for health and shipping anywhere in the United States or Canada. Bulls have received two rounds of One Shot Ultra 8, BoviShield Gold 5 FP, Fusogard for footrot and have been poured with Dectomax.



### Bid Online

Sale will be broadcast live on **www.CCI.live**  
See instructions for viewing on bidding on page 23.

## GUARANTEE

Each bull selling for \$4,000 or more is backed by a first breeding season loss of use guarantee. First breeding season is defined as 90 days after initial turn out. The bulls have been screened for structural soundness, but injuries and problems do occasionally arise once they go to breeding pastures. If your bull becomes incapacitated, a suitable replacement of equal or greater value will be provided if available or a credit minus salvage value will be furnished which may be used at future Malek Angus Ranch sales. This guarantee does not apply to accidental death of the bull.

## DELIVERY

Malek Angus Ranch offers **free delivery** to locations in Montana. Delivery cost outside of the state is guaranteed at the lowest possible cost. Please inform us on sale day of your delivery instructions at check out.  
***If you choose to take your bulls home sale day you will receive a \$100 credit per bull!***

## TERMS & CONDITIONS

Bulls sell under the suggested terms and conditions of the American Angus Association.

We would like to welcome everyone to the 2023 spring bull sale at Malek Angus Ranch. Seems unreal to be our 10th annual bull sale at the ranch. Things have definitely progressed since our first year in business. Our first year selling bulls our crop consisted of one bull. A decade later, we are offering seventy eight head. Since 1992 we have experienced droughts, floods, market highs and market lows. It looks as though we are currently through the drought, through Covid, and the cattle market is on a steady run. As our friend Joe Goggins says, "These bulls will sire some of the highest priced feeder calves in history."

This crop of bulls we are offering can participate in the marketplace at the weaning stage or the finished beef market. They offer both the growth and carcass quality to turn a profit at whatever stage in the market one wants to participate in.

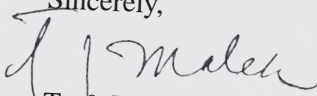
Due to the drought these bulls were weaned and put on feed in late August. As a result of the lack of grass and water, while changing our pasture rotation we felt it was necessary to do so. This decision would allow our cows to an ample amount of time to get ready for the current calf crop. This early weaning has allowed us to cull more and scrutinize this group of bulls and cows to a higher standard. In the process of weaning these bulls they have been parent verified by the use of DNA and have genetically enhanced EPDS that allow higher accuracy standards. The phenotype, maternal ability, and disposition is measured throughout the year on a daily basis as we birth, raise, and feed these bulls under owner. We feel if your going to have some feedlot grow your bulls you really don't know what you got for a product if you don't see it daily.

Some highlight sire groups of this years bull sale are the Connealy Clarity sons. The Clarity offspring have been topping sales from coast to coast sale after sale. They have big number sets and rank up against the elite cattle in the breed. The Sterling Pacific sons are generally a calving ease group that have a smaller mature stature, while expressing thickness and growth in a very eye appealing package. The Ellingson Three Rivers sons have top end growth with lots carcass quality. The Three Rivers sons have as much extension and extra length as any cattle we have used in our program. The KCF Exponential sons are a group of high CED cattle that grow fast and don't sacrifice carcass quality. The Greater Good sire group is a moderate calving ease, explosive growth, with extra end product merit. The Transcendant sire was selected to use because he brings calving ease along with the highest marbling EPD in the entire Angus breed.

With these selected sire groups offered we hope you look throughout this entire catalog and make your own evaluation of this years crop. We once again invite you to come look at these bulls anytime prior to the sale. Our open house will be on March 15 at 5:00 pm. The bulls will be penned and ready for viewing. The morning of the sale (March, 16) we will host coffee and rolls. Lunch to follow at noon, served by Elmos Highwood Bar.

In closing comments we sincerely want to thank you. It is simply humbling to see how many of you continue to be loyal customers and even better friends. Thank you, we are eager to foster new acquaintances and lasting friendship in the cattle business in the years to come.

Sincerely,

  
Ty & Tami Malek



Ty & Tami Malek  
22700 Highwood Rd - Highwood, MT 59450  
Ty (406) 899-4360  
malekangusranch406@gmail.com

# EPDs - The Ultimate Selection Tool

1

## M A R Clarity 257

Reg# +\*20369676 ID 257 DOB 1/30/2022

**HD50K** - Indicates bull is 50K tested. See information on 23. Individual DNA data for each bull is listed on pages 20 & 21.

### CAB Target the Brand

See information below. A well above average of Malek bulls qualify!

Cherry Creek Land Grant  
Connealy Clarity  
Breshie of Conanga 6988

K C F Bennett Homestead  
Cherry Crk Eva B27 M  
Connealy Confidence Plus  
Brelly of Conanga 367  
Mytty In Focus  
A A R Lady Kelton 5551  
S Chisum 6175  
Blevins Erica Rito 5453

A A R Ten X 7008 S A  
MAR Erica Rito 1401  
Highwood Erica Rito 209

Birth Wt

86

205 365

731 1136

WW/R Scrotal

ET 42<sub>cm</sub>

CEW	BW	WW	YW	MILK	CW	Marb	RE	\$M	\$W	\$B	\$C
+4	+1.8	+84	+151	+28	+85	+1.32	+0.76	+89	+83	+227	+383



Top 1% CW	Top 2% \$G	Top 4% RADG	Top 15% Fat
Top 1% \$F	Top 3% \$M	Top 4% Marb	Top 25% Claw
Top 1% \$B	Top 3% \$W	Top 5% WN	Top 25% HS
Top 1% \$C	Top 4% YW		

Individual Performance

### EPD Percentile Ranking

Angus breed comparison of EPDs to other non-parent bulls.

**Expected Progeny Difference (EPD)**, is the prediction of how future progeny of each animal are expected to perform relative to the progeny of other animals listed in the database. EPDs are expressed in units of measure for the trait.

#### PRODUCTION EPDs:

**Calving Ease Direct (CED)**, is expressed as a difference in percentage of unassisted births, with a higher value indicating greater calving ease in first calf heifers. It predicts the average difference in ease with which a sire's calves will be born when he is bred to first-calf heifers.

**Birth Weight EPD (BW)**, expressed in pounds, is a predictor of a sire's ability to transmit birth weight to his progeny compared to that of other sires.

**Weaning Weight (WW) & Yearling Weight (YW)**, expressed in pounds, are predictors of a sire's ability to transmit weaning & yearling growth to his progeny compared to that of other sires.

#### MATERNAL EPD:

**Milk EPD (Milk)**, is a predictor of a sire's genetic merit for milk and mothering ability as expressed in his daughters compared to daughters of other sires. In other words, it is that part of a calf's weaning weight attributed to milk and mothering ability.

#### CARCASS EPDs:

**Carcass Weight EPD (CW)**, expressed in pounds is a predictor of the differences in hot carcass weight of a sire's progeny compared to progeny of other sires.

**Marbling EPD (Marb)**, expressed as a fraction of the difference in USDA marbling score of a sire's progeny compared to progeny of other sires.

**Ribeye Area EPD (RE)**, expressed in square inches, is a predictor of the difference in ribeye area of a sire's progeny compared to progeny of other sires.

#### \$VALUE INDEXES:

**Multi-trait selection indexes to assist Weaned Calf Value (\$W)**, is the expected average difference in future progeny performance for preweaning merit. \$W includes both revenue and cost adjustments associated with differences in birth weight, weaning direct growth, maternal milk, and mature cow size. **Beef Value (\$B)**, is the expected average difference in future progeny performance for postweaning and carcass value compared to progeny of other sires.



## ABOVE AVERAGE GOALS REQUIRE TARGETED BULLS

*Aim High*

The Targeting the Brand™ logo highlights registered Angus bulls with greater genetic potential to produce calves that meet the most challenging specifications of the Certified Angus Beef® brand.

Only 1 in 4 non-parent Angus bulls qualify.

### Minimum Genetic Requirements

Marbling EPD (Marb)	+0.65
Dollar Grid Carcass Index (\$G)	+55.0



For more information on Targeting the Brand™ visit CABcattle.com.

# *Malek Angus Ranch EPDs*

## *Compared to Angus Breed Averages*

### *65 Registered Sale Bulls*

<i>Malek Bull Average</i>		<i>Breed Avg or Better</i>	<i>Angus Breed Average</i>	
Calving Ease Direct EPD	+7	39 Bulls	+6	Calving Ease Direct EPD
Birth Weight EPD	+1.7	24 Bulls	+1.2	Birth Weight EPD
Weaning Weight EPD	+73	61 Bulls	+61	Weaning Weight EPD
Yearling Weight EPD	+128	55 Bulls	+108	Yearling Weight EPD
Scrotal EPD	+0.87	32 Bulls	+0.86	Scrotal EPD
Docility EPD	+20	45 Bulls	+18	Docility EPD
CEM EPD	+9	47 Bulls	+8	CEM EPD
Milk EPD	+25	29 Bulls	+27	Milk EPD
Carcass Weight EPD	+59	51 Bulls	+48	Carcass Weight EPD
Marbling EPD	+0.93	52 Bulls	+0.63	Marbling EPD
Ribeye EPD	+0.81	52 Bulls	+0.62	Ribeye EPD
\$Weaning Value	+66	56 Bulls	+57	\$Weaning Value
\$Feed Value	+102	53 Bulls	+85	\$Feed Value
\$Grid Value	+70	58 Bulls	+50	\$Grid Value
\$Beef Value	+171	58 Bulls	+138	\$Beef Value
\$Combined Index	+282	55 Bulls	+241	\$Combined Index

### ***About these Bulls:***

All the bulls in this offering have been fed at the ranch on a high roughage ration with plenty of room to move and exercise. While their genetics and performance are impressive, they are backed from end to end by a phenotypically superior group of bulls.

Every bull has a clear **freeze brand** for easy identification in the pasture. These bulls are ready for Spring breeding. They are not feedlot spoiled and will be ready to go to work, cover country, provide exceptional breeding performance and come back in the fall in good condition.

**YEARLINGS.** We culled deep at weaning and again at the first of the year. The bulls that have made the sale have earned their spot and are bulls that we are proud to have represent us.

**COMMERCIAL YEARLINGS.** This year we have a few commercial yearlings throughout the sale. This select group are out of purebred Angus cows that were never registered. These bulls have HD50K and were just too good to cut. They were raised in the same contemporaries as the registered bulls and are backed with the same guarantees and high expectations we demand.

If you are unable to make it to Highwood on sale day, give Ty or any of our representatives listed a call and let them know what you are looking for. We will fill your order and guarantee your satisfaction of the bulls delivered.

# Curve Bending EPDs

Lot 1



CED	BW	WW	YW	RADG	SC	HP	CEM	MILK	Doc	Claw	Angle	HS	CW	Marb	RE	Fat	\$M	\$W	\$F	\$G	\$B	\$C
<b>+4</b>	<b>+1.8</b>	<b>+84</b>	<b>+151</b>	<b>+33</b>	<b>+87</b>	<b>+11.8</b>	<b>+9</b>	<b>+28</b>	<b>+22</b>	<b>+44</b>	<b>+46</b>	<b>+38</b>	<b>+85</b>	<b>+1.32</b>	<b>+76</b>	<b>-.016</b>	<b>+89</b>	<b>+83</b>	<b>+139</b>	<b>+89</b>	<b>+227</b>	<b>+383</b>
70%	65%	5%	4%	4%	50%	50%	40%	35%	35%	25%	35%	25%	1%	4%	30%	15%	3%	3%	1%	2%	1%	1%

1

## M A R Clarity 257

Reg# +\*20369676 ID 257 DOB 1/30/2022

Cherry Creek Land Grant  
**Connealy Clarity**  
 Breshie of Conanga 6988

A A R Ten X 7008 S A  
**MAR Erica Rito 1401**  
 Highwood Erica Rito 209

K C F Bennett Homestead  
 Cherry Crk Eva B27 M  
 Connealy Confidence Plus  
 Brelly of Conanga 367  
 Mytty In Focus  
 A A R Lady Kelton 5551  
 S Chisum 6175  
 Blevins Erica Rito 5453

Birth Wt	Adj 205	WWR	Adj 365	Current Wt	Scrotal
<b>86</b>	<b>731</b>	<b>ET</b>	<b>1136</b>	<b>1396</b>	<b>42cm</b>

CED	BW	WW	YW	DMI	YH	SC	Doc	Claw	Angle	PAP
39	43	<b>6</b>	<b>5</b>	77	46	58	<b>19</b>	<b>25</b>	46	90

HS	HP	CEM	Milk	MW	MH	CW	Marb	RE	FAT	Tend
36	46	<b>15</b>	54	54	78	<b>1</b>	<b>2</b>	25	<b>17</b>	<b>17</b>

Our lead off bull offers an elite numbers package that very few can match. He is in the top 15% percent or better in 14 epd traits. He brings reasonable calving ease and top end materna qualities. Lot 1 is pleasing to the eye and posts curve bending growth numbers. Study his blend for Yearling, Marbling, \$Energy, \$Maternal and \$Beef. A tremendous opportunity to add carcass merit and efficiency without sacrificing performance. He has several paternal brothers selling this spring and last fall and they were on the top end of each and every sale.

### Reference Sire



**Connealy Clarity** +\*19555171

CED	BW	WW	YW	MILK	CW	Marb	RE	\$W	\$B	\$C
<b>+6</b>	<b>+1.5</b>	<b>+76</b>	<b>+142</b>	<b>+21</b>	<b>+68</b>	<b>+1.13</b>	<b>+1.04</b>	<b>+64</b>	<b>+204</b>	<b>+351</b>

### Reference Dam



**MAR Erica Rito 1401**

Dam of Lot 1. Owned with Pleasant Valley Farms, TN

# Calving Ease and Growth

Lot 2



CED	BW	WW	YW	RADG	SC	HP	CEM	MILK	Doc	Claw	Angle	HS	CW	Marb	RE	Fat	\$M	\$W	\$F	\$G	\$B	\$C
+11	+1.8	+87	+169	+38	+1.25	+15.2	+11	+22	+38	+4.0	+4.2	+5.8	+90	+5.4	+9.6	-.030	+79	+70	+142	+56	+197	+335
15%	65%	3%	1%	1%	30%	15%	20%	80%	1%	15%	20%	60%	1%	60%	10%	10%	15%	20%	1%	35%	3%	1%

Reference Dam



**WRCC Blackcap F11**  
Donor Dam of Lot 2

2

## CA Clarity 2211

Reg# +\*20288275 ID 2211 DOB 1/31/2022

Cherry Creek Land Grant  
Connealy Clarity  
Breshie of Conanga 6988

Jindra Acclaim  
WRCC Blackcap F11  
EXAR Blackcap 5801

K C F Bennett Homestead  
Cherry Crk Eva B27 M  
Connealy Confidence Plus  
Brelly of Conanga 367  
Jindra 3rd Dimension  
Jindra Blackbird Lassy 1111  
EXAR Resistol 3710B  
EXAR Blackcap 2563

Birth Wt	Adj 205	WWR	Adj 365	Current Wt	Scrotal
75	714	ET	1082	1242	39.5cm

CED	BW	WW	YW	DMI	YH	SC	Doc	Claw	Angle	PAP
17	44	4	1	100	15	16	1	12	48	97

HS	HP	CEM	Milk	MW	MH	CW	Marb	RE	FAT	Tend
48	6	62	87	2	15	1	57	5	8	22

Lot 2 is truly a unique combination of calving ease, weaning weight, and yearling weight. Use him on heifers or use him on cows. His epd profile speaks for itself. He is in the top 15% or better for 15 traits. A tank of a bull, he is long bodied and standing on solid legs and feet with massive volume. He has lots of maternal merit: Top 15% for HP, top 20% for CEM and top 1% Docility. Growth comes in strong with Top 3% WW, Top 1% YW, RADG Top 1%, CW Top 1%, \$F Top 1%. This Clarity son is a bull that has serious earning potential in the seedstock and commercial business.

A joint embryo project between Cash Angus and Malek Angus.



Not enough can be said about the value of good feet and legs on bulls. When it comes down to it, all the other numbers and phenotype are of no use if your next herd sire won't hold up. Lot 2 stands on an exceptional foundation and will thrive in any environment.

# Standout Phenotype

Lot 3



*Pam Vanek*



CED	BW	WW	YW	RADG	SC	HP	CEM	MILK	Doc	Claw	Angle	HS	CW	Marb	RE	Fat	\$M	\$W	\$F	\$G	\$B	\$C
<b>+11</b>	<b>+1.5</b>	<b>+72</b>	<b>+130</b>	<b>+28</b>	<b>+1.00</b>	<b>+11.3</b>	<b>+12</b>	<b>+18</b>	<b>+19</b>	<b>+41</b>	<b>+41</b>	<b>+12</b>	<b>+60</b>	<b>+1.26</b>	<b>+64</b>	<b>+0.27</b>	<b>+71</b>	<b>+61</b>	<b>+107</b>	<b>+81</b>	<b>+188</b>	<b>+315</b>
15%	60%	20%	20%	25%	45%	60%	15%	95%	50%	20%	15%	2%	25%	5%	50%	70%	30%	40%	15%	5%	5%	3%

3

## M A R Pacific 260

Reg# \*20572405 ID 260 DOB 1/13/2022

Hoover No Doubt  
Sterling Pacific 904  
Baldrige Isabel B082

Baldrige Alternative E125  
M A R Miss Amy 9012  
M A R Miss Amy 1743

Mogck Bullseye  
Miss Blackcap Ellston J2  
G A R Prophet  
Baldrige Isabel Y69  
Poss Easy Impact 0119  
Baldrige Blackbird A030  
Rito 9Q20 of Rita 5F56 GHM  
MAR Miss Amy 1404

Birth Wt	Adj 205	WWR	Adj 365	Current Wt	Scrotal
<b>78</b>	<b>692</b>	<b>100</b>	<b>1148</b>	<b>1248</b>	<b>37cm</b>

HDSOK										
CED	BW	WW	YW	DMI	YH	SC	Doc	Claw	Angle	PAP
29	56	40	38	46	99	35	59	<b>14</b>	<b>19</b>	75
HS	HP	CEM	Milk	MW	MH	CW	Marb	RE	FAT	Tend
<b>5</b>	47	67	94	66	85	40	<b>8</b>	49	70	30

Lot 3 has a standout phenotype with a real herd bull presence. A moderate bull with great feet. He is the right kind! He is the type of bull that you will easily find in the pen. Outstanding calving ease prospect with adequate growth. The Pacific sons have been very well received this Spring. He has the look to make some tremendous females that will last for years to come. His mother is a Baldrige Alternative daughter with a beautiful udder and great feet - the kind of cow that will breed back early, raise an exceptional calf and become a fixture in the herd.

## Reference Sire



**Baldrige Alternative** \*18837398

CED	BW	WW	YW	MILK	CW	Marb	RE	\$W	\$B	\$C
<b>+11</b>	<b>+1.1</b>	<b>+65</b>	<b>+119</b>	<b>+11</b>	<b>+64</b>	<b>+1.01</b>	<b>+89</b>	<b>+45</b>	<b>+196</b>	<b>+289</b>

Maternal grandsire to Lot 3. Alternative has had a positive impact on our program, adding thickness to his calves and his daughters are excellent mother cows with good udders. They are the kind that will calve on their own, raise a good calf year after year.  
Owned with the Alternative Syndicate.



# Ideal Angus Bull

Lot 4



CED	BW	WW	YW	RADG	SC	HP	CEM	MILK	Doc	Claw	Angle	HS	CW	Marb	RE	Fat	\$M	\$W	\$F	\$G	\$B	\$C
<b>+8</b>	<b>+1.8</b>	<b>+70</b>	<b>+131</b>	<b>+28</b>	<b>+1.76</b>	<b>+12.5</b>	<b>+14</b>	<b>+30</b>	<b>+23</b>	<b>+46</b>	<b>+35</b>	<b>+23</b>	<b>+57</b>	<b>+1.53</b>	<b>+47</b>	<b>+0.56</b>	<b>+77</b>	<b>+68</b>	<b>+99</b>	<b>+89</b>	<b>+188</b>	<b>+321</b>
35%	65%	25%	20%	25%	10%	40%	4%	25%	30%	35%	4%	10%	30%	1%	75%	95%	15%	25%	25%	2%	5%	3%

Reference Sire



**Sterling Pacific 904** +19444025

CED	BW	WW	YW	MILK	CW	Marb	RE	\$W	\$B	\$C
<b>+10</b>	<b>+1.6</b>	<b>+76</b>	<b>+139</b>	<b>+17</b>	<b>+60</b>	<b>+1.32</b>	<b>+55</b>	<b>+59</b>	<b>+188</b>	<b>+320</b>

We chose Sterling Pacific for his outstanding phenotype and carcass merit, all backed by top notch pedigree. He passes on his deep, square made, structurally correct phenotype and top notch disposition to his progeny.

4

**M A R Pacific 245**

Reg# \*20414333 ID 245 DOB 1/8/2022

Hoover No Doubt  
**Sterling Pacific 904**  
Baldrige Isabel B082

G A R Sure Fire  
**M A R Erica 1847**  
M A R Erica 1615

Mogck Bullseye  
Miss Blackcap Ellston J2  
G A R Prophet  
Baldrige Isabel Y69  
Connealy In Sure 8524  
Chair Rock 5050 G A R 8086  
SydGen FATE 2800  
M A R Erica Rito 1354

Birth Wt	Adj 205	WWR	Adj 365	Current Wt	Scrotal
<b>82</b>	<b>821</b>	<b>119</b>	<b>1245</b>	<b>1390</b>	<b>41cm</b>

HOSOK										
CED	BW	WW	YW	DMI	YH	SC	Doc	Claw	Angle	PAP
<b>31</b>	<b>57</b>	<b>35</b>	<b>10</b>	<b>88</b>	<b>33</b>	<b>6</b>	<b>39</b>	<b>25</b>	<b>1</b>	<b>24</b>
HS	HP	CEM	Milk	MW	MH	CW	Marb	RE	FAT	Tend
<b>14</b>	<b>62</b>	<b>13</b>	<b>33</b>	<b>35</b>	<b>49</b>	<b>24</b>	<b>2</b>	<b>74</b>	<b>95</b>	<b>64</b>

Here is a big, stout Pacific son. This particular sure-fire dam is very moderate in stature but really gets it done when raising her progeny. This calf has been a standout since he was in Spring pasture. He is very good on PAP, end product merit and has top end foot structure. 245 is just a no holes bull all the way through.

# Three Rivers



## 5 M A R Three Rivers 258

Reg# +\*20369591 ID 258 DOB 1/18/2022

Ellingson Homestead 6030  
**Ellingson Three Rivers 8062**  
 EA Emblynnette 6279

PA Fortitude 2500  
**M A R Erica Rito 1757**  
 MAR Erica Rito 1401

CTS Remedy 1T01  
 EA Erica 1082  
 Ellingson Chaps 4095  
 EA Emblynnette 2159  
 GAR-EGL Protege  
 G G Clara 0171  
 A A R Ten X 7008 S A  
 Highwood Erica Rito 209

CED	BW	WW	YW	MILK	CW	Marb	RE	\$M	\$W	\$B	\$C
+3	+2	+83	+147	+17	+84	+1.04	+1.00	+67	+64	+217	+348

Top 1% MH	Top 1% CW	Top 1% \$F	Top 1% \$B	Top 1% \$C	Top 2% YH	Top 5% WN	Top 5% YW	Top 10% RADG	Top 10% CEM	Top 10% RE	Top 10% Fat	Top 10% \$G	Top 15% Angle	Top 15% PAP	Top 15% Marb
-----------	-----------	------------	------------	------------	-----------	-----------	-----------	--------------	-------------	------------	-------------	-------------	---------------	-------------	--------------

CED	BW	WW	YW	DMI	YH	SC	Doc	Claw	Angle	PAP
66	69	6	5	74	4	79	17	12	17	20

HS	HP	CEM	Milk	MW	MH	CW	Marb	RE	FAT	Tend
43	69	5	93	11	3	2	14	7	21	7

This bull is a brother to the high selling pregnancy in the 2022 Oklahoma City Stock Show. His dam is a big powerhouse cow at Malek Angus. 1757 has a near perfect udder and is out of a Fortitude cow. A full brother to Lot 5 sells as Lot 20.

## 6 M A R Three Rivers 271

Reg# \*20369584 ID 271 DOB 1/15/2022

Ellingson Homestead 6030  
**Ellingson Three Rivers 8062**  
 EA Emblynnette 6279

FF Rito 6V27 of 4D01 2240  
**M A R Rita 9115**  
 M A R Rita 1600

CTS Remedy 1T01  
 EA Erica 1082  
 Ellingson Chaps 4095  
 EA Emblynnette 2159  
 V A R Discovery 2240  
 FF Rita 4D01 of 9Q23 Denver  
 SydGen FATE 2800  
 Highwood Rita 203

CED	BW	WW	YW	MILK	CW	Marb	RE	\$M	\$W	\$B	\$C
-4	+4.2	+93	+169	+20	+89	+7.3	+1.21	+57	+66	+205	+323

Top 1% WN	Top 1% YW	Top 1% CW	Top 1% \$F	Top 2% RADG	Top 2% MW	Top 2% RE	Top 2% \$B	Top 2% \$C	Top 3% YH	Top 4% MH	Top 10% Angle	Top 20% HS	Top 20% \$G	Top 25% Fat	Top 25% \$W
-----------	-----------	-----------	------------	-------------	-----------	-----------	------------	------------	-----------	-----------	---------------	------------	-------------	-------------	-------------

CED	BW	WW	YW	DMI	YH	SC	Doc	Claw	Angle	PAP
97	88	1	1	99	7	20	22	17	7	53

HS	HP	CEM	Milk	MW	MH	CW	Marb	RE	FAT	Tend
30	24	75	89	2	8	1	38	1	34	73

This very moderate framed Three Rivers son is arguably out of the best young cow at Malek Angus Ranch. She is super gentle and has passed that docility on to this potential herd sire. Check Lot 6 out sale day and give him an extra scratch.

Reference Dam



**MAR Erica Rito 1757** \*19021324  
 Donor dam of Lot 5 & 20.

Reference Sire



**Ellingson Three Rivers 8062** \*19203618

CED	BW	WW	YW	MILK	CW	Marb	RE	\$W	\$B	\$C
-8	+5.9	+103	+188	+18	+100	+6.3	+1.05	+63	+216	+350

We chose Three Rivers for his breed leading weaning and yearling growth combined with incredible carcass. He has not disappointed in producing stout made, high performing sons, and daughters we are excited to see in our cow herd next year.

# Growth Kings



## 7 M A R El Dorado 226

Reg# +\*20412068 ID 226 DOB 1/18/2022

Poss Maverick  
**M A R El Dorado**  
 M A R Erica 1806

Basin Payweight 1682  
 Poss Pride 5163  
 3F Epic 4631  
 Highwood Erica Rito 209  
 Silveiras Conversion 8064  
 Hickory Hill Erica 009  
 SydGen FATE 2800  
 CAR Miss Amy 591

BUBS Southern Charm AA31  
**M A R Miss Amy 1837**  
 M A R Miss Amy 1550

Birth Wt	365
<b>93</b>	<b>1355</b>
205	Current Wt
<b>873</b>	<b>1476</b>
WWR	Scrotal
<b>ET</b>	<b>43cm</b>

CED	BW	WW	YW	MILK	CW	Marb	RE	\$M	\$W	\$B	\$C
<b>+1</b>	<b>+3.0</b>	<b>+104</b>	<b>+172</b>	<b>+28</b>	<b>+92</b>	<b>+1.12</b>	<b>+1.12</b>	<b>+51</b>	<b>+91</b>	<b>+220</b>	<b>+336</b>

Top 1% WN	Top 1% \$W	Top 1% \$B	Top 4% \$G
Top 1% CW	Top 1% MW	Top 2% RADG	Top 10% YH
Top 1% \$C	Top 1% \$F	Top 2% SC	Top 10% Marb
Top 1% YW	Top 1% MH	Top 3% RE	

CED	BW	WW	YW	DMI	YH	SC	Doc	Claw	Angle	PAP
<b>42</b>	<b>24</b>	<b>1</b>	<b>7</b>	<b>82</b>	<b>13</b>	<b>4</b>	<b>20</b>	<b>75</b>	<b>92</b>	<b>84</b>
HS	HP	CEM	Milk	MW	MH	CW	Marb	RE	FAT	Tend
<b>68</b>	<b>71</b>	<b>65</b>	<b>39</b>	<b>2</b>	<b>2</b>	<b>1</b>	<b>14</b>	<b>6</b>	<b>35</b>	<b>38</b>

This bull has all the power and growth of any bull in the country. His carcass is also very top notch. El Dorado is the past high seller for Malek Angus and his 108 WW EPD ranks him as the #6 WW bull in the breed, and he currently posts a 242 \$B and 364 \$C.

## 8 M A R Greater Good 191

Reg# +\*20389916 ID 191 DOB 8/5/2021

G A R Ashland  
**G A R Greater Good**  
 G A R Sure Fire A5008

G A R Early Bird  
 Chair Rock Ambush 1018  
 G A R Sure Fire  
 G A R Mandate A2011  
 Werner War Party 2417  
 B A Lady 6807 305  
 A A R Ten X 7008 S A  
 Highwood Erica Rito 209

R B Tour Of Duty 177  
**M A R Erica 1616**  
 MAR Erica Rito 1400

Birth Wt	
<b>80</b>	
Current Wt	
<b>1636</b>	
Scrotal	
<b>43cm</b>	

CED	BW	WW	YW	MILK	CW	Marb	RE	\$M	\$W	\$B	\$C
<b>+8</b>	<b>+3.0</b>	<b>+91</b>	<b>+167</b>	<b>+32</b>	<b>+77</b>	<b>+1.65</b>	<b>+1.10</b>	<b>+57</b>	<b>+80</b>	<b>+226</b>	<b>+350</b>

Top 1% YW	Top 1% \$C	Top 3% CW	Top 4% MH
Top 1% Marb	Top 2% WN	Top 3% RE	Top 4% \$W
Top 1% \$G	Top 3% YH	Top 4% RADG	Top 4% \$F
Top 1% \$B	Top 3% MW	Top 4% HS	Top 5% DOC

CED	BW	WW	YW	DMI	YH	SC	Doc	Claw	Angle	PAP
<b>24</b>	<b>62</b>	<b>3</b>	<b>1</b>	<b>99</b>	<b>3</b>	<b>54</b>	<b>14</b>	<b>55</b>	<b>40</b>	<b>73</b>
HS	HP	CEM	Milk	MW	MH	CW	Marb	RE	FAT	Tend
<b>2</b>	<b>81</b>	<b>63</b>	<b>25</b>	<b>4</b>	<b>5</b>	<b>3</b>	<b>1</b>	<b>3</b>	<b>26</b>	<b>94</b>

This bull is a little older, fall-born bull. His dam is a super front end donor cow. 1616 is the full sister to the extraordinary herd bull Linz Exemplify. Check out the Marbling EPD on this bull. His docility ranks him in the top 5% of the breed.

### Reference Sire



### G A R Greater Good +\*19362382

CED	BW	WW	YW	MILK	CW	Marb	RE	\$W	\$B	\$C
<b>+10</b>	<b>+2.0</b>	<b>+90</b>	<b>+160</b>	<b>+27</b>	<b>+71</b>	<b>+1.39</b>	<b>+1.07</b>	<b>+79</b>	<b>+204</b>	<b>+318</b>

We added Great Good to our AI program for his overall quality, eye appeal and his impressive \$Value profiles.

### Reference Dam



### MAR Erica 1616 +\*18499816

Donor dam of Lot 8. Other sons sell as Lots 18, 38 and 58

# Pacific Power House Bulls

9

## M A R Pacific 259

Reg# \*20370369 ID 259 DOB 1/16/2022

Hoover No Doubt  
Sterling Pacific 904  
Baldrige Isabel B082

Jindra Megahit  
M A R Erica 9002  
M A R Erica 1741

Mogck Bullseye  
Miss Blackcap Ellston J2  
G A R Prophet  
Baldrige Isabel Y69  
Hoff Blockbuster SC 929 1612  
Hoff Sweetheart S C 216  
PA Fortitude 2500  
Highwood Erica Rito 009

Birth Wt	
84	
205	365
705	1145
WWR	Scrotal
102	39 <sub>cm</sub>

CED	BW	WW	YW	MILK	CW	Marb	RE	\$M	\$W	\$B	\$C
+10	+1.6	+66	+112	+26	+54	+77	+94	+81	+65	+163	+292

Top 1% CEM	Top 10% \$M	Top 15% RE	Top 20% \$G
Top 3% Angle	Top 10% \$C	Top 20% CED	Top 20% \$B
Top 10% Fat	Top 15% Claw	Top 20% HS	Top 25% \$F

These Pacific sons seem to have calving ease on their side. This bull is a foot improver. He walks great and has ease in movement. He will be a great addition to any program that is looking for better feet in their herd.



Lot 12

10

## M A R Pacific 254

Reg# +\*20370435 ID 254 DOB 1/22/2022

Hoover No Doubt  
Sterling Pacific 904  
Baldrige Isabel B082

Rito 9Q20 of Rita 5F56 GHM  
M A R Miss Amy 1739  
CAR Miss Amy 591

Mogck Bullseye  
Miss Blackcap Ellston J2  
G A R Prophet  
Baldrige Isabel Y69  
Gardens Highmark  
Rita 5F56 of 1198 FD  
Hyline Right Time 338  
CAR Miss Amy 121

Birth Wt	
88	
205	365
630	1057
WWR	Scrotal
ET	38 <sub>cm</sub>

CED	BW	WW	YW	MILK	CW	Marb	RE	\$M	\$W	\$B	\$C
+13	+1.2	+76	+138	+31	+50	+96	+62	+80	+76	+148	+272

Top 1% Angle	Top 10% YW	Top 10% \$W	Top 20% Marb
Top 2% Claw	Top 10% HS	Top 15% WN	Top 20% \$G
Top 4% CEM	Top 10% \$M	Top 20% Milk	Top 25% \$C
Top 10% CED			

Super calving ease Pacific son out of a now-deceased dam that broke her back last summer. This bull is a brother to the fancy heifers that sold so well at the Oklahoma Stock Show. This bull packs a fantastic phenotype in a smaller mature size package.

12

## M A R Exponential 213

Reg# \*Pending ID 213 DOB 1/10/2022

Casino Bomber N33  
K C F Bennett Exponential  
K C F Miss Southside B226

Baldrige Alternative E125  
M A R Lucy 0066  
MAR Lucy 1432

KM Broken Bow 002  
Casino Annie K48  
K C F Bennett Southside  
K C F Miss Trustmark W236  
Poss Easy Impact 0119  
Baldrige Blackbird A030  
PA Fortitude 2500  
M A R Lucy 232

Birth Wt	
74	
205	365
756	1193
WWR	Scrotal
100	35.5 <sub>cm</sub>

CED	BW	WW	YW	MILK	CW	Marb	RE	\$M	\$W	\$B	\$C
+8	+2.0	+71	+126	+21	+65	+94	+95	+53	+60	+190	+299

This bull is really easy to look at and gets better every day. You can just watch him taking shape all the time. These exceptional cattle have an impressive phenotype combined with end product merit. They will contribute to high quality carcasses in the years to come.

11

## M A R Pacific 230

Reg# +\*Commercial ID 230 DOB 1/13/2022

Hoover No Doubt  
Sterling Pacific 904  
Baldrige Isabel B082

3F Epic 4631  
M A R Pride 1842  
M A R Pride 1560

Mogck Bullseye  
Miss Blackcap Ellston J2  
G A R Prophet  
Baldrige Isabel Y69  
Varilek Product 2010 04  
Zebo Queen 1072  
SydGen FATE 2800  
K A Pride 1303

Birth Wt	
80	
205	365
762	1213
WWR	Scrotal
110	41 <sub>cm</sub>

CED	BW	WW	YW	MILK	CW	Marb	RE	\$M	\$W	\$B	\$C
+8	+2.0	+81	+147	+20	+79	+1.24	+54	+58	+63	+193	+308

NHC. A little growthier Pacific son with some extra frame. This bull is just starting to come into himself. The older he gets the thicker his is becoming. He should leave some really nice daughters that milk very well and won't have udder breakdowns.

Reference Dam



Highwood Erica Rito 209 \*17344851

Our foundation Erica Rito cow - the grandam of Lot 13.



Lot 13

13

## M A R Clarity 233

Reg# +\*20369672 ID 233 DOB 1/23/2022

Cherry Creek Land Grant  
Connealy Clarity  
Breshie of Cononga 6988

A A R Ten X 7008 S A  
MAR Erica Rito 1401  
Highwood Erica Rito 209

K C F Bennett Homestead  
Cherry Crk Eva B27 M  
Connealy Confidence Plus  
Brelly of Cononga 367  
Mytty In Focus  
A A R Lady Kelton 5551  
S Chisum 6175  
Blevins Erica Rito 5453

Birth Wt	
100	
205	365
829	1226
WWR	Scrotal
ET	37 <sub>cm</sub>

CED	BW	WW	YW	MILK	CW	Marb	RE	\$M	\$W	\$B	\$C
+2	+1.7	+84	+145	+17	+76	+1.08	+95	+60	+69	+206	+327

Top 2% \$F	Top 4% CW	Top 10% RADG	Top 15% HS
Top 2% \$B	Top 5% WN	Top 10% DOC	Top 15% Marb
Top 2% \$C	Top 5% \$G	Top 10% Angle	Top 20% \$W
Top 3% Fat	Top 10% YW	Top 10% RE	Top 25% MW

Another bull out of the 1401 cow. We believe in this cow so much that we sold her once and then went and bought her back. She just keeps delivering big, stout cattle that pay the bills on the scale.

# Exponentially Improve Your Herd

## 14 M A R Exponential 295

Reg# \*20566708 ID 295 DOB 1/13/2022

Casino Bomber N33  
K C F Bennett Exponential  
K C F Miss Southside B226

Baldrige Alternative E125  
M A R Rita 0013  
ACC/MAR Rita 6120

KM Broken Bow 002  
Casino Annie K48  
K C F Bennett Southside  
K C F Miss Trustmark W236  
Poss Easy Impact 0119  
Baldrige Blackbird A030  
Quaker Hill Rampage 0A36  
HW Complete of 6108 1548

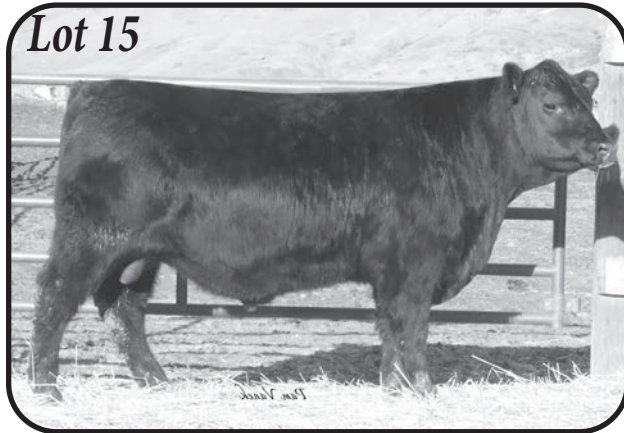
Birth Wt	
205	365
<b>751</b>	<b>1089</b>
WWR	Scrotal
<b>109</b>	<b>35.75cm</b>

CED	BW	WW	YW	MILK	CW	Marb	RE	\$M	\$W	\$B	\$C
<b>+7</b>	<b>+1.4</b>	<b>+84</b>	<b>+138</b>	<b>+23</b>	<b>+70</b>	<b>+99</b>	<b>+1.35</b>	<b>+59</b>	<b>+75</b>	<b>+189</b>	<b>+304</b>

 Top 1% RE	Top 10% YW	Top 10% \$W	Top 15% \$F
Top 5% WN	Top 10% MW	Top 10% \$C	Top 25% YH
Top 5% \$G	Top 10% MH	Top 15% Marb	Top 25% SC
Top 5% \$B	Top 10% CW	Top 15% Fat	

A bull that should work on larger framed heifers. He's from an Alternative dam. They are super thick, easy fleshing type of cattle that don't always need a feed bucket in front of them. This bull should have early maturing daughters with some great feet and legs. This bull should pass on carcass for the end owner of his offspring.

### Lot 15



## 15 M A R Exponential 212

Reg# \*20369502 ID 212 DOB 1/11/2022

Casino Bomber N33  
K C F Bennett Exponential  
K C F Miss Southside B226

Baldrige Alternative E125  
M A R Blackcap 0056  
M A R Blackcap 1811

KM Broken Bow 002  
Casino Annie K48  
K C F Bennett Southside  
K C F Miss Trustmark W236  
Poss Easy Impact 0119  
Baldrige Blackbird A030  
SydGen FATE 2800  
M A R Blackcap 1341

Birth Wt	
205	365
<b>730</b>	<b>1236</b>
WWR	Scrotal
<b>105</b>	<b>38cm</b>

CED	BW	WW	YW	MILK	CW	Marb	RE	\$M	\$W	\$B	\$C
<b>+10</b>	<b>+0.7</b>	<b>+89</b>	<b>+150</b>	<b>+24</b>	<b>+82</b>	<b>+1.22</b>	<b>+1.17</b>	<b>+50</b>	<b>+81</b>	<b>+212</b>	<b>+325</b>

 Top 1% \$B	Top 2% \$G	Top 4% \$W	Top 10% Marb
Top 2% WN	Top 2% \$C	Top 10% HS	Top 20% CED
Top 2% CW	Top 3% \$F	Top 10% MW	Top 25% RADG
Top 2% RE	Top 4% YW	Top 10% MH	Top 25% Fat

A little more calving ease with lots of end product merit. This bulls number package will stand alongside many AI sires around the country.

### Lot 17



### Lot 16



## 16 M A R Exponential 209

Reg# \*20369506 ID 209 DOB 1/11/2022


Casino Bomber N33  
K C F Bennett Exponential  
K C F Miss Southside B226

Baldrige Alternative E125  
M A R Erica 0050  
M A R Erica 1839

KM Broken Bow 002  
Casino Annie K48  
K C F Bennett Southside  
K C F Miss Trustmark W236  
Poss Easy Impact 0119  
Baldrige Blackbird A030  
GMA Unanimous 1502  
M A R Erica 1616

Birth Wt	
205	365
<b>708</b>	<b>1158</b>
WWR	Scrotal
<b>102</b>	<b>34cm</b>

CED	BW	WW	YW	MILK	CW	Marb	RE	\$M	\$W	\$B	\$C
<b>+4</b>	<b>+2.3</b>	<b>+85</b>	<b>+142</b>	<b>+22</b>	<b>+76</b>	<b>+94</b>	<b>+1.03</b>	<b>+65</b>	<b>+74</b>	<b>+191</b>	<b>+313</b>

 Top 4% WN	Top 4% \$C	Top 10% \$G	Top 25% Claw
Top 4% CW	Top 10% YW	Top 20% MH	Top 25% MW
Top 4% \$F	Top 10% RE	Top 20% Marb	Top 25% Fat
Top 4% \$B	Top 10% \$W	Top 25% DOC	

Very nice bull with reasonable calving ease and explosive growth with end product merit. These Baldrige Alternative daughters are making excellent cows so far. This is the kind of bull that will work on heifers who will produce steers that will go right on the truck with no cutbacks.



The dam (as a calf) and grandam of Lot 209.  
His grandam is the natural daughter of our 1616 Erica donor cow, recognized as a herd sire producer.

## 17 M A R Exponential 204

Reg# \*20369511 ID 204 DOB 1/8/2022


Casino Bomber N33  
K C F Bennett Exponential  
K C F Miss Southside B226

M A R Payweight 733  
M A R Rita 0020  
MAR Rita 1441

KM Broken Bow 002  
Casino Annie K48  
K C F Bennett Southside  
K C F Miss Trustmark W236  
Basin Payweight 1682  
Dean's Queenie X092  
MF Final Answer 053  
Jones Rita 8127

Birth Wt	
205	365
<b>663</b>	<b>1121</b>
WWR	Scrotal
<b>96</b>	<b>39cm</b>

CED	BW	WW	YW	MILK	CW	Marb	RE	\$M	\$W	\$B	\$C
<b>+8</b>	<b>+2.1</b>	<b>+79</b>	<b>+142</b>	<b>+25</b>	<b>+73</b>	<b>+78</b>	<b>+91</b>	<b>+48</b>	<b>+66</b>	<b>+179</b>	<b>+280</b>

 Top 5% CW	Top 10% YW	Top 15% SC	Top 20% \$C
Top 5% \$F	Top 10% MH	Top 15% RE	Top 25% Claw
Top 5% MW	Top 10% \$B	Top 20% \$G	Top 25% \$W
Top 10% WN			

Bigger framed bull with reasonable calving ease and a CED at +7. Has very desirable foot and claw scores along with above average carcass numbers.

# Performance and Carcass Merit



## 18 M A R Greater Good 234

Reg# +\*20369746 ID 234 DOB 1/14/2022

G A R Ashland	G A R Early Bird	Birth Wt	
G A R Greater Good	Chair Rock Ambush 1018	<b>80</b>	
G A R Sure Fire A5008	G A R Sure Fire	205	365
R B Tour Of Duty 177	G A R Mandate A2011	<b>750</b>	<b>1222</b>
M A R Erica 1616	Werner War Party 2417	WWR	Scrotal
MAR Erica Rito 1400	B A Lady 6807 305	<b>ET</b>	<b>38<sub>cm</sub></b>
	A A R Ten X 7008 S A		
	Highwood Erica Rito 209		

CED	BW	WW	YW	MILK	CW	Marb	RE	\$M	\$W	\$B	\$C
<b>+9</b>	<b>+0.7</b>	<b>+83</b>	<b>+148</b>	<b>+25</b>	<b>+67</b>	<b>+1.22</b>	<b>+1.08</b>	<b>+47</b>	<b>+74</b>	<b>+196</b>	<b>+301</b>

	Top 2% \$G	Top 5% WN	Top 10% Marb	Top 15% YH
	Top 3% \$B	Top 5% YW	Top 10% \$W	Top 15% HS
	Top 4% RE	Top 10% MW	Top 10% \$C	Top 15% MH
	Top 4% Fat	Top 10% CW	Top 15% RADG	Top 15% \$F

Another high numbered bull out of a great cow in the Erica family. This bull is highly recommended for heifers and you won't have to worry about the calves being in the cut back pen.

## 20 M A R Three Rivers 229

Reg# +\*20369589 ID 229 DOB 1/26/2022

Ellingson Homestead 6030	CTS Remedy 1T01	Birth Wt	
Ellingson Three Rivers 8062	EA Erica 1082	<b>86</b>	
EA Emblynette 6279	Ellingson Chaps 4095	205	365
PA Fortitude 2500	EA Emblynette 2159	<b>710</b>	<b>1169</b>
M A R Erica Rito 1757	GAR-EGL Protege	WWR	Scrotal
MAR Erica Rito 1401	G G Clara 0171	<b>ET</b>	<b>40<sub>cm</sub></b>
	A A R Ten X 7008 S A		
	Highwood Erica Rito 209		

CED	BW	WW	YW	MILK	CW	Marb	RE	\$M	\$W	\$B	\$C
<b>-5</b>	<b>+5.0</b>	<b>+100</b>	<b>+173</b>	<b>+17</b>	<b>+91</b>	<b>+1.27</b>	<b>+1.00</b>	<b>+60</b>	<b>+69</b>	<b>+232</b>	<b>+361</b>

	Top 1% WN	Top 1% CW	Top 2% MH	Top 5% Marb
	Top 1% YW	Top 1% \$F	Top 2% \$G	Top 10% RE
	Top 2% RADG	Top 1% \$B	Top 4% MW	Top 10% Fat
	Top 1% Angle	Top 1% \$C	Top 5% YH	Top 20% \$W

These Three Rivers bulls need no introduction with their growth and carcass. This 229 bull is in the top 240 non-parent bulls in the entire Angus breed. There is no need to cross breed when there are bulls like 229 around. These bulls will produce big heavy steers that will go on to grade for the feeder. These kind of bulls make buyers come back year after year to buy steers.

## 19 M A R Great Good 224

Reg# +\*20369749 ID 224 DOB 1/22/2022

G A R Ashland	G A R Early Bird	Birth Wt	
G A R Greater Good	Chair Rock Ambush 1018	<b>95</b>	
G A R Sure Fire A5008	G A R Sure Fire	205	365
A A R Ten X 7008 S A	G A R Mandate A2011	<b>737</b>	<b>1163</b>
MAR Erica Rito 1401	Mytty In Focus	WWR	Scrotal
Highwood Erica Rito 209	A A R Lady Kelton 5551	<b>ET</b>	<b>38<sub>cm</sub></b>
	S Chisum 6175		
	Blevins Erica Rito 5453		

CED	BW	WW	YW	MILK	CW	Marb	RE	\$M	\$W	\$B	\$C
<b>+3</b>	<b>+2.4</b>	<b>+87</b>	<b>+150</b>	<b>+27</b>	<b>+72</b>	<b>+0.83</b>	<b>+0.69</b>	<b>+51</b>	<b>+80</b>	<b>+178</b>	<b>+282</b>

	Top 3% WN	Top 10% YH	Top 10% \$F	Top 15% MH
	Top 4% YW	Top 10% CW	Top 10% \$B	Top 15% \$C
	Top 4% \$W	Top 10% Fat	Top 15% RADG	Top 20% \$G

This bull is the flush mate to the elite Las Vegas heifer that sold to Jocko Valley in Ariele, MT. The 1401 cow works on every bull we ever tried her on. She delivers the numbers. This bull has extra frame and will really push the scale down in the fall.

### Reference Sire



G A R Greater Good +\*19362382

CED	BW	WW	YW	MILK	CW	Marb	RE	\$M	\$W	\$B	\$C
<b>+10</b>	<b>+2.0</b>	<b>+90</b>	<b>+160</b>	<b>+27</b>	<b>+71</b>	<b>+1.39</b>	<b>+1.07</b>	<b>+79</b>	<b>+204</b>	<b>+318</b>	

### Reference Dam



MAR Erica Rito 1757 \*19021324

Donor dam of Lot 5 & 20.



MAR Erica Rito 2041 +\*20369751

A full sister to Lot 19, 2041 was the selection of Jocko Valley Angus in the December National Finals Angus Sale in Las Vegas.

# Calving Ease Specialists



## 23 M A R Transcendent 201

Reg# \*20568344 ID 201 DOB 1/3/2022

G A R Momentum		G A R Progress		Birth Wt							
G A R Transcendent		G A R Big Eye 1770		74							
G A R Prophet 2685		G A R Prophet		205	365						
Bobcat Blue Sky		G A R Daybreak 2842		727	1129						
M A R Miss Amy 0006		Musgrave Big Sky		WWR	Scrotal						
M A R Miss Amy 1743		Bobcat Lass 411		103	36cm						
		Rito 9Q20 of Rita 5F56 GHM									
		M A R Miss Amy 1404									
CED	BW	WW	YW	MILK	CW	Marb	RE	\$M	\$W	\$B	\$C
+14	+0.5	+62	+108	+27	+50	+1.28	+62	+60	+64	+171	+282
Top 2% HS		Top 4% Marb		Top 15% \$B		Top 15% \$C					
Top 4% CED		Top 5% \$G									

A true blue heifer bull with a pedigree back to the 1743 Miss Amy cow. This whole program has been built on the Miss Amy cow family. Their maternal qualities are second to none. He offers a top 4% Marbling EPD for quality in the feedlot.

## 21 M A R Transcendent 246

Reg# \*20416573 ID 246 DOB 1/14/2022

G A R Momentum		G A R Progress		Birth Wt							
G A R Transcendent		G A R Big Eye 1770		82							
G A R Prophet 2685		G A R Prophet		205	365						
TR Mr Aberdeen 1068Y		G A R Daybreak 2842		703	1117						
M A R Eriskay 1854		TC Aberdeen 759		WWR	Scrotal						
M A R Eriskay 1539		TR Ms Erica 8035U		102	39cm						
		PA Fortitude 2500									
		Highwood Eriskay 904									
CED	BW	WW	YW	MILK	CW	Marb	RE	\$M	\$W	\$B	\$C
+10	+0.8	+72	+121	+27	+47	+1.43	+68	+55	+71	+169	+274
Top 2% Marb		Top 10% Fat		Top 15% \$B		Top 20% WN					
Top 2% \$G		Top 15% \$W		Top 20% CED		Top 20% \$C					

A super calving ease bull with a massive middle – something we don't always see. This bull deserves everyone's attention his combination of calving ease, end product merit and phenotype.

## 24 M A R Transcendent 243

Reg# \*20369592 ID 243 DOB 1/8/2022

G A R Momentum		G A R Progress		Birth Wt							
G A R Transcendent		G A R Big Eye 1770		64							
G A R Prophet 2685		G A R Prophet		205	365						
GMA Unanimous 1502		G A R Daybreak 2842		638	996						
M A R Erica 1839		Vision Unanimous 1418		WWR	Scrotal						
M A R Erica 1616		DDA Barbara 1302		92	35cm						
		R B Tour Of Duty 177									
		M A R Erica Rito 1400									
CED	BW	WW	YW	MILK	CW	Marb	RE	\$M	\$W	\$B	\$C
+11	-0.9	+62	+108	+27	+48	+1.55	+91	+69	+66	+183	+306
Top 1% Marb		Top 10% Angle		Top 15% CED		Top 15% RE					
Top 1% \$G		Top 10% \$B		Top 15% BW		Top 25% \$W					
Top 5% \$C											

This is a super calving ease bull with lineage back to the Erica 1616 cow who is a mainstay donor at Malek Angus. 1616 will continue to be seen in pedigrees in the future. This bull will do well on any heifer projects and pass on lots of marbling to create quality in the slaughter plant.

## 22 M A R Transcendent 207

Reg# \*20552410 ID 207 DOB 1/8/2022

G A R Momentum		G A R Progress		Birth Wt							
G A R Transcendent		G A R Big Eye 1770		70							
G A R Prophet 2685		G A R Prophet		205	365						
SydGen FATE 2800		G A R Daybreak 2842		592	1054						
M A R Minburn 1855		SydGen Trust 6228		WWR	Scrotal						
K A Minburn 1302		SydGen Heroine 9808		86	43cm						
		A A R Ten X 7008 S A									
		K A Minburn 100									
CED	BW	WW	YW	MILK	CW	Marb	RE	\$M	\$W	\$B	\$C
+11	+1.9	+75	+120	+20	+59	+1.29	+81	+66	+66	+187	+309
Top 4% Marb		Top 15% CED		Top 15% MH		Top 25% CW					
Top 4% \$G		Top 15% WN		Top 20% SC		Top 25% RE					
Top 5% \$B		Top 15% CEM		Top 20% \$F		Top 25% \$W					
Top 5% \$C											

Heifer bull buyers gather around. This bull is as deep and thick as you can make one for a heifer bull. He's the kind of bull that will give you a calf with substance but with his +11 CED, the heifers will calve unassisted. This bull has as much marbling as any bull in the sale, ranking in the top 4% and an impressive \$W.



## Reference Sire

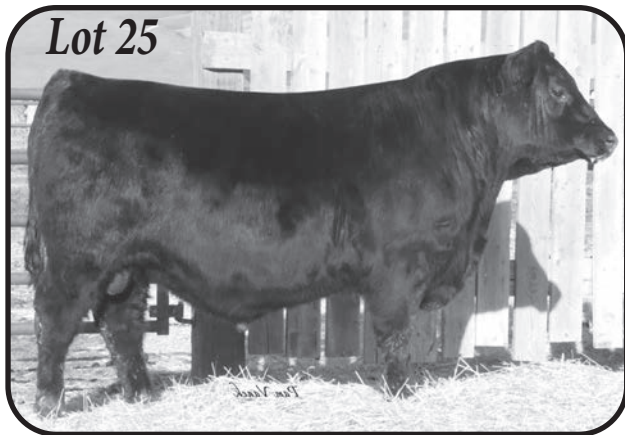


### G A R Transcendent \*19570738

CED	BW	WW	YW	MILK	CW	Marb	RE	\$W	\$B	\$C
+15	+0.3	+75	+125	+24	+47	+2.40	+78	+72	+217	+348

The Transcendent sons take carcass quality to a new level without sacrificing calving ease and growth.

# Transcendent and Eastwood



Lot 25

## 25 M A R Transcendent 241

Reg# \*20552411 ID 241 DOB 1/15/2022

G A R Momentum	G A R Progress	Birth Wt	
G A R Transcendent	G A R Big Eye 1770	<b>88</b>	
G A R Prophet 2685	G A R Prophet	205	365
SydGen FATE 2800	G A R Daybreak 2842	<b>653</b>	<b>1112</b>
M A R Erica 1807	SydGen Trust 6228	WWR	Scrotal
M A R Erica Rito 1354	SydGen Heroine 9808	<b>94</b>	<b>38cm</b>
	Connealy Confidence 0100		
	Blevins Erica Rito 5453		

CED	BW	WW	YW	MILK	CW	Marb	RE	\$M	\$W	\$B	\$C
<b>+9</b>	<b>+1.5</b>	<b>+60</b>	<b>+107</b>	<b>+28</b>	<b>+40</b>	<b>+1.28</b>	<b>+91</b>	<b>+69</b>	<b>+62</b>	<b>+168</b>	<b>+287</b>

Top 3% \$G	Top 15% Angle	Top 15% \$B	Top 20% Fat
Top 4% Marb	Top 15% RE	Top 15% \$C	Top 25% \$EN

These Transcendent sons demonstrate value in the cattle business. They calve easy and have lots of end product merit. The marbling these Transcendents have is something that is pretty rare in the state of Montana. Remember, we are in the business of raising beef – and these are the kind of bulls that will keep us in business.

## 26 M A R Transcendent 285

Reg# \*20579768 ID 285 DOB 1/12/2022

G A R Momentum	G A R Progress	Birth Wt	
G A R Transcendent	G A R Big Eye 1770	<b>82</b>	
G A R Prophet 2685	G A R Prophet	205	365
Baldrige Alternative E125	G A R Daybreak 2842	<b>675</b>	<b>1160</b>
M A R Erica 0079	Poss Easy Impact 0119	WWR	Scrotal
M A R Erica 1805	Baldrige Blackbird A030	<b>98</b>	<b>33cm</b>
	EXAR Hi-Tech 4769B		
	MAR Erica Rito 1401		

CED	BW	WW	YW	MILK	CW	Marb	RE	\$M	\$W	\$B	\$C
<b>+12</b>	<b>+0.1</b>	<b>+67</b>	<b>+121</b>	<b>+25</b>	<b>+49</b>	<b>+1.92</b>	<b>+0.97</b>	<b>+45</b>	<b>+62</b>	<b>+210</b>	<b>+317</b>

Top 1% Marb	Top 3% \$C	Top 10% RE	Top 20% Fat
Top 1% \$G	Top 10% CED	Top 15% DOC	Top 25% BW
Top 1% \$B	Top 10% PAP	Top 15% CEM	Top 25% MW

Heifer bull supreme with a high altitude program bonus. His negative PAP will make him adaptable and of extra value to some producers.

## 27 M A R Transcendent 249

Reg# \*20584530 ID 249 DOB 1/4/2022

G A R Momentum	G A R Progress	Birth Wt	
G A R Transcendent	G A R Big Eye 1770	<b>70</b>	
G A R Prophet 2685	G A R Prophet	205	365
FF Rito 6V27 of 4D01 2240	G A R Daybreak 2842	<b>649</b>	<b>1114</b>
M A R Miss Wix 9110	V A R Discovery 2240	WWR	Scrotal
M A R Miss Wix 1607	FF Rita 4D01 of 9Q23 Denver	<b>Twin</b>	<b>37cm</b>
	PA Fortitude 2500		
	M A R Miss Wix 1202		

CED	BW	WW	YW	MILK	CW	Marb	RE	\$M	\$W	\$B	\$C
<b>+12</b>	<b>+1.2</b>	<b>+75</b>	<b>+132</b>	<b>+29</b>	<b>+58</b>	<b>+1.72</b>	<b>+97</b>	<b>+68</b>	<b>+74</b>	<b>+206</b>	<b>+335</b>

Top 1% Marb	Top 10% CED	Top 15% YW	Top 25% RADG
Top 1% \$G	Top 10% RE	Top 15% DOC	Top 25% CW
Top 1% \$C	Top 10% \$W	Top 20% CEM	Top 25% \$F
Top 2% \$B	Top 15% WN		

This bull will be a highly recommended heifer bull prospect with lots of high quality to add to his offspring.

## 28 M A R Eastwood 264

Reg# \*20363440 ID 264 DOB 1/14/2022

Jindra Acclaim	Jindra 3rd Dimension	Birth Wt	
T C A Eastwood	Jindra Blackbird Lassy 1111	<b>84</b>	
T C A Marquis Treasure 711	Pine View Marquis P154	205	365
M A R Rito 702	T C A Accruel Treasure 511	<b>725</b>	<b>1143</b>
M A R Miss Amy 9031	Woodside Rito 4P26 of 0242	WWR	Scrotal
M A R Miss Amy 1614	MAR Blackcap 1439	<b>105</b>	<b>39cm</b>
	SydGen FATE 2800		
	M A R Miss Amy 1344		

CED	BW	WW	YW	MILK	CW	Marb	RE	\$M	\$W	\$B	\$C
<b>-4</b>	<b>+2.7</b>	<b>+80</b>	<b>+148</b>	<b>+29</b>	<b>+85</b>	<b>+1.13</b>	<b>+69</b>	<b>+45</b>	<b>+69</b>	<b>+221</b>	<b>+332</b>

Top 1% CW	Top 3% RADG	Top 10% MW	Top 10% \$G
Top 1% \$F	Top 5% YW	Top 10% MH	Top 15% DOC
Top 1% \$B	Top 10% WN	Top 10% Marb	Top 20% \$W
Top 2% \$C	Top 10% YH		

A high growth bull that blended with the Sydgen Fate bull back to the Miss Amy that is the foundation of the whole MAR program. Sydgen Fate is an elite Pathfinder bull in the American Angus Association. The Fate cattle just get the job done day in and day out and have tremendous docility.



Lot 29

## 29 M A R Eastwood 270

Reg# \*20368562 ID 270 DOB 1/15/2022

Jindra Acclaim	Jindra 3rd Dimension	Birth Wt	
T C A Eastwood	Jindra Blackbird Lassy 1111	<b>84</b>	
T C A Marquis Treasure 711	Pine View Marquis P154	205	365
M A R Rito 702	T C A Accruel Treasure 511	<b>820</b>	<b>1140</b>
M A R Erica 9102	Woodside Rito 4P26 of 0242	WWR	Scrotal
M A R Erica 1516	MAR Blackcap 1439	<b>118</b>	<b>37.25cm</b>
	PA Fortitude 2500		
	M A R Erica Rito 1332		

CED	BW	WW	YW	MILK	CW	Marb	RE	\$M	\$W	\$B	\$C
<b>-1</b>	<b>+3.4</b>	<b>+88</b>	<b>+156</b>	<b>+28</b>	<b>+72</b>	<b>+6.8</b>	<b>+61</b>	<b>+34</b>	<b>+73</b>	<b>+165</b>	<b>+248</b>

Top 2% YW	Top 4% MH	Top 15% RADG	Top 15% \$W
Top 3% WN	Top 10% CW	Top 15% YH	Top 20% \$B
Top 3% MW	Top 10% \$F		

A cow bull with added milk. He brings above average milk for the breed and really nice growth numbers. This Fortitude son will improve udder quality in one shot. All our Fortitude daughters have exceptional udders.

## 30 M A R Eastwood 276

Reg# \*20566722 ID 276 DOB 1/18/2022

Jindra Acclaim	Jindra 3rd Dimension	Birth Wt	
T C A Eastwood	Jindra Blackbird Lassy 1111	<b>96</b>	
T C A Marquis Treasure 711	Pine View Marquis P154	205	365
Marda Blacksmith 683	T C A Accruel Treasure 511	<b>572</b>	<b>1047</b>
M A R Blackcap Empress 9222	Connealy Black Granite	WWR	Scrotal
KA Blackcap Empress 1529	S A V Blackcap May 3092	<b>83</b>	<b>32cm</b>
	2 Bar Twenty X		
	SJH Blackcap Empress B013		

CED	BW	WW	YW	MILK	CW	Marb	RE	\$M	\$W	\$B	\$C
<b>-6</b>	<b>+4</b>	<b>+69</b>	<b>+121</b>	<b>+30</b>	<b>+58</b>	<b>+1.05</b>	<b>+44</b>	<b>+54</b>	<b>+61</b>	<b>+173</b>	<b>+278</b>

Top 15% HP	Top 15% \$F	Top 15% \$B	Top 25% Milk
Top 15% Marb	Top 15% \$G	Top 20% \$C	Top 25% CW

A smaller mature frame score bull. His daughters will mature early with a 15.5 HP epd. This bull will add quality to carcasses. He has got marbling to burn.



# No Doubt about Performance

## 31 M A R No Doubt 227

Reg# \*20415313 ID 227 DOB 2/27/2022

Hoover No Doubt Linz No Doubt 7173 RB Lady Product 185-355	Mogck Bullseye Miss Blackcap Ellston J2 Connealy Final Product R B Lady Credence 185-890 SydGen Trust 6228 SydGen Heroine 9808 Hyline Right Time 338 CAR Miss Amy 121	Birth Wt <b>82</b>
SydGen FATE 2800 M A R Miss Amy 1546 CAR Miss Amy 591		205 365
		<b>720 1145*</b>
		WWR Scrotal
		<b>104 38.25cm</b>

CED	BW	WW	YW	MILK	CW	Marb	RE	\$M	\$W	\$B	\$C
+7	+0.7	+65	+116	+33	+66	+81	+59	+65	+70	+169	+284

	Top 2% YH	Top 4% MH	Top 15% CW	Top 20% SW
	Top 4% SC	Top 10% \$F	Top 15% \$B	Top 25% Claw
	Top 4% CEM	Top 15% Milk	Top 15% \$C	

This bull will make a supreme heifer bull for any herd. He has great docility and a classic pedigree – a Fate out of the Miss Amy 591 cow who was a mainstay in our program. \*Too young at Yrlg date, calculated Adj 365



Lot 35

## 32 M A R No Doubt 247

Reg# \*20364939 ID 247 DOB 3/2/2022

Hoover No Doubt Linz No Doubt 7173 RB Lady Product 185-355	Mogck Bullseye Miss Blackcap Ellston J2 Connealy Final Product R B Lady Credence 185-890 Aberdeen 759	Birth Wt <b>90</b>
TR Mr Aberdeen 1068Y M A R Miss Amy 1863 MAR Miss Amy 1404	TR Ms Erica 8035U A A R Ten X 7008 S A CAR Miss Amy 591	205 365
		<b>716 1034*</b>
		WWR Scrotal
		<b>103 38cm</b>

CED	BW	WW	YW	MILK	CW	Marb	RE	\$M	\$W	\$B	\$C
+7	+2.7	+61	+104	+30	+37	+95	+47	+71	+61	+142	+255

	Top 2% CEM	Top 15% Claw	Top 20% Marb	Top 20% \$G
	Top 10% DMI	Top 20% SC	Top 20% Fat	Top 25% Milk
	Top 10% Angle			

With his stature and CED, this bull will work on heifers. He has top end scrotal and will have early maturing daughters. He is well rounded with good feet and legs and good carcass scores. \*Too young at Yrlg date, calculated Adj 365

## 35 M A R Pacific 272

Reg# \*20572404 ID 272 DOB 1/13/2022

Hoover No Doubt Sterling Pacific 904 Baldrige Isabel B082	Mogck Bullseye Miss Blackcap Ellston J2 G A R Prophet Baldrige Isabel Y69 M A R Double XL 320 KA Eriskay 1547 MF Final Answer 053 Highwood Lass 115	Birth Wt <b>86</b>
M A R Double XL 722 M A R Lass 9215 MAR Lass 1429		205 365
		<b>773 1149</b>
		WWR Scrotal
		<b>112 40cm</b>

CED	BW	WW	YW	MILK	CW	Marb	RE	\$M	\$W	\$B	\$C
+3	+3.8	+82	+126	+16	+59	+60	+51	+72	+62	+139	+252

	Top 10% WN	Top 25% YW	Top 25% HP	Top 25% CW
	Top 15% DOC	Top 25% Claw	Top 25% MW	Top 25% \$M
	Top 15% CEM			

A big growth Pacific son with lots of scrotal and top docility that has good feet and legs. This bull has lots of \$M coming from the Double XL bull who is a past graduate of the Malek Angus bull sale.

## 33 M A R No Doubt 269

Reg# \*20364943 ID 269 DOB 2/28/2022

Hoover No Doubt Linz No Doubt 7173 RB Lady Product 185-355	Mogck Bullseye Miss Blackcap Ellston J2 Connealy Final Product R B Lady Credence 185-890 R Double XL 320	Birth Wt <b>75</b>
M A R Double XL 735 M A R Miss Amy 9100 M A R Miss Amy 1546	M A R Erica Rito 1334 SydGen FATE 2800 CAR Miss Amy 591	205 365
		<b>674 1168*</b>
		WWR Scrotal
		<b>97 35cm</b>

CED	BW	WW	YW	MILK	CW	Marb	RE	\$M	\$W	\$B	\$C
+1	+3.0	+74	+120	+26	+60	+81	+85	+78	+73	+170	+298

	Top 10% \$C	Top 15% \$F	Top 20% RE	Top 25% RADG
	Top 15% DMI	Top 15% \$B	Top 20% Fat	Top 25% \$EN
	Top 15% \$M	Top 20% WN	Top 20% \$G	Top 25% CW
	Top 15% \$W			

You just can't go wrong with the Double XL back to a Fate by the Miss Amy. Maternal genetics for sure! \*Too young at Yrlg date, calculated Adj 365



Lot 36

## 34 M A R No Doubt 268

Reg# \*20364942 ID 268 DOB 2/24/2022

Hoover No Doubt Linz No Doubt 7173 RB Lady Product 185-355	Mogck Bullseye Miss Blackcap Ellston J2 Connealy Final Product R B Lady Credence 185-890 R Double XL 320	Birth Wt <b>86</b>
M A R Double XL 735 M A R Erica Rito 9090 M A R Erica Rito 1333	M A R Erica Rito 1334 Connealy Consensus 7229 Blevins Erica Rito 5453	205 365
		<b>677 1214*</b>
		WWR Scrotal
		<b>98 36cm</b>

CED	BW	WW	YW	MILK	CW	Marb	RE	\$M	\$W	\$B	\$C
+3	+2.4	+70	+123	+20	+53	+1.16	+21	+62	+62	+160	+270

	Top 10% Marb	Top 20% CEM	Top 25% \$EN	Top 25% \$C
	Top 15% \$G	Top 25% WN	Top 25% \$B	

A bull that goes back to the Blevins 5453 cow who is the start of the Erica cow family that has done so much food for us here at Malek Angus. The Erica's are efficient cattle that do the work with less input. This particular bull excels in DMI and has extra marbling. \*Too young at Yrlg date, calculated Adj 365

## 36 M A R Maverick 237

Reg# \*20375509 ID 237 DOB 1/17/2022

Poss Maverick M A R Maverick 9505 MAR Erica Rito 1401	Basin Payweight 1682 Poss Pride 5163 A A R Ten X 7008 S A Highwood Erica Rito 209 G A R Prophet Rita 0242 of Rita 7068 5M2 S Chisum 6175 ICC Miss Wix 4618	Birth Wt <b>83</b>
Woodside Rito 4P26 of 0242 M A R Miss Wix 1711 ICC Miss Wix 3049		205 365
		<b>708 1209</b>
		WWR Scrotal
		<b>102 39cm</b>

CED	BW	WW	YW	MILK	CW	Marb	RE	\$M	\$W	\$B	\$C
+3	+3.0	+79	+134	+32	+70	+98	+86	+70	+77	+182	+306

	Top 5% \$C	Top 10% \$W	Top 10% \$B	Top 20% Marb
	Top 10% WN	Top 10% \$F	Top 15% YW	Top 20% RE
	Top 10% CW	Top 10% \$G	Top 15% Milk	Top 25% PAP

The only Maverick son in the sale, 9505 was our second high selling bull in 2021. Lot 36 is a soggy, big volume bull that moves with ease. He combines a good HP epd with above average weaning data and good carcass. The 4P26 daughters have done a fantastic job for us and Riverbend in Idaho Falls, ID. They are deep bodied easy keeping cows that will remain in the herd for years to come.

# Malek Angus

37

## M A R Index 296

Reg# \*20560672 ID 296 DOB 8/5/2021

V A R Index 3282  
Riverbend Index E316  
Riverbend Lady B066

SydGen FATE 2800  
M A R Lady 1511  
M A R Lady 1326

G A R Ingenuity  
Sandpoint Blackbird 8809  
Sitz Top Game 561X  
Riverbend Lady Z147  
SydGen Trust 6228  
SydGen Heroine 9808  
2 Bar Twenty X  
M A R Lady 005

Birth Wt

80

205 365

WWR Scrotal

39cm

CED	BW	WW	YW	MILK	CW	Marb	RE	\$M	\$W	\$B	\$C
+8	+1.9	+64	+107	+28	+50	+0.82	+1.10	+61	+64	+158	+266



Top 3% RE Top 15% Fat Top 15% \$G Top 25% \$B  
Top 15% DOC

A heifer bull for easy calving in an easy-fleshing package that is very docile.



Lot 40

38

## M A R Home Town 205

Reg# +\*20455139 ID 205 DOB 1/12/2022

G A R Ashland  
G A R Home Town  
Chair Rock Sure Fire 6095

R B Tour Of Duty 177  
M A R Erica 1616  
MAR Erica Rito 1400

G A R Early Bird  
Chair Rock Ambush 1018  
G A R Sure Fire  
Chair Rock Progress 3005  
Werner War Party 2417  
B A Lady 6807 305  
A A R Ten X 7008 S A  
Highwood Erica Rito 209

Birth Wt

80

205 365

597 949

WWR Scrotal

ET 37.5cm

CED	BW	WW	YW	MILK	CW	Marb	RE	\$M	\$W	\$B	\$C
+12	-0.1	+68	+125	+28	+58	+1.09	+1.23	+61	+67	+186	+302



Top 1% RE Top 10% CED Top 15% HS Top 25% BW  
Top 2% CEM Top 10% PAP Top 15% Fat Top 25% YW  
Top 4% \$G Top 10% Marb Top 20% HP Top 25% CW  
Top 5% \$B Top 10% \$C Top 20% \$F Top 25% \$W

A super heifer bull prospect out of one of the most proven cows in the program. The full sister to 1616, 1617, is the dam of Linz Exemplify and he needs no further introduction and is a top semen seller in the breed. His +12 CED solidifies his heifer bull potential.

40

## M A R Pacific 225

Reg# +\*Commercial ID 225 DOB 1/20/2022

Hoover No Doubt  
Sterling Pacific 904  
Baldridge Isabel B082

3F Epic 4631  
M A R Pride 1842  
M A R Pride 1560

Mogck Bullseye  
Miss Blackcap Ellston J2  
G A R Prophet  
Baldridge Isabel Y69  
Varilek Product 2010 04  
Zebo Queen 1072  
SydGen FATE 2800  
K A Pride 1303

Birth Wt

94

205 365

868 1239

WWR Scrotal

ET 39cm

CED	BW	WW	YW	MILK	CW	Marb	RE	\$M	\$W	\$B	\$C
+8	+2.0	+81	+147	+20	+79	+1.24	+0.54	+58	+63	+193	+308

NHC. A very complete Pacific that is as thick as any bull in the sale. This bull cannot be line bred due to being NHC, but he will work very well in any commercial breeding program.

39

## M A R Fate 221

Reg# 20363434 ID 221 DOB 2/7/2022

SydGen Trust 6228  
SydGen FATE 2800  
SydGen Heroine 9808

MF Final Answer 053  
Ka Blackclass 1414  
GPAR Blackclass Y125

SCR Promise 4042  
SydGen Forever Lady 4413  
SydGen Contact  
D A A R Heroine L T 108  
S A V Final Answer 0035  
MF Lass 862  
Sitz RLS Upward 7498  
GPAR Expectation N-28

Birth Wt

108

205 365

744 1219

WWR Scrotal

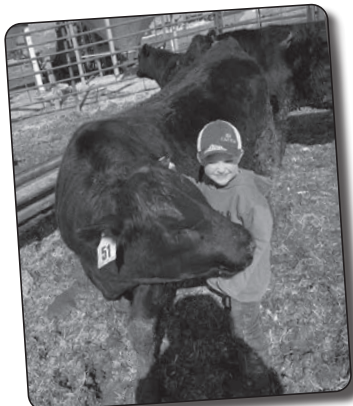
108 43cm

CED	BW	WW	YW	MILK	CW	Marb	RE	\$M	\$W	\$B	\$C
-1	+4.4	+88	+155	+23	+86	+0.53	+0.79	+46	+64	+185	+286



Top 1% YH Top 1% \$F Top 3% YW Top 10% \$B  
Top 1% SC Top 2% MW Top 4% RADG Top 15% \$C  
Top 1% MH Top 3% WN Top 10% Claw Top 25% RE  
Top 1% CW

This bull will add frame and fertility. His SC EPD places him in the top 1% of the breed.



41

## M A R Pacific 250

Reg# +\*Commercial ID 250 DOB 1/23/2022

Hoover No Doubt  
Sterling Pacific 904  
Baldridge Isabel B082

3F Epic 4631  
M A R Pride 1842  
M A R Pride 1560

Mogck Bullseye  
Miss Blackcap Ellston J2  
G A R Prophet  
Baldridge Isabel Y69  
Varilek Product 2010 04  
Zebo Queen 1072  
SydGen FATE 2800  
K A Pride 1303

Birth Wt

106

205 365

668 1246

WWR Scrotal

ET 38cm

CED	BW	WW	YW	MILK	CW	Marb	RE	\$M	\$W	\$B	\$C
+8	+2.0	+81	+147	+20	+79	+1.24	+0.54	+58	+63	+193	+308

NHC

42

## M A R Pacific 265

Reg# +\*Commercial ID 265 DOB 1/21/2022

Hoover No Doubt  
Sterling Pacific 904  
Baldridge Isabel B082

3F Epic 4631  
M A R Pride 1842  
M A R Pride 1560

Mogck Bullseye  
Miss Blackcap Ellston J2  
G A R Prophet  
Baldridge Isabel Y69  
Varilek Product 2010 04  
Zebo Queen 1072  
SydGen FATE 2800  
K A Pride 1303

Birth Wt

108

205 365

733 1175

WWR Scrotal

ET 39cm

CED	BW	WW	YW	MILK	CW	Marb	RE	\$M	\$W	\$B	\$C
+8	+2.0	+81	+147	+20	+79	+1.24	+0.54	+58	+63	+193	+308

NHC

# Bulls that will pay for themselves at weaning

## 43 M A R Payweight 288

Reg# \*20560673 ID 288 DOB 3/3/2022

Basin Payweight 1682 <b>M A R Payweight 9036</b> CAV Lady Innovation 2145-617		Basin Payweight 006S 21AR O Lass 7017 MAR Innovation 251 RB Lady Sterling 890-2145 TC Aberdeen 759 TR Ms Erica 8035U SydGen FATE 2800 M A R Lady 1326		Birth Wt <b>80</b>							
TR Mr Aberdeen 1068Y <b>M A R Lady 1827</b> M A R Lady 1511		205	365								
		<b>681</b>	<b>1203*</b>								
		WWR	Scrotal								
		<b>96</b>	<b>40<sub>cm</sub></b>								
CED	BW	WW	YW	MILK	CW	Marb	RE	\$M	\$W	\$B	\$C
<b>+12</b>	<b>-1.4</b>	<b>+47</b>	<b>+84</b>	<b>+23</b>	<b>+27</b>	<b>+88</b>	<b>+91</b>	<b>+84</b>	<b>+52</b>	<b>+142</b>	<b>+268</b>
Top 2% CEM		Top 10% DMI		Top 15% RE		Top 25% Angle					
Top 3% \$EN		Top 10% Claw		Top 15% \$G		Top 25% Marb					
Top 10% CED		Top 10% \$M		Top 20% Fat		Top 25% \$C					
Top 10% BW											

A sleep-all-night kind of heifer bull with nice phenotype, good feet and very acceptable carcass values. \*Too young at Yrfg date, calculated Adj 365

## 44 Out of Sale

## 45 M A R Payweight 263

Reg# 20584531 ID 263 DOB 1/30/2022

Basin Payweight 1682 <b>M A R Payweight 9036</b> CAV Lady Innovation 2145-617		Basin Payweight 006S 21AR O Lass 7017 MAR Innovation 251 RB Lady Sterling 890-2145 Poss Easy Impact 0119 Baldrige Blackbird A030 SydGen FATE 2800 MAR Eileenmere 230		Birth Wt <b>95</b>							
Baldrige Alternative E125 <b>M A R Eileenmere 9030</b> M A R Eileenmere 1604		205	365								
		<b>725</b>	<b>1136</b>								
		WWR	Scrotal								
		<b>105</b>	<b>39.25<sub>cm</sub></b>								
CED	BW	WW	YW	MILK	CW	Marb	RE	\$M	\$W	\$B	\$C
<b>+10</b>	<b>+1.4</b>	<b>+66</b>	<b>+112</b>	<b>+23</b>	<b>+51</b>	<b>+87</b>	<b>+74</b>	<b>+63</b>	<b>+59</b>	<b>+169</b>	<b>+282</b>
Top 15% DMI		Top 15% \$C		Top 20% CEM		Top 25% PAP					
Top 15% \$F		Top 20% CED		Top 20% \$G		Top 25% Marb					
Top 15% \$B											

Nice heifer bull type numbers that will produce low input cattle. His DMI ranks him in the top 15% of the breed. With the ever-increasing price of feed, these low DMI cattle are going to pay for themselves in short order.

## 46 M A R Payweight 239

Reg# \*20364938 ID 239 DOB 2/19/2022

Basin Payweight 1682 <b>M A R Payweight 9036</b> CAV Lady Innovation 2145-617		Basin Payweight 006S 21AR O Lass 7017 MAR Innovation 251 RB Lady Sterling 890-2145 GAR-EGE Protege G G Clara 0171 G A R Ultimate Diamond Lucy 180R		Birth Wt <b>83</b>							
PA Fortitude 2500 <b>M A R Lucy 1730</b> M A R Lucy 1226		205	365								
		<b>718</b>	<b>1107</b>								
		WWR	Scrotal								
		<b>104</b>	<b>37<sub>cm</sub></b>								
CED	BW	WW	YW	MILK	CW	Marb	RE	\$M	\$W	\$B	\$C
<b>+4</b>	<b>+1.6</b>	<b>+73</b>	<b>+121</b>	<b>+16</b>	<b>+52</b>	<b>+0.85</b>	<b>+0.85</b>	<b>+41</b>	<b>+61</b>	<b>+164</b>	<b>+254</b>
Top 15% DMI		Top 20% RE		Top 25% RADG		Top 25% Fat					
Top 15% PAP		Top 20% \$G		Top 25% SC		Top 25% \$F					
Top 20% WN		Top 20% \$B		Top 25% Marb							

This bull will sire super uddered daughters. He has a very good PAP epd along with ample carcass to enhance any program. In the top 15% of the breed for DMI, he is made for efficiency and will sire easy-keeping daughters.



SydGen Fate 2800 #\*17521423  
Denver Stock Show 2014  
Our now-deceased Pathfinder Sire.

## 47 M A R Index 261

Reg# \*20363439 ID 261 DOB 1/29/2022

V A R Index 3282 <b>Riverbend Index E316</b> Riverbend Lady B066		G A R Ingenuity Sandpoint Blackbird 8809 Sitz Top Game 561X Riverbend Lady Z147 Byergo Black Magic 3348 Byergo Miss Elia 2834 A A R Ten X 7008 S A CAR Miss Amy 591		Birth Wt <b>92</b>							
Byergo Titus 6340 <b>M A R Miss Amy 9020</b> M A R Miss Amy 1349		205	365								
		<b>648</b>	<b>1203</b>								
		WWR	Scrotal								
		<b>94</b>	<b>37<sub>cm</sub></b>								
CED	BW	WW	YW	MILK	CW	Marb	RE	\$M	\$W	\$B	\$C
<b>+2</b>	<b>+4.2</b>	<b>+76</b>	<b>+139</b>	<b>+24</b>	<b>+57</b>	<b>+68</b>	<b>+99</b>	<b>+58</b>	<b>+61</b>	<b>+162</b>	<b>+268</b>
Top 4% Fat		Top 10% DOC		Top 15% MH		Top 25% \$G					
Top 10% YW		Top 10% RE		Top 20% \$B		Top 25% \$C					
Top 10% RADG		Top 15% WN		Top 25% \$F							

A bull that brings together what we are looking for. Big growth with low inputs. Top WW and YW combined with impressive RADG and DMI. He is going to sire the kind of calves and replacements that grow without any extra effort and are easy keepers.

## 48 M A R Index 238

Reg# \*20363435 ID 238 DOB 2/1/2022

V A R Index 3282 <b>Riverbend Index E316</b> Riverbend Lady B066		G A R Ingenuity Sandpoint Blackbird 8809 Sitz Top Game 561X Riverbend Lady Z147 G A R Prophet Rita 0242 of Rita 7068 5M2 2 Bar Twenty X Riverbend Young Lucy T375		Birth Wt <b>102</b>							
Woodside Rito 4P26 of 0242 <b>M A R Young Lucy 1436</b> Ka Young Lucy 1436		205	365								
		<b>705</b>	<b>1123</b>								
		WWR	Scrotal								
		<b>102</b>	<b>37.5<sub>cm</sub></b>								
CED	BW	WW	YW	MILK	CW	Marb	RE	\$M	\$W	\$B	\$C
<b>+7</b>	<b>+1.0</b>	<b>+56</b>	<b>+102</b>	<b>+36</b>	<b>+48</b>	<b>+97</b>	<b>+97</b>	<b>+65</b>	<b>+64</b>	<b>+161</b>	<b>+274</b>
Top 4% Milk		Top 10% RE		Top 20% Marb		Top 20% \$C					
Top 5% DOC		Top 10% \$G		Top 20% \$B		Top 25% HS					
Top 10% Claw		Top 15% Fat									

A super calving ease sire out of the Index E316 bull. Index has been a mainstay of our program. This future herd sire will leave some very nice daughters backed by the 4P26 lineage. The 4P26 daughters have been really good to us and are producing some of our top seedstock. They are very feminine with very deep middles.

## 49 M A R Index 240

Reg# \*20363436 ID 240 DOB 2/15/2022

V A R Index 3282 <b>Riverbend Index E316</b> Riverbend Lady B066		G A R Ingenuity Sandpoint Blackbird 8809 Sitz Top Game 561X Riverbend Lady Z147 Gardens Highmark Rita 5F56 of 1198 FD Hylite Right Time 338 CAR Miss Amy 121		Birth Wt <b>78</b>							
Rito 9Q20 of Rita 5F56 GHM <b>M A R Miss Amy 1739</b> CAR Miss Amy 591		205	365								
		<b>673</b>	<b>1019</b>								
		WWR	Scrotal								
		<b>98</b>	<b>37.75<sub>cm</sub></b>								
CED	BW	WW	YW	MILK	CW	Marb	RE	\$M	\$W	\$B	\$C
<b>+12</b>	<b>+0.2</b>	<b>+58</b>	<b>+102</b>	<b>+31</b>	<b>+35</b>	<b>+69</b>	<b>+93</b>	<b>+63</b>	<b>+62</b>	<b>+131</b>	<b>+233</b>
Top 10% CED		Top 15% DMI		Top 15% RE		Top 20% Milk					
Top 10% Claw		Top 15% Angle		Top 20% CEM							

An Index out of a Miss Amy is an easy calving package with super DMI. This bull is the complete deal with super foot scores and above average carcass. He is out of one of our past donor cows who passes on her beautiful phenotype to her progeny.

## 50 M A R Fate 298

Reg# 20363432 ID 298 DOB 2/7/2022

SydGen Trust 6228 <b>SydGen FATE 2800</b> SydGen Heroine 9808		SCR Promise 4042 SydGen Forever Lady 4413 SydGen Contact D A R Heroine L T 108 Connealy Consensus Blue Lilly of Conanga 16 SQ Credence 67S SandPoint Blackcap 6889		Birth Wt <b>83</b>							
Connealy Consensus 7229 <b>M A R Blackcap 1342</b> Highwood Blackcap 0684		205	365								
		<b>715</b>	<b>1241</b>								
		WWR	Scrotal								
		<b>103</b>	<b>37<sub>cm</sub></b>								
CED	BW	WW	YW	MILK	CW	Marb	RE	\$M	\$W	\$B	\$C
<b>+13</b>	<b>+0.3</b>	<b>+51</b>	<b>+95</b>	<b>+27</b>	<b>+59</b>	<b>+55</b>	<b>+87</b>	<b>+56</b>	<b>+53</b>	<b>+168</b>	<b>+274</b>
Top 10% CED		Top 10% \$F		Top 20% RE		Top 25% DMI					
Top 10% HS		Top 15% CEM		Top 20% \$C		Top 25% CW					
Top 10% Fat		Top 15% \$B									

A super thick heifer bull with great shape and style. This bull moves out really well and has a super top on him.

# Power House Performance Alternatives

Lot 51



Lot 52



51

**M A R El Dorado 215**

Reg# \*20552414 ID 215 DOB 1/12/2022

Poss Maverick  
M A R El Dorado  
M A R Erica 1806

Basin Payweight 1682  
Poss Pride 5163  
3F Epic 4631  
Highwood Erica Rito 209  
Poss Easy Impact 0119  
Baldridge Blackbird A030  
TR Mr Aberdeen 1068Y  
MAR Miss Amy 1404

Baldridge Alternative E125  
M A R Miss Amy 0081  
M A R Miss Amy 1863

Birth Wt

80

205 365

730 1157

WWR Scrotal

105 37cm

CED	BW	WW	YW	MILK	CW	Marb	RE	\$M	\$W	\$B	\$C
+1	+2.1	+82	+137	+29	+59	+1.37	+69	+46	+79	+190	+292



Top 2% \$G	Top 5% \$W	Top 15% YW	Top 25% MW
Top 3% Marb	Top 10% WN	Top 15% DMI	Top 25% CW
Top 4% RADG	Top 10% Angle	Top 20% \$F	Top 25% Fat
Top 4% \$B	Top 10% \$C	Top 25% Claw	

A super marbling bull with top 10% WW epd. He is very sound on his feet and will be a commercial cattleman's dream.

52

**M A R Alternative 294**

Reg# \*20566784 ID 294 DOB 1/14/2022

Baldridge Alternative E125  
M A R Alternative 025  
M A R Miss Amy 1614

Poss Easy Impact 0119  
Baldridge Blackbird A030  
SydGen FATE 2800  
M A R Miss Amy 1344  
Connealy Black Granite  
Bar R Iris Anita 0113  
2 Bar Twenty X  
Highwood Eriskay 613

Bar R Jet Black 5063  
M A R Eriskay 9046  
M A R Eriskay 1637

Birth Wt

74

205 365

735 1138

WWR Scrotal

106 41cm

CED	BW	WW	YW	MILK	CW	Marb	RE	\$M	\$W	\$B	\$C
+11	-1.2	+65	+111	+26	+56	+93	+1.20	+84	+72	+172	+307



Top 2% PAP	Top 10% \$M	Top 15% \$W	Top 20% Marb
Top 2% RE	Top 10% \$G	Top 15% \$B	Top 25% DMI
Top 5% \$C	Top 15% CED	Top 20% \$EN	Top 25% \$F
Top 10% BW	Top 15% Angle		

Super calving ease with a negative BW epd while maintaining moderate growth and super marbling scores.

53

**M A R Alternative 208**

Reg# \*20421416 ID 208 DOB 2/1/2022

Baldridge Alternative E125  
M A R Alternative 029  
M A R Blackcap 1628

Poss Easy Impact 0119  
Baldridge Blackbird A030  
Deer Valley All In  
MAR Blackcap 1439  
Byergo Black Magic 3348  
Byergo Miss Elia 2834  
Woodside Rito 4P26 of 024  
ICC Miss Wix 3049

Byergo Titus 6340  
M A R Miss Wix 0044  
M A R Miss Wix 1711

Birth Wt

80

205 365

690 1172

WWR Scrotal

100 37.75cm

CED	BW	WW	YW	MILK	CW	Marb	RE	\$M	\$W	\$B	\$C
+7	+1.5	+71	+123	+30	+51	+0.31	+1.01	+69	+73	+134	+243



Top 3% SC	Top 10% RE	Top 15% \$W	Top 25% Milk
Top 10% PAP	Top 15% Fat	Top 25% WN	

A very easy fleshing bull that will add plenty of weaning weight and growth. He is in the top 3% of the breed for SC epd and will sire daughters that will be very fertile.

54

**M A R Alternative 202**

Reg# 20363426 ID 202 DOB 2/1/2022

Baldridge Alternative E125  
M A R Alternative 029  
M A R Blackcap 1628

Poss Easy Impact 0119  
Baldridge Blackbird A030  
Deer Valley All In  
MAR Blackcap 1439  
S S Objective T510 0T26  
Rita 3B8 of 2536 BW  
G T Shear Force  
Basin Enchantress R256

Riverbend Cornerstone  
K A Enchantress 001  
Basin Enchantress 576U

Birth Wt

76

205 365

657 1142

WWR Scrotal

95 41cm

CED	BW	WW	YW	MILK	CW	Marb	RE	\$M	\$W	\$B	\$C
+6	+2.2	+75	+131	+21	+53	+0.25	+0.65	+57	+62	+126	+220



Top 10% HS	Top 20% YW	Top 20% HP	Top 20% Fat
Top 15% WN	Top 20% SC	Top 20% MW	Top 25% PAP

Ranks in the top 20% of the breed for Heifer Pregnancy - you'll want to keep replacements out of this impressive prospect. A high PAP bull that will work well at altitude.



# No Alternative to Malek Sires



Lot 55

58

## M A R Alternative 284

Reg# \*20552413 ID 284 DOB 1/30/2022

Baldrige Alternative E125  
M A R Alternative 025  
M A R Miss Amy 1614

Poss Easy Impact 0119  
Baldrige Blackbird A030  
SydGen FATE 2800  
M A R Miss Amy 1344  
Werner War Party 2417  
B A Lady 6807 305  
A A R Ten X 7008 S A  
Highwood Erica Rito 209

Birth Wt

75

205 365

625 1148

WWR Scrotal

Twin 39cm

R B Tour Of Duty 177  
M A R Erica 1616  
MAR Erica Rito 1400

CED	BW	WW	YW	MILK	CW	Marb	RE	\$M	\$W	\$B	\$C
+9	+2.0	+72	+128	+23	+65	+97	+90	+64	+62	+179	+296

Top 10% \$B	Top 15% CEM	Top 20% HS	Top 25% HP
Top 10% \$C	Top 15% \$G	Top 20% Marb	Top 25% MW
Top 15% RE	Top 15% CW	Top 20% WN	Top 25% RADG
Top 15% \$F	Top 20% YW	Top 25% YH	

A twin, both raised on the 1616 cow. The Alternative bred cattle with the Erica's are making a positive impact in our herd.

55

## M A R Fortitude 231

Reg# 20560676 ID 231 DOB 2/1/2022

PA Fortitude 2500  
MAR Fortitude 502  
K A Pride 1303

GAR-EGL Protege  
G G Clara 0171  
MF Final Answer 053  
K A Pride 102  
Connealy Consensus 7229  
Sandpoint Blackbird 8809  
MF Final Answer 053  
Highwood Lass 115

Birth Wt

94

205 365

779 1294

WWR Scrotal

113 39.5cm

V A R Generation 2100  
M A R Lass 1620  
MAR Lass 1429

CED	BW	WW	YW	MILK	CW	Marb	RE	\$M	\$W	\$B	\$C
-3	+4.8	+92	+163	+24	+82	+58	+1.02	+48	+68	+181	+283

Top 1% WN	Top 2% \$F	Top 10% RE	Top 15% \$C
Top 1% YW	Top 10% RADG	Top 10% \$B	Top 20% Claw
Top 2% MW	Top 10% YH	Top 15% MH	Top 25% \$W
Top 2% CW			

We are excited about the maternal brothers of this bull that will be featured in next year's sale. 1620 is as impressive to look at as she is genetically. On top of her maternal qualities, she has passes on extra RE and Tenderness.

59

## M A R Alternative 214

Reg# \*20425519 ID 214 DOB 2/3/2022

Baldrige Alternative E125  
M A R Alternative 029  
M A R Blackcap 1628

Poss Easy Impact 0119  
Baldrige Blackbird A030  
Deer Valley All In  
MAR Blackcap 1439  
Poss Easy Impact 0119  
Baldrige Blackbird A030  
Quaker Hill Rampage 0A3  
HW Complete of 6108 1548

Birth Wt

83

205 365

618 1063

WWR Scrotal

89 34.5cm

Baldrige Alternative E125  
M A R Rita 0067  
ACC/MAR Rita 6120

CED	BW	WW	YW	MILK	CW	Marb	RE	\$M	\$W	\$B	\$C
+9	+2.4	+80	+136	+8	+53	+34	+1.00	+33	+51	+143	+218

Top 1% Fat	Top 10% WN	Top 15% YW	Top 20% HS
Top 3% PAP	Top 10% RE	Top 15% MW	

A double bred Alternative bull with a big ribeye and good docility.

56

## M A R Fortitude 228

Reg# 20560674 ID 228 DOB 1/29/2022

PA Fortitude 2500  
MAR Fortitude 502  
K A Pride 1303

GAR-EGL Protege  
G G Clara 0171  
MF Final Answer 053  
K A Pride 102  
SydGen Trust 6228  
SydGen Heroine 9808  
Hoover Dam  
SandPoint Blackcap 6889

Birth Wt

90

205 365

577 1038

WWR Scrotal

na 37cm

SydGen FATE 2800  
M A R Blackcap 1548  
M A R Pride 236

CED	BW	WW	YW	MILK	CW	Marb	RE	\$M	\$W	\$B	\$C
+11	+0.5	+61	+109	+21	+51	0.64	0.65	+46	+53	+153	+244

Top 2% CEM	Top 10% SC	Top 15% CED	Top 25% \$F
------------	------------	-------------	-------------

60

## M A R Alternative 217

Reg# \*20363425 ID 217 DOB 2/4/2022

Baldrige Alternative E125  
M A R Alternative 052  
M A R Lucy 1352

Poss Easy Impact 0119  
Baldrige Blackbird A030  
EXAR Upshot 0562B  
SJH Lucy 9682  
Hoover No Doubt  
RB Lady Product 185-355  
A A R Ten X 7008 S A  
CAR Miss Amy 591

Birth Wt

100

205 365

634 959

WWR Scrotal

92 34cm

Linz No Doubt 7173  
M A R Miss Amy 0102  
M A R Miss Amy 1344

CED	BW	WW	YW	MILK	CW	Marb	RE	\$M	\$W	\$B	\$C
-1	+4.9	+58	+93	+13	+24	+72	+37	+42	+35	+114	+190

Top 4% Claw	Top 15% Angle	Top 20% CEM	Top 20% \$EN
Top 5% DMI			

Very good foot score bull with above average marbling.

57

## M A R Fortitude 266

Reg# 20560669 ID 266 DOB 1/28/2022

PA Fortitude 2500  
MAR Fortitude 502  
K A Pride 1303

GAR-EGL Protege  
G G Clara 0171  
MF Final Answer 053  
K A Pride 102  
Vision Unanimous 1418  
DDA Barbara 1302  
Wulffs Git-R-Done 730  
Hyline Pride 2103

Birth Wt

89

205 365

692 1097

WWR Scrotal

100 36.5cm

GMA Unanimous 1502  
M A R Pride 9069  
M A R Pride 236

CED	BW	WW	YW	MILK	CW	Marb	RE	\$M	\$W	\$B	\$C
+3	+0.7	+59	+108	+25	+41	+59	+69	+60	+54	+132	+231

Top 2% PAP	Top 15% Claw	Top 15% Angle	Top 20% HP
------------	--------------	---------------	------------

A bull built to make replacement heifers. He ranks among the best of the breed for Heifer Pregnancy epd and brings above average milk to the table.

61

## M A R Alternative 219

Reg# 20582256 ID 219 DOB 2/22/2022

Baldrige Alternative E125  
M A R Alternative 062  
M A R Miss Amy 1349

Poss Easy Impact 0119  
Baldrige Blackbird A030  
A A R Ten X 7008 S A  
CAR Miss Amy 591  
Mytty In Focus  
A A R Lady Kelton 5551  
Hyline Right Time 338  
Davis Yr Blackbird 558H

Birth Wt

88

205 365

787 1240\*

WWR Scrotal

na 41cm

A A R Ten X 7008 S A  
M A R Blackbird 1350  
Riverbend Blackbird R164

CED	BW	WW	YW	MILK	CW	Marb	RE	\$M	\$W	\$B	\$C
+10	+0.9	+63	+113	+23	+45	+55	+80	+66	+60	+149	+259

Top 20% CED	Top 20% DMI	Top 20% CEM	Top 25% Fat
Top 20% RADG	Top 20% PAP	Top 25% RE	Top 25% \$F

These Alternative bulls work on heifers. He goes back to the 558H cow, a powerhouse that needs no introduction. \*Too young at Yrlg date, calculated Adj 365

# Malek Angus - Quality Guaranteed

62

## M A R Alternative 248

Reg# 20560670 ID 248 DOB 2/18/2022

Baldridge Alternative E125 <b>M A R Alternative 062</b> M A R Miss Amy 1349		Poss Easy Impact 0119 Baldridge Blackbird A030 A A R Ten X 7008 S A CAR Miss Amy 591 S A V Final Answer 0035 Happy Dell of Conanga 262 N Bar Emulation EXT Hyline Pride 870		Birth Wt <b>68</b>							
		205	365								
Connealy Right Answer 746 <b>M A R Ellen 241</b> Hyline Pride 559		<b>646</b>	<b>1188</b>	WWR	Scrotal						
		<b>93</b>	<b>39<sub>cm</sub></b>								
CED	BW	WW	YW	MILK	CW	Marb	RE	\$M	\$W	\$B	\$C
<b>+13</b>	<b>-0.6</b>	<b>+58</b>	<b>+113</b>	<b>+23</b>	<b>+46</b>	<b>+.63</b>	<b>+.68</b>	<b>+44</b>	<b>+53</b>	<b>+148</b>	<b>+236</b>
Top 2% CEM		Top 10% CED		Top 10% RADG		Top 15% BW					

With his +13 CED, this bull will work on any group of heifers out there.

66

## M A R Fortitude 267

Reg# 20560675 ID 267 DOB 1/30/2022

PA Fortitude 2500 <b>MAR Fortitude 502</b> K A Pride 1303		GAR-EGL Protege G G Clara 0171 MF Final Answer 053 K A Pride 102 Basin Payweight 1682 Dean's Queenie X092 SydGen FATE 2800 M A R Lucy 1307		Birth Wt <b>90</b>							
		205	365								
M A R Payweight 733 <b>M A R Lucy 9076</b> M A R Lucy 1609		<b>788</b>	<b>1274</b>	WWR	Scrotal						
		<b>100</b>	<b>40<sub>cm</sub></b>								
CED	BW	WW	YW	MILK	CW	Marb	RE	\$M	\$W	\$B	\$C
<b>+1</b>	<b>+3.5</b>	<b>+91</b>	<b>+160</b>	<b>+10</b>	<b>+69</b>	<b>+.62</b>	<b>+.81</b>	<b>+33</b>	<b>+55</b>	<b>+167</b>	<b>+250</b>
Top 1% YH		Top 2% YW		Top 10% CW		Top 20% DOC					
Top 1% MW		Top 2% MH		Top 10% SF		Top 25% RE					
Top 2% WN		Top 4% RADG		Top 15% \$B							

Fortitude x Fate has worked very well for our program and both sires have seen success across the country, receiving the elite Pathfinder Sire status from the American Angus Association.

63

## M A R Payweight 223

Reg# 20364936 ID 223 DOB 2/18/2022

Basin Payweight 1682 <b>M A R Payweight 9036</b> CAV Lady Innovation 2145-617		Basin Payweight 006S 21AR O Lass 7017 MAR Innovation 251 RB Lady Sterling 890-2145 GDAR Game Day 449 Sitz Pride 88T Connealy Consensus 7229 K A Enchantress 001		Birth Wt <b>74</b>							
		205	365								
Sitz Dynasty 264Z <b>Ka Enchantress 1435</b> K A Enchantress 200		<b>697</b>	<b>1147</b>	WWR	Scrotal						
		<b>101</b>	<b>35.25<sub>cm</sub></b>								
CED	BW	WW	YW	MILK	CW	Marb	RE	\$M	\$W	\$B	\$C
<b>+14</b>	<b>-1.5</b>	<b>+63</b>	<b>+98</b>	<b>+30</b>	<b>+31</b>	<b>+.59</b>	<b>+.18</b>	<b>+74</b>	<b>+77</b>	<b>+99</b>	<b>+202</b>
Top 4% CED		Top 10% Angle		Top 15% CEM		Top 20% \$M					
Top 10% BW		Top 10% \$W		Top 15% \$EN		Top 25% Milk					
Top 10% Claw											

A negative BW bull with outstanding CED. From his big scrotal, nice DMI and super foot scores, he does a lot of things right to add value to any cow herd.

67

## M A R Fortitude 283

Reg# 20581047 ID 283 DOB 3/23/2022

PA Fortitude 2500 <b>MAR Fortitude 502</b> K A Pride 1303		GAR-EGL Protege G G Clara 0171 MF Final Answer 053 K A Pride 102 Connealy Consensus Blue Lilly of Conanga 16 Rito 112 of 2536 Rito 616 Blevins Erica Enhancer 2133		Birth Wt <b>95</b>							
		205	365								
Connealy Consensus 7229 <b>M A R Erica Rito 1334</b> Blevins Erica Rito 5453		<b>743</b>	<b>1270*</b>	WWR	Scrotal						
		<b>105</b>	<b>37.5<sub>cm</sub></b>								
CED	BW	WW	YW	MILK	CW	Marb	RE	\$M	\$W	\$B	\$C
<b>+2</b>	<b>+3.5</b>	<b>+76</b>	<b>+129</b>	<b>+23</b>	<b>+53</b>	<b>+.44</b>	<b>+.51</b>	<b>+67</b>	<b>+66</b>	<b>+133</b>	<b>+240</b>
Top 15% WN		Top 20% YW		Top 25% Fat		Top 25% \$W					
Top 15% YH											

Backed by the foundation Erica family, he traces back to the original "Erica", 5453 who set the benchmark for high maternal and growth cattle in our herd. \*Too young at Yrlg date, calculated Adj 365

64

## M A R Payweight 220

Reg# 20364934 ID 220 DOB 2/28/2022

Basin Payweight 1682 <b>M A R Payweight 9036</b> CAV Lady Innovation 2145-617		Basin Payweight 006S 21AR O Lass 7017 MAR Innovation 251 RB Lady Sterling 890-2145 S A V Final Answer 0035 Prides Pita of Conanga 8821 S S Objective T510 0T26 G A R Integrity 3696		Birth Wt <b>90</b>							
		205	365								
Connealy Capitalist 028 <b>MAR Capitalist of 9045 1410</b> SH Objective 9045		<b>647</b>	<b>1043*</b>	WWR	Scrotal						
		<b>93</b>	<b>38<sub>cm</sub></b>								
CED	BW	WW	YW	MILK	CW	Marb	RE	\$M	\$W	\$B	\$C
<b>+5</b>	<b>+2.9</b>	<b>+67</b>	<b>+108</b>	<b>+18</b>	<b>+40</b>	<b>+.95</b>	<b>+.74</b>	<b>+54</b>	<b>+55</b>	<b>+143</b>	<b>+239</b>
Top 10% Claw		Top 15% Angle		Top 15% \$G		Top 20% Marb					

Exceptional feet and marbling epds on this bull. \*Too young at Yrlg date, calculated Adj 365

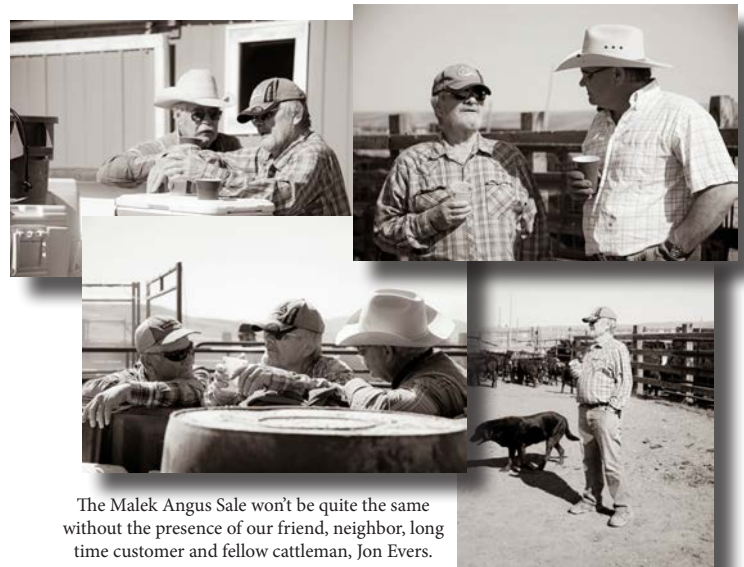
65

## M A R Payweight 282

Reg# 20560671 ID 282 DOB 3/4/2022

Basin Payweight 1682 <b>M A R Payweight 9036</b> CAV Lady Innovation 2145-617		Basin Payweight 006S 21AR O Lass 7017 MAR Innovation 251 RB Lady Sterling 890-2145 S A V Final Answer 0035 MF Lass 862 W C C Bando B88 M A R G T A R Lucy 113		Birth Wt <b>82</b>							
		205	365								
MF Final Answer 053 <b>M A R Lucy 1308</b> M A R Lucy 311		<b>735</b>	<b>1074*</b>	WWR	Scrotal						
		<b>104</b>	<b>38<sub>cm</sub></b>								
CED	BW	WW	YW	MILK	CW	Marb	RE	\$M	\$W	\$B	\$C
<b>+4</b>	<b>+1.3</b>	<b>+62</b>	<b>+113</b>	<b>+39</b>	<b>+45</b>	<b>+.87</b>	<b>+.36</b>	<b>+44</b>	<b>+69</b>	<b>+142</b>	<b>+228</b>
Top 2% Milk		Top 20% Claw		Top 25% RADG		Top 25% Angle					
Top 10% SC		Top 20% \$W		Top 25% DMI		Top 25% Marb					

With his moderate actual birthweight, this bull should work on young cows and bigger heifers. He will add value on the rail along with extra tenderness. \*Too young at Yrlg date, calculated Adj 365



The Malek Angus Sale won't be quite the same without the presence of our friend, neighbor, long time customer and fellow cattleman, Jon Evers.

# Index Sons - Heifer Bull Prospects

68

## M A R Index 235

Reg# \*20421419 ID 235 DOB 2/2/2022

V A R Index 3282  
Riverbend Index E316  
Riverbend Lady B066

SydGen FATE 2800  
M A R Blackcap 1674  
M A R Blackcap 1356

G A R Ingenuity  
Sandpoint Blackbird 8809  
Sitz Top Game 561X  
Riverbend Lady Z147  
SydGen Trust 6228  
SydGen Heroine 9808  
Hoover Dam  
SandPoint Blackcap 6889

Birth Wt	
205	365
<b>648</b>	<b>1184</b>
WWR	Scrotal
<b>94</b>	<b>37.5cm</b>

CED	BW	WW	YW	MILK	CW	Marb	RE	\$M	\$W	\$B	\$C
<b>+13</b>	<b>-0.3</b>	<b>+49</b>	<b>+93</b>	<b>+35</b>	<b>+45</b>	<b>+71</b>	<b>+1.07</b>	<b>+84</b>	<b>+60</b>	<b>+152</b>	<b>+281</b>



Top 3% Claw  
Top 4% RE  
Top 10% CED  
Top 10% DOC  
Top 10% CEM  
Top 10% Milk  
Top 10% Fat  
Top 10% \$M  
Top 15% \$C  
Top 20% BW  
Top 20% \$EN  
Top 20% \$G

All these Index sons are potential heifer bulls. Index is a docile sire and these sons are nice to work with and quiet to be around. His dam is a Fate daughter - cows that perform at a high level with added longevity.



We appreciate the hard work that Bryan Miller puts into our operation every day.

69

## M A R Index 277

Reg# \*20363441 ID 277 DOB 2/8/2022

V A R Index 3282  
Riverbend Index E316  
Riverbend Lady B066

ACC Ascension 7014  
M A R Miss Amy 9224  
M A R Miss Amy 1517

G A R Ingenuity  
Sandpoint Blackbird 8809  
Sitz Top Game 561X  
Riverbend Lady Z147  
Basin Payweight 1682  
CoX Y03s Rita 4192  
PA Fortitude 2500  
M A R Miss Amy 1344

Birth Wt	
205	365
<b>683</b>	<b>1168</b>
WWR	Scrotal
<b>99</b>	<b>39cm</b>

CED	BW	WW	YW	MILK	CW	Marb	RE	\$M	\$W	\$B	\$C
<b>+8</b>	<b>+1.1</b>	<b>+65</b>	<b>+114</b>	<b>+26</b>	<b>+43</b>	<b>+1.02</b>	<b>+47</b>	<b>+64</b>	<b>+64</b>	<b>+152</b>	<b>+261</b>



Top 10% Claw  
Top 10% Fat  
Top 15% Marb  
Top 15% \$G  
Top 25% DOC

A heifer bull that brings a good DMI to the table. A well rounded bull when you consider his combination of DMI, CED and carcass merit.

70

## M A R Index 292

Reg# \*20589169 ID 292 DOB 2/24/2022

V A R Index 3282  
Riverbend Index E316  
Riverbend Lady B066

GMA Unanimous 1502  
M A R Lucy 9228  
M A R Lucy 1608

G A R Ingenuity  
Sandpoint Blackbird 8809  
Sitz Top Game 561X  
Riverbend Lady Z147  
Vision Unanimous 1418  
DDA Barbara 1302  
2 Bar Twenty X  
M A R Lucy 1206

Birth Wt	
205	365
<b>668</b>	<b>1058*</b>
WWR	Scrotal
<b>95</b>	<b>32cm</b>

CED	BW	WW	YW	MILK	CW	Marb	RE	\$M	\$W	\$B	\$C
<b>+2</b>	<b>+2.0</b>	<b>+63</b>	<b>+110</b>	<b>+26</b>	<b>+43</b>	<b>+42</b>	<b>+73</b>	<b>+58</b>	<b>+58</b>	<b>+129</b>	<b>+225</b>



Out of a very nice young cow that will see many years at Malek Angus.  
\*Too young at Yrlg date, calculated Adj 365



## Driving the science of better breeding

There's little room for error in the cattle business. Producers need the most advanced information to make smart selection decisions, and Angus Genetics Inc. (AGI) provides it through genomic-enhanced expected progeny differences (GE-EPDs). EPDs that traditionally contained all pedigree, performance and progeny information now also include results from available genomic, or DNA, tests. Breeders who use genomic technology give buyers access to AGI-generated GE-EPDs that provide:

- Increased predictability and decreased risk for young and unproven animals due to enhanced accuracy of EPDs
- Better characterization of genetics for difficult-to-measure performance traits (such as carcass traits, maternal traits and feed efficiency)
- The ability to make more rapid progress for traits that are important to you, due to:
  - more accurate selection
  - easier identification of genetic outliers
  - the ability to propagate young animals with confidence earlier in their lives

In fact, GE-EPDs on unproven animals have the same amount of accuracy as if they had recorded 8-33 calves, depending on the trait. That's valuable insight, offered regularly through the breed's weekly national cattle evaluation at [www.angus.org](http://www.angus.org).

### How do you know if EPDs are genomic-enhanced?

Ask your breeder, refer to the registration paper, or look for the AGI GE-EPD logo, Angus GS™ powered by partner Neogen GeneSeek or the HD50k or i50k by partner Zoetis.



# Malek Commercial Bulls

## 71 M A R Fortitude 236

Reg# Commercial ID 236 DOB 1/8/2022

PA Fortitude 2500  
MAR Fortitude 502  
K A Pride 1303

MAR Angus Dam													
Sire EPDs:													
Birth Wt	205	365	WWR	Scrotal									
80	684	1177	com	37cm									
CED	BW	WW	YW	MILK	CW	Marb	RE	\$M	\$W	\$B	\$C		
+5	+1.9	+78	+141	+23	+60	+61	+80	+46	+64	+167	+263		

A nice, big stout bull. His dam is one of our top performers with a lineage clear back to Uncle Jim from the Jolly Roger days. This bull is going to put out some exceptional calves.



Lot 72

## 72 M A R Emerald 273

Reg# Commercial ID 273 DOB 1/18/2022

Connealy Confidence Plus  
Connealy Emerald  
Jace of Conanga 6571

MAR Angus Dam													
Sire EPDs:													
Birth Wt	205	365	WWR	Scrotal									
73	569	1050	com	37.5cm									
CED	BW	WW	YW	MILK	CW	Marb	RE	\$M	\$W	\$B	\$C		
+7	-0.3	+63	+123	+19	+37	+86	+1.12	+68	+52	+158	+273		

Probably the cleanest sheath bull in the sale, he is a big scrotal bull.

## 73 M A R Alternative 275

Reg# Commercial ID 275 DOB 2/10/2022

Baldrige Alternative E125  
M A R Alternative 025  
M A R Miss Amy 1614

MAR Angus Dam													
Sire EPDs:													
Birth Wt	205	365	WWR	Scrotal									
114	692	1202	com	38cm									
CED	BW	WW	YW	MILK	CW	Marb	RE	\$M	\$W	\$B	\$C		
+9	+0.4	+67	+119	+27	+74	+98	+1.01	+72	+68	+200	+331		

A thick, stout made bull in a moderate frame package.

## 74 M A R Alternative 291

Reg# Commercial ID 291 DOB 3/4/2022

Baldrige Alternative E125  
M A R Alternative 062  
M A R Miss Amy 1349

MAR Enchantress Dam													
Sire EPDs:													
Birth Wt	205	365	WWR	Scrotal									
84	778	1181	com	35cm									
CED	BW	WW	YW	MILK	CW	Marb	RE	\$M	\$W	\$B	\$C		
+9	-0.9	+60	+112	+20	+48	+90	+92	+59	+56	+173	+283		

A smooth fronted bull with an ideal Angus head for easy calving, he should be a heifer bull candidate.

## 75 M A R Payweight 262

Reg# Commercial ID 262 DOB 2/13/2022

Basin Payweight 1682  
M A R Payweight 9036  
CAV Lady Innovation 2145-617

MAR Angus Dam													
Sire EPDs:													
Birth Wt	205	365	WWR	Scrotal									
80	684	1114	twin	38.5cm									
CED	BW	WW	YW	MILK	CW	Marb	RE	\$M	\$W	\$B	\$C		
+6	+1.3	+71	+118	+18	+52	+97	+76	+66	+63	+174	+292		

The dam of this bull is an ideal looking cow. He has lots of growth, a big soggy middle, and will pass on exceptional volume.

## 76 M A R Payweight 252

Reg# Commercial ID 252 DOB 2/14/2022

Basin Payweight 1682  
M A R Payweight 9036  
CAV Lady Innovation 2145-617

MAR Angus Dam													
Sire EPDs:													
Birth Wt	205	365	WWR	Scrotal									
95	655	981	com	37cm									
CED	BW	WW	YW	MILK	CW	Marb	RE	\$M	\$W	\$B	\$C		
+6	+1.3	+71	+118	+18	+52	+97	+76	+66	+63	+174	+292		

A classy looking heifer bull that was weaned over a month later than his contemporaries, but still came on strong in the feed yard.

## 77 M A R Double XL 290

Reg# Commercial ID 290 DOB 3/8/2022

M A R Double XL 735  
M A R Double XL 9098  
Ka Blackclass 1414

MAR Angus Dam													
Sire EPDs:													
Birth Wt	205	365	WWR	Scrotal									
78	699	1156	com	34.25cm									
CED	BW	WW	YW	MILK	CW	Marb	RE	\$M	\$W	\$B	\$C		
+5	+2.1	+61	+112	+32	+50	+65	+49	+59	+61	+143	+244		

A smooth shouldered bull that will work fine on heifers or young cows.



Lot 78

## 78 M A R Angus Bull 287

Reg# Commercial ID 287 DOB 1/25/2022

Angus Sire

MAR Angus Dam			
Birth Wt	Act YW	Scrotal	
82	1188	43cm	

A smooth shouldered bull that will work fine on heifers or young cows.





## Pathfinder Sires

The American Angus Pathfinder program identifies cows that have produced their first calf before they are three years old, have maintained an annual calving interval and reported three or more calves with an average Weaning Weight Ratio of 105 or better.

To qualify as a Pathfinder Sire, a sire must have five or more daughters that qualify as Pathfinder cows. We are pleased that THREE of our foundation sires have been designated Pathfinder Sires this year:

**Woodside Rito 4P26 of 0242, #\*17892063**

**PA Fortitude 2500, #\*17418539**

**Syngen Fate 2800, #+\*17521423**



## Watch the Sale on CCI.live!

*The best, the fastest and most comprehensive marketing & bidding tool!*

### *How to Bid Online...*

- As a buyer, you DO NOT need to login to watch the sale but you must have a validated account to bid.

To BID ONLINE go to [www.CCI.live](http://www.CCI.live) in your Chrome, Firefox, Safari or other modern browser:

- 1) Click on the sale schedule page.
- 2) Click on the sale of interest.
- 3) Click on Bid Online- Register and then Get Buyer Number

- After you are logged in, you must proceed to the sale page for your auction and click Bid Online - Register, then "Get Buyer Number." Some auctions require valid credit card number on file to obtain a buyer number to bid.

- CCI.live will operate with ease on a modern cellular device, laptop, desktop or tablet.

- A **current browser** is important and will always make your experience better.

- For successful bidding you must have good Internet service! It is very important to be stationary if bidding. If you are driving and bidding, expect to have some service issues. If you are stationary on a good device, with healthy Internet, expect a very successful bidding environment. If you have slow Internet watch the "asking price" on the screen, it is real time, and refresh your browser if you feel like you have some lag.

- **Support line open during all sales. TEXT 405-400-9505** - Please alert the ranch for your hauling preferences.

# HD50K DNA

LOT	CED%	BW%	WW%	YW%	DMI%	YH%	SC%	DOC%	Claw%	Angle%	PAP%	HS%	HP%	CEM%	MILK%	MW%	MH%	CW%	MARB%	RE%	FAT%	TEND%
1	39	43	6	5	77	46	58	19	25	46	90	36	46	15	54	54	78	1	2	25	17	17
2	17	44	4	1	100	15	16	1	12	48	97	48	6	62	87	2	15	1	57	5	8	22
3	29	56	40	38	46	99	35	59	14	19	75	5	47	67	94	66	85	40	8	49	70	30
4	31	57	35	10	88	33	6	39	25	1	24	14	62	13	33	35	49	24	2	74	95	64
5	66	69	6	5	74	4	79	17	12	17	20	43	69	5	93	11	3	2	14	7	21	7
6	97	88	1	1	99	7	20	22	17	7	53	30	24	75	89	2	8	1	38	1	34	73
7	42	24	1	7	82	13	4	20	75	92	84	68	71	65	39	2	2	1	14	6	35	38
8	24	62	3	1	99	3	54	14	55	40	73	2	81	63	25	4	5	3	1	3	26	94
9	51	76	18	42	55	32	51	75	7	1	61	23	55	11	56	49	28	13	29	10	19	25
10	15	53	16	8	96	57	28	34	3	1	61	12	61	47	12	20	26	25	24	33	70	38
11	65	75	7	3	100	13	9	65	88	94	40	19	85	41	89	5	3	5	3	58	94	96
12	22	68	1	3	100	19	16	2	17	70	83	56	86	77	87	1	2	2	19	47	77	60
13	51	33	15	15	54	66	60	3	67	17	84	47	77	23	95	18	42	5	6	13	5	65
14	45	38	5	18	98	33	12	21	41	30	68	7	37	93	65	7	9	10	17	1	20	59
15	18	25	2	14	97	37	100	34	88	97	29	1	53	79	48	6	5	1	6	6	39	67
16	63	59	4	12	98	28	73	6	22	39	72	16	67	80	53	12	17	2	20	7	39	45
17	75	86	2	2	99	27	7	47	33	55	87	14	21	86	42	1	3	2	44	5	25	27
18	7	16	20	18	83	29	75	20	96	29	69	17	74	65	63	18	36	18	8	4	10	96
19	51	51	7	7	88	7	75	37	100	40	76	86	100	71	48	14	9	5	24	37	17	46
20	97	97	1	1	96	4	58	80	8	1	67	13	84	14	95	2	2	1	4	6	14	13
21	16	26	48	61	70	79	49	74	41	75	78	35	61	91	56	41	48	54	4	39	19	93
22	63	85	17	60	46	11	14	89	46	14	80	73	36	62	67	25	10	15	4	22	74	85
23	16	31	64	75	39	67	98	45	78	27	65	4	83	100	58	82	58	42	9	34	82	48
24	59	38	54	52	78	89	94	31	39	5	42	61	67	90	41	69	86	46	2	9	69	79
25	47	58	80	67	20	62	48	78	25	12	83	64	89	81	46	85	79	58	8	16	27	91
26	5	5	75	50	49	88	42	31	99	82	3	32	67	65	54	31	68	53	1	8	26	82
27	19	44	22	5	94	19	92	34	70	55	30	67	34	80	91	24	25	27	2	8	28	47
28	94	64	28	9	60	23	28	14	37	28	57	49	74	74	42	19	26	3	13	45	43	77
29	84	72	13	6	97	47	79	41	24	23	60	67	97	38	35	6	13	13	46	49	52	35
30	83	55	34	56	54	32	77	77	82	78	65	9	9	83	32	39	35	14	19	74	48	76
31	24	23	34	24	73	1	5	40	29	93	41	77	76	12	11	31	2	8	23	36	79	85
32	79	95	29	56	18	25	20	61	6	19	79	51	55	11	25	61	20	60	12	71	27	17
33	93	86	8	45	32	15	45	17	56	51	80	22	81	33	58	66	23	14	38	13	25	48
34	79	74	18	37	70	85	52	66	70	68	77	28	87	22	73	54	84	25	9	89	92	19
35	61	80	12	68	45	25	17	22	35	19	80	73	12	12	95	14	21	21	58	58	84	2
36	53	54	5	29	90	15	30	38	76	58	17	55	33	16	17	17	13	3	24	16	45	13
37	70	80	34	50	58	13	39	19	71	50	62	69	75	84	43	32	34	20	27	1	12	60
38	4	4	66	65	42	87	70	54	100	80	11	25	22	7	49	64	83	55	19	4	9	73
39	85	95	1	1	96	1	2	73	14	43	85	22	80	34	48	1	1	1	51	26	80	16
40	11	17	21	16	99	42	4	51	33	48	37	44	85	17	87	18	10	34	1	91	98	62



# HD50K DNA

LOT	CED%	BW%	WW%	YW%	DMI%	YH%	SC%	DOC%	Claw%	Angle%	PAP%	HS%	HP%	CEM%	MILK%	MW%	MH%	CW%	MARB%	RE%	FAT%	TEND%	
41	49	77	7	8	97	20	93	26	48	36	80	25	84	20	89	10	3	3	2	44	95	77	
42	41	65	4	5	98	14	35	74	49	14	38	77	64	9	99	6	4	5	16	75	98	20	
43	12	14	72	70	30	80	77	47	4	25	30	84	34	12	75	93	93	77	18	10	30	64	
44	7	15	67	68	12	86	62	22	58	73	82	36	79	4	22	45	72	41	43	75	41	60	
45																							
46	56	34	12	26	53	50	16	82	49	64	6	83	97	47	92	6	37	15	35	7	12	89	
47	90	95	5	7	82	13	54	10	62	42	38	63	91	79	62	16	7	8	38	2	4	42	
48	43	32	87	61	77	89	38	4	15	61	35	15	83	97	9	84	82	60	14	22	36	48	
49	30	60	29	23	34	51	20	14	13	28	71	86	71	72	31	20	38	50	41	5	51	7	
50	21	43	85	57	49	84	40	75	57	40	55	21	69	53	45	66	84	30	61	27	14	35	
51	67	49	12	14	46	71	13	58	24	16	62	54	100	44	41	28	45	19	2	37	22	45	
52	14	6	64	52	40	94	38	35	31	12	5	12	75	70	57	82	92	33	15	2	30	31	
53	32	34	24	35	66	39	1	42	65	72	4	86	67	53	26	53	34	34	83	3	10	32	
54	87	93	1	2	99	19	18	71	51	75	9	10	7	26	60	1	9	2	92	10	15	57	
55	97	98	1	1	93	12	85	24	15	29	86	84	77	56	58	2	13	1	48	10	79	24	
56	44	60	55	33	59	52	7	37	66	92	81	40	74	25	68	32	30	20	48	40	38	49	
57	67	27	71	43	48	65	87	40	12	18	2	69	13	75	63	32	66	74	50	59	87	41	
58	15	41	17	17	91	12	74	33	27	91	39	20	28	18	60	16	26	10	19	11	45	93	
59	33	62	3	13	94	33	57	42	96	71	4	20	79	74	99	3	10	14	83	4	1	93	
60	78	89	57	91	14	70	50	64	2	15	77	45	99	13	100	76	82	95	39	90	88	30	
61	6	27	37	30	65	59	23	65	53	10	26	27	98	66	45	56	54	23	95	4	8	45	
62	31	53	63	29	37	72	35	44	29	51	34	16	93	15	64	53	66	63	40	28	61	51	
63	6	5	38	89	48	97	35	79	8	10	55	59	85	35	30	82	98	78	42	95	90	31	
64	35	54	36	78	50	88	60	48	2	14	37	37	44	91	95	55	66	58	18	30	50	62	
65	51	29	45	21	53	51	3	54	5	14	65	56	92	88	1	16	33	33	28	80	92	18	
66	73	73	2	4	92	2	49	6	88	88	75	96	38	24	100	1	1	15	57	26	66	86	
67	47	44	10	53	77	13	74	84	61	84	77	85	61	43	72	57	69	17	84	45	16	21	
68	4	6	81	67	61	25	38	7	3	91	23	57	51	51	7	86	69	39	31	4	21	75	
69	36	40	51	43	49	63	39	11	11	62	35	81	58	97	60	51	50	54	13	71	19	56	
70	91	91	7	19	88	31	99	30	46	6	40	95	98	97	96	14	22	12	91	11	4	39	
71	71	76	2	5	94	1	82	14	48	17	61	78	78	7	62	1	1	2	75	18	30	72	
72	13	33	64	61	28	82	79	84	48	67	43	17	78	76	77	72	79	63	29	17	7	45	
73																							
74	4	9	83	69	11	99	89	70	79	69	8	77	49	3	67	68	78	68	42	17	20	29	
75	9	5	86	96	3	99	71	93	3	35	52	71	62	18	37	85	88	90	40	52	83	43	
76	38	14	14	8	67	23	87	3	28	29	19	86	89	62	68	17	8	32	26	45	83	10	
77	3	7	70	60	21	74	83	87	52	13	32	39	20	13	43	63	67	60	12	32	72	58	
78	14	16	91	95	8	45	63	93	87	99	5	59	69	2	87	72	48	88	88	69	43	34	





Ty & Tami Malek  
22700 Highwood Rd  
Highwood, MT 59450

# MALEK ANGUS RANCH BULL SALE



**Thursday, March 16, 2023 - At the Ranch, Highwood, MT**