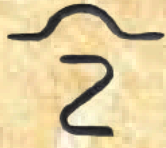




McCann



Red Angus

Selling

90 Yearling Bulls

3rd Annual Bull Sale

Monday, March 6, 2023

Billings Livestock Commission

Billings MT 1:00 PM MST



Sale Day Weekend Schedule

Sunday, March 5:

- Cattle Viewing All Day at Billings Livestock
- Complimentary Prime Rib Buffet Starting at 7:00 PM
Big Horn Resort, 1801 Majestic Lane, Billings **PLEASE RSVP 208-743-5517**

Monday, March 6:

- Join Us For A Complimentary Lunch at 11:00 AM MST
- Sale Starts at 1:00 PM MST

Sales Staff

Greg Goggins, Auctioneer 406-200-1880



Curt Cox 307-630-4604

Curt Cox has worked as a Livestock Field Representative for the Wyoming Livestock Roundup for the past 17 years. He grew up on his family's commercial cattle operation South of Chugwater and graduated from the University of Wyoming. He currently lives in Casper with his wife Diane and twin sons Carter and Cooper.



Devin Murnin 406-696-1502

Devin Murnin has been with the Western Livestock Journal since 2015. He has helped cattle producers throughout the west market and procure cattle. Devin grew up on a commercial cow/calf ranch in eastern Montana and was very active in 4-H and FFA. He graduated from Colorado State University where he was on the Livestock Judging and Seedstock Merchandizing Teams.



Andy Rest 406-670-5678

Andy Rest represents the Cattle Business Weekly at livestock sales across Montana and northern Wyoming. He has over 40 years of experience in the livestock publication business and has previously been a regional manager for both the American Angus Association and North American Limousin Foundation. He lives in Billings, MT.



Blair Williams

Blair Williams grew up on a ranch in southwestern Montana and currently lives in Broadus. He joined the Tri-State team in January 2023 and looks forward to servicing the cattle industry.



Rachael Oliver 406-480-1569

Rachael is part of the commercial marketing team at the Red Angus Association of America. She is based out of Eastern Montana, covering most of Montana and all of North Dakota working alongside commercial and seedstock Red Angus producers. Please feel free to contact her with any questions about marketing and value added programs offered by the Red Angus Association of America.

Bidding Options

Internet:



Phone Bids: Buyers unable to attend the sale may call Jason Beck or Lori McCann or any of the sales staff listed above. If you would like to discuss the sale offering, call us (preferably several days prior to the sale) and describe your needs so that we can assist you in choosing the right cattle to fit your operation. Bids are handled in confidence with **SATISFACTION GUARANTEE** on all private treaty sales.

Wintering and Delivery

- McCann Red Angus offers free delivery within Montana and to adjoining states.. Delivery beyond adjoining states will be to central points and at buyer's cost.
- \$250 discount per bull will be given if you haul your own bull on sale day
- \$100 refund per bull if picked up in Billings prior to MARCH 15, 2023. Refund will be mailed following owner taking possession.

Billings Livestock Commission policy requires that all sales must be settled at the end of the sale or within 5 days if prior arrangements have been made.

Contact Information

Office	208-743-5517
Jason Beck - Cattle Manager	208-790-0646
Lori McCann	208-791-6725

Additional Sale Day contacts:

Billings Livestock Commission - → office	406-245-4151
---	--------------

Accommodations

Please mention that you are attending the McCann Red Angus bull sale when making reservations to receive the best rates available!

- Sale Headquarters - Big Horn Resort, 1801 Majestic Lane, Billings 406-839-9300
- Holiday Inn Express and Suites, Billings West 406-652-0111

Sale Order

All animals sell in catalog order!

Guarantee

The sale offering is guaranteed to be fertile and reproductively sound in accordance with the terms and conditions as recommended by the Red Angus Association of America. If a guarantee situation occurs, the buyer will have the option to select a suitable replacement, if available, or take a sale credit. All bulls are guaranteed through the first breeding season which is considered to end September 1 of the year of purchase and any claims need to be made by that date.

Herd Health

Herd health is monitored by Ferdinand Veterinary Clinic in Idaho and Alpine Veterinary Service in Missoula, MT. All cattle will be accompanied by proper health certificates for shipment and have had a complete vaccination program. Bulls will have passed a breeding soundness exam and fertility test prior to the sale.

Liability

All persons who attend the sale or view the cattle do so at their own risk. McCann Red Angus, McCann Ranch and Livestock Co., and Billings Livestock Auction (BLS) assume no liability - legal or otherwise - for any accidents that occur on sale or viewing premises.

Sale Day Announcements

All announcements from the auction block on sale day will take precedence over the information contained in the catalog. The Red Angus Association of America Terms and Conditions will apply if the terms and conditions printed here are not applicable.

Semen Interests and Possession

McCann Red Angus is retaining 1/3 revenue sharing semen interest in every bull selling in this sale. This gives McCann Red Angus the option to collect, use and market semen from any bull at the expense of McCann Red Angus and convenience of buyer. Full possession and full salvage value sells on all bulls unless otherwise identified prior to the sale. Retained possession bulls are available for semen collection only and are required to be returned by the purchaser for McCann Red Angus's natural breeding season. There is no guarantee on bulls to freeze semen unless specific terms are agreed to prior to sale. McCann Red Angus reserves the control of sale and distribution of all semen sold on co-owned bulls. Buyer's will be compensated upon receipt of payment for semen sold.

Supplemental sheet / Carcass Ultrasound Data

Scrotal measurements will be available sale day or prior to the sale at www.mccannredangus.com

Terms

Terms of sale are cash or check. All cattle must be settled for at the conclusion of the auction. Cattle will not be released from the sale premises until payment is received in full.

Welcome to the 3rd Annual McCann Red Angus Bull sale! It hardly seems possible that three years have gone by since our first sale. It has been a huge learning and growing experience for us to get to know many of the Red Angus breeders across the country. We have an excellent set of bulls this year that have done extremely well and overall weigh more than any other set that we've offered. The weather in our part of the world was much better last summer, producing excellent summer pasture and, of course, an excellent hay crop. The bulls have been in Billings since October and as you can see, they have done exceptionally well. We are excited to bring you twelve different Sire groups, eight of which are new offerings for us. With the variety of Sire groups there should be a bull to fit everyone's needs.

I'd like to bring you up-to-date with what has been going on with our family. Lori ran a successful primary campaign in May and then ran with success in the general election in November and is now serving her second term in the Idaho House of Representatives. She spends January through March and possibly some of April in Boise, serving the people of our District and State. She was appointed as vice chair of the Education Committee, is a member of the Agricultural Committee and the Commerce/Human Resources Committee. We are all very proud of the work she does for the people of Idaho.

Our 11th grandchild, Oliver McCann, was born right after the sale last year, to our son, Bill III, and wife Rachel. He joins his big brother Lyric and sister, Cadence, along with his 4-legged brother, Indy. He started walking recently and is such a happy little guy. Jason and Sadie stay busy with work on the ranch and their 3 girls, Gracie, Kylee and Halle. Mindy's two boys are grown and we enjoy visiting with them as adults. Aaron and Lindy have three boys, Colton, Carter and Weston, and the boys keep everyone on their toes! We enjoy them all, even though we don't get to see them often. Luke and Debbie Lowe continue to be a big part of our family. They became grandparents this year and are enjoying the time they can spend with baby Shawn and his parents. Pete and Julie Wittman are also important members of our extended family. They have a son and daughter who also keep them running, and lastly, Toby and Laura Uhlenkott also enjoy life with their 3 boys. This rounds out the McCann Clan, the family side of our operation which is very important to us, as we are a family organization and as you know, it takes help from everyone to keep things going.

Continuing the McCann way, always looking forward to bigger and better, we are excited to bring you this pen of bulls. Please call Jason at 208-790-0646, and he will help you pick the right bull for your herd. Disposition is always on the top of our list, and these bulls will not disappoint.

Again, on behalf of the McCann Family, we welcome you to our 3rd Annual Bull Sale! Thank you for your past support and we look forward to helping you find the right bull to enhance your herd and your bottom line.
Bill, Jr.

Please plan to join us both days!!

Sunday, March 5, at Big Horn Mountain Resort, 1801 Majestic Lane, Billings, MT 59102:

* Social Hour starting at 6:00 p.m.

* Complimentary Prime Rib Dinner buffet starts at 7:00 p.m.

(Please RSVP if possible to Amanda Coleman (legalassistant@wvmccann.com) or call 208-743-5517 and let us know how many will be attending.)

Monday, March 6, at Billings Livestock:

* Complimentary lunch starting at 11:00 a.m.

Monday, March 6, at Big Horn Mountain Resort:

* After sale celebration: Please join us after the sale for additional conversation, finger foods, and a drink or two!



Thank you for taking the time to consider our cattle!

Please feel free to call us anytime with questions or if you need additional information to help narrow down the options!

We look forward to visiting with old friends and making new ones in Billings, Montana, on Monday, March 6!



Delivery Information

- McCann Red Angus offers free delivery within Montana and to adjoining states.. Delivery beyond adjoining states will be to central points and at buyer's cost.
- \$250 discount per bull will be given if you haul your own bull on sale day
- \$100 refund per bull if picked up in Billings prior to MARCH 15, 2023. Refund will be mailed following owner taking possession.





LOT 1



RED U2 Blue Collar 295E, Sire

1 MCCANN BLUE COLLAR 2105

RED U-2 RECKONING 149A
RED U2 BLUE COLLAR 295E
RED U-2 ANEXA 439A

RED U-2 RECON 192Y
RED U-2 ANEXA 271Y
RED MINBURN COPENHAGEN 3Y
RED U-2 ANEXA 443Y

CRUMP MISSION STATEMENT 6187
CRUMP VERNICE 898
CRUMP VERNICE 5210

LJC MISSION STATEMENT P27
TR BRANDY XT074
5L ADVOCATE 817-14W
MDM VERNICE 1218

ADJ MARB	1.99
RATIO	
ADJ REA	13.02
RATIO	
ADJ FAT	0.2
RATIO	
DAM'S MPPA	111

	HB	GM	CED	BW	WW	YW	ADG	MILK	ME	HPG	CEM	STAY	MARB	YG	CW	REA	FAT
EPD	55	26	10	0.8	71	118	0.29	36	0	10	7	15	0.32	0.13	28	0.08	0.03
TOP%	50%	75%	86%	91%	14%	12%	12%	1%	31%	83%	52%	50%	73%	83%	30%	61%	76%
WEIGHTS →				90	752	1251				4646481							
RATIOS →				108	112	114											

DOB:01-18-2022 A / 100% AR

Lot 1 is a very solid bull with performance data and a great look, we are liking our first set of sons from Blue Collar. We feel his female progeny will make great cows; we retained twelve daughters in our herd.



Crump Mission Statement 6187, maternal grandsire





2 MCCANN NEW QUEST 2191

DAMAR NEWQUEST C815
LDR NEW QUEST 8071
LDR BANE BERRY 5238

S A V RESOURCE 1441
CRUMP ELIZABETH 8146
MDM VERNICE 1020

ANDRAS NEW DIRECTION R240
BROWN MS CONQUEST Z7870
RED LAZY MC CC DETOUR 2W
RED SOO LINE BANE BERRY 5238

RITO 707 OF IDEAL 3407 7075
S A V BLACKCAP MAY 4136
WPRA AVALANCHE 818
MDM VERNICE 81-8

ADJ MARB	1.84
RATIO	76
ADJ REA	13.09
RATIO	117
ADJ FAT	0.18
RATIO	80
DAM'S MPPA	100

	HB	GM	CED	BW	WW	YW	ADG	MILK	ME	HPG	CEM	STAY	MARB	YG	CW	REA	FAT
EPD	8	48	11	-1	61	100	0.24	24	8	11	4	11	0.44	0.13	40	0.26	0.04
TOP%	99%	29%	79%	67%	47%	45%	43%	64%	80%	63%	93%	89%	43%	84%	6%	24%	84%
WEIGHTS →				87	703	1195		4646549					DOB:01-10-2022		A / 100% AR		
RATIOS →																	

* Lot 2 is a long deep stout bull, with a wean weight of 810 lbs.
* You truly cannot miss 2191; he is a unique deep raspberry color.
* His dam is becoming one of our best cows on her third season of being flushed.

3 MCCANN PROPULSION 2177

PIE ONE OF A KIND 777
BB PROPULSION 9096
BB MS GINNIE 6256

MUSHRUSH LOCK 'N' LOAD U213
CRUMP NANCY 5172
TR NANCY WT932

PIE ONE OF A KIND 352
PIE JULY DALLES 569
LARSON SUN KING 016
BB MS GINNIE 6019-2057

BUF CRK LANCER R017
MUSHRUSH PRIMROSE MM R213
TR EPIC ST618
KCC NANCY T777

ADJ MARB	3.42
RATIO	142
ADJ REA	13.09
RATIO	112
ADJ FAT	0.2
RATIO	86
DAM'S MPPA	103

	HB	GM	CED	BW	WW	YW	ADG	MILK	ME	HPG	CEM	STAY	MARB	YG	CW	REA	FAT
EPD	75	52	13	-1.2	75	117	0.26	34	3	17	8	15	0.73	0.13	23	0.08	0.04
TOP%	14%	22%	49%	63%	7%	12%	26%	2%	47%	2%	31%	54%	6%	85%	50%	61%	88%
WEIGHTS →				86	812	1179		4646391					DOB:02-10-2022		A / 100% AR		
RATIOS →				101	121	107											

Lot 3 combines my favorite cow, 5172, with a young sire - Propulsion 9096 - who sires phenotype, power, and style. Propulsion calves are born with "the look". Lot 3 combines performance and carcass traits and comes from a cow who just doesn't miss.



LOT 4

4

MCCANN INNOVATION 0103-2053

CRUMP INNOVATION 8185
CRUMP INNOVATION 0103
CRUMP VERNICE 898

CRUMP HERCULES 333
CRUMP VERNICE 866
CRUMP VERNICE 2150

S A V RESOURCE 1441
MDM VERNICE 1020
CRUMP MISSION STATEMENT 6187
CRUMP VERNICE 5210
MLK CRK EXPRESS 9127
MDM VERNICE 1218
MDM 4X13 109-0
MDM VERNICE 380

ADJ MARB	2.06
RATIO	85
ADJ REA	12.7
RATIO	109
ADJ FAT	0.2
RATIO	87
DAM'S MPPA	100

We sampled 0103 who was a highlight bull in our 2021 sale and was purchased by Rohrich's Cutting Edge Ranch. Just like his sire, 8185, 0103 sons are long, deep, and powerful.

	HB	GM	CED	BW	WW	YW	ADG	MILK	ME	HPG	CEM	STAY	MARB	YG	CW	REA	FAT
EPD	49	21	11	1.8	79	130	0.32	27	11	12	5	15	0.05	0.06	45	0.5	0.03
TOP %	61%	83%	79%	97%	3%	3%	4%	34%	89%	38%	82%	49%	99%	48%	2%	4%	72%
WEIGHTS →				80	687	1180		4646465		DOB:01-17-2022			A / 100% AR				
RATIOS →				96	102	107											



Crump Innovation 0103, Sire



Crump Innovation 8185, Paternal Grandsire



*** 96 BWR * 105 WWR * 103 YWR**



LOT 5

5

MCCANN FREIGHTLINER 2161

RRA ONE AND ONLY 733
NIO FREIGHTLINER 0068
RED U6 ALANA 13X

BROWN PREMIER X7876
CRUMP SAMARINDA 7762
MDM SAMARINDA 270

PIE ONE OF A KIND 352
WCR MISS BLACKBIRD DE 510Y
BLACK WHEEL ODYSSEY 117U
RED U6 ALANA 65T

BECKTON NEBULA P P707
BROWN MS DESTINATION T7664
WPRA AVALANCHE 818
MDM SAMARINDA 1328

ADJ MARB	2.41
RATIO	100
ADJ REA	12.06
RATIO	103
ADJ FAT	0.32
RATIO	139
DAM'S MPPA	103

Here is the first of a few Freightliner sons we have to offer. We purchased Freightliner in 2021 from Niobrara Red Angus. Unfortunately, he was injured shortly after turnout so calves will be limited but what we have seen we really like.

	HB	GM	CED	BW	WW	YW	ADG	MILK	ME	HPG	CEM	STAY	MARB	YG	CW	REA	FAT
EPD	29	46	14	-2.5	69	116	0.29	30	12	11	9	12	0.49	0.23	29	0.03	0.06
TOP %	90%	34%	30%	37%	20%	14%	10%	14%	92%	59%	18%	87%	33%	99%	28%	72%	99%
WEIGHTS →				82	703	1136		4646431		DOB:01-14-2022		A / 100% AR					
RATIOS →				96	105	103											



NIO Freightliner 0068, Sire



RED U6 Alana 13X, Paternal Granddam



LOT 6

6

MCCANN DIRECT AFFECT 2043

RED SIX MILE DEEP IMPACT 38D
CRUMP DIRECT AFFECT 9861
CRUMP RAM 4416

PIE JUST RIGHT 540
CRUMP LASS 0168
CRUMP LASS 782

SIX MILE SIGNATURE 295B
RED SIX MILE LAKOTO 35W
5L MTN SIGN 435-10Z
LELAND RAM 9243W

PIE THE COWBOY KIND 343
RAISLAND LAKOTA 311-158
VGW MY KIND 540
MDM MRM LASS 1230

ADJ MARB	1.54
RATIO	64
ADJ REA	12.96
RATIO	111
ADJ FAT	0.28
RATIO	123
DAM'S MPPA	103

	HB	GM	CED	BW	WW	YW	ADG	MILK	ME	HPG	CEM	STAY	MARB	YG	CW	REA	FAT
EPD	21	26	15	-3.7	70	110	0.25	26	1	7	8	10	0.28	0	19	0.16	0.01
TOP %	95%	74%	20%	18%	18%	23%	34%	42%	36%	97%	31%	94%	82%	21%	69%	43%	24%
WEIGHTS →				73	726	1232		4646333		DOB:01-27-2022			A / 100% AR				
RATIOS →				94	108	112											

Lot 6 is a heifer bull with some punch! Birth weight of 73 lbs, weaned at 726 lbs, and yearling of 1230 lbs.

Direct Affect calves are consistent with low birth weights that just flat grow.

His dam did a great job right out of the gate - raised a front end bull calf and bred right back.



Lot 6 on dam in May, 2023





LOT 7

7

MCCANN INNOVATION 0103-2013

CRUMP INNOVATION 8185
CRUMP INNOVATION 0103
CRUMP VERNICE 898

VGW MY KIND 540
CRUMP SHEBA 7706
CRUMP SHEBA 4410

SAV RESOURCE 1441
MDM VERNICE 1020
CRUMP MISSION STATEMENT 6187
CRUMP VERNICE 5210

BUF CRK THE RIGHT KIND U199
VGW W054-HAZY 1390
CRUMP FOREVER WEST 2102
MLK CRK SHEBA 079

ADJ MARB	3.2
RATIO	133
ADJ REA	11.54
RATIO	99
ADJ FAT	0.31
RATIO	135
DAM'S MPPA	105

	HB	GM	CED	BW	WW	YW	ADG	MILK	ME	HPG	CEM	STAY	MARB	YG	CW	REA	FAT
EPD	48	46	9	-0.5	68	118	0.31	31	15	12	5	17	0.3	0.17	45	0.15	0.03
TOP %	63%	33%	91%	75%	24%	12%	5%	10%	97%	40%	83%	30%	79%	94%	2%	46%	76%
WEIGHTS →				86	699	1298	4646427		DOB:01-19-2022		A / 100% AR						
RATIOS →				102	104	118											

A powerful calf that's going to sure make those soggy feeder calves!





LOT 8

8

MCCANN DIRECT AFFECT 2017

RED SIX MILE DEEP IMPACT 38D
CRUMP DIRECT AFFECT 9861
CRUMP RAM 4416

CRUMP RESOURCE 8201
CRUMP SHOSHONE 0217
CRUMP SHOSHONE 359

SIX MILE SIGNATURE 295B
RED SIX MILE LAKOTO 35W
5L MTN SIGN 435-10Z
LELAND RAM 9243W
S A V RESOURCE 1441
MDM VERNICE 1020
5L CANYON WATCH 1386-113Y
MDM SHOSHONE 440

ADJ MARB	2.5
RATIO	104
ADJ REA	11.87
RATIO	102
ADJ FAT	0.26
RATIO	113
DAM'S MPPA	104

	HB	GM	CED	BW	WW	YW	ADG	MILK	ME	HPG	CEM	STAY	MARB	YG	CW	REA	FAT
EPD	43	45	12	-0.4	75	118	0.27	28	3	9	7	13	0.43	0.09	30	0.2	0.03
TOP %	73%	35%	65%	77%	8%	12%	22%	29%	48%	91%	55%	72%	45%	67%	24%	34%	72%
WEIGHTS →			82	736	1129	4646345		DOB:01-15-2022		A / 100% AR							
RATIOS →			105	110	103												

A Direct Affect son out of a Resource 8201 daughter.



LOT 9

9

MCCANN PROPULSION 2027

PIE ONE OF A KIND 777
BB PROPULSION 9096
BB MS GINNIE 6256

BROWN COMPLETE B238
CRUMP SHEBA 7806
MLK CRK SHEBA 048

PIE ONE OF A KIND 352
PIE JULY DALLES 569
LARSON SUN KING 016
BB MS GINNIE 6019-2057
LSF TAKEOVER 9943W
BROWN MS P707 X7580
5L BLAZIN TRAIL 1336-237V
MLK CRK SHEBA 748

ADJ MARB	2.85
RATIO	118
ADJ REA	12.52
RATIO	107
ADJ FAT	0.32
RATIO	140
DAM'S MPPA	101

	HB	GM	CED	BW	WW	YW	ADG	MILK	ME	HPG	CEM	STAY	MARB	YG	CW	REA	FAT
EPD	37	23	10	-2.8	81	116	0.22	33	6	18	5	10	0.61	0.2	25	0.02	0.06
TOP %	82%	80%	86%	32%	3%	14%	57%	3%	69%	1%	83%	95%	15%	97%	43%	74%	98%
WEIGHTS →			89	696	1188	4646437		DOB:01-18-2022		A / 100% AR							
RATIOS →			104	104	108												

Lot 9 is a high-performing Propulsion son who has checked all of our boxes with a 690 lb wean weight, 1200 lb yearling weight, and scanned a 13 inch ribeye.



Crump Shoshone 0217, dam of Lot 8





LOT 10

10

MCCANN MEGA 2029

CRUMP MAGNITUDE 5507
CRUMP MEGA 8849
MDM VERNICE 1020

BROWN PREMIER X7876
CRUMP TABITHA 3140
WPRA AVALANCHE 818
MDM VERNICE 81-8
BIEBER ROLLIN DEEP Y118
BIEBER TILLY 143Y
CRUMP RUNAWAY 5121
CRUMP RAM 4416

ADJ MARB	3.44
RATIO	143
ADJ REA	12.47
RATIO	107
ADJ FAT	0.31
RATIO	134
DAM'S MPPA	100

BIEBER LB MITIGATOR C314
CRUMP RAM 0730
CRUMP RAM 7710

	HB	GM	CED	BW	WW	YW	ADGM	MILK	ME	HPG	CEM	STAY	MARB	YG	CW	REA	FAT
EPD	13	66	12	-1.6	66	116	0.31	30	8	10	7	10	0.66	-0.01	25	0.3	0.01
TOP %	98%	8%	58%	55%	30%	13%	5%	13%	79%	77%	59%	94%	10%	15%	41%	18%	24%
WEIGHTS →				84	681	1116		4646351		DOB:01-09-2022			A / 100% AR				
RATIOS →				108	101	101											

These Mega sons are consistent across the board. Just like their sire, they are very easy going cattle.



Crump Mega 8849, Sire





LOT 11

11

MCCANN NEW QUEST 2147

DAMAR NEWQUEST C815
LDR NEW QUEST 8071
LDR BANE BERRY 5238

5L MTN SIGN 435-10Z
CRUMP RAM 4416
LELAND RAM 9243W

ANDRAS NEW DIRECTION R240
BROWN MS CONQUEST Z7870
RED LAZY MC CC DETOUR 2W
RED SOO LINE BANE BERRY 5238
5L ADVOCATE 817-14W
5L LAKOTA 1583-435
5L MTN RAM X975-5066
FOSTER'S CEDER 36

ADJ MARB	3.13
RATIO	130
ADJ REA	10.3
RATIO	92
ADJ FAT	0.22
RATIO	99
DAM'S MPPA	104

Here is an ET calf that you can breed your heifers to and not sacrifice performance. The dam of 2147 consistently produces low birth to high yearling weight ratios in her calves.

	HB	GM	CED	BW	WW	YW	ADG	MILK	ME	HPG	CEM	STAY	MARB	YG	CW	REA	FAT
EPD	55	29	19	-3.2	60	95	0.22	30	2	9	9	16	0.52	0.16	12	-0.13	0.04
TOP %	50%	68%	1%	25%	52%	55%	58%	12%	44%	87%	10%	47%	27%	92%	87%	95%	91%
WEIGHTS →				92	630	1134		4646477		DOB:01-17-2022			A / 100% AR				
RATIOS →																	





LOT 12

12

MCCANN MITIGATOR 0323 - 2059

BIEBER LB MITIGATOR C314
CRUMP MITIGATOR 0323
MDM SUSIE 133-9

PIE ONE OF A KIND 352
CRUMP PINETA 7120
CRUMP PINETA 4146

BIEBER ROLLIN DEEP Y118
BIEBER TILLY 143Y
LJC JAVELIN M08
MDM SUSIE 91-6
BUF CRK THE RIGHT KIND U199
PIE FAYETTE 1160
5L MTN SIGN 435-10Z
BUF CRK PINETA U092

ADJ MARB	2.43
RATIO	101
ADJ REA	11.56
RATIO	99
ADJ FAT	0.24
RATIO	104
DAM'S MPPA	98

The sire, Crump Mitigator 0323, who was sold in 2021 to BG Livestock LLC, was sampled and we plan to use him in our 2023 sire lineup.

	HB	GM	CED	BW	WW	YW	ADG	MILK	ME	HPG	CEM	STAY	MARB	YG	CW	REA	FAT
EPD	34	26	11	-4.2	54	90	0.23	30	11	13	8	12	0.41	-0.05	12	0.16	-0.01
TOP %	86%	74%	72%	12%	75%	66%	52%	14%	89%	23%	24%	83%	50%	7%	87%	43%	7%
WEIGHTS →				85	636	1140		4646419		DOB:01-14-2022		A / 100% AR					
RATIOS →				101	95	104											



PIE One of a Kind 352, Maternal Grand sire



Bieber LB Mitigator C314, Paternal Grand sire





LOT 13

13 **MCCANN FREIGHTLINER 2051A**

<p>RRA ONE AND ONLY 733 NIO FREIGHTLINER 0068 RED U6 ALANA 13X</p> <p>5L CANYON WATCH 1386-113Y CRUMP SHOSHONE 359 MDM SHOSHONE 440</p>	<p>PIE ONE OF A KIND 352 WCR MISS BLACKBIRD DE 510Y BLACK WHEEL ODYSSEY 117U RED U6 ALANA 65T</p> <p>5L NIGHT WATCH 203-04T 5L RUBY 490-1386 GLACIER LOGAN 210 MDM SHOSHONE 1680</p>	<table border="1"> <tr><td>ADJ MARB</td></tr> <tr><td>RATIO</td></tr> <tr><td>ADJ REA</td></tr> <tr><td>RATIO</td></tr> <tr><td>ADJ FAT</td></tr> <tr><td>RATIO</td></tr> <tr><td>DAM'S MPPA</td></tr> </table>	ADJ MARB	RATIO	ADJ REA	RATIO	ADJ FAT	RATIO	DAM'S MPPA
ADJ MARB									
RATIO									
ADJ REA									
RATIO									
ADJ FAT									
RATIO									
DAM'S MPPA									

	HB	GM	CED	BW	WW	YW	ADG	MILK	ME	HPG	CEM	STAY	MARB	YG	CW	REA	FAT
EPD	77	30	16	-2.4	56	94	0.24	32	0	12	9	17	0.30	0.08	17	0.00	0.02
TOP %	12%	66%	13%	39%	88%	58%	44%	6%	32%	30%	11%	26%	79%	57%	73%	77%	47%
WEIGHTS →				78	637	1234		4715467		DOB:01-19-2022		A / 100% AR					
RATIOS →																	

2051A is a dark red Freightliner son with a wide top, and great hip; loaded with phenotype. He is a high performing calving ease bull with an actual weaning weight of 630 lbs and yearling weight of 1,230 lbs.





LOT 14



LOT 15

14

MCCANN BLUE COLLAR 2129

RED U-2 RECKONING 149A
RED U2 BLUE COLLAR 295E
RED U-2 ANEXA 439A

5L CANYON WATCH 1386-113Y
CRUMP CARRIE 3185
BUF CRK CARRIE W131

RED U-2 RECON 192Y
RED U-2 ANEXA 271Y
RED MINBURN COPENHAGEN 3Y
RED U-2 ANEXA 443Y

5L NIGHT WATCH 203-04T
5L RUBY 490-1386
COYOTE HILLS A502M M L 1175
BUF CRK CARRIE N126

ADJ MARB	2.41
RATIO	100
ADJ REA	13.02
RATIO	111
ADJ FAT	0.26
RATIO	113
DAM'S MPPA	98

	HB	GM	CED	BW	WW	YW	ADG	MILK	ME	HPG	CEM	STAY	MARB	YG	CW	REA	FAT
EPD	61	26	10	0.1	62	97	0.22	30	-1	11	6	16	0.35	0.12	22	0.08	0.04
TOP %	38%	74%	86%	84%	46%	52%	58%	11%	26%	62%	70%	41%	65%	79%	53%	61%	84%
WEIGHTS →				84	677	1093	4646371		DOB:01-18-2022		A / 100% AR						
RATIOS →				99	101	99											

A top weaning Blue Collar son who you won't want to miss in the pen!

15

MCCANN STATEMENT 2283

CRUMP MISSION STATEMENT 6187
CRUMP MISSION STATEMENT 897
CRUMP SHOSHONE 359

5L MTN SIGN 435-10Z
CRUMP RAM 4416
LELAND RAM 9243W

LJC MISSION STATEMENT P27
TR BRANDY XT074
5L CANYON WATCH 1386-113Y
MDM SHOSHONE 440

5L ADVOCATE 817-14W
5L LAKOTA 1583-435
5L MTN RAM X975-5066
FOSTER'S CEDER 36

ADJ MARB	1.95
RATIO	
ADJ REA	11.1
RATIO	
ADJ FAT	0.22
RATIO	
DAM'S MPPA	104

	HB	GM	CED	BW	WW	YW	ADG	MILK	ME	HPG	CEM	STAY	MARB	YG	CW	REA	FAT
EPD	50	47	16	-3.6	66	109	0.27	36	4	10	8	15	0.42	0.12	33	-0.03	0
TOP %	60%	31%	15%	19%	29%	25%	23%	1%	52%	75%	22%	58%	48%	78%	16%	83%	19%
WEIGHTS →				84	699	1167	4666085		DOB:01-17-2022		A / 100% AR						
RATIOS →																	

897 sired calves have been some of our favorites over the past couple of years! We were very excited when we got the opportunity to get 897 back in our herd for the 2023 breeding year.





LOT 16

16

MCCANN BLUE COLLAR 2131

RED U-2 RECKONING 149A
RED U2 BLUE COLLAR 295E
RED U-2 ANEXA 439A

RED U-2 RECON 192Y
RED U-2 ANEXA 271Y
RED MINBURN COPENHAGEN 3Y
RED U-2 ANEXA 443Y

CRUMP ASSAULT 6655
CRUMP DONA PRIDE 834
CRUMP DONA PRIDE 6198

5L DEFENDER 560-30Z
CRUMP CEDAR 4432
CRUMP HERCULES 333
MDM DONA PRIDE 315

ADJ MARB	2.37
RATIO	98
ADJ REA	12.58
RATIO	108
ADJ FAT	0.25
RATIO	110
DAM'S MPPA	102

	HB	GM	CED	BW	WW	YW	ADG	MILK	ME	HPG	CEM	STAY	MARB	YG	CW	REA	FAT
EPD	66	25	10	0.1	75	113	0.24	32	-4	7	7	17	0.5	0.11	20	0.01	0.03
TOP %	27%	75%	84%	84%	8%	18%	45%	4%	18%	97%	52%	32%	30%	76%	65%	76%	72%
WEIGHTS →			86	709	1113			4646463			DOB:01-22-2022			A / 100% AR			
RATIOS →			103	106	101												

Blue Collar son with a high wean weight of 760 lbs and scanned a 12.7 inch ribeye.



LOT 17

17

MCCANN PROPULSION 2109

PIE ONE OF A KIND 777
BB PROPULSION 9096
BB MS GINNIE 6256

PIE ONE OF A KIND 352
PIE JULY DALLES 569
LARSON SUN KING 016
BB MS GINNIE 6019-2057

MUSHRUSH LOCK 'N' LOAD U213
CRUMP NEXA 5126
CRUMP NEXA 2111

BUF CRK LANCER R017
MUSHRUSH PRIMROSE MM R213
MDM CUB 4-160-0
MDM NEXA 67-8

ADJ MARB	2.27
RATIO	94
ADJ REA	12
RATIO	103
ADJ FAT	0.22
RATIO	96
DAM'S MPPA	106

	HB	GM	CED	BW	WW	YW	ADG	MILK	ME	HPG	CEM	STAY	MARB	YG	CW	REA	FAT
EPD	96	45	10	0.3	75	113	0.24	33	7	15	8	20	0.62	0.12	32	0.12	0.03
TOP %	2%	35%	88%	86%	8%	17%	40%	2%	76%	5%	35%	4%	14%	80%	19%	52%	69%
WEIGHTS →			85	716	1143			4646389			DOB:01-17-2022			A / 100% AR			
RATIOS →			99	107	104												

- * 85 lb birth weight
- * 805 lb actual wean weight
- * 1200 lb yearling weight

18

MCCANN MEGA 2145

CRUMP MAGNITUDE 5507
CRUMP MEGA 8849
MDM VERNICE 1020

BROWN PREMIER X7876
CRUMP TABITHA 3140
WPRA AVALANCHE 818
MDM VERNICE 81-8

PIE CINCH 4126
CRUMP AMBER 9856
CRUMP AMBER Y187

LSF SAGA 1040Y
TKP BONNE BEL 110
RED HILL 13R RIPPER 28U
BUF CRK AMBER R087

ADJ MARB	3.3
RATIO	137
ADJ REA	11.09
RATIO	95
ADJ FAT	0.18
RATIO	77
DAM'S MPPA	103

	HB	GM	CED	BW	WW	YW	ADG	MILK	ME	HPG	CEM	STAY	MARB	YG	CW	REA	FAT
EPD	16	20	15	-3.3	69	112	0.27	32	2	7	8	9	0.28	0.14	18	-0.04	0.03
TOP %	98%	84%	18%	24%	21%	20%	20%	4%	40%	97%	29%	96%	82%	85%	69%	86%	81%
WEIGHTS →			84	709	1126			4646519			DOB:01-10-2022			A / 100% AR			
RATIOS →			103	106	102												

A Mega son we plan to collect and use on a group of heifers.





LOT 19

19

MCCANN BLUE COLLAR 2089

RED U-2 RECKONING 149A
RED U2 BLUE COLLAR 295E
RED U-2 ANEXA 439A

BROWN COMPLETE B238
CRUMP SHEBA 7786
MLK CRK SHEBA 048

RED U-2 RECON 192Y
RED U-2 ANEXA 271Y
RED MINBURN COPENHAGEN 3Y
RED U-2 ANEXA 443Y
LSF TAKEOVER 9943W
BROWN MS P707 X7580
5L BLAZIN TRAIL 1336-237V
MLK CRK SHEBA 748

ADJ MARB	2.01
RATIO	84
ADJ REA	12.8
RATIO	110
ADJ FAT	0.24
RATIO	106
DAM'S MPPA	99

	HB	GM	CED	BW	WW	YW	ADG	MILK	ME	HPG	CEM	STAY	MARB	YG	CW	REA	FAT
EPD	61	37	12	-2.6	57	91	0.21	32	1	11	8	16	0.56	0.16	25	-0.01	0.04
TOP %	38%	51%	61%	35%	63%	63%	61%	4%	40%	48%	34%	47%	21%	92%	43%	81%	85%
WEIGHTS →				83	631	1129	4646433		DOB:01-29-2022		A / 100% AR						
RATIOS →				97	94	103											



Brown Complete B238, Maternal Grandsire



Red U2 Blue Collar 295E, Paternal Grandsire

*Blue Collar + Complete =
Long Made, Easy Flething Cattle*

*Lot 19 is a long spined, big hipped Blue Collar son
who will produce some great feeder calves
and replacement heifers.*





LOT 20

20

MCCANN PROPULSION 2193

PIE ONE OF A KIND 777
BB PROPULSION 9096
BB MS GINNIE 6256

PIE ONE OF A KIND 352
PIE JULY DALLES 569
LARSON SUN KING 016
BB MS GINNIE 6019-2057

WPRA AVALANCHE 818
CRUMP SUSIE 686
CRUMP SUSIE 3110

PIE AVALANCHE 381
WPRA BLACK RED JOY 508
5L SIGNATURE 5615
MDM SUSIE 91-6

ADJ MARB	2.95
RATIO	122
ADJ REA	12.2
RATIO	104
ADJ FAT	0.27
RATIO	118
DAM'S MPPA	105

	HB	GM	CD	BW	WW	YW	ADG	MILK	ME	HPG	CEM	STAY	MARB	YG	CW	REA	FAT
EPD	57	39	9	0.1	77	122	0.28	34	6	16	7	13	0.48	0.17	34	0.14	0.04
TOP %	47%	47%	89%	84%	5%	8%	16%	2%	68%	3%	61%	75%	34%	93%	15%	46%	92%
WEIGHTS →		90	727	1124		4646415				DOB:01-17-2022		A / 100% AR					
RATIOS →		105	108	102													



BB Propulsion 9096, Sire

BB Propulsion has done a great job producing consistent high wean weight and high-performance calves. Lot 20 is a great example of that!

"BB Propulsion offers great performance while producing eye catching, heavy muscled, structurally correct cattle that are dark red. In addition, Propulsion progeny consistently put together the antagonistic traits of Marbling and Ribeye Area. A top sire, his calves just don't disappoint. I was very impressed seeing progeny sell this past year and couldn't be happier with our first set of calves."





LOT 21

21

MCCANN RESOURCE 8201 - 2097

S A V RESOURCE 1441
CRUMP RESOURCE 8201
MDM VERNICE 1020

VGW MY KIND 540
CRUMP DORY LASS 9106
CRUMP DORY LASS 7122

RITO 707 OF IDEAL 3407 7075
S A V BLACKCAP MAY 4136
WPRA AVALANCHE 818
MDM VERNICE 81-8
BUF CRK THE RIGHT KIND U199
VGW W054-HAZY 1390
PIE ONE OF A KIND 352
CRUMP DORY LASS 4154

ADJ MARB	2.54
RATIO	105
ADJ REA	10.74
RATIO	92
ADJ FAT	0.23
RATIO	99
DAM'S MPPA	106

	HB	GM	CED	BW	WW	YW	ADG	MILK	ME	HPG	CEM	STAY	MARB	YG	CW	REA	FAT
EPD	7	60	11	0.8	70	116	0.28	23	5	13	7	7	0.47	0.07	39	0.2	0
TOP %	99%	13%	75%	91%	16%	14%	14%	73%	60%	16%	55%	99%	36%	53%	7%	34%	22%
WEIGHTS →				90	765	1211		4646487			DOB:03-16-2022		A / 100% AR				
RATIOS →				110	114	110											

One of the youngest calves in the sale but you wouldn't know that!



LOT 22

22

MCCANN PROPULSION 2153

PIE ONE OF A KIND 777
BB PROPULSION 9096
BB MS GINNIE 6256

BIEBER ROOSEVELT W384
CRUMP SAMARINDA 3160
MDM SAMARINDA 150-9

PIE ONE OF A KIND 352
PIE JULY DALLES 569
LARSON SUN KING 016
BB MS GINNIE 6019-2057
BIEBER ROUGH RIDER 10712
BIEBER SHEBA 9602
MDM CHATEAU 895
MDM SAMARINDA 56-7

ADJ MARB	3.76
RATIO	156
ADJ REA	11.1
RATIO	94
ADJ FAT	0.27
RATIO	118
DAM'S MPPA	101

	HB	GM	CED	BW	WW	YW	ADG	MILK	ME	HPG	CEM	STAY	MARB	YG	CW	REA	FAT
EPD	92	17	14	-4.6	60	89	0.18	31	6	13	9	21	0.51	0.28	18	-0.23	0.06
TOP %	3%	88%	34%	9%	51%	68%	81%	8%	69%	26%	21%	2%	29%	99%	69%	99%	99%
WEIGHTS →				80	684	1100		4646369			DOB:01-17-2022		A / 100% AR				
RATIOS →				95	102	100											

This bull's dam is 3160; she's one that you can count on. She breeds AI every year. Even t old she raises calves that wean over 700 lbs!



LOT 23

23

MCCANN BADGE 2185

RED U2 EMBLEM 147F
RED U2Q BADGE 73H
RED U-2 REBELLO 400C

RED SIX MILE DEEP IMPACT 38D
CRUMP NEXA 9108
CRUMP NEXA 466

RED YCLC COPENHAGEN 653C
RED U2 MS DIVIDE 28Z
RED U-2 RECON 192Y
RED U-2 REBELLO 278Z
SIX MILE SIGNATURE 295B
RED SIX MILE LAKOTO 35W
5L MTN SIGN 435-10Z
MDM NEXA 78-9

ADJ MARB	2.45
RATIO	102
ADJ REA	11.91
RATIO	102
ADJ FAT	0.17
RATIO	75
DAM'S MPPA	102

	HB	GM	CED	BW	WW	YW	ADG	MILK	ME	HPG	CEM	STAY	MARB	YG	CW	REA	FAT
EPD	52	10	12	-0.8	66	99	0.21	29	1	8	6	16	0.3	0.1	16	-0.02	0.02
TOP %	56%	95%	54%	70%	29%	46%	66%	21%	38%	94%	77%	36%	79%	67%	76%	82%	62%
WEIGHTS →				86	673	1096		4646489			DOB:03-02-2022		A / 100% AR				
RATIOS →				105	100	100											

Badge calves are square made and stout. This is another young calf that shouldn't be discounted due to his age.



LOT 24

24

MCCANN MEGA 2025

CRUMP MAGNITUDE 5507
CRUMP MEGA 8849
MDM VERNICE 1020

CRUMP RESOURCE 8201
CRUMP SHEBA 0740
CRUMP SHEBA 7836

BROWN PREMIER X7876
CRUMP TABITHA 3140
WPRA AVALANCHE 818
MDM VERNICE 81-8

S A V RESOURCE 1441
MDM VERNICE 1020
PIE ONE OF A KIND 352
MLK CRK SHEBA 048

ADJ MARB	2.58
RATIO	107
ADJ REA	10.69
RATIO	92
ADJ FAT	0.31
RATIO	134
DAM'S MPPA	98

	HB	GM	CED	BW	WW	YW	ADG	MILK	ME	HPG	CEM	STAY	MARB	YG	CW	REA	FAT
EPD	20	18	12	-1.7	59	97	0.24	27	13	9	5	14	0.34	0.06	17	0.2	0.04
TOP %	96%	87%	64%	53%	57%	50%	42%	35%	94%	86%	82%	71%	68%	47%	75%	34%	86%
WEIGHTS →				84	645	1103		4646355			DOB:01-10-2022		A / 100% AR				
RATIOS →				108	96	100											

2025's dam did a great job with this Mega son being her first calf.





LOT 25

25

MCCANN BLUE COLLAR 2163

RED U-2 RECKONING 149A
RED U2 BLUE COLLAR 295E
RED U-2 ANEXA 439A

5L DEFENDER 560-30Z
CRUMP EMILY 6610
CRUMP EMMA 220

RED U-2 RECON 192Y
RED U-2 ANEXA 271Y
RED MINBURN COPENHAGEN 3Y
RED U-2 ANEXA 443Y

5LADVOCATE 817-14W
5L BLACK ADINA 525-560
BASIN EXT 8628
MDM EMMA 1210

ADJ MARB	1.68
RATIO	70
ADJ REA	12.87
RATIO	110
ADJ FAT	0.31
RATIO	135
DAM'S MPPA	104

This Blue Collar son could easily lead off in the sale. One of the bigger, stouter bulls that you could use to add body and depth into your calves. This bull also has one of the higher actual weaning weights at 805 lbs and yearling weights at 1280 lbs.

	HB	GM	CED	BW	WW	YW	ADG	MILK	ME	HPG	CEM	STAY	MARB	YG	CW	REA	FAT
EPD	66	40	9	1.6	72	118	0.28	30	-4	8	5	17	0.42	0.1	30	0.18	0.03
TOP %	28%	45%	90%	96%	12%	12%	15%	11%	18%	96%	84%	22%	48%	70%	25%	39%	72%
WEIGHTS →				90	714	1271	4646413		DOB:01-15-2022		A / 100% AR						
RATIOS →				105	106	116											



"After seeing Blue Collar calves sell the past few years, we chose to use him for his consistency to produce style, type and structurally correct cattle. A total outcross sire that produces sons that provide top bulls, high quality replacements or those dark red feeders the feed lots are after."





LOT 26

26

MCCANN FREIGHTLINER 2165

RRA ONE AND ONLY 733
NIO FREIGHTLINER 0068
RED U6 ALANA 13X

PIE CINCH 4126
CRUMP SAMARINDA 820
CRUMP SAMARINDA678

PIE ONE OF A KIND 352
WCR MISS BLACKBIRD DE 510Y
BLACK WHEEL ODYSSEY 117U
RED U6 ALANA 65T
LSF SAGA 1040Y
TKP BONNE BEL 110
5L DEFENDER 560-30Z
MDM SAMARINDA 106-1

ADJ MARB	1.71
RATIO	71
ADJ REA	12.19
RATIO	104
ADJ FAT	0.23
RATIO	100
DAM'S MPPA	102

	HB	GM	CED	BW	WW	YW	ADG	MILK	ME	HPG	CEM	STAY	MARB	YG	CW	REA	FAT
EPD	42	40	13	-0.4	80	134	0.34	29	1	11	6	13	0.28	0.14	31	0.15	0.04
TOP %	74%	46%	51%	77%	3%	2%	2%	23%	36%	50%	77%	79%	82%	87%	21%	46%	87%
WEIGHTS →	85		694	1128	4646457		DOB:01-16-2022		A / 100% AR								
RATIOS →	102	103	103														

A moderate framed Freightliner son out of a dam you can't help but notice. 820 possesses so much width and depth and is a favorite to be around, always greeting you in the pasture.



LOT 27

27

MCCANN MEGA 2041A

CRUMP MAGNITUDE 5507
CRUMP MEGA 8849
MDM VERNICE 1020

RED HILL B571 JULIAN 845
HAT CRK AMBER 128
BUF CRK AMBER W179

BROWN PREMIER X7876
CRUMP TABITHA 3140
WPRA AVALANCHE 818
MDM VERNICE 81-8
BECKTON JULIAN GG B571
BECKTON BARMAID M554 CH
BUF CRK JULIAN R034
BUF CRK AMBER 6157

ADJ MARB	
RATIO	
ADJ REA	
RATIO	
ADJ FAT	
RATIO	
DAM'S MPPA	105

	HB	GM	CED	BW	WW	YW	ADG	MILK	ME	HPG	CEM	STAY	MARB	YG	CW	REA	FAT
EPD	52	37	16	-3	56	95	0.24	32	6	10	8	16	0.43	0.02	13	0.19	0.03
TOP %	56%	52%	13%	29%	66%	56%	43%	7%	67%	74%	31%	39%	45%	28%	85%	35%	70%
WEIGHTS →	82		718	1315	4715465		DOB:02-06-2022		A / 100% AR								
RATIOS →																	

Lot 27 is a high-performing Mega son out of a long term donor.



LOT 28

28

MCCANN DIRECT AFFECT 2133

RED SIX MILE DEEP IMPACT 38D
CRUMP DIRECT AFFECT 9861
CRUMP RAM 4416

MR COACH 1296
CRUMP ANASCO 0206
CRUMP ANASCO 7140

SIX MILE SIGNATURE 295B
RED SIX MILE LAKOTO 35W
5L MTN SIGN 435-10Z
LELAND RAM 9243W
MR COACH 20003
M R ROYAL 4077S
PIE ONE OF A KIND 352
CRUMP ANASCO 5164

ADJ MARB	1.77
RATIO	74
ADJ REA	11.25
RATIO	96
ADJ FAT	0.22
RATIO	98
DAM'S MPPA	95

	HB	GM	CED	BW	WW	YW	ADG	MILK	ME	HPG	CEM	STAY	MARB	YG	CW	REA	FAT
EPD	-6	16	14	-3.5	50	79	0.18	23	3	10	7	6	0.11	0.13	33	0.17	0.03
TOP %	99%	89%	32%	21%	84%	83%	79%	74%	50%	69%	46%	99%	99%	82%	16%	40%	79%
WEIGHTS →	70		592	1210	4646343		DOB:01-01-2022		A / 100% AR								
RATIOS →	91	88	110														

Low birth weight bull that can be used on heifers with confidence!!



LOT 29

29

MCCANN BLUE COLLAR 2141

RED U-2 RECKONING 149A
RED U2 BLUE COLLAR 295E
RED U-2 ANEXA 439A

CRUMP PACESETTER 491
CRUMP SUSIE 698
CRUMP SUSIE 4110

RED U-2 RECON 192Y
RED U-2 ANEXA 271Y
RED MINBURN COPENHAGEN 3Y
RED U-2 ANEXA 443Y
5L MTN SIGN 435-10Z
MDM VERNICE 1020
RED RMJ REDMAN 1T
CRUMP SUSIE 2108

ADJ MARB	1.59
RATIO	66
ADJ REA	12.14
RATIO	104
ADJ FAT	0.25
RATIO	109
DAM'S MPPA	104

	HB	GM	CED	BW	WW	YW	ADG	MILK	ME	HPG	CEM	STAY	MARB	YG	CW	REA	FAT
EPD	69	21	12	-1.4	56	88	0.2	35	-1	6	9	18	0.38	0.18	26	0.1	0.06
TOP %	23%	82%	58%	59%	68%	70%	71%	1%	29%	98%	13%	15%	58%	96%	41%	56%	99%
WEIGHTS →	85		692	1190	4646417		DOB:01-19-2022		A / 100% AR								
RATIOS →	99	103	108														

Top quality cow family behind this bull with a 692 lb actual wean weight and 1200 lb actual yearling weight.



LOT 31

30

MCCANN BLUE COLLAR 2137

RED U-2 RECKONING 149A
RED U2 BLUE COLLAR 295E
RED U-2 ANEXA 439A

PIE CINCH 4126
CRUMP BRANDY 9304
TR BRANDY XT074

RED U-2 RECON 192Y
RED U-2 ANEXA 271Y
RED MINBURN COPENHAGEN 3Y
RED U-2 ANEXA 443Y

LSF SAGA 1040Y
TKP BONNE BEL 110
TR EPIC S1618
TR COCA RT527

ADJ MARB	1.55
RATIO	65
ADJ REA	14.05
RATIO	120
ADJ FAT	0.21
RATIO	92
DAM'S MPPA	98

	HB	GM	CED	BW	WW	YW	ADG	MILK	ME	HPG	CEM	STAY	MARB	YG	CW	REA	FAT
EPD	58	41	13	-3.8	56	89	0.2	32	-4	9	9	15	0.43	0.07	28	0.2	0.02
TOP %	44%	43%	49%	17%	68%	69%	67%	7%	18%	84%	19%	60%	45%	51%	30%	34%	53%
WEIGHTS →				80	648	988	4646493		DOB:01-20-2022		A / 100% AR						
RATIOS →				98	96	90											

A moderate framed Blue Collar son with a REA ratio of 120!

31

MCCANN BADGE 2083A

RED U2 EMBLEM 147F
RED U2Q BADGE 73H
RED U-2 REBELLO 400C

CRUMP RUNAWAY 5121
CRUMP SCARLET 8174
MDM SUSIE 133-9

RED YCLC COPENHAGEN 653C
RED U2 MS DIVIDE 28Z
RED U-2 RECON 192Y
RED U-2 REBELLO 278Z

CRUMP RUNAWAY 3178
MDM GLACIER REBAL 124-9
LJC JAVELIN M08
MDM SUSIE 91-6

ADJ MARB	
RATIO	
ADJ REA	
RATIO	
ADJ FAT	
RATIO	
DAM'S MPPA	104

	HB	GM	CED	BW	WW	YW	ADG	MILK	ME	HPG	CEM	STAY	MARB	YG	CW	REA	FAT
EPD	46	47	9	-0.7	72	112	0.25	30	2	10	5	15	0.56	0.05	34	0.2	0
TOP %	68%	32%	89%	71%	13%	20%	35%	15%	44%	83%	88%	54%	21%	39%	14%	35%	18%
WEIGHTS →				88	839	1429	4715471		DOB:03-21-2022		A / 100% AR						
RATIOS →																	

This is the youngest bull in the sale with the highest adjusted yearling weight.

32

MCCANN FREIGHTLINER 2291A

RRA ONE AND ONLY 733
NIO FREIGHTLINER 0068
RED U6 ALANA 13X

PIE CINCH 4126
CRUMP EMILY 8814
CRUMP EMILY 6604

PIE ONE OF A KIND 352
WCR MISS BLACKBIRD DE 510Y
BLACK WHEEL ODYSSEY 117U
RED U6 ALANA 65T

LSF SAGA 1040Y
TKP BONNE BEL 110
5L DEFENDER 560-30Z
CRUMP EMMA 220

ADJ MARB	
RATIO	
ADJ REA	
RATIO	
ADJ FAT	
RATIO	
DAM'S MPPA	98

	HB	GM	CED	BW	WW	YW	ADG	MILK	ME	HPG	CEM	STAY	MARB	YG	CW	REA	FAT
EPD	58	29	14	-3.1	61	101	0.25	29	3	13	7	15	0.34	0.09	18	0.02	0.02
TOP %	44%	69%	25%	26%	49%	41%	31%	19%	47%	21%	40%	55%	68%	62%	72%	73%	61%
WEIGHTS →				76	688	1230	4715477		DOB:02-25-2022		A / 100% AR						
RATIOS →																	

A solid Freightliner son out of a young Cinch 4126 daughter.



Top 26% CED with Eye Catching Phenotype!

LOT 32





LOT 33

33

MCCANN INNOVATION 2069

S A V RESOURCE 1441
CRUMP INNOVATION 8185
MDM VERNICE 1020

BROWN PREMIER X7876
CRUMP INDIGO 534
MDM INDIGO 29-1

RITO 707 OF IDEAL 3407 7075
S A V BLACKCAP MAY 4136
WPRA AVALANCHE 818
MDM VERNICE 81-8
BECKTON NEBULA P P707
BROWN MS DESTINATION T7664
MDM CHATEAU 895
MDM INDIGO 25-9

ADJ MARB	2.21
RATIO	92
ADJ REA	11.61
RATIO	99
ADJ FAT	0.22
RATIO	98
DAM'S MPPA	100

	HB	GM	CED	BW	WW	YW	ADG	MILK	ME	HPG	CEM	STAY	MARB	YG	CW	REA	FAT
EPD	12	49	15	-3.2	51	89	0.23	21	11	10	8	11	0.46	0.16	38	0.23	0.05
TOP%	98%	28%	25%	25%	81%	69%	47%	87%	89%	80%	22%	88%	39%	92%	7%	29%	94%
WEIGHTS →				86	616	1060		4646395					DOB:02-05-2022		A / 100% AR		
RATIOS →				101	92	96											

Lot 33 is a dark red moderate framed 8185 son.



LOT 34

34

MCCANN MEGA 2057

RED SIX MILE DEEP IMPACT 38D
CRUMP DIRECT AFFECT 9861
CRUMP RAM 4416

CRUMP SUPREME 7813
CRUMP CHEROKEE 0142
SRJJ CHEROKEE B45

SIX MILE SIGNATURE 295B
RED SIX MILE LAKOTO 35W
5L MTN SIGN 435-10Z
LELAND RAM 9243W

PIE ONE OF A KIND 352
MLK CRK SHEBA 048
LELAND RED DIRECTION 8348U
MS HAMMEL CHEROKEE P145

ADJ MARB	1.47
RATIO	61
ADJ REA	11.72
RATIO	100
ADJ FAT	0.24
RATIO	106
DAM'S MPPA	97

	HB	GM	CED	BW	WW	YW	ADG	MILK	ME	HPG	CEM	STAY	MARB	YG	CW	REA	FAT
EPD	19	35	9	-0.1	71	121	0.31	28	11	13	6	10	0.4	0.08	23	0.12	0.03
TOP%	96%	57%	89%	81%	15%	9%	5%	28%	91%	25%	77%	93%	53%	61%	53%	52%	69%
WEIGHTS →				77	617	1022		4646325					DOB:12-24-2021		A / 100% AR		
RATIOS →				99	92	93											

Direct Affect sons possess extreme calf vigor. Not long after calving they are up, moving, and difficult to catch.



Crump Direct Affect 9861, Sire





LOT 36

35 MCCANN NEW QUEST 2061

DAMAR NEWQUEST C815
LDR NEW QUEST 8071
LDR BANEERRY 5238

S A V RESOURCE 1441
CRUMP ELIZABETH 8146
MDM VERNICE 1020

ANDRAS NEW DIRECTION R240
BROWN MS CONQUEST Z7870
RED LAZY MC CC DETOUR 2W
RED 500 LINE BANEERRY 5238

RITO 707 OF IDEAL 3407 7075
S A V BLACKCAP MAY 4136
WPRA AVALANCHE 818
MDM VERNICE 81-8

ADJ MARB	2.71
RATIO	112
ADJ REA	12.1
RATIO	108
ADJ FAT	0.17
RATIO	76
DAM'S MPPA	100

HB	GM	CED	BW	WW	YW	ADG	MILK	ME	HPG	CEM	STAY	MARB	YG	CW	REA	FAT	
EPD	-3	62	13	-0.6	74	125	0.32	24	8	11	6	8	0.53	0.15	40	0.24	0.04
TOP %	99%	11%	48%	74%	10%	6%	4%	64%	80%	63%	77%	98%	25%	89%	5%	27%	86%
WEIGHTS →			88	642	968		4646403						DOB:01-17-2022		A / 100% AR		
RATIOS →																	

36 MCCANN AVALANCHE 2113

WPRA AVALANCHE 818
MCCANN AVALANCHE 0174
CRUMP SCARLET 8174

BROWN COMPLETE B238
CRUMP VERNICE 0154
CRUMP VERNICE 648

PIE AVALANCHE 381
WPRA BLACK RED JOY 508
CRUMP RUNAWAY 5121
MDM SUSIE 133-9

LSF TAKEOVER 9943W
BROWN MS P707 X7580
LSF SAGA 1040Y
CRUMP VERNICE 436

ADJ MARB	1.26
RATIO	53
ADJ REA	13.41
RATIO	115
ADJ FAT	0.14
RATIO	60
DAM'S MPPA	96

HB	GM	CED	BW	WW	YW	ADG	MILK	ME	HPG	CEM	STAY	MARB	YG	CW	REA	FAT	
EPD	45	45	15	-2.7	54	80	0.16	22	3	12	8	14	0.66	0.24	30	0.11	0.08
TOP %	70%	36%	18%	34%	74%	82%	88%	84%	50%	41%	34%	71%	10%	99%	24%	54%	99%
WEIGHTS →			78	608	1007		4646329						DOB:01-11-2022		A / 100% AR		
RATIOS →			101	91	92												

We have used lot 36's sire 0174 for two years now, as a cleanup on heifer with great success.

37 MCCANN PROPULSION 2127A

PIE ONE OF A KIND 777
BB PROPULSION 9096
BB MS GINNIE 6256

MDM O'S CUBS DREAM 3-7
MDM SHOSHONE 87-1
MDM SHOSHONE 440

PIE ONE OF A KIND 352
PIE JULY DALLES 569
LARSON SUN KING 016
BB MS GINNIE 6019-2057

WFR O'S CUB'S DREAM 4854P
MDM OLE DONA PRIDE 12
GLACIER LOGAN 210
MDM SHOSHONE 1680

ADJ MARB	
RATIO	
ADJ REA	
RATIO	
ADJ FAT	
RATIO	
DAM'S MPPA	104

HB	GM	CED	BW	WW	YW	ADG	MILK	ME	HPG	CEM	STAY	MARB	YG	CW	REA	FAT	
EPD	82	34	13	-2.2	68	101	0.21	33	4	15	10	17	0.57	0.14	25	-0.05	0.02
TOP %	8%	58%	44%	44%	23%	42%	66%	3%	58%	8%	9%	31%	19%	87%	42%	87%	64%
WEIGHTS →			84	764	1090		4715521						DOB:01-17-2022		A / 100% AR		
RATIOS →																	

High performance and high weaning Propulsion son. 2127A will sire a great set of feeders.



LOT 37





LOT 38

38

MCCANN INNOVATION 2095

S A V RESOURCE 1441
CRUMP INNOVATION 8185
MDM VERNICE 1020

RITO 707 OF IDEAL 3407 7075
S A V BLACKCAP MAY 4136
WPRA AVALANCHE 818
MDM VERNICE 81-8
BECKTON NEBULA P P707
BROWN MS DESTINATION T7664
MDM O'S CUBS DREAM 4-7
MDM VERNICE 383

LSF RAB SOVEREIGN X7780
CRUMP VERNICE 380
MDM VERNICE 63-1

ADJ MARB	2.03
RATIO	84
ADJ REA	12.13
RATIO	104
ADJ FAT	0.23
RATIO	99
DAM'S MPPA	91

	HB	GM	CED	BW	WW	YW	ADG	MILK	ME	HPG	CEM	STAY	MARB	YG	CW	REA	FAT
EPD	55	30	15	-2.4	52	83	0.19	18	7	10	8	18	0.37	0.25	29	-0.14	0.05
TOP%	49%	67%	23%	39%	80%	78%	73%	97%	72%	76%	24%	17%	61%	99%	27%	95%	95%
WEIGHTS →	83		702	1154	4646377		DOB:03-22-2022		A / 100% AR								
RATIOS →	98		105	105													

8185 son you can use on heifers



LOT 39

39

MCCANN FREIGHTLINER 2183

RRA ONE AND ONLY 733
NIO FREIGHTLINER 0068
RED U6 ALANA 13X

PIE ONE OF A KIND 352
WCR MISS BLACKBIRD DE 510Y
BLACK WHEEL ODYSSEY 117U
RED U6 ALANA 65T
CRUMP RUNAWAY 3178
MDM GLACIER REBAL 124-9
CRUMP HERCULES 333
TR CEDAR UT857

CRUMP RUNAWAY 5121
CRUMP CEDAR 9874
CRUMP CEDAR 6656

ADJ MARB	1.63
RATIO	68
ADJ REA	12.15
RATIO	104
ADJ FAT	0.21
RATIO	92
DAM'S MPPA	108

	HB	GM	CED	BW	WW	YW	ADG	MILK	ME	HPG	CEM	STAY	MARB	YG	CW	REA	FAT
EPD	19	47	9	1	75	115	0.26	26	1	12	4	10	0.28	-0.09	40	0.46	-0.03
TOP%	76%	32%	93%	92%	8%	15%	30%	44%	35%	44%	96%	94%	82%	3%	5%	5%	1%
WEIGHTS →	84		769	1209	4646525		DOB:02-26-2022		A / 100% AR								
RATIOS →	103		114	110													



LOT 40

40

MCCANN BLUE COLLAR 2081

RED U-2 RECKONING 149A
RED U2 BLUE COLLAR 295E
RED U-2 ANEXA 439A

RED U-2 RECON 192Y
RED U-2 ANEXA 271Y
RED MINBURN COPENHAGEN 3Y
RED U-2 ANEXA 443Y
MDM O'S CUBS DREAM 4-7
MDM NEXA 99-7
MDM CHATEAU 324
MDM NEXA 769

MDM CUB 4-160-0
CRUMP NEXA 2111
MDM NEXA 67-8

ADJ MARB	1.45
RATIO	60
ADJ REA	11.13
RATIO	95
ADJ FAT	0.21
RATIO	91
DAM'S MPPA	101

	HB	GM	CED	BW	WW	YW	ADG	MILK	ME	HPG	CEM	STAY	MARB	YG	CW	REA	FAT
EPD	78	15	10	-0.6	56	84	0.17	32	-3	5	8	20	0.43	0.18	15	-0.14	0.04
TOP%	11%	90%	83%	74%	66%	77%	84%	6%	21%	98%	24%	4%	45%	96%	81%	95%	93%
WEIGHTS →	89		740	1045	4646367		DOB:02-19-2022		A / 100% AR								
RATIOS →	105		110	95													

Blue Collar son out of a time tested dam.



LOT 41

41

MCCANN BADGE 2117

RED U2 EMBLEM 147F
RED U2Q BADGE 73H
RED U-2 REBELLO 400C

RED YCLC COPENHAGEN 653C
RED U2 MS DIVIDE 28Z
RED U-2 RECON 192Y
RED U-2 REBELLO 278Z
BUF CRK THE RIGHT KIND U199
VGW W054-HAZY 1390
BROWN PREMIER X7876
CRUMP CEDAR 5588

VGW MY KIND 540
CRUMP CEDAR 9894
CRUMP CEDAR 7736

ADJ MARB	1.73
RATIO	72
ADJ REA	10.81
RATIO	93
ADJ FAT	0.2
RATIO	86
DAM'S MPPA	101

	HB	GM	CED	BW	WW	YW	ADG	MILK	ME	HPG	CEM	STAY	MARB	YG	CW	REA	FAT
EPD	47	-4	11	-1.7	72	112	0.25	28	1	13	7	12	0.13	0.03	11	-0.03	0
TOP%	66%	99%	68%	53%	13%	19%	31%	24%	36%	27%	48%	82%	98%	30%	90%	83%	19%
WEIGHTS →	86		685	1108	4646529		DOB:02-11-2022		A / 100% AR								
RATIOS →	105		102	101													

42**MCCANN NEW QUEST 2093**

DAMAR NEWQUEST C815
LDR NEW QUEST 8071
LDR BANE BERRY 5238

5L MTN SIGN 435-10Z
CRUMP RAM 4416
LELAND RAM 9243W

ANDRAS NEW DIRECTION R240
BROWN MS CONQUEST Z7870
RED LAZY MC CC DETOUR 2W
RED SOO LINE BANE BERRY 5238
5L ADVOCATE 817-14W
5L LAKOTA 1583-435
5L MTN RAM X975-5066
FOSTER'S CEDER 36

ADJ MARB	2.8
RATIO	116
ADJ REA	11.64
RATIO	104
ADJ FAT	0.26
RATIO	119
DAM'S MPPA	104

	HB	GM	CED	BW	WW	YW	ADG	MILK	ME	HPG	CEM	STAY	MARB	YG	CW	REA	FAT
EPD	14	51	16	-5.9	58	95	0.23	30	2	9	8	10	0.55	0.25	30	-0.02	0.06
TOP %	98%	24%	10%	3%	62%	55%	46%	12%	44%	87%	39%	96%	22%	99%	24%	82%	99%
WEIGHTS →				77	640	1037		4646425		DOB:02-07-2022			A / 100% AR				
RATIOS →																	

Lot 42 is a heifer bull that is a dark red color. He is a New Quest son out of a cow that has never been herself many times over.

**LOT 42****43****MCCANN MITIGATOR 0323 - 2047**

BIEBER LB MITIGATOR C314
CRUMP MITIGATOR 0323
MDM SUSIE 133-9

PIE ONE OF A KIND 352
CRUMP SHEBA 7860
MLK CRK SHEBA 048

BIEBER ROLLIN DEEP Y118
BIEBER TILLY 143Y
LJC JAVELIN M08
MDM SUSIE 91-6
BUF CRK THE RIGHT KIND U199
PIE FAYETTE 1160
5L BLAZIN TRAIL 1336-237V
MLK CRK SHEBA 748

ADJ MARB	2.72
RATIO	113
ADJ REA	11.12
RATIO	95
ADJ FAT	0.22
RATIO	96
DAM'S MPPA	99

	HB	GM	CED	BW	WW	YW	ADG	MILK	ME	HPG	CEM	STAY	MARB	YG	CW	REA	FAT
EPD	40	9	12	-0.6	76	126	0.31	30	14	15	8	12	0.26	0.12	22	-0.07	0.01
TOP %	77%	95%	61%	74%	7%	5%	5%	11%	96%	7%	22%	85%	86%	77%	56%	89%	44%
WEIGHTS →				78	629	1080		4646441		DOB:01-18-2022			A / 100% AR				
RATIOS →				91	94	98											

High performance 0323 son with a 78 lb birth weight and a 695 lb actual wean weight.

**LOT 43****44****MCCANN SPARTACUS 2019**

BIEBER SPARTACUS A193
BIEBER ROU SPARTACUS D13
GHR CHINOOK W30

5L MTN SIGN 435-10Z
CRUMP RAM 4416
LELAND RAM 9243W

BIEBER ROUSE SAMURAI X22
BIEBER TILLY 233U
LJC MISSION STATEMENT P27
BASIN CHINOOK 08P6
5L ADVOCATE 817-14W
5L LAKOTA 1583-435
5L MTN RAM X975-5066
FOSTER'S CEDER 36

ADJ MARB	1.96
RATIO	81
ADJ REA	11.88
RATIO	106
ADJ FAT	0.29
RATIO	131
DAM'S MPPA	104

	HB	GM	CED	BW	WW	YW	ADG	MILK	ME	HPG	CEM	STAY	MARB	YG	CW	REA	FAT
EPD	60	49	19	-5.9	58	96	0.24	33	2	9	9	17	0.45	0.08	31	0.08	0
TOP %	39%	27%	2%	3%	61%	52%	41%	3%	45%	90%	17%	25%	41%	57%	23%	61%	24%
WEIGHTS →				83	600	1050		4646537		DOB:01-22-2022			A / 100% AR				
RATIOS →																	

**LOT 44****45****MCCANN BADGE 2049**

RED U2 EMBLEM 147F
RED U2Q BADGE 73H
RED U-2 REBELLO 400C

CRUMP MISSION STATEMENT 6187
CRUMP SHOSHONE 936
CRUMP SHOSHONE 428

RED YCLC COPENHAGEN 653C
RED U2 MS DIVIDE 28Z
RED U-2 RECON 192Y
RED U-2 REBELLO 278Z
LJC MISSION STATEMENT P27
TR BRANDY XT074
MLK CRK EXPRESSIVE 1103
CRUMP SHOSHONE 234

ADJ MARB	3.2
RATIO	133
ADJ REA	10.99
RATIO	94
ADJ FAT	0.24
RATIO	107
DAM'S MPPA	96

	HB	GM	CED	BW	WW	YW	ADG	MILK	ME	HPG	CEM	STAY	MARB	YG	CW	REA	FAT
EPD	51	70	9	-1.2	66	115	0.31	26	9	11	8	15	0.65	0.11	40	0.18	0.01
TOP %	57%	5%	90%	63%	28%	15%	7%	45%	85%	62%	34%	49%	11%	73%	6%	39%	41%
WEIGHTS →				87	575	1081		4646503		DOB:01-04-2022			A / 100% AR				
RATIOS →				106	86	98											

This sale will be broadcast live on the internet.

DVAuction
Broadcasting Real-Time Auctions

Real time bidding & proxy bidding available.



46		MCCANN INNOVATION 0103-2009															
CRUMP INNOVATION 8185 CRUMP INNOVATION 0103 CRUMP VERNICE 898					S A V RESOURCE 1441 MDM VERNICE 1020 CRUMP MISSION STATEMENT 6187 CRUMP VERNICE 5210					ADJ MARB 3.03 RATIO 126 ADJ REA 12.36 RATIO 106 ADJ FAT 0.16 RATIO 69 DAM'S MPPA 102							
VGW MY KIND 540 CRUMP SUSIE 9900 CRUMP SUSIE 7812					BUF CRK THE RIGHT KIND U199 VGW W054-HAZY 1390 5L DEFENDER 560-30Z MDM SUSIE 133-9												
	HB	GM	CED	BW	WW	YW	ADG	MILK	ME	HPG	CEM	STAY	MARB	YG	CW	REA	FAT
EPD	33	45	12	-0.7	79	130	0.32	28	11	14	6	12	0.42	0.01	34	0.33	0
TOP %	87%	35%	64%	72%	4%	3%	4%	24%	90%	11%	79%	85%	48%	22%	14%	14%	24%
WEIGHTS →	85		699		1104		4646531		DOB:01-14-2022		A / 100% AR						
RATIOS →	104		104		100												

47		MCCANN BADGE 2115															
RED U2 EMBLEM 147F RED U2Q BADGE 73H RED U-2 REBELLO 400C					RED YCLC COPENHAGEN 653C RED U2 MS DIVIDE 28Z RED U-2 RECON 192Y RED U-2 REBELLO 278Z					ADJ MARB 4.32 RATIO 0 ADJ REA 11.43 RATIO 0 ADJ FAT 0.16 RATIO 0 DAM'S MPPA 97							
CRUMP MAGNITUDE 5507 CRUMP CHAISIE 9316 CRUMP EMMA 220					BROWN PREMIER X7876 CRUMP TABITHA 3140 BASIN EXT 8628 MDM EMMA 1210												
	HB	GM	CED	BW	WW	YW	ADG	MILK	ME	HPG	CEM	STAY	MARB	YG	CW	REA	FAT
EPD	31	60	13	-0.5	66	107	0.26	27	5	10	7	12	0.58	0.04	35	0.13	-0.01
TOP %	89%	13%	45%	75%	30%	28%	28%	32%	60%	80%	59%	81%	18%	37%	12%	49%	5%
WEIGHTS →	71				4679265		DOB:01-31-2022		A / 100% AR								
RATIOS →																	

48		MCCANN STATEMENT 2031															
CRUMP MISSION STATEMENT 6187 CRUMP MISSION STATEMENT 897 CRUMP SHOSHONE 359					LJC MISSION STATEMENT P27 TR BRANDY XT074 5L CANYON WATCH 1386-113Y MDM SHOSHONE 440					ADJ MARB 2.36 RATIO 98 ADJ REA 9.8 RATIO 87 ADJ FAT 0.13 RATIO 58 DAM'S MPPA 104							
5L MTN SIGN 435-10Z CRUMP RAM 4416 LELAND RAM 9243W					5L ADVOCATE 817-14W 5L LAKOTA 1583-435 5L MTN RAM X975-5066 FOSTER'S CEDER 36												
	HB	GM	CED	BW	WW	YW	ADG	MILK	ME	HPG	CEM	STAY	MARB	YG	CW	REA	FAT
EPD	63	50	16	-4.3	52	95	0.27	36	4	10	9	18	0.46	0	19	0.11	0
TOP %	33%	26%	11%	12%	80%	56%	23%	1%	52%	75%	19%	19%	39%	20%	68%	54%	14%
WEIGHTS →	86		538		1018		4646423		DOB:01-17-2022		A / 100% AR						
RATIOS →																	

897 typically is not noted as low birth weight, but bred with 4416 we feel 2031 should make a heifer bull with added performance.





LOT 49

49 MCCANN FREIGHTLINER 2189

RRA ONE AND ONLY 733
NIO FREIGHTLINER 0068
RED U6 ALANA 13X

CRUMP MISSION STATEMENT 6187
CRUMP EMMA 938
CRUMP EMMA 520

PIE ONE OF A KIND 352
WCR MISS BLACKBIRD DE 510Y
BLACK WHEEL ODYSSEY 117U
RED U6 ALANA 65T

LJC MISSION STATEMENT P27
TR BRANDY XT074
MUSHRUSH LOCK 'N' LOAD U213
CRUMP EMMA 220

ADJ MARB	2.02
RATIO	84
ADJ REA	12.35
RATIO	106
ADJ FAT	0.29
RATIO	127
DAM'S MPPA	97

HB	GM	CED	BW	WW	YW	ADG	MILK	ME	HPG	CEM	STAY	MARB	YG	CW	REA	FAT	
EPD	19	53	12	-0.4	72	128	0.35	29	10	14	8	8	0.35	0.11	36	0.37	0.04
TOP %	97%	21%	63%	77%	12%	4%	1%	17%	86%	12%	29%	98%	65%	74%	10%	11%	93%
WEIGHTS →			85	682	1057		4646507				DOB:01-20-2022		A / 100% AR				
RATIOS →			104	102	96												

50 MCCANN 33G - 2143A

RED MRLA RESOURCE 137E
RED U2 RESOURCE 33G
U2 BEAUTY 113Z

5L MTN SIGN 435-10Z
CRUMP RAM 4416
LELAND RAM 9243W

MRLA RELOAD 56C
MRLA MISS 4422B
RED U-2 MAMA'S BOY 167X
RED U-2 BEAUTY 817X

5L ADVOCATE 817-14W
5L LAKOTA 1583-435
5L MTN RAM X975-5066
FOSTER'S CEDER 36

ADJ MARB	
RATIO	
ADJ REA	
RATIO	
ADJ FAT	
RATIO	
DAM'S MPPA	104

HB	GM	CED	BW	WW	YW	ADG	MILK	ME	HPG	CEM	STAY	MARB	YG	CW	REA	FAT	
EPD	46	29	14	-3.3	50	80	0.19	30	-3	10	6	15	0.4	0.15	15	-0.11	0.03
TOP %	67%	69%	32%	24%	84%	82%	76%	13%	22%	75%	67%	60%	51%	89%	79%	93%	81%
WEIGHTS →			85	632	1180		4715475				DOB:02-26-2022		A / 100% AR				
RATIOS →																	

Smooth made bull that posted a good wean weight.

51 MCCANN BADGE 2175

RED U2 EMBLEM 147F
RED U2Q BADGE 73H
RED U-2 REBELLO 400C

PIE CINCH 4126
CRUMP BRANDY 9366
TR BRANDY XT074

RED YLCL COPENHAGEN 653C
RED U2 MS DIVIDE 28Z
RED U-2 RECON 192Y
RED U-2 REBELLO 278Z

LSF SAGA 1040Y
TKP BONNE BEL 110
TR EPIC ST618
TR COCA RT527

ADJ MARB	1.25
RATIO	52
ADJ REA	12.38
RATIO	106
ADJ FAT	0.15
RATIO	66
DAM'S MPPA	102

HB	GM	CED	BW	WW	YW	ADG	MILK	ME	HPG	CEM	STAY	MARB	YG	CW	REA	FAT	
EPD	64	-11	11	-1.2	66	107	0.26	29	0	12	5	17	-0.16	0.1	28	0.08	0.02
TOP %	32%	99%	73%	63%	31%	28%	26%	17%	30%	39%	83%	32%	99%	70%	30%	61%	47%
WEIGHTS →			83	703	1019		4646505				DOB:02-28-2022		A / 100% AR				
RATIOS →			101	105	93												

Badge calves are wide based and stout in stature.



LOT 50





52

MRL 2101

BIEBER SPARTACUS A193
BIEBER ROU SPARTACUS D13
GHR CHINOOK W30

CRUMP ASSAULT 6655
CRUMP NEXA 822
CRUMP NEXA 6168

BIEBER ROUSE SAMURAI X22
BIEBER TILLY 233U
LJC MISSION STATEMENT P27
BASIN CHINOOK 08P6

5L DEFENDER 560-30Z
CRUMP CEDAR 4432
BIEBER LET'S ROLL B563
MDM NEXA 1390

ADJ MARB	1.81
RATIO	75
ADJ REA	14.35
RATIO	123
ADJ FAT	0.26
RATIO	114
DAM'S MPPA	105

	HB	GM	CED	BW	WW	YW	ADG	MILK	ME	HPG	CEM	STAY	MARB	YG	CW	REA	FAT
EPD	60	48	15	-2.8	69	113	0.28	33	6	12	9	16	0.37	-0.01	40	0.73	0.04
TOP %	39%	30%	17%	32%	20%	17%	16%	4%	69%	43%	15%	42%	61%	15%	5%	1%	85%
WEIGHTS →				77	714	1195		4646459		DOB:02-26-2022		A / 100% AR					
RATIOS →				91	106	109											

Spartacus D13 son that can be used on heifers. 2101 scanned a 14.35 REA that ratioed 123. A heifer bull that you can use without sacrificing performance.

53

MCCANN BADGE 2103A

RED U2 EMBLEM 147F
RED U2Q BADGE 73H
RED U-2 REBELLO 400C

RED HILL B571 JULIAN 845
HAT RANCH AMBER 128
BUF CRK AMBER W179

RED YCLC COPENHAGEN 653C
RED U2 MS DIVIDE 28Z
RED U-2 RECON 192Y
RED U-2 REBELLO 278Z

BECKTON JULIAN GG B571
BECKTON BARMAID M554 CH
BUF CRK JULIAN R034
BUF CRK AMBER 6157

ADJ MARB	
RATIO	
ADJ REA	
RATIO	
ADJ FAT	
RATIO	
DAM'S MPPA	105

	HB	GM	CED	BW	WW	YW	ADG	MILK	ME	HPG	CEM	STAY	MARB	YG	CW	REA	FAT
EPD	72	25	12	-0.6	64	97	0.21	31	0	11	6	18	0.29	0.05	22	0.16	0.02
TOP %	19%	76%	65%	74%	38%	50%	63%	11%	29%	51%	80%	14%	80%	41%	55%	43%	47%
WEIGHTS →				77	716	1259		4715473		DOB:02-28-2022		A / 100% AR					
RATIOS →																	

A twin out of our Donor Hat Ranch Amber 128. 2103A is a dark red 73H son with balanced EPD numbers.



54

MCCANN DIRECT AFFECT 2055

RED SIX MILE DEEP IMPACT 38D
CRUMP DIRECT AFFECT 9861
CRUMP RAM 4416

MR COACH 1296
CRUMP ANASCO 0160
CRUMP ANASCO 4148

SIX MILE SIGNATURE 295B
RED SIX MILE LAKOTO 35W
5L MTN SIGN 435-10Z
LELAND RAM 9243W

MR COACH 20003
M R ROYAL 4077S
CRUMP FOREVER WEST 210Z
BUF CRK ANASCO W015

ADJ MARB	2.56
RATIO	106
ADJ REA	10.22
RATIO	87
ADJ FAT	0.26
RATIO	113
DAM'S MPPA	97

	HB	GM	CED	BW	WW	YW	ADG	MILK	ME	HPG	CEM	STAY	MARB	YG	CW	REA	FAT
EPD	32	33	14	-2.9	56	102	0.28	23	1	9	7	12	0.34	0.25	19	-0.18	0.06
TOP %	88%	61%	38%	30%	67%	40%	14%	74%	35%	86%	55%	82%	68%	99%	67%	97%	99%
WEIGHTS →				81	618	999		4646331		DOB:01-18-2022		A / 100% AR					
RATIOS →				103	92	91											

When we purchased Direct Affect in Crump's last production sale, 2055 is just what we expected 9861 to produce - calves that come easy but are loaded with performance, a wide top, and a full spring of rib.





LOT 55



LOT 56

55

MCCANN SPARTAN 2037

BIEBER SPARTACUS A193
BIEBER SPARTAN E639
BIEBER RENEE 477A

CRUMP SUPREME 7813
CRUMP BELGA 0132
CRUMP BELGA 4152

BIEBER ROUSE SAMURAI X22
BIEBER TILLY 233U
VGW OLY 903
OLC RENEE S188
PIE ONE OF A KIND 352
MLK CRK SHEBA 048
TR JULIAN YT180
TR BELGA WT909

ADJ MARB	2.7
RATIO	112
ADJ REA	10.75
RATIO	92
ADJ FAT	0.25
RATIO	110
DAM'S MPPA	101

	HB	GM	CED	BW	WW	YW	ADG	MILK	ME	HPG	CEM	STAY	MARB	YG	CW	REA	FAT
EPD	40	32	10	-2.1	70	106	0.23	26	8	16	7	12	0.66	0.21	18	-0.12	0.05
TOP %	77%	62%	82%	44%	17%	30%	50%	50%	78%	4%	61%	87%	10%	98%	72%	94%	97%
WEIGHTS →				84	693	1104		4646317									
RATIOS →				106	103	100											

We felt the breeding of Supreme x Spartacus would complement each other nicely, with the power of Supreme and the shape and structure of Spartacus.

56

MCCANN 33G - 2011A

RED MRLA RESOURCE 137E
RED U2 RESOURCE 33G
U2 BEAUTY 113Z

5L MTN SIGN 435-10Z
CRUMP RAM 4416
LELAND RAM 9243W

MRLA RELOAD 56C
MRLA MISS 4422B
RED U-2 MAMA'S BOY 167X
RED U-2 BEAUTY 48X
5L ADVOCATE 817-14W
5L LAKOTA 1583-435
5L MTN RAM X975-5066
FOSTER'S CEDER 36

ADJ MARB	
RATIO	
ADJ REA	
RATIO	
ADJ FAT	
RATIO	
DAM'S MPPA	104

	HB	GM	CED	BW	WW	YW	ADG	MILK	ME	HPG	CEM	STAY	MARB	YG	CW	REA	FAT
EPD	46	29	14	-3.1	50	80	0.19	30	-3	10	6	15	0.4	0.14	16	-0.09	0.03
TOP %	67%	69%	31%	26%	84%	82%	77%	13%	22%	75%	67%	60%	53%	87%	78%	91%	81%
WEIGHTS →				88	610	1102		4715459									
RATIOS →																	

33G sires calves that just look the part at birth. They are stout, square, and stylish.





LOT 57

57

MCCANN PREMIERE 2167

BECKTON NEBULA P P707
BROWN PREMIER X7876
BROWN MS DESTINATION T7664

5L BIG IRON 4558-28B
CRUMP AMBER 9850
CRUMP AMBER Y187

BECKTON NEBULA M045
BECKTON LANA M809 EP
5L DESTINATION 893-6215
BROWN MS JULIA M7788
5L DEFENDER 560-30Z
5L FIREFLY 1065-4558
RED HILL 13R RIPPER 28U
BUF CRK AMBER R087

ADJ MARB	3.63
RATIO	151
ADJ REA	12.15
RATIO	104
ADJ FAT	0.19
RATIO	83
DAM'S MPPA	103

	HB	GM	CED	BW	WW	YW	ADG	MILK	ME	HPG	CEM	STAY	MARB	YG	CW	REA	FAT
EPD	34	86	13	-2.9	69	116	0.3	31	1	9	8	12	0.66	0.05	42	0.35	0.01
TOP %	86%	1%	40%	30%	20%	13%	9%	11%	40%	90%	34%	87%	10%	40%	4%	12%	31%
WEIGHTS →				79	757	1156	4646517		DOB:02-26-2022		A / 100% AR						
RATIOS →				97	113	105											

Premier son with strong EPD profile. We plan on sampling 2167, who is backed by one of our top cow families. He is a high scanning bull with a ratio of 151 on IMF and an actual 12.7 REA.



LOT 58

58

MCCANN PREMIERE 2135

BECKTON NEBULA P P707
BROWN PREMIER X7876
BROWN MS DESTINATION T7664

CRUMP OK 7773
CRUMP REBAL 9828
CRUMP REBAL 7778

BECKTON NEBULA M045
BECKTON LANA M809 EP
5L DESTINATION 893-6215
BROWN MS JULIA M7788
PIE ONE OF A KIND 352
CRUMP EMMA 220
BROWN COMPLETE B238
MDM GLACIER REBAL 124-9

ADJ MARB	4.31
RATIO	179
ADJ REA	11.08
RATIO	95
ADJ FAT	0.11
RATIO	49
DAM'S MPPA	99

	HB	GM	CED	BW	WW	YW	ADG	MILK	ME	HPG	CEM	STAY	MARB	YG	CW	REA	FAT
EPD	31	67	15	-6.1	59	92	0.2	27	9	13	10	11	0.87	0.16	31	0.06	0.04
TOP %	89%	7%	23%	2%	57%	63%	68%	32%	85%	26%	6%	92%	2%	92%	21%	66%	84%
WEIGHTS →				71	631	1018	4646513		DOB:01-28-2022		A / 100% AR						
RATIOS →				88	94	93											

If you're looking for a sleep all night heifer bull here you go! Actual birth 71 lbs, - 6.1 bw, and CED at 15.



LOT 59

59

MCCANN BLUE COLLAR 2001

RED U-2 RECKONING 149A
RED U2 BLUE COLLAR 295E
RED U-2 ANEXA 439A

WPRA AVALANCHE 818
CRUMP HAZY 4418
VGW 554T-HAZY 1001

RED U-2 RECON 192Y
RED U-2 ANEXA 271Y
RED MINBURN COPENHAGEN 3Y
RED U-2 ANEXA 443Y
PIE AVALANCHE 381
WPRA BLACK RED JOY 508
RED SSS OLY 554T
VGW M517-HAZY 0875

ADJ MARB	2.13
RATIO	88
ADJ REA	9.94
RATIO	85
ADJ FAT	0.27
RATIO	117
DAM'S MPPA	93

	HB	GM	CED	BW	WW	YW	ADG	MILK	ME	HPG	CEM	STAY	MARB	YG	CW	REA	FAT
EPD	77	30	11	-0.2	49	87	0.23	29	-7	6	7	20	0.35	0.09	17	0.1	0.04
TOP %	12%	66%	71%	80%	85%	72%	48%	22%	13%	98%	59%	4%	65%	67%	76%	56%	86%
WEIGHTS →				90	560	993	4646387		DOB:01-13-2022		A / 100% AR						
RATIOS →				105	83	90											

A Blue Collar son that has been a favorite all winter. Picture day was easy as he's always posing in the pen.



LOT 60

60

MCCANN AVALANCHE 2035

WPRA AVALANCHE 818
MCCANN AVALANCHE 0174
CRUMP SCARLET 8174

CRUMP INNOVATION 8185
CRUMP INDIGO 0204
CRUMP INDIGO 534

PIE AVALANCHE 381
WPRA BLACK RED JOY 508
CRUMP RUNAWAY 5121
MDM SUSIE 133-9
S A V RESOURCE 1441
MDM VERNICE 1020
BROWN PREMIER X7876
MDM INDIGO 29-1

ADJ MARB	2.1
RATIO	87
ADJ REA	10.72
RATIO	92
ADJ FAT	0.21
RATIO	91
DAM'S MPPA	100

	HB	GM	CED	BW	WW	YW	ADG	MILK	ME	HPG	CEM	STAY	MARB	YG	CW	REA	FAT
EPD	9	71	12	0.8	75	137	0.39	27	12	8	6	11	0.33	-0.04	48	0.6	0
TOP %	99%	5%	55%	91%	8%	1%	1%	33%	92%	96%	79%	90%	70%	10%	1%	2%	16%
WEIGHTS →				71	676	1087	4646341		DOB:02-18-2022		A / 100% AR						
RATIOS →				91	101	99											



61

MCCANN BLUE COLLAR 2139

RED U-2 RECKONING 149A
RED U2 BLUE COLLAR 295E
RED U-2 ANEXA 439A

BIEBER ROOSEVELT W384
CRUMP NEXA 630
CRUMP 3X 352

RED U-2 RECON 192Y
RED U-2 ANEXA 271Y
RED MINBURN COPENHAGEN 3Y
RED U-2 ANEXA 443Y
BIEBER ROUGH RIDER 10712
BIEBER SHEBA 9602
MLK CRK EXPRESSIVE 1103
MDM 3X 34-1

ADJ MARB	3.09
RATIO	128
ADJ REA	11.34
RATIO	97
ADJ FAT	0.16
RATIO	69
DAM'S MPPA	97

	HB	GM	CED	BW	WW	YW	ADG	MILK	ME	HPG	CEM	STAY	MARB	YG	CW	REA	FAT
EPD	78	24	14	-3.6	42	57	0.1	30	-6	10	9	18	0.54	0.21	19	-0.11	0.05
TOP %	11%	78%	26%	19%	95%	97%	99%	14%	15%	67%	11%	19%	24%	98%	67%	93%	98%
WEIGHTS →				78	584	916	4646405		DOB:01-13-2022		A / 100% AR						
RATIOS →				91	87	83											



62

MCCANN BADGE 2281

RED U2 EMBLEM 147F
RED U2Q BADGE 73H
RED U-2 REBELLO 400C

CRUMP MAGNITUDE 5507
CRUMP AMBER 9336
CRUMP AMBER Y187

RED YCLC COPENHAGEN 653C
RED U2 MS DIVIDE 28Z
RED U-2 RECON 192Y
RED U-2 REBELLO 278Z
BROWN PREMIER X7876
CRUMP TABITHA 3140
RED HILL 13R RIPPER 28U
BUF CRK AMBER R087

ADJ MARB	5.01
RATIO	208
ADJ REA	9.23
RATIO	79
ADJ FAT	0.2
RATIO	89
DAM'S MPPA	101

	HB	GM	CED	BW	WW	YW	ADG	MILK	ME	HPG	CEM	STAY	MARB	YG	CW	REA	FAT
EPD	39	38	14	-2.8	59	95	0.22	33	1	8	7	14	0.38	0.04	25	0.13	0
TOP %	78%	49%	31%	32%	57%	56%	53%	3%	38%	96%	55%	63%	58%	35%	41%	49%	22%
WEIGHTS →				71	649	959	4646497		DOB:01-31-2022		A / 100% AR						
RATIOS →				88	97	87											

Lot 62's 5.01 Adj Marbling measurement gave him the highest marbling ratio in the sale offering!!

Please plan to join us both days!!

Sunday, March 5, at Big Horn Mountain Resort:

- * Social Hour starting at 6:00 p.m.
 - * Complimentary Prime Rib Dinner buffet starts at 7:00 p.m.
- (Please RSVP if possible to legalassistant@wvmccann.com or call 208-743-5517 and let us know how many will be attending.)

Monday, March 6, at Billings Livestock:

- * Complimentary lunch starting at 11:00 a.m.

Monday, March 6, at Big Horn Mountain Resort:

- * After sale celebration: Please join us after the sale for additional conversation, finger foods, and a drink or two!

63

MCCANN 33G - 2033A

RED MRLA RESOURCE 137E
RED U2 RESOURCE 33G
U2 BEAUTY 113Z

5L MTN SIGN 435-10Z
CRUMP RAM 4416
LELAND RAM 9243W

MRLA RELOAD 56C
MRLA MISS 4422B
RED U-2 MAMA'S BOY 167X
RED U-2 BEAUTY 48X
5L ADVOCATE 817-14W
5L LAKOTA 1583-435
5L MTN RAM X975-5066
FOSTER'S CEDER 36

ADJ MARB	
RATIO	
ADJ REA	
RATIO	
ADJ FAT	
RATIO	
DAM'S MPPA	104

	HB	GM	CED	BW	WW	YW	ADG	MILK	ME	HPG	CEM	STAY	MARB	YG	CW	REA	FAT
EPD	46	29	14	-3.1	50	80	0.19	30	-3	10	6	15	0.4	0.14	16	-0.09	0.03
TOP %	67%	69%	31%	26%	84%	82%	77%	13%	22%	75%	67%	60%	53%	87%	78%	91%	81%
WEIGHTS →				86	614	1088	4715463		DOB:01-20-2022		A / 100% AR						
RATIOS →																	

A heifer bull out of our Donor 4416. This New Quest son can be used with confidence considering his pedigree is stacked with calving ease.



64

MCCANN NEW QUEST 2045

DAMAR NEWQUEST C815
LDR NEW QUEST 8071
LDR BANE BERRY 5238

5L MTN SIGN 435-10Z
CRUMP RAM 4416
LELAND RAM 9243W

ANDRAS NEW DIRECTION R240
BROWN MS CONQUEST Z7870
RED LAZY MC CC DETOUR 2W
RED SOO LINE BANE BERRY 5238
5L ADVOCATE 817-14W
5L LAKOTA 1583-435
5L MTN RAM X975-5066
FOSTER'S CEDER 36

ADJ MARB	3.09
RATIO	128
ADJ REA	10.23
RATIO	91
ADJ FAT	0.24
RATIO	106
DAM'S MPPA	104

	HB	GM	CED	BW	WW	YW	ADG	MILK	ME	HPG	CEM	STAY	MARB	YG	CW	REA	FAT
EPD	40	33	19	-7.1	44	68	0.14	30	2	9	9	14	0.65	0.27	15	-0.35	0.05
TOP %	78%	61%	2%	1%	93%	93%	92%	12%	44%	87%	15%	66%	11%	99%	80%	99%	97%
WEIGHTS →				78	536	933	4646379		DOB:01-06-2022		A / 100% AR						
RATIOS →																	

Use this bull on your heifers for calves guaranteed to come easy. Use him on your favorite cows for easy fleshing, moderate sized replacements!





LOT 63

63

MCCANN 33G - 2033A

RED MRLA RESOURCE 137E
 RED U2 RESOURCE 33G
 U2 BEAUTY 113Z

5L MTN SIGN 435-10Z
 CRUMP RAM 4416
 LELAND RAM 9243W

MRLA RELOAD 56C
 MRLA MISS 4422B
 RED U-2 MAMA'S BOY 167X
 RED U-2 BEAUTY 48X

5L ADVOCATE 817-14W
 5L LAKOTA 1583-435
 5L MTN RAM X975-5066
 FOSTER'S CEDER 36

ADJ MARB	
RATIO	
ADJ REA	
RATIO	
ADJ FAT	
RATIO	
DAM'S MPPA	104

	HB	GM	CED	BW	WW	YW	ADG	MILK	ME	HPG	CEM	STAY	MARB	YG	CW	REA	FAT
EPD	46	29	14	-3.1	50	80	0.19	30	-3	10	6	15	0.4	0.14	16	-0.09	0.03
TOP %	67%	69%	31%	26%	84%	82%	77%	13%	22%	75%	67%	60%	53%	87%	78%	91%	81%
WEIGHTS →				86	614	1088		4715463									
RATIOS →																	

A heifer bull out of our Donor 4416. This New Quest son can be used with confidence considering his pedigree is stacked with calving ease.



LOT 64

64

MCCANN NEW QUEST 2045

DAMAR NEWQUEST C815
 LDR NEW QUEST 8071
 LDR BANE BERRY 5238

5L MTN SIGN 435-10Z
 CRUMP RAM 4416
 LELAND RAM 9243W

ANDRAS NEW DIRECTION R240
 BROWN MS CONQUEST 27870
 RED LAZY MC CC DETOUR 2W
 RED SOO LINE BANE BERRY 5238

5L ADVOCATE 817-14W
 5L LAKOTA 1583-435
 5L MTN RAM X975-5066
 FOSTER'S CEDER 36

ADJ MARB	3.09
RATIO	128
ADJ REA	10.23
RATIO	91
ADJ FAT	0.24
RATIO	106
DAM'S MPPA	104

	HB	GM	CED	BW	WW	YW	ADG	MILK	ME	HPG	CEM	STAY	MARB	YG	CW	REA	FAT
EPD	40	33	19	-7.1	44	68	0.14	30	2	9	9	14	0.65	0.27	15	-0.35	0.05
TOP %	78%	61%	2%	1%	93%	93%	92%	12%	44%	87%	15%	66%	11%	99%	80%	99%	97%
WEIGHTS →				78	536	933		4646379									
RATIOS →																	

Use this bull on your heifers for calves guaranteed to come easy. Use him on your favorite cows for easy fleshing, moderate sized replacements!

65

MCCANN BADGE 2063

RED U2 EMBLEM 147F
 RED U2Q BADGE 73H
 RED U-2 REBELLO 400C

PIE CINCH 4126
 CRUMP AMBER 9110
 CRUMP AMBER Y187

RED YCLC COPENHAGEN 653C
 RED U2 MS DIVIDE 28Z
 RED U-2 RECON 192Y
 RED U-2 REBELLO 278Z

LSF SAGA 1040Y
 TKP BONNE BEL 110
 RED HILL 13R RIPPER 28U
 BUF CRK AMBER R087

ADJ MARB	2.85
RATIO	118
ADJ REA	10.66
RATIO	91
ADJ FAT	0.2
RATIO	89
DAM'S MPPA	99

	HB	GM	CED	BW	WW	YW	ADG	MILK	ME	HPG	CEM	STAY	MARB	YG	CW	REA	FAT
EPD	72	10	12	0.1	74	121	0.29	30	-4	9	6	18	0.01	0.08	28	0.09	0.01
TOP %	18%	95%	63%	84%	9%	8%	10%	14%	19%	92%	76%	17%	99%	56%	31%	60%	33%
WEIGHTS →				78	655	965		4646491									
RATIOS →				96	98	88											

66

MCCANN RESOURCE 8201 - 2091

S A V RESOURCE 1441
 CRUMP RESOURCE 8201
 MDM VERNICE 1020

CRUMP RUNAWAY 3178
 CRUMP SAMARINDA 530
 MDM SAMARINDA 270

RITO 707 OF IDEAL 3407 7075
 S A V BLACKCAP MAY 4136
 WPRA AVALANCHE 818
 MDM VERNICE 81-8

CRUMP 300 ULTRA MAGNUM Y106
 BUF CRK PRIMROSE U021
 WPRA AVALANCHE 818
 MDM SAMARINDA 1328

ADJ MARB	3.42
RATIO	142
ADJ REA	11.44
RATIO	98
ADJ FAT	0.24
RATIO	107
DAM'S MPPA	97

	HB	GM	CED	BW	WW	YW	ADG	MILK	ME	HPG	CEM	STAY	MARB	YG	CW	REA	FAT
EPD	31	30	12	-3.5	55	87	0.2	23	1	9	5	14	0.47	0.06	18	0.34	0.05
TOP %	89%	67%	54%	21%	71%	72%	71%	73%	39%	84%	82%	67%	36%	48%	71%	13%	97%
WEIGHTS →				81	622	1084		4646393									
RATIOS →				95	93	99											

67

MCCANN DIRECT AFFECT 2007

RED SIX MILE DEEP IMPACT 38D
 CRUMP DIRECT AFFECT 9861
 CRUMP RAM 4416

WPRA AVALANCHE 818
 MCCANN SCARLET 0168
 CRUMP SCARLET 8168

SIX MILE SIGNATURE 295B
 RED SIX MILE LAKOTO 35W
 5L MTN SIGN 435-10Z
 LELAND RAM 9243W

PIE AVALANCHE 381
 WPRA BLACK RED JOY 508
 CRUMP RUNAWAY 5121
 MDM SUSIE 133-9

ADJ MARB	2.13
RATIO	88
ADJ REA	11.38
RATIO	97
ADJ FAT	0.21
RATIO	93
DAM'S MPPA	96

	HB	GM	CED	BW	WW	YW	ADG	MILK	ME	HPG	CEM	STAY	MARB	YG	CW	REA	FAT
EPD	15	30	15	-4.6	50	80	0.19	26	3	7	7	12	0.53	0.13	13	0.05	0.05
TOP %	98%	66%	21%	9%	84%	82%	78%	42%	51%	98%	55%	86%	25%	82%	86%	68%	96%
WEIGHTS →				72	602	977		4646335									
RATIOS →				94	90	89											

Heifer bull with a birth weight of 72 lbs and CED of 15!

68

MCCANN BADGE 2021A

RED U2 EMBLEM 147F
 RED U2Q BADGE 73H
 RED U-2 REBELLO 400C

5L BIG IRON 4558-28B
 CRUMP MADI 9344
 CRUMP EMMA 220

RED YCLC COPENHAGEN 653C
 RED U2 MS DIVIDE 28Z
 RED U-2 RECON 192Y
 RED U-2 REBELLO 278Z

5L DEFENDER 560-30Z
 5L FIREFLY 1065-4558
 BASIN EXT 8628
 MDM EMMA 1210

ADJ MARB	
RATIO	
ADJ REA	
RATIO	
ADJ FAT	
RATIO	
DAM'S MPPA	97

	HB	GM	CED	BW	WW	YW	ADG	MILK	ME	HPG	CEM	STAY	MARB	YG	CW	REA	FAT
EPD	38	38	11	-0.5	63	100	0.23	26	1	10	5	14	0.46	0.05	24	0.19	0.02
TOP %	80%	50%	78%	75%	42%	44%	47%	46%	38%	79%	83%	69%	39%	41%	45%	37%	51%
WEIGHTS →				84	538	987		4715461									
RATIOS →																	



Crump Ram 4416 , dam of lots 11, 20, 42, 44, 48, 50, 56, 63 and 64

** Picture taken December 2022 with fall calf at side after having been flushed at Transova*



69

MCCANN BADGE 2065A

RED U2 EMBLEM 147F
RED U2Q BADGE 73H
RED U-2 REBELLO 400C

BUF CRK THE RIGHT KIND U199
CRUMP GARNET 8154
MDM GLACIER REBAL 124-9

RED YCLC COPENHAGEN 653C
RED U2 MS DIVIDE 28Z
RED U-2 RECON 192Y
RED U-2 REBELLO 278Z
BUF CRK THE RIGHT KIND R017
BUF CRK SHOSHONE R353
D A IMAGE MAKER 713
MDM GLACIER REBAL 85

ADJ MARB	
RATIO	
ADJ REA	
RATIO	
ADJ FAT	
RATIO	
DAM'S MPPA	96

	HB	GM	CED	BW	WW	YW	ADG	MILK	ME	HPG	CEM	STAY	MARB	YG	CW	REA	FAT
EPD	39	51	11	-0.4	65	101	0.22	28	-2	11	5	13	0.52	0.06	30	0.13	0.01
TOP %	79%	24%	68%	77%	31%	41%	53%	28%	24%	60%	87%	74%	27%	48%	24%	49%	24%
WEIGHTS →				86	633	1125		4715469									
RATIOS →																	

A twin that is a moderate framed Badge son. Lot 69's dam is the widest cow on the ranch; she raised both twins and still had a BCS of 8 at weaning.

70

MCCANN FREIGHTLINER 2155

RRA ONE AND ONLY 733
NIO FREIGHTLINER 0068
RED U6 ALANA 13X

MDM CHATEAU 100-111-9
MDM BO LASS 117-1
MDM BO LASS 155

PIE ONE OF A KIND 352
WCR MISS BLACKBIRD DE 510Y
BLACK WHEEL ODYSSEY 117U
RED U6 ALANA 65T
MDM CHATEAU 32-100-7
MDM VERNICE 45
CCF MAKE A DEAL 0123
MDM BO LASS 471

ADJ MARB	1.64
RATIO	68
ADJ REA	9.59
RATIO	82
ADJ FAT	0.07
RATIO	31
DAM'S MPPA	98

	HB	GM	CED	BW	WW	YW	ADG	MILK	ME	HPG	CEM	STAY	MARB	YG	CW	REA	FAT
EPD	46	54	12	0.9	72	124	0.33	26	3	11	7	13	0.51	0.1	23	0.05	0.02
TOP %	68%	20%	58%	92%	13%	6%	3%	42%	50%	51%	48%	76%	29%	71%	50%	68%	64%
WEIGHTS →				88	667	1031		4646361									
RATIOS →				104	99	94											

A young Freightliner son with a solid set of EPD's.

71

MCCANN BADGE 2119

RED U2 EMBLEM 147F
RED U2Q BADGE 73H
RED U-2 REBELLO 400C

PIE ONE OF A KIND 352
CRUMP EVIE 9884
CRUMP EMMA 220

RED YCLC COPENHAGEN 653C
RED U2 MS DIVIDE 28Z
RED U-2 RECON 192Y
RED U-2 REBELLO 278Z
BUF CRK THE RIGHT KIND U199
PIE FAYETTE 1160
BASIN EXT 8628
MDM EMMA 1210

ADJ MARB	1.66
RATIO	69
ADJ REA	11.36
RATIO	97
ADJ FAT	0.18
RATIO	81
DAM'S MPPA	97

	HB	GM	CED	BW	WW	YW	ADG	MILK	ME	HPG	CEM	STAY	MARB	YG	CW	REA	FAT
EPD	75	13	9	-0.6	58	91	0.21	26	3	12	5	20	0.21	0.09	25	0.13	0.03
TOP %	15%	93%	93%	74%	60%	63%	65%	46%	50%	35%	84%	6%	93%	65%	42%	49%	69%
WEIGHTS →				89	651	1026		4646527									
RATIOS →				109	97	93											

72

MCCANN FREIGHTLINER 2085

RRA ONE AND ONLY 733
NIO FREIGHTLINER 0068
RED U6 ALANA 13X

BROWN PREMIER X7876
CRUMP REBAL 7792
MDM GLACIER REBAL 124-9

PIE ONE OF A KIND 352
WCR MISS BLACKBIRD DE 510Y
BLACK WHEEL ODYSSEY 117U
RED U6 ALANA 65T
BECKTON NEBULA P P707
BROWN MS DESTINATION T7664
D A IMAGE MAKER 713
MDM GLACIER REBAL 85

ADJ MARB	3.3
RATIO	137
ADJ REA	10.35
RATIO	89
ADJ FAT	0.21
RATIO	90
DAM'S MPPA	104

	HB	GM	CED	BW	WW	YW	ADG	MILK	ME	HPG	CEM	STAY	MARB	YG	CW	REA	FAT
EPD	49	49	13	-1.1	64	109	0.28	30	7	12	8	14	0.63	0.22	21	-0.16	0.05
TOP %	62%	28%	49%	65%	35%	25%	17%	11%	73%	36%	31%	67%	13%	98%	61%	96%	94%
WEIGHTS →				87	688	979		4646435									
RATIOS →				102	102	89											

73

MCCANN INNOVATION 0103 - 2187

CRUMP INNOVATION 8185
CRUMP INNOVATION 0103
CRUMP VERNICE 898

BROWN PREMIER X7876
CRUMP VERNICE 536
CRUMP VERNICE 310

S A V RESOURCE 1441
MDM VERNICE 1020
CRUMP MISSION STATEMENT 6187
CRUMP VERNICE 5210
BECKTON NEBULA P P707
BROWN MS DESTINATION T7664
BIEBER ROOSEVELT W384
MDM VERNICE 6-6

ADJ MARB	2.67
RATIO	111
ADJ REA	11.1
RATIO	95
ADJ FAT	0.25
RATIO	109
DAM'S MPPA	106

	HB	GM	CED	BW	WW	YW	ADG	MILK	ME	HPG	CEM	STAY	MARB	YG	CW	REA	FAT
EPD	40	66	10	0.3	78	135	0.36	30	15	12	5	15	0.59	0.18	45	0.19	0.04
TOP %	78%	8%	88%	86%	5%	2%	1%	16%	97%	38%	89%	53%	17%	96%	2%	37%	86%
WEIGHTS →				88	678	1093		4646397									
RATIOS →				103	101	99											



LOT 73

74

MCCANN 33G - 2039

RED MRLA RESOURCE 137E
RED U2 RESOURCE 33G
U2 BEAUTY 113Z

5L CANYON WATCH 1386-113Y
CRUMP SHOSHONE 359
MDM SHOSHONE 440

MRLA RELOAD 56C
MRLA MISS 4422B
RED U-2 MAMA'S BOY 167X
RED U-2 BEAUTY 48X
5L NIGHT WATCH 203-04T
5L RUBY 490-1386
GLACIER LOGAN 210
MDM SHOSHONE 1680

ADJ MARB	3.58
RATIO	149
ADJ REA	9.07
RATIO	81
ADJ FAT	0.15
RATIO	66
DAM'S MPPA	105

	HB	GM	CED	BW	WW	YW	ADG	MILK	ME	HPG	CEM	STAY	MARB	YG	CW	REA	FAT
EPD	96	31	12	-1.2	46	72	0.16	31	-4	13	7	21	0.41	0.11	17	-0.21	0
TOP %	2%	65%	54%	63%	91%	90%	87%	11%	18%	24%	41%	2%	50%	77%	73%	98%	22%
WEIGHTS →				79	545	924		4646541									
RATIOS →																	



LOT 74

"8201 sires moderate framed cattle with all the shape, structure, and muscle you could ask for. He consistently adds body and thickness."



Crump Resource 8201, Sire

75

MCCANN RESOURCE 8201 - 2107

S A V RESOURCE 1441
CRUMP RESOURCE 8201
MDM VERNICE 1020

VGW MY KIND 540
CRUMP CEDAR 7712
CRUMP CEDAR 4432

RITO 707 OF IDEAL 3407 7075
S A V BLACKCAP MAY 4136
WPRA AVALANCHE 818
MDM VERNICE 81-8
BUF CRK THE RIGHT KIND U199
VGW W054-HAZY 1390
WPRA AVALANCHE 818
CRUMP CEDAR Y101

ADJ MARB	1.58
RATIO	66
ADJ REA	12.12
RATIO	104
ADJ FAT	0.25
RATIO	109
DAM'S MPPA	105

EPD	TOP %	WEIGHTS →	RATIOS →	HB	GM	CED	BW	WW	YW	ADG	MILK	ME	HPG	CEM	STAY	MARB	YG	CW	REA	FAT	
28	91%	90	106	28	25	9	0.9	71	118	0.29	25	5	12	5	13	0.23	-0.01	19	0.26	0.01	
		706	105																		
		1169	106																		
		4646429																			
		DOB:01-18-2022																			
		2 / 100% AR																			

Lot 75's actual wean weight is 706 lbs; out of a consistent My Kind 540 daughter.



LOT 75

76

MCCANN RESOURCE 8102 - 2099

S A V RESOURCE 1441
CRUMP RESOURCE 8201
MDM VERNICE 1020

5L MTN SIGN 435-10Z
CRUMP CHIEF 4404
MLK CRK CHIEF 208

RITO 707 OF IDEAL 3407 7075
S A V BLACKCAP MAY 4136
WPRA AVALANCHE 818
MDM VERNICE 81-8
5L ADVOCATE 817-14W
5L LAKOTA 1583-435
BASIN HOBO 79E
MLK CRK CHIEF 062

ADJ MARB	2.7
RATIO	112
ADJ REA	12.09
RATIO	103
ADJ FAT	0.27
RATIO	116
DAM'S MPPA	103

EPD	TOP %	WEIGHTS →	RATIOS →	HB	GM	CED	BW	WW	YW	ADG	MILK	ME	HPG	CEM	STAY	MARB	YG	CW	REA	FAT	
24	94%	84	98	24	24	15	-3.4	51	79	0.18	28	-2	9	7	12	0.37	0.12	19	0.22	0.06	
		693	100																		
		1102																			
		4646385																			
		DOB:02-10-2022																			
		2 / 100% AR																			

This bull has an actual wean weight of 710 lbs.



LOT 76

77

MRL 2181

S A V RESOURCE 1441
CRUMP RESOURCE 8201
MDM VERNICE 1020

CRUMP ASSAULT 6655
CRUMP CEDAR 8822
CRUMP CEDAR 6656

RITO 707 OF IDEAL 3407 7075
S A V BLACKCAP MAY 4136
WPRA AVALANCHE 818
MDM VERNICE 81-8
5L DEFENDER 560-30Z
CRUMP CEDAR 4432
CRUMP HERCULES 333
TR CEDAR UT857

ADJ MARB	2.25
RATIO	93
ADJ REA	11.62
RATIO	99
ADJ FAT	0.27
RATIO	118
DAM'S MPPA	101

EPD	TOP %	WEIGHTS →	RATIOS →	HB	GM	CED	BW	WW	YW	ADG	MILK	ME	HPG	CEM	STAY	MARB	YG	CW	REA	FAT	
28	92%	88	104	28	24	10	-0.1	76	127	0.32	23	2	11	3	13	0.11	0.09	33	0.3	0.04	
		698	109																		
		1197																			
		4646473																			
		DOB:02-24-2022																			
		2 / 100% AR																			

This 8201 son is the thickest bull in the sale. If you're looking to moderate a set of cows, lot 77 will do it. High performance numbers and posted a 700 lb actual wean weight.



LOT 77





LOT 78

78		MRL 2171															
S A V RESOURCE 1441 CRUMP RESOURCE 8201 MDM VERNICE 1020		RITO 707 OF IDEAL 3407 7075 S A V BLACKCAP MAY 4136 WPRA AVALANCHE 818 MDM VERNICE 81-8															
SPUR BLUE MOON 2273Z CRUMP HAZY 5510 VGW 554T-HAZY 1050		BROWN BLUE MOON W7638 LCS 903 RED SSS OLY 554T VGW 5004-HAZY 0860															
ADJ MARB 1.57 RATIO 65 ADJ REA 11.55 RATIO 99 ADJ FAT 0.17 RATIO 74 DAM'S MPPA 104																	
EPD	8	30	11	-0.6	70	115	0.28	23	6	8	4	11	0.33	0.05	22	0.21	0.02
TOP %	99%	67%	71%	74%	17%	16%	17%	77%	70%	94%	93%	88%	70%	40%	54%	32%	60%
WEIGHTS →	91		714	1141	4646399		DOB:02-20-2022		2 / 100% AR								
RATIOS →	106		106	104													

Another high performing 8201 son with above average weaning and yearling performance.



LOT 79

79		MCCANN RESOURCE 8201 - 2157															
S A V RESOURCE 1441 CRUMP RESOURCE 8201 MDM VERNICE 1020		RITO 707 OF IDEAL 3407 7075 S A V BLACKCAP MAY 4136 WPRA AVALANCHE 818 MDM VERNICE 81-8															
SL BIG IRON 4558-28B CRUMP AMBER 9848 CRUMP AMBER Y187		5L DEFENDER 560-30Z 5L FIREFLY 1065-4558 RED HILL 13R RIPPER 28U BUF CRK AMBER R087															
ADJ MARB 2.18 RATIO 91 ADJ REA 12.21 RATIO 105 ADJ FAT 0.22 RATIO 98 DAM'S MPPA 103																	
EPD	4	33	13	-1.5	64	105	0.26	27	2	8	5	10	0.36	0.09	21	0.35	0.06
TOP %	99%	61%	49%	57%	35%	32%	30%	36%	41%	96%	90%	94%	64%	63%	59%	12%	99%
WEIGHTS →	80		713	1136	4646515		DOB:03-08-2022		2 / 100% AR								
RATIOS →	98		106	103													



LOT 80

80		MCCANN NEW QUEST 2023															
DAMAR NEWQUEST C815 LDR NEW QUEST 8071 LDR BANE BERRY 5238		ANDRAS NEW DIRECTION R240 BROWN MS CONQUEST Z7870 RED LAZY MC CC DETOUR 2W RED SOO LINE BANE BERRY 5238															
S A V RESOURCE 1441 CRUMP ELIZABETH 8146 MDM VERNICE 1020		RITO 707 OF IDEAL 3407 7075 S A V BLACKCAP MAY 4136 WPRA AVALANCHE 818 MDM VERNICE 81-8															
ADJ MARB 1.81 RATIO 75 ADJ REA 13.4 RATIO 119 ADJ FAT 0.28 RATIO 126 DAM'S MPPA 100																	
EPD	8	37	14	-0.8	71	120	0.3	24	8	11	7	9	0.42	0.09	22	0.14	0.03
TOP %	99%	52%	31%	70%	14%	10%	8%	65%	80%	63%	55%	96%	48%	62%	54%	47%	76%
WEIGHTS →	84		624	1104	4646411		DOB:01-17-2022		2 / 100% AR								
RATIOS →																	

This set of flush brothers out of a full sister to Crump Resource 8201 is very consistent. These high performing heavy weaning brothers could move anyone in the right direction.

81		MCCANN NEW QUEST 2002															
DAMAR NEWQUEST C815 LDR NEW QUEST 8071 LDR BANE BERRY 5238		ANDRAS NEW DIRECTION R240 BROWN MS CONQUEST Z7870 RED LAZY MC CC DETOUR 2W RED SOO LINE BANE BERRY 5238															
S A V RESOURCE 1441 CRUMP ELIZABETH 8146 MDM VERNICE 1020		RITO 707 OF IDEAL 3407 7075 S A V BLACKCAP MAY 4136 WPRA AVALANCHE 818 MDM VERNICE 81-8															
ADJ MARB 1.85 RATIO 77 ADJ REA 12.51 RATIO 111 ADJ FAT 0.3 RATIO 134 DAM'S MPPA 100																	
EPD	33	8	15	-2.5	59	92	0.21	24	8	11	7	14	0.41	0.22	11	-0.09	0.07
TOP %	87%	96%	18%	37%	58%	61%	64%	65%	80%	63%	44%	66%	50%	99%	89%	91%	99%
WEIGHTS →	82		637	1105	4646447		DOB:01-11-2022		2 / 100% AR								
RATIOS →																	

82		MCCANN NEW QUEST 2005															
DAMAR NEWQUEST C815 LDR NEW QUEST 8071 LDR BANE BERRY 5238		ANDRAS NEW DIRECTION R240 BROWN MS CONQUEST Z7870 RED LAZY MC CC DETOUR 2W RED SOO LINE BANE BERRY 5238															
S A V RESOURCE 1441 CRUMP ELIZABETH 8146 MDM VERNICE 1020		RITO 707 OF IDEAL 3407 7075 S A V BLACKCAP MAY 4136 WPRA AVALANCHE 818 MDM VERNICE 81-8															
ADJ MARB 1.44 RATIO 60 ADJ REA 12.39 RATIO 110 ADJ FAT 0.26 RATIO 116 DAM'S MPPA 100																	
EPD	4	18	14	-2.6	65	102	0.23	24	8	11	7	9	0.32	0.12	22	0.23	0.05
TOP %	99%	87%	36%	35%	32%	39%	48%	65%	80%	63%	59%	97%	73%	79%	55%	29%	98%
WEIGHTS →	87		640	1079	4646533		DOB:01-16-2022		2 / 100% AR								
RATIOS →																	

83**MCCANN INNOVATION 2173**

S A V RESOURCE 1441
CRUMP INNOVATION 8185
MDM VERNICE 1020

5L MTN SIGN 435-10Z
CRUMP PINETA 4146
BUF CRK PINETA U092

RITO 707 OF IDEAL 3407 7075
S A V BLACKCAP MAY 4136
WPRA AVALANCHE 818
MDM VERNICE 81-8
5L ADVOCATE 817-14W
5L LAKOTA 1583-435
BUF CRK JULIAN R034
BUF CRK PINETA 4500

ADJ MARB	1.91
RATIO	79
ADJ REA	12.14
RATIO	104
ADJ FAT	0.29
RATIO	129
DAM'S MPPA	102

	HB	GM	CED	BW	WW	YW	ADG	MILK	ME	HPG	CEM	STAY	MARB	YG	CW	REA	FAT
EPD	40	28	14	-1.6	64	109	0.28	24	11	12	6	16	0.23	0.07	28	0.41	0.05
TOP %	78%	70%	34%	55%	37%	25%	14%	61%	91%	38%	68%	42%	91%	52%	31%	8%	95%
WEIGHTS →				86	685	1106		4646381		DOB:02-07-2022			2 / 100% AR				
RATIOS →				101	102	101											

Lot 83 is great if you're looking for length and a touch more frame than the 8201 sons. 8185 adds length to his calves.

**LOT 83****84****MCCANN 33G - 2179**

RED MRLA RESOURCE 137E
RED U2 RESOURCE 33G
U2 BEAUTY 113Z

5L DEFENDER 560-30Z
CRUMP BASALT 8166
MDM GLACIER REBAL 124-9

MRLA RELOAD 56C
MRLA MISS 4422B
RED U-2 MAMA'S BOY 167X
RED U-2 BEAUTY 48X
5L ADVOCATE 817-14W
5L BLACK ADINA 525-560
D A IMAGE MAKER 713
MDM GLACIER REBAL 85

ADJ MARB	3.55
RATIO	147
ADJ REA	10.97
RATIO	94
ADJ FAT	0.26
RATIO	113
DAM'S MPPA	99

	HB	GM	CED	BW	WW	YW	ADG	MILK	ME	HPG	CEM	STAY	MARB	YG	CW	REA	FAT
EPD	12	38	12	0	60	88	0.18	29	-1	13	5	8	0.53	0.14	29	-0.01	0.02
TOP %	98%	49%	64%	83%	54%	69%	82%	18%	25%	20%	87%	98%	25%	87%	28%	81%	60%
WEIGHTS →				87	655	1101		4646547		DOB:12-15-2021			2 / 100% AR				
RATIOS →				104	98	100											

A mid December calf, 2179 is an early maturing son of 33G already exhibiting a big crest. Lot 84 had an actual wean weight of 790 lbs.

**LOT 84****85****MCCANN FREIGHTLINER 2195**

RRA ONE AND ONLY 733
NIO FREIGHTLINER 0068
RED U6 ALANA 13X

S A V RESOURCE 1441
CRUMP SABLE 8156
CRUMP EMMA 220

PIE ONE OF A KIND 352
WCR MISS BLACKBIRD DE 510Y
BLACK WHEEL ODYSSEY 117U
RED U6 ALANA 65T
RITO 707 OF IDEAL 3407 7075
S A V BLACKCAP MAY 4136
BASIN EXT 8628
MDM EMMA 1210

ADJ MARB	1.57
RATIO	65
ADJ REA	11.96
RATIO	102
ADJ FAT	0.28
RATIO	124
DAM'S MPPA	102

	HB	GM	CED	BW	WW	YW	ADG	MILK	ME	HPG	CEM	STAY	MARB	YG	CW	REA	FAT
EPD	33	50	12	1.1	76	129	0.33	24	8	13	7	11	0.38	0.03	32	0.39	0.02
TOP %	87%	26%	65%	93%	7%	4%	3%	61%	79%	22%	57%	88%	58%	30%	20%	9%	62%
WEIGHTS →				83	661	1041		4646451		DOB:02-02-2022			2 / 100% AR				
RATIOS →				98	98	95											

Lot 85 and his dam 8156 were at the flush facility throughout the summer; he is a very solid stylish Freightliners son.

**LOT 85****86****MCCANN INNOVATION 2149**

S A V RESOURCE 1441
CRUMP INNOVATION 8185
MDM VERNICE 1020

RED LWNBRG HARVESTOR 103C
CRUMP DONA PRIDE 896
CRUMP DONA PRIDE 552

RITO 707 OF IDEAL 3407 7075
S A V BLACKCAP MAY 4136
WPRA AVALANCHE 818
MDM VERNICE 81-8
TED HARVESTOR 154A
RED TED MAGNUM 141Y
BROWN PREMIER X7876
CRUMP DONA PRIDE 349

ADJ MARB	1.56
RATIO	65
ADJ REA	11.81
RATIO	101
ADJ FAT	0.22
RATIO	97
DAM'S MPPA	105

	HB	GM	CED	BW	WW	YW	ADG	MILK	ME	HPG	CEM	STAY	MARB	YG	CW	REA	FAT
EPD	0	57	11	2.9	92	152	0.38	20	8	12	5	8	0.31	0.16	63	0.47	0.03
TOP %	99%	16%	79%	99%	1%	1%	1%	92%	79%	42%	90%	98%	75%	91%	1%	5%	81%
WEIGHTS →				88	790	1230		4646479		DOB:03-02-2022			2 / 100% AR				
RATIOS →				104	118	112											

**LOT 86**

McCann
2
Red Angus

Reference Sire EPDS



Red U2 Blue Collar 295E

Red U2 Blue Collar 295E

3927955 02-21-2017 100% AR

RED U-2 RECON 192Y
RED U2 RECKONING 149A
RED U2 ANEXA 271Y

RED MINBURN COPENHAGEN 3Y
RED U-2 ANEXA 439A
RED U-2 ANEXA 443Y

RED U2 MISSION 61W
RED U-2 LARKABA 8133U
RED HOWE MAGNUM 169W
RED U-2 ANEXA 333N
RED RMJ REDMAN 1T
MINBURN MAY 112M
RED HOWE MAGNUM 169W
RED U-2 ANEXA 127W

	HB	GM	CED	BW	WW	YW	MILK	ME	HPG	CEM	STAY	MARB	YG	CW	REA	FAT
EPD	73	28	9	1.1	64	100	34	-8	4	8	18	0.39	0.13	26	0.06	0.03
TOP%	21%	64%	84%	90%	44%	48%	3%	8%	99%	31%	16%	54%	77%	42%	60%	75%



NIO Freightliner 0068

NIO Freightliner 0068

4370165 02-11-2020 100% AR

PIE ONE OF A KIND 352
RRA ONE AND ONLY 733
WCR MISS BLACKBIRD DE 510Y

BLACK WHEEL ODYSSEY 117U
RED U6 ALANA 13X
RED U6 ALANA 12K

BUF CRK THE RIGHT KIND U199
PIE FAYETTE 1160
RED LAZY MC CC DETOUR 2W
BLAIRS BLACKBIRD 107X
BLACK WHEEL ODYSSEY 2M
RED WHEEL BRIDGET 7P
RED U6 TWENTY X 29P
RED U6 ALANA 65T

	HB	GM	CED	BW	WW	YW	MILK	ME	HPG	CEM	STAY	MARB	YG	CW	REA	FAT
EPD	54	31	14	-0.4	72	122	30	6	12	8	14	0.21	.10	29	0.19	0.03
TOP%	49%	59%	34%	73%	19%	14%	16%	64%	42%	36%	59%	86%	64%	34%	37%	75%



Crump Direct Affect 9861

Crump Direct Affect 9861

4099212 02-19-2019 100% AR

SIX MILE SIGNATURE 295B
RED SIX MILE DEEP IMPACT 38D
RED SIX MILE LAKOTO 35W

5L MTN SIGN 435-10Z
CRUMP RAM 4416
LELAND RAM 9243W

RED SIX MILE GRAND SLAM 130Z
RED SELMA OF SIX MILE 358X
RED LAZY MC SMASH 41N
RED STEWART LAKOTO 612S
5L ADVOCATE 817-14W
5L LAKOTA 1583-435
5L MTN RAM X975-5066
FOSTER'S CEDER 36

	HB	GM	CED	BW	WW	YW	MILK	ME	HPG	CEM	STAY	MARB	YG	CW	REA	FAT
EPD	21	20	16	-3.7	60	96	28	2	8	7	12	0.27	0.11	18	0.01	0.03
TOP%	90%	75%	14%	20%	56%	57%	32%	42%	91%	55%	83%	77%	70%	66%	70%	74%



Crump Mega 8849

Crump Mega 8849

3867311 02-12-2018 100% AR

BROWN PREMIER X7876
CRUMP MAGNITUDE 5507
CRUMP TABITHA 3140

BECKTON NEBULA P707
BROWN MS DESTINATION T7664
CRUMP 300 ULTRA MAGNUM Y106
VGW T376-TABITHA 1069

WPRA AVALANCHE 818
MDM VERNICE 1020
MDM VERNICE 81-8

PIE AVALANCHE 381
WPRA BLACK RED JOY 508
MDM CHATEAU 324
MDM VERNICE 999

	HB	GM	CED	BW	WW	YW	MILK	ME	HPG	CEM	STAY	MARB	YG	CW	REA	FAT
EPD	7	45	16	-3.2	58	103	30	12	7	8	12	0.55	-0.01	14	0.28	0.02
TOP%	96%	34%	17%	27%	66%	44%	15%	88%	96%	41%	83%	26%	18%	77%	25%	60%



BB Propulsion 9096

BB Propulsion 9096

4169122 03-15-2019 100% AR

PIE ONE OF A KIND 352
PIE ONE OF A KIND 777
PIE JULY DALLES 569

BUF CRK THE RIGHT KIND U199
PIE FAYETTE 1160
ANDRAS NEW DIRECTION R240
3422 PIE

LARSON SUN KING 016
BB MS GINNIE 6256
BB MS GINNIE 6019-2057

BECKTON NEBULA P P707
LARSON TAMARA 545-556
MESSMER PACKER 5008
MESSMER GINNIE 5019

	HB	GM	CED	BW	WW	YW	MILK	ME	HPG	CEM	STAY	MARB	YG	CW	REA	FAT
EPD	79	37	12	-2.0	86	128	34	7	19	9	14	0.59	0.18	36	0.13	0.04
TOP%	14%	48%	55%	47%	3%	8%	3%	70%	1%	21%	59%	21%	90%	16%	47%	88%



Crump Mitigator 0323

Crump Mitigator 0323

4282181 01-16-2020 100% AR

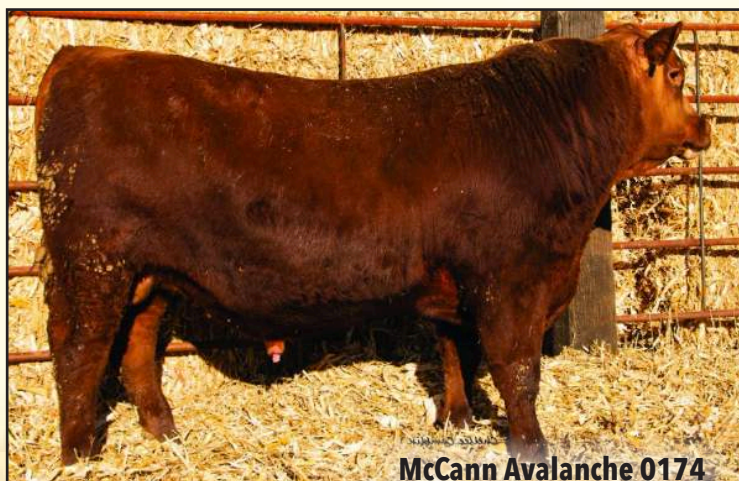
BIEBER ROLLIN DEEP Y118
BIEBER LB MITIGATOR C314
BIEBER TILLY 143Y

BIEBER ROOSEVELT W384
BIEBER TILLY 399W
LACY GOLD BAR 8123
BIEBER TILLY 319W

LJC JAVELIN M08
MDM SUSIE 133-9
MDM SUSIE 91-6

BECKTON LANCER F442 T
LJC LOGAN E56 945
BJR MAKE MY DAY 981
MDM SUSIE 644

	HB	GM	CED	BW	WW	YW	MILK	ME	HPG	CEM	STAY	MARB	YG	CW	REA	FAT
EPD	11	20	8	-1.5	76	128	31	12	10	7	9	0.38	0.03	16	0.11	0.01
TOP%	95%	76%	90%	55%	11%	8%	13%	88%	68%	48%	95%	56%	32%	71%	50%	42%



McCann Avalanche 0174

McCann Avalanche 0174

4354871 01-28-2020 100% AR

PIE AVALANCHE 381
WPRA AVALANCHE 818
WPRA BLACK RED JOY 508

PERKS ADVANCE 121R
PIE MS GRAND C 036
BON VIEW NEW DESIGN 878
RBJR REDJOY E402

CRUMP RUNAWAY 5121
CRUMP SCARLET 8174
MDM SUSIE 133-9

CRUMP RUNAWAY 3178
MDM GLACIER REBAL 124-9
LJC JAVELIN M08
MDM SUSIE 91-6

	HB	GM	CED	BW	WW	YW	MILK	ME	HPG	CEM	STAY	MARB	YG	CW	REA	FAT
EPD	28	46	11	-1.1	68	112	32	6	9	6	13	0.60	0.12	24	0.04	0.03
TOP%	85%	34%	71%	62%	32%	27%	10%	65%	87%	73%	76%	19%	72%	46%	64%	65%





Red U2Q Badge 73H

Red U2Q Badge 73H

4609313 01-25-2020 100% AR

RED YCLC COPENHAGEN
RED U2 EMBLEM 147F
RED U2 MS DIVIDE 28Z

RED U-2 AUTHENTIC 139A
RED YCLC COUNTESS 653C
RED HOWE MAGNUM 169W
RED U2 MS DIVIDE 475W

RED U-2 RECON 192Y
RED U-2 REBELLO 400C
RED U-2 REBELLO 278Z

RED U2 MISSION 61W
RED U-2 LARKABA 8133U
RED LAZY MC COWBOY CUT 26U
RED U-2 REBELLO 318N

Table with 16 columns: HB, GM, CED, BW, WW, YW, MILK, ME, HPG, CEM, STAY, MARB, YG, CW, REA, FAT. Includes EPD and TOP% rows.



Red U2 Resource 33G

Red U2 Resource 33G

4235976 01-05-2019 100% AR

RITO 707 OF IDEAL 3407 7075
S A V RESOURCE 1441
S A V BLACKCAP MAY 4136

R R RITO 707
IDEAL 3407 OF 1418 076
S A V 8180 TRAVELER 004
S A V MAY 2397

RED BAR - E-L WARDEN 144W
RED MRLA MISS 641Y
RED MRLA 793R

RED BAR-E-L RIBEYE 103R
RED BAR - E-L LARKABA 72N
RED CHOPPER K RESURRECTION 2
RED GET-A-LONG PENNY 376

Table with 16 columns: HB, GM, CED, BW, WW, YW, MILK, ME, HPG, CEM, STAY, MARB, YG, CW, REA, FAT. Includes EPD and TOP% rows.

Brown Premier X7876

1379610 01-14-2010 100% AR

BECKTON NEBULA M045
BECKTON NEBULA P P707
BECKTON LANA M809 EP

BECKTON NEPTUNE R2 K065
BECKTON BELGA K285
BECKTON EPIC K1 K863
BECKTON LANA K253 DM

5L DESTINATION 893-6215
BROWN MS DESTINATION T 7664
BROWN MS JULIAN H7059

5L DIRECT FIRE 1541-6443
5L ADINA 525-893
BJR MONU 4X-303
RABS MS JULIAN H7059

Table with 16 columns: HB, GM, CED, BW, WW, YW, MILK, ME, HPG, CEM, STAY, MARB, YG, CW, REA, FAT. Includes EPD and TOP% rows.

Crump Innovation 8185

3867585 01-19-2018 100% AR

RITO 707 OF IDEAL 3407 7075
S A V RESOURCE 1441
S A V BLACKCAP MAY 4136

R R RITO 707
IDEAL 3407 OF 1418 076
S A V 8180 TRAVELER 004
S A V MAY 2397

WPRA AVALANCHE 818
MDM VERNICE 1020
MDM VERNICE 81-8

PIE AVALANCHE 381
WPRA BLACK RED JOY 508
MDM CHATEAU 324
MDM VERNICE 999

Table with 16 columns: HB, GM, CED, BW, WW, YW, MILK, ME, HPG, CEM, STAY, MARB, YG, CW, REA, FAT. Includes EPD and TOP% rows.

Crump Mission Statement 897

3867179 02-01-2018 100% AR

LJC MISSION STATEMENT P27
CRUMP MISSION STATEMENT 6187
TR BRANDY XT074

LJC LANCER 806
LJC HANNAH 106
TR EPIC 5T618
TR COCA RT527

5L CANYON WATCH 1386-113Y
CRUMP SHOSHONE 359
MDM SHOSHONE 440

5L NIGHT WATCH 203-04T
5L RUBY 490-1386
GLACIER LOGAN 210
MDM SHOSHONE 1680

Table with 16 columns: HB, GM, CED, BW, WW, YW, MILK, ME, HPG, CEM, STAY, MARB, YG, CW, REA, FAT. Includes EPD and TOP% rows.

Crump Innovation 0103

4301123 01-03-2020 100% AR

S A V RESOURCE 1441
CRUMP INNOATION 8185
MDM VERNICE 1020

RITO 707 OF IDEAL 3407 7075
S A V BLACKCAP MAY 4136
WPRA AVALANCHE 818
MDM VERNICE 81-8

CRUMP MISSION STATEMENT 6187
CRUMP VERNICE 898
CRUMP VERNICE 5210

LJC MISSION STATEMENT P27
TR BRANDY XT074
5L ADVOCATE 817-14W
MDM VERNICE 1218

Table with 16 columns: HB, GM, CED, BW, WW, YW, MILK, ME, HPG, CEM, STAY, MARB, YG, CW, REA, FAT. Includes EPD and TOP% rows.

Crump Resource 8201

3867565 01-14-2018 100% AR

RITO 707 OF IDEAL 3407 7075
S A V RESOURCE 1441
S A V BLACKCAP MAY 4136

R R RITO 707
IDEAL 3407 OF 1418 06
S A V 8180 TRAVELER 004
S A V MAY 2397

WPRA AVALANCHE 818
MDM VERNICE 1020
MDM VERNICE 81-8

PIE AVALANCHE 381
WPRA BLACK RED JOY 508
MDM CHATEAU 324
MDM VERNICE 999

Table with 16 columns: HB, GM, CED, BW, WW, YW, MILK, ME, HPG, CEM, STAY, MARB, YG, CW, REA, FAT. Includes EPD and TOP% rows.



The future is bright at McCann Red Angus!

SRJJ Cherokee B45 #1714491 has proven herself in real life and earned a spot in our donor lineup! Watch for progeny in our 2024 sale!





*McCann Red Angus
1027 Bryden Ave.
Lewiston, ID 83501*

Sires Include:



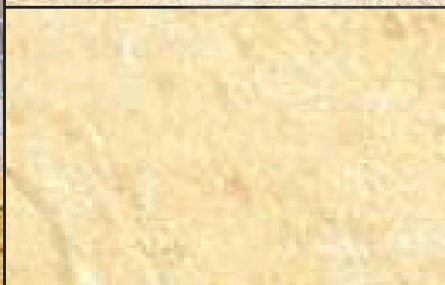
RED U2 Blue Collar 295E



RED U2 Resource 33G



NIO Freightliner 0086



Crump Resource 8201



BB Propulsion 9096



Crump Direct Affect 9861

Request a catalog, find updated information and learn more about us at

www.mccannredangus.com

