



22ND ANNUAL
Production Sale
FEBRUARY 14, 2024

LUNCH AT NOON | SALE AT 1PM
AT THE DOUBLE M SALE BARN • STANFIELD, OR

Your Maternal Power



22ND ANNUAL *Production Sale* FEBRUARY 14, 2024

LUNCH @ NOON | SALE @ 1PM
AT THE DOUBLE M SALE BARN • STANFIELD, OR



Sale Details



Auctioneer:
C.D. "Butch" Booker
Mobile: (509) 989-2855

LiveAuctions.TV

Bid live online LiveAuctions.tv

LIVESTOCK PUBLICATION REPRESENTATIVES:

Jared Patterson, *Western Livestock Journal* (208) 312-2386
Rod Wesselman, *Wesselman Livestock* (509) 765-9219
Quannah Gardiner, *Angus Journal* (620) 635-0294
Mark Frisbie, *Western Ag Reporter* (208) 890-4517

SALE DAY PHONES:

(541) 379-0632 - Cell, Devin
(541) 449-3558 - Richard
(541) 377-0114 - Cell, Garrett

SALE LOCATION:

Double M Sale Facility
30256 Stanfield Meadows Rd., Stanfield, OR 97875.

Directions: Take Exit 182 off of Interstate 84. Turn North, then take the first right onto Stanfield Meadows Rd. Second driveway on the right.

ABSENTEE BIDDER INFORMATION:

Buyers that cannot attend the sale may call Meadow Acres Angus Ranch and leave a bid for the lot they wish to purchase. If buyer is not satisfied 100% with the purchase, you won't own it. This is a guarantee to any buyer.

TERMS & CONDITIONS OF SALE:

All cattle will sell under the suggested Terms and Conditions of the American Angus Association (http://www.angus.org/Pub/suggested_sale_terms.pdf). Supplemental sheets to the sale will take precedence over information listed in the sale book.

LOT NUMBERS:

Lot numbers on animals selling will correspond with the sale book.

DELIVERY OF SALE CATTLE:

Free delivery on sale cattle up to 300 miles (bulls only, females delivered at cost). Anything over will be done at cost. All cattle will be delivered at the buyer's risk within a reasonable length of time after the sale. Pick cattle up sale day and receive a \$50 credit.

FEED ARRANGEMENTS:

Free feed until March 1. Then feeding will be charged to buyer at normal rate.

MARKETING OPTION - CALF BUY BACK PROGRAM:

Contact: Devin Correa (541) 379-0632

BREEDING INFORMATION:

We guarantee that all breeding cattle sold by Meadow Acres Angus Ranch, both bulls and females, are fertile to the best of our knowledge. If a bull is injured at any time in the first year breeding season so as to make him functionally infertile, we will provide you with a satisfactory replacement (if available), or issue you a credit equal to the bull's purchase price minus the salvage value received for that bull. If a female is determined to be a non-breeder, then we would ask you to sell her and would offer you the difference of her purchase price minus the salvage value as credit in any future Meadow Acres Angus Ranch sale. All credit is good to use at next year's sale. We would simply ask you to contact us before you cull your infertile animal.

This is not a life insurance policy, however. We will not replace a dead animal if it is killed or dies for any reason. We would suggest that normal care still needs to be exercised toward these animals and that particularly the yearling bulls not be allowed to get thin.

HERD HEALTH:

Meadow Acres has tested BVD free. All females born at Meadow Acres Angus Ranch have been brucellosis vaccinated. Cattle offered for sale have been vaccinated with 3 rounds of 8 Way, Multimin, Enforce3, Bovishield Gold 5 and Ivomec Pour On. Clean Up II at ultrasounding. All bulls are vaccinated with Vibrio-Lepto and Pour On at semen check.

REVENUE SHARING:

Meadow Acres Angus Ranch will be retaining one-third semen interest in every bull selling. Buyer will have full possession and salvage value of the bull.

ACCOMMODATIONS:

Best Western, Hermiston (541) 564-0202
Oxford Suites, Hermiston (541) 564-8000
Comfort Inn & Suites, Hermiston (541) 564-5991
Holiday Inn Express (541) 585-5656

LUNCH:

A complimentary steak lunch will be served on sale day starting at noon. Coffee and donuts will be available in the morning.

SALE OFFERING:

Cattle may be viewed at the ranch any time prior to the sale.

LIABILITY:

All persons who attend this sale do so at their own risk, legal or otherwise. Meadow Acres Angus Ranch and their staff assume no liability for property loss or accidents that may occur.

Shaded EPD boxes are values ranking in the top 25%.

ANGUSMEDIA EPDs contained in the hard copy of this sale book were current as of print date. Digital versions of this sale book can be viewed online at www.angus.org and will have EPDs updated every Friday with the exception of EPD references in footnotes and photos. Any PDF downloads from the website will contain EPDs current as of the date downloaded. References: American Angus Association®, AHIR®, AngusLink™, CAB®, Pathfinder®.

Welcome to the Sale

Dear Cattlemen and Cattlewomen,

We would like to personally welcome you to our 22nd Annual Maternal Power Production Sale here at Meadow Acres Angus Ranch. We enjoy being able to be a valuable part of your operation's success and look forward to being a partner with you heading into the future. We are proud to be family owned and operated (three generations) and do business the old-fashioned way with a handshake.

This year's offering will consist of 95 fall bulls that we feel are the best we've offered for public auction. We are excited for each of you to study and analyze them. All bulls have once again been BVD tested, ultra-sounded, groomed, Angus GS tested (which includes parentage), semen tested, and freeze branded for easy identification for you the valued customer. For the first time in a few years, we are also offering two open registered heifers from the heart of the replacement heifers. They have also been BVD tested, groomed, and Angus GS tested. These are two heifers that you can start a herd with.

We are proud of the offering this year. From top to bottom, this is a great set of bulls to select from. The bulls have had no creep feed or hoof trimming. We are highly focused on feet and legs. If bulls can't travel, they can't breed. We are, and have been, committed to creating cattle that are balanced and stay the course for maternal, moderate, and structural soundness. Our emphasis is high on maternal, as the mother cow is the backbone of our operation. Great cows make great bulls.

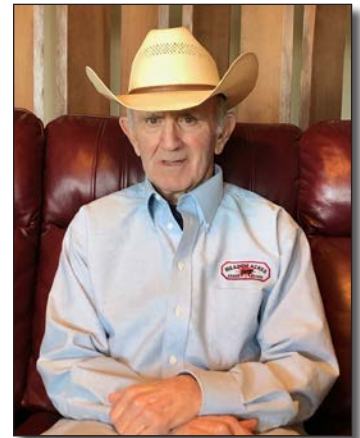
Cow herds evolve over many years, not overnight. As you study this sale catalog, you will see a program that has been built on balanced genetics that will stand the test of time. We have been using embryo transfer since 2004 and have many $\frac{3}{4}$ and $\frac{1}{2}$ sisters in the herd that have added consistency amongst the herd. Flush cows here are meticulously hand picked from the herd to ensure only the most elite genetics are propagated.

The bulls always look much better in person but if you are unable to attend, the sale will be broadcast on LiveAuctions.TV, and videos will be available to view prior to the sale. We look forward to seeing you on February 14, 2024, for our 22nd annual production sale. If there is anything you need or if you have any questions, please contact us day or night.

The Correas



Garrett, Melanie, Devin and Gage Correa



Richard Correa

Meadow Acres Angus Ranch • 32581 Correa Lane • Echo, Oregon 97826

Richard Correa (541) 449-3558 • Devin Correa (541) 379-0632 Cell • meadowacresangus@msn.com • www.meadowacresangus.com



Meadow Acres Donors



Meadow Acres Blackbird 719

Meadow Acres Blackbird 719

Birth Date: 09-02-2016 | Cow 18968472 | Tattoo: 719

Donor

#Cole Creek Black Cedar 46P
 #*Cole Creek Cedar Ridge TV
 16134394 #Cole Creek Clovanada 49S
 #Connealy Thunder
 #Meadow Acres Blackbird 3112
 17675279 Meadow Acres Blackbird 0218

SM	+98
\$W	+63
\$F	+49
\$G	+40
\$B	+88
\$C	+212

CED	BW	WW	YW	RADG	DMI	YH	SC	DOC	CLAW	ANGLE	PAP	HS
+12	-.6	+44	+74	+16	+.97	-.1	+.91	+17	+34	+42	+11	+15
HP	CEM	MILK	MW	MH	SEN	CW	MARB	RE	FAT			
+18.9	+11	+38	+0	-.2	+9	+17	+58	-.01	+0.23			



Meadow Acres Blackcap 210

Meadow Acres Blackcap 210

Birth Date: 12-06-2011 | Cow 17421835 | Tattoo: 210

Donor

#*Connealy Onward
 #*Sitz Wisdom 481T
 15636992 Sitz Elluna Elite 94P
 #Bon View New Design 878
 Meadow Acres Blackcap 36
 14666382 Leachman Blackcap 5032

SM	+68
\$W	+66
\$F	+105
\$G	+42
\$B	+147
\$C	+259

CED	BW	WW	YW	RADG	DMI	YH	SC	DOC	CLAW	ANGLE	PAP	HS
+0	+4.6	+68	+116	+22	+1.35	+1.1	+1.30	+10	+52	+44	+1.19	+65
HP	CEM	MILK	MW	MH	SEN	CW	MARB	RE	FAT			
+15.4	+5	+40	+59	+5	-.22	+60	+46	+59	+0.14			



Meadow Acres Blackcap 968

Meadow Acres Blackcap 968

Birth Date: 09-11-2018 | Cow 19599188 | Tattoo: 968

Donor

+Rito 707 of Ideal 3407 7075
 #+*S A V Resource 1441
 17016597 *S A V Blackcap May 4136
 #*Mytty In Focus
 +Meadow Acres Blackcap 1121
 17102274 Meadow Acres Blackcap 36

SM	+64
\$W	+68
\$F	+91
\$G	+22
\$B	+113
\$C	+211

CED	BW	WW	YW	RADG	DMI	YH	SC	DOC	CLAW	ANGLE	PAP	HS
+2	+2.7	+74	+128	+23	+1.61	+7	+1.06	+19	+49	+47	+52	+54
HP	CEM	MILK	MW	MH	SEN	CW	MARB	RE	FAT			
+13.7	+5	+27	+77	+4	-.24	+53	+0.04	+73	+0.22			



Meadow Acres Blackbird 3112

Meadow Acres Blackbird 3112

Birth Date: 11-01-2012 | Cow #17675279 | Tattoo: 3112

Donor

#Baldridge Kaboom K243 KCF
 #Connealy Thunder
 15148659 #Parka of Conanga 241
 #B A R Ext Traveler 205
 Meadow Acres Blackbird 0218
 14258136 V N A R Blackbird 16D 224J

SM	+99
\$W	+62
\$F	+66
\$G	+41
\$B	+107
\$C	+238

CED	BW	WW	YW	RADG	DMI	YH	SC	DOC	CLAW	ANGLE	PAP	HS
+9	+9	+49	+79	+17	+.66	+3	+53	+16	+35	+39	+0	+39
HP	CEM	MILK	MW	MH	SEN	CW	MARB	RE	FAT			
+18.6	+12	+33	+7	+0	+8	+27	+55	+16	+0.14			



Meadow Acres Formera 8202

Meadow Acres Formera 8202

Birth Date: 11-30-2017 | Cow +*19314072 | Tattoo: 8202

Donor

#+*Coleman Charlo 0256
 +*Coleman Charlo 3212
 17783509 +*Coleman Donna 714
 #*Cole Creek Cedar Ridge 1V
 +*Meadow Acres Formera 4169
 18011869 +Fink Formera 9375 7223 NPV

SM	+65
\$W	+67
\$F	+82
\$G	+61
\$B	+143
\$C	+250

CED	BW	WW	YW	RADG	DMI	YH	SC	DOC	CLAW	ANGLE	PAP	HS
+7	+1.4	+71	+125	+26	+1.22	+2	+61	+22	+41	+45	+2.61	+50
HP	CEM	MILK	MW	MH	SEN	CW	MARB	RE	FAT			
+15.0	+5	+27	+86	+4	-.29	+45	+85	+48	+0.13			

Meadow Acres Donors

Meadow Acres Pride 810

Birth Date: 09-09-2017 | Cow 19314075 | Tattoo: 810

Donor

#+*Coleman Charlo 0256
 +*Coleman Charlo 3212
 17783509 +*Coleman Donna 714
 #Connealy Thunder
 Meadow Acres Pride 4156
 18009555 +Meadow Acres Rita 787

\$M	+98
\$W	+50
\$F	+45
\$G	+30
\$B	+75
\$C	+195



Meadow Acres Pride 810

CED	BW	WW	YW	RADG	DMI	YH	SC	DOC	CLAW	ANGLE	PAP	HS
+8	+2	+43	+78	+21	+29	-8	-38	+11	+26	+36	+3.99	+61
HP	CEM	MILK	MW	MH	SEN	CW	MARB	RE	FAT			
+20.3	+2	+22	-16	-8	+20	+2	+35	+17	+0.27			

Meadow Acres Miss 8222

Birth Date: 09-18-2017 | Cow +19299574 | Tattoo: 8222

Donor

+Rito 707 of Ideal 3407 7075
 #+*S A V Renown 3439
 17633839 *S A V Blackcap May 4136
 #*Cole Creek Cedar Ridge 1V
 +*Fink Miss 3408 0756 CR
 17805748 +Fink Miss 0756 2110 NW

\$M	+68
\$W	+63
\$F	+76
\$G	+33
\$B	+108
\$C	+208



Meadow Acres Miss 8222

CED	BW	WW	YW	RADG	DMI	YH	SC	DOC	CLAW	ANGLE	PAP	HS
-2	+2.3	+63	+110	+24	+86	+2	+84	+18	+36	+48	-26	+60
HP	CEM	MILK	MW	MH	SEN	CW	MARB	RE	FAT			
+13.6	+4	+30	+54	+0	-14	+33	+31	+51	+0.24			

Meadow Acres Lass 665

Birth Date: 09-16-2015 | Cow 18646453 | Tattoo: 665

Donor

#*Sitz Upward 307R
 #*Sitz Dash 10277
 15656868 +Sitz Everelda Entense 2665
 #Connealy Thunder
 Meadow Acres Lass 4131
 18009540 +Meadow Acres Rita 632

\$M	+76
\$W	+57
\$F	+80
\$G	+40
\$B	+120
\$C	+232



Meadow Acres Lass 665

CED	BW	WW	YW	RADG	DMI	YH	SC	DOC	CLAW	ANGLE	PAP	HS
+9	-4	+48	+85	+20	+44	-2	+75	+16	+48	+53	+1.52	+35
HP	CEM	MILK	MW	MH	SEN	CW	MARB	RE	FAT			
+13.7	+12	+28	+15	-4	+7	+27	+64	+22	+0.89			

Meadow Acres 0235

Birth Date: 09-20-2019 | Cow +*19945443 | Tattoo: 0235

Donor

#*Connealy Onward
 #*Sitz Wisdom 481T
 15636992 Sitz Elluna Elite 94P
 #*Cole Creek Cedar Ridge 1V
 +*Fink Miss 5380 1314 CR
 18507393 +Fink Miss 1314 5523 EXT

\$M	+82
\$W	+56
\$F	+77
\$G	+45
\$B	+123
\$C	+242



Meadow Acres 0235

CED	BW	WW	YW	RADG	DMI	YH	SC	DOC	CLAW	ANGLE	PAP	HS
+11	+1	+51	+96	+27	+65	+2	+1.20	+16	+45	+40	+1.10	+33
HP	CEM	MILK	MW	MH	SEN	CW	MARB	RE	FAT			
+13.4	+7	+25	+12	-3	+10	+32	+53	+35	-0.19			

Meadow Acres Erica 2248 7200

Birth Date: 09-12-2016 | Cow #+*18968511 | Tattoo: 7200

Donor

#+Boyd New Day 8005
 #+GDAR Game Day 449
 14691231 #G D A R Miss Wix 474
 #Nichols Extra K205
 +*Fink Erica 2248 9380 K205
 17540665 +Fink Erica 9380 3463 5522

\$M	+74
\$W	+72
\$F	+96
\$G	+47
\$B	+143
\$C	+259



Meadow Acres Erica 2248 7200

CED	BW	WW	YW	RADG	DMI	YH	SC	DOC	CLAW	ANGLE	PAP	HS
+5	+1.3	+58	+102	+21	+1.7	+3	+93	+11	+51	+54	+2.47	+58
HP	CEM	MILK	MW	MH	SEN	CW	MARB	RE	FAT			
+15.0	+0	+40	+20	-3	-3	+50	+63	+48	+0.39			

Reference Sires

A SAV Resource 1441

Birth Date: 01-07-2011 | Bull #+*17016597 | Tattoo: 1441

#R R Rito 707
+Rito 707 of Ideal 3407 7075
13066860 Ideal 3407 of 1418 076

#S AV 8180 Traveler 004
*S AV Blackcap May 4136
14739095 #+S AV May 2397

Rito N Bar
Erickay of Rollin Rock 3
#Ideal 1418 of 8103 4286
Ideal 076 of 692 8375
#Sitz Traveler 8180
+Boyd Forever Lady 8003
#+S A F 598 Bando 5175
S AV May 7238

\$M	+54
\$W	+52
\$F	+89
\$G	+22
\$B	+110
\$C	+197

CED	BW	WW	YW	RADG	DMI	YH	SC	DOC	CLAW	ANGLE	PAP	HS
-1	+4.0	+69	+130	+26	+1.98	-1	+1.09	+22	+38	+39	-.68	+.60
HP	CEM	MILK	MW	MH	\$EN	CW	MARB	RE	FAT			
+13.1	+0	+17	+85	-1	-23	+50	-.09	+1.09	+.003			



SAV Resource 1441

B Sitz Stellar 726D

Birth Date: 01-23-2016 | Bull *18397542 | Tattoo: 726D

#*Benfield Substance 8506
**Mohnen Substantial 272
17292558 Mohnen Glyn Mawr Elba 1758

#*Connealy Final Product
*SITZ Pride 200B
17776820 #+*Sitz Pride 308Y

#+H A Image Maker 0415
Benfield Edella 1105
#LT Territory 5824 of EA
Mohnen Glyn Mawr Elba 1345
*Connealy Product 568
#Ebonista of Conanga 471
#*Sitz Upward 307R
#Sitz Pride 44P

\$M	+55
\$W	+63
\$F	+91
\$G	+46
\$B	+137
\$C	+233

CED	BW	WW	YW	RADG	DMI	YH	SC	DOC	CLAW	ANGLE	PAP	HS
+5	-1	+69	+125	+27	+1.46	+3	+.84	+16	+.30	+.40	-2.46	-.18
HP	CEM	MILK	MW	MH	\$EN	CW	MARB	RE	FAT			
+8.3	+9	+17	+76	+4	-18	+47	+.64	+.41	+.058			



Sitz Stellar 726D

C Sitz Barricade 632F

Birth Date: 02-01-2018 | Bull *19078148 | Tattoo: 632F

#*Mohnen Substantial 272
*Sitz Stellar 726D
18397542 *SITZ Pride 200B

*Sitz Superior 10971
+*SITZ Barbaramere Nell 765D
18689015 Sitz Barbaramere Nell 73T

#*Benfield Substance 8506
Mohnen Glyn Mawr Elba 1758
#*Connealy Final Product
#+*Sitz Pride 308Y
#+GDAR Game Day 449
+*Sitz RLS Eisa Evergreen 5279
#Sitz New Design 458N
Sitz Barbaramere Nell 109R

\$M	+78
\$W	+57
\$F	+114
\$G	+51
\$B	+165
\$C	+292

CED	BW	WW	YW	RADG	DMI	YH	SC	DOC	CLAW	ANGLE	PAP	HS
+1	+4.0	+82	+140	+25	+1.82	+4	+.75	+17	+.32	+.36	-1.36	+.11
HP	CEM	MILK	MW	MH	\$EN	CW	MARB	RE	FAT			
+18.9	+10	+16	+92	+6	-26	+79	+.73	+.58	+.074			



Sitz Barricade 632F

D Coleman Bravo 6313

Birth Date: 07-04-2016 | Bull +*18734838 | Tattoo: 6313

#*O C C Paxton 730P
#+*Coleman Charlo 0256
16879074 +Bohi Abigale 6014

#*Connealy Onward
+*Coleman Donna 714
15706882 +*Coleman Donna 386

+O C C Focus 813F
O C C Blackbird 736K
#Sitz Traveler 8180
S AV Abigale 6062
#Connealy Lead On
Altune of Conanga 6104
#Basin Rainmaker 654X
+KMK Donna J311

\$M	+105
\$W	+71
\$F	+62
\$G	+19
\$B	+81
\$C	+210

CED	BW	WW	YW	RADG	DMI	YH	SC	DOC	CLAW	ANGLE	PAP	HS
+15	-.2	+53	+97	+19	+1.43	-.4	+.83	+32	+.26	+.38	+.78	+.27
HP	CEM	MILK	MW	MH	\$EN	CW	MARB	RE	FAT			
+12.8	+11	+21	-22	-8	+21	+28	+.07	+.43	+.028			



Coleman Bravo 6313

Reference Sires

E Basin Rainmaker 4404

Birth Date: 03-19-2014 | Bull *17913751 | Tattoo: 4404

#Basin Rainmaker P175
Basin Rainmaker 2704
 17280032
 #Basin Erica 7520 BV
 #+*Basin Payweight 1075
 +*Basin Joy 1036
 16935098
 Basin Joy 5667

#Basin Rainmaker 747L
 Basin Blackcap Lady 693L
 #Basin Franchise P142
 Basin Erica 8R02 BV
 #Vermillion Payweight J847
 +Basin Lucy 3829
 #*B P F Special Focus 504
 Basin Joy 204R

SM	+82
\$W	+68
\$F	+99
\$G	+46
\$B	+144
\$C	+269

CED	BW	WW	YW	RADG	DMI	YH	SC	DOC	CLAW	ANGLE	PAP	HS
+7	+1.2	+59	+107	+23	+1.11	+0	+70	+24	+36	+35	+1.24	+24
HP	CEM	MILK	MW	MH	\$EN	CW	MARB	RE	FAT			
+16.3	+12	+35	+55	+0	-18	+46	+57	+44	+0.17			



Basin Rainmaker 4404

F ZWT Summitt 6507

Birth Date: 04-24-2016 | Bull +*18561289 | Tattoo: 6507

+Rito 707 of Ideal 3407 7075
 #+*S A V Renown 3439
 17633839
 *S A V Blackcap May 4136
 #*Connealy Onward
 +*Coleman Donna 714
 15706882
 +*Coleman Donna 386

#R R Rito 707
 Ideal 3407 of 1418 076
 #S A V 8180 Traveler 004
 #+S A V May 2397
 #Connealy Lead On
 Altune of Conanga 6104
 #Basin Rainmaker 654X
 +KMK Donna J311

SM	+95
\$W	+66
\$F	+88
\$G	+29
\$B	+96
\$C	+220

CED	BW	WW	YW	RADG	DMI	YH	SC	DOC	CLAW	ANGLE	PAP	HS
+10	+6	+61	+106	+24	+95	+1	+34	+26	+32	+37	+3.70	+34
HP	CEM	MILK	MW	MH	\$EN	CW	MARB	RE	FAT			
+17.2	+3	+20	+26	-1	+6	+29	+14	+72	+0.03			



ZWT Summitt 6507

G Mohnen Substantial 272

Birth Date: 01-03-2012 | Bull #*17929558 | Tattoo: 272

#+H A Image Maker 0415
 ##Benfield Substance 8506
 16207085
 Benfield Edella 1105
 #LT Territory 5824 of EA
Mohnen Glyn Mawr Elba 1758
 16396059
 Mohnen Glyn Mawr Elba 1345

#Hero 6267 of R R 2418
 H A Rito Blackcap 9038
 Jauer Java 8136
 Benfield Edella 7813
 #Sitz Tradition RLS 8702
 +EA Lucy 141
 #+Baldridge Mullen M528
 Mohnen Glyn Mawr Elba 721

SM	+73
\$W	+63
\$F	+75
\$G	+28
\$B	+104
\$C	+208

CED	BW	WW	YW	RADG	DMI	YH	SC	DOC	CLAW	ANGLE	PAP	HS
+12	-1.9	+61	+107	+23	+1.00	+1	+1.26	+20	+41	+43	+44	+10
HP	CEM	MILK	MW	MH	\$EN	CW	MARB	RE	FAT			
+13.2	+8	+17	+42	+0	-1	+31	+27	+44	+0.41			



Mohnen Substantial 272

H Spring Cove Crossbow

Birth Date: 01-24-2014 | Bull *17924903 | Tattoo: 4205

#*Summitcrest Complete 1P55
 #+*KM Broken Bow 002
 16764044
 #Summitcrest Princess 0P12
 #*C C A Emblazon 702
Spring Cove Pretty 205
 17423236
 Spring Cove Pretty 009

#C F Right Design 1802
 Summitcrest Elba 1M17
 Basin Ambush 8161
 #Summitcrest Princess 2J10
 #+O C C Emblazon 854E
 Limestone Blackcap R128
 #+SydGen 928 Destination 5420
 Spring Cove Pretty 737

SM	+28
\$W	+47
\$F	+83
\$G	+90
\$B	+172
\$C	+251

CED	BW	WW	YW	RADG	DMI	YH	SC	DOC	CLAW	ANGLE	PAP	HS
+14	-1.3	+53	+104	+28	+89	-2	+36	+16	+56	+50	-45	+36
HP	CEM	MILK	MW	MH	\$EN	CW	MARB	RE	FAT			
+9.2	+10	+24	+95	+3	-32	+30	+1.40	+39	-0.08			



Spring Cove Crossbow



Resource Sons

5 AV Resource 1441



SM	+54
\$W	+52
SF	+89
\$G	+22
\$B	+110
\$C	+197

CED	BW	WW	YW	CEM	MILK	SEN	CW	MARB	RE	FAT
-1	+4.0	+69	+130	+0	+17	-23	+50	-.09	+1.09	+0.03

3 Meadow Acres Resource 3238

Birth Date: 09-20-2022 | Bull +*20812111 | Tattoo: 3238

+Rito 707 of Ideal 3407 7075 #R R Rito 707
 #+*S AV Resource 1441 Ideal 3407 of 1418 076
 17016597 *S AV Blackcap May 4136 #S AV 8180 Traveler 004
 ANGUS 6S Meadow Acres 616 0228 #+S AV May 2397
 Meadow Acres Winnette 826 #Rito 616 of 4820 6807
 16195302 Thomas Winnette 8230 V N A R Trans Lass 142E
 #Sitz Traveler 8180
 Thomas Winnette 2393



BW	87
Adj. WW	
Wt. 12/28/23	1330
SC	44
Adj. %IMF	
Adj. RE	
Dam's NR	3-113

CED	BW	WW	YW	RADG	DMI	YH	SC	DOC	CLAW	ANGLE	PAP	HS	HP	CEM
-1	+3.2	+67	+118	+24	+1.20	+2	+1.22	+5	+32	+33	+89	+67	+10.4	+4
MILK	MW	MH	SEN	CW	MARB	RE	FAT	\$M	\$W	\$F	\$G	\$B	\$C	
+18	+70	+1	-16	+42	-.10	+.83	-.021	+54	+51	+81	+20	+101	+185	



Lot 1



Lot 4

1 Meadow Acres Resource 3237

Birth Date: 09-19-2022 | Bull +*20812109 | Tattoo: 3237

+Rito 707 of Ideal 3407 7075 #R R Rito 707
 #+*S AV Resource 1441 Ideal 3407 of 1418 076
 17016597 *S AV Blackcap May 4136 #S AV 8180 Traveler 004
 ANGUS 6S Meadow Acres 616 0228 #+S AV May 2397
 Meadow Acres Winnette 826 #Rito 616 of 4820 6807
 16195302 Thomas Winnette 8230 V N A R Trans Lass 142E
 #Sitz Traveler 8180
 Thomas Winnette 2393



BW	83
Adj. WW	
Wt. 12/28/23	1430
SC	43
Adj. %IMF	
Adj. RE	
Dam's NR	3-113

CED	BW	WW	YW	RADG	DMI	YH	SC	DOC	CLAW	ANGLE	PAP	HS	HP	CEM
+5	+2.1	+60	+110	+26	+92	+8	+60	+24	+44	+42	+1.06	+52	+10.2	+6
MILK	MW	MH	SEN	CW	MARB	RE	FAT	\$M	\$W	\$F	\$G	\$B	\$C	
+30	+83	+6	-29	+52	+18	+72	+0.35	+49	+55	+98	+28	+126	+212	

4 Meadow Acres Resource 3239

Birth Date: 09-26-2022 | Bull +*20812115 | Tattoo: 3239

+Rito 707 of Ideal 3407 7075 #R R Rito 707
 #+*S AV Resource 1441 Ideal 3407 of 1418 076
 17016597 *S AV Blackcap May 4136 #S AV 8180 Traveler 004
 ANGUS 6S #+B/R New Frontier 095 #+S AV May 2397
 +Meadow Acres Blackbird 897 #B/R New Design 036
 16193927 Leachman Blackbird 5025 White Fence Pride H1
 #+Leachman Right Time
 Leachman Blackbird 2019



BW	90
Adj. WW	657
Wt. 12/28/23	1445
SC	45
Adj. %IMF	2.36
Adj. RE	13.8
Dam's NR	7-99

CED	BW	WW	YW	RADG	DMI	YH	SC	DOC	CLAW	ANGLE	PAP	HS	HP	CEM
+2	+2.7	+57	+99	+19	+1.08	+2	+1.60	+23	+31	+34	+34	+69	+13.1	+6
MILK	MW	MH	SEN	CW	MARB	RE	FAT	\$M	\$W	\$F	\$G	\$B	\$C	
+22	+49	-2	-7	+44	+58	+67	+0.04	+74	+50	+84	+50	+135	+249	

2 Meadow Acres Resource 3236

Birth Date: 09-23-2022 | Bull +*20794083 | Tattoo: 3236

+Rito 707 of Ideal 3407 7075 #R R Rito 707
 #+*S AV Resource 1441 Ideal 3407 of 1418 076
 17016597 *S AV Blackcap May 4136 #S AV 8180 Traveler 004
 ANGUS 6S Meadow Acres 616 0228 #+S AV May 2397
 Meadow Acres Winnette 826 #Rito 616 of 4820 6807
 16195302 Thomas Winnette 8230 V N A R Trans Lass 142E
 #Sitz Traveler 8180
 Thomas Winnette 2393



BW	95
Adj. WW	638
Wt. 12/28/23	1390
SC	42
Adj. %IMF	1.93
Adj. RE	13.1
Dam's NR	3-113

CED	BW	WW	YW	RADG	DMI	YH	SC	DOC	CLAW	ANGLE	PAP	HS	HP	CEM
-3	+3.8	+51	+96	+21	+90	+5	+98	+22	+39	+39	-17	+30	+12.8	+7
MILK	MW	MH	SEN	CW	MARB	RE	FAT	\$M	\$W	\$F	\$G	\$B	\$C	
+24	+40	+1	-4	+39	+32	+.86	-.005	+67	+41	+77	+40	+118	+220	



Lot 2

Resource and Thunder Sons

7 Meadow Acres Resource 3245

Birth Date: 09-20-2022 | Bull +*20812105 | Tattoo: 3245

+Rito 707 of Ideal 3407 7075 #R R Rito 707
 #+*S AV Resource 1441 Ideal 3407 of 1418 076
 17016597 *S AV Blackcap May 4136 #S AV 8180 Traveler 004
 ANGUS ANGUS #*Mytty In Focus ET #+S AV May 2397
 #S A F Focus of E R
 +Meadow Acres Perfection 1120 Mytty Countess 906
 17102265 Meadow Acres 616 354 #Rito 616 of 4820 6807
 +V N A R Perfection 10F 9H

BW	74
Adj. WW	
Wt. 12/28/23	1325
SC	44
Adj. %IMF	
Adj. RE	
Dam's NR	5-112

CED	BW	WW	YW	RADG	DMI	YH	SC	DOC	CLAW	ANGLE	PAP	HS	HP	CEM
+7	+4	+58	+109	+22	+1.71	+0	+1.92	+19	+51	+47	+85	+48	+12.5	+3
MILK	MW	MH	SEN	CW	MARB	RE	FAT	\$M	\$W	\$F	\$G	\$B	\$C	
+27	+42	-2	-6	+29	-35	+1.01	+0.01	+65	+60	+62	+8	+69	+154	



Lot 5

5 Meadow Acres Resource 3241

Birth Date: 09-27-2022 | Bull +*20812118 | Tattoo: 3241

+Rito 707 of Ideal 3407 7075 #R R Rito 707
 #+*S AV Resource 1441 Ideal 3407 of 1418 076
 17016597 *S AV Blackcap May 4136 #S AV 8180 Traveler 004
 ANGUS ANGUS #+B/R New Frontier 095 ET #+S AV May 2397
 #B/R New Design 036
 +Meadow Acres Blackbird 897 White Fence Pride H1
 16193927 Leachman Blackbird 5025 #+Leachman Right Time
 Leachman Blackbird 2019

BW	99
Adj. WW	551
Wt. 12/28/23	1360
SC	43.5
Adj. %IMF	3.14
Adj. RE	14.3
Dam's NR	7-99

CED	BW	WW	YW	RADG	DMI	YH	SC	DOC	CLAW	ANGLE	PAP	HS	HP	CEM
-5	+5.4	+78	+130	+24	+1.44	+8	+1.87	+16	+36	+28	+32	+63	+14.5	+2
MILK	MW	MH	SEN	CW	MARB	RE	FAT	\$M	\$W	\$F	\$G	\$B	\$C	
+27	+74	+6	-23	+57	+22	+1.05	-0.01	+74	+63	+96	+37	+134	+248	



Lot 8

6 Meadow Acres Resource 3242

Birth Date: 09-29-2022 | Bull +*20812121 | Tattoo: 3242

+Rito 707 of Ideal 3407 7075 #R R Rito 707
 #+*S AV Resource 1441 Ideal 3407 of 1418 076
 17016597 *S AV Blackcap May 4136 #S AV 8180 Traveler 004
 ANGUS ANGUS #+B/R New Frontier 095 ET #+S AV May 2397
 #B/R New Design 036
 +Meadow Acres Blackbird 897 White Fence Pride H1
 16193927 Leachman Blackbird 5025 #+Leachman Right Time
 Leachman Blackbird 2019

BW	68
Adj. WW	477
Wt. 12/28/23	1135
SC	42
Adj. %IMF	2.86
Adj. RE	13.3
Dam's NR	7-99

CED	BW	WW	YW	RADG	DMI	YH	SC	DOC	CLAW	ANGLE	PAP	HS	HP	CEM
+8	+0	+47	+90	+19	+1.17	+2	+95	+13	+40	+34	-72	+82	+9.8	+2
MILK	MW	MH	SEN	CW	MARB	RE	FAT	\$M	\$W	\$F	\$G	\$B	\$C	
+27	+39	-2	-5	+20	+33	+67	+0.06	+56	+49	+58	+37	+96	+181	

8 Meadow Acres Thunder 3240

Birth Date: 09-28-2022 | Bull +20812050 | Tattoo: 3240

#Baldridge Kaboom K243 KCF #Jauer 353 Traveler 589 27
 #Connealy Thunder Pleasanta of Conanga 736
 15148659 #Parka of Conanga 241 #Bon View Bando 598
 ANGUS ANGUS #Sitz Alliance 6595 ET #Partina of Conanga 6237
 #Sitz Traveler 8180
 +Meadowacres Rita 614 #Sitz Barbaramere Jet 2698
 15483466 O&m Rita 9116 of 6054 #+Rito 9M9 of 2036 Scotch Cap
 +G A R Ext 6054

BW	99
Adj. WW	660
Wt. 12/28/23	1450
SC	43.5
Adj. %IMF	2.72
Adj. RE	13.8
Dam's NR	2-101

CED	BW	WW	YW	RADG	DMI	YH	SC	DOC	CLAW	ANGLE	PAP	HS	HP	CEM
-1	+2.0	+58	+97	+21	+77	+7	+72	+27	+34	+39	+1.64	+51	+9.2	+8
MILK	MW	MH	SEN	CW	MARB	RE	FAT	\$M	\$W	\$F	\$G	\$B	\$C	
+26	+28	+5	+1	+40	+58	+48	+0.31	+77	+60	+75	+46	+120	+233	



Stellar Sons

11 Meadow Acres Stellar 323

Birth Date: 09-09-2022 | Bull 20794028 | Tattoo: 323

#*Mohnen Substantial 272
 #*Benfield Substance 8506
 #*Sitz Stellar 726D
 18397542 *SITZ Pride 2008
 Mohnen Glyn Mawr Elba 1758
 #*Conneally Final Product
 #+*Sitz Pride 308Y
 #D H D Traveler 6807
 #+O C C Emblazon 854E
 #Dixie Erica of C H 1019
 #+Rito 9M9 of 2036 Scotch Cap
 #+G A R Ext 6054

BW	80
Adj. WW	404
Wt. 12/28/23	1190
SC	41
Adj. %IMF	2.77
Adj. RE	10.8
Dam's NR	7-88

CED	BW	WW	YW	RADG	DMI	YH	SC	DOC	CLAW	ANGLE	PAP	HS	HP	CEM
+5	+1.0	+55	+98	+1.23	+1.76	+1.2	+1.35	+1.14	+1.39	+1.45	+1.23	+1.11	+1.97	+7
MILK	MW	MH	SEN	CW	MARB	RE	FAT	SM	SW	SF	SG	SB	SC	
+20	+44	+1.2	+1	+22	+59	+30	+035	+63	+47	+63	+43	+107	+202	



SM	+55
\$W	+63
SF	+91
\$G	+46
\$B	+137
\$C	+233

CED	BW	WW	YW	CEM	MILK	SEN	CW	MARB	RE	FAT
+5	-1	+69	+125	+9	+17	-18	+47	+64	+41	+058



Lot 9



Lot 12

9 Meadow Acres Stellar 313

Birth Date: 09-13-2022 | Bull 20794025 | Tattoo: 313

#*Mohnen Substantial 272
 #*Benfield Substance 8506
 #*Sitz Stellar 726D
 18397542 *SITZ Pride 2008
 Mohnen Glyn Mawr Elba 1758
 #*Conneally Final Product
 #+*Sitz Pride 308Y
 #+Boyd New Day 8005
 #+GDAR Game Day 449
 #GD A R Miss Wix 474
 #Conneally Thunder
 #ER Blackbird J928

BW	85
Adj. WW	551
Wt. 12/28/23	1365
SC	41
Adj. %IMF	2.16
Adj. RE	11.7
Dam's NR	5-107

CED	BW	WW	YW	RADG	DMI	YH	SC	DOC	CLAW	ANGLE	PAP	HS	HP	CEM
+4	+4	+65	+105	+21	+57	+0	+03	+16	+36	+41	-2.88	+10	+13.5	+6
MILK	MW	MH	SEN	CW	MARB	RE	FAT	SM	SW	SF	SG	SB	SC	
+23	+28	-1	+3	+48	+22	+51	+081	+86	+69	+92	+24	+116	+236	

12 Meadow Acres Stellar 334

Birth Date: 09-17-2022 | Bull 20813992 | Tattoo: 334

#*Mohnen Substantial 272
 #*Benfield Substance 8506
 #*Sitz Stellar 726D
 18397542 *SITZ Pride 2008
 Mohnen Glyn Mawr Elba 1758
 #*Conneally Final Product
 #+*Sitz Pride 308Y
 #+*PA Power Tool 9108
 #+*PA Full Power 1208
 #Pine View SQR Rita W091
 #+O C C Emblazon 854E
 Meadow Acres Rita 1000

BW	75
Adj. WW	603
Wt. 12/28/23	1515
SC	41
Adj. %IMF	2.44
Adj. RE	15.9
Dam's NR	4-116

CED	BW	WW	YW	RADG	DMI	YH	SC	DOC	CLAW	ANGLE	PAP	HS	HP	CEM
+3	+1.8	+83	+137	+23	+1.45	+5	+24	+8	+41	+33	-43	+09	+12.2	+5
MILK	MW	MH	SEN	CW	MARB	RE	FAT	SM	SW	SF	SG	SB	SC	
+15	+85	+5	-22	+49	+42	+98	+009	+61	+68	+81	+46	+127	+226	

10 Meadow Acres Stellar 316

Birth Date: 09-07-2022 | Bull 20794027 | Tattoo: 316

#*Mohnen Substantial 272
 #*Benfield Substance 8506
 #*Sitz Stellar 726D
 18397542 *SITZ Pride 2008
 Mohnen Glyn Mawr Elba 1758
 #*Conneally Final Product
 #+*Sitz Pride 308Y
 #*Conneally Consensus 7229
 #Conneally Black Granite
 #Eura Elga of Conanga 9109
 #Conneally Thunder
 Meadow Acres Miss Emma 926

BW	75
Adj. WW	552
Wt. 12/28/23	1445
SC	40
Adj. %IMF	2.34
Adj. RE	13.5
Dam's NR	3-105

CED	BW	WW	YW	RADG	DMI	YH	SC	DOC	CLAW	ANGLE	PAP	HS	HP	CEM
+9	+3	+81	+139	+26	+1.64	+7	+95	+18	+47	+50	-62	+30	+11.6	+11
MILK	MW	MH	SEN	CW	MARB	RE	FAT	SM	SW	SF	SG	SB	SC	
+28	+86	+7	-29	+57	+61	+55	+033	+64	+79	+91	+48	+139	+244	



Lot 10



Stellar - Barricade Sons

13 Meadow Acres Stellar 349

Birth Date: 09-03-2022 | Bull *20813916 | Tattoo: 349

*Sitz Stellar 726D
18397542

ANGUS GS
Meadow Acres Perfection 073
19918880

Meat Acres Perfection 478

##Mohnen Substantial 272
##SITZ Pride 2008

##Benfield Substance 8506
Mohmen Glyn Mawr Elba 1758
##*Connealy Final Product
##+*Sitz Pride 308Y
##+*Coleman Charlo 0256
*S A V Blackcap May 4136
##*S A V Final Answer 0035
+Meadow Acres Perfection 2106

BW	75
Adj. WW	510
Wt. 12/28/23	1345
SC	41.5
Adj. %IMF	3.24
Adj. RE	10.6
Dam's NR	2-99

CED	BW	WW	YW	RADG	DMI	YH	SC	DOC	CLAW	ANGLE	PAP	HS	HP	CEM
+7	-1.2	+68	+123	+28	+1.08	+5	+82	+23	+31	+39	-25	+12	+11.0	+11
MILK	MW	MH	SEN	CW	MARB	RE	FAT	SM	SW	SF	\$G	\$B	\$C	
+36	+42	+1	-12	+49	+42	+45	+0.72	+84	+79	+93	+34	+127	+249	

Sitz Barricade 632F



\$M	+78
\$W	+57
\$F	+114
\$G	+51
\$B	+165
\$C	+292

CED	BW	WW	YW	CEM	MILK	SEN	CW	MARB	RE	FAT
+1	+4.0	+82	+140	+10	+16	-26	+79	+73	+58	+0.74

14 Meadow Acres Stellar 356

Birth Date: 10-15-2022 | Bull 20794032 | Tattoo: 356

*Sitz Stellar 726D
18397542

ANGUS GS
Meadow Acres Rita 9174
19601730

Meat Acres Rita 628

##Mohnen Substantial 272
##SITZ Pride 2008

##*Connealy Guinness
##Connealy Dublin 8223
Panda of Conanga 3609
##+*PA Full Power 1208
+Fink Erica 9380 3463 5522

BW	72
Adj. WW	627
Wt. 12/28/23	1420
SC	43
Adj. %IMF	3.25
Adj. RE	14.3
Dam's NR	2-131

CED	BW	WW	YW	RADG	DMI	YH	SC	DOC	CLAW	ANGLE	PAP	HS	HP	CEM
+5	+1.5	+83	+134	+26	+1.10	+5	+20	+1	+20	+38	-1.26	+10	+8.0	+8
MILK	MW	MH	SEN	CW	MARB	RE	FAT	SM	SW	SF	\$G	\$B	\$C	
+19	+93	+8	-28	+55	+94	+77	+0.02	+55	+72	+91	+70	+161	+264	



Lot 16

15 Meadow Acres Stellar 3206

Birth Date: 11-25-2022 | Bull *20813976 | Tattoo: 3206

*Sitz Stellar 726D
18397542

ANGUS GS
Meadow Acres Erica 2248 7200
18968511

##+GDAR Game Day 449
##+*Meadow Acres Erica 2248 9380 K205

##Benfield Substance 8506
Mohmen Glyn Mawr Elba 1758
##*Connealy Final Product
##+*Sitz Pride 308Y
##+*Boyd New Day 8005
#G D A R Miss Wix 474
#Nichols Extra K205
+Fink Erica 9380 3463 5522

BW	80
Adj. WW	554
Wt. 12/28/23	1170
SC	41
Adj. %IMF	2.49
Adj. RE	10.8
Dam's NR	4-99

CED	BW	WW	YW	RADG	DMI	YH	SC	DOC	CLAW	ANGLE	PAP	HS	HP	CEM
+4	+1.0	+69	+117	+22	+1.56	+5	+1.31	+11	+40	+43	-1.16	+23	+16.3	+2
MILK	MW	MH	SEN	CW	MARB	RE	FAT	SM	SW	SF	\$G	\$B	\$C	
+24	+40	+2	-4	+51	+72	+34	+0.61	+83	+70	+91	+48	+140	+265	

16 Meadow Acres Barricade 324

Birth Date: 09-18-2022 | Bull 20812126 | Tattoo: 324

*Sitz Stellar 726D
19078148

ANGUS GS
Meadow Acres Rita 274 835
19299529

##*Mohnen Substantial 272
##SITZ Pride 2008
##Sitz Superior 10971
Sitz Barbaramere Nell 73T
#Baldridge Kaboom K243 KCF
#Parka of Conanga 241
##*S A V Final Answer 0035
O&M Rita 9116 of 6054

BW	87
Adj. WW	532
Wt. 12/28/23	1455
SC	40
Adj. %IMF	3.18
Adj. RE	12.8
Dam's NR	4-102

CED	BW	WW	YW	RADG	DMI	YH	SC	DOC	CLAW	ANGLE	PAP	HS	HP	CEM
-8	+4.7	+75	+139	+29	+1.99	+6	+1.24	-3	+28	+33	-1.01	+27	+19.4	+6
MILK	MW	MH	SEN	CW	MARB	RE	FAT	SM	SW	SF	\$G	\$B	\$C	
+19	+95	+9	-29	+68	+53	+70	+0.32	+60	+50	+112	+46	+158	+265	

Bravo - Capitalist Sons

Coleman Bravo 6313



SM	+105
SW	+71
SF	+62
SG	+19
SB	+81
SC	+210

CED	BW	WW	YW	CEM	MILK	SEN	CW	MARB	RE	FAT
+15	-2	+53	+97	+11	+21	+21	+28	+07	+43	+028

20 Meadow Acres Bravo 3128

Birth Date: 11-18-2022 | Bull 20795390 | Tattoo: 3128

#+*Coleman Charlo 0256
+*Coleman Bravo 6313
18734838



#*Sitz Wisdom 481T

Meadow Acres Blackbird 782
18986675

#*O C C Paxton 730P
+Bohi Abigale 6014
#*Connealy Onward
+*Coleman Donna 386
#*Connealy Onward
Sitz Elluna Elite 94P
#*S AV Final Answer 0035
#Meadow Acres Blackbird 3112

BW	72
Adj. WW	509
Wt. 12/28/23	1195
SC	42
Adj. %IMF	2.44
Adj. RE	9.5
Dam's NR	2-93

CED	BW	WW	YW	RADG	DMI	YH	SC	DOC	CLAW	ANGLE	PAP	HS	HP	CEM
+14	-6	+49	+92	+19	+1.32	+2	+1.20	+23	+35	+43	+28	+44	+17.7	+13
MILK	MW	MH	SEN	CW	MARB	RE	FAT	SM	SW	SF	SG	SB	SC	
+22	-4	-5	+18	+11	+24	+19	+031	+103	+54	+41	+24	+65	+187	

17 Meadow Acres Bravo 35

Birth Date: 10-15-2022 | Bull 20794024 | Tattoo: 35

#+*Coleman Charlo 0256
+*Coleman Bravo 6313
18734838

#Connealy Thunder
Meadow Acres Pride 4156
18009555

#*O C C Paxton 730P
+Bohi Abigale 6014
#*Connealy Onward
+*Coleman Donna 386
#Baldridge Kaboom K243 KCF
#Parka of Conanga 241
#*O C C Emblazon 854E
Meadow Acres Rita 1000

BW	72
Adj. WW	393
Wt. 12/28/23	1160
SC	40
Adj. %IMF	1.86
Adj. RE	11.1
Dam's NR	6-88

CED	BW	WW	YW	RADG	DMI	YH	SC	DOC	CLAW	ANGLE	PAP	HS	HP	CEM
+13	-5	+45	+85	+21	+1.03	-3	+1.34	+24	+35	+42	+1.49	+40	+13.9	+10
MILK	MW	MH	SEN	CW	MARB	RE	FAT	SM	SW	SF	SG	SB	SC	
+21	-5	-5	+19	+23	+25	+35	+008	+91	+43	+53	+29	+82	+197	

21 Meadow Acres Bravo 3184

Birth Date: 12-11-2022 | Bull 20795387 | Tattoo: 3184

#+*Coleman Charlo 0256
+*Coleman Bravo 6313
18734838



#+*PA Full Power 1208

Meadow Acres Rita 960 861
19299531

#*O C C Paxton 730P
+Bohi Abigale 6014
#*Connealy Onward
+*Coleman Donna 386
#+*PA Power Tool 9108
*Pine View SQR Rita W091
#+*O C C Emblazon 854E
Meadow Acres Rita 1000

BW	85
Adj. WW	424
Wt. 12/28/23	1050
SC	39
Adj. %IMF	2.46
Adj. RE	11.1
Dam's NR	1-84

CED	BW	WW	YW	RADG	DMI	YH	SC	DOC	CLAW	ANGLE	PAP	HS	HP	CEM
+3	+3.0	+67	+118	+25	+1.10	-1	-08	+25	+37	+43	+1.76	+18	+12.0	-1
MILK	MW	MH	SEN	CW	MARB	RE	FAT	SM	SW	SF	SG	SB	SC	
+23	+15	-3	+9	+47	+38	+1.00	-003	+90	+65	+93	+45	+138	+269	

18 Meadow Acres Bravo 340

Birth Date: 10-24-2022 | Bull 20794030 | Tattoo: 340

#+*Coleman Charlo 0256
+*Coleman Bravo 6313
18734838



#+*PA Full Power 1208
Meadow Acres Perfection 826
19306044

#*O C C Paxton 730P
+Bohi Abigale 6014
#*Connealy Onward
+*Coleman Donna 386
#+*PA Power Tool 9108
*Pine View SQR Rita W091
#+*PA Full Power 1208
Meadow Acres Perfection 764

BW	82
Adj. WW	492
Wt. 12/28/23	1165
SC	39
Adj. %IMF	3.04
Adj. RE	14.3
Dam's NR	3-87

CED	BW	WW	YW	RADG	DMI	YH	SC	DOC	CLAW	ANGLE	PAP	HS	HP	CEM
+5	+1.7	+69	+121	+24	+1.33	+6	+7.2	+30	+44	+44	+98	+41	+14.2	+9
MILK	MW	MH	SEN	CW	MARB	RE	FAT	SM	SW	SF	SG	SB	SC	
+19	+24	+2	+7	+33	+65	+81	+039	+95	+65	+75	+53	+127	+260	



Lot 22

19 Meadow Acres Bravo 391

Birth Date: 10-07-2022 | Bull *20795392 | Tattoo: 391

#+*Coleman Charlo 0256
+*Coleman Bravo 6313
18734838



#Connealy Thunder
+Meadow Acres Rita 329
17675226

#*O C C Paxton 730P
+Bohi Abigale 6014
#*Connealy Onward
+*Coleman Donna 386
#Baldridge Kaboom K243 KCF
#Parka of Conanga 241
#Sitz Alliance 6595
O&m Rita 9116 of 6054

BW	75
Adj. WW	477
Wt. 12/28/23	1150
SC	44
Adj. %IMF	1.98
Adj. RE	11.6
Dam's NR	7-102

CED	BW	WW	YW	RADG	DMI	YH	SC	DOC	CLAW	ANGLE	PAP	HS	HP	CEM
+5	+2.5	+71	+130	+27	+1.67	+6	+1.19	+31	+31	+34	+59	+43	+15.2	+8
MILK	MW	MH	SEN	CW	MARB	RE	FAT	SM	SW	SF	SG	SB	SC	
+28	+37	+4	-4	+42	+45	+58	+033	+101	+70	+80	+40	+120	+257	

22 Meadow Acres Capitalist 3132

Birth Date: 08-19-2022 | Bull *20794055 | Tattoo: 3132

#*Connealy Capitalist 028
#+*LD Capitalist 316
17666102



#+*PA Full Power 1208
Meadow Acres Rita 151
20209723

#*S AV Final Answer 0035
Prides Pita of Conanga 8821
#*A Future Direction 5321
LD Dixie Erica Oar 0853
#+*PA Power Tool 9108
*Pine View SQR Rita W091
+*Coleman Charlo 3212
Meadow Acres Rita 8115 5125

BW	65
Adj. WW	444
Wt. 12/28/23	1235
SC	43.5
Adj. %IMF	1.69
Adj. RE	13.7
Dam's NR	1-93

CED	BW	WW	YW	RADG	DMI	YH	SC	DOC	CLAW	ANGLE	PAP	HS	HP	CEM
+12	-2.1	+49	+80	+17	+09	-8	+1.49	+5	+42	+41	+16	+40	+12.3	+6
MILK	MW	MH	SEN	CW	MARB	RE	FAT	SM	SW	SF	SG	SB	SC	
+19	+0	-6	+19	+20	+88	+60	+057	+77	+56	+65	+60	+125	+239	

Blk Granite Sons

Sire of Meadow Acres BLK Granite 875



SM	+70
\$W	+63
SF	+101
\$G	+40
\$B	+141
\$C	+253

CED	BW	WW	YW	CEM	MILK	SEN	CW	MARB	RE	FAT
+13	+5	+63	+112	+14	+24	-9	+48	+40	+63	+010



Lot 26

23 Meadow Acres Blk Granite3115

Birth Date: 10-20-2022 | Bull 20794049 | Tattoo: 3115

#*Connealy Black Granite	#*Connealy Consensus 7229	BW	75
Meadow Acres BLK Granite 875	#Eura Elga of Conanga 9109	Adj. WW	384
19299500	#*Cole Creek Cedar Ridge 1V	Wt. 12/28/23	1220
ANGUS GS	+Fink Miss 0732 5523 NW	SC	37
+*Meadow Acres Miss 6185	#*CTS Remedy 1T01	Adj. %IMF	3.17
*Ellingson Homegrown 6035	*EA Blanche 4137	Adj. RE	9.7
Meadow Acres Rita 143	*+*PA Full Power 1208	Dam's NR	1-80
20217329	#Meadow Acres Rita 3102		

CED	BW	WW	YW	RADG	DMI	YH	SC	DOC	CLAW	ANGLE	PAP	HS	HP	CEM
+14	-5	+46	+94	+25	+25	+2	-47	+16	+60	+58	+24	+73	+14.8	+14
MILK	MW	MH	SEN	CW	MARB	RE	FAT	SM	SW	SF	SG	SB	SC	
+23	+14	-2	+10	+34	+79	+51	+035	+73	+48	+90	+56	+146	+262	

26 Meadow Acres Blk Granite3147

Birth Date: 10-13-2022 | Bull 20794058 | Tattoo: 3147

#*Connealy Black Granite	#*Connealy Consensus 7229	BW	72
Meadow Acres BLK Granite 875	#Eura Elga of Conanga 9109	Adj. WW	489
19299500	#*Cole Creek Cedar Ridge 1V	Wt. 12/28/23	1210
ANGUS GS	+Fink Miss 0732 5523 NW	SC	40
+*Meadow Acres Rita 285 1242	#*Coleman Charlo 0256	Adj. %IMF	1.94
20217624	*Coleman Donna 714	Adj. RE	13.1
	#S AV Pioneer 7301	Dam's NR	1-102
	+Meadow Acres Rita 8115		

CED	BW	WW	YW	RADG	DMI	YH	SC	DOC	CLAW	ANGLE	PAP	HS	HP	CEM
+14	-7	+67	+130	+30	+1.51	+3	+42	+25	+45	+44	-98	+52	+17.4	+12
MILK	MW	MH	SEN	CW	MARB	RE	FAT	SM	SW	SF	SG	SB	SC	
+32	+85	+3	-31	+75	+57	+90	+023	+71	+67	+127	+51	+179	+303	

24 Meadow Acres Blk Granite3122

Birth Date: 10-21-2022 | Bull 20794050 | Tattoo: 3122

#*Connealy Black Granite	#*Connealy Consensus 7229	BW	75
Meadow Acres BLK Granite 875	#Eura Elga of Conanga 9109	Adj. WW	523
19299500	#*Cole Creek Cedar Ridge 1V	Wt. 12/28/23	1120
ANGUS GS	+Fink Miss 0732 5523 NW	SC	40
+*Coleman Navigator 614	#Cole Creek Black Cedar 46P	Adj. %IMF	3.21
Meadow Acres Miss Kaye 167	+*Coleman Eriskay 291	Adj. RE	12.2
20217377	#*Koupal Advance 28	Dam's NR	1-109
	+Meadow Acres Miss Kaye 6111		

CED	BW	WW	YW	RADG	DMI	YH	SC	DOC	CLAW	ANGLE	PAP	HS	HP	CEM
+6	+2.4	+74	+125	+25	+1.17	+2	+1.07	+25	+49	+53	+33	+58	+15.8	+10
MILK	MW	MH	SEN	CW	MARB	RE	FAT	SM	SW	SF	SG	SB	SC	
+21	+93	+4	-29	+49	+38	+71	+017	+63	+62	+94	+40	+134	+237	

27 Meadow Acres Blk Granite3155

Birth Date: 10-02-2022 | Bull 20794059 | Tattoo: 3155

#*Connealy Black Granite	#*Connealy Consensus 7229	BW	65
Meadow Acres BLK Granite 875	#Eura Elga of Conanga 9109	Adj. WW	417
19299500	#*Cole Creek Cedar Ridge 1V	Wt. 12/28/23	1065
ANGUS GS	+Fink Miss 0732 5523 NW	SC	37
+*S AV Renown 3439	+Rito 707 of Ideal 3407 7075	Adj. %IMF	2.10
Meadow Acres Rita 1166	*S AV Blackcap May 4136	Adj. RE	11.1
20215451	#*S AV Thunderbird 9061	Dam's NR	1-87
	+Meadow Acres Rita 2113		

CED	BW	WW	YW	RADG	DMI	YH	SC	DOC	CLAW	ANGLE	PAP	HS	HP	CEM
+17	-2.2	+60	+107	+21	+1.24	+1	+53	+31	+59	+50	-10	+29	+15.8	+14
MILK	MW	MH	SEN	CW	MARB	RE	FAT	SM	SW	SF	SG	SB	SC	
+31	+41	-2	-8	+36	+35	+38	+048	+82	+70	+72	+31	+103	+216	

25 Meadow Acres Blk Granite3139

Birth Date: 10-13-2022 | Bull 20794057 | Tattoo: 3139

#*Connealy Black Granite	#*Connealy Consensus 7229	BW	75
Meadow Acres BLK Granite 875	#Eura Elga of Conanga 9109	Adj. WW	518
19299500	#*Cole Creek Cedar Ridge 1V	Wt. 12/28/23	1235
ANGUS GS	+Fink Miss 0732 5523 NW	SC	39
+*ZWT Summit 6507	#+*S AV Renown 3439	Adj. %IMF	2.19
+*Meadow Acres Perfection 1245	*Coleman Donna 714	Adj. RE	12.9
20215511	#*Sitz Wisdom 481T	Dam's NR	1-108
	+Meadow Acres Perfection 0100		

CED	BW	WW	YW	RADG	DMI	YH	SC	DOC	CLAW	ANGLE	PAP	HS	HP	CEM
+9	+2.0	+75	+132	+27	+1.54	+4	+95	+18	+55	+57	+2.25	+55	+18.6	+11
MILK	MW	MH	SEN	CW	MARB	RE	FAT	SM	SW	SF	SG	SB	SC	
+15	+74	+1	-16	+54	+21	+76	+017	+70	+60	+95	+32	+126	+233	

28 Meadow Acres Blk Granite3177

Birth Date: 11-20-2022 | Bull 20794068 | Tattoo: 3177

#*Connealy Black Granite	#*Connealy Consensus 7229	BW	65
Meadow Acres BLK Granite 875	#Eura Elga of Conanga 9109	Adj. WW	452
19299500	#*Cole Creek Cedar Ridge 1V	Wt. 12/28/23	1130
ANGUS GS	+Fink Miss 0732 5523 NW	SC	38.5
+*Coleman Charlo 3212	#+*Coleman Charlo 0256	Adj. %IMF	2.74
+*Meadow Acres Perfection 1239	*Coleman Donna 714	Adj. RE	14.2
20217547	#*Sitz Wisdom 481T	Dam's NR	1-100
	+Meadow Acres Perfection 0100		

CED	BW	WW	YW	RADG	DMI	YH	SC	DOC	CLAW	ANGLE	PAP	HS	HP	CEM
+18	-1.5	+58	+102	+22	+98	-2	+57	+28	+55	+55	+1.34	+64	+14.2	+14
MILK	MW	MH	SEN	CW	MARB	RE	FAT	SM	SW	SF	SG	SB	SC	
+23	+33	-4	+0	+38	+45	+77	+033	+79	+62	+82	+43	+124	+240	

Rainfall - Rainmaker Sons

S AV Rainfall 6846



SM	+79
\$W	+66
\$F	+77
\$G	+57
\$B	+134
\$C	+253

CED	BW	WW	YW	CEM	MILK	SEN	CW	MARB	RE	FAT
+7	+4	+56	+108	+11	+26	+2	+25	+71	+70	+006

Basin Rainmaker 4404



SM	+82
\$W	+68
\$F	+99
\$G	+46
\$B	+144
\$C	+269

CED	BW	WW	YW	CEM	MILK	SEN	CW	MARB	RE	FAT
+7	+1.2	+59	+107	+12	+35	-18	+46	+57	+44	+017

29 Meadow Acres Rainfall 381

Birth Date: 10-24-2022 | Bull *20813642 | Tattoo: 381

#+*Coleman Charlo 0256
 #*S AV Rainfall 6846
 18578963
 *S AV Blackcap May 4136
 ANGUS
 #*Connealy Black Granite
 #*Meadow Acres Perfection 9235
 19599190
 +Meadow Acres In Focus 1118

#*O C C Paxton 730P
 +Bohi Abigale 6014
 #S AV 8180 Traveler 004
 #+S AV May 2397
 #*Connealy Consensus 7229
 #Eura Elga of Conanga 9109
 #*Mytty In Focus
 Meadow Acres 616 354

BW	65
Adj. WW	382
Wt. 12/28/23	1105
SC	41
Adj. %IMF	3.53
Adj. RE	10.6
Dam's NR	2-90

CED	BW	WW	YW	RADG	DMI	YH	SC	DOC	CLAW	ANGLE	PAP	HS	HP	CEM
+16	-2.3	+44	+75	+19	-12	-6	+1.04	+21	+38	+38	-14	+28	+12.9	+11
MILK	MW	MH	SEN	CW	MARB	RE	FAT	\$M	\$W	\$F	\$G	\$B	\$C	
+23	+8	-5	+13	+9	+54	+29	+0.06	+83	+52	+56	+43	+99	+211	

31 Meadow Acres Rainmaker 39

Birth Date: 10-30-2022 | Bull 20812083 | Tattoo: 39

Basin Rainmaker 2704
 #*Basin Rainmaker 4404
 17913751
 +*Basin Joy 1036
 ANGUS
 #+*S AV Resource 1441
 Meadow Acres Blackbird 962
 19599124
 Meadow Acres Blackbird 642

#Basin Rainmaker P175
 #Basin Erica 7520 BV
 #+*Basin Payweight 1075
 Basin Joy 566T
 +Rito 707 of Ideal 3407 7075
 #S AV Blackcap May 4136
 #*Connealy Black Granite
 Meadow Acres Blackbird 29

BW	72
Adj. WW	519
Wt. 12/28/23	1190
SC	42.5
Adj. %IMF	2.6
Adj. RE	11.7
Dam's NR	3-108

CED	BW	WW	YW	RADG	DMI	YH	SC	DOC	CLAW	ANGLE	PAP	HS	HP	CEM
+12	-1.2	+54	+85	+16	+40	-4	+1.84	+23	+44	+46	-19	+28	+13.9	+12
MILK	MW	MH	SEN	CW	MARB	RE	FAT	\$M	\$W	\$F	\$G	\$B	\$C	
+25	+3	-7	+14	+33	+59	+32	+0.41	+94	+66	+79	+43	+122	+252	

30 Meadow Acres Rainfall 3161

Birth Date: 09-13-2022 | Bull *20813627 | Tattoo: 3161

#+*Coleman Charlo 0256
 #*S AV Rainfall 6846
 18578963
 *S AV Blackcap May 4136
 ANGUS
 #*Ellingson Homestead 6030
 Meadow Acres Blackcap 186
 20215377
 Meadow Acres Blackcap 513

#*O C C Paxton 730P
 +Bohi Abigale 6014
 #S AV 8180 Traveler 004
 #+S AV May 2397
 #*CTS Remedy 1T01
 EA Erica 1082
 #*S AV Thunderbird 9061
 Meadow Acres Blackcap 396

BW	75
Adj. WW	436
Wt. 12/28/23	1140
SC	42
Adj. %IMF	3.27
Adj. RE	12.0
Dam's NR	1-91

CED	BW	WW	YW	RADG	DMI	YH	SC	DOC	CLAW	ANGLE	PAP	HS	HP	CEM
+5	+1.3	+60	+107	+24	+91	+0	+7.8	+11	+48	+54	+31	+46	+11.0	+11
MILK	MW	MH	SEN	CW	MARB	RE	FAT	\$M	\$W	\$F	\$G	\$B	\$C	
+30	+42	+0	-8	+36	+60	+77	+0.53	+63	+64	+81	+49	+130	+232	



Lot 32

32 Meadow Acres Rainmaker 337

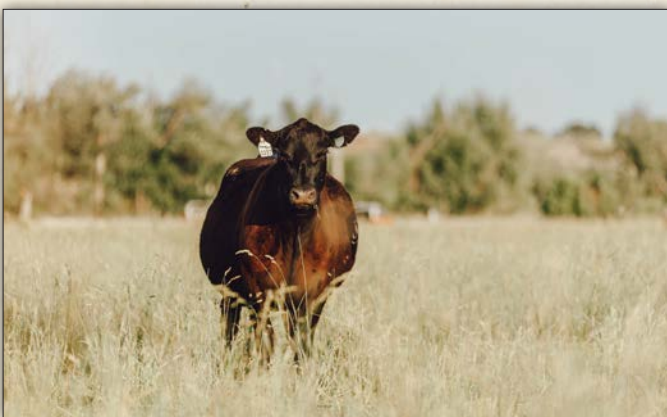
Birth Date: 10-07-2022 | Bull 20812097 | Tattoo: 337

Basin Rainmaker 2704
 #*Basin Rainmaker 4404
 17913751
 +*Basin Joy 1036
 #+O C C Emblazon 854E
 +Meadow Acres Rita 2114
 17431079
 O8m Rita 9116 of 6054

#Basin Rainmaker P175
 #Basin Erica 7520 BV
 #+*Basin Payweight 1075
 Basin Joy 566T
 #D H D Traveler 6807
 Dixie Erica of C H 1019
 #+Rito 9M9 of 2036 Scotch Cap
 +G A R Ext 6054

BW	75
Adj. WW	521
Wt. 12/28/23	1265
SC	43
Adj. %IMF	2.90
Adj. RE	13.4
Dam's NR	8-92

CED	BW	WW	YW	RADG	DMI	YH	SC	DOC	CLAW	ANGLE	PAP	HS	HP	CEM
+7	+1.1	+62	+107	+22	+74	+2	+1.43	+19	+41	+45	+1.26	+32	+16.2	+11
MILK	MW	MH	SEN	CW	MARB	RE	FAT	\$M	\$W	\$F	\$G	\$B	\$C	
+28	+45	+0	-14	+45	+55	+61	+0.03	+77	+61	+84	+48	+132	+248	



Rainmaker - Summitt Sons

33 Meadow Acres Rainmaker 341

Birth Date: 09-13-2022 | Bull *20812079 | Tattoo: 341

Basin Rainmaker 2704
 *Basin Rainmaker 4404
 17913751
 +*Basin Joy 1036
 ANGUS
 #**Koupal Advance 28
 Meadow Acres Winnette 0113
 19929291
 Meadow Acres Winnette 840

#Basin Rainmaker P175
 #Basin Erica 7520 BV
 #+*Basin Payweight 1075
 Basin Joy 566T
 #Koupal Juneau 797
 *Koupal Ebonette 734
 #*Connealy Black Granite
 Meadow Acres Winnette 470

BW	72
Adj. WW	504
Wt. 12/28/23	1315
SC	40
Adj. %IMF	2.75
Adj. RE	11.2
Dam's NR	2-103

CED	BW	WW	YW	RADG	DMI	YH	SC	DOC	CLAW	ANGLE	PAP	HS	HP	CEM
+13	-2	+65	+106	+21	+69	+1	+37	+10	+42	+38	-1.03	+43	+11.1	+15
MILK	MW	MH	SEN	CW	MARB	RE	FAT	SM	SW	SF	SG	SB	SC	
+26	+44	+1	-7	+33	+50	+63	+0.04	+75	+70	+72	+46	+118	+228	

ZWT Summitt 6507



SM	+95
SW	+66
SF	+68
SG	+29
SB	+96
SC	+220

CED	BW	WW	YW	CEM	MILK	SEN	CW	MARB	RE	FAT
+10	+6	+61	+106	+3	+20	+6	+29	+14	+72	+0.03

34 Meadow Acres Summitt 3138

Birth Date: 08-26-2022 | Bull *20813783 | Tattoo: 3138

#+*S A V Renown 3439
 +*ZWT Summitt 6507
 18561289
 +*Coleman Donna 714
 ANGUS
 *Coleman Navigator 614
 *Meadow Acres Erica 161
 20217413
 #+*Meadow Acres Erica 2248 7200

+Rito 707 of Ideal 3407 7075
 *S A V Blackcap May 4136
 #*Connealy Onward
 +*Coleman Donna 386
 #Cole Creek Black Cedar 46P
 +*Coleman Eriskay 291
 #+GDAR Game Day 449
 +*Fink Erica 2248 9380 K205

BW	65
Adj. WW	440
Wt. 12/28/23	1210
SC	40
Adj. %IMF	2.56
Adj. RE	12.6
Dam's NR	1-92

CED	BW	WW	YW	RADG	DMI	YH	SC	DOC	CLAW	ANGLE	PAP	HS	HP	CEM
+6	+7	+52	+92	+20	+1.04	+0	+30	+23	+50	+35	+3.66	+61	+17.6	+1
MILK	MW	MH	SEN	CW	MARB	RE	FAT	SM	SW	SF	SG	SB	SC	
+28	+16	-4	+6	+29	+41	+62	+0.23	+88	+59	+65	+39	+105	+224	



Lot 34

35 Meadow Acres Summitt 338

Birth Date: 10-10-2022 | Bull 20813797 | Tattoo: 338

#+*S A V Renown 3439
 +*ZWT Summitt 6507
 18561289
 +*Coleman Donna 714
 ANGUS
 #Rito 616 of 4B20 6807
 Meadow Acres Blackbird 051
 16793762
 Meadow Acres Blackbird 0218

+Rito 707 of Ideal 3407 7075
 *S A V Blackcap May 4136
 #*Connealy Onward
 +*Coleman Donna 386
 #D H D Traveler 6807
 +Rita 4B20 of OFB1 Bando
 #B A R Ext Traveler 205
 V N A R Blackbird 16D 224J

BW	75
Adj. WW	503
Wt. 12/28/23	1300
SC	41
Adj. %IMF	2.67
Adj. RE	11.3
Dam's NR	8-99

CED	BW	WW	YW	RADG	DMI	YH	SC	DOC	CLAW	ANGLE	PAP	HS	HP	CEM
+7	+2.4	+72	+121	+23	+1.23	+3	+41	+29	+40	+32	+2.96	+18	+14.5	+4
MILK	MW	MH	SEN	CW	MARB	RE	FAT	SM	SW	SF	SG	SB	SC	
+15	+91	+5	-25	+39	+23	+63	-0.07	+63	+54	+69	+33	+102	+195	

36 Meadow Acres Summitt 3149

Birth Date: 09-02-2022 | Bull *20813793 | Tattoo: 3149

#+*S A V Renown 3439
 +*ZWT Summitt 6507
 18561289
 +*Coleman Donna 714
 ANGUS
 #*Connealy Capitalist 028
 Meadow Acres Winnette 115
 20215448
 Meadow Acres Winnette 94

+Rito 707 of Ideal 3407 7075
 *S A V Blackcap May 4136
 #*Connealy Onward
 +*Coleman Donna 386
 #*S A V Final Answer 0035
 Prides Pita of Conanga 8821
 #*Sitz Wisdom 481T
 #Meadow Acres Winnette 688

BW	65
Adj. WW	439
Wt. 12/28/23	1170
SC	39.5
Adj. %IMF	2.05
Adj. RE	11.8
Dam's NR	1-92

CED	BW	WW	YW	RADG	DMI	YH	SC	DOC	CLAW	ANGLE	PAP	HS	HP	CEM
+16	-2.7	+50	+92	+22	+72	-2	+42	+21	+52	+52	+1.32	-0.9	+12.7	+5
MILK	MW	MH	SEN	CW	MARB	RE	FAT	SM	SW	SF	SG	SB	SC	
+31	+3	-6	+11	+11	-0.1	+32	+0.15	+79	+65	+47	+15	+62	+159	



Summit - Territory - Substantial Sons

37 Meadow Acres Summitt 3150

Birth Date: 08-24-2022 | Bull 20813791 | Tattoo: 3150

#+*S A V Renown 3439 +Rito 707 of Ideal 3407 7075
 +*ZWT Summitt 6507 *S A V Blackcap May 4136
 18561289 +*Coleman Donna 714 #*Connealy Onward
 +*Coleman Donna 386
 #+*S A V Rainfall 6846 #+*Coleman Charlo 0256
 *S A V Blackcap May 4136
 #*Connealy Black Granite
 Meadow Acres Rita 14
 20215505 Meadow Acres Rita 163 985
 Meadow Acres Rita 163 7118

BW	60
Adj. WW	484
Wt. 12/28/23	1280
SC	43
Adj. %IMF	4.63
Adj. RE	12.1
Dam's NR	1-101

CED	BW	WW	YW	RADG	DMI	YH	SC	DOC	CLAW	ANGLE	PAP	HS	HP	CEM
+12	-1.1	+63	+107	+23	+78	+3	+19	+26	+41	+50	+1.82	+37	+18.2	+10
MILK	MW	MH	SEN	CW	MARB	RE	FAT	SM	SW	SF	SG	SB	SC	
+28	+48	+1	-10	+36	+55	+68	+0.08	+87	+69	+75	+49	+124	+248	



Lot 40

38 Meadow Acres Summitt 3135

Birth Date: 09-13-2022 | Bull 20813596 | Tattoo: 3135

#+*S A V Renown 3439 +Rito 707 of Ideal 3407 7075
 +*ZWT Summitt 6507 *S A V Blackcap May 4136
 18561289 +*Coleman Donna 714 #*Connealy Onward
 +*Coleman Donna 386
 #*Connealy Lead On #*Connealy Leadtime
 Meadow Acres Rita 36 Eligence Plus of Conanga
 17675211 +Meadow Acres Rita 953 #+B/R New Frontier 095
 08m Rita 9116 of 6054

BW	80
Adj. WW	310
Wt. 12/28/23	1085
SC	38.5
Adj. %IMF	2.19
Adj. RE	11.4
Dam's NR	8-101

CED	BW	WW	YW	RADG	DMI	YH	SC	DOC	CLAW	ANGLE	PAP	HS	HP	CEM
+5	+3.3	+62	+108	+23	+1.17	+4	+89	+19	+35	+31	+3.22	+63	+16.4	+3
MILK	MW	MH	SEN	CW	MARB	RE	FAT	SM	SW	SF	SG	SB	SC	
+19	+36	-2	+1	+44	+65	+88	+0.18	+87	+52	+84	+56	+140	+269	

40 Meadow Acres Territory 348

Birth Date: 09-13-2022 | Bull 20813774 | Tattoo: 348

#+*S A V Resource 1441 +Rito 707 of Ideal 3407 7075
 *S A V Territory 7225 *S A V Blackcap May 4136
 18913034 *S A V Emblynette 3293 #+S A V 004 Density 4336
 #*S A V Emblynette 7411
 #*Connealy Black Granite #*Connealy Consensus 7229
 Meadow Acres Donna 973 #Eura Elga of Conanga 9109
 19599143 +Meadow Acres Donna 2236 7185 #+GDAR Game Day 449
 +*Fink Donna 2236 8285 FA

BW	85
Adj. WW	519
Wt. 12/28/23	1390
SC	42
Adj. %IMF	1.70
Adj. RE	12.1
Dam's NR	2-105

CED	BW	WW	YW	RADG	DMI	YH	SC	DOC	CLAW	ANGLE	PAP	HS	HP	CEM
+5	+2.1	+77	+133	+26	+1.44	+5	+91	+24	+46	+51	-31	+36	+12.7	+9
MILK	MW	MH	SEN	CW	MARB	RE	FAT	SM	SW	SF	SG	SB	SC	
+26	+76	+5	-23	+69	-0.1	+97	+0.42	+70	+71	+111	+21	+132	+241	

39 Meadow Acres Territory 328

Birth Date: 09-07-2022 | Bull *20813769 | Tattoo: 328

#+*S A V Resource 1441 +Rito 707 of Ideal 3407 7075
 *S A V Territory 7225 *S A V Blackcap May 4136
 18913034 *S A V Emblynette 3293 #+S A V 004 Density 4336
 #*S A V Emblynette 7411
 #*Connealy Black Granite #*Connealy Consensus 7229
 +*Meadow Acres Perfection 9233 #Eura Elga of Conanga 9109
 19599189 +Meadow Acres in Focus 1118 #*Mytty In Focus
 Meadow Acres 616 354

BW	60
Adj. WW	423
Wt. 12/28/23	1190
SC	43
Adj. %IMF	3.24
Adj. RE	10.7
Dam's NR	3-93

CED	BW	WW	YW	RADG	DMI	YH	SC	DOC	CLAW	ANGLE	PAP	HS	HP	CEM
+14	-1.3	+62	+109	+25	+88	+2	+94	+31	+56	+47	-3.37	+16	+20.5	+12
MILK	MW	MH	SEN	CW	MARB	RE	FAT	SM	SW	SF	SG	SB	SC	
+30	+51	-2	-13	+45	+53	+39	+0.62	+89	+69	+92	+39	+131	+259	



SM	+73
SW	+63
SF	+75
SG	+28
SB	+104
SC	+208

41 Meadow Acres Substantial 321

Birth Date: 09-15-2022 | Bull 20813785 | Tattoo: 321

#*Benfield Substance 8506 #+H A Image Maker 0415
 #*Mohnen Substantial 272 Benfield Edella 1105
 17292558 Mohnen Glyn Mawr Elba 1758 #LT Territory 5824 of EA
 Mohnen Glyn Mawr Elba 1345
 #*HA Cowboy Up 5405 *HA Outside 3008
 Meadow Acres Rita 0189 #*HA Blackcap Lady 1602
 19924285 Meadow Acres Rita 989 #+B/R New Frontier 095
 +Meadow Acres Rita 512

BW	78
Adj. WW	455
Wt. 12/28/23	1245
SC	39
Adj. %IMF	2.26
Adj. RE	12.1
Dam's NR	2-98

CED	BW	WW	YW	RADG	DMI	YH	SC	DOC	CLAW	ANGLE	PAP	HS	HP	CEM
+4	+1.0	+62	+109	+26	+79	+3	+81	+17	+44	+44	+1.05	+43	+12.9	+3
MILK	MW	MH	SEN	CW	MARB	RE	FAT	SM	SW	SF	SG	SB	SC	
+21	+57	+3	-9	+39	+37	+47	+0.06	+64	+53	+79	+37	+116	+214	



Substantial - Crossbow Sons

42 Meadow Acres Substantial 352

Birth Date: 09-13-2022 | Bull *20813792 | Tattoo: 352

**Benfield Substance 8506 #+H A Image Maker 0415
 Benfield Edella 1105
 #*Mohnen Substantial 272 #LT Territory 5824 of EA
 17292558 Mohnen Glyn Mawr Elba 1758
 Mohnen Glyn Mawr Elba 1345
ANGUS #*Cole Creek Cedar Ridge 1V
 #*Cole Creek Black Cedar 46P
 #*Meadow Acres Rita 8115 9240 #*Cole Creek Clovanada 49S
 19599085 +Meadow Acres Rita 8115 #*S AV 8180 Traveler 004
 O&M Rita 9116 of 6054

BW	80
Adj. WW	537
Wt. 12/28/23	1385
SC	44
Adj. %IMF	2.36
Adj. RE	12.4
Dam's NR	3-103

CED	BW	WW	YW	RADG	DMI	YH	SC	DOC	CLAW	ANGLE	PAP	HS	HP	CEM
+1	+1.9	+75	+133	+28	+1.51	+8	+1.25	+17	+46	+50	+78	+35	+20.4	+6
MILK	MW	MH	SEN	CW	MARB	RE	FAT	SM	SW	SF	SG	SB	SC	
+23	+86	+4	-27	+59	+64	+39	+045	+73	+65	+96	+46	+143	+258	

Spring Cove Crossbow



SM	+28
SW	+47
SF	+83
SG	+90
SB	+172
SC	+251

CED	BW	WW	YW	CEM	MILK	SEN	CW	MARB	RE	FAT
+14	-1.3	+53	+104	+10	+24	-32	+30	+1.40	+39	-.008

43 Meadow Acres Substantial 3159

Birth Date: 09-06-2022 | Bull *20813777 | Tattoo: 3159

**Benfield Substance 8506 #+H A Image Maker 0415
 Benfield Edella 1105
 #*Mohnen Substantial 272 #LT Territory 5824 of EA
 17292558 Mohnen Glyn Mawr Elba 1758
 Mohnen Glyn Mawr Elba 1345
ANGUS #*ZWT Summit 6507
 #*S AV Renown 3439
 Meadow Acres Rita 1128 #*Coleman Donna 714
 20215515 Meadow Acres Rita 34 #*GDAR Game Day 449
 Meadow Acres Rita 152

BW	80
Adj. WW	471
Wt. 12/28/23	1190
SC	39
Adj. %IMF	1.80
Adj. RE	11.0
Dam's NR	1-99

CED	BW	WW	YW	RADG	DMI	YH	SC	DOC	CLAW	ANGLE	PAP	HS	HP	CEM
-2	+3.0	+79	+134	+26	+1.47	+5	+1.58	+4	+64	+55	+2.56	+40	+11.3	-3
MILK	MW	MH	SEN	CW	MARB	RE	FAT	SM	SW	SF	SG	SB	SC	
+21	+83	+4	-24	+50	+28	+1.01	+002	+40	+66	+91	+40	+131	+210	

45 Meadow Acres Crossbow 36

Birth Date: 10-06-2022 | Bull 20813737 | Tattoo: 36

#+*KM Broken Bow 002 #*Summitcrest Complete 1P55
 #*Summitcrest Princess OP12
 #*Spring Cove Crossbow #*C C A Emblazon 702
 17924903 Spring Cove Pretty 205 Spring Cove Pretty 009
ANGUS #*S AV Final Answer 0035 #*Sitz Traveler 8180
 #*Sitz Upward 307R
 Meadow Acres Miss Kaye 521 S AV Emulous 8145
 18327624 #Meadow Acres Miss Kaye 340 #*TC Total 410
 Meadow Acres Miss Kaye 015

BW	60
Adj. WW	503
Wt. 12/28/23	1235
SC	43
Adj. %IMF	3.54
Adj. RE	13.2
Dam's NR	4-96

CED	BW	WW	YW	RADG	DMI	YH	SC	DOC	CLAW	ANGLE	PAP	HS	HP	CEM
+17	-3.4	+55	+92	+20	+26	+1	+46	+19	+52	+48	-1.07	+67	+9.6	+16
MILK	MW	MH	SEN	CW	MARB	RE	FAT	SM	SW	SF	SG	SB	SC	
+29	+55	+3	-14	+31	+87	+49	+050	+56	+63	+78	+59	+137	+234	

44 Meadow Acres Substantial 3162

Birth Date: 09-03-2022 | Bull *20813779 | Tattoo: 3162

**Benfield Substance 8506 #+H A Image Maker 0415
 Benfield Edella 1105
 #*Mohnen Substantial 272 #LT Territory 5824 of EA
 17292558 Mohnen Glyn Mawr Elba 1758
 Mohnen Glyn Mawr Elba 1345
ANGUS #*ZWT Summit 6507
 #*S AV Renown 3439
 #*Meadow Acres Perfection 1243 #*Coleman Donna 714
 20215512 Meadow Acres Perfection 4132 #*Sitz Wisdom 481T
 +Meadow Acres Perfection 0100

BW	75
Adj. WW	390
Wt. 12/28/23	1060
SC	39
Adj. %IMF	2.13
Adj. RE	10.1
Dam's NR	1-82

CED	BW	WW	YW	RADG	DMI	YH	SC	DOC	CLAW	ANGLE	PAP	HS	HP	CEM
+11	-2	+64	+103	+16	+1.46	+0	+92	+15	+49	+57	+2.40	+17	+15.1	+9
MILK	MW	MH	SEN	CW	MARB	RE	FAT	SM	SW	SF	SG	SB	SC	
+26	+10	-2	+10	+26	+37	+44	+061	+92	+74	+54	+32	+86	+204	

46 Meadow Acres Crossbow 318

Birth Date: 10-05-2022 | Bull 20813628 | Tattoo: 318

#+*KM Broken Bow 002 #*Summitcrest Complete 1P55
 #*Summitcrest Princess OP12
 #*Spring Cove Crossbow #*C C A Emblazon 702
 17924903 Spring Cove Pretty 205 Spring Cove Pretty 009
ANGUS #*Sitz Dash 10277 #*Sitz Upward 307R
 #*Sitz Everelda Entense 2665
 +Meadow Acres Bonnie 8230 #*S AV Final Answer 0035
 19299538 #*Fink Bonnie 3495 522 FA
 +Finks Bonnie 522 0372 5522

BW	72
Adj. WW	444
Wt. 12/28/23	1140
SC	44
Adj. %IMF	2.96
Adj. RE	12.8
Dam's NR	3-94

CED	BW	WW	YW	RADG	DMI	YH	SC	DOC	CLAW	ANGLE	PAP	HS	HP	CEM
+13	-1.0	+60	+104	+25	+64	-3	+74	+29	+45	+48	+0	+18	+13.9	+9
MILK	MW	MH	SEN	CW	MARB	RE	FAT	SM	SW	SF	SG	SB	SC	
+22	+64	+0	-15	+36	+1.12	+86	-.031	+67	+58	+82	+83	+165	+281	



47 Meadow Acres Crossbow 374

Birth Date: 10-06-2022 | Bull 20813630 | Tattoo: 374

#+*KM Broken Bow 002 #*Summitcrest Complete 1P55
 #*Summitcrest Princess OP12
 #*Spring Cove Crossbow #*C C A Emblazon 702
 17924903 Spring Cove Pretty 205 Spring Cove Pretty 009
ANGUS #+*PA Full Power 1208 #+*PA Power Tool 9108
 #*Pine View SQR Rita W091
 Meadow Acres Rita 2104 869 #+O C C Emblazon 854E
 19299533 +Meadow Acres Rita 2104 O&M Rita 9116 of 6054

BW	80
Adj. WW	430
Wt. 12/28/23	1205
SC	38.5
Adj. %IMF	4.17
Adj. RE	11.4
Dam's NR	3-95

CED	BW	WW	YW	RADG	DMI	YH	SC	DOC	CLAW	ANGLE	PAP	HS	HP	CEM
+10	-5	+54	+100	+25	+48	-2	+07	+28	+57	+54	-72	+36	+11.6	+8
MILK	MW	MH	SEN	CW	MARB	RE	FAT	SM	SW	SF	SG	SB	SC	
+26	+33	-2	-1	+23	+1.33	+39	+013	+68	+58	+68	+84	+153	+266	

Crossbow Sons

48 Meadow Acres Crossbow 3134

Birth Date: 09-07-2022 | Bull *20813595 | Tattoo: 3134

*Spring Cove Crossbow
17924903 Spring Cove Pretty 205



+*Coleman Bravo 6313

Meadow Acres Rose 1145

20217569 Meadow Acres Rose 4123

#Summitcrest Complete 1P55
#Summitcrest Princess OP12
#*C A Emblazon 702
Spring Cove Pretty 009
#*Coleman Charlo 0256
+*Coleman Donna 714
#Connealy Thunder
+Meadow Acres Rita 944

BW	60
Adj. WW	425
Wt. 12/28/23	1165
SC	41.5
Adj. %IMF	2.32
Adj. RE	12.5
Dam's NR	1-89

CED	BW	WW	YW	RADG	DMI	YH	SC	DOC	CLAW	ANGLE	PAP	HS	HP	CEM
+16	-2.0	+49	+93	+2.0	+1.20	+0	+6.7	+30	+5.0	+4.6	+1.69	+0.7	+12.0	+12
MILK	MW	MH	SEN	CW	MARB	RE	FAT	SM	SW	SF	SG	SB	SC	
+33	+36	-1	-7	+18	+7.4	+4.9	+0.01	+70	+5.9	+5.6	+5.6	+11.2	+215	

51 Meadow Acres Crossbow 3144

Birth Date: 08-20-2022 | Bull *20813623 | Tattoo: 3144

*Spring Cove Crossbow
17924903 Spring Cove Pretty 205



+*Coleman Bravo 6313

Meadow Acres Winnette 1123

20217447 Meadow Acres Winnette 840

#Summitcrest Complete 1P55
#Summitcrest Princess OP12
#*C A Emblazon 702
Spring Cove Pretty 009
#*Coleman Charlo 0256
+*Coleman Donna 714
#*Connealy Black Granite
Meadow Acres Winnette 470

BW	60
Adj. WW	466
Wt. 12/28/23	1225
SC	43
Adj. %IMF	2.11
Adj. RE	12.0
Dam's NR	1-97

CED	BW	WW	YW	RADG	DMI	YH	SC	DOC	CLAW	ANGLE	PAP	HS	HP	CEM
+18	-1.0	+69	+121	+2.7	+9.8	+1	+1.60	+39	+3.7	+4.0	-2.03	+4.9	+12.6	+12
MILK	MW	MH	SEN	CW	MARB	RE	FAT	SM	SW	SF	SG	SB	SC	
+28	+59	+2	-16	+52	+6.3	+5.9	+0.40	+85	+7.3	+10.1	+4.9	+15.0	+280	

49 Meadow Acres Crossbow 3136

Birth Date: 09-01-2022 | Bull *20813598 | Tattoo: 3136

*Spring Cove Crossbow
17924903 Spring Cove Pretty 205



+*Coleman Bravo 6313

*Meadow Acres Perfection 190

20217545 +*Meadow Acres Perfection 6183

#Summitcrest Complete 1P55
#Summitcrest Princess OP12
#*C A Emblazon 702
Spring Cove Pretty 009
#*Coleman Charlo 0256
+*Coleman Donna 714
#*Connealy Consensus 7229
+Meadow Acres in Focus 1118

BW	72
Adj. WW	395
Wt. 12/28/23	1160
SC	40
Adj. %IMF	3.00
Adj. RE	10.5
Dam's NR	1-83

CED	BW	WW	YW	RADG	DMI	YH	SC	DOC	CLAW	ANGLE	PAP	HS	HP	CEM
+9	+1.5	+55	+105	+2.3	+1.55	+1	+8.8	+29	+5.1	+4.8	-1.58	+4.3	+6.9	+7
MILK	MW	MH	SEN	CW	MARB	RE	FAT	SM	SW	SF	SG	SB	SC	
+12	+56	+3	-5	+35	+7.8	+1.1	+0.10	+42	+3.8	+8.1	+5.3	+13.4	+216	

52 Meadow Acres Crossbow 3146 [MP]

Birth Date: 09-28-2022 | Bull *20813625 | Tattoo: 3146

*Spring Cove Crossbow
17924903 Spring Cove Pretty 205



+*Coleman Bravo 6313

Meadow Acres Perfection 145

20217446 Meadow Acres Perfection 826

#Summitcrest Complete 1P55
#Summitcrest Princess OP12
#*C A Emblazon 702
Spring Cove Pretty 009
#*Coleman Charlo 0256
+*Coleman Donna 714
#*PA Full Power 1208
Meadow Acres Perfection 657

BW	60
Adj. WW	367
Wt. 12/28/23	1145
SC	36
Adj. %IMF	3.47
Adj. RE	12.0
Dam's NR	1-77

CED	BW	WW	YW	RADG	DMI	YH	SC	DOC	CLAW	ANGLE	PAP	HS	HP	CEM
+14	-1.5	+48	+94	+2.4	+7.8	+2	-1.1	+24	+4.7	+3.9	-5.3	+3.7	+17.5	+9
MILK	MW	MH	SEN	CW	MARB	RE	FAT	SM	SW	SF	SG	SB	SC	
+29	+36	+2	-5	+21	+6.2	+3.0	-0.03	+80	+5.4	+6.4	+4.8	+11.2	+225	



Lot 50



Lot 53

50 Meadow Acres Crossbow 3143

Birth Date: 08-31-2022 | Bull *20813621 | Tattoo: 3143

*Spring Cove Crossbow
17924903 Spring Cove Pretty 205



+*Coleman Bravo 6313

Meadow Acres Rita 1105

20217530 Meadow Acres Rita 512.765

#Summitcrest Complete 1P55
#Summitcrest Princess OP12
#*C A Emblazon 702
Spring Cove Pretty 009
#*Coleman Charlo 0256
+*Coleman Donna 714
#*CTS Remedy 1T01
+Meadow Acres Rita 512.5182

BW	65
Adj. WW	566
Wt. 12/28/23	1350
SC	41
Adj. %IMF	3.71
Adj. RE	12.8
Dam's NR	1-118

CED	BW	WW	YW	RADG	DMI	YH	SC	DOC	CLAW	ANGLE	PAP	HS	HP	CEM
+15	-1.5	+64	+116	+2.5	+9.2	+1	+3.4	+16	+6.0	+6.3	+1.17	+1.7	+8.7	+15
MILK	MW	MH	SEN	CW	MARB	RE	FAT	SM	SW	SF	SG	SB	SC	
+29	+54	+0	-14	+40	+1.21	+6.0	+0.55	+54	+6.9	+8.4	+7.7	+16.2	+264	

53 Meadow Acres Crossbow 3160

Birth Date: 08-24-2022 | Bull *20813618 | Tattoo: 3160

*Spring Cove Crossbow
17924903 Spring Cove Pretty 205



+*Coleman Bravo 6313

Meadow Acres Blackcap 1115

20217538 Meadow Acres Blackcap 775

#Summitcrest Complete 1P55
#Summitcrest Princess OP12
#*C A Emblazon 702
Spring Cove Pretty 009
#*Coleman Charlo 0256
+*Coleman Donna 714
#*Cole Creek Cedar Ridge 1V
Meadow Acres Blackcap 571

BW	75
Adj. WW	461
Wt. 12/28/23	1240
SC	41
Adj. %IMF	3.41
Adj. RE	12.4
Dam's NR	1-96

CED	BW	WW	YW	RADG	DMI	YH	SC	DOC	CLAW	ANGLE	PAP	HS	HP	CEM
+8	+1.8	+68	+117	+2.5	+9.1	-1	+1.05	+27	+5.3	+5.1	+1.63	+7.0	+13.2	+7
MILK	MW	MH	SEN	CW	MARB	RE	FAT	SM	SW	SF	SG	SB	SC	
+22	+77	+2	-21	+38	+7.0	+4.2	+0.07	+61	+6.0	+8.1	+5.3	+13.4	+235	

Crossbow - Cedar Sons

54 Meadow Acres Crossbow 3175

Birth Date: 12-17-2022 | Bull 208114905 | Tattoo: 3175

*Spring Cove Crossbow
Meadow Acres Crossbow 1132
 20217543 Meadow Acres Miss Emma 713
 ANGUS
 #+*S AV Resource 1441
Meadow Acres Rita 595 8142
 19299552 Meadow Acres Rita 595

#+*KM Broken Bow 002
 Spring Cove Pretty 205
 #*Connealy Black Granite
 #Meadow Acres Miss Emma 3113
 +Rito 707 of Ideal 3407 7075
 *S AV Blackcap May 4136
 #S AV Pioneer 7301
 +Meadow Acres Rita 944

CED	BW	WW	YW	RADG	DMI	YH	SC	DOC	CLAW	ANGLE	PAP	HS	HP	CEM
+13	-1.1	+54	+101	+23	+97	+1	+1.23	+34	+42	+46	-11	+52	+16.6	+8
MILK	MW	MH	SEN	CW	MARB	RE	FAT	SM	SW	SF	SG	SB	SC	
+37	+39	-3	-11	+27	+63	+72	+0.08	+84	+66	+62	+53	+115	+233	

58 Meadow Acres Crossbow 3214

Birth Date: 12-28-2022 | Bull 208114932 | Tattoo: 3214

*Spring Cove Crossbow
Meadow Acres Crossbow 1132
 20217543 Meadow Acres Miss Emma 713
 ANGUS
 #*Sitz Wisdom 481T
Meadow Acres Winnetta 94
 19595101 #Meadow Acres Winnetta 688

#+*KM Broken Bow 002
 Spring Cove Pretty 205
 #*Connealy Black Granite
 #Meadow Acres Miss Emma 3113
 #*Connealy Onward
 Sitz Elluna Elite 94P
 #+*PA Full Power 1208
 Meadow Acres Winnetta 149

CED	BW	WW	YW	RADG	DMI	YH	SC	DOC	CLAW	ANGLE	PAP	HS	HP	CEM
+11	-1.0	+62	+111	+24	+1.06	+6	+4.6	+16	+40	+34	+84	+50	+10.1	+9
MILK	MW	MH	SEN	CW	MARB	RE	FAT	SM	SW	SF	SG	SB	SC	
+33	+55	+4	-16	+46	+42	+31	+0.57	+66	+69	+89	+33	+122	+224	

55 Meadow Acres Crossbow 3183

Birth Date: 12-15-2022 | Bull 208114913 | Tattoo: 3183

*Spring Cove Crossbow
Meadow Acres Crossbow 111
 20217534 Meadow Acres Rita 975
 ANGUS
 #Connealy Thunder
Meadow Acres Rita 644
 18646454 Meadow Acres Rita 173

#+*KM Broken Bow 002
 Spring Cove Pretty 205
 #*Schieffelbein Effective 61
 Meadow Acres Rita 730
 #Baldrige Kaboom K243 KCF
 #Parka of Conanga 241
 #*Mytty In Focus
 +Meadow Acres Rita 515

CED	BW	WW	YW	RADG	DMI	YH	SC	DOC	CLAW	ANGLE	PAP	HS	HP	CEM
+12	-3	+57	+111	+28	+96	+3	+8.6	+24	+75	+58	+2.09	+23	+12.2	+12
MILK	MW	MH	SEN	CW	MARB	RE	FAT	SM	SW	SF	SG	SB	SC	
+30	+60	+2	-17	+35	+82	+39	+0.48	+52	+59	+84	+55	+139	+232	

59 Meadow Acres Crossbow 3221

Birth Date: 12-27-2022 | Bull 208114935 | Tattoo: 3221

*Spring Cove Crossbow
Meadow Acres Crossbow 111
 20217534 Meadow Acres Rita 975
 ANGUS
 #+*S AV Resource 1441
+Meadow Acres Blackbird 7189
 18968491 +Meadow Acres Blackbird 1123

#+*KM Broken Bow 002
 Spring Cove Pretty 205
 #*Schieffelbein Effective 61
 Meadow Acres Rita 730
 +Rito 707 of Ideal 3407 7075
 *S AV Blackcap May 4136
 Tehama Total M811
 #Tehama Elite Blackbird L305

CED	BW	WW	YW	RADG	DMI	YH	SC	DOC	CLAW	ANGLE	PAP	HS	HP	CEM
+4	+1.9	+62	+112	+23	+1.13	+1	+1.58	+22	+56	+38	+2.17	+57	+9.5	+6
MILK	MW	MH	SEN	CW	MARB	RE	FAT	SM	SW	SF	SG	SB	SC	
+31	+31	-2	-3	+56	+57	+58	+0.29	+72	+67	+102	+47	+148	+264	

56 Meadow Acres Crossbow 3209

Birth Date: 12-25-2022 | Bull 208114928 | Tattoo: 3209

*Spring Cove Crossbow
Meadow Acres Crossbow 111
 20217534 Meadow Acres Rita 975
 ANGUS
 #S AV Pioneer 7301
Meadow Acres Rita 592
 18327703 +Meadow Acres Rita 949

#+*KM Broken Bow 002
 Spring Cove Pretty 205
 #*Schieffelbein Effective 61
 Meadow Acres Rita 730
 #*S AV Final Answer 0035
 S AV Blackbird 5297
 #+B/R New Frontier 095
 O&m Rita 9116 of 6054

CED	BW	WW	YW	RADG	DMI	YH	SC	DOC	CLAW	ANGLE	PAP	HS	HP	CEM
+4	+2.1	+61	+107	+25	+93	+5	+5.1	+15	+48	+47	+1.02	+0	+14.5	+11
MILK	MW	MH	SEN	CW	MARB	RE	FAT	SM	SW	SF	SG	SB	SC	
+22	+86	+5	-26	+44	+91	+63	+0.30	+52	+50	+86	+65	+151	+248	

60 Meadow Acres Innovation 3243

Birth Date: 09-22-2022 | Bull +*20812053 | Tattoo: 3243

#*Connealy Impression
****MAR Innovation 251**
 16983331 #*MAR Final Kahuna 856
 ANGUS
 Tehama Total M811
+Meadow Acres Blackbird 1123
 17102255 #Tehama Elite Blackbird L305



#Connealy Reflection
 Pearl Pammy of Conanga 194
 #*S AV Final Answer 0035
 #MAR Kahuna Precision 328 674
 #S Traveler 6807 T510
 #Tehama Elite Blackbird K592
 #+*G A R Grid Maker
 #Tehama Elite Blackbird H758

CED	BW	WW	YW	RADG	DMI	YH	SC	DOC	CLAW	ANGLE	PAP	HS	HP	CEM
+5	+6	+52	+82	+17	-0.9	+5	+7.1	+9	+49	+43	+1.02	+49	+7.6	+13
MILK	MW	MH	SEN	CW	MARB	RE	FAT	SM	SW	SF	SG	SB	SC	
+28	+44	+2	-8	+22	+63	+18	+0.06	+51	+57	+68	+46	+114	+199	

57 Meadow Acres Crossbow 3210

Birth Date: 12-16-2022 | Bull 208114930 | Tattoo: 3210

*Spring Cove Crossbow
Meadow Acres Crossbow 111
 20217534 Meadow Acres Rita 975
 ANGUS
 #*Hoover Dam
Meadow Acres Rita 567
 18325595 +Meadow Acres Rita 2111

#+*KM Broken Bow 002
 Spring Cove Pretty 205
 #*Schieffelbein Effective 61
 Meadow Acres Rita 730
 #*SydGen C C & 7
 #Erica of Ellston C124
 #+O C C Emblazon 854E
 O&m Rita 9116 of 6054

CED	BW	WW	YW	RADG	DMI	YH	SC	DOC	CLAW	ANGLE	PAP	HS	HP	CEM
+11	-2.1	+42	+77	+21	+16	-4	-4.5	+9	+39	+43	+3.25	+34	+11.7	+9
MILK	MW	MH	SEN	CW	MARB	RE	FAT	SM	SW	SF	SG	SB	SC	
+20	+15	-3	+11	+26	+59	+47	+0.04	+67	+45	+61	+48	+109	+208	

61 Meadow Acres Cedar 314

Birth Date: 10-18-2022 | Bull 20794026 | Tattoo: 314

#*Cole Creek Cedar Ridge 1V
+*Meadow Acres Cedar 6204
 18661870 +*Fink Miss 1393 8379 NW
 ANGUS
 #*Hoover Dam
Meadow Acres Perfection 573
 18325590 Meadow Acres Perfection 27

#Cole Creek Black Cedar 46P
 #Cole Creek Clovada 495
 #S AV Net Worth 4200
 Fink Miss 8379 6535 IF
 #*SydGen C C & 7
 #Erica of Ellston C124
 #H A R B Windy 702 JH
 Meadow Acres Perfection 961

CED	BW	WW	YW	RADG	DMI	YH	SC	DOC	CLAW	ANGLE	PAP	HS	HP	CEM
+13	-1	+78	+132	+25	+1.72	+1.0	+1.77	+16	+39	+60	+1.87	+47	+9.4	+11
MILK	MW	MH	SEN	CW	MARB	RE	FAT	SM	SW	SF	SG	SB	SC	
+34	+90	+7	-35	+48	+78	+58	+0.11	+54	+81	+71	+59	+130	+223	

70 Meadow Acres Cedar 3105

Birth Date: 10-20-2022 | Bull *20794042 | Tattoo: 3105

#*Cole Creek Cedar Ridge 1V
 +*Meadow Acres Cedar 6202
 18661871
 +*Fink Miss 1393 8379 NW
 ANGUS GS
 #+*PA Full Power 1208
 Meadow Acres Blackcap 066
 19936848
 Meadow Acres Blackcap 513

#Cole Creek Black Cedar 46P
 #Cole Creek Clovanada 49S
 #S AV Net Worth 4200
 Fink Miss 8379 6535 IF
 #+*PA Power Tool 9108
 *Pine View SQR Rita W091
 #*S AV Thunderbird 9061
 Meadow Acres Blackcap 396

CED	BW	WW	YW	RADG	DMI	YH	SC	DOC	CLAW	ANGLE	PAP	HS	HP	CEM
+6	-3	+59	+103	+21	+90	+1	+91	+13	+61	+56	-44	+39	+10.7	+9
MILK	MW	MH	SEN	CW	MARB	RE	FAT	SM	SW	SF	SG	SB	SC	
+21	+35	-1	+0	+31	+48	+56	+038	+60	+59	+75	+41	+116	+210	

74 Meadow Acres Cedar 3112

Birth Date: 10-19-2022 | Bull 20794048 | Tattoo: 3112

#*Cole Creek Cedar Ridge 1V
 +*Meadow Acres Cedar 6204
 18661870
 +*Fink Miss 1393 8379 NW
 ANGUS GS
 #*S AV Final Answer 0035
 Meadow Acres Perfection 478
 18009346
 +Meadow Acres Perfection 2106

#Cole Creek Black Cedar 46P
 #Cole Creek Clovanada 49S
 #S AV Net Worth 4200
 Fink Miss 8379 6535 IF
 #Sitz Traveler 8180
 S AV Emulous 8145
 #*Mytty In Focus
 Meadow Acres 616 354

CED	BW	WW	YW	RADG	DMI	YH	SC	DOC	CLAW	ANGLE	PAP	HS	HP	CEM
+10	-5	+64	+114	+26	+106	+4	+101	+11	+39	+55	+134	+64	+10.7	+12
MILK	MW	MH	SEN	CW	MARB	RE	FAT	SM	SW	SF	SG	SB	SC	
+29	+55	+2	-14	+29	+14	+34	+040	+63	+68	+62	+20	+83	+171	

71 Meadow Acres Cedar 3106

Birth Date: 11-17-2022 | Bull *20794043 | Tattoo: 3106

#*Cole Creek Cedar Ridge 1V
 +*Meadow Acres Cedar 6202
 18661871
 +*Fink Miss 1393 8379 NW
 ANGUS GS
 #*Connealy Consensus 7229
 +*Meadow Acres Rita 787 0240
 19920531
 +Meadow Acres Rita 787

#Cole Creek Black Cedar 46P
 #Cole Creek Clovanada 49S
 #S AV Net Worth 4200
 Fink Miss 8379 6535 IF
 #*Connealy Consensus
 Blue Lilly of Conanga 16
 #+O C C Emblazon 854E
 Meadow Acres Rita 1000

CED	BW	WW	YW	RADG	DMI	YH	SC	DOC	CLAW	ANGLE	PAP	HS	HP	CEM
+8	+3	+60	+103	+24	+91	+2	+80	+20	+44	+51	+89	+42	+4.3	+7
MILK	MW	MH	SEN	CW	MARB	RE	FAT	SM	SW	SF	SG	SB	SC	
+26	+42	+2	-6	+38	+64	+35	+027	+54	+63	+75	+47	+122	+212	

75 Meadow Acres Cedar 3124

Birth Date: 10-30-2022 | Bull 20794051 | Tattoo: 3124

#*Cole Creek Cedar Ridge 1V
 +*Meadow Acres Cedar 6204
 18661870
 +*Fink Miss 1393 8379 NW
 ANGUS GS
 #+*Werner War Party 2417
 Meadow Acres Blackbird 311
 17675818
 +Meadow Acres Blackbird 8101

#Cole Creek Black Cedar 46P
 #Cole Creek Clovanada 49S
 #S AV Net Worth 4200
 Fink Miss 8379 6535 IF
 #*Connealy Onward
 +BAAR USA Lady Jaye 489
 #G 13 Structure
 Leachman Blackbird 5025

CED	BW	WW	YW	RADG	DMI	YH	SC	DOC	CLAW	ANGLE	PAP	HS	HP	CEM
+9	-2	+57	+95	+20	+80	+2	+136	+14	+38	+41	-27	+69	+9.9	+9
MILK	MW	MH	SEN	CW	MARB	RE	FAT	SM	SW	SF	SG	SB	SC	
+32	+39	-1	-8	+21	+43	+18	+001	+68	+66	+52	+36	+88	+182	

72 Meadow Acres Cedar 3108

Birth Date: 10-22-2022 | Bull *20794044 | Tattoo: 3108

#*Cole Creek Cedar Ridge 1V
 +*Meadow Acres Cedar 6202
 18661871
 +*Fink Miss 1393 8379 NW
 ANGUS GS
 #*Sitz Wisdom 481T
 +*Meadow Acres 0235
 19945443
 +*Fink Miss 5380 1314 CR

#Cole Creek Black Cedar 46P
 #Cole Creek Clovanada 49S
 #S AV Net Worth 4200
 Fink Miss 8379 6535 IF
 #*Connealy Onward
 Sitz Elluna Elite 94P
 #*Cole Creek Cedar Ridge 1V
 +Fink Miss 1314 5523 EXT

CED	BW	WW	YW	RADG	DMI	YH	SC	DOC	CLAW	ANGLE	PAP	HS	HP	CEM
+9	+0	+54	+94	+21	+68	-1	+1.01	+13	+43	+48	-1.78	+53	+15.9	+10
MILK	MW	MH	SEN	CW	MARB	RE	FAT	SM	SW	SF	SG	SB	SC	
+27	+0	-6	+15	+30	+44	+13	+021	+94	+64	+68	+35	+102	+226	

76 Meadow Acres Cedar 3126

Birth Date: 10-22-2022 | Bull *20794052 | Tattoo: 3126

#*Cole Creek Cedar Ridge 1V
 +*Meadow Acres Cedar 6202
 18661871
 +*Fink Miss 1393 8379 NW
 ANGUS GS
 *Ellingson Homegrown 6035
 Meadow Acres Blackbird 030
 20039592
 Meadow Acres Blackbird 87

#Cole Creek Black Cedar 46P
 #Cole Creek Clovanada 49S
 #S AV Net Worth 4200
 Fink Miss 8379 6535 IF
 #*CTS Remedy 1T01
 *EA Blanche 4137
 #+*S AV Resource 1441
 +Meadow Acres Blackbird 897

CED	BW	WW	YW	RADG	DMI	YH	SC	DOC	CLAW	ANGLE	PAP	HS	HP	CEM
+13	-1.1	+47	+84	+19	+84	-1	+1.24	+10	+36	+42	-93	+62	+9.5	+12
MILK	MW	MH	SEN	CW	MARB	RE	FAT	SM	SW	SF	SG	SB	SC	
+32	+35	-4	-6	+22	+67	+50	+034	+61	+57	+54	+50	+105	+197	

73 Meadow Acres Cedar 3110

Birth Date: 10-30-2022 | Bull 20794046 | Tattoo: 3110

#*Cole Creek Cedar Ridge 1V
 +*Meadow Acres Cedar 6204
 18661870
 +*Fink Miss 1393 8379 NW
 ANGUS GS
 #*S AV Final Answer 0035
 Meadow Acres Rita 611 881
 19299545
 Meadow Acres Rita 512 611

#Cole Creek Black Cedar 46P
 #Cole Creek Clovanada 49S
 #S AV Net Worth 4200
 Fink Miss 8379 6535 IF
 #Sitz Traveler 8180
 S AV Emulous 8145
 #Connealy Thunder
 +Meadow Acres Rita 512

CED	BW	WW	YW	RADG	DMI	YH	SC	DOC	CLAW	ANGLE	PAP	HS	HP	CEM
+12	+0	+67	+119	+26	+1.03	+4	+1.65	+23	+30	+49	+1.85	+28	+16.8	+12
MILK	MW	MH	SEN	CW	MARB	RE	FAT	SM	SW	SF	SG	SB	SC	
+30	+59	+3	-17	+47	+39	+84	+003	+85	+71	+86	+43	+129	+252	

77 Meadow Acres Cedar 3129

Birth Date: 10-20-2022 | Bull 20794053 | Tattoo: 3129

#*Cole Creek Cedar Ridge 1V
 +*Meadow Acres Cedar 6204
 18661870
 +*Fink Miss 1393 8379 NW
 ANGUS GS
 #*Connealy Black Granite
 Meadow Acres Rita 740
 18968423
 Meadow Acres Rita 414

#Cole Creek Black Cedar 46P
 #Cole Creek Clovanada 49S
 #S AV Net Worth 4200
 Fink Miss 8379 6535 IF
 #*Connealy Consensus 7229
 #Eura Elga of Conanga 9109
 #Connealy Thunder
 #Meadow Acres Rita 156

CED	BW	WW	YW	RADG	DMI	YH	SC	DOC	CLAW	ANGLE	PAP	HS	HP	CEM
+15	-7	+63	+109	+27	+62	+4	+1.09	+16	+38	+58	+96	+43	+10.5	+11
MILK	MW	MH	SEN	CW	MARB	RE	FAT	SM	SW	SF	SG	SB	SC	
+30	+53	+2	-14	+38	+30	+53	+036	+64	+69	+81	+32	+112	+209	

Substance Sons

94 Meadow Acres Substance 3208

Birth Date: 12-12-2022 | Bull 20794080 | Tattoo: 3208

#*Benfield Substance 8506
+*Meadow Acres Substance 6199
 18692575 Tehama Blackcap Y691

ANGUS
ASSOCIATION

#+0 C C Emblazon 854E

+Meadow Acres Rita 2108

17431078 O&M Rita 9116 of 6054

#+H A Image Maker 0415
 Benfield Edella 1105
 #+G A R New Design 5050
 +Tehama Blackcap N548
 #D H D Traveler 6807
 Dixie Erica of C H 1019
 #+Rito 9M9 of 2036 Scotch Cap
 +G A R Ext 6054

BW	85
Adj. WW	476
Wt. 12/28/23	1165
SC	40.5
Adj. %IMF	3.83
Adj. RE	12.1
Dam's NR	8-106

CED	BW	WW	YW	RADG	DMI	YH	SC	DOC	CLAW	ANGLE	PAP	HS	HP	CEM
-1	+2.7	+51	+96	+26	+42	+2	-20	+28	+27	+33	+1.90	+52	+14.5	+4
MILK	MW	MH	SEN	CW	MARB	RE	FAT	\$M	\$W	\$F	\$G	\$B	\$C	
+40	+53	+2	-19	+33	+72	+65	+0.34	+72	+55	+71	+55	+126	+235	

95 Meadow Acres Substance 3227

Birth Date: 01-05-2023 | Bull 20794082 | Tattoo: 3227

#*Benfield Substance 8506
+*Meadow Acres Substance 6199
 18692575 Tehama Blackcap Y691

ANGUS
ASSOCIATION

*Ellingson Homegrown 6035

Meadow Acres Blackbird 989

19599438 Meadow Acres Blackbird 72

#+H A Image Maker 0415
 Benfield Edella 1105
 #+G A R New Design 5050
 +Tehama Blackcap N548
 #*CTS Remedy 1T01
 *EA Blanche 4137
 #*Cole Creek Cedar Ridge 1V
 Meadow Acres Blackbird 4122

BW	75
Adj. WW	
Wt. 12/28/23	1065
SC	38
Adj. %IMF	
Adj. RE	
Dam's NR	1-94

CED	BW	WW	YW	RADG	DMI	YH	SC	DOC	CLAW	ANGLE	PAP	HS	HP	CEM
+1	+2.6	+62	+114	+27	+95	+2	-42	+22	+33	+27	+1.83	+07	+8.4	+5
MILK	MW	MH	SEN	CW	MARB	RE	FAT	\$M	\$W	\$F	\$G	\$B	\$C	
+32	+72	+3	-24	+47	+74	+77	+0.28	+57	+59	+93	+58	+151	+253	



Registered Angus Heifers



Lot 96



Lot 97

96 Meadow Acres Blackbird 3205

Birth Date: 12-25-2022 | Cow 20794084 | Tattoo: 3205

##Benfield Substance 8506
+*Meadow Acres Substance 6199
18692575 Tehama Blackcap Y691



##Cole Creek Cedar Ridge 1V
Meadow Acres Blackbird 719
18968472 #Meadow Acres Blackbird 3112

##+H A Image Maker 0415
Benfield Edella 1105
##+G A R New Design 5050
+Tehama Blackcap N548
#Cole Creek Black Cedar 46P
#Cole Creek Clovanada 49S
#Connealy Thunder
Meadow Acres Blackbird 0218

BW	75
Adj. WW	
Wt. 12/28/23	
SC	
Adj. %IMF	
Adj. RE	
Dam's NR	3-98

CED	BW	WW	YW	RADG	DMI	YH	SC	DOC	CLAW	ANGLE	PAP	HS	HP	CEM
+2	+3.4	+68	+113	+26	+95	+2	+1.22	+21	+33	+30	+1.13	+.03	+15.3	+3
MILK	MW	MH	SEN	CW	MARB	RE	FAT	\$M	\$W	\$F	\$G	\$B	\$C	
+31	+54	+1	-15	+39	+55	+60	-.005	+84	+67	+76	+49	+124	+245	

97 Meadow Acres Perfection 389

Birth Date: 10-30-2022 | Cow *20794085 | Tattoo: 389

##Cole Creek Cedar Ridge 1V
+*Meadow Acres Cedar 6204
18661870 +*Fink Miss 1393 8379 NW



##Connealy Consensus 7229
+*Meadow Acres Perfection 6183
18735637 +Meadow Acres in Focus 1118

#Cole Creek Black Cedar 46P
#Cole Creek Clovanada 49S
#S A V Net Worth 4200
Fink Miss 8379 6535 IF
##Connealy Consensus
Blue Lilly of Conanga 16
##Mytty In Focus
Meadow Acres 616 354

BW	72
Adj. WW	534
Wt. 12/28/23	
SC	
Adj. %IMF	
Adj. RE	
Dam's NR	6-98

CED	BW	WW	YW	RADG	DMI	YH	SC	DOC	CLAW	ANGLE	PAP	HS	HP	CEM
+9	-.1	+53	+86	+15	+73	+1	+1.20	+10	+32	+.42	-.06	+.42	+15.0	+10
MILK	MW	MH	SEN	CW	MARB	RE	FAT	\$M	\$W	\$F	\$G	\$B	\$C	
+22	+10	-.1	+13	+24	+.68	-.23	+.050	+89	+58	+58	+40	+97	+215	



Explanation of EPDs

Expected Progeny Difference (EPD), is the prediction of how future progeny of each animal are expected to perform relative to the progeny of other animals listed in the database. EPDs are expressed in units of measure for the trait, plus or minus. Interim EPDs may appear on young animals when their performance has yet to be incorporated into the American Angus Association National Cattle Evaluation (NCE) procedures. This EPD will be preceded by an "I", and may or may not include the animal's own performance record for a particular trait, depending on its availability, appropriate contemporary grouping, or data edits needed for NCE.

GROWTH

Calving Ease Direct (CED), is expressed as a difference in percentage of unassisted births, with a higher value indicating greater calving ease in first-calf heifers. It predicts the average difference in ease with which a sire's calves will be born when he is bred to first-calf heifers.

Birth Weight EPD (BW), expressed in pounds, is a predictor of a sire's ability to transmit birth weight to his progeny compared to that of other sires.

Weaning Weight EPD (WW), expressed in pounds, is a predictor of a sire's ability to transmit weaning growth to his progeny compared to that of other sires.

Yearling Weight EPD (YW), expressed in pounds, is a predictor of a sire's ability to transmit yearling growth to his progeny compared to that of other sires.

Residual Average Daily Gain (RADG), feed efficiency expressed in pounds per day, is a predictor of a sire's genetic ability for post-weaning gain in future progeny compared to that of other sires, given a constant amount of feed consumed.

Dry Matter Intake (DMI), expressed in pounds per day, is a predictor of difference in transmitting ability for feed intake during the post-weaning phase, compared to that of other sires.

Scrotal Circumference EPD (SC), expressed in centimeters, is a predictor of the difference in transmitting ability for scrotal size compared to that of other sires.

Docility (DOC), is expressed as a difference in yearling cattle temperament, with a higher value indicating more favorable docility. It predicts the average difference of progeny from a sire in comparison with another sire's calves.

MATERNAL

Calving Ease Maternal (CEM), is expressed as a difference in percentage of unassisted births with a higher value indicating greater calving ease in first-calf daughters. It predicts the average ease with which a sire's daughters will calve as first-calf heifers when compared to daughters of other sires.

Maternal Milk EPD (Milk), is a predictor of a sire's genetic merit for milk and mothering ability as expressed in his daughters compared to daughters of other sires. In other words, it is that part of a calf's weaning weight attributed to milk and mothering ability.

CARCASS

Carcass Weight EPD (CW), expressed in pounds is a predictor of the differences in hot carcass weight of a sire's progeny compared to progeny of other sires.

Marbling EPD (Marb), expressed as a fraction of the difference in USDA marbling score of a sire's progeny compared to progeny of other sires.

Ribeye Area EPD (RE), expressed in square inches, is a predictor of the difference in ribeye area of a sire's progeny compared to progeny of other sires.

Fat Thickness EPD (Fat), expressed in inches, is a predictor of the differences in external fat thickness at the 12th rib (as measured between the 12th and 13th ribs) of a sire's progeny compared to progeny of other sires.

\$VALUE INDEXES

\$Value indexes, are multi-trait selection indexes to assist beef producers by adding simplicity to genetic selection decisions. \$Values are reported in dollars per head, where a higher value is more favorable. The \$Value is an estimate of how future progeny of each sire are expected to perform, on average, compared to progeny of other sires in the database if the sires were randomly mated to cows and if calves were exposed to the same environment.

Maternal Value (\$M), an index expressed in dollars per head, predicts profitability differences in progeny due to genetics from conception to weaning.

Weaned Calf Value (\$W), an index value expressed in dollars per head, is the expected average difference in future progeny performance for pre-weaning merit. \$W includes both revenue and cost adjustments associated with differences in birth weight, weaning direct growth, maternal milk, and mature cow size.

Beef Value (\$B), an index value expressed in dollars per head, is the expected average difference in future progeny performance for post-weaning and carcass value compared to progeny of other sires.

Combined Value (\$C), an index expressed in dollars per head, includes all traits that make up both \$M and \$B with the objective that commercial producers will replace 20% of their breeding females per year with replacement heifers retained within their own herd.

MAKE YOUR CATTLE STAND OUT



You've made a significant investment in your genetics, but does the market recognize that? Stand out by differentiating our cattle with AngusLinkSM programs: the Genetic Merit ScorecardSM and AngusVerifiedSM.

ANGUS LINKSM
**GENETIC
MERIT**
SCORECARDSM

The Genetic Merit Scorecard gives buyers the confidence they need to pay more for your quality calves.

ANGUS
VERIFIEDSM

AngusVerified validates your calves are sired by registered Angus bulls and make your cattle stand apart from other black hides on sale day.

Users of AngusLink programs earn **\$13-15/CWT PREMIUMS** on average. Give us a call, and learn how to claim your competitive edge with AngusLink value-added programs.

ANGUS LINKSM
VALUE ADDED PROGRAMS

ANGUSLINK.COM | 816-383-5100

The Genetic Merit Scorecard and AngusVerified are administered by IMI Global.



32581 Correa Lane, Echo, OR 97826
Richard Correa (541) 449-3558
Devin Correa (541) 379-0632 Cell
E-mail: meadowacresangus@msn.com www.meadowacresangus.com

Presorted First Class
US Postage Paid
San Luis Obispo
Permit #8

22ND ANNUAL *Production Sale* FEBRUARY 14, 2024



LUNCH AT NOON | SALE AT 1PM
AT THE DOUBLE M SALE BARN • STANFIELD, OR

Your Maternal Power