



**20th
Annual**

Production Sale

Wednesday • 1:00 PM
February 9, 2022
Double M Sale Facility

30256 Stanfield Meadows Road, Stanfield, OR 97875

LiveAuctions.TV

www.meadowacresangus.com



"Our Customers Make the Difference"

99 Bulls Sell FEBRUARY 9, 2022

1 PM • Double M Sale Facility, Stanfield, OR

The Double M Sale Facility is located at 30256 Stanfield Meadows Road, Stanfield, OR 97875. Directions: Take Exit 182 off of Interstate 84. Turn North, then take the first right onto Stanfield Meadows Rd. Second driveway on the right.

Bull Buyer Information



Auctioneer:
C.D. "Butch" Booker
Mobile: (509) 989-2855



<http://www.LiveAuctions.tv>

LIVESTOCK PUBLICATION REPRESENTATIVES:

Logan Ipsen, *Western Livestock Journal* (916) 947-2392
Rod Wesselman, *Wesselman Livestock* (509) 765-9219
Jared Patterson, *Angus Journal* (208) 312-2386

SALE DAY PHONES:

(541) 379-0632 - Cell, Devin
(541) 449-3558 - Richard
(541) 377-0114 - Cell, Garrett

SALE LOCATION:

Double M Sale Facility
30256 Stanfield Meadows Rd., Stanfield, OR 97875.

Directions: Take Exit 182 off of Interstate 84. Turn North, then take the first right onto Stanfield Meadows Rd. Second driveway on the right.

ABSENTEE BIDDER INFORMATION:

Buyers that cannot attend the sale may call Meadow Acres Angus Ranch and leave a bid for the lot they wish to purchase. If buyer is not satisfied 100% with the purchase, you won't own it. This is a guarantee to any buyer.

TERMS & CONDITIONS OF SALE:

All cattle will sell under the suggested Terms and Conditions of the American Angus Association (http://www.angus.org/Pub/suggested_sale_terms.pdf). Supplemental sheets to the sale will take precedence over information listed in the sale book.

LOT NUMBERS:

Lot numbers on animals selling will correspond with the sale book.

DELIVERY OF SALE CATTLE:

Free delivery on sale cattle up to 300 miles (bulls only, females delivered at cost). Anything over will be done at cost. All cattle will be delivered at the buyer's risk within a reasonable length of time after the sale. Pick cattle up sale day and receive a \$50 credit.

FEED ARRANGEMENTS:

Free feed until March 1. Then feeding will be charged to buyer at normal rate.

MARKETING OPTION - CALF BUY BACK PROGRAM

Contact: Devin Correa (541) 379-0632

BREEDING INFORMATION:

We guarantee that all breeding cattle sold by Meadow Acres Angus Ranch, both bulls and females, are fertile to the best of our knowledge. If a bull is injured at any time in the first year breeding season so as to make him functionally infertile, we will provide you with a satisfactory replacement (if available), or issue you a credit equal to the bull's purchase price minus the salvage value received for that bull. If a female is determined to be a non-breeder, then we would ask you to sell her and would offer you the difference of her purchase price minus the salvage value as credit in any future Meadow Acres Angus Ranch sale. All credit is good, use at next year's sale. We would simply ask you to contact us before you cull your infertile animal.

This is not a life insurance policy, however. We will not replace a dead animal if it is killed or dies for any reason. We would suggest that normal care still needs to be exercised toward these animals and that particularly the yearling bulls not be allowed to get thin.

HERD HEALTH:

Meadow Acres Ranch has tested BVD Free. All cattle will be accompanied by proper health certificates for immediate shipment. All females born at Meadow Acres Angus Ranch have been brucellosis vaccinated. Cattle offered for sale have been vaccinated with 8 Way, Multimin, Enforce3 and Bovishield Gold 5 and Ivomec Pour On at branding and weaning. Clean Up II at ultrasounding.

REVENUE SHARING:

Meadow Acres Angus Ranch will be retaining one-third semen interest in every bull selling. Buyer will have full possession and salvage value of the bull.

ACCOMMODATIONS:

Best Western, Hermiston (541) 564-0202
Oxford Suites, Hermiston (541) 567-8000
Comfort Inn & Suites, Hermiston (541) 564-5991
Holiday Inn Express (541) 585-5656

LUNCH:

A complimentary steak lunch will be served on sale day starting at 12. Coffee and donuts will be available in the morning.

SALE OFFERING:

Cattle may be viewed at the ranch any time prior to the sale.

LIABILITY:

All persons who attend this sale do so at their own risk, legal or otherwise. Meadow Acres Angus Ranch and their staff assume no liability for property loss or accidents that may occur.

ANGUS MEDIA EPDs contained in the hard copy of this sale book were current as of print date. Digital versions of this sale book can be viewed online at www.angus.org and will have EPDs updated every Friday with the exception of EPD references in footnotes and photos. Any PDF downloads from the website will contain EPDs current as of the date downloaded. References: American Angus Association®, AHIR®, AngusLink™, CAB®, Pathfinder®.

Meadow Acres Angus Ranch • 32581 Correa Lane • Echo, Oregon 97826

Richard Correa (541) 449-3558 • Devin Correa (541) 379-0632 Cell • meadowacresangus@msn.com • www.meadowacresangus.com



www.meadowacresangus.com

Welcome to the Sale...



Garrett, Melanie, Devin and Gage Correa

Dear Cattlemen and Cattlewomen,

We would like to welcome you to our 20th Anniversary sale here at Meadow Acres Angus Ranch. Without the support of great customers and friends in this business, we wouldn't be able to commemorate our 20th Anniversary. We enjoy being able to be a valuable part of your operation's success.

This year's offering will consist of 100 fall bulls that are our best to date that we have offered for public auction. Once again, the bulls have been BVD tested, ultra-sounded, semen tested, groomed, Angus GS tested, and freeze branded for easy identification for our valued customers.

We are very proud of the offering this year, and from top to bottom this is a great set of cattle to choose from. We are committed to raising cattle that are balanced and staying the course for maternal, moderate, and structural soundness. Our emphasis is high on maternal, to create great mother cows, not terminal cattle that won't hold up in the real world.

Cow herds evolve over many years, not instantly. As you study this sale book you will see a program that has been built on balance and genetics that have stood the test of time. We have been using embryo transfer since 2004, so we have many $\frac{3}{4}$ and $\frac{1}{2}$ sisters in the herd that has added consistency in the cow herd.

The sale will be on Live Auctions TV and videos will be available for the bulls. Please join us February 9th, 2022 for our 20th Anniversary sale. If you have questions, please contact us.

The Correas



Richard Correa



A Coleman Bravo 6313

[AMF-CAF-DZF-DDF-MIF-NHF-OHF-OSF-RDF]

Birth Date: 07-04-2016 | Bull #*18734838 | Tattoo: 6313

#*O C C Paxton 730P
#*Coleman Charlo 0256
16879074

+O C C Focus 813F
O C C Blackbird 736K
#Sitz Traveler 8180
S A V Abigale 6062

#*Connealy Onward
+*Coleman Donna 714
15706882

#Connealy Lead On
Altune of Conanga 6104
#Basin Rainmaker 654K
+KMK Donna J311

SM	+89
SW	+59
SF	+59
SG	+22
SB	+81
SC	+194

CED	BW	WW	YW	CEM	MILK	\$EN	CW	MARB	RE	FAT
+16	-.5	+55	+101	+10	+21	+13	+29	+.11	+39	+0.38



B Spring Cove Crossbow

[AMF-CAF-DZF-DDF-MIF-NHF]

Birth Date: 01-24-2014 | Bull #*17924903 | Tattoo: 4205

#*Summitcrest Complete 1P55
#*KM Broken Bow 002
16764044

#C F Right Design 1802
Summitcrest Elba 1M17
Basin Ambush 8161
#Summitcrest Princess 2J10

#*C C A Emblazon 702
Spring Cove Pretty 205
17423236

#+O C C Emblazon 854E
Limestone Blackcap R128
#+SydGen 928 Destination 5420
Spring Cove Pretty 737

SM	+37
SW	+61
SF	+100
SG	+67
SB	+167
SC	+254

CED	BW	WW	YW	CEM	MILK	\$EN	CW	MARB	RE	FAT
+16	-1.3	+58	+107	+14	+27	-37	+47	+1.02	+62	+0.10



C Raven Powerball 53

[AMF-CAF-DZF-DDF-MIF-NHF-OHF-OSF]

Birth Date: 01-12-2013 | Bull #*17632447 | Tattoo: 53

#*G A R Predestined
#*PA Power Tool 9108
16381311

#B/R New Design 036
#+G A R Ext 4206
#Bon View New Design 208
#Shamrock's Beebe Queen 1823

#*Hoover Dam
+*Raven Emma E 4241
17149368

#*SydGen C C & 7
#Erica of Ellston C124
#+Pine Creek Traveler 124-1107
Sitz Emma E

SM	+65
SW	+58
SF	+92
SG	+63
SB	+155
SC	+266

CED	BW	WW	YW	CEM	MILK	\$EN	CW	MARB	RE	FAT
+10	+2	+57	+107	+11	+25	-21	+42	+93	+61	+0.02



D S A V Renown 3439

[AMF-CAF-DZF-DDF-MIF-NHF-OHF-OSF-RDF]

Birth Date: 01-07-2013 | Bull #*17633839 | Tattoo: 3439

#R R Rito 707
+Rito 707 of Ideal 3407 7075
13066860

Rito N Bar
ErisKay of Rollin Rock 3
#Ideal 1418 of 8103 4286
Ideal 076 of 692 8375

#S A V 8180 Traveler 004
*S A V Blackcap May 4136
14739095

#Sitz Traveler 8180
+Boyd Forever Lady 8003
#+S A F 598 Bando 5175
S A V May 7238

SM	+57
SW	+65
SF	+73
SG	+15
SB	+88
SC	+171

CED	BW	WW	YW	CEM	MILK	\$EN	CW	MARB	RE	FAT
-2	+2.8	+70	+125	+2	+19	-23	+38	-.22	+82	+0.10

E Coleman Navigator 614

[AMF-CAF-DZF-DDF-MIF-NHF-OHF-OSF-RDF]

Birth Date: 01-06-2016 | Bull *18570027 | Tattoo: 614

#C H Quantum 6247
#Cole Creek Black Cedar 46P
14496765 Cole Creek Clova Juanada 67

#C H Quantum 3330
C H Blackbird 0136
#A A R Windy Ridge 523
Cole Creek Clova Juanada 811
#*O C C Juneau 807J
+*Coleman Donna 714
#D H D Traveler 6807
Papa Eriskay 7883

SM	+59
SW	+58
SF	+61
SG	+30
SB	+92
SC	+178

CED	BW	WW	YW	CEM	MILK	SEN	CW	MARB	RE	FAT
+4	+8	+63	+103	+3	+17	-14	+30	+18	+50	-.012



F ZWT Summitt 6507

[AMF-CAF-DZF-DDF-MIF-NHF-OHF-OSF-RDF]

Birth Date: 04-24-2016 | Bull +*18561289 | Tattoo: 6507

+Rito 707 of Ideal 3407 7075
#*S A V Renown 3439
17633839 *S A V Blackcap May 4136

#R R Rito 707
Ideal 3407 of 1418 076
#S A V 8180 Traveler 004
#*S A V May 2397
#Connealy Lead On
Altune of Conanga 6104
#Basin Rainmaker 654X
+KMK Donna J311

SM	+74
SW	+61
SF	+63
SG	+31
SB	+94
SC	+196

CED	BW	WW	YW	CEM	MILK	SEN	CW	MARB	RE	FAT
+10	+5	+63	+112	+4	+18	-3	+29	+16	+71	-.003



G HA Cowboy Up 5405

[AMF-CAF-DZF-DDF-MIF-NHF-OHF-OSF]

Birth Date: 01-30-2015 | Bull *18286467 | Tattoo: 5405

#*KG Solution 0018
*HA Outside 3008
17651088 #*HA Ever Lady 1575

#MOGCK Sure Shot
KG Rito Lady 8724
#*S A V Bismarck 5682
HA Ever Lady 8066
#*Connealy Onward
*Sitz Henrietta Pride 81M
#E&b 4137 Dominett 814
+HA Blackcap Lady 3833

SM	+36
SW	+63
SF	+78
SG	+23
SB	+102
SC	+168

CED	BW	WW	YW	CEM	MILK	SEN	CW	MARB	RE	FAT
+8	+2.6	+75	+137	+4	+15	-31	+39	+0.4	+31	-.035



H S A V Rainfall 6846

[AMF-CAF-DZF-DDF-MIF-NHF-OHF-OSF-RDF]

Birth Date: 01-09-2016 | Bull +*18578963 | Tattoo: 6846

#*O C C Paxton 730P
#*Coleman Charlo 0256
16879074 +Bohi Abigale 6014

+O C C Focus 813F
O C C Blackbird 736K
#Sitz Traveler 8180
S A V Abigale 6062
#Sitz Traveler 8180
+Boyd Forever Lady 8003
#*S A F 598 Bando 5175
S A V May 7238

SM	+85
SW	+64
SF	+65
SG	+50
SB	+115
SC	+234

CED	BW	WW	YW	CEM	MILK	SEN	CW	MARB	RE	FAT
+7	+2	+57	+110	+4	+27	-2	+20	+65	+61	+0.13





Coleman Bravo 6313

SM	+89
SW	+59
SF	+59
SG	+22
SB	+81
SC	+194

CED	BW	WW	YW	CEM	MILK	\$EN	CW	MARB	RE	FAT
+16	-.5	+55	+101	+10	+21	+13	+29	+11	+39	+038



MEADOW ACRES BRAVO 1119 - Lot 3

1 Meadow Acres Bravo 160

Birth Date: 09-07-2020 | Bull 20171609 | Tattoo: 160

#+*Coleman Charlo 0256	#*O C C Paxton 730P	SM	+61
+*Coleman Bravo 6313	+Bohi Abigale 6014	SW	+67
18734838	+*Coleman Donna 714	SF	+99
ANGUS	+*Coleman Donna 386	SG	+35
#TC Total 410	#Bon View New Design 208	SB	+134
#Meadow Acres Miss Kaye 340	+TC Erica Eileen 2047	SC	+235
17675648	#*Mytty In Focus		
	Meadow Acres Miss Kaye 875		

CED	BW	WW	YW	SC	DOC	CEM	MILK	\$EN	CW	MARB	RE	FAT
+10	+.4	+68	+122	+1.10	+33	+8	+22	-27	+55	+20	+77	-.018
ANGLE	CLAW	BW	Adj. WW	Wt. 12/28/21	SC	Adj. %IMF	Adj. RE	Dam's Nursing Ratio				
+51	+51	75	725	1605	45	2.07	13.4	7-112				

3 Meadow Acres Bravo 1119

Birth Date: 09-06-2020 | Bull 20171523 | Tattoo: 1119

#+*Coleman Charlo 0256	#*O C C Paxton 730P	SM	+87
+*Coleman Bravo 6313	+Bohi Abigale 6014	SW	+67
18734838	+*Coleman Donna 714	SF	+91
ANGUS	+*Coleman Donna 386	SG	+31
#Connealy Thunder	#Baldrige Kaboom K243 KCF	SB	+122
Meadow Acres Rita 274 835	#Parka of Conanga 241	SC	+245
19299529	#*S A V Final Answer 0035		
	O&M Rita 9116 of 6054		

CED	BW	WW	YW	SC	DOC	CEM	MILK	\$EN	CW	MARB	RE	FAT
+12	-.4	+64	+114	+96	+15	+12	+19	+1	+51	+28	+53	+038
ANGLE	CLAW	BW	Adj. WW	Wt. 12/28/21	SC	Adj. %IMF	Adj. RE	Dam's Nursing Ratio				
+46	+38	75	674	1485	43.5	3.13	14.3	2-102				



MEADOW ACRES BRAVO 166 - Lot 2

2 Meadow Acres Bravo 166

Birth Date: 09-26-2020 | Bull 20171532 | Tattoo: 166

#+*Coleman Charlo 0256	#*O C C Paxton 730P	SM	+81
+*Coleman Bravo 6313	+Bohi Abigale 6014	SW	+81
18734838	+*Coleman Donna 714	SF	+56
ANGUS	+*Coleman Donna 386	SG	+46
#+*PA Full Power 1208	+*PA Power Tool 9108	SB	+102
Meadow Acres Rita 730	*Pine View SQR Rita W091	SC	+213
18968480	+*O C C Embazon 854E		
	O&M Rita 9116 of 6054		

CED	BW	WW	YW	SC	DOC	CEM	MILK	\$EN	CW	MARB	RE	FAT
+5	+1.7	+73	+122	+1.20	+24	+5	+25	-7	+31	+52	+54	-.012
ANGLE	CLAW	BW	Adj. WW	Wt. 12/28/21	SC	Adj. %IMF	Adj. RE	Dam's Nursing Ratio				
+47	+40	85	718	1505	42.5	1.86	12.5	2-115				

4 Meadow Acres Bravo 1140

Birth Date: 09-08-2020 | Bull 20171559 | Tattoo: 1140

#+*Coleman Charlo 0256	#*O C C Paxton 730P	SM	+85
+*Coleman Bravo 6313	+Bohi Abigale 6014	SW	+85
18734838	+*Coleman Donna 714	SF	+63
ANGUS	+*Coleman Donna 386	SG	+38
#*S A V Final Answer 0035	#Sitz Traveler 8180	SB	+101
#Meadow Acres Miss Kaye 512	S A V Emulous 8145	SC	+216
18327646	#*Sitz Wisdom 481T		
	Meadow Acres Miss Kaye 875		

CED	BW	WW	YW	SC	DOC	CEM	MILK	\$EN	CW	MARB	RE	FAT
+11	+.9	+69	+116	+1.35	+22	+7	+31	-7	+39	+39	+61	+025
ANGLE	CLAW	BW	Adj. WW	Wt. 12/28/21	SC	Adj. %IMF	Adj. RE	Dam's Nursing Ratio				
+56	+40	80	682	1480	42	2.41	13.5	5-108				

5 Meadow Acres Bravo 1143

Birth Date: 09-04-2020 | Bull 20171448 | Tattoo: 1143

#+*Coleman Charlo 0256	#*O C C Paxton 730P	SM	+106
+*Coleman Bravo 6313	+Bohi Abigale 6014	SW	+74
18734838	+*Coleman Donna 714	SF	+66
ANGUS	+*Coleman Donna 386	SG	+34
#*Connealy Black Granite	#*Connealy Consensus 7229	SB	+100
Meadow Acres Lass 872	#Eura Elga of Conanga 9109	SC	+236
19299556	#*Sitz Dash 10277		
	Meadow Acres Lass 4131		

CED	BW	WW	YW	SC	DOC	CEM	MILK	\$EN	CW	MARB	RE	FAT
+14	-.2	+54	+93	+84	+28	+13	+30	+10	+29	+34	+55	+037
ANGLE	CLAW	BW	Adj. WW	Wt. 12/28/21	SC	Adj. %IMF	Adj. RE	Dam's Nursing Ratio				
+48	+24	75	618	1455	43	3.17	13.1	2-98				

6 Meadow Acres Bravo 1255

Birth Date: 09-15-2020 | Bull +*20177636 | Tattoo: 1255

+*Coleman Charlo 0256
18734838
+*Coleman Donna 714
ANGUS
#S AV 8180 Traveler 004
+Meadow Acres Rita 8115
16193939 O&m Rita 9116 of 6054



#*O C C Paxton 730P
+Bohi Abigale 6014
#*Connealy Onward
+*Coleman Donna 386
#Sitz Traveler 8180
+Boyd Forever Lady 8003
+*Rito 9M9 of 2036 Scotch Cap
+G A R Ext 6054

SM	+85
SW	+72
SF	+75
SG	+33
SB	+108
SC	+225

CED	BW	WW	YW	SC	DOC	CEM	MILK	SEN	CW	MARB	RE	FAT
+9	+1.2	+62	+107	+29	+25	+10	+28	-7	+37	+20	+61	-014
ANGLE	CLAW	BW	Adj. WW	Wt. 12/28/21	SC	Adj. %IMF	Adj. RE	Dam's Nursing Ratio				
+36	+40	79	621	1415	42	2.36	13.0	5-117				

7 Meadow Acres Bravo 1256

Birth Date: 09-16-2020 | Bull +*20217615 | Tattoo: 1256

+*Coleman Charlo 0256
18734838
+*Coleman Donna 714
ANGUS
#S AV Pioneer 7301
#*Meadow Acres Rita 8115 285
17421861 +Meadow Acres Rita 8115



#*O C C Paxton 730P
+Bohi Abigale 6014
#*Connealy Onward
+*Coleman Donna 386
#*S AV Final Answer 0035
S AV Blackbird 5297
#S AV 8180 Traveler 004
O&m Rita 9116 of 6054

SM	+74
SW	+62
SF	+42
SG	+24
SB	+67
SC	+161

CED	BW	WW	YW	SC	DOC	CEM	MILK	SEN	CW	MARB	RE	FAT
+2	+2.9	+68	+108	+1.08	+19	+9	+17	-5	+18	+23	+11	+028
ANGLE	CLAW	BW	Adj. WW	Wt. 12/28/21	SC	Adj. %IMF	Adj. RE	Dam's Nursing Ratio				
+51	+38	74	570	1455	44.5	2.93	11.7	5-114				

8 Meadow Acres Bravo 1257

Birth Date: 09-21-2020 | Bull +*20217618 | Tattoo: 1257

+*Coleman Charlo 0256
18734838
+*Coleman Donna 714
ANGUS
#S AV Pioneer 7301
#*Meadow Acres Rita 8115 285
17421861 +Meadow Acres Rita 8115



#*O C C Paxton 730P
+Bohi Abigale 6014
#*Connealy Onward
+*Coleman Donna 386
#*S AV Final Answer 0035
S AV Blackbird 5297
#S AV 8180 Traveler 004
O&m Rita 9116 of 6054

SM	+80
SW	+62
SF	+72
SG	+37
SB	+108
SC	+220

CED	BW	WW	YW	SC	DOC	CEM	MILK	SEN	CW	MARB	RE	FAT
+9	+1.2	+61	+111	+1.58	+27	+10	+21	-2	+32	+35	+52	+006
ANGLE	CLAW	BW	Adj. WW	Wt. 12/28/21	SC	Adj. %IMF	Adj. RE	Dam's Nursing Ratio				
+56	+47	82	652	1450	43.5	2.54	13.7	5-114				

9 Meadow Acres Bravo 1259

Birth Date: 09-15-2020 | Bull +*20217635 | Tattoo: 1259

+*Coleman Charlo 0256
18734838
+*Coleman Donna 714
ANGUS
#S AV 8180 Traveler 004
+Meadow Acres Rita 8115
16193939 O&m Rita 9116 of 6054



#*O C C Paxton 730P
+Bohi Abigale 6014
#*Connealy Onward
+*Coleman Donna 386
#Sitz Traveler 8180
+Boyd Forever Lady 8003
+*Rito 9M9 of 2036 Scotch Cap
+G A R Ext 6054

SM	+74
SW	+73
SF	+66
SG	+19
SB	+85
SC	+184

CED	BW	WW	YW	SC	DOC	CEM	MILK	SEN	CW	MARB	RE	FAT
+6	+1.7	+62	+110	+46	+21	+8	+32	-18	+35	-.07	+58	+006
ANGLE	CLAW	BW	Adj. WW	Wt. 12/28/21	SC	Adj. %IMF	Adj. RE	Dam's Nursing Ratio				
+40	+33	83	630	1530	40	2.07	13.9	5-117				

10 Meadow Acres Bravo 152

Birth Date: 10-14-2020 | Bull 20217517 | Tattoo: 152

+*Coleman Charlo 0256
18734838
+*Coleman Donna 714
ANGUS
#*PA Full Power 1208
Meadow Acres Rita 2104 869
19299533 +Meadow Acres Rita 2104

#*O C C Paxton 730P
+Bohi Abigale 6014
#*Connealy Onward
+*Coleman Donna 386
#*PA Power Tool 9108
*Pine View SQR Rita W091
+*O C C Emblazon 854E
O&m Rita 9116 of 6054

SM	+77
SW	+81
SF	+60
SG	+35
SB	+95
SC	+200

CED	BW	WW	YW	SC	DOC	CEM	MILK	SEN	CW	MARB	RE	FAT
+13	+2	+66	+118	+1.54	+25	+6	+32	-15	+34	+23	+53	-.038
ANGLE	CLAW	BW	Adj. WW	Wt. 12/28/21	SC	Adj. %IMF	Adj. RE	Dam's Nursing Ratio				
+52	+45	75	630	1350	44	1.83	13.2	1-103				

11 Meadow Acres Bravo 174

Birth Date: 09-03-2020 | Bull 20217607 | Tattoo: 174

+*Coleman Charlo 0256
18734838
+*Coleman Donna 714
ANGUS
#*Werner War Party 2417
Meadow Acres Blackbird 311
17675818 +Meadow Acres Blackbird 8101

#*O C C Paxton 730P
+Bohi Abigale 6014
#*Connealy Onward
+*Coleman Donna 386
#*Connealy Onward
+BAAR USA Lady Jaye 489
#G 13 Structure
Leachman Blackbird 5025

SM	+95
SW	+61
SF	+48
SG	+30
SB	+78
SC	+196

CED	BW	WW	YW	SC	DOC	CEM	MILK	SEN	CW	MARB	RE	FAT
+4	+2.3	+54	+85	+97	+24	+6	+24	+11	+20	+30	+26	+022
ANGLE	CLAW	BW	Adj. WW	Wt. 12/28/21	SC	Adj. %IMF	Adj. RE	Dam's Nursing Ratio				
+49	+34	75	575	1355	43.5	1.84	11.5	5-99				

12 Meadow Acres Bravo 195

Birth Date: 09-11-2020 | Bull 20217612 | Tattoo: 195

+*Coleman Charlo 0256
18734838
+*Coleman Donna 714
ANGUS
#Connealy Lead On
Meadow Acres Rita 36
17675211 +Meadow Acres Rita 953

#*O C C Paxton 730P
+Bohi Abigale 6014
#*Connealy Onward
+*Coleman Donna 386
#Connealy Leadtime
Eligence Plus of Conanga
#+B/R New Frontier 095
O&m Rita 9116 of 6054

SM	+80
SW	+65
SF	+52
SG	+35
SB	+87
SC	+193

CED	BW	WW	YW	SC	DOC	CEM	MILK	SEN	CW	MARB	RE	FAT
+10	+0	+53	+85	+71	+27	+8	+25	+8	+26	+29	+55	-.007
ANGLE	CLAW	BW	Adj. WW	Wt. 12/28/21	SC	Adj. %IMF	Adj. RE	Dam's Nursing Ratio				
+60	+47	75	618	1390	43	1.73	11.8	6-99				



MEADOW ACRES BRAVO 1259 - Lot 9



ZWT Summitt 6507

SM	+74
SW	+61
SF	+63
SG	+31
SB	+94
SC	+196

CED	BW	WW	YW	CEM	MILK	\$EN	CW	MARB	RE	FAT
+10	+5	+63	+112	+4	+18	-3	+29	+16	+71	-.003



MEADOW ACRES SUMMITT 1260 - Lot 15

15 Meadow Acres Summitt 1260

Birth Date: 09-25-2020 | Bull +*20215510 | Tattoo: 1260

+*S AV Renown 3439 +Rito 707 of Ideal 3407 7075
 +*ZWT Summitt 6507 *S AV Blackcap May 4136
 18561289 +*Coleman Donna 714 #*Connealy Onward
 +*Coleman Donna 386
 ANGUSGS #*Sitz Wisdom 481T ET #*Connealy Onward
 Meadow Acres Perfection 4132 Sitz Elluna Elite 94P
 19243907 +Meadow Acres Perfection 0100 #+O C C Emblazon 854E
 +V N A R Perfection 10F 9H

SM	+64
SW	+61
SF	+61
SG	+30
SB	+92
SC	+183

CED	BW	WW	YW	SC	DOC	CEM	MILK	\$EN	CW	MARB	RE	FAT
+10	+1.1	+58	+106	+51	+18	+4	+22	+1	+31	+26	+41	+016
ANGLE	CLAW	BW	Adj. WW	Wt. 12/28/21	SC	Adj. %IMF	Adj. RE	Dam's Nursing Ratio				
+38	+37	92	693	1585	44	3.36	13.4	2-119				



MEADOW ACRES SUMMITT 1251 - Lot 13

13 Meadow Acres Summitt 1251

Birth Date: 09-24-2020 | Bull +*20215449 | Tattoo: 1251

+*S AV Renown 3439 +Rito 707 of Ideal 3407 7075
 +*ZWT Summitt 6507 *S AV Blackcap May 4136
 18561289 +*Coleman Donna 714 #*Connealy Onward
 +*Coleman Donna 386
 ANGUSGS #*Sitz Wisdom 481T ET #*Connealy Onward
 Meadow Acres Perfection 4132 Sitz Elluna Elite 94P
 19243907 +Meadow Acres Perfection 0100 #+O C C Emblazon 854E
 +V N A R Perfection 10F 9H

SM	+54
SW	+65
SF	+59
SG	+40
SB	+99
SC	+182

CED	BW	WW	YW	SC	DOC	CEM	MILK	\$EN	CW	MARB	RE	FAT
+10	+1.1	+58	+105	+52	+21	+5	+28	-14	+27	+48	+43	+020
ANGLE	CLAW	BW	Adj. WW	Wt. 12/28/21	SC	Adj. %IMF	Adj. RE	Dam's Nursing Ratio				
+47	+42	95	666	1570	41	4.77	12.6	2-119				

16 Meadow Acres Summitt 194

Birth Date: 09-08-2020 | Bull *20215323 | Tattoo: 194

+*S AV Renown 3439 +Rito 707 of Ideal 3407 7075
 +*ZWT Summitt 6507 *S AV Blackcap May 4136
 18561289 +*Coleman Donna 714 #*Connealy Onward
 +*Coleman Donna 386
 ANGUSGS #*Sitz Wisdom 481T ET #*Connealy Onward
 Meadow Acres Perfection 4132 Sitz Elluna Elite 94P
 19243907 +Meadow Acres Perfection 0100 #+O C C Emblazon 854E
 +V N A R Perfection 10F 9H

SM	+69
SW	+74
SF	+91
SG	+46
SB	+137
SC	+247

CED	BW	WW	YW	SC	DOC	CEM	MILK	\$EN	CW	MARB	RE	FAT
+8	+1.8	+76	+133	+71	+13	+2	+21	-22	+57	+57	+52	+015
ANGLE	CLAW	BW	Adj. WW	Wt. 12/28/21	SC	Adj. %IMF	Adj. RE	Dam's Nursing Ratio				
+53	+51	80	686	1495	45	2.57	12.9	2-119				

14 Meadow Acres Summitt 1252

Birth Date: 09-21-2020 | Bull +*20215514 | Tattoo: 1252

+*S AV Renown 3439 +Rito 707 of Ideal 3407 7075
 +*ZWT Summitt 6507 *S AV Blackcap May 4136
 18561289 +*Coleman Donna 714 #*Connealy Onward
 +*Coleman Donna 386
 ANGUSGS #Connealy Thunder ET #Baldridge Kaboom K243 KCF
 Meadow Acres Rita 414 #Parka of Conanga 241
 18009479 #Meadow Acres Rita 156 #*O C C Missing Link 830M
 Meadow Acres Rita 989

SM	+89
SW	+73
SF	+64
SG	+54
SB	+118
SC	+242

CED	BW	WW	YW	SC	DOC	CEM	MILK	\$EN	CW	MARB	RE	FAT
+15	-2.6	+51	+86	+05	+15	+9	+30	+9	+28	+66	+82	+008
ANGLE	CLAW	BW	Adj. WW	Wt. 12/28/21	SC	Adj. %IMF	Adj. RE	Dam's Nursing Ratio				
+41	+38	85	620	1405	42	3.80	13.9	3-107				



MEADOW ACRES SUMMITT 1252 - Lot 14

Coleman Charlo 3212



SM	+74
SW	+66
SF	+76
SG	+41
SB	+117
SC	+226

CED	BW	WW	YW	CEM	MILK	\$EN	CW	MARB	RE	FAT
+4	+3	+60	+107	-2	+25	-9	+34	+50	+49	+025

17 Meadow Acres Charlo 1253

Birth Date: 09-21-2020 | Bull +*20217539 | Tattoo: 1253

+*Coleman Charlo 0256 #O C C Paxton 730P
 +*Coleman Charlo 3212 +Bohi Abigale 6014
 17783509 +*Coleman Donna 714 #*Connealy Onward
 +*Coleman Donna 386
 #*Sitz Wisdom 481T #*Connealy Onward
 Meadow Acres Perfection 4132 Sitz Elluna Elite 94P
 19243907 +Meadow Acres Perfection 0100 #+O C C Emblazon 854E
 +V N A R Perfection 10F 9H



SM	+67
SW	+61
SF	+53
SG	+45
SB	+98
SC	+194

CED	BW	WW	YW	SC	DOC	CEM	MILK	\$EN	CW	MARB	RE	FAT
+6	+7	+56	+93	+1.18	+9	+3	+23	-4	+22	+60	+38	+020
ANGLE	CLAW	BW	Adj. WW	Wt. 12/28/21	SC	Adj. %IMF	Adj. RE	Dam's Nursing Ratio				
+57	+52	87	556	1385	41	3.11	14.2	2-119				

18 Meadow Acres Charlo 1254

Birth Date: 09-20-2020 | Bull +*20217536 | Tattoo: 1254

+*Coleman Charlo 0256 #O C C Paxton 730P
 +*Coleman Charlo 3212 +Bohi Abigale 6014
 17783509 +*Coleman Donna 714 #*Connealy Onward
 +*Coleman Donna 386
 #*Sitz Wisdom 481T #*Connealy Onward
 Meadow Acres Perfection 4132 Sitz Elluna Elite 94P
 19243907 +Meadow Acres Perfection 0100 #+O C C Emblazon 854E
 +V N A R Perfection 10F 9H



SM	+58
SW	+59
SF	+85
SG	+46
SB	+131
SC	+228

CED	BW	WW	YW	SC	DOC	CEM	MILK	\$EN	CW	MARB	RE	FAT
+9	+4	+55	+99	+1.02	+14	+2	+23	-4	+40	+63	+38	+019
ANGLE	CLAW	BW	Adj. WW	Wt. 12/28/21	SC	Adj. %IMF	Adj. RE	Dam's Nursing Ratio				
+60	+54	95	696	1450	44	3.81	13.1	2-119				

19 Meadow Acres Charlo 1261

Birth Date: 09-15-2020 | Bull +*20217575 | Tattoo: 1261

+*Coleman Charlo 0256 #O C C Paxton 730P
 +*Coleman Charlo 3212 +Bohi Abigale 6014
 17783509 +*Coleman Donna 714 #*Connealy Onward
 +*Coleman Donna 386
 #Connealy Thunder #Baldridge Kaboom K243 KCF
 Meadow Acres Rita 414 #Parka of Conanga 241
 18009479 #Meadow Acres Rita 156 #+O C C Missing Link 830M
 Meadow Acres Rita 989



SM	+74
SW	+82
SF	+69
SG	+42
SB	+112
SC	+219

CED	BW	WW	YW	SC	DOC	CEM	MILK	\$EN	CW	MARB	RE	FAT
+5	+2	+65	+107	+1.10	+22	+3	+33	-20	+36	+63	+16	+032
ANGLE	CLAW	BW	Adj. WW	Wt. 12/28/21	SC	Adj. %IMF	Adj. RE	Dam's Nursing Ratio				
+45	+46	96	677	1505	46.5	3.06	10.6	3-107				

20 Meadow Acres Charlo 180

Birth Date: 09-08-2020 | Bull 20217564 | Tattoo: 180

#+*Coleman Charlo 0256 #*O C C Paxton 730P
 +*Coleman Charlo 3212 +Bohi Abigale 6014
 17783509 +*Coleman Donna 714 #*Connealy Onward
 +*Coleman Donna 386
 #*Connealy Black Granite #*Connealy Consensus 7229
 Meadow Acres Blackbird 621 #Eura Elga of Conanga 9109
 18805536 Meadow Acres Blackbird 4129 #H A R B Windy 702 JH
 +Meadow Acres Blackbird 629

SM	+84
SW	+82
SF	+95
SG	+50
SB	+145
SC	+272

CED	BW	WW	YW	SC	DOC	CEM	MILK	\$EN	CW	MARB	RE	FAT
+4	+1.5	+69	+120	+1.53	+31	-1	+30	-9	+54	+59	+80	+013
ANGLE	CLAW	BW	Adj. WW	Wt. 12/28/21	SC	Adj. %IMF	Adj. RE	Dam's Nursing Ratio				
+56	+47	75	586	1380	44.5	2.58	12.3	4-95				

Spring Cove Crossbow



SM	+37
SW	+61
SF	+100
SG	+67
SB	+167
SC	+254

CED	BW	WW	YW	CEM	MILK	\$EN	CW	MARB	RE	FAT
+16	-1.3	+58	+107	+14	+27	-37	+47	+1.02	+62	+010

21 Meadow Acres Crossbow 1103

Birth Date: 09-06-2020 | Bull 20217537 | Tattoo: 1103

#+*KM Broken Bow 002 #*Summitcrest Complete 1P55
 #*Spring Cove Crossbow #Summitcrest Princess OP12
 17924903 Spring Cove Pretty 205 #*C C A Emblazon 702
 +Meadow Acres Erica 2248 7196 Spring Cove Pretty 009
 18968505 #*Sitz Dash 10277 #*Sitz Upward 307R
 +*Fink Erica 2248 9380 K205 #Sitz Everelda Entense 2665
 #Nichols Extra K205
 +Meadow Acres Rita 5522

SM	+55
SW	+57
SF	+73
SG	+47
SB	+120
SC	+211

CED	BW	WW	YW	SC	DOC	CEM	MILK	\$EN	CW	MARB	RE	FAT
+13	-1.6	+58	+100	+0.3	+19	+11	+19	-20	+32	+83	+12	+078
ANGLE	CLAW	BW	Adj. WW	Wt. 12/28/21	SC	Adj. %IMF	Adj. RE	Dam's Nursing Ratio				
+54	+57	72	580	1280	41	3.04	12.0	3-97				

22 Meadow Acres Crossbow 111

Birth Date: 08-21-2020 | Bull 20217534 | Tattoo: 111

#+*KM Broken Bow 002 #*Summitcrest Complete 1P55
 #*Spring Cove Crossbow #Summitcrest Princess OP12
 17924903 Spring Cove Pretty 205 #*C C A Emblazon 702
 +Meadow Acres Rita 975 Spring Cove Pretty 009
 19599142 #*Schiefelbein Effective 61 #CAR Efficient 534
 #*Frosty Answer 3979
 +*PA Full Power 1208
 +Meadow Acres Rita 2104

SM	+69
SW	+74
SF	+84
SG	+61
SB	+145
SC	+257

CED	BW	WW	YW	SC	DOC	CEM	MILK	\$EN	CW	MARB	RE	FAT
+11	+0	+64	+110	+0.90	+20	+10	+28	-19	+41	+91	+63	+024
ANGLE	CLAW	BW	Adj. WW	Wt. 12/28/21	SC	Adj. %IMF	Adj. RE	Dam's Nursing Ratio				
+52	+53	85	719	1515	41.5	N/A	N/A	1-117				

23 Meadow Acres Crossbow 1129

Birth Date: 09-12-2020 | Bull 20217549 | Tattoo: 1129

#+*KM Broken Bow 002	#*Summitcrest Complete 1P55	SM	+50
*Spring Cove Crossbow	#Summitcrest Princess OP12	SW	+59
17924903 Spring Cove Pretty 205	#*C C A Emblazon 702	SF	+106
ANGUS <small>GENETICS</small>	Spring Cove Pretty 009	SG	+74
#*Connealy Thunder	#Baldridge Kaboom K243 KCF	SB	+181
Meadow Acres Miss Kaye 6111	#Parka of Conanga 241	SC	+285
18646447 Meadow Acres Miss Kaye 015	#*Mytty In Focus		
	Meadow Acres Miss Kaye 875		

CED	BW	WW	YW	SC	DOC	CEM	MILK	SEN	CW	MARB	RE	FAT
+7	+2.6	+73	+129	+1.48	+22	+9	+18	-39	+60	+1.14	+83	+0.19
ANGLE	CLAW	BW	Adj. WW	Wt. 12/28/21	SC	Adj. %IMF	Adj. RE	Dam's Nursing Ratio				
+46	+58	82	579	1440	42	4.74	13.1	4-96				

27 Meadow Acres Crossbow 134

Birth Date: 08-25-2020 | Bull 20217511 | Tattoo: 134

#+*KM Broken Bow 002	#*Summitcrest Complete 1P55	SM	+54
*Spring Cove Crossbow	#Summitcrest Princess OP12	SW	+79
17924903 Spring Cove Pretty 205	#*C C A Emblazon 702	SF	+91
ANGUS <small>GENETICS</small>	Spring Cove Pretty 009	SG	+43
#*Ellingson Homegrown 6035	#*CTS Remedy 1T01	SB	+135
Meadow Acres Rita 93	*EA Blanche 4137	SC	+229
19599458 Meadow Acres Rita 34	#*GDAR Game Day 449		
	Meadow Acres Rita 152		

CED	BW	WW	YW	SC	DOC	CEM	MILK	SEN	CW	MARB	RE	FAT
+9	+2	+59	+99	+72	+14	+9	+39	-25	+51	+45	+74	+0.10
ANGLE	CLAW	BW	Adj. WW	Wt. 12/28/21	SC	Adj. %IMF	Adj. RE	Dam's Nursing Ratio				
+50	+53	82	471	1230	43.5	N/A	N/A	1-77				

24 Meadow Acres Crossbow 1132

Birth Date: 10-03-2020 | Bull 20217543 | Tattoo: 1132

#+*KM Broken Bow 002	#*Summitcrest Complete 1P55	SM	+61
*Spring Cove Crossbow	#Summitcrest Princess OP12	SW	+76
17924903 Spring Cove Pretty 205	#*C C A Emblazon 702	SF	+106
ANGUS <small>GENETICS</small>	Spring Cove Pretty 009	SG	+50
#*Connealy Black Granite	#*Connealy Consensus 7229	SB	+156
Meadow Acres Miss Emma 713	#Eura Elga of Conanga 9109	SC	+263
18968469 #Meadow Acres Miss Emma 3113	#*Connealy Thunder		
	Meadow Acres Miss Emma 926		

CED	BW	WW	YW	SC	DOC	CEM	MILK	SEN	CW	MARB	RE	FAT
+16	-1.5	+61	+113	+23	+17	+13	+34	-27	+57	+64	+64	+0.15
ANGLE	CLAW	BW	Adj. WW	Wt. 12/28/21	SC	Adj. %IMF	Adj. RE	Dam's Nursing Ratio				
+54	+44	72	630	1385	42	2.61	12.1	1-103				

28 Meadow Acres Crossbow 171

Birth Date: 10-05-2020 | Bull 20217557 | Tattoo: 171

#+*KM Broken Bow 002	#*Summitcrest Complete 1P55	SM	+65
*Spring Cove Crossbow	#Summitcrest Princess OP12	SW	+70
17924903 Spring Cove Pretty 205	#*C C A Emblazon 702	SF	+94
ANGUS <small>GENETICS</small>	Spring Cove Pretty 009	SG	+46
#*Connealy Thunder	#Baldridge Kaboom K243 KCF	SB	+140
#Meadow Acres Direction 279	#Parka of Conanga 241	SC	+247
17945968 Meadow Acres Direction 859	Meadow Acres 616 0228		
	Meadow Acres Direction 355		

CED	BW	WW	YW	SC	DOC	CEM	MILK	SEN	CW	MARB	RE	FAT
+10	+4	+65	+116	+1.66	+29	+13	+29	-38	+53	+56	+49	-0.01
ANGLE	CLAW	BW	Adj. WW	Wt. 12/28/21	SC	Adj. %IMF	Adj. RE	Dam's Nursing Ratio				
+39	+48	75	669	1555	43	2.56	14.0	6-112				

25 Meadow Acres Crossbow 117

Birth Date: 08-12-2020 | Bull 20208033 | Tattoo: 117

#+*KM Broken Bow 002	#*Summitcrest Complete 1P55	SM	+63
*Spring Cove Crossbow	#Summitcrest Princess OP12	SW	+72
17924903 Spring Cove Pretty 205	#*C C A Emblazon 702	SF	+87
ANGUS <small>GENETICS</small>	Spring Cove Pretty 009	SG	+49
#*Cole Creek Cedar Ridge 1V	#*Cole Creek Black Cedar 46P	SB	+136
Meadow Acres Miss Kaye 922	#*Cole Creek Clovanada 49S	SC	+239
19599076 #Meadow Acres Miss Kaye 512	#*S A V Final Answer 0035		
	Meadow Acres Miss Kaye 316		

CED	BW	WW	YW	SC	DOC	CEM	MILK	SEN	CW	MARB	RE	FAT
+17	-2.1	+53	+104	+0.4	+15	+13	+39	-25	+40	+59	+57	-0.11
ANGLE	CLAW	BW	Adj. WW	Wt. 12/28/21	SC	Adj. %IMF	Adj. RE	Dam's Nursing Ratio				
+65	+55	65	646	1435	43	N/A	N/A	1-105				

29 Meadow Acres Crossbow 18

Birth Date: 08-09-2020 | Bull 20217528 | Tattoo: 18

#+*KM Broken Bow 002	#*Summitcrest Complete 1P55	SM	+71
*Spring Cove Crossbow	#Summitcrest Princess OP12	SW	+63
17924903 Spring Cove Pretty 205	#*C C A Emblazon 702	SF	+65
ANGUS <small>GENETICS</small>	Spring Cove Pretty 009	SG	+55
+*Coleman Charlo 3212	#*+*Coleman Charlo 0256	SB	+120
Meadow Acres Rita 512 967	#*Coleman Donna 714	SC	+227
19599237 +Meadow Acres Rita 512 5182	#*S A V Final Answer 0035		
	+Meadow Acres Rita 512		

CED	BW	WW	YW	SC	DOC	CEM	MILK	SEN	CW	MARB	RE	FAT
+12	-1.3	+51	+96	+68	+15	+10	+30	-13	+24	+80	+42	+0.09
ANGLE	CLAW	BW	Adj. WW	Wt. 12/28/21	SC	Adj. %IMF	Adj. RE	Dam's Nursing Ratio				
+55	+49	75	611	1410	44	N/A	N/A	1-100				

26 Meadow Acres Crossbow 13

Birth Date: 09-04-2020 | Bull 20217525 | Tattoo: 13

#+*KM Broken Bow 002	#*Summitcrest Complete 1P55	SM	+70
*Spring Cove Crossbow	#Summitcrest Princess OP12	SW	+74
17924903 Spring Cove Pretty 205	#*C C A Emblazon 702	SF	+74
ANGUS <small>GENETICS</small>	Spring Cove Pretty 009	SG	+72
#*Ellingson Homegrown 6035	#*CTS Remedy 1T01	SB	+146
Meadow Acres Rita 9199	*EA Blanche 4137	SC	+259
19599446 Meadow Acres Rita 50	#*S A V Thunderbird 9061		
	Meadow Acres Rita 330		

CED	BW	WW	YW	SC	DOC	CEM	MILK	SEN	CW	MARB	RE	FAT
+11	-7	+56	+95	+4.7	+23	+8	+35	-17	+33	+1.18	+64	+0.44
ANGLE	CLAW	BW	Adj. WW	Wt. 12/28/21	SC	Adj. %IMF	Adj. RE	Dam's Nursing Ratio				
+45	+51	80	515	1245	44	5.77	12.1	1-84				

30 Meadow Acres Crossbow 182

Birth Date: 10-01-2020 | Bull 20217540 | Tattoo: 182

#+*KM Broken Bow 002	#*Summitcrest Complete 1P55	SM	+46
*Spring Cove Crossbow	#Summitcrest Princess OP12	SW	+55
17924903 Spring Cove Pretty 205	#*C C A Emblazon 702	SF	+84
ANGUS <small>GENETICS</small>	Spring Cove Pretty 009	SG	+51
#*GDAR Game Day 449	#*Boyd New Day 8005	SB	+134
+Meadow Acres Donna 2236 7190	#D A R Miss Wix 474	SC	+220
18968496 +*Fink Donna 2236 8285 FA	#*S A V Final Answer 0035		
	+Fink Donna 8285 3465 K205		

CED	BW	WW	YW	SC	DOC	CEM	MILK	SEN	CW	MARB	RE	FAT
+8	-4	+58	+101	-.11	+21	+6	+19	-18	+41	+69	+60	+0.32
ANGLE	CLAW	BW	Adj. WW	Wt. 12/28/21	SC	Adj. %IMF	Adj. RE	Dam's Nursing Ratio				
+53	+53	75	615	1400	44.5	3.43	11.3	1-101				

31 Meadow Acres Crossbow 199

Birth Date: 09-29-2020 | Bull 20208026 | Tattoo: 199

#+*KM Broken Bow 002	#Summitcrest Complete 1P55	SM	+47									
*Spring Cove Crossbow	#Summitcrest Princess OP12	SW	+52									
17924903 Spring Cove Pretty 205	#*C C A Emblazon 702	SF	+83									
ANGUS	Spring Cove Pretty 009	SG	+59									
#Rito 616 of 4B20 6807	#D H D Traveler 6807	SB	+142									
Meadow Acres Blackbird 051	+Rita 4B20 of OFB1 Bando	SC	+231									
16793762 Meadow Acres Blackbird 0218	#B A R Ext Traveler 205											
	V N A R Blackbird 16D 224J											
CED	BW	WW	YW	SC	DOC	CEM	MILK	\$EN	CW	MARB	RE	FAT
+12	-1.0	+47	+80	-.01	+13	+5	+24	-9	+36	+90	+50	+0.24
ANGLE	CLAW	BW	Adj. WW	Wt. 12/28/21	SC	Adj. %IMF	Adj. RE	Dam's Nursing Ratio				
+54	+59	75	557	1285	36	3.10	12.7	6-98				

34 Meadow Acres Rainfall 120

Birth Date: 08-28-2020 | Bull 20215441 | Tattoo: 120

#+*Coleman Charlo 0256	#*O C C Paxton 730P	SM	+66									
+*S A V Rainfall 6846	+Bohi Abigale 6014	SW	+82									
18578963 *S A V Blackcap May 4136	#S A V 8180 Traveler 004	SF	+81									
ANGUS	#+S A V May 2397	SG	+51									
#*Mohen South Dakota 402	+*Mohen Density 730	SB	+132									
+Meadow Acres Jilt 9202	*Mohen Jilt 539	SC	+237									
19616885 #+*Mohen Jilt 1501	*S A V Final Answer 0035											
	#+*Mohen Jilt 1655											
CED	BW	WW	YW	SC	DOC	CEM	MILK	\$EN	CW	MARB	RE	FAT
+8	+1.4	+73	+130	+55	+28	+5	+30	-26	+42	+57	+80	-0.09
ANGLE	CLAW	BW	Adj. WW	Wt. 12/28/21	SC	Adj. %IMF	Adj. RE	Dam's Nursing Ratio				
+46	+51	82	575	1405	42	N/A	N/A	1-94				

32 Meadow Acres Guinness 170

Birth Date: 10-14-2020 | Bull 20208049 | Tattoo: 170

#Connealy Dublin 8223	Connealy Full Freight	SM	+95									
*Connealy Guinness	Black Rina of Conanga 69	SW	+75									
17031279 Panda of Conanga 3609	EGL Target 1148	SF	+67									
ANGUS	Ponderra of Conanga 750	SG	+52									
#+O C C Emblazon 854E	#D H D Traveler 6807	SB	+118									
+Meadow Acres Rita 1000 782	Dixie Erica of C H 1019	SC	+248									
15854062 Meadow Acres Rita 1000	#High Valley AC6 Ambush											
	O&M Rita 9116 of 6054											
CED	BW	WW	YW	SC	DOC	CEM	MILK	\$EN	CW	MARB	RE	FAT
+6	+1.8	+64	+110	+94	+16	+13	+29	-7	+33	+85	+26	+0.53
ANGLE	CLAW	BW	Adj. WW	Wt. 12/28/21	SC	Adj. %IMF	Adj. RE	Dam's Nursing Ratio				
+43	+34	82	605	1380	44	2.90	12.0	5-99				

35 Meadow Acres Rainfall 1216

Birth Date: 11-25-2020 | Bull 20215591 | Tattoo: 1216

#+*Coleman Charlo 0256	#*O C C Paxton 730P	SM	+83									
+*S A V Rainfall 6846	+Bohi Abigale 6014	SW	+72									
18578963 *S A V Blackcap May 4136	#S A V 8180 Traveler 004	SF	+65									
ANGUS	#+S A V May 2397	SG	+35									
#*Sitz Dash 10277	#*Sitz Upward 307R	SB	+100									
Meadow Acres Rose 671	+Sitz Everelda Entense 2665	SC	+213									
18646457 Meadow Acres Rose 4123	#Connealy Thunder											
	+Meadow Acres Rita 944											
CED	BW	WW	YW	SC	DOC	CEM	MILK	\$EN	CW	MARB	RE	FAT
+8	+7	+63	+109	+48	+25	+5	+26	-8	+33	+47	+34	+0.62
ANGLE	CLAW	BW	Adj. WW	Wt. 12/28/21	SC	Adj. %IMF	Adj. RE	Dam's Nursing Ratio				
+39	+44	82	591	1250	39.5	3.20	12.8	3-93				

S A V Rainfall 6846



SM	+85
SW	+64
SF	+65
SG	+50
SB	+115
SC	+234

CED	BW	WW	YW	CEM	MILK	\$EN	CW	MARB	RE	FAT
+7	+2	+57	+110	+4	+27	-2	+20	+65	+61	+0.13

36 Meadow Acres Rainfall 1217

Birth Date: 11-20-2020 | Bull 20215589 | Tattoo: 1217

#+*Coleman Charlo 0256	#*O C C Paxton 730P	SM	+88									
+*S A V Rainfall 6846	+Bohi Abigale 6014	SW	+69									
18578963 *S A V Blackcap May 4136	#S A V 8180 Traveler 004	SF	+78									
ANGUS	#+S A V May 2397	SG	+44									
#+*PA Full Power 1208	#+*PA Power Tool 9108	SB	+121									
Meadow Acres Perfection 657	*Pine View SQR Rita W091	SC	+245									
18646611 Meadow Acres Perfection 764	#+B/R New Frontier 095											
	V N A R Perfection 8438 362J											
CED	BW	WW	YW	SC	DOC	CEM	MILK	\$EN	CW	MARB	RE	FAT
+7	+1.3	+68	+121	+90	+24	+9	+22	-13	+33	+49	+47	-0.13
ANGLE	CLAW	BW	Adj. WW	Wt. 12/28/21	SC	Adj. %IMF	Adj. RE	Dam's Nursing Ratio				
+33	+33	80	567	1190	39.5	2.09	11.2	3-98				

33 Meadow Acres Rainfall 110

Birth Date: 08-20-2020 | Bull 20215506 | Tattoo: 110

#+*Coleman Charlo 0256	#*O C C Paxton 730P	SM	+92									
+*S A V Rainfall 6846	+Bohi Abigale 6014	SW	+84									
18578963 *S A V Blackcap May 4136	#S A V 8180 Traveler 004	SF	+58									
ANGUS	#+S A V May 2397	SG	+62									
#+*PA Full Power 1208	#+*PA Power Tool 9108	SB	+120									
Meadow Acres Rita 163 9153	*Pine View SQR Rita W091	SC	+248									
19599125 Meadow Acres Rita 163	Meadow Acres Emblazon 983											
	+Meadow Acres Rita 944											
CED	BW	WW	YW	SC	DOC	CEM	MILK	\$EN	CW	MARB	RE	FAT
+14	-3.3	+63	+116	+1.24	+22	+5	+31	+1	+22	+92	+60	+0.14
ANGLE	CLAW	BW	Adj. WW	Wt. 12/28/21	SC	Adj. %IMF	Adj. RE	Dam's Nursing Ratio				
+44	+37	72	535	1255	42	N/A	N/A	1-87				

37 Meadow Acres Rainfall 1231

Birth Date: 11-25-2020 | Bull 20215597 | Tattoo: 1231

#+*Coleman Charlo 0256	#*O C C Paxton 730P	SM	+78									
+*S A V Rainfall 6846	+Bohi Abigale 6014	SW	+60									
18578963 *S A V Blackcap May 4136	#S A V 8180 Traveler 004	SF	+51									
ANGUS	#+S A V May 2397	SG	+36									
#*S A V Thunderbird 9061	#*S A V Final Answer 0035	SB	+87									
Meadow Acres Rita 50	*S A V Emblynette 7411	SC	+191									
18327798 Meadow Acres Rita 330	#*Sitz Dash 10277											
	Meadow Acres Rita 1113											
CED	BW	WW	YW	SC	DOC	CEM	MILK	\$EN	CW	MARB	RE	FAT
+14	-1.9	+48	+85	+35	+8	+7	+25	+9	+13	+38	+53	+0.31
ANGLE	CLAW	BW	Adj. WW	Wt. 12/28/21	SC	Adj. %IMF	Adj. RE	Dam's Nursing Ratio				
+51	+60	75	586	1045	41.5	2.58	11.8	4-97				

38 Meadow Acres Rainfall 124

Birth Date: 08-18-2020 | Bull #20215503 | Tattoo: 124

#+*Coleman Charlo 0256	#*O C C Paxton 730P	SM	+88
+*S A V Rainfall 6846	+Bohi Abigale 6014	SW	+76
18578963	#S A V 8180 Traveler 004	SF	+85
ANGUS	#+S A V May 2397	SG	+45
#*Connealy Black Granite	#*Connealy Consensus 7229	SB	+130
+*Meadow Acres Perfection 9232	#Eura Elga of Conanga 9109	SC	+257
19599187	#*Mytty In Focus		
+Meadow Acres in Focus 1118	Meadow Acres 616 354		

CED	BW	WW	YW	SC	DOC	CEM	MILK	\$EN	CW	MARB	RE	FAT
+8	+7	+69	+119	+1.35	+29	+6	+23	-5	+39	+71	+24	+0.56
ANGLE	CLAW	BW	Adj. WW	Wt. 12/28/21	SC	Adj. %IMF	Adj. RE	Dam's Nursing Ratio				
+41	+43	85	544	1230	42.5	N/A	N/A					1-89

42 Meadow Acres Rainfall 139

Birth Date: 08-20-2020 | Bull #20215499 | Tattoo: 139

#+*Coleman Charlo 0256	#*O C C Paxton 730P	SM	+93
+*S A V Rainfall 6846	+Bohi Abigale 6014	SW	+75
18578963	#S A V 8180 Traveler 004	SF	+61
ANGUS	#+S A V May 2397	SG	+37
#*Connealy Black Granite	#*Connealy Consensus 7229	SB	+98
+*Meadow Acres Perfection 9237	#Eura Elga of Conanga 9109	SC	+220
19599192	#*Mytty In Focus		
+Meadow Acres in Focus 1118	Meadow Acres 616 354		

CED	BW	WW	YW	SC	DOC	CEM	MILK	\$EN	CW	MARB	RE	FAT
+8	-1.7	+57	+97	+27	+23	+9	+28	+6	+22	+41	+54	+0.40
ANGLE	CLAW	BW	Adj. WW	Wt. 12/28/21	SC	Adj. %IMF	Adj. RE	Dam's Nursing Ratio				
+48	+40	85	597	1360	40.5	N/A	N/A					1-97

39 Meadow Acres Rainfall 130

Birth Date: 08-09-2020 | Bull #20215500 | Tattoo: 130

#+*Coleman Charlo 0256	#*O C C Paxton 730P	SM	+65
+*S A V Rainfall 6846	+Bohi Abigale 6014	SW	+84
18578963	#S A V 8180 Traveler 004	SF	+61
ANGUS	#+S A V May 2397	SG	+46
#*Connealy Black Granite	#*Connealy Consensus 7229	SB	+107
+*Meadow Acres Perfection 9235	#Eura Elga of Conanga 9109	SC	+204
19599190	#*Mytty In Focus		
+Meadow Acres in Focus 1118	Meadow Acres 616 354		

CED	BW	WW	YW	SC	DOC	CEM	MILK	\$EN	CW	MARB	RE	FAT
+12	-3	+67	+112	+1.19	+17	+10	+31	-11	+26	+67	+24	+0.25
ANGLE	CLAW	BW	Adj. WW	Wt. 12/28/21	SC	Adj. %IMF	Adj. RE	Dam's Nursing Ratio				
+47	+48	75	674	1370	43.5	N/A	N/A					1-100



CED	BW	WW	YW	SC	DOC	CEM	MILK	\$EN	CW	MARB	RE	FAT
+10	+2	+57	+107	+11	+25	-21	+42	+93	+61	+0.02		

40 Meadow Acres Rainfall 135

Birth Date: 08-11-2020 | Bull 20215504 | Tattoo: 135

#+*Coleman Charlo 0256	#*O C C Paxton 730P	SM	+71
+*S A V Rainfall 6846	+Bohi Abigale 6014	SW	+51
18578963	#S A V 8180 Traveler 004	SF	+75
ANGUS	#+S A V May 2397	SG	+57
#*Connealy Black Granite	#*Connealy Consensus 7229	SB	+132
Meadow Acres Rita 947	#Eura Elga of Conanga 9109	SC	+242
19599157	#*Connealy Thunder		
+Meadow Acres Rita 512 611	Meadow Acres Rita 512		

CED	BW	WW	YW	SC	DOC	CEM	MILK	\$EN	CW	MARB	RE	FAT
+15	-1.8	+50	+97	+1.04	+21	+13	+20	+0	+23	+83	+57	+0.24
ANGLE	CLAW	BW	Adj. WW	Wt. 12/28/21	SC	Adj. %IMF	Adj. RE	Dam's Nursing Ratio				
+57	+49	70	540	1210	43	N/A	N/A					1-88

43 Meadow Acres Powerball 1117

Birth Date: 10-14-2020 | Bull 20233430 | Tattoo: 1117

#+*PA Power Tool 9108	#*G A R Predestined	SM	+70
#*Raven Powerball 53	*Shamrocks Beebe Queen 3095	SW	+48
17632447	#*Hoover Dam	SF	+94
ANGUS	PCAR Emma E 2215	SG	+49
#+O C C Emblazon 854E	#D H D Traveler 6807	SB	+142
+Meadow Acres Rita 2114	Dixie Erica of C H 1019	SC	+254
17431079	#+Rito 9M9 of 2036 Scotch Cap		
+Meadow Acres Rita 6054	+G A R Ext 6054		

CED	BW	WW	YW	SC	DOC	CEM	MILK	\$EN	CW	MARB	RE	FAT
+6	+2.6	+53	+96	+97	+27	+11	+23	-13	+42	+50	+83	-0.13
ANGLE	CLAW	BW	Adj. WW	Wt. 12/28/21	SC	Adj. %IMF	Adj. RE	Dam's Nursing Ratio				
+55	+48	85	542	1375	36	1.95	14.7					6-90

41 Meadow Acres Rainfall 136

Birth Date: 08-28-2020 | Bull #20215501 | Tattoo: 136

#+*Coleman Charlo 0256	#*O C C Paxton 730P	SM	+90
+*S A V Rainfall 6846	+Bohi Abigale 6014	SW	+87
18578963	#S A V 8180 Traveler 004	SF	+53
ANGUS	#+S A V May 2397	SG	+47
#*Connealy Black Granite	#*Connealy Consensus 7229	SB	+100
+*Meadow Acres Perfection 9233	#Eura Elga of Conanga 9109	SC	+220
19599189	#*Mytty In Focus		
+Meadow Acres in Focus 1118	Meadow Acres 616 354		

CED	BW	WW	YW	SC	DOC	CEM	MILK	\$EN	CW	MARB	RE	FAT
+10	-5	+55	+93	+1.44	+17	+7	+41	+4	+16	+65	+36	+0.18
ANGLE	CLAW	BW	Adj. WW	Wt. 12/28/21	SC	Adj. %IMF	Adj. RE	Dam's Nursing Ratio				
+50	+44	82	654	1430	40.5	N/A	N/A					1-107

44 Meadow Acres Powerball 1173

Birth Date: 09-07-2020 | Bull 20217466 | Tattoo: 1173

#+*PA Power Tool 9108	#*G A R Predestined	SM	+62
#*Raven Powerball 53	*Shamrocks Beebe Queen 3095	SW	+61
17632447	#*Hoover Dam	SF	+85
ANGUS	PCAR Emma E 2215	SG	+58
#*Connealy Final Solution	#Connealy Answer 71	SB	+143
Meadow Acres Rita 8115 5125	Este of Conanga 364	SC	+247
18327821	#S A V Pioneer 7301		
+Meadow Acres Rita 8115 285	+Meadow Acres Rita 8115		

CED	BW	WW	YW	SC	DOC	CEM	MILK	\$EN	CW	MARB	RE	FAT
+8	+1.8	+70	+123	+80	+16	+9	+18	-28	+42	+82	+42	-0.15
ANGLE	CLAW	BW	Adj. WW	Wt. 12/28/21	SC	Adj. %IMF	Adj. RE	Dam's Nursing Ratio				
+53	+47	85	550	1210	39	3.02	9.6					4-92

45 Meadow Acres Powerball 1190

Birth Date: 11-02-2020 | Bull 2017462 | Tattoo: 1190

#+*PA Power Tool 9108	#*G A R Predestined	SM	+70
#*Raven Powerball 53	*Shamrocks Beebee Queen 3095	SW	+71
17632447	#*Hoover Dam	SF	+87
ANGUS	PCAR Emma E 2215	SG	+53
#+*S A V Angus Valley 1867	#*S A V Iron Mountain 8066	SB	+140
Meadow Acres Rita 623	#+*S A V May 2397	SC	+252
18667284	#*S A V Final Answer 0035		
	+Meadow Acres Rita 949		

CED	BW	WW	YW	SC	DOC	CEM	MILK	SEN	CW	MARB	RE	FAT
+6	+8	+63	+111	+1.13	+18	+14	+32	-36	+42	+70	+62	+014
ANGLE	CLAW	BW	Adj. WW	Wt. 12/28/21	SC	Adj. %IMF	Adj. RE	Dam's Nursing Ratio				
+53	+43	75	686	1265	44.5	3.93	14.3	3-102				

48 Meadow Acres Cowboy Up 1153

Birth Date: 10-30-2020 | Bull *20208030 | Tattoo: 1153

*HA Outside 3008	#*KG Solution 0018	SM	+76
*HA Cowboy Up 5405	#*HA Ever Lady 1575	SW	+80
18286467	#*Sitz Upward 307R	SF	+88
ANGUS	HA Blackcap Lady 5515	SG	+36
+*Coleman Charlo 3212	#+*Coleman Charlo 0256	SB	+124
+*Meadow Acres Formera 8197	+*Coleman Donna 714	SC	+237
19314064	#*Cole Creek Cedar Ridge 1V		
	+Fink Formera 9375 7223 NPV		

CED	BW	WW	YW	SC	DOC	CEM	MILK	SEN	CW	MARB	RE	FAT
+5	+2.0	+75	+138	+1.73	+21	+2	+28	-27	+47	+35	+36	-014
ANGLE	CLAW	BW	Adj. WW	Wt. 12/28/21	SC	Adj. %IMF	Adj. RE	Dam's Nursing Ratio				
+41	+32	72	707	1340	41.5	2.64	12.2	1-109				

46 Meadow Acres Powerball 1224

Birth Date: 11-28-2020 | Bull 2017481 | Tattoo: 1224

#+*PA Power Tool 9108	#*G A R Predestined	SM	+46
#*Raven Powerball 53	*Shamrocks Beebee Queen 3095	SW	+64
17632447	#*Hoover Dam	SF	+92
ANGUS	PCAR Emma E 2215	SG	+30
#*S A V Final Answer 0035	#Sitz Traveler 8180	SB	+122
+Meadow Acres Perfection 5186	S A V Emulous 8145	SC	+204
18327672	#*S A V Final Answer 0035		
	+Meadow Acres Perfection 0101		
	#Meadow Acres Perfection 565		

CED	BW	WW	YW	SC	DOC	CEM	MILK	SEN	CW	MARB	RE	FAT
+11	+1.5	+72	+131	+1.21	+18	+11	+20	-35	+50	+26	+48	+035
ANGLE	CLAW	BW	Adj. WW	Wt. 12/28/21	SC	Adj. %IMF	Adj. RE	Dam's Nursing Ratio				
+53	+57	82	666	1290	40.5	2.46	11.9	2-104				

49 Meadow Acres Cowboy Up 1229

Birth Date: 11-19-2020 | Bull 20125570 | Tattoo: 1229

*HA Outside 3008	#*KG Solution 0018	SM	+46
*HA Cowboy Up 5405	#*HA Ever Lady 1575	SW	+52
18286467	#*Sitz Upward 307R	SF	+94
ANGUS	HA Blackcap Lady 5515	SG	+48
#Connealy Thunder	#Baldridge Kaboom K243 KCF	SB	+142
Meadow Acres Rita 9116 4135	#Parka of Conanga 241	SC	+230
18009602	#+Rito 9M9 of 2036 Scotch Cap		
	+G A R Ext 6054		

CED	BW	WW	YW	SC	DOC	CEM	MILK	SEN	CW	MARB	RE	FAT
+8	+1.4	+62	+115	+31	+17	+7	+18	-25	+47	+50	+61	-035
ANGLE	CLAW	BW	Adj. WW	Wt. 12/28/21	SC	Adj. %IMF	Adj. RE	Dam's Nursing Ratio				
+54	+45	72	643	1290	42.5	2.96	12.4	4-104				

HA Cowboy Up 5405



SM	+36
SW	+63
SF	+78
SG	+23
SB	+102
SC	+168

CED	BW	WW	YW	CEM	MILK	SEN	CW	MARB	RE	FAT
+8	+2.6	+75	+137	+4	+15	-31	+39	+04	+31	-035

50 Meadow Acres Cowboy Up 1235

Birth Date: 11-25-2020 | Bull 20125563 | Tattoo: 1235

*HA Outside 3008	#*KG Solution 0018	SM	+39
*HA Cowboy Up 5405	#*HA Ever Lady 1575	SW	+54
18286467	#*Sitz Upward 307R	SF	+59
ANGUS	HA Blackcap Lady 5515	SG	+35
#+*S A V Resource 1441	+Rito 707 of Ideal 3407 7075	SB	+94
+Meadow Acres Donna 2238 7193	*S A V Blackcap May 4136	SC	+161
18968498	+Fink Donna 2238 8288 FA		
	+Fink Donna 8288 3465 K205		

CED	BW	WW	YW	SC	DOC	CEM	MILK	SEN	CW	MARB	RE	FAT
+10	+6	+60	+103	+76	+18	+8	+17	-17	+18	+34	+52	+018
ANGLE	CLAW	BW	Adj. WW	Wt. 12/28/21	SC	Adj. %IMF	Adj. RE	Dam's Nursing Ratio				
+54	+45	80	650	1270	41	2.27	13.0	1-100				

47 Meadow Acres Cowboy Up 1120

Birth Date: 08-31-2020 | Bull 20208034 | Tattoo: 1120

*HA Outside 3008	#*KG Solution 0018	SM	+44
*HA Cowboy Up 5405	#*HA Ever Lady 1575	SW	+60
18286467	#*Sitz Upward 307R	SF	+65
ANGUS	HA Blackcap Lady 5515	SG	+10
#*Cole Creek Cedar Ridge 1V	#*Cole Creek Black Cedar 46P	SB	+75
+Meadow Acres Rita 8115 8228	#*Cole Creek Clovanada 49S	SC	+141
19300270	#S A V 8180 Traveler 004		
	+Meadow Acres Rita 8115		
	O&m Rita 9116 of 6054		

CED	BW	WW	YW	SC	DOC	CEM	MILK	SEN	CW	MARB	RE	FAT
+11	+3	+55	+95	+98	+3	+4	+26	-19	+27	-17	+19	-006
ANGLE	CLAW	BW	Adj. WW	Wt. 12/28/21	SC	Adj. %IMF	Adj. RE	Dam's Nursing Ratio				
+45	+41	78	737	1480	42	N/A	N/A	1-120				

51 Meadow Acres Capitalist 113

Birth Date: 09-03-2020 | Bull *20208036 | Tattoo: 113

#*S A V Final Answer 0035	#Sitz Traveler 8180	SM	+89
*Connealy Capitalist 028	S A V Emulous 8145	SW	+60
16752262	#C R A Bextor 872 5205 608	SF	+82
ANGUS	Prides Tray of Conanga 6499	SG	+41
#*Cole Creek Cedar Ridge 1V	#*Cole Creek Black Cedar 46P	SB	+124
+*Meadow Acres Rita 8115 9240	#*Cole Creek Clovanada 49S	SC	+250
19599085	#S A V 8180 Traveler 004		
	+Meadow Acres Rita 8115		
	O&m Rita 9116 of 6054		

CED	BW	WW	YW	SC	DOC	CEM	MILK	SEN	CW	MARB	RE	FAT
+3	+2.7	+55	+92	-.09	+26	+7	+28	-9	+41	+43	+50	-012
ANGLE	CLAW	BW	Adj. WW	Wt. 12/28/21	SC	Adj. %IMF	Adj. RE	Dam's Nursing Ratio				
+46	+52	90	595	1305	41.5	1.97	11.9	1-97				

52 Meadow Acres Homegrown 11

Birth Date: 09-06-2020 | Bull 20217328 | Tattoo: 11

*CTS Remedy 1T01	#Connealy Thunder	SM	+82
*Ellingson Homegrown 6035	CTS 7V03 Bellemeire Maid 9T02	SW	+74
18542959	*Ellingson Format 2205	SF	+84
	#EA Blanche 1137	SG	+45
ANGUS		SB	+129
SS		SC	+249
**Mohnen South Dakota 402	+*Mohnen Density 730		
+Meadow Acres Jilt 9205	*Mohnen Jilt 539		
19616886	*S A V Final Answer 0035		
	#+*Mohnen Jilt 1655		

CED	BW	WW	YW	SC	DOC	CEM	MILK	SEN	CW	MARB	RE	FAT
+7	+1.5	+62	+96	+1.44	+12	+9	+28	-5	+45	+67	+34	+049
ANGLE	CLAW	BW	Adj. WW	Wt. 12/28/21	SC	Adj. %IMF	Adj. RE	Dam's Nursing Ratio				
+26	+35	85	585	1200	42	2.43	10.5					1-104

55 Meadow Acres Navigator 1102

Birth Date: 09-07-2020 | Bull 20217416 | Tattoo: 1102

#Cole Creek Black Cedar 46P	#CH Quantum 6247	SM	+79
*Coleman Navigator 614	Cole Creek Clova Juanada 67	SW	+68
18570027	#+*Coleman Juneau 044	SF	+78
ANGUS	#+Sinclair Eriskay 2N1 7883	SG	+33
SS	#Connealy Thunder	SB	+111
Meadow Acres Rita 512 763	CTS 7V03 Bellemeire Maid 9T02	SC	+223
18968482	*S A V Final Answer 0035		
	+Meadow Acres Rita 512		

CED	BW	WW	YW	SC	DOC	CEM	MILK	SEN	CW	MARB	RE	FAT
+0	+1.4	+59	+97	+38	+15	+4	+28	-10	+38	+23	+71	+013
ANGLE	CLAW	BW	Adj. WW	Wt. 12/28/21	SC	Adj. %IMF	Adj. RE	Dam's Nursing Ratio				
+52	+48	85	664	1170	41.5	2.80	12.6					2-104

53 Meadow Acres Homestead 164 [ONP]

Birth Date: 10-02-2020 | Bull 20215340 | Tattoo: 164

*CTS Remedy 1T01	#Connealy Thunder	SM	+84
*Ellingson Homestead 6030	CTS 7V03 Bellemeire Maid 9T02	SW	+71
18543019	#LT Territory 5824 of EA	SF	+114
ANGUS	#PA Alliance 2606	SG	+45
SS		SB	+159
Meadow Acres Blackcap 760	#*Connealy Onward	SC	+290
18968422	Sitz Elluna Elite 94P		
	*S A V Final Answer 0035		
	Meadow Acres Blackcap 396		
	Meadow Acres Blackcap 79		

CED	BW	WW	YW	SC	DOC	CEM	MILK	SEN	CW	MARB	RE	FAT
-2	+4.3	+84	+159	+1.79	+29	+9	+25	-44	+68	+71	+27	+056
ANGLE	CLAW	BW	Adj. WW	Wt. 12/28/21	SC	Adj. %IMF	Adj. RE	Dam's Nursing Ratio				
+48	+46	95	766	1615	44.5	2.42	12.0					3-120

56 Meadow Acres Navigator 1121

Birth Date: 09-01-2020 | Bull 20217464 | Tattoo: 1121

#Cole Creek Black Cedar 46P	#CH Quantum 6247	SM	+50
*Coleman Navigator 614	Cole Creek Clova Juanada 67	SW	+54
18570027	#+*Coleman Juneau 044	SF	+64
ANGUS	#+Sinclair Eriskay 2N1 7883	SG	+24
SS	#S A V Pioneer 7301	SB	+88
Meadow Acres Perfection 123	#*S A V Final Answer 0035	SC	+164
17102204	S A V Blackbird 5297		
	Meadow Acres 616 0228		
	Meadow Acres Direction 355		

CED	BW	WW	YW	SC	DOC	CEM	MILK	SEN	CW	MARB	RE	FAT
-1	+4.1	+70	+104	+2.10	+8	+2	+13	-13	+35	+10	+35	+003
ANGLE	CLAW	BW	Adj. WW	Wt. 12/28/21	SC	Adj. %IMF	Adj. RE	Dam's Nursing Ratio				
+53	+60	82	551	1255	42	2.08	9.8					7-99

Coleman Navigator 614



SM	+59
SW	+58
SF	+61
SG	+30
SB	+92
SC	+178

CED	BW	WW	YW	SC	DOC	CEM	MILK	SEN	CW	MARB	RE	FAT
+4	+8	+63	+103	+3	+17	-14	+30	+18	+50		+50	-012

54 Meadow Acres Navigator 1100

Birth Date: 08-28-2020 | Bull 20217454 | Tattoo: 1100

#Cole Creek Black Cedar 46P	#CH Quantum 6247	SM	+67
*Coleman Navigator 614	Cole Creek Clova Juanada 67	SW	+56
18570027	#+*Coleman Juneau 044	SF	+59
	#+Sinclair Eriskay 2N1 7883	SG	+36
#S A V Pioneer 7301	#*S A V Final Answer 0035	SB	+95
Meadow Acres Perfection 590	S A V Blackbird 5297	SC	+190
18327705	#Hyline Right Time 338		
	V N A R Perfection 1411 323H		

CED	BW	WW	YW	SC	DOC	CEM	MILK	SEN	CW	MARB	RE	FAT
+8	-.4	+56	+89	+1.19	+17	+8	+20	-8	+27	+37	+44	+008
ANGLE	CLAW	BW	Adj. WW	Wt. 12/28/21	SC	Adj. %IMF	Adj. RE	Dam's Nursing Ratio				
+47	+50	75	488	1285	44	N/A	N/A					4-94

58 Meadow Acres Navigator 176

Birth Date: 09-08-2020 | Bull 20217452 | Tattoo: 176

#Cole Creek Black Cedar 46P	#CH Quantum 6247	SM	+60
*Coleman Navigator 614	Cole Creek Clova Juanada 67	SW	+64
18570027	#+*Coleman Juneau 044	SF	+71
ANGUS	#+Sinclair Eriskay 2N1 7883	SG	+24
SS	#*S A V Final Answer 0035	SB	+95
+Meadow Acres Rita 512 5183	S A V Emulous 8145	SC	+183
18351533	#Sitz Alliance 6595		
	O&M Rita 9116 of 6054		

CED	BW	WW	YW	SC	DOC	CEM	MILK	SEN	CW	MARB	RE	FAT
+3	+1.0	+65	+104	-.06	+23	+0	+18	-8	+33	+05	+48	-.004
ANGLE	CLAW	BW	Adj. WW	Wt. 12/28/21	SC	Adj. %IMF	Adj. RE	Dam's Nursing Ratio				
+54	+53	80	510	1428	41.5	1.29	12.4					5-96

59 Meadow Acres Navigator 183

Birth Date: 09-07-2020 | Bull #20217460 | Tattoo: 183

#Cole Creek Black Cedar 46P	#CH Quantum 6247	SM	+96
*Coleman Navigator 614	Cole Creek Clova Juanada 67	SW	+66
18570027	#+Coleman Juneau 044	SF	+60
ANGUS	#+Sinclair Eriskay 2N1 7883	SG	+44
#Connealy Thunder	#Baldrige Kaboom K243 KCF	SB	+104
+Meadow Acres Rita 329	#Parka of Conanga 241	SC	+231
17675226	#Sitz Alliance 6595		
	O&M Rita 9116 of 6054		

CED	BW	WW	YW	SC	DOC	CEM	MILK	SEN	CW	MARB	RE	FAT
+4	+1.9	+65	+108	+69	+22	+10	+20	-2	+25	+56	+47	+017
ANGLE	CLAW	BW	Adj. WW	Wt. 12/28/21	SC	Adj. %IMF	Adj. RE	Dam's Nursing Ratio				
+39	+50	75	544	1305	42	2.24	13.3	6-101				

63 Meadow Acres Navigator 198

Birth Date: 09-11-2020 | Bull 20217332 | Tattoo: 198

#Cole Creek Black Cedar 46P	#CH Quantum 6247	SM	+56
*Coleman Navigator 614	Cole Creek Clova Juanada 67	SW	+68
18570027	#+Coleman Juneau 044	SF	+61
ANGUS	#+Sinclair Eriskay 2N1 7883	SG	+45
#+S A V Resource 1441	+Rito 707 of Ideal 3407 7075	SB	+105
+Meadow Acres Perfection 8224	*S A V Blackcap May 4136	SC	+192
19353906	#Mtyty In Focus		
	Meadow Acres 616 354		

CED	BW	WW	YW	SC	DOC	CEM	MILK	SEN	CW	MARB	RE	FAT
+2	+2.6	+70	+123	+1.09	+8	+2	+25	-28	+39	+33	+97	-033
ANGLE	CLAW	BW	Adj. WW	Wt. 12/28/21	SC	Adj. %IMF	Adj. RE	Dam's Nursing Ratio				
+53	+46	85	711	1555	44	2.33	15.0	1-116				

60 Meadow Acres Navigator 185

Birth Date: 09-11-2020 | Bull 20217467 | Tattoo: 185

#Cole Creek Black Cedar 46P	#CH Quantum 6247	SM	+67
*Coleman Navigator 614	Cole Creek Clova Juanada 67	SW	+47
18570027	#+Coleman Juneau 044	SF	+77
ANGUS	#+Sinclair Eriskay 2N1 7883	SG	+56
#+B/R New Frontier 095	#B/R New Design 036	SB	+133
+Meadow Acres Rita 949	White Fence Pride H1	SC	+240
17023154	#+Rito 9M9 of 2036 Scotch Cap		
	+G A R Ext 6054		

CED	BW	WW	YW	SC	DOC	CEM	MILK	SEN	CW	MARB	RE	FAT
+6	+1.7	+48	+84	+1.04	+12	+9	+22	-1	+33	+67	+78	-021
ANGLE	CLAW	BW	Adj. WW	Wt. 12/28/21	SC	Adj. %IMF	Adj. RE	Dam's Nursing Ratio				
+57	+55	85	632	1360	41	1.85	13.0	10-97				



CED	BW	WW	YW	SC	DOC	CEM	MILK	SEN	CW	MARB	RE	FAT
+2	+3.5	+75	+123	-4	+21	-12	+37	-11	+86	-014		

SM	+85
SW	+70
SF	+62
SG	+22
SB	+84
SC	+194

61 Meadow Acres Navigator 189

Birth Date: 10-12-2020 | Bull 20217456 | Tattoo: 189

#Cole Creek Black Cedar 46P	#CH Quantum 6247	SM	+73
*Coleman Navigator 614	Cole Creek Clova Juanada 67	SW	+51
18570027	#+Coleman Juneau 044	SF	+55
ANGUS	#+Sinclair Eriskay 2N1 7883	SG	+53
#+Hoover Dam	#SjdGen C C & 7	SB	+108
Meadow Acres Rita 596	#Erica of Ellston C124	SC	+213
18325588	#+O C C Emblazon 854E		
	O&M Rita 9116 of 6054		

CED	BW	WW	YW	SC	DOC	CEM	MILK	SEN	CW	MARB	RE	FAT
+3	+2.6	+55	+89	+93	+16	+8	+19	+1	+21	+80	+25	+010
ANGLE	CLAW	BW	Adj. WW	Wt. 12/28/21	SC	Adj. %IMF	Adj. RE	Dam's Nursing Ratio				
+55	+51	82	543	1285	41.5	3.15	11.9	3-95				

64 Meadow Acres President 1109

Birth Date: 10-11-2020 | Bull 20230237 | Tattoo: 1109

#+Coleman Charlo 0256	#O C C Paxton 730P	SM	+56
+S A V President 6847	+Bohi Abigale 6014	SW	+64
18578964	#S A V 8180 Traveler 004	SF	+93
ANGUS	#+S A V May 2397	SG	+20
#+S A V Thunderbird 9061	#S A V Final Answer 0035	SB	+113
#Meadow Acres Perfection 591	*S A V Emblynette 7411	SC	+203
18317986	#S A V Final Answer 0035		
	#Meadow Acres Perfection 565		

CED	BW	WW	YW	SC	DOC	CEM	MILK	SEN	CW	MARB	RE	FAT
+3	+3.5	+73	+123	+66	+24	+6	+20	-23	+51	-14	+72	-020
ANGLE	CLAW	BW	Adj. WW	Wt. 12/28/21	SC	Adj. %IMF	Adj. RE	Dam's Nursing Ratio				
+56	+56	80	627	1405	41.5	1.42	12.7	5-107				

62 Meadow Acres Navigator 196

Birth Date: 09-06-2020 | Bull 20217419 | Tattoo: 196

#Cole Creek Black Cedar 46P	#CH Quantum 6247	SM	+69
*Coleman Navigator 614	Cole Creek Clova Juanada 67	SW	+51
18570027	#+Coleman Juneau 044	SF	+49
ANGUS	#+Sinclair Eriskay 2N1 7883	SG	+40
#Connealy Thunder	#Baldrige Kaboom K243 KCF	SB	+89
Meadow Acres Rita 512 611	#Parka of Conanga 241	SC	+184
18732972	#Sitz Alliance 6595		
	O&M Rita 9116 of 6054		

CED	BW	WW	YW	SC	DOC	CEM	MILK	SEN	CW	MARB	RE	FAT
+6	-.1	+45	+78	+1.33	+21	+7	+26	-6	+15	+58	+16	+031
ANGLE	CLAW	BW	Adj. WW	Wt. 12/28/21	SC	Adj. %IMF	Adj. RE	Dam's Nursing Ratio				
+50	+57	75	516	1280	42.5	2.14	11.2	4-95				

65 Meadow Acres President 1228

Birth Date: 11-22-2020 | Bull 20230267 | Tattoo: 1228

#+Coleman Charlo 0256	#O C C Paxton 730P	SM	+72
+S A V President 6847	+Bohi Abigale 6014	SW	+74
18578964	#S A V 8180 Traveler 004	SF	+66
ANGUS	#+S A V May 2397	SG	+64
#+GDAR Game Day 449	#+Boyd New Day 8005	SB	+130
#Meadow Acres Elluna 333	#G D A R Miss Wix 474	SC	+241
17675230	#S A V Final Answer 0035		
	+Meadow Acres Elluna 999		

CED	BW	WW	YW	SC	DOC	CEM	MILK	SEN	CW	MARB	RE	FAT
+4	+1.6	+60	+104	+79	+17	-5	+33	-14	+34	+94	+71	+013
ANGLE	CLAW	BW	Adj. WW	Wt. 12/28/21	SC	Adj. %IMF	Adj. RE	Dam's Nursing Ratio				
+57	+45	82	653	1285	41	4.20	14.3	5-101				

S AV Raindance 6848



SM	+48
SW	+64
SF	+91
SG	+27
SB	+117
SC	+200

CED	BW	WW	YW	CEM	MILK	\$EN	CW	MARB	RE	FAT
+9	+1.8	+67	+128	+6	+24	-23	+45	-.02	+92	-.011

66 Meadow Acres Raindance 116

Birth Date: 09-07-2020 | Bull 20215480 | Tattoo: 116

#+*Coleman Charlo 0256 #*O C C Paxton 730P
 +*S AV Raindance 6848 +Bohi Abigale 6014
 18578965 *S AV Blackcap May 4136 #S AV 8180 Traveler 004
 ANGUS #+S AV May 2397
 #*Mohnen South Dakota 402 +*Mohnen Density 730
 +Meadow Acres Jilt 9203 *Mohnen Jilt 539
 19595102 #+*Mohnen Jilt 1501 #*S AV Final Answer 0035
 #+*Mohnen Jilt 1655

SM	+62
SW	+73
SF	+63
SG	+36
SB	+99
SC	+190

CED	BW	WW	YW	SC	DOC	CEM	MILK	\$EN	CW	MARB	RE	FAT
+14	-1.0	+52	+93	+08	+18	+6	+35	-1	+22	+39	+40	+015
ANGLE	CLAW	BW	Adj. WW	Wt. 12/28/21	SC	Adj. %IMF	Adj. RE	Dam's Nursing Ratio				
+61	+46	72	504	1265	42.5	2.51	11.2	1-82				

67 Meadow Acres Raindance 1214

Birth Date: 11-25-2020 | Bull 20215522 | Tattoo: 1214

#+*Coleman Charlo 0256 #*O C C Paxton 730P
 +*S AV Raindance 6848 +Bohi Abigale 6014
 18578965 *S AV Blackcap May 4136 #S AV 8180 Traveler 004
 ANGUS #+S AV May 2397
 #Connealy Thunder #Baldridge Kaboom K243 KCF
 Meadow Acres Rita 644 #Parka of Conanga 241
 18646454 Meadow Acres Rita 173 #*Mytty In Focus
 +Meadow Acres Rita 515

SM	+62
SW	+83
SF	+97
SG	+29
SB	+126
SC	+225

CED	BW	WW	YW	SC	DOC	CEM	MILK	\$EN	CW	MARB	RE	FAT
+10	+5	+69	+128	+2.35	+17	+10	+35	-27	+50	+14	+72	+012
ANGLE	CLAW	BW	Adj. WW	Wt. 12/28/21	SC	Adj. %IMF	Adj. RE	Dam's Nursing Ratio				
+59	+54	75	599	1240	41.5	2.12	13.4	1-92				

68 Meadow Acres Raindance 127

Birth Date: 09-10-2020 | Bull 20215479 | Tattoo: 127

#+*Coleman Charlo 0256 #*O C C Paxton 730P
 +*S AV Raindance 6848 +Bohi Abigale 6014
 18578965 *S AV Blackcap May 4136 #S AV 8180 Traveler 004
 ANGUS #+S AV May 2397
 #+*PA Full Power 1208 #+*PA Power Tool 9108
 Meadow Acres Lauren 971 *Pine View SQR Rita W091
 19599111 Meadow Acres Lauren 4130 #*S AV Iron Mountain 8066
 Meadow Acres Rita 142

SM	+59
SW	+66
SF	+68
SG	+37
SB	+105
SC	+195

CED	BW	WW	YW	SC	DOC	CEM	MILK	\$EN	CW	MARB	RE	FAT
+9	+1.0	+58	+111	+90	+19	+8	+30	-16	+31	+36	+52	+011
ANGLE	CLAW	BW	Adj. WW	Wt. 12/28/21	SC	Adj. %IMF	Adj. RE	Dam's Nursing Ratio				
+58	+63	85	604	1390	43	2.22	12.2	1-99				

69 Meadow Acres Raindance 133

Birth Date: 09-05-2020 | Bull 20215477 | Tattoo: 133

#+*Coleman Charlo 0256 #*O C C Paxton 730P
 +*S AV Raindance 6848 +Bohi Abigale 6014
 18578965 *S AV Blackcap May 4136 #S AV 8180 Traveler 004
 ANGUS #+S AV May 2397
 #+*S AV Universal 4038 #*S AV International 2020
 Meadow Acres Rita 923 *S AV Blackcap May 4136
 19599267 Meadow Acres Rita 6100 #*Cole Creek Cedar Ridge 1V
 Meadow Acres Rita 922

SM	+32
SW	+39
SF	+82
SG	+29
SB	+111
SC	+176

CED	BW	WW	YW	SC	DOC	CEM	MILK	\$EN	CW	MARB	RE	FAT
+1	+4.9	+63	+124	+83	+21	+4	+19	-36	+35	+17	+57	+010
ANGLE	CLAW	BW	Adj. WW	Wt. 12/28/21	SC	Adj. %IMF	Adj. RE	Dam's Nursing Ratio				
+48	+45	85	543	1305	42	2.22	11.5	1-89				

S AV Renown 3439



SM	+57
SW	+65
SF	+73
SG	+15
SB	+88
SC	+171

CED	BW	WW	YW	CEM	MILK	\$EN	CW	MARB	RE	FAT
-2	+2.8	+70	+125	+2	+19	-23	+38	-.22	+82	+010

70 Meadow Acres Renown 1131

Birth Date: 10-02-2020 | Bull *20215450 | Tattoo: 1131

+Rito 707 of Ideal 3407 7075 #RR Rito 707
 #+*S AV Renown 3439 Ideal 3407 of 1418 076
 17633839 *S AV Blackcap May 4136 #S AV 8180 Traveler 004
 ANGUS #+S AV May 2397
 #*Cole Creek Cedar Ridge 1V #Cole Creek Black Cedar 46P
 +*Meadow Acres Formera 4169 #Cole Creek Clovanada 49S
 18011869 +Fink Formera 9375 7223 NPV #+*Sinclair Net Present Value
 Fink Formera 7223 3223 K205

SM	+86
SW	+77
SF	+83
SG	+23
SB	+106
SC	+223

CED	BW	WW	YW	SC	DOC	CEM	MILK	\$EN	CW	MARB	RE	FAT
+7	+9	+72	+120	+34	+19	+8	+25	-27	+49	+01	+59	+0
ANGLE	CLAW	BW	Adj. WW	Wt. 12/28/21	SC	Adj. %IMF	Adj. RE	Dam's Nursing Ratio				
+38	+33	75	691	1550	43	2.06	14.7	3-109				

71 Meadow Acres Renown 1220

Birth Date: 11-28-2020 | Bull 20215452 | Tattoo: 1220

+Rito 707 of Ideal 3407 7075 #RR Rito 707
 #+*S AV Renown 3439 Ideal 3407 of 1418 076
 17633839 *S AV Blackcap May 4136 #S AV 8180 Traveler 004
 ANGUS #+S AV May 2397
 #+GDAR Game Day 449 #+Boyd New Day 8005
 Meadow Acres Blackcap 332 #GD A R Miss Wix 474
 17675229 +Meadow Acres Blackcap 1121 #*Mytty In Focus
 Meadow Acres Blackcap 36

SM	+59
SW	+62
SF	+88
SG	+27
SB	+116
SC	+209

CED	BW	WW	YW	SC	DOC	CEM	MILK	\$EN	CW	MARB	RE	FAT
-1	+2.6	+70	+124	+40	+22	+1	+19	-20	+47	+10	+62	-.001
ANGLE	CLAW	BW	Adj. WW	Wt. 12/28/21	SC	Adj. %IMF	Adj. RE	Dam's Nursing Ratio				
+44	+41	75	621	1305	41	2.19	12.9	5-100				



S AV Resource 1441

SM	+56
SW	+55
SF	+91
SG	+25
SB	+116
SC	+206

CED	BW	WW	YW	CEM	MILK	\$EN	CW	MARB	RE	FAT
+2	+4.1	+69	+132	+0	+17	-27	+51	-.11	+1.10	-.003

72 Meadow Acres Resource 1223

Birth Date: 11-26-2020 | Bull #20215520 | Tattoo: 1223

#+Rito 707 of Ideal 3407 7075 #R R Rito 707
 #+*S AV Resource 1441 Ideal 3407 of 1418 076
 17016597 *S AV Blackcap May 4136 #S AV 8180 Traveler 004
 #+S AV May 2397
 #*Mytty In Focus #S A F Focus of E R
 #Meadow Acres Perfection 1120 Mytty Countess 906
 17102265 #Rito 616 of 4B20 6807
 Meadow Acres 616 354 +V N A R Perfection 10F 9H

SM	+52
SW	+56
SF	+99
SG	+39
SB	+139
SC	+232

CED	BW	WW	YW	SC	DOC	CEM	MILK	\$EN	CW	MARB	RE	FAT
+5	+3.4	+72	+131	+2.20	+21	+6	+17	-28	+54	+.28	+.99	+0.07
ANGLE	CLAW	BW	Adj. WW	Wt. 12/28/21	SC	Adj. %IMF	Adj. RE	Dam's Nursing Ratio				
+34	+35	85	733	1335	39	2.70	15.2	5-112				

73 Meadow Acres Resource 158

Birth Date: 10-13-2020 | Bull 20208027 | Tattoo: 158

#+Rito 707 of Ideal 3407 7075 #R R Rito 707
 #+*S AV Resource 1441 Ideal 3407 of 1418 076
 17016597 *S AV Blackcap May 4136 #S AV 8180 Traveler 004
 #+S AV May 2397
 #*Mytty In Focus #S A F Focus of E R
 Meadow Acres Perfection 359 Mytty Countess 906
 17675242 Meadow Acres Perfection 172 #Bon View New Design 1407
 Meadow Acres 616 354

SM	+61
SW	+58
SF	+78
SG	+30
SB	+108
SC	+201

CED	BW	WW	YW	SC	DOC	CEM	MILK	\$EN	CW	MARB	RE	FAT
+8	+1.7	+60	+109	N/A	N/A	+7	+26	-18	+37	+.13	+.79	+0.16
ANGLE	CLAW	BW	Adj. WW	Wt. 12/28/21	SC	Adj. %IMF	Adj. RE	Dam's Nursing Ratio				
N/A	N/A	75	652	1420	44	2.16	14.6	2-122				

74 Meadow Acres Resource 179

Birth Date: 09-06-2020 | Bull 20215517 | Tattoo: 179

#+Rito 707 of Ideal 3407 7075 #R R Rito 707
 #+*S AV Resource 1441 Ideal 3407 of 1418 076
 17016597 *S AV Blackcap May 4136 #S AV 8180 Traveler 004
 #+S AV May 2397
 #+Boyd New Day 8005 #A A R New Trend
 Meadow Acres Lucy 254 SV F Forever Lady 57D
 17938096 Meadow Acres Lucy 97 #*S AV Final Answer 0035
 Meadow Acres Lucy 469

SM	+61
SW	+64
SF	+80
SG	+28
SB	+108
SC	+201

CED	BW	WW	YW	SC	DOC	CEM	MILK	\$EN	CW	MARB	RE	FAT
+10	-1.1	+57	+110	+1.04	+14	+7	+27	-17	+39	+.16	+.55	+0.17
ANGLE	CLAW	BW	Adj. WW	Wt. 12/28/21	SC	Adj. %IMF	Adj. RE	Dam's Nursing Ratio				
+39	+39	75	714	1380	41	2.09	13.6	8-100				

75 Meadow Acres Roughrider 1221

Birth Date: 12-22-2020 | Bull 20217201 | Tattoo: 1221

#+*Connealy Earman 076E #*Connealy Consensus
 *Ellingson Roughrider 4202 #*Brazila of Conanga 3991 839A
 17933463 *EA Blacklass 8914 LT Curve Bender 4810 of EA
 +SAV Blacklass 374
 #*Connealy Capitalist 028 #*S AV Final Answer 0035
 Prides Pita of Conanga 8821
 #*Sitz Wisdom 481T
 Meadow Acres Rita 673 Meadow Acres Rita 4134 Meadow Acres Rita 060

SM	+93
SW	+97
SF	+117
SG	+38
SB	+155
SC	+294

CED	BW	WW	YW	SC	DOC	CEM	MILK	\$EN	CW	MARB	RE	FAT
+3	+2.5	+88	+160	+1.55	+16	+6	+34	-36	+73	+.53	+.54	+0.90
ANGLE	CLAW	BW	Adj. WW	Wt. 12/28/21	SC	Adj. %IMF	Adj. RE	Dam's Nursing Ratio				
+48	+31	82	692	1210	41	2.96	12.0	2-104				



Meadow Acres BLK Granite 875

SM	+75
SW	+71
SF	+84
SG	+37
SB	+120
SC	+231

CED	BW	WW	YW	CEM	MILK	\$EN	CW	MARB	RE	FAT
+8	+2.1	+66	+109	+11	+25	-12	+42	+32	+.55	-.008

SIRE OF REFERENCE SIRE PICTURED.

76 Meadow Acres Blk Granite 121

Birth Date: 09-21-2020 | Bull 20214132 | Tattoo: 121

#*Connealy Black Granite #*Connealy Consensus 7229
 Meadow Acres BLK Granite 875 #Eura Elga of Conanga 9109
 19299500 +*Meadow Acres Miss 6185 #*Cole Creek Cedar Ridge 1V
 +Fink Miss 0732 5523 NW
 #+*PA Full Power 1208 #+*PA Power Tool 9108
 Meadow Acres Rita 915 #Pine View SQR Rita W091
 19599122 #Meadow Acres Rita 156 #*O C C Missing Link 830M
 Meadow Acres Rita 989

SM	+58
SW	+52
SF	+68
SG	+47
SB	+115
SC	+207

CED	BW	WW	YW	SC	DOC	CEM	MILK	\$EN	CW	MARB	RE	FAT
+2	+1.0	+58	+102	-.20	+26	+5	+16	-7	+26	+.65	+.32	+0.11
ANGLE	CLAW	BW	Adj. WW	Wt. 12/28/21	SC	Adj. %IMF	Adj. RE	Dam's Nursing Ratio				
+58	+62	75	568	1225	42	2.47	10.6	1-94				

77 Meadow Acres Blk Granite 131

Birth Date: 10-12-2020 | Bull 20208029 | Tattoo: 131

#*Connealy Black Granite #*Connealy Consensus 7229
 Meadow Acres BLK Granite 875 #Eura Elga of Conanga 9109
 19299500 +*Meadow Acres Miss 6185 #*Cole Creek Cedar Ridge 1V
 +Fink Miss 0732 5523 NW
 #+*PA Full Power 1208 #+*PA Power Tool 9108
 Meadow Acres Rita 98 #Pine View SQR Rita W091
 19599116 +Meadow Acres Rita 2111A #+O C C Emblazon 854E
 Meadow Acres Rita 6054

SM	+77
SW	+73
SF	+71
SG	+40
SB	+110
SC	+220

CED	BW	WW	YW	SC	DOC	CEM	MILK	\$EN	CW	MARB	RE	FAT
+1	+2.3	+66	+115	+.65	+13	+8	+28	-13	+39	+.49	+.29	+0.04
ANGLE	CLAW	BW	Adj. WW	Wt. 12/28/21	SC	Adj. %IMF	Adj. RE	Dam's Nursing Ratio				
+44	+53	82	638	1310	42	2.97	10.3	1-105				

78 Meadow Acres Blk Granite 132

Birth Date: 10-01-2020 | Bull 20208040 | Tattoo: 132

#*Connealy Black Granite
Meadow Acres **BLK Granite 875**
19299500 +*Meadow Acres Miss 6185

ANGUSGS
#*Cole Creek Cedar Ridge 1V
Meadow Acres **Rita 9176**
19599080 Meadow Acres Rita 310

#*Connealy Consensus 7229
#Eura Elga of Conanga 9109
#*Cole Creek Cedar Ridge 1V
+Fink Miss 0732 5523 NW
#*Cole Creek Black Cedar 46P
#*Cole Creek Clovanada 49S
#*S A V Iron Mountain 8066
Meadow Acres Rita 079

SM	+90
SW	+83
SF	+84
SG	+26
SB	+110
SC	+233

CED	BW	WW	YW	SC	DOC	CEM	MILK	SEN	CW	MARB	RE	FAT
+6	+2.3	+79	+128	+1.00	+23	+10	+23	-14	+49	+14	+46	+0.09
ANGLE	CLAW	BW	Adj. WW	Wt. 12/28/21	SC	Adj. %IMF	Adj. RE	Dam's Nursing Ratio				
+55	+53	75	640	1390	43.5	2.63	12.8	1-104				



MEADOW ACRES CEDAR 1148 - Lot 81

79 Meadow Acres Blk Granite162

Birth Date: 10-31-2020 | Bull 20225265 | Tattoo: 1162

#*Connealy Black Granite
Meadow Acres **BLK Granite 875**
19299500 +*Meadow Acres Miss 6185

ANGUSGS
#+GDAR Game Day 449
+Meadow Acres **Erica 2248 7191**
18968501 +*Fink Erica 2248 9380 K205

#*Connealy Consensus 7229
#Eura Elga of Conanga 9109
#*Cole Creek Cedar Ridge 1V
+Fink Miss 0732 5523 NW
#+Boyd New Day 8005
#GD A R Miss Wix 474
#Nichols Extra K205
+Fink Erica 9380 3463 5522

SM	+63
SW	+71
SF	+102
SG	+47
SB	+149
SC	+256

CED	BW	WW	YW	SC	DOC	CEM	MILK	SEN	CW	MARB	RE	FAT
+7	+2.0	+70	+112	+1.03	+17	+11	+24	-26	+57	+49	+75	-0.08
ANGLE	CLAW	BW	Adj. WW	Wt. 12/28/21	SC	Adj. %IMF	Adj. RE	Dam's Nursing Ratio				
+55	+52	75	636	1190	42	2.39	12.8	1-98				

81 Meadow Acres Cedar 1148

Birth Date: 10-19-2020 | Bull 20208047 | Tattoo: 1148

#*Cole Creek Cedar Ridge 1V
+*Meadow Acres **Cedar 6204**
18661870 +*Fink Miss 1393 8379 NW

ANGUSGS
#*S A V Thunderbird 9061
Meadow Acres **Winnette 470**
18009870 Meadow Acres Winnette 218

#*Cole Creek Black Cedar 46P
#*Cole Creek Clovanada 49S
#S A V Net Worth 4200
Fink Miss 8379 6535 IF
#*S A V Final Answer 0035
#S A V Emblynette 7411
#+Boyd New Day 8005
Meadow Acres Winnette 063

SM	+50
SW	+64
SF	+74
SG	+37
SB	+110
SC	+193

CED	BW	WW	YW	SC	DOC	CEM	MILK	SEN	CW	MARB	RE	FAT
+10	-.3	+59	+103	+1.00	+19	+7	+26	-15	+38	+32	+49	-0.15
ANGLE	CLAW	BW	Adj. WW	Wt. 12/28/21	SC	Adj. %IMF	Adj. RE	Dam's Nursing Ratio				
+53	+47	75	635	1345	42.5	2.23	12.1	6-94				

80 Meadow Acres Blk Granite165

Birth Date: 10-31-2020 | Bull 20208053 | Tattoo: 1165

#*Connealy Black Granite
Meadow Acres **BLK Granite 875**
19299500 +*Meadow Acres Miss 6185

ANGUSGS
#*Schiefelbein Effective 61
Meadow Acres **Formera 981**
19599141 Meadow Acres Formera 7160

#*Connealy Consensus 7229
#Eura Elga of Conanga 9109
#*Cole Creek Cedar Ridge 1V
+Fink Miss 0732 5523 NW
#CAR Efficient 534
+*Frosty Answer 3979
Mytty Bobrat 2161
+Meadow Acres Formera 4171

SM	+80
SW	+74
SF	+57
SG	+41
SB	+98
SC	+207

CED	BW	WW	YW	SC	DOC	CEM	MILK	SEN	CW	MARB	RE	FAT
+18	-2.3	+52	+86	+1.88	+24	+14	+31	+6	+26	+54	+41	+0.37
ANGLE	CLAW	BW	Adj. WW	Wt. 12/28/21	SC	Adj. %IMF	Adj. RE	Dam's Nursing Ratio				
+65	+62	65	661	1225	40	2.57	12.8	1-102				

82 Meadow Acres Cedar 1149 [DHP]

Birth Date: 10-19-2020 | Bull 20208032 | Tattoo: 1149

#*Cole Creek Cedar Ridge 1V
+*Meadow Acres **Cedar 6204**
18661870 +*Fink Miss 1393 8379 NW

ANGUSGS
#*S A V Final Answer 0035
Meadow Acres **Blackcap 396**
17675250 Meadow Acres Blackcap 79

#*Cole Creek Black Cedar 46P
#*Cole Creek Clovanada 49S
#S A V Net Worth 4200
Fink Miss 8379 6535 IF
#Sitz Traveler 8180
S A V Emulous 8145
#Hyline Right Time 338
Meadow Acres Blackcap 578

SM	+82
SW	+77
SF	+86
SG	+30
SB	+117
SC	+234

CED	BW	WW	YW	SC	DOC	CEM	MILK	SEN	CW	MARB	RE	FAT
+9	-.3	+66	+114	+1.69	+22	+11	+29	-20	+43	+29	+34	+0.24
ANGLE	CLAW	BW	Adj. WW	Wt. 12/28/21	SC	Adj. %IMF	Adj. RE	Dam's Nursing Ratio				
+40	+41	72	671	1330	44	1.72	12.4	7-99				

Meadow Acres Cedar 6204



SM	+50
SW	+76
SF	+65
SG	+46
SB	+111
SC	+194

CED	BW	WW	YW	SC	DOC	CEM	MILK	SEN	CW	MARB	RE	FAT
+11	+0	+63	+112	+7	+33	-25	+31	+59	+32	+0.11		

SIRE OF REFERENCE SIRE PICTURED.

83 Meadow Acres Cedar 1154

Birth Date: 10-25-2020 | Bull 20208037 | Tattoo: 1154

#*Cole Creek Cedar Ridge 1V
+*Meadow Acres **Cedar 6202**
18661871 +*Fink Miss 1393 8379 NW

ANGUSGS
#*Sitz Dash 10277
Meadow Acres **Rita 6178 879**
19299568 +*Meadow Acres Rita 960 6178

#*Cole Creek Black Cedar 46P
#*Cole Creek Clovanada 49S
#S A V Net Worth 4200
Fink Miss 8379 6535 IF
#*Sitz Upward 307R
+Sitz Everelda Entense 2665
#+*Connealy Earman 076E
+Meadow Acres Rita 1000 960

SM	+66
SW	+74
SF	+58
SG	+28
SB	+86
SC	+178

CED	BW	WW	YW	SC	DOC	CEM	MILK	SEN	CW	MARB	RE	FAT
+6	+1.7	+58	+91	+1.48	+10	+10	+32	-5	+31	+20	+47	+0.27
ANGLE	CLAW	BW	Adj. WW	Wt. 12/28/21	SC	Adj. %IMF	Adj. RE	Dam's Nursing Ratio				
+55	+59	72	668	1255	43	1.98	11.8	2-100				

84 Meadow Acres Cedar 1168 [CHP]

Birth Date: 10-30-2020 | Bull 20208031 | Tattoo: 1168

ANGUS
 #*Cole Creek Cedar Ridge 1V #Cole Creek Black Cedar 46P
 +*Meadow Acres Cedar 6202 #Cole Creek Clovanada 49S
 18661871 +*Fink Miss 1393 8379 NW #5 A V Net Worth 4200
 Fink Miss 8379 6535 IF
 #+*PA Power Tool 9108
 Meadow Acres Blackcap 819 *Pine View SQR Rita W091
 19299535 Meadow Acres Blackcap 471 #Bon View New Design 878
 V N A R Blackcap A619 225H

SM	+79
SW	+65
SF	+46
SG	+44
SB	+90
SC	+196

CED	BW	WW	YW	SC	DOC	CEM	MLK	SEN	CW	MARB	RE	FAT
+7	-.3	+49	+76	+1.36	+13	+9	+27	+11	+21	+.71	+.08	+.044
ANGLE	CLAW	BW	Adj. WW	Wt. 12/28/21	SC	Adj. %IMF	Adj. RE	Dam's Nursing Ratio				
+47	+50	65	622	1205	42	2.91	11.0	2.93				

88 Meadow Acres Cedar 1179

Birth Date: 12-06-2020 | Bull 20236364 | Tattoo: 1179

ANGUS
 #*Cole Creek Cedar Ridge 1V #Cole Creek Black Cedar 46P
 +*Meadow Acres Cedar 6204 #Cole Creek Clovanada 49S
 18661870 +*Fink Miss 1393 8379 NW #5 A V Net Worth 4200
 Fink Miss 8379 6535 IF
 #Baldridge Kaboom K243 KCF
 #Parka of Conanga 241
 #O C C Missing Link 830M
 Meadow Acres Rita 519

SM	+62
SW	+75
SF	+67
SG	+50
SB	+117
SC	+214

CED	BW	WW	YW	SC	DOC	CEM	MLK	SEN	CW	MARB	RE	FAT
+12	-1.2	+60	+101	+1.56	+14	+9	+33	-20	+38	+.65	+.51	+0
ANGLE	CLAW	BW	Adj. WW	Wt. 12/28/21	SC	Adj. %IMF	Adj. RE	Dam's Nursing Ratio				
+52	+40	75	679	1240	42	3.29	13.6	3-107				

85 Meadow Acres Cedar 1169

Birth Date: 10-25-2020 | Bull 20208042 | Tattoo: 1169

ANGUS
 #*Cole Creek Cedar Ridge 1V #Cole Creek Black Cedar 46P
 +*Meadow Acres Cedar 6204 #Cole Creek Clovanada 49S
 18661870 +*Fink Miss 1393 8379 NW #5 A V Net Worth 4200
 Fink Miss 8379 6535 IF
 #+GDAR Game Day 449
 #Boyd New Day 8005
 +Meadow Acres Donna 2236 7185 #G D A R Miss Wix 474
 18968495 +*Fink Donna 2236 8285 FA #*S A V Final Answer 0035
 +Fink Donna 8285 3465 K205

SM	+83
SW	+84
SF	+61
SG	+46
SB	+107
SC	+222

CED	BW	WW	YW	SC	DOC	CEM	MLK	SEN	CW	MARB	RE	FAT
+8	-.2	+65	+108	+.98	+11	+13	+33	-15	+38	+.62	+.44	+.022
ANGLE	CLAW	BW	Adj. WW	Wt. 12/28/21	SC	Adj. %IMF	Adj. RE	Dam's Nursing Ratio				
+50	+28	75	655	1330	41.5	2.90	11.8	3-98				

89 Meadow Acres Cedar 1186

Birth Date: 10-30-2020 | Bull 20208044 | Tattoo: 1186

ANGUS
 #*Cole Creek Cedar Ridge 1V #Cole Creek Black Cedar 46P
 +*Meadow Acres Cedar 6202 #Cole Creek Clovanada 49S
 18661871 +*Fink Miss 1393 8379 NW #5 A V Net Worth 4200
 Fink Miss 8379 6535 IF
 #*Sitz Dash 10277
 #*Sitz Upward 307R
 +Meadow Acres Bonnie 8230 +Sitz Everelda Entense 2665
 19299538 +*Fink Bonnie 3495 522 FA #*S A V Final Answer 0035
 +Finks Bonnie 522 0372 5522

SM	+81
SW	+73
SF	+73
SG	+55
SB	+128
SC	+247

CED	BW	WW	YW	SC	DOC	CEM	MLK	SEN	CW	MARB	RE	FAT
+7	-.1	+63	+108	+1.09	+22	+9	+26	-9	+32	+.88	+.28	+.029
ANGLE	CLAW	BW	Adj. WW	Wt. 12/28/21	SC	Adj. %IMF	Adj. RE	Dam's Nursing Ratio				
+57	+51	75	598	1170	43	2.57	11.3	2-94				

86 Meadow Acres Cedar 1171

Birth Date: 10-25-2020 | Bull 20208039 | Tattoo: 1171

ANGUS
 #*Cole Creek Cedar Ridge 1V #Cole Creek Black Cedar 46P
 +*Meadow Acres Cedar 6204 #Cole Creek Clovanada 49S
 18661870 +*Fink Miss 1393 8379 NW #5 A V Net Worth 4200
 Fink Miss 8379 6535 IF
 #+*S A V Resource 1441
 #Rito 707 of Ideal 3407 7075
 Meadow Acres Perfection 7131 *S A V Blackcap May 4136
 18968475 +Meadow Acres Perfection 2115 #*Mytty In Focus
 Meadow Acres 616 354

SM	+54
SW	+66
SF	+59
SG	+28
SB	+87
SC	+167

CED	BW	WW	YW	SC	DOC	CEM	MLK	SEN	CW	MARB	RE	FAT
+18	-2.0	+55	+93	+1.33	+20	+12	+28	-19	+20	+.30	+.20	+.040
ANGLE	CLAW	BW	Adj. WW	Wt. 12/28/21	SC	Adj. %IMF	Adj. RE	Dam's Nursing Ratio				
+61	+46	65	554	1105	43	2.60	10.4	2-86				

90 Meadow Acres Cedar 1188

Birth Date: 11-07-2020 | Bull 20208052 | Tattoo: 1188

ANGUS
 #*Cole Creek Cedar Ridge 1V #Cole Creek Black Cedar 46P
 +*Meadow Acres Cedar 6204 #Cole Creek Clovanada 49S
 18661870 +*Fink Miss 1393 8379 NW #5 A V Net Worth 4200
 Fink Miss 8379 6535 IF
 #*Cole Creek Cedar Ridge 1V #Cole Creek Black Cedar 46P
 Meadow Acres Miss Kaye 714 #Cole Creek Clovanada 49S
 18968424 Meadow Acres Miss Kaye 435 #*Ellingson Identity 9104
 Meadow Acres Miss Kaye 712

SM	+100
SW	+71
SF	+76
SG	+26
SB	+102
SC	+232

CED	BW	WW	YW	SC	DOC	CEM	MLK	SEN	CW	MARB	RE	FAT
+12	-.9	+55	+99	+.16	+20	+10	+28	+9	+31	+.18	+.27	+.006
ANGLE	CLAW	BW	Adj. WW	Wt. 12/28/21	SC	Adj. %IMF	Adj. RE	Dam's Nursing Ratio				
+62	+35	72	626	1180	43	2.32	11.9	1-97				

87 Meadow Acres Cedar 1176

Birth Date: 11-20-2020 | Bull 20208041 | Tattoo: 1176

ANGUS
 #*Cole Creek Cedar Ridge 1V #Cole Creek Black Cedar 46P
 +*Meadow Acres Cedar 6204 #Cole Creek Clovanada 49S
 18661870 +*Fink Miss 1393 8379 NW #5 A V Net Worth 4200
 Fink Miss 8379 6535 IF
 #*Cole Creek Cedar Ridge 1V #Cole Creek Black Cedar 46P
 Meadow Acres Blackbird 719 #Cole Creek Clovanada 49S
 18968472 #Meadow Acres Blackbird 3112 #Connealy Thunder
 Meadow Acres Blackbird 0218

SM	+75
SW	+75
SF	+45
SG	+42
SB	+88
SC	+189

CED	BW	WW	YW	SC	DOC	CEM	MLK	SEN	CW	MARB	RE	FAT
+11	-.9	+61	+97	+.98	+18	+7	+29	-15	+22	+.59	+.12	+0
ANGLE	CLAW	BW	Adj. WW	Wt. 12/28/21	SC	Adj. %IMF	Adj. RE	Dam's Nursing Ratio				
+46	+26	70	664	1140	42	2.84	12.8	2-98				

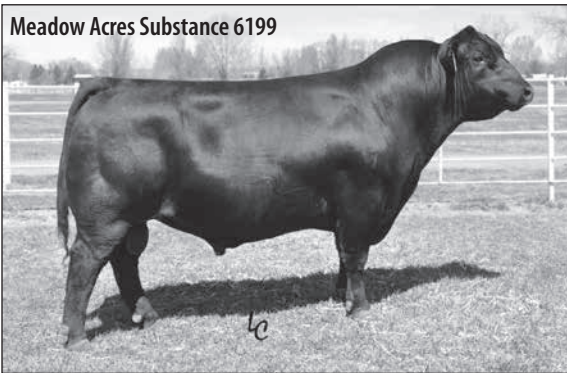
91 Meadow Acres Cedar 178 [CHP]

Birth Date: 10-11-2020 | Bull 20208035 | Tattoo: 178

ANGUS
 #*Cole Creek Cedar Ridge 1V #Cole Creek Black Cedar 46P
 +*Meadow Acres Cedar 6204 #Cole Creek Clovanada 49S
 18661870 +*Fink Miss 1393 8379 NW #5 A V Net Worth 4200
 Fink Miss 8379 6535 IF
 #+Boyd Poundmaker 21
 #Sitz Alliance 6595
 +Boyd Forever Lady 9001
 Meadow Acres Alexina 255 #G A R Retail Product
 17422950 Meadow Acres Alexina 916 Meadow Acres Alexina 026

SM	+56
SW	+63
SF	+52
SG	+53
SB	+105
SC	+192

CED	BW	WW	YW	SC	DOC	CEM	MLK	SEN	CW	MARB	RE	FAT
+8	-.1	+45	+86	+.73	+17	+9	+39	-10	+16	+.86	+.02	+.005
ANGLE	CLAW	BW	Adj. WW	Wt. 12/28/21	SC	Adj. %IMF	Adj. RE	Dam's Nursing Ratio				
+61	+36	85	561	1210	38.5	2.65	11.7	8-97				



Meadow Acres Substance 6199

SM	+69
SW	+77
SF	+108
SG	+55
SB	+163
SC	+280

CED	BW	WW	YW	CEM	MILK	\$EN	CW	MARB	RE	FAT
+3	+3.2	+72	+130	+6	+34	-38	+60	+67	+88	+0.04

SIRE OF REFERENCE SIRE PICTURED.

92 Meadow Acres Substance 1177

Birth Date: 11-20-2020 | Bull 20208045 | Tattoo: 1177

#*Benfield Substance 8506	#+H A Image Maker 0415	SM	+61
+*Meadow Acres Substance 6199	Benfield Edella 1105	SW	+61
18692575	+G A R New Design 5050	SF	+89
ANGUS	+Tehama Blackcap N548	SG	+41
GS	#*S A V Final Answer 0035	SB	+130
	#Sitz Traveler 8180	SC	+230
+Meadow Acres Perfection 5189	S A V Emulous 8145		
18327708	#Rito 616 of 4B20 6807		
	+V N A R Perfection 10F 9H		

CED	BW	WW	YW	SC	DOC	CEM	MILK	\$EN	CW	MARB	RE	FAT
+8	-.2	+61	+109	+56	+13	+11	+20	-11	+40	+45	+60	+0.23
ANGLE	CLAW	BW	Adj. WW	Wt. 12/28/21	SC	Adj. %IMF	Adj. RE	Dam's Nursing Ratio				
+39	+57	75	627	1295	42	3.35	12.3	4-95				

93 Meadow Acres Substance 1178

Birth Date: 11-17-2020 | Bull 20208051 | Tattoo: 1178

#*Benfield Substance 8506	#+H A Image Maker 0415	SM	+74
+*Meadow Acres Substance 6199	Benfield Edella 1105	SW	+59
18692575	+G A R New Design 5050	SF	+93
ANGUS	+Tehama Blackcap N548	SG	+41
GS	#S A V Pioneer 7301	SB	+135
	#*S A V Final Answer 0035	SC	+249
Meadow Acres Rita 592	S A V Blackbird 5297		
18327703	+Meadow Acres Rita 949		
	#+B/R New Frontier 095		
	O&M Rita 9116 of 6054		

CED	BW	WW	YW	SC	DOC	CEM	MILK	\$EN	CW	MARB	RE	FAT
+0	+4.5	+73	+119	+53	+19	+10	+19	-27	+50	+34	+83	-.007
ANGLE	CLAW	BW	Adj. WW	Wt. 12/28/21	SC	Adj. %IMF	Adj. RE	Dam's Nursing Ratio				
+16	+34	85	703	1300	42.5	2.47	12.2	3-98				

94 Meadow Acres Substance 1181

Birth Date: 11-24-2020 | Bull 20208048 | Tattoo: 1181

#*Benfield Substance 8506	#+H A Image Maker 0415	SM	+58
+*Meadow Acres Substance 6199	Benfield Edella 1105	SW	+71
18692575	+G A R New Design 5050	SF	+86
ANGUS	+Tehama Blackcap N548	SG	+41
GS	#*Hoover Dam	SB	+127
	#*SjdGen C C & 7	SC	+223
Meadow Acres Rita 567	#Erica of Ellston C124		
18325595	+Meadow Acres Rita 2111		
	#+O C C Embazon 854E		
	O&M Rita 9116 of 6054		

CED	BW	WW	YW	SC	DOC	CEM	MILK	\$EN	CW	MARB	RE	FAT
-3	+2.4	+62	+108	+65	+10	-5	+34	-27	+46	+52	+50	+0.39
ANGLE	CLAW	BW	Adj. WW	Wt. 12/28/21	SC	Adj. %IMF	Adj. RE	Dam's Nursing Ratio				
+35	+41	92	670	1325	41	2.61	13.2	3-101				

95 Meadow Acres Substance 1196

Birth Date: 11-29-2020 | Bull 20208043 | Tattoo: 1196

#*Benfield Substance 8506	#+H A Image Maker 0415	SM	+67
+*Meadow Acres Substance 6199	Benfield Edella 1105	SW	+80
18692575	+G A R New Design 5050	SF	+72
ANGUS	+Tehama Blackcap N548	SG	+50
GS	#*Connealy Capitalist 028	SB	+122
	#*S A V Final Answer 0035	SC	+225
Meadow Acres Direction 6168	Prides Pita of Conanga 8821		
18660682	Meadow Acres 616 0228		
	Meadow Acres Direction 859		
	Meadow Acres Direction 355		

CED	BW	WW	YW	SC	DOC	CEM	MILK	\$EN	CW	MARB	RE	FAT
+8	+1.0	+73	+125	+10	+26	+6	+29	-35	+34	+73	+41	+0.27
ANGLE	CLAW	BW	Adj. WW	Wt. 12/28/21	SC	Adj. %IMF	Adj. RE	Dam's Nursing Ratio				
+58	+54	85	606	1140	42	3.46	12.3	1-94				

96 Meadow Acres Substance 1198

Birth Date: 12-17-2020 | Bull 20208046 | Tattoo: 1198

#*Benfield Substance 8506	#+H A Image Maker 0415	SM	+59
+*Meadow Acres Substance 6199	Benfield Edella 1105	SW	+77
18692575	+G A R New Design 5050	SF	+93
ANGUS	+Tehama Blackcap N548	SG	+25
GS	#*S A V Final Answer 0035	SB	+118
	#Sitz Traveler 8180	SC	+212
+Meadow Acres Perfection 5185	S A V Emulous 8145		
18327673	+Meadow Acres Perfection 0101		
	#*S A V Final Answer 0035		
	#Meadow Acres Perfection 565		

CED	BW	WW	YW	SC	DOC	CEM	MILK	\$EN	CW	MARB	RE	FAT
-3	+4.4	+82	+134	+1.03	+19	+2	+26	-37	+56	+21	+61	+0.93
ANGLE	CLAW	BW	Adj. WW	Wt. 12/28/21	SC	Adj. %IMF	Adj. RE	Dam's Nursing Ratio				
+41	+49	95	716	1200	43	2.39	14.7	2-102				

97 Meadow Acres Substance 1213

Birth Date: 11-30-2020 | Bull 20208050 | Tattoo: 1213

#*Benfield Substance 8506	#+H A Image Maker 0415	SM	+76
+*Meadow Acres Substance 6199	Benfield Edella 1105	SW	+71
18692575	+G A R New Design 5050	SF	+104
ANGUS	+Tehama Blackcap N548	SG	+52
GS	+Mytty Thunderstruck	SB	+156
	#Connealy Thunder	SC	+278
Meadow Acres Blackbird 4122	#+Sitz Everelda Entense 5038		
18037136	+Meadow Acres Blackbird 897		
	#+B/R New Frontier 095		
	Leachman Blackbird 5025		

CED	BW	WW	YW	SC	DOC	CEM	MILK	\$EN	CW	MARB	RE	FAT
+1	+3.9	+70	+124	+1.07	+32	+4	+30	-24	+55	+57	+85	-.015
ANGLE	CLAW	BW	Adj. WW	Wt. 12/28/21	SC	Adj. %IMF	Adj. RE	Dam's Nursing Ratio				
+49	+41	92	720	1365	44	2.80	13.7	6-98				

98 Meadow Acres Substance 1230

Birth Date: 10-31-2020 | Bull 20211624 | Tattoo: 1230

#*Benfield Substance 8506	#+H A Image Maker 0415	SM	+87
+*Meadow Acres Substance 6199	Benfield Edella 1105	SW	+80
18692575	+G A R New Design 5050	SF	+71
ANGUS	+Tehama Blackcap N548	SG	+39
GS	+V D A R Bushwacker 3035	SB	+110
	#B C C Bushwacker 41-93	SC	+230
Meadow Acres Rita 1116	#V D A R Lass 5186		
17102207	+Meadow Acres Rita 848		
	#+O C C Embazon 854E		
	Meadow Acres Rita 1000		

CED	BW	WW	YW	SC	DOC	CEM	MILK	\$EN	CW	MARB	RE	FAT
+6	+8	+62	+101	+50	+27	+8	+35	-17	+37	+48	+62	+0.65
ANGLE	CLAW	BW	Adj. WW	Wt. 12/28/21	SC	Adj. %IMF	Adj. RE	Dam's Nursing Ratio				
+41	+43	78	702	1350	43	1.90	13.9	6-107				

99 Meadow Acres Substance 1232

Birth Date: 11-28-2020 | Bull 20208038 | Tattoo: 1232

+*Meadow Acres Substance 6199
18692575 Tehama Blackcap Y691

ANGUS

Meadow Acres Rita 622
18660843 +Meadow Acres Rita 2113

#H A Image Maker 0415
Benfield Edella 1105
#+G A R New Design 5050
+Tehama Blackcap N548
#*Connealy Right Answer 746
Polite Press of Conanga 1409
#+O C C Emblazon 854E
O&m Rita 9116 of 6054

SM	+78
SW	+79
SF	+110
SG	+45
SB	+156
SC	+280



CED	BW	WW	YW	SC	DOC	CEM	MILK	SEN	CW	MARB	RE	FAT
+9	+2.7	+80	+137	+27	+17	+9	+23	-23	+62	+66	+53	+069
ANGLE	CLAW	BW	Adj. WW	Wt. 12/28/21	SC	Adj. %IMF	Adj. RE	Dam's Nursing Ratio				
+46	+55	92	676	1340	41	3.49	11.8	4-107				



EXPLANATION OF EPDs

Expected Progeny Difference (EPD), is the prediction of how future progeny of each animal are expected to perform relative to the progeny of other animals listed in the database. EPDs are expressed in units of measure for the trait, plus or minus. Interim EPDs may appear on young animals when their performance has yet to be incorporated into the American Angus Association National Cattle Evaluation (NCE) procedures. This EPD will be preceded by an "I", and may or may not include the animal's own performance record for a particular trait, depending on its availability, appropriate contemporary grouping, or data edits needed for NCE.

GROWTH

Calving Ease Direct (CED), is expressed as a difference in percentage of unassisted births, with a higher value indicating greater calving ease in first-calf heifers. It predicts the average difference in ease with which a sire's calves will be born when he is bred to first-calf heifers.

Birth Weight EPD (BW), expressed in pounds, is a predictor of a sire's ability to transmit birth weight to his progeny compared to that of other sires.

Weaning Weight EPD (WW), expressed in pounds, is a predictor of a sire's ability to transmit weaning growth to his progeny compared to that of other sires.

Yearling Weight EPD (YW), expressed in pounds, is a predictor of a sire's ability to transmit yearling growth to his progeny compared to that of other sires.

Residual Average Daily Gain (RADG), feed efficiency expressed in pounds per day, is a predictor of a sire's genetic ability for post-weaning gain in future progeny compared to that of other sires, given a constant amount of feed consumed.

Dry Matter Intake (DMI), expressed in pounds per day, is a predictor of difference in transmitting ability for feed intake during the post-weaning phase, compared to that of other sires.

Scrotal Circumference EPD (SC), expressed in centimeters, is a predictor of the difference in transmitting ability for scrotal size compared to that of other sires.

Docility (DOC), is expressed as a difference in yearling cattle temperament, with a higher value indicating more favorable docility. It predicts the average difference of progeny from a sire in comparison with another sire's calves.

MATERNAL

Calving Ease Maternal (CEM), is expressed as a difference in percentage of unassisted births with a higher value indicating greater calving ease in first-calf daughters. It predicts the average ease with which a sire's daughters will calve as first-calf heifers when compared to daughters of other sires.

Maternal Milk EPD (Milk), is a predictor of a sire's genetic merit for milk and mothering ability as expressed in his daughters compared to daughters of other sires. In other words, it is that part of a calf's weaning weight attributed to milk and mothering ability.

CARCASS

Carcass Weight EPD (CW), expressed in pounds is a predictor of the differences in hot carcass weight of a sire's progeny compared to progeny of other sires.

Marbling EPD (Marb), expressed as a fraction of the difference in USDA marbling score of a sire's progeny compared to progeny of other sires.

Ribeye Area EPD (RE), expressed in square inches, is a predictor of the difference in ribeye area of a sire's progeny compared to progeny of other sires.

Fat Thickness EPD (Fat), expressed in inches, is a predictor of the differences in external fat thickness at the 12th rib (as measured between the 12th and 13th ribs) of a sire's progeny compared to progeny of other sires.

\$VALUE INDEXES

\$Value indexes, are multi-trait selection indexes to assist beef producers by adding simplicity to genetic selection decisions. \$Values are reported in dollars per head, where a higher value is more favorable. The \$Value is an estimate of how future progeny of each sire are expected to perform, on average, compared to progeny of other sires in the database if the sires were randomly mated to cows and if calves were exposed to the same environment.

Maternal Value (\$M), an index expressed in dollars per head, predicts profitability differences in progeny due to genetics from conception to weaning.

Weaned Calf Value (\$W), an index value expressed in dollars per head, is the expected average difference in future progeny performance for pre-weaning merit. \$W includes both revenue and cost adjustments associated with differences in birth weight, weaning direct growth, maternal milk, and mature cow size.

Beef Value (\$B), an index value expressed in dollars per head, is the expected average difference in future progeny performance for post-weaning and carcass value compared to progeny of other sires.

Combined Value (\$C), an index expressed in dollars per head, includes all traits that make up both \$M and \$B with the objective that commercial producers will replace 20% of their breeding females per year with replacement heifers retained within their own herd.

Created by Angus Genetics Inc. (AGI) and powered by Neogen GeneSeek, our sale cattle have been tested with the first DNA profile designed specifically for Angus cattle, Angus GSSM.

Each marker is intentionally chosen from the Angus genome to drive the Angus breed into the future. It offers maximum accuracy for genomically enhanced EPDs at great value. Testing heifer and bull calves ultimately allows you to reap the benefits of faster genetic gain in your commercial herd. With Angus GS, it's all about you, our customer.

Trait	Progeny Equivalent
Calving Ease Direct (CED)	26
Birth Weight (BW)	23
Weaning Weight (WW)	27
Yearling Weight (YW)	23
Dry Matter Intake (DMI)	12
Yearling height (YH)	17
Scrotal Circumference (SC)	15
Docility (DOC)	12
Claw Set (CLAW)	10
Foot Angle (ANGLE)	10
Heifer Pregnancy (HP)	17
Calving Ease Maternal (CEM)	20
Milk	36
Mature Weight (MW)	15
Mature Height (MH)	9
Carcass Weight (CW)	15
Carcass Marbling (MARB)	11
Carcass Ribeye (RE)	17
Carcass Fat (FAT)	14



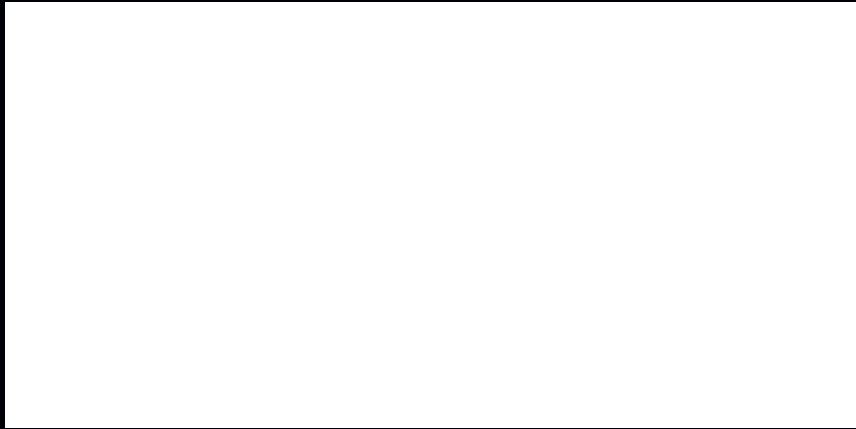
Make Angus GS work for you at Angus.org/AGI/AngusGS or contact your Neogen GeneSeek representative at (402) 435-0665.





32581 Correa Lane, Echo, OR 97826
Richard Correa (541) 449-3558
Devin Correa (541) 379-0632 Cell
E-mail: meadowacresangus@msn.com www.meadowacresangus.com

Presorted First Class
US Postage Paid
San Luis Obispo
Permit #8



**20th
Annual**

Production Sale

Wednesday • 1:00 PM

February 9, 2022

Double M Sale Facility

30256 Stanfield Meadows Road, Stanfield, OR 97875

*Directions: Take Exit 182 off of Interstate 84. Turn North, then take the first right onto Stanfield Meadows Rd.
Second driveway on the right.*

LiveAuctions.TV

www.meadowacresangus.com