

Quality Red Angus Cattle Bred to Function Efficiently



Annual Bull Sale

Saturday, March 20, 2021

At the Ranch, Plevna, MT • 1 p.m. MDT

100 Yearling Red Angus Bulls

Bulls can be viewed at Bruce Bowman's feedlot,
1 mile south of Rhame, ND, until three days prior to the sale.

Catalog & videos available online
www.milkcrekreds.com

DVAuction Broadcasting
Real-time Auctions

Welcome



Welcome to our 2021 sale offering. As I write this we are enjoying a warm up in eastern Montana after a two week winter blast of arctic air. The one thing that is certain about where we live, the weather is apt to change at any time. This past summer we experienced some extreme drought along with a grasshopper infestation that consumed much of what grew. With that environment our bulls and commercial steers weaned about 50 pounds under the past few years. We were thankful that the cows bred up well under these conditions. Much of our stockpiled grass that we use for winter grazing was stripped by the hoppers leaving less nutrients for grazing so we were placed in a situation of having to supplement with some hay by the end of November.

This year's offering will include many sires that we have used in the past as well as some new sires that will have some different genetics. The two sires that are new to offering both come from Canada. Red Minburn Copenhagen 3Y is a sire we were able to use AI after getting semen from U2 Ranch from Alberta. We also have a Grandson of Copenhagen, Red U2 Money Talks, that we purchased from U2 in their 2019 sale. These two sires along with the sires we have used in the past all produce a similar type and kind of offspring that we feel will work in our environment and how we operate our ranch. Our goal with these genetics is to produce cattle that have a frame size and the fleshing ability to thrive in our ever changing environmental conditions while optimizing growth, carcass and milk. One thing that remains standard is functionality of the genetics comes first. Good feet, problem free udders, and quiet dispositions are at the top of that standard.

We continue to have the bulls developed at Eric and Andrea Bowman's in Rhame, North Dakota. It has been a pleasure to work with this family for over 25 years when we started feeding with Eric's dad, Bruce. Now we get to watch Dillon (Eric and Andrea's son) becoming more involved with their operation. Eric feeds the bulls a TMR ration so that they should gain around 2.5 pounds per day. The bulls have two large lots along with a small pasture to get adequate exercise so they can develop for their future job of breeding cows and heifers.

We continue to try to utilize the technology available to provide the most accurate information available to our customers. This past year we participated in a program provided by the Red Angus Association called Red Cow Rally. Through this program we collected DNA on all of our cows which then was used to enhance their EPDS as well as verify their parentage. Red Angus also developed a new index as well as revamped their existing indexes. These will be listed in the catalog along with how each animal ranks within the breed for each index. The new Index ProS is a combination index that measures traits important from conception to the rail. This differs from the Herd builder index that now looks at traits important to the cow/calf producer through weaning and the Gridmaster Index that looks at traits important to post weaning as well as carcass.

We hope that the information provided within the pages of this catalog will be useful to you in evaluating our offering. If you have any questions about this information or need additional information please do not hesitate to contact us.

We always look forward to the opportunity to meeting people involved in this life style that we call ranching as well as re-newing friendships from the past.

May God Bless You.

Bruce, Tena, Jaclyn Ketchum and Jeff, Cele and Blaze Menees

As servants of the Lord, we are striving to be stewards of the land and cattle that He created and allowed us to manage so that we may glorify Him.



Bruce, Tena & Jaclyn Ketchum • Jeff, Cele and Blaze Menees

Quality Red Angus Cattle Bred to Function Efficiently



Bruce & Tena Ketchum
1721 Plevna Road
Plevna, MT 59344
(406) 778-3819
ketchum@midrivers.com
www.milkcreekreds.com



Sale Information

Milk Creek Reds Bull Sale Saturday, March 20, 2021

1 p.m. MDT • Milk Creek Reds Ranch • Plevna, MT

Selling:

100 Yearling Red Angus Bulls

SALE DAY LUNCH:

Complimentary lunch and pie will be served at 11:30 a.m.

SALE LOCATION:

At the Ranch (see map on page 2 for directions)
2093 Plevna Road South, Plevna, Mont. 406-778-3819

CATTLE VIEWING:

The bulls can be viewed at Bruce & Eric Bowman's feedlot 1 mile south of Rhame, N.D., until March 17th. After this time the bulls will be at the ranch.

SUPPLEMENTAL SHEET

Supplemental sheet with Updated EPDs, Scrotal Measurements, Frame Score will be available online a few days before the sale and on sale day.

SALE VIDEO

The video of the sale cattle will be available to view by March 1, 2021, at www.milkcreekreds.com or www.dvauction.com. If you don't have high speed internet or are unable to view the video over the internet, contact us for a DVD on the sale cattle.

SALE FORMAT:

Once again we will be offering the bulls through a rancher's auction. We will have an auctioneer that will auction the sale in a relaxed atmosphere. Each interested buyer will be able to bid on the bull of their choice with low pressure and the ability to be comfortable.

Online bidding will take place on DVAuction. Go to www.dvauction.com.

PHONE ORDERS

Buyers unable to attend the sale may call or send their bids to the owners, Bruce or Tena Ketchum. If you would like to discuss the sale offering, call us and describe your needs and budget and we can select your genetics for you. We can bid on the animal for you and you pay only the bid price established by the auction. Bids are handled in confidence on all orders. If there are several people needing to use this method for the sale we will set up a conference call for you to call into during the sale. Please call a few days in advance if this is needed so that we may set this up and get you the necessary phone number and information ahead of sale time.

SALE CONTACTS:

Milk Creek Reds	
Bruce and Tena Ketchum	406-778-3819 (Home) 406-978-3819 (Cell)
Auctioneer:	
Scott Weishaar	701-872-5299
Red Angus Association of America:	
Nolan Woodruff	805-861-0996
Videos:	
DVAuction	406-978-2124
DV Auction:	
Jay Rost	406-978-2124

AIR TRANSPORTATION

Billings, Mont.	230 miles
Rapid City, S.D.	190 Miles
Bismark, N.D.	230 miles

LIABILITY

All persons who attend the sale or view the cattle do so at their own risk. The owners assume no liability, legal or otherwise, for any accidents that occur on the sale or viewing premises.

ACCOMODATIONS:

Baker, Mont.	
(If planning to stay please reserve early as the oil field activity can cause room shortages.)	
Montana Motel	406-778-3315
Miles City, Mont.	
Sleep Inn & Suites	406-232-3000
Miles City Inn & Suites	866-599-6674

TERMS

The terms of the sale are cash. All settlements will be made with clerks of the sale immediately following the conclusion of the sale and before any cattle will be released. We will follow the Terms and Conditions set forth by the Red Angus Association of America. Announcements made by seller on sale day take precedence over any statements printed in this catalog or advertisement.

DELIVERY

We will provide delivery up to 300 miles. Over 300 miles we will work with the buyer to make arrangements on delivery. **A \$100 credit per bull will be applied to the purchase price of the bull if the new owner picks up the bull(s) on the day of the sale.** Delivery of the bulls will start the week after the sale.

BULL HEALTH PROGRAM

The bulls received Vision 7 at branding and then were preconditioned in August with Bovishield Gold One Shot and Vision 7 Somnus. In November, we followed up with Pyramid 5+Presponse. They received a Fusiguard injection in November and a booster in December. The lice prevention program consisted of injectable Dectomax in November, Clean-Up II in December, Clean-Up II in January and Stand Guard in February. Semen evaluations were performed by Fallon County Vet Service prior to the sale and all the evaluation forms will be available sale day.

BULL DEVELOPMENT

The bulls are fed on a ration to develop them into sound, functional, useable bulls for big country. They are fed to gain 2.5 lbs per day. The ration consists of whole kernel corn (7.5 lbs), distillers grain (1.6 lbs), and a balance of 45% grass, 25% alfalfa, 30% oat hay chopped hay mix along with a mineral supplement. This ration is developed to use 1% of the feed base being grain to reach our goal of 2.5 lb gain. They have been developed at Bruce & Eric Bowman's feedlot which is located 1 mile south of Rhame, N.D.

SEMEN INTEREST

Milk Creek Reds is retaining one-half revenue-sharing semen interest in all bulls in the sale. The retained semen interest by Milk Creek Reds allows us to collect semen, use semen on the bull in our herd, as well as share in semen revenue if the bull would develop interest to be used in other herds or semen marketing companies. Any semen collection would be at the buyer's convenience in the off-season use. Full possession and full salvage value sells on all bulls in this sale.

CATALOG & PROMOTION:

Tracey Koester, Cow Camp Promotions www.cowcamppromotions.com

Sale Information



WATCH AND BID ONLINE AT DVAUCTION.COM

Can't make the sale?

We are pleased to bring you real-time Internet bidding and a live broadcast of this sale through DV Auction. To watch or bid online, simply complete the following steps:

- Visit the DVAuction web site at www.dvauction.com
- Click on the "Register" tab
- Enter a user name, password and your contact information.
- Click on "Apply for Bidding."
- Select the sale from the list of other auctions and click "Apply".
- Complete the process by filling out the Banking & Lending information requested.

Be sure to include a personal contact at your bank, we will contact them in order to get a credit reference.

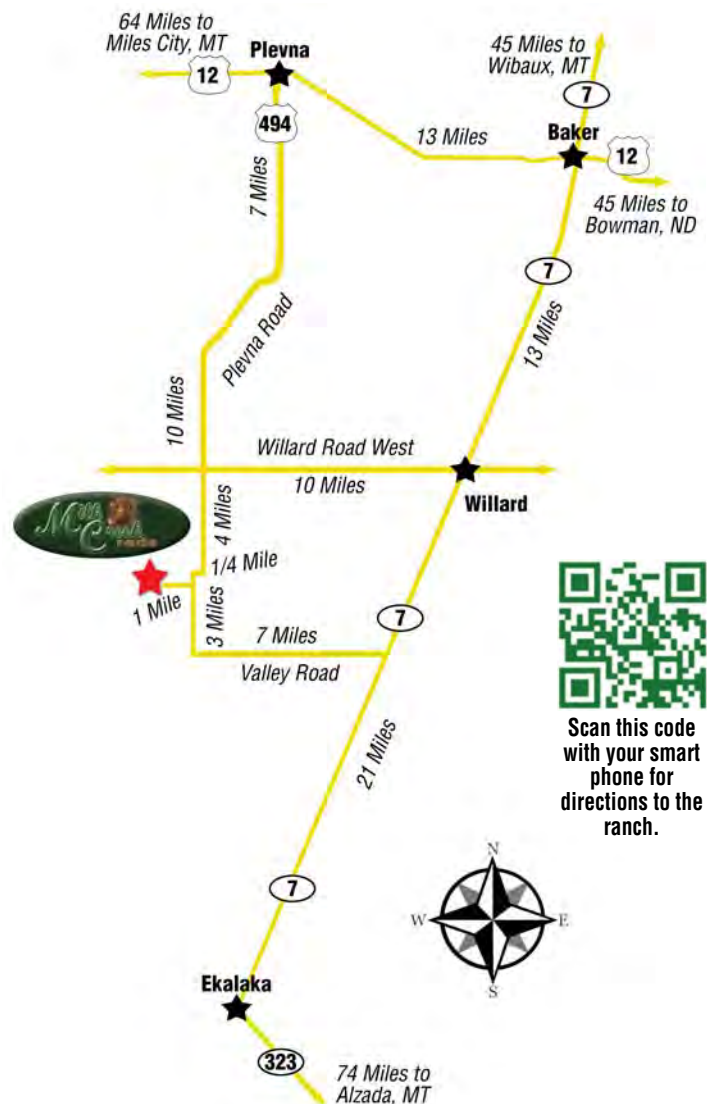
If you would prefer to be approved using your credit card, call (402) 474-5557.

Please be sure to apply for bidding at least a day in advance of the sale- every effort will be made to process your application in a timely manner.

DVAuction will contact you once you have been approved to bid. We do not provide buyer numbers until you have purchased a lot in the sale, and that number is only usable for that auction. After the sale contact the sale owner or manager to make arrangements for payment and delivery of your online purchases.

Please Note: High speed Internet access (DSL, T-1, or Broadband) is required to be able to bid successfully during the sale. If you have any questions, please contact DVAuction at (402) 474-5557 or email support@dvauction.com.

Proxy Bidding: If you can't access a computer during the sale, you can now place a "proxy bid" through DVAuction. Simply follow the instructions listed above, and as the sale date nears there will be a "Proxy Bidding" link under the sale listing on the main page of DVAuction. You can then place the maximum amount that you'd like to bid, and our system will represent your bid just as if you were there.



Can't make the sale?
Watch it LIVE and bid in
real-time on
DVAuction
Broadcasting Real-Time Auctions
www.dvauction.com
Technical Support
(402) 474-5557 | support@dvauction.com



Scan this code with your smart phone for directions to the ranch.

Red Angus Guide to EPDS and Indexes

ProS... Profitability and Sustainability is an all-purpose index that predicts average economic differences in all segments in the beef supply chain. This index is a combination of the breeding objectives modeled in the HerdBuilder and GridMaster selection indexes. In this index, replacement heifers are retained from within the herd and all remaining progeny are fed out to slaughter and sold on a quality-based grid. Traits included in this index include calving ease, growth, HPG, STAY, Mature Weight, Dry Matter Intake and carcass traits. The resulting index is expressed in dollars per head born (Index/High Value).

HB..... HerdBuilder is a maternal selection index that predicts the economic differences of animals for traits that are important from conception through weaning. Expressed as dollars per head born, HB is calculated based on the scenario that bulls are mated to heifers and cows, replacement heifers are retained and all remaining progeny are marketed at weaning. Traits included in the HB index include Calving Ease Direct, Calving Ease Maternal, Weaning Weight, Milk, Mature Weight, Heifer Pregnancy and Stayability (Index/High Value).

GM..... GridMaster is a selection index that predicts the average economic difference of non-replacement calves through the post-weaning phase of production. GM places selection pressure on growth, feedyard performance and carcass traits. Expressed as dollars per head born, GM is calculated based on the scenario that progeny are fed out to slaughter and marketed on a quality-based carcass grid. Traits included in GM include Average Daily Gain, Carcass Weight, Dry Matter Intake, Marbling, Back Fat and Rib Eye Area (Index/High Value).

CED..... Calving Ease Direct predicts differences in the percent of calves born unassisted out of 2-year-old dams. (Percent/High Value)

BW..... Birth Weight predicts differences in actual birth weight of progeny. (Pounds/Low Value)

WW..... Weaning Weight predicts differences in 205-day weaning weight. (Pounds/High Value)

YW..... Yearling Weight predicts differences in 365-day yearling weight. (Pounds/High Value)

ADG..... Average Daily Gain predicts differences in weight gain between 205 and 365 days of age. (Pounds/High Value)

DMI..... Dry Matter Intake predicts differences in daily feed intake as measured in a feedlot during the post-weaning period. (Pounds/Low Value)

MILK..... Milk predicts differences in weaning weight attributed to the milking ability of the animal's daughters. (Pounds/High Value)

ME..... Maintenance Energy predicts the difference in maintenance energy requirements. (Mcal per Month/Low Value)

HPG..... Heifer Pregnancy predicts differences in the percent of daughters who are able to conceive and calve at 2 years of age following exposure to breeding. (Percent/High Value)

CEM..... Calving Ease Maternal predicts differences in the percent of daughters who are able to calve unassisted as 2-year-old heifers. (Percent/High Value)

STAY..... Stayability predicts differences in the ability of an animals' retained daughters to remain productive in the herd – calve every year – through 6 years of age. (Percent/High Value)

MARB..... Marbling predicts differences in marbling score – amount of intramuscular fat measured at the 13th rib. (Marbling Score Units/High Value)

YG..... Yield Grade predicts differences in USDA Yield Grade, which is calculated using CW, REA and Fat. (Yield Grade Units/Low Value)

CW..... Carcass Weight predicts differences in actual hot carcass weight. (Pounds/High Value)

REA..... Ribeye Area predicts differences in square inches of ribeye area measured at the 13th rib. (Square Inches/High Value)

FAT..... Fat predicts differences in the depth of backfat measured between the 12th and 13th ribs. (Inches/Low Value)

RED ANGUS
RANCH TESTED. RANCHER TRUSTED.
RedAngus.org



PROFIT. REPEAT.

Generate repeated profits with Red Angus bulls.

Year after year, despite unpredictable market conditions, cattle producers see increased ROI on their Red Angus-sired calves that excel both in the yard and on the rail. Increase your profit potential with Red Angus genetics and experience the Red Angus advantage.

Visit RedAngus.org for details on Red Angus marketing programs.



RED ANGUS
RANCH TESTED. RANCHER TRUSTED.



Reference Sires



RIDGE LEGEND 2069



A
RIDGE LEGEND 2069
 REG. #1545794 TATTOO: 2069 OTT BD: 2/19/12 100% 1A

5L LAKOTA LEGEND 7074
 5L LEGEND 1553-425V
 5L HAZEL 45L-1553
 5L NORMANDY CANYON 6024
RIDGE AQUILA 552-8066
 RIDGE AQUILA 213-552

[O C C LEGEND 616L
 BASIN LAKOTA C999
 5L NORSEMAN KING 2291
 LA TRAVLIN 124 HAZEL 45
 LCHMN GRANDCANYON 1244G
 NORSEMAN 1312 PJM
 MLK CRK FLAGSTONE
 RIDGE AQUILA 366-213ET

BW/Ratio	73	90
WW/Ratio	624	100
YW/Ratio	1079	97
ADG/Ratio	2.85	97
%IMF/Ratio	2.94	90
REA/Ratio	13.21	102
Fat/Ratio	0.43	138
Dam's MPPA/Age	108	

ProS	HB	GM
53	59	-6
98%	82%	98%

CED	BW	WW	YW	ADG	DMI	M	ME	HPG	CEM	ST	MARB	YG	CW	REA	FAT
16	-1.4	37	62	0.16	1.11	25	-8	6	8	14	0.07	0.01	-5	-0.09	0.02
12%	55%	98%	96%	88%	24%	48%	13%	97%	31%	63%	97%	26%	98%	82%	48%

The 2069 young females in our herd are the reason that we continue to use this sire. They are moderate, dark red, good footed with beautiful udders. We have used him clean up on heifers for the first three breeding seasons and are using him on cows through A.I. as we sold him as a 5-year-old bull back to Sandbur Ridge Red Angus.



RIDGE ADMIRAL 3411



B
RIDGE ADMIRAL 3411
 REG. #1589182 TATTOO: 3411 OTT BD: 2/5/13 100% 1A

5L LAKOTA LEGEND 7074
 5L LEGEND 1553-425V
 5L HAZEL 45L-1553
 MILK CRK EXPRESS 9127
RIDGE GRANDIOSE 629-1112
 RIDGE GRANDIOSE 435-629

[O C C LEGEND 616L
 BASIN LAKOTA C999
 5L NORSEMAN KING 2291
 LA TRAVLIN 124 HAZEL 45
 5L GRAND EXPRESS 453-5655
 MLK CRK SHEBA 043
 HOLDEN HI HO 753
 PANHANDLE GRANDIOSE 435

BW/Ratio	77	105
WW/Ratio	675	112
YW/Ratio	1217	111
ADG/Ratio	3.38	109
%IMF/Ratio	4.6	104
REA/Ratio	12.82	103
Fat/Ratio	0.53	130
Dam's MPPA/Age	106	

ProS	HB	GM
181	106	75
2%	7%	6%

CED	BW	WW	YW	ADG	DMI	M	ME	HPG	CEM	ST	MARB	YG	CW	REA	FAT
13	-2.7	47	89	0.26	1.55	26	-2	22	6	17	0.45	0.16	42	0.43	0.06
40%	33%	89%	67%	28%	60%	45%	30%	1%	74%	24%	38%	86%	7%	8%	98%

We continue to use Ridge Admiral in our AI sire lineup because of how his progeny perform in our environment. The bulls have been well received by our commercial as well as registered customers and the oldest females are now 6 years old and bringing in good calves while functioning very well in our environment.



MUSHRUSH IMPACT Z352



C
MUSHRUSH IMPACT Z352
 REG. #1589455 TATTOO: Z352 MUS BD: 8/31/12 100% 1A

BUF CRK LANCER R017
MUSHRUSH IMPRESSIVE CA U236
 MUSHRUSH MADAM LT R265
 BECKTON JULIAN G1 J526
MUSHRUSH ZENA JL X320
 MUSHRUSH ZENA EP U339

[BECKTON LANCER F442 T
 BUF CRK JULIET N036
 TR JULIAN LT142
 MUSHRUSH ROBIN M125
 BECKTON JULIAN GG B571
 BECKTON ANNIE F743 LN
 BECKTON EPIC R415 KM
 MUSHRUSH ROBIN M125

BW/Ratio	54	82
WW/Ratio	672	105
YW/Ratio	1086	104
ADG/Ratio	2.57	103
%IMF/Ratio	3.11	101
REA/Ratio	12.68	101
Fat/Ratio	0.19	104
Dam's MPPA/Age	89	

ProS	HB	GM
150	123	27
11%	1%	68%

CED	BW	WW	YW	ADG	DMI	M	ME	HPG	CEM	ST	MARB	YG	CW	REA	FAT
18	-7.5	59	93	0.21	1.31	24	1	19	8	20	0.5	0.16	9	0.03	0.07
6%	1%	56%	59%	62%	39%	60%	54%	1%	25%	5%	30%	87%	81%	60%	99%

We are pleased to offer some Z352 progeny which is an A.I. sire that has given us great results from low birth weights and calving ease to above average weaning and yearling ratios. These progeny do not have your typical low birth weight, calving ease look instead they have rib shape and muscle which can catch your eye. We are calving his first daughters this year and are very pleased with their udder structure and mothering ability.

Reference Sires



MLK CRK ADVOCATE 4304

MLK CRK SHEBA 1014, dam



MLK CRK ADVOCATE 4304

REG. #1685793 TATTOO: 4304 BTK BD: 3/13/14 100% 1A

5L ADVOCATE 817-14W
5L SECRET AGENT 117-229Z
5L ROXIE 854-117

5L SIGNATURE 5615
5L MARTA 345-817
5L SIGNATURE 5615
XXX ROXIE 854 MR
TR JULIAN LT142
MLK CRK LENA 763
BECKTON EPIC R397 K
MLK CRK SHEBA 333

ProS	HB	GM
114	85	29
52%	36%	65%

MLK CRK REDSTONE
MLK CRK SHEBA 1014
MLK CRK SHEBA 966X

BW/Ratio	82	98
WW/Ratio	815	120
YW/Ratio	1286	116
ADG/Ratio	2.93	110
%IMF/Ratio	4.71	150
REA/Ratio	14.29	114
Fat/Ratio	0.38	150
Dam's MPPA/Age	104	

CED	BW	WW	YW	ADG	DMI	M	ME	HPG	CEM	ST	MARB	YG	CW	REA	FAT
4	0.9	79	110	0.19	1.87	17	-3	21	-1	17	0.79	0.12	17	0.30	0.07
99%	88%	6%	26%	72%	84%	94%	26%	1%	99%	33%	4%	73%	59%	17%	99%

We have calved our fourth crop of daughters out of 4304 and are very pleased with their fleshing ability, moderate size, feet and leg structure, and calving ease. The 4304 daughters are the largest sire group in our cow herd because of the ability of this sire to produce higher performance with good carcass and leave the right size and kind of females in the herd.



5L THE REAL DEAL 1687-143B



5L THE REAL DEAL 1687-143B

REG. #1701634 TATTOO: 143B FLR BD: 2/16/14 100% 1A

5L ADVOCATE 817-14W
5L DEFENDER 560-30Z
5L BLACK ADINA 525-560

5L SIGNATURE 5615
5L MARTA 345-817
TC STOCKMAN 365
5L ADINA 293-525
5L DIRECT FIRE 1641-6443
5L ADINA 525-893
5L NORSEMAN KING 2291
5L FIREFLY 190-2573

ProS	HB	GM
153	75	78
10%	56%	5%

5L DESTINATION 893-6215
5L FIREFLY 275-1687
5L FIREFLY 2573-275

BW/Ratio	78	96
WW/Ratio	715	111
YW/Ratio	1314	116
ADG/Ratio	3.74	122
%IMF/Ratio	4.52	92
REA/Ratio	13.81	108
Fat/Ratio	0.31	114
Dam's MPPA/Age	105	

CED	BW	WW	YW	ADG	DMI	M	ME	HPG	CEM	ST	MARB	YG	CW	REA	FAT
14	-1	69	124	0.34	2.76	25	8	15	8	13	0.66	0.04	43	0.28	0
36%	62%	23%	9%	3%	99%	50%	92%	11%	38%	71%	11%	38%	6%	19%	12%

The Real Deal progeny have more depth of rib and capacity than most other sires that we have used. We have calved out quite a few first calf heifers this year and they are deep and easy keeping with good udders.



RED MINBURN COPENHAGEN 3Y



RED MINBURN COPENHAGEN 3Y

REG. #2400918 TATTOO: BD: 2/5/11 100%

5L NORSEMAN KING 2291
RED RMJ REDMAN 1T
CROWFOOT KURUBA 4033P

VGW KING OF THE WEST
NORSEMAN 1312 PJM
O C C HUNTER 928H
RED CROWFOOT KURUBA 2030M
STEVENSON FORTUNE 425C
CRESCENT CREEK ROSEBUD 115F
MINBURN LANCER 11B
EVERBLACK MAY 86S

ProS	HB	GM
95	97	-2
77%	15%	97%

CRESCENT CREEK MAIN EVENT 6H
MINBURN MAY 112M
MINBURN MAY 90G

BW/Ratio	88	
WW/Ratio	798	100
YW/Ratio	1319	100
ADG/Ratio		
%IMF/Ratio		
REA/Ratio		
Fat/Ratio		
Dam's MPPA/Age		

CED	BW	WW	YW	ADG	DMI	M	ME	HPG	CEM	ST	MARB	YG	CW	REA	FAT
10	-0.8	61	94	0.21	1.57	24	-18	12	8	14	0.05	0.09	15	-0.02	0.02
76%	66%	48%	57%	64%	62%	58%	1%	34%	38%	70%	98%	61%	63%	71%	55%

Copenhagen is a new AI sire in our lineup with his progeny born this spring being the first we have had. We found progeny of this bull at the U2 ranch in Canada 4 years ago while touring through their pastures viewing cattle. His daughters impressed us as to their type

and kind that we like to a point that every cow we asked Joanne Unger what she was out of it would end up being a Copenhagen daughter. We viewed Copenhagen as an 8-year-old bull and found him to be very sound and holding his condition. When U2 dispersed last year everyone else found the Copenhagen daughters as well and they were one of the highest selling sire groups in a record setting sale.



Reference Sires



RIDGE PROVISION 6013



RIDGE PROVISION 6013

REG. #3552198 TATTOO: 6013 OTT BD: 1/29/16 100% 1A

BUF CRK THE RIGHT KIND U199
5L ADVANTAGE 3267-221Y
 5L ADINA 195-3267

5L ZENITH 1425-5767
RIDGE MONA 8162-2057
 RIDGE MONA 620-8162

BUF CRK LANCER R017
 BUF CRK SHOSHONE R353

5L TRADITION 203-6145
 5L ADINA 2113-195

5L MTN NORSE 71-7994
 5L OSCE 233-1425

MUSHRUSH LTJULIAN LG S005
 RIDGE MONA 303-620

ProS	HB	GM
123	108	15
39%	6%	86%

BW/Ratio	70	89
WW/Ratio	711	116
YW/Ratio	1200	104
ADG/Ratio	3.05	91
%IMF/Ratio	5.46	130
REA/Ratio	13.12	93
Fat/Ratio	0.35	125
Dam's MPPA/Age	105	

CED	BW	WW	YW	ADG	DMI	M	ME	HPG	CEM	ST	MARB	YG	CW	REA	FAT
12	-3.1	54	82	0.18	0.96	29	-6	19	7	16	0.3	0.00	2	0.00	0.01
55%	27%	74%	79%	80%	16%	17%	19%	1%	50%	34%	70%	21%	94%	67%	33%

We used 6013 A.I. on both heifers and cows and then used him naturally on 52 two year old heifers where he held his flesh well and had only 3 open cows in his group. By using this bull hard we have recorded 65 progeny this past year and 66 progeny the previous year which allows us to determine his genetic merit within our herd. We are calving 3 year old and first calf heifers and they look to be the right kind of females.



5L VIGILANTE 2674-11D



5L VIGILANTE 2674-11D

REG. #3565034 TATTOO: 11D FLR BD: 1/29/16 100% 1A

5L ADVANTAGE 3267-221Y
5L BOURNE 117-48A
 5L ROXIE 854-117

5L DEFENDER 560-30Z
5L OPAL 930-2674
 5L OPAL 2218-930

BUF CRK THE RIGHT KIND U199
 5L ADINA 195-3267

5L SIGNATURE 5615
 XXX ROXIE 854 MR

5L ADVOCATE 817-14W
 5L BLACK ADINA 525-560

5L TRADESMAN 1715-6237
 5L OPAL 656-2218

ProS	HB	GM
127	82	45
33%	41%	36%

BW/Ratio	55	83
WW/Ratio	577	92
YW/Ratio	1049	96
ADG/Ratio	2.94	102
%IMF/Ratio	6.45	126
REA/Ratio	11.06	88
Fat/Ratio	0.32	139
Dam's MPPA/Age	97	

CED	BW	WW	YW	ADG	DMI	M	ME	HPG	CEM	ST	MARB	YG	CW	REA	FAT
16	-5.6	52	85	0.21	1.46	26	-3	18	7	14	0.66	0.21	16	-0.09	0.06
13%	4%	79%	73%	61%	52%	45%	27%	2%	57%	64%	11%	96%	63%	82%	98%

Vigilante is an A.I. sire that we have used the past three years on heifers and cows. The heifers bred to him calved easy and his progeny were above average for weaning and yearling ratios. We really like the moderate frame and shape that he puts in his progeny. His first daughters are calving now.



HRR ADVANTAGE 6120



HRR ADVANTAGE 6120

REG. #3572939 TATTOO: 6120 BCO BD: 3/2/16 100% 1A

BUF CRK THE RIGHT KIND U199
5L ADVANTAGE 3267-221Y
 5L ADINA 195-3267

MLK CRK EXPRESS 9127
HRR BANA 309
 HRR BANA 193

BUF CRK LANCER R017
 BUF CRK SHOSHONE R353

5L TRADITION 203-6145
 5L ADINA 2113-195

5L GRAND EXPRESS 453-5655
 MLK CRK SHEBA 043

HRR KNIGHT 956
 HRR BANA 860

ProS	HB	GM
113	97	15
53%	15%	86%

BW/Ratio	76	90
WW/Ratio	644	104
YW/Ratio	1081	102
ADG/Ratio	2.72	98
%IMF/Ratio	2.42	98
REA/Ratio	12.24	94
Fat/Ratio	0.2	93
Dam's MPPA/Age	100	

CED	BW	WW	YW	ADG	DMI	M	ME	HPG	CEM	ST	MARB	YG	CW	REA	FAT
14	-3.9	54	80	0.16	0.94	21	-4	16	9	15	0.32	0.00	4	-0.04	0
33%	17%	72%	82%	88%	14%	78%	25%	7%	14%	58%	66%	22%	91%	74%	21%

6120 is a sire that we bought from Heart River Red Angus. He is an easy fleshing deep made Advantage son that stamps his progeny with a dark color pattern. His first daughters in production have nice udders and are good footed like their sire.



Top Dollar Angus Feeder Calf Program

Promote Your Verified Genetic Investment

Top Dollar Angus is the industry leader in third-party genetic verification and marketing assistance for superior Angus and Red Angus-based feeder cattle. Our program stamps a unique identity on the 'best of the best' by verifying and then showcasing their genetic merit. The Top Dollar Angus team works directly with a large number of feedyards and buyers to provide them with documented superior feeder cattle, coupled with genetic risk mitigation and the precision understanding they need to pursue your cattle with absolute confidence.

Top Dollar Angus enables cow-calf producers to benefit from the genetic value already built into their herds. Producers that invest in high-end genetics, as well as strong health and nutrition programs, need a means of positively differentiating their calves from average cattle. Top Dollar Angus does that. Industry demand is strong for genetically superior feeder calves with the right supporting documentation. Don't make buyers guess, let them know by putting the Top Dollar Angus badge of honor on your premium genetic investment.



How it Works:

Our program begins with a FREE genetic evaluation based on the current/past herd sires used in your program. We evaluate the sires used in your herd based on their growth and carcass merit characteristics. A herd that qualifies for Top Dollar Angus has cattle that are at least 50% Angus or Red Angus and also ranks in the top 25% of its respective breed for growth and carcass merit.

Once qualified, our team provides boots on the ground to share this valuable information with buyers looking for high quality cattle that will go on feed and perform. Our team has experience coast to coast and works directly in all channels (video, local auction, direct and internet). Plus, we have the resources to provide a very fast turn-around.

What our Customers Say:

"Top Dollar Angus is a program that benefits all levels of the industry. The seedstock producer is rewarded for providing superior genetics to the commercial cattleman, who in turn supplies the feeder with efficient cattle that will produce top-end carcasses. As Top Dollar Angus continues to raise their qualifying standard, these cattlemen will have to up their game to purchase the genetics that will fit the program. These cattlemen will see a return on investment when offering reputation feeders at market time."

– Jon Pedotti – San Simeon Creek Ranch, California

Nate Smith, General Manager • (620) 546-4839 • nate@topdollarangus.com

Kacey Jacobson • (701) 391-4646 • kacey@topdollarangus.com

Jake Feddes • (406) 581-8157 • jake@topdollarangus.com

Adam Menker • (419) 310-5344 • adam@topdollarangus.com

Jason Gagnon • (559) 723-6362 • jason@topdollarangus.com

Andy Albrecht • (402) 922-1000 • andy@topdollarangus.com

www.topdollarangus.com





Reference Sires



5L FAST BREAK 117-324E



5L FAST BREAK 117-324E

REG. # 3744611 TATTOO: 324E FLR BD: 3/14/17 100% 1A

5L BLAZIN KIND 189-228Y
5L HOT SHOT 2370-186A
 5L MARTHA 425-2370

5L SIGNATURE 5615
5L ROXIE 854-117
 XXX ROXIE 854 MR

[BUF CRK THE RIGHT KIND U199
 5L FIREFLY 1687-189
 5L TRADESMAN 1715-6237
 5L MARTHA 693-425
 5L NORSEMAN KING 2291
 5L RUBY 199-01
 XXX SUN FIRE 3136 HC
 XXX ROXIE 040 MR

BW/Ratio	66	84
WW/Ratio	611	108
YW/Ratio	964	97
ADG/Ratio	2.19	81
%IMF/Ratio	4.82	113
REA/Ratio	13.7	107
Fat/Ratio	0.21	127
Dam's MPPA/Age	108	

ProS	HB	GM
109	95	13
59%	18%	88%

CED	BW	WW	YW	ADG	DMI	M	ME	HPG	CEM	ST	MARB	YG	CW	REA	FAT
18	-4.3	51	75	0.14	1.32	27	0	15	8	17	0.49	0.07	1	0.17	0.06
6%	13%	80%	88%	92%	39%	29%	47%	12%	28%	22%	31%	52%	94%	34%	98%

We selected Fast Break out of the 2018 5L bull sale based on his phenotype, foot and leg structure, performance and his dam who happens to be the dam of the popular 5L Bourne sire. We have used him on heifers the past three breeding seasons and have been pleased with the calving ease and type of his progeny. We are looking forward to getting his daughters into production.



RED U2 MONEY TALKS 530F



RED U2 MONEY TALKS 530F

REG. # 4085940 TATTOO: 530F DUA BD: 2/17/18 100% 1A

RED U-2 RECON 192Y
RED U-2 RECKONING 149A
 RED U-2 ANEXA 271Y

RED MINBURN COPENHAGEN 3Y
RED U-2 MS DYNAMO 233B
 RED U-2 MS DYNAMO 234Z

[RED U2 MISSION 61W
 RED U-2 LARKABA 8133U
 RED HOWE MAGNUM 169W
 RED U-2 ANEXA 333N
 RED RMJ REDMAN 1T
 MINBURN MAY 112M
 RED U2 MISSION 61W
 RED FLYING K MS DYNAMO 73U

BW/Ratio	78	
WW/Ratio	734	
YW/Ratio	1328	
ADG/Ratio	3.71	
%IMF/Ratio		
REA/Ratio		
Fat/Ratio		
Dam's MPPA/Age		

ProS	HB	GM
168	130	38
4%	1%	49%

CED	BW	WW	YW	ADG	DMI	M	ME	HPG	CEM	ST	MARB	YG	CW	REA	FAT
13	-3.8	46	76	0.19	0.91	27	-18	8	9	22	0.32	0.13	17	0.01	0.04
42%	18%	91%	86%	73%	13%	30%	1%	87%	18%	1%	66%	78%	57%	64%	84%

After 3 trips to Canada studying the cow herd at U2 we came to the conclusion that we needed to sample a pedigree that worked multiple times in their program. We selected Money Talks out of their 2019 bull sale after studying the bull calves the previous fall as well as at the sale and studying the cows in the spring and fall. We used 530f of both heifers and cows A.I. and then turned him with 50 plus head of 1st calf heifers for natural service.



Yearling Bulls



Lot 1 • MLK CRK THE REAL DEAL 0205



1

MLK CRK THE REAL DEAL 0205

REG. # 4292563 TATTOO: 205 BTK BD: 2/8/20 100% 1A

5L DEFENDER 560-30Z
5L THE REAL DEAL 1687-143B
 5L FIREFLY 275-1687

MLK CRK ADVOCATE 4304
MLK CRK ASTER 696
 MLK CRK ASTER 0100

5L ADVOCATE 817-14W
 5L BLACK ADINA 525-560
 5L DESTINATION 893-6215
 5L FIREFLY 2573-275
 5L SECRET AGENT 117-229Z
 MLK CRK SHEBA 1014
 BECKTON EPIC R397 K
 MLK CRK ASTER 175

BW/Ratio	80	92
WW/Ratio	680	107
YW/Ratio	1223	110
ADG/Ratio	3.39	112
%IMF/Ratio	2.33	101
REA/Ratio	12.8	100
Fat/Ratio	0.36	128
Dam's MPPA/Age	104.0	4

ProS	HB	GM
136	87	48
20%	29%	28%

CED	BW	WW	YW	ADG	DMI	M	ME	HPG	CEM	ST	MARB	YG	CW	REA	FAT
14	-2.1	68	110	0.26	2.10	26	3	15	6	16	0.56	0.09	29	0.17	0.03
28%	42%	19%	20%	23%	97%	43%	69%	7%	65%	42%	17%	72%	18%	32%	74%

We are starting the sale off with a balanced Real Deal son that is dark red with additional length. He balances birth with above average growth ratios and average or better carcass traits. On the numbers side of things he ranks in the top 30% or better on all three of the indexes.



MLK CRK SHEBA 107, dam of Lot 2



2

MLK CRK THE REAL DEAL 0204

REG. # 4292317 TATTOO: 204 BTK BD: 2/8/20 100% 1A

5L DEFENDER 560-30Z
5L THE REAL DEAL 1687-143B
 5L FIREFLY 275-1687

TR JULIAN LT142
MLK CRK SHEBA 107
 MLK CRK SHEBA 900

5L ADVOCATE 817-14W
 5L BLACK ADINA 525-560
 5L DESTINATION 893-6215
 5L FIREFLY 2573-275
 BECKTON JULIAN GG B571
 TR LANA G760
 5L GRAND EXPRESS 453-5655
 MLK CRK SHEBA 403

BW/Ratio	87	99
WW/Ratio	719	114
YW/Ratio	1239	117
ADG/Ratio	3.24	101
%IMF/Ratio	2.67	115
REA/Ratio	13.0	101
Fat/Ratio	0.37	132
Dam's MPPA/Age	100.0	9

ProS	HB	GM
163	98	65
2%	11%	7%

CED	BW	WW	YW	ADG	DMI	M	ME	HPG	CEM	ST	MARB	YG	CW	REA	FAT
16	-3.0	67	113	0.29	1.84	27	4	13	10	17	0.53	0.04	35	0.31	0.01
11%	27%	22%	14%	9%	87%	33%	74%	22%	6%	32%	22%	42%	8%	12%	44%

0204 has put together an impressive resume for the position of Herd bull. He has indexed well on growth and carcass while keeping birth in check. He has ranked in the top 2, 11, and 7 percent of the breed on all the indexes. More important he looks like a bull and has the depth of rib and thickness over the top and through the quarter which should transmit to more muscle in his progeny. He is also backed by a 10-year-old cow with a 100.0 MPPA that was sold to Rogers Cattle Company in MO in our fall female sale.



3

MLK CRK ADMIRAL 0208

REG. # 4292571 TATTOO: 208 BTK BD: 2/9/20 100% 1A

5L LEGEND 1553-425V
RIDGE ADMIRAL 3411
 RIDGE GRANDIOSE 629-1112

BIEBER H HUGHES W109
MLK CRK SHEBA 603
 MLK CRK SHEBA 200

5L LAKOTA LEGEND 7074
 5L HAZEL 45L-1553
 MLK CRK EXPRESS 9127
 RIDGE GRANDIOSE 435-629
 BASIN HOB0 0545
 BASIN ROSE 06T0
 C-T GRAND STATEMENT 1025
 MLK CRK SHEBA 900

BW/Ratio	88	101
WW/Ratio	648	102
YW/Ratio	1201	108
ADG/Ratio	3.45	114
%IMF/Ratio	2.59	112
REA/Ratio	13.1	102
Fat/Ratio	0.40	143
Dam's MPPA/Age	104.0	4

ProS	HB	GM
177	120	56
1%	1%	16%

CED	BW	WW	YW	ADG	DMI	M	ME	HPG	CEM	ST	MARB	YG	CW	REA	FAT
13	-2.0	59	100	0.26	1.66	27	-2	18	9	19	0.45	0.10	33	0.36	0.05
40%	45%	51%	38%	26%	75%	31%	31%	1%	15%	11%	37%	78%	10%	9%	97%

The Admiral sons that we have in this offering offer a tremendous amount of depth, thickness, and fleshing ability. 0208 carries these traits along with exceeding the average on growth and carcass ratios. He also ranks in the 1% ProS and top 1% HerdBuilder indexes within the breed. His Dam is a Bieber Hughes daughter with a 104 MPPA and very good feet and nice udder.

10 – Milk Creek Reds Bull Sale



4

MLK CRK ADMIRAL 0210

REG. # 4292425 TATTOO: 210 BTK BD: 2/10/20 100% 1A

5L LEGEND 1553-425V
RIDGE ADMIRAL 3411
 RIDGE GRANDIOSE 629-1112

5L SECRET AGENT 117-229Z
MLK CRK SUN GAL 458
 MLK CRK SUN GAL 199X

5L LAKOTA LEGEND 7074
 5L HAZEL 45L-1553
 MLK CRK EXPRESS 9127
 RIDGE GRANDIOSE 435-629
 5L ADVOCATE 817-14W
 5L ROXIE 854-117
 BECKTON EPIC R397 K
 BJR SUN GAL 4X-561

BW/Ratio	100	112
WW/Ratio	714	113
YW/Ratio	1264	113
ADG/Ratio	3.44	114
%IMF/Ratio	4.51	195
REA/Ratio	11.8	92
Fat/Ratio	0.32	114
Dam's MPPA/Age	104.0	6

ProS	HB	GM
174	101	73
1%	8%	3%

CED	BW	WW	YW	ADG	DMI	M	ME	HPG	CEM	ST	MARB	YG	CW	REA	FAT
6	0.7	66	108	0.27	1.56	26	-2	19	2	19	0.60	0.17	43	0.30	0.05
98%	90%	26%	22%	20%	65%	38%	30%	1%	99%	11%	12%	96%	2%	13%	97%

Lot 4 is one of the heaviest weaning and yearling bulls in the offering along with posting the highest marbling index when compared to his contemporaries. He is deep ribbed, easy fleshing and travels out very well. His 7-year-old Fusion dam has earned a 104 MPPA and bred back AI again this year.

Catalog and video online at www.milkcrekreds.com



Yearling Bulls



Lot 5 • MLK CRK ADMIRAL 0212



5

MLK CRK ADMIRAL 0212

REG. # 4292503 TATTOO: 212 BTK BD: 2/10/20 100% 1A

5L LEGEND 1553-425V

RIDGE ADMIRAL 3411

RIDGE GRANDIOSE 629-1112

5L LEGEND 1553-425V

MLK CRK LAKOTA 543

MLK CRK LAKOTA 319

5L LAKOTA LEGEND 7074

5L HAZEL 45L-1553

MLK CRK EXPRESS 9127

RIDGE GRANDIOSE 436-629

5L LAKOTA LEGEND 7074

5L HAZEL 45L-1553

BECKTON EPIC R397 K

MLK CRK LAKOTA 912

BW/Ratio	87	99
WW/Ratio	663	105
YW/Ratio	1239	111
ADG/Ratio	3.59	119
%IMF/Ratio	2.28	99
REA/Ratio	12.6	98
FaI/Ratio	0.39	139
Dam's MPPA/Age	101.0	5

ProS HB GM

158 90 68

4% 22% 6%

CED BW WW YW ADG DMI M ME HPG CEM ST MARB YG CW REA FAT

14 -2.6 54 102 0.30 1.52 26 -1 20 6 15 0.37 0.13 36 0.29 0.05

30% 33% 71% 35% 7% 61% 42% 33% 1% 71% 61% 56% 89% 6% 14% 96%

If you are looking for a beef bull with a moderate frame and as deep and thick as they come Lot 5 might be worth studying. He is the result of a half brother half sister mating that produced above average ratios for weaning and yearling. His dam is a 6-year-old 5L Legend daughter that is moderate framed, good footed, good uddered and has caught AI again this year.



Lot 6 • MLK CRK ADVOCATE 0222



6

MLK CRK ADVOCATE 0222

REG. # 4292361 TATTOO: 222 BTK BD: 2/12/20 100% 1A

5L SECRET AGENT 117-229Z

MLK CRK ADVOCATE 4304

MLK CRK SHEBA 1014

5L GRAND EXPRESS 453-5655

MLK CRK LAKOTA 291

MLK CRK LAKOTA 850

5L ADVOCATE 817-14W

5L ROXIE 854-117

MLK CRK REDSTONE

MLK CRK SHEBA 966X

5L NORSEMAN EXPRESS

5L RUBY 01-453

GLACIER CUB 446

MLK CRK LAKOTA 651

BW/Ratio	98	110
WW/Ratio	730	115
YW/Ratio	1237	111
ADG/Ratio	3.16	105
%IMF/Ratio	2.65	115
REA/Ratio	12.8	100
FaI/Ratio	0.30	107
Dam's MPPA/Age	99.0	8

ProS HB GM

149 109 40

8% 3% 46%

CED BW WW YW ADG DMI M ME HPG CEM ST MARB YG CW REA FAT

8 0.0 71 104 0.21 1.52 21 -2 17 4 18 0.55 0.11 27 0.21 0.04

94% 82% 12% 30% 63% 61% 83% 31% 2% 91% 14% 19% 79% 24% 25% 93%

This dark red, long made Advocate 4304 son has pushed down the scales at weaning and again at a year of age. His dam is a Grand express ET daughter that goes back to our 850 cow that models the style and type that we like to see in a red angus cow. With generations of great cows in the top and bottom of the pedigree as well as great performance individually, this bull should produce great bulls and heifer replacements



Lot 7 • MLK CRK INSIDER 0226X



7

MLK CRK INSIDER 0226X

REG. # 4292543 TATTOO: 0226X BTK BD: 3/8/20 100% 1A

5L ADVANTAGE 3267-221Y

HRR ADVANTAGE 6120

HRR BANA 309

RIDGE ADMIRAL 3411

MLK CRK EMUMAR 598

MLK CRK EMUMAR 232

BUF CRK THE RIGHT KIND U199

5L ADINA 195-3267

MLK CRK EXPRESS 9127

HRR BANA 193

5L LEGEND 1553-425V

RIDGE GRANDIOSE 629-1112

MUSHRUSH IMPRESSIVE CA U236

MLK CRK EMUMAR 024

BW/Ratio	94	107
WW/Ratio	695	110
YW/Ratio	1232	111
ADG/Ratio	3.35	111
%IMF/Ratio	2.32	100
REA/Ratio	13.8	108
FaI/Ratio	0.31	110
Dam's MPPA/Age	103.0	5

ProS HB GM

137 95 42

18% 15% 41%

CED BW WW YW ADG DMI M ME HPG CEM ST MARB YG CW REA FAT

11 -1.6 62 102 0.25 1.33 24 -2 18 6 15 0.38 0.02 19 0.24 0.02

70% 53% 40% 35% 30% 42% 59% 29% 1% 75% 51% 54% 29% 54% 21% 66%

The HRR Advantage 6120 sons offer depth of rib and thickness with balance in performance and eye appeal. Most of them will be darker in color and moderate in frame. Lot 7 represents this sire group very well bringing a 110 and 111 weaning and yearling ratio to the offering.

Yearling Bulls



8

MLK CRK THE REAL DEAL 0231

REG. # 4292519 TATTOO: 231 BTK BD: 2/14/20 100% 1A

5L DEFENDER 560-30Z
5L THE REAL DEAL 1687-143B
 5L FIREFLY 275-1687

5L ADVOCATE 817-14W
 5L BLACK ADINA 525-560
 5L DESTINATION 893-6215
 5L FIREFLY 2573-275

BECKTON DOMINOR A038 J7
 BECKTON DOMINOR Y052 N6
 BECKTON TARA Y111 J

MLK CRK SUN GAL 5113
 MLK CRK SUN GAL 2122

MLK CRK EXPRESS 9141
 MLK CRK SUN GAL 880

ProS	HB	GM
151	82	69
7%	40%	5%

CED	BW	WW	YW	ADG	DMI	M	ME	HPG	CEM	ST	MARB	YG	CW	REA	FAT
13	-0.4	67	119	0.33	1.97	24	6	15	6	15	0.43	0.13	43	0.22	0.02
49%	76%	23%	8%	2%	93%	59%	87%	7%	61%	52%	41%	88%	2%	24%	71%

BW/Ratio	94	107
WW/Ratio	664	105
YW/Ratio	1256	113
ADG/Ratio	3.70	123
%IMF/Ratio	2.97	128
REA/Ratio	13.0	101
Fat/Ratio	0.30	107
Dam's MPPA/Age	102.0	5

Lot 8 offers one of the higher yearling weights and marbling scores in the offering. He profiles very well with above average depth and thickness and is smooth made through out.



Lot 9 • MLK CRK VENTURE 0235



9

MLK CRK VENTURE 0235

REG. # 4292321 TATTOO: 235 BTK BD: 2/15/20 100% 1A

RED U-2 RECKONING 149A
RED U2 MONEY TALKS 530F
 RED U-2 MS DYNAMO 233B

RED U-2 RECON 192Y
 RED U-2 ANEXA 271Y
 RED MINBURN COPENHAGEN 3Y
 RED U-2 MS DYNAMO 234Z

MLK CRK EXPRESS 9127

5L GRAND EXPRESS 453-5655
 MLK CRK SHEBA 043

MLK CRK EMUMAR 152
 MLK CRK EMUMAR 959

BECKTON EPIC R397 K
 MLK CRK EMUMAR 854

ProS	HB	GM
141	114	28
14%	1%	74%

CED	BW	WW	YW	ADG	DMI	M	ME	HPG	CEM	ST	MARB	YG	CW	REA	FAT
13	-2.3	57	86	0.18	1.10	25	-10	9	8	20	0.33	0.13	19	-0.04	0.03
35%	39%	58%	70%	78%	24%	50%	4%	83%	25%	4%	66%	51%	81%	76%	

BW/Ratio	93	105
WW/Ratio	733	116
YW/Ratio	1166	105
ADG/Ratio	2.70	89
%IMF/Ratio	2.31	100
REA/Ratio	12.0	93
Fat/Ratio	0.33	118
Dam's MPPA/Age	102.0	9

0235 is our first bull offering of the Money talks sire group. He is moderate in frame with an easy going temperament, while offering a 116 weaning index. He is backed by a 10-year-old Express 9127 daughter that has earned a 102 MPPA.



Lot 10 • MLK CRK VIGILANTE 0271



10

MLK CRK VIGILANTE 0271

REG. # 4292885 TATTOO: 271 BTK BD: 2/20/20 100% 1A

5L BOURNE 117-48A
5L VIGILANTE 2674-11D
 5L OPAL 930-2674

5L ADVANTAGE 3267-221Y
 5L ROXIE 854-117
 5L DEFENDER 560-30Z
 5L OPAL 2218-930

RIDGE ADMIRAL 3411

5L LEGEND 1553-425V
 RIDGE GRANDIOSE 629-1112

MLK CRK EMUMAR 855
 MLK CRK EMUMAR 541

ANDRAS FUSION R236
 MLK CRK EMUMAR 353

ProS	HB	GM
124	75	49
36%	57%	27%

CED	BW	WW	YW	ADG	DMI	M	ME	HPG	CEM	ST	MARB	YG	CW	REA	FAT
12	-3.5	60	97	0.23	1.53	27	-3	17	3	14	0.56	0.18	26	0.03	0.05
64%	19%	49%	47%	46%	63%	31%	25%	2%	96%	67%	17%	97%	27%	65%	97%

BW/Ratio	74	101
WW/Ratio	675	113
YW/Ratio	1102	105
ADG/Ratio	2.66	93
%IMF/Ratio	2.34	95
REA/Ratio	11.4	96
Fat/Ratio	0.29	114
Dam's MPPA/Age	105.0	2

We lead off this pen of calving ease bulls with a Vigilante son that started off with a 74 pound birth weight and weaned off of a 1st calf heifer at 675. 0271 offers more than calving ease with his smooth thickness in the top and quarter along with depth of body.



Yearling Bulls



Lot 11 • MLK CRK VIGILANTE 0274



11

MLK CRK VIGILANTE 0274

REG. # 4292911 TATTOO: 274 BTK BD: 2/21/20 100% 1A

5L BOURNE 117-48A
5L VIGILANTE 2674-11D
5L OPAL 930-2674

MUSHRUSH IMPACT Z352
MLK CRK LAKOTA 870
MLK CRK LAKOTA 6121

5L ADVANTAGE 3267-221Y
5L ROXIE 854-117
5L DEFENDER 560-30Z
5L OPAL 2218-930
MUSHRUSH IMPRESSIVE CA U236
MUSHRUSH ZENA JL X320
LACY KING 9240
MLK CRK LAKOTA 709

BW/Ratio	68	95
WW/Ratio	608	102
YW/Ratio	1134	108
ADG/Ratio	3.28	115
%IMF/Ratio	3.53	144
REA/Ratio	11.7	98
Fat/Ratio	0.30	118
Dam's MPPA/Age	101.0	2

ProS	HB	GM
156	101	55
4%	7%	17%

CED	BW	WW	YW	ADG	DMI	M	ME	HPG	CEM	ST	MARB	YG	CW	REA	FAT
17	-5.1	55	94	0.24	1.38	27	-2	17	8	17	0.63	0.20	20	-0.05	0.05
6%	5%	68%	54%	35%	47%	28%	32%	2%	28%	29%	9%	98%	47%	82%	99%

We are calving the third set of heifers bred to Vigilante and have been very pleased with the birth weight to growth ratio. Lot 11 not only brings the growth but also brings one of the higher marbling scores along with it.



12

MLK CRK VIGILANTE 0276

REG. # 4292809 TATTOO: 276 BTK BD: 2/21/20 100% 1A

5L BOURNE 117-48A
5L VIGILANTE 2674-11D
5L OPAL 930-2674

RIDGE ADMIRAL 3411
MLK CRK LAKOTA 819
MLK CRK LAKOTA 282

5L ADVANTAGE 3267-221Y
5L ROXIE 854-117
5L DEFENDER 560-30Z
5L OPAL 2218-930
5L LEGEND 1553-425V
RIDGE GRANDIOSE 629-1112
HOLDEN LJ JULIAN 924
MLK CRK LAKOTA 555

BW/Ratio	68	94
WW/Ratio	635	106
YW/Ratio	1101	105
ADG/Ratio	2.90	101
%IMF/Ratio	3.56	145
REA/Ratio	11.9	100
Fat/Ratio	0.24	95
Dam's MPPA/Age	102.0	2

ProS	HB	GM
152	101	50
6%	7%	25%

CED	BW	WW	YW	ADG	DMI	M	ME	HPG	CEM	ST	MARB	YG	CW	REA	FAT
18	-5.0	51	86	0.22	1.26	25	-3	19	8	17	0.57	0.14	18	0.07	0.05
3%	6%	79%	71%	55%	35%	47%	26%	1%	26%	33%	16%	92%	58%	55%	98%

Lot 12 follows lot 11 in birth, growth, and marbling. He also offers the Vigilante phenotype with more depth and thickness than you would expect to find in this much calving ease. Ranking in the top 10 % or better for calving ease and birth weight along with herd builder and Pros indicies.



Lot 13 • MLK CRK IMPACT 0277



13

MLK CRK IMPACT 0277

REG. # 4292927 TATTOO: 277 BTK BD: 2/21/20 100% 1A

MUSHRUSH IMPRESSIVE CA U236
MUSHRUSH IMPACT Z352
MUSHRUSH ZENA JL X320

SHOCO DATA
MLK CRK LAKOTA 884
MLK CRK LAKOTA 850

BUF CRK LANCER R017
MUSHRUSH MADAM LT R265
BECKTON JULIAN G1 J526
MUSHRUSH ZENA EP U339
SHOCO SIR ROBIN
VDAR BLACKANA 303
GLACIER CUB 446
MLK CRK LAKOTA 651

BW/Ratio	79	109
WW/Ratio	654	110
YW/Ratio	1158	110
ADG/Ratio	3.14	110
%IMF/Ratio	2.02	82
REA/Ratio	11.6	97
Fat/Ratio	0.30	118
Dam's MPPA/Age	104.0	2

ProS	HB	GM
172	133	39
1%	1%	50%

CED	BW	WW	YW	ADG	DMI	M	ME	HPG	CEM	ST	MARB	YG	CW	REA	FAT
15	-3.7	63	99	0.22	1.25	27	4	17	10	22	0.44	0.16	22	-0.02	0.04
19%	17%	36%	42%	50%	35%	31%	77%	2%	6%	1%	39%	95%	41%	76%	94%

Ranking in the top 1% for the ProS and HerdBuilder indicies and combining that with 110 weaning and yearling ratios make this Impact son a good candidate to put on heifers and then move on to cows later on in his life.

Yearling Bulls



14 MLK CRK IMPACT 0279

REG. # 4292871 TATTOO: 279 BTK BD: 2/22/20 100% 1A

MUSHRUSH IMPRESSIVE CA U236
MUSHRUSH IMPACT 2352
 MUSHRUSH ZENA JL X320
 RIDGE ADMIRAL 3411
MLK CRK BONNEBELL 848
 MLK CRK BONNEBELL 555

BUF CRK LANCER R017
 MUSHRUSH MADAM LT R265
 BECKTON JULIAN G1 J526
 MUSHRUSH ZENA EP U339
 5L LEGEND 1553-425V
 RIDGE GRANDIOSE 629-1112
 BECKTON DOMINOR A038 J7
 MLK CRK BONNEBELL 874

BW/Ratio	75	103
WW/Ratio	601	101
YW/Ratio	1116	106
ADG/Ratio	3.21	112
%IMF/Ratio	1.82	74
REA/Ratio	12.3	103
Fat/Ratio	0.26	102
Dam's MPPA/Age	100.0	2

ProS	HB	GM	CED	BW	WW	YW	ADG	DMI	M	ME	HPG	CEM	ST	MARB	YG	CW	REA	FAT
142	104	38	13	-4.4	56	92	0.22	1.30	24	0	20	5	18	0.38	0.14	21	0.14	0.05
13%	5%	51%	37%	10%	63%	58%	51%	39%	58%	41%	1%	82%	16%	54%	92%	43%	39%	99%



Lot 15 • MLK CRK EXPRESSIVE 0294



15 MLK CRK EXPRESSIVE 0294

REG. # 4292775 TATTOO: 294 BTK BD: 2/27/20 100% 1A

5L GRAND EXPRESS 453-5655
MLK CRK EXPRESS 9127
 MLK CRK SHEBA 043
 RIDGE PROVISION 6013
MLK CRK ESTONIA 817
 MLK CRK ESTONIA 933

5L NORSEMAN EXPRESS
 5L RUBY 01-453
 BJR PROOF 224-159
 MLK CRK SHEBA 869
 5L ADVANTAGE 3267-221Y
 RIDGE MONA 8162-2057
 RED YY RED KNIGHT 640F
 SEEGER ESTONIA 355

BW/Ratio	81	110
WW/Ratio	660	111
YW/Ratio	1167	111
ADG/Ratio	3.16	111
%IMF/Ratio	2.63	107
REA/Ratio	11.6	97
Fat/Ratio	0.19	76
Dam's MPPA/Age	104.0	2

ProS	HB	GM	CED	BW	WW	YW	ADG	DMI	M	ME	HPG	CEM	ST	MARB	YG	CW	REA	FAT
142	111	31	16	-2.7	57	86	0.18	1.14	25	-7	12	10	18	0.35	0.06	18	0.00	0.01
12%	32%	62%	12%	32%	62%	71%	77%	26%	55%	10%	32%	3%	19%	61%	52%	57%	72%	31%

We continue to use Express 9127 on heifers even though he would be 11 years old this spring. When you study lot 15 hopefully you see what we do and it will help to explain why we still use this sire. 9127 not only produces bulls that look like 0294 but his daughters we have had over the past 10 years are what we are striving to produce.



16 MLK CRK HOT SHOT 0320

REG. # 4292897 TATTOO: 320 BTK BD: 3/6/20 100% 1A

5L HOT SHOT 2370-186A
5L FAST BREAK 117-324E
 5L ROXIE 854-117
 5L FIRECRACKER 560-117A
MLK CRK LAKOTA 828
 MLK CRK LAKOTA 636

5L BLAZIN KIND 189-228Y
 5L MARTHA 425-2370
 5L SIGNATURE 5615
 XXX ROXIE 854 MR
 BUF CRK THE RIGHT KIND U199
 5L BLACK ADINA 525-560
 ANDRAS FUSION R236
 MLK CRK LAKOTA 149

BW/Ratio	60	84
WW/Ratio	674	113
YW/Ratio	1087	103
ADG/Ratio	2.57	90
%IMF/Ratio	2.75	112
REA/Ratio	11.8	99
Fat/Ratio	0.32	123
Dam's MPPA/Age	105.0	2

ProS	HB	GM	CED	BW	WW	YW	ADG	DMI	M	ME	HPG	CEM	ST	MARB	YG	CW	REA	FAT	
112	81	31	19	-5.6	54	79	0.15	1.29	29	-2	15	9	14	0.62	0.06	8	0.13	0.04	
58%	43%	68%	1%	3%	70%	82%	38%	88%	38%	18%	30%	6%	9%	74%	10%	53%	89%	41%	94%

0320 started off at only 60 pounds at birth but was able to gain ground quickly and wean off at 674. He also brings some marbling to the table posting a 112 ratio to go along with his calving ease and growth.



Yearling Bulls



Lot 17 • MLK CRK IMPACT 0333



17 MLK CRK IMPACT 0333

REG. # 4292829 TATTOO: 333 BTK BD: 3/10/20 100% 1A

MUSHRUSH IMPRESSIVE CA U236
MUSHRUSH IMPACT Z352
MUSHRUSH ZENA JL X320

RIDGE LEGEND 2069
MLK CRK LAKOTA 8101

MLK CRK LAKOTA 383

BUF CRK LANCER R017
MUSHRUSH MADAM LT R265
BECKTON JULIAN G1 J526
MUSHRUSH ZENA EP U339
5L LEGEND 1553-425V
RIDGE AQUILA 552-8066
LACY KING 9240
MLK CRK LAKOTA 873

BW/Ratio	73	101
WW/Ratio	680	114
YW/Ratio	1187	113
ADG/Ratio	3.16	111
%IMF/Ratio	2.16	88
REA/Ratio	12.8	107
Fat/Ratio	0.29	112
Dam's MPPA/Age	106.0	2

ProS	HB	GM
148	111	37

8%	2%	53%
----	----	-----

CED	BW	WW	YW	ADG	DMI	M	ME	HPG	CEM	ST	MARB	YG	CW	REA	FAT
18	-4.5	60	99	0.24	1.23	25	-1	15	9	19	0.39	0.12	17	0.10	0.05
2%	9%	47%	42%	37%	33%	46%	34%	8%	11%	10%	51%	84%	61%	48%	96%

This long made attractive Impact son brings some of the top weaning and yearling growth ratios out of our first calf heifers. He lists in the top 2% for calving ease and 8% for birth-weight while maintaining a top 3% ranking for the HerdBuilder index.



18 CMK IMPACT 0335

REG. # 4292251 TATTOO: 335 CMK BD: 3/11/20 100% 1A

MUSHRUSH IMPRESSIVE CA U236
MUSHRUSH IMPACT Z352
MUSHRUSH ZENA JL X320

RIDGE PROVISION 6013
CMK FAITH 8105

CMK ZENA 203

BUF CRK LANCER R017
MUSHRUSH MADAM LT R265
BECKTON JULIAN G1 J526
MUSHRUSH ZENA EP U339
5L ADVANTAGE 3267-221Y
RIDGE MONA 8162-2057
LACY KING 9240
CMK ANGEL 804

BW/Ratio	75	105
WW/Ratio	679	112
YW/Ratio	1211	0
ADG/Ratio	3.31	0
%IMF/Ratio	2.54	0
REA/Ratio	12.7	0
Fat/Ratio	0.27	0
Dam's MPPA/Age	105.0	2

ProS	HB	GM
149	128	21

8%	1%	86%
----	----	-----

CED	BW	WW	YW	ADG	DMI	M	ME	HPG	CEM	ST	MARB	YG	CW	REA	FAT
15	-3.9	63	95	0.20	1.41	27	0	17	8	21	0.47	0.03	5	0.15	0.04
15%	14%	34%	50%	67%	49%	32%	41%	2%	34%	1%	33%	36%	93%	38%	90%

Our Daughter's, Cele, heifer raised this powerful impact calving ease son. He posts some of the highest weaning and yearling weights from the first calf heifer group while starting out at only 75 pounds of birth. He ranks in the top 8% for the ProS and top 1% for HerdBuilder indices.



Lot 19 • MLK CRK ADMIRAL 0324



19 MLK CRK ADMIRAL 0324

REG. # 4292583 TATTOO: 324 BTK BD: 3/7/20 100% 1A

5L LEGEND 1553-425V
RIDGE ADMIRAL 3411
RIDGE GRANDIOSE 629-1112

MLK CRK ADVOCATE 4304
MLK CRK VAL 648

MLK CRK VAL 439

5L LAKOTA LEGEND 7074
5L HAZEL 45L-1553
MLK CRK EXPRESS 9127
RIDGE GRANDIOSE 435-629
5L SECRET AGENT 117-229Z
MLK CRK SHEBA 1014
BECKTON EPIC R397 K
MLK CRK VAL 886

BW/Ratio	83	95
WW/Ratio	695	110
YW/Ratio	1205	108
ADG/Ratio	3.18	105
%IMF/Ratio	2.38	103
REA/Ratio	14.0	109
Fat/Ratio	0.37	131
Dam's MPPA/Age	105.0	4

ProS	HB	GM
164	110	54

2%	3%	19%
----	----	-----

CED	BW	WW	YW	ADG	DMI	M	ME	HPG	CEM	ST	MARB	YG	CW	REA	FAT
10	-1.9	61	102	0.26	1.52	24	-1	21	4	18	0.49	0.12	28	0.34	0.06
81%	47%	42%	34%	26%	61%	57%	33%	1%	92%	15%	30%	84%	20%	10%	99%

We start off our pen of Admiral sons with the youngest of the pen. He might be a bit younger but he makes up for it with his balance of birth, growth, and carcass ratios. He adds to his individual growth ratios a ranking of the top 2 and 3% for ProS and HerdBuilder indexes. I think his strongest attribute is how he is put together phenotypically carrying the depth, length, thickness and style along with a dark red color.

Yearling Bulls



20 MLK CRK ADMIRAL 0221
 REG. # 4292557 TATTOO: 221 BTK BD: 2/12/20 100% 1A

5L LEGEND 1553-425V
 RIDGE ADMIRAL 3411
 RIDGE GRANDIOSE 629-1112

MLK CRK ADVOCATE 4304
 MLK CRK VAL 686
 MLK CRK VAL 062

5L LAKOTA LEGEND 7074
 5L HAZEL 45L-1553
 MLK CRK EXPRESS 9127
 RIDGE GRANDIOSE 435-629
 5L SECRET AGENT 117-229Z
 MLK CRK SHEBA 1014
 RED YY RED KNIGHT 640F
 MLK CRK VAL 886

BW/Ratio	82	94
WW/Ratio	715	113
YW/Ratio	1174	105
ADG/Ratio	2.86	95
%IMF/Ratio	3.25	141
REA/Ratio	11.3	88
Fat/Ratio	0.30	107
Dam's MPPA/Age	107.0	4

ProS	HB	GM
159	103	56
3%	6%	16%

CED	BW	WW	YW	ADG	DMI	M	ME	HPG	CEM	ST	MARB	YG	CW	REA	FAT
12	-2.0	62	100	0.23	1.67	26	-2	21	5	17	0.54	0.14	35	0.26	0.05
61%	45%	38%	39%	42%	76%	37%	29%	1%	89%	33%	20%	92%	7%	18%	97%

When measuring the merits of a potential herd bull everyone has traits that they place a higher emphasis on than others. Lot 20 may challenge those because of how he covers the bases of birth to growth to carcass, he backs it up with a dam that has a 107 mppa and tops it off with ranking in the top 6 % or better for both ProS and HerdBuilder indexes. He also offers the depth of rib and thickness we come to expect from his sire.

21 MLK CRK ADMIRAL 0224
 REG. # 4292397 TATTOO: 224 BTK BD: 2/13/20 100% 1A

5L LEGEND 1553-425V
 RIDGE ADMIRAL 3411
 RIDGE GRANDIOSE 629-1112

RIDGE TRADESMAN 6237-0002
 MLK CRK RED TOP 361
 MLK CRK RED TOP 013

5L LAKOTA LEGEND 7074
 5L HAZEL 45L-1553
 MLK CRK EXPRESS 9127
 RIDGE GRANDIOSE 435-629
 5L TRADESMAN 1715-6237
 PVRA DESIGN LASS 515
 5L GRAND EXPRESS 453-5655
 MLK CRK RED TOP 232

BW/Ratio	89	100
WW/Ratio	633	100
YW/Ratio	1186	106
ADG/Ratio	3.46	115
%IMF/Ratio	2.26	98
REA/Ratio	13.5	105
Fat/Ratio	0.43	154
Dam's MPPA/Age	97.0	7

ProS	HB	GM
172	117	55
1%	1%	17%

CED	BW	WW	YW	ADG	DMI	M	ME	HPG	CEM	ST	MARB	YG	CW	REA	FAT
11	-1.6	52	90	0.24	1.48	24	-4	21	5	19	0.40	0.14	32	0.29	0.05
68%	53%	78%	63%	38%	57%	64%	22%	1%	84%	7%	49%	90%	12%	14%	99%

Admiral continues to stamp his sons with the depth and thickness exhibited in lot 21. 0224 can compete in the breed ranks of the indexes as well coming in the top 1 % for ProS and HerdBuilder.



Lot 22 • MLK CRK ADMIRAL 0229

22 MLK CRK ADMIRAL 0229
 REG. # 4292537 TATTOO: 229 BTK BD: 2/14/20 100% 1A

5L LEGEND 1553-425V
 RIDGE ADMIRAL 3411
 RIDGE GRANDIOSE 629-1112

ANDRAS FUSION R236
 MLK CRK EMUMAR 541
 MLK CRK EMUMAR 353

5L LAKOTA LEGEND 7074
 5L HAZEL 45L-1553
 MLK CRK EXPRESS 9127
 RIDGE GRANDIOSE 435-629
 ANDRAS IN FOCUS B175
 ANDRAS BELLE B167
 LACY KING 9240
 MLK CRK EMUMAR 152

BW/Ratio	101	114
WW/Ratio	673	106
YW/Ratio	1136	102
ADG/Ratio	2.89	96
%IMF/Ratio	2.22	96
REA/Ratio	12.8	99
Fat/Ratio	0.28	100
Dam's MPPA/Age	105.0	5

ProS	HB	GM
136	80	56
20%	47%	16%

CED	BW	WW	YW	ADG	DMI	M	ME	HPG	CEM	ST	MARB	YG	CW	REA	FAT
10	-0.4	56	92	0.22	1.52	26	-3	16	3	16	0.51	0.07	29	0.29	0.03
86%	76%	62%	57%	49%	61%	38%	25%	4%	97%	40%	25%	59%	18%	14%	83%



Lot 23 • MLK CRK ADMIRAL 0236

23 MLK CRK ADMIRAL 0236
 REG. # 4292395 TATTOO: 236 BTK BD: 2/16/20 100% 1A

5L LEGEND 1553-425V
 RIDGE ADMIRAL 3411
 RIDGE GRANDIOSE 629-1112

MLK CRK EXPRESS 9141
 MLK CRK LAKOTA 335
 MLK CRK LAKOTA 007

5L LAKOTA LEGEND 7074
 5L HAZEL 45L-1553
 MLK CRK EXPRESS 9127
 RIDGE GRANDIOSE 435-629
 5L GRAND EXPRESS 453-5655
 MLK CRK SHEBA 079
 5L TRADESMAN 1715-6317
 MLK CRK LAKOTA 429

BW/Ratio	87	98
WW/Ratio	620	98
YW/Ratio	1176	106
ADG/Ratio	3.47	115
%IMF/Ratio	2.08	90
REA/Ratio	12.6	98
Fat/Ratio	0.30	108
Dam's MPPA/Age	99.0	7

ProS	HB	GM
166	98	67
2%	10%	6%

CED	BW	WW	YW	ADG	DMI	M	ME	HPG	CEM	ST	MARB	YG	CW	REA	FAT
10	-0.4	56	103	0.29	1.59	23	1	17	6	18	0.33	0.11	41	0.31	0.03
78%	76%	63%	31%	8%	68%	69%	54%	2%	75%	18%	66%	80%	3%	12%	82%



Yearling Bulls



Lot 24 • MLK CRK ADMIRAL 0237



24 MLK CRK ADMIRAL 0237

REG. # 4292335 IATTOO: 237 BTK BD: 2/16/20 100% 1A

5L LEGEND 1553-425V
RIDGE ADMIRAL 3411
RIDGE GRANDIOSE 629-1112

MLK CRK EPIC 8171
MLK CRK RED TOP 231
MLK CRK RED TOP 070

5L LAKOTA LEGEND 7074
5L HAZEL 45L-1553
MLK CRK EXPRESS 9127
RIDGE GRANDIOSE 435-629
BECKTON EPIC R397 K
MLK CRK SHEBA 403
5L TRAILBLAZER 1766-188V
MLK CRK RED TOP 828

BW/Ratio	89	100
WW/Ratio	647	102
YW/Ratio	1166	105
ADG/Ratio	3.24	107
%IMF/Ratio	1.80	78
REA/Ratio	14.0	109
Fat/Ratio	0.41	147
Dam's MPPA/Age	103.0	8

ProS	HB	GM
171	116	56
1%	1%	17%

CED	BW	WW	YW	ADG	DMI	M	ME	HPG	CEM	ST	MARB	YG	CW	REA	FAT
14	-2.0	54	98	0.27	1.42	25	0	18	7	19	0.43	0.12	24	0.21	0.05
34%	45%	71%	45%	16%	51%	52%	43%	1%	38%	7%	41%	85%	34%	25%	98%

Ranking at the top 1 % for ProS and HerdBuilder and top 17% for GridMaster allows the discerning breeder to view the ranks of this bull on a number bases. He also did well when compared to his contemporaries in the categories of weaning , yearling and ribeye while descending from a cow with a 103 MPPA.



25 MLK CRK ADMIRAL 0251

REG. # 4292337 IATTOO: 251 BTK BD: 2/18/20 100% 1A

5L LEGEND 1553-425V
RIDGE ADMIRAL 3411
RIDGE GRANDIOSE 629-1112

HOLDEN LJ JULIAN 924
MLK CRK LAKOTA 282
MLK CRK LAKOTA 555

5L LAKOTA LEGEND 7074
5L HAZEL 45L-1553
MLK CRK EXPRESS 9127
RIDGE GRANDIOSE 435-629
BECKTON JULIAN GG B571
TR LANA G760
BUF CRK GIULIANI L851
MLK CRK LAKOTA 239

BW/Ratio	83	93
WW/Ratio	607	96
YW/Ratio	1172	105
ADG/Ratio	3.53	117
%IMF/Ratio	2.79	121
REA/Ratio	13.0	102
Fat/Ratio	0.36	129
Dam's MPPA/Age	97.0	8

ProS	HB	GM
167	110	57
2%	3%	15%

CED	BW	WW	YW	ADG	DMI	M	ME	HPG	CEM	ST	MARB	YG	CW	REA	FAT
15	-3.4	50	89	0.24	1.05	23	-2	19	6	19	0.39	0.11	25	0.24	0.05
20%	21%	82%	64%	34%	21%	70%	28%	1%	75%	7%	51%	80%	30%	21%	97%



26 MLK CRK ADMIRAL 0318

REG. # 4292607 IATTOO: 318 BTK BD: 3/6/20 100% 1A

5L LEGEND 1553-425V
RIDGE ADMIRAL 3411
RIDGE GRANDIOSE 629-1112

LACY KING 9240
MLK CRK ASTER 6123
MLK CRK ASTER 837

5L LAKOTA LEGEND 7074
5L HAZEL 45L-1553
MLK CRK EXPRESS 9127
RIDGE GRANDIOSE 435-629
LACY SIGNATURE 7006
LACY LAKOTA 7155
SHOCO DATA
MLK CRK ASTER 547

BW/Ratio	73	84
WW/Ratio	614	97
YW/Ratio	1037	93
ADG/Ratio	2.64	87
%IMF/Ratio	2.22	96
REA/Ratio	12.4	97
Fat/Ratio	0.25	88
Dam's MPPA/Age	98.0	4

ProS	HB	GM
150	99	50
8%	9%	25%

CED	BW	WW	YW	ADG	DMI	M	ME	HPG	CEM	ST	MARB	YG	CW	REA	FAT
14	-3.4	44	75	0.20	1.20	24	-4	16	7	18	0.44	0.08	21	0.19	0.03
28%	21%	92%	86%	70%	31%	58%	21%	5%	56%	14%	39%	62%	45%	29%	87%



Lot 27 • MLK CRK COPENHAGEN 0255



27 MLK CRK COPENHAGEN 0255

REG. # 4292481 IATTOO: 255 BTK BD: 2/18/20 100% 1A

RED RMJ REDMAN 1T
RED MINBURN COPENHAGEN 3Y
MINBURN MAY 112M

ANDRAS FUSION R236
MLK CRK THUNDER 499
HRR THUNDER 751

5L NORSEMAN KING 2291
CROWFOOT KURUBA 4033P
CRESCENT CREEK MAIN EVENT 6H
MINBURN MAY 90G
ANDRAS IN FOCUS B175
ANDRAS BELLE B167
SHOCO DATA
HRR HITHUNDER 444

BW/Ratio	98	110
WW/Ratio	652	103
YW/Ratio	1242	111
ADG/Ratio	3.69	122
%IMF/Ratio	2.14	92
REA/Ratio	14.4	112
Fat/Ratio	0.28	101
Dam's MPPA/Age	100.0	6

ProS	HB	GM
133	89	44
23%	25%	38%

CED	BW	WW	YW	ADG	DMI	M	ME	HPG	CEM	ST	MARB	YG	CW	REA	FAT
7	1.2	73	120	0.29	1.65	22	-9	10	6	15	0.35	0.05	27	0.16	0.01
97%	93%	9%	8%	8%	74%	76%	5%	70%	61%	59%	61%	48%	24%	35%	41%

We begin this pen of Copenhagen sons with Lot 27 who has done a lot of things right. He has good growth and ribeye ratios and descends from the powerful Thunder cow family. This bull is very attractive and carries his depth and thickness throughout. Keep all of his daughters.

Yearling Bulls



28 **MLK CRK COPENHAGEN 0227**
 REG. # 4292445 TATTOO: 227 BTK BD: 2/14/20 100% 1A

RED RMJ REDMAN 1T
RED MINBURN COPENHAGEN 3Y
 MINBURN MAY 112M

5L NORSEMAN KING 2291
 CROWFOOT KURUBA 4033P

5L SECRET AGENT 117-229Z
MLK CRK ASTER 464
 MLK CRK ASTER 432

CRESCENT CREEK MAIN EVENT 6H
 MINBURN MAY 90G

5L ADVOCATE 817-14W
 5L ROXIE 854-117

SHOCO DATA
 MLK CRK ASTER 175

BW/Ratio	97	109
WW/Ratio	657	104
YW/Ratio	1265	114
ADG/Ratio	3.80	126
%IMF/Ratio	1.57	68
REA/Ratio	12.0	93
Fat/Ratio	0.19	68
Dam's MPPA/Age	104.0	6

ProS	HB	GM
134	104	29
22%	5%	71%

CED	BW	WW	YW	ADG	DMI	M	ME	HPG	CEM	ST	MARB	YG	CW	REA	FAT
9	-0.2	65	103	0.24	1.64	27	-9	14	5	18	0.25	0.11	28	0.02	0.01
90%	79%	29%	33%	38%	72%	31%	5%	12%	87%	21%	86%	81%	22%	67%	48%



Lot 29 • MLK CRK COPENHAGEN 0240

29 **MLK CRK COPENHAGEN 0240**
 REG. # 4292291 TATTOO: 240 BTK BD: 2/16/20 100% 1A

RED RMJ REDMAN 1T
RED MINBURN COPENHAGEN 3Y
 MINBURN MAY 112M

5L NORSEMAN KING 2291
 CROWFOOT KURUBA 4033P

5L GRAND EXPRESS 453-5655
MLK CRK LAKOTA 975
 MLK CRK LAKOTA 953

CRESCENT CREEK MAIN EVENT 6H
 MINBURN MAY 90G

5L NORSEMAN EXPRESS
 5L RUBY 01-453

LARSON RED LIGHTNING
 MLK CRK LAKOTA 112-RAMB

BW/Ratio	88	100
WW/Ratio	626	99
YW/Ratio	1154	104
ADG/Ratio	3.28	109
%IMF/Ratio	1.76	76
REA/Ratio	15.0	117
Fat/Ratio	0.24	86
Dam's MPPA/Age	97.0	11

ProS	HB	GM
99	89	10
78%	26%	96%

CED	BW	WW	YW	ADG	DMI	M	ME	HPG	CEM	ST	MARB	YG	CW	REA	FAT
11	-0.3	59	94	0.22	1.25	21	-11	12	5	16	0.10	-0.01	11	0.22	0.02
75%	77%	52%	52%	52%	35%	82%	3%	38%	84%	45%	99%	17%	81%	24%	64%

Lot 29 was produced by an 10 year Grand Express daughter and the popular Canadian cow making sire Copenhagen. 0240 offers as much muscle in the lower quarter as any bull in the offering. He is moderate, deep and has that attractive look.



MLK CRK SUN GAL 1001, dam

30 **MLK CRK COPENHAGEN 0239**
 REG. # 4292329 TATTOO: 239 BTK BD: 2/16/20 100% 1A

RED RMJ REDMAN 1T
RED MINBURN COPENHAGEN 3Y
 MINBURN MAY 112M

5L NORSEMAN KING 2291
 CROWFOOT KURUBA 4033P

BECKTON EPIC R397 K
MLK CRK SUN GAL 1001
 BJR SUN GAL 4X-561

CRESCENT CREEK MAIN EVENT 6H
 MINBURN MAY 90G

BECKTON EPIC K F075
 BECKTON KIT F468 JL

BJR MONU 4X-303
 BJR SUN GAL 1193-375

BW/Ratio	93	105
WW/Ratio	647	102
YW/Ratio	1196	107
ADG/Ratio	3.42	113
%IMF/Ratio	2.09	91
REA/Ratio	12.4	97
Fat/Ratio	0.26	93
Dam's MPPA/Age	101.0	9

ProS	HB	GM
122	85	37
40%	34%	53%

CED	BW	WW	YW	ADG	DMI	M	ME	HPG	CEM	ST	MARB	YG	CW	REA	FAT
8	-0.7	60	102	0.26	1.51	24	-6	11	4	17	0.23	0.13	28	0.05	0.02
95%	71%	47%	35%	24%	60%	63%	12%	53%	93%	29%	90%	86%	20%	60%	71%



Yearling Bulls



Blaze, 3 months old



31

MLK CRK COPENHAGEN 0209

REG. # 4292463 TATTOO: 209 BTK BD: 2/10/20 100% 1A

RED RMJ REDMAN 1T
RED MINBURN COPENHAGEN 3Y
 MINBURN MAY 112M

MLK CRK IMPRESSIVE 1144

MLK CRK EMU MAR 422

MLK CRK EMU MAR 812

5L NORSEMAN KING 2291
 CROWFOOT KURUBA 4033P
 CRESCENT CREEK MAIN EVENT 6H
 MINBURN MAY 90G
 MUSHRUSH IMPRESSIVE CA U236
 MLK CRK LAKOTA 910
 RED YY RED KNIGHT 640F
 MLK CRK EMU MAR 951

BW/Ratio	89	100
WW/Ratio	603	95
YW/Ratio	1169	105
ADG/Ratio	3.53	117
%IMF/Ratio	1.97	85
REA/Ratio	13.0	101
Fat/Ratio	0.17	61
Dam's MPPA/Age	97.0	6

ProS	HB	GM
106	88	19
67%	28%	89%

CED	BW	WW	YW	ADG	DMI	M	ME	HPG	CEM	ST	MARB	YG	CW	REA	FAT
14	-1.8	55	89	0.21	1.28	25	-9	14	8	13	0.15	0.08	18	-0.03	0.01
34%	48%	67%	64%	59%	38%	48%	4%	8%	31%	76%	97%	66%	58%	78%	44%



32

MLK CRK COPENHAGEN 0214

REG. # 4292313 TATTOO: 214 BTK BD: 2/10/20 100% 1A

RED RMJ REDMAN 1T
RED MINBURN COPENHAGEN 3Y
 MINBURN MAY 112M

BECKTON EPIC R397 K

MLK CRK LAKOTA 173

MLK CRK LAKOTA 825

5L NORSEMAN KING 2291
 CROWFOOT KURUBA 4033P
 CRESCENT CREEK MAIN EVENT 6H
 MINBURN MAY 90G
 BECKTON EPIC K F075
 BECKTON KIT F468 JL
 RED YY RED KNIGHT 640F
 MLK CRK LAKOTA 611

BW/Ratio	90	102
WW/Ratio	652	103
YW/Ratio	1126	101
ADG/Ratio	2.96	98
%IMF/Ratio	1.94	84
REA/Ratio	12.3	96
Fat/Ratio	0.26	93
Dam's MPPA/Age	101.0	9

ProS	HB	GM
122	106	17
39%	4%	91%

CED	BW	WW	YW	ADG	DMI	M	ME	HPG	CEM	ST	MARB	YG	CW	REA	FAT
9	-1.1	60	95	0.22	1.44	25	-8	13	7	17	0.20	0.11	18	-0.03	0.03
90%	63%	48%	51%	54%	53%	51%	8%	18%	47%	23%	94%	82%	56%	78%	74%

Mating Copenhagen with on of our top Epic daughters produced this moderate framed soggy made herdbull prospect. His dam produced the 23,000 dollar Grassroots bulls selling to Ole Farms in Canada in our 2016 sale.



Lot 32 • MLK CRK COPENHAGEN 0214



MLK CRK LAKOTA 173, dam

Yearling Bulls



33 MLK CRK COPENHAGEN 0211

REG. # 4292487 TATTOO: 211 BTK BD: 2/10/20 100% 1A

RED RMJ REDMAN 1T
RED MINBURN COPENHAGEN 3Y
MINBURN MAY 112M

MLK CRK REDSTONE
MLK CRK LAKINA 4110
MLK CRK LAKINA 523

5L NORSEMAN KING 2291
CROWFOOT KURUBA 4033P
CRESCENT CREEK MAIN EVENT 6H
MINBURN MAY 90G
TR JULIAN LT142
MLK CRK LENA 763
SHOCO DATA
MLK CRK LAKINA 228

BW/Ratio	88	99
WW/Ratio	637	101
YW/Ratio	978	88
ADG/Ratio	2.13	70
%IMF/Ratio	2.05	89
REA/Ratio	10.3	80
Fat/Ratio	0.16	57
Dam's MPPA/Age	107.0	6

ProS	HB	GM
95	87	8
83%	30%	97%

CED	BW	WW	YW	ADG	DMI	M	ME	HPG	CEM	ST	MARB	YG	CW	REA	FAT
10	-1.5	53	72	0.12	1.54	29	-7	13	7	15	0.31	0.12	16	-0.09	0.02
84%	55%	75%	88%	95%	63%	14%	10%	23%	49%	56%	72%	82%	63%	88%	64%



34 MLK CRK COPENHAGEN 0216

REG. # 4292433 TATTOO: 216 BTK BD: 2/12/20 100% 1A

RED RMJ REDMAN 1T
RED MINBURN COPENHAGEN 3Y
MINBURN MAY 112M

RIDGE LEGEND 2069
MLK CRK EMUMAR 477
MLK CRK EMUMAR 229

5L NORSEMAN KING 2291
CROWFOOT KURUBA 4033P
CRESCENT CREEK MAIN EVENT 6H
MINBURN MAY 90G
5L LEGEND 1553-425V
RIDGE AQUILA 552-8066
MUSHRUSH IMPRESSIVE CA U236
MLK CRK VAL 062

BW/Ratio	94	105
WW/Ratio	637	101
YW/Ratio	979	88
ADG/Ratio	2.14	71
%IMF/Ratio	1.88	82
REA/Ratio	13.7	107
Fat/Ratio	0.20	72
Dam's MPPA/Age	98.0	6

ProS	HB	GM
65	86	-21
99%	32%	99%

CED	BW	WW	YW	ADG	DMI	M	ME	HPG	CEM	ST	MARB	YG	CW	REA	FAT
12	-1.0	48	68	0.13	1.31	24	-12	12	5	16	0.12	-0.06	-9	0.06	0.01
64%	65%	86%	91%	94%	40%	58%	2%	33%	82%	42%	98%	7%	99%	58%	42%



35 MLK CRK COPENHAGEN 0261

REG. # 4292279 TATTOO: 261 BTK BD: 2/19/20 100% 1A

RED RMJ REDMAN 1T
RED MINBURN COPENHAGEN 3Y
MINBURN MAY 112M

BUF CRK GIULIANI L851
MLK CRK FIREFLY 974
MLK CRK LANA 760

5L NORSEMAN KING 2291
CROWFOOT KURUBA 4033P
CRESCENT CREEK MAIN EVENT 6H
MINBURN MAY 90G
BKT JULIAN 7526 G
BUF CRK MARI GOLD1230
BUF CRK CHF 824-1658
MLK CRK LANA 704-HOBO

BW/Ratio	102	116
WW/Ratio	668	106
YW/Ratio	1181	106
ADG/Ratio	3.19	106
%IMF/Ratio	1.86	80
REA/Ratio	13.1	102
Fat/Ratio	0.36	129
Dam's MPPA/Age	103.0	11

ProS	HB	GM
89	78	11
89%	51%	95%

CED	BW	WW	YW	ADG	DMI	M	ME	HPG	CEM	ST	MARB	YG	CW	REA	FAT
8	0.5	56	89	0.21	1.23	24	-11	15	1	16	0.14	0.11	14	-0.05	0.03
96%	88%	63%	64%	63%	33%	57%	3%	5%	99%	45%	98%	80%	72%	82%	77%



36 MLK CRK THE REAL DEAL 0202

REG. # 4292541 TATTOO: 202 BTK BD: 2/8/20 100% 1A

5L DEFENDER 560-30Z
5L THE REAL DEAL 1687-143B
5L FIREFLY 275-1687

BECKTON DOMINOR A038 J7
MLK CRK EMUMAR 537
MLK CRK EMUMAR 229

5L ADVOCATE 817-14W
5L BLACK ADINA 525-560
5L DESTINATION 893-6215
5L FIREFLY 2573-275
BECKTON DOMINOR Y052 N6
BECKTON TARA Y111 J
MUSHRUSH IMPRESSIVE CA U236
MLK CRK VAL 062

BW/Ratio	84	95
WW/Ratio	653	103
YW/Ratio	1073	96
ADG/Ratio	2.62	87
%IMF/Ratio	2.47	107
REA/Ratio	11.6	90
Fat/Ratio	0.28	100
Dam's MPPA/Age	98.0	5

ProS	HB	GM
117	74	43
48%	59%	39%

CED	BW	WW	YW	ADG	DMI	M	ME	HPG	CEM	ST	MARB	YG	CW	REA	FAT
14	-2.0	59	96	0.23	1.82	23	3	15	7	14	0.45	0.08	25	0.10	0.02
24%	45%	54%	48%	41%	86%	66%	72%	5%	45%	73%	37%	66%	30%	48%	59%

Lot 36 starts off the pen of Real Deal sons that continue to offer above average growth with carcass and produce daughters that are deep, easy keeping and very functional.



Lot 37 • MLK CRK THE REAL DEAL 0232



37 MLK CRK THE REAL DEAL 0232

REG. # 4292515 TATTOO: 232 BTK BD: 2/14/20 100% 1A

5L DEFENDER 560-30Z
5L THE REAL DEAL 1687-143B
5L FIREFLY 275-1687

HRR IMPRESSIVE 227
MLK CRK FIREFLY 593
MLK CRK KNIGHT 9108

5L ADVOCATE 817-14W
5L BLACK ADINA 525-560
5L DESTINATION 893-6215
5L FIREFLY 2573-275
MUSHRUSH IMPRESSIVE CA U236
HRR BANA 031
RED YY RED KNIGHT 640F
MLK CRK FIREFLY 787

BW/Ratio	95	108
WW/Ratio	673	106
YW/Ratio	1191	107
ADG/Ratio	3.23	107
%IMF/Ratio	2.48	107
REA/Ratio	12.0	93
Fat/Ratio	0.20	72
Dam's MPPA/Age	97.0	5

ProS	HB	GM
135	79	55
21%	48%	17%

CED	BW	WW	YW	ADG	DMI	M	ME	HPG	CEM	ST	MARB	YG	CW	REA	FAT
13	-1.1	63	108	0.28	1.83	26	2	15	6	15	0.47	0.05	28	0.10	0.00
47%	63%	35%	22%	13%	87%	45%	59%	8%	71%	59%	33%	48%	20%	48%	18%

This long made Real Deal son is deep and attractive. He has a distinguishing black birth mark over his left hip but it didn't prevent him from attaining above average growth and marbling ratios.



Yearling Bulls



38

MLK CRK THE REAL DEAL 0233

REG. # 4292471 IATTOO: 233 BTK BD: 2/15/20 100% 1A

5L DEFENDER 560-30Z
5L THE REAL DEAL 1687-143B
5L FIREFLY 275-1687

5L ADVOCATE 817-14W
5L BLACK ADINA 525-560
5L DESTINATION 893-6215
5L FIREFLY 2573-275
BUF CRK LANCER R017
MUSHRUSH MADAM LT R265
BECKTON EPIC R397 K
MLK CRK SHEBA 521

BW/Ratio	95	107
WW/Ratio	644	102
YW/Ratio	1165	105
ADG/Ratio	3.26	108
%IMF/Ratio	2.88	125
REA/Ratio	14.4	112
Fat/Ratio	0.32	115
Dam's MPPA/Age	94.0	6

MUSHRUSH IMPRESSIVE CA U236

MLK CRK SHEBA 440

MLK CRK SHEBA 862

ProS HB GM

132 76 56

24% 55% 16%



CED	BW	WW	YW	ADG	DMI	M	ME	HPG	CEM	ST	MARB	YG	CW	REA	FAT
13	-0.7	65	110	0.28	1.83	23	4	12	7	15	0.54	-0.01	23	0.28	0.01
35%	71%	30%	19%	12%	87%	70%	79%	34%	43%	58%	20%	17%	37%	15%	33%

Lot 38 balances above average growth ratios with a 125 marbling ratio and 112 REA ratio. Phenotypically he is long made and thick topped.



39

MLK CRK THE REAL DEAL 0242

REG. # 4292347 IATTOO: 242 BTK BD: 2/16/20 100% 1A

5L DEFENDER 560-30Z
5L THE REAL DEAL 1687-143B
5L FIREFLY 275-1687

5L ADVOCATE 817-14W
5L BLACK ADINA 525-560
5L DESTINATION 893-6215
5L FIREFLY 2573-275
LACY SIGNATURE 7006
LACY LAKOTA 7155
BECKTON EPIC R397 K
MLK CRK BONIBEL 561

BW/Ratio	102	114
WW/Ratio	741	117
YW/Ratio	1333	120
ADG/Ratio	3.70	123
%IMF/Ratio	1.58	68
REA/Ratio	16.3	127
Fat/Ratio	0.18	65
Dam's MPPA/Age	105.0	8

LACY KING 9240

MLK CRK BONNEBELL 284

MLK CRK BONNEBELL 854

ProS HB GM

124 63 61

37% 81% 11%



CED	BW	WW	YW	ADG	DMI	M	ME	HPG	CEM	ST	MARB	YG	CW	REA	FAT
9	0.8	71	124	0.33	1.86	27	3	11	2	16	0.46	-0.06	26	0.45	0.00
88%	91%	11%	4%	2%	88%	31%	66%	50%	99%	45%	35%	6%	26%	4%	24%

Lot 39 produced some of the highest weaning and yearling weights as well as biggest ribeye measurements in the offering. If you are wanting to add pounds to your feeder calves 0242 maybe able to help.



40

MLK CRK THE REAL DEAL 0200

REG. # 4292385 IATTOO: 200 BTK BD: 2/8/20 100% 1A

5L DEFENDER 560-30Z
5L THE REAL DEAL 1687-143B
5L FIREFLY 275-1687

5L ADVOCATE 817-14W
5L BLACK ADINA 525-560
5L DESTINATION 893-6215
5L FIREFLY 2573-275
5L GRAND EXPRESS 453-5655
MLK CRK SHEBA 079
BECKTON EPIC R397 K
MLK CRK BONIBEL 527

BW/Ratio	86	96
WW/Ratio	650	103
YW/Ratio	1115	100
ADG/Ratio	2.91	96
%IMF/Ratio	3.59	155
REA/Ratio	12.5	97
Fat/Ratio	0.24	85
Dam's MPPA/Age	95.0	7

MLK CRK EXPRESS 9141

MLK CRK BONIBEL 331

MLK CRK BONIBEL 752

ProS HB GM

140 89 51

15% 24% 24%



CED	BW	WW	YW	ADG	DMI	M	ME	HPG	CEM	ST	MARB	YG	CW	REA	FAT
13	-2.1	60	97	0.23	1.95	24	5	10	8	18	0.56	0.06	27	0.15	0.01
38%	42%	50%	47%	43%	92%	62%	83%	77%	21%	16%	17%	54%	23%	38%	42%

Lot 40 has one of the higher marbling scores in this offering of bulls. He complements this with above average weaning and moderate birth weight.



Lot 41 • MLK CRK THE REAL DEAL 0201



41

MLK CRK THE REAL DEAL 0201

REG. # 4292415 IATTOO: 201 BTK BD: 2/7/20 100% 1A

5L DEFENDER 560-30Z
5L THE REAL DEAL 1687-143B
5L FIREFLY 275-1687

5L ADVOCATE 817-14W
5L BLACK ADINA 525-560
5L DESTINATION 893-6215
5L FIREFLY 2573-275
5L ADVOCATE 817-14W
5L ROXIE 854-117
MUSHRUSH IMPRESSIVE CA U236
SIXE MS BOEING

BW/Ratio	97	109
WW/Ratio	668	106
YW/Ratio	1147	103
ADG/Ratio	2.99	99
%IMF/Ratio	2.37	103
REA/Ratio	13.0	101
Fat/Ratio	0.26	92
Dam's MPPA/Age	101.0	6

5L SECRET AGENT 117-229Z

MLK CRK MS BOEING 462

MLK CRK MS BOEING 129

ProS HB GM

138 92 46

17% 20% 34%

CED	BW	WW	YW	ADG	DMI	M	ME	HPG	CEM	ST	MARB	YG	CW	REA	FAT
12	-1.2	60	97	0.23	2.03	27	1	14	6	17	0.58	0.00	21	0.21	0.01
62%	61%	48%	46%	43%	95%	33%	53%	10%	65%	28%	15%	20%	46%	25%	28%

This Real Deal son offers above average growth and carcass ratios while displaying a dark red hair coat.

Yearling Bulls



42 MLK CRK THE REAL DEAL 0203

REG. # 4292453 TATTOO: 203 BTK BD: 2/8/20 100% 1A

5L DEFENDER 560-30Z
5L THE REAL DEAL 1687-143B
5L FIREFLY 275-1687

5L ADVOCATE 817-14W
5L BLACK ADINA 525-560
5L DESTINATION 893-6215
5L FIREFLY 2573-275

BUF CRK MEDALLION N328
BUF CRK AMBER R087

RED YY RED KNIGHT 640F
MLK CRK LAKOTA 189

BUF CRK JUST RIGHT X116
MLK CRK LAKOTA 498
MLK CRK LAKOTA 624

ProS	HB	GM
103	72	31
73%	64%	68%

BW/Ratio	88	99
WW/Ratio	680	107
YW/Ratio	1046	94
ADG/Ratio	2.28	75
%IMF/Ratio	2.50	108
REA/Ratio	13.3	103
Fat/Ratio	0.35	125
Dam's MPPA/Age	102.0	6

CED	BW	WW	YW	ADG	DMI	M	ME	HPG	CEM	ST	MARB	YG	CW	REA	FAT
13	-1.3	62	96	0.21	1.94	23	4	13	6	15	0.49	0.00	17	0.21	0.01
40%	58%	38%	49%	61%	92%	68%	74%	20%	67%	62%	30%	20%	62%	25%	44%



43 MLK CRK THE REAL DEAL 0215

REG. # 4292619 TATTOO: 215 BTK BD: 2/11/20 100% 1A

5L DEFENDER 560-30Z
5L THE REAL DEAL 1687-143B
5L FIREFLY 275-1687

5L ADVOCATE 817-14W
5L BLACK ADINA 525-560
5L DESTINATION 893-6215
5L FIREFLY 2573-275

JACOBSON BLAZIN ON 0057
5L DOUBLE BLAZE 1134-8576
5L FUSCHIA 643-3668

MLK CRK EXPRESS 9141
MLK CRK BONNEBELL 962

MLK CRK BONNEBELL 637
MLK CRK BONNEBELL 2111

ProS	HB	GM
145	97	48
11%	12%	29%



BW/Ratio	91	104
WW/Ratio	648	102
YW/Ratio	1139	101
ADG/Ratio	3.06	101
%IMF/Ratio	1.81	78
REA/Ratio	12.2	95
Fat/Ratio	0.18	64
Dam's MPPA/Age	101.0	4

CED	BW	WW	YW	ADG	DMI	M	ME	HPG	CEM	ST	MARB	YG	CW	REA	FAT
14	-2.1	61	104	0.27	2.10	27	3	13	9	17	0.38	0.05	31	0.15	0.00
33%	42%	46%	31%	17%	97%	32%	65%	18%	13%	28%	54%	50%	13%	38%	23%



44 MLK CRK THE REAL DEAL 0207

REG. # 4292545 TATTOO: 207 BTK BD: 2/9/20 100% 1A

5L DEFENDER 560-30Z
5L THE REAL DEAL 1687-143B
5L FIREFLY 275-1687

5L ADVOCATE 817-14W
5L BLACK ADINA 525-560
5L DESTINATION 893-6215
5L FIREFLY 2573-275

5L LEGEND 1553-425V
RIDGE AQUILA 552-8066

MLK CRK EXPRESS 9127
MLK CRK EMUMAR 959

RIDGE LEGEND 2069
MLK CRK EMUMAR 525
MLK CRK EMUMAR 152

ProS	HB	GM
114	67	47
54%	75%	32%



BW/Ratio	94	107
WW/Ratio	612	97
YW/Ratio	1099	99
ADG/Ratio	3.04	101
%IMF/Ratio	2.03	88
REA/Ratio	10.3	80
Fat/Ratio	0.28	100
Dam's MPPA/Age	97.0	5

CED	BW	WW	YW	ADG	DMI	M	ME	HPG	CEM	ST	MARB	YG	CW	REA	FAT
15	-1.2	55	95	0.25	1.87	23	1	11	8	14	0.41	0.13	29	-0.08	0.01
20%	61%	67%	52%	33%	89%	68%	52%	61%	34%	71%	46%	87%	18%	87%	28%



45 MLK CRK THE REAL DEAL 0226

REG. # 4292539 TATTOO: 226 BTK BD: 2/3/20 100% 1A

5L DEFENDER 560-30Z
5L THE REAL DEAL 1687-143B
5L FIREFLY 275-1687

5L ADVOCATE 817-14W
5L BLACK ADINA 525-560
5L DESTINATION 893-6215
5L FIREFLY 2573-275

5L LEGEND 1553-425V
RIDGE GRANDIOSE 629-1112

C-T GRAND STATEMENT 1025
MLK CRK SHEBA 636

RIDGE ADMIRAL 3411
MLK CRK SHEBA 5115
MLK CRK SHEBA 223

ProS	HB	GM
155	86	69
5%	31%	5%



BW/Ratio	89	101
WW/Ratio	633	100
YW/Ratio	1158	104
ADG/Ratio	3.28	109
%IMF/Ratio	2.36	102
REA/Ratio	13.5	105
Fat/Ratio	0.24	85
Dam's MPPA/Age	99.0	5

CED	BW	WW	YW	ADG	DMI	M	ME	HPG	CEM	ST	MARB	YG	CW	REA	FAT
12	-1.3	62	107	0.28	2.11	24	3	15	7	15	0.53	0.04	40	0.38	0.01
61%	58%	39%	24%	12%	97%	63%	64%	6%	45%	55%	22%	40%	3%	7%	41%



Lot 46 • MLK CRK EXPRESSIVE 0269



46 MLK CRK EXPRESSIVE 0269

REG. # 4292773 TATTOO: 269 BTK BD: 2/20/20 100% 1A

5L GRAND EXPRESS 453-5655
MLK CRK EXPRESS 9127
MLK CRK SHEBA 043

5L NORSEMAN EXPRESS
5L RUBY 01-453

BJR PROOF 224-159
MLK CRK SHEBA 869

5L ADVANTAGE 3267-221Y
RIDGE MONA 8162-2057

RED YY RED KNIGHT 640F
MLK CRK ASTER 175

RIDGE PROVISION 6013
MLK CRK ASTER 879
MLK CRK ASTER 923

ProS	HB	GM
117	89	28
48%	24%	74%

BW/Ratio	81	111
WW/Ratio	692	116
YW/Ratio	1177	112
ADG/Ratio	3.02	106
%IMF/Ratio	2.35	96
REA/Ratio	13.6	114
Fat/Ratio	0.30	118
Dam's MPPA/Age	106.0	2

CED	BW	WW	YW	ADG	DMI	M	ME	HPG	CEM	ST	MARB	YG	CW	REA	FAT
11	-1.0	64	93	0.18	1.18	24	-7	12	5	16	0.32	-0.01	19	0.27	0.01
70%	65%	34%	55%	76%	29%	63%	9%	35%	88%	35%	69%	17%	52%	16%	44%



Yearling Bulls



47 MLK CRK EXPRESSIVE 0288

REG. # 4292781 TATTOO: 288 BTK BD: 2/26/20 100% 1A

5L GRAND EXPRESS 453-5655
MLK CRK EXPRESS 9127
MLK CRK SHEBA 043

5L ADVANTAGE 3267-221Y
MLK CRK LANA 837
MLK CRK LANA 987

5L NORSEMAN EXPRESS
5L RUBY 01-453
BJR PROOF 224-159
MLK CRK SHEBA 869
BUF CRK THE RIGHT KIND U199
5L ADINA 195-3267
BECKTON EPIC R397 K
MLK CRK LANA 670

BW/Ratio	85	115
WW/Ratio	663	111
YW/Ratio	1151	109
ADG/Ratio	3.03	106
%IMF/Ratio	2.23	91
REA/Ratio	14.2	119
Fat/Ratio	0.29	115
Dam's MPPA/Age	104.0	2

ProS	HB	GM
122	97	25

40%	11%	80%
-----	-----	-----

CED	BW	WW	YW	ADG	DMI	M	ME	HPG	CEM	ST	MARB	YG	CW	REA	FAT
13	-1.4	65	92	0.17	1.11	21	-6	11	9	16	0.35	0.00	17	0.27	0.02
43%	57%	29%	58%	83%	25%	86%	12%	58%	10%	47%	61%	19%	59%	16%	59%

9127, lot 47's sire continues to produce above average growth even when his EPDS says he shouldn't. 0288 also offers one of the larger ribeyes in the offering out of 1st calf heifers.



Lot 48 • MLK CRK LEGENDARY 0218



48 MLK CRK LEGENDARY 0218

REG. # 4292569 TATTOO: 218 BTK BD: 2/12/20 100% 1A

5L LEGEND 1553-425V
RIDGE LEGEND 2069
RIDGE AQUILA 552-8066

JACOBSON BLAZIN ON 0057
MLK CRK LAKOTA 613
MLK CRK LAKOTA 194

5L LAKOTA LEGEND 7074
5L HAZEL 45L-1553
5L NORMANDY CANYON 6024
RIDGE AQUILA 213-552
5L DOUBLE BLAZE 1134-8576
5L FUSCHIA 643-3668
TR JULIAN W7951
MLK CRK LAKOTA 769

BW/Ratio	85	98
WW/Ratio	660	104
YW/Ratio	1154	104
ADG/Ratio	3.08	102
%IMF/Ratio	1.86	81
REA/Ratio	13.4	105
Fat/Ratio	0.36	129
Dam's MPPA/Age	100.0	4

ProS	HB	GM
99	91	8

78%	21%	97%
-----	-----	-----

CED	BW	WW	YW	ADG	DMI	M	ME	HPG	CEM	ST	MARB	YG	CW	REA	FAT
17	-2.8	45	72	0.17	1.24	28	-6	11	9	17	0.12	0.03	9	0.09	0.02
4%	30%	90%	89%	84%	34%	21%	12%	60%	12%	27%	98%	37%	85%	52%	68%

2069 has left us with some attractive yet productive young to midaged cows that have great udders. 0218 is a long, thick made 2069 son that has performed well and should leave some outstanding replacements while adding pounds to the feeder cattle.



49 MLK CRK LEGENDARY 0230

REG. # 4292443 TATTOO: 230 BTK BD: 2/14/20 100% 1A

5L LEGEND 1553-425V
RIDGE LEGEND 2069
RIDGE AQUILA 552-8066

ANDRAS FUSION R236
MLK CRK LAKOTA 434
MLK CRK LAKOTA 429

5L LAKOTA LEGEND 7074
5L HAZEL 45L-1553
5L NORMANDY CANYON 6024
RIDGE AQUILA 213-552
ANDRAS IN FOCUS B175
ANDRAS BELLE B167
SHOCO DATA
MLK CRK LAKOTA 066

BW/Ratio	90	101
WW/Ratio	637	101
YW/Ratio	1152	103
ADG/Ratio	3.22	107
%IMF/Ratio	3.01	130
REA/Ratio	13.5	105
Fat/Ratio	0.39	140
Dam's MPPA/Age	103.0	6

ProS	HB	GM
96	68	28
81%	72%	73%

CED	BW	WW	YW	ADG	DMI	M	ME	HPG	CEM	ST	MARB	YG	CW	REA	FAT
13	-1.5	43	75	0.20	1.20	26	-3	7	7	16	0.35	0.02	4	-0.05	0.01
37%	55%	93%	86%	69%	31%	36%	23%	98%	43%	43%	61%	28%	94%	82%	31%

Lot 49's dam is a 7-year-old Fusion daughter that has earned a 103 MPPA. 0230 produced ratios above average for weaning and yearling while scanning a marbling score 30 percent above the average and a ribeye 5 percent above the average.



50 MLK CRK LEGENDARY 0245

REG. # 4292301 TATTOO: 245 BTK BD: 2/17/20 100% 1A

5L LEGEND 1553-425V
RIDGE LEGEND 2069
RIDGE AQUILA 552-8066

5L BLAZIN RED 1354-6166
MLK CRK LAKOTA 083
MLK CRK LAKOTA 850

5L LAKOTA LEGEND 7074
5L HAZEL 45L-1553
5L NORMANDY CANYON 6024
RIDGE AQUILA 213-552
5L BLAZIN HOBO 404-5654
5L REBA 60-1354
GLACIER CUB 446
MLK CRK LAKOTA 651

BW/Ratio	91	103
WW/Ratio	667	105
YW/Ratio	1063	95
ADG/Ratio	2.46	81
%IMF/Ratio	1.41	61
REA/Ratio	11.9	93
Fat/Ratio	0.18	65
Dam's MPPA/Age	104.0	10

ProS	HB	GM
79	88	-10

96%	26%	99%
-----	-----	-----

CED	BW	WW	YW	ADG	DMI	M	ME	HPG	CEM	ST	MARB	YG	CW	REA	FAT
14	-1.6	43	64	0.13	1.08	29	-2	12	7	17	0.13	0.06	-3	-0.24	0.01
31%	53%	93%	94%	93%	23%	16%	29%	27%	43%	22%	98%	53%	99%	98%	41%

Yearling Bulls



51

MLK CRK STEWARD 0356

REG. # 4292625 TATTOO: 356 BTK BD: 3/19/20 100% 1A

MLK CRK ADVOCATE 4304
MLK CRK STEWARD 6308
MLK CRK EMUMAR 150

5L SECRET AGENT 117-229Z
MLK CRK SHEBA 1014
MUSHRUSH IMPRESSIVE CA U236
MLK CRK EMUMAR 641
RIDGE LEGEND 2069
5L LEGEND 1553-425V
RIDGE AQUILA 552-8066
5L SECRET AGENT 117-229Z
MLK CRK VAL 549A

BW/Ratio	75	85
WW/Ratio	632	100
YW/Ratio	1052	94
ADG/Ratio	2.62	87
%IMF/Ratio	3.58	155
REA/Ratio	13.1	102
Fat/Ratio	0.28	100
Dam's MPPA/Age	101.0	4

ProS	HB	GM
107	96	11

67%	14%	95%													
CED	BW	WW	YW	ADG	DMI	M	ME	HPG	CEM	ST	MARB	YG	CW	REA	FAT
14	-3.5	46	68	0.14	1.32	23	-3	14	7	18	0.52	0.00	-8	0.04	0.04
24%	19%	89%	91%	92%	41%	66%	25%	11%	47%	16%	24%	22%	99%	63%	88%

Don't overlook this late March, low birth weight steward son that has a 155 marbling ratio along with a 102 REA ratio. He is attractive, deep and thick and should work well on heifers and cows.



52

MLK CRK STEWARD 0366

REG. # 4292345 TATTOO: 366 BTK BD: 4/1/20 100% 1A

MLK CRK ADVOCATE 4304
MLK CRK STEWARD 6308
MLK CRK EMUMAR 150

5L SECRET AGENT 117-229Z
MLK CRK SHEBA 1014
MUSHRUSH IMPRESSIVE CA U236
MLK CRK EMUMAR 641
RIDGE TRADESMAN 6237-0002
5L TRADESMAN 1715-6237
PVRA DESIGN LASS 515
BUF CRK GIULIANI L851
MLK CRK BLOCKANNA 065

BW/Ratio	84	94
WW/Ratio	660	104
YW/Ratio	1088	98
ADG/Ratio	2.67	88
%IMF/Ratio	2.32	100
REA/Ratio	13.3	104
Fat/Ratio	0.32	116
Dam's MPPA/Age	98.0	8

ProS	HB	GM
113	102	11

55%	7%	95%													
CED	BW	WW	YW	ADG	DMI	M	ME	HPG	CEM	ST	MARB	YG	CW	REA	FAT
12	-2.5	53	81	0.17	1.38	19	-1	17	5	19	0.40	0.05	0	0.08	0.04
50%	35%	73%	79%	83%	47%	94%	34%	2%	86%	9%	49%	45%	97%	53%	94%



Lot 52 • MLK CRK STEWARD 0366



53

MLK CRK IMPACT 0290

REG. # 4292881 TATTOO: 290 BTK BD: 2/26/20 100% 1A

MUSHRUSH IMPRESSIVE CA U236
MUSHRUSH IMPACT Z352
MUSHRUSH ZENA JL X320

BUF CRK LANCER R017
MUSHRUSH MADAM LT R265
BECKTON JULIAN G1 J526
MUSHRUSH ZENA EP U339

BECKTON DOMINOR A038 J7
MLK CRK LAKOTA 898
MLK CRK LAKOTA 558

BECKTON DOMINOR Y052 N6
BECKTON TARA Y111 J
5L LEGEND 1553-425V
MLK CRK LAKOTA 652

BW/Ratio	70	98
WW/Ratio	609	102
YW/Ratio	1041	99
ADG/Ratio	2.69	94
%IMF/Ratio	2.16	88
REA/Ratio	10.0	84
Fat/Ratio	0.18	72
Dam's MPPA/Age	101.0	2

ProS	HB	GM
138	106	32

17%	4%	64%													
CED	BW	WW	YW	ADG	DMI	M	ME	HPG	CEM	ST	MARB	YG	CW	REA	FAT
17	-5.0	52	86	0.22	1.05	21	0	19	8	18	0.34	0.18	14	-0.07	0.05
6%	6%	78%	70%	55%	21%	83%	42%	1%	34%	16%	64%	97%	70%	85%	98%



54

MLK CRK LEGENDARY 0248

REG. # 4292311 TATTOO: 248 BTK BD: 2/17/20 100% 1A

5L LEGEND 1553-425V
RIDGE LEGEND 2069
RIDGE AQUILA 552-8066

5L LAKOTA LEGEND 7074
5L HAZEL 45L-1553
5L NORMANDY CANYON 6024
RIDGE AQUILA 213-552

TR JULIAN WT951
MLK CRK LAKOTA 194
MLK CRK LAKOTA 769

TR JULIAN LT151
TR LANA G760
BUF CRK GIULIANI L851
MLK CRK LAKOTA 356

BW/Ratio	83	94
WW/Ratio	610	96
YW/Ratio	1018	91
ADG/Ratio	2.54	84
%IMF/Ratio	1.87	81
REA/Ratio	11.9	93
Fat/Ratio	0.22	79
Dam's MPPA/Age	94.0	9

ProS	HB	GM
73	78	-4

97%	51%	99%													
CED	BW	WW	YW	ADG	DMI	M	ME	HPG	CEM	ST	MARB	YG	CW	REA	FAT
16	-2.8	41	64	0.14	1.05	25	-3	10	8	17	0.12	0.05	-1	-0.14	0.02
10%	30%	95%	94%	91%	21%	52%	24%	75%	31%	33%	98%	50%	98%	93%	59%



Yearling Bulls



55 MLK CRK LEGENDARY 0220

REG. # 4292323 TATTOO: 220 BTK BD: 2/12/20 100% 1A

5L LEGEND 1553-425V
RIDGE LEGEND 2069
RIDGE AQUILA 552-8066

5L LAKOTA LEGEND 7074
5L HAZEL 45L-1553
5L NORMANDY CANYON 6024
RIDGE AQUILA 213-552
BUF CRK LANCER R017
MUSHRUSH MADAM LT R265
BUF CRK GIULIANI L851
MLK CRK LAKOTA 618

BW/Ratio	75	85
WW/Ratio	613	97
YW/Ratio	1094	98
ADG/Ratio	3.00	99
%IMF/Ratio	2.43	105
REA/Ratio	12.2	95
FaI/Ratio	0.30	107
Dam's MPPA/Age	100.0	9

MUSHRUSH IMPRESSIVE CA U236
MLK CRK LAKOTA 149
MLK CRK LAKOTA 963

ProS	HB	GM
85	70	15
92%	69%	93%

CED	BW	WW	YW	ADG	DMI	M	ME	HPG	CEM	ST	MARB	YG	CW	REA	FAT
17	-3.0	43	70	0.17	1.03	25	-4	10	8	14	0.21	0.06	6	-0.06	0.02
6%	27%	93%	90%	84%	20%	51%	19%	62%	26%	63%	93%	52%	92%	84%	61%



56 MLK CRK VENTURE 0270

REG. # 4292845 TATTOO: 270 BTK BD: 2/21/20 100% 1A

RED U-2 RECKONING 149A
RED U2 MONEY TALKS 530F
RED U-2 MS DYNAMO 233B

RED U-2 RECON 192Y
RED U-2 ANEXA 271Y
RED MINBURN COPENHAGEN 3Y
RED U-2 MS DYNAMO 234Z
5L LEGEND 1553-425V
RIDGE GRANDIOSE 629-1112
RIDGE LEGEND 2069
MLK CRK EMUMAR 229

BW/Ratio	74	101
WW/Ratio	596	100
YW/Ratio	1122	107
ADG/Ratio	3.28	115
%IMF/Ratio	2.34	96
REA/Ratio	12.6	106
FaI/Ratio	0.23	91
Dam's MPPA/Age	100.0	2

RIDGE ADMIRAL 3411
MLK CRK EMUMAR 860
MLK CRK EMUMAR 477

ProS	HB	GM
139	98	41
16%	11%	44%

CED	BW	WW	YW	ADG	DMI	M	ME	HPG	CEM	ST	MARB	YG	CW	REA	FAT
12	-2.8	46	80	0.22	1.08	27	-11	12	5	19	0.31	0.07	16	0.12	0.03
56%	30%	90%	80%	55%	23%	35%	3%	30%	82%	11%	72%	59%	63%	43%	82%

As we begin this Pen of Money Talks sons you will find bulls out of cows as well as first calf heifers. We continue to use him both ways because he works well. Lot 56 is a deep ribbed heifer bull prospect.



Lot 57 • MLK CRK VENTURE 0272



57 MLK CRK VENTURE 0272

REG. # 4292435 TATTOO: 272 BTK BD: 2/20/20 100% 1A

RED U-2 RECKONING 149A
RED U2 MONEY TALKS 530F
RED U-2 MS DYNAMO 233B

RED U-2 RECON 192Y
RED U-2 ANEXA 271Y
RED MINBURN COPENHAGEN 3Y
RED U-2 MS DYNAMO 234Z
BUF CRK LANCER R017
MUSHRUSH MADAM LT R265
C-T GRAND STATEMENT 1025
MLK CRK CPR LASS 528

BW/Ratio	88	99
WW/Ratio	657	104
YW/Ratio	1159	104
ADG/Ratio	3.14	104
%IMF/Ratio	3.24	140
REA/Ratio	11.9	92
FaI/Ratio	0.27	97
Dam's MPPA/Age	106.0	6

MUSHRUSH IMPRESSIVE CA U236
MLK CRK LASS 460
MLK CRK CPR LASS 239

ProS	HB	GM
145	105	40
11%	5%	47%

CED	BW	WW	YW	ADG	DMI	M	ME	HPG	CEM	ST	MARB	YG	CW	REA	FAT
12	-2.6	57	91	0.21	1.17	28	-9	8	8	20	0.40	0.11	20	0.00	0.03
55%	33%	61%	59%	56%	29%	20%	6%	96%	34%	5%	49%	80%	50%	72%	74%

Lot 57 is balanced with good depth, length and thickness. He also has tipped the scales above average while scanning a 140 marbling ratio. His 7-year-old Impressive dam is what we like to see in our cows, moderate, deep ribbed, along with good feet and udder.



Lot 58 • MLK CRK VENTURE 0286



58 MLK CRK VENTURE 0286

REG. # 4292843 TATTOO: 286 BTK BD: 2/26/20 100% 1A

RED U-2 RECKONING 149A
RED U2 MONEY TALKS 530F
RED U-2 MS DYNAMO 233B

RED U-2 RECON 192Y
RED U-2 ANEXA 271Y
RED MINBURN COPENHAGEN 3Y
RED U-2 MS DYNAMO 234Z
BUF CRK THE RIGHT KIND U199
5L ADINA 195-3267
5L SECRET AGENT 117-229Z
MLK CRK SALLEE 153

BW/Ratio	86	116
WW/Ratio	682	114
YW/Ratio	1153	109
ADG/Ratio	2.93	102
%IMF/Ratio	2.15	88
REA/Ratio	13.1	110
FaI/Ratio	0.28	111
Dam's MPPA/Age	106.0	2

5L ADVANTAGE 3267-221Y
MLK CRK SALLEE 807
MLK CRK SALLEE 495

ProS	HB	GM
160	122	38
3%	1%	50%

CED	BW	WW	YW	ADG	DMI	M	ME	HPG	CEM	ST	MARB	YG	CW	REA	FAT
11	-1.9	65	102	0.23	1.16	26	-11	12	7	20	0.35	0.03	20	0.23	0.02
69%	47%	29%	35%	44%	28%	39%	2%	28%	47%	5%	61%	33%	47%	22%	64%

0286 is another 530F son that has competed well against his contemporaries. He earned 114 and 109 weaning and yearling ratios and measured over a 13 inch ribeye. He can also compete within the breed on the indexes where he ranks in the top 3 and 1 percent for ProS and HerdBuilder.



Yearling Bulls



64 MLK CRK VENTURE 0322

REG. # 4292763 TATTOO: 322 BTK BD: 3/7/20 100% 1A

RED U-2 RECKONING 149A
RED U2 MONEY TALKS 530F
 RED U-2 MS DYNAMO 233B
 MLK CRK ADVOCATE 4304
MLK CRK OMEGA 7133
 MLK CRK OMEGA 889

RED U-2 RECON 192Y
 RED U-2 ANEXA 271Y
 RED MINBURN COPENHAGEN 3Y
 RED U-2 MS DYNAMO 234Z
 5L SECRET AGENT 117-229Z
 MLK CRK SHEBA 1014
 RED YY RED KNIGHT 640F
 RED CROWFOOT OMEGA 9179J

BW/Ratio	83	98
WW/Ratio	654	103
YW/Ratio	1078	97
ADG/Ratio	2.64	87
%IMF/Ratio	2.57	111
REA/Ratio	11.9	93
Fat/Ratio	0.21	74
Dam's MPPA/Age	101.0	3

ProS	HB	GM
148	118	29
9%	1%	71%

CED	BW	WW	YW	ADG	DMI	M	ME	HPG	CEM	ST	MARB	YG	CW	REA	FAT
11	-1.9	54	81	0.17	1.18	26	-12	13	6	20	0.42	0.07	14	0.06	0.03
66%	47%	70%	79%	84%	30%	41%	2%	16%	76%	3%	44%	59%	71%	58%	73%



65 JNK PROVISION 0313

REG. # 4292265 TATTOO: 313 JNK BD: 3/6/20 100% 1A

5L ADVANTAGE 3267-221Y
RIDGE PROVISION 6013
 RIDGE MONA 8162-2057
 RED CROWFOOT REDMAN 3107A
JNK NOVA 7101
 JNK NARA 533

BUF CRK THE RIGHT KIND U199
 5L ADINA 195-3267
 5L ZENITH 1425-5767
 RIDGE MONA 620-8162
 RED LAZY MC REDMAN 94Y
 RED CROWFOOT BRNDINA 1103Y
 RIDGE ADMIRAL 3411
 JNK MISS LINDSAY 293

BW/Ratio	83	93
WW/Ratio	719	103
YW/Ratio	1223	102
ADG/Ratio	3.14	101
%IMF/Ratio	2.20	106
REA/Ratio	13.8	99
Fat/Ratio	0.27	110
Dam's MPPA/Age	98.0	3

ProS	HB	GM
118	96	22
47%	13%	84%

CED	BW	WW	YW	ADG	DMI	M	ME	HPG	CEM	ST	MARB	YG	CW	REA	FAT
14	-3.1	55	85	0.19	1.12	25	-7	18	7	15	0.31	0.05	10	0.02	0.02
29%	24%	68%	73%	75%	25%	52%	11%	1%	49%	58%	72%	44%	85%	67%	59%

Above average growth in a moderate birth weight package best represents lot 65. The combination of his dam along with Provision should make some nice replacements.



66 MLK CRK PROVISION 0266

REG. # 4292699 TATTOO: 266 BTK BD: 2/20/20 100% 1A

5L ADVANTAGE 3267-221Y
RIDGE PROVISION 6013
 RIDGE MONA 8162-2057
 JACOBSON BLAZIN ON 0057
MLK CRK RED TOP 730
 MLK CRK RED TOP 361

BUF CRK THE RIGHT KIND U199
 5L ADINA 195-3267
 5L ZENITH 1425-5767
 RIDGE MONA 620-8162
 5L DOUBLE BLAZE 1134-8576
 5L FUSCHIA 643-3668
 RIDGE TRADESMAN 6237-0002
 MLK CRK RED TOP 013

BW/Ratio	82	96
WW/Ratio	631	100
YW/Ratio	1118	100
ADG/Ratio	3.03	100
%IMF/Ratio	2.02	87
REA/Ratio	13.6	106
Fat/Ratio	0.31	112
Dam's MPPA/Age	103.0	3

ProS	HB	GM
146	125	21
10%	1%	85%

CED	BW	WW	YW	ADG	DMI	M	ME	HPG	CEM	ST	MARB	YG	CW	REA	FAT
13	-3.3	53	82	0.18	1.31	29	-6	19	8	19	0.33	0.04	11	0.09	0.02
38%	22%	73%	77%	79%	40%	15%	12%	1%	21%	9%	66%	39%	82%	52%	68%



67 MLK CRK PROVISION 0314

REG. # 4292639 TATTOO: 314 BTK BD: 3/6/20 100% 1A

5L ADVANTAGE 3267-221Y
RIDGE PROVISION 6013
 RIDGE MONA 8162-2057
 JACOBSON BLAZIN ON 0057
MLK CRK LAKOTA 724
 MLK CRK LAKOTA 709

BUF CRK THE RIGHT KIND U199
 5L ADINA 195-3267
 5L ZENITH 1425-5767
 RIDGE MONA 620-8162
 5L DOUBLE BLAZE 1134-8576
 5L FUSCHIA 643-3668
 RED YY RED KNIGHT 640F
 MLK CRK LAKOTA 301

BW/Ratio	86	101
WW/Ratio	684	108
YW/Ratio	1138	102
ADG/Ratio	2.83	94
%IMF/Ratio	1.88	81
REA/Ratio	13.1	102
Fat/Ratio	0.21	74
Dam's MPPA/Age	101.0	3

ProS	HB	GM
141	126	15
14%	1%	92%

CED	BW	WW	YW	ADG	DMI	M	ME	HPG	CEM	ST	MARB	YG	CW	REA	FAT
15	-3.1	56	82	0.16	1.25	31	-5	17	9	19	0.29	-0.01	11	0.04	0.00
22%	24%	63%	77%	87%	35%	7%	16%	2%	15%	6%	77%	17%	81%	63%	14%

Lot 67 • MLK CRK PROVISION 0314

Yearling Bulls



68

MLK CRK PROVISION 0317

REG. # 4292765 IATTOO: 317 BTK BD: 3/6/20 100% 1A

5L ADVANTAGE 3267-221Y
RIDGE PROVISION 6013
RIDGE MONA 8162-2057

BUF CRK THE RIGHT KIND U199
5L ADINA 195-3267
5L ZENITH 1425-5767
RIDGE MONA 620-8162
5L SECRET AGENT 117-229Z
MLK CRK SHEBA 1014
RED YY RED KNIGHT 640F
RED CROWFOOT OMEGA 9179J

BW/Ratio	74	88
WW/Ratio	677	107
YW/Ratio	1043	94
ADG/Ratio	2.28	75
%IMF/Ratio	1.91	83
REA/Ratio	13.9	108
Fat/Ratio	0.10	35
Dam's MPPA/Age	102.0	3

MLK CRK ADVOCATE 4304
MLK CRK OMEGA 7112
MLK CRK OMEGA 889

ProS	HB	GM
117	119	-2
49%	1%	99%

CED	BW	WW	YW	ADG	DMI	M	ME	HPG	CEM	ST	MARB	YG	CW	REA	FAT
14	-3.6	56	75	0.12	1.21	27	-6	19	7	18	0.39	-0.09	-7	0.12	0.00
29%	17%	64%	86%	96%	32%	27%	14%	1%	49%	12%	51%	3%	99%	43%	24%



69

MLK CRK PROVISION 0325

REG. # 4292753 IATTOO: 325 BTK BD: 3/8/20 100% 1A

5L ADVANTAGE 3267-221Y
RIDGE PROVISION 6013
RIDGE MONA 8162-2057

BUF CRK THE RIGHT KIND U199
5L ADINA 195-3267
5L ZENITH 1425-5767
RIDGE MONA 620-8162
5L LEGEND 1553-425V
RIDGE AQUILA 552-8066
BECKTON EPIC R397 K
MLK CRK LAKOTA 909

BW/Ratio	81	95
WW/Ratio	644	102
YW/Ratio	1098	99
ADG/Ratio	2.83	94
%IMF/Ratio	2.04	88
REA/Ratio	13.6	106
Fat/Ratio	0.30	106
Dam's MPPA/Age	101.0	3

RIDGE LEGEND 2069
MLK CRK LAKOTA 760
MLK CRK LAKOTA 534

ProS	HB	GM
116	108	9
50%	3%	97%

CED	BW	WW	YW	ADG	DMI	M	ME	HPG	CEM	ST	MARB	YG	CW	REA	FAT
14	-2.3	51	80	0.18	1.04	28	-4	16	9	17	0.33	0.00	-7	-0.03	0.02
25%	39%	78%	80%	78%	21%	21%	22%	4%	17%	22%	66%	19%	99%	78%	64%



70

MLK CRK PROVISION 0330

REG. # 4292667 IATTOO: 330 BTK BD: 3/10/20 100% 1A

5L ADVANTAGE 3267-221Y
RIDGE PROVISION 6013
RIDGE MONA 8162-2057

BUF CRK THE RIGHT KIND U199
5L ADINA 195-3267
5L ZENITH 1425-5767
RIDGE MONA 620-8162
ANDRAS FUSION R236
MLK CRK LAKOTA 953
5L BLAZIN RED 1354-6166
MLK CRK LAKOTA 850

BW/Ratio	70	83
WW/Ratio	691	109
YW/Ratio	1093	98
ADG/Ratio	2.50	83
%IMF/Ratio	1.95	84
REA/Ratio	13.3	103
Fat/Ratio	0.19	67
Dam's MPPA/Age	105.0	3

MLK CRK UNIFIED 4207
MLK CRK LAKOTA 744
MLK CRK LAKOTA 083

ProS	HB	GM
114	106	8
53%	4%	97%

CED	BW	WW	YW	ADG	DMI	M	ME	HPG	CEM	ST	MARB	YG	CW	REA	FAT
14	-4.0	50	73	0.15	1.20	32	2	17	9	18	0.35	-0.01	-2	-0.05	0.01
31%	13%	82%	88%	91%	31%	3%	57%	2%	18%	16%	61%	17%	98%	82%	28%

Lot 70 was produced by a 2nd calver and should work well on heifers while adding some weaning weight and ribeye to his progeny



71

MLK CRK PROVISION 0336

REG. # 4292657 IATTOO: 336 BTK BD: 3/10/20 100% 1A

5L ADVANTAGE 3267-221Y
RIDGE PROVISION 6013
RIDGE MONA 8162-2057

BUF CRK THE RIGHT KIND U199
5L ADINA 195-3267
5L ZENITH 1425-5767
RIDGE MONA 620-8162
BUF CRK THE RIGHT KIND U199
5L ADINA 195-3267
BECKTON EPIC R397 K
MLK CRK LAKOTA 624

BW/Ratio	73	86
WW/Ratio	693	109
YW/Ratio	1106	99
ADG/Ratio	2.57	85
%IMF/Ratio	1.97	85
REA/Ratio	13.6	106
Fat/Ratio	0.23	81
Dam's MPPA/Age	105.0	3

5L ADVANTAGE 3267-221Y
MLK CRK LAKOTA 765
MLK CRK LAKOTA 953

ProS	HB	GM
130	120	10
27%	1%	96%

CED	BW	WW	YW	ADG	DMI	M	ME	HPG	CEM	ST	MARB	YG	CW	REA	FAT
12	-3.2	63	91	0.17	1.06	28	-3	19	8	18	0.33	-0.04	1	0.06	0.00
50%	24%	36%	61%	81%	22%	25%	27%	1%	23%	18%	66%	10%	97%	58%	23%

Lot 71 • MLK CRK PROVISION 0336



Yearling Bulls



Lot 72 • MLK CRK PROVISION 0340



72 MLK CRK PROVISION 0340

REG. # 4292743 TATTOO: 340 BTK BD: 3/11/20 100% 1A

5L ADVANTAGE 3267-221Y
RIDGE PROVISION 6013
RIDGE MONA 8162-2057
MLK CRK EXPRESS 9127
MLK CRK BONNEBELL 722
MLK CRK BONNEBELL 520

BW/Ratio	91	107
WW/Ratio	656	104
YW/Ratio	1182	106
ADG/Ratio	3.28	109
%IMF/Ratio	2.24	97
REA/Ratio	14.0	109
Fat/Ratio	0.26	92
Dam's MPPA/Age	102.0	3

ProS	HB	GM																				
138	98	41	16%	11%	45%	CED	BW	WW	YW	ADG	DMI	M	ME	HPG	CEM	ST	MARB	YG	CW	REA	FAT	
			49%	47%	42%	44%	46%	43%	27%	16%	5%	54%	45%	66%	16%	37%	14%	33%				



73 MLK CRK PROVISION 0353

REG. # 4292591 TATTOO: 353 BTK BD: 3/15/20 100% 1A

5L ADVANTAGE 3267-221Y
RIDGE PROVISION 6013
RIDGE MONA 8162-2057
MLK CRK ADVOCATE 4304
MLK CRK LANA 662
MLK CRK LANA 452

BW/Ratio	98	111
WW/Ratio	694	110
YW/Ratio	1127	101
ADG/Ratio	2.70	89
%IMF/Ratio	2.38	103
REA/Ratio	13.4	104
Fat/Ratio	0.31	111
Dam's MPPA/Age	103.0	4

ProS	HB	GM																				
112	87	24	58%	29%	80%	CED	BW	WW	YW	ADG	DMI	M	ME	HPG	CEM	ST	MARB	YG	CW	REA	FAT	
			98%	76%	45%	57%	70%	44%	33%	23%	1%	98%	35%	33%	49%	89%	67%	74%				



74 MLK CRK PROVISION 0360

REG. # 4292669 TATTOO: 360 BTK BD: 3/21/20 100% 1A

5L ADVANTAGE 3267-221Y
RIDGE PROVISION 6013
RIDGE MONA 8162-2057
MLK CRK ADVOCATE 4304
MLK CRK MERCEDES 748
J5 L297 MERCEDES 14X

BW/Ratio	88	102
WW/Ratio	659	104
YW/Ratio	1160	104
ADG/Ratio	3.12	103
%IMF/Ratio	2.73	118
REA/Ratio	13.6	106
Fat/Ratio	0.31	111
Dam's MPPA/Age	101.0	3

ProS	HB	GM																			
130	98	33	27%	11%	64%	CED	BW	WW	YW	ADG	DMI	M	ME	HPG	CEM	ST	MARB	YG	CW	REA	FAT
			94%	42%	39%	57%	75%	35%	20%	1%	97%	25%	20%	36%	81%	39%	74%				

Lot 74 offers a balanced package of above average growth and carcass.



75 MLK CRK ADVOCATE 0238

REG. # 4292551 TATTOO: 238 BTK BD: 2/15/20 100% 1A

5L SECRET AGENT 117-229Z
MLK CRK ADVOCATE 4304
MLK CRK SHEBA 1014
LACY KING 9240
MLK CRK LAKINA 5109
MLK CRK LAKINA 523

BW/Ratio	93	105
WW/Ratio	681	108
YW/Ratio	1217	109
ADG/Ratio	3.34	111
%IMF/Ratio	2.66	115
REA/Ratio	13.1	102
Fat/Ratio	0.34	122
Dam's MPPA/Age	100.0	5

ProS	HB	GM																				
131	84	47	26%	36%	32%	CED	BW	WW	YW	ADG	DMI	M	ME	HPG	CEM	ST	MARB	YG	CW	REA	FAT	
			99%	85%	13%	33%	66%	55%	79%	24%	3%	99%	16%	4%	78%	34%	18%	98%				

Yearling Bulls



Lot 76 • MLK CRK ADVOCATE 0262

76 MLK CRK ADVOCATE 0262
 REG. # 4292521 TATTOO: 262 BTK BD: 2/19/20 100% 1A

5L SECRET AGENT 117-229Z
MLK CRK ADVOCATE 4304
 MLK CRK SHEBA 1014

BECKTON DOMINOR A038 J7
MLK CRK LAKOTA 599
 MLK CRK LAKOTA 2118

5L ADVOCATE 817-14W
 5L ROXIE 854-117
 MLK CRK REDSTONE
 MLK CRK SHEBA 966X
 BECKTON DOMINOR Y052 N6
 BECKTON TARA Y111 J
 RIDGE TRADESMAN 6237-0002
 MLK CRK LAKOTA 926

BW/Ratio	94	107
WW/Ratio	666	105
YW/Ratio	1087	98
ADG/Ratio	2.63	87
%IMF/Ratio	2.19	95
REA/Ratio	11.3	88
Fat/Ratio	0.28	101
Dam's MPPA/Age	101.0	5

ProS	HB	GM
105	78	27
69%	51%	75%

CED	BW	WW	YW	ADG	DMI	M	ME	HPG	CEM	ST	MARB	YG	CW	REA	FAT
6	0.8	65	97	0.19	1.51	18	-2	21	-1	16	0.48	0.17	20	0.06	0.06
99%	91%	27%	47%	70%	60%	95%	28%	1%	99%	39%	31%	96%	48%	58%	99%



Lot 77 • MLK CRK ADVOCATE 0264

77 MLK CRK ADVOCATE 0264
 REG. # 4292511 TATTOO: 264 BTK BD: 2/20/20 100% 1A

5L SECRET AGENT 117-229Z
MLK CRK ADVOCATE 4304
 MLK CRK SHEBA 1014

LACY KING 9240
MLK CRK THELMA 553
 MLK CRK THELMA 376X

5L ADVOCATE 817-14W
 5L ROXIE 854-117
 MLK CRK REDSTONE
 MLK CRK SHEBA 966X
 LACY SIGNATURE 7006
 LACY LAKOTA 7155
 BUF CRK JUST RIGHT X116
 MLK CRK THELMA 715

BW/Ratio	92	104
WW/Ratio	658	104
YW/Ratio	1134	102
ADG/Ratio	2.97	98
%IMF/Ratio	2.94	127
REA/Ratio	13.9	108
Fat/Ratio	0.39	140
Dam's MPPA/Age	99.0	5

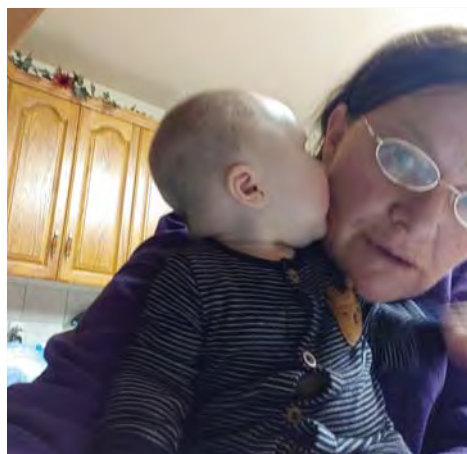
ProS	HB	GM
129	94	35
29%	17%	58%

CED	BW	WW	YW	ADG	DMI	M	ME	HPG	CEM	ST	MARB	YG	CW	REA	FAT
9	-1.0	63	92	0.18	1.45	21	-4	17	2	18	0.67	0.07	12	0.25	0.05
91%	65%	36%	58%	78%	54%	85%	21%	2%	99%	15%	6%	57%	78%	19%	98%

4304 continues to leave sons that exceed in growth and carcass but his strongest attribute is the daughters that we have in our herd. Lot 77 also carries the dark red color along with good depth of rib.



Grandpa Bruce and Blaze



Grandma Tena and Blaze



Aunt Jac and Blaze



Yearling Bulls



78

MLK CRK INSIDER 0337

REG. # 4292305 TATTOO: 337 BTK BD: 3/10/20 100% 1A

5L ADVANTAGE 3267-221Y

HRR ADVANTAGE 6120

HRR BANA 309

MLK CRK EXPRESS 9127

MLK CRK LAKOTA 103

MLK CRK LAKOTA 173

BUF CRK THE RIGHT KIND U199

5L ADINA 195-3267

MLK CRK EXPRESS 9127

HRR BANA 193

5L GRAND EXPRESS 453-5655

MLK CRK SHEBA 043

MLK CRK CORNERSTONE JC

MLK CRK LAKOTA 858

BW/Ratio	94	107
WW/Ratio	740	117
YW/Ratio	1183	106
ADG/Ratio	2.76	91
%IMF/Ratio	2.25	97
REA/Ratio	12.9	100
Fat/Ratio	0.31	110
Dam's MPPA/Age	102.0	9

ProS	HB	GM
123	106	17

38% 4% 90%

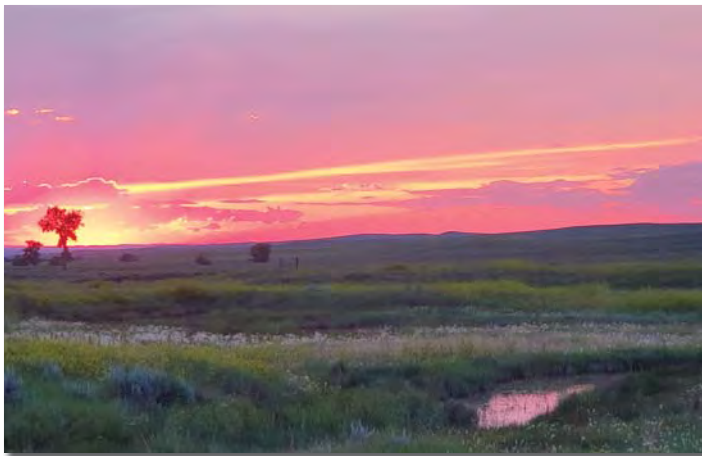
CED	BW	WW	YW	ADG	DMI	M	ME	HPG	CEM	ST	MARB	YG	CW	REA	FAT
12	-1.9	61	89	0.17	1.04	22	-4	12	6	19	0.27	0.08	15	-0.09	0.01
64%	47%	45%	65%	81%	21%	75%	19%	26%	64%	9%	82%	65%	70%	88%	38%



Lot 78 • MLK CRK INSIDER 0337



MLK CRK LAKOTA 103, dam of Lot 78



79

MLK CRK INSIDER 0368

REG. # 4292399 TATTOO: 368 BTK BD: 4/4/20 100% 1A

5L ADVANTAGE 3267-221Y

HRR ADVANTAGE 6120

HRR BANA 309

MLK CRK BLAZIN TRAIL 1162

MLK CRK THELMA 3100

MLK CRK THELMA 016

BUF CRK THE RIGHT KIND U199

5L ADINA 195-3267

MLK CRK EXPRESS 9127

HRR BANA 193

5L BLAZIN TRAIL 1336-237V

HRR THUNDER 751

BUF CRK LANCER-F L297

MLK CRK THELMA 616

BW/Ratio	84	94
WW/Ratio	671	106
YW/Ratio	1104	99
ADG/Ratio	2.71	90
%IMF/Ratio	2.16	94
REA/Ratio	13.3	103
Fat/Ratio	0.32	113
Dam's MPPA/Age	105.0	7

ProS	HB	GM
107	100	8

65% 9% 97%

CED	BW	WW	YW	ADG	DMI	M	ME	HPG	CEM	ST	MARB	YG	CW	REA	FAT
12	-2.3	58	83	0.16	1.37	23	-3	15	8	16	0.37	0.01	3	-0.05	0.01
59%	39%	58%	76%	87%	46%	72%	25%	7%	21%	40%	56%	25%	96%	82%	31%

Yearling Bulls



Lot 80 • JNK INSIDER 0369

80 JNK INSIDER 0369
 REG. # 4292261 TATTOO: 369 JNK BD: 4/7/20 100% 1A

5L ADVANTAGE 3267-221Y
 HRR ADVANTAGE 6120
 HRR BANA 309

RIDGE ADMIRAL 3411
 JNK PIPER 512
 JNK MONSTER 215

BUF CRK THE RIGHT KIND U199
 5L ADINA 195-3267
 MLK CRK EXPRESS 9127
 HRR BANA 193

5L LEGEND 1553-425V
 RIDGE GRANDIOSE 629-1112
 C-T GRAND STATEMENT 1025
 JNK MONIQUE 639

BW/Ratio	93	99
WW/Ratio	715	102
YW/Ratio	1207	101
ADG/Ratio	3.07	98
%IMF/Ratio	1.95	94
REA/Ratio	14.0	101
Fat/Ratio	0.22	90
Dam's MPPA/Age	103.0	5

ProS	HB	GM
146	110	36
10%	2%	56%

CED	BW	WW	YW	ADG	DMI	M	ME	HPG	CEM	ST	MARB	YG	CW	REA	FAT
12	-2.0	58	92	0.22	1.41	24	-3	18	9	17	0.36	0.03	20	0.16	0.01
62%	45%	56%	57%	56%	50%	61%	25%	1%	16%	33%	60%	33%	50%	35%	44%

Jac, our youngest, has this bull which is one of the youngest bulls in the sale but offers above average growth in a moderate frame package.

81 MLK CRK INSIDER 0295
 REG. # 4292621 TATTOO: 295 BTK BD: 2/28/20 100% 1A

5L ADVANTAGE 3267-221Y
 HRR ADVANTAGE 6120
 HRR BANA 309

MLK CRK ADVOCATE 4304
 MLK CRK LAKOTA 602
 MLK CRK LAKOTA 2115

BUF CRK THE RIGHT KIND U199
 5L ADINA 195-3267
 MLK CRK EXPRESS 9127
 HRR BANA 193

5L SECRET AGENT 117-229Z
 MLK CRK SHEBA 1014
 MLK CRK EXPRESS 9141
 MLK CRK LAKOTA 932

BW/Ratio	81	92
WW/Ratio	621	98
YW/Ratio	1044	94
ADG/Ratio	2.64	87
%IMF/Ratio	2.51	109
REA/Ratio	13.2	103
Fat/Ratio	0.27	95
Dam's MPPA/Age	97.0	4

ProS	HB	GM
118	104	14
47%	6%	93%

CED	BW	WW	YW	ADG	DMI	M	ME	HPG	CEM	ST	MARB	YG	CW	REA	FAT
13	-3.3	57	81	0.15	1.23	22	-3	15	8	17	0.48	0.02	1	0.01	0.02
46%	22%	61%	79%	89%	33%	81%	25%	6%	26%	27%	31%	29%	97%	70%	66%

82 MLK CRK INSIDER 0334
 REG. # 4292497 TATTOO: 334 BTK BD: 3/11/20 100% 1A

5L ADVANTAGE 3267-221Y
 HRR ADVANTAGE 6120
 HRR BANA 309

HRR IMPRESSIVE 227
 MLK CRK CROWFOOT 5104
 MLK CRK CROWFOOT 0117

BUF CRK THE RIGHT KIND U199
 5L ADINA 195-3267
 MLK CRK EXPRESS 9127
 HRR BANA 193

MUSHRUSH IMPRESSIVE CA U236
 HRR BANA 031
 RED CROWFOOT OLE'S OSCAR
 RED CFCC 505K

BW/Ratio	80	91
WW/Ratio	615	97
YW/Ratio	1082	97
ADG/Ratio	2.91	96
%IMF/Ratio	1.93	84
REA/Ratio	12.6	98
Fat/Ratio	0.23	82
Dam's MPPA/Age	97.0	5

ProS	HB	GM
109	89	20
62%	25%	86%

CED	BW	WW	YW	ADG	DMI	M	ME	HPG	CEM	ST	MARB	YG	CW	REA	FAT
16	-4.0	51	81	0.19	1.00	22	-5	15	9	14	0.30	0.00	4	-0.02	0.00
11%	13%	79%	79%	76%	19%	75%	16%	6%	9%	71%	74%	20%	94%	76%	24%



We appreciate Colonel Scott

83 MLK CRK INSIDER0345
 REG. # 4292431 TATTOO: 345 BTK BD: 3/13/20 100% 1A

5L ADVANTAGE 3267-221Y
 HRR ADVANTAGE 6120
 HRR BANA 309

MUSHRUSH IMPRESSIVE CA U236
 MLK CRK LAKOTA 455
 MLK CRK LAKOTA 2105

BUF CRK THE RIGHT KIND U199
 5L ADINA 195-3267
 MLK CRK EXPRESS 9127
 HRR BANA 193

BUF CRK LANCER R017
 MUSHRUSH MADAM LT R265
 MLK CRK EXPRESS 9141
 MLK CRK LAKOTA 813

BW/Ratio	83	93
WW/Ratio	606	96
YW/Ratio	1111	100
ADG/Ratio	3.16	105
%IMF/Ratio	2.25	97
REA/Ratio	12.9	101
Fat/Ratio	0.29	103
Dam's MPPA/Age	103.0	6

ProS	HB	GM
108	86	22
64%	31%	84%

CED	BW	WW	YW	ADG	DMI	M	ME	HPG	CEM	ST	MARB	YG	CW	REA	FAT
13	-2.6	58	89	0.19	1.06	23	-3	14	8	14	0.31	0.02	8	0.04	0.01
38%	33%	57%	64%	71%	22%	72%	27%	10%	25%	66%	72%	29%	87%	63%	42%



Yearling Bulls



MLK CRK SHEBA 900, donor dam



84 MLK CRK ADVOCATE 0400

REG. # 4306181 TATTOO: 400 BTK BD: 3/13/20 100% 1A

5L SECRET AGENT 117-229Z
MLK CRK ADVOCATE 4304
 MLK CRK SHEBA 1014

5L GRAND EXPRESS 453-5655
MLK CRK SHEBA 900
 MLK CRK SHEBA 403

5L ADVOCATE 817-14W
 5L ROXIE 854-117

MLK CRK REDSTONE
 MLK CRK SHEBA 966X

5L NORSEMAN EXPRESS
 5L RUBY 01-453

GLACIER CHATEAU 744
 MLK CRK SHEBA 055

BW/Ratio	81	0
WW/Ratio	672	0
YW/Ratio	1114	0
ADG/Ratio	2.77	0
%IMF/Ratio	3.03	127
REA/Ratio	12.9	102
Fat/Ratio	0.35	120
Dam's MPPA/Age	98.0	11

ProS	HB	GM
144	104	40
11%	5%	46%

CED	BW	WW	YW	ADG	DMI	M	ME	HPG	CEM	ST	MARB	YG	CW	REA	FAT
10	-1.1	63	92	0.18	1.59	22	-3	18	5	17	0.61	0.03	20	0.38	0.04
84%	63%	35%	58%	78%	68%	75%	25%	1%	79%	31%	11%	35%	47%	7%	94%

Lots 84 and 85 are ET Flush mates out of our Grand express daughter that sold to Jay Young of Kansas in our 2020 female sale. These full brothers should produce some excellent females.



85 MLK CRK ADVOCATE 0403

REG. # 4306193 TATTOO: 403 BTK BD: 3/15/20 100% 1A

5L SECRET AGENT 117-229Z
MLK CRK ADVOCATE 4304
 MLK CRK SHEBA 1014

5L GRAND EXPRESS 453-5655
MLK CRK SHEBA 900
 MLK CRK SHEBA 403

5L ADVOCATE 817-14W
 5L ROXIE 854-117

MLK CRK REDSTONE
 MLK CRK SHEBA 966X

5L NORSEMAN EXPRESS
 5L RUBY 01-453

GLACIER CHATEAU 744
 MLK CRK SHEBA 055

BW/Ratio	82	0
WW/Ratio	581	0
YW/Ratio	1062	0
ADG/Ratio	3.01	0
%IMF/Ratio	2.38	100
REA/Ratio	13.0	102
Fat/Ratio	0.30	103
Dam's MPPA/Age	98.0	11

ProS	HB	GM
142	104	38
13%	5%	52%

CED	BW	WW	YW	ADG	DMI	M	ME	HPG	CEM	ST	MARB	YG	CW	REA	FAT
10	-1.1	63	92	0.18	1.59	22	-3	18	5	17	0.57	0.02	20	0.38	0.04
84%	63%	35%	58%	78%	68%	75%	25%	1%	79%	31%	16%	30%	47%	7%	91%

Lots 84 and 85 are ET Flush mates out of our Grand express daughter that sold to Jay Young of Kansas in our 2020 female sale. These full brothers should produce some excellent females.



Lot 86 • MLK CRK GRASS ROOTS 0402



86 MLK CRK GRASS ROOTS 0402

REG. # 4306191 TATTOO: 402 BTK BD: 3/15/20 100% 1A

MUSHRUSH IMPRESSIVE CA U236
MLK CRK GRASS ROOTS
 MLK CRK LAKOTA 173

5L GRAND EXPRESS 453-5655
MLK CRK SHEBA 900
 MLK CRK SHEBA 403

BUF CRK LANCER R017
 MUSHRUSH MADAM LT R265

BECKTON EPIC R397 K
 MLK CRK LAKOTA 825

5L NORSEMAN EXPRESS
 5L RUBY 01-453

GLACIER CHATEAU 744
 MLK CRK SHEBA 055

BW/Ratio	82	0
WW/Ratio	701	0
YW/Ratio	1118	0
ADG/Ratio	2.61	0
%IMF/Ratio	2.12	89
REA/Ratio	12.2	96
Fat/Ratio	0.34	117
Dam's MPPA/Age	98.0	11

ProS	HB	GM
128	96	32
31%	14%	66%

CED	BW	WW	YW	ADG	DMI	M	ME	HPG	CEM	ST	MARB	YG	CW	REA	FAT
14	-3.8	49	77	0.17	1.15	26	-2	14	10	16	0.36	0.00	13	0.23	0.02
28%	15%	83%	84%	82%	27%	38%	29%	9%	7%	43%	60%	22%	75%	22%	68%

Yearling Bulls



87

MLK CRK PROVISION 0405

REG. # 4306195 TATTOO: 405 BTK BD: 3/16/20 100% 1A

5L ADVANTAGE 3267-221Y
RIDGE PROVISION 6013
 RIDGE MONA 8162-2057

5L GRAND EXPRESS 453-5655
MLK CRK SHEBA 900
 MLK CRK SHEBA 403

BUF CRK THE RIGHT KIND U199
 5L ADINA 195-3267
 5L ZENITH 1425-5767
 RIDGE MONA 620-8162
 5L NORSEMAN EXPRESS
 5L RUBY 01-453
 GLACIER CHATEAU 744
 MLK CRK SHEBA 055

BW/Ratio	82	0
WW/Ratio	638	0
YW/Ratio	1150	0
ADG/Ratio	3.20	0
%IMF/Ratio	2.74	115
REA/Ratio	12.0	95
Fat/Ratio	0.29	100
Dam's MPPA/Age	98.0	11

ProS	HB	GM
148	114	34
9%	1%	61%

CED	BW	WW	YW	ADG	DMI	M	ME	HPG	CEM	ST	MARB	YG	CW	REA	FAT
14	-3.1	51	78	0.17	1.12	28	-4	19	10	17	0.38	-0.03	13	0.23	0.01
26%	24%	80%	82%	82%	26%	20%	22%	1%	7%	31%	54%	11%	76%	22%	36%

Lots 87, 88, and 89 are ET Flush mates that should sire excellent females



88

MLK CRK PROVISION 0407

REG. # 4306197 TATTOO: 407 BTK BD: 3/19/20 100% 1A

5L ADVANTAGE 3267-221Y
RIDGE PROVISION 6013
 RIDGE MONA 8162-2057

5L GRAND EXPRESS 453-5655
MLK CRK SHEBA 900
 MLK CRK SHEBA 403

BUF CRK THE RIGHT KIND U199
 5L ADINA 195-3267
 5L ZENITH 1425-5767
 RIDGE MONA 620-8162
 5L NORSEMAN EXPRESS
 5L RUBY 01-453
 GLACIER CHATEAU 744
 MLK CRK SHEBA 055

BW/Ratio	91	0
WW/Ratio	725	0
YW/Ratio	1184	0
ADG/Ratio	2.87	0
%IMF/Ratio	2.12	89
REA/Ratio	12.3	97
Fat/Ratio	0.21	73
Dam's MPPA/Age	98.0	11

ProS	HB	GM
145	114	31
10%	1%	67%

CED	BW	WW	YW	ADG	DMI	M	ME	HPG	CEM	ST	MARB	YG	CW	REA	FAT
14	-3.1	51	78	0.17	1.12	28	-4	19	10	17	0.34	-0.04	13	0.23	0.00
26%	24%	80%	82%	82%	26%	20%	22%	1%	7%	31%	64%	9%	76%	22%	24%

Lots 87, 88, and 89 are ET Flush mates that should sire excellent females



Lot 89 • MLK CRK PROVISION 0408



89

MLK CRK PROVISION 0408

REG. # 4306199 TATTOO: 408 BTK BD: 3/21/20 100% 1A

5L ADVANTAGE 3267-221Y
RIDGE PROVISION 6013
 RIDGE MONA 8162-2057

5L GRAND EXPRESS 453-5655
MLK CRK SHEBA 900
 MLK CRK SHEBA 403

BUF CRK THE RIGHT KIND U199
 5L ADINA 195-3267
 5L ZENITH 1425-5767
 RIDGE MONA 620-8162
 5L NORSEMAN EXPRESS
 5L RUBY 01-453
 GLACIER CHATEAU 744
 MLK CRK SHEBA 055

BW/Ratio	70	0
WW/Ratio	674	0
YW/Ratio	1139	0
ADG/Ratio	2.90	0
%IMF/Ratio	1.98	83
REA/Ratio	14.2	113
Fat/Ratio	0.27	94
Dam's MPPA/Age	98.0	11

ProS	HB	GM
145	114	31
11%	1%	67%

CED	BW	WW	YW	ADG	DMI	M	ME	HPG	CEM	ST	MARB	YG	CW	REA	FAT
14	-3.1	51	78	0.17	1.12	28	-4	19	10	17	0.34	-0.04	13	0.23	0.01
26%	24%	80%	82%	82%	26%	20%	22%	1%	7%	31%	64%	10%	76%	22%	31%

Lots 87, 88, and 89 are ET Flush mates that should sire excellent females



MLK CRK Lakota 288, donor dam



90

MLK CRK MALBEC 0406

REG. # 4306183 TATTOO: 406 BTK BD: 3/19/20 100% 1A

RED U-2 RECKONING 149A
RED U2 MALBEC 195D
 RED U-2 MABEL 60A

MLK CRK REDSTONE
MLK CRK LAKOTA 288
 MLK CRK LAKOTA 064

RED U-2 RECON 192Y
 RED U-2 ANEXA 271Y
 RED MINBURN COPENHAGEN 3Y
 RED U-2 MABEL 7061T
 TR JULIAN LT142
 MLK CRK LENA 763
 5L BLAZIN TRAIL 1336-237V
 MLK CRK LAKOTA 515

BW/Ratio	72	0
WW/Ratio	677	0
YW/Ratio	1100	0
ADG/Ratio	2.64	0
%IMF/Ratio	1.89	79
REA/Ratio	12.0	95
Fat/Ratio	0.23	80
Dam's MPPA/Age	101.0	8

ProS	HB	GM
135	124	11
20%	1%	95%

CED	BW	WW	YW	ADG	DMI	M	ME	HPG	CEM	ST	MARB	YG	CW	REA	FAT
14	-2.9	55	83	0.17	1.21	24	-9	12	9	20	0.27	0.06	8	-0.02	0.02
28%	28%	66%	76%	83%	32%	64%	6%	33%	12%	3%	82%	52%	88%	76%	64%

Lot 90 and 91 are ET Flush mates that combine the Malbec with one of our best Redstone daughters



Yearling Bulls



God's Blessing!



91 MLK CRK MALBEC 0410

REG. # 4306185 TATTOO: 410 BTK BD: 3/23/20 100% 1A

RED U-2 RECKONING 149A	RED U-2 RECON 192Y	BW/Ratio	107	0	
RED U-2 MABEL 60A	RED U-2 ANEXA 271Y	WW/Ratio	712	0	
MLK CRK REDSTONE	RED MINBURN COPENHAGEN 3Y	YW/Ratio	1104	0	
MLK CRK LAKOTA 288	RED U-2 MABEL 7061T	ADG/Ratio	2.45	0	
MLK CRK LAKOTA 064	TR JULIAN LT142	%IMF/Ratio	2.44	102	
ProS	HB	GM	REA/Ratio	13.2	104
138	124	14	Fat/Ratio	0.30	104
17%	1%	93%	Dam's MPPA/Age	101.0	8

CED	BW	WW	YW	ADG	DMI	M	ME	HPG	CEM	ST	MARB	YG	CW	REA	FAT
14	-2.9	55	83	0.17	1.21	24	-9	12	9	20	0.31	0.07	8	-0.02	0.03
28%	28%	66%	76%	83%	32%	64%	6%	33%	12%	3%	72%	59%	88%	76%	73%

Lot 90 and 91 are ET Flush mates that combine the Malbec with one of our best Redstone daughters



Lot 92 • MLK CRK VIGILANTE 0243



92 MLK CRK VIGILANTE 0243

REG. # 4292853 TATTOO: 243 BTK BD: 2/16/20 100% 1A

5L BOURNE 117-48A	5L ADVANTAGE 3267-221Y	BW/Ratio	82	111	
5L VIGILANTE 2674-11D	5L ROXIE 854-117	WW/Ratio	641	107	
5L OPAL 930-2674	5L DEFENDER 560-30Z	YW/Ratio	1096	104	
RIDGE ADMIRAL 3411	5L OPAL 2218-930	ADG/Ratio	2.83	99	
MLK CRK BLOCKANA 851	5L LEGEND 1553-425V	%IMF/Ratio	2.50	102	
MLK CRK BLOCKANA 4119	RIDGE GRANDIOSE 629-1112	REA/Ratio	10.7	90	
ProS	HB	GM	Fat/Ratio	0.24	94
130	80	50	Dam's MPPA/Age	103.0	2
27%	46%	25%			

CED	BW	WW	YW	ADG	DMI	M	ME	HPG	CEM	ST	MARB	YG	CW	REA	FAT
10	-1.8	59	97	0.24	1.65	25	-2	18	3	15	0.52	0.19	30	0.03	0.05
83%	48%	50%	45%	39%	73%	49%	30%	1%	98%	54%	24%	98%	17%	65%	96%



93 MLK CRK ACCENT 0359

REG. # 4292931 TATTOO: 359 BTK BD: 3/19/20 100% 1A

BECKTON ACCENT U777 C2	BECKTON CODY K1 P014	BW/Ratio	71	98	
BECKTON ACCENT D306 E3	BECKTON SUSAN R022 CQ	WW/Ratio	625	105	
BECKTON TAMARA Y685 E	BECKTON EPIC K4 N795	YW/Ratio	1041	99	
LACY KING 9240	BECKTON TAMARA U358 CT	ADG/Ratio	2.59	90	
MLK CRK LAKINA 8403	LACY SIGNATURE 7006	%IMF/Ratio	2.18	89	
MLK CRK LAKINA 523	LACY LAKOTA 7155	REA/Ratio	11.6	98	
ProS	HB	GM	Fat/Ratio	0.27	105
93	69	24	Dam's MPPA/Age	102.0	2
85%	71%	81%			

CED	BW	WW	YW	ADG	DMI	M	ME	HPG	CEM	ST	MARB	YG	CW	REA	FAT
17	-5.2	41	63	0.14	0.99	31	-1	10	8	15	0.45	0.09	4	-0.04	0.04
4%	5%	95%	95%	93%	18%	6%	37%	73%	20%	52%	37%	70%	95%	81%	91%



94 MLK CRK PROVISION 0307

REG. # 4292665 TATTOO: 307 BTK BD: 3/3/20 100% 1A

5L ADVANTAGE 3267-221Y	BUF CRK THE RIGHT KIND U199	BW/Ratio	71	84	
RIDGE PROVISION 6013	5L ADINA 195-3267	WW/Ratio	628	99	
RIDGE MONA 8162-2057	5L ZENITH 1425-5767	YW/Ratio	1049	94	
MLK CRK ROYAL FLUSH 5368	RIDGE MONA 620-8162	ADG/Ratio	2.62	87	
MLK CRK BONNEBELL 793	RED CROWFOOT 4ACES 2193Z	%IMF/Ratio	1.45	63	
MLK CRK BONNEBELL 039	XO CROWFOOT QUEEN 2463Z	REA/Ratio	11.5	89	
ProS	HB	GM	Fat/Ratio	0.14	49
122	112	10	Dam's MPPA/Age	97.0	3
40%	2%	96%			

CED	BW	WW	YW	ADG	DMI	M	ME	HPG	CEM	ST	MARB	YG	CW	REA	FAT
17	-5.6	45	68	0.15	0.93	26	-9	16	10	17	0.21	0.01	3	-0.06	0.01
5%	3%	91%	92%	91%	16%	42%	5%	3%	6%	24%	93%	26%	95%	84%	26%

Yearling Bulls



95 MLK CRK VENTURE 0293

REG. # 4292631 TATTOO: 293 BTK BD: 2/27/20 100% 1A

RED U-2 RECKONING 149A
RED U2 MONEY TALKS 530F
 RED U-2 MS DYNAMO 233B
 MLK CRK ADVOCATE 4304
RIDGE MONA 1116-7062
 RIDGE MONA 740-1116

BW/Ratio	77	91
WW/Ratio	621	98
YW/Ratio	1072	96
ADG/Ratio	2.81	93
%IMF/Ratio	2.35	102
REA/Ratio	11.9	93
Fat/Ratio	0.26	94
Dam's MPPA/Age	99.0	3

ProS	HB	GM
148	121	27
8%	1%	75%

CED	BW	WW	YW	ADG	DMI	M	ME	HPG	CEM	ST	MARB	YG	CW	REA	FAT
11	-3.2	54	82	0.18	1.19	24	-11	12	7	21	0.38	0.05	12	0.13	0.03
68%	24%	72%	77%	80%	30%	56%	3%	32%	53%	2%	54%	47%	79%	41%	83%



96 MLK CRK PROVISION 0339

REG. # 4292671 TATTOO: 339 BTK BD: 3/10/20 100% 1A

5L ADVANTAGE 3267-221Y
RIDGE PROVISION 6013
 RIDGE MONA 8162-2057
 JACOBSON BLAZIN ON 0057
MLK CRK ASTER 742
 MLK CRK ASTER 185

BW/Ratio	66	79
WW/Ratio	616	97
YW/Ratio	1007	90
ADG/Ratio	2.43	80
%IMF/Ratio	2.07	90
REA/Ratio	11.6	90
Fat/Ratio	0.28	99
Dam's MPPA/Age	99.0	3

ProS	HB	GM
109	120	-12
63%	1%	99%

CED	BW	WW	YW	ADG	DMI	M	ME	HPG	CEM	ST	MARB	YG	CW	REA	FAT
15	-4.3	46	65	0.12	1.12	29	-5	16	9	19	0.16	0.04	-2	-0.14	0.02
22%	10%	89%	94%	96%	25%	13%	16%	3%	9%	7%	97%	43%	99%	93%	51%



97 MLK CRK PROVISION 0315

REG. # 4292617 TATTOO: 315 BTK BD: 3/5/20 100% 1A

5L ADVANTAGE 3267-221Y
RIDGE PROVISION 6013
 RIDGE MONA 8162-2057
 BUF CRK CARRY OUT X102
MLK CRK SHEBA 640
 MLK CRK SHEBA 1014

BW/Ratio	63	73
WW/Ratio	583	92
YW/Ratio	1064	95
ADG/Ratio	3.00	99
%IMF/Ratio	2.01	87
REA/Ratio	12.9	100
Fat/Ratio	0.27	95
Dam's MPPA/Age	97.0	4

ProS	HB	GM
129	103	26
29%	6%	77%

CED	BW	WW	YW	ADG	DMI	M	ME	HPG	CEM	ST	MARB	YG	CW	REA	FAT
15	-4.7	48	78	0.19	0.88	28	-2	16	8	17	0.37	0.01	1	0.07	0.02
15%	7%	85%	83%	76%	14%	24%	28%	3%	21%	24%	56%	24%	97%	55%	71%



98 MLK CRK PROVISION 0310

REG. # 4292645 TATTOO: 310 BTK BD: 3/5/20 100% 1A

5L ADVANTAGE 3267-221Y
RIDGE PROVISION 6013
 RIDGE MONA 8162-2057
 BECKTON DOMINOR A038 J7
MLK CRK SHEBA 7109
 MLK CRK SHEBA 822

BW/Ratio	71	84
WW/Ratio	600	95
YW/Ratio	1043	94
ADG/Ratio	2.76	91
%IMF/Ratio	2.04	88
REA/Ratio	12.2	95
Fat/Ratio	0.25	88
Dam's MPPA/Age	97.0	3

ProS	HB	GM
129	110	20
28%	3%	87%

CED	BW	WW	YW	ADG	DMI	M	ME	HPG	CEM	ST	MARB	YG	CW	REA	FAT
16	-4.5	45	69	0.15	0.89	23	-3	18	9	18	0.30	0.05	7	0.02	0.03
7%	9%	90%	91%	90%	14%	66%	26%	1%	9%	18%	74%	50%	91%	67%	76%



99 MLK CRK VENTURE 0234

REG. # 4292479 TATTOO: 234 BTK BD: 2/15/20 100% 1A

RED U-2 RECKONING 149A
RED U2 MONEY TALKS 530F
 RED U-2 MS DYNAMO 233B
 ANDRAS FUSION R236
MLK CRK LAKOTA 438
 MLK CRK LAKOTA 969

BW/Ratio	86	96
WW/Ratio	619	98
YW/Ratio	1078	97
ADG/Ratio	2.87	95
%IMF/Ratio	3.10	134
REA/Ratio	13.0	101
Fat/Ratio	0.20	72
Dam's MPPA/Age	98.0	6

ProS	HB	GM
158	120	38
4%	1%	50%

CED	BW	WW	YW	ADG	DMI	M	ME	HPG	CEM	ST	MARB	YG	CW	REA	FAT
15	-4.3	43	67	0.15	0.95	26	-9	8	11	21	0.50	0.04	9	-0.04	0.01
15%	10%	93%	92%	89%	16%	41%	5%	95%	1%	1%	27%	39%	86%	81%	33%



100 MLK CRK VENTURE 0228

REG. # 4292403 TATTOO: 228 BTK BD: 2/14/20 100% 1A

RED U-2 RECKONING 149A
RED U2 MONEY TALKS 530F
 RED U-2 MS DYNAMO 233B
 MLK CRK EXPRESS 9127
MLK CRK EMUMAR 324X
 MLK CRK EMUMAR 158

BW/Ratio	85	95
WW/Ratio	596	94
YW/Ratio	1064	95
ADG/Ratio	2.92	97
%IMF/Ratio	1.55	67
REA/Ratio	12.6	98
Fat/Ratio	0.20	72
Dam's MPPA/Age	95.0	7

ProS	HB	GM
145	115	30
11%	1%	69%

CED	BW	WW	YW	ADG	DMI	M	ME	HPG	CEM	ST	MARB	YG	CW	REA	FAT
13	-3.2	49	79	0.19	1.04	25	-10	8	9	21	0.26	0.08	18	0.02	0.02
35%	24%	84%	81%	76%	21%	46%	4%	92%	15%	2%	84%	66%	58%	67%	61%



Around the Ranch





Bruce & Tena Ketchum
1721 Plevna Road
Plevna, MT 59344
(406) 778-3819
ketchum@midrivers.com

FIRST CLASS
US POSTAGE
PAID
UNITED PRINTING

CHANGE SERVICE REQUESTED



Annual Bull Sale
Saturday,
March 20, 2021

DVAuction Broadcasting
Real-time Auctions

Catalog & videos available online
www.milkcreekreds.com