



NORTH DAKOTA ANGUS ASSOCIATION

*Select*  
**BULL & FEMALE**  
*Sale*

SATURDAY 1:00 PM

**JANUARY 4, 2025**

*Kist Livestock, Mandan, ND*

**BULLS • BRED & OPEN HEIFERS • DONOR COWS • PLUS EMBRYOS & SEMEN**





# NORTH DAKOTA ANGUS ASSOCIATION *Select* BULL & FEMALE *Sale*

SATURDAY 1:00 PM  
**JANUARY 4, 2025** *Kist Livestock,  
Mandan, ND*

## SALE DAY PHONES

**Kist Livestock**  
**1-800-732-1163 (ND Only)**  
**or 701-663-9573**

## SALE MANAGED BY

**Logan Hoffmann 701-388-2618**  
**Consulting by Vern Frey 701-721-0344**  
**Frey Livestock Services**

## LIVESTOCK PRESS REPRESENTATIVES

### Farm & Ranch Guide

Kirby Goettsch 605-380-3939

### Cattle Business Weekly

Kadon Leddy 605-924-0757

### Western Ag Reporter

Tony Heins 701-400-4435

### North Dakota Stockmen's Association

Scott Ressler, 701-391-7310

### American Angus Association

Andrew Swanson 507-829-4133

## Cattle Will Be Videoed Ahead of the Sale

**This sale will be broadcast live on the internet.**



Buyers unable to attend the sale may send their bids to the sale managers, ringmen or auctioneer. Bids will be handled as if you were present.

## SALE LOCATION: Kist Livestock Auction

1715 40th Ave SE, Mandan, ND 58554 (On the Strip)  
1-800-732-1163 (ND Only) or 701-663-9573

## SALE HEADQUARTERS: Ramada Inn - 701-258-7000

1400 Interchange Ave, Bismarck, ND 58501  
Also, Bismarck-Mandan offers a wide range of fine motels and hotels.

## TRANSPORTATION: On request, airplanes will be met at the Bismarck Airport.

**INSPECTION OF CATTLE:** Andrew, Logan, and Vern will be on the sale site from Thursday through sale day.

**HEALTH:** All cattle will be accompanied by proper health certificates for immediate shipment.

**INSURANCE:** Available sale day. We recommend bulls be insured. All animals will sell under the terms and conditions recommended by the American Angus Association.

**LIABILITY:** All persons attending this sale do so at their own risk legal or otherwise, for their safety or the behavior of the animals. The owner, sale management and the sale staff assume no liability for property loss or any accidents that may occur.

**TERMS:** Cash. All cattle are to be settled for sale day unless prior arrangements have been made.

**ANNOUNCEMENTS:** Announcements from the auction block will take precedence over the sale book.

**LUNCH:** Lunch will be available sale day.

**AUCTIONEER:** Roger Jacobs, 406-698-7686

**AMERICAN ANGUS ASSOCIATION:** Andrew Swanson 507-829-4133

## NORTH DAKOTA ANGUS ASSOCIATION:

Kathy Tokach, President  
Sydney Glasoe Caraballo, Vice President  
Travis & Ashley Bruner, Secretary/Treasurer

**EPDS:** EPDs may vary from the time the sale book was printed until transfer of ownership.

**SOCIAL:** Consignor's Social, sponsored by Cattle Business Weekly and Martin-Trudeau Insurance be held Friday, January 3rd, 2025 at 7:00 pm at the Ramada, Bismarck.



# Welcome....

to the highly anticipated North Dakota State Angus Sale! It is with great excitement that we present to you this elite offering of cattle and genetic lots consigned by members of the North Dakota Angus Association. These cattle have been hand selected from the top of the consigner's herds and we would like to thank them for allowing us the chance to select these cattle and genetic lots. It is undoubtedly an exciting time to be in the Angus business and this offering provides a great opportunity to add front end genetics to your herd.

This year we have a powerful set of yearling and coming 2 year old bull consignments sired by Sitz Incentive, Connealy Craftsman, L A R Man in Black, HCC Whitewater, S Architect, SAV Rise N Shine, B A R Dynamic, Myers Fair-N-Square, Boyd Bellringer, Dameron Viroqua and more!

The open heifers are sired by HCC Whitewater, Ellingson Badlands, Connealy Craftsman, Boyd Bellringer, Brown Double Decker, CFI Payout, Deep Creek Square Deal, L A R Man in Black, Ellingson Prolific, Hummel Argentine, SAV Glory Days and more!

The bred heifer offering consists of heifers sired by HCC Whitewater, KR Quality, MOGCK Entice, S Architect, L A R Man in Black, and Silveiras Style 9303.

You will also have the opportunity to purchase a proven donor, along with 3 of her direct daughters and her best granddaughter, as well as many exciting lots of rare and valuable semen and exciting embryo packages.

The 2025 North Dakota Angus Association State Sale offering is full of quality from top to bottom. Please accept this as your official invite to this event. You will not be disappointed!

Logan, Andrew, and Vern will be at the sale site from Thursday through sale day. Please reach out to us with any questions on this year's sale offering. We look forward to seeing you at Kist Livestock on January 4th, 2025. The catalog will be available on DV Auction, the American Angus Association website, the North Dakota Angus Association website as well as the North Dakota Angus Facebook page and the Frey Livestock Sales and Service Facebook page.

*Sincerely,*

**Logan Hoffmann 701-388-2618**



## 2025 NORTH DAKOTA ANGUS SELECT CONSIGNORS

Anderson Angus Ranch .....	Lots 1-7
Becker Stock Farm .....	Lots 8-12
Brown Angus Ranch .....	Lots 13-14
Carlson Angus .....	Lot 15
Erdmann Angus Ranch .....	Lots 16-17
Fleck Ranch .....	Lots 18-19
Four Hill Farms .....	Lots 20-22
Haugen Cattle Company .....	Lots 23-24
North Dakota Stockmen's .....	Lot 25
Harding Angus .....	Lot 26-30
Lennick Ranch .....	Lots 31-32
Montgomery Ranch .....	Lots 33-36
Nelson Angus .....	Lot 37
Nord Angus .....	Lots 38-40
Petersen Farms .....	Lots 41-45
Reese Family Angus .....	Lots 46-48
A&M Cattle Company .....	Lots 49-50
TNT Angus .....	Lots 51-53
Topp Angus .....	Lots 54-55
Valley View Farm .....	Lots 56-57
Vandeberghe's Flying V Angus .....	Lot 58
Winters Livestock .....	Lot 59

## EMBRYO CONSIGNORS

Fleck Ranch .....	Lots 60A & 60B
Brown Angus Ranch .....	Lots 61-62
Bruner Angus Ranch .....	Lots 63
2 Ten Cattle Company .....	Lot 64-66
Vetsch TLC's Angus .....	Lot 67
Wendel Livestock .....	Lot 68

## SEMEN CONSIGNORS

Becker Stock Farm .....	Lots 68-69
Vetsch TLC's Angus .....	Lot 70
Becker Stock Farm .....	Lots 69-70
Wendel Livestock .....	Lot 71-73
Vetsch TLC's Angus .....	Lot 74A & B



LOTS 1-7

## ANDERSON ANGUS RANCH

Ryan Anderson  
4509 149th Ave SE  
Chaffee, ND 58079  
701-238-1064  
dakotasitework@gmail.com

### LOT 1 AAR MAGNUM 41

BD: 1/25/24 Bull 21091086 Tattoo: 41

MEAD MAGNITUDE  
S A V MAGNUM 1335  
S A V EMBLYNETTE 9023  
DEER VALLEY GROWTH FUND  
AAR BARBARA 07  
A A R BARBARA 341

K C F BENNETT SOUTHSIDE  
MEAD PRIMROSE N198  
LD CAPITALIST 316  
S A V EMBLYNETTE 7505  
BASIN PAYWEIGHT 1682  
DEER VALLEY RITA 36113  
S A V NET WORTH 8092  
G F BARBARA 232

Production EPDs				Maternal EPDs				\$Values				
CED	BW	WW	YW	CEM	Milk	SEN	SM	SW	SF	SG	SB	SC
8	1.4	90	158	16	19	-44	80	73	112	45	157	256
Carcass EPDs				CW	Marb	0.42	REA	0.92	Fat	0.014		

Act. BW: 71 | WWR: 105

Dam's Production: BWR 3@99 | WWR 3@102

Act 10/12 weight 930 lbs. Heifer bull deluxe. WDA 3.56. SAV Magnum 1335 is the \$345,000 lead off bull of the 2022 SAV sale to ST Genetics and Mohnen Angus. Check out this calving ease bull on sale day.



LOT 1 – AAR MAGNUM 41

### LOT 2 AAR GIBSON 460

BD: 2/7/24 Bull 21090839 Tattoo: 460

CONNEALY CONFIDENCE PLUS  
BALDRIDGE GIBSON G859  
BALDRIDGE ISABEL B061  
S A V AMERICA 8018  
AAR LUCY 27  
A A R LUCY 44

CONNEALY CONFIDENCE 0100  
ELBANNA OF CONANGA 1209  
G A R PROPHET  
BALDRIDGE ISABEL Y69  
S A V PRESIDENT 6847  
S A V MADAME PRIDE 0075  
PLATTEMERE WEIGH UP K360  
E A TIGER STAR 808

Production EPDs				Maternal EPDs				\$Values				
CED	BW	WW	YW	CEM	Milk	SEN	SM	SW	SF	SG	SB	SC
-4	2.7	96	157	4	25	-23	98	91	102	49	151	294
Carcass EPDs				CW	Marb	0.59	REA	0.74	Fat	0.039		

Act. BW: 74 | WWR: 122

Dam's Production: BWR 1@103 | WWR 1@122

Act 10/12 weight 990lbs. Herd Bull Alert. Wow, check out this awesome job this first calf heifer produced. The docility in this bull, nice and calm. WDA 3.99 lbs.



LOT 2 – AAR GIBSON 460

### LOT 3 AAR REGIMENT 412

BD: 1/28/24 Bull 21090738 Tattoo: 412

WAR CAVALRY B063 Z044  
WILKS REGIMENT 9035  
VINTAGE CHLOE 6137  
S A V AMERICA 8018  
AAR BLACK PRIDE 13  
A A R ELIMINATOR 0941

CONNEALY CAVALRY 1149  
WAR CC&7 Z044 X029  
V A R EMPIRE 3037  
V A R CHLOE 2227  
S A V PRESIDENT 6847  
S A V MADAME PRIDE 0075  
DDR FIRST EDITION 6027  
JAR ELIMINATOR 094 6164

Production EPDs				Maternal EPDs				\$Values				
CED	BW	WW	YW	CEM	Milk	SEN	SM	SW	SF	SG	SB	SC
8	1.7	84	152	12	33	-32	67	84	112	66	177	297
Carcass EPDs				CW	Marb	0.79	REA	1.18	Fat	0.013		

Act. BW: 78 | WWR: 102

Dam's Production: BWR 2 @ 104 | WWR 2@105

Act 10/12 weight 870 lbs. Heifer Bull Alert. Carries the CAB Stamp. Check out the \$B and \$C numbers. WDA 3.37 lbs.



LOT 3 – AAR REGIMENT 412



## LOT 4 AAR TAHOE 45

BD: 1/27/24

Bull 21088891

Tattoo: 45

WAR TAHOE 039-210  
TEHAMA TAHOE B767

WAR ANNA 713-039

AAR PRIDE 922  
S A V RAINFALL 6846

STASSENS PRIDE 10T

TEHAMA UPWARD Y238  
TEHAMA MARY BLACKBIRD Y684  
MUSGRAVE 316 EXCLUSIVE  
WAR ANNA 408-713  
COLEMAN CHARLO 0256  
S A V BLACKCAP MAY 4136  
PVF ALL PAYDAY 729  
S A F EILEEN LASS 15J

Production EPDs				Maternal EPDs			\$Values					
CED	BW	WW	YW	CEM	Milk	SEN	SM	SW	SF	SG	SB	SC
8	1	86	149	6	30	-37	71	85	91	69	160	279
Carcass EPDs				CW	Marb	1.06	REA	0.35	Fat	0.015		

Act. BW: 78 | WWR: 107

Dam's Production: BWR 4@101 | WWR 4@97

Act 10/12 weight 960 lbs. Heifer bull. Carries the CAB stamp. WDA 3.71 lbs. This calf is out of our resident herd sire. Don't pass this one up.



LOT 4 – AAR TAHOE 45



LOT 5 – AAR STEP UP 44

## LOT 5 AAR STEP UP 44

BD: 1/27/24

Bull 21097362

Tattoo: 44

EZAR STEP UP 9178  
G A R BIG STEP K715

BASIN LUCY 4261

AAR BARRIE 741  
MOHNEN SOUTH DAKOTA 124

WK BARRIE 5561

G A R SURE FIRE  
CHAIR ROCK PROPHET 3131

EXAR DENVER 2002B  
BASIN LUCY 1022

MOHNEN SOUTH DAKOTA 402  
MOHNEN COQUETTE PRIDE 151

LEACHMAN HEAVY DESIGN 3022J  
WK BARRIE 8491

Production EPDs				Maternal EPDs			\$Values					
CED	BW	WW	YW	CEM	Milk	SEN	SM	SW	SF	SG	SB	SC
8	0.1	62	106	14	28	-6	82	64	81	63	144	269
Carcass EPDs				CW	31	Marb	0.97	REA	0.39	Fat	0.043	

Act. BW: 71 | WWR: 107

Dam's Production: BWR 6@97 | WWR 6@97

Act 10/12 weight 960 lbs. Heifer bull alert. WDA 3.71. Carries the CAB stamp. AngusGS Genomics available sale day.



## LOT 6 AAR MADAME PRIDE 337

BD: 1/30/23

Bred Heifer 21026684

Tattoo: 337

HCC WHITEWATER 9010  
MILL BRAE IDENTIFIED 4031

ROCK CREEK SARA 6066

AAR MADAME PRIDE 05  
S A V ELATION 7899

AAR PRIDE 850

KOUPALS B&B IDENTITY  
MILL BRAE PRO BLACKCAP 1092  
SILVEIRAS CONVERSION 8064  
H P C A CONFIDENCE A322  
SINCLAIR EMULATION XXP  
S A V BLACKCAP MAY 1782  
MOHNEN CROSS COUNTRY 1203  
STASSENS PRIDE 10T

Production EPDs				Maternal EPDs			\$Values					
CED	BW	WW	YW	CEM	Milk	SEN	SM	SW	SF	SG	SB	SC
9	1.1	70	125	10	34	31	57	72	118	65	183	294
Carcass EPDs				CW	74	Marb	0.78	REA	1.47	Fat	0.061	

Act. BW: 80 | WW: 532

Dam's Production: NR 2@101

Breeding Info: AI'd on 4/27/24 to S Armstrong (20143639), ultrasound-  
ed safe and estimated due 2/3/25. Carrying a bull calf.

This heifer also carries the CAB stamp. Heifer was blood tested for Johnes and tested negative. Heifer has had first round of scour shots.



LOT 6 – AAR MADAME PRIDE 337



# LOT 7 AAR QUEEN MOTHER 335

BD: 1/29/23 Bred Heifer 21024857 Tattoo: 335

MOGCK ENTICE  
SYDGEN ENHANCE  
MOGCK ERICA 2255  
S A V NET WORTH 8092  
A A R QUEEN MOTHER 337  
CARLSON LADY LSD 643

SYDGEN EXCEED 3223  
SYDGEN RITA 2618  
MOGCK SURE SHOT 253  
MOGCK ERICA 2162  
S A V NET WORTH 4200  
S A V BLACKBIRD 8155  
LAGRAND SPECIAL DESIGN 4047  
CARLSON TOPLINE 317

Production EPDs				Maternal EPDs				\$Values					
CED	BW	WW	YW	CEM	Milk	SEN	SM	SW	SF	SG	SB	SC	
1	3.1	76	135	4	26	-25	71	66	93	62	155	272	
Carcass EPDs				CW	58	Marb	0.85	REA	0.44	Fat	-0.019		

Act. BW: 80 | WW: 580/97

Dam's Production: WWR 10@102

Breeding Info: AI'd on 4/27/24 to S Armstrong (20143639), ultrasound-  
ed safe and estimated due 2/3/25. Carrying a heifer calf.

This heifer carries the CAB stamp. Heifer was blood tested for johnes and tested negative. Heifer has had first round of scour shots.



LOT 7 – AAR QUEEN MOTHER 335

## LOTS 8-12 BECKER STOCK FARM

Tom Becker  
8861 11th Ave SE  
Minot, ND 58703  
Tom-701-720-2299  
Garrett- 701-721-9400  
becker@minot.com



LOT 8 – BSF ALL NATURAL 2415



LOT 9 – BSF RING THE BELL 2402

# LOT 8 BSF ALL NATURAL 2415

BD: 2/3/24 Bull 21087912 Tattoo: 2415

BAR-E-L NATURAL LAW 52Y  
S A V BISMARCK 5682  
BAR-E-L MAGNOLIA 143K  
SHIPWHEEL CHINOOK  
S BLOSSOM 0278  
S BLOSSOM 8378

G A R GRID MAKER  
S A V ABIGALE 0451  
BAR E L MCC 365 ICON 20H  
DOUBLE FOUR DUCHESS 12G  
H A IMAGE MAKER 0415  
APEX ERISKAY 5506  
R&S EXPEDITION 1404  
S BLOSSOM 4190

Production EPDs				Maternal EPDs				\$Values					
CED	BW	WW	YW	CEM	Milk	SEN	SM	SW	SF	SG	SB	SC	
5	2.5	66	108	8	33	-17	61	69	79	36	115	210	
Carcass EPDs				CW	42	Marb	0.36	REA	0.41	Fat	0.016		

Act. BW: 88/ET | WW: 801/ET

Dam's Production: NR 7@108

Real Herd Bull material here. When we bought these embryos from Spickler Ranch South, we really were hoping for a female but bulls of this caliber don't come around that often. I'm sure this one will impress most cattlemen looking for honest, good cattle. The Blossom cow has done it time after time after time. Don't be afraid of this one not turning out. Retaining 1/3 semen interest.

# LOT 9 BSF RING THE BELL 2402

BD: 1/20/24 Bull 21087907 Tattoo: 2402

BOYD BELLRINGER 2010  
G A R HOME TOWN  
BOYD ROSETTA 0007  
DAMERON FIRST CLASS  
BSF FIRST CLASS QUEEN 1612  
SCHROEDERS QUEEN MOTHER

G A R ASHLAND  
CHAIR ROCK SURE FIRE 6095  
DEER VALLEY GROWTH FUND  
BOYD ROSETTA 4302  
EXG RS FIRST RATE S903 R3  
DAMERON NORTHERN MISS 3114  
S A V BRILLIANCE 8077  
SCHROEDER QUEEN MOTHER 18

Production EPDs				Maternal EPDs				\$Values					
CED	BW	WW	YW	CEM	Milk	SEN	SM	SW	SF	SG	SB	SC	
1	4.2	96	158	6	18	-52	44	69	112	61	173	268	
Carcass EPDs				CW	70	Marb	0.72	REA	1	Fat	0.007		

Act. BW: 80 | WW: 834/110

Dam's Production: 3@102

Another great bull out of our First Class Donor that sold a year ago in this very sale. Ring the Bell has numerous 1/2 brothers working in other herds. Make note this one comes with the CAB Stamp. So will this one be the best one you decide. The homework is already done. Retaining 1/3 semen interest.





## LOT 10 BSF 2016 HOPE QUALITY 2318

BD: 2/20/23 Bred Heifer 20782580 Tattoo: 2318

TEF OUTSIDE 514  
KR QUALITY 8525  
KR LUCY ROSE 6587

YOUNG DALE BELIEVE 46B  
BSF A25 HOPE 2016  
BSF PRINCESS W2 A25

HA OUTSIDE 3008  
T E F JET PRINCESS 714  
MAY-WAY EQUITY  
KR LUCY ROSE 4086  
YOUNG DALE XCALIBER 32X  
YOUNG DALE GRACE 126Z  
S A V CLARK 8374  
BSF PRINCESS EL CAP W2

Production EPDs				Maternal EPDs			\$Values					
CED	BW	WW	YW	CEM	Milk	\$EN	\$M	\$W	\$F	\$G	\$B	\$C
1	2.9	79	139	3	21	-39	38	61	86	21	108	178
Carcass EPDs				CW	52	Marb	0.1	REA	0.62	Fat	0.082	

Act. BW: 80/105 | WW: 754/105

Breeding Info: AI'd on 5/8/24 to Millars Duke 816 (19343216), estimated due 2/15/25.

This one might not be donor material but I bet you 6 months after she calves to Duke you call me and say thank you for selling her. I am that confident in this female. Buy her and lets see what happens.



LOT 10 – BSF 2016 HOPE QUALITY 2318



LOT 11 – BSF HVR BARB 2428

## LOT 11 BSF HVR BARB 2428

BD: 3/1/24 Open Heifer 21085003 Tattoo: 2428

YOUNG DALE BELIEVE 46B  
HILL VALLEY RECKONING 931  
HILL VALLEY ELBINA 456

BUBS SOUTHERN CHARM AA31  
RCL BARB 9481  
RCL BARB 4815

YOUNG DALE XCALIBER 32X  
YOUNG DALE GRACE 126Z  
MILL COULEE UPWARD 005  
HILL VALLEY ELBINA 928  
SILVEIRAS CONVERSION 8064  
HICKORY HILL ERICA 009  
SOO LINE MOTIVE 9016  
RCL BARB 8515

Production EPDs				Maternal EPDs			\$Values					
CED	BW	WW	YW	CEM	Milk	\$EN	\$M	\$W	\$F	\$G	\$B	\$C
1	3.7	67	114	1	20	-15	57	49	98	37	135	232
Carcass EPDs				CW	45	Marb	0.34	REA	0.67	Fat	0.029	

Act. BW: 89/107 | WW: 640

Show Heifer deluxe. First female out of this Southern Charm daughter that we picked up from Rock Creek. We should not be selling this one because I am positive this one will be a model cow after who ever is done having fun showing her.



LOT 12 – BSF B BELL MISS HOPE 2417

## LOT 12 BSF B BELL MISS HOPE 2417

BD: 2/5/24 Open Heifer 21087903 Tattoo: 2417

G A R HOME TOWN  
BOYD BELLINGER 2010  
BOYD ROSETTA 0007

YOUNG DALE BELIEVE 46B  
BSF A25 HOPE 2016  
BSF PRINCESS W2 A25

G A R ASHLAND  
CHAIR ROCK SURE FIRE 6095  
DEER VALLEY GROWTH FUND  
BOYD ROSETTA 4302  
YOUNG DALE XCALIBER 32X  
YOUNG DALE GRACE 126Z  
S A V CLARK 8374  
BSF PRINCESS EL CAP W2

Production EPDs				Maternal EPDs			\$Values					
CED	BW	WW	YW	CEM	Milk	\$EN	\$M	\$W	\$F	\$G	\$B	\$C
7	0.9	79	142	10	21	-26	69	70	92	53	145	257
Carcass EPDs				CW	56	Marb	0.64	REA	0.88	Fat	0.045	

Act. BW: 74/90 | WW: 609/97

Proven Genetics in this ones pedigree, Hometown, Growth Fund, Young Dale Believe, SAV Clark, and Princess W2. Good numbers with a great look. Buy with confidence.



LOT 13-14

## BROWN ANGUS RANCH

Justin Brown  
4115 Hwy 25  
Center, ND 58530  
701-207-0054  
justin@brownsangusranch.com

## LOT 13 BROWN CHLOE 4105

BD: 2/12/24 Open Heifer 21107290 Tattoo: 4105

HOOVER NO DOUBT  
BROWN DOUBLE DECKER 0004  
S A V BLACKCAP MAY 7888

S A V SENSATION 5615  
BROWN CHLOE 8021  
BAR CHLOE 6103

MOGCK BULLSEYE  
MISS BLACKCAP ELLSTON J2  
S A V 8180 TRAVELER 004  
S A V MAY 2397  
S A V REGISTRY 2831  
S A V BLACKCAP MAY 4136  
SSAF TIGER 302  
BAR CHLOE 0751

Production EPDs				Maternal EPDs				\$Values					
CED	BW	WW	YW	CEM	Milk	SEN	SM	SW	SF	SG	SB	SC	
-5	5.1	68	118	5	22	-17	61	43	97	40	138	240	
Carcass EPDs				CW	Marb	REA	0.46	0.45	Fat	0.03			

Act. BW: 92

Dam's Production: 4@101 BWR | 4@100 WWR | 2@103 YWR | 5 calves at 369 days.  
A high performance scale crushing daughter of our record selling Brown Double Decker 0004. She characterizes the best of the Chloe family and has the potential to be a major asset for her new owner. We had a hard time letting this one go! She is deep ribbed, capacious, and sound structured. She stems from a fertile and productive cow family that has been a foundation cow since our inception into the registered Angus breed. Dam has a tremendous record for being highly fertile and functional. She has had 5 calves with a 369 day calving interval. Granddam is a pathfinder and still in production with 6@104 weaning ratio.



LOT 13'S SIRE – BROWN DOUBLE DECKER 0004



LOT 14'S SIRE – CFI PAYOUT F408

## LOT 14 BROWN BLACK JESTRESS 4174

BD: 3/12/24 Open Heifer 21107291 Tattoo: 4174

SPRING COVE PAYWEIGHT 5841  
CFI PAYOUT F408  
CAIRES FOREVER LADY 025

BROOKING BANK NOTE 4040  
BROWN BLACK JESTRESS 9088  
BAR BLACK JESTRESS 3194

BASIN PAYWEIGHT 1682  
SPRING COVE BLOSSOM 841  
GINGER HILL GAMER 105  
GINGER HILL FOREVER LADY 066  
CONNEALY EARNAN 076E  
E A ROSE 918  
HF TIGER 5T  
BAR TAZY 1942

Production EPDs				Maternal EPDs				\$Values					
CED	BW	WW	YW	CEM	Milk	SEN	SM	SW	SF	SG	SB	SC	
8	0	54	99	10	24	-6	57	47	77				
Carcass EPDs				CW	Marb	REA	0.46	0.45	Fat	0.03			

Act. BW: 78

A special young Payout F408 daughter with ideal structure and performance. She ranks in the top of the herd for weaning weight and functionality. She has a maternal look with a nice front end, a wedge shaped design, and loads of true Angus character. Her cow family has been very prepotent and fertile on our ranch. This blending is sure to exhibit nice udder structure and teat size as her whole family has been doing this for generations. Dam has had 4 calves at 351 day calving interval, Grand dam has produced top end sires for us in the past and has a 7@106 weaning ratio and two daughters working in production. Great grand dam was in production until 15 years old and had 10 @ 100 for birth, 10@102 for weaning ratio.



## LOT 15 CARLSON ANGUS RANCH

Jon Carlson  
6548 98th Ave SW  
Regent, ND 58650  
701-690-7190  
jon@carlsonangus.com



LOT 15 – CARLSON ELBA 4021

## LOT 15 CARLSON ELBA 4021

BD: 2/24/24

Open Heifer 21094299

Tattoo: 4021

ELLINGSON RIDER PRIDE 7282  
ELLINGSON BADLANDS 0285  
EA BELLS GIRL 7617

MUSGRAVE 316 STUNNER

T K ELBA F5

S A V ELBA 6120

ELLINGSON ROUGHRIDER 4202  
EA QUEEN DOLLY 3246  
KOU PAL ADVANCE 28  
EA BELLS GIRL 2181  
LD CAPITALIST 316  
MCATL BLACKBIRD 831-1378  
S A V PEDIGREE 4834  
S A V ELBA 1401

Production EPDs				Maternal EPDs			\$Values					
CED	BW	WW	YW	CEM	Milk	\$EN	\$M	\$W	\$F	\$G	\$B	\$C
10	0.1	67	114	6	32	-21	72	73	104	39	143	257
Carcass EPDs				CW	53	Marb	0.36	REA	0.73	Fat	0.029	

Act. BW: 79/ | WW: 748/ | YW: /

Dam's Production: BWR-2@108, WWR-2@117, YWR-2@109

Carlson Elba 4021 is a thick, wide based, elegant fronted heifer with a maternal stacked pedigree. Her Dam is super nice fronted, broody Musgrave Stunner daughter and she is sired by Ellingson Badlands, one of the most popular bulls in the Angus breed. Her great granddam SAV Elba 1401 served as a donor at Schaff Angus Valley and Mohnen Angus. Carlson Elba 4021 has true donor potential and will be one of the top Badlands daughters to sell this spring! Carlson Angus would like to retain 6 embryos in the future at their expense.

## LOTS 16-17 ERDMANN ANGUS RANCH

Jeremy Erdmann  
13460 Hwy 27  
Lisbon, ND 58054  
701-680-2937  
erdmannangus@gmail.com



« LOT 16'S SIRE –  
EZAR STEP UP 9178



» LOT 17'S SIRE –  
CONNEALY CRAFTSMAN

## LOT 16 EAR MISS STEP UP E402

BD: 1/21/24

Open Heifer 21087963

Tattoo: E402

G A R BIG STEP K715  
EZAR STEP UP 9178  
BASIN LUCY 4261

CONNEALY BLACKHAWK 6198  
SILVER C SHOSHONEBLKHWK001  
SILVERCREEKSHOSHONEWPTYH510

G A R SURE FIRE  
CHAIR ROCK PROPHET 3131  
EXAR DENVER 2002B  
BASIN LUCY 1022  
CONNEALY ARMORY  
PRECIOUS OF CONANGA 380X  
WERNER WAR PARTY 2417  
SILVER C SHOSHONE MENTORH203

Production EPDs				Maternal EPDs			\$Values					
CED	BW	WW	YW	CEM	Milk	\$EN	\$M	\$W	\$F	\$G	\$B	\$C
9	-1.2	68	126	14	33	-34	60	70	83	61	144	247
Carcass EPDs				CW	44	Marb	0.91	REA	0.46	Fat	0.048	

Act. BW: 61 | WW: 616

E402 is stamped with the CAB's Targeting the Brand Logo, and out of the popular Select Sire's bull EXAR Step Up 9178. This female is another one that is hard to get rid of because of her balanced EPD profile. Along with being a bigger framed female, with lots of length and power. Top 10% of the breed for BW and Milk EPDs.



## LOT 17 EAR 017 BLACK LADY E426

BD: 2/2/24

Open Heifer 21088185

Tattoo: E426

SITZ RESILIENT 10208  
CONNEALY CRAFTSMAN  
BLACK CATHY OF CONANGA 8521

MUSGRAVE SKY HIGH 1535  
EAR MISS SKY HIGH E922  
EAR MISS UPWARD E413

SITZ STELLAR 7260  
SITZ MISS BURGESS 1856  
CONNEALY NIOBRARA 5451  
BLACK CARLA OF CONANGA 450  
MUSGRAVE BIG SKY  
FLAG QUEEN W 00649  
SITZ UPWARD 307R  
EAR MISS PENDELTON E017

Production EPDs				Maternal EPDs			\$Values					
CED	BW	WW	YW	CEM	Milk	\$EN	\$M	\$W	\$F	\$G	\$B	\$C
3	2.2	80	138	4	36	-19	89	85	99	55	154	289
Carcass EPDs				CW	64	Marb	0.77	REA	0.67	Fat	0.066	

Act. BW: 62 | WW: 624

A daughter we should be keeping out of a Pathfinder Dam & comes from a long line of Pathfinders as she goes back to our donor cow we raised EAR Miss Pendelton E017 who is now deceased. E426's dam tattooed 3 @ 104 for weaning. E426 is in the top 3% \$W and 5% \$M, along with the top 15% for WW and YW EPD, and top 25% for \$C. Phenotypically she is a long, deep bodied, moderate framed female.





LOTS 18-19

## FLECK RANCH

Les Fleck  
6180 Hwy 6  
Solen, ND 58570  
701-391-5577  
ljfranch@yahoo.com

### LOT 18 FLECKS BLACK ANIE SC 4065

BD: 3/18/24 Open Heifer 21098596 Tattoo: 4065

MARCYS SCALE CRUSHER  
S A V SCALE HOUSE 0845  
S A V BLACKCAP MAY 1416

BASIN PAYWEIGHT 1075  
FLECK'S BLACK ANNIE 5065  
PINE COULEE BLACK ANNIE U7

SITZ UPWARD 307R  
MARCYS ERICA 393  
RITO 707 OF IDEAL 3407 7075  
S A V BLACKCAP MAY 4136  
VERMILION PAYWEIGHT J847  
BASIN LUCY 3829  
CONNEALY ONWARD  
WAR HILL BLACKBONE ANNIE

Production EPDs				Maternal EPDs			\$Values						
CED	BW	WW	YW	CEM	Milk	\$EN	\$M	\$W	\$F	\$G	\$B	\$C	
4	2.4	80	138	11	19	-25	62	66	115	37	151	258	
Carcass EPDs		CW	66	Marb	0.25	REA	0.74	Fat	-0.015				

Act. BW: 95 | WW: 713

A top end heifer out of 5065. This is her natural calf, we also have 25 embryo calves by her Mother. Very clean fronted, correct heifer. She should make a true brood cow. Sired by Scale House, a true breeding bull. This heifer weaned at 692# with no creep, 713 adj 205.



LOT 18 - FLECKS BLACK ANIE SC 4065



LOT 19 - FLECKS BLACK ANNIE MB 4663

### LOT 19 FLECKS BLACK ANNIE MB 4663

BD: 3/11/24 Open Heifer 21098584 Tattoo: 4663

BAR R JET BLACK 5063  
LAR MAN IN BLACK  
JMB MAXINE TG 2131

BASIN PAYWEIGHT 1075  
FLECK'S BLACK ANNIE 5065  
PINE COULEE BLACK ANNIE U7

CONNEALY BLACK GRANITE  
BAR R IRIS ANITA 0113  
SITZ TOP GAME 561X  
JMB MAXINE DELUXE 9034  
VERMILION PAYWEIGHT J847  
BASIN LUCY 3829  
CONNEALY ONWARD  
WAR HILL BLACKBONE ANNIE

Production EPDs				Maternal EPDs			\$Values					
CED	BW	WW	YW	CEM	Milk	\$EN	\$M	\$W	\$F	\$G	\$B	\$C
5	2.7	86	145	8	21	-33	66	72	124	54	177	296
Carcass EPDs		CW	74	Marb	0.68	REA	0.75	Fat	0.034			

Act. BW: 93 | WW: 703

With the encouragement of Vern and Logan, I've decided to offer this broody heifer for sale. LAR Man in Black out of our number 1 donor female, Flecks Black Annie 5065, should make a powerful brood cow. Deep ribbed, long bodied heifer. Weaned at 703 pounds, third highest weaning weight heifer in our entire herd without creep. This powerful heifer should add maternal value in any herd. Donor prospect!



LOTS 20-22

## FOUR HILL FARMS

Jake Thompson  
21990 Hwy 34  
Barnesville, MN 56514  
218-329-9293  
fourhillfarms2@yahoo.com



LOT 20'S DAM –  
FLYING V MISS PRIDE 10K



LOT 20'S SIRE –  
HCC WHITEWATER 9010



LOT 21'S SIRE – SCHIEFELBEIN GABLE 311



LOT 22'S DAM – NSF CRYSTAL F148

## LOT 20 FHF MISS PRIDE M3

BD: 1/29/24

Open Heifer 21094059

Tattoo: 7345

MILL BRAE IDENTIFIED 4031  
HCC WHITEWATER 9010  
ROCK CREEK SARA 6066

SQUARE B TRUE NORTH 8052  
FLYING V MISS PRIDE 10K  
FLYING V MISS PRIDE 35H

KOUPALS B&B IDENTITY  
MILL BRAE PRO BLACKCAP 1092  
SILVEIRAS CONVERSION 8064  
H P C A CONFIDENCE A322  
S A V RAINFALL 6846  
ELBANNA OF CONANGA 1209  
SYDGEN ENHANCE  
FLYING V MISS PRIDE 95Z

Production EPDs				Maternal EPDs			\$Values					
CED	BW	WW	YW	CEM	Milk	SEN	\$M	\$W	\$F	\$G	\$B	\$C
13	-2.3	60	109	12	30	-6	72	64	109	73	201	340
Carcass EPDs				CW	Marb	REA	1.42	1.15	Fat	0.077		

Act. BW: 50/85 | WW: 716/95

This beautiful Whitewater heifer out of Square B True North first calf heifer that goes back to the Flying V Miss Pride 95Z will really grab your eye. Her maternal great grand dam was the cornerstone to the Flying V program raising multiple bulls that ended up at studs. With \$ values in the top 30% and Marbling and Ribeye epds north of 1, this heifer has the genetic potential to end up in a donor pen some day. Angus GS enhanced epds and parentage by sale day.



## LOT 21 FHF EMULATION M6

BD: 2/5/24

Open Heifer 21099440

Tattoo: 7348

SITZ RESILIENT 10208  
SCHIEFELBEIN GABLE 311  
FROSTY ELBA LIZZY 5569

MOGCK UNITED FRONT 118  
FHF EMULATION FRONT  
FHF EMULATION TRACTION

SITZ STELLAR 726D  
SITZ MISS BURGESS 1856  
SCHIEFELBEIN WHAM 686  
FROSTY ELBA LIZZY 3565  
MOGCK UNITED FRONT 503  
MOGCK MISS 2856  
HAF TRACTION 8014  
FHF EMULATION TOPHAND

Production EPDs				Maternal EPDs			\$Values					
CED	BW	WW	YW	CEM	Milk	SEN	\$M	\$W	\$F	\$G	\$B	\$C
9	1.8	89	154	14	22	-36	73	77	113	45	157	277
Carcass EPDs				CW	Marb	REA	0.49	0.72	Fat	0.033		

Act. BW: 72/ | WW: 793/105

This Schiefelbein Gable sired heifer out of a first calf heifer is packed full of performance. WW and YW epds in the top 5%. This heifer was the highest weaning weight of all the heifers of the 2024 calf crop. Gable has topped Sire buyers most popular list for entire year. Angus GS enhanced epds and parentage available by sale day.

## LOT 22 FHF JEWEL M89 PT

BD: 3/12/24

Open Heifer 21099335

Tattoo: M89

MYERS FAIR-N-SQUARE M39  
DEEP CREEK SQUARE DEAL  
DEEP CREEK STEP LASS 064

BAR S SURE DEAL 5202  
NSF CRYSTAL F148  
NSF CRYSTAL B125

WOODHILL BLUEPRINT  
MYERS MISS BEAUTY M136  
RBM STEP AHEAD C80  
DEEP CREEK TOTAL LASS 701  
BUSH'S SURE DEAL 33  
BAR S PRIDE 0017  
O C C UNDERSTUDY 918U  
NSF CRYSTAL 004 S55

Production EPDs				Maternal EPDs			\$Values					
CED	BW	WW	YW	CEM	Milk	SEN	\$M	\$W	\$F	\$G	\$B	\$C
3	1.4	69	119	3	30	-12	77	68	83	44	127	242
Carcass EPDs				CW	Marb	REA	0.48	0.58	Fat	0.017		

Act. BW: 74/ | WW: 677/100

Dam's Production: BWR 103 | WWR 104

This Square Deal heifer is packed full of maternal power. Her dam is the highest revenue earning cow at Four Hill Farms. F148 has been in the donor pen for the past 3 years and produced 9 sons on last years production sale having the second and third high selling bulls going to Erdman Angus Ranch and Anderson Angus respectively. This heifer is very difficult to let go but we wanted to offer our best. Angus GS enhanced Epds and parentage available by sale day.



**LOTS 23-24**

## HAUGEN CATTLE COMPANY

Lynn Haugen  
11451 9th St SE  
Hannaford, ND 58448  
701-789-1444  
haugencattleco@yahoo.com



**LOT 23 – HCC INCENTIVE 4004**

### **LOT 23 HCC INCENTIVE 4004**

BD: 1/21/24

Bull 21112182

Tattoo: 4004

SITZ INCENTIVE 704H  
SITZ BARBARAMERE NELL 53F

MOHNEN IMPRESSIVE 1093  
HCC QUEEN 8004-0119-Y685  
H C C QUEEN 9119-0955

MOHNEN SUBSTANTIAL 272  
SITZ PRIDE 200B  
SITZ INVASION 574D  
SITZ BARBARAMERE NELL 105D  
BASIN EXCITEMENT  
MOHNEN JILT 787  
MYTTY IN FOCUS  
H C C QUEEN 7955-0308

Production EPDs				Maternal EPDs				\$Values							
CED	BW	WW	YW	CEM	Milk	SEN	\$M	\$W	\$F	\$G	\$B	\$C			
3	2.4	79	131	11	28	-17	83	73	93	41	133	256			
Carcass EPDs				CW	48	Marb	0.55	REA	0.35	Fat	0.066				

Act. BW: 88/111 | WW: 851/110

Dam's Production: BWR 3@105 | WWR 3@109 | YWR 1@112.

Bull calf that is very stout, complete, stylish with maternal excellence! Dam has produced sale toppers for HCC. Dam is going into donor pen(3 generations of Donors). Angus GS test will be available. Retainign 1/3 semen interest.



**LOT 24 – HCC FOOT LBS 4912**

### **LOT 24 HCC FOOT LBS 4912**

BD: 1/16/24

Bull 21112377

Tattoo: 4912

SITZ RESILIENT 10208  
CONNEALY CRAFTSMAN  
BLACK CATHY OF CONANGA 8521

BASIN PAYWEIGHT 1682  
HCC MAVIS 7912-0710  
HCC MAVIS 5710-0065

SITZ STELLAR 726D  
SITZ MISS BURGESS 1856  
CONNEALY NIOBRARA 5451  
BLACK CARLA OF CONANGA 450  
BASIN PAYWEIGHT 006S  
21AR O LASS 7017  
MUSGRAVE BIG SKY  
SILVER C LAU MAV GTOPEH H833

Production EPDs				Maternal EPDs				\$Values							
CED	BW	WW	YW	CEM	Milk	SEN	\$M	\$W	\$F	\$G	\$B	\$C			
0	2.1	81	140	6	32	-20	89	76	97	65	162	299			
Carcass EPDs				CW	47	Marb	0.95	REA	0.61	Fat	0.041				

Act. BW: 85/108 | WW: 868/113

Dam's Production: BWR 6@106 | WWR 6@108 | YWR 3@107

Powerful herd sire who is very deep bodied, long, free moving with a ton of performance. Crowd favorite at the North Dakota Angus Association tour. Dam is going into the Donor pen. Both sides of pedigree is loaded. Both sides of pedigree is loaded. AngusGS tests will be available sale day. Retaining 1/3 semen interest.



## **LOT 25 WILD FIRE DISASTER RELIEF ROLLOVER**

In times of need, North Dakota Angus Association (NDAA) Members and Friends come together and help each other through the difficulties. The recent wildfires that have blazed across Western North Dakota have left many of our members wondering "where can we help?".

Back in October, fires destroyed nearly 120,000 acres across Western North Dakota, burned the homes of several families, took the lives of two men, and killed hundreds of animals in the path. To help ease the financial burden left behind for many ranchers, the NDAA Board of Directors decided to place a lot in the NDAA State Select Sale as a 'Rollover Auction' lot, with funds going to the North Dakota Stockmen's Foundation (NDSF) Out of the Ashes Wildfire Disaster Relief Program to help those in need.

The North Dakota Stockmen's Association (NDSA) and NDSF have teamed up to support cattle ranchers who suffered significant losses in wildfires in the northwest and other places across the state this fall. To help North Dakota cattlemen and women offset losses from these destructive fires and the challenges that are sure to linger long after the last flame is put out, the non-profit organizations launched the Out of the Ashes Wildfire Disaster Relief Program. The gifts will be pooled and distributed in their entirety to North Dakota cattle ranchers this winter through an application and nomination process. A committee comprised of fellow ranchers will review the applications and distribute the funds to those most in need.

The NDSF is a 501(c)3 charitable organization, so gifts can be deducted as charitable contributions for income tax purposes. For more information about the Out of the Ashes Wildfire Disaster Relief Program or other ways to help, call (701) 223-2522 or visit [www.ndstockmen.org](http://www.ndstockmen.org).



REKINDLING HOPE FOR NORTH DAKOTA CATTLE PRODUCERS IMPACTED BY THE 2024 WILDFIRES

# OUT OF THE ASHES

## WILDFIRE DISASTER RELIEF PROGRAM

The North Dakota Stockmen's Association and North Dakota Stockmen's Foundation have teamed up to support cattle-ranching families in North Dakota who have suffered catastrophic losses in the horrific wildfires that swept across the state in October.

In addition to their own \$50,000 gift, the NDSA and NDSF are inviting others to join with them to provide financial support to help these ranchers rise from the ashes and rebuild their herds, their homes and their hope.

Checks can be sent to the North Dakota Stockmen's Foundation with "Out of the Ashes" written in the memo. The NDSA and NDSF will distribute 100% of the money raised to the victims of the wildfires through an application and nomination process. The NDSF is a 501(c)3.

Checks may be written to  
**NORTH DAKOTA  
STOCKMEN'S FOUNDATION**  
with "Out of the Ashes" in the memo.  
Send to 4520 Ottawa St., Bismarck, ND 58503.

Credit card gifts can be made here:



701-223-2522  
[WWW.NDSTOCKMEN.ORG](http://WWW.NDSTOCKMEN.ORG)





LOTS 26-30

## HARDING ANGUS

Nic Harding  
9359 22nd St NE  
Tolna, ND 58380  
701-650-2044  
hardingangusranch@gmail.com

### LOT 26 HARDING LASS 798

BD: 2/17/17 Donor Cow 19028586 Tattoo: 798

S A V RESOURCE 1441

S A V BLACKCAP MAY 4136

CONNEALY MENTOR 7374

PRAIRIE PRIDE LASS 2061

PRAIRIE PRIDE LASS 374

R R RITO 707  
IDEAL 3407 OF 1418 076  
S A V 8180 TRAVELER 004  
S A V MAY 2397  
G A R RETAIL PRODUCT  
EXECUTA OF CONANGA 939  
G A R GRID MAKER  
PRAIRIE PRIDE LASS 955

Production EPDs				Maternal EPDs			\$Values					
CED	BW	WW	YW	CEM	Milk	SEN	\$M	\$W	\$F	\$G	\$B	\$C
2	3.1	56	96	9	18	3	68	45	85	43	127	233
Carcass EPDs				CW	Marb	REA	1.27	Fat	-0.001			

Act. BW: 84/100 | WW: 682/103

Dam's Production: 7-97 | 7-96 | 2-90

Breeding Info: AI'd on 6/15/24 to S Architect 9501 (19437622). Pasture exposed to S Logo 1100 (20133151). Confirmed bred to S Logo 1100. Estimated Due Date 4/10/25.

I decided to flush Harding Lass 798 when she became a pathfinder dam, I'm glad I went that direction with her, the example of her daughters and what she can do will sell right along side her. The large number of cows, bred heifers and heifer calves in my herd, although young, look the part and are on the right track to follow in her footsteps. A granddaughter had the highest weaning weight bull calf on my place this fall. 798 had six flush brothers sired by S Architect 9501 that were a feature in my 2024 bull sale. She is still in her prime and can do a lot for anyone interested in her. She has been flushed 5 times and has averaged 14.8 viable embryos per flush.



LOT 26 – HARDING LASS 798



LOT 27 – HARDING LASS ET 409

### LOT 27 HARDING LASS ET 409

BD: 2/17/24 Open Heifer 21084739 Tattoo: 409

SYDGEN BLUEPRINT  
S ARCHITECT 9501

S BLOSSOM 7514

S A V RESOURCE 1441

HARDING LASS 798

PRAIRIE PRIDE LASS 2061

KM BROKEN BOW 002  
SITZ FLORABELLE FANNY 4735

S WHITLOCK 179

S BLOSSOM 5525

RITO 707 OF IDEAL 3407 7075

S A V BLACKCAP MAY 4136

CONNEALY MENTOR 7374

PRAIRIE PRIDE LASS 374

Production EPDs				Maternal EPDs			\$Values					
CED	BW	WW	YW	CEM	Milk	SEN	\$M	\$W	\$F	\$G	\$B	\$C
1	2.9	89	146	9	23	-20	87	81	109	48	157	291
Carcass EPDs				CW	Marb	REA	1.13	Fat	0.017			

Act. BW: 92/ | WW: 804/100

This heifer is straight up one of the most phenotypical beautiful heifers I have raised. She performed on top of that weaning off her recipient dam heavy. Somewhat of a dead ringer to her dam, the Harding Lass 798 x S Architect 9501 mating has worked so well. This heifer does the talking for herself. I will retain a right to a future flush. Genomics available by sale day.



## LOT 28 HARDING LASS ET 360

BD: 2/24/23

Bred Heifer 20909453

Tattoo: 360

SYDGEN BLUEPRINT

S ARCHITECT 9501

S BLOSSOM 7514

S A V RESOURCE 1441

HARDING LASS 798

PRAIRIE PRIDE LASS 2061

KM BROKEN BOW 002  
SITZ FLORABELLE FANNY 4735

S WHITLOCK 179

S BLOSSOM 5525

RITO 707 OF IDEAL 3407 7075

S A V BLACKCAP MAY 4136

CONNELLY MENTOR 7374

PRAIRIE PRIDE LASS 374

Production EPDs				Maternal EPDs			\$Values						
CED	BW	WW	YW	CEM	Milk	\$EN	\$M	\$W	\$F	\$G	\$B	\$C	
4	1.3	68	112	11	19	-5	87	63	87	43	130	256	
Carcass EPDs		CW	48	Marb	0.46	REA	0.67	Fat	0.031				

Act. BW: 87/100 | WW: 650/100 | YW: 879/100

Breeding Info: AI'd on 5/6/24 to Connealy Craftsman (20132505). Pasture exposed to HCC Intent 3303. Confirmed bred to Connealy Craftsman. Estimated Due Date 2/10/25.

Another daughter from the great donor Harding Lass 798, she is bred up with a heifer calf to Connealy Craftsman. These heifers are hard to part with. If 798 hadn't given me multiple daughters in my herd and an inventory of embryos in my tank, I don't think I would even consider letting these individuals go. Retaining the right to a future flush. Genomics available sale day.



LOT 29 – HARDING LASS ET 362

## LOT 30 HARDING MARCIA 356

BD: 2/21/23

Bred Heifer 20909444

Tattoo: 356

SYDGEN BLUEPRINT

S ARCHITECT 9501

S BLOSSOM 7514

TOPP HURON 8350

HARDING MARCIA 181

TOPP MARCIA 7039

KM BROKEN BOW 002  
SITZ FLORABELLE FANNY 4735

S WHITLOCK 179

S BLOSSOM 5525

MOHNN SOUTH DAKOTA 402

TOPP BARBARA 5309

MUSGRAVE BIG SKY

TA MARCIA 0620

Production EPDs				Maternal EPDs			\$Values					
CED	BW	WW	YW	CEM	Milk	\$EN	\$M	\$W	\$F	\$G	\$B	\$C
4	2.0	87	139	6	26	-11	96	89	101	50	151	292
Carcass EPDs		CW	68	Marb	0.66	REA	0.66	Fat	0.058			

Act. BW: 84/106 | WW: 693/101 | YW: 1039/99

Dam's Production: ET daughter

Breeding Info: AI'd on 5/7/24 to Connealy Craftsman (20132505). Pasture exposed to HCC Intent 3303. Confirmed bred to HCC Intent 3303. Estimated Due Date 2/22/25.

When picking some bred heifers to consign to the NDAA sale, I didn't mess around and went straight to the top of my bred heifer pen. 356 is possibly my favorite heifer I have, picked from about 80 head, she is naturally an extremely thick heifer who passes a lot of power. Harding Marcia 356's dam, Harding Marcia 181, is an product of an ET mating. 356's grandam, Topp Marcia 7039 is a cow that I admired from the Topp Angus herd, I was lucky enough to get a hold of some eggs on her, and mating her with a bull who we lost to soon and had limited semen supply on, Topp Huron 8350. A maternal brother of 356 will be a highlight of my 2025 bull sale. Retaining a right to a future flush. Genomics available by sale day.



LOT 28 – HARDING LASS ET 360

## LOT 29 HARDING LASS ET 362

BD: 2/24/23

Bred Heifer 20909457

Tattoo: 362

SYDGEN BLUEPRINT

S ARCHITECT 9501

S BLOSSOM 7514

S A V RESOURCE 1441

HARDING LASS 798

PRAIRIE PRIDE LASS 2061

KM BROKEN BOW 002  
SITZ FLORABELLE FANNY 4735

S WHITLOCK 179

S BLOSSOM 5525

RITO 707 OF IDEAL 3407 7075

S A V BLACKCAP MAY 4136

CONNELLY MENTOR 7374

PRAIRIE PRIDE LASS 374

Production EPDs				Maternal EPDs			\$Values					
CED	BW	WW	YW	CEM	Milk	\$EN	\$M	\$W	\$F	\$G	\$B	\$C
7	0.8	75	118	11	21	-9	90	74	82	31	113	237
Carcass EPDs		CW	48	Marb	0.23	REA	0.70	Fat	0.043			

Act. BW: 72/94 | WW: 690/100 | YW: 989/100

Dam's Production: 6-102 6-109 2-107

Breeding Info: AI'd on 5/76/24 to Connealy Craftsman (20132505). Pasture exposed to HCC Intent 3303. Confirmed bred to Connealy Craftsman. Estimated Due Date 2/11/25.

An ET daughter out of my main donor cow Harding Lass 798. Harding Lass ET 362 is big, broody, and long just like her mother. Sired by the great, S Architect 9501, and bred up to calf to the popular Connealy Craftsman with a bull calf. A heifer that's hard to let go so I will be retaining the right to a future flush. Genomics available sale day.



LOT 30 – HARDING MARCIA 356



LOTS 31-32

## LENNICK RANCH

Travis Lennick  
5424 25th St  
New Salem, ND 58563  
701-220-8959  
wandalennick@hotmail.com



LOT 32 – LENNICK CRACK OF DAWN 444

## LOT 31 LENNICK RENOVATION 427

BD: 2/7/24 Bull 21079664 Tattoo: 427

S A V RENOWN 3439  
S A V RENOVATION 6822  
S A V MADAME PRIDE 0151  
CONNEALY ADVANCE 3371  
CEDARFLO 5133 BLACKBIRD 667  
CEDARFLO 5652 BLACKBIRD 654  
RITO 707 OF IDEAL 3407 7075  
S A V BLACKCAP MAY 4136  
S A V 004 DENSITY 4336  
S A V MADAME PRIDE 0075  
KOUPL ADVANCE 28  
BLACK CARY OF CONANGA 3371  
HA PROGRAM 5652  
CEDARFLO 8005 BLACKBIRD 419

Production EPDs				Maternal EPDs				\$Values				
CED	BW	WW	YW	CEM	Milk	\$EN	\$M	\$W	\$F	\$G	\$B	\$C
6	2.1	73	137	3	30	-30	63	67	101	55	156	265
Carcass EPDs				CW	Marb	REA	0.86	Fat	0.003			

Act. BW: 83/100 | WW: 891/100

Dam's Production: BWR 6/100 | WWR 6/103 | YWR 3/102

Here is a blockbuster renovation son. His dam has 14 direct daughters retained in our herd. He is a very sound, long sided, deep bodied bull with authentic angus breed characteristics. He's super clean throughout his front 1/3 while maintaining power and performance. His daughters will be very classy while standing out in the herd with power calves and very maternal females. Weight on 10-20-24 1105

## LOT 32 LENNICK CRACK OF DAWN 444

BD: 2/5/24 Bull 21081244 Tattoo: 444

S A V RENOVATION 6822  
S A V RISE N SHINE 2709  
S A V EMBLYNETTE 2369  
S A V FARMYARD 6885  
LENNICK FARM TREASURE 107J  
FLYING V BELLS WING 61F  
S A V RENOWN 3439  
S A V MADAME PRIDE 0151  
S A V 707 RITO 9969  
S A V EMBLYNETTE 7566  
S A V RENOWN 3439  
S A V MADAME PRIDE 5290  
MGR TREASURE  
FLYING V BELLS WING 17Y

Production EPDs				Maternal EPDs				\$Values				
CED	BW	WW	YW	CEM	Milk	\$EN	\$M	\$W	\$F	\$G	\$B	\$C
4	1.5	67	126	12	28	-23	63	63	116	61	177	293
Carcass EPDs				CW	Marb	REA	0.87	Fat	0.062			

Act. BW: 78/98 | WW: 864/100

Dam's Production: BWR 2/101 | WWR 2/109 | YWR 1/112

### Breeding Info:

Here's an outstanding one-of-a-kind Rise and Shine son, Whose dam has a progeny weaning ratio of 2/109, he's a very long deep sided, power house with an abundance of phenotype. He stands on outstanding structure with who also has a great deal of foot and bone beneath him, he's also one that maintains a super smooth front 1/3 while he also possesses authentic angus breed characteristics. To also add his maternal sister was the Reserve Champion Angus Female at the Morton County Fair. Check him out on sale day. Weight on 10-20-24 1020

LOTS 33-36

## MONTGOMERY RANCH

281 64th Ave SE  
Carrington, ND 58421  
Cody's Cell: 701-652-5397  
Jory's Cell: 701-653-5245



LOT 33'S SIRE –  
RIVERSTONE VEGAS 49H

## LOT 33 HSF VEGAS 4030

BD: 3/1/24 Bull 21085009 Tattoo: 4030

KR CASINO 6243  
RIVERSTONE VEGAS 49H  
COLEMAN DIXIE ERICA 3372  
COLBURN PRIMO 5153  
MAR LADY MAY 2221  
MJP PURFEERST MOLLY 407  
CFCC BLACK JACK 001  
MALSONS SAVANNAH 27Y  
COLEMAN CHARLO 0256  
COLEMAN DIXIE ERICA 1342  
DAMERON FIRST CLASS  
SILVEIRAS SARAS DREAM 1339  
S A V BRILLIANCE 8077  
MOFFITT LASSIE M637

Production EPDs				Maternal EPDs				\$Values				
CED	BW	WW	YW	CEM	Milk	\$EN	\$M	\$W	\$F	\$G	\$B	\$C
4	2.6	81	131	5	31	-26	71	73	81			
Carcass EPDs				CW	Marb	REA		Fat				

Act. BW: 71/99 | WW: 833/126

Dam's Production: 1/99 | 1/126

Calving ease Vegas son out of Cally's show heifer from the summer of 2023. Dam was an awesome built Primo daughter that won multiple shows including the ND Junior Angus Field Day and went on to wean the heaviest 205 day weight bull calf of our 2024 calf crop.





LOT 34 & 36'S SIRE – MYERS FAIR-N-SQUARE M39



LOT 35'S SIRE – CONNEALY CRAFTSMAN



LOT 34 & 36'S GRANDSIRE – WOODHILL BLUEPRINT

## LOT 34 MAR FAIR-N-SQUARE 4017

BD: 2/24/24

Bull 21085007

Tattoo: 4017

WOODHILL BLUEPRINT  
MYERS FAIR-N-SQUARE M39  
MYERS MISS BEAUTY M136

JINDRA ACCLAIM  
MAR LADY 1040  
4M 4200 IDEAL LADY A4

CONNEALY CONFIDENCE PLUS  
WOODHILL EVERGREEN Z291-B233  
CONNEALY THUNDER  
MYERS MISS BEAUTY M476  
JINDRA 3RD DIMENSION  
JINDRA BLACKBIRD LASSY 1111  
S A V NET WORTH 4200  
4M 5682 IDEAL LADY 9194

Production EPDs				Maternal EPDs			SValues					
CED	BW	WW	YW	CEM	Milk	SEN	\$M	\$W	\$F	\$G	\$B	\$C
3	2.4	82	145	3	30	-34	58	68	96			
Carcass EPDs		CW		Marb		REA			Fat			

Act. BW: 83/108 | WW: 744/113

Dam's Production: 2/107 | 2/110 | 1/112

Big ribbed, good footed Fair and Square son. Dam is a productive young daughter of Jindra Acclaim that traces back to Net Worth and Bismarck. Moderate birthweight with plenty of growth.

## LOT 35 MAR CRAFTSMAN 4035

BD: 3/1/24

Bull 21085010

Tattoo: 4035

SITZ RESILIENT 10208  
CONNEALY CRAFTSMAN  
BLACK CATHY OF CONANGA 8521

KR APOLLO 6312  
MAR WINNIE 8077  
MAR WINNIE 6141

SITZ STELLAR 726D  
SITZ MISS BURGESS 1856  
CONNEALY NIOBRARA 5451  
BLACK CARLA OF CONANGA 450  
KRAMERS APOLLO 317  
WK ALICE PRIDE 0529  
BUSHES BIG HOSS 963  
EXAR WINNIE 6219

Production EPDs				Maternal EPDs			SValues					
CED	BW	WW	YW	CEM	Milk	SEN	\$M	\$W	\$F	\$G	\$B	\$C
4	1.4	79	133	6	34	-16	100	76	83			
Carcass EPDs		CW		Marb		REA			Fat			

Act. BW: 78/98 | WW: 743/113

Dam's Production: 4/100 | 4/109 | 3/113

Stout made, big bodied Craftsman son that is a definite herdbull prospect. Out of a very productive cow that ratios 4/109 for weaning. Traces back to the Express Winnie 6219 donor that we purchased out of a past Big Event Sale.

## LOT 36 MAR MAY 4023

BD: 2/25/24

Open Heifer 21088134

Tattoo: 4023

WOODHILL BLUEPRINT  
MYERS FAIR-N-SQUARE M39  
MYERS MISS BEAUTY M136

S A V BRILLIANCE 8077  
MAR MAY 5134  
BV MAY S80U

CONNEALY CONFIDENCE PLUS  
WOODHILL EVERGREEN Z291-B233  
CONNEALY THUNDER  
MYERS MISS BEAUTY M476  
S A V BISMARCK 5682  
S A V BLACKCAP MAY 5270  
S A V 8180 TRAVELER 004  
S A V BLACKCAP MAY 4546

Production EPDs				Maternal EPDs			SValues					
CED	BW	WW	YW	CEM	Milk	SEN	\$M	\$W	\$F	\$G	\$B	\$C
5	1.1	66	110	4	32	-12	70	66	77			
Carcass EPDs		CW		Marb		REA			Fat			

Act. BW: 83/108 | WW: 744/113

Dam's Production: 6/101 | 6/105

Good production and phenotype heifer prospect. Has the look to be shown and the pedigree and performance to make a great cow. A granddaughter of our S80U Donor who was a full sister in blood to Net Worth.



LOTS 33

## NELSON ANGUS

Mike Nelson  
8555 72nd Ave NE  
Egeland, ND  
Mike- 701-230-2132  
Galen Misek-785-678-3026

## LOT 37 NELSON RD ROYAL FLUSH M401

BD: 2/14/24 Bull 21090717 Tattoo: M401

KR CASINO 6243  
RIVERSTONE VEGAS 49H  
COLEMAN DIXIE ERICA 3372

PANTHER CR INCREDIBLE 6704  
NELSONS MISSY LADY F851  
NELSONS MISSY LADY A302

CFCC BLACK JACK 001  
MALSONS SAVANNAH 27Y  
COLEMAN CHARLO 0256  
COLEMAN DIXIE ERICA T342  
MUSGRAVE INVISION  
PANTHER CR JH BLACKBIRD 409  
S A V IRON MOUNTAIN 8066  
NELSONS MISSY LADY K373

Production EPDs				Maternal EPDs				SValues				
CED	BW	WW	YW	CEM	Milk	SEN	SM	SW	SF	SG	SB	SC
6	0.2	66	113	9	31	-10	65	69	87	43	130	234
Carcass EPDs		CW		Marb		0.53	REA		0.5	Fat		0.04

Act. BW: 65/ WW: 780

Long sided, smooth made calving ease Vegas son from a nice young Incredible daughter.



LOT 37'S SIRE - RIVERSTONE VEGAS 49H

LOTS 38-40

## NORD ANGUS

Bob & Luke Nord  
1439 150th st.  
Wolverton, MN 56594  
Luke 701 446 6157  
Bob 701 361 6493  
lnordangus@gmail.com

## LOT 38 NORDS REDEMPTION 2405

BD: 1/5/24 Bull 21065496 Tattoo: 2405

3F EPIC 4631  
CHESTNUT REDEMPTION 38  
CHESTNUT WETONKA WJ 63

TEHAMA TAHOE B767  
NORDS MISSIE 2224  
NORDS MISSIE 2324

VARILEK PRODUCT 2010 04  
ZEBO QUEEN 1072  
HAYNES OUTRIGHT 452  
CHESTNUT WETONKA A S 461  
TEHAMA UPWARD Y238  
TEHAMA MARY BLACKBIRD Y684  
KENNY EPIC 8423-2  
NORDS MISSIE 8261

Production EPDs				Maternal EPDs				SValues				
CED	BW	WW	YW	CEM	Milk	SEN	SM	SW	SF	SG	SB	SC
-5	4.8	100	164	4	25	-42	58	82	112	54	167	275
Carcass EPDs		CW		Marb		0.48	REA		1.16	Fat		-0.037

Act. BW: 76/108 WW: 917/117

High performing, stretchy herd bull prospect out of a beautiful first calf Tahoe daughter.



LOT 38 - NORDS REDEMPTION 2405





**LOT 39 – NORDS EXCLUSIVE 2426**



**LOT 39'S DAM –  
MUSGRAVE  
QUEEN 1433**

## LOT 40 NORDS LUCY 2337

BD: 3/13/23

Bred Heifer 21108561

Tattoo: 2337

GAMBLES HOT ROD  
SILVEIRAS STYLE 9303  
SILVEIRAS ELBA 2520

PVF ALL PAYDAY 729  
PVF LUCY 1125  
THOMAS LUCY 7360

FAMOUS 7001  
CHAMPION HILL LADY 703  
TWIN VALLEY PRECISION E161  
D A R ELBA 55  
S A V PAYROLL 5281  
P V F BLACKBIRD 201  
S A V 8180 TRAVELER 004  
THOMAS LUCY 4440

Production EPDs				Maternal EPDs			\$Values						
CED	BW	WW	YW	CEM	Milk	SEN	\$M	\$W	\$F	\$G	\$B	\$C	
2	3.3	52	90	4	20	-15	10	36	83	30	113	157	
Carcass EPDs				CW	28	Marb	0.19	REA	0.57	Fat	0.008		

Act. BW: 74 | WW: 635

Breeding Info: Bred to Musgrave Soul 137-1433 (20676004). Confirmed Safe.  
Estimated Due Date 2/20/25

2337 will be the last opportunity to own a full sister to Nords Lucy 9211 who had an outstanding career for Lynsey Schmitz. She was Reserve Supreme Female at AKSARBEN, Grand Champion Female at the American Royal, and Reserve Division Champion at the NAILE Open Show. A maternal sister to 2337, Nords Lucy 8022, was shown by the Stagemeyer family and earned accolades including Reserve Champion Female at NJAS, Supreme Female at the American Royal, and Reserve Champion Female at the NWSS. The Lucy cow family is renowned for producing exceptional cattle once they hit production—offering outstanding maternal ability and ideal udders, regardless of the sire. These daughters of the famous PVF Lucy 1125 are producing consistent bulls and females. 9211 has averaged 14,350 on ten Angus calves and 17,500 on two Simmental sired calves. 8022 rang the bell for stagemeyers with a 50,000 heifer sired by natural law as well as AI sire Fortunate son. -Retaining 2 flushes



**LOT 40'S SERVICE SIRE –  
MUSGRAVE SOUL 137-1433**

## LOT 39 NORDS EXCLUSIVE 2426

BD:

Bull 21063828

Tattoo:

LD CAPITALIST 316  
MUSGRAVE 316 EXCLUSIVE  
MUSGRAVE PRIM LASSIE 163-386

MUSGRAVE AVIATOR  
MUSGRAVE QUEEN 1433  
FLAG QUEEN W 00649

CONNEALY CAPITALIST 028  
LD DIXIE ERICA 2053  
MUSGRAVE FOUNDATION  
SCR PRIM LASSIE 80634  
KOUPLS B&B IDENTITY  
MCATL FOREVER LADY 1429-138  
S A V 004 DENSITY 4336  
PLATTEMERE QUEEN W 660

Production EPDs				Maternal EPDs			\$Values						
CED	BW	WW	YW	CEM	Milk	SEN	\$M	\$W	\$F	\$G	\$B	\$C	
6	1.1	81	146	9	33	-28	76	83	121	62	183	313	
Carcass EPDs				CW	75	Marb	0.93	REA	0.59	Fat	0.062		

Act. BW: 75/97 | WW: 875/111

Dam's Production: BW 97 | WW 103

Stout, calving ease trait bull that has the intangibles on paper and hoof. His dam was our top selection from Musgrave Angus



**LOT 40'S MATERNAL SISTER –  
NORDS LUCY 8022**

**SON OF LOT 40'S  
MATERNAL SISTER  
NORDS LUCY 8022  
& STAG FORTUNATE**



**LOT 40'S MATERNAL SISTER – NORDS LUCY 9211**



LOTS 41-45

## PETERSEN FARMS

Lavern, Kris & Kyle Petersen  
6744 Co Rd 19  
Bowbells, ND 58721  
701-339-0305  
krispetersen@nccray.net

### LOT 41 PF WHITEWATER 410

BD: 1/27/24 Bull 21089379 Tattoo: 410

HCC WHITEWATER 9010  
ROCK CREEK SARA 6066  
MUSGRAVE FOUNDATION  
PF LASS 326  
SCR LASS 80722

KOUPALS B&B IDENTITY  
MILL BRAE PRO BLACKCAP 1092  
SILVEIRAS CONVERSION 8064  
H P C A CONFIDENCE A322  
KESSLERS FRONTMAN R001  
MCATL BLACKCAP JUARA 29-434  
BT CROSSOVER 758N  
W A C LASS 05

Production EPDs				Maternal EPDs				\$Values					
CED	BW	WW	YW	CEM	Milk	\$EN	\$M	\$W	\$F	\$G	\$B	\$C	
-4	3.4	74	132	1	23	-24	47	60	110	83	193	297	
Carcass EPDs				CW	Marb	1.21	REA	1.09	Fat	0.040			

Act. BW: 79/95 | WW: 847/103

Dam's Production: BWR 9 @ 103 | WWR 9 @ 106

A full brother to the 2024 ND Angus Select Bull and Female sale high selling bull that was purchased by Frey Angus as well as a heifer highlight that was selected by Lindskov's LT Ranch.



LOT 41 & 45'S SIRE -  
HCC WHITEWATER 9010



LOT 42'S SIRE -  
S A V RISE N SHINE 2709

### LOT 42 PF RISE N SHINE

BD: 1/31/24 Bull 21100065 Tattoo: 426

S A V RENOVATION 6822  
S A V RISE N SHINE 2709  
S A V EMBLYNETTE 2369  
MCATL PURE PRODUCT 903-55  
PF BLACKBIRD ERICA 215  
G F BLACKBIRD ERICA 5147

S A V RENOWN 3439  
S A V MADAME PRIDE 0151  
S A V 707 RITO 9969  
S A V EMBLYNETTE 7566  
CONNEALY FINAL PRODUCT  
M A ESTA 55-252  
VERMILION YELLOWSTONE N234  
G F PRINCESS ERICA 356-0631

Production EPDs				Maternal EPDs				\$Values					
CED	BW	WW	YW	CEM	Milk	\$EN	\$M	\$W	\$F	\$G	\$B	\$C	
-1	3.5	64	114	6	31	-16	65	60	99	45	144	252	
Carcass EPDs				CW	Marb	0.70	REA	0.19	Fat	0.084			

Act. BW: 85/101 | WW: 856/102

Dam's Production: BWR 11 @ 96 | WWR 11 @ 106

Stylish, stout made Rise N Shine son from a highly productive Pure Product daughter.



## LOT 43 PF MAN IN BLACK 424

BD: 1/31/24

Bull 21089470

Tattoo: 424

LAR MAN IN BLACK

BAR R JET BLACK 5063

JMB MAXINE TG 2131

PF BLACK LASS 906

BUBS SOUTHERN CHARM AA31

PF BLACK LASS 315

CONNEALY BLACK GRANITE

BAR R IRIS ANITA 0113

SITZ TOP GAME 561X

JMB MAXINE DELUXE 9034

SILVEIRAS CONVERSION 8064

HICKORY HILL ERICA 009

CONNEALY EARNAN 076E

PF BLACK LASS 072

Production EPDs				Maternal EPDs			\$Values					
CED	BW	WW	YW	CEM	Milk	\$EN	\$M	\$W	\$F	\$G	\$B	\$C
-1	3.5	64	114	6	31	-16	65	60	99	45	114	252
Carcass EPDs				CW	52	Marb	0.70	REA	0.19	Fat	0.084	

Act. BW: 80/94 | WW: 882/105

Dam's Production: BW 4@100 WWR 4@103

Larger outline Man in Black that has a ton of growth and performance.



LOT 43 & 44'S SIRE -  
LAR MAN IN BLACK



LOT 44 - PF MAN IN BLACK 484 & DAM THIS FALL

## LOT 44 PF MAN IN BLACK 484

BD: 3/5/24

Bull 21089462

Tattoo: 484

LAR MAN IN BLACK

BAR R JET BLACK 5063

JMB MAXINE TG 2131

PF GRACE 086

BUBS SOUTHERN CHARM AA31

PF GRACE 288

CONNEALY BLACK GRANITE

BAR R IRIS ANITA 0113

SITZ TOP GAME 561X

JMB MAXINE DELUXE 9034

SILVEIRAS CONVERSION 8064

HICKORY HILL ERICA 009

S A V CLARK 8374

PF GRACE 968

Production EPDs				Maternal EPDs			\$Values					
CED	BW	WW	YW	CEM	Milk	\$EN	\$M	\$W	\$F	\$G	\$B	\$C
1	3.8	95	163	4	32	-35	70	88	121	53	174	296
Carcass EPDs				CW	87	Marb	0.59	REA	1.16	Fat	0.049	

Act. BW: 77 | WW: 856

Dam's Production: NR 3@103

Out of one of the young and upcoming cows on the place, this Man in Black son will produce highly productive daughter and sons that grow.



LOT 41 & 45'S GRANDSIRE -  
MILL BRAE IDENTIFIED 4031

## LOT 45 PF LASS 403

BD: 1/23/24

Open Heifer 21089381

Tattoo: 403

HCC WHITEWATER 9010

MILL BRAE IDENTIFIED 4031

ROCK CREEK SARA 6066

PF LASS 326

MUSGRAVE FOUNDATION

SCR LASS 80722

KOUPALS B&B IDENTITY

MILL BRAE PRO BLACKCAP 1092

SILVEIRAS CONVERSION 8064

H P C A CONFIDENCE A322

KESSLERS FRONTMAN R001

MCATL BLACKCAP JUARA 29-434

BT CROSSOVER 758N

W A C LASS 05

Production EPDs				Maternal EPDs			\$Values					
CED	BW	WW	YW	CEM	Milk	\$EN	\$M	\$W	\$F	\$G	\$B	\$C
-4	3.9	80	143	5	28	-36	46	66	115	76	191	294
Carcass EPDs				CW	71	Marb	1.06	REA	1.01	Fat	0.017	

Act. BW: 80/101 | WW: 772/106

Dam's Production: BWR 9 @ 103 | WWR 9 @ 106

A full sister to the 2024 ND Angus Select Bull and Female sale high selling bull that was purchased by Frey Angus as well as a heifer highlight that was selected by Lindskov's LT Ranch.





**LOTS 46-48**

## REESE FAMILY ANGUS

Tyler Reese  
25608 Co Rd 1  
Hancock, MN 56244  
320-287-2897  
tylerreese10@gmail.com

### LOT 46 RFA DYNAMIC 426

BD: 2/13/24 Bull 20970841 Tattoo: 426

**B A R DYNAMIC**  
DEER VALLEY GROWTH FUND  
B A R BLACKCAP 7235-B0048  
FREYS COWBOY LOGIC  
**RFA MISS WIX 212**  
RFA MISS WIX 012

BASIN PAYWEIGHT 1682  
DEER VALLEY RITA 36113  
THREE TREES XCEPTIONAL B0048  
B A R BLACKCAP 3683-745  
HA COWBOY UP 5405  
F A R PRINCESS 148Z  
MUSGRAVE 316 STUNNER  
MISS WIX 343 OF MC CUMBER

Production EPDs				Maternal EPDs			\$Values						
CED	BW	WW	YW	CEM	Milk	SEN	\$M	\$W	\$F	\$G	\$B	\$C	
18	-3.3	91	154	12	30	-30	69	97	100	47	147	260	
Carcass EPDs				CW	Marb	0.58	REA	0.68	Fat	0.047			

Act. BW: 69/91 | WW: 809/121

Dam's Production: BWR 1@91 | WWR 1@121

Truly a unique herdsire prospect in a variety of ways. On hoof, this elite calving ease Dynamic son carries a ton of body shape, substance, thickness, and power. Born at just 69lbs, 426 worked is way to a WW of 809 and WWR@121. On paper, he sports elite spread ranking in the top 1% CED & BW and top 5% YW. His dam, RFA Miss Wix 212, by Freys Cowboy Logic, ranks as one of the top young cows in our herd and did an outstanding job raising her first! She's elegant in her build, nice uddered, with plenty of thickness and bone. His granddam RFA Miss Wix 012 by Musgrave Stunner, ranks a cornerstone donor in our herd and is unmatched for her power, body shape, and fertility with a calving interval 3@363. A bull backed by a proven cow family, elite data, and quality look.



LOT 46 – RFA DYNAMIC 426



DONOR GRANDDAM  
OF RFA DYNAMIC 426

### LOT 47 RFA PROLIFIC 414

BD: 2/7/24 Bull 20970832 Tattoo: 414

**ELLINGSON PROLIFIC**  
ELLINGSON PROFOUND 8155  
EA QUEEN 8070  
KG JUSTIFIED 3023  
**RFA MS JUSTIFIED 103**  
PRV MS CONVERSATION 9008

S POWERPOINT WS 5503  
EA ROSETTA 6157  
KOU PAL JUNEAU 797  
EA QUEEN 2350  
CONNEALY JUDGMENT  
KG MISS MAGIC 1443  
SAC CONVERSATION  
SANKEYS LADY 521

Production EPDs				Maternal EPDs			\$Values						
CED	BW	WW	YW	CEM	Milk	SEN	\$M	\$W	\$F	\$G	\$B	\$C	
1	1.2	69	108	11	29	16	129	85	87	65	152	326	
Carcass EPDs				CW	Marb	0.99	REA	0.51	Fat	0.046			

Act. BW: 86/106 | WW: 718/106

Dam's Production: BWR 2@95 | WWR2@104

Sired by the popular Ellingson Prolific, this bull has a maternal written all over him. Ranking in the top 3% HP, 2% Claw, 5% Angle, 3% \$W, and even exceeds his sire with top 1% \$M @+129! On hoof he is easy to like, square made, wide topped, expressively muscled, with superb body shape and foot quality. His 3 year old dam, by KG Justified, is a moderate framed, nicely uddered, feminine cow. No matter if he produces thick made bulls, heavy muscled steers, or maternal heifers, his value is endless.



LOT 47 – RFA PROLIFIC 414



LOT 47'S MATERNAL BROTHER –  
RFA BROADVIEW 308



# **LOT 48 RFA RAWHIDE 410**

BD: 2/7/24

Bull 20970830

Tattoo: 410

**POSS RAWHIDE**  
POSS MAVERICK  
POSS BLUEBLOOD 6502

**RFA B PRIDE 930**  
MAR INNOVATION 251  
B PRIDE 946 OF MC CUMBER

BASIN PAYWEIGHT 1682  
POSS PRIDE 5163  
POSS EASY IMPACT 0119  
POSS BLUEBLOOD 920  
CONNEALY IMPRESSION  
MAR FINAL KAHUNA 856  
SINCLAIR EXTRA 4X13  
B PRIDE 722 OF MC CUMBER

Production EPDs				Maternal EPDs			\$Values					
CED	BW	WW	YW	CEM	Milk	\$EN	\$M	\$W	\$F	\$G	\$B	\$C
10	0.7	77	115	13	27	-15	76	84	99	62	161	285
Carcass EPDs				CW	Marb	\$EN	REA	\$F	Fat			
				53	0.79		0.84		0.007			

Act. BW: 84/100 | WW: 723/106

Dam's Production: BWR 3@105 | WWR 2@106 | YWR 1 @100

This rugged, thick made Rawhide son is a load! He offers plenty of bone, muscle mass, body, and dimension. His EPD predictions indicate he is suitable for heifers at +9 CED, also ranking top 1% PAP, 2% DMI, 15% Angle. His balanced dam, by MAR Innovation, has been a consistent producer of broody daughters and powerful bulls. With her son, RFA Stellar 313, commanding \$6,000 at the 2024 MN Bull Test Sale. Look for this guy to sire pounds heavy, thick made, heavy muscled calves. Carries CAB stamp.



**LOT 48- RFA RAWHIDE 410Å**

**LOTS 49-50**

## **A&M CATTLE COMPANY**

Marc & Amanda Shores  
9084 Co Rd 81  
Evansville, MN 56326  
218-205-8938  
amshores1727@gmail.com

# **LOT 49 A & M NORA 126**

BD: 1/26/24

Open Heifer 20868291

Tattoo: 126

**WILKS REGIMENT 9035**  
WAR CAVALRY 8063 Z044  
VINTAGE CHLOE 6137

**AAR BARBARAMERE 221**  
DEER VALLEY GROWTH FUND  
CARTER BARBARAMERE 8757

CONNEALY CAVALRY 1149  
WAR CC&7 Z044 X029  
V A R EMPIRE 3037  
V A R CHLOE 2227  
BASIN PAYWEIGHT 1682  
DEER VALLEY RITA 36113  
S A V SENSATION 5615  
KA BARBARAMERE 4201

Production EPDs				Maternal EPDs			\$Values					
CED	BW	WW	YW	CEM	Milk	\$EN	\$M	\$W	\$F	\$G	\$B	\$C
10	1.6	86	153	9	29	-46	30	79	105	58	164	243
Carcass EPDs				CW	Marb	\$EN	REA	\$F	Fat			
				69	0.74		0.71		0.007			

Act. BW: NA | WW: NA | YW: NA



**LOT 49 - A & M NORA 126**



## LOT 50 2 TEN RITA 9G90-G95

BD: 3/10/24

Open Heifer 20996687

Tattoo: 310

DB ICONIC G95

MUSGRAVE 316 STUNNER

DB MS DISCOVERY D13

SYDGEN ENHANCE

1A WELYTOK ENHANCE RITA 9G90

CHF 3784 RITA 1706

LD CAPITALIST 316

MCATL BLACKBIRD 831-1378

V A R DISCOVERY 2240

DB MS FINAL TOOL 4120

SYDGEN EXCEED 3223

SYDGEN RITA 2618

SYDGEN EXPRESS 3487B

SYDGEN RITA 3784

Production EPDs				Maternal EPDs			\$Values					
CED	BW	WW	YW	CEM	Milk	\$EN	\$M	\$W	\$F	\$G	\$B	\$C
8	0.8	88	163	6	26	-55	44	75	109	88	197	300
Carcass EPDs		CW	65	Marb	1.56	REA	0.15	Fat	0.053			

Act. BW: NA | WW: NA | YW: NA



LOT 50 – 2 TEN RITA 9G90-G95

LOTS 51-53

## TNT ANGUS

Troy Carter

6336 93rd st NE

Rocklake, ND 58365

701-305-0104

troycarter77@hotmail.com



LOT 51 – TNT BLACKBIRD 329

## LOT 51 TNT BLACKBIRD 329

BD: 2/16/23

Bred Heifer 20788966

Tattoo: 329

BAR R JET BLACK 5063

LAR MAN IN BLACK

JMB MAXINE TG 2131

S A V RESOURCE 1441

TNT BLACKBIRD 719

EVENSON BLACKBIRD 7132

CONNEALY BLACK GRANITE

BAR R IRIS ANITA 0113

SITZ TOP GAME 561X

JMB MAXINE DELUXE 9034

RITO 707 OF IDEAL 3407 7075

S A V BLACKCAP MAY 4136

CONNEALY FOUNDATION 426

EVENSON BLACKBIRD 2303

Production EPDs				Maternal EPDs			\$Values					
CED	BW	WW	YW	CEM	Milk	\$EN	\$M	\$W	\$F	\$G	\$B	\$C
-3	5.5	92	159	3	24	-43	58	62	127	54	181	293
Carcass EPDs		CW	73	Marb	0.71	REA	0.75	Fat	0.049			

Act. BW: NA | WW: 707/117 | YW: 974/114

Dam's Production: BW 5@111 | WW 5@106 ww | YW 3@107

Breeding Info: Bred to SITZ LT Resilient10412 (20307895). Estimated due date 4/14/24.

A powerful daughter of Man in Black. Big time figures. Dam is the front pasture kind with an excellent production record. Maternal brother to this heifer was a highlight in our sale a couple years ago. This heifer has a bright future.



## LOT 52 TNT HIGH PRIME 413

BD: 2/5/24

Open Heifer 21099408

Tattoo: 413

S A V AMERICA 8018  
S A V GLORY DAYS 1832  
S A V MADAME PRIDE 3145

HA PAYWEIGHT 6453  
B/D RICE HIGH PRIME 9516  
ACA HIGH PRIME 6560

S A V PRESIDENT 6847  
S A V MADAME PRIDE 0075  
S A V PRIORITY 7283  
S A V MADAME PRIDE 1171  
BASIN PAYWEIGHT 1682  
HA BLACKCAP LADY 1815  
BSF HOT LOTTO 1401  
ACA HIGH PRIME 1534

Production EPDs				Maternal EPDs				\$Values					
CED	BW	WW	YW	CEM	Milk	\$EN	\$M	\$W	\$F	\$G	\$B	\$C	
3	3.4	82	142	6	25	-46	33	63	129	40	169	252	
Carcass EPDs				CW	74	Marb	0.34	REA	0.68	Fat		-0.007	

Act. BW: 82/99 | WW: 686/105

Dam's Production: 3@94 BW | 3@108 WW | 2@107 YW

Glory Days has done a phenomenal job at our place. Here is a highlight of the heifer calves sired by him. She is absolutely one of the best calves of the calf crop. Dam is another front pasture type cow with an awesome record. Maternal brother by Scalehouse was our high selling bull a couple years ago.



LOT 52'S SIRE -  
S A V GLORY DAYS 1832



LOT 53 - TNT MARTHA 402

## LOT 53 TNT MARTHA 402

BD: 2/1/24

Open Heifer 21101128

Tattoo: 402

BAR R JET BLACK 5063  
LAR MAN IN BLACK  
JMB MAXINE TG 2131

CW522 1682 PAYWEIGHT C204 17  
TNT MARTHA 046  
TNT MARTHA 784

CONNEALY BLACK GRANITE  
BAR R IRIS ANITA 0113  
SITZ TOP GAME 561X  
JMB MAXINE DELUXE 9034  
CARTER'S PAYWEIGHT 1682-C204  
CW 543ROSELLA EILEENMERE 522  
TNT PERFORMAN 412  
VERMILION S MARTHA 4080

Production EPDs				Maternal EPDs				\$Values					
CED	BW	WW	YW	CEM	Milk	\$EN	\$M	\$W	\$F	\$G	\$B	\$C	
6	2.8	91	154	9	29	-42	69	8	119	59	178	300	
Carcass EPDs				CW	70	Marb	0.82	REA	0.64	Fat		0.042	

Act. BW: 81/99 | WW: 751/115

DAM'S PRODUCTION: 3@97 BW | 3@115 WW | 2@113 YW

This heifer has been a standout from early on. Big time EPD spread and a tremendous future in front of her. Her young dam has been an absolute rock star every year. Productive and fertile I'd expect the same from this female. Maternal sister is a highlight of our bred heifers at home.



LOT 51 & 53'S SIRE -  
LAR MAN IN BLACK



**LOTS 54-55**

## TOPP ANGUS

Paul Topp  
8205 14<sup>th</sup> St. NE  
Grace City, ND 58445  
701-650-8371  
www.toppangus.com  
topp@daktel.com



**LOT 54 – TOPP ERISKAY 4168**



**LOT 54'S DAM –  
COLEMAN ERISKAY 7305**



**LOT 55 – TOPP BARBARA 4079**

## **LOT 54** TOPP ERISKAY 4168

BD: 2/6/24

Open Heifer 21091094

Tattoo: 4168

DON APARICIO SERRUCHO57 MAXI  
**HUMMEL ARGENTINE**  
RUBETA FONTANA 7567-T/E-

S A V RESOURCE 1441  
**COLEMAN ERISKAY 7305**  
COLEMAN ERISKAY 3331

DON JOSE 176 MAXI  
DON APARICIO SERRANIAS 57  
CONSENZA DON ROBERTO 338 T/E  
RUBETA FONTANA 6207-T/E-  
RITO 707 OF IDEAL 3407 7075  
S A V BLACKCAP MAY 4136  
LEACHMAN RIGHT TIME  
SINCLAIR ERISKAY 2N1 7883

Production EPDs				Maternal EPDs			SValues					
CED	BW	WW	YW	CEM	Milk	SEN	\$M	\$W	\$F	\$G	\$B	\$C
4	2.8	63	110	5	18	-6	49	50	99	30	129	216
Carcass EPDs				CW	Marb	REA	0.8	Fat	0.049			

**Act. BW: 83/ET | WW: 617/ET**

Topp Eriskay 4168 is an outcross to our program. In an effort to bring the Coleman Eriskay family into our program we purchased a large embryo package combining the complete outcross Hummel Argentine known for functionality, great structure, & great phenotype with the incredible Eriskay 7305 (Resouce x Right Time). With many full sisters, we allowed Andrew & Logan to select their pick of the flush for this sale. We feel confident in the maternal strength, functionality, and complete soundness in Topp Eriskay 4168.



**LOT 54'S SIRE –  
HUMMEL ARGENTINE**

## **LOT 55** TOPP BARBARA 4079

BD: 1/12/24

Open Heifer 21028334

Tattoo: 4079

ELLINGSON PROFOUND 8155  
**ELLINGSON PROLIFIC**  
EA QUEEN 8070

SITZ DRIVE 625F  
**TOPP BARBARA 0123**  
TOPP BARBARA 6023

S POWERPOINT WS 5503  
EA ROSETTA 6157  
KOU PAL JUNEAU 797  
EA QUEEN 2350  
SITZ INVASION 574D  
SITZ MISS BURGESS 304D  
CONNEALY CAPITALIST 028  
TC BARBARA 3088

Production EPDs				Maternal EPDs			SValues					
CED	BW	WW	YW	CEM	Milk	SEN	\$M	\$W	\$F	\$G	\$B	\$C
4	3.8	89	150	13	31	-26	106	83	101	42	143	291
Carcass EPDs				CW	Marb	REA	0.57	Fat	0.076			

**Act. BW: 81/106 | WW: 709/111**

**Dam's Production: BWR 3/100 | WWR 3/107 | YWR 2/104**

Topp Barbara 4079 is offered right from the heart of our program. Combining our foundation Barbara 3088 with the proven maternal sires Capitalist 028 & Sitz Drive 625F with the outcross performance sire Prolific, Barbara 4079 has the potential, the look, and the pedigree to become a front line cow. Her dam Barbara 0123 is off to a great start with a 358 day calving interval on 3 calves with BR 3/100, WR 3/107, YR 2/104. Top 3% WW, 10% YW, 3% HP, 1% Claw, 1% Angle, 10% PAP, 1% \$M. We strive to produce genetics where the visual appraisal, actual data, & genetic potential match and Barbara 4079 hits it!



**LOTS 56-57**

## VALLEY VIEW FARM

Leroy Richard  
15683 53rd St SE  
Kindred, ND 58051  
701-799-0288  
ljrich120@yahoo.com



**LOT 56 – VVF CAPITALIST 1723**



**LOT 57 – VVF CAPITALIST 0423**

### LOT 56 VVF CAPITALIST 1723

BD: 5/11/23

Bull 20859391

Tattoo: 1723

LD CAPITALIST 316  
S 316 CAPITALIST 0108  
S QUEEN ESSA 1290

SJH CONSENSUS H 3229  
VVF CONNEALY QUEEN 0079  
Z A DISCOVERED THE QUEEN

CONNEALY CAPITALIST 028  
LD DIXIE ERICA 2053  
S WHITLOCK 179  
S QUEEN ESSA 1290  
CONNEALY CONSENSUS 7229  
BOBO BLACKCAP 9522  
V A R DISCOVERY 2240  
M A R QUEEN SUSANN 1118

Production EPDs				Maternal EPDs				\$Values					
CED	BW	WW	YW	CEM	Milk	SEN	\$M	\$W	\$F	\$G	\$B	\$C	
5	2.9	74	136	7	35	-27	63	72	105	63	168	281	
Carcass EPDs				CW	Marb	0.73	REA	1.04	Fat	-0.017			

Act. BW: 78 | WW: 810 | YW: 1328

This bull is a performance bull. Top 25% for WW & \$W, top 20% for YW, top 35% for \$F. A long and thick bull that will put pounds on your calf crop. Sire has 10 out of 14 pathfinders in his pedigree.



### LOT 57 VVF CAPITALIST 0423

BD: 4/27/23

Bull 20859387

Tattoo: 423

LD CAPITALIST 316  
S 316 CAPITALIST 0108  
S QUEEN ESSA 1290

SJH CONSENSUS H 3229  
VVF CONNEALY ELBA 0157  
RESSLER ELBA 513

CONNEALY CAPITALIST 028  
LD DIXIE ERICA 2053  
S WHITLOCK 179  
S QUEEN ESSA 1290  
CONNEALY CONSENSUS 7229  
BOBO BLACKCAP 9522  
DEER VALLEY ALL IN  
MOGCK ELBA 2019

Production EPDs				Maternal EPDs				\$Values					
CED	BW	WW	YW	CEM	Milk	SEN	\$M	\$W	\$F	\$G	\$B	\$C	
5	2	74	131	3	27	-5	87	75	97	79	176	315	
Carcass EPDs				CW	Marb	1.17	REA	0.89	Fat	0.038			

Act. BW: 70 | WW: 780 | YW: 1275

This bull is in the top 15% for maternal. Top 10% for \$G, top 20% for \$W, top 25% for \$C, top 25% for \$EN. This is a cow maker bull. A very thick and clean animal. Retaining 1/3 semen interest.



**LOT 56 & 57'S SIRE –  
S 316 CAPITALIST 0108**



LOTS 58

## VANDEBERGHE'S FLYING V ANGUS

Kelsey Vandenberghe or  
Paul Vandenberghe  
6147 42nd St SE  
Cleveland, ND 58424



LOT 58 –  
FLYING V  
VIROQUA 113L

## LOT 58 FLYING V VIROQUA 113L

BD: 2/27/23

Bull 20723750

Tattoo: 113L

WOODHILL PATENT  
DAMERON VIROQUA  
WOODHILL EVERGREEN B124-F168

BUBS SOUTHERN CHARM AA31  
FLYING V PRIMROSE LADY 43G  
FLYING V PRIMROSE LADY 82C

BALDRIDGE COLONEL C251  
WOODHILL EVERGREEN Y10-C62  
CONNEALY CONFIDENCE PLUS  
WOODHILL EVERGREEN Y295-B124  
SILVEIRAS CONVERSION 8064  
HICKORY HILL ERICA 009  
B P F SPECIAL FOCUS 504  
FLYING V PRIMROSE 47T

Production EPDs				Maternal EPDs				SValues							
CED	BW	WW	YW	CEM	Milk	SEN	\$M	\$W	\$F	\$G	\$B	\$C			
7	0.9	83	153	10	25	-32	65	75	119	77	196	319			
Carcass EPDs				CW	Marb	1.06	REA	1.02	Fat	0.013					

Act. BW: 88/102 | WW: 710/105 | YW: 1284/107

Dam's Production: BWR: 3@104 | WWR: 3@100 | YWR: 2@104

Selling 2/3 interest and full possession. A herd sire prospect with tremendous depth, high growth, a great set of carcass traits and an excellent maternal pedigree. He stands down on a set of big footed, sound structured feet and legs. 113L was collected at a year of age at ORigen with over 90% fertility on his first jump; he sells with the option to take 100 straws. We used him very heavily in our breeding program, with over 50 calves expected. Maternal brother Flying V Western Edge 9J, has also been used extensively posting WR 55@101 YR 31@101 and sold in the Black Hills Stock Show



LOT 58'S DAM –  
FLYING V PRIMROSE LADY 43G

LOTS 59

## WINTERS LIVESTOCK

Bodie Winters  
PO Box 114  
Binford, ND 58416  
406-861-4040  
bodiewinters1@gmail.com



LOT 59 –WL DELIA 4062

## LOT 59 WL DELIA 4062

BD: 1/11/24

Open Heifer 21089541

Tattoo: 4062

SITZ RESILIENT 10208  
CONNEALY CRAFTSMAN  
BLACK CATHY OF CONANGA 8521

VNDY TCCO LOONIE 800F  
TOPP DELIA 1144  
MFA DELIA 28G

SITZ STELLAR 726D  
SITZ MISS BURGESS 1856  
CONNEALY NIOBRARA 5451  
BLACK CARLA OF CONANGA 450  
BROOKING BANK NOTE 4040  
PONDEROSA JENN'S 1406FAY135A  
FF BLACK GOLD JF C19  
MFA DELIA 115C

Production EPDs				Maternal EPDs				SValues							
CED	BW	WW	YW	CEM	Milk	SEN	\$M	\$W	\$F	\$G	\$B	\$C			
-2	2.4	64	104	10	29	9	93	71	66	55	121	250			
Carcass EPDs				CW	33	Marb	0.70	REA	0.86	Fat	0.057				

Act. BW: 67 | WW: 611 Delia is very eye appealing. She is long-spined, deep, and big topped. By Craftsman she will be an asset in the future.





**LOTS 60A & B**

## FLECK RANCH

Les Fleck  
6180 Hwy 6  
Solen, ND 58570  
701-391-5577  
ljfranch@yahoo.com



**LOT 60 A & B'S DONOR DAM –  
FLECK'S BLACK ANNIE 5065**



**LOT 60 A & B'S MATERNAL SISTER  
FLECKS BLACK PRES 0656**

### **LOT 60A 3 IVF EMBRYOS**

Consignor: Fleck Angus

ELLINGSON PROFOUND 8155  
**ELLINGSON PROLIFIC**  
EA QUEEN 8070

BASIN PAYWEIGHT 1075  
**FLECK'S BLACK ANNIE 5065**  
PINE COULEE BLACK ANNIE U7

S POWERPOINT WS 5503  
EA ROSETTA 6157  
KOU PAL JUNEAU 797  
EA QUEEN 2350  
VERMILION PAYWEIGHT J847  
BASIN LUCY 3829  
CONNEALY ONWARD  
WAR HILL BLACKBONE ANNIE

Sire's Production EPDs				Maternal EPDs				\$Values						
CED	BW	WW	YW	CEM	Milk	\$EN	\$M	\$W	\$F	\$G	\$B	\$C		
1	3.9	87	142	12	15	-9	113	66	125	53	177	343		
Carcass EPDs				CW	85	Marb	0.65	REA	0.67	Fat	0.018			
Dam's Production EPDs				Maternal EPDs				\$Values						
CED	BW	WW	YW	CEM	Milk	\$EN	\$M	\$W	\$F	\$G	\$B	\$C		
2	2.6	78	130	7	18	-28	61	62	115	37	152	258		
Carcass EPDs				CW	63	Marb	0.29	REA	0.66	Fat	0.001			

Selling 3 IVF Embryos. Fleck's Black Annie 5065 is our #1 donor. There will be 12 sons features in our production sale Feb 13, 2025. We have 15 daughters working in our herd, 2 of which are also in our donor pen. True Angus genetics, balanced EPD's. beautiful udder, good feet and legs, Top 3% doc score. Top income producing cow in our herd. Mated to Ellingson Prolific. Foot improver top 1%, maternal Top 1%, loaded with muscle and depth of body. This should be an exiting mating of top Angus genetics.

### **LOT 60B 3 IVF EMBRYOS**

Consignor: Fleck Angus

ELLINGSON PROFOUND 8155  
**ELLINGSON PROLIFIC**  
EA QUEEN 8070

BASIN PAYWEIGHT 1075  
**FLECK'S BLACK ANNIE 5065**  
PINE COULEE BLACK ANNIE U7

S POWERPOINT WS 5503  
EA ROSETTA 6157  
KOU PAL JUNEAU 797  
EA QUEEN 2350  
VERMILION PAYWEIGHT J847  
BASIN LUCY 3829  
CONNEALY ONWARD  
WAR HILL BLACKBONE ANNIE

Sire's Production EPDs				Maternal EPDs				\$Values						
CED	BW	WW	YW	CEM	Milk	\$EN	\$M	\$W	\$F	\$G	\$B	\$C		
1	3.9	87	142	12	15	-9	113	66	125	53	177	343		
Carcass EPDs				CW	85	Marb	0.65	REA	0.67	Fat	0.018			
Dam's Production EPDs				Maternal EPDs				\$Values						
CED	BW	WW	YW	CEM	Milk	\$EN	\$M	\$W	\$F	\$G	\$B	\$C		
2	2.6	78	130	7	18	-28	61	62	115	37	152	258		
Carcass EPDs				CW	63	Marb	0.29	REA	0.66	Fat	0.001			

Selling 3 IVF Embryos. Fleck's Black Annie 5065 is our #1 donor. There will be 12 sons features in our production sale Feb 13, 2025. We have 15 daughters working in our herd, 2 of which are also in our donor pen. True Angus genetics, balanced EPD's. beautiful udder, good feet and legs, Top 3% doc score. Top income producing cow in our herd. Mated to Ellingson Prolific. Foot improver top 1%, maternal Top 1%, loaded with muscle and depth of body. This should be an exiting mating of top Angus genetics.

**LOT 60 A & B'S SIRE –  
ELLINGSON PROLIFIC**





LOT 61-62

## BROWN ANGUS RANCH

Justin Brown  
4115 Hwy 25  
Center, ND 58530  
701-207-0054  
justin@brownsangusranch.com

### LOT 61 3 OR 6 IVF EMBRYOS

Consignor: Browns Angus Ranch

MUSGRAVE 316 COLOSSAL 137  
S A V COURAGE 3003  
S A V MADAME PRIDE 4407  
MUSGRAVE SKY HIGH 1535  
MUSGRAVE BARBARA 1721  
MUSGRAVE BARBARA 1411-2266

LD CAPITALIST 316  
MUSGRAVE LADY BARBARA 545  
S A V RESOURCE 1441  
S A V MADAME PRIDE 0235  
MUSGRAVE BIG SKY  
FLAG QUEEN W 00649  
S A V REGISTRY 2831  
TRIPLE B BARBARA 2266

Sire's Production EPDs				Maternal EPDs				\$Values				
CED	BW	WW	YW	CEM	Milk	\$EN	\$M	\$W	\$F	\$G	\$B	\$C
1+6	1+1.0	1+65	1+112	1+7	1+23	-15	65	62	94	48	142	249
Carcass EPDs				CW	57	Marb	0.48	REA	0.85	Fat	0.001	
Dam's Production EPDs				Maternal EPDs				\$Values				
CED	BW	WW	YW	CEM	Milk	\$EN	\$M	\$W	\$F	\$G	\$B	\$C
10	1.6	50	91	7	30	-13	61	50	86	27	113	208
Carcass EPDs				CW	31	Marb	0.31	REA	0.35	Fat	0.098	

Selling 3 or 6 IVF guarantee 1 of 3 or 2 of 6. A major sale attraction and opportunity to get in on the front end of this new mating for us. Barbara 1721 has been a major producer for us and has been a major contributor in our program. She is the grand dam of our 2024 high seller at \$15,000, Brown Decision Maker 3022 who sold to Oak Row Angus, MI. This mating should compliment the style and power of 1721 very well and we are anticipating a great offering in years to come. She is 3@96 for birth, 3@104 for weaning, 2@106 for yearling weight. 6 calves at 365 day interval.



LOT 61'S DAM –  
MUSGRAVE BARBARA 1721



LOT 61'S SIRE –  
S A V COURAGE 3003

### LOT 62 3 IVF EMBRYOS

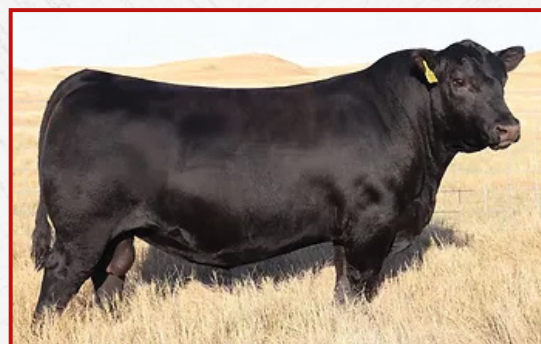
Consignor: Browns Angus Ranch:

S A V AMERICA 8018  
S A V GLORY DAYS 1832  
S A V MADAME PRIDE 3145  
S A V RENOVATION 6822  
S A V BLACKCAP MAY 0589  
S A V BLACKCAP MAY 1808

S A V PRESIDENT 6847  
S A V MADAME PRIDE 0075  
S A V PRIORITY 7283  
S A V MADAME PRIDE 1171  
S A V RENOWN 3439  
S A V MADAME PRIDE 0151  
S A V NET WORTH 4200  
S A V MAY 2397

Sire's Production EPDs				Maternal EPDs				\$Values				
CED	BW	WW	YW	CEM	Milk	\$EN	\$M	\$W	\$F	\$G	\$B	\$C
1	5.1	83	148	1	20	-45	30	52	132	45	177	260
Carcass EPDs				CW	73	Marb	0.32	REA	0.92	Fat	-0.052	
Dam's Production EPDs				Maternal EPDs				\$Values				
CED	BW	WW	YW	CEM	Milk	\$EN	\$M	\$W	\$F	\$G	\$B	\$C
4	4.0	79	0136	3	27	-34	40	65	111	36	147	231
Carcass EPDs				CW	65	Marb	0.47	REA	0.50	Fat	0.100	

Selling 3 IVF embryos, guarantee 1 pregnancy out of 3. Embryos stored at Transova Genetics in Iowa. This is a powerful maternally bred mating from the flush sister to the \$40,000 SAV John Wayne. A superb uddered donor female that has an abundance of depth and power in a nice package. We have a darn good flush of bulls that will be offered in our 2025 production sale from Blackcap May 0589. Blackcap May 1808 is the dam of Lowery and Sirebuyer sensation S A V Double Wide who has seen extensive use around the land. This is a great opportunity to get in on one of our best young up and coming females on the ranch.



LOT 62'S SIRE –  
S A V GLORY DAYS 1832



LOT 62'S DONOR –  
SAV BLACKCAP MAY 0589



LOTS 63

## BRUNER ANGUS RANCH

Travis Bruner  
4049 12th Ave NE  
Drake, ND 58736  
701-626-2070  
brunerangusranch@gmail.com



» LOT 63'S SIRE –  
DEEP CREEK  
SQUARE DEAL



« LOT 63'S  
DONOR –  
BAR MISS NO  
DOUBT 0126

LOTS 64-66

## 2TEN CATTLE COMPANY

Jeremy or Hannah Schmidgall  
20893 457th Ave  
Vining, MN 56588  
320-424-2215  
j.schmidgall@outlook.com



LOT 64'S DAM – SPRING COVE LIZA 754

## LOT 63 3 IVF EMBRYOS

Consignor: Bruner Angus Ranch

MYERS FAIR-N-SQUARE M39  
DEEP CREEK SQUARE DEAL  
DEEP CREEK STEP LASS 064

HOOVER NO DOUBT  
BAR MISS NO DOUBT 0126  
MISS WIX 348 OF S A F

WOODHILL BLUEPRINT  
MYERS MISS BEAUTY M136  
RBM STEP AHEAD C80  
DEEP CREEK TOTAL LASS 701  
MOGCK BULLSEYE  
MISS BLACKCAP ELLSTON J2  
CONNEALY FINAL PRODUCT  
MISS WIX 124 OF SAF

Sire's Production EPDs				Maternal EPDs			\$Values					
CED	BW	WW	YW	CEM	Milk	\$EN	\$M	\$W	\$F	\$G	\$B	\$C
5	1.3	86	145	8	32	-24	94	90	110	66	176	322
Carcass EPDs				CW	67	Marb	0.92	REA	0.83	Fat	0.046	

Dam's Production EPDs				Maternal EPDs			\$Values					
CED	BW	WW	YW	CEM	Milk	\$EN	\$M	\$W	\$F	\$G	\$B	\$C
-7	4.0	74	137	11	13	-15	56	48	116	57	174	282
Carcass EPDs				CW	65	Marb	0.79	REA	0.64	Fat	0.43	

• This is an opportunity to acquire a proven mating with great earning potential. These embryos are full siblings to a standout flush of calves we weaned this fall and currently have at Bruner Angus Ranch. There are two bull calves that will highlight our 2025 February production sale and 3 heifer calves that are shaping into an exciting group. The mating consistently produced a wide base, extreme depth from their rib through their flank, and a very attractive front 1/3.

• The dam in this mating t aka "Charlotte" was Rayna's show heifer the summer of 2021. She has always had a great disposition, has great mothering instincts, and is structurally flawless from the ground up! She has a BWR of 3/98, WWR 3/103, and a YWR 3/103. Her first calf she raised was a \$10,000 yearling bull in our 2023 production sale. The grandmother to 0126 is also a donor and Pathfinder at Bruner Angus Ranch currently at 12 years of age.

• The sire Deep Creek Square Deal was our selection with Select Sires in the 2023 Deep Creek Angus sale for \$50,000. Progeny reports after the first calf crop has been weaned are tremendous! Square Deal was used at large number of high-profile registered herds with excellent results. Square Deal is a sire that you will be hearing a lot more about coming into the spring 2025 sale season.

• 3 IVF embryos – guaranteeing 1 pregnancy if implanted by a certified embryologist

## LOT 64 3 IVF EMBRYOS

Consignor: 2 Ten Cattle Company

HPCA VERACIOUS  
44 FAITHFUL 2764  
DCF RUBY OF TIFFANY 6799

SYDGEN 928 DESTINATION 5420  
SPRING COVE LIZA 754  
SPRING COVE LIZA 021

MILL BRAE IDENTIFIED 4031  
H P C A SUNRISE A246  
V A R GENERATION 2100  
DCF RUBY OF TIFFANY 7592  
B/R DESTINATION 727-928  
SHADY BROOK ENTENSE 76D 29H  
C C A EMBLAZON 702  
SPRING COVE LIZA 721

Sire's Production EPDs				Maternal EPDs			\$Values					
CED	BW	WW	YW	CEM	Milk	\$EN	\$M	\$W	\$F	\$G	\$B	\$C
7	2.9	88	158	10	222	-27	67	73	144	106	250	392
Carcass EPDs				CW	86	Marb	1.68	REA	1.30	Fat	0.059	

Dam's Production EPDs				Maternal EPDs			\$Values					
CED	BW	WW	YW	CEM	Milk	\$EN	\$M	\$W	\$F	\$G	\$B	\$C
6	1.5	55	104	11	30	-12	75	56	79	70	149	268
Carcass EPDs				CW	34	Marb	0.95	REA	0.71	Fat	-0.014	

Spring Cove Liza 754 is a cow you wish you had 100 of. She has a beautiful udder at 8 years old and carries her condition very well while milking very hard. 754's Dam is the mother of Spring Cove Reno. 44 Faithful 2764 is the Krebs/ Thomas Ranch purchase from 44 farms last year. We are excited to see these calves



## LOT 65 3 IVF EMBRYOS

Consignor: 2Ten Cattle Company

HPCA VERACIOUS  
BNWZ VALIDITY 2491  
RB LADY DENVER 167-453

MOGCK ENTICE  
CRAZY K BLACKBIRD 0032  
VINTAGE BLACKBIRD 7260

MILL BRAE IDENTIFIED 4031  
H P C A SUNRISE A246  
EXAR DENVER 2002B  
R B LADY PARTY 167-305  
SYDGEN ENHANCE  
MOGCK ERICA 2255  
BASIN PAYWEIGHT 1682  
SANDPOINT BLACKBIRD 8809

Sire's Production EPDs				Maternal EPDs				\$Values					
CED	BW	WW	YW	CEM	Milk	SEN	\$M	\$W	\$F	\$G	\$B	\$C	
8	2.2	81	138	13	30	-22	78	81	142	111	253	406	
Carcass EPDs				CW	96	Marb	1.55	REA	1.69	Fat	-0.026		
Dam's Production EPDs				Maternal EPDs				\$Values					
CED	BW	WW	YW	CEM	Milk	SEN	\$M	\$W	\$F	\$G	\$B	\$C	
8	1.1	79	141	9	27	-43	57	70	116	84	200	316	
Carcass EPDs				CW	62	Marb	1.24	REA	0.80	Fat	0.002		

Blackbird 0032 from the famed Blackbird family that has been big producers for Riverbend, Pollard, and Carlson Cattle Co. 0032 first natural calf brought \$20,000 1/2 interest in the D&W Angus sale to FB Genetics. A year later she sold a package of 3 embryos to Heisman for \$1100 each. She has a royal pedigree, high growth with Frame, and EPD upgrading genetics.



LOT 65 & 66'S SIRE – BNWZ VALIDITY 2491

## LOT 66 3 IVF EMBRYOS

Consignor: 2Ten Cattle Company

HPCA VERACIOUS  
BNWZ VALIDITY 2491  
RB LADY DENVER 167-453

LAR MAN IN BLACK  
RIDL JOANNE 357  
RIDL JOANNE 069

MILL BRAE IDENTIFIED 4031  
H P C A SUNRISE A246  
EXAR DENVER 2002B  
R B LADY PARTY 167-305  
BAR R JET BLACK 5063  
JMB MAXINE TG 2131  
SITZ ACCOMPLISHMENT 720F  
HAF JOANNE 8156

Sire's Production EPDs				Maternal EPDs				\$Values					
CED	BW	WW	YW	CEM	Milk	SEN	\$M	\$W	\$F	\$G	\$B	\$C	
8	2.2	81	138	13	30	-22	78	81	142	111	253	406	
Carcass EPDs				CW	96	Marb	1.55	REA	1.69	Fat	-0.026		
Dam's Production EPDs				Maternal EPDs				\$Values					
CED	BW	WW	YW	CEM	Milk	SEN	\$M	\$W	\$F	\$G	\$B	\$C	
13	-0.7	82	143	10	11	-43	26	58	105	54	159	232	
Carcass EPDs				CW	62	Marb	0.79	REA	0.61	Fat	0.80		

Ridl Joanne 357 was the high selling heifer on the 2024 Ridl production sale in Dickenson. 357 is a clean fronted Man in black heifer we flushed BNWZ Validity combining the power of HPCA Veracious and RB Lady Denver 453

LOTS 67 & 74

**VETSCH TLC'S  
ANGUS**  
TOM VETSCH  
575 62ND ST SE  
HAZELTON, ND 58544  
701-202-4904

## LOT 67 3 OR 6 IVF EMBRYOS

Consignor: Vetsch TLC's Angus

SITZ FEAT 729H  
SPRING COVE GRANT 200K  
SPRING COVE CAROL 811

S A V REGARD 4863  
JANSSEN BLACKCAP MAY 7079  
S A V BLACKCAP MAY 1804

SITZ ACCOMPLISHMENT 720F  
SITZ SITZ FOREVER LADY 12F  
SPRING COVE RENO 4021  
SPRING COVE CAROL 655  
S A V RESOURCE 1441  
S A V BLACKCAP MAY 5530  
S A V IRON MOUNTAIN 8066  
S A V MAY 2397

Sire's Production EPDs				Maternal EPDs				\$Values					
CED	BW	WW	YW	CEM	Milk	SEN	\$M	\$W	\$F	\$G	\$B	\$C	
8	-0.3	80	139	12	26	-15	93	82	103	64	167	310	
Carcass EPDs				CW	65	Marb	1.04	REA	0.54	Fat	0.101		
Dam's Production EPDs				Maternal EPDs				\$Values					
CED	BW	WW	YW	CEM	Milk	SEN	\$M	\$W	\$F	\$G	\$B	\$C	
-3	6.6	82	134	4	29	-32	51	64	104	37	141	234	
Carcass EPDs				CW	61	Marb	0.17	REA	0.8	Fat	-0.052		

Selling 3 or 6 IVF guaranteed 1 or 2 pregnancies out of Janssen Blackcap May 7079 and Spring Cove Grant. Janssen Blackcap May 7079 was our pick at Janssens Mature Cow Herd Dispersal. After seeing her with her perfect udder and teats along side with her stunning 6 week old heifer calf. 7079 is a long bodied, deep hipped proven power cow. This powerful producer is a triple-bred Blackcap May who has earned a progeny birth ratio of 92 balanced with a progeny weaning ratio of 110 on three natural calves and has served as a valued foundation donor for Janssens Her son in 2022 was both the heaviest 205 day weight and 365 day weight and lot 2 bull in that offering and in 2023 another son was a top feature. 7079 is a daughter of the \$200,000 sire SAV Regard and is from a donor dam who is a flush sister to the \$200,000 sire SAV Angus Valley 1867. The sire to these embryos are out of Spring Cove Grant 200K who is the \$400,000 all time record seller of the historic 105 year old Spring Cove Ranch, selected by the partnership of Lindskov LT Ranch and Montana Ranch. 200K is a generational sire for the traits impactful for profitability in today's beef industry. Backed by generations of proven and productive dams. Grant is from a now-deceased dam earning a progeny WR of 3 @110 and YR 3@ 106 in a practical and real world environment. He maintains the right kind of growth curve needed by commercial ranchers with WW and YW in the top 15 percent balanced with top 25 percent moderated MW and top 35 percent SEN Grant also excels for convenience traits with rankings 2% \$M 4% \$W 10% \$Claw and 15% HP.



LOT 67'S DAM –  
JANSSEN  
BLACKCAP MAY  
7079



LOT 67'S SIRE –  
SPRING COVE GRANT 200K



**LOT 68, 71-73**

## WENDEL LIVESTOCK

10213 68th St SE  
LaMoure, ND 58458  
701-710-0425  
701-709-0777  
smmcarr@daktel.com



**LOT 68'S SIRE – CONNEALY VALIDATION**

**LOTS 69-70**

## BECKER STOCK FARM

Tom Becker  
8861 11th Ave SE  
Minot, ND 58703  
Tom-701-720-2299  
Garrett- 701-721-9400  
becker@minot.com

**LOT 70**

## BASIN PAYWEIGHT 1682 – 4 UNITS

Consignor: Becker Angus DOB: 2/11/11 Reg: 17038724

VERMILION PAYWEIGHT J847  
**BASIN PAYWEIGHT 006S**  
BASIN LUCY 3829  
  
HARB PENDLETON 765 J H  
**21AR O LASS 7017**  
21AR O LASS F24A

VERMILION DATELINE 7078  
VERMILION LASS 7969  
C A FUTURE DIRECTION 5321  
S A V FINAL ANSWER 0035  
TC STOCKMAN 365  
H A R B BLACK LADY 375 J H  
VDAR LEGEND 1281  
21AR O LASS A24

Production EPDs				Maternal EPDs				\$Values			
CED	BW	WW	YW	CEM	Milk	SEN	\$M	\$W	\$F	\$G	\$C
6	0.7	65	116	10	30	-4	66	83	100	45	253
Carcass EPDs				CW	Marb	REA	0.26	Fat	0.029		

**LOT 68**

## 3 CONVENTIONAL EMBRYOS

Consignor: Wendel Livestock

CONNEALY VINDICATE 0366  
**CONNEALY VALIDATION**  
ENVY MARRA OF CONANGA 7745  
  
JAUER 353 TRAVELER 589 27  
**SITZ FLORABELLE FANNY 5053**  
SITZ FLORABELLE FANNY 1293

CONNEALY NATIONAL 390C  
BINDA OF CONANGA 833J  
CONNEALY UPTOWN 098E  
ENVY MARIA OF CONANGA 5855  
JAUER 7111 TRAVELER 353 719  
JAUER 6807 TRAVELER 27 085  
SITZ ALLIANCE 6595  
SITZ FLORABELLE FANNY 706

Sire's Production EPDs				Maternal EPDs				\$Values			
CED	BW	WW	YW	CEM	Milk	SEN	\$M	\$W	\$F	\$G	\$C
7	3.4	95	160	8	26	-23	92	87	134	73	360
Carcass EPDs				CW	Marb	0.85	REA	1.33	Fat	-0.025	

Dam's Production EPDs				Maternal EPDs				\$Values			
CED	BW	WW	YW	CEM	Milk	SEN	\$M	\$W	\$F	\$G	\$C
13	-0.7	82	143	10	11	-43	26	58	105	54	232
Carcass EPDs				CW	Marb	0.79	REA	0.61	Fat	0.80	

Sitz Florabelle Fanny 5053 is the dam of the \$120,000 ST sire Sitz Intuition. 5053 is a very fertile productive cow; at Sitz Angus she maintained a 364-day calving interval and her production record showed an average BR of 96 and WR of 101 consistently balancing significant calving ease with above average performance. Fanny is pictured as a coming 9-year-old and still carries her functional appearance as a coming 12-year-old today. Our interest and appreciation of was confirmed with friend and fellow North Dakota breeder Justin Spickler at Spickler Ranch North, Glenfield ND. The Florabelle Fanny cow family comes with extra fleshing ability, maternal functionality, sound uddered, and milk very well.

**LOT 69**

## BAR-E-L NATURAL LAW 52Y – 3 UNITS

Consignor: Becker Angus DOB: 2/18/11 Reg: 19310190

G A R GRID MAKER  
**S A V BISMARCK 5682**  
S A V ABIGALE 0451

BAR E L MCC 365 ICON 20H  
**BAR-E-L MAGNOLIA 143K**  
DOUBLE FOUR DUCHESS 12G

G D A R TRAVELER 044  
G A R PRECISION 2536  
SCHOENES FIX IT 826  
S A V ABIGALE 6062  
TC STOCKMAN 365  
STRATHMORE APRIL 3A  
HF LANCER 77D  
KBJ DUCHESS 125A

Production EPDs				Maternal EPDs				\$Values			
CED	BW	WW	YW	CEM	Milk	SEN	\$M	\$W	\$F	\$G	\$C
2	3.2	55	104	21	82	-18	44	38	103	43	232
Carcass EPDs				CW	Marb	0.44	REA	0.64	Fat	0.014	

**LOT 71**

## LAR MAN IN BLACK – 10 UNITS

Consignor: Wendel Livestock DOB: 1/27/20 Reg: 19955191

CONNEALY BLACK GRANITE  
**BAR R JET BLACK 5063**  
BAR R IRIS ANITA 0113  
  
SITZ TOP GAME 561X  
**JMB MAXINE TG 2131**  
JMB MAXINE DELUXE 9034

CONNEALY CONSENSUS 7229  
EURA ELGA OF CONANGA 9109  
SITZ UPWARD 307R  
BAR R ANITA 7081  
GDAR GAME DAY 449  
SITZ PRIDE 88T  
STEVENSON CE DELUXE 1914  
JMB MAXINE 720

Production EPDs				Maternal EPDs				\$Values			
CED	BW	WW	YW	CEM	Milk	SEN	\$M	\$W	\$F	\$G	\$C
8	2.8	93	160	9	23	-37	69	76	133	71	334
Carcass EPDs				CW	Marb	1.07	REA	0.83	Fat	0.066	



## LOT 72 TEHAMA PATRIARCH F028

### 10 SEXED UNITS & 5 CONVENTIONAL UNITS

Consignor: Wendel Livestock DOB: 2/3/17 Reg: 18981191

HOOVER DAM  
S S NIAGARA Z29  
JET S S X144

CONNEALY THUNDER  
TEHAMA ELITE BLACKBIRD D826  
TEHAMA ELITE BLACKBIRD Z630

SYDGEN C C & 7  
ERICA OF ELLSTON C124  
B/R NEW DAY 454  
JET S S T151  
BALDRIDGE KABOOM K243 KCF  
PARKA OF CONANGA 241  
MCC DAYBREAK  
TEHAMA ELITE BLACKBIRD T766

Production EPDs				Maternal EPDs		SValues						
CED	BW	WW	YW	CEM	Milk	SEN	SM	SW	SF	SG	SB	SC
14	-1.8	70	134	15	29	-23	84	80	100	65	165	298
Carcass EPDs				CW	Marb	REA	0.91	0.80	Fat	0.039		

## LOT 73 DVAR HUCKLEBERRY 871- 10 UNITS

Consignor: Wendel Livestock DOB: 2/3/18 Reg: 19211568

CONNEALY CONFIDENCE 0100  
CONNEALY CONFIDENCE PLUS  
ELBANNA OF CONANGA 1209

HOOVER DAM  
DVAR HENRIETTA PRIDE 4001  
SITZ HENRIETTA PRIDE 643T

CONNEALY TOBIN  
BECKA GALA OF CONANGA 8281  
CONNEALY CONSENSUS  
ELBASTA OF CONANGA 9703  
SYDGEN C C & 7  
ERICA OF ELLSTON C124  
CONNEALY ONWARD  
SITZ HENRIETTA PRIDE 81M

Production EPDs				Maternal EPDs		SValues						
CED	BW	WW	YW	CEM	Milk	SEN	SM	SW	SF	SG	SB	SC
3	1.8	70	124	1	22	2	90	65	128	76	203	353
Carcass EPDs				CW	Marb	REA	0.85	1.55	Fat	-0.023		

## LOT 74A SPRING COVE RENO- 1 UNIT

Consignor: Vetsch TLC's Angus DOB: 2/12/14 Reg: 17926446

SUMMITCREST COMPLETE 1P55  
KM BROKEN BOW 002  
SUMMITCREST PRINCESS OP12

C C A EMBLAZON 702  
SPRING COVE LIZA 021  
SPRING COVE LIZA 721

C F RIGHT DESIGN 1802  
SUMMITCREST ELBA 1M17  
BASIN AMBUSH 8161  
SUMMITCREST PRINCESS 2J10  
O C C EMBLAZON 854E  
LIMESTONE BLACKCAP R128  
HYLINE RIGHT TIME 338  
SPRING COVE LIZA 146

Production EPDs				Maternal EPDs		SValues						
CED	BW	WW	YW	CEM	Milk	SEN	SM	SW	SF	SG	SB	SC
7	1.2	81	135	8	32	-16	105	105	97	85	165	319
Carcass EPDs				CW	Marb	REA	1.14	0.72	Fat	-0.036		

Semen is located at Transova-Iowa

## LOT 74B SPRING COVE RENO- 1 UNIT

Consignor: Vetsch TLC's Angus DOB: 2/12/14 Reg: 17926446

SUMMITCREST COMPLETE 1P55  
KM BROKEN BOW 002  
SUMMITCREST PRINCESS OP12

C C A EMBLAZON 702  
SPRING COVE LIZA 021  
SPRING COVE LIZA 721

C F RIGHT DESIGN 1802  
SUMMITCREST ELBA 1M17  
BASIN AMBUSH 8161  
SUMMITCREST PRINCESS 2J10  
O C C EMBLAZON 854E  
LIMESTONE BLACKCAP R128  
HYLINE RIGHT TIME 338  
SPRING COVE LIZA 146

Production EPDs				Maternal EPDs		SValues						
CED	BW	WW	YW	CEM	Milk	SEN	SM	SW	SF	SG	SB	SC
7	1.2	81	135	8	32	-16	105	105	97	85	165	319
Carcass EPDs				CW	Marb	REA	1.14	0.72	Fat	-0.036		

Semen is located at Transova-Iowa

# Thank You!

Thank you for supporting the consignors to the 2025 ND Angus Association Select Bull and Female Sale. If you like to continue supporting them, check out their marketing plans for the spring of 2025.

**Anderson Angus Ranch**  
Chaffee, ND  
Private Treaty

**Becker Stock Farm**  
Minot, ND  
2-19-25 Online DVAuction

**Browns Angus Ranch**  
Center, ND  
2-9-25 at the Ranch

**Bruner Angus Ranch**  
Drake, ND  
2-16-25 at the Ranch

**Carlson Angus**  
Regent, ND  
2-22-25 at the Ranch

**Erdmann Angus Ranch**  
Lisbon, ND  
2-28-25 at Ransom County Fairgrounds

**Fleck Ranch**  
Solen, ND  
2-13-25 at the Ranch

**Four Hill Farms**  
Barnesville, MN  
4-4-25 at the Ranch

**Harding Angus**  
Tolna, ND  
2-28-25 Online DVAuction

**Haugen Cattle Company**  
Hannaford, ND  
3-28-25 at Kist Livestock

**Lennick Ranch**  
New Salem, ND  
Private Treaty

**Montgomery Ranch/  
Hansen Sisters**  
Carrington, ND  
Private Treaty

**Nelson Angus**  
Egeland, ND  
2-8-25 at the Ranch

**Nord Angus**  
Wolverton, MN  
2-10-25 Online DVAuction

**Petersen Farms**  
Bowbells, ND  
Private Treaty

**Reese Family Angus**  
Hancock, MN  
Private Treaty

**A&M Cattle Company**  
Evansville, MN  
Private Treaty

**TNT Angus**  
Rock Lake, ND  
2-26-25 Online DVAuction

**Topp Angus**  
Grace City, ND  
4-11-25 At Kist Livestock

**2Ten Cattle Company**  
Vining, MN  
Private Treaty

**Valley View Farm**  
Kindred, ND  
Private Treaty

**Vandenberghe Flying V  
Angus**  
Cleveland, ND  
Private Treaty

**Vetsch TLC Angus**  
Hazelton, ND  
Private Treaty

**Wendel Livestock**  
LaMoure, ND  
5-6-25 at the Ranch

**Winters Livestock**  
Binford, ND  
4-11-25 at Kist Livestock



# NORTH DAKOTA ANGUS ASSOCIATION ENDOWMENT

## -Growing Stronger with Your Support!

Thanks to the generosity of the heifer donors, Fast Angus of New Salem, raffle winner Evan Lemere of Bismarck and the many ticket purchasers, the North Dakota Angus Endowment is growing stronger and stronger each year. The money raised from this raffle helps provide scholarship and leadership development opportunities for North Dakota Junior Angus Association members.

### HEIFER DONORS:

Fast Angus, New Salem

### HEIFER WINNER:

Evan Lemere, Bismarck  
(not pictured)



## THANK YOU TO THESE 2024 DONATION HEIFER RAFFLE TICKET BUYERS:

Cooper, Emmett & Rhett Acheson	Kai Demontigny	Letty Harding	Larry Piatz	Haylie Spickler
Ellie Anderson	David Dockter	Gene Harris	Dalton Reinfeld	Kadence Spickler
Ryan Anderson	Janet Dohrmann	Sam Hawk	Jim Reinfeld	Quaid Spickler
Sally Anderson	Dressler Ranch	Hawk Angus Farms	Betty Jo Ridl	Trace Spickler
Todd Bang	Hunter Duckwitz	Chase Heck	Emily Ridl	Wyatt Spickler
Ron Bauman	Paul Elijah	Jeffery Herman	Jayci Ridl	Cassidy Strommen
Bauman Angus	Stetson Ellingson	Pete Hetle	Ridl Angus	Clint Strommen
Emmett & Bryar Black	Ellingson Angus	Hoyt Angus	Darlene Roberts	Cooper Strommen
Travis Bladow	Kaylee Erdmann	Darrel Jallo	Stacey Roberts	Moriah Strommen
Hayden Bollinger	Rylee Erdmann	Jason Jallo	Avery Roth	Rowdy Strommen
Paul Brown	Erdmann Angus Ranch	Jay Johnson	Nathan Roth	Verlyn Strommen
Brown Angus	Lee Falk	Ross Johnson	Nola Roth	Strommen Ranch
Ashley Bruner	Evan Farnsworth	Kelly Klein	Sara Roth	Al Stulz
Rayna Bruner	Bennett Fischer	Evan Lemere	Clarence Roth, Jr.	Abby Talkingston
Todd Buchholz	Carson Fischer	Damaris Lorenz	Karlee Sailer	Kyle Teubner
Ty Buchholz	Chris & Ashley Fischer	Amber Lyons	Chloe Sandland	Bentley, Briar & Gentry Tokach
Kevin Caraballo	Flambeau Mountain	Ayriel Lyons	Chris Sandland	Lance Trihub
Lane Caraballo	Angus	Jacob Lyons	Michael Sandland	Beverly Vollmer
Riley Caraballo	Les Fleck	Raney Lyons	Mike Sandland	Robert Weigel
Sydney Caraballo	Corinne Frey	Samantha Lyons	Sage Sandland	Isabel Wendel
Wyatt Caraballo	Vern Frey	Frank Matejcek	Rylee Scherbenske	Kennedy Wendel
Darnel Carlson	Pam Geiger	Bre Mittlieder	Tate Scherbenske	Kinsley Wendel
Ellie Carlson	Art Glasoe	Norman Myers	Tom Schmidt	Reed Wendel
Paityn Carlson	Linda Glasoe	Nelson Angus	Hanna Schneider	Rose Wendel
Classic Angus	Elliott Gress	Alisha Nord-Donnelly	Jerome Short	Ryder Wendel
Sydney Connelly	Gust Ranch	Colter Oie	Candace Sieg	Wendel Livestock
Darin Cuskelly	Matt Hager	Jason Otto	Annie Slaubaugh	Gerald Wettlaufer
Zack Davidson	Cally Hansen	Blake Peterson	Judith Slaubaugh	Bob White
Julie DeKrey	Molly Hansen	Liz Peterson	Kevin Slaubaugh	
Jon DeKrey	Jagger Harding	Betty Petry		
	Karsen Harding			



Logan Hoffmann  
3818 147th Ave. SE  
Wheatland, ND 58079

NORTH DAKOTA ANGUS ASSOCIATION  
*Select*  
**BULL & FEMALE**  
*Sale*

SATURDAY 1 PM  
**JANUARY 4, 2025**  
*Kist Livestock, Mandan, ND*



**BULLS • BRED & OPEN HEIFERS • DONOR COWS  
PLUS EMBRYOS & SEMEN**