

NORTH DAKOTA ANGUS ASSOCIATION

Select **BULL**
&
FEMALE
sale

ND

JANUARY 7, 2023

SATURDAY • 1:00 PM

KIST LIVESTOCK AUCTION • MANDAN, ND



North Dakota Angus Association Select GENERAL INFORMATION

SALE DAY PHONES

Kist Livestock

1-800-732-1163 (ND Only)

or 701-663-9573

Frey Livestock Sales & Service

701-721-0344

**Frey Livestock
Sales & Service, Inc.**



Vern & Corinne Frey

701-721-0344

vernfrey55@gmail.com

FreyLivestockSales.com

Frey Livestock on Facebook

LIVESTOCK PRESS REPRESENTATIVES

Farm & Ranch Guide

Kirby Goettsch 605-380-3939

Cattle Business Weekly

Tony Heins 701-400-4435

Tri-State Livestock News

Scott Dirk 605-380-6024

American Angus Association

Rod Geppert 605-295-3673

CATTLE WILL BE VIDEOED AHEAD OF THE SALE

This sale will be broadcast live on the internet.

DVAuction

Broadcasting Real-Time Auctions

Real time bidding & proxy bidding available.

Buyers unable to attend the sale may send their bids to the sale managers, ringmen or auctioneer. Bids will be handled as if you were present.

SALE LOCATION: Kist Livestock Auction

1-800-732-1163 (ND Only) or 701-663-9573

"On The Strip", Mandan, ND

SALE HEADQUARTERS: Ramada Inn - 701-258-7000

1400 Interchange Ave, Bismarck, ND 58501

Also, Bismarck-Mandan offers a wide range of fine motels and hotels.

TRANSPORTATION: On request, airplance will be met at the Bismarck Airport.

INSPECTION OF CATTLE: Cattle will be available for inspection at the sale barn starting Thursday, January 5, 2023 through sale day. Very Frey will be at Kist beginning Thursday, January 5, 2023.

HEALTH: All cattle will be accompanied by proper health certificates for immediate shipment.

INSURANCE: Available sale day. We recommend bulls be insured. All animals will sell under the terms and conditions recommended by the American Angus Association.

LIABILITY: All persons attending this sale do so at their own risk legal or otherwise, for their safety or the behavior of the animals. The owner, sale management and the sale staff assume no liability for property loss or any accidents that may occur.

TERMS: Cash. All cattle are to be settled for sale day unless prior arrangements have been made.

ANNOUNCEMENTS: Announcements from the auction block will take precedence over the sale book.

LUNCH: Lunch will be available sale day.

AUCTIONEER: Roger Jacobs, 406-698-7686

AMERICAN ANGUS ASSOCIATION: Rod Geppert, 605-295-3673

NORTH DAKOTA ANGUS ASSOCIATION:

Casey Maher, President

Kathy Tokach, Vice President

Travis & Ashley Bruner, Secretary/Treasurer

EPDS: EPDs may vary from the time the sale book was printed until transfer of ownership.

SOCIAL: Consignor's Social, sponsored by Tony Heins (Cattle Business Weekly), Scott Dirk (Tri-State Livestock News), Al Schoenfeld (Multimin USA, Inc), and Ray Trudeau (Martin-Trudeau Insurance) will be held Friday, January 6th, 2023 at 7:00 pm at the Ramada, Bismarck.

Frey Livestock Sales & Service, Inc.

Vern & Corinne Frey
701-721-0344

vernfrey55@gmail.com

FreyLivestockSales.com

Frey Livestock on Facebook



Welcome Everyone to the 2023 ND Angus Association Select Bull & Female Sale!

It is with great anticipation that we invite as many of you to attend this event featuring outstanding cattle. They have been personally selected for this annual sale. Thank you to the consignors that have offered the very best of their programs to have you add some of the breed's best genetics to your herd.

On the bull consignments, you will find an excellent set of yearling bulls that will add performance, growth, and carcass traits to your programs — sons of Sitz Resilient, Deer Valley Growth Fund, Tehama Tahoe, Hoover No Doubt, Wilks Regiment, Mogck Entice, Bubbs Southern Charm & Poss Deadwood, plus more.

I am very excited to have everyone evaluate this offering.

This year we have a superior set of donor females being offered. These females are sired by SydGen Enhance, SAV Net Worth, EXAR-Hi-Tech 4769B, and SydGen 928 Destination 5420 (Whiskey).

Included is as strong a set of spring heifer calves ever offered at this sale. They are sired by SAV Scalehouse, Coleman Triumph, Conley Express, Tehama Tahoe, Sterling Pacific, Wilks Regiment, plus more. Donor prospects, show prospects, and super producing females will be available.

The bred heifer offering will be exceptional with females sired by some of the breed's top sires — VAR Legend, Sitz Stellar, SydGen Gavel, Tex Playbook, plus more.

We have a super set of embryo packages sired by Connealy Craftsman, Connealy Clarity, HCC Whitewater, Sitz Stellar, SG Salvation, LAR Man In Black, SAV Glory Days, Sitz Resilient, plus more.

This may be the most powerful set of genetics ever offered at the North Dakota Angus Association Select Bull & Female Sale. Plan to attend — you will not be disappointed.

Corinne and I will be at the sale site Thursday, January 5, 2023 through sale day. If we can be of help, contact us at vernfrey55@gmail.com or 701-721-0344. The sale will be posted on the American Angus Association website, DV Auction, Frey Livestock website, Frey Livestock Facebook page, and the ND Angus Association website. The event will be live on dvauction.com sale day.

Thank you!
Vern & Corinne Frey



2023 North Dakota Angus Select Consignors

Anderson Angus Ranch.....	Lots 1-4	Johnson Bros Angus.....	Lots 31-33	TLC Angus.....	Lots 63-72
Becker Stock Farm.....	Lots 5-9	KFLL.....	Lots 34-37	<u>Embryo Consignors</u>	
Bruner/Haugen/KFLL.....	Lot 10	Koski Land and Cattle.....	Lots 38-39	TLC Angus.....	Lots 73-80
Cargo Ranch.....	Lot 11	Lennick Ranch.....	Lots 40-41	Browns Angus Ranch.....	Lot 81
Duckwitz Angus Ranch.....	Lots 12-13	Montgomery Ranch.....	Lots 42-43	Bruner Angus Ranch.....	Lots 82-83
Erdmann Angus Ranch.....	Lot 14	Nord Angus.....	Lots 44-47	NDSA/David Dockter.....	Lots 84-85
Fleck Ranch.....	Lot 15	Petersen Farms.....	Lots 48-50	Fleck Ranch.....	Lots 86-87
Four Hill Farms.....	Lots 16-18	Valley View Farms.....	Lots 51-53	2 Ten Cattle Company.....	Lot 88
Glasoe Angus.....	Lot 19	2 Ten Cattle Company.....	Lots 54-56	Wendel Livestock.....	Lot 89
Harding Angus.....	Lots 20-22	Oak Lane Farm.....	Lot 57	<u>Pregnancy Consignor</u>	
Haugen Cattle Company.....	Lots 23-25	A&M Cattle Company.....	Lots 58-60	2 Ten Cattle Company.....	Lot 90
Hauser Angus.....	Lots 26-27	Sprunk Angus.....	Lot 61	<u>Semen Consignor</u>	
Hoffmann Angus Farms.....	Lots 28-30	Swanson Angus.....	Lot 62	Strommen Cattle Co.....	Lots 91-92



ANDERSON ANGUS RANCH

Ryan K. Anderson
459 149th Ave SE
Chaffee, ND 58079
Cell: 701-238-1064
asally841@aol.com
LOTS 1-4

Lots 1 & 2 are sons of the popular Select Sires bull Wilks Regiment 9035, who was one of the most talked about at the 2020 National Western Stock Show in Denver, Colorado. He was high selling bull in the National Western Angus Bull Sale. Big spread bull with .7 BW, +93 WW, +175 yearling and top 1% \$B an top 1% for \$C. Lots 1 and 2 are both high performing calving ease sons of Regiment with low actual birth weights and recording high weaning weights.



AAR Regiment 24 - Lot 2



AAR Regiment 24

Birth Date: 1/18/2022 Bull 20489960 Tattoo: 24

WAR Cavalry B063 Z044
Wilks Regiment 9035
Vintage Chloe 6137

Connealy Cavalry 1149
War CC&7 Z044 X029
VAR Empire 3037
VAR Chloe 2227

HAF Traction 7066
AAR Barbara 052
Ellie Barbara 63

JMB Traction 292
DH Erica 019
Deer Valley All In
Ellie Barbara 448

PRODUCTION EPDs				MATERNAL EPDs			\$ VALUES				
CED	BW	WW	YW	CEM	Milk	\$EN	\$W	\$F	\$G	\$B	\$C
+12	+0.5	+82	+139	+10	+29	-35	+81	+94	+55	+148	+258
CARCASS	CW			MARB			REA		FAT		
		+60			+0.65			+0.66			-0.002

- Heifer Bull Deluxe
- Birth WT. 76 lbs., Actual WW 10/5/22 934 lbs., Weaning Ratio 122
- Dam's Production Wean Ratio 1@122, Birth Ratio 1@105
- WDA 3.59 lbs.
- Balanced EPD profile and carries the Certified Angus Beef stamp
- Registers 9 traits in the top 20% of the breed.
- Another herd bull prospect



AAR Regiment 211 - Lot 1



AAR Regiment 211

Birth Date: 1/22/2022 Bull 20489962 Tattoo: 211

WAR Cavalry B063 Z044
Wilks Regiment 9035
Vintage Chloe 6137

Connealy Cavalry 1149
War CC&7 Z044 X029
VAR Empire 3037
VAR Chloe 2227

SAV Rainfall 6846
AAR Enchantress 015
AAR Enchantress 440

Coleman Charlo 0256
SAV Blackcap May 4136
Styles Upward L92
JAR Yesmar 829 2140

PRODUCTION EPDs				MATERNAL EPDs			\$ VALUES				
CED	BW	WW	YW	CEM	Milk	\$EN	\$W	\$F	\$G	\$B	\$C
+11	-0.2	+74	+135	+9	+42	-16	+89	+91	+45	+137	+273
CARCASS	CW			MARB			REA		FAT		
		+55			+0.43			+0.82			+0.011

- Heifer Bull Deluxe
- Birth WT. 76 lbs., Actual WW 10/5/22 950 lbs., Weaning Ratio 124
- Dam's Production Wean Ratio 1/124, Birth Ratio 1/105
- WDA 3.71 lbs., Check out the Milk Number
- Shows exceptional EPD profile from birth to weaning to yearling.
- High ribeye EPD at +.82. Will be one of the top \$M bulls in the sale at +95, top 1% of the breed
- Exceptional pedigree with herd bull EPD's.



AAR Growth Fund 226 - Lot 4



AAR No Doubt 215 - Lot 3



AAR No Doubt 215

Birth Date: 1/24/2022 Bull 20491711 Tattoo: 215

Mogck Bullseye
Hoover No Doubt
Miss Blackcap Ellston J2

MOGCK Sure Shot
Mogck Mary 1255
SydGen CC&7
Miss Blackcap Ellston D154

AAR Harvester 413
AAR Blackcap 667
AAR Boyd New Day 154

SAV Harvester 0338
Stassen's Blackbird Lou 4R
AAR MC 2500 Schurrtop 0723
AAR Boyd New Day 051

PRODUCTION EPDs				MATERNAL EPDs			\$ VALUES					
CED	BW	WW	YW	CEM	Milk	\$EN	\$W	\$F	\$G	\$B	\$C	
+2	+3.9	+74	+133	+11	+19	-33	+52	+100	+52	+152	+264	
CARCASS	CW			MARB			REA			FAT		
		+61			+0.7			+0.5			+0.031	

- Growth Bull
- Birth WT. 78 lbs., Actual WW 10/5/22 930 lbs., Wean Ratio 113
- Dam's Production Wean Ratio 5@110, Birth Ratio 5@99
- WDA 3.71 lbs., This cow never misses.
- Power bull by Hoover No Doubt
- Good weaning weight out of high ratioing dam, that performance is outstanding



AAR Growth Fund 226

Birth Date: 1/27/2022 Bull 20492003 Tattoo: 226

Basin Payweight 1682
Deer Valley Growth Fund
Deer Valley Rita 36113

Basin Payweight 006S
21AR O Lass 7017
Plattmeyer Weigh Up K360
Deer Valley Rita 9457

Styles Upward L92
Ellie Barbara 448
GF Barbara 232

Sitz Upward 307R
Plainview Lassie F11
S Frontline 018
GF Barbara 739

PRODUCTION EPDs				MATERNAL EPDs			\$ VALUES					
CED	BW	WW	YW	CEM	Milk	\$EN	\$W	\$F	\$G	\$B	\$C	
+9	+2.1	+72	+139	+10	+30	-34	+66	+90	+30	+120	+210	
CARCASS	CW			MARB			REA			FAT		
		+53			+0.08			+0.86			-0.001	

- Heifer Bull/Growth Bull This bull can be used either way
- Birth WT. 78 lbs., Actual WW 10/5/22 888 lbs., Wean Ratio 109
- Dam's Production Wean Ratio 6/100, Birth Ratio 6/98
- WDA 3.54 lbs
- Sired by the very popular Deer Valley Growth Fund, big spread EPD profile has a +.86 RE EPD
- Great prospect by Growth Fund



BECKER STOCK FARM

Tom & Shelly Becker, Garrett Becker
8861 11th Avenue SE
Minot, ND 58701
Tom's Cell: 701-720-2299
Garrett's Cell: 701-721-9400
becker@minot.com
LOTS 5-9



BSF 1720 Princess Annu 226 - Lot 5



BSF 1720 Princess Annu 2206

Birth Date: 2/11/2022 Cow 20487247 Tattoo: 2206

Deer Valley Growth Fund
Car Don Annuity 114
CAR Don Blackbird 935

Basin Payweight 1682
Deer Valley Rita 36113
Quaker Hill Rampage 0A36
EF Blackbird 3241

Colburn Primo 5153
BSF N2 Primo Princess 1720
BSF Princess TCF N2

Dameron First Class
Silveiras Saras Dream 1339
TC Freedom 104
Prairie Pride Princess 116

PRODUCTION EPDs				MATERNAL EPDs			\$ VALUES					
CED	BW	WW	YW	CEM	Milk	\$EN	\$W	\$F	\$G	\$B	\$C	
+7	+1.2	+61	+108	+11	+25	-15	+54	+79				
CARCASS	CW			MARB			REA			FAT		

- BW 75, BWR 88, Adj. 205 508, 205 Ratio 78
- If you are looking for a show heifer this one has the Primo stunning look. She goes back to our TC Freedom mom N2 that did everything right. Don't let this one get away. I'm pretty sure you won't be disappointed.
- 50K data available sale day



BSF 1406 Princess MG 2217 - Lot 6



BSF 151A Miss Geico 2128 - Lot 7

Lot 6 BSF 1406 Princess MG 2217

Birth Date: 2/24/2022 Cow 20483685 Tattoo: 2217

Baldrige Colonel C251
Mohnen General 548
SAV Madame Pride 5290

baldrige Xpand x743
Baldrige Isabel Y69
SAV 8180 Traveler 004
SAV Madame Pride 0075

Musgrave Foundation
BSF MF Princess TCF 1406
BSF Princess TCF N2

Kesslers Frontman R001
MCATL Blackcap Juara 29-434
TC Freedom 104
Prairie Pride Princess 116

PRODUCTION EPDs				MATERNAL EPDs			\$ VALUES					
CED	BW	WW	YW	CEM	Milk	\$EN	\$W	\$F	\$G	\$B	\$C	
+1	+3	+71	+117	+5	+29	-23	+63	+79				
CARCASS		CW		MARB			REA			FAT		

- BW 90, BWR 106, Adj. 205 660, 205 Ratio 101
- This one will make a cow. Her full sister made the replacement pen and then calved this spring. We wouldn't let this one go if we didn't already have one.
- 50K data available sale day

Lot 7 BSF 151A Miss Geico 2128

Birth Date: 3/21/2021 Cow 20468617 Tattoo: 2128

TGM Compton 1738
BSF Geico 1905
BSF Princess TCF N2

Silveiras Style 9303
Dameron Northern Miss 3198
TC Freedom 104
Prairie Pride Princess 116

BSAR Opportunity 9114
FAR Princess 151A
FAR Princess 215X

BSAR Design Doctor 0910
Bishops Lassie 746
SAV King of Mountain 8200
FAR Princess 203T

PRODUCTION EPDs				MATERNAL EPDs			\$ VALUES					
CED	BW	WW	YW	CEM	Milk	\$EN	\$W	\$F	\$G	\$B	\$C	
+4	+1.5	+60	+101	+7	+25	-17	+54	+75				
CARCASS		CW		MARB			REA			FAT		

- BW 70, BWR 93, Adj. 205 624, 205 Ratio 105
- AI'd and Examined Safe to Tehama Tahoe estimated due date 2/5/2023
- Here is a daughter out of our Compton/TC Freedom N2 son that sired our steer that Sutter Clark showed this year. He won many shows out east and also won his class at this years Junior National in Kansas City. This girls mom was selected at Frey Angus in 2015 as their top selling bred heifer.

Lot 8 BSF Resilient 2212

Birth Date: 2/19/2022 Bull 20476411 Tattoo: 2212

Sitz Stellar 726D
Sitz Resilient 10208
Sitz Miss Burgess 1856

Mohnen Substantial 272
Sitz Pride 200B
Sitz Top Game 561X
Sitz Miss Burgess 4381

EXEC Mr Crossfire 6P01
BSF 1607 Princess CF 1908
BSF Xcal W2 Princess 1607

GAR Prophet
Chair Rock In Sure 2008
Young Dale Xcaliber 32X
BSF Princess EL Cap W2

PRODUCTION EPDs				MATERNAL EPDs			\$ VALUES					
CED	BW	WW	YW	CEM	Milk	\$EN	\$W	\$F	\$G	\$B	\$C	
+7	+1	+79	+134	+7	+26	-23	+70	+86				
CARCASS		CW		MARB			REA			FAT		

- BW 82, BWR 98, Adj. 205 785, 205 Ratio 106
- Heifer bull deluxe
- This one is made right with an attractive look. Out of the hot Resilient and a second calving Crossfire daughter and then back to W2 will make a great combination for the right kind.
- 50K data available sale day



BSF Resilient 2212 - Lot 8



BSF Annuity 2215 - Lot 9



BSF Annuity 2215

Birth Date: 2/22/2022 Bull 20476410 Tattoo: 2215

Deer Valley Growth Fund
Car Don Annuity 114
CAR Don Blackbird 935

Basin Payweight 1682
Deer Valley Rita 36113
Quaker Hill Rampage 0A36
EF Blackbird 3241

Young Dale Xcaliber 32X
BSF N2 Xcal Princess 1629
BSF Princess TCF N2

Young Dale Knock Out 134U
Brookmore Tibbie 222T
TC Freedom 104
Prairie Pride Princess 116

PRODUCTION EPDs				MATERNAL EPDs			\$ VALUES				
CED	BW	WW	YW	CEM	Milk	\$EN	\$W	\$F	\$G	\$B	\$C
+2	+2.7	+79	+137	+9	+28	-29	+66	+89			
CARCASS	CW			MARB		REA			FAT		

- BW 88, BWR 101, Adj. 205 721, 205 Ratio 98
- This one is one of the first sons to sell out of the Krebs new sire Car Don Annuity. He also goes back to our TC Freedom cow N2 that never missed. Check him out sale day.
- 50K data available sale day



Elba 9185 -
Daughter of
Lot 10



KFL Elba
1A 1567 ET
- Daughter of
Lot 10



BRUNER ANGUS RANCH

Travis's Cell: 701-626-2070
brunerangusranch@gmail.com

HAUGEN CATTLE COMPANY

Lynn's Cell: 701-789-1444
701-769-266
haugencattleco@yahoo.com

K&F LAND & LIVESTOCK

Vern's Cell: 701-721-0344
vernfrey55@gmail.com
Mark's Cell: 701-370-1253
kakmark@utma.com

LOT 10



MOGCK Elba 1567

Birth Date: 1/17/2017 Cow 18879303 Tattoo: 1567

SydGen Exceed 3223
SydGen Enhance
SydGen Rita 2618

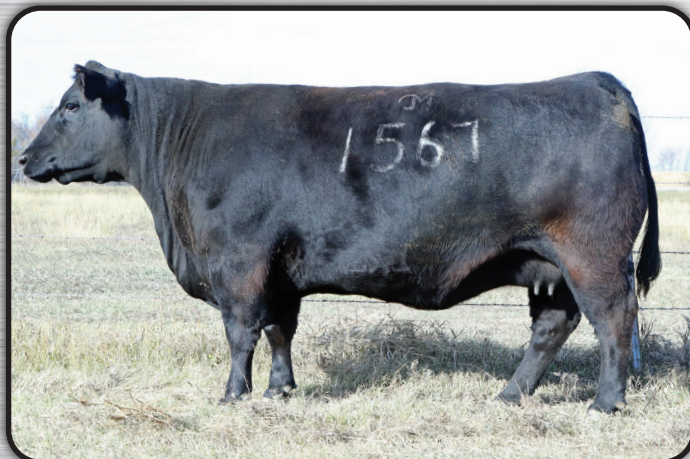
SydGen Googol
SydGen Forever Lady 1255
SydGen Liberty GA 8627
Fox Run Rita 9308

S A V Thunderbird 9061
Mogck Elba 1295
Mogck Elba 789

S A V Final Answer 0035
S A V Emblynette 7411
Woodhill Mainline
Mogck Elba 2307

PRODUCTION EPDs				MATERNAL EPDs			\$ VALUES				
CED	BW	WW	YW	CEM	Milk	\$EN	\$W	\$F	\$G	\$B	\$C
+9	-.2	+69	+122	+8	+29	-21	+72	+98	+51	+149	+268
CARCASS	CW			MARB		REA			FAT		

- MOGCK Elba 1567 was selected as the pick of the bred heifers from Mogck and Sons Angus Program of Olivet, SD. She is a female with extra length, depth of side and very wide based. Super docile and has a perfect udder. She averages 6 to 8 embryos per flush.
- She is in the top 25% for 17 traits. Her track record has been extremely productive as far as dollars generated for all of the partners.
- She is a 2017 model cow, still in her prime.
- Sells open and ready to flush.



MOGCK Elba 1567 - Lot 10



CARGO RANCH

Jake Cargo
364 65th Street NE
Towner, ND 58788
Cell: 701-240-6672
cargoranch@yahoo.com
LOT 11



CR Natalie 948 692 - Lot 11



CR Natalie 948 692

Birth Date: 2/9/2022 Cow 20497618 Tattoo: 692

FREYS True Grit
FAR Fair Lady 8094

HA Cowboy Up 5405
F A R Princess 148Z
Frey's Appearance
FAR Fair Lady 71B

Connealy Impression
TNT Natalie 948
TNT Natalie 303

Connealy Reflection
Pearl Pammy of Conanga 194
S A Neutron 377
T N T Sable 19J

PRODUCTION EPDs				MATERNAL EPDs			\$ VALUES				
CED	BW	WW	YW	CEM	Milk	\$EN	\$W	\$F	\$G	\$B	\$C
+9	+8	+67	+114	+11	+24	-22	+63	+79	+36	+115	+211
CARCASS	CW			MARB			REA		FAT		
		+35			+43			+33			+046

- BW 78, Actual 205 770
- The dam of CR Natalie 948 692 has been a great cow. She never misses, always has an excellent calf. This one is really good, long bodied, super clean fronted. Sired by Frey's True Grit, who is a featured sire at Frey Angus Ranch.
- Solid EPD profile, who's dam will be 14 years old. All kinds of maternal power in this female.



DUCKWITZ ANGUS RANCH

Hunter Duckwitz
2417 121st Ave SW
Belfield, ND 58622
Cell: 701-260-7215
duckwitzangusranch@gmail.com
LOTS 12-13



DAR Honcho 235

Birth Date: 2/16/2022 Bull 20440229 Tattoo: 235

Bar Wick Eureka 943 310
Duff Honcho 426
Duff BI 619 LadyPop 1017

OCC Eureka 865E
OCC Dixie Erica 943D
Duff Basic Instinct 6501
Duff NL B351 Lady Pop 619

Connealy Irish 0204
Free Wrangler 4580 J F
Freedom Lady 580 JF

Connealy Wrangler
Black Crest of Conanga 5640
TC Freedom 104
Bando Lady 411 EA

PRODUCTION EPDs				MATERNAL EPDs			\$ VALUES				
CED	BW	WW	YW	CEM	Milk	\$EN	\$W	\$F	\$G	\$B	\$C
-2	+3.2	+57	+89	+0	+22	-5	+48	+66	+25	+91	+171
CARCASS	CW			MARB			REA		FAT		
		+18			+0.01			+0.56			-0.021

- BW 92, Adj. 205 756, 205 Ratio 105
- Dam's Production WWR 6/103
- DAR Honcho 235 is a bull with a little more power and style. One that has plenty of base width, shape of rib, and herd bull character.



DAR Honcho 235 - Lot 12



DAR Resilient 231 - Lot 13

Lot 13

DAR Resilient 231

Birth Date: 1/19/2022 Bull 20434979 Tattoo: 231

Sitz Stellar 726D
Sitz Resilient 10208
Sitz Miss Burgess 1856

Mohnen Substantial 272
Sitz Pride 200B
Sitz Top Game 561X
Sitz Miss Burgess 4381

Nords Introduction 6110
Dar Lassie 2023
DAR granite 0302

PVF Insight 0129
KR Cally 4931
Connealy Black Granite
WC Alliance 3345 920

PRODUCTION EPDs				MATERNAL EPDs			\$ VALUES				
CED	BW	WW	YW	CEM	Milk	\$EN	\$W	\$F	\$G	\$B	\$C
+7	+1.4	+73	+129	+7	+24	-20	+61	+89			
CARCASS	CW			MARB			REA		FAT		

- BW 80, Adj. 205 743, 205 Ratio 103
- Dam's Production WWR 1/103
- DAR Resilient 231 is a bull that has plenty of stature and eye appeal.
- A bull that's out of a first calf heifer that's on track to be a future donor.
- 231 is yet another bull that fits our breeding philosophy of the five P's Power-Performance-Phenotype-Predictability-Profitability
- If you are looking for a bull with a splash of calving ease here he is.
- Angus GS available sale day
- Selling 2/3 semen interest and full possession



ERDMANN ANGUS RANCH

Jeremy Erdmann
13460 Hwy 27
Lisbon, ND 58054
Cell: 701-680-2937
erdmannangus@gmail.com
LOT 14

Lot 14

EAR Miss Capitalist E204

Birth Date: 1/10/2022 Cow 20507021 Tattoo: E204

S A V Final Answer 0035
Connealy Capitalist 028
Prides Pita of Conanga 8821

Sitz Traveler 8180
S A V Emulous 8145
C R A Bextor 872 5205 608
Prides Trav of Conanga 6499

HA Cowboy Up 5405
EAR Miss Cowboy Up E809
Ear Miss Rainmaker E202

HA Outside 3008
HA Blackcap Lady 1602
Basin Rainmaker 814Z
Ear Destination E005

PRODUCTION EPDs				MATERNAL EPDs			\$ VALUES				
CED	BW	WW	YW	CEM	Milk	\$EN	\$W	\$F	\$G	\$B	\$C
+3	+3.4	+65	+116	+4	+24	-14	+66	+87	+30	+116	+216
CARCASS	CW			MARB			REA		FAT		

- BW 62, Adj 205 688, 205 Ratio 105
- Dam's Production WWR 2/110
- Dam is deep bodied, good structured cow with nice udder
- 204 herself is a larger outlined female, with plenty of muscle shape and stands on a good set of feet and legs



Connealy Capitalist 028 - Sire of Lot 14

FLECK RANCH

Les and Aaron Fleck
6180 Hwy 6
Solen, ND 58970
Les: 701-391-5577
ljfranch@yahoo.com
Aaron: 701-391-3557
afleck@westriv.com

LOT 15



SAV America 8018 -Sire to Lot 15

FOUR HILL FARMS

Jake Thompson
21990 Hwy 34
Barnesville, MN 56514
218-329-9293
fourhillfarms2@yahoo.com
LOTS 16-18



Sterling Pacific 904 - Sire of Lot 16

Lot 15

FR Black Annie 1543

Birth Date: 3/12/2021

Cow 20230069

Tattoo: 1543

SAV President 6847
SAV America 8018
SAV Madame Pride 0075

Coleman Charlo 0256
SAV Blackcap May 4136
SAF 598 Bando 5175
SAV Madame Pride 8264

SAV International 2020
FR Black Annie 7120
Pine Coulee Black Annie U7

SAV Harvester 0338
SAV Emblynette 5483
Connealy Onward
War Hill Blackbone Annie

PRODUCTION EPDs				MATERNAL EPDs			\$ VALUES				
CED	BW	WW	YW	CEM	Milk	\$EN	\$W	\$F	\$G	\$B	\$C
+1	+3.6	+77	+137	+2	+23	-28	+62	+88	+32	+121	+217
CARCASS	CW	+54		MARB	+.22		REA	+.67		FAT	+.023

- BW 89, Adj. 205 729
- Al'd to SAV Ease 0840, pasture exposed to 5MB Right On 0534. Examined safe to SAV Ease 0840 due March 5th
- Black Annie 1543 is a super broody, highly maternal, powerhouse of a young female. She is an embryo calf out of our very best International daughter flushed to the world record selling bull SAV America. Her maternal granddam is probably the best cow ever raised at Pine Coulee Angus Ranch in Montana, Black Annie U7. Our Black Annie 1543 is one of 4 flush sisters and 1 flush brother. Her flush brother was the 4th high seller in last year's production sale for \$8,000. And her 3 flush sisters are all retained in our herd. She is Vern's pick of the litter.

Lot 16

Foxy Lucy Pacific

Birth Date: 2/5/2022

Cow 20487394

Tattoo: 2090

Hoover No Doubt
Sterling Pacific 904
Baldrige Isabel B082

Mogck Bullseye
Miss Blackcap Ellston J2
GAR Prophet
Baldrige Isabel Y69

OSU First Class 1164
Nords Foxy Lucy 7090
Nords Foxy Lucy 3000

Dameron First Class
OSU Empress 7165
PVF Insight 0129
Nords Foxy Lucy 920

PRODUCTION EPDs				MATERNAL EPDs			\$ VALUES				
CED	BW	WW	YW	CEM	Milk	\$EN	\$W	\$F	\$G	\$B	\$C
+4	+2.5	+72	+125	+11	+22	-25	+56	+85			
CARCASS	CW			MARB			REA			FAT	

- BW 84, Adj. 205 744
- Dam's Production: BWR 100, WWR 100, YWR 100
- You do not want to miss this heifer! Wide, deep, feminine with performance. 2nd heaviest WW on heifers out of the Nord Lucy family. This heifer can be a dual threat, competitive if you want a show project but will make a great cow sired by Sterling Pacific.



VAR Legend 5019 - Sire of Lot 17

Lot
17

FHF Pride Legend 189

Birth Date: 2/17/2021 Cow 20280604 Tattoo: 189

VAR Discovery 2240
VAR Legend 5019
PF CC&7 Henrietta Pride 1044

AAR Ten X 7008 SA
Deer Valley Rita 0308
SydGen CC&7
Sitz Henrietta Pride 643T

Clearwater Equator R55
Clearwater Pride T23
Clearwater Pride L02

McCumber Equator 6122
PHA Maid 012
AA Trail Boss 925
AA Pride 808

PRODUCTION EPDs				MATERNAL EPDs			\$ VALUES				
CED	BW	WW	YW	CEM	Milk	\$EN	\$W	\$F	\$G	\$B	\$C
+4	+2.7	+67	+122	+13	+21	-31	+51	+96	+57	+153	+254
CARCASS	CW			MARB			REA		FAT		
		+50			+75			+47			-003

- BW 76, BWR 100, Adj. 205 685
- Dam's Production: BWR 12/98, WWR 11/102, YWR 2/102
- Pasture exposed to Mogck United Front 118 and WAR Tahoe 926-112 (May 5th - July 28th) Estimated due date February 16th
- Great brood cow prospect out of a pathfinder dam.
- This heifers dam and granddam are both pathfinders, her dam has also produced 3 other pathfinders as natural calves. With spring conditions I did not AI the heifers but have a lot of faith in the 2 bulls used for natural service. Both of which were purchased from the top end of each respective sale.
- Johnes tested free and ultrasounded safe to calve February 16th

Lot
18

FHF United Front 1152

Birth Date: 4/24/2021 Bull 20187839 Tattoo: 1152

Mogck United Front 503
Mogck United Front 118
Mogck Miss 2856

Mogck Frontman 1141
Mogck Eileen 40
Connealy Earnan 98L
Mogck Miss 12

VAR Legend 5019
FHF Barbaras Legend 9152
FHF Miss Barbaras Chisum

VAR Discovery 2240
PF CC&7 Henrietta Pride 1044
S Chisum 2243
FHF Barbaras War Party

PRODUCTION EPDs				MATERNAL EPDs			\$ VALUES				
CED	BW	WW	YW	CEM	Milk	\$EN	\$W	\$F	\$G	\$B	\$C
+6	+1.1	+74	+136	+9	+32	-42	+72	+88	+51	+140	+235
CARCASS	CW			MARB			REA		FAT		
		+52			+54			+73			-012

- BW 73, BWR 92, Adj. 205 744, 205 Ratio 100
- This aged bull was born a little late to be a part of our production sale, but does not mean the quality isn't there. His genomic ranking put him in the top 7% for WW, 2% YW, 11% Milk, 21% for RE. His granddam has been a prolific producer for us. She has a wean ratio of 107 which ended her up in the donor pen where this bulls dam came from.
- Johnes Free, Semen Checked, Virgin bull.
- Suitable for heifers



GLASOE ANGUS

Sydney Glasoe Caraballo
8533 114th Ave NW
Wildrose, ND 58795
Cell: 678-989-7189
701-539-2338
glasoeangusnd@gmail.com
LOT 19



Lot 19 G A Minnabelle 117

Birth Date: 3/2/2021 Cow 20283549 Tattoo: 117

Mogck Bullseye
Hoover No Doubt
Miss Blackcap Ellston J2

MOGCK Sure Shot
Mogck Mary 1255
SydGen C C & 7
Miss Blackcap Ellston D154

Mytty In Focus
G A Minabelle 709
Glasoes Minabelle 550

S A F Focus of E R
Mytty Countess 906
Vermilion Dateline 7078
Glasoes Minabelle 168

PRODUCTION EPDs				MATERNAL EPDs			\$ VALUES				
CED	BW	WW	YW	CEM	Milk	\$EN	\$W	\$F	\$G	\$B	\$C
+1	+2.4	+74	+141	+6	+26	-38	+61	+105	+66	+171	+270
CARCASS		CW	+62	MARB	+99	REA	+50	FAT	+029		

- BW 83, BWR 101, Adj. 205 803, 205 Ratio 118, Adj. 365 pending, 365 Ratio pending
- Dam's Production BWR 12/102, WWR 12/110, YWR 11/110
- AI'd to Tehama Tahoe B767 (17817177) on 5/26/22. Pasture exposed to G A Storm 016 (19889229) from 6/4/22-9/15/22. Examined safe AI and due 3/1/23.
- G A Minnabelle 117, a Hoover No Doubt daughter, exhibits a capacious and stylish frame topped by a smooth and superior length of spine and a gentle nature. Her function, fertility and future maternal performance are backed by the exceptional maternal strength of her dam, real-world data and an attractive EPD and genomic profile. Minnabelle 117 is the ET daughter of Pathfinder G A Minabelle 709, a coming sixteen-year-old dam in full-time active flush service at Heart River Genetics in Belfield, ND. Minabelle 709 has demonstrated exceptional fertility, soundness and performance; she earned a 367-day calving interval with twelve consecutive calves and an average WR of 110. Her hooves have never been trimmed, she delivered every calf without assistance, and she raised every calf on a beautiful udder and milk score of +27 without any exposure to creep feed or supplementation to them or her. At ten and eleven years old, her two bull calves earned adjusted 205-day weights of 804 and 806 pounds. Her next two natural daughters earned 739 and 722 pounds.
- Every 709 son sold as a yearling fertility-tested bull in our annual sale or were used by us for natural service. One of 709's Pathfinder daughters, a 2013 dam, is also serving as an embryo donor dam while raising a calf at side and due this spring. 709 has flushed incredibly well for us – producing up to 20 embryos at a time, and typically more than half are frozen.
- Minnabelle 117 is the first and best ET daughter of 709 we are offering. She gained 4.01 pounds per day on grass and the milk and mothering of her recipient dam, a registered Glasoe Angus dam with a milk score of +20. We reserve the right to a flush on Minnabelle 117.



G A Minnabelle 117 - Lot 19



G A Minabelle 709 - Dam of Lot 19



Harding Payweight 2505 - Lot 21

HARDING ANGUS

Nic Harding
9339 22nd St NE
Tolna, ND 58380
701-650-2044
LOTS 20-22



Harding Payweight 2093 - Lot 20

Lot 20 Harding Payweight 2093

Birth Date: 3/3/2022 Bull 20462764 Tattoo: 2093

Basin Payweight 006S
Basin Payweight 1682
21AR O Lass 7017

Vermilion Payweight J847
Basin Lucy 3829
HARB Pendleton 765 J H
21AR O Lass F24A

Sitz Bullseye 11964
Harding Elsa Evergreen 093
Harding Elsa Evergreen 608

Mogck Bullseye
Sitz Emma E 4151
MOGCK Confidence 1453
HCC Elsa Evergreen 4632-0313

PRODUCTION EPDs				MATERNAL EPDs			\$ VALUES					
CED	BW	WW	YW	CEM	Milk	\$EN	\$W	\$F	\$G	\$B	\$C	
-5	+5.1	+87	+148	+6	+29	-23	+70	+121	+43	+164	+289	
CARCASS	CW			MARB			REA			FAT		
		+69			+51			+60			+046	

- BW 90, BWR 113, Adj. 205 920, 205 Ratio 112
- Actual weaning weight on 9/17/22 was 830 lbs.
- An extremely stout calf with a lot of body mass, out of a first calf Sitz Bullseye 11964 heifer.
- This bull will sire big calves that you will want to keep the females from.
- He will be easy to find in the pen sale day.

Lot 21 Harding Payweight 2505

Birth Date: 2/27/2022 Bull 20462847 Tattoo: 2505

Basin Payweight 006S
Basin Payweight 1682
21AR O Lass 7017

Vermilion Payweight J847
Basin Lucy 3829
HARB Pendleton 765 J H
21AR O Lass F24A

HF Jungle Jim 357Y
Harding Rosella 505
Spring Valley Rosella 9159

HF Tiger 5T
HF Evening Tinge 9L
BT Equator 395M
Spring Valley Rosella 915

PRODUCTION EPDs				MATERNAL EPDs			\$ VALUES					
CED	BW	WW	YW	CEM	Milk	\$EN	\$W	\$F	\$G	\$B	\$C	
+4	+1.6	+66	+115	+7	+32	-16	+63	+82				
CARCASS	CW			MARB			REA			FAT		

- BW 90, BWR 103, Adj. 205 875, 205 Ratio 107
- Dam's Production BWR 4/104, WWR 4/108, YWR 1/109
- Actual weaning weight on 9/17/22 was 865 lbs.
- A big framed 1682 son, out of a cow who has done a great job for me.
- Sired by Basin Payweight 1682 a bull who has sired many of the feature bulls used currently.
- Lots of frame, performance, and power.

Lot 22 Harding Deposit K 2094

Birth Date: 2/24/2022 Bull 20470695 Tattoo: 2094

Deer Valley Growth Fund
Janssen Dow Jones 0005
Janssen Bessie Heiress 6028

Basin Payweight 1682
Deer Valley Rita 36113
SAV Seedstock 4838
SAV Bessie Heiress 3946

Topp Barron 6148
Harding Beebe Queen K 094
HCC Beebe Queen 5707-0432

SVA The Donald 4030
SAV Blackbird 5297
Mogck Bullseye
HCC Beebe Queen 2432-0773

PRODUCTION EPDs				MATERNAL EPDs			\$ VALUES					
CED	BW	WW	YW	CEM	Milk	\$EN	\$W	\$F	\$G	\$B	\$C	
+5	+2.6	+85	+150	+7	+30	-26	+78	+116	+37	+153	+277	
CARCASS	CW			MARB			REA			FAT		
		+72			+33			+70			+035	

- BW 82, BWR 103, Adj. 205 903, 205 Ratio 110
- Dam's Production BWR 1/103, WWR 1/110
- Actual weaning weight on 9/17/22 was 834 lbs.
- Sired by one of my favorite bulls to sell in 2021, Janssen Dow Jones 0005.
- Harding Deposit K 2094 is a bull that has stood out since early spring, and never let his foot off the gas. Hard to find much for flaws in this bull.
- Dam is sired by Topp Barron 6148, who has consistently filled my replacement and bull pen for the last 4 years.
- A pedigree backed by generations of power, Dow Jones x Topp Barron x Mogck Bullseye x Sitz Foresight.



Harding Deposit K2094 - Lot 22



HAUGEN CATTLE COMPANY

Lynn Haugen
11451 9th St SE
Hannaford, ND 58448
701-789-1444
haugencattleco@yahoo.com
LOTS 23-25



HCC No Doubt 2680

Birth Date: 1/18/2022 Bull 20499216 Tattoo: 2680

Mogck Bullseye
Hoover No Doubt
Miss Blackcap Ellston J2

MOGCK Sure Shot
Mogck Mary 1255
SydGen CC&7
Miss Blackcap Ellston D154

WMR Timeless 458
HCC Lucy 3531-0186
Basin Lucy 9068

Leachman Right Time 338-5605
WMR Blackcap 521
SydGen Contact
Basin Lucy 2T06

PRODUCTION EPDs				MATERNAL EPDs			\$ VALUES					
CED	BW	WW	YW	CEM	Milk	\$EN	\$W	\$F	\$G	\$B	\$C	
+5	+2.2	+67	+126	+12	+26	-25	+59	+102	+53	+155	+265	
CARCASS	CW			MARB			REA		FAT			
			+54			+68		+77				+057

- BW 95, BWR 100, Adj. 205 775, ET
- Dam's Production: BWR 2/97, WWR 2/112, YWR 1/108
- This herdsire prospect is very long and complete and resembles his sire Hoover No Doubt.
- Dam went into HCC donor pen after her first calf. Dam's first calf was purchased by Genex in 2016 at HCC annual bull sale. Dam's pedigree has the likes of Leachman Right Time, Dateline, SydGen Contact, and Basin Lucy cow family. Dam has been a very successful donor with bulls selling in past NDAA Select Sales and HCC annual bull sales, along with many replacement heifers.
- Genomic tests available sale day or before
- Retaining 1/3 semen interest.



Hoover No Doubt - Sire of Lot 23



HCC Resilient 2823

Birth Date: 2/8/2022 Bull 20503628 Tattoo: 2823

Sitz Stellar 726D
Sitz Resilient 10208
Sitz Miss Burgess 1856

Mohnen Substantial 272
Sitz Pride 200B
Sitz Top Game 561X
Sitz Miss Burgess 4381

Basin Payweight 1682
HCC Shoshone 6823-0404
HCC Shoshone 2404-0283

Basin Payweight 006S
21AR O Lass 7017
Werner War Party 2417
Silver Creek Mentor H085

PRODUCTION EPDs				MATERNAL EPDs			\$ VALUES					
CED	BW	WW	YW	CEM	Milk	\$EN	\$W	\$F	\$G	\$B	\$C	
+5	+2.4	+92	+150	+7	+29	-32	+89	+91	+50	+142	+271	
CARCASS	CW			MARB			REA		FAT			
			+61			+60		+62				+013

- BW 90, BWR 102, Adj. 205 883, 205 Ratio 120
- Dam's Production: BWR 4/105, WWR 4/119, YWR 2/113
- Powerful herdsire prospect who is deep bodied, big top line, free moving and high performing
- His sire Sitz Resilient 10208 is becoming one of the most popular sires in the breed, siring many sale toppers around the country.
- He has strong maternal genetics, granddam BWR 8/103, WWR 8/105, YWR 5/111. Bulls pedigree is loaded with the likes of Sitz Stellar 7261, Sitz Top Game 561X, Mohnen Substantial 272, Basin Payweight 1682, Basin Payweight 006S, Connealy Mentor 7374.
- 1/2 brother sold in last year's 2022 State Select Sale to Ron Gilliland.
- His dam 6823 is very fertile. She flushed after calving 13 grade 1 embryos and bred back AI days later.
- Genomic tests available sale day or before
- Retaining 1/3 semen interest



Sitz Resilient 10208 - Sire of Lot 24

Lot
25

HCC Growth Fund 2664

Birth Date: 1/16/2022 Bull 20501504 Tattoo: 2664

Basin Payweight 1682
Deer Valley Growth Fund
Deer Valley Rita 36113

Basin Payweight 006S
21AR O Lass 7017
Plattmire Weigh Up K360
Deer Valley Rita 9457

GAR Grid Maker
Silver C Maverick GM H809
Silver C Maverick Ideal H404

GDAR Traveler 044
GAR Precision 2536
HHF Ideal 1418 191 F6
Silver C Lau Mav Ext 473 H126

PRODUCTION EPDs				MATERNAL EPDs			\$ VALUES					
CED	BW	WW	YW	CEM	Milk	\$EN	\$W	\$F	\$G	\$B	\$C	
+9	+1.3	+71	+129	+11	+28	-27	+68	+93	+31	+123	+224	
CARCASS	CW			MARB			REA			FAT		
		+53			+18			+61			+012	

- BW 82, BWR 100, Adj. 205 817, ET
- Dam's Production: BWR 10/100, WWR 10/109, YWR 8/110
- His sire, Deer Valley Growth Fund, is a roster member at Select Sires.
- Powerful herd sire prospect who is very deep bodied, big top line, free moving, with a ton of performance.
- The dam is a daughter of GAR Gridmaker, who is a member at Select Sires, who bred in performance and made very functional females.
- Dam has had many sale topper's in HCC annual bull sales.
- Recommended for use on larger framed heifers
- Genomic tests available sale day or before
- Retaining 1/3 semen interest



Deer Valley Growth Fund - Sire of Lots 25 & 26



Myers Silverado M109 - Sire of Lot 27



HAUSER ANGUS

Jesse Hauser
2751 7th Ave
Hebron, ND 58638
701-880-0882
hauserangus@outlook.com
LOTS 26-27

Lot
26

Growth Fund K59

Birth Date: 3/17/2022 B 20364832 Tattoo: K59

Basin Payweight 1682
Deer Valley Growth Fund
Deer Valley Rita 36113

Basin Payweight 006S
21AR O Lass 7017
Plattmire Weigh Up K360
Deer Valley Rita 9457

CCA Program 278
OPP Pride Lady D186
OPP Pride Lady P186

HA Program 9124
CCA Donna 418
Big Rok Quincy 061
Opp Pride Lady 1886

PRODUCTION EPDs				MATERNAL EPDs			\$ VALUES					
CED	BW	WW	YW	CEM	Milk	\$EN	\$W	\$F	\$G	\$B	\$C	
+10	-0.2	+75	+132	+13	+33	-33	+73	+99	+31	+131	+234	
CARCASS	CW			MARB			REA			FAT		
		+55			+31			+37			+37	

- BW 80. BWR -0.2. Adj. 205 765. 205 Ratio 122.
- Dam's Production: BWR -2.3. WWR 44. YWR 74
- Growth Fund K59 has a -.2 BW EPD with excellent growth EPD's. His dam originated in the Opp Angus program at Hebron, ND.
- Calving Ease and maternal should be this calf's strength

Lot
27

Silverado K38

Birth Date: 2/6/2022 B 20364676 Tattoo: K38

Tehama Tahoe B767
Myers Silverado M109
Myers Kem M87

Tehama Upward Y238
Tehama Mary Blackbird Y684
S S Niagara Z29
Myers Kem M85

Barstow Cash
DAR Cash 4703
MAR Savannah 3009

Sitz Dash 10277
Barstow Queen W16
S A V Brilliance 8077
MAR Savannah 122

PRODUCTION EPDs				MATERNAL EPDs			\$ VALUES					
CED	BW	WW	YW	CEM	Milk	\$EN	\$W	\$F	\$G	\$B	\$C	
+5	+2.0	+62	+116	+9	+27	-10	+52	+84				
CARCASS	CW			MARB			REA			FAT		

- BW 84 lbs. BWR 2.1. Adj. 205 660. 205 Ratio 117
- Dam's Production: BWR 2.5. WWR 50. YWR 94
- This bull is sired by Myers Silverado M109, a Select Sires bull, in turn is by the everpopular Tehama Tahoe B767, one of Select's hottest selling semen bulls. His granddam MAR Savannah 3009 was selected out of a previous NDAA State Select Sale.



HOFFMANN ANGUS FARMS

14552 39th St SE
Wheatland, ND 58079
Dallas: 701-238-7842
Logan: 701-388-2618
dhoff@ictc.com
LOTS 28-30



28 HAF Annuity 2004

Birth Date: 1/27/2022 Bull 20459536 Tattoo: 2004

Deer Valley Growth Fund
Car Don Annuity 114
CAR Don Blackbird 935

Basin Payweight 1682
Deer Valley Rita 36113
Quaker Hill Rampage 0A36
EF Blackbird 3241

EZAR Gold Rush 6001
HAF Lass 015
HAF KH Lass 3192

VAR Discovery 2240
VAR Blackcap 1059
VAR Programmer 96450
TH Lass 29

PRODUCTION EPDs				MATERNAL EPDs			\$ VALUES					
CED	BW	WW	YW	CEM	Milk	\$EN	\$W	\$F	\$G	\$B	\$C	
+7	+1.1	+91	+154	+15	+28	-34	+88	+105	+50	+155	+281	
CARCASS	CW			MARB			REA			FAT		
		+72				+54		+71			+004	

- BW 74, BWR 96, Adj. 205 918, 205 Ratio 118
- Dam's Production: BWR 1/96, WWR 1/118
- Annuity was our pick of Growth Fund sons to use due to his EPD profile and added phenotype, and we feel this is a perfect example of what we were hoping for.
- His beautiful 2 year old mother did an awesome job raising this calf to weaning, and did so all while breeding back first cycle.
- If you're looking for a calving ease bull with added growth, while still maintaining phenotype, 2004 should be on your list.
- Selling 2/3 interest and full possession



HAF Annuity 2004 - Lot 28



HAF Resilient 2103 - Lot 29



29 HAF Resilient 2103

Birth Date: 2/7/2022 Bull 20456266 Tattoo: 2103

Sitz Stellar 726D
Sitz Resilient 10208
Sitz Miss Burgess 1856

Mohnen Substantial 272
Sitz Pride 200B
Sitz Top Game 561X
Sitz Miss Burgess 4381

JJD Identity 4001
HAF Windsong 6049
HAF KH Windsong 4019

Koupals B&B Identity
JJD Miss Bell 1130
Mohnen South Dakota 402
DH Windsong 084

PRODUCTION EPDs				MATERNAL EPDs			\$ VALUES					
CED	BW	WW	YW	CEM	Milk	\$EN	\$W	\$F	\$G	\$B	\$C	
+3	+2.2	+81	+140	+0	+29	-39	+75	+94	+67	+161	+266	
CARCASS	CW			MARB			REA			FAT		
		+57				+91		+76			+010	

- BW 87, BWR 102, Adj. 205 879, 205 Ratio 113
- Dam's Production: BWR 5/102, WWR 5/106, YWR 2/102
- The Resilient progeny are sought after in high demand across the country, and for good reason. 2103 offers added growth while still maintaining the look of a herd bull that you are proud to show off.
- The Windsong cow family at our place brings two things to mind, production and longevity, both of which help with profitability.
- Selling 2/3 interest and full possession



30 HAF Versatile 2150

Birth Date: 2/13/2022 Bull 20455161 Tattoo: 2150

Baldrige Forecaster B160
Baldrige Versatile
Baldrige Blackbird A030

GAR Prophet
Baldrige Pratissa W165
Hoover Dam
Baldrige Blackbird X89

Barstow Cash
HAF/KLC Lassie 4178
Plainview Lassie 71B

Sitz Dash 10277
Barstow Queen W16
Bon View New Design 1407
Plainview Lassie 92X

PRODUCTION EPDs				MATERNAL EPDs			\$ VALUES					
CED	BW	WW	YW	CEM	Milk	\$EN	\$W	\$F	\$G	\$B	\$C	
+4	+3.8	+102	+178	+10	+20	-56	+55	+75	+89	+210	+327	
CARCASS	CW			MARB			REA			FAT		
		+82				+1.28		+98			-002	

- BW 89, BWR 105, Adj. 205 892, 205 Ratio 114
- Dam's Production: BWR 7/102, WWR 7/108, YWR 2/113
- Stemming from a highly productive cow, this Versatile sired bull is worth a look. His only two maternal brothers were both sold through the Select Sale in previous years, and 2 of his 4 sisters were sold through the Pearls of the Prairie Sale, with the other 2 being retained in our herd.
- Sired by the high selling bull at Baldrige Angus in 2021. 2150 has an outstanding EPD profile for growth and carcass, while maintaining plenty of eye appeal and substance of body.
- Selling 2/3 interest and full possession



JOHNSON BROS ANGUS

Jeremy & Nathan Johnson
7366 80th St NE
Egeland, ND 58331
Jeremy: 701-370-2029
Nathan: 701-351-4386
purpleroan@yahoo.com
LOTS 31-33



JBAR Miss Ettas Queen 114J

Birth Date: 1/16/2021 Cow 20342338 Tattoo: 114J

SydGen Trust 6228
SydGen Black Pearl 2006
SydGen Anita 8611

SCR Promise 4042
SydGen Forever Lady 4413
Connealy Forward
Three Trees Anita 5133

Blake Cash Flow 4225
Miss Ettas Queen 821 OAR
Miss Ettas Queen 414 OAR

R/M Ultra Cash Flow 102
Blake Dottie 772
JRF New Design 878 03
Miss Ettas Queen 806 OAR

PRODUCTION EPDs				MATERNAL EPDs			\$ VALUES					
CED	BW	WW	YW	CEM	Milk	\$EN	\$W	\$F	\$G	\$B	\$C	
+4	+2.5	+54	+99	+12	+31	-15	+53	+98	+50	+149	+246	
CARCASS	CW			MARB			REA			FAT		
		+46			+64			+53			+022	

- BW 78, BWR 100, Adj. 205 614, 205 Ratio 100, Adj. 365 1099, 365 Ratio 100
- Dam's Production: BWR 6/100, WWR 6/109
- Pasture exposed to JBAR Resilient 601J (5/1/22 - 6/15/22) Estimated due date 3/15/23
- Black Pearl daughter with extreme length, depth of body, and thickness.
- Out of Pathfinder cow - one of the best in our herd. She is a powerful heifer.
- Ultrasound shows she is bred to Sitz Resilient son.
- Retaining one flush



SydGen Black Pearl 2006 - Sire to Lot 31



JBAR Resilient 601J

Birth Date: 1/6/2021 Bull 20141666 Tattoo: 601J

Sitz Stellar 726D
Sitz Resilient 10208
Sitz Miss Burgess 1856

Mohnen Substantial 272
Sitz Pride 200B
Sitz Top Game 561X
Sitz Miss Burgess 4381

Connealy In Focus 4925
JBAR Proud Belle 601D
Jbar Proud Belle 322a

Mytty In Focus
Black Cana of Conanga 206
Sitz Upward 307R
Nelsons Proude Belle S617

PRODUCTION EPDs				MATERNAL EPDs			\$ VALUES					
CED	BW	WW	YW	CEM	Milk	\$EN	\$W	\$F	\$G	\$B	\$C	
+11	-.3	+60	+106	+14	+38	-7	+74	+76	+57	+132	+276	
CARCASS	CW			MARB			REA			FAT		
		+38			+79			+32			-.002	

- BW 75, BWR 95, Adj. 205 870, 205 Ratio 98, Adj. 365 1236, Act. 365 1365, 365 Ratio 99
- Dam's Production: BWR 96, WWR 102
- Low birthweight, high growth, phenotypically flawless. He got up and grew with a 870 lb 205 day weight.
- Dam has perfect udder and 3 daughters are retained in our herd.
- Sitz Resilient sons have been topping sales across the country. This bull has been a standout since birth.



JBAR Resilient 601J- Lot 32

Lot 32 sells with 50 straws of semen!



HAF Versatile 2150 - Lot 30

Lot 33

JBAR CowboyUP 1J

Birth Date: 1/6/2021 Bull 20304073 Tattoo: 1J

Jbar 6G

HA Cowboy Up 5405

FAR Bonnie Brae 158A

SAV Bismarck 5682

Johnson Bros Delia W1

Nelsons Delia S621

HA Outside 3008

HA Blackcap Lady 1602

Barstow Cash

FAR Bonnie Brae 126U

GAR Grid Maker

SAV Abigale 0451

Lemmon Newline C804

N A Delia 104 OAR

PRODUCTION EPDs				MATERNAL EPDs			\$ VALUES					
CED	BW	WW	YW	CEM	Milk	\$EN	\$W	\$F	\$G	\$B	\$C	
+4	+3.1	+60	+108	+8	+24	-21	+48	+89	+29	+118	+202	
CARCASS	CW			MARB			REA			FAT		
		+38			+13			+62			+006	

- BW 81, BWR 105, Adj. 205 821, 205 Ratio 98, Adj. 365 1277, 365 Ratio 100
- Dam's Production: BWR 96, WWR 99
- Long bodied, extremely thick, good boned grandson of Cowboy Up.
- His sire's full sister was the top selling open heifer at the 2019 State Select Sale. He is out of a Bismarck daughter. He will deliver high performance with a calving ease package.



HA Cowboy Up 5405 - Grandsire of Lot 33

Lot 34

KFLL Elba 5G 2105 ET

Birth Date: 3/5/2021 Cow 20203093 Tattoo: 21051

Basin Payweight 1682

Tex Playbook 5437

Rita 1C43 of 9M26 Complete

Basin Payweight 006S

21AR O Lass 7017

Summitcrest Complete 1P55

Rita 9M26 of Rita 5F56 Pred

Mogck Bullseye

CW 2114 Lady Elba 453

CW 7161 Lady Elba 2114

Mogck Sure Shot

Mogck Mary 1255

SAV Potential 0205

CW 14 Lady Gammer 7161 DS

PRODUCTION EPDs				MATERNAL EPDs			\$ VALUES					
CED	BW	WW	YW	CEM	Milk	\$EN	\$W	\$F	\$G	\$B	\$C	
-4	+4.5	+87	+141	+11	+29	-29	+78	+103	+31	+134	+250	
CARCASS	CW			MARB			REA			FAT		
		+69			+28			+35			+019	

- BW 85, Actual WW 10/6/21 755 lbs.
- AI bred to HCC Whitewater 9010 on 6/4/22, Pasture exposed to TA Resilient 1012 from 6/23/22 to 08/07/22. Examined safe to HCC Whitewater 9010 estimated due date 03/14/23
- Carrying a heifer calf by HCC Whitewater 9010.
- Phenotypically she is our standout female. Sired by the ever popular Tex Playbook, out of our great Bullseye donor female.
- You will appreciate the performance and look this female exhibits.



KFLL Elba 5G 2105 ET - Lot 34



KFLL Erica 906 2111 - Lot 35

Lot
35

KFLL Erica 906 2111

Birth Date: 3/3/2021

Cow 20156751

Tattoo: 2111

Baldrige Colonel C251
SydGen KCF Gavel 8361
KCF Miss Fortress B398

baldrige Xpand x743
Baldrige Isabel Y69
KCF Bennett Fortress
KCF Miss Southside Z541

SydGen Enhance
KFLL Trojan Erica 671 906
CW 355 Trojan Erica 671

SydGen Exceed 3223
SydGen Rita 2618
Ponca Creek Pepper
CW 137 Trojan Erica 355

PRODUCTION EPDs				MATERNAL EPDs			\$ VALUES					
CED	BW	WW	YW	CEM	Milk	\$EN	\$W	\$F	\$G	\$B	\$C	
+7	+3.0	+93	+171	+8	+29	-43	+80	+112	+79	+191	+319	
CARCASS	CW			MARB			REA			FAT		
		+69			+1.05			+1.05			-0.06	

- BW 71, Actual WW on 9/26/21 760 lbs.
- AI bred to HCC Whitewater 9010 on 6/4/22, Pasture exposed to TA Resilient 1012 from 6/23/22 to 08/07/22. Examined safe to HCC Whitewater 9010 estimated due date 03/14/23
- Carrying a bull calf by Whitewater.
- Check out her numbers! Ranks in the top 1% for WW, YW, RADG, YH. Top 2% for \$C, Top 3% for \$B, \$W, Top 4% for HS, Top 5% for RE and \$G, Top 10% for SC, MW, MH, \$F, and CW, and Top 15% for Marb and Claw. In total 17 traits in the top 15% of the breed.
- Sired by SydGen Gavel, out of a SydGen Enhance daughter, interesting female no doubt. As you would expect has the CAB stamp on her pedigree.



KFLL Lady Elba 453 2101 - Lot 36



KFLL Elbena 910 2113 - Lot 37

Lot
36

KFLL Lady Elba 453 2101

Birth Date: 2/14/2021

Cow 20156748

Tattoo: 2101

Connealy Comrade 1385
Kesslers Commodore 6516
Kesslers Rainbow 0595

Connealy Consensus 7229
Happy Gee of Conanga 919
Summitrest Complete 1P55
Kesslers Rainbow 3043

Mogck Bullseye
CW 2114 Lady Elba 453
CW 7161 Lady Elba 2114

Mogck Sure Shot
Mogck Mary 1255
SAV Potential 0205
CW 14 Lady Gammer 7161 DS

PRODUCTION EPDs				MATERNAL EPDs			\$ VALUES					
CED	BW	WW	YW	CEM	Milk	\$EN	\$W	\$F	\$G	\$B	\$C	
+1	+2.4	+91	+160	+8	+30	-40	+84	+104	+43	+147	+260	
CARCASS	CW			MARB			REA			FAT		
		+71			+4.3			+6.1			+0.06	

- BW 80, Actual WW on 9/26/21 860 lbs.
- AI bred to HCC Whitewater 9010 on 6/23/2022, Pasture exposed to KFLL General 4G ET from 6/10/22 to 6/23/22, and to TA Resilient 1012 from 6/23/2022 to 08/07/2022, Estimated due date 04/02/2023
- Truly the deepest bodied, highest performing heifer ever raised at KFLL. Started out with a modest 80 lb. birthweight, but never looked back.
- She is the natural calf of the donor dam who was the high selling bred heifer in the MN State Angus Sale sired by Mogck Bullseye. This bred heifer is sired by Kesslers Commodore 6516 who definitely made an impact in the Dakota's. She could truly be a donor female in her own right. She is bred to HCC Whitewater or pasture bred to TA Resilient 1012.

Lot
37

KFLL Elbena 910 2113

Birth Date: 3/4/2021

Cow 20156752

Tattoo: 2113

SydGen Enhance
2XL Evolution 7033
2XL Opal 5933

SydGen Exceed 3223
SydGen Rita 2618
Baldrige Waylon W34
EC Objective N2189

Casino Bomber N33
KFLL Elbena 1575 910
HAF Elbena 1575

KM Broken Bow 002
Casino Annie K48
KR Little Joe
HAF Elbena 1112

PRODUCTION EPDs				MATERNAL EPDs			\$ VALUES					
CED	BW	WW	YW	CEM	Milk	\$EN	\$W	\$F	\$G	\$B	\$C	
+0	+4.9	+88	+161	+0	+26	-50	+65	+135	+83	+218	+333	
CARCASS	CW			MARB			REA			FAT		
		+81			+1.11			+9.3			-0.44	

- BW 89, Actual WW on 9/26/21 720 lbs.
- AI bred to Sitz Resilient 10208 on 6/4/22, Pasture exposed to TA Resilient 1012 from 6/23/2022 to 08/07/22. Examined safe to Sitz Resilient 10208 due 03/14/23
- Carrying a heifer calf by the ever popular Sitz Resilient 10208. Sired by 2XL Evolution 7033 who is a resident herd sire at Cottonwood Angus Farms in Pipestone, MN. He is one of the best sons of SydGen Enhance I've set my eyes on. He has a marbling EPD of +1.11 and RE EPD of .94, his \$B is +201 and \$C is +319.
- Her dam was selected at Hanneken Angus Royaltown, MN. She has been an excellent producer. She ranks in the top 1% for \$F, \$B, \$C, and YW, top 2% for CW. A very feminine female that ranks in the top 20% for 16 different EPD's. Her \$B is +218 and \$C is +333 both top 1%.
- Her pedigree has the CAB stamp as well.



KOSKI LAND AND CATTLE

Richard Koski
24951 353rd St NE
Wing, ND 58494
701-400-3669
koski@bektel.com
LOTS 38-39



7/S Splash 415 - Sire of Lot 39



KLC Splash 161

Birth Date: 3/20/2021 Bull 20231825 Tattoo: 161

PVF Insight 0129
7/S Splash 415
7 S Blackbird Joyce 16

SAV Brilliance 8077
PVF Missie 790
QLC Structure H365R
DMR Blackbird Joyce

Baldrige Nebraska 901
BFL Eileen Elba 54
BFL Veronica

SAF Focus of ER
Baldrige Flossie 367
Vermilion Dateline 7078
BFL Eileen Elba

PRODUCTION EPDs				MATERNAL EPDs			\$ VALUES				
CED	BW	WW	YW	CEM	Milk	\$EN	\$W	\$F	\$G	\$B	\$C
+1	+2.8	+67	+122	+10	+30	-33	+60	+116	+49	+166	+261
CARCASS	CW			MARB			REA		FAT		
			+65			+46					

- BW 98, Adj. 205 760, Adj. YW 1346
- Dam's Production: BWR 98, WWR 107, YWR 99
- This donor cow has had many high sellers of past ND Bull Test sales.
- KLC Splash 161 is sired by the Krebs Ranch 7/S Splash 415, a bull who Krebs purchased from the Sundsbak Family at DesLacs, ND.
- KLC Splash 161 has tremendous length of side, a long hipped bull that will definitely be a highlight of the two year old bulls selling in this sale.



E G Eyes Onyou - Sire of Lot 38



KLC Eyes Onyou 222

Birth Date: 3/16/2022 Bull 20493039 Tattoo: 222

Hoover No Doubt
E G Eyes Onyou
Baldrige Isabel D275

Mogck Bullseye
Miss Blackcap Ellston J2
Haynes Outright 452
Baldrige Isabel Y69

HF Tiger 5T
KLC Anna 143

MAR Anna 3178

HF Kodiak 5R
HF Echo 84R
Bon View New Design 1407
MAR Anna 4911

PRODUCTION EPDs				MATERNAL EPDs			\$ VALUES				
CED	BW	WW	YW	CEM	Milk	\$EN	\$W	\$F	\$G	\$B	\$C
-4	+4.5	+78	+145	+2	+27	-36	+54	+99			
CARCASS	CW			MARB			REA		FAT		

- BW 98, Adj. 205 812, BWR 117, WWR 115
- Dam's Production: BWR 105, WWR 101, YWR 109
- E G Eyes Onyou is a very popular son of the great Hoover No Doubt.
- This son of E G Eyes Onyou is very thick, deep made bull.
- Could be one of the stoutest bulls you will see on sale day.



LENNICK ANGUS RANCH

Glen & Travis Lennick
5424 25th Street
New Salem, ND 58563
Travis's Cell: 701-220-8959
Glen: 701-527-0718
wandalennick@hotmail.com
LOTS 40-41



Lennick Comeback 215 - Lot 41



Lennick Southern Charm 221 - Lot 40

Lot
41

Lennick Comeback 215

Birth Date: 1/22/2022 Bull 20474251 Tattoo: 215

Sitz Stellar 726D
Sitz Resilient 10208
Sitz Miss Burgess 1856

Mohnen Substantial 272
Sitz Pride 200B
Sitz Top Game 561X
Sitz Miss Burgess 4381

Woodhill Blueprint
Lennick Blackcap 002
AAR Blackcap 82

Connealy Confidence Plus
Woodhill Evergreen Z291-B233
Baldrige Bronc
AAR Blackcap 667

PRODUCTION EPDs				MATERNAL EPDs			\$ VALUES					
CED	BW	WW	YW	CEM	Milk	\$EN	\$W	\$F	\$G	\$B	\$C	
+4	+2.6	+88	+150	+5	+30	-35	+75	+94				
CARCASS	CW			MARB			REA			FAT		

- BW 79, BWR 105, Adj. 205 845, Actual ww 868, 205 Ratio 116
- Dam's Production 1/105, WWR 1/116
- This Resilient son is nothing short of what you would expect. He led the herd with the highest actual weaning weight of 868 lbs.
- He is a thick, muscular, powerful bull that you don't want to shy away from.

Lot
40

Lennick Southern Charm 221

Birth Date: 1/21/2022 Bull 20474081 Tattoo: 221

Silveiras Conversion 8064
BUBS Southern Charm AA31
Hickory Hill Erica 009

BT Crossover 758N
EXG Saras Dream S609 R3
Connealy Stimulus 8419
Hickory Hill Erica TA32

Ridl Arsenal 606
Lennick Windsong 801
HAF Windsong 6033

Connealy Arsenal 2174
Ridl Erica 417
SAV Recharge 3436
DH Windsong 084

PRODUCTION EPDs				MATERNAL EPDs			\$ VALUES					
CED	BW	WW	YW	CEM	Milk	\$EN	\$W	\$F	\$G	\$B	\$C	
+3	+2.6	+68	+121	+7	+27	-30	+58	+89	+50	+139	+233	
CARCASS	CW			MARB			REA			FAT		

- BW 80, BWR 98, Adj. 205 726, Actual ww 782, 205 Ratio 98
- Dam's Production BWR 3/77, WWR 3/99
- This Bubs Southern Charm son is a well balanced package. He has the length, stoutness, and overall flare.
- You are sure to get some good cow prospects out of him.

MONTGOMERY RANCH

281 64th Ave SE
Carrington, ND 58421
Cody's Cell: 701-652-5397
Jory's Cell: 701-653-5245
LOTS 42-43

Lot 42 MAR Erica 101

Birth Date: 2/8/2021 Cow 20471381 Tattoo: 1001

Mohnen Substantial 272
Sitz Stellar 726D
SITZ Pride 200B

Benfield Substance 8506
Mohnen Glyn Mawr Elba 1758
Connealy Final Product
Sitz Pride 308Y

S A V Sensation 5615
MAR Erica 9038
MAR Erica Dianna 4014

S A V Registry 2831
S A V Blackcap May 4136
Connealy Final Product
LaGrand Erica Dianna 9161

PRODUCTION EPDs				MATERNAL EPDs			\$ VALUES						
CED	BW	WW	YW	CEM	Milk	\$EN	\$W	\$F	\$G	\$B	\$C		
+1	+1.4	+66	+121	+7	+20	-23	+50	+86					
CARCASS	CW			MARB			REA			FAT			

- BW 74, BWR 100, Adj. 205 681, 205 Ratio 98
- Dam's Production: BWR 1/100, WWR 198
- AI'd to HCC Whitewater 9010 (19870506) on 5/26/22. Pasture exposed to MAR Sensation 0020 (19976098) from 6/1/22-7/3/22. Examined safe AI and due 2/22/23.
- We are excited to offer 2 outstanding Sitz Stellar daughters from the top of our replacement pen, both bred to the highly sought after bull HCC Whitewater 901. The Erica and Monica cow families have been around Montgomery Ranch for many generations and have plenty of productivity to go with their longevity. We are confident these bred heifers will do well for their new owners and could make a huge impact with their first calf.

NORDS ANGUS

Lucas Nord
1439 150th Street
Wolverton, MN 56594
Cell: 701-446-6157
Bob's Cell: 701-361-6493
rnorda@aol.com
LOTS 44-47



Sitz Stellar 726D - Sire of Lots 42 & 43

Lot 43 MAR Monica 1002

Birth Date: 2/23/2021 Cow 20464801 Tattoo: 1002

Mohnen Substantial 272
Sitz Stellar 726D
SITZ Pride 200B

Benfield Substance 8506
Mohnen Glyn Mawr Elba 1758
Connealy Final Product
Sitz Pride 308Y

Chestnut Asset 187
MAR Monica 9058
MAR Monica 5023

Brooking Asset 5065
Chestnut Monica 122
MAR Believe 3001
MAR Monica 3040

PRODUCTION EPDs				MATERNAL EPDs			\$ VALUES						
CED	BW	WW	YW	CEM	Milk	\$EN	\$W	\$F	\$G	\$B	\$C		
+3	+2.3	+77	+131	+3	+25	-32	+69	+79	+39	+118	+215		
CARCASS	CW			MARB			REA			FAT			

- BW 74, BWR 100, Adj. 205 706, 205 Ratio 12
- Dam's Production: BWR 1/10, WWR 1/102
- AI'd to HCC Whitewater 9010 (19870506) on 5/5/22. Pasture exposed to MAR Sensation 0020 (19976098) from 6/1/22-7/3/22. Examined safe AI and due 2/11/23.

Lot 44 Nords Foxy Lucy 2216

Birth Date: 2/2/2022 Cow 20489403 Tattoo: 2216

Hoover No Doubt
Sterling Pacific 904
Baldrige Isabel B082

Mogck Bullseye
Miss Blackcap Ellston J2
GAR Prophet
Baldrige Isabel Y69

BC Lookout 7024
Nords Foxy Lucy 1248
Nords Foxy Lucy 820

OCC Legend 616L
Gibbet Hill Mignonne E37
Exar Lutton 1831
Nords Foxy Lucy 610

PRODUCTION EPDs				MATERNAL EPDs			\$ VALUES						
CED	BW	WW	YW	CEM	Milk	\$EN	\$W	\$F	\$G	\$B	\$C		
+10	+1.5	+66	+114	+10	+20	-14	+59	+84	+62	+146	+258		
CARCASS	CW			MARB			REA			FAT			

- BW 80, WW 725
- Dense made, good built female backed by a lineage of consistent cows that grab that extra gear in terms of quality and cow ability.
- 2216 is a maternal sister to the top selling bull on this sale last year that went to Nebraska.
- No creep feed.



Nords Foxy Lucy 2216 - Lot 44



Dam of Lot 44, Nords Foxy Lucy 2216

Lot 45 Nords Redemption 2212

Birth Date: 1/15/2022 Bull 20439908 Tattoo: 2212

3F Epic 4631
Chestnut Redemption 38
Chestnut Wetonka WJ 63

Varilek Product 2010 04
Zebo Queen 1072
Haynes Outright 452
Chestnut Wetonka AS 461

PVF All Payday 729
Nord-PVF Lucy 3360
Thomas Lucy 7360

SAV Payroll 5281
PVF Blackbird 201
SAV 8180 Traveler 004
Thomas Lucy 4440

PRODUCTION EPDs				MATERNAL EPDs			\$ VALUES					
CED	BW	WW	YW	CEM	Milk	\$EN	\$W	\$F	\$G	\$B	\$C	
+5	+1.6	+67	+121	+12	+31	-15	+70	+89	+50	+140	+249	
CARCASS	CW			MARB			REA			FAT		
		+50			+65			+54			+032	

- BW 73, WW 779
- Stud beef bull that has big proportions with a low birthweight. 2212 blends stoutness and structure with remarkable phenotype.
- Out of an incredible 9 year old dam who raised a \$20,000 heifer last fall.
- She also is a full sister to our PVF Lucy 1125 donor who has produced countless high selling bulls and females.
- No creep feed

Lot 46 Nords Pacific 2219

Birth Date: 2/4/2022 Bull 20439910 Tattoo: 2219

Hoover No Doubt
Sterling Pacific 904
Baldrige Isabel B082

Mogck Bullseye
Miss Blackcap Ellston J2
GAR Prophet
Baldrige Isabel Y69

Plattmeyer Im T111-B11
KR Cally 4931
WK Cally 2328

Connealy Impression
College Queen Plattmeyer 70
VAR Rocky 80029
Thoene Danny 759

PRODUCTION EPDs				MATERNAL EPDs			\$ VALUES					
CED	BW	WW	YW	CEM	Milk	\$EN	\$W	\$F	\$G	\$B	\$C	
+0	+5.1	+87	+148	+10	+26	-39	+68	+90	+64	+154	+274	
CARCASS	CW			MARB			REA			FAT		
		+57			+88			+64			+013	

- BW 88, WW 774
- Bigger outlined bull that will be able to cover cows in his freshman year.
- 2219 will enhance both his bull and female calf crops.
- Top 3% WW and top 5% for YW.
- KR Cally 4931 was the high selling pick of the Krebs ranch females, she is raising the right kind of cattle that hold up and perform.
- No creep feed



Nords Redemption 2212 - Lot 45



Nords Pacific 2219 - Lot 46



Nords Tahoe 2221 - Lot 47

Lot 47 Nords Tahoe 2221

Birth Date: 2/6/2022 Bull 20439911 Tattoo: 2221

Tehama Upward Y238
Tehama Tahoe B767
Tehama Mary Blackbird Y684

Sitz Upward 307R
Tehama Elite Blackbird T735
SAV Final Answer 0035
Tehama Mary Blackbird T073

PVF Windfall SCC 9005
Nord PVF Blackbird 3088
All PVF Blackbird 645

PVF All Payday 729
Dameron PVF Proven Queen010
Leachman Saugahatchee 3000C
PVF Blackbird 201

PRODUCTION EPDs				MATERNAL EPDs			\$ VALUES					
CED	BW	WW	YW	CEM	Milk	\$EN	\$W	\$F	\$G	\$B	\$C	
+13	-1.1	+55	+93	+11	+28	+4	+65	+79	+48	+128	+245	
CARCASS	CW			MARB			REA			FAT		
		+36				+47		+93			+019	

- BW 72, WW 738
- Long spined, stout hipped, big time calving ease bull.
- 2221 is an example of why the Tahoe cattle are so sought after and how longevity is a staple within these stock.
- His dam is another 9 year old female who raises high quality bulls and females every year.
- No creep feed



PETERSEN FARMS

LaVern, Kris & Kyle Petersen
6887 County Rd 19
Bowbells, ND 58721
Cell: 701-339-0305
701-377-2345
krispetersen@nccray.net
LOTS 48-50



Tehama Tahoe B767 - Sire of Lots 47 & 48

Lot 48 PF Tahoe 206

Birth Date: 2/4/2022 Bull 20482885 Tattoo: 206

Tehama Upward Y238
Tehama Tahoe B767
Tehama Mary Blackbird Y684

Sitz Upward 307R
Tehama Elite Blackbird T735
SAV Final Answer 0035
Tehama Mary Blackbird T073

Musgrave 316 Stunner
PF Lass 026
PF Lass 326

LD Capitalist 316
MCATL Blackbird 831-1378
Musgrave Foundation
SCR Lass 80722

PRODUCTION EPDs				MATERNAL EPDs			\$ VALUES					
CED	BW	WW	YW	CEM	Milk	\$EN	\$W	\$F	\$G	\$B	\$C	
+7	+6	+82	+140	+4	+32	-30	+77	+90				
CARCASS	CW			MARB			REA			FAT		

- BW 76, Adj. 205 816, BW Ratio 100, WW Ratio 110
- Dam's Production BWR 1/100, WWR 1/110
- Tahoe son's have became well sought after this past year.
- He is out of a first calf heifer.
- This calf has eye appeal and performance.
- Will be a consignment to make sure you find sale day.



Sitz Resilient 10208 - Sire of Lots 49 & 50

Lot 50 PF Resilient 250

Birth Date: 2/19/2022 Bull 20482886 Tattoo: 250

Sitz Stellar 726D
Sitz Resilient 10208
Sitz Miss Burgess 1856

Mohnen Substantial 272
Sitz Pride 200B
Sitz Top Game 561X
Sitz Miss Burgess 4381

Musgrave Foundation
PF Lass 326
SCR Lass 80722

Kesslers Frontman R001
MCATL Blackcap Juara 29-434
BT Crossover 758N
WAC Lass 05

PRODUCTION EPDs				MATERNAL EPDs			\$ VALUES					
CED	BW	WW	YW	CEM	Milk	\$EN	\$W	\$F	\$G	\$B	\$C	
+6	+1.0	+82	+147	+6	+24	-36	+69	+101	+64	+165	+279	
CARCASS	CW			MARB			REA		FAT			
		+57				+82		+71			-011	

- BW 81, Adj. 205 796, BW Ratio 96, WW Ratio 107
- Dam's Production - BWR 8/102, WWR 8/107, Calving Interval 8/366 days
- Our PF Lass 326 cow has been a very productive cow in our herd. This donor cow has always been consistent for us every year.
- Her Resilient son this year has a balanced epd profile. Carcass epd's are all in the top 35% with excellent Marb and RE epd's. \$W, \$F, \$G, \$B, and \$C are all in the top 20%.
- Certainly makes herd bull criteria for the most astute cattlemen.

Lot 49 PF Resilient 221

Birth Date: 2/10/2022 Bull 20488191 Tattoo: 221

Sitz Stellar 726D
Sitz Resilient 10208
Sitz Miss Burgess 1856

Mohnen Substantial 272
Sitz Pride 200B
Sitz Top Game 561X
Sitz Miss Burgess 4381

LD Capitalist 316
PF Queen Mother 807
PF Queen Mother 515

Connealy Capitalist 028
LD Dixie Erica 2053
SAV Potential 0205
PF Queen Mother 760

PRODUCTION EPDs				MATERNAL EPDs			\$ VALUES					
CED	BW	WW	YW	CEM	Milk	\$EN	\$W	\$F	\$G	\$B	\$C	
+8	+5	+90	+154	+9	+22	-34	+77	+111	+57	+169	+294	
CARCASS	CW			MARB			REA		FAT			
		+63				+70		+83			+021	

- BW 77, Adj. 205 845, BW Ratio 93, WW Ratio 113
- Dam's Production - BWR 3/96, WWR 3/105, Calving Interval 3/359 days
- Balanced epd's across the epd profile. Calving ease, growth, and performance. Qualifies for the CAB stamp. Excellent claw and angle epd's as well.
- Top 20% for \$M, top 15% for \$B, as well as top 10% for \$W, \$F, and \$C

VALLEY VIEW FARMS
LeRoy Richard
15683 53rd Street SE
Kindred, ND 58051
Cell: 701-799-0288
ljrich120@yahoo.com
LOTS 51-53

Lot 51 VVF Entice 0521

Birth Date: 5/4/2021 Bull 20293002 Tattoo: 0521

SydGen Enhance
MOGCK Entice
MOGCK Erica 2255

SydGen Exceed 3223
SydGen Rita 2618
Mogck Sure Shot
MOGCK Erica 2162

CSA Danny 1144
CSA Beauty 3160
CSA Beauty 1060

Connealy Danny 5398
CSA Second Chance 754
CSA 6006 Alliance 811
CSA Beauty 737

PRODUCTION EPDs				MATERNAL EPDs			\$ VALUES					
CED	BW	WW	YW	CEM	Milk	\$EN	\$W	\$F	\$G	\$B	\$C	
+4	+2.1	+93	+160	+2	+24	-35	+83	+107	+52	+159	+284	
CARCASS	CW			MARB			REA		FAT			
		+70				+45		+1.02			-024	

- BW 70, Adj. 205 765, Adj. 365 1365
- High Growth
- This is by far the best bull we have raised at Valley View Farms.
- Ranks 10% or better in 13 EPD's. Ranks in 1% for WW and YW, Ranks 10% for RADG(more profits) This bull is a reflection of his sire.
- He has a great gentle way about him, top 10% for docility.
- Need to improve claw and angle? He will do that for your herd.
- Top 15 % on \$M, top 4% for \$W, top 10% \$F
- You need to look this guy over sale day.
- Retaining 1/3 interest



VVF Entice 0521 - Lot 51



VVF Leachman 1221 - Lot 52



VVF Citation 48 0221 - Lot 53

Lot
52

VVF Leachman 1221

Birth Date: 5/15/2021 Bull 20292771 Tattoo: 1221

N Bar Emulation EXT
Leachman Right Time
Leachman Erica 0025

Emulation N Bar 5522
N Bar Primrose 2424
Tehama Bando 155
Leachman Erica 8058

SJH Consensus H 3229
WF Connealy Susan 0147
ZA discovered the queen

Connealy Consensus 7229
BoBo Blackcap 9522
VAR Discovery 2240
MAR Queen Susann 1118

PRODUCTION EPDs				MATERNAL EPDs			\$ VALUES					
CED	BW	WW	YW	CEM	Milk	\$EN	\$W	\$F	\$G	\$B	\$C	
-1	+4.6	+58	+112	+3	+26	-27	+41	+90	+36	+126	+198	
CARCASS	CW			MARB								
		+48			+36		REA	+21	FAT		-013	

- Another good son of Leachman Right Time
- If you need a little more frame this guy will do that. If you need good females for the future he will do that too.
- He will also clean up some feet problems.
- After he turned a year old he really grew into a good looking herd bull.
- 25% for RADG is going to get you that growth and weight for more profit.

Lot
53

VVF Citation 48 0221

Birth Date: 4/23/2021 Bull 20216407 Tattoo: 0221

KCF Bennett Citation
WF Citation Alliance 0048
CSA Beauty 3160

KCF Bennett Consent Y75
Thomas Patricia 9705
CSA Danny 1144
CSA Beauty 1060

Leachman Right Time
WF Leachman R0019
CSA Beauty 3160

N Bar Emulation EXT
Leachman Erica 0025
CSA Danny 1144
CSA Beauty 1060

PRODUCTION EPDs				MATERNAL EPDs			\$ VALUES					
CED	BW	WW	YW	CEM	Milk	\$EN	\$W	\$F	\$G	\$B	\$C	
+9	-.8	+54	+96	+8	+32	-21	+60	+86	+64	+150	+237	
CARCASS	CW			MARB								
		+41			+86		REA	+66	FAT		+005	

- BW 61, Adj. 205 710, Adj. 365 1270
- This guy is a brick. He is wide, deep, and long.
- With a BW -.8 you can sleep all night.
- Ranked at the top 25% on marbling will add to the premiums when selling his calves.
- Top 15% on milk will also give you the type of heifers that will milk.
- Good on heifers and out of a first calf heifer.



Sleepy Joe - Maternal Brother to Lots 54 & 55



Maternal Sisters to Lot 56



SCHMIDGALL'S 2 TEN CATTLE COMPANY

Jeremy & Hannah Schmidgall
20893 457th Avenue
Vining, MN 56588
Cell: 320-424-2215
jhschmidgall@live.com
LOTS 54-56

Lot 54 2 TEN EXPRESS LADY 001

Birth Date: 1/2/2022 H 20407292 Tattoo: 001

PRODUCTION EPDs				MATERNAL EPDs			\$ VALUES				
CED	BW	WW	YW	CEM	Milk	\$EN	\$W	\$F	\$G	\$B	\$C
+0	+2.0	+64	+105	+6	+26	-24	+60	+91	+55	+146	+242
CARCASS		CW	+44	MARB	+84	REA		+32	FAT		+043



2 Ten Express Lady 001 - Lot 54

Lot 56 2TEN ERDMAN 222

Birth Date: 1/2/2022 H 20434138 Tattoo: 222

Paintrock Mountain Man
Paintrock Trapper
Emulous of Paintrock 93-9

Connealy Capitalist 028
EAR Capitalist E620
TNT Ms Ally 292

Kesslers Frontman R001
Enchantress of PR 3635
Isaacs Alliance 7161
Paintrock Emulous 446-6

S A V Final Answer 0035
Prides Pita of Conanga 8821
BT Impressive 898
TNT MS ALLY 947

PRODUCTION EPDs				MATERNAL EPDs			\$ VALUES					
CED	BW	WW	YW	CEM	Milk	\$EN	\$W	\$F	\$G	\$B	\$C	
+0	+3.2	+67	+125	+1	+30	-27	+59	+111	+43	+156	+271	
CARCASS		CW	+60	MARB		+67	REA		+14	FAT <td>+033</td>		+033

- A SOLID COW PROSPECT OUT OF EAR CAPITALIST E620, WHO WAS PURCHASED FROM EARDMANN ANGUS RANCH AT THE 2016 WINTER SHOW SALE. MATERNAL SISTERS HAVE SOLD TO KIRA VERGIN AND RICK SCHMIDT
- THE SIRE PAINTROCK TRAPPER IS A TRIED AND TRUE BULL THAT HAS BEEN USED IN THE PAST 5 YEARS. HE IS TOP 10% FOR CLAW AND ANGLE WHILE BEING TOP 15% FOR ADG AND TOP 20% FOR DRY MATTER INTAKE.

Lot 55 2 TEN EXPRESS LADY 003

Birth Date: 1/2/2022 H 20407291 Tattoo: 003

PRODUCTION EPDs				MATERNAL EPDs			\$ VALUES				
CED	BW	WW	YW	CEM	Milk	\$EN	\$W	\$F	\$G	\$B	\$C
-5	+3.0	+71	+124	+3	+18	-40	+49	+107	+45	+152	+232
CARCASS		CW	+52	MARB		+44	REA		+59	FAT	-.011

Sma Watchout 482
Conley Express 7211
DPL Sandy 3040

Silveiras Watchout 0514
2K Beauty 961
Silveiras Style 9303
K N C Cabin Creek Sandy 804

PVF Insight 0129
Cool Pines Lady 1517
Fancy Chance Lady 62

S A V Brilliance 8077
PVF Missie 790
Exar Lutton 1831
Champion Hill Lady 4636

- A COUPLE OF FLUSHMATES OUT OF CONLEY EXPRESS 7211 AND THE #3 RANKED \$B INSIGHT DAUGHTER, COOL PINES LADY 1517. THESE FLUSH SISTERS HAVE THE PHENOTYPE TO COMPETE WHILE NOT SACRIFICING GROWTH AND CARCASS TRAITS
- TOP 20% OF THE BREED OR BETTER IN 9 TRAITS - WW,YW, RADG, YH, MW,MH,ANGLE, FAT,AND \$FEED. THESE WILL SHOW AND BECOME A HERD STAPLE WHEN THEY'RE DONE



2 Ten Express Lady 003 - Lot 55



2Ten Erdman 222 - Lot 56

OAK LANE FARM

Scott Shively
Box 55
Towner, ND 58788
Cell: 701-721-3423
oaklnfarm2@yahoo.com
LOT 57

A&M CATTLE COMPANY

Marc & Amanda Shores
9084 County Rd 81
Evansville, MN 56326
Cell: 218-205-8938
amshores1727@gmail.com
LOTS 58-60

Lot 57 Oak Lane Blackbird 172

Birth Date: 3/17/2022 Cow 20493435 Tattoo: 172

Shoshone Viking GD60
Oak Lane Foremost 96
Shoshone Frances 6306

Franchester of Wye
Hyland Barbara 0266
Shoshone Pivot 6159
Lookout Blackbird 27T

Hyland Bobby 5125
Oak Lane Blackbird 28
Lookout Blackbird 80X

Jad Phylis W6157
Hyland Barbara 0266
Oak Lane Epic Encore 358
Lookout Blackbird 27T

PRODUCTION EPDs				MATERNAL EPDs			\$ VALUES					
CED	BW	WW	YW	CEM	Milk	\$EN	\$W	\$F	\$G	\$B	\$C	
+10	+1.5	+78	+141	+6	+32	-29	+78	+100	+57	+157	+257	
CARCASS	CW			MARB			REA			FAT		

- BW 78, WW 605
- For anyone who believes that the female in a heifers pedigree are an indicator of her maternal value this heifer should interest you.

Lot 58 A&M Regiment Lady 0120

Birth Date: 1/20/2022 Cow 20484179 Tattoo: 0120

WAR Cavalry B063 Z044
Wilks Regiment 9035
Vintage Chloe 6137

Connealy Cavalry 1149
War CC&7 Z044 X029
V A R Empire 3037
V A R Chloe 2227

MOGCK United Front 118
AAR Witch 090
AAR Witch 826

MOGCK United Front 503
Mogck Miss 2856
HA Cowboy Up 5405
A A R Witch 445

PRODUCTION EPDs				MATERNAL EPDs			\$ VALUES					
CED	BW	WW	YW	CEM	Milk	\$EN	\$W	\$F	\$G	\$B	\$C	
+10	+1.5	+78	+141	+6	+32	-29	+78	+100	+57	+157	+257	
CARCASS	CW			MARB			REA			FAT		

- BW 78
- The Wilks Regiment calves are flat out good as they combine the phenotype look of an Angus cow while adding the growth and carcass that is demanded of the progressive breeders of today.
- 0120 comes from a nice uddered cow from Ryan Andersons herd that was a first calf heifer. She ranks in the top 10% of the breed or better in WW, YW, ADG, and \$Weaned all while being in the middle of the breed for DMI. TRUE BALANCE!

Lot 59 A&M Elenor 0210

Birth Date: 2/1/2022 Cow 20484180 Tattoo: 0210

Musgrave 316 Stunner
PF Stunner 013
PF Lass 326

LD Capitalist 316
MCATL Blackbird 831-1378
Musgrave Foundation
SCR Lass 80722

ADD JP Pretty 5188
J J Emily
J J Burbells Pride 4309

ADD JP Pretty 5002
Precise Blackbird Add 36N
ADD New Alliance
5M ND Burbell Add 9T

PRODUCTION EPDs				MATERNAL EPDs			\$ VALUES					
CED	BW	WW	YW	CEM	Milk	\$EN	\$W	\$F	\$G	\$B	\$C	
+1	+2.6	+58	+102	+5	+31	-30	+54	+91	+44	+135	+231	
CARCASS	CW			MARB			REA			FAT		

- BW 83
- A heifer that will perform the way a mama cow should for years to come.
- 0210 is the only heifer to sell in 2022, sired by PF Stunner 013, who was the high selling bull on the 2020 North Dakota Select Sale from Petersen Farms, Bowbells, ND. This Bull stamps them the same on every calf with extremely high vigor at birth, thick build with solid wean weights, and awesome dispositions. The bull calves are thick, square hiped, and great feet. One son went top 1% of the breed for tenderness after his Genomics came back.
- The dam is a solid 10 year old cow that calves every year on time. Shes coming with another PF stunner calf in 2023

Lot 60 A&M Hometown Ella

Birth Date: 1/31/2022 Cow pending Tattoo: 0130

PRODUCTION EPDs				MATERNAL EPDs			\$ VALUES					
CED	BW	WW	YW	CEM	Milk	\$EN	\$W	\$F	\$G	\$B	\$C	
.0												
CARCASS	CW			MARB			REA			FAT		



A&M Regiment Lady 0120 - Lot 58



A&M Elenor 0210 - Lot 59



A&M Hometown Ella - Lot 60



SPRUNK ANGUS

Dale Sprunk
14757 43rd St SE
Chaffee, ND 58079
Cell: 701-238-5432
sprunkangus@gmail.com
LOT 61



Deer Valley Growth Fund - Sire to Lot 61



Spr A Growth Fund 29

Birth Date: 1/30/2022 Bull 20502312 Tattoo: 29

Basin Payweight 1682
Deer Valley Growth Fund
Deer Valley Rita 36113

SAV Resource 1441
Spr A 29 Rosetta 746
Spr A Rosetta 29

Basin Payweight 006S
21AR O Lass 7017
Plattmere Weigh Up K360
Deer Valley Rita 9457

Rito 707 of Ideal 3407 7075
SAV Blackcap May 4136
Sitz Upward 307R
SAV Rosetta 8500

PRODUCTION EPDs				MATERNAL EPDs				\$ VALUES			
CED	BW	WW	YW	CEM	Milk	\$EN	\$W	\$F	\$G	\$B	\$C
+7.0	+2.1	+98	+176	+8	+26	-55	+79	+124	+26	+150	+253
CARCASS	CW			MARB			REA		FAT		
			+73			-02		+90			+007

- BW 85, BWR 100, Adj. 205 838, 205 Ratio 125
- Dam's Production: BWR 4/103, WWR 4/106, YWR 2/102
- Check out the growth numbers for this bull +98 WW and +176 YW! If you want heavy steer calves in the fall to sell more pounds, here is a bull to consider and still keep birth weight in line this bull should meet your needs.
- Double bred to the great Sitz Upward 307R.

SWANSON ANGUS

Andrew Swanson
2554 290th St
Ivanhoe, MN 56142
Cell: 507-829-4133
aswanson@mnss.coop
LOT 62



Tehama Tahoe B767 - Sire to Lot 62

TLC ANGUS

Thomas, Charlet, & Lee Vetsch
575 62nd Street SE
Hazelton, ND 58544
Cell: 701-202-4904
701-782-4133
leevetsch@gmail.com
LOTS 63-80



TLC Patricia 7622 - Lot 63

Lot 62 Swanson Primrose 213

Birth Date: 2/18/2022 H 20483424 Tattoo: 213

Tehama Upward Y238
Tehama Tahoe B767
Tehama Mary Blackbird Y684

SydGen Enhance
Josephson Primrose 934
Josephson Primrose J340

Sitz Upward 307R
Tehama Elite Blackbird T735
S A V Final Answer 0035
Tehama Mary Blackbird T073

SydGen Exceed 3223
SydGen Rita 2618
Josephson C C & 7 J112
Josephson Primrose J073

PRODUCTION EPDs				MATERNAL EPDs				\$ VALUES				
CED	BW	WW	YW	CEM	Milk	\$EN	\$W	\$F	\$G	\$B	\$C	
+4.0	+2.9	+88	+153	+4	+33	-31	+80	+95	+66	+161	+280	
CARCASS	CW			MARB			REA		FAT			
		+48			+85			+79			-0.04	

- BW 95 lbs. BWR 123. Adj. 205 761 lbs. 205 Ratio 128
- Dam's Production BWR 1/123 WWR 1/128
- This Calf was a standout all summer. Good disposition, sound, correct, and powerful. Tahoe does a great job at siring cattle that calve easy, grow, grade, and turn into awesome cows. I have seen first-hand the wet daughters by Tahoe and in my opinion, that is the strength of that bull, easy fleshing, good uddered cows that get pregnant and wean a heavy calf. This female will be no exception.

Lot 63 TLC Patricia 7622

Birth Date: 2/23/2022 Cow 20503623 Tattoo: 7622

GAR Ashland
GAR Home Town
Chair Rock Sure Fire 6095

GAR Early Bird
Chair Rock Ambush 1018
GAR Sure Fire
Chair Rock Progress 3005

SS Objective T510 OT26
Thomas Patricia 9705
Thomas Patricia 71138

SS Traveler 6807 T510
SS Miss Rita R011 7R8
GAR Predestined
Thomas Patricia 2626

PRODUCTION EPDs				MATERNAL EPDs				\$ VALUES				
CED	BW	WW	YW	CEM	Milk	\$EN	\$W	\$F	\$G	\$B	\$C	
13	0.7	69	126	11	27	-21	68	100	93	193	312	
CARCASS	CW			MARB			REA		FAT			
		55			1.32			0.96			-0.034	

- BW 68, Adj. 205 674 - ET
- An elite direct daughter of 9705 and GAR Home Town
- 7622's dam Thomas Patricia 9705 ranks in the top 1% of all parent dam's in the breed for WW, YW, and \$W. Top 2% for \$G and \$B. Top 3% for CW. Top 4% for \$C. Top 5% for Marb. Top 10% for CED and RE. Top 20% for Milk.
- 9705's also the dam of KCF Bennett Summation, KCF Bennett Citation, and KCF Bennett Fortress a member of Select Sires lineup.
- GAR Home Town is the record selling bull at Gardiner Angus Ranch.
- TLC Vetsch Angus will be retaining a future flush with a minimum of 6 viable embryos.
- Help yourself with this heifer. We feel she has a bright future and will walk with the best of anyones herd.
- 50K data available sale day.



Thomas Patricia 9705 - Dam to Lot 63



GAR Home Town - Sire to Lot 63



KCF Bennett Summation
Son of Thomas Patricia 9705



KCF Bennett Fortress
Son of Thomas Patricia 9705



KCF Bennett Citation
Son of Thomas Patricia 9705

Lot
64

TLC Super Mama 0022

Birth Date: 2/1/2022 Cow 20503625 Tattoo: 0022

Mogck Bullseye
Hoover No Doubt
Miss Blackcap Ellston J2

MOGCK Sure Shot
Mogck Mary 1255
SydGen CC&7
Miss Blackcap Ellston D154

CRA Bextor 872 5205 608
MCC SuperMama 0139
MCC SuperMama 7212

BAR Ext Traveler 205
Cra Lady Jaye 608 498 S Easy
MCC Daybreak
MCC SuperMama 1174

PRODUCTION EPDs				MATERNAL EPDs			\$ VALUES				
CED	BW	WW	YW	CEM	Milk	\$EN	\$W	\$F	\$G	\$B	\$C
4	2.7	67	122	12	18	-12	53	104	68	173	289
CARCASS	CW	53	MARB	0.91	REA	0.87	FAT	0.015			

- BW 74, Adj. 205 685 - ET
- A wonderful, super gentle, awesome female with no creep.
- This female has lots of potential and we also feel she is a donor prospect.
- Longevity is built into this heifer. As her mother is still in high production at 13 years and her grandmother went to 14 years with a BWR of 5/91, WWR of 5/108, and a YWR of 5/112.
- An awesome opportunity to add to your herd.



TLC Super Mama 0022 - Lot 64



MCC SuperMama 0139
Dam to Lots 64, 66, & 69



Hoover No Doubt
Sire to Lot 64

Lot
65

TLC Tesa 5922

Birth Date: 2/3/2022

Cow 20503626

Tattoo: 5922

Marcys Scale Crusher
SAV Scale House 0845
SAV Blackcap May 1416

Sitz Upward 307R
Marcys Erica 393
Rito 707 of Ideal 3407 7075
SAV Blackcap May 4136

SAV Net Worth 4200
TK Tesa W592
TK Tesa R94

SAV 8180 Traveler 004
SAV May 2410
Bon View New Design 878
TK Tesa M508

PRODUCTION EPDs				MATERNAL EPDs			\$ VALUES					
CED	BW	WW	YW	CEM	Milk	\$EN	\$W	\$F	\$G	\$B	\$C	
4	3.1	72	124	7	27	-20	66	102	41	143	253	
CARCASS	CW	58		MARB	0.4	REA	0.57	FAT	0.002			

- BW 88, Adj. 205 736
- One of the very first SAV Scale House progeny to sell.
- A great opportunity to acquire a powerful, neat natured, unique, high end female from the top of our herd that is really hard to part with, hadn't been for W592 success of producing embryos for us.
- She is a natural AI bred calf out of the phenomenal SAV Scale House, that was the \$275,000 high selling stud of 2021.
- TLC 5922's dam is selling in this very sale @ 14 years of age being very sound.
- TK W592 was purchased December of 2021, raised this heifer calf, and is leaving us with 48 embryos. She is also the mother of the \$48,000 TK Steamboat 307 that will sell the featured bred heifer in the TK December sale and also the featured bull calf in that same sale, where W592 will also be selling a featured bred heifer.
- If you want to add an abundance of power and good looks, here she is.
- No creep feed
- 50K data available sale day



TLC Tesa 5922 - Lot 65

Lot
66

TLC Super Mama 9092

Birth Date: 1/29/2022

Cow 20503624

Tattoo: 9092

Coleman Bravo 6313
Coleman Triumph 9145
Lawsons Chloe C815

Coleman Charlo 0256
Coleman Donna 714
SAV Renown 3439
Lawsons Chloe Z341

CRA Bextor 872 5205 608
MCC SuperMama 0139
MCC SuperMama 7212

BAR Ext Traveler 205
Cra Lady Jaye 608 498 S Easy
MCC Daybreak
MCC SuperMama 1174

PRODUCTION EPDs				MATERNAL EPDs			\$ VALUES					
CED	BW	WW	YW	CEM	Milk	\$EN	\$W	\$F	\$G	\$B	\$C	
10	0.1	60	107	8	21	-8	57	88	52	139	254	
CARCASS	CW	39		MARB	0.58	REA	0.7	FAT	0.002			

- BW 70, Adj. 205 710 - ET
- An absolute stunning female at the very top of our heifer pen.
- A must see heifer with very high expectations wherever she lands.
- Super gentle, high maternal female with this combination of genetics.
- 9092 we feel is an absolute donor prospect and weaned off at 900 lbs. with no creep.
- You can have it all with this dynamic female. Her mother and grandmother both served as donors for Marshall Cattle.



TLC Super Mama 9092 - Lot 66



Coleman Triumph 9145 - Sire to Lots 66 & 69

Lot
67

TLC Liza 3982

Birth Date: 2/23/2022 Cow 20504627 Tattoo: 3982

Poss Maverick
Poss Deadwood
Poss Ellunmere 399

Basin Payweight 1682
Poss Pride 5163
Poss Easy Impact 0119
Poss Ellunmere 0170

SydGen 928 Destination 5420
Spring Cove Liza 754
Spring Cove Liza 021

B/R Destination 727-928
Shady Brook Entense 76D 29H
CCA Emblazon 702
Spring Cove Liza 721

PRODUCTION EPDs				MATERNAL EPDs			\$ VALUES					
CED	BW	WW	YW	CEM	Milk	\$EN	\$W	\$F	\$G	\$B	\$C	
9	0.8	70	126	10	30	-29	70	112	92	204	336	
CARCASS	CW	59		MARB	1.43	REA	0.79	FAT	0.011			

- BW 70, Adj. 205 677 - ET
- An opportunity here to add this heifer to your program, and quite possibly your donor pen.
- TLC Liza 3982 is a sharp fronted, elegant, high capacity female, with no creep feed.
- Her dam 754 is selling in this very sale, and we thought long and hard to let her go, but after leaving us with several calves, and a nice shelf of embryos, that decision was made.
- Her sire Poss Deadwood was the \$900,000 stud from Danny Poss Production sale that is producing and selling many high selling progeny.
- 3982 may just be the only Deadwood available this year in the whole state of North Dakota. When you put Liza 754 on the bottom of the pedigree we feel you have a female that will compliment your program greatly.
- 50K data available sale day



TLC Liza 3982 - Lot 67

Lot
68

TLC Deadwood 1402

Birth Date: 2/25/2022 Bull 20503621 Tattoo: 1402

Poss Maverick
Poss Deadwood
Poss Ellunmere 399

Basin Payweight 1682
Poss Pride 5163
Poss Easy Impact 0119
Poss Ellunmere 0170

SAV Sensation 5615
TLC Queenies Sensation 877ET
HF Queenie 161B

SAV Registry 2831
SAV Blackcap May 4136
HF Simulator 62Z
HF Queenie 373X

PRODUCTION EPDs				MATERNAL EPDs			\$ VALUES					
CED	BW	WW	YW	CEM	Milk	\$EN	\$W	\$F	\$G	\$B	\$C	
5	1.4	68	123	6	26	-30	63	111	73	184	293	
CARCASS	CW	58		MARB	1.04	REA	0.77	FAT	0.011			

- BW 86, Adj. 205 833 - ET
- A thick made moderate framed, super correct made sharp fronted well natured bull.
- He has lots of bone and absolutely perfect hooves
- His maternal brother Beer Run 16 was the 2021 ND Bull Test winner and \$13,500 high selling bull going to Kerry Dockter and Kyle Jenson of Denhoff, ND
- 1402's dam is on the front end of her story and we believe she will be heard of for sometime. She is a phenomenal female with excellent feet and hoof structure, long and thick, gentle natured, and an absolute perfect udder.
- 1402 stands proud with a good set of testicles and raised with no creep feed
- His sire Poss Deadwood was the \$900,000 stud from Danny Poss Angus.
- 1402 will probably be the only Deadwood bull calf in the state to sell.
- Retaining 1/3 semen rights



TLC Deadwood 1402 - Lot 68



Poss Deadwood - Sire to Lots 67 & 68

Lot
69

TLC Triumph 5592

Birth Date: 1/30/2022

Bull 20503622

Tattoo: 5592

Coleman Bravo 6313
Coleman Triumph 9145
Lawsons Chloe C815

Coleman Charlo 0256
Coleman Donna 714
SAV Renown 3439
Lawsons Chloe Z341

CRA Bextor 872 5205 608
MCC SuperMama 0139
MCC SuperMama 7212

BAR Ext Traveler 205
Cra Lady Jaye 608 498 S Easy
MCC Daybreak
MCC SuperMama 1174

PRODUCTION EPDs				MATERNAL EPDs			\$ VALUES					
CED	BW	WW	YW	CEM	Milk	\$EN	\$W	\$F	\$G	\$B	\$C	
10	0.1	60	107	8	21	-8	57	88	52	139	254	
CARCASS	CW			MARB			REA			FAT		
		39			0.58			0.7			0.002	

- BW 72, Adj. 205 804 - ET
- A son of the \$225,000 Coleman Triumph
- A super high maternal, gentle, good footed, calving ease, yet enough power to generate pounds individual.
- His dam was the high seller at the Marshall Cattle Dispersal that generated multiple embryos for us. She is still in production at her new home at 13 years of age.
- 5592's dam 0139 has a BWR of 10/98, WWR of 10/106, a YWR of 10/105, and an IMF ratio of 10/101.
- No creep feed
- Retaining 1/3 semen rights



TLC Triumph 5592 - Lot 69

Lot
70

Spring Cove Liza 754

Birth Date: 1/30/2017

Cow 18894495

Tattoo: 754

B/R Destination 727-928
SydGen 928 Destination 5420
Shady Brook Entense 76D 29H

B/R Destination 727
B/R Blackcap Empress 558
Sitz Traveler 9929
BT Everelda Entense 76D

CCA Emblazon 702
Spring Cove Liza 021
Spring Cove Liza 721

OCC Emblazon 854E
Limestone Blackcap R128
Hyline Right Time 338
Spring Cove Liza 146

PRODUCTION EPDs				MATERNAL EPDs			\$ VALUES					
CED	BW	WW	YW	CEM	Milk	\$EN	\$W	\$F	\$G	\$B	\$C	
6	1.6	56	104	10	30	-14	57	83	71	154	277	
CARCASS	CW			MARB			REA			FAT		
		38			1			0.6			-0.009	

- Sells AI Bred to calf 3/15/23 with a confirmed bull calf by the \$500,000 Connealy Craftsman.
- A beautiful donor purchased in the 2020 Spruce Mountain sale where she served as a donor as she combines the outcross Sydenstricker Genetics sire, Destination 5420 with the headliner of the Hultman Angus and Baldrige Brothers donor program, Liza 021, best known as the dam of Reno 4021.
- Liza 754 and her maternal brother Reno 4021's, dam records a BR 6/96, WR 6/110, and YR 6/107 while showing ultrasound ratios IMF 5/106 and REA 5/101.
- Liza 754 has been successfully flushed 7 times for us averaging over 10 high quality embryos per flush.
- Liza sold our high selling bull in 2021 and has a bred heifer with us and a wonderful shelf of embryos. She also sold the high selling embryos at this very sale last year.
- Also selling a heifer calf of Poss Deadwood.
- 3 IVF embryos by Connealy Craftsman
- 3 IVF embryos by SG Salvation



Spring Cove Liza 754 - Lot 70

Dam to Lots 67, 73 & 74

Lot 71

EPF Blackcap 6624

Birth Date: 9/10/2016 Cow 18686675 Tattoo: 6624

AAR Ten X 7008 SA
EXAR HI-Tech 4769B
EXAR Rita U049

Mytty In Focus
AAR Lady Kelton 5551
E&B 1680 Precision 1023
GAR New Design 1200

GAR Prophet
Bricton Blackcap 3795
Springfield Blackcap 0148

CRA Bextor 872 5205 608
GAR Objective 1885
Connealy Forward
Springfield Blackcap 7217

PRODUCTION EPDs				MATERNAL EPDs			\$ VALUES					
CED	BW	WW	YW	CEM	Milk	\$EN	\$W	\$F	\$G	\$B	\$C	
13	-0.2	79	136	15	25	-33	75	102	64	166	266	
CARCASS	CW			MARB			REA			FAT		
		59			0.86			0.59			-0.007	

- Sells in her entirety.
- 6624 was our purchase at the Express Ranches Big Event Sale in 2021, and was their \$40,000 purchase from EDF's.
- She was flushed 7 times at Express and we flushed her 7 times with our flushing averaging 15 high quality embryos per flush and recorded progeny ratios of 93 for birth, 105 weaning, and 106 for ribeye.
- Her calves will hit the ground for us this spring with lots of anticipation as she is a stunning female with an EPD profile that puts her in the top 2% CEM, top 2% WW, top 2% YW, top 4% \$B, top 4% \$W, top 4% CWT, top 5% \$F, top 10% \$G, top 10% CED, top 10% Doc, top 15% Marb, top 20% Angle, top 20% BW, top 30% \$AxH and top 30% REA
- She sells with calf at side, due AI bred to calf Dec. 23, 2022 to Schiefelbein Showman 338.
- Selling 3 IVF embryos of Connealy Clarity, and 3 IVF embryos of Sitz Stellar



EPF Blackcap 6624 - Lot 71
Dam to Lots 75 & 76

Lot 72

TK Tesa W592

Birth Date: 2/7/2009 Cow 16498081 Tattoo: W592

SAV 8180 Traveler 004
SAV Net Worth 4200
SAV May 2410

Sitz Traveler 8180
Boyd Forever Lady 8003
SAF 598 Bando 5175
SAV May 6269

Bon View New Design 878
TK Tesa R94
TK Tesa M508

B/R New Design 036
Bon View Gammer 85
SAF Strategy 9015
TK Tesa 1540

PRODUCTION EPDs				MATERNAL EPDs			\$ VALUES					
CED	BW	WW	YW	CEM	Milk	\$EN	\$W	\$F	\$G	\$B	\$C	
0	4.3	64	110	2	31	-22	56	95	45	139	232	
CARCASS	CW			MARB			REA			FAT		
		47			0.52			0.43			0.007	

- Selling in her entirety.
- The dam of the \$48,000 TK Angus and Minert-Simonson Angus herd sire TK Steamboat 0307
- An elegant fronted female with a powerful look, great udder, and excellent feet. She is a proven producer with an average NR of 107 on 7 progeny as well as progeny IMF and REA ratios of 119 and 107 on 2 sons. She had sons sell for \$12,500, \$5,500, and \$48,000. We purchased her from TK's female sale just a year back and put her in our donor program where she produced 48 high quality embryos on 4 flushes.
- W592 still has lots to offer, she is very sound at 14 years. We think W592 will maintain the longevity, soundness, power and history she had for us and her new owner.
- Also selling her natural heifer calf by Scale House 0845
- 3 IVF embryos by Connealy Clarity
- 3 IVF embryos by HCC Whitewater
- Sells bred to WCF Rainmaker who was the top selling bull from Duppong's Willow Creek for a March calf.



TK Tesa W592 - Lot 72
Dam to Lots 77 & 78

Lot
73

3 IVF Embryos

Sitz Stellar 726D
Sitz Miss Burgess 1856
Connealy Niobrara 5451
Black Carla of Conanga 450

SydGen 928 Destination 5420
Spring Cove Liza 754
Spring Cove Liza 021

B/R Destination 727-928
Shady Brook Entense 76D 29H
CCA Emblazon 702
Spring Cove Liza 721

PRODUCTION EPDs				MATERNAL EPDs			\$ VALUES					
	CED	BW	WW	YW	CEM	Milk	\$EN	\$W	\$F	\$G	\$B	\$C
S	+8	+1.7	+84	+145	+5	+40	-18	+94	+102	+75	+177	+345
D	+6	+1.6	+56	+104	+10	+30	-14	+57	+83	+71	+154	+277
CARCASS	S	CW	+67	MARB	+1.03	REA	+94	FAT	+.010			
	D	CW	+38	MARB	+1.00	REA	+60	FAT	-.009			

- Seller guarantees one pregnancy if implanted by a certified embryologist.
- Shipping is buyers expense



Connealy Craftsman - Sire to Lots 73

Lot
74

3 IVF Embryos

Baldrige Alternative E125
SG Salvation
MGR JP Rita 7037

Poss Easy Impact 0119
Baldrige Blackbird A030
Basin Payweight 1682
MGR Rita 2145

SydGen 928 Destination 5420
Spring Cove Liza 754
Spring Cove Liza 021

B/R Destination 727-928
Shady Brook Entense 76D 29H
CCA Emblazon 702
Spring Cove Liza 721

PRODUCTION EPDs				MATERNAL EPDs			\$ VALUES					
	CED	BW	WW	YW	CEM	Milk	\$EN	\$W	\$F	\$G	\$B	\$C
S	+9	+3.4	+78	+138	+13	+21	-31	+60	+142	+86	+228	+362
D	+6	+1.6	+56	+104	+10	+30	-14	+57	+83	+71	+154	+277
CARCASS	S	CW	+82	MARB	+1.30	REA	+95	FAT	+.032			
	D	CW	+38	MARB	+1.00	REA	+60	FAT	-.009			

- Seller guarantees one pregnancy if implanted by a certified embryologist.
- Shipping is buyers expense



SG Salvation - Sire to Lot 74

Lot
75

3 IVF Embryos

Cherry Creek Land Grant
Connealy Clarity
Breshie of Conanga 6988

K C F Bennett Homestead
Cherry Crk Eva B27 M
Connealy Confidence Plus
Brelly of Conanga 367

EXAR Hi-Tech 4769B
EPF Blackcap 6624
Bricton Blackcap 3795

AAR Ten X 7008 SA
EXAR Rita U049
GAR Prophet
Springfield Blackcap 0148

PRODUCTION EPDs				MATERNAL EPDs			\$ VALUES					
	CED	BW	WW	YW	CEM	Milk	\$EN	\$W	\$F	\$G	\$B	\$C
S	+7	+1.1	+76	+142	+4	+21	-20	+65	+121	+81	+202	+346
D	+13	-.2	+79	+136	+15	+25	-33	+75	+102	+64	+166	+266
CARCASS	S	CW	+67	MARB	+1.08	REA	+98	FAT	-.023			
	D	CW	+59	MARB	+86	REA	+59	FAT	-.007			

- Seller guarantees one pregnancy if implanted by a certified embryologist.
- Shipping is buyers expense



Connealy Clarity - Sire to Lots 75 & 77

Lot 76 3 IVF Embryos

Mohnen Substantial 272
Sitz Stellar 726D
Sitz Pride 200B

Benfield Substance 8506
Mohnen Glyn Mawr Elba 1758
Connealy Final Product
Sitz Pride 308Y

EXAR Hi-Tech 4769B
EPF Blackcap 6624
Bricton Blackcap 3795

A A R Ten X 7008 S A
EXAR Rita U049
G A R Prophet
Springfield Blackcap 0148

PRODUCTION EPDs				MATERNAL EPDs			\$ VALUES					
CED	BW	WW	YW	CEM	Milk	\$EN	\$W	\$F	\$G	\$B	\$C	
S	+3	-.3	+71	+128	+8	+19	-20	+61	+91	+45	+137	+243
D	+13	-.2	+79	+136	+15	+25	-33	+75	+102	+64	+166	+266
CARCASS	S	CW	+49	MARB	+62	REA	+.57	FAT	+.072			
	D	CW	+59	MARB	+.86	REA	+.59	FAT	-.007			

- Seller guarantees one pregnancy if implanted by a certified embryologist.
- Shipping is buyers expense



Sitz Stellar 726D - Sire to Lot 76

Lot 77 3 IVF Embryos

Cherry Creek Land Grant
Connealy Clarity
Breshie of Conanga 6988

K C F Bennett Homestead
Cherry Crk Eva B27 M
Connealy Confidence Plus
Brelly of Conanga 367

SAV Net Worth 4200
TK Tesa W592
TK Tesa R94

SAV 8180 Traveler 004
SAV May 2410
Bon View New Design 878
TK Tesa M508

PRODUCTION EPDs				MATERNAL EPDs			\$ VALUES					
CED	BW	WW	YW	CEM	Milk	\$EN	\$W	\$F	\$G	\$B	\$C	
S	+7	+1.1	+76	+142	+4	+21	-20	+65	+121	+81	+202	+346
D	+0	+4.3	+64	+110	+2	+31	-22	+56	+95	+45	+139	+232
CARCASS	S	CW	+67	MARB	+1.08	REA	+.98	FAT	-.023			
	D	CW	+47	MARB	+.52	REA	+.43	FAT	+.007			

- Seller guarantees one pregnancy if implanted by a certified embryologist.
- Shipping is buyers expense



TK Tesa W592 - Lot 72
Dam to Lots 77 & 78

Lot 78 3 IVF Embryos

Mill Brae Identified 4031
HCC Whitewater 9010
Rock Creek Sara 6066

Koupals B&B Identity
Mill Brae Pro Blackcap 1092
Silveiras Conversion 8064
H P C A Confidence A322

SAV Net Worth 4200
TK Tesa W592
TK Tesa R94

SAV 8180 Traveler 004
SAV May 2410
Bon View New Design 878
TK Tesa M508

PRODUCTION EPDs				MATERNAL EPDs			\$ VALUES					
CED	BW	WW	YW	CEM	Milk	\$EN	\$W	\$F	\$G	\$B	\$C	
S	+12	-.9	+71	+128	+14	+27	-21	+72	+97	+93	+190	+319
D	+0	+4.3	+64	+110	+2	+31	-22	+56	+95	+45	+139	+232
CARCASS	S	CW	+55	MARB	+1.35	REA	+1.31	FAT	+.038			
	D	CW	+47	MARB	+.52	REA	+.43	FAT	+.007			

- Seller guarantees one pregnancy if implanted by a certified embryologist.
- Shipping is buyers expense



HCC Whitewater 9010 - Sire to Lot 78

Lot 79 4 Conventional Embryos

GAR Ashland
GAR Home Town
Chair Rock Sure Fire 6095

GAR Early Bird
Chair Rock Ambush 1018
GAR Sure Fire
Chair Rock Progress 3005

CRA Bextor 872 5205 608
MCC SuperMama 0139
MCC SuperMama 7212

BAR Ext Traveler 205
Cra Lady Jaye 608 498 S Easy
MCC Daybreak
MCC SuperMama 1174

	PRODUCTION EPDs				MATERNAL EPDs			\$ VALUES				
	CED	BW	WW	YW	CEM	Milk	\$EN	\$W	\$F	\$G	\$B	\$C
S	+15	-.4	+61	+117	+13	+35	-.18	+.57	+104	+114	+218	+346
D	+10	+.7	+57	+100	+11	+19	-.8	+.50	+.88	+.67	+155	+260
CARCASS	S	CW	+52	MARB	+1.73	REA	+1.09	FAT	-.042			
	D	CW	+37	MARB	+.86	REA	+.88	FAT	+0			

- Seller guarantees two pregnancies if implanted by a certified embryologist.
- Shipping is buyers expense



GAR Home Town - Sire to Lot 79

Lot 80 4 Conventional Embryos

Mogck Bullseye
Hoover No Doubt
Miss Blackcap Ellston J2

MOGCK Sure Shot
Mogck Mary 1255
SydGen CC&7
Miss Blackcap Ellston D154

CRA Bextor 872 5205 608
MCC SuperMama 0139
MCC SuperMama 7212

BAR Ext Traveler 205
Cra Lady Jaye 608 498 S Easy
MCC Daybreak
MCC SuperMama 1174

	PRODUCTION EPDs				MATERNAL EPDs			\$ VALUES				
	CED	BW	WW	YW	CEM	Milk	\$EN	\$W	\$F	\$G	\$B	\$C
S	-2	+4.6	+76	+143	+13	+16	-.16	+.58	+121	+69	+189	+312
D	+10	+.7	+57	+100	+11	+19	-.8	+.50	+.88	+.67	+155	+260
CARCASS	S	CW	+70	MARB	+.95	REA	+.85	FAT	+.030			
	D	CW	+37	MARB	+.86	REA	+.88	FAT	+0			

- Seller guarantees two pregnancies if implanted by a certified embryologist.
- Shipping is buyers expense



Hoover No Doubt - Sire to Lot 80



MCC SuperMama 0139 - Dam to Lots 79 & 80



BROWN'S ANGUS RANCH

Justin Brown
4115 Hwy 25
Center, ND 58530
Cell: 701-207-0054
701-794-8771
justin@brownsangusranch.com
LOT 81



4 Conventional Embryos

S A V Renown 3439
S A V Renovation 6822
S A V Madame Pride 0151

Baldrige Colonel C251
Montana Blackbird 8122
Galaxy Blackbird 2102

Rito 707 of Ideal 3407 7075
S A V Blackcap May 4136
S A V 004 Density 4336
S A V Madame Pride 0075

baldrige Xpand x743
Baldrige Isabel Y69
Sitz Upward 307R
Riverbend Blackbird 4301

	PRODUCTION EPDs				MATERNAL EPDs			\$ VALUES				
	CED	BW	WW	YW	CEM	Milk	\$EN	\$W	\$F	\$G	\$B	\$C
S	+5	+2.3	+71	+125	+3	+18	-10	+57	+78	+30	+108	+207
D	+7	+1.1	+81	+144	+9	+33	-37	+82	+103	+53	+156	+276
CARCASS	S	CW	+40	MARB	+40	REA	+27	FAT	+0.89			
	D	CW	+65	MARB	+52	REA	+99	FAT	-0.005			

- A rare opportunity to acquire embryos from SAV Renovation 6822. The now deceased Angus phenom in Canada blended with a rare combination of sheer phenotype power and a tremendous EPD profile.
- 8122 is the result of blending the \$580,000 Colonel with the popular now deceased Blackbird 2102. Galaxy Blackbird 2102 is a maternal sister to Sandpoint Blackbird 8809.
- Blackbird 8122 ranks in the top 30% or better in the breed for 14 EPD/Indexes including the top 1% for \$W, top 2% for WW, YW and Claw, 4% for SC, CW and RE, 10% for RADG, Milk, MW, Angle and \$F, top 15% for \$B and \$M.
- Seller guarantees two pregnancies if implanted by a certified embryologist. Embryos stored at TK Vet, Glen Ullin, ND.
- Shipping is buyers expense



Montana Blackbird 8122 - Dam to Lot 81



Montana Blackbird 8122 - Dam to Lot 81



BRUNER ANGUS RANCH

Travis Bruner
4049 12th Ave NE
Drake, ND 58736
701-626-2070
brunerangusranch@gmail.com
LOTS 82 & 83



3 IVF Embryos

Marcys Scale Crusher
SAV Scale House 0845
SAV Blackcap May 1416

S Chisum 6175
Miss Wix 125 of SAF
Miss Wix 841 of SAF

Sitz Upward 307R
Marcys Erica 393
Rito 707 of Ideal 3407 7075
SAV Blackcap May 4136

S Alliance 3313
S Gloria 464
McCumber 228K Traveler 2011
Miss Wix 418 of SAF

	PRODUCTION EPDs				MATERNAL EPDs			\$ VALUES				
	CED	BW	WW	YW	CEM	Milk	\$EN	\$W	\$F	\$G	\$B	\$C
S	+7	+1.8	+79	+138	+12	+24	-19	+74	+110	+38	+148	+270
D	+1	+4.0	+69	+120	+8	+32	-19	+65	+92	+31	+123	+218
CARCASS		S	CW	+70	MARB	+28	REA	+70	FAT	-0.03		
		D	CW	+55	MARB	+14	REA	+78	FAT	+0.11		

- Miss Wix 125 of SAF best known as the dam of BAR B52. B52 was the high selling bull from our 2020 production sale for \$26,000 to Ressler Angus Ranch. 125 is also the granddam of BAR Explosive who was our high selling 2 year old bull in our 2021 sale for \$14,000 to Mohnen Angus.
- This is the first time we have ever offered embryos for sale from this herd building matriarch. To date we have registered 71 ET calves and 5 natural calves from what we consider the best donor cow at Bruner Angus Ranch to date!
- 125 is currently the highest income earning cow at Bruner Angus Ranch. We have 15 daughters currently working in our herd and 10 more heifers in our 2022 replacement pen.
- Seller guarantees one pregnancy if implanted by a certified embryologist. Embryos produced and located at Boviteq, Madison WI
- Offering 3 IVF embryos from SAV Scale House 0845.
- Shipping is buyers expense



SAV Scale House 0845 - Sire to Lot 82



Connealy Craftsman - Sire to Lot 83



3 IVF Embryos

Sitz Resilient 10208
Connealy Craftsman
Black Cathy of Conanga 8251

Jindra Acclaim
BAR Miss Acclaim 9118
BAR New Design 8027

Sitz Stellar 726D
Sitz Miss Burgess 1856
Connealy Niobrara 5451
Black Carla of Conanga 450

Jindra 3rd Dimension
Jindra Blackbird Lassy 1111
Sik Design 7259
BAR 3110 Lifeline 5145

	PRODUCTION EPDs				MATERNAL EPDs			\$ VALUES				
S	CED	BW	WW	YW	CEM	Milk	\$EN	\$W	\$F	\$G	\$B	\$C
D	+8	+1.7	+84	+145	+5	+40	-18	+94	+102	+75	+177	+345
	-2	+5.2	+80	+140	+9	+28	-48	+60	+118	+50	+167	+246
CARCASS		S	CW	+67	MARB	+1.03	REA	+94	FAT		+010	
		D	CW	+74	MARB	+58	REA	+57	FAT		+004	

- BAR Miss Acclaim 9118 is a rising star in the donor pen at Bruner Angus Ranch. As a first calf heifer she weaned the heaviest bull calf to walk across the scale from our 2021 calf crop, including all ET calves! In this year's calf crop she weaned the heaviest natural born heifer calf, 2nd heaviest overall to one ET heifer calf.
- Her bull calf from last year BAR Commodore 1024 was the high selling yearling bull for \$14,500, selling to Northway Cattle Company of Alberta Canada.
- 9118 will add performance to any bull she is mated with, and is proving her worth at a very young age. Get in on a rare opportunity!
- Seller guarantees one pregnancy if implanted by a certified embryologist. Embryos produced and located at Boviteq, Madison WI
- Offering 3 IVF Embryos from Connealy Craftsman the \$500,000 selection by Select Sires & ST Genetics.
- Shipping is buyers expense



Miss Wix 125 of SAF - Dam to Lot 82



ND STOCKMEN'S ASSOCIATION DONATED BY DAVID DOCKTER

407 S 2nd St
Bismarck, ND 58504
701-223-2522
jellingson@ndstockmen.org
LOTS 84 & 85

These embryo packages are consigned by the North Dakota Stockmen's Foundation and were a gift to the 501(c) 3 from David Dockter of Dockter's W-Heart Ranch of Mandan, N.D. The proceeds of the sale of these embryos will be used toward the North Dakota Stockmen's Building Campaign. The NDSF and Stockmen's Association are working together on the project.

The NDSA's headquarters is the home and command post of the 93-year-old and more-than-3,100-member organization. Members were proud to erect its current building in 1974, and the facility has served the organization well over those nearly 50 years. Since then, the organization has grown not only in members, but in responsibilities and services. Additionally, the NDSF was launched and maintains a significant charitable portfolio, which helps provide hope and opportunity for the state's cattle industry through projects such as scholarships, research and disaster relief. The new building is expected to be approximately 10,000 square feet and include modern and ADA-compliant features.

The goal is to break ground on the new site once the groups have secured two-thirds of the funding in donations and pledges. The proceeds from the sale of the existing NDSA headquarters will be applied to the purchase. The goal is to reach this threshold by Spring 2023.



3 Conventional Embryos

E W A Peyton 642
E W A Teamwork 821
E W A 543 of 117 Weigh Up

GAR Sure Fire
GAR Sure Fire 3657
GAR Prophet 2954

Quaker Hill Manning 4EX9
E W A 444 of 968 Progress
Plattmire Weigh Up K360
Edgewood Lady 117

Connealy In Sure 8524
Chair Rock 5050 G A R 8086
G A R Prophet
G A R Daybreak 1201

	PRODUCTION EPDs				MATERNAL EPDs			\$ VALUES				
	CED	BW	WW	YW	CEM	Milk	\$EN	\$W	\$F	\$G	\$B	\$C
S	+10	+0.9	+97	+171	+12	+29	-51	+88	+148	+73	+222	+346
D	+11	+0	+60	+108	+11	+28	-27	+59	+96	+75	+171	+275
CARCASS	S	CW	+91	MARB	+0.96	REA	+1.14	FAT	+0.026			
	D	CW	+50	MARB	+1.11	REA	+0.7	FAT	+0.015			

- All no. 1 embryos collected and stored at TK Vet Service, Glen Ullin, ND (701-348-9099)
- Guarantee 1 pregnancy when implanted by a certified embryologist
- Sire Teamwork has 391 genomic progeny and has 16 EPD traits in the top 20%
- In Select Sires 2022 Fall Beef Catalog Teamwork is listed in top 10 traits WW no. 1, YW no. 1, Ribeye no. 8, \$W no. 9, \$B no. 4 (172), \$C no. 7 +277



3 Conventional Embryos

E W A Teamwork 821
E W A Network 025
E W A 8124 of 6131 Niagara

GAR Ashland
GAR Ashland 2280
GAR Sure Fire 3657

E W A Peyton 642
E W A 543 of 117 Weigh Up
S S Niagara Z29
E W A 6131 of 2052 Fortress

GAR Early Bird
Chair Rock Ambush 1018
GAR Sure Fire
GAR Prophet 2954

	PRODUCTION EPDs				MATERNAL EPDs			\$ VALUES				
	CED	BW	WW	YW	CEM	Milk	\$EN	\$W	\$F	\$G	\$B	\$C
S	+11	+0.5	+89	+165	+12	+38	-51	+89	+157	+87	+244	+371
D	+11	+1	+75	+135	+7	+29	-45	+69	+94	+80	+175	+280
CARCASS	S	CW	+94	MARB	+1.21	REA	+1.22	FAT	+0.015			
	D	CW	+59	MARB	+1.18	REA	+0.78	FAT	+0.006			

- All no. 1 embryos collected and stored at TK Vet Service, Glen Ullin, ND (701-348-9099)
- Guarantee 1 pregnancy when implanted by a certified embryologist
- Sire EWA Network 025 has 17 EPDs in the top 20%
- In Select Sires 2022 Beef Catalog Fall Top 10 list
- WW 2%, YW 1%, RE 1%, \$W 1%, \$B 1%, \$C 1%
- Dam GAR Ashland 2280 has 17 EPD traits in the top 25%.
- Calving ease plus superior growth with great carcass EPDs.
- Shipping is buyers expense



EWA Network 025 - Sire to Lot 84



EWA Teamwork 821 - Sire to Lot 85

- Dam GAR Sure Fire 3657 has 16 trait EPDs in the top 25% on 2 calves.
- Calving ease with superior growth with carcass EPDs
- Shipping is buyers expense

FLECK RANCH

Les and Aaron Fleck
6180 Hwy 6
Solen, ND 58570
Les: 701-391-5577
ljfranch@yahoo.com
Aaron: 701-391-3557
afleck@westriv.com
LOTS 86 & 87

Lot 86 5 IVF Embryos

SAV America 8018
SAV Glory Days 1832
SAV Madame Pride 3145

SAV President 6847
SAV Madame Pride 0075
SAV Priority 7283
SAV Madame Pride 1171

Basin Payweight 107S
Flecks Black Annie 5065
Pine Coulee Black Annie U7

Vermilion Payweight J847
Basin Lucy 3829
Connealy Onward
War Hill Blackbone Annie

PRODUCTION EPDs				MATERNAL EPDs			\$ VALUES					
CED	BW	WW	YW	CEM	Milk	\$EN	\$W	\$F	\$G	\$B	\$C	
S	+2	+4.7	+75	+136	+1	+18	-34	+48	+110	+35	+145	+231
D	+3	+3.2	+77	+128	+8	+21	-35	+61	+115	+38	+153	+262
CARCASS	S	CW	+65	MARB	+19	REA	+74	FAT	-0.018			
	D	CW	+68	MARB	+25	REA	+66	FAT	-0.026			

- 5065 is a beautiful cow from end to end. Very docile. She is the #1 income producing cow at Fleck's. She produces top sellers year after year. ND Bull Test 2022 son's by SAV America and Hoover No Doubt won the Jackpot for ADG, also SAV America son won the WDA contest.
- The dam behind 5065, Pine Coulee Black Annie U7 sold at Pine Coulee's female sale at 10 years of age for \$62,000.
- These embryos are a tremendous opportunity to own significant genetics by a very top end cow and sires who should compliment "5065."
- The cow families behind this mating 5065, U7, 0075, 4136. Top cows in the Angus Industry. Opportunity!
- 5 IVF embryos by SAV Glory Days 1832, seller guarantees 2 pregnancies if implanted by certified embryologist.
- IVF embryos collected and stored at TransOva in Iowa.
- Shipping is buyers expense



Flecks Black Annie 5065 - Dam to Lots 86 & 87

Lot 87 5 IVF Embryos

Bar R Jet Black 5063
LAR Man In Black
JMB Maxine TG 2131

Connealy Black Granite
Bar R Iris Anita 0113
Sitz Top Game 561X
JMB Maxine Deluxe 9034

Basin Payweight 107S
Flecks Black Annie 5065
Pine Coulee Black Annie U7

Vermilion Payweight J847
Basin Lucy 3829
Connealy Onward
War Hill Blackbone Annie

PRODUCTION EPDs				MATERNAL EPDs			\$ VALUES					
CED	BW	WW	YW	CEM	Milk	\$EN	\$W	\$F	\$G	\$B	\$C	
S	+10	+1.9	+94	+168	+9	+28	-48	+84	+128	+71	+199	+331
D	+3	+3.2	+77	+128	+8	+21	-35	+61	+115	+38	+153	+262
CARCASS	S	CW	+88	MARB	+1.08	REA	+79	FAT	+0.067			
	D	CW	+68	MARB	+25	REA	+66	FAT	-0.026			

- 5065 is a beautiful cow from end to end. Very docile. She is the #1 income producing cow at Fleck's. She produces top sellers year after year. ND Bull Test 2022 son's by SAV America and Hoover No Doubt won the Jackpot for ADG, also SAV America son won the WDA contest.
- The dam behind 5065, Pine Coulee Black Annie U7 sold at Pine Coulee's female sale at 10 years of age for \$62,000.
- These embryos are a tremendous opportunity to own significant genetics by a very top end cow and sires who should compliment "5065."
- A powerful sire to compliment 5065 to a "T." He combines tremendous base width and muscle with exceptional substance, rib shape, and length of body. Pure Power
- 5 IVF embryos by LAR Man In Black, seller guarantees 2 pregnancies if implanted by certified embryologist.
- IVF embryos collected and stored at TransOva in Iowa.
- Shipping is buyers expense



LAR Man in Black - Sire to Lot 87



SAV Glory Days 1832 - Sire to Lot 86



SCHMIDGALL'S 2 TEN CATTLE COMPANY

Jeremy & Hannah Schmidgall
20893 457th Avenue
Vining, MN 56588
Cell: 320-424-2215
jhschmidgall@live.com
LOT 88

Lot
88

2 IVF Embryos

Basin Deposit 6249
Basin Jameson 1076
Basin Joy 9140

Casino Bomber N33
KFLL Beauty 806 012
KFLL Windy 806

Basin Advance 3134
Basin Lucy 4288
EXAR Monumental 6056B
Basin Joy 5367

KM Broken Bow 002
Casino Annie K48
Baldrige Colonel C251
ARROW Beauty 5115

	PRODUCTION EPDs				MATERNAL EPDs			\$ VALUES				
	CED	BW	WW	YW	CEM	Milk	\$EN	\$W	\$F	\$G	\$B	\$C
S	+8	+1.4	+108	+179	+8	+31	-52	+103	+127	+93	+221	+364
D	+7	+9	+85	+143	+5	+20	-21	+78	+106	+65	+172	+305
CARCASS	S	CW	+96	MARB	+1.39	REA	+1.03	FAT	+.011			
	D	CW	+68	MARB	+.87	REA	+.75	FAT	+.008			

- 3 IVF EMBRYOS GUARANTEEING 1 PREGNANCY IF IMPLANTED BY A CERTIFIED EMBRYOLOGIST
- PHENOTYPE AND GENOTYPE IS HOW TO BEST DESCRIBE THIS COW. TOP 20% OR BETTER IN 12 GENOMIC INDEXES, CALVED WITH TWINS AS A FIRST CALF HEIFER AND STILL BRED BACK ON HER SECOND CYCLE!! I THINK SHE DESERVED THE SHOT OF FSH!
- THE SIRE HAS BEEN ONE OF THE HOTTEST SIRES IN 2022. HIS LIMITED SEMEN SALES HAVE COMMANDED \$1200 A STRAW TO BREEDERS ACROSS THE LAND. BE ON THE CUTTING EDGE ON PEDIGREE AND GENOMIC POTENTIAL!
- Shipping is buyers expense



KFL Beauty 806 012 - Dam to Lot 88



Basin Jameson 1076 - Sire to Lot 88



WENDEL LIVESTOCK

10213 68th St SE
LaMoure, ND 58458
701-710-0425
701-709-0777
smmcarr@daktel.com
LOT 89

Lot
89

5 Conventional Embryos

Sitz Stellar 726D
Sitz Resilient 10208
Sitz Miss Burgess 1856

Mohnen Substantial 272
Sitz Pride 200B
Sitz Top Game 561X
Sitz Miss Burgess 4381

Jauer 353 Traveler 589 27
Sitz Florabelle Fanny 5053
Sitz Florabelle Fanny 1293

Jauer 7111 Traveler 353 719
Jauer 6807 Traveler 27 085
Sitz Alliance 6595
Sitz Florabelle Fanny 706

	PRODUCTION EPDs				MATERNAL EPDs			\$ VALUES				
	CED	BW	WW	YW	CEM	Milk	\$EN	\$W	\$F	\$G	\$B	\$C
S	+9	+3	+80	+142	+7	+22	-22	+71	+84	+69	+152	+289
D	+9	+3	+44	+71	+7	+41	+2	+63	+60	+48	+108	+222
CARCASS	S	CW	+48	MARB	+93	REA	+75	FAT	+0.03			
	D	CW	+23	MARB	+67	REA	+37	FAT	+0.04			

- Dam's Production: BWR 7/95, WWR 7/100, YWR 7/99
- Florabelle Fanny 5053 was our pick in the 2021 Sitz "Elite Sort" Female Sale as one of the sale features. This proven dam produced Sitz Intuition 9929 selected by ST Genetics as the \$120,000 sale feature in the Fall 2020 Sitz Bull Sale. 5053 was produced from the Sitz embryo program, combining Pathfinder sire Traveler 589 and the Pathfinder donor dam, 1293, that stacks maternal power from Pathfinder sire Sitz Alliance 6595 and Pathfinder sire Leachman Right Time.
- Florabelle Fanny 5053 entered our ET program shortly after calving and we are offering 5 embryos by Sitz Resilient 10208. We feel this mating will prove to be a valuable maternal performance success.
- A maternal sister to this valuable donor sold for \$20,000 and 31 maternal brothers to her have sold in past Sitz bull sales for \$246,250 to average \$7,944. They include a \$17,000 purchase to Brian and Denise McNeil and a \$13,000 herd sire to Justin and Sara Spickler in North Dakota.
- Selling 5 conventional embryos, guaranteeing 2 pregnancies if implanted by a certified embryologist.
- Shipping is buyers expense



Sitz Resilient 10208 - Sire to Lot 89



Sitz Florabelle Fanny 5053 - Dam to Lot 89



Sitz Intuition 9929 - Son of Sitz Florabelle Fanny 5053



SCHMIDGALL'S 2 TEN CATTLE COMPANY

Jeremy & Hannah Schmidgall
20893 457th Avenue
Vining, MN 56588
Cell: 320-424-2215
jhschmidgall@live.com
LOT 90



Heifer Pregnancy

Poss Maverick
Springfield McClintok 0026
DCF Lucy 6075

HPCA Veracious
2 Ten Emblynette 12
2Ten Emblynette 12

Basin Payweight 1682
Poss Pride 5163
Freys Opportunity 148A
Thomas Lucy 2861

Mill Brae Identified 4031
H P C A Sunrise A246
G A R Ashland
EG Seedstock 1701

	PRODUCTION EPDs				MATERNAL EPDs			\$ VALUES				
	CED	BW	WW	YW	CEM	Milk	\$EN	\$W	\$F	\$G	\$B	\$C
S	+9	+0	+82	+159	+16	+37	-59	+79	+166	+88	+254	+387
D	+7	+3.8	+95	+170	+9	+31	-41	+84	+114	+90	+205	+334
CARCASS	S	CW	+98	MARB	+1.16	REA	+1.20	FAT	-0.023			
	D	CW	+80	MARB	+1.26	REA	+1.13	FAT	-0.012			

- LAST YEAR WE CONSIGNED PICK OF THE HEIFERS OUT OF HPCA VERACIOUS X WELYTOK RITA 9G90. GILLILAND LIVESTOCK SELECTED 2 TEN RITA 142, WHO HAS 13 EPD'S AND \$ VALUE INDEXES IN THE TOP 1% OF THE BREED. RITA 142 THEN WENT ON TO SELL ½ INTEREST FOR \$11,000 IN THE SOURCE SESSIONS INVITATIONAL ON OCTOBER 23, 2022.
- THIS YEAR WE ARE OFFERING PICK OF THE SPRINGFIELD MCCLINTOK 0026. A POSS MAVERICK OUT OF A FREYS OPPORTUNITY 148A DAUGHTER. THIS BULLS USAGE HAS BEEN MAKING PREGANCIAS AND EGGS FOR PROGRESSIVE BREEDERS EVERYWHERE.
- TOP 1%-RADG,CEM,CW,RE,\$AXH,\$AXJ,\$F,\$B AND \$C
- TOP 5%- WW,YW,MILK,MW,MH,DOC,\$W,\$G
- TOP 15%- YH,MARB,FAT, ANGLE
- THE DAM, 2 TEN EMBLYETTE 12, IS JUST GETTING BETTER AS SHE MOVES INTO HER PRIME. SHE IS A BEAUTIFUL UDDERED ASHLAND DAUGHTER THAT IS A GRANDDAUGHTER OF SAV EMBLYNETTE 5229, WHO IS A DONOR FOR EMMY GROUP PRESTON, WI.
- TOP 5%- WW,YW, MW,RADG,MH,RE,FAT,\$AXJ,\$W
- TOP 15%- YH,ANGLE,\$AXH,\$F



Springfield McClintok 0026 - Sire to Lot 90



STROMMEN CATTLE COMPANY

Jeremy & Rachel Strommen
312 South 4th St
New Salem, ND 58563
701-260-7405
701-391-1325
jdstrommen@gmail.com
LOTS 91 & 92

NOTES



SAV Renew 8132 (5 Units)

Birth Date: 2/21/2018 19250927 Tattoo: 8132

Rito 707 of Ideal 3407 7075
S A V Renown 3439
S A V Blackcap May 4136

R R Rito 707
Ideal 3407 of 1418 076
S A V 8180 Traveler 004
S A V May 2397

Connealy Cavalry 1149
S A V Blackcap May 4593
S A V Blackcap May 8051

Connealy Consensus
Brista of Conanga 927T
S A V Bismarck 5682
S A V Blackcap May 6517

PRODUCTION EPDs				MATERNAL EPDs			\$ VALUES					
CED	BW	WW	YW	CEM	Milk	SEN	\$W	\$F	\$G	\$B	\$C	
-3	+4.2	+88	+145	+7	+27	-26	+76	+83	+32	+116	+232	
CARCASS		CW	+52	MARB	+11	REA	+88	FAT	-.005			

- Shipping is buyers expense



SAV Renew 8132 (5 Units)

Birth Date: 2/21/2018 19250927 Tattoo: 8132

Rito 707 of Ideal 3407 7075
S A V Renown 3439
S A V Blackcap May 4136

R R Rito 707
Ideal 3407 of 1418 076
S A V 8180 Traveler 004
S A V May 2397

Connealy Cavalry 1149
S A V Blackcap May 4593
S A V Blackcap May 8051

Connealy Consensus
Brista of Conanga 927T
S A V Bismarck 5682
S A V Blackcap May 6517

PRODUCTION EPDs				MATERNAL EPDs			\$ VALUES					
CED	BW	WW	YW	CEM	Milk	SEN	\$W	\$F	\$G	\$B	\$C	
-3	+4.2	+88	+145	+7	+27	-26	+76	+83	+32	+116	+232	
CARCASS		CW	+52	MARB	+11	REA	+88	FAT	-.005			

- Shipping is buyers expense



SAV Renew 8132 - Lots 91 & 92

North Dakota Angus Assn. Endowment

- Growing Stronger with Your Support!

Thanks to the generosity of the heifer donors, Best Angus & Quarter Horses of Watford City, raffle winner Duckwitz Angus of Belfeld and the many ticket purchasers, the North Dakota Angus Endowment is growing stronger and stronger each year. The money raised from this raffle helps provide scholarship and leadership development opportunities for North Dakota Junior Angus Association members.



Heifer Donors:

Best Angus & Quarter Horses, Watford City

Heifer Winner:

Duckwitz Angus, Belfeld

Thank you to these 2022 Donation Heifer Raffle Ticket Buyers:

Cooper, Emmett & Rhett Acheson	Jake Cargo	Frey Angus Ranch	Dustin Krueger	Paige Sailer	Hank Thompson
Western Agency	LeAnn Cargo	Kirsten Gemar	Langerud Angus	Troy Sailer	Piper Thompson
Ellie Anderson	Darnel Carlson	Merrick Gemar	Abby Lennick	Kurtis & Arlene Schaff	Shelby Thompson
Ryan Anderson	Coy Carter	Rachel Gemar	Allison Lennick	Martin & Angie Schaff	Bentley, Briar & Gentry Tokach
Sally Anderson	Harlee Carter	Randy Graham	Anabel Lennick	Schaff	Kathy Tokach
Isabella Baker	Dain Cuskelly	Rena & Tanner Gress	Paden Lennick	Rylee Scherbenske	Chuck Tompkins
McCoy Baker	Zach Davidson	Gracie Hagen	Maher Angus Ranch	Brodyn Schmidgall	Holden Topp
Zoe Baker	Scott Davis	Jagger Harding	Frank Matejcek	Hannah Schmidgall	Hudson Topp
Bauman Angus	Janet Dohrmann	Kalsen Harding	Danny Mostad	Scott Shively	Sienna Topp
Eddie Berentson	LJ Dohrmann	Letty Harding	Jaden Murphy	Mark Shores	John Vastag
Jayne Berube	Hunter Duckwitz	Gene Harris	Morgan Murphy	Candace Sieg	Chad Vessels
Ryan Boen	Jesse Duckwitz	Deb Hatlewick	Braxton, Addy, & Henslee Nelson	Emmit Sieg	Lee Vetsch
Brooks Chalky Butte Ranch	Duckwitz Angus Ranch	Sara Hatlewick	Behr Nord	Renee Sieg	Tom Vetsch
Bailey Brown	Clyde Dukart	Brady Haugen	Petersen Farms	Justin Spickler	Vollmer Angus Ranch
Braxton Brown	Amy Ellenbecker	Tanner Haugen	David & Betty Petry	Jeremy Strommen	Bob Watkins
Brooklynn Brown	Jeff Ellenson	Haugen Cattle Co.	Ray W. Petry	Rachel Strommen	Isabel Wendel
Casey Brown	Ellingson Angus	Sue Hoffman	Larry Piatz	Brooks Swanson	Kennedy Wendel
Drew Brown	Stetson & Brynn Ellingson	Terry Hoffman	JoAnne Quale	Owen Swanson	Reed Wendel
Parker Brown	Mark Ellis	Lance Hoffmann	Marlin Rambousek	Brett Tastad	Rose Wendel
Reagen Brown	Edmund Farnsworth	Cassidy Hoyt	LeRoy Richard	Chuck & Gail Tastad	Ryder Wendel
Blaine & Kim Bruner	Fast Angus Ranch	Harlie Hoyt	Darlene Roberts	Eva Tastad	Shane Wendel
Frankie Bruner	Harley Feiring	Jocsyln Hoyt	Stacey Roberts	Nate Tastad	Wendel Livestock
Rayna Bruner	Taylor Feiring	Logan Hoyt	Emma Rodine	Sydney Tastad	White Angus Ranch
Bruner Angus Ranch	Aaron Fleck	Arlen Jacobson	Avery Roth	Carley Thompson	Bodie Winters
Eli Burken	Corrine Frey	Kirby Josephson	Eugene Sailer	Cheyenne Thompson	Yuly Cattle Co.
Emmett Burken	Dusty Frey	Darby Kakela	Justin Sailer	Clint Thompson	
	Vern Frey	Mark Kakela	Karlee Sailer	Emma Thompson	
		Jasper Kelly			
		Orrin Kelly			

**Frey Livestock
Sales & Service, Inc.**

Vern & Corinne Frey

PO Box 600
Towner, ND 58788-0600

NORTH DAKOTA ANGUS ASSOCIATION

Select **BULL**
&
FEMALE
sale

