

ANNUAL RED ANGUS BULL SALE

NORTHERN LITES



RED ANGUS RANCH

**THURSDAY,
MARCH 31, 2022**
GLASGOW STOCKYARDS, GLASGOW, MT
SELLING 31 YEARLING RED ANGUS BULLS



Lot 2



Lot 3



Lot 4



Lot 7



Lot 13



Lot 25

- Breeding soundness exam prior to sale
- Carcass ultrasound data available at sale
- Free delivery within 300 miles (or \$100 discount if you haul)
- All bulls 100% guaranteed for soundness and fertility for the first breeding season
- Bulls fed free until delivery

NORTHERN LITES RED ANGUS

BRYCE RISA

CELL: 406-724-7029 • OFFICE: 406-762-3247

EMAIL: BRYCERISA@HOTMAIL.COM • CATALOG ONLINE AT COWCAMPCATALOGS.COM





NORTHERN LITES



RED ANGUS RANCH

Contact Us:

Northern Lites Red Angus
Bryce Risa

Cell: 406-724-7029

Office: 406-762-3247

Email: brycerisa@hotmail.com

Facebook:

Northern Lites Red Angus



Online Catalog:

cowcampcatalogs.com

Sortable Data:

@Northern_Lites_Red_Angus
On the BullPEN app

ANNUAL BULL SALE

THURSDAY, MARCH 31, 2022

GLASGOW STOCKYARDS, GLASGOW, MT
1 P.M. MDT (FOLLOWING GIBBS RED ANGUS)

LUNCH AT NOON

Welcome,

I would like to thank everyone for the continued interest and support of our program. This past year was for us, as for most of you, very challenging. We were able to catch a little moisture early in the year, but after that it was a very dry year. With the drought this year, the efficiency of our cows was tested way more than the years previously. The cows were not given any special treatment and were still expected to raise a high-quality calf and breed back in a 45-day breeding season. I was very impressed with how our cow herd excelled in the less than desirable conditions of this summer. Our calf weights were on par with previous years and breed up was similar to a normal year's average.

We believe in an easy-keeping functional female that can maintain body condition during our harsh winters and excel in our summers. We emphasize good foot and udder structure; anything that fails to meet our standards will be culled out of the herd. With that being said, I think that you can buy with confidence in that the bulls you purchase from us will help move your program forward no matter the conditions that mother nature gives you.

We start calving around the 15th of March, and the bulls were weaned this year around the 1st of October. The bulls were fed at Bruce Hould's in Malta again this year. They are fed a high roughage diet and have performed very well, gaining over 3 pounds per day. I put an extra emphasis on foot structure and temperament in the bulls.

The sale will be at the Glasgow Stockyards again this year. I would like to thank Iva, Jake, Cody and the staff at Glasgow Stockyards for helping get the sale organized. We have also decided to use DVAuction, along with Cattle USA for online bidding. If you choose to bid with DVAuction, please sign up a couple days ahead so you have time to get registered.

If you have any questions, please feel free to give me a call any time.

Thanks again!

Bryce Risa

Northern Lites Red Angus

INFORMATION



LOCATION:

Glasgow Stockyards
7444 Hwy 42 • PO Box 129 • Glasgow, MT 59230
Phone: 406-228-9306

CONTACT:

Bryce: 406-724-7029 (c)
Email: brycerisa@hotmail.com

SALE DAY CONTACTS:

Glasgow Stockyards
Cody Cornwell 406-263-1589
Jake Newton 406-390-5109
Iva Murch 406-263-7529

AUCTIONEER:

Ed Hinton 406-783-728

RED ANGUS ASSOCIATION:

Rachel Oliver, Commercial Marketing Specialist.....406-480-1569

BREEDING SOUNDNESS EXAM:

All bulls are guaranteed breeders. All bulls will pass a breeding soundness exam and will be fertility tested prior to the sale.

CARCASS ULTRASOUND DATA:

Data will be available on sale day.

CATTLE VIEWING:

Bulls will be at B and L Hould Feedlot in Malta, Mt until March 29th. You are more than welcome to view them at the lot any-time. They will be available to view at Glasgow Stockyard all day Wednesday, March 30th and prior to the sale on Thursday March 31st.

DELIVERY POLICY:

We offer free delivery on the bulls within 300 miles. Delivery beyond 300 miles will be to central points at buyer's cost. We offer \$100 off each bull taken home prior to delivery. beyond 300 miles will be to central points at buyer's cost. We offer \$100 off each bull taken home prior to delivery.

LIABILITY:

All persons who attend the sale or view the cattle do so at their own risk. Northern Lites Ranch and Glasgow Stockyard I LLC. assumes no liability – legal or otherwise for any accidents that occur on sale day or visiting premises.

FEEDING POLICY:

Bulls will be fed for free until delivery.

SALE DAY ANNOUNCEMENTS:

All announcements on sale day will take precedence over the information contained in the catalog.

GUARANTEE:

All bulls in the offering are guaranteed to pass a fertility and health examination. In the event of a bull failing a semen examination or being injured while at Northern Lites Red Angus, a suitable replacement will be furnished if available or your money will be giving back. We encourage buyers to purchase livestock loss of use and mortality insurance.

HERD HEALTH:

All bulls have vaccinated with Vista Once SQ and Vision 7 som-nus at branding and preconditioning. They have been following the Heath protocol at the Hould Feed yard since the 10th of October. All bulls will be poured prior to delivery.

TERMS:

The terms of the sale are cash. All settlements will be made immediately following the conclusion of the sale and before the cattle will be released. Red Angus Association Terms and Conditions will apply if the terms and conditions printed here are not applicable.

DVAuction
Broadcasting Real-Time Auctions
www.DVAuction.com
Watch & Bid online for FREE!

DVAuction Online Only Auctions
How they work:
This means that bidders will be able to preview the lots online with complete information, including their pedigree, EPDs, and possibly a video, for several days prior to the sale. During that time, bidders can leave a maximum bid, which the system will represent confidentially up to that amount. Bidders can also bid incrementally, as the bid advances prior to the close.
All lots will close at the same time. Bidding will be extended if a bid is placed on any lot near the closing time. Bidding will officially close when there are no bids placed within a 5 minute period of time.

For General Questions Please Contact Our Office:
(402) 316-5460 or support@dvauction.com
*High Speed Internet Access Required



REFERENCE SIRES



A

BIEBER DC WARHEAD F120

#3958909

BD	BW	WW	WR	Cat.	%
1/12/18	70	749	120	1A	100%

BIEBER CL ATOMIC C218

BIEBER SURPRISE 243D

ANDRAS FUSION R236
BIEBER DATELINE 308Y
BIEBER ROLLIN DEEP Y118
BIEBER SURPRISE 288A

ProS	HB	GM
104	86	18
27%	6%	80%

CED	BW	WW	YW	ADG	DMI	M	ME	HPG	CEM	ST	MARB	YG	CW	REA	FAT
11	0.0	92	146	0.34	3.01	30	18	12	7	23	0.32	0.13	43	0.46	0.05
64%	78%	1%	2%	5%	99%	12%	98%	35%	42%	1%	68%	75%	8%	9%	95%

- We selected Warhead from the Bieber Red Angus 2019 production sale. We are extremely pleased with his son's growth and fleshing ability. His daughters have shown to be very maternal and to be very easy keepers. On top of all that, all his calves have exceptionally quiet dispositions along with very sound foot and leg structure. Co-Owned with Bieber Red Angus and AVC Red Angus. Semen Available



B

LELAND LOTTO 722-9161

#4155374

BD	BW	WW	WR	Cat.	%
4/5/19	99	779	106	1A	100%

VGW LOTTO 722

LELAND EXCEL 223-5619

5L BOURNE 117-48A
VGW MEG-FIREFLY 14102
VGW EXCELL 223
LELAND COMMITMENT 211X

ProS	HB	GM
111	58	53
20%	37%	21%

CED	BW	WW	YW	ADG	DMI	M	ME	HPG	CEM	ST	MARB	YG	CW	REA	FAT
9	1.4	82	143	0.38	2.13	28	14	18	4	15	0.43	0.09	37	0.29	0.02
89%	92%	5%	2%	1%	94%	29%	93%	2%	86%	56%	44%	56%	14%	21%	59%

- We selected 9161 from the Leland Red Angus 2020 production sale. We have been impressed with the growth and disposition of his calves. He's also proving to have very good foot structure and to be able to add a little extra bone to his offspring. Co-owned with Leland Red Angus.



C

PIE BUCKAROO 9167

#4210426

BD	BW	WW	WR	Cat.	%
2/21/19	84	711	103	1A	100%

5L BLOCKADE 2218-308

PIE SALVOD 686

5L DEFENDER 560-30Z
5L OPAL 656-2218
PIE THE COWBOY KIND 343
PIE SALVOD 0347

ProS	HB	GM
106	29	78
25%	83%	4%

CED	BW	WW	YW	ADG	DMI	M	ME	HPG	CEM	ST	MARB	YG	CW	REA	FAT
10	0.1	74	126	0.32	2.21	19	11	11	3	14	0.60	-0.15	48	0.71	-0.04
83%	79%	13%	9%	7%	95%	90%	87%	54%	96%	65%	18%	3%	4%	3%	3%

- We selected 9167 from Pieper Red Angus's 2020 production sale. We are impressed with his calves' growth and carcass merit. The foot and leg structure of his offspring is also very impressive. Unfortunately, we lost 9167 in 2021 so this will be his only progeny that we will have to offer.

REFERENCE SIRES



CRUMP INNOVATION 8185

D

CRUMP INNOVATION 8185

#3867585

BD	BW	WW	WR	Cat.	%
1/19/18	89	786	ET	2	100%

S A V RESOURCE 1441

RITO 707 OF IDEAL 3407 7075

S A V BLACKCAP MAY 4136

WPRA AVALANCHE 818

MDM VERNICE 81-8

ProS HB GM

81 25 56

56% 86% 17%

MDM VERNICE 1020

CED BW WW YW ADG DMI M ME HPG CEM ST MARB YG CW REA FAT

11 2.1 89 156 0.42 2.35 19 8 13 2 14 0.25 0.15 60 0.56 0.05

72% 95% 2% 1% 1% 97% 88% 77% 23% 96% 63% 81% 83% 1% 5% 91%

- We decided to sample 8185 as an AI sire to outcross our cow herd. We are impressed with the growth and over all structural soundness of his offspring. His females seem to have a very maternal shape along with very good feet and legs.



RED U2 RESOURCE 33G

E

RED U2 RESOURCE 33G

#4235976

BD	BW	WW	WR	Cat.	%
1/5/19					100%

RED MRLA RESOURCE 137E

MRLA RELOAD 56C

MRLA MISS 4422B

RED U-2 MAMA'S BOY 167X

RED U-2 BEAUTY 48X

ProS HB GM

55 27 28

86% 85% 61%

U2 BEAUTY 113Z

CED BW WW YW ADG DMI M ME HPG CEM ST MARB YG CW REA FAT

7 1.2 58 97 0.25 1.35 25 0 14 5 11 0.27 0.10 20 0.00 0.02

95% 91% 63% 52% 40% 41% 55% 30% 15% 84% 90% 77% 61% 57% 70% 51%



CRUMP RESOURCE 8201

F

CRUMP RESOURCE 8201

#3867565

BD	BW	WW	WR	Cat.	%
1/14/18	91	706	ET	2	100%

S A V RESOURCE 1441

RITO 707 OF IDEAL 3407 7075

S A V BLACKCAP MAY 4136

WPRA AVALANCHE 818

MDM VERNICE 81-8

ProS HB GM

74 19 55

67% 91% 18%

MDM VERNICE 1020

CED BW WW YW ADG DMI M ME HPG CEM ST MARB YG CW REA FAT

9 2.3 76 128 0.33 1.74 19 3 10 1 13 0.37 0.04 41 0.62 0.04

89% 96% 11% 7% 6% 75% 88% 44% 64% 98% 70% 57% 36% 10% 4% 88%





YEARLING BULLS

Top Dollar Angus Feeder Calf Program



Promote Your Verified Genetic Investment

Top Dollar Angus is the industry leader in third-party genetic verification and marketing assistance for superior Angus and Red Angus-based feeder cattle. Our program stamps a unique identity on the 'best of the best' by verifying and then showcasing their genetic merit. The Top Dollar Angus team works directly with a large number of feedyards and buyers to provide them with documented superior

feeder cattle, coupled with genetic risk mitigation and the precision understanding they need to pursue your cattle with absolute confidence.

Top Dollar Angus enables cow-calf producers to benefit from the genetic value already built into their herds. Producers that invest in high-end genetics, as well as strong health and nutrition programs, need a means of positively differentiating their calves from average cattle. Top Dollar Angus does that. Industry demand is strong for genetically superior feeder calves with the right supporting documentation. Don't make buyers guess, let them know by putting the Top Dollar Angus badge of honor on your premium genetic investment.



Contact our team for more information and a free evaluation:



www.topdollarangus.com

Nate Smith, General Manager • (620) 546-4839 • nate@topdollarangus.com

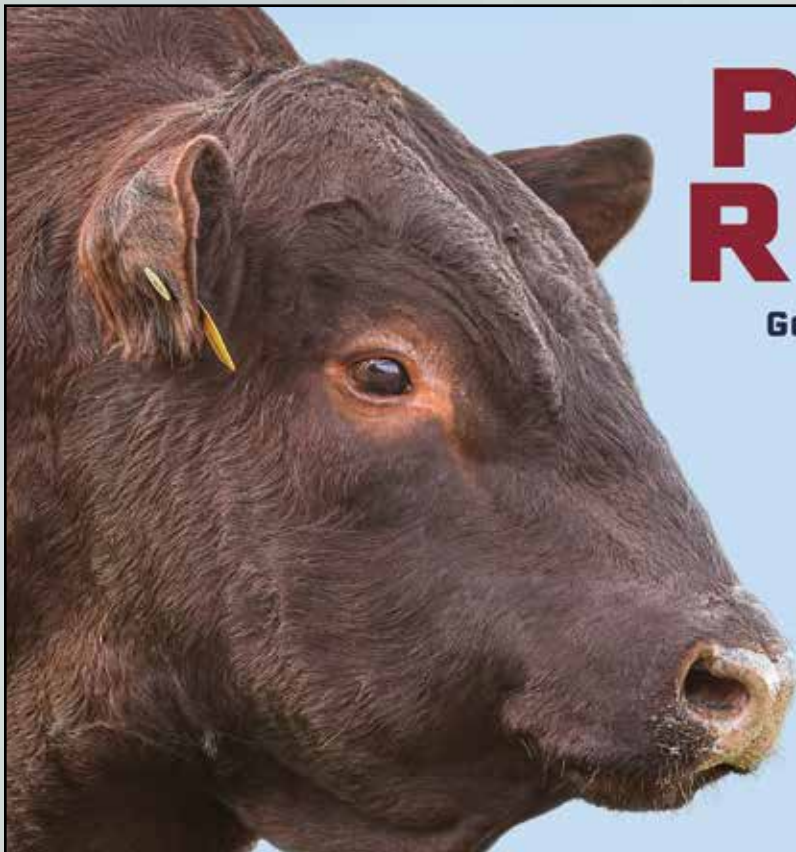
Kaytlin Hokanson • (307) 461-7687 • kaytlin@topdollarangus.com

Jake Feddes • (406) 581-8157 • jake@topdollarangus.com

Jim Akers • (859) 361-4221 • akersjim@bellsouth.net

Jason Gagnon • (559) 723-6362 • jason@topdollarangus.com

Andy Albrecht • (402) 922-1000 • andy@topdollarangus.com



PROFIT. REPEAT.

**Generate repeated profits
with Red Angus bulls.**

Year after year, despite unpredictable market conditions, cattle producers see increased ROI on their Red Angus-sired calves that excel both in the yard and on the rail. Increase your profit potential with Red Angus genetics and experience the Red Angus advantage.

Visit **RedAngus.org**
for details on Red Angus
marketing programs.

RED ANGUS
RANCH TESTED. RANCHER TRUSTED.

Red Angus Guide to EPDS and Indexes

ProS... Profitability and Sustainability is an all-purpose index that predicts average economic differences in all segments in the beef supply chain. This index is a combination of the breeding objectives modeled in the HerdBuilder and GridMaster selection indexes. In this index, replacement heifers are retained from within the herd and all remaining progeny are fed out to slaughter and sold on a quality-based grid. Traits included in this index include calving ease, growth, HPG, STAY, Mature Weight, Dry Matter Intake and carcass traits. The resulting index is expressed in dollars per head born (Index/High Value).

HB HerdBuilder is a maternal selection index that predicts the economic differences of animals for traits that are important from conception through weaning. Expressed as dollars per head born, HB is calculated based on the scenario that bulls are mated to heifers and cows, replacement heifers are retained and all remaining progeny are marketed at weaning. Traits included in the HB index include Calving Ease Direct, Calving Ease Maternal, Weaning Weight, Milk, Mature Weight, Heifer Pregnancy and Stayability (Index/High Value).

GM..... GridMaster is a selection index that predicts the average economic difference of non-replacement calves through the post-weaning phase of production. GM places selection pressure on growth, feedyard performance and carcass traits. Expressed as dollars per head born, GM is calculated based on the scenario that progeny are fed out to slaughter and marketed on a quality-based carcass grid. Traits included in GM include Average Daily Gain, Carcass Weight, Dry Matter Intake, Marbling, Back Fat and Rib Eye Area (Index/High Value).

CED Calving Ease Direct predicts differences in the percent of calves born unassisted out of 2-year-old dams. (Percent/High Value)

BW Birth Weight predicts differences in actual birth weight of progeny. (Pounds/Low Value)

WW Weaning Weight predicts differences in 205-day weaning weight. (Pounds/High Value)

YW Yearling Weight predicts differences in 365-day yearling weight. (Pounds/High Value)

ADG..... Average Daily Gain predicts differences in weight gain between 205 and 365 days of age. (Pounds/High Value)

DMI Dry Matter Intake predicts differences in daily feed intake as measured in a feedlot during the post-weaning period. (Pounds/Low Value)

MILK Milk predicts differences in weaning weight attributed to the milking ability of the animal's daughters. (Pounds/High Value)

ME Maintenance Energy predicts the difference in maintenance energy requirements. (Mcal per Month/Low Value)

HPG..... Heifer Pregnancy predicts differences in the percent of daughters who are able to conceive and calve at 2 years of age following exposure to breeding. (Percent/High Value)

CEM Calving Ease Maternal predicts differences in the percent of daughters who are able to calve unassisted as 2-year-old heifers. (Percent/High Value)

STAY..... Stayability predicts differences in the ability of an animals' retained daughters to remain productive in the herd – calve every year – through 6 years of age. (Percent/High Value)

MARB.... Marbling predicts differences in marbling score – amount of intramuscular fat measured at the 13th rib. (Marbling Score Units/High Value)

YG Yield Grade predicts differences in USDA Yield Grade, which is calculated using CW, REA and Fat. (Yield Grade Units/Low Value)

CW Carcass Weight predicts differences in actual hot carcass weight. (Pounds/High Value)

REA Ribeye Area predicts differences in square inches of ribeye area measured at the 13th rib. (Square Inches/High Value)

FAT..... Fat predicts differences in the depth of backfat measured between the 12th and 13th ribs. (Inches/Low Value)

RED ANGUS
RANCH TESTED. RANCHER TRUSTED.
RedAngus.org





YEARLING BULLS



LOT 1

1

NLR RESOURCE 1044

#4434063

BD	BW	WW	WR	Cat.	%
3/24/21	91	712	99	1A	100%

CRUMP INNOVATION 8185

CRUMP CARDI 7802

S A V RESOURCE 1441
MDM VERNICE 1020
PIE ONE OF A KIND 352
MLK CRK SHEBA 048

ProS	HB	GM
62	26	36
89%	92%	51%

CED	BW	WW	YW	ADG	DMI	M	ME	HPG	CEM	ST	MARB	YG	CW	REA	FAT
11	0.1	87	146	0.36	2.29	27	21	13	5	13	0.32	0.14	41	0.31	0.05
77%	84%	1%	1%	1%	99%	35%	99%	22%	81%	75%	72%	89%	4%	15%	94%

DAM'S DATA: DAM'S AGE: 4 # OF CALVES: 4 AVG BW: 96 AVG WW: 797 AVG WR: 116

- A powerful outcrossed Innovation 8185 son
- He is a big-hipped bull with a long spine
- If you're looking for a new blood line that will add pounds on sale day, take a long look at this bull



LOT 2

2

NLR BUCKAROO 1008

#4434135

BD	BW	WW	WR	Cat.	%
3/28/21	87	850	119	1A	100%

PIE BUCKAROO 9167

GMRA OPHELIA 279

5L BLOCKADE 2218-30B
PIE SALVOD 686
LJC MISSION STATEMENT P27
GMRA OPHELIA 840

ProS	HB	GM
68	27	40
84%	91%	41%

CED	BW	WW	YW	ADG	DMI	M	ME	HPG	CEM	ST	MARB	YG	CW	REA	FAT
11	-2.1	78	123	0.28	2.54	28	16	11	4	14	0.48	-0.02	38	0.39	-0.01
75%	43%	4%	6%	13%	99%	25%	98%	41%	94%	62%	32%	12%	7%	8%	7%

DAM'S DATA: DAM'S AGE: 9 # OF CALVES: 8 AVG BW: 87 AVG WW: 714 AVG WR: 111

- A bold sprung, deep-ribbed Buckaroo 9167 son
- 1008 posted the heaviest WW in the sale and has never looked back
- You'll appreciate his high volume with extra extension when you walk around him on sale day
- A maternal brother was purchased as Lot 2 in the 2021 sale by Tigh Fuhrman of Richland, MT



LOT 3

3

NLR BUCKAROO 1021

#4434109

BD	BW	WW	WR	Cat.	%
3/31/21	94	755	105	1A	100%

PIE BUCKAROO 9167

NLR REDEEM D604

5L BLOCKADE 2218-30B
PIE SALVOD 686
BROWN JYJ REDEMPTION Y1334
B402 NLR

ProS	HB	GM
101	49	52
30%	57%	18%

CED	BW	WW	YW	ADG	DMI	M	ME	HPG	CEM	ST	MARB	YG	CW	REA	FAT
9	1.4	84	142	0.36	2.25	21	11	14	4	15	0.43	-0.05	37	0.50	0.00
92%	95%	1%	1%	1%	99%	88%	92%	12%	91%	49%	43%	7%	8%	3%	12%

DAM'S DATA: DAM'S AGE: 5 # OF CALVES: 4 AVG BW: 85 AVG WW: 690 AVG WR: 103

- A wide-topped, 9167 son that is sure to add pounds to his calves come sale day
- 1021 has 7 traits in the top 10% of the breed with WW and YW in the top 1%
- A thick muscled calf that will really catch your eye



LOT 4

4

NLR BUCKAROO 1038

#4434075

BD	BW	WW	WR	Cat.	%
3/27/21	83	769		1A	100%

PIE BUCKAROO 9167

BIEBER MISS DANA 244E

5L BLOCKADE 2218-30B
PIE SALVOD 686
BIEBER HARD DRIVE Y120
BIEBER MISS DANA 284A

ProS	HB	GM
123	38	85
7%	78%	1%

CED	BW	WW	YW	ADG	DMI	M	ME	HPG	CEM	ST	MARB	YG	CW	REA	FAT
12	-1.0	72	123	0.32	2.08	19	11	12	6	14	0.67	-0.10	51	0.68	-0.02
64%	66%	11%	6%	3%	96%	94%	92%	27%	79%	63%	7%	3%	1%	1%	2%

DAM'S DATA: DAM'S AGE: 4 # OF CALVES: 3 AVG BW: 77 AVG WW: 675 AVG WR: 93

- A 9167 son that has one of the biggest BW-WW spreads in the offering
- You'll appreciate his wide base and calm disposition
- 1038 has 10 EPDs in the top 10% of the breed with a ProS score in the top 1%

YEARLING BULLS



LOT 5



LOT 6



LOT 7



LOT 8

5

NLR BUCKAROO 1030

#4434091

BD	BW	WW	WR	Cat.	%
4/6/21	106	722	101	1A	100%

PIE BUCKAROO 9167

5L BLOCKADE 2218-30B

PIE SALVOD 686

NLR REDEEM E751

BROWN JYJ REDEMPTION Y1334

NLR DIRECTION C504

ProS	HB	GM
111	41	69
18%	73%	3%

CED	BW	WW	YW	ADG	DMI	M	ME	HPG	CEM	ST	MARB	YG	CW	REA	FAT
10	0.4	68	111	0.27	2.07	19	7	12	4	16	0.72	0.00	41	0.37	-0.01
83%	87%	20%	19%	20%	96%	94%	77%	35%	95%	47%	4%	16%	4%	9%	6%

DAM'S DATA: DAM'S AGE: 4 # OF CALVES: 3 AVG BW: 84 AVG WW: 644 AVG WR: 95

- 1030 got a head start at calving time and has never looked back
- You'll appreciate his heavy muscle expression and natural thickness on sale day
- If you're looking for a bull to add pounds to your calves, this guy is for you

6

NLR WARHEAD 1087

#4433987

BD	BW	WW	WR	Cat.	%
3/20/21	89	708	114	1B	99.9%

BIEBER DC WARHEAD F120

BIEBER CL ATOMIC C218

BIEBER SURPRISE 243D

NLR MARKSMAN 9052

LELAND MARKSMAN 6629

NLR REDEEM E749

ProS	HB	GM
93	54	39
42%	48%	43%

CED	BW	WW	YW	ADG	DMI	M	ME	HPG	CEM	ST	MARB	YG	CW	REA	FAT
12	-0.4	88	147	0.37	2.57	32	18	12	7	16	0.31	0.12	49	0.39	0.03
61%	76%	1%	1%	1%	99%	4%	99%	24%	51%	38%	75%	79%	1%	8%	79%

DAM'S DATA: DAM'S AGE: 2 # OF CALVES: 1 AVG BW: 96 AVG WW: 708 AVG WR: 114

- Out of a first-calf heifer that did a fine job on her first calf
- Long patterned bull with a wide base
- 1087 is the first Warhead F120 bull in the sale and is a great example of what to expect from this sire group

7

NLR WARHEAD 1047

#4434057

BD	BW	WW	WR	Cat.	%
4/12/21	70	730	108	1B	87.3%

BIEBER DC WARHEAD F120

BIEBER CL ATOMIC C218

BIEBER SURPRISE 243D

NLR MARKSMAN 839

LELAND MARKSMAN 6629

NLR FIRE 603

ProS	HB	GM
102	73	29
28%	14%	67%

CED	BW	WW	YW	ADG	DMI	M	ME	HPG	CEM	ST	MARB	YG	CW	REA	FAT
16	-3.3	75	122	0.29	2.35	33	14	13	9	19	0.37	0.05	32	0.44	0.04
10%	23%	6%	7%	10%	99%	3%	96%	19%	19%	10%	60%	41%	17%	5%	88%

DAM'S DATA: DAM'S AGE: 3 # OF CALVES: 2 AVG BW: 83 AVG WW: 745 AVG WR: 109

- Heifer bull buyers pay attention
- A calving ease bull that will put plenty of growth in his calves
- Like all F120, sons this bull has a very quiet disposition and will produce very productive daughters
- Sold a full brother as lot 1 to Scott Boreson of Glasgow MT in 2021

8

NLR WARHEAD 1071

#4434009

BD	BW	WW	WR	Cat.	%
3/15/21	84	636	102	1B	99.9%

BIEBER DC WARHEAD F120

BIEBER CL ATOMIC C218

BIEBER SURPRISE 243D

NLR SILVER BOW 9003

C-T SILVER BOW 6020

LELAND RED DIRECTION 132X

ProS	HB	GM
98	71	27
35%	16%	72%

CED	BW	WW	YW	ADG	DMI	M	ME	HPG	CEM	ST	MARB	YG	CW	REA	FAT
12	0.1	81	132	0.32	2.37	30	14	12	8	18	0.39	0.09	29	0.28	0.04
63%	84%	2%	2%	4%	99%	13%	97%	29%	22%	14%	53%	68%	26%	18%	91%

DAM'S DATA: DAM'S AGE: 2 # OF CALVES: 1 AVG BW: 92 AVG WW: 636 AVG WR: 102

- A long patterned F120 son that is powerfully constructed
- Out of a first-calf heifer that is showing a lot of potential in our herd
- Will produce scale topping calves in the fall, along with daughters that will stay around for a long time



YEARLING BULLS

9

NLR WARHEAD 1081

#4433999

BD	BW	WW	WR	Cat.	%
3/18/21	61	641	103	1A	100%

BIEBER DC WARHEAD F120

BIEBER CL ATOMIC C218
BIEBER SURPRISE 243D
BROWN-CH INDEPENDENCE D5670
GMRA LAKOTA 540

ProS	HB	GM
90	55	35
48%	45%	54%

NLR INDEPENDENCE 9024

CED	BW	WW	YW	ADG	DMI	M	ME	HPG	CEM	ST	MARB	YG	CW	REA	FAT
16	-4.4	71	109	0.24	2.29	34	17	13	8	17	0.51	0.10	37	0.32	0.04
11%	10%	12%	23%	42%	99%	1%	99%	14%	26%	32%	26%	71%	8%	13%	85%

DAM'S DATA: DAM'S AGE: 2 # OF CALVES: 1 AVG BW: 69 AVG WW: 641 AVG WR: 103

- Another Warhead son that will produce high yielding feeder cattle
- You'll really appreciate the natural thickness of 1081
- We are calving our first set of Warhead F120 daughters this spring and they are every bit as good as we had expected



LOT 12

10

NLR BUCKAROO 1034

#4434083

BD	BW	WW	WR	Cat.	%
4/1/21	94	742	104	1A	100%

PIE BUCKAROO 9167

5L BLOCKADE 2218-30B
PIE SALVOD 686
HXC DECLARATION 5504C
GMRA ANNE 399

ProS	HB	GM
105	42	63
24%	71%	7%

GMRA ANNE 792

CED	BW	WW	YW	ADG	DMI	M	ME	HPG	CEM	ST	MARB	YG	CW	REA	FAT
7	0.8	75	130	0.34	2.28	20	20	12	3	18	0.60	-0.11	32	0.36	-0.04
97%	91%	6%	3%	1%	99%	89%	99%	32%	97%	15%	13%	2%	16%	10%	1%

DAM'S DATA: DAM'S AGE: 4 # OF CALVES: 3 AVG BW: 92 AVG WW: 700 AVG WR: 103

- A high volume 9167 son
- A heavy built bull that is full of red meat
- 1034 has 7 traits in the top 10% of the breed

11

NLR BUCKAROO 1040

#4434071

BD	BW	WW	WR	Cat.	%
4/14/21	90	732	102	1A	100%

PIE BUCKAROO 9167

5L BLOCKADE 2218-30B
PIE SALVOD 686
BIEBER HARD DRIVE Y120
BIEBER SAM 566C

ProS	HB	GM
97	15	83
35%	98%	1%

BIEBER SAM 423E

CED	BW	WW	YW	ADG	DMI	M	ME	HPG	CEM	ST	MARB	YG	CW	REA	FAT
9	1.3	82	132	0.31	2.07	20	15	14	4	11	0.69	-0.05	58	0.79	0.00
88%	94%	2%	2%	5%	96%	89%	97%	12%	94%	91%	6%	6%	1%	1%	15%

DAM'S DATA: DAM'S AGE: 4 # OF CALVES: 3 AVG BW: 88 AVG WW: 648 AVG WR: 100

- WW ranked in the top 25% of this year's offering
- A high-volume bull that has a lot of natural thickness

12

NLR BUCKAROO 1023

#4434105

BD	BW	WW	WR	Cat.	%
4/22/21	87	722	101	1A	100%

PIE BUCKAROO 9167

5L BLOCKADE 2218-30B
PIE SALVOD 686
CRUMP FOREVER WEST 2102
FEDDES LAKINA X158 A74

ProS	HB	GM
67	13	54
84%	98%	14%

NLR WEST D608

CED	BW	WW	YW	ADG	DMI	M	ME	HPG	CEM	ST	MARB	YG	CW	REA	FAT
9	0.1	68	116	0.30	2.08	23	10	9	4	12	0.46	0.02	40	0.48	0.02
93%	84%	19%	13%	9%	96%	73%	89%	88%	91%	85%	36%	26%	5%	4%	54%

DAM'S DATA: DAM'S AGE: 5 # OF CALVES: 4 AVG BW: 88 AVG WW: 689 AVG WR: 98

- A big-topped, deep-ribbed, 9167 son
- Maternal bothers were purchased by Dustin Pankratz in 2021 and Justin Fuhrman in 2020



Red NAVIGATOR

... identifying the genetic merit of commercial females to deliver valuable guidance to profit-minded producers!

- Parentage (if sire is DNA tested)
- Genetic assessment (percentile rank) for each RAAA trait
- Most accurate results on commercial females that are 75% or more Red Angus



940-387-3502, Ext. 14 • dna@redangus.org

RED ANGUS
RANCH TESTED. RANCHER TRUSTED.

PROFIT. REPEAT.

Generate repeated profits with the industry's most-favored female.

Independent research from a decade of data collection showed Red Angus-sired heifers commanded \$66/head more than females of other breed types. That's nearly \$5,300 on a single load of replacement heifers to boost profits on your operation.

Visit RedAngus.org for details on the industry's most-favored female.

RED ANGUS
RANCH TESTED. RANCHER TRUSTED.





YEARLING BULLS



LOT 13

13

NLR INNOVATION 1020

#4434111

BD	BW	WW	WR	Cat.	%
3/31/21	78	792	111	2	100%

CRUMP INNOVATION 8185

ProS HB GM

122 74 48

NLR GOLDBAR C509

S A V RESOURCE 1441
MDM VERNICE 1020
BIEBER GOLDBAR Y379
GMRA VENICE 571

8%	12%	24%	CED	BW	WW	YW	ADG	DMI	M	ME	HPG	CEM	ST	MARB	YG	CW	REA	FAT
15	-0.5	72	117	0.28	1.22	27	-8	9	7	17	0.28	-0.02	36	0.58	0.02			
22%	75%	12%	12%	14%	33%	28%	13%	82%	55%	25%	83%	13%	10%	2%	66%			

DAM'S DATA: DAM'S AGE: 6 # OF CALVES: 5 AVG BW: 74 AVG WW: 680 AVG WR: 107

- Don't adjust your eyes, yes – he is black. We sampled a black red carrier bull last year in hopes of getting some red outcrossed calves.
- 1020 posted the third biggest WW in this year's offering
- A heavy built Innovation 8185 son that will produce functional and productive females



LOT 14

14

NLR INNOVATION 1014

#4434123

BD	BW	WW	WR	Cat.	%
4/4/21	94	750	105	2	100%

CRUMP INNOVATION 8185

ProS HB GM

103 56 47

FEDDES OSCE Y32 B38

S A V RESOURCE 1441
MDM VERNICE 1020
C-T MAKIN DESIGNS 1157
FEDDES OSCE Y32

27%	44%	25%	CED	BW	WW	YW	ADG	DMI	M	ME	HPG	CEM	ST	MARB	YG	CW	REA	FAT
8	-0.5	73	114	0.26	1.11	24	-13	8	3	15	0.35	0.17	41	0.22	0.04			
93%	75%	10%	15%	27%	24%	62%	7%	95%	97%	50%	64%	94%	4%	28%	91%			

DAM'S DATA: DAM'S AGE: 7 # OF CALVES: 5 AVG BW: 86 AVG WW: 700 AVG WR: 101

- A power-packed 8185 son with lots of rib and volume
- Posted one of the highest BW-WW spreads in the sale
- A maternal brother was purchased by Westby Ranch Inc. in 2021



LOT 15

15

NLR 1043

#4434065

BD	BW	WW	WR	Cat.	%
3/16/21	93	656		3	50%

CRUMP EMMA 7790

ProS HB GM

146 79 66

PIE ONE OF A KIND 352
CRUMP EMMA 220

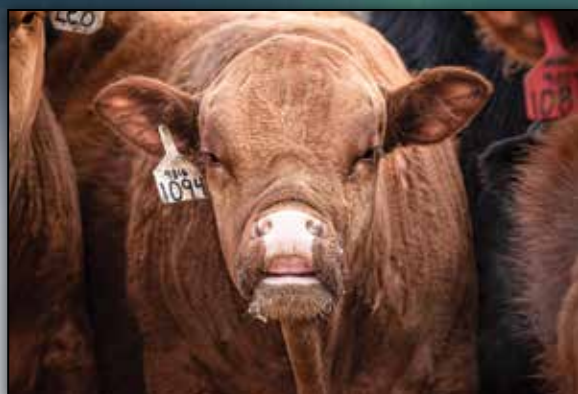
1%	8%	5%	CED	BW	WW	YW	ADG	DMI	M	ME	HPG	CEM	ST	MARB	YG	CW	REA	FAT
11	0.4	66	112	0.29	0.71	21	-12	11	8	16	0.38	0.26	44	0.03	0.05			
78%	87%	26%	17%	11%	7%	83%	8%	56%	27%	45%	56%	99%	2%	71%	96%			

DAM'S DATA: DAM'S AGE: 4 # OF CALVES: 3 AVG BW: 94 AVG WW: 721 AVG WR: 111

- 1043 is out of a cow we purchased from the Crump Red Angus Dispersal
- A long-patterned bull that will produce functional females
- We are still waiting for DNA to prove his sire – we will have it by sale day



YEARLING BULLS



16

NLR BUCKAROO 1029

#4434093

BD	BW	WW	WR	Cat.	%
4/21/21	78	683	95	1A	100%

PIE BUCKAROO 9167

ProS	HB	GM
103	34	69
26%	84%	3%

MLK CRK LAKOTA 738

5L BLOCKADE 2218-30B

PIE SALVOD 686

MLK CRK EXPRESS 9127

MLK CRK LAKOTA 5103

CED	BW	WW	YW	ADG	DMI	M	ME	HPG	CEM	ST	MARB	YG	CW	REA	FAT
12	0.4	70	118	0.30	1.75	19	5	13	5	12	0.56	-0.04	40	0.35	-0.02
61%	87%	16%	10%	7%	82%	94%	60%	17%	86%	82%	18%	9%	5%	11%	2%

DAM'S DATA: DAM'S AGE: 4 # OF CALVES: 3 AVG BW: 77 AVG WW: 657 AVG WR: 95

- A smooth-made 9167 son that still packs a powerful punch
- 1029 is a little more moderate bull that is built with a stout construction



17

NLR BUCKAROO 1025

#4434101

BD	BW	WW	WR	Cat.	%
3/27/21	80	688	96	1A	100%

PIE BUCKAROO 9167

ProS	HB	GM
97	59	39
35%	37%	44%

GMRA THELMA 649

5L BLOCKADE 2218-30B

PIE SALVOD 686

BIEBER ROOSEVELT W384

GMRA THELMA 831

CED	BW	WW	YW	ADG	DMI	M	ME	HPG	CEM	ST	MARB	YG	CW	REA	FAT
11	0.0	71	113	0.26	1.99	23	11	14	5	17	0.42	0.01	33	0.32	0.01
72%	82%	13%	16%	24%	94%	73%	90%	8%	83%	27%	46%	23%	16%	13%	26%

DAM'S DATA: DAM'S AGE: 5 # OF CALVES: 5 AVG BW: 68 AVG WW: 629 AVG WR: 98

- A stylish 9167 son that has lots of volume
- A powerfully constructed bull who will produce scale topping calves



18

NLR WARHEAD 1064

#4434023

BD	BW	WW	WR	Cat.	%
3/19/21	81	643	103	1B	87.5%

BIEBER DC WARHEAD F120

ProS	HB	GM
156	116	40
1%	1%	40%

NLR WINCHESTER 964

BIEBER CL ATOMIC C218

BIEBER SURPRISE 243D

GMRA WINCHESTER 6238

NLR EPIC 610

CED	BW	WW	YW	ADG	DMI	M	ME	HPG	CEM	ST	MARB	YG	CW	REA	FAT
14	-3.1	68	109	0.26	2.12	30	11	16	8	24	0.53	0.10	31	0.27	0.04
28%	25%	22%	22%	25%	97%	12%	91%	2%	21%	1%	23%	72%	20%	20%	90%

DAM'S DATA: DAM'S AGE: 2 # OF CALVES: 1 AVG BW: 87 AVG WW: 643 AVG WR: 103

- A calving ease specialist that posted a 104 WR
- Will work well on heifers and cow alike



19

NLR BUCKAROO 1004

#4434143

BD	BW	WW	WR	Cat.	%
4/5/21	83	738	103	1B	99.8%

PIE BUCKAROO 9167

ProS	HB	GM
89	41	48
50%	74%	24%

LELAND COOL 9047-Y47

5L BLOCKADE 2218-30B

PIE SALVOD 686

LELAND COOL 9047W

LELAND RED DIRECTION 8268U

CED	BW	WW	YW	ADG	DMI	M	ME	HPG	CEM	ST	MARB	YG	CW	REA	FAT
9	-1.2	68	108	0.25	2.31	26	14	11	4	17	0.44	-0.04	44	0.43	-0.02
89%	62%	22%	24%	30%	99%	40%	96%	46%	92%	33%	41%	9%	2%	6%	2%

DAM'S DATA: DAM'S AGE: 10 # OF CALVES: 9 AVG BW: 80 AVG WW: 644 AVG WR: 102

- Out of a 10-year-old cow who still produced one of the top WW in the offering
- 1004 will sire high-yielding feeder cattle



YEARLING BULLS



20

NLR WARHEAD 1067

#4434017

BD	BW	WW	WR	Cat.	%
3/26/21	100	642	103	1B	87.3%

BIEBER DC WARHEAD F120

BIEBER CL ATOMIC C218
BIEBER SURPRISE 243D
LELAND MARKSMAN 6629
NLR FIRE 716

ProS	HB	GM
106	50	56
23%	56%	13%

NLR MARKSMAN 961

CED	BW	WW	YW	ADG	DMI	M	ME	HPG	CEM	ST	MARB	YG	CW	REA	FAT
5	3.4	94	156	0.39	2.02	28	10	11	2	18	0.35	-0.05	46	0.62	0.00
99%	99%	1%	1%	1%	95%	23%	89%	46%	99%	21%	64%	6%	2%	1%	10%

DAM'S DATA: DAM'S AGE: 2 # OF CALVES: 1 AVG BW: 105 AVG WW: 642 AVG WR: 103

- A heavy built Warhead F120 son with a rugged look to him
- A big-boned bull that will provide plenty of growth

21

NLR LOTTO 1033

#4434085

BD	BW	WW	WR	Cat.	%
4/1/21	91	764	107	1A	100%

LELAND LOTTO 722-9161

VGW LOTTO 722
LELAND EXCEL 223-5619
HXC DECLARATION 5504C
GMRA LAKOTA 710

ProS	HB	GM
96	43	53
37%	70%	16%

GMRA LAKOTA 788

CED	BW	WW	YW	ADG	DMI	M	ME	HPG	CEM	ST	MARB	YG	CW	REA	FAT
9	2.7	85	143	0.36	1.97	28	14	14	5	14	0.42	0.12	42	0.15	0.01
93%	99%	1%	1%	1%	93%	22%	96%	12%	83%	65%	46%	82%	3%	42%	39%

DAM'S DATA: DAM'S AGE: 4 # OF CALVES: 3 AVG BW: 86 AVG WW: 695 AVG WR: 102

- A Lotto 9161 son that posted a WW in the top 25% in the offering
- 1033 has one of the top BW-WW spreads in the offering
- A deep-ribbed bull with lots of volume

22

NLR LOTTO 1007

#4434137

BD	BW	WW	WR	Cat.	%
4/14/21	95	819	114	1A	100%

LELAND LOTTO 722-9161

VGW LOTTO 722
LELAND EXCEL 223-5619
FED FLIKK MULBERRY X648
FEDDES BLOCKANA 825

ProS	HB	GM
93	26	67
42%	93%	4%

FEDDES BLOCKANA Z63

CED	BW	WW	YW	ADG	DMI	M	ME	HPG	CEM	ST	MARB	YG	CW	REA	FAT
7	4.0	83	140	0.36	2.21	31	16	15	3	13	0.51	-0.06	47	0.53	-0.02
97%	99%	1%	1%	1%	98%	7%	98%	5%	97%	79%	26%	6%	1%	2%	2%

DAM'S DATA: DAM'S AGE: 9 # OF CALVES: 9 AVG BW: 78 AVG WW: 697 AVG WR: 109

- Another Lotto 9161 son with a big spread from birth to weaning
- Posted the 2nd highest WW in the offering
- A big-boned bull that will sire profitable feeder cattle



23

NLR BUCKAROO 1005

#4434141

BD	BW	WW	WR	Cat.	%
4/16/21	92	723	101	1A	100%

PIE BUCKAROO 9167

5L BLOCKADE 2218-30B
PIE SALVOD 686
RED CROWFOOT OLE'S OSCAR
C-T MISS PAN 0920

ProS	HB	GM
100	63	37
32%	29%	50%

C-T MISS PAN 1118

CED	BW	WW	YW	ADG	DMI	M	ME	HPG	CEM	ST	MARB	YG	CW	REA	FAT
13	-2.8	56	84	0.18	1.81	21	9	12	6	19	0.61	-0.08	17	0.39	0.00
42%	31%	65%	74%	81%	86%	83%	84%	34%	64%	10%	12%	4%	73%	8%	21%

DAM'S DATA: DAM'S AGE: 10 # OF CALVES: 9 AVG BW: 73 AVG WW: 639 AVG WR: 95

- A little more moderate 9167 son
- An athletic built bull with a stylish look

24

NLR LOTTO 1032

#4434087

BD	BW	WW	WR	Cat.	%
3/27/21	89	612	TW	1A	100%

LELAND LOTTO 722-9161

VGW LOTTO 722
LELAND EXCEL 223-5619
MLK CRK EXPRESS 9127
MLK CRK LAKOTA 517

ProS	HB	GM
97	54	43
36%	48%	33%

MLK CRK LAKOTA 760X

CED	BW	WW	YW	ADG	DMI	M	ME	HPG	CEM	ST	MARB	YG	CW	REA	FAT
12	-1.1	66	112	0.29	1.67	25	5	11	7	15	0.33	0.04	31	0.34	0.02
54%	64%	27%	17%	10%	75%	47%	61%	46%	51%	49%	70%	36%	21%	12%	64%

DAM'S DATA: DAM'S AGE: 4 # OF CALVES: 4 AVG BW: 87 AVG WW: 639 AVG WR: 97

- 1032 is a moderate, easy fleshing Lotto 9161 son
- He is a twin calf that was raised by his own mother

YEARLING BULLS



25

NLR RESOURCE 1098

#4433965

BD	BW	WW	WR	Cat.	%
3/10/21	84	618	99	1A	100%

RED U2 RESOURCE 33G

RED MRLA RESOURCE 137E
U2 BEAUTY 113Z

CRUMP AMBER 9844

5L BIG IRON 4558-28B
CRUMP AMBER Y187

ProS	HB	GM
94	70	24
41%	17%	78%

CED	BW	WW	YW	ADG	DMI	M	ME	HPG	CEM	ST	MARB	YG	CW	REA	FAT
14	-3.1	47	76	0.18	1.25	29	-2	12	8	17	0.35	0.02	10	0.10	0.02
28%	25%	88%	85%	78%	35%	14%	24%	39%	27%	23%	64%	28%	90%	54%	54%

DAM'S DATA: DAM'S AGE: 2 # OF CALVES: 1 AVG BW: 91 AVG WW: 618 AVG WR: 99

- 1098, like the next few lots is out of a heifer that we purchased from the Crump dispersal
- A Resource 33G son with a smooth front end

26

NLR WARHEAD 1068

#4434015

BD	BW	WW	WR	Cat.	%
3/20/21	81	561	90	1B	87.5%

BIEBER DC WARHEAD F120

BIEBER CL ATOMIC C218
BIEBER SURPRISE 243D

NLR MARKSMAN 962

LELAND MARKSMAN 6629
NLR WEST 719

ProS	HB	GM
118	63	55
11%	29%	14%

CED	BW	WW	YW	ADG	DMI	M	ME	HPG	CEM	ST	MARB	YG	CW	REA	FAT
12	-0.6	78	134	0.35	1.83	27	9	11	7	17	0.23	0.09	53	0.49	0.03
60%	73%	4%	2%	1%	87%	31%	82%	58%	43%	26%	91%	68%	1%	3%	73%

DAM'S DATA: DAM'S AGE: 2 # OF CALVES: 1 AVG BW: 86 AVG WW: 561 AVG WR: 90

- A moderate-framed, Warhead F120 son that can still add extra weight to his calves on sale day
- A heavy built calf with a wide base

27

NLR RESOURCE 1094

#4433973

BD	BW	WW	WR	Cat.	%
3/21/21	95	687	111	1A	100%

RED U2 RESOURCE 33G

RED MRLA RESOURCE 137E
U2 BEAUTY 113Z

CRUMP LADY KATYA 9816

CRUMP SUPREME 7813
CRUMP LADY KATYA Z072

ProS	HB	GM
82	46	36
62%	64%	52%

CED	BW	WW	YW	ADG	DMI	M	ME	HPG	CEM	ST	MARB	YG	CW	REA	FAT
7	2.1	75	121	0.29	1.84	28	10	14	6	14	0.36	0.09	33	0.14	0.01
98%	97%	7%	8%	11%	87%	27%	87%	7%	77%	67%	63%	67%	15%	46%	45%

DAM'S DATA: DAM'S AGE: 2 # OF CALVES: 1 AVG BW: 102 AVG WW: 687 AVG WR: 111

- A deep flanked bull out of a first-calf heifer
- 1094 is a moderate calf with a big hip and deep quarter

28

NLR SPARTACUS 1100

#4433961

BD	BW	WW	WR	Cat.	%
3/26/21	81	644	104	1A	100%

BIEBER ROU SPARTACUS D13

BIEBER SPARTACUS A193
GHR CHINOOK W30

CRUMP EMMA 9890

VGW MY KIND 540
CRUMP EMMA 7818

ProS	HB	GM
113	61	53
15%	34%	16%

CED	BW	WW	YW	ADG	DMI	M	ME	HPG	CEM	ST	MARB	YG	CW	REA	FAT
14	-2.6	69	114	0.28	1.61	30	6	14	9	14	0.53	-0.01	28	0.38	0.01
27%	33%	17%	15%	16%	70%	13%	72%	10%	13%	62%	23%	15%	29%	9%	39%

DAM'S DATA: DAM'S AGE: 2 # OF CALVES: 1 AVG BW: 88 AVG WW: 644 AVG WR: 104

- An easy fleshing bull who will produce well-grading feeder cattle
- An easy-doing calf with a rugged look

29

NLR RESOURCE 1026

#4434099

BD	BW	WW	WR	Cat.	%
3/18/21	84	648	91	2	100%

CRUMP RESOURCE 8201

S A V RESOURCE 1441
MDM VERNICE 1020

CRUMP EMILY 6622

5L DEFENDER 560-30Z
CRUMP EMMA 220

ProS	HB	GM
55	9	46
94%	99%	28%

CED	BW	WW	YW	ADG	DMI	M	ME	HPG	CEM	ST	MARB	YG	CW	REA	FAT
11	-1.1	63	106	0.27	1.52	21	5	14	4	9	0.35	0.01	30	0.38	0.02
67%	64%	38%	29%	20%	61%	84%	66%	7%	94%	97%	64%	22%	22%	8%	52%

DAM'S DATA: DAM'S AGE: 5 # OF CALVES: 4 AVG BW: 75 AVG WW: 636 AVG WR: 96

- A black hided Resource 8201 son with a stud bull look
- A powerful bull in a little more moderate package

30

NLR RESOURCE 1095

#4433971

BD	BW	WW	WR	Cat.	%
4/16/21	84	633	102	2	100%

RED U2 RESOURCE 33G

RED MRLA RESOURCE 137E
U2 BEAUTY 113Z

CRUMP REBAL 9824

PIE SENSATION 591
CRUMP REBAL 7816

ProS	HB	GM
102	52	51
28%	52%	20%

CED	BW	WW	YW	ADG	DMI	M	ME	HPG	CEM	ST	MARB	YG	CW	REA	FAT
11	-0.6	68	117	0.30	1.55	28	9	13	7	15	0.49	0.29	36	-0.21	0.04
78%	73%	20%	12%	7%	64%	23%	85%	16%	48%	60%	30%	99%	10%	98%	94%

DAM'S DATA: DAM'S AGE: 2 # OF CALVES: 1 AVG BW: 91 AVG WW: 633 AVG WR: 102

- A heavy muscled Resource 33G son with a square hip
- A bull that will add extra punch to his calves on sale day





NORTHERN LITES RANCH
PO BOX 33
OPHEIM, MT 59250

NORTHERN LITES
4
RED ANGUS RANCH

ANNUAL RED ANGUS BULL

THURSDAY,
MARCH 31, 2022

GLASGOW STOCKYARDS, GLASGOW, MT
SELLING 31 YEARLING RED ANGUS BULLS
1 P.M. MDT (FOLLOWING GIBB RED ANGUS)