

# ANNUAL RED ANGUS BULL SALE

NORTHERN LITES



RED ANGUS RANCH

THURSDAY,  
MARCH 25, 2021

GLASGOW STOCKYARDS, GLASGOW, MT  
SELLING 32 YEARLING RED ANGUS BULLS



## SIRE CODES

7795 – CRUMP ONE OF A KIND 7795  
6020 – C-T SILVER BOW 6020

F120 – BIEBER DC WARHEAD F120  
8221F – GMRA BRUNSWICK 8221F

5599 – CRUMP PREMIER 5599  
7234 – GMRA LONGMIRE 7234

- Breeding soundness exam prior to sale
- Carcass ultrasound data available at sale
- Free delivery within 300 miles (or \$100 discount if you haul)
- All bulls 100% guaranteed for soundness and fertility for the first breeding season
- Bulls fed free until delivery

NORTHERN LITES RED ANGUS

BRYCE RISA

CELL: 406-724-7029 • OFFICE: 406-762-3247

EMAIL: BRYCERISA@HOTMAIL.COM • CATALOG ONLINE AT COWCAMPCATALOGS.COM







NORTHERN LITES  
**4**  
RED ANGUS RANCH

**Contact Us:**

Northern Lites Red Angus  
Bryce Risa

Cell: 406-724-7029

Office: 406-762-3247

Email: [brycerisa@hotmail.com](mailto:brycerisa@hotmail.com)

**Facebook:**

Northern Lites Red Angus



**Online Catalog:**

[cowcampcatalogs.com](http://cowcampcatalogs.com)

**Sortable Data:**

📍 Northern\_Lites\_Red\_Angus  
On the BullPEN app

# ANNUAL BULL SALE

## THURSDAY, MARCH 25, 2021

GLASGOW STOCKYARDS, GLASGOW, MT  
1 P.M. MDT (FOLLOWING GIBBS RED ANGUS)

Welcome,

I would first like to thank everyone for the continued interest and support in my program. For those of you that are not familiar with my program, I thought I would give a little background. My family has been raising commercial Red Angus cattle for nearly forty years. I bought my first registered heifers in 2012. Through keeping heifer calves and purchasing bred cows from progressive breeders in Montana and the Dakotas, I have been building a registered herd alongside our commercial cows. The cows are not given any special treatment and expected to raise a high-quality calf. They are expected to breed back in a 45-day breeding season. We believe in an easy-keeping functional female that can maintain during our harsh winters and excel in our summers. We emphasize good foot and udder structure; anything that fails to meet our standards will be culled out of the herd.

We start calving around the 15th of March, and the bulls were weaned this year around the 1st of October. The bulls were fed at Bruce Hould's in Malta again this year. They are fed a high ruffage diet and have performed very well gaining over 3 pounds per day. I put an extra emphasis on foot structure and temperament in the bulls.

The sale will be at the Glasgow Stockyards again this year. I would like to thank Iva Murch, Jake Newton and the staff at Glasgow Stockyards for helping get the sale organized.

If you have any questions, please feel free to give me a call any time

Thanks again!

Bryce Risa, Northern Lites Red Angus Ranch

# Red NAVIGATOR

... identifying the genetic merit of  
commercial females to deliver valuable  
guidance to profit-minded producers!

- Sire identification (if sire is DNA tested)
- Across-breed EPD percentile rankings
- Best results on commercial females at least 75% Red Angus
- Only \$22/head



# RED ANGUS

RANCH TESTED. RANCHER TRUSTED.

[RedAngus.org](http://RedAngus.org) • (940) 387-3502

## INFORMATION



### LOCATION:

Glasgow Stockyards  
7444 Hwy 42 • PO Box 129 • Glasgow MT 59230  
Phone: 406-228-9306

### CONTACT:

Bryce: 406-724-7029 (c) • 406-762-3336 (h) • 406-762-3247 (o)  
Email: brycerisa@hotmail.com

### SALE DAY CONTACTS:

Owner: Jake Newton: 406-390-5109  
Auctioneer: Ed Hinton 406-783-7285  
Yards Manager: Iva Murch 406-263-7529

### BREEDING SOUNDNESS EXAM:

All bulls are guaranteed breeders. All bulls will pass a breeding soundness exam and will be fertility tested prior to the sale.

### CARCASS ULTRASOUND DATA:

Data will be available on sale day.

### CATTLE VIEWING:

Bulls will be at B and L Hould Feedlot in Malta, Mt until March 23th. You are more than welcome to view them at the lot any-time. They will be available to view at Glasgow Stockyard all day Wednesday March 24th and prior to the sale on Thursday March 25th.

### DELIVERY POLICY:

We offer free delivery on the bulls within 300 miles. Delivery beyond 300 miles will be to central points at buyer's cost. We offer \$100 off each bull taken home prior to delivery.

### GUARANTEE:

All bulls in the offering are guaranteed to pass a fertility and health examination. In the event of a bull failing a semen examination or being injured while at Northern Lites Red Angus, a suitable replacement will be furnished if available or your money will be giving back. We encourage buyers to purchase livestock loss of use and mortality insurance.

### HERD HEALTH:

All bulls have vaccinated with Vista Once SQ and Vision 7 somnus at branding and preconditioning. They have been following the Heath protocol at the Hould Feed yard since the 30th of October. All bulls will be poured prior to delivery.

### LIABILITY:

All persons who attend the sale or view the cattle do so at their own risk. Northern Lites Ranch and Glasgow Stockyard I LLC. assumes no liability – legal or otherwise for any accidents that occur on sale day or visiting premises.

### SALE DAY ANNOUNCEMENTS:

All announcements on sale day will take precedence over the information contained in the catalog.

### TERMS:

The terms of the sale are cash. All settlements will be made immediately following the conclusion of the sale and before the cattle will be released. Red Angus Association Terms and Conditions will apply if the terms and conditions printed here are not applicable

### FEEDING POLICY:

Bulls will be fed for free until delivery.

SEARCHING  
FOR **PERFECT**  
EPD COMBINATIONS



FIND YOUR SORT  
on **BullPEN**

Search Handle

Northern\_Lites\_Red\_Angus

*BullPEN is a new app that allows you to sort & save preferred bulls based on desired EPD ranges and traits.*







# Top Dollar Angus Feeder Calf Program

## Promote Your Verified Genetic Investment

Top Dollar Angus is the industry leader in third-party genetic verification and marketing assistance for superior Angus and Red Angus-based feeder cattle. Our program stamps a unique identity on the 'best of the best' by verifying and then showcasing their genetic merit. The Top Dollar Angus team works directly with a large number of feedyards and buyers to provide them with documented superior feeder cattle, coupled with genetic risk mitigation and the precision understanding they need to pursue your cattle with absolute confidence.

Top Dollar Angus enables cow-calf producers to benefit from the genetic value already built into their herds. Producers that invest in high-end genetics, as well as strong health and nutrition programs, need a means of positively differentiating their calves from average cattle. Top Dollar Angus does that. Industry demand is strong for genetically superior feeder calves with the right supporting documentation. Don't make buyers guess, let them know by putting the Top Dollar Angus badge of honor on your premium genetic investment.



### How it Works:

Our program begins with a FREE genetic evaluation based on the current/past herd sires used in your program. We evaluate the sires used in your herd based on their growth and carcass merit characteristics. A herd that qualifies for Top Dollar Angus has cattle that are at least 50% Angus or Red Angus and also ranks in the top 25% of its respective breed for growth and carcass merit.

Once qualified, our team provides boots on the ground to share this valuable information with buyers looking for high quality cattle that will go on feed and perform. Our team has experience coast to coast and works directly in all channels (video, local auction, direct and internet). Plus, we have the resources to provide a very fast turn-around.

### What our Customers Say:

*"Top Dollar Angus is a program that benefits all levels of the industry. The seedstock producer is rewarded for providing superior genetics to the commercial cattleman, who in turn supplies the feeder with efficient cattle that will produce top-end carcasses. As Top Dollar Angus continues to raise their qualifying standard, these cattlemen will have to up their game to purchase the genetics that will fit the program. These cattlemen will see a return on investment when offering reputation feeders at market time."*

– Jon Pedotti – San Simeon Creek Ranch, California

Nate Smith, General Manager • (620) 546-4839 • [nate@topdollarangus.com](mailto:nate@topdollarangus.com)

Kacey Jacobson • (701) 391-4646 • [kacey@topdollarangus.com](mailto:kacey@topdollarangus.com)

Jake Feddes • (406) 581-8157 • [jake@topdollarangus.com](mailto:jake@topdollarangus.com)

Adam Menker • (419) 310-5344 • [adam@topdollarangus.com](mailto:adam@topdollarangus.com)

Jason Gagnon • (559) 723-6362 • [jason@topdollarangus.com](mailto:jason@topdollarangus.com)

Andy Albrecht • (402) 922-1000 • [andy@topdollarangus.com](mailto:andy@topdollarangus.com)

[www.topdollarangus.com](http://www.topdollarangus.com)





# Red Angus Guide to EPDS and Indexes

**ProS...** Profitability and Sustainability is an all-purpose index that predicts average economic differences in all segments in the beef supply chain. This index is a combination of the breeding objectives modeled in the HerdBuilder and GridMaster selection indexes. In this index, replacement heifers are retained from within the herd and all remaining progeny are fed out to slaughter and sold on a quality-based grid. Traits included in this index include calving ease, growth, HPG, STAY, Mature Weight, Dry Matter Intake and carcass traits. The resulting index is expressed in dollars per head born (Index/High Value).

**HB .....** HerdBuilder is a maternal selection index that predicts the economic differences of animals for traits that are important from conception through weaning. Expressed as dollars per head born, HB is calculated based on the scenario that bulls are mated to heifers and cows, replacement heifers are retained and all remaining progeny are marketed at weaning. Traits included in the HB index include Calving Ease Direct, Calving Ease Maternal, Weaning Weight, Milk, Mature Weight, Heifer Pregnancy and Stayability (Index/High Value).

**GM.....** GridMaster is a selection index that predicts the average economic difference of non-replacement calves through the post-weaning phase of production. GM places selection pressure on growth, feedyard performance and carcass traits. Expressed as dollars per head born, GM is calculated based on the scenario that progeny are fed out to slaughter and marketed on a quality-based carcass grid. Traits included in GM include Average Daily Gain, Carcass Weight, Dry Matter Intake, Marbling, Back Fat and Rib Eye Area (Index/High Value).

**CED .....** Calving Ease Direct predicts differences in the percent of calves born unassisted out of 2-year-old dams. (Percent/High Value)

**BW .....** Birth Weight predicts differences in actual birth weight of progeny. (Pounds/Low Value)

**WW .....** Weaning Weight predicts differences in 205-day weaning weight. (Pounds/High Value)

**YW .....** Yearling Weight predicts differences in 365-day yearling weight. (Pounds/High Value)

**ADG.....** Average Daily Gain predicts differences in weight gain between 205 and 365 days of age. (Pounds/High Value)

**DMI .....** Dry Matter Intake predicts differences in daily feed intake as measured in a feedlot during the post-weaning period. (Pounds/Low Value)

**MILK .....** Milk predicts differences in weaning weight attributed to the milking ability of the animal's daughters. (Pounds/High Value)

**ME .....** Maintenance Energy predicts the difference in maintenance energy requirements. (Mcal per Month/Low Value)

**HPG.....** Heifer Pregnancy predicts differences in the percent of daughters who are able to conceive and calve at 2 years of age following exposure to breeding. (Percent/High Value)

**CEM .....** Calving Ease Maternal predicts differences in the percent of daughters who are able to calve unassisted as 2-year-old heifers. (Percent/High Value)

**STAY.....** Stayability predicts differences in the ability of an animals' retained daughters to remain productive in the herd – calve every year – through 6 years of age. (Percent/High Value)

**MARB....** Marbling predicts differences in marbling score – amount of intramuscular fat measured at the 13th rib. (Marbling Score Units/High Value)

**YG .....** Yield Grade predicts differences in USDA Yield Grade, which is calculated using CW, REA and Fat. (Yield Grade Units/Low Value)

**CW .....** Carcass Weight predicts differences in actual hot carcass weight. (Pounds/High Value)

**REA .....** Ribeye Area predicts differences in square inches of ribeye area measured at the 13th rib. (Square Inches/High Value)

**FAT.....** Fat predicts differences in the depth of backfat measured between the 12th and 13th ribs. (Inches/Low Value)

**RED ANGUS**  
RANCH TESTED. RANCHER TRUSTED.  
[RedAngus.org](http://RedAngus.org)





## 1 NLR WARHEAD 0066 #4257915

BD	BW	WW	WR	Cat.	%
3/22/20	88	759	108	1B	87.3%

BIEBER DC WARHEAD F120

BIEBER CL ATOMIC C218  
BIEBER SURPRISE 243D  
LELAND MARKSMAN 6629  
NLR FIRE 603

ProS	HB	GM
117	78	39
48%	50%	50%

NLR MARKSMAN 839

CED	BW	WW	YW	ADG	DMI	M	ME	HPG	CEM	ST	MARB	YG	CW	REA	FAT
8	1.4	95	151	0.35	2.37	31	7	9	3	17	0.35	0.12	39	0.27	0.04

96%	95%	1%	1%	1%	99%	6%	94%	82%	97%	31%	61%	86%	4%	16%	88%
-----	-----	----	----	----	-----	----	-----	-----	-----	-----	-----	-----	----	-----	-----

DAM'S DATA: DAM'S AGE: 2 # OF CALVES: 1 AVG BW: 93 AVG WW: 759 AVG WR: 108

- A stylish, deep ribbed F120 son with extra extension.
- He has one of the top spreads from BW to WW in our offering.
- We really appreciate his quiet disposition.



## 2 NLR 1 OF A KIND 0011 #4257825

BD	BW	WW	WR	Cat.	%
4/14/20	91	745	105	1A	100%

CRUMP ONE OF A KIND 7795

PIE ONE OF A KIND 352  
MLK CRK SHEBA 048  
LJC MISSION STATEMENT P27  
GMRA OPHELIA 840

ProS	HB	GM
114	87	27
54%	29%	76%

GMRA OPHELIA 279

CED	BW	WW	YW	ADG	DMI	M	ME	HPG	CEM	ST	MARB	YG	CW	REA	FAT
11	-0.9	81	127	0.29	2.25	32	12	12	6	17	0.25	0.08	35	0.19	0.01

70%	66%	2%	3%	11%	99%	3%	99%	28%	64%	28%	86%	63%	8%	29%	41%
-----	-----	----	----	-----	-----	----	-----	-----	-----	-----	-----	-----	----	-----	-----

DAM'S DATA: DAM'S AGE: 8 # OF CALVES: 7 AVG BW: 87 AVG WW: 694 AVG WR: 109

- A big hipped, high volume 7795 son.
- His dam has a 109 WW ratio on 7 head.
- A real rugged, power-packed bull that will add pounds on sale day.



## 3 NLR WARHEAD 0053 #4257907

BD	BW	WW	WR	Cat.	%
3/11/20	87	705	101	1B	99.9%

BIEBER DC WARHEAD F120

BIEBER CL ATOMIC C218  
BIEBER SURPRISE 243D  
LELAND MARKSMAN 6629  
NLR WEST D610

ProS	HB	GM
137	97	40
18%	12%	48%

NLR MARKSMAN 8000

CED	BW	WW	YW	ADG	DMI	M	ME	HPG	CEM	ST	MARB	YG	CW	REA	FAT
10	-2.2	73	118	0.28	2.39	30	9	8	7	20	0.51	0.07	27	0.31	0.04

78%	41%	8%	9%	13%	99%	9%	97%	93%	53%	3%	25%	57%	24%	12%	89%
-----	-----	----	----	-----	-----	----	-----	-----	-----	----	-----	-----	-----	-----	-----

DAM'S DATA: DAM'S AGE: 2 # OF CALVES: 1 AVG BW: 94 AVG WW: 705 AVG WR: 101

- A thick muscled, high volume F120 son.
- Out of a first calf heifer, whom we are excited about.
- Will produce high-yielding feeder cattle.



## 4 NLR WARHEAD 0031 #4257899

BD	BW	WW	WR	Cat.	%
4/12/20	74	804	115	1A	100%

BIEBER DC WARHEAD F120

BIEBER CL ATOMIC C218  
BIEBER SURPRISE 243D  
CRUMP PREMIER 5599  
C-T LINSEY 1019

ProS	HB	GM
170	118	52
1%	1%	22%

NLR PREMIER E703

CED	BW	WW	YW	ADG	DMI	M	ME	HPG	CEM	ST	MARB	YG	CW	REA	FAT
13	-1.2	88	138	0.31	2.81	32	11	11	9	21	0.58	0.09	46	0.37	0.02

40%	61%	1%	1%	4%	99%	4%	99%	45%	13%	2%	15%	73%	1%	7%	71%
-----	-----	----	----	----	-----	----	-----	-----	-----	----	-----	-----	----	----	-----

DAM'S DATA: DAM'S AGE: 3 # OF CALVES: 2 AVG BW: 80 AVG WW: 804 AVG WR: 115

- A power-packed stylish F120 son that has the highest adjusted WW in the offering.
- Out of an exciting dam that has an average WW ratio of 115 on two head.
- Will work well on heifers or cows.



# YEARLING BULLS



LOT 5

5

## NLR WARHEAD 0051

#4257885

BD	BW	WW	WR	Cat.	%
4/10/20	81	771	110	1A	100%

### BIEBER DC WARHEAD F120

BIEBER CL ATOMIC C218  
BIEBER SURPRISE 243D  
RED U-2 FOREIGNER 413B  
5L SEOLA 3558-963

ProS	HB	GM
156	119	37
5%	1%	53%

5L SEOLA 963-2567

CED	BW	WW	YW	ADG	DMI	M	ME	HPG	CEM	ST	MARB	YG	CW	REA	FAT
12	-0.8	90	141	0.32	2.69	30	3	17	7	18	0.30	0.05	47	0.60	0.04
61%	69%	1%	1%	3%	99%	9%	69%	2%	53%	17%	74%	48%	1%	1%	88%

DAM'S DATA: DAM'S AGE: 3 # OF CALVES: 2 AVG BW: 87 AVG WW: 750 AVG WR: 110

- A stylish, powerful F120 son with extra extension.
- His three-year-old dam has an average WW of 750 lbs. on two head.
- Third highest WW in the offering.



LOT 6

6

## NLR WARHEAD 0036

#4257881

BD	BW	WW	WR	Cat.	%
4/20/20	68	696	99	1A	100%

### BIEBER DC WARHEAD F120

BIEBER CL ATOMIC C218  
BIEBER SURPRISE 243D  
MLK CRK EXPRESS 9127  
MLK CRK LAKOTA 5103

ProS	HB	GM
136	99	38
19%	10%	52%

MLK CRK LAKOTA 738

CED	BW	WW	YW	ADG	DMI	M	ME	HPG	CEM	ST	MARB	YG	CW	REA	FAT
15	-3.0	75	115	0.25	2.30	25	5	11	9	17	0.55	0.09	29	0.22	0.03
16%	27%	5%	12%	31%	99%	50%	85%	45%	10%	24%	19%	69%	18%	24%	77%

DAM'S DATA: DAM'S AGE: 3 # OF CALVES: 2 AVG BW: 76 AVG WW: 645 AVG WR: 95

- An attractive, smooth made calving ease specialist.
- A light BW bull that will add pounds on sale day.



LOT 7

7

## NLR 1 OF A KIND 0025

#4257859

BD	BW	WW	WR	Cat.	%
4/8/20	95	721	102	1A	100%

### CRUMP ONE OF A KIND 7795

PIE ONE OF A KIND 352  
MLK CRK SHEBA 048  
BROWN JYJ REDEMPTION Y1334  
B402 NLR

ProS	HB	GM
159	88	71
4%	28%	4%

NLR REDEEM D604

CED	BW	WW	YW	ADG	DMI	M	ME	HPG	CEM	ST	MARB	YG	CW	REA	FAT
7	2.5	87	148	0.38	2.16	25	7	16	5	15	0.45	0.09	50	0.38	0.02
97%	98%	1%	1%	1%	98%	46%	93%	4%	79%	61%	37%	72%	1%	7%	59%

DAM'S DATA: DAM'S AGE: 4 # OF CALVES: 3 AVG BW: 82 AVG WW: 658 AVG WR: 103

- A powerful wide topped, deep ribbed bull with a lot of volume.
- A 7795 son who weaned in the top 25% of our offering.



LOT 8

8

## NLR 1 OF A KIND 0017

#4257843

BD	BW	WW	WR	Cat.	%
4/13/20	95	800	113	1A	100%

### CRUMP ONE OF A KIND 7795

PIE ONE OF A KIND 352  
MLK CRK SHEBA 048  
LOOSLI RIGHT KIND 107  
FEDDES SLEEK Y142

ProS	HB	GM
160	100	60
3%	8%	12%

FEDDES SLEEK Y142 B72

CED	BW	WW	YW	ADG	DMI	M	ME	HPG	CEM	ST	MARB	YG	CW	REA	FAT
8	-1.2	71	112	0.25	2.20	31	7	12	3	22	0.48	0.05	49	0.45	0.01
96%	61%	11%	16%	27%	98%	8%	93%	38%	97%	1%	31%	47%	1%	4%	41%

DAM'S DATA: DAM'S AGE: 6 # OF CALVES: 5 AVG BW: 92 AVG WW: 715 AVG WR: 105

- Deep quartered, heavy built bull whose calves will add extra weight on sale day.
- He has an actual WW of 734 lbs.





## YEARLING BULLS



LOT 9

9

### NLR SILVER BOW 0016

#4257839

BD	BW	WW	WR	Cat.	%
4/4/20	97	718	102	1A	100%

C-T SILVER BOW 6020

FEDDES SILVER BOW B226

C-T VRDALE 1183

C-T MAKIN DESIGNS 1157

FEDDES OSCE Y32

ProS	HB	GM
115	67	49
51%	75%	27%

FEDDES OSCE Y32 B38

CED	BW	WW	YW	ADG	DMI	M	ME	HPG	CEM	ST	MARB	YG	CW	REA	FAT
7	0.5	71	111	0.25	1.95	32	3	10	5	14	0.45	0.04	36	0.37	0.02

97% 88% 12% 18% 31% 92% 4% 70% 69% 88% 65% 37% 41% 6% 7% 56%

DAM'S DATA: DAM'S AGE: 6 # OF CALVES: 4 AVG BW: 84 AVG WW: 687 AVG WR: 100

- A big boned 6020 son that will produce high-yielding feeder cattle.



LOT 10

10

### NLR 1 OF A KIND 0035

#4257895

BD	BW	WW	WR	Cat.	%
4/10/20	92	773	110	1B	99.9%

CRUMP ONE OF A KIND 7795

PIE ONE OF A KIND 352

MLK CRK SHEBA 048

BIEBER ROLLIN DEEP Y118

LELAND RIGHT FOCUS 347Z

ProS	HB	GM
124	91	33
36%	20%	63%

NLR DEEP E723

CED	BW	WW	YW	ADG	DMI	M	ME	HPG	CEM	ST	MARB	YG	CW	REA	FAT
7	1.4	87	142	0.34	2.39	30	11	17	5	16	0.28	0.12	35	0.22	0.03

98% 95% 1% 1% 1% 99% 12% 99% 2% 89% 36% 79% 82% 8% 24% 83%

DAM'S DATA: DAM'S AGE: 3 # OF CALVES: 2 AVG BW: 95 AVG WW: 773 AVG WR: 112

- An eye-catching heavy built 7795 son.
- A maternal brother sold as Lot 1 in 2020.

## PROFIT. REPEAT.

**Generate repeated profits with the industry's most-favored female.**

Independent research from a decade of data collection showed Red Angus-sired heifers commanded \$66/head more than females of other breed types. That's nearly \$5,300 on a single load of replacement heifers to boost profits on your operation.

Visit [RedAngus.org](http://RedAngus.org) for details on the industry's most-favored female.

**RED ANGUS**  
RANCH TESTED. RANCHER TRUSTED.



# YEARLING BULLS



11

## NLR WARHEAD 0067

#4257925

BD	BW	WW	WR	Cat.	%
3/20/20	97	694	99	1B	87.5%

BIEBER DC WARHEAD F120

BIEBER CL ATOMIC C218  
BIEBER SURPRISE 243D  
LELAND MARKSMAN 6629  
NLR EPIC 606

ProS	HB	GM
177	95	81
1%	14%	1%

NLR MARKSMAN840

CED	BW	WW	YW	ADG	DMI	M	ME	HPG	CEM	ST	MARB	YG	CW	REA	FAT
7	1.8	98	169	0.44	2.28	28	7	12	3	18	0.51	0.12	54	0.45	0.03

96% 96% 1% 1% 1% 99% 22% 92% 27% 96% 16% 25% 86% 1% 4% 87%  
DAM'S DATA: DAM'S AGE: 2 # OF CALVES: 1 AVG BW: 102 AVG WW: 694 AVG WR: 99

- A heavy-boned bull that will add an extra punch on sale day.



12

## NLR 1OF A KIND 0023

#4257853

BD	BW	WW	WR	Cat.	%
4/3/20	105	698	99	1A	100%

CRUMP ONE OF A KIND 7795

PIE ONE OF A KIND 352  
MLK CRK SHEBA 048  
BIEBER ROUSE SAMURAI X22  
BIEBER TILLY 201X

ProS	HB	GM
125	65	60
35%	78%	12%

NLR SAMURAI C508

CED	BW	WW	YW	ADG	DMI	M	ME	HPG	CEM	ST	MARB	YG	CW	REA	FAT
2	4.7	99	160	0.38	1.98	26	11	13	1	16	0.43	0.16	48	0.12	0.01

99% 99% 1% 1% 1% 93% 37% 99% 18% 99% 47% 41% 94% 1% 43% 48%  
DAM'S DATA: DAM'S AGE: 5 # OF CALVES: 4 AVG BW: 92 AVG WW: 652 AVG WR: 98

- Big boned, powerful bull whose progeny will really push the scale down on sale day.



13

## NLR 1 OF A KIND0019

#4257845

BD	BW	WW	WR	Cat.	%
4/6/20	96	679	96	1B	99.9%

CRUMP ONE OF A KIND 7795

PIE ONE OF A KIND 352  
MLK CRK SHEBA 048  
MESSMER REVELATION W016  
LELAND VACATION 5211R

ProS	HB	GM
146	81	64
10%	42%	8%

LELAND REVELATION W016-4614

CED	BW	WW	YW	ADG	DMI	M	ME	HPG	CEM	ST	MARB	YG	CW	REA	FAT
8	1.5	86	144	0.36	1.84	26	11	16	5	15	0.30	0.10	51	0.36	0.02

95% 95% 1% 1% 1% 87% 41% 99% 3% 89% 58% 74% 77% 1% 9% 52%  
DAM'S DATA: DAM'S AGE: 6 # OF CALVES: 5 AVG BW: 85 AVG WW: 627 AVG WR: 96

- Heavy built, easy fleshing bull that will produce scale topping calves.



14

## NLR SILVER BOW 0008

#4257817

BD	BW	WW	WR	Cat.	%
4/23/20	94	677	96	1A	100%

C-T SILVER BOW 6020

FEDDES SILVER BOW B226  
C-T VRDALE 1183  
RED CROWFOOT OLE'S OSCAR  
C-T MISS PAN 0920

ProS	HB	GM
143	117	25
13%	1%	79%

C-T MISS PAN 1118

CED	BW	WW	YW	ADG	DMI	M	ME	HPG	CEM	ST	MARB	YG	CW	REA	FAT
13	-3.3	52	81	0.18	1.52	29	4	11	8	23	0.51	-0.03	2	0.14	0.02

40% 22% 76% 78% 77% 62% 17% 79% 55% 28% 1% 25% 11% 96% 39% 51%  
DAM'S DATA: DAM'S AGE: 9 # OF CALVES: 8 AVG BW: 71 AVG WW: 627 AVG WR: 94

- A deep ribbed, wide based bull with lots of volume.





LOT 15

15

## NLR SILVER BOW 0006

#4257821

BD	BW	WW	WR	Cat.	%
4/3/20	94	679	96	1B	99.8%

C-T SILVER BOW 6020

FEDDES SILVER BOW B226

C-T VRDALE 1183

LELAND COOL 9047W

LELAND RED DIRECTION 8268U

ProS	HB	GM
114	81	33

LELAND COOL 9047-Y47

CED	BW	WW	YW	ADG	DMI	M	ME	HPG	CEM	ST	MARB	YG	CW	REA	FAT
12	0.2	61	98	0.23	1.96	34	7	10	8	17	0.33	0.00	24	0.23	0.00

58% 85% 43% 44% 45% 93% 1% 92% 67% 28% 33% 66% 21% 31% 22% 23%

DAM'S DATA: DAM'S AGE: 9 # OF CALVES: 8 AVG BW: 80 AVG WW: 633 AVG WR: 102

- A 6020 son with lots of volume.
- A real smooth made, easy keeping bull.



LOT 16

16

## NLR SILVER BOW 0004

#4257813

BD	BW	WW	WR	Cat.	%
4/22/20	90	676	96	1B	99.9%

C-T SILVER BOW 6020

FEDDES SILVER BOW B226

C-T VRDALE 1183

5L RED DIRECTION 691-6046

LELAND MAJORETTE 7181T

ProS	HB	GM
104	91	13

LELAND RED DIRECTION 132X

CED	BW	WW	YW	ADG	DMI	M	ME	HPG	CEM	ST	MARB	YG	CW	REA	FAT
10	-0.6	59	92	0.20	1.64	30	4	15	7	16	0.30	0.16	14	-0.12	0.04

86% 72% 50% 57% 64% 73% 9% 73% 8% 47% 35% 74% 94% 72% 91% 91%

DAM'S DATA: DAM'S AGE: 10 # OF CALVES: 9 AVG BW: 83 AVG WW: 664 AVG WR: 98

- A clean sheath, long-spined bull.
- Dam is a 10-year-old cow that has a 664 lb. WW average on 9 calves.



LOT 17

17

## NLR 1 OF A KIND 0003

#4257809

BD	BW	WW	WR	Cat.	%
4/17/20	75	710	100	1A	100%

CRUMP ONE OF A KIND 7795

PIE ONE OF A KIND 352

MLK CRK SHEBA 048

RED CROWFOOT OLE'S OSCAR

C-T LINSEY 0815

ProS	HB	GM
145	99	46

C-T LINSEY 1019

CED	BW	WW	YW	ADG	DMI	M	ME	HPG	CEM	ST	MARB	YG	CW	REA	FAT
13	-2.0	68	107	0.24	2.02	34	10	9	9	20	0.54	0.15	32	0.18	0.05

37% 45% 19% 24% 34% 95% 1% 98% 83% 16% 4% 20% 94% 11% 31% 96%

DAM'S DATA: DAM'S AGE: 10 # OF CALVES: 9 AVG BW: 74 AVG WW: 681 AVG WR: 104

- A smooth shouldered sure-fire calving ease.
- He will work well on heifers of any size.



LOT 18

18

## NLR 1 OF A KIND 0005

#4257815

BD	BW	WW	WR	Cat.	%
4/8/20	90	647	91	1B	99.4%

CRUMP ONE OF A KIND 7795

PIE ONE OF A KIND 352

MLK CRK SHEBA 048

5L RED DIRECTION 691-6046

LELAND LOGAN 147K

ProS	HB	GM
189	139	49

LELAND RED DIRECTION 375X

CED	BW	WW	YW	ADG	DMI	M	ME	HPG	CEM	ST	MARB	YG	CW	REA	FAT
11	-0.9	67	107	0.25	1.84	27	8	25	8	21	0.65	0.20	27	-0.14	0.03

74% 66% 21% 24% 31% 87% 29% 95% 1% 32% 2% 7% 98% 22% 93% 83%

DAM'S DATA: DAM'S AGE: 10 # OF CALVES: 9 AVG BW: 80 AVG WW: 622 AVG WR: 95

- A thick muscled, big-hipped calf.
- Will produce heifers that will stay in your herd a long time.



# YEARLING BULLS



LOT 19

19

## NLR SILVER BOW 0012

#4257829

BD	BW	WW	WR	Cat.	%
4/14/20	93	693	98	1B	99.7%

C-T SILVER BOW 6020

FEDDES SILVER BOW B226

C-T VRDALE 1183

LELAND RIGHT FOCUS 61X

LELAND JULIA 410-9218W

ProS	HB	GM
128	100	28

LELAND RIGHT FOCUS 192Z

30%	9%	73%
-----	----	-----

CED	BW	WW	YW	ADG	DMI	M	ME	HPG	CEM	ST	MARB	YG	CW	REA	FAT
9	0.1	64	105	0.26	1.81	29	4	12	7	19	0.39	0.00	11	0.25	0.03

88% 83% 32% 28% 25% 85% 15% 75% 42% 58% 6% 51% 19% 81% 19% 76%

DAM'S DATA: DAM'S AGE: 8 # OF CALVES: 7 AVG BW: 89 AVG WW: 684 AVG WR: 100

- A deep quartered, athletic built 6020 son.
- Maternal brothers have sold to Kevin Nelson of Richland, MT and Nelson Ranch of Richland, MT.



LOT 20

20

## NLR WARHEAD 0043

#4257875

BD	BW	WW	WR	Cat.	%
4/21/20	83	678	97	1A	100%

BIEBER DC WARHEAD F120

BIEBER CL ATOMIC C218

BIEBER SURPRISE 243D

HXC DECLARATION 5504C

GMRA ANGIE 889

ProS	HB	GM
151	87	64

GMRA ANGIE 710Z

7%	30%	8%
----	-----	----

CED	BW	WW	YW	ADG	DMI	M	ME	HPG	CEM	ST	MARB	YG	CW	REA	FAT
9	2.1	95	159	0.40	2.51	24	14	12	7	16	0.37	0.12	57	0.32	0.01

89% 97% 1% 1% 1% 99% 59% 99% 36% 58% 39% 56% 86% 1% 11% 38%

DAM'S DATA: DAM'S AGE: 3 # OF CALVES: 2 AVG BW: 84 AVG WW: 657 AVG WR: 95

- A powerfully constructed bull that will sire high-yielding feeder cattle.



LOT 21

21

## NLR WARHEAD 0063

#4257933

BD	BW	WW	WR	Cat.	%
3/26/20	91	647	92	1B	99.9%

BIEBER DC WARHEAD F120

BIEBER CL ATOMIC C218

BIEBER SURPRISE 243D

CRUMP PREMIER 5599

LELAND REVELATION W016-4614

ProS	HB	GM
124	81	42

NLR PREMIER 8055

37%	42%	42%
-----	-----	-----

CED	BW	WW	YW	ADG	DMI	M	ME	HPG	CEM	ST	MARB	YG	CW	REA	FAT
9	1.0	84	139	0.34	2.21	24	10	11	7	15	0.27	0.02	36	0.49	0.03

88% 92% 1% 1% 1% 98% 59% 98% 51% 45% 51% 82% 31% 6% 3% 76%

DAM'S DATA: DAM'S AGE: 2 # OF CALVES: 1 AVG BW: 98 AVG WW: 647 AVG WR: 92

- A soft made, big topped F120 son.



LOT 22

22

## NLR WARHEAD 0047

#4257879

BD	BW	WW	WR	Cat.	%
4/2/20	63	629	90	1A	100%

BIEBER DC WARHEAD F120

BIEBER CL ATOMIC C218

BIEBER SURPRISE 243D

BIEBER HARD DRIVE Y120

BIEBER MISS DANA 284A

ProS	HB	GM
158	105	53

BIEBER MISS DANA 244E

4%	5%	20%
----	----	-----

CED	BW	WW	YW	ADG	DMI	M	ME	HPG	CEM	ST	MARB	YG	CW	REA	FAT
16	-2.6	80	123	0.27	2.36	24	10	11	10	19	0.58	0.01	39	0.39	0.01

11% 33% 2% 5% 17% 99% 57% 98% 59% 6% 9% 15% 27% 4% 6% 28%

DAM'S DATA: DAM'S AGE: 3 # OF CALVES: 2 AVG BW: 74 AVG WW: 628 AVG WR: 93

- A sleep-all-night, "make every basketball game" heifer bull.
- A light BW bull that will sire calves with added growth.





## YEARLING BULLS



23

**NLR SILVER BOW 0046**

#4257903

BD	BW	WW	WR	Cat.	%
4/11/20	85	653	93	1A	100%

C-T SILVER BOW 6020

FEDDES SILVER BOW B226

C-T VRDALE 1183

5L TURBO TED 6592-298B

5L REDBIRD 4033-470

ProS	HB	GM
116	82	34
50%	40%	61%

5L REDBIRD 470-7157

CED	BW	WW	YW	ADG	DMI	M	ME	HPG	CEM	ST	MARB	YG	CW	REA	FAT
8	-0.4	62	98	0.23	1.86	28	-1	15	4	16	0.60	0.07	11	-0.02	0.02

94% 76% 42% 43% 45% 88% 24% 37% 7% 94% 42% 12% 60% 82% 76% 66%

DAM'S DATA: DAM'S AGE: 3 # OF CALVES: 2 AVG BW: 88 AVG WW: 655 AVG WR: 93

- A moderate, cherry red, easy-keeping 6020 son.



24

**NLR SILVER BOW 0027**

#4257863

BD	BW	WW	WR	Cat.	%
4/7/20	91	648	92	1A	100%

C-T SILVER BOW 6020

FEDDES SILVER BOW B226

C-T VRDALE 1183

CRUMP FOREVER WEST 2102

FEDDES LAKINA X158 A74

ProS	HB	GM
105	86	19
70%	32%	88%

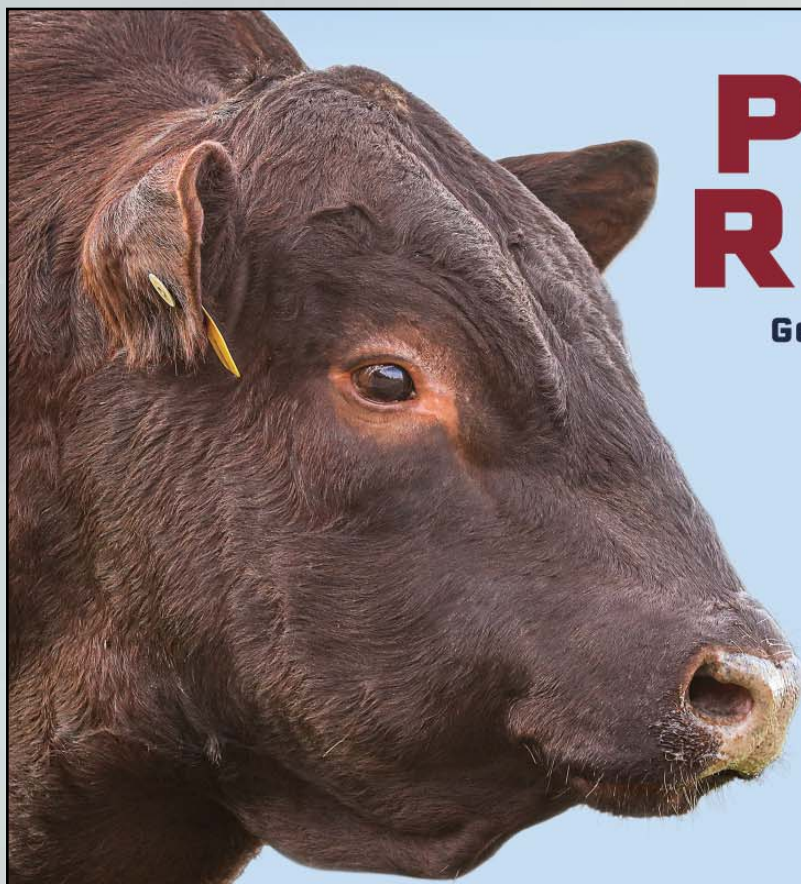
NLR WEST D608

CED	BW	WW	YW	ADG	DMI	M	ME	HPG	CEM	ST	MARB	YG	CW	REA	FAT
9	0.4	68	113	0.28	1.73	30	5	12	7	16	0.24	0.06	13	0.12	0.04

92% 87% 18% 14% 12% 80% 9% 81% 35% 53% 37% 88% 56% 76% 43% 88%

DAM'S DATA: DAM'S AGE: 4 # OF CALVES: 3 AVG BW: 88 AVG WW: 673 AVG WR: 97

- An athletic build, long ribbed, smooth made 6020 son.



# PROFIT. REPEAT.

**Generate repeated profits  
with Red Angus bulls.**

Year after year, despite unpredictable market conditions, cattle producers see increased ROI on their Red Angus-sired calves that excel both in the yard and on the rail. Increase your profit potential with Red Angus genetics and experience the Red Angus advantage.

Visit **RedAngus.org**  
for details on Red Angus  
marketing programs.

**RED ANGUS**  
RANCH TESTED. RANCHER TRUSTED.



# YEARLING BULLS



25

## NLR SILVER BOW 0014

#4257833

BD	BW	WW	WR	Cat.	%
4/16/20	84	664	94	1B	99.3%

C-T SILVER BOW 6020

FEDDES SILVER BOW B226

C-T VRDALE 1183

LORENZEN SANTIAM ENCORE 8400

LELAND CHATEAU9033-1325

ProS	HB	GM
107	70	36
66%	68%	55%

LELAND ENCORE 481Z

CED	BW	WW	YW	ADG	DMI	M	ME	HPG	CEM	ST	MARB	YG	CW	REA	FAT
12	-2.3	59	94	0.22	1.55	34	1	7	7	15	0.41	-0.07	14	0.45	0.02

61% 39% 54% 53% 51% 64% 1% 48% 98% 38% 51% 46% 5% 73% 4% 61%

DAM'S DATA: DAM'S AGE: 8 # OF CALVES: 7 AVG BW: 82 AVG WW: 688 AVG WR: 102

- A long patterned, free-strided 6020 son.
- He is a smooth shouldered bull who will work well on heifers.



26

## NLR 1 OF A KIND 0001

#4257811

BD	BW	WW	WR	Cat.	%
4/12/20	97	716	101	1A	100%

CRUMP ONE OF A KIND 7795

PIE ONE OF A KIND 352

MLK CRK SHEBA 048

FEDDES ATLAS 867

GMRA ANGIE ROSE 385

ProS	HB	GM
122	91	31
40%	21%	68%

BCRR ANGIE ROSE 012X

CED	BW	WW	YW	ADG	DMI	M	ME	HPG	CEM	ST	MARB	YG	CW	REA	FAT
8	1.0	74	109	0.22	1.91	32	7	12	5	18	0.45	0.05	27	0.26	0.03

94% 92% 7% 20% 53% 91% 4% 92% 28% 87% 14% 37% 48% 24% 18% 73%

DAM'S DATA: DAM'S AGE: 10 # OF CALVES: 9 AVG BW: 91 AVG WW: 722 AVG WR: 106

- Heavy built, deep flanked, 7795 son.
- His 10-year-old mother has a lifetime WW ratio of 106.



27

## NLR 1 OF A KIND 0040

#4257883

BD	BW	WW	WR	Cat.	%
4/17/20	85	705	101	1A	100%

CRUMP ONE OF A KIND 7795

PIE ONE OF A KIND 352

MLK CRK SHEBA 048

MLK CRK EXPRESS 9127

MLK CRK LAKOTA 517

ProS	HB	GM
104	76	28
70%	55%	73%

MLK CRK LAKOTA 760X

CED	BW	WW	YW	ADG	DMI	M	ME	HPG	CEM	ST	MARB	YG	CW	REA	FAT
7	1.2	80	121	0.26	1.96	26	3	13	4	15	0.23	0.11	39	0.27	0.03

97% 93% 2% 6% 23% 93% 39% 65% 24% 93% 61% 90% 80% 4% 16% 80%

DAM'S DATA: DAM'S AGE: 3 # OF CALVES: 2 AVG BW: 89 AVG WW: 669 AVG WR: 97

- An easy fleshing, heavy built 7795 son that will produce profitable feeder cattle.



28

## NLR BRUNSWICK 0054

#4257935

BD	BW	WW	WR	Cat.	%
3/22/20	88	616	88	1A	100%

GMRA BRUNSWICK 8221F

FEDDES BRUNSWICK D202

GMRA OPHELIA 664

LELAND EPIC 397-4471

C-T LINSEY 1019

ProS	HB	GM
131	91	40
25%	21%	46%

NLR EPIC 8012

CED	BW	WW	YW	ADG	DMI	M	ME	HPG	CEM	ST	MARB	YG	CW	REA	FAT
9	-0.2	55	87	0.20	1.83	29	6	14	7	18	0.42	0.01	25	0.35	0.02

88% 79% 69% 69% 65% 87% 13% 89% 11% 58% 16% 44% 25% 30% 9% 66%

DAM'S DATA: DAM'S AGE: 2 # OF CALVES: 1 AVG BW: 96 AVG WW: 616 AVG WR: 88

- A deep flanked, dark red calf out of a two-year-old mother.





29

## NLR BRUNSWICK 0058

#4257919

BD	BW	WW	WR	Cat.	%
4/7/20	82	653	93	1A	100%

GMRA BRUNSWICK 8221F

FEDDES BRUNSWICK D202  
GMRA OPHELIA 664  
BIEBER ROLLIN DEEP Y118  
NLR DIRECTION C504

ProS	HB	GM
126	78	48
34%	50%	30%

NLR MERLIN 8020

CED	BW	WW	YW	ADG	DMI	M	ME	HPG	CEM	ST	MARB	YG	CW	REA	FAT
11	-0.4	69	119	0.31	1.92	26	4	9	7	16	0.35	0.06	29	0.36	0.04

65% 76% 16% 8% 4% 91% 39% 78% 83% 45% 45% 61% 52% 18% 9% 89%  
DAM'S DATA: DAM'S AGE: 2 # OF CALVES: 1 AVG BW: 89 AVG WW: 653 AVG WR: 93

- A moderate framed, heavy built bull with lots of volume.



30

## NLR PREMIER 0059

#4257923

BD	BW	WW	WR	Cat.	%
4/1/20	56	583		1A	100%

CRUMP PREMIER 5599

BROWN PREMIER X7876  
BUF CRK PRIMROSE U021  
BIEBER ROLLIN DEEP Y118  
FEDDES OSCE Y32 B38

ProS	HB	GM
165	99	66
2%	10%	7%

NLR DEEP 8029

CED	BW	WW	YW	ADG	DMI	M	ME	HPG	CEM	ST	MARB	YG	CW	REA	FAT
13	0.6	82	133	0.32	1.70	25	4	12	9	16	0.43	0.05	44	0.34	0.01

44% 89% 1% 1% 3% 77% 51% 78% 40% 9% 40% 41% 48% 1% 10% 28%  
DAM'S DATA: DAM'S AGE: 2 # OF CALVES: 2 AVG BW: 59 AVG WW: 577 AVG WR: 0

- A moderate Crump 5599 son.
- He is a twin calf which gained well all year.



31

## NLR WARHEAD 0072

#4347425

BD	BW	WW	WR	Cat.	%
3/16/20	86	652		2	100%

BIEBER DC WARHEAD F120

BIEBER CL ATOMIC C218  
BIEBER SURPRISE 243D

ProS	HB	GM
134	99	35
22%	10%	58%

CED	BW	WW	YW	ADG	DMI	M	ME	HPG	CEM	ST	MARB	YG	CW	REA	FAT
12	-0.7	78	123	0.28	1.81	27	0	8	7	18	0.38	0.06	24	0.25	0.03

62% 71% 3% 5% 11% 85% 33% 39% 94% 38% 16% 54% 51% 32% 19% 80%  
DAM'S DATA: DAM'S AGE: # OF CALVES: AVG BW: AVG WW: AVG WR:

- Two bulls that were switched at birth with commercial cows.
- We did not find out until their DNA tests came back but by that time, they both were pretty stylish bulls so we decided to offer them for sale. Their sires are correct. Out of commercial cows.



32

## NLR EPIC 0073

#4351043

BD	BW	WW	WR	Cat.	%
4/2/20	82	629		3	50%

GMRA LONGMIRE 7234

BECKTON EPIC R397 K  
GMRA JUANA 348

ProS	HB	GM
124	77	47
36%	52%	32%

CED	BW	WW	YW	ADG	DMI	M	ME	HPG	CEM	ST	MARB	YG	CW	REA	FAT
10	0.1	64	98	0.21	0.81	23	-7	9	6	14	0.36	-0.03	23	0.27	0.00

80% 83% 33% 44% 58% 11% 66% 9% 81% 75% 63% 60% 11% 38% 16% 17%  
DAM'S DATA: DAM'S AGE: # OF CALVES: AVG BW: AVG WW: AVG WR:

- Two bulls that were switched at birth with commercial cows.
- We did not find out until their DNA tests came back but by that time, they both were pretty stylish bulls so we decided to offer them for sale. Their sires are correct. Out of commercial cows.



# RED ANGUS MARKETING PROGRAMS

## How to Enroll in FCCP and AA

1. The producer contacts the Red Angus Association of America at (940) 226-4762 and answers a short supplier enrollment questionnaire over the phone. RAAA staff will ask general management, animal identification and breeding questions. If needed, the producer may be asked to supply additional documentation on breeding such as semen receipt, lease agreements or information on purchased females.
2. After all documentation is recorded, staff will ship the tags directly to the producer who must tag the calves before they leave the ranch of origin – birth, branding, preconditioning, weaning or before loading on the semi.
3. The producer will receive a customer enrollment agreement to fill out and return to RAAA with a copy of their calving records.
4. Staff will issue the USDA-approved Certificate of Compliance upon receiving the customer enrollment agreement and calving record.

**FCCP Tags**  
99¢ each

**Allied Access Tags**  
99¢ each

**EID Combo Sets**  
\$3 each

## Feeder Calf Certification Program



- Traceability to at least 50% Red Angus genetics
- Source verified to ranch of origin
- Group age verified

Eligible for Choice+ and G.O. Red Grids  
No enrollment fee, 99¢/tag  
840-compliant EIDs available upon request



**GENETICS  
AGE  
SOURCE**



## Allied Access

- Source verified to ranch of origin
- Group age verified

Not eligible for Choice+ or G.O. Red Grids  
No enrollment fee, 99¢/tag  
840-compliant EIDs available upon request



**AGE  
SOURCE**

**The Red Angus Feeder Calf Certification Program is the first step in differentiating your cattle to buyers, feedlots and packers.**

Experience industry-leading return on investment for just the cost of an ear tag – with no enrollment fees. The Red Angus Association of America Marketing Team offers assistance to Red Angus bull customers at no charge.

Visit [RedAngus.org](http://RedAngus.org) for contact information.

## Red Angus Marketing

- **FCCP** (Yellow Tag)
- **Allied Access** (Green Tag)
- **Premium Red Baldy** (White Tag)
- **American Red** (Blue Tag)
- **Tyson's Choice+ Grid**
- **Greater Omaha's G.O. Red Grid**
- **Stockyard**
- **Feedlot Partners**
- **Red Angus FeederFax**
- **Red Angus FeMail**
- **Calendar of Events**

**RED ANGUS**

RANCH TESTED. RANCHER TRUSTED.

[RedAngus.org](http://RedAngus.org) • (940) 226-4762





NORTHERN LITES RANCH  
PO BOX 33  
OPHEIM, MT 59250

NORTHERN LITES  
4  
RED ANGUS RANCH

# ANNUAL RED ANGUS BULL

THURSDAY,  
MARCH 25, 2021

GLASGOW STOCKYARDS, GLASGOW, MT  
SELLING 32 YEARLING RED ANGUS BULLS  
1 P.M. MDT (FOLLOWING GIBB RED ANGUS)