

# Prickly Pear Simmental Ranch

INVITES YOU TO OUR ANNUAL  
Simmental & Simangus Sale

SELLING 70 BULLS



February 6, 2021

1:00 PM ■ Helena, Montana

Dear Cattlemen:

After the crazy year that was 2020, I hope all of you are healthy and doing well. This year's sale offering is again a very even set of bulls. We had great weather for calving and a nice start to spring in our area, but you will see the weaning weights were down from previous years because we had one of the driest summers we've ever seen in the area where the bull pairs run. I looked up some of the range tests in that area from MSU and found the range was running between 4.6 and 5 percent protein, so for the first time since I've been managing Prickly Pear Ranch I had to make the decision to put out protein tubs to help out the cows and calves. But as always I still refuse to creep feed the calves out on range. The calves were weaned in early September and started on grain October 1st. They have been on the same rolled ration as the previous three years with them getting to their target 8lb's a day by November 15th.

This year you will see several past sires and quite a few new sires. Again, two of the top producing Angus sires are Circle L Gus and Werner Flat Top. Gus ratioed 100.5 on his 5 sons with 3 out of the 5 being off first calf heifers and Flat Top ratioed 107 on his 5 sons. Now to the new sires; the calves sired by Basin Rainmaker 4404 will add length and depth of body. They have great phenotype and solid looking feet and legs. The Sydgen Enhance calves have a ton of length with a little more frame to them. Hooks Eagle did a nice job with low birthweight, big tops and thick hips. They will be smaller framed cattle with above average Maternal Calving Ease. Both the BBS True Justice B10 and TJ Roosevelt will sire calves with a little more birth weight but will add the extra pounds at weaning. The SHSF Freightliner bull sired one of the best groups in the sale. The 3 bulls averaged 107.5 at weaning and are gaining in the top of the sale bulls. Look for a lot more of his calves in the future with 15 cows AI bred to him last spring. The highlight of our herd sires this year is Gibbs Bama Boy(aka Bam Bam). His three sons for the sale averaged 105 at weaning. For the first time I'm keeping one out of the sale. He ratioed 118 at weaning. I'm going to use him this coming spring and sell him in next spring's sale as a two year old. I've also gone back to his sire and have 13 cows bred to calve this spring. His calves are built like him, moderately thick with great disposition.

This spring I again will be calving a bunch of new AI sires, here are a few to look for: Kessler's Commodore, Marda Blacksmith, Sitz Stellar and Gibbs Element. I also have 16 heifers bred to calve to Ellingson Blazer X37 in the spring. I felt it was time to reuse him as his daughters are proving to be some of our top producers with excellent udders.

Looking forward to seeing everyone at the sale.

Sincerely,

Troy Wheeler



Check us out at

[www.pricklypearsimmental.com](http://www.pricklypearsimmental.com)



# Prickly Pear Simmental Ranch

## Sale Day Schedule

### Friday, February 5, 2021

All Day Cattle on Display  
6:00 PM Pre-Sale Dinner

### Prickly Pear Simmental Ranch Sale Barn

2853 Canyon Ferry Road

### Sale Day Phones:

Troy 406-949-1754  
Gary 406-439-2360  
Sale Day Only 406-439-3675

### Hotels

Comfort Suite 406-495-0505  
Marriot Residence Inn 406-443-8010  
Holiday Inn Express 406-442-7500  
Wingate by Wyndham 406-449-3000

### Airlines

Helena is serviced by Delta, United,  
and Alaska Airlines.

Online Videos Available!

### Saturday, February 6, 2021

8:00 AM Cattle on Display  
12:00 PM Complimentary Lunch  
1:00 PM Sale

### Auctioneer

Roger Jacobs 406-698-7686

### Sale Day Representatives

Barry Ellis 406-855-4183  
John Goggins 406-698-4159  
Dick Perkins 406-560-0082

### Airlines

Helena is serviced by Delta, United, and Alaska  
Airlines.

**DVAuction**  
*Broadcasting Real-Time Auctions*

**Visit [www.DVAuction.com](http://www.DVAuction.com)  
and Register Today!**

For General Questions Please Contact Our Office:  
(402) 316-5460 or [support@dvauction.com](mailto:support@dvauction.com)

## New Customers

For those of you that are new customers I just want to go over a few goals we strive for:

1. Is disposition. I see a lot of people now are putting disposition codes in their catalogs. We take great pride in the disposition of our cattle, so you can assume they're all very docile unless noted by us.
2. Is retaining the growth while improving everything else we all want - calving ease, smaller birth weights, moderate frame size, good udders, feet, etc. Growth is one of Simmentals best assets. Some people are concentrating on birth weights so hard they are losing the growth advantage.
3. We concentrate more on calving ease and maternal calving ease than birth weights. All the bulls in the sale were unassisted at birth.
4. We also look at individual performance more than growth EPDs. The EPDs will change if the animal has the performance, but the animal won't always perform just because he's got good EPDs.

## Sight Unseen Purchases

We guarantee all sight unseen purchases. Call ahead of time and we will go over the offering. You can leave a bid with us or a representative, or you may bid via the phone or on the internet during the sale. you will be treated as though you are at the sale. Please call us if you need additional information.

## Guarantee

All bulls are guaranteed breeders. As our valued customers if you have any problems at all, let us help you solve them. Our livelihood depends on your satisfaction.

## Trucking

We give \$125 per bull discount if you haul your own bulls on sale day. We deliver free around April 1st if within 300 miles, otherwise guarantee no more than \$400 per bull in Continental USA.

**Volume Discount...3% off with purchase of 5 or more bulls**

## Directions to the ranch

### From I-15:

Take Custer Avenue exit (#194). Head East for a total of 3.1 miles. At the one mile mark it will reduce to a single lane and turn into Canyon Ferry Road. The sale facility will be just after a gravel pit pond on your right.

### From the East on US 12:

At the West end of East Helena turn right (N) by the Exxon Gas station (first turn after the two stoplights) go North approximately two miles to a stoplight. Turn left (W) onto Canyon Ferry Road. Go about 3/8 of a mile, our sale facility is on the left.

### From the West on US 12:

Turn left (N) at 3rd light (Henderson Street). Turn right (E) at stop sign in front of Fairgrounds (Custer). Continue East until you cross over I-15 and then use the direction from I-15 above.

The address is **2853 Canyon Ferry Road, Helena, MT 59602** if you want to use a GPS.



## Retained Semen Interest

The bull buyer will receive full possession, 100% salvage value, and 2/3 semen interest of any bull purchased in this sale (unless otherwise noted). This means we are retaining a 1/3 semen interest in these bulls. This semen interest is a royalty interest that entitles Prickly Pear Simmental Ranch to 1/3 of the revenues of any semen sold. PPSR semen interest remains even if the bull or any interest in the bull is sold to a third party. It is the buyer's responsibility to ensure that PPSR's interest is upheld if semen is ever sold. The buyer must also inform any third party of PPSR's interest if the bull is ever sold. PPSR will not be responsible for expense related to semen collection or promotion of any bull purchased, unless a mutual agreement is reached prior to semen collection or promotion. Our retained semen interest also includes the right to collect semen on the bull at our expense and the buyer's convenience.

## Actual Scrotal Measurements

We do not believe in adjusted yearling scrotal measurements, therefore, all scrotal measurements are actual figures. Actual measurements will be taken at the end of January. All bulls under 30 centimeters will be sifted regardless of age. The bull's testicular size is an early indication of puberty, which is passed on to their sons and daughters. Bulls with larger testicles service more cows and produce more semen, plus their daughter's cycle at an earlier age and have a higher conception rate.

All bulls are measured and palpated by Chuteside Veterinary Service prior to sale. Since a lot can happen between January and April, they will all be fertility tested prior to delivery. The extra \$25 added to our \$100 off if you take your bulls on sale day is to pay for testing at home with your other bulls. The scrotal measurements will be on a supplement sheet along with carcass data.

Most testicular growth occurs from nine to twelve months of age. Remember to consider the age of the calf at the end of January when using these measurements.

## Beef Improvement Federation Recommendation for Scrotal Circumference

Months of Age	12-14	15-20	21-30	30+
Excellent	35	37	39	40
Good	30-35	31-37	32-39	33-40
Poor	30	31	32	33

# Quick Guide to ASA EPDs and \$ Indexes

**Expected Progeny Differences (EPDs):** EPDs are the most accurate and effective tool available for comparing genetic levels. In using EPDs, the difference between two sires' EPDs represents the unit difference expected in the performance of their progeny. For example, if sires A and B have EPDs of +10 and -5, a 15-unit difference would be expected in their progeny (moving from -5 to +10 yields 15 units). Key to using EPDs is knowing what units they are expressed in. For example, if the above case referred to weaning weight EPDs, A would be expected to sire 15-pounds more *weaning weight* than B. If calving ease were the trait, A would be expected to sire 15-percent more *unassisted births* in first-calf heifers; in other words, if B sired 30 assists in a group of 100 heifers, we'd expect A to require 15 *assists*. A percentile-ranking chart is required to determine where a bull's EPDs rank him relative to other bulls in the breed. For percentile rankings or more detailed information about EPDs and \$ indexes visit [www.simmental.org](http://www.simmental.org). Listed below are the units ASA EPDs are expressed in:

**All-Purpose Index (API):** Dollars per cow exposed under an all-purpose sire scenario. (See below for more details)

**Back Fat (BF):** Inches of backfat.

**Birth Weight (BW):** Pounds of birth weight.

**Calving Ease (CE):** Percent of unassisted births when used on heifers.

**Carcass Weight (CW):** Pounds of carcass weight.

**Maternal Calving Ease (MCE):** Percent of unassisted births in first-calving daughters.

**Milk (MLK):** Pounds of weaning weight due to milk.

**Marbling (MRB):** Marbling score.

**Maternal Weaning Weight (MWW):** Pounds of weaning weight due to milk and growth.

**Ribeye Area (REA):** Square inches of ribeye.

**Warner-Bratzler Shear Force (WBSF):** Pounds of force required to shear a steak.

**Stayability (STAY):** Percent of daughters remaining in the cowherd at 6 years of age.

**Terminal Index (TI):** dollars per cow exposed under a terminal-sire scenario. (See below for more details.)

**Weaning Weight (WW):** Pounds of weaning weight.

**Yearling Weight (YW):** Pounds of yearling weight.

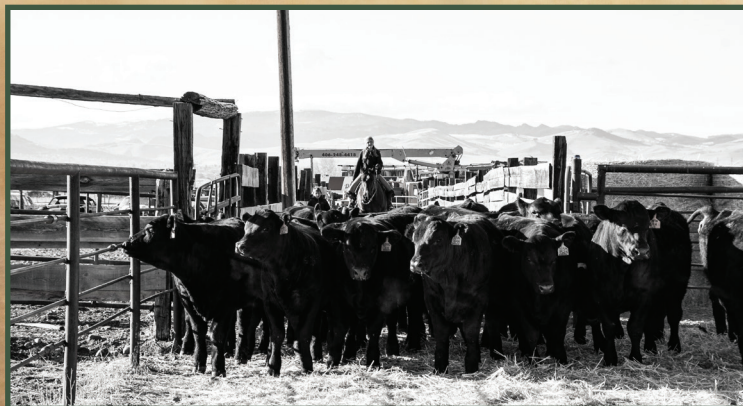
**Yield Grade (YG):** Yield grade score.

**\$ Indexes:** Though EPDs allow for the comparison of genetic levels for many economically important traits, they only provide a piece of the economic puzzle. That's where \$ indexes come in. Through well-conceived, rigorous mathematical computation, \$ indexes blend EPDs and economics to estimate an animal's overall impact on your bottom line. The same technology that led to the dramatic progress in swine, poultry, and dairy genetics over the last several decades was used to develop the following \$ indexes:

**All-Purpose Index (API):** Evaluates sires for use on the entire cow herd (bred to both Angus first-calf heifers and mature cows) with the portion of their daughters required to maintain herd size retained and the remaining heifers and steers put on feed and sold grade and yield.

**Terminal Index (TI):** Evaluates sire for use on mature Angus cows with all offspring put on feed and sold grade and yield.

**Using API and TPI:** First, determine which index to use; if you're keeping replacements use API, if not, TI. Then, just as with EPDs, zero in on the unit difference between bulls. (As described above, index units are in dollars per cow exposed.) The difference can be used to determine how much a bull is worth compared to another. Or, put another way, how much you can pay for one bull compared to another. For example, when buying an all-purpose-type sire, you can quickly figure a bull scoring +100 for API is worth an extra \$6,000 over a +50 bull if both are exposed to 30 cows over 4 years ( $\$50 \text{ diff.} \times 30 \text{ hd.} \times 4 \text{ yr.} = \$6,000$ ). A percentile-ranking chart is required to determine where a bull's index value ranks him relative to other bulls in the breed. For percentile ranking or more detailed information about EPDs and \$ indexes.



# Reference Sires

Name	Breeds	CE	BW	WW	YW	MCE	Milk	MWW	CW	YG	MB	BF	REA	API	TI
<b>Purebred Simmental</b>															
BBS TRUE JUSTICE B10	PB SM	12.3	0.7	87.3	131.9	8.6	32.3	75.9	24.1	-0.57	0.15	-0.118	1.04	149.0	87.2
HOOK'S BOZEMAN 8B	PB SM	13.3	-0.2	70.1	107.4	7.4	9.9	44.9	12.8	-0.49	0.47	-0.085	0.91	156.2	83.6
KOCH BIG TIMBER 685D	PB SM	16.8	-4.3	76.3	113.5	8.7	30.7	68.8	29.4	-0.16	0.36	-0.033	0.51	158.1	90.2
KOCH LC MONTE 803U	PB SM	8.2	2.7	86.4	134.9	4.8	18.4	61.5	45.5	-0.36	0.07	-0.093	0.87	119	79.6
NLC FABIAN 64F	PB SM	9.8	2	74.4	107.1	5.1	18.5	55.6	23	-0.46	0.24	-1.103	0.82	146.6	77.4
NLC GEN TEN 82E	PB SM	7.2	3.8	80.6	126.8	4.9	30.8	71.1	35.7	-0.35	0.43	-0.071	0.89	147.1	84.6
TJ ROOSEVELT 366E	PB SM	8.9	2.5	93.4	134.4	5.5	33.1	79.7	39.4	-0.32	0.37	-0.051	0.99	153.1	92
<b>SimAngus</b>															
IR CAPITALIST E041	1/2 SM 1/2 AN	16.8	-3.9	69.2	119.3	9.4	31.8	66.4	39.5	-0.01	1	-0.011	0.34	188	98
JC JOURNEY 610E	1/2 SM 1/2 AN	18.6	-4.4	51.1	89.9	12.1	25	50.5	35.3	-0.16	0.51	-0.059	0.37	146.8	75.4
GIBBS 7258E BAMA BOY	3/4 SM 1/4 AN	12.4	1.4	77.4	119.7	6.9	20.4	59	44.3	-0.38	0.15	-0.072	1.06	129.6	74.4
HOOK'S EAGLE 6E	3/4 SM 1/4 AN	15.2	-1.7	103.7	166	9.7	20	71.8	49.4	-0.40	0.58	-0.072	1.20	172.9	105.7
SHSF FREIGHTLINER D10	3/4 SM 1/4 AN	8.6	2.3	102.8	169.5	7.2	18.7	70.7	64.1	-0.34	0.26	-0.067	1.24	135.9	91.2
<b>Angus</b>															
BASIN RAINMAKER 4404	PB AN	17.8	-1.9	76.7	135.5	13.3	20.9	59.1	56.3	0.21	0.49	0.045	0.3	124.8	87.7
BLEVINS THUNDER 6965	PB AN	13.8	-1.1	67.7	112.5	9.5	20.7	54.5	51	0.16	0.71	0.036	0.32	133.8	75.4
CIRCLE L GUS	PB AN	19.3	-4.2	79.9	125.9	15.8	16.9	56.8	78.7	0.25	0.36	0.067	0.65	118.9	77.2
KM BROKEN BOW 002	PB AN	17.7	-3.9	80	123.9	14.1	19.3	59.3	48	0.07	0.77	0.021	0.45	145.3	87.9
LD CAPITALIST 316	PB AN	16	-3.1	84.6	134.7	11.6	19.8	62	57.1	0.26	0.62	0.061	0.3	138.3	85.2
LEACHMAN INVESTMENT 7599	PB AN	13.5	1	82.9	134	9.6	20	61.4	54.8	0.43	0.51	0.082	-0.1	127.9	75.5
LEACHMAN PAYGRADE 8517	PB AN	13.7	-0.2	68.4	111.8	8.9	21.9	56.1	43.5	0.36	0.7	0.065	-0.16	127.4	73.5
SYDGEN ENHANCE	PB AN	17.8	-2.5	85.4	152.2	10.7	20.3	63	81.6	0.24	1	0.049	0.57	164.8	95.9
WERNER FLAT TOP 4136	PB AN	19.7	-4.4	70.1	134.7	12	24.1	59.1	39.5	0.13	0.7	0.038	0.29	147	82.9



Basin Rainmaker 4404



Circle L Gus



Werner Flat Top 4136



Hook's Eagle 6E



TJ Roosevelt 366E



SHSF Freightliner D10

# SimAngus Bulls



1

## PPSR GUS 25H ASA # (3808828)

Tattoo: 25H BD 2/24/2020 3/8 Simmental  
Black Polled

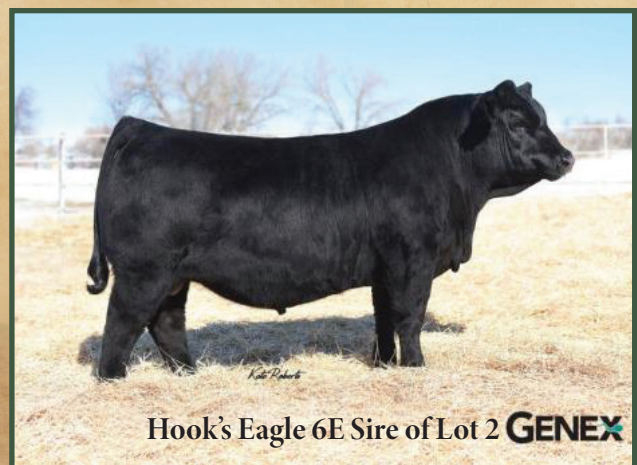
Sire: Circle L Gus  
Circle L Pride X097

Koch LC Monte 803U  
Dam: Miss Prickly Pear 840F  
Miss Prickly Pear 744T

BW	90
ADJ. WW	568
WW RATIO	91
WDA	2.45
#Calves	1 @ 91

CE	BW	WW	YW	MCE	MM	MWW	CW	YG	MB	BF	REA	API	TI
13.7	0.2	78.3	123.4	10.4	15	54.1	56	-0.9	0.17	-0.17	.75	111	73

Don't overlook this Circle L Gus son. His grand dam is bred to calve at 14 years old. His dam is a first calf heifer that ran on the dry mountain and was ratioed against good running age cows. He'll sire cattle with lots of longevity.



2

## RKNWHRT EAGLE 9H ASA # (3808958)

Tattoo: 9H BD 2/21/2020 3/8 Simmental  
Homo Black Homo Polled

Sire: Hook's Eagle 6E  
Hook's Crystal 1C

R B Tour of Duty 177  
Dam: RKNWHRT Violet 661D  
SPA 194 of 504 X INC

BW	85
ADJ. WW	670
WW RATIO	105
WDA	2.59
#Calves	3 @ 109

CE	BW	WW	YW	MCE	MM	MWW	CW	YG	MB	BF	REA	API	TI
16	-1.4	87.2	142.8	10.7	22.7	66.2	51.6	-1.8	0.62	-0.3	.88	159	93

Lot 2 is out of one of the best cow lines I've ever had. His grand dam is Lot 20 in the sale. He ranks in the top 10% of the breed for 6 Epd's.



3

## PPSR BROKEN BOW 14H ASA # (3808722)

Tattoo: 14H BD 2/22/2020 3/8 Simmental  
Black Polled

Sire: KM Broken Bow 002  
Summitcrest Princess 0P12

PPSR Montana King 81Y  
Dam: Miss Prickly Pear F830  
Miss Prickly Pear 007X

BW	73
ADJ. WW	674
WW RATIO	104
WDA	2.64
#Calves	1 @ 104

CE	BW	WW	YW	MCE	MM	MWW	CW	YG	MB	BF	REA	API	TI
14	-1.4	82.2	128.1	10.5	22.4	63.4	47.2	-0.6	0.38	-0.25	.48	134	83

Lot 3 is out of a 2 year old Montana King daughter. He is extremely long and deep. He ranks in the top 5 % of the breed for Maternal Calving Ease.

## 4 PPSR ENHANCE 16H ASA # (3808782)

Tattoo: 16H BD 2/22/2020 3/8 Simmental

Black Homo Polled

Sire: Syngen Enhance  
Syngen Rita 2618

Dam: Miss Prickly Pear E781  
Miss Prickly Pear 543C

BW	75
ADJ. WW	578
WW RATIO	92
WDA	2.59
#Calves	2 @ 98

CE	BW	WW	YW	MCE	MM	MWW	CW	YG	MB	BF	REA	API	TI
17.9	-3.1	76	127.1	11.2	21.9	59.8	58.4	-0.6	0.73	-0.11	.9	163	91

Lot 4 posts the highest API Epd in the sale. He also has second lowest Birth Weight Epd and the third highest Calving Ease and TI Epd.



Lot 6

## 7 PPSR HANK 134H ASA # (3808841)

Tattoo: 134H BD 3/24/2020 3/8 Simmental

Black Homo Polled

Sire: Blevins Thunder 6965  
Blevins Blackbird Rain 7208

Dam: Miss Prickly Pear 614D  
Miss Prickly Pear 446B

BW	87
ADJ. WW	677
WW RATIO	108
WDA	2.98
#Calves	3 @ 105

CE	BW	WW	YW	MCE	MM	MWW	CW	YG	MB	BF	REA	API	TI
14.2	-1.1	71.6	116.1	10.1	26	61.8	37.6	.04	0.73	.012	.33	155	85

Lot 7 is out of a 4 year old that has 105 ratio on her first 3 calves. His great grand dam is the 7004T donor who's ET calves are some of the best in the program. He ranks in the top 3 % of the breed for Marbling.

## 9 PPSR FLAT TOP 5H ASA # (3808784)

Tattoo: 5H BD 2/18/2020 1/2 Simmental

Black Polled

Sire: Werner Flat Top 4136  
Werner Lady 0304

Dam: Miss Prickly Pear 046X  
Miss Prickly Pear 041K

BW	70
ADJ. WW	616
WW RATIO	99
WDA	2.76
#Calves	6 @ 105

CE	BW	WW	YW	MCE	MM	MWW	CW	YG	MB	BF	REA	API	TI
14	-5	79.8	135.4	8.6	23.6	63.5	32.6	-1.7	0.32	-0.4	.52	139	82

Twin to Lot 8. These two look just like all the Flat Top calves do. They're deep sided with great rib shape.

## 5 PPSR GUS 19H ASA # (3808832)

Tattoo: 19H BD 2/23/2020 3/8 Simmental

Black Homo Polled

Sire: Circle L Gus  
Circle L Pride X097

Dam: Miss Prickly Pear 880F  
Miss Prickly Pear 010X

BW	85
ADJ. WW	664
WW RATIO	102
WDA	2.58
#Calves	1 @ 102

CE	BW	WW	YW	MCE	MM	MWW	CW	YG	MB	BF	REA	API	TI
16.8	-3.1	76	127.1	11.2	21.9	59.8	58.4	-0.6	0.73	-0.11	.9	163	91

Lot 5 ranks in the top 1% of the breed for Maternal Calving Ease and top 5% for Calving Ease. He is a thick hipped great disposition bull out of a first calf heifer.

## 6 RKNWHRT BAMBAM 96H ASA # (3808942)

Tattoo: 96H BD 3/11/2020 3/8 Simmental

Black Homo Polled

Sire: Gibbs 7258E Bama Boy  
GIBBS 8308U Georgia 6S10

Dam: SPA 438 Blackbird  
SPA 863 Of 282 NS

BW	97
ADJ. WW	649
WW RATIO	101
WDA	2.95
#Calves	1 @ 101

CE	BW	WW	YW	MCE	MM	MWW	CW	YG	MB	BF	REA	API	TI
12.4	0.1	73.9	117.8	6.3	22.5	59.4	42.9	-1	0.33	-0.1	.66	126	75

This Bam Bam son is out of a very small framed cow that consistently performs year after year. He is a deep bodied bull with a balanced set of Epd's.

## 8 PPSR FLAT TOP 4H ASA # (3808783)

Tattoo: 4H BD 2/18/2020 1/2 Simmental

Black Polled

Sire: Werner Flat Top 4136  
Werner Lady 0304

Dam: Miss Prickly Pear 046X  
Miss Prickly Pear 041K

BW	68
ADJ. WW	619
WW RATIO	99
WDA	2.73
#Calves	6 @ 105

CE	BW	WW	YW	MCE	MM	MWW	CW	YG	MB	BF	REA	API	TI
14	-5	79.8	135.4	8.6	23.6	63.5	32.6	-1.7	0.32	-0.4	.52	139	82

Lot 8 and 9 are twins that were raised together on the cow. She weaned over 1300 pounds of calves. She is a 10 year old that has a calving interval of 368 days with 12 total calves..

## 10 RKNWHRT JOURNEY 6H ASA # (3824388)

Tattoo: 6H BD 2/19/2020 1/2 Simmental

Homo Black Homo Polled

Sire: JC Journey 610E  
JC Miss USPB 610S

Dam: ADV MS Crossbow F8053  
Wide Range D612

BW	64
ADJ. WW	647
WW RATIO	98
WDA	2.45
#Calves	1 @ 98

CE	BW	WW	YW	MCE	MM	MWW	CW	YG	MB	BF	REA	API	TI
18.7	-3.9	63.6	103.5	-11.8	23.7	55.4	38.2	-1.9	.51	-0.4	.65	154	82

Lot 10 is a small framed bull that is out of a bred heifer I purchased from Advanced Beef Genetics. He's thick topped with a great hip.

# 11 PPSR GUS 24H ASA # (3808830)

Tattoo: 24H BD 2/24/2020 1/2 Simmental  
Black Polled

Sire: Circle L Gus  
S Chisum 6175  
Circle L Pride X097

Dam: Miss Prickly Pear 853F  
Koch LC Monte 803U  
Miss Prickly Pear 430B

BW	84
ADJ. WW	620
WW RATIO	99
WDA	2.58
#Calves	1 @ 99

CE	BW	WW	YW	MCE	MM	MWW	CW	YG	MB	BF	REA	API	TI
13.2	-0.4	82.8	128.6	11	19.4	60.8	61.1	-0.6	.25	-.013	.74	124	80

Lot 11 is out of a first calf heifer. He ranks in the top 3% of the breed for Maternal Calving Ease. His grand dam has Lot 37 in the sale and posted a weaning weight ratio of 102 on 5 calves.



Lot 13



Lot 14



Sydgen Enhance Sire of Lots 15 & 16

# 12 PPSR GUS 27H ASA # (3808819)

Tattoo: 27H BD 2/25/2020 1/2 Simmental  
Hetero Black Polled

Sire: Circle L Gus  
S Chisum 6175  
Circle L Pride X097

Dam: Miss Prickly Pear 167Y  
TNT Gunner N208  
Miss Prickly Pear 702T

BW	97
ADJ. WW	636
WW RATIO	102
WDA	2.88
#Calves	7 @ 103

CE	BW	WW	YW	MCE	MM	MWW	CW	YG	MB	BF	REA	API	TI
16.7	-1	76.4	114.4	12.5	23.7	51.9	47.4	-.11	0.13	-.017	.7	127	75

The dam of Lot 12 posts a weaning ratio of 103 on 7 calves. He ranks in the top 1% of the breed for Maternal Calving Ease. A bull that needs a little more room to move. Non Aggressive

# 13 PPSR CAP 316 33H ASA # (3808729)

Tattoo: 33H BD 2/26/2020 1/2 Simmental  
Black Polled

Sire: LD Capitalist 316  
Connealy Capitalist 028  
LD Dixie Erica 2053

Dam: Miss Prickly Pear 383A  
RCR Wrangler S215  
Miss Prickly Pear 021K

BW	83
ADJ. WW	642
WW RATIO	103
WDA	2.73
#Calves	6 @ 107

CE	BW	WW	YW	MCE	MM	MWW	CW	YG	MB	BF	REA	API	TI
10.7	-0.7	80.4	124.4	7.3	27.6	67.8	44.6	-.06	0.41	-.011	.56	139	84

A big topped bull whose dam posts a Calving Interval of 368 with a Weaning Ratio of 107 on 6 calves.

# 14 PPSR FLAT TOP 36H ASA # (3808798)

Tattoo: 36H BD 2/26/2020 1/2 Simmental  
Homo Black Polled

Sire: Werner Flat Top 4136  
Connealy Black Granite  
Werner Lady 0304

Dam: Miss Prickly Pear C524  
PPSR King Easy 5Z  
Miss Prickly Pear 928W

BW	93
ADJ. WW	662
WW RATIO	106
WDA	3.02
#Calves	4 @ 106

CE	BW	WW	YW	MCE	MM	MWW	CW	YG	MB	BF	REA	API	TI
12.7	0.3	78.1	133.7	7.2	27.3	66.2	39.1	-.21	0.41	-.044	.69	137	83

Lot 14 is a deep sided son of Flat Top that ratioed 106 at weaning with 84 contemporaries. His dam has a weaning ratio of 106 on her first 4 calves.

# 15 PPSR ENHANCE 38H ASA # (3808781)

Tattoo: 38H BD 2/28/2020 1/2 Simmental  
Black Polled

Sire: Sydgen Enhance  
Sydgen Exceed 3223  
Sydgen Rita 2618

Dam: Miss Prickly Pear 769E  
GIBBS 0601X Raisincain  
Miss Prickly Pear 321A

BW	87
ADJ. WW	601
WW RATIO	96
WDA	2.64
#Calves	2 @ 103

CE	BW	WW	YW	MCE	MM	MWW	CW	YG	MB	BF	REA	API	TI
15.6	-0.5	82.6	134.8	8.7	22.7	64	54.9	-.15	0.57	-.038	.57	153	90

Lot 15 ranks in the top 5 % of the breed for TI. The Enhance sons are all like peas in a pod, long spined with good muscling.



Lot 16

## 16 PPSR ENHANCE 42H ASA # (3808766)

Tattoo: 42H BD 2/28/2020 1/2 Simmental

Homo Black Homo Polled

Sire: Sydgen Exceed 3223  
Sydgen Enhance  
Sydgen Rita 2618

Dam: Triple C Bettis S72J  
Miss Prickly Pear 229Z  
Miss Prickly Pear 089X

BW	80
ADJ. WW	611
WW RATIO	98
WDA	2.83
#Calves	6 @ 98

CE	BW	WW	YW	MCE	MM	MWW	CW	YG	MB	BF	REA	API	TI
18.2	-2.8	76.1	123.6	11.8	24	62	47.9	-1	0.53	-0.17	.68	159	88

This Enhance son posts the 2nd highest Calving Ease Epd in the sale and it ranks in the top 2% of the breed.



Lot 17

## 17 PPSR RAINMAKER 48H ASA # (3808898)

Tattoo: 48H BD 3/01/2020 1/2 Simmental

Black Polled

Sire: Basin Rainmaker 2704  
Basin Rainmaker 4404  
Basin Joy 1036

Dam: PPSR Double the Beef 29W  
Miss Prickly Pear A314  
Miss Prickly Pear 849U

BW	90
ADJ. WW	639
WW RATIO	102
WDA	2.90
#Calves	5 @ 106

CE	BW	WW	YW	MCE	MM	MWW	CW	YG	MB	BF	REA	API	TI
14	0	75.4	122.6	8.7	27	64.6	47.6	-0.9	0.30	-0.33	.53	129	78

Lot 17 has been one of my favorites all year. His dam posts a weaning ratio of 106 on 5 calves. One of the longest half bloods in the sale with great depth of body.

## 18 PPSR FLAT TOP 49H ASA # (3808793)

Tattoo: 49H BD 3/01/2020 1/2 Simmental

Black Polled

Sire: Werner Flat Top 4136  
Connealy Black Granite  
Werner Lady 0304

Dam: PPSR Acres Plus 53K  
Miss Prickly Pear 972W  
Miss Prickly Pear 492P

BW	100
ADJ. WW	645
WW RATIO	103
WDA	2.95
#Calves	8 @ 101

CE	BW	WW	YW	MCE	MM	MWW	CW	YG	MB	BF	REA	API	TI
9.2	2.1	69.4	121.3	6.4	28.5	63.1	35.2	-1.3	0.4	-0.32	.5	132	75

The only blazed faced bull in the sale. He is one of the top bulls in the sale. He is out of an 11 year old dam that ratioed 101 on her calves at weaning.



Lot 20

## 19 PPSR RAINMAKER 50H ASA # (3808904)

Tattoo: 50H BD 3/01/2020 1/2 Simmental

Black Polled

Sire: Basin Rainmaker 2704  
Basin Rainmaker 4404  
Basin Joy 1036

Dam: PPSR King Easy 5Z  
Miss Prickly Pear 883F  
Miss Prickly Pear 387A

BW	78
ADJ. WW	591
WW RATIO	95
WDA	2.51
#Calves	1 @ 95

CE	BW	WW	YW	MCE	MM	MWW	CW	YG	MB	BF	REA	API	TI
13.9	-0.4	72.7	118.7	9.7	22.9	59.2	38.4	-1.1	0.25	-0.29	.5	127	76

Lot 19 is out of a first calf heifer that also ran up on the dry mountain. His grand dam has Lot 26 in the sale and has posted a weaning ratio of 108 on her calves. I see great things to come from his dam.

## 20 RKNWHRT ROOSEVELT 51H ASA # (3808966)

Tattoo: 51H BD 3/01/2020 1/2 Simmental

Homo Black Homo Polled

Sire: CCR Cowboy Cut 5048Z  
TJ Roosevelt 366E  
TJ 99A

Dam: CAR Incredibull 858  
SPA 194 of 504 X INC  
SPA 504 of 303N X MD

BW	94
ADJ. WW	650
WW RATIO	102
WDA	2.85
#Calves	8 @ 96

CE	BW	WW	YW	MCE	MM	MWW	CW	YG	MB	BF	REA	API	TI
14.7	0.1	74.7	110.8	-9.3	26.6	63.9	38.6	-0.7	0.5	-0.03	-.59	145	82

The dam of Lot 20 has been one of the best cows I've ever owned. She is grand dam to Lot 2. He is a deep sided bull with great thickness.



Dam of Lot 22

## 21 PPSR ENHANCE 54H ASA # (3808779)

Tattoo: 54H BD 3/02/2020 1/2 Simmental

Hetero Black Polled

Sire: Sydgen Enhance  
Sydgen Rita 2618

Dam: RYMO MS Beefmaker X263  
RYMO MS Trademark N28A  
RYMO MS Trademark T28X

BW	88
ADJ. WW	611
WW RATIO	98
WDA	2.82
#Calves	4 @ 104

CE	BW	WW	YW	MCE	MM	MWW	CW	YG	MB	BF	REA	API	TI
13.8	-0.5	79.8	131.6	7.3	25.3	65.2	54.4	-1.4	0.6	-0.26	.82	152	90

Here's another long spined Enhance son with a well balanced set of Epd's.

## 22 PPSR RAINMAKER 56H ASA # (3808899)

Tattoo: 56H BD 3/02/2020 1/2 Simmental

Hetero Black Polled

Sire: Basin Rainmaker 2704  
Basin Joy 1036

Dam: RFS Red Iron T20  
Miss Prickly Pear C504  
Miss Prickly Pear 197Y

BW	87
ADJ. WW	643
WW RATIO	103
WDA	2.75
#Calves	4 @ 102

CE	BW	WW	YW	MCE	MM	MWW	CW	YG	MB	BF	REA	API	TI
14	-0.2	75.9	116.2	10	24.1	62	35.5	-1.6	0.28	-0.28	.63	128	78

Lot 22 is one of the thickest bulls in the sale. His dam is moderate framed and has posted a weaning ratio of 102 on 4 calves. With this set of Epd's and his look, he's sure to be great.

## 23 PPSR RAINMAKER 57H ASA # (3808902)

Tattoo: 57H BD 3/03/2020 1/2 Simmental  
Black Polled

Sire: Basin Rainmaker 2704  
Basin Joy 1036

Dam: PPSR King Easy 5Z  
Miss Prickly Pear E756  
Miss Prickly Pear 387A

BW	94
ADJ. WW	632
WW RATIO	101
WDA	2.61
#Calves	2 @ 100

CE	BW	WW	YW	MCE	MM	MWW	CW	YG	MB	BF	REA	API	TI
11.4	1.1	81	134.4	8.4	22.3	62.7	41.7	-1.1	0.35	-0.24	.57	133	81

Lot 23 is from the same family as Lot 19 and 26. His dam has posted a weaning ratio of 102 on her first two calves. His grand dam has a weaning ratio of 108.

## 24 PPSR FLAT TOP 60H ASA # (3808786)

Tattoo: 60H BD 3/03/2020 1/2 Simmental

Black Polled

Sire: Connealy Black Granite  
Werner Flat Top 4136  
Werner Lady 0304

Dam: KAPPES Trailblazer S516  
Miss Prickly Pear 270Z  
Miss Prickly Pear 380N

BW	92
ADJ. WW	726
WW RATIO	116
WDA	2.95
#Calves	3 @ 111

CE	BW	WW	YW	MCE	MM	MWW	CW	YG	MB	BF	REA	API	TI
12.6	0.7	86.9	146.6	8.5	27	70.4	44.3	-1.4	0.37	-0.34	.62	137	87

This Flat Top son ratioed 116 with 84 contemporaries. He ranks in the top 10% of the breed for both weaning and yearling weight Epd's.

## 25 PPSR CAP 316 64H ASA # (3808723)

Tattoo: 64H BD 3/04/2020 1/2 Simmental

Hetero Black Polled

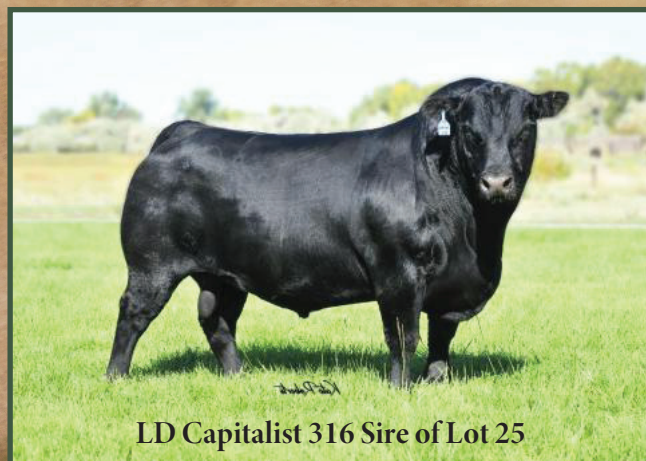
Sire: Connealy Capitalist 028  
LD Capitalist 316  
LD Dixie Erica 2053

Dam: TNT Gunner N208  
Miss Prickly Pear 037X  
Miss Prickly Pear 702T

BW	87
ADJ. WW	625
WW RATIO	100
WDA	2.76
#Calves	9 @ 100

CE	BW	WW	YW	MCE	MM	MWW	CW	YG	MB	BF	REA	API	TI
15.8	-1.7	74.9	111.2	10.8	22.5	59.9	37.8	-0.9	0.27	-0.23	.48	135	79

Lot 25 is a thick topped Capitalist son who's dam posts a 367 day calving interval on 9 calves.



LD Capitalist 316 Sire of Lot 25



Lot 26

## 26 PPSR GUS 69H ASA # (3808823)

Tattoo: 69H BD 3/05/2020 1/2 Simmental  
Black Polled

Sire: S Chisum 6175  
Circle L Gus  
Circle L Pride X097

Dam: SVR W817  
Miss Prickly Pear 387A  
Miss Prickly Pear 246M

BW	87
ADJ. WW	673
WW RATIO	108
WDA	2.98
#Calves	6 @ 108

CE	BW	WW	YW	MCE	MM	MWW	CW	YG	MB	BF	REA	API	TI
14.4	-1.5	73.8	113	12.2	26	62.8	47.7	-13	0.20	-.022	.71	129	77

Lot 26 is out of the maternal Grand dam to Lots 19 and 23. He ratioed 108 with 84 contemporaries. His Maternal Calving Ease ranks in the top 1% of the breed and is the third largest MCE in the sale.



Lot 27

## 27 PPSR FLAT TOP 80H ASA # (3808792)

Tattoo: 80H BD 3/08/2020 1/2 Simmental  
Black Polled

Sire: Connealy Black Granite  
Werner Flat Top 4136  
Werner Lady 0304

Dam: SRS Right-On 22R  
Miss Prickly Pear 831U  
Miss Prickly Pear 317N

BW	100
ADJ. WW	698
WW RATIO	107
WDA	2.98
#Calves	9 @ 106

CE	BW	WW	YW	MCE	MM	MWW	CW	YG	MB	BF	REA	API	TI
11.6	1.1	74.1	127.2	6.4	28.2	65.2	36.2	-15	0.44	-.035	.55	137	80

Lot 27 is one of my favorite Flat Top sons in the sale. He's out of a 12 year old cow that posts a weaning ratio of 106 on her calves. A little bigger framed bull with loads of muscle.



Lot 28

## 28 PPSR ENHANCE 83H ASA # (3808777)

Tattoo: 83H BD 3/09/2020 1/2 Simmental  
Black Polled

Sire: Sydgen Exceed 3223  
Sydgen Enhance  
Sydgen Rita 2618

Dam: ESMJ Conservative MJ9365  
Miss Prickly Pear 934W  
Miss Prickly Pear 6503S

BW	96
ADJ. WW	661
WW RATIO	106
WDA	2.64
#Calves	9 @ 105

CE	BW	WW	YW	MCE	MM	MWW	CW	YG	MB	BF	REA	API	TI
14.6	0.4	84.8	136.7	6.2	25.7	68.1	57.7	-16	0.46	-.041	.8	145	88

Lot 28 is a long made bull with a big hip that carries deep into his quarter. His dam has a weaning weight ratio of 105 on 9 calves.



Lot 29

## 29 PPSR ENHANCE 101H ASA # (3808771)

Tattoo: 101H BD 3/11/2020 1/2 Simmental  
Black Polled

Sire: Sydgen Exceed 3223  
Sydgen Enhance  
Sydgen Rita 2618

Dam: MR Ishee Catalyst  
Miss Prickly Pear 437B  
Miss Prickly Pear 411P

BW	92
ADJ. WW	662
WW RATIO	106
WDA	3.17
#Calves	4 @ 102

CE	BW	WW	YW	MCE	MM	MWW	CW	YG	MB	BF	REA	API	TI
15	-0.3	85.6	143.7	-9.3	25.7	68.5	65	-13	0.63	-.03	-.9	162	94

Lot 29 is a deep bodied Enhance son that posts the 3rd biggest Yearling weight and API in the entire sale.



Basin Rainmaker 4404 Sire Lot 30

GENEX

## 30 PPSR RAINMAKER 103H ASA # (3808900)

Tattoo: 103H BD 3/12/2020 1/2 Simmental

Black Polled

Sire: Basin Rainmaker 2704  
Basin Joy 1036

Dam: NLC T286 Snake Eyes  
NLC LL326 Liona

BW	96
ADJ. WW	637
WW RATIO	102
WDA	2.80
#Calves	11 @ 103

CE	BW	WW	YW	MCE	MM	MWW	CW	YG	MB	BF	REA	API	TI
12.4	1.5	76.3	123.1	8.6	24.5	62.5	41.1	-14	0.15	-0.19	.69	120	73

Lot 30 is a natural calf out of the great Snake Eyes donor T286. She posted a weaning weight ratio of 103 on 11 calves. His a deep bodied bull with a big top. Maternal brother to the PPSR Heavy Duty bull used in our program.



Lot 31

## 31 PPSR FLAT TOP 105H ASA # (3808799)

Tattoo: 105H BD 3/12/2020 1/2 Simmental

Homo Black Homo Polled

Sire: Werner Flat Top 4136  
Werner Lady 0304

Dam: PPSR King Easy 5Z  
Miss Prickly Pear C525  
Miss Prickly Pear 908W

BW	87
ADJ. WW	661
WW RATIO	106
WDA	3.08
#Calves	4 @ 105

CE	BW	WW	YW	MCE	MM	MWW	CW	YG	MB	BF	REA	API	TI
16.9	-1.4	76.4	127.5	8.8	25.6	63.7	28.3	-08	0.35	-0.18	.37	146	82

Lot 31 is a deep bodied Flat Top son that has one of the most well balanced sets of Epd's in the sale. His dam has ratioed 105 on her first 4 calves at weaning.

## 32 PPSR CAP 316 108H ASA # (3808726)

Tattoo: 108H BD 3/13/2020 1/2 Simmental

Black Homo Polled

Sire: LD Capitalist 316  
LD Dixie Erica 2053

Dam: RC Club King 040R  
Miss Prickly Pear 325A  
Miss Prickly Pear 532R

BW	87
ADJ. WW	603
WW RATIO	96
WDA	2.59
#Calves	6 @ 95

CE	BW	WW	YW	MCE	MM	MWW	CW	YG	MB	BF	REA	API	TI
11.5	0.1	75.3	114.4	7.7	20.7	58.3	40.3	-08	0.35	-0.23	.47	133	78

Lot 32 is out of a perfect uddered daughter of Club King and grandson to the 532R Preferred Beef donor that produced our Double the Beef herd sire.

## 33 PPSR DUKE 114H ASA # (3808749)

Tattoo: 114H BD 3/13/2020 1/2 Simmental

Black Polled

Sire: Sitz Investment 660Z  
Leachman Investment 7599  
Leachman Erica 7005

Dam: MCM Top Grade 018X  
Miss Prickly Pear 788E  
Miss Prickly Pear 6224S

BW	83
ADJ. WW	658
WW RATIO	105
WDA	2.66
#Calves	2 @ 103

CE	BW	WW	YW	MCE	MM	MWW	CW	YG	MB	BF	REA	API	TI
12.7	0.7	84.5	133.1	8.6	24.1	66.3	45.4	-07	0.45	-0.01	.25	145	85

Lot 33 is a bigger framed Duke son that will add length and size to a set of calves.

## 34 PPSR DUKE 126H ASA # (3808741)

Tattoo: 126H BD 3/20/2020 1/2 Simmental

Black Polled

Sire: Sitz Investment 660Z  
Leachman Investment 7599  
Leachman Erica 7005

Dam: PPSR Black Avenger 108D  
Miss Prickly Pear 830U  
Miss Prickly Pear 557R

BW	94
ADJ. WW	672
WW RATIO	104
WDA	2.75
#Calves	11 @ 100

CE	BW	WW	YW	MCE	MM	MWW	CW	YG	MB	BF	REA	API	TI
10.2	3.2	75.1	116.5	7.9	25.5	63	38.7	-01	0.24	-0.12	-.26	127	71

This Duke son is out of a 12 year old cow with a weaning ratio of 100 on 11 calves and a 370 day calving Interval. If you looking for consistency and longevity look no further.

## 35 PPSR DUKE 128H ASA # (3808748)

Tattoo: 128H BD 3/21/2020 1/2 Simmental

Black Polled

Sire: Sitz Investment 660Z  
Leachman Investment 7599  
Leachman Erica 7005

Dam: KOCH LC Monte 803U  
Miss Prickly Pear 779E  
Miss Prickly Pear 173Y

BW	84
ADJ. WW	615
WW RATIO	98
WDA	2.46
#Calves	2 @ 95

CE	BW	WW	YW	MCE	MM	MWW	CW	YG	MB	BF	REA	API	TI
13.2	0.2	74.9	116.4	9.3	21.2	58.6	42.6	-05	0.23	-0.04	.25	129	75

This is a high Calving Ease son out of the Duke bull that goes back to the dam of Lot 65.

# 36 PPSR HANK 132H ASA # (3808844)

Tattoo: 132H BD 3/23/2020 1/2 Simmental

Black Polled

TC Thunder 805  
Sire: Blevins Thunder 6965  
Blevins Blackbird Rain 7208

NLC Break Free 72W  
Dam: Miss Prickly Pear 667D  
Miss Prickly Pear 934W

BW	92
ADJ. WW	602
WW RATIO	96
WDA	2.51
#Calves	2 @ 91

CE	BW	WW	YW	MCE	MM	MWW	CW	YG	MB	BF	REA	API	TI
14	1	82.2	128.7	7.7	20.1	61.2	48.1	-18	0.36	-.038	.78	137	82

Lot 36 is a Blevins Thunder son with great eye appeal.

# 37 PPSR BAILEY 140H ASA # (3808932)

Tattoo: 140H BD 3/27/2020 1/2 Simmental

Black Polled

Springcove Paygrade 5064  
Sire: Leachman Paygrade 8517  
Leachman Blackcap 6089

SRS Text Book 50T  
Dam: Miss Prickly Pear 430B  
Miss Prickly Pear 214Z

BW	102
ADJ. WW	675
WW RATIO	108
WDA	2.85
#Calves	5 @ 102

CE	BW	WW	YW	MCE	MM	MWW	CW	YG	MB	BF	REA	API	TI
10.2	1.2	77.8	120.8	8.2	24.4	63.2	45.2	-.01	0.46	-.012	.34	134	81

Lot 37 is a Leachman Paygrade son that is thick topped with a big hip. His dam has posted a weaning ratio of 102 on 5 calves. He posted a weaning ratio of 108 with 84 contemporaries.

# 38 PPSR BIG TIMBER 43H ASA # (3808697)

Tattoo: 43H BD 2/29/2020 5/8 Simmental

Black Polled

Hook's Yellowstone 97Y  
Sire: Koch Big Timber 685D  
Koch MS Hooks Boy

Blevins Thunder 6965  
Dam: Miss Prickly Pear 893F  
Miss Prickly Pear 357A

BW	87
ADJ. WW	637
WW RATIO	102
WDA	2.51
#Calves	2 @ 102

CE	BW	WW	YW	MCE	MM	MWW	CW	YG	MB	BF	REA	API	TI
11.9	0.6	77.5	118	7.1	27.2	65.9	36	-13	0.4	-.032	.5	139	81

Lot 38 is out of a first calf heifer. He posted a weaning ratio of 102 with 84 contemporaries up against running age cows.

# 39 RKNWHRT CAPITALIST 1H ASA # (3824386)

Tattoo: 1H BD 2/06/2020 5/8 Simmental

Homo Black Homo Polled

Hook's Capitalist 37C  
Sire: IR Capitalist E041  
IR MS Geneva Z339

SHSF Freightliner D10  
Dam: JC MS 705Z Freightliner 847F  
SLN Miss 593W 705Z

BW	70
ADJ. WW	672
WW RATIO	102
WDA	2.60
#Calves	1 @ 102

CE	BW	WW	YW	MCE	MM	MWW	CW	YG	MB	BF	REA	API	TI
15.4	-2.5	74.8	126.7	10	28.9	66.3	46.5	-.11	0.65	-.023	.64	163	91

Lot 39 is out of a Freightliner daughter I purchased from JC simmentals. He's a deep bodied bull that posts both Marbling and API Epd's in the top 5% of the breed.

# 40 PPSR FREIGHTLINER 22H ASA # (3808807)

Tattoo: 22H BD 2/24/2020 5/8 Simmental

Black Homo Polled

TJ Makers Mark 215Y  
Sire: SHSF Freightliner D10  
Hooks Punky 5P

S A V Homesteader 7282  
Dam: Miss Prickly Pear A331  
Miss Prickly Pear 504R

BW	88
ADJ. WW	670
WW RATIO	107
WDA	3.06
#Calves	5 @ 100

CE	BW	WW	YW	MCE	MM	MWW	CW	YG	MB	BF	REA	API	TI
13.5	-0.2	85.8	141.5	10.4	22.3	65.2	54	-.24	0.26	-.042	.99	140	85

Lot 40 has been a real stand out since a week old. He posted a weaning ratio of 107 with 84 contemporaries. He is long, deep and thick. A real herd bull prospect.

# 41 PPSR EAGLE 29H ASA # (3808755)

Tattoo: 29H BD 2/26/2020 5/8 Simmental

Black Homo Polled

Hook's Black Hawk 50B  
Sire: Hook's Eagle 6E  
Hook's Crystal 1C

CCR Convoy 7005X  
Dam: Miss Prickly Pear 358A  
Miss Prickly Pear 941W

BW	90
ADJ. WW	685
WW RATIO	110
WDA	2.48
#Calves	6 @ 104

CE	BW	WW	YW	MCE	MM	MWW	CW	YG	MB	BF	REA	API	TI
9.1	1.2	91.7	145.7	-7.1	26.1	71.9	47.9	-.19	0.44	-.034	.83	147	90

Lot 41 is a bigger framed Eagle that showed great growth. He posted a weaning ratio of 110 with 84 contemporaries. He posts both Weaning and Yearling weight Epd's in the top 5% of the breed.



Lot 40



Lot 41



## 42 PPSR FREIGHTLINER 30H ASA # (3808805)

Tattoo: 30H BD 2/26/2020 5/8 Simmental

Homo Black Homo Polled

TJ Makers Mark 215Y

Sire: SHSF Freightliner D10  
Hooks Punky 5P

TR MR Aberdeen 1068Y

Dam: Miss Prickly Pear 680D  
Miss Prickly Pear 089X

BW	90
ADJ. WW	672
WW RATIO	108
WDA	2.87
#Calves	3 @ 102

CE	BW	WW	YW	MCE	MM	MWW	CW	YG	MB	BF	REA	API	TI
11.1	0.8	87	139.5	8	22.7	66.2	45.2	-29	0.24	-.051	.96	134	83

This Freightliner son has it all. His Dam is going to be in the donor program with ratios of 102 at weaning, 103 for marbling and 107 for Ribeye on her first two calves. He posted a 108 ratio at weaning with 84 contemporaries

## 43 PPSR FREIGHTLINER 31H ASA # (3808809)

Tattoo: 31H BD 2/26/2020 5/8 Simmental

Homo Black Homo Polled

TJ Makers Mark 215Y

Sire: SHSF Freightliner D10  
Hooks Punky 5P

Hook's Black Hawk 50B

Dam: Miss Prickly Pear 754E  
Miss Prickly Pear 7004T

BW	91
ADJ. WW	677
WW RATIO	108
WDA	2.83
#Calves	2 @ 104

CE	BW	WW	YW	MCE	MM	MWW	CW	YG	MB	BF	REA	API	TI
12.6	0.5	90.5	143.7	8.8	21.9	67.1	54	-.35	0.19	-.065	1.15	137	85

Lot 43 is a maternal grandson of the great 7004T donor. He posts the third highest Weaning Weight Epd and second highest Ribeye Epd in the sale,

## 44 RKNWHRT BOZEMAN 41H ASA # (3808949)

Tattoo: 41H BD 2/28/2020 5/8 Simmental

Black Homo Polled

GW-WBF Substance 820Y

Sire: Hook's Bozeman 8B  
Hook's Will Power 24W

Hook's Black Hawk 50B

Dam: RKNWHRT MS Hawk F817  
JVC Queen Elsie Q62 8066

BW	91
ADJ. WW	662
WW RATIO	99
WDA	2.49
#Calves	1 @ 99

CE	BW	WW	YW	MCE	MM	MWW	CW	YG	MB	BF	REA	API	TI
8.5	1.7	75.8	116.6	5.3	15.6	53.5	30.7	-28	0.40	-.046	.81	131	78

## 45 RKNWHRT BIG TIMBER 91H ASA # (3808943)

Tattoo: 91H BD 3/09/2020 5/8 Simmental

Black Homo Polled

Hook's Yellowstone 97Y

Sire: Koch Big Timber 685D  
Koch MS Hooks Boy

S D S Graduate 006X

Dam: RKNWHRT Pride 469B  
JVC MS Pride 129 8072

BW	82
ADJ. WW	628
WW RATIO	98
WDA	2.90
#Calves	5 @ 102

CE	BW	WW	YW	MCE	MM	MWW	CW	YG	MB	BF	REA	API	TI
12.8	-2.8	73.2	111.6	6.9	27.5	64.1	35.3	-.12	0.28	-.025	-.53	134	80

Lot 45 is a thick made Big Timber son with a big spring of rib. His dam has a 364 day calving interval and posts a weaning ratio of 102 on 5 calves.

## 46 PPSR BOZEMAN 8H ASA # (3808709)

Tattoo: 8H BD 2/20/2020 3/4 Simmental

Black Polled

GW-WBF Substance 820Y

Sire: Hook's Bozeman 8B  
Hook's Will Power 24W

S A V Bruiser 9164

Dam: Miss Prickly Pear 816F  
Miss Prickly Pear 100Y

BW	74
ADJ. WW	606
WW RATIO	97
WDA	2.20
#Calves	1 @ 97

CE	BW	WW	YW	MCE	MM	MWW	CW	YG	MB	BF	REA	API	TI
13.9	-1.1	72.8	114	8.9	15.9	52.2	23.8	-.33	0.34	-.059	.77	138	79

Lot 46 is out of an Sav Bruiser daughter that shows great fleshability and still raises a good calf



## 47 PPSR BIG TIMBER 13H ASA # (3808691)

Tattoo: 13H BD 2/22/2020 3/4 Simmental

Homo Black Homo Polled

Hook's Yellowstone 97Y

Sire: Koch Big Timber 685D  
Koch MS Hooks Boy

CCR Wide Range 9005A

Dam: Miss Prickly Pear 841F  
Miss Prickly Pear 7004T

BW	73
ADJ. WW	600
WW RATIO	96
WDA	2.31
#Calves	1 @ 96

CE	BW	WW	YW	MCE	MM	MWW	CW	YG	MB	BF	REA	API	TI
16.6	-3.2	76.7	113.2	9.5	24.2	62.5	25.9	-.26	0.21	-.036	.76	150	85

Lot 47 is a maternal grandson of the 7004T donor. He posts both Calving Ease and Birth Weight Epd's in the top 5% of the breed.



Hook's Bozeman 8B Sire of Lots 44, 46, & 48

## 48 PPSR BOZEMAN 26H ASA # (3808711)

Tattoo: 26H BD 2/25/2020 3/4 Simmental

Black Polled

GW-WBF Substance 820Y

Sire: Hook's Bozeman 8B

Hook's Will Power 24W

MDG Upward 2 6182

Dam: Miss Prickly Pear F804

Miss Prickly Pear C543

BW	77
ADJ. WW	656
WW RATIO	105
WDA	2.64
#Calves	1 @ 105

CE	BW	WW	YW	MCE	MM	MWW	CW	YG	MB	BF	REA	API	TI
149	-1.2	73.7	112.5	9.7	19.6	56.4	30.5	-34	0.29	-06	.85	137	79

This bull's two year old mother did a great job; posting a weaning ratio of 105 on her first calf. His grand dam also has weaning ratios of 103 on her first 3 calves.

## 49 RKNWHRT JUSTICE 44H ASA # (3808969)

Tattoo: 4H BD 2/29/2020 3/4 Simmental

Homo Black Homo Polled

BDV True Grit 11X

Sire: BBS True Justice B10

BBS Miss Justice Z7

Koch LC Monte 803U

Dam: RKNWHRT Miss Monte 752E

RKNWHRT Finals Image 200Z

BW	93
ADJ. WW	650
WW RATIO	102
WDA	2.89
#Calves	1 @ 102

CE	BW	WW	YW	MCE	MM	MWW	CW	YG	MB	BF	REA	API	TI
11	0.6	80.6	122.2	6.9	25.8	66.1	23.9	-34	0.26	-074	.68	133	80

This bigger framed True Justice son has really come on during test. He's deep bodied with a thick hip.

## 50 PPSR BIG TIMBER 45H ASA # (3808698)

Tattoo: 45H BD 2/29/2020 3/4 Simmental

Black Polled

Hook's Yellowstone 97Y

Sire: Koch Big Timber 685D

Koch MS Hooks Boy

Connealy Courage 25L

Dam: Miss Prickly Pear F807

Miss Prickly Pear 460B

BW	73
ADJ. WW	643
WW RATIO	103
WDA	2.58
#Calves	1 @ 103

CE	BW	WW	YW	MCE	MM	MWW	CW	YG	MB	BF	REA	API	TI
16.6	-2.7	76.3	114.4	9.2	30	68.1	37.6	-21	0.38	-033	.77	147	85

Lot 50 posts Calving ease, Birth weight and Maternal Calving Ease Epd's that rank in the top 10% of the breed.



Lot 51

## 51 PPSR ROOSEVELT 55H ASA # (3808919)

Tattoo: 55H BD 3/02/2020 3/4 Simmental

Black Polled

CCR Cowboy Cut 5048Z

Sire: TJ Roosevelt 366E

TJ 99A

Blevins Comrade 5928

Dam: Miss Prickly Pear 774E

Miss Prickly Pear 568C

BW	98
ADJ. WW	708
WW RATIO	113
WDA	2.86
#Calves	2 @ 109

CE	BW	WW	YW	MCE	MM	MWW	CW	YG	MB	BF	REA	API	TI
10.5	2.6	90.4	135.4	5.4	32.5	77.6	40.6	-23	0.29	-038	.84	133	84

Lot 51 is one of the easiest going bulls in the pen. His 3 year old dam has knocked it out of the park with weaning ratios of 109 on her first two calves. She also posted a yearling weight ratio of 110 on her first calf. He posts a Weaning Weight Epd that ranks in the top 5% of the breed.



TJ Roosevelt 366E Sire of Lots 51 & 52

## 52 PPSR ROOSEVELT 71H ASA # (3808907)

Tattoo: 71H BD 3/05/2020 3/4 Simmental

Black Polled/S

CCR Cowboy Cut 5048Z

Sire: TJ Roosevelt 366E

TJ 99A

SA V Homesteader 7282

Dam: Miss Prickly Pear 208Z

Miss Prickly Pear 202M

BW	102
ADJ. WW	628
WW RATIO	100
WDA	2.65
#Calves	4 @ 97

CE	BW	WW	YW	MCE	MM	MWW	CW	YG	MB	BF	REA	API	TI
9.9	2.5	79.1	118.1	-6.5	27.9	67.4	29.1	-19	0.25	-032	-.59	130	76

Lot 52 is a thick made scurred bull that will add weight to a set of calves.



Lot 53

## 53 PPSR TRUE JUSTICE 74H ASA # (3808924)

Tattoo: 74H BD 3/07/2020 3/4 Simmental

Black Polled

BDV True Grit 11X

Sire: BBS True Justice 74H

BBS Miss Justice Z7

Ox Bow Traveler 7266

Dam: Miss Prickly Pear 944W

Miss Prickly Pear 234M

BW	102
ADJ. WW	794
WW RATIO	121
WDA	3.33
#Calves	10 @ 106

CE	BW	WW	YW	MCE	MM	MWW	CW	YG	MB	BF	REA	API	TI
7.1	3.4	90.9	138.2	6.4	33.2	78.6	47.5	-32	0.17	-0.77	.87	122	81

Lot 53 is a bigger framed bull that will add pounds to a set of calves. His 11 year old dam posts weaning ratios of 106 on 10 calves with a calving interval of 369 days. He posts the second highest Weaning Weight Epd in the sale.

## 54 PPSR GEN TEN 81H ASA # (3808817)

Tattoo: 81H BD 3/08/2020 3/4 Simmental

Black Polled

NLC Progressive 40C

Sire: NLC Gen Ten 82E

NLC A109 Amber

Boyoboy 9750

Dam: Miss Prickly Pear Z204

Miss Prickly Pear G754

BW	100
ADJ. WW	653
WW RATIO	104
WDA	2.61
#Calves	6 @ 95

CE	BW	WW	YW	MCE	MM	MWW	CW	YG	MB	BF	REA	API	TI
10.2	2.5	79.6	125.1	4.8	27.4	67.1	35.7	-18	0.39	-0.54	.49	139	80

Lot 54 is out of one of the best looking cows to walk Prickly Pear Ranch. He is long built with a deep side.

## 55 PPSR BIG TIMBER 87H ASA # (3808688)

Tattoo: 87H BD 3/09/2020 3/4 Simmental

Black Polled/S

Hook's Yellowstone 97Y

Sire: Koch Big Timber 685D

Koch MS Hooks Boy

Boyoboy 9750

Dam: Miss Prickly Pear Z231

Miss Prickly Pear H801

BW	100
ADJ. WW	623
WW RATIO	100
WDA	2.71
#Calves	4 @ 102

CE	BW	WW	YW	MCE	MM	MWW	CW	YG	MB	BF	REA	API	TI
11.3	-0.6	66.2	97.6	5	32.1	65.2	17.1	-16	0.32	-0.33	.35	136	74

This scurred Big Timber son has lots of length with a deep side and big quarter.



NLC Fabian 64F (Madar) Sire of Lot 56

## 56 PPSR FABIAN 143H ASA # (3808879)

Tattoo: 143H BD 3/28/2020 3/4 Simmental

Black Polled

Hook's Bozeman 8B

Sire: NLC Fabian 64F

NLC X136

Hyline Right Time 338

Dam: Miss Prickly Pear U053

Miss Prickly Pear 053K

BW	95
ADJ. WW	708
WW RATIO	113
WDA	3.12
#Calves	10 @ 108

CE	BW	WW	YW	MCE	MM	MWW	CW	YG	MB	BF	REA	API	TI
8	3.6	82.4	124.1	5.1	25.2	66.4	31.8	-33	0.16	-0.67	.8	127	74

The first of many Fabian, (aka Madar) to make the sale. This bull is a deep bodied bull with a great disposition like his sire. His dam posts a weaning ratio of 108 on 10 calves.

## 57 PPSR BAM BAM 144H ASA # (3808678)

Tattoo: 144H BD 3/28/2020 3/4 Simmental

Black Homo Polled

GIBBS 3009A Element

Sire: Gibbs 7258E Bama Boy

GIBBS 8308U Georgia 6S10

Ellingson Blazer X37

Dam: Miss Prickly Pear 399A

Miss Prickly Pear 102Y

BW	100
ADJ. WW	640
WW RATIO	102
WDA	2.69
#Calves	5 @ 103

CE	BW	WW	YW	MCE	MM	MWW	CW	YG	MB	BF	REA	API	TI
12.7	1.7	77.6	121.5	6.3	23.3	62.1	48	-35	0.13	-0.83	.95	126	74

Lot 57 is a long spined deep bodied bull that has a dam that posted weaning weight ratios of 103 on 5 calves.

## 58 PPSR ROOSEVELT 75H ASA # (3808914)

Tattoo: 75H BD 3/07/2020 3/4 Simmental

Black Polled

CCR Cowboy Cut 5048Z

Sire: TJ Roosevelt 366E

TJ 99A

PPSR Extra Credit 20P

Dam: Miss Prickly Pear U205

205

BW	99
ADJ. WW	641
WW RATIO	103
WDA	2.79
#Calves	10 @ 102

CE	BW	WW	YW	MCE	MM	MWW	CW	YG	MB	BF	REA	API	TI
9.5	2.5	79.9	117.6	5.8	29.3	69.2	27.9	-38	0.23	-0.7	.87	135	81

The dam to Lot 58 really outdid herself ratioing 103 at the age of twelve with 84 contemporaries. He's got longevity built into him.

# Purebred Bulls

## 59 PPSR GEN TEN 32H ASA # (3808815)

Tattoo: 32H BD 2/26/2020 Purebred Simmental

Homo Black Homo Polled

Sire: NLC Progressive 40C  
NLC Gen Ten 82E  
NLC A109 Amber

Dam: Ellingson Blazer X37  
Miss Prickly Pear 461B  
Miss Prickly Pear 529R

BW	91
ADJ. WW	599
WW RATIO	96
WDA	2.66
#Calves	4 @ 90

CE	BW	WW	YW	MCE	MM	MWW	CW	YG	MB	BF	REA	API	TI
13	1.1	75.7	114.7	7.1	26.4	64.1	40.9	-49	0.12	-0.97	.96	139	78

Lot 59 has lots of eye appeal. His grand dam was a donor for years and calved until the age of 15.

## 60 PPSR GEN TEN 35H ASA # (3808818)

Tattoo: 35H BD 2/26/2020 Purebred Simmental

Black Homo Polled

Sire: NLC Progressive 40C  
NLC Gen Ten 82E  
NLC A109 Amber

Dam: PPSR King Easy 5Z  
Miss Prickly Pear E741  
Miss Prickly Pear 400B

BW	99
ADJ. WW	618
WW RATIO	99
WDA	2.58
#Calves	2 @ 90

CE	BW	WW	YW	MCE	MM	MWW	CW	YG	MB	BF	REA	API	TI
5.8	4.2	83.3	132.3	2.7	23.8	65.4	41.8	-27	0.39	-0.66	.76	141	84

## 61 PPSR MONTE 65H ASA # (3808889)

Tattoo: 65H BD 3/04/2020 Purebred Simmental

Black Polled

Sire: GW Lucky Charm 665K  
Koch LC Monte 803U  
LRS MS Revolution 656S

Dam: SYS Kappes Detonator 656S  
Miss Prickly Pear 199Y  
Miss Prickly Pear 570R

BW	84
ADJ. WW	610
WW RATIO	98
WDA	2.82
#Calves	3 @ 102

CE	BW	WW	YW	MCE	MM	MWW	CW	YG	MB	BF	REA	API	TI
13.2	0.5	72.9	111.1	7.5	23.4	59.8	29.4	-32	0.1	-0.69	.71	132	76

Lot 61 is a phenotypically correct son of Monte. The Monte daughters have been producing very well for our program.

## 62 PPSR TRUE JUSTICE 84H ASA # (3808926)

Tattoo: 84H BD 3/09/2020 Purebred Simmental

Black Homo Polled

Sire: BDV True Grit 11X  
BBS True Justice B10  
BBS Miss Justice Z7

Dam: PPSR Shear Power 54U  
Miss Prickly Pear X08  
NLC T286 Tamra

BW	92
ADJ. WW	677
WW RATIO	108
WDA	2.91
#Calves	8 @ 102

CE	BW	WW	YW	MCE	MM	MWW	CW	YG	MB	BF	REA	API	TI
12.8	0.6	81	122.2	8.2	29.3	69.7	29.1	-56	0.01	-1.14	1.11	137	80

Lot 62 is a power bull that is a maternal grandson of the T286 donor. His dam has a weaning weight ratio of 102 on 8 calves. He posts the third highest Ribeye Epd in the sale.



Hook's Bozeman 8B Sire of Lot 63

## 63 PPSR BOZEMAN 90H ASA # (3808706)

Tattoo: 90H BD 3/09/2020 Purebred Simmental

Black Polled

Sire: GW-WBF Substance 820Y  
Hook's Bozeman 8B  
Hook's Will Power 24W

Dam: RCR Wrangler S215  
Miss Prickly Pear 438B  
Miss Prickly Pear U002

BW	87
ADJ. WW	626
WW RATIO	100
WDA	2.69
#Calves	5 @ 105

CE	BW	WW	YW	MCE	MM	MWW	CW	YG	MB	BF	REA	API	TI
11.7	0.7	69.9	103.1	6	24	58.9	16.5	-43	0.25	-0.87	.75	146	77

Lot 63 is out of a perfect uddered cow bred to Bozeman who sires tight uddered daughters. Should be a great udder fixer.



Chelsea Campbell  
Lot 64

## 64 PPSR TRUE JUSTICE 93H ASA # (3808922)

Tattoo: 93H BD 3/10/2020 Purebred Simmental  
Black Polled/S  
BDV True Grit 11X  
Sire: BBS True Justice B10  
BBS Miss Justice Z7  
TNT Axis X307  
Dam: Miss Prickly Pear 366A  
Miss Prickly Pear 406P

BW	98
ADJ. WW	676
WW RATIO	108
WDA	2.98
#Calves	5 @ 100

CE	BW	WW	YW	MCE	MM	MWW	CW	YG	MB	BF	REA	API	TI
9	2.5	89.2	135.8	6.5	27.5	72.1	35.9	-.51	0.01	-.103	1.14	128	81

Lot 64 is a thick made True Justice son that posts the top Ribeye Epd in the sale. He also ranks in the top 10% of the breed for Weaning Weight, Yearling Weight and Maternal Weaning Weight Epd's.

## 65 PPSR GEN TEN 95H ASA # (3808811)

Tattoo: 95H BD 3/11/2020 Purebred Simmental  
Black Polled  
NLC Progressive 40C  
Sire: NLC Gen Ten 82E  
NLC A109 Amber  
Kappes Trailblazer S516  
Dam: Miss Prickly Pear 173Y  
Miss Prickly Pear 596R

BW	100
ADJ. WW	650
WW RATIO	104
WDA	2.65
#Calves	7 @ 102

CE	BW	WW	YW	MCE	MM	MWW	CW	YG	MB	BF	REA	API	TI
8.4	2.8	73.7	110.7	6.6	30.5	67.3	30.9	-.34	0.22	-.082	0.69	137	76

This Gen Ten son is out of a 9 year cow that posts a weaning ratio of 102 on her calves.

## 66 PPSR BIG TIMBER 98H ASA # (3808702)

Tattoo: 98H BD 3/11/2020 Purebred Simmental  
Black Polled  
Hook's Yellowstone 97Y  
Sire: Koch Big Timber 685D  
Koch MS Hooks Boy  
PPSR 105T  
Dam: Miss Prickly Pear 997W  
Miss Prickly Pear 461P

BW	89
ADJ. WW	633
WW RATIO	101
WDA	2.76
#Calves	7 @ 104

CE	BW	WW	YW	MCE	MM	MWW	CW	YG	MB	BF	REA	API	TI
8.1	0.5	73.9	113.5	6.5	27.3	64.2	30.1	-.22	0.31	-.058	.5	136	80



Katie Roberts  
Hook's Eagle 6E Sire of Lot 68

## 67 PPSR MONTE 102H ASA # (3808891)

Tattoo: 102H BD 3/12/2020 Purebred Simmental  
Hetero Black Polled  
GW Lucky Charm 665K  
Sire: Koch LC Monte 803U  
LRS MS Revolution 656S  
Rymo Zing Coat R38Y  
Dam: Miss Prickly Pear 472B  
Miss Prickly Pear 619S

BW	100
ADJ. WW	655
WW RATIO	105
WDA	2.87
#Calves	4 @ 102

CE	BW	WW	YW	MCE	MM	MWW	CW	YG	MB	BF	REA	API	TI
9.7	2.6	84.3	132.1	4.5	19.2	61.3	33.6	-.43	0.08	-.104	.86	125	79

A nice Monte son that will add weaning weight to calves.



Chelsea Campbell  
Lot 68

## 68 PPSR EAGLE 106H ASA # (3808754)

Tattoo: 106H BD 3/12/2020 Purebred Simmental  
Black Polled  
Hook's Black Hawk 50B  
Sire: Hook's Eagle 6E  
Hook's Crystal 1C  
RCR Wrangler S215  
Dam: Miss Prickly Pear 323A  
Miss Prickly Pear 072X

BW	80
ADJ. WW	675
WW RATIO	108
WDA	2.90
#Calves	5 @ 108

CE	BW	WW	YW	MCE	MM	MWW	CW	YG	MB	BF	REA	API	TI
13.8	-.01	87.7	135.5	9	28.6	72.4	41.6	-.39	0.24	-.087	-.96	159	90

Lot 68 is one of my favorite Eagle calves. He ranks in the top 5% of the breed for 4 Epd's and in the top 10% of the breed for 3 more.

# 69 PPSR GEN TEN 120H ASA # (3808816)

Tattoo: 120H BD 3/16/2020 Purebred Simmental

Homo Black Homo Polled

NLC Progressive 40C

Sire: NLC Gen Ten 82E

NLC A109 Amber

SRS Text Book 50T

Dam: Miss Prickly Pear 964W

Miss Prickly Pear 501R

BW	98
ADJ. WW	695
WW RATIO	111
WDA	2.51
#Calves	9 @ 102

CE	BW	WW	YW	MCE	MM	MWW	CW	YG	MB	BF	REA	API	TI
8.6	1.7	76.1	110.8	6.9	30.5	68.5	32.5	-.33	0.24	-.074	.75	137	79

Lot 69 is out of an 11 year old cow that has a 362 day calving interval. She also managed to wean a calf at 111 ratio on the mountain. This is a bull that should sire longevity.

# 70 PPSR BAM BAM 138H ASA # (3808669)

Tattoo: 138H BD 3/27/2020 Purebred Simmental

Black Polled

Gibbs 3009A Element

Sire: Gibbs 7258E Bama Boy

Gibbs 8308U Georgia 6S10

SRS Right-On 22R

Dam: Miss Prickly Pear 131Y

SS Irish Donna 13K

BW	98
ADJ. WW	695
WW RATIO	111
WDA	2.90
#Calves	8 @ 102

CE	BW	WW	YW	MCE	MM	MWW	CW	YG	MB	BF	REA	API	TI
9.3	2.6	78.5	121.6	5.1	25.9	65.1	34.1	-.41	0.19	-.095	.86	136	79

Lot 70 is one of the youngest bulls in the sale but he sure has made up for a later start! He ratioed 111 with 84 contemporaries at weaning. His 9 year old dam has a weaning ratio of 102 on 8 calves.



# Prickly Pear Simmental Senior Herd Sires



**Blevins Thunder (Hank)**



**Leachman Paygrade 8517 (Bailey)**



**Leachman Investmant (Duke)**



**Ellingson Blazer**

[www.pricklypearsimmental.com](http://www.pricklypearsimmental.com)





The cows out in  
their summer  
pasture



THANKS FOR COMING!



**Prickly Pear  
Simmental Ranch**

2515 Canyon Ferry Road  
Helena, MT. 59602

Time Sensitive Material. Please Deliver Immediately



**Annual Bull Sale**  
**February 6, 2021**

1:00 PM Helena, Montana

This sale will be broadcast live on the internet.

**DVAuction**

**Broadcasting Real-Time Auctions**

Real time bidding & proxy bidding available.

[www.pricklypearsimmental.com](http://www.pricklypearsimmental.com)