

PRAIRIE HILLS

Gelbvieh

ANNUAL BULL SALE

1PM MST • FEBRUARY 12, 2022

AT THE RANCH — NORTH OF DICKINSON, ND.
SELLING 50 PUREBRED GELBVIEH, BALANCER, AND RED ANGUS BULLS



PRAIRIEHILLSGELBVIEH.COM

BID ONLINE AT:

This sale will be broadcast live on the internet.
DVAuction
Broadcasting Real-Time Auctions
Real time bidding & proxy bidding available.

Hello and Welcome!

We would like to welcome everyone to our annual production sale. 2021 has been full of a whole new set of challenges, but every year we become more resilient and learn to roll with the punches. Like most of the midwest, we started the year off dry and it just continued to get drier. Through some creative pasture management, and occasional rain, we were able to make it through most of the summer in decent shape. The calves were weaned earlier than normal this year on September 1st to try and save on the grass. We were able to reduce some cow numbers, which will really help us to tighten up the quality of the cow herd as we go forward. No matter what changes and challenges life may toss at us, the one thing that is always constant is that good, hard working cattle will pay the bills. We all ask a lot from our cattle, and more people are recognizing that Gelbvieh females are some of the hardest working mamas in the industry.

This year we are offering the first sons of our new herd bull additions. We place a large emphasis on keeping our genetics fresh so we can continually offer fresh bloodlines that will work for our customers. We tend to say it every year, but the set of bulls we have to offer this year is the strongest, most consistent group of bulls we've ever had on the ranch. We are incredibly proud of these bulls, the way they've developed, and the future in front of them. Our goal is to provide you with genetics that not only make you money, but bulls you'll be proud to have walking your pasture.

We continue to use the mineral and feed programs developed for us by our nutritionists at Biozyme. The bulls are grown on a forage based ration that allows them to grow at a rate of 3 to 3.5 pounds per day, while still keeping them fresh and not getting overly fat. This has also allowed us to keep them on the same mineral program from conception through sale day. We continue to be impressed by their performance, and their ability hold together when they hit the pasture. This years offering is averaging 3.65 pounds per day since weaning - very impressive given the weather swings we've been given this fall and winter.

The sale will again be held at the sale facility at Klint & Maralee's. All cattle will be sold by video, with the bulls & females available for viewing within feet of the sale facility. No live animals will be entering the building. We will have the videos available for viewing on our website www.prairiehillsgelbvieh.com approximately 2 weeks before the sale. Any supplemental sale information will also be posted on our website. The animals will be available for viewing beginning at 12PM on Friday, February 11th, and 9AM Saturday, February 12th.

This year the sale will be broadcast on the internet through DVAuction.com. Please make sure you're approved prior to the sale if you'd like to bid online. We will also have people available if you choose to bid over the phone. Please contact Klint or Galen in advance so arrangements can be made.

We would again like to thank everyone for their support over the last 37 years. Please stop by anytime to tour through the sale offering and cow herd. If you have questions on any of the animals, please don't hesitate to contact Klint or Galen.



Klint and Maralee Sickler Family

2171 102nd Ave SW
Gladstone, ND 58630
Klint Sickler - 701-483-5250 (home)
701-260-1853 (cell)



Galen and Marcia Sickler Family

10190 22nd Street SW
Gladstone, ND 58630
Galen Sickler - 701-225-9212 (home)
701-690-6977 (cell)

PRAIRIE HILLS
Gelbvieh

THANK YOU!

**Klint & Maralee Sickler Family
Galen & Marcia Sickler Family**

PRAIRIE HILLS *Gelbvieh* ANNUAL BULL SALE

**SATURDAY,
FEBRUARY 12, 2022**
1:00 P.M. (MST)
AT THE RANCH
DICKINSON, NORTH DAKOTA

SELLING 50 PUREBRED GELBVIEH, BALANCER & RED ANGUS BULLS

SALE DAY CONTACTS

Prairie Hills Gelbvieh - 701-483-5250
Klint Sickler - 701-260-1853
Galen Sickler - 701-690-6977

AUCTIONEER

Jay Elfeldt: 308-293-3049

RING SERVICE

Jared Murnin - Western Ag Reporter - 406-321-1542
James Odermann - Special Assignment - 701-575-4767
Dan McCarty - Special Assignment - 970-481-5217

SALE DAY MEAL

A complimentary meal is provided by Prairie Hills Gelbvieh on sale day at noon at the Prairie Hills Gelbvieh sale facility.

SUPPLEMENT SHEET:

All weights, scrotal measurements, and other supplemental material will be posted to the PHG & DVAuction websites the week of the sale. A supplement sheet will also be available sale day.

VIEWING OF SALE CATTLE:

Bulls will be available for viewing any time prior to the sale. Cattle will be ready for viewing by 9AM on sale day.

ONLINE BIDDING:

Buyers who are unable to attend the sale may register and bid live online at www.DVAuction.com, complete details on page 4 of the sale book.

TERMS AND CONDITIONS:

Terms are check or cash. All cattle sell under the standard terms and conditions recommended by the American Gelbvieh Association. A copy of the terms and conditions may be obtained from the AGA, or Prairie Hills Gelbvieh.

HEALTH INFORMATION:

All cattle sell with a valid health certificate that will allow shipment anywhere in the continental United States. All cattle are guaranteed to meet health requirements to ship to Canada.

REGISTRATION PAPERS:

All registration papers on the animals selling are in order and will be transferred to the new owner. Papers will be mailed by the AGA or ARAA and should be to the new owner in 30-45 days.

EPDS:

All EPDs are provided by the American Gelbvieh Association or American Red Angus Association and are current as of January 1, 2022. Weaning weights provided in the catalog are adjusted weights that have been calculated by the respective associations.

DNA:

All bulls selling have been sire and dam verified, with genomically enhanced EPDs published in the catalog. We have also tested all bulls for homozygous polled and homozygous black, with results printed in the catalog. All testing was done through Geneseek.

LIABILITY:

All persons attending the sale do so at their own risk. Prairie Hills Gelbvieh assumes no liability for accidents, theft, injury, disease, or damages occurring at the sale site.

**STORM DATE
FEBRUARY 14, 2022**

**IN CASE OF INCLEMENT WEATHER, CHECK
WWW.PRAIRIEHILLSGELBVIEH.COM
FOR DETAILS.**

SPECIAL THANK YOU

We'd like to say a special "Thank You" to everyone who helps us throughout the year. Our success wouldn't be possible without you! Especially:

Luke & Amanda Vangness
Sandy Martsching
Jonah Honeyman

Cheech Holznagel
Wyatt Devries
Kayla Brew

The folks at Ranch House Designs for making us look good!

Directions to Prairie Hills Gelbvieh • From Dickinson, ND

North on Hwy 22 - 15 miles to 23rd St SW (mile marker 85) • East on 23rd St SW - 7 miles to 101st Ave SW
North on 101st Ave SW - 1 mile to 22nd St SW • West on 22nd St SW - 1.5 miles

VIDEO AUCTION SALE PROCEDURE:

All animals selling will be penned at the sale facility. The auction will be conducted inside the sale barn at Prairie Hills Gelbvieh. A video of each animal will be played on large screen displays as the respective animal sells. Cattle will not come into the sale ring. Please arrive early to view the sale offering.

ONLINE VIDEO VIEWING:

Videos of each lot will be available for viewing on the PHG website (www.prairiehillsgelbvieh.com) approximately 2 weeks before the sale.

DELIVERY:

PHG is excited to offer free nationwide shipping on total purchases over \$10,000, otherwise we will deliver all purchases for free within 300 miles of the ranch. We will try to coordinate deliveries between multiple buyers so bulls can be delivered conveniently and efficiently to the buyer. We offer a \$50 discount if you haul your purchase home the week of the sale.

FEEDING:

We will feed all purchases free of charge until April 1st. Bulls can be left after this date and fed for \$3 per day until delivery.

HERD HEALTH:

Bulls have received all appropriate vaccinations and any applicable boosters. All animals have also received Ivomec pour-on prior to sale day.

INSURANCE:

We will make every effort to manage any bulls left in our care in the same manner we manage our own herd bulls, however we understand that accidents do happen. All animals become the responsibility of the buyer after the purchase. We highly recommend insuring your purchase. Contact Klint after the sale to discuss available options.

BREEDING SEASON GUARANTEE:

All bulls are sold as guaranteed breeding animals. We will semen test any bulls left in our care in mid-March. If you haul your purchase home before that date, we encourage you to have a breeding soundness exam completed before that date. Any bull failing a semen test, or shown to be a non-breeder will be replaced if possible, or the buyer will receive a credit (not to exceed the purchase price of the animal), minus salvage value, towards a purchase within the next year.

INTERNATIONAL SALES:

Prairie Hills Gelbvieh is experienced in transporting animals across the Canadian border and will assist in that transaction. All fees associated with that (brokerage, health testing, etc) are the responsibility of the buyer.

DVAuction
Broadcasting Real-Time Auctions

Never Miss An Auction Again!
Watch & Bid online for FREE!

**Visit www.DVAuction.com
and Register Today!**

For General Questions Please Contact Our Office:
(402) 316-5460 or support@dvauction.com

REFERENCE SIRES

A

MCCA GUNNER 947G

MCCA947G | AMGV1443537 | 2/19/2019 | PB 87.1% GELBVIEH

HOMOZYGOUS POLLED | RED

FMGF BLUE'S IMPACT 001X
SIRE: GHGF LONE STAR D027
VRT LAZY TV MS CURVE B027

HYEK BLACK IMPACT 3960N
FMGF ONCE IN A BLUE MOON ET
JCB LAZY TV CURVE TIME T163
VRT LAZY TV MS Z394
WOAK REVOLUTION 08T
JMDS BLACK BETTY
DCH HILLE Y109
DCH HILLE Y305

Birth Wt	87
Adj WW	854

JMDS MR REV
DAM: MCCA CLEMENTINE 5147C
DCH HILLE A147

CE	BW	WW	YW	MK	TM	CEM	YG	CW	REA	MB	FPI
12	0.4	80	120	21	61	5	-0.19	34	0.54	0.38	85.87



MCCA GUNNER 947G

The red bull that is quickly proving himself as one of the hottest red purebred bulls available. He stamps his calves with rib shape, hip, and quarter. Used successfully at PHG on cows and heifers. OWNED BY PRAIRIE HILLS GELBVIEH & MCCARTY CATTLE CO.

B

RWG EXACT COMBINATION 7409

RWGE409 | CDGV163329 | 4/11/2017 | PB 99.9% GELBVIEH

HOMOZYGOUS POLLED | RED

RWG WAR ADMIRAL 2528
SIRE: RWG RIGHT COMBINATION 5506
SLC LORA 164Y

LCR WARNOCK 612W
RWG SEXY-KITTY 6034
SLC MASTER PLAN 191U
SLC LORA C 299P
RWG TRACTION 7412
VG VALLEY MISS TRIX 157T
RWG WHY ME 9515
RWG HADIE'S WITHDRAWAL 9725

Birth Wt	91
Adj WW	906

RWG XTREME TRACTION 0521
DAM: RWG HADIE 3505
RWG YES HADIE 1508

CE	BW	WW	YW	MK	TM	CEM	YG	CW	REA	MB	FPI
10	0.7	79	106	20	59	5	-0.13	42	0.53	0.12	76.43



RWG EXACT COMBINATION 7409

Exact Combination has made waves over the last couple of years as "The" red bull to breed to. His first calves have gone on to win the Canadian bull futurity, have topped nearly every sale they've sold in, and have hung numerous champion banners for PHG and RWG. OWNED BY PRAIRIE HILLS GELBVIEH & ROYAL WESTERN GELBVIEH

C

DVE DAVIDSON HOWARD 3E

DVE3E | CDGV162275 | 1/26/2017 | PB 89.1% GELBVIEH

HOMOZYGOUS POLLED | RED

DVE DVE DAVIDSON JUMPSTART 44X
SIRE: DVE DVE DAVIDSON THE GIFT 110B
DVE DVE DAVIDSON MS MARK 92U

STON STON SECRET WEAPON 6S
DVE DVE DAVIDSON MS JIM 36R
DVE DVE DAVIDSON PLD MARK 194P
DVE DVE DAVIDSON MISS JIM 104N
BTI EXTRA 2106K ET
STON PLD BLACK JASSY 57P
DRT MAMBO 32T
DVE DAVIDSON MS B 107T

Birth Wt	78
Adj WW	819

STON STON SECRET WEAPON 6S
DAM: DVE DAVIDSON MS SECRET 44B
DVE DAVIDSON MS MAMBO 16W

CE	BW	WW	YW	MK	TM	CEM	YG	CW	REA	MB	FPI
10	2	102	149	16	67	3	-0.2	66	0.97	-0.05	85.15



DVE DAVIDSON HOWARD 3E

Purchased as the high seller from Davidson's in 2018, Howard calves have been really well received by our commercial customers over the last 3 years. Howard adds length of body, width of top, and lower quarter into his calves. OWNED BY PRAIRIE HILLS GELBVIEH

D

PHG PAYCHECK C24

PHGC24 | AMGV1322836 | 2/25/2015 | PB 99.9% GELBVIEH

HOMOZYGOUS POLLED | DOUBLE BLACK

DVE DAVIDSON THAT 'B 4 4R
SIRE: DVE DAVIDSON PAYDAY 59W
DVE DAVIDSON MS BK RRRAP 20P

DVE DAVIDSON DEJA-VU 90N
DVE DAVIDSON JULIO 67L
DVE DAVIDSON BLACK RRRAP ET
LCS BIG SKY GAL 351H
JNS MR IMAGE 6E ET
JNS MISS CAROLINA POWER 25E
BEA 7089G
KRT G051

Birth Wt	82
Adj WW	842

LWHF FEARLESS
DAM: BEA 5038R
BEA 2006M

CE	BW	WW	YW	MK	TM	CEM	YG	CW	REA	MB	FPI
11	2	74	107	12	49	3	-0.24	38	0.67	0.11	72.63



PHG PAYCHECK C24

Paycheck has left his mark on our herd over the years. We think so highly of his daughters that we seldom let them leave. Thick made bull and steer calves, with fantastic daughters. We retired Paycheck in the spring of 2021, so these will be the last naturally sired calves from him. OWNED BY PRAIRIE HILLS GELBVIEH

E

BLB GOODVIEW GRINDER 39G

BLB39G | CDGV169752 | 2/18/2019 | PB 87.5% GELBVIEH

HOMOZYGOUS POLLED**DOUBLE BLACK**

BLB BLB GOODVIEW PLD BUD 2B
SIRE: BLB GOODVIEW PLD DIPLOMAT
 BLB GOODVIEW PLD HEATHER

BLB GOODVIEW PLD REVOLVER 12Z
 BLB GOODVIEW PLD WILMA 1W
 OUTBACK 142X
 BLB GOODVIEW PLD HEATHER 23Y
 EGL GADGET F1258
 BCM LADY IN BLACK ET
 DVE DAVIDSON PLD KEN 164N

Birth Wt	94
Adj WW	634

EGL GARTH J040 ET
DAM: BLB GOODVIEW PLD WILMA 1W
 BLB GOODVIEW PLD 39P

CE	BW	WW	YW	MK	TM	CEM	YG	CW	REA	MB	FPI
9	0.8	54	74	16	42	5	-0.2	15	0.27	0.36	67.1

**BLB GOODVIEW GRINDER 39G**

Purchased from Goodview Gelbvieh in Canada, we added Grinder for his thickness and depth of chest and rib. His first calves are impressive, with his daughters being clean fronted and very maternal appearing. **OWNED BY PRAIRIE HILLS GELBVIEH**

F

CMR CONSENSUS 60G

CMR60G | AMGV1446832 | 3/16/2019 | PB 93.8% GELBVIEH

HOMOZYGOUS POLLED**DOUBLE BLACK**

VRT LAZY TV SAM U451
SIRE: BNC AT EASE A357
 BNC MISS HOJER Y045

KHR SAM SPADE 02S
 VRT LAZY TV MS FULLBACK L643
 JDPD ASTRO 407S
 BNC MISS HOJER U859
 HYEK BLACK IMPACT 3960N
 EGL P190
 RED FORTUNATE 681S
 CMR LACEY 2L

Birth Wt	85
Adj WW	719

PLA BIG DOG 101Y
DAM: CMR 82A
 CMR SUZIE 270W

CE	BW	WW	YW	MK	TM	CEM	YG	CW	REA	MB	FPI
15	-0.9	59	91	32	61	8	-0.23	33	0.78	0.09	69.77

**CMR CONSENSUS 60G**

Consensus was purchased as the high selling bull in 2020 from Gustin's. We found this calf at their summer field day and were excited to see how he developed by sale time. He produces calves that are very smooth and thick made, while having an extra shot of eye appeal. **OWNED BY PRAIRIE HILLS GELBVIEH**

G

MDR N.H. BLACKOUT 7412E

MDR7412E | AMGV1396471 | 2/3/2017 | PB 85.9% GELBVIEH

HOMOZYGOUS POLLED**HOMOZYGOUS BLACK**

CCRO CAROLINA EXCLUSIVE 1230Y
SIRE: JKGF NEW HORIZON C51 ET
 KCF MISS FORTUNE U490

DCSF POST ROCK SILVER 233U1
 CCRO MS C-CROSS EC / 7309T
 JBOB CAROLINA FORTUNE 2564JET
 KCF MISS LANDMARK R352
 MCC BLACKOUT 404
 ELK CK MISS 339N
 FHG FLYING H EXCLUSIVE
 DLF LEGRAND ENCORE ET

Birth Wt	78
Adj WW	796

MDR BLACK OUT 1339Y
DAM: MDR BARBI 412B
 MDR 725T

CE	BW	WW	YW	MK	TM	CEM	YG	CW	REA	MB	FPI
15	-0.7	66	111	21	54	10	-0.27	26	0.75	0.41	81.43

**MDR N.H. BLACKOUT 7412E**

Black Out was purchased as the high seller from the Oklahoma Sooner Select sale. We were impressed by the performance and ultrasound data this calving ease option posted while on feed test. We lost Black Out this fall to a broken leg with limited semen available. **OWNED BY PRAIRIE HILLS GELBVIEH & DOBSON RANCH**

H

PHG EMINENCE E02

PHGE02 | AMGV1389102 | 2/16/2017 | PB 87.5% GELBVIEH

HOMOZYGOUS POLLED**DOUBLE BLACK**

CTR CTR SANDHILLS 0065X
SIRE: BABR DOMINANCE 4280B
 BEA CINDY LOU WHO ET

CTR SANDMAN 6523S
 CTR 7281T
 RID R COLLATERAL 2R
 BEA ELLA ET
 LTC RIDGE STAR HOLMAN 123H
 FLAD BEACH GIRL 60R
 ELK CK BRONCO'S EDGE 904L
 DDN BELLY RIVER LILY 122L

Birth Wt	78
Adj WW	870

FLAD FLADELAND DRACULA 57Y
DAM: DDN BELLY RIVER AMBER 56A
 DDN BELLY RIVER RAMONA 5108R

CE	BW	WW	YW	MK	TM	CEM	YG	CW	REA	MB	FPI
14	-1.2	72	104	18	54	7	-0.06	33	0.42	0.5	85.24

**PHG EMINENCE E02**

Eminence was our 2018 Bull Futurity winner, who went on to sell to Chimney Butte Ranch in the national sale. We've used him extensively in our AI program, with sons and daughters being in high demand throughout the country. Eminence was lost this fall to a broken leg as well, with limited semen available. **OWNED BY CHIMNEY BUTTE RANCH & PRAIRIE HILLS GELBVIEH**



**PHG JOHNNIE WALKER J47
SELLS AS LOT 1**

1

PHG JOHNNIE WALKER J47

PHGJ47
AMGV1510899
3/5/2021
80.7% GELBVIEH

HOMOZYGOUS POLLED
RED

Birth Wt
87
Adj WW
864
Dam NR
5/111

GHGF LONE STAR D027
SIRE: MCCA GUNNER 947G
MCCA CLEMENTINE 5147C

WOAK REVOLUTION 08T
DAM: JMDS MISS MARTIN C17
JMDS REBA

FMGF BLUE'S IMPACT 001X
VRT LAZY TV MS CURVE B027
JMDS MR REV
DCH HILLE A147

KCF BENNETT KINGPIN K403
RLBG TAMARA N006
HFGC HART 34W18
TLW 379T

CE	BW	WW	YW	MK	TM	CEM	YG	CW	REA	MB	FPI
12	1.1	83	123	27	69	6	-0.21	38	0.64	0.46	89.37

Every year there is a debate over who will be the lead-off lot in the sale. This year, I think the decision was made for us around June 1. Johnnie Walker has been an absolute stand-out since this spring, being the calf that always grabs your attention when you saw him at side of his dam. Speaking of his dam, she's well on her way to the donor pen. A Dam of Merit in 2019, 2020, and 2021 - Johnnie Walker is the first bull calf she has raised after stocking the replacement pen with her daughters. 5 calves for a 111 weaning ratio isn't a fluke either. Nearly every daughter to this point has been in the top 5 at weaning time. This guy will be one of the best Gunner sons to sell this spring, and he's going to raise the bar high for everyone else. 87 red pounds at birth, 864 at weaning, and EPDs that are in the top 5% almost all the way across the board. Being an outcross to almost every red pedigree available is just icing on the cake! If we didn't already have Gunner walking in our pastures, this guy wouldn't be leaving the place. **SELLING FULL POSSESSION, 1/2 SEMEN INTEREST**



**PHG JAGERMEISTER J67
SELLS AS LOT 2**

2

PHGJ67
AMGV1510946
3/12/2021
PB 93.6% GELBVIEH

HOMOZYGOUS POLLED
RED

Birth Wt
81
Adj WW
830
Dam NR
2/107

SIRE: GHGF LONE STAR D027
MCCA GUNNER 947G
MCCA CLEMENTINE 5147C

DAM: DCHD GBG DOZER 039D
PHG MISS BAILEY F73
DCHD BAILEY'S GIRL 261Y

FMGF BLUE'S IMPACT 001X
VRT LAZY TV MS CURVE B027
JMDS MR REV
DCH HILLE A147

DVE DAVIDSON MCGRAW 21B
DCHD GOLDEN BUCKLE GELV 039Z
DCH HILLE T504 TREMOR ET
DCHD BAILEY'S GIRL 122U

CE	BW	WW	YW	MK	TM	CEM	YG	CW	REA	MB	FPI
11	2.4	87	126	24	67	5	-0.25	41	0.79	0.12	81.14

Wow, take a look at Lot 2! If you've been looking for that high percentage, outcross, homo polled herd sire, you don't need to go any farther! We've had our eye on this stunner all summer, partially because of his brake checking good looks, but also because his mama raised the Hold My Beer H14 bull last year. If she drops another calf like this guy, she's heading to the donor pen! The cool front, smooth design, and muscle expression this guy shows are not camera tricks - he's legitimately this good! Performance wise, he is the overall leader for ADG at 4.41 pounds per day since weaning. If numbers are more your things, take a look at the paper - He's top 5% or better for all of the performance traits, yet still in the top 10% for his carcass and FPI numbers. I'll say the same thing I said on Lot 1 - if Gunner wasn't walking our pastures, this guy would be. **SELLING FULL POSSESSION, 1/2 SEMEN INTEREST**



Wyatt Davies

PHG JIM BEAM J14
SELLS AS LOT 3

3

PHGJ14
AMGV1510890
2/25/2021
PB 93.6% GELBVIEH

HOMOZYGOUS POLLED
BLACK

Birth Wt	77
Adj WW	747
Dam NR	7/100

SIRE: GHGF LONE STAR D027
MCCA GUNNER 947G
MCCA CLEMENTINE 5147C

DAM: COLB MR XAVIER X812
PHG ACAPELLA A26
PHG REDNECK LADY Y19

FMGF BLUE'S IMPACT 001X
VRT LAZY TV MS CURVE B027
JMDS MR REV
DCH HILLE A147

OZZ EXT GOVENOR 3N
RACA MS RED MAPLE 812U
DVE DAVIDSON PLD REDNECK 6T
SEPT FITCH N008 ET

CE	BW	WW	YW	MK	TM	CEM	YG	CW	REA	MB	FPI
14	0.1	72	104	25	60	9	-0.28	18	0.55	0.4	82.88

PHG JIM BEAM J14

What happens when you breed the hottest new sire in the breed, to a 4 time Dam of Merit? You end up with a shot of Jim Beam! Black, Homo Polled, Purebred, and take a look at his numbers! Whether you're looking for CE, performance, or carcass, he checks all of the boxes, even pegging a top 5% marbling number. Phenotypically he has one of the longest hips in the sale, while also being wide based with a huge amount of middle, and strides out on a nice easy step and fills his track completely. He is currently the #2 overall bull for ADG, at 4.34 pounds per day since weaning. Xavier daughters have done an excellent job for us, and the cow side is tried and tested, going back to the tremendous GNG Kelly 14Z cow. Complete front, back, inside and out. **SELLING FULL POSSESSION, 1/2 SEMEN INTEREST**



**PHG JUDE J10
SELLS AS LOT 5**

5

PHG JUDE J10

PHGJ10 | AMGV1510953 | 2/25/2021 | PB 93.6% GELBVIEW

HOMOZYGOUS POLLED

RED

GHGF LONE STAR D027
SIRE: MCCA GUNNER 947G
MCCA CLEMENTINE 5147C

FMGF BLUE'S IMPACT 001X
VRT LAZY TV MS CURVE B027
JMDS MR REV
DCH HILLE A147

DCHD GBG DOZER 039D
DAM: PHG ISABELLA G101
PHG SUNSHINE D19

DVE DAVIDSON MCGRAW 21B
DCHD GOLDEN BUCKLE GELV 039Z
RWG YIKES 1512
DVE DAVIDSON PATSY 24Z

Birth Wt
78
Adj WW
768
Dam NR
1/99

CE	BW	WW	YW	MK	TM	CEM	YG	CW	REA	MB	FPI
10	1.9	80	121	21	61	3	-0.17	43	0.78	0.14	77.63

Hey Jude - just like the classic song, this is one that you're going to keep coming back to time and time again. Gunner 947G on a first calving Dozer daughter really clicked, but it also makes him a 3/4 brother to the Lot 2 bull. Isabella G101 was a member of our 2020 National Champion pen of heifers, so the expectations were awful high on this mating. J10 was actually pegged to make the return trip to Denver this year as well. Soggy middled, with that extra eye appeal to turn your head in the pen, he's pretty cool! H10 has been gaining 4.17 pounds per day since weaning, 4th over all bulls.

6

PHG JUPITER J49

PHGJ49 | AMGV1510889 | 3/6/2021 | PB 93.6% GELBVIEW

HOMOZYGOUS POLLED

RED

GHGF LONE STAR D027
SIRE: MCCA GUNNER 947G
MCCA CLEMENTINE 5147C

FMGF BLUE'S IMPACT 001X
VRT LAZY TV MS CURVE B027
JMDS MR REV
DCH HILLE A147

MCCA CORNHUSKER RED 524C
DAM: MCCA GYPSY 930G
MCCA EUCALYPTUS 730E

RWG TRACTION 7412
MCCA ZIVA Z24
DCH HILLE RED DIRT ROAD B166
CLKG CLKG 30N 30Y

Birth Wt
79
Adj WW
749
Dam NR
1/96

CE	BW	WW	YW	MK	TM	CEM	YG	CW	REA	MB	FPI
15	0.1	70	102	20	55	8	-0.16	23	0.39	0.34	79.91

PHG Jupiter J49 is Trey Sickler's first trip to the auction barn. We purchased the Gypsy female from McCarty's for Trey's first breeding female, and she laid down and had this awesome Gunner son for her first effort. Another Gunner with awesome numbers, and phenotype to match! Top 15% for CE, and Marbling, with a 79 pound actual BW and a 4.12 ADG to back it up. Don't overlook that mama is a Cornhusker Red daughter, and they are quickly getting the reputation as some of the best females in the breed. Can't miss here!



**PHG JOYRIDE J91
SELLS AS LOT 7**

7

PHG JOYRIDE J91

PHGJ91 | AMGV1510939 | 3/18/2021 | PB 93.6% GELBVIEWH

HOMOZYGOUS POLLED | RED

<p>GHGF LONE STAR D027 SIRE: MCCA GUNNER 947G MCCA CLEMENTINE 5147C</p> <p>DTKF EMOTIONS SUCKER PUNCH DAM: PHG MISS REDNECK LADY F15 PHG REDNECK LADY Y19</p>	<p>FMGF BLUE'S IMPACT 001X VRT LAZY TV MS CURVE B027 JMDS MR REV DCH HILLE A147</p> <p>BABR CY 808U ET DTKF FAITH'S EMOTION 116U ET DVE DAVIDSON PLD REDNECK 6T SEPT FITCH N008 ET</p>	<table border="1"> <tr><td>Birth Wt</td></tr> <tr><td>72</td></tr> <tr><td>Adj WW</td></tr> <tr><td>794</td></tr> <tr><td>Dam NR</td></tr> <tr><td>2/102</td></tr> </table>	Birth Wt	72	Adj WW	794	Dam NR	2/102
Birth Wt								
72								
Adj WW								
794								
Dam NR								
2/102								

CE	BW	WW	YW	MK	TM	CEM	YG	CW	REA	MB	FPI
13	0.4	67	94	25	58	6	-0.21	29	0.61	0.14	72.24

Here comes another red Gunner son, but this time in a calving ease package! Sucker Punch on a Redneck daughter on the bottom side stacks the calving ease - Gunner adds the power and the middle. 72 pounds at birth, exploding to 794 pounds at weaning - that's the way it's supposed to work! Take a look at the bull - he's been one of my favorites all summer as he's probably the longest spined Gunner son in the offering, yet has all sorts of middle and rib to him. The cherry red color is just icing on the cake!

8

PHG JOHN BOY J94

PHGJ94 | AMGV1510931 | 3/23/2021 | PB 93.6% GELBVIEWH

HOMOZYGOUS POLLED | RED

<p>GHGF LONE STAR D027 SIRE: MCCA GUNNER 947G MCCA CLEMENTINE 5147C</p> <p>RWG YIKES 1512 DAM: PHG E73 DVE DAVIDSON PATSY 24Z</p>	<p>FMGF BLUE'S IMPACT 001X VRT LAZY TV MS CURVE B027 JMDS MR REV DCH HILLE A147</p> <p>PHG MR. WIZARD W27 VG VALLEY MISS TOUCH 61T STON STON SECRET WEAPON 6S DVE DAVIDSON MS PLD JIM 59S</p>	<table border="1"> <tr><td>Birth Wt</td></tr> <tr><td>94</td></tr> <tr><td>Adj WW</td></tr> <tr><td>849</td></tr> <tr><td>Dam NR</td></tr> <tr><td>3/103</td></tr> </table>	Birth Wt	94	Adj WW	849	Dam NR	3/103
Birth Wt								
94								
Adj WW								
849								
Dam NR								
3/103								

CE	BW	WW	YW	MK	TM	CEM	YG	CW	REA	MB	FPI
8	2.5	81	120	20	61	0	-0.19	38	0.67	0.22	78.53

Lot 8 is another homo polled, red, Gunner son. This time we're stacking Gunner on a proven Yikes daughter that's well on her way to Dam of Merit status. If you're looking for a performance bull, but don't want to sacrifice maternal or carcass, study this guy hard. There's a reason some of our best cows trace back to Yikes, they are the model of maternally efficient females. He's been gaining 4.22 pounds per day since weaning, putting him as the #3 overall bull.



**PHG JAMES J60
SELLS AS LOT 9**

9

PHG JAMES J60

PHGJ60 | AMGV1510894 | 3/9/2021 | PB 93.6% GELBVIEWH

HOMOZYGOUS POLLED | BLACK

SIRE: GHGF LONE STAR D027
MCCA GUNNER 947G
MCCA CLEMENTINE 5147C

FMGF BLUE'S IMPACT 001X
VRT LAZY TV MS CURVE B027
JMDS MR REV
DCH HILLE A147

DAM: RWG YIKES 1512
PHG BLACK NELL B24
MKT X78

PHG MR. WIZARD W27
VG VALLEY MISS TOUCH 61T
TOG TWIN OAK DIRECTION 81S
MKT10S

Birth Wt
83
Adj WW
768
Dam NR
6/102

CE	BW	WW	YW	MK	TM	CEM	YG	CW	REA	MB	FPI
14	2.2	75	110	20	57	6	-0.07	22	0.25	0.23	76.71

Emerson Sickler brings us Lot 9. This cow has really put some stellar bull calves through this sale for Emerson, so when he wanted to breed Nell to Gunner, it seemed like a no brainer. Emerson's luck hit again with this awesome black purebred Gunner son. Mama is a Yikes daughter that has reached Dam of Merit status in 2020 and 2021, and her 102 weaning ratio over 6 calves tells me she will do it again! Long sided and thick topped, J60 has the pieces to give you those scale busting sons and daughters that will keep you in the money.

10

PHG JASPER J103

PHGJ103 | AMGV1510929 | 3/31/2021 | PB 99.9% GELBVIEWH

DOUBLE POLLED | BLACK

SIRE: DVE DAVIDSON PAYDAY 59W
PHG PAYCHECK C24
BEA 5038R

DVE DAVIDSON THAT'B 4 4R
DVE DAVIDSON MS BK RRRAP 70P
LWHF FEARLESS
BEA 2006M

DAM: DDGR YUKON 172Z
PHG MISS AFTERGLOW E56
PHG AFTERGLOW A30

JKGF W95
DDGR SAHARA 141U
RWG WHY ME 9515
VVGR MISS 716P

Birth Wt
73
Adj WW
820
Dam NR
3/104

CE	BW	WW	YW	MK	TM	CEM	YG	CW	REA	MB	FPI
12	0.1	67	97	21	55	7	-0.23	38	0.75	0.16	72.75

Lot 10 is the first Paycheck calf in the offering. This late March calf combines the power of Paycheck with the proven maternal performance from Why Me and Yukon, proven by her 104 weaning ratio on her first 3 calves. J103 has a great combination of calving ease and performance with his 73 pound BW, exploding to an 820 pound WW. His EPDs put him firmly between the guard rails on all of the traits.



**PHG JAMESON J44
SELLS AS LOT 11**

11

PHG JAMESON J44

PHGJ44 | AMGV1510934 | 3/4/2021 | PB 92.8% GELBVIEWH

DOUBLE POLLED | DOUBLE BLACK

DVE DAVIDSON PAYDAY 59W
SIRE: PHG PAYCHECK C24
BEA 5038R

DVE DAVIDSON THAT 'B 4 4R
DVE DAVIDSON MS BK RRRAP 70P
LWHF FEARLESS
BEA 2006M

Birth Wt	87
Adj WW	839
Dam NR	3/102

CCRO CAROLINA LEVERAGE 3214A
DAM: PHG CAROLINA E753 ET
VVGR ELEGANCE 716T

VRT LAZY TV SAM U45I
CCRO BELLE OF THE BALL 1309Y
JCB LAZY TV BEECH JET R052ET
VVGR MISS 807R

CE	BW	WW	YW	MK	TM	CEM	YG	CW	REA	MB	FPI
10	2.3	81	120	17	58	5	-0.29	50	1.06	0.3	81.9

If you're looking for a loose made, soggy middled bull to add some pounds to your calf crop, you're going to want to take a good look at Lot 11. This may be the deepest middled black calf in the group - not surprising coming from Paycheck! His Eminence sired half brother was one of our high sellers in 2021, and mama carries a 102 weaning ratio over her first 3 calves, the guesswork is almost taken out of this guy! Top 1% for CW, and REA; top 5% for WW; top 10% for YW, Fat, FPI; top 15% for Stayability, YG, and Marbling.

12

PHG JOSE J35

PHGJ35 | AMGV1510980 | 3/2/2021 | PB 99.9% GELBVIEWH

HOMOZYGOUS POLLED | HOMOZYGOUS BLACK

DVE DAVIDSON PAYDAY 59W
SIRE: PHG PAYCHECK C24
BEA 5038R

DVE DAVIDSON THAT 'B 4 4R
DVE DAVIDSON MS BK RRRAP 70P
LWHF FEARLESS
BEA 2006M

Birth Wt	88
Adj WW	740
Dam NR	8/96

RWG WHY ME 9515
DAM: PHG MISS TOOTSIE Z72
PHG TOOTSIE T54

EGL PABST L011 ET
VG VALLEY MISS 34N ET
SEGA PUNCHLINE 203P
GAR GAUGLER GAL 923J

CE	BW	WW	YW	MK	TM	CEM	YG	CW	REA	MB	FPI
10	1.2	62	90	18	49	4	-0.3	32	0.75	0.05	65.32

If good bulls are backed by good cows, Lot 12 ranks near the top of the class. If you study the pedigrees through this catalog, you'll see PHG Z72 show up in quite a few of them. Numerous daughters and grand daughters have been retained in our herd over the years, and for good reason. They just flat work. Combining Paycheck with this cow is a no-brainer, giving you an extra shot of maternal power, while producing calves that will pound down the scale. Homo Black, Homo Polled.



**PHG JUMP START J26
SELLS AS LOT 13**

13

PHG JUMP START J26

PHGJ26 | AMGV1510907 | 2/28/2021 | PB 99.9% GELBVIEH

HOMOZYGOUS POLLED | DOUBLE BLACK

DVE DAVIDSON PAYDAY 59W
SIRE: PHG PAYCHECK C24
BEA 5038R

DDGR YUKON 172Z
DAM: PHG CARLY C56
PHG BOBBY SUE Z31

DVE DAVIDSON THAT 'B 4 4R
DVE DAVIDSON MS BK RRRAP 70P
LWHF FEARLESS
BEA 2006M

JKGF W95
DDGR SAHARA 141U
COLB MR XAVIER X812
MKT X78

Birth Wt
79
Adj WW
760
Dam NR
5/94

CE	BW	WW	YW	MK	TM	CEM	YG	CW	REA	MB	FPI
14	0	67	97	17	51	8	-0.17	28	0.59	0.25	75.02

Jump Start J26 is a Paycheck son that gives you a combination of calving ease, growth and performance, with maternal and marbling. 79 pounds at birth, exploding to 760 pounds at weaning, while still having the eye appeal to spice up a set of steer calves. His dam was awarded Dam of Merit in 2019, with 3 daughters still producing in the herd. Homo Polled, top 10% for Stayability and PG30; top 20% for CED, CEM, and Marbling.

14

PHG JOSE J57

PHGJ57 | AMGV1510933 | 3/8/2021 | PB 92.8% GELBVIEH

HOMOZYGOUS POLLED | DOUBLE BLACK

DVE DAVIDSON PAYDAY 59W
SIRE: PHG PAYCHECK C24
BEA 5038R

CCRO CAROLINA LEVERAGE 3214A
DAM: PHG MISS ELEGANCE E752 ET
VVGR ELEGANCE 716T

DVE DAVIDSON THAT 'B 4 4R
DVE DAVIDSON MS BK RRRAP 70P
LWHF FEARLESS
BEA 2006M

VRT LAZY TV SAM U451
CCRO BELLE OF THE BALL 1309Y
JCB LAZY TV BEECH JET R052ET
VVGR MISS 807R

Birth Wt
71
Adj WW
728
Dam NR
3/92

CE	BW	WW	YW	MK	TM	CEM	YG	CW	REA	MB	FPI
14	-0.7	67	88	15	48	7	-0.2	26	0.59	0.31	76.69

Lot 14 is another calving ease Paycheck option out of a great combination with a Carolina Leverage daughter, stemming from one of our most prolific donor females in 716T. J57 has the pedigree to produce females that you are going to want to retain for years. 71 pounds at birth, 728 at weaning.



MDR N.H. BLACK OUT 7412E
SIRE OF LOTS 15 & 16

15

PHG JUSTICE J46

PHGJ46 | AMGV1510969 | 3/5/2021 | PB 93% GELBVIEH

HOMOZYGOUS POLLED | DOUBLE BLACK

JKGF NEW HORIZON C51 ET
SIRE: MDR N.H. BLACKOUT 7412E
MDR BARBI 412B

CCRO CAROLINA EXCLUSIVE 1230Y
KCF MISS FORTUNE U490
MDR BLACK OUT 1339Y
MDR 725T

Birth Wt	74
Adj WW	700
Dam NR	1/91

PHG PAYCHECK C24
DAM: PHG PRAIRIE GINA DAVIS G79
KKC MS LAR Z3Y

DVE DAVIDSON PAYDAY 59W
BEA 5038R
DDGR LAREDO 154R
KKC MS POWER 118N

CE	BW	WW	YW	MK	TM	CEM	YG	CW	REA	MB	FPI
13	-1.5	58	86	20	49	7	-0.24	13	0.39	0.22	71.3

Last year our Black Out calves were one of our most popular sire groups. This year he decided to give us a slug of heifers, and only 2 bull calves - but boy are they good! J46 has heifer bull written all over him - 74 pounds at birth out of a first calver, 700 at weaning, and with the smooth shoulder and structure to let you get 8 hours of shut eye at calving. Paycheck on the cow side gives you that extra maternal punch you want as well. Top 15% for BW; top 30% for CED, CEM, HP, PG30, Stayability, YG, and Marbling.

17

PHG JAVIER J38

PHGJ38 | AMGV1510963 | 3/3/2021 | PB 93.6% GELBVIEH

HOMOZYGOUS POLLED | RED

RWG TRACTION 7412
SIRE: MCCA CORNHUSKER RED 524C
MCCA ZIVA Z24

RWG ROYAL RESERVE 5066
RWG NINE LIFE KITTY Z1N
KALA KALINA 0027X
GVC MARTHA W6

Birth Wt	80
Adj WW	737
Dam NR	1/95

RWG EXACT COMBINATION 7409
DAM: PHG MISS MARTINI G65
JMDS MISS MARTIN C17

RWG RIGHT COMBINATION 5506
RWG HADIE 3505
WOAK REVOLUTION 08T
JMDS REBA

CE	BW	WW	YW	MK	TM	CEM	YG	CW	REA	MB	FPI
12	-0.1	82	112	21	62	6	-0.13	39	0.52	0.21	82.64

When we were breeding cows last spring, we used 2 straws of Cornhusker Red, and ended up with 1 bull and 1 heifer calf. Looking at the cow side, using that ultra rare semen was an easy decision - mama is a half sister to Lot 1! Cornhusker, Exact Combination, and the C17 grand dam all in one pedigree - this guy was destined for greatness from the moment that straw was thawed out. 80 pounds at birth, 737 at weaning, and EPDs in the top 15% or better for WW, YW, TM, Stayability, CW, and FPI.

16

PHG JAFAR J77

PHGJ77 | AMGV1510908 | 3/14/2021 | PB 93% GELBVIEH

HOMOZYGOUS POLLED | BLACK

JKGF NEW HORIZON C51 ET
SIRE: MDR N.H. BLACKOUT 7412E
MDR BARBI 412B

CCRO CAROLINA EXCLUSIVE 1230Y
KCF MISS FORTUNE U490
MDR BLACK OUT 1339Y
MDR 725T

Birth Wt	70
Adj WW	742
Dam NR	5/101

RWG YIKES 1512
DAM: PHG ROSIE C58
PHG MISS PAYDAY Y03

PHG MR. WIZARD W27
VG VALLEY MISS TOUCH 61T
DVE DAVIDSON PAYDAY 59W
PHG SCARLETTE S11

CE	BW	WW	YW	MK	TM	CEM	YG	CW	REA	MB	FPI
12	1.1	68	101	21	56	6	-0.26	39	0.81	0.27	75.56

If you've ever toured through our cows, you've more than likely met our mascot "Rosie". There's a backstory that comes along with her, but we've only got so many pages to work with. The short story is that the combination of Yikes with Black Out really clicked. We actually looked at this guy as a black Denver bull, but kicked him out when we switched to red bulls. He's currently in the top 10% of the bulls for ADG, packing on the pounds at 4.12 pounds per day since weaning. Eye appeal, great pedigree, and EPDs in the top 20% for carcass and above breed average for almost all performance traits - we'll even include a free photo with Rosie!

18

PHG JAGUAR J97

PHGJ97 | AMGV1510930 | 3/24/2021 | PB 93.8% GELBVIEH

HOMOZYGOUS POLLED | HOMOZYGOUS BLACK

BLB GOODVIEW PLD DIPLOMAT
SIRE: BLB GOODVIEW GRINDER 39G
BLB GOODVIEW PLD WILMA 1W

BLB BLB GOODVIEW PLD BUD 2B
BLB GOODVIEW PLD HEATHER
EGL GARTH J040 ET
BLB GOODVIEW PLD 39P

Birth Wt	87
Adj WW	768
Dam NR	3/100

JKGF LWHF SUPER FLEX Z353
DAM: PHG MISS CARLY E57
PHG CARLY C56

JKGF REFLEX X4 ET
LWHF JKGF TWILA 353W ET
DDGR YUKON 172Z
PHG BOBBY SUE Z31

CE	BW	WW	YW	MK	TM	CEM	YG	CW	REA	MB	FPI
12	1.6	69	99	18	53	8	-0.35	24	0.58	0.13	71.99

Jaguar J97 is the first Grinder calf on offer this year and really crossed nicely with his Super Flex sired dam. We purchased Grinder as a replacement for Paycheck and his calves are definitely following in the same type and pattern that we're looking for. Take a look at J97 and you'll see the width, depth, and thickness we're breeding for.



**PHG JAVA J20
SELLS AS LOT 19**

19

PHG JAVA J20

PHGJ20 | AMGV1510937 | 2/26/2021 | PB 87.5% GELBVIEWH

HOMOZYGOUS POLLED | HOMOZYGOUS BLACK

SIRE: BLB GOODVIEW PLD DIPLOMAT
BLB GOODVIEW GRINDER 39G
BLB GOODVIEW PLD WILMA 1W

DAM: BABR DOMINANCE 4280B
PHG LADY EARL E96
VVGR MISS 92W ET

BLB BLB GOODVIEW PLD BUD 2B
BLB GOODVIEW PLD HEATHER
EGL GARTH J040 ET
BLB GOODVIEW PLD 39P
CTR CTR SANDHILLS 0065X
BEA CINDY LOU WHO ET
JOB DANELL DIAMOND SIX 41L
PHG PRAIRIE ESMORALDA E08

Birth Wt	88
Adj WW	790
Dam NR	3/101

CE	BW	WW	YW	MK	TM	CEM	YG	CW	REA	MB	FPI
8	1.3	62	89	18	48	4	-0.05	33	0.4	0.21	67.04

Lot 19 is a Grinder calf that we've had our eyes on all summer. Incredibly thick made, deep ribbed, and a quarter that will make you go "Whoa". His pedigree gives a lot of options for breeding, with Dominance on the top side, and his dam traces back to PHG Nitevision - a bull we raised way back in 1993. Whether you're looking to breed a group of Angus based cows, or you need some fresh blood for your Gelbvieh females, J20 brings a lot of answers to the table.

20

PHG JIMBO J105

PHGJ105 | AMGV1510981 | 4/2/2021 | PB 93.8% GELBVIEWH

DOUBLE POLLED | HOMOZYGOUS BLACK

SIRE: BLB GOODVIEW PLD DIPLOMAT
BLB GOODVIEW GRINDER 39G
BLB GOODVIEW PLD WILMA 1W

DAM: DVE DAVIDSON PAYDAY 59W
PHG LADY GAGA Z76
CVV MISS 58P

BLB BLB GOODVIEW PLD BUD 2B
BLB GOODVIEW PLD HEATHER
EGL GARTH J040 ET
BLB GOODVIEW PLD 39P
DVE DAVIDSON THAT 'B 4 4R
DVE DAVIDSON MS BK RRRAP 70P
WMM WEAVER LANCELOT 264L
PHG PRAIRIE ESMORALDA E08

Birth Wt	81
Adj WW	851
Dam NR	8/104

CE	BW	WW	YW	MK	TM	CEM	YG	CW	REA	MB	FPI
13	0.6	60	82	20	50	6	-0.1	20	0.32	0.48	75.45

J105 is one of the youngest bulls in the sale, but he's been keeping up with his older brothers and not missing a step. 81 pounds at birth, exploding to 851 pounds at weaning. This shouldn't be a surprise though with mama having a 104 weaning ratio over 8 calves. Here's another calf that traces back to Nitevision on the bottom side. A great combination of new genetics, coupled with proven cow power that has lasted nearly 30 years!



**PHG JAGGER J93
SELLS AS LOT 21**

21

PHG JAGGER J93

PHGJ93 | AMG1510920 | 3/21/2021 | PB 93.8% GELBVIEWH

HOMOZYGOUS POLLED | RED

BLB GOODVIEW PLD DIPLOMAT
SIRE: BLB GOODVIEW GRINDER 39G
 BLB GOODVIEW PLD WILMA 1W

BLB BLB GOODVIEW PLD BUD 2B
 BLB GOODVIEW PLD HEATHER
 EGL GARTH J040 ET
 BLB GOODVIEW PLD 39P

DDGR YUKON 17ZZ
DAM: PHG MISS AFTERGLOW D85
 PHG AFTERGLOW A30

JKGF W95
 DDGR SAHARA 141U
 RWG WHY ME 9515
 VVGR MISS 716P

Birth Wt
89
Adj WW
961
Dam NR
4/108

CE	BW	WW	YW	MK	TM	CEM	YG	CW	REA	MB	FPI
9	1.1	65	92	25	58	7	-0.14	30	0.52	0.46	76.74

Jagger is our heaviest weaning calf on offer this year, tipping the scales at an incredible 961 pound adjusted weaning weight, for a 124 ratio. Mama has a 108 weaning ratio over 4 calves, so she's no stranger to raising a whopper like this! She's actually a 2 time Dam of Merit - a pretty impressive feat for a young cow like this. These Grinder calves really put all the pieces together nicely - long sided, deep middled, and a great hip and quarter. Top 20% for Milk, and top 3% for marbling!

22

PHG JAMOCHA J29

PHGJ29 | AMG1510928 | 3/1/2021 | PB 93.8% GELBVIEWH

HOMOZYGOUS POLLED | BLACK

BLB GOODVIEW PLD DIPLOMAT
SIRE: BLB GOODVIEW GRINDER 39G
 BLB GOODVIEW PLD WILMA 1W

BLB BLB GOODVIEW PLD BUD 2B
 BLB GOODVIEW PLD HEATHER
 EGL GARTH J040 ET
 BLB GOODVIEW PLD 39P

WRS SILENT STAN 20S
DAM: PHG MISS NELL E49
 PHG BLACK NELL B24

DCSF POST ROCK TOP BRASS ET
 RWG MS JACKIE 19L
 RWG YIKES 1512
 MKT X78

Birth Wt
85
Adj WW
667
Dam NR
3/86

CE	BW	WW	YW	MK	TM	CEM	YG	CW	REA	MB	FPI
12	0.9	48	68	15	39	5	-0.21	13	0.28	0.19	60.34

Lot 22 is another really nice Grinder son, coming from a very moderate framed Silent Stan daughter. Mama is actually a sister to the Lot 9 bull, tracing back to the great B24 Yikes daughter that is the cornerstone of Emerson's young program. With the maternal power behind this guy, he's going to leave the type of females you can build, or rebuild, a herd with.



BLB GOODVIEW GRINDER 39G
SIRE OF LOTS 18-24



CMR CONSENSUS 60G
SIRE OF LOTS 25-27

23

PHGJ59 | AMGV1510979 | 3/9/2021 | PB 93.8% GELBVIEW

HOMOZYGOUS POLLED | **HOMOZYGOUS BLACK**

BLB GOODVIEW PLD DIPLOMAT
SIRE: BLB GOODVIEW GRINDER 39G
BLB GOODVIEW PLD WILMA 1W

COLB MR XAVIER X812
DAM: PHG BOBBY SUE Z31
MKT X78

BLB BLB GOODVIEW PLD BUD 2B
BLB GOODVIEW PLD HEATHER
EGL GARTH J040 ET
BLB GOODVIEW PLD 39P
OZZ EXT GOVERNOR 3N
RACA MS RED MAPLE 812U
TOG TWIN OAK DIRECTION 81S
MKT 10S

Birth Wt
86
Adj WW
834
Dam NR
8/104

Homo black and Homo polled, this Grinder son out of the Z31 Xavier cow is another deep middled beef machine. You'll really appreciate the thickness and capacity of this bull, while knowing he's got the genetics to give you options for bulls, steers, or females. Mama has awards to rival an NDSU trophy case - Dam of Merit in 2016, 2017, 2018, 2019, and 2020. And then to top things off, she achieved Dam of Distinction in 2021 - putting her in the top 1% of cows in the Gelbvieh breed! There aren't many bulls selling that can make that kind of claim!

24

PHGJ90 | AMGV1510906 | 3/18/2021 | PB 93.8% GELBVIEW

HOMOZYGOUS POLLED | **HOMOZYGOUS BLACK**

BLB GOODVIEW PLD DIPLOMAT
SIRE: BLB GOODVIEW GRINDER 39G
BLB GOODVIEW PLD WILMA 1W

COLB MR XAVIER X812
DAM: PHG MISS XAVIER C509 ET
MCFG 153R

BLB BLB GOODVIEW PLD BUD 2B
BLB GOODVIEW PLD HEATHER
EGL GARTH J040 ET
BLB GOODVIEW PLD 39P
OZZ EXT GOVERNOR 3N
RACA MS RED MAPLE 812U
GKG STORM 225M
MCFG 33J ET

Birth Wt
89
Adj WW
737
Dam NR
5/98

CE	BW	WW	YW	MK	TM	CEM	YG	CW	REA	MB	FPI
9	2.8	58	82	20	49	6	-0.24	8	0.18	0.21	64.27

Jeter, like the ball player, has that something extra that makes him special. Is it the way he carries himself through the pen, the added length of spine, or the width over his top? Maybe it's the maternal stacked pedigree tracing back to 153R - the most prolific embryo producer at PHG - that sets him apart? Whatever it is, you're sure to find this guy in the pen!

25

PHGJ23 | AMGV1510975 | 2/27/2021 | PB 99.9% GELBVIEW

HOMOZYGOUS POLLED | **RED**

BNC AT EASE A357
SIRE: CMR CONSENSUS 60G
CMR 82A

RWG EXACT COMBINATION 7409
DAM: PHG MISS BAILEY G99
DCHD BAILEY'S GIRL 261Y

VRT LAZY TV SAM U451
BNC MISS HOJER Y045
PLA BIG DOG 101Y
CMR SUZIE 270W
RWG RIGHT COMBINATION 5506
RWG HADIE 3505
DCH HILLE T504 TREMOR ET
DCHD BAILEY'S GIRL 122U

Birth Wt
81
Adj WW
736
Dam NR
1/95

CE	BW	WW	YW	MK	TM	CEM	YG	CW	REA	MB	FPI
11	1.1	69	100	28	62	6	-0.22	27	0.67	0.02	69.7

Jabroni is the first Consensus son this year, and he combines two of our newest sire groups - Consensus on the top side, and a first calving Exact Combination daughter on the bottom. We bred Consensus to a handful of heifers to test his calving ease, and the unassisted 81 pound calf was the proof we needed. Dark red in color, he's got the EPDs to put him in the upper ranks of the breed for the money making traits. The maternal strength of EC on the bottom just helps to seal the deal.



**PHG JAY J39
SELLS AS LOT 26**



**PHG JEFFERSON J51
SELLS AS LOT 27**

26

PHG JAY J39

PHGJ39 | AMGV1510900 | 3/3/2021 | PB 99.9% GELBVIEH

HOMOZYGOUS POLLED | HOMOZYGOUS BLACK

BNC AT EASE A357
SIRE: CMR CONSENSUS 60G
CMR 82A

VRT LAZY TV SAM U451
BNC MISS HOJER Y045
PLA BIG DOG 101Y
CMR SUZIE 270W
DVE DAVIDSON THAT 'B 4 4R
DVE DAVIDSON MS BK RRRAP 70P
PHG FIGHTING IRISH N07
PHG PRAIRIE PRINCESS P02

Birth Wt
81
Adj WW
799
Dam NR
5/104

DVE DAVIDSON PAYDAY 59W
DAM: PHG CASH COW C18
PHG SHEENA S19

CE	BW	WW	YW	MK	TM	CEM	YG	CW	REA	MB	FPI
14	1	64	97	29	62	6	-0.31	35	0.84	0.13	71.34

Rugged good looks, good with numbers, and setup to make you money - you'd think we named this guy after our auctioneer! This homo black and polled Consensus son is the spitting image of his sire - smooth and straight in his lines with a deep thick quarter. His dam is a 3 time Dam of Merit, an impressive feat since she's only been eligible for 3 years! That shouldn't be surprising with Payday and Fighting Irish in her pedigree. Top 15% or better for Milk, TM, PG30, YG, REA, and Fat!

27

PHG JEFFERSON J51

PHGJ51 | AMGV1510891 | 3/6/2021 | PB 99.9% GELBVIEH

HOMOZYGOUS POLLED | DOUBLE BLACK

BNC AT EASE A357
SIRE: CMR CONSENSUS 60G
CMR 82A

VRT LAZY TV SAM U451
BNC MISS HOJER Y045
PLA BIG DOG 101Y
CMR SUZIE 270W
KCF BENNETT KINGPIN K403
RLBG TAMARA N006
FHG FLYING H FORTUNE 100S
CRAN MISS ALERT N323

Birth Wt
80
Adj WW
800
Dam NR
7/105

WOAK REVOLUTION 08T
DAM: JMDS MISS GOOD LOOKING
CRAN W962

CE	BW	WW	YW	MK	TM	CEM	YG	CW	REA	MB	FPI
16	0.6	73	106	31	67	8	-0.23	32	0.66	0.04	74.87

Lot 27 is the last Consensus son on offer this year. Another calf that we've had our eye on all summer. He's been an eye catcher out on grass while standing along his 5 time Dam of Merit mama. Like the other Consensus sons, he's exceptionally smooth made and long sided. He stands in the top 1% for Milk; 3% for TM; 10% for CED; 25% for WW, YW, CEM, PG30, DOC, DMI, and Fat.



**PHG JUST DO IT J120
SELLS AS LOT 28**

28

PHGJ120
AMGV1520311
2/26/2021
PB 93.8% GELBVIEWH

HOMOZYGOUS POLLED
BLACK

Birth Wt
84
Adj WW
937
Dam NR
6/106

SIRE: BABR DOMINANCE 4280B
PHG EMINENCE E02
DDN BELLY RIVER AMBER 56A

DAM: RWG YIKES 1512
PHG BETTY B57
DCH HILLE Y105

CTR CTR SANDHILLS 0065X
BEA CINDY LOU WHO ET
FLAD FLADELAND DRACULA 57Y
DDN BELLY RIVER RAMONA 5108R
PHG MR. WIZARD W27
VG VALLEY MISS TOUCH 61T
DCH HILLE T266 TYE
DCH HILLE W129 WINNER

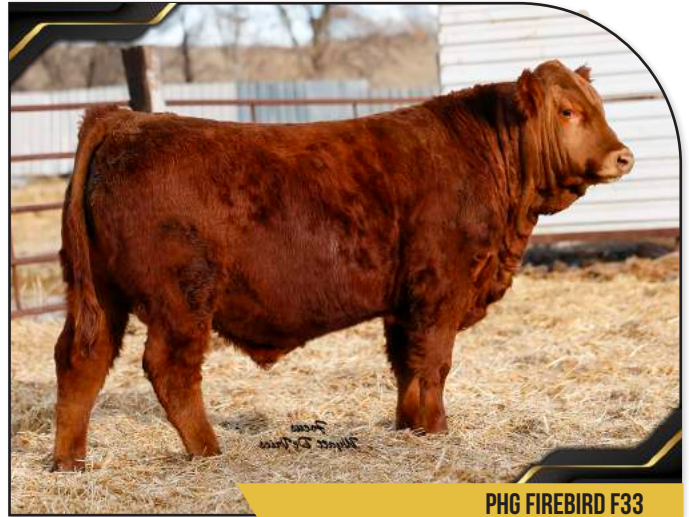
CE	BW	WW	YW	MK	TM	CEM	YG	CW	REA	MB	FPI
11	1.5	86	122	20	64	4	-0.11	42	0.69	0.32	85.59

Never before has a bull received 2 pages in our sale catalog, but J120 isn't your normal bull. We made the statement in 2018 when Eminence won the bull futurity at NWSS that he was the best bull raised at PHG. Well I'd like to introduce you to the best Eminence son that we've seen so far, potentially even better than his sire! His dam may be one of the best cows to walk the pastures at PHG - a Dam of Merit in 2018, 2019, 2020, and 2021, and take a look at her progeny listed on the next page. Every red bull calf that she had has topped our sale that year. Her two daughters have headlined and topped our female sale over the past 2 years, with a 3rd daughter being the anchor to our national champion pen of heifers, and being our newest donor female. Which brings us to "Just Do It". 84 pounds at birth, and a scale busting 937 pounds at weaning - he continues to get better every day. Check out the numbers on this guy, top 2% for WW; 5% for CW, and FPI; 10% for YW, and Scrotal; and 20% for TM, Stayability, and Marbling. **SALE TERMS WILL BE ANNOUNCED CLOSER TO SALE DAY, CONTACT US FOR MORE DETAILS!**

PROGENY OF PHG BETTY B57



PHG DA VINCI D52
SIRE FOR GUSTIN DIAMOND D



PHG FIREBIRD F33
SIRE FOR HOPFER FAMILY - H4 RANCH



PHG BETTY GRABLE G41
DONOR FOR PHG



PHG HOMEGIRL 04H ET
HIGH SELLER IN 2020 FEMALE SALE



PHG HOMEGIRL 06H ET
HIGH SELLER IN 2021 FEMALE SALE




- ARROWQUIP REPRESENTATIVE
- FREEZE BRANDING
- SALE PREPARATION
- GENERAL LIVESTOCK WORK

CHRIS "CHEECH" HOLZNAGEL
(701) 400.2900



**PHG JUSTIFIED J58
SELLS AS LOT 29**

29

PHG JUSTIFIED J58

PHGJ58 | AMGV1510944 | 3/8/2021 | 50% BALANCER

HOMOZYGOUS POLLED

DOUBLE BLACK

SIRE: MAY-WAY BREAKOUT 1310
HF ALCATRAZ 60F
HF MAYFLOWER 191Z

DAM: DCHD GBG DOZER 039D
PHG MISS BRITTANY F61
PHG BRITTANY B219 ET

AVF BREAKOUT 5409
MAY-WAY BANDO 086
HF TIGER 5T
HF MAYFLOWER 78P
DVE DAVIDSON MCGRAW 21B
DCHD GOLDEN BUCKLE GELV 039Z
JCB LAZY TV BEECH JET R052ET
CVV MISS 58P

Birth Wt
80
Adj WW
769
Dam NR
2/97

Lot 29 is one of the first black Balancers that we've offered for sale. We've had a lot of requests for outcross Balancer bulls, so we began searching for an Angus bull that would fit our operation. We landed on HF Alcatraz, the \$200,000 bull sold by Hamilton Farms in Canada that was the talk of Denver in 2019 and 2020. You have to appreciate the look of J58 - wedge shaped, deep middle, with a powerful rear 1/3. He's done great at the feed bunk as well, putting up an ADG of 4.08 since weaning, or top 10% of the entire bull offering. We look forward to landing more calves like him this spring!

CE	BW	WW	YW	MK	TM	CEM	YG	CW	REA	MB	FPI
10	0	69	105	24	59	3	-0.11	35	0.69	0.05	71

30

PHG JACOBY J13

PHGJ13 | AMGV1510883 | 2/25/2021 | PB 87.5% GELBVIEH

HOMOZYGOUS POLLED

BLACK

SIRE: RWG RIGHT COMBINATION 5506
RWG EXACT COMBINATION 7409
RWG HADIE 3505

DAM: RWG TRACTION 7412
MCCA CLARICE 58C
MCCA MISS X8 OF U4

RWG WAR ADMIRAL 2528
SLC LORA 164Y
RWG XTREME TRACTION 0521
RWG YES HADIE 1508
RWG ROYAL RESERVE 5066
RWG NINE LIFE KITTY 21N
MYTTY IN FOCUS
MCCA UNITY U4 OF S20

Birth Wt
76
Adj WW
661
Dam NR
5/88

CE	BW	WW	YW	MK	TM	CEM	YG	CW	REA	MB	FPI
15	-3.2	62	88	14	45	8	-0.16	20	0.41	0.12	72.3

J13 is a black Exact Combination son that combines the calving ease of Clarice 58C, with the depth and growth of Exact Combination. Clarice is best known as the dam of Ivanka E01, the high selling female at the ND Golden Rule that sold to Kittle and French Farms. She's probably one of the easiest fleshing females in the herd and is a paternal sister to Cornhusker Red. She's passed on her fleshing ability, with J13 posting a 4.10 ADG since weaning, placing him in the top 10% of the bull offering. If you're looking for a different option to breed your heifers to, without sacrificing performance or fleshing ability, pay close attention to Lot 30.

31

PHG JOLT J25

PHGJ25 | AMGV1510892 | 2/28/2021 | PB 99.9% GELBVIEH

HOMOZYGOUS POLLED

BLACK

SIRE: RWG RIGHT COMBINATION 5506
RWG EXACT COMBINATION 7409
RWG HADIE 3505

DAM: DVE DAVIDSON PAYDAY 59W
PHG PRAIRIE ALVIRA A31
MKT X78

RWG WAR ADMIRAL 2528
SLC LORA 164Y
RWG XTREME TRACTION 0521
RWG YES HADIE 1508
DVE DAVIDSON THAT 'B 4 4R
DVE DAVIDSON MS BK RRRAP 70P
TOG TWIN OAK DIRECTION 81S
MKT 10S

Birth Wt
88
Adj WW
767
Dam NR
7/103

CE	BW	WW	YW	MK	TM	CEM	YG	CW	REA	MB	FPI
11	1.2	72	97	21	57	4	-0.09	31	0.33	0.13	72.33

Here is another black EC son that should grab your attention. Every one of these Exact Combination calves are like peas in a very good looking pod. Smooth made off their front end, soft middle, and they all have that EC hip and quarter to them. J25's dam has been one of our most consistent females over the years, proven by her 103 weaning ratio over 7 calves. She's had 2 bull calves make the trip to Denver as pen bulls, so breeding her to EC was a no-brainer. You can bid with confidence on this guy!



**PHG JACK DANIEL'S J02
SELLS AS LOT 32**

32

PHG JACK DANIEL'S J02

PHGJ02 | AMGV1510948 | 2/20/2021 | PB 88.1% GELBVIEWH

HOMOZYGOUS POLLED

RED

SIRE: RWG RIGHT COMBINATION 5506
RWG EXACT COMBINATION 7409
RWG HADIE 3505

DAM: CRAN CRANVIEW SANDHILLS D58 ET
CRAN FAYE F822
CRAN CRAN Y133

RWG WAR ADMIRAL 2528
SLC LORA 164Y
RWG XTREME TRACTION 0521
RWG YES HADIE 1508
CTR CTR SANDHILLS 0065X
DCH HILLE ZULA Z133
CRAN FINAL ANSWER W24 ET
JHL LCC ISCHEL LN017

Birth Wt
88
Adj WW
829
Dam NR
2/105

Talk about a cow that is quickly working her way into the donor pen! Faye F822 is best known for knocking it out of the park on her first calf - the \$31,000 PHG Hamilton H13 bull that sold through this sale last spring. Not to be outdone, she stepped up and dropped this stud Exact Combination calf this year. We've seen more Exact Combination calves than anyone in the country, and I'm going to make the bold statement that this guy could be the best one, and a few that have seen him say he is better than his old man. Super sound, complete, and smooth - while being an absolute meat wagon. Jack has that same "Look at Me" presence that his brother and his sire have, and would have been the lead off bull in our Denver pen. Red purebred bulls are hard to find, good ones are even harder - here's your chance to take home a great one!

SELLING FULL POSSESSION, 1/2 SEMEN INTEREST.

CE	BW	WW	YW	MK	TM	CEM	YG	CW	REA	MB	FPI
9	2.6	87	119	19	63	4	-0.04	50	0.57	0.01	75.82

33

PHG JOKER J106

PHGJ106 | AMGV1510897 | 4/3/2021 | PB 99.9% GELBVIEWH

HOMOZYGOUS POLLED

BLACK

SIRE: RWG RIGHT COMBINATION 5506
RWG EXACT COMBINATION 7409
RWG HADIE 3505

PHG FARGO Z65
DAM: PHG KYLEE'S KATIE B68
PHG BOBBY SUE Z31

RWG WAR ADMIRAL 2528
SLC LORA 164Y
RWG XTREME TRACTION 0521
RWG YES HADIE 1508
KTHU EL PASO
PHG WISHFUL THINKING W06
COLB MR XAVIER X812
MKT X78

Birth Wt
71
Adj WW
765
Dam NR
6/103

CE	BW	WW	YW	MK	TM	CEM	YG	CW	REA	MB	FPI
13	-0.4	68	86	22	56	8	-0.27	21	0.4	0.29	77.03

This homo polled, black son of Exact Combination is brought to us by Miss Kylee Sickler. We've started to let the kids handle their own breeding decisions, and Kylee was certain she needed to breed Katie to EC. If she keeps breeding them like this, she might be picking out bulls for us soon too! 71 pounds at birth, 765 at weaning, and he keeps getting better every day. This guy is going to be more moderate framed than his pen mates, but keep in mind he's also one of the youngest calves in the sale. Check out his profile and the depth and thickness he already has, he's just going to get better as he matures. Mama was a Dam of Merit in 2018, 2019, 2020, 2021.

34

PHG JESSE J19

PHGJ19 | AMGV1510976 | 2/26/2021 | PB 99.9% GELBVIEWH

HOMOZYGOUS POLLED

RED

SIRE: RWG RIGHT COMBINATION 5506
RWG EXACT COMBINATION 7409
RWG HADIE 3505

PHG WOMANIZER W24
DAM: PHG PHG KYLEE'S Y52
PHG TANA T63

RWG WAR ADMIRAL 2528
SLC LORA 164Y
RWG XTREME TRACTION 0521
RWG YES HADIE 1508
ELK CK FORMULA 957S
MCFG 153R
PHG FIGHTING IRISH N07
PHG PRAIRIE PRINCESS P02

Birth Wt
81
Adj WW
674
Dam NR
8/101

CE	BW	WW	YW	MK	TM	CEM	YG	CW	REA	MB	FPI
12	1.2	72	96	21	57	8	-0.2	37	0.55	0.01	70.06

Lot 34 is a red homo polled son of EC that combines two very strong maternal pedigrees on his mothers side - Womanizer and Fighting Irish. Womanizer was a red son of Formula that we retained and were only able to walk for 2 years before he got hurt and had to be replaced. We don't have many daughters left in the herd from him as a result, but the ones that are here are darn good. We've started using Fighting Irish in our AI program since those daughters consistently bring in some of our best calves. Stacking these two sires with EC produces a bull that checks a lot of boxes!



**PHG JUDD HOOS J99
SELLS AS LOT 35**

35

PHG JUDD HOOS J99

PHGJ99 | AMGV1510879 | 3/25/2021 | PB 93.8% GELBVIEH

HOMOZYGOUS POLLED | RED

SIRE: RWG RIGHT COMBINATION 5506
RWG EXACT COMBINATION 7409
RWG HADIE 3505

DAM: JRI MS PRESTO 282B41
JRI MS FRANKIE 282R11

RWG WAR ADMIRAL 2528
SLC LORA 164Y
RWG XTREME TRACTION 0521
RWG YES HADIE 1508
JRI POP A TOP 197T83
JRI MS GRAND CANYON 282S2
JRI EXTRA EXPOSURE 285L71 ET
JRI MS NEW & IMPROVED 282L9

Birth Wt	87
Adj WW	893
Dam NR	6/108

CE	BW	WW	YW	MK	TM	CEM	YG	CW	REA	MB	FPI
13	1.1	86	126	20	64	5	-0.14	51	0.82	-0.06	77.55

Here comes the meat wagon! If you are looking for an EC son with extra length of body, depth of chest, and that nice long hip - you've found your bull. Another calf that made friends at our open house this summer, you can't help but appreciate the amount of beef that J99 packs onto his skeleton. Mama has raised 6 calves now for a 108 weaning ratio. More impressive is this guys 893 pound weaning weight for a 114 ratio of his own. Top 10% or better for WW, YW, TM, CW, and REA.

37

PHG JUSTIN J56

PHGJ56 | AMGV1510926 | 3/8/2021 | PB 93.8% GELBVIEH

HOMOZYGOUS POLLED | RED

SIRE: RWG RIGHT COMBINATION 5506
RWG EXACT COMBINATION 7409
RWG HADIE 3505

DAM: PHG PRAIRIE SWEET HEART E36
FLAD FLADELAND LADY A 11X

RWG WAR ADMIRAL 2528
SLC LORA 164Y
RWG XTREME TRACTION 0521
RWG YES HADIE 1508
CTR CTR SANDHILLS 0065X
BEA CINDY LOU WHO ET
JDPD ASTRO 407S
FLAD BEACH GIRL 43R

Birth Wt	79
Adj WW	829
Dam NR	3/105

CE	BW	WW	YW	MK	TM	CEM	YG	CW	REA	MB	FPI
11	1.4	76	106	19	57	6	-0.15	36	0.62	0.17	76.06

Another red EC son! 79 pounds at birth, 829 at weaning, and a pedigree loaded with Dominance and Astro - he should get some attention! His grand dam was purchased as the Sweetheart Futurity Champion at Agribition in 2012 and has left some very good daughters behind - like J56's dam who carries a 105 weaning ratio over 3 calves and became a Dam of Merit in her first year eligible. Top 25% or better for WW, YW, PG30, CW, and FPI.

36

PHG JOURNEY J48

PHGJ48 | AMGV1510872 | 3/6/2021 | PB 99.9% GELBVIEH

HOMOZYGOUS POLLED | RED

SIRE: RWG RIGHT COMBINATION 5506
RWG EXACT COMBINATION 7409
RWG HADIE 3505

DAM: KHR 53T
KHR 063X
KHR 736T

RWG WAR ADMIRAL 2528
SLC LORA 164Y
RWG XTREME TRACTION 0521
RWG YES HADIE 1508
KIT TABASCO J26 ET
KHR 142L
JRI FULLY EXPOSED 270N83
KHR 241M

Birth Wt	85
Adj WW	764
Dam NR	10/100

CE	BW	WW	YW	MK	TM	CEM	YG	CW	REA	MB	FPI
9	1.7	74	106	24	61	4	-0.25	30	0.54	0.08	72.66

We call J48's dam "Monica" around here, but we should change it to "Old Reliable". 10 calves for an even 100 ratio. That's pretty darn impressive when you think about it. Calves like J48, and cows like his dam, are what keep all of us in business. They bring in a good one every year, the calves come easy and grow like kochia in a ND drought, and then move down the stream to their next home. Longevity is one of the most profitable traits in the livestock business, so to find a bull from a proven older cow - that's a trait you want to bring home. Be sure to find this guy on sale day.

38

PHG JUDAH J79

PHGJ79 | AMGV1522764 | 3/15/2021 | 50% BALANCER

HOMOZYGOUS POLLED | RED

SIRE: RWG RIGHT COMBINATION 5506
RWG EXACT COMBINATION 7409
RWG HADIE 3505

DAM: PHG BRNDINA 804F
RED WILBAR BRNDINA 638S

RWG WAR ADMIRAL 2528
SLC LORA 164Y
RWG XTREME TRACTION 0521
RWG YES HADIE 1508
LJRA LSF SAGA 1040Y
PIE PLAYMATE 232
RED TER-RON TORNADO 157M
RED LAZY MC BRNDINA 15E

Birth Wt	60
Adj WW	716
Dam NR	2/95

CE	BW	WW	YW	MK	TM	CEM	YG	CW	REA	MB	FPI
19	-4.8	60	74	21	51	10	-0.07	9	0.2	0.18	75.22

Here's something a little different - a 50% Balancer son from Exact Combination. Our Red Angus cows all get bred AI, and then are exposed to a red Gelbvieh bull. Well this guys mama is one of the prettiest Red Angus cows you'll find, and she gave us this 60 pound Balancer calf who went on to wean off at 716 pounds! If you've got a group of cows or heifers that need some calving ease, as well as a shot of hybrid vigor, take a hard look at this guy. Very sweet profiling, masculine fronted, but still has that EC hip and quarter to him. Top 2% for CED and BW; Top 10% for CEM and Stayability!



PHG JOHN WAYNE J32
BROTHER TO LOTS 39-44
RETAINED BY PHG AS NEW HERD SIRE

39

PHG JACKO J110

PHGJ110 | AMGV1510949 | 4/8/2021 | PB 99.9% GELBVIEH

HOMOZYGOUS POLLED | BLACK

DVE DVE DAVIDSON THE GIFT 110B
SIRE: DVE DAVIDSON HOWARD 3E
 DVE DAVIDSON MS SECRET 44B

DVE DVE DAVIDSON JUMPSTART 44X
 DVE DVE DAVIDSON MS MARK 92U
 STON STON SECRET WEAPON 6S
 DVE DAVIDSON MS MAMBO 16W

DDN DIRT ROAD 71D
DAM: PHG MISS FUSION F83
 PHG DOC DEBBIE D36

JRI PETERBILT 282B31 ET
 DDN BELLY RIVER ZED-X 230Z
 DDGR YUKON 172Z
 DCHD GOLDEN BUCKLE GELV 075Y

Birth Wt	80
Adj WW	784
Dam NR	2/105

CE	BW	WW	YW	MK	TM	CEM	YG	CW	REA	MB	FPI
12	0.6	76	105	21	59	4	-0.13	40	0.73	0.13	75.96

Jacko J110 is the first of the Howard calves this year, and this homo polled black bull should make your list. Like all of the Howards, he's incredibly long spined and thick made. Mama is a Dirt Road daughter who's heifer calf last year scanned a 4.6 IMF, so don't let his carcass numbers fool you either. On paper he's easy to like, in the top 30% or better for WW, YW, TM, HP, PG30, Stayability, CW, and REA.

41

PHG JORDAN J68

PHGJ68 | AMGV1510936 | 3/12/2021 | PB 93.8% GELBVIEH

DOUBLE POLLED | RED

DVE DVE DAVIDSON THE GIFT 110B
SIRE: DVE DAVIDSON HOWARD 3E
 DVE DAVIDSON MS SECRET 44B

DVE DVE DAVIDSON JUMPSTART 44X
 DVE DVE DAVIDSON MS MARK 92U
 STON STON SECRET WEAPON 6S
 DVE DAVIDSON MS MAMBO 16W

DTKF EMOTIONS SUCKER PUNCH
DAM: PHG PRAIRIE EVIE E84
 PHG PHG RUBY Y46

BABR CY 808U ET
 DTKF FAITH'S EMOTION 116U ET
 CVV MR 08U
 CVV MISS 57P ET PRAIRIEJEWEL

Birth Wt	72
Adj WW	760
Dam NR	3/105

CE	BW	WW	YW	MK	TM	CEM	YG	CW	REA	MB	FPI
9	2.7	74	107	22	59	2	-0.24	40	0.75	0.02	69.62

Jordan comes from a young Dam of Merit female that really put down the hammer on this calf. The bottom side of her pedigree chases back to the Prairie Jewel and Nite Vision breeding that we've mentioned on other lots. The powerful influence of those older genetics, combined with newer sires like Sucker Punch and Howard, really combined into something special in the J68 bull. Top 25% or better for WW, YW, TM, Scrotal, CW, and Fat.

40

PHG JAZZ J37

PHGJ37 | AMGV1510909 | 3/3/2021 | PB 99.9% GELBVIEH

DOUBLE POLLED | RED

DVE DVE DAVIDSON THE GIFT 110B
SIRE: DVE DAVIDSON HOWARD 3E
 DVE DAVIDSON MS SECRET 44B

DVE DVE DAVIDSON JUMPSTART 44X
 DVE DVE DAVIDSON MS MARK 92U
 STON STON SECRET WEAPON 6S
 DVE DAVIDSON MS MAMBO 16W

NGC X RATED 84X
DAM: PHG CINDI C70
 PHG PHG KYLEE'S Y52

CK UNDERCOVER AGENT 7U
 SLC ANITA 124J ET
 PHG WOMANIZER W24
 PHG TANA T63

Birth Wt	89
Adj WW	778
Dam NR	5/98

CE	BW	WW	YW	MK	TM	CEM	YG	CW	REA	MB	FPI
10	2	93	132	17	64	5	-0.23	45	0.82	-0.03	80.12

J37 caught our eye earlier this summer - for a year with not much grass and a long walk to water, this guy seemed to be packing on the pounds from eating dirt and rocks. I don't know how he got it done, but he darn sure got after it. These Howard sons all pattern so similar, it's hard to not sound like a broken record. Long spined, performance based, smooth patterned sums up the group as a whole. Here's a great option for those Red Angus based females that needs a little performance punch without sacrificing phenotype. Top 1% for WW; 2% for YW; 3% for CW; and 10% for TM, Scrotal, and Fat.

42

PHG JONAH J72

PHGJ72 | AMGV1510935 | 3/13/2021 | PB 99.9% GELBVIEH

HOMOZYGOUS POLLED | RED

DVE DVE DAVIDSON THE GIFT 110B
SIRE: DVE DAVIDSON HOWARD 3E
 DVE DAVIDSON MS SECRET 44B

DVE DVE DAVIDSON JUMPSTART 44X
 DVE DVE DAVIDSON MS MARK 92U
 STON STON SECRET WEAPON 6S
 DVE DAVIDSON MS MAMBO 16W

RWG YIKES 1512
DAM: PHG PRAIRIE EVE E81
 PHG COUNTESS C71

PHG MR. WIZARD W27
 VG VALLEY MISS TOUCH 61T
 DTKF EMOTIONS SUCKER PUNCH
 VVGR MISS 92W ET

Birth Wt	80
Adj WW	837
Dam NR	3/106

CE	BW	WW	YW	MK	TM	CEM	YG	CW	REA	MB	FPI
9	0.9	80	115	21	61	2	-0.2	44	0.72	-0.12	71.35

Another Howard son out of a 1st ballot Dam of Merit female. This is a calf that will be easy to find on sale day! He's got the signature stamp of Howard in his length of body, smoothness of his shoulder, and the thickness he carries from his chest into his quarter. Mama might be one of the easiest fleshing red cows in the herd and she's certainly passed that on to her calf. Study the paper and you'll see an 80 pound BW, exploding to 837 at weaning. EPDs put him in the top 25% or better for WW, YW, TM, Scrotal, CW, and Fat.



DVE DAVIDSON HOWARD 3E
SIRE OF LOTS 39-44

43

PHG JORDY J86

PHGJ86 | AMGV1510977 | 3/17/2021 | PB 99.9% GELBVIEWH

HOMOZYGOUS POLLED | RED

SIRE: DVE DVE DAVIDSON THE GIFT 110B
DVE DAVIDSON HOWARD 3E
DVE DAVIDSON MS SECRET 44B

DVE DVE DAVIDSON JUMPSTART 44X
DVE DVE DAVIDSON MS MARK 92U
STON STON SECRET WEAPON 6S
DVE DAVIDSON MS MAMBO 16W

DAM: PHG WOMANIZER W24
PHG MISS EUNICE Z12
VG VALLEY MISS EUNICE 21X

ELK CK FORMULA 957S
MCFG 153R
VG VALLEY PLD BLACKBIRD 33M
VG VALLEY MISS UNI 12U

Birth Wt	81
Adj WW	890
Dam NR	8/99

CE	BW	WW	YW	MK	TM	CEM	YG	CW	REA	MB	FPI
13	-1	80	113	20	60	5	-0.24	45	0.76	-0.04	77.14

I wish I could have gotten a good picture of this guy standing by his mother this summer. Z12 is the poster child for moderate framed, tanky bodied cows. To wean this monster off at 890 pounds, and then turn around and breed back inside a 365 day interval is pretty impressive! Even more so when you consider the drought conditions she did it in. The Howard calves continue to impress us with their growth and conversion, while the daughters are proving to be great mothers as well. Top 25% or better for BW, WW, YW, TM, HP,

45

PHG JIM BOB J08

PHGJ08 | AMGV1510940 | 2/25/2021 | PB 93.8% GELBVIEWH

HOMOZYGOUS POLLED | DOUBLE BLACK

SIRE: BABR DOMINANCE 4280B
PHG EMINENCE E02
DDN BELLY RIVER AMBER 56A

CTR CTR SANDHILLS 0065X
BEA CINDY LOU WHO ET
FLAD FLADELAND DRACULA 57Y
DDN BELLY RIVER RAMONA 5108R

DAM: RWG YIKES 1512
PHG MISS TOOTSIE F16
PHG MISS TOOTSIE Z72

PHG MR. WIZARD W27
VG VALLEY MISS TOUCH 61T
RWG WHY ME 951S
PHG TOOTSIE T54

Birth Wt	71
Adj WW	680
Dam NR	2/92

CE	BW	WW	YW	MK	TM	CEM	YG	CW	REA	MB	FPI
15	-4	48	66	18	42	7	-0.08	18	0.35	0.26	68.37

If you're needing a black hided heifer bull, and want a little different pedigree, take a good look at Lot 45. This Eminence sired calf combines 3 bulls that we've used successfully on heifers - Eminence, Why Me, and Yikes. His 71 pound BW and top 1% CE and BW EPDs tell me that you're not getting out of any piano or dance recitals next spring so you can watch heifers. More importantly, those daughters are going to be the money making kind, with a top 1% Stayability EPD, and CEM, HP, and PG30 all in the top 25%.

44

PHG JIGSAW J89

PHGJ89 | AMGV1510927 | 3/18/2021 | PB 99.9% GELBVIEWH

HOMOZYGOUS POLLED | RED

SIRE: DVE DVE DAVIDSON THE GIFT 110B
DVE DAVIDSON HOWARD 3E
DVE DAVIDSON MS SECRET 44B

DVE DVE DAVIDSON JUMPSTART 44X
DVE DVE DAVIDSON MS MARK 92U
STON STON SECRET WEAPON 6S
DVE DAVIDSON MS MAMBO 16W

DAM: WRS SILENT STAN 20S
PHG MISS TOOTSIE E47
PHG MISS TOOTSIE Z72

DCSF POST ROCK TOP BRASS ET
WRS MS JACKIE 19L
RWG WHY ME 951S
PHG TOOTSIE T54

Birth Wt	86
Adj WW	813
Dam NR	3/101

CE	BW	WW	YW	MK	TM	CEM	YG	CW	REA	MB	FPI
11	2.3	82	117	19	60	4	-0.3	43	0.75	0.03	75.9

Another great profiling Howard son out of a cow that should have been a Dam of Merit, but she was just barely outside the 365 day calving interval. This guy is packed full of red meat, and you have to appreciate the muscle expression when you watch him move. The cow family here combines Silent Stan with Why Me, two Canadian sires that have left a tremendous group of daughters behind. A full brother sold last year to Bob Hart in Kansas City. Top 1% for Fat; 4% for WW; 10% for YW, YG, and CW; 25% for TM, Scrotal, and REA.

46

PHG JARVIS J55

PHGJ55 | AMGV1510965 | 3/8/2021 | PB 93.8% GELBVIEWH

HOMOZYGOUS POLLED | RED

SIRE: BABR DOMINANCE 4280B
PHG EMINENCE E02
DDN BELLY RIVER AMBER 56A

CTR CTR SANDHILLS 0065X
BEA CINDY LOU WHO ET
FLAD FLADELAND DRACULA 57Y
DDN BELLY RIVER RAMONA 5108R

DAM: RWG EXACT COMBINATION 7409
PHG MISS BABS G69
PHG BABS B38

RWG RIGHT COMBINATION 5506
RWG HADIE 3505
DTKF EMOTIONS SUCKER PUNCH
PHG MISS TOOTSIE Z72

Birth Wt	80
Adj WW	788
Dam NR	1/102

CE	BW	WW	YW	MK	TM	CEM	YG	CW	REA	MB	FPI
12	0.9	71	94	22	57	6	-0.18	28	0.57	0.17	73.77

Jarvis is one of the first red Eminence calves that we've sold through this sale, and he's been one to watch all summer. Out of a first calving Exact Combination daughter, he'll grab your attention with his dark red hair coat and cool side profile. He is a great combination of being masculine designed, yet still being smooth and complete in his profile. EPDs are within the guard rails in all traits, while his real numbers put him ahead of his contemporaries. A great option if you're needing an infusion of new red genetics in your herd.



**PHG JUD 193J
SELLS AS LOT 47**

47

PHG JUD 193J ET

PHG193J ET | RAAA4529563 | 2/26/21 | 1A - RED ANGUS

HOMOZYGOUS POLLED | RED

DKF ELIMINATOR 15A
SIRE: RED DKF RAZOR 55C
DKF MISS NET WORTH 21A

SAV ELIMINATOR 9105
RED DKF MISS POWER 17P
SAV NET WORTH 4200
DKF MISS POWER UP 95X

Birth Wt	88
Adj WW	775
Dam NR	

BAR M KING 2009
DAM: LRLD PENNY B52
LRLD PENNY Z68

BAR M KING 9002
MISS BAR M 7249-8002
3SCC DOMINOR W311
LRLD RAMBO 147

CE	BW	WW	YW	MK	TM	CEM	YG	CW	REA	MB	FPI
10	0.1	62	104	31		5	0.17	33	-0.06	0.36	

Our Red Angus offering is smaller than normal this year, but Jud is a perfect bull to lead this strong group of bulls. We purchased his dam from Lost River Livestock as a bred heifer, and she has knocked it out of the park with every calf she's given us. We felt so strongly about her that she entered our ET program last year as a donor. We were able to flush her to Razor and PTO, giving us the lots 47 and 48 bulls. Jud is like the sale topping Razor calves we've had over the last 3 years. Incredibly deep made, thick bodied, with EPDs in the

48

PHG JESSIE 192J ET

PHG192J ET | RAAA4529565 | 2/23/21 | 1A - RED ANGUS

HOMOZYGOUS POLLED | RED

RED SOO LINE POWER EYE 161X
SIRE: KJHT POWER TAKE OFF
SRA PAINTBUCKET

RED COCKBURN RIBEYE 308U
RED TR LYNN 301R
RED NORTHLINE FAT TONY 605U
SRA PICABO PROMISE

Birth Wt	82
Adj WW	670
Dam NR	

BAR M KING 2009
DAM: LRLD PENNY B52
LRLD PENNY Z68

BAR M KING 9002
MISS BAR M 7249-8002
3SCC DOMINOR W311
LRLD RAMBO 147

CE	BW	WW	YW	MK	TM	CEM	YG	CW	REA	MB	FPI
13	0	52	89	30		8	0.1	19	-0.06	0.23	

Lot 48 is a half brother to the Lot 47 bull, sharing a donor cow in B52. If Lot 47 is the more performance oriented brother, Lot 48 appears to be the more maternally based bull with EPDs for Milk, CEM, and Stayability in the top 20% of the breed. We've had good luck with these PTO calves over the last 2 years, with our first PTO daughters calving this spring. All signs indicate that this guy should be the right kind to make you money.

49

PHG JAMESTOWN 191J ET

PHG191J ET | RAAA4529567 | 2/23/21 | 1A - RED ANGUS

HOMOZYGOUS POLLED | RED

RED TER-RON PARKER 34A
SIRE: RED LAZY MC EDISON 126E
RED LAZY MC CRISTY 132X

TER-RON PARK PLACE 18Y
RED TER-RON DIAMOND MIST 164
RED RMJ REDMAN 1T
RED LAZY MC CRISTY 81T

Birth Wt	85
Adj WW	635
Dam NR	

BB TRADESMAN 0002
DAM: RED LAZY MC PEPPER 170A
RED JORD BUD PEPPER 141X

SL TRADESMAN 1715-6237
SL MARTHA 1612-1074
RED BRYLOR SDL REDWOOD 217S
RED ROSE BUD PEPPER 023R

CE	BW	WW	YW	MK	TM	CEM	YG	CW	REA	MB	FPI
11	-0.7	54	88	19		6	0	14	0.16	0.16	

Our last Red Angus bull is Lot 49, a Lazy MC Edison son that is a full brother to last years high selling Red Angus. Jamestown is very similar in type - long sided, deep ribbed, but in a more moderate framed package. His dam is quickly becoming one of the leading donors for Lazy MC. An outcross to nearly all US genetics, use him to make awesome commercial calves, or a spectacular group of Balancer cattle.

50

PHG JUNIPER J87

PHGJ87 | AMGV1510886 | 3/17/2021 | 52.5% BALANCER

HOMOZYGOUS POLLED | RED

DVE DVE DAVIDSON THE GIFT 110B
SIRE: DVE DAVIDSON HOWARD 3E
DVE DAVIDSON MS SECRET 44B

DVE DVE DAVIDSON JUMPSTART 44X
DVE DVE DAVIDSON MS MARK 92U
STON STON SECRET WEAPON 6S
DVE DAVIDSON MS MAMBO 16W

Birth Wt	82
Adj WW	772
Dam NR	2/98

RED LAZY MC JACK 119C
DAM: PHG DIONA 805F
RED LAZY MC DIONA 97N

RED TER-RON PARKER 34A
RED LAZY MC FIREFLY 4Y
LAZY MC WORLDWIDE 5K
T G DIONA 6B

CE	BW	WW	YW	MK	TM	CEM	YG	CW	REA	MB	FPI
10	0.6	75	115	19	56	4	-0.05	35	0.41	0.17	75.94

To round out the sale, we bring you Juniper J87. This Howard sired Balancer bull comes from one of our leading Red Angus females - Diona 805F. I've had my eye on this calf all summer and you'll see why when you find him in the pen. Super smooth and clean made, but with that extra shot of power and thickness we all want. His half-sister was the high selling open heifer in our 2020 female sale, so mama knows how to raise the good ones. We think you'll appreciate him when you find him on February 12th!

PRAIRIE HILLS
Gelbvieh

2171 102ND AVE SW, GLADSTONE,
ND 58630

PRAIRIE HILLS
Gelbvieh
ANNUAL BULL SALE

1PM MST • FEBRUARY 12, 2022

AT THE RANCH — NORTH OF DICKINSON, ND.
SELLING 50 PUREBRED GELBVIEH, BALANCER, AND RED ANGUS BULLS

PRAIRIEHILLSGELBVIEH.COM

BID ONLINE AT:

This sale will be broadcast live on the internet.
DVAuction
Broadcasting Real-Time Auctions
Real time bidding & proxy bidding available.