

# Prickly Pear Simmental Ranch Annual Bull Sale

**SATURDAY, FEBRUARY 5, 2022**

**HELENA, MONTANA @ 1:00**





# Welcome

DEAR CATTLEMAN,

I WOULD LIKE TO START MY LETTER OFF THIS YEAR BY SAYING THANKS TO ALL OUR BULL BUYERS. WHEN I LOOK BACK ON THE YEAR FROM THE SALE UNTIL NOW, IT'S BEEN A HARD BUT FUN YEAR. I GOT TO SEE MY COW HERD I'VE BEEN WORKING HARD ON FOR THE LAST 15 YEARS PROVE THEY CAN PERFORM IN ALL CONDITIONS. AS ALWAYS, THE BULL CALF PAIRS, INCLUDING 2-YEAR-OLDS, RAN UP ON THE DRY MOUNTAIN ABOVE FORT HARRISON. THE CALVES WERE WEANED SEPTEMBER 1ST WITH AN AVERAGE 205 WEIGHT RIGHT AT 700 POUNDS DURING THIS EXTREMELY DRY SUMMER, WITHOUT CREEP OR ANY EXTRA PROTEIN TUBS! THE COWS CAME HOME IN LATE OCTOBER WITH ONLY 3% DRY FOR THE BUNCH. AT THE BOTTOM OF THIS LETTER IS A PICTURE OF A 2-YEAR-OLD WITH HER BULL CALF THE 3RD WEEK OF AUGUST.

THIS YEAR THERE WERE A FEW STAND OUT SIRE GROUPS. THE FIRST WOULD BE ELLINGSON BLAZER'S AVERAGE WEANING RATIO OF 108 ON 6 BULLS IN THE SALE. I MADE THE DECISION TO GO BACK TO USING HIM AFTER A FEW YEARS AWAY. HE HAS LOW BIRTH WEIGHTS AND ABOVE AVERAGE GROWTH AND ADDS A LOT OF MATERNAL BACK INTO A HERD. THE NEXT GROUP THAT DID EXTREMELY WELL WAS THE HOOK'S EAGLE, WITH AN AVERAGE WEANING RATIO OF 104 ON 7 BULLS IN THE SALE. THE BULL THAT WILL BE REPLACING THE CIRCLE L GUS ANGUS BULL, THAT WE'VE BEEN USING IS KESSLER'S COMMODORE. HIS CALVES HAVE ADDED LENGTH, DEPTH AND THICKNESS. THEY'RE ALSO VERY EASY GOING, WHICH IS A TRAIT I LOOK VERY HARD AT. ONE OF THE SALE HIGHLIGHTS IS A COMMODORE SON, LOT 14, WITH A 205 WEIGHT OF 854 OUT OF A 15-YEAR-OLD DAM. THERE WAS ONE HERD BULL THAT SORTED HIMSELF TO THE TOP OF THE SIRES, OUR LEACHMAN PAYGRADE 8517. HIS BULLS RATIO 104 AT WEANING. HE ADDS LOTS OF DEPTH AND THICKNESS.

LOOKING TO THE FUTURE I'M EXCITED TO SAY THAT 20% OF THE BULLS IN THE SALE WERE RAISED BY 2-YEAR-OLDS ON THE MOUNTAIN IN EXTREME CONDITIONS THIS YEAR, WITH ONLY 3 DRYs OUT OF 76 CALVED LAST YEAR.

THE BIG ADDITION TO THE RANCH THIS YEAR WAS GARY'S NEPHEW KYLER, WHO GRADUATED FROM MSU AND STARTED TO WORK FULL TIME ON THE RANCH. HE AND I ARE WORKING HARD TOGETHER TO KEEP THE FOCUS OF THE RANCH ON WHAT HAS BEEN MY LIFE'S GOAL OF BUILDING BULLS THAT MAKE YOUR JOBS EASY.

I WOULD LIKE TO THANK THE BURNHAMS FOR STANDING BEHIND ME ON ALL OF MY DECISIONS.

SINCERELY,

*Troy Wheeler* - RANCH MANAGER



# Sale Day

## INFORMATION

SATURDAY, FEBRUARY 5, 2022

### FRIDAY, FEBRUARY 4, 2022

All Day Cattle on Display  
6:00pm Pre-Sale Dinner

### SATURDAY, FEBRUARY 5, 2022

8:00am Cattle on Display  
12:00pm Complimentary Lunch  
1:00pm Sale

### SALE DAY LOCATION

**PRICKLY PEAR SIMMENTAL RANCH SALE BARN**  
2853 Canyon Ferry Road, Helena, MT 59602

**DIRECTIONS: FROM I-15** - Take Custer Avenue Exit (#194). Head East for 3.1 miles. At the one mile mark it will reduce to a single lane and turn into Canyon Ferry Road. The sale facility will be just after a gravel pit pond on your right.

**FROM THE EAST ON US 12** - At the West end of East Helena turn right (N) by the Exxon Gas Station (first turn after the two stoplights) go North approximately two miles to a stoplight. Turn left (W) onto Canyon Ferry Road. Go about 3/8 of a mile, our sale facility is on the left.

**FROM THE WEST ON US 12** - Turn left (N) at 3rd light (Henderson Street). Turn right (E) at stop sign in front of fairgrounds (Custer). Continue East until you cross over I-15 and then use the directions from I-15 above.

### SALE DAY PHONES

Troy: 406-949-1754  
Gary: 406-439-2360  
Sale Day Only: 406-439-3675

### AUCTIONEER

Roger Jacobs: 406-698-7686

### SALE DAY REPRESENTATIVES

Barry Ellis: 406-855-4183  
John Goggins: 406-698-4159  
Dick Perkins: 406-560-0082

### SIGHT UNSEEN PURCHASE

We guarantee all sight unseen purchases. Call ahead of time and we will go over the offering. You can leave a bid with us or a representative, or you may bid via the phone or on the Internet during the sale. You will be treated as though you are here at the sale. Please call us if you need additional information.

### GUARANTEE

All bulls are guaranteed breeders. As our valued customers if you have any problems at all, let us help you solve them. Our livelihood depends on your satisfaction.

### TRUCKING

We give \$125 per bull discount if you haul your own bulls on sale day. We deliver free around April 1st if within 300 miles, otherwise guarantee no more than \$400 per bull in Continental USA.

**VOLUME DISCOUNT - 3% OFF WITH PURCHASE OF 5 OR MORE BULLS.**

### NEW CUSTOMERS

For those of you that are new customers, I just want to go over a few goals we strive for:

1. Disposition. I see a lot of people now are putting disposition codes in their catalogs. We take great pride in the disposition of our cattle, so you can assume they're all very docile unless noted by us.
2. Retaining growth while improving everything else we all want. Calving ease, smaller birth weights, moderate frame size, good udders, feet, etc. Growth is one of Simmental's best assets. Some people are concentrating on birth weights so hard they are losing the growth advantage.
3. We concentrate more on calving ease and maternal calving ease than birth weights. All the bulls in the sale were unassisted at birth.
4. We also look at individual performance more than growth EPDs. The EPDs will change if the animal has the performance, but the animal won't always perform just because he's got good EPDs.

### ACCOMMODATIONS/AIRLINES

Helena is serviced by Delta, United, and Alaska Airlines.

Comfort Suite  
3180 Washington St.  
Helena, MT  
406-495-0505

Marriot Residence Inn  
2500 E Custer Ave.  
Helena, MT  
406-443-8010

Holiday Inn Express  
3170 N Sanders St.  
Helena, MT  
406-442-7500

Wingate by Wyndham  
2007 N Oakes St.  
Helena, MT  
406-449-3000



## RETAINED SEMEN INTEREST

The bull buyer will receive full possession, 100% salvage value, and 2/3 semen interest of any bull purchased in this sale (unless otherwise noted). This means we are retaining a 1/3 semen interest in these bulls. This semen interest is a royalty interest that entitles Prickly Pear Simmental Ranch (PPSR) to 1/3 of the revenues of any semen sold. PPSR semen interest remains even if the bull or any interest in the bull is sold to a third party. It is the buyer's responsibility to ensure that PPSR's interest is upheld if semen is ever sold. The buyer must also inform any third party of PPSR's interest if the bull is ever sold. PPSR will not be responsible for expense related to semen collection or promotion of any bull purchased, unless a mutual agreement is reached prior to semen collection or promotion. Our retained semen interest also includes the right to collect semen on the bull at our expense and the buyer's convenience.

## ACTUAL SCROTAL MEASUREMENTS

We do not believe in adjusted yearling scrotal measurements, therefore all scrotal measurements are actual figures. Actual measurements will be taken at the end of January. All bulls under 30 centimeters will be sifted regardless of age. The bull's testicular size is an early indicator of puberty, which is passed on to their sons and daughters. Bulls with larger testicles service more cows and produce more semen, plus their daughters cycle at an earlier age and have a higher conception rate.

All bulls are measured and palpated by Derek Brown DVM prior to sale. Since a lot can happen between January and April, they will all be fertility tested prior to delivery. The extra \$25 added to our \$100 off if you take your bulls on sale day is to pay for testing at home with your other bulls. The scrotal measurements will be on a supplement sheet along with carcass data.

Most testicular growth occurs from nine to twelve months of age. Remember to consider the age of the calf at the end of January when using these measurements.

## BEEF IMPROVEMENT FEDERATION RECOMMENDATION FOR SCROTAL CIRCUMFERENCE

MONTHS OF AGE	1-12	15-20	21-30	30+
EXCELLENT	35	37	39	40
GOOD	30-35	31-37	32-39	33-40
POOR	30	31	32	33

***DVAuction***  
***Broadcasting Real-Time Auctions***

**Visit [www.DVAuction.com](http://www.DVAuction.com)  
and Register Today!**

For General Questions Please Contact Our Office:  
(402) 316-5460 or [support@dvauction.com](mailto:support@dvauction.com)

**WWW.PRICKLYPEARSIMMENTAL.COM**



# Quick Guide to American Simmental Association EPDs and \$ Indexes

## **EXPECTED PROGENY DIFFERENCES (EPDS):**

EPDs are the most accurate and effective tool available for comparing genetic levels. In using EPDs, the difference between two sires' EPDs represents the unit difference expected in the performance of their progeny. For example, if sires A and B have EPDs of +10 and -5, a 15 unit difference would be expected in their progeny (moving from -5 to +10 yields 15 units). Key to using EPDs is knowing what units they are expressed in. For example, if the above case referred to weaning weight EPDs, sire A would be expected to sire 15 pounds more weaning weight than sire B. If calving ease were the trait, sire A would be expected to sire 15 percent more unassisted births in first calf heifers; in other words, if sire B sired 30 assists in a group of 100 heifers, we'd expect sire A to require 15 assists. A percentile ranking chart is required to determine where a bull's EPDs rank him relative to other bulls in the breed. For percentile rankings or more detailed information about EPDs and \$ Indexes visit [www.simmental.org](http://www.simmental.org)

Listed below are the units ASA EPDs are expressed in:

### **ALL-PURPOSE INDEX (API)**

Dollars per cow exposed under an all-purpose sire scenario. (See below for more details)

### **BACK FAT (BF)**

Inches of backfat.

### **BIRTH WEIGHT (BW)**

Pounds of birth weight.

### **CALVING EASE (CE)**

Percent of unassisted births when used on heifers.

### **CARCASS WEIGHT (CW)**

Pounds of carcass weight.

### **MATERNAL CALVING EASE (MCE)**

Percent of unassisted births in first-calving daughters.

### **MILK (MLK)**

Pounds of weaning weight due to milk.

### **MARBLING (MRB)**

Marbling score.

### **MATERNAL WEANING WEIGHT (MWW)**

Pounds of weaning weight due to milk and growth.

### **RIBEYE AREA (REA)**

Square inches of ribeye.

### **WARNER-BRATZLER SHEAR FORCE (WBSF)**

Pounds of force required to shear a steak.

### **STAYABILITY (STAY)**

Percent of daughters remaining in the cowherd at 6 years of age.

### **TERMINAL INDEX (TI)**

Dollars per cow exposed under a terminal-sire scenario. (See below for more details).

## **WEANING WEIGHT (WW)**

Pounds of weaning weight.

## **YEARLING WEIGHT (YW)**

Pounds of yearling weight.

## **YIELD GRADE (YG)**

Yield grade score.

## **\$ INDEXES**

Though EPDs allow for the comparison of genetic levels for many economically important traits, they only provide a piece of the economic puzzle. That's where \$ Indexes come in. Through well-conceived, rigorous mathematical computation, \$ Indexes blend EPDs and economics to estimate an animal's overall impact on your bottom line. The same technology that led to the dramatic progress in swine, poultry, and dairy genetics over the last several decades was used to develop the following \$ Indexes.

### **ALL-PURPOSE INDEX (API)**

Evaluates sires for use on the entire cow herd (bred to both Angus first-calf heifers and mature cows) with the portion of their daughters required to maintain herd size retained and the remaining heifers and steers put on feed and sold grade and yield.

### **TERMINAL INDEX (TI)**

Evaluates sire for use on mature Angus cows with all offspring put on feed and sold grade and yield.

### **USING API AND TI**

First, determine which index to use; if you're keeping replacements use API, if not, TI. Then, just as with EPDs, zero in on the unit difference between bulls. (As described above, index units are in dollars per cow exposed.) The difference can be used to determine how much a bull is worth compared to another. Or, put another way, how much you can pay for one bull compared to another. For example, when buying an all-purpose-type sire, you can quickly figure a bull scoring +100 for API is worth an extra \$6,000 over a +50 bull if both are exposed to 30 cows over 4 years (\$50 diff. X 30 hd. X 4 yr. = \$6,000). A percentile-ranking chart is required to determine where a bull's index value ranks him relative to other bulls in the breed. For percentile rankings or more detailed information about EPDs and \$ Indexes visit [www.simmental.org](http://www.simmental.org)

## **THANK YOU**

Abbi Boggess  
Alyssa Herman

Catalog & Ad Design  
Photography & Videography



# Reference Sires

NAME	CE	BW	WW	YW	ADG	MCE	MILK	MWW	CW	YG	MARB	BF	REA	API	TI
PUREBRED SIMMENTAL															
ELLINGSON BLAZER X37	18.5	-2.1	68.5	102.5	0.21	8.7	23.1	57.3	36.3	-0.47	-0.29	0.130	0.80	111.2	68.0
NLC FABIAN 64F	10.0	1.8	70.1	103.1	0.21	5.2	20.5	55.5	29.0	-0.44	0.18	-0.091	0.91	139.5	74.3
GIBBS 3009A ELEMENT	7.8	2.2	88.6	141.1	0.33	5.5	28.8	73.0	47.5	-0.48	0.38	-0.103	1.20	145.7	91.5
HOOK'S FRONTLINE 40F	13.4	-1.1	71.1	111.7	0.25	7.6	24.4	60.0	23.5	-0.39	0.49	-0.058	0.93	162.2	87.4
HL JUDGE 4G	10.0	1.4	77.7	119.0	0.26	7.3	29.0	67.8	36.6	-0.31	0.53	-0.054	0.91	158.8	88.7
NLC GEN TEN 82E	7.5	3.9	77.0	114.7	0.24	5.5	35.3	73.7	41.2	-0.28	0.37	-0.049	0.91	140.9	81.2
PERCENTAGE SIMMENTAL															
HOOK'S EAGLE 6E	13.8	-2.0	102.1	162.4	0.38	6.4	19.1	70.1	50.5	-0.35	0.55	-0.044	1.27	169.0	103.8
J-J ZINSER 514C	8.3	2.3	105.9	161.3	0.35	7.7	15.5	68.4	47.1	-0.25	0.13	-0.063	0.77	123.8	88.2
SHSF FREIGHTLINER D10	8.8	2.5	101.6	163.6	0.39	9.0	20.0	70.7	60.5	-0.40	0.24	-0.074	1.33	134.7	90.1
GIBBS 7258E BAMA BOY	12.3	1.4	77.3	118.3	0.26	6.7	24.1	62.7	41.8	-0.38	0.20	-0.076	1.01	129.6	75.8
PUREBRED ANGUS															
KESSLERS COMMODORE 6516	15.9	-2.3	107.4	179.5	0.45	10.5	18.7	72.4	82.2	0.26	0.81	0.043	0.47	156.0	102.2
HA PRIME CUT 4493	15.6	-0.5	92.0	146.1	0.34	8.2	19.7	65.7	64.9	0.03	0.49	0.018	0.76	119.3	83.1
LEACHMAN PAYGRADE 8517	12.7	0.3	74.0	119.6	0.28	6.3	25.2	62.2	51.8	0.27	0.76	0.056	0.15	132.3	77.0
SITZ STELLAR 726D	15.6	-2.9	91.9	153.0	0.38	8.0	20.7	66.5	55.7	0.36	0.62	0.094	0.22	150.8	88.3
TEHAMA TAHOE B767	16.9	-2.3	93.1	151.8	0.37	7.3	24.2	70.7	65.5	0.10	0.91	0.033	0.66	163.6	97.0
SYDGEN ENHANCE	14.9	-2.0	87.3	157.2	0.44	10.1	20.9	64.4	73.7	0.17	1.00	0.029	0.54	160.6	95.5
LEACHMAN INVESTMENT 7599	12.6	0.6	79.4	128.2	0.30	8.4	21.9	61.6	60.3	0.43	0.52	0.085	-0.01	124.5	72.9
BLEVINS THUNDER 6965	13.5	-0.8	68.0	111.0	0.27	8.6	21.3	55.2	48.6	0.14	0.73	0.031	0.31	134.8	74.6
CIRCLE L GUS	18.9	-4.2	80.2	126.5	0.29	15.4	15.9	56.0	78.8	0.24	0.36	0.068	0.68	150.8	98.4
RKNWHRT COUNTDOWN 16G	15.8	-2.5	69.7	113.7	0.28	8.8	20.9	55.6	36.9	0.13	0.57	0.039	0.28	132.1	73.7
MARDA BLACKSMITH 683	16.0	-1.2	89.2	148.9	0.37	10.2	21.7	66.3	51.9	0.07	0.22	0.028	0.56	108.1	76.2
RKNWHRT IGGY 1G	16.5	-1.3	81.0	127.1	0.29	9.3	20.9	61.3	52.1	0.24	0.29	0.062	0.30	119.0	71.4





# Sim Angus Bulls

LOT 1

## PPSR COMMODORE 1J

1/4 SM 02/06/2021 ASA# 3959045  
HOMO BLACK POLLED

CONNEALY COMRADE 1385  
KESSLERS COMMODORE 6516  
KESSLERS RAINBOW 0595

BLEVINS HEISMAN ANSWER 7526  
MISS PRICKLY PEAR G942  
MISS PRICKLY PEAR 685D

CE	BW	WW	YW	ADG	MCE	BW	80
11.5	1.6	100.1	166.5	0.42	7.5	205 WT	705
						RATIO	105
						RANK	22 OF 73
						WDA	2.82
						DAM RATIO	1 @ 105
MILK	MWW	MARB	BF	REA	API	TI	
19.7	69.7	0.68	0.01	0.48	148.2	97.9	

LOT 1 IS OUT OF A FIRST CALF HEIFER. HE RANKS IN THE TOP 1% OF THE BREED FOR BOTH WEANING AND YEARLING WEIGHT EPD'S. THIS COMMODORE SON ALSO RANKS IN THE TOP 3% OF THE BREED FOR TI EPD.



LOT 3

## PPSR IGGY 92J

1/4 SM 03/13/2021 ASA# 3959047  
BLACK POLLED

CONNEALY COUNTDOWN  
RKNWHRT IGGY 1G  
RKNWHRT IDEALS IMAGE 012X

BLEVINS HEISMAN ANSWER 7526  
MISS PRICKLY PEAR G952  
MISS PRICKLY PEAR 955W

CE	BW	WW	YW	ADG	MCE	BW	78
14	-0.8	76.9	121	0.28	8.2	205 WT	674
						RATIO	100
						RANK	1 OF 1
						WDA	2.62
						DAM RATIO	1 @ 100
MILK	MWW	MARB	BF	REA	API	TI	
21.5	59.9	0.38	0.019	0.33	134.8	79.1	

LOT 3 IS A DEEP BODIED BULL WITH A GREAT DISPOSITION. HE RANKS IN THE TOP 30% OF THE BREED FOR BOTH API AND TI EPD'S.



KESSLERS COMMODORE 6516  
SIRE TO LOT 1

LOT 2

## PPSR COUNTDOWN 84J

1/4 SM 03/08/2021 ASA# 3958986  
BLACK POLLED

CONNEALY COUNTDOWN  
RKNWHRT COUNTDOWN 16G  
RKNWHRT IDEALS IMAGE 012X

CONNEALY BLACK GRANTIE  
MISS PRICKLY PEAR 973G  
MISS PRICKLY PEAR 598C

CE	BW	WW	YW	ADG	MCE	BW	94
11.8	1.6	84.4	133.5	0.3	7.5	205 WT	656
						RATIO	98
						RANK	48 OF 73
						WDA	2.54
						DAM RATIO	1 @ 98
MILK	MWW	MARB	BF	REA	API	TI	
21.4	63.8	0.2	0.002	0.56	116.5	76.7	

LOT 2 RANKS IN THE TOP 20% OF THE BREED IN 3 EPD'S. HE'S A MODERATE FRAMED DEEP BODIED SON OUT OF OUR CONNEALY COUNTDOWN SON.



CONNEALY COUNTDOWN  
GRAND SIRE TO LOT 3 & LOT 4



## PPSR BAILEY 96J

1/4 SM 03/17/2021 ASA# 3958800  
BLACK POLLED

LOT  
4

SPRING COVE PAYGRADE 5064  
**LEACHMAN PAYGRADE 8517**  
LEACHMAN BLACKCAP 6089

SITZ EMBLAZON 9598  
**MISS PRICKLY PEAR 118Y**  
MISS PRICKLY PEAR 807U

BW	100
205 WT	694
RATIO	103
RANK	25 OF 73
WDA	2.62
DAM RATIO	-



CE	BW	WW	YW	ADG	MCE	MILK	MWW	MARB	BF	REA	API	TI
8.4	2	75.2	120.6	0.28	3.5	28.4	65.9	0.58	0.014	0.24	130.9	79.6

LOT 4 IS ONE OF THE THICKEST BULLS IN THE SALE. HIS 10 YEAR OLD DAM HAS RATIOED 9 CALVES AT 102 AT WEANING, BRED TO 8 DIFFERENT SIRES. HE RANKS IN THE TOP 10% OF THE BREED FOR MARBLING EPD.

## PPSR GUS 16J

3/8 SM 02/17/2021 ASA# 3958966  
BLACK HOMO POLLED

LOT  
5

S CHISUM 6175  
**CIRCLE L GUS**  
CIRCLE L PRIDE X097

CCR WIDE RANGE 9005A  
**MISS PRCKLY PEAR 962G**  
MISS PRICKLY PEAR 358A

BW	80
205 WT	755
RATIO	112
RANK	7 OF 73
WDA	3.00
DAM RATIO	1 @ 112



CE	BW	WW	YW	ADG	MCE	MILK	MWW	MARB	BF	REA	API	TI
13.3	-1.3	87.3	139.8	0.33	10.8	19.4	63	0.27	0.025	0.88	127.9	83.6

LOT 5 IS OUT OF A FIRST CALF HEIFER. HE RATIOED 112 WITH 73 CONTEMPORARIES AT WEANING. HE RANKS IN THE TOP 10% OF THE BREED FOR MATERNAL CALVING EASE EPD'S. LOT 5 ALSO RANKS IN THE TOP 15% FOR BIRTH WEIGHT EPD.

## RKNWHRT EAGLE 39J

3/8 SM 02/23/2021 ASA# 3957045  
HOMO BLACK HOMO POLLED

LOT  
6

HOOK'S BLCK HAWK 50B  
**HOOK'S EAGLE 6E**  
HOOK'S CRYSTAL 1C

R B TOUR OF DUTY 177  
**RKNWHRT VIOLET 661D**  
SPA 194 OF 504 X INC

BW	91
205 WT	689
RATIO	104
RANK	5 OF 13
WDA	3.00
DAM RATIO	4 @ 108



CE	BW	WW	YW	ADG	MCE	MILK	MWW	MARB	BF	REA	API	TI
13.6	-1.9	86.4	138.8	0.33	7.7	22.4	65.5	0.73	-0.015	0.98	162.9	96.3

LOT 6 IS OUT OF A MODERATE FRAMED TOUR OF DUTY DAUGHTER THAT HAS RATIOED 108 ON HER FIRST 4 CALVES AT WEANING. HE RANKS IN THE TOP 3% OF THE BREED FOR TI AND THE TOP 15% FOR 5 ADDITIONAL EPD'S.



WT  
7

## PPSR COUNTDOWN 77J

3/8 SM 03/05/2021 ASA# 3959030  
BLACK POLLED

CONNEALY COUNTDOWN  
RKNWHRT COUNTDOWN 16G  
RKNWHRT IDEALS IMAGE 012X

PPSR BLACK GRANITE 101E  
MISS PRICKLY PEAR G935  
MISS PRICKLY PEAR 908W

CE	BW	WW	YW	ADG	MCE		
15.6	-2	70.3	110.3	0.25	8.5	DAM RATIO	1 @ 99
MILK	MWW	MARB	BF	REA	API	TI	
23.9	59	0.4	-0.003	0.41	136.9	78.2	

LOT 7 RANKS IN THE TOP 10% OF THE BREED FOR CALVING EASE AND THE TOP 15% FOR MATERNAL CALVING EASE.



HOOK'S EAGLE 6E  
SIRE TO LOT 9

GENEX

WT  
8

## PPSR COUNTDOWN 89J

3/8 SM 03/10/2021 ASA# 3958985  
BLACK POLLED

CONNEALY COUNTDOWN  
RKNWHRT COUNTDOWN 16G  
RKNWHRT IDEALS IMAGE 012X

HOOK'S BLACK HAWK 50B  
MISS PRICKLY PEAR 938G  
MISS PRICKLY PEAR 782E

CE	BW	WW	YW	ADG	MCE		
13.7	0.9	93.1	141.9	0.3	8.1	DAM RATIO	1 @ 111
MILK	MWW	MARB	BF	REA	API	TI	
20.8	67.4	0.26	0.015	0.8	133.6	84.1	

LOT 8 IS A LONG SPINED BULL OUT OF A FIRST CALF HEIFER. HE RATIOED 111 AT WEANING AGAINST 73 CONTEMPORARIES. HE RANKS IN THE TO 10% OF THE BREED FOR BOTH WEANING AND YEARLING WEIGHT EPD'S.

WT  
9

## PPSR EAGLE 3J

1/2 SM 02/11/2021 ASA# 3958894  
HOMO BLACK HOMO POLLED

HOOK'S BLACK HAWK 50B  
HOOK'S EAGLE 6E  
HOOK'S CRYSTAL 1C

CIRCLE L GUS  
MISS PRICKLY PEAR 900G  
MISS PRICKLY PEAR 709E

CE	BW	WW	YW	ADG	MCE		
14.1	-2.1	91.6	140.4	0.31	8.2	DAM RATIO	1 @ 101
MILK	MWW	MARB	BF	REA	API	TI	
20.6	66.4	0.42	-0.012	1	145.9	93.2	

LOT 9 IS A MODERATE FRAMED DEEP BODIED BULL WITH A GREAT SPRING OF RIB. HE RANKS IN THE TOP 5% OF THE BREED FOR BIRTH WEIGHT EPD. HE ALSO RANKS IN THE TOP 15% FOR CALVING EASE, API AND TI EPD'S.

## PPSR PRIME CUT 25J

1/2 SM 02/20/2021 ASA# 3958788  
HOMO BLACK HOMO POLLED

WT  
10

VERMILION SIRLOIN  
HA PRIME CUT 4493  
HA MISS BLACKCAP 9127

BLACK IRISH KANSAS  
MISS PRICKLY PEAR 504R  
MISS PRICKLY PEAR 338N

BW	84
205 WT	673
RATIO	100
RANK	1 OF 1
WDA	2.84
DAM RATIO	10 @ 101



CE	BW	WW	YW	ADG	MCE	MILK	MWW	MARB	BF	REA	API	TI
17.9	-2	73.2	115.6	0.27	11.6	25.3	61.8	0.27	-0.035	0.69	137.7	79.5

LOT 10 IS AN EMBRYO BROTHER TO LOT 17. HE RANKS IN THE TOP 3% OF THE BREED FOR CALVING EASE AND MATERNAL CALVING EASE. HIS DAM POSTED WEANING RATIOS OF 101 ON 10 CALVES BRED TO 10 DIFFERENT SIRES.



# PPSR BLACKSMITH 26J

1/2 SM

02/21/2021

ASA# 3958853

BLACK POLLED

LOT  
11

CONNEALY BLACK GRANITE  
**MARDA BLACKSMITH 683**  
S A V BLACKCAP MAY 3092

ELLINGSON BLAZER X37  
**MISS PRICKLY PEAR 523C**  
MISS PRICKLY PEAR 323A

BW	87
205 WT	720
RATIO	107
RANK	17 OF 73
WDA	3.08
DAM RATIO	4 @ 108



LOT 11 IS A LONG SPINED SON OF MARDA BLACKSMITH. HE RANKS IN THE TOP 15% OF THE BREED FOR BOTH CALVING EASE AND GROWTH TRAITS. RATIOED 107 AT WEANING WITH 73 CONTEMPORARIES.

CE	BW	WW	YW	ADG	MCE	MILK	MWW	MARB	BF	REA	API	TI
15.8	-0.7	84	133.2	0.31	9.7	29	70.9	0.13	-0.045	0.68	133.9	81.1

LOT  
12

## RKNWHRT ZINSER 32J

1/2 SM

02/22/2021

ASA# 3957044

HOMO BLACK

HOMO POLLED

CCR SPARTAN 9124A  
**J-J ZINSER 514C**  
J BAR J MISS PREDENTINE

GIBBS 1100Y HY DEACON  
**RKNWHRT LOLA 659D**  
CCAR CREEK ANGUS RANCH

CE	BW	WW	YW	ADG	MCE
8.9	1.1	92.1	137.3	0.28	6.5

MILK	MWW	MARB	BF	REA	API	TI
18	64	0.03	-0.046	0.51	107.7	76.8

LOT 12 IS A DEEP BODIED SON OF ZINSER THAT IN THE TOP 10% OF THE BREED FOR WEANING WEIGHT EPD. HIS DAM HAS A CALVING INTERVAL OF 359 DAYS AND 102 WEANING RATIO AVERAGE ON HER FIRST 4 CALVES.

BW	94
205 WT	694
RATIO	104
RANK	4 OF 13
WDA	2.95
DAM RATIO	4 @ 102

LOT  
13

## PPSR STELLAR 33J

1/2 SM

02/23/2021

ASA# 3959006

BLACK

POLLED

MOHNEN SUBSTANTIAL 272  
**SITZ STELLAR 726D**  
SITZ PRIDE 200B

PPSR KING EASY 5Z  
**MISS PRICKLY PEAR C524**  
MISS PRICKLY PEAR 928W

CE	BW	WW	YW	ADG	MCE
12.5	-0.5	83.3	134.8	0.32	6.4

MILK	MWW	MARB	BF	REA	API	TI
25.6	67.2	0.32	-0.019	0.62	139.8	84.4

BW	84
205 WT	667
RATIO	99
RANK	42 OF 73
WDA	3.01
DAM RATIO	5 @ 104

LOT 13 IS A BIGGER FRAMED BULL WITH A GREAT DISPOSITION. HIS SIRE RANKS IN THE TOP 1% OF THE ANGUS FEET EPD. HE PACKS A WELL BALANCED SET OF EPD'S.

# PPSR COMMODORE 41J

1/2 SM

02/23/2021

ASA# 3959036

HETERO BLACK

POLLED

LOT  
14

CONNEALY COMRADE 1385  
**KESSLERS COMMODORE 6516**  
KESSLERS RAINBOW 0595

HOOKS SHEAR FORCE 38K  
**MISS PRICKLY PEAR 6053S**  
MISS PRICKLY PEAR 384N

BW	87
205 WT	854
RATIO	100
RANK	1 OF 1
WDA	3.42
DAM RATIO	12 @ 98



CE	BW	WW	YW	ADG	MCE	MILK	MWW	MARB	BF	REA	API	TI
15.5	-2	80.9	126.7	0.29	8.4	23.3	63.8	0.48	-0.026	0.7	154.4	88.9

LOT 14 IS THE THICKEST BULL IN THE SALE. HE HAS THE HEAVIEST 205 WT OF 854 LBS OFF A 15 YEAR OLD DAM. SHE HAS A CALVING INTERVAL OF 366 DAYS. HE RANKS IN THE TOP 4% OF THE BREED FOR TI AND TOP 15% OF THE BREED FOR API EPD'S. RETAINING 1/2 SEMEN INTEREST.



LOT  
15

## PPSR TAHOE 42J

1/2 SM 02/24/2021 ASA# 3959010  
BLACK POLLED

TEHAMA UPWARD Y238  
**TEHAMA TAHOE B767**  
TEHAMA MARY BLACKBIRD Y684

PPSR DOUBLE THE BEEF 29W  
**MISS PRICKLY PEAR Y104**  
MISS PRICKLY PEAR 6503S

CE	BW	WW	YW	ADG	MCE
16.2	-0.7	80.6	126	0.28	8.2

BW	87
205 WT	704
RATIO	105
RANK	23 OF 73
WDA	2.93
DAM RATIO	9 @ 104

MILK	MWW	MARB	BF	REA	API	TI
30.3	70.5	0.5	-0.025	0.64	150.7	88.2

LOT 15 RANKS IN THE TOP 10% OF THE BREED FOR 7 EPD'S.  
HE A THICK TOPPED BULL WITH AN EXTRA THICK HIP. HIS  
DAM HAS RATIOED 104 AT WEANING ON 9 CALVES BRED TO 8  
DIFFERENT SIRES.



**TEHAMA TAHOE B767**  
SIRE TO LOT 15

## PPSR STELLAR 47J

1/2 SM 02/24/2021 ASA# 3959004  
HETERO BLACK POLLED

LOT  
16

MOHNEN SUBSTANTIAL 272  
**SITZ STELLAR 726D**  
SITZ PRIDE 200B

GCF MR AMIGO  
**MISS PRICKLY PEAR 321A**  
MISS PRICKLY PEAR 167Y

CE	BW	WW	YW	ADG	MCE	MILK	MWW	MARB	BF	REA	API	TI
17.7	-3	76.7	116.1	0.25	9	21.6	60	0.28	0	0.45	148	81.5

BW	81
205 WT	642
RATIO	95
RANK	55 OF 73
WDA	3.06
DAM RATIO	7 @ 103



LOT 16 IS A MODERATE FRAMED THICK  
MADE BULL. HE RANKS IN THE TOP 10% OF  
THE BREED FOR CALVING EASE AND BIRTH  
WEIGHT EPD'S. HIS DAM HAS A 368 DAY  
CALVING INTERVAL ON 7 CALVES.

## PPSR PRIME CUT 50J

1/2 SM 02/25/2021 ASA# 3958786  
BLACK POLLED

LOT  
17

VERMILION SIRLOIN  
**HA PRIME CUT 4493**  
HA MISS BLACKCAP 9127

BLACK IRISH KANSAS  
**MISS PRICKLY PEAR 504R**  
MISS PRICKLY PEAR 338N

CE	BW	WW	YW	ADG	MCE	MILK	MWW	MARB	BF	REA	API	TI
17.9	-1.1	83.8	130.7	-.29	11.6	25.3	67.1	0.27	-0.035	0.78	140.1	84.7

BW	91
205 WT	819
RATIO	100
RANK	1 OF 1
WDA	3.22
DAM RATIO	10 @ 101



LOT 17 IS EMBRYO BROTHER TO LOT 10. HE  
POSTED THE SECOND HEAVIEST 205 WT AT  
808 LB'S. LIKE HIS BROTHER HE RANKS IN  
THE TOP 3% OF THE BREED FOR CALVING  
EASE AND MATERNAL CALVING EASE EPD'S.  
LOT 17 ALSO RANKS IN THE TOP 15% OF THE  
BREED FOR WEANING AND YEARLING WEIGHT  
EPD'S.



LOT  
18

## PPSR STELLAR 52J

1/2 SM 02/26/2021 ASA# 3959003  
HETERO BLACK POLLED

MOHNEN SUBSTANTIAL 272  
**SITZ STELLAR 726D**  
SITZ PRIDE 200B

TNT GUNNER N208  
**MISS PRICKLY PEAR 037X**  
MISS PRICKLY PEAR 702T

CE	BW	WW	YW	ADG	MCE	BW	205 WT	RATIO	RANK	WDA	DAM RATIO
16.2	-2	76.4	117.7	0.26	9	87	660	99	3 OF 3	2.90	10 @ 101
MILK	MWW	MARB	BF	REA	API	TI					
23.2	61.3	0.29	-0.008	0.44	144.5	80.5					

LOT 18 RANKS IN THE TOP 5% OF THE BREED FOR CALVING EASE AND TOP 15% FOR BIRTH WEIGHT. HIS 12 YEAR OLD DAM HAS AN AVERAGE WEANING RATIO OF 100 ON 10 CALVES BREED TO 9 DIFFERENT SIRES. SHE ALSO HAS A 366 DAY CALVING INTERVAL.

LOT  
19

## PPSR ENHANCE 53J

1/2 SM 02/27/2021 ASA# 3958920  
BLACK POLLED

SYDGEN EXCEED 3223  
**SYDGEN ENHANCE**  
SYDGEN RITA 2618

HOOK'S BOULEVARD 41B  
**MISS PRICKLY PEAR 820F**  
MISS PRICKLY PEAR 347A

CE	BW	WW	YW	ADG	MCE	BW	205 WT	RATIO	RANK	WDA	DAM RATIO
12.3	0.8	83.6	140.2	0.35	7.2	94	675	100	39 OF 73	2.92	2 @ 103
MILK	MWW	MARB	BF	REA	API	TI					
24.3	66	0.66	-0.022	0.57	152.1	91.3					

LOT 19 IS A LONG MADE SON OF ENHANCE. HE RANKS IN THE TOP 15% OF THE BREED FOR MARBLING.

## PPSR TAHOE 56J

1/2 SM 02/27/2021 ASA# 3959009  
BLACK POLLED

LOT  
20

TEHAMA UPWARD Y238  
**TEHAMA TAHOE B767**  
TEHAMA MARY BLACKBIRD Y684

SVR W817  
**MISS PRICKLY PEAR 387A**  
MISS PRICKLY PEAR 246M

BW	205 WT	RATIO	RANK	WDA	DAM RATIO
100	730	109	11 OF 73	3.11	7 @ 108



CE	BW	WW	YW	ADG	MCE	MILK	MWW	MARB	BF	REA	API	TI
11.8	0.6	83.6	130.4	0.29	7	29.5	71.3	0.47	-0.039	0.71	150.3	87.4

LOT 20 IS A BIGGER FRAMED BULL WITH LOTS OF MUSCLE. HIS DAM HAS A CALVING INTERVAL OF 370 DAYS WITH AN AVERAGE WEANING RATIO OF 108 ON 7 CALVES BRED TO 7 DIFFERENT SIRES. HE'LL ADD POUNDS AT WEANING.

LOT  
21

## PPSR GUS 58J

1/2 SM 02/28/2021 ASA# 3958960  
BLACK POLLED

S CHISUM 6175  
**CIRCLE L GUS**  
CIRCLE L PRIDE X097

PPSR MONTANA KING 81Y  
**MISS PRICKLY PEAR A301**  
MISS PRICKLY PEAR 830U

CE	BW	WW	YW	ADG	MCE	BW	205 WT	RATIO	RANK	WDA	DAM RATIO
15.3	-1.3	67.6	106	0.24	11.2	89	569	85	70 OF 73	2.56	7 @ 98
MILK	MWW	MARB	BF	REA	API	TI					
19.6	53.4	0.2	-0.009	0.48	124.8	71.8					

LOT 21 IS ANOTHER THICK MADE CIRCLE L GUS SON WITH A GREAT SET OF BALANCED EPD'S.

LOT  
22

## PPSR ENHANCE 59J

1/2 SM 01/28/2021 ASA# 3958917  
BLACK POLLED

SYDGEN EXCEED 2332  
**SYDGEN ENHANCE**  
SYDGEN RITA 2618

SRS TEXT BOOK 50T  
**MISS PRICKLY PEAR 430B**  
MISS PRICKLY PEAR 214Z

CE	BW	WW	YW	ADG	MCE	BW	205 WT	RATIO	RANK	WDA	DAM RATIO
11.1	0.2	87.2	143.3	0.35	8.9	100	724	108	15 OF 73	3.25	6 @ 103
MILK	MWW	MARB	BF	REA	API	TI					
24.5	68.1	0.63	-0.3	0.73	153.3	93.3					

LOT 22 IS ONE OF THE MOST PHENOTYPICALLY CORRECT BULLS IN THE SALE. HE'S LONG SPINED WITH A THICK TOP AND HIP. HE RANKS IN THE TOP 10% FOR TI AND TOP 15% FOR API EPD'S.



LOT  
23

## PPSR COMMODORE 60J

1/2 SM 02/28/2021 ASA# 3959037  
BLACK POLLED

CONNEALY COMRADE 1385

### KESSLERS COMMODORE 6516

KESSLERS RAINBOW 0595

ESMH CONSERVATIVE MJ9365

### MISS PRICKLY PEAR 934W

MISS PRICKLY PEAR 6503S

CE	BW	WW	YW	ADG	MCE
13.2	0.8	98.6	153.1	0.34	6.1

MILK	MWW	MARB	BF	REA	API	TI
25.2	74.4	0.37	-0.042	0.82	142.3	93.3

BW	100
205 WT	758
RATIO	112
RANK	4 OF 22
WDA	2.82
DAM RATIO	10 @ 106

LOT 23 IS OUT OF A 12 YEAR OLD DAM THAT HAS A 365 DAY CALVING INTERVAL ON 10 CALVES. HE RANKS IN THE TOP 10% OF THE BREED FOR YEARLING WEIGHT AND AVERAGE DAILY GAIN EPD'S.

LOT  
24

## PPSR COMMODORE 64J

1/2 SM 03/01/2021 ASA# 3959041  
BLACK POLLED

CONNEALY COMRADE 1385

### KESSLERS COMMODORE 6516

KESSLERS RAINBOW 0595

KOCK LC MONTE 803U

### MISS PRICKLY PEAR 853F

MISS PRICKLY PEAR 430B

CE	BW	WW	YW	ADG	MCE
13.1	-0.5	99	158.6	0.37	9.1

MILK	MWW	MARB	BF	REA	API	TI
21.4	70.9	0.51	-0.025	0.67	151.2	97.9

BW	80
205 WT	670
RATIO	117
RANK	1 OF 2
WDA	2.68
DAM RATIO	2 @ 108

LOT 24 IS A LONG SPINED COMMODORE SON THAT CARRIES MUSCLE DEEP IN HIS QUARTER. HE RANKS IN THE TOP 10% OF THE BREED FOR TI EPD.

LOT  
25

## PPSR COUNTDOWN 67J

1/2 SM 03/02/2021 ASA# 3959029  
BLACK POLLED

CONNEALY COUNTDOWN

### RKNWHRT COUNTDOWN 16G

RKNWHRT IDEALS IMAGE 012X

GIBBS 2698Z BIG JOHN

### MISS PRICKLY PEAR G909

MISS PRICKLY PEAR U854

CE	BW	WW	YW	ADG	MCE
11.5	0.3	73.2	115.5	0.26	7

MILK	MWW	MARB	BF	REA	API	TI
19	55.6	0.29	-0.029	0.58	126.2	75.6

BW	86
205 WT	644
RATIO	96
RANK	52 OF 73
WDA	2.51
DAM RATIO	1 @ 96

LOT 25 IS A DEEP BODIED BIG RIBBED BULL OUT OF A FIRST CALF HEIFER.

LOT  
26

## PPSR ENHANCE 68J

1/2 SM 03/02/2021 ASA# 3955895  
HOMO BLACK HOMO POLLED

SYDGEN EXCEED 3223

### SYDGEN ENHANCE

SYDGEN RITA 2618

HTP SVF IN DEW TIME

### MISS PRICKLY PEAR 348A

MISS PRICKLY PEAR 964W

CE	BW	WW	YW	ADG	MCE
13.5	0.1	83.5	129.7	0.29	8.6

MILK	MWW	MARB	BF	REA	API	TI
20.2	61.9	0.49	-0.018	0.56	144.1	86.8

BW	98
205 WT	663
RATIO	103
RANK	4 OF 11
WDA	2.61
DAM RATIO	5 @ 96

LOT 26 A LONG MADE BULL WITH A GREAT DISPOSITION. HE RANKS IN THE TOP 20% OF THE BREED FOR BIRTH WEIGHT, API AND TI EPD'S.

LOT  
27

## PPSR GUS 71J

1/2 SM 03/03/2021 ASA# 3958965  
BLACK HOMO POLLED

S CHISUM 6175

### CIRCLE L GUS

CIRCLE L PRIDE X097

PPSR MONTANA KING 81Y

### MISS PRICKLY PEAR F810

MISS PRICKLY PEAR 466B

CE	BW	WW	YW	ADG	MCE
12.2	0.9	88.7	136	0.3	9

MILK	MWW	MARB	BF	REA	API	TI
21.5	65.7	0.19	-0.024	0.8	123.9	81.7

BW	97
205 WT	715
RATIO	106
RANK	19 OF 73
WDA	2.88
DAM RATIO	2 @ 105

LOT 27 IS OUT OF ONE OF THE BEST YOUNG MONTANA KING DAUGHTERS RATIOING 105 AT WEANING ON HER FIRST 2 CALVES. HE'S A THICK TOPPED BIG MIDDLED BULL.

LOT  
28

## PPSR COMMODORE 73J

1/2 SM 03/04/2021 ASA# 3959035  
BLACK POLLED

CONNEALY COMRADE 1385

### KESSLERS COMMODORE 6516

KESSLERS RAINBOW 0595

RCR WRANGLER S215

### MISS PRICKLY PEAR 483B

MISS PRICKLY PEAR U002

CE	BW	WW	YW	ADG	MCE
13	-0.2	87.2	137.7	0.31	7.5

MILK	MWW	MARB	BF	REA	API	TI
27.7	71.2	0.4	-0.024	0.54	148.2	88

BW	90
205 WT	678
RATIO	1101
RANK	36 OF 73
WDA	2.75
DAM RATIO	6 @ 105

LOT 28 RANKS IN THE TOP 15% OF THE BREED FOR MATERNAL MILK EPD. HIS DAM HAS AN AVERAGE WEANING RATIO OF 105 ON 6 CALVES BRED TO 6 DIFFERENT SIRES.



LOT  
29

**PPSR BLACKSMITH 83J**

1/2 SM 03/07/2021 ASA# 3958852  
BLACK POLLED

CONNELLY BLACK GRANTIE  
**MARDA BLACKSMITH 683**  
S A V BLACKCAP MAY 3092

SRS RIGHT-ON 22R  
**MISS PRICKLY PEAR 142Y**  
MISS PRICKLY PEAR 704T

CE	BW	WW	YW	ADG	MCE
14.2	0.2	72.9	118.7	0.29	8.4

MILK	MWW	MARB	BF	REA	API	TI
27	63.4	0.03	-0.035	0.69	116.1	70.7

BW	91
205 WT	632
RATIO	94
RANK	59 OF 73
WDA	2.86
DAM RATIO	8 @ 101

LOT 29 IS A THICK HIPPED SON OF MARDA BLACKSMITH WITH EXCELLENT PHENOTYPE.

LOT  
30

**PPSR DUKE 94J**

1/2 SM 03/14/2021 ASA# 3958868  
BLACK POLLED

SITZ INVESTMENT 660Z  
**LEACHMAN INVESTMENT 7599**  
LEACHMAN ERICA 7005

GIBBS 0601X RAISINCAIN  
**MISS PRICKLY PEAR 769E**  
MISS PRICKLY PEAR 321A

CE	BW	WW	YW	ADG	MCE
12.4	1.3	83.2	127.4	0.28	7.3

MILK	MWW	MARB	BF	REA	API	TI
23.6	65.2	0.31	-0.021	0.51	133.8	80.9

BW	96
205 WT	695
RATIO	103
RANK	1 OF 2
WDA	2.85
DAM RATIO	3 @ 103

LOT 30 IS A BIGGER FRAMED BULL THAT IS LONG AND DEEP BODIED.

LOT  
31

**PPSR DUKE 98J**

1/2 SM 03/16/2021 ASA# 3958860  
BLACK POLLED

SITZ INVESTMENT 660Z  
**LEACHMAN INVESTMENT 7599**  
LEACHMAN ERICA 7005

MR ISHEE CATALYST  
**MISS PRICKLY PEAR 437B**  
MISS PRICKLY PEAR 411P

CE	BW	WW	YW	ADG	MCE
12.7	0.5	76.6	123.5	0.29	8.3

MILK	MWW	MARB	BF	REA	API	TI
26.6	64.5	0.41	-0.011	0.57	142.3	80.8

BW	92
205 WT	638
RATIO	95
RANK	57 OF 73
WDA	2.68
DAM RATIO	5 @ 101

LOT 31 RANKS IN THE TOP 20% OF THE BREED FOR MATERNAL CALVING EASE AND API EPD'S.

LOT  
32

**PPSR DUKE 203J**

1/2 SM 03/08/2021 ASA# 3958864  
BLACK POLLED

SITZ INVESTMENT 660Z  
**LEACHMAN INVESTMENT 7599**  
LEACHMAN ERICA 7005

SRS RIGHT-ON 22R  
**MISS PRICKLY PEAR 958W**  
MISS PRICKLY PEAR 6046

CE	BW	WW	YW	ADG	MCE
12.1	1.6	74.3	114.5	0.25	7.6

MILK	MWW	MARB	BF	REA	API	TI
24.1	61.2	0.33	-0.007	0.29	132.2	75.2

BW	100
205 WT	679
RATIO	101
RANK	33 OF 73
WDA	2.96
DAM RATIO	10 @ 97

LOT 32 IS OUT OF A 12 YEAR OLD DAM THAT STILL RATIOED 101 AT WEANING WITH 73 CONTEMPORARIES IN AN EXTREMELY TOUGH YEAR.

LOT  
33

**PPSR BAILEY 205J**

1/2 SM 03/20/2021 ASA# 3958808  
HOMO BLACK HOMO POLLED

SPRING COVE PAYGRADE 5064  
**LEACHMAN PAYGRADE 8517**  
LEACHMAN BLACKCAP 6089

MR ISHEE CATALYST  
**MISS PRICKLY PEAR 442B**  
MISS PRICKLY PEAR 908W

CE	BW	WW	YW	ADG	MCE
11.3	1.8	78.4	118.4	0.25	5.6

MILK	MWW	MARB	BF	REA	API	TI
30.3	69.5	0.38	-0.021	0.61	133.3	79.6

BW	98
205 WT	681
RATIO	101
RANK	31 OF 73
WDA	2.83
DAM RATIO	5 @ 107

LOT 33 IS A DEEP BODIED BULL WITH LOTS OF RIB SHAPE AND THICKNESS. HIS DAM POSTS AN AVERAGE WEANING RATIO OF 107 ON 5 CALVES. HE RANKS IN THE TOP 10% OF THE BREED FOR MATERNAL MILK AND MARBLING EPD'S.

LOT  
34

**PPSR DUKE 210J**

1/2 SM 03/22/2021 ASA# 3958855  
BLACK HOMO POLLED

SITZ INVESTMENT 660Z  
**LEACHMAN INVESTMENT 7599**  
LEACHMAN ERICA 7005

SRS RIGHT-ON 22R  
**MISS PRICKLY PEAR 139Y**  
MISS PRICKLY PEAR 419P

CE	BW	WW	YW	ADG	MCE
11.7	1	68.4	109	0.25	7.6

MILK	MWW	MARB	BF	REA	API	TI
25.9	60.1	0.34	-0.016	0.34	128.2	73.2

BW	90
205 WT	640
RATIO	95
RANK	56 OF 73
WDA	2.89
DAM RATIO	6 @ 96

LOT 34 IS A LONG MADE BULL WHO'S OUT OF A 10 YEAR OLD DAM THAT HAS A 371 DAY CALVING INTERVAL ON 9 CALVES.



LOT  
35

## PPSR BAILEY 211J

1/2 SM 03/23/2021 ASA# 3958807  
BLACK HOMO POLLED

SPRING COVE PAYGRADE 5064  
**LEACHMAN PAYGRADE 8517**  
LEACHMAN BLACKCAP 6089

TNT AXIS X307  
**MISS PRICKLY PEAR 352A**  
MISS PRICKLY PEAR 7016T

CE	BW	WW	YW	ADG	MCE
8.4	2.7	79.9	119.1	0.25	4.1

MILK	MWW	MARB	BF	REA	API	TI
22.8	62.7	0.43	-0.001	0.51	126.8	79

BW	100
205 WT	683
RATIO	106
RANK	3 OF 11
WDA	2.65
DAM RATIO	4 @ 96

LOT 35 IS OUT OF A STRUCTURALLY CORRECT TNT AXIS DAUGHTER WITH AN EXCELLENT UDDER.

LOT  
36

## PPSR BAILEY 212J

1/2 SM 03/24/2021 ASA# 3958806  
BLACK POLLED

SPRING COVE PAYGRADE 5064  
**LEACHMAN PAYGRADE 8517**  
LEACHMAN BLACKCAP 6089

SYS KAPPES DETONATOR 626  
**MISS PRICKLY PEAR 350A**  
MISS PRICKLY PEAR 949W

CE	BW	WW	YW	ADG	MCE
13.9	0.6	74.5	115.4	0.26	7.1

MILK	MWW	MARB	BF	REA	API	TI
27.4	64.6	0.42	-0.034	0.58	139.6	80.2

BW	92
205 WT	721
RATIO	107
RANK	17 OF 73
WDA	2.78
DAM RATIO	6 @ 105

LOT 36 IS A SON OF BAILEY WHO IS PROVING TO SIRE GROWTH AND THICKNESS. HIS DAM HAS AN AVERAGE WEANING RATIO OF 105 ON 6 CALVES BRED TO 6 DIFFERENT SIRES. HE RANKS IN THE TOP 10% OF THE BREED FOR CALVING EASE EPD.

LOT  
37

## PPSR HANK 214J

1/2 SM 03/30/2021 ASA# 3958970  
BLACK POLLED

TC THUNDER 805  
**BLEVINS THUNDER 6965**  
BLEVINS BLACKBIRD RAIN 7208

PPSR KING EASY 5Z  
**MISS PRICKLY PEAR 496B**  
MISS PRICKLY PEAR 6503S

CE	BW	WW	YW	ADG	MCE
9.3	1.2	70	106.7	0.23	5.5

MILK	MWW	MARB	BF	REA	API	TI
22.8	57.8	0.27	-0.05	0.69	121.8	72.4

BW	100
205 WT	630
RATIO	94
RANK	60 OF 73
WDA	2.57
DAM RATIO	6 @ 104

LOT 37 IS ONE OF THE LAST HANK SONS. HANK'S DAUGHTERS ARE PROVING TO BE SOME OF THE EASIEST KEEPING COWS IN THE HERD.

LOT  
38

## PPSR EAGLE 5J

5/8 SM 02/13/2021 ASA# 3958902  
BLACK POLLED

HOOK'S BLACK HAWK 50B  
**HOOK'S EAGLE 6E**  
HOOK'S CRYSTAL 1C

MCR HORIZON 081  
**MISS PRICKLY PEAR 997G**  
MISS PRICKLY PEAR 037X

CE	BW	WW	YW	ADG	MCE
17.2	-4.2	87.3	135.6	0.3	8.9

MILK	MWW	MARB	BF	REA	API	TI
22.9	66.6	0.43	-0.04	0.96	158.3	94.6

BW	64
205 WT	691
RATIO	103
RANK	26 OF 73
WDA	2.65
DAM RATIO	1 @ 103

LOT 38 IS ANOTHER EAGLE SON OUT OF A FIRST CALF HEIFER. HE RANKS IN THE TOP 3% OF THE BREED FOR CALVING EASE, BIRTH WEIGHT AND API EPD'S. SHOULD MAKE A GREAT HEIFER BULL.

## PPSR EAGLE 7J

5/8 SM 02/13/2021 ASA# 3958897  
HOMO BLACK HOMO POLLED

LOT  
39

HOOK'S BLACK HAWK 50B  
**HOOK'S EAGLE 6E**  
HOOK'S CRYSTAL 1C

CRICLE L GUS  
**MISS PRICKLY PEAR 921G**  
MISS PRICKLY PEAR 459B

CE	BW	WW	YW	ADG	MCE	MILK	MWW	MARB	BF	REA	API	TI
15.4	-2.5	88.4	139	0.32	9.2	22.7	66.9	0.41	-0.021	0.99	148.8	92.2

BW	79
205 WT	691
RATIO	103
RANK	27 OF 73
WDA	2.88
DAM RATIO	1 @ 103



LOT 39 HAS A BIG TOP AND THICK HIP. HE RANKS IN THE TOP 5% OF THE BREED FOR WEANING WEIGHT, YEARLING WEIGHT AND TI EPD'S.



LOT  
40

### PPSR EAGLE 10J

5/8 SM 02/15/2021 ASA# 3958899  
HOMO BLACK HOMO POLLED

HOOK'S BLACK HAWK 50B  
HOOK'S EAGLE 6E  
HOOK'S CRYSTAL 1C

HA PRIME CUT 4493  
MISS PRICKLY PEAR 941G  
MISS PRICKLY PEAR 046X

CE	BW	WW	YW	ADG	MCE
13.5	-0.3	100	154.7	0.34	7

MILK	MWW	MARB	BF	REA	API	TI
21.6	71.6	0.46	-0.05	1.05	153.3	97.9

BW	82
205 WT	726
RATIO	108
RANK	13 OF 73
WDA	2.71
DAM RATIO	1 @ 108

LOT 40 IS A DEEP SIDED BULL WITH LOTS OF SPRING OF RIB. HE RANKS IN THE TOP 1% OF THE BREED FOR WEANING AND YEARLING WEIGHT EPD'S. HE RATIOED 108 AT WEANING WITH 73 CONTEMPORARIES.

LOT  
41

### PPSR BLAZER 11J

5/8 SM 02/15/2021 ASA# 3957064  
BLACK HOMO POLLED

KAPPES TRAILBLAZER S516  
ELLINGSON BLAZER X37  
ELLINGSON MS MR MT R562

HOOK'S BLACK HAWK 50B  
RKNWHRT FLO 943G  
OX BOW BARBARAMERE JET 525

CE	BW	WW	YW	ADG	MCE
11.2	1.6	84.6	123.3	0.24	4.1

MILK	MWW	MARB	BF	REA	API	TI
21.7	64	-0.22	-0.064	0.98	99	68.6

BW	97
205 WT	704
RATIO	106
RANK	3 OF 13
WDA	2.79
DAM RATIO	1 @ 106

LOT 41 RANKS IN THE TOP 10% OF THE BREED FOR RIBEYE.

LOT  
42

### PPSR BLAZER 20J

5/8 SM 02/18/2021 ASA# 3958875  
HOMO BLACK HOMO POLLED

KAPPES TRIALBLAZER S516  
ELLINGSON BLAZER X37  
ELLINGSON MS MR MT R562

WERNER FLAT TOP 4136  
MISS PRICKLY PEAR 916G  
MISS PRICKLY PEAR E781

CE	BW	WW	YW	ADG	MCE
17.2	-1	81	128.8	0.3	9.5

MILK	MWW	MARB	BF	REA	API	TI
24.9	65.3	0.21	-0.069	0.9	132.2	82.2

BW	86
205 WT	716
RATIO	106
RANK	18 OF 73
WDA	2.87
DAM RATIO	1 @ 106

LOT 42 IS ANOTHER BLAZER OUT OF A FLAT TOP DAUGHTER. THE FLAT TOP DAUGHTERS HAVE PROVEN TO BE PRODUCERS IN TOUGH CONDITIONS. HE RATIOED 106 AT WEANING WITH 73 CONTEMPARIES WHILE RANKING IN THE TOP 4% OF THE BREED FOR CALVING EASE AND BIRTH WEIGHT.

LOT  
43

### PPSR ZINER 24J

5/8 SM 02/20/2021 ASA# 3959020  
BLACK HOMO POLLED

CCR SPARTAN 9124A  
J-J ZINER 514C  
J BAR J MISS PRESENTINE

CONNEALY COMRADE 1385  
MISS PRICKLY PEAR 700E  
MISS PRICKLY PEAR B442

CE	BW	WW	YW	ADG	MCE
12.9	-0.8	88.8	137.2	0.3	7.7

MILK	MWW	MARB	BF	REA	API	TI
19.5	63.9	0.25	-0.028	0.58	133.6	85.2

BW	87
205 WT	683
RATIO	102
RANK	30 OF 73
WDA	2.92
DAM RATIO	3 @ 104

LOT 43 IS ONE OF THE MOST WELL BALANCED BULLS IN THE SALE. HIS DAM IS AS PHENOTYPICALLY CORRECT AS THEY COME. SHE HAS RATIOED 104 AVERAGE AT WEANING ON HER FIRST 3 CALVES BRED TO 3 DIFFERENT SIRS.

### PPSR EAGLE 27J

5/8 SM 02/21/2021 ASA# 3958892  
BLACK POLLED

LOT  
44

HOOK'S BLACK HAWK 50B  
HOOK'S EAGLE 6E  
HOOK'S CRYSTAL 1C

ELLINGSON BLAZER X37  
MISS PRICKLY PEAR 710E  
MISS PRICKLY PEAR 544C

CE	BW	WW	YW	ADG	MCE	MILK	MWW	MARB	BF	REA	API	TI
16.9	-2.7	86.4	133.4	0.29	9.3	24.3	67.5	0.34	-0.062	0.92	152.3	90.5

BW	72
205 WT	679
RATIO	101
RANK	32 OF 73
WDA	2.76
DAM RATIO	2 @ 108



LOT 44 HAS BEEN ONE OF MY FAVORITES FROM THE START OF TEST. HIS DAM IS MODERATE FRAMED WITH A PERFECT UDDER. HE RANKS IN THE TOP 3% OF THE BREED FOR CALVING EASE AND BIRTH WEIGHT EPD'S.



LOT  
45

**PPSR ZINSE 29J**

5/8 SM 02/21/2021 ASA# 3959012  
BLACK POLLED

CCR SPARTAN 9124A  
**J-J ZINSE 514C**  
J BAR J MISS PREDENTINE

SITZ EMBLAZON 9598  
**MISS PRICKLY PEAR 115Y**  
MISS PRICKLY PEAR 411P

CE	BW	WW	YW	ADG	MCE
6.2	3.5	90.2	136	0.29	5.7

MILK	MWW	MARB	BF	REA	API	TI
19.7	64.8	0.38	-0.042	0.4	133.4	82.9

BW	104
205 WT	708
RATIO	105
RANK	21 OF 73
WDA	2.68
DAM RATIO	7 @ 98

LOT 45 IS A DEEP BODIED ZINSE SON THAT WILL ADD PERFORMANCE TO ANY COW HERD.

LOT  
46

**PPSR FREIGHTLINER 30J**

5/8 SM 02/22/2021 ASA# 3958933  
BLACK POLLED

TJ MAKERS MARK 215Y  
**SHSF FREIGHTLINER D10**  
HOOKS PUNKY 5P

HOOK'S BLACK HAWK 50B  
**MISS PRICKLY PEAR 803F**  
MISS PRICKLY PEAR 642D

CE	BW	WW	YW	ADG	MCE
11.2	1.2	93.4	148.8	0.35	8.3

MILK	MWW	MARB	BF	REA	API	TI
19.8	66.5	0.19	-0.057	1.19	134.6	85.5

BW	93
205 WT	665
RATIO	99
RANK	44 OF 73
WDA	2.75
DAM RATIO	2 @ 93

LOT 46 IS LONG WITH A BIG TOP. HE RANKS IN THE TOP 1% OF THE BREED FOR WEANING WEIGHT, YEARLING WEIGHT AND RIBEYE EPD'S.

LOT  
47

**PPSR FREIGHTLINER 37J**

5/8 SM 02/23/2021 ASA# 3958930  
HOMO BLACK HOMO POLLED

TJ MAKERS MARK 215Y  
**SHSF FREIGHTLINER D10**  
HOOKS PUNKY 5P

HOOK'S BLACK HAWK 50B  
**MISS PRICKLY PEAR 754E**  
MISS PRICKLY PEAR 7004T

CE	BW	WW	YW	ADG	MCE
14	-0.5	87.3	137	0.31	10.3

MILK	MWW	MARB	BF	REA	API	TI
22.8	66.3	0.19	-0.061	1.18	140.1	84.5

BW	85
205 WT	700
RATIO	104
RANK	24 OF 73
WDA	2.71
DAM RATIO	3 @ 104

LOT 47 IS A FREIGHTLINER SON THAT RANKS IN THE TOP 1% OF THE BREED FOR RIBEYE AND THE TOP 4% FOR MATERNAL CALVING EASE EPD'S.

LOT  
48

**PPSR ZINSE 54J**

5/8 SM 02/27/2021 ASA# 3959024  
BLACK POLLED

CCR SPARTAN 9124A  
**J-J ZINSE 514C**  
J BAR J MISS PREDENTINE

PPSR HEAVY DUTY 16C  
**MISS PRICKLY PEAR 827F**  
MISS PRICKLY PEAR 172Y

CE	BW	WW	YW	ADG	MCE
14	-0.5	87.3	137	0.31	10.3

MILK	MWW	MARB	BF	REA	API	TI
22.8	66.3	0.19	-0.061	1.18	140.1	84.5

BW	105
205 WT	726
RATIO	108
RANK	14 OF 73
WDA	2.91
DAM RATIO	2 @ 107

LOT 48 IS MADE TO ADD POUNDS TO CALVES. HE RANKS IN THE TOP 1% OF THE BREED FOR BOTH WEANING AND YEARLING WEIGHT EPD'S. HE ALSO MAINTAINS A GOOD CALVING EASE AT 7.2.

**RKNWHRT ELEMENT 75J**

5/8 SM 03/04/2021 ASA# 3957040  
BLACK HOMO POLLED

LOT  
49

GW-WBF SUBSTANCE 820Y  
**GIBBS 3009A ELEMENT**  
GIBBS 9128W MABELLE N341

S D S GRADUATE 006X  
**RKNWHRT PRIDE 469B**  
JVC MS PRIDE 129 8072

CE	BW	WW	YW	ADG	MCE	MILK	MWW	MARB	BF	REA	API	TI
13.6	-1.7	69	105.3	0.23	8.9	26.7	61.2	0.39	-0.046	0.68	145	79.4

BW	84
205 WT	651
RATIO	98
RANK	8 OF 13
WDA	2.79
DAM RATIO	6 @ 102



LOT 49 HAS A GREAT DISPOSITION WITH TONS OF THICKNESS. HIS DAM POSTS AN AVERAGE WEANING RATIO OF 102 ON 6 CALVES WITH A 363 DAY CALVING INTERVAL.



LOT  
50

## PPSR EAGLE 8J

3/4 SM 02/13/2021 ASA# 3958903  
BLACK POLLED

HOOK'S BLACK HAWK 50B  
HOOK'S EAGLE 6E  
HOOK'S CRYSTAL 1C

PPSR BLACK GRANITE 101E  
MISS PRICKLY PEAR G910  
65R/MS PRICKLY PEAR 553R

CE	BW	WW	YW	ADG	MCE
9.8	2	93.9	145.6	0.32	5.8

MILK	MWW	MARB	BF	REA	API	TI
24.4	71.3	0.37	-0.052	0.98	143.1	89

BW	93
205 WT	758
RATIO	113
RANK	5 OF 73
WDA	2.74
DAM RATIO	1 @ 113

LOT 50 IS OFF ANOTHER FIRST CALF HEIFER THAT DID AN AMAZING JOB. HE RATIOED 113 AT WEANING WITH 73 CONTEMPORARIES. HE RANKS IN THE TOP 1% OF THE BREED FOR RIBEYE AND TOP 2% FOR WEANING WEIGHT.



HOOK'S BLACK HAWK 50B  
GRAND SIRE TO LOT 50

ST Genetics

## PPSR BLAZER 13J

3/4 SM 02/16/2021 ASA# 3958874  
HOMO BLACK POLLED

LOT  
51

KAPPES TRAILBLAZER S516  
ELLINGSON BLAZER X37  
ELLINGSON MS MR MT R562

WERNER FLAT TOP 4136  
MISS PRICKLY PEAR 908G  
MISS PRICKLY PEAR 460B

CE	BW	WW	YW	ADG	MCE	MILK	MWW	MARB	BF	REA	API	TI
17.6	-1.1	81.6	124.5	0.27	9.7	30.3	71.1	0.13	-0.092	0.91	134.6	81.5

BW	80
205 WT	772
RATIO	115
RANK	2 OF 73
WDA	2.65
DAM RATIO	1 @ 115



LOT 51 IS ANOTHER BLAZER SON OUT OF A FIRST CALF HEIFER. HE POSTED A 205 WT OF 772 WITH A RATIO OF 115 AGAINST 73 CONTEMPORARIES. HE RANKS IN THE TOP 3% OF THE BREED FOR CALVING EASE AND MATERNAL CALVING EASE.

## PPSR FRONTLINE 14J

3/4 SM 02/16/2021 ASA# 3958938  
HOMO BLACK HOMO POLLED

LOT  
52

CDI MAINLINE 265D  
HOOK'S FRONTLINE 40F  
HOOK'S CARINA 15C

HOOK'S BLACK HAWK 50B  
MISS PRICKLY PEAR 926G  
MISS PRICKLY PEAR 700E

CE	BW	WW	YW	ADG	MCE	MILK	MWW	MARB	BF	REA	API	TI
15.4	-1.3	82	132.4	0.31	8.1	23.3	64.3	0.44	-0.033	0.95	157.1	88.3

BW	81
205 WT	662
RATIO	98
RANK	47 OF 37
WDA	2.65
DAM RATIO	1 @ 98



LOT 52 HAS ONE OF THE MOST SOLID SETS OF EPD'S IN THE SALE. HE RANKS IN THE TOP 10% OF THE BREED FOR 5 EPD'S AND TOP 15% FOR 3 MORE EPD'S.



LOT  
53

### PPSR BLAZER 22J

3/4 SM 02/19/2021 ASA# 3958872  
HOMO BLACK HOMO POLLED

KAPPES TRAILBLAZER S516  
ELLINGSON BLAZER X37  
ELLINGSON MS MR MT R562

KM BROKEN BOW 002  
MISS PRICKLY PEAR 902G  
MISS PRICKLY PEAR 786E

CE	BW	WW	YW	ADG	MCE
16.1	-0.2	83.8	129.1	0.28	9

MILK	MWW	MARB	BF	REA	API	TI
23.1	64.1	0.14	-0.081	0.84	126.4	80.6

BW	92
205 WT	750
RATIO	111
RANK	8 OF 73
WDA	2.48
DAM RATIO	1 @ 111

LOT 53 IS A BLAZER SON OUT OF A PHENOTYPICALLY CORRECT KM BROKEN BOW FIRST CALF HEIFER. HE RANKS IN THE TOP 10% OF THE BREED FOR CALVING EASE EPD. HE POSTS A 205 WEIGHT RATIO OF 111 WITH 73 CONTEMPARIES.

LOT  
54

### PPSR BLAZER 23J

3/4 SM 02/10/2021 ASA# 3958879  
HOMO BLACK HOMO POLLED

KAPPES TRAILBLAZER S516  
ELLINGSON BLAZER X37  
ELLINGSON MS MR MT R562

S A V BRUISER 9164  
MISS PRICKLY PEAR 937G  
MISS PRICKLY PEAR 934W

CE	BW	WW	YW	ADG	MCE
14.9	0.5	81.9	124.7	0.27	7

MILK	MWW	MARB	BF	REA	API	TI
22.7	63.6	-0.08	-0.091	0.79	109.8	72.8

BW	94
205 WT	661
RATIO	99
RANK	2 OF 3
WDA	2.56
DAM RATIO	1 @ 99

LOT 54 IS ANOTHER THICK MADE SON OF BLAZER THAT RANKS IN THE TOP 10% OF THE BREED FOR WEANING WEIGHT EPD OFF A FIRST CALF HEIFER.

LOT  
55

### PPSR ELEMENT 28J

3/4 SM 02/21/2021 ASA# 3958910  
HOMO BLACK HOMO POLLED

GW-WBF SUBSTANCE 820Y  
GIBBS 3009A ELEMENT  
GIBBS 9128W MABELLE N341

HOOK'S BLACK HAWK 50B  
MISS PRICKLY PEAR 740E  
MISS PRICKLY PEAR 7004T

CE	BW	WW	YW	ADG	MCE
13.3	-0.6	80.5	124.9	0.28	8.5

MILK	MWW	MARB	BF	REA	API	TI
26.3	66.5	0.29	-0.059	0.97	152.2	87.6

BW	87
205 WT	673
RATIO	101
RANK	1 OF 3
WDA	2.66
DAM RATIO	3 @ 100

LOT 55 RANKS IN THE TOP 4% OF THE BREED FOR RIBEYE AND TOP 15% FOR MATERNAL CALVING EASE EPD'S.

LOT  
56

### RKNWHRT ELEMENT 38J

3/4 SM 02/23/2021 ASA# 3957038  
HOMO BLACK HOMO POLLED

GW-WBF SUBSTANCE 820Y  
GIBBS 3009A ELEMENT  
GIBBS 9128W MABELLE N341

SVR W817  
RKNWHRT BLACK LADY B406  
RKNWHRT BLACK LADY 92W

CE	BW	WW	YW	ADG	MCE
7.5	2	80.4	123.9	0.27	5.4

MILK	MWW	MARB	BF	REA	API	TI
26.5	66.6	0.44	-0.077	0.7	130.3	82.4

BW	100
205 WT	665
RATIO	100
RANK	6 OF 13
WDA	2.89
DAM RATIO	4 @ 101

LOT 56 IS HOMOZYGOUS BLACK AND POLLED. HE'S A LONG MADE BULL WITH LOTS OF THICKNESS.

## PPSR ROOSEVELT 65J

3/4 SM 03/01/2021 ASA# 3959002  
BLACK POLLED

LOT  
57

CCR COWBOY CUT 5048Z  
TJ ROOSEVELT 366E  
TJ 99A

CONNEALY COURAGE 25L  
MISS PRICKLY PEAR F807  
MISS PRICKLY PEAR 460B

CE	BW	WW	YW	ADG	MCE	MILK	MWW	MARB	BF	REA	API	TI
10.7	2.5	90.5	134.5	0.27	6.2	32	77.2	0.28	-0.044	0.98	138.2	84.5

BW	98
205 WT	770
RATIO	114
RANK	4 OF 73
WDA	3.22
DAM RATIO	2 @ 109



LOT 57 IS A THICK MADE BULL WITH A BIG TOP. HE RANKS IN THE TOP 3% OF THE BREED FOR WEANING WEIGHT EPD. HIS DAM AVERAGED 109 RATIO AT WEANING ON HER FIRST TWO CALVES.



LOT  
58

## PPSR MADAR 90J

3/4 SM 03/12/2021 ASA# 3958990  
BLACK HOMO POLLED

HOOK'S BOZEMAN 8B  
NLC FABIAN 64F  
NLC X136

GIBBS 1100Y HY DEACON  
MISS PRICKLY PEAR 608D  
MISS PRICKLY PEAR 901W

CE	BW	WW	YW	ADG	MCE
14.5	0.2	71.8	103.8	0.2	8.4

BW	88
205 WT	633
RATIO	98
RANK	7 OF 11
WDA	2.76
DAM RATIO	4 @ 96

MILK	MWW	MARB	BF	REA	API	TI
18.2	54.1	0.27	-0.059	0.77	135.2	74.8

LOT 58 IS LEVEL TOPPED WITH A THICK HIP. HE RANKS IN THE TOP 25% OF THE BREED FOR CALVING EASE, MATERNAL CALVING EASE AND RIBEYE EPD'S.

NLC FABIAN 64F  
SIRE TO LOT 58 & 59



LOT  
59

## PPSR MADAR 93J

3/4 SM 03/13/2021 ASA# 3958992  
BLACK POLLED

HOOK'S BOZEMAN 8B  
NLC FABIAN 64F  
NLC X136

GIBBS 1100Y HY DEACON  
MISS PRICKLY PEAR 642D  
MISS PRICKLY PEAR 007X

CE	BW	WW	YW	ADG	MCE
10.8	2	79.8	121.7	0.26	6.3

BW	89
205 WT	710
RATIO	106
RANK	20 OF 73
WDA	2.86
DAM RATIO	4 @ 106

MILK	MWW	MARB	BF	REA	API	TI
23.5	63.4	0.08	-0.076	0.8	120	73.4

LOT 59 IS A DEEP BODIED 3/4 BLOOD WITH A GREAT DISPOSITION. HIS DAM POSTS A WEANING RATIO OF 104 ON HER FIRST 4 CALVES.



LOT  
60

## PPSR BAILIFF 213J

3/4 SM 03/27/2021 ASA# 3958825  
BLACK POLLED

SFG THE JUDGE D633  
HL JUDGE 4G  
IR MS LAUSANNE W139

CONNEALY BLACK GRANITE  
MISS PRICKLY PEAR 773E  
NLC T286 TAMRA

CE	BW	WW	YW	ADG	MCE
12	0.6	73.9	111.7	0.24	7.9

BW	90
205 WT	660
RATIO	97
RANK	2 OF 2
WDA	2.62
DAM RATIO	3 @ 97

MILK	MWW	MARB	BF	REA	API	TI
25.7	62.6	0.36	-0.4	0.74	140.2	78.3

LOT 60 RANKS IN THE TOP 15% OF THE BREED FOR RIBEYE EPD. HIS GRANDDAM WAS THE GREAT SNAKE EYES DONOR T286 THAT POSTED AN AVERAGE WEANING RATIO OF 103 ON 11 CALVES.



# Purebred Bulls

LOT  
61

## PPSR BLAZER 21J

PB SM 02/18/2021 ASA# 3958876  
BLACK HOMO POLLED

KAPPES TRAILBLAZER S516  
ELLINGSON BLAZER X37  
ELLINGSON MS MR MT R562

HOOK'S BEACON 56B  
MISS PRICKLY PEAR 917G  
MISS PRICKLY PEAR 063X

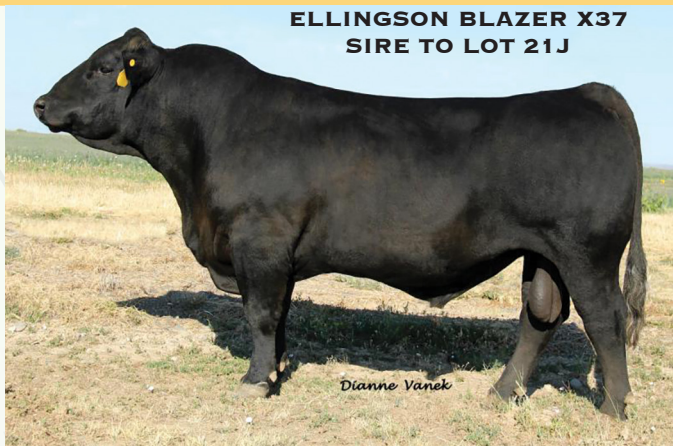
CE	BW	WW	YW	ADG	MCE
13.8	0.2	85	125.7	0.25	8.3

MILK	MWW	MARB	BF	REA	API	TI
27.6	70	0.1	-0.071	1.03	141.2	84.3

BW	90
205 WT	771
RATIO	115
RANK	3 OF 73
WDA	2.75
DAM RATIO	1 @ 115

LOT 61 IS THE FIRST OF MANY I'M SURE YOU'LL SEE OUT OF THIS FIRST CALF HEIFER. HE POSTED A WEANING RATIO OF 115 AT WEANING WITH 73 CONTEMPORARIES. HE ALSO RANKS IN THE TOP 15% OF THE BREED FOR CALVING EASE AND MATERNAL CALVING EASE EPD'S. HIS GRAND DAM POSTED WEANING RATIOS OF 104 ON 8 CALVES BEFORE BECOMING A DONOR.

ELLINGSON BLAZER X37  
SIRE TO LOT 21J



LOT  
62

## PPSR FREIGHTLINER 70J

PB SM 03/03/2021 ASA# 3958931  
BLACK POLLED

TJ MAKERS MARK 215Y  
SHSF FREIGHTLINER D10  
HOOKS PUNKY 5P

MCM TOP GRADE 018X  
MISS PRICKLY PEAR 788E  
MISS PRICKLY PEAR 6224S

CE	BW	WW	YW	ADG	MCE
9.6	2.1	98.2	154.1	0.35	7.9

MILK	MWW	MARB	BF	REA	API	TI
24.9	73.9	-.3	-0.077	0.96	149.3	94.7

BW	93
205 WT	779
RATIO	116
RANK	1 OF 73
WDA	2.82
DAM RATIO	3 @ 107

LOT 62 HAS A WEANING RATIO OF 116 WITH 73 CONTEMPORARIES. HE RANKS IN THE TOP 2% OF THE BREED FOR WEANING AND YEARLING WEIGHT EPD'S. HIS TOP GRADE DAM HAS POSTED A WEANING RATIO OF 107 ON HER FIRST 3 CALVES.

SHSF FREIGHTLINER D10  
SIRE TO LOT 62



LOT  
63

## PPSR GEN TEN 82J

PB SM 03/06/2021 ASA# 3958955  
BLACK HOMO POLLED

NLC PROGRESSIVE 40C  
NLC GEN TEN 82E  
NLC A109 AMBER

PPSR SHEAR POWER 54U  
MISS PRICKLY PEAR X08  
NLC T286 TAMRA

CE	BW	WW	YW	ADG	MCE
11.7	1.3	71.4	107.1	0.22	7.4

MILK	MWW	MARB	BF	REA	API	TI
30.8	66.4	0.1	-0.075	1.01	135	75

BW	91
205 WT	663
RATIO	99
RANK	45 OF 73
WDA	2.52
DAM RATIO	9 @ 102

LOT 63 RANKS IN THE TOP 10% OF THE BREED FOR BOTH CALVING EASE AND MATERNAL CALVING EASE EPD'S. HIS DAM HAS RATIOED 102 ON 9 CALVES AT WEANING BRED TO 9 DIFFERENT SIRES.

NLC GEN TEN 82E  
SIRE TO LOT 63





LOT  
64

### PPSR MADAR 86J

PB SM 03/09/2021 ASA# 3958995  
BLACK POLLED

HOOK'S BOZEMAN 8B  
NLC FABIAN 64F  
NLC X136

LRS RANGE BOSS 901Z  
MISS PRICKLY PEAR 707E  
MISS PRICKLY PEAR 368A

CE	BW	WW	YW	ADG	MCE
10.9	0.5	71.4	101.6	0.19	5

MILK	MWW	MARB	BF	REA	API	TI
19.1	54.7	0.13	-0.069	0.72	136.9	74.8

BW	91
205 WT	647
RATIO	96
RANK	51 OF 73
WDA	2.91
DAM RATIO	3 @ 96

LOT 64 IS A DEEP BODIED SON OF THE FABIAN HERD SIRE. HE HAS A THICK TOP AND CARRIES MUSCLE DEEP INTO HIS QUARTER.

LOT  
65

### PPSR MADAR 99J

PB SM 03/16/2021 ASA# 3958989  
HETERO BLACK POLLED

HOOK'S BOZEMAN 8B  
NLC FABIAN 64F  
NLC X136

RC CLUB KING 040R  
MISS PRICKLY PEAR 331A  
65R/MS PRICKLY PEAR 544R

CE	BW	WW	YW	ADG	MCE
12.6	-0.4	61	88.3	0.17	6.8

MILK	MWW	MARB	BF	REA	API	TI
20.9	51.4	0.16	-0.082	0.48	143.2	70.9

BW	93
205 WT	569
RATIO	85
RANK	71 OF 73
WDA	2.52
DAM RATIO	7 @ 99

LOT 65 IS OUT A PERFECT UDDERED DAUGHTER OF RC CLUB KING. HE RANKS IN THE TOP 20% OF THE BREED FOR BIRTH WEIGHT AND TOP 25% OF THE BREED FOR API EPD'S.

## PPSR BAM BAM 202J

PB SM 03/18/2021 ASA# 3958839  
BLACK POLLED

LOT  
66

GIBBS 3009A ELEMENT  
GIBBS 7258E BAMA BOY  
GIBBS 8308U GEORGIA 6S10

TRIPLE C BETTIS S72J  
MISS PRICKLY PEAR 067X  
MISS PRICKLY PEAR 643F

CE	BW	WW	YW	ADG	MCE	MILK	MWW	MARB	BF	REA	API	TI
10.3	2	77.5	114.2	0.23	5.3	25.9	64.6	0.03	-0.099	1.02	127.5	75.7

BW	95
205 WT	729
RATIO	108
RANK	12 OF 73
WDA	2.87
DAM RATIO	9 @ 100



LOT 66 IS OUT OF A 12 YEAR OLD DAM. HE POSTS A NICE BALANCED SET OF EPD'S AND HAS A 108 WEANING RATIO WITH 73 CONTEMPORARIES.

LOT  
67

### PPSR MADAR 208J

PB SM 03/21/2021 ASA# 3958993  
BLACK POLLED

HOOK'S BOZEMAN 8B  
NLC FABIAN 64F  
NLC X136

PPSR MONTANA KING 81Y  
MISS PRICKLY PEAR D658  
MISS PRICKLY PEAR 040X

CE	BW	WW	YW	ADG	MCE
9.8	2.2	70.9	105.3	0.21	5

MILK	MWW	MARB	BF	REA	API	TI
19.7	55.2	0.16	-0.075	0.52	136.8	73.1

BW	100
205 WT	652
RATIO	97
RANK	40 OF 73
WDA	2.60
DAM RATIO	4 @ 99

LOT 67 IS A MODERATE FRAMED PUREBRED WITH DEPTH OF BODY AND A THICK HIP. HIS DAM HAS A 364 DAY CALVING INTERVAL ON HER FIRST 4 CALVES.





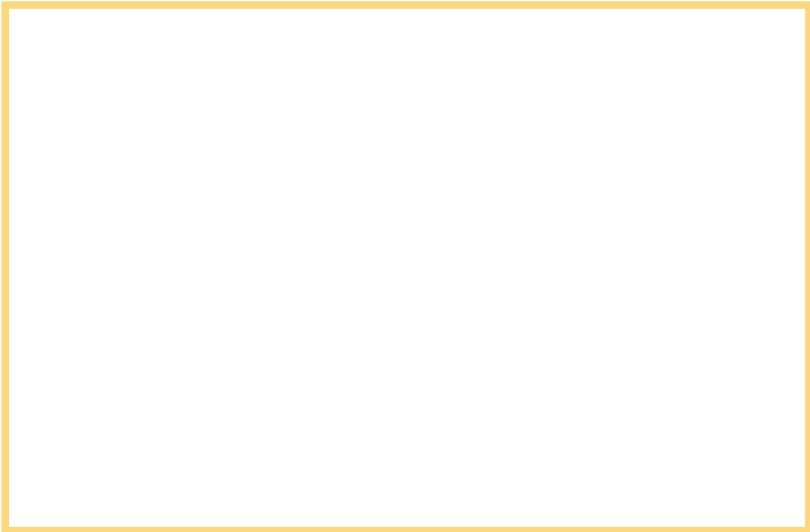
A Speical Thank You  
and  
See You Down The Trail



[WWW.PRICKLYPEARSIMMENTAL.COM](http://WWW.PRICKLYPEARSIMMENTAL.COM)



**PRICKLY PEAR  
SIMMENTAL RANCH  
2515 CANYON FERRY ROAD  
HELENA, MONTANA 59602**



# *Annual Bull Sale*

TIME SENSITIVE MATERIAL. PLEASE DELIVER IMMEDIATELY.

**SATURDAY, FEBRUARY 5, 2022 @ 1:00PM  
HELENA, MONTANA**

