



REDD RANCHES

BULL SALE

APRIL 11TH 2020 ♦ PARADOX, COLORADO

***SELLING 177 RED & BLACK ANGUS
& SIM-GELB ANGUS COMPOSITE***

Pedigree is one thing, Performance is EVERYTHING!

Welcome!



Sale Day Phone
1.800.442.8557

Paul's Cell
970.534.1974

reddranches@gmail.com

Jennifer's Cell
970.640.7543
jewestfall@gmail.com

***Please check our
website for sale
updates.***

We echo our bank when they say, "You Are the Reason We Are In Business". Our business is supplying you with superior genetic potential in a range-ready package, a yearling bull. A bull from a range savvy cow herd with 100 plus years of surviving and prospering in dry desert country and high-altitude summer range.

We believe in science. We believe "if you can measure it, you can improve it." Mother Nature is our partner. We select for cows that naturally do well on the range. There is no good reason to subsidize the poor doers, it is costly and counterproductive.

We have been measuring our livestock for many, many years. I grew up on the range, in sheep camps and cow camps, sometimes 100 miles from home. We weigh everything, calves, cows, bulls, ewes, lambs and wool.

With the cattle we have been weighing and measuring for 80 years. When the breed associations were still stuck in the show ring, we helped found Performance Registry International. PRI rented time on huge IBM computers to keep the records and develop the breeding values from 10,000's of cattle. We developed progeny testing and carcass evaluation and certification, it was years later when the breed associations adopted Performance, measuring, and computer assisted selection tools.

We have the attitude, "if there is anything that may help make our cattle more productively efficient, we seek after those things." When the research was being done on Brisket Disease, Colorado State University, researchers tested our entire Red Angus herd, and all herd bulls of all breeds. We culled one third of our Red Angus cows and half of our Red Angus bulls. The losses from Brisket Disease stopped, in 1979. PAP testing is part of every animal's record that comes into or goes out of our herd.

Generations of positive selection for more productive cattle is our legacy. We are blessed to have seasons, Winter, Spring, Summer and Fall. Just as the ancients celebrated Winter Solstice, "the Sun was coming back", we are renewed and buoyed up by the coming of Spring, green grass, newborn calves; we have a new beginning with each new Spring. We vow to do it better this coming new year. We plan ways to manage our land and our lives better. Life is too short to be wasted on, "just okay." We need to make a difference, improve what we can improve.

We hope you will recognize Redd Ranches as a place you can find cattle that will improve your cattle and your life.

Warmly,

Paul & Diane Redd
(the third generation)

Jennifer Redd Westfall
(the fourth generation)



**CATALOG AND VIDEOS OF EACH
LOT ARE AVAILABLE ONLINE**

WWW.REDDRANCHES.COM

SALE INFORMATION

CONTENTS

Welcome.....	Inside Front
Sale Representatives	
Acknowledgments & Announcements.....	1
Internet Bidding.....	2
PAP Score Guidelines.....	3
IGENITY Profile / Use.....	4
How to Read the Catalog.....	5
Reference Sires	
Red Angus.....	6
Black Angus.....	25-26
Sim & Gelb Angus Composites.....	41
Hereford Influenced Composites.....	47
SALE BULLS	
Red Angus.....	7
Red Angus High Percentage.....	15
Black Angus.....	26
Black Angus High Percentage.....	33
Sim & Gelb Angus Composites.....	42
Hereford Influenced Composites.....	47
Redd Ranches Horse Program.....	52
Sale Terms & Conditions.....	50
Tattoo /Lot Index.....	51
Bull Buyer's Drawing.....	52

Sale Offering

177 Bulls

SATURDAY, APRIL 11TH, 2020

PARADOX, COLORADO

LUNCH 11:30 AM – SALE 1:00 PM

Representatives

Joe Goggins.....	Auctioneer
Pete Crow.....	Western Livestock Journal
Dwayne Dietz.....	Special Assignment
David Redd.....	Redd Ranches Guides and Outfitters
Adam Noble.....	ABS Semen Reps.
Doug Coombs.....	Hoffman AI Services
Cole Owens.....	Superior Livestock
Nate Smith.....	Neogen
Nolan Woodruff.....	Red Angus Assoc 940.477.4594

Acknowledgements

Veterinarian.....	Dr. Johnson, Dr. Len Sorensen, Moab, UT
Breeding Soundness.....	Overton Vet Clinic, North Platte, NE
Pulmonary Artery Pressure.....	Tim Holt, Fort Collins, CO
Trimming.....	Rodney Barwick, Cozad, NE
Brand Inspectors.....	Josh Sinks, Nucla, CO Ricki Wilcox, Lasal, UT
Feedlot.....	Mitch Ziebell, Darr Feedlot, NE
Records and Administration.....	Jennifer Westfall
Redd Ranches Team.....	Kurtis & Tava Luster, Dusty Hatch, Alan Hatch
Sale Day Lunch.....	Diane Redd, Family, Friends and Neighbors
Beef Chefs.....	Brian, Brad and Marc Lambert

Announcements

- All EPDs are given in a Red Angus base.
- All Animals are BVD tested & negative.
- Announcements from the sale block will take precedent over any written material.

Catalog Design:



www.krosecattle.com
406 285-1907

HOW TO PARTICIPATE AS AN ABSENTEE BUYER

We have made preparations to bid and buy livestock through Superior Productions' "Call or Click-To-Bid" service for those unable to attend in person on sale day. Please note that all of the lots in the sale will also be available for viewing online prior to sale day at www.superiorlivestock.com.

Here's How it Works

Turn in Bids Over the Phone. This is our traditional method of buying livestock. To get started simply go online to www.superiorlivestock.com and click on the tab titled "Register for a Buyer Number". Select the registration form for Superior Productions and print the registration form, fill it out and fax it in to Superior Productions at (817) 378-3380 with a signature on it, or scan and email the form to: info@superiorauction.com. You can also mail it in to the address provided on the form. Upon receipt of this information Superior will call you with a buyer's number and the bid line phone number that you will use on sale day to place bids over the phone.

Click-To-Bid. This is Superior's online bidding platform for cattle buying. Please note that high speed internet is required – this is not for dial-up or satellite internet. Registration is free, but you must become a member of www.superiorclicktobid.com to sign up. Becoming a member is easy - just go to the homepage of www.superiorclicktobid.com and follow the out-lined steps to get started. Input your information and select a username and password. You will receive an e-mail confirming you are a member. From that point forward you just have to sign in and select the sale you would like to register for and once approved you will receive an e-mail confirming which sale you are now registered for.

Viewing the Auction. There are 2 places to view the sale broadcast live on the internet: www.superiorlivestock.com or www.superiorclicktobid.com. Just go to the home page of either website and select the auction. If you just want to watch the auction on your computer, smartphone or tablet go to www.superiorlivestock.com, but if you want to bid over the computer you must go to www.superiorclicktobid.com. Remember you can call in to bid on the internet, but you must be a member of www.superiorclicktobid.com to "click- to-bid". Your computer must have Flash Media Player installed for this website to view the auction.

If you have any questions, please call the Superior Productions office at 800-431- 4452.

**If you plan to bid by phone through Superior Livestock or 'Click-to-Bid', you must register at www.superiorlivestock.com prior to bidding.*





PAP RISK CATEGORY FLOW CHART


Location of PAP Test: LaSal Mountains above Paradox Colorado

Redd Ranches Elevation: 8,095 feet

HIGH ELEVATION TEST CHART

PAP test conducted at elevations more than 7000 ft.

PAP Score	Use at Low Elev. (<4000 feet)	Use at Moderate Elev. (4000-5500 FEET)	Use at High Elev. (5500-7500 feet)
34–39	Low Risk	Low Risk	Low Risk
40–45	Low Risk	Low Risk	Low Risk
46–49	Moderate Risk	Moderate Risk	Moderate Risk
>50	Moderate Risk	Moderate Risk	High Risk



Timothy N. Holt, DVM

Lisa Herrick, Certified PAP Technician, 2020

Brisket disease (Altitude sickness, Bovine high-mountain disease) is a relatively common hypoxic disease of high-altitude cattle worldwide, and one of the Rocky Mountain Region's most costly diseases in cattle. This disease is caused by pulmonary arterial hypertension, circulatory edema, and congestive heart failure as a result of low-pressures associated with low-oxygen high-altitude grazing. Dr. Tim Holt of Colorado State University is the leading authority on PAP and has been studying brisket disease for 35 years. We are fortunate enough to have had the honor of working with Dr. Tim Holt DVM since the beginning of his PAP career. We have been PAP testing our herd since 1978-40 YEARS.

At Redd Ranches we have been running our herd at high elevations for 103 years, PAP testing for 40 years, we research, study, and select the top performing bulls in the world with Low PAP to use in our A.I. Program.

IGENITY PROFILE

IGENITY® provides the beef industry with the most comprehensive genetic profile of multiple traits of economic importance. The insights gained from an IGENITY profile help producers make more confident selection, management and marketing decisions. The IGENITY profile includes multiple-marker analyses for traits such as: Average Daily Gain, Tenderness, Choice, Stayability, Maternal Calving Ease and Feed Efficiency.

Profile Score Advantages:

To assist cattle producers in understanding the value of DNA technology, IGENITY has developed a scoring system for each trait using a scale of 1 to 10. Higher values are not necessarily better, they simply indicate that the animal has the potential for more of that trait. The following descriptions and table (Table 1) are useful in defining each trait and reflect the relative difference expected in animals compared to contemporaries with an IGENITY profile score of 1.



Igenity® – Confident Selection

Score Interpretation

Average Daily Gain (ADG)

Based on pounds of gain per day. The Igenity score for Average Daily Gain (ADG) identifies genetic potential for post-weaning growth.

Calving Ease(CE)

Greater probability a calf will be born unassisted out of a first-calf heifer, including birth weight and shape of the calf. A higher value is greater calving ease.

Stayability (Stay)

The chance a heifer will remain in the herd as a productive cow until at least six years of age. A higher value is desired.

Choice

The IGENITY profile scores for Quality Grade and Marbling reflect extremely powerful multiple marker analyses which are indicative of an animal's potential for intramuscular fat deposition and Choice or better Quality Grade carcasses. Choice shows an indication of an animal's ability to grade and marble.

Feed Efficiency (Feed)

This is an indicator of feed efficiency. It is the difference in animals' daily consumption of feed to achieve the same level of daily gain. Lower RFI indicates greater feed efficiency.

Tenderness (Tend)

Genetic potential for beef tenderness (Warner-Bratzler Shear Force). A higher 1-10 score is more tender.

Index Scores

Igenity Production Index (IPI)

The Igenity Production Index is well balanced for maternal, production and carcass progeny traits. It is designed for producers who raise their own heifers and want broad improvement across multiple traits. Weightings: Stay 30%; CEM 10%; ADG 15%; RFI -15%; Marb 20%; Tend 10%.

Igenity Maternal Index (IMI)

This index is highly maternal and designed to select replacement heifers for fertility, longevity, moderate cow size and higher weaned calf weight. It is a tool developed for producers who sell calves at weaning or after a short backgrounding period. Trait Weightings: CED 5%, CEM 5%, HPG 5%, Stay 25%, WW 30%, -20% YW, -10% RFI.

HOW TO READ THE CATALOG

a	85	b Redd Hill B571 Julian 208F	o Frame		p Scrotal		q PAP		r EPD Base											
			3.4		37		40		RA											
Sire: REDHILL B571 JULIAN 1W Dam: REDD MS REDEMPTION D539			c Red	d R97	e Polled	f Reg	h BD: 12-Feb													
j	Birth		Weaning		CED		Yearling				DNA		ADG	CE	Stay	Choice	Feed	Tend	Igen Prog	Igen Mat
	wt	EPD	Ratio	EPD	EPD	ADG	AdjWt	Ratio	EPD	Profile								Index	Index	
	67	-1.4	99	62	12	3.4	1041	107	98									7.3	6.3	

KEY

- a** Lot #
- b** Name of Animal
- c** Dam's Year of Birth
First Digit Year of Birth
R 2005
S 2006
T 2007
U 2008
W 2009
X 2010
Y 2011
Z 2012
A 2013
B 2014
C 2015
D 2016
E 2017
- d** Color
- e** Polled or Scurs
- f** Registration Status
- g** Percent of Breed
(Example shown is 97% Red Angus)
R - Red Angus
A - Angus
H - Hereford
G - Gelbvieh
S - Simmental
T - Tarantaise
- h** Date of Birth
- i** Actual Birth Weight
- j** EPD's in lbs.
(Expected Progency Differences)
- k** Weaning Weight Ratio
The weaning weight of the calf, adjusted to 205 days and adjusted for the age of the cow compared to his herd mates.
- l** Calving Ease Direct EPD (CED) Is a predictor of a sire's genetic merit for milk and mothering ability as expressed in his daughters compared to daughters of other sires. In other words, it is part of a calf's weaning weight attributed to milk and mothering ability.
- m** Average Daily Gain
A measure of the bull's gain performance while, "on test."
- n** Adjusted Yearling Weight Ratio.
Computed by adding the 205 day adjusted weight to the gain since weaning. It combines weaning and gain to give a complete picture of the bull's growth. Note: Adj. Yearling Wt. is the best performance measure of the bull.
- o** Frame Score
Adjusted for age to help predict mature size.
- p** Scrotal Circumference
Adjusted to yearling age, in cm. Large scrotal circumference indicates greater service capacity, daughters will tend to be more fertile and productive cows. Use scrotal circumference to improve total herd fertility.
- q** Pulmonary Artery Pressure
Used to help avoid, "Brisket Disease." Scores of 42 and less are recommended for ranches above 7,000 ft. Ranches lower than 7,000 ft. have little risk of, "Brisket," or, "High Mountain Disease."
- r** EPD Base. Each breed association has their own EPD base that they choose to use. To assist our customers in comparing bulls against each other we have adjusted each animal in this catalog to the Red Angus base (RA).
- s** Igenity Production & Maternal Indexes
- t** DNA Scores

RED ANGUS

“The First Real Performance Breed,” the best thing that has ever happened to our cow herd, no more cancer eye or spoiled udders, more live calves weaned, more pounds of calf wean per cow bred. With a Red Angus cowherd, you have many good options: replacements, or terminal crosses that will grade choice.



RED ANGUS REFERENCE SIREs

NAAB #	REG #	NAME	HB	GM	CE	BW	BW acc	WW	YW	ADG	DMI	
1AR946	1441805	BROWN JYJ REDEMPTION Y1334	188	51	15	-4.4	96	65	113	0.3	1.65	
SIRE: BECKTON NEBULA P P707 PGSire: BECKTON NEBULA M045			MILK	ME	HPG	CEM	STAY	MARB	YG	CW	REA	FAT
MGSire: LJC MISSION STATEMENT P27 MGGsire: LJC LANCER 806			19	-4	14	8	15	0.58	0.09	31	0.08	0.02

NAAB #	REG #	Name	HB	GM	CE	BW	BW acc	WW	YW	ADG	DMI	
29AR262	1689588	NO WORRIES	182	53	15	-3.8	78	69	118	0.31	1.55	
SIRE: BROWN JYJ REDEMPTION Y1334 PGSire: BECKTON NEBULA P P707			MILK	ME	HPG	CEM	STAY	MARB	YG	CW	REA	FAT
MGSire: LSF JBOB EXPECTATION 6034S MGGsire: LCHMN ENTERPRISE 1370H			21	-1	16	7	14	0.71	0.1	25	0.1	0.02

NAAB #	REG #	Name	HB	GM	CE	BW	BW acc	WW	YW	ADG	DMI	
59AR669	1703720	BROWN ORACLE 228	54	15	-3	89	74	119	0.28	1.17		
SIRE: BROWN REVELATION P7021 PGSire: BFCK CHEROKEE CNYN 4912			MILK	ME	HPG	CEM	STAY	MARB	YG	CW	REA	FAT
MGSire: BECKTON NEBULA P P707 MGGsire: BECKTON NEBULA M045			14	1	11	7	19	0.66	-0.08	44	0.73	0.01

NAAB #	REG #	NAME	HB	GM	CE	BW	BW acc	WW	YW	ADG	DMI	
262AR634	1725295	LSF RHO NIGHT FOCUS 76B	225	50	17	-2.9	74	77	115	0.24	1.45	
SIRE: LSF NIGHT CALVER 9921W PGSire: MESSMER PACKER S008			MILK	ME	HPG	CEM	STAY	MARB	YG	CW	REA	FAT
MGSire: MYTTY FOCUS MGGsire: S A F FOCUS OF E R			21	1	17	12	18	0.72	0.27	43	0.1	0.06

Red Angus Breed Average EPDS

HB	GM	CE	BW	WW	YW	ADG	DMI	MILK	ME	HPG	CEM	STAY	MARB	YG	CW	REA	FAT
173	49	12	-1.36	58	91	0.21	0.93	22	-1	11	7	15.79	0.44	0	23	0.08	0.03



RED ANGUS LOTS

1	REDD NO WORRIES 224 G								Frame	Scrotal	PAP	EPD Base							
									5.38	36	38	RA							
Sire: LSF BRA NO WORRIES 4657B										Dam: REDD MS BKT HERITAGE									
										R	R94	Pol	Reg	BD: 2/17/19					
Birth		Weaning		CED	Yearling				DNA Profile	ADG	CE	Stay	Choice	Feed	Tend	Igen Prog Index	Igen Mat Index		
wt	EPD	Ratio	EPD		ADG	AdjWt	Ratio	EPD											
80	-1.8	110	65	12	4.26	1256	118	105	9	7	7	6	6	9	6.90	6.05			

2	REDD NO WORRIES 221 G								Frame	Scrotal	PAP	EPD Base							
									5.09	34	40	RA							
Sire: LSF BRA NO WORRIES 4657B										Dam: REDD MS BKT HERITAGE									
										R	R96	Pol	Reg	BD: 2/14/19					
Birth		Weaning		CED	Yearling				DNA Profile	ADG	CE	Stay	Choice	Feed	Tend	Igen Prog Index	Igen Mat Index		
wt	EPD	Ratio	EPD		ADG	AdjWt	Ratio	EPD											
45	-6.6	110	71	16	3.86	1196	113	115	7	5	8	7	7	7	6.55	6.2			





3	REDD ORACLE 646 G	Frame	Scrotal	PAP	EPD Base															
		5.02	35		RA															
Sire: BROWN ORACLE B112 Dam: REDD MS BKT NEBULA A514		R	R94	Pol	Reg	BD: 3/17/19														
Birth wt	EPD	Weaning Ratio	EPD	CED EPD	Yearling ADG	AdjWt	Ratio	EPD	DNA Profile	ADG	CE	Stay	Choice	Feed	Tend	Igen Index	Prog Index	Igen Index	Mat Index	
76	-2.1	106	69	15	4.2	1228	116	109												

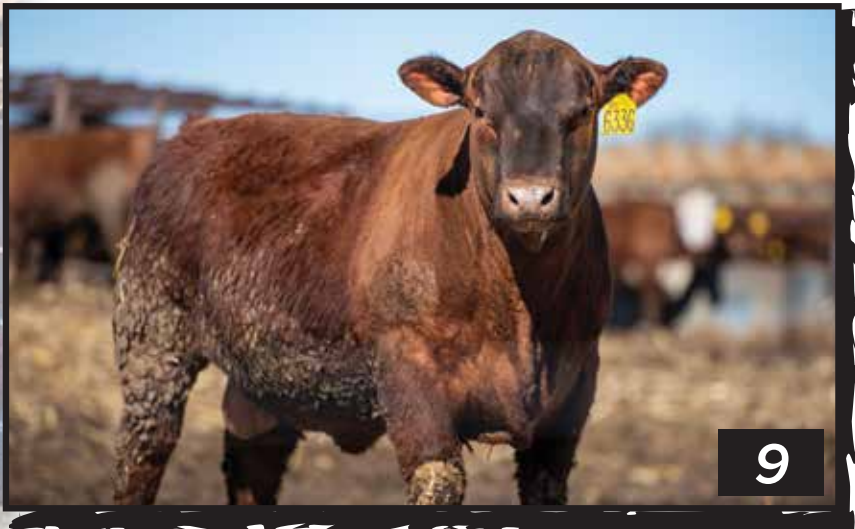
4	REDD NO WORRIES 232 G	Frame	Scrotal	PAP	EPD Base														
		5.13	34	40	RA														
Sire: LSF BRA NO WORRIES 4657B Dam: REDD MS REDEMPTION E422		R	R94	Pol	Reg	BD: 2/17/19													
Birth wt	EPD	Weaning Ratio	EPD	CED EPD	Yearling ADG	AdjWt	Ratio	EPD	DNA Profile	ADG	CE	Stay	Choice	Feed	Tend	Igen Index	Prog Index	Igen Index	Mat Index
73	-1.7	107	63	13	3.81	1170	110	101		6	8	8	7	6	7	6.85		6.4	

5	REDD REDEMPTION 636 G	Frame	Scrotal	PAP	EPD Base														
		4.98	34	46	RA														
Sire: BROWN JYJ REDEMPTION Y1334 Dam: REDD MS PREMIER C326		R	R100	Pol	Reg	BD: 3/14/19													
Birth wt	EPD	Weaning Ratio	EPD	CED EPD	Yearling ADG	AdjWt	Ratio	EPD	DNA Profile	ADG	CE	Stay	Choice	Feed	Tend	Igen Index	Prog Index	Igen Index	Mat Index
80	-2	99	61	13	4.32	1207	114	98		8	5	6	6	6	5	5.85		5.5	

6	REDD REDEMPTION 671 G	Frame	Scrotal	PAP	EPD Base														
		5.58	34	37	RA														
Sire: BROWN JYJ REDEMPTION Y1334 Dam: REDD MS PREMIER C367		R	R96	Pol	Nt. Reg	BD: 3/21/19													
Birth wt	EPD	Weaning Ratio	EPD	CED EPD	Yearling ADG	AdjWt	Ratio	EPD	DNA Profile	ADG	CE	Stay	Choice	Feed	Tend	Igen Index	Prog Index	Igen Index	Mat Index
68	-2.8	100	62	14	4.32	1213	114	102		10	7	8	6	8	8	6.95		6.25	

7	REDD NIGHT FOCUS 620 G										Frame	Scrotal	PAP	EPD Base				
											5.95	35	38	RA				
Sire: LSF RHO NIGHT FOCUS 76B Dam: REDD MS CONNEALY A542														R	R100	Pol	Reg	BD: 3/12/19
Birth wt	EPD	Weaning Ratio	EPD	CED EPD	Yearling ADG	AdjWt	Ratio	EPD	DNA Profile	ADG	CE	Stay	Choice	Feed	Tend	Igen Prog Index	Igen Mat Index	
83	-1.9	102	66	14	3.64	1116	105	98		5	6	8	6	8	10	6.20	6.2	

8	REDD REDEMPTION 600 G										Frame	Scrotal	PAP	EPD Base				
											3.82	33	38	RA				
Sire: BROWN JYJ REDEMPTION Y1334 Dam: REDD MS BKT NEBULA A008														R	R96	Pol	Reg	BD: 3/3/19
Birth wt	EPD	Weaning Ratio	EPD	CED EPD	Yearling ADG	AdjWt	Ratio	EPD	DNA Profile	ADG	CE	Stay	Choice	Feed	Tend	Igen Prog Index	Igen Mat Index	
56	-5.4	102	57	17	3.18	1042	98	94		8	8	6	7	6	10	6.65	5.8	



9	REDD ORACLE 633 G										Frame	Scrotal	PAP	EPD Base				
											3.98	35	44	RA				
Sire: BROWN ORACLE B131 Dam: REDD MS PRIMETIME X040														R	R99	Pol	Reg	BD: 3/14/19
Birth wt	EPD	Weaning Ratio	EPD	CED EPD	Yearling ADG	AdjWt	Ratio	EPD	DNA Profile	ADG	CE	Stay	Choice	Feed	Tend	Igen Prog Index	Igen Mat Index	
74	-2.9	106	63	16	3.24	1071	101	102		7	9	8	10	6	9	7.60	6.5	

10	REDD NO WORRIES 223 G										Frame	Scrotal	PAP	EPD Base				
											4.59	35	41	RA				
Sire: LSF BRA NO WORRIES 4657B Dam: REDD MS REDEMPTION E381														R	R99	Pol	Reg	BD: 2/14/19
Birth wt	EPD	Weaning Ratio	EPD	CED EPD	Yearling ADG	AdjWt	Ratio	EPD	DNA Profile	ADG	CE	Stay	Choice	Feed	Tend	Igen Prog Index	Igen Mat Index	
65	-4.8	99	63	15	3.75	1116	105	106		8	6	7	7	6	7	6.65	6.2	

11**REDD NIGHT FOCUS 624 G**

Frame	Scrotal	PAP	EPD Base
5.86	34	39	RA

Sire: LSF RHO NIGHT FOCUS 76B Dam: REDD MS BKT LANCER A524 R R100 Pol Nt. Reg BD: 3/13/19

Birth		Weaning		CED	Yearling				DNA	ADG	CE	Stay	Choice	Feed	Tend	Igen Prog	Igen Mat
wt	EPD	Ratio	EPD	EPD	ADG	AdjWt	Ratio	EPD	Profile						Index	Index	
71	-2.2	100	68	15	4.8	1043	98	103		7	9	7	7	7	8	6.65	6.15

12**REDD NIGHT FOCUS 676 G**

Frame	Scrotal	PAP	EPD Base
4.61	37	48	RA

Sire: LSF RHO NIGHT FOCUS 76B Dam: REDD MS REDEMPTION D540 R R99 Pol Reg BD: 3/23/19

Birth		Weaning		CED	Yearling				DNA	ADG	CE	Stay	Choice	Feed	Tend	Igen Prog	Igen Mat
wt	EPD	Ratio	EPD	EPD	ADG	AdjWt	Ratio	EPD	Profile						Index	Index	
82	-1.8	99	65	14	4.26	1198	113	101		7	5	7	6	7	6	5.85	5.65

13**REDD REDEMPTION 216 G**

Frame	Scrotal	PAP	EPD Base
4.56	37	35	RA

Sire: BROWN JYJ REDEMPTION Y1334 Dam: REDD MS BECKTON NEBULA D148 R R99 Pol Reg BD: 2/12/19

Birth		Weaning		CED	Yearling				DNA	ADG	CE	Stay	Choice	Feed	Tend	Igen Prog	Igen Mat
wt	EPD	Ratio	EPD	EPD	ADG	AdjWt	Ratio	EPD	Profile						Index	Index	
63	-2	95	61	13	3.86	1116	105	98		8	10	8	7	6	8	7.15	6.5

14**REDD NIGHT FOCUS 618 G**

Frame	Scrotal	PAP	EPD Base
3.95	33	43	RA

Sire: LSF RHO NIGHT FOCUS 76B Dam: REDD MS CONQUEST C032 R R97 Pol Reg BD: 3/12/19

Birth		Weaning		CED	Yearling				DNA	ADG	CE	Stay	Choice	Feed	Tend	Igen Prog	Igen Mat
wt	EPD	Ratio	EPD	EPD	ADG	AdjWt	Ratio	EPD	Profile						Index	Index	
65	-3.9	93	44	16	4.03	1133	107	66		7	8	7	6	7	5	6.05	6.15

15**REDD REDEMPTION 661 G**

Frame	Scrotal	PAP	EPD Base
5.07	36	42	RA

Sire: BROWN JYJ REDEMPTION Y1334 Dam: REDD MS CONQUEST D115 R R94 Pol Reg BD: 3/20/19

Birth		Weaning		CED	Yearling				DNA	ADG	CE	Stay	Choice	Feed	Tend	Igen Prog	Igen Mat
wt	EPD	Ratio	EPD	EPD	ADG	AdjWt	Ratio	EPD	Profile						Index	Index	
79	-2.6	117	66	14	2.73	1051	99	108		8	8	8	5	6	9	6.85	6.1

16**REDD REDEMPTION 752 G**

Frame	Scrotal	PAP	EPD Base
5.96	34	36	RA

Sire: BROWN JYJ REDEMPTION Y1334 Dam: REDD MS BKT NEBULA Y214 R R100 Pol Reg BD: 4/15/19

Birth		Weaning		CED	Yearling				DNA	ADG	CE	Stay	Choice	Feed	Tend	Igen Prog	Igen Mat
wt	EPD	Ratio	EPD	EPD	ADG	AdjWt	Ratio	EPD	Profile						Index	Index	
85	-2.5	113	71	14	3.12	1093	103	117		7	6	6	6	6	8	5.90	5.7



17	REDD NIGHT FOCUS 638 G								Frame	Scrotal	PAP	EPD Base					
									4.48	32	36	RA					
Sire: LSF RHO NIGHT FOCUS 76B Dam: REDD MS PREMIER C354									R	R100	Pol	Reg	BD: 3/14/19				
Birth	Weaning	CED	Yearling				DNA	ADG	CE	Stay	Choice	Feed	Tend	Igen Prog	Igen Mat		
wt	EPD	Ratio	EPD	EPD	ADG	AdjWt	Ratio	EPD	Profile					Index	Index		
77	-3.4	105	66	15	3.01	1031	97	105		7	8	6	6	7	10	6.25	5.5

18	REDD NO WORRIES 209 G								Frame	Scrotal	PAP	EPD Base					
									3.79	35	47	RA					
Sire: LSF BRA NO WORRIES 4657B Dam: REDD MS REDEMPTION E385									R	R94	Pol	Reg	BD: 2/10/19				
Birth	Weaning	CED	Yearling				DNA	ADG	CE	Stay	Choice	Feed	Tend	Igen Prog	Igen Mat		
wt	EPD	Ratio	EPD	EPD	ADG	AdjWt	Ratio	EPD	Profile					Index	Index		
67	-1.7	95	63	13	3.47	1055	99	101		7	8	8	6	7	7	6.55	6.3

19	REDD NO WORRIES 205 G								Frame	Scrotal	PAP	EPD Base					
									4.01	32	39	RA					
Sire: LSF BRA NO WORRIES 4657B Dam: REDD MS REDEMPTION E310									R	R100	Pol	Reg	BD: 2/8/19				
Birth	Weaning	CED	Yearling				DNA	ADG	CE	Stay	Choice	Feed	Tend	Igen Prog	Igen Mat		
wt	EPD	Ratio	EPD	EPD	ADG	AdjWt	Ratio	EPD	Profile					Index	Index		
84	-1	94	60	15	3.58	1063	100	100		8	8	7	7	6	10	7.05	6.1

20	REDD REDEMPTION 648 G								Frame	Scrotal	PAP	EPD Base					
									4.77	34	36	RA					
Sire: BROWN JYJ REDEMPTION Y1334 Dam: REDD WARRIOR T106									R	R100	Pol	Reg	BD: 3/17/19				
Birth	Weaning	CED	Yearling				DNA	ADG	CE	Stay	Choice	Feed	Tend	Igen Prog	Igen Mat		
wt	EPD	Ratio	EPD	EPD	ADG	AdjWt	Ratio	EPD	Profile					Index	Index		
62	-5.4	103	59	17	2.9	1003	95	98		8	8	7	6	6	10	6.75	6.05

21**REDD REDEMPTION 675 G**

Frame	Scrotal	PAP	EPD Base
4.1	36	35	RA

Sire: BROWN JYJ REDEMPTION Y1334 Dam: REDD MS HIGH ROLLER C300 R R90 Pol Reg BD: 3/22/19

Birth		Weaning		CED	Yearling				DNA	ADG	CE	Stay	Choice	Feed	Tend	Igen Prog	Igen Mat
wt	EPD	Ratio	EPD	EPD	ADG	AdjWt	Ratio	EPD	Profile						Index	Index	
73	-3.4	106	68	14	2.78	1000	94	112		5	7	6	5	5	9	5.85	5.75

22**REDD NIGHT FOCUS 706 G**

Frame	Scrotal	PAP	EPD Base
4.23	35	36	RA

Sire: LSF RHO NIGHT FOCUS 76B Dam: REDD MS BKT LANCER A523 R R100 Pol Reg BD: 3/31/19

Birth		Weaning		CED	Yearling				DNA	ADG	CE	Stay	Choice	Feed	Tend	Igen Prog	Igen Mat
wt	EPD	Ratio	EPD	EPD	ADG	AdjWt	Ratio	EPD	Profile						Index	Index	
78	-2.2	96	60	15	3.41	1048	99	87		7	6	8	7	6	5	6.50	6.15

**23****23****REDD NIGHT FOCUS 712 G**

Frame	Scrotal	PAP	EPD Base
4.73	35	40	RA

Sire: LSF RHO NIGHT FOCUS 76B Dam: REDD MS REDEMPTION D578 R R99 Pol Reg BD: 3/31/19

Birth		Weaning		CED	Yearling				DNA	ADG	CE	Stay	Choice	Feed	Tend	Igen Prog	Igen Mat
wt	EPD	Ratio	EPD	EPD	ADG	AdjWt	Ratio	EPD	Profile						Index	Index	
76	-2.5	95	64	15	3.98	1134	107	102		6	6	6	6	6	7	5.85	5.75

24**REDD NO WORRIES 218 G**

Frame	Scrotal	PAP	EPD Base
4.08	32	35	RA

Sire: LSF BRA NO WORRIES 4657B Dam: REDD MS REDEMPTION E138 R R98 Pol Nt. Reg BD: 2/13/19

Birth		Weaning		CED	Yearling				DNA	ADG	CE	Stay	Choice	Feed	Tend	Igen Prog	Igen Mat
wt	EPD	Ratio	EPD	EPD	ADG	AdjWt	Ratio	EPD	Profile						Index	Index	
71	-2.6	88	64	14	3.75	1063	100	105		8	8	7	7	6	8	6.75	6.15

25	REDD REDEMPTION 716 G								Frame	Scrotal	PAP	EPD Base					
									4.73	34	45	RA					
Sire: BROWN JYJ REDEMPTION Y1334 Dam: REDD MS THUNDER B748										R	R94	Pol	Reg	BD: 3/31/19			
Birth wt	EPD	Weaning Ratio	EPD	CED EPD	ADG	Yearling AdjWt	Ratio	EPD	DNA Profile	ADG	CE	Stay	Choice	Feed	Tend	Igen Prog Index	Igen Mat Index
82	-2	95	61	13	3.3	1026	97	98		8	8	7	7	6	10	6.95	6.05

26	REDD NIGHT FOCUS 625 G								Frame	Scrotal	PAP	EPD Base					
									4.72	32	39	RA					
Sire: LSF RHO NIGHT FOCUS 76B Dam: REDD MS PREMIER C360										R	R96	Pol	Nt. Reg	BD: 5/1/19			
Birth wt	EPD	Weaning Ratio	EPD	CED EPD	ADG	Yearling AdjWt	Ratio	EPD	DNA Profile	ADG	CE	Stay	Choice	Feed	Tend	Igen Prog Index	Igen Mat Index
80	-2.1	96	68	15	3.86	1120	106	103		8	8	8	7	6	7	7.05	6.45

27	REDD NO WORRIES 255 G								Frame	Scrotal	PAP	EPD Base					
									4.14	30		RA					
Sire: LSF BRA NO WORRIES 4657B Dam: REDD MS REDEMPTION E144										R	R99	Pol	Reg	BD: 3/25/19			
Birth wt	EPD	Weaning Ratio	EPD	CED EPD	ADG	Yearling AdjWt	Ratio	EPD	DNA Profile	ADG	CE	Stay	Choice	Feed	Tend	Igen Prog Index	Igen Mat Index
73	-3.2	94	56	13	3.64	1072	101	93									

28	REDD REDEMPTION 726 G								Frame	Scrotal	PAP	EPD Base					
									3.77	33	39	RA					
Sire: BROWN JYJ REDEMPTION Y1334 Dam: REDD MS BECKTON HERITAGE D606										R	R90	Pol	Reg	BD: 4/2/19			
Birth wt	EPD	Weaning Ratio	EPD	CED EPD	ADG	Yearling AdjWt	Ratio	EPD	DNA Profile	ADG	CE	Stay	Choice	Feed	Tend	Igen Prog Index	Igen Mat Index
71	-4	104	65	16	2.84	1002	94	109		6	9	7	7	7	10	6.60	5.65

29	REDD REDEMPTION 704 G								Frame	Scrotal	PAP	EPD Base					
									4.63	32	36	RA					
Sire: BROWN JYJ REDEMPTION Y1334 Dam: REDD MS BECKTON HERITAGE D606										R	R97	Pol	Nt. Reg	BD: 3/31/19			
Birth wt	EPD	Weaning Ratio	EPD	CED EPD	ADG	Yearling AdjWt	Ratio	EPD	DNA Profile	ADG	CE	Stay	Choice	Feed	Tend	Igen Prog Index	Igen Mat Index
76	-2.9	94	62	14	5	1090	103	102		7	9	9	7	6	10	7.30	6.55

30	REDD REDEMPTION 684 G								Frame	Scrotal	PAP	EPD Base					
									4.14	33	37	RA					
Sire: BROWN JYJ REDEMPTION Y1334 Dam: REDD MS ROMEO R276										R	R100	Pol	Nt. Reg	BD: 3/25/19			
Birth wt	EPD	Weaning Ratio	EPD	CED EPD	ADG	Yearling AdjWt	Ratio	EPD	DNA Profile	ADG	CE	Stay	Choice	Feed	Tend	Igen Prog Index	Igen Mat Index
65	-2.9	95	62	14	3	1019	96	102		7	9	8	4	7	8	6.15	6.1

31**REDD REDEMPTION 713 G**

Frame	Scrotal	PAP	EPD Base
3.74	33	46	RA

Sire: BROWN JYJ REDEMPTION Y1334 Dam: REDD MS BKT NEBULA B844 R R100 Pol Reg BD: 3/31/19

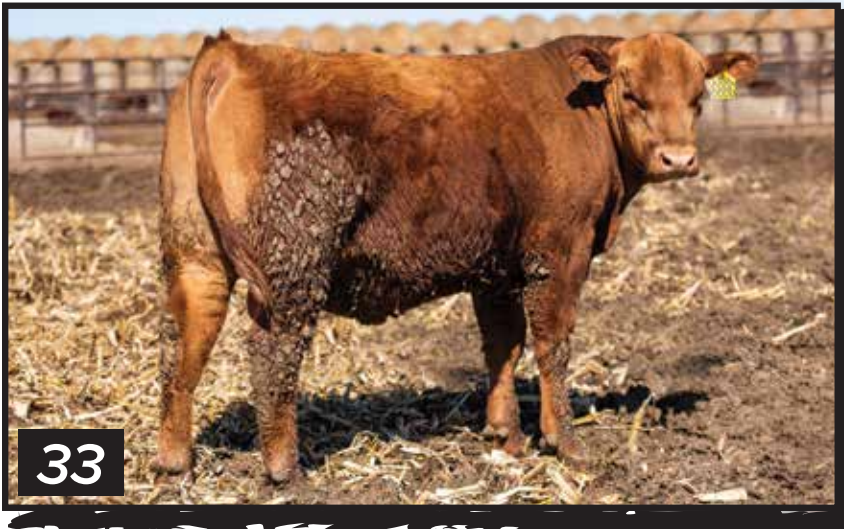
Birth		Weaning		CED	Yearling				DNA	ADG	CE	Stay	Choice	Feed	Tend	Igen Prog	Igen Mat
wt	EPD	Ratio	EPD	EPD	ADG	AdjWt	Ratio	EPD	Profile						Index	Index	
67	-5.6	91	48	17	2.78	920	87	82		6	10	6	5	7	10	5.80	5.4

32**REDD SURE FIRE 719 G**

Frame	Scrotal	PAP	EPD Base
5.25	35	40	RA

Sire: GAR SURE FIRE Dam: REDD MS THUNDER B864 R R99 Pol Reg BD: 4/1/19

Birth		Weaning		CED	Yearling				DNA	ADG	CE	Stay	Choice	Feed	Tend	Igen Prog	Igen Mat
wt	EPD	Ratio	EPD	EPD	ADG	AdjWt	Ratio	EPD	Profile						Index	Index	
60	-5	89	50	21	2.9	931	88	83		7	8	9	5	7	9	6.65	6.4

**33****33****REDD NIGHT FOCUS 688 G**

Frame	Scrotal	PAP	EPD Base
4.16	34	46	RA

Sire: LSF RHO NIGHT FOCUS 76B Dam: REDD MS PREMIER C352 R R99 Pol Reg BD: 3/26/19

Birth		Weaning		CED	Yearling				DNA	ADG	CE	Stay	Choice	Feed	Tend	Igen Prog	Igen Mat
wt	EPD	Ratio	EPD	EPD	ADG	AdjWt	Ratio	EPD	Profile						Index	Index	
65	-5.2	84	52	17	3.24	960	90	80		5	9	7	7	6	4	5.90	6.05

34**REDD NIGHT FOCUS 689 G**

Frame	Scrotal	PAP	EPD Base
4.67	33	49	RA

Sire: LSF RHO NIGHT FOCUS 76B Dam: REDD CONQUEST D129 R R99 Pol Reg BD: 3/27/19

Birth		Weaning		CED	Yearling				DNA	ADG	CE	Stay	Choice	Feed	Tend	Igen Prog	Igen Mat
wt	EPD	Ratio	EPD	EPD	ADG	AdjWt	Ratio	EPD	Profile						Index	Index	
79	-2.5	99	60	15	2.39	900	85	91		7	7	6	6	7	4	5.65	5.85

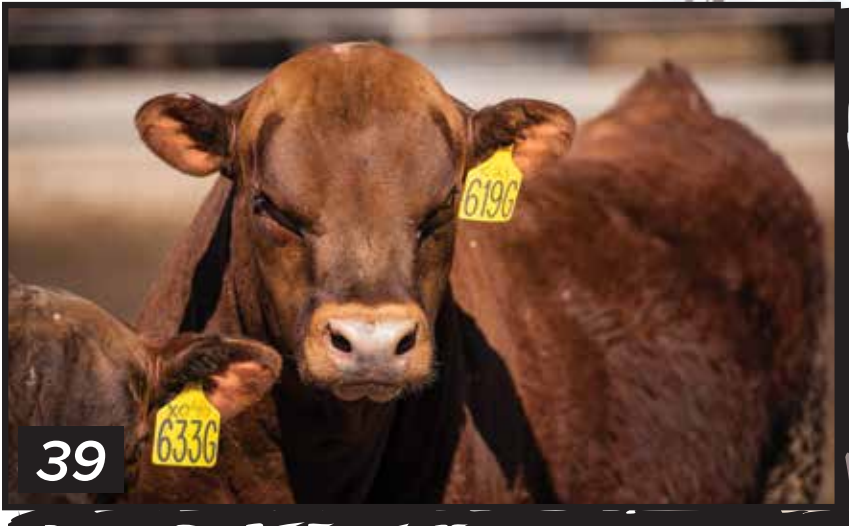


The high performing Red Angus bulls, bulls with added Hybrid Vigor and added performance, through the years they have been the top performing and the highest selling bulls in our sales. They are vigorous, energetic range bulls.



35	REDD NO WORRIES 243 G	Frame	Scrotal	PAP	EPD Base												
		5.18	37	34	RA												
Sire: LSF BRA NO WORRIES 4657B Dam: REDD MS HERITAGE E142		R	R88	Pol	Reg	BD: 2/21/19											
Birth wt	EPD	Weaning Ratio	EPD	CED EPD	Yearling ADG	AdjWt	Ratio	EPD	DNA Profile	ADG	CE	Stay	Choice	Feed	Tend	Igen Prog Index	Igen Mat Index
85	-0.3	120	73	11	4.37	1335	123	116		8	7	6	6	6	6	6.05	5.65

36	REDD REDEMPTION 206 G	Frame	Scrotal	PAP	EPD Base												
		5.77	36	40	RA												
Sire: BROWN JYJ REDEMPTION Y1334 Dam: REDD MS DENSITY E426		R	R75S25	Pol	Reg	BD: 2/9/19											
Birth wt	EPD	Weaning Ratio	EPD	CED EPD	Yearling ADG	AdjWt	Ratio	EPD	DNA Profile	ADG	CE	Stay	Choice	Feed	Tend	Igen Prog Index	Igen Mat Index
83	-2	116	61	13	3.75	1218	112	98		7	6	5	5	7	8	5.35	5.35



37	REDD NIGHT FOCUS 663 G				Frame	Scrotal	PAP	EPD Base									
					6.06	36	40	RA									
Sire: LSF RHO NIGHT FOCUS 76B					Dam: REDD MS ROJO B712					R	R75	Pol	Reg	BD: 3/20/19			
Birth wt	EPD	Weaning Ratio	EPD	CED EPD	ADG	Yearling AdjWt	Ratio	EPD	DNA Profile	ADG	CE	Stay	Choice	Feed	Tend	Igen Prog Index	Igen Mat Index
85	-1.3	111	67	14	3.92	1216	112	99		9	6	8	8	5	6	7.35	6.9

38	REDD NO WORRIES 201 G				Frame	Scrotal	PAP	EPD Base									
					4.75	36	41	RA									
Sire: LSF BRA NO WORRIES 4657B					Dam: REDD MS HERITAGE E136					R	R88	Pol	Reg	BD: 2/7/19			
Birth wt	EPD	Weaning Ratio	EPD	CED EPD	ADG	Yearling AdjWt	Ratio	EPD	DNA Profile	ADG	CE	Stay	Choice	Feed	Tend	Igen Prog Index	Igen Mat Index
83	-1.4	105	65	12	4.03	1200	111	103		7	7	7	6	6	6	6.20	6.1

39	REDD NIGHT FOCUS 619 G				Frame	Scrotal	PAP	EPD Base									
					5.2	35	37	RA									
Sire: LSF RHO NIGHT FOCUS 76B					Dam: REDD MS CONQUEST C021					R	R75H25	Pol	Reg	BD: 3/12/19			
Birth wt	EPD	Weaning Ratio	EPD	CED EPD	ADG	Yearling AdjWt	Ratio	EPD	DNA Profile	ADG	CE	Stay	Choice	Feed	Tend	Igen Prog Index	Igen Mat Index
77	-2.9	109	66	15	3.86	1196	110	99		7	5	8	6	5	10	6.95	6.45





40	REDD NO WORRIES 213 G	Frame	Scrotal	PAP	EPD Base											
		4.04	36	43	RA											
Sire: LSF BRA NO WORRIES 4657B Dam: REDD MS HERITAGE E129		R	R88	Pol	Reg	BD: 2/10/19										
Birth wt	EPD	Weaning Ratio	EPD	CED EPD	Yearling ADG AdjWt Ratio EPD		DNA Profile	ADG	CE	Stay	Choice	Feed	Tend	Igen Index	Prog Index	Igen Mat Index
77	-2.35	98	63.5	13	4.2	1194	110	103.5	7	8	6	7	7	9	6.35	5.55

41	REDD REDEMPTION 233 G	Frame	Scrotal	PAP	EPD Base											
		4.63	33	39	RA											
Sire: BROWN JYJ REDEMPTION Y1334 Dam: REDD MS BKT HERITAGE E457		R	R88	Pol	Reg	BD: 2/17/19										
Birth wt	EPD	Weaning Ratio	EPD	CED EPD	Yearling ADG AdjWt Ratio EPD		DNA Profile	ADG	CE	Stay	Choice	Feed	Tend	Igen Index	Prog Index	Igen Mat Index
73	-2	109	61	13	3.47	1135	105	98	7	8	7	5	7	10	6.25	5.6

42	REDD NO WORRIES 229 G	Frame	Scrotal	PAP	EPD Base											
		6.05	35	35	RA											
Sire: LSF BRA NO WORRIES 4657B Dam: REDD MS RED DENSITY E350		R	R75S25	Pol	Nt. Reg	BD: 2/18/19										
Birth wt	EPD	Weaning Ratio	EPD	CED EPD	Yearling ADG AdjWt Ratio EPD		DNA Profile	ADG	CE	Stay	Choice	Feed	Tend	Igen Index	Prog Index	Igen Mat Index
83	-1.8	108	66	13	4	1206	111	107	6	5	6	6	6	7	5.95	5.65

43	REDD ORACLE 709 G	Frame	Scrotal	PAP	EPD Base											
		5.23	35	49	RA											
Sire: BROWN ORACLE B127 Dam: REDD MS ABSOLUTE D144		R	R88	Pol	Reg	BD: 3/31/19										
Birth wt	EPD	Weaning Ratio	EPD	CED EPD	Yearling ADG AdjWt Ratio EPD		DNA Profile	ADG	CE	Stay	Choice	Feed	Tend	Igen Index	Prog Index	Igen Mat Index
74	-1.95	109	66	15	4.03	1225	113	104	5	8	7	9	5	9	7.05	6.25

44	REDD NO WORRIES 225 G								Frame	Scrotal	PAP	EPD Base					
									4.58	37	42	RA					
Sire: LSF BRA NO WORRIES 4657B Dam: REDD MS HERITAGE E115										R	R88	Pol	Reg	BD: 2/13/19			
Birth wt	EPD	Weaning Ratio	EPD	CED EPD	ADG	Yearling AdjWt	Ratio	EPD	DNA Profile	ADG	CE	Stay	Choice	Feed	Tend	Igen Prog Index	Igen Mat Index
79	-2	97	59	13	4.09	1169	108	96		7	8	7	6	6	7	6.20	5.95

45	REDD ORACLE 717 G								Frame	Scrotal	PAP	EPD Base					
									5.73	36		RA					
Sire: BROWN ORACLE B116 Dam: REDD MS ROMEO B875										R	R75	Pol	Reg	BD: 3/31/19			
Birth wt	EPD	Weaning Ratio	EPD	CED EPD	ADG	Yearling AdjWt	Ratio	EPD	DNA Profile	ADG	CE	Stay	Choice	Feed	Tend	Igen Prog Index	Igen Mat Index
72	-1.75	102	66.5	13	3.81	1148	106	103									

46	REDD REDEMPTION 252 G								Frame	Scrotal	PAP	EPD Base					
									5.27	33	41	RA					
Sire: BROWN JYJ REDEMPTION Y1334 Dam: REDD MS TOP HAND E128										R	R88	Pol	Nt. Reg	BD: 3/17/19			
Birth wt	EPD	Weaning Ratio	EPD	CED EPD	ADG	Yearling AdjWt	Ratio	EPD	DNA Profile	ADG	CE	Stay	Choice	Feed	Tend	Igen Prog Index	Igen Mat Index
85	-2.65	105	61.5	14	3.98	1194	110	101		9	7	7	6	5	7	6.75	6

47	REDD REDEMPTION 628 G								Frame	Scrotal	PAP	EPD Base					
									4.47	33	41	RA					
Sire: BROWN JYJ REDEMPTION Y1334 Dam: REDD MS BKT NEBULA B900										R	R88	Pol	Reg	BD: 3/13/19			
Birth wt	EPD	Weaning Ratio	EPD	CED EPD	ADG	Yearling AdjWt	Ratio	EPD	DNA Profile	ADG	CE	Stay	Choice	Feed	Tend	Igen Prog Index	Igen Mat Index
83	-2	104	61	13	3.07	1044	96	98		8	7	7	8	6	10	7.05	6.05

48	REDD REDEMPTION 657 G								Frame	Scrotal	PAP	EPD Base					
									5.54	33	35	RA					
Sire: BROWN JYJ REDEMPTION Y1334 Dam: REDD MS ROJO Z036										R	R75	Pol	Reg	BD: 3/18/19			
Birth wt	EPD	Weaning Ratio	EPD	CED EPD	ADG	Yearling AdjWt	Ratio	EPD	DNA Profile	ADG	CE	Stay	Choice	Feed	Tend	Igen Prog Index	Igen Mat Index
85	-2	103	61	13	3.3	1073	99	98		7	7	9	6	6	8	6.90	6.2

49	REDD NO WORRIES 239 G								Frame	Scrotal	PAP	EPD Base					
									5.14	34	39	RA					
Sire: LSF BRA NO WORRIES 4657B Dam: REDD MS DENSITY E328										R	R70S25	Pol	Reg	BD: 2/18/19			
Birth wt	EPD	Weaning Ratio	EPD	CED EPD	ADG	Yearling AdjWt	Ratio	EPD	DNA Profile	ADG	CE	Stay	Choice	Feed	Tend	Igen Prog Index	Igen Mat Index
85	-1.7	100	63	13	3.64	1114	103	101		7	9	8	7	6	7	6.90	6.35

50	REDD BKT CARDINAL 750 G								Frame	Scrotal	PAP	EPD Base						
									5.46	34	37	RA						
Sire: BECKTON CARDINAL E505		Dam: REDD MS ABSOLUTE D143		B	R75	Pol	Reg	BD: 4/15/19										
Birth wt	EPD	Weaning Ratio	EPD	CED EPD	Yearling				DNA Profile	ADG	CE	Stay	Choice	Feed	Tend	Igen Index	Prog Index	Igen Mat Index
80	-2	110	72	13	3.92	1211	112	116		7	9	6	6	7	7	6.05	5.9	

51	REDD REDEMPTION 642 G								Frame	Scrotal	PAP	EPD Base						
									4.25	35	35	RA						
Sire: BROWN JYJ REDEMPTION Y1334		Dam: REDD MS TRIPLE C BETTIS B898		R	R70S25	Pol	Reg	BD: 3/15/19										
Birth wt	EPD	Weaning Ratio	EPD	CED EPD	Yearling				DNA Profile	ADG	CE	Stay	Choice	Feed	Tend	Igen Index	Prog Index	Igen Mat Index
88	-2	101	61	13	3.07	1027	95	98		7	8	6	7	5	9	6.55	5.55	

52	REDD SURE FIRE 612 G								Frame	Scrotal	PAP	EPD Base						
									4.69	37	36	RA						
Sire: GAR SURE FIRE		Dam: REDD MS RANCHES COMMERCIAL III		R	R75	Pol	Nt. Reg	BD: 3/11/19										
Birth wt	EPD	Weaning Ratio	EPD	CED EPD	Yearling				DNA Profile	ADG	CE	Stay	Choice	Feed	Tend	Igen Index	Prog Index	Igen Mat Index
68	-1.7	79	75	12	4.43	1130	104	112		7	9	6	9	7	7	6.65	5.6	

53	REDD BKT ACCENT 775 G								Frame	Scrotal	PAP	EPD Base						
									8.49	33	39	RA						
Sire: BECKTON ACCENT D308		Dam: REDD MS HIGH-ROLLER C302		R	R75	Pol	Nt. Reg	BD: 4/25/19										
Birth wt	EPD	Weaning Ratio	EPD	CED EPD	Yearling				DNA Profile	ADG	CE	Stay	Choice	Feed	Tend	Igen Index	Prog Index	Igen Mat Index
83	-0.8		61.5	13	4.9			98		6	8	8	4	5	9	6.40	6.35	

54	REDD SURE FIRE 702 G								Frame	Scrotal	PAP	EPD Base						
									5.9	34	37	RA						
Sire: GAR SURE FIRE		Dam: REDD MS REVENUE D600		R	R88	Pol	Reg	BD: 3/26/19										
Birth wt	EPD	Weaning Ratio	EPD	CED EPD	Yearling				DNA Profile	ADG	CE	Stay	Choice	Feed	Tend	Igen Index	Prog Index	Igen Mat Index
74	-2.6	106	62	18	3.35	1101	102	103		10	5	6	9	7	4	6.70	5.65	

55	REDD NO WORRIES 748 G								Frame	Scrotal	PAP	EPD Base						
									4.65	31	35	RA						
Sire: LSF BRA NO WORRIES 4657B		Dam: REDD MS DENSITY D553		R	R70S25	Pol	Reg	BD: 4/11/19										
Birth wt	EPD	Weaning Ratio	EPD	CED EPD	Yearling				DNA Profile	ADG	CE	Stay	Choice	Feed	Tend	Igen Index	Prog Index	Igen Mat Index
79	-0.5	106	72	14	3.69	1152	106	113		7	5	6	5	6	5	5.60	5.8	

56	REDD ORACLE 714 G								Frame	Scrotal	PAP	EPD Base					
									5.23	36	45	RA					
Sire: BROWN ORACLE B114		Dam: REDD MS REVENUE B754		R	R75	Pol	Reg	BD: 3/31/19									
Birth wt	EPD	Weaning Ratio	EPD	CED EPD	Yearling				DNA Profile	ADG	CE	Stay	Choice	Feed	Tend	Igen Prog Index	Igen Mat Index
75	-1.3	101	66	13	3.12	1035	96	101		8	8	8	7	5	9	7.30	6.4

57	REDD SURE FIRE 649 G								Frame	Scrotal	PAP	EPD Base					
									4.77	36	36	RA					
Sire: GAR SURE FIRE		Dam: REDD MS STETSON A704		R	R70S25	Pol	Reg	BD: 3/17/19									
Birth wt	EPD	Weaning Ratio	EPD	CED EPD	Yearling				DNA Profile	ADG	CE	Stay	Choice	Feed	Tend	Igen Prog Index	Igen Mat Index
67	-3.8	96	55	19	2.95	984	91	87		7	7	7	5	4	7	6.40	6.15

58	REDD REDEMPTION 248 G								Frame	Scrotal	PAP	EPD Base					
									4.38	35	34	RA					
Sire: BROWN JYJ REDEMPTION Y1334		Dam: REDD MS HERITAGE E160		R	R88	Pol	Reg	BD: 3/7/19									
Birth wt	EPD	Weaning Ratio	EPD	CED EPD	Yearling				DNA Profile	ADG	CE	Stay	Choice	Feed	Tend	Igen Prog Index	Igen Mat Index
79	-1.9	99	61	13	3.24	1045	96	99		7	7	7	6	5	7	6.35	6

59	REDD NIGHT FOCUS 251 G								Frame	Scrotal	PAP	EPD Base					
									4.23	33	37	RA					
Sire: LSF RHO NIGHT FOCUS 76B		Dam: REDD MS HERITAGE U E416		R	R88	Pol	Nt. Reg	BD: 3/14/19									
Birth wt	EPD	Weaning Ratio	EPD	CED EPD	Yearling				DNA Profile	ADG	CE	Stay	Choice	Feed	Tend	Igen Prog Index	Igen Mat Index
78	-1.8	102	69	15	3.12	1043	96	104		9	8	7	8	6	8	7.20	6.35

60	REDD NIGHT FOCUS 703 G								Frame	Scrotal	PAP	EPD Base					
										31	46	RA					
Sire: LSF RHO NIGHT FOCUS 76B		Dam: REDD MS PROFICIENT X110		R	R75H25	Pol	Nt. Reg	BD: 3/29/19									
Birth wt	EPD	Weaning Ratio	EPD	CED EPD	Yearling				DNA Profile	ADG	CE	Stay	Choice	Feed	Tend	Igen Prog Index	Igen Mat Index
68	-0.5	92	63	15	3.35	1026	95	96		5	8	8	6	7	7	6.25	6.05

61	REDD BKT NEBULA 760 G								Frame	Scrotal	PAP	EPD Base					
									4.96	33	44	RA					
Sire: BECKTON NEBULA E055		Dam: REDD MS ASSET D103		R	R75	Pol	Nt. Reg	BD: 4/15/19									
Birth wt	EPD	Weaning Ratio	EPD	CED EPD	Yearling				DNA Profile	ADG	CE	Stay	Choice	Feed	Tend	Igen Prog Index	Igen Mat Index
71	-2.5	94	68	13	3.98	1137	105	95		8	8	7	9	7	8	6.80	6.2



62	REDD NIGHT FOCUS 674 G								Frame	Scrotal	PAP	EPD Base					
									4.85	31	37	RA					
Sire: LSF RHO NIGHT FOCUS 76B Dam: REDD MS RANCHES COMMERCIAL R R75 Pol Nt. Reg BD: 3/22/19																	
Birth wt	EPD	Weaning Ratio	EPD	CED EPD	ADG	Yearling AdjWt	Ratio	EPD	DNA Profile	ADG	CE	Stay	Choice	Feed	Tend	Igen Prog Index	Igen Mat Index
72	-1.7	97	68	15	2.73	949	88	101		7	6	7	6	5	5	6.15	6.15

63	REDD BKT CARDINAL 789 G								Frame	Scrotal	PAP	EPD Base					
									5.7	33	34	RA					
Sire: BECKTON CARDINAL E505 Dam: REDD MS LIMELIGHT Z046 R R75 Pol Reg BD: 4/30/19																	
Birth wt	EPD	Weaning Ratio	EPD	CED EPD	ADG	Yearling AdjWt	Ratio	EPD	DNA Profile	ADG	CE	Stay	Choice	Feed	Tend	Igen Prog Index	Igen Mat Index
73	-3.9	100	53	17	3.47	1087	100	86		6	5	7	7	7	8	6.20	5.8

64	REDD NIGHT FOCUS 655 G								Frame	Scrotal	PAP	EPD Base					
									4.54	33	40	RA					
Sire: LSF RHO NIGHT FOCUS 76B Dam: REDD MS RANCHES COMMERCIAL III R R75 Pol Nt. Reg BD: 3/18/19																	
Birth wt	EPD	Weaning Ratio	EPD	CED EPD	ADG	Yearling AdjWt	Ratio	EPD	DNA Profile	ADG	CE	Stay	Choice	Feed	Tend	Igen Prog Index	Igen Mat Index
72	-1.7	81	68	15	3.69	1019	94	101		8	7	6	6	7	8	6.10	5.5

65	REDD REDEMPTION 753 G								Frame	Scrotal	PAP	EPD Base					
									3.72	33	40	RA					
Sire: BROWN JYJ REDEMPTION Y1334 Dam: REDD MS BECKTON NEBULA D133 R R88 Pol Reg BD: 4/15/19																	
Birth wt	EPD	Weaning Ratio	EPD	CED EPD	ADG	Yearling AdjWt	Ratio	EPD	DNA Profile	ADG	CE	Stay	Choice	Feed	Tend	Igen Prog Index	Igen Mat Index
78	-2.5	98	66	15	3.64	1102	102	98		6	8	8	7	7	8	6.70	5.75

66	REDD BKT EPIC 771 G								Frame	Scrotal	PAP	EPD Base					
									5.57	33	46	RA					
Sire: BECKTON EPIC D052		Dam: REDD MS BKT NEBULA B874		R	R88	Pol	Nt. Reg	BD: 4/22/19									
Birth wt	EPD	Weaning Ratio	EPD	CED EPD	Yearling				DNA Profile	ADG	CE	Stay	Choice	Feed	Tend	Igen Prog Index	Igen Mat Index
78	-1.55	102	59.5	14	3.07	1031	95	91		4	8	8	7	6	5	6.35	6.3

67	REDD BKT CARDINAL 743 G								Frame	Scrotal	PAP	EPD Base					
									5.25	35	39	RA					
Sire: BECKTON CARDINAL E189		Dam: REDD MS BKT JULIAN B768		R	R75	Pol	Nt. Reg	BD: 4/8/19									
Birth wt	EPD	Weaning Ratio	EPD	CED EPD	Yearling				DNA Profile	ADG	CE	Stay	Choice	Feed	Tend	Igen Prog Index	Igen Mat Index
76	-4.8		53	18	4			87		6	8	7	6	7	6	5.80	5.55

68	REDD REDEMPTION 757 G								Frame	Scrotal	PAP	EPD Base					
									4.85	35		RA					
Sire: BROWN JYJ REDEMPTION Y1334		Dam: REDD MS BECKTON NEBULA D131		R	R88	Pol	Nt. Reg	BD: 4/15/19									
Birth wt	EPD	Weaning Ratio	EPD	CED EPD	Yearling				DNA Profile	ADG	CE	Stay	Choice	Feed	Tend	Igen Prog Index	Igen Mat Index
84	-2.6		62	14	4.9			102		8	7	6	5	7	8	5.90	5.2

69	REDD SURE FIRE 744 G								Frame	Scrotal	PAP	EPD Base					
									6.29	32		RA					
Sire: GAR SURE FIRE		Dam: REDD MS ABSOLUTE D554		R	R75	Pol	Nt. Reg	BD: 4/11/19									
Birth wt	EPD	Weaning Ratio	EPD	CED EPD	Yearling				DNA Profile	ADG	CE	Stay	Choice	Feed	Tend	Igen Prog Index	Igen Mat Index
88	-2.1		75	12	4.3			114		8	7	5	9	7	3	6.00	5.5

70	REDD REDEMPTION II 767 G								Frame	Scrotal	PAP	EPD Base					
									4.54	33		RA					
Sire: REDD REDEMPTION 772 D		Dam: REDD MS NEBULA X228		R	R75	Pol	Reg	BD: 4/20/19									
Birth wt	EPD	Weaning Ratio	EPD	CED EPD	Yearling				DNA Profile	ADG	CE	Stay	Choice	Feed	Tend	Igen Prog Index	Igen Mat Index
70	-3.05	92	60.5	15	3.3	1017	94	94									

71	REDD BKT EPIC 779 G								Frame	Scrotal	PAP	EPD Base					
									5.42	34	41	RA					
Sire: BECKTON EPIC D052		Dam: REDD MS BECKTON EPIC A036		R	R88	Pol	Reg	BD: 4/28/19									
Birth wt	EPD	Weaning Ratio	EPD	CED EPD	Yearling				DNA Profile	ADG	CE	Stay	Choice	Feed	Tend	Igen Prog Index	Igen Mat Index
72	-1.8	97	59.5	12	3.18	1026	95	92		7	7	7	7	5	7	6.55	5.65

72	REDD BKT SCAMP 257 G								Frame	Scrotal	PAP	EPD Base					
									4.05	33		RA					
Sire: BECKTON SCAMP D034		Dam: REDD MS ASSET E 486		R	R75	Pol	Reg	BD: 4/4/19									
Birth wt	EPD	Weaning Ratio	EPD	CED EPD	ADG	Yearling AdjWt	Ratio	EPD	DNA Profile	ADG	CE	Stay	Choice	Feed	Tend	Igen Prog Index	Igen Mat Index
67	-2.7	100	55.5	13	3.12	1029	95	85									

73	REDD ORACLE 608 G								Frame	Scrotal	PAP	EPD Base					
									3.41	34	36	RA					
Sire: BROWN ORACLE B113		Dam: REDD MS REVENUE B728		R	R88	Pol	Reg	BD: 3/9/19									
Birth wt	EPD	Weaning Ratio	EPD	CED EPD	ADG	Yearling AdjWt	Ratio	EPD	DNA Profile	ADG	CE	Stay	Choice	Feed	Tend	Igen Prog Index	Igen Mat Index
45	-1.7	85	63	13	2.67	879	81	101		6	8	6	9	6	10	6.75	5.85

74	REDD RANCHES PWR-UP 254 G								Frame	Scrotal	PAP	EPD Base					
									4.14	34	36	RA					
Sire: REDD RANCHES PWR-UP		Dam: REDD MS REDEMPTION E412		R	R75	Pol	Reg	BD: 3/25/19									
Birth wt	EPD	Weaning Ratio	EPD	CED EPD	ADG	Yearling AdjWt	Ratio	EPD	DNA Profile	ADG	CE	Stay	Choice	Feed	Tend	Igen Prog Index	Igen Mat Index
79	-2.3	98	61	13	2.9	985	91	101		6	6	10	5	6	10	7.05	6.5

75	REDD ORACLE 770 G								Frame	Scrotal	PAP	EPD Base					
									4.83	32	46	RA					
Sire: BROWN ORACLE B115		Dam: REDD MS REVENUE B795		R	R75	Pol	Reg	BD: 4/22/19									
Birth wt	EPD	Weaning Ratio	EPD	CED EPD	ADG	Yearling AdjWt	Ratio	EPD	DNA Profile	ADG	CE	Stay	Choice	Feed	Tend	Igen Prog Index	Igen Mat Index
64	-2.1	94	52	13	2.9	963	89	82		6	8	7	8	8	10	6.55	5.75

76	REDD BKT EPIC 793 G								Frame	Scrotal	PAP	EPD Base					
									4.23	30		RA					
Sire: BECKTON EPIC D052		Dam: REDD MS RANCHES COMMERCIAL		R	R75	Pol	Nt. Reg	BD: 5/1/19									
Birth wt	EPD	Weaning Ratio	EPD	CED EPD	ADG	Yearling AdjWt	Ratio	EPD	DNA Profile	ADG	CE	Stay	Choice	Feed	Tend	Igen Prog Index	Igen Mat Index
77	-1.35	90	60	12	3.24	994	92	90									

77	REDD BKT SCAMP 801 G								Frame	Scrotal	PAP	EPD Base					
									4.47	31		RA					
Sire: Beckton Scamp D034		Dam: REDD MS RANCHES COMMERCIAL		R	R75	Pol	Nt. Reg	BD: 5/1/19									
Birth wt	EPD	Weaning Ratio	EPD	CED EPD	ADG	Yearling AdjWt	Ratio	EPD	DNA Profile	ADG	CE	Stay	Choice	Feed	Tend	Igen Prog Index	Igen Mat Index
70	-2.7	92	55.5	12	3.12	987	91	85									

We Now Offer Brown Mid-Rib Forage Corn

\$75 per bag

- When planted in narrow rows at 90,000 to 100,00 seeds per acre, our extremely digestible Brown Mid-Rib forage corn can produce up to 7 tons of dry matter in as little as 80 days.
- Plant with a 15' corn planter or grain drill with press wheels.
- Harvest similar to sorghum-sudan by grazing, greenchop, haylage or baleage
- Free freight nationwide on 1 or more pallets

Call to order Today
 Jennifer Redd-Westfall
 970.640.7543 • jewestfall@gmail.com

Ray Brothers
 Seed Farms

78	REDD NIGHT FOCUS 258 G	Frame	Scrotal	PAP	EPD Base												
		3.82	30	42	RA												
Sire: LSF RHO NIGHT FOCUS 76B Dam: REDD MS RANCHES COMMERCIAL R R75 Pol Nt. Reg BD: 3/3/19																	
Birth wt	EPD	Weaning Ratio	EPD	CED EPD	Yearling ADG	AdjWt	Ratio	EPD	DNA Profile	ADG	CE	Stay	Choice	Feed	Tend	Igen Prog Index	Igen Mat Index
70	-1.7	96	68	15	1.36	730	67	101		8	6	5	7	5	4	6.10	5.85

79	REDD BKT EPIC 784 G	Frame	Scrotal	PAP	EPD Base												
		4.92	30	37	RA												
Sire: BECKTON EPIC D052 Dam: REDD MS ASSET C337 R R75 Pol Reg BD: 4/28/19																	
Birth wt	EPD	Weaning Ratio	EPD	CED EPD	Yearling ADG	AdjWt	Ratio	EPD	DNA Profile	ADG	CE	Stay	Choice	Feed	Tend	Igen Prog Index	Igen Mat Index
71	-4.5	95	48	16	2.9	970	90	78		8	6	6	7	4	7	5.95	6

80	REDD REDEMPTION II 788 G	Frame	Scrotal	PAP	EPD Base												
		4.71	33		RA												
Sire: REDD REDEMPTION 772 D Dam: REDD MS RANCHES COMMERCIAL R R75 Pol Nt. Reg BD: 4/30/19																	
Birth wt	EPD	Weaning Ratio	EPD	CED EPD	Yearling ADG	AdjWt	Ratio	EPD	DNA Profile	ADG	CE	Stay	Choice	Feed	Tend	Igen Prog Index	Igen Mat Index
80	-3.05	86	60.5	14	3.12	958	88	94									

BLACK ANGUS

Easy calving, high growth, quality carcass, they own the market, the market loves black because they assume black means Angus, the Angus Association is working hard giving us more improvement tools. Black or Red, Angus cattle are known for traits that can make a real difference in a cow herd.

Black Angus Breed Average EPDS

CED	BW	WW	YW	RADG	DMI	YH	SC	DOC	Claw	Angle	HP	CEM
6	1.2	54	96	0.23	0.73	0.5	0.76	15	0.50	0.50	10.7	9
MILK	MW	MH	CW	MARB	REA	FAT	\$M	\$W	\$F	\$G	\$B	\$EN
25	46	0.3	38	0.50	0.50	0.012	52	54	82	44	126	-11



FRONT & CENTER

BLACK ANGUS REFERENCE SIREs

NAAB#	REG#	Name	PAP	CED	BW	WW	YW	RADG	DMI	YH	SC	DOC				
29an1840	17029809	FRONT & CENTER	UNK	14	-0.7	60	105	0.25	0.24	0.3	1.54	15				
Claw	Angle	HP	CEM	MILK	MW	MH	CW	MARB	REA	FAT	\$M	\$W	\$F	\$G	\$B	\$EN
0.5	0.54	9.4	11	0.32	50	0	29	0.24	0.79	0.022	53	74	81	35	117	-17
SIRE: Kessler's Frontman R001						PGSire: Connealy Front Page 0228										
MGSire: Connealy Right Answer 746						MGGsire: SAV Final Answer 0035										

NAAB#	REG#	Name	PAP	CED	BW	WW	YW	RADG	DMI	YH	SC	DOC				
29AN1783	16430795	KCF BENNETT ABSOLUTE w299	37	11	-0.2	62	114	0.28	0.7	0.1	1.03	18				
Claw	Angle	HP	CEM	MILK	MW	MH	CW	MARB	REA	FAT	\$M	\$W	\$F	\$G	\$B	\$EN
0.56	0.48	6.9	8	2	80	0	44	0.68	0.69	0.033	33	6	95	54	149	-26
SIRE: SAV Final Answer 0035						PGSire: Sitz Traveler 8180										
MGSire: Wulffs Ext 6106						MGGsire: N Bar Emulation EXT										

Additional Reference Sires Listed on Page 26

BLACK ANGUS

Continued from Page 25



NAAB#	REG#	Name	PAP	CED	BW	WW	YW	RADG	DMI	YH	SC	DOC				
001AN0124916796888		KG SOLLUTION 0018	-	11	-1.9	66	121	0.3	0.96	0.3	1.07	27				
Claw	Angle	HP	CEM	MILK	MW	MH	CW	MARB	REA	FAT	\$M	\$W	\$F	\$G	\$B	\$EN
0.55	0.53	15.3	11	22	71	0.3	42	0.45	0.59	-0.11	64	74	91	46	137	-22
SIRE: MOGCK Sure Shot						PGSire: Mytty In Focus										
MGSire: KG Onward 6221						MGGsire: Connealy Onward										

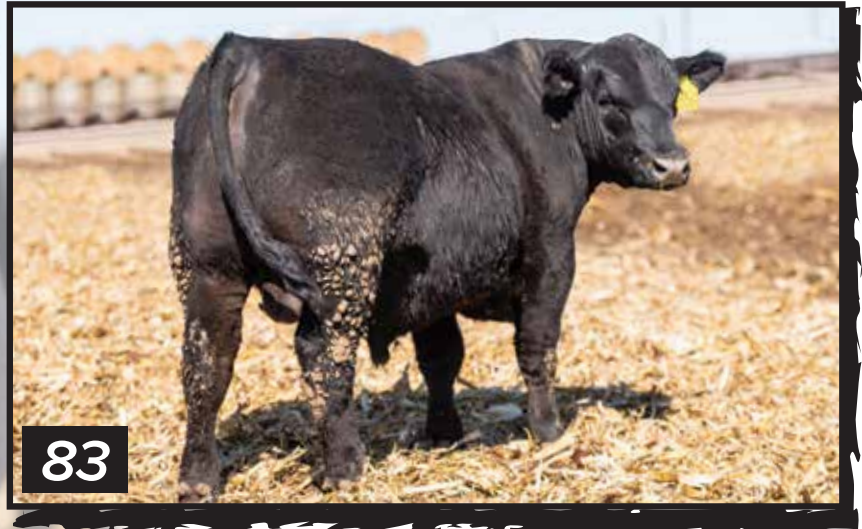
NAAB#	REG#	Name	PAP	CED	BW	WW	YW	RADG	DMI	YH	SC	DOC				
7AN389	17328461	G A R SURE FIRE	38	16	-0.3		107	0.27	0.49	0.3	2.41	30				
Claw	Angle	HP	CEM	MILK	MW	MH	CW	MARB	REA	FAT	\$M	\$W	\$F	\$G	\$B	\$EN
0.55	0.4	1.3	9	32	26	0.1	48	1.35	0.69	0.042	74	80	97	86	155.78	-6
SIRE: Connealy in Sure 8524						PGSire: Mytty In Focus										
MGSire: G A R New Design 5050						MGGsire: B/R New Design 036										

BLACK ANGUS LOTS



81		REDD SURE FIRE 217 G				Frame	Scrotal	PAP	EPD Base									
						5.08	35	37	RA									
Sire: GAR SURE FIRE		Dam: REDD MS REDEMPTION E377		B		A97	Pol	Reg	BD: 2/13/19									
Birth wt	EPD	Weaning Ratio	EPD	CED EPD	Yearling				DNA Profile	ADG	CE	Stay	Choice	Feed	Tend	Igen Index	Prog Index	Igen Mat Index
80	-1.1	114	63	15	4.55	1333	118	99		9	8	5	9	7	5	6.45		5.85

82	REDD SURE FIRE 228 G				Frame	Scrotal	PAP	EPD Base										
					5.12	39	35	RA										
Sire: GAR SURE FIRE		Dam: REDD MS ABSOLUTE E456		B	A96	Pol	Reg	BD: 2/16/19										
Birth wt	EPD	Weaning Ratio	EPD	CED EPD	Yearling				DNA Profile	ADG	CE	Stay	Choice	Feed	Tend	Igen Index	Prog Index	Igen Mat Index
77	-1.1	108	63	15	4.55	1302	116	99										



83	REDD SURE FIRE 235 G				Frame	Scrotal	PAP	EPD Base										
					4.88	37	36	RA										
Sire: GAR SURE FIRE		Dam: REDD MS BECKTON EPIC E333		B	A100	Pol	Reg	BD: 2/17/19										
Birth wt	EPD	Weaning Ratio	EPD	CED EPD	Yearling				DNA Profile	ADG	CE	Stay	Choice	Feed	Tend	Igen Index	Prog Index	Igen Mat Index
86	-1	120	76	14	3.64	1220	108	120		10	8	6	9	7	4	6.70	5.8	

84	REDD FRONT & CENTER 616 G				Frame	Scrotal	PAP	EPD Base										
					5.43	34	41	RA										
Sire: CONNEALY FRONT & CENTER		Dam: REDD MS CHINOOK A042		B	A94	Pol	Reg	BD: 3/11/19										
Birth wt	EPD	Weaning Ratio	EPD	CED EPD	Yearling				DNA Profile	ADG	CE	Stay	Choice	Feed	Tend	Igen Index	Prog Index	Igen Mat Index
86	-1.4	122	78	17	3.12	1150	102	119		10	8	6	9	6	5	6.95	5.9	

85	REDD FRONT & CENTER 244 G				Frame	Scrotal	PAP	EPD Base										
					5.18	36	36	RA										
Sire: Connealy Front & Center		Dam: REDD MS REDEMPTION E430		B	A94	Scr	Reg	BD: 2/21/19										
Birth wt	EPD	Weaning Ratio	EPD	CED EPD	Yearling				DNA Profile	ADG	CE	Stay	Choice	Feed	Tend	Igen Index	Prog Index	Igen Mat Index
83	-2.2	117	74.7	16	3.69	1215	108	112.45		7	7	8	5	7	7	6.45	5.95	

86	REDD SURE FIRE 203 G								Frame	Scrotal	PAP	EPD Base					
									4.51	34	36	RA					
Sire: GAR SURE FIRE		Dam: REDD MS TOP HAND E101		B	A99	Pol	Nt. Reg	BD: 2/8/19									
Birth wt	EPD	Weaning Ratio	EPD	CED EPD	Yearling				DNA Profile	ADG	CE	Stay	Choice	Feed	Tend	Igen Prog Index	Igen Mat Index
71	-2.05	106	74.7	12	3.86	1183	105	113.95		10	8	5	9	7	4	6.50	5.85

87	REDD SURE FIRE 245 G								Frame	Scrotal	PAP	EPD Base					
									5.47	35	38	RA					
Sire: GAR SURE FIRE		Dam: REDD MS TOP HAND E109		B	A100	Pol	Nt. Reg	BD: 2/24/19									
Birth wt	EPD	Weaning Ratio	EPD	CED EPD	Yearling				DNA Profile	ADG	CE	Stay	Choice	Feed	Tend	Igen Prog Index	Igen Mat Index
78	-2.1	110	75	12	3.92	1212	108	114		8	9	7	9	7	3	6.70	6.1

88	REDD REDEMPTION 672 G								Frame	Scrotal	PAP	EPD Base					
									5.58	35	40	RA					
Sire: BROWN JYJ REDEMPTION Y1334		Dam: VAR Eisa Evergreen 2417-44A		B	A100	Pol	Reg	BD: 3/21/19									
Birth wt	EPD	Weaning Ratio	EPD	CED EPD	Yearling				DNA Profile	ADG	CE	Stay	Choice	Feed	Tend	Igen Prog Index	Igen Mat Index
84	-1.8	104	66	14	4.09	1211	107	112		8	7	8	6	6	9	6.95	5.8



88



89	REDD SOLUTION 685 G								Frame	Scrotal	PAP	EPD Base					
									4.66	35	40	RA					
Sire: KG SOLLUTION 0018		Dam: REDD MS CONNEALY A526		B	A94	Pol	Reg	BD: 3/26/19									
Birth wt	EPD	Weaning Ratio	EPD	CED EPD	Yearling				DNA Profile	ADG	CE	Stay	Choice	Feed	Tend	Igen Prog Index	Igen Mat Index
79	-1.8	104	70	14	4.2	1226	109	113		8	8	7	6	8	6	6.15	6.1

90	REDD FRONT & CENTER 207 G								Frame	Scrotal	PAP	EPD Base					
									4.27	35	38	RA					
Sire: Connealy Front & Center		Dam: REDD MS BECKTON NEBULA E436		B	A99	Pol	Reg	BD: 2/9/19									
Birth wt	EPD	Weaning Ratio	EPD	CED EPD	Yearling				DNA Profile	ADG	CE	Stay	Choice	Feed	Tend	Igen Prog Index	Igen Mat Index
78	-2.1	103	70	16	3.75	1149	102	116		7	10	7	7	7	10	6.95	6

91	REDD SURE FIRE 249 G								Frame	Scrotal	PAP	EPD Base					
									5.38	35	35	RA					
Sire: BECKTON CARDINAL E505		Dam: REDD MS TOP HAND E130		B	A94	Pol	Nt. Reg	BD: 3/7/19									
Birth wt	EPD	Weaning Ratio	EPD	CED EPD	Yearling				DNA Profile	ADG	CE	Stay	Choice	Feed	Tend	Igen Prog Index	Igen Mat Index
84	-3.6	108	55	16	3.81	1186	105	90		7	8	7	6	6	9	6.40	5.75

92	REDD SURE FIRE 654 G								Frame	Scrotal	PAP	EPD Base					
									5.27	36	39	RA					
Sire: GAR SURE FIRE		Dam: REDD MS CONNEALY B895		B	A97	Pol	Reg	BD: 3/17/19									
Birth wt	EPD	Weaning Ratio	EPD	CED EPD	Yearling				DNA Profile	ADG	CE	Stay	Choice	Feed	Tend	Igen Prog Index	Igen Mat Index
66	-1.5	110	63	15	3.01	1066	95	99		6	9	7	7	6	5	6.25	6.15

93	REDD SURE FIRE 737 G								Frame	Scrotal	PAP	EPD Base					
									5.8	36	37	RA					
Sire: GAR SURE FIRE		Dam: REDD MS THUNDER B811		B	A98	Pol	Reg	BD: 4/5/19									
Birth wt	EPD	Weaning Ratio	EPD	CED EPD	Yearling				DNA Profile	ADG	CE	Stay	Choice	Feed	Tend	Igen Prog Index	Igen Mat Index
72	-3.1	94	58	17	4.55	1226	109	94		8	9	7	9	6	4	6.95	6.15

94	REDD FRONT & CENTER 607 G								Frame	Scrotal	PAP	EPD Base					
									5.9	34	43	RA					
Sire: Connealy Front & Center		Dam: REDD MS LIMELIGHT Z251		B	A90	Pol	Reg	BD: 3/9/19									
Birth wt	EPD	Weaning Ratio	EPD	CED EPD	Yearling				DNA Profile	ADG	CE	Stay	Choice	Feed	Tend	Igen Prog Index	Igen Mat Index
68	-3.6	99	65	20	3.35	1066	95	104		6	10	6	8	8	7	6.05	5.7

95	REDD SOLUTION 611 G								Frame	Scrotal	PAP	EPD Base					
									5.93	35		RA					
Sire: KG SOLLUTION 0018		Dam: REDD MS THUNDER C027		B	A99	Pol	Reg	BD: 3/11/19									
Birth wt	EPD	Weaning Ratio	EPD	CED EPD	Yearling				DNA Profile	ADG	CE	Stay	Choice	Feed	Tend	Igen Prog Index	Igen Mat Index
80	-2.6	98	63	16	3.69	1114	99	105									



96	REDD FRONT & CENTER 701 G									Frame	Scrotal	PAP	EPD Base				
										4.7	38	37	RA				
Sire: Connealy Front & Center										Dam: REDD MS BECKTON NEBULA Y323		B	A92	Pol	Nt. Reg	BD: 3/29/19	
Birth wt	EPD	Weaning Ratio	EPD	CED EPD	ADG	Yearling AdjWt	Ratio	EPD	DNA Profile	ADG	CE	Stay	Choice	Feed	Tend	Igen Prog Index	Igen Mat Index
73	-2.2	104	75	13	3.35	1089	97	112		6	8	7	7	6	8	6.65	6.05

97	REDD REDEMPTION 680 G									Frame	Scrotal	PAP	EPD Base				
										5.36	32	41	RA				
Sire: BROWN JYJ REDEMPTION Y1334										Dam: VAR Queen X20-530		B	A100	Pol	Reg	BD: 3/23/19	
Birth wt	EPD	Weaning Ratio	EPD	CED EPD	ADG	Yearling AdjWt	Ratio	EPD	DNA Profile	ADG	CE	Stay	Choice	Feed	Tend	Igen Prog Index	Igen Mat Index
86	-1.4	96	66	13	3.98	1146	102	112		8	9	7	8	5	7	7.00	6.25

98	REDD SOLUTION 609 G									Frame	Scrotal	PAP	EPD Base				
										4.91	36	40	RA				
Sire: KG SOLLUTION 0018										Dam: REDD MS THUNDER B865		B	A99	Pol	Reg	BD: 3/9/19	
Birth wt	EPD	Weaning Ratio	EPD	CED EPD	ADG	Yearling AdjWt	Ratio	EPD	DNA Profile	ADG	CE	Stay	Choice	Feed	Tend	Igen Prog Index	Igen Mat Index
71	-4	101	64	18	2.84	994	88	105		7	9	8	7	7	10	7.05	6.35

99	REDD SOLUTION 677 G									Frame	Scrotal	PAP	EPD Base				
										4.11	34	39	RA				
Sire: KG SOLLUTION 0018										Dam: REDD MS BECKTON CLIFFTOP D590		B	A94	Pol	Reg	BD: 3/23/19	
Birth wt	EPD	Weaning Ratio	EPD	CED EPD	ADG	Yearling AdjWt	Ratio	EPD	DNA Profile	ADG	CE	Stay	Choice	Feed	Tend	Igen Prog Index	Igen Mat Index
72	-2.3	99	67	15	3.81	1137	101	109		8	8	7	6	6	7	6.55	6.15

100	REDD SOLUTION 735 G								Frame	Scrotal	PAP	EPD Base					
									6.17	37	38	RA					
Sire: KG SOLLUTION 0018		Dam: REDD MS CONQUEST C025		B	A99	Pol	Nt. Reg	BD: 4/3/19									
Birth wt	EPD	Weaning Ratio	EPD	CED EPD	Yearling				DNA Profile	ADG	CE	Stay	Choice	Feed	Tend	Igen Prog Index	Igen Mat Index
71	-2.9	78	14	3.1				121		7	9	7	7	7	7	6.45	5.9

101	REDD FRONT & CENTER 678 G								Frame	Scrotal	PAP	EPD Base					
									4.61	33	44	RA					
Sire: Connealy Front & Center		Dam: REDD MS REDEMPTION D544		B	A96	Pol	Reg	BD: 3/23/19									
Birth wt	EPD	Weaning Ratio	EPD	CED EPD	Yearling				DNA Profile	ADG	CE	Stay	Choice	Feed	Tend	Igen Prog Index	Igen Mat Index
85	-2.3	94	67	15	4.03	1148	102	109		6	8	7	6	6	10	6.55	5.8

102	REDD FRONT & CENTER 640 G								Frame	Scrotal	PAP	EPD Base					
									5.89	36	44	RA					
Sire: Connealy Front & Center		Dam: REDD MS NEW DESIGN Y292		B	A97	Pol	Nt. Reg	BD: 3/15/19									
Birth wt	EPD	Weaning Ratio	EPD	CED EPD	Yearling				DNA Profile	ADG	CE	Stay	Choice	Feed	Tend	Igen Prog Index	Igen Mat Index
88	-2.3	75	13	4.9				113		7	8	7	8	7	7	6.85	5.9

103	REDD ABSOLUTE 693 G								Frame	Scrotal	PAP	EPD Base					
									4.67	33		RA					
Sire: KCF BENNETT ABSOLUTE W299		Dam: REDD MS THUNDER B870		B	A90	Scr	Reg	BD: 3/27/19									
Birth wt	EPD	Weaning Ratio	EPD	CED EPD	Yearling				DNA Profile	ADG	CE	Stay	Choice	Feed	Tend	Igen Prog Index	Igen Mat Index
77	-2.5	86	56	16	4.09	1115	99	91									

104	REDD RANCHES PWR-UP 699 G								Frame	Scrotal	PAP	EPD Base					
									5.46	34	41	RA					
Sire: REDD RANCHES PWR-UP		Dam: REDD MS GARDENS WAVE Y023		B	A94	Pol	Reg	BD: 4/15/19									
Birth wt	EPD	Weaning Ratio	EPD	CED EPD	Yearling				DNA Profile	ADG	CE	Stay	Choice	Feed	Tend	Igen Prog Index	Igen Mat Index
72	-3.2	108	61	16	3.18	1082	96	90		7	7	7	7	7	7	6.35	5.9

105	REDD FRONT & CENTER 694 G								Frame	Scrotal	PAP	EPD Base					
									5.42	34	34	RA					
Sire: Connealy Front & Center		Dam: REDD MS ABSOLUTE D142		B	A99	Pol	Reg	BD: 3/27/19									
Birth wt	EPD	Weaning Ratio	EPD	CED EPD	Yearling				DNA Profile	ADG	CE	Stay	Choice	Feed	Tend	Igen Prog Index	Igen Mat Index
82	-1.3	107	70	17	3.12	1072	95	111		7	7	6	6	6	10	6.50	5.9

106	REDD SURE FIRE 606 G								Frame	Scrotal	PAP	EPD Base					
									4.16	35	37	RA					
Sire: GAR SURE FIRE		Dam: REDD MS THUNDER B911		B	A99	Pol	Reg	BD: 3/9/19									
Birth wt	EPD	Weaning Ratio	EPD	CED EPD	Yearling				DNA Profile	ADG	CE	Stay	Choice	Feed	Tend	Igen Prog Index	Igen Mat Index
67	-4.1	75	46	20	4.09	1056	94	77		6	9	5	8	7	5	5.80	5.65

107	REDD REDEMPTION 637 G								Frame	Scrotal	PAP	EPD Base					
									4.73	33	38	RA					
Sire: BROWN JYJ REDEMPTION Y1334		Dam: REDD MS PREMIER C304		B	R100	Pol	Reg	BD: 3/14/19									
Birth wt	EPD	Weaning Ratio	EPD	CED EPD	Yearling				DNA Profile	ADG	CE	Stay	Choice	Feed	Tend	Igen Prog Index	Igen Mat Index
72	-3.8	91	55	14	3.47	1031	97	95		8	9	8	6	7	9	6.90	6.05

108	REDD SOLUTION 692 G								Frame	Scrotal	PAP	EPD Base					
									4.17	33	48	RA					
Sire: KG SOLLUTION 0018		Dam: REDD MS THUNDER B818		B	A97	Pol	Reg	BD: 3/27/19									
Birth wt	EPD	Weaning Ratio	EPD	CED EPD	Yearling				DNA Profile	ADG	CE	Stay	Choice	Feed	Tend	Igen Prog Index	Igen Mat Index
79	-3	87	59	17	3.58	1038	92	98		8	10	8	9	6	9	7.95	6.45

109	REDD SURE FIRE 610 G								Frame	Scrotal	PAP	EPD Base					
									4.19	33	37	RA					
Sire: GAR SURE FIRE		Dam: REDD MS THUNDER C008		B	A99	Pol	Reg	BD: 3/11/19									
Birth wt	EPD	Weaning Ratio	EPD	CED EPD	Yearling				DNA Profile	ADG	CE	Stay	Choice	Feed	Tend	Igen Prog Index	Igen Mat Index
71	-3.3	83	50	19	3.75	1042	92	84		9	9	7	8	6	6	7.10	6.55

110	REDD FRONT & CENTER 670 G								Frame	Scrotal	PAP	EPD Base					
									4.83	36	36	RA					
Sire: Connealy Front & Center		Dam: REDD MS ALL-IN D556		B	A99	Pol	Nt. Reg	BD: 3/21/19									
Birth wt	EPD	Weaning Ratio	EPD	CED EPD	Yearling				DNA Profile	ADG	CE	Stay	Choice	Feed	Tend	Igen Prog Index	Igen Mat Index
84	-2.3	90	75	13	3.69	1069	95	113		7	9	8	8	8	8	7.20	6.25

111	REDD FRONT & CENTER 665 G								Frame	Scrotal	PAP	EPD Base					
									4.07	36	44	RA					
Sire: Connealy Front & Center		Dam: REDD MS ABSOLUTE D145		B	A99	Pol	Reg	BD: 3/20/19									
Birth wt	EPD	Weaning Ratio	EPD	CED EPD	Yearling				DNA Profile	ADG	CE	Stay	Choice	Feed	Tend	Igen Prog Index	Igen Mat Index
80	-1.8	85	60	17	3.86	1072	95	96		5	9	7	6	7	9	6.35	5.8

112	REDD SURE FIRE 728 G								Frame	Scrotal	PAP	EPD Base					
									4.28	33	37	RA					
Sire: GAR SURE FIRE		Dam: REDD MS NEW DESIGN R252		B	A95	Pol	Nt. Reg	BD: 4/3/19									
Birth wt	EPD	Weaning Ratio	EPD	CED EPD	Yearling				DNA Profile	ADG	CE	Stay	Choice	Feed	Tend	Igen Prog Index	Igen Mat Index
68	-2	90	75	12	3.58	1051	93	113		6	8	7	7	5	4	6.20	6.2

113	REDD ORACLE 742 G								Frame	Scrotal	PAP	EPD Base					
									5.1	34	49	RA					
Sire: BROWN ORACLE B123		Dam: REDD MS PREMIER C335		B	A99	Pol	Reg	BD: 4/8/19									
Birth wt	EPD	Weaning Ratio	EPD	CED EPD	Yearling				DNA Profile	ADG	CE	Stay	Choice	Feed	Tend	Igen Prog Index	Igen Mat Index
65	-4.1	96	62	16	3.18	1019	90	101		8	9	8	8	7	10	7.30	5.95

114	REDD SOLUTION 681 G								Frame	Scrotal	PAP	EPD Base					
									3.61	33	38	RA					
Sire: KG SOLLUTION 0018		Dam: REDD MS ABSOLUTE D536		B	A94	Pol	Reg	BD: 3/23/19									
Birth wt	EPD	Weaning Ratio	EPD	CED EPD	Yearling				DNA Profile	ADG	CE	Stay	Choice	Feed	Tend	Igen Prog Index	Igen Mat Index
71	-3.4	85	60	17	3.3	980	87	101		8	8	7	7	6	9	7.15	6.35



BLACK ANGUS (HIGH PERCENTAGE)

High Percentage Angus with a dose of Hybrid Vigor, these are with highest yearling weight bulls in the sale. Angus cattle are known for traits that can make a real difference in cow herd profitability, including calving ease, marbling and growth. Their ability to produce a high-quality carcass, with increased marbling, puts Angus beef as the top choice for consumers.

115	REDD SURE FIRE 238 G								Frame	Scrotal	PAP	EPD Base					
									6.13	39	37	RA					
Sire: GAR SURE FIRE		Dam: REDD MS BECKTON EPIC E302		B	A88	Pol	Reg	BD: 2/17/19									
Birth wt	EPD	Weaning Ratio	EPD	CED EPD	Yearling				DNA Profile	ADG	CE	Stay	Choice	Feed	Tend	Igen Prog Index	Igen Mat Index
85	-1.1	121	63	15	4.55	1381	120	99		8	7	7	8	7	1	6.40	6.3

116	REDD SOLUTION 605 G								Frame	Scrotal	PAP	EPD Base					
									6.39	36	37	RA					
Sire: KG SOLLUTION 0018		Dam: REDD MS TRIPLE C BETTIS B869 B			A70S25	Pol	Nt. Reg	BD: 3/8/19									
Birth wt	EPD	Weaning Ratio	EPD	CED EPD	ADG	Yearling AdjWt	Ratio	EPD	DNA Profile	ADG	CE	Stay	Choice	Feed	Tend	Igen Prog Index	Igen Mat Index
84	-1.9	116	81	14	4.6	1362	118	123		6	8	7	6	6	9	6.55	6.2

117	REDD SURE FIRE 208 G								Frame	Scrotal	PAP	EPD Base					
									5.77	37	35	RA					
Sire: GAR SURE FIRE		Dam: REDD MS TOP HAND E100			B	A88	Pol	Nt. Reg	BD: 2/9/19								
Birth wt	EPD	Weaning Ratio	EPD	CED EPD	ADG	Yearling AdjWt	Ratio	EPD	DNA Profile	ADG	CE	Stay	Choice	Feed	Tend	Igen Prog Index	Igen Mat Index
77	-1.85	113	74.7	12	4.72	1364	118	112.95		8	9	7	9	6	3	6.75	6.2

118	REDD SURE FIRE 215 G								Frame	Scrotal	PAP	EPD Base					
									5.55	36		RA					
Sire: GAR SURE FIRE		Dam: REDD MS TOP HAND E102			B	A80	Pol	Nt. Reg	BD: 2/11/19								
Birth wt	EPD	Weaning Ratio	EPD	CED EPD	ADG	Yearling AdjWt	Ratio	EPD	DNA Profile	ADG	CE	Stay	Choice	Feed	Tend	Igen Prog Index	Igen Mat Index
78	-1.5	110	76	11	4.15	1258	109	114									

119	REDD FRONT & CENTER 214 G								Frame	Scrotal	PAP	EPD Base					
									5.55	38	41	RA					
Sire: Connealy Front & Center		Dam: REDD MS HERITAGE E150			B	A88	Pol	Reg	BD: 2/11/19								
Birth wt	EPD	Weaning Ratio	EPD	CED EPD	ADG	Yearling AdjWt	Ratio	EPD	DNA Profile	ADG	CE	Stay	Choice	Feed	Tend	Igen Prog Index	Igen Mat Index
70	-3.1	109	71	17	3.86	1206	105	111		7	8	6	7	7	9	6.45	5.55





120	REDD FRONT & CENTER 230 G				Frame	Scrotal	PAP	EPD Base									
					5.38	35	39	RA									
Sire: Connealy Front & Center					Dam: REDD MS WARRIOR E161		B	A88	Pol	Reg	BD: 3/7/19						
Birth wt	EPD	Weaning Ratio	EPD	CED EPD	Yearling				DNA Profile	ADG	CE	Stay	Choice	Feed	Tend	Igen Prog Index	Igen Mat Index
83	-1.5	115	64	16	4.03	1267	110	99		7	9	6	7	9	10	6.15	5.55

121	REDD BKT CARDINAL 708 G				Frame	Scrotal	PAP	EPD Base									
					4.98	35		RA									
Sire: BECKTON CARDINAL E189					Dam: REDD RANCHES COMMERCIAL DAM		B	A75	Pol	Nt. Reg	BD: 3/31/19						
Birth wt	EPD	Weaning Ratio	EPD	CED EPD	Yearling				DNA Profile	ADG	CE	Stay	Choice	Feed	Tend	Igen Prog Index	Igen Mat Index
80	-2.8	104	77	12	4.72	1315	114	90									

122	REDD FRONT & CENTER 700 G				Frame	Scrotal	PAP	EPD Base									
					6.2	37	38	RA									
Sire: Connealy Front & Center					Dam: REDD MS RANCHES COMMERCIAL III		B	A75	Pol	Nt. Reg	BD: 3/29/19						
Birth wt	EPD	Weaning Ratio	EPD	CED EPD	Yearling				DNA Profile	ADG	CE	Stay	Choice	Feed	Tend	Igen Prog Index	Igen Mat Index
80	-1.9	108	75	13	4.09	1237	107	111		9	8	8	7	6	7	7.30	6.4

123	REDD SURE FIRE 660 G				Frame	Scrotal	PAP	EPD Base									
					5.05	34	34	RA									
Sire: GAR SURE FIRE					Dam: REDD MS THUNDER C015		B	A84	Pol	Reg	BD: 3/19/19						
Birth wt	EPD	Weaning Ratio	EPD	CED EPD	Yearling				DNA Profile	ADG	CE	Stay	Choice	Feed	Tend	Igen Prog Index	Igen Mat Index
71	-3.2	102	63	17	4.26	1235	107	93		7	10	6	8	6	4	6.40	6.45



124	REDD FRONT & CENTER 724 G	Frame	Scrotal	PAP	EPD Base													
		5.51	35	42	RA													
Sire: Connealy Front & Center		Dam: REDD MS ASSET B798		B	A75	Pol	Reg	BD: 4/2/19										
Birth wt	EPD	Weaning Ratio	EPD	CED EPD	Yearling ADG		AdjWt	Ratio	EPD	DNA Profile	ADG	CE	Stay	Choice	Feed	Tend	Igen Prog Index	Igen Mat Index
77	-1.3	110	66	13	3.75	1195	104	101		7	6	7	7	7	10	6.75	5.9	

125	REDD FRONT & CENTER 715 G	Frame	Scrotal	PAP	EPD Base													
		5.23	35	40	RA													
Sire: Connealy Front & Center		Dam: REDD MS ASSET C399		B	A75	Pol	Reg	BD: 3/31/19										
Birth wt	EPD	Weaning Ratio	EPD	CED EPD	Yearling ADG		AdjWt	Ratio	EPD	DNA Profile	ADG	CE	Stay	Choice	Feed	Tend	Igen Prog Index	Igen Mat Index
78	-1.5	99	64	16	4.55	1264	110	99		7	8	6	6	7	7	6.05	5.55	

126	REDD FRONT & CENTER 210 G	Frame	Scrotal	PAP	EPD Base													
		5.04	36	45	RA													
Sire: Connealy Front & Center		Dam: REDD MS HERITAGE E123		B	A88	Pol	Nt. Reg	BD: 2/10/19										
Birth wt	EPD	Weaning Ratio	EPD	CED EPD	Yearling ADG		AdjWt	Ratio	EPD	DNA Profile	ADG	CE	Stay	Choice	Feed	Tend	Igen Prog Index	Igen Mat Index
78	-2.1	106	75	13	3.41	1115	97	112		5	8	8	8	6	7	6.70	6.15	

127	REDD SURE FIRE 603 G	Frame	Scrotal	PAP	EPD Base													
		5.63	36	38	RA													
Sire: GAR SURE FIRE		Dam: REDD MS ASSET C380		B	A75	Pol	Reg	BD: 3/7/19										
Birth wt	EPD	Weaning Ratio	EPD	CED EPD	Yearling ADG		AdjWt	Ratio	EPD	DNA Profile	ADG	CE	Stay	Choice	Feed	Tend	Igen Prog Index	Igen Mat Index
83	-1.1	103	63	15	3.64	1139	99	99		9	6	6	7	8	5	6.00	5.45	

128	REDD SOLUTION 602 G	Frame	Scrotal	PAP	EPD Base													
		5.92	35	38	RA													
Sire: KG SOLLUTION 0018		Dam: REDD MS REVENUE B742		B	A75	Pol	Nt. Reg	BD: 3/4/19										
Birth wt	EPD	Weaning Ratio	EPD	CED EPD	Yearling ADG		AdjWt	Ratio	EPD	DNA Profile	ADG	CE	Stay	Choice	Feed	Tend	Igen Prog Index	Igen Mat Index
64	-2	95	79	14	4.5	1054	92	120		8	10	7	7	6	7	6.85	6.45	

129	REDD BKT ACCENT 796 G								Frame	Scrotal	PAP	EPD Base						
									4.97	32	37	RA						
Sire: BECKTON ACCENT D308		Dam: REDD MS RANCHES COMMERCIAL		B	R75	Pol	Nt. Reg	BD: 5/1/19										
Birth wt	EPD	Weaning Ratio	EPD	CED EPD	Yearling				DNA Profile	ADG	CE	Stay	Choice	Feed	Tend	Igen Index	Prog Index	Igen Mat Index
80	-1.9	105	59.5	14	3.81	1175	108	94		5	7	6	6	6	7	5.80		5.75

130	REDD SURE FIRE 725 G								Frame	Scrotal	PAP	EPD Base						
									4.26	33	37	RA						
Sire: GAR SURE FIRE		Dam: REDD MS ROJO C398		B	A75	Pol	Nt. Reg	BD: 4/2/19										
Birth wt	EPD	Weaning Ratio	EPD	CED EPD	Yearling				DNA Profile	ADG	CE	Stay	Choice	Feed	Tend	Igen Index	Prog Index	Igen Mat Index
61	-1.7	91	75	12	4.09	1149	100	112		8	10	5	9	6	4	6.55		5.85

131	REDD SURE FIRE 226 G								Frame	Scrotal	PAP	EPD Base						
									4.35	33	47	RA						
Sire: GAR SURE FIRE		Dam: REDD MS TOP HAND E113		B	A88	Pol	Nt. Reg	BD: 2/15/19										
Birth wt	EPD	Weaning Ratio	EPD	CED EPD	Yearling				DNA Profile	ADG	CE	Stay	Choice	Feed	Tend	Igen Index	Prog Index	Igen Mat Index
77	-1.8	89	75	12	3.75	1082	94	113		5	8	7	7	6	4	6.00		5.9

132	REDD FRONT & CENTER 730 G								Frame	Scrotal	PAP	EPD Base						
									5.67	35	37	RA						
Sire: Connealy Front & Center		Dam: REDD MS STETSON A505		B	A70S25	Pol	Nt. Reg	BD: 4/3/19										
Birth wt	EPD	Weaning Ratio	EPD	CED EPD	Yearling				DNA Profile	ADG	CE	Stay	Choice	Feed	Tend	Igen Index	Prog Index	Igen Mat Index
78	-2	102	77	13	4.7	1068	94	114		7	8	8	7	7	7	6.65		5.7

133	REDD SURE FIRE 710 G								Frame	Scrotal	PAP	EPD Base						
									4.73	35	38	RA						
Sire: GAR SURE FIRE		Dam: REDD MS ASSET D330		B	A75	Pol	Nt. Reg	BD: 3/31/19										
Birth wt	EPD	Weaning Ratio	EPD	CED EPD	Yearling				DNA Profile	ADG	CE	Stay	Choice	Feed	Tend	Igen Index	Prog Index	Igen Mat Index
83	-1.7	105	75	12	3.47	1123	97	112		7	9	5	8	7	7	6.05		5.7

134	REDD BKT ACCENT 780 G								Frame	Scrotal	PAP	EPD Base						
									5.17	33	38	RA						
Sire: BECKTON ACCENT D308		Dam: REDD MS COMPOSURE B735		B	A75	Pol	Nt. Reg	BD: 4/28/19										
Birth wt	EPD	Weaning Ratio	EPD	CED EPD	Yearling				DNA Profile	ADG	CE	Stay	Choice	Feed	Tend	Igen Index	Prog Index	Igen Mat Index
78	-1.25	93	59.5	14	4.2	1175	102	94										

135 REDD BKT CARDINAL 790 G

Frame	Scrotal	PAP	EPD Base
5.47	34	42	RA

Sire: BECKTON CARDINAL E189 Dam: REDD MS RANCHES COMMERCIAL B A75 Pol Nt. Reg BD: 5/1/19

Birth wt	EPD	Weaning		CED EPD	Yearling				DNA Profile	ADG	CE	Stay	Choice	Feed	Tend	Igen Prog Index	Igen Mat Index
		Ratio	EPD		ADG	AdjWt	Ratio	EPD									
80	-4.6	112	53	19	3.18	1112	97	86		5	9	6	7	7	7	6.05	5.75

136 REDD ABSOLUTE 659 G

Frame	Scrotal	PAP	EPD Base
4.45	35		RA

Sire: KCF BENNETT ABSOLUTE W299 Dam: RDD MS NEW DESIGN Y238 B A75 Pol Nt. Reg BD: 3/19/19

Birth wt	EPD	Weaning		CED EPD	Yearling				DNA Profile	ADG	CE	Stay	Choice	Feed	Tend	Igen Prog Index	Igen Mat Index
		Ratio	EPD		ADG	AdjWt	Ratio	EPD									
60	-1.8	95	76	12	2.8	1026	90	116		8	8	7	10	8	10	7.45	5.85

137 REDD SURE FIRE 247 G

Frame	Scrotal	PAP	EPD Base
4.35	34	36	RA

Sire: BECKTON CARDINAL E505 Dam: REDD MS ASSET E342 B A75 Pol Reg BD: 3/5/19

Birth wt	EPD	Weaning		CED EPD	Yearling				DNA Profile	ADG	CE	Stay	Choice	Feed	Tend	Igen Prog Index	Igen Mat Index
		Ratio	EPD		ADG	AdjWt	Ratio	EPD									
61	-2.2	90	63	15	3.69	1079	94	99		7	8	7	6	8	9	6.10	5.75

138 REDD SURE FIRE 782 G

Frame	Scrotal	PAP	EPD Base
4.67	34	41	RA

Sire: GAR SURE FIRE Dam: REDD MS PREDESTINED D525 B A70S25 Pol Nt. Reg BD: 4/28/19

Birth wt	EPD	Weaning		CED EPD	Yearling				DNA Profile	ADG	CE	Stay	Choice	Feed	Tend	Igen Prog Index	Igen Mat Index
		Ratio	EPD		ADG	AdjWt	Ratio	EPD									
77	-1.2	103	77	11	3.75	1157	100	116		8	9	7	9	6	7	7.35	6.3

139 REDD BKT CARDINAL 802 G

Frame	Scrotal	PAP	EPD Base
4.72	38	37	RA

Sire: BECKTON CARDINAL E189 Dam: REDD MS ASSET A724 B R75 Pol Nt. Reg BD: 5/1/19

Birth wt	EPD	Weaning		CED EPD	Yearling				DNA Profile	ADG	CE	Stay	Choice	Feed	Tend	Igen Prog Index	Igen Mat Index
		Ratio	EPD		ADG	AdjWt	Ratio	EPD									
74	-2.5	101	60	14	3.41	1079	100	90		5	8	7	5	7	10	5.85	6.1

140 REDD SOLUTION 764 G

Frame	Scrotal	PAP	EPD Base
4.96	32	44	RA

Sire: KG SOLLUTION 0018 Dam: REDD MS ASSET B798 B A75 Pol Nt. Reg BD: 4/15/19

Birth wt	EPD	Weaning		CED EPD	Yearling				DNA Profile	ADG	CE	Stay	Choice	Feed	Tend	Igen Prog Index	Igen Mat Index
		Ratio	EPD		ADG	AdjWt	Ratio	EPD									
80	-2.5	93	78	14	3.35	1036	90	119		7	9	6	7	6	7	6.20	5.55



141		REDD BKT CARDINAL 786 G								Frame	Scrotal	PAP	EPD Base				
										5.7	33	39	RA				
Sire: BECKTON CARDINAL E189		Dam: REDD MS REVENUE B807		B		A75		Pol		Reg		BD: 4/30/19					
Birth wt	EPD	Weaning Ratio	EPD	CED EPD	ADG	Yearling AdjWt	Ratio	EPD	DNA Profile	ADG	CE	Stay	Choice	Feed	Tend	Igen Prog Index	Igen Mat Index
80	-3.1	96	48	16	3.47	1071	93	78		7	8	7	5	8	6	5.70	5.85

142		REDD FRONT & CENTER 664 G								Frame	Scrotal	PAP	EPD Base				
										4.07	35		RA				
Sire: Connealy Front & Center		Dam: REDD MS THUNDER D150		B		A88		Pol		Reg		BD: 3/20/19					
Birth wt	EPD	Weaning Ratio	EPD	CED EPD	ADG	Yearling AdjWt	Ratio	EPD	DNA Profile	ADG	CE	Stay	Choice	Feed	Tend	Igen Prog Index	Igen Mat Index
65	-4.2	85	53	20	3.69	1048	91	84									

143		REDD FRONT & CENTER 650 G								Frame	Scrotal	PAP	EPD Base				
										4.02	37	42	RA				
Sire: Connealy Front & Center		Dam: REDD MS THUNDER C020		B		A88		Pol		Reg		BD: 3/17/19					
Birth wt	EPD	Weaning Ratio	EPD	CED EPD	ADG	Yearling AdjWt	Ratio	EPD	DNA Profile	ADG	CE	Stay	Choice	Feed	Tend	Igen Prog Index	Igen Mat Index
79	-2.4	88	57	18	3.07	968	84	91		5	8	5	7	7	10	5.95	5.7

144		REDD NIGHT FOCUS 794 G								Frame	Scrotal	PAP	EPD Base				
										5.22	34		RA				
Sire: LSF RHO NIGHT FOCUS 76B		Dam: REDD MS BLACK CROSS T177		B		R75		Pol		Nt. Reg		BD: 5/1/19					
Birth wt	EPD	Weaning Ratio	EPD	CED EPD	ADG	Yearling AdjWt	Ratio	EPD	DNA Profile	ADG	CE	Stay	Choice	Feed	Tend	Igen Prog Index	Igen Mat Index
80	-1.7	102	68	15	3.24	1057	98	101									

145	REDD SURE FIRE 787 G	Frame	Scrotal	PAP	EPD Base												
		4.95	33	40	RA												
Sire: REDD RANCHES PWR-UP-UP		Dam: REDD MS CONNEALY A508		B	A88	Pol	Reg	BD: 4/30/19									
Birth wt	EPD	Weaning Ratio	EPD	CED EPD	Yearling				DNA Profile	ADG	CE	Stay	Choice	Feed	Tend	Igen Prog Index	Igen Mat Index
64	-5.5	92	46	17	3.01	978	85	72		7	8	5	7	5	7	6.05	5.65

146	REDD SOLUTION 751 G	Frame	Scrotal	PAP	EPD Base												
		4.96	30	40	RA												
Sire: KG SOLLUTION 0018		Dam: REDD MS THUNDER D130		B	A88	Scr	Reg	BD: 4/15/19									
Birth wt	EPD	Weaning Ratio	EPD	CED EPD	Yearling				DNA Profile	ADG	CE	Stay	Choice	Feed	Tend	Igen Prog Index	Igen Mat Index
65	-4.1	88	54	20	3.12	976	85	87		8	9	7	8	8	9	6.95	6.25

147	REDD SOLUTION 601 G	Frame	Scrotal	PAP	EPD Base												
		3.09	30		RA												
Sire: KG SOLLUTION 0018		Dam: REDD MS ASSET B747		B	A75	Pol	Reg	BD: 3/4/19									
Birth wt	EPD	Weaning Ratio	EPD	CED EPD	Yearling				DNA Profile	ADG	CE	Stay	Choice	Feed	Tend	Igen Prog Index	Igen Mat Index
64	-2.3	70	67	15	3.01	860	75	109									



COMPOSITES (SIM ANGUS & GELB. ANGUS)

Hybrid Vigor, more active as sires, longevity, the best of multiple breeds. Simmentals have been in our breeding plan since 1957, few breeds can match capacity to grow. Gelbvieh heifers reach puberty early, earlier than even good Black Baldys, their crossbred calves have added muscle.



Gelbvieh Breed Average EPDS

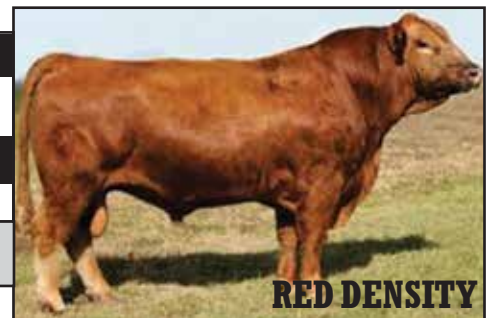
GELBIEH	CE	BW	WW	YW	Milk	TM	CEM	HP	PG30	Stay	DOC	DMI	YG	CW	REA	MRB	FAT	ADG	RFI	\$COW	FPI	EPI
Gelbvieh	12	0.5	63	89	19	50	6	5	0	15	12	.002	-0.29	18	0.30	0.19	-0.06	-0.046	-0.010	104.50	70.39	60.65
Balancers	13	0.0	64	96	19	51	7	4	1	15	12	.037	-0.09	26	0.45	0.39	0.01	.010	-0.011	99.84	76.39	102.02

NAAB #	AGA	NAME	CE	Brth	Wean	Year	Milk	TM	CEM	HP	PG30	Stay	DOC	DMI	YG	CW	REA	MRB	FAT	ADG	RFI	\$COW	FPI	EPI
GV3620	1296413	VRT LAZY TV SAM U451	17	-0.3	71	100	30	65	9	15.81	5.23	18	15	.045	-0.63	9	0.99	0.25	-0.12	-0.094	.082	149.09	81.97	34.87
SIRE: SAM SPADE 02S MGSire: FULLBACK 011G			PGSire: 03N MGSire: BENNETTANCHOR B227																					

NAAB #	AGA	NAME	CE	Brth	Wean	Year	Milk	TM	CEM	HP	PG30	Stay	DOC	DMI	YG	CW	REA	MRB	FAT	ADG	RFI	\$COW	FPI	EPI
GV5011	947498	KRT Lazy TV Second Class R87	16	-2.3	71	109	21	57	11	14.07	6.25	24	9	.061	-0.14	25	.48	0.06	-0.02	-0.025	-.004	167.67	76.93	88.07
Sire: LAZY TV CLASSIC M358 MGSire: BUF CRK DYNAMICS 3820			PGSire: BFCK CHEROKEE CNYN 4912 MGSire: RCN DYNAMO 732																					

NAAB #	AGA	NAME	CE	Brth	Wean	Year	Milk	TM	CEM	HP	PG30	Stay	DOC	DMI	YG	CW	REA	MRB	FAT	ADG	RFI	\$COW	FPI	EPI
GV 152	850450	OZZ 3N	13	-0.5	67	103	24	57	11	7.67	5.75	18	8	-.041	-0.33	10	0.67	0.52	-.05	-.016	-.043	134.32	84.16	99.15
Sire: FLYING H EXCLUSIVE MGSire: MR A34033E			PGSire: M/L ADVANTAGE MGSire: 340A																					

NAAB#	ASA	NAME	CE	Brth	Wean	PWG	Year	ADG	MCE	Milk	MWW	Stay	Doc	CW	YG	Mrb	BF	REA	Shr	API	TI		
7SM59	2466650	RED DENSITY	13.1	2.2	69.6		102.3	0.2	9.2	32.5													
Sire: WS BEEF MAKER R13 MGSire: HC HUMMER 12M			PGSire: HOOKS SHEAR FORCE 38K MGSire: WLE POWER STROKE																				



Simmental Breed Average EPDS

SIMMENTAL	CE	Brth	Wean	PWG	Year	MCE	Milk	MWW	Stay	Doc	CW	YG	Mrb	BF	REA	Shr	API	TI
Purebred	10	1.80	67.8	0.20	100.6	5.20	21.60	55.60	17.40	10.50	28.30	-0.46	0.01	-0.11	0.82	-0.33	123.77	68.93
Hybrid	11.70	0.60	64.50	0.21	98.5	6.30	21.70	54.40	15.40	11.20	29.50	+0.23	0.28	-0.04	0.62	-0.32	123.83	69.24

SIM ANGUS & GELB ANGUS COMPOSITE LOTS

148	REDD SURE FIRE 241 G	Frame	Scrotal	PAP	EPD Base												
		6.64	37	38	RA												
Sire: GAR SURE FIRE		Dam: REDD MS ROLLER E408		B	A60S38 Pol	Reg	BD: 2/18/19										
Birth wt	EPD	Weaning Ratio	EPD	CED EPD	Yearling				DNA Profile	ADG	CE	Stay	Choice	Feed	Tend	Igen Prog Index	Igen Mat Index
88	0.3	123	78	15	4.55	1389	125	123		6	8	7	7	5	3	6.20	6.3

149	REDD FRONT & CENTER 212 G	Frame	Scrotal	PAP	EPD Base												
		5.05	39	37	RA												
Sire: Connealy Front & Center		Dam: REDD MS ROLLER E410		B	A60S38 Pol	Reg	BD: 2/11/19										
Birth wt	EPD	Weaning Ratio	EPD	CED EPD	Yearling				DNA Profile	ADG	CE	Stay	Choice	Feed	Tend	Igen Prog Index	Igen Mat Index
85	0.3	115	76	15	3.98	1258	113	114		7	8	7	6	4	7	6.70	6.3

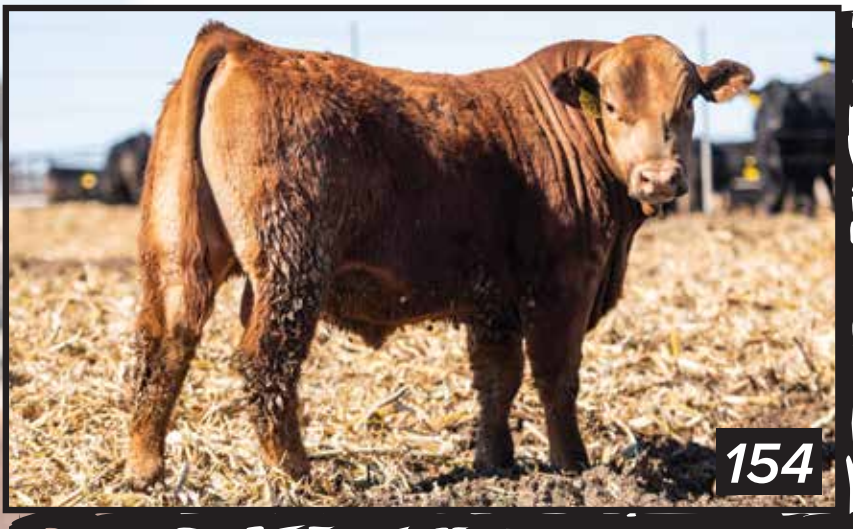


150	RDD DENSITY 755 G	Frame	Scrotal	PAP	EPD Base												
		7.2	34	40	RA												
Sire: MR SHEE-RED DENSITY		Dam: REDD MS BECKTON HUSTLER V405		R	S50R40 Pol	Nt. Reg	BD: 4/15/19										
Birth wt	EPD	Weaning Ratio	EPD	CED EPD	Yearling				DNA Profile	ADG	CE	Stay	Choice	Feed	Tend	Igen Prog Index	Igen Mat Index
85	0.7	106	64	13	4.89	1355	122	96		7	6	5	5	5	4	5.45	5.8

151	REDD SURE FIRE 202 G	Frame	Scrotal	PAP	EPD Base												
		4	36	38	RA												
Sire: GAR SURE FIRE		Dam: REDD MS TRIPLE C BETTIS E395		B	A60S38 Pol	Reg	BD: 2/7/19										
Birth wt	EPD	Weaning Ratio	EPD	CED EPD	Yearling				DNA Profile	ADG	CE	Stay	Choice	Feed	Tend	Igen Prog Index	Igen Mat Index
84	-1.1	106	63	15	3.92	1197	108	99		6	9	6	9	6	4	6.45	5.95

152	REDD DENSITY 652 G								Frame	Scrotal	PAP	EPD Base						
									5.02	35	39	RA						
Sire: MR SHEE-RED DENSITY		Dam: REDD MS BKT LANCER A607		B	S50A38	Pol	Reg	BD: 3/17/19										
Birth wt	EPD	Weaning Ratio	EPD	CED EPD	ADG	Yearling AdjWt	Ratio	EPD	DNA Profile	ADG	CE	Stay	Choice	Feed	Tend	Igen Index	Prog Index	Igen Mat Index
86	0.8	105	64	13	3.98	1201	108	92		4	8	7	7	4	4	6.25		6.15

153	REDD DENSITY 662 G								Frame	Scrotal	PAP	EPD Base						
									4.82	34	35	RA						
Sire: MR SHEE-RED DENSITY		Dam: REDD MS CHINOOK A032		R	S50R40	Pol	Reg	BD: 3/20/19										
Birth wt	EPD	Weaning Ratio	EPD	CED EPD	ADG	Yearling AdjWt	Ratio	EPD	DNA Profile	ADG	CE	Stay	Choice	Feed	Tend	Igen Index	Prog Index	Igen Mat Index
79	-0.8	100	63	16	4.03	1185	107	91		4	7	6	5	5	7	5.60		5.8



154	REDD DENSITY 632 G								Frame	Scrotal	PAP	EPD Base						
									5.21	35	38	RA						
Sire: MR SHEE-RED DENSITY		Dam: REDD MS CONQUEST C044		R	S60R40	Pol	Reg	BD: 3/13/19										
Birth wt	EPD	Weaning Ratio	EPD	CED EPD	ADG	Yearling AdjWt	Ratio	EPD	DNA Profile	ADG	CE	Stay	Choice	Feed	Tend	Igen Index	Prog Index	Igen Mat Index
71	1.6	104	65	12	3.58	1131	102	96		6	8	7	7	5	7	6.80		6.1

155	REDD VRT TV SAM 615 G								Frame	Scrotal	PAP	EPD Base						
									4.94	36	36	RA						
Sire: VRT LAZY TIMSAM U451		Dam: REDD MS THUNDER C017		B	G50A40	Pol	Reg	BD: 3/11/19										
Birth wt	EPD	Weaning Ratio	EPD	CED EPD	ADG	Yearling AdjWt	Ratio	EPD	DNA Profile	ADG	CE	Stay	Choice	Feed	Tend	Igen Index	Prog Index	Igen Mat Index
72	-2	95	49	15	3.86	1131	102	75										

156	REDD HATFIELD 722 G								Frame	Scrotal	PAP	EPD Base					
									5.76	35	36	RA					
Sire: REDD HATFIELD 8160		Dam: REDD MS STETSON A605		B	A50S25T25	Pol	Nt. Reg	BD: 4/2/19									
Birth wt	EPD	Weaning Ratio	EPD	CED EPD	ADG	Yearling AdjWt	Ratio	EPD	DNA Profile	ADG	CE	Stay	Choice	Feed	Tend	Igen Prog Index	Igen Mat Index
80	1.3	99	71	11	3.92	1158	104	97		7	4	4	3	6	7	4.80	4.75

157	REDD DENSITY 682 G								Frame	Scrotal	PAP	EPD Base					
									7.53	38	42	RA					
Sire: MR SHEE-RED DENSITY		Dam: RDD MS BKT WARRIOR S218		R	S50R25G20	Pol	Nt. Reg	BD: 3/25/19									
Birth wt	EPD	Weaning Ratio	EPD	CED EPD	ADG	Yearling AdjWt	Ratio	EPD	DNA Profile	ADG	CE	Stay	Choice	Feed	Tend	Igen Prog Index	Igen Mat Index
88	0.9	109	64	13	3.3	1081	98	95		4	5	6	5	5	3	5.20	5.75

158	REDD SURE FIRE 237 G								Frame	Scrotal	PAP	EPD Base					
									5.54	38	34	RA					
Sire: GAR SURE FIRE		Dam: REDD MS TOP HAND E120		B	A50S40	Pol	Nt. Reg	BD: 2/17/19									
Birth wt	EPD	Weaning Ratio	EPD	CED EPD	ADG	Yearling AdjWt	Ratio	EPD	DNA Profile	ADG	CE	Stay	Choice	Feed	Tend	Igen Prog Index	Igen Mat Index
82	-1.6	109	76	11	3.5	1081	98	115		8	8	7	7	7	6	6.70	6.15

159	REDD DENSITY 721 G								Frame	Scrotal	PAP	EPD Base					
									7.65	33	37	RA					
Sire: MR SHEE-RED DENSITY		Dam: REDD MS BKT NEBULA Z234		R	S50R40	Pol	Nt. Reg	BD: 4/2/19									
Birth wt	EPD	Weaning Ratio	EPD	CED EPD	ADG	Yearling AdjWt	Ratio	EPD	DNA Profile	ADG	CE	Stay	Choice	Feed	Tend	Igen Prog Index	Igen Mat Index
83	1.6	112	61	12	3.2	983	89	93		4	6	5	5	6	5	4.95	5.7

160	REDD VRT TV SAM 766 G								Frame	Scrotal	PAP	EPD Base					
									4.98	35		RA					
Sire: VRT LAZY TIMSAM U451		Dam: REDD MS PREDESTINED A626		B	G57A25S12Pol		Nt. Reg	BD: 4/16/19									
Birth wt	EPD	Weaning Ratio	EPD	CED EPD	ADG	Yearling AdjWt	Ratio	EPD	DNA Profile	ADG	CE	Stay	Choice	Feed	Tend	Igen Prog Index	Igen Mat Index
85	-0.6	89	75	12	4.49	1200	108	123									

161	REDD VRT TV SAM 644 G								Frame	Scrotal	PAP	EPD Base					
									6.28	31	35	RA					
Sire: VRT LAZY TIMSAM U451		Dam: REDD MS DIRECT B850		B	G50A40	Pol	Nt. Reg	BD: 3/7/19									
Birth wt	EPD	Weaning Ratio	EPD	CED EPD	ADG	Yearling AdjWt	Ratio	EPD	DNA Profile	ADG	CE	Stay	Choice	Feed	Tend	Igen Prog Index	Igen Mat Index
87	-0.7	89	74	12	3.5	1200	109	120		7	8	5	4	5	6	5.55	5.9

162	REDD GOVENOR 746 G								Frame	Scrotal	PAP	EPD Base						
									5.4	33	45	RA						
Sire: OZZ EXT GOVERNOR 3N		Dam: REDD MS CHINOOK A003		B	G73A25	Pol	Reg	BD: 4/11/19										
Birth wt	EPD	Weaning Ratio	EPD	CED EPD	Yearling				DNA Profile	ADG	CE	Stay	Choice	Feed	Tend	Igen Index	Prog Index	Igen Mat Index
82	-1.4	106	64	15	3.07	1064	96	96		8	4	5	5	5	7	5.90	5.9	

163	REDD GOVENOR 762 G								Frame	Scrotal	PAP	EPD Base						
									4.47	33	38	RA						
Sire: OZZ EXT GOVENOR 3N		Dam: REDD MS GOVERNOR A608		R	G75R25	Pol	Reg	BD: 4/15/19										
Birth wt	EPD	Weaning Ratio	EPD	CED EPD	Yearling				DNA Profile	ADG	CE	Stay	Choice	Feed	Tend	Igen Index	Prog Index	Igen Mat Index
85	-1.2	104	66	14	3.18	1067	96	98		6	5	7	6	7	10	6.20	5.7	

164	REDD KRT LAZY TV CLASS 686 G								Frame	Scrotal	PAP	EPD Base						
									4.41	33	35	RA						
Sire: LAZY TV SECOND CLASS R87		Dam: REDD MS TRIPLE C BETTIS B731		R	G47S25R25	Pol	Reg	BD: 3/26/19										
Birth wt	EPD	Weaning Ratio	EPD	CED EPD	Yearling				DNA Profile	ADG	CE	Stay	Choice	Feed	Tend	Igen Index	Prog Index	Igen Mat Index
58	-0.1	89	63	12	3.35	1015	92	93		6	7	7	6	6	4	5.95	5.75	

165	REDD GOVENOR 741 G								Frame	Scrotal	PAP	EPD Base						
									5.35	34	43	RA						
Sire: OZZ EXT GOVERNOR 3N		Dam: REDD MS ROOKIE B882		B	G55A40	Pol	Reg	BD: 4/8/19										
Birth wt	EPD	Weaning Ratio	EPD	CED EPD	Yearling				DNA Profile	ADG	CE	Stay	Choice	Feed	Tend	Igen Index	Prog Index	Igen Mat Index
80	-0.7	102	64	13	2.67	975	88	96		6	7	6	6	5	4	5.80	5.95	

166	REDD BKT EPIC 778 G								Frame	Scrotal	PAP	EPD Base						
									5.42	27	36	RA						
Sire: BECKTON EPIC D052		Dam: REDD MS ASSET B755		B	G49S30A20	Pol	Nt. Reg	BD: 4/28/19										
Birth wt	EPD	Weaning Ratio	EPD	CED EPD	Yearling				DNA Profile	ADG	CE	Stay	Choice	Feed	Tend	Igen Index	Prog Index	Igen Mat Index
85	-2	88	63	16	3.92	1102	99	95		8	5	6	7	7	7	6.20	5.45	

167	REDD BKT EPIC 759 G								Frame	Scrotal	PAP	EPD Base						
									5.46	34	36	RA						
Sire: BECKTON EPIC 3773		Dam: REDD MS STETSON A511		B	A60S40	Pol	Reg	BD: 4/15/19										
Birth wt	EPD	Weaning Ratio	EPD	CED EPD	Yearling				DNA Profile	ADG	CE	Stay	Choice	Feed	Tend	Igen Index	Prog Index	Igen Mat Index
88	-2	96	65	13	3.01	1001	90	101		5	3	5	4	4	3	5.00	5.65	

168	REDD DENSITY 645 G								Frame	Scrotal	PAP	EPD Base						
									4.25	30	39	RA						
Sire: MR SHEE-RED DENSITY		Dam: REDD MS BECKTON EPIC U035		R	S50R25G20	Pol	Reg	BD: 3/15/19										
Birth wt	EPD	Weaning Ratio	EPD	CED EPD	ADG	Yearling AdjWt	Ratio	EPD	DNA Profile	ADG	CE	Stay	Choice	Feed	Tend	Igen Index	Prog Index	Igen Mat Index
67	-1.6	96	53	16	2.44	910	82	83		6	4	5	3	5	7	5.10		5.1

169	REDD GOVENOR 761 G								Frame	Scrotal	PAP	EPD Base						
									5.46	36	37	RA						
Sire: Ozz EXT Governor 3N		Dam: REDD MS LLC HYBRID S316		B	G75R25 Pol	Reg	BD: 4/15/19											
Birth wt	EPD	Weaning Ratio	EPD	CED EPD	ADG	Yearling AdjWt	Ratio	EPD	DNA Profile	ADG	CE	Stay	Choice	Feed	Tend	Igen Index	Prog Index	Igen Mat Index
84	-1.3	92	66	13	3.35	1031	93	101		5	4	6	4	5	3	5.15		6.05

170	REDD KRT LAZY TV CLASS 695 G								Frame	Scrotal	PAP	EPD Base						
									4.19	32	33	RA						
Sire: LAZY TV SECOND CLASS R87		Dam: REDD MS BECKTON WARRIOR U330		R	G57R40	Pol	Reg	BD: 3/28/19										
Birth wt	EPD	Weaning Ratio	EPD	CED EPD	ADG	Yearling AdjWt	Ratio	EPD	DNA Profile	ADG	CE	Stay	Choice	Feed	Tend	Igen Index	Prog Index	Igen Mat Index
65	-4.4	86	56	17	3.3	990	89	85		3	8	6	5	6	7	5.20		5.8

171	REDD KRT LAZY TV CLASS 626 G								Frame	Scrotal	PAP	EPD Base						
									4.71	33	34	RA						
Sire: LAZY TV SECOND CLASS R87		Dam: REDD MS TRIPLE BETTIS C321		R	G47S25R25	Pol	Reg	BD: 3/13/19										
Birth wt	EPD	Weaning Ratio	EPD	CED EPD	ADG	Yearling AdjWt	Ratio	EPD	DNA Profile	ADG	CE	Stay	Choice	Feed	Tend	Igen Index	Prog Index	Igen Mat Index
83	-1.3	84	67	14	3.01	937	84	99		6	5	6	4	5	7	5.50		6.05



COMPOSITES (HEREFORD INFLUENCED)

Our historical roots, the base of the herd, many of our Angus, Red Angus, Simmental, Gelbvieh, and Composites were built on Hereford roots. This herd is built tough range savvy self-reliant never miss cows. Built with the best bulls in the world, 62 years using AI.

NAAB	REG	NAME	BREED	CE	BW	WW	YW	DMI	SC	SCF		
1hp849	43558667	VALIDATE	PH	2.7	1.6	68	104	0.5	1.1	21.7		
MILK	M&G	CEM	MW	US	TS	CWT	FAT	REA	MB	BMI	BLL	CHB
31	66	3.4	67	1.3	1.4	76	0.053	0.91	1.19	502	659	119
Sire: EFBEEF TFL U208					PGSire: EFBEEF FOREMOST U208							
MGSire: MSU TCF REVOLUTION 4R					MGGsire: FELTONS LEGEND 242							



Hereford Breed Average EPDS

CE	BW	WW	YW	DMI	SC	SCF	MILK	M & G	CEM	MW	US	TS	CWT	FAT	REA	MB	BMI	BLL	CHB
2.3	2.9	51	83	0.2	0.9	14.5	23	49	1.8	88	1.2	1.2	64	0.011	0.36	0.09	317	383	100

HEREFORD INFLUENCE LOTS

172	REDD VALIDATE 718 G	Frame	Scrotal	PAP	EPD Base												
		6.74	34	38	RA												
Sire: EFBEEF BR VALIDATED B413 Dam: REDD MS BECKTON EPIC A026 RB H50R50 Pol Nt. Reg BD: 4/1/19																	
Birth wt	EPD	Weaning Ratio	EPD	CED EPD	Yearling				DNA Profile	ADG	CE	Stay	Choice	Feed	Tend	Igen Prog Index	Igen Mat Index
79	-0.6	114	71	12	3.98	1233	111	90		5	8	6	6	5	4	5.75	6

173	REDD NIGHT FOCUS 647 G	Frame	Scrotal	PAP	EPD Base												
		5.02	34	35	RA												
Sire: LSF RHO NIGHT FOCUS 76B Dam: REDD MS RANCHES COMMERCIAL RB R50H50 Pol Nt. Reg BD: 3/17/19																	
Birth wt	EPD	Weaning Ratio	EPD	CED EPD	Yearling				DNA Profile	ADG	CE	Stay	Choice	Feed	Tend	Igen Prog Index	Igen Mat Index
71	-1.7	100	68	15	3.3	1052	94	101		6	8	6	7	6	4	5.85	5.95

174	REDD ORACLE 687 G	Frame	Scrotal	PAP	EPD Base												
		5.55	33	40	RA												
Sire: BROWN ORACLE B129 Dam: REDD MS BECKTON D545 RB R88 Pol Nt. Reg BD: 3/26/19																	
Birth wt	EPD	Weaning Ratio	EPD	CED EPD	Yearling				DNA Profile	ADG	CE	Stay	Choice	Feed	Tend	Igen Prog Index	Igen Mat Index
84	-2	111	65	12	5	1055	97	104		6	5	6	8	7	8	6.20	6



175	REDD VALIDATE 734 G	Frame	Scrotal	PAP	EPD Base												
		6.27	34	36	RA												
Sire: EFBEEF BR VALIDATED B415 Dam: REDD MS TARGET D557		H	H90	Pol	Nt. Reg	BD: 4/3/19											
Birth wt	EPD	Weaning Ratio	EPD	CED EPD	Yearling				DNA Profile	ADG	CE	Stay	Choice	Feed	Tend	Igen Prog Index	Igen Mat Index
77	1.1	100	67	11	ADG	AdjWt	Ratio	EPD		4	8	5	6	5	7	5.60	5.7

176	REDD VALIDATE 732 G	Frame	Scrotal	PAP	EPD Base												
		5.77	32	39	RA												
Sire: EFBEEF BR VALIDATED B416 Dam: REDD MS ENHANCER U331		H	H95	Pol	Nt. Reg	BD: 4/3/19											
Birth wt	EPD	Weaning Ratio	EPD	CED EPD	Yearling				DNA Profile	ADG	CE	Stay	Choice	Feed	Tend	Igen Prog Index	Igen Mat Index
74	1.2	96	67	12	ADG	AdjWt	Ratio	EPD		3	8	5	4	4	3	4.70	6

177	REDD VALIDATE 723 G	Frame	Scrotal	PAP	EPD Base												
		5.01	33	39	RA												
Sire: EFBEEF BR VALIDATED B414 Dam: REDD MS BECKTON EPIC D157		RB	H75R25	Pol	Nt. Reg	BD: 4/2/19											
Birth wt	EPD	Weaning Ratio	EPD	CED EPD	Yearling				DNA Profile	ADG	CE	Stay	Choice	Feed	Tend	Igen Prog Index	Igen Mat Index
77	-0.4	90	71	12	ADG	AdjWt	Ratio	EPD		5	9	5	6	6	3	5.10	5.6

THANK YOU
 We hope to meet you at the sale.



FAMILY is not just
an **IMPORTANT** thing,
it's **EVERYTHING.**



TERMS & CONDITIONS

All bulls will be sold to the highest bidder where there are two or more bids. The auctioneer will settle all disputes as to bids. Announcements made from the auction block take precedence over any printed matter. The terms of the sale are cash. All settlements must be made immediately following the auction.

Every bull in the sale is, to the best of our knowledge, free from any disease or defect. Every bull has been tested for Pulmonary Artery Pressure (PAP), Trichomonas, BVD and passed a breeding soundness exam. All bulls are guaranteed to be breeders. If a bull fails to breed after a six month trial, the bull may be returned to Redd Ranches in Paradox, Colorado. Redd Ranches reserves the right to try the bull for six months and if it proves to be a breeder, to return it to the buyer at the buyer's expense. If the bull proves to be a non-breeder, an adjustment will be made by Redd Ranches, either by substituting a bull mutually agreed upon as being of equal value, or credit in the next Redd Ranches Bull sale, or by refund of the full purchase price. Redd Ranches assumes no other liability, legal or otherwise, to make any further compensation to the buyer should a bull purchased in this sale be a non-breeder. No other warranty of any nature is expressed or implied.

BULLS LEAVING COLORADO

Every effort has been made to obtain the necessary health permits/tests to allow bulls to travel on sale day to neighboring states. In the event additional test/permits are required, Redd Ranches will obtain the necessary permits and coordinate delivery with the buyer.

MAIL & PHONE BID

We encourage you to come and see the bulls personally. However, that's not always possible. We will do whatever we can to help you get to the bulls you need. You have the option to place a phone bid directly with Redd Ranches, it will be handled confidentially and honestly. It is recommended that you call a day or two before the sale to discuss what you need and what is most important in your selection. To Place a direct phone in bid with Redd Ranches call: 800-442-8557 Jennifer's Cell: 970-640-7543

Internet Bidding: See Superior Livestock Auction page 2.

FREE DELIVERY

Redd Ranches offers free delivery 500 miles to central corrals, 1000 miles on 40+ bulls. trucking is done by semi and by ranch truck trailer where possible, depending on how loads end up. We appreciate the cooperation between buyers in sharing corrals and meeting the truck at central locations. Even if you have been buying bulls at Redd Ranches for 50, please give the cashier complete transfer and delivery instructions. Your suggestions on a central corral for your area will help.

½ INTEREST SALES:

Buyer receives full possession and salvage of the bull. Redd Ranches reserves the right to collect the bull at the buyer's convenience, and reserves ½ breeding interest, which is the right to register calves and to sell semen collected by Redd Ranches.

LIABILITIES

Although accidents at livestock sales seldom occur, everyone attending this sale does so at their own risk. The owners and employees of Redd Ranches assume no liability, legal or otherwise, in the event of an accident, bodily injury, theft, act of God, errors in catalogs or omissions, or percentage verification. We try to keep the most accurate records possible and have bull tight fences, but on a rare occasion, accidents of breeding occur that we are not aware of or cannot control. We do everything we can to determine the correct parentage with DNA testing.

TATTOO & LOT INDEX



Lot #	Bull ID	Lot #	Bull ID	Lot #	Bull ID	Lot #	Bull ID
1	224 G	48	657 G	95	611 G	142	664 G
2	221 G	49	239 G	96	701 G	143	650 G
3	646 G	50	750 G	97	680 G	144	794 G
4	232 G	51	642 G	98	609 G	145	787 G
5	636 G	52	612 G	99	677 G	146	751 G
6	671 G	53	775 G	100	735 G	147	601 G
7	620 G	54	702 G	101	678 G	148	241 G
8	600 G	55	748 G	102	640 G	149	212 G
9	633 G	56	714 G	103	693 G	150	755 G
10	223 G	57	649 G	104	699 G	151	202 G
11	624 G	58	248 G	105	694 G	152	652 G
12	676 G	59	251 G	106	606 G	153	662 G
13	216 G	60	703 G	107	637 G	154	632 G
14	618 G	61	760 G	108	692 G	155	615 G
15	661 G	62	674 G	109	610 G	156	722 G
16	752 G	63	789 G	110	670 G	157	682 G
17	638 G	64	655 G	111	665 G	158	237 G
18	209 G	65	753 G	112	728 G	159	721 G
19	205 G	66	771 G	113	742 G	160	766 G
20	648 G	67	743 G	114	681 G	161	644 G
21	675 G	68	757 G	115	238 G	162	746 G
22	706 G	69	744 G	116	605 G	163	762 G
23	712 G	70	767 G	117	208 G	164	686 G
24	218 G	71	779 G	118	215 G	165	741 G
25	716 G	72	257 G	119	214 G	166	778 G
26	625 G	73	608 G	120	230 G	167	759 G
27	255 G	74	254 G	121	708 G	168	645 G
28	726 G	75	770 G	122	700 G	169	761 G
29	704 G	76	793 G	123	660 G	170	695 G
30	684 G	77	801 G	124	724 G	171	626 G
31	713 G	78	258 G	125	715 G	172	718 G
32	719 G	79	784 G	126	210 G	173	647 G
33	688 G	80	788 G	127	603 G	174	687 G
34	689 G	81	217 G	128	602 G	175	734 G
35	243 G	82	228 G	129	796 G	176	732 G
36	206 G	83	235 G	130	725 G	177	723 G
37	663 G	84	616 G	131	226 G		
38	201 G	85	244 G	132	730 G		
39	619 G	86	203 G	133	710 G		
40	213 G	87	245 G	134	780 G		
41	233 G	88	672 G	135	790 G		
42	229 G	89	685 G	136	659 G		
43	709 G	90	207 G	137	247 G		
44	225 G	91	249 G	138	782 G		
45	717 G	92	654 G	139	802 G		
46	252 G	93	737 G	140	764 G		
47	628 G	94	607 G	141	786 G		

BULL BUYER GIVE AWAY

Our #1 goal is to provide you with proven, reliable bulls.

It is also our goal to put more fun into your Redd Ranches Bull Sale experience. It has become a tradition: Spend less on advertising and give more real prizes to those who buy our bulls. It is fun to win And it is fun to give, but everyone on our ranch wishes they had a 4x4 to help them with their work when they see the shiny new one each year.



PRIZES

4 x 4 UTV

**Chainsaw
and More**

**REPEAT BUYER
5% DISCOUNT**

All buyers who purchased bulls at our 2019 Bull Sale are eligible to receive a 5% discount on all bulls purchased at this year's 2020 Bull Sale.

HOW IT WORKS

Each time a bull is purchased, the lot# will be put on ticket(s) and placed in a barrel. At the end of the sale we will draw for the prizes. If you purchased the lot# that appears on the drawn ticket, you win that prize. You must be present to win the UTV. Winners are responsible to get their prize home and must be 18-years or older to win.

Increase Your Odds

\$2000 – 1 Ticket in the barrel	\$3000 - 3 Tickets in the barrel
\$4000 – 10 Tickets in the barrel	\$5000+ – 15 Tickets in the barrel

***For more information on horses
and availability contact:***

**David Redd 435-459-4930 or
Jonathan Redd 435-459-9144**



REDD RANCH HORSES

52 WWW.REDDRANCHES.COM



WHY NOT MAKE AN INFORMED DECISION?

Our experts & PRF program

+

The numbers from your actual ranch

=

A 2020 "mock policy"

This is how you keep it

A "mock policy" uses numbers from your actual ranch and shows you how the policy would perform throughout this year.

When it's time to make a decision this fall, you'll have all the facts.

REDD • SUMMIT
— ADVISORS —
RANGELAND INSURANCE



The Redd Family
20923 550 Rd,
Paradox, CO 81429

BULL SALE

APRIL 11TH 2020 ♦ PARADOX, COLORADO
SELLING 177 BULLS

RED ANGUS & BLACK ANGUS,
SIM & GELB ANGUS COMPOSITES

Pedigree is one thing, Performance is **EVERYTHING!**

VISIT US ONLINE

WWW.REDDRANCHES.COM