

KOS

A4

ROUGH COUNTRY BREEDERS SALE

Glasgow Stockyards | Glasgow, MT



Lunch 11:30 am

SALE STARTS

1 PM

THURSDAY

MARCH

2024

SELLING

12 Registered
Black Angus
Yearling Bulls

5 Registered
Red Angus
Yearling Bulls

2 lots of Open
Replacement Heifers

KOSS ANGUS

Kendall Koss
406.654.7695
kosskendall@gmail.com

MARTIN RED ANGUS

Heather Martin
406.654.7664
heather_martin1990@hotmail.com

ROUGH COUNTRY BREEDERS SALE

SALE DAY PHONES

For Black Angus

Kendall Koss 406-654-7695

Kevin Koss 406-654-7828

For Red Angus

Heather Martin 406-654-7664

David Score 406-390-6680

SALE LOCATION

Glasgow Stockyards Inc

Fort Peck Hwy E • Glasgow, MT

Office..... 406-228-9306

Iva Murch 406-263-7529

Jake Newton 406-390-5109

Cody Cornwell 406-263-1589

Dean Barnes 406-263-1175

AUCTIONEER

Ed Hinton 406-783-7285

SALE CONSULTANTS

Glasgow Stockyards 406-228-9306

Rachael Oliver, Red Angus Rep..... 406-480-1569

TERMS AND CONDITIONS

Cattle will sell under the suggested Terms & Conditions of the American Angus Association and the Red Angus Association of America.

SALE ORDER

Bulls will sell in Lot Tag Number order.

ONLINE BIDDING

Bidding can take place on www.cattleusa.com
Please pre register a couple days before the sale.
But last minute is welcome also.

SEMEN INTEREST

Retaining 1/3 interest in all bulls.

WATCH BULL VIDEOS AT

www.BillPelton.com

LIABILITY

All persons who attend this sale do so at their own risk, legal or otherwise, for their safety or the behavior of the animals. The owners, sale management firm, and the sales staff assume no liability for property loss or any accident that may occur.

BULL INSURANCE

Pelton Livestock Marketing & Consulting

Bill Pelton406-671-5100

bill@billpelton.com

LOSS OF USE POLICY

Koss Angus and Martin Red Angus will pay 4% of sale price towards the Stockman Insurance policy. Balance of policy will be paid by the customer. If the customer chooses to decline the policy, Koss Angus/Martin Red Angus have no obligation to cover any losses due to injury, sickness, or death.

Koss Angus/Martin Red Angus guarantee all cattle to be sound the day of the sale.

TRUCKING

Provided free in the state of Montana and at cost for outside of Montana. *Offering \$50 if you haul your bulls home sale day.*

BULLS WINTERING

Bulls will be hauled immediately after the sale.

BIDDING

The Auctioneer in charge will settle any and all disputes as to bids, and his decisions on such matters will be final. Information noted on the auction block takes precedence over information in the catalog and supplement sheets.

ABSENTEE BIDS

We hope everyone can attend the sale in person, but for those of you who can't attend the sale, they can participate by calling Heather or Kendall before sale day. Sale day you can try to reach us or call Glasgow Stockyards.

ROUGH COUNTRY BREEDERS SALE

Offering \$50.00
if you haul your
bulls home sale day.

SCHEDULE
**THURSDAY
MARCH 21,
2024**

Welcome to our 2024 Rough Country Breeders sale. The producers who make up this group include Martin Red Angus (Heather Martin) and Koss Angus (Kendall & Iris Koss). On Thursday, March 21, 2024 at Glasgow, MT Stockyards we will be offering 12 registered Black Angus and 5 registered Red Angus bulls and 2 lots of replacement heifers (Red Angus and Black Angus) that we feel will be great additions to your herd.

NEW THIS YEAR ... from Fortunate 405 - 2 FREE straws for every Angus heifer purchased today at the sale. Semen stored at Genex Hawkeye West in Billings. Contact Heather Martin 406-654-7664 or David Score 406-390-6680 for more information.

As ranchers, we strive for easy calving, high growth and performance cattle that will build a cowherd that is problem free. Our cattle are bred to survive and thrive in harsh, rough country environments.

We are excited to offer high quality Angus genetics featuring sons and grandsons of CAR Chinook 786, Basin Rainmaker 4404. Also Red Angus superior quality genetics featuring sons of Allegiance, HXC Declaration 5504C and Laubach Jumbo 9061. We hope you notice we aren't afraid to use our own genetics and put them back into our program.

If you can't attend sale day, cattle will be available to view a couple days prior at Glasgow Stockyards. Please feel free to leave a bid at the Glasgow office 406-228-9306, or call one of us prior to sale day. If we can help in anyway, please let us know. We hope to visit with each of you on sale day, but if we miss you we have provided foot notes that we hope are informative and helpful in your bull selection process.

Thank you for your continued support and interest in our programs. We look forward to seeing you on sale day!

Sincerely,
ROUGH COUNTRY BREEDERS

8:00AM
Bulls available for
viewing at the
Glasgow Stockyards

11:30AM
Lunch provided

1:00PM - Sale

ACCOMMODATIONS
Cottonwood Inn
406-228-8213



Kendall & Iris Koss 406.654.7695
2346 Fourchette Bay Rd · Malta, MT
kosskendall@gmail.com



Heather Martin 406.654.7664
2405 Martin Rd · Malta, MT
heather_martin1990@hotmail.com

Kendall & Iris Koss
406-654-7695

kosskendall@gmail.com

THE VALUE OF YOUR HERD IS OUR FIRST PRIORITY



KOSS ANGUS

SINCE 2017



ANGUS

Reference Sires



CAR CHINNOOK 786



BASIN RAINMAKER 4404

★ KOSS ANGUS ★

1 KOSS CHINNOOK 318

Calved 03/26/23 Reg AAA 20864722

A A R REALLY WINDY 1205
 CAR CHINNOOK 786
 CAR MISS MARIE 5109
 SCORE CHINNOOK 903
 MC CUMBER 235 FORTUNATE 4154
 SCORE B PRIDE 701
 B PRIDE 6163 OF MC CUMBER

KOSS CHINNOOK 318

LEACHMAN RIGHT TIME
 HARB STUR-D 191 JH
 H A R B BLACK LADY 073 J H
 FAIRVIEW LUCY 4132
 SINCLAIR RITO LEGACY 3R9
 FAIRVIEW LUCY W240
 R3 LUCY DATELINE L540

Birth Wt
85
 Wean Wt
575

CED	BW	WW	YW	Milk	CEM
+10	+0.3	+39	+67	+28	+9
	\$EN	\$M	\$W		
	+5	+82	+43		



This cow bull is a half brother to the high selling bull in last year's sale and is leading off the 2024 Koss Sale with good reason. This bull packs a lot in his moderate frame package, he has tremendous depth, a perfectly flat topline and great feet. This bull was weaned off at 575 and has continued to grow and excel in this group of bulls.

2 KOSS REMARKABLE 305

Calved 02/28/23 Reg AAA 20864716

CAR REMARKABLE 640
 NF REMARKABLE FBL
 NF KADES BLOOM B04
 SCORE REMARKABULL 137
 S A V BRUISER 9164
 SCORE MISS WIX 812
 MISS WIX 542 OF MC CUMBER

KOSS REMARKABLE 305

SITZ TRAVELER 8180
 S A V FINAL ANSWER 0035
 S A V ENULOUS 8145
 KOSS LADY 511
 PA POWER TOOL 9108
 JVC BLACKBIRD 421
 JVC BLACKBIRD 217

Birth Wt
72
 Wean Wt
540

CED	BW	WW	YW	Milk	CEM
+9	+0.5	+55	+99	+25	+11.5
	\$EN	\$M	\$W		
	-1	na	na		



Lot 2 is a bull that was sired by Score Remarkable and has been one of my favorites from the start, this bull is raised out of a two-year-old heifer that traces back to Traveler 8180. This bull has the makings to be an exceptional heifer or cow bull, he has a 72 lb birthweight and weaned off his first time momma at 540 lbs, he has tremendous length and muscle and is sure to bring calving ease and growth to your herd.

3 KOSS CHINNOOK 310

Calved 03/02/23 Reg AAA 20866563

A A R WINDY RIDGE 362
 A A R REALLY WINDY 1205
 A A R LADY KELTON 2170
 CAR CHINNOOK 786
 CAR TRACKER 904
 CAR MISS MARIE 5109
 CAR MARIE 0108

KOSS CHINNOOK 310

MC CUMBER TREMENDOUS 2008
 MC CUMBER 2008 TRMNDOS 7178
 LASSIE 5117 OF MC CUMBER
 SCORE RITO LADY 02
 CAR CHINNOOK 786
 SCORE MISS RITO LADY 613
 NA RITO LADY JCN 097

Birth Wt
88
 Wean Wt
575

CED	BW	WW	YW	Milk	CEM
+8	+1.8	+51	+91	+26	+6
	\$EN	\$M	\$W		
	na	na	+46		



This bull is a cow bull sired by CAR Chinnook 786. This bull is another top pick in this year's sale, weaning off the cow at 575, this bull has a lot of eye appeal, he has lots of length and depth, a good flat topline, and travels well with good feet. This is a bull that is going to have great calving ease in your cow herd but is also going to produce the pounds in the fall.

★ KOSS ANGUS ★

4 KOSS CHINNOOK 303

Calved 02/25/23 Reg AAA 20866610

A A R WINDY RIDGE 362
 A A R REALLY WINDY 1205
 A A R LADY KELTON 2170
 CAR CHINNOOK 786
 CAR TRACKER 904
 CAR MISS MARIE 5109
 CAR MARIE 0108

KOSS CHINNOOK 303

SINCLAIR ENTREPRENEUR 8R101
 MC CUMBER RITO ROLETTE 1108
 B PRIDE 636 OF MC CUMBER
 SCORE MISS WIX 401
 BT RIGHT TIME 24J
 MISS WIX 585 OF MC CUMBER
 MISS WIX 3027 OF MC CUMBER

Birth Wt
78
Wean Wt
605

CED	BW	WW	YW	Milk	CEM
+7	+1.2	+39	+69	+28	+4
	\$EN	\$M	\$W		
	+4	+56	+43		



If you're looking for a heifer bull that is going to give you piece of mind and a good night's sleep next spring this bull is the one for you. He has a +7 CED, 78 lb birthweight, and weaned off the cow at 605 lb. This bull is going to not only give you calving ease but his calves are going to tip the scales in your favor in the fall.

5 KOSS CHINNOOK 302

Calved 02/25/23 Reg AAA 20866608

A A R WINDY RIDGE 362
 A A R REALLY WINDY 1205
 A A R LADY KELTON 2170
 CAR CHINNOOK 786
 CAR TRACKER 904
 CAR MISS MARIE 5109
 CAR MARIE 0108

KOSS CHINNOOK 302

N BAR EMULATION EXT V722
 SINCLAIR EXECUTIVE 9XV2
 N BAR PRIMROSE Y3051
 SINCLAIR BLKCAP 7U62 7RF1
 PBC 707 1M F0203
 SINCLAIR BLKCAP 7RF1 0953
 PAPA BLACKCAP 0953

Birth Wt
83
Wean Wt
635

CED	BW	WW	YW	Milk	CEM
+9	+0.3	+39	+66	+23	+4
	\$EN	\$M	\$W		
	+9	+52	+39		



Lot 5 is a bull that has been at the top of this group of bulls all year, this bull is a great bull for cows or heifers. Don't let the 83 lb birthweight scare you on using this guy on heifers he has +9 CED and a BW of 0.3. This bull is a bull that can be used on both heifers and cows and is going to give you calving ease and growth. This bull weaned off at 635 lb.

6 KOSS RAINMAKER 306

Calved 02/28/23 Reg AAA 20866605

BASIN RAINMAKER P175
 BASIN RAINMAKER 2704
 BASIN ERICA 7520 BV
 BASIN RAINMAKER 4404
 BASIN PAYWEIGHT 1075
 BASIN JOY 1036
 BASIN JOY 566T

KOSS RAINMAKER 306

A A R REALLY WINDY 1205
 CAR CHINNOOK 786
 CAR MISS MARIE 5109
 SCORE FORT LADY 105
 MC CUMBER 248 FORTUNATE 405
 SCORE MISS FORT LADY 609
 SINCLAIR LADY 4RP17 0X34

Birth Wt
80
Wean Wt
505

CED	BW	WW	YW	Milk	CEM
+7	+0.8	52	92	+33	11
	\$EN	\$M	\$W		
	-7	na	na		

If you are looking for a bull to put out on the heifers this summer this guy is a good pick. Raised on a first calf heifer he was born at 80 lb has a +7 CED and was weaned off at 505 lb. This bull is one that's a little bit younger but really catches your eye in the pen of bulls, he has a moderate frame, straight topline, has good depth, good feet, and moves out and travels well.

★ KOSS ANGUS ★

7 KOSS REMARKABLE 317

Calved 03/22/23 Reg AAA 20864721

CAR REMARKABLE 640
 NF REMARKABLE FBL
 NF KADES BLOOM B04
 SCORE REMARKABULL 137
 S A V BRUISER 9164
 SCORE MISS WIX 812
 MISS WIX 542 OF MC CUMBER

KOSS REMARKABLE 317

CAR CHINNOOK 786
 SCORE CHINNOOK 511
 NA MISS FINAL DESIGN JCN 941
 KOSS LADY CHINOOK 908
 HARB STUR-D 191 JH
 FAIRVIEW HEATHER LASS 3136
 FAIRVIEW HEATHER LASS OW12

Birth Wt
83
 Wean Wt
530

CED	BW	WW	YW	Milk	CEM
+9	+0.7	+50	+88	+25	+12
\$EN		\$M		\$W	
na		na		+47	



Lot 7 is another bull that I would not be afraid to use on heifers, he has an 83 lb birthweight but don't let that shy you away, he has a +9 CED and a 0.7 BW. This bull is out of one of my favorite dams that has produced good bull calves as well as great females that are in my herd. He was weaned off at 530 lb. This bull would be a great addition to put on heifers or cows.

8 KOSS REMARKABLE 313

Calved 03/08/23 Reg AAA 20864723

CAR REMARKABLE 640
 NF REMARKABLE FBL
 NF KADES BLOOM B04
 SCORE REMARKABULL 137
 S A V BRUISER 9164
 SCORE MISS WIX 812
 MISS WIX 542 OF MC CUMBER

KOSS REMARKABLE 313

PBC 707 1M F0203
 FAIRVIEW JH CASCADE 2226
 COLE CREEK 104 JUANADA 8M
 FAIRVIEW LADY 5062
 RITO 2B94 OF RITA 6K20 BW
 FAIRVIEW LADY 2162
 FAIRVIEW LADY OD6

Birth Wt
80
 Wean Wt
425

CED	BW	WW	YW	Milk	CEM
+6	+1.5	+55	+102	+22	+8
\$EN		\$M		\$W	
-9		+65		+45	

Lot 8 is a bull sired by Score Remarkable and is a great heifer bull prospect. He was born at 80 lb and has a CED of +6. This bull has a great topline has great feet and a very gentle disposition. If you want a bull that is going to help you get more sleep in the spring be sure not to miss out on him.

9 JVC GROWTH FUND 3346

Calved 03/12/23 Reg AAA 20633358

BASIN PAYWEIGHT 1682
 DEER VALLEY GROWTH FUND
 DEER VALLEY RITA 36113
 VERMILION GROWTH FUND J207
 SITZ MADISON 10477
 VERMILION BRANDY 4153
 VERMILION BRANDY 1236

JVC GROWTH FUND 3346

CONNELLY SPUR
 VERMILION SPUR E870
 VERMILION LASS 4942
 JVC JENNY WON 219A
 MUSGRAVE AVIATOR
 RHR JENNY WON 795
 RHR COCO C100

Birth Wt
76
 Wean Wt
465

CED	BW	WW	YW	Milk	CEM
+7	+0.9	+77	+131	+25	+7
\$EN		\$M		\$W	
na		na		+66	



Charlie, Cheryl, Iris, Kelly, Kendall, Brenda, Kennedy & Kevin

This is a bull raised out of a first calf heifer that I purchased from Jocko Valley Cattle, this bull is a sure fire heifer bull sired by Vermilion Growth Fund he has a 76 lb birthweight and a +7 CED. This bull is very eye appealing and has good muscle and depth with a great disposition. This bull is a top pick heifer bull in this year's sale.

★ KOSS ANGUS ★

10 COMMERCIAL BULL

Calved 03/16/23

Lot 10 was raised on a first calf heifer purchased from Jocko Valley, unfortunately I could not get the papers on him cleared so he is selling as commercial. This bull is one of my favorite bulls in this group and is a great pick in the sale regardless of the papers. He has a Birthweight 80 lb and was weaned off his first time momma at 550 lb. If anyone would like to approach me on this bull or lots 11 and 12 being suitable on heifers, please approach me sale day or give me a call and I will give you my insight.

Birth Wt
80
Wean Wt
550



11 COMMERCIAL BULL

Calved 03/26/23

Lot 11 was also raised on a first calf heifer purchased from Jocko Valley and much like lot 10 was not able to clear the papers, this group of bulls from the cows purchased are a very even and similar looking group of bulls. This bull has a 76 lb birthweight and weaned off at 465 lb.

Birth Wt
76
Wean Wt
465

12 COMMERCIAL BULL

Calved 03/29/23

Lot 12 rounding out the Koss sale is another bull raised on a first calf heifer purchased from Jocko Valley and does not have papers, he is ending our sale but is not any less quality than the previous 11 Lots. This bull was a little smaller at weaning but has been on the gain ever since. This bull has good performance with a 72 lb birthweight.

Birth Wt
72
Wean Wt
425



Kelly Koss



FREE!

NEW THIS YEAR...

from Fortunate 405 -
2 free straws for
every Angus heifer
purchased today
at the sale.

Stored at
Genex Hawkeye West
in Billings.

Contact Heather Martin
406-654-7664 or
David Score 406-390-6680
for more information.



*Oaklyn
and
Kendall*



MARTIN

Red Angus

Heather Martin
406-654-7664
Heather_Martin1990@hotmail.com



John Evans and Heather Martin



David, Aspen, Micaela and Nova

David Score
406-390-6680
score_2010@hotmail.com

RED ANGUS

Reference Sires



ALLEGIANCE



HXC DECLARATION 5504C

MARTIN *Red Angus*

14

MARTIN ALLEGIANCE 302

Calved 02/15/23

RAAA Reg 4873460

LSF NEXTPECTATION 0083X
LEACHMAN PLEDGE A282Z
LCOC ZARA TG004
HXC ALLEGIANCE 5502C
BECKTON NEBULA P P707
HXC 100Y
HXC ZIMA 338N

COW BULL

MARTIN ALLEGIANCE 302

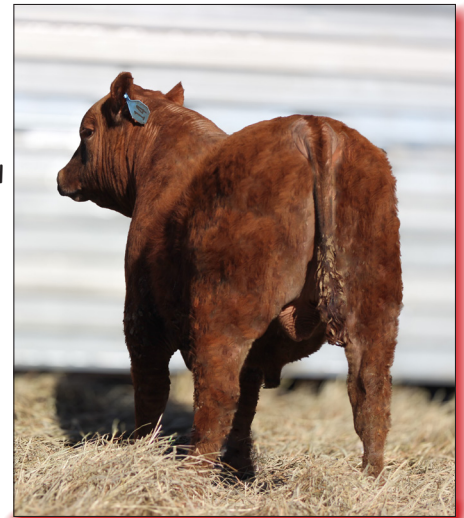
BROWN PARAMOUNT X7879
CLZB FUSION C534
LCS 023
LAUBACH OSCE 8174
FISCHER C'MON MAN 152
FISCHER OSCE 4431
FISCHER OSCE 4631

Birth Wt
88
Adj Wn Wt
537

CED	BW	WW	YW	Milk	ME	Stay
10	-0.3	65	112	21	10	17
CW	Marb	REA	Pro\$	HB	GM	
36	0.69	0.11	124	55	69	



We are starting the Red Angus section with Martin Allegiance 302. He started at 88# on a very cold day, but that didn't stop him from growing. He has a wide top. He's in the top 9% for Pro\$ and Top 5% for HB.



15

MARTIN JUMBO 308

Calved 03/23/23

RAAA Reg 4873448

LSF SRR JUMBO 3104A
BAR M JUMBO 5152
BAR M MS DESIGN 9960-2133
LAUBACH JUMBO 9061
3C CHEROKEE SQUALL 04W
LAUBACH DARLING 3122
LAUBACH DARLING 539

COW BULL

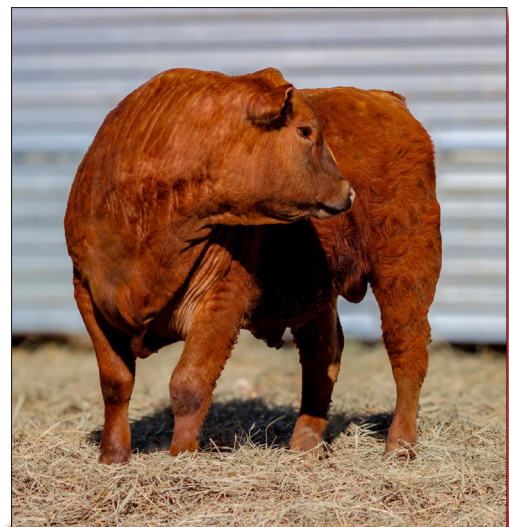
MARTIN JUMBO 308

BECKTON WARRIOR U636 J5
BECKTON WARRIOR Z314 N6
BECKTON COCA T454 NX
J5 Z314 MISS ROSE 6013
DCC RIDGE RUNNER 511
DCC MISS ROSE 806
DKK ROSE R09

Birth Wt
82
Adj Wn Wt
498

CED	BW	WW	YW	Milk	ME	Stay
11	-1.5	57	91	16	3	15
CW	Marb	REA	Pro\$	HB	GM	
15	0.42	-0.14	81	47	34	

This is the only jumbo that we have for sale this year. He adds length and width. This bull and next years bull will be the last of this sire, as we have retained many females from him.



16

MARTIN 330 COMMERCIAL BULL

Calved 02/15/23

Reg #

He has a good top with nice length and nice hip.

COW BULL

Birth Wt
80
Adj Wn Wt
540

MARTIN Red Angus

17

MARTIN SPARTACUS 311

Calved 04/03/23 RAAA Reg 4873476

BIEBER ROUSE SAMURAI X22
 BIEBER SPARTACUS A193
 BIEBER TILLY 233U
 BIEBER SPARTACUS E361
 VGW OLY 903
 BIEBER SUSAN 125A
 BIEBER SUSAN 115Y

COW BULL

MARTIN SPARTACUS 311

LSF BOXED BEEF 9063W
 TBJR BEEF SENSATION 6808D
 SRR MISS SENSATION 12
 MARTIN SENATION 09
 RED HONORABLE 6324
 LAUBACH BREEZY 0116
 FISCHERS BREEZY 316

Birth Wt
75
 Adj Wn Wt
540



Martin Spartacus 311 is a first for us here at Martin Red Angus to be in the Top 20% or better in 4 categories - WW top 13%; YW top 11%; ADG top 10% and MARB top 16%.

CED	BW	WW	YW	Milk	ME	Stay
11	-0.9	73	120	23	6	13
CW	Marb	REA	Pro\$	HB	GM	
30	0.59	0.07	89	40	49	



HEIFER



18

MARTIN DECLARATION 318

Calved 05/01/23 RAAA Reg # 4873438

If you are wanting longevity this is your bull.
 His dam is a 13 year old cow still producing.

Birth Wt
70
 Adj Wn Wt
500

CED	MILK	CEM	STAY
14	24	8	11



Aspen
 and
 Nova

Red Angus Guide to EPDS and Indexes

ProS... Profitability and Sustainability is an all-purpose index that predicts average economic differences in all segments in the beef supply chain. This index is a combination of the breeding objectives modeled in the HerdBuilder and GridMaster selection indexes. In this index, replacement heifers are retained from within the herd and all remaining progeny are fed out to slaughter and sold on a quality-based grid. Traits included in this index include calving ease, growth, HPG, STAY, Mature Weight, Dry Matter Intake and carcass traits. The resulting index is expressed in dollars per head born (Index/High Value).

HB HerdBuilder is a maternal selection index that predicts the economic differences of animals for traits that are important from conception through weaning. Expressed as dollars per head born, HB is calculated based on the scenario that bulls are mated to heifers and cows, replacement heifers are retained and all remaining progeny are marketed at weaning. Traits included in the HB index include Calving Ease Direct, Calving Ease Maternal, Weaning Weight, Milk, Mature Weight, Heifer Pregnancy and Stayability (Index/High Value).

GM.... GridMaster is a selection index that predicts the average economic difference of non-replacement calves through the post-weaning phase of production. GM places selection pressure on growth, feedyard performance and carcass traits. Expressed as dollars per head born, GM is calculated based on the scenario that progeny are fed out to slaughter and marketed on a quality-based carcass grid. Traits included in GM include Average Daily Gain, Carcass Weight, Dry Matter Intake, Marbling, Back Fat and Rib Eye Area (Index/High Value).



19 OPEN REPLACEMENT HEIFERS; 12 COMMERCIAL RED ANGUS HEIFERS



31 OPEN REPLACEMENT HEIFERS; 14 ANGUS HEIFERS

CED Calving Ease Direct predicts differences in the percent of calves born unassisted out of 2-year-old dams. (Percent/High Value)

BW Birth Weight predicts differences in actual birth weight of progeny. (Pounds/Low Value)

WW Weaning Weight predicts differences in 205-day weaning weight. (Pounds/High Value)

YW Yearling Weight predicts differences in 365-day yearling weight. (Pounds/High Value)

ADG Average Daily Gain predicts differences in weight gain between 205 and 365 days of age. (Pounds/High Value)

DMI Dry Matter Intake predicts differences in daily feed intake as measured in a feedlot during the post-weaning period. (Pounds/Low Value)

MILK Milk predicts differences in weaning weight attributed to the milking ability of the animal's daughters. (Pounds/High Value)

HPG Heifer Pregnancy predicts differences in the percent of daughters who are able to conceive and calve at 2 years of age following exposure to breeding. (Percent/High Value)

CEM Calving Ease Maternal predicts differences in the percent of daughters who are able to calve unassisted as 2-year-old heifers. (Percent/High Value)

STAY Stayability predicts differences in the ability of an animals' retained daughters to remain productive in the herd – calve every year – through 6 years of age. (Percent/High Value)

MARB Marbling predicts differences in marbling score – amount of intramuscular fat measured at the 13th rib. (Marbling Score Units/High Value)

YG Yield Grade predicts differences in USDA Yield Grade, which is calculated using CW, REA and Fat. (Yield Grade Units/Low Value)

CW Carcass Weight predicts differences in actual hot carcass weight. (Pounds/High Value)

REA Ribeye Area predicts differences in square inches of ribeye area measured at the 13th rib. (Square Inches/High Value)

FAT Fat predicts differences in the depth of backfat measured between the 12th and 13th ribs. (Inches/Low Value)

RED ANGUS
RANCH TESTED. RANCHER TRUSTED.
RedAngus.org



MARTIN RED ANGUS
2405 Martin Rd
Malta, MT 59538

CARRIER ROUTE
PRESORT STAND.
U.S. POSTAGE PAID
MALTA, MT
PERMIT NO. 36

ROUGH COUNTRY BREEDERS SALE

Thurs, March 21, 2024
*Glasgow Stockyards * Glasgow, MT*

KOSS ANGUS

Kendall Koss
406.654.7695
kosskendall@gmail.com

MARTIN RED ANGUS

Heather Martin
406.654.7664
heather_martin1990@hotmail.com