

SLOVEK RANCH

Angus & Angus Plus Genetics ANNUAL BULL SALE

Tuesday, March 22, 2022
2:00 PM (MT) • Philip (SD) Livestock LLC

Selling:

47 SimAngus &
Angus Plus Bulls

30 Registered
Black Angus Bulls



Bill & Pennie Slovek
(605) 457-2311



Bo & Aubrey Slovek
(605) 457-2003 or 454-8124

www.SlovekRanch.com • Philip, South Dakota

Slovek Ranch



Philip, South Dakota

Tuesday,
March 22, 2022

2:00 PM (MT)

Philip (SD) Livestock LLC

Sale Day Phone: (605) 859-2577

Join us for a complimentary lunch prior to the sale!



AUCTIONEER: Dace Harper - 605-515-1535

SALE DAY REPRESENTATIVES:

Beau Ravellette(605) 685-8155
RPI Promotions

Don Ravellette(605) 685-5147
RPI Promotions

Dan Piroutek(605) 544-3316
Tri-State Livestock News

Scott Dirk(605) 380-6024
Tri-State Livestock News

Wyatt Schaack(308) 202-0004
The Cattle Business Weekly

DELIVERY:

\$75.00 credit on a future sale if you haul your bull(s) home sale day. Free delivery on all bulls within 300-mile radius of Philip. After 300 miles, delivery at cost.

GUARANTEE:

All bulls guaranteed for soundness, fertility and will have passed a breeding exam.

BREEDING SEASON GUARANTEE:

All bulls selling for \$3,000 or more will be covered 50% by Slovek Ranch if they are injured during their first breeding season. Breeding season is defined as the 60-day period (not to exceed September 1, 2022) following the first turnout of the bull. Buyer keeps all salvage value and will receive credit at future sales for the difference between the purchase price and salvage value. Please notify us as soon as possible if injury should occur and prior to the injured bull being sold. All injured bulls must be identified and diagnosed by a veterinarian and claims made before September 1, 2022.

Example A: A \$5,000 bull is injured and will not heal and is sold for \$1,000. The buyer will keep the \$1,000 and receive \$2,000 credit.

Example B: A \$2,400 bull is injured and will not heal. No credit is given. Buyer retains all salvage.

This does not cover mismanagement or neglect.

RETAINING INTEREST:

Slovek Ranch retains the right to collect semen on every bull at our cost and at buyer's convenience. Full possession and full salvage value sells on all bulls.

VOLUME DISCOUNT:

We will be offering a volume discount credit for future sales. You pay what you bid and credit for future sales will be as follows:

- 1% of purchase price of 3rd bull
- 2% of purchase price of 4th bull
- 3% of purchase price of 5th bull
- 4% of purchase price of 6th bull
- 5% of purchase price of 7th bull
- 6% of purchase price of 8th bull
- 7% of purchase price of 9th bull
- 8% of purchase price of 10th or more bulls

**ANNOUNCEMENTS MADE FROM THE AUCTION BLOCK
TAKE PRECEDENCE OVER PRINTED MATERIAL.**

Videos of the bulls are online at slovekranch.com

This sale will be broadcasted on:
DVAuction
Broadcasting Real-Time Auctions
**** Under Philip Livestock ****

SLOVEK RANCH

Bill & Pennie Slovek

605-457-2311 – slovek@gwtc.net

Bo & Aubrey Slovek

605-457-2003 • 605-454-8124 (c)

boslovek@goldenwest.net

20901 Slovek Road • Philip, SD 57567

Catalog produced by:



RPI Promotions

Don Ravellette • (605) 685-5147
Beau Ravellette • (605) 685-8155
P.O. Box 788 • Philip, South Dakota 57567

www.rpipromotions.com

Dear Cattle Producers,

We would like to welcome you to the 2022 Slovek Ranch Bull Sale and say thank you to our customers! We love what we do and are here to serve your needs! This year's sale brings a set of bulls that carry characteristics and genetics designed to be successful in every aspect of the industry and help bring both longevity with vitality to your operation. Our goal is to do what we can to create the best cattle for our customers in order to keep your operation profitable!

My herd is culled hard in areas of feet, structure, udders, and pleasant dispositions; they are bred to be well-balanced and problem-free. A shorter breeding season is also becoming a quality I focus more on in the sense that if they breed in a 45 day breeding cycle, they get to stay. At calving time, any female that needs assistance is sold. By doing this, they pass on impressive fertility to their daughters and certain qualities of calving ease that make your job easier and ultimately puts money back into your pocket.

These cattle have to go out and work for a living. They are bred to be easy keeping and efficient females whose progeny will pack on pounds using less feed; with feed and input costs, this is more important now than ever to keep your operation profitable!!! This winter, 1 bale of hay has sustained 60 heifer calves and two donor cows thus far. My bulls are fed slower and not pushed hard, allowing them to grow at a more natural pace and this helps them hold up over the long term.

I do not have time to put up with nuisance cattle and I don't expect you to have to either. By being hard on my cattle, they should create offspring that are easier on you and put more money into your pocket.

I stand behind my genetics and if you have any problems, please call me and I will take care of you!

Hope to see you soon,

Bo & Aubrey Slovek



Sale online at DVAuction.com under Philip Livestock Auction

REFERENCE SIRES

Angus Sire



Hoover All American

BD: 12/13/2017 • Reg: AAA *19200180

Bruns Uppercut 610
Bruns Top Cut 373 AAA #*17680548
 Dakota Miss 669 Baf
 Hoover Dam
Blueblood Lady Ellston M3 AAA 17603678
 Blueblood Lady Ellston H118

Production									Maternal						Carcass				\$Values					
CED Acc %	BW Acc %	WW Acc %	YW Acc %	RADG Acc %	DMI Acc %	YH Acc %	SC Acc %	Doc Acc %	HP Acc %	CEM Acc %	Milk Acc %	MkH MkD	MW Acc %	MH Acc %	\$EN %	CW Acc %	Marb Acc %	RE Acc %	Fat Acc %	\$M %	\$W %	\$F %	\$B %	\$C %
+10.51	-2.68	+51.61	+102.45	+27.33	+1.17.33	+3.49	+74.48	+27.38	+11.7.27	+4.32	+31.34		+22.38	-2.41	-3	+49.44	+44.36	+93.37	-005.32	+73	+63	+105	+152	+270
25%	20%	75%	55%	25%	70%	70%	55%	10%	45%	85%	15%		85%	90%	25%	35%	60%	10%	30%	20%	45%	20%	25%	20%

Angus Sire



BUBS Southern Charm AA31

BD: 10/31/2013 • Reg: AAA *17853196

BT Crossover 758N
Silveiras Conversion 8064 AAA *16262077
 EXG Saras Dream S609 R3
 Connealy Stimulus 8419
Hickory Hill Erica 009 AAA *16944100
 Hickory Hill Erica TA32

Production									Maternal						Carcass				\$Values					
CED Acc %	BW Acc %	WW Acc %	YW Acc %	RADG Acc %	DMI Acc %	YH Acc %	SC Acc %	Doc Acc %	HP Acc %	CEM Acc %	Milk Acc %	MkH MkD	MW Acc %	MH Acc %	\$EN %	CW Acc %	Marb Acc %	RE Acc %	Fat Acc %	\$M %	\$W %	\$F %	\$B %	\$C %
+3.81	+3.2.97	+68.96	+116.94	+24.46	+77.46	+5.93	+2.07.93	+7.90	+10.7.78	+5.82	+28.77	175 545	+55.68	+3.61	-17	+47.78	+98.77	+88.73	+008.76	+63	+75	+92	+160	+271
75%	90%	25%	35%	50%	45%	45%	2%	85%	60%	80%	30%		55%	55%	55%	40%	10%	15%	45%	40%	20%	40%	20%	20%

Angus Sire



Jindra Blackout

BD: 02/21/2017 • Reg: AAA *18996457

Jindra 3rd Dimension
Jindra Acclaim AAA #*17972810
 Jindra Blackbird Lassie 1111
 G T Shear Force
Jindra Judy J 1314 3150 AAA +18459621
 Hoff Judy S C 669 1314

Production									Maternal						Carcass				\$Values					
CED Acc %	BW Acc %	WW Acc %	YW Acc %	RADG Acc %	DMI Acc %	YH Acc %	SC Acc %	Doc Acc %	HP Acc %	CEM Acc %	Milk Acc %	MkH MkD	MW Acc %	MH Acc %	\$EN %	CW Acc %	Marb Acc %	RE Acc %	Fat Acc %	\$M %	\$W %	\$F %	\$B %	\$C %
+2.70	+2.9.91	+63.89	+124.83	+30.42	+1.35.42	+6.78	+24.84	+25.73	+10.2.42	+7.55	+32.46	7 36	+83.45	+6.45	-32	+65.52	+29.47	+71.48	+004.47	+52	+63	+131	+167	+269
85%	85%	40%	25%	10%	80%	35%	85%	15%	65%	65%	15%		20%	25%	90%	10%	75%	30%	40%	65%	45%	2%	15%	20%

REFERENCE SIRES

Angus Sire



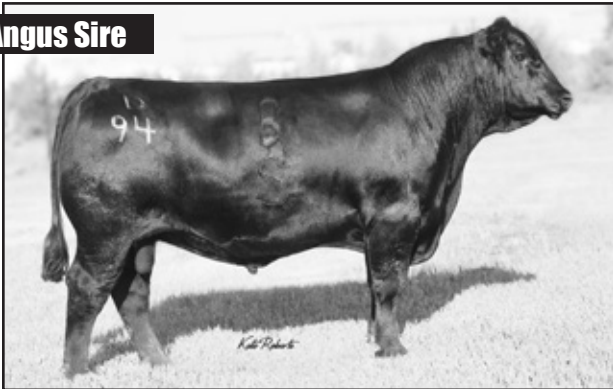
Raven Casino E5

BD: 01/01/2017 • Reg: AAA +*18858569

PA Power Tool 9108
Raven Powerball 53 AAA #*17632447
 Raven Emma E 4241
 CAR Efficient 534
Raven Blackbird 1249 AAA *16437484
 Raven Blackbird 315

Production									Maternal						Carcass				\$Values					
CED Acc %	BW Acc %	WW Acc %	YW Acc %	RADG Acc %	DMI Acc %	YH Acc %	SC Acc %	Doc Acc %	HP Acc %	CEM Acc %	Milk Acc %	MkH MkD	MW Acc %	MH Acc %	SEN %	CW Acc %	Marb Acc %	RE Acc %	Fat Acc %	\$M %	\$W %	\$F %	\$B %	\$C %
+7.46	+1.37	+53.63	+99.47	+25.34	+75.34	+0.48	+1.6554	+36.35	+11.425	+9.37	+26.37	11	+26.39	-3.41	-2	+43.46	+1.0840	+53.40	-.00337	+77	+58	+95	+164	+290
45%	55%	70%	60%	40%	40%	90%	10%	1%	50%	45%	45%		85%	95%	20%	50%	10%	55%	30%	10%	55%	35%	15%	10%

Angus Sire



BS MAGA D94

BD: 04/05/2016 • Reg: AAA *18621683

SydGen Trust 6228
SydGen FATE 2800 AAA #*17521423
 SydGen Heroine 9808
 S A V Final Answer 0035
BS Gammer 453 AAA *18079251
 BS Gammer 206

Production									Maternal						Carcass				\$Values					
CED Acc %	BW Acc %	WW Acc %	YW Acc %	RADG Acc %	DMI Acc %	YH Acc %	SC Acc %	Doc Acc %	HP Acc %	CEM Acc %	Milk Acc %	MkH MkD	MW Acc %	MH Acc %	SEN %	CW Acc %	Marb Acc %	RE Acc %	Fat Acc %	\$M %	\$W %	\$F %	\$B %	\$C %
+7.43	+2.97	+70.64	+132.51	+30.36	+1.4036	+6.56	+1.0653	+20.36	+12.828	+7.38	+29.39	311	+66.43	+4.44	-23	+55.46	+1.0140	+54.40	+0.03638	+70	+71	+107	+170	+290
45%	85%	20%	15%	10%	85%	35%	35%	35%	35%	65%	25%		40%	45%	70%	25%	10%	55%	85%	25%	25%	15%	10%	10%

Angus Sire



Baldrige Colonel C251

BD: 04/23/2015 • Reg: AAA +*18493773

Hoover Dam
baldrige Xpand x743 AAA +16762739
 Baldrige Queen S87
 Styles Upgrade J59
Baldrige Isabel Y69 AAA *17149410
 Baldrige Isabel T935

Production									Maternal						Carcass				\$Values					
CED Acc %	BW Acc %	WW Acc %	YW Acc %	RADG Acc %	DMI Acc %	YH Acc %	SC Acc %	Doc Acc %	HP Acc %	CEM Acc %	Milk Acc %	MkH MkD	MW Acc %	MH Acc %	SEN %	CW Acc %	Marb Acc %	RE Acc %	Fat Acc %	\$M %	\$W %	\$F %	\$B %	\$C %
+2.86	+1.59	+65.94	+129.92	+31.63	+1.5563	+4.93	+99.92	+27.86	+5.468	+7.86	+31.83	281895	+77.76	+1.77	-29	+49.68	+77.65	+92.62	-.03665	+51	+76	+95	+158	+256
85%	60%	35%	15%	10%	90%	60%	40%	10%	95%	65%	15%		30%	70%	85%	35%	25%	10%	5%	70%	20%	35%	20%	30%

REFERENCE SIRES

Simmental Sire



HOOK'S BLACK HAWK 50B

BD: 03/20/2014 • Reg: ASA 2854467

MCC DAYBREAK
 HOOK'S XAVIER 14X ASA: 2559356
 HOOKS PATTI 3P
 HOOK'S QUEST 86U
 HOOK'S YVETTE 100Y ASA: 2674891
 HOOKS SAVANNAH 14S

Production										Carcass						Index	
Trait	CE	BW	WW	YW	MCE	Milk	MWW	Stay	Doc	CW	YG	Marb	BF	REA	SHEAR	API	TI
EPD	17.0	-2.9	87.8	136.9	9.4	18.8	62.6	19.9	12.3	54.6	-0.35	0.27	-0.023	1.49	-0.52	156.2	89.3
ACC	0.83	0.92	0.90	0.89	0.70	0.73	0.78	0.55	0.56	0.76	0.53	0.70	0.53	0.70	0.17		

Simmental Sire



CCR COWBOY CUT 5048Z

BD: 02/20/2012 • Reg: ASA 2703910

HOOKS SHEAR FORCE 38K
 TRIPLE C SINGLETARY S3H ASA: 2341645
 LUCAS JOSIE 19K
 HTP SVF IN DEW TIME
 CCR MS 4045 TIME 7322T ASA: 2427254
 CCR MS PRETTY 4045P

Production										Carcass						Index	
Trait	CE	BW	WW	YW	MCE	Milk	MWW	Stay	Doc	CW	YG	Marb	BF	REA	SHEAR	API	TI
EPD	11.8	2.6	97.5	137.8	7.7	24.1	72.8	21.7	18.0	35.3	-0.32	0.41	-0.056	0.89	-0.56	162.4	95.2
ACC	0.85	0.97	0.96	0.95	0.88	0.90	0.92	0.82	0.58	0.87	0.63	0.83	0.79	0.86	0.17		

Videos of the bulls are online at slovekranch.com

ANGUS YEARLING BULLS

Donor Dam

Lots 1-4, 15-19, 33-34



*Focus
Kyla*

BS LADY Y88

1

BS Blackout 7J

BD: 2/17/21 100% Angus Reg: 20259697

Sire: **Jindra Blackout**

O C C Ultra Design 946U

Dam: **BS Lady Y88**

Werner Lady 88

BW	81
Adj. 205	668
WW Ratio	ET
Adj. YW	1183
Adj. SC	36.03

BW	WW	YW	SC	Milk
+1.7	+54	+103	+0.15	+34

• Full brother to lot 2, 3, 19. Maternal brother to 4, 15, 16, 17, 18 (all Angus) and 33, 34(SimAngus).



**Lot
1**

2

BS Blackout 12J

BD: 2/20/21 100% Angus Reg: 20262467

Sire: **Jindra Blackout**

O C C Ultra Design 946U

Dam: **BS Lady Y88**

Werner Lady 88

BW	86
Adj. 205	666
WW Ratio	ET
Adj. YW	1240
Adj. SC	38.16

BW	WW	YW	SC	Milk
+3.1	+60	+111	+0.15	+31

• Full brother to lot 1, 3, 19. Maternal brother to 4, 15, 16, 17, 18 (all Angus) and 33, 34 (SimAngus).



**Lot
2**

ANGUS YEARLING BULLS

3

BS Blackout 11J

BD: 2/20/21 100% Angus Reg: 20262466

Sire: *Jindra Blackout*

O C C Ultra Design 946U

Dam: *BS Lady Y88*

Werner Lady 88

BW	80
Adj. 205	629
WW Ratio	ET
Adj. YW	1202
Adj. SC	37.63

BW	WW	YW	SC	Milk
+0.7	+45	+87	+0.62	+31

- Full brother to lot 1, 2, 19. Maternal brother to 4, 15, 16, 17, 18 (all Angus) and 33, 34(SimAngus).
- Heifer bull



4

BS Southern Charm 14J

BD: 2/21/21 100% Angus Reg: 20259700

Sire: *BUBS Southern Charm AA31*

O C C Ultra Design 946U

Dam: *BS Lady Y88*

Werner Lady 88

BW	83
Adj. 205	660
WW Ratio	ET
Adj. YW	1158
Adj. SC	42.16

BW	WW	YW	SC	Milk
+4.2	+58	+97	+1.99	+28

- Full brother to lots 15, 16. Maternal brother to lots 1, 2, 3, 17, 18 Angus and 33, 34 SimAngus.

5

BS Colonel 9J

BD: 2/18/21 100% Angus Reg: 20260128

Sire: *Baldrige Colonel C251*

Werner War Party 2417

Dam: *RB Lady Party 890-4228*

R B Lady Standard 305-890

BW	88
Adj. 205	703
WW Ratio	ET
Adj. YW	1271
Adj. SC	40.06

BW	WW	YW	SC	Milk
+4.2	+79	+142	+1.33	+30

- Powerful ET calf. Full brother to lot 6

6

BS Colonel 15J

BD: 2/24/21 100% Angus Reg: 20260129

Sire: *Baldrige Colonel C251*

Werner War Party 2417

Dam: *RB Lady Party 890-4228*

R B Lady Standard 305-890

BW	89
Adj. 205	693
WW Ratio	ET
Adj. YW	1291
Adj. SC	32.78

BW	WW	YW	SC	Milk
+3.2	+65	+125	+0.96	+37

- Full brother to lot 5



7

BS Casino 10J

BD: 2/18/21 100% Angus Reg: 20259698

Sire: *Raven Casino E5*

R B Tour Of Duty 177

Dam: *BS Linda G274*

Slov Linda T2

BW	74
Adj. 205	640
WW Ratio	102
Adj. YW	1229
Adj. SC	37.09

BW	WW	YW	SC	Milk
-0.6	+47	+92	+1.62	+25

- Heifer bull

8

BS Casino 13J

BD: 2/21/21 100% Angus Reg: 20259699

Sire: *Raven Casino E5*

Rito 9Q20 of Rita 5F56 GHM

Dam: *BS Rachel G269*

BS Rachel Y94

BW	74
Adj. 205	633
WW Ratio	101
Adj. YW	1145
Adj. SC	35.19

BW	WW	YW	SC	Milk
-1.2	+40	+76	+0.87	+31

- Heifer bull

ANGUS YEARLING BULLS

9 **BS Casino 16J**
 BD: 2/28/21 100% Angus Reg: 20259701

Sire: **Raven Casino E5**
 S A V President 6847

Dam: **BS Lady President G272**
 RB Lady Party 890-4228

BW	88
Adj. 205	668
WW Ratio	106
Adj. YW	1175
Adj. SC	37.41

BW	WW	YW	SC	Milk
+2.1	+66	+114	+0.88	+36

10 **BS High Point 20J**
 BD: 3/7/21 100% Angus Reg: 20283961

Sire: **JK High Point 745**
 Centennial Upward 524

Dam: **Revo Eblinette 15-259**
 Revo Eblinette 12-3132

BW	76
Adj. 205	659
WW Ratio	105
Adj. YW	1157
Adj. SC	38.11

BW	WW	YW	SC	Milk
-0.2	+60	+100	+0.27	+33

• Heifer bull



11 **BS Exclusive 3J**
 BD: 2/3/21 100% Angus Reg: 20262799

Sire: **Musgrave 316 Exclusive**
 Stevenson Templeton 3308

Dam: **Vin-Mar Arkdale Pride 8151**
 Vin-Mar Arkdale Pride 1745

BW	76
Adj. 205	656
WW Ratio	104
Adj. YW	1178
Adj. SC	36.11

BW	WW	YW	SC	Milk
+1.4	+53	+95	+0.26	+31

• Heifer bull that is built like a tank.

12 **BS Tiger 17J**
 BD: 3/4/21 100% Angus Reg: 20263266

Sire: **T/D Tiger 8106**
 Coleman Charlo 0256

Dam: **JVC Pride 967**
 JVC Emulous Pride 163

BW	78
Adj. 205	630
WW Ratio	100
Adj. YW	1152
Adj. SC	36

BW	WW	YW	SC	Milk
-0.2	+64	+111	+1.11	+30

• Heifer bull

13 **BS Cavalry 6J**
 BD: 2/14/21 100% Angus Reg: 20297280

Sire: **JVC Cavalry V3326**
 Coleman Charlo 0256

Dam: **JVC Evergreen 958**
 JVC Evergreen 198

BW	69
Adj. 205	675
WW Ratio	107
Adj. YW	1142
Adj. SC	38.46

BW	WW	YW	SC	Milk
-1.4	+65	+109	+1.09	+24

• Heifer bull



JVC Cavalry V3326 – Sire to Lot 13

14 **BS Rival 2J**
 BD: 2/2/21 100% Angus Reg: 20260127

Sire: **Potts Bros Rival 166**
 Connealy Consensus 7229

Dam: **Vin-Mar Princess 3121**
 Vin-Mar Black Princess 1728

BW	97
Adj. 205	632
WW Ratio	100
Adj. YW	1352
Adj. SC	38.55

BW	WW	YW	SC	Milk
+4.8	+78	+142	+1.52	+25

• Bigger framed growth bull

ANGUS TWO-YEAR OLD BULLS



**Lot
15**

15 BS Southern Charm 41H

BD: 4/22/20 100% Angus Reg: 20278390

Sire: **BUBS Southern Charm AA31**

O C C Ultra Design 946U

Dam: **BS Lady Y88**

Werner Lady 88

BW	90
Adj. 205	554
WW Ratio	ET
Adj. YW	1053
Adj. SC	42

BW	WW	YW	SC	Milk
+3.9	+68	+119	+1.94	+30

• Full brother to lot 16, 4 and many maternal siblings in the sale. Powerful athletic bull.



**Lot
16**

16 BS Southern Charm 36H

BD: 4/18/20 100% Angus Reg: 20278389

Sire: **BUBS Southern Charm AA31**

O C C Ultra Design 946U

Dam: **BS Lady Y88**

Werner Lady 88

BW	83
Adj. 205	557
WW Ratio	ET
Adj. YW	979
Adj. SC	44

BW	WW	YW	SC	Milk
+5.0	+74	+127	+2.03	+32

• Full brother to lot 15, 4 and many maternal siblings in the sale.



**Lot
17**

17 BS Casino 15H

BD: 2/27/20 100% Angus Reg: 19945009

Sire: **Raven Casino E5**

O C C Ultra Design 946U

Dam: **BS Lady Y88**

Werner Lady 88

BW	77
Adj. 205	567
WW Ratio	ET
Adj. YW	1007
Adj. SC	43.5

BW	WW	YW	SC	Milk
+1.4	+52	+95	+1.82	+23

• Full brother to last years top seller to Odde Ranch and lot 18. Maternal sibling to many others in the sale. Expect easy keeping docile calves.
• Heifer bull

18 BS Casino 21H

BD: 3/6/20 100% Angus Reg: 19932660

Sire: **Raven Casino E5**

O C C Ultra Design 946U

Dam: **BS Lady Y88**

Werner Lady 88

BW	64
Adj. 205	550
WW Ratio	ET
Adj. YW	939
Adj. SC	44

BW	WW	YW	SC	Milk
+0.7	+40	+69	+1.58	+27

• Carbon copy of lot 17.
• Heifer bull



BS Lady Y88 – Dam to Lot 15-19

ANGUS TWO-YEAR OLD BULLS



19

BS Blackout 19H

BD: 3/3/20

100% Angus

Reg: 19951226

Sire: *Jindra Blackout*

O C C Ultra Design 946U

Dam: *BS Lady Y88*

Werner Lady 88

BW	75
Adj. 205	537
WW Ratio	ET
Adj. YW	1035
Adj. SC	38.5

BW	WW	YW	SC	Milk
+1.2	+51	+95	+0.45	+28

• Full brother to lots 1-3 and many others in the sale. A docile well put together bull.



20

BS Casino 32H

BD: 4/16/20

100% Angus

Reg: 20020665

Sire: *Raven Casino E5*

BS MAGA D94

Dam: *BS Canyon Erica F252*

BS Canyon Erica 539

BW	77
Adj. 205	566
WW Ratio	108
Adj. YW	1048
Adj. SC	39.5

BW	WW	YW	SC	Milk
-0.8	+69	+130	+1.42	+26

• Heifer bull

ANGUS TWO-YEAR OLD BULLS



21

BS Casino 57H

BD: 5/23/20

100% Angus

Reg: 20020662

Sire: *Raven Casino E5*

PA Fortitude 2500

Dam: *BS Forever Lady F237*

SydGen Forever Lady 7106

BW	90
Adj. 205	547
WW Ratio	106
Adj. YW	940
Adj. SC	42.5

BW	WW	YW	SC	Milk
+0.7	+57	+101	+1.50	+19

• Heifer bull



22 BS Souther Charm 43H

BD: 4/26/20

100% Angus

Reg: 20278386

Sire: *BUBS Southern Charm AA31*

S A V Final Answer 0035

Dam: *BS Missie 323*

Summitcrest Missie 432u

BW	76
Adj. 205	664
WW Ratio	113
Adj. YW	1182
Adj. SC	44

BW	WW	YW	SC	Milk
+1.0	+70	+120	+1.17	+25

• Deep thick bull



23

BS Southern Charm 53H

BD: 5/8/20

100% Angus

Reg: 20278321

Sire: *BUBS Southern Charm AA31*

PA Fortitude 2500

Dam: *BS Forever Lady 570*

SydGen Forever Lady 7106

BW	75
Adj. 205	613
WW Ratio	104
Adj. YW	1043
Adj. SC	42

BW	WW	YW	SC	Milk
-0.4	+56	+95	+1.25	+26

• Heifer bull



24

BS All American 42H

BD: 4/23/20

100% Angus

Reg: 20020664

Sire: *Hoover All American*

HA Cowboy Up 5405

Dam: *BS Lady Jaye F248*

V A R Lady Jaye 9212

BW	89
Adj. 205	619
WW Ratio	104
Adj. YW	1083
Adj. SC	41

BW	WW	YW	SC	Milk
+3.0	+63	+108	+0.89	+24

ANGUS TWO-YEAR OLD BULLS

25

BS All American 51H

BD: 5/6/20 100% Angus Reg: 20020660

Sire: *Hoover All American*

BS Reckoning D104

Dam: *BS Forever Lady F229*

BS Forever Lady 563

BW	86
Adj. 205	593
WW Ratio	113
Adj. YW	961
Adj. SC	36.5

BW	WW	YW	SC	Milk
+3.3	+57	+110	+0.66	+34

26

BS All American 39H

BD: 4/20/20 100% Angus Reg: 20020661

Sire: *Hoover All American*

SydGen FATE 2800

Dam: *BS Miss Jilt F231*

BS Miss Jilt 335

BW	80
Adj. 205	512
WW Ratio	98
Adj. YW	925
Adj. SC	42

BW	WW	YW	SC	Milk
+1.1	+48	+92	+1.12	+25

• Heifer bull

27

BS Maga 55H

BD: 5/9/20 100% Angus Reg: 20020656

Sire: *BS MAGA D94*

PA Fortitude 2500

Dam: *BS Rita E143*

SQ Rita 3540 144S

BW	80
Adj. 205	615
WW Ratio	104
Adj. YW	1061
Adj. SC	42.5

BW	WW	YW	SC	Milk
+2.0	+60	+103	+1.23	+22

28

BS Maga 44H

BD: 4/26/20 100% Angus Reg: 20020653

Sire: *BS MAGA D94*

BS Highwayman 300

Dam: *BS Blackbird 532*

BS Blackbird Y95

BW	80
Adj. 205	577
WW Ratio	98
Adj. YW	1062
Adj. SC	42

BW	WW	YW	SC	Milk
+0.8	+50	+100	+1.28	+35

• Heifer bull



BS Gammer 453 – Dam to Lot 29

29

BS Cowboy Up 24H

BD: 4/14/20 100% Angus Reg: 20287821

Sire: *HA Cowboy Up 5405*

S A V Final Answer 0035

Dam: *BS Gammer 453*

BS Gammer 206

BW	87
Adj. 205	610
WW Ratio	100
Adj. YW	1138
Adj. SC	44

BW	WW	YW	SC	Milk
+3.7	+75	+139	+1.40	+16

• Maternal brother to BS Maga who has a couple sons in the sale.

30

BS Stunner 6H

BD: 2/7/20 100% Angus Reg: 19949115

Sire: *Musgrave 316 Stunner*

Connealy Comrade 1385

Dam: *Power Rade 8267 JF*

Great Power 2671 J F

BW	78
Adj. 205	628
WW Ratio	101
Adj. YW	1070
Adj. SC	38

BW	WW	YW	SC	Milk
+0.3	+60	+112	+0.96	+25

• Heifer bull



SIM-ANGUS BULLS

31

B/S Casino 8SJ

BD: 2/24/21

SimAngus

Reg: 3998751

Sire: **RAVEN CASINO E5**

BMR EXPLORER

Dam: **LAH MISS ADELE 206Z**

SHAWNEE MISS 770P

BW	93
Adj. 205	642 ET
Adj. YW	1198
Adj. SC	37

BW	WW	YW	Milk	Marb	REA
+0.5	+71	+106	+17	+0.47	+0.42

• SimAngus bull 50/50. Out of my Simmental donor. You'll see a lot of progeny by her in the future.

33

B/S COWBOY CUT 40SH

BD: 4/22/20

SimAngus

Reg: 3855590

Sire: **CCR COWBOY CUT 5048Z**

O C C ULTRA DESIGN 946U

Dam: **BS LADY Y88**

WERNER LADY 88

BW	81
Adj. 205	635/ET
Adj. YW	1060
Adj. SC	45

BW	WW	YW	Milk	Marb	REA
+0.4	+76	+112	+21	+0.46	+0.48

• Full brother to lot 34 and last years second top seller. Many maternal siblings in the sale.

32

B/S Casino 5SJ

BD: 2/24/21

SimAngus

Reg: 3998750

Sire: **RAVEN CASINO E5**

HOOK'S BEACON 56B

Dam: **GS1**

V A R LADY JAYE 9212

BW	88
Adj. 205	646/108
Adj. YW	1119
Adj. SC	36.5

BW	WW	YW	Milk	Marb	REA
-1.2	+76	+122	+23	+0.77	+0.62

• 25% Simmental. Dam was an ET calf.



34

B/S COWBOY CUT 23SH

BD: 4/11/20

SimAngus

Reg: 4003229

Sire: **CCR COWBOY CUT 5048Z**

O C C ULTRA DESIGN 946U

Dam: **BS LADY Y88**

WERNER LADY 88

BW	84
Adj. 205	565/ET
Adj. YW	988
Adj. SC	45

BW	WW	YW	Milk	Marb	REA
+0.4	+76	+112	+21	+0.46	+0.48

• Full brother to lot 33 and last years second top seller. Many maternal siblings in the sale.



35

B/S COWBOY CUT 26SH

BD: 4/17/20

SimAngus

Reg: 4003227

Sire: **CCR COWBOY CUT 5048Z**

PA FORTITUDE 2500

Dam: **BS LADY JAYE 444**

V A R LADY JAYE 9212

BW	78
Adj. 205	699/ET
Adj. YW	1070
Adj. SC	44

BW	WW	YW	Milk	Marb	REA
+0.4	+83	+125	+21	+0.65	+0.59

• Dam is one of my favorite donors. Maternal brother to lot 38.

SIM-ANGUS BULLS

Donor Dam
Lots 35-38



Focus
BS LADY JAYE 444

38 **B/S Black Hawk 17SH**
BD: 2/29/20 SimAngus Reg: 3855585
Sire: **HOOK'S BLACK HAWK 50B**
PA FORTITUDE 2500
Dam: **BS LADY JAYE 444**
V A R LADY JAYE 9212

BW	92
Adj. 205	612/ET
Adj. YW	1170
Adj. SC	43

BW	WW	YW	Milk	Marb	REA
-2.4	+78	+125	+18	+0.59	+0.90

• Dam is one of my favorite donors. Maternal brother to lot 35.



Lot
38

39 **B/S Black Hawk 25SH**
BD: 4/15/20 SimAngus Reg: 4003224
Sire: **HOOK'S BLACK HAWK 50B**
S A V RESOURCE 1441
Dam: **BS LADY JAYE E168**
BS LADY JAYE 444

BW	79
Adj. 205	602/ET
Adj. YW	994
Adj. SC	43

BW	WW	YW	Milk	Marb	REA
-1.4	+83	+135	+17	+0.41	+1.03

• Grandam is the 444 donor. Dam of lots 35 and 38.



ANGUS PLUS TWO-YEAR OLD BULLS

Dear Cattle Producers,

Welcome to the annual bull sale. This year will be mostly two year old bulls with a few yearlings. There will also be some fall bulls in this years offering. I'm liking September weather way better for calving than February!

The bulls are fertility tested and the two year olds have been trich tested. They have had their reproductive shots and been wormed. Nearly every bull in the sale is sired by a bull that has been tested for feed efficiency.

We want to take the yearling bulls home and keep them growing after the sale until around May 10th. They will gain a 100 pounds or more by then.

If you have any questions give a call 457-2311 home or 685-3588 cell or if you want to look at the bulls prior to the sale we are 10 miles north, 9 west, I north and 3 west of Philip.

The sale starts at 2 this year.

Hope to see you soon,

Bill & Pennie Slovek



41

W472H

63AN 37SM
BLACK
BD: 2/15/20

Sire: *X166D*

BW	70
WW Ratio	105
Scrotal	40

Dam: *E3851*

BW	WW	YW	MK	RE	IMF	\$Profit	\$Ranch
-1.9	+47	+90	+24	+0.63	+0.68	\$18,340.00	\$70.00
						%Rank	3.6
							1.6

- Homo Black
- Heifer Bull

42

W330H

52AN 34SM 14 GV
BLACK
BD: 4/24/20

Sire: *X166D*

BW	97
WW Ratio	117
Scrotal	41

Dam: *A4000*

BW	WW	YW	MK	RE	IMF	\$Profit	\$Ranch
+3.0	+57	+91	+21	+0.50	+0.50	\$13,410.00	\$59.00
						%Rank	15.3
							5.8

- Homo Black

43

W309H

66AN16SM 18GV
BLACK
BD: 4/18/20

Sire: *D008D*

BW	78
WW Ratio	116
Scrotal	44

Dam: *X371*

BW	WW	YW	MK	RE	IMF	\$Profit	\$Ranch
-1.1	+52	+96	+28	+0.16	+0.32	\$13,366.00	\$44.00
						%Rank	15.4
							20.6

ANGUS PLUS TWO-YEAR OLD BULLS

44

W375H

75AN 25SM
BLACK
BD: 4/7/20

Sire: *G081D*

Dam: *FU847*

BW	75
WW Ratio	111
Scrotal	42

BW	WW	YW	MK	RE	IMF	\$Profit	\$Ranch
+3.8	+58	+96	+25	+0.88	+0.53	\$14,402.00	\$25.00
%Rank						11.9	55.8

45

W294H

60AN 40SM
BLACK
BD: 4/15/20

Sire: *X166D*

Dam: *E822*

BW	86
WW Ratio	109
Scrotal	39

BW	WW	YW	MK	RE	IMF	\$Profit	\$Ranch
+2.5	+52	+88	+26	+0.55	+0.69	\$16,974.00	\$56.00
%Rank						5.7	7.7

46

W461H

36AN 17SM 47SD
BLACK
BD: 4/18/20

Sire: *R021C*

Dam: *B3910*

BW	81
WW Ratio	113
Scrotal	40

BW	WW	YW	MK	RE	IMF	\$Profit	\$Ranch
+1.5	+53	+85	+28	+0.91	+0.36	\$17,720.00	\$51.00
%Rank						4.5	12.3

• Homo Black

47

W349H

75AN 25SM
BLACK
BD: 5/1/20

Sire: *X799D*

Dam: *E6629*

BW	83
WW Ratio	106
Scrotal	40

BW	WW	YW	MK	RE	IMF	\$Profit	\$Ranch
+2.5	+63	+111	+26	+0.62	+0.32	\$11,424.00	\$10.00
%Rank						23.7	82.1

• Homo Black

48

W351H

60AN 40SM
BLACK
BD: 5/3/20

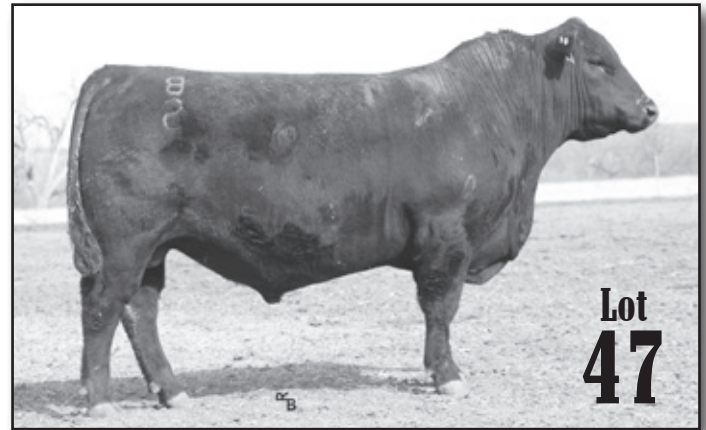
Sire: *X166D*

Dam: *E5200*

BW	87
WW Ratio	116
Scrotal	37.5

BW	WW	YW	MK	RE	IMF	\$Profit	\$Ranch
-0.1	+50	+82	+24	+0.30	+0.72	\$16,394.00	\$59.00
%Rank						6.8	5.9

• Homo Black



49

W463H

50AN 50SM
BLACK
BD: 4/27/20

Sire: *S329F*

Dam: *D5139*

BW	97
WW Ratio	108
Scrotal	42.5

BW	WW	YW	MK	RE	IMF	\$Profit	\$Ranch
+1.3	+49	+94	+25	+1.02	+0.44	\$16,722.00	\$34.00
%Rank						6.2	38.2

50

W314H

62AN 38SM
BLACK
BD: 4/19/20

Sire: *U070E*

Dam: *D3992*

BW	81
WW Ratio	107
Scrotal	45

BW	WW	YW	MK	RE	IMF	\$Profit	\$Ranch
-0.2	+55	+99	+14	+0.56	+0.21	\$11,689.00	\$35.00
%Rank						22.4	35.7

ANGUS PLUS TWO-YEAR OLD BULLS

51

W307H

50AN 50SM
BLACK
BD: 4/18/20

Sire: **S329F**

Dam: **Z455**

BW	92
WW Ratio	115
Scrotal	42

BW	WW	YW	MK	RE	IMF	\$Profit	\$Ranch	
+3.5	+59	+106	+23	+1.14	+0.40	\$15,856.00	-\$4.00	
• Homo Black						%Rank	8.0	94.6

52

W305H

68AN 32SM
BLACK
BD: 4/18/20

Sire: **L016E**

Dam: **Z6502**

BW	88
WW Ratio	119
Scrotal	41.5

BW	WW	YW	MK	RE	IMF	\$Profit	\$Ranch	
+1.6	+59	+108	+27	+0.92	+0.64	\$18,643.00	\$30.00	
						%Rank	3.3	46.5

53

W319H

70AN 30SM
BLACK
BD: 4/22/20

Sire: **U683E**

Dam: **B6539**

BW	81
WW Ratio	103
Scrotal	41

BW	WW	YW	MK	RE	IMF	\$Profit	\$Ranch	
-2.4	+35	+74	+30	+0.70	+0.47	\$17,378.00	\$70.00	
• Homo Black						%Rank	5.0	1.6



54

W313H

70AN 30SM
BLACK
BD: 4/19/20

Sire: **X799D**

Dam: **E3838**

BW	78
WW Ratio	112
Scrotal	42

BW	WW	YW	MK	RE	IMF	\$Profit	\$Ranch	
-0.1	+61	+112	+26	+0.97	+0.69	\$19,785.00	\$26.00	
• Homo Black						%Rank	2.2	53.6

55

W483H

84AN 16SM
BLACK
BD: 4/10/20

Sire: **S892E**

Dam: **FU881**

BW	86
WW Ratio	103
Scrotal	36.5

BW	WW	YW	MK	RE	IMF	\$Profit	\$Ranch	
+3.2	+53	+93	+22	+0.79	+0.41	\$8,397.00	\$5.00	
						%Rank	40.3	88.3



56

W302H

60AN 40SM
BLACK
BD: 4/17/20

Sire: **X799D**

Dam: **Y427**

BW	95
WW Ratio	105
Scrotal	42

BW	WW	YW	MK	RE	IMF	\$Profit	\$Ranch	
+3.0	+54	+99	+21	+0.82	+0.71	\$15,302.00	\$22.00	
						%Rank	9.3	62.6

ANGUS PLUS TWO-YEAR OLD BULLS



57

W290H

70AN 30SM
BLACK
BD: 4/13/20

Sire: *X166D*

Dam: *E3813*

BW	88
WW Ratio	115
Scrotal	38.5

BW	WW	YW	MK	RE	IMF	\$Profit	\$Ranch
+3.6	+64	+110	+19	+0.60	+0.78	\$15,998.00	\$29.00
• Homo Black						%Rank	7.7 48.0

58

W557H

63AN 37SM
BLACK
BD: 4/13/20

Sire: *X166D*

Dam: *E5179*

BW	93
WW Ratio	109
Scrotal	43.5

BW	WW	YW	MK	RE	IMF	\$Profit	\$Ranch
+3.1	+51	+76	+26	+0.32	+0.52	\$12,237.00	\$56.00
• Homo Black						%Rank	20.0 7.8



59

W338H

62AN 38SM
BLACK
BD: 4/27/20

Sire: *X166D*

Dam: *E3841*

BW	89
WW Ratio	108
Scrotal	41

BW	WW	YW	MK	RE	IMF	\$Profit	\$Ranch
+3.3	+67	+125	+28	+0.94	+0.48	\$16,245.00	\$29.00
• Homo Black						%Rank	7.1 48.4

60

W359H

56AR 35SM 9GV
RED
BD: 5/8/20

Sire: *S329F*

Dam: *A710*

BW	95
WW Ratio	112
Scrotal	45.5

BW	WW	YW	MK	RE	IMF	\$Profit	\$Ranch
+1.9	+49	+86	+21	+1.10	+0.41	\$15,493.00	\$21.00
						%Rank	8.9 64.3

61

W342H

50AR 50 SM
RED
BD: 4/28/20

Sire: *W149E*

Dam: *A709*

BW	103
WW Ratio	109
Scrotal	39.5

BW	WW	YW	MK	RE	IMF	\$Profit	\$Ranch
+4.5	+55	+88	+27	+0.97	+0.29	\$15,934.00	\$22.00
						%Rank	7.8 62.6



ANGUS PLUS FALL BULLS

66

BX801H

55AN 29SM 16GV
BLACK
BD: 9/13/20

Sire: **S329F**

BW	74
WW Ratio	98
Scrotal	40

Dam: **BX801**

BW	WW	YW	MK	RE	IMF	\$Profit	\$Ranch	
-3.0	+38	+70	+25	+1.08	+0.64	\$20,423.00	\$69.00	
						%Rank	1.7	1.7

• Heifer Bull



70

DX673H

50AN 25SM 25GV
BLACK
BD: 9/13/20

Sire: **U070E**

BW	75
WW Ratio	112
Scrotal	38

Dam: **DX673**

BW	WW	YW	MK	RE	IMF	\$Profit	\$Ranch	
+0.3	+59	+103	+24	+0.59	+0.26	\$17,731.00	\$53.00	
						%Rank	4.5	10.1

• Homo Black

67

C241H

80AR 20SM
RED
BD: 9/16/20

Sire: **X799D**

BW	68
WW Ratio	104
Scrotal	40

Dam: **C241**

BW	WW	YW	MK	RE	IMF	\$Profit	\$Ranch	
-0.3	+49	+98	+19	+0.68	+0.77	\$17,303.00	\$24.00	
						%Rank	5.1	58.7

68

CU942H

54AN 46SM
BLACK
BD: 10/12/20

Sire: **X166D**

BW	86
WW Ratio	109
Scrotal	37.5

Dam: **CU942**

BW	WW	YW	MK	RE	IMF	\$Profit	\$Ranch	
-1.5	+59	+104	+21	+0.93	+0.60	\$22,882.00	\$66.00	
						%Rank	0.6	2.7

• Homo Black

69

DX622H

56AN 44SM
BLACK
BD: 9/11/20

Sire: **S329F**

BW	73
WW Ratio	114
Scrotal	40

Dam: **DX622**

BW	WW	YW	MK	RE	IMF	\$Profit	\$Ranch	
-2.1	+45	+86	+18	+1.42	+0.43	\$19,801.00	\$54.00	
						%Rank	2.2	9.1

• Homo Black
• Heifer Bull

71

E3824H

60AN 40SM
BLACK
BD: 9/18/20

Sire: **X166D**

BW	81
WW Ratio	106
Scrotal	38

Dam: **E3824**

BW	WW	YW	MK	RE	IMF	\$Profit	\$Ranch	
-1.4	+54	+93	+25	+0.37	+0.88	\$18,874.00	\$81.00	
						%Rank	3.0	0.3

• Homo Black

ANGUS PLUS FALL BULLS

72

E3850H

84AN 16SM
BLACK
BD: 10/10/20

Sire: *U070E*

BW	72
WW Ratio	110
Scrotal	38.5

Dam: *E3850*

BW	WW	YW	MK	RE	IMF	\$Profit	\$Ranch	
+2.1	+56	+91	+28	+0.31	+0.85	\$17,733.00	\$54.00	
• Homo Black						%Rank	4.5	8.8

73

E3872H

63AN 37SM
BLACK
BD: 9/14/20

Sire: *L016E*

BW	72
WW Ratio	100
Scrotal	33.5

Dam: *E3872*

BW	WW	YW	MK	RE	IMF	\$Profit	\$Ranch	
-0.2	+47	+89	+22	+0.64	+0.66	\$14,892.00	\$47.00	
• Homo Black						%Rank	10.5	16.2

74

E5196H

68AN 32SM
BLACK
BD: 9/12/20

Sire: *X799D*

BW	70
WW Ratio	98
Scrotal	36

Dam: *E5196*

BW	WW	YW	MK	RE	IMF	\$Profit	\$Ranch	
-2.3	+42	+82	+22	+0.78	+0.75	\$18,570.00	\$49.00	
• Heifer Bull						%Rank	3.4	13.9

75

E5206H

68AN 32SM
BLACK
BD: 10/6/20

Sire: *X799D*

BW	76
WW Ratio	109
Scrotal	35

Dam: *E5206*

BW	WW	YW	MK	RE	IMF	\$Profit	\$Ranch	
+0.4	+55	+98	+25	+0.66	+0.72	\$19,966.00	\$44.00	
						%Rank	2.0	20.4



76

ET054H

60AR 40SM
RED
BD: 9/18/20

Sire: *S329F*

BW	75
WW Ratio	113
Scrotal	37

Dam: *ET054*

BW	WW	YW	MK	RE	IMF	\$Profit	\$Ranch	
+0.5	+49	+93	+28	+0.90	+0.54	\$19,025.00	\$24.00	
						%Rank	2.9	58.9

77

FB048H

82AR 18SM
RED
BD: 9/12/20

Sire: *X799D*

BW	78
WW Ratio	95
Scrotal	38

Dam: *FB048*

BW	WW	YW	MK	RE	IMF	\$Profit	\$Ranch	
+1.3	+51	+93	+17	+0.56	+0.77	\$13,556.00	\$15.00	
						%Rank	14.7	74.0

78

FU906H

70AN 30SM
BLACK
BD: 9/21/20

Sire: *X799D*

BW	79
WW Ratio	105
Scrotal	36

Dam: *A6532F*

BW	WW	YW	MK	RE	IMF	\$Profit	\$Ranch	
-1.8	+53	+98	+17	+0.71	+0.73	\$17,163.00	\$45.00	
						%Rank	5.4	19.0

ANGUS PLUS YEARLING BULLS

79

W259J

54AN 46SM
BLACK
BD: 2/21/21

Sire: *U683E*

BW	74
WW Ratio	104
Scrotal	35

Dam: *FU967*

BW	WW	YW	MK	RE	IMF	\$Profit	\$Ranch	
+2.1	+43	+85	+24	+1.02	+0.57	\$20,539.00	\$58.00	
• Heifer Bull						%Rank	1.6	6.1



80

K075J

77AN 23SM
BLACK
BD: 2/16/21

Sire: *M444F*

BW	84
WW Ratio	106
Scrotal	39

Dam: *GK194*

BW	WW	YW	MK	RE	IMF	\$Profit	\$Ranch	
+0.9	+60	+105	+30	+1.02	+0.62	\$19,323.00	\$24.00	
• Homo Black						%Rank	2.6	58.3

81

W196J

72AN 28SM
BLACK
BD: 2/17/21

Sire: *M444F*

BW	74
WW Ratio	107
Scrotal	39

Dam: *E3851*

BW	WW	YW	MK	RE	IMF	\$Profit	\$Ranch	
-3.1	+47	+85	+35	+0.78	+0.68	\$21,202.00	\$55.00	
• Homo Black						%Rank	1.3	8.2
• Heifer Bull								

82

W200J

72AR 28SM
RED
BD: 2/20/21

Sire: *M444F*

BW	71
WW Ratio	121
Scrotal	38.5

Dam: *FK241*

BW	WW	YW	MK	RE	IMF	\$Profit	\$Ranch	
-0.4	+59	+100	+35	+0.86	+0.40	\$21,111.00	\$62.00	
• Heifer Bull						%Rank	1.3	4.2

83

W207J

58AN 42SM
BLACK
BD: 2/19/21

Sire: *M444F*

BW	74
WW Ratio	104
Scrotal	36.5

Dam: *GW401*

BW	WW	YW	MK	RE	IMF	\$Profit	\$Ranch	
-0.4	+41	+76	+28	+0.63	+0.72	\$18,578.00	\$51.00	
• Heifer Bull						%Rank	3.4	12.2

84

W294J

62AR 38SM
RED
BD: 2/20/21

Sire: *X799D*

BW	69
WW Ratio	100
Scrotal	38

Dam: *E823*

BW	WW	YW	MK	RE	IMF	\$Profit	\$Ranch	
-5.5	+37	+76	+24	+0.65	+0.83	\$20,172.00	\$57.00	
• Heifer Bull						%Rank	1.9	6.9

FUTURE REFERENCE SIRES

OUTCROSS 9077

Reg: +*19605058 | Sire: S A V 004 Density 4336



CED: +0
BW: +4.2
WW: +57
YW: +95
Milk: +17
CW: +44
Marb: +.23
RE: +.73
\$M: +35
\$W: +38
\$B: +126
\$C: +198

Blending the maternal sire, Density, with a powerhouse dam produced in the famed Tres Marias program in Argentina, Outcross was the lead-off and top-seller of the 2020 Montana sale. Contact Bo Slovek for semen/certificates.

REVIVAL 0074

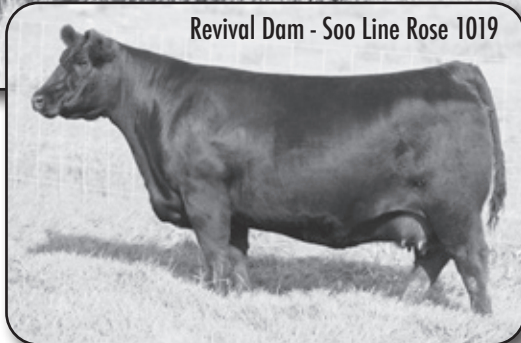
Reg: +*20057293 | Sire: S A V Renovation 6822



CED: +6
BW: +.8
WW: +58
YW: +104
Milk: +22
CW: +32
Marb: +.57
RE: +.52
\$M: +66
\$W: +60
\$B: +122
\$C: +224

Blending Renovation with Rose 1019, the expressively muscled and soft-sided Revival has seen use in the breed's renowned balanced-trait, maternal herds. Contact Bo Slovek for semen/certificates.

Revival Dam - Soo Line Rose 1019



Revival Grandam - EA ROSE 918



Slovak Ranch
B
S

Philip, South Dakota
20901 Slovak Road
Philip, SD 57567

Selling 80 Bulls
Angus & Angus Plus Genetics
Tuesday, March 22, 2022
2:00 PM (MT)
Philip (SD) Livestock LLC

FIRST CLASS MAIL
U.S. POSTAGE
PAID
PHILIP, SD
PERMIT NO. 20

First Class Mail
Time Dated Material

