



Annual Sale

**Tuesday,
April 21, 2020 • 1 PM**

**Western Livestock Auction
Great Falls, Montana**

Welcome

Ryan & Karnell Perry
406/788-9869 406/390-5473



On behalf of my family and all the Treasure Bull Test consignors and their families I would like to welcome you to the Annual Treasure Bull Test Sale. We thank you for your continued support and interest of our program and this Sale.

It didn't take very long for this to happen, but I've had a goal for this Test and Sale. I want a deep, complete set of "Cowboy Kind" Angus Bulls that will work for anyone. I have said since they arrived early November that this is the set of the bulls. I believe if you cut the lot tags out and just look at the bulls. Use the original "EPD" in this business, a non-recognized "EPD" by any breed association. If you were to use the "EYE EPD", study the bulls and analyze the bulls, you would be hard pressed to tell me which would be the first in the door and the last to sell. There is high quality "Cowboy Kind" from front to back.

With the risk of not wanting to get political, spiritual or controversial, we are in unparalleled and unprecedented times in the world. The Ag Sector has been knocked down and kicked in the guts more times than we can count, for many different reasons. But each time we have gotten up, trudged onward and persevered. We will again, we will get through this, and we will be stronger for it. I will get factual though. The consumer demand at the meat counter is unequalled. We can't keep it on the shelves, it is the choice protein source of consumers and that is very evident. With each passing day and week, where we have no choice but to stay home, cook and eat BEEF. The American population is going to like how they feel, how healthy they are, and how different their bank statements look with their new way of living. They will keep coming back for more of our BEEF!

We also understand the seriousness and concerns of the COVID-19 pandemic, and how it has affected travel, closures, cancellations, and suggested social distancing and isolation. We will take all precautions necessary for everyone's concerns and safety.

~ The bulls are available for viewing from now to April 19th to view at North Montana Feeders in Choteau, MT. North Montana Feeders is seven miles north of Choteau on US Hwy 89.

~ Videos of the all the bulls will be available on Northern Livestock Video Auction in early April. www.northernlivestockvideo.com

~ The bulls will be at Western Livestock Auction in Great Falls, MT for viewing on Sunday, April 19th right up until sale time.

~ Northern Livestock Video Auction will be on site at the sale for bidding and buying via the internet or telephone. You will find on page 3 of catalog the instructions for getting registered.

~ Call the consignors also, I know they would love to visit about their individual programs. All their contact information is available in the catalog on page 2.

Feel free to call at any time with questions. We want to help you in any way possible to get the genetics you want for your program and the upcoming breeding season. Once again, your safety is our up-most concern.

With that we are going to have a BULL SALE! You would wear out several pickups and numerous wind shields to find a set of "Cowboy Kind" Angus Bulls as deep with quality, consistency and program as what you will see April 21st.

Stay safe. Stay healthy. Enjoy having the kids around during calving season because even though times are difficult, having them with you daily is priceless!



**Perry Family - Brant, Karnell, Ryan
"Donald", Pryce & Quayd**

Ryan



PO Box 1, Power MT 59468
Email: info@treasurebulltest.com
www.treasurebulltest.com





PERFORMANCE SALE

Tuesday,

APRIL 21, 2020

Lunch 11:30 AM Sale 1:00 PM
WESTERN LIVESTOCK AUCTION
GREAT FALLS, MT

~ General Information ~

Pre-Sale Viewing of Bulls

The bulls will be at Western Livestock Auction on Sunday, April 19, 2020 and available for viewing. Prior to that they are available for viewing anytime at North Montana Feeders, 7 miles North of Choteau, MT. They are located in Pens B8 and B9.

Sale Day Phones

Western Livestock Auction
406/727-5400

Ryan Perry 406/788-9869
Karnell Perry 406/390-5473

Auctioneer:
Joe Goggins 406/861-5664

Livestock Press

Kurt Kangas 406/366-4190.....Angus Journal/Angus Ass'n
John Goggins 406/698-4159 Western Ag Reporter
Devin Murnin 406/696-1502 Western Livestock Journal

Footnotes are provided by consignors. Feel free to contact consignors about their bulls. Consignor contact information is on page 2.

Fertility

Every bull selling has had a complete breeding physical and has been semen tested. Scrotal measurements were taken March 17, 2020. Measurements listed are actual size. Bulls sell guaranteed to be breeders via natural service. Guarantees are between the buyer and TBT Consignor only!

Veterinarian: Dr. Kurt Johnson, 406/788-0700

Health

All bulls have also been tested negative for BVD. Bulls have completed all requirements for immediate interstate shipment. If your state or providence requires more for import than has been completed, it will be done immediately after the sale. TBT will assume all extra vet expenses for interstate shipment.

Trucking

Trucking is at the buyers' expense and responsibility! Several TBT Consignors will have trailers with them and will help with delivery if possible. Contact TBT prior to sale to discuss and coordinate possible delivery options. TBT has several contacts who they deem to be reliable livestock carriers.

Insurance

Mortality Insurance is available thru Tyler Holland, Novich Insurance Agency. See page 3 for insurance options. Buyer pays for ½ and TBT Consignor pays for ½. Buyers if you choose to insure your bulls please do so when settling for bulls.

Performance Data

EPD's listed in this catalog are as of March 15, 2020.

Transportation & Accommodations

Great Falls is served by several airlines. We will meet any planes if notified.

O'Haire Motor Inn 17 7th St. S, Great Falls, MT.....406-454-2141

La Quinta Inn 600 River Dr S, Great Falls, MT.....406-761-2600

Ask for the Treasure Bull Test Rates.

Terms and Conditions

Bulls sell under the terms and conditions of the American Angus Association. Settlement is cash. Settlement must be made at the time of sale unless arrangements have been made prior to sale with individual consignor and TBT. Registration papers will be transferred to buyer when settlement has been made. Announcements made from auction block take precedence over printed material. Auctioneer will settle any disputes of bids. Anyone attending the sale does so at their own risk. TBT and Western Livestock Auction, LLC assume no liability, legal or otherwise, for any accidents which may occur.



INDEX OF CONSIGNORS

BLACK ANGUS CONSIGNORS AND LOT NUMBERS

Barton Angus Ranch John & Brian Barton 1849 S. Lakeline Dr. Salt Lake City, UT 84109 801-541-1473 5 ~ 6 ~ 7	Fourmile Creek Angus Shaun & Michaela Hystad 145 Fourmile Creek Rd Great Falls, MT 59404 406-231-5297 66 ~ 68	McFadgen Angus Mark & Kathy McFadgen 3024 Bugli Lane Stevensville, MT 59870 406.360.8701 63 ~ 64	Springvale Ranch Shawn & Jen Christensen 56835 Little Bitterroot Rd Hot Springs, MT 59845 406.741.2519 44
Cook Angus Bill & Codi Cook 1980 Nth 5th Rd Huntley, MT 59037 406.670.0689 24 ~ 25 ~ 26 ~ 27 ~ 28 ~ 29 31 ~ 32 ~ 33 ~ 34 ~ 35 ~ 36 37 ~ 39 ~ 40 ~ 41 ~ 42 ~ 43	Gem State Angus Kevin & Jessica Thibault 2185 Settlers Lane Twin Falls, ID 83301 435.881.3974 92 ~ 93 ~ 94 ~ 96	Magic Valley Angus Mike & Trina Wieseler 920 Juniper Rd Mesa, WA 99343 509.539.1442 86 ~ 88 ~ 89 ~ 90 ~ 91	WildKat Angus Kevin Warner 1233 Western Skies Trail Stevensville, MT 59870 406.552.7258 65
CS Angus Craig & Shelby Weirather 18941 Shild Rd Newell, SD 57760 406.552.3178 69 ~ 70 ~ 71	Granger Angus Jim & Elizabeth Granger 1929 Eden Road Great Falls, MT 59405 406.736.5588 8 ~ 9 ~ 10 ~ 11 ~ 12 ~ 13 ~ 14	Olson Cattle Co Wendy & Kane Olson 63702 Chalwain Rd St. Ignatius, MT 59865 406.261.3782 53 ~ 54 ~ 55 ~ 56 ~ 57 58 ~ 59 ~ 60 ~ 61 ~ 62	Willekes Angus Bob Willekes 10 Cowboy Way Choteau, MT 59422 406.590.2520 15 ~ 16 ~ 17 ~ 18 ~ 19 20 ~ 21 ~ 22 ~ 23
Dalbey Angus John Dalbey 1982 Mtn View Orchard Rd Corvallis, MT 59828 406.546.7822 49 ~ 50	J Bar Stenberg Ranch Jerome & Kathy Stenberg 36402 Dublin Gulch Rd St Ignatius, MT 59865 406-644-3636 99 ~ 100 ~ 102	RK Perry Ryan & Karnell Perry Box 1 Power, MT 59468 406.788.9869 72 ~ 73 ~ 74 ~ 75 ~ 77 ~ 78 79 ~ 80 ~ 81 ~ 82 ~ 83 ~ 84 126 ~ 127 ~ 128 ~ 129 ~ 130	Piazzola Angus Jerry Piazzola 35 S Main St Butte, MT 59701 406.310.0151 2
Double T Angus Brad Thompson 1709 N McKinley St. Jerome, ID 83338 208.404.2450 97 ~ 98	Kelleher Livestock Jim Kelleher 5097 Gunsight Lane Florence, MT 59833 406.546.7771 45 ~ 46		

RED ANGUS CONSIGNORS AND LOT NUMBERS

J Bar Stenberg Ranch
Jerome & Kathy Stenberg
36402 Dublin Gulch Rd
St Ignatius, MT 59865
406-644-3636
103 ~ 105

DeBruycker Reds
Mark & Belva DeBruycker
2649 12th Lane NW
Bynum, MT 59419
406.590.0355
106 ~ 107 ~ 110 ~ 111 ~ 113
115 ~ 116 ~ 117 ~ 118 ~ 119
121 ~ 122 ~ 123 ~ 124 ~ 125



The Treasure Bull Test Sale
will be broadcast live via the internet at

www.cattleUSA.com

Bid and WATCH LIVE with Northern Livestock Video Auction

Be sure to register before sale day to view and/or bid!
Call 1-866-616-5035 or register online at www.cattleUSA.com

Northern Livestock Sale Day Bid Line
1-406-245-0889

To view **online catalog** and **pre-sale video** of the bulls go to
www.northernlivestockvideo.com
and click on the **Treasure Bull Test Sale**

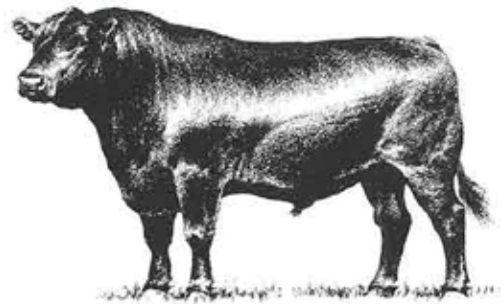
BULL MORTALITY INSURANCE

Novich Insurance Agency, agent for XL Catlin Insurance Co

Tyler Holland
(406) 684-5264
tylerholland@3rivers.net

One Year Policy Term, from the date of the sale
Full Mortality Only Option = 5.8%
\$200 minimum premium

Full Mortality
100% of the value of the bull in the event of death or
humane destruction as a result of a life-threatening
injury. No deductibles, no co-insurance.



ABOVE AVERAGE GOALS REQUIRE TARGETED BULLS

Aim High

The Targeting the Brand™ logo highlights registered Angus bulls with greater genetic potential to produce calves that meet the most challenging specifications of the *Certified Angus Beef*® brand. Only 3 in 10 non-parent Angus bulls meet the Targeting the Brand genetic requirements.

Minimum Genetic Requirements

Value

Marbling EPD (Marb)	+0.54
Dollar Grid Carcass Index (\$G)	+46.0



For more information on Targeting the Brand™ visit CABcattle.com.



Driving the science of better breeding

There's little room for error in the cattle business. Producers need the most advanced information to make smart selection decisions, and Angus Genetics Inc. (AGI) provides it through genomic-enhanced expected progeny differences (GE-EPDs).

EPDs that traditionally contained all pedigree, performance and progeny information now also include results from available genomic, or DNA, tests. Breeders who use genomic technology give buyers access to AGI-generated GE-EPDs that provide:

Increased predictability and decreased risk for young and unproven animals due to enhanced accuracy of EPDs

Better characterization of genetics for difficult-to-measure performance traits (such as carcass traits, maternal traits and feed efficiency)

The ability to make more rapid progress for traits that are important to you, due to:

- more accurate selection
- easier identification of genetic outliers
- the ability to propagate young animals with confidence earlier in their lives

In fact, GE-EPDs on unproven animals have the same amount of accuracy as if they had recorded 8-33 calves, depending on the trait. That's valuable insight, offered regularly through the breed's weekly national cattle evaluation at www.angus.org.

How do you know if EPDs are genomic-enhanced?

Ask your breeder, refer to the registration paper, or look for the AGI GE-EPD logo, Angus GS™ powered by partner Neogen GeneSeek or the HD50k or i50k by partner Zoetis.



BLACK ANGUS BULLS

2

PAR EZ Money 300

Piazzola
Angus

Black Angus

AAA#: 19540047

DOB: 1/29/19

Tattoo: 1519

KR DINERO
FF EZ Money D217
JF Shoshone W42

H A Image Maker 0415

PAR Image Maker 043

PAR-Net Worth 21

Entry Wt	Final Wt
870	1225
WDA	ADG
3.05	3.14
WDA Ratio	ADG Ratio
96	84

CED	BW	WW	YW	MILK	\$M	\$B
6	1.3	70	123	29	63	124
BW	205 Day Wt.	205 Day Ratio	365 Day Wt.	365 Day Ratio	Scrotal	TBT Index
88	798	111	1054	90	32	95

FF EZ MONEY D217 is an impressive sire that will add width and length to all his calves. Lot 2 has the same traits; he came off mountain pasture at 6000 feet elevation and weighted 849 lbs. the first of Sept. His Dam from HA Image Maker 0415 has a long smooth frame, good feet and perfect utter. I would consider this bull as a herd builder.

5

Bar LD 316 935

Barton
Angus

Black Angus

AAA#: +19491293

DOB: 2/20/19

Tattoo: 935

Connealy Capitalist 028
LD Capitalist 316
LD Dixie Erica 2053

S A V 8180 Traveler 004

DB Lucy 163

Basin Lucy 178E

Entry Wt	Final Wt
740	1100
WDA	ADG
2.89	3.19
WDA Ratio	ADG Ratio
91	85

CED	BW	WW	YW	MILK	\$M	\$B
12	-0.4	68	119	41	43	142
BW	205 Day Wt.	205 Day Ratio	365 Day Wt.	365 Day Ratio	Scrotal	TBT Index
79	745	112	1115	95	35	97

Great mating by "Cap 316" and MGD of Basin Lucy 178E. His Donor Dam 163 has produced over 90 calves to date. CE bull with good growth and balance.



LD Capitalist 316 - Sire of Lot 5

6

BAR Renown 941

Barton
Angus

Black Angus

AAA#: +19491179

DOB: 2/23/19

Tattoo: 941

Rito 707 of Ideal 3407 7075

S A V Renown 3439

S A V Blackcap May 4136

R R Rito 707

Coleman Donna 26

Coleman Donna 714

Entry Wt	Final Wt
810	1250
WDA	ADG
3.32	3.89
WDA Ratio	ADG Ratio
105	104

CED	BW	WW	YW	MILK	\$M	\$B
1	3.2	80	140	20	51	104
BW	205 Day Wt.	205 Day Ratio	365 Day Wt.	365 Day Ratio	Scrotal	TBT Index
82	742	104	1189	102	33	103

By the Pathfinder Dam Coleman Donna 206 who now works as a Donor at Montana Angus Ranch. Top of the Breed for WW, YW, Docility, and Claw EPDs. Maternal Powerhouse.

7

BAR Resource 961

Barton
Angus

Black Angus

AAA#: 19502818

DOB: 3/21/19

Tattoo: 961

S A V Resource 1441

BAR Resource 713

Coleman Donna 0254

S A V Thunderbird 9061

BAR Pride 310

BAR Retail Pride 113

Entry Wt	Final Wt
750	1120
WDA	ADG
3.19	3.27
WDA Ratio	ADG Ratio
101	88

CED	BW	WW	YW	MILK	\$M	\$B
-1	2.3	62	96	23	57	90
BW	205 Day Wt.	205 Day Ratio	365 Day Wt.	365 Day Ratio	Scrotal	TBT Index
80	789	115	1170	100	34	101

Resource descendants continue to impress with their muscle expression and structural soundness. This bull is no different. His sire was chosen as the top Bull from a flush that included a Full brother who sold for 10,000 @ Midland Bull Test.



S A V Renown 3439 - Sire of Lot 6 & 8

BLACK ANGUS BULLS



Granger Renown 910

Granger
Angus

Black Angus

AAA#: +19521101

DOB: 2/16/19

Tattoo: 910

Rito 707 of Ideal 3407 7075

S A V Renown 3439

S A V Blackcap May 4136

Bon View New Design 208

Granger Pride 592

Granger Pride 790

Entry Wt	Final Wt
825	1265
WDA	ADG
3.29	3.89
WDA Ratio	ADG Ratio
104	104

CED	BW	WW	YW	MILK	\$M	\$B
-8	4.7	71	111	27	56	88
BW	205 Day Wt.	205 Day Ratio	365 Day Wt.	365 Day Ratio	Scrotal	TBT Index
74	709	106	1183	101	35	104

ET calf from our still active 15-year-old Pathfinder donor Dam. She is a full sister to the three flush mate bulls that won Midland Bull Test World Champion Pen of Three in 2006. She has 11 calves weaned at 106 ratio. Granddam 8@111.



Granger Logic 923

Granger
Angus

Black Angus

AAA#: 19537638

DOB: 3/1/19

Tattoo: 923

SITZ Logic Y46

TH Logic 2116

TH Pride Heidi 84

Granger Black Cedar 150

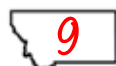
Granger Pride 598

Granger Pride 191

Entry Wt	Final Wt
890	1355
WDA	ADG
3.65	4.12
WDA Ratio	ADG Ratio
115	110

CED	BW	WW	YW	MILK	\$M	\$B
-2	3.3	76	125	22	62	
BW	205 Day Wt.	205 Day Ratio	365 Day Wt.	365 Day Ratio	Scrotal	TBT Index
90	788	111	1328	114	37	112

Young Pathfinder Dam with 3@106



Granger Great Falls 909

Granger
Angus

Black Angus

AAA#: 19512303

DOB: 2/13/19

Tattoo: 909

S A V Final Answer 0035

Granger Great Falls 053

Granger Pride 275

Wards Onward 610

Granger Lucy 973

Granger Lucy 782

Entry Wt	Final Wt
830	1225
WDA	ADG
3.17	3.5
WDA Ratio	ADG Ratio
100	93

CED	BW	WW	YW	MILK	\$M	\$B
0	1.1	51	92	32	50	98
BW	205 Day Wt.	205 Day Ratio	365 Day Wt.	365 Day Ratio	Scrotal	TBT Index
90	725	102	1167	100	37	98

Dam - 8@102



Granger Payweight 922

Granger
Angus

Black Angus

AAA#: 19512305

DOB: 2/16/19

Tattoo: 922

Basin Payweight 1682

Curtin 1682 Payweight 7066

Blue Ston Pride 9064

Connealy Onward

Granger Pride 985

Granger Pride 275

Entry Wt	Final Wt
835	1310
WDA	ADG
3.41	4.2
WDA Ratio	ADG Ratio
108	112

CED	BW	WW	YW	MILK	\$M	\$B
7	0.3	51	98	39	53	97
BW	205 Day Wt.	205 Day Ratio	365 Day Wt.	365 Day Ratio	Scrotal	TBT Index
79	749	105	1246	107	40	108

Dam - 8@97. Sire Curtin Payweight was our choice of bulls from Midland Bull Test.



Granger Logic 903

Granger
Angus

Black Angus

AAA#: 19537637

DOB: 3/5/19

Tattoo: 903

SITZ Logic Y46

TH Logic 2116

TH Pride Heidi 84

Craft Hoover Dam 683-110

Granger Lucy 527

Granger Lucy 276

Entry Wt	Final Wt
830	1220
WDA	ADG
3.32	3.45
WDA Ratio	ADG Ratio
105	92

CED	BW	WW	YW	MILK	\$M	\$B
2	2	68	114	24	62	
BW	205 Day Wt.	205 Day Ratio	365 Day Wt.	365 Day Ratio	Scrotal	TBT Index
85	766	108	1249	107	39	102

Dam - 3@98



Granger Payweight 911

Granger
Angus

Black Angus

AAA#: 19512306

DOB: 2/17/19

Tattoo: 911

Basin Payweight 1682

Curtin 1682 Payweight 7066

Blue Ston Pride 9064

Schurrtop American 5846

Granger Pride 988

Granger Pride 275

Entry Wt	Final Wt
830	1240
WDA	ADG
3.24	3.63
WDA Ratio	ADG Ratio
102	97

CED	BW	WW	YW	MILK	\$M	\$B
1	3.6	46	77	24	66	95
BW	205 Day Wt.	205 Day Ratio	365 Day Wt.	365 Day Ratio	Scrotal	TBT Index
93	745	105	1159	99	42	100

Dam - 8@101

BLACK ANGUS BULLS

14

Granger Statement 932

Granger
Angus

Black Angus

AAA#: 19521189

DOB: 2/14/19

Tattoo: 932



Jindra Acclaim
Stevenson Statement 70750
Stevenson Erica 4004

S A V Pioneer 7301
Granger Pride Rachael 093
Granger Pride Rachael 897

Entry Wt	Final Wt
860	1280
WDA	ADG
3.32	3.72
WDA Ratio	ADG Ratio
105	99

CED	BW	WW	YW	MILK	\$M	\$B
7	1.2	56	107	24	67	153
BW	205 Day Wt.	205 Day Ratio	365 Day Wt.	365 Day Ratio	Scrotal	TBT Index
83	718	101	1134	97	38	99

16

WILL Bravo G09

Willekes
Angus

Black Angus

AAA#: 19485221

DOB: 1/16/19

Tattoo: G09



Coleman Charlo 0256
Coleman Bravo 6313
Coleman Donna 714

HA Cowboy Up 5405
Willekes Entense E47
Pine Coulee Entense T515

Entry Wt	Final Wt
750	1300
WDA	ADG
3.13	4.87
WDA Ratio	ADG Ratio
99	130

CED	BW	WW	YW	MILK	\$M	\$B
10	0.5	65	118	32	61	114
BW	205 Day Wt.	205 Day Ratio	365 Day Wt.	365 Day Ratio	Scrotal	TBT Index
81	774	110	1330	114	37	118

This herd sire prospect was produced by a nice first calf heifer, out of our most valued donor cow, T515 by the extremely popular and proven sire, Cowboy Up. A great combination of calving ease, maternal, and growth.

CHAMPION ADG BLACK ANGUS BULL
HIGH INDEX BLACK ANGUS BULL

15

Will Gold Star G41

Willekes
Angus

Black Angus

AAA#: 19561237

DOB: 2/8/19

Tattoo: G41



FF Black Gold JF C19
FF Gold Star JF C74
JF Eriskay C74

Musgrave Big Sky
Willekes Lady E12
Pine Coulee Lady B127

Entry Wt	Final Wt
715	1150
WDA	ADG
2.93	3.85
WDA Ratio	ADG Ratio
93	103

CED	BW	WW	YW	MILK	\$M	\$B
6	1.2	57	92	29	77	74
BW	205 Day Wt.	205 Day Ratio	365 Day Wt.	365 Day Ratio	Scrotal	TBT Index
83	673	111	1175	101	34	105

Dam is a beautiful Big Sky first calf heifer. Granddam recently joined our short list of donors.

17

WILL Easy Money G19

Willekes
Angus

Black Angus

AAA#: +19485224

DOB: 1/20/19

Tattoo: G19



KR DINERO
FF EZ Money D217
JF Shoshone W42

S A V Net Worth 4200
S A V Emblynette 8423
S A V Emblynette 7261

Entry Wt	Final Wt
780	1285
WDA	ADG
3.13	4.47
WDA Ratio	ADG Ratio
99	119

CED	BW	WW	YW	MILK	\$M	\$B
1	3.4	66	116	27	53	119
BW	205 Day Wt.	205 Day Ratio	365 Day Wt.	365 Day Ratio	Scrotal	TBT Index
86	696	103	1204	103	37	108

Donor dam by Net Worth has been a fantastic producer for us, many sons have sold very well through past Midland Test bull sales. Lot 17's sire, Easy Money, is quickly becoming recognized by many astute breeders.



Coleman Bravo 6313 - Sire of Lot 16



FF EZ Money D17 - Sire of Lot 2 & 17

BLACK ANGUS BULLS

18

WILL Spur G47

Willekes
Angus

Black Angus

AAA#: 19485135

DOB: 2/13/19

Tattoo: G47

Connealy Stimulus 8419

Connealy Spur

Jazza of Conanga 8594

S Chisum 6175

JF Pride Z196

Vermilion Pride 3563

Entry Wt	Final Wt
770	1195
WDA	ADG
3.09	3.76
WDA Ratio	ADG Ratio
97	100

CED	BW	WW	YW	MILK	\$M	\$B
4	4.2	66	113	31	67	128
BW	205 Day Wt.	205 Day Ratio	365 Day Wt.	365 Day Ratio	Scrotal	TBT Index
88	680	112	1080	92	36	101

Dam of lot 18 has produced the past high gaining efficiency sire at MBT, selling as lot 2 to Doug Harrison. His son sells as Lot 22.

MEMBER OF RESERVE CHAMPION SIRE GROUP BLACK ANGUS

19

WILL Spur G 33

Willekes
Angus

Black Angus

AAA#: +19485137

DOB: 1/27/19

Tattoo: G33

Connealy Stimulus 8419

Connealy Spur

Jazza of Conanga 8594

S A V Net Worth 4200

Pine Coulee Pride of Lee W25

B5 Pride of Lee 5125

Entry Wt	Final Wt
830	1325
WDA	ADG
3.28	4.38
WDA Ratio	ADG Ratio
103	117

CED	BW	WW	YW	MILK	\$M	\$B
6	2.6	57	108	28	78	132
BW	205 Day Wt.	205 Day Ratio	365 Day Wt.	365 Day Ratio	Scrotal	TBT Index
90	681	103	1237	106	41	109

Dam is a new donor who has proven herself. She is an extremely powerful Net Worth daughter, with great utter and teats. She is standing on a great set of legs and feet. These Spur sons should perform with the very best in the Angus breed.

MEMBER OF RESERVE CHAMPION SIRE GROUP BLACK ANGUS



Connealy Spur - Sire of Lots 18, 19, 20, 29, 34, 35, 36, 53, 55, & 62

20

WILL Spur G35

Willekes
Angus

Black Angus

AAA#: +19485138

DOB: 1/28/19

Tattoo: G35

Connealy Stimulus 8419

Connealy Spur

Jazza of Conanga 8594

S A V Net Worth 4200

Pine Coulee Pride of Lee W25

B5 Pride of Lee 5125

Entry Wt	Final Wt
780	1310
WDA	ADG
3.25	4.69
WDA Ratio	ADG Ratio
103	125

CED	BW	WW	YW	MILK	\$M	\$B
3	4.5	67	128	25	58	146
BW	205 Day Wt.	205 Day Ratio	365 Day Wt.	365 Day Ratio	Scrotal	TBT Index
89	670	103	1294	111	43	113

Dam is a new donor who has proven herself. She is an extremely powerful Net Worth daughter, with great utter and teats. She is standing on a great set of legs and feet. These Spur sons should perform with the very best in the Angus breed.

RESERVE CHAMPION ADG BLACK ANGUS BULL

MEMBER OF RESERVE CHAMPION SIRE GROUP BLACK ANGUS

21

WILL Rampage G13 [DDF]

Willekes
Angus

Black Angus

AAA#: 19505254

DOB: 1/17/19

Tattoo: G13

MCC Daybreak

Quaker Hill Rampage 0A36

QHF Blackcap 6E2 of4V16 4355

FF Dempsey Y11

Willekes Lady A402

Willekes Lady of 410

Entry Wt	Final Wt
840	1300
WDA	ADG
3.14	4.07
WDA Ratio	ADG Ratio
99	109

CED	BW	WW	YW	MILK	\$M	\$B
7	2.3	63	118	24	31	142
BW	205 Day Wt.	205 Day Ratio	365 Day Wt.	365 Day Ratio	Scrotal	TBT Index
82	696	100	1225	105	37	105

Powerful Rampage son out of our most proven cow family. Granddam has produced top performing ratio sons at MBT, including our 2nd high selling bull to Leo McDonnell and MJB Ranch for \$20K. Dam has produced 5 calves @369 days, 5@99 WR. Granddam has produced 15 natural calves @397 days (donor). 13 @103 WR. 5 @102 YR. Great Granddam has produced 16 natural calves @100 WR.

22

Will Great Falls 630-G12

Willekes
Angus

Black Angus

AAA#: 19533710

DOB: 1/17/19

Tattoo: G12

Granger Great Falls 053

Granger Great Falls 630

Grnager Pride Rachael 890

Willekes Traveler R186 63Y

Willekes Blackbird E34

Mission Blackbird C-15

Entry Wt	Final Wt
770	1285
WDA	ADG
3.1	4.56
WDA Ratio	ADG Ratio
98	122

CED	BW	WW	YW	MILK	\$M	\$B
2	3.3	62	108	28	51	124
BW	205 Day Wt.	205 Day Ratio	365 Day Wt.	365 Day Ratio	Scrotal	TBT Index
83	726	107	1262	108	40	112

Dam of Lot 22 is an excellent first calf heifer with a bright future. Sire was a past high gain and performance bull at MBT and was a top seller to Wheeler Mountain Angus. Sons and daughters of 630 are simply outstanding.

BLACK ANGUS BULLS

23

WILL Black Gold G04

Willekes
Angus

Black Angus

AAA#: 19485200

DOB: 1/10/19

Tattoo: G04

Connealy Black Granite

FF Black Gold JF C19

JF Barbaramere Y3

KR DINERO

Willekes Lady E35

Willekes Lady of 410

Entry Wt	Final Wt
705	1165
WDA	ADG
2.77	4.07
WDA Ratio	ADG Ratio
87	109

CED	BW	WW	YW	MILK	\$M	\$B
11	-1.6	43	80	34	54	104
BW	205 Day Wt.	205 Day Ratio	365 Day Wt.	365 Day Ratio	Scrotal	TBT Index
78	701	104	1155	99	35	104

Black Gold has become a Go to sire for us, he does many things right. Sons are high performers and daughters are now proving themselves to be outstanding young cows. Lot 23s dam is out of the same cow family as our Lot 21 bull.

25

Cook Bomber 903G [OHF]

Cook
Angus

Black Angus

AAA#: 19550721

DOB: 2/20/19

Tattoo: 903G

KM Broken Bow 002

Casino Bomber N33

Casino Annie K48

Connealy Right Answer 746

Vermilion Lady 1194

Vermilion Lady 5105



Entry Wt	Final Wt
790	1250
WDA	ADG
3.29	4.07
WDA Ratio	ADG Ratio
104	109

CED	BW	WW	YW	MILK	\$M	\$B
9	1.7	88	145	23	58	166
BW	205 Day Wt.	205 Day Ratio	365 Day Wt.	365 Day Ratio	Scrotal	TBT Index
86	756	106	1202	103	32	106

Dam NR 6@107 YR 5@104. Bomber son that has been a favorite since he was a calf. Top 1% WW, YW. Top 10% CW, \$W, \$F, \$B. Above average Marb. and REA.

24

Cook Bomber 902G

Cook
Angus

Black Angus

AAA#: +19550243

DOB: 2/17/19

Tattoo: 902G

KM Broken Bow 002

Casino Bomber N33

Casino Annie K48

Connealy Dublin 8223

Vermilion Pattie 1117

Vermilion Pattie 8114



Entry Wt	Final Wt
760	1230
WDA	ADG
3.21	4.16
WDA Ratio	ADG Ratio
101	111

CED	BW	WW	YW	MILK	\$M	\$B
6	0.5	64	106	27	70	140
BW	205 Day Wt.	205 Day Ratio	365 Day Wt.	365 Day Ratio	Scrotal	TBT Index
88	738	104	1173	100	34	105

Pathfinder Dam NR 7@107 YR 6@107. We have 10 of these Bomber sons in the years TBT sale. Here is one out of a top producing Dublin daughter that has above average EPD's in most categories.

26

Cook High Regard 906G

Cook
Angus

Black Angus

AAA#: 19550246

DOB: 2/13/19

Tattoo: 906G

BTR High Regard 552

Vermilion High Regard E541

Vermilion Lass 2129

WW Definitive 9097

BF Quality 633

Becker Farms Quality 6023



Entry Wt	Final Wt
845	1360
WDA	ADG
3.51	4.56
WDA Ratio	ADG Ratio
111	122

CED	BW	WW	YW	MILK	\$M	\$B
7	1.9	68	131	32	69	154
BW	205 Day Wt.	205 Day Ratio	365 Day Wt.	365 Day Ratio	Scrotal	TBT Index
88	738	104	1250	107	38	111

Dam NR 104 YR 107. Vermilion High Regard E541 was our choice at the Spring 2018 VR Sale. This son is moderate birth, high growth bull that is big footed, big boned, big bodied cowboy kind.



Casino Bomber N33 - Sire of Lots 24, 25, 32, 33, 37, 39, 40, 41, 42 & 43

27

Cook High Regard 907G

Cook
Angus

Black Angus

AAA#: 19550247

DOB: 3/9/19

Tattoo: 907G

BTR High Regard 552

Vermilion High Regard E541

Vermilion Lass 2129

WW Definitive 9097

BF Effie 783

Becker Farms Effie 7077



Entry Wt	Final Wt
730	1155
WDA	ADG
3.18	3.76
WDA Ratio	ADG Ratio
100	101

CED	BW	WW	YW	MILK	\$M	\$B
-4	4	63	106	23	49	108
BW	205 Day Wt.	205 Day Ratio	365 Day Wt.	365 Day Ratio	Scrotal	TBT Index
86	752	106	1155	99	34	102

Dam NR 103 YR 99. High Regard son out of a good producing cow that we have two daughters retained in our herd.

BLACK ANGUS BULLS

28

Cook Quarterback 908G

Cook
Angus

Black Angus
AAA#: 19552594
DOB: 3/7/19
Tattoo: 908G

S A V Regard 4863
SAV Quarterback 7933
S A V Blackcap May 3525
Sitz JLS Game Day 9630
Vermilion BC Alexina 3358
Vermilion Alexina 9366



CED	BW	WW	YW	MILK	\$M	\$B
-1	3.3	78	124	15	62	109
BW	205 Day Wt.	205 Day Ratio	365 Day Wt.	365 Day Ratio	Scrotal	TBT Index
92	777	109	1120	96	33	101

Dam NR 4@109 YR 3@105. Quarterback son out of a good Game Day daughter. We will have several Quarterback sons next year.

32

Cook Bomber JLM 912G

Cook
Angus

Black Angus
AAA#: 19550250
DOB: 2/14/19
Tattoo: 912G

KM Broken Bow 002
Casino Bomber N33
Casino Annie K48
Vermilion Dateline 7078
Vermilion Lucy 5304
Vermilion Lucy 1566



CED	BW	WW	YW	MILK	\$M	\$B
-2	3.4	76	124	17	48	161
BW	205 Day Wt.	205 Day Ratio	365 Day Wt.	365 Day Ratio	Scrotal	TBT Index
87	722	102	1119	96	36	101

Dam NR 3@103. Bomber out of a VRD daughter that should improve performance and enhance carcass and \$ Values.

29

Cook Spur JLM 909G [OHF]

Cook
Angus

Black Angus
AAA#: 19550248
DOB: 2/14/19
Tattoo: 909G

Connealy Stimulus 8419
Connealy Spur
Jazza of Conanga 8594
Sitz Madison 10477
Vermilion Blackcap 3507
Vermilion Blackcap 7295



CED	BW	WW	YW	MILK	\$M	\$B
5	3.4	70	115	14	73	132
BW	205 Day Wt.	205 Day Ratio	365 Day Wt.	365 Day Ratio	Scrotal	TBT Index
90	731	103	1128	97	33	102

Spur son that should make good females. Connealy Spur covers all the bases. Top 25% WW, YW, Doc, Claw, Angle and \$M.

33

Cook Bomber 913G

Cook
Angus

Black Angus
AAA#: +19550262
DOB: 2/16/19
Tattoo: 913G

KM Broken Bow 002
Casino Bomber N33
Casino Annie K48
Vermilion Dateline 7078
WMD Dateline C675
LaGrand Blackcap 4594



CED	BW	WW	YW	MILK	\$M	\$B
1	3.7	80	135	20	47	202
BW	205 Day Wt.	205 Day Ratio	365 Day Wt.	365 Day Ratio	Scrotal	TBT Index
89	736	104	1117	96	34	103

Bomber and VRD again. This bull is Top 2% WW, Top 3% YW, Top 1% CW, Top 15% Marb, +1.06 REA EPD putting him the Top 3%, Top 1% \$F and \$B with a +125 and +202, Top 4% \$G with a +77. Big time figures in a pretty good bull.

31

Cook High Regard 911G

Cook
Angus

Black Angus
AAA#: 19549739
DOB: 2/17/19
Tattoo: 911G

BTR High Regard 552
Vermilion High Regard E541
Vermilion Lass 2129
Vermilion Boss Z002
WC Blackbird 5003
Vermilion Blackbird 2341



CED	BW	WW	YW	MILK	\$M	\$B
5	2.9	62	114	23	63	147
BW	205 Day Wt.	205 Day Ratio	365 Day Wt.	365 Day Ratio	Scrotal	TBT Index
82	719	101	1040	89	34	98

Complete High Regard son that is above average across the board for carcass and \$ Value EPDs.

34

Cook Spur 915G

Cook
Angus

Black Angus
AAA#: 19549740
DOB: 2/14/19
Tattoo: 915G

Connealy Stimulus 8419
Connealy Spur
Jazza of Conanga 8594
Vermilion Franklin Z131
WC Effie 6678
BF Effie 783



CED	BW	WW	YW	MILK	\$M	\$B
7	3.4	65	99	32	72	99
BW	205 Day Wt.	205 Day Ratio	365 Day Wt.	365 Day Ratio	Scrotal	TBT Index
86	719	101	1035	89	32	95

Dam NR 2@101. Good Spur son out of a good producing Franklin grand-daughter.

BLACK ANGUS BULLS

35

Cook Spur JLM 916G

Cook Angus

Black Angus

AAA#: 19550252

DOB: 2/15/19

Tattoo: 916G



Connealy Stimulus 8419

Connealy Spur

Jazza of Conanga 8594

S A V Privilege 3030

WC Princess 6681

Vermilion Princess 3577

Entry Wt	Final Wt
655	1100
WDA	ADG
2.86	3.94
WDA Ratio	ADG Ratio
90	105

CED	BW	WW	YW	MILK	\$M	\$B
6	3.1	79	125	15	76	130
BW	205 Day Wt.	205 Day Ratio	365 Day Wt.	365 Day Ratio	Scrotal	TBT Index
84	722	102	1049	90	34	99

Spur son out of a Privilege daughter is a good combination. Disposition should be a strong point for this bull. Top 3% in Claw and Angle foot EPDs. Top 15% WW, YW, CEM, \$M, \$W.

39

Cook Bomber 926G

Cook Angus

Black Angus

AAA#: 19549744

DOB: 1/28/19

Tattoo: 926G



KM Broken Bow 002

Casino Bomber N33

Casino Annie K48

Connealy Spur

WC Blackcap 7355

Vermilion Blackcap 7561

Entry Wt	Final Wt
780	1330
WDA	ADG
3.3	4.87
WDA Ratio	ADG Ratio
104	130

CED	BW	WW	YW	MILK	\$M	\$B
16	-1.5	69	121	33	83	153
BW	205 Day Wt.	205 Day Ratio	365 Day Wt.	365 Day Ratio	Scrotal	TBT Index
73	790	111	1225	105	38	115

Dam NR 111 YR 105. Bomber son that has that HERD BULL look. Out of first calf daughter by Spur that we feel has a bright future. Top 20% in 15 EPDs and \$ Values categories plus +16 CED. Bomber sons have been topping some of the best sales all over the country. We think this one could be the real deal.

CHAMPION ADG BLACK ANGUS BULL
MEMBER OF CHAMPION SIRE GROUP BLACK ANGUS

36

Cook Spur JLM 917G

Cook Angus

Black Angus

AAA#: 19550253

DOB: 2/14/19

Tattoo: 917G



Connealy Stimulus 8419

Connealy Spur

Jazza of Conanga 8594

Sitz JLS Game Day 9630

WC Lass 6683

Vermilion Lass 3251

Entry Wt	Final Wt
830	1260
WDA	ADG
3.26	3.81
WDA Ratio	ADG Ratio
103	102

CED	BW	WW	YW	MILK	\$M	\$B
2	3.4	84	145	16	66	177
BW	205 Day Wt.	205 Day Ratio	365 Day Wt.	365 Day Ratio	Scrotal	TBT Index
80	787	111	1201	103	35	105

Dam NR 110 YR 103. Spur son that been a favorite since birth. Top 1% WW and YW. Strong Marb and REA EPDs along with +176 \$B which is Top 4%. Our Spur son topped the TBT sale last year to Black Pine Farms, Heron MT. This bull is a lot the same and maybe better in some traits.

40

Cook Bomber JLM 927G

Cook Angus

Black Angus

AAA#: 19550256

DOB: 2/3/19

Tattoo: 927G



KM Broken Bow 002

Casino Bomber N33

Casino Annie K48

Connealy Spur

WC Lass 7357

Vermilion Lass 3251

Entry Wt	Final Wt
710	1165
WDA	ADG
2.93	4.03
WDA Ratio	ADG Ratio
93	108

CED	BW	WW	YW	MILK	\$M	\$B
13	0	69	120	28	60	135
BW	205 Day Wt.	205 Day Ratio	365 Day Wt.	365 Day Ratio	Scrotal	TBT Index
76	751	106	1137	97	34	104

Dam NR 107 YR 96. Bomber son out of another Spur first calf heifer. Heifer bull with +13 CED that will add pounds at weaning and yearling.

37

Cook Bomber 918G

Cook Angus

Black Angus

AAA#: 19550254

DOB: 2/12/19

Tattoo: 918G



KM Broken Bow 002

Casino Bomber N33

Casino Annie K48

S A V Privilege 3030

WC Lady 6684

Vermilion Lady 3220

Entry Wt	Final Wt
680	1115
WDA	ADG
2.87	3.85
WDA Ratio	ADG Ratio
91	103

CED	BW	WW	YW	MILK	\$M	\$B
11	-1.8	76	131	28	72	167
BW	205 Day Wt.	205 Day Ratio	365 Day Wt.	365 Day Ratio	Scrotal	TBT Index
78	749	105	1021	87	33	98

Dam NR 105. Bomber son that is +11 CED. Heifer bull with some punch. Carcass EPDs and \$ Values are all above average as well.

41

Cook Bomber 932G

Cook Angus

Black Angus

AAA#: 19549745

DOB: 2/6/19

Tattoo: 932G



KM Broken Bow 002

Casino Bomber N33

Casino Annie K48

HA High Regard 5421

FF Fantasy E204

FF Fantasy B99

Entry Wt	Final Wt
745	1225
WDA	ADG
3.11	4.25
WDA Ratio	ADG Ratio
98	114

CED	BW	WW	YW	MILK	\$M	\$B
11	0.4	81	127	26	62	135
BW	205 Day Wt.	205 Day Ratio	365 Day Wt.	365 Day Ratio	Scrotal	TBT Index
76	743	105	1082	93	36	104

Dam NR 105. Bomber son that will also work on heifers. +11 CED. Top 2% WW. Top 10% YW. Top 1% \$W. Another Bomber that will add performance.

BLACK ANGUS BULLS

42

Cook Bomber 933G

Cook
Angus

Black Angus

AAA#: +19648859

DOB: 2/4/19

Tattoo: 933G



KM Broken Bow 002

Casino Bomber N33

Casino Annie K48

S A V Privilege 3030

WC Evergreen 5002

BC Evergreen 1738

Entry Wt	Final Wt
810	1315
WDA	ADG
3.32	4.47
WDA Ratio	ADG Ratio
105	119

CED	BW	WW	YW	MILK	\$M	\$B
5	0.4	74	117	25	69	104
BW	205 Day Wt.	205 Day Ratio	365 Day Wt.	365 Day Ratio	Scrotal	TBT Index
88	761	105	1213	104	32	109

Dam NR 105 YR 98. Big, stout Bomber that is out of a top Privilege daughter. Top 4% WW. Top 3% \$W.

MEMBER OF THE CHAMPION SIRE GROUP BLACK ANGUS

44

Springvale Southside 942

Spring
Vale Ranch

Black Angus

AAA#: 19543891

DOB: 3/16/19

Tattoo: 942



Nichols Extra K205

KCF Bennett Southside

K C F Miss 208 S11

G A R Retail Product

Springvale Bonny 981

Springvale Bonny 306

Entry Wt	Final Wt
785	1260
WDA	ADG
3.54	4.2
WDA Ratio	ADG Ratio
112	112

CED	BW	WW	YW	MILK	\$M	\$B
-3	3.2	66	125	29	65	168
BW	205 Day Wt.	205 Day Ratio	365 Day Wt.	365 Day Ratio	Scrotal	TBT Index
93	818	107	1297	111	39	110

This is a strong growth bull from birth to yearling. He is in the top 3% for docility and heifer pregnancy, and the top 25% or better for all \$ value numbers. Dam is a pathfinder cow with daughters retained in our herd.

43

Cook Bomber 934G [OHF]

Cook
Angus

Black Angus

AAA#: +19651247

DOB: 1/31/19

Tattoo: 934G



KM Broken Bow 002

Casino Bomber N33

Casino Annie K48

LC Grid Topper 6078

Vermilion Lass 8028

Vermilion Lass 6133

Entry Wt	Final Wt
840	1365
WDA	ADG
3.41	4.65
WDA Ratio	ADG Ratio
108	124

CED	BW	WW	YW	MILK	\$M	\$B
10	-0.5	74	134	34	52	156
BW	205 Day Wt.	205 Day Ratio	365 Day Wt.	365 Day Ratio	Scrotal	TBT Index
88	752	106	1242	106	37	112

Dam NR 8@106 YR 8@103. Bomber son that will also work on heifers that has a lot of power to go with it. Out of consistent producing cow that is a pathfinder. He is a maternal brother to Vermilion Bear Paw.

MEMBER OF THE CHAMPION SIRE GROUP BLACK ANGUS

45

Jka Acclaim Midland G205

Kelleher
Livestock

Black Angus

AAA#: 19653726

DOB: 2/12/19

Tattoo: G205



Jindra 3rd Dimension

Jindra Acclaim

Jindra Blackbird Lassie 1111

Myttys Midland R189

Mytty Barbaramere Jet 205U

Sitz Barbaramere Jet 918

Entry Wt	Final Wt
695	1125
WDA	ADG
2.9	3.81
WDA Ratio	ADG Ratio
91	102

CED	BW	WW	YW	MILK	\$M	\$B
3	1.1	53	100	32	50	136
BW	205 Day Wt.	205 Day Ratio	365 Day Wt.	365 Day Ratio	Scrotal	TBT Index
81	725	105	1049	90	32	99

This bull has a low BW EPD. A top 20% CWT EPD. A top 20% \$F value. He is a 3/4 brother to Lot 46.



KCF Bennett Southside - Sire of Lot 44



Jindra Acclaim - Sire of 45, 46, 63 & 65

BLACK ANGUS BULLS

46

Jka Acclaim Upshot 205G Kelleher Livestock

Black Angus

RAAA#: 19653659

DOB: 3/7/19

Tattoo: 205G



Jindra 3rd Dimension
Jindra Acclaim
Jindra Blackbird Lassy 1111

EXAR Upshot 0562B
Jka Upshot Barb Jet D205
Mytty Barbaramere Jet 205U

Entry Wt	Final Wt
725	1170
WDA	ADG
3.21	3.94
WDA Ratio	ADG Ratio
101	105

CED	BW	WW	YW	MILK	\$M	\$B
0	4.7	86	148	19	32	180
BW	205 Day Wt.	205 Day Ratio	365 Day Wt.	365 Day Ratio	Scrotal	TBT Index
83	760	110	1151	99	34	105

He has 9 Growth & Value EPDs in the top 10%. 7 of his 9 are in the top 1% in the Growth, Carcass & \$ Value categories. He's a grandson of EXAR UPSHOT.

53

Occ Spur 963

Olson Cattle Co

Black Angus

AAA#: 19644401

DOB: 3/16/19

Tattoo: 963

Connealy Stimulus 8419
Connealy Spur
Jazza of Conanga 8594

Bon View New Design 878
LA 878 503
L A Deposit 108

Entry Wt	Final Wt
815	1300
WDA	ADG
3.65	4.29
WDA Ratio	ADG Ratio
115	115

CED	BW	WW	YW	MILK	\$M	\$B
12	0.5	59	96	29	68	127
BW	205 Day Wt.	205 Day Ratio	365 Day Wt.	365 Day Ratio	Scrotal	TBT Index
70	804	115	1312	112	40	114

Dam WR 13@106 YR 12@103. Eye appeal and performance in the Spur son. His 16-year-old dam is the definition of maternal longevity. Her production, udder quality, feet and disposition have never faltered.

49

JD Summitt 914

Dalbey Angus

Black Angus

AAA#: 19545885

DOB: 3/12/19

Tattoo: 914



S A V Renown 3439
ZWT Summit 6507
Coleman Donna 714

S A V Brilliance 8077
JD 8077 Pride 29Z
JD 88U Pride 013X

Entry Wt	Final Wt
845	1275
WDA	ADG
3.54	3.81
WDA Ratio	ADG Ratio
112	102

CED	BW	WW	YW	MILK	\$M	\$B
11	-0.3	54	99	23	74	99
BW	205 Day Wt.	205 Day Ratio	365 Day Wt.	365 Day Ratio	Scrotal	TBT Index
72	761	111	1261	108	34	107

54

Occ Dually 955

Olson Cattle Co

Black Angus

AAA#: 19644674

DOB: 3/2/19

Tattoo: 955

DL Sonic 444
DL Dually
DL Incentive 2103

Lafins Cutting Edge 2075
OCC Enchantress 002
OCC Enchantress 310

Entry Wt	Final Wt
810	1220
WDA	ADG
3.3	3.63
WDA Ratio	ADG Ratio
104	97

CED	BW	WW	YW	MILK	\$M	\$B
6	1.5	69	118	20	46	110
BW	205 Day Wt.	205 Day Ratio	365 Day Wt.	365 Day Ratio	Scrotal	TBT Index
65	826	100	1199	103	32	100

Dam WR 6@107 YR 5@104. 368-Day calving interval on 7 calves. Paternal brother sold to Wade Jacobsen in the 2019 TBT Sale.

50

JD Renown 98

Dalbey Angus

Black Angus

AAA#: 19545884

DOB: 2/20/19

Tattoo: 98



Rito 707 of Ideal 3407 7075
SAV Renown 3439
S A V Blackcap May 4136

S A V Brilliance 8077
JD 8077 Jestress 54
JD 307R Jestress 912W

Entry Wt	Final Wt
900	1295
WDA	ADG
3.41	3.5
WDA Ratio	ADG Ratio
108	93

CED	BW	WW	YW	MILK	\$M	\$B
1	2.5	70	131	36	58	124
BW	205 Day Wt.	205 Day Ratio	365 Day Wt.	365 Day Ratio	Scrotal	TBT Index
72	758	110	1322	113	33	105

55

Occ Spur 969

Olson Cattle Co

Black Angus

AAA#: 19644399

DOB: 3/19/19

Tattoo: 969

Connealy Stimulus 8419
Connealy Spur
Jazza of Conanga 8594

Leachman Right Time
OCC Lass 795
X C A Miss 6807 495

Entry Wt	Final Wt
755	1170
WDA	ADG
3.31	3.67
WDA Ratio	ADG Ratio
105	98

CED	BW	WW	YW	MILK	\$M	\$B
6	2.2	57	97	27	65	119
BW	205 Day Wt.	205 Day Ratio	365 Day Wt.	365 Day Ratio	Scrotal	TBT Index
80	758	108	1165	100	35	102

Dam WR 7@106 YR 6@104. Connealy Spur 2363 genetics are highly sought after by cattlemen across the country. This bull combines paternal performance along with maternal longevity.

BLACK ANGUS BULLS

56

OCC Big Sky 9729

Olson
Cattle Co

Black Angus

AAA#: 19645277

DOB: 3/26/19

Tattoo: 9729

Musgrave Big Sky
Malsons Big Sky 254D
Malsons Savannah 76W

OCC Ultimate Answer 118
OCC Montana Dream 348
OCC Montana Dream 044

Entry Wt	Final Wt
720	1120
WDA	ADG
3.24	3.54
WDA Ratio	ADG Ratio
102	95

CED	BW	WW	YW	MILK	\$M	\$B
5	2.0	66	121	26	42	126
BW	205 Day Wt.	205 Day Ratio	365 Day Wt.	365 Day Ratio	Scrotal	TBT Index
79	723	103	1116	96	37	98

Dam WR 3@108 YR 2@104. Out of a high performance, stout Big Sky son. Granddam is a donor at Olson Cattle Co. She produced the high selling feed efficiency bull at 2017 Midland Bull Test.

58

OCC Achievement 9110

Olson
Cattle Co

Black Angus

AAA#: 19644668

DOB: 4/10/19

Tattoo: 9110

Poss Lasting Impact 3118
Poss Achievement
Poss Erica 327

HA Cowboy Up 5405
OCC Montana Dream 779
OCC Montana Dream 809

Entry Wt	Final Wt
720	1160
WDA	ADG
3.5	3.89
WDA Ratio	ADG Ratio
111	104

CED	BW	WW	YW	MILK	\$M	\$B
12	1.2	77	141	22	48	149
BW	205 Day Wt.	205 Day Ratio	365 Day Wt.	365 Day Ratio	Scrotal	TBT Index
74	809	115	1351	116	34	112

Dam WR 1@115 YR 1@116. Out of a first calf heifer. Sired by the eye appealing, calving ease, and carcass merit sire Poss Achievement.

57

OCC Southern Charm 970

Olson
Cattle Co

Black Angus

AAA#: 19642793

DOB: 3/19/19

Tattoo: 970

Silveiras Conversion 8064
BUBS Southern Charm AA31
Hickory Hill Erica 009

OCC Ultimate Answer 118
OCC Lady 416
OCC Lady Merit 121

Entry Wt	Final Wt
705	1220
WDA	ADG
3.46	4.56
WDA Ratio	ADG Ratio
109	122

CED	BW	WW	YW	MILK	\$M	\$B
5	1.9	63	105	26	69	156
BW	205 Day Wt.	205 Day Ratio	365 Day Wt.	365 Day Ratio	Scrotal	TBT Index
79	706	101	1201	103	38	109

Dam WR 3@105 YR 2@102. Sired by the popular Origen high semen seller, BUBS Southern Charm. Southern Charm sons have added carcass value and performance. They have been a sought-after sire group this sale season.

59

OCC Southern Charm 982

Olson
Cattle Co

Black Angus

AAA#: 19642795

DOB: 3/28/19

Tattoo: 982

Silveiras Conversion 8064
BUBS Southern Charm AA31
Hickory Hill Erica 009

R B Active Duty 010
OCC Lucy 513
OCC Lucy 616

Entry Wt	Final Wt
715	1175
WDA	ADG
3.42	4.07
WDA Ratio	ADG Ratio
108	109

CED	BW	WW	YW	MILK	\$M	\$B
6	2.5	67	114	27	56	
BW	205 Day Wt.	205 Day Ratio	365 Day Wt.	365 Day Ratio	Scrotal	TBT Index
81	739	106	1166	100	38	105

Dam WR 2@104 YR 2@103. A stout Southern Charm son with added carcass value and performance.



BUBS Southern Charm AA31 - Sire of Lots 57, 59 & 60

60

OCC Southern Charm 986

Olson
Cattle Co

Black Angus

AAA#: 19644665

DOB: 4/2/19

Tattoo: 986

Silveiras Conversion 8064
BUBS Southern Charm AA31
Hickory Hill Erica 009

OCC Ultimate Answer 118
OCC Everelda Entense 572
JAF Everelda Entense 22W

Entry Wt	Final Wt
685	1150
WDA	ADG
3.39	4.12
WDA Ratio	ADG Ratio
107	110

CED	BW	WW	YW	MILK	\$M	\$B
9	0.2	73	126	20	60	116
BW	205 Day Wt.	205 Day Ratio	365 Day Wt.	365 Day Ratio	Scrotal	TBT Index
68	717	102	1212	104	36	105

Dam WR 2@103 YR 2@104. Southern Charm sons have been a popular sire group this spring.

BLACK ANGUS BULLS

61

OCC Big Sky 979

Olson
Cattle Co

Black Angus

AAA#: 19645278

DOB: 3/27/19

Tattoo: 979

Musgrave Big Sky
Malsons Big Sky 254D
Malsons Savannah 76W

OCC Ultimate Answer 118
OCC Montana Dream 426
OCC Montana Dream 404

Entry Wt	Final Wt
755	1155
WDA	ADG
3.35	3.54
WDA Ratio	ADG Ratio
106	95

CED	BW	WW	YW	MILK	\$M	\$B
3	2.8	67	120	24	45	
BW	205 Day Wt.	205 Day Ratio	365 Day Wt.	365 Day Ratio	Scrotal	TBT Index
80	752	107	1233	106	36	103

Dam WR 2@106 YR 1@106. Sire is a high-performance Big Sky son.

64

Mcfadgen Upshot 912

McFadgen
Angus

Black Angus

AAA#: +19506829

DOB: 4/14/19

Tattoo: 912

Sitz Upward 307R
EXAR Upshot 0562B
EXAR Barbara T020

S A V Bismarck 5682
Warner's Beauty 503
Mytty Kinochtry Beauty 1033

Entry Wt	Final Wt
775	1200
WDA	ADG
3.67	3.76
WDA Ratio	ADG Ratio
116	101

CED	BW	WW	YW	MILK	\$M	\$B
5	3.4	66	113	16	47	127
BW	205 Day Wt.	205 Day Ratio	365 Day Wt.	365 Day Ratio	Scrotal	TBT Index
86	804	100	1297	111	35	104

This EXAR Upshot 0562B son will surely catch your eye. He is the WDA Champion and a CAB bull. His HD50K test puts him at WW of Top 20% and YW of Top 20%. What a combination: EXAR Upshot and back to WK Bobcat on the Dam's side. He has been a favorite of ours since birth. Cow bull - not a heifer bull.

CHAMPION WDA BLACK ANGUS BULL

62

OCC Spur 973

Olson
Cattle Co

Black Angus

AAA#: 19644381

DOB: 3/26/19

Tattoo: 973

Connealy Stimulus 8419
Connealy Spur
Jazza of Conanga 8594

OCC Ultimate Answer 118
OCC Gina 557
OCC Gina 014

Entry Wt	Final Wt
665	1140
WDA	ADG
3.29	4.2
WDA Ratio	ADG Ratio
104	112

CED	BW	WW	YW	MILK	\$M	\$B
9	1.4	63	106	27	79	130
BW	205 Day Wt.	205 Day Ratio	365 Day Wt.	365 Day Ratio	Scrotal	TBT Index
72	708	101	1183	101	36	105

Dam WR 2@103 YR 1@101. Connealy Spur genetics are sought after by cattlemen across the country.

65

KW Royal Acclaim 907

[AMF-CAF-D2F-DDF-M1F-NHF-OHF-OSF-RDF]

WildKat
Angus

Black Angus

AAA#: +19363993

DOB: 2/3/19

Tattoo: 907

Jindra 3rd Dimension
Jindra Acclaim
Jindra Blackbird Lassy 1111

SF Speedway A187
Miss JT Lindsey 781
Miss JT Demi 338

Entry Wt	Final Wt
865	1315
WDA	ADG
3.31	3.98
WDA Ratio	ADG Ratio
104	106

CED	BW	WW	YW	MILK	\$M	\$B
2	3	83	154	36	51	194
BW	205 Day Wt.	205 Day Ratio	365 Day Wt.	365 Day Ratio	Scrotal	TBT Index
74	734	100	1304	112	33	106

This fine Acclaim son will add profit to any cow calf operation. Top 1% of the breed for WW, YW, RADG, MH, CW, \$W, \$F and \$B. Top 2% for \$C, Top 4% for RE, Top 2% for MILK, Top 3% MH. He has the 9th heaviest YW in the TBT sale for Blacks and Reds.

Selling 2/3 Interest and Full Possession.

63

McFadgen Royal Ben 908

McFadgen
Angus

Black Angus

AAA#: 19561469

DOB: 3/17/19

Tattoo: 908

Jindra 3rd Dimension
Jindra Acclaim
Jindra Blackbird Lassy 1111

SydGen FATE 2800
McFadgen Liberty Fate
M M Lucy's Liberty 157

Entry Wt	Final Wt
715	1150
WDA	ADG
3.24	3.85
WDA Ratio	ADG Ratio
102	103

CED	BW	WW	YW	MILK	\$M	\$B
12	-0.6	48	102	35	39	191
BW	205 Day Wt.	205 Day Ratio	365 Day Wt.	365 Day Ratio	Scrotal	TBT Index
72	776	100	1243	106	34	103

Here is a HEIFER BULL you will like out of Jindra Acclaim. He has a very good SC EPD of top 35%! His birth weight was 72 lbs. and adjusted weaning weight 776 lbs. (no creep feed). HD50K test shows this CAB bull having \$B at top 1%, RADG top 1%, and \$F top 1%. A bonus is his good feet which comes from BC Lookout (Sire of his Granddam). This Dam's bloodline has beautiful udders & feet which have passed on to the offspring.

66

4MC Indeed 1904

Fourmile
Creek Angus

Black Angus

AAA#: +19524241

DOB: 3/14/19

Tattoo: 1904

K C F Bennett Absolute
RB Indeed 02-4515
R B Lady Standard 305-02

EXAR Denver 2002B
SD Lady 4024 W
R B Lady 7125-2933

Entry Wt	Final Wt
755	1195
WDA	ADG
3.34	3.89
WDA Ratio	ADG Ratio
105	104

CED	BW	WW	YW	MILK	\$M	\$B
9	-0.7	77	139	36	41	150
BW	205 Day Wt.	205 Day Ratio	365 Day Wt.	365 Day Ratio	Scrotal	TBT Index
72	641	108	1217	104	33	105

BLACK ANGUS BULLS

68

4MC Cowboy Up 1906

Fourmile
Creek Angus

Black Angus

AAA#: +19540246

DOB: 1/29/19

Tattoo: 1906

HA Outside 3008

HA Cowboy Up 5405

HA Blackcap Lady 1602

WR Journey-1X74

EXAR Blackcap 7748

Quaker Hill Blackcap 4PT3

CED	BW	WW	YW	MILK	\$M	\$B
6	1.2	63	104	14	45	116
BW	205 Day Wt.	205 Day Ratio	365 Day Wt.	365 Day Ratio	Scrotal	TBT Index
86	666	100	1197	102	35	98



Entry Wt	Final Wt
800	1190
WDA	ADG
2.96	3.45
WDA Ratio	ADG Ratio
93	92

71

CS Showdown 9024

CS
Angus

Black Angus

AAA#: 19566507

DOB: 2/10/19

Tattoo: 9024

V D A R Sonny Boy 1194

VDAR Showdown 7236

V D A R Forever Lady 1409

Connealy Onward

CS Lass 7041

Csar Lass 111

CED	BW	WW	YW	MILK	\$M	\$B
8	1.8	73	127	26	46	112
BW	205 Day Wt.	205 Day Ratio	365 Day Wt.	365 Day Ratio	Scrotal	TBT Index
75	797	111	1204	103	33	100

Dam is a first calf heifer.



Entry Wt	Final Wt
840	1200
WDA	ADG
3.08	3.19
WDA Ratio	ADG Ratio
97	85

69

CS Showdown 9008

CS
Angus

Black Angus

AAA#: 19566497

DOB: 2/2/19

Tattoo: 9008

V D A R Sonny Boy 1194

VDAR Showdown 7236

V D A R Forever Lady 1409

Connealy Onward

CS Lass 7001

VDAR Lass 2019

CED	BW	WW	YW	MILK	\$M	\$B
6	2.3	57	97	33	56	102
BW	205 Day Wt.	205 Day Ratio	365 Day Wt.	365 Day Ratio	Scrotal	TBT Index
84	755	105	1235	106	35	101

Dam is a first calf heifer.



Entry Wt	Final Wt
830	1225
WDA	ADG
3.08	3.5
WDA Ratio	ADG Ratio
97	93

72

RKP 7236-7055 93

RK
Perry

Black Angus

AAA#: 19529238

DOB: 2/19/19

Tattoo: 93

V D A R Sonny Boy 1194

VDAR Showdown 7236

V D A R Forever Lady 1409

Sitz Top Game 561X

RKP 561X-8456 7055

Vermilion Lass 8456

CED	BW	WW	YW	MILK	\$M	\$B
6	1.4	50	94	24	27	103
BW	205 Day Wt.	205 Day Ratio	365 Day Wt.	365 Day Ratio	Scrotal	TBT Index
85	920	106	1242	106	36	100



Entry Wt	Final Wt
925	1300
WDA	ADG
3.41	3.32
WDA Ratio	ADG Ratio
108	89

70

CS Showdown 9010

CS
Angus

Black Angus

AAA#: 19566489

DOB: 2/3/19

Tattoo: 9010

V D A R Sonny Boy 1194

VDAR Showdown 7236

V D A R Forever Lady 1409

Connealy Onward

CS Lass 7034

Csar Lass 111

CED	BW	WW	YW	MILK	\$M	\$B
12	0.3	60	104	29	68	101
BW	205 Day Wt.	205 Day Ratio	365 Day Wt.	365 Day Ratio	Scrotal	TBT Index
83	716	100	1151	99	33	97

Dam is a first calf heifer.



Entry Wt	Final Wt
790	1175
WDA	ADG
2.96	3.41
WDA Ratio	ADG Ratio
93	91



VDAR Showdown 7236 - Sire of Lots 69, 70, 71 & 72

BLACK ANGUS BULLS

73

RKP 514-732 915

RK Perry

Black Angus

AAA#: 19527266

DOB: 2/26/19

Tattoo: 915



Vision Unanimous 1418

S Foundation 514

S Lady Ann 8384

Vermilion Game Day C382

RKP C382-4035 732

RKP CS 255-6813 4035

Entry Wt	Final Wt
840	1210
WDA	ADG
3.24	3.27
WDA Ratio	ADG Ratio
102	88

CED	BW	WW	YW	MILK	\$M	\$B
-2	1.6	58	104	26	54	128
BW	205 Day Wt.	205 Day Ratio	365 Day Wt.	365 Day Ratio	Scrotal	TBT Index
85	902	104	1213	104	33	99

Top 15% Marb. Top 20% \$G.

75

RKP BN54-503 919

RK Perry

Black Angus

AAA#: 19527559

DOB: 3/1/19

Tattoo: 919



Styles Cash R400

SAC Cashin

Buffalos Elba BN17

Connealy Countdown

RKP 32-323 503

RKP X8-325 323

Entry Wt	Final Wt
865	1285
WDA	ADG
3.46	3.72
WDA Ratio	ADG Ratio
109	99

CED	BW	WW	YW	MILK	\$M	\$B
9	0.5	66	124	23	53	153
BW	205 Day Wt.	205 Day Ratio	365 Day Wt.	365 Day Ratio	Scrotal	TBT Index
84	863	100	1214	104	36	101

Dam WR 3@102 YR 3@101. Top 20% WW, YW, Claw, \$F and \$W.

74

RKP 514-710 96

RK Perry

Black Angus

AAA#: 19527258

DOB: 2/19/19

Tattoo: 96



Vision Unanimous 1418

S Foundation 514

S Lady Ann 8384

Shipwheel Montana 2600

RKP 2600-8456 710

Vermilion Lass 8456

Entry Wt	Final Wt
890	1350
WDA	ADG
3.54	4.07
WDA Ratio	ADG Ratio
112	109

CED	BW	WW	YW	MILK	\$M	\$B
5	2.3	76	126	25	59	137
BW	205 Day Wt.	205 Day Ratio	365 Day Wt.	365 Day Ratio	Scrotal	TBT Index
75	902	104	1253	107	36	107

Dam is flush mate to the high selling bull from the 2018 TBT Sale to Vermilion Ranch. Top 2% Claw and Top 1% Angle. Top 10% WW, YW, SC, Doc and \$W.

77

RKP 607-47 927

RK Perry

Black Angus

AAA#: 19529327

DOB: 3/6/19

Tattoo: 927



S Whitlock 179

S Cornerstone 607

S Blossom 0278

SydGen Googol

RKP 0413-2480 47

Vermilion Lass 2480

Entry Wt	Final Wt
875	1225
WDA	ADG
3.35	3.01
WDA Ratio	ADG Ratio
106	80

CED	BW	WW	YW	MILK	\$M	\$B
5	1.2	72	114	32	52	124
BW	205 Day Wt.	205 Day Ratio	365 Day Wt.	365 Day Ratio	Scrotal	TBT Index
88	874	101	1208	103	35	95

Top 2% \$W. Top 20% WW, YW, SC, Claw, and Milk.



S Foundation 514 - Sire of Lots 73, 74, 78, 126, 127, 128 & 129

78

RKP 514-434 928

RK Perry

Black Angus

AAA#: 19527294

DOB: 3/6/19

Tattoo: 928



Vision Unanimous 1418

S Foundation 514

S Lady Ann 8384

Bobcat Xcalibur

RKP X8-123 434

RKP 921-720R 123

Entry Wt	Final Wt
840	1245
WDA	ADG
3.4	3.58
WDA Ratio	ADG Ratio
107	96

CED	BW	WW	YW	MILK	\$M	\$B
2	3.5	61	101	24	76	119
BW	205 Day Wt.	205 Day Ratio	365 Day Wt.	365 Day Ratio	Scrotal	TBT Index
90	868	100	1190	102	38	99

Dam WR 4@101 YR 2@100. Top 25% SC, Doc, Claw, Angle and \$M.

BLACK ANGUS BULLS

79

RKP BN54-66 933

RK
Perry

Black Angus

AAA#: 19527556

DOB: 3/8/19

Tattoo: 933



Styles Cash R400

SAC Cashin

Buffalos Elba BN17

Musgrave Big Sky

RKP 1310-325 66

Merle of Braun Creek 325

Entry Wt	Final Wt
845	1235
WDA	ADG
3.39	3.45
WDA Ratio	ADG Ratio
107	92

CED	BW	WW	YW	MILK	\$M	\$B
-2	4.8	73	114	26	70	123
BW	205 Day Wt.	205 Day Ratio	365 Day Wt.	365 Day Ratio	Scrotal	TBT Index
85	891	103	1208	103	36	99

Dam WR 2@104 YR 2@101. Top 20% WW, YW, SC, Claw, Angle, \$M and \$W.

82

RKP WM C382-48 G5

RK
Perry

Black Angus

AAA#: 19547257

DOB: 3/2/19

Tattoo: G5



Sitz JLS Game Day 9630

Vermilion Game Day C382

Vermilion Lass 9514

SydGen Googol

RKP 0413-2480 48

Vermilion Lass 2480

Entry Wt	Final Wt
820	1300
WDA	ADG
3.51	4.25
WDA Ratio	ADG Ratio
111	114

CED	BW	WW	YW	MILK	\$M	\$B
-4	5.5	82	141	29	40	152
BW	205 Day Wt.	205 Day Ratio	365 Day Wt.	365 Day Ratio	Scrotal	TBT Index
90	804	112	1170	100	37	109

Dam WR 3@109 YR 2@100. Top 1% WW. Top 2% YW. Top 10% \$F and \$W. Top 20% \$B.

80

RKP GL BN54-32 934

RK
Perry

Black Angus

AAA#: 19619391

DOB: 3/8/19

Tattoo: 934



Styles Cash R400

SAC Cashin

Buffalos Elba BN17

SS Really Windy 3016

RKP GL-Lass 32

Bobcat Lass 725

Entry Wt	Final Wt
735	1200
WDA	ADG
3.3	4.12
WDA Ratio	ADG Ratio
104	110

CED	BW	WW	YW	MILK	\$M	\$B
2	2.1	60	98	22	57	114
BW	205 Day Wt.	205 Day Ratio	365 Day Wt.	365 Day Ratio	Scrotal	TBT Index
87	706	103	1164	100	36	104

Top 3% Claw. Top 25% SC.

83

RKP WM C382-410 G10

RK
Perry

Black Angus

AAA#: 19547258

DOB: 3/5/19

Tattoo: G10



Sitz JLS Game Day 9630

Vermilion Game Day C382

Vermilion Lass 9514

Vermilion Mabry

RKP Z212-032 410

RKP 367N-S603 032

Entry Wt	Final Wt
820	1275
WDA	ADG
3.47	4.03
WDA Ratio	ADG Ratio
110	108

CED	BW	WW	YW	MILK	\$M	\$B
2	3.3	77	141	33	64	162
BW	205 Day Wt.	205 Day Ratio	365 Day Wt.	365 Day Ratio	Scrotal	TBT Index
87	768	107	1287	110	37	108

Dam WR 3@105 YR 1@109. Top 1% \$F. Top 4% WW, YW and \$W.

81

RKP WM C382-032 G3

RK
Perry

Black Angus

AAA#: 19547259

DOB: 3/1/19

Tattoo: G3



Sitz JLS Game Day 9630

Vermilion Game Day C382

Vermilion Lass 9514

Double AA Old Post Bandolier

RKP 367N-S603 032

PCC Barbara Perfection S603

Entry Wt	Final Wt
835	1250
WDA	ADG
3.37	3.67
WDA Ratio	ADG Ratio
106	98

CED	BW	WW	YW	MILK	\$M	\$B
5	1.8	60	107	28	69	130
BW	205 Day Wt.	205 Day Ratio	365 Day Wt.	365 Day Ratio	Scrotal	TBT Index
89	782	108	1234	106	33	104

Top 15% Claw, Angle and \$M.

84

RKP WM C382-2284 G17

RK
Perry

Black Angus

AAA#: 19547256

DOB: 3/17/19

Tattoo: G17



Sitz JLS Game Day 9630

Vermilion Game Day C382

Vermilion Lass 9514

Vermilion X Factor

Vermilion Zara 2284

Vermilion Zara 8007

Entry Wt	Final Wt
840	1300
WDA	ADG
3.66	4.07
WDA Ratio	ADG Ratio
116	109

CED	BW	WW	YW	MILK	\$M	\$B
-2	3.3	90	156	24	72	163
BW	205 Day Wt.	205 Day Ratio	365 Day Wt.	365 Day Ratio	Scrotal	TBT Index
90	806	112	1307	112	34	111

Dam WR 4@104 YR 3@100. Top 1% WW, YW and \$F. Top 4% RADG, Doc, Angle and \$W.

RESERVE CHAMPION WDA BLACK ANGUS BULL

BLACK ANGUS BULLS

86

MVCC Safe Deposit [DDP] Magic Valley Angus

Black Angus
AAA#: 19608022
DOB: 2/22/19
Tattoo: 913

Buford Safe Deposit A167
Werner Safe Deposit 7088
Dbl R Bar Dixie Erica A272
Yardley Answer X344
MVCC Winning Colors 364
JR Winning Colors 501X

Entry Wt	Final Wt
855	1225
WDA	ADG
3.24	3.27
WDA Ratio	ADG Ratio
102	88

CED	BW	WW	YW	MILK	\$M	\$B
-2	2.6	65	100	26	64	
BW	205 Day Wt.	205 Day Ratio	365 Day Wt.	365 Day Ratio	Scrotal	TBT Index
84	778	113	1199	103	40	101

90

MVCC South Dakota 912 Magic Valley Angus

Black Angus
AAA#: 19608021
DOB: 2/23/19
Tattoo: 912

Mohnen Density 730
Mohnen South Dakota 402
Mohnen Jilt 539
Coleman Charlo 0256
JVC Blackcap 517
JVC Blackcap 317

Entry Wt	Final Wt
825	1190
WDA	ADG
2.99	3.23
WDA Ratio	ADG Ratio
94	86

CED	BW	WW	YW	MILK	\$M	\$B
1	4.1	72	117	25	71	127
BW	205 Day Wt.	205 Day Ratio	365 Day Wt.	365 Day Ratio	Scrotal	TBT Index
87	780	114	1157	99	37	100

88

MVCC 5005-914 [M1P] Magic Valley Angus

Black Angus
AAA#: 19608023
DOB: 3/6/19
Tattoo: 914

Mc Cumber Titanium 3127
Mc Cumber Titanium 5005
Miss Wix 7126 of Mc Cumber
Coleman Charlo 0256
MVCC Dixie Erica 694
O C C Dixie Erica 754U

Entry Wt	Final Wt
665	1110
WDA	ADG
3.03	3.94
WDA Ratio	ADG Ratio
96	105

CED	BW	WW	YW	MILK	\$M	\$B
1	2.2	50	94	24	33	117
BW	205 Day Wt.	205 Day Ratio	365 Day Wt.	365 Day Ratio	Scrotal	TBT Index
82	653	95	1104	95	36	98

91

MVCC Black Gold 922 Magic Valley Angus

Black Angus
AAA#: 19608045
DOB: 2/4/19
Tattoo: 922

Connealy Black Granite
FF Black Gold JF C19
JF Barbaramere Y3
MVCC Resourceful 576
MVCC Brenna 760
M V C C Babette 1609

Entry Wt	Final Wt
760	1210
WDA	ADG
3.06	3.98
WDA Ratio	ADG Ratio
96	106

CED	BW	WW	YW	MILK	\$M	\$B
4	2.4	69	123	23	46	121
BW	205 Day Wt.	205 Day Ratio	365 Day Wt.	365 Day Ratio	Scrotal	TBT Index
79	711	104	1201	103	35	104

89

MVCC Titanium 921 [M1P-OHP] Magic Valley Angus

Black Angus
AAA#: 19608029
DOB: 2/18/19
Tattoo: 921

Sinclair Fortunate Son
Mc Cumber Titanium 3127
Miss Wix 926 OF Mc Cumber
JR Presence 0047
MVCC Pride 441
M V C C Pride 923

Entry Wt	Final Wt
845	1240
WDA	ADG
3.25	3.5
WDA Ratio	ADG Ratio
102	93

CED	BW	WW	YW	MILK	\$M	\$B
1	2.1	64	103	18	37	101
BW	205 Day Wt.	205 Day Ratio	365 Day Wt.	365 Day Ratio	Scrotal	TBT Index
88	828	115	1151	99	35	102



Mc Cumber Titanium 3127 - Sire of Lot 89

BLACK ANGUS BULLS

92

GSAR Homestead 08J

Gem
State Angus

Black Angus
AAA#: 19466989
DOB: 2/8/19
Tattoo: 08J

CTS Remedy 1T01
Ellingson Homestead 6030
EA Erica 1082

AAR Ten X 7008 S A
GSAR Ten X Pride 13E
GSAR Extra Pride 925



CED	BW	WW	YW	MILK	\$M	\$B
5	2.6	63	116	28	65	141
BW	205 Day Wt.	205 Day Ratio	365 Day Wt.	365 Day Ratio	Scrotal	TBT Index
86	625	98	1144	98	38	100

Here is a nice Homestead son with a big outline. He has been the Cowboy Kind since day one and has continued to perform while on test. His dam is a bigger framed, long bodied cow. She records WR: 2@105 & YR: 2@99. Look at the growth potential and balance throughout all his numbers. He won't produce suitcase cattle!

93

GSAR Dollar Up 14J

Gem
State Angus

Black Angus
AAA#: 19457152
DOB: 2/11/19
Tattoo: 14J

Sitz Upward 307R
Sitz Dollar Up 489Z
Sitz Barbaramere Jet 52U

Sitz Lightning 659Z
GSAR Lightning Pride 07E
GSAR Reflection Pride 08C



CED	BW	WW	YW	MILK	\$M	\$B
12	-1.4	54	95	37	67	146
BW	205 Day Wt.	205 Day Ratio	365 Day Wt.	365 Day Ratio	Scrotal	TBT Index
74	693	109	1159	99	34	98

Look at this Sitz Dollar Up son. He is an excellent calving ease prospect with a unique pedigree. He offers a disciplined spread from his calving ease to YW while offering breed leading carcass quality. His dam is moderate framed, long fronted and has a near perfect udder, you'll want to keep his daughters! This bull came off the cow at 730 pounds at weaning in September, he offers real world performance.



Ellingson Homestead 6030 - Sire of Lot 92

94

GSAR Dollar Up 35J

Gem
State Angus

Black Angus
AAA#: 19457153
DOB: 2/11/19
Tattoo: 35J

Sitz Upward 307R
Sitz Dollar Up 489Z
Sitz Barbaramere Jet 52U

Spring Cove Payweight 5027
GSAR Blackbird 08G
GSAR Blackbird 26E



CED	BW	WW	YW	MILK	\$M	\$B
11	-0.6	52	91	34	79	114
BW	205 Day Wt.	205 Day Ratio	365 Day Wt.	365 Day Ratio	Scrotal	TBT Index
67	649	102	1145	98	39	98

This bull is a half-brother to lot 93. He is from a first calf heifer that is a granddaughter of Payweight 1682 and goes back to the immortal Leachman Right Time. This heifer bull prospect offers a negative BW EPD, disciplined growth numbers and a \$M in the top 3% of the breed. His daughters will be nearly perfect in their udder structure, easy fleshing and should have the look!

96

GSAR 03E Lightning 37J

Gem
State Angus

Black Angus
AAA#: +19462260
DOB: 3/24/19
Tattoo: 37J

Sitz Lightning 659Z
GSAR Lightning 03E
Sitz JLS Lass 64N

AAR Ten X 7008 S A
GSAR Lucky Lady 11E
GSAR Lucky Lady 19C



CED	BW	WW	YW	MILK	\$M	\$B
11	1.4	81	137	25	68	171
BW	205 Day Wt.	205 Day Ratio	365 Day Wt.	365 Day Ratio	Scrotal	TBT Index
70	699	110	1117	96	34	103

Here is the definition of a "Spread" bull! He offers a CED in the top 15% of breed at +11 and a BW EPD of 1.4, he explodes to +81 WW, top 2%, +137 YW, top 3% of the breed. This bull offers breed leading carcass numbers and a very strong \$M, \$W and \$B. He is sired by our resident herd bull, GSAR Lightning 03E, who is creating his own legacy with an old school pedigree and extremely good progeny that perform and genomic test well. This bull lines up a few of the most popular A.I. sires from recent history; Connealy Thunder, Sitz Alliance 6595, Ten X & VDAR Really Windy 4097.

97

TT Bruiser J02

Double T
Angus

Black Angus
AAA#: 19596034
DOB: 1/18/19
Tattoo: J02

S A V Bismarck 5682
SAV Bruiser 9164
S A V Miss Bobbie 7463

V A R Generation 2100
TT Lucky Lady G29
TT Lucky Lady 624



CED	BW	WW	YW	MILK	\$M	\$B
6	2.7	70	118	30	63	134
BW	205 Day Wt.	205 Day Ratio	365 Day Wt.	365 Day Ratio	Scrotal	TBT Index
70	744	114	1086	93	34	103

Here is a unique bull out of the proven sire SAV Bruiser 9164! This bull is wide based and stout. He offers moderate birth weight and explosive growth to weaning and yearling ages. His progeny should be early maturing with disciplined mature size. His Generation sired dam is a very nice young cow with some frame and an impeccable udder. His maternal granddam was in the donor pen and in production until she was 13 years old.

BLACK ANGUS BULLS

98

TT Rainmaker J08

Double T
Angus

Black Angus

AAA#: 19596290

DOB: 1/28/19

Tattoo: J08



Basin Rainmaker 2704

Basin Rainmaker 4404

Basin Joy 1036

TT Game Changer Y01

TT Lass F26

TT Lass X07

Entry Wt	Final Wt
750	1260
WDA	ADG
3.13	4.51
WDA Ratio	ADG Ratio
99	121

CED	BW	WW	YW	MILK	\$M	\$B
5	2.1	74	130	26	62	155
BW	205 Day Wt.	205 Day Ratio	365 Day Wt.	365 Day Ratio	Scrotal	TBT Index
71	753	115	1168	100	32	112

This bull is the cream of the crop from our program. His dam was a first calf heifer and weaned him in September at 805 lbs.! Rainmaker J08 is unique from top to bottom and has stood out since day one. He offers moderate birth-weight with weaning and yearling weight EPD's in the top 5% of the breed. This bull offers very strong carcass and \$B. The bottom side of his pedigree is extreme in maternal quality and stacks Game Day on New Day and Leachman Right Time. This is a big time Herd Bull prospect that has checked all the boxes and performed at the top along the way!

99

Stenberg Edition 9705

J Bar
Stenberg Ranch

Black Angus

AAA#: 19543027

DOB: 12/19/18

Tattoo: 9705



Hoff Charger S C 242

Hoff Limited Edition S C 594

Hoff Boss Lady S C 3V9

Riverbend Design 1407 4145

Stenberg Kate 705

Tate

Entry Wt	Final Wt
950	1295
WDA	ADG
2.92	3.05
WDA Ratio	ADG Ratio
92	82

CED	BW	WW	YW	MILK	\$M	\$B
5	1.7	43	83	26	23	151
BW	205 Day Wt.	205 Day Ratio	365 Day Wt.	365 Day Ratio	Scrotal	TBT Index
65	777	109	1111	95	36	95

100

Stenberg Limitless 9470

J Bar
Stenberg Ranch

Black Angus

AAA#: 19543003

DOB: 12/16/18

Tattoo: 9470



Hoff Charger S C 242

Hoff Limited Edition S C 594

Hoff Boss Lady S C 3V9

Stenberg Coalition 509

Stenberg Lady 470

Stenberg Lady Emulation 670

Entry Wt	Final Wt
1060	1465
WDA	ADG
3.28	3.58
WDA Ratio	ADG Ratio
104	96

CED	BW	WW	YW	MILK	\$M	\$B
-1	3.9	53	99	16	21	131
BW	205 Day Wt.	205 Day Ratio	365 Day Wt.	365 Day Ratio	Scrotal	TBT Index
85	734	103	1274	109	39	103

102

Stenberg Design 9166 [OHP]

J Bar
Stenberg Ranch

Black Angus

AAA#: 19537194

DOB: 12/19/18

Tattoo: 9166



W C C Special Design L309

OCC Montana Design 502

S A Montana Dream

R B Traveler 3244

Stenberg Larita 6166

Stenberg Julia 166

Entry Wt	Final Wt
1055	1450
WDA	ADG
3.27	3.5
WDA Ratio	ADG Ratio
103	93

CED	BW	WW	YW	MILK	\$M	\$B
0	2.5	61	101	26	54	133
BW	205 Day Wt.	205 Day Ratio	365 Day Wt.	365 Day Ratio	Scrotal	TBT Index
82	730	102	1253	107	39	101



Basin Rainmaker 4404 - Sire of Lot 98

126

RKP 514-724 97

RK
Perry

Black Angus

AAA#: 19527264

DOB: 2/19/19

Tattoo: 97



Vision Unanimous 1418

S Foundation 514

S Lady Ann 8384

Vermilion Game Day C382

RKP C382-428 724

RKP Z555-2227 428

Entry Wt	Final Wt
780	1170
WDA	ADG
3.07	3.45
WDA Ratio	ADG Ratio
97	92

CED	BW	WW	YW	MILK	\$M	\$B
2	2.8	53	99	24	57	125
BW	205 Day Wt.	205 Day Ratio	365 Day Wt.	365 Day Ratio	Scrotal	TBT Index
74	854	99	1125	96	37	96

Top 20% Marb.

BLACK ANGUS BULLS

127

RKP 514-735 910

RK Perry

Black Angus

AAA#: 19527254

DOB: 2/22/19

Tattoo: 910



Vision Unanimous 1418

S Foundation 514

S Lady Ann 8384

Vermilion Game Day C382

RKP C382-100 735

RKP 6262-H023 100

Entry Wt	Final Wt
790	1215
WDA	ADG
3.21	3.76
WDA Ratio	ADG Ratio
101	101

CED	BW	WW	YW	MILK	\$M	\$B
-1	3.1	55	115	29	66	155
BW	205 Day Wt.	205 Day Ratio	365 Day Wt.	365 Day Ratio	Scrotal	TBT Index
88	818	95	1221	105	35	100

Top 10% SC, Doc, and Claw. Top 15% \$F and \$B.

129

RKP 514-76 917

RK Perry

Black Angus

AAA#: 19618103

DOB: 2/28/19

Tattoo: 917



Vision Unanimous 1418

S Foundation 514

S Lady Ann 8384

Mytty Thunderstruck

RKP W355-1401 76

Donnas Lass 1401 Fox Cross

Entry Wt	Final Wt
650	1135
WDA	ADG
3.05	4.29
WDA Ratio	ADG Ratio
96	115

CED	BW	WW	YW	MILK	\$M	\$B
-1	2.1	49	77	24	74	108
BW	205 Day Wt.	205 Day Ratio	365 Day Wt.	365 Day Ratio	Scrotal	TBT Index
87	712	104	1091	93	36	104

Top 20% WW, YW, SC, Doc and \$F.

128

RKP 514-720 913

RK Perry

Black Angus

AAA#: 19527262

DOB: 2/25/19

Tattoo: 913



Vision Unanimous 1418

S Foundation 514

S Lady Ann 8384

Vermilion Game Day B138

RKP B138-56 720

RKP Y117-7345 56

Entry Wt	Final Wt
800	1175
WDA	ADG
3.13	3.32
WDA Ratio	ADG Ratio
99	89

CED	BW	WW	YW	MILK	\$M	\$B
8	0.7	63	118	26	67	120
BW	205 Day Wt.	205 Day Ratio	365 Day Wt.	365 Day Ratio	Scrotal	TBT Index
76	855	99	1206	103	34	97

Top 15% YW, Doc, Claw and Angle.

130

RKP 607-59 926

RK Perry

Black Angus

AAA#: 19529325

DOB: 3/5/19

Tattoo: 926



S Whitlock 179

S Cornerstone 607

S Blossom 0278

Vermilion Bear Paw

RKP Y117-7345 59

Stevenson Clova Pride 7345

Entry Wt	Final Wt
815	1260
WDA	ADG
3.43	3.94
WDA Ratio	ADG Ratio
108	105

CED	BW	WW	YW	MILK	\$M	\$B
5	2.6	67	126	27	49	134
BW	205 Day Wt.	205 Day Ratio	365 Day Wt.	365 Day Ratio	Scrotal	TBT Index
89	824	95	1238	106	37	102

Dam WR 3@102 YR 3@102.

2020 TREASURE BULL TEST



This was started many years ago as a little contest where every consignor gets a \$100 bill thrown in the pot. The consignor picks one bull from there consignment list at test arrival. The bull they think will gain the best. These select bulls are indexed different and separately from the TBT Index; 1/2 ADG Ratio, 1/4 205 Day Ratio, 1/4 365 Day Ratio. Winners take all!

- Jackpot Champion ~ Lot 39 ~ A Casino Bomber N33 son from Cook Angus with a 119 Index
 - Reserve Champion ~ Lot 20 ~ A Connealy Spur son from Willekes Angus with a 116 Index
 - 3rd Place ~ Tie between Lot 53 a son of Connealy Spur from Olson Cattle
- And Lot 98 a son of Basin Rainmaker 4404 from Double T Angus with 114 Indexes

RED ANGUS BULLS

103

STENBERG TROPHY 9466

J Bar
Stenberg Ranch

Red Angus

RAAA#: 4149786

DOB: 12/17/18

Tattoo: 9466



BROWN COMMITMENT X7787

MCPHEE TROPHY 36

ROYCE'S SENSATIONAL 14

KCC BREAK THRU W972

SUNR RUBY 429

SUNR RUBY 556

Entry Wt	Final Wt
1035	1450
WDA	ADG
3.26	3.67
WDA Ratio	ADG Ratio
108	94

CED	BW	WW	YW	MILK	HB	GM
11	-0.4	74	121	24	189	50
BW	205 Day Wt.	205 Day Ratio	365 Day Wt.	365 Day Ratio	Scrotal	TBT Index
88	719	100	1159	93	42	96

Twin of Cow

RESERVE CHAMPION WDA RED ANGUS BULL

106

MBD G24

DeBruycker
Reds

Red Angus

RAAA#: 4179712

DOB: 2/16/19

Tattoo: G24

BROWN JYJ REDEMPTION Y1334

LSF BRA NO WORRIES 4657B

LSF CRYSTAL R5154 X0105

HOLDEN BREAK THRU 248

MBD MS BREAKTHRU JR C56

HOLDEN HEIDI 450

Entry Wt	Final Wt
650	1140
WDA	ADG
2.97	4.34
WDA Ratio	ADG Ratio
98	111

CED	BW	WW	YW	MILK	HB	GM
14	-3.7	52	86	31	172	47
BW	205 Day Wt.	205 Day Ratio	365 Day Wt.	365 Day Ratio	Scrotal	TBT Index
68	609	98	1264	102	36	104

MEMBER OF CHAMPION SIRE GROUP RED ANGUS

105

STENBERG TROPHY 952

J Bar
Stenberg Ranch

Red Angus

RAAA#: 4149788

DOB: 12/20/18

Tattoo: 952



BROWN COMMITMENT X7787

MCPHEE TROPHY 36

ROYCE'S SENSATIONAL 14

LSF TBJ VISION 4805B

STENBERG ROSE 61D

STENBERG ROSE 1Z

Entry Wt	Final Wt
930	1365
WDA	ADG
3.09	3.85
WDA Ratio	ADG Ratio
102	99

CED	BW	WW	YW	MILK	HB	GM
13	-0.6	69	114	23	193	51
BW	205 Day Wt.	205 Day Ratio	365 Day Wt.	365 Day Ratio	Scrotal	TBT Index
79	766	103	1157	93	33	98

107

MBD G19

DeBruycker
Reds

Red Angus

RAAA#: 4179728

DOB: 2/14/19

Tattoo: G19

BROWN JYJ REDEMPTION Y1334

LSF BRA NO WORRIES 4657B

LSF CRYSTAL R5154 X0105

HOLDEN BREAK THRU 248

MBD MS BREAKTHRU D77

HOLDEN ALLISON 317

Entry Wt	Final Wt
715	1155
WDA	ADG
2.99	3.89
WDA Ratio	ADG Ratio
99	100

CED	BW	WW	YW	MILK	HB	GM
12	-2.9	66	107	28	172	49
BW	205 Day Wt.	205 Day Ratio	365 Day Wt.	365 Day Ratio	Scrotal	TBT Index
69	684	108	1246	100	34	103



McPhee Trophy - Sire of Lots 103 & 105



LSF BRA No Worries 4657B - Sire of Lots 106, 107, 115, 118 & 122

RED ANGUS BULLS

110

MBD G48

DeBruycker
Reds

Red Angus

RAAA#: 4179758

DOB: 3/5/19

Tattoo: G48

SUNR 507B
MBD ULTIMATE D22
MBD MS LEADTIME B48
LCOC EASTWOOD A167Z
MBD MS EASTWOOD D16
HOLDEN TIBBIE 202

Entry Wt	Final Wt
670	1055
WDA	ADG
2.87	3.41
WDA Ratio	ADG Ratio
95	88

CED	BW	WW	YW	MILK	HB	GM
8	0.1	60	100	29	163	48
BW	205 Day Wt.	205 Day Ratio	365 Day Wt.	365 Day Ratio	Scrotal	TBT Index
76	687	109	1223	99	34	99

115

MBD G37

DeBruycker
Reds

Red Angus

RAAA#: 4179708

DOB: 2/22/19

Tattoo: G37

BROWN JYJ REDEMPTION Y1334
LSF BRA NO WORRIES 4657B
LSF CRYSTAL R5154 X0105
HOLDEN SLAM DUNK 134
MBD MS SLAMDUNK B17
HOLDEN GRBAC 760

Entry Wt	Final Wt
720	1210
WDA	ADG
3.20	4.34
WDA Ratio	ADG Ratio
106	111

CED	BW	WW	YW	MILK	HB	GM
13	-2.9	65	110	23	189	50
BW	205 Day Wt.	205 Day Ratio	365 Day Wt.	365 Day Ratio	Scrotal	TBT Index
75	673	108	1320	106	33	108

MEMBER OF CHAMPION SIRE GROUP RED ANGUS

111

MBD G45

DeBruycker
Reds

Red Angus

RAAA#: 4179726

DOB: 3/1/19

Tattoo: G45

SUNR ULTIMATE RIBEYE 672Z
SUNR 507B
SUNR ELEANOR 507
HOLDEN BREAK THRU 248
MBD MS BREAKTHRU D47
HOLDEN BECKY 035

Entry Wt	Final Wt
630	1110
WDA	ADG
2.99	4.25
WDA Ratio	ADG Ratio
99	109

CED	BW	WW	YW	MILK	HB	GM
8	1.5	62	103	26	159	48
BW	205 Day Wt.	205 Day Ratio	365 Day Wt.	365 Day Ratio	Scrotal	TBT Index
85	640	102	1270	102	34	104

MEMBER OF RESERVE CHAMPION SIRE GROUP RED ANGUS

116

MBD G18

DeBruycker
Reds

Red Angus

RAAA#: 4179686

DOB: 2/13/19

Tattoo: G18

LJC MISSION STATEMENT P27
HOLDEN SLAM DUNK 134
HOLDEN SWEET SUE 512
DKK ULTIMATE 9032
HOLDEN BELLE 104
HOLDEN BELLE 642

Entry Wt	Final Wt
740	1150
WDA	ADG
2.97	3.63
WDA Ratio	ADG Ratio
98	93

CED	BW	WW	YW	MILK	HB	GM
13	-1.9	68	113	18	170	50
BW	205 Day Wt.	205 Day Ratio	365 Day Wt.	365 Day Ratio	Scrotal	TBT Index
68	665	107	1201	97	35	99

113

MBD G59

DeBruycker
Reds

Red Angus

RAAA#: 4179678

DOB: 3/10/19

Tattoo: G59

HOLDEN BREAK THRU 248
MBD BREAKTHRU D33
HOLDEN BELLE 642
LCOC KINDLE A082P
HOLDEN LOUISE 661
HOLDEN GRBAC 874

Entry Wt	Final Wt
685	1130
WDA	ADG
3.12	3.94
WDA Ratio	ADG Ratio
103	101

CED	BW	WW	YW	MILK	HB	GM
9	0.3	61	89	26	174	47
BW	205 Day Wt.	205 Day Ratio	365 Day Wt.	365 Day Ratio	Scrotal	TBT Index
82	690	111	1286	104	36	105

**Ranch Tested.
Rancher Trusted.
Red Angus**

RED ANGUS BULLS

117

MBD G32

DeBruycker
Reds

Red Angus

RAAA#: 4179684

DOB: 2/20/19

Tattoo: G32

LJC MISSION STATEMENT P27

HOLDEN SLAM DUNK 134

HOLDEN SWEET SUE 512

TR JULIUS ST633

HOLDEN BELGA 914

HOLDEN BELGA 713

Entry Wt	Final Wt
690	1160
WDA	ADG
3.05	4.16
WDA Ratio	ADG Ratio
101	107

CED	BW	WW	YW	MILK	HB	GM
10	0.7	74	127	19	194	52
BW	205 Day Wt.	205 Day Ratio	365 Day Wt.	365 Day Ratio	Scrotal	TBT Index
85	651	104	1238	100	35	104

121

MBD G72

DeBruycker
Reds

Red Angus

RAAA#: 4179746

DOB: 3/19/19

Tattoo: G72

SUNR ULTIMATE RIBEYE 672Z

SUNR 507B

SUNR ELEANOR 507

SUNR 507B

MBD MS SUNR E37

HOLDEN BELGA 914

Entry Wt	Final Wt
660	1165
WDA	ADG
3.30	4.47
WDA Ratio	ADG Ratio
109	115

CED	BW	WW	YW	MILK	HB	GM
10	0.6	65	111	30	162	49
BW	205 Day Wt.	205 Day Ratio	365 Day Wt.	365 Day Ratio	Scrotal	TBT Index
78	749	115	1455	117	32	116

RESERVE CHAMPION ADG RED ANGUS BULL
CHAMPION WDA RED ANGUS BULL
HIGH INDEX RED ANGUS BULL
MEMBER OF RESERVE CHAMPION SIRE GROUP RED ANGUS

118

MBD G14

DeBruycker
Reds

Red Angus

RAAA#: 4179718

DOB: 2/8/19

Tattoo: G14

BROWN JYJ REDEMPTION Y1334

LSF BRA NO WORRIES 4657B

LSF CRYSTAL R5154 X0105

HOLDEN BREAK THRU 248

MBD MS BREAKTHRU JR C42

HOLDEN DIPY DO 806

Entry Wt	Final Wt
665	1185
WDA	ADG
3.02	4.60
WDA Ratio	ADG Ratio
100	118

CED	BW	WW	YW	MILK	HB	GM
11	-1.6	56	92	26	158	49
BW	205 Day Wt.	205 Day Ratio	365 Day Wt.	365 Day Ratio	Scrotal	TBT Index
80	608	97	1297	105	35	107

CHAMPION ADG RED ANGUS BULL
MEMBER OF CHAMPION SIRE GROUP RED ANGUS

122

MBD G38

DeBruycker
Reds

Red Angus

RAAA#: 4179696

DOB: 2/23/19

Tattoo: G38

BROWN JYJ REDEMPTION Y1334

LSF BRA NO WORRIES 4657B

LSF CRYSTAL R5154 X0105

HOLDEN LEAD TIME 120

HOLDEN BARMAID 309

HOLDEN BARMAID 142

Entry Wt	Final Wt
720	1175
WDA	ADG
3.12	4.03
WDA Ratio	ADG Ratio
103	104

CED	BW	WW	YW	MILK	HB	GM
12	-2.3	69	116	27	183	50
BW	205 Day Wt.	205 Day Ratio	365 Day Wt.	365 Day Ratio	Scrotal	TBT Index
77	670	107	1240	100	33	104

119

MBD G82

DeBruycker
Reds

Red Angus

RAAA#: 4179682

DOB: 3/28/19

Tattoo: G82

SUNR ULTIMATE RIBEYE 672Z

SUNR 507B

SUNR ELEANOR 507

LJC JAVELIN M08

HOLDEN DIPY DO 806

HOLDEN DIPY DO 431

Entry Wt	Final Wt
590	1005
WDA	ADG
2.92	3.67
WDA Ratio	ADG Ratio
97	94

CED	BW	WW	YW	MILK	HB	GM
9	0.9	57	94	25	145	48
BW	205 Day Wt.	205 Day Ratio	365 Day Wt.	365 Day Ratio	Scrotal	TBT Index
80	640	103	1151	93	33	97

123

MBD G66

DeBruycker
Reds

Red Angus

RAAA#: 4179714

DOB: 3/16/19

Tattoo: G66

SUNR ULTIMATE RIBEYE 672Z

SUNR 507B

SUNR ELEANOR 507

LCOC EASTWOOD A167Z

MBD MS EASTWOOD C71

HOLDEN BARMAID 313

Entry Wt	Final Wt
655	1065
WDA	ADG
2.99	3.63
WDA Ratio	ADG Ratio
99	93

CED	BW	WW	YW	MILK	HB	GM
10	0.7	60	102	29	173	48
BW	205 Day Wt.	205 Day Ratio	365 Day Wt.	365 Day Ratio	Scrotal	TBT Index
80	681	109	1234	100	32	101

RED ANGUS BULLS

124

MBD G53

**DeBruycker
Reds**

Red Angus

RAAA#: 4179702

DOB: 3/7/19

Tattoo: G53

SUNR ULTIMATE RIBEYE 672Z

SUNR 507B

SUNR ELEANOR 507

HOLDEN SLAM DUNK 134

MBD MS SLAMDUNK B27

HOLDEN LEA 009

Entry Wt	Final Wt
635	1055
WDA	ADG
2.89	3.72
WDA Ratio	ADG Ratio
96	96

CED	BW	WW	YW	MILK	HB	GM
11	-0.8	58	102	24	171	49
BW	205 Day Wt.	205 Day Ratio	365 Day Wt.	365 Day Ratio	Scrotal	TBT Index
76	625	100	1212	98	34	98

125

MBD G104

**DeBruycker
Reds**

Red Angus

RAAA#: 4179690

DOB: 2/26/19

Tattoo: G104

SUNR ULTIMATE RIBEYE 672Z

SUNR 507B

SUNR ELEANOR 507

LJC MISSION STATEMENT P27

HOLDEN BELLE 224

HOLDEN BELLE 642

Entry Wt	Final Wt
705	1155
WDA	ADG
3.09	3.98
WDA Ratio	ADG Ratio
102	102

CED	BW	WW	YW	MILK	HB	GM
10	-0.5	62	103	26	164	49
BW	205 Day Wt.	205 Day Ratio	365 Day Wt.	365 Day Ratio	Scrotal	TBT Index
78	663	106	1267	102	37	103

MEMBER OF RESERVE CHAMPION SIRE GROUP RED ANGUS



Thanks to everyone behind the scenes who make this test so successful.



Bull Selection – Simplified.

Red Angus stakeholders have enjoyed the capability of selecting bulls based on economically relevant traits (ERTs), such as Heifer Pregnancy or Stayability, that truly impact their operations profitability. While these ERTs allow for efficient selection decisions, the growing number of ERTs and EPDs has resulted in confusion as producers attempt to estimate a sire's overall impact. In response, RAAA has developed the HerdBuilder and GridMaster indices, which answer the question:

“What impact will each potential sire have on my operation's profitability?”

HERDBUILDER

Producers selecting bulls to develop profitable replacement females and maximize the value of non-replacement marketed progeny should incorporate the HerdBuilder Index into their selection decisions.

The HerdBuilder Index is built using the following scenario:

- Red Angus bulls mated to cows and heifers
- Replacement heifers retained from within the herd
- All remaining progeny sold on a quality-based carcass grid

Given that replacement heifers are retained, significant influence is placed on the obvious maternal ERTs of Stayability, Heifer Pregnancy and Calving Ease. Additionally, with all remaining progeny sold on a quality-based carcass grid, Marbling, Yield Grade and growth EPDs also impact the HerdBuilder Index.

GRIDMASTER

Use the GridMaster Index if your operation's primary goal is maximizing profitability of feeders in the feedyard and on the rail.

The GridMaster Index is built using the following scenario:

- Red Angus bulls mated to cows
- All progeny sold on a quality-based carcass grid

Marbling, Yield Grade and growth EPDs are the traits of primary importance in the GridMaster Index.

**While the process of calculating an index is very complex,
the resulting selection tool is very simple to implement.**

HerdBuilder and GridMaster are expressed as differences in profitability per exposure.

HerdBuilder Example:

30 cows x 5 years breeding = 150 exposures

Bull A has a HerdBuilder Index of 175: $175 \times 150 = \$26,250$

Bull B has a HerdBuilder Index of 100: $100 \times 150 = \$15,000$

**\$11,250 Difference
in Profitability**

Ranch Tested. Rancher Trusted.

Red Angus

(940) 387-3502 | RedAngus.org



Thank You
For Your Support



American Angus Association Selection Tools

Expected Progeny Difference (EPD), is the prediction of how future progeny of each animal are expected to perform relative to the progeny of other animals listed in the database. EPDs are expressed in units of measure for the trait, plus or minus. Interim EPDs may appear on young animals when their performance has yet to be incorporated into the American Angus Association National Cattle Evaluation (NCE) procedures. This EPD will be preceded by an "I", and may or may not include the animal's own performance record for a particular trait, depending on its availability, appropriate contemporary grouping, or data edits needed for NCE.

Accuracy (ACC), is the reliability that can be placed on the EPD. An accuracy of close to 1.0 indicates higher reliability. Accuracy is impacted by the number of progeny and ancestral records included in the analysis.

Calving Ease Direct (CED), is expressed as a difference in percentage of unassisted births, with a higher value indicating greater calving ease in first-calf heifers. It predicts the average difference in ease with which a sire's calves will be born when he is bred to first-calf heifers.

Birth Weight (BW), expressed in pounds, is a predictor of a sire's ability to transmit birth weight to his progeny compared to that of other sires.

Weaning Weight (WW), expressed in pounds, is a predictor of a sire's ability to transmit weaning growth to his progeny compared to that of other sires.

Residual Average Daily Gain (RADG), feed efficiency expressed in pounds per day, is a predictor of a sire's genetic ability for postweaning gain in future progeny compared to that of other sires, given a constant amount of feed consumed.

Yearling Weight (YW), expressed in pounds, is a predictor of a sire's ability to transmit yearling growth to his progeny compared to that of other sires.

Yearling Height (YH), is a predictor of a sire's ability to transmit yearling height, expressed in inches, compared to the that of other sires.

Scrotal Circumference (SC), expressed in centimeters, is a predictor of the difference in transmitting ability for scrotal size compared to that of other sires.

Dockility (DOC), is expressed as a difference in yearling cattle temperament, with a higher value indicating more favorable dockility in a sire's offspring compared to another sire.

MATERNAL
Heifer Pregnancy (HP), is a selection tool to increase the probability or chance of a sire's daughters becoming pregnant as first-calf heifers during a normal breeding season. A higher EPD is the more favorable direction, and the EPD is reported in percentage units.

Calving Ease Maternal (CEM), is expressed as a difference in percentage of unassisted births, with a higher value indicating greater calving ease in first-calf daughters. It predicts the average ease with which a sire's daughters will calve as first-calf heifers when compared to daughters of other sires.

Maternal Milk (Milk), is a predictor of a sire's genetic merit for milk and mothering ability in his daughters compared to daughters of other sires. In other words, it is that part of a calf's weaning weight attributed to milk and mothering ability.

Mature Weight (MW), expressed in pounds, is a predictor of the difference in mature weight of daughters of a sire compared to the daughters of other sires.

Mature Height (MH), expressed in inches, is a predictor of the difference in mature height of a sire's daughters compared to daughters of other sires.

FOOT SCORE

Claw Set (Claw), is expressed in units of claw-set score. A lower EPD is more favorable, indicating a sire will produce progeny with more ideal claw set, which is toes that are symmetrical, even and appropriately spaced.

Foot Angle (Angle), is expressed in units of foot-angle score. A lower EPD is more favorable, indicating a sire will produce progeny with more ideal foot angle, which is a 45-degree angle at the pastern joint with appropriate toe length and heel depth.

CARCASS

The genetic evaluation produces a single set of EPDs for carcass traits where the units of measure are in trait format and analyzed on an age-constant basis.

Carcass Weight (CW), expressed in pounds, is a predictor of the differences in hot carcass weight of a sire's progeny compared to progeny of other sires.

Marbling (Marb), is expressed as a fraction of the difference in USDA marbling score of a sire's progeny compared to progeny of other sires.

Ribeye Area (RE), expressed in square inches, is a predictor of the difference in ribeye area of a sire's progeny compared to progeny of other sires.

Fat Thickness (Fat), expressed in inches, is a predictor of the differences in external fat thickness at the 12th rib (as measured between the 12th and 13th ribs) of a sire's progeny compared to progeny of other sires.

\$VALUE INDEXES

\$Value Indexes, reported in dollars per head, are multi-trait selection indexes where a higher value suggests more profit. The \$Value is an estimate of how future progeny of each sire are expected to perform, on average, compared to progeny of other sires if sires were randomly mated to cows and if calves were exposed to the same environment.

Maternal Weaned Calf Value (\$M), expressed in dollars per head, predicts profitability differences in progeny due to genetics from conception to weaning. Increased selection pressure on \$M aims to decrease overall mature cow size and improve foot structure and fertility while maintaining weaning weights consistent with today's production.

Weaned Calf Value (\$W), expressed in dollars per head, provides the expected difference in future progeny performance for postweaning merit compared to progeny of other sires. The underlying objective assumes commercial producers will retain ownership of cattle through the feedlot phase and sell fed cattle on a carcass weight basis with no considerations of premiums or discounts for quality and yield grade.

Cow Energy Value (\$EN), expressed in dollars savings per cow per year, assesses differences in cow energy requirements as an expected dollar savings difference in daughters of sires. A larger value is more favorable when comparing two animals. Components for computing \$EN savings difference include lactation energy requirements and energy costs associated with differences in mature cow size.

Feedlot Value (\$F), expressed in dollars per head, is the expected average difference in future progeny performance for postweaning merit compared to progeny of other sires. The underlying objective assumes commercial producers will retain ownership of cattle through the feedlot phase and sell fed cattle on a carcass weight basis with no considerations of premiums or discounts for quality and yield grade.

Grid Value (\$G), expressed in dollars per carcass, is the expected average difference in future progeny performance for carcass grid merit, including quality and yield grade attributes, compared to progeny of other sires.

Beef Value (\$B), expressed in dollars per carcass, represents the expected average differences in the progeny postweaning performance and carcass value compared to progeny of other sires. This index assumes commercial producers wean all male and female progeny, retain ownership of these animals through the feedlot phase, and market these animals on a quality-based carcass grid.



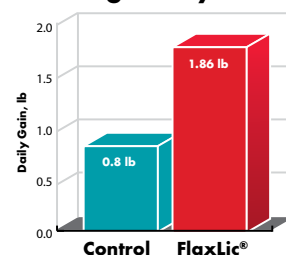
FlaxLic® Supplements: *Improving the Performance of Your Herd*

Flaxlic® provides essential vitamins and minerals for proper bull conditioning. **Flaxlic** blocks are completely fortified to prepare your bulls for breeding season. **Flaxlic** is also great for show animals, calves at weaning, breeding heifers and cows. In addition, **Flaxlic** is the first low moisture block to contain a high level of alpha-linolenic acid derived from flaxseed and edible linseed oil.

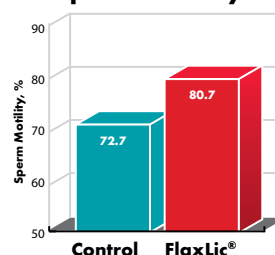
High-energy **Flaxlic** blocks contain 15% fat, essential minerals, and vitamins, and work around the clock to meet the demands of breeding bulls! Get your bulls ready for breeding season.

Visit **smartlic.com** today for more information!

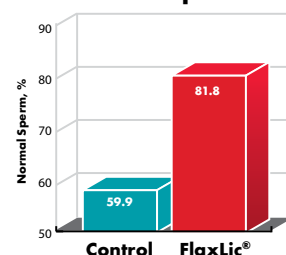
Average Daily Gain



Sperm Motility



Normal Sperm



FlaxLic now has
a U.S. Product and
Process Patent for elevating
Lipid Blood Levels in Livestock.

888-571-3421
smartlic.com

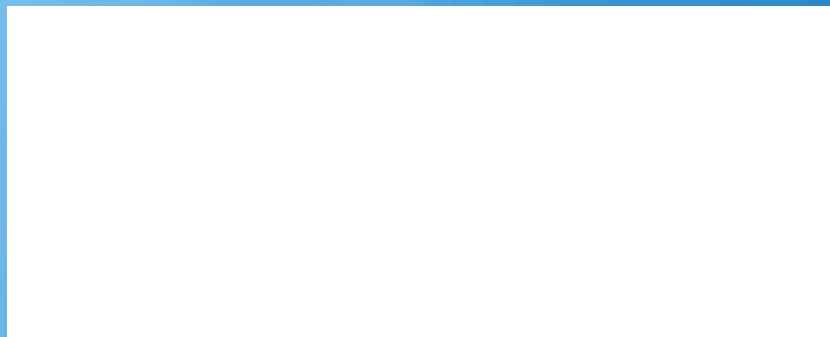




**TREASURE
BULL TEST**

PO Box 1, Power, MT 59468

FIRST CLASS MAIL
AUTO
U.S. POSTAGE
PAID
Lewistown, MT
Permit #181



The Cowboy's & Cowgirl's Performance Test

**120 Big Time Performance
Tested Angus Bulls Sell**



TREASURE BULL TEST

Join Us April 21, 2020
Great Falls, Montana

Ryan & Karnell Perry
406/788-9869 406/390-5473
PO Box 1, Power MT 59468
Email: info@treasurebulltest.com

Catalog: www.treasurebulltest.com