



*Big Sky  
Country Born  
and Raised*

*Annual Sale*

**April 20, 2021 • 1:00 PM**

**Western Livestock Auction • Great Falls, Montana**

*The Cowboy's  
and Cowgirl's  
Performance Bull Test*





**NEW**

# Nasalgen<sup>®</sup> 3-PMH

The **first and only** intranasal vaccine with both viral and bacterial pneumonia protection.

**The color of unmatched protection against IBR, BRSV, PI<sub>3</sub>, *Pasteurella multocida* and *Mannheimia haemolytica*.**

Nasalgen<sup>®</sup> 3-PMH is a one-of-a-kind respiratory vaccine that is safe to use in young calves for a strong, healthy foundation. And a unique BluShadow<sup>®</sup> diluent means there's no second-guessing which animals have been vaccinated. This cattle friendly vaccine is one more way Merck Animal Health Works for you.

Learn more at [Nasalgen.com](http://Nasalgen.com).



**Nasalgen<sup>®</sup> 3**  
IBR, BRSV, PI<sub>3</sub>

**CHOOSE YOUR LEVEL  
OF BRD PROTECTION**



**Nasalgen 3-PMH**  
IBR, BRSV, PI<sub>3</sub>  
+ *Pasteurella multocida*  
+ *Mannheimia haemolytica*



**Ryan & Karnell Perry**  
**406/788-9869 406/390-5473**



## Welcome

On behalf of my wife and myself, along with all the consignors and their respective families I would like to welcome you to the Annual Treasure Bull Test Sale. We thank you for your continued interest and support in the program and this sale.

It is always a pleasure this time of year when you get to visit with so many hard-working farmers and ranchers mostly about the market, little about the weather, and more about government these days. Then towards the end of the conversation they ask how

do the bulls look? My simple answer is, "Let's go look at them." These bulls have the right "LOOK" and black and white performance numbers to back them. Bulls were fed to allow the cream to rise to the top, but not pushed to where they are all fattened up. I am still a believer after another challenging cattle feeding year, the cattle with a little more birth, little more bone, have the performance "LOOK", they will be highly sought after when it comes time to market them. I also believe they pack a little more hardiness from birth through the end of feeding period. They can handle cold winters at birth, they do not get cut back at shipping, they hardly see the sick pen when in the feedyard, and if they do, they snap out of it and go on to perform. These bulls are sound footed, free moving, along with having lots of performance and growth. They possess the "LOOK" to sire outstanding feeder cattle as well as females for your cow herd. The "LOOK" is what will keep the rancher and cattle feeder in business. This is why we are "The Cowboy's and Cowgirl's Performance Test."

Once again, the sale will be on Northern Livestock Video Auction. The new bidding format for production sales is outstanding. Also feel free to preview them at [www.northernlivestockvideo.com](http://www.northernlivestockvideo.com)

Finally, I would like to thank Matt, Chet, and the boys at Muddy Creek Feedyard for the outstanding job they did. The bulls are in outstanding condition for immediate service. We would also like to thank Janice for all she does in such short notice, her work is always outstanding.

Please join us once again this year on Monday, April 19th at 4 PM, for "Happy Hour Bull Preview". Plenty of refreshments, snacks, and fellowship among ranchers and TBT consignors to be had while previewing the bulls.

We will see you at the sale on Tuesday, April 20th. You will truly appreciate this set of "Cowboy Kind" Angus Bulls!

Ryan



**Perry Family - Pryce, Quayd  
Brant, Karnell, Ryan**



**PO Box 1, Power MT 59468**  
**Email: [info@treasurebulltest.com](mailto:info@treasurebulltest.com)**  
**[www.treasurebulltest.com](http://www.treasurebulltest.com)**







## PERFORMANCE SALE

Tuesday,

**APRIL 20, 2021**

Lunch 11:30 AM Sale 1:00 PM  
WESTERN LIVESTOCK AUCTION  
GREAT FALLS, MT

### ~ General Information ~

#### Pre-Sale Viewing of Bulls

The bulls will be at Western Livestock Auction on Sunday, April 18, 2021 and available for viewing. Prior to that they are available for viewing anytime at Muddy Creek Feedyard, 2 miles west of Vaughn, MT. They are in Pens 71 and 72.

#### Sale Day Phones

Western Livestock Auction

406/727-5400

Ryan Perry 406/788-9869

Karnell Perry 406/390-5473

#### Auctioneer:

Joe Goggins 406/861-5664

#### Livestock Press

Kurt Kangas 406/366-4190.....Angus Journal/Angus Ass'n  
John Goggins 406/698-4159 ..... Western Ag Reporter  
Devin Murnin 406/696-1502 ..... Western Livestock Journal

*Footnotes are provided by consignors. Feel free to contact consignors about their bulls. Consignor contact information is on page 3.*

#### Fertility

Every bull selling has had a complete breeding physical and has been semen tested. Scrotal measurements were taken April 2, 2021. Measurements listed are actual size. Bulls sell guaranteed to be breeders via natural service. Guarantees are between the buyer and TBT Consignor only!

**Veterinarian: Dr. Kurt Johnson, 406/788-0700**

#### Health

All bulls have also been tested negative for BVD. The bulls all received their first dose of Fusogard. Bulls have completed all requirements for immediate interstate shipment. If your state or providence requires more for import than has been completed, it will be done immediately after the sale. TBT will assume all extra vet expenses for interstate shipment.

#### Trucking

Trucking is at the buyers' expense and responsibility! Several TBT Consignors will have trailers with them and will help with delivery if possible. Contact TBT prior to sale to discuss and coordinate possible delivery options. TBT has several contacts who they deem to be reliable livestock carriers.

#### Insurance

Mortality Insurance is available thru Tyler Holland, Novich Insurance Agency. See page 4 for insurance options. Buyer pays for ½ and TBT Consignor pays for ½. Buyers if you choose to insure your bulls please do so when settling for bulls.

#### Performance Data

EPD's listed in this catalog are as of March 19, 2021.

#### Transportation & Accommodations

Great Falls is served by several airlines. We will meet any planes if notified.

O'Haire Motor Inn 17 7th St. S, Great Falls, MT.....406-454-2141

La Quinta Inn 600 River Dr S, Great Falls, MT.....406-761-2600

*Ask for the Treasure Bull Test Rates.*

#### Terms and Conditions

Bulls sell under the terms and conditions of the American Angus Association. Settlement is cash. Settlement must be made at the time of sale unless arrangements have been made prior to sale with individual consignor and TBT. Registration papers will be transferred to buyer when settlement has been made. Announcements made from auction block take precedence over printed material. Auctioneer will settle any disputes of bids. Anyone attending the sale does so at their own risk. TBT and Western Livestock Auction, LLC assume no liability, legal or otherwise, for any accidents which may occur.



## INDEX OF CONSIGNORS

### CONSIGNORS AND LOT NUMBERS

<b>VGA Livestock</b> <b>Dallas Van Gelder</b> 14470 Churchill Rd Manhattan, MT 59741 406.581.8086 1 ~ 2 ~ 3	<b>Flesch Angus</b> <b>Jeff Flesch</b> Box 574 Shelby, MT 59474 970.290.4353 17 ~ 18 ~ 19 ~ 20	<b>LK Bar Angus Ranch</b> Larry Krein 36351 Dublin Gulch Rd St Ignatius, MT 59865 406.644.2801 72 ~ 73 ~ 75	<b>Willekes Angus</b> <b>Marshall Willekes</b> 10 Cowboy Way Choteau, MT 59422 406.590.7011 99 ~ 100 ~ 101 ~ 102
<b>Spring Vale Ranch</b> <b>Shaun &amp; Jen Christensen</b> 56835 Little Bitterroot Rd Hot Springs, MT 59845 406.741.2519 5	<b>JLR Angus</b> <b>Jess Matt</b> 96 E Bridger Rd Bridger, MT 59014 406.662.3283 21 ~ 22 ~ 25 ~ 27 30 ~ 31 ~ 32 ~ 33	<b>Granger Angus</b> <b>Jim &amp; Elizabeth Granger</b> 1929 Eden Rd Great Falls, MT 59405 406.736.5588 76 ~ 77 ~ 78 ~ 79 80 ~ 81 ~ 83	<b>Beuerman Angus Ranch</b> <b>Erich Beuerman</b> 135 Meriwether Rd Cut Bank, MT 59427 406.551.3759 104 ~ 107
<b>Krantz Angus</b> <b>Clark &amp; Carter Krantz</b> 835 Fairmont Rd Kalispell, MT 59901 406.250.1081 6 ~ 7 ~ 8	<b>RK Perry</b> <b>Ryan &amp; Karnell Perry</b> Box 1 Power, MT 59468 406.788.9869 34 ~ 35 ~ 36 ~ 37 ~ 38 ~ 39 ~ 41 42 ~ 44 ~ 45 ~ 46 ~ 47 ~ 49 ~ 50 51 ~ 52 ~ 53 ~ 54 ~ 55 ~ 57 ~ 58 59 ~ 60	<b>Granger Livestock LLC</b> <b>Forrest Granger</b> 1524 Eden Rd Great Falls, MT 59405 406.868.5148 84 ~ 85 ~ 86	<b>Olson Cattle Co</b> <b>Wendy Olson</b> 63702 Chawain Rd St Ignatius, MT 59865 406.261.3782 109 ~ 110 ~ 111
<b>Harrison Angus Ranch</b> <b>Doug Harrison</b> Box 274 Boyd, MT 59013 406.962.3867 9 ~ 10 ~ 11 ~ 13 ~ 14 ~ 15	<b>MSU Angus</b> <b>TJ Carlisle</b> Box 172900 Bozeman, MT 59717 307.248.3815 61 ~ 62 ~ 63 ~ 66	<b>MLK Angus</b> <b>Mark Keller</b> 2828 Lincoln Rd E Helena, MT 59602 406.431.0872 87 ~ 88	<b>Barton Angus Ranch</b> John & Brian Barton 1849 S Lakeline Dr Salt Lake City, UT 84109 801.541.1473 112 ~ 113 ~ 118 119 ~ 120 ~ 121
<b>Jacobsen Ranch</b> <b>Wade Jacobsen</b> 1282 US Hwy 89 Sun River, MT 59483 406.799.5889 16	<b>Fourmile Creek Angus</b> <b>Shaun &amp; Michaela Hystad</b> 145 Fourmile Creek Rd Great Falls, MT 59404 406.231.5297 68 ~ 69 ~ 70 ~ 71	<b>Willekes Angus</b> <b>Bob Willekes</b> 10 Cowboy Way Choteau, MT 59422 406.590.2526 89 ~ 91 ~ 92 93 ~ 95 ~ 96	<b>LB Farms ~ WB Angus ~</b> <b>TJB Reds</b> <b>Shelley &amp; Wes &amp; TJ Brown</b> 2156 S Sunset Bench Rd Stevensville, MT 59870 406.240.4879 122 ~ 124 ~ 126



## **Bid through Northern Livestock Video Auction's NEW Online Bidding Platform! Desktop and Mobile Friendly**

### **For the Desktop:**

1. It is best to use the Google Chrome web browser.
2. **Pre-Register at least one day prior to the sale.**
3. Go to [bid.northernlivestockvideo.com](http://bid.northernlivestockvideo.com) and click "Get Approved to Bid".
4. Doing this will prompt you to create an account, after which you will fill out a bidder approval application.
5. Once Approved, an email will be sent to the email account provided, please click the link in that email to activate your account and a buyer number will be provided.
6. On sale day (after approval), visit [www.northernlivestockvideo.com](http://www.northernlivestockvideo.com) to view and bid!

### **For the Mobile:**

Use your mobile device to download the Northern App and follow the above steps to get approved.

**There is an instructional video on how to register to bid on our website,  
[www.northernlivestockvideo.com](http://www.northernlivestockvideo.com) if you have any questions.**

**For technical assistance with Internet Viewing and Bidding Questions,  
call Sam Fraser 406-860-0590.**

### **Phone Bidding:**

Anyone wanting to use the Northern Livestock phone bank to bid must pre-register and have a bid number to bid on the phone.

**To register with NLVA call 866-616-5035 Before Sale Day.**

View the Online CATALOG and VIDEO CLIP of each BULL selling at [www.northernlivestockvideo.com](http://www.northernlivestockvideo.com)

Bidders who are successful in making purchases will be contacted following the sale to make payment and delivery arrangements.

Northern Livestock's Sale Day Bid Line: **1-406-245-0889.**

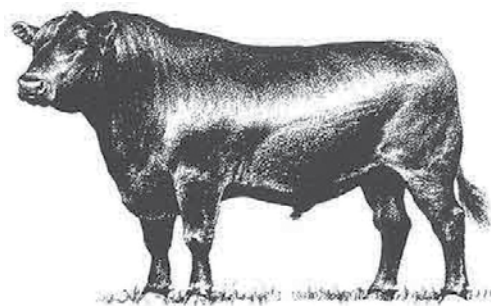
## **BULL MORTALITY INSURANCE**

**Novich Insurance Agency, agent for XL Catlin Insurance Co**

**Tyler Holland  
(406) 684-5264  
[tylerholland@3rivers.net](mailto:tylerholland@3rivers.net)**

**One Year Policy Term, from the date of the sale  
Full Mortality Only Option = 5.8%  
\$200 minimum premium**

**Full Mortality  
100% of the value of the bull in the event of death or  
humane destruction as a result of a life-threatening  
injury. No deductibles, no co-insurance.**



# ABOVE AVERAGE GOALS REQUIRE TARGETED BULLS

*Aim High*

The Targeting the Brand™ logo highlights registered Angus bulls with greater genetic potential to produce calves that meet the most challenging specifications of the *Certified Angus Beef®* brand.

**Only 1 in 4 non-parent Angus bulls qualify.**

## *Minimum Genetic Requirements*

Marbling EPD (Marb)	+0.65
Dollar Grid Carcass Index (\$G)	+55.0



For more information on Targeting the Brand™ visit [CABcattle.com](http://CABcattle.com).



## Driving the science of better breeding

There's little room for error in the cattle business. Producers need the most advanced information to make smart selection decisions, and Angus Genetics Inc. (AGI) provides it through genomic-enhanced expected progeny differences (GE-EPDs).

EPDs that traditionally contained all pedigree, performance and progeny information now also include results from available genomic, or DNA, tests. Breeders who use genomic technology give buyers access to AGI-generated GE-EPDs that provide:

- Increased predictability and decreased risk for young and unproven animals due to enhanced accuracy of EPDs
- Better characterization of genetics for difficult-to-measure performance traits (such as carcass traits, maternal traits and feed efficiency)
- The ability to make more rapid progress for traits that are important to you, due to:
  - more accurate selection
  - easier identification of genetic outliers
  - the ability to propagate young animals with confidence earlier in their lives

In fact, GE-EPDs on unproven animals have the same amount of accuracy as if they had recorded 8-33 calves, depending on the trait. That's valuable insight, offered regularly through the breed's weekly national cattle evaluation at [www.angus.org](http://www.angus.org).

### How do you know if EPDs are genomic-enhanced?

Ask your breeder, refer to the registration paper, or look for the AGI GE-EPD logo, Angus GS™ powered by partner Neogen GeneSeek or the HD50k or i50k by partner Zoetis.





# BLACK ANGUS BULLS

**1**

## Vga Unique 1420

**VGA  
Livestock**

Black Angus

AAA#: 19897016

DOB: 01/15/20

Tattoo: 1420

Plattmire Weigh Up K360

Deer Valley Unique 5635

Sitz Henrietta Pride 643T

Hyline Image Maker 1048

Vga Pride 28

Hyline Pride 833

CED	BW	WW	YW	MILK	\$C
4	2.8	63	113	23	250
BW	205 Day Wt.	205 Day Ratio	365 Day Wt.	365 Day Ratio	TBT Index
89	729	108	1206	100	107

**Selling 2/3 Interest and Full Possession.**

**3**

## Vga Weigh Up 1320

**VGA  
Livestock**

Black Angus

AAA#: 19896702

DOB: 01/16/20

Tattoo: 1320

Plattmire Weigh Up K360

J&J Weigh Up 294

J & J Miss Georgina 294

S A V Resource 1441

Vga Pride 1713

Vga Pride C314

CED	BW	WW	YW	MILK	\$C
0	3.6	72	130	24	255
BW	205 Day Wt.	205 Day Ratio	365 Day Wt.	365 Day Ratio	TBT Index
93	733	109	1334	111	118

Dam WR 2@110.

**Selling 2/3 Interest and Full Possession.**

**CHAMPION ADG BULL.**

**2**

## Vga Unique 320

**VGA  
Livestock**

Black Angus

AAA#: 19871636

DOB: 01/08/20

Tattoo: 320

Plattmire Weigh Up K360

Deer Valley Unique 5635

Sitz Henrietta Pride 643T

Basin Excitement

Vga Lucy 161

Vga Lucy J39

CED	BW	WW	YW	MILK	\$C
6	1.8	70	128	22	253
BW	205 Day Wt.	205 Day Ratio	365 Day Wt.	365 Day Ratio	TBT Index
81	702	104	1224	102	111

Dam WR 2@103. The 50K done on this bull ranks him in the Top 8% for YW, Top 20% for WW, and Top 11% for HP.

**Selling 2/3 Interest and Full Possession.**

**5**

## Springvale Exclusive 056

**Springvale  
Ranch**

Black Angus

AAA#: 19835859

DOB: 03/24/20

Tattoo: 056

LD Capitalist 316

Musgrave 316 Exclusive

Musgrave Prim Lassie 163-386

SydGen Aim 0001

Springvale Blackcap 447

Springvale Blackcap 925

**ANGUS**  
Presented by Angus Society

CED	BW	WW	YW	MILK	\$C
5	2.2	70	121	25	231
BW	205	205	365	365	TBT Index
	Day Wt.	Day Ratio	Day Wt.	Day Ratio	
92	737	104	1240	103	101

Son of the popular Musgrave 316 Exclusive, Springvale Exclusive 056 has docility in the Top 4%, WW Top 15% and YW in the Top 20%. His adjusted 205 wt. is 737 lbs. His dam has a weaning ratio of 104 with a 369-day calving interval and has one daughter retained in the herd.



Deer Valley Unique 5635 - Sire of Lots 1 & 2



Musgrave 316 Exclusive - Sire of Lot 5



# BLACK ANGUS BULLS

**6**

## CAK Tahoe Dinero 0-1

**Krantz Angus**

Black Angus

AAA#: 19678261

DOB: 01/09/20

Tattoo: 2001

Tehama Upward Y238  
Tehama Tahoe B767  
Tehama Mary Blackbird Y684

KR DINERO  
FF Miss Angus E167

FF Miss Angus Z95

Entry Wt	Final Wt
829	1197
WDA	ADG
2.91	3.57
WDA Ratio	ADG Ratio
90	102



CED	BW	WW	YW	MILK	\$C
6	3.2	80	141	29	263
BW	205 Day Wt.	205 Day Ratio	365 Day Wt.	365 Day Ratio	TBT Index
92	682	106	1135	94	101

Balanced Growth. Top 3% WW & YW, Top 10% Scrotal, Docility, \$W & \$B. Top 20% Marb. Top 30% RE. Top 15% \$C at +263.

**8**

## Carters Tahoe 025

**Krantz Angus**

Black Angus

AAA#: 19813539

DOB: 01/31/20

Tattoo: 2025

Tehama Upward Y238  
Tehama Tahoe B767  
Tehama Mary Blackbird Y684

CK Carter's Extra K205 115  
CK Blackjack K205 159

CK Blackjack I87 024

Entry Wt	Final Wt
860	1251
WDA	ADG
3.22	3.80
WDA Ratio	ADG Ratio
99	109



CED	BW	WW	YW	MILK	\$C
8	1.9	75	126	35	274
BW	205 Day Wt.	205 Day Ratio	365 Day Wt.	365 Day Ratio	TBT Index
80	720	112	1188	99	107

Maternal and Growth. Top 1% HP. Top 2% \$W. Top 4% \$M & Milk. Top 10% WW. Top 15% YW. Maternal Grandam currently raising 12th calf, a nice Rain-fall for the 2022 TBT.

**7**

## Carters Capitalist 316 2010

**Krantz Angus**

Black Angus

AAA#: 19761407

DOB: 01/19/20

Tattoo: 2010

Connealy Capitalist 028  
LD Capitalist 316  
LD Dixie Erica 2053

Hoover Dam  
CK Blackjack Hoover 510  
BG Blackjack Cap

Entry Wt	Final Wt
875	1253
WDA	ADG
3.12	3.67
WDA Ratio	ADG Ratio
96	105



CED	BW	WW	YW	MILK	\$C
5	2.5	70	112	25	261
BW	205 Day Wt.	205 Day Ratio	365 Day Wt.	365 Day Ratio	TBT Index
98	693	108	1166	97	103

Deep Bodied Growth. Top 15% WW, \$W, \$C. Top 20% RE. Comes from same maternal family as Lot 8.

**9**

## HARB Rampage 024 [CAF-OSF]

**Harrison Angus Ranch**

Black Angus

AAA#: 19990209

DOB: 03/28/20

Tattoo: 024

Quaker Hill Rampage 0A36  
Will Rampage 196D  
JF Pride Z196

Alberda Traveler 416  
H A R B Miss Bruty 130  
M A R Miss Bruty 4242

Entry Wt	Final Wt
851	1162
WDA	ADG
3.50	3.02
WDA Ratio	ADG Ratio
108	87

CED	BW	WW	YW	MILK	\$C
6	1.0	62	106	22	236
BW	205 Day Wt.	205 Day Ratio	365 Day Wt.	365 Day Ratio	TBT Index
80	813	117	1281	106	103

Eleven yr. old cow w/ BR 9@98, WR 9@101 & YR 5@100. She has good feet, legs, and udder. Very docile with a deep body. Sire provides calving ease with vigor.



Tehama Tahoe B767 - Sire of Lots 6 & 8

**10**

## HARB Charm 015 [OHP]

**Harrison Angus Ranch**

Black Angus

AAA#: 19982345

DOB: 03/07/20

Tattoo: 015

Silveiras Conversion 8064  
BUBS Southern Charm AA31  
Hickory Hill Erica 009

SL Great Falls 301  
HARB Leena 628

H A R B Leena 924-308

Entry Wt	Final Wt
915	1357
WDA	ADG
3.84	4.29
WDA Ratio	ADG Ratio
119	123

CED	BW	WW	YW	MILK	\$C
6	1.9	69	116	31	
BW	205 Day Wt.	205 Day Ratio	365 Day Wt.	365 Day Ratio	TBT Index
89	780	112	1445	120	118

Four yr. old cow w/ BR 2@101, WR 2@115 & YR 1@101. Good feet, legs, and udder. She is feminine with deep body and angular. SL Great Falls 301 produces good females.

**Selling 2/3 Interest and Full Possession.**

# BLACK ANGUS BULLS

**11**

## HARB Rampage 030

Harrison  
Angus Ranch

Black Angus

AAA#: 19982344

DOB: 04/09/20

Tattoo: 030

Quaker Hill Rampage 0A36  
Will Rampage 196D  
JF Pride Z196

Bovagene Shannon 103  
H A R B Belle Nellie 921-336  
H A R B Belle Nellie 921

CED	BW	WW	YW	MILK	\$C
5	2.4	81	134	27	
BW	205 Day Wt.	205 Day Ratio	365 Day Wt.	365 Day Ratio	TBT Index
89	878	126	1357	113	107

Seven yr. old cow w/ BR 2@106, WR 2@120 & YR 1@105. Dam is deep bodied, long, and angular with docility. Sire is easy calving with extreme fast growth.

**14**

## HARB McCoy 031 [ OHP-OSF ]

Harrison  
Angus Ranch

Black Angus

AAA#: 19990190

DOB: 04/12/20

Tattoo: 031

CA McCoy 4222  
HARB McCoy 147  
H A R B 702 Polly Ann 716

HARB Consensus 7229-172  
HARB Miss Bruty 233-421  
H A R B Miss Bruty 309-233

CED	BW	WW	YW	MILK	\$C
7	0.5	56	100	32	
BW	205 Day Wt.	205 Day Ratio	365 Day Wt.	365 Day Ratio	TBT Index
87	830	115	1263	105	99

Good feet and legs. Good udder. Bred to produce females with CA McCoy, HARB Windy and HARB Consensus. Dam WR 5@108 YR 2@108.

**13**

## HARB Charm 011 [ OHP ]

Harrison  
Angus Ranch

Black Angus

AAA#: 19985213

DOB: 03/05/20

Tattoo: 011

Silveiras Conversion 8064  
BUBS Southern Charm AA31  
Hickory Hill Erica 009

HARB Chisum 132  
HARB Miss Nadine 733  
HARB Miss Nadine 221-402

CED	BW	WW	YW	MILK	\$C
3	3.3	62	106	25	
BW	205	205	365	365	TBT Index
	Day Wt.	Day Ratio	Day Wt.	Day Ratio	
87	715	103	1275	106	99

Good feet and legs on dam. She is angular with good udder and docile. She has one calf WR 1@103. Sire produces deep angular females with lots of docility.

**16**

## JR Dually 0641 [ AMF-DDF ]

Jacobsen  
Ranch

Black Angus

AAA#:

DOB: 02/21/20

Tattoo: 0641

DL Dually  
Occ Dually 859  
OCC Evergreen 041

HARB Pendleton 765 J H  
JR MS Pendleton 0601  
JR MS Payweight 8646

ANGUSGS  
Proud to be Angus Certified

CED	BW	WW	YW	MILK	\$C
8	1.1	56	100	27	203
BW	205	205	365	365	TBT Index
	Day Wt.	Day Ratio	Day Wt.	Day Ratio	
84	714	106	1289	107	103

Sire is a past TBT High Seller.



BUBS Southern Charm AA31 - Sire of Lots 10, 13, 109, 110 & 124

**17**

## FF Value Added H72

Flesch  
Angus

Black Angus

AAA#: +19892190

DOB: 01/28/20

Tattoo: H72

HA Prime Cut 4493  
HA Value Added 7578  
HA Rito Lady 3839

S A V Final Answer 0035  
FF Herrietta Pride W10  
FF Fanny T35

ANGUSGS  
Proud to be Angus Certified

CED	BW	WW	YW	MILK	\$C
5	1.9	58	108	24	205
BW	205 Day Wt.	205 Day Ratio	365 Day Wt.	365 Day Ratio	TBT Index
92	762	110	1278	106	112

Big, high volume son of HA Value Added. Maternal brother to FF Dempsey Y11.



# BLACK ANGUS BULLS

**18**

## FF Conclusion JF H86

**Flesch  
Angus**

Black Angus

AAA#: +19892244

DOB: 01/29/20

Tattoo: H86

Bushs Easy Decision 98

FF Conclusion F83

JF Eriskey B80

KR DINERO

FF Shoshone JF D149

JF Shoshone W42

Entry Wt	Final Wt
856	1264
WDA	ADG
3.23	3.96
WDA Ratio	ADG Ratio
100	114

ANGUSGS  
Powered by Angus Genetics

CED	BW	WW	YW	MILK	\$C
8	1.1	66	126	34	264
BW	205 Day Wt.	205 Day Ratio	365 Day Wt.	365 Day Ratio	TBT Index
92	713	104	1280	106	108

We are extremely excited about the progeny by FF Conclusion F83, they combine real world performance, docility, excellent feet, and above average REA. H86 combines those characteristics in a moderate BW, with excellent docility and feet EPD's. H86 mother is a full sister to FF EZ Money D217.

**19**

## FF EZ Money H136

**Flesch  
Angus**

Black Angus

AAA#: +19892396

DOB: 02/17/20

Tattoo: H136

KR DINERO

FF EZ Money D217

JF Shoshone W42

K R Gavel 1057

KR Patience 4417

WK Patience 2483

Entry Wt	Final Wt
851	1284
WDA	ADG
3.45	4.20
WDA Ratio	ADG Ratio
106	120

ANGUSGS  
Powered by Angus Genetics

CED	BW	WW	YW	MILK	\$C
4	2.7	74	136	36	247
BW	205 Day Wt.	205 Day Ratio	365 Day Wt.	365 Day Ratio	TBT Index
83	727	107	1286	107	111

We are extremely excited about the progeny by FF Conclusion F83, they combine real world performance, docility, excellent feet, and above average REA. H86 combines those characteristics in a moderate BW, with excellent docility and feet EPD's. H86 mother is a full sister to FF EZ Money D217.

**20**

## FF Summation PF H222

**Flesch  
Angus**

Black Angus

AAA#: 19943900

DOB: 03/13/20

Tattoo: H222

K C F Bennett Consent Y75

K C F Bennett Summation

Thomas Patricia 9705

KR Hitch

KR Lucy 7485

KR Lucy 4203

Entry Wt	Final Wt
881	1240
WDA	ADG
3.57	3.49
WDA Ratio	ADG Ratio
110	100

ANGUSGS  
Powered by Angus Genetics

CED	BW	WW	YW	MILK	\$C
7	2.3	87	154	16	285
BW	205 Day Wt.	205 Day Ratio	365 Day Wt.	365 Day Ratio	TBT Index
85	800	108	1330	110	106

A powerful bull who ranks in the Top 1% of the breed for WW, YW and docility. Dam was selected from the Krebs Ranch dispersal sale.

**21**

## JLR Revelant 904H

**JLR  
Angus**

Black Angus

AAA#: 19867772

DOB: 02/04/20

Tattoo: 904H

HA Outside 3008

HA Relevant 6022

HA Blackcap Lady 0855

Sitz Madison 10477

Vermilion Queenall 1133

Vermilion Queenall 8219

Entry Wt	Final Wt
773	1136
WDA	ADG
2.95	3.52
WDA Ratio	ADG Ratio
91	101

ANGUSGS  
Powered by Angus Genetics

CED	BW	WW	YW	MILK	\$C
12	0.3	48	90	35	202
BW	205 Day Wt.	205 Day Ratio	365 Day Wt.	365 Day Ratio	TBT Index
70	664	99	1085	90	97

**22**

## JLR Keystone 906H [ OHF ]

**JLR  
Angus**

Black Angus

AAA#: 19867773

DOB: 02/11/20

Tattoo: 906H

Myers Keystone M263

Shipwheel BLS Keystone 7550

Shipwheel BLS Rachel 510

LC Grid Topper 6078

Vermilion Pride 1503

Vermilion Pride 4183

Entry Wt	Final Wt
712	1132
WDA	ADG
2.99	4.08
WDA Ratio	ADG Ratio
92	117

ANGUSGS  
Powered by Angus Genetics

CED	BW	WW	YW	MILK	\$C
0	2.6	56	95	23	215
BW	205 Day Wt.	205 Day Ratio	365 Day Wt.	365 Day Ratio	TBT Index
88	665	99	1097	91	102



K C F Bennett Summation - Sire of Lot 20

# BLACK ANGUS BULLS

**25**

## JLR Countdown 920H

**JLR  
Angus**

Black Angus

AAA#: 19865299

DOB: 03/13/20

Tattoo: 920H

Vermilion Countdown C095

Vermilion Countdown F594

Vermilion Lass 2225

Vermilion Bear Paw

Clear Creek Classy Pride 365

CCA Pride 023

Entry Wt	Final Wt
635	1052
WDA	ADG
3.03	4.05
WDA Ratio	ADG Ratio
94	116

ANGUSGS  
Powered by Angus Genetics

CED	BW	WW	YW	MILK	\$C
14	0.1	64	119	23	190
BW	205 Day Wt.	205 Day Ratio	365 Day Wt.	365 Day Ratio	TBT Index
82	757	113	1115	93	107

Pathfinder Dam. Calving ease bull with Top 10% for HP.

**30**

## JLR Re-ride H375

**JLR  
Angus**

Black Angus

AAA#: 19865304

DOB: 03/03/20

Tattoo: H375

Connealy Spur

Vermilion Re-Ride

Vermilion Lass 3265

TC Franklin 619

Vermilion Erica 2120

Vermilion Erica 0611

Entry Wt	Final Wt
767	1107
WDA	ADG
3.10	3.30
WDA Ratio	ADG Ratio
96	95

ANGUSGS  
Powered by Angus Genetics

CED	BW	WW	YW	MILK	\$C
11	1.5	66	111	15	205
BW	205 Day Wt.	205 Day Ratio	365 Day Wt.	365 Day Ratio	TBT Index
84	719	105	1059	88	96

**27**

## JLR Spur H372

**JLR  
Angus**

Black Angus

AAA#: 19865301

DOB: 03/05/20

Tattoo: H372

Connealy Stimulus 8419

Connealy Spur

Jazza of Conanga 8594

Vermilion Nebraska S538

Vermilion Lass 2638

Vermilion Lass 8239

Entry Wt	Final Wt
853	1206
WDA	ADG
3.40	3.43
WDA Ratio	ADG Ratio
105	98

ANGUSGS  
Powered by Angus Genetics

CED	BW	WW	YW	MILK	\$C
-1	5.9	74	135	19	274
BW	205 Day Wt.	205 Day Ratio	365 Day Wt.	365 Day Ratio	TBT Index
88	723	105	1154	96	100

Top 1% for \$F with Top 3% Claw and Top 1% Angle.

**31**

## JLR Doc Neal H376

**JLR  
Angus**

Black Angus

AAA#: 19865305

DOB: 04/03/20

Tattoo: H376

PA Full Power 1208

Connealy Doc Neal

Poppy of Conanga 765

Connealy Dublin 8223

Vermilion Pride 2169

Vermilion Pride 9555

Entry Wt	Final Wt
756	1108
WDA	ADG
3.40	3.42
WDA Ratio	ADG Ratio
105	98

ANGUSGS  
Powered by Angus Genetics

CED	BW	WW	YW	MILK	\$C
11	-0.3	54	105	26	217
BW	205 Day Wt.	205 Day Ratio	365 Day Wt.	365 Day Ratio	TBT Index
76	749	109	1140	95	101



Connealy Spur - Sire of Lots 27 & 33



Vermilion Re-Ride - Sire of Lot 30



# BLACK ANGUS BULLS

**32**

**JLR Bomber H377** [OHF]

**JLR Angus**

Black Angus

AAA#: 19868681

DOB: 02/06/20

Tattoo: H377

KM Broken Bow 002

Casino Bomber N33

Casino Annie K48

Vermilion Re-Ride

Vermilion Erica 8206

Vermilion Erica 1065

Entry Wt	Final Wt
776	1101
WDA	ADG
2.87	3.16
WDA Ratio	ADG Ratio
89	90

ANGUSGS

CED	BW	WW	YW	MILK	\$C
13	-1.7	67	117	25	250
BW	Day Wt.	Day Ratio	Day Wt.	Day Ratio	TBT Index
68	748	109	1069	89	96

Calving ease bull with Top 4% for HP.

**34**

**RKP E143-0213 001**

**RK Perry**

Black Angus

AAA#: +19938470

DOB: 02/17/20

Tattoo: 001

Connealy Spur

Vermilion Spur E143

Vermilion Blackbird 4468

Connealy Dublin 8223

Vermilion Lass 0213

Vermilion Lass 3298

Entry Wt	Final Wt
947	1411
WDA	ADG
3.79	4.50
WDA Ratio	ADG Ratio
117	129

ANGUSGS

CED	BW	WW	YW	MILK	\$C
4	4.3	68	129	36	276
BW	Day Wt.	Day Ratio	Day Wt.	Day Ratio	TBT Index
88	777	108	1401	116	118

Pathfinder Donor Dam from Vermilion Ranch who goes back to one of their best VRD daughters they ever had. WR 8@108 YR 8@108.

**33**

**JLR Spur H378**

**JLR Angus**

Black Angus

AAA#: 19865306

DOB: 03/20/20

Tattoo: H378

Connealy Stimulus 8419

Connealy Spur

Jazza of Conanga 8594

Connealy Courage 25L

Leachman Burgess 7047

Leachman Burgess 4077

Entry Wt	Final Wt
704	1081
WDA	ADG
3.18	3.66
WDA Ratio	ADG Ratio
98	105

ANGUSGS

CED	BW	WW	YW	MILK	\$C
9	1.5	59	115	32	251
BW	Day Wt.	Day Ratio	Day Wt.	Day Ratio	TBT Index
80	785	114	1115	93	104

Very maternal bull with 9 Pathfinders in the 3-generation pedigree.

**35**

**RKP E143-0213 002**

**RK Perry**

Black Angus

AAA#: +19935700

DOB: 02/20/20

Tattoo: 002

Connealy Spur

Vermilion Spur E143

Vermilion Blackbird 4468

Connealy Dublin 8223

Vermilion Lass 0213

Vermilion Lass 3298

Entry Wt	Final Wt
874	1306
WDA	ADG
3.54	4.19
WDA Ratio	ADG Ratio
109	120

ANGUSGS

CED	BW	WW	YW	MILK	\$C
7	1.8	60	133	32	261
BW	Day Wt.	Day Ratio	Day Wt.	Day Ratio	TBT Index
85	669	108	1309	109	112

Pathfinder Donor Dam from Vermilion Ranch who goes back to one of their best VRD daughters they ever had. WR 8@108 YR 8@108.



Casino Bomber N33 - Sire of Lot 32



Vermilion Spur E143 - Sire of Lots 34, 35, 36, 37, 41 & 47

# BLACK ANGUS BULLS

**36**

**RKP E143-0213 003**

**RK Perry**

Black Angus

AAA#: +19935699

DOB: 02/22/20

Tattoo: 003

Connealy Spur  
Vermilion Spur E143  
Vermilion Blackbird 4468

Connealy Dublin 8223

Vermilion Lass 0213

Vermilion Lass 3298

ANGUSGS



CED	BW	WW	YW	MILK	\$C
9	1.6	58	120	32	256
BW	205 Day Wt.	205 Day Ratio	365 Day Wt.	365 Day Ratio	TBT Index
84	663	108	1221	101	113

Pathfinder Donor Dam from Vermilion Ranch who goes back to one of their best VRD daughters they ever had. WR 8@108 YR 8@108.

**39**

**RKP D131-835 011**

**RK Perry**

Black Angus

AAA#: 19933696

DOB: 02/26/20

Tattoo: 011

S A V Privilege 3030  
Vermilion Roughrider  
Vermilion Blackette 3139

S Chisum 255

RKP 255-136 835

Will Lucy 113M

ANGUSGS

CED	BW	WW	YW	MILK	\$C
0	2.2	66	115	26	205
BW	205 Day Wt.	205 Day Ratio	365 Day Wt.	365 Day Ratio	TBT Index
78	852	103	1221	101	102

**37**

**RKP E143-0213 004**

**RK Perry**

Black Angus

AAA#: +19935698

DOB: 02/23/20

Tattoo: 004

Connealy Spur  
Vermilion Spur E143  
Vermilion Blackbird 4468

Connealy Dublin 8223

Vermilion Lass 0213

Vermilion Lass 3298

ANGUSGS



CED	BW	WW	YW	MILK	\$C
7	2.9	68	124	31	262
BW	205 Day Wt.	205 Day Ratio	365 Day Wt.	365 Day Ratio	TBT Index
85	709	108	1247	104	102

Pathfinder Donor Dam from Vermilion Ranch who goes back to one of their best VRD daughters they ever had. WR 8@108 YR 8@108.

**41**

**RKP E143-47 020**

**RK Perry**

Black Angus

AAA#: 19933834

DOB: 03/01/20

Tattoo: 020

Connealy Spur  
Vermilion Spur E143  
Vermilion Blackbird 4468

SydGen Googol

RKP 0413-2480 47

Vermilion Lass 2480

ANGUSGS

CED	BW	WW	YW	MILK	\$C
8	1.0	65	124	43	266
BW	205 Day Wt.	205 Day Ratio	365 Day Wt.	365 Day Ratio	TBT Index
84	820	99	1224	102	101

**38**

**RKP 8024-825 005**

**RK Perry**

Black Angus

AAA#: 19936536

DOB: 02/23/20

Tattoo: 005

V D A R Sonny Boy 1194  
CS Sonny Boy 8024  
CS Lass 4005

S A V Pedigree 4834

RKP 4834-64 825

RKP 1310-325 64

ANGUSGS



CED	BW	WW	YW	MILK	\$C
3	4.5	67	120	25	230
BW	205 Day Wt.	205 Day Ratio	365 Day Wt.	365 Day Ratio	TBT Index
70	813	103	1206	100	96

**42**

**RKP 5212-30 024 [M1F]**

**RK Perry**

Black Angus

AAA#: 19942137

DOB: 03/03/20

Tattoo: 024

S A V Resource 1441  
Ellingson Transcend 5212  
EA Hyalite Lady 1333

S A V Prosperity 9131

RKP GL-Janiece 30

Vermilion JL Janiece 732

ANGUSGS

CED	BW	WW	YW	MILK	\$C
5	2.3	65	121	24	274
BW	205 Day Wt.	205 Day Ratio	365 Day Wt.	365 Day Ratio	TBT Index
88	801	97	1314	109	109



# BLACK ANGUS BULLS

**44**

**RKP Y290-61 030**

**RK Perry**

Black Angus

AAA#: 19936640

DOB: 03/04/20

Tattoo: 030

RR Playmaker 7356  
Vermilion Playmaker Y290  
Vermilion Mamere 6555

Connealy Countdown  
RKP 32-325 61

Merle of Braun Creek 325

Entry Wt	Final Wt
947	1324
WDA	ADG
3.72	3.66
WDA Ratio	ADG Ratio
115	105

ANGUSGS  
Powered by Waggon Service

CED	BW	WW	YW	MILK	\$C
-2	3.8	53	89	26	169
BW	205 Day Wt.	205 Day Ratio	365 Day Wt.	365 Day Ratio	TBT Index
86	831	110	1376	114	110

**46**

**RKP F325-71 037**

**RK Perry**

Black Angus

AAA#: 19930562

DOB: 03/06/20

Tattoo: 037

KR Abundant 4948  
Vermilion Abundant F325  
Vermilion Violet 4270

Boyd Signature 1014  
RKP 1014-8456 71

Vermilion Lass 8456

Entry Wt	Final Wt
784	1175
WDA	ADG
3.32	3.80
WDA Ratio	ADG Ratio
102	109

ANGUSGS  
Powered by Waggon Service

CED	BW	WW	YW	MILK	\$C
4	1.4	46	80	26	202
BW	205 Day Wt.	205 Day Ratio	365 Day Wt.	365 Day Ratio	TBT Index
78	753	96	1247	103	103

**45**

**RKP 316-0213 036**

**RK Perry**

Black Angus

AAA#: +19935696

DOB: 03/06/20

Tattoo: 036

Connealy Capitalist 028  
LD Capitalist 316  
LD Dixie Erica 2053

Connealy Dublin 8223  
Vermilion Lass 0213

Vermilion Lass 3298

Entry Wt	Final Wt
906	1209
WDA	ADG
3.42	2.94
WDA Ratio	ADG Ratio
106	84

ANGUSGS  
Powered by Waggon Service

CED	BW	WW	YW	MILK	\$C
7	1.5	66	111	23	227
BW	205 Day Wt.	205 Day Ratio	365 Day Wt.	365 Day Ratio	TBT Index
84	806	108	1240	103	98

Pathfinder Donor Dam from Vermilion Ranch who goes back to one of their best VRD daughters they ever had. WR 8@108 YR 8@108.

**47**

**RKP E143-0213 040**

**RK Perry**

Black Angus

AAA#: 19933835

DOB: 03/07/20

Tattoo: 040

Connealy Spur  
Vermilion Spur E143  
Vermilion Blackbird 4468

Connealy Dublin 8223  
Vermilion Lass 0213

Vermilion Lass 3298

Entry Wt	Final Wt
918	1348
WDA	ADG
3.82	4.17
WDA Ratio	ADG Ratio
118	120

ANGUSGS  
Powered by Waggon Service

CED	BW	WW	YW	MILK	\$C
6	2.4	65	130	35	261
BW	205 Day Wt.	205 Day Ratio	365 Day Wt.	365 Day Ratio	TBT Index
90	836	106	1414	117	114

Pathfinder Donor Dam from Vermilion Ranch who goes back to one of their best VRD daughters they ever had. WR 8@108 YR 8@108. Top 15% in 14 EPDs.



LD Capitalist 316 - Sire of Lots 7, 45 & 49

**49**

**RKP 316-0213 046**

**RK Perry**

Black Angus

AAA#: +19935695

DOB: 03/14/20

Tattoo: 046

Connealy Capitalist 028  
LD Capitalist 316  
LD Dixie Erica 2053

Connealy Dublin 8223  
Vermilion Lass 0213

Vermilion Lass 3298

Entry Wt	Final Wt
855	1172
WDA	ADG
3.39	3.08
WDA Ratio	ADG Ratio
105	88

ANGUSGS  
Powered by Waggon Service

CED	BW	WW	YW	MILK	\$C
-4	4.6	80	138	33	277
BW	205 Day Wt.	205 Day Ratio	365 Day Wt.	365 Day Ratio	TBT Index
85	809	108	1225	102	99

Pathfinder Donor Dam from Vermilion Ranch who goes back to one of their best VRD daughters they ever had. WR 8@108 YR 8@108. Top 1% \$F. Top 2% \$B. Top 10% \$W & \$C.

# BLACK ANGUS BULLS

**50**

**RKP F325-72 048**

**RK Perry**

Black Angus

AAA#: 19931672

DOB: 03/15/20

Tattoo: 048

KR Abundant 4948  
Vermilion Abundant F325  
Vermilion Violet 4270

Sitz Top Game 561X  
RKP 561X-8456 72

Vermilion Lass 8456

Entry Wt	Final Wt
927	1291
WDA	ADG
3.74	3.53
WDA Ratio	ADG Ratio
115	101

ANGUSGS  
Powered by Angus Genetics

CED	BW	WW	YW	MILK	\$C
3	3.7	77	133	33	256
BW	205 Day Wt.	205 Day Ratio	365 Day Wt.	365 Day Ratio	TBT Index
86	864	115	1395	116	111

Dam WR 2@110. Top 5% WW & \$W.

**52**

**RKP F325-7069 055**

**RK Perry**

Black Angus

AAA#: 19931680

DOB: 03/27/20

Tattoo: 055

KR Abundant 4948  
Vermilion Abundant F325  
Vermilion Violet 4270

Sitz Top Game 561X  
RKP 561X-8456 7069

Vermilion Lass 8456

Entry Wt	Final Wt
732	1181
WDA	ADG
3.55	4.36
WDA Ratio	ADG Ratio
110	125

ANGUSGS  
Powered by Angus Genetics

CED	BW	WW	YW	MILK	\$C
3	3.3	70	123	29	244
BW	205 Day Wt.	205 Day Ratio	365 Day Wt.	365 Day Ratio	TBT Index
90	818	108	1315	109	114



**51**

**RKP F325-724 051**

**RK Perry**

Black Angus

AAA#: 19930566

DOB: 03/18/20

Tattoo: 051

KR Abundant 4948  
Vermilion Abundant F325  
Vermilion Violet 4270

Vermilion Game Day C382  
RKP C382-428 724

RKP Z555-2227 428

Entry Wt	Final Wt
948	1280
WDA	ADG
3.74	3.22
WDA Ratio	ADG Ratio
115	92

ANGUSGS  
Powered by Angus Genetics

CED	BW	WW	YW	MILK	\$C
-6	5.4	77	122	25	228
BW	205 Day Wt.	205 Day Ratio	365 Day Wt.	365 Day Ratio	TBT Index
90	938	113	1391	115	107

**53**

**RKP 8024-428 060**

**RK Perry**

Black Angus

AAA#: 19930565

DOB: 04/05/20

Tattoo: 060

V D A R Sonny Boy 1194  
CS Sonny Boy 8024  
CS Lass 4005

GK Herd Maker Z555  
RKP Z555-2227 428

Vermilion Martha 2227

Entry Wt	Final Wt
733	1232
WDA	ADG
3.80	4.84
WDA Ratio	ADG Ratio
117	139

ANGUSGS  
Powered by Angus Genetics

CED	BW	WW	YW	MILK	\$C
3	3.1	60	99	22	203
BW	205 Day Wt.	205 Day Ratio	365 Day Wt.	365 Day Ratio	TBT Index
85	897	108	1373	114	120

Dam WR 4@103 YR 3@104.



Vermilion Abundant F325 - Sire of Lots 46, 50, 51 & 52

**54**

**RKP 78-E4 H6**

**RK Perry**

Black Angus

AAA#: 19971585

DOB: 03/15/20

Tattoo: H6

Boyd Signature 1014  
RKP 1014-8456 78  
Vermilion Lass 8456

Vermilion Game Day B138  
RKP PQ B138-307 E4

RKP 107S-S602 307

Entry Wt	Final Wt
858	1262
WDA	ADG
3.66	3.92
WDA Ratio	ADG Ratio
113	112

ANGUSGS  
Powered by Angus Genetics

CED	BW	WW	YW	MILK	\$C
10	0.4	64	119	27	209
BW	205 Day Wt.	205 Day Ratio	365 Day Wt.	365 Day Ratio	TBT Index
82	818	108	1367	113	111

Sire was a past TBT ADG Champion.

# BLACK ANGUS BULLS

**55**

**RKP 78-032 H8**

**RK Perry**

Black Angus

AAA#: 19971586

DOB: 03/17/20

Tattoo: H8

Boyd Signature 1014

**RKP 1014-8456 78**

Vermilion Lass 8456

Double AA Old Post Bandolier

**RKP 367N-S603 032**

PCC Barbara Perfection S603

Entry Wt	Final Wt
705	1168
WDA	ADG
3.41	4.50
WDA Ratio	ADG Ratio
105	129

ANGUS GS

CED	BW	WW	YW	MILK	\$C
7	1.3	40	78	20	175
BW	205 Day Wt.	205 Day Ratio	365 Day Wt.	365 Day Ratio	TBT Index
90	768	102	1256	104	112

Sire was a past TBT ADG Champion.

**59**

**RKP 6848-0213 H54**

**RK Perry**

Black Angus

AAA#: +19935691

DOB: 01/25/20

Tattoo: H54

Coleman Charlo 0256

**S A V Raindance 6848**

S A V Blackcap May 4136

Connealy Dublin 8223

**Vermilion Lass 0213**

Vermilion Lass 3298

Entry Wt	Final Wt
963	1268
WDA	ADG
3.21	2.96
WDA Ratio	ADG Ratio
99	85

ANGUS GS

CED	BW	WW	YW	MILK	\$C
2	3.8	56	111	22	217
BW	205 Day Wt.	205 Day Ratio	365 Day Wt.	365 Day Ratio	TBT Index
88	749	108	1225	102	98

Pathfinder Donor Dam from Vermilion Ranch who goes back to one of their best VRD daughters they ever had. WR 8@108 YR 8@108.

**57**

**RKP 78-420 H15**

**RK Perry**

Black Angus

AAA#: 19971587

DOB: 03/25/20

Tattoo: H15

Boyd Signature 1014

**RKP 1014-8456 78**

Vermilion Lass 8456

Vermilion Mabry

**RKP Z212-537 420**

Sandford Ms Big Time 537

Entry Wt	Final Wt
721	1159
WDA	ADG
3.46	4.25
WDA Ratio	ADG Ratio
107	122

ANGUS GS

CED	BW	WW	YW	MILK	\$C
0	4.3	61	120	19	215
BW	205 Day Wt.	205 Day Ratio	365 Day Wt.	365 Day Ratio	TBT Index
90	769	102	1247	103	109

Top 1% Claw & Angle. Sire was a past TBT ADG Champion.

**60**

**RKP 6848-0213 H96**

**RK Perry**

Black Angus

AAA#: +19935690

DOB: 02/01/20

Tattoo: H96

Coleman Charlo 0256

**S A V Raindance 6848**

S A V Blackcap May 4136

Connealy Dublin 8223

**Vermilion Lass 0213**

Vermilion Lass 3298

Entry Wt	Final Wt
1017	1493
WDA	ADG
3.85	4.62
WDA Ratio	ADG Ratio
119	132

ANGUS GS

CED	BW	WW	YW	MILK	\$C
3	3.0	62	112	19	224
BW	205 Day Wt.	205 Day Ratio	365 Day Wt.	365 Day Ratio	TBT Index
92	785	108	1489	124	121

Pathfinder Donor Dam from Vermilion Ranch who goes back to one of their best VRD daughters they ever had. WR 8@108 YR 8@108.

**CHAMPION TBT INDEX BULL.**  
**RESERVE CHAMPION ADG BULL.**  
**RESERVE CHAMPION WDA BULL.**

**58**

**RKP 833-438 H34**

**RK Perry**

Black Angus

AAA#: 19973835

DOB: 03/11/20

Tattoo: H34

S A V Sensation 5615

**RKP 5615-136 833**

Will Lucy 113M

Bobcat Xcalibur

**RKP X8-018 438**

RKP 7078-9330 018

Entry Wt	Final Wt
780	1143
WDA	ADG
3.28	3.52
WDA Ratio	ADG Ratio
101	101

ANGUS GS

CED	BW	WW	YW	MILK	\$C
6	2.8	74	124	18	210
BW	205 Day Wt.	205 Day Ratio	365 Day Wt.	365 Day Ratio	TBT Index
70	746	99	1189	99	100



S A V Raindance 6848 - Sire of Lots 59 & 60



# BLACK ANGUS BULLS

**61**

## MSU Champ 20209

Montana State University

Black Angus

AAA#: +19848644

DOB: 03/01/20

Tattoo: 20209

Musgrave Sky High 1535  
Musgrave Feature  
Musgrave Pride 1416-166

Tombstone 050  
SRS Manor 4221B  
Ox Bow Manor 443

Entry Wt	Final Wt
664	1074
WDA	ADG
2.99	3.98
WDA Ratio	ADG Ratio
92	114

ANGUSGS

CED	BW	WW	YW	MILK	\$C
13	-0.2	50	92	29	190
BW	205 Day Wt.	205 Day Ratio	365 Day Wt.	365 Day Ratio	TBT Index
88	646	102	1098	91	102

This is a bull that can provide strong old school genetics while possessing high fertility by being in the Top 2% for Scrotal and the Top 3% in HP. With his exceptional CED and CEM, he is set up to be a quality calving ease bull without losing gain on his offspring. A special thanks goes out to Tim Skinner for donating this embryo to the MSU Angus Program.

**62**

## MSU Brush Buster 20211

Montana State University

Black Angus

AAA#: +19874579

DOB: 03/01/20

Tattoo: 20211

A A R Really Windy 1205  
V D A R Really Windy 4097  
VDAR Blackbird 2031

F V 20K King 308M  
Diamond Lucy 752  
Diamond Lucy 180R

Entry Wt	Final Wt
739	1083
WDA	ADG
3.02	3.34
WDA Ratio	ADG Ratio
93	96

ANGUSGS

CED	BW	WW	YW	MILK	\$C
17	-2.9	52	92	23	188
BW	205 Day Wt.	205 Day Ratio	365 Day Wt.	365 Day Ratio	TBT Index
65	594	107	1115	93	99

With a nice moderate birth weight (Top 2%) and being in the Top 1% for calving ease, this bull has calving ease written all over him. A special thanks goes out to Patty Nissen at Top Notch Angus for donating this embryo to the MSU Angus Program.



V D A R Really Windy 4097 - Sire of Lot 62

**63**

## MSU Hellcat 20221

Montana State University

Black Angus

AAA#: +19848645

DOB: 03/05/20

Tattoo: 20221

Basin Max 602C  
21AR Coal Bank C014  
Leachman Lass 5014

O C C Traveler 723Z  
Farview Lady Erica 756  
Farview Lady Erica 282

Entry Wt	Final Wt
600	981
WDA	ADG
2.76	3.70
WDA Ratio	ADG Ratio
85	106

ANGUSGS

CED	BW	WW	YW	MILK	\$C
0	0.9	42	69	30	177
BW	205 Day Wt.	205 Day Ratio	365 Day Wt.	365 Day Ratio	TBT Index
90	592	106	1012	84	99

This bull offers strong paternal and maternal genetic that can improve the pedigree within any herd. A special thanks goes out to Roger and Sandy Jacobs and Summit Angus for donating this embryo to the MSU Angus Program.

**66**

## MSU Black Spur 20231

Montana State University

Black Angus

AAA#: +19848647

DOB: 03/07/20

Tattoo: 20231

Musgrave Big Sky  
Bobcat Blue Sky  
Bobcat Lass 411

Sitz Upward 307R  
Baldco Emulota 5685  
JMB Emulota 013

Entry Wt	Final Wt
705	1103
WDA	ADG
3.12	3.86
WDA Ratio	ADG Ratio
96	111

ANGUSGS

CED	BW	WW	YW	MILK	\$C
5	4.1	86	147	30	255
BW	205 Day Wt.	205 Day Ratio	365 Day Wt.	365 Day Ratio	TBT Index
88	633	120	1146	95	107

This bull marks a variety of supreme traits on any producers check list. With his high daily gain, high TBT Index, large REA, large carcass weight, this bull is a Growth Bull for sure. While being a growth bull he does not come short in the fertility area with the Top 4% of HP. His pedigree and EPDs speak for themselves when you consider this bull an all-around exceptional bull. A special thanks goes out to Bryan Ratzburg at Bobcat Angus for the donation of this embryo to the MSU Angus Program.



Bobcat Blue Sky - Sire of Lot 66

# BLACK ANGUS BULLS

**68**

## 4MC Cavalry 2005

Fourmile Creek Angus

Black Angus

AAA#: 19783878

DOB: 02/20/20

Tattoo: 2005

Connealy Cavalry 1149

JVC Cavalry V3326

Brusett Forever W857

Mill Coulee Payweight 419

ICC BV Erica 6313

Icc Bon View Erica 7212



CED	BW	WW	YW	MILK	\$C
11	1.5	92	148	17	209
BW	205 Day Wt.	205 Day Ratio	365 Day Wt.	365 Day Ratio	TBT Index
81	828	108	1203	100	106

A calving ease bull made to put pounds on the ground with WW & YW in Top 2%.

**70**

## 4MC easy money 2012

Fourmile Creek Angus

Black Angus

AAA#: 19817166

DOB: 02/25/20

Tattoo: 2012

Plattmere Weigh Up K360

Stevenson Easy Money 70688

Down T Blackbird 5646

Cudlobe In Focus 5S

Stevenson Lily 2380

Diamond Lily S371



CED	BW	WW	YW	MILK	\$C
10	0.1	67	126	39	260
BW	205 Day Wt.	205 Day Ratio	365 Day Wt.	365 Day Ratio	TBT Index
89	755	99	1295	107	99

A bull that will provide you with growth and genetics. He is in the top 1% for EPD's in RADG & Milk, as well as Top 2% for \$F & 4% for \$W.

**69**

## 4MC Automatic 2013

Fourmile Creek Angus

Black Angus

AAA#: 19783880

DOB: 02/25/20

Tattoo: 2013

DL Dually

DL Automatic 1088

DL Barbara 150

S A V Universal 4038

FF Esia Evergreen F17

FF Esia Evergreen B160



CED	BW	WW	YW	MILK	\$C
5	80	136	38	38	284
BW	205 Day Wt.	205 Day Ratio	365 Day Wt.	365 Day Ratio	TBT Index
79	771	100	1201	100	102

A bull that combines a strong appearance with strong growth and maternal traits. His half-brother sold at Lewis's for \$32K this spring.

**71**

## 4MC Automatic 2007

Fourmile Creek Angus

Black Angus

AAA#: 19783883

DOB: 02/24/20

Tattoo: 2007

DL Dually

DL Automatic 1088

DL Barbara 150

SydGen FATE 2800

KA Miss Amy 1549

CAR Miss Amy 591



CED	BW	WW	YW	MILK	\$C
8	1.5	76	137	22	245
BW	205 Day Wt.	205 Day Ratio	365 Day Wt.	365 Day Ratio	TBT Index
88	738	97	1246	103	110

This calving ease bull, from a deceased sire, has 6 pathfinders on his papers. Combined with that he is in the Top 10% for WW, 5% for YW, & Top 10% \$F.



JVC Cavalry V3326 - Sire of Lot 68



DL Automatic 1088 - Sire of Lots 69 & 71

# BLACK ANGUS BULLS

## 72 Krein Sitz Bullseye Otis 018 LK Bar Angus

Black Angus					
AAA#: 19859150					
DOB: 02/07/20					
Tattoo: K018					
Mogck Bullseye					
Sitz Bullseye 9994					
Sitz Pride 0128					
Mytty In Focus					
La Beth Belle Doris 03					
La Beth Belle Annie 957					
Entry Wt		Final Wt			
840		1252			
WDA		ADG			
3.28		4.00			
WDA Ratio		ADG Ratio			
101		115			
CED	BW	WW	YW	MILK	\$C
10	1.4	75	129	32	231
BW	205	205	365	365	TBT Index
83	703	100	1245	103	106

Dam WR 7@99 YW 1@90. Grandam WR 6@96 YW 2@102.  
I have used Sitz bulls in my AI program for about 20 years. This is an example of the quality you can get from Sitz bulls. His EPD's rank him in the Top 2% for \$W, Top 10% for WW, YW, Milk, Top 15% for CW.

## 73 Krein Sitz Bullseye Carl 025 LK Bar Angus

Black Angus					
AAA#: 19859152					
DOB: 02/13/20					
Tattoo: K025					
Mogck Bullseye					
Sitz Bullseye 9994					
Sitz Pride 0128					
H A Image Maker 0415					
La Beth Miss Natalie 108					
La Beth Miss Courtney 902					
Entry Wt		Final Wt			
925		1329			
WDA		ADG			
3.53		3.92			
WDA Ratio		ADG Ratio			
109		112			
CED	BW	WW	YW	MILK	\$C
8	1.2	71	115	28	214
BW	205	205	365	365	TBT Index
85	784	111	1342	111	111

Dam WR 8@102 YW 3@102. Grandam WR 7@98 YW 4@103.  
First bull calf she has raised. All other calves have been heifers. Three heifers were selected for the Nile Female Sale. Three heifers are in production in our herd of cows. The Dam is a deep bodied cow with a good udder and feet. His EPD's rank him in the Top 5% for CEM, Top 10% for \$W, Top 15% for WW, Top 20% for CW.



Sitz Bullseye 9994 - Sire of Lots 72 & 73

## 75 Krein Enhance Gunner 042 LK Bar Angus

Black Angus					
AAA#: 19859155					
DOB: 02/19/20					
Tattoo: K042					
SydGen Exceed 3223					
SydGen Enhance					
SydGen Rita 2618					
B/R New Day 454					
Krein Miss Madam Mim 444					
La Beth Miss Natalie 108					
Entry Wt		Final Wt			
885		1315			
WDA		ADG			
3.55		4.17			
WDA Ratio		ADG Ratio			
110		120			
CED	BW	WW	YW	MILK	\$C
6	3.3	81	150	27	284
BW	205	205	365	365	TBT Index
89	765	109	1343	111	113

Dam WR 5@98 YW 3@103. Grandam WR 8@103 YW 3@102.  
This bull exhibits eye appeal, a standout in the pasture. Lots of deep and capacity. Dam has lots of capacity, good udder, and feet. His EPD's rank him in the Top 1% for RADG, Top 2% for YW, Top 3% for WW, Top 4% for CW, Top 10% for Doc. His \$ values are in the Top 15% for \$W, Top 2% for \$F, Top 5% for \$B and Top 10% for \$C.

## 76 Granger President 009 Granger Angus

Black Angus					
AAA#: 19837252					
DOB: 02/11/20					
Tattoo: 009					
Coleman Charlo 0256					
S A V President 6847					
S A V Blackcap May 4136					
H A R B Windy 758 J H					
Granger Pride 370					
Granger pride 097					
Entry Wt		Final Wt			
829		1189			
WDA		ADG			
3.15		3.50			
WDA Ratio		ADG Ratio			
97		100			
CED	BW	WW	YW	MILK	\$C
1	3.5	60	103	24	177
BW	205	205	365	365	TBT Index
90	775	101	1157	96	99

Dam WR 6@103. Grandam WR 9@99. Great Grandam WR 7@107.



SydGen Enhance - Sire of Lot 75



# BLACK ANGUS BULLS

**77**

## Granger President 035

Granger  
Angus

Black Angus

AAA#: 19840244

DOB: 02/10/20

Tattoo: 035

Coleman Charlo 0256  
S A V President 6847  
S A V Blackcap May 4136

Granger Great Falls 053

Granger Pride 483

Granger Pride 981

Entry Wt	Final Wt
980	1344
WDA	ADG
3.55	3.53
WDA Ratio	ADG Ratio
110	101

ANGUSGS  
Powered by Angus GeneCard

CED	BW	WW	YW	MILK	\$C
0	3.4	83	146	19	195
BW	205 Day Wt.	205 Day Ratio	365 Day Wt.	365 Day Ratio	TBT Index
85	787	102	1303	108	104

Dam WR 5@99. Grandam WR 8@98. Great Grandam WR 5@99.

**80**

## Granger Black Eagle 013

Granger  
Angus

Black Angus

AAA#: 19844937

DOB: 02/14/20

Tattoo: 013

Granger Great Falls 630  
Granger Black Eagle 822  
Granger Pride Rachel 685

Granger Cash 643

Granger Pride 836

Granger Pride 489

Entry Wt	Final Wt
793	1175
WDA	ADG
3.13	3.71
WDA Ratio	ADG Ratio
97	106

ANGUSGS  
Powered by Angus GeneCard

CED	BW	WW	YW	MILK	\$C
6	3.0	66	121	23	212
BW	205 Day Wt.	205 Day Ratio	365 Day Wt.	365 Day Ratio	TBT Index
86	767	100	1217	101	102

Dam WR 1@100. Grandam WR 5@105. Great Grandam WR 6@100.

**78**

## Granger Stockman 032

Granger  
Angus

Black Angus

AAA#: 19844940

DOB: 02/23/20

Tattoo: 032

HA Cowboy Up 5405  
Granger Stockman LC 815  
Curtin Erroline 3039

KR Millionaire

Granger Miss Pride 730

Granger Pride 487

Entry Wt	Final Wt
917	1283
WDA	ADG
3.51	3.55
WDA Ratio	ADG Ratio
108	102

CED	BW	WW	YW	MILK	\$C
0	4.2	71	130	29	
BW	205 Day Wt.	205 Day Ratio	365 Day Wt.	365 Day Ratio	TBT Index
96	809	105	1315	109	105

Dam WR 2@107. Grandam WR 5@105. Great Grandam WR 7@107.

**81**

## Granger Black Eagle 007

Granger  
Angus

Black Angus

AAA#: 19844936

DOB: 02/16/20

Tattoo: 007

Granger Great Falls 630  
Granger Black Eagle 822  
Granger Pride Rachel 685

KR Millionaire

Granger Eldorene 729

Granger Eldorene 179

Entry Wt	Final Wt
871	1188
WDA	ADG
3.18	3.08
WDA Ratio	ADG Ratio
98	88

ANGUSGS  
Powered by Angus GeneCard

CED	BW	WW	YW	MILK	\$C
3	2.4	74	133	27	188
BW	205 Day Wt.	205 Day Ratio	365 Day Wt.	365 Day Ratio	TBT Index
82	765	100	1204	100	96

Grandam WR 5@105. Great Grandam WR 11@105.

**79**

## Granger Great Falls 050

Granger  
Angus

Black Angus

AAA#: +19832379

DOB: 02/22/20

Tattoo: 050

Granger Great Falls 053  
Granger Great Falls 630  
Granger Pride Rachel 890

Bon View New Design 208

Granger Pride 592

Granger Pride 790

Entry Wt	Final Wt
826	1207
WDA	ADG
3.29	3.70
WDA Ratio	ADG Ratio
102	106

HOBOK

CED	BW	WW	YW	MILK	\$C
6	1.2	62	96	28	189
BW	205 Day Wt.	205 Day Ratio	365 Day Wt.	365 Day Ratio	TBT Index
80	772	105	1209	100	104

Dam WR 12@105. Grandam WR 11@103. Dam IMF 6@106, RE 6@103. ET calf from our great 592 Pride cow. She is still in the herd at 16. Her 3 full brothers won the MBT World Champion Pen of Three in 2006.



Granger Black Eagle 822 - Sire of Lots 80, 81, 84 & 85

# BLACK ANGUS BULLS

**83**

## Granger Homestead 027

Granger  
Angus

Black Angus

AAA#: 19854516

DOB: 02/10/20

Tattoo: 027

CTS Remedy 1T01  
Ellingson Homestead 6030  
EA Erica 1082

HA Cowboy Up 5405

Granger Pride 845

Granger Pride 592

Entry Wt	Final Wt
871	1226
WDA	ADG
3.23	3.45
WDA Ratio	ADG Ratio
100	99



CED	BW	WW	YW	MILK	\$C
2	3.9	83	144	25	261
BW	205 Day Wt.	205 Day Ratio	365 Day Wt.	365 Day Ratio	TBT Index
80	782	102	1257	104	102

Dam WR 1@111. Grandam WR 6@102. Great Grandam WR 11@104.

**86**

## Granger Stockman FG 07

Granger  
Livestock LLC

Black Angus

AAA#: 19861765

DOB: 02/12/20

Tattoo: 073

HA Cowboy Up 5405  
Granger Stockman LC 815  
Curtin Erroline 3039

Wards Onward 610

Granger Pride 857

Hyline Pride G347

Entry Wt	Final Wt
846	1228
WDA	ADG
3.26	3.71
WDA Ratio	ADG Ratio
101	106



CED	BW	WW	YW	MILK	\$C
4	4.1	64	109	11	148
BW	205 Day Wt.	205 Day Ratio	365 Day Wt.	365 Day Ratio	TBT Index
96	780	106	1232	102	105

Dam is a Pathfinder with a 103 WR on 11 calves. Grandam is also a Pathfinder.

**84**

## Granger Black Eagle FG 077

Granger  
Livestock LLC

Black Angus

AAA#: 19861766

DOB: 02/14/20

Tattoo: 077

Granger Great Falls 630  
Granger Black Eagle 822  
Granger Pride Rachel 685

Connealy Danny Boy

Granger Pride 191

Granger Pride 790

Entry Wt	Final Wt
884	1239
WDA	ADG
3.30	3.45
WDA Ratio	ADG Ratio
102	99



CED	BW	WW	YW	MILK	\$C
2	4.5	72	122	30	262
BW	205 Day Wt.	205 Day Ratio	365 Day Wt.	365 Day Ratio	TBT Index
99	794	108	1218	101	103

Dam is a Pathfinder with a 104 WR and excellent temperament.

**87**

## MLK Acclaim 017

MLK  
Angus

Black Angus

AAA#: 19758339

DOB: 03/03/20

Tattoo: 017

Jindra 3rd Dimension  
Jindra Acclaim  
Jindra Blackbird Lassie 1111

Sitz Investment 660Z

MLK Everelda Entense 5171

Sitz Everelda Entense 1721

Entry Wt	Final Wt
955	1325
WDA	ADG
3.71	3.59
WDA Ratio	ADG Ratio
115	103



CED	BW	WW	YW	MILK	\$C
0	3.0	78	143	34	264
BW	205 Day Wt.	205 Day Ratio	365 Day Wt.	365 Day Ratio	TBT Index
83	884	119	1310	109	109

This bull's dam has had 4 calves with WR @ 105 and YR 1@106. This Acclaim son has stood out since the day he was born. His dam is from the proven Everelda Entense family. His grandam was used as a donor cow for the Sitz Ranch and his great grandam is Sitz 023 out of 1137. This guy is in the Top 4% WR, Top 3% YW, Top 1% \$F and Top 10% \$B.

**85**

## Granger Black Eagle FG 075

Granger  
Livestock LLC

Black Angus

AAA#: 19861764

DOB: 02/14/20

Tattoo: 075

Granger Great Falls 630  
Granger Black Eagle 822  
Granger Pride Rachel 685

Schurrtop MC 2500

Granger Eileen 850

Hyline Eileenmere 236

Entry Wt	Final Wt
822	1190
WDA	ADG
3.17	3.57
WDA Ratio	ADG Ratio
98	102



CED	BW	WW	YW	MILK	\$C
5	2.1	62	108	18	180
BW	205 Day Wt.	205 Day Ratio	365 Day Wt.	365 Day Ratio	TBT Index
90	815	110	1184	98	103

Dam is a Pathfinder with a 104 WR on 11 calves.



Jindra Acclaim - Sire of Lot 87

# BLACK ANGUS BULLS

**88**

## MLK Ashland 021

**MLK  
Angus**

Black Angus

AAA#: 19847673

DOB: 02/25/20

Tattoo: 021

G A R Early Bird  
G A R Ashland  
Chair Rock Ambush 1018

Woodhill Foresight  
Sitz JLS Queen Esther 2157  
Sitz JLS Queen Esther 3924

Entry Wt	Final Wt
892	1232
WDA	ADG
3.38	3.30
WDA Ratio	ADG Ratio
104	95

ANGUS  
CS  
Presented by Angus Services

CED	BW	WW	YW	MILK	\$C
3	3.9	79	129	26	259
BW	205 Day Wt.	205 Day Ratio	365 Day Wt.	365 Day Ratio	TBT Index
68	856	115	1276	106	105

This bull's Pathfinder dam is out of a great cow family that will add longevity to your herd! She has had 4 calves with WR @ 106 and YR 5@102. This good Ashland son has outstanding EPD's including WR in Top 4%, YR in the Top 10% and Top 10% Marb.

**91**

## Will Great Falls 630 H32

**Willekes  
Angus**

Black Angus

AAA#: +19825634

DOB: 01/26/20

Tattoo: G32

Granger Great Falls 053  
Granger Great Falls 630  
Grnager Pride Rachel 890

D H D Traveler 6807  
Pine Coulee Entense T515  
Sitz Everelda Entense 2198

Entry Wt	Final Wt
857	1234
WDA	ADG
3.13	3.66
WDA Ratio	ADG Ratio
97	105

CED	BW	WW	YW	MILK	\$C
5	1.7	48	91	27	165
BW	205 Day Wt.	205 Day Ratio	365 Day Wt.	365 Day Ratio	TBT Index
85	699	104	1165	97	102

Lot 91 is out of our proven donor cow T515. She has a perfect udder and feet with a maternal pedigree. Her daughters in production are doing great. T515 has produced high quality sons who perform year after year. They make the keeping kind!

**89**

## Will Great Falls 630 F61

**Willekes  
Angus**

Black Angus

AAA#: 19809040

DOB: 02/21/20

Tattoo: H61

Granger Great Falls 053  
Granger Great Falls 630  
Grnager Pride Rachel 890

HA Outside 3377  
Willekes Pride of Lee C210  
Pine Coulee Pride of Lee W25

Entry Wt	Final Wt
972	1221
WDA	ADG
3.32	2.42
WDA Ratio	ADG Ratio
102	69

HOBOK

CED	BW	WW	YW	MILK	\$C
0	3.4	64	110	27	182
BW	205 Day Wt.	205 Day Ratio	365 Day Wt.	365 Day Ratio	TBT Index
98	824	126	1217	101	95

Dam of Lot 89 has recently joined our donor pen with an outstanding WR of 4@114, as well as a 376-calving interval. She stands on a perfect set of feet, with a perfect udder. Granddam produced last year's TBT high indexing bull selling for \$17K. This is a thick made bull with good structure.

**92**

## Will Black Magic H39

**Willekes  
Angus**

Black Angus

AAA#: +19831766

DOB: 01/30/20

Tattoo: H39

Silveiras Conversion 8064  
Byergo Black Magic 3348  
Byergo Elia Cupcake 5900

D H D Traveler 6807  
Pine Coulee Entense T515  
Sitz Everelda Entense 2198

Entry Wt	Final Wt
829	1182
WDA	ADG
3.03	3.43
WDA Ratio	ADG Ratio
94	98

CED	BW	WW	YW	MILK	\$C
3	3.4	56	108	31	214
BW	205 Day Wt.	205 Day Ratio	365 Day Wt.	365 Day Ratio	TBT Index
85	646	104	1124	93	98



Granger Great Falls 630 - Sire of Lots 79, 89, 91 & 101



Byergo Black Magic 3348 - Sire of Lots 92, 93, 99 & 100



# BLACK ANGUS BULLS

**93**

## Will Black Magic H35

**Willekes Angus**

Black Angus

AAA#: +19831765

DOB: 01/29/20

Tattoo: H35

Silveiras Conversion 8064

Byergo Black Magic 3348

Byergo Elia Cupcake 5900

D H D Traveler 6807

Pine Coulee Entense T515

Sitz Everelda Entense 2198

Entry Wt	Final Wt
944	1308
WDA	ADG
3.35	3.53
WDA Ratio	ADG Ratio
103	101

CED	BW	WW	YW	MILK	\$C
3	3.4	56	108	31	214
BW	205 Day Wt.	205 Day Ratio	365 Day Wt.	365 Day Ratio	TBT Index
82	680	104	1240	103	103

**96**

## Will Gold Star H46

**Willekes Angus**

Black Angus

AAA#: 19877681

DOB: 02/01/20

Tattoo: H46

FF Black Gold JF C19

FF Black Star JF C74

JF Eriskay C74

S Chisum 6175

JF Pride Z196

Vermilion Pride 3563



Entry Wt	Final Wt
834	1175
WDA	ADG
3.03	3.31
WDA Ratio	ADG Ratio
94	95

CED	BW	WW	YW	MILK	\$C
1	0.5	62	106	27	190
BW	205 Day Wt.	205 Day Ratio	365 Day Wt.	365 Day Ratio	TBT Index
88	659	100	1142	95	97

Out of a proven cow we bought from Fleisch Angus, who produced a past high performing son at MBT.

**95**

## Will Weigh Up H15

**Willekes Angus**

Black Angus

AAA#: 19880258

DOB: 01/20/20

Tattoo: H15

Plattmire Weigh Up K360

J&J Weigh Up 294

J & J Miss Georgina 294

FF Black Gold JF C19

Willekes Rita F12

Willekes Rita C205



Entry Wt	Final Wt
751	1151
WDA	ADG
2.88	3.88
WDA Ratio	ADG Ratio
89	111

CED	BW	WW	YW	MILK	\$C
5	0.5	52	100	20	195
BW	205 Day Wt.	205 Day Ratio	365 Day Wt.	365 Day Ratio	TBT Index
83	629	96	1165	97	101

Sure shot heifer bull out of a beautiful Black Gold daughter!

**99**

## MWA Black Magic H02

**Marshall Willekes Angus**

Black Angus

AAA#: +19883072

DOB: 01/23/20

Tattoo: H02

Silveiras Conversion 8064

Byergo Black Magic 3348

Byergo Elia Cupcake 5900

D H D Traveler 6807

Pine Coulee Entense T515

Sitz Everelda Entense 2198

Entry Wt	Final Wt
958	1294
WDA	ADG
3.26	3.26
WDA Ratio	ADG Ratio
101	93

CED	BW	WW	YW	MILK	\$C
3	3.4	56	108	31	214
BW	205 Day Wt.	205 Day Ratio	365 Day Wt.	365 Day Ratio	TBT Index
88	637	104	1222	101	99

Black Magic son out of our maternal Donor Cow T515. Good structured bull with great eye appeal.



J&J Weigh Up 294 - Sire of Lots 3, 95 & 102

**100**

## MWA Black Magic 04H

**Marshall Willekes Angus**

Black Angus

AAA#: +19883073

DOB: 01/26/20

Tattoo: 04H

Silveiras Conversion 8064

Byergo Black Magic 3348

Byergo Elia Cupcake 5900

D H D Traveler 6807

Pine Coulee Entense T515

Sitz Everelda Entense 2198

Entry Wt	Final Wt
931	1243
WDA	ADG
3.15	3.03
WDA Ratio	ADG Ratio
97	87

CED	BW	WW	YW	MILK	\$C
3	3.4	56	108	31	214
BW	205 Day Wt.	205 Day Ratio	365 Day Wt.	365 Day Ratio	TBT Index
88	669	104	1172	97	96

Flush brother to Lot 92, 93 and 99, who has been a standout since birth. Long bodied with a real Angus look.

# BLACK ANGUS BULLS

**101**

## MWA Great Falls 05H

Marshall  
Willekes Angus

Black Angus

AAA#: +19872722

DOB: 01/27/20

Tattoo: 05H

Granger Great Falls 053  
Granger Great Falls 630  
Grnager Pride Rachel 890

D H D Traveler 6807  
Pine Coulee Entense T515  
Sitz Everelda Entense 2198

CED	BW	WW	YW	MILK	\$C
5	1.7	48	91	27	165
BW	205 Day Wt.	205 Day Ratio	365 Day Wt.	365 Day Ratio	TBT Index
94	634	104	1061	88	96

Bull out of our ET program, big-boned bull with lots of pattern.

**104**

## BEU Commonwealth H809

Beuerman  
Angus Ranch

Black Angus

AAA#: 19806920

DOB: 02/16/20

Tattoo: H809

Basin Payweight 1682  
Connealy Commonwealth  
Parisian of Conanga 3582

H A R B Windy 702 JH  
H A R B F11 Clova Pride 809  
H A R B F11 Clova Pride 539

ANGUSGS  
Genomic Selection

CED	BW	WW	YW	MILK	\$C
7	-0.3	55	98	24	212
BW	205 Day Wt.	205 Day Ratio	365 Day Wt.	365 Day Ratio	TBT Index
78	703	100	1201	100	96

High maternal bull with AngusGS genomic percentile rankings of Top 10% WW, 2% Doc, and 4% HP all while keeping mature height and weight in check. Dam is still producing strong at 13 years of age.

**102**

## MWA Weigh up 01H

Marshall  
Willekes Angus

Black Angus

AAA#: 19988289

DOB: 01/18/20

Tattoo: 01H

Plattmire Weigh Up K360  
J&J Weigh Up 294  
J & J Miss Georgina 294

Will Rampage 143D  
Willekes Blackbird 143D  
Mission Blackbird C-15

CED	BW	WW	YW	MILK	\$C
7	0.8	63	110	27	
BW	205 Day Wt.	205 Day Ratio	365 Day Wt.	365 Day Ratio	TBT Index
81	682	100	1192	99	108

Sure shot heifer bull with lots of growth. Moderate framed with exceptional muscle shape. Dam is a first calf heifer out of a long line of proven cows in our herd.

**107**

## BEU Assertive H116

Beuerman  
Angus Ranch

Black Angus

AAA#: +19806932

DOB: 02/22/20

Tattoo: H116

K C F Bennett Absolute  
K C F Bennett Assertive  
K C F Miss Homestead Z98

Hoover Dam  
PF G18 Ever Entense 2085  
SMR Ever Entense 0318

ANGUSGS  
Genomic Selection

CED	BW	WW	YW	MILK	\$C
13	-0.6	68	126	32	278
BW	205 Day Wt.	205 Day Ratio	365 Day Wt.	365 Day Ratio	TBT Index
76	723	101	1181	98	95

Maternal half-brother to a 2017 High Feed Efficiency Bull at Midland Bull Test. Donor dam is an outstanding Hoover Dam daughter that stands on impeccable feet and legs. This is a calving ease bull that does not sacrifice growth or carcass.



Connealy Commonwealth - Sire of Lot 104



K C F Bennett Assertive - Sire of Lot 107

# BLACK ANGUS BULLS

**109**

## OCC Southern Charm 074

Olson  
Cattle Co

Black Angus

AAA#: 19972245

DOB: 03/21/20

Tattoo: 074

Silveiras Conversion 8064  
BUBS Southern Charm AA31  
Hickory Hill Erica 009

OCC 4-Ward 720

OCC Evergreen 041

Vermilion Evergreen 7310

CED	BW	WW	YW	MILK	\$C
8	1.5	60	98	29	226
BW	205 Day Wt.	205 Day Ratio	365 Day Wt.	365 Day Ratio	TBT Index
76	773	107	1160	96	107

Maternal excellence with power and growth are stacked in this pedigree. His 11-year-old dam is impeccable in her udder and foot design and has had multiple sons that have been past highlights at Treasure Bull Test and Midland Bull Test. Ranks in the Top 25% of the breed for Milk, Scrotal and \$W.

**112**

## Bar Rave 006

Barton  
Angus Ranch

Black Angus

AAA#: 19781804

DOB: 02/03/20

Tattoo: 006

Jindra Acclaim  
RBM RAVE  
RBM Polly B66

TEX Playbook 5437

BAR Miss Playbook 805

BAR Miss Resource 609

ANGUSGS  
Proven by Angus Genetics

CED	BW	WW	YW	MILK	\$C
10	-0.2	65	125	30	230
BW	205 Day Wt.	205 Day Ratio	365 Day Wt.	365 Day Ratio	TBT Index
74	717	119	1240	103	112

Low-birthweight, CE son of the up-and-coming sire Rave. He has shown a lot of performance from a 2-year-old heifer by the proven sires Playbook and Resource. Born and raised @ 7000' elevation.

**110**

## OCC Southern Charm 078

Olson  
Cattle Co

Black Angus

AAA#: 19972270

DOB: 03/23/20

Tattoo: 078

Silveiras Conversion 8064  
BUBS Southern Charm AA31  
Hickory Hill Erica 009

Mytty In Focus

OCC Lucy 832

Inniway Ms VRD 232



CED	BW	WW	YW	MILK	\$C
7	1.8	64	106	31	240
BW	205 Day Wt.	205 Day Ratio	365 Day Wt.	365 Day Ratio	TBT Index
81	784	108	1169	97	
					107

The bottom side of this pedigree reads with maternal excellence and longevity. His 13-year-old dam has been a consistent producer at Olson Cattle Company with multiple daughters being retained as replacements. Ranks in the Top 4% of the breed for Scrotal. Top 15% for Milk, Marb, \$W and \$G.

**113**

## BAR U-2 Coalition 011

Barton  
Angus Ranch

Black Angus

AAA#: +19781738

DOB: 02/08/20

Tattoo: 011

HF Syndicate 213Z  
U-2 Coalition 206C  
U2 Erelite 109Z

Wulffs Ext 6106

Coleman Eriskay 402

Coleman Eriskay 287

ANGUSGS  
Proven by Angus Genetics

CED	BW	WW	YW	MILK	\$C
6	1.6	57	102	34	177
BW	205 Day Wt.	205 Day Ratio	365 Day Wt.	365 Day Ratio	TBT Index
78	657	106	1111	92	
					107

This embryo transfer Coalition son is backed by a long line of proven cattle with longevity and productivity. Pathfinder Dam descending from Sinclair Eriskay 2N1 7883.

Top 10% Docility, Top 15% Claw, Top 20% Angle EPD's. Born and raised @ 7000' elevation.

**111**

## OCC Cowboy 088

Olson  
Cattle Co

Black Angus

AAA#: 19953938

DOB: 03/31/20

Tattoo: 088

HA Cowboy Up 5405  
Occ Cowboy Up 848  
OCC Gina 257

OCC Ultimate Answer 118

OCC Gina 540

OCC Gina 257

CED	BW	WW	YW	MILK	\$C
5	2.0	84	137	24	222
BW	205 Day Wt.	205 Day Ratio	365 Day Wt.	365 Day Ratio	TBT Index
82	843	116	1389	115	120

There is tremendous growth and maternal bred deep onto this bull's pedigree for proven performance. He will add pounds and power to a set of calves. Ranks in the Top 2% of the breed for WW and YW. Top 5% for \$W. Top 15% for \$F.

**CHAMPION WDA BULL.**



RBM Rave - Sire of Lot 112



# BLACK ANGUS BULLS

## 118 BAR Power Play RT 021 Barton Angus Ranch

Black Angus

AAA#: +19781790

DOB: 02/11/20

Tattoo: 021

Basin Payweight 1682  
V A R Power Play 7018  
Sandpoint Blackbird 8809

S A V Final Answer 0035

BAR Donna 401

Coleman Donna 012

Entry Wt	Final Wt
856	1216
WDA	ADG
3.22	3.50
WDA Ratio	ADG Ratio
99	100

ANGUSGS  
Powered by Wageningen Research

CED	BW	WW	YW	MILK	\$C
6	1.3	73	131	36	223
BW	205 Day Wt.	205 Day Ratio	365 Day Wt.	365 Day Ratio	TBT Index
82	720	100	1190	99	100

Extremely deep bodied and wide based. Their Dam is from a full sister to Donna 386. Born and raised @ 7000' elevation.

## 120 BAR Playbook 027 Barton Angus Ranch

Black Angus

AAA#: +19784067

DOB: 02/13/20

Tattoo: 027

Basin Payweight 1682  
TEX Playbook 5437  
Rita 1C43 of 9M26 Complete

Sitz Upward 307R

Greenane Juanada Z04

Daltons Juanada 8350

Entry Wt	Final Wt
739	1181
WDA	ADG
3.14	4.29
WDA Ratio	ADG Ratio
97	123

ANGUSGS  
Powered by Wageningen Research

CED	BW	WW	YW	MILK	\$C
4	3.2	76	128	31	271
BW	205 Day Wt.	205 Day Ratio	365 Day Wt.	365 Day Ratio	TBT Index
82	662	101	1176	98	107

Powerful Playbook ET son. Good looking bull from all angles with a pedigree tracing back to the powerful sires, Upward 307R and Net Worth 4200. Born and raised @ 7000' elevation.

## 119 BAR Power Play RT 002 Barton Angus Ranch

Black Angus

AAA#: 19781793

DOB: 02/12/20

Tattoo: 002

Basin Payweight 1682  
V A R Power Play 7018  
Sandpoint Blackbird 8809

S A V Thunderbird 9061

BAR Pride 310

BAR Retail Pride 113

Entry Wt	Final Wt
767	1159
WDA	ADG
3.07	3.81
WDA Ratio	ADG Ratio
95	109

ANGUSGS  
Powered by Wageningen Research

CED	BW	WW	YW	MILK	\$C
8	-1.1	62	104	38	219
BW	205 Day Wt.	205 Day Ratio	365 Day Wt.	365 Day Ratio	TBT Index
70	745	123	1119	93	106

Low birthweight Power Play son. Like his sire, he exhibits extra depth of rib and a big square hip. Thunderbird dam has been a consistent producer of quality calves. This heifer safe bull will add dimension and fleshing ability. Born and raised @ 7000' elevation.

## 121 BAR Homestead 030 Barton Angus Ranch

Black Angus

AAA#: +19806663

DOB: 02/17/20

Tattoo: 030

CTS Remedy 1T01  
Ellingson Homestead 6030  
EA Erica 1082

Connealy Onward

Pine Coulee Black Annie Y96

War Hill Blackbone Annie

Entry Wt	Final Wt
729	1094
WDA	ADG
2.94	3.54
WDA Ratio	ADG Ratio
91	102

ANGUSGS  
Powered by Wageningen Research

CED	BW	WW	YW	MILK	\$C
3	2.3	61	111	34	225
BW	205 Day Wt.	205 Day Ratio	365 Day Wt.	365 Day Ratio	TBT Index
84	693	105	1100	91	99

Embryo transfer bull by Homestead. This mating created cattle with long length of spine and extra frame size with a lot of growth. Onward dam by Black Annie Y96. Excels for SC, HP, CEM, Milk EPD's. Born and raised @ 7000' elevation.



V A R Power Play 7018 - Sire of Lots 118 & 119



Ellingson Homestead 6030 - Sire of Lots 83 & 121

# BLACK ANGUS BULLS

**122**

## LB New Beginning 004

**L B Farms**

Black Angus

AAA#: 19822267

DOB: 02/02/20

Tattoo: 004

Connealy Capitalist 028

Boyd Cartwright 3303

S A V Abigale 8076

S A V Bruiser 9164

LB New Design 813B

LB Upward Lucy 411

Entry Wt	Final Wt
950	1213
WDA	ADG
3.13	2.55
WDA Ratio	ADG Ratio
97	73

ANGUSGS  
Powered by Sengen Genetics

CED	BW	WW	YW	MILK	\$C
11	0.8	77	129	26	210
BW	205 Day Wt.	205 Day Ratio	365 Day Wt.	365 Day Ratio	TBT Index
78	806	106	1305	108	96

Out of first calf heifer.

**124**

## WB Northern Lights 018

**Wes Brown**

Black Angus

AAA#: 19822339

DOB: 02/20/20

Tattoo: 018

Silveiras Conversion 8064

BUBS Southern Charm AA31

Hickory Hill Erica 009

S A V Net Worth 4200

Mc Fadgen's Reata 318

Ayres Reata Karama 718

Entry Wt	Final Wt
893	1295
WDA	ADG
3.51	3.90
WDA Ratio	ADG Ratio
108	112

ANGUSGS  
Powered by Sengen Genetics

CED	BW	WW	YW	MILK	\$C
-2	4.7	71	117	27	238
BW	205 Day Wt.	205 Day Ratio	365 Day Wt.	365 Day Ratio	TBT Index
94	856	107	1421	118	112

**CO-CHAMPION YOUTH BULL.**

# RED ANGUS BULL

**126**

## TJB T BONE 001

**TJB Reds**

Red Angus

RAAA#: 4297011

DOB: 01/22/20

Tattoo: 001

LSF TAKEOVER 9943W

OOO Sir Loin 5122

BROWN MS PARAMOUNT A7033

SUTH GOLDEN FUSION 08C

TJB CONCHETTA 808

SUTH CONCHETTA 4151

Entry Wt	Final Wt
866	1194
WDA	ADG
3.00	3.18
WDA Ratio	ADG Ratio
103	126

GGPLD

CED	BW	WW	YW	Milk	ProS
14	-5.2	57	99	24	141
BW	205 Day Wt.	205 Day Ratio	365 Day Wt.	365 Day Ratio	TBT Index
74	738	103	1257	108	112

Out of first calf heifer.

**CO-CHAMPION YOUTH BULL.**

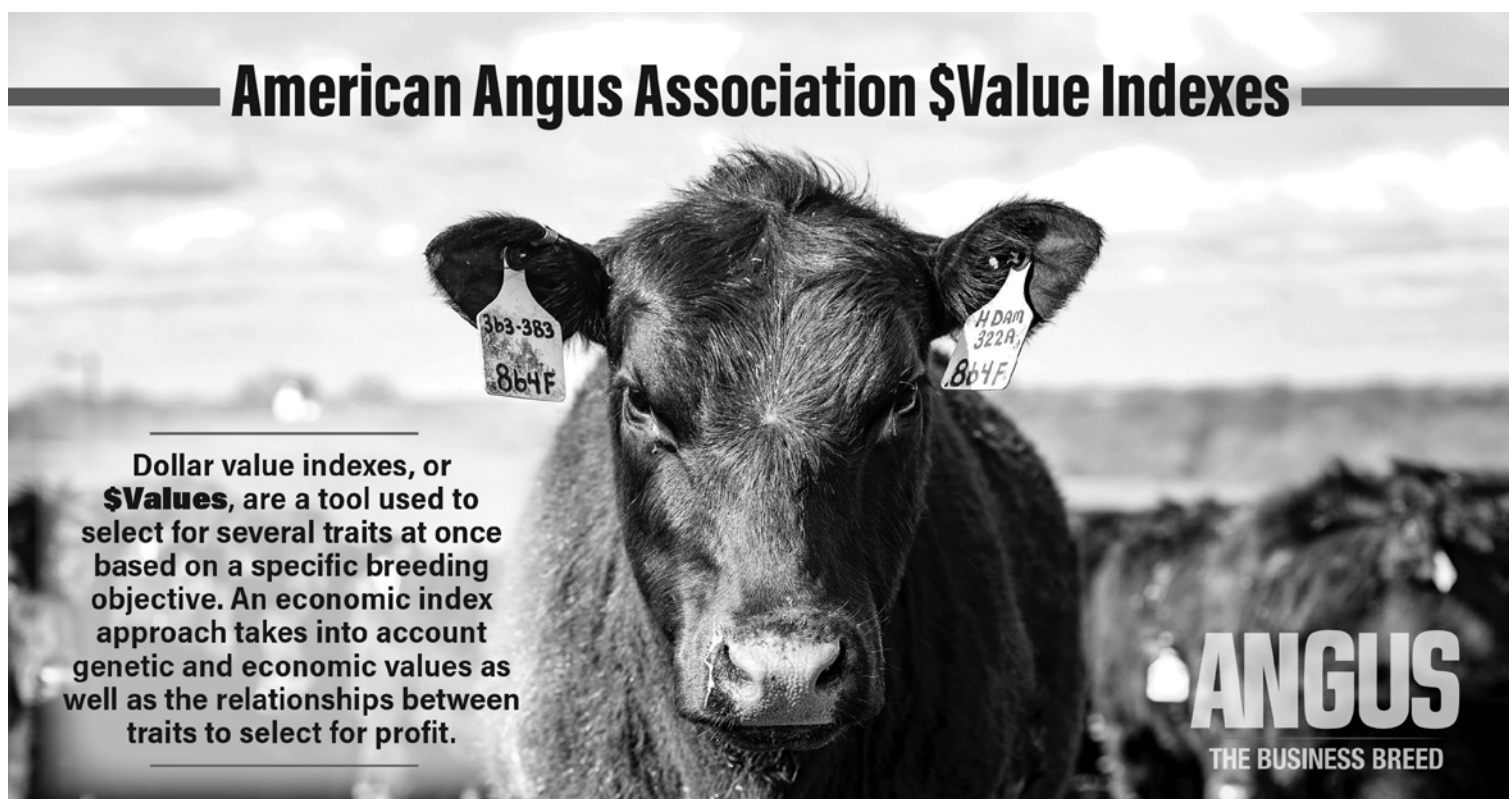


OOO Sir Loin 5122 - Sire of Lot 126

## NEW RED ANGUS EPD EXPLANATION:

**ProS ... Profitability and Sustainability** is an all-purpose index that predicts average economic differences in all segments in the beef supply chain. This index is a combination of the breeding objectives modeled in the HerdBuilder and GridMaster selection indexes. In this index, replacement heifers are retained from within the herd and all remaining progeny are fed out to slaughter and sold on a quality-based grid. Traits included in this index include calving ease, growth, HPG, STAY, Mature Weight, Dry Matter Intake and carcass traits. The resulting index is expressed in dollars per head born (Index/High Value).

# American Angus Association \$Value Indexes



Dollar value indexes, or **\$Values**, are a tool used to select for several traits at once based on a specific breeding objective. An economic index approach takes into account genetic and economic values as well as the relationships between traits to select for profit.

**Maternal Weaned Calf Value (\$M)**, an index expressed in dollars per head, predicts profitability differences in progeny due to genetics from conception to weaning. \$M is built off of a self-replacing herd model where commercial cattlemen replace 25% of their breeding females in the first generation and 20% in subsequent generations. Remaining cull females and all male progeny are sold as feeder calves. Increased selection pressure on \$M aims to decrease overall mature cow size and improve foot structure and fertility while maintaining weaning weights consistent with today's production.

**Weaned Calf Value (\$W)**, an index expressed in dollars per head, provides the expected difference in future progeny preweaning performance from birth to weaning. \$W assumes that producers retain 20% of their female progeny for replacements and sell the rest of their cull female and male progeny as feeder calves. Over time, increased selection pressure on \$W will increase pre-weaning growth through additional weaning weight and maternal milk with expenses adjustment for mature size and maternal milk.

**Feedlot Value (\$F)**, an index expressed in dollars per head, is the expected average difference in future progeny performance for post-weaning merit compared to progeny of other sires. The underlying objective assumes commercial producers will retain ownership of cattle through the feedlot phase and sell fed cattle on a carcass weight basis with no considerations of premiums or discounts for quality and yield grade.

**Grid Value (\$G)**, an index expressed in dollars per carcass, is the expected average difference in future progeny performance for carcass grid merit, including quality and yield grade attributes, compared to progeny of other sires.

**Beef Value (\$B)**, an index expressed in dollars per carcass, facilitates simultaneous multi-trait genetic selection for feedlot and carcass merit. \$B represents the expected average differences in the progeny postweaning performance and carcass value compared to progeny of other sires. This index assumes commercial producers wean all male and female progeny, retain ownership of these animals through the feedlot phase and market these animals on a quality-based carcass grid.

**Combined Value (\$C)**, an index expressed in dollars per head, includes all traits that make up both \$M and \$B with the objective that commercial producers will replace 20% of their breeding females per year with replacement heifers retained within their own herd. The remaining cull heifer and steer progeny are then assumed to be sent to the feedlot where the producers retain ownership of those cattle and eventually sell them on a quality-based carcass merit grid.

## EPDS DIRECTLY INCORPORATED INTO EACH \$VALUE

	MATERNAL		TERMINAL			
TRAIT	\$M	\$W	\$F	\$G	\$B	\$C
CED	✓					✓
BW		✓				
WW	✓	✓				✓
YW			✓		✓	✓
CEM	✓					✓
Milk	✓	✓				✓
MW	✓	✓				✓
DOC	✓					✓
HP	✓					✓
Claw	✓					✓
Angle	✓					✓
DMI			✓		✓	✓
CW			✓	✓	✓	✓
RE				✓	✓	✓
Marb				✓	✓	✓
Fat				✓	✓	✓





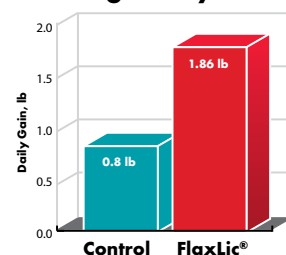
## FlaxLic® Supplements: *Improving the Performance of Your Herd*

**Flaxlic®** provides essential vitamins and minerals for proper bull conditioning. **Flaxlic** blocks are completely fortified to prepare your bulls for breeding season. **Flaxlic** is also great for show animals, calves at weaning, breeding heifers and cows. In addition, **Flaxlic** is the first low moisture block to contain a high level of alpha-linolenic acid derived from flaxseed and edible linseed oil.

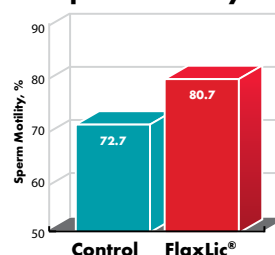
High-energy **Flaxlic** blocks contain 15% fat, essential minerals, and vitamins, and work around the clock to meet the demands of breeding bulls! Get your bulls ready for breeding season.

Visit **smartlic.com** today for more information!

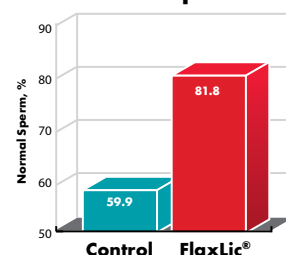
**Average Daily Gain**



**Sperm Motility**



**Normal Sperm**



FlaxLic now has  
a U.S. Product and  
Process Patent for elevating  
Lipid Blood Levels in Livestock.

**888-571-3421**  
**smartlic.com**





**TREASURE  
BULL TEST**

PO Box 1, Power, MT 59468

FIRST CLASS MAIL  
AUTO  
U.S. POSTAGE  
**PAID**  
Lewistown, MT  
Permit #181

**ONLY  
THE  
BEST**

**97** Performance Tested Angus Bulls  
From The Treasure State Sell



Ryan & Karnell Perry  
406/788-9869 406/390-5473  
PO Box 1, Power MT 59468  
Email: [info@treasurebulltest.com](mailto:info@treasurebulltest.com)



[www.treasurebulltest.com](http://www.treasurebulltest.com)