



*The Cowboy's
and Cowgirl's
Performance Bull Test*

Annual Sale

April 19, 2022 • 1:00 PM

Western Livestock Auction • Great Falls, Montana



Welcome

Ryan & Karnell Perry
406/788-9869 406/390-5473



On behalf of my wife and myself, along with all the consignors and their respective families I would like to welcome you to the Annual Treasure Bull Test Sale. We thank you for your continued interest and support in the program and this sale.

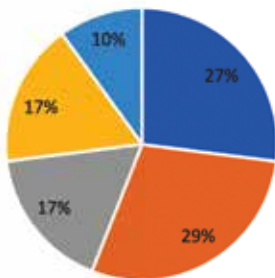
Merriam-Webster defines "Value" as: a fair return or equivalent in goods, services, or money for something exchanged.

If you are wondering where I'm going with this. On average the consignors are selling bulls that would be anywhere from the Top 10% to Top 30% of their respective herds. The bulls were then put through an extensive test where only the Top 75% of those made the sale, and without a doubt from top to bottom this is as good of a set of bulls we have ever sold. Looking at those percentiles and as history has told us in a bull test production sale format there are truly outstanding bulls from the first in to the last sold.

If you look at the pie chart on this page and put two and two together. It has been several years since you could trade straight across for a bull. With the way this slaughter bull market is, 27% of bulls sold would qualify. Digging deeper and looking at market potential in the future will allow you to buy 75% of the bull offering with two to a little over three steer calves if you remember what happened in 2014 and 2015 when we had the same supply issues we could potentially face here in the future. That is true "Value" for your dollar in the world we live in today. In fact, there is not another ag production expenditure that makes as much sense as buying these fresh, young athletic Black Angus Bulls. The consignors brought their best, allowing us to sell the best of the best to add value to your farm and ranch bottom line and cow herd.

Once again, the sale will be on Northern Livestock Video Auction. Also feel free to preview them at www.northernlivestockvideo.com

FOUR YEAR AVERAGE OF TBT BULL PURCHASES



■ \$2000-\$3000 ■ \$3001-\$4000 ■ \$4001-\$5000 ■ \$5001-\$7500 ■ Over \$7500

Finally, I would like to thank Matt, Chet, Coleman, and everyone involved at Muddy Creek Feedyard for the outstanding job they did. The bulls are in outstanding condition for immediate service.

Please join us once again this year on Monday, April 18th at 4 PM, for "Happy Hour Bull Preview". Plenty of refreshments, snacks, and fellowship among ranchers and TBT consignors to be had while previewing the bulls.

We will see you at the sale on Tuesday, April 19th. You will truly appreciate this set of "Cowboy Kind" Angus Bulls!

TBT Crew and Consignors

PO Box 1, Power MT 59468
Email: info@treasurebulltest.com
www.treasurebulltest.com





PERFORMANCE SALE

Tuesday,

APRIL 19, 2022

Lunch 11:30 AM Sale 1:00 PM
WESTERN LIVESTOCK AUCTION
GREAT FALLS, MT

~ General Information ~

Pre-Sale Viewing of Bulls

The bulls will be at Western Livestock Auction on Sunday, April 17, 2022 and available for viewing. Prior to that they are available for viewing anytime at Muddy Creek Feedyard, 2 miles west of Vaughn, MT. They are in Pens 72 and 73.

Sale Day Phones

Western Livestock Auction

406/727-5400

Ryan Perry 406/788-9869

Karnell Perry 406/390-5473

Auctioneer:

Joe Goggins 406/861-5664

Livestock Press

Kurt Kangas 406/366-4190.....Angus Journal/Angus Ass'n
John Goggins 406/698-4159 Western Ag Reporter
Devin Murnin 406/696-1502 Western Livestock Journal

Footnotes are provided by consignors. Feel free to contact consignors about their bulls. Consignor contact information is on page 2.

Fertility

Every bull selling has had a complete breeding physical and has been semen tested. Scrotal measurements were taken April 7, 2022. Measurements listed are actual size. Bulls sell guaranteed to be breeders via natural service. Guarantees are between the buyer and TBT Consignor only!

Veterinarian: Dr. Craig Moore, 406/466-3020

Health

All bulls have also been tested negative for BVD. Bulls have completed all requirements for immediate interstate shipment. If your state or providence requires more for import than has been completed, it will be done immediately after the sale. TBT will assume all extra vet expenses for interstate shipment.

Delivery

Free delivery to central locations (stockyards, etc.) within 500 miles of Great Falls, MT on all bulls selling for \$4000 or more, or the purchase of multiple bulls. Delivery beyond 500 miles will be billed at cost. Buyers picking up bulls within five days will be given a \$50 rebate per bull.

Insurance

Mortality Insurance is available thru Tyler Holland, Novich Insurance Agency. See page 3 for insurance options. Buyer pays for ½ and TBT Consignor pays for ½. Buyers if you choose to insure your bulls please do so when settling for bulls.

Performance Data

EPD's listed in this catalog are as of March 18, 2022.

Transportation & Accommodations

Great Falls is served by several airlines. We will meet any planes if notified.

O'Haire Motor Inn 17 7th St. S, Great Falls, MT.....406-454-2141

La Quinta Inn 600 River Dr S, Great Falls, MT.....406-761-2600

Ask for the Treasure Bull Test Rates.

Terms and Conditions

Bulls sell under the terms and conditions of the American Angus Association. Settlement is cash. Settlement must be made at the time of sale unless arrangements have been made prior to sale with individual consignor and TBT. Registration papers will be transferred to buyer when settlement has been made. Announcements made from auction block take precedence over printed material. Auctioneer will settle any disputes of bids. Anyone attending the sale does so at their own risk. TBT and Western Livestock Auction, LLC assume no liability, legal or otherwise, for any accidents which may occur.

INDEX OF CONSIGNORS

CONSIGNOR	LOT #
Harrison Angus Doug & Gladys Harrison Boyd, MT 406.962.3867	1
	2
	3
	4
	5
Gem State Angus Ranch Kevin Thibault Jerome, ID 435.881.3974	7
Double T Angus Brad Thompson Jerome, ID 208.404245	10
	11
	12
Granger Ranch Jim & Beth Granger Great Falls, MT 406.736.5588	13
	14
Springvale Ranch Shawn & Jen Christensen Hot Springs, MT 406.741.2519	15
	16
Dalbey Angus John Dalbey Corvallis, MT 406.546.7822	17
	18
	19
K Bar S Angus Kyle Gollehon Choteau, MT 406.590.5943	20
	21
Marshall Willekes Angus Marshall Willekes Choteau, MT 406.590.7011	22
	23
	24
	26
	27
	28
	29
30	

CONSIGNOR	LOT #
Willekes Angus Bob & Brenda Willekes Choteau, MT 406.590.2520	31
	32
	33
	34
	35
	36
Troyer Ranch LLC Wayne Troyer Moore, MT 406.366.4539	41
	43
MSU Angus Taylre Sitz Tim DelCurto Bozeman, MT 406.641.0807 541.910.8970	45
	46
	47
	48
	49
	50
51	
Lewis Land & Livestock Kaleb & Kari Lewis Cut Bank, MT 406.209.2953	56
	57
	58
	59
	60
	61
Jocko Valley Cattle LLC Marvin Rehbein Arlee, MT 406.546.4687	63
	65
Casha Corder Fort Benton, MT 406.231.8515	66
MLK Angus Mark & Lynn Keller Helena, MT 406.431.0872	67
	68

CONSIGNOR	LOT #
Krantz Angus Clark & Carter Krantz Kalispell, MT 406.250.1081	70
	71
Beuerman Angus Erich Beuerman Cut Bank, MT 406.551.3759	72
	73
WildKat Angus Kevin Warner Stevensville, MT 406.552.7258	75
Circle L Angus Cory & Kari Lamey Wise River, MT 406.491.7363	77
	78
	79
	80
RK Perry Ryan & Karnell Perry Power, MT 406.788.9869	81
	82
	83
	84
	85
	87
	88
	89
	91
	92
93	
94	
95	
96	
Colter Zentner Bridger, MT 406.425.2708	98



Bid through Northern Livestock Video Auction's NEW Online Bidding Platform! Desktop and Mobile Friendly

For the Desktop:

1. It is best to use the Google Chrome web browser.
2. **Pre-Register at least one day prior to the sale.**
3. Go to bid.northernlivestockvideo.com and click "Get Approved to Bid".
4. Doing this will prompt you to create an account, after which you will fill out a bidder approval application.
5. Once Approved, an email will be sent to the email account provided, please click the link in that email to activate your account and a buyer number will be provided.
6. On sale day (after approval), visit www.northernlivestockvideo.com to view and bid!

For the Mobile:

Use your mobile device to download the Northern App and follow the above steps to get approved.

There is an instructional video on how to register to bid on our website, www.northernlivestockvideo.com if you have any questions.

For technical assistance with Internet Viewing and Bidding Questions, call Sam Fraser 406-860-0590.

Phone Bidding:

Anyone wanting to use the Northern Livestock phone bank to bid must pre-register and have a bid number to bid on the phone.

To register with NLVA call 866-616-5035 Before Sale Day.

View the Online CATALOG and VIDEO CLIP of each BULL selling at www.northernlivestockvideo.com

Bidders who are successful in making purchases will be contacted following the sale to make payment and delivery arrangements.

Northern Livestock's Sale Day Bid Line: **1-406-245-0889.**

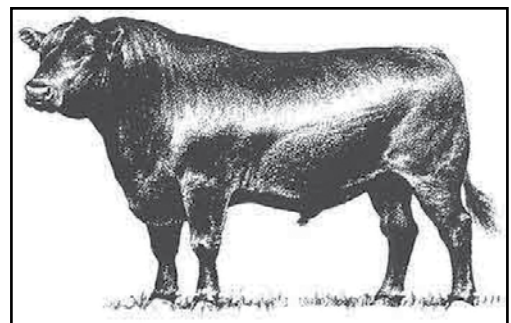
BULL MORTALITY INSURANCE

Novich Insurance Agency, agent for XL Catlin Insurance Co

**Tyler Holland
(406) 684-5264
tylerholland@3rivers.net**

**One Year Policy Term, from the date of the sale
Full Mortality Only Option = 5.8%
\$200 minimum premium**

**Full Mortality
100% of the value of the bull in the event of death or
humane destruction as a result of a life-threatening
injury. No deductibles, no co-insurance.**



ABOVE AVERAGE GOALS REQUIRE TARGETED BULLS

Aim High

The Targeting the Brand™ logo highlights registered Angus bulls with greater genetic potential to produce calves that meet the most challenging specifications of the *Certified Angus Beef*® brand.

Only 1 in 4 non-parent Angus bulls qualify.

Minimum Genetic Requirements

Marbling EPD (Marb)	+0.65
Dollar Grid Carcass Index (\$G)	+55.0



For more information on Targeting the Brand™ visit CABcattle.com.



Driving the science of better breeding

There's little room for error in the cattle business. Producers need the most advanced information to make smart selection decisions, and Angus Genetics Inc. (AGI) provides it through genomic-enhanced expected progeny differences (GE-EPDs).

EPDs that traditionally contained all pedigree, performance and progeny information now also include results from available genomic, or DNA, tests. Breeders who use genomic technology give buyers access to AGI-generated GE-EPDs that provide:

Increased predictability and decreased risk for young and unproven animals due to enhanced accuracy of EPDs

Better characterization of genetics for difficult-to-measure performance traits (such as carcass traits, maternal traits and feed efficiency)

The ability to make more rapid progress for traits that are important to you, due to:

- more accurate selection
- easier identification of genetic outliers
- the ability to propagate young animals with confidence earlier in their lives

In fact, GE-EPDs on unproven animals have the same amount of accuracy as if they had recorded 8-33 calves, depending on the trait. That's valuable insight, offered regularly through the breed's weekly national cattle evaluation at www.angus.org.

How do you know if EPDs are genomic-enhanced?

Ask your breeder, refer to the registration paper, or look for the AGI GE-EPD logo, Angus GS™ powered by partner Neogen GeneSeek or the HD50k or i50k by partner Zoetis.



BLACK ANGUS BULLS

1

HARB Plus-1-101

[M1P-OHP]

Harrison
Angus Ranch

Black Angus

AAA#: 20274240

DOB: 02/19/21

Tattoo: 101

Connealy Confidence Plus
E&B Plus One
E&B Lady 1023 Precision 936

SL Great Falls 301
HARB Erica Annee 612
H A R B Erica Annie 928

Entry Wt	Final Wt				
879	1269				
ADG	ADG Ratio				
3.48	103				
WDA	WDA Ratio				
3.33	104				
BW	205 Day Wt.	205 Day Ratio	365 Day Wt.	365 Day Ratio	TBT Ratio
93	810	100	1234	103	102



CED	BW	WW	YW	SC	MILK	\$M	\$W	\$F	\$B	\$C
3	2.1	68	127	1.10	29	60	71	99	138	239

Cow 612 has a docile disposition, good feet, excellent udder. Good mother with moderate size.

3

HARB Commodore 111

Harrison
Angus Ranch

Black Angus

AAA#: 20277201

DOB: 03/24/21

Tattoo: 111

Connealy Comrade 1385
Kesslers Commodore 6516
Kesslers Rainbow 0595

S A V Resource 1441
HARB Lady Elbas 715
H A R B Lady Elbas 631-16



Entry Wt	Final Wt				
824	1272				
ADG	ADG Ratio				
4.00	118				
WDA	WDA Ratio				
3.66	114				
BW	205 Day Wt.	205 Day Ratio	365 Day Wt.	365 Day Ratio	TBT Ratio
85	818	103	1285	108	110

CED	BW	WW	YW	SC	MILK	\$M	\$W	\$F	\$B	\$C
4	2.8	91	175	1.18	17	48	72	121	179	280

Very popular pedigree. 715 has a good disposition, good feet with an excellent udder and moderate size.

2

HARB Commodore 102

[OHP]

Harrison
Angus Ranch

Black Angus

AAA#: 20277222

DOB: 02/20/21

Tattoo: 102

Connealy Comrade 1385
Kesslers Commodore 6516
Kesslers Rainbow 0595

Flat Mountain Protege 5
HARB Eldora Erica 328-418
H A R B Eldora Erica 328

Entry Wt	Final Wt				
884	1214				
ADG	ADG Ratio				
2.95	87				
WDA	WDA Ratio				
3.19	99				
BW	205 Day Wt.	205 Day Ratio	365 Day Wt.	365 Day Ratio	TBT Ratio
67	773	98	1178	99	95



CED	BW	WW	YW	SC	MILK	\$M	\$W	\$F	\$B	\$C
6	0.9	67	119	1.40	23	69	67	92	132	240

418 cow is docile, good feet, excellent udder. Good mother with moderate size.

4

HARB Commodore 106

[M1P-OHP]

Harrison
Angus Ranch

Black Angus

AAA#: 20277224

DOB: 03/01/21

Tattoo: 106

Connealy Comrade 1385
Kesslers Commodore 6516
Kesslers Rainbow 0595

Paintrock IN Focus 91-8
HARB Jumbileen 029-408
H A R B Jumbileen 029



Entry Wt	Final Wt				
822	1229				
ADG	ADG Ratio				
3.63	107				
WDA	WDA Ratio				
3.31	103				
BW	205 Day Wt.	205 Day Ratio	365 Day Wt.	365 Day Ratio	TBT Ratio
88	801	101	1214	102	103

CED	BW	WW	YW	SC	MILK	\$M	\$W	\$F	\$B	\$C
10	0.7	70	125	0.64	33	80	83	92	155	281

408 cow has a good disposition with good feet and excellent udder. She is medium size.



E&B Plus One - Sire of Lots 1, 5 & 76



Kesslers Commodore 6516 - Sire of Lots 2, 3 & 4

BLACK ANGUS BULLS

5 HARB Plus One 110 [M1P]

Harrison Angus Ranch

Black Angus
 AAA#: 20243605
 DOB: 03/05/21
 Tattoo: 110

Connealy Confidence Plus
E&B Plus One
 E&B Lady 1023 Precision 936
 SL Great Falls 301
HARB Leena 628
 H A R B Leena 924-308

Entry Wt	Final Wt
920	1393
ADG	ADG Ratio
4.22	124
WDA	WDA Ratio
3.80	118



BW	205 Day Wt.	205 Day Ratio	365 Day Wt.	365 Day Ratio	TBT Ratio
67	855	109	1384	116	116

CED	BW	WW	YW	SC	MILK	\$M	\$W	\$F	\$B	\$C
17	-2.3	74	130	0.40	44	76	104	83	144	263

Dam has a good disposition with good feet and a more moderate frame and excellent udder. Very good calving ease herd sire prospect.

7 GSAR F12 Resource 30L

Gem State Angus Ranch

Black Angus
 AAA#: 20117542
 DOB: 02/17/21
 Tattoo: 30L

S A V Resource 1441
TT Resource F12
 TT Lucky Lady X02
 GSAR Lightning 45E
GSAR Katie 25H
 GSAR Katie 2F

Entry Wt	Final Wt
906	1287
ADG	ADG Ratio
3.40	100
WDA	WDA Ratio
3.36	105



BW	205 Day Wt.	205 Day Ratio	365 Day Wt.	365 Day Ratio	TBT Ratio
86	753	108	1261	106	105

CED	BW	WW	YW	SC	MILK	\$M	\$W	\$F	\$B	\$C
2	3.3	70	128	1.54	35	99	81	86	149	292

Here is a big-time performance bull that offers a strong pedigree with maternal depth. His dam's production record is BR 2@110, WR 2@109, YR 1@110 & IMF 1@130. His maternal Granddam has recorded: BR 3@103, WR 3@103, YR 2@107 & IMF 2@108. He is in the top 1% \$Maternal and checkout the balance through his numbers. He will sire ground pounding steers and the kind of females to keep.



TT Resource F12 - Sire of Lots 7, 10, 11 & 12

10 TT F12 Resource L10

Double T Angus

Black Angus
 AAA#: 20163541
 DOB: 02/19/21
 Tattoo: L10

S A V Resource 1441
TT Resource F12
 TT Lucky Lady X02
 Koupals B&B EXTRA 7080
TT Miss Dawn G04
 TT Miss Dawn G04



BW	205 Day Wt.	205 Day Ratio	365 Day Wt.	365 Day Ratio	TBT Ratio
75	842	120	1292	108	108

CED	BW	WW	YW	SC	MILK	\$M	\$W	\$F	\$B	\$C
6	1.1	74	126		31	88	83	92	147	279

Checkout this soggy made, wide based, thick topped stud! This bull comes from a super deep bodied cow that is moderate made, sound footed and nice uddered. She records BR 3@98, WR 3@107, YR 1@99 & REA 1@108. Look at the spread in his numbers, you can use him on heifers and graduate him as the herd bull. He is also bringing strong carcass numbers to the table.
CHAMPION SIRE GROUP

11 TT F12 Resource L11

Double T Angus

Black Angus
 AAA#: 20163542
 DOB: 02/21/21
 Tattoo: L11

S A V Resource 1441
TT Resource F12
 TT Lucky Lady X02
 V A R Generation 2100
TT Lucky Lady G29
 TT Lucky Lady 624

BW	205 Day Wt.	205 Day Ratio	365 Day Wt.	365 Day Ratio	TBT Ratio
82	755	108	1214	102	110

CED	BW	WW	YW	SC	MILK	\$M	\$W	\$F	\$B	\$C
3	3.0	68	118	0.83	31	76	70	88	133	249

Here is another outstanding TT Resource F12 son. Look at the performance in this prospect, gaining over 4 pounds per day, L11 offers a little more length of body and frame than some. This bull is out of a larger framed powerful made cow. His dam records: BR 3@104, WR 3@108, YR 2@106, IMF 1@100 & REA 1@106 and she is backed by a VRD by Alliance 6595 foundation cow.
CHAMPION SIRE GROUP

12 TT F12 Resource L27

Double T Angus

Black Angus
 AAA#: 20163551
 DOB: 03/05/21
 Tattoo: L27

S A V Resource 1441
TT Resource F12
 TT Lucky Lady X02
 Jindra Double Vision
TT Lass F04
 TT Lass D24



BW	205 Day Wt.	205 Day Ratio	365 Day Wt.	365 Day Ratio	TBT Ratio
75	706	101	1164	98	105

CED	BW	WW	YW	SC	MILK	\$M	\$W	\$F	\$B	\$C
7	0.7	59	108	0.66	28	89	63	94	144	276

The calving ease TT Resource F12 son of the group that is a surefire heifer bull prospect. This bull hails from the Lass family at Vermilion and Sitz and has a strong maternal base behind him. Checkout the balance in his numbers, the respectable carcass numbers and the top 3% \$Maternal.

CHAMPION SIRE GROUP

BLACK ANGUS BULLS

13 Granger Resilient 103

Granger Ranch

Black Angus		Sitz Stellar 726D		Entry Wt	Final Wt					
AAA#: 20153488		Sitz Resilient 10208		878	1318					
DOB: 02/12/21		Sitz Miss Burgess 1856		ADG	ADG Ratio					
Tattoo: 103		Granger Great Falls 630		3.93	116					
		Granger Pride 819		WDA	WDA Ratio					
		Granger Pride 680		3.40	106					
BW	205 Day Wt.	205 Day Ratio	365 Day Wt.	365 Day Ratio	TBT Ratio					
92	826	111	1290	108	112					
CED	BW	WW	YW	SC	MILK	\$M	\$W	\$F	\$B	\$C
-1	3.6	93	164	2.45	23	77	85	114	155	278

Lots of power in this bull. His EPD's put him in the top 1% for weaning and top 1% for yearling weight. Combine that with a top 3% feed efficiency and top 1% scrotal. There's more. Do you need to correct feet? He ranks in the top 1% for foot angle and top 10% for claw. His docile Dam has 1 weaning at 111 ratio. Grand dam 3/101 weaning and 1/111 yearling. Great, Great Grand Dam 7/102 and 5/104.

16 Springvale Exclusive 144

Springvale Ranch

Black Angus		LD Capitalist 316		Entry Wt	Final Wt					
AAA#: 20181207		Musgrave 316 Exclusive		832	1215					
DOB: 03/23/21		Musgrave Prim Lassie 163-386		ADG	ADG Ratio					
Tattoo: 144		JMB Traction 292		3.42	101					
		Springvale Blackcap 742		WDA	WDA Ratio					
		Springvale Blackcap 814		3.48	109					
BW	205 Day Wt.	205 Day Ratio	365 Day Wt.	365 Day Ratio	TBT Ratio					
93	877	119	1280	107	108					
CED	BW	WW	YW	SC	MILK	\$M	\$W	\$F	\$B	\$C
3	2.6	77	136	1.01	21	75	74	95	139	255

A performance bull in the top 10% for WW and YW. His daughters will have the ability to be high performing cows.

14 Granger Cash 123

[M1P]

Granger Ranch

Black Angus		Barstow Cash		Entry Wt	Final Wt					
AAA#: 20145960		Granger Cash 643		888	1324					
DOB: 02/16/21		Curtin Erroline 3039		ADG	ADG Ratio					
Tattoo: 123		EXAR Powerhouse 2077B		3.89	115					
		Granger Pride 578		WDA	WDA Ratio					
		Granger Pride 976		3.45	108					
BW	205 Day Wt.	205 Day Ratio	365 Day Wt.	365 Day Ratio	TBT Ratio					
90	795	106	1279	107	109					
CED	BW	WW	YW	SC	MILK	\$M	\$W	\$F	\$B	\$C
6	2.2	61	103	1.23	29	72	63	96	152	269

This calf can greatly improve his daughter's pregnancy rate, as he ranks in the top 2% for heifer pregnancy EPD. And like lot 13, he ranks in top 1% foot angle and top 10% claw, for foot improvement. Dam 5/103 weaning, 3/105 yearling. Grand Dam 6/98 weaning, 4/100 yearling. Great Grand Dam 3/104 weaning, 2/110 ylg. GGG Dam 7/107 wean, 5/107 ylg. This bull's sire sold at Midland to Felton Angus.

17 JD Exclusive 13

Dalbey Angus

Black Angus		LD Capitalist 316		Entry Wt	Final Wt					
AAA#: 20155703		Musgrave 316 Exclusive		945	1313					
DOB: 01/05/21		Musgrave Prim Lassie 163-386		ADG	ADG Ratio					
Tattoo: 13		HF Tiger 5T		3.29	97					
		JD Blackbird 42		WDA	WDA Ratio					
		JD 458N Blackbird 811U		3.08	96					
BW	205 Day Wt.	205 Day Ratio	365 Day Wt.	365 Day Ratio	TBT Ratio					
78	736	102	1156	97	99					
CED	BW	WW	YW	SC	MILK	\$M	\$W	\$F	\$B	\$C
6	1.6	66	111	0.97	24	54	66	89	157	258

Dam has a good, usable calf every year no matter the sire. She also breeds back every year first time and early, the kind you might want to keep heifers out of. Calving interval of 365 on 6.

15 Springvale Exclusive 143

Springvale Ranch

Black Angus		LD Capitalist 316		Entry Wt	Final Wt					
AAA#: 20181208		Musgrave 316 Exclusive		796	1202					
DOB: 03/23/21		Musgrave Prim Lassie 163-386		ADG	ADG Ratio					
Tattoo: 143		Sydgen Aim 0001		3.63	107					
		Springvale Bonny 507		WDA	WDA Ratio					
		Springvale Bonny 377		3.44	107					
BW	205 Day Wt.	205 Day Ratio	365 Day Wt.	365 Day Ratio	TBT Ratio					
83	820	111	1250	105	108					
CED	BW	WW	YW	SC	MILK	\$M	\$W	\$F	\$B	\$C
8	-1.0	62	118	1.41	37	59	80	107	151	255

Real nice calving ease bull that should make top notch replacement heifers. Maternal brother sold to Gollaher Angus in Cascade, MT in the 2019 Treasure Test sale for \$8000. Dam has 5 head at BW 90, WW 104 ratios.



Musgrave 316 Exclusive - Sire of Lots 15, 16, 17 & 18

BLACK ANGUS BULLS

18 JD Exclusive 14

Dalbey
Angus

Black Angus
AAA#: 20155702
DOB: 01/07/21
Tattoo: 14

LD Capitalist 316
Musgrave 316 Exclusive
Musgrave Prim Lassie 163-386

S A V Brilliance 8077
JD 8077 Jestress 54
JD 307R Jestress 912W



BW	205 Day Wt.	205 Day Ratio	365 Day Wt.	365 Day Ratio	TBT Ratio
80	721	100	1167	98	96

CED	BW	WW	YW	SC	MILK	\$M	\$W	\$F	\$B	\$C
7	0.3	69	118	0.82	21	65	71	96	139	245

Dam is a full sister to the bull that topped this sale 10 years ago. She is a heavy milking cow with a sound udder. Calving interval of 360 on 5.

20 KBS Resilient J01

K Bar S
Angus

Black Angus
AAA#: +20279486
DOB: 01/29/21
Tattoo: J01

Sitz Stellar 726D
Sitz Resilient 10208
Sitz Miss Burgess 1856

HA Cowboy Up 5405
Willekes Entense E47
Pine Coulee Entense T515

BW	205 Day Wt.	205 Day Ratio	365 Day Wt.	365 Day Ratio	TBT Ratio
85	796	101	1302	109	109

CED	BW	WW	YW	SC	MILK	\$M	\$W	\$F	\$B	\$C
9	1.0	65	122	0.96	27	57	69	90	133	230

Calving ease and performance in this full brother to the High Index, ADG and Jackpot Champion Bull for the 2022 TBT.

19 JD Steller 12

Dalbey
Angus

Black Angus
AAA#: 20155705
DOB: 01/03/21
Tattoo: 12

Mohnen Substantial 272
Sitz Stellar 726D
SITZ Pride 200B

S A V President 6847
JD 6847 Pride 99
JD Pride 93W



BW	205 Day Wt.	205 Day Ratio	365 Day Wt.	365 Day Ratio	TBT Ratio
80	752	104	1192	100	100

CED	BW	WW	YW	SC	MILK	\$M	\$W	\$F	\$B	\$C
-5	3.9	87	148	1.41	33	83	93	96	125	245

This is this Dam's first calf, a beautiful President daughter and somewhat more moderate than some of the other cows. Granddam lasted well into her teens and always had a top end calf, and we expect it to continue with her. Calving interval will be less than 370 next year.

21 KBS Resilient J02

K Bar S
Angus

Black Angus
AAA#: +20279487
DOB: 01/31/21
Tattoo: J02

Sitz Stellar 726D
Sitz Resilient 10208
Sitz Miss Burgess 1856

HA Cowboy Up 5405
Willekes Entense E47
Pine Coulee Entense T515

BW	205 Day Wt.	205 Day Ratio	365 Day Wt.	365 Day Ratio	TBT Ratio
84	784	101	1340	112	114

CED	BW	WW	YW	SC	MILK	\$M	\$W	\$F	\$B	\$C
9	1.0	65	122	0.96	27	57	69	90	133	230

Herd Bull Prospect that has a lot of similarities for type, performance and look to his full brother who is the 2022 TBT High Index Bull, ADG Champion and Jackpot Champion. **3rd PLACE CHAMPION ADG**



Sitz Stellar 726D - Sire of Lots 19 & 70



Sitz Resilient 10208 - Sire of Lots 13, 20, 21 & 31

BLACK ANGUS BULLS

22 MWA Acclaim J13 [M1P]

Black Angus
AAA#: 20109053
DOB: 02/06/21
Tattoo: J13

Jindra 3rd Dimension
Jindra Acclaim
 Jindra Blackbird Lassy 1111
 Will 112 of Rita R186
Willekes Blackbird E34
 Mission Blackbird C-15

Marshall Willekes Angus

Entry Wt	Final Wt				
820	1202				
ADG	ADG Ratio				
3.41	101				
WDA	WDA Ratio				
3.05	95				
BW	205 Day Wt.	205 Day Ratio	365 Day Wt.	365 Day Ratio	TBT Ratio
94	753	111	1146	96	103

CED	BW	WW	YW	SC	MILK	\$M	\$W	\$F	\$B	\$C
1	3.0	70	130	0.66	30	41	67	126	173	265

High performing bull out of a tremendous 5-year-old Dam. Dam is moderate with lots of natural power. Top 25% in WW, YW, RADG, YH, Milk, MW, MH, CW, \$F, \$B, \$C.

24 MWA Chaps J15

Black Angus
AAA#: 20083121
DOB: 02/07/21
Tattoo: J15

Ellingson Chaps 4095
Top Notch Chaps 816
 Baldco Queen Mother 456
 Hoover Bullseye M122
Top Notch Beauty 717
 NA Miss Lucky Beauty 8882

Marshall Willekes Angus

Entry Wt	Final Wt				
845	1244				
ADG	ADG Ratio				
3.56	105				
WDA	WDA Ratio				
3.17	99				
BW	205 Day Wt.	205 Day Ratio	365 Day Wt.	365 Day Ratio	TBT Ratio
82	730	108	1184	99	104

CED	BW	WW	YW	SC	MILK	\$M	\$W	\$F	\$B	\$C
4	0.9	68	120	1.23	31	76	76	91	128	242

Moderate BW bull with exceptional eye appeal. Dam is moderate with great udder and feet. Big-topped, wide-hipped bull with structure. Top 25% in WW, YW, SC, HP, Milk, Docility, RE, \$M, \$W.

23 MWA Homeraised J12

Black Angus
AAA#: 20096886
DOB: 02/06/21
Tattoo: J12

Ellingson Homegrown 6035
Mohnen Homeraised 3758
 Mohnen Coquette 1126
 Hoover Bullseye M122
Top Notch Miss Sana 727
 NA Miss Sana 035

Marshall Willekes Angus

Entry Wt	Final Wt				
783	1176				
ADG	ADG Ratio				
3.51	103				
WDA	WDA Ratio				
2.98	93				
BW	205 Day Wt.	205 Day Ratio	365 Day Wt.	365 Day Ratio	TBT Ratio
87	685	101	1118	94	99

CED	BW	WW	YW	SC	MILK	\$M	\$W	\$F	\$B	\$C
6	1.4	59	108	1.46	30	65	63	87	132	236

Moderate bull with good maternal qualities. Dam has perfect udder and feet, gained 3.51 lbs./day, top 30% in SC, HP, CEM, and Milk.

26 MWA Gold Star J29

Black Angus
AAA#: 20094120
DOB: 02/15/21
Tattoo: J29

FF Black Gold JF C19
FF Gold Star JF C74
 JF Eriskay C74
 Stevenson Statement 70750
FF Henrietta Pride G26
 FF Henrietta Pride C126

Marshall Willekes Angus

Entry Wt	Final Wt				
745	1152				
ADG	ADG Ratio				
3.63	107				
WDA	WDA Ratio				
2.99	93				
BW	205 Day Wt.	205 Day Ratio	365 Day Wt.	365 Day Ratio	TBT Ratio
86	695	103	1163	98	103

CED	BW	WW	YW	SC	MILK	\$M	\$W	\$F	\$B	\$C
4	3.9	72	124		23	69	60	91		

This bull came off a first calf heifer who did a fantastic job! She was the high selling female at the 2019 Fleisch Angus Sale. Bull exhibits good eye appeal, with added muscle.



Jindra Acclaim - Sire of Lot 22



Mohnen Homeraised 3758 - Sire of Lot 23

BLACK ANGUS BULLS

27 MWA Cowboy Up

Black Angus
AAA#: 20083122
DOB: 03/05/21
Tattoo: J39

HA Cowboy Up 5405
Top Notch Cowboy Up 801
Ox Bow Barbaramere Jet 206
Stevenson Turbo Power 50010
Top Notch Lady 776
Top Notch Final Answer 17

Marshall
Willekes Angus

Entry Wt	Final Wt				
797	1188				
ADG	ADG Ratio				
3.49	103				
WDA	WDA Ratio				
3.24	101				
BW	205 Day Wt.	205 Day Ratio	365 Day Wt.	365 Day Ratio	TBT Ratio
83	711	105	1190	100	103

CED	BW	WW	YW	SC	MILK	\$M	\$W	\$F	\$B	\$C
7	1.6	75	123	0.74	22	73	75	80	113	220

Moderate bull with early growth and natural thickness. Dam is moderate with lots of natural power, and easy fleshing ability. Top 25% in WW, YW, \$M, \$W.

30 Will Gold Star J49

Black Angus
AAA#: 20237568
DOB: 02/04/21
Tattoo: J49

FF Black Gold JF C19
FF Gold Star JF C74
JF Eriskay C74
KR DINERO
Willekes Entense E39
Pine Coulee Entense T515

Marshall
Willekes Angus

Entry Wt	Final Wt				
788	1256				
ADG	ADG Ratio				
4.18	123				
WDA	WDA Ratio				
3.17	99				
BW	205 Day Wt.	205 Day Ratio	365 Day Wt.	365 Day Ratio	TBT Ratio
68T/Bull	722	109	1237	104	112

CED	BW	WW	YW	SC	MILK	\$M	\$W	\$F	\$B	\$C
9	0.8	59	107	0.45	26	56	63	77	110	199

High performing bull out of a pathfinder dam. She is a powerful KR Dinero daughter, who turned pathfinder on her first 3 calves. He gained 4.18 lbs./day.

28 MWA Spur J40

Black Angus
AAA#: 20083117
DOB: 03/07/21
Tattoo: J40

Connealy Spur
SRS Spur 4257G
S R S Kathy 0103X
Hoover Bullseye M122
Top Notch Miss Chinook 576
Top Notch Ms Chink 8170-10

Marshall
Willekes Angus

Entry Wt	Final Wt				
717	1070				
ADG	ADG Ratio				
3.15	93				
WDA	WDA Ratio				
2.93	91				
BW	205 Day Wt.	205 Day Ratio	365 Day Wt.	365 Day Ratio	TBT Ratio
85	710	108	1076	90	97

CED	BW	WW	YW	SC	MILK	\$M	\$W	\$F	\$B	\$C
7	1.4	55	115	1.38	31	62	58	101	140	244

Heavy muscled bull out of a moderate 7-year-old dam, this bull is docile in the pen as well as on paper, top 2% in docility. Top 30% in SC, HP, Milk, Angle, \$F.

31 Will Resilient J055

Black Angus
AAA#: +20289407
DOB: 01/25/21
Tattoo: J055

Sitz Stellar 726D
Sitz Resilient 10208
Sitz Miss Burgess 1856
HA Cowboy Up 5405
Willekes Entense E47
Pine Coulee Entense T515

Willekes
Angus

Entry Wt	Final Wt				
951	1489				
ADG	ADG Ratio				
4.80	142				
WDA	WDA Ratio				
3.67	114				
BW	205 Day Wt.	205 Day Ratio	365 Day Wt.	365 Day Ratio	TBT Ratio
82	807	101	1366	115	119

CED	BW	WW	YW	SC	MILK	\$M	\$W	\$F	\$B	\$C
7	0.5	64	122	0.42	36	53	76	81	124	214

Herd Sire Prospect. High Performance. Low Birth Weight, excellent proven Maternal Cow Family. Dam is a nice young cow whose first son was a 2020 high performing, top indexing herd sire. All the sons and daughters out of this flush have been outstanding. Full brothers in this sale are lots 20 and 21. Donor granddam still in production at age 16.

TBT HIGH INDEX. CHAMPION ADG. JACKPOT CHAMPION. SELLING 2/3 INTEREST AND FULL POSSESSION

29 MWA Payweight J37

Black Angus
AAA#: 20083124
DOB: 03/01/21
Tattoo: J37

Basin Payweight 1682
HA Payweight 9128
HA Lass 0874
Hoover Bullseye M122
Top Notch Lady 853
NA Image of a Lady 757

Marshall
Willekes Angus

Entry Wt	Final Wt				
741	1170				
ADG	ADG Ratio				
3.83	113				
WDA	WDA Ratio				
3.15	98				
BW	205 Day Wt.	205 Day Ratio	365 Day Wt.	365 Day Ratio	TBT Ratio
85	703	104	1182	99	105

CED	BW	WW	YW	SC	MILK	\$M	\$W	\$F	\$B	\$C
5	1.6	62	109	1.06	33	68	71	86	129	235

High gaining Payweight son out of an exciting 3-year-old dam. Bull with explosive early growth and added muscle. Top 35% in SC, HP, CEM, Milk, Claw, Angle, \$M, \$W.



Coleman Bravo 6313 - Sire of Lot 32

BLACK ANGUS BULLS

32 Will Bravo J42 [M1P]

Willekes Angus

Black Angus
 Coleman Charlo 0256
 Coleman Bravo 6313
 Coleman Donna 714
 Buford Ranch Hand Y194
 Pine Coulee Lady B127
 Pine Coulee Lady Z87

BW	205 Day Wt.	205 Day Ratio	365 Day Wt.	365 Day Ratio	TBT Ratio
75	747	113	1203	101	107

CED	BW	WW	YW	SC	MILK	\$M	\$W	\$F	\$B	\$C
19	-3.5	46	79	0.74	32	74	70	39	59	151

Excellent heifer bull with style and thickness. Dam is a beautiful donor cow in our herd.

34 Will Gold Star J52 [M1P]

Willekes Angus

Black Angus
 FF Black Gold JF C19
 FF Gold Star JF C74
 JF Eriskay C74
 Granger Great Falls 630
 Willekes Black Annie F49
 Pine Coulee Black Annie A50

BW	205 Day Wt.	205 Day Ratio	365 Day Wt.	365 Day Ratio	TBT Ratio
92	744	113	1149	96	102

CED	BW	WW	YW	SC	MILK	\$M	\$W	\$F	\$B	\$C
-1	5.1	76	131	1.18	26	76	68	85	114	224

Dam is a nice young cow back to one of the top producing cow families at Pine Coulee.

33 Willspur J851

Willekes Angus

Black Angus
 Connealy Stimulus 8419
 Connealy Spur
 Jazza of Conanga 8594
 HA Outside 3377
 Willekes Pride of Lee C210
 Pine Coulee Pride of Lee W25

BW	205 Day Wt.	205 Day Ratio	365 Day Wt.	365 Day Ratio	TBT Ratio
87	668	115	1211	102	113

CED	BW	WW	YW	SC	MILK	\$M	\$W	\$F	\$B	\$C
-1	5.3	76	143	2.16	38	62	77	106	142	246

ET Son out of one of our top donor cows. Granddam is also a donor who produced our high selling, top performing Spur son here at TBT in 2020. Top 10% of the breed for WW, top 5% YW, top 15% RADG, top 2% SC, top 2% Milk, top 25% MW, top 20% Claw, top 10% Angle, top 15% \$W, top 15% \$F.

35 Will Timeless J47

Willekes Angus

Black Angus
 Leachman Right Time 338-5605
 WMR Timeless 458
 WMR Blackcap 521
 S A V Final Answer 0035
 Willekes Emblynette 20D
 S A V Emblynette 8423

BW	205 Day Wt.	205 Day Ratio	365 Day Wt.	365 Day Ratio	TBT Ratio
103	675	105	1196	100	104

CED	BW	WW	YW	SC	MILK	\$M	\$W	\$F	\$B	\$C
2	5.0	66	113	1.00	26	65	56	90	124	226

Expect to increase your weaning weights with this bull. Lots of good proven pathfinder cows in this pedigree.



Connealy Spur - Sire of Lot 33



WMR Timeless 458 - Sire of Lot 35

BLACK ANGUS BULLS

36 Will Black Gold J68

Willekes Angus

Black Angus
 AAA#: 20242156
 DOB: 02/20/21
 Tattoo: J68

FF Black Gold JF C19
 FF Gold Star JF C74
 JF Eriskay C74
 S Chisum 6175
 JF Pride Z196
 Vermilion Pride 3563

Entry Wt	Final Wt
890	1289
ADG	ADG Ratio
3.56	105
WDA	WDA Ratio
3.39	106

BW	205 Day Wt.	205 Day Ratio	365 Day Wt.	365 Day Ratio	TBT Ratio
91	731	110	1240	104	106

CED	BW	WW	YW	SC	MILK	\$M	\$W	\$F	\$B	\$C
6	2.1	69	115	0.68	25	78	71	85	110	221

Dam is an older proven Chisum daughter, who has several sons working as herd sires, combines performance and top 15% Maternal.



FF Gold Star JF C74 - Sire of Lots 26, 30, 34 & 36

41 TR3 Tahoe 104

[AMF-CAF-D2F-DDF-M1F-NHF-OHF-OSF-RDF]

Troyer Ranch LLC

Black Angus
 AAA#: 20144998
 DOB: 01/14/21
 Tattoo: 104

Tehama Upward Y238
 Tehama Tahoe B767
 Tehama Mary Blackbird Y684
 A A R Foreman 7733
 TR3 Ankonian 928
 A A R Ankonian 6674

Entry Wt	Final Wt
813	1287
ADG	ADG Ratio
4.23	125
WDA	WDA Ratio
3.09	96

BW	205 Day Wt.	205 Day Ratio	365 Day Wt.	365 Day Ratio	TBT Ratio
65	702	105	1200	101	110

CED	BW	WW	YW	SC	MILK	\$M	\$W	\$F	\$B	\$C
9	-0.5	73	140	1.73	41	81	95	100	167	298

Supreme calving ease bull out of a first calf heifer that ranks in the top 15% of twelve EPDS.



Tehama Tahoe B767 - Sire of Lot 41

43 TR3 kendall 106

[AMF-CAF-D2F-DDF-M1F-NHF-OHF-OSF-RDF]

Troyer Ranch LLC

Black Angus
 AAA#: 20144994
 DOB: 02/02/21
 Tattoo: 106

KG Justified 3023
 A A R Kendall 7015
 A A R Blackbird Kay 5267
 GDAR Load Up 7104
 A A R Juanadamere 9009
 A A R Juanadamere 7352

Entry Wt	Final Wt
824	1206
ADG	ADG Ratio
3.41	101
WDA	WDA Ratio
3.03	94

BW	205 Day Wt.	205 Day Ratio	365 Day Wt.	365 Day Ratio	TBT Ratio
82	757	113	1185	99	104

CED	BW	WW	YW	SC	MILK	\$M	\$W	\$F	\$B	\$C
2	0.8	74	135	1.41	40	90	93	102	154	290

This calving ease bull has lots of maternal bred into him. Top 2% in HP, Milk, \$M and \$W.



A A R Kendall 7015 - Sire of Lot 43

BLACK ANGUS BULLS

45 MSU Cash 21241

[AMF-CAF-D2F-DDF-M1F-NHF-OHF-OSF-RDF]

MSU
Angus

Black Angus
AAA#: +20153367
DOB: 03/12/21
Tattoo: 21241

Sitz Dash 10277
Barstow Cash
Barstow Queen W16
Sitz New Design 349M
Sitz Pride 374
Sitz Pride 2322

Entry Wt	Final Wt
766	1235
ADG	ADG Ratio
4.19	124
WDA	WDA Ratio
3.43	107

BW	205 Day Wt.	205 Day Ratio	365 Day Wt.	365 Day Ratio	TBT Ratio
98	764	104	1250	105	111

CED	BW	WW	YW	SC	MILK	\$M	\$W	\$F	\$B	\$C
3	2.5	65	129	0.72	16	38	46	104	146	227

MSU Cash 21241 is a stout made, powerful, and well-constructed young sire with a noteworthy pedigree. This Barstow Cash son goes back to Sitz Upward 307R, Sitz Alliance 6595, and Bon View New Design 1407. He offers some contending yearling growth and ranks in the top 35% of the breed for both carcass weight and ribeye. This bull resulted from an embryo donated by MLK Angus. Thank you, Mark and Lynn Keller, for your continued support of the MSU Angus program! **3rd PLACE JACKPOT CHAMPION**

46 MSU Titan 21242

[AMF-CAF-D2F-DDF-M1F-NHF-OHF-OSF-RDF]

MSU
Angus

Black Angus
AAA#: +20238166
DOB: 03/14/21
Tattoo: 21242

Baldrige Waylon W34
Baldrige Titan A139
Baldrige Forever Lady T269
Sitz Alliance 6595
C L Barbaramere Jet 5822
Sitz Barbaramere Jet 834

Entry Wt	Final Wt
737	1171
ADG	ADG Ratio
3.88	114
WDA	WDA Ratio
3.27	102

BW	205 Day Wt.	205 Day Ratio	365 Day Wt.	365 Day Ratio	TBT Ratio
100	779	103	1190	100	106

CED	BW	WW	YW	SC	MILK	\$M	\$W	\$F	\$B	\$C
-1	2.9	61	112	1.52	28	55	61	82	116	205

MSU Titan 21242 is a front pasture kind of bull made for a maternal mother cow. He offers respectable weaning and yearling growth. The Circle L program has a focus on PAP score, and this Titan son is in the top 40% of the breed. This bull resulted from an embryo donated by Circle L Angus. Thank you, Cory and Kari Lamey, for your continued support of the MSU Angus program!



Barstow Cash - Sire of Lots 45 & 47

47 MSU Cash 2123

[AMF-CAF-D2F-DDF-M1F-NHF-OHF-OSF-RDF]

MSU
Angus

Black Angus
AAA#: +20152023
DOB: 03/14/21
Tattoo: 21243

Sitz Dash 10277
Barstow Cash
Barstow Queen W16
Sitz New Design 349M
Sitz Pride 374
Sitz Pride 2322

Entry Wt	Final Wt
741	1157
ADG	ADG Ratio
3.71	110
WDA	WDA Ratio
3.23	101

BW	205 Day Wt.	205 Day Ratio	365 Day Wt.	365 Day Ratio	TBT Ratio
88	697	104	1176	99	104

CED	BW	WW	YW	SC	MILK	\$M	\$W	\$F	\$B	\$C
11	0.4	61	116	0.60	26	55	61	95	141	238

MSU Cash 21243 is a phenotypically pleasing calf with a nicely balanced set of EPDs. This low-birth-weight sire (ranks in the top 30% of the breed for low birth weight) offers calving ease as well as being in the top 45% for weaning weight. He is in the top 15% in the breed for heifer pregnancy. This bull resulted from an embryo donated by MLK Angus. Thank you, Mark and Lynn Keller, for your continued support of the MSU Angus program!

48 MSU Titan 21229

[AMF-CAF-D2F-DDF-M1F-NHF-OHF-OSF-RDF]

MSU
Angus

Black Angus
AAA#: +20238165
DOB: 03/08/21
Tattoo: 21229

Baldrige Waylon W34
Baldrige Titan A139
Baldrige Forever Lady T269
Sitz Alliance 6595
C L Barbaramere Jet 5822
Sitz Barbaramere Jet 834

Entry Wt	Final Wt
807	1210
ADG	ADG Ratio
3.60	106
WDA	WDA Ratio
3.32	104

BW	205 Day Wt.	205 Day Ratio	365 Day Wt.	365 Day Ratio	TBT Ratio
100	767	103	1214	102	104

CED	BW	WW	YW	SC	MILK	\$M	\$W	\$F	\$B	\$C
-4	4.2	79	143	1.59	32	55	77	96	147	246

If you want some calves with growth, then MSU Titan 21229 is your kind of bull. This young sire can pack on the pounds and increase the paycheck come shipping day. He sits at the top 10% in the breed for weaning and top 5% for yearling weight. His \$W is in the top 15% of the breed and his \$F, \$B, and \$G are not too far behind. This bull resulted from an embryo donated by Circle L Angus. Thank you, Cory and Kari Lamey, for your continued support of the MSU Angus program!



Baldrige Titan A139 - Sire of Lots 46 & 48

BLACK ANGUS BULLS

49 MSU Marshall 21240

[AMF-CAF-D2F-DDF-M1F-NHF-OHF-OSF-RDF]

Black Angus

AAA#: +20150563

DOB: 03/12/21

Tattoo: 21240

S A V Resource 1441

Coleman Marshall 7170

Coleman Donna 197

Coleman Juneau 044

Coleman Eriskay 291

Sinclair Eriskay 2N1 7883

ANGUS

BW	205 Day Wt.	205 Day Ratio	365 Day Wt.	365 Day Ratio	TBT Ratio
84	693	104	1170	98	103

CED	BW	WW	YW	SC	MILK	\$M	\$W	\$F	\$B	\$C
15	-0.5	60	106	0.26	28	68	71	62	84	177

MSU Marshall 21240 is a well put together prospect with some calving ease. He has a +15 CED and ranks in the top 15% of the breed for low birth weight. He is a great young sire from a long line of reputable bulls including D H D Traveler 6807. D H D Traveler 6807 became the number one bull in the history of the Accelerated Genetics AI Stud for semen sales and has a progeny weaning ratio of 101 on more than 13,000 head. This bull resulted from an embryo donated by Coleman Angus. Thank you, Larry and Dee Coleman & Jeremy and Jenny Haag, for your continued support of the MSU Angus program!

MSU Angus

Entry Wt	Final Wt
746	1156
ADG	ADG Ratio
3.66	108
WDA	WDA Ratio
3.21	100



Coleman Marshall 7170 - Sire of Lot 49

50 MSU Payweight 21219

[AMF-CAF-D2F-DDF-M1F-NHF-OHF-OSF-RDF]

Black Angus

AAA#: +20238188

DOB: 03/05/21

Tattoo: 21219

Vermilion Payweight J847

Basin Payweight 107S

Basin Lucy 3829

S A F Connection

Circle L 6807 Traveler 3655

V T 6807 Traveler R43

ANGUS

BW	205 Day Wt.	205 Day Ratio	365 Day Wt.	365 Day Ratio	TBT Ratio
103	749	102	1179	99	100

CED	BW	WW	YW	SC	MILK	\$M	\$W	\$F	\$B	\$C
1	4.4	64	110	0.79	23	51	52	104	138	230

MSU Payweight 21219 has been another eye appealing young sire for the MSU Angus program. He is a high weaning bull that offers a more moderate frame. This big ribeye bull should add length and value-added carcass with a ribeye EPD ranking in the top 20% of the breed. This bull resulted from an embryo donated by Circle L Angus. Thank you, Cory and Kari Lamey, for your continued support of the MSU Angus program!

MSU Angus

Entry Wt	Final Wt
812	1183
ADG	ADG Ratio
3.31	98
WDA	WDA Ratio
3.22	101



Basin Payweight 107S - Sire of Lot 50

51 MSU Empire 21246

[AMF-CAF-D2F-DDF-M1F-NHF-OHF-OSF-RDF]

Black Angus

AAA#: +20150565

DOB: 03/16/21

Tattoo: 21246

S A V Renown 3439

Montana Empire 7045

Deer Valley Blackcap 4153

Basin Payweight 1682

Montana Rita 6097

Rita 8H17 of Rita 3I10 Total

ANGUS

BW	205 Day Wt.	205 Day Ratio	365 Day Wt.	365 Day Ratio	TBT Ratio
96	759	106	1184	99	99

CED	BW	WW	YW	SC	MILK	\$M	\$W	\$F	\$B	\$C
2	1.8	72	129	0.65	32	64	84	94	132	235

MSU Empire 21246 offers tremendous growth, ribeye, and carcass potential. This son of Montana Empire 704S has a noteworthy pedigree, going back to SAV Renown 3439 and Basin Payweight 1682. With a \$W ranking in the top 10% of the breed and a +72 weaning weight EPD, this deep sided young sire is guaranteed to add value to your calves in the fall. This bull resulted from an embryo donated by Montana Angus Ranch. Thank you, David and Sandy Sabey, Matt Cottle, and David Brown, for your continued support.

MSU Angus

Entry Wt	Final Wt
813	1159
ADG	ADG Ratio
3.09	91
WDA	WDA Ratio
3.26	102



Montana Empire 7045 - Sire of Lot 51

BLACK ANGUS BULLS

56 Lewis Big League 130

[M1P-OHP-OSF]

Lewis Land & Livestock

Black Angus

AAA#: 20160102

DOB: 02/24/21

Tattoo: 130

Jindra Acclaim

Stevenson Big League 70749

RL 9061 Birdie 3102

Stevenson Templeton 3308

Lewis Ellen's Queen 512C

KG Ellen's Queen 061

Entry Wt	Final Wt
888	1289
ADG	ADG Ratio
3.58	106
WDA	WDA Ratio
3.43	107

BW	205 Day Wt.	205 Day Ratio	365 Day Wt.	365 Day Ratio	TBT Ratio
57	730	106	1259	106	106

CED	BW	WW	YW	SC	MILK	\$M	\$W	\$F	\$B	\$C
10	-0.3	68	115	1.08	29	60	79	86	125	222

This heifer bull prospect is a moderate framed, wide based, big-topped bull full of rib shape and muscle. He's attractively made and ranks in the top 10% of the breed for marbling. Dam is a consistent producer, averaging 5 at 100 NR and 3 at 104 YR with a 366-day calving interval. She has two daughters retained in the herd. Boasts a balanced EPD profile, ranking in the top 20% of the breed for CED and BW, top 25% for WW and Milk, and top 35% for YW and SC. Sire, Stevenson Big League 70749, recorded the heaviest weaning weight in the 70-year history of Stevenson Angus Ranch, weighing 1,340 pounds at 10 months of age when he sold two-thirds interest for a new Stevenson record of \$221,000. As of November 2021, he had 813 progeny with an average NR of 102 and 395 at 103 YR.

57 Lewis Everlast 131

[OHP]

Lewis Land & Livestock

Black Angus

AAA#: 20160113

DOB: 02/24/21

Tattoo: 131

Baldrige Alternative E125

Stevenson Everlast

Stevenson Edwina 3179

Stevenson Rockmount RX933

Lewis Allison 535C

KKL Allison 300A

Entry Wt	Final Wt
824	1169
ADG	ADG Ratio
3.08	91
WDA	WDA Ratio
3.11	97

BW	205 Day Wt.	205 Day Ratio	365 Day Wt.	365 Day Ratio	TBT Ratio
54	735	106	1141	96	98

CED	BW	WW	YW	SC	MILK	\$M	\$W	\$F	\$B	\$C
13	0	63	116	0.45	30	50	70	96	163	261

Here's a moderate framed, deep bodied bull with the substance to go with it. Dam averages 4 at 102 NR, 3 at 99 YR with an impressive 358-day calving interval. Granddam averages 7 at 100 NR, 3 at 105 YR. While muscle and marbling are typically antagonistic traits, Stevenson Everlast combines them both ranking in the top 10% of breed for ribeye and top 3% of the breed for marbling. Everlast is backed by a phenomenal cow family with dam posting 5 at 109 NR, granddam 4 at 105 NR, and great-granddam 5 at 109 NR.



Stevenson Everlast - Sire of Lot 57

58 Lewis Turbo Power 133

[M1P]

Lewis Land & Livestock

Black Angus

AAA#: 20160042

DOB: 03/05/21

Tattoo: 133

PA Full Power 1208

Stevenson Turbo Power 50010

Stevenson Amber Rose 3262

Stevenson Top Game 41523

Rimrock Rose 861F

Rimrock Rose 433B

Entry Wt	Final Wt
862	1222
ADG	ADG Ratio
3.21	95
WDA	WDA Ratio
3.33	104

BW	205 Day Wt.	205 Day Ratio	365 Day Wt.	365 Day Ratio	TBT Ratio
65	767	111	1253	105	104

CED	BW	WW	YW	SC	MILK	\$M	\$W	\$F	\$B	\$C
5	1.9	74	120	0.33	35	70	92	101	145	258

This bull is hard to miss in the pen! He's long bodied, stout made, and masculine with an incredibly attractive profile as well. Ranks in the top 5% of the breed for milk, top 15% for WW, top 20% for ribeye, and top 25% for YW. Dam is a long bodied, easy fleshing cow who averages 1 at 111 NR and 1 at 105 YR. Sire, Stevenson Turbo Power 50010 at ORigen, is known for his eye appeal and muscle, proven calving ease with both performance and carcass.

59 Lewis Declaration 135

Lewis Land & Livestock

Black Angus

AAA#: 20160088

DOB: 03/12/21

Tattoo: 135

Jindra Acclaim

Stevenson Declaration 70748

RL 9061 Birdie 3102

Stevenson Rockmount RX933

Lewis Jean 6108D

KG Beauty Jean 256

Entry Wt	Final Wt
909	1370
ADG	ADG Ratio
4.12	121
WDA	WDA Ratio
3.81	119

BW	205 Day Wt.	205 Day Ratio	365 Day Wt.	365 Day Ratio	TBT Ratio
86	792	115	1383	116	117

CED	BW	WW	YW	SC	MILK	\$M	\$W	\$F	\$B	\$C
5	1.0	77	147	0.27	32	48	85	140	178	279

Power, power, power! This herd bull prospect is one of the big spread bulls of the sale, coupling moderate birth (just +1.0 BW EPD) with outstanding performance across the board. He ranks in top 1% for \$F, top 4% of the breed for YW, the top 10% of the breed for WW, \$W, and \$B, top 15% for milk, and top 25% for RE. Phenotypically, he's long bodied, deep sided, square hipped, and tight sheathed. Highest weight per day of age bull in the test, he was raised on just shortgrass prairie, salt, and mineral before gaining 4.12 pounds per day at the bunk to top the WDA category. Dam averages 3 at 114 NR and 3 at 114 YR. Additionally, she has calved in the first cycle each year and has one daughter retained in the herd. A maternal brother by Stevenson Templeton sold in the Spring 2019 Stevenson Angus sale for \$4,000. Sire, Stevenson Declaration 70748, combines calving ease, performance, volume, and eye appeal and is backed by an impressive cow family.

CHAMPION WDA. JACKPOT RESERVE CHAMPION.
SELLING 2/3 INTEREST and FULL POSSESSION



Stevenson Turbo Power 50010 - Sire of Lot 58

BLACK ANGUS BULLS

60 Lewis Easy Money 138

Lewis Land & Livestock

Black Angus

AAA#: 20159601

DOB: 03/12/21

Tattoo: 138

Plattermere Weigh Up K360
Stevenson Easy Money 70688

Down T Blackbird 5646

Stevenson Templeton 3308
Rimrock Esther 636D

Rimrock Esther 206

Entry Wt	Final Wt
825	1229
ADG	ADG Ratio
3.61	106
WDA	WDA Ratio
3.41	106

BW	205 Day Wt.	205 Day Ratio	365 Day Wt.	365 Day Ratio	TBT Ratio
74	752	109	1243	104	106

CED	BW	WW	YW	SC	MILK	\$M	\$W	\$F	\$B	\$C
10	0.1	67	125	0.92	31	51	77	81	102	183

This is a surefire calving ease selection with a balanced EPD profile across the board. He's in the top 15% of the breed on milk and \$W, top 20% on CED and YW, and top 30% on WW. He'll add some extra rib and length as well. Dam is a moderate framed, easy fleshing cow averaging 3 at 111 NR, 3 at 109 YR with two daughters retained in the herd. Sired by Stevenson Easy Money 70688, the big-time growth bull with moderate birth and a huge ribeye.



Stevenson Easy Money 70688 - Sire of Lot 60

61 Lewis Declaration 134

[OHP]

Lewis Land & Livestock

Black Angus

AAA#: 20160081

DOB: 03/12/21

Tattoo: 134

Jindra Acclaim

Stevenson Declaration 70748

RL 9061 Birdie 3102

Stevenson Right Look 41123

Lewis Sadie 604D

KKL Sadie 438B

Entry Wt	Final Wt
841	1205
ADG	ADG Ratio
3.25	96
WDA	WDA Ratio
3.35	104

BW	205 Day Wt.	205 Day Ratio	365 Day Wt.	365 Day Ratio	TBT Ratio
76	742	107	1218	102	102

CED	BW	WW	YW	SC	MILK	\$M	\$W	\$F	\$B	\$C
7	1.5	86	154	0.29	32	59	94	132	180	292

If you sell cattle by the pound, this is a big-time performance bull! He ranks in the top 3% of the breed for WW, top 2% for YW and RE, and top 15% for milk. His \$W ranks him in the top 2%, \$F is top 1%, and \$B is top 5%. He does all this with a moderate 1.4 BW EPD as well! He's a long bodied, big hiped, growthy bull. Dam averages 4 at 100 NR, 2 at 101 YR with her sole daughter retained in the herd. Sired by Stevenson Declaration 70748, the Jindra Acclaim son that combines calving ease and performance. Declaration comes from a high production cow family with tremendous maternal influence and is a stout made, massive type sire with both volume and eye appeal.



Stevenson Declaration 70748 - Sire of Lots 59 & 61

63 JVC Spur 21196

Jocko Valley Cattle LLC

Black Angus

AAA#: 20179791

DOB: 03/31/21

Tattoo: 21196

Connealy Spur

Vermilion Spur E870

Vermilion Lass 4942

Summitcrest Stardom 1S54

JVC Henrietta Pride Y1143

Sitz Henrietta Pride 1510

Entry Wt	Final Wt
756	1104
ADG	ADG Ratio
3.11	92
WDA	WDA Ratio
3.24	101

BW	205 Day Wt.	205 Day Ratio	365 Day Wt.	365 Day Ratio	TBT Ratio
74	720	98	1173	98	96

CED	BW	WW	YW	SC	MILK	\$M	\$W	\$F	\$B	\$C
4	2.2	55	103	-0.31	27	49	54	82	133	222

The sire is the extremely popular Vermilion Spur E870. His progeny has topped sales across the state of Montana in the last year.



Vermilion Spur E870 - Sire of Lots 63 & 65



Connealy Onward - Sire of Lot 67

BLACK ANGUS BULLS

65 JVC Spur 21219

Jocko Valley Cattle LLC

Black Angus
AAA#: 20179793
DOB: 04/14/21
Tattoo: 21219

Connealy Spur
Vermilion Spur E870
Vermilion Lass 4942

C R A Bextor 872 5205 608
JVC Charisma A358
River Hills Charisma X145

Entry Wt	Final Wt				
719	1074				
ADG	ADG Ratio				
3.17	93				
WDA	WDA Ratio				
3.28	102				
BW	205 Day Wt.	205 Day Ratio	365 Day Wt.	365 Day Ratio	TBT Ratio
86	751	102	1177	99	98

CED	BW	WW	YW	SC	MILK	\$M	\$W	\$F	\$B	\$C
3	3.7	70	114	0.21	24	72	68	85	117	224

The sire is the extremely popular Vermilion Spur E870. His progeny has topped sales across the state of Montana in the last year. This bull is the youngest in the offering, but by maturity might be the most impressive of the bunch.

68 MLK Cash 172

MLK Angus

Black Angus
AAA#: 20126031
DOB: 01/16/21
Tattoo: 172

Barstow Cash
MLK Cash 852
Sitz Pride 374

Sitz Profile 1160
MLK Blackbird 972
Sitz Blackbird 6720

Entry Wt	Final Wt				
921	1281				
ADG	ADG Ratio				
3.21	95				
WDA	WDA Ratio				
3.09	96				
BW	205 Day Wt.	205 Day Ratio	365 Day Wt.	365 Day Ratio	TBT Ratio
78	863	116	1234	103	104

CED	BW	WW	YW	SC	MILK	\$M	\$W	\$F	\$B	\$C
3	2.5	79	142	0.63	20	73	71	113	166	288

This bull is out of a first calf heifer. He had a wean ratio of 116 and adjusted weight of 863 lbs. MLK Cash 172's impressive EPDs ranks high with a WW in the top 10%, YW top 5%, \$B in the top 15% and \$C in the top 10%. This bull will add pounds to your calves. His dam comes from a long line of the Sitz Blackbird Family adding great maternal, feet, and udders to your program.

66 Casha Goforth Admiral D150

Casha Corder

Black Angus
AAA#: 20155260
DOB: 03/10/21
Tattoo: J120

V A R Generation 2100
Goforth Admiral E25
RB-GFC Lady Upshot 890-3144

Bobcat Xcalibur
FF Jenny B120
FF Jenny U129

Entry Wt	Final Wt				
927	1240				
ADG	ADG Ratio				
2.79	82				
WDA	WDA Ratio				
3.43	107				
BW	205 Day Wt.	205 Day Ratio	365 Day Wt.	365 Day Ratio	TBT Ratio
86	820	105	1250	98	95

CED	BW	WW	YW	SC	MILK	\$M	\$W	\$F	\$B	\$C
-1	3.9	75	127	0.76	16	40	57	124	167	257

This bull marks of a variety of supreme traits on any producers check list. Top 3% \$F and top 15% for \$B and WW. This bull will pack on the #s to calves of any commercial operator.

CHAMPION YOUTH

70 CAK Stellar Party 1-28

Krantz Angus

Black Angus
AAA#: 20041110
DOB: 01/23/21
Tattoo: 2128

Mohnen Substantial 272
Sitz Stellar 726D
SITZ Pride 200B

Werner War Party 2417
CAK Lassie War Party 404
CAK Lassie Extra K205 001

Entry Wt	Final Wt				
819	1160				
ADG	ADG Ratio				
3.04	90				
WDA	WDA Ratio				
2.84	89				
BW	205 Day Wt.	205 Day Ratio	365 Day Wt.	365 Day Ratio	TBT Ratio
86	653	106	1052	88	95

CED	BW	WW	YW	SC	MILK	\$M	\$W	\$F	\$B	\$C
6	0.7	70	120	0.87	24	99	78	85	117	251

Top 1% \$ Maternal, well balanced, moderate framed, calm Sitz Stellar son. Cow never misses, 5 @ 102 wean ratio.

67 MLK TW Onward 148

MLK Angus

Black Angus
AAA#: 20142148
DOB: 02/14/21
Tattoo: 148

Connealy Lead On
Connealy Onward
Altune of Conanga 6104

Wulffs Ext 6106
Coleman Donna 6143
KMK Donna J311

Entry Wt	Final Wt				
824	1194				
ADG	ADG Ratio				
3.30	97				
WDA	WDA Ratio				
3.09	96				
BW	205 Day Wt.	205 Day Ratio	365 Day Wt.	365 Day Ratio	TBT Ratio
88	712	100	1148	96	98

CED	BW	WW	YW	SC	MILK	\$M	\$W	\$F	\$B	\$C
10	1.3	51	86	0.77	29	83	59	82	109	224

This ET bull's sire Connealy Onward, sired Sitz Upward 307R who had an unmatched EPD profile in his day. 307R's moderate birth weight with breed leading EPD's for WW, YW, SC & milk with outstanding carcass weight and merit. Coleman Donna 6143, a Coleman Angus donor cow is a deep broody cow with excellent udders, feet, disposition, and eye appeal. Her dam KMK Donna J311 is from the heart of the Donna Family having 27 daughters with an average wean ratio of 104. Her sire Wulff's Ext 6101, a calving ease sire saw record semen sales following his early death.

71 Carters Blacktail 149

Krantz Angus

Black Angus
AAA#: 20102037
DOB: 02/13/21
Tattoo: 2149

FF Black Gold JF C19
CAK Black Tail Source 8-74
Mytty Countess 6486

Deer Valley All In
CK Blackbird All In 808
CK Blackbird Capitalist 1601

Entry Wt	Final Wt				
737	1100				
ADG	ADG Ratio				
3.24	96				
WDA	WDA Ratio				
2.84	89				
BW	205 Day Wt.	205 Day Ratio	365 Day Wt.	365 Day Ratio	TBT Ratio
74	675	110	1085	91	99

CED	BW	WW	YW	SC	MILK	\$M	\$W	\$F	\$B	\$C
14	0.1	67	116	1.44	26	56	73	84	129	223

Heifer bull top 4% CED with growth and shape. Our highest weaning ratio calf this year.

BLACK ANGUS BULLS

72 BEU Weigh UP J58

[M1P-OHP]

Beuerman Angus

Black Angus

AAA#: 20092388

DOB: 02/16/21

Tattoo: J58

Plattemere Weigh Up K360

J&J Weigh Up 294

J & J Miss Georgina 294

EAR Blazin Oak 15513

BEU Lady PD F258

Lady of Peak Dot 135Z

Entry Wt	Final Wt
911	1245
ADG	ADG Ratio
2.98	88
WDA	WDA Ratio
3.24	101

BW	205 Day Wt.	205 Day Ratio	365 Day Wt.	365 Day Ratio	TBT Ratio
88	854	138	1244	104	102

CED	BW	WW	YW	SC	MILK	\$M	\$W	\$F	\$B	\$C
5	2.2	75	127	1.14	20	61	68	94	149	254

A standout bull from the start. J58 was able to post an impressive 205 weight of 854 pounds after a dry summer that saw impacted weaning weights on many of his contemporaries. Out of a three-year-old cow that we see as an up-and-coming star in the herd.

SELLING 2/3 INTEREST and FULL POSSESSION



J&J Weigh Up 294 - Sire of Lot 72

73 BEU Concord J49

Beuerman Angus

Black Angus

AAA#: 20092389

DOB: 02/04/21

Tattoo: J49

Connealy Consensus

Connealy Concord

Eura Elga of Conanga 9109

NWD Longmire 620

BEU Dixie Erica 938

Coleman Dixie Erica 1339

Entry Wt	Final Wt
726	1091
ADG	ADG Ratio
3.26	96
WDA	WDA Ratio
2.76	86

BW	205 Day Wt.	205 Day Ratio	365 Day Wt.	365 Day Ratio	TBT Ratio
66	651	106	1077	90	97

CED	BW	WW	YW	SC	MILK	\$M	\$W	\$F	\$B	\$C
16	-2.9	53	89	1.17	22	67	59	68	108	207

Out of a first calf heifer. A great calving ease prospect that excels in many important maternal traits.



Connealy Concord - Sire of Lot 73



2XL Bronc 8153 - Sire of Lot 75

75 KW 2XLent Acclaim 111

[AMF-CAF-D2F-DDF-M1F-NHF-OHF-OSF-RDF]

WildKat Angus

Black Angus

AAA#: 19994151

DOB: 03/04/21

Tattoo: 111

Baldrige Bronc

2XL Bronc 8153

2XL Clova Pride 6230

Jindra Acclaim

K W Beauty Acclaim 903

Mytty Kinochtry Beauty 1033

Entry Wt	Final Wt
850	1162
ADG	ADG Ratio
2.79	82
WDA	WDA Ratio
3.16	98

BW	205 Day Wt.	205 Day Ratio	365 Day Wt.	365 Day Ratio	TBT Ratio
74	816	100	1242	104	95

CED	BW	WW	YW	SC	MILK	\$M	\$W	\$F	\$B	\$C
15	-1.2	75	131	0.36	23	82	81	88	146	271

Balanced calving ease prospect with outstanding carcass traits. Top 10% for WW, YW, HP, \$M and \$W. Top 20% for CEM, Doc, and Marb.

BLACK ANGUS BULLS

76 Mcfadgen Fave One 103 McFadgen Angus

Black Angus

AAA#: 20105549

DOB: 03/06/21

Tattoo: 103



ANGUS 360

Connealy Confidence Plus
E&B Plus One
E&B Lady 1023 Precision 936

EXAR Upshot 0562B
Mcfadgen 3338 Lady 412
Mcfadgen Blackbird 3338

Entry Wt	Final Wt
890	1217
ADG	ADG Ratio
2.90	85
WDA	WDA Ratio
3.33	103

BW	205 Day Wt.	205 Day Ratio	365 Day Wt.	365 Day Ratio	TBT Ratio
83	806	100	1215	101	95

CED	BW	WW	YW	SC	MILK	\$M	\$W	\$F	\$B	\$C
10	0	67	119	-0.15	28	78	80	75	152	275

This bull is an E&B Plus One son, out of one of our best cows. The EXAR Upshot Dam is a beautiful cow with a great udder, feet are great & she's fertile. As a 2-year-old this Dam raised a heifer we sold at Nile. The heifer returned to Nile in 2017 to win the Angus Futurity. This bull has a weaning of 877 lbs. This \$W is top 15 percent. He's GS tested. His \$C is top 15% & CAB with Marbling of top 2%.

78 Circle L Charm 160J Circle L Angus

Black Angus

AAA#: +20070506

DOB: 02/10/21

Tattoo: 160J

ANGUS 360

Silveiras Conversion 8064
BUBS Southern Charm AA31
Hickory Hill Erica 009

BSAR Opportunity 9114
C L Everelda Entense Z143
C L Everelda Entense 29T

Entry Wt	Final Wt
846	1250
ADG	ADG Ratio
3.61	106
WDA	WDA Ratio
3.21	100

BW	205 Day Wt.	205 Day Ratio	365 Day Wt.	365 Day Ratio	TBT Ratio
83	698	106	1176	99	104

CED	BW	WW	YW	SC	MILK	\$M	\$W	\$F	\$B	\$C
4	2.1	70	117	1.38	36	75	85	103	167	292

Embryo transplant full brothers that are sure to catch your eye. Attractive, well patterned bulls that will add carcass, scrotal and high maternal traits. Descending from a high producing Everelda Entense donor. 160J offers a very balanced EPD Profile as he ranks in the Top 4% Milk, Top 10% RE, Fat, \$W, \$C, Top 15% Claw, Angle, \$G, \$B, Top 20% WW, SC, HP, \$M and \$F. **SELLING 2/3 INTEREST and FULL POSSESSION**

77 Circle L Payweight 05J Circle L Angus

Black Angus

AAA#: +20070517

DOB: 01/15/21

Tattoo: 05J

ANGUS 360

Basin Payweight 006S
Basin Payweight 1682
21AR O Lass 7017

Connealy Lead On
JVC Altune of Conanga 803
Altune of Conanga 6104

Entry Wt	Final Wt
959	1362
ADG	ADG Ratio
3.60	106
WDA	WDA Ratio
3.27	102

BW	205 Day Wt.	205 Day Ratio	365 Day Wt.	365 Day Ratio	TBT Ratio
81	696	103	1224	103	104

CED	BW	WW	YW	SC	MILK	\$M	\$W	\$F	\$B	\$C
0	2.7	73	125	0.67	31	54	78	108	157	258

Embryo transplant sired by Basin Payweight 1682, known for producing moderate, high volume, easy fleshing cattle with strong maternal ability. Dam is a high producing donor and full sister to Connealy Onward. 05J ranks in the Top 25% for 9 traits while genomic percentile rankings are Top 5% WW, Top 13% YW, Top 4% YH, Top 12% Doc, Top 2% MW, Top 1% CW, Top 13% RE. **SELLING 2/3 INTEREST and FULL POSSESSION**

79 Circle L Charm 159J Circle L Angus

Black Angus

AAA#: +20075695

DOB: 02/10/21

Tattoo: 159J

ANGUS 360

Silveiras Conversion 8064
BUBS Southern Charm AA31
Hickory Hill Erica 009

BSAR Opportunity 9114
C L Everelda Entense Z143
C L Everelda Entense 29T

Entry Wt	Final Wt
883	1320
ADG	ADG Ratio
3.90	115
WDA	WDA Ratio
3.38	106

BW	205 Day Wt.	205 Day Ratio	365 Day Wt.	365 Day Ratio	TBT Ratio
92	708	106	1238	104	108

CED	BW	WW	YW	SC	MILK	\$M	\$W	\$F	\$B	\$C
11	1.6	73	121	0.80	29	64	81	84	141	247

Embryo transplant full brothers that are sure to catch your eye. Attractive, well patterned bulls that will add carcass, scrotal and high maternal traits. Descending from a high producing Everelda Entense donor. 159J offers a nice birth to yearling spread while ranking in the Top 10% \$W, and HP, Top 15% CED, WW, Top 25% YW, Angle, Milk, and \$G. **SELLING 2/3 INTEREST and FULL POSSESSION**



Basin Payweight 1682 - Sire of Lot 77



BUBS Southern Charm AA31 - Sire of Lots 78 & 79

BLACK ANGUS BULLS

80 Circle L Flagstone 79J

Circle L
Angus

Black Angus
AAA#: 20085799
DOB: 01/29/21
Tattoo: 79J

Hoover No Doubt
Baldrige Flagstone F411
Baldrige Isabel Y69

Plattemere Weigh Up K360
Circle L Weigh Up 288D
HCC 1407 Net Worth 2061

Entry Wt	Final Wt
870	1300
ADG	ADG Ratio
3.84	113
WDA	WDA Ratio
3.23	101

BW	205 Day Wt.	205 Day Ratio	365 Day Wt.	365 Day Ratio	TBT Ratio
90	691	98	1195	100	104

CED	BW	WW	YW	SC	MILK	\$M	\$W	\$F	\$B	\$C
-2	4.7	81	150	1.45	28	69	76	113	174	295

Stout made cow bull with impressive EPD Profile sure to add pay weight. Ranks in the Top 1% Angle, 3% YW, 5% WW and RADG, Top 10% Doc, Fat, \$F, \$B, \$C, Top 15% SC, Claw, and CW.

82 RKP 5212-0213 101

RK
Perry

Black Angus
AAA#: +20207304
DOB: 02/18/21
Tattoo: 101

S A V Resource 1441
Ellingson Transcend 5212
EA Hyalite Lady 1333
Connealy Dublin 8223
Vermilion Lass 0213
Vermilion Lass 3298

Entry Wt	Final Wt
851	1375
ADG	ADG Ratio
4.68	138
WDA	WDA Ratio
3.60	112

BW	205 Day Wt.	205 Day Ratio	365 Day Wt.	365 Day Ratio	TBT Ratio
94	756	108	1330	112	119

CED	BW	WW	YW	SC	MILK	\$M	\$W	\$F	\$B	\$C
5	3.5	77	149	1.28	26	44	65	124	182	280

Pathfinder Donor Dam from Vermilion Ranch who goes back to one of their best VRD daughters they ever had. WR 9@108 YR 9@109.

RESERVE CHAMPION ADG

81 RKP 5212-0213 100

RK
Perry

Black Angus
AAA#: +20207320
DOB: 02/20/21
Tattoo: 100

S A V Resource 1441
Ellingson Transcend 5212
EA Hyalite Lady 1333

Connealy Dublin 8223
Vermilion Lass 0213
Vermilion Lass 3298

Entry Wt	Final Wt
889	1335
ADG	ADG Ratio
3.98	117
WDA	WDA Ratio
3.51	110

BW	205 Day Wt.	205 Day Ratio	365 Day Wt.	365 Day Ratio	TBT Ratio
97	751	108	1296	109	111

CED	BW	WW	YW	SC	MILK	\$M	\$W	\$F	\$B	\$C
-5	6	74	137	1.49	32	45	62	118	168	263

Pathfinder Donor Dam from Vermilion Ranch who goes back to one of their best VRD daughters they ever had. WR 9@108 YR 9@109.

83 RKP F83-A41 109

RK
Perry

Black Angus
AAA#: 20253326
DOB: 02/01/21
Tattoo: 109

Bushs Easy Decision 98
FF Conclusion F83
JF Eriskay B80

A A R Ten X 7008 S A
FF Henrietta Pride Y14
FF Henrietta Pride Y14

Entry Wt	Final Wt
965	1372
ADG	ADG Ratio
3.63	107
WDA	WDA Ratio
3.44	107

BW	205 Day Wt.	205 Day Ratio	365 Day Wt.	365 Day Ratio	TBT Ratio
74	826	108	1287	108	108

CED	BW	WW	YW	SC	MILK	\$M	\$W	\$F	\$B	\$C
8	-0.7	77	132	1.28	27	78	89	113	179	310

Dam WR 4@108 YR 4@106.



Baldrige Flagstone F411 - Sire of Lot 80



Ellingson Transcend 5212 - Sire of Lots 81 & 82

BLACK ANGUS BULLS

84 RKP F83-Z95 110

RK Perry

Black Angus
 Bushes Easy Decision 98
 AAA#: 20253327
 DOB: 02/01/21
 Tattoo: 110

FF Conclusion F83
 JF Eriskay B80

Connealy Revenue 7289
 FF Miss Angus Z95
 MP 8005 Miss Angus S611

ANGUS	BW	205 Day Wt.	205 Day Ratio	365 Day Wt.	365 Day Ratio	TBT Ratio
	84	837	104	1194	100	101

CED	BW	WW	YW	SC	MILK	\$M	\$W	\$F	\$B	\$C
-1	4.5	73	115	0.62	26	60	68	81	119	214

Dam WR 6@107 YR 5@101. Dam was a high selling cow at the John Flesch Retirement Dispersal in 2020.

87 RKP F325-56 119

RK Perry

Black Angus
 AAA#: 20197292
 DOB: 02/26/21
 Tattoo: 119

KR Abundant 4948
 Vermilion Abundant F325
 Vermilion Violet 4270

Vermilion Bear Paw
 RKP Y117-7345 56
 Stevenson Clova Pride 7345

ANGUS	BW	205 Day Wt.	205 Day Ratio	365 Day Wt.	365 Day Ratio	TBT Ratio
	95	842	104	1390	117	110

CED	BW	WW	YW	SC	MILK	\$M	\$W	\$F	\$B	\$C
0	3.2	71	134	1.24	24	63	63	111	168	281

Dam WR 5@105 YR 5@106.

3rd PLACE CHAMPION WDA

85 RKP F83-C136 114

RK Perry

Black Angus
 AAA#: 20253328
 DOB: 02/16/21
 Tattoo: 114

Bushes Easy Decision 98
 FF Conclusion F83
 JF Eriskay B80

S A V Renown 3439
 FF Henrietta Pride C136
 FF Herrietta Pride W10

ANGUS	BW	205 Day Wt.	205 Day Ratio	365 Day Wt.	365 Day Ratio	TBT Ratio
	81	817	107	1205	101	104

CED	BW	WW	YW	SC	MILK	\$M	\$W	\$F	\$B	\$C
6	0.7	57	102	0.19	33	70	71	83	122	228

Dam WR 5@104 YR 3@98. Dam raised the second and fifth high selling bulls this year at Flesch Angus Sale.

88 RKP F325-47 120

RK Perry

Black Angus
 AAA#: 20197291
 DOB: 02/26/21
 Tattoo: 120

KR Abundant 4948
 Vermilion Abundant F325
 Vermilion Violet 4270

SydGen Googol
 RKP 0413-2480 47
 Vermilion Lass 2480

ANGUS	BW	205 Day Wt.	205 Day Ratio	365 Day Wt.	365 Day Ratio	TBT Ratio
	90	821	102	1243	104	104

CED	BW	WW	YW	SC	MILK	\$M	\$W	\$F	\$B	\$C
3	2.3	81	143	1.54	35	71	90	123	173	295

Dam WR 6@99 YR 5@98.



FF Conclusion F83 - Sire of Lots 83, 84 & 85



Vermilion Abundant F325 - Sire of Lots 87 & 88

BLACK ANGUS BULLS

89 RKP 78-30 121

[M1F]

RK Perry

Black Angus
AAA#: 20197293
DOB: 03/01/21
Tattoo: 121

Boyd Signature 1014
RKP 1014-8456 78
Vermilion Lass 8456
S A V Prosperity 9131
RKP GL-Janiece 30
Vermilion JL Janiece 732

Entry Wt	Final Wt
917	1233
ADG	ADG Ratio
2.82	83
WDA	WDA Ratio
3.32	104

BW	205 Day Wt.	205 Day Ratio	365 Day Wt.	365 Day Ratio	TBT Ratio
92	831	103	1229	103	96

CED	BW	WW	YW	SC	MILK	\$M	\$W	\$F	\$B	\$C
-2	4.4	78	132	1.49	27	75	75	113	146	264

Dam WR 4@97 YR 2@102. Dam raised second high selling bull last year at TBT Sale.

93 RKP WM 9513-434 I8

RK Perry

Black Angus
AAA#: 20198877
DOB: 03/07/21
Tattoo: I8

Poss Maverick
Poss Rawhide
Poss Blueblood 6502
Bobcat Xcalibur
RKP X8-123 434
RKP 921-720R 123

Entry Wt	Final Wt
855	1194
ADG	ADG Ratio
3.03	89
WDA	WDA Ratio
3.27	102

BW	205 Day Wt.	205 Day Ratio	365 Day Wt.	365 Day Ratio	TBT Ratio
88	777	102	1194	100	97

CED	BW	WW	YW	SC	MILK	\$M	\$W	\$F	\$B	\$C
6	1.7	66	115	0.88	27	86	75	97	162	296

Dam WR 6@103 YR 4@103.

91 RKP 9513-0213 133

RK Perry

Black Angus
AAA#: 20198879
DOB: 03/12/21
Tattoo: 133

Poss Maverick
Poss Rawhide
Poss Blueblood 6502
Connealy Dublin 8223
Vermilion Lass 0213
Vermilion Lass 3298

Entry Wt	Final Wt
959	1373
ADG	ADG Ratio
3.70	109
WDA	WDA Ratio
3.81	119

BW	205 Day Wt.	205 Day Ratio	365 Day Wt.	365 Day Ratio	TBT Ratio
80	926	115	1424	119	114

CED	BW	WW	YW	SC	MILK	\$M	\$W	\$F	\$B	\$C
7	1.1	78	135	1.07	27	41	80	140	216	321

Pathfinder Donor Dam from Vermilion Ranch who goes back to one of their best VRD daughters they ever had. WR 9@108 YR 9@109.

RESERVE CHAMPION WDA
RESERVE CHAMPION SIRE GROUP

94 RKP WM 9513-72 I14

RK Perry

Black Angus
AAA#: 20198872
DOB: 03/10/21
Tattoo: I14

Poss Maverick
Poss Rawhide
Poss Blueblood 6502
Sitz Top Game 561X
RKP 561X-8456 72
Vermilion Lass 8456

Entry Wt	Final Wt
837	1198
ADG	ADG Ratio
3.22	95
WDA	WDA Ratio
3.31	103

BW	205 Day Wt.	205 Day Ratio	365 Day Wt.	365 Day Ratio	TBT Ratio
83	820	107	1221	102	101

CED	BW	WW	YW	SC	MILK	\$M	\$W	\$F	\$B	\$C
0	4.7	88	154	1.08	30	54	84	137	192	303

Dam WR 3@109 YR 2@109. Maternal brother to high selling bull last year to C Spear Angus.

RESERVE CHAMPION SIRE GROUP

92 RKP WM 9513-87 I6

RK Perry

Black Angus
AAA#: 20198869
DOB: 03/06/21
Tattoo: I6

Poss Maverick
Poss Rawhide
Poss Blueblood 6502
Mytty ForeFront 77P
RKP 77P-2480 87
Vermilion Lass 2480

Entry Wt	Final Wt
849	1190
ADG	ADG Ratio
3.04	90
WDA	WDA Ratio
3.25	101

BW	205 Day Wt.	205 Day Ratio	365 Day Wt.	365 Day Ratio	TBT Ratio
87	802	105	1225	103	99

CED	BW	WW	YW	SC	MILK	\$M	\$W	\$F	\$B	\$C
10	0.6	73	127	0.76	30	82	85	110	169	301

Dam WR 2@108 YR 2@108.



Poss Rawhide - Sire of Lots 91, 92, 93, 94 & 95

BLACK ANGUS BULLS

95 RKP WM 9513-839 I15

RK Perry

Black Angus
AAA#: 20198870
DOB: 03/11/21
Tattoo: I15

Poss Maverick
Poss Rawhide
Poss Blueblood 6502

S A V Sensation 5615
RKP 5615-3221 839
BLEVINS QUEEN Windy 3221



CED	BW	WW	YW	SC	MILK	\$M	\$W	\$F	\$B	\$C
7	1.5	76	133	1.27	20	73	71	120	176	301

Dam WR 2@103 YR 2@101.
RESERVE CHAMPION SIRE GROUP

Entry Wt	Final Wt
785	1147
ADG	ADG Ratio
3.23	95
WDA	WDA Ratio
3.18	99
TBT Ratio	100

98 Cherry Crk Powerpoint I28 S

Colter Zentner

Black Angus
AAA#: 20054221
DOB: 01/25/21
Tattoo: I28

S Powerpoint WS 5503
Cherry Crk Powerpoint F301 S
Ms CCR Diana 5372 0143M

Cherry Crk Destination 2513M
Cherry Crk Shandi D52
Cherry Crk Shandi 024 42S



CED	BW	WW	YW	SC	MILK	\$M	\$W	\$F	\$B	\$C
15	-2.6	65	12	0.38	29	72	76	100	163	283

An extreme calving ease bull with a very balanced set of EPDs. He has 13 EPDs in the top 25% including all his \$Values.

Entry Wt	Final Wt
885	1247
ADG	ADG Ratio
3.23	95
WDA	WDA Ratio
3.07	96
TBT Ratio	99

96 RKP 833-202 I21

RK Perry

Black Angus
AAA#: 20238113
DOB: 03/17/21
Tattoo: I21

S A V Sensation 5615
RKP 5615-136 833
Will Lucy 113M

WK Bobcat
Bobcat Miss Angus 202
Bobcat Lass 9060



CED	BW	WW	YW	SC	MILK	\$M	\$W	\$F	\$B	\$C
4	2.7	59	114	0.85	27	62	56	98	117	214

Dam WR 6@103 YR 4@106.

Entry Wt	Final Wt
832	1231
ADG	ADG Ratio
3.56	105
WDA	WDA Ratio
3.47	108
TBT Ratio	107



Cherry Crk Powerpoint F301 S - Sire of Lot 98

2022 TREASURE BULL TEST



This was started many years ago as a little contest where every consignor gets a \$100 bill thrown in the pot. The consignor picks one bull from their consignment list at test arrival. The bull they think will gain the best. These select bulls are indexed differently and separately from the TBT Index; 1/2 ADG Ratio, 1/4 205 Day Ratio, 1/4 365 Day Ratio. Winners take all!

- **Jackpot Champion ~ Lot 31 ~ A son of Sitz Resilient 10208 from Willekes Angus with a 125 Index**
- **Reserve Champion ~ Lot 59 ~ Stevenson Declaration 70748 son from Lewis Land & Livestock with a 122 Index**
- **3rd Place Champion ~ Lot 45 from MSU Angus with a son of Barstow Cash with a 114 Index**

American Angus Association Selection Tools

Expected Progeny Difference (EPD), is the prediction of how future progeny of each animal are expected to perform relative to the progeny of other animals listed in the database. EPDs are expressed in units of measure for the trait, plus or minus. Interim EPDs may appear on young animals when their performance has yet to be incorporated into the American Angus Association National Cattle Evaluation (NCE) procedures. This EPD will be preceded by an "I"; and may or may not include the animal's own performance record for a particular trait, depending on its availability, appropriate contemporary grouping, or data edits needed for NCE.

Accuracy (ACC), is the reliability that can be placed on the EPD. An accuracy of close to 1.0 indicates higher reliability. Accuracy is impacted by the number of progeny and ancestral records included in the analysis.

Calving Ease Direct (CED), is expressed as a difference in percentage of unassisted births, with a higher value indicating greater calving ease in first-calf heifers. It predicts the average difference in ease with which a sire's calves will be born when he is bred to first-calf heifers.

Birth Weight (BW), expressed in pounds, is a predictor of a sire's ability to transmit birth weight to his progeny compared to that of other sires.

Weaning Weight (WW), expressed in pounds, is a predictor of a sire's ability to transmit weaning growth to his progeny compared to that of other sires.

Residual Average Daily Gain (RADG), feed efficiency expressed in pounds per day, is a predictor of a sire's genetic ability for postweaning gain in future progeny compared to that of other sires, given a constant amount of feed consumed.

Yearling Weight (YW), expressed in pounds, is a predictor of a sire's ability to transmit yearling growth to his progeny compared to that of other sires.

Yearling Height (YH), is a predictor of a sire's ability to transmit yearling height, expressed in inches, compared to the that of other sires.

Scrotal Circumference (SC), expressed in centimeters, is a predictor of the difference in transmitting ability for scrotal size compared to that of other sires.

Docility (DOC), is expressed as a difference in yearling cattle temperament, with a higher value indicating more favorable docility in a sire's offspring compared to another sire.

MATERNAL

Heifer Pregnancy (HP), is a selection tool to increase the probability or chance of a sire's daughters becoming pregnant as first-calf heifers during a normal breeding season. A higher EPD is the more favorable direction, and the EPD is reported in percentage units.

Calving Ease Maternal (CEM), is expressed as a difference in percentage of unassisted births, with a higher value indicating greater calving ease in first-calf daughters. It predicts the average ease with which a sire's daughters will calve as first-calf heifers when compared to daughters of other sires.

Maternal Milk (Milk), is a predictor of a sire's genetic merit for milk and mothering ability in his daughters compared to daughters of other sires. In other words, it is that part of a calf's weaning weight attributed to milk and mothering ability.

Mature Weight (MW), expressed in pounds, is a predictor of the difference in mature weight of daughters of a sire compared to the daughters of other sires.

Mature Height (MH), expressed in inches, is a predictor of the difference in mature height of a sire's daughters compared to daughters of other sires.

FOOT SCORE

Claw Set (Claw), is expressed in units of claw-set score. A lower EPD is more favorable, indicating a sire will produce progeny with more ideal claw set, which is toes that are symmetrical, even and appropriately spaced.

Foot Angle (Angle), is expressed in units of foot-angle score. A lower EPD is more favorable, indicating a sire will produce progeny with more ideal foot angle, which is a 45-degree angle at the pastern joint with appropriate toe length and heel depth.

CARCASS

The genetic evaluation produces a single set of EPDs for carcass traits where the units of measure are in trait format and analyzed on an age-constant basis.

Carcass Weight (CW), expressed in pounds, is a predictor of the differences in hot carcass weight of a sire's progeny compared to progeny of other sires.

Marbling (Marb), is expressed as a fraction of the difference in USDA marbling score of a sire's progeny compared to progeny of other sires.

Ribeye Area (RE), expressed in square inches, is a predictor of the difference in ribeye area of a sire's progeny compared to progeny of other sires.

Fat Thickness (Fat), expressed in inches, is a predictor of the differences in external fat thickness at the 12th rib (as measured between the 12th and 13th ribs) of a sire's progeny compared to progeny of other sires.

\$VALUE INDEXES

\$Value Indexes, reported in dollars per head, are multi-trait selection indexes where a higher value suggests more profit. The \$Value is an estimate of how future progeny of each sire are expected to perform, on average, compared to progeny of other sires if sires were randomly mated to cows and if calves were exposed to the same environment.

Maternal Weaned Calf Value (\$M), expressed in dollars per head, predicts profitability differences in progeny due to genetics from conception to weaning. Increased selection pressure on \$M aims to decrease overall mature cow size and improve foot structure and fertility while maintaining weaning weights consistent with today's production.

Weaned Calf Value (\$W), expressed in dollars per head, provides the expected difference in future progeny preweaning performance from birth to weaning. Increased selection pressure on \$W increases weaning and maternal milk traits while increasing mature cow size.

Cow Energy Value (\$EN), expressed in dollars savings per cow per year, assesses differences in cow energy requirements as an expected dollar savings difference in daughters of sires. A larger value is more favorable when comparing two animals. Components for computing \$EN savings difference include lactation energy requirements and energy costs associated with differences in mature cow size.

Feedlot Value (\$F), expressed in dollars per head, is the expected average difference in future progeny performance for postweaning merit compared to progeny of other sires. The underlying objective assumes commercial producers will retain ownership of cattle through the feedlot phase and sell feed cattle on a carcass weight basis with no considerations of premiums or discounts for quality and yield grade.

Grid Value (\$G), expressed in dollars per carcass, is the expected average difference in future progeny performance for carcass grid merit, including quality and yield grade attributes, compared to progeny of other sires.

Beef Value (\$B), expressed in dollars per carcass, represents the expected average differences in the progeny postweaning performance and carcass value compared to progeny of other sires. This index assumes commercial producers wean all male and female progeny, retain ownership of these animals through the feedlot phase, and market these animals on a quality-based carcass grid.

American Angus Association \$Value Indexes



Dollar value indexes, or **\$Values**, are a tool used to select for several traits at once based on a specific breeding objective. An economic index approach takes into account genetic and economic values as well as the relationships between traits to select for profit.

ANGUS
THE BUSINESS BREED

Maternal Weaned Calf Value (\$M), an index expressed in dollars per head, predicts profitability differences in progeny due to genetics from conception to weaning. \$M is built off of a self-replacing herd model where commercial cattlemen replace 25% of their breeding females in the first generation and 20% in subsequent generations. Remaining cull females and all male progeny are sold as feeder calves. Increased selection pressure on \$M aims to decrease overall mature cow size and improve foot structure and fertility while maintaining weaning weights consistent with today's production.

Weaned Calf Value (\$W), an index expressed in dollars per head, provides the expected difference in future progeny preweaning performance from birth to weaning. \$W assumes that producers retain 20% of their female progeny for replacements and sell the rest of their cull female and male progeny as feeder calves. Over time, increased selection pressure on \$W will increase weaning and maternal milk traits while also continuing to increase mature cow size.

Feedlot Value (\$F), an index expressed in dollars per head, is the expected average difference in future progeny performance for post-weaning merit compared to progeny of other sires. The underlying objective assumes commercial producers will retain ownership of cattle through the feedlot phase and sell fed cattle on a carcass weight basis with no considerations of premiums or discounts for quality and yield grade.

Grid Value (\$G), an index expressed in dollars per carcass, is the expected average difference in future progeny performance for carcass grid merit, including quality and yield grade attributes, compared to progeny of other sires.

Beef Value (\$B), an index expressed in dollars per carcass, facilitates simultaneous multi-trait genetic selection for feedlot and carcass merit. \$B represents the expected average differences in the progeny postweaning performance and carcass value compared to progeny of other sires. This index assumes commercial producers wean all male and female progeny, retain ownership of these animals through the feedlot phase and market these animals on a quality-based carcass grid.

Combined Value (\$C), an index expressed in dollars per head, includes all traits that make up both \$M and \$B with the objective that commercial producers will replace 20% of their breeding females per year with replacement heifers retained within their own herd. The remaining cull heifer and steer progeny are then assumed to be sent to the feedlot where the producers retain ownership of those cattle and eventually sell them on a quality-based carcass merit grid.

EPDS DIRECTLY INCORPORATED INTO EACH \$VALUE

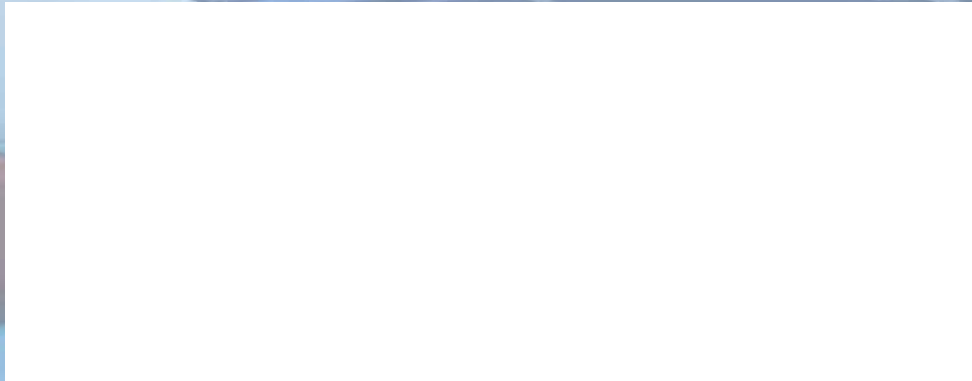
TRAIT	MATERNAL		TERMINAL			\$C
	\$M	\$W	\$F	\$G	\$B	
CEM	✓					✓
Milk	✓	✓				✓
MW	✓	✓				✓
DOC	✓					✓
HP	✓					✓
Claw Angle	✓					✓
DMI			✓		✓	✓
CW			✓	✓	✓	✓
RE				✓	✓	✓
Marb				✓	✓	✓
Fat				✓	✓	✓



**TREASURE
BULL TEST**

PO Box 1, Power, MT 59468

FIRST CLASS MAIL
AUTO
U.S. POSTAGE
PAID
Lewistown, MT
Permit #181



**ONLY
THE
BEST**

75 Performance Tested
Angus Bulls Sell



Ryan & Karnell Perry
406/788-9869 406/390-5473
PO Box 1, Power MT 59468
Email: info@treasurebulltest.com



TREASURE BULL TEST

www.treasurebulltest.com