



*The Cowboy's
and Cowgirl's
Performance Bull Test*

Annual Sale

April 18, 2023 • 1:00 PM

Western Livestock Auction • Great Falls, Montana





PERFORMANCE IS SERVED.
CRYSTALYX.COM

B.T.I. DISTRIBUTING
1-406-873-4433
btifeeds@qwestoffice.net

Blueprint[®] ΩMEGA

BLUEPRINTANIMALNUTRITION.COM

Blueprint[®]

TARGETED NUTRITION

Targeted Nutrition. Without Excess. For Peak Performance.

Blueprint[®] is the next step forward in high-performing animal nutrition.

CRYSTALYX[®] Blueprint[®] products contain 100% organic trace minerals made to unlock the health and potential of your cattle, enabling them to perform at their very best.



Immune Health



Supports Fertility



Genetic Potential

What can Blueprint do for you?

+2.7%

increase in conception rate

MORE CALVES

+24lbs.

increased weaning weight

HEAVIER CALVES

-2.1%

drop in pre-weaning mortality rate

HEALTHIER CALVES

If you are looking for better results in your herd and more money in your pocket, turn to Blueprint[®]. **More calves. Heavier calves. Healthier calves.**

Find the CRYSTALYX[®] Blueprint[®] line-up at blueprintanimalnutrition.com

Ryan & Karnell Perry
406/788-9869 406/390-5473



On behalf of my wife and myself, along with all the consignors and their respective families I would like to welcome you to the Annual Treasure Bull Test Sale. We thank you for your continued support and interest in the program and sale.

Without a doubt and it goes without saying that this set of bulls is outstanding. We started the test mid-November with 155 top bulls from mostly Montana seedstock producers. We then proceeded to whittle and sort down to the Top 75%. An unbelievable and challenging feat because all the consignors have really bought into the TBT program of supplying high quality and high performance "Cowboy Kind" Angus genetics to North Central Montana and beyond.

Please feel free and I strongly suggest calling the consignors on their consignments. I know they would love to visit and provide any more information you might need. This is a deep offering of calving ease, performance Black Angus Bulls that the consignors are extremely proud of!

Finally, I would like to thank Matt, Rose and the entire family and crew at Muddy Creek Feedyard. Once again they did an outstanding job with the bulls this year. We feel they are in perfect condition to go on with for immediate service. Dr Craig and Jolene Moore with East Slope Vet Clinic for everything they do for us at the feedyards and yards.

The sale will be on Northern Livestock Video Auction. Also feel free to preview them at www.northernlivestockvideo.com.

Please join us on Monday, April 17th at 4 PM, for "Happy Hour Bull Preview". Plenty of refreshments, snacks, and fellowship among ranchers and TBT consignors to be had while previewing the bulls.

We will see you at the sale on Tuesday, April 18th. You will truly appreciate this set of "Cowboy Kind" Angus Bulls!

TBT Crew and Consignors



Perry Family



Muddy Creek Feedyard



East Slope Vet



PERFORMANCE SALE

Tuesday,

APRIL 18, 2023

Lunch 11:30 AM Sale 1:00 PM
WESTERN LIVESTOCK AUCTION
GREAT FALLS, MT

~ General Information ~

Pre-Sale Viewing of Bulls

The bulls will be at Western Livestock Auction on Sunday, April 16, 2023 and available for viewing. Prior to that they are available for viewing anytime at Muddy Creek Feedyard, 2 miles west of Vaughn, MT. They are in Pens 70, 71 and 72.

Sale Day Phones

Western Livestock Auction

406/727-5400

Ryan Perry 406/788-9869

Karnell Perry 406/390-5473

Auctioneer:

Joe Goggins 406/861-5664

Livestock Press

Kurt Kangas 406/366-4190.....Angus Journal/Angus Ass'n
John Goggins 406/698-4159 Western Ag Reporter
Devin Murnin 406/696-1502 Western Livestock Journal

Footnotes are provided by consignors. Feel free to contact consignors about their bulls. Consignor contact information is on page 3.

Fertility

Every bull selling has had a complete breeding physical and has been semen tested. Scrotal measurements were taken April 6, 2023. Measurements listed are actual size. Bulls sell guaranteed to be breeders via natural service. Guarantees are between the buyer and TBT Consignor only!

Veterinarian: Dr. Craig Moore, 406/466-3020

Health

All bulls have also been tested negative for BVD. Bulls have completed all requirements for immediate interstate shipment. If your state or providence requires more for import than has been completed, it will be done immediately after the sale. TBT will assume all extra vet expenses for interstate shipment.

Delivery

Free delivery to central locations (stockyards, etc.) within 500 miles of Great Falls, MT on all bulls selling for \$4000 or more, or the purchase of multiple bulls. Delivery beyond 500 miles will be billed at cost. Buyers picking up bulls within five days will be given a \$50 rebate per bull.

Insurance

Mortality Insurance is available thru Tyler Holland, Novich Insurance Agency. See page 3 for insurance options. Buyer pays for ½ and TBT Consignor pays for ½. Buyers if you choose to insure your bulls please do so when settling for bulls.

Performance Data

EPD's listed in this catalog are as of March 18, 2023.

Transportation & Accommodations

Great Falls is served by several airlines. We will meet any planes if notified.

O'Haire Motor Inn 17 7th St. S, Great Falls, MT.....406-454-2141

La Quinta Inn 600 River Dr S, Great Falls, MT.....406-761-2600

Ask for the Treasure Bull Test Rates.

Terms and Conditions

Bulls sell under the terms and conditions of the American Angus Association. Settlement is cash. Settlement must be made at the time of sale unless arrangements have been made prior to sale with individual consignor and TBT. Registration papers will be transferred to buyer when settlement has been made. Announcements made from auction block take precedence over printed material. Auctioneer will settle any disputes of bids. Anyone attending the sale does so at their own risk. TBT and Western Livestock Auction, LLC assume no liability, legal or otherwise, for any accidents which may occur.

2023 INDEX OF CONSIGNORS

Granger Ranch
Jim & Elizabeth Granger
1929 Eden Rd
Great Falls, MT 59405
406.736.5588
blackcow@3rivers.net
1 ~ 2 ~ 3 ~ 4 ~ 5 ~ 6 ~ 7

Granger Livestock
Forrest Granger
1524 Eden Rd
Great Falls, MT 59405
406.868.5148
forrestgranger@gmail.com
8

Casha Corder
Box 1002
Fort Benton, MT 59442
406.231.8515
trampus@corderland.com
9 ~ 10 ~ 11

MLK Angus
Mark & Lynn Keller
2828 Lincoln Rd E
Helena, MT 59602
406.431.0872
mlkangus@outlook.com
13 ~ 14

A Bar Angus
Duane & Julie Wacker
100 Alec Roy Rd
Roundup, MT 59072
406.861.7459
wackerdj@midrivers.com
16

Rockin' Horse Angus Genetics
Brandon Harrison
1149 Sheridan Ave
Cody, WY 82414
307.996.6363
brandonharrisonenterprises@gmail.com
19

Harrison Angus Ranch
Doug Harrison
Box 274
Boyd, MT 59013
406.962.3867
21 ~ 22 ~ 23 ~ 24 ~ 25 ~ 27

C Spear Angus
Bill Cook & Jess Matt
1980 Nth 5th Rd
Huntley, MT 59037
406.670.0689 Bill
406.670.6311 Jess
cookbill44@gmail
28 ~ 29 ~ 30 ~ 31 ~ 32 ~ 33 ~ 34
35 ~ 37 ~ 39 ~ 40 ~ 41 ~ 42

Legacy Ridge Angus
Cody Arnold
Box 322
Chinook, MT 59523
406.390.5417
codyarnold50@gmail.com
46 ~ 47 ~ 49

Krantz Angus
Clark & Carter Krantz
835 Fairmont Rd
Kalispell, MT 59901
406.250.1081
3kidfarm@centurytel.net
51

Fourmile Creek Angus
Shawn & Michaela Hystad
145 Fourmile Creek Rd
Great Falls, MT 59404
406.231.5297
shawn-del27@yahoo.com
52

Cash Angus
Chase Mury
7 Tourmaline Lane
Great Falls, MT 59404
406.590.1069
chaseamury@gmail.com
55 ~ 57

Willekes Angus
Bob & Brenda Willekes
10 Cowboy Way
Choteau, MT 59422
406.590.2526
mtmarblegranite@yahoo.com
60 ~ 62 ~ 63 ~ 64
65 ~ 67 ~ 68 ~ 69

Marshall Willekes Angus
Marshall Willekes
10 Cowboy Way
Choteau, MT 59422
406.590.7011
marshallwillekes@yahoo.com
71 ~ 73 ~ 74 ~ 75 ~ 76 ~ 77 ~ 78

Grandview Farms
Kevin & Don Thibault
2185 Settlers Lane
Twin Falls, MT ID 83301
435.881.3974 Kevin
208.420.5061 Don
kthibault@yahoo.com
79 ~ 80

Double T Angus
Brad Thompson
368 E 300 North
Jerome, ID 83338
208.404.2450
doubletangus@hotmail.com
81

Stone's Black Rock Cattle
Owen & Mariel Stone
163 Stone Blvd
Geraldine, MT 59446
406.564.0122
sbrcattle@gmail.com
85 ~ 87

Beuerman Angus Ranch
Erich Beuerman
135 Meriwether Rd
Cut Bank, MT 59427
406.551.3759
ebeuerman@gmail.com
88 ~ 91

Jacobsen Ranch
Wade Jacobsen
1282 US Hwy 89
Sun River, MT 59483
406.799.5889
93

Gollaher Ranch
Ted Gollaher
3112 Cascade Hound Creek Rd
Cascade, MT 59421
406.750.5301
tedgollaher@yahoo.com
94 ~ 95 ~ 97 ~ 98

Troyer Ranch LLC
Wayne Troyer
203 Troyer Lane
Moore, MT 59464
406.707.0245
99 ~ 100 ~ 101

Olson Cattle Co
Wendy Olson
63702 Chalcain Rd
St Ignatius, MT 59865
406.261.3782
occ@blackfoot.net
102 ~ 104 ~ 105

Harrer's Lost Lake Ranch
Grant & Deanna Harrer
137 Eden Rd
Great Falls, MT 59405
406.899.9061
drharrer@gmail.com
106

Harwood Cattle Co
Jeff & Suzanne Harwood
7068 S Peak Rd
Geyser, MT 59447
406.366.5424
jharwoodcattle@gmail.com
107

Springvale Ranch
Shaun & Jen Christensen
56835 Little Bitterroot Rd
Hot Springs, MT 59845
406.741.2519
springvale@hotspringsmt.net
108 ~ 109

Dalbey Angus
John Dalbey
1982 Mtn View Orchard Rd
Corvallis, MT 59828
406.564.7822
jd4947@yahoo.com
111 ~ 112

Lewis Land & Livestock
Kaleb & Kari Lewis
714 E Main
Cut Bank, MT 59427
406.209.2953
kariandkableblewis@gmail.com
113 ~ 115 ~ 116 ~ 117 ~ 119 120

McFadgen Angus
Mark & Kathy McFadgen
3024 Bugli Lane
Stevensville, MT 59870
406.531.2301
mcfadgenmark@hotmail.cocm
121 ~ 123

MSU Angus
Thomas Hamilton
Tim DelCurto
Box 172900
Bozeman, MT 59717
541.403.4163 Thomas
msu-angus@gmail.com
124 ~ 125 ~ 126 ~ 127

RK Perry
Ryan & Karnell Perry
Box 1
Power, MT 59468
406.788.9869
rkperry@icloud.com
128 ~ 129 ~ 130 ~ 132 ~ 133
134 ~ 135 ~ 137 ~ 138 ~ 139
141 ~ 144 ~ 146 ~ 147 ~ 148
149 ~ 150

*Feel free to contact
consignors about
their bulls.*



Bid through Northern Livestock Video Auction's NEW Online Bidding Platform! Desktop and Mobile Friendly

For the Desktop:

1. It is best to use the Google Chrome web browser.
2. **Pre-Register at least one day prior to the sale.**
3. Go to bid.northernlivestockvideo.com and click "Get Approved to Bid".
4. Doing this will prompt you to create an account, after which you will fill out a bidder approval application.
5. Once Approved, an email will be sent to the email account provided, please click the link in that email to activate your account and a buyer number will be provided.
6. On sale day (after approval), visit www.northernlivestockvideo.com to view and bid!

For the Mobile:

Use your mobile device to download the Northern App and follow the above steps to get approved.

There is an instructional video on how to register to bid on our website, www.northernlivestockvideo.com if you have any questions.

For technical assistance with Internet Viewing and Bidding Questions, call Sam Fraser 406-860-0590.

Phone Bidding:

Anyone wanting to use the Northern Livestock phone bank to bid must pre-register and have a bid number to bid on the phone.

To register with NLVA call 866-616-5035 Before Sale Day.

View the Online CATALOG and VIDEO CLIP of each BULL selling at www.northernlivestockvideo.com

Bidders who are successful in making purchases will be contacted following the sale to make payment and delivery arrangements.

Northern Livestock's Sale Day Bid Line: **1-406-245-0889.**

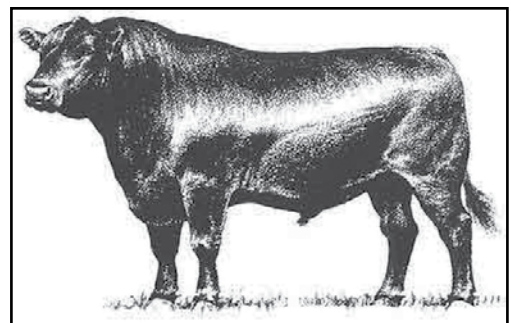
BULL MORTALITY INSURANCE

Novich Insurance Agency, agent for XL Catlin Insurance Co

**Tyler Holland
(406) 684-5264
tylerholland@3rivers.net**

**One Year Policy Term, from the date of the sale
Full Mortality Only Option = 6.35%
\$200 minimum premium**

**Full Mortality
100% of the value of the bull in the event of death or
humane destruction as a result of a life-threatening
injury. No deductibles, no co-insurance.**



ABOVE AVERAGE GOALS REQUIRE TARGETED BULLS

Aim High

The Targeting the Brand™ logo highlights registered Angus bulls with greater genetic potential to produce calves that meet the most challenging specifications of the *Certified Angus Beef®* brand.

Only 1 in 4 non-parent Angus bulls qualify.

Minimum Genetic Requirements

Marbling EPD (Marb)	+0.65
Dollar Grid Carcass Index (\$G)	+55.0



For more information on Targeting the Brand™ visit CABcattle.com.



Driving the science of better breeding

There's little room for error in the cattle business. Producers need the most advanced information to make smart selection decisions, and Angus Genetics Inc. (AGI) provides it through genomic-enhanced expected progeny differences (GE-EPDs).

EPDs that traditionally contained all pedigree, performance and progeny information now also include results from available genomic, or DNA, tests. Breeders who use genomic technology give buyers access to AGI-generated GE-EPDs that provide:

Increased predictability and decreased risk for young and unproven animals due to enhanced accuracy of EPDs

Better characterization of genetics for difficult-to-measure performance traits (such as carcass traits, maternal traits and feed efficiency)

The ability to make more rapid progress for traits that are important to you, due to:

- more accurate selection
- easier identification of genetic outliers
- the ability to propagate young animals with confidence earlier in their lives

In fact, GE-EPDs on unproven animals have the same amount of accuracy as if they had recorded 8-33 calves, depending on the trait. That's valuable insight, offered regularly through the breed's weekly national cattle evaluation at www.angus.org.

How do you know if EPDs are genomic-enhanced?

Ask your breeder, refer to the registration paper, or look for the AGI GE-EPD logo, Angus GS™ powered by partner Neogen GeneSeek or the HD50k or i50k by partner Zoetis.



BLACK ANGUS BULLS

1 Granger Versatile 235

Granger Angus

Black Angus
 AAA#: +*20474049
 DOB: 2/9/2022
 Tattoo: 235

Baldridge Forecaster B160
Baldridge Versatile
 Baldridge Blackbird A030
 Granger Great Falls 053
Curtin Erroline 3039
 Blue Ston Erroline 8040



BW	205 Day Wt.	205 Day Ratio	365 Day Wt.	365 Day Ratio	TBT Ratio
84	735	114	1250	105	116

CED	BW	WW	YW	SC	MILK	\$M	\$W	\$F	\$B	\$C
7	2.7	95	164	1.27	23	49	75	114	192	298

Donor Dam has had 6 bulls sell at auction for an ave. of \$11,000. This bulls EPD Rank top 1% WW, YW, MW. Top 4% RADG and \$B, Top 5% \$F, Top 10% Marb, \$W, \$G and \$C. Top 15% PAP and 20% HP. Genomics Rank top 12% for docility. **TBT HIGH INDEX BULL. JACKPOT CHAMPION. RESERVE CHAMPION ADG. SELLING 2/3 INTEREST AND FULL POSSESSION**

2 Granger Jet 231

Granger Angus

Black Angus
 AAA#: *20457126
 DOB: 2/12/2022
 Tattoo: 231

Connealy Black Granite
Bar R Jet Black 5063
 Bar R Iris Anita 0113
 Curtin 1682 Payweight 7066
Granger Miss Pride 047
 Granger Miss Pride 726



BW	205 Day Wt.	205 Day Ratio	365 Day Wt.	365 Day Ratio	TBT Ratio
97	850	106	1339	112	111

CED	BW	WW	YW	SC	MILK	\$M	\$W	\$F	\$B	\$C
2	4.0	77	138	1.35	28	61	64	102	138	240

Dam 1/106 weaning, Grand Dam 3/104 WR and 2/109 YR. Top 10% YW, Top 15% WW and RADG.



Baldridge Versatile - Sire of Lots 1 & 21

3 Granger Pacific 224

Granger Angus

Black Angus
 AAA#: *20457383
 DOB: 2/17/2022
 Tattoo: 224

Hoover No Doubt
Sterling Pacific 904
 Baldridge Isabel B082
 Granger Great Falls 630
Granger Eileen 937
 Granger Eileen 728



BW	205 Day Wt.	205 Day Ratio	365 Day Wt.	365 Day Ratio	TBT Ratio
85	798	99	1327	111	114

CED	BW	WW	YW	SC	MILK	\$M	\$W	\$F	\$B	\$C
8	1.9	78	149	2.42	26	79	67	115	187	322

Herd Bull numbers on this calf. Dam 2/108 WR 1/114 YR. Grand Dam 3/108 WR 3/106 YR. He ranks in the top 10% in 14 EPD categories. Top 15% in 18 categories. Top 1% in 5 categories. He is in the top 5% in 8 genomic categories. A Pacific out of a great young cow. **CHAMPION ADG. SELLING 2/3 INTEREST AND FULL POSSESSION**

4 Granger Resilient 227

Granger Angus

Black Angus
 AAA#: *20476325
 DOB: 2/1/2022
 Tattoo: 227

Sitz Stellar 726D
Sitz Resilient 10208
 Sitz Miss Burgess 1856
 S A V President 6847
Granger Pride 042
 Granger Pride 582



BW	205 Day Wt.	205 Day Ratio	365 Day Wt.	365 Day Ratio	TBT Ratio
76	811	101	1309	110	107

CED	BW	WW	YW	SC	MILK	\$M	\$W	\$F	\$B	\$C
8	-1.0	70	123	1.57	36	96	80	79	125	258

Great heifer bull with a top 2% HP, top 3% PAP, top 5 foot angle, 10% claw, 15% docility and scrotal. Top 1% \$M Top 4% \$W.



Sitz Resilient 10208 - Lots 4, 7, 80 & 105

FROM BREED LEADING SIRES

5 Granger Renown 207

Granger Angus

Black Angus S A V Renown 3439
 AAA#: *20596585 Granger Renown 910
 DOB: 2/24/2022 Granger Pride 592
 Tattoo: 207 Granger Cash 642
 Granger Pride 827
 Granger Pride 170

Entry Wt	Final Wt				
904	1346				
ADG	ADG Ratio				
4.02	116				
WDA	WDA Ratio				
3.58	113				
BW	205 Day Wt.	205 Day Ratio	365 Day Wt.	365 Day Ratio	TBT Ratio
75	872	108	1332	112	112

CED	BW	WW	YW	SC	MILK	\$M	\$W	\$F	\$B	\$C
-4	4.3	88	144	1.72	30	52	75	92	142	236

Use this bull on cows. Top 3% WW, top 10% YW, Top 15% PAP, Top 4% claw, Top 10% \$W. Cow weaned 2/107. Grand Dam 8/101.

8 Granger Logic 250

Granger Livestock

Black Angus SITZ Logic Y46
 AAA#: *20474069 TH Logic 2116
 DOB: 2/17/2022 TH Pride Heidi 84
 Tattoo: 250 PA Power Tool 9108
 Granger Pride 574
 Granger Pride 592

Entry Wt	Final Wt				
956	1343				
ADG	ADG Ratio				
3.52	101				
WDA	WDA Ratio				
3.51	111				
BW	205 Day Wt.	205 Day Ratio	365 Day Wt.	365 Day Ratio	TBT Ratio
88	859	100	1293	108	103

CED	BW	WW	YW	SC	MILK	\$M	\$W	\$F	\$B	\$C
5	.9	68	113	1.37	36	70	78	73	105	206

Dam 6/101 WR. Grand Dam 12/105 WR 11/103 YR. Great Grand Dam 8/111 WR 5/114 YR.

6 Granger Homestead 218

Granger Angus

Black Angus Ellingson Homestead 6030
 AAA#: *20486875 Big Dry Homestead F7
 DOB: 3/10/2022 BDAR Royal Queen 626D
 Tattoo: 218 A A R Ten X 7008 S A
 Leachman Lass 5051
 Leachman Lass 9006

Entry Wt	Final Wt				
853	1307				
ADG	ADG Ratio				
4.13	119				
WDA	WDA Ratio				
3.61	114				
BW	205 Day Wt.	205 Day Ratio	365 Day Wt.	365 Day Ratio	TBT Ratio
87	808	100	1314	110	110

CED	BW	WW	YW	SC	MILK	\$M	\$W	\$F	\$B	\$C
11	.1	65	126	1.65	37	87	72	96	135	262

Heifer bull with top 2% HP, 3% milk, 4% \$M, 10% scrotal. She has weaned 3/104 with 2/111 YR.

9 CC Rimrock K17

Casha Corder

Black Angus Connealy Rimrock 7541
 AAA#: *20479692 FF Rimrock JF H183
 DOB: 2/6/2022 FF Shoshone JF D136
 Tattoo: K17 S A V Raindance 6848
 FF Miss Angus H17
 FF Miss Angus F106

Entry Wt	Final Wt				
910	1303				
ADG	ADG Ratio				
3.57	103				
WDA	WDA Ratio				
3.31	105				
BW	205 Day Wt.	205 Day Ratio	365 Day Wt.	365 Day Ratio	TBT Ratio
83	794	98	1304	109	103

CED	BW	WW	YW	SC	MILK	\$M	\$W	\$F	\$B	\$C
1	2.8	81	151	1.00	27	54	69	104	135	229

Long bodied calving ease bull that exhibit fast growth, positive fats on good frame. We would expect this bull to produce for all beef operations.

7 Granger Resilient 215

Granger Angus

Black Angus Sitz Stellar 726D
 AAA#: *20457396 Sitz Resilient 10208
 DOB: 2/20/2022 Sitz Miss Burgess 1856
 Tattoo: 215 HA Cowboy Up 5405
 Granger Pride 835
 Granger Pride 174

Entry Wt	Final Wt				
851	1243				
ADG	ADG Ratio				
3.56	103				
WDA	WDA Ratio				
3.27	104				
BW	205 Day Wt.	205 Day Ratio	365 Day Wt.	365 Day Ratio	TBT Ratio
83	794	99	1219	102	101

CED	BW	WW	YW	SC	MILK	\$M	\$W	\$F	\$B	\$C
7	1.5	72	126		23	73	60	84		

Dam 3/100 Grand Dam 8/105 with 3/104 YR.

10 CC Rimrock K243

Casha Corder

Black Angus Connealy Rimrock 7541
 AAA#: *20479694 FF Rimrock JF H183
 DOB: 2/20/2022 FF Shoshone JF D136
 Tattoo: K243 Goforth Admiral E25
 FF Henrietta Pride H243
 FF Henrietta Pride A155

Entry Wt	Final Wt				
859	1224				
ADG	ADG Ratio				
3.32	96				
WDA	WDA Ratio				
3.22	102				
BW	205 Day Wt.	205 Day Ratio	365 Day Wt.	365 Day Ratio	TBT Ratio
77	818	101	1254	105	101

CED	BW	WW	YW	SC	MILK	\$M	\$W	\$F	\$B	\$C
1	2.4	73	123	1.30	28	85	73	95	138	264

Thick, correct animal on good frame that finished well. An ideal herd-improver. He is a free moving bull on a good size frame. Well worth a look.

BLACK ANGUS BULLS

11 CC Conclusion K22

Casha Corder

Black Angus [OHF]
 Bushes Easy Decision 98
FF Conclusion F83
 AAA#: +*20520819 JF Eriskay B80
 DOB: 1/20/2022
 Tattoo: K22
 Bobcat Xcalibur
FF Jenny B120
 FF Jenny U129

Entry Wt	Final Wt
1036	1384
ADG	ADG Ratio
3.16	91
WDA	WDA Ratio
3.37	107
TBT Ratio	
107	101

BW	205 Day Wt.	205 Day Ratio	365 Day Wt.	365 Day Ratio	TBT Ratio
84	803	106	1274	107	101

CED	BW	WW	YW	SC	MILK	\$M	\$W	\$F	\$B	\$C
-9	5.9	77	140	.49	27	65	57	119	174	291

Lots of shape and performance in this Conclusion son with a great temperament. Top 10 percent in YW and \$C for the breed. 1036# entry weight was one of largest in offering. Incredible early muscle and thickness equate to dollars in the pocket!

13 MLK Granite 288

MLK Angus

Black Angus Hilltop Granite 4210
KG Granite 9915
 AAA#: *20428274 KG Blackbird 3433
 DOB: 3/22/2022
 Tattoo: 288
 Connealy Thunder
MLK Elsiemere 887
 MLK Elsiemere 687

Entry Wt	Final Wt
880	1220
ADG	ADG Ratio
2.81	81
WDA	WDA Ratio
3.49	110
TBT Ratio	
107	97

BW	205 Day Wt.	205 Day Ratio	365 Day Wt.	365 Day Ratio	TBT Ratio
92	820	103	1280	107	97

CED	BW	WW	YW	SC	MILK	\$M	\$W	\$F	\$B	\$C
2	3.7	81	140	1.63	12	38	50	104	157	242

This high indexing bull is in the top 10% in both WR and YR ratios. His Granddam had 3 WR @ 106 and 2 YR ratios @ 108. This guy will pack on the pounds!



Sitz Upward 307R - Sire of Lot 14

14 MLK TW Upward 287

MLK Angus

Black Angus Connealy Onward
Sitz Upward 307R
 AAA#: +*20391718 Sitz Henrietta Pride 81M
 DOB: 3/2/2022
 Tattoo: 287
 N Bar Explosion TNT
Sinclair Lady 5ETI 4465
 Ideal 4465 of 6807 4286

Entry Wt	Final Wt
891	1280
ADG	ADG Ratio
3.67	106
WDA	WDA Ratio
3.46	110
TBT Ratio	
107	106

BW	205 Day Wt.	205 Day Ratio	365 Day Wt.	365 Day Ratio	TBT Ratio
85	768	105	1282	107	106

CED	BW	WW	YW	SC	MILK	\$M	\$W	\$F	\$B	\$C
6	.8	72	123	1.53	26	62	69	100	142	246

This ET Bull was sired by Sitz Upward 307R. He has breed leading EPDs for WR, YR, scrotal and carcass. The donor dam was the top selling \$48,000 female at the 2008 Circle L Angus Sale. Her dam was Ideal 4465 of 6807 4286. She generated over 2.5 million in progeny sales. She is considered the Feed Efficiency Female of the Angus Breed and the best daughter of the great DHD Traveler 6807.

16 A Bar Neel's TM Junior 284

A Bar Angus

Black Angus H A Image Maker 0415
Rockin Horse Tailor Made 456
 AAA#: *20439708 CHK WGN Butterfly 807
 DOB: 1/30/2022
 Tattoo: 284
 Cole Creek Black Cedar 1100
Ginger Hill Lass 574
 V D A R Lass 5714

Entry Wt	Final Wt
822	1229
ADG	ADG Ratio
3.30	95
WDA	WDA Ratio
3.06	97
TBT Ratio	
95	97

BW	205 Day Wt.	205 Day Ratio	365 Day Wt.	365 Day Ratio	TBT Ratio
84	663	100	1138	95	97

CED	BW	WW	YW	SC	MILK	\$M	\$W	\$F	\$B	\$C
5	-1.8	17	40	1.26	38	52	30	50	98	179

Owned with Neel's Angus. Time tested proven bloodlines bred for fertility, structure, functional females and calving ease.



Rockin Horse Tailor Made 456 - Sire of Lot 16

FROM BREED LEADING SIRES

19 Rockin Horse Boot Track

[AMF-CAF-D2F-DDF-M1F-NHF-OHF-OSF-RDF]

Black Angus

AAA#: *20489327

DOB: 3/22/2022

Tattoo: 203

Cole Creek Tracker 1232

Rockin Horse A Bar Back Track

Rockin Horse Eriskay 404

Rockin Horse Bootleg 553

Rockin Horse Monarch 758

Rockin Horse Butterfly 201



BW	205 Day Wt.	205 Day Ratio	365 Day Wt.	365 Day Ratio	TBT Ratio
91	753	101	1158	97	97

CED	BW	WW	YW	SC	MILK	\$M	\$W	\$F	\$B	\$C
6	.3	23	44	.21	29	33	33	40	69	122

Rockin Horse Boot Track exemplifies efficient, low input, proven maternal performance. This late March calf weaned at 760 lbs. the middle of October on milk, grass, salt and mineral. In my book that equates to profitability for a cow calf operation.

Rockin' Horse Angus

22 HARB Stock Fund 205

[M1F-OHF]

Black Angus

AAA#: *20572837

DOB: 2/20/2022

Tattoo: 205

Deer Valley Growth Fund

EXAR Stock Fund 9097B

EXAR Empress 0875

H A R B Icon 019

HARB Miss Nadine 221-402

H A R B Miss Nadine 929-221

BW	205 Day Wt.	205 Day Ratio	365 Day Wt.	365 Day Ratio	TBT Ratio
82	717	98	1316	110	107

CED	BW	WW	YW	SC	MILK	\$M	\$W	\$F	\$B	\$C
9	.7	71	132		28	74	62	107	154	274

Dam is deep bodied, good feet, good udder, docile. Early calver that breeds back early every year. **RESERVE CHAMPION SIRE GROUP.**

Harrison Angus

21 HARB Versatile 203

Black Angus

AAA#: *20542753

DOB: 2/17/2022

Tattoo: 203

Baldrige Forecaster B160

Baldrige Versatile

Baldrige Blackbird A030

S A V Final Answer 0035

H A R B Lady Elbas 922

H A R B Lady Elbas D09 624



BW	205 Day Wt.	205 Day Ratio	365 Day Wt.	365 Day Ratio	TBT Ratio
84	813	106	1321	111	109

CED	BW	WW	YW	SC	MILK	\$M	\$W	\$F	\$B	\$C
7	1.2	65	114	.71	26	58	59	85	148	250

Mother calved at 13 yrs. of age and the 3rd cow to calve. Very docile, good udder, good feet. Deep body, moderate size, one of the best producing daughters of Final Answer. Sire sold for \$250,000 at Baldrige.

Harrison Angus

23 HARB Stock Fund 206

[OHF]

Black Angus

AAA#: *20572835

DOB: 3/1/2022

Tattoo: 206

Deer Valley Growth Fund

EXAR Stock Fund 9097B

EXAR Empress 0875

Flat Mountain Protege 5

HARB Eldora Erica 328-418

H A R B Eldora Erica 328

BW	205 Day Wt.	205 Day Ratio	365 Day Wt.	365 Day Ratio	TBT Ratio
79	828	113	1361	114	111

CED	BW	WW	YW	SC	MILK	\$M	\$W	\$F	\$B	\$C
8	-.1	78	136	.42	26	65	72	108	158	270

Note the calving ease of Lot 23. Mother is deep ribbed, good feet, docile, high marbling, good udder. She had a bull in TBT last year. **3rd PLACE CHAMPION JACKPOT. CO-RESERVE CHAMPION WDA. RESERVE CHAMPION SIRE GROUP.**

Harrison Angus



EXAR Stock Fund 9097B - Lots 22-25, 73 & 75

24 HARB Stock Fund 211

[M1F-OHF]

Black Angus

AAA#: *20572833

DOB: 3/10/2022

Tattoo: 211

Deer Valley Growth Fund

EXAR Stock Fund 9097B

EXAR Empress 0875

SL Great Falls 301

HARB Princess Val 610

H A R B Princess Val 660-116

BW	205 Day Wt.	205 Day Ratio	365 Day Wt.	365 Day Ratio	TBT Ratio
84	725	99	1286	108	105

CED	BW	WW	YW	SC	MILK	\$M	\$W	\$F	\$B	\$C
7	.5	67	126		30	59	61	92		

The Great Falls dam is docile, good feet, excellent udder. Notice the spread on this bull. **RESERVE CHAMPION SIRE GROUP.**

Harrison Angus

BLACK ANGUS BULLS

25 HARB Stock Fund 212

Harrison Angus

Black Angus
 AAA#: *20572838
 DOB: 3/12/2022
 Tattoo: 212

Deer Valley Growth Fund
EXAR Stock Fund 9097B
 EXAR Empress 0875

S Chisum 6175
H A R B Lady Elbas 631-316
 H A R B Lady Elbas D09 631

Entry Wt	Final Wt				
845	1200				
ADG	ADG Ratio				
3.23	93				
WDA	WDA Ratio				
3.33	106				
BW	205 Day Wt.	205 Day Ratio	365 Day Wt.	365 Day Ratio	TBT Ratio
84	760	104	1229	103	100

CED	BW	WW	YW	SC	MILK	\$M	\$W	\$F	\$B	\$C
6	1.7	74	136	.56	25	63	62	114	158	268

Grand Dam is sired by the most docile Herd Bull we have ever raised.

29 C Spear High Regard K130

C Spear Angus

Black Angus
 AAA#: 20390609
 DOB: 3/15/2022
 Tattoo: K130

BTR High Regard 552
Vermilion High Regard E541
 Vermilion Lass 2129

Connealy Spur
Leachman Spur 8533
 Leachman Burgess 5071

Entry Wt	Final Wt				
808	1204				
ADG	ADG Ratio				
3.60	104				
WDA	WDA Ratio				
3.37	107				
BW	205 Day Wt.	205 Day Ratio	365 Day Wt.	365 Day Ratio	TBT Ratio
86	891	118	1275	107	109

CED	BW	WW	YW	SC	MILK	\$M	\$W	\$F	\$B	\$C
-2	4.4	77	136	1.27	33	64	68	109	145	252

27 HARB New Conquest 215

Harrison Angus

Black Angus
 AAA#: *20542759
 DOB: 3/22/2022
 Tattoo: 215

Connealy Conquest
Allisons New Conquest 864
 WRAF Barbara 614

H A R B Icon 019
H A R B Princess Val 116-301
 H A R B Princess Val 660-116

Entry Wt	Final Wt				
833	1271				
ADG	ADG Ratio				
3.98	115				
WDA	WDA Ratio				
3.63	115				
BW	205 Day Wt.	205 Day Ratio	365 Day Wt.	365 Day Ratio	TBT Ratio
89	768	105	1344	113	111

CED	BW	WW	YW	SC	MILK	\$M	\$W	\$F	\$B	\$C
4	2.6	63	104	1.02	26	54	57	64	111	198

The dam has a good calf every year while always breeding back first cycle. She is docile with good feet and udder. Which are traits we have watched for several years.

30 C Spear Power K136

C Spear Angus

Black Angus
 AAA#: *20390615
 DOB: 2/28/2022
 Tattoo: K136

Vermilion Abundant F325
RKP Power 048
 RKP 561X-8456 72

KM Broken Bow 002
Leachman Erica 9035
 Leachman Erica 6084

Entry Wt	Final Wt				
718	1077				
ADG	ADG Ratio				
3.26	94				
WDA	WDA Ratio				
2.90	92				
BW	205 Day Wt.	205 Day Ratio	365 Day Wt.	365 Day Ratio	TBT Ratio
78	795	105	1118	94	98

CED	BW	WW	YW	SC	MILK	\$M	\$W	\$F	\$B	\$C
5	1.1	71	119	.38	32	64	73	87	136	240

K136 is another high performing Power son who is a long and thick made bull with performance. Out of a nice KM Broken Bow 002 daughter who has never missed!

28 C Spear Power K04

C Spear Angus

Black Angus
 AAA#: *20390618
 DOB: 3/13/2022
 Tattoo: K04

Vermilion Abundant F325
RKP Power 048
 RKP 561X-8456 72

Vermilion Want To
Vermilion Lass 9054
 Vermilion Lass 7280

Entry Wt	Final Wt				
751	1113				
ADG	ADG Ratio				
3.29	95				
WDA	WDA Ratio				
3.10	98				
BW	205 Day Wt.	205 Day Ratio	365 Day Wt.	365 Day Ratio	TBT Ratio
83	859	114	1200	101	103

CED	BW	WW	YW	SC	MILK	\$M	\$W	\$F	\$B	\$C
1	3.7	73	126	.85	32	79	69	92	140	261

K04 has been a stud since day 1. Sired by RKP Power, a bull we purchased out of this sale in 2021, you will like these Power females! **CHAMPION SIRE GROUP.**

31 C Spear High Regard K211

C Spear Angus

Black Angus
 AAA#: 20390620
 DOB: 3/13/2022
 Tattoo: K211

BTR High Regard 552
Vermilion High Regard E541
 Vermilion Lass 2129

Spring Cove Paygrade 5064
Leachman Blackcap 8003
 Leachman Blackcap 4050

Entry Wt	Final Wt				
748	1134				
ADG	ADG Ratio				
3.51	101				
WDA	WDA Ratio				
3.16	100				
BW	205 Day Wt.	205 Day Ratio	365 Day Wt.	365 Day Ratio	TBT Ratio
87	871	116	1204	101	106

CED	BW	WW	YW	SC	MILK	\$M	\$W	\$F	\$B	\$C
2	2.7	71	128	.80	30	68	67	110	148	260

FROM BREED LEADING SIRES

32 C Spear Power K225

C Spear Angus

Black Angus
AAA#: *20390630
DOB: 2/28/2022
Tattoo: K225

Vermilion Abundant F325
RKP Power 048
RKP 561X-8456 72

Connealy Spur
Leachman Blackcap 9070
Leachman Blackcap 2054

Entry Wt	Final Wt				
763	1239				
ADG	ADG Ratio				
4.33	125				
WDA	WDA Ratio				
3.33	106				
BW	205 Day Wt.	205 Day Ratio	365 Day Wt.	365 Day Ratio	TBT Ratio
80	789	105	1254	105	112

CED	BW	WW	YW	SC	MILK	\$M	\$W	\$F	\$B	\$C
6	3.7	82	139	1.14	31	85	76	120	176	313

K225 is a very high performing son of Power who is out of a very high-quality Spur daughter. K225 ranks top 2% for RE with a +1.15! Top 3% for Claw and CW. Top 4% for \$F and \$C with a +312. Top 5% for \$M with a +85. Top 10% for WEPD and YEPD. **CHAMPION SIRE GROUP. 3rd PLACE CHAMPION ADG.**

33 C Spear America K323

C Spear Angus

Black Angus
AAA#: +*20390590
DOB: 2/4/2022
Tattoo: K323

S A V President 6847
S A V America 8018
S A V Madame Pride 0075

Vermilion Bear Paw
Vermilion Lady 3220
Vermilion Lady 6038

Entry Wt	Final Wt				
824	1266				
ADG	ADG Ratio				
4.02	116				
WDA	WDA Ratio				
3.20	101				
BW	205 Day Wt.	205 Day Ratio	365 Day Wt.	365 Day Ratio	TBT Ratio
90	741	110	1182	99	108

CED	BW	WW	YW	SC	MILK	\$M	\$W	\$F	\$B	\$C
11	2.2	72	134	1.73	30	63	66	82	138	242

K323 is a high performing and high calving ease son of SAV America. Out of Vermilion Lady 3220 who has been in the donor pen and the females we have out of this flush are exceptionally good. If you like to keep replacements, these America sons are the way to go. Flush brother to 34.



S A V America 8018 - Lots 33 & 34

34 C Spear America K324

C Spear Angus

Black Angus
AAA#: +*20390591
DOB: 2/3/2022
Tattoo: K324

S A V President 6847
S A V America 8018
S A V Madame Pride 0075

Vermilion Bear Paw
Vermilion Lady 3220
Vermilion Lady 6038

Entry Wt	Final Wt				
781	1147				
ADG	ADG Ratio				
3.33	96				
WDA	WDA Ratio				
2.89	92				
BW	205 Day Wt.	205 Day Ratio	365 Day Wt.	365 Day Ratio	TBT Ratio
98	694	110	1072	90	99

CED	BW	WW	YW	SC	MILK	\$M	\$W	\$F	\$B	\$C
2	4.2	68	120	.52	33	44	58	113	165	258

K324 is another high performing America son who has performed well from the start. Long, thick and good! Flush brother to 33.

35 C Spear Black Jet K337

C Spear Angus

Black Angus
AAA#: +*20390559
DOB: 2/2/2022
Tattoo: K337

Connealy Black Granite
Bar R Jet Black 5063
Bar R Iris Anita 0113

Connealy Spur
WC Blackcap 7355
Vermilion Blackcap 7561

Entry Wt	Final Wt				
782	1217				
ADG	ADG Ratio				
3.95	114				
WDA	WDA Ratio				
3.06	97				
BW	205 Day Wt.	205 Day Ratio	365 Day Wt.	365 Day Ratio	TBT Ratio
93	716	106	1133	95	105

CED	BW	WW	YW	SC	MILK	\$M	\$W	\$F	\$B	\$C
6	2.0	69	126	.06	33	78	70	104	144	265

K337 is a high performing son of the popular Bar R Jet Black 5063. K337 is out of WC Blackcap 7355 who is the mother of Cook Bomber 926G who sold through the TBT for \$22,000 to Bar JV Angus. The Jet Black females we have are some of our very best replacements we have. Flush brother to 37 and 39.



Bar R Jet Black 5063 - Sire of Lots 2, 35, 37, 39, 71, 74, & 77

BLACK ANGUS BULLS

37 C Spear Black Jet K339

C Spear Angus

Black Angus
 AAA#: +*20390561
 DOB: 2/4/2022
 Tattoo: K339

Connealy Black Granite
Bar R Jet Black 5063
 Bar R Iris Anita 0113
 Connealy Spur
WC Blackcap 7355
 Vermilion Blackcap 7561

Entry Wt	Final Wt				
813	1171				
ADG	ADG Ratio				
3.25	94				
WDA	WDA Ratio				
2.96	94				
BW	205 Day Wt.	205 Day Ratio	365 Day Wt.	365 Day Ratio	TBT Ratio
89	721	106	1098	92	97



CED	BW	WW	YW	SC	MILK	\$M	\$W	\$F	\$B	\$C
15	.7	62	111	1.54	30	74	65	98	143	259

K339 is another high performing and high calving ease son of Jet Black out of 7355. These Jet Black females are extremely high quality. Flush brother to 35 and 39.

41 C Spear High Regard K121

C Spear Angus

Black Angus
 AAA#: 20390542
 DOB: 3/12/2022
 Tattoo: K121

BTR High Regard 552
Vermilion High Regard E541
 Vermilion Lass 2129
 Sitz Investment 660Z
Leachman Blackcap 8023
 Leachman Blackcap 5029

Entry Wt	Final Wt				
757	1137				
ADG	ADG Ratio				
3.45	100				
WDA	WDA Ratio				
3.16	100				
BW	205 Day Wt.	205 Day Ratio	365 Day Wt.	365 Day Ratio	TBT Ratio
84	815	108	1189	100	103

CED	BW	WW	YW	SC	MILK	\$M	\$W	\$F	\$B	\$C
1	2.6	73	133	.99	28	71	67	112	146	260

39 C Spear Black Jet K342

C Spear Angus

Black Angus
 AAA#: +*20390564
 DOB: 2/1/2022
 Tattoo: K342

Connealy Black Granite
Bar R Jet Black 5063
 Bar R Iris Anita 0113
 Connealy Spur
WC Blackcap 7355
 Vermilion Blackcap 7561

Entry Wt	Final Wt				
821	1232				
ADG	ADG Ratio				
3.74	108				
WDA	WDA Ratio				
3.09	98				
BW	205 Day Wt.	205 Day Ratio	365 Day Wt.	365 Day Ratio	TBT Ratio
75	748	106	1148	96	103



CED	BW	WW	YW	SC	MILK	\$M	\$W	\$F	\$B	\$C
17	-.5	81	136	.90	33	82	87	102	164	295

K342 is a high calving ease and high performing son of Jet Black out of 7355. K342 is a true herd bull prospect! K342 ranks top 1% in CED and \$W. Top 4% in CEM. Top 10% in WEPD, \$M and \$C with a +292! Very high-quality individual here!!

42 C Spear Power K227

C Spear Angus

Black Angus
 AAA#: *20390582
 DOB: 3/7/2022
 Tattoo: K227

Vermilion Abundant F325
RKP Power 048
 RKP 561X-8456 72
 Poss Achievement
Leachman Blackcap 9076
 Leachman Blackcap 1026

Entry Wt	Final Wt				
665	1112				
ADG	ADG Ratio				
4.06	117				
WDA	WDA Ratio				
3.05	97				
BW	205 Day Wt.	205 Day Ratio	365 Day Wt.	365 Day Ratio	TBT Ratio
86	744	99	1152	97	104

CED	BW	WW	YW	SC	MILK	\$M	\$W	\$F	\$B	\$C
-1	4.1	85	150	1.35	35	59	77	113	158	264

K227 is a high performing son of RKP Power who has a very outcross pedigree for most. These Power females are some of our best replacements. **CHAMPION SIRE GROUP.**

40 C Spear Thedford K112

[M1F]

C Spear Angus

Black Angus
 AAA#: *20390557
 DOB: 1/26/2022
 Tattoo: K112

Bar R Jet Black 5063
Hoffman Thedford
 HA Rito Lady 3839
 S A V Quarterback 7933
WC Fantasy E14
 FF Fantasy E14

Entry Wt	Final Wt				
704	1143				
ADG	ADG Ratio				
3.99	115				
WDA	WDA Ratio				
2.82	89				
BW	205 Day Wt.	205 Day Ratio	365 Day Wt.	365 Day Ratio	TBT Ratio
73	778	103	1123	94	104



CED	BW	WW	YW	SC	MILK	\$M	\$W	\$F	\$B	\$C
3	2.3	95	167	1.51	32	78	90	127	188	322

K112 is an extremely high performing individual who has been a stud since day 1. Sired by the \$200,000 ST sire Hoffman Thedford. Out of a first calf heifer who is making her way into the donor pen. K112 is in the top 1% for WEPD, YEPD, CW and \$W. Top 2% in YH, \$F, and RE with a +1.17. Top 3% for RADG, Doc, Angle, and \$C with a +322.



RKP Power 048 - Sire of Lots 28, 30, 32 & 42

FROM BREED LEADING SIRES

46 Legacy Crackerjack 201

[AMF-CAF-D2F-DDF-M1F-NHF-OHF-OSF-RDF]

Black Angus

AAA#: *20449650

DOB: 2/12/2022

Tattoo: 201

Musgrave 316 Stunner

Musgrave Crackerjack

Musgrave Rito Jet A649

Barstow Bankroll B73

CLB Rosebud C801

TB Rosebud 113



BW	205 Day Wt.	205 Day Ratio	365 Day Wt.	365 Day Ratio	TBT Ratio
80	752	100	1264	106	105

CED	BW	WW	YW	SC	MILK	\$M	\$W	\$F	\$B	\$C
7	-.9	62	115	1.58	26	46	59	109	157	250

Heavy weaning, high growth bull from the highly maternal CLB Rosebud C801 cow, which was the Grand Champion Angus Female at 2019 Black Hills Stock Show Angus Female sale. Sired by Crackerjack 201 who is known for calf vigor at birth and a jet-black coat color with outstanding Angus character. Top 10% MH, \$F. Top 15% BW, SC.

47 Legacy Crackerjack 204

[AMF-CAF-D2F-DDF-M1F-NHF-OHF-OSF-RDF]

Black Angus

AAA#: *20449639

DOB: 2/20/2022

Tattoo: 204

Musgrave 316 Stunner

Musgrave Crackerjack

Musgrave Rito Jet A649

Stevenson Easy Money 70688

ECA Queen Mother 050

Baldco Queen Mother 437



BW	205 Day Wt.	205 Day Ratio	365 Day Wt.	365 Day Ratio	TBT Ratio
84	783	102	1303	109	111

CED	BW	WW	YW	SC	MILK	\$M	\$W	\$F	\$B	\$C
4	1.8	77	135	1.11	36	58	81	105	145	246

Loaded with performance, nicely balanced bull. Impressive ADG of 4.18 lbs. Dam comes from the reputable Baldco Queen Mother cow family. Grand Dam was purchased at Baldrige Tiedeman Sale. Sire Crackerjack 201 has proven his utility in many environments as a go-to bull that creates tremendous replacements. Top 4% Milk, \$W. Top 15% WW, YW, CW, RE, \$F.

CHAMPION YOUTH.



Musgrave Crackerjack - Sire of Lots 46 & 47

Legacy Ridge Angus

49 Legacy Payweight 207

[AMF-CAF-D2F-DDF-M1F-NHF-OHF-OSF-RDF]

Black Angus

AAA#: *20446829

DOB: 3/12/2022

Tattoo: 207

Basin Payweight 1682

HA Payweight 9128

HA Lass 0874

Sitz Top Game 561X

Baldco Emulota 157E

JMB Emulota 013



BW	205 Day Wt.	205 Day Ratio	365 Day Wt.	365 Day Ratio	TBT Ratio
84	773	100	1197	100	99

CED	BW	WW	YW	SC	MILK	\$M	\$W	\$F	\$B	\$C
8	.1	67	119	.68	36	52	74	82	133	225

Nicely balanced bull, complete package. Dam Baldco Emulota 157E was purchased at Baldrige Tiedeman Angus Production sale and continues to prove she is an excellent female. Dam has exceptional combination of muscle and maternal traits in an attractive package. Grand Sire, Basin Payweight 1682 sires thick made easy fleshing, high quality females with excellent udders. Top 4% Milk. Top 10% \$W. Top 15% CEM, RE.

51 CAK Rainfall Cap316 2-20

Black Angus

AAA#: *20429860

DOB: 1/21/2022

Tattoo: 2220

Coleman Charlo 0256

S A V Rainfall 6846

S A V Blackcap May 4136

LD Capitalist 316

CAK Lassie Capitalist316 015

CAK Lassie War Party 404



BW	205 Day Wt.	205 Day Ratio	365 Day Wt.	365 Day Ratio	TBT Ratio
78	641	112	1071	90	98

CED	BW	WW	YW	SC	MILK	\$M	\$W	\$F	\$B	\$C
4	1.9	68	119	1.44	25	91	68	60	115	240

Top 2% \$M at +92. A calm, average frame size, trait balanced SAV Rainfall/Capitalist 316 son. He was one of our top weaning bulls from a 2 yr. old and his granddam produced a bull that sold well at the 2022 TBT. A consistent top producing cow family for us with good feet and udders.



S A V Rainfall 6846 - Sire of Lot 51

BLACK ANGUS BULLS

52 4MC Back in Black 2273

Fourmile Creek Angus

Black Angus
AAA#: *20463549
DOB: 3/17/2022
Tattoo: 2273

Baldrige Alternative E125
M A R Back In Black 9008
M A R Capitalist 1714

S A V Renown 3439
FF Empress JL E73
JL Empress X149

Entry Wt	Final Wt
679	1100
ADG	ADG Ratio
3.83	110
WDA	WDA Ratio
3.10	98
TBT Ratio	
97	102

BW	205 Day Wt.	205 Day Ratio	365 Day Wt.	365 Day Ratio	TBT Ratio
106	656	100	1159	97	102

CED	BW	WW	YW	SC	MILK	\$M	\$W	\$F	\$B	\$C
3	3.6	79	136	1.16	19	42	58	89	141	225



M A R Back In Black 9008 - Sire of Lot 52

55 CA Pay Grade 2227

Cash Angus

Black Angus
AAA#: *20288274
DOB: 1/26/2022
Tattoo: 2227

Mill Coulee Pay Raise
ICC Pay Raise 4886
ICC Blackbird 0739

G A R Prophet
Maplecrest B I G Rita 4027
G A R 5050 New Design 669

Entry Wt	Final Wt
728	1104
ADG	ADG Ratio
3.42	99
WDA	WDA Ratio
2.73	86
TBT Ratio	
92	97

BW	205 Day Wt.	205 Day Ratio	365 Day Wt.	365 Day Ratio	TBT Ratio
70	736	100	1102	92	97

CED	BW	WW	YW	SC	MILK	\$M	\$W	\$F	\$B	\$C
12	-1.0	66	110	.49	18	62	61	64	107	201

A big time calving ease bull with adequate growth, good footed. His pedigree has a lot of good maternal lines in it. His grandsire 107S is a foundation Pathfinder Sire. He should sire nice females.



ICC Pay Raise 4886 - Sire of Lot 55

57 CA Clarity 2221

Cash Angus

Black Angus
AAA#: *20288278
DOB: 2/3/2022
Tattoo: 2221

Cherry Creek Land Grant
Connealy Clarity
Breshie of Conanga 6988

Baldrige Bronc
Trowbridge Lady Jaye 7120
Trowbridge Lady Jaye Z142

Entry Wt	Final Wt
776	1134
ADG	ADG Ratio
3.25	94
WDA	WDA Ratio
2.86	91
TBT Ratio	
98	97

BW	205 Day Wt.	205 Day Ratio	365 Day Wt.	365 Day Ratio	TBT Ratio
73	770	100	1164	98	97

CED	BW	WW	YW	SC	MILK	\$M	\$W	\$F	\$B	\$C
12	-1.7	61	112	.67	31	87	69	78	152	284

A calving ease bull sired by the rare and popular Connealy Clarity out of a moderate functional Baldrige Bronc daughter. Top 4% \$Maternal, 10% Docility, 15% Marbling, 15% Angle & Heifer Preg & Claw 20%. A bull that hits a lot of the important traits in the breed.



Connealy Clarity - Sire of Lot 57

FROM BREED LEADING SIRES

60 Will Conclusion K11

Willekes Angus

Black Angus		Bushes Easy Decision 98				Entry Wt	Final Wt			
AAA#: *20501142		FF Conclusion F83				886	1322			
DOB: 1/22/2022		JF Eriskay B80				ADG	ADG Ratio			
Tattoo: K11		Musgrave Big Sky				3.96	114			
		Willekes Lady E12				WDA	WDA Ratio			
		Pine Coulee Lady B127				3.23	102			
ANGUS 3S		BW	205 Day Wt.	205 Day Ratio	365 Day Wt.	365 Day Ratio	TBT Ratio			
		89	676	105	1203	101	107			
CED	BW	WW	YW	SC	MILK	\$M	\$W	\$F	\$B	\$C
6	2.1	67	125	.97	28	75	63	92	126	238

Dam of lot 60 is a front pasture kind of cow. Keep this bull's daughters, I think they will make you great cows.

63 Will Conclusion K41

Willekes Angus

Black Angus		Bushes Easy Decision 98				Entry Wt	Final Wt			
AAA#: *20508192		FF Conclusion F83				794	1180			
DOB: 1/30/2022		JF Eriskay B80				ADG	ADG Ratio			
Tattoo: K41		S A V Final Answer 0035				3.51	101			
		Willekes Emblynette 20D				WDA	WDA Ratio			
		S A V Emblynette 8423				2.94	93			
ANGUS 3S		BW	205 Day Wt.	205 Day Ratio	365 Day Wt.	365 Day Ratio	TBT Ratio			
		88	645	100	1090	91	97			
CED	BW	WW	YW	SC	MILK	\$M	\$W	\$F	\$B	\$C
6	2.2	60	98	1.41	31	79	65	91	164	292

Dam is a solid proven cow. Our Conclusion daughters have just calved, and we really like them.

62 Will Conclusion K61

Willekes Angus

Black Angus		Bushes Easy Decision 98				Entry Wt	Final Wt			
AAA#: *20508191		FF Conclusion F83				864	1300			
DOB: 2/22/2022		JF Eriskay B80				ADG	ADG Ratio			
Tattoo: K61		PA Fortitude 2500				3.96	114			
		Willekes Bonny C221				WDA	WDA Ratio			
		Pine Coulee Bonny Z78				3.44	109			
ANGUS 3S		BW	205 Day Wt.	205 Day Ratio	365 Day Wt.	365 Day Ratio	TBT Ratio			
		97	730	118	1227	103	111			
CED	BW	WW	YW	SC	MILK	\$M	\$W	\$F	\$B	\$C
-1	4.5	76	136	.62	25	65	59	101	157	269

Donor Dam of lot 62 is a model Angus cow. She turned pathfinder on her first 3 calves with a weaning average of 109. Loads of maternal and performance in lot 62, he has been a standout since birth.

64 Will Pacific K43

Willekes Angus

Black Angus		Hoover No Doubt				Entry Wt	Final Wt			
AAA#: +*20508193		Sterling Pacific 904				944	1302			
DOB: 1/30/2022		Baldrige Isabel B082				ADG	ADG Ratio			
Tattoo: K43		S A V Net Worth 4200				3.25	94			
		Pine Coulee Pride of Lee W25				WDA	WDA Ratio			
		B5 Pride of Lee 5125				3.25	103			
ANGUS 3S		BW	205 Day Wt.	205 Day Ratio	365 Day Wt.	365 Day Ratio	TBT Ratio			
		98	702	110	1222	102	102			
CED	BW	WW	YW	SC	MILK	\$M	\$W	\$F	\$B	\$C
3	3.7	74	135	.98	24	70	59	106	179	302

Good old proven Donor Dam by Net Worth. Sire, Pacific, is doing an outstanding job across the country.



FF Conclusion F83 - Sire of Lots 11, 60, 62 & 63



Sterling Pacific 904 - Sire of Lots 3, 64, 65 & 76

BLACK ANGUS BULLS

65 Will Pacific K46

Willekes Angus

Black Angus

AAA#: +*20534050

DOB: 2/1/2022

Tattoo: K46

Hoover No Doubt

Sterling Pacific 904

Baldrige Isabel B082

HA Outside 3377

Willekes Pride of Lee C210

Pine Coulee Pride of Lee W25

Entry Wt	Final Wt	
806	1250	
ADG	ADG Ratio	
4.04	116	
WDA	WDA Ratio	
3.13	99	
365 Day Wt.	365 Day Ratio	TBT Ratio
85	639	115
1154	97	109

BW	205 Day Wt.	205 Day Ratio	365 Day Wt.	365 Day Ratio	TBT Ratio
85	639	115	1154	97	109

CED	BW	WW	YW	SC	MILK	\$M	\$W	\$F	\$B	\$C
-6	4.8	79	144	1.96	31	75	67	97	157	279

Out of one of the best Donor cows we own, both Dam and Granddam are proven, high performing and Maternal gems.

68 Will Spur K78

[M1F]

Willekes Angus

Black Angus

AAA#: *20523384

DOB: 3/8/2022

Tattoo: K78

Connealy Spur

WILL Spur G35

Pine Coulee Pride of Lee W25

HA Cowboy Up 5405

Willekes Entense E47

Pine Coulee Entense T515

Entry Wt	Final Wt	
788	1212	
ADG	ADG Ratio	
3.85	111	
WDA	WDA Ratio	
3.33	106	
365 Day Wt.	365 Day Ratio	TBT Ratio
84	739	115
1211	101	109

BW	205 Day Wt.	205 Day Ratio	365 Day Wt.	365 Day Ratio	TBT Ratio
84	739	115	1211	101	109

CED	BW	WW	YW	SC	MILK	\$M	\$W	\$F	\$B	\$C
2	2.7	63	123	1.49	34	65	61	83	118	218

67 Will Stunner K68

Willekes Angus

Black Angus

AAA#: +*20501340

DOB: 2/25/2022

Tattoo: K68

LD Capitalist 316

Musgrave 316 Stunner

MCATL Blackbird 831-1378

S A V Untouchable 8665

S R S Rose 1244Y

S R S Rose 7185T

Entry Wt	Final Wt	
734	1112	
ADG	ADG Ratio	
3.44	99	
WDA	WDA Ratio	
2.97	94	
365 Day Wt.	365 Day Ratio	TBT Ratio
85	623	106
1077	90	98

BW	205 Day Wt.	205 Day Ratio	365 Day Wt.	365 Day Ratio	TBT Ratio
85	623	106	1077	90	98

CED	BW	WW	YW	SC	MILK	\$M	\$W	\$F	\$B	\$C
8	-3	76	128	.82	29	61	78	93	125	223

A little more moderate, and nicely made Stunner son, out of a great Donor Cow that we own with the Skinner's. Same Dam as lot 69.

69 Willekes Headline 1244K

Willekes Angus

Black Angus

AAA#: *20437664

DOB: 3/19/2022

Tattoo: 1244K

Musgrave 316 Stunner

SRS Head Line 2277H

SRS Rose 2277Z

S A V Untouchable 8665

S R S Rose 1244Y

S R S Rose 7185T

Entry Wt	Final Wt	
868	1259	
ADG	ADG Ratio	
3.55	103	
WDA	WDA Ratio	
3.57	113	
365 Day Wt.	365 Day Ratio	TBT Ratio
86	811	114
1355	114	110

CED	BW	WW	YW	SC	MILK	\$M	\$W	\$F	\$B	\$C
4	2.7	74	129	1.68	37	64	75	102	141	247

Headline is an exciting new Herd Sire at Skinner Seedstock, where sons will be featured in this Springs Bull Sale. Beautiful Donor Dam is jointly owned with Skinners, she has produced both sons and daughters that have been very well received in past sales.



Musgrave 316 Stunner - Sire of Lot 67



WILL Spur G35 - Sire of Lot 68

FROM BREED LEADING SIRES

71 MWA Jet Black 04K

Black Angus
 AAA#: *20350496
 DOB: 1/23/2022
 Tattoo: 04K

Connealy Black Granite
Bar R Jet Black 5063
 Bar R Iris Anita 0113

Hoover Bullseye M122
Top Notch Lady 729
 Top Notch Lady Chinook 002

BW	205 Day Wt.	205 Day Ratio	365 Day Wt.	365 Day Ratio	TBT Ratio
91	709	102	1194	100	102

CED	BW	WW	YW	SC	MILK	\$M	\$W	\$F	\$B	\$C
5	2.9	79	143	1.13	32	58	72	107	152	255

Lot 71 is loaded with muscle expression and rib. Outstanding female behind this guy. A mid-sized cow that has it all. He performed really and will make a dandy set of females down the road. Top 25% or better in WW, YW, RADG, doc, HS, CEM, milk, CW, \$W \$F.

Marshall Willekes Angus

Entry Wt	Final Wt
912	1308
ADG	ADG Ratio
3.60	104
WDA	WDA Ratio
3.21	102

75 MWA Stock Fund 10K

Black Angus
 AAA#: *20347978
 DOB: 1/29/2022
 Tattoo: 10K

Deer Valley Growth Fund
EXAR Stock Fund 9097B
 EXAR Empress 0875

Connealy Guinness
Top Notch Miss Design 837
 NA Miss Abe Design 004

BW	205 Day Wt.	205 Day Ratio	365 Day Wt.	365 Day Ratio	TBT Ratio
92	727	104	1242	104	103

CED	BW	WW	YW	SC	MILK	\$M	\$W	\$F	\$B	\$C
5	2.4	82	145	1.33	28	67	73	113	182	303

Lot 75 was a pasture favorite. Bull with tremendous rib shape and thickness. Big cheat floor and wide hipped. Cannot say enough good things about this guy. Moderate cow with all the right qualities. Hold an impressive EPD spread as well. Top 25% or better in WW, YW, RADG, Doc, CW, Marb, HP. As well as top 2% tenderness.

Marshall Willekes Angus

Entry Wt	Final Wt
942	1332
ADG	ADG Ratio
3.55	102
WDA	WDA Ratio
3.31	105

73 MWA Stock Fund 06K

Black Angus
 AAA#: *20347984
 DOB: 1/24/2022
 Tattoo: 06K

Deer Valley Growth Fund
EXAR Stock Fund 9097B
 EXAR Empress 0875

Hoover Bullseye M122
Top Notch Miss Sana 861
 NA Miss Sana 035

BW	205 Day Wt.	205 Day Ratio	365 Day Wt.	365 Day Ratio	TBT Ratio
93	696	100	1227	103	103

CED	BW	WW	YW	SC	MILK	\$M	\$W	\$F	\$B	\$C
5	2.4	86	152	.38	31	72	81	121	166	287

Big boned bull with a little extra frame. Great young cow behind him that has great fertility and performance. Gentle as the come with an impressive EPD spread. Top 3% YW, \$F. Top 4% Doc, CEM, \$W. Genomics came back top 1% weaning weight.

Marshall Willekes Angus

Entry Wt	Final Wt
920	1328
ADG	ADG Ratio
3.71	107
WDA	WDA Ratio
3.26	103

76 MWA Pacific 12K

Black Angus
 AAA#: +*20508184
 DOB: 1/30/2022
 Tattoo: 12K

Hoover No Doubt
Sterling Pacific 904
 Baldrige Isabel B082

HA Outside 3377
Willekes Pride of Lee C210
 Pine Coulee Pride of Lee W25

BW	205 Day Wt.	205 Day Ratio	365 Day Wt.	365 Day Ratio	TBT Ratio
104	706	115	1262	106	111

CED	BW	WW	YW	SC	MILK	\$M	\$W	\$F	\$B	\$C
3	3.2	75	137	1.45	28	73	66	111	170	294

HERD BULL. Lot 76 stems from our most impressive donor on the place. Cow is picture perfect and loaded with performance with a ratio of 5@ 115. 2nd generation donor. He is a phenotypic standout that is long bodied and loaded with muscle. Performed really well and carry's a great EPD spread. Bull that is really hard to fault and had lots of potential.

Marshall Willekes Angus

Entry Wt	Final Wt
910	1339
ADG	ADG Ratio
3.90	112
WDA	WDA Ratio
3.34	106

74 MWA Jet Black 07K

Black Angus
 AAA#: *20350491
 DOB: 1/25/2022
 Tattoo: 07K

Connealy Black Granite
Bar R Jet Black 5063
 Bar R Iris Anita 0113

Hoover Bullseye M122
Top Notch Miss Quality 859
 NA Miss Quality VRD 9117

BW	205 Day Wt.	205 Day Ratio	365 Day Wt.	365 Day Ratio	TBT Ratio
88	717	103	1138	95	98

CED	BW	WW	YW	SC	MILK	\$M	\$W	\$F	\$B	\$C
9	2.1	74	132	.66	29	64	69	106	160	272

Athletic bull that will get out and cover cows. Comes from a great cow with easy fleshing ability. Bull that has some style.

Marshall Willekes Angus

Entry Wt	Final Wt
859	1223
ADG	ADG Ratio
3.31	95
WDA	WDA Ratio
3.01	95

77 MWA Jet Black 17K

Black Angus
 AAA#: *20350494
 DOB: 2/3/2022
 Tattoo: 17K

Connealy Black Granite
Bar R Jet Black 5063
 Bar R Iris Anita 0113

Will 112 of Rita R186
Willekes Blackbird E34
 Mission Blackbird C-15

BW	205 Day Wt.	205 Day Ratio	365 Day Wt.	365 Day Ratio	TBT Ratio
96	734	105	1184	99	103

CED	BW	WW	YW	SC	MILK	\$M	\$W	\$F	\$B	\$C
6	3.9	68	124	1.69	26	43	54	78	118	196

Another bull out of a tremendous cow. Gentle female with no holes. Loaded with performance with a ratio of 3@ 108. Big middled bull that has a great look.

Marshall Willekes Angus

Entry Wt	Final Wt
868	1270
ADG	ADG Ratio
3.65	105
WDA	WDA Ratio
3.20	101

BLACK ANGUS BULLS

78 MWA El Dorado 14K

Marshall Willekes Angus

Black Angus

AAA#: *20394663

DOB: 2/1/2022

Tattoo: 14K

Poss Maverick
M A R El Dorado
M A R Erica 1806

Connealy Guinness
Top Notch Lass 750
NA Lass 309

Entry Wt	Final Wt
939	1346
ADG	ADG Ratio
3.70	107
WDA	WDA Ratio
3.37	107
TBT Ratio	
105	105

BW	205 Day Wt.	205 Day Ratio	365 Day Wt.	365 Day Ratio	TBT Ratio
108	729	104	1248	105	105

CED	BW	WW	YW	SC	MILK	\$M	\$W	\$F	\$B	\$C
-5	4.3	87	149	1.11	30	51	76	120	214	329

Lot 78 is loaded with bone and muscle. A power bull that will sire calves that flat grow. Backed by a great cow. Blood came back and put him in the top 2% marbling. Top 5% or better in WW, YW, \$F, \$G, \$B, \$C.

80 GV Resilient 208

Grandview Farms

Black Angus

AAA#: *20446049

DOB: 2/4/2022

Tattoo: 208

Sitz Stellar 726D
Sitz Resilient 10208
Sitz Miss Burgess 1856

Bruin Upoar 0070
GV Miss Kaye 802
Nelson Miss Kaye 7093

Entry Wt	Final Wt
845	1257
ADG	ADG Ratio
3.75	108
WDA	WDA Ratio
3.17	101
TBT Ratio	
100	106

BW	205 Day Wt.	205 Day Ratio	365 Day Wt.	365 Day Ratio	TBT Ratio
80	765	110	1191	100	106

CED	BW	WW	YW	SC	MILK	\$M	\$W	\$F	\$B	\$C
7	1.0	80	138	.84	27	83	78	107	176	311

HERD BULL PROSPECT. He offers a big spread in calving ease to a top 10% WW & 15% YW. He is balanced throughout his numbers with a top 10% \$M, \$W, \$B and a top 4% \$C at \$312! Dam's production: 4@365 calving interval, 3@103 WR, 2@104 YR, 2@106 IMF! A flush brother to his dam is a former standout at the Treasure Bull Test and working at Harrer's Lost Lake Ranch. **SELLING 2/3 INTEREST AND FULL POSSESSION.**

79 GV Logo 202

Grandview Farms

Black Angus

AAA#: *20445771

DOB: 1/31/2022

Tattoo: 202

SITZ Logo 12964
Sitz Logo 8148
SITZ Barbaramere Nell 912

Hoover Counselor N29
GV Dora 002
GV Dora 803

Entry Wt	Final Wt
763	1140
ADG	ADG Ratio
3.43	99
WDA	WDA Ratio
2.85	90
TBT Ratio	
94	100

BW	205 Day Wt.	205 Day Ratio	365 Day Wt.	365 Day Ratio	TBT Ratio
70	750	108	1126	94	100

CED	BW	WW	YW	SC	MILK	\$M	\$W	\$F	\$B	\$C
7	.4	77	125	1.28	25	81	77	88	130	250

Heifer bull prospect in this Logo 8148 son. This bull is stout made and well put together. He offers balanced numbers across the board. The calves should come easy and really grow. The daughters should be the keeping kind with his strong maternal pedigree. He offers a top 1% HP, 3% PAP, 10% \$M & 10% \$W. **SELLING 2/3 INTEREST AND FULL POSSESSION.**

81 TT F12 Resource M02

Double T Angus

Black Angus

AAA#: *20442480

DOB: 1/21/2022

Tattoo: M02

S A V Resource 1441
TT Resource F12
TT Lucky Lady X02

Jindra Double Vision
TT Miss Dawn H21
TT Miss Dawn 902

Entry Wt	Final Wt
847	1262
ADG	ADG Ratio
3.77	109
WDA	WDA Ratio
3.08	98
TBT Ratio	
98	105

BW	205 Day Wt.	205 Day Ratio	365 Day Wt.	365 Day Ratio	TBT Ratio
74	734	107	1168	98	105

CED	BW	WW	YW	SC	MILK	\$M	\$W	\$F	\$B	\$C
5	.5	66	111	.84	27	67	65	70	97	193

Here is a low birthweight bull with balanced growth and a super maternal pedigree. His PATHFINDER Dam has 3@105 NR and is one of the good ones. His maternal Granddam and Great Granddam were donors in the program. This prospect offers a top 2% HP and 3% PAP. These F12 sons will get it done and leave a beautiful set of daughters. **SELLING 2/3 INTEREST AND FULL POSSESSION.**



Sitz Logo 8148 - Sire of Lot 79



TT Resource F12 - Sire of Lot 81

FROM BREED LEADING SIRES

85 SBRC EI Dorado 2209

Stone's Black Rock Cattle

Black Angus

AAA#: *20478767

DOB: 2/25/2022

Tattoo: 2209

Poss Maverick
M A R EI Dorado
M A R Erica 1806

A A R Ten X 7008 S A

Fidelity X Factor

Windy Ridge Fidelity 138



BW	205 Day Wt.	205 Day Ratio	365 Day Wt.	365 Day Ratio	TBT Ratio
98	706	102	1200	101	104

CED	BW	WW	YW	SC	MILK	\$M	\$W	\$F	\$B	\$C
9	1.9	74	127	1.44	32	71	75	121	195	324

This ET calf was bred for balance. He carries this balance clear through his EPDs all the way to his \$Values. Top 2% \$C, 4% \$F and \$B, top 10% \$W and \$G, and top 25% \$M. The dam had excellent calving ease, milk, structure and feet; while the sire, the \$24,000 Malek Angus high sale buy in 2021, has great growth and carcass traits including 11 top #1%.

87 SBRC EI Dorado 2520

Stone's Black Rock Cattle

Black Angus

AAA#: *20484339

DOB: 1/25/2022

Tattoo: 2520

Poss Maverick
M A R EI Dorado
M A R Erica 1806

PA Fortitude 2500

M A R Erica Rito 1718

M A R Erica Rito 1335



BW	205 Day Wt.	205 Day Ratio	365 Day Wt.	365 Day Ratio	TBT Ratio
90	777	105	1170	98	99

CED	BW	WW	YW	SC	MILK	\$M	\$W	\$F	\$B	\$C
-4	2.9	79	132	.60	37	52	79	118	200	311

Another powerful MAR EI Dorado son. Heaviest WW off the cow at 840 lbs. His EPDs carry strong growth, and carcass traits; while his \$Values boast top 2% \$B, 4% \$F and \$C, top 5% \$W and \$G. His Dam has a deep rib, and extra length while walking on good feet with a smooth stride.

88 BEU Kendall K26

[OHP]

Beuerman Angus

Black Angus

AAA#: *20395203

DOB: 2/15/2022

Tattoo: K26

KG Justified 3023
A A R Kendall 7015
A A R Blackbird Kay 5267

Quaker Hill Rampage 0A36

SCC Lady of Peak Dot 285

Lady of Peak Dot 135Z



BW	205 Day Wt.	205 Day Ratio	365 Day Wt.	365 Day Ratio	TBT Ratio
72	682	107	1113	93	99

CED	BW	WW	YW	SC	MILK	\$M	\$W	\$F	\$B	\$C
10	1.2	68	111	1.24	29	91	71	78	149	284

Outstanding growth and calving ease. Phenomenal HP +19.4 (top 1%). Top 2% \$M and top 15% \$C will make for a real herd bull. **SELLING 2/3 INTEREST AND FULL POSSESSION.**

91 BEU Fast Forward K78

Beuerman Angus

Black Angus

AAA#: *20422912

DOB: 2/16/2022

Tattoo: K78

Basin Payweight 1682
JR Fast Forward
JNSR MS Queen 453B

EAR Blazin Oak 15513

BEU Stealth Lady F17A

Coleman Lady 0173



BW	205 Day Wt.	205 Day Ratio	365 Day Wt.	365 Day Ratio	TBT Ratio
86	656	103	1129	95	99

CED	BW	WW	YW	SC	MILK	\$M	\$W	\$F	\$B	\$C
8	.7	70	123	.76	29	64	71	96	147	255

Very nicely balanced EPD figures. Out a very well put together female that stands on a large, correct foot.



JR Fast Forward - Sire of Lot 91



A A R Kendall 7015 - Sire of Lot 88

BLACK ANGUS BULLS

93 JR Cowboy 2635

[DDF-OHF]

Jacobsen Ranch

Black Angus Occ Cowboy Up 848
 AAA#: *20483425 OCC Cowboy 088
 DOB: 3/1/2022 OCC Gina 540
 Tattoo: 2635
 Carstens War Party 103
 JR MS War Party 6640
 JR MS Black 0637

Entry Wt	Final Wt
878	1260
ADG	ADG Ratio
3.47	100
WDA	WDA Ratio
3.40	108
TBT Ratio	
106	106

BW	205 Day Wt.	205 Day Ratio	365 Day Wt.	365 Day Ratio	TBT Ratio
81	733	112	1261	106	106

CED	BW	WW	YW	SC	MILK	\$M	\$W	\$F	\$B	\$C
6	1.4	72	124	1.09	24	50	64	98	125	212



97 GR Quarterback 2087

[AMF-CAF-D2F-DDF-M1F-NHF-OHF-OSF-RDF]

Gollaher Ranch

Black Angus S A V Quarterback 7933
 AAA#: *20473469 Cook Quarterback 041H
 DOB: 2/22/2022 WC Lady 5004
 Tattoo: 2087
 M A R Fortitude 512
 Gollaher Miss Fortitude 8087
 1020 MDG Pendleton

Entry Wt	Final Wt
811	1194
ADG	ADG Ratio
3.48	100
WDA	WDA Ratio
3.16	100
TBT Ratio	
100	102

BW	205 Day Wt.	205 Day Ratio	365 Day Wt.	365 Day Ratio	TBT Ratio
82	748	106	1191	100	102

CED	BW	WW	YW	SC	MILK	\$M	\$W	\$F	\$B	\$C
8	1.4	78	133	1.35	25	86	77	94	133	259



94 GR Privilege 2023

[D2F-DDF-M1F-NHF-OSF-RDF]

Gollaher Ranch

Black Angus S A V Privilege 3030
 AAA#: *20473460 Vermilion Privilege D839
 DOB: 2/7/2022 Vermilion Queen Lady 3831
 Tattoo: 2023
 Connealy Irish 0204
 MDG Pendleton Irish 3012
 1020 MDG Pendleton

Entry Wt	Final Wt
808	1205
ADG	ADG Ratio
3.61	104
WDA	WDA Ratio
3.07	97
TBT Ratio	
94	101

BW	205 Day Wt.	205 Day Ratio	365 Day Wt.	365 Day Ratio	TBT Ratio
84	743	105	1125	94	101

CED	BW	WW	YW	SC	MILK	\$M	\$W	\$F	\$B	\$C
8	1.3	61	107	.78	22	45	52	99	141	228



98 GR Doc Neal 2100

[AMF-CAF-D2F-DDF-M1F-NHF-OHF-OSF-RDF]

Gollaher Ranch

Black Angus Connealy Doc Neal
 AAA#: *20473470 Vermilion Doc Neal E072
 DOB: 2/27/2022 Vermilion June 5271
 Tattoo: 2100
 Vermilion Dempsey A061
 MDG Erica Dempsey 7095
 MDG Erica 2119

Entry Wt	Final Wt
805	1199
ADG	ADG Ratio
3.58	103
WDA	WDA Ratio
3.21	102
TBT Ratio	
102	106

BW	205 Day Wt.	205 Day Ratio	365 Day Wt.	365 Day Ratio	TBT Ratio
84	793	112	1218	102	106

CED	BW	WW	YW	SC	MILK	\$M	\$W	\$F	\$B	\$C
7	.2	56	99	.78	34	81	64	90	120	237



95 GR Privilege 2042

[AMF-CAF-D2F-DDF-M1F-NHF-OHF-OSF-RDF]

Gollaher Ranch

Black Angus S A V Privilege 3030
 AAA#: *20473463 Vermilion Privilege D839
 DOB: 2/11/2022 Vermilion Queen Lady 3831
 Tattoo: 2042
 Connealy Counselor
 MDG Counselor Shoshone 5041
 MDG Shoshone 9006

Entry Wt	Final Wt
888	1246
ADG	ADG Ratio
3.25	94
WDA	WDA Ratio
3.20	102
TBT Ratio	
101	102

BW	205 Day Wt.	205 Day Ratio	365 Day Wt.	365 Day Ratio	TBT Ratio
82	793	112	1200	101	102

CED	BW	WW	YW	SC	MILK	\$M	\$W	\$F	\$B	\$C
5	1.0	60	106	1.19	34	51	65	71	120	207



99 TR3 Logo 204

[AMF-CAF-D2F-DDF-M1F-NHF-OHF-OSF-RDF]

Troyer Ranch LLC

Black Angus SITZ Logo 12964
 AAA#: *20483035 Sitz Logo 6197
 DOB: 1/13/2022 Sitz Pride 0128
 Tattoo: 204
 A A R Ten X 3052
 TR3 Patti Kelton 721
 K A S Patti Kelton 7413

Entry Wt	Final Wt
953	1317
ADG	ADG Ratio
3.31	95
WDA	WDA Ratio
3.15	100
TBT Ratio	
96	97

BW	205 Day Wt.	205 Day Ratio	365 Day Wt.	365 Day Ratio	TBT Ratio
88	640	100	1150	96	97

CED	BW	WW	YW	SC	MILK	\$M	\$W	\$F	\$B	\$C
2	1.4	79	127	1.27	31	82	82	62	103	216



The sire, Sitz Logo 6197 was the \$60,000 high selling bull in the fall of 2018. We are pleased with the calves we are getting out of this sire. Mother is moderate framed cow that never misses.

FROM BREED LEADING SIRES

100 TR3 Logo 206

[AMF-CAF-D2F-DDF-M1F-NHF-OHF-OSF-RDF]

Black Angus SITZ Logo 12964
AAA#: *20483036 **Sitz Logo 6197**
DOB: 1/14/2022 Sitz Pride 0128
Tattoo: 206
 A A R Rito 1163
TR3 Ferns Pride 604
 A A R Ferns Pride 5009

BW	205 Day Wt.	205 Day Ratio	365 Day Wt.	365 Day Ratio	TBT Ratio
87	686	107	1119	94	97

CED	BW	WW	YW	SC	MILK	\$M	\$W	\$F	\$B	\$C
4	.2	78	124	1.02	26	51	78	93	123	211

Logo 6197 son out of a nice cow with good feet and udder.

Troyer Ranch LLC

102 OCC Atlantis 2211

Olson Cattle Co

Black Angus S A V Rainfall 6846
AAA#: *20537404 **Square B Atlantis 8060**
DOB: 2/14/2022 Elbanna of Conanga 1209
Tattoo: 2211
 OCC Ultimate Answer 118
OCC Everelda Entense 572
 JAF Everelda 22W

BW	205 Day Wt.	205 Day Ratio	365 Day Wt.	365 Day Ratio	TBT Ratio
79	806	110	1203	101	105

CED	BW	WW	YW	SC	MILK	\$M	\$W	\$F	\$B	\$C
5	2.0	68	116	.62	27	79	68	73	119	233

Herd Sire Prospect. An excellent footed, very complete Square B Atlantis son with a triple digit Rib Eye EPD (+1.15). This bull stems from a strong maternal foundation, with a full brother being retained at Olson Cattle Co as a senior herd sire.

101 TR3 Logo 210

[AMF-CAF-D2F-DDF-M1F-NHF-OHF-OSF-RDF]

Black Angus SITZ Logo 12964
AAA#: *20483032 **Sitz Logo 6197**
DOB: 1/18/2022 Sitz Pride 0128
Tattoo: 210
 Connealy Confidence
TR3 Lady Kelton 609
 A A R Lady Kelton 8019

BW	205 Day Wt.	205 Day Ratio	365 Day Wt.	365 Day Ratio	TBT Ratio
82	697	109	1171	98	104

CED	BW	WW	YW	SC	MILK	\$M	\$W	\$F	\$B	\$C
7	1.3	82	130	.88	30	70	86	76	90	187

Another Logo son. Stand out since birth.

Troyer Ranch LLC

104 OCC Atlantis 2240

Olson Cattle Co

Black Angus S A V Rainfall 6846
AAA#: *20537406 **Square B Atlantis 8060**
DOB: 2/25/2022 Elbanna of Conanga 1209
Tattoo: 2240
 OCC Windy 201
OCC Lady 525
 OCC Lady Merit 121

BW	205 Day Wt.	205 Day Ratio	365 Day Wt.	365 Day Ratio	TBT Ratio
78	832	114	1173	98	100

CED	BW	WW	YW	SC	MILK	\$M	\$W	\$F	\$B	\$C
8	1.5	66	110	.79	29	72	67	67	127	237

Another Square B Atlantis son with a triple digit Rib Eye EPD (+1.13). His dam has excellent feet along with a picture-perfect udder.



Sitz Logo 6197 - Sire of Lots 99-101



Square B Atlantis 8060 - Sire of Lots 102 & 104

BLACK ANGUS BULLS

105 OCC Resilient 2270

Olson
Cattle Co

Black Angus

AAA#: *20537407

DOB: 2/27/2022

Tattoo: 2270

Sitz Stellar 726D
Sitz Resilient 10208
Sitz Miss Burgess 1856

Connealy Spur
OCC Lucy 844
OCC Lucy 620

Entry Wt	Final Wt
932	1274
ADG	ADG Ratio
3.11	90
WDA	WDA Ratio
3.42	108
TBT Ratio	104



BW	205 Day Wt.	205 Day Ratio	365 Day Wt.	365 Day Ratio	TBT Ratio
80	873	119	1272	107	104

CED	BW	WW	YW	SC	MILK	\$M	\$W	\$F	\$B	\$C
11	.7	73	123	.91	36	95	82	88	134	269

A calving ease Resilient son with a double digit CED. He ranks in the top 1% for \$M, top 2% for CEM, top 3% for \$W, and top 4% for Milk.



Deer Valley Growth Fund - Sire of Lot 107

106 Lost Lake Ascent K166

[DDF-M1F-OHF]

Harrer's
Lost Lake Ranch

Black Angus

AAA#: *20475379

DOB: 2/11/2022

Tattoo: K166

Bruin Uproar 0070
GV Uproar 802
Nelson Miss Kaye 7093

Cherry Crk Discovery C22
Nana P Discovery F84 LLR
Nana on the Rocks C30 LLR

Entry Wt	Final Wt
877	1211
ADG	ADG Ratio
3.04	88
WDA	WDA Ratio
3.11	99
TBT Ratio	98



BW	205 Day Wt.	205 Day Ratio	365 Day Wt.	365 Day Ratio	TBT Ratio
84	768	110	1169	98	98

CED	BW	WW	YW	SC	MILK	\$M	\$W	\$F	\$B	\$C
4	.9	68	127	.36	29	54	63	103	167	271



GV Uproar 802 - Sire of Lot 106

107 HCC Growth Fund 2100

Harwood
Cattle Co

Black Angus

AAA#: +*20565295

DOB: 1/19/2022

Tattoo: 2100

Basin Payweight 1682
Deer Valley Growth Fund
Deer Valley Rita 36113

S A V Bismarck 5682
HA Rito Lady 5330
HA Rito Lady 1695

Entry Wt	Final Wt
1027	1450
ADG	ADG Ratio
3.85	111
WDA	WDA Ratio
3.52	112
TBT Ratio	107



BW	205 Day Wt.	205 Day Ratio	365 Day Wt.	365 Day Ratio	TBT Ratio
88	889	100	1326	111	107

CED	BW	WW	YW	SC	MILK	\$M	\$W	\$F	\$B	\$C
9	1.4	81	140	.80	29	75	80	105	139	255

This bull's mother came from Hinman Angus. She was our pick of entire crop of Bismarck heifers that year. This cow is one of the best Bismarck daughters you will see. Deep bodied easy doing with excellent feet and perfect udder. She is from the HA Rito Lady cow family that has been one of there most productive cow families.



SRS Headline 2277H - Sire of Lot 69

FROM BREED LEADING SIRES

108 Springvale Full Power 238 Springvale Ranch

Black Angus
AAA#: *20473048
DOB: 3/15/2022
Tattoo: 238

PA Full Power 1208
Schafer Full Power 1803
SJH Confidence of 0171 2529
V A R Discovery 2240
Springvale Bonny 548
Springvale Bonny 981



BW	205 Day Wt.	205 Day Ratio	365 Day Wt.	365 Day Ratio	TBT Ratio
93	918	124	1445	121	115

CED	BW	WW	YW	SC	MILK	\$M	\$W	\$F	\$B	\$C
2	2.6	100	176	.53	21	74	81	118	191	322

A performance bull in the top 1% for WW, YW and RADG. Top 20% or better in many other traits. Dam and Grand Dam are both pathfinder cows. **RESERVE CHAMPION JACKPOT. CHAMPION WDA.**

109 Springvale Full Power 237 Springvale Ranch

Black Angus
AAA#: *20473047
DOB: 3/15/2022
Tattoo: 237

PA Full Power 1208
Schafer Full Power 1803
SJH Confidence of 0171 2529
Springvale Trust 101
Springvale Duchess 495
Springvale Duchess 103



BW	205 Day Wt.	205 Day Ratio	365 Day Wt.	365 Day Ratio	TBT Ratio
81	807	109	1215	102	99

CED	BW	WW	YW	SC	MILK	\$M	\$W	\$F	\$B	\$C
5	.7	56	97	.90	30	63	60	83	140	245

Dam is really easy to look at. Ratios 7 head 93 birth, 7 head 100 weaning, 367 day calving interval.



Schafer Full Power 1803 - Sire of Lots 108 & 109

111 JD Exclusive 22 Dalbey Angus

Black Angus
AAA#: *20463101
DOB: 1/4/2022
Tattoo: 22

LD Capitalist 316
Musgrave 316 Exclusive
Musgrave Prim Lassie 163-386
S A V President 6847
JD 6847 Pride 99
JD Pride 93W



BW	205 Day Wt.	205 Day Ratio	365 Day Wt.	365 Day Ratio	TBT Ratio
90	818	108	1273	107	103

CED	BW	WW	YW	SC	MILK	\$M	\$W	\$F	\$B	\$C
4	2.4	78	135	1.24	29	79	75	94	134	253

Dam is a beautiful President daughter with perfect feet and udders. Dam has 2 WW @ 106 and a calving interval of 366 on 2. Granddam was a lead on cow that lasted into her teens and always had a top calf.

112 JD Exclusive 213 Dalbey Angus

Black Angus
AAA#: *20463098
DOB: 2/18/2022
Tattoo: 213

LD Capitalist 316
Musgrave 316 Exclusive
Musgrave Prim Lassie 163-386
HF Tiger 5T
JD Jestress 45
JD 307R Jestress 912W



BW	205 Day Wt.	205 Day Ratio	365 Day Wt.	365 Day Ratio	TBT Ratio
89	765	101	1218	102	98

CED	BW	WW	YW	SC	MILK	\$M	\$W	\$F	\$B	\$C
6	1.1	61	111	.79	37	80	70	80	108	220

Dam is a Tiger daughter with a calving interval of 369 on 7. Granddam is the 912W Upward daughter that was a mother to the bull Russ Pepper bought in 2012, a strong cow family.



Musgrave 316 Exclusive - Sire of Lots 111 & 112

BLACK ANGUS BULLS

113 Lewis Easy Money 236

Lewis Land & Livestock

Black Angus

AAA#: *20484652

DOB: 3/2/2022

Tattoo: 236

Plattemere Weigh Up K360
Stevenson Easy Money 70688

Down T Blackbird 5646

Stevenson Rebel 41054

Lewis Sweet Pea 613D

KG Miss Sweet Focus 027



BW	205 Day Wt.	205 Day Ratio	365 Day Wt.	365 Day Ratio	TBT Ratio
79	772	113	1241	104	108

CED	BW	WW	YW	SC	MILK	\$M	\$W	\$F	\$B	\$C
6	2.1	90	156	1.42	22	54	77	108	151	250

If cattle that grow is the goal, don't miss this one! He's in the top 2% of the breed for WW and YW and top 10% on \$W and \$F. He'll produce calves with frame that can grow and gain! His dam averages 4 at 104 weaning ratio with a perfect 365 day calving interval! He's sired by Stevenson Easy Money 70688, the Plattemere Weigh Up K360 son who is a big-time growth bull with moderate birth and a huge ribeye.

115 Lewis Everlast 238

Lewis Land & Livestock

Black Angus

AAA#: *20484633

DOB: 3/6/2022

Tattoo: 238

Baldrige Alternative E125

Stevenson Everlast

Stevenson Edwina 3179

Stevenson Templeton 3308

Rimrock Esther 636D

Rimrock Esther 206



BW	205 Day Wt.	205 Day Ratio	365 Day Wt.	365 Day Ratio	TBT Ratio
70	707	103	1164	98	100

CED	BW	WW	YW	SC	MILK	\$M	\$W	\$F	\$B	\$C
13	-1.6	64	104	-.58	27	89	72	62	117	241

It's time to breed heifers! This Everlast son is the top 10% of the breed on Calving Ease Direct and top 5% of the breed on BW. His dam is a moderate framed, easy fleshing cow that produces stout calves with muscle and eye appeal. She posts 4 calves with an average 109 weaning ratio, she knows how to grow them! He's very attractive, heavy muscled with a lot of shape to the rib and stout boned but clean fronted for calving ease. While muscle and marbling are typically antagonistic traits, Stevenson Everlast combines them both ranking in the top 10% of breed for ribeye and top 3% of the breed for marbling. Everlast is backed by a phenomenal cow family with dam posting 5 at 109 NR, granddam 4 at 105 NR, and great-granddam 5 at 109 NR.



Stevenson Easy Money 70688 - Sire of Lots 113 & 116

116 Lewis Easy Money 241

[OHP-M1F]

Lewis Land & Livestock

Black Angus

AAA#: *20484653

DOB: 3/8/2022

Tattoo: 241

Plattemere Weigh Up K360

Stevenson Easy Money 70688

Down T Blackbird 5646

Stevenson Rainmaker 1283

KKL Ellen 373A

KG Ellen's Design 863U



BW	205 Day Wt.	205 Day Ratio	365 Day Wt.	365 Day Ratio	TBT Ratio
76	731	107	1180	99	100

CED	BW	WW	YW	SC	MILK	\$M	\$W	\$F	\$B	\$C
7	0	69	126	.69	25	68	68	97	164	281

This Easy Money 70688 son is balanced across the board. He's in the top 25% of the breed on birth, top 30% on WW, top 25% on YW and top 20% for marbling. He's long bodied with a growthy look. His sire, Stevenson Easy Money 70688, is in the top 3% of the breed on WW, top 2% on YW and top 10% on RE.

117 Lewis Everlast 242

Lewis Land & Livestock

Black Angus

AAA#: *20484637

DOB: 3/12/2022

Tattoo: 242

Baldrige Alternative E125

Stevenson Everlast

Stevenson Edwina 3179

Stevenson Rockmount RX933

KKL Clova Pride 455B

KG Clova Pride's Bank 820U



BW	205 Day Wt.	205 Day Ratio	365 Day Wt.	365 Day Ratio	TBT Ratio
75	730	107	1267	106	108

CED	BW	WW	YW	SC	MILK	\$M	\$W	\$F	\$B	\$C
8	1.8	71	117	-.75	19	62	60	115	174	288

His dam is consistent producer with 7 calves at a 363-day calving interval. He's in the top 25% on WW, top 35% on YW, and top 5% on RE. He's moderate framed with a lot of shape through the rib and hind quarter. His sire, Stevenson Everlast packages muscle, volume, and base width with incredible marbling. He traces back to Kari's NILE Merit heifer, Stevenson Clova Pride 2164 who was an incredible producer with 9 calves in a 370-day calving interval, and averaged 105 WR and YR.



Stevenson Everlast - Sire of Lots 115, 117 & 119

FROM BREED LEADING SIRES

119 Lewis Everlast 251

[OHP]

Black Angus

AAA#: *20484635

DOB: 3/26/2022

Tattoo: 251

Baldrige Alternative E125

Stevenson Everlast

Stevenson Edwina 3179

Stevenson Frontman 2024

Lewis Reagan 537C

KKL Reagan 395A



BW	205 Day Wt.	205 Day Ratio	365 Day Wt.	365 Day Ratio	TBT Ratio
78	789	115	1228	103	105

CED	BW	WW	YW	SC	MILK	\$M	\$W	\$F	\$B	\$C
2	2.2	60	106	.58	22	63	52	81	139	243

He led the pack at weaning with a 115-weaning ratio. He's deep ribbed, wide based, and clean fronted. His dam boasts 6 calves with a 361-day calving interval and averaged 108 WR on 5 and 104 YR on 3. His granddam is a Pathfinder with 8 at 114 WR, 5 at 108 YR with a 367-day calving interval. His dam is a long bodied, moderate framed, sure-footed cow. Stevenson Everlast is deep ribbed, big volumed, and big topped, combining muscling and marbling.

120 Lewis Claymore 252

Black Angus

AAA#: *20484657

DOB: 3/30/2022

Tattoo: 252

EXAR Monumental 6056B

HW Netherton Claymore

HW Netherton Blackclass 15D

Stevenson Rockmount RX933

Lewis Clova Pride 586

KG Clova Pride's Focus 783T



BW	205 Day Wt.	205 Day Ratio	365 Day Wt.	365 Day Ratio	TBT Ratio
80	748	109	1314	110	110

CED	BW	WW	YW	SC	MILK	\$M	\$W	\$F	\$B	\$C
1	2.0	65	128	.84	29	59	59	96	168	277

He's in the top 10% of the breed on marbling and his dam has 5 at 109 WR, 1 at 113 YR. While he's certainly balanced from the side profile with a square hip, don't miss getting behind this bull, he has some definite width from stifle to stifle with shape down the top. His sire, HW Netherton Claymore 3H, is in the top 1% of the breed on marbling and combines impressive phenotype with carcass quality. His Pathfinder granddam posted 9 at a 368-day calving interval, averaged 102 WR and 104 YR while his great granddam was Kari's NILE Merit heifer, Clova Pride 2164 who was a phenomenally consistent producer. **CO-RESERVE CHAMPION WDA.**



HW Netherton Claymore - Sire of Lot 120

Lewis Land & Livestock

121 McFadgen Noah 29

[AMF-CAF-D2F-DDF-M1F-NHF-OHF-OSF-RDF]

Black Angus

AAA#: *20543846

DOB: 3/12/2022

Tattoo: 29

Syngen Enhance

Baldrige SR Goalkeeper

Baldrige Isabel E030

Fruthings Safebet 1166

McFadgen Isabella 89

McFadgen Isabella 620



BW	205 Day Wt.	205 Day Ratio	365 Day Wt.	365 Day Ratio	TBT Ratio
81	754	100	1319	111	103

CED	BW	WW	YW	SC	MILK	\$M	\$W	\$F	\$B	\$C
7	1.1	70	129	1.54	27	46	67	91	150	241

This bull's sire is Baldrige SR Goalkeeper, \$90,000 Bull at the 2020 Baldrige sale. Goalkeeper's sons have topped multiple sales in the US & Australia. This son, like his sire has great fertility and good feet. He weaned off the cow at 791 lbs. He will add pounds to your calves. HD50K tested and Certified Angus Beef (CAB).

123 McFadgen Brodie 22

Black Angus

AAA#: *20481686

DOB: 3/6/2022

Tattoo: 22

Syngen Enhance

Baldrige SR Goalkeeper

Baldrige Isabel E030

PA Safeguard 021

Warner's Safe May 601

M M Miss Macy May 110



BW	205 Day Wt.	205 Day Ratio	365 Day Wt.	365 Day Ratio	TBT Ratio
77	725	100	1236	104	97

CED	BW	WW	YW	SC	MILK	\$M	\$W	\$F	\$B	\$C
3	2.0	69	126	.93	31	50	67	95	160	258

This bull's sire is Baldrige SR Goalkeeper whose Granddam is the million dollar producer (Baldrige Isabel 69 cow). With his pedigree, this son will give you great replacement heifers. He weaned off the momma cow at 789 lbs. She has a great udder, good feet and is very maternal. HD50K tested and is Certified Angus Beef (CAB).



Baldrige SR Goalkeeper - Sire of Lots 121 & 123

BLACK ANGUS BULLS

124 MSU Tahoe 21200

[AMF-CAF-D2F-DDF-M1F-NHF-OHF-OSF-RDF]

Black Angus

AAA#: *20395596

DOB: 4/16/2021

Tattoo: 21200

Tehama Upward Y238
Tehama Tahoe B767
 Tehama Mary Blackbird Y684
 Circle L Gus
Circle L Altune 454G
 Circle L Altune Z6



BW	205 Day Wt.	205 Day Ratio	365 Day Wt.	365 Day Ratio	TBT Ratio
77	824	100	1170	100	

CED	BW	WW	YW	SC	MILK	\$M	\$W	\$F	\$B	\$C
5	1.6	82	134	1.44	20	96	79	75	124	257

MSU Tahoe 21200 is out of a really nice Circle L Gus daughter that was donated to the MSU program by Circle L Angus. He ranks in the top 20% of the breed for WW, YW, SC, and Doc. This is a bull you could use on cows to make highly productive females as re ranks in the tip 1% for \$Maternal.

MSU Angus

Entry Wt	Final Wt
ADG	ADG Ratio
WDA	WDA Ratio



Tehama Tahoe B767 - Sire of Lot 124

125 MSU Brag on Ag 21248

[AMF-CAF-D2F-DDF-M1F-NHF-OHF-OSF-RDF]

Black Angus

AAA#: *20395466

DOB: 04/21/2021

Tattoo: 21248

V A R Discovery 2240
44 Bragging Rights 4372
 44 Ruby 2357
 Circle L Gus
Circle L Molly 202E
 Circle L Molly 916W



BW	205 Day Wt.	205 Day Ratio	365 Day Wt.	365 Day Ratio	TBT Ratio
72	611	98	1003	100	

CED	BW	WW	YW	SC	MILK	\$M	\$W	\$F	\$B	\$C
12	-1.5	69	109	.33	11	77	61	71	134	251

MSU Brag on Ag 21248 is a calving ease bull out of a Circle L Molly 202E. He exhibits good carcass value as he ranks in the top 35% for MARB and 10% for RE. This bull has a balanced and complete EPD profile and is backed by a really good cow.

MSU Angus

Entry Wt	Final Wt
ADG	ADG Ratio
WDA	WDA Ratio



44 Bragging Rights 4372 - Sire of Lot 125

126 MSU Cool 21256

[AMF-CAF-D2F-DDF-M1F-NHF-OHF-OSF-RDF]

Black Angus

AAA#: *20396069

DOB: 4/26/2021

Tattoo: 21256

Connealy Heat 0243
Connealy Cool 39L
 JMc Jeena Allie 8345 5399
 SITZ Logo 12964
Sitz Blackcap 3857
 Sitz Blackcap 5633



BW	205 Day Wt.	205 Day Ratio	365 Day Wt.	365 Day Ratio	TBT Ratio
101	628	101	1055	105	

CED	BW	WW	YW	SC	MILK	\$M	\$W	\$F	\$B	\$C
1	2.5	70	111	1.64	26	86	68	80	124	247

MSU Cool 21256 is a son of Connealy Cool and Sitz Blackcap 3857 who was donated to the MSU program by Sitz Angus Ranch. This is a cow bull that has good growth and ranks in the top 1% for HP and top 10% for SC EPDs.

MSU Angus

Entry Wt	Final Wt
ADG	ADG Ratio
WDA	WDA Ratio



Connealy Cool 39L - Sire of Lot 126

FROM BREED LEADING SIRES

127 MSU Templeton 21205

[AMF-CAF-D2F-DDF-M1F-NHF-OHF-OSF-RDF]

Black Angus

AAA#: *20476705

DOB: 4/24/2021

Tattoo: 21205

Stevenson Templeton 3308

Stevenson Templeton 80458

Rimrock Fancy Lady 543C

Pine Coulee Wolf 56D

MSU Lucy 19204

Pine Coulee Lucy E25



BW	205 Day Wt.	205 Day Ratio	365 Day Wt.	365 Day Ratio	TBT Ratio
95	670	100	1136	100	

CED	BW	WW	YW	SC	MILK	\$M	\$W	\$F	\$B	\$C
7	2.9	76	132	1.24	23	63	64	105	138	242

MSU Templeton 21205 is a son of our resident herd sire Stevenson Templeton 80458 he has a balanced EPD profile and ranks in the top 20% of the breed for WW, YW, CEM, and PAP.

MSU Angus

129 RKP 514-0213 24K

Black Angus

AAA#: +*20512533

DOB: 1/24/2022

Tattoo: 24K

Vision Unanimous 1418

S Foundation 514

S Lady Ann 8384

Connealy Dublin 8223

Vermilion Lass 0213

Vermilion Lass 3298



BW	205 Day Wt.	205 Day Ratio	365 Day Wt.	365 Day Ratio	TBT Ratio
83	784	108	1280	107	111

CED	BW	WW	YW	SC	MILK	\$M	\$W	\$F	\$B	\$C
4	2.8	68	117	1.08	21	60	55	82	130	229

Pathfinder Donor Dam from Vermilion Ranch who goes back to one of their best VRD daughters they have ever had. WR 10@109 YR 9@109.

RK Perry

128 RKP 514-0213 17K

Black Angus

AAA#: +*20512535

DOB: 1/22/2022

Tattoo: 17K

Vision Unanimous 1418

S Foundation 514

S Lady Ann 8384

Connealy Dublin 8223

Vermilion Lass 0213

Vermilion Lass 3298



BW	205 Day Wt.	205 Day Ratio	365 Day Wt.	365 Day Ratio	TBT Ratio
82	722	108	1179	99	108

CED	BW	WW	YW	SC	MILK	\$M	\$W	\$F	\$B	\$C
4	1.4	59	110	2.14	23	71	53	81	131	241

Pathfinder Donor Dam from Vermilion Ranch who goes back to one of their best VRD daughters they have ever had. WR 10@109 YR 9@109.

RK Perry

130 RKP 514-0213 200

Black Angus

AAA#: +*20512532

DOB: 2/17/2022

Tattoo: 200

Vision Unanimous 1418

S Foundation 514

S Lady Ann 8384

Connealy Dublin 8223

Vermilion Lass 0213

Vermilion Lass 3298



BW	205 Day Wt.	205 Day Ratio	365 Day Wt.	365 Day Ratio	TBT Ratio
90	647	108	1107	93	102

CED	BW	WW	YW	SC	MILK	\$M	\$W	\$F	\$B	\$C
4	2.1	53	91	1.86	31	71	55	76	118	224

Pathfinder Donor Dam from Vermilion Ranch who goes back to one of their best VRD daughters they have ever had. WR 10@109 YR 9@109.

RK Perry



S Foundation 514 - Sire of Lots 128-130

132 RKP F411-Y100 202

Black Angus

AAA#: +*20514151

DOB: 2/22/2022

Tattoo: 202

Hoover No Doubt

Baldrige Flagstone F411

Baldrige Isabel Y69

Connealy Revenue 7289

FF Eisa Evergreen Y100

FF Eisa Evergreen S85



BW	205 Day Wt.	205 Day Ratio	365 Day Wt.	365 Day Ratio	TBT Ratio
92	710	107	1231	103	108

CED	BW	WW	YW	SC	MILK	\$M	\$W	\$F	\$B	\$C
1	1.5	70	116	1.34	29	80	74	85	140	262

Moderate dam was one of the high selling females at the John Flesch Retirement Dispersal. WR 8@107 YR 3@103.

RK Perry

BLACK ANGUS BULLS

133 RKP F411-Y100 203

RK Perry

Black Angus
AAA#: +*20514152
DOB: 2/24/2022
Tattoo: 203

Hoover No Doubt
Baldrige Flagstone F411
Baldrige Isabel Y69

Connealy Revenue 7289
FF Eisa Evergreen Y100
FF Eisa Evergreen S85

Entry Wt	Final Wt
727	1119
ADG	ADG Ratio
3.56	103
WDA	WDA Ratio
2.98	94
TBT Ratio	
92	100



BW	205 Day Wt.	205 Day Ratio	365 Day Wt.	365 Day Ratio	TBT Ratio
88	622	107	1095	92	100

CED	BW	WW	YW	SC	MILK	\$M	\$W	\$F	\$B	\$C
3	.8	59	112	1.53	29	64	59	88	145	252

Moderated dam was one of the high selling females at the John Flesch Retirement Dispersal. WR 8@107 YR 3@103.

135 RKP F411-Y100 208

RK Perry

Black Angus
AAA#: +*20514159
DOB: 2/28/2022
Tattoo: 208

Hoover No Doubt
Baldrige Flagstone F411
Baldrige Isabel Y69

Connealy Revenue 7289
FF Eisa Evergreen Y100
FF Eisa Evergreen S85

Entry Wt	Final Wt
776	1152
ADG	ADG Ratio
3.42	99
WDA	WDA Ratio
3.10	98
TBT Ratio	
95	100



BW	205 Day Wt.	205 Day Ratio	365 Day Wt.	365 Day Ratio	TBT Ratio
80	704	107	1136	95	100

CED	BW	WW	YW	SC	MILK	\$M	\$W	\$F	\$B	\$C
4	1.0	58	108	0.84	28	71	58	79	140	253

Moderate dam was one of the high selling females at the John Flesch Retirement Dispersal. WR 8@107 YR 3@103.

134 RKP F411-Y100 207

RK Perry

Black Angus
AAA#: +*20514157
DOB: 2/28/2022
Tattoo: 207

Hoover No Doubt
Baldrige Flagstone F411
Baldrige Isabel Y69

Connealy Revenue 7289
FF Eisa Evergreen Y100
FF Eisa Evergreen S85

Entry Wt	Final Wt
737	1209
ADG	ADG Ratio
4.29	124
WDA	WDA Ratio
3.25	103
TBT Ratio	
100	110



BW	205 Day Wt.	205 Day Ratio	365 Day Wt.	365 Day Ratio	TBT Ratio
82	664	107	1191	100	110

CED	BW	WW	YW	SC	MILK	\$M	\$W	\$F	\$B	\$C
-1	2.8	75	129	0.65	26	75	68	91	149	268

Moderate dam was one of the high selling females at the John Flesch Retirement Dispersal. WR 8@107 YR 3@103.

137 RKP H015-028 210

RK Perry

Black Angus
AAA#: *20460674
DOB: 2/24/2022
Tattoo: 210

SITZ Commerce 670F
Vermilion Commerce H015
Vermilion Ettarre 8046

Vermilion Spur E143
RKP E143-59 028
RKP Y117-7345 59

Entry Wt	Final Wt
831	1240
ADG	ADG Ratio
3.72	107
WDA	WDA Ratio
3.30	105
TBT Ratio	
108	108



BW	205 Day Wt.	205 Day Ratio	365 Day Wt.	365 Day Ratio	TBT Ratio
85	901	110	1285	108	108

CED	BW	WW	YW	SC	MILK	\$M	\$W	\$F	\$B	\$C
2	3.8	82	153	0.73	23	63	59	93	157	267



Baldridge Flagstone F411 - Sire of Lots 132-135



Vermilion Commerce H015 - Sire of Lots 137-139 & 141

FROM BREED LEADING SIRES

138 RKP H015-022 211

RK Perry

Black Angus
AAA#: *20460672
DOB: 2/25/2022
Tattoo: 211

SITZ Commerce 670F
Vermilion Commerce H015
Vermilion Ettarre 8046

Ellingson Transcend 5212
RKP 5212-0213 022
Vermilion Lass 0213

ANGUS 3S		BW	205 Day Wt.	205 Day Ratio	365 Day Wt.	365 Day Ratio	TBT Ratio
		81	858	105	1147	96	102

CED	BW	WW	YW	SC	MILK	\$M	\$W	\$F	\$B	\$C
11	-.2	47	92	1.00	30	68	49	59	104	203

144 RKP Y290-923 232

RK Perry

Black Angus
AAA#: *20444562
DOB: 3/13/2022
Tattoo: 232

RR Playmaker 7356
Vermilion Playmaker Y290
Vermilion Mamere 6555

S Cornerstone 607
RKP 607-56 923
RKP Y117-7345 56

ANGUS 3S		BW	205 Day Wt.	205 Day Ratio	365 Day Wt.	365 Day Ratio	TBT Ratio
		90	830	101	1266	106	101

CED	BW	WW	YW	SC	MILK	\$M	\$W	\$F	\$B	\$C
2	4.6	79	143	1.30	20	64	52	100	146	253

139 RKP H015-009 213

RK Perry

Black Angus
AAA#: *20460673
DOB: 2/26/2022
Tattoo: 213

SITZ Commerce 670F
Vermilion Commerce H015
Vermilion Ettarre 8046

Vermilion Playmaker Y290
RKP Y290-66 009
RKP 1310-325 66

ANGUS 3S		BW	205 Day Wt.	205 Day Ratio	365 Day Wt.	365 Day Ratio	TBT Ratio
		89	922	112	1199	100	104

CED	BW	WW	YW	SC	MILK	\$M	\$W	\$F	\$B	\$C
-4	4.4	77	126	0.57	17	65	55	71	97	191

146 RKP 0061-3574 236

RK Perry

Black Angus
AAA#: *20447582
DOB: 3/16/2022
Tattoo: 236

Bar R Jet Black 5063
Hoffman Thedford
HA Rito Lady 3839

S John Wayne
Vermilion Lass 3574
Vermilion Lass 9188

ANGUS 3S		BW	205 Day Wt.	205 Day Ratio	365 Day Wt.	365 Day Ratio	TBT Ratio
		86	870	106	1206	101	104

CED	BW	WW	YW	SC	MILK	\$M	\$W	\$F	\$B	\$C
4	2.2	78	132	1.08	24	86	72	121	171	308

Dam WR 8@106 YR 7@102.

141 RKP H015-033 220

RK Perry

Black Angus
AAA#: *20460670
DOB: 3/4/2022
Tattoo: 220

SITZ Commerce 670F
Vermilion Commerce H015
Vermilion Ettarre 8046

Ellingson Transcend 5212
RKP 5212-0213 033
Vermilion Lass 0213

ANGUS 3S		BW	205 Day Wt.	205 Day Ratio	365 Day Wt.	365 Day Ratio	TBT Ratio
		90	906	110	1308	110	111

CED	BW	WW	YW	SC	MILK	\$M	\$W	\$F	\$B	\$C
2	2.2	77	143	0.27	22	45	59	110	154	245



Hoffman Thedford - Sire of Lots 40 & 146

BLACK ANGUS BULLS

147 RKP WM 9513-F66 K1

RK Perry

Black Angus
AAA#: *20440272
DOB: 3/1/2022
Tattoo: K1

Poss Maverick
Poss Rawhide
Poss Blueblood 6502

Bushs Easy Decision 98
FF Henrietta Pride F66
FF Henrietta Pride C136



BW	205 Day Wt.	205 Day Ratio	365 Day Wt.	365 Day Ratio	TBT Ratio
78	695	102	1155	97	104

CED	BW	WW	YW	SC	MILK	\$M	\$W	\$F	\$B	\$C
13	-.4	87	147	1.48	33	90	94	116	181	325

Dam WR 3@101 YR 2@100.

149 RKP WM 9513-410 K7

RK Perry

Black Angus
AAA#: *20440377
DOB: 3/5/2022
Tattoo: K7

Poss Maverick
Poss Rawhide
Poss Blueblood 6502

Vermilion Mabry
RKP Z212-032 410
RKP 367N-S603 032



BW	205 Day Wt.	205 Day Ratio	365 Day Wt.	365 Day Ratio	TBT Ratio
84	728	107	1176	99	108

CED	BW	WW	YW	SC	MILK	\$M	\$W	\$F	\$B	\$C
12	.4	66	111	1.34	37	64	75	99	157	268

Dam WR 6@105 YR 2@108. She raised one of the high selling bulls at the 2020 TBT Sale.

148 RKP WM 9513-C224 K3

RK Perry

Black Angus
AAA#: *20440376
DOB: 3/3/2022
Tattoo: K3

Poss Maverick
Poss Rawhide
Poss Blueblood 6502

Vermilion Dublin Y620
FF Winona C224
FF Winona Z55



BW	205 Day Wt.	205 Day Ratio	365 Day Wt.	365 Day Ratio	TBT Ratio
78	691	101	1161	97	103

CED	BW	WW	YW	SC	MILK	\$M	\$W	\$F	\$B	\$C
13	-1.2	64	119	0.77	36	62	73	100	166	277

Dam WR 4@103 YR 3@102.

150 RKP WM E043-202 K9

RK Perry

Black Angus
AAA#: *20444536
DOB: 3/6/2022
Tattoo: K9

Connealy Doc Neal
Vermilion Charge On
Vermilion Eldorene 5165

WK Bobcat
Bobcat Miss Angus 202
Bobcat Lass 9060



BW	205 Day Wt.	205 Day Ratio	365 Day Wt.	365 Day Ratio	TBT Ratio
89	715	105	1146	96	104

CED	BW	WW	YW	SC	MILK	\$M	\$W	\$F	\$B	\$C
9	.3	48	92	.10	32	75	54	81	142	259

Dam WR 7@103 YR 5@105.



Poss Rawhide - Sire of Lots 147-149



Vermilion Charge On - Sire of Lot 150

2023 JACKPOT WINNERS

2023 TREASURE BULL TEST



The Jackpot was started several years ago by Russ and Barb Pepper as a little contest where every consignor gets a \$100 bill thrown in the pot. The consignor picks one bull from their consignment list on the day of arrival. The bull they think will gain the best. These bulls are indexed separately from the TBT Index. $\frac{1}{2}$ ADG Ratio, $\frac{1}{4}$ 205 Day Ratio, and $\frac{1}{4}$ 365 Day Ratio. Winners take all!

- **Jackpot Champion ~ Lot 1 ~ A son of Baldrige Versatile from Granger Angus with a 119 Index**
- **Reserve Champion ~ Lot 108 ~ A Schafer Full Power son from Springvale Ranch with a 113 Index**
- **3rd Place Champion ~ Lot 23 from Harrison Angus with a son of EXAR Stock Fund 9097B with a 110 Index**

American Angus Association Selection Tools

Expected Progeny Difference (EPD), is the prediction of how future progeny of each animal are expected to perform relative to the progeny of other animals listed in the database. EPDs are expressed in units of measure for the trait, plus or minus. Interim EPDs may appear on young animals when their performance has yet to be incorporated into the American Angus Association National Cattle Evaluation (NCE) procedures. This EPD will be preceded by an "I"; and may or may not include the animal's own performance record for a particular trait, depending on its availability, appropriate contemporary grouping, or data edits needed for NCE.

Accuracy (ACC), is the reliability that can be placed on the EPD. An accuracy of close to 1.0 indicates higher reliability. Accuracy is impacted by the number of progeny and ancestral records included in the analysis.

Calving Ease Direct (CED), is expressed as a difference in percentage of unassisted births, with a higher value indicating greater calving ease in first-calf heifers. It predicts the average difference in ease with which a sire's calves will be born when he is bred to first-calf heifers.

Birth Weight (BW), expressed in pounds, is a predictor of a sire's ability to transmit birth weight to his progeny compared to that of other sires.

Weaning Weight (WW), expressed in pounds, is a predictor of a sire's ability to transmit weaning growth to his progeny compared to that of other sires.

Residual Average Daily Gain (RADG), feed efficiency expressed in pounds per day, is a predictor of a sire's genetic ability for postweaning gain in future progeny compared to that of other sires, given a constant amount of feed consumed.

Yearling Weight (YW), expressed in pounds, is a predictor of a sire's ability to transmit yearling growth to his progeny compared to that of other sires.

Yearling Height (YH), is a predictor of a sire's ability to transmit yearling height, expressed in inches, compared to the that of other sires.

Scrotal Circumference (SC), expressed in centimeters, is a predictor of the difference in transmitting ability for scrotal size compared to that of other sires.

Docility (DOC), is expressed as a difference in yearling cattle temperament, with a higher value indicating more favorable docility in a sire's offspring compared to another sire.

MATERNAL

Heifer Pregnancy (HP), is a selection tool to increase the probability or chance of a sire's daughters becoming pregnant as first-calf heifers during a normal breeding season. A higher EPD is the more favorable direction, and the EPD is reported in percentage units.

Calving Ease Maternal (CEM), is expressed as a difference in percentage of unassisted births, with a higher value indicating greater calving ease in first-calf daughters. It predicts the average ease with which a sire's daughters will calve as first-calf heifers when compared to daughters of other sires.

Maternal Milk (Milk), is a predictor of a sire's genetic merit for milk and mothering ability in his daughters compared to daughters of other sires. In other words, it is that part of a calf's weaning weight attributed to milk and mothering ability.

Mature Weight (MW), expressed in pounds, is a predictor of the difference in mature weight of daughters of a sire compared to the daughters of other sires.

Mature Height (MH), expressed in inches, is a predictor of the difference in mature height of a sire's daughters compared to daughters of other sires.

FOOT SCORE

Claw Set (Claw), is expressed in units of claw-set score. A lower EPD is more favorable, indicating a sire will produce progeny with more ideal claw set, which is toes that are symmetrical, even and appropriately spaced.

Foot Angle (Angle), is expressed in units of foot-angle score. A lower EPD is more favorable, indicating a sire will produce progeny with more ideal foot angle, which is a 45-degree angle at the pastern joint with appropriate toe length and heel depth.

CARCASS

The genetic evaluation produces a single set of EPDs for carcass traits where the units of measure are in trait format and analyzed on an age-constant basis.

Carcass Weight (CW), expressed in pounds, is a predictor of the differences in hot carcass weight of a sire's progeny compared to progeny of other sires.

Marbling (Marb), is expressed as a fraction of the difference in USDA marbling score of a sire's progeny compared to progeny of other sires.

Ribeye Area (RE), expressed in square inches, is a predictor of the difference in ribeye area of a sire's progeny compared to progeny of other sires.

Fat Thickness (Fat), expressed in inches, is a predictor of the differences in external fat thickness at the 12th rib (as measured between the 12th and 13th ribs) of a sire's progeny compared to progeny of other sires.

\$VALUE INDEXES

\$Value Indexes, reported in dollars per head, are multi-trait selection indexes where a higher value suggests more profit. The \$Value is an estimate of how future progeny of each sire are expected to perform, on average, compared to progeny of other sires if sires were randomly mated to cows and if calves were exposed to the same environment.

Maternal Weaned Calf Value (\$M), expressed in dollars per head, predicts profitability differences in progeny due to genetics from conception to weaning. Increased selection pressure on \$M aims to decrease overall mature cow size and improve foot structure and fertility while maintaining weaning weights consistent with today's production.

Weaned Calf Value (\$W), expressed in dollars per head, provides the expected difference in future progeny preweaning performance from birth to weaning. Increased selection pressure on \$W increases weaning and maternal milk traits while increasing mature cow size.

Cow Energy Value (\$EN), expressed in dollars savings per cow per year, assesses differences in cow energy requirements as an expected dollar savings difference in daughters of sires. A larger value is more favorable when comparing two animals. Components for computing \$EN savings difference include lactation energy requirements and energy costs associated with differences in mature cow size.

Feedlot Value (\$F), expressed in dollars per head, is the expected average difference in future progeny performance for postweaning merit compared to progeny of other sires. The underlying objective assumes commercial producers will retain ownership of cattle through the feedlot phase and sell feed cattle on a carcass weight basis with no considerations of premiums or discounts for quality and yield grade.

Grid Value (\$G), expressed in dollars per carcass, is the expected average difference in future progeny performance for carcass grid merit, including quality and yield grade attributes, compared to progeny of other sires.

Beef Value (\$B), expressed in dollars per carcass, represents the expected average differences in the progeny postweaning performance and carcass value compared to progeny of other sires. This index assumes commercial producers wean all male and female progeny, retain ownership of these animals through the feedlot phase, and market these animals on a quality-based carcass grid.

American Angus Association \$Value Indexes



Dollar value indexes, or **\$Values**, are a tool used to select for several traits at once based on a specific breeding objective. An economic index approach takes into account genetic and economic values as well as the relationships between traits to select for profit.

Maternal Weaned Calf Value (\$M), an index expressed in dollars per head, predicts profitability differences in progeny due to genetics from conception to weaning. \$M is built off of a self-replacing herd model where commercial cattlemen replace 25% of their breeding females in the first generation and 20% in subsequent generations. Remaining cull females and all male progeny are sold as feeder calves. Increased selection pressure on \$M aims to decrease overall mature cow size and improve foot structure and fertility while maintaining weaning weights consistent with today's production.

Weaned Calf Value (\$W), an index expressed in dollars per head, provides the expected difference in future progeny preweaning performance from birth to weaning. \$W assumes that producers retain 20% of their female progeny for replacements and sell the rest of their cull female and male progeny as feeder calves. Over time, increased selection pressure on \$W will increase weaning and maternal milk traits while also continuing to increase mature cow size.

Feedlot Value (\$F), an index expressed in dollars per head, is the expected average difference in future progeny performance for post-weaning merit compared to progeny of other sires. The underlying objective assumes commercial producers will retain ownership of cattle through the feedlot phase and sell fed cattle on a carcass weight basis with no considerations of premiums or discounts for quality and yield grade.

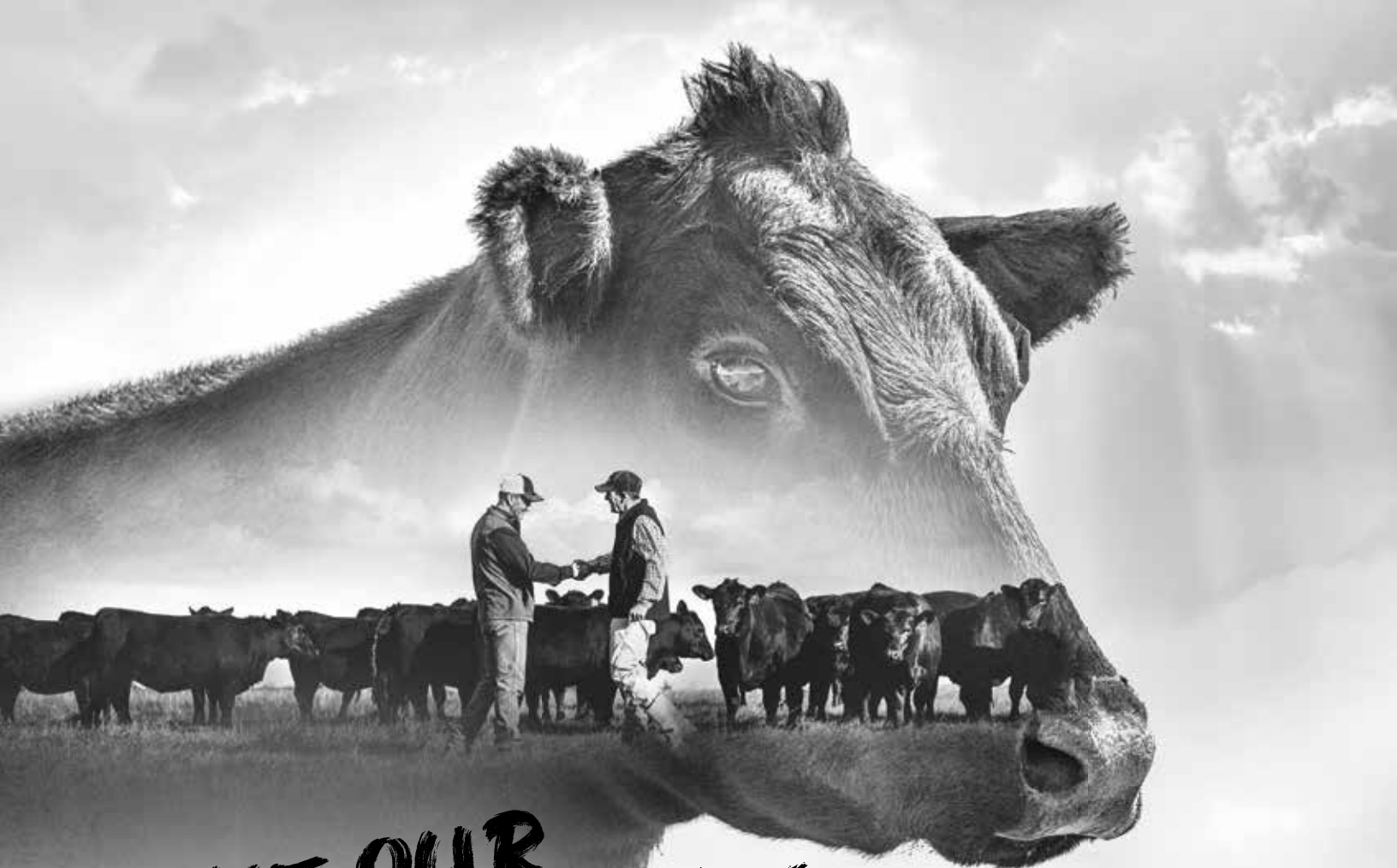
Grid Value (\$G), an index expressed in dollars per carcass, is the expected average difference in future progeny performance for carcass grid merit, including quality and yield grade attributes, compared to progeny of other sires.

Beef Value (\$B), an index expressed in dollars per carcass, facilitates simultaneous multi-trait genetic selection for feedlot and carcass merit. \$B represents the expected average differences in the progeny postweaning performance and carcass value compared to progeny of other sires. This index assumes commercial producers wean all male and female progeny, retain ownership of these animals through the feedlot phase and market these animals on a quality-based carcass grid.

Combined Value (\$C), an index expressed in dollars per head, includes all traits that make up both \$M and \$B with the objective that commercial producers will replace 20% of their breeding females per year with replacement heifers retained within their own herd. The remaining cull heifer and steer progeny are then assumed to be sent to the feedlot where the producers retain ownership of those cattle and eventually sell them on a quality-based carcass merit grid.

EPDS DIRECTLY INCORPORATED INTO EACH \$VALUE

TRAIT	MATERNAL		TERMINAL			
	\$M	\$W	\$F	\$G	\$B	\$C
CED	✓					✓
BW		✓				
WW	✓	✓				✓
YW			✓		✓	✓
CEM	✓					✓
Milk	✓	✓				✓
MW	✓	✓				✓
DOC	✓					✓
HP	✓					✓
Claw Angle	✓					✓
DMI			✓		✓	✓
CW			✓	✓	✓	✓
RE				✓	✓	✓
Marb				✓	✓	✓
Fat				✓	✓	✓



TAKE OUR
WORK
FOR IT.

Protect your investment with decades of research, support and proven products.

Bovine Respiratory Disease (BRD) is a challenge all producers face, but you don't need to face it alone. Merck Animal Health is by your side with over 25 veterinarians and a research facility in the heart of cattle country supporting our local teams of cattle experts. We work hard to deliver the industry's most comprehensive BRD portfolio, now including AROVYN™ (tulathromycin injection). Merck Animal Health ensures you have the right solution for your cattle's health and your bottom line too.

**You stand behind them, we stand behind you.
Learn more at The-BRD-Experts.com.**

IMPORTANT SAFETY INFORMATION: AROVYN has a pre-slaughter withdrawal time of 18 days in cattle. Do not use in female dairy cattle 20 months of age or older. Do not use in animals known to be hypersensitive to the product. See Full Prescribing Information.

Introducing

AROVYN[™]
(tulathromycin injection)
Injectable Solution
Antibiotic





**TREASURE
BULL TEST**

PO Box 1, Power, MT 59468

FIRST CLASS MAIL
AUTO
U.S. POSTAGE
PAID
LEWISTOWN, MT
Permit No. 181

**110
PERFORMANCE
TESTED
BLACK ANGUS BULLS SELL**



Ryan & Karnell Perry
406/788-9869 406/390-5473



TREASURE BULL TEST