

Veseth Cattle Co.

16th Annual Sale

MONDAY, March 7, 2022

Lunch at 11:30 • Sale at 1:00

Glasgow Stockyards • Glasgow, MT



WWW.CATTLEUSA.COM

Selling

54 Red Angus Composite Yearling Bulls

15 Red Bred Heifers

80 Red Heifer Calves

45 Short Term Red Cows

Drew Slade Dispersion:

24 Running Age Cows

Keith VandeSandt Dispersion:

45 Running Age Cows

DALE & JANET VESETH

22787 Midale Road • Malta, MT 59538

(406) 658-2504 • djvsth@itstriangle.com

www.vesethcattleco.com

Ranching, Conservation, Communities — A Winning Team!

REGISTRATION IS OPEN! | LOG IN AT 7 P.M., 3RD THURSDAY OF EACH MONTH

2022 Rural Resilience Webinar Series



SCAN ME

Feb. 17: Mapping technology for resilient grazing management,
Brady Allred, Rangeland Analysis Platform; Bill Milton, Milton Ranch

March 17: Reflections on *Nourishment*, Dr. Fred Provenza, Utah State University

April 21: Reviving & Restoring desert landscapes with livestock,
Allen Williams & Alejandro Carrillo, Understanding Ag, LLC

Pre-registration is required, but FREE and open to all:

www.ranchstewards.org



www.ranchstewards.org | (406) 654-1405 | PO Box 716, Malta, MT 59538



Veseth Cattle Co.

22787 Midale Road • Malta, MT 59538
(406) 658-2504 • djvsth@itstriangle.com

16th Annual Sale

March 7, 2022

Selling

54 Red Angus Composite Yearling Bulls • 15 Red Bred Heifers
80 Red Heifer Calves • 45 Short Term Red Cows
Drew Slade Dispersion: 24 Running Age Cows
Keith VandeSandt Dispersion: 45 Running Age Cows

SALE LOCATION

Glasgow Stockyards Inc • Fort Peck Hwy E • Glasgow, MT
Office 406-228-9306
Iva Murch 406-263-7529
Jake Newton 406-390-5109

SALE DAY PHONES

Collin Gibbs, Auctioneer 406-939-0645
Bill Pelton, Pelton Livestock 406-671-5100
Iva Murch, Manager Glasgow Stockyards 406-263-7529
Jake Newton, Glasgow Stockyards 406-390-5109
John Koss 406-301-2887
Jim Steele 406-654-7090
Dale Veseth, Cell (prior to day of sale) 406-658-2504

AUCTIONEER

Colin Gibbs 406-939-0645
gibbs.livestock@gmail.com

SALE CONSULTANTS

Bill Pelton 406-671-5100
Glasgow Stockyards 406-228-9306

TERMS & CONDITIONS

Cattle will sell under the suggested Terms and
Conditions of the Red Angus Association of America.

ACCOMMODATIONS

Cottonwood Inn 406-228-8213

ULTRASOUND

We will ultrasound on February 10th, 2022. Weights and
scrotal circumference will also be updated at this time. This
information will be available on www.glasgowstockyards.com
and on www.billpelton.com (Go to Sales Calendar, then to
March 7th to find Veseth Cattle Co information.)

RETAINED INTEREST BULLS

We are retaining 1/2 interest in every bull selling. Buyer gets 1/2
interest, full possession and full salvage value. This allows us to
reserve the right to collect semen on any bull in the offering at
the buyer's convenience.

SUPPLEMENT SHEETS

Supplement sheets with weights, scrotal circumference and
ultrasound data will be available at Glasgow Stockyards
or www.glasgowstockyards.com, www.billpelton.com or
email Dale and Janet at djvsth@itstriangle.com

VIDEOS

We will video the cattle on February 18th (may
depend on weather). Videos will be available on www.glasgowstockyards.com and the Veseth Cattle page on
www.billpelton.com (Go to Sales Calendar, then to
March 7th to find Veseth Cattle Co sale page.)

SALE ORDER

Bulls and females will be sold in catalog order.

INTERNET BIDDING

On Sale day Internet bidding will be
available on www.cattleusa.com.

Be sure and register to bid on the website 24 on hours
before the sale. For questions contact the Glasgow
Stockyards at 406-228-9306.

Videos and information can be found through Pelton
Livestock Marketing and Consulting.

LIABILITY

All persons who attend the sale do so at their own risk.
Veseth Cattle Co assume no liability, legal or otherwise,
for any accident which may occur.

BULLS WINTERING

The yearling bulls will be fed free of charge until they are
ready for delivery between May 1st and June 1st.

BREEDING SOUNDNESS EXAM

The bulls will pass a breeding soundness exam by a
certified veterinarian before delivery.

BIDDING

The Auctioneer will make the final
decision on any bidding disputes.



Dear Customers, Neighbors and Friends

When and where can I buy Veseth breeding stock?

Veseth Cattle Co will be selling on March 7th, 2022 at the Glasgow Stockyards, Inc. (GSI) at 1 PM MST. There will be a complimentary lunch available starting at 11:30 catered by Doris Ozark. The cattle will be sold live through GSI by auctioneer Collin Gibbs. The sale order will be in catalog order.

The cattle will be videoed on February 18th and will be posted for viewing a few days later at www.billpelton.com or www.glasgowstockyards.com.

Dale will be available prior to sale day at home (406) 658-2504 for absentee bids and questions. Collin Gibbs, our auctioneer, can be reached prior to the sale at (406) 939-0645 with any bids or questions. Jim Steele will be available during the sale at (406) 654-7090 for absentee bidding; (please contact Jim before the sale). All absentee bidders need to register with the Glasgow Stockyards at (406) 228-9306.

What is for sale and what is the base price?

Veseth Cattle Co will have 55 bulls for sale. The 2022 bull base price is \$2500 including wintering and breeding soundness evaluation at no additional cost. Bulls will be ready for delivery between May 5th and June 1st. Please go through the catalog to see our 2022 offering including female groups.

How does the sale work?

There will be buyer numbers available for prospective buyers at the office at GSI. Absentee bidders, please register prior to the sale at (406) 228-9306. Internet bidding will be available at www.cattleusa.com during the sale. Please register 24 hours ahead of the sale.

All cattle will be started at base price; anything unsold will be available at private treaty. The bulls will be sold individually and the females by gate cut based on the buyer's head count needs. All females will sell FOB (freight on buyer) for delivery as soon as possible after the sale. The bulls will be wintered and evaluated for breeding soundness and ready for delivery on May 1st – June 1st. Veseth Cattle Co provides free delivery of bulls to central points up to 300 miles. This way bulls can be delivered in truckload lots. Bulls sold over 300 miles will be at cost. We have a long-distance hauler we contract with for cattle sold out of Montana.

Ultrasound: We will ultrasound the bulls on February 10th, 2022. Weights and scrotal circumference will be updated at this time. This information will be available at the Glasgow Stockyards; www.billpelton.com; www.glasgowstockyards.com or email your request to djvsth@itstriangnle.com.

Thank you!

**Dale & Janet – Fred & Jackie
and Crew!**

Are there discounts on cattle?

There are discounts. Veseth Cattle will rebate the Volume and Partner discount after the sale. The Young Rancher Discount is taken care of by the Glasgow Stockyards. Bring your drivers license for verification of age.

Volume Discount Every bull bought after the first bull will receive a 1% discount on each additional bull, with a maximum of 10%.

Young Rancher Discount I sympathize with young people trying to get a start in agriculture today. It was tough when I started ranching and it is only tougher now. Anybody 25 years and younger gets a 10% discount on all breeding cattle purchases. Anybody 26 to 35 years old gets a 5% discount on all breeding cattle purchases. This is for young people buying in their own name and brand and not for old established ranches. Veseth Cattle Co puts a maximum discount of \$2000 per buyer per year on young rancher discounts.

What traits do we select for in the cowherd?

First, we select for functional traits including disposition, udder quality, feet and legs, fleshing ability and moderate mature size. Secondly, we select for calving ease, you will find most of the AI and natural service sires we use are in the top percentages within their breed for calving ease. On the ranch, the cow is on her own. In the spring I go through and tag once per day on everything but 2-year-old heifer's calves. Next, we select for a moderate, maternal cow with longevity (stayability) that lives on minimal inputs. Our cows usually graze year-round with only mineral, and protein supplement during the winter in semi-arid conditions in the Missouri River breaks. Fourth, we put as much growth into the cattle as we can without wrecking functional traits, calving ease and moderate sized cows with excellent maternal abilities. Lastly, we try to improve carcass traits when we don't wreck the rest of the selection criteria.

Bull birth weights: We only weigh the 2-year old's calves at birth. The 2-year old cow's calves are weighed on a Tru-Test scale. The cow bulls are hoof taped due to time factors and land topography; Jim and I tag all the calves. The hoof tape is an estimate of birth weight; I think it is usually within 5 lbs. of the actual birth weight.

Our bulls are smaller than bulls at most other sales. There are good reasons why they are smaller at this time in their lives. Our bulls are born in April, not in January. These cattle are moderate framed cattle. Elephant cattle are bigger and have higher maintenance requirements. Our cattle live in the Missouri River breaks, without mountain meadow or irrigated pasture. We usually graze our cow herd year-round without harvested feedstuffs i.e. hay, haylage or silage, except in the worst conditions.

A word on age advantaged bulls

This year the calves were light at weaning from drought and grasshopper infestations. Bulls will get bigger if they are not used until they are 3 years old, but using younger bulls gives you potentially more breeding seasons and less bull depreciation /calf. Younger bulls may need additional care while they are growing, but it is still cheaper than buying expensive older bulls. These are working cattle for working ranchers. It has been a mild winter and this will reflect on cattle condition and size.

How to Read the Performance Information in the Sale Catalog

Cattle will sell in catalog order. The bulls will be grouped in 6 categories: 1.) High Performing – These are standout bulls from all other categories. 2.) Red Angus Maternal sired bulls from our AI program from the best Red Angus Sires in the breed. 3.) DLC Sire Group – this is a composite sire group that excels thru weaning and should reduce mature cow weights. 4.) Composite Maternal Group – These are maternally bred composite cattle that are the highest performance level and the fewest problems on the ranch. 5.) Red Angus Calving Ease these are bulls sired by the Red Angus sires selected for calving ease in our AI program. If they don't work for us – We don't sell them to you. Bulls in this category have a birth weight under 80 lbs and were calved easily. 6) Simmental X Calving Ease group – trying to widen our calving ease genetic base. We have used some Simmental influenced cattle with good success. The bulls in this group weigh under 80 lbs. at birth and are sired by proven calving ease sires.

I have written a few tips on how to read the categories in the bull data sheet:

The first column is the Sale Lot # and the bulls will be sold in order starting at Lot 1.

The second column is the ID # the calf was given at birth. We start with 1; the higher the # the younger the calf. Very high #'s i.e. 330 were retagged and identified with mom as a cross reference. KV cattle are owned by my cattle partner, Keith VandeSandt.

The third column is the sire abbreviation for the bull's sire. Please see catalog for sire reference information and abbreviations. In the case of MMS, YMS and CMS. These are multiple sire groups used in natural mating in large pastures.

The fourth column is the sale bulls birth date.

The fifth column is the bull's birth weight. Actual birth weights are taken on 2 year old heifer calves with a True Test scale on loadcells. The cows are calved under range conditions, calves are tagged, and hoof taped on their birthdate. Calves that tape 100 lbs.+ are castrated. Traditionally, we assist 10 to 20% of the heifers and less than 1% of the cows during calving.

The sixth column is a calving code. #1 is unassisted. #2 is light assistance. #3 is hard pull. #4 is C-section. #5 is an abnormal presentation i.e. front leg back or a breech birth. You will only see #1s and a few #2s and a rare #5 in the sale bulls.

The seventh column is the adjusted 205 day weight – This is the preconditioning weight adjusted for calf age and includes dam age adjustment factor for 2 year olds = 60 lbs., 3 year olds = 40 lbs., 4 year olds = 20 lbs. and 10+ year olds = 20 lbs.

The eighth column is the Nursing Ratio (NR). NR = individual bull adjusted 205 day wt./ average bull adjusted 205 day wt. As you look at the data, you need to remember that we started out with 160 + bull calves and we are selling 55 in the sale. After all the culling there are very few average bulls left.

The ninth column is Average Daily Gain (ADG). The bulls were started on test on 10/18/21 and were weighed on 1/12/22. The ADG = 3.60 lbs. In this column you can see what the individual bull was gaining. New ADG information will be on the ultrasound data sheet available on www.billpelton.com and www.glasgowstockyards.com and on sale day. This data will be taken on 2/10/22

The tenth column is January 12/22 bull weight. The average weight on 1/12/22 was 836 lbs. Another weight will be collected on

2/10/22 and be reported on the Ultrasound data sheet. In addition, that weight will be used to calculate an adjusted 365 day weight which will also be on the Ultrasound data sheet.

Scrotal Circumference will be recorded on 2/10/22 and will be available with the ultrasound data. It is important to remember that the bulls will not be 12 months old until April. The last two years, these bulls have an averaged 38 Centimeter Scrotal measurement at their Breeding Soundness Examination (BSE) on 4/25/21.

The eleventh column is adjusted frame score was recorded on 10/15/21.

The 12th column is dam ID. The letter corresponds with cow age for this year. G=2 years, F = 3 years, E= 4 years, D = 5 years, C= 6 years, B = 7 years, A= 8 years, Z = 9 years, Y = 10 years, X = 11 years.

The 13th column is maternal grandsire/ great grandsire. A blank line means unidentified ancestry.

The 14th column is new data, we have been able to add through the good work of Anna Merriman, our beef records expert. This column is calving interval (CI). A cow with a 365 CI calves on the same day every year. A cow that has a longer CI is getting later calving every year. You will note a blank space for G cows as they will not have a CI until they calve next spring.

The 15th column is cow disposition is scored 1-10 and is taken at calving time. 1 = killer, 10 = no concern for personal safety while tagging calf. 6 = too dangerous to tag calf at birth.

The 16th column is cow udder score given a tagging. 1 = drags on ground, 3 = usually need to milk, 7= functional udder and 10 = perfect teat size above hock suspension with 4 equal, level quarters.

The 17th column cow weight (unadjusted for age) taken at pregnancy testing in early October every year.

The 18th cow efficiency = % calf weaned/ cow body weight. Formula = calf adjusted 205 day/ cow weight (unadjusted). Traditionally, smaller cows produce a higher % calf weaned.

The 19th Pregnancy test - body condition score determined by Dr. Anne Johnson, DVM in early October. 1= starved to death and 10 = grossly obese.

The 20th Pregnancy Status determined by DVM in early October. B = 1st 45 days, Late = after 45 days, O = not pregnant on test day.

Reference Sires



RD Brown JYJ Redemption Y1334

RAAA# 1441805. The Veseth Abbreviation is RD.

RD was the most used bull in the Red Angus breed for many years. His calves have performance and added muscle and he sires good moderate daughters. This is our 5th calf crop by RD and will be the last as we can't get semen. Usually, he is the top \$ sire group. RD has 7 sons in the sale. RD is in the top 8% for BW, the top 10% for ProS, GM, Marb.

ProS	HB	GM	CED	BW	WW	YW	ADG	DMI	Milk	ME	HPG	CEM	STAY	Marb	YG	CW	REA	Fat
123	59	64	15	-5.0	64	113	0.31	1.96	25	3	11	7	15	0.67	0.13	32	-0.04	0.01



MB MB Milwillah Marble Bar J53

RAAA# 3567871 The Veseth herd Abbreviation is MB.

We have used this sire 2 years and can't get semen anymore. It is expensive as he is an Australian bred bull. We have had exceptional luck with these cattle. They perform, have large scrotals, are free moving with an exceptional phenotype. We will have a 3 year old son on display at the sale and hope to collect two MB sons this spring to carry on the line. Out of 30 units of MB semen, we brought 2 bulls to Hould's feedlot. One was gaining 5.4 lbs./day the first 36 days, we decided to pull him from the sale to collect him. The other MB son will start the Red Angus Maternal group in the sale. MB is in the top 5% for CW and the top 11% for YW and CEM.

ProS	HB	GM	CED	BW	WW	YW	ADG	DMI	Milk	ME	HPG	CEM	STAY	Marb	YG	CW	REA	Fat
92	35	57	14	1.3	75	123	0.30	2.16	28	5	12	10	10	0.61	0.20	45	0.19	0.05



PJ Veseth PJ

The Veseth herd abbreviation is PJ.

This was a bull sold in our sale that we bought back from our cattle partner Keith VandeSandt. He is a KCC Pinnacle 949-109 son out of an exceptional Buf Crk Lancer FL297 daughter. He is an exceptional calver and will see heavy use now that RD is gone. These should be maternal cattle as well. We have used him for his 3rd AI season on heifers this last summer.

ProS	HB	GM	CED	BW	WW	YW	ADG	DMI	Milk	ME	HPG	CEM	STAY	Marb	YG	CW	REA	Fat
80	62	18	15	-3.9	67	103	0.23	1.27	30	0	10	11	14	0.37	0.21	16	-0.08	0.06

EPDs are of PJ's sire, KCC Pinnacle 949-109



297 Veseth 297 Bull

The Veseth herd abbreviation is 297.

297 is out of the old Buf Crk Lancer FL297 bull bred to my best cow. She was moderate framed, thick and easy fleshing. 297 is used for maternal value, calving ease, his progeny will perform, and they are moderate at maturity. Veseth 297 is a complete herdsire. He is the only bull I collected twice for a total of 600+ semen units.

Pictured at 8 years old, 2000 lbs, 44.5 SC. Recorded highest BCS of Veseth herdsires to date.

ProS	HB	GM	CED	BW	WW	YW	ADG	DMI	Milk	ME	HPG	CEM	STAY	Marb	YG	CW	REA	Fat
107	87	20	19	-6.4	50	72	0.14	0.77	27	-5	8	11	16	0.33	0.01	6	0.06	0.01

EPDs are of 297's sire, Buf Crk Lancer FL297

Reference Sires



TP Veseth Top Performer

Veseth abbreviation is TP.

TP was a calf we raised out of (RA) sire (Laubach Timeberlake ET) x (SM) Big Sky daughter. These are very maternal cattle. The bull was sold to Owen DeBrucker. This is his 4th AI calf crop on the ranch. These are very complete cattle that excel in every area of production. TP has a bull in the Simmental X CE group. This is last of the TP calves to sell at the ranch.



RE WBF Rest Easy U085

American Simmental Association # 2472430 Veseth herd abbreviation is RE.

This RE 5th calf crop on the ranch as a heifer bull. We ended up using the last 17 RE straws in the summer of 2021. We just can't say enough good about this bull. RE's calves, grow, make fabulous cows that have long productive lives and mature early for a moderate mature weight. RE has one bull in the high performance group and several sons in the Simmental X CE group. RE in the top 1% for CE, BW, MCE, MM, Marb and API, the top 25% for Stay and TI.

CE	BW	WW	YW	ADG	MCE	MM	MWW	STAY	Doc	CW	YG	Marb	BF	REA	Shr	API
24.2	-8.4	41.4	60.5	0.12	12.8	39.9	60.5	18.7	-8.4	1.3	-0.14	0.63	-0.042	0.00	-0.33	182.7



LD LD Leachman Decree X936D

American Simmental Assoc. # 3144373 Veseth herd abbreviation is LD.

LD is homozygous polled and he is 35% AR/63% SM. The Leachman Profit index rank is in top 0.2% for the population and the profit \$ value is \$24,122. We have used LD for two years and like the cattle. His females are the best. They have a moderate, long body with excellent udders. There are several sons in the sale in the composite group and one at the beginning of the high performance group. LD has 12 of 16 traits measured in the top 30% of the population. LD is in the top 1% for CE, MCE, Stay and API. The top 4% for Marb and BF and the top 10% for MM, Doc and TI.

CE	BW	WW	YW	ADG	MCE	MM	MWW	STAY	Doc	CW	YG	Marb	BF	REA	Shr	API
21.4	-4.4	66.3	94.6	0.18	12.4	28.6	61.8	24.9	15.6	32.3	-0.41	0.72	-0.097	0.81	-0.28	189.2



CE Lorenzen Next Episode D100

ASA# 3287884. The Veseth herd abbreviation is CE.

These are 50% AR x 50% SM ET bulls from the famous (SM) Hook's Mika 141M flush with (RA) the \$100,000 LSF TBJ Takeback bull. We bought 4 ET brothers and cleaned up our heifers for 5 years with those bulls. We had such good success we took the best ET bull down and collected him for AI use in the future. The CE bulls will be in the Simmental X CE group and the bred heifers will carry their calves. The CE EPD profile puts the bulls in the top 2% for BW and MM, the top 3% API, the top 4% for Marb, the top 5% for CE, MCE and BF, the top 15% for Stay.

*Picture of Veseth's Sire's Sire
LSF TBJ Takeback 4856B ASA # 3098335*

CE	BW	WW	YW	ADG	MCE	MM	MWW	STAY	Doc	CW	YG	Marb	BF	REA	Shr	API
17.8	-5.0	68.3	93.7	0.16	10.4	31.7	65.8	18.5	13.6	27.9	-0.17	0.70	-0.009	0.70		170.3

Reference Sires



Picture of WS Outcross C164
Sire of LBRS Garmin G702

GR LBRS Garmin G702

ASA # 3605659. *Veseth herd abbreviation is GR.*

This was a bull we bought at Bulls of the Big Sky test and sale. He was the top gainer in over 200 bulls. He had a 72 lb. BW out of a 13 year old donor cow. GR had 12 out of 15 traits that measured in the top 35% of the American Simmental Association data base. Including in the top 1% for MCE and the top 5% for CE. He had a 39.3 scrotal and is dog gentle so we bought him. GR has two calves that made the sale in the maternal composite pen. These cattle perform well and will have more frame.

CE	BW	WW	YW	ADG	MCE	MM	MWW	STAY	Doc	CW	YG	Marb	BF	REA	Shr	API
14.1	-1.1	78.1	124.8	0.29	9.9	24.3	63.3	19.0	12.2	39.0	-0.32	0.11	-0.087	0.69	-0.42	146.2



DLC DLCC AR Go Big 651G

Composite. ½ DS ½ SM ¼ SS

Veseth abbreviation is DLC.

When you read this you might be asking: What the hell was Dale thinking? Here is my story. I bought this bull out of the DLCC sale in Pierz, MN. The folks that raise the best South Devon's in the world. DLC was actually raised by Aaron Rasmussen from Alliance, NE. Aaron is the Leachman AI representative I buy semen from because he knows more about sire lines that anybody else in the world. Aaron's goal is to raise the best mother cows that ever walked the face of the earth, and he has trotted around most of the earth trying to do just that. DLC was advertised as being out of Aaron Rasmussen's "best, most moderate cow"; So I bought him. He didn't cost much. I

was going to stick him out in the back pasture and forget him. I brought him home and he is a think meat wagon in a 4.4 frame that is always fleshy. Long story short, we ended up collecting him, out of the 1st 30 straws we used we got 10 bulls and most stayed bulls through the cut from 160 bulls down to 77 head. That has never DLC continued happened in 25 years of raising bulls. We will have him on display at the sale. And we will start the sale with one of his bull calves because they've earned it. The rest of his calves will be in the DLC pen.

MMS Veseth Multi Sire

Veseth abbreviation for the mature cows multi-sire breeding group is MMS. These are the mature cows we run in the Missouri River breaks. We only keep bulls out of our very best cows and cull this group hard.

If they are not exceptional, they are steers.



Do the Math & Find the Value!

What does it take for a bull to make it to the annual Veseth Cattle Co bull sale?

A rancher only gets 50% male calves to start with.

Veseth Cattle Co saved 161 bulls of the 354 male calves weaned in 2021. These bulls were selected based on the birth weight, Dam's past performance, pedigree, udder score, disposition score, conformation and polled status. $161 \text{ bulls} / 354 \text{ male calves} = 45.5\%$ retained as bulls.

At preconditioning, 40 of the 161 were banded due to performance, conformation and disposition. $121 \text{ bulls remain} / 161 \text{ kept} = 75\% \times 45.5\% = 34\%$ of bulls remain from all male calves.

At pre-feedlot workup 89 bulls remained of 121 weaned $= 74\%$ of $34\% = 25\%$ of bulls remain from all male calves.

After 56 days on tests, 13 low performers were removed from test of 89 $= 76$ bulls remain on test. $76 / 89 = 86\% \times 25\% = 21.5\%$ bulls remain from all male calves.

55 head of bulls selected for sale after ultrasound data was collected from 76 head $= 55 / 76 = 72\% \times 21.5\% = 15.6\%$ of bulls remain from all male calves weaned.

For every 100 male calves at Veseth Cattle Co, we currently raise 15.5 bulls for our sale. This is our selection process. So for some of these bull guys that raise 1000 bulls per year, how many cows would they need using the above selection process? $6500 \text{ cows} \times 15.5\% = 1007$ bulls, of course no herd has 100% bulls, so they would need to start with 13,000 mother cows using Veseth Cattle Co's selection pressure.

Dollars and Cents:

The Montana Angus Association documented that 16,786 bulls were sold at auction from 6 breeds in Montana and Wyoming in FY2021 at an average price \$5262 per bull. The Veseth Cattle Co bull sale average was \$3500. That is a 33% savings per bull. Let's say that over the life of a bull (4 years \times 25 calves/year) you get 100 calves. You bought the average bull at auction for \$5262. It would cost you \$52.62/calf for bull cost vs. \$35/calf for the Veseth bull = a difference of \$17.62/head / 500 lb. calf = \$-.035 lb. difference in production cost. And you could get more calves and more pounds out of a Veseth Hybrid Reds too!



Veseth Cattle Facts

The ranch NOAA weather records recorded less than 8" of precipitation this year following less than 9" in 2020. It has been tough going! We are sure it is going to rain we just don't know when.

We would like to congratulate our customers and partners. Olsen Ranch JV LLC sold their steers at 800 lbs in the Diamond Ring Ranch sale to the same buyer in Nebraska. This last year their steers gained 4 lbs/day on feed. We would also like to congratulate long time bull customers, Boucher Ranch. Their donation to the Montana Stockgrowers Foundation placed 2nd in the carcass contest which included 60 steers from across Montana.

There are some FFA and 4-Hers in the congratulations category too. Spencer Gibbs was a recipient of the Veseth loaner cow program. Spencer took this cow's calf to the Phillips County Fair as a market beef and was named Reserve Champion. Gavin Slade took another Veseth bred steer and placed 3rd. Gavin's steer was the 2nd heaviest at the Fair weighing 1605 lbs. Ryan Baeth took a Veseth bred market steer to the Gallatin County Fair and the steer was the top gainer out of 61 entries with an ADG of 4.50 lbs. We also wanted to recognize Charlotte Steele for training her steer to ride. Those Veseth steers are tame, but they don't neck rein very well!

The bulls have done well. The first 35 days they were gaining 3.35 per day. That was the same gain the bulls recorded last year. However, this year I took off the bottom 13 bulls and this pushed the average daily gain to 3.60 per day. There aren't many cattle that can out perform these cattle and certainly not at the Veseth sale average.

These bulls are gaining well but are not fat. The ultrasound data from 2021, on the Veseth bulls was .13" for backfat. I don't know of any other groups of bulls with less than .22" backfat and many with substantially more.

The industry standard is 1.0 square inch of Rib Eye Area (REA) per 100 lbs. of body weight (CWT). We started ultra-sounding in 2015. At that time our average was 1.06 square inch REA/CWT. The bulls in 2021 averaged 1.16" REA/CWT. This is part of the reason we have increased our adjusted REA by over an inch per animal in that time. You need to remember that these cattle are selected first for calving ease and maternal before selection for growth and carcass.

In 2015 the average ultrasound intra-muscular fat (IMF) was 4.68 and in 2021 IMF was 5.36. That moved the marbling scores in these bulls from Select + to Choice -. You need to remember that bulls don't marble as well as steers.



High Performing Bulls *Group 1*

Group 1 will include the high performing bulls from all groups. These bulls will sell first in the sale.

Look for individual lot numbers in Performance Pen (Pen 1).

Calf Info												Dam Info					Preg-Test			
Sale Lot	Calf ID	Calving Year Calf Sire ID	Calf Birth Date	Calf Birth Wt.	Calving Ease	Actual Adj 205 Day Weight	NR (Bulls - PC)	Avg Daily Gain 1/12	Jan 12 Wt	Frame Score 1/4	Poll Status	Cow ID	Dam Sire ID	Calving Interval	Cow Disposition	Cow Udder	Fall Cow Weight	Weaning % (205/cow wt)	BCS	Fall Preg Test
1	61	RE	4/1/21	72	1	717	120.4	3.52	837	5.8	SC	G11	RD		10	10	1150	62%	5	B
2	204	LD	4/21/21	94	1	703	118.1	3.47	857	6.2	P	E33	BA	373	10	10	1305	54%	5	L
3	17	RD	3/25/21	64	1	599	100.5	3.76	867	5.7	P	G47			10	10	1150	52%	5	B
4	69	MMS	4/10/21	83	1	705	118.4	3.74	949	6.7	P	C80	TBC/ JUL	356	10	10	1385	51%	5	B
5	130	MMS	4/16/21	88	1	706	118.6	4.19	955	6.6	SC	DW221	RK	342	10	9	1520	46%	7	B
6	129	DLC	4/16/21	90	1	695	116.6	3.50	893	5.9	P	D162	HBMS	366	9	10	1355	51%	5	B



Red Angus Maternal *Group 2*

Calf Info												Dam Info					Preg-Test			
Sale Lot	Calf ID	Calving Year Calf Sire ID	Calf Birth Date	Calf Birth Wt.	Calving Ease	Actual Adj 205 Day Weight	NR (Bulls - PC)	Avg Daily Gain 1/12	Jan 12 Wt	Frame Score 1/4	Poll Status	Cow ID	Dam Sire ID	Calving Interval	Cow Disposition	Cow Udder	Fall Cow Weight	Weaning % (205/cow wt)	BCS	Fall Preg Test
7	131	MB	4/16/21	80	1	682	114.5	3.71	915	6.6	P	D60	297	376	10	10	1415	48%	5	B
8	19	RD	3/26/21	81	1	596	100.0	3.84	834	5.9	P	G169	SX		10	10	1025	58%	5	L
9	6	297	3/22/21	87	2	577	96.9	3.84	838	5.1	P	G269			10	10	1120	52%	5	B



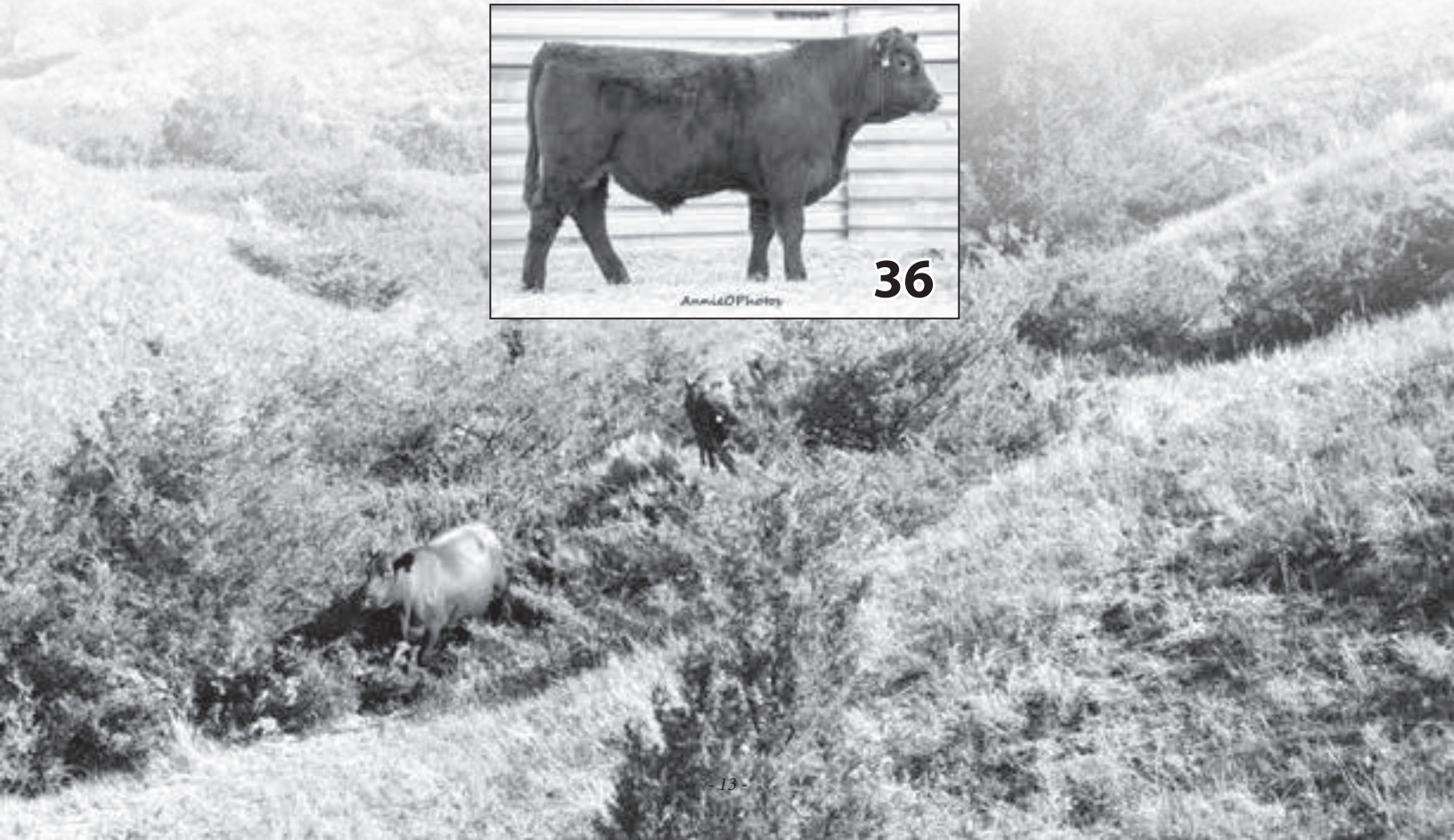
DLC Sire Group *Group 3*

Calf Info												Dam Info					Preg-Test			
Sale Lot	Calf ID	Calving Year Calf Sire ID	Calf Birth Date	Calf Birth Wt.	Calving Ease	Actual Adj 205 Day Weight	NR (Bulls - PC)	Avg Daily Gain 1/12	Jan 12 Wt	Frame Score 1/4	Poll Status	Cow ID	Dam Sire ID	Calving Interval	Cow Disposition	Cow Udder	Fall Cow Weight	Weaning % (205/cow wt)	BCS	Fall Preg Test
10	KV703	DLC	4/9/21	78	1	668	112.2	3.26	827	5.5	SC	KV703	MJ	364	10	10	1270	53%	4	B
11	108	DLC	4/11/21	77	1	632	106.2	3.32	790	5.5	P	F35	RE/BP	375	10	10	1110	57%	5	B
12	114	DLC	4/12/21	85	1	626	105.2	3.49	842	5.0	P	E20	NC/HMH	366			1335	47%	4	B
13	63	DLC	4/2/21	82	1	615	103.3	3.57	815	5.6	P	F38	BA/FUS	351	10	10	1095	56%	6	B
14	102	DLC	4/10/21	86	1	599	100.6	3.31	789	5.0	P	E160	HBMS	364	10	10	1255	48%	5	B



Maternal Composite *Group 4*

Calf Info												Dam Info					Preg-Test			
Sale Lot	Calf ID	Calving Year Calf Sire ID	Calf Birth Date	Calf Birth Wt.	Calving Ease	Actual Adj 205 Day Weight	NR (Bulls - PC)	Avg Daily Gain 1/12	Jan 12 Wt	Frame Score 1/4	Poll Status	Cow ID	Dam Sire ID	Calving Interval	Cow Disposition	Cow Udder	Fall Cow Weight	Weaning % (205/cow wt)	BCS	Fall Preg Test
15	321	GR	4/19/21	80	1	693	116.5	4.21	920	6.4	P	D211	HBMS	377	10	10	1565	44%	5	O
16	139	MMS	4/17/21	87	1	686	115.1	4.02	927	6.6	P	C90	TB	367	10	10	1475	46%	5	B
17	190	MMS	4/25/21	90	1	679	114.0	3.42	890	6.5	P	61Y	AB	381	10	9	1170	58%	4	B
18	KV448	MMS	4/20/21	80	1	677	113.6	3.76	895	6.2	P	KV448	MGS/ NK	380	9	10	1250	54%	5	B
19	172	MMS	4/19/21	90	1	675	113.3	3.63	916	6.2	P	C71	RK	354	10	10	1510	45%	5	B
20	186	MMS	4/22/21	75	1	671	112.7	3.95	879	6.2	P	25X		370	10	9	1175	57%	4	B
21	92	MMS	4/15/21	90	1	668	112.2	3.00	795	6.6	P	C82	TBC	357	10	10	1235	54%	4	B
22	89	MMS	4/14/21	95	1	663	111.4	3.74	897	6.1	P	B52	29Z	369	10	10	1100	60%	4	B
23	168	LD	4/19/21	93	1	662	111.2	3.77	846	6.4	P	F157		360	10	8	1180	56%	4	B
24	189	MMS	4/23/21	85	1	658	110.5	3.31	839	6.5	P	D44	BP	361			1330	49%	5	B
25	132	MMS	4/16/21	88	1	655	110.1	3.69	897	6.6	P	A234		347	9	10	1300	50%	5	B
26	137	MMS	4/17/21	85	1	652	109.5	3.94	866	6.4	P	Z41	NB		10	10	1105	59%	4	B
27	47	MMS	4/9/21	83	1	650	109.1	3.68	904	6.2	P	A41	297/NB	365	10	10	1340	49%	5	B
28	147	MMS	4/18/21	85	1	644	108.2	3.82	862	6.9	P	C153	LET/297	349	10	10	1350	48%	6	B
29	48	MMS	4/10/21	81	1	642	107.8	3.87	894	6.0	P	B61	ET	360	10	9	1445	44%	4	B
30	143	MMS	4/18/21	87	1	637	107.0	3.38	813	6.6	P	C34	RK	344	9	9	1195	53%	5	B
31	135	MMS	4/17/21	75	1	632	106.2	3.27	812	5.6	P	96Y	ACV	360	10	10	1300	49%	4	B
32	163	GR	4/17/21	85	1	629	105.6	4.01	836	5.9	P	E147	BCL	344	10	10	1305	48%	5	B
33	87	MMS	4/13/21	84	1	626	105.2	3.27	818	6.5	P	A139		353	10	10	1365	46%	5	B
34	202	TP	4/20/21	85	1	622	104.5	3.91	823	6.2	P	E35	VIC/ ACV	360	10	10	1240	50%	5	B
35	144	MMS	4/18/21	82	1	607	101.9	3.84	852	5.9	P	B12	NC	374	10	9	1130	54%	4	B
36	200	LD	4/20/21	81	1	606	101.8	3.83	803	5.9	P	F301		349	10	10	1245	49%	4	B
37	KV60D	LD	4/23/21	94	1	605	101.6	4.08	834	6.2	P	KV60D		353	10	10	1455	42%	4	B



Red Angus Calving Ease *Group 5*

Calf Info												Dam Info					Preg-Test			
Sale Lot	Calf ID	Calving Year Calf Sire ID	Calf Birth Date	Calf Birth Wt.	Calving Ease	Actual Adj 205 Day Weight	NR (Bulls - PC)	Avg Daily Gain 1/12	Jan 12 Wt	Frame Score 1/4	Poll Status	Cow ID	Dam Sire ID	Calving Interval	Cow Disposition	Cow Udder	Fall Cow Weight	Weaning % (205/cow wt)	BCS	Fall Preg Test
38	21	PJ	3/26/21	76	1	611	102.6	4.09	835	5.4	P	G32	CE		10	10	986	62%	4	B
39	50	PJ	3/29/21	65	1	604	101.4	3.72	886	5.2	P	G118	CE		10	10	1010	60%	4	O
40	5	RD	3/21/21	75	1	604	101.4	3.40	803	4.6	P	G101	MBMS		10	10	948	64%	4	B
41	33	PJ	3/29/21	76	1	595	99.9	3.28	781	5.5	P	G191	MBMS		10	10	1130	53%	5	B
42	31	PJ	3/28/21	66	1	592	99.4	3.43	760	5.2	P	G168	MBMS		9	10	982	60%	4	B
43	4	297	3/21/21	72	1	589	98.9	3.61	773	5.1	P	G97			10	10	1225	48%	4	B
44	8	RD	3/23/21	72	1	588	98.8	4.29	870	5.4	P	G158	HBMS		10	10	1025	57%	5	B
45	14	297	3/24/21	63	1	587	98.5	3.38	777	5.6	P	G280			10	10	930	63%	4	O
46	28	297	3/27/21	62	1	582	97.7	3.85	796	5.7	P	G192	LD		10	10	1090	53%	4	B
47	9	RD	3/23/21	66	5	559	93.8	3.93	818	4.6	P	G171	SX		10	10	1035	54%	5	B
48	2	RD	3/20/21	63	1	557	93.6	3.96	836	4.8	P	G173	MBMS		10	10	1140	49%	5	L
49	30	297	3/27/21	66	2	544	91.4	3.79	750	4.5	P	G21 (E192)	RE		10+	10	898	61%	4	B



Simmental X Calving Ease *Group 6*

Calf Info												Dam Info					Preg-Test			
Sale Lot	Calf ID	Calving Year Calf Sire ID	Calf Birth Date	Calf Birth Wt.	Calving Ease	Actual Adj 205 Day Weight	NR (Bulls - PC)	Avg Daily Gain 1/12	Jan 12 Wt	Frame Score 1/4	Poll Status	Cow ID	Dam Sire ID	Calving Interval	Cow Disposition	Cow Udder	Fall Cow Weight	Weaning % (205/cow wt)	BCS	Fall Preg Test
50	113	CE	4/12/21	70	1	658	110.5	3.82	817	5.5	P	G31	RE/LO		10	10	1075	61%	5	B
51	62	RE	4/2/21	76	1	624	104.8	3.38	783	5.8	P	G107	CE		10	10	1020	61%	5	O
52	156	CE	4/16/21	75	1	600	100.8	3.66	784	5.4	P	G260	SX		10	10	1105	54%	5	B
53	59	RE	4/1/21	68	1	589	99.0	3.66	806	5.6	P	G189	MBMS		10	10	1090	54%	5	B
54	121	TP	4/13/21	71	1	566	95.0	3.69	765	5.5	P	KHR769	52C/ COL	369	10	10	1305	43%	5	B
55	58	RE	3/31/21	68	1	553	92.9	3.33	743	5.5	P	G326			8	10	1050	53%	4	B





2022 Females

All bred females will be retested at GSI prior to the sale.

Groups 7-12

If you need less than 5 head of any of the Veseth female groups call Dale and we can get you taken care of at the ranch.

406-658-2504.

10 Veseth Red Bred Heifers *Group 7*

These heifers have been pasture exposed to a LBW Collier F.P. son from June 5, 2021 for 60 days. The bred heifers traditionally weigh between 1000 and 1100 lbs on sale day. Cattle will be back poured for lice control prior to transport to GSI. The base price is \$1400.

15 Veseth Red Bred Heifers *Group 8*

These heifers are bred to calve between April 25th and May 10th. The calves will be out of our LBS Calving Ease bulls. These heifers traditionally weigh between 1000 and 1100 lbs on sale day. These cattle will have lice control prior to the sale. The base price is \$1400.

Drew Slade Dispersion

Drew bought bred heifers from us in earlier sales. Unfortunately, due to drought he lost his grazing lease and has to sell his cattle. Drew takes excellent care of his livestock. They will be in good condition and be up to date with all health protocols. Drew's phone number is 406-654-7210.

8 Slade 3 Year Old Cows *Group 9*

These cows were exposed to Christofferson Angus bulls beginning July 2nd. These females will be tested at GSI prior to the sale. Drew's base price is \$1450.

16 Slade Cows 5 to 6 Years Old *Group 10*

There are 2 cows that are 5 yrs old and 14 cows that are 6 yrs old. These cows were exposed to the same Christofferson Angus bulls beginning July 2nd.

These females will also be tested at GSI prior to the sale. Drew's base price is \$1450.

Keith VandeSandt Dispersion *Group 11*

Keith VandeSandt has decided to disperse his cow herd. The cow herd originated from Registered Red Angus and has a 30 year AI history. These cows have been part of the Veseth Cattle program for many years and have contributed bulls and heifers to the sale. Cows ages vary from Bred 2 year olds to Mature cows. Videos of the cows are available on www.billpelton.com and at www.glasgowstockyards.com.

Some of Keith VandeSandt's cows don't have letters in their IDs. The First # on the tag designates the year the cow was born. (013 = 11 years and 100 = 10 years etc.) All of Keith's cows have red tags as an easier way to identify them.

The base prices will be \$1400 for bred heifers, \$1450 for young cows and \$850 for short term cows.

Keith's phone number is 406-945-2058

80 Veseth Yearling Heifers/**50,000 lb Load** *Group 12*

80 Yearling heifers off the ranch. They have been banged and carry EID tags. They were given estrumate to ensure they are open. This year I sorted off some of my largest heifers trying to reduce my mature cow herd size. So there will be a big end. Jake Newton, GSI manager goes through the heifers and sorts for size, so there will be a couple bunches. The buyer has the choice to take all the heifers to maintain a potload. Our projected weight is 650 lbs on sale day. The base price is \$950.

45 Veseth Short Term Cows *Group 13*

These cows were exposed to Veseth Red bulls beginning on July 2nd. They may be preg tagged early before May 15th or late after May 15th. They have been on Amidon S64 mineral and will be lice poured by sale day. We will have signs with a head count by age on sale day. Jake Newton will go through and sort the cows for structure and function. These cows will be pregnancy tested at GSI. These Cows should weight 1300 – 1350 lbs on sale day. The base price is \$850. These cows are individually ID'd with tags and brands that indicate the age of the cows by color.

X	Purple Tag	= 11 Years
Y	White Tag	= 10 Years
Z	Red Tag	= 9 Years
A	Yellow Tag	= 8 Years
B	Orange Tag	= 7 Years
C	Pink Tag	= 6 Years



Veseth Future Sires



EG Bieber CL Energize F121

RAAA# is 3958815. Veseth Abbreviation is EG.

This is an ABS bull. In recent years Bieber genetics have dominated the Red Angus breed for the combination of calving ease coupled with explosive growth. EG was our choice with his EPD profile and outstanding phenotype. Field reports put his calves at very moderate.

ProS	HB	GM	CED	BW	WW	YW	ADG	DMI	Milk	ME	HPG	CEM	STAY	Marb	YG	CW	REA	Fat
159	90	69	20	-6.5	66	115	0.31	1.82	27	4	12	11	19	0.62	0.06	37	0.42	0.03



NF LSF RHO Night Focus

RAAA# is 1725295. Veseth Abbreviation is NF.

He is a Select Sires bull. We sampled NF for two reasons. First, we used his sire LSF Night Calver in our AI program for 5 years and we also liked the daughters out of the Mytty in Focus bull. NF should be a tremendous female producer. Secondly, his EPD's are Top of the breed to 13 of 17 traits which include the top 1% for ProS index, HB index, and HBG.

ProS	HB	GM	CED	BW	WW	YW	ADG	DMI	Milk	ME	HPG	CEM	STAY	Marb	YG	CW	REA	Fat
161	97	64	15	-3.1	76	115	0.24	1.66	31	-6	19	9	16	0.82	0.25	47	0.24	0.07



IP IR Imperial D948

ASA# 3210738. Veseth Abbreviation is IP.

IP is a purebred Simmental bull we hope to use for CE and Maternal traits in our herd. We selected IP because we were out of semen on our Rest Easy bull and were looking for a replacement for some CE composite bulls. IP is a Select Sire bull. He is long bodied and very moderate. His calves have great dispositions. IP is in the top 1% for CE, BW, MCE, Marbling and API index. Top 4% for TI, Top 5% for DOC and Top 10% for Stay.

CE	BW	WW	YW	ADG	MCE	MM	MWW	STAY	Doc	CW	YG	Marb	BF	REA	Shr	API
17.9	-3.1	61.6	97.8	0.23	9.6	18.3	49.0	19.2	16.6	15.9	-0.51	0.92	-0.077	1.08	-0.54	193.7



FC Leachman First Class W306G

Veseth Abbreviation is FC.

FC is a stabilizer from the Leachman of Colorado program. His \$Profit index is \$24,961, puts him in the top 0.1% of cattle tested. He is also the top 4% for Feed:Gain, 0.2% for \$Feeder Index, 5% for BW, 5% for YW, top 2% for REA, the top 0.3% for IMF, top 6% for CW and top 4% for PAP score.

CE	BW	WW	YW	ADG	MCE	MM	MWW	STAY	Doc	CW	YG	Marb	BF	REA	Shr	API	TI
13.0	-2.5	66.8	109.6	0.27	5.9	22.0	55.4	12.0	13.3	19.1	-0.33	0.53	-0.048	0.80		137.7	81.2

Veseth Future Sires



FT GGT Flamethrower 923G

½ RA ½ Saler. Homozygous polled. Veseth Abbreviation is FT.

FT sold in the GG&T Cattle Sale for \$14,000 as their 2nd highest seller. He was their lead bull out of their Optimizer Pen at the Denver Stock Show. He had a 63 lb Bwt and a 831 lb WW. For SA EPDs of -3.0 Bw, 82 WW and 22 Milk. In addition, he had a 17"+ REA, 471 IMF and 45 cm Scrotal. I thought if I was going to sample a Salers sire here he is. We used 20 straws on heifers and cows. FT calves will be ¼ SA and their calves on your ranch will be 1/8 SA.

BW	WW	YW	Milk	Fat	REA	Marb	CW	Doc	STAY	CED
-3.3	80	120	21	-0.04	0.64	-0.1	31.6	14	13	15.4



855 Veseth CERA-SM

His abbreviation is 855.

855 is a fourth generation AI home raised bull. Stacking 18A (RA) x RE (SM) x BN (comp) x HMH (RA). This bull sold to our good friends and customers in the 2021 sale as lot 1. We were interested in sampling bull for elite calving ease as 3 of the 4 generations in his pedigree were excellent calving ease lines. He had a 68 lb. birth weight and a very moderate frame score of 4.9. His mother weaned 69% of her body weight nursing this guy. And he went onto to be our all-time high gaining bull at 4.73 lbs. day. I will be watching for his calves!



VB Veseth 18A Balancer 55

The name abbreviation is VB. He is ½ RA ½ GV.

VB sold to our longtime customers Olsen Ranch JV LLC as lot #2. This is another powerful 18A son out of a low birthweight producing Kicking Horse Gelbvieh cow. He has an 83 lb. BW and gained 4.3 lbs./day on test. To date, VB is the largest REA bull we have raised. He has a 1.31 square inch REA/CWT and he also posted 108 IMF ratio. If you want some meat – here he is and he should produce excellent females as well.



I have served as veterinarian for the Veseth cattle herd since the late 1970s, Over the years, Dale and company have selected and culled for many factors to create a uniform herd that is easy-calving and easy-handling.

Herd health includes annually: preg-testing, branding, preconditioning, pre-breeding and bull-testing programs.

Breeding females are vaccinated with PregGuard and a clostridial/hemophilus vaccine at preg-test. Branding vaccines(Pyramid5/Presponse and Vision7) are administered by the Veseth crew, along with a chelated trace mineral drench.

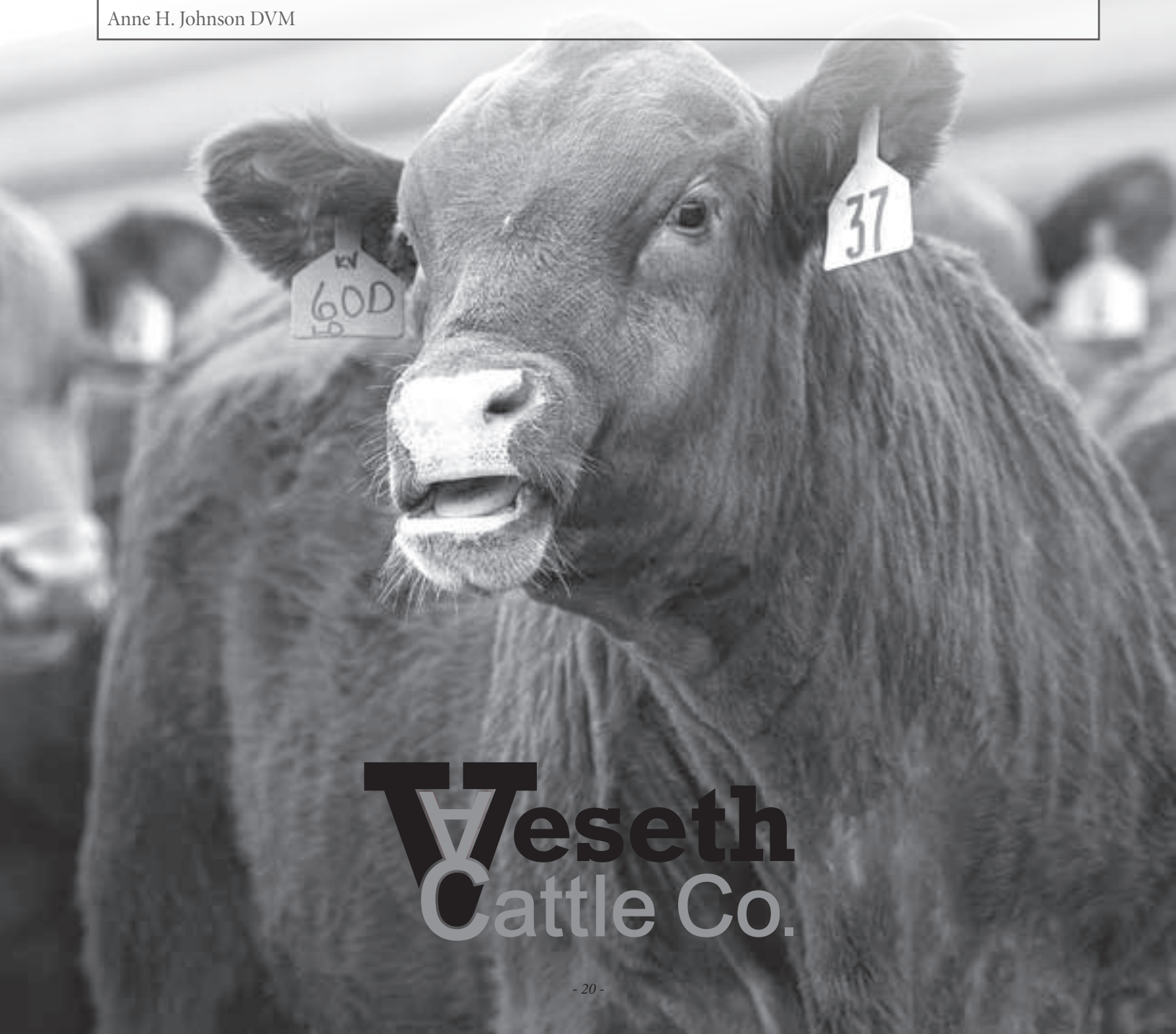
At preconditioning, Pyramid5/Presponse, Vision7/Somnus, Mycoplasma,and Endovac are given by myself and my staff, as well as chelated mineral drench and a pour-on. Bull prospects are given Fusogard as well.

Heifers calves for replacements are selected and Brucellosis-vaccinated after weaning. All calves are boosted with Hemophilus vaccine after weaning, by Dale's crew. Bull prospects are given a Fusogard booster.

Bulls are tested prior to sale(or turn-out) and given PregGard. Pour-on products are used according to the need: flies,lice and internal parasites.

I have had opportunity to see Veseth bulls in other herds that I work. They tend to be quite durable, working well for 8-9 years for some. The calves they sire also seem to be more laid-back and easier to process. I believe this is because of the effort Dale puts in to low-stress handling techniques and a rigorous selection for good attitudes.

Anne H. Johnson DVM



Veseth
Cattle Co.

Sale Notes

Thanks for Joining Us at Our 16th Annual Sale!

Veseth
Cattle Co.



Veseth Cattle Co.

DALE & JANET VESETH

22787 Midale Road • Malta, MT 59538

(406) 658-2504 • djvsth@itstriangle.com

FIRST CLASS

US Postage
Paid
Ballyhoo Printing
59457



WWW.CATTLEUSA.COM

FIRST CLASS



Hould Feedlot

5867 MT HWY 363

Malta, MT 59538

Hould
Feedlot

Malta

to Grass Range,
Billings

16th Annual Sale

March 7, 2022

Lunch at 11:30 • Sale at 1:00

Glasgow Stockyards • Glasgow, MT

Glasgow

Glasgow Stockyards

Fort Peck HWY E

Glasgow, MT 59230