

Veseth Cattle Co.

18th Annual Sale

MONDAY, March 11, 2024

Lunch at 11:30 • Sale at 1:00

Glasgow Stockyards • Glasgow, MT



WWW.CATTLEUSA.COM

Selling

65 Red Hybrid Yearling Bulls

15 Red Bred Heifers to Start March 20th

40 Red Bred Heifers to Start April 20th

65 Red Heifer Calves - Bangsed

10 Black Heifer Calves - Bangsed

36 Short Term Cows

Margaret Demarais Dispersal 10

-12 Mature Cows

DALE & JANET VESETH

22787 Midale Road • Malta, MT 59538

(406) 658-2504 • djvsth@itstriangle.com

www.vesethcattleco.com



RANCHERS
— STEWARDSHIP ALLIANCE —

THE POWER OF PASSING IT ON

with Jolene Brown

Do you really want your ranching business to continue?

If so, there are important decisions to make and actions to take...starting today.

In this upbeat, eye-opening workshop, you'll learn the top 3 things that must be addressed for the successful transition of a business.

SATURDAY, MAY 11
MALTA, MONTANA

❖
RANCHSTEWARDS.ORG



Sonja Gregory
Bar D Livestock Services

UGC Certified Technician
Lewistown, MT

406-538-8824 406-670-2045

bardlivestock@yahoo.com



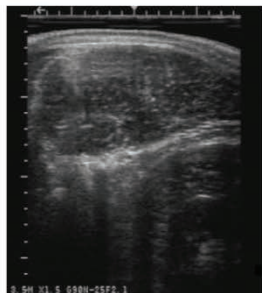
Ranchers who care about their data use UltraInsights to "take a peek under the hide."

Improve your herd and create more value for your customers.

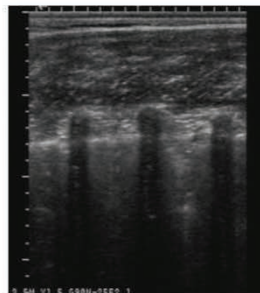
Schedule your ultrasound today!



Rump Fat



Ribeye Area & Fat Thickness



% Intramuscular Fat



Visit us at www.ultrainsights.com
(660)562-2074 [call or text]
ui@ultrainsights.com



Veseth Cattle Co.

22787 Midale Road • Malta, MT 59538
(406) 658-2504 • djvsth@itstriangle.com

18th Annual Sale

March 11, 2024

Selling 65 Red Hybrid Yearling Bulls
15 Red Bred Heifers to Start March 20th
40 Red Bred Heifers to Start April 20th
65 Red Heifer Calves - *Banged*
10 Black Heifer Calves - *Banged*
36 Short Term Cows
Margaret Demarais Dispersal 10 - 12 Mature Cows

SALE LOCATION

Glasgow Stockyards Inc • Fort Peck Hwy E • Glasgow, MT
Office 406-228-9306
Iva Murch 406-263-7529
Jake Newton 406-390-5109

SALE DAY PHONES

Collin Gibbs, Auctioneer 406-939-0645
Bill Pelton, Pelton Livestock 406-671-5100
Iva Murch, Manager Glasgow Stockyards 406-263-7529
Jake Newton, Glasgow Stockyards 406-390-5109
John Koss 406-301-2887
Jim Steele 406-654-7090
Dale Veseth, Home (prior to day of sale) 406-658-2504

AUCTIONEER

Collin Gibbs 406-939-0645
gibbs.livestock@gmail.com

SALE CONSULTANTS

Bill Pelton 406-671-5100
Glasgow Stockyards 406-228-9306

TERMS & CONDITIONS

Cattle will sell under the suggested Terms and Conditions of the Red Angus Association of America.

ACCOMMODATIONS

Cottonwood Inn 406-228-8213

ULTRASOUND

We will ultrasound on February 8, 2024. Weights and scrotal circumference will also be updated at this time. This information will be available on www.glasgowstockyards.com and on www.billpelton.com (Go to Sales Calendar, then to March 11th to find Veseth Cattle Co information.)

RETAINED INTEREST BULLS

We are retaining 1/2 interest in every bull selling. Buyer gets 1/2 interest, full possession and full salvage value. This allows us to reserve the right to collect semen on any bull in the offering at the buyer's convenience.

SUPPLEMENT SHEETS

Supplement Sheets will be done about the end of February and will be available at the Glasgow Stockyards or www.glasgowstockyards.com, www.billpelton.com (Go to Sales Calendar, then to March 11th to Veseth Cattle Co to find sale data). Or email Dale and Janet at djvsth@itstriangle.com This data includes weights, scrotal circumference, ultrasound data and EPDs made up of 16 EPDs that are through the International Genetic Solutions EPD format and American Simmental Association. (more info on these EPDs is available in the catalog).

VIDEOS

We will video the cattle on February 10th. Videos will be available on www.glasgowstockyards.com and the Veseth Cattle page on www.billpelton.com (Go to Sales Calendar, then to March 11th to find Veseth Cattle Co sale page.)

SALE ORDER

Bulls and females will be sold in catalog order.



INTERNET BIDDING

On Sale day Internet bidding will be available on www.cattleusa.com. Be sure and register to bid on the website 24 hours before the sale. For questions contact the Glasgow Stockyards at 406-228-9306.

Videos and information can be found through Pelton Livestock Marketing and Consulting.

LIABILITY

All persons who attend the sale do so at their own risk. Veseth Cattle Co assume no liability, legal or otherwise, for any accident which may occur.

BULLS WINTERING

The yearling bulls will be fed free of charge until they are ready for delivery between May 1st and June 1st.

BREEDING SOUNDNESS EXAM

The bulls will pass a breeding soundness exam by a certified veterinarian before delivery.

BIDDING

The Auctioneer will make the final decision on any bidding disputes.

Dear Customers, Neighbors and Friends

When and where can I buy Veseth breeding stock?

Veseth Cattle Co sale will be on March 11th, 2024, at the Glasgow Stockyards, Inc. (GSI) at 1 PM MST. There will be a complimentary lunch available starting at 11:30 catered by Doris Ozark. The cattle will be sold live through GSI by auctioneer Collin Gibbs. The sale order will be in catalog order starting with Lot 1.

The cattle will be videoed on in mid-February and will be posted for viewing a few days later at www.billpelton.com or www.glasgowstockyards.com.

Dale will be available prior to sale day at home (406) 658-2504 for absentee bids and questions. Collin Gibbs, our auctioneer, can be reached prior to the sale at (406) 939-0645 with any bids or questions. Jim Steele will be available during the sale at (406) 654-7090 for absentee bidding; (please contact Jim before the sale). Internet bidding will be available at www.cattleusa.com during the sale. Please register 24 hours ahead of the sale. There will be buyer numbers available for prospective buyers at the office at GSI.

What is for sale and what is the base price?

Veseth Cattle Co will have 65 bulls for sale. The 2024 bull base price is \$2750 including wintering and breeding soundness evaluation at no additional cost. Bulls will be ready for delivery between May 5th and June 1st. Please go through the catalog to see our 2024 offering including female groups.

Delivery

All cattle will be started at base price; anything unsold will be available at private treaty. The bulls will be sold individually and the females by gate cut based on the buyer's head count needs. All females will sell FOB (freight on buyer) for delivery as soon as possible after the sale. The bulls will be wintered and evaluated for breeding soundness and ready for delivery on May 1st – June 1st. Veseth Cattle Co provides free delivery of bulls to central points up to 300 miles. This way bulls can be delivered in truckload lots. Bulls sold over 300 miles will be at cost. We have a long-distance hauler we contract with for cattle sold out of Montana.

Ultrasound

We will ultrasound the bulls on February 8, 2024. Weights and scrotal circumference will be updated at this time. This information will be available at the Glasgow Stockyards; www.billpelton.com; www.glasgowstockyards.com or email your request to djvsth@itstriangle.com.

Are there discounts on cattle?

There are discounts. The Young Rancher Discount is taken care of by the Glasgow Stockyards. Bring your drivers license for verification of age.

Volume Discount If the buyer buys 5 or more bulls, he will receive a 5% discount. If the buyer buys 10 or more bulls, he will receive a 10% discount. The discounts will be taken care of by the Glasgow Stockyards.

Young Rancher Discount I sympathize with young people trying to get a start in agriculture today. It was tough when I started ranching and it is only tougher now. Anybody 25 years and younger gets a 10% discount on all breeding cattle purchases. Anybody 26 to 35 years old gets a 5% discount on all breeding cattle purchases. This is for young people buying in their own name and brand and not for old established ranches. Veseth Cattle Co puts a maximum discount of \$2000 per buyer per year on young rancher discounts.

What traits do we select for in the cowherd?

First, we select for functional traits including disposition, udder quality, feet and legs, fleshing ability and moderate mature size. Secondly, we select for calving ease, you will find most of the AI and natural service sires we use are in the top percentages within their breed for calving ease. On the ranch, the cow is on her own. In the spring I go through and tag once per day on everything but 2-year-old heifer's calves. Next, we select for a moderate, maternal cow with longevity (stayability) that lives on minimal inputs. Our cows usually graze year-round with only mineral, and protein supplement during the winter in semi-arid conditions in the Missouri River breaks. Fourth, we put as much growth into the cattle as we can without wrecking functional traits, calving ease and moderate sized cows with excellent maternal abilities. Lastly, we try to improve carcass traits when we don't wreck the rest of the selection criteria.

Bull birth weights: We only weigh the 2-year old's calves at birth. The 2-year old cow's calves are weighed on a Tru-Test scale. The cow bulls are hoof taped due to time factors and land topography; Jim, Will and I tag all the calves. The hoof tape is an estimate of birth weight; I think it is usually within 5 lbs. of the actual birth weight.

Our bulls are smaller than bulls at most other sales. There are good reasons why they are smaller at this time in their lives. Our bulls are born in April, not in January. These cattle are moderate framed cattle. Elephant cattle are bigger and have higher maintenance requirements. Our cattle live in the Missouri River breaks, without mountain meadow or irrigated pasture. We usually graze our cow herd year-round without harvested feedstuffs i.e., hay, haylage or silage, except in the worst conditions.

Thank you!
Dale & Janet

Quick Reference to ASA EPD and \$ Indexes

Expected Progeny Differences (EPD): EPD are the most accurate and effective tool available for comparing genetic levels. In using EPD, the difference between two sires' EPD represents the unit difference expected in the performance of their progeny. For example, if sires A and B have EPD of +10 and -5, a 15-unit difference would be expected in their progeny (moving from -5 to +10 yields 15 units). Key to using EPD is knowing what units they are expressed in. For example, if the above case referred to weaning weight EPD, A would be expected to sire 15-pounds more weaning weight than B. If calving ease were the trait, A would be expected to sire 15-percent more unassisted births in first-calf heifers; in other words, if B sired 30 assists in a group of 100 heifers, we'd expect A to require 15 assists. A percentile-ranking chart is required to determine where a bull's EPD rank him relative to other bulls in the breed. For percentile rankings or more detailed information about EPD and \$ indexes visit www.simmental.org. Listed below are the units ASA EPD are expressed in:

All-Purpose Index (API): Dollars per cow exposed under an all-purpose-sire scenario. (See below for more details.)

Back Fat (BF): Inches of backfat.

Birth Weight (BW): Pounds of birth weight.

Calving Ease (CE): Percent of unassisted births when used on heifers.

Carcass Weight (CW): Pounds of carcass weight.

Maternal Calving Ease (MCE): Percent of unassisted births in first-calving daughters.

Milk (MLK): Pounds of weaning weight due to milk.

Marbling (MRB): Marbling score.

Maternal Weaning Weight (MWW): Pounds of weaning weight due to milk and growth.

\$ Indexes: Though EPD allow for the comparison of genetic levels for many economically important traits, they only provide a piece of the economic puzzle. That's where \$ indexes come in. Through wellconceived, rigorous mathematical computation, \$ indexes blend EPD and economics to estimate an animal's overall impact on your bottom line. The same technology that led to the dramatic progress in swine, poultry and dairy genetics over the last several decades was used to develop the following \$ indexes:

All-Purpose Index (API): Evaluates sires for use on the entire cow herd (bred to both Angus first-calf heifers and mature cows) with the portion of their daughters required to maintain herd size retained and the remaining heifers and steers put on feed and sold grade and yield.

Terminal Index (TI): Evaluates sire for use on mature Angus cows with all offspring put on feed and sold grade and yield.

Using API and TI: First, determine which index to use; if you're keeping replacements use API, if not, TI. Then, just as with EPD, zero in on the unit difference between bulls. (As described above, index units are in dollars per cow exposed.) The difference can be used to determine how much a bull is worth compared to another. Or, put another way, how much you can pay for one bull compared to another. For example, when buying an all-purpose-type sire, you can quickly figure a bull scoring +100 for API is worth an extra \$6,000 over a +50 bull if both are exposed to 30 cows over 4 years ($\$50 \text{ diff.} \times 30 \text{ hd.} \times 4 \text{ yr.} = \$6,000$). A percentile-ranking chart is required to determine where a bull's index value ranks him relative to other bulls in the breed. For percentile rankings or more detailed information about EPD and \$ indexes visit www.simmental.org.

Ribeye Area (REA): Square inches of ribeye.

Warner-Bratzler Shear Force (WBSF): Pounds of force required to shear a steak.

Stayability (STAY): Percent of daughters remaining in the cowherd at 6 years of age.

Terminal Index (TI): Dollars per cow exposed under a terminal-sire scenario. (See below for more details.)

Weaning Weight (WW): Pounds of weaning weight.

Yearling Weight (YW): Pounds of yearling weight.

Yield Grade (YG): Yield grade score.

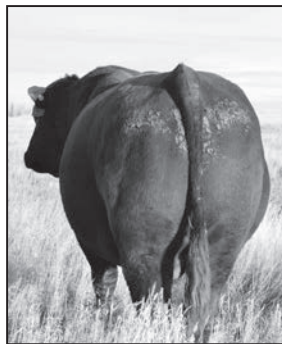
Reference Sires

DLC DLCC AR Go Big 651G



ASA#4281100. 50% DS 25% SS 18% SM 7% AN. The Veseth herd abbreviation is DLC.
I bought this bull from Aaron Rasmussen, he is the cowherd consultant for Leachman of Colorado. DLC is out of Aaron's best cow. This is the third calf crop we have by DLC. We calved his first daughters this year and they were exceptional. Moderate, beautiful udder and dark red. The DLC cattle display exceptional muscle and correctness in a small frame package and are a dark cherry red color. DLC's Genetic Enhanced EPDs (GE-EPDs) are in the top 25% for BW and the top 35% for CE. They include Sale Lots 11, 22, 27 and 65.

| CE | BW | WW | YW | ADG | MCE | MM | MWW | STAY | Doc | CW | YG | Marb | BF | REA | Shr | API | TI |
|------|------|------|------|------|-----|------|------|------|------|-----|-------|------|--------|------|-----|------|------|
| 14.8 | -1.3 | 53.3 | 78.5 | 0.16 | 8.3 | 20.7 | 47.2 | 3.6 | 11.5 | 9.9 | -0.32 | 0.07 | -0.072 | 0.45 | | 87.8 | 60.2 |



297 Veseth 297 Bull

ASA#3853136. The Veseth herd abbreviation is 297.
The Veseth herd abbreviation is 297. 297 is out of the old Buf Crk Lancer FL297 bull bred to my best cow. She was moderate framed, thick and easy fleshing. 297 is used for maternal value, calving ease, his progeny will perform, and they are moderate at maturity. Veseth 297 is a complete herd sire. He is the only bull I collected twice for a total of 600+ semen units.

Pictured at 8 years old, 2000 lbs, 44.5 SC.
Recorded highest BCS of Veseth Herd sires to date.

This is the most proven bull in my program. These cattle do it all! Good dispositions, calving ease, easy fleshing, good structure, good feed, excellent fertility and stayability. His daughters are truly exceptional, so he stays in our AI program. We used 297 for 8 years in natural service and will use all 600+ straws in the AI program. 297's GE-EPDs (Genetic Enhanced EPDs) put him in the top 2% for BW, the top 3% for CE and MCE and the top 15% for Doc. 297 has 5 sons. They include Sale Lots 8, 10, 13 and 58.

| CE | BW | WW | YW | ADG | MCE | MM | MWW | STAY | Doc | CW | YG | Marb | BF | REA | Shr | API | TI |
|------|------|------|-------|------|------|------|------|------|------|------|-------|------|--------|-----|-----|-------|------|
| 19.5 | -5.2 | 71.9 | 107.1 | 0.22 | 11.7 | 21.7 | 57.6 | 8.7 | 15.6 | 16.6 | -0.08 | 0.15 | -0.021 | 0.2 | | 121.3 | 77.5 |



MB Milwillah Marble Bar 53

RAAA#3567871. Veseth abbreviation is MB.
We have used MB for 3 years. He is an Australia bred bull. These cattle are structurally correct, have a great phenotype, larger scrotal circumference and dynamic performance. MBJ is a son of MB out of my best cow. We have included these bulls with the MB bulls. They include Sale Lots 9, 12 and 15.

| ProS | HB | GM | CED | BW | WW | YW | ADG | DMI | Milk | ME | HPG | CEM | STAY | Marb | YG | CW | REA | Fat |
|------|----|----|-----|-----|----|-----|------|------|------|----|-----|-----|------|------|------|----|------|------|
| 92 | 42 | 50 | 14 | 1.2 | 80 | 129 | 0.30 | 2.35 | 29 | 9 | 13 | 10 | 11 | 0.64 | 0.27 | 44 | 0.02 | 0.05 |

Reference Sires

855 Veseth CERA-SM



ASA#4271830. His abbreviation is 855.

855 is a 4th generation AI home raised bull stacking the pedigrees of WFL Merlin 18A 50% x RE (SM) 25% x BN 12.5% x HMH RA 12.5%. 855 has the highest ADG recorded on test 4.75 lbs / day. This bull is owned by our good friends and customers Sather Ranch. This is the 2nd calf crop by 855. We can calve him on heifers. They are moderate framed with explosive performance. 855's GE-EPDs put him in the top 15% for WW and the top 20% for YW. They include Sale Lots 3, 20, 26, 33 and 72.

| CE | BW | WW | YW | ADG | MCE | MM | MWW | STAY | Doc | CW | YG | Marb | BF | REA | Shr | API | TI |
|------|------|------|-------|------|-----|------|------|------|-----|------|-------|------|-------|------|-----|------|------|
| 13.2 | -0.1 | 88.4 | 134.5 | 0.29 | 8.0 | 19.7 | 63.8 | 3.5 | 9.1 | 16.2 | -0.22 | 0.04 | -0.06 | 0.32 | | 99.1 | 79.8 |



PJ Veseth PJ

ASA#4137224. Veseth herd abbreviation is PJ.

PJ was a bull sold in our sale that we bought back from our cattle partner Keith VandeSandt. He is a KCC Pinnacle 949 - 109 son out of an exceptional Buf CrK Lancer FL 297 daughter. This is PJ's 4th AI calf crop on the ranch. He is traditionally the easiest calving sire in our heifer program. The bulls have a great phenotype, perform well on test and are dark red! PJ's GE-EPDs (Genetic Enhanced EPDs) are in the top 1% MCE, the top 2% for CE, the top 3% for BW and the top 4% for Doc. His sons sell in Lots 2, 55, 57, 59 and 61.

| CE | BW | WW | YW | ADG | MCE | MM | MWW | STAY | Doc | CW | YG | Marb | BF | REA | Shr | API | TI |
|------|------|------|-------|------|------|------|------|------|------|------|------|------|-------|-------|-----|-------|------|
| 20.7 | -4.9 | 72.6 | 119.5 | 0.29 | 14.8 | 21.3 | 57.4 | 10.2 | 18.3 | 16.0 | 0.11 | 0.19 | 0.024 | -0.06 | | 124.4 | 80.8 |



VB Veseth 18A Balancer 55

ASA#4271217. Veseth herd abbreviation is VB.

He is 1/2 RA and 1/2 GV. VB is sired by WFL Merlin 18A (RA) bull out of a Kicking Horse Gelbvieh cow with a beautiful udder and low birth weight. He sold to our long-time customers, Olsen Ranch JV LLC in 2021. This is our 2nd calf crop out of our AI program. The calves are born smaller than average, have great calf vigor, are long bodied, grow like weeds and are dark colored. VB's GE-EPDs put him in the top 2% for Terminal index, the top 4% for Maternal WW, the top 10% for WW, the top 15% for Doc and the top 20% for YW. They include Sale Lots 5, 47 and 52.

| CE | BW | WW | YW | ADG | MCE | MM | MWW | STAY | Doc | CW | YG | Marb | BF | REA | Shr | API | TI |
|------|------|------|-------|------|-----|------|------|------|------|-----|-------|------|-------|------|-----|-------|-------|
| 13.1 | -0.1 | 92.8 | 136.7 | 0.27 | 6.9 | 30.0 | 76.4 | 6.3 | 15.8 | 4.2 | -0.31 | 0.21 | -0.06 | 0.44 | | 136.2 | 101.6 |



FT GGT Flamethrower 923G

ASA#738233. Veseth herd abbreviation is FT.

1/2 RA x 1/2 Saler. Homozygous polled. We have sampled FT over 2 years using 30 straws. We will calve his first heifers this year. We are impressed thus far with FT calves. We like the daughters best; we kept 7 head in the replacements, and they all bred; 2 in the latter group. If we are pleased with the daughters in production, we intend to buy more semen. Their disposition is good, and they match our cattle in frame size. Some of the bulls are standouts for performance and the Marbling and Ribeye area was impressive on the 2023 bulls. His GE-EPDs are the top 5% for BW. They include Sale Lots 43 and 50.

| CE | BW | WW | YW | ADG | MCE | MM | MWW | STAY | Doc | CW | YG | Marb | BF | REA | Shr | API | TI |
|------|------|------|------|------|-----|------|------|------|------|-----|-------|-------|--------|------|-----|-------|------|
| 14.0 | -4.0 | 59.8 | 93.6 | 0.21 | 7.4 | 18.6 | 48.4 | 14.1 | 12.5 | 6.8 | -0.25 | -0.01 | -0.052 | 0.36 | | 135.3 | 79.8 |

Reference Sires

AC Bieber CL Atomic C218



RAAA#3474996. Veseth Abbreviation is AC.

This is an old Select Sires bull. Westphal Red Angus were using AC and his calves were good and topping their sale. This is his first calf crop here and we will start the sale with one. We used him again in 2023 and bought the last of his semen in the Select Sires System for 2024. They include Sale Lots 1, 7, 14, 53 and 54.

| ProS | HB | GM | CED | BW | WW | YW | ADG | DMI | Milk | ME | HPG | CEM | STAY | Marb | YG | CW | REA | Fat |
|------|----|----|-----|------|----|-----|------|------|------|----|-----|-----|------|------|------|----|------|------|
| 81 | 27 | 54 | 17 | -3.6 | 75 | 128 | 0.34 | 1.94 | 31 | 5 | 9 | 11 | 11 | 0.57 | 0.11 | 28 | 0.03 | 0.02 |

RH Veseth Record Holder

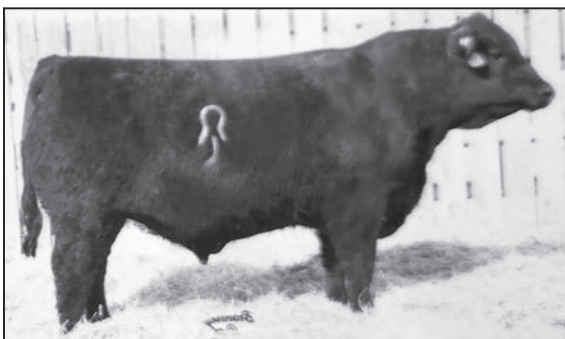


ASA#4271832. Veseth abbreviation is RH.

Veseth abbreviation is RH. This is a home-grown bull and as his name implies after 30 years of raising bulls RH is a 3.88 lb Weight per day of Age. (WDA). A new record for the ranch. His birth weight was 81 lbs and 365 days later he weighed 1421 lbs. RH's Genetic Enhanced EPDs (GE-EPDs) put him in the top 2% for ADG, the top 3% for YW, the top 10% for WW and Doc; From BW EPDs to Yearling EPDs RH has a whopping 157lb spread. These are his first sons, and one will make the performance pen. They include Sale Lots 4, 17, 18, 19, 23 and 24.

| CE | BW | WW | YW | ADG | MCE | MM | MWW | STAY | Doc | CW | YG | Marb | BF | REA | Shr | API | TI |
|------|------|------|-------|-----|-----|------|------|------|------|------|------|------|--------|------|-----|-------|------|
| 13.1 | -0.3 | 92.7 | 156.8 | 0.4 | 8.1 | 19.9 | 66.1 | 3.4 | 17.0 | 23.9 | -0.1 | 0.11 | -0.029 | 0.29 | | 103.4 | 83.7 |

DV Leachman Devout X799D



ASA#3144310. Veseth herd abbreviation is DV.

DV is the third bull we have used from the Leachman program. They are very balanced for all traits. DV has good calving ease, we like the looks of his daughters best. We used him again in our AI program this year. His Leachman Total Profit # is \$26,403 which puts him in the top 1% of all cattle tested. He is heterozygous black, so we do have some black bulls in the sale. DV is in the top 1% for calving ease, Direct Birth Wt and Maternal Calving Ease. The top 10% for Marbling and All purpose index (API). The top 20% for Docility and the top 25% for the Terminal Index (TI). They include Sale Lots 64, 71, 73 and 74.

| CE | BW | WW | YW | ADG | MCE | MM | MWW | STAY | Doc | CW | YG | Marb | BF | REA | Shr | API | TI |
|------|------|------|------|------|------|------|------|------|------|------|-------|------|--------|------|-----|-------|------|
| 23.4 | -6.3 | 58.2 | 98.5 | 0.25 | 13.3 | 16.9 | 46.2 | 10.6 | 14.7 | 25.9 | -0.17 | 0.74 | -0.027 | 0.52 | | 161.9 | 86.3 |

HB Bar CK Herd Builder 7048E



ASA #3370568. Veseth herd abbreviation is HB.

5/8 Simmental 3/8 AN. We bought this bull out of Washington State several years ago. We liked his daughters in production and started using him on heifers. It was a small sample, but we did not touch one calf. HB might be the proverbial sleep all night calving ease sire. HB is in the top 1% for CE. The top 2% for Bwt. The top 4% for Maternal Calving Ease (MCE) and stayability. The top 15% for API. They include Sale Lots 69 and 70.

| CE | BW | WW | YW | ADG | MCE | MM | MWW | STAY | Doc | CW | YG | Marb | BF | REA | SF | API | TI |
|------|------|------|------|------|------|------|------|------|-----|-----|-------|------|--------|------|-------|-------|------|
| 22.1 | -5.0 | 47.8 | 67.4 | 0.12 | 11.0 | 24.3 | 48.1 | 19.5 | 8.6 | 7.6 | -0.38 | 0.39 | -0.052 | 0.76 | -0.44 | 154.3 | 71.7 |

Reference Sires



HM Lazy TV Homemade G420

AMGV #1450862. Veseth herd abbreviation is HM.

62% GV 37.5 % RA. Homo Polled. Veseth herd abbreviation is HM. HM is a herd sire at Thortensen's Lazy TV Ranch at Selby, SD. Thorstensen's have been selecting cattle based on feed conversion data or Low Residual Feed Intake (RFI) for 10 years. They have made as much progress as any breeder in North America. I thought HM's sire group was best for RFI in their 200 bulls sired from 18 different Red Angus, Gelbvieh and Simmental breeds. We purchased a son of HM due to HM's limited semen inventory. 414 is HM's most efficient son sold to date with a negative Residue Feed Intake of -7.3. That number puts him in the most feed efficient .3 of 1% of the entire IGS data base. Calves sell in Sale Lots 6 and 51.

| CE | BW | WW | YW | M | TM | HP | PG30 | ST | Doc | SC | DMI | YG | CW | REA | MARB | FAT | ADG | RFI | SCOW | FPI | EPI |
|----|------|----|-----|----|----|------|-------|----|-----|------|------|------|----|-----|------|------|------|------|--------|-------|--------|
| 17 | -2.6 | 89 | 132 | 32 | 76 | 15.2 | -1.56 | 17 | 10 | 1.60 | .126 | -.19 | 47 | .84 | .21 | -.03 | .134 | -.33 | 125.79 | 92.82 | 209.49 |



EG Bieber CL Energize F121

RAAA#3958815. Veseth Abbreviation is EG.

EG is one of the most highly used Red Angus sires in the breed today. He has a great phenotype with tremendous thickness throughout. He is advertised to improve feet and the calves have excellent dispositions. His EPD profile is outstanding. EG is in the top 5% for B Wt. The top 6% for CED, ADG, and Grid Master (GM). The top 9% for CEM. The top 10% for REA. The top 12% for ProS (Index). The top 19% for CW and MARB and the top 20% for YW. They include Sale Lots 56 and 60.

| ProS | HB | GM | CED | BW | WW | YW | ADG | DMI | Milk | ME | HPG | CEM | STAY | Marb | YG | CW | REA | Fat |
|------|----|----|-----|------|----|-----|------|------|------|----|-----|-----|------|------|------|----|------|------|
| 110 | 43 | 67 | 17 | -5.4 | 65 | 113 | 0.30 | 1.42 | 29 | 2 | 15 | 6 | 13 | 0.57 | 0.01 | 27 | 0.40 | 0.02 |



Maternal Brother to BN

BN Veseth BN 68

ASA#4271355. Veseth Herd Abbreviation is BN.

BN 68 is a natural service sire we used for 5 years. He was my favorite Burlington Northern (BN) son that we used and AI'd in our herd for years. BN 68 is out of our B166 cow; she is moderate, easy fleshing and is a beautiful phenotypic example of what a cow should look like. One of these years she will be headed to the ET donor pen. BN 68 was 1 of 30+ natural service sires that sired calves for us in 2022. After we DNA tested the bulls this year we found he had sired 12 bulls of the 92 bulls we sent to the Hould Development Center. Some of them are sale toppers. The ranch will buy 2 of these sons back in the sale to keep this important line of cattle in our breeding program. (Not to be mean to our customers). These are smaller framed, thick made cattle with less birth weight than average. BN's GE-EPDs put him in the top 1% for Maternal WW. His sons include Lots 28, 32, 35, 39, 40, 42, 45, 62, 66 and 67.

| CE | BW | WW | YW | ADG | MCE | MM | MWW | STAY | Doc | CW | YG | Marb | BF | REA | Shr | API | TI |
|------|------|------|-------|------|------|------|------|------|------|------|-------|------|--------|------|-----|-------|------|
| 20.7 | -1.6 | 73.7 | 116.6 | 0.27 | 12.9 | 21.4 | 58.1 | 5.7 | 14.0 | -2.1 | -0.29 | 0.18 | -0.068 | 0.24 | | 115.4 | 76.7 |

MMS Mature Cowherd Multiple Sires

All cows 5 years old through 11 years are run in the largest herd possible to conserve forage by rapidly rotating pastures. We don't use Artificial Insemination (AI) on this group because we are not tough enough to be successful because of herd size, pasture size and cow age. These are our older proven cows and usually this group has the most performance in our sale. One reason for this is that the selection pressure in this group is the hardest. Each MMS calf stands on his own merit. If there is a problem, he is a steer. Most of the sires are home raised and the best ones are sampled in our AI program.



US Meat Animal Research Center

*Comparing Breed, Heterosis Effects on Mature Weight
by Dr. Robert Hough, The Register, October 2023.*

Comparing Mature weights across 16 breeds, the US Meat Animal Research Center (USMARC) studied 5,156 cows with 108,957 weight records. The average weight for age adjusted cows was 1430 pounds. The study's heritability estimate for mature cow weight was 0.56, indicating that this trait responds rapidly to selection. The following data uses Angus as the basis for comparison.

| BREED | MATURE COW WEIGHT DIFFERENCE |
|-----------------|------------------------------|
| Angus | 0.0 |
| Charolais | -19.6 |
| Hereford | -38.5 |
| Salers | -54.6 |
| Santa Gertrudis | -66.7 |
| Simmental | -73.5 |
| Maine Anjou | -81.2 |
| Limousin | -95.3 |
| Red Angus | -98.6 |
| Brangus | -108.2 |
| Chiangus | -119.9 |
| Shorthorn | -132.4 |
| Gelbveigh | -145.4 |
| Beefmaster | -151.4 |
| Braunveih | -300.7 |

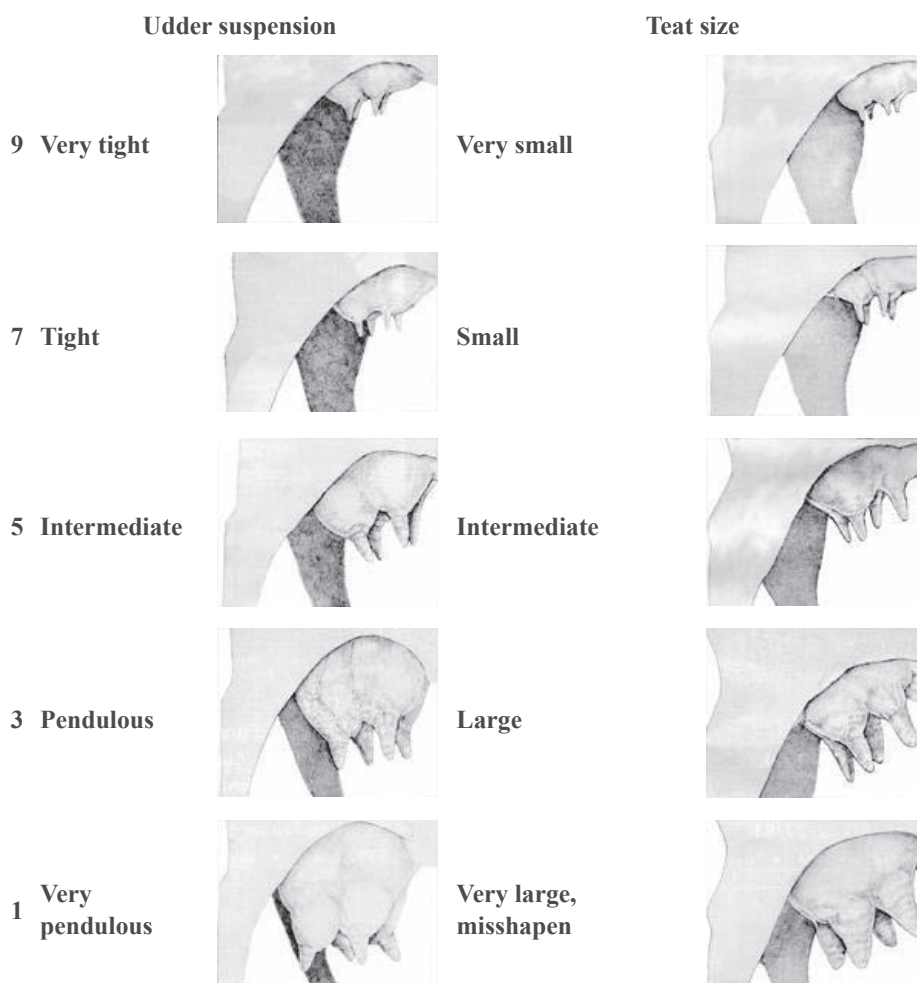
The Veseth Hybrid Red Composite average was -113 pounds less than Angus for mature cow weight.

What is a genomic test and why does a GE-EPD benefit a bull buyer?

To put it simply, DNA genomic tests study the genetics inherited by the animal and how those genes interact to express phenotype, i.e., traits that can be measured. The GGP-uLD panel is recommended for herd sires or replacement heifers and is considered an excellent cost effective DNA testing option and yields ~31,000 SNP markers. Each animal's results go through the ASA genetic evaluation powered by IGS-BOLT and are added to the animal's Expected Progeny Differences (EPDs), therefore increasing the accuracy of the EPDs. For some traits it's the equivalent of having up to 25 progeny already recorded to that individual. Utilizing genomic testing helps us to evaluate animal's at a younger age with a higher level of confidence and provides another tool that can be used for selection or purchasing criteria by bull buyer's.

Phenotype

Deliberate, annual evaluation of udder quality is an essential component of cow-calf production. The Beef Improvement Federation recommends scoring udder suspension and teat size annually on cows within 24 hours of the cow giving birth. These subjective numerical scores (see table below) can easily be assigned in the pasture. Scores should be assigned according to the worst quarter of the cow's udder. To ensure consistency and facilitate comparison of records, preferably one person should evaluate all cows each year and across years. Written notes about abnormal shapes or characteristics other than udder suspension and teat size may be useful.



High Performing Bulls *Group 1*

Group 1 will include the high performing bulls from all groups. These bulls will sell first in the sale.

Look for individual lot numbers in Performance Pen (Pen 1).

| Calf Info | | | | | | | | | | | | Dam Info | | | | Preg-Test | | | |
|-----------|---------|---------------------------|-----------------|----------------|--------------|---------------------------|-----------------|----------------|----------|-------------|-------------|------------|-------------|------------------|------|-----------------|------------------------|-----|----------------|
| Sale Lot | Calf ID | Calving Year Calf Sire ID | Calf Birth Date | Calf Birth Wt. | Calving Ease | Adj 205 Day Wt Bulls Only | NR (Bulls - PC) | Avg Daily Gain | Dec 6 Wt | Frame Score | Poll Status | Age of Dam | Dam Sire ID | Udder Suspension | Teat | Fall Cow Weight | Weaning % (205/cow wt) | BCS | Fall Preg Test |
| 1 | 126 | AC | 4/16/23 | 97 | 1 | 712 | 114 | 3.45 | 929 | 6.1 | P | 5 | PB/NC | 9 | 8 | | | | |
| 2 | 24 | PJ | 3/27/23 | 70 | 1 | 647 | 104 | 3.84 | 828 | 4.8 | P | 2 | LD | 9 | 9 | 1060 | 61% | 4 | B |
| 3 | 30 | 855 | 3/28/23 | 68 | 1 | 691 | 111 | 3.59 | 837 | 5.3 | P | 2 | FP | 9 | 8 | 810 | 85% | 4 | B |
| 4 | 135 | RH | 4/15/23 | 88 | 1 | 656 | 106 | 3.40 | 811 | 5.6 | P | 3 | BN/SKC | 9 | 9 | 1230 | 53% | 4 | B |
| 5 | 125 | VB | 4/16/23 | 95 | 1 | 699 | 112 | 3.94 | 897 | 5.6 | P | 5 | HBMS | 9 | 9 | 1260 | 55% | 5 | B |
| 6 | 159 | 414 | 4/21/23 | 84 | 1 | 625 | 101 | 4.11 | 808 | 4.8 | P | 4 | SX | 9 | 9 | 1135 | 55% | 5 | L |

Red Angus Maternal *Group 2*

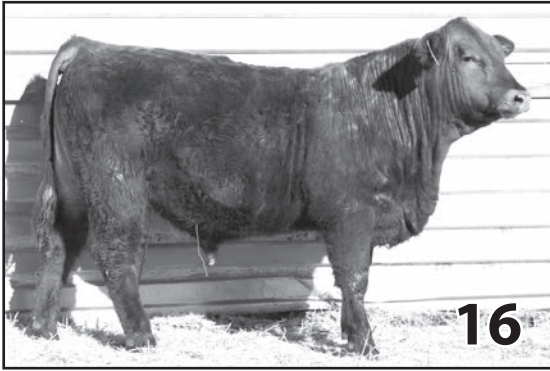
| Calf Info | | | | | | | | | | | | Dam Info | | | | Preg-Test | | | |
|-----------|---------|---------------------------|-----------------|----------------|--------------|---------------------------|-----------------|----------------|----------|-------------|-------------|------------|-------------|------------------|------|-----------------|------------------------|-----|----------------|
| Sale Lot | Calf ID | Calving Year Calf Sire ID | Calf Birth Date | Calf Birth Wt. | Calving Ease | Adj 205 Day Wt Bulls Only | NR (Bulls - PC) | Avg Daily Gain | Dec 6 Wt | Frame Score | Poll Status | Age of Dam | Dam Sire ID | Udder Suspension | Teat | Fall Cow Weight | Weaning % (205/cow wt) | BCS | Fall Preg Test |
| 7 | 131 | AC | 4/13/23 | 86 | 1 | 690 | 111 | 3.86 | 872 | 6.1 | P | 4 | MBMS | 9 | 9 | 1080 | 64% | 5 | B |
| 8 | 121 | 297 | 4/16/23 | 80 | 1 | 661 | 106 | 3.31 | 837 | 6.1 | P | 5 | | 9 | 9 | 1210 | 55% | 5 | B |
| 9 | 63 | MBJ | 4/6/23 | 87 | 1 | 645 | 104 | 4.07 | 852 | 5.9 | P | 3 | BN/LET | 9 | 9 | 1115 | 58% | 4 | B |
| 10 | 60 | 297 | 4/11/23 | 82 | 1 | 633 | 102 | 3.20 | 820 | 5.1 | P | 5 | | 9 | 9 | 1135 | 56% | 5 | B |
| 11 | 93 | MB | 4/9/23 | 94 | 1 | 622 | 100 | 2.99 | 778 | 5.5 | P | 3 | PJ/RE | 8 | 8 | 986 | 63% | 3 | B |
| 12 | 168 | MBJ | 4/21/23 | 77 | 1 | 615 | 99 | 3.79 | 790 | 4.3 | P | 5 | PB | 9 | 8 | 1205 | 51% | 6 | B |
| 13 | 89 | 297 | 4/8/23 | 87 | 1 | 572 | 92 | 4.04 | 773 | 5.5 | P | 4 | | 9 | 9 | 1450 | 39% | 6 | B |
| 14 | 142 | AC | 4/15/23 | 85 | 1 | 596 | 96 | 3.20 | 786 | 5.6 | P | 4 | | 9 | 9 | 1050 | 57% | 3 | B |
| 15 | 104 | MB | 4/11/23 | 86 | 1 | 575 | 92 | 3.98 | 816 | 5.1 | P | 3 | DOM | 9 | 9 | 1125 | 51% | 4 | B |



English Influenced Maternal Hybrid *Group 3*

| Calf Info | | | | | | | | | | | | Dam Info | | | | Preg-Test | | | |
|-----------|---------|---------------------------|-----------------|----------------|--------------|---------------------------|-----------------|----------------|----------|-------------|-------------|------------|-------------|------------------|------|-----------------|------------------------|-----|----------------|
| Sale Lot | Calf ID | Calving Year Calf Sire ID | Calf Birth Date | Calf Birth Wt. | Calving Ease | Adj 205 Day Wt Bulls Only | NR (Bulls - PC) | Avg Daily Gain | Dec 6 Wt | Frame Score | Poll Status | Age of Dam | Dam Sire ID | Udder Suspension | Teat | Fall Cow Weight | Weaning % (205/cow wt) | BCS | Fall Preg Test |
| 16 | 200 | MMS | 4/23/23 | 92 | 1 | 761 | 122 | 3.68 | 855 | 4.8 | P | 10 | NK | 7 | 8 | 1300 | 59% | 4 | O |
| 17 | 130 | RH | 4/13/23 | 85 | 1 | 658 | 106 | 3.69 | 848 | 5.6 | P | 4 | BN | 9 | 9 | 1270 | 51% | 4 | B |
| 18 | 87 | RH | 4/15/23 | 88 | 1 | 675 | 108 | 3.09 | 807 | 5.1 | P | 5 | BN/BI | 8 | 9 | 1195 | 56% | 4 | B |
| 19 | 157 | RH | 4/20/23 | 85 | 1 | 655 | 105 | 3.38 | 819 | 5.2 | P | 3 | RE/RD/LET | 9 | 9 | 1030 | 64% | 5 | B |
| 20 | 3 | 855 | 3/22/23 | 86 | 1 | 642 | 103 | 3.93 | 878 | 4.7 | P | 2 | MMS | 9 | 9 | 920 | 70% | 4 | B |
| 21 | 188 | MMS | 4/23/23 | 85 | 1 | 641 | 103 | 3.86 | 858 | 6.3 | P | 9 | OLY/NB | 9 | 8 | 1405 | 46% | 5 | B |
| 22 | 70 | RH | 4/8/23 | 85 | 1 | 631 | 102 | 3.89 | 833 | 5.1 | P | 3 | MMS | 9 | 9 | 1140 | 56% | 4 | B |
| 23 | 134 | RH | 4/15/23 | 82 | 1 | 603 | 97 | 2.99 | 758 | 5.5 | P | 3 | BN | 9 | 8 | 1080 | 59% | 4 | B |
| 24 | 102 | RH | 4/11/23 | 90 | 1 | 602 | 97 | 3.49 | 779 | 4.8 | P | 3 | VIC/18A | 9 | 9 | 1180 | 51% | 4 | B |
| 25 | 175 | MMS | 4/22/23 | 87 | 1 | 594 | 95 | 3.78 | 758 | 4.8 | P | 6 | RK/R034 | 8 | 7 | 1150 | 52% | 4 | B |
| 26 | 31 | 855 | 3/28/23 | 80 | 1 | 592 | 95 | 3.84 | 766 | 5.2 | P | 2 | FP | 9 | 9 | 988 | 60% | 4 | B |
| 27 | 146 | DLC | 4/16/23 | 88 | 1 | 579 | 93 | 3.61 | 753 | 5.5 | P | 3 | MMS/R034 | 9 | 9 | 1075 | 55% | 4 | B |
| 28 | 73 | BN68 | 4/10/23 | 75 | 1 | 576 | 93 | 3.34 | 784 | 5.1 | P | 6 | FUS/PAC | 8 | 8 | 1225 | 48% | 4 | B |





After 87 days on feed at Hould Development Center
our 93 bulls had an average daily gain of 3.54 lbs / day.
This is a new average record for our ranch.

Continental Influenced Maternal Hybrid *Group 4*

| Calf Info | | | | | | | | | | | | Dam Info | | | | Preg-Test | | | |
|-----------|---------|---------------------------|-----------------|----------------|--------------|---------------------------|-----------------|----------------|----------|-------------|-------------|------------|-------------|------------------|------|-----------------|------------------------|-----|----------------|
| Sale Lot | Calf ID | Calving Year Calf Sire ID | Calf Birth Date | Calf Birth Wt. | Calving Ease | Adj 205 Day Wt Bulls Only | NR (Bulls - PC) | Avg Daily Gain | Dec 6 Wt | Frame Score | Poll Status | Age of Dam | Dam Sire ID | Udder Suspension | Teat | Fall Cow Weight | Weaning % (205/cow wt) | BCS | Fall Preg Test |
| 30 | 186 | MMS | 4/22/23 | 94 | 1 | 779 | 125 | 4.20 | 915 | 6.3 | P | 9 | BW | 8 | 7 | 1170 | 67% | 5 | B |
| 31 | 179 | 876 | 4/22/23 | 95 | 1 | 776 | 125 | 4.02 | 942 | 6.8 | P | 6 | HBMS | 8 | 9 | 1450 | 54% | 5 | B |
| 32 | 204 | BN68 | 4/23/23 | 95 | 1 | 757 | 122 | 3.40 | 848 | 5.3 | P | 7 | HBMS | 9 | 8 | 1245 | 61% | 4 | O |
| 33 | 2 | 855 | 3/22/23 | 80 | 1 | 731 | 118 | 3.74 | 880 | 5.1 | P | 2 | RE | 9 | 9 | 936 | 78% | 4 | B |
| 34 | 54 | MMS | 4/8/23 | 85 | 1 | 697 | 112 | 3.79 | 838 | 5.0 | P | 8 | | 8 | 8 | 1320 | 53% | 5 | B |
| 35 | 84 | BN68 | 4/14/23 | 77 | 1 | 692 | 111 | 2.92 | 788 | 5.1 | P | 9 | GWS | 8 | 8 | 1255 | 55% | 3 | B |
| 36 | 40 | PRK | 4/1/23 | 85 | 1 | 681 | 109 | 2.59 | 772 | 6.3 | P | 2 | | 9 | 9 | 1050 | 61% | 4 | B |
| 37 | 202 | XTR | 4/23/23 | 80 | 1 | 669 | 108 | 3.11 | 802 | 6.8 | P | 10 | RA | 9 | 7 | 1185 | 56% | 4 | B |
| 38 | 201 | 876 | 4/23/23 | 92 | 1 | 657 | 106 | 3.68 | 783 | 5.8 | P | 10 | | 9 | 8 | 1280 | 51% | 4 | B |
| 39 | 163 | BN68 | 4/17/23 | 82 | 1 | 651 | 105 | 3.39 | 830 | 6.2 | P | 8 | MS | 8 | 7 | 1465 | 44% | 5 | B |
| 40 | 115 | BN68 | 4/15/23 | 85 | 1 | 642 | 103 | 3.51 | 828 | 5.1 | P | 6 | IO | 9 | 8 | 1365 | 47% | 5 | B |
| 41 | 83 | MMS | 4/14/23 | 85 | 1 | 634 | 102 | 3.33 | 803 | 6.1 | P | 6 | HBMS | 9 | 9 | 1490 | 43% | 6 | B |
| 42 | 80 | BN68 | 4/14/23 | 82 | 1 | 636 | 102 | 3.18 | 814 | 4.6 | P | 7 | HBMS | 8 | 8 | 1270 | 50% | 5 | B |
| 43 | 173 | FT | 4/22/23 | 90 | 1 | 636 | 102 | 3.86 | 808 | 5.8 | P | 5 | | 9 | 9 | 1245 | 51% | 5 | B |
| 44 | 161 | XTR | 4/13/23 | 77 | 1 | 630 | 101 | 3.45 | 819 | 5.6 | P | 6 | HBMS | 8 | 8 | 1480 | 43% | 5 | B |
| 45 | 53 | BN68 | 4/8/23 | 89 | 1 | 628 | 101 | 3.65 | 804 | 4.5 | P | 6 | RK | 8 | 9 | 1380 | 46% | 5 | O |
| 46 | 56 | MMS | 4/8/23 | 90 | 1 | 621 | 100 | 3.88 | 770 | 5.0 | P | 9 | | 9 | 8 | 1195 | 52% | 5 | B |
| 47 | 71 | VB | 4/8/23 | 88 | 1 | 613 | 99 | 3.67 | 780 | 5.0 | P | 3 | DOM/BM | 9 | 9 | 1205 | 51% | 5 | B |
| 48 | 57 | XTR | 4/8/23 | 80 | 1 | 611 | 98 | 4.08 | 821 | 5.0 | P | 8 | | 9 | 9 | 1310 | 47% | 5 | B |
| 49 | 171 | HAD | 4/20/23 | 87 | 1 | 602 | 97 | 3.53 | 768 | 5.7 | P | 6 | BN | 9 | 9 | 1355 | 44% | 5 | B |
| 50 | 137 | FT | 4/15/23 | 90 | 1 | 596 | 96 | 3.89 | 811 | 5.1 | P | 4 | SX | 9 | 8 | 1205 | 49% | 5 | B |
| 51 | 72 | HM | 4/8/23 | 82 | 1 | 602 | 97 | 4.26 | 840 | 5.0 | P | 4 | | 9 | 9 | 984 | 61% | 4 | B |
| 52 | 123 | VB | 4/16/23 | 80 | 1 | 593 | 95 | 3.41 | 776 | 5.2 | P | 5 | SM | 9 | 9 | 1150 | 52% | 5 | B |



30



31



32



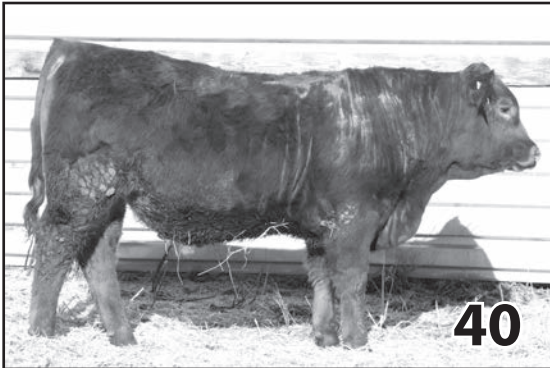
33



34



35



40



44



50

Red Angus Calving Ease Group 5

| Calf Info | | | | | | | | | | | | Dam Info | | | | Preg-Test | | | |
|-----------|---------|---------------------------|-----------------|----------------|--------------|---------------------------|-----------------|----------------|----------|-------------|-------------|------------|-------------|------------------|------|-----------------|------------------------|-----|----------------|
| Sale Lot | Calf ID | Calving Year Calf Sire ID | Calf Birth Date | Calf Birth Wt. | Calving Ease | Adj 205 Day Wt Bulls Only | NR (Bulls - PC) | Avg Daily Gain | Dec 6 Wt | Frame Score | Poll Status | Age of Dam | Dam Sire ID | Udder Suspension | Teat | Fall Cow Weight | Weaning % (205/cow wt) | BCS | Fall Preg Test |
| 53 | 100 | AC | 4/11/23 | 75 | 1 | 608 | 98 | 3.68 | 743 | 5.5 | S | 4 | | 9 | 9 | 1170 | 52% | 4 | B |
| 54 | 91 | AC | 4/9/23 | 76 | 1 | 611 | 98 | 3.08 | 768 | 5.0 | P | 4 | MBMS | 9 | 9 | 1040 | 59% | 3 | B |
| 55 | 34 | PJ | 3/29/23 | 69 | 1 | 607 | 98 | 3.20 | 732 | 4.3 | P | 2 | MMS | 9 | 9 | 952 | 64% | 4 | B |
| 56 | 5 | EG | 3/23/23 | 70 | 1 | 577 | 93 | 3.34 | 754 | 4.2 | P | 2 | DLC | 9 | 9 | 1025 | 56% | 5 | B |
| 57 | 33 | PJ | 3/29/23 | 64 | 1 | 577 | 93 | 3.31 | 774 | 5.3 | P | 2 | GR | 9 | 9 | 998 | 58% | 4 | B |
| 58 | 103 | 297 | 4/11/23 | 68 | 1 | 572 | 92 | 2.94 | 704 | 4.6 | P | 3 | MMS | 9 | 9 | 1040 | 55% | 5 | B |
| 59 | 18 | PJ | 3/25/23 | 66 | 1 | 569 | 91 | 3.88 | 776 | 4.2 | P | 2 | TP | 8 | 9 | 952 | 60% | 4 | B |
| 60 | 41 | EG | 4/1/23 | 76 | 1 | 566 | 91 | 3.71 | 737 | 3.9 | P | 2 | TP | 9 | 9 | 1015 | 56% | 4 | B |
| 61 | 32 | PJ | 3/29/23 | 79 | 1 | 547 | 88 | 3.88 | 699 | 3.3 | P | 2 | DB | 9 | 9 | 878 | 62% | 4 | B |

Veseth Veterinarian

I have served as the veterinarian for the Veseth cattle herd since the late 1970's. Over the years, Dale and company have selected and culled for many factors to create a uniform herd that is easy-calving and easy-handling, with superior performance on range and in the feedlot.

The herd health procedures include annually: preg-testing, branding, preconditioning, pre-breeding, and bull-testing programs. Breeding females are vaccinated with PregGuard and a clostridial/hemophilus vaccine prior to breeding their first year and each year after at preg-test.

Branding vaccines for the calves this year (Pyramid5/Presponse and Vision7) were administered by the Veseth crew, along with a trace mineral drench.

At preconditioning this past fall, Nasalgen3 PMH, Vision7/Somnus, mycoplasma, Piliguard Pinkeye, and Endovac were administered by myself and my staff, as well as a chelated trace mineral drench and CleanUp 2. Bull prospects were given Fusoguard as well. Heifer calves for replacements were selected and Brucellosis-vaccinated after weaning. All calves were given a booster dose of Hemophilus after weaning, by Dale's crew. Bull prospects received a 2nd dose of Fusoguard. Bulls are tested prior to sale (or turn-out) and given PregGuard. Pour-on products are used according to the need: flies, lice, and internal parasites.

I have had the opportunity to see Veseth Bulls in other herds where I work. They seem to be quite durable, working well for 8-9 years for some. The calves they sire also seem to be more laid-back and easy to process. I believe this is because of the effort Dale puts into low-stress handling techniques and rigorous selection for good attitudes.

Anne H Johnson, DVM Malta, Montana



Hybrid Calving Ease Group 6

| Calf Info | | | | | | | | | | | | Dam Info | | | | Preg-Test | | | |
|-----------|---------|---------------------------|-----------------|----------------|--------------|---------------------------|-----------------|----------------|----------|-------------|-------------|------------|-------------|------------------|------|-----------------|------------------------|-----|----------------|
| Sale Lot | Calf ID | Calving Year Calf Sire ID | Calf Birth Date | Calf Birth Wt. | Calving Ease | Adj 205 Day Wt Bulls Only | NR (Bulls - PC) | Avg Daily Gain | Dec 6 Wt | Frame Score | Poll Status | Age of Dam | Dam Sire ID | Udder Suspension | Teat | Fall Cow Weight | Weaning % (205/cow wt) | BCS | Fall Preg Test |
| 62 | 210 | BN68 | 4/25/23 | 70 | 1 | 671 | 108 | 3.49 | 801 | 6.3 | P | 7 | RE/GWS | 9 | 8 | 1370 | 49% | 5 | B |
| 63 | 174 | HAD | 4/22/23 | 75 | 1 | 639 | 103 | 3.69 | 772 | 4.8 | P | 7 | LET | 8 | 9 | 1135 | 56% | 5 | B |
| 64 | 9 | DV | 3/23/23 | 80 | 1 | 625 | 100 | 4.32 | 835 | 4.7 | P | 2 | MB | 9 | 9 | 1065 | 59% | 4 | L |
| 65 | 94 | DLC | 4/9/23 | 72 | 1 | 589 | 95 | 3.78 | 763 | 4.5 | P | 4 | | 9 | 9 | 1150 | 51% | 5 | B |
| 66 | 119 | BN68 | 4/16/23 | 70 | 1 | 586 | 94 | 3.35 | 718 | 4.7 | P | 8 | | 9 | 9 | 1315 | 45% | 5 | O |
| 67 | 166 | BN68 | 4/21/23 | 75 | 1 | 582 | 93 | 3.32 | 762 | 5.8 | P | 7 | ACV | 8 | 8 | 1300 | 45% | 5 | B |
| 68 | 29 | BS15 | 3/28/23 | 68 | 1 | 571 | 92 | 3.44 | 712 | 4.3 | P | 2 | MMS | 9 | 9 | 956 | 60% | 4 | B |
| 69 | 11 | HB | 3/24/23 | 65 | 1 | 554 | 89 | 3.84 | 731 | 4.7 | P | 2 | PM | 9 | 9 | 834 | 66% | 4 | B |
| 70 | 27 | HB | 3/27/23 | 70 | 1 | 549 | 88 | 3.48 | 704 | 3.3 | P | 2 | 297 | 9 | 9 | | | | |
| 71 | 8 | DV | 3/23/23 | 70 | 2 | 546 | 88 | 3.34 | 709 | 3.2 | P | 2 | RE | 9 | 9 | 894 | 61% | 4 | B |
| 72 | 7 | 855 | 3/23/23 | 73 | 2 | 544 | 87 | 3.64 | 768 | 4.2 | P | 2 | MMS | 9 | 9 | 870 | 63% | 4 | B |
| 73 | 1 | DV | 3/21/23 | 69 | 1 | 542 | 87 | 3.41 | 723 | 4.1 | P | 2 | LD | 9 | 9 | 1060 | 51% | 3 | B |
| 74 | 35 | DV | 3/29/23 | 70 | 1 | 515 | 83 | 2.86 | 663 | 4.3 | P | 2 | RD | 9 | 9 | 1145 | 45% | 5 | B |





Group Spares *Group 7*

| Calf Info | | | | | | | | | | | | Dam Info | | | | Preg-Test | | | |
|-----------|---------|---------------------------|-----------------|----------------|--------------|---------------------------|-----------------|----------------|----------|-------------|-------------|------------|-------------|------------------|------|-----------------|------------------------|-----|----------------|
| Sale Lot | Calf ID | Calving Year Calf Sire ID | Calf Birth Date | Calf Birth Wt. | Calving Ease | Adj 205 Day Wt Bulls Only | NR (Bulls - PC) | Avg Daily Gain | Dec 6 Wt | Frame Score | Poll Status | Age of Dam | Dam Sire ID | Udder Suspension | Teat | Fall Cow Weight | Weaning % (205/cow wt) | BCS | Fall Preg Test |
| 75 | 14 | PJ | 3/24/23 | 72 | 1 | 576 | 93 | 2.47 | 667 | 4.7 | P | 2 | PX | 9 | 9 | 884 | 65% | 4 | B |
| 76 | 10 | 855 | 3/24/23 | 86 | 1 | 556 | 89 | 4.20 | 791 | 4.7 | P | 2 | PJ | 9 | 9 | 1045 | 53% | 4 | B |
| 77 | 88 | VB | 4/8/23 | 84 | 1 | 553 | 89 | 3.20 | 782 | 5.0 | P | 4 | MB | 9 | 9 | 1050 | 53% | 5 | O |
| 78 | 51 | MMS | 4/7/23 | 85 | 1 | 658 | 106 | 3.07 | 831 | 6.0 | P | 7 | RE/ET | 9 | 7 | 1235 | 53% | 4 | O |
| 79 | 4 | DV | 3/22/23 | 70 | 1 | 515 | 83 | 3.12 | 665 | 3.2 | P | 2 | FP | 9 | 9 | 850 | 61% | 4 | B |
| 81 | 45 | BS15 | 4/5/23 | 71 | 1 | 602 | 97 | 3.59 | 735 | | P | 2 | DLC | 9 | 9 | | | | |
| 82 | 13 | DV | 3/24/23 | 62 | 2 | 548 | 88 | 3.29 | 741 | 4.7 | P | 2 | RE | 9 | 9 | 880 | 62% | 3 | B |
| 83 | 92 | 297 | 4/10/23 | 86 | 1 | 571 | 92 | 2.92 | 746 | 6.0 | P | 4 | MBMS | 9 | 9 | 1215 | 47% | 5 | O |
| 84 | 317 | 855 | 3/23/23 | 60 | 1 | 513 | 83 | 3.54 | 701 | | P | 2 | 297 | 9 | 9 | 978 | 52% | 4 | B |
| 85 | 192 | BN68 | 4/22/23 | 88 | 1 | 612 | 98 | 3.07 | 752 | 5.8 | P | 8 | HMH | 9 | 9 | 1200 | 51% | 5 | B |
| 86 | 77 | MMS | 4/11/23 | 77 | 1 | 576 | 93 | 3.54 | 760 | 5.1 | P | 9 | BW | 8 | 8 | 1280 | 45% | 4 | B |
| 88 | 230 | BN68 | 4/26/23 | 77 | 1 | 632 | 102 | 3.55 | 742 | 5.4 | P | 7 | HBMS | 8 | 7 | 1225 | 52% | 5 | B |
| 89 | 43 | KHR15J | 4/2/23 | 92 | 5 | 664 | 107 | 3.91 | 860 | 4.9 | P | 5 | | 9 | 8 | 1615 | 41% | 5 | B |
| 91 | 22 | 855 | 3/27/23 | 92 | 2 | 576 | 93 | 2.85 | 711 | 4.3 | P | 2 | RD | 8 | 9 | 858 | 67% | 4 | B |
| 92 | 169 | VB | 4/20/23 | 85 | 1 | 613 | 99 | 2.52 | 750 | 5.7 | P | 5 | | 9 | 9 | 1235 | 50% | 5 | B |



Veseth Cattle Facts

Our 4-H kids did very well this year. Aubrey Smith from Cohagen, MT successfully showed a bred heifer to Grand Champion at the Garfield Co. Fair. The heifer is a daughter of a Veseth cow purchased by the Smith family. Aubrey and her heifer also placed first in the red Division at the NILE in Billings this year. Charlotte Steele took Reserve Grand Champion honors with her steer in the Red Angus division at the Gallatin Co. Fair 2023. Courtney Merriman's steer stood in 4th place overall in Market Beef at the Phillips Co. Fair and placed 2nd in Showmanship with him. Hi is her first steer. This year we have 7 steers going to the fair in 2 counties. Stay Tuned!

We got our feedlot and carcass data back from the 10 steers studied at the Northern Agriculture Research Center (NARC) at Havre in 2023. They were slaughtered at 13.5 months of age and 90% graded Choice, and all those steers yielded in Yield Grade 2 with no 3's, 4's, or 5's. We were very pleased. This year we sent NARC 12 head of steers for their experiment. On January 19, 2024, those 12 steers weighed 745 and were gaining 4.5 lbs/day. This year we sent our steer donation to the Montana Stockgrowers Foundation (MSF) and then they bought 9 more steers from the ranch to add to their program as they had liked the health, docility and performance of our previous donation steers.

Our program has reached several milestones this year. For the first time we will be providing Expected Progeny Differences (EPDs) to our customers. This information is through International Genetic Solutions EPD Format; the format includes everything but Angus and Hereford genetics. The EPDs will be the same as the American Simmental Association EPDs. The EPDs will be provided with the supplement sheet that includes the ultrasound data and final bull performance data. We would like to thank Anna Merriman who has recorded our in-herd data for many years and Leoma Wells at "Data Genie" for making this transition possible. This process will take 4 years to get to the industry average accuracies on the bulls. The data is being processed through the American Simmental Association in the International Genetic Solutions model that is currently calculating EPDs for 16 different breeds across the world. (Please see the article on EPD trait format). After 87 days on feed at Hould Development Center our 93 bulls had an average daily gain record of 3.54 lbs / day. This is a new average record for our ranch.

I am always surprised how well our cattle perform in many different arenas. We attribute these successes to a disciplined and balanced selection program that utilizes hybrid vigor and breed complementarity to allow us to shoot at more targets.

Thank you for your interest and support for our breeding program.



Aubrey



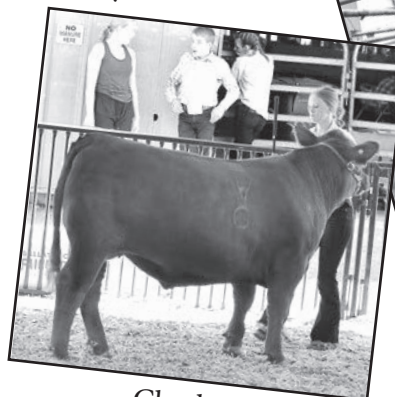
Courtney



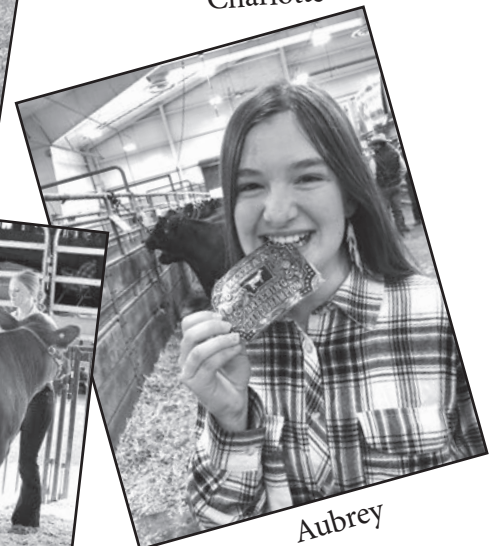
Charlotte



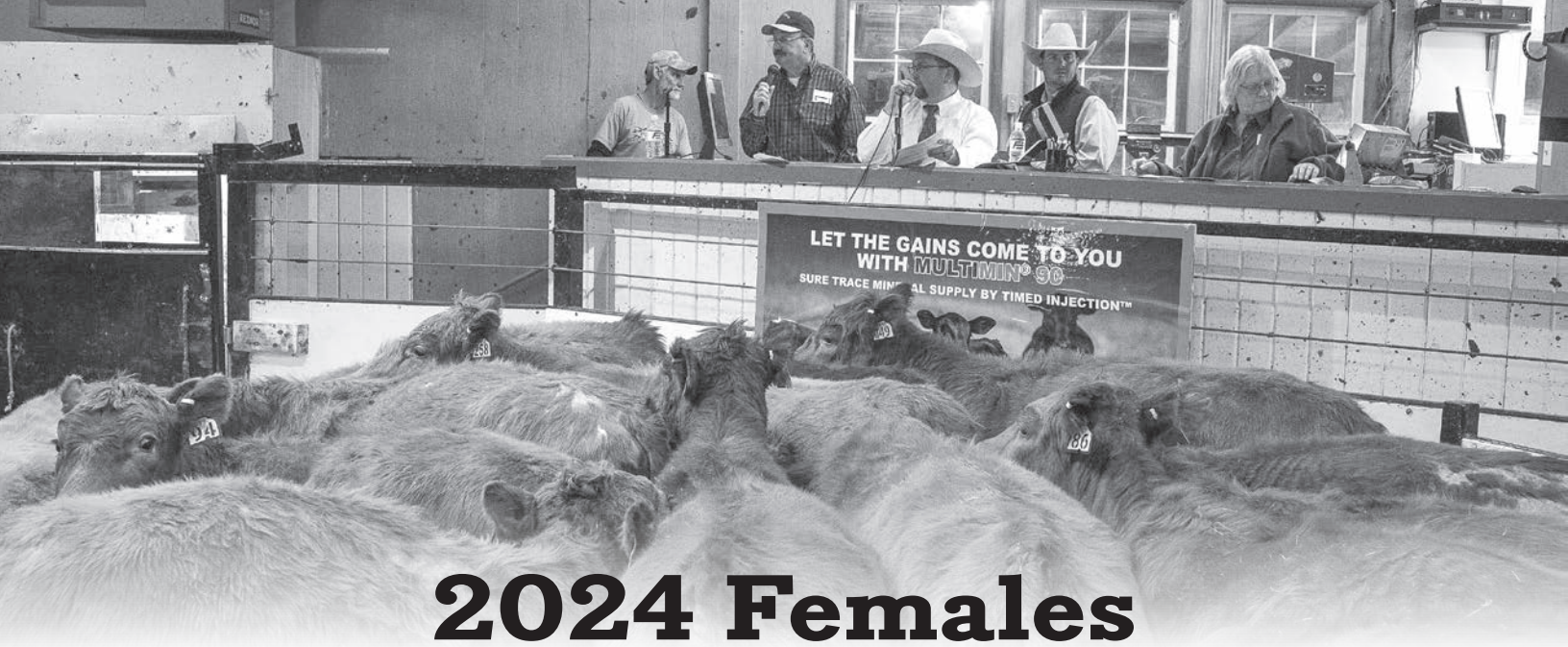
Courtney



Charlotte



Aubrey



2024 Females

All bred females will be tested prior to the sale and back poured with CleanUp 2.

Groups 7-10

If you need less than 5 head of any of the Veseth female groups call Dale and we can get you taken care of at the ranch.

406-658-2504

15 Veseth Red Bred Heifers *Group 7A*

The first group of approximately 15 heifers will start calving March 20th for 30 days. Traditionally these heifers weigh between 1000 and 1100 lbs on sale day. They can be seen via video at www.billpelton.com or at the ranch until March 9th and at Glasgow Stockyards through the sale. These heifers have electronic bangs tags. They will be poured with Clean-Up II prior to the sale.

The heifers were pregnancy tested and given Preg Guard 10 and Fusoguard on Sept 1st. They will be preg tested again at the Glasgow Stockyards prior to the sale. The buyer can buy Group B heifers at the same price to insure a pot load of bred heifers.

The base price is \$2200.

35 Veseth Red Bred Heifers *Group 7B*

There are approximately 35 bred heifers in this group. The information is the same except for the calving date.

This group of heifers will start calving April 25th for 30 days.

Veseth Red Yearling Heifers *Group 8A*

This is a group of red heifers. They have electronic bangs identification tags. The heifers also have pink Z tags with individual numbers. They have received their first shot of Fusoguard for foot rot and their first pinkeye vaccine as well. Their heifers should weigh 700 lbs on sale day. They can be seen at the Hould Development Center until March 9th and then at Glasgow Stockyards through the sale. They have been poured with Clean-Up II prior to the sale.

The buyer has the choice to take all the heifer calves to make a potload. The base price is \$1550.

Veseth Black Yearling Heifers *Group 8B*

Approximately 12 head of Black heifers. We had a neighbor heifer bull get in to our cows and I used a heterozygous Black bull (DV). These heifers have not been topped. They have all the shots; electronic bangs ID tags and ear tags the red heifers have.

Margaret Demarais Mature Cow Dispersion *Group 9*

Margaret has decided to sell 10 head of her older cows from 6 to 11 years old. These cows are Veseth breeding bred back to Veseth Hybrid Reds. Bulls were turned in July 14 for 50 days. Base price on the 6 – 7 yr old cows is \$1875. The older cows have a base price of \$1550.

36 Veseth Short Term Red Cows *Group 10*

These cows were exposed to Veseth Red bulls beginning on July 2nd. They will be preg tagged to calve early before May 15th or late after May 15th. We will have signs with a head count by age on sale day. Jake Newton will go through and sort the cows for structure and function. They will be back poured and preg tested at Glasgow Stockyards prior to the sale.

These cows should weigh between 1300 – 1350 lbs on sale day. The base price is \$1350.

| | |
|--------------|------------|
| Z Red Tag | = 11 Years |
| A Yellow Tag | = 10 Years |
| B Orange Tag | = 9 Years |
| C Pink Tag | = 8 Years |
| D Green Tag | = 7 Years |
| E Blue Tag | = 6 Years |
| F Orange Tag | = 5 Years |
| G White Tag | = 4 Years |
| H Red Tag | = 3 Years |
| J Yellow Tag | = 2 Years |



Veseth Future Sires

BC Bieber Blue Chip H302

RAAA #4303789. Veseth Abbreviation is BC.

This is a calving ease bull we have high hopes for. We used him on yearling heifers. He has 14 of 19 EPD traits in the top 30% of the breed, including top 2% for Marbling, the top 5% for ProS index, herdbuilder index and stayability. The top 6% for calving ease, maternal, top 7% for Direct Calving ease, and 8% for Birth weight (an impressive -6.6). BC has two shots of the Australian bulls in his pedigree that have been at the top of performance in our program. He is a long body Stockmarket son with advertised excellent feet.



| ProS | HB | GM | CED | BW | WW | YW | ADG | DMI | Milk | ME | HPG | CEM | STAY | Marb | YG | CW | REA | Fat |
|------|----|----|-----|------|----|-----|------|------|------|----|-----|-----|------|------|------|----|------|------|
| 154 | 93 | 61 | 21 | -6.6 | 70 | 112 | 0.26 | 2.05 | 27 | 4 | 12 | 14 | 19 | 0.92 | 0.10 | 26 | 0.32 | 0.05 |

EA Dubas Excellent Answer

RAAA #1587637. Veseth Abbreviation is EA.

An Origen sire that has a tremendous birthweight to yearling spread of 139. This bull goes back to Nebula P707 x SAV Final Answer x LCC Cheyenne B221L. We have had excellent females out of all 3 of these sires in the past. He is as advertised, a heavily muscled, moderate frame bull with excellent hoof shape and siring excellent productive long-lived daughters. EA was selected as a maternal sire.



| ProS | HB | GM | CED | BW | WW | YW | ADG | DMI | Milk | ME | HPG | CEM | STAY | Marb | YG | CW | REA | Fat |
|------|----|----|-----|------|----|-----|------|------|------|----|-----|-----|------|------|------|----|-------|------|
| 103 | 73 | 30 | 14 | -2.2 | 85 | 137 | 0.32 | 1.68 | 29 | 13 | 13 | 12 | 17 | 0.25 | 0.28 | 42 | -0.28 | 0.02 |

HG CDI/NF Honor Guard 267H

ASA #3801515. Veseth Abbreviation is HG.

A Select Sires purebred bull with balanced EPDs and an athletic phenotype that he passed on to his calves. He is in the top 1% for calving ease. Stayability and all-purpose index. These will be exceptional replacement females.



| CE | BW | WW | YW | ADG | MCE | MM | MWW | STAY | Doc | CW | YG | Marb | BF | REA | SF | API | TI |
|------|------|------|-------|------|------|------|------|------|------|------|-------|------|--------|------|-------|-------|-------|
| 18.7 | -1.1 | 91.9 | 133.6 | 0.26 | 10.3 | 22.3 | 68.1 | 26.8 | 12.1 | 32.4 | -0.49 | 0.51 | -0.078 | 1.21 | -0.28 | 193.7 | 101.2 |

RO MR SRT Red October G1761

ASA #3568229. Veseth Abbreviation is RO.

These are excellent calving ease, maternal cattle with moderate growth and good carcass traits, we have been looking for a good Imperial son with more growth than the Imperial sire. We used Imperial 3 years ago, but none of the bulls Imperial sired met our performance criteria and were all banded before test. However, I saved 11 heifers in the replacements and all 11 bred in the first 30 days. This was the first for any AI sire in over 200 separate sires used in our program thus far. RO is in the top 1% of the breed for calving ease, maternal calving ease, marbling, All-purpose index (maternal API and Terminal index (TI)). He is in the top 3% for birthweight, the top 10% for stayability, and the top 20% for average daily gain, Ribeye Area and Shear force (tenderness). The first 13 RO sons to sell at the Keller Broken Heart Ranch sale averaged \$9,354. The first RO flush with the Electra donor sold for \$83K. We will have calves from the best bull from that mating in 2 years.



| CE | BW | WW | YW | ADG | MCE | MM | MWW | STAY | Doc | CW | YG | Marb | BF | REA | SF | API | TI |
|------|------|------|-------|------|-----|------|------|------|-----|------|-------|------|-------|------|------|-------|-------|
| 15.9 | -2.5 | 76.6 | 119.7 | 0.27 | 8.0 | 19.0 | 57.2 | 19.7 | 8.4 | 28.8 | -0.39 | 0.82 | -0.04 | 1.16 | -0.4 | 190.8 | 101.0 |

Sale Notes

Thanks for Joining Us at Our 18th Annual Sale!

Veseth
Cattle Co.



Weseth Cattle Co.

DALE & JANET VESETH

22787 Midale Road • Malta, MT 59538

(406) 658-2504 • djvsth@itstriangle.com

Prepaid
FIRST CLASS
US Postage
Paid
Ballyhoo Printing
59457

*Pelton
Livestock*
Marketing & Consulting



WWW.CATTLEUSA.COM

FIRST CLASS



Hould Feedlot
5867 MT HWY 363
Malta, MT 59538

**Hould
Feedlot**

Malta

to Grass Range,
Billings

18th Annual Sale

March 11, 2024

Lunch at 11:30 • Sale at 1:00

Glasgow Stockyards • Glasgow, MT

Glasgow

Glasgow Stockyards
Fort Peck HWY E
Glasgow, MT 59230