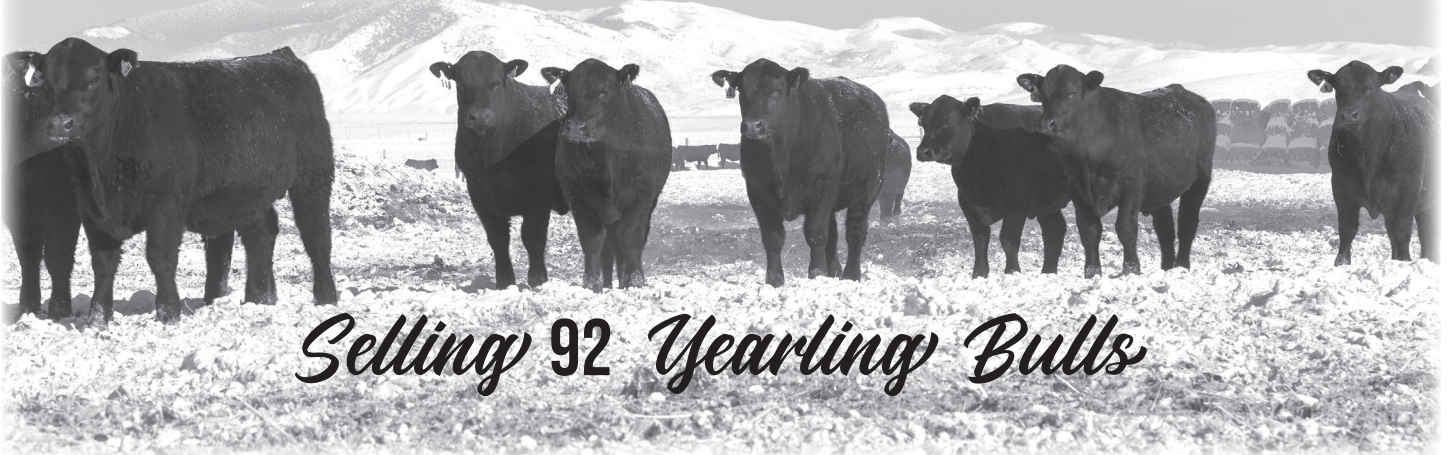




LUFKIN CATTLE COMPANY

Wednesday, March 16, 2022

11:30 A.M. Lunch • Sale at 1:00 P.M. MST • At the Ranch • Salmon, ID



Selling 92 Yearling Bulls

AUCTIONEER:

Trent Stewart - Redmond, OR

PRESS REPRESENTATIVES:

Jared Patterson - American Angus Association 208-312-2386

Mark Frisbie - Western Livestock Reporter 208-890-4517

Eric Drees - Western Livestock Journal 208-329-4808

Jeff Thomas - Agri-Media Livestock 406-581-8859

STATE BRAND INSPECTOR:

Jay Wiley & Ted O'Neal

WEBSITE: www.lufkincattlecompany.com

SALE LOCATION:

**Sale held at the Ranch
71 Price Creek Road**

- 17 miles south of Salmon, Idaho
- 32 miles north of Leadore, Idaho
- Traveling on Highway 28, turn west on Haynes Road, go about 1 mile then right on Price Creek Road for about another mile heading north.



Motels in Salmon, ID

- Stagecoach Inn208-756-2919
- Sacajawea Inn.....208-756-2294
- Wagons West Motel.....208-756-4281
- Salmon River Motel.....208-756-8880
- Syringa Lodge208-756-4424
- Leadore Homestead (Leadore).....208-768-2742





Dear Friends,

Our family would like to invite you to our 18th bull sale. This is our 6th sale at our current location in Salmon. We would like to thank all of our friends, neighbors and loyal customers for making it possible for our family to do something we are very passionate about.

2021 was a very challenging year with drought, the pandemic, rising input costs and fluctuating markets, making it a challenge to stay in the business. However we believe those who have stayed the course, maintained their cow herd and invested in good genetics are going to get paid for their efforts in the next few years.

We would like to thank Egan Land & Livestock, Brock Egan, Kyle Nelson and crew and Dr. Todd Shenton for doing an outstanding job developing the bulls. The bulls have been Genomic, Performance, PAP and fertility tested and are ready to go to work.

We will once again host lunch on sale day before the sale, so come early. The bulls will be available to view a few days before the sale. We would love to have you come look at them. If you have questions please call or you can always look them up on www.angus.org.

We hope to see you sale day but if you are unable to attend we will have click to bid with Superior Livestock online.

Carl & Robin Lufkin Family

"FOR ALL YOUR BULL BUYING NEEDS"

Ron Frye Marketing believes that bull buying is an essential part of any cattle operation. The genetics purchased each year are the building blocks for future generations of your cow herd. We are proud to be a part of this sale and the influence they have on their customers' programs through the years. We would hope that our knowledge of this sale offering would be beneficial to your quest of building a superior cow calf operation.

We are available to talk with you anytime and answer any questions you have about the cattle or the program. We look forward to assisting you and learning about your needs. Call us prior to the sale for any of your bull buying needs. If you are unable to attend the sale and need help purchasing bull(s) we would be happy to assist you in any way possible.

Thank you for your interest. Please come say hello to Randy or I on sale day.

Sincerely,

Ron Frye
406-600-7514
Ronfryemarketing@gmail.com
Call. Text. Email.

Randy Frye
406-209-7628
randytfrye@gmail.com
Call. Text. Email.



ronfryemarketing@gmail.com | www.RonFryeMarketing.com

SALE INFORMATION

We try to provide our customers with as much information as we can on each bull in the sale. This year we genomic DNA tested most of the bulls with the AGI test. So, the EPDs are a result of both the DNA and the actual performance of the bull. The bulls were weighed off test the first week of February, so a handful of bulls were too young to have “official” yearling weights. Those numbers are marked NA (Not Available) in the catalog.

MANAGEMENT PROGRAM Last year we calved about 300 cows. We handle the cows just like commercial cattle. Cows never eat anything but grass and hay. Mature cows with heifer calves and replacement heifers are summered on BLM Range on Baldy Basin. Mature cows with bull calves spend the summer at home on Sandy Creek. All young cows were pastured at Scott Tyler’s Ranch on Mill Creek. After weaning, all cows winter pasture on wet meadows along the Lemhi River. We start feeding the young cows in mid-December. The cows are comingled for calving, and then separated into age groups again with their calves. None of the females on the ranch ever receive and any grain-this is a grass deal.

GENETIC PLAN Our whole deal is developing cattle that will make commercial producers money. We focus on light birth cattle to reduce your labor load and result in more live calves at weaning. We focus on growth because you get paid for pounds. We try to stay away from huge frame cattle and excessive milk production. We are always searching

for genetics that will improve our herd.

HEALTH PROGRAM Our health program is aimed at prevention. We vaccinate at branding with 8-way Clostridium and modified live IBR-BVD-PI3-BRSV. We give the same vaccinations plus Pasturella a couple of weeks prior to weaning. The heifers get bang’s vaccinated after weaning. About a month before breeding, the yearling heifers get another shot of IBR-BVD-PI3-BRSV. On the day the bulls are examined for breeding soundness, they get 8-way Clostridium and IBR-BVD-PI3-BRSV. We also give a wart vaccine to the bulls to reduce the number of penile warts. This herd has been on a modified live BVD vaccination program for so long, that it is pointless to test for persistently infected BVD individuals.

PATHFINDER COWS Pathfinder cows are the cows in the herd that always calve on time and raise a calf at least 5% heavier than the herd average. A cow has to raise three calves to qualify. **Upward 307R, Hero 0616, Alliance 431N and Sitz Final Statement 618X are Pathfinder bulls that we proved.** In the Angus breed, less than 1% of cows are Pathfinders. In this herd, over 10% are Pathfinders. All Pathfinders will be marked with the pound (#) sign in their pedigrees in this catalog. You can be sure that if a bull makes it to the sale, he is fertile, healthy, functionally sound, and his performance data and EPDs are as accurate as we can make them.

FOR SEMEN AND CHUTE-SIDE SERVICE

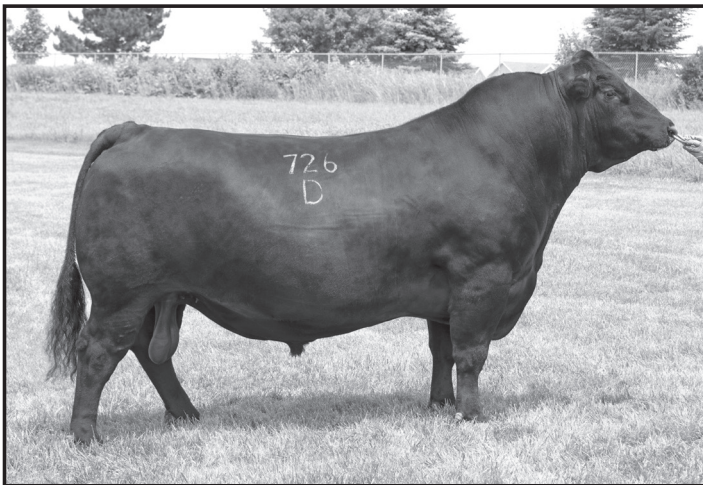
CONTACT CJ LUFKIN AT (208) 756-7224



REFERENCE SIREs



Blueprint is Confidence Plus son that is wide based and heavy muscled. His mother is one of the best cows in the Angus breed. He will add dimension, improve muscle and shape and increase REA while improving foot quality. We have just calved our first Blueprint daughters and they are proving to be excellent cows.



Stellar is a Sitz bred bull we have used for a few years. They are light birth and middle of the road for frame size with outstanding growth. Stellar is a real foot and udder improver. Stellar will be our best sire group for PAP. He is a thick topped deep sided bull with an outstanding Maternal Pedigree.

A Woodhill Blueprint

DOB: 01/26/2014 Reg: 18876777 Tattoo: E60

Sire: **Connealy Confidence Plus**
 Connealy Confidence 0100
 Becka Gala of Conanga 8281
 Connealy Consensus
 Elbanna of Conanga 1209
 Elbasta of Conanga 9703
 D R Sierra Cut 7404
 Tehama Sierra Cut Z118
 Tehama Echo X315

Dam: **Woodhill Evergreen Z291-B233**
 SydGen C C & 7
 Woodhill Evergreen U6-Z291
 Woodhill Evergreen S28-U6

CED	BW	WW	YW	SC	MILK	RE	\$W	\$F	\$B
+9	+6	+68	+127	+49	+30	+1.08	+76	+104	+164
.80	.94	.92	.87	.85	.51	.50			
30%	35%	25%	20%	70%	20%	3%	20%	20%	15%

- At +259 ranks in the top 15% for \$Carcass
- At +1.08 ranks in the top 3% for Ribeye Area
- At +164 ranks in the top 15% for \$Beef Value
- At +127 ranks in the top 20% for Yearling Weight

B Sitz Stellar 726D

DOB: 01/23/2016 Reg: 18397542 Tattoo: 726D

Sire: **Mohnen Substantial 272**
 H A Image Maker 0415 1407
 Benfield Substance 8506
 Benfield Edella 1105
 LT Territory 5824 of EA
 Mohnen Glyn Mawr Elba 1758
 Mohnen Glyn Mawr Elba 1345

Dam: **SITZ Pride 200B**
 Connealy Final Product
 Ebonista of Conanga 471
 Sitz Upward 307R
 Sitz Pride 308Y
 Sitz Pride 44P

CED	BW	WW	YW	SC	MILK	RE	\$W	\$F	\$B
+4	-.2	+71	+130	+90	+23	+.64	+71	+101	+142
.87	.95	.94	.90	.89	.52	.48			
70%	20%	20%	15%	45%	65%	40%	25%	25%	40%

- At +73 ranks in the top 20% for \$Maternal
- At +71 ranks in the top 25% for \$Weaned Calf Value
- At +257 ranks in the top 25% for \$Carcass
- In the top 1% for Foot Score EPDS

REFERENCE SIRE INDEX

Sire	Name	CED	BW	WW	YW	YH	SC	Doc	HP	CEM	Milk	MW	MH	\$M	\$W	\$F	\$B
A	Woodhill Blueprint	+9	+6	+68	+127	+0	+49	+21	+9.5	+9	+30	+63	+4	+66	+76	+104	+164
		.80	.94	.92	.87	.85	.85	.80	.57	.60	.51	.54	.50				
B	Sitz Stellar 726D	+4	-.2	+71	+130	+3	+90	+21	+9.2	+8	+23	+74	+3	+73	+71	+101	+142
		.87	.95	.94	.90	.87	.89	.81	.69	.54	.52	.46	.47				
C	Sitz Resilient 10208	+9	+4	+79	+143	+5	+1.10	+20	+15.2	+7	+25	+77	+4	+85	+81	+115	+170
		.79	.93	.91	.79	.65	.66	.68	.30	.32	.34	.43	.44				
D	E&B Plus One	+13	-.9	+51	+100	-.1	+.04	+20	+14.9	+7	+23	+16	+1	+86	+54	+81	+148
		.84	.95	.93	.88	.87	.87	.77	.34	.34	.36	.47	.46				

REFERENCE SIREs



Resilient is the complete package. He is phenotypically correct, has an excellent EPD profile and an actual PAP of 37. He had a weaning ratio of 121 and a yearling ratio of 117 (top5%). Resilient calves in our herd had a WW Ratio of 106.

C Sitz Resilient 10208

DOB: 02/15/2018 Reg: 19057457 Tattoo: 10208

Benfield Substance 8506
Mohnen Substantial 272
Mohnen Glyn Mawr Elba 1758
Sire: **Sitz Stellar 726D**
Connealy Final Product
SITZ Pride 200B
Sitz Pride 308Y
GDAR Game Day 449
Sitz Top Game 561X
Sitz Pride 88T
Dam: **Sitz Miss Burgess 1856**
Sitz Rainmaker 10899
Sitz Miss Burgess 4381
Sitz Miss Burgess 1609

CED	BW	WW	YW	SC	MILK	RE	\$W	\$F	\$B
+9	+4	+79	+143	+1.10	+25	+84	+81	+115	+170
.79	.93	.91	.79	.66	.34	.44			
30%	35%	10%	5%	30%	50%	15%	10%	10%	10%

- At +85 ranks in the top 4% for \$Maternal
- At +305 ranks in the top 4% for \$Combined
- At +143 ranks in the top 5% for YW EPD



Plus One is the son of the very popular Confidence Plus bull. Plus One has a lot of eye appeal and is extra thick and deep. He was among the top 10 sires for Progeny registered in 2021 for the AAA. He has excellent maternal traits and Foot score EPD's. The Pathfinder Dam of Plus One has weaned 6 natural calves with an average ratio of 108.

D E&B Plus One

DOB: 01/26/2018 Reg: 19196960 Freeze Brand: 816

Connealy Tobin
Connealy Confidence 0100
Becka Gala of Conanga 8281
Sire: **Connealy Confidence Plus**
Connealy Consensus 9703
Elbanna of Conanga 1209
Elbasta of Conanga 9703
G A R Precision 1680
E&B 1680 Precision 1023
E&b 6807 Lady Traveler 61
Dam: **E&B Lady 1023 Precision 936**
Bon View New Design 878
E&B Lady 878 New Design 441
E&b 5706 Lady Arbitrator 824

CED	BW	WW	YW	SC	MILK	RE	\$W	\$F	\$B
+13	-.9	+51	+100	+0.04	+23	+72	+54	+81	+148
.84	.95	.93	.88	.87	.36	.58			
10%	15%	60%	60%	95%	65%	30%	65%	65%	30%

- At +86 ranks in the top 4% for \$Maternal
- At +278 ranks in the top 15% for \$C
- At +13 ranks in the top 10% for CED

INDEX BY SIRE

Sitz Resilient 10208	1-3-4-8-9-10-20-24-33-34-46-47-49-50-51-92	Riverbend No Doubt 9009	21-30-31-39-40-62-63-64-65-74-81-85
Sitz Stellar 726D	2-7-13-14-15-25-38-45-48-52	LCC Playbook 886	29-70
E& B Plus One	5-6-41-57-60-76-89	LCC Chisum7121	27-28-67-73-83-91
S A V Raindance 6848	11-12-22-23-37	SBAR Upward 764-6025	36-80
Riverbend 1682 E219	16-17-32-53-77-79-87	HARB Fort Worth 669 JH	42-43-44-55-86
Woodhill Blueprint	18-26-35-54-56-59-61-90	Leadore LCC Hurricane C404	66-68-71-72-75-78-82-84-88
LCC Statement 7134	19-58-69		

EXPLANATION OF TERMS USED IN SALE BOOK

INDIVIDUAL PERFORMANCE

Birth Weight (BW) – Actual weight of the calf within 24 hours of birth. It is affected by age of fetus, age of dam, feeding level, temperature during late fetal development, and genetics for birth weight.

Weaning Weight (WW) – Weight at weaning adjusted to 205 days and for the age of dam.

Weaning Weight Ratio (WR) – A within herd ranking of adjusted weaning weight. Calculated as the calf's adjusted weight divided by the average weight of the group with which he was raised to weaning. A ratio of 100 is always the average of the group.

Yearling Weight (YW) – Weight at Yearling adjusted to 365 days and for age of dam.

Yearling Weight Ratio (YR) - A within herd comparison of all bulls tested based on adjusted 365-day weight. A ratio of 100 is the average of the contemporary group.

Cow Production – Reported as number of calves weaned and average WR and number of calves tested to Yearling and average YR. These bull calves are included in average YR (ex. 5/100, 4/99).

PAP Score - We PAP Tested every bull in the sale. PAP scored animals are assigned a specific number. This number is a predictor of susceptibility to HMD (High Mountain Disease). Animals should be evaluated in ranges rather than by specific numbers. Animals over a score range (2-4 points) have the same likelihood of succumbing to HMD. In general, for bulls tested at 4000 to 5500 feet, and used at elevations up to 7500 feet, bulls scored 34-39 have a Low Risk and bulls scored 40-50 have a Moderate Risk.

Expected Progeny Difference (EPD), is the prediction of how future progeny of each animal are expected to perform relative to the progeny of other animals listed in the database. EPDs are expressed in units of measure for the trait, plus or minus. Interim EPDs may appear on young animals when their performance has yet to be incorporated into the American Angus Association National Cattle Evaluation (NCE) procedures. This EPD will be preceded by an "I", and may or may not include the animal's own performance record for a particular trait, depending on its availability, appropriate contemporary grouping, or data edits needed for NCE.

Accuracy (ACC), is the reliability that can be placed on the EPD. An accuracy of close to 1.0 indicates higher reliability. Accuracy is impacted by the number of progeny and ancestral records included in the analysis.

GROWTH

Calving Ease Direct (CED), is expressed as a difference in percentage of unassisted births, with a higher value indicating greater calving ease in first- calf heifers. It predicts the average difference in ease with which a sire's calves will be born when he is bred to first-calf heifers.

Birth Weight EPD (BW), expressed in pounds, is a predictor of a sire's ability to transmit birth weight to his progeny compared to that of other sires.

Weaning Weight EPD (WW), expressed in pounds, is a predictor of a sire's ability to transmit weaning growth to his progeny compared to that of other sires.

Yearling Weight EPD (YW), expressed in pounds, is a predictor of a sire's ability to transmit yearling growth to his progeny compared to that of other sires.

Scrotal Circumference EPD (SC), expressed in centimeters, is a predictor of the difference in transmitting ability for scrotal size compared to that of other sires.

CARCASS

The genetic evaluation produces a single set of EPDs for carcass weight, marbling score, Ribeye area and fat thickness. The units of measure are in carcass trait format and analyzed on an age-constant basis.

Carcass Weight EPD (CW), expressed in pounds is a predictor of the differences in hot carcass weight of a sire's progeny compared to progeny of other sires.

Marbling EPD (Marb), expressed as a fraction of the difference in USDA marbling score of a sire's progeny compared to progeny of other sires.

Ribeye Area EPD (RE), expressed in square inches, is a predictor of the difference in ribeye area of a sire's progeny compared to progeny of other sires.

\$VALUE INDEXES

\$Value indexes, are multi-trait selection indexes to assist beef producers by adding simplicity to genetic selection decisions. \$Values are reported in dollars per head, where a higher value is more favorable. The \$Value is an estimate of how future progeny of each sire are expected to perform, on average, compared to progeny of other sires in the database if the sires were randomly mated to cows and if calves were exposed to the same environment.

Weaned Calf Value (\$W), an index value expressed in dollars per head, is the expected average difference in future progeny performance for preweaning merit. \$W includes both revenue and cost adjustments associated with differences in birth weight, weaning direct growth, maternal milk, and mature cow size.

Feedlot Value (\$F), an index value expressed in dollars per head, is the expected average difference in future progeny performance for postweaning merit compared to progeny of other sires.

Beef Value (\$B), an index value expressed in dollars per head, is the expected average difference in future progeny performance for postweaning and carcass value compared to progeny of other sires.

Lufkin Cattle Company • Salmon, Idaho



LCC Resilient 143

DOB: 01/23/21 Reg AAA: 20221645 Tattoo: 143

Sire: Sitz Stellar 726D
Sitz Miss Burgess 1856

Dam: SITZ Logo 12964
LCC BLK Beauty 712
LEADORE LCC Blk Beauty C256



Ind. Perf.	
WW	683
WR	114
YW	1225
YR	109
DAM PROD.	
3-103, 2-103	

BW	CED	BW	WW	YW	MILK	PAP	Marb	RE	\$M	\$W	\$F	\$B
72	14	-0.5	78	130	25	37	0.57	0.66	92	87	92	141





2 LCC Stellar 137

DOB: 01/23/21 Reg AAA: 20222940 Tattoo: 137

Sire: **Sitz Stellar 726D**
 Mohnen Substantial 272
 SITZ Pride 200B
 Sitz Final Statement 618X

Dam: **LCC Deena 799**
 Leadore Deena Y50



Ind. Perf.	
WW	614
WR	103
YW	1222
YR	109
DAM PROD.	
3-104, 3-102	

	BW	CED	BW	WW	YW	MILK
	75	4	0.6	64	119	23
PAP	Marb	RE	\$M	\$W	\$F	\$B
35	0.42	0.6	65	64	79	117



3 LCC Resilient 1134

DOB: 02/06/21 Reg AAA: 20221648 Tattoo: 1134

Sire: **Sitz Resilient 10208**
 Sitz Stellar 726D
 Sitz Miss Burgess 1856

Dam: **LCC Blue Lass D96**
 Sitz Final Statement 618X
 Leadore Blue Lass 8470



Ind. Perf.	
WW	659
WR	99
YW	1225
YR	107
DAM PROD.	
2-104, 1-107	

BW	CED	BW	WW	YW	MILK	PAP	Marb	RE	\$M	\$W	\$F	\$B
85	6	1	79	134	26	45	0.55	0.79	82	88	82	128

Lufkin Cattle Company • Salmon, Idaho



4 LCC Resilient 151

DOB: 01/25/21 Reg AAA: 20221633 Tattoo: 151

Sire: **Sitz Stellar 726D**
 Sitz Miss Burgess 1856
 Sitz Final Statement 618X

Dam: **LCC Pride 870**
 Leadore Pride Z508



<i>Ind. Perf.</i>	
WW	610
WR	102
YW	1228
YR	109
DAM PROD.	
1-102, 1-109	

BW	CED	BW	WW	YW	MILK	
74	8	1	74	140	26	
PAP	Marb	RE	\$M	\$W	\$F	\$B
30	0.59	0.48	56	73	104	149



5 LCC Plus One 197

DOB: 02/02/21 Reg AAA: 20233876 Tattoo: 197

Sire: **E&B Plus One**
 Connealy Confidence Plus
 E&B Lady 1023 Precision 936

Dam: **Leadore Lady B43**
 Sitz Final Statement 618X
 Leadore Lady 8566



<i>Ind. Perf.</i>	
WW	690
WR	104
YW	1280
YR	113
DAM PROD.	
5-102, 4-104	

BW	CED	BW	WW	YW	MILK	PAP	Marb	RE	\$M	\$W	\$F	\$B
84	2	2.7	67	128	19	50+	0.68	0.57	69	56	103	155



6 LCC Plus One 182

DOB: 01/31/21 Reg AAA: 20233874 Tattoo: 182

Sire: **E&B Plus One**
 Connealy Confidence Plus
 E&B Lady 1023 Precision 936

Dam: **LEADORE LCC Rosie C631**
 KG Smart Bet 1758
 Leadore Rosie A261



Ind. Perf.	
WW	626
WR	105
YW	1218
YR	108
DAM PROD.	
4-108, 4-110	

BW	CED	BW	WW	YW	MILK	PAP	Marb	RE	\$M	\$W	\$F	\$B
81	1	2.5	74	130	21	39	0.46	0.68	67	69	107	152





17c LCC Stellar 1114

DOB: 02/03/21 Reg AAA: 20222944 Tattoo: 1114
Ind. Perf.

Mohnen Substantial 272

Sire: Sitz Stellar 726D

SITZ Pride 200B

LEADORE LCC Hurricane C404

Dam: LCC Frosty 7171

LEADORE LCC Frosty C504



WW	627
WR	105
YW	1240
YR	110

DAM PROD.
2-103, 1-110

BW	CED	BW	WW	YW	MILK	
81	11	-0.1	66	129	25	
PAP	Marb	RE	\$M	\$W	\$F	\$B
47	0.65	0.53	58	67	86	134



8c LCC Resilient 1113

DOB: 02/03/21 Reg AAA: 20221651 Tattoo: 1113

Sitz Stellar 726D

Sire: Sitz Resilient 10208

Sitz Miss Burgess 1856

Sitz Upward 307R

Dam: Leadore Effie B567

Leadore Effie 742



Ind. Perf.

WW	622
WR	104
YW	1214
YR	108

DAM PROD.
5-103, 5-103

BW	CED	BW	WW	YW	MILK	PAP	Marb	RE	\$M	\$W	\$F	\$B
92	1	2.6	63	110	33	40	-0.07	0.56	67	71	98	115

Lufkin Cattle Company • Salmon, Idaho



9 LCC Resilient 153

DOB: 01/26/21 Reg AAA: 20247299 Tattoo: 153
Ind. Perf.
 Sitz Stellar 726D
Sire: Sitz Resilient 10208
 Sitz Miss Burgess 1856
 SITZ Logo 12964
Dam: LCC Blue Lady 719
 LEADORE LCC Blue Lady C204

WW	640
WR	107
YW	1182
YR	105
DAM PROD.	
2-111, 2-109	

BW	CED	BW	WW	YW	MILK
73	7	1.6	78	124	22

PAP	Marb	RE	\$M	\$W	\$F	\$B
43	0.28	0.45	101	84	82	114

10 LCC Resilient 158

DOB: 01/27/21 Reg AAA: 20221638 Tattoo: 158
Ind. Perf.
 Sitz Stellar 726D
Sire: Sitz Resilient 10208
 Sitz Miss Burgess 1856
 SITZ Logo 12964
Dam: LCC Ankonja 715
 LEADORE LCC Ankonja C653

WW	602
WR	101
YW	1180
YR	105
DAM PROD.	
3-100, 3-101	

BW	CED	BW	WW	YW	MILK
77	14	-1.4	74	132	27

PAP	Marb	RE	\$M	\$W	\$F	\$B
39	0.58	0.55	76	85	92	137



11 LCC Raindance J4

DOB: 01/15/21 Reg AAA: 20222905 Tattoo: J4
Ind. Perf.
 Coleman Charlo 0256
Sire: S A V Raindance 6848
 S A V Blackcap May 4136
 Sitz Final Statement 618X
Dam: LCC Rosena D62
 Leadore Rosena Z124

WW	852
WR	109
YW	1290
YR	106
DAM PROD.	
4-103, 1-106	

BW	CED	BW	WW	YW	MILK
84	8	0.5	60	112	37

PAP	Marb	RE	\$M	\$W	\$F	\$B
47	-0.13	0.85	46	76	91	113



Lufkin Cattle Company • Salmon, Idaho



12 LCC Raindance J3

DOB: 01/15/21 Reg AAA: 20222911 Tattoo: J3

Coleman Charlo 0256

Sire: S A V Raindance 6848

S A V Blackcap May 4136

Leadore Upward Z23

Dam: LEADORE LCC Queen C663

Leadore Queen Z379



Ind. Perf.

WW	842
WR	107
YW	1247
YR	102

DAM PROD.	
5-105, 4-97	

BW	CED	BW	WW	YW	MILK	PAP	Marb	RE	\$M	\$W	\$F	\$B
72	9	-0.1	50	96	27	34	0.21	0.74	31	54	73	109

13 LCC Stellar 161

DOB: 01/27/21 Reg AAA: 20222942 Tattoo: 161

Mohnen Substantial 272

Sire: Sitz Stellar 726D

SITZ Pride 200B

Leadore Upward Z23

Dam: LCC Mabel 7193

Leadore Mabel B739



Ind. Perf.

WW	711
WR	107
YW	1196
YR	105

DAM PROD.	
3-105, 2-104	

BW	CED	BW	WW	YW	MILK
76	11	-1.6	65	123	32

PAP	Marb	RE	\$M	\$W	\$F	\$B
44	0.69	0.88	64	78	98	151





14 LCC Stellar 188

DOB: 01/31/21 Reg AAA: 20222945 Tattoo: 188

Sire: **Sitz Stellar 726D**
Mohnen Substantial 272
SITZ Pride 200B

Dam: **LCC Blue Lady 7126**
Mytty Source
Leadore Blue Lady Y260



Ind. Perf.	
WW	700
WR	106
YW	1220
YR	108
DAM PROD.	
2-105, 2-104	

BW	CED	BW	WW	YW	MILK	PAP	Marb	RE	\$M	\$W	\$F	\$B
91	5	2.2	72	125	17	44	0.6	0.79	44	60	90	140



Lufkin Cattle Company • Salmon, Idaho



15 LCC Stellar 186

DOB: 01/31/21 Reg AAA: 20222935 Tattoo: 186
Ind. Perf.

Sire: **Sitz Stellar 726D**
Mohnen Substantial 272
SITZ Pride 200B
S Chisum 255

Dam: **LCC Black Beauty 8165**
Leadore Black Beauty Y464

WW	673
WR	113
YW	1220
YR	108

DAM PROD.
1-113, 1-108



	BW	CED	BW	WW	YW	MILK
	79	9	-0.3	71	128	31
PAP	Marb	RE	\$M	\$W	\$F	\$B
37	0.37	0.58	71	83	113	149

16 LCC Payweight 180

DOB: 01/30/21 Reg AAA: 20212008 Tattoo: 180
Ind. Perf.

Sire: **Riverbend 1682 E219**
Basin Payweight 1682
Riverbend Blackcap B021
Sitz Powerball 643D

Dam: **LCC Margie 823**
LEADORE LCC Margie C117

WW	610
WR	102
YW	1228
YR	109

DAM PROD.
2-101, 1-109



	BW	CED	BW	WW	YW	MILK
	73	7	0.6	69	131	28
PAP	Marb	RE	\$M	\$W	\$F	\$B
31	0.63	0.51	65	75	113	162



17 LCC Payweight 1135

DOB: 02/06/21 Reg AAA: 20211988 Tattoo: 1135
Ind. Perf.

Sire: **Riverbend 1682 E219**
Basin Payweight 1682
Riverbend Blackcap B021
Sitz Final Statement 618X

Dam: **Leadore Ann A375**
Leadore Ann 7587

WW	638
WR	96
YW	1214
YR	107

DAM PROD.
7-98, 4-104



	BW	CED	BW	WW	YW	MILK
	86	0	3.3	68	120	27
PAP	Marb	RE	\$M	\$W	\$F	\$B
42	0.7	0.22	26	62	75	122

18 LCC Blueprint 1141

DOB: 02/07/21 Reg AAA: 20221541 Tattoo: 1141
Ind. Perf.
 Connealy Confidence Plus
Sire: Woodhill Blueprint
 Woodhill Evergreen Z291-B233
 Sitz Final Statement 618X
Dam: LCC Shadow D24
 Leadore Shadow Y261

WW	580
WR	97
YW	1188
YR	105
DAM PROD.	
4-100, 4-104	



BW	CED	BW	WW	YW	MILK
75	5	1.7	65	116	20

PAP	Marb	RE	\$M	\$W	\$F	\$B
34	0.4	0.84	51	61	105	146



19 LCC Statement 1195

DOB: 02/16/21 Reg AAA: 20235387 Tattoo: 1195
Ind. Perf.
 Sitz Final Statement 618X
Sire: LCC Statement 7134
 Leadore Francie Z395
 KG Retail Value 8248
Dam: LCC Blackbird D65
 Leadore Blackbird B749

WW	687
WR	104
YW	1247
YR	110
DAM PROD.	
3-106, 3-106	



BW	CED	BW	WW	YW	MILK
84	9	0.9	63	111	22

PAP	Marb	RE	\$M	\$W	\$F	\$B
39	0.25	0.64	52	65	93	126



20 LCC Resilient 1181

DOB: 02/11/21 Reg AAA: 20221650 Tattoo: 1181
Ind. Perf.
 Sitz Stellar 726D
Sire: Sitz Resilient 10208
 Sitz Miss Burgess 1856
 Leadore 7635 Hero 0671
Dam: Leadore Blackcap Beauty B746
 Leadore Blackcap Beauty Y360

WW	746
WR	113
YW	1236
YR	109
DAM PROD.	
6-98, 2-110	



BW	CED	BW	WW	YW	MILK
101	2	2.1	69	117	20

PAP	Marb	RE	\$M	\$W	\$F	\$B
50+	0.22	0.55	48	64	97	127




21 LCC No Doubt 119

DOB: 01/17/21 Reg AAA: 20235011 Tattoo: 119
Ind. Perf.

Sire: Hoover No Doubt
Riverbend No Doubt 9009
Diablo Isabel 1068
Leadore Statement B142
Dam: LCC Sandy 9186
Leadore Sandy A447

WW	684
WR	114
YW	1210
YR	107

DAM PROD.
1-114, 1-107

						
BW	CED	BW	WW	YW	MILK	
76	3	2.2	65	116	29	
PAP	Marb	RE	\$M	\$W	\$F	\$B
38	0.59	0.59	52	66	105	150



22 LCC Raindance J7

DOB: 01/20/21 Reg AAA: 20222909 Tattoo: J7

Sire: Coleman Charlo 0256
S A V Raindance 6848
S A V Blackcap May 4136

Dam: Sitz Upward 307R
LEADORE LCC Eileenmere C178
Glory B Eileenmere 389T



Ind. Perf.	
WW	830
WR	106
YW	1350
YR	111

DAM PROD.
5-104, 5-105

BW	CED	BW	WW	YW	MILK	PAP	Marb	RE	\$M	\$W	\$F	\$B
69	7	2.7	62	113	22	45	0.18	0.76	42	54	90	125

Lufkin Cattle Company • Salmon, Idaho

23 LCC Raindance J6

DOB: 01/19/21 Reg AAA: 20222902 Tattoo: J6

Coleman Charlo 0256

Sire: S A V Raindance 6848

S A V Blackcap May 4136

Leadore 8756 Foremost A132

Dam: LCC Winnie C807

Leadore Winnie A191



<i>Ind. Perf.</i>	
WW	828
WR	106
YW	1239
YR	102
DAM PROD.	
4-105, 3-105	

	BW	CED	BW	WW	YW	MILK
	77	8	2.4	62	118	22
PAP	Marb	RE	\$M	\$W	\$F	\$B
50+	0.14	0.85	54	56	95	130



24 LCC Resilient 138

DOB: 01/23/21 Reg AAA: 20221644 Tattoo: 138

Sitz Stellar 726D

Sire: Sitz Resilient 10208

Sitz Miss Burgess 1856

Leadore Upward Z23

Dam: LCC Royal Ann 7179

Leadore Royal Ann A324

<i>Ind. Perf.</i>	
WW	723
WR	121
YW	1168
YR	104
DAM PROD.	
3-113, 3-101	

BW	CED	BW	WW	YW	MILK	PAP	Marb	RE	\$M	\$W	\$F	\$B
73	12	-1.4	73	125	26	40	0.35	0.49	58	83	100	134

25 LCC Stellar 1125

DOB: 02/04/21 Reg AAA: 20222941 Tattoo: 1125

Mohnen Substantial 272

Sire: Sitz Stellar 726D

SITZ Pride 200B

Mytty Source

Dam: LCC Barbara B 784

Leadore Barbara B A443



<i>Ind. Perf.</i>	
WW	638
WR	96
YW	1184
YR	104
DAM PROD.	
3-99, 2-106	

	BW	CED	BW	WW	YW	MILK
	83	3	2	73	125	22
PAP	Marb	RE	\$M	\$W	\$F	\$B
	48	0.47	0.71	85	74	92



MAKE THE CO-OP CHOICE



ENERGY

Propane, bulk fuel, oils & lubricants

wvcenergy.com

AGRONOMY

Precision agriculture, fertilizer & seed

valleyag.com

RETAIL

Farm supply, clothing, boots, fencing & feed

shop.valleywidecoop.com



26 LCC Blueprint 1179

DOB: 02/11/21 Reg AAA: 20221585 Tattoo: 1179
Ind. Perf.
 Connealy Confidence Plus
Sire: Woodhill Blueprint
 Woodhill Evergreen Z291-B233
 Leadore Statement A272
Dam: LEADORE LCC Ldy Shoshone C87
 Leadore Lady Shoshone 8610

WW	694
WR	105
YW	1193
YR	105

HDSOK **DAM PROD.**
 5-97, 4-98

BW	CED	BW	WW	YW	MILK	
87	8	0.2	48	84	35	
PAP	Marb	RE	\$M	\$W	\$F	\$B
36	0.56	0.94	58	67	76	126

27 LCC Chisum 1215

DOB: 02/25/21 Reg AAA: 20211999 Tattoo: 1215
Ind. Perf.
 S Chisum 255
Sire: LCC Chisum 7121
 Leadore Nichole 080
 KG Retail Value 8248
Dam: LCC Frosty C237
 Leadore Frosty Y291

WW	738
WR	111
YW	1279
YR	112

DAM PROD.
 3-109, 2-110

BW	CED	BW	WW	YW	MILK	
85	4	2.3	72	129	29	
PAP	Marb	RE	\$M	\$W	\$F	\$B
34			60	73	93	

28 LCC Chisum 1160

DOB: 02/09/21 Reg AAA: 20211990 Tattoo: 1160
Ind. Perf.
 S Chisum 255
Sire: LCC Chisum 7121
 Leadore Nichole 080
 KG Retail Value 8248
Dam: Leadore Erica B39
 Leadore Erica 7565

WW	730
WR	110
YW	1239
YR	109

DAM PROD.
 5-103, 5-100

BW	CED	BW	WW	YW	MILK	
94	2	3.1	72	125	22	
PAP	Marb	RE	\$M	\$W	\$F	\$B
38	0.54	0.99	47	68	110	161



29 LCC Playbook 1162

DOB: 02/09/21 Reg AAA: 20235014 Tattoo: 1162
Ind. Perf.
 TEX Playbook 5437
Sire: LCC Playbook 886
 Leadore Eileenmere A227
 Sitz Upward 307R
Dam: LCC Black Duchess D72
 Leadore Black Duchess 7488

WW	595
WR	99
YW	1168
YR	103

DAM PROD.
 4-103, 3-100

BW	CED	BW	WW	YW	MILK	
76	13	-0.7	49	97	30	
PAP	Marb	RE	\$M	\$W	\$F	\$B
38	0.08	0.37	74	61	70	93

30 LCC No Doubt 132

DOB: 01/20/21 Reg AAA: 20235021 Tattoo: 132
Ind. Perf.

Hoover No Doubt
Sire: Riverbend No Doubt 9009
Diablo Isabel 1068
Marda Blacksmith 683
Dam: LCC Rosie 954
LCC Rosie D160

HD50K

<i>WW</i>	651
<i>WR</i>	109
<i>YW</i>	1177
<i>YR</i>	104
<i>DAM PROD.</i>	
1-109, 1-104	

<i>BW</i>	<i>CE</i>	<i>BW</i>	<i>WW</i>	<i>YW</i>	<i>MILK</i>
72	0	1.3	64	115	29

<i>PAP</i>	<i>Marb</i>	<i>RE</i>	<i>\$M</i>	<i>\$W</i>	<i>\$F</i>	<i>\$B</i>
35	0.41	0.61	85	73	87	128

31 LCC No Doubt 146

DOB: 01/24/21 Reg AAA: 20235022 Tattoo: 146
Ind. Perf.

Hoover No Doubt
Sire: Riverbend No Doubt 9009
Diablo Isabel 1068
Marda Blacksmith 683
Dam: LCC Alice 9162
Leadore Alice B78

HD50K

<i>WW</i>	619
<i>WR</i>	104
<i>YW</i>	1176
<i>YR</i>	105
<i>DAM PROD.</i>	
1-104, 1-105	

<i>BW</i>	<i>CE</i>	<i>BW</i>	<i>WW</i>	<i>YW</i>	<i>MILK</i>
79	0	3	58	102	16

<i>PAP</i>	<i>Marb</i>	<i>RE</i>	<i>\$M</i>	<i>\$W</i>	<i>\$F</i>	<i>\$B</i>
50	0.49	0.3	61	46	82	118

32 LCC Payweight 1117

DOB: 02/04/21 Reg AAA: 20211985 Tattoo: 1117
Ind. Perf.

Basin Payweight 1682
Sire: Riverbend 1682 E219
Riverbend Blackcap B021
Sitz Final Statement 618X
Dam: LCC Frosty D70
Leadore Frosty B605

HD50K

<i>WW</i>	615
<i>WR</i>	103
<i>YW</i>	1137
<i>YR</i>	101
<i>DAM PROD.</i>	
3-105, 3-104	

<i>BW</i>	<i>CE</i>	<i>BW</i>	<i>WW</i>	<i>YW</i>	<i>MILK</i>
72	6	0.5	54	101	40

<i>PAP</i>	<i>Marb</i>	<i>RE</i>	<i>\$M</i>	<i>\$W</i>	<i>\$F</i>	<i>\$B</i>
36	0.65	0.22	86	76	78	121

33 LCC Resilient 189

DOB: 01/31/21 Reg AAA: 20221652 Tattoo: 189
Ind. Perf.

Sitz Stellar 726D
Sire: Sitz Resilient 10208
Sitz Miss Burgess 1856
Sitz Upward 307R
Dam: Leadore Excel Z262
Leadore Excel 0738

HD50K

<i>WW</i>	665
<i>WR</i>	100
<i>YW</i>	1190
<i>YR</i>	105
<i>DAM PROD.</i>	
8-106, 7-104	

<i>BW</i>	<i>CE</i>	<i>BW</i>	<i>WW</i>	<i>YW</i>	<i>MILK</i>
68	11	-0.8	69	125	35

<i>PAP</i>	<i>Marb</i>	<i>RE</i>	<i>\$M</i>	<i>\$W</i>	<i>\$F</i>	<i>\$B</i>
42	0.64	0.52	75	85	79	127

34 LCC Resilient 126

DOB: 01/19/21 Reg AAA: 20247298 Tattoo: 126
Ind. Perf.

Sitz Stellar 726D
Sire: Sitz Resilient 10208
Sitz Miss Burgess 1856
SITZ Logo 12964
Dam: LCC Ankonina 721
LEADORE LCC Ankonina C55

HD50K

<i>WW</i>	625
<i>WR</i>	105
<i>YW</i>	1142
<i>YR</i>	102
<i>DAM PROD.</i>	
3-104, 3-101	

<i>BW</i>	<i>CE</i>	<i>BW</i>	<i>WW</i>	<i>YW</i>	<i>MILK</i>
66	11	-0.5	72	117	21

<i>PAP</i>	<i>Marb</i>	<i>RE</i>	<i>\$M</i>	<i>\$W</i>	<i>\$F</i>	<i>\$B</i>
36	0.59	0.74	103	81	89	139

35 LCC Blueprint 1164

DOB: 02/10/21 Reg AAA: 20221625 Tattoo: 1164
Ind. Perf.

Connealy Confidence Plus
Sire: Woodhill Blueprint
Woodhill Evergreen Z291-B233
Sitz Final Statement 618X
Dam: Leadore Mabel A412
Leadore KCK Mabel 5207

HD50K

<i>WW</i>	648
<i>WR</i>	98
<i>YW</i>	1152
<i>YR</i>	102
<i>DAM PROD.</i>	
5-99, 2-100	

<i>BW</i>	<i>CE</i>	<i>BW</i>	<i>WW</i>	<i>YW</i>	<i>MILK</i>
90	2	1.9	53	93	23

<i>PAP</i>	<i>Marb</i>	<i>RE</i>	<i>\$M</i>	<i>\$W</i>	<i>\$F</i>	<i>\$B</i>
41	0.61	0.66	54	53	80	128

Lufkin Cattle Company • Salmon, Idaho

36 LCC 764 Upward 1119

DOB: 02/04/21 Reg AAA: 20211986 Tattoo: 1119
Ind. Perf.

Sitz Upward 307R
Sire: **SBAR Upward 764-6025**
SBAR Dixie Erica 129-764
Sitz Upward 307R
Dam: **Leadore Alice B B561**
Glory B Alice 379T

WW	654
WR	99
YW	1132
YR	100
DAM PROD.	
6-101, 3-106	



BW	CED	BW	WW	YW	MILK
78	14	-0.7	60	108	23

PAP	Marb	RE	\$M	\$W	\$F	\$B
36	0.25	0.5	81	65	87	119



37 LCC Raindance J8

DOB: 01/20/21 Reg AAA: 20222899 Tattoo: J8
Ind. Perf.

Coleman Charlo 0256
Sire: **S A V Raindance 6848**
S A V Blackcap May 4136
GGT Windy 54A
Dam: **LEADORE LCC Blue Lady C711**
Leadore Blue Lady A405

WW	821
WR	105
YW	1178
YR	97
DAM PROD.	
5-103, 3-101	



BW	CED	BW	WW	YW	MILK
68	5	2.5	62	110	28

PAP	Marb	RE	\$M	\$W	\$F	\$B
50+	0.06	0.76	51	63	69	99



38 LCC Stellar 128

DOB: 01/20/21 Reg AAA: 20222936 Tattoo: 128
Ind. Perf.

Mohnen Substantial 272
Sire: **Sitz Stellar 726D**
SITZ Pride 200B
Leadore Upward Z23
Dam: **LCC Black Venus 8151**
LEADORE LCC Black Venus C79

WW	580
WR	97
YW	1146
YR	102
DAM PROD.	
2-100, 1-102	



BW	CED	BW	WW	YW	MILK
72	6	0.8	79	134	23

PAP	Marb	RE	\$M	\$W	\$F	\$B
40	0.2	0.41	58	81	83	111

39 LCC No Doubt 15

DOB: 01/14/21 Reg AAA: 20235023 Tattoo: 15
Ind. Perf.

Hoover No Doubt
Sire: **Riverbend No Doubt 9009**
Diablo Isabel 1068
KM Broken Bow 002
Dam: **LCC Heather 9114**
Leadore Heather 9289

WW	581
WR	97
YW	1189
YR	105
DAM PROD.	
1-97, 1-105	



BW	CED	BW	WW	YW	MILK
55	15	-2.5	62	113	19

PAP	Marb	RE	\$M	\$W	\$F	\$B
44	0.69	0.46	60	63	82	129

Lufkin Cattle Company • Salmon, Idaho



40 LCC No Doubt J5

DOB: 01/16/21 Reg AAA: 20235024 Tattoo: J5
Ind. Perf.

Sire: Hoover No Doubt
Diablo Isabel 1068
LEADORE LCC Hurricane C404

Dam: LCC Eileenmere 9202
LEADORE LCC Eileenmere C178

WW	702
WR	90
YW	1184
YR	98
DAM PROD.	
1-90, 1-98	

BW	CED	BW	WW	YW	MILK
69	3	1.9	56	106	27

PAP	Marb	RE	\$M	\$W	\$F	\$B
46	0.27	0.73	66	59	86	122

41 LCC Plus One 1129

DOB: 02/05/21 Reg AAA: 20233870 Tattoo: 1129
Ind. Perf.

Sire: Connealy Confidence Plus
E&B Plus One
E&B Lady 1023 Precision 936
CCAR Hoover Dam Y985

Dam: LCC Ankonina D136
Leadore Ankonina 0313

WW	606
WR	101
YW	1132
YR	100
DAM PROD.	
4-107, 4-103	

BW	CED	BW	WW	YW	MILK
83	5	1.5	65	126	18

PAP	Marb	RE	\$M	\$W	\$F	\$B
48	0.65	0.52	40	56	98	148

42 LCC Fort Worth J16

DOB: 02/24/21 Reg AAA: 20238590 Tattoo: J16
Ind. Perf.

Sire: LD Emblazon 999
HARB Fort Worth 669 JH
HARB Princess Vel 988 JH
Sitz Investment 660Z

Dam: LEADORE LCC Star C231
Leadore Star 8526

WW	853
WR	109
YW	1258
YR	104
DAM PROD.	
3-106, 2-103	

BW	CED	BW	WW	YW	MILK
71	10	-0.5	62	121	21

PAP	Marb	RE	\$M	\$W	\$F	\$B
41	0.44	0.51	46	55	102	139

43 LCC Fort Worth J17

DOB: 03/01/21 Reg AAA: 20238591 Tattoo: J17
Ind. Perf.

Sire: LD Emblazon 999
HARB Fort Worth 669 JH
HARB Princess Vel 988 JH
Sitz Uncommon

Dam: Leadore Winnie Z139
Leadore KCK Winnie 413

WW	798
WR	102
YW	1232
YR	102
DAM PROD.	
7-96, 3-100	

BW	CED	BW	WW	YW	MILK
85	1	3.4	60	109	14

PAP	Marb	RE	\$M	\$W	\$F	\$B
35	0.49	0.25	28	36	90	130

44 LCC Fort Worth J12

DOB: 02/16/21 Reg AAA: 20238587 Tattoo: J12
Ind. Perf.

Sire: LD Emblazon 999
HARB Fort Worth 669 JH
HARB Princess Vel 988 JH
Leadore Hurricane 0532

Dam: LEADORE LCC Mabel C408
Leadore KCK Mabel 5207

WW	792
WR	101
YW	1181
YR	97
DAM PROD.	
3-96, 2-100	

BW	CED	BW	WW	YW	MILK
90	2	2.1	44	75	26

PAP	Marb	RE	\$M	\$W	\$F	\$B
37	0.43	0.47	49	42	70	109

Lufkin Cattle Company • Salmon, Idaho



45 LCC Stellar 1104

DOB: 02/02/21 Reg AAA: 20222947 Tattoo: 1104
Ind. Perf.
 Mohnen Substantial 272
Sire: Sitz Stellar 726D
 SITZ Pride 200B
 Mytty Source
Dam: LCC Winnie 7109
 Leadore Winnie Y577

WW	664
WR	100
YW	1123
YR	99

DAM PROD.
2-105, 2-105

BW	CED	BW	WW	YW	MILK
79	8	0.1	62	114	24

PAP	Marb	RE	\$M	\$W	\$F	\$B
38	0.6	0.35	68	65	81	123

46 LCC Resilient 149

DOB: 01/25/21 Reg AAA: 20221642 Tattoo: 149
Ind. Perf.
 Sitz Stellar 726D
Sire: Sitz Resilient 10208
 Sitz Miss Burgess 1856
 Sitz Final Statement 618X
Dam: LCC Eileenmere 761
 Leadore Eileenmere A526

WW	636
WR	96
YW	1105
YR	97

DAM PROD.
3-94, 1-97

BW	CED	BW	WW	YW	MILK
76	8	0.3	69	121	29

PAP	Marb	RE	\$M	\$W	\$F	\$B
40	0.33	0.66	76	80	95	132

47 LCC Resilient 150

DOB: 01/25/21 Reg AAA: 20221634 Tattoo: 150
Ind. Perf.
 Sitz Stellar 726D
Sire: Sitz Resilient 10208
 Sitz Miss Burgess 1856
 SITZ Logo 12964
Dam: LCC Erica 89
 LCC Erica D36

WW	620
WR	104
YW	1126
YR	100

DAM PROD.
2-102, 1-100

BW	CED	BW	WW	YW	MILK
65	15	-2.2	74	122	26

PAP	Marb	RE	\$M	\$W	\$F	\$B
31	0.62	0.94	89	88	85	138

48 LCC Stellar 154

DOB: 01/26/21 Reg AAA: 20222943 Tattoo: 154
Ind. Perf.
 Mohnen Substantial 272
Sire: Sitz Stellar 726D
 SITZ Pride 200B
 Leadore Upward Z23
Dam: LCC Heather 7188
 Leadore Heather B13

WW	628
WR	95
YW	1118
YR	99

DAM PROD.
3-96, 3-100

BW	CED	BW	WW	YW	MILK
82	3	1.1	64	120	31

PAP	Marb	RE	\$M	\$W	\$F	\$B
34	0.81	0.44	49	72	96	148



Lufkin Cattle Company • Salmon, Idaho

49 LCC Resilient 160

DOB: 01/27/21 Reg AAA: 20221646 Tattoo: 160

Ind. Perf.

Sitz Stellar 726D

Sire: Sitz Resilient 10208

Sitz Miss Burgess 1856

LEADORE LCC Hurricane C404

Dam: LCC Margie 7114

LEADORE LCC Margie C78

HD50K

WW	602
WR	101
YW	1138
YR	101

DAM PROD.
3-101, 3-99

BW	CED	BW	WW	YW	MILK
76	14	-1.4	58	103	32

PAP	Marb	RE	\$M	\$W	\$F	\$B
37	0.62	0.74	57	73	95	143

50 LCC Resilient 166

DOB: 01/28/21 Reg AAA: 20221636 Tattoo: 166

Ind. Perf.

Sitz Stellar 726D

Sire: Sitz Resilient 10208

Sitz Miss Burgess 1856

S Chisum 255

Dam: LCC Lucy Belle 8121

Leadore Lucy Belle 0780

HD50K

WW	616
WR	103
YW	1122
YR	100

DAM PROD.
2-105, 2-104

BW	CED	BW	WW	YW	MILK
70	12	0.9	60	102	22

PAP	Marb	RE	\$M	\$W	\$F	\$B
39	0.15	0.49	70	63	80	107



51 LCC Resilient 165

DOB: 01/28/21 Reg AAA: 20221641 Tattoo: 165

Ind. Perf.

Sitz Stellar 726D

Sire: Sitz Resilient 10208

Sitz Miss Burgess 1856

S Chisum 255

Dam: LCC Nichole 775

Leadore Nichole Y241

HD50K

WW	592
WR	89
YW	1070
YR	94

DAM PROD.
3-89, 2-98

BW	CED	BW	WW	YW	MILK
68	13	-0.9	62	110	31

PAP	Marb	RE	\$M	\$W	\$F	\$B
37	0.1	0.71	80	76	84	112

52 LCC Stellar 171

DOB: 01/29/21 Reg AAA: 20222934 Tattoo: 171

Ind. Perf.

Mohnen Substantial 272

Sire: Sitz Stellar 726D

SITZ Pride 200B

Sitz Powerball 643D

Dam: LCC Rosena 833

LEADORE LCC Rosena C720

HD50K

WW	546
WR	91
YW	1082
YR	96

DAM PROD.
2-95, 1-96

BW	CED	BW	WW	YW	MILK
73	12	-2.2	52	108	33

PAP	Marb	RE	\$M	\$W	\$F	\$B
38	0.63	0.24	83	68	91	132

53 LCC Payweight 1103

DOB: 02/02/21 Reg AAA: 20211984 Tattoo: 1103
Ind. Perf.

Basin Payweight 1682
Sire: Riverbend 1682 E219
Riverbend Blackcap B021
TEX Playbook 5437
Dam: LCC Blackbird 8108
Leadore Blackbird Z34

HD50K

WW	606
WR	101
YW	1132
YR	100
DAM PROD.	
1-101, 1-100	

BW	75	CEW	9	BW	0.7	WW	67	YW	109	MILK	29
PAP	Marb	RE	\$M	\$W	\$F	\$B					
41	0.57	0.41	65	80	64	108					

54 LCC Blueprint 1140

DOB: 02/06/21 Reg AAA: 20221627 Tattoo: 1140
Ind. Perf.

Connealy Confidence Plus
Sire: Woodhill Blueprint
Woodhill Evergreen Z291-B233
Sitz Final Statement 618X
Dam: Leadore Eileenmere A227
Leadore KCK Eileenmere 5424

HD50K

WW	639
WR	96
YW	1133
YR	99
DAM PROD.	
7-99, 6-98	

BW	70	CEW	6	BW	-1.1	WW	59	YW	109	MILK	43
PAP	Marb	RE	\$M	\$W	\$F	\$B					
43	0.17	0.55	61	82	78	107					

55 LCC Fort Worth J15

DOB: 02/24/21 Reg AAA: 20238589 Tattoo: J15
Ind. Perf.

LD Emblazon 999
Sire: HARB Fort Worth 669 JH
HARB Princess Vel 988 JH
KG Retail Value 8248
Dam: Leadore Blue Lady B309
Leadore Blue Lady 0275

HD50K

WW	721
WR	92
YW	1193
YR	98
DAM PROD.	
5-95, 2-95	

BW	75	CEW	11	BW	0.9	WW	67	YW	112	MILK	16
PAP	Marb	RE	\$M	\$W	\$F	\$B					
31	0.56	0.39	52	61	86	130					

56 LCC Blueprint 1137

DOB: 02/06/21 Reg AAA: 20221542 Tattoo: 1137
Ind. Perf.

Connealy Confidence Plus
Sire: Woodhill Blueprint
Woodhill Evergreen Z291-B233
Leadore Statement A340
Dam: LCC Rosie D160
Leadore Rosie Z534

HD50K

WW	670
WR	101
YW	1113
YR	98
DAM PROD.	
4-101, 3-103	

BW	80	CEW	9	BW	-0.8	WW	50	YW	93	MILK	33
PAP	Marb	RE	\$M	\$W	\$F	\$B					
33	0.97	0.71	60	67	73	137					



Lufkin Cattle Company • Salmon, Idaho

57 LCC Plus One 1132

DOB: 02/06/21 Reg AAA: 20233873 Tattoo: 1132
Ind. Perf.

Connealy Confidence Plus
Sire: **E&B Plus One**
E&B Lady 1023 Precision 936
Sitz Final Statement 618X
Dam: **LCC Barbara B D20**
Leadore Barbara B Y294

HD50K

WW	617
WR	93
YW	1102
YR	97
DAM PROD.	
4-99, 3-100	

BW	CED	BW	WW	YW	MILK
76	10	-0.3	51	94	24

PAP	Marb	RE	\$M	\$W	\$F	\$B
34	0.67	0.82	75	55	84	139

58 LCC Statement 1152

DOB: 02/08/21 Reg AAA: 20235301 Tattoo: 1152
Ind. Perf.

Sitz Final Statement 618X
Sire: **LCC Statement 7134**
Leadore Francie Z395
Leadore Upward B677
Dam: **LCC Rosella D178**
Leadore Rosella B245

HD50K

WW	612
WR	92
YW	1090
YR	96
DAM PROD.	
4-95, 2-94	

BW	CED	BW	WW	YW	MILK
75	10	-0.7	40	73	39

PAP	Marb	RE	\$M	\$W	\$F	\$B
36	0.73	0.69	67	63	78	132

59 LCC Blueprint 1108

DOB: 02/03/21 Reg AAA: 20221629 Tattoo: 1108
Ind. Perf.

Connealy Confidence Plus
Sire: **Woodhill Blueprint**
Woodhill Evergreen Z291-B233
Leadore KCK Vagabond 5186
Dam: **Leadore Barbara B Y829**
Glory B Barbara 303T

HD50K

WW	683
WR	103
YW	1112
YR	98
DAM PROD.	
9-103, 6-104	

BW	CED	BW	WW	YW	MILK
96	12	0.3	58	105	20

PAP	Marb	RE	\$M	\$W	\$F	\$B
34	0.6	0.84	59	57	88	141

60 LCC Plus One 1107

DOB: 02/03/21 Reg AAA: 20233878 Tattoo: 1107
Ind. Perf.

Connealy Confidence Plus
Sire: **E&B Plus One**
E&B Lady 1023 Precision 936
Leadore 7635 Hero 9675
Dam: **Leadore Sandy A447**
Leadore Sandy 0431

HD50K

WW	581
WR	97
YW	1067
YR	95
DAM PROD.	
7-103, 7-102	

BW	CED	BW	WW	YW	MILK
84	9	0.6	59	100	26

PAP	Marb	RE	\$M	\$W	\$F	\$B
38	0.4	0.67	77	65	77	117

61 LCC Blueprint 1116

DOB: 02/03/21 Reg AAA: 20221632 Tattoo: 1116
Ind. Perf.

Connealy Confidence Plus
Sire: **Woodhill Blueprint**
Woodhill Evergreen Z291-B233
Sitz Upward 307R
Dam: **Leadore Tammy 8460**
Leadore Tammy 8149

HD50K

WW	622
WR	94
YW	1107
YR	97
DAM PROD.	
12-104, 9-104	

BW	CED	BW	WW	YW	MILK
82	4	2.6	59	112	31

PAP	Marb	RE	\$M	\$W	\$F	\$B
45	0.21	1.03	55	61	100	142



62 LCC No Doubt 12

DOB: 01/12/21 Reg AAA: 20235009 Tattoo: 12
Ind. Perf.

Hoover No Doubt
Sire: Riverbend No Doubt 9009
Diablo Isabel 1068
Sitz Stellar 726D
Dam: LCC Blue Lady 94
LCC Blue Lady 719

WW	578
WR	97
YW	1090
YR	97
DAM PROD.	
1-97, 1-97	

BW	CED	BW	WW	YW	MILK
64	8	-0.7	60	104	23

PAP	Marb	RE	\$M	\$W	\$F	\$B
42			81	60	79	

63 LCC No Doubt 115

DOB: 01/17/21 Reg AAA: 20235013 Tattoo: 115
Ind. Perf.

Hoover No Doubt
Sire: Riverbend No Doubt 9009
Diablo Isabel 1068
SITZ Logo 12964
Dam: LCC J Lady 965
Leadore J Lady B9

WW	606
WR	101
YW	1072
YR	95
DAM PROD.	
1-101, 1-95	

BW	CED	BW	WW	YW	MILK
67	10	-0.6	50	86	21

PAP	Marb	RE	\$M	\$W	\$F	\$B
38	0.34	0.54	84	52	63	99

64 LCC No Doubt 113

DOB: 01/16/21 Reg AAA: 20235012 Tattoo: 113
Ind. Perf.

Hoover No Doubt
Sire: Riverbend No Doubt 9009
Diablo Isabel 1068
LEADORE LCC Z23 Upward C433
Dam: LCC Rosena 9191
Leadore Rosena 0471

WW	604
WR	101
YW	1044
YR	93
DAM PROD.	
1-101, 1-93	

BW	CED	BW	WW	YW	MILK
64	9	-0.8	51	93	25

PAP	Marb	RE	\$M	\$W	\$F	\$B
43	0.56	0.25	55	56	77	116

65 LCC No Doubt 118

DOB: 01/17/21 Reg AAA: 20235015 Tattoo: 118
Ind. Perf.

Hoover No Doubt
Sire: Riverbend No Doubt 9009
Diablo Isabel 1068
Leadore Statement B142
Dam: LCC Deena 9179
Leadore Deena B697

WW	586
WR	98
YW	1012
YR	90
DAM PROD.	
1-98, 1-90	

BW	CED	BW	WW	YW	MILK
60	3	0.5	56	95	23

PAP	Marb	RE	\$M	\$W	\$F	\$B
45	0.23	0.43	70	59	71	100

66 LCC Hurricane 1208

DOB: 02/21/21 Reg AAA: 20211997 Tattoo: 1208
Ind. Perf.

Leadore Hurricane 0532
Sire: LEADORE LCC Hurricane C404
Leadore Wingina 8590
S Chisum 255
Dam: LCC Alice 8127
LCC Alice D166

WW	653
WR	109
YW	1109
YR	98
DAM PROD.	
1-109, 1-98	

BW	CED	BW	WW	YW	MILK
71	11	-0.2	62	95	27

PAP	Marb	RE	\$M	\$W	\$F	\$B
43			74	70	66	

67 LCC Chisum 1236

DOB: 03/03/21 Reg AAA: 20235018 Tattoo: 1236
Ind. Perf.

S Chisum 255
Sire: LCC Chisum 7121
Leadore Nichole 080
KG Retail Value 8248
Dam: LEADORE LCC Barbara B C93
Leadore Barbara B Y570

WW	734
WR	111
YW	1208
YR	106
DAM PROD.	
5-105, 3-101	

BW	CED	BW	WW	YW	MILK
95	4	1.9	65	120	31

PAP	Marb	RE	\$M	\$W	\$F	\$B
33	0.55	0.61	69	75	105	152



68 LCC Hurricane 1220

DOB: 02/26/21 Reg AAA: 20212000 Tattoo: 1220
Ind. Perf.

Leadore Hurricane 0532

Sire: LEADORE LCC Hurricane C404
Leadore Wingina 8590
KG Smart Bet 1758

Dam: Leadore Alice B B127
Leadore Alice B Z673

WW	660
WR	100
YW	1180
YR	104

DAM PROD.	
5-108, 3-108	

BW	CED	BW	WW	YW	MILK
84	6	0.9	64	113	29

PAP	Marb	RE	\$M	\$W	\$F	\$B
35	0.32	0.36	64	69	34	31


69 LCC Statement 1168

DOB: 02/10/21 Reg AAA: 20235388 Tattoo: 1168
Ind. Perf.

Sitz Final Statement 618X

Sire: LCC Statement 7134
Leadore Francie Z395
Sitz Upward 307R

Dam: Leadore Eileenmere A276
Leadore Eileenmere 6163



WW	680
WR	103
YW	1128
YR	100

DAM PROD.	
7-96, 6-100	

BW	CED	BW	WW	YW	MILK
86	9	0.4	47	86	28

PAP	Marb	RE	\$M	\$W	\$F	\$B
34	0.81	0.33	59	54	74	125

70 LCC Playbook 1214

DOB: 02/24/21 Reg AAA: 20211998 Tattoo: 1214
Ind. Perf.

TEX Playbook 5437

Sire: LCC Playbook 886
Leadore Eileenmere A227
Leadore Upward Z23

Dam: LCC J Lady 7175
Leadore J Lady B9

WW	659
WR	99
YW	1149
YR	101

DAM PROD.	
3-101, 2-102	

BW	CED	BW	WW	YW	MILK
75	7	0.9	62	108	30

PAP	Marb	RE	\$M	\$W	\$F	\$B
31	0.04	0.55	69	69	86	110

71 LCC Hurricane 1223

DOB: 02/28/21 Reg AAA: 20212001 Tattoo: 1223
Ind. Perf.

Leadore Hurricane 0532

Sire: LEADORE LCC Hurricane C404
Leadore Wingina 8590
SITZ Logo 12964

Dam: LCC Blackbird 75
LEADORE LCC Blackbird C261

WW	633
WR	106
YW	1103
YR	98

DAM PROD.	
3-100, 1-98	

BW	CED	BW	WW	YW	MILK
80	11	-0.6	65	104	25

PAP	Marb	RE	\$M	\$W	\$F	\$B
43			82	70	72	

72 LCC Hurricane 1233

DOB: 03/02/21 Reg AAA: 20212004 Tattoo: 1233
Ind. Perf.

Leadore Hurricane 0532

Sire: LEADORE LCC Hurricane C404
Leadore Wingina 8590
Sitz Upward 307R

Dam: Leadore Francie Z395
Leadore KCK Francie 5275

WW	629
WR	105
YW	1125
YR	100

DAM PROD.	
7-108, 7-107	

BW	CED	BW	WW	YW	MILK
83	6	1.6	60	104	32

PAP	Marb	RE	\$M	\$W	\$F	\$B
36	0.45	0.38	60	68	88	125

73 LCC Chisum 1239

DOB: 03/03/21 Reg AAA: 20235019 Tattoo: 1239
Ind. Perf.

S Chisum 255
Sire: LCC Chisum 7121
Leadore Nichole 080
Leadore 512 Freighter 7423
Dam: Leadore Blackbird Y579
Leadore Blackbird 7144

WW	719
WR	108
YW	1167
YR	102
DAM PROD.	
6-105, 5-103	


BW	CED	BW	WW	YW	MILK
101	0	3.6	64	107	28

PAP	Marb	RE	\$M	\$W	\$F	\$B
33	0.42	0.46	66	63	92	130

74 LCC No Doubt 1243

DOB: 03/04/21 Reg AAA: 20212005 Tattoo: 1243
Ind. Perf.

Hoover No Doubt
Sire: Riverbend No Doubt 9009
Diablo Isabel 1068
Leadore Epoch 6159
Dam: Leadore Eileenmere Z117
Leadore Eileenmere 7194



WW	692
WR	104
YW	1151
YR	101
DAM PROD.	
8-99, 3-99	

BW	CED	BW	WW	YW	MILK
86	-4	4.4	71	127	17

PAP	Marb	RE	\$M	\$W	\$F	\$B
37	0.76	0.44	77	53	110	161

75 LCC Hurricane 1267

DOB: 03/18/21 Reg AAA: 20212007 Tattoo: 1267
Ind. Perf.

Leadore Hurricane 0532
Sire: LEADORE LCC Hurricane C404
Leadore Wingina 8590
Leadore 7635 Hero 9675
Dam: Leadore Mabel B739
Leadore Mabel 9706

WW	774
WR	117
YW	1225
YR	112
DAM PROD.	
6-110, 5-108	

BW	CED	BW	WW	YW	MILK
80	11	-0.8	67	113	35


PAP	Marb	RE	\$M	\$W	\$F	\$B
41	0.47	0.47	57	83	92	131



76 LCC Plus One 1143

DOB: 02/07/21 Reg AAA: 20233875 Tattoo: 1143
Ind. Perf.

Connealy Confidence Plus
Sire: E&B Plus One
E&B Lady 1023 Precision 936
Sitz Upward 307R
Dam: Leadore Jilt B549
Leadore Jilt 9186



WW	633
WR	106
YW	1047
YR	93
DAM PROD.	
4-99, 2-96	

BW	CED	BW	WW	YW	MILK
75	10	0.1	47	91	29

PAP	Marb	RE	\$M	\$W	\$F	\$B
39	0.61	0.6	64	57	67	116

77 LCC Payweight 1184

DOB: 02/12/21 Reg AAA: 20211992 Tattoo: 1184
Ind. Perf.

Basin Payweight 1682
Sire: Riverbend 1682 E219
Riverbend Blackcap B021
RR 2418 Hero 0616
Dam: Leadore Shoshone 0338
Leadore KCK Shoshone 5230

WW	728
WR	110
YW	1125
YR	99
DAM PROD.	
8-112, 5-105	

BW	CED	BW	WW	YW	MILK
99	-2	4.4	63	107	38

PAP	Marb	RE	\$M	\$W	\$F	\$B
41	0.45	0.23	84	68	85	122

Lufkin Cattle Company • Salmon, Idaho

78 LCC Hurricane 1190

DOB: 02/14/21 Reg AAA: 20211993 Tattoo: 1190
Ind. Perf.

Leadore Hurricane 0532
Sire: **LEADORE LCC Hurricane C404**
Leadore Wingina 8590
S Chisum 255
Dam: **LCC Rosella 772**
Leadore Rosella 0132

WW	610
WR	92
YW	1125
YR	99
DAM PROD.	
2-95, 1-99	

BW	CED	BW	WW	YW	MILK
64	16	-2.3	54	93	26

PAP	Marb	RE	\$M	\$W	\$F	\$B
34			64	61	73	

79 LCC Payweight 1169

DOB: 02/10/21 Reg AAA: 20211991 Tattoo: 1169
Ind. Perf.

Basin Payweight 1682
Sire: **Riverbend 1682 E219**
Riverbend Blackcap B021
Sitz Final Statement 618X
Dam: **LCC Deena D205**
CCAR Deena Z246

WW	681
WR	103
YW	1110
YR	98
DAM PROD.	
4-93, 2-101	

BW	CED	BW	WW	YW	MILK
76	11	-0.5	65	110	25

PAP	Marb	RE	\$M	\$W	\$F	\$B
42	0.64	0.21	73	74	76	122

80 LCC 764 Upward 1205

DOB: 02/19/21 Reg AAA: 20211996 Tattoo: 1205
Ind. Perf.

Sitz Upward 307R
Sire: **SBAR Upward 764-6025**
SBAR Dixie Erica 129-764
Sitz Final Statement 618X
Dam: **Leadore Royal Ann A324**
Tyler Royal Alliance D102

WW	663
WR	100
YW	1148
YR	101
DAM PROD.	
7-100, 7-105	

BW	CED	BW	WW	YW	MILK
78	11	1	64	115	24

PAP	Marb	RE	\$M	\$W	\$F	\$B
36	0.04	0.37	51	64	104	124

81 LCC No Doubt 123

DOB: 01/19/21 Reg AAA: 20235017 Tattoo: 123
Ind. Perf.

Hoover No Doubt
Sire: **Riverbend No Doubt 9009**
Diablo Isabel 1068
Riverbend 1682 E219
Dam: **LCC Margie 932**
LCC Margie 7114

WW	600
WR	100
YW	1096
YR	97
DAM PROD.	
1-100, 1-97	

BW	CED	BW	WW	YW	MILK
68	11	-1	49	91	23

PAP	Marb	RE	\$M	\$W	\$F	\$B
42	0.63	0.37	78	55	85	127



Lufkin Cattle Company • Salmon, Idaho

82 LCC Hurricane 1196

DOB: 02/16/21 Reg AAA: 20211994 Tattoo: 1196
Ind. Perf.

Leadore Hurricane 0532
Sire: LEADORE LCC Hurricane C404
Leadore Wingina 8590
Sitz Final Statement 618X
Dam: LCC Rose 790
Leadore Rose Z259

WW	680
WR	103
YW	1102
YR	97
DAM PROD.	
2-102, 2-100	

BW	78	CEW	8	BW	0	WW	60	YW	98	MILK	27
PAP	Marb	RE	\$M	\$W	\$F	\$B					
33			71	66	72						

83 LCC Chisum 1198

DOB: 02/17/21 Reg AAA: 20211995 Tattoo: 1198
Ind. Perf.

S Chisum 255
Sire: LCC Chisum 7121
Leadore Nichole 080
SITZ Logo 12964
Dam: LCC Blue Lass 713
LEADORE LCC Blue Lass C252

WW	650
WR	98
YW	1088
YR	96
DAM PROD.	
2-103, 2-104	

BW	76	CEW	9	BW	0.7	WW	63	YW	107	MILK	26
PAP	Marb	RE	\$M	\$W	\$F	\$B					
36			89	65	78						

84 LCC Hurricane 1224

DOB: 02/28/21 Reg AAA: 20212002 Tattoo: 1224
Ind. Perf.

Leadore Hurricane 0532
Sire: LEADORE LCC Hurricane C404
Leadore Wingina 8590
Leadore Upward 7544
Dam: Leadore Barbara B 0269
Leadore Barbara B 6331

WW	698
WR	105
YW	1116
YR	98
DAM PROD.	
9-103, 8-105	

BW	101	CEW	-2	BW	4.5	WW	68	YW	112	MILK	26
PAP	Marb	RE	\$M	\$W	\$F	\$B					
38	0.39	0.48	65	61	91	128					

85 LCC No Doubt 1264

DOB: 03/18/21 Reg AAA: 20212006 Tattoo: 1264
Ind. Perf.

Hoover No Doubt
Sire: Riverbend No Doubt 9009
Diablo Isabel 1068
Sitz Final Statement 618X
Dam: LEADORE LCC Belle C224
Leadore Belle 8359

WW	762
WR	115
YW	1181
YR	108
DAM PROD.	
4-104, 3-101	

BW	76	CEW	5	BW	1.8	WW	63	YW	107	MILK	34
PAP	Marb	RE	\$M	\$W	\$F	\$B					
48	0.5	0.74	73	78	88	134					

86 LCC Fort Worth J14

DOB: 02/20/21 Reg AAA: 20238588 Tattoo: J14
Ind. Perf.

LD Emblazon 999
Sire: HARB Fort Worth 669 JH
HARB Princess Vel 988 JH
Sitz Alliance 431N
Dam: Leadore Lucy Belle 0780
Leadore Lucy Belle 1248

WW	711
WR	91
YW	1138
YR	94
DAM PROD.	
8-97, 5-98	

BW	70	CEW	10	BW	0.4	WW	53	YW	94	MILK	24
PAP	Marb	RE	\$M	\$W	\$F	\$B					
35	0.52	0.39	58	55	75	115					

87 LCC Payweight 1124

DOB: 02/04/21 Reg AAA: 20211987 Tattoo: 1124
Ind. Perf.

Basin Payweight 1682
Sire: Riverbend 1682 E219
Riverbend Blackcap B021
Leadore Upward Y101
Dam: Leadore Empress B324
Leadore Empress Y517

WW	571
WR	86
YW	1024
YR	90
DAM PROD.	
6-99, 3-105	

BW	73	CEW	12	BW	-0.7	WW	47	YW	102	MILK	35
PAP	Marb	RE	\$M	\$W	\$F	\$B					
36	0.47	0.15	80	60	84	119					

Lufkin Cattle Company • Salmon, Idaho

88 LCC Hurricane 1241

DOB: 03/04/21 Reg AAA: 20235020 Tattoo: 1241

Leadore Hurricane 0532

Sire: LEADORE LCC Hurricane C404

Leadore Wingina 8590

Leadore Upward 7544

Dam: Leadore Queen A688

Leadore Queen 0276

Ind. Perf.	
WW	728
WR	110
YW	1110
YR	98

DAM PROD.	
5-105, 3-102	

	BW	CED	BW	WW	YW	MILK
	87	6	0.9	64	100	29
PAP	Marb	RE	\$M	\$W	\$F	\$B
32	0.35	0.46	73	74	82	118

89 LCC Plus One 1153

DOB: 02/08/21 Reg AAA: 20233877 Tattoo: 1153

Connealy Confidence Plus

Sire: E&B Plus One

E&B Lady 1023 Precision 936

Sitz Final Statement 618X

Dam: Leadore Deena B412

Leadore Deena 069

Ind. Perf.	
WW	653
WR	98
YW	1019
YR	89

DAM PROD.	
4-95, 2-99	

	BW	CED	BW	WW	YW	MILK
	91	9	2.1	59	119	24
PAP	Marb	RE	\$M	\$W	\$F	\$B
50+	0.51	0.62	72	58	104	147

90 LCC Blueprint 1161

DOB: 02/09/21 Reg AAA: 20221631 Tattoo: 1161

Connealy Confidence Plus

Sire: Woodhill Blueprint

Woodhill Evergreen Z291-B233

Sitz Upward 307R

Dam: Leadore Nichole 8524

Leadore Nichole 037

Ind. Perf.	
WW	530
WR	89
YW	1047
YR	93

DAM PROD.	
10-108, 9-107	

	BW	CED	BW	WW	YW	MILK
	93	4	2.6	68	126	25
PAP	Marb	RE	\$M	\$W	\$F	\$B
35	0.19	0.69	61	65	107	138



91 LCC Chisum 1228

DOB: 03/01/21 Reg AAA: 20212003 Tattoo: 1228

S Chisum 255

Sire: LCC Chisum 7121

Leadore Nichole 080

Sitz Upward 307R

Dam: Leadore Black Beauty Y464

Leadore Black Beauty 035

Ind. Perf.	
WW	692
WR	104
YW	1054
YR	93

DAM PROD.	
8-105, 8-104	

	BW	CED	BW	WW	YW	MILK
	83	9	0.1	36	72	31
PAP	Marb	RE	\$M	\$W	\$F	\$B
38	0.53	0.2	60	47	73	110

92 LCC Resilient 1131

DOB: 02/05/21 Reg AAA: 20221649 Tattoo: 1131

Sitz Stellar 726D

Sire: Sitz Resilient 10208

Sitz Miss Burgess 1856

Sitz Investment 660Z

Dam: LCC Ankonion D46

Leadore Ankonion Y439

Ind. Perf.	
WW	657
WR	99
YW	953
YR	84

DAM PROD.	
3-106, 3-95	

	BW	CED	BW	WW	YW	MILK
	81	6	0.2	60	100	26
PAP	Marb	RE	\$M	\$W	\$F	\$B
34	0.73	0.16	52	69	74	120

THIS IS
COMMUNITY
BANKING

This is wide range lending needs.



Operating
Lines of Credit

Equipment

Livestock

Land

135 Farnsworth Way
Rigby, ID | 208.745.8107

D.L. Evans
BANK





HOW TO PARTICIPATE AS AN ABSENTEE BUYER

We have made preparations to bid and buy livestock through Superior Productions' "Call or Click-To-Bid" service for those unable to attend in person on sale day. **Please note that all of the lots in the sale will also be available for viewing online prior to sale day at www.superiorlivestock.com.**

HERE'S HOW IT WORKS

Turn in Bids Over the Phone. This is our traditional method of buying livestock. To get started simply go online to www.superiorlivestock.com and click on the tab titled "Register for a Buyer Number". Select the registration form for Superior Productions and print

the registration form, fill it out and fax it in to Superior Productions at (817) 378-3380 with a signature on it, or scan and email the form to info@superiorauction.com. You can also mail it in to the address provided on the form. Upon receipt of this information Superior will call you with a buyer's number and the bid line phone number that you will use on sale day to place bids over the phone.

Click-To-Bid

This is Superior's online bidding platform for cattle buying. Please note that high speed internet is required – this is not for dial-up or satellite internet. Registration is free, but you must become a member of www.superiorclicktobid.com to sign up. Becoming a member is easy - just go to the homepage of www.superiorclicktobid.com and follow the out-lined steps to get started. Input your information and select a username and password. You will receive an e-mail confirming you are a member. From that point forward you just have to sign in and select the sale you would like to register for and once approved you will receive an e-mail confirming which sale you are now registered for.

Viewing the Auction

There are 2 places to view the sale broadcast live on the internet:

www.superiorlivestock.com or www.superiorclicktobid.com. Just go to the home page of either website and select the auction. If you just want to watch the auction on your computer, smartphone or tablet go to www.superiorlivestock.com, but if you want to bid over the computer you must go to

www.superiorclicktobid.com. Remember you can call in to bid on the internet, but you must be a member of www.superiorclicktobid.com to "click-to-bid". Your computer must have Flash Media Player installed for this website to view the auction. If you have any questions, please call the Superior Productions office at 800-431-4452.

*If you plan to bid by phone through Superior Livestock or 'Click-to-Bid', you must register at www.superiorlivestock.com prior to bidding.



Lufkin Cattle Company Guarantee

We are not lawyers, so our guarantee is simple:
If you are unhappy with any bull you purchase from this sale,
call us and we will make the deal right for you.

Call Carl Lufkin 208-303-0438

Sale Terms and Conditions

This sale is being conducted under the sale terms and conditions adopted by the American Angus Association. If you want to read the entire terms, go to the Angus website (www.angus.org).

Bidding

Each bull will be sold to the highest bidder. The auctioneer will settle any disputes as to bids and his decision shall be final.

Terms

Terms of the sale are cash unless credit arrangements are made with Carl or Robin Lufkin.

Transfers – Registration papers will be transferred to buyer if he informs the sale clerk.

Health

Interstate health papers will be furnished for each bull requiring them.

Announcements

Any changes from information in the Sale Book will be announced from the auction block.

Retained Interest

Lufkin Cattle Company reserves the right to retain a breeding or AI interest in any bull sold in the sale. Retained interest will be announced from the auction block.

Genetic Defects

All bulls in the sale are tested free of genetic defects or have no potential carriers in their pedigree. Lufkin Cattle Company reserves the right to obtain DNA for testing from any bull suspected of carrying a genetic defect.

Rights and Obligations

The above terms and conditions shall constitute a contract and shall be equally binding on both buyer and Lufkin Cattle Company.

Bull Delivery

Bulls will be delivered free to Idaho and adjoining states.

Liability

All persons who attend the sale do so at their own risk. Lufkin Cattle Company assumes no liability, legal or otherwise, for any accidents that may occur.