

A black Angus cow is the central focus of the image, standing in a field of straw. The cow has two ear tags: a white one on its left ear with the number '30' and a yellow one on its right ear with the number '70'. The background is a blurred white fence.

Master Angus

Annual Production Sale

Wednesday, March 25, 2020 - 1 p.m. - Bear Paw Livestock
Chinook, Montana

Master Angus

Gene Ryg & Vinee' Cox

8585 Barney Olson Road
Chinook, Montana

Email us at generyg@gmail.com
or call (406) 357-2265 or (406) 680-7483

Welcome to Master Angus Annual Sale!

Vinee' and I welcome you to our sale. For over 29 years we have been working on putting together moderate, maternal, low input cows for our herd. We are proud and enjoy very much being in the Angus business and providing you good Black Angus seed stock.

Our bulls were fed at Hould's Feedlot in Malta again this year. They gained an average of 3.22 lbs per day, with back fat at .27. We are very pleased with the results. Thank you, Bruce, Linda and your crew for doing an excellent job of feeding and caring for our bulls again this year.

The demand for Angus steers and heifers just keeps getting better. The sale of Angus bulls this spring has been solid. Not only for the feeder calves these bulls will produce, also for the great Angus females they will put in your herd. The Angus cow is the most trouble free and low input cows used on the grasslands of America.

As we move forward with our cow herd we have chosen sons of Cole Creek Black Cedar (Neel's Power 512), McCumber Titanium 5005 (McCumber Influence 7121), Master Keystone 7129, Keystone is a son of McCumber Rowdy 5206 and our Sitz Tradition granddaughter MA Eola 129. We stayed with maternal sires of the Angus breed, knowing that the Angus mother cow will keep us in the cattle business. Our cow herd is a reflection of some of the great Black Angus cow herds in Montana and North Dakota. You will find daughters that have GDAR, Sitz, Arntzen, Vermilion, and Cole Creek genetics in our herd and McCumber Angus genetics from North Dakota. We feel these breeders have blazed the path for our herd and the entire American Angus breed. I will say it again, breeders that focus on maternal traits have as good or better carcass quality than breeders that breed to try and satisfy the packers.

Commercial cattle breeders beware of the path the AI industry is promoting. Talk to the above mentioned breeders ask them how important the following traits, feet, udders, fertility and disposition are to a cow herd.

Please feel free to evaluate the bulls any time prior to the sale at the Hould feedlot south of Malta, MT, then on March 24th at the Bear Paw Livestock Commission in Chinook, MT.

Look for our bull videos at: masterangus.com.

Vinee' and I would like to thank you for your past support and future business. We are extremely grateful for your friendship. If you have any questions, or if we can be of any service, please call us as we would enjoy visiting with you.

See you at the sale,
Gene and Vinee'



Master Angus

48 Registered Angus Bulls Sell
Wednesday, March 25, 2020

SALE LOCATION

Bear Paw Livestock Sale Yards

TIME

1:00 p.m.

SALE DAY PHONES

(406) 357-2286 or Cell (406) 680-7483

TERMS

Cash or cashable check at the time of settlement.
Bulls must be paid for before delivery is made or before he is hauled from sale site, unless previous arrangements have been made.

AUCTIONEER

Kyle Shobe (406) 366-0472

RING MEN

Kurt Kangas - American Angus Association
Logen Mydland - Special Assignment

ALL BULLS

Bulls have been performance tested, BVD PI Negative, fertility tested, ultrasounded for carcass merit and free of all known genetic defects.

ACCOMMODATIONS

Bear Paw Court - 406-357-2221
Chinook Motor Inn - 406-357-2248

FREE DELIVERY

Up to 150 miles on purchases of \$3,000 or more, at cost beyond 150 miles. Bulls will be delivered within a couple of days after sale unless prior arrangements have been made. Bring your trailer, haul your bulls and receive \$50.00 per head off purchase price.

*We would like to say thank you
to Annie Branger of AnnieO Photos for taking our pictures this year!*
www.annieophotos.com



Lot
1

Master Dakota 9129

Tattoo: 9129

Tag: 9129

DOB: 01/29/19

Reg. No.

19559032

S A V Resource 1441
Sire: S R Dakota 514
S R Polly 804

Rito 707 of Ideal 3407 7075
S A V Blackcap May 4136
Sitz Alliance 6595
SR Polly 323

RYG Tradition 517
Dam: MA Eola 129
MA Eola 29

Sitz Tradition RLS 8702
Cole Creek Luckycap 0102
Master Guru 0686
E 7 Eola 4977

\$Values

\$W \$F \$G \$QG \$YG \$B
59.00 93.00 28.00 0.00 0.00 121.00

Dam Production: BR 7 98; WR 7 104;

Production EPD's					Maternal EPD's					
CED	BW	WN	YR	RADG	SC	DOC	HP	CEM	Milk	\$EN
+ 9	-0.5	+ 54	+ 91	+ 0.00		+ 0		+ 4	+ 26	-11.00

Carcass Epds: I + 27 I + 0.18 I + 0.35 I + 0.007

Projected sale day wt 1382. SC 38.5 cm Maternal brother to Master Keystone 7129.

Ind. Record	
BW	83
WW	888
205	804
WR	105
ADG	2.8
YW	1,205
365	1,204
YR	97
IMF	4.17 /103
REA	12.20 /97
FAT	0.25 / 93

Lot
2

Master Dakota 9146

Tattoo: 9146

Tag: 9146

DOB: 02/22/19

Reg. No.

19559033

S A V Resource 1441
Sire: S R Dakota 514
S R Polly 804

Rito 707 of Ideal 3407 7075
S A V Blackcap May 4136
Sitz Alliance 6595
SR Polly 323

CAR Chinnook 786
Dam: MA Missy Ella 146
DSS Missy Ella 23P

A A R Really Windy 1205
CAR Miss Marie 5109
Connealy Lead On
DSS Missy Ella 61B

\$Values

\$W \$F \$G \$QG \$YG \$B
61.00 91.00 28.00 0.00 0.00 120.00

Dam Production: BR 7 106; WR 7 105;

Production EPD's					Maternal EPD's					
CED	BW	WN	YR	RADG	SC	DOC	HP	CEM	Milk	\$EN
+ 4	+ 2.4	+ 60	+ 103	+ 0.00	I + 1.20	+ 0	I + 11.1	+ 2	+ 28	-17.00

Carcass Epds: I + 38 I + 0.12 I + 0.58 I + 0.004

Projected sale da wt 1432 SC 38.5 cm

Ind. Record	
BW	99
WW	861
205	834
WR	109
ADG	3.4
YW	1,255
365	1,330
YR	107
IMF	3.08 / 76
REA	13.70 /109
FAT	0.27 /100

Lot
3

Master Legend 9529

Tattoo: 9529-B19

Tag: 9529

DOB: 02/11/19

Reg. No.

19558999

S A V Renown 3439
Sire: Mytty Legend 5062
Mytty Pride 1015

Rito 707 of Ideal 3407 7075
S A V Blackcap May 4136
Mytty In Focus
Mytty Pride 111W

A A R Bennett 1543
Dam: MA Eola 529
MA Eola 29

Sitz Dash 10277
A A R Shania 6550
GDAR Approval 9328
MA Eola 9

\$Values

\$W \$F \$G \$QG \$YG \$B
55.00 91.00 27.00 0.00 0.00 118.00

Dam Production: BR 3 99; WR 3 108;

Production EPD's					Maternal EPD's					
CED	BW	WN	YR	RADG	SC	DOC	HP	CEM	Milk	\$EN
+ 4	+ 2.1	+ 62	+ 107	+ 0.00		+ 0		+ 7	+ 22	-23.00

Carcass Epds: I + 37 I + 0.15 I + 0.51 I + 0.021

Projected sale day wt 1475 SC 37.5 cm

Ind. Record	
BW	89
WW	874
205	834
WR	109
ADG	3.6
YW	1,298
365	1,368
YR	110
IMF	3.49 / 86
REA	13.70 /109
FAT	0.24 / 89

Master
Angus



Lot 4 Master Legend 9479
Tattoo: 9479 Tag: 9479 DOB: 02/19/19 Reg. No. 19558995

S A V Renown 3439
Sire: Mytty Legend 5062
Mytty Pride 1015

Rito 707 of Ideal 3407 7075
S A V Blackcap May 4136
Mytty In Focus
Mytty Pride 111W

GDAR Approval 9328
Dam: MA Missy Ella 3846
MA Missy Ella 846

Sitz Alliance 7487
GDAR Miss Wix 4337
ER Justice N013
DSS Missy Ella 23P

\$Values
\$W \$F \$G \$QG \$YG \$B
51.00 95.00 44.00 0.00 0.00 140.00

Dam Production: BR 5 104; WR 5 104:

Production EPD's							Maternal EPD's			
CED	BW	WN	YR	RADG	SC	DOC	HP	CEM	Milk	\$EN
-1	+ 3.4	+ 64	+ 111	+ 0.00		+ 0		+ 4	+ 21	-19.00

Carcass Epds: I + 41 I + 0.47 I + 0.61 I + 0.019

Projected sale day wt 1478 SC 38.5 cm

Ind. Record	
BW	100
WW	875
205	840
WR	110
ADG	3.66
YW	1,301
365	1,376
YR	111
IMF	4.95 /122
REA	15.10 /20
FAT	0.35 /130

Lot 5 Master Dakota 9467
Tattoo: 9467 Tag: 9467 DOB: 02/09/19 Reg. No. 19559022

S A V Resource 1441
Sire: S R Dakota 514
S R Polly 804

Rito 707 of Ideal 3407 7075
S A V Blackcap May 4136
Sitz Alliance 6595
SR Polly 323

Mc Cumber Mason 352
Dam: MA Juanada 5340
MA Juanada 340

Mc Cumber Rito Rolette 1108
B Pride 461 OF Mc Cumber
A A R Bennett 1543
MA Juanada R825

\$Values
\$W \$F \$G \$QG \$YG \$B
58.00 102.00 19.00 0.00 0.00 121.00

Dam Production: BR 2 104; WR 2 104:

Production EPD's							Maternal EPD's			
CED	BW	WN	YR	RADG	SC	DOC	HP	CEM	Milk	\$EN
+ 5	+ 1.6	+ 57	+ 98	+ 0.00		+ 0		+ 4	+ 27	-12.00

Carcass Epds: I + 40 I + 0.00 I + 0.49 I + 0.030

Projected sale day wt 1514 SC 39.5 cm

Ind. Record	
BW	90
WW	872
205	827
WR	108
ADG	3.96
YW	1,337
365	1,413
YR	114
IMF	3.86 / 95
REA	13.80 /10
FAT	0.32 /119

Lot 6 Master Dakota 9532
Tattoo: 9532 Tag: 9532 DOB: 02/09/19 Reg. No. 19559020

S A V Resource 1441
Sire: S R Dakota 514
S R Polly 804

Rito 707 of Ideal 3407 7075
S A V Blackcap May 4136
Sitz Alliance 6595
SR Polly 323

A A R Bennett 1543
Dam: MA Blackcap 532
MA Blackcap 9919

Sitz Dash 10277
A A R Shania 6550
LT Total Edge 6045
M A Guru Blackcap 9199

\$Values
\$W \$F \$G \$QG \$YG \$B
48.00 83.00 18.00 0.00 0.00 101.00

Dam Production: BR 3 96; WR 2 97:

Production EPD's							Maternal EPD's			
CED	BW	WN	YR	RADG	SC	DOC	HP	CEM	Milk	\$EN
+ 4	+ 2.2	+ 52	+ 93	+ 0.00		+ 0		+ 5	+ 25	-8.00

Carcass Epds: I + 27 I + 0.02 I + 0.23 I + 0.011

Projected sale day wt 1469 SC 37 cm

Ind. Record	
BW	89
WW	813
205	773
WR	101
ADG	3.77
YW	1,292
365	1,376
YR	111
IMF	4.28 /105
REA	11.70 /93
FAT	0.29 /107



Lot 4

AnnieOPhotos



Lot 5

AnnieOPhotos



Lot 6

AnnieOPhotos

Master Angus

Lot
7

Master Dakota 9472

Tattoo: 9472

Tag: 9472

DOB: 02/19/19

Reg. No. 19559021

Sire: S A V Resource 1441
S R Dakota 514
S R Polly 804

Rito 707 of Ideal 3407 7075
S A V Blackcap May 4136
Sitz Alliance 6595
SR Polly 323

Dam: A A R Bennett 1543
MA Eola 5129
MA Eola 129

Sitz Dash 10277
A A R Shania 6550
RYG Tradition 517
MA Eola 29

Ind. Record	
BW	104
WW	830
205	812
WR	106
ADG	3.51
YW	1,239
365	1,327
YR	107
IMF	4.61 /114
REA	12.80 102
FAT	0.38 /141

\$Values

\$W 49.00 \$F 96.00 \$G 27.00 \$QG 0.00 \$YG 0.00 \$B 123.00

Dam Production: BR 3 110; WR 3 110:

Production EPD's						Maternal EPD's				
CED	BW	WN	YR	RADG	SC	DOC	HP	CEM	Milk	\$EN
-1	+4.2	+58	+102	+0.00		+0		-2	+27	-16.00

Carcass Epds: I + 35 I + 0.20 I + 0.39 I + 0.032

Projected sale day wt 1416. Maternal brother to 2019 high selling bull. Weaned off his dam at 830 lbs. SC 39.5 cm

Lot
8

Master Keystone 969

Tattoo: 969

Tag: 969

DOB: 01/26/19

Reg. No. 19559015

Sire: Mc Cumber Rowdy 5206
Master Keystone 7129
MA Eola 129

Sinclair Fortunate Son
Lassie 0101 of Mc Cumber
RYG Tradition 517
MA Eola 29

Dam: A A R Bennett 1543
MA Blackcap 69
MA Blackcap 9919

Sitz Dash 10277
A A R Shania 6550
LT Total Edge 6045
MA Guru Blackcap 9199

Ind. Record	
BW	91
WW	887
205	835
WR	109
ADG	4.05
YW	1,364
365	1,437
YR	116
IMF	3.96 / 98
REA	13.20 105
FAT	0.23 / 85

\$Values

\$W 54.00 \$F 114.00 \$G 31.00 \$QG 0.00 \$YG 0.00 \$B 145.00

Dam Production: BR 2 105; WR 2 103:

Production EPD's						Maternal EPD's				
CED	BW	WN	YR	RADG	SC	DOC	HP	CEM	Milk	\$EN
+3	+2.8	+63	+111	+0.00		+0		+6	+23	-16.00

Carcass Epds: I + 41 I + 0.31 I + 0.28 I + 0.027

Projected sale day wt 1541. Gained over 4lbs/day. His dam is full sister to the Bennett bull GDAR bought a couple years ago. This cow family has really performed well for us. 969 is a real herd bull prospect! SC 37.5



Master Bennett 3919



Master Bennett 3919 Dam

MA Blackcap 9919 maternal grand dam to Lot 8. Also dam to Master Bennett 3919, high selling bull in 2014 to GDAR and dam to MA Blackcap 69 lot 8's dam.

**Master
Angus**

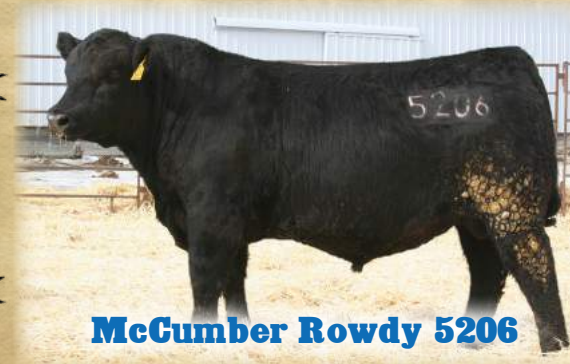


Lot 7

AnnieOPhotos



Lot 8



McCumber Rowdy 5206



Lassie 0101

McCumber Rowdy 5206, sire to Master Keystone 7129. 0101 Dam of Rowdy.

Lot
9

Master Legend 9480

Tattoo: 9480

Tag: 9480

DOB: 02/19/19

Reg. No. 19558994

Sire: SAV Renown 3439
Mytty Legend 5062
Mytty Pride 1015

Rito 707 of Ideal 3407 7075
SAV Blackcap May 4136
Mytty In Focus
Mytty Pride 111W

Dam: Master Hard Drive 058
MA Juanada 2710
MA Juanada 710

McCumber Hard Drive 7150
MA Blackcap 58
Legacy Informer RYG 322
Indreland Juanada 2032

\$Values						Ind. Record					
\$W	\$F	\$G	\$QG	\$YG	\$B	BW	WW	205	WR	ADG	YW
47.00	83.00	29.00	0.00	0.00	113.00	98	849	815	107	3.47	1,253
Dam Production: BR 6 107; WR 6 109:						365	1,324	107	IMF	3.26 / 80	REA 13.30 106
						FAT	0.26 / 96				
Production EPD's								Maternal EPD's			
CED	BW	WN	YR	RADG	SC	DOC	HP	CEM	Milk	\$EN	
+ 0	+ 3.5	+ 55	+ 99	+ 0.00	+ 1.00	+ 0	+ 7.4	+ 3	+ 26	-26.00	

Carcass Epds: I + 41 I + 0.16 I + 0.54 I + 0.007
Projected sale day wt 1430 SC 38 cm

Lot
10

Master Legend 9480

Tattoo: 919-B19

Tag: 919

DOB: 02/13/19

Reg. No. 625489670

Sire: Cole Creek Black Cedar 46P
Neel's Power 512
Coleman Miss Wix 923

C H Quantum 6247
Cole Creek Clova Juanada 67
G D A R Rainmaker 340
Homestretch Miss Wix 299

Dam: McCumber Hard Drive 7150
MA Juanada 19
MA Juanada R825

SAV 8180 Traveler 004
Lassie 206 of Mc Cumber
Baldrige Guru 427
DSS Juanada 74B

\$Values						Ind. Record					
\$W	\$F	\$G	\$QG	\$YG	\$B	BW	WW	205	WR	ADG	YW
			0.00	0.00		99	815	769	101	3.47	1,220
Dam Production: BR 7 104; WR 7 101:						365	1,279	104	IMF	3.64 / 90	REA 13.10 104
						FAT	0.23 / 85				
Production EPD's								Maternal EPD's			
CED	BW	WN	YR	RADG	SC	DOC	HP	CEM	Milk	\$EN	
				+ 0.00		+ 0					

Projected sale day wt 1397 SC 38.5 cm

Lot
11

Master Keystone 9592

Tattoo: 9592

Tag: 9592

DOB: 02/07/19

Reg. No. 19559014

Sire: Mc Cumber Rowdy 5206
Master Keystone 7129
MA Eola 129

Sinclair Fortunate Son
Lassie 0101 of Mc Cumber
RYG Tradition 517
MA Eola 29

Dam: AAR Bennett 1543
MA Kenadee 592
MA Blackbird 9756

Sitz Dash 10277
AAR Shania 6550
McCumber Hard Drive 7150
MA Blackbird 756

\$Values						Ind. Record					
\$W	\$F	\$G	\$QG	\$YG	\$B	BW	WW	205	WR	ADG	YW
50.00	80.00	27.00	0.00	0.00	107.00	101	905	854	112	2.79	1,219
Dam Production: BR 2 108; WR 2 101:						365	1,249	101	IMF	4.37 / 108	REA 11.60 / 92
						FAT	0.25 / 93				
Production EPD's								Maternal EPD's			
CED	BW	WN	YR	RADG	SC	DOC	HP	CEM	Milk	\$EN	
-2	+ 4.7	+ 64	+ 111	+ 0.00		+ 0		+ 3	+ 24	-18.00	

Carcass Epds: I + 24 I + 0.20 I + 0.15 I + 0.002
Projected sale day wt 1396 SC 36.5 cm

Master
Angus



Lot 9



Lot 10



Lot 11

Lot 12 Master Legend 9447
Tattoo: 9447 Tag: 9447 DOB: 02/16/19 Reg. No. 19558998

Sire: S A V Renown 3439
Mytty Legend 5062
Mytty Pride 1015

Rito 707 of Ideal 3407 7075
S A V Blackcap May 4136
Mytty In Focus
Mytty Pride 111W

Dam: MA Juanada 447
GDAR Approval 9328
DSS Juanada 25P

Sitz Alliance 7487
GDAR Miss Wix 4337
Connealy Lead On
DSS Juanada 74B

\$Values					
\$W	\$F	\$G	\$QG	\$YG	\$B
42.00	93.00	48.00	0.00	0.00	140.00

Dam Production: BR 3 104; WR 4 100:

Production EPD's						Maternal EPD's				
CED	BW	WN	YR	RADG	SC	DOC	HP	CEM	Milk	\$EN
+ 1	+ 2.9	+ 55	+ 100	+ 0.00		+ 0		+ 6	+ 20	-13.00

Carcass Epds: I + 27 I + 0.53 I + 0.56 I + 0.008

Projected sale day wt 1383 SC 37 cm

Ind. Record	
BW	97
WW	828
205	788
WR	103
ADG	3.27
YW	1,208
365	1,266
YR	102
IMF	5.99 /148
REA	13.60 /108
FAT	0.30 /111

Lot 13 Master Dakota 9483
Tattoo: 9483-B19 Tag: 9483 DOB: 02/21/19 Reg. No. 19559030

Sire: S A V Resource 1441
S R Dakota 514
S R Polly 804

Rito 707 of Ideal 3407 7075
S A V Blackcap May 4136
Sitz Alliance 6595
SR Polly 323

Dam: MA Miss Brook 0824
Cole Creek Black Cedar 46P
MA Miss Brook 824

C H Quantum 6247
Cole Creek Clova Juanada 67
ER Justice N013
DSS Miss Brook 71B

\$Values					
\$W	\$F	\$G	\$QG	\$YG	\$B
58.00	90.00	29.00	0.00	0.00	119.00

Dam Production: BR 7 100; WR 8 103:

Production EPD's						Maternal EPD's				
CED	BW	WN	YR	RADG	SC	DOC	HP	CEM	Milk	\$EN
I + 4	+ 1.6	+ 55	+ 95	+ 0.00	I + 1.12	+ 0	I + 11.9	I + 4	+ 27	-11.00

Carcass Epds: I + 34 I + 0.27 I + 0.31 I + 0.031

Projected sale day wt 1401 SC 39.5 cm

Ind. Record	
BW	
WW	833
205	804
WR	105
ADG	3.37
YW	1,224
365	1,297
YR	105
IMF	4.42 /109
REA	12.20 /97
FAT	0.31 /115

Lot 14 Master Keystone 9634
Tattoo: 9634 Tag: 9634 DOB: 02/09/19 Reg. No. 19559016

Sire: Mc Cumber Rowdy 5206
Master Keystone 7129
MA Eola 129

Sinclair Fortunate Son
Lassie 0101 of Mc Cumber
RYG Tradition 517
MA Eola 29

Dam: MA Missy 634
Mc Cumber Mason 352
MA Eola 4050

Mc Cumber Rito Rolette 1108
B Pride 461 OF Mc Cumber
GDAR Approval 9328
MA Eola Guru 050

\$Values					
\$W	\$F	\$G	\$QG	\$YG	\$B
58.00	91.00	32.00	0.00	0.00	122.00

Dam Production: BR 2 98; WR 2 104:

Production EPD's						Maternal EPD's				
CED	BW	WN	YR	RADG	SC	DOC	HP	CEM	Milk	\$EN
+ 5	+ 1.6	+ 60	+ 105	+ 0.00		+ 0		+ 6	+ 25	-15.00

Carcass Epds: I + 25 I + 0.28 I + 0.34 I + 0.015

Projected sale day wt 1298 SC 33.5 cm

Ind. Record	
BW	95
WW	878
205	855
WR	112
ADG	2.23
YW	1,121
365	1,161
YR	94
IMF	3.75 / 92
REA	11.80 / 94
FAT	0.21 / 78



Master Angus

Lot 15 Master Keystone 9437
Tattoo: 9437 Tag: 9437 DOB: 02/13/19 Reg. No. 19559012

Mc Cumber Rowdy 5206
Sire: Master Keystone 7129
MA Eola 129
A A R Bennett 1543
Dam: MA Kenadee 437
MA Blackbird 9756

Sinclair Fortunate Son
Lassie 0101 of Mc Cumber
RYG Tradition 517
MA Eola 29
Sitz Dash 10277
A A R Shania 6550
McCumber Hard Drive 7150
MA Blackbird 756

Ind. Record	
BW	93
WW	831
205	783
WR	102
ADG	3.39
YW	1,262
365	1,325
YR	107
IMF	4.73 /117
REA	12.70 101
FAT	0.26 / 96

\$Values					
\$W	\$F	\$G	\$QG	\$YG	\$B
49.00	84.00	29.00	0.00	0.00	114.00

Dam Production: BR 4 107; WR 4 98;

Production EPD's							Maternal EPD's			
CED	BW	WN	YR	RADG	SC	DOC	HP	CEM	Milk	\$EN
+ 3	+ 2.6	+ 58	+ 102	+ 0.00		+ 0		+ 5	+ 22	-12.00

Carcass Epds: I + 29 I + 0.24 I + 0.22 I + 0.003

Projected sale day wt 1439 SC 35.5 cm

Lot 16 Master Keystone 9474
Tattoo: 9474 Tag: 9474 DOB: 02/15/19 Reg. No. 19559001

Mc Cumber Rowdy 5206
Sire: Master Keystone 7129
MA Eola 129
Mc Cumber Fortunate 213
Dam: MA Fortune 4216
MA Fortune Blackbird 216

Sinclair Fortunate Son
Lassie 0101 of Mc Cumber
RYG Tradition 517
MA Eola 29
Sinclair Fortunate Son
Miss Wix 5139 of Mc Cumber
McCumber Hard Drive 7150
MA Fortune Blackbird 7641

Ind. Record	
BW	79
WW	755
205	784
WR	102
ADG	3.5
YW	1,167
365	1,302
YR	105
IMF	3.49 / 86
REA	13.10 104
FAT	0.24 / 89

\$Values					
\$W	\$F	\$G	\$QG	\$YG	\$B
52.00	105.00	28.00	0.00	0.00	133.00

Dam Production: BR 3 101; WR 3 102;

Production EPD's							Maternal EPD's			
CED	BW	WN	YR	RADG	SC	DOC	HP	CEM	Milk	\$EN
I + 2	I + 2.7	I + 60	I + 106	+ 0.00		+ 0		I + 6	I + 23	-20.00

Carcass Epds: I + 37 I + 0.15 I + 0.47 I + 0.009

Projected sale day wt 1344 SC 34.5 cm

Lot 17 Master Dakota 9473
Tattoo: 9473 Tag: 9473 DOB: 02/15/19 Reg. No. 19559026

S A V Resource 1441
Sire: S R Dakota 514
S R Polly 804
CAR Chinnook 786
Dam: MA Blackbird 3631
M A Blackbird 631

Rito 707 of Ideal 3407 7075
S A V Blackcap May 4136
Sitz Alliance 6595
SR Polly 323
A A R Really Windy 1205
CAR Miss Marie 5109
CAR Tracker 421
M A Blackbird 31

Ind. Record	
BW	87
WW	862
205	817
WR	107
ADG	3.52
YW	1,271
365	1,332
YR	108
IMF	4.13 /102
REA	13.30 106
FAT	0.31 /115

\$Values					
\$W	\$F	\$G	\$QG	\$YG	\$B
57.00	99.00	30.00	0.00	0.00	129.00

Dam Production: BR 4 96; WR 5 100;

Production EPD's							Maternal EPD's			
CED	BW	WN	YR	RADG	SC	DOC	HP	CEM	Milk	\$EN
I + 6	+ 1.8	+ 57	+ 97	+ 0.00		+ 0		I + 5	+ 26	-15.00

Carcass Epds: I + 34 I + 0.21 I + 0.49 I + 0.020

pProjected sale day wt 1448 SC 39 cm



Lot 15

AnnieOPhotos



Lot 16

AnnieOPhotos



Lot 17

AnnieOPhotos

Lot 19 Master Legend 9404
Tattoo: 9404 Tag: 9404 DOB: 02/04/19 Reg. No. 19558997

Sire: SAV Renown 3439
Mytty Legend 5062
Mytty Pride 1015

Rito 707 of Ideal 3407 7075
SAV Blackcap May 4136
Mytty In Focus
Mytty Pride 111W

Dam: CAR Chinnook 786
MA Lass 404
MA Bar Lass 04

AA R Really Windy 1205
CAR Miss Marie 5109
McCumber Hard Drive 7150
MA Bar Lass 7521

\$Values
\$W 48.00 \$F 84.00 \$G 22.00 \$QG 0.00 \$YG 0.00 \$B 107.00

Dam Production: BR 3 101; WR 3 105

Production EPD's							Maternal EPD's			
CED	BW	WN	YR	RADG	SC	DOC	HP	CEM	Milk	\$EN
I + 5	I + 2.3	I + 57	I + 101	+ 0.00		+ 0		I + 8	I + 21	-21.00

Carcass Epds: I + 24 I + 0.05 I + 0.33 I -0.004

Projected sale day wt 1388 SC 39 cm

Ind. Record	
BW	83
WW	764
205	771
WR	101
ADG	3.77
YW	1,211
365	1,334
YR	108
IMF	3.78 / 93
REA	13.00 103
FAT	0.17 / 63

Lot 20 Master Keystone 9522
Tattoo: 9522 Tag: 9522 DOB: 02/12/19 Reg. No. 19560409

Sire: Mc Cumber Rowdy 5206
Master Keystone 7129
MA Eola 129

Sinclair Fortunate Son
Lassie 0101 of Mc Cumber
RYG Tradition 517
MA Eola 29

Dam: AA R Bennett 1543
MA Blackbird 522
MA Blackbird 22

Sitz Dash 10277
AA R Shania 6550
GDAR Approval 9328
MA Blackbird 9756

\$Values
\$W 49.00 \$F 69.00 \$G 28.00 \$QG 0.00 \$YG 0.00 \$B 97.00

Dam Production: BR 2 108; WR 2 99:

Production EPD's							Maternal EPD's			
CED	BW	WN	YR	RADG	SC	DOC	HP	CEM	Milk	\$EN
+ 2	+ 3.0	+ 58	+ 103	+ 0.00		+ 0		+ 4	+ 23	-12.00

Carcass Epds: I + 19 I + 0.21 I + 0.20 I + 0.000

Projected sale day wt 1313 SC 37 cm

Ind. Record	
BW	94
WW	813
205	779
WR	102
ADG	3.27
YW	1,136
365	1,185
YR	96
IMF	4.46 /110
REA	12.50 /99
FAT	0.20 / 74

Lot 21 Master Legend 9496
Tattoo: 9496 Tag: 9496 DOB: 03/16/19 Reg. No. 19559000

Sire: SAV Renown 3439
Mytty Legend 5062
Mytty Pride 1015

Rito 707 of Ideal 3407 7075
SAV Blackcap May 4136
Mytty In Focus
Mytty Pride 111W

Dam: GDAR Approval 9328
MA Eola 5185
MA Eola 185

Sitz Alliance 7487
GDAR Miss Wix 4337
McCumber Hard Drive 7150
MA Eola 85

\$Values
\$W 52.00 \$F 75.00 \$G 21.00 \$QG 0.00 \$YG 0.00 \$B 96.00

Dam Production: BR 3 97; WR 3 103:

Production EPD's							Maternal EPD's			
CED	BW	WN	YR	RADG	SC	DOC	HP	CEM	Milk	\$EN
+ 5	+ 1.1	+ 55	+ 97	+ 0.00		+ 0		+ 9	+ 23	-19.00

Carcass Epds: I + 27 I + 0.03 I + 0.38 I + 0.006

Projected sale day wt 1373 SC 37.5 cm

Ind. Record	
BW	85
WW	761
205	812
WR	106
ADG	3.43
YW	1,196
365	1,361
YR	110
IMF	3.57 / 88
REA	13.70 109
FAT	0.30 /111

Master Angus



AnnieOPhotos



Lot 20

AnnieOPhotos



Lot 21

AnnieOPhotos

Lot 25 Master Legend 9001
Tattoo: 9001 Tag: 9001 DOB: 02/23/19 Reg. No. 19558990

Sire: SAV Renown 3439
Mytty Legend 5062
Mytty Pride 1015

Rito 707 of Ideal 3407 7075
SAV Blackcap May 4136
Mytty In Focus
Mytty Pride 111W

Dam: Cole Creek Black Cedar 46P
MA Bar Lass 001
MA Bar Lass 01

CH Quantum 6247
Cole Creek Clova Juanada 67
Baldridge Guru 427
MA Bar Lass 6297

\$Values
\$W 38.00 \$F 83.00 \$G 29.00 \$QG 0.00 \$YG 0.00 \$B 112.00

Dam Production: BR 8 99; WR 8 99;

Production EPD's							Maternal EPD's			
CED	BW	WN	YR	RADG	SC	DOC	HP	CEM	Milk	\$EN
+ 4	+ 1.5	+ 51	+ 95	+ 0.00		+ 0		+ 7	+ 17	-13.00

Carcass Epds: I + 25 I + 0.20 I + 0.47 I + 0.016

Projected sale day wt. 1321. SC 37.5 cm

Ind. Record	
BW	87
WW	763
205	741
WR	97
ADG	3.26
YW	1,144
365	1,221
YR	99
IMF	3.90 / 96
REA	13.90 /110
FAT	0.25 / 93

Lot 26 Master Keystone 9481
Tattoo: 9481 Tag: 9481 DOB: 02/20/19 Reg. No. 19559013

Sire: Mc Cumber Rowdy 5206
Master Keystone 7129
MA Eola 129

Sinclair Fortunate Son
Lassie 0101 of Mc Cumber
RYG Tradition 517
MA Eola 29

Dam: AAR Bennett 1543
MA Blackbird 5088
MA Blackbird 088

Sitz Dash 10277
AAR Shania 6550
Cole Creek Black Cedar 46P
MA Blackbird 88

\$Values
\$W 43.00 \$F 70.00 \$G 26.00 \$QG 0.00 \$YG 0.00 \$B 96.00

Dam Production: BR 3 104; WR 3 94;

Production EPD's							Maternal EPD's			
CED	BW	WN	YR	RADG	SC	DOC	HP	CEM	Milk	\$EN
+ 2	+ 2.8	+ 54	+ 97	+ 0.00		+ 0		+ 3	+ 21	-8.00

Carcass Epds: I + 21 I + 0.20 I + 0.13 I + 0.004

Projected sale day wt 1314 SC 35.5 cm

Ind. Record	
BW	94
WW	757
205	744
WR	97
ADG	3.25
YW	1,137
365	1,222
YR	99
IMF	4.33 /107
REA	11.30 /90
FAT	0.26 / 96

Lot 27 Master Power 9471
Tattoo: 9471 Tag: 9471 DOB: 02/11/19 Reg. No. 19559036

Sire: Cole Creek Black Cedar 46P
Neel's Power 512
Coleman Miss Wix 923

CH Quantum 6247
Cole Creek Clova Juanada 67
GDAR Rainmaker 340
Homestretch Miss Wix 299

Dam: CAR Incredibull 080
CAR Miss Taresa 5144
CAR Miss Taresa 1198

LAR Windy 64 423S
CAR Miss Taresa 663
CAR Hero 9143
CAR Miss Taresa 908

\$Values
\$W 35.00 \$F 101.00 \$G 35.00 \$QG 0.00 \$YG 0.00 \$B 136.00

Dam Production: BR 3 98; WR 3 104;

Production EPD's							Maternal EPD's			
CED	BW	WN	YR	RADG	SC	DOC	HP	CEM	Milk	\$EN
+ 5	+ 1.4	+ 39	+ 69	+ 0.00	I + 0.69	+ 0	I + 10.1	+ 9	+ 21	8.00

Carcass Epds: I + 15 I + 0.32 I + 0.54 I + 0.029

Projected sale day wt 1324 SC 39 cm

Ind. Record	
BW	83
WW	735
205	704
WR	92
ADG	3.49
YW	1,147
365	1,222
YR	99
IMF	3.56 / 88
REA	13.40 /106
FAT	0.32 /119



Lot 25

AnnieOPhotos



Lot 26

AnnieOPhotos



Lot 27

AnnieOPhotos

Master Angus

Lot 28 Master Power 9300
Tattoo: 9300 Tag: 9300 DOB: 02/27/19 Reg. No. 19559038

Sire: Neel's Power 512
Coleman Miss Wix 923

C H Quantum 6247
Cole Creek Clova Juanada 67
G D A R Rainmaker 340
Homestretch Miss Wix 299

Dam: MA Cynthia 300
MA Cynthia 00

A A R Bennett 1543
A A R Shania 6550
Cole Creek Black Cedar 46P
MA Cynthia 8160

\$Values
\$W 30.00 \$F 86.00 \$G 29.00 \$QG 0.00 \$YG 0.00 \$B 115.00

Dam Production: BR 5 110; WR 5 101:

Production EPD's							Maternal EPD's			
CED	BW	WN	YR	RADG	SC	DOC	HP	CEM	Milk	\$EN
+ 0	+ 3.2	+ 45	+ 84	+ 0.00		+ 0		+ 2	+ 20	2.00

Carcass Epds: I + 10 I + 0.27 I + 0.23 I + 0.025

Projected sale day wt 1328 SC 38.5 cm

Ind. Record	
BW	103
WW	775
205	763
WR	100
ADG	3.23
YW	1,151
365	1,237
YR	100
IMF	3.97 / 98
REA	13.20 105
FAT	0.28 104

Lot 29 Master Dakota 957
Tattoo: 957 Tag: 957 DOB: 02/11/19 Reg. No. 19559019

Sire: S R Dakota 514
S R Polly 804

Rito 707 of Ideal 3407 7075
S A V Blackcap May 4136
Sitz Alliance 6595
SR Polly 323

Dam: MA Jody's Lady 57
MA Jody's Lady 3421

Mc Cumber Mason 352
B Pride 461 OF Mc Cumber
A A R Bennett 1543
RYG Jody's Lady 421

\$Values
\$W 45.00 \$F 57.00 \$G 15.00 \$QG 0.00 \$YG 0.00 \$B 73.00

Dam Production: BR 2 90; WR 2 96:

Production EPD's							Maternal EPD's			
CED	BW	WN	YR	RADG	SC	DOC	HP	CEM	Milk	\$EN
+ 10	-0.6	+ 41	+ 76	+ 0.00		+ 0		+ 7	+ 27	-2.00

Carcass Epds: I + 13 I -0.06 I + 0.31 I + 0.008

Projected sale day wt 1290 SC 37 cm

Ind. Record	
BW	77
WW	743
205	711
WR	93
ADG	3.03
YW	1,113
365	1,177
YR	95
IMF	3.46 / 85
REA	12.90 102
FAT	0.26 / 96

Lot 30 Master Influence 9770
Tattoo: 9770 Tag: 9770 DOB: 03/01/19 Reg. No. 19559002

Sire: Mc Cumber Influence 7121
B Pride 530 of Mc Cumber

Mc Cumber Titanium 5005
Miss Wix 7126 of Mc Cumber
Mc Cumber Tremendous 2008
B Pride 3150 of Mc Cumber

Dam: MA Blackcap Effie 770
MA Blackcap Effie 5271

Neel's Power 512
Coleman Miss Wix 923
GDAR Approval 9328
MA Blackcap Effie 271

\$Values
\$W 60.00 \$F 77.00 \$G 22.00 \$QG 0.00 \$YG 0.00 \$B 99.00

Dam Production: BR 1 97; WR 1 108:

Production EPD's							Maternal EPD's			
CED	BW	WN	YR	RADG	SC	DOC	HP	CEM	Milk	\$EN
+ 8	-0.5	+ 54	+ 86	+ 0.00		+ 0		+ 6	+ 25	-2.00

Carcass Epds: I + 16 I + 0.09 I + 0.37 I + 0.020

Projected sale day wt 1230. SC 37 cm Pictured on cover of sale catalog. Will make great calving ease bull.

Ind. Record	
BW	77
WW	767
205	828
WR	108
ADG	2.7
YW	1,076
365	1,217
YR	98
IMF	3.57 / 88
REA	13.20 105
FAT	0.33 122



Lot 28

AnnieOPhotos



Lot 29

AnnieOPhotos



Lot 30

AnnieOPhotos

Master Angus

Lot 32 Master Influence 9487 Tag: 9487 DOB: 02/26/19 Reg. No. 19559005

Mc Cumber Titanium 5005
Sire: Mc Cumber Influence 7121
B Pride 530 of Mc Cumber

Mc Cumber Titanium 3127
Miss Wix 7126 of Mc Cumber
Mc Cumber Tremendous 2008
B Pride 3150 of Mc Cumber

Mytty Tuff 4196
Dam: MA Juanada 7447
MA Juanada 447

S A V Resource 1441
Mytty Eppionia 156T
GDAR Approval 9328
DSS Juanada 25P

\$Values
\$W \$F \$G \$QG \$YG \$B
44.00 57.00 22.00 0.00 0.00 79.00

Dam Production: BR 1 102; WR 1 93;

Production EPD's							Maternal EPD's			
CED	BW	WN	YR	RADG	SC	DOC	HP	CEM	Milk	\$EN
+ 7	+ 0.0	+ 43	+ 75	+ 0.00		+ 0		+ 5	+ 24	5.00

Carcass Epds: I + 13 I + 0.08 I + 0.36 I + 0.017

Projected sale day wt 1210 SC 34 cm

Ind. Record	
BW	82
WW	654
205	710
WR	93
ADG	3.2
YW	1,033
365	1,187
YR	96
IMF	3.50 / 86
REA	13.00 103
FAT	0.29 107

Lot 33 Master Keystone 9050 Tag: 9050 DOB: 02/05/19 Reg. No. 19559010

Mc Cumber Rowdy 5206
Sire: Master Keystone 7129
MA Eola 129

Sinclair Fortunate Son
Lassie 0101 of Mc Cumber
RYG Tradition 517
M A Eola 29

McCumber Hard Drive 7150
Dam: MA Eola Guru 050
MA Eola Guru 50

S A V 8180 Traveler 004
Lassie 206 of Mc Cumber
Baldrige Guru 427
E 7 Eola 4977

\$Values
\$W \$F \$G \$QG \$YG \$B
55.00 92.00 38.00 0.00 0.00 130.00

Dam Production: BR 7 98; WR 7 106;

Production EPD's							Maternal EPD's			
CED	BW	WN	YR	RADG	SC	DOC	HP	CEM	Milk	\$EN
I + 4	I + 2.1	I + 57	I + 102	+ 0.00		+ 0		I + 7	I + 27	-21.00

Carcass Epds: I + 33 I + 0.40 I + 0.25 I + 0.000

Projected sale day wt. 1264. SC 36 cm

Ind. Record	
BW	72
WW	699
205	712
WR	93
ADG	3.29
YW	1,087
365	1,202
YR	97
IMF	4.56 /112
REA	10.90 /87
FAT	0.20 / 74

Lot 34 Master Power 9478 Tag: 9478 DOB: 02/18/19 Reg. No. 19559009

Cole Creek Black Cedar 46P
Sire: Neel's Power 512
Coleman Miss Wix 923

C H Quantum 6247
Cole Creek Clova Juanada 67
G D A R Rainmaker 340
Homestretch Miss Wix 299

Mc Cumber Sequence 4262
Dam: MA Cynthia 6300
MA Cynthia 300

Sinclair Fortunate Son
Erianna 9014 OF Mc Cumber
A A R Bennett 1543
MA Cynthia 00

\$Values
\$W \$F \$G \$QG \$YG \$B
32.00 66.00 26.00 0.00 0.00 93.00

Dam Production: BR 2 98; WR 2 97;

Production EPD's							Maternal EPD's			
CED	BW	WN	YR	RADG	SC	DOC	HP	CEM	Milk	\$EN
+ 5	+ 0.9	+ 40	+ 79	+ 0.00		+ 0		+ 5	+ 21	1.00

Carcass Epds: I + 5 I + 0.27 I + 0.09 I + 0.029

Projected sale day wt 1273 SC 36 cm

Ind. Record	
BW	82
WW	704
205	711
WR	93
ADG	3.33
YW	1,096
365	1,205
YR	97
IMF	3.96 / 98
REA	11.00 /87
FAT	0.28 104

Master Angus



Lot 32

AnnieOPhotos



Lot 33

AnnieOPhotos



Lot 34

AnnieOPhotos

Lot 35 Master Legend 9250
Tattoo: 9250 Tag: 9250 DOB: 03/07/19 Reg. No. 19558993

Sire: SAV Renown 3439
Mytty Legend 5062
Mytty Pride 1015

Dam: MA Eola 250
MA Eola Guru 50

Rito 707 of Ideal 3407 7075
SAV Blackcap May 4136
Mytty In Focus
Mytty Pride 111W

Sitz Alliance 7487
GDAR Miss Wix 4337
Baldridge Guru 427
E 7 Eola 4977

Ind. Record	
BW	81
WW	737
205	746
WR	98
ADG	2.99
YW	1,085
365	1,184
YR	96
IMF	4.02 / 99
REA	12.00 / 95
FAT	0.26 / 96

\$Values					
\$W	\$F	\$G	\$QG	\$YG	\$B
42.00	80.00	34.00	0.00	0.00	114.00

Dam Production: BR 6 97; WR 6 100:

Production EPD's						Maternal EPD's				
CED	BW	WN	YR	RADG	SC	DOC	HP	CEM	Milk	\$EN
+ 6	+ 0.9	+ 50	+ 93	+ 0.00		+ 0		+ 9	+ 20	-17.00

Carcass Epds: I + 26 I + 0.29 I + 0.44 I + 0.006
Projected sale day wt 1262 SC 37 cm

Lot 36 Master Dakota 9217
Tattoo: 9217 Tag: 9217 DOB: 03/11/19 Reg. No. 19559024

Sire: SAV Resource 1441
SR Dakota 514
SR Polly 804

Dam: MA Chere 217
MA Chere 9417

Rito 707 of Ideal 3407 7075
SAV Blackcap May 4136
Sitz Alliance 6595
SR Polly 323

Sitz Alliance 7487
GDAR Miss Wix 4337
McCumber Hard Drive 7150
RYG Chere 417

Ind. Record	
BW	67
WW	726
205	814
WR	106
ADG	3.22
YW	1,103
365	1,289
YR	104
IMF	4.62 /114
REA	13.00 /103
FAT	0.41 /152

\$Values					
\$W	\$F	\$G	\$QG	\$YG	\$B
54.00	86.00	31.00	0.00	0.00	117.00

Dam Production: BR 5 99; WR 5 104:

Production EPD's						Maternal EPD's				
CED	BW	WN	YR	RADG	SC	DOC	HP	CEM	Milk	\$EN
I + 7	I + 0.1	I + 46	I + 81	+ 0.00		+ 0		I + 6	I + 31	-9.00

Carcass Epds: I + 36 I + 0.24 I + 0.50 I + 0.025
Projected sale day wt 1280 SC 40.5 cm

Lot 37 Master Legend 9800
Tattoo: 9800-B19 Tag: 9800 DOB: 03/03/19 Reg. No. 19559028

Sire: SAV Renown 3439
Mytty Legend 5062
Mytty Pride 1015

Dam: MA Eola 800
MA Eola 00

Rito 707 of Ideal 3407 7075
SAV Blackcap May 4136
Mytty In Focus
Mytty Pride 111W

Sitz Traveler 5556
Sitz Eppionia 3708
Baldridge Guru 427
E 7 Eola 4977

Ind. Record	
BW	81
WW	728
205	748
WR	98
ADG	2.83
YW	1,055
365	1,159
YR	94
IMF	4.17 /103
REA	11.40 /90
FAT	0.31 /115

\$Values					
\$W	\$F	\$G	\$QG	\$YG	\$B
35.00	94.00	27.00	0.00	0.00	121.00

Dam Production: BR 9 94; WR 9 98:

Production EPD's						Maternal EPD's				
CED	BW	WN	YR	RADG	SC	DOC	HP	CEM	Milk	\$EN
+ 7	+ 0.6	+ 46	+ 89	+ 0.00	I + 0.84	+ 0		+ 11	+ 18	-13.00

Carcass Epds: I + 18 I + 0.22 I + 0.26 I + 0.026
Projected sale day wt 1232 SC 38 cm



Aiton Veterinary Service

"Traveling Country Vet"

Dr. Brock Aiton, DVM

(406) 390-5029

Home: (406) 357-3607

Providing large and small animal veterinary care.
Herd health, spays/neuters, vaccinations, preventive medicine.

5040 Paradise Valley Road * Chinook, MT 59523

Lot 38 Master Keystone 9928
Tattoo: 9928 Tag: 9928 DOB: 03/19/19 Reg. No. 19559011

Mc Cumber Rowdy 5206	Sinclair Fortunate Son	Ind. Record
Sire: Master Keystone 7129	Lassie 0101 of Mc Cumber	
MA Eola 129	RYG Tradition 517	
	MA Eola 29	
LT Total Edge 6045	K C F Bennett Total	BW 87
Dam: MA Brook 928	L T Bando Lassy 3285	WW 714
MA Brook 28	Baldrige Guru 427	205 778
	MA Brook Ext 8131	WR 102
		ADG 2.93
		YW 1232
		365 TY
		YR TY
		IMF 4.96
		REA 10.6
		FAT .22

Production EPD's							Maternal EPD's			
CED	BW	WN	YR	RADG	SC	DOC	HP	CEM	Milk	\$EN
+ 3	+ 1.7	+ 55	+ 97	+ 0.00		+ 0		+ 6	+ 22	-9.00

Carcass Epds: I + 32 I + 0.36 I + 0.26 I + 0.024
Projected sale day wt 1232 SC 38 cm

Lot 39 Master Power 9116
Tattoo: 9116 Tag: 9116 DOB: 03/11/19 Reg. No. 19558989

Cole Creek Black Cedar 46P	C H Quantum 6247	Ind. Record
Sire: Neel's Power 512	Cole Creek Clova Juanada 67	
Coleman Miss Wix 923	G D A R Rainmaker 340	
	Homestretch Miss Wix 299	
McCumber Hard Drive 7150	S A V 8180 Traveler 004	BW 82
Dam: MA Guru Blackcap 116	Lassie 206 of Mc Cumber	WW 686
MA Guru Blackcap 9199	Baldrige Guru 427	205 704
	E 7 Blackcap 1998	WR 92
		ADG 3.52
		YW 1,103
		365 1,229
		YR 99
		IMF 4.71 /116
		REA 13.20 /105
		FAT 0.23 / 85

Production EPD's							Maternal EPD's			
CED	BW	WN	YR	RADG	SC	DOC	HP	CEM	Milk	\$EN
+ 6	+ 0.4	+ 34	+ 66	+ 0.00		+ 0		+ 7	+ 22	5.00

Carcass Epds: I + 21 I + 0.45 I + 0.40 I + 0.027
Projected sale day wt 1280 SC 37.5 cm

Lot 40 Master Dakota 955
Tattoo: 955 Tag: 955 DOB: 02/13/19 Reg. No. 19559018

S A V Resource 1441	Rito 707 of Ideal 3407 7075	Ind. Record
Sire: S R Dakota 514	S A V Blackcap May 4136	
S R Polly 804	Sitz Alliance 6595	
	SR Polly 323	
A A R Bennett 1543	Sitz Dash 10277	BW 80
Dam: MA Juanada 55	A A R Shania 6550	WW 710
MA Juanada 1710	GDAR Approval 9328	205 684
	MA Juanada 710	WR 89
		ADG 3.03
		YW 1,064
		365 1,130
		YR 91
		IMF 4.38 /108
		REA 12.50 /99
		FAT 0.26 / 96

Production EPD's							Maternal EPD's			
CED	BW	WN	YR	RADG	SC	DOC	HP	CEM	Milk	\$EN
+ 9	-0.6	+ 44	+ 78	+ 0.00	I + 1.08	+ 0	I + 12.6	+ 5	+ 24	0.00

Carcass Epds: I + 16 I + 0.19 I + 0.48 I + 0.014
Projected sale day wt 1241 SC 38.5 cm



Lot 41 Master Power 9166
Tattoo: 9166 Tag: 9166 DOB: 02/28/19 Reg. No. 19559037

Cole Creek Black Cedar 46P	C H Quantum 6247	Ind. Record
Sire: Neel's Power 512	Cole Creek Clova Juanada 67	
Coleman Miss Wix 923	G D A R Rainmaker 340	
	Homestretch Miss Wix 299	
McCumber Hard Drive 7150	S A V 8180 Traveler 004	BW 101
Dam: MA Bar Lass 166	Lassie 206 of Mc Cumber	WW 805
MA Bar Lass 66	Baldrige Guru 427	205 795
	MA Bar Lass 6297	WR 104
		ADG 2.97
		YW 1,055
		365 1,110
		YR 90
		IMF 3.15 / 78
		REA 12.00 /95
		FAT 0.23 / 85

Production EPD's							Maternal EPD's			
CED	BW	WN	YR	RADG	SC	DOC	HP	CEM	Milk	\$EN
-1	+ 3.2	+ 48	+ 88	+ 0.00		+ 0		+ 3	+ 24	-9.00

Carcass Epds: I + 13 I + 0.27 I + 0.31 I + 0.026
Projected sale day wt 1232 SC 36.5 cm

Lot 42 Master Influence 9111
Tattoo: 9111 Tag: 9111 DOB: 02/07/19 Reg. No. 19559004

Mc Cumber Titanium 5005	Mc Cumber Titanium 3127	Ind. Record
Sire: Mc Cumber Influence 7121	Miss Wix 7126 of Mc Cumber	
B Pride 530 of Mc Cumber	Mc Cumber Tremendous 2008	
	B Pride 3150 of Mc Cumber	
Mc Cumber Rowdy 5206	Sinclair Fortunate Son	BW 70
Dam: MA Brook 7228	Lassie 0101 of Mc Cumber	WW 673
MA Brook 228	McCumber Hard Drive 7150	205 692
	MA Brook 28	WR 90
		ADG 2.94
		YW 1,017
		365 1,126
		YR 91
		IMF 4.26 /105
		REA 10.50 /83
		FAT 0.17 / 63

Production EPD's							Maternal EPD's			
CED	BW	WN	YR	RADG	SC	DOC	HP	CEM	Milk	\$EN
+ 9	-0.1	+ 43	+ 69	+ 0.00		+ 0		+ 8	+ 22	7.00

Carcass Epds: I + 8 I + 0.15 I + 0.20 I + 0.004
Projected sale day wt. 1194 SC 32.5 cm

Lot **43**
 Master Influence 9791
 Tag: 9791
 DOB: 02/25/19
 Reg. No. 19559007

Mc Cumber Titanium 5005	Mc Cumber Titanium 3127	Ind. Record
Sire: Mc Cumber Influence 7121	Miss Wix 7126 of Mc Cumber	
B Pride 530 of Mc Cumber	Mc Cumber Tremendous 2008	
	B Pride 3150 of Mc Cumber	
Mc Cumber Mason 352	Mc Cumber Rito Rolette 1108	BW 73
Dam: MA Beauty Pride 791	B Pride 461 OF Mc Cumber	WW 687
MA Beauty Pride 91	Sitz Traveler 351P	205 740
	E7 Beauty Pride 2958	WR 97
		ADG 2.99
		YW 1,037
		365 1,182
		YR 96
		IMF 4.40 /108
		REA 14.20 /113
		FAT 0.38 /141

Production EPD's					Maternal EPD's					
CED	BW	WN	YR	RADG	SC	DOC	HP	CEM	Milk	\$EN
+ 11	-1.7	+ 36	+ 59	+ 0.00		+ 0		+ 9	+ 26	8.00

Carcass Epds: I + 13 I + 0.16 I + 0.43 I + 0.024

Projected sale day wt 1214 SC 35 cm

Lot **44**
 Master Viking 9494
 Tag: 9494
 DOB: 03/11/19
 Reg. No. 19558992

Cole Creek Black Cedar 46P	C H Quantum 6247	Ind. Record
Sire: Neel's Power 512	Cole Creek Clova Juanada 67	
Coleman Miss Wix 923	G D A R Rainmaker 340	
	Homestretch Miss Wix 299	
McCumber Hard Drive 7150	S A V 8180 Traveler 004	BW 98
Dam: MA Blackbird 9756	Lassie 206 of Mc Cumber	WW 810
MA Blackbird 756	CAR Tracker 5119	205 854
	MA Blackbird 56	WR 112
		ADG 2.3
		YW 1,065
		365 1,176
		YR 95
		IMF 5.08 /125
		REA 13.70 /109
		FAT 0.27 /100

Production EPD's					Maternal EPD's					
CED	BW	WN	YR	RADG	SC	DOC	HP	CEM	Milk	\$EN
-1	+ 3.1	+ 57	+ 98	+ 0.00		+ 0		+ 5	+ 22	-11.00

Carcass Epds: I + 11 I + 0.50 I + 0.35 I + 0.037

Projected sale day wt 1242 SC 37 cm

Lot **45**
 Master Armour 9469
 Tag: 9469
 DOB: 02/11/19
 Reg. No. 19558991

Mc Cumber Titanium 5005	Mc Cumber Titanium 3127	Ind. Record
Sire: Mc Cumber Armour 7148	Miss Wix 7126 of Mc Cumber	
Miss Wix 2003 of Mc Cumber	O C C Tremendous 619T	
	Miss Wix 2022 HC Mc Cumber	
Neel's Power 512	Cole Creek Black Cedar 46P	BW 94
Dam: MA Juanada 7519	Coleman Miss Wix 923	WW 593
MA Juanada 519	GDAR Approval 9328	205 626
	MA Juanada 19	WR 82
		ADG 2.79
		YW 922
		365 1,040
		YR 84
		IMF 4.21 /104
		REA 10.10 /80
		FAT 0.17 / 63

Production EPD's					Maternal EPD's					
CED	BW	WN	YR	RADG	SC	DOC	HP	CEM	Milk	\$EN
+ 1	+ 2.2	+ 38	+ 75	+ 0.00		+ 0		+ 2	+ 22	4.00

Carcass Epds: I + 1 I + 0.01 I + 0.11 I + 0.002

Projected sale day wt 1099 SC 34 cm



Lot **46**
 Master Power 9489
 Tag: 9489
 DOB: 02/28/19
 Reg. No. 19560410

Cole Creek Black Cedar 46P	C H Quantum 6247	Ind. Record
Sire: Neel's Power 512	Cole Creek Clova Juanada 67	
Coleman Miss Wix 923	G D A R Rainmaker 340	
	Homestretch Miss Wix 299	
A A R Bennett 1543	Sitz Dash 10277	BW 100
Dam: MA Jody's Lass 5421	A A R Shania 6550	WW 739
RYG Jody's Lady 421	Sitz Alliance 6595	205 745
	Lady Rito Power 1137 E A R	WR 97
		ADG 2.45
		YW 1,017
		365 1,095
		YR 88
		IMF 4.69 /116
		REA 12.70 /101
		FAT 0.22 / 81

Production EPD's					Maternal EPD's					
CED	BW	WN	YR	RADG	SC	DOC	HP	CEM	Milk	\$EN
+ 0	+ 3.2	+ 43	+ 83	+ 0.00		+ 0		+ 3	+ 22	1.00

Carcass Epds: I + 8 I + 0.50 I + 0.22 I + 0.045

Projected sale day wt 1194 SC 37 cm

Lot **47**
 Master Dakota 9498
 Tag: 9498
 DOB: 04/12/19
 Reg. No. 19559023

S A V Resource 1441	Rito 707 of Ideal 3407 7075	Ind. Record
Sire: S R Dakota 514	S A V Blackcap May 4136	
S R Polly 804	Sitz Alliance 6595	
	SR Polly 323	
GDAR Approval 9328	Sitz Alliance 7487	BW 95
Dam: MA Eola 4050	GDAR Miss Wix 4337	WW 658
MA Eola Guru 050	McCumber Hard Drive 7150	205 776
	MA Eola Guru 50	WR 101
		ADG 3.13
		YW 1004
		365 TY
		YR TY
		IMF .71
		REA 10.9
		FAT .19

Production EPD's					Maternal EPD's					
CED	BW	WN	YR	RADG	SC	DOC	HP	CEM	Milk	\$EN
+ 3	+ 1.8	+ 55	+ 98	+ 0.00	I + 0.80	+ 0	I + 9.8	+ 2	+ 28	-15.00

Carcass Epds: I + 36 I + 0.24 I + 0.53 I + 0.008

Projected sale day wt 1204 SC 36 cm

Master Angus Herd Bulls



SR DAKOTA 514
REG #18351824



MYTTY LEGEND 5062
REG #18214111



MCCUMBER INFLUENCE 7121
REG #18844405



MASTER KEYSTONE 7129
REG #18856975



NEEL'S POWER 512
REG #18331603

Master Angus



Lot 32 - Master Influence 9487



Lot 43 - Master Influence 9791



Master Angus

Gene Ryg & Vinee' Cox
8585 Barney Olson Road
Chinook, Montana 59523

"Keep Them Black"

406.357.2265
Cell 406.680.7483



ADDRESS SERVICE REQUESTED

Visit masterangus.com to view the bull videos.



Lot 8 - Master Keystone 969

Bulls produced from a solid maternal foundation.