



**VERSION 2.0**



ANGUS FEMALE SALE

**SATURDAY, OCTOBER 17, 2020**

12:00 Noon, at Billings Livestock Commission – Billings, Montana





## 51 Lots of Montana's Best Genetics

- OPEN HEIFERS ■ BRED HEIFERS ■
- DONOR COWS ■ EMBRYO LOTS ■
- SEMEN ■ HEIFER PREGNANCY ■

# ANGUS FEMALE SALE SATURDAY, OCTOBER 17, 2020

12:00 Noon, at Billings Livestock Commission – Billings, Montana

### Auctioneer

Joe Goggins (406) 861-5664

### Marketing Agents

Ron Frye (406) 600-7514 | Randy Frye (406) 209-7628

### Sale Day Representatives

Kurt Kangas, Angus Journal .....(406) 366-4190  
 Jeff Thomas, Agri Media .....(406) 581-8859  
 John Goggins, Western Ag Reporter .....(406) 698-4159  
 Don Ravellette, RPI Promotions .....(605) 685-5147

### Transportation

Billings Logan International Airport is served by all major airlines.

### Health

Interstate health papers will be furnished on all cattle selling.

### Terms

Cash - Please settle for cattle promptly. All cattle sell according to the standard terms and conditions of the American Angus Association.

### Insurance

Will be available sale day.

### Trucking

Buyer is responsible for trucking. However, we will be glad to assist in making the best possible trucking arrangements.

### Pedigrees

Roger Jacobs (406) 698-7686

### Liability

All persons attending this sale do so at their own risk, legal or otherwise for their safety or the behavior of the animals. The owners, Ron Frye Marketing and sale staff assume no liability for property loss or any accidents that may occur.

### Announcements

from the sale block will take precedence over the catalog. Buyers unable to attend may send their bids to Ron Frye Marketing or field representatives.

### Bid Online at:



See page 8 for more details

Cover photos by Cate Doubet taken at Flesch Angus Shelby, MT

### ANNUAL MEETING

October 16, 2020, 1:30pm  
 Billings LiveStock Commission (BLS),  
 Billings, Montana

#### AGENDA

Call to Order: President, Cory Poser  
 Invocation  
 Introduction of Special Guests  
 Pledge of Allegiance:  
 Vice President, Jake Callantine  
 Roll Call of Board Members Present  
 Approval of Agenda  
 Distribution and Approval of  
 2019 Annual Meeting Minutes

#### ELECTION OF OFFICERS:

North Central Region: Andee Peterson  
 At-Large Position: Darrell Stevenson  
 Eastern Region: Chad Denowh

#### REPORTS:

President's Report: Cory Poser  
 Introduction of Officers  
 Financial Report: Lorrie Vennes  
 AAA Report: Dave Hinman, AAA Director  
 Kurt Kangas, Regional Manager  
 NILE Female Sale Report: Ron Frye  
 Advertising Report: Ron Frye  
 Montana Angus News Report:  
 Jesse Thompson  
 Executive Administrator Report:  
 Jesse Thompson  
 Montana Junior Angus  
 Association Report:  
 Jena & Jordyn Wagner, Zane Barragree  
 Montana Beef Council Report:  
 Kathy Creighton-Smith  
 MSU Angus Herd Report:  
 Tim Skinner, Dr. Tim DelCurto

#### NEW BUSINESS:

2021 Proposed Tour Dates

#### OTHER BUSINESS:

Questions, Comments, Announcements,  
 Other Business

#### ADJOURNMENT



SALE MANAGED BY:

**Ron Frye Marketing**  
 Ron Frye: (406) 600-7514  
 ronfryemarketing@gmail.com  
 Ronfryemarketing.com



**Sale Sponsored By:**  
**Montana Angus Association**  
 President – Cory Poser  
 1st Vice President – Jake Callantine  
 Executive Administrator – Jesse Thompson

## SCHEDULE OF EVENTS

### Bull Studs Open House

Thursday, October 15, 2020 • 1-5pm

Friday, October 16, 2020 • 9am-12pm

Participating: Genex, ORigen, World West Sire Services

### October 16, 2020, 1:30 p.m.

Annual Meeting

- Billings Livestock Commission (BLS), Billings, MT

### October 16, 2020

NILE Angus Female Sale Pen Preview

- Following Annual Meeting
- Billings Livestock Commission (BLS), Billings, MT

### October 16, 2020, 5:30 p.m.

Montana Angus Association Membership Social

- Billings Livestock Commission (BLS), Billings, MT
- Complementary Appetizers & Bar Provided

### October 17, 2020, 9-10:30 a.m.

2020 Junior Angus Futurity

- Billings Livestock Commission (BLS), Billings, MT
- The deadline for entry is October 1. Call Jake Callantine at (406) 388-2408 to enter. Cash prizes are awarded.

### October 17, 2020, 12 p.m.

2020 NILE Angus Female Sale

- Billings Livestock Commission (BLS), Billings, MT
- Call Ron Frye at (406) 600-7514 for more information
- Annual Breeder's Directory Priority Page Auction to be held at the start of the sale. Money raised from Priority Page Auction funds the Montana Angus Association.



## MONTANA ANGUS ASSOCIATION

### President

- Cory Poser .....406-366-3461

### 1st Vice President

- Jake Callantine .....406-581-4764

### Directors

- Tim Skinner .....406-581-6224
- Darrell Stevenson .....406-350-5443
- Chad Denowh .....406-489-1762
- Klint Swanson .....406-357-2492
- Ron Frye .....406-600-7514
- Roger Indreland .....406-932-4232
- Kevin Arntzen .....406-350-1612
- Kurt Swanson .....406-799-7026

### Executive Administrator

- Jesse Thompson .....406-450-3429
- montanaangusnews@mtangus.org

## Welcome...

... to the 2020 edition of the NILE Angus Female Sale. Sponsored by the Montana Angus Association.

Montana has a tremendous amount of experience breeding Angus cattle! What separates Montana from other states? Besides the sheer volume of Angus cattle produced in our state, the breeders here have proven longevity. Families raising Angus, generation after generation, and widening the horizons on what is possible for the Angus breed. Think about your own operation: how many years are wrapped up in building your Angus cow herd? That experience is hard to come by and is what makes Montana the envy of the breed.

The NILE Female Sale is the benefactor of all those years of experience. The quality of this offering year after year is as good as it gets in Angus females. It is not only a showcase of Montanans, and all their years breeding Angus cattle. This is an opportunity for breeders to share their hard work and dedication to the Angus breed with each other. I truly believe there are females in this sale that change the fortunes for their new owners, females you can build a cow herd around.

The ability of Montana Angus breeders to mentor new breeders or young men and women who show a passion for Angus cattle is legendary. A friend of mine tells the story often that he was never going to live in Montana and raise Angus cattle, until a couple of brothers that were Montana Angus breeders befriended him and the rest, as they say, is history.

If you have any questions about the offering, please give us a call we'd be glad to help in any way possible. The contact information for each consignor is located with the lots they are selling, any questions can be directed to them as well, and who knows maybe a life changing relationship will be born at the 2020 NILE Angus Female Sale.



### Ron Frye

- (406) 600-7514
- ronfryemarketing@gmail.com
- ronfryemarketing.com

## NILE ANGUS SALE CONSIGNMENT LIST

### 3C CATTLE LLC

Lots 3, 4

### ARNTZEN ANGUS RANCH

Lot 5

### BALTRUSCH ANGUS RANCH

Lot 6

### BARRAGREE CATTLE CO

Lots 7, 8

### BASIN ANGUS RANCH

Lots 9, 10, 11

### BEARTOOTH ANGUS

Lots 12, 13

### GREEN MOUNTAIN ANGUS RANCH

Lot 14

### HILLTOP ANGUS RANCH

Lot 15

### HINMAN ANGUS

Lots 16, 17

### HOLLOW TOP ANGUS

Lot 18

### HYLINE ANGUS RANCH

Lots 19, 20

### IDLAND CATTLE CO.

Lots 21, 22, 23

### JL FARMS

Lots 24, 25, 26

### K G RANCH

Lots 27, 28

### NISSAN ANGUS

Lots 29, 30

### SITZ ANGUS FARM

Lots 31, 32

### SKINNER RANCH SEEDSTOCK

Lots 33, 34

### SPLIT DIAMOND RANCH

Lot 35

### STEVENSON ANGUS RANCH

Lots 36, 37

### MEGED ANGUS RANCH

Lot 38

### STREAMSIDE CATTLE CO

Lot 39

### TIMBER LINE RANCH

Lots 40, 41

### TOP NOTCH RANCH

Lots 42, 43, 44

### VERMILION RANCH

Lot 45

### WILDKAT ANGUS

Lots 46, 47

### – EMBRYO DIVISION – MEGED ANGUS RANCH AND STEVENSON ANGUS RANCH

Lot 48

### STILLWATER CATTLE CO

Lot 49

### STREAMSIDE CATTLE CO

Lot 50

### – SEMEN DIVISION – HOLLOW TOP ANGUS

Lot 51



### PREMIUMS & AWARDS:

PREMIUMS OF UP TO \$4,000 WILL BE AVAILABLE.

IT WILL BE DISTRIBUTED AS FOLLOWS:

AN AWARD OF \$250 FOR PARTICIPATION (PLACING 3RD OR LOWER), 2ND IN CLASS \$275, CLASS WINNER \$325. NO DIVISION PRIZE. THE TOP TWO HEIFERS FROM EACH CLASS COME BACK FOR CHAMPION; REMAINING PREMIUM MONEY WILL BE DIVIDED 60/40 TO THE GRAND & RESERVE CHAMPIONS. THE MAA RESERVES THE RIGHT TO ADJUST THE PAYOUT BASED ON ENTRIES. THE DISTRIBUTION OF THE PREMIUMS AWARDED WILL BE ADJUSTED IF FEWER CATTLE THAN ANTICIPATED ARE ENTERED.

ALL PARTICIPANTS WILL RECEIVE A JACKET. BREEDERS OF GRAND CHAMPION AND RESERVE CHAMPION WILL RECEIVE A COAT.

*2019 Grand Champion*



*2019 Reserve Champion*



*StreamSide Cattle Co.*

\$1,000 was awarded to the 2019 PayneWest NILE Grand Champion Futurity Female. StreamSide Elisha is owned by Elizabeth Hickey of Moore, MT and the heifer was bred by StreamSide Cattle Co. of Manhattan, MT. Elisha StreamSide is the daughter of C&C Priority.



*JL Farms*

\$800 was awarded to the 2019 PayneWest NILE Reserve Grand Champion Futurity Female. JLF Blackbird 8262 is owned by Wylee Simenson of Chinook, MT and the heifer was bred by JL Farms of Billings, MT. JLF Blackbird is the daughter of SAC Conversation.

### CLASS NUMBERS:

1. HEIFERS BORN APR. 1-APR. 30, 2019
2. HEIFERS BORN MAR. 1-MAR. 31, 2019
3. HEIFERS BORN FEB. 1-FEB. 29, 2019
4. HEIFERS BORN JAN. 1-JAN. 31, 2019
5. HEIFERS BORN SEPT. 1-DEC. 31, 2018
6. COW/CALF-OPEN TO ANY HEIFER

Purchased through the NILE Angus Sale since inception. Pair is eligible to show if the heifer had not been entered in previous NILE Angus Futurity Shows  
- Grand Champion Futurity Female (winners class 1-6)  
- Reserve Grand Champion Futurity Female

**TO ENTER, PLEASE CALL  
JAKE CALLANTINE AT  
(406) 388-2408 BY OCTOBER 1**

To be eligible to show in the 2021 futurity, the heifer must be purchased by a junior and that junior owner must show the heifer. Registration of the animal in the junior's name must take place as you file the ownership transfer immediately following the sale.



265 Bobcat Angus Loop • Galata, MT 59444

**Bryan: 406-937-5858 (h)**

**406-788-3272 (c)**

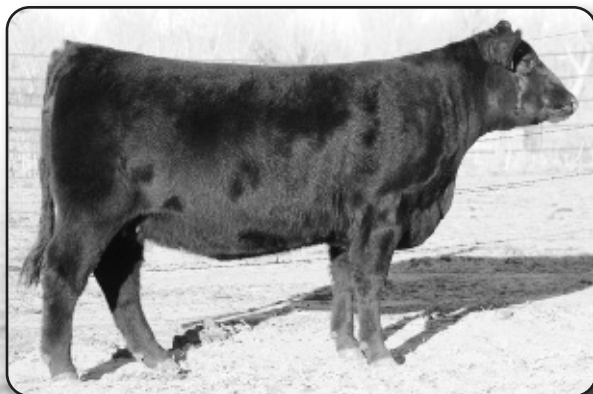
**Ernie: 406-788-3244 (c)**



**BOBCAT BLUE SKY – REG: \*18880272**

Blue Sky is the top selling bull from the 2018 sale that Bobcat is using heavily to carry on the legacy of Big Sky.

He wraps together an EPD profile to gain genetic ground in a package that made him a N.V.S.S yards highlight. Blue Sky's donor dam has a record of outstanding performance and represents so much of what we deem ideal in an Angus female.



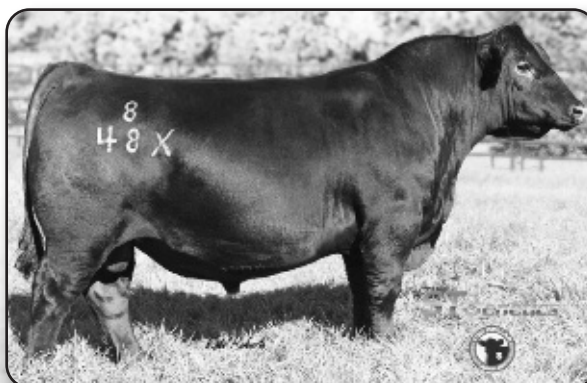
**BALDCO EMULOTA 5685 – REG: +19809452**

# Pick of the Heifer Calves

**Choose from every E.T Heifer born the Spring of 2020 at Bobcat Angus**

## FEATURED SIRES AND DAMS OF THE OFFERING:

- **Connealy Emerald x Baldco Emulota 5686**  
(Emulota 5686 is a maternal sister to JMB Traction)  
– Tattoo: 036 – AAA: 19809452
- **Bobcat Blue Sky x Baldco Emulota 147E**  
(Emulota 147E is a full sister to JMB Traction)  
– Tattoo: 010 – AAA: 19808230
- **Jindra Megahit x Bobcat Lass 411**  
(Lass 411 is the dam of Bobcat Blue Sky)  
– Tattoo: 005 – AAA: 19810375
- **Connealy Emerald x Bobcat Lass 417**  
(Lass 417 is a full sister to the Dam of Bobcat Blue Sky)  
– Tattoo: 001 – AAA: 19808228
- **Sydgen Enhance x SAV Primrose 7861**  
(Primrose 7861 a dam of Bobcat Big Sky)  
– Tattoo: 056 – AAA: 19810741
- **Jindra Megahit x Bobcat Primrose 501**  
(501 - Our pick of the Big Sky daughters)



**CONNELLY EMERALD – REG: \*19257149**



## Lot 2 JC Heiken Angus & Sons

PO Box 32 • 14946 Buffalo Trail  
Broadview, MT 59015

Joe Heiken 406-667-2239 • 406-861-1020

John Heiken 406-855-7839

Brian Heiken 406-861-3151

Ben Heiken 406-860-7331

## Pick of the Heifers

Pick of every female born at

JC Heiken Angus & Sons in 2019 & 2020

Since the inception of his registered cowherd, JC Heiken Angus & Sons have never sold a registered female from their herd to a registered breeder. Joe has a philosophy that "keep the best to be the best." Now Heiken Angus is giving you the opportunity to take home one of their best. The gates are wide open, pick any female born in 2019 & 2020. Joe and his sons have long been known for purchasing some of the best herd sires in the breed. This is your opportunity to dig deep into 30 years of breeding. You won't be disappointed! There is no wrong choice!

### AI SERVICE SIRES FOR 2019 HEIFERS:

- Heiken Broadview
- Sitz Logo 12964
- HA Cowboy Kind 8157
- Vermilion Spur E119
- Musgrave Stunner 1905

### LARGE SIRE GROUPS OF 2019 BRED HEIFERS SIRED BY:

- Vermilion Spur E119
- S Chisum 255
- Sitz Logo 12964
- Sitz Asset 402C

### LARGE SIRE GROUPS OF 2020 HEIFER CALVES SIRED BY:

- Sitz Logo 12964
- Vermilion Spur E119
- Peak Dot No Doubt 69F
- HA Cowboy Kind 8157
- S Chisum 255

### Some of the heifer calves available:

Tattoo	Reg. No.	SIRE	MGS	CED	BW	WW	YW	Milk	CW	Marb	RE	\$M	\$W	\$F	\$B	\$C
0032	19683782	SITZ Logo 12964	S Chisum 255	19	-4.2	72	116	27	38	.60	.60	111	91	62	108	251
0707	19691404	HA Cowboy Kind 8157	Connealy Final Solution	10	0.9	87	154	27	57	.64	.34	61	91	89	135	236
0636	19691459	Vermilion Spur E119	SITZ Logo 12964	5	2.5	82	141	26	57	.67	.34	88	83	90	135	263
0120	19691526	HA Cowboy Kind 8157	Connealy Judgment	6	3.0	89	152	36	63	.34	.56	62	98	93	128	228
0659	19743309	SITZ Logo 12964	Sitz Top Seed 539X	9	0.2	88	150	22	61	.57	.42	103	92	94	138	282
0209	19785797	Peak Dot No Doubt 69F	SITZ Logo 12964	2	2.3	86	140	30	54	.30	.89	97	96	82	122	255

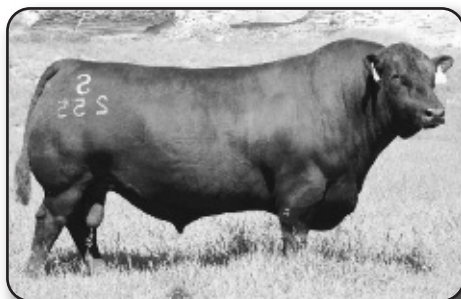
### Some of the bred heifers available:

Tattoo	Reg. No.	SIRE	MGS	CED	BW	WW	YW	Milk	CW	Marb	RE	\$M	\$W	\$F	\$B	\$C
9061	19421395	Jindra Acclaim 134	SITZ Logo 12964	3	2.0	81	141	29	60	.71	.53	62	86	98	154	262
9809	19460539	SITZ Logo 12964	Stevenson Solution 3191	12	0	81	138	23	56	.60	.14	85	85	84	124	246
9083	19425738	SITZ Logo 12964	Connealy Mentor 7374	11	-0.6	76	136	24	59	.44	.52	70	79	98	138	249
9600	19421382	Jindra Acclaim 134	SITZ Logo 12964	5	1.5	77	130	30	71	.47	.66	82	85	117	162	292
9800	19421016	Vermilion Spur E119	Sitz Top Seed 539X	15	-0.9	69	126	21	48	.17	.39	73	68	94	120	229
9705	19425729	Sitz Asset 402C	SITZ Final Answer 700Y	2	3.9	82	143	17	62	.48	.64	67	65	98	143	252

Tattoos 9061, 9809, 9083, 9600, 9800 are bred to HA Cowboy Kind 8157. Tattoos 9705 Sitz Logo.



SITZ LOGO 12964 – REG: 17746620



S CHISUM 255 – REG: 17298481



HEIKEN BROADVIEW – REG: 1942100

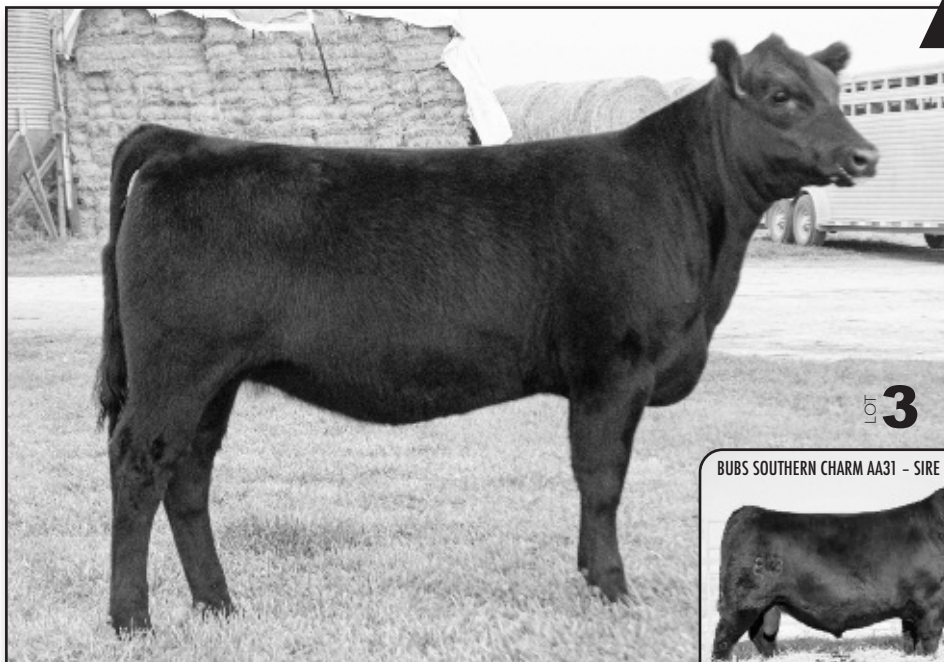


LOGO DAUGHTER



CHISUM 255 DAUGHTER





LOT 3

BUBS SOUTHERN CHARM AA31 - SIRE



LOT 3

## 3C Cattle LLC

Chad & Lacey Sutherlin  
3858 Illinois Bench Rd • Stevensville, MT 59870  
406-544-0043 (Lacey) • 406-360-1875 (Chad)  
threeccattleco@yahoo.com

- BW: 80 lbs
- Belle 0144 is a super attractive female that is refined in her design and clean fronted. She offers a super complete package that is structurally correct and free moving. Her actual docility is unmatched. She also offers a very impressive EPD profile. She is in the top 30% of the breed for ALL \$Value Indexes which includes being in the top 15% for \$W.
- The dam of 0144 is very attractive herself. She is a long bodied, clean fronted cow that you notice in the pasture. As a first calf heifer she raised an impressive bull calf that was chosen by a long time customer to be a calving ease herd sire. Her granddam posts solid ratios of weaning: 4@ 103 and yearling 4 @ 102.
- Her now deceased sire, Southern Charm, has made his mark in the Angus breed! He is very well known for his exceptional phenotype - he is sound structured, has an attractive pattern with added capacity and fleshing ability. He has top end \$Maternal and \$Weaning indexes with breed leading Scrotal Circumference.
- Belle 0144 will be a great asset to your herd if you are looking for a junior show heifer prospect or a replacement female to produce the next great one or BOTH!
- Angus GS tests have been submitted.

Heifer  
LOT 3

## 3C BELLE 0144

BD: 02/03/2020 Reg: 19812829 Tattoo: 0144

SILVEIRAS CONVERSION 8064  
BUBS SOUTHERN CHARM AA31 AAA \*17853196  
HICKORY HILL ERICA 009  
MUSGRAVE AVIATOR  
3C BLACKCAP AVIATOR 1610 AAA 18516092  
3C BLACKCAP PRODUCT 1430

BT CROSSOVER 758N  
EXG SARAS DREAM S609 R3  
CONNEALY STIMULUS 8419  
HICKORY HILL ERICA TA32  
KROUPALS B&B IDENTITY  
MCATL FOREVER LADY 1429-138  
CONNEALY FINAL PRODUCT  
G C BLACKCAP FORWARD

CED	BW	WW	YW	Milk	CW	Marb	RE	\$M	\$W	\$F	\$B	\$C
6	2.0	62	110	29	42	.62	.72	70	70	88	140	252

Heifer  
LOT 4

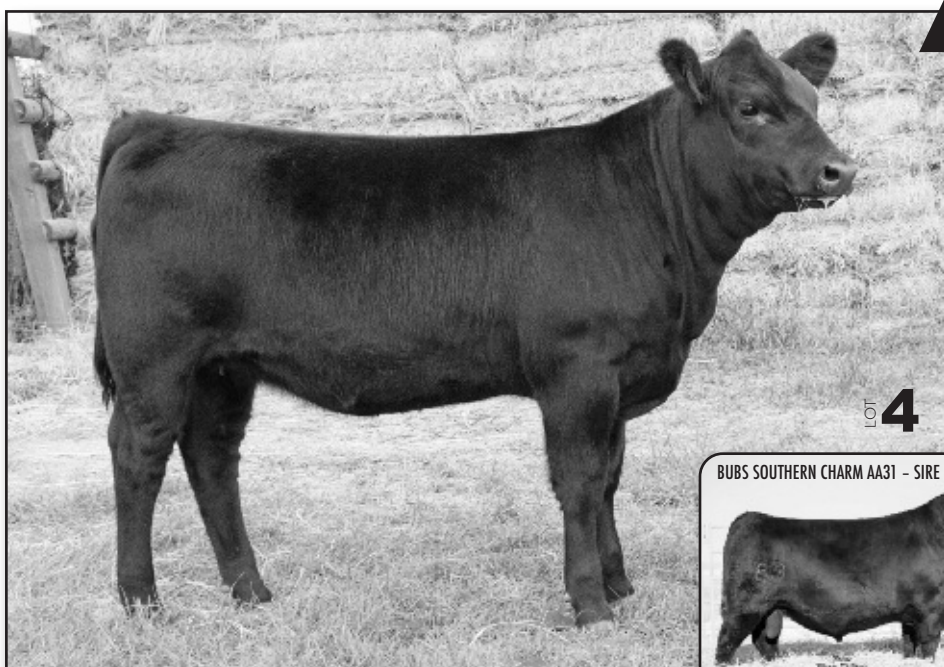
## 3C 406 TROJAN ERICA 0212

BD: 02/13/2020 Reg: 19813629 Tattoo: 0212

SILVEIRAS CONVERSION 8064  
BUBS SOUTHERN CHARM AA31 AAA \*17853196  
HICKORY HILL ERICA 009  
DIAMOND STEAKHOUSE 9378  
DIAMOND TROJAN ERICA 1792 AAA 16881003  
DIAMOND TROJAN ERICA T405

BT CROSSOVER 758N  
EXG SARAS DREAM S609 R3  
CONNEALY STIMULUS 8419  
HICKORY HILL ERICA TA32  
21AR BIG SPREAD 7012A  
DIAMOND ENCHANTRESS N135  
PAF ND EXCEL 878  
DIAMOND TROJAN ERICA 787P

CED	BW	WW	YW	Milk	CW	Marb	RE	\$M	\$W	\$F	\$B	\$C
4	2.5	55	92	25	37	.67	.45	63	56	82	133	236



LOT 4

BUBS SOUTHERN CHARM AA31 - SIRE



LOT 4

## 3C Cattle LLC/406 Cattle

Chad & Lacey Sutherlin / Cody Sutherlin  
3858 Illinois Bench Rd • Stevensville, MT 59870  
406-544-0043 (Lacey) • 406-360-1875 (Chad)  
406-207-9176 (Cody)

- BW: 83 lbs
- Trojan Erica 0212 is very powerful in her makeup. She is a stout made, wide topped heifer that carries tons of natural thickness and muscle in a feminine package. She is super long sided and offers lots of capacity and spring of rib.
- The dam of 0212 is raising her 7th calf. She is a capacious powerfully made cow that is very good footed and has a great udder. The Trojan Erica cow family needs no introduction, this cow family has proven itself to have made some of the great females in the breed!
- Her now deceased sire, Southern Charm, has made his mark in the Angus breed! He is very well known for his exceptional phenotype - he is sound structured, attractive patterned with added capacity and fleshing ability. He has top end \$Maternal and \$Weaning indexes with breed leading Scrotal Circumference.
- Trojan Erica 0212 will build a foundation for capacious broody cows with rib, thickness and good feet. She is a thick easy fleshing female that has the tools to make a lasting impact on your herd.
- Angus GS tests have been submitted.

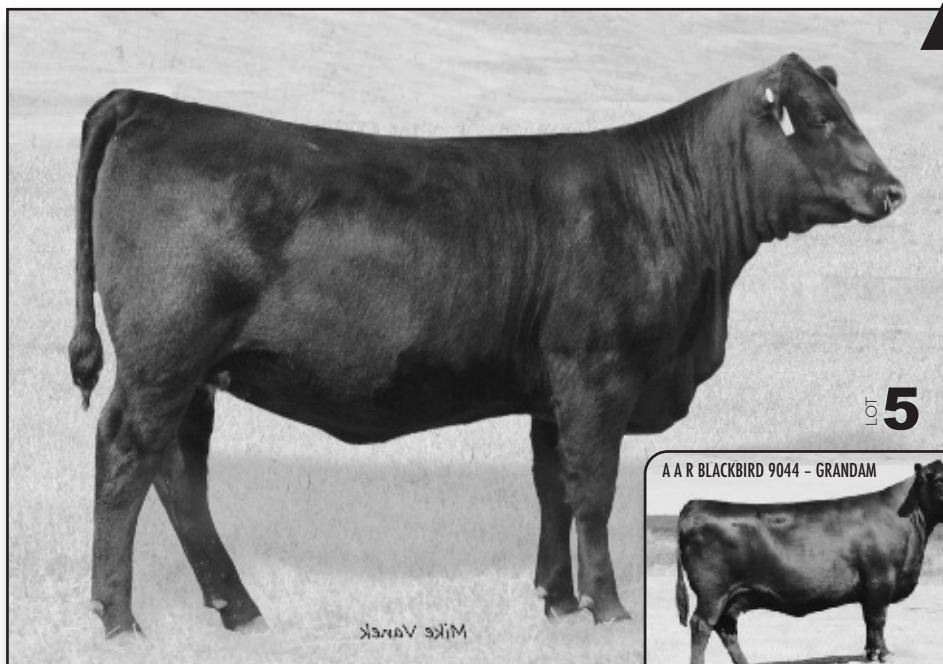
## LOT 5 Arntzen Angus Ranch

Kevin Arntzen

577 Arntzen Lane • Hilger, MT 59451

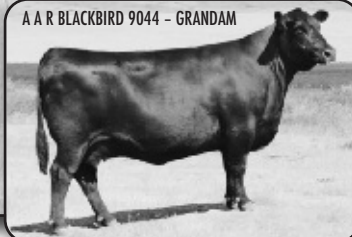
**406 350-1612 (c)**

- BW: 74, 205 day wt.: 707. Dam is a full sister to the \$9000. AAR 2019 NILE consignment.
- Blackbird 0058 is a deep ribbed, long bodied, pretty fronted heifer with a proven maternal pedigree. Her Dam is a product of our ET program. Donor cow, Blackbird 9044 has been the most influential cow in the history of AAR. She has produced 13 herd sires to date, either sold through the AAR bull sale or retained in our herd and many beautiful young cows. She has made over 120 embryos in 4 conventional flushes.
- Sire: Musgrave 316 Stunner is one of the most used A.I. sires of the past couple years. He sires progeny that are extremely easy on the eye, and have a user friendly EPD profile. Stunner calves have been phenotypic standouts with exceptional muscle, length of body and deep ribbed.
- MGS: KG Justified has been everything we hoped he'd be when we purchased him in 2014 along with GDAR. Justified has become a popular AI sire all over the country due to his calving ease, good growth and muscle expression. His daughters are moderate in frame, beautifully uddered, and productive.
- Maternal Grandam: AAR Blackbird 9044 is a tremendous donor, a powerful female that posts a WR of 107 on 6 calves and YR of 109 on 6 calves.



LOT 5

A A R BLACKBIRD 9044 - GRANDAM



## LOT 5 A A R BLACKBIRD 0058

BD: 02/08/2020 Reg: 19801825 Tattoo: 0058

LD CAPITALIST 316  
MUSGRAVE 316 STUNNER AAA \*18467508  
MCATL BLACKBIRD 831-1378  
KG JUSTIFIED 3023  
A A R BLACKBIRD 8232 AAA +19232994  
A A R BLACKBIRD 9044

CONNEALY CAPITALIST 028  
LD DIXIE ERICA 2053  
MCATL PURE PRODUCT 903-55  
MCATL BLACKBIRD 1378-573  
CONNEALY JUDGMENT  
KG MISS MAGIC 1443  
B C MATRIX 4132  
A A R BLACKBIRD 7026

CED	BW	WW	YW	Milk	CW	Marb	RE	\$M	\$W	\$F	\$B	\$C
9	-.2	65	114	24	-	-	-	-	64	-	-	-

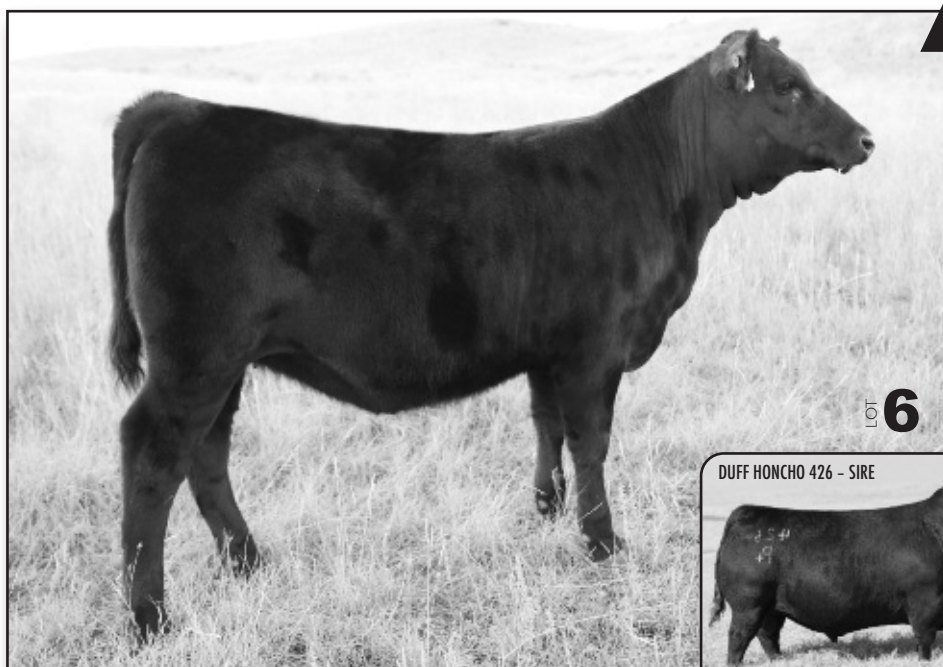
## LOT 6 BA RANCH FOREVER LADY 18H

BD: 03/05/2020 Reg: 19806951 Tattoo: 18H

BAR WICK EUREKA 943 310  
DUFF HONCHO 426 AAA \*18135257  
DUFF BI 619 LADYPOP 1017  
BON VIEW NEW DESIGN 878  
MILK RIVER FOREVER LADY 1600 AAA +17273555  
LUKEN'S FOREVER LADY 7600

O C C EUREKA 865E  
O C C DIXIE ERICA 943D  
DUFF BASIC INSTINCT 6501  
DUFF NL 8351 LADY POP 619  
B/R NEW DESIGN 036  
BON VIEW GAMMER 85  
D H D TRAVELER 6807  
G D A R FOREVER LADY 9600

CED	BW	WW	YW	Milk	CW	Marb	RE	\$M	\$W	\$F	\$B	\$C
8	-.3	35	56	24	6	.18	.20	57	41	49	74	153



LOT 6

DUFF HONCHO 426 - SIRE



## LOT 6 Baltrusch Angus Ranch

Nathan and Ashlee Baltrusch

7680 Rd 10 N • Havre, MT

**406-570-8646**

- BW: 80, 205 WT: 582
- AI sired by Duff Honcho 426. Hanco is the deepest bodied, easiest fleshing bull ever produced in the Duff program. Honcho's dam comes from a long line of cow families that have produced generations of successful females.
- Dam is a 9 year old New Design 878 daughter who's maternal Grandsire is DHD Traveler 6807. She is one of the most fertile females in our program, and has bred AI every year we have owned her.
- This early March born heifer is deep sided, feminine, and clean fronted. She combines eye appeal with a proven pedigree to make a long lasting, productive cow that could be valuable in any operation.

3 BW 100, 3 YW 99, 3 WR 104



## LOT 7 Barragree Cattle Co

Brian & Zane Barragree

Box 562 • Absarokee, MT 59001

406-780-1219 Brian • 406-425-1720 Zane

- 28H combines two of the most popular bulls in the breed, E&B Plus One and Capitalist 316. This combination created a standout phenotypical heifer that has the pedigree and EPD profile to be something special!
- Her dam, BCC Everelda Entense 108F, traces to the legendary Sitz Everelda Entense 1905, one of the greatest cows the breed has ever known.
- E&B Plus One is a phenotypical standout! A calving ease sire that posts strong growth numbers, excellent Marb, and RE combined with \$ values that rank near the top of the breed. The Pathfinder dam of Plus One has weaned 6 natural calves with an average WR 108.

- Individual Performance: BWR 95, WR 103
- Maternal Grandam: BR 9 @ 98, WR 9 @ 104, YR 9 @ 102



E&B PLUS ONE - SIRE



## Heifer LOT 7 BCC EVERELDA ENTENSE 28H

BD: 02/09/2020 Reg: 19803982 Tattoo: 28H

CONNEALY CONFIDENCE PLUS  
E&B PLUS ONE AAA +\*19196960  
E&B LADY 1023 PRECISION 936

LD CAPITALIST 316  
BCC EVERELDA ENTENSE 108F AAA 19402631  
SCC EVERELDA ENTENSE 86U

CONNEALY CONFIDENCE 0100  
ELBANNA OF CONANGA 1209  
E&B 1680 PRECISION 1023  
E&B LADY 878 NEW DESIGN 441  
CONNEALY CAPITALIST 028  
LD DIXIE ERICA 2053  
BT NEW DAY 121R  
BT EVERELDA ENTENSE 582H

CED	BW	WW	YW	Milk	CW	Marb	RE	\$M	\$W	\$F	\$B	\$C
8	1.0	62	115	27	49	.63	.66	61	63	99	151	257

## Heifer LOT 8 BCC ELBA MERRICK 170H

BD: 03/23/2020 Reg: 19805176 Tattoo: 170H

SMA WATCHOUT 482  
CONLEY EXPRESS 7211 AAA +\*18941522  
DPL SANDY 3040  
PVF INSIGHT 0129  
BCC ELBA MERRICK 36C AAA #18208393  
J A F ELBA MERRICK 53U

SILVEIRAS WATCHOUT 0514  
2K BEAUTY 961  
SILVEIRAS STYLE 9303  
K N C CABIN CREEK SANDY 804  
S A V BRILLIANCE 8077  
PVF MISSIE 790  
M A BROADSIDE 1334-822  
BTR ELBA MERRICK 230

CED	BW	WW	YW	Milk	CW	Marb	RE	\$M	\$W	\$F	\$B	\$C
-1	2.8	69	110	22	42	.60	.40	28	63	88	135	203

## LOT 8 Barragree Cattle Co

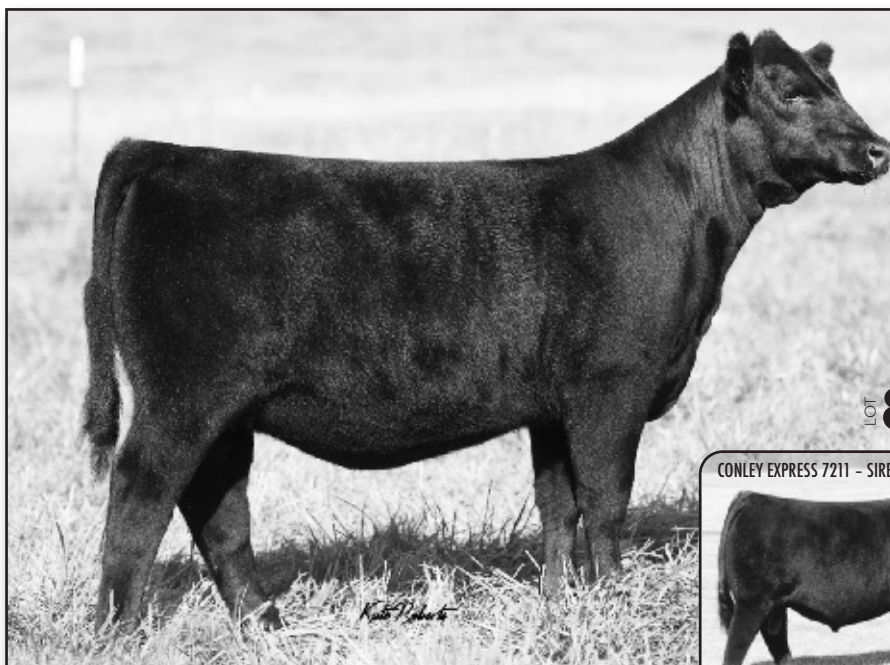
Brian & Zane Barragree

Box 562 • Absarokee, MT 59001

406-780-1219 Brian • 406-425-1720 Zane

- Conley Express 7211 (18941522) MGS: PVF Insight 0129
- 170H is a Stand Out Show Heifer Prospect!
- Sired by one of the hottest sires in the nation, Conley Express 7211. Express progeny truly rank among the elite show heifers in the country.
- Conley Express' first fourteen daughters averaged \$29,500 at the big event at Express Ranches while his daughter helped rewrite Conley Ranch history at their record breaking female sale.
- Dam is a complete daughter of PVF Insight 0129 that continues to produce and impress. Dam: 4 @ 98 BR, 4 @ 107 WR

- Individual Performance: BWR 100, WR 110



CONLEY EXPRESS 7211 - SIRE

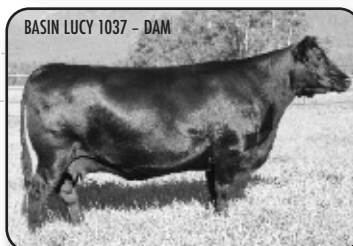
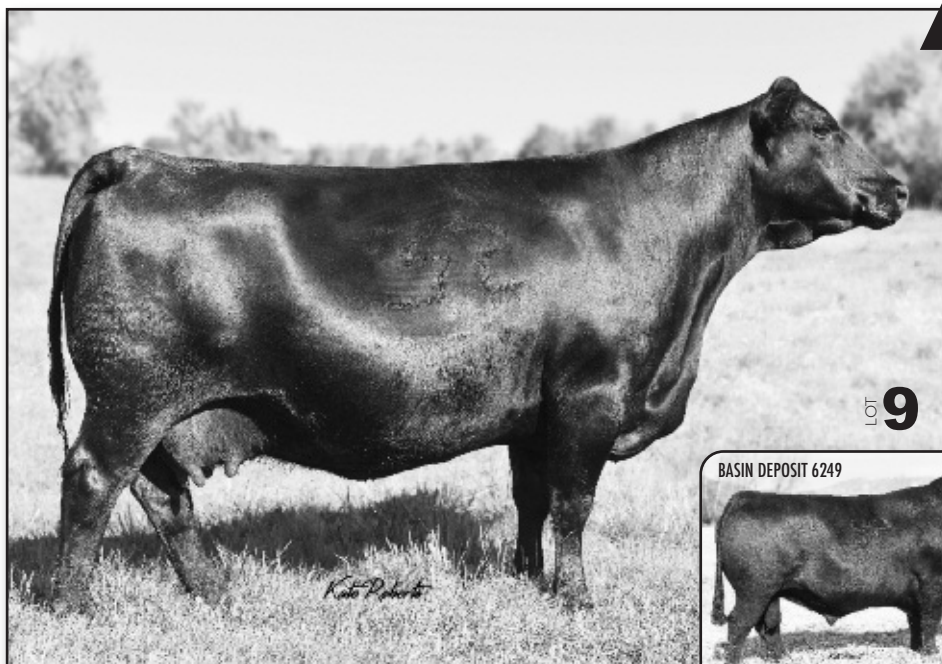


## LOT 9 Basin Angus Ranch

Doug & Sharon Stevenson  
54 Evergreen Dr. • Joliet, MT 59041  
**Doug Stevenson – 406-350-0350**  
**Shane Whiteman – 406-366-0688**

- The most powerful phenotype donor ever offered for sale by Basin Angus. She is deep bodied, easy fleshing, and powerful in her fore rib, along with exceptional foot and leg structure.
- 4288 was flushed 7 times last year, producing 56 good quality embryos for an average of 8 per flush.
- With her embryo calves due in 2021, and her son being the heaviest used bull in the Basin herd this year, 4288 is poised to be the major building block for the future at Basin Angus.

LOT 9



- Bred to VERMILION SPUR E143, and due approximately 2-6-2021.
- SELLING ONE-HALF INTEREST with the option to double the purchase price to own all of this powerful donor.
- The first natural calf from 4288 is BASIN DEPOSIT 6249. He is the most complete performance sire ever produced in the Basin Angus herd. With weaning records on his first 36 progeny and ultrasound on 16 head, DEPOSIT has progeny averages of BR 102, WR 104, YR 105, IMF 107, REA 100.
- DEPOSIT has EPDs that rank in the top 1% of the breed for WW, YW, MARB, along with top 1% for \$W Index and \$C Index. He ranks in the top 2% for CLAW and \$B Index, top 3% for CW and \$M Index, and top 10% for HP.
- The DEPOSIT sons were the high selling sire group of the 2020 Montana Performance Bull Coop Sale, including the high selling bull, BASIN DEPOSIT 9324 at \$36,000 to ABS.

- The dam of 4288, BASIN LUCY 1037 is a moderate framed, easy fleshing donor that is a standout for carcass merit. After serving as a donor at Basin Angus, she sold for \$47,000 for one-half interest to Montana Ranch to top the 2016 Stars of Texas Sale. BASIN LUCY 1037 is now a donor at Ankony Angus and Leachman Cattle of CO.

Donor Cow  
LOT 9

### BASIN LUCY 4288

BD: 01/24/2014 Reg: +\*17926843 Tattoo: 4288

EXAR UPSHOT 0562B SITZ UPWARD 307R  
EXAR DENVER 2002B AAA #\*17160560 EXAR BARBARA T020  
EXAR ROYAL LASS 1067 EXAR 263C  
BR ROYAL LASS 19-132  
GARDENS WAVE GARDENS HIGHMARK  
BASIN LUCY 1037 AAA +\*16938584 GREEN GARDEN LADY 6255 S2  
BASIN LUCY 2625 VERMILION PAYWEIGHT J847  
BASIN LUCY 3829

CED	BW	WW	YW	Milk	CW	Marb	RE	\$M	\$W	\$F	\$B	\$C
8	1.0	60	105	24	50	.83	.82	56	61	99	160	264

## LiveAuctions.TV 2.0

### HERE'S HOW IT WORKS

Go to [www.LiveAuctions.tv](http://www.LiveAuctions.tv) and click on "NILE Angus Female Sale" from the homepage. Sales are listed in chronological order so just scroll down until you find the NILE Angus Female auction. Once you find the auction click on either the auction name or the ranch logo and you will go to the auction web page. You should then see the ranch logo and auction details on the left side of the web page. On the right side of that same web page you will see a box that says Login. If you already have an account with LiveAuctions just type in your E-mail Address and Password. If you have not registered on or after September 1st, 2020 then click on the link that says "Create Account" at the bottom right of the Login box. Please note that LiveAuctions released LiveAuctions 2.0 on September 1st, 2020 so if you had an account prior to September 1st you WILL HAVE TO CREATE A NEW ACCOUNT. Follow the steps to Register and/or Login. Once you are registered and logged in click "Request A Buyer Number" and you will be ready to bid.

**Bidders who are successful in making purchases will be contacted by the ranch after the sale to settle payment and discover your shipping plans.**

**If you have questions or need help please call our customer support at (817) 725-8595.**



## LOT 10 Basin Angus Ranch

Doug & Sharon Stevenson

54 Evergreen Dr. • Joliet, MT 59041

**Doug Stevenson – 406-350-0350**

**Shane Whiteman – 406-366-0688**

- BASIN LUCY 9363 combines very attractive phenotype with outstanding performance data. She is balanced and correct in her structure, excellent on her feet and legs, and very long bodied. She has a very strong and balanced EPD profile, and ranks in the top 1% of the breed for \$B Index and \$C Index.
- The sire of BASIN LUCY 9363, BASIN ADVANCE 5016 was the top selling bull of the 2016 Montana Performance Bull Coop sale, to Express Ranches. Used extensively at Express and Basin, BASIN ADVANCE 5016 is a powerful source of added ribeye area in a moderate, balanced and maternal phenotype.
- The dam of BASIN LUCY 9363, BASIN LUCY 1667 has a progeny record of 3 BR 102, 3 WR 108, 3 YR 107, 17 IMF 110. She is also the dam of BASIN LUCY 3150, and the grandam of BASIN PAYCHECK 5249. BASIN LUCY 3150 was the top selling female of the 2018 Montana Ranch sale, at \$60,000 to EZ Angus, and now serves as a donor for EZ Angus and Riverbend Ranch. BASIN PAYCHECK 5249 continues to be used heavily in the Basin herd, siring daughters with a very maternal Angus look and sons with moderate frame, added muscle, and marbling.
- Bred to SQUARE B TRUE NORTH 8052, and due approximately 1-23-2021.



LOT 10

BASIN LUCY 1667 – DAM



BASIN PAYCHECK 5249



Bred Heifer  
**LOT 10**

### BASIN LUCY 9363

BD: 03/05/2019 Reg: +\*I9590493 Tattoo: 9363

BASIN ADVANCE 3134 G A R PROGRESS  
BASIN ADVANCE 5016 AAA \*18185320 BASIN O LASS 1663  
BASIN JOY 2006 SUMMITCREST COMPLETE 1P55  
HOOVER DAM BASIN JOY 566T  
BASIN LUCY 1667 AAA \*17045633 SYDGEN C C & 7  
BASIN LUCY W213 ERICA OF ELLSTON C124  
B C C BUSHWACKER 41-93  
BASIN LUCY 3829

CED	BW	WW	YW	Milk	CW	Marb	RE	\$M	\$W	\$F	\$B	\$C
8	2.9	68	117	27	61	1.13	1.12	65	68	117	200	324

Heifer  
**LOT 11**

### BASIN LUCY 0054

BD: 01/24/2020 Reg: \*I9734475 Tattoo: 0054

BASIN PAYWEIGHT 1682 BASIN PAYWEIGHT 0065  
BASIN PAYCHECK 5249 AAA \*18184147 21AR O LASS 7017  
BASIN LUCY 3150 BASIN RAINMAKER P175  
SYDGEN ENHANCE BASIN LUCY 1667  
BASIN LUCY 8063 AAA \*19130779 SYDGEN EXCEED 3223  
BASIN LUCY 4209 SYDGEN RITA 2618  
BASIN PAYWEIGHT 1075  
BASIN LUCY 2106

CED	BW	WW	YW	Milk	CW	Marb	RE	\$M	\$W	\$F	\$B	\$C
7	.6	69	133	36	61	.79	.53	47	77	108	164	260

## LOT 11 Basin Angus Ranch

Doug & Sharon Stevenson

54 Evergreen Dr. • Joliet, MT 59041

**Doug Stevenson – 406-350-0350**

**Shane Whiteman – 406-366-0688**

- BASIN LUCY 0054 has the look and the pedigree of a future donor cow. Selected as our top pick to exemplify the balance of phenotype, performance data, and maternal cow power that we aim for in the Basin program.
- Individual performance: BW 66, Adjusted WW 588, WR 106.
- The two year old dam of BASIN LUCY 0054 is well on her way toward a spot in the Basin donor pen.
- The grandam is a top producing donor cow that adds growth and ribeye area. She has a progeny record of 3 WR 108, 3 YR 108, 20 REA 105. She has a GAR Sure Fire son working for Leo McDonnell and an Enhance son working at Quaker Hill.
- The great grandam has a progeny record of 5 WR 105, 3 YR 113, 4 IMF 110, 4 REA 104.
- The great, great grandam has a progeny record of 7 WR 103, 4 YR 105.



LOT 11

BASIN LUCY 8063 – DAM



## LOT 12 Beartooth Angus

Cory Albin  
104 Zumbrun Road • Red Lodge, MT 59068  
406-794-1287

- 909 is a powerful daughter of LD Capitalist 316. She posts a strong EPD profile that combines growth, carcass, and maternal.
- Dam, E24, was purchased from Pine Coulee Angus. E24, an E.T. daughter of Mohnen Bedrock and the famed EXT daughter, P7 cow, was the beginning of Madelynn Albin's registered Angus herd. Pine Coulee Lucy P7 posts 7 BR @ 106, 7 WR @ 112, and 26 calves ratioed 102 ribeye, selling over \$150,000 worth of offspring.
- Sired by LD Capitalist 316, who is the very popular Beef 360, Musgrave & Luddington calving ease sire. 316 sires progeny that are extremely complete with lots of eye appeal. 316 has been one of the most popular sires of those visiting the World West semen sires.
- Due January 14th, 2021 to Square B Atlantis 8060, owned by Beartooth Angus & Montana Ranch LLC, one of the most exciting A.I. sires this past spring. The mating of 909 to Square B Atlantis could be a tremendous opportunity for any Angus breeder. Look for great things from this young sire.
- Retaining the right to one flush at buyers convenience.

LOT 12

SQUARE B ATLANTIS 8060 - AI SIRE



## Bred Heifer LOT 12 BEARTOOTH LUCY 909

BD: 01/26/2019 Reg: \*19747949 Tattoo: 909

CONNEALY CAPITALIST 028  
LD CAPITALIST 316 AAA +\*17666102  
LD DIXIE ERICA 2053  
MOHNEN BEDROCK 1244  
PINE COULEE LUCY E24 AAA +\*18874640  
PINE COULEE LUCY P7  
S A V FINAL ANSWER 0035  
PRIDES PITA OF CONANGA 8821  
C A FUTURE DIRECTION 5321  
LD DIXIE ERICA OAR 0853  
MOHNEN SOUTH DAKOTA 402  
MOHNEN JILT 1709  
N BAR EMULATION EXT  
PINE COULEE LUCY OP11

CED	BW	WW	YW	Milk	CW	Marb	RE	\$M	\$W	\$F	\$B	\$C
3	2.4	64	109	27	51	.73	.75	62	66	97	152	259

## Bred Heifer LOT 13 BEARTOOTH BARBARA 910

BD: 01/28/2019 Reg: +\*19735270 Tattoo: 910

SILVEIRAS CONVERSION 8064  
BUBS SOUTHERN CHARM AA31 AAA +\*17853196  
HICKORY HILL ERICA 009  
BASIN PAYWEIGHT 1075  
ICC BARBARA K 5259 AAA +\*18229584  
MILL COULEE BARBARA K 905  
BT CROSSOVER 758N  
EXG SARAS DREAM S609 R3  
CONNEALY STIMULUS 8419  
HICKORY HILL ERICA TA32  
VERMILION PAYWEIGHT J847  
BASIN LUCY 3829  
S A V FINAL ANSWER 0035  
MILL COULEE BARBARA K 414

CED	BW	WW	YW	Milk	CW	Marb	RE	\$M	\$W	\$F	\$B	\$C
11	-1.4	46	77	39	23	.91	.60	67	70	62	127	232

## LOT 13 Beartooth Angus

Cory Albin  
104 Zumbrun Road • Red Lodge, MT 59068  
406-794-1287

- 910 is a very attractive female sired by the increasingly popular and deceased Bubs Southern Charm AA31. Southern Charm progeny have been sale toppers across the country and he continues to be a must use bull at A.I. time.
- The dam of 910, ICC Barbara K 5259, has produced nearly \$100,000 worth of progeny. Bulls out of this exciting younger donor averaged close to \$8,000 the past two bull sales for Split Diamond Ranch.
- Due January 14th to Square B Atlantis. Maternal grandam, Mill Coulee Barbara K 905, has placed several sons in registered herds, including the \$47,000 Diamond Payweight 704C purchased by Sitz Angus.

LOT 13

BUBS SOUTHERN CHARM AA31 - SIRE





# LOT 14 Green Mountain Angus Ranch

Tim & Kris Todd

35 Green Mountain Dr. • Ryegate, MT 59074

406-568-2768 (H) • 406-220-1975 (C)

- H486 has produced great performance EPDs, highlighted by top 1% in the Angus breed for heifer pregnancy (HP).
- Other tops within the entire angus breed include: \$C 10%, \$B 10%, \$F 10%, CW 15%, SC 20%, DOC 25%, Marb 25%, WW and YW 25%. The outcross and proven performance numbers are set up for outstanding donor success.
- The dam of H486 was a highlight heifer calf that was featured by Green Mountain Angus Ranch in the 2015 Nile Angus Female Sale, selling to Linz Heritage Angus, Crown Point, IN for \$12,000. She has since become a feature donor cow for that firm. The Maternal Grandam, JVC Altune of Conanga 803 has been a working donor dam at GMAR and has produced top sellers in both bulls and females the past six years. She is a full sister to the renowned Pathfinder performance sire, Connealy Onward.
- The sire, Diamond in the Rough, was the high selling bull from the 2010 fall bull sale at Diamond Dot Angus Ranch selling to Schaff Angus Valley and Genex. His progeny have exceptional growth, depth, and exceptional docility.

LOT 14

GMAR ACTIVE DUTY C264 - DAM



PICTURED AS A HEIFER CALF

## Heifer LOT 14 GMAR DIAMOND DUTY H486

BD: 03/06/2020 Reg: +\*19751417 Tattoo: H486

DIAMOND JUSTICE 901S  
DIAMOND IN THE ROUGH AAA #\*16608684  
DIAMOND BLACK LADY 7206  
R B ACTIVE DUTY 010  
GMAR ACTIVE DUTY C264 AAA +\*18112660  
JVC ALTUNE OF CONANGA 803  
ER JUSTICE N013  
ERISKAY OF ER J238  
DIAMOND PAYWEIGHT 738N  
DIAMOND BLACK LADY M281  
LCC NEW STANDARD  
B A LADY 6807 305  
CONNEALY LEAD ON  
ALTUNE OF CONANGA 6104

CED	BW	WW	YW	Milk	CW	Marb	RE	\$M	\$W	\$F	\$B	\$C
5	1.2	64	113	25	56	.79	.49	60	64	102	159	266

## Donor Cow LOT 15 HILLTOP CINDERELLA 39

BD: 01/29/2013 Reg: #17631899 Tattoo: 39

SF RITO 112-758  
HILLTOP FERGUS 0303 AAA #16814602  
DJ DIXIE T135  
SITZ RAINMAKER 11127  
HILLTOP CINDERELLA 194 AAA 17138677  
HILLTOP CINDERELLA 655  
RITO 112 OF 2536 RITO 616  
BALDRIDGE PRIDE N594  
K C F BENNETT PERFORMER  
ER DIXIE P249  
SITZ RAINMAKER 8075  
SITZ EMMA E 417L  
S A V 5175 BANDO 2194  
HILLTOP CINDERELLA 692

CED	BW	WW	YW	Milk	CW	Marb	RE	\$M	\$W	\$F	\$B	\$C
3	3.2	73	126	23	45	.71	.60	67	67	87	140	249

## LOT 15 Hilltop Angus Ranch

Cory & Gary Poser

1831 Everson Road • Denton, MT 59430

406-567-2439 • 406-366-3461

- Cinderella 39 is a featured Pathfinder donor for Hilltop Angus. She has a production record of 4@97 BW and 4@106 VVW. Two daughters of Cinderella 39 are working in the Hilltop herd and have a combined Nursing ratio of 104 on 6 calves weaned.
- 39 is best known as the dam of Hilltop Edge 3747, the top performing bull in the history of Hilltop Angus, who went on to sell for \$22,000 to Infinity Angus in the 2018 Hilltop Bull Sale. Edge has been well used in both commercial and registered herds with great success.
- Cinderella 39 is very feminine fronted and stylish, with good feet and a perfect udder. She is deep bodied and easy fleshing. Cinderella traces back to the cornerstone E6 donor cow, one of the very first cows ever flushed at Hilltop. The Cinderella cow family is proven for longevity and production.

LOT 15

HILLTOP EDGE 3747



- Sells with 4 conventional embryos by SAV Constitution 8054 (Reg: 19249584) and 4 conventional embryos by Sitz Alpine 11076 (Reg: 18385837).
- Constitution was the \$50,000, second top selling, President son of the 2019 SAV sale. His dam is a full sister to Resource. Constitution's first calves are stunners that are phenotypically outstanding with herd changing muscle and thickness.
- Alpine was selected with Genex as the \$50,000 top selling bull of the 2017 Sitz fall sale. Alpine is a proven calving ease bull with tremendous carcass traits. Alpine daughters look fantastic and his first sons were sale features in the 2020 Hilltop Sale.



LOT 16

## LOT 16 Hinman Angus

Dave & Yvonne Hinman  
Billy & Heidi Lulloff  
PO Box 220 • Malta, MT 59538

Home 406-654-1809 • Dave's cell 406-654-4656  
Billy's 406-654-4669

- H285 is sired by one of the most exciting sires in the breed today, Connealy Emerald (19257149). The Sexing Technologies standout is quickly becoming the go to favorite of those seeking the Confidence Plus genetics. Emerald is the big time spread bull that has strong carcass traits and values.
  - H285 posts an impressive EPD profile, and is backed by some of the strongest cows Hinman Angus has ever raised. H285 traces 4 times to the legendary HA matron, HA Rito Blackcap 9038.
  - H285's dam is Blackcap Lady 3893, her sire is the legendary HA Program 1742. Program's dam is one of the finest Image Maker daughters (HA Lass 4206) to ever grace the pastures of Hinman Angus.
- BW 90  
• Dam's Prod: 5WR @ 109, 5YR @ 107



HA BLACKCAP LADY 3893 - DAM

**LOT 16** **HA BLACKCAP LADY H285**  
BD: 02/15/2020 Reg: I9802261 Tattoo: H285

CONNEALY CONFIDENCE PLUS  
CONNEALY EMERALD AAA \*19257149  
JACE OF CONANGA 6571

HA PROGRAM 1742  
HA BLACKCAP LADY 3893 AAA #17647399  
HA BLACKCAP LADY 1550

CONNEALY CONFIDENCE 0100  
ELBANNA OF CONANGA 1209  
CONNEALY ARMORY  
JAZZY OF CONANGA 4660 860C  
HA PROGRAM 7328  
HA LASS 4206  
HA BASIC 7355  
HA BLACKCAP LADY 4414

CED	BW	WW	YW	Milk	CW	Marb	RE	\$M	\$W	\$F	\$B	\$C
11	-.2	65	123	30	55	.75	.88	66	73	106	168	284

**LOT 17** **HA BLACKCAP LADY 9799**  
BD: 03/14/2019 Reg: \*I9605828 Tattoo: 9799

CONNEALY CONFIDENCE PLUS  
E&B PLUS 628 AAA \*18548870  
E&B LADY ABSOLUTE 411

HA CONSENSUS 2279  
HA BLACKCAP LADY 6083 AAA 18634043  
HA BLACKCAP LADY 1855

CONNEALY CONFIDENCE 0100  
ELBANNA OF CONANGA 1209  
K C F BENNETT ABSOLUTE  
E&B LADY 0203 ALLIANCE 2194  
CONNEALY CONSENSUS 7229  
HA BLACKBIRD 4299  
HA BASIC 7355  
H A BLACKCAP LADY 1015

CED	BW	WW	YW	Milk	CW	Marb	RE	\$M	\$W	\$F	\$B	\$C
16	-.6	60	100	15	35	.49	.69	54	56	75	120	210



LOT 17

## LOT 17 Hinman Angus

Dave & Yvonne Hinman  
Billy & Heidi Lulloff  
PO Box 220 • Malta, MT 59538

Home 406-654-1809 • Dave's cell 406-654-4656  
Billy's 406-654-4669

- 9799 is a promising young female. Sired by E&B Confidence 628 who was out of a KCF Bennett Absolute dam, tying together two of the most popular bulls in the breed, Confidence Plus and Absolute.
  - 9799 dam traces 3 times to the HA foundation female, HA Blackcap Lady 9038. 9038, the dam of Image Maker, was a remarkable cow with multitudes of females retained in the HA cow herd.
  - Due Date 2/6/2021 to HA Outside Two 7891
  - HA Outside Two was the top selling bull at the 2018 Hinman Bull Sale, purchased by Hollow Top Angus. He is a full brother to HA Outside 3008, the sire of HA Cowboy Up. The dam of HA Outside Two is an outstanding SAV Bismarck daughter owned by Hinman Angus & Hollow Top Angus.
- Production: WR 104



CONNEALY CONFIDENCE PLUS - PAT. GRANDSIRE



# LOT 18 Hollow Top Angus

Porter Bennett  
PO Box 456 • Ennis, MT 59729

**Owners: Porter Bennett & Carolyn Quan**  
**303-513-9058**

**Cattle Operations: Clay Clarke 406-223-5078**

- 9159 will be a great addition to any Angus program. She is straight out of the Hollow Top embryo program, sired by the top selling bull at the Hinman Angus 2018 sale. HA Outside Two 7891 is a full brother to the sire of HA Cowboy Up.
- Outside Two's dam is a powerful daughter of SAV Bismarck. HA Ever Lady 1575 is currently being flushed by Hinman Angus & Hollow Top Angus.
- Production is the cornerstone of the Hollow Top Angus ET program. HA Blackcap Lady 0590 is a past herd sire producer with a son working at Bobcat Angus, Galata, MT. 0590 posts

7 WR @ 107, 7 YR @ 107, 18 IMF @ 119.

• Due Date 3/5/21 to Sitz Profound 680G, the \$70,000 top selling bull at the Sitz Angus Spring Bull Sale, sired by Sitz Stellar 726D and purchased by Hollow Top Angus. Canadian semen rights were purchased by Hamilton Farms. Profound semen was recently made available through Breeder Link.

• 9159 posts EPDs in the top 10% for CED, BW, HP and 25% Marb; 30% YW.



LOT 18

SITZ PROFOUND 680G



**LOT 18** **HT BLACKCAP LADY 9159**  
BD: 04/06/2019 Reg: +\*19644733 Tattoo: 9159

KG SOLUTION 0018  
HA OUTSIDE TWO 7891 AAA +\*18918582  
HA EVER LADY 1575  
GARDENS PRIME STAR  
HA BLACKCAP LADY 0590 AAA #16766468  
HA BLACKCAP LADY 3833

MOGCK SURE SHOT  
KG RITO LADY 8724  
S A V BISMARCK 5682  
HA EVER LADY 8066  
N BAR PRIME TIME D806  
GREEN GARDEN JILT C242 S1  
R R BLACK LABEL 4560  
H A RITO BLACKCAP 9038

CED	BW	WW	YW	Milk	CW	Marb	RE	\$M	\$W	\$F	\$B	\$C
12	-1.2	56	108	24	34	.81	.25	56	57	68	120	212



## LOT 19 Hyline Angus Ranch

Ben & Ken Van Dyke

2062 Bitterroot Road • Bozeman, MT 59718

406-580-0224 (B) • 406-580-6443 (K)

- BW: 78 Ratio: 99 WW: 900 Ratio: 124
- Dam Production -- BW: 1@99 WW: 1@124
- Grandam Production -- WW: 3@98 YW: 3@98
- Great Grandam -- BW: 7@92 WW: 7@106 YW: 7@105
- Great Great Grandam -- BW: 10@94 WW: 10@104 YW: 9@105 Great x3 Grandam -- BW: 5@105 WW: 5@108 YW: 5@109 Great x4 Grand dam -- BW: 8@100 WW: 8@109 YW: 8@106
- When people talk about maternally bred females, Hyline Pride 015 is what comes to mind. The Hyline Pride cow family and bulls like 338, Leachman Right Time, Ext, and Final Answer, result in this outstanding featured heifer. It takes a female like 015 to truly make an impact on the breed. Proven production records like this are what helped make Montana a destination for maternally bred Angus cattle. 015 has an extremely long front end and defines what it means to be long

bodied, deep, and stout. All while standing on perfect feet and legs. Her sire, Hyline Fixx 156, was the high selling bull of the 2017 bull sale. He went on to be heavily used within our own herd as well as in a progressive registered herd in Texas. His first daughters have made tremendous females that are very reminiscent of the 338 daughters that have worked so well for many breeders across the country. Hyline Right Time 338 is the ultimate female producer, he has stood the test of time with many daughters being in the top of herds across the country. His daughters have left a lasting mark in many herds, including ours.

LOT 19

HYLINE RIGHT TIME 338



Fall Heifer **LOT 19** BD: 10/07/2019 Reg: \*19757268 Tattoo: R015

HYLINE RIGHT TIME 338  
HYLINE FIXX 156 AAA \*18464601  
HYLINE EILEENMERE 184

HYLINE RIGHT ANSWER 273  
HYLINE PRIDE 700 AAA 18849596  
HYLINE PRIDE 901

LEACHMAN RIGHT TIME  
HYLINE PRIDE 265  
HYLINE RITO 498  
PARSONS PRIDE 1503  
CONNEALY RIGHT ANSWER 746  
HYLINE PRIDE 559  
HYLINE RIGHT TIME 338  
HYLINE PRIDE 558

CED	BW	WW	YW	Milk	CW	Marb	RE	\$M	\$W	\$F	\$B	\$C
1	3.0	58	91	38	46	.19	.37	57	73	72	99	185

Fall Heifer **LOT 20** BD: 09/23/2019 Reg: \*19759615 Tattoo: R003

KM BROKEN BOW 002  
SPRING COVE CROSSBOW AAA \*17924903  
SPRING COVE PRETTY 205

EMERINE PACKER 505  
HYLINE PRIDE 814 AAA 19155902  
HYLINE PRIDE 901

SUMMITCREST COMPLETE 1P55  
SUMMITCREST PRINCESS OP12  
C C A EMBLAZON 702  
SPRING COVE PRETTY 009  
HYLINE PACKER 884  
TIN CUP  
HYLINE RIGHT TIME 338  
HYLINE PRIDE 558

CED	BW	WW	YW	Milk	CW	Marb	RE	\$M	\$W	\$F	\$B	\$C
-1	3.6	70	116	28	61	.56	.45	57	70	105	152	254

## LOT 20 Hyline Angus Ranch

Ben & Ken Van Dyke

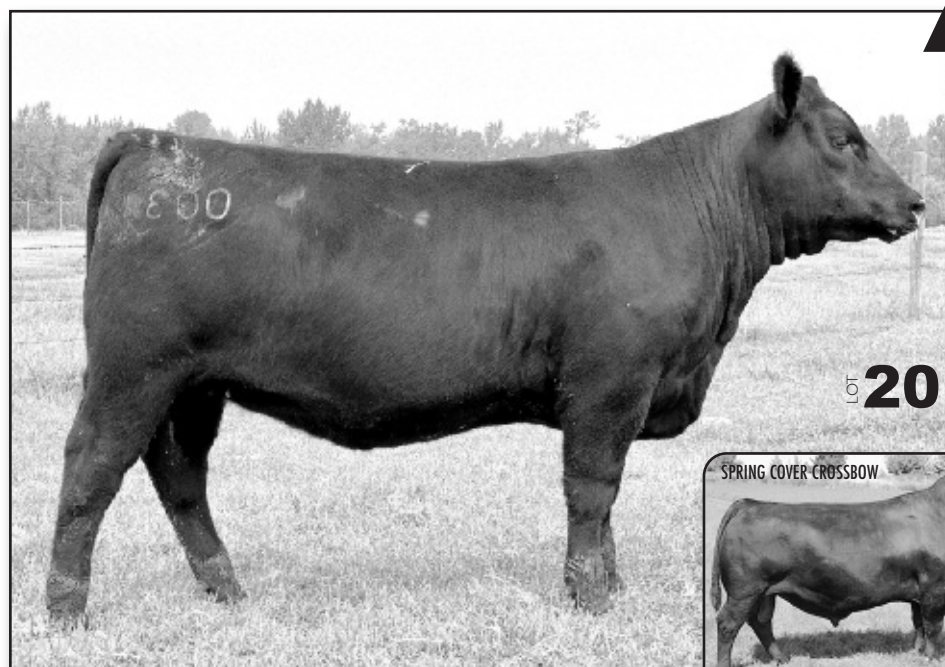
2062 Bitterroot Road • Bozeman, MT 59718

406-580-0224 (B) • 406-580-6443 (K)

- BW: 70 WW: 890 Ratio: 124
- Dam Production -- BW: 1@100 WW: 2@124
- Grandam Production -- WW: 3@98 YW: 3@98
- Great Grandam -- BW: 7@92 WW: 7@106 YW: 7@105
- Great Great Grandam -- BW: 10@94 WW: 10@104 YW: 9@105 Great x3 Grandam -- BW: 5@105 WW: 5@108 YW: 5@109 Great x4 Grandam -- BW: 8@100 WW: 8@109 YW: 8@106
- Featuring a royally bred Springcove Crossbow daughter that weaned off at 890 pounds, actual weaning weight from a first calf heifer. Not often will you find a heifer calf that has the depth of rib, length of body, and sheer power that 003 possesses. This young female comes from a premier cow family that has produced leading sires in the breed, such as: Hyline Right Time 338, Hyline Right Answer 273, and Hyline SVF Rito 1116. With her cow family backing her, she will certainly become a featured donor in any herd. If you are serious about producing high end, high maternal cattle just take a look at the production records backing this heifer. With Hyline Pride 003's EPDs, DNA profile, and outstanding pedigree, she can truly be taken in any direction a breeder needs.

LOT 20

SPRING COVER CROSSBOW

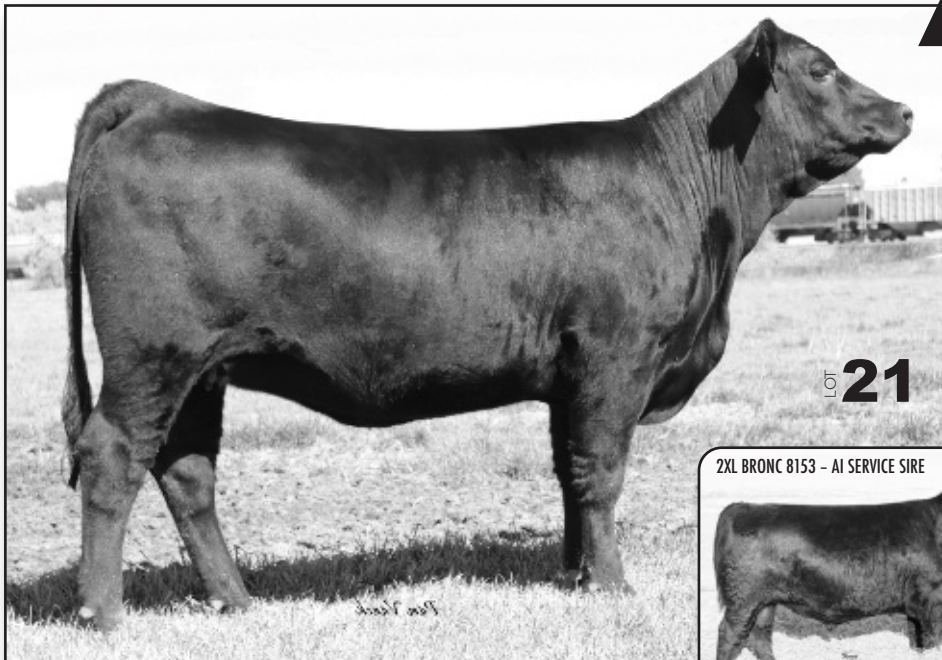




## LOT 21 Idland Cattle Co.

Reece Idland  
PO Box 329 • Circle, MT 59215  
406-974-2295

- AI bred on 4/10/2020 to 2XL Bronc 8153. Vet checked safe to 2XL Bronc 8153 and estimated due 1/17/2021.
- Individual performance: BW 76 lbs, BWR 100, 205 wt. 582 lbs, WWR 100 (ET).
- Dams production: 2 WR 103. She is a full sister to the ORigen all-time semen sales leader Hoover Dam and is co-owned by Stevensons Diamond Dot, MT and Gene Krester, MO
- Grandam's production: 6 BR 96, 6 NR 114, 6 YR 106 - Pathfinder.
- JVC Cavalry V3326 was the \$22,000 top selling bull in the 2014 Jocko Valley Bull Sale where he posted great genomic scores. This big stifle, robust, herdsire has lots of length, capacity, performance, and eye appeal producing top selling sons and daughters for Stevensons Diamond Dot, Idland Cattle Co, Jocko Valley and TD Angus.
- The service sire, 2XL Bronc 8153 is the exciting ORigen featured curve bender with CED +12, BW -.5, WW +88, YW +152 with top 1% \$M at +96 and top 2% for \$C at +305. His KCF Bennett Southside dam is a new donor for Reece Idland and Clint Stevenson.



2XL BRONC 8153 - AI SERVICE SIRE



Bred Heifer **LOT 21** **ICC ERICA L40-9704**  
BD: 03/14/2019 Reg: +\*19491725 Tattoo: 9704

CONNEALY CAVALRY 1149  
JVC CAVALRY V3326 AAA \*17784803  
BRUSETT FOREVER W857

SYDGEN C C & 7  
ERICA OF ELLSTON L40 AAA \*17306300  
ERICA OF ELLSTON C124

CONNEALY CONSENSUS  
BRISTA OF CONANGA 927T  
TC FRANKLIN 619  
BRUSETT FOREVER 827  
S A F CONNECTION  
SYDGEN FOREVER LADY 4087  
TC GRIDIRON 258  
ERICA OF ELLSTON V65

CED	BW	WW	YW	Milk	CW	Marb	RE	\$M	\$W	\$F	\$B	\$C
2	2.2	70	117	28	49	.41	.51	57	74	87	128	223

Bred Heifer **LOT 22** **ICC EMULOTA 596-9666**  
BD: 02/23/2019 Reg: +\*19509631 Tattoo: 9666

VARILEK PRODUCT 2010 04  
3F EPIC 4631 AAA 17950219  
ZEBO QUEEN 1072

BARSTOW CASH  
BALDCO EMULOTA 596 AAA \*18551416  
JMB EMULOTA 013

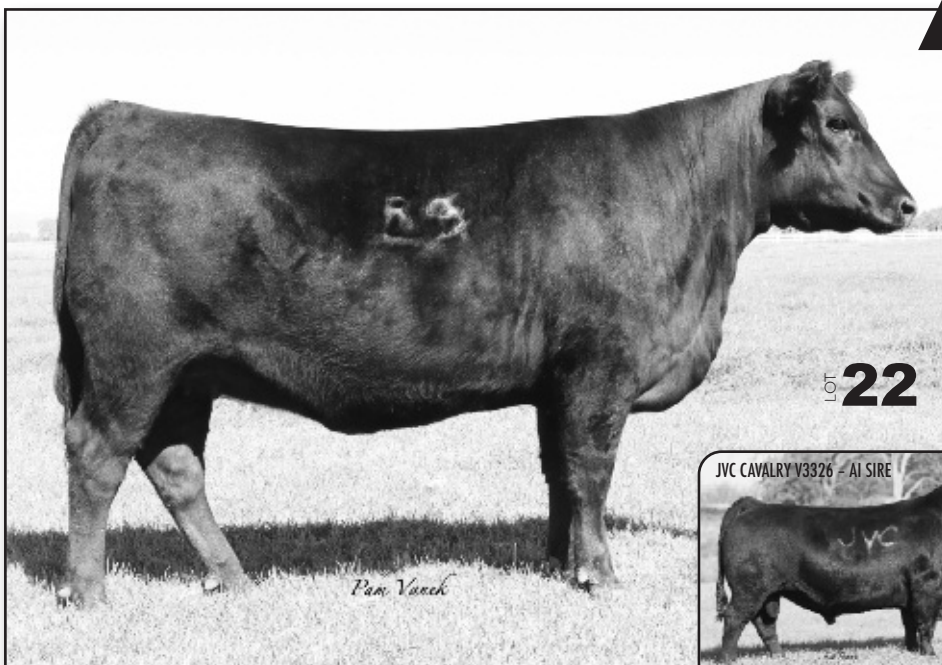
CONNEALY FINAL PRODUCT  
VARILEK PEARL 0006 014  
EF COMPLEMENT 8088  
EXG BLACKCAP 6247 PPC  
SITZ DASH 10277  
BARSTOW QUEEN W16  
S A V 004 PREDOMINANT 4438  
BAR S EMULOTA 5426

CED	BW	WW	YW	Milk	CW	Marb	RE	\$M	\$W	\$F	\$B	\$C
13	-2.3	69	123	23	51	.92	.64	52	78	87	149	245

## LOT 22 Idland Cattle Co.

Reece Idland  
PO Box 329 • Circle, MT 59215  
406-974-2295

- AI bred on 4/10/2020 to JVC Cavalry V3326. Vet checked safe to Cavalry and estimated due 1/17/2021.
- Individual performance: BW 58 lbs, BWR 100, 205 wt. 640 lbs, WWR 100 (ET).
- Donor dam was selected as a \$20,000 feature in the 2017 National Western Foundation Female Sale and is a maternal brother to the Select Sires herdsire, JMB Traction 292. She is now featured at Blohm Farms, Reinbeck, IA.
- Grandam's Production: 3 BR 98, 3 NR 112, 3 YR 108. She posts 41 IMF 102, RE 103. Great Grandam's production: 10 BR 96, 10 NR 104, 9 YR 103 - Pathfinder.
- A flush brother, ICC Epic 9413 was the \$11,500 top selling bull calf in the 2019 Idland Dispersion selected by Griffin Land & Cattle, Roundup, MT.
- Super spread calving ease and growth genetics with moderate YH (+0) and MH (-1) EPDs. Scrotal +1.30.



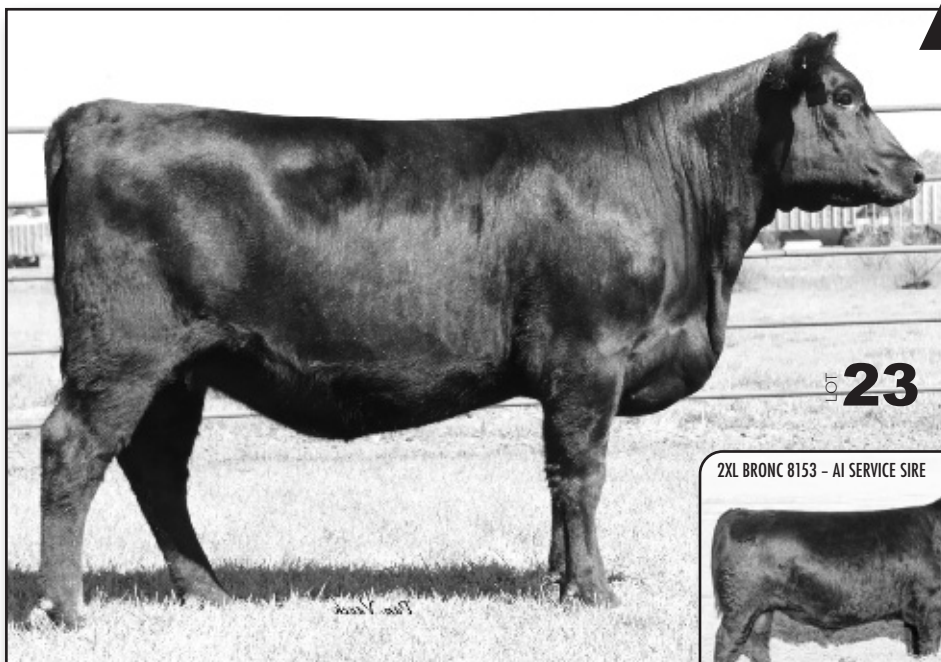
JVC CAVALRY V3326 - AI SIRE



## LOT 23 Idland Cattle Co.

Reece Idland  
PO Box 329 • Circle, MT 59215  
406-974-2295

- AI bred on 4/10/2020 to 2XL Bronc 8153. Vet checked safe to 2XL Bronc 8153 and estimated due 1/17/2021.
- Dam's production: 1 NR 109, 1 YR 112. She was selected by Reece Idland in the 2016 Nile from Jed Stevenson's Rich Angus herd at Hobson, MT.
- A maternal brother by RB Active Duty 010 sold in the 2018 ICC Bull Sale for \$4,500. Grandam's production: 3 BR 100, 3 NR 102, 2 YR 103.
- Foundation 3rd dam is sired by Basin Rainmaker 747L.
- LD Capitalist 316 is the Beef 360 calving ease bull that is phenotypically phenomenal. He is heavy muscled, bold ribbed and attractive going back to the proven Dixie Erica cow family at Luddington's.
- The service sire, 2XL Bronc 8153 is the \$50,000 top valued animal of the 2019 Idland Cattle Company Dispersal and is one of the most complete packages in the Angus breed in terms of combining his phenotype with his exceptional genomic enhanced EPD profile.



2XL BRONC 8153 - AI SERVICE SIRE



## Bred Heifer LOT 23 ICC RI RUBY 978

BD: 02/21/2019 Reg: \*19507475 Tattoo: 978

CONNEALY CAPITALIST 028  
LD CAPITALIST 316 AAA +\*17666102  
LD DIXIE ERICA 2053  
BASIN PAYWEIGHT 107S  
RICH RUBY 0525 AAA 18531173  
BASIN RUBY 0286  
S A V FINAL ANSWER 0035  
PRIDES PITA OF CONANGA 8821  
C A FUTURE DIRECTION 5321  
LD DIXIE ERICA OAR 0853  
VERMILION PAYWEIGHT J847  
BASIN LUCY 3829  
HOOVER DAM  
BASIN RUBY T434

CED	BW	WW	YW	Milk	CW	Marb	RE	\$M	\$W	\$F	\$B	\$C
7	-.4	60	98	23	48	.56	.67	49	64	99	145	237

## Heifer LOT 24 JLF PAISLEY 0102

BD: 02/10/2020 Reg: \*19793606 Tattoo: 0102

B C LOOKOUT 7024  
PVF SURVEILLANCE 4129 AAA +\*17954726  
PVF ELLEN 9100  
EXAR LUTTON 1831  
SCC / SS LASSIE'S STAR 016 AAA +\*18536709  
R F LASSIE'S STAR 199  
O C C LEGEND 616L  
GIBBET HILL MIGNONNE E37  
PVF ALL PAYDAY 729  
HYLINE ELLEN 410  
NORTHERN IMPROVEMENT 4480 GF  
EXAR SARAS DREAM 9809  
RITO 9FB3 OF 5H11 FULLBACK  
R F LASSIE 645

CED	BW	WW	YW	Milk	CW	Marb	RE	\$M	\$W	\$F	\$B	\$C
2	3.5	54	85	15	26	.07	.38	45	38	68	91	163



## LOT 24 JL Farms

Jena & Jordyn Wagner  
3752 Little Creek Lane RR 9 • Billings, MT 59101  
406-670-9618

- A family favorite, and for good reason! We have been watching her since day one and we knew she would not disappoint. "Roxanne" is perhaps the stoutest, most powerful daughter of Surveillance we have laid eyes on. Step behind this heifer and you will immediately know what we are talking about. The fact that she does all that in an extremely soft, feminine package makes her the most unique animal we have ever raised. Not to mention she is flawless in her joints and has a loving disposition. She is going to be a special breeding piece!
- Retaining 1/3 embryo interest BW: 82

PVF SURVEILLANCE 4129



J&L 0102 DAM @ DENVER







LOT 25

## LOT 25 JL Farms

Jena & Jordyn Wagner  
3752 Little Creek Lane RR 9 • Billings, MT 59101  
406-670-9618

- Hailing from the legendary Princess 1012 cow family, we really struck gold with this first calf Turning Point female out of our pick from the 2018 Rogen's female offering. There is no doubt "GiGi" lives up to the head-turning look, capacity, muscle, and stoutness for which Turning Point is making his name. We are confident that this well-balanced female will become your best friend over the next year, but also have a strong run in the show ring, and more importantly, become a truly versatile breeding piece in your cow herd.
- Retaining 1/3 embryo interest
- BW 70

STEVENS TURNING POINT - SIRE



## Heifer LOT 25 JLF PRINCESS 0291

BD: 01/29/2020 Reg: 19791389 Tattoo: 0291

PLATTEMERE WEIGH UP K360  
STEVENS TURNING POINT AAA +\*18434747  
STEVENS PRIDE 1167X  
BC II SKYFALL 2812  
ROGENS PRINCESS 801 AAA 19208312  
ROGENS PRINCESS 1530  
SITZ UPWARD 307R  
BARBARA OF PLATTEMERE 337  
S A V BISMARCK 5682  
FSHK PRIDE 180  
BCII MONEY MAKIN EXPRESS 508  
LIMESTONE ARKDALE PRIDE U184  
PVF INSIGHT 0129  
GREENS PRINCESS 4012

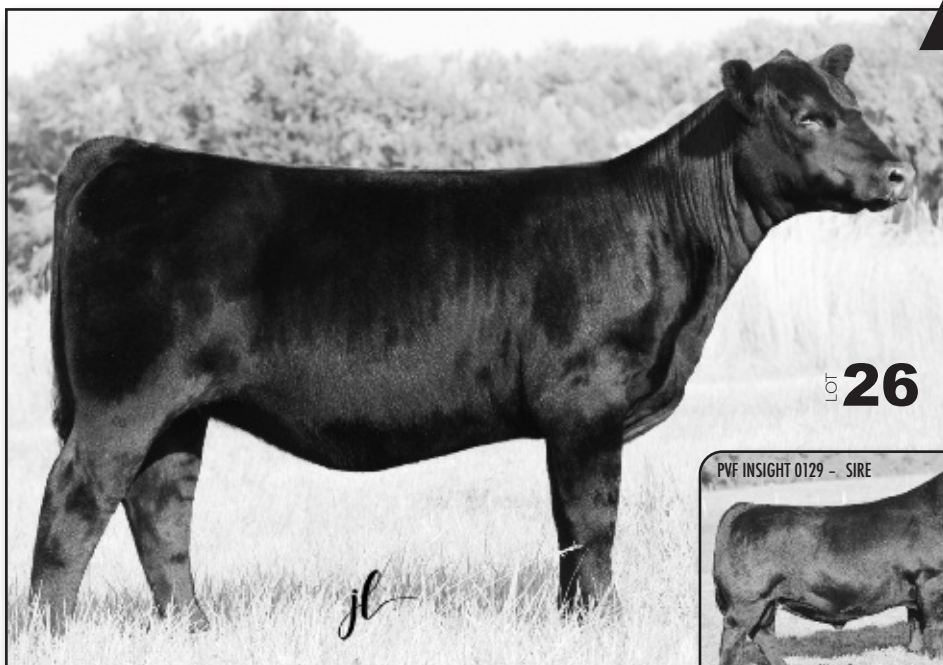
CED	BW	WW	YW	Milk	CW	Marb	RE	\$M	\$W	\$F	\$B	\$C
8	.5	53	84	13	29	.28	.11	48	44	78	104	183

## Heifer LOT 26 JLF ELAINE 0182

BD: 02/18/2020 Reg: 19791390 Tattoo: 0182

S A V BRILLIANCE 8077  
PVF INSIGHT 0129 AAA #\*16805884  
PVF MISSIE 790  
MUSGRAVE AVIATOR  
JLF ELAINE 7123 AAA 18835624  
JAF ELAINE 162W  
S A V BISMARCK 5682  
S A V BLACKCAP MAY 5270  
P V F NEW HORIZON 001  
P V F MISS RAPTOR 024  
KOUPLS B&B IDENTITY  
MCATL FOREVER LADY 1429-138  
BT NEW DAY 121R  
BT ELAINE 899M

CED	BW	WW	YW	Milk	CW	Marb	RE	\$M	\$W	\$F	\$B	\$C
4	1.9	52	94	27	44	.02	1.13	46	53	97	129	213



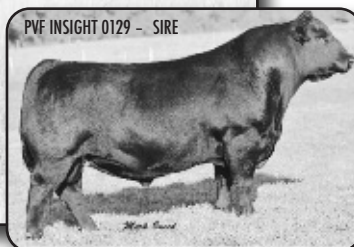
LOT 26

## LOT 26 JL Farms

Jena & Jordyn Wagner  
3752 Little Creek Lane RR 9 • Billings, MT 59101  
406-670-9618

- Mr. Reliable, Insight, has done it again, stamping "Ellie" with eye-appealing, classy build that will never go out of style. This sharp fronted, refined, and feminine heifer is ultra-long in her build and crisp and clean in her lines. She has all the pieces of an extraordinary breeding heifer. Don't overlook her now, or you will be watching her walk out of class ahead of you next fall.
- Retaining 1/3 embryo interest
- BW 80

PVF INSIGHT 0129 - SIRE





LOT 27



## LOT 27 K G Ranch

Paul & Kaye Doddridge  
100 KG Ranch Rd • Three Forks, MT 59752  
Office: 406-285-3660

- 9004 is a daughter of S.T. Genetics' sire, Sitz Response. Response is a proven calving ease sire who is making beautiful daughters. He is truly a complete sire. The dam of Response is the famed Sitz Ellunas Elite 656T.
- Maternal grandsire is KG Resolution 4042 and is a former KG sale topper purchased by Hilltop Angus and Accelerated Genetics.
- Connealy Capitalist 028 is also prominent in the pedigree. The very popular Capitalist is known for his calving ease, performance, and eye appeal.
- AI Bred to KG Resolution 4042. Due date 2/4/21  
Prod: BW 58, BR 86, WR 103, YR 102

## Bred Heifer LOT 27 KG EISA EVERGREEN 9004

BD: 01/18/2019 Reg: 19656281 Tattoo: 9004

S A V RESOURCE 1441 RITO 707 OF IDEAL 3407 7075  
SITZ RESPONSE 405C AAA +\*18219638 S A V BLACKCAP MAY 4136  
SITZ ELLUNAS ELITE 656T SITZ UPWARD 307R  
KG RESOLUTION 4042 KG ELLUNAS ELITE 35M  
KG EISA EVERGREEN 7020 AAA 19048016 KG SOLUTION 0018  
KG EISA EVERGREEN 5810 KG RITO DUCHESS 2717  
KG EISA EVERGREEN 9404 CONNEALY CAPITALIST 028

CED	BW	WW	YW	Milk	CW	Marb	RE	\$M	\$W	\$F	\$B	\$C
15	-2.3	52	99	25	32	.29	.69	68	54	70	108	208

## Bred Heifer LOT 28 KG PRINCESS 9006

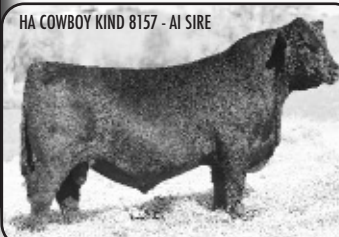
BD: 01/19/2019 Reg: 19656283 Tattoo: 9006

CONNEALY JUDGMENT CONNEALY CONSENSUS 7229  
KG JUSTIFIED 3023 AAA \*17707279 ENTRINE OF CONANGA 9876  
KG MISS MAGIC 1443 SITZ WISDOM 481T  
KG HIGH REGARD 2073 KG MISS MAGIC 3528  
KG PRINCESS 7329 AAA 19048107 GEIS BALOO 13'08  
KG PRINCESS 9778 KG MISS WIX 0680  
KG PRINCESS 3362 KG UPWARD 7226

CED	BW	WW	YW	Milk	CW	Marb	RE	\$M	\$W	\$F	\$B	\$C
12	-1.8	58	104	28	43	.70	.40	68	64	80	129	235



LOT 28



## LOT 28 K G Ranch

Paul & Kaye Doddridge  
100 KG Ranch Rd • Three Forks, MT 59752  
Office: 406-285-3660

- 9006 is a daughter of the very popular Genex sire KG Justified 3023. Justified has been an instrumental part of the KG Ranch, Gartner Denowh Angus Ranch, and Amtzen Angus Ranch programs. Year after year, Justified sons top these sales. Justified daughters continue to impress breeders across the nation and are a major reason semen sales have spiked the last couple of years.
- Dam: sired by KG High Regard 2073, the former KG Ranch sale topper purchased by Hinman Angus. The High Regard females have made excellent females and are responsible for many top selling bulls at KG Ranch annual bull sales.
- AI bred to HA Cowboy Kind 8157 (19274974) Due Date: 2/4/21; HA Cowboy Kind 8157 was the top selling bull at the 2019 Hinman Angus Sale. His first calves look to have tremendous potential.
- BW 58 lbs
- WR 102, YR 102, 86 BR
- Grandam: 9@105 WR, 9@102 YR





## LOT 29 Nissen Angus

Jeff & Christie Nissen  
PO Box 1508 • Chinook, MT 59523

Jeff: 406-949-1101 • Christie: 406-262-4125

- ¾ sister to Lot 30
- The sire of lots 29 & 30, Hilltop Final Option 5297 was our top pick in the 2016 Hilltop Angus Ranch sale for \$17,000. He was chosen for his phenotype and performance. We really like the maternal power behind this bull as well. In Hilltop's 2017 sale, 5297's dam produced Hilltop Allied 6262 - the \$40,000 top selling, Genex roster member to Hollow Top Angus at Pony, MT.
- Service sire for Lot 29, LD Capitalist 316 is a highly sought after, elite sire. Phenotypically flawless, sound footed, deep ribbed, heavy muscled and calving ease to boot! His picture speaks volumes and his calves are the herd building kind!
  - Full brother to Lot 29 sold in our 2019 production sale to Dan McNeill, Chinook, MT for \$4250
  - BW: 81 lbs - Act. WW: 727 lbs - Adj 205: 660 lbs WR@104 - YR@98
  - Dam's Production: 2WR@104, 2YR@101
  - 50K Tested/Parent Verified
  - Tested negative for BVD-PI
  - **Vet Checked Service Sire: LD Capitalist 316 due 1/29/2021.**

LD CAPITALIST 316 - SERVICE SIRE



## Bred Heifer LOT 29 NA LADY 943

BD: 01/30/2019 Reg: \*19811682 Tattoo: 943

CARTER FINAL OPTION 201  
HILLTOP FINAL OPTION 5297 AAA 18282850  
HILLTOP SHOSHONE 273

GDAR CJD ALLIANCE 0714  
NA LADY 521C AAA 18961360  
NA MISS FRONTIER ANNA 5533

CONNEALY FINAL PRODUCT  
CARTER LACEE 2189  
LYONS SANTA FE 6119  
HILLTOP SHOSHONE 69  
SITZ ALLIANCE 7487  
GDAR CJD KEM 8602  
B/R NEW FRONTIER 095  
NA MISS SANA ANNA 2205

CED	BW	WW	YW	Milk	CW	Marb	RE	\$M	\$W	\$F	\$B	\$C
7	.5	60	110	32	45	.52	.60	60	68	86	132	231

## Bred Heifer LOT 30 NA PRINCENE 9163

BD: 03/04/2019 Reg: \*19811683 Tattoo: 9163

CARTER FINAL OPTION 201  
HILLTOP FINAL OPTION 5297 AAA 18282850  
HILLTOP SHOSHONE 273

GDAR CJD ALLIANCE 0714  
NA PRINCENE 505C AAA \*18961351  
NA MISS SANA 121Y

CONNEALY FINAL PRODUCT  
CARTER LACEE 2189  
LYONS SANTA FE 6119  
HILLTOP SHOSHONE 69  
SITZ ALLIANCE 7487  
GDAR CJD KEM 8602  
SITZ ONWARD 9007  
NA MISS SANA PLAY 4244

CED	BW	WW	YW	Milk	CW	Marb	RE	\$M	\$W	\$F	\$B	\$C
9	.4	61	110	33	43	.43	.54	63	71	83	124	224



## LOT 30 Nissen Angus

Jeff & Christie Nissen  
PO Box 1508 • Chinook, MT 59523

Jeff: 406-949-1101 • Christie: 406-262-4125

- ¾ sister to Lot 29
- Maternal Grandsire of Lots 29 & 30, GDAR CJD Alliance 0714 was one of the top selling, high-ratioing bulls in GDAR's 2011 sale. 0714's calves have low birth and explosive growth, along with their superior carcass merit. We have a lot of his daughters in production and they are some great momma cows! Moderate framed, easy keepers with plenty of milk, solid structures and great dispositions.
- Owned Herd/Service Sire for Lot 30, Square B Milestone 7143 is a Pure Beef Genetics roster member.
- Milestone is sired by the phenotype king and female maker, SAV Sensation 5615. Sensation topped Schaff's 2016 sale at \$650,000. Milestone's dam is the famous Eura Elga of Conanga 9109. Her impressive progeny includes Connealy Black Granite, Connealy Concord and Connealy Western Cut.
  - Maternal brother to Lot 30 sold in our 2019 production sale to Keith Burke, Glasgow, MT for \$4750
  - BW: 85 lbs - Act. WW 713 lbs - Adj 205: 700 lbs WR@110 - YR@103
  - Dam's Production: 2WR@109, 2YR@103
  - 50K Tested/Parent Verified
  - Tested negative for BVD-PI
  - **Vet Checked Service Sire: Square B Milestone 7143 due 2/15/2021.**

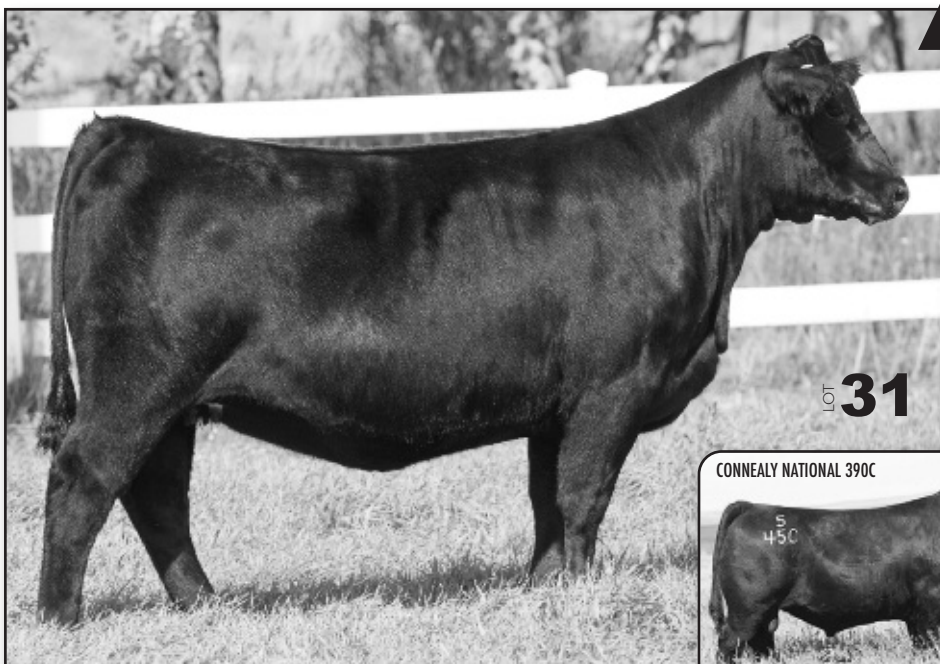
SQUARE B MILESTONE 7143 - SERVICE SIRE



## LOT 31 Sitz Angus Farm

Jim Sitz 406-925-9888  
9100 MT Hwy 91 North • Dillon, MT 59725  
Bob Sitz 406-581-9153  
P.O. Box 129 • Harrison, MT 59735

- Due Date 1/29/2021 to Connealy National 390C
- BW: 74, WR: 105, YR: 107
- 20G is an ideal Stellar daughter produced from a very neat Broken Bow daughter that is off to a great start with her production record. The grandam, 344C, has produced 4 calves @ 102 birth ratio, 103 weaning ratio, 102 yearling ratio and has maintained a 362 day calving interval. The great grandam was a highly productive donor cow that is most known as the dam of Sitz Longevity 556Z. The Stellar daughters look to be fantastic females with superb udder structure, and excellent foot quality. We believe that 20G can also be a highly productive female that is broody in her makeup, good uddered, good footed, and easy on the eye.
- Bred to Connealy National 390C (18498059) sired by Deer Valley Patriot and out of a terrific Confidence daughter. National is an all around calving ease sire that comes with a complete EPD profile.



CONNEALY NATIONAL 390C



Bred Heifer  
**LOT 31**

### SITZ PRIDE 20G

BD: 01/22/2019 Reg: I9392716 Tattoo: 20G

MOHNEN SUBSTANTIAL 272  
SITZ STELLAR 726D AAA \*18397542  
SITZ PRIDE 200B  
KM BROKEN BOW 002  
SITZ PRIDE 66E AAA \*18744121  
SITZ PRIDE 344C

BENFIELD SUBSTANCE 8506  
MOHNEN GLYN MAWR ELBA 1758  
CONNEALY FINAL PRODUCT  
SITZ PRIDE 308Y  
SUMMITCREST COMPLETE 1P55  
SUMMITCREST PRINCESS OPT2  
SITZ LOGIC Y46  
SITZ PRIDE 625W

CED	BW	WW	YW	Milk	CW	Marb	RE	\$M	\$W	\$F	\$B	\$C
5	1.7	79	140	29	58	.73	.54	79	80	95	148	271

Donor Cow  
**LOT 32**

### SITZ PRIDE 308Y

BD: 01/30/2011 Reg: #+\*17050218 Tattoo: 308Y

CONNEALY ONWARD  
SITZ UPWARD 307R AAA #14963730  
SITZ HENRIETTA PRIDE 81M  
SITZ ALLIANCE 9800  
SITZ PRIDE 44P AAA #14658668  
SITZ PRIDE 796

CONNEALY LEAD ON  
ALTUNE OF CONANGA 6104  
SITZ VALUE 7097  
SITZ HENRIETTA PRIDE 1370  
SITZ ALLIANCE 6595  
SITZ BARBARA PERFECTION 3171  
LEACHMAN RIGHT TIME  
SITZ PRIDE 698

CED	BW	WW	YW	Milk	CW	Marb	RE	\$M	\$W	\$F	\$B	\$C
3	2.9	64	108	38	49	.47	.69	62	78	89	133	235

## LOT 32 Sitz Angus Farm

Jim Sitz 406-925-9888  
9100 MT Hwy 91 North • Dillon, MT 59725  
Bob Sitz 406-581-9153  
P.O. Box 129 • Harrison, MT 59735

- Due Date 2/24/2021 Sitz Resilient 10208
- 308Y is the Grandam of the popular ABS sire, Sitz Stellar 726D, and it is easy to see that the power and shape that Stellar is known for originated from this great Pathfinder donor cow. 308Y posts an impressive production record, recording 5 calves @ 109 weaning ratio, 108 yearling ratio. 308Y is a power cow that you can build a cowherd around offering big time performance, superb foot quality, longevity, and excellent phenotype. The dam of 308Y was also a highly productive donor cow for Sitz Angus, producing 45 progeny. She recorded 7 natural calves @ 109 weaning ratio and 103 yearling ratio.
- Bred to Sitz Resilient 10208 (19057457), a very exciting young sire that topped the fall 2019 Sitz Angus sale at \$165,000. Resilient has the potential to be one of the most impactful sires the breed has to offer. This young Stellar son comes with an EPD profile that few bulls can rival.



SITZ RESILIENT 10208





## LOT 33 Skinner Ranch Seedstock

Kim Skinner • Tim Skinner  
162 Farm to Market W • Hall, MT 59837  
406-288-3872 (H) • 406-581-1852 (Kim)  
406-581-6224 (Tim)

- WWR: 6@107 YWR: 5@107
- Due 1/28/2021 to Musgrave Feature
- An exciting donor cow right out of the top of Skinner's herd. A cow that has that timeless look to her. This cow is a beautifully patterned cow that is long, thick and level designed. She is extremely bold ribbed while maintaining a beautiful, feminine front end. She has outstanding structure from the ground up, starting with excellent feet and ideal foot angle. Couple her excellent design, and momma cow look with a great udder and you have a cow to build a herd around. Her attributes do not end there, she has an impressive resume with her progeny. She continues to impress with her exceptional WWR: 6@107 and YWR: 5@107.

One son has been retained in Skinner's herd.

- SRS Chloe 2205Z was held out for flushing last summer where she averaged over 11 eggs on 4 different flushes. She is bred back to Musgrave Feature for a January 28th calf. Feature was a crowd favorite at the Musgrave 2019 bull sale. He is phenotypically the best bull we saw sell in 2019. He is excellent footed and has continued to impress us in his first two breeding seasons. His calves exhibit his same balance and style, and his first 65 calves in our herd have averaged 101 at 205 days.

- SRS Chloe 2205Z also posts good carcass trait EPDs with Marbling and \$ Grid in the top 10% and Ribeye area in the top 15%. Her \$ Weaned ranks her in the top 10% of the breed as well.



Donor Cow  
**LOT 33**

### SRS CHLOE 2205Z

BD: 01/26/2012 Reg: +\*17328293 Tattoo: 2205Z

BON VIEW NEW DESIGN 208

TC TOTAL 410

TC ERICA EILEEN 2047

C A FUTURE DIRECTION 5321

BASIN CHLOE 2P31

BASIN CHLOE 6102

B/R NEW DESIGN 036  
BON VIEW ERICA 443  
TWIN VALLEY PRECISION E161  
TC ERICA EILEEN 5116  
G A R PRECISION 1680  
C A MISS POWER FIX 308  
VERMILION DATELINE 7078  
BASIN CHLOE B93

CED	BW	WW	YW	Milk	CW	Marb	RE	\$M	\$W	\$F	\$B	\$C
2	1.9	55	86	38	31	.89	.70	54	73	68	132	225

Heifer  
**LOT 34**

### SRS JOYCE 0250H

BD: 02/03/2020 Reg: 19790620 Tattoo: 0250H

MUSGRAVE SKY HIGH 1535

MUSGRAVE FEATURE

MUSGRAVE PRIDE 1416-166

S CHISUM 6175

SRS JOYCE 3213A

BASIN JOYCE S474

MUSGRAVE BIG SKY

FLAG QUEEN W 00649

MOGCK BULLSEYE

WATERS PRIDE ROSE 166

S ALLIANCE 3313

S GLORIA 464

BROOKS EXT 792

BASIN JOYCE 2264

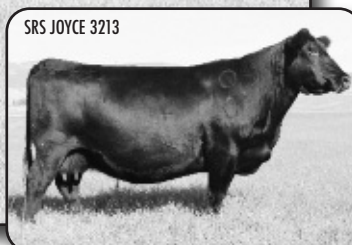
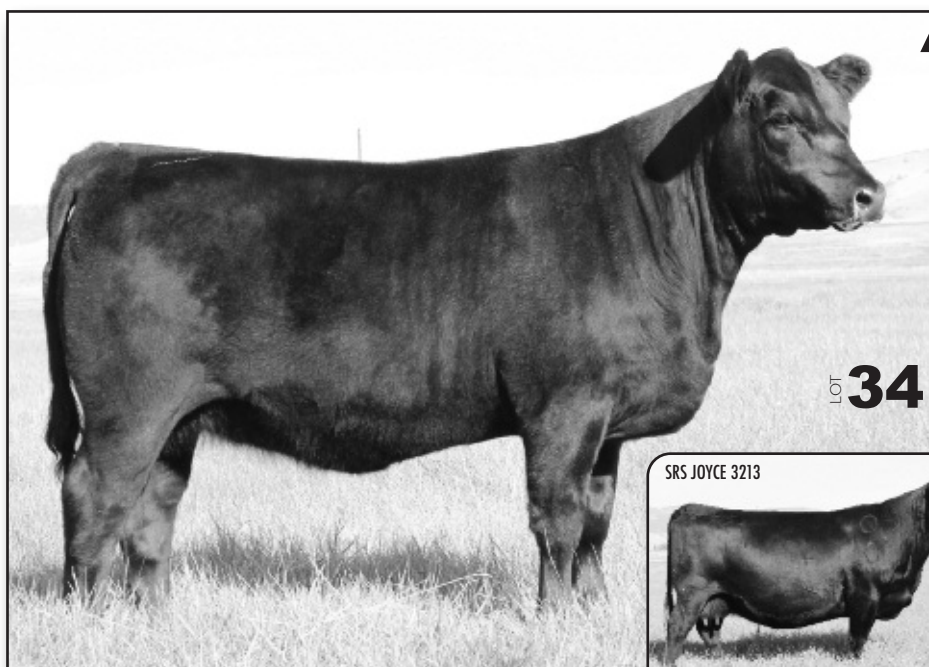
CED	BW	WW	YW	Milk	CW	Marb	RE	\$M	\$W	\$F	\$B	\$C
2	2.2	59	103	22	41	.41	.57	60	56	85	125	222

## LOT 34 Skinner Ranch Seedstock

Kim Skinner • Tim Skinner  
162 Farm to Market W • Hall, MT 59837  
406-288-3872 (H) • 406-581-1852 (Kim)  
406-581-6224 (Tim)

- BW: 80; Adj 205: 660, ratio 102
- This Feature heifer is a heifer that has stood out since birth. She is a level designed heifer that is super clean through her front. She is wide topped, extremely deep ribbed and soft flanked.
- Her dam is a cow that has continued to produce high quality calves in Skinner's herd. She is the daughter of one of Skinner's top donor cows, producing over 50 progeny that has left many outstanding daughters as well as producing many standout herd sires. This cow is extremely broody, great uddered and excellent footed. Feature was a crowd favorite at the Musgrave 2019 bull sale. He is excellent footed and has continued to impress us in his first two breeding seasons. His calves exhibit his same balance and style and his first 65 calves in our herd have averaged 101 at 205 days. His daughters have the look to make beautiful Angus cows and will make a strong impact on our program moving forward.

- Dam's Prod - BR 6@94; WR 6@99
- Grandam's Prod - BR 9@98; WR 9@107





# HEIFER PREGNANCY

## LOT 35 Split Diamond Ranch

Hans & Steve Buckner  
53 Ridder Lane • Whitehall, MT 59759  
406-581-0612 (Hans' Cell)

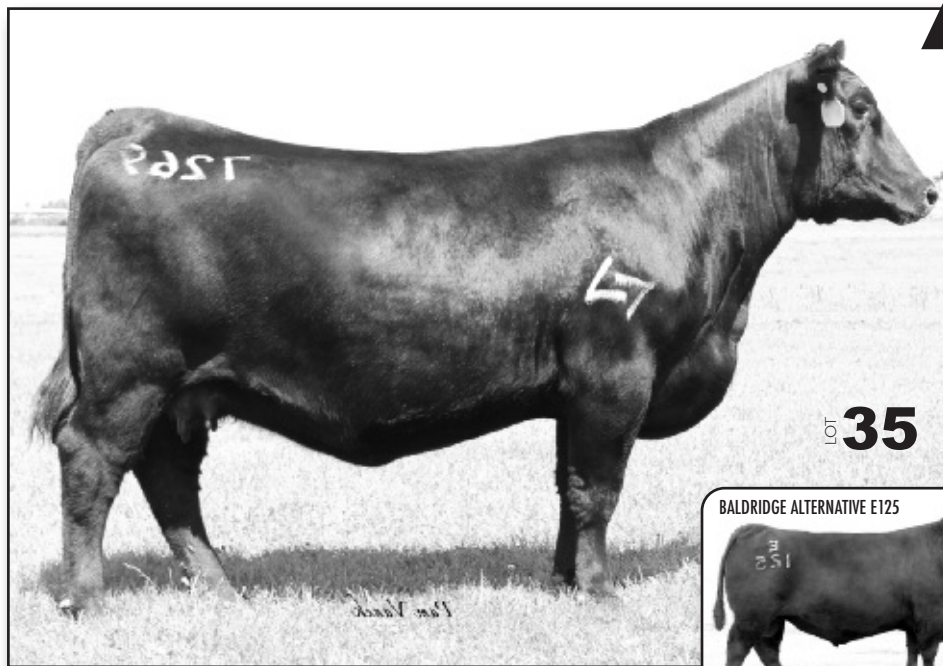
- **Due Date: February 10th, 2021**
- Donor dam, SD Lady 4114-7269 was the \$25,000 top selling heifer in the 2017 NILE selected by Southard Ranches, Wheatland WY. She posts a progeny record of 1 NR 104, 2 REA 103 her first daughter by Marda Blacksmith 683 was a NILE highlight in the 2019 sale, selling for \$8,000 to Wall Street Cattle, Lebanon, MO. Her natural son, SD Blacksmith 7269-9678, was a \$7,000 selection in the 2020 Split Diamond Bull Sale to Buhler Land and Cattle, Lima, MT.
- Grandam's Production: 3 BR 95, 2 NR 109, 2 YR 103, 12 IMF 114, 12 REA 100. Her individual progeny sales total over \$90,000.
- Great Grandam's Production: 4 NR 109, 3 YR 112, 24 IMF 102, 24 REA 103. Her individual progeny sales total over \$170,000.
- With over \$275,000 in combined progeny sales and over 35 combined retained females in the Split Diamond program, the possibility of this becoming a 4th generation donor dam who is bred for performance, functionality, longevity and production is extremely high. Don't miss this opportunity to continue this legendary cow family and expand your herd into the future.
- Sire, Baldridge Alternative was the top-selling bull of his calf crop at Baldridge Brothers when

BALDRIDGE ALTERNATIVE E125



two-thirds interest sold for \$120,000 in 2018, after his maternal brother Baldridge Command C036 sold two-thirds interest for \$155,000 to ABS as their dam's first natural calf. The first 18 sons of Alternative, all 2019 spring calves, sold for an average of \$11,097 in the 2019 Stevenson Fall Sale.

- This mating is jam packed with proven real-world performance backed by proven cow families to minimize the risk and maximize the potential for any program to leave a lasting impression.
- Registered recip AAA #18881593
- Data BW +2.9, YW +82, WR: +146



LOT 35

### SD LADY 4114-7269 W

BD: 02/03/2017 Reg: +\*18841480 Tattoo: 7269

RITO 707 OF IDEAL 3407 7075

S A V RENOWN 3439

AAA #\*17633839

S A V BLACKCAP MAY 4136

EXAR DENVER 2002B

SD LADY 4114 W

AAA #\*17812613

R B LADY 7125-2933

R R RITO 707

IDEAL 3407 OF 1418 076

S A V 8180 TRAVELER 004

S A V MAY 2397

EXAR UPSHOT 0562B

EXAR ROYAL LASS 1067

G A R OBJECTIVE 7125

R B LADY STANDARD 308-933

CED	BW	WW	YW	Milk	CW	Marb	RE	\$M	\$W	\$F	\$B	\$C
2	2.8	82	147	21	62	.53	.64	49	76	100	147	240





STEVENSON EVERLAST - AI SIRE



AI SIRE  
TO LOT **36**

## LOT 36 Stevenson Angus Ranch

Keith Stevenson  
P.O. Box 170 • Hobson, MT 59452  
**406-350-5450**

- Maternal sister to STEVENSON TURNING POINT
- One of the last ET daughters by the great Stevenson Pride 1167X
- She's a maternal sister to Stevenson Rockmount, Stevenson CE Deluxe 1914 and Stevenson Hero 1216X
- Maternal sister to Stevenson Premium 69374, featured herd bull for Joseph Angus and ORigen.
- PRIDE 1167X records 4 WR 105 and 4 YR 102
- 9563 is sired by Stevenson Big League 70749, the high selling bull from our 2017 sale at \$221,000, featured at ORigen and ABS Global as the dominating performance sire of the breed

- AI confirmed to STEVENSON EVERLAST due 2/21.
- STEVENSON EVERLAST was the \$37,500 Alternative son from last fall's sale.

STEVENSON PRIDE 1167X - DAM



## Bred Heifer LOT 36 STEVENSON PRIDE 9563

BD: 02/20/2019 Reg: +\*19435940 Tattoo: 9563

JINDRA ACCLAIM  
STEVENSON BIG LEAGUE 70749 AAA +\*18836113  
RL 9061 BIRDIE 3102  
S A V BISMARCK 5682  
STEVENSON PRIDE 1167X AAA #\*16607377  
FSHK PRIDE 180

JINDRA 3RD DIMENSION  
JINDRA BLACKBIRD LASSY 1111  
S A V THUNDERBIRD 9061  
RL 0145 IMAGE 102  
G A R GRID MAKER  
S A V ABIGALE 0451  
SITZ ALLIANCE 6595  
FSHK PRIDE 725

CED	BW	WW	YW	Milk	CW	Marb	RE	\$M	\$W	\$F	\$B	\$C
12	-.3	70	118	27	57	.65	.61	72	80	106	156	274

## Heifer LOT 37 STEVENSON ANNIE 0050

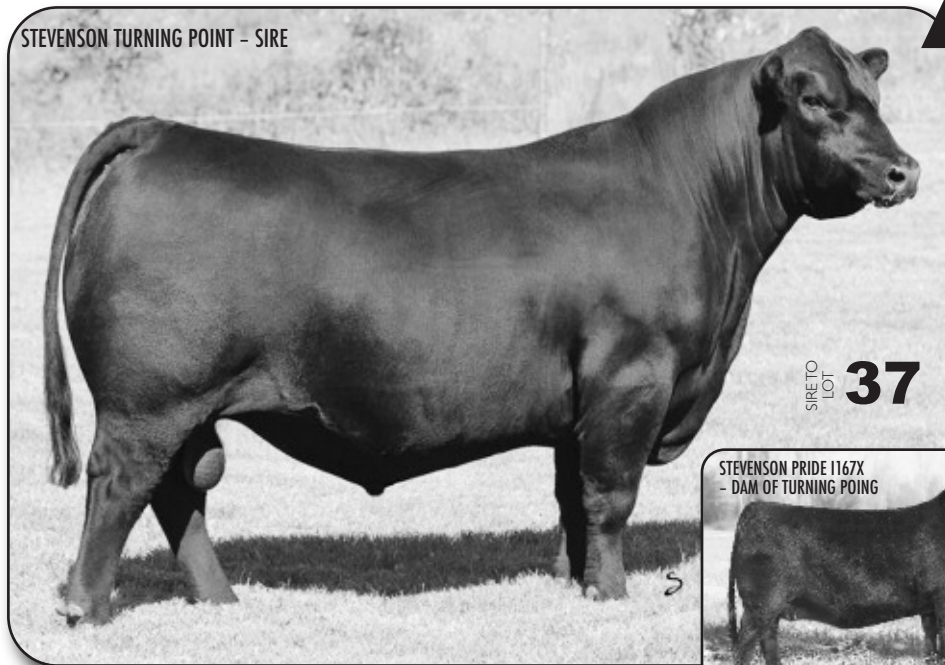
BD: 04/09/2020 Reg: \*19767534 Tattoo: 0050

PLATTEMERE WEIGH UP K360  
STEVENSON TURNING POINT AAA +\*18434747  
STEVENSON PRIDE 1167X  
THOMAS BIG RIVER 4081  
DOWN T ANNIE 7651 AAA 18831824  
DOWN T ANNIE 5657

SITZ UPWARD 307R  
BARBARA OF PLATTEMERE 337  
S A V BISMARCK 5682  
FSHK PRIDE 180  
A A R TEN X 7008 S A  
THOMAS CAROL 2062  
STEVENSON ROCKMOUNT 3605  
LCY ANNIE 309

CED	BW	WW	YW	Milk	CW	Marb	RE	\$M	\$W	\$F	\$B	\$C
11	1.3	70	111	15	43	.60	.71	69	67	86	138	248

STEVENSON TURNING POINT - SIRE



SIRE TO LOT **37**

## LOT 37 Stevenson Angus Ranch

Darrell Stevenson  
428 Birky Road • White Sulphur Springs, MT 59645  
**406-350-5443**

- A younger April show heifer prospect by Stevenson Turning Point
- Turning Point sired the only bull to win both Grand Champion at both Canadian Agribition and NWSS in the same year. He is one of the hottest bulls in the Genex lineup with a stop you in your tracks look and superior calving ease.
- The first TURNING POINT daughters are the real deal with superb udder design and eye catching maternal look.
- Stevenson Pride 1167X is the dam of Stevenson Turning Point

STEVENSON PRIDE 1167X  
- DAM OF TURNING POINT



# DIAMOND IN THE ROUGH - MATERNAL GRANDSIRE



MATERNAL  
GRANDSIRE  
TO LOT  
**38**

## LOT 38 Meged Angus Ranch

Haven Meged  
696 Tongue River Road • Miles City, MT 59301  
**406-951-3004**

- The dam (Diamond Blackcap 151C) of 0010 was the high selling donor prospect from R&S Angus dispersion. Diamond Blackcap 151C was sired by Diamond in the Rough. She records 3 WR 101.
- Longtime, top producing cow family from Clint's program
- Heifer is a deep sided, roomy female. She's powerful.
- Extra capacity, fleshing ability and marbling ... promising brood cow prospect.
- Sired by JVC Calvary V3326
- Calvary is an excellent calving ease sire that is at the top of the breed for performance. While he brings a great combination of traits to his EPD profile, don't overlook his daughters as they may prove to be his greatest attributes. They are excellent mother cows.

JVC CALVARY V3326 - SIRE



## Heifer LOT 38 MEGED BLACKCAP 0010

BD: 02/16/2020 Reg: \*19761986 Tattoo: 0010

CONNEALY CAVALRY 1149  
JVC CAVALRY V3326 AAA \*17784803  
BRUSETT FOREVER W857

DIAMOND IN THE ROUGH  
DIAMOND BLACKCAP 151C AAA 18130628  
DIAMOND BLACKCAP 913Y

CONNEALY CONSENSUS  
BRISTA OF CONANGA 927T  
TC FRANKLIN 619  
BRUSETT FOREVER 827  
DIAMOND JUSTICE 901S  
DIAMOND BLACK LADY 7206  
21AR ROUNDUP 7005  
DIAMOND BLACKCAP 6589

CED	BW	WW	YW	Milk	CW	Marb	RE	\$M	\$W	\$F	\$B	\$C
2	3.0	81	138	20	61	.94	.55	48	74	99	161	257

Sire  
Dam

## Heifer LOT 39 STRMSIDE ENVIOUSBLKBIRD 2024

BD: 02/10/2020 Reg: 19802329 Tattoo: 2024

PVF INSIGHT 0129  
MAR INSIGHT 6060 AAA \*18544526  
CHAMPION HILL GEORGINA 7791

S A V SENSATION 5615  
STREAMSIDE ENVIOUS BLACKBIRD AAA +19369617  
DEPPE ENVIOUS BLACKBIRD 350

S A V BRILLIANCE 8077  
PVF MISSIE 790  
S A V IRON MOUNTAIN 8066  
CHAMPION HILL GEORGINA 6174  
S A V REGISTRY 2831  
S A V BLACKCAP MAY 4136  
BC EAGLE EYE 110-7  
EXAR ENVIOUS BLACKBIRD 8382

CED	BW	WW	YW	Milk	CW	Marb	RE	\$M	\$W	\$F	\$B	\$C
6	2.0	62	113	26	51	.34	.96	41	60	109	152	238
2	3.1	61	113	19	44	.36	.56	34	46	91	131	204



## LOT 39 Streamside Cattle Co

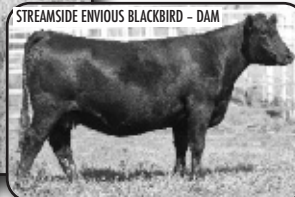
Dan, Amber, Avery & Trista Bates  
20323 Norris Rd • Manhattan MT 59741  
**Dan 406-570-9001 • Amber 406-570-2205**

- We haven't been this excited for an up and coming show prospect at StreamSide Cattle for some time! We strive year in and year out to put one together that checks all the boxes and we feel pretty strongly that we have done so with Stream-Side Envious Blackbird 2024. 2024 is as extended through her front 1/3 as you can make one and still have them pack a punch in the muscle and thickness department. 2024 has the presence and attitude of a champion yet is as sweet as a kitten. Please don't pass this one by if you are considering Angus Jr Nationals next summer in Grand Island NE.
- The young dam of 2024 was a product of a flush we did with SAV Sensation 5615 on our stoutest and biggest footed donor, Deppe Envious Blackbird 350. We could not have asked for better results. Our goal would be to have a pasture full of 1st calf heifers like her.
- MAR Insight 6060, an impressive son of PVF Insight 0129 was used to AI all of our heifers last year. Montgomery Angus Ranch, ND comments that his offspring are stamped with his extra cool front and are stout and powerful all the way to the ground.

MAR INSIGHT 6060 - SIRE



STREAMSIDE ENVIOUS BLACKBIRD - DAM





## Lot 40 Timber Line Ranch

Jake Callantine

3655 Flathead Pass Rd. • Belgrade, MT 59714

406-388-2408 (H) • 406-581-4764 (C)

- BW: 92; 205 day wt.: 764
- A59 is a stout, well made female with more look and poise than you're inclined to find. Her pedigree is full of good looking, functional females that can get the job done. This combination of phenotype and performance make her the ideal Jr's project.
- Dam was our pick of the Flesch Angus sale females in 2018 BW 92
- Dam Production: BR 1 @ 100; WR 1 @ 100
- SCC Paycheck was our pick of the 2019 MT Performance Bull Co-op Sale. He's a super stout, long bodied, good footed PayCheck son that has put a ton of look and power into our calf crop.
- Has the highest % heifer retention at Timberline Ranch
- Ranks in the top 2% of the breed for WW, YW, and RADG



FF SHOSHONE X5 - MATERNAL GRANDAM



**LOT 40** **TLR SHOSHONE A59**  
 Heifer BD: 03/30/2020 Reg: I9808127 Tattoo: A59

BASIN PAYCHECK 5249  
 SCC PAYCHECK 23F AAA \*19214788  
 SCC MS WITCH 8D  
 VERMILION PRIVILEGE C142  
 FF SHOSHONE JF E224 AAA 19806796  
 FF SHOSHONE X5  
 BASIN PAYWEIGHT 1682  
 BASIN LUCY 3150  
 BASIN EXCITEMENT  
 SCC MS WITCH 70B  
 S A V PRIVILEGE 3030  
 VERMILION DATELINE 2090  
 S A V BISMARCK 5682  
 JF SHOSHONE U97

CED	BW	WW	YW	Milk	CW	Marb	RE	\$M	\$W	\$F	\$B	\$C
6	1.8	62	111	25	-	-	-	72	58	85	-	-

**LOT 41** **TLR EVERELDA ENTENSE CJ A39**  
 Heifer BD: 03/24/2020 Reg: I9787566 Tattoo: A39

VERMILION SIRLOIN  
 HA PRIME CUT 4493 AAA \*17943466  
 HA MISS BLACKCAP 9127  
 FF CORRECT Z58  
 TLR EVERELDA ENTENSE CJ 5-92 AAA 18295039  
 TLR EVERELDA ENTENSE CJ 1-02  
 TC FRANKLIN 619  
 VERMILION LASS 8482  
 HA PROGRAM 5652  
 H A MISS BLACKCAP 1250  
 S A V FINAL ANSWER 0035  
 FF FANTASY S53  
 S A V BISMARCK 5682  
 TLR EVERELDA ENTENSE CJ W48

CED	BW	WW	YW	Milk	CW	Marb	RE	\$M	\$W	\$F	\$B	\$C
10	1.1	62	105	29	-	-	-	64	67	83	-	-

## Lot 41 Timber Line Ranch

Jake Callantine

3655 Flathead Pass Rd. • Belgrade, MT 59714

406-388-2408 (H) • 406-581-4764 (C)

- BW: 72; 205 day wt.: 707
- A39 is going to make a cow! We've had a fantastic turnout with our PrimeCut calves and this heifer is no exception. On the bottom side - the Correct cows are exceptional mothers with good udders, good feet and plenty more to love. A39 is deep, stout, made right and ready to get to work.
- BW 72
- Dam Production: BR 3 @ 97; WR 3 @ 105
- Grandam Production: BR 6 @ 97; WR 6 @ 101
- There's not much you don't already know about HA Prime Cut - they're just good! Our Prime Cut calves are as solid as they come, really happy with how this sire has worked in our herd. Lots of body and power in his calves and this heifer calf is a prime example.



HA PRIME CUT 4493



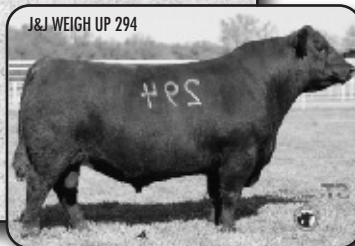
## LOT 42 Top Notch Ranch

Marv & Patty Cross

15380 Clear Creek Rd. • Chinook, MT 59523

406-357-3534 (H) • 406-262-3127 (C)

- J&J Weigh Up 294 (18004546) is a highly thought of son of Plattermere Weigh Up featured at S.T. Genetics. 294 phenotype is hard to come by. An excellent front end coupled with a big square hip and a soft flank make this sire extremely attractive.
- Adj 205 – 744, 104 ratio. Dam is a 2-year-old Guinness daughter with a bright future at Top Notch Angus. Maternal Grandam has 7 WR @ 109 and 5 YR @ 105. Top 4% for WW and YW.



## LOT 42 TOP NOTCH SUGAR 015

BD: 01/28/2020

Reg: \*19790645

Tattoo: 015

PLATTERMERE WEIGH UP K360  
J&J WEIGH UP 294 AAA 18004546  
J & J MISS GEORGINA 294

CONNEALY GUINNESS  
TOP NOTCH SUGAR 835 AAA 19164967  
NA MISS SUGAR DESIGN 253

SITZ UPWARD 307R  
BARBARA OF PLATTERMERE 337  
TC ROMEO 917  
J&J MISS GEORGINA 927  
CONNEALY DUBLIN 8223  
PANDA OF CONANGA 3609  
GDAR CJD ALLIANCE 0714  
NA MISS SUGAR DESIGN YR 901

CED	BW	WW	YW	Milk	CW	Marb	RE	\$M	\$W	\$F	\$B	\$C
1	3.0	77	136	29	53	.84	.48	61	74	98	156	263

## LOT 43 TOP NOTCH SWEETHEART 040

BD: 02/04/2020

Reg: \*19791652

Tattoo: 040

PLATTERMERE WEIGH UP K360  
STEVENSON EASY MONEY 70688 AAA 18821965  
DOWN T BLACKBIRD 5646

SHIPWHEEL FAR & WIDE 3501  
TOP NOTCH SWEETHEART 622 AAA \*18519267  
NA MISS PENDLETON 947

SITZ UPWARD 307R  
BARBARA OF PLATTERMERE 337  
STEVENSON ROCKMOUNT RX933  
DOWN T BLACKBIRD 3942  
SHIPWHEEL FAR & WIDE 1558  
SHIPWHEEL ENCHANTRESS 1102  
HARB PENDLETON 765 J H  
NA MISS MEG 0157

CED	BW	WW	YW	Milk	CW	Marb	RE	\$M	\$W	\$F	\$B	\$C
2	2.5	81	145	35	73	.36	.80	48	85	122	164	261

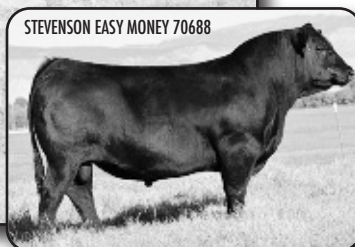
## LOT 43 Top Notch Ranch

Marv & Patty Cross

15380 Clear Creek Rd. • Chinook, MT 59523

406-357-3534 (H) • 406-262-3127 (C)

- Adj. 205 – 781, 110 ratio.
- Dam has 3 WR @ 111, 2 YR @ 112.
- A very productive cow who has earned her keep. We kept as a replacement, her calf in 2019. In 2018 she produced a bull that was a top seller in the 2019 Northern Premier Sale.
- Maternal Grandam was flushed successfully multiple times. She has 6 natural calves with WR of 109 and YR at 106.
- A genomics outlier, EASY MONEY dominates for performance, muscle and \$values. Featured as the second high selling bull in Stevenson's spring sale, EASY MONEY is co-owned with Lazy JB Angus, Montrose CO.





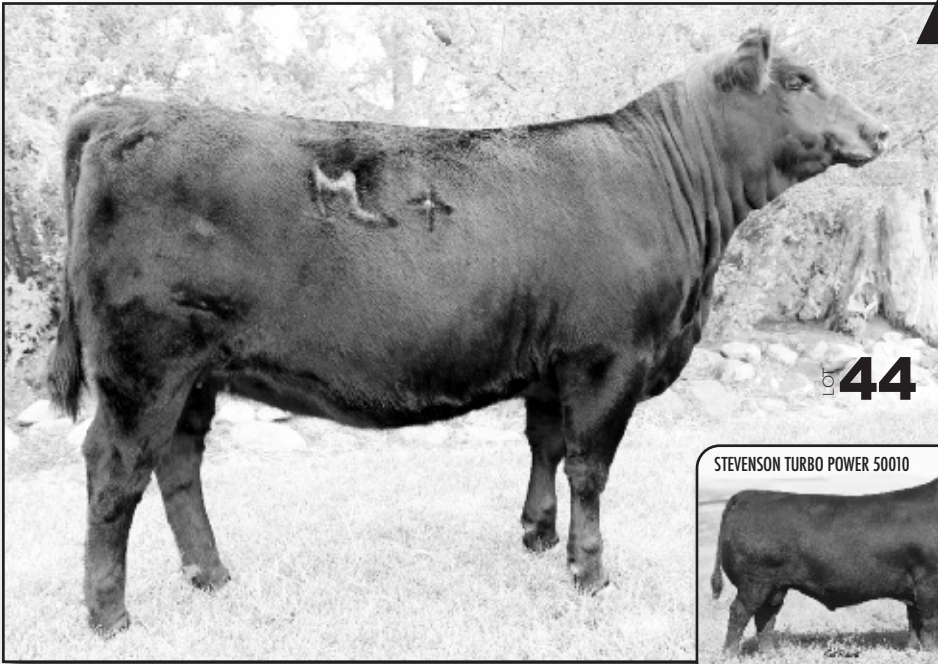
## LOT 44 Top Notch Ranch

Marv & Patty Cross

15380 Clear Creek Rd. • Chinook, MT 59523

406-357-3534 (H) • 406-262-3127 (C)

- Adj. 205 – 750, 105 ratio. Pathfinder dam with 6 WR @ 105, 5 YR @ 104. This cow has never missed being AI'd. Her 2016 bull was a sale topper in the 2017 Northern Premier Sale, selling to Gardner-Denowh. She also produced a sale topper in 2016. We have kept as a replacement, her 2018 Commonwealth heifer. She is following in her dam's footsteps, weaning off a high ratioing calf this year. If you want a heifer with volume and style along with good feet and legs and a solid maternal background look this one up. She is a dandy. She is going to be extremely hard to part with!
- Stevenson Turbo Power 50010 is a light birth weight sire with plenty of performance. Turbo Power checks all the boxes for Marb, RE, & \$ values.



## LOT 44 TOP NOTCH LADY BIZ 044

BD: 02/05/2020 Reg: 19790744 Tattoo: 044

PA FULL POWER 1208  
STEVENS TURBO POWER 50010 AAA \*18104996  
STEVENS AMBER ROSE 3262

HA BISMARCK 1625  
TOP NOTCH LADY BIZ 362 AAA #17699082  
TOP NOTCH FINAL ANSWER 17

PA POWER TOOL 9108  
PINE VIEW SQR RITA W091  
HF REBEL 53Y  
STEVENS AMBER ROSE 1333  
S A V BISMARCK 5682  
HA BLACKBIRD 4299  
HOLMAN FINAL ANSWER 820  
TOP NOTCH MS IMAGE MAKER 95

CED	BW	WW	YW	Milk	CW	Marb	RE	\$M	\$W	\$F	\$B	\$C
13	-1.1	64	100	29	41	.54	.57	50	80	83	129	217



NOTES: \_\_\_\_\_

## LOT 45 Vermilion Ranch

The Pat Goggins Family  
P.O. Box 30758 • Billings, MT 59107  
406-670-0078 • 406-861-5664

- The Vermilion Ranch continues the tradition of consigning one of their best to the NILE. They are the only consignor that has sold at the NILE from the very beginning, each and every year. Here is a bred heifer that is really clean fronted, big bodied, sound and has COW written all over her.

- She is sired by an exciting home bred bull we call Charge On, who has already sired sale topping sons in our sale. His Grandam was the lead off cow in the Vermilion Cow Dispersion of 2019. She has progeny ratios of 6 WN @ 107 and 6 Yrlg @ 107. Her own dam, a Spur bred cow, has progeny ratios of 2 WN @ 108 and 2 Yrlg @ 108. This heifer's ratios are WN @ 109 and Yrlg @ 109.

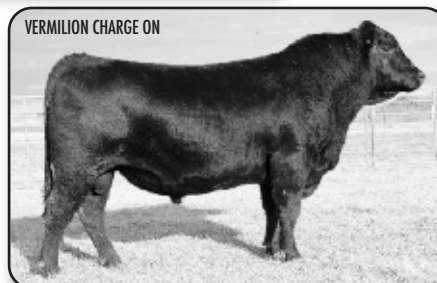
- She is bred to Connealy McIlroy (19249452). His first calves are some of the best on the ranch. He is a calving ease sire and yet he ranks in the top 2% in weaning and yearling, +83 and +150 respectively. She is carrying a heifer calf due March 1, 2021.



LOT 45



CONNEALY MCILROY



VERMILION CHARGE ON

Bred Heifer **LOT 45** **VERMILION BLACKBIRD 9140**  
BD: 02/12/2019 Reg: I9508294 Tattoo: 9140

CONNEALY DOC NEAL  
VERMILION CHARGE ON AAA 18833154  
VERMILION ELDORENE 5165

VERMILION SPUR B008  
VERMILION BLACKBIRD 6246 AAA 18499267  
VERMILION BLACKBIRD 1321

PA FULL POWER 1208  
POPPY OF CONANGA 765  
CONNEALY COUNTDOWN  
VERMILION ELDORENE 2269  
CONNEALY SPUR  
VERMILION EVERGREEN 2018  
HARB COWCUTTA 776 J H  
VERMILION BLACKBIRD 4472

CED	BW	WW	YW	Milk	CW	Marb	RE	\$M	\$W	\$F	\$B	\$C
9	2.5	75	133	28	50	.81	.47	69	79	89	144	256

**VIDEOS ARE AVAILABLE ONLINE AT:**

**LiveAuctions.TV 2.0**

Check the updated EPDs through  
American Angus Association





## LOT 46 WildKat Angus

Kevin M. Warner

1233 Western Skies Trl. • Stevensville, MT 59870

406-552-7258

- This heifer's sire is Circle L Gus. He is a breed leader for lower PAP scores in his progeny. She inherits her sire's great feed efficiency, great foot scores, and low PAP EPD's. She projects a top 1% \$M value. Her maternal Grandsire is the Pathfinder ABS Global Bull PA Safeguard 021, with top Marb, RE, \$F, \$G, \$B, & \$C. All of her bottom side sires are Pathfinder bulls. Additionally, her maternal grandam was the 2012 Western Montana State Fair Reserve Champion Female. Gussie May 007 will make any herd a fine mother cow and show prospect. Her pedigree is full of Pathfinder ancestors, 7 total.

• BW 75 lbs

SIRE TO LOT 46

PA SAFEGUARD 021 - MAT. GRANDSIRE



**LOT 46** **KW GUSSIE MAY 007**  
BD: 04/23/2020 Reg: \*19719789 Tattoo: 007

S CHISUM 6175  
CIRCLE L GUS AAA \*17993084  
CIRCLE L PRIDE X097  
PA SAFEGUARD 021  
WARNER'S SAFE MAY 601 AAA \*18480621  
M M MISS MACY MAY 11

S ALLIANCE 3313  
S GLORIA 464  
HARB PENDLETON 765 J H  
CIRCLE L PRIDE 38T  
G A R NEW DESIGN 5050  
PA LORNA MARSHALL 2905-730  
CONNEALY THUNDER  
M M MISS MACY 910

CED	BW	WW	YW	Milk	CW	Marb	RE	\$M	\$W	\$F	\$B	\$C
10	-1.4	60	95	18	40	.26	.47	90	66	91	121	247

**LOT 47** **KW BEAUTY SENSATION 009**  
BD: 03/21/2020 Reg: 19758035 Tattoo: 009

SITZ SENSATION 693A  
GC 3C SENSATION SWAG 701E AAA \*18916275  
GC BLACKCAP JULIE 1312  
SYDGEN FATE 2800  
WARNER'S BEBE FATE 804 AAA \*19078399  
WARNER'S BLACK BEAUTY 401

A A R TEN X 7008 S A  
SITZ BARBARAMERE NELL 13Y  
CONNEALY CONFIDENCE 0100  
GC BLACKCAP FACTOR 1312  
SYDGEN TRUST 6228  
SYDGEN HEROINE 9808  
S A V BISMARCK 5682  
MYTTY KINCHTRY BEAUTY 1033

CED	BW	WW	YW	Milk	CW	Marb	RE	\$M	\$W	\$F	\$B	\$C
12	-1.6	53	101	32	43	.57	.49	62	67	93	137	240

## LOT 47 WildKat Angus

Kevin M. Warner

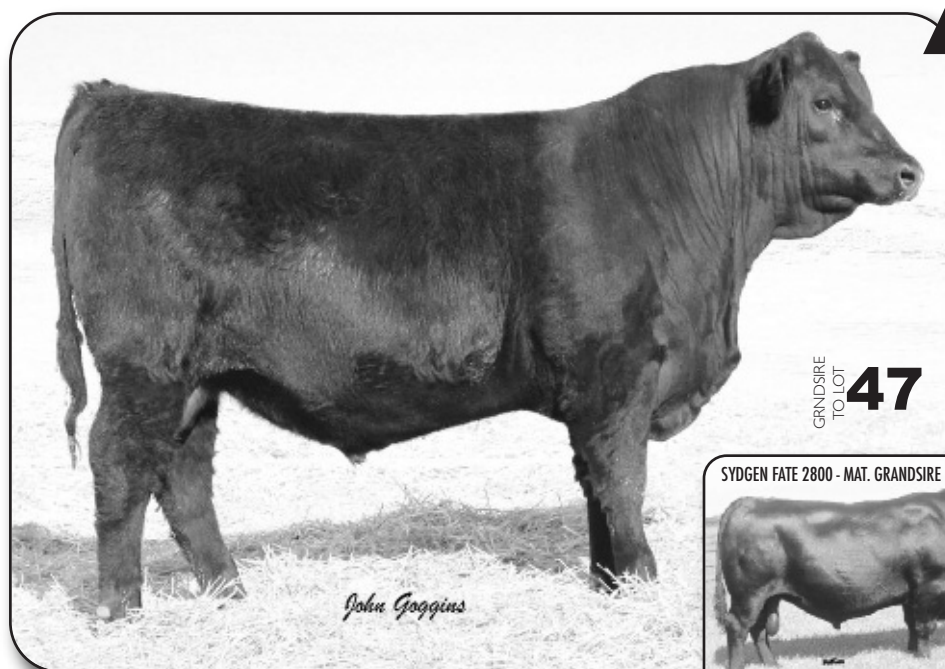
1233 Western Skies Trl. • Stevensville, MT 59870

406-552-7258

- This heifer's sire is a breed leader for calving ease and low birth weights. He has passed those traits to this heifer. Her dam, who is a SydGen Fate 2800 daughter, adds in growth and \$ values. She is a beautiful and docile heifer that will make a great mother cow and show prospect. Her pedigree is full of Pathfinder ancestors, 7 total. She possesses a complete EPD profile with excellent \$ values.
- Sydgen Fate 2800 is the MGS to KW Beauty Synsation 009. Fate was the highlight of the 2013 Sydgen annual sale when he set a Sydgen record purchase price at \$113,000. Sensation was a featured highlight of the 2014 Sitz Angus Sale. Backed by one of the top maternal cow families of their legendary herd.

GRANDSIRE TO LOT 47

SYDGEN FATE 2800 - MAT. GRANDSIRE



# EMBRYO DIVISION

LOT **48**

## Meged Angus Ranch and Stevenson Angus Ranch

White Sulphur Springs, MT  
**Darrell Stevenson 406-350-5443**  
**Haven Meged 406-951-3004**



SIRE: POSS RAWHIDE - AAA \*19416968

POSS MAVERICK  
 POSS RAWHIDE AAA \*19416968  
 POSS BLUEBLOOD 6502

S A V BISMARCK 5682  
 STEVENSON PRIDE LADY 8140 AAA \*16548174  
 STEVENSON PRIDE LADY U027U

BASIN PAYWEIGHT 1682  
 POSS PRIDE 5163  
 POSS EASY IMPACT 0119  
 POSS BLUEBLOOD 920  
 G A R GRID MAKER  
 S A V ABIGALE 0451  
 H A IMAGE MAKER 0415  
 STEVENSON PRIDE LADY 4890

PROJECTED EPDS

CED	BW	WW	YW	Milk	CW	Marb	RE	\$M	\$W	\$F	\$B	\$C
8	.5	67	116	25	55	.64	.56	58	70	105	156	259



DAM: STEVENSON PRIDE LADY 8140 - AAA \*16548174

### LOT A: 4 EMBRYOS | LOT B: 4 EMBRYOS

- Stevenson Pride Lady 8140 by Poss Rawhide
- One of our favorite donors, she records 6 WR 107, 4 YR 101, 13 IMF 100 with 13 RE 100
- Rawhide created industry interest as the top selling, \$140,000, bull this spring for Poss Angus. Recognized as the best son of Poss Maverick to date.
- Embryos stored at ORigen (conventional)

LOT **49**

## Stillwater Cattle Co

Rob and Pam Aumuller  
 403 Stillwater Drive • Columbus, MT 59019  
**Rob & Pam 406-321-2470**

3F EPIC 4631  
 EXAR MONUMENTAL 6056B AAA \*18379347  
 FWY 7008 OF C085 4029

S A V 8180 TRAVELER 004  
 NUETA ROYAL PRIDE 170U AAA \*16401982  
 BT ROYAL PRIDE 237G

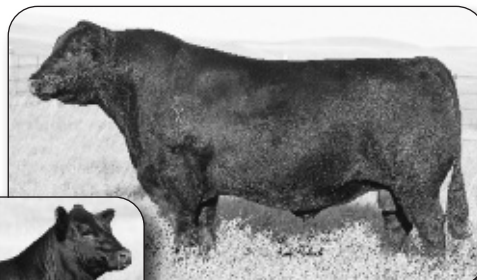
VARILEK PRODUCT 2010 04  
 ZEBO QUEEN 1072  
 A A R TEN X 7008 S A  
 FWY RITA C085  
 SITZ TRAVELER 8180  
 BOYD FOREVER LADY 8003  
 O S U 6T6 ULTRA  
 BT ROYAL PRIDE 326A

PROJECTED EPDS

CED	BW	WW	YW	Milk	CW	Marb	RE	\$M	\$W	\$F	\$B	\$C
11	.1	59	106	30	48	.82	.54	43	65	89	146	232



DAM: NUETA ROYAL PRIDE 170U - AAA \*16401982



SIRE: EXAR MONUMENTAL 6056B  
 AAA \*1837934



170U DAUGHTER Sired BY CASINO BOMBER

### THREE EMBRYOS: (1) GRADE 1, (2) GRADE 2

#### GUARANTEE 1 HEIFER PREGNANCY

- 170U is a maternal sister to the 2005 NWSS Champion Bull, BT Crossover. Two daughters have sold for an average of \$13,750. As an 11 year old cow, her natural raised son was one of SCC's top selling bulls in the 2020 bull sale. A full sib to these embryos is our top bull calf of 2021. Guarantee 1 pregnancy.



# EMBRYO DIVISION

LOT **50**

**StreamSide Cattle Co**

Dan, Amber, Avery & Trista Bates  
20323 Norris Rd • Manhattan MT 59741  
Dan 406-570-9001 • Amber 406-570-2205



SIRE: SITZ RESPONSE 405C - AAA +\*18219638

S A V RESOURCE 1441  
SITZ RESPONSE 405C AAA +\*18219638  
SITZ ELLUNAS ELITE 656T

CONNEALY FINAL SOLUTION  
CHERRY KNOLL AURORA 1227 AAA 17310655  
CHERRY KNOLL AURORA 7050

RITO 707 OF IDEAL 3407 7075  
S A V BLACKCAP MAY 4136  
SITZ UPWARD 307R  
SITZ ELLUNAS ELITE 35M  
CONNEALY ANSWER 71  
ESTE OF CONANGA 364  
BOYD ON TARGET 1083  
J K S MISS CHEYENNE 196

**PROJECTED EPDS**

CED	BW	WW	YW	Milk	CW	Marb	RE	\$M	\$W	\$F	\$B	\$C
8	.1	50	98	28	28	.31	.53	50	58	72	107	190



DAM: CHERRY KNOLL AURORA 1227 - AAA 17310655

## 3 EMBRYOS - 3 GRADE 1 IVF EMBRYOS

- Superior material genetic package. Aurora is an ideal cow, great footed, ultra feminine, moderate and has a beautiful udder with small teats at 8 years old. Aurora calved at 22 months of age, then decreased her calving interval by 30-60 days for the next three years until we then flushed her for a year and held her over. She's never missed on a breeding. Cows like Aurora can't help but make you money.
- Sitz Response 405C is a flush brother to Sitz Asset, purchased by Hilltop Angus, KG Ranch & S.T. Genetics. Response is a complete sire in every way.

# SEMEN DIVISION

LOT **51**

**Hollow Top Angus**

- Selling: Lot A: 10 Units, Lot B: 10 Units
- Semen stored at World West Semen Sires.
- EPD Profile: WW 2%, YW 5%, SC 25%, HP 2%, M 1%, Marb 10%, RE 30%, CW 25%, \$M 2%, \$B 25%, \$C 10%
- Pedigree: Hard to find semen out of S.T. Genetics roster member, Spring Cove Reno. Reno has produced top selling progeny across the nation and has left his mark on the Angus breed. His EPD profile is exceptional, it possesses excellent growth, carcass, and \$ values.

LOT **51**

## SPRING COVE RENO 4021

BD: 02/12/2014 Reg: \*17926446 Tattoo: 4021

SUMMITCREST COMPLETE 1P55  
KM BROKEN BOW 002 AAA #\*16764044  
SUMMITCREST PRINCESS 0P12

C C A EMBLAZON 702  
SPRING COVE LIZA 021 AAA \*16773385  
SPRING COVE LIZA 721

C F RIGHT DESIGN 1802  
SUMMITCREST ELBA 1M17  
BASIN AMBUSH 8161  
SUMMITCREST PRINCESS 2J10  
O C C EMBLAZON 854E  
LIMESTONE BLACKCAP R128  
HYLINE RIGHT TIME 338  
SPRING COVE LIZA 146

CED	BW	WW	YW	Milk	CW	Marb	RE	\$M	\$W	\$F	\$B	\$C
7	.9	82	136	39	51	.95	.65	80	101	78	148	272



Porter Bennett  
PO Box 456 • Ennis, MT 59729  
Owners: Porter Bennett & Carolyn Quan 303-513-9058  
Cattle Operations: Clay Clarke 406-223-5078



# Thank you

**for your support for this year's  
NILE Angus Female Sale**

---



**Ron Frye Marketing**  
Ron Frye: (406) 600-7514  
[ronfryemarketing@gmail.com](mailto:ronfryemarketing@gmail.com)  
[Ronfryemarketing.com](http://Ronfryemarketing.com)



This image shows a blank sheet of white paper with horizontal ruling lines. The lines are evenly spaced and run across the width of the page. There are no margins, text, or other markings on the paper.



RON FRYE | MARKETING

P.O. Box 1363

Three Forks, MT 59752

FIRST CLASS MAIL  
U.S. POSTAGE  
**PAID**  
PHILIP, SD  
PERMIT NO. 20

Cover photos by:

*Cate Brubaker*  
CREATIVE SERVICES

Bid Online at:

**LiveAuctions** TV 2.0